

## 20140930\_SystemPerformanceCheck-D2450V2 SN 706

Frequency: 2450 MHz; Duty Cycle: 1:1; Room Ambient Temperature: 24.0°C; Liquid Temperature: 23.0°C

Medium parameters used:  $f = 2450$  MHz;  $\sigma = 1.87$  S/m;  $\epsilon_r = 38.483$ ;  $\rho = 1000$  kg/m<sup>3</sup>

DASY5 Configuration:

- Area Scan Setting: Find Secondary Maximum Within: 2.0 dB and with a peak SAR value greater than 0.0012W/kg
- Electronics: DAE3 Sn427; Calibrated: 1/21/2014
- Probe: EX3DV4 - SN3902; ConvF(7.29, 7.29, 7.29); Calibrated: 5/19/2014;
- Sensor-Surface: 2.5mm (Mechanical Surface Detection)
- Phantom: SAM; Type: QD000P40CD; Serial: TP 1751

**Head/Pin=100 mW/Area Scan (71x71x1):** Interpolated grid: dx=1.200 mm, dy=1.200 mm

Reference Value = 63.104 V/m; Power Drift = 0.08 dB

**Fast SAR: SAR(1 g) = 5.7 W/kg; SAR(10 g) = 2.47 W/kg**

Maximum value of SAR (interpolated) = 8.37 W/kg

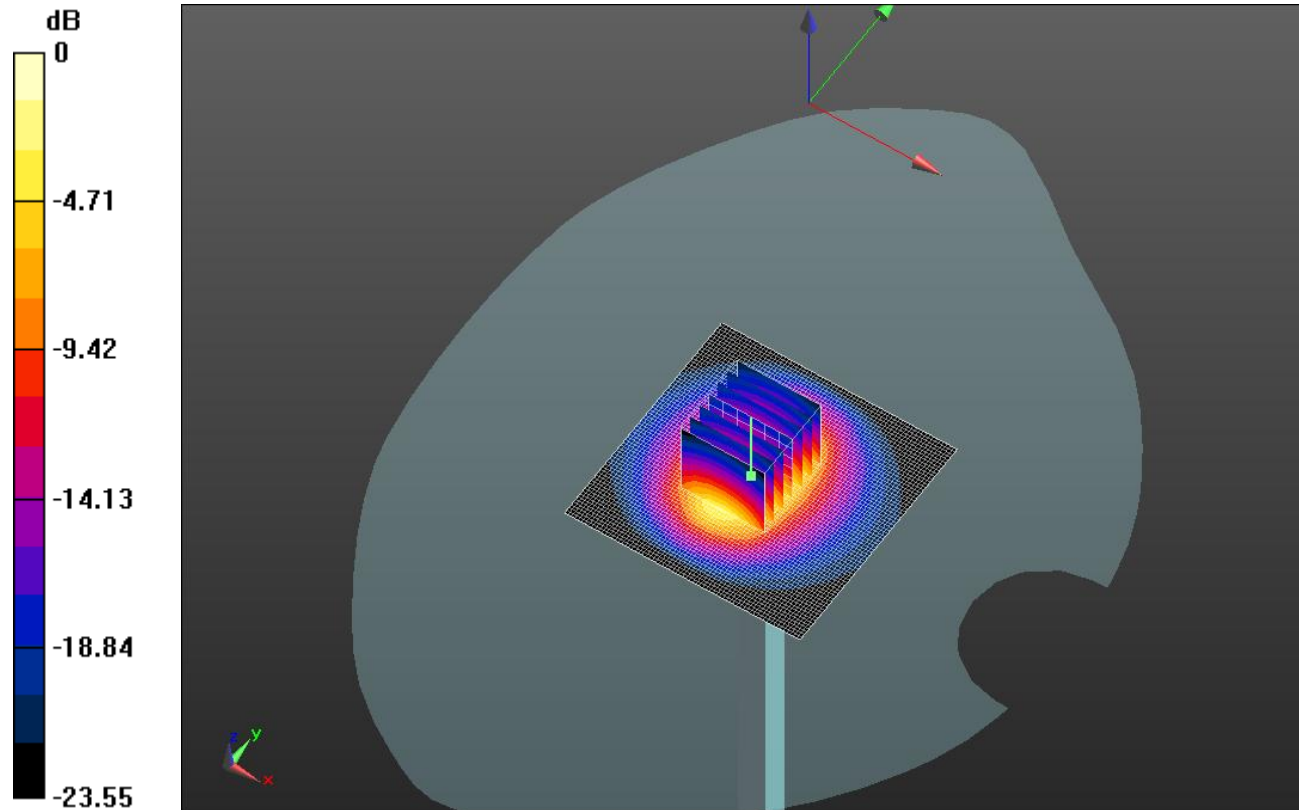
**Head/Pin=100 mW/Zoom Scan (7x7x7)/Cube 0:** Measurement grid: dx=5mm, dy=5mm, dz=5mm

Reference Value = 63.104 V/m; Power Drift = 0.08 dB

Peak SAR (extrapolated) = 12.2 W/kg

**SAR(1 g) = 5.6 W/kg; SAR(10 g) = 2.53 W/kg**

Maximum value of SAR (measured) = 8.10 W/kg

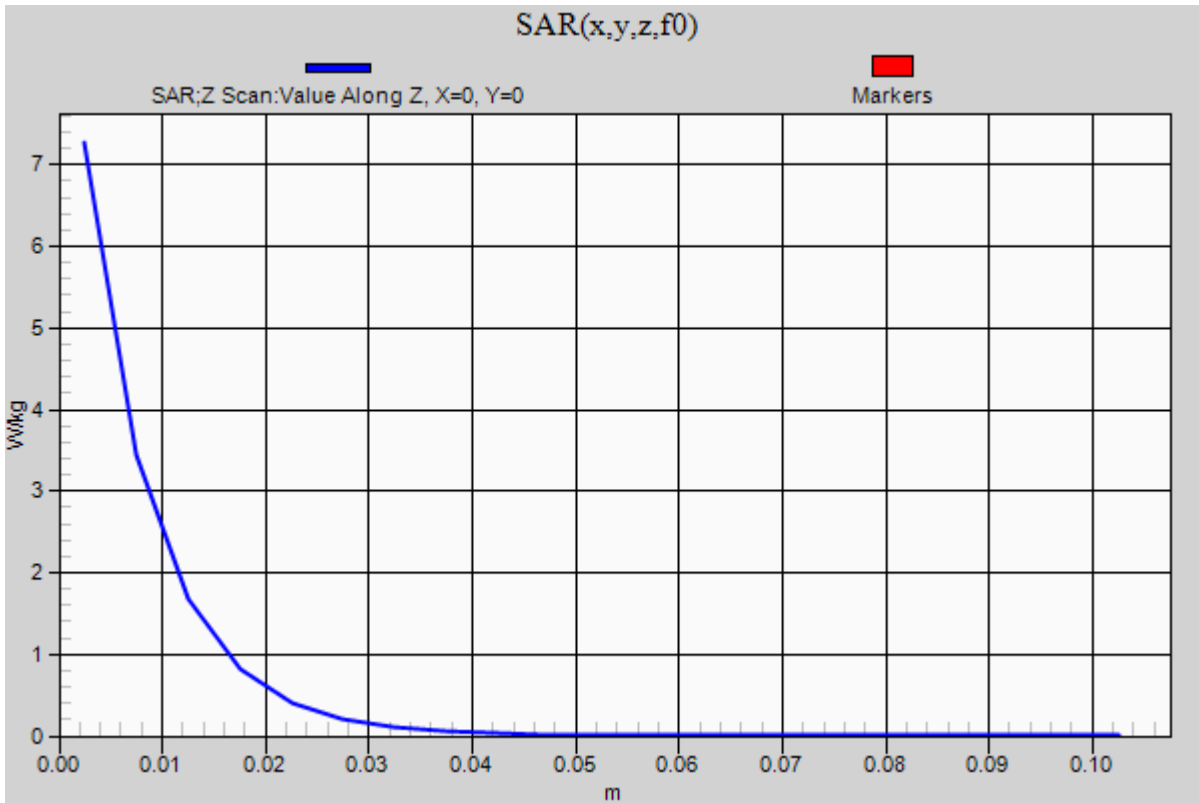


0 dB = 8.10 W/kg = 9.08 dBW/kg

### 20140930\_SystemPerformanceCheck-D2450V2 SN 706

Frequency: 2450 MHz; Duty Cycle: 1:1

**Head/Pin=100 mW/Z Scan (1x1x21):** Measurement grid: dx=20mm, dy=20mm, dz=5mm  
Maximum value of SAR (measured) = 7.27 W/kg



## 20140930 SystemPerformanceCheck-D2600V2 SN 1036

Frequency: 2600 MHz; Duty Cycle: 1:1; Room Ambient Temperature: 24.0°C; Liquid Temperature: 23.0°C

Medium parameters used:  $f = 2600$  MHz;  $\sigma = 2.241$  S/m;  $\epsilon_r = 50.786$ ;  $\rho = 1000$  kg/m<sup>3</sup>

DASY5 Configuration:

- Area Scan Setting: Find Secondary Maximum Within: 2.0 dB and with a peak SAR value greater than 0.0012W/kg
- Electronics: DAE4 Sn1377; Calibrated: 8/27/2014
- Probe: EX3DV4 - SN3929; ConvF(6.64, 6.64, 6.64); Calibrated: 5/9/2014;
- Sensor-Surface: 2.5mm (Mechanical Surface Detection)
- Phantom: ELI-B V5.0; Type: QDOVA001BB; Serial: S/n:1216

**Body/Pin=100 mW/Area Scan (71x71x1):** Interpolated grid: dx=1.200 mm, dy=1.200 mm

Reference Value = 63.12 V/m; Power Drift = 0.00 dB

**Fast SAR: SAR(1 g) = 6.34 W/kg; SAR(10 g) = 2.76 W/kg**

Maximum value of SAR (interpolated) = 9.27 W/kg

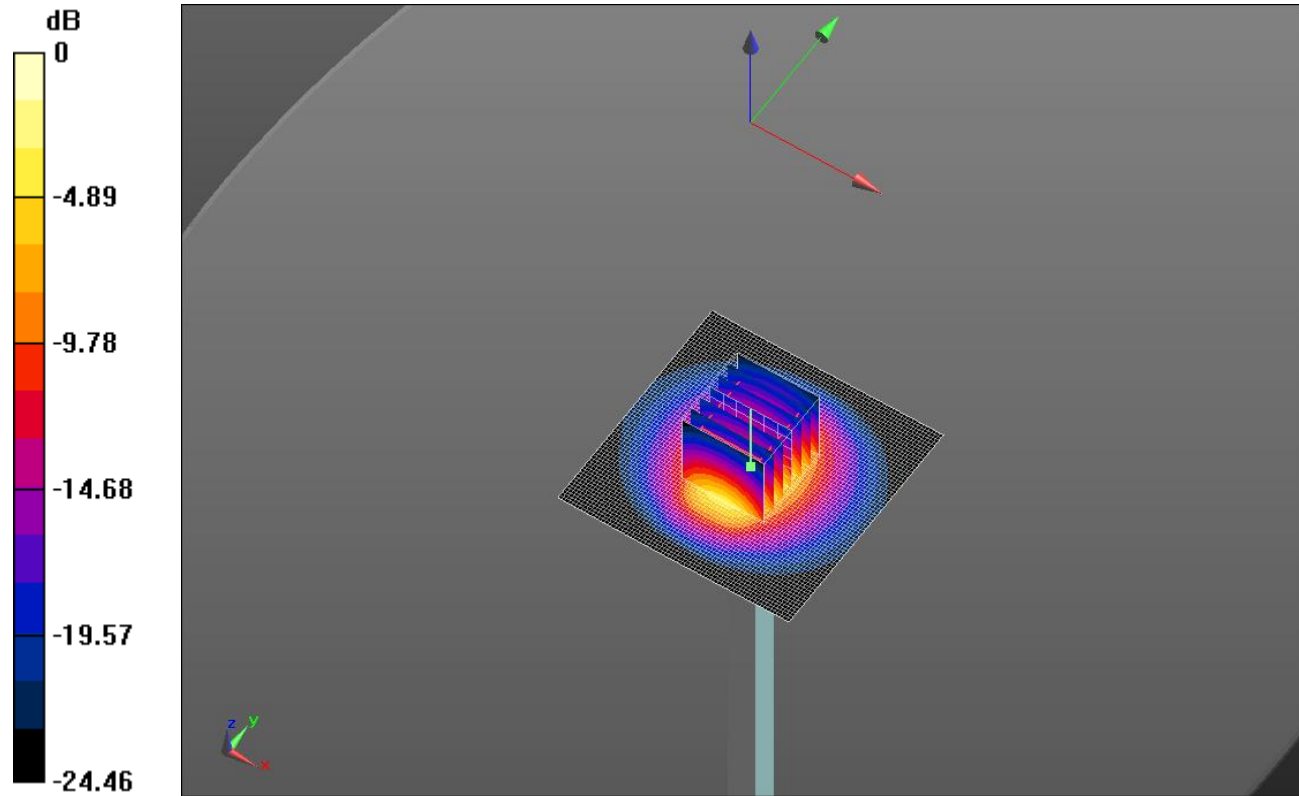
**Body/Pin=100 mW/Zoom Scan (7x7x7)/Cube 0:** Measurement grid: dx=5mm, dy=5mm, dz=5mm

Reference Value = 63.12 V/m; Power Drift = 0.00 dB

Peak SAR (extrapolated) = 13.4 W/kg

**SAR(1 g) = 6.08 W/kg; SAR(10 g) = 2.67 W/kg**

Maximum value of SAR (measured) = 8.87 W/kg

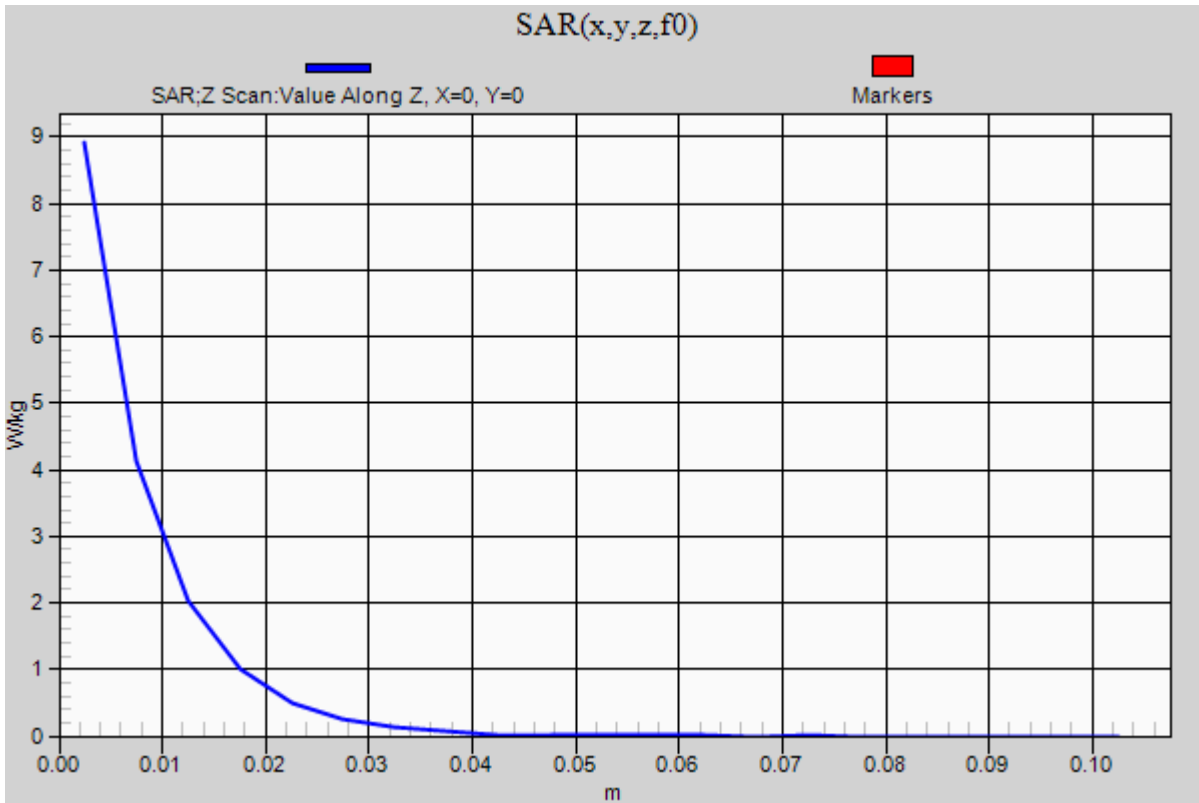


0 dB = 8.87 W/kg = 9.48 dBW/kg

### 20140930 SystemPerformanceCheck-D2600V2 SN 1036

Frequency: 2600 MHz; Duty Cycle: 1:1

**Body/Pin=100 mW/Z Scan (1x1x21):** Measurement grid: dx=20mm, dy=20mm, dz=5mm  
Maximum value of SAR (measured) = 8.91 W/kg



## 20140930\_SystemPerformanceCheck-D835V2 SN 4d117

Frequency: 835 MHz; Duty Cycle: 1:1; Room Ambient Temperature: 24.0°C; Liquid Temperature: 23.0°C

Medium parameters used:  $f = 835 \text{ MHz}$ ;  $\sigma = 1.017 \text{ S/m}$ ;  $\epsilon_r = 53.025$ ;  $\rho = 1000 \text{ kg/m}^3$

DASY5 Configuration:

- Area Scan Setting: Find Secondary Maximum Within: 2.0 dB and with a peak SAR value greater than 0.0012W/kg
- Electronics: DAE4 Sn1439; Calibrated: 5/14/2014
- Probe: EX3DV4 - SN3991; ConvF(9.7, 9.7, 9.7); Calibrated: 5/16/2014;
- Sensor-Surface: 2.5mm (Mechanical Surface Detection)
- Phantom: ELI v5.0 (B); Type: QDOVA002AA; Serial: TP:1257

**Body/Pin=100 mW/Area Scan (7x7x1):** Measurement grid: dx=15mm, dy=15mm

Maximum value of SAR (measured) = 1.21 W/kg

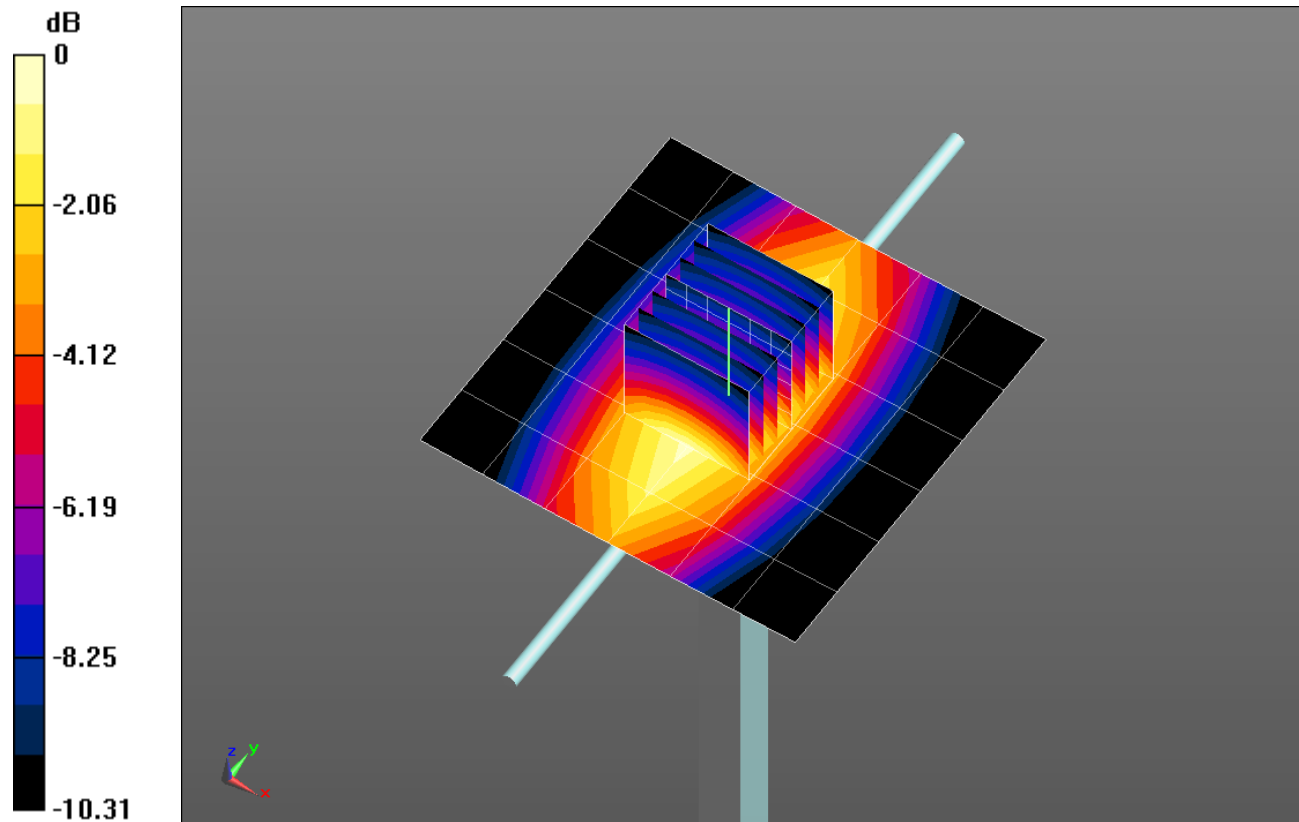
**Body/Pin=100 mW/Zoom Scan (7x7x7)/Cube 0:** Measurement grid: dx=5mm, dy=5mm, dz=5mm

Reference Value = 35.05 V/m; Power Drift = 0.01 dB

Peak SAR (extrapolated) = 1.48 W/kg

**SAR(1 g) = 1 W/kg; SAR(10 g) = 0.658 W/kg**

Maximum value of SAR (measured) = 1.22 W/kg

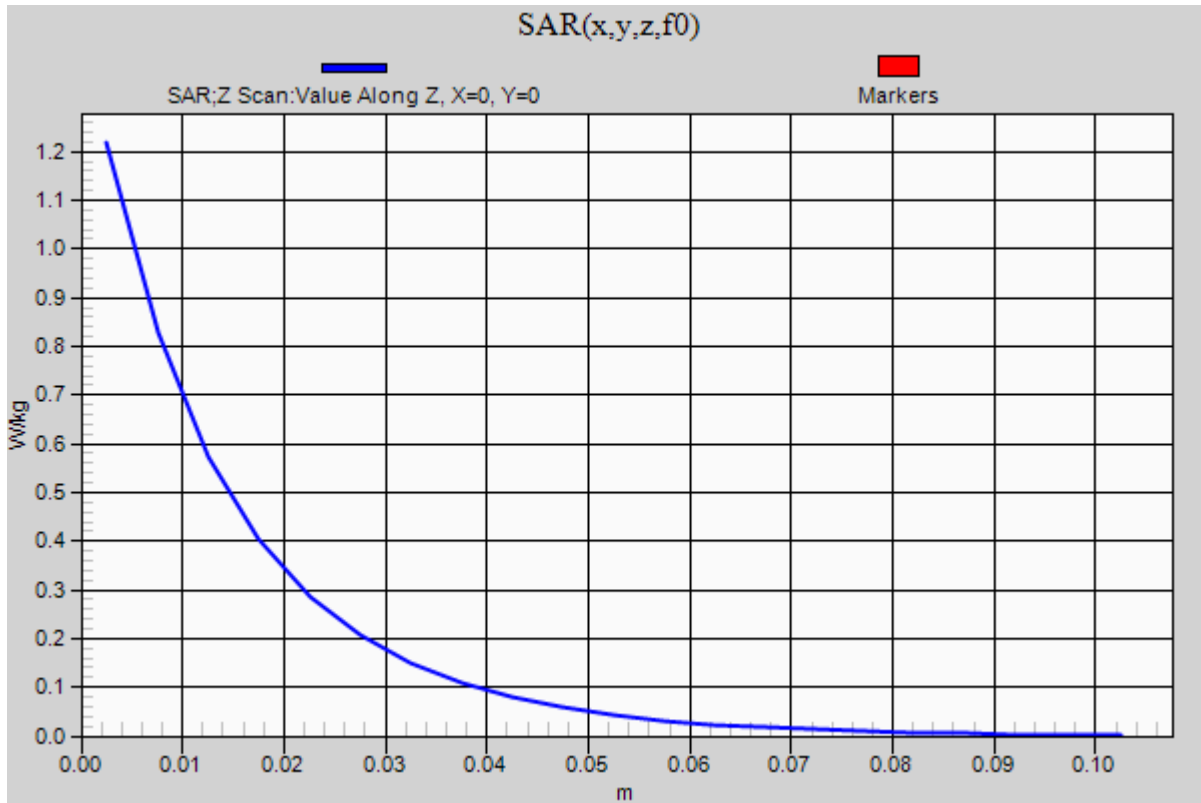


0 dB = 1.22 W/kg = 0.86 dBW/kg

### 20140930\_SystemPerformanceCheck-D835V2 SN 4d117

Frequency: 835 MHz; Duty Cycle: 1:1

**Body/Pin=100 mW/Z Scan (1x1x21):** Measurement grid: dx=20mm, dy=20mm, dz=5mm  
Maximum value of SAR (measured) = 1.22 W/kg



## 20140929\_SystemPerformanceCheck-D1900V2 SN 5d043

Frequency: 1900 MHz; Duty Cycle: 1:1; Room Ambient Temperature: 24.0°C; Liquid Temperature: 23.0°C

Medium parameters used:  $f = 1900 \text{ MHz}$ ;  $\sigma = 1.387 \text{ S/m}$ ;  $\epsilon_r = 38.467$ ;  $\rho = 1000 \text{ kg/m}^3$

DASY5 Configuration:

- Area Scan Setting: Find Secondary Maximum Within: 2.0 dB and with a peak SAR value greater than 0.0012W/kg
- Electronics: DAE4 Sn1439; Calibrated: 5/14/2014
- Probe: EX3DV4 - SN3991; ConvF(8.55, 8.55, 8.55); Calibrated: 5/16/2014;
- Sensor-Surface: 2.5mm (Mechanical Surface Detection (Locations From Previous Scan Used)), Sensor-Surface: 2.5mm (Mechanical Surface Detection)
- Phantom: TWIN SAM v5.0; Type: QD000P40CD; Serial: TP:1829

**Head/Pin=100 mW/Area Scan (7x7x1):** Measurement grid: dx=15mm, dy=15mm

Maximum value of SAR (measured) = 4.58 W/kg

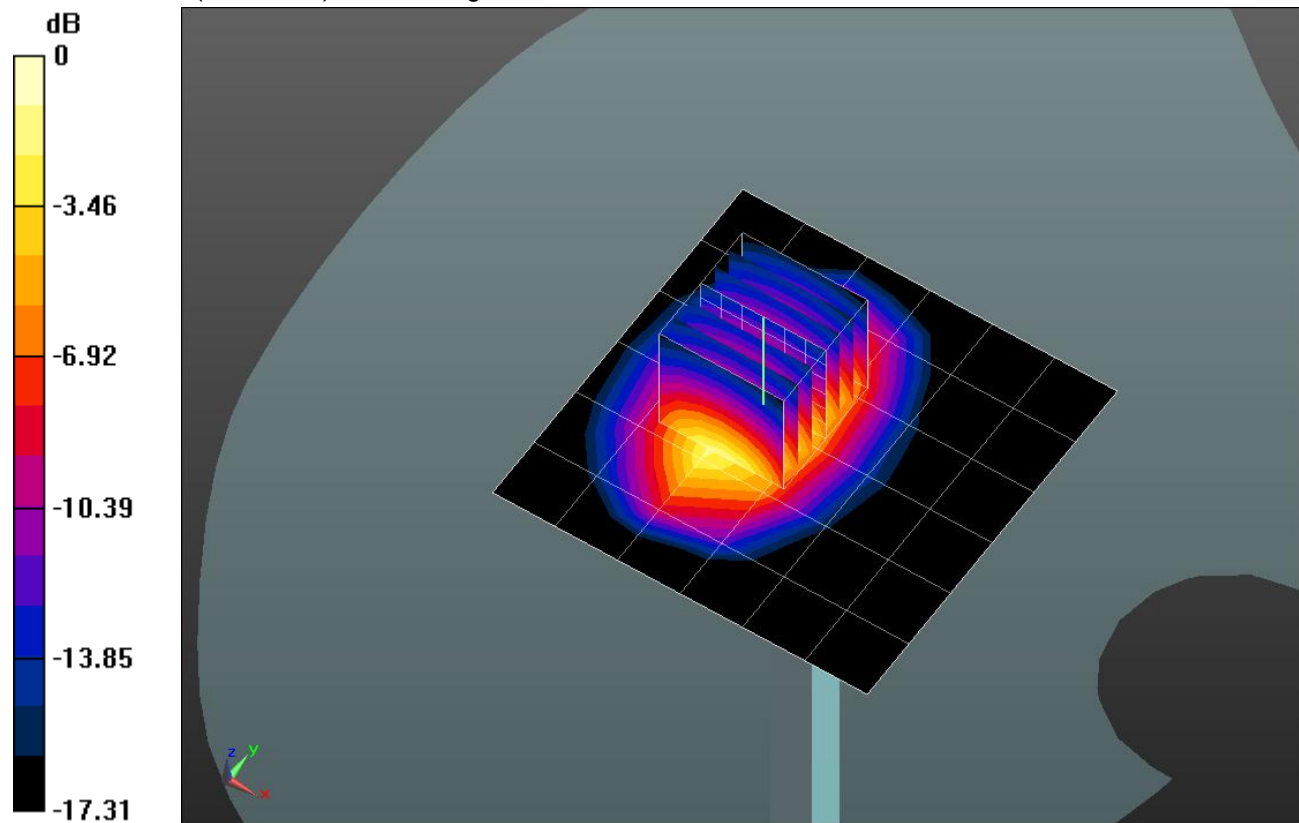
**Head/Pin=100 mW/Zoom Scan (7x7x7)/Cube 0:** Measurement grid: dx=5mm, dy=5mm, dz=5mm

Reference Value = 38.06 V/m; Power Drift = 0.19 dB

Peak SAR (extrapolated) = 6.91 W/kg

**SAR(1 g) = 3.75 W/kg; SAR(10 g) = 1.96 W/kg**

Maximum value of SAR (measured) = 5.07 W/kg

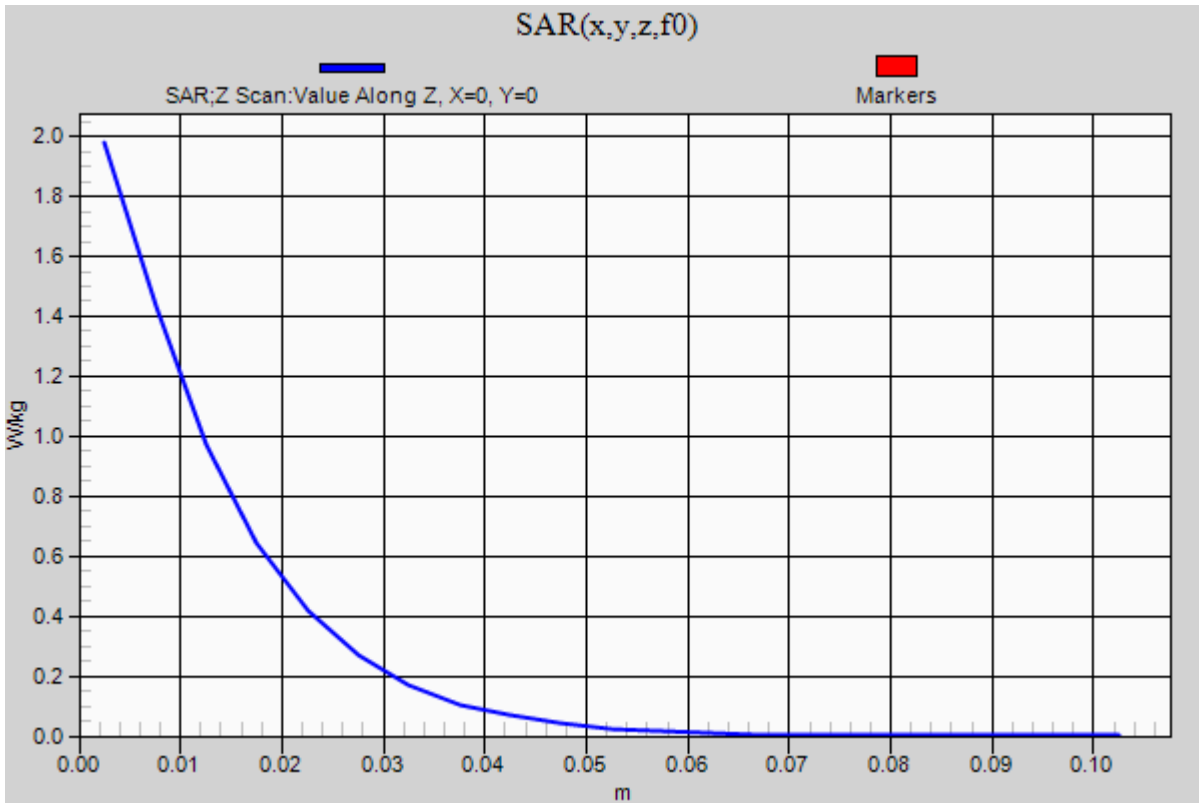


0 dB = 5.07 W/kg = 7.05 dBW/kg

### 20140929\_SystemPerformanceCheck-D1900V2 SN 5d043

Frequency: 1900 MHz; Duty Cycle: 1:1

**Head/Pin=100 mW/Z Scan (1x1x21):** Measurement grid: dx=20mm, dy=20mm, dz=5mm  
Maximum value of SAR (measured) = 1.98 W/kg



## 20141001\_SystemPerformanceCheck-D5GHzV2 SN 1003

Frequency: 5200 MHz; Duty Cycle: 1:1; Room Ambient Temperature: 24.0°C; Liquid Temperature: 23.0°C

Medium parameters used:  $f = 5200 \text{ MHz}$ ;  $\sigma = 5.337 \text{ S/m}$ ;  $\epsilon_r = 47.031$ ;  $\rho = 1000 \text{ kg/m}^3$

DASY5 Configuration:

- Area Scan Setting: Find Secondary Maximum Within: 2.0 dB and with a peak SAR value greater than 0.0012W/kg
- Electronics: DAE4 Sn1439; Calibrated: 5/14/2014
- Probe: EX3DV4 - SN3991; ConvF(4.66, 4.66, 4.66); Calibrated: 5/16/2014;
- Sensor-Surface: 1.4mm (Mechanical Surface Detection)
- Phantom: ELI v5.0 (B); Type: QDOVA002AA; Serial: TP:1257

**Body/5.2 GHz, Pin=100mW/Area Scan (7x7x1):** Measurement grid: dx=10mm, dy=10mm

Maximum value of SAR (measured) = 18.6 W/kg

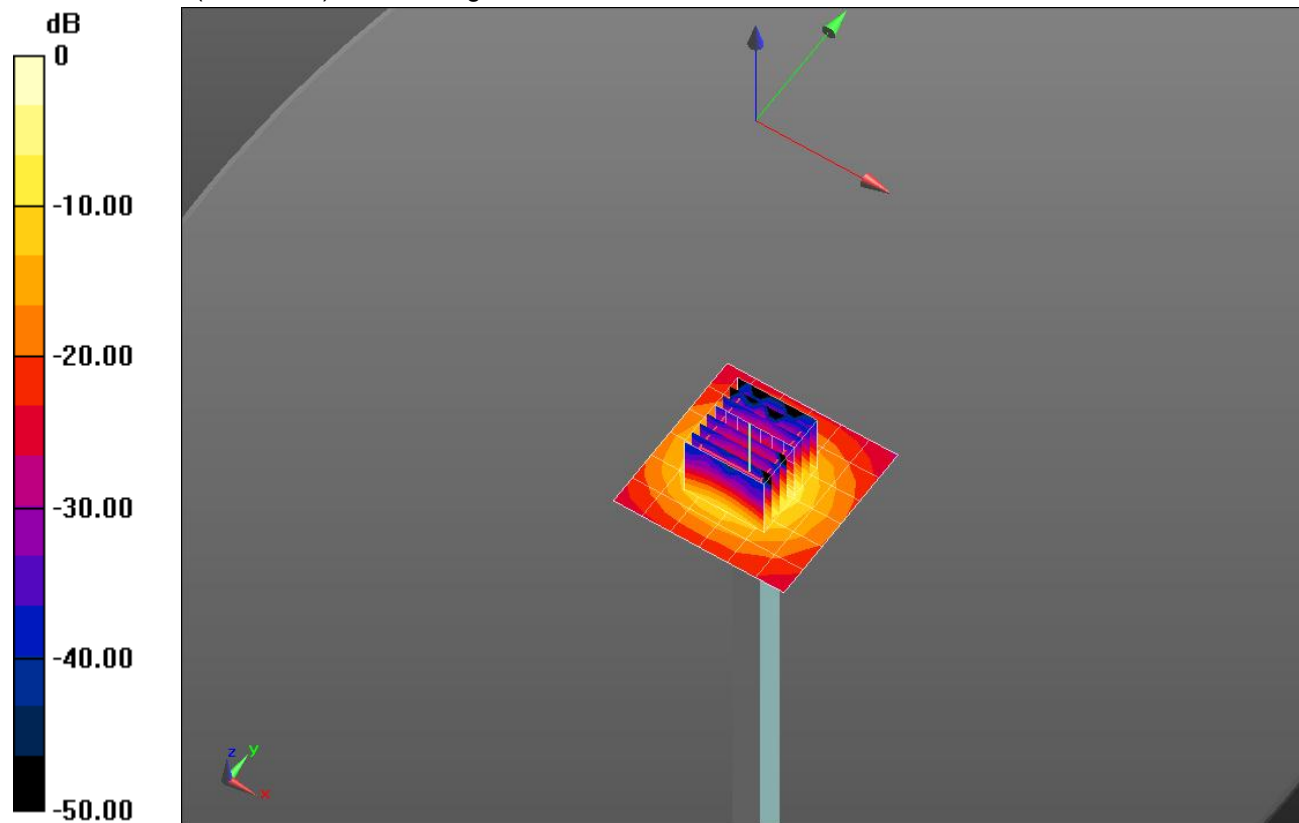
**Body/5.2 GHz, Pin=100mW/Zoom Scan (8x8x7)/Cube 0:** Measurement grid: dx=4mm, dy=4mm, dz=1.4mm

Reference Value = 53.82 V/m; Power Drift = 0.04 dB

Peak SAR (extrapolated) = 31.9 W/kg

**SAR(1 g) = 7.79 W/kg; SAR(10 g) = 2.21 W/kg**

Maximum value of SAR (measured) = 18.4 W/kg

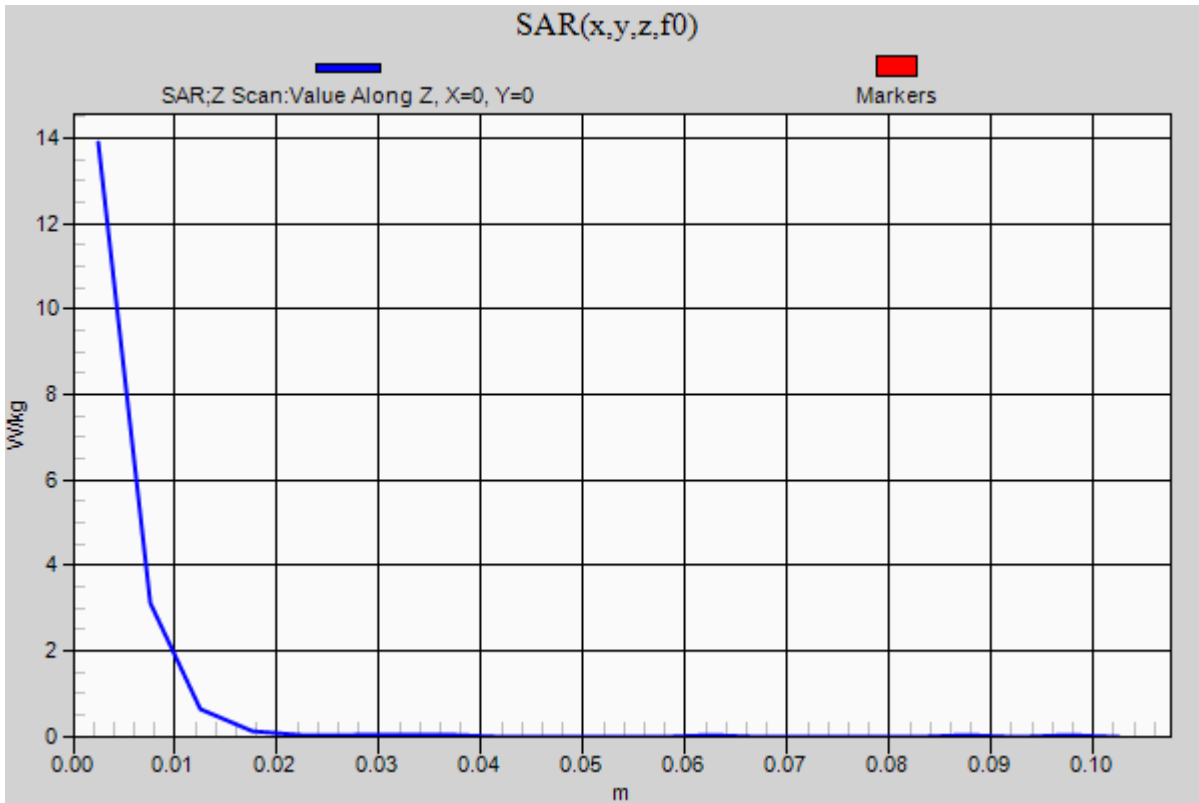


0 dB = 18.4 W/kg = 12.65 dBW/kg

### 20141001\_SystemPerformanceCheck-D5GHzV2 SN 1003

Frequency: 5200 MHz; Duty Cycle: 1:1

**Body/5.2 GHz, Pin=100mW/Z Scan (1x1x21):** Measurement grid: dx=20mm, dy=20mm, dz=5mm  
Maximum value of SAR (measured) = 13.9 W/kg



## GSM 850

Frequency: 836.6 MHz; Duty Cycle: 1:8.00018; Room Ambient Temperature: 24.0°C; Liquid Temperature: 23.0°C  
 Medium parameters used (interpolated):  $f = 836.6$  MHz;  $\sigma = 0.923$  S/m;  $\epsilon_r = 39.753$ ;  $\rho = 1000$  kg/m<sup>3</sup>

DASY5 Configuration:

- Area Scan Setting: Find Secondary Maximum Within: 2.0 dB and with a peak SAR value greater than 0.0012W/kg
- Electronics: DAE4 Sn1439; Calibrated: 5/14/2014
- Probe: EX3DV4 - SN3991; ConvF(9.94, 9.94, 9.94); Calibrated: 5/16/2014;
- Sensor-Surface: 2.5mm (Mechanical Surface Detection (Locations From Previous Scan Used)), Sensor-Surface: 2.5mm (Mechanical Surface Detection)
- Phantom: TWIN SAM v5.0; Type: QD000P40CD; Serial: TP:1829

**RHS/Touch\_GSM Voice\_ch 190/Area Scan (9x13x1):** Measurement grid: dx=15mm, dy=15mm

[Info: Interpolated medium parameters used for SAR evaluation.](#)

Maximum value of SAR (measured) = 0.159 W/kg

**RHS/Touch\_GSM Voice\_ch 190/Zoom Scan (5x5x7)/Cube 0:** Measurement grid: dx=8mm, dy=8mm, dz=5mm

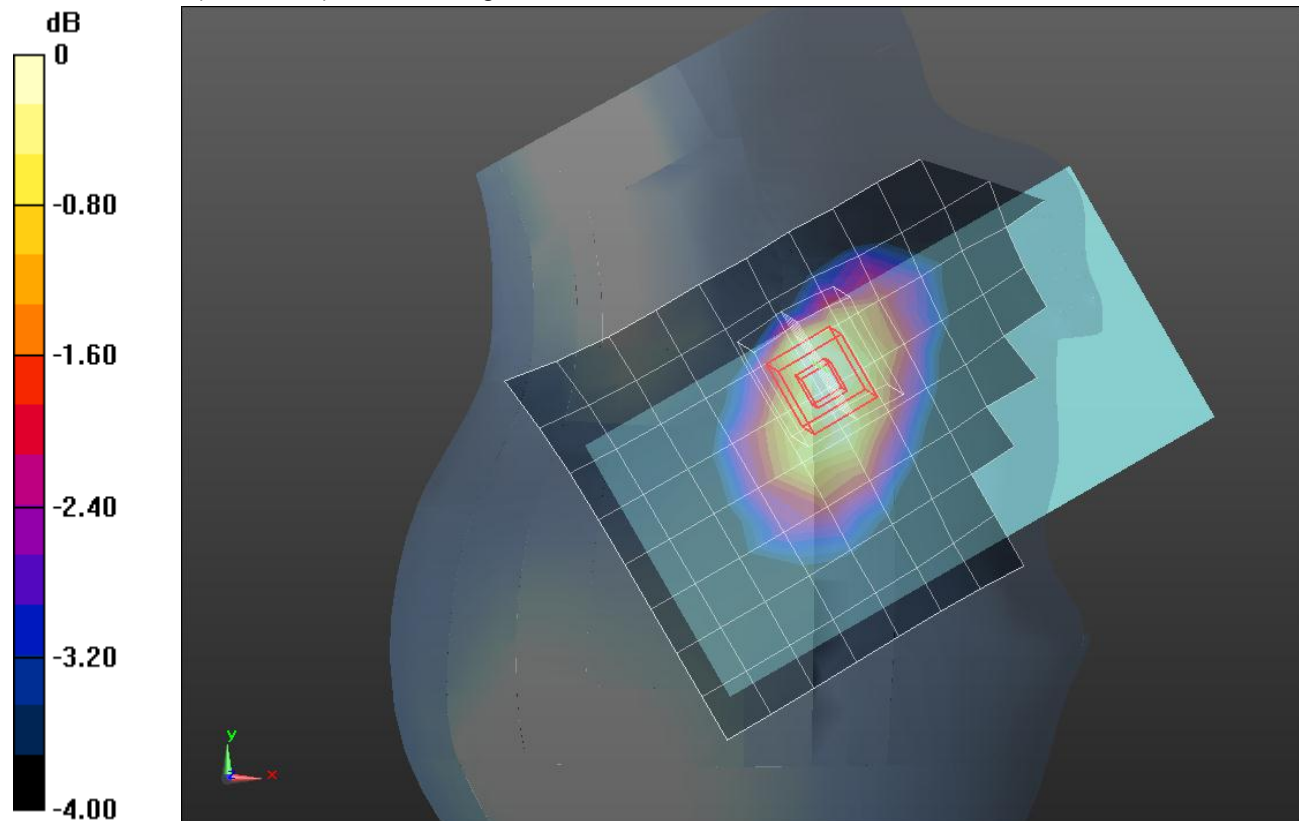
Reference Value = 13.17 V/m; Power Drift = -0.11 dB

Peak SAR (extrapolated) = 0.187 W/kg

**SAR(1 g) = 0.144 W/kg; SAR(10 g) = 0.109 W/kg**

[Info: Interpolated medium parameters used for SAR evaluation.](#)

Maximum value of SAR (measured) = 0.160 W/kg



0 dB = 0.160 W/kg = -7.96 dBW/kg

## GSM 850

Frequency: 836.6 MHz; Duty Cycle: 1:2.60016; Room Ambient Temperature: 24.0°C; Liquid Temperature: 23.0°C  
 Medium parameters used (interpolated):  $f = 836.6 \text{ MHz}$ ;  $\sigma = 0.923 \text{ S/m}$ ;  $\epsilon_r = 39.753$ ;  $\rho = 1000 \text{ kg/m}^3$

DASY5 Configuration:

- Area Scan Setting: Find Secondary Maximum Within: 2.0 dB and with a peak SAR value greater than 0.0012W/kg
- Electronics: DAE4 Sn1439; Calibrated: 5/14/2014
- Probe: EX3DV4 - SN3991; ConvF(9.94, 9.94, 9.94); Calibrated: 5/16/2014;
- Sensor-Surface: 2.5mm (Mechanical Surface Detection)
- Phantom: TWIN SAM v5.0; Type: QD000P40CD; Serial: TP:1829

**RHS/Touch\_GPRS 3 Slot\_ch 190/Area Scan (9x13x1):** Measurement grid: dx=15mm, dy=15mm

[Info: Interpolated medium parameters used for SAR evaluation.](#)

Maximum value of SAR (measured) = 0.318 W/kg

**RHS/Touch\_GPRS 3 Slot\_ch 190/Zoom Scan (5x5x7)/Cube 0:** Measurement grid: dx=8mm, dy=8mm, dz=5mm

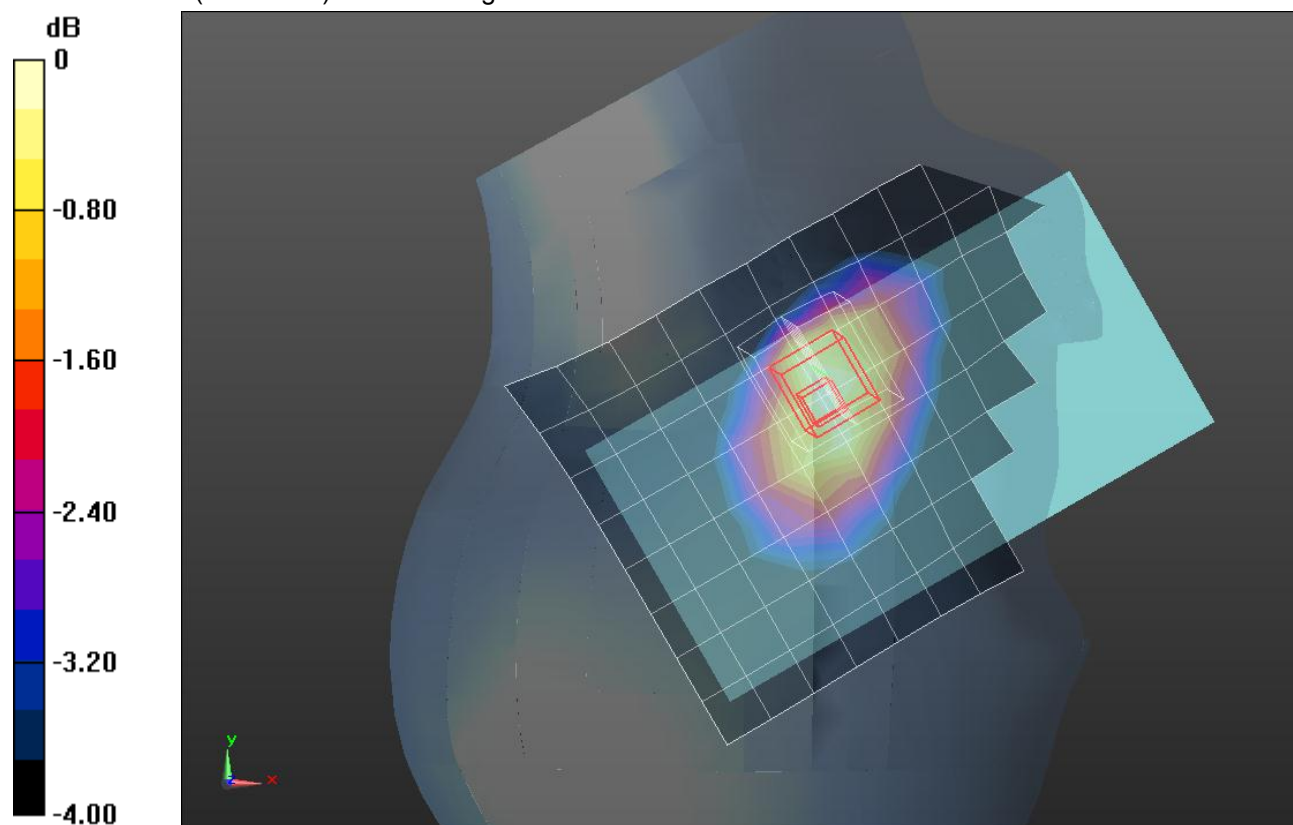
Reference Value = 18.79 V/m; Power Drift = -0.12 dB

Peak SAR (extrapolated) = 0.381 W/kg

**SAR(1 g) = 0.290 W/kg; SAR(10 g) = 0.222 W/kg**

[Info: Interpolated medium parameters used for SAR evaluation.](#)

Maximum value of SAR (measured) = 0.326 W/kg



0 dB = 0.326 W/kg = -4.87 dBW/kg

## GSM 1900

Frequency: 836.6 MHz; Duty Cycle: 1:8.00018; Room Ambient Temperature: 24.0°C; Liquid Temperature: 23.0°C  
 Medium parameters used (interpolated):  $f = 836.6$  MHz;  $\sigma = 1.019$  S/m;  $\epsilon_r = 53.012$ ;  $\rho = 1000$  kg/m<sup>3</sup>

DASY5 Configuration:

- Area Scan Setting: Find Secondary Maximum Within: 2.0 dB and with a peak SAR value greater than 0.0012W/kg
- Electronics: DAE4 Sn1439; Calibrated: 5/14/2014
- Probe: EX3DV4 - SN3991; ConvF(9.7, 9.7, 9.7); Calibrated: 5/16/2014;
- Sensor-Surface: 2.5mm (Mechanical Surface Detection)
- Phantom: ELI v5.0 (B); Type: QDOVA002AA; Serial: TP:1257

**Rear/GSM Voice\_Ch 190/Area Scan (9x14x1):** Measurement grid: dx=15mm, dy=15mm

[Info: Interpolated medium parameters used for SAR evaluation.](#)

Maximum value of SAR (measured) = 0.397 W/kg

**Rear/GSM Voice\_Ch 190/Zoom Scan (5x5x7)/Cube 0:** Measurement grid: dx=8mm, dy=8mm, dz=5mm

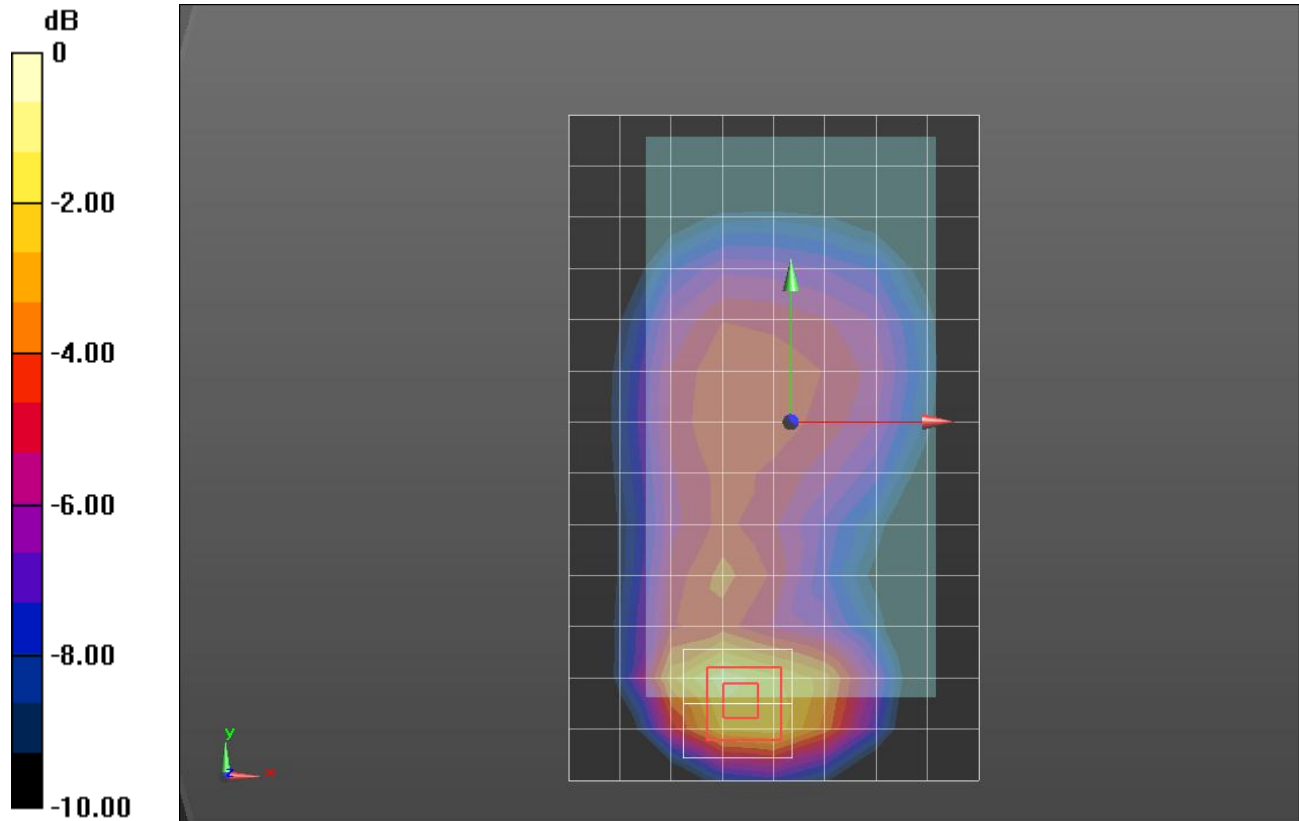
Reference Value = 20.02 V/m; Power Drift = -0.06 dB

Peak SAR (extrapolated) = 0.620 W/kg

**SAR(1 g) = 0.375 W/kg; SAR(10 g) = 0.217 W/kg**

[Info: Interpolated medium parameters used for SAR evaluation.](#)

Maximum value of SAR (measured) = 0.481 W/kg



0 dB = 0.481 W/kg = -3.18 dBW/kg

## GSM 1900

Frequency: 836.6 MHz; Duty Cycle: 1:2.60016; Room Ambient Temperature: 24.0°C; Liquid Temperature: 23.0°C  
 Medium parameters used (interpolated):  $f = 836.6$  MHz;  $\sigma = 1.019$  S/m;  $\epsilon_r = 53.012$ ;  $\rho = 1000$  kg/m<sup>3</sup>

DASY5 Configuration:

- Area Scan Setting: Find Secondary Maximum Within: 2.0 dB and with a peak SAR value greater than 0.0012W/kg
- Electronics: DAE4 Sn1439; Calibrated: 5/14/2014
- Probe: EX3DV4 - SN3991; ConvF(9.7, 9.7, 9.7); Calibrated: 5/16/2014;
- Sensor-Surface: 2.5mm (Mechanical Surface Detection (Locations From Previous Scan Used)), Sensor-Surface: 2.5mm (Mechanical Surface Detection)
- Phantom: ELI v5.0 (B); Type: QDOVA002AA; Serial: TP:1257

**Rear/GPRS 3 Slot\_Ch 190/Area Scan (9x14x1):** Measurement grid: dx=15mm, dy=15mm

[Info: Interpolated medium parameters used for SAR evaluation.](#)

Maximum value of SAR (measured) = 0.794 W/kg

**Rear/GPRS 3 Slot\_Ch 190/Zoom Scan (5x5x7)/Cube 0:** Measurement grid: dx=8mm, dy=8mm, dz=5mm

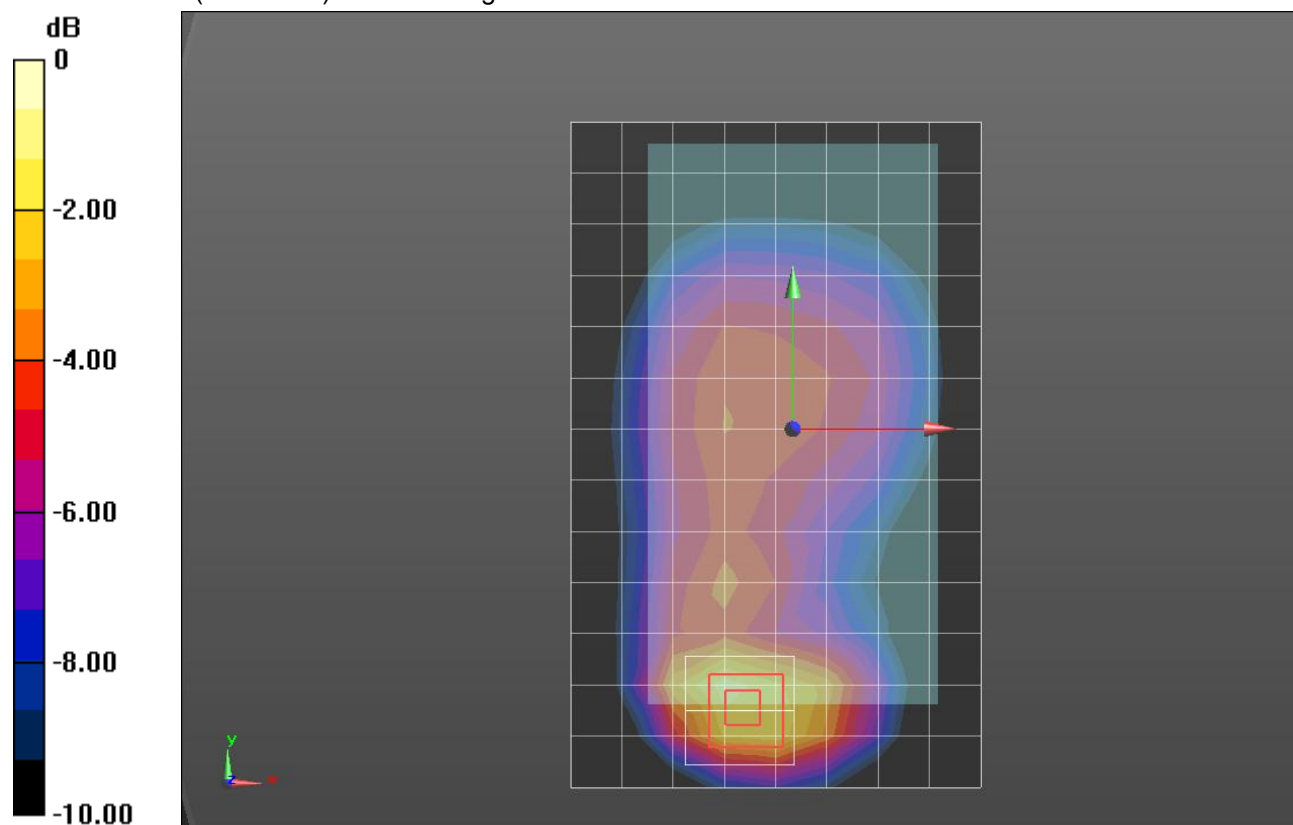
Reference Value = 28.51 V/m; Power Drift = -0.08 dB

Peak SAR (extrapolated) = 1.25 W/kg

**SAR(1 g) = 0.752 W/kg; SAR(10 g) = 0.436 W/kg**

[Info: Interpolated medium parameters used for SAR evaluation.](#)

Maximum value of SAR (measured) = 0.967 W/kg



0 dB = 0.967 W/kg = -0.15 dBW/kg

## GSM 1900

Frequency: 1880 MHz; Duty Cycle: 1:8.00018; Room Ambient Temperature: 24.0°C; Liquid Temperature: 23.0°C  
 Medium parameters used:  $f = 1880 \text{ MHz}$ ;  $\sigma = 1.369 \text{ S/m}$ ;  $\epsilon_r = 38.555$ ;  $\rho = 1000 \text{ kg/m}^3$

DASY5 Configuration:

- Area Scan Setting: Find Secondary Maximum Within: 2.0 dB and with a peak SAR value greater than 0.0012W/kg
- Electronics: DAE4 Sn1439; Calibrated: 5/14/2014
- Probe: EX3DV4 - SN3991; ConvF(8.55, 8.55, 8.55); Calibrated: 5/16/2014;
- Sensor-Surface: 2.5mm (Mechanical Surface Detection)
- Phantom: TWIN SAM v5.0; Type: QD000P40CD; Serial: TP:1829

**RHS/Touch\_GSM Voice\_ch 661/Area Scan (9x13x1):** Measurement grid: dx=15mm, dy=15mm  
 Maximum value of SAR (measured) = 0.0809 W/kg

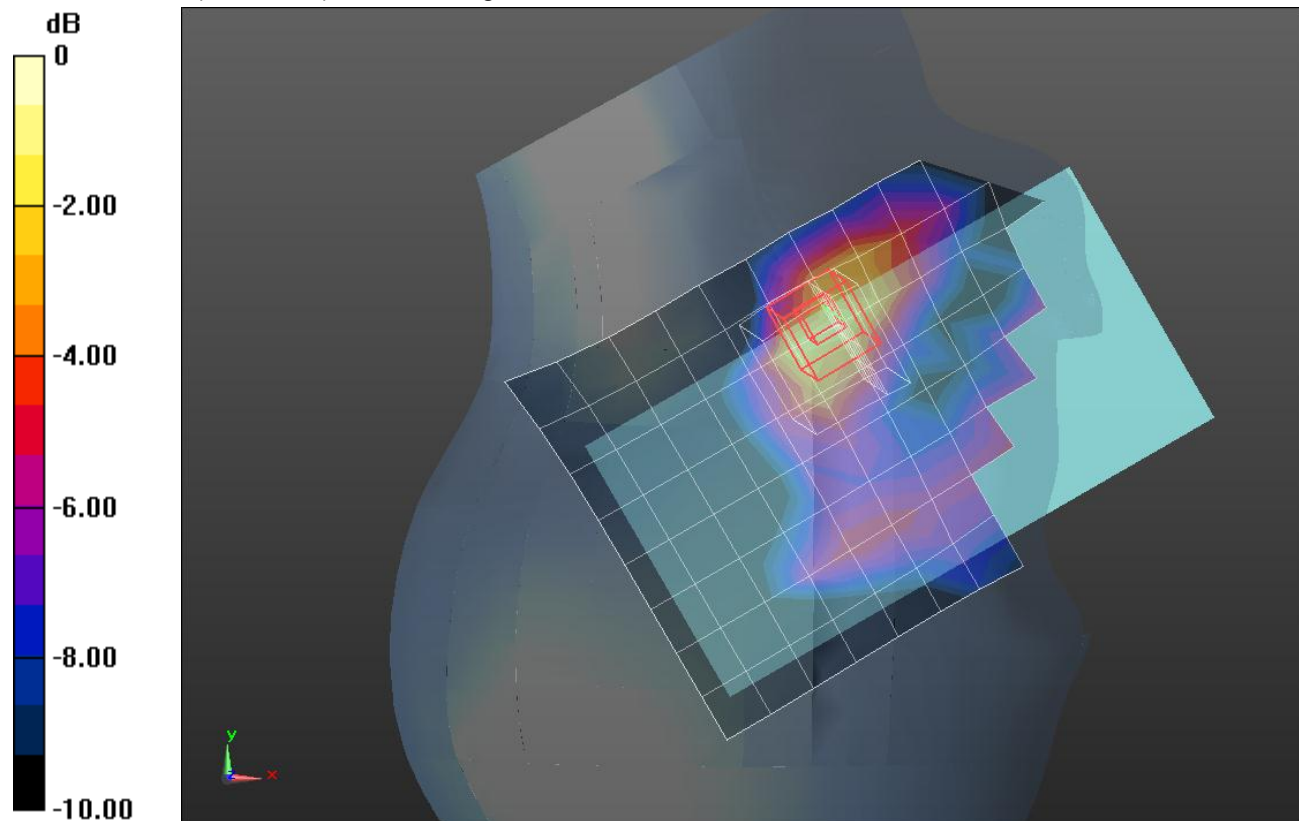
**RHS/Touch\_GSM Voice\_ch 661/Zoom Scan (5x5x7)/Cube 0:** Measurement grid: dx=8mm, dy=8mm, dz=5mm

Reference Value = 7.325 V/m; Power Drift = -0.13 dB

Peak SAR (extrapolated) = 0.133 W/kg

**SAR(1 g) = 0.081 W/kg; SAR(10 g) = 0.048 W/kg**

Maximum value of SAR (measured) = 0.106 W/kg



0 dB = 0.106 W/kg = -9.75 dBW/kg

### GSM 1900

Frequency: 1880 MHz; Duty Cycle: 1:2.60016; Room Ambient Temperature: 24.0°C; Liquid Temperature: 23.0°C  
 Medium parameters used:  $f = 1880 \text{ MHz}$ ;  $\sigma = 1.369 \text{ S/m}$ ;  $\epsilon_r = 38.555$ ;  $\rho = 1000 \text{ kg/m}^3$

DASY5 Configuration:

- Area Scan Setting: Find Secondary Maximum Within: 2.0 dB and with a peak SAR value greater than 0.0012W/kg
- Electronics: DAE4 Sn1439; Calibrated: 5/14/2014
- Probe: EX3DV4 - SN3991; ConvF(8.55, 8.55, 8.55); Calibrated: 5/16/2014;
- Sensor-Surface: 2.5mm (Mechanical Surface Detection (Locations From Previous Scan Used)), Sensor-Surface: 2.5mm (Mechanical Surface Detection)
- Phantom: TWIN SAM v5.0; Type: QD000P40CD; Serial: TP:1829

**RHS/Touch\_GPRS 3 Slot\_ch 661/Area Scan (9x13x1):** Measurement grid: dx=15mm, dy=15mm  
 Maximum value of SAR (measured) = 0.112 W/kg

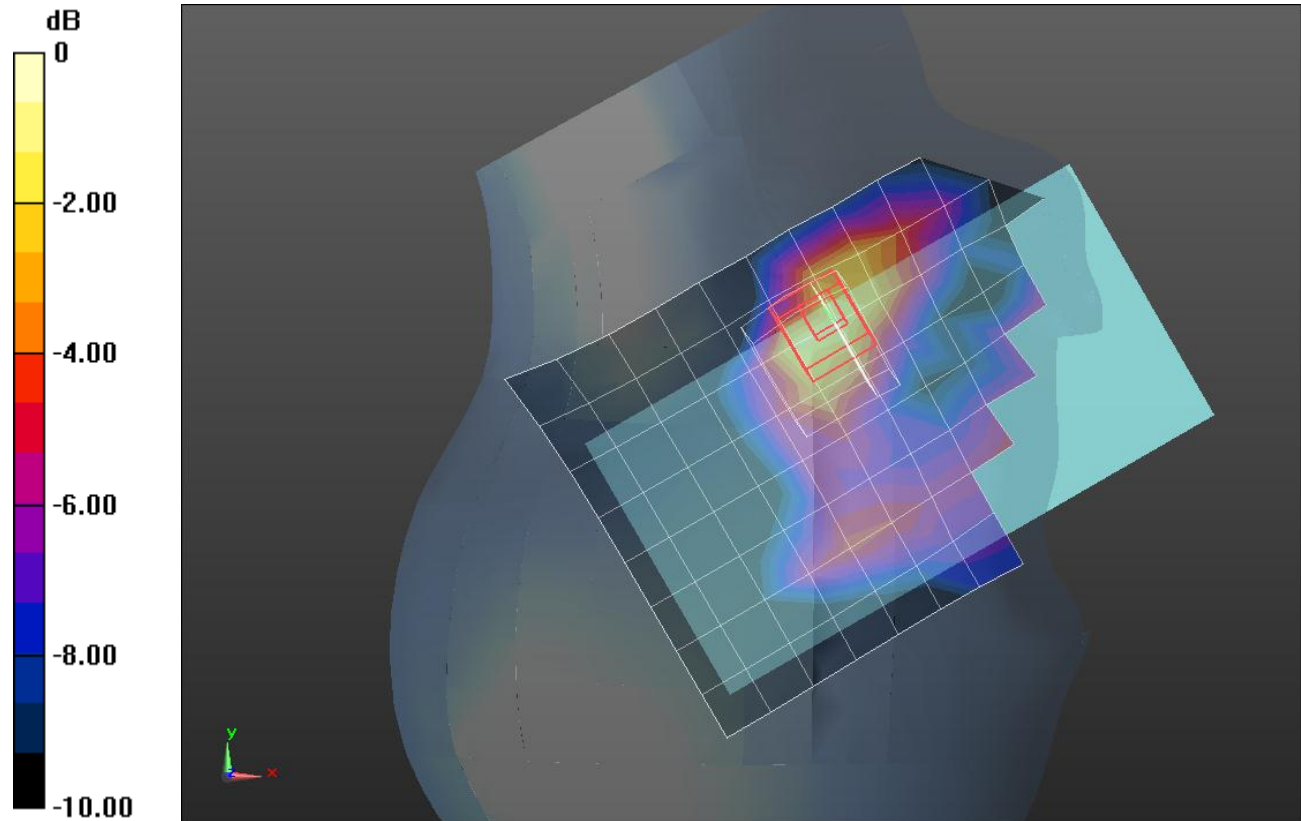
**RHS/Touch\_GPRS 3 Slot\_ch 661/Zoom Scan (5x5x7)/Cube 0:** Measurement grid: dx=8mm, dy=8mm, dz=5mm

Reference Value = 8.615 V/m; Power Drift = 0.09 dB

Peak SAR (extrapolated) = 0.176 W/kg

**SAR(1 g) = 0.108 W/kg; SAR(10 g) = 0.063 W/kg**

Maximum value of SAR (measured) = 0.141 W/kg



0 dB = 0.141 W/kg = -8.51 dBW/kg

## GSM 1900

Frequency: 1880 MHz; Duty Cycle: 1:8.00018; Room Ambient Temperature: 24.0°C; Liquid Temperature: 23.0°C  
 Medium parameters used:  $f = 1880 \text{ MHz}$ ;  $\sigma = 1.504 \text{ S/m}$ ;  $\epsilon_r = 51.642$ ;  $\rho = 1000 \text{ kg/m}^3$

DASY5 Configuration:

- Area Scan Setting: Find Secondary Maximum Within: 2.0 dB and with a peak SAR value greater than 0.0012W/kg
- Electronics: DAE4 Sn1439; Calibrated: 5/14/2014
- Probe: EX3DV4 - SN3991; ConvF(7.65, 7.65, 7.65); Calibrated: 5/16/2014;
- Sensor-Surface: 2.5mm (Mechanical Surface Detection (Locations From Previous Scan Used)), Sensor-Surface: 2.5mm (Mechanical Surface Detection)
- Phantom: ELI v5.0 (B); Type: QDOVA002AA; Serial: TP:1257

**Front/GSM Voice\_Ch 661/Area Scan (9x14x1):** Measurement grid: dx=15mm, dy=15mm

Maximum value of SAR (measured) = 0.537 W/kg

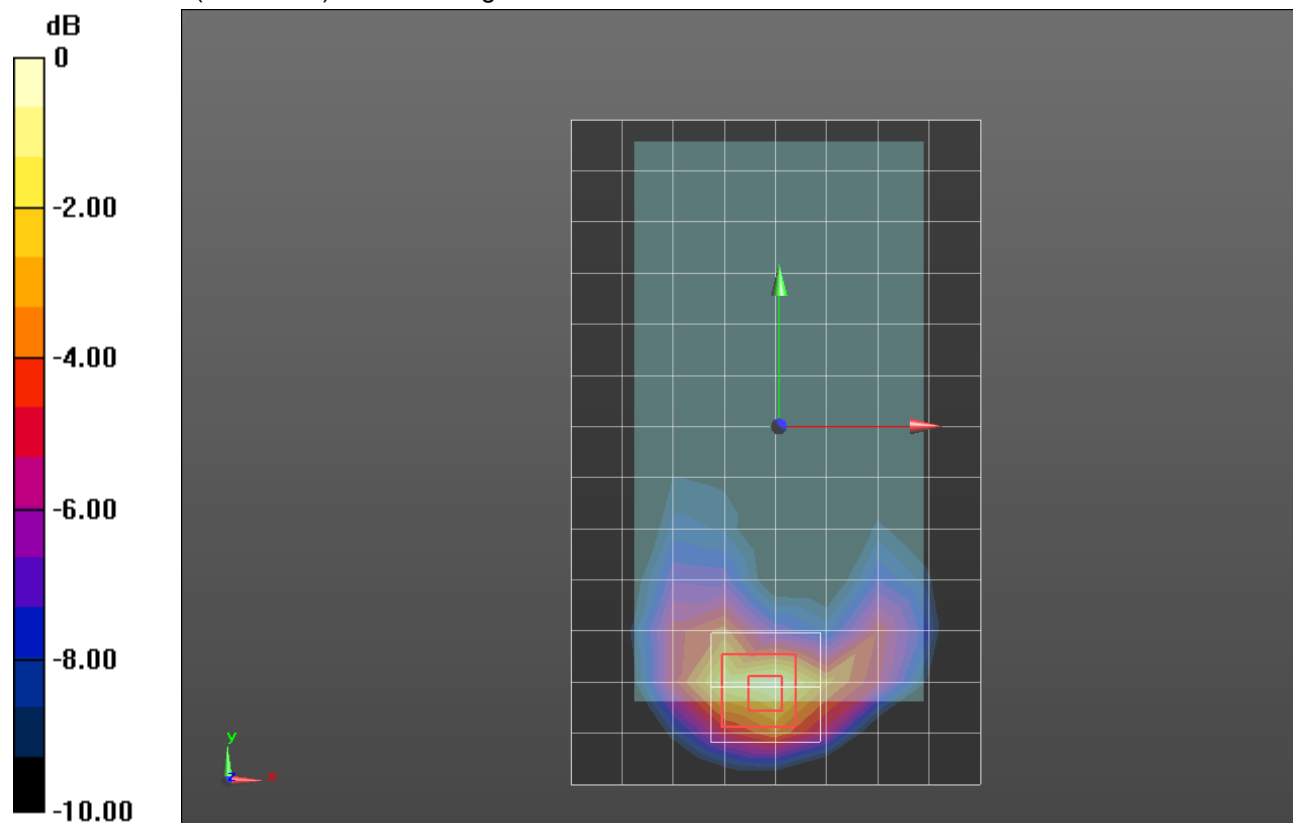
**Front/GSM Voice\_Ch 661/Zoom Scan (5x5x7)/Cube 0:** Measurement grid: dx=8mm, dy=8mm, dz=5mm

Reference Value = 19.18 V/m; Power Drift = 0.01 dB

Peak SAR (extrapolated) = 0.741 W/kg

**SAR(1 g) = 0.443 W/kg; SAR(10 g) = 0.244 W/kg**

Maximum value of SAR (measured) = 0.576 W/kg



0 dB = 0.576 W/kg = -2.40 dBW/kg

## GSM 1900

Frequency: 1880 MHz; Duty Cycle: 1:2.60016; Room Ambient Temperature: 24.0°C; Liquid Temperature: 23.0°C  
 Medium parameters used:  $f = 1880 \text{ MHz}$ ;  $\sigma = 1.504 \text{ S/m}$ ;  $\epsilon_r = 51.642$ ;  $\rho = 1000 \text{ kg/m}^3$

DASY5 Configuration:

- Area Scan Setting: Find Secondary Maximum Within: 2.0 dB and with a peak SAR value greater than 0.0012W/kg
- Electronics: DAE4 Sn1439; Calibrated: 5/14/2014
- Probe: EX3DV4 - SN3991; ConvF(7.65, 7.65, 7.65); Calibrated: 5/16/2014;
- Sensor-Surface: 2.5mm (Mechanical Surface Detection)
- Phantom: ELI v5.0 (B); Type: QDOVA002AA; Serial: TP:1257

**Front/GPRS 3 Slot\_Ch 661/Area Scan (9x14x1):** Measurement grid:  $dx=15\text{mm}$ ,  $dy=15\text{mm}$

Maximum value of SAR (measured) = 0.763 W/kg

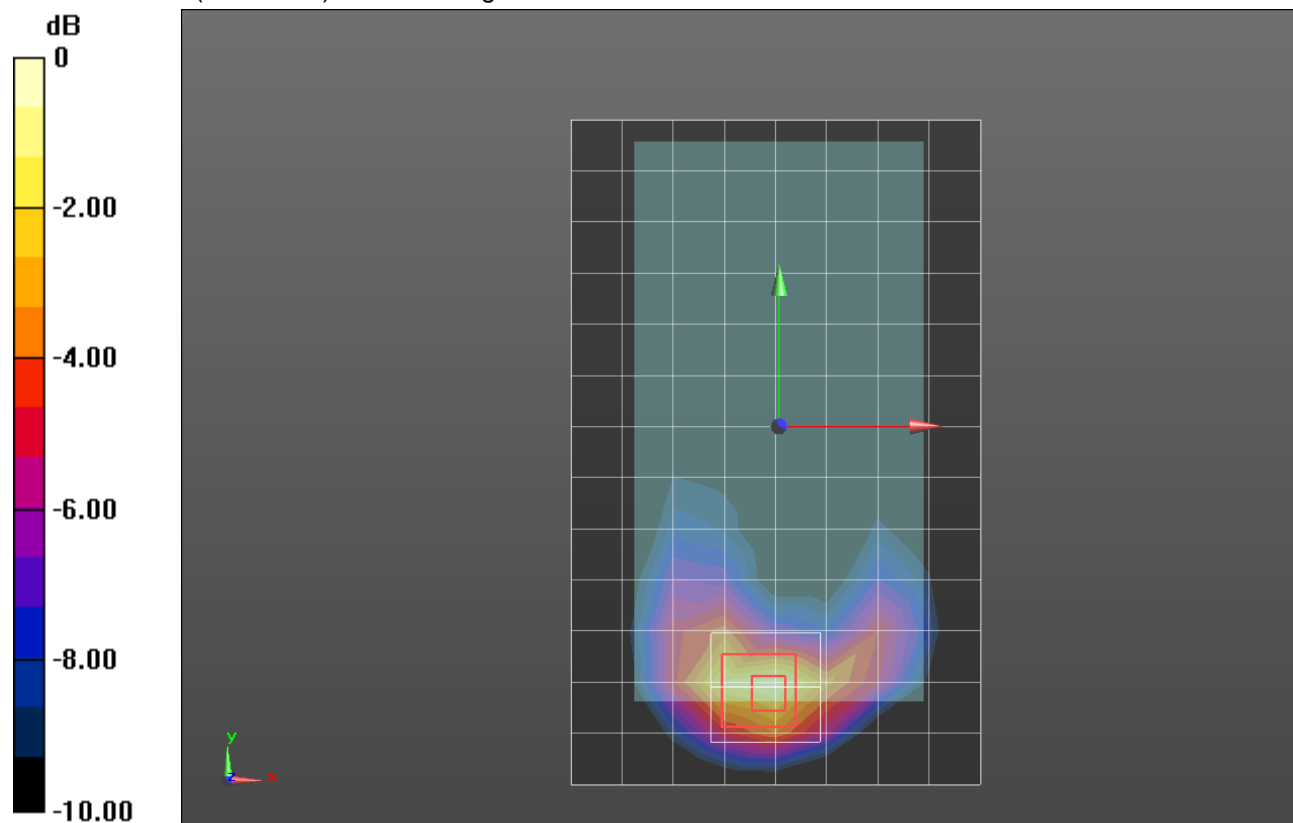
**Front/GPRS 3 Slot\_Ch 661/Zoom Scan (5x5x7)/Cube 0:** Measurement grid:  $dx=8\text{mm}$ ,  $dy=8\text{mm}$ ,  $dz=5\text{mm}$

Reference Value = 22.91 V/m; Power Drift = 0.01 dB

Peak SAR (extrapolated) = 1.05 W/kg

**SAR(1 g) = 0.630 W/kg; SAR(10 g) = 0.347 W/kg**

Maximum value of SAR (measured) = 0.814 W/kg



0 dB = 0.814 W/kg = -0.89 dBW/kg

## W-CDMA Band V

Frequency: 836.6 MHz; Duty Cycle: 1:1; Room Ambient Temperature: 24.0°C; Liquid Temperature: 23.0°C  
 Medium parameters used (interpolated):  $f = 836.6$  MHz;  $\sigma = 0.923$  S/m;  $\epsilon_r = 39.753$ ;  $\rho = 1000$  kg/m<sup>3</sup>

DASY5 Configuration:

- Area Scan Setting: Find Secondary Maximum Within: 2.0 dB and with a peak SAR value greater than 0.0012W/kg
- Electronics: DAE4 Sn1439; Calibrated: 5/14/2014
- Probe: EX3DV4 - SN3991; ConvF(9.94, 9.94, 9.94); Calibrated: 5/16/2014;
- Sensor-Surface: 2.5mm (Mechanical Surface Detection (Locations From Previous Scan Used)), Sensor-Surface: 2.5mm (Mechanical Surface Detection)
- Phantom: TWIN SAM v5.0; Type: QD000P40CD; Serial: TP:1829

**RHS/Touch\_Rel. 99 RMC\_ch 4183/Area Scan (9x13x1):** Measurement grid: dx=15mm, dy=15mm

[Info: Interpolated medium parameters used for SAR evaluation.](#)

Maximum value of SAR (measured) = 0.104 W/kg

**RHS/Touch\_Rel. 99 RMC\_ch 4183/Zoom Scan (5x5x7)/Cube 0:** Measurement grid: dx=8mm, dy=8mm, dz=5mm

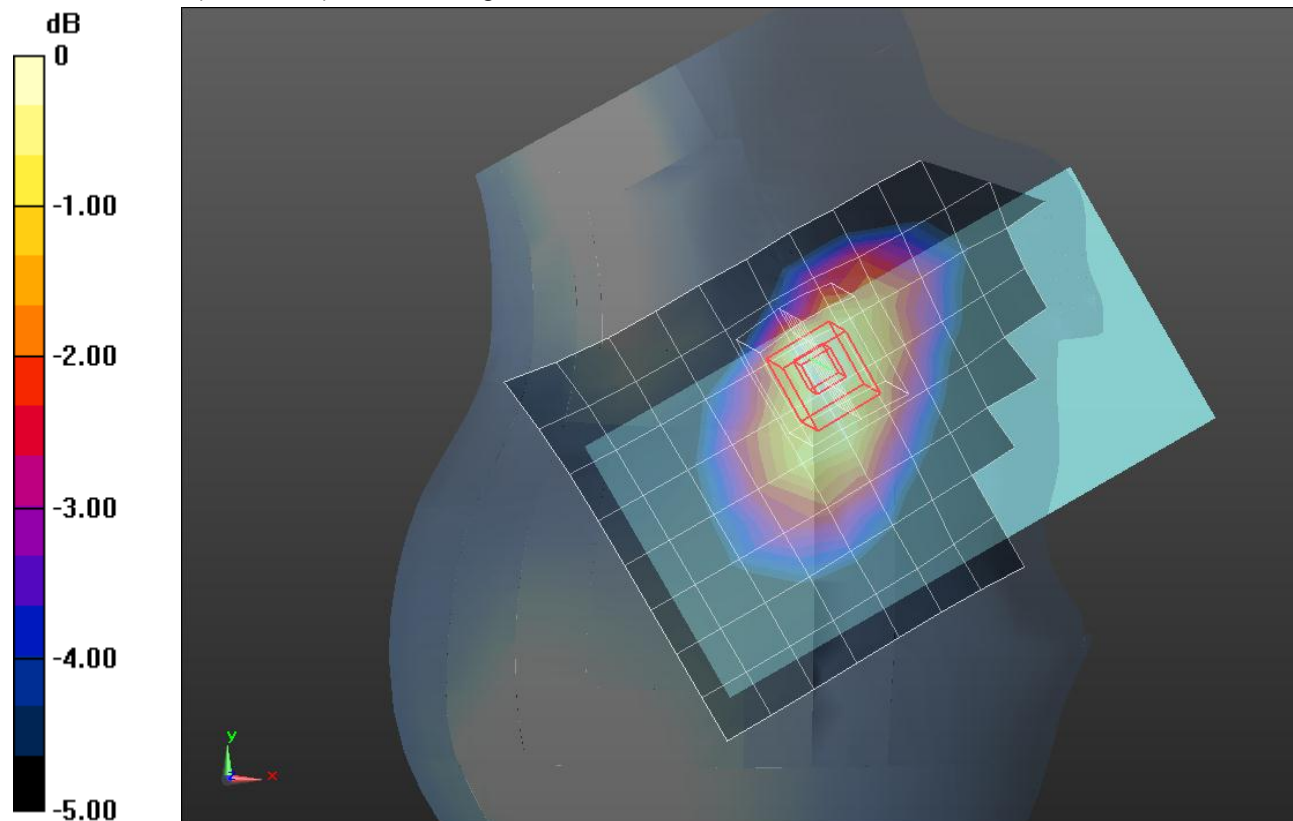
Reference Value = 10.74 V/m; Power Drift = -0.11 dB

Peak SAR (extrapolated) = 0.128 W/kg

**SAR(1 g) = 0.096 W/kg; SAR(10 g) = 0.073 W/kg**

[Info: Interpolated medium parameters used for SAR evaluation.](#)

Maximum value of SAR (measured) = 0.110 W/kg



0 dB = 0.110 W/kg = -9.59 dBW/kg

## W-CDMA Band V

Frequency: 836.6 MHz; Duty Cycle: 1:1; Room Ambient Temperature: 24.0°C; Liquid Temperature: 23.0°C  
 Medium parameters used (interpolated):  $f = 836.6$  MHz;  $\sigma = 1.019$  S/m;  $\epsilon_r = 53.012$ ;  $\rho = 1000$  kg/m<sup>3</sup>

DASY5 Configuration:

- Area Scan Setting: Find Secondary Maximum Within: 2.0 dB and with a peak SAR value greater than 0.0012W/kg
- Electronics: DAE4 Sn1439; Calibrated: 5/14/2014
- Probe: EX3DV4 - SN3991; ConvF(9.7, 9.7, 9.7); Calibrated: 5/16/2014;
- Sensor-Surface: 2.5mm (Mechanical Surface Detection)
- Phantom: ELI v5.0 (B); Type: QDOVA002AA; Serial: TP:1257

**Rear/Rel. 99 RMC\_ch 4183/Area Scan (9x14x1):** Measurement grid: dx=15mm, dy=15mm

[Info: Interpolated medium parameters used for SAR evaluation.](#)

Maximum value of SAR (measured) = 0.327 W/kg

**Rear/Rel. 99 RMC\_ch 4183/Zoom Scan (5x5x7)/Cube 0:** Measurement grid: dx=8mm, dy=8mm, dz=5mm

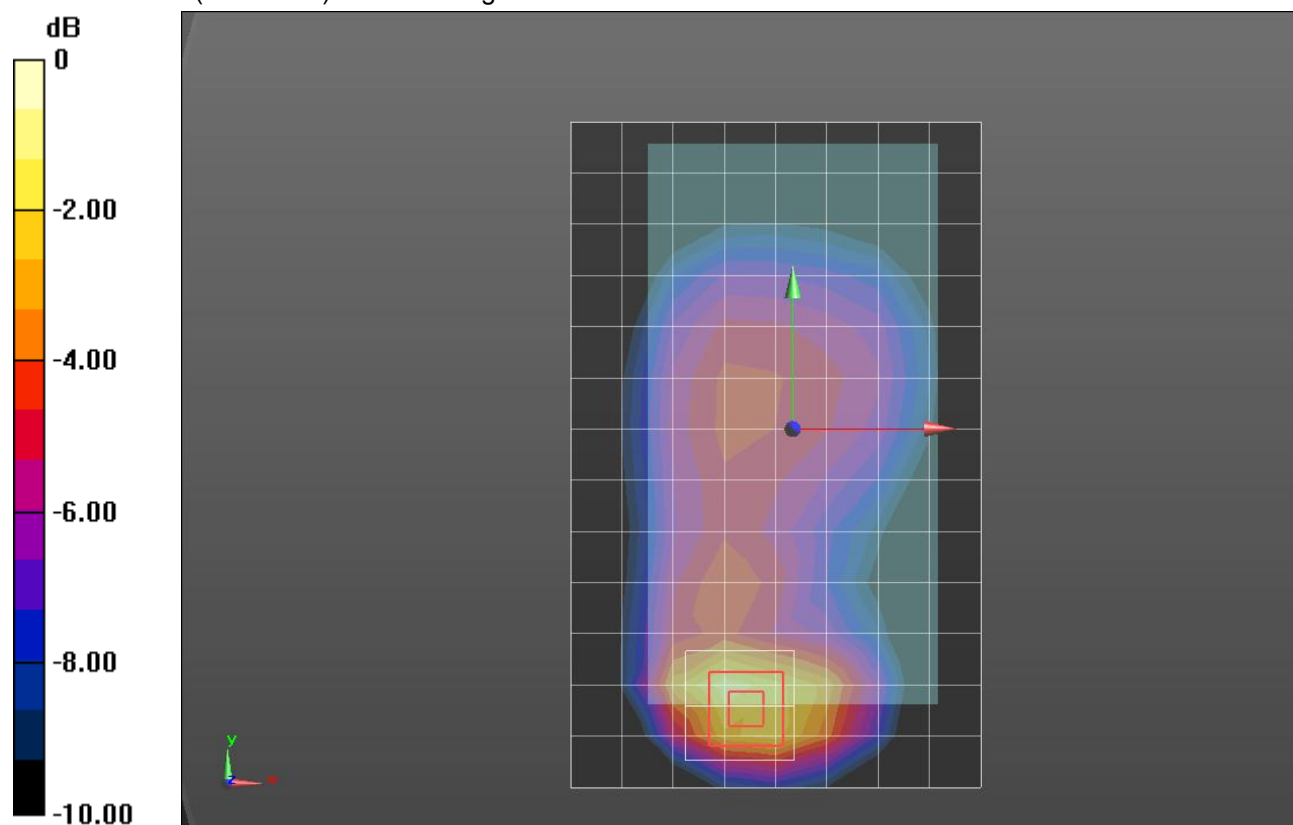
Reference Value = 18.14 V/m; Power Drift = -0.04 dB

Peak SAR (extrapolated) = 0.511 W/kg

**SAR(1 g) = 0.304 W/kg; SAR(10 g) = 0.174 W/kg**

[Info: Interpolated medium parameters used for SAR evaluation.](#)

Maximum value of SAR (measured) = 0.395 W/kg



0 dB = 0.395 W/kg = -4.03 dBW/kg

## W-CDMA Band II

Frequency: 1880 MHz; Duty Cycle: 1:1; Room Ambient Temperature: 24.0°C; Liquid Temperature: 23.0°C  
 Medium parameters used:  $f = 1880 \text{ MHz}$ ;  $\sigma = 1.369 \text{ S/m}$ ;  $\epsilon_r = 38.555$ ;  $\rho = 1000 \text{ kg/m}^3$

DASY5 Configuration:

- Area Scan Setting: Find Secondary Maximum Within: 2.0 dB and with a peak SAR value greater than 0.0012W/kg
- Electronics: DAE4 Sn1439; Calibrated: 5/14/2014
- Probe: EX3DV4 - SN3991; ConvF(8.55, 8.55, 8.55); Calibrated: 5/16/2014;
- Sensor-Surface: 2.5mm (Mechanical Surface Detection)
- Phantom: TWIN SAM v5.0; Type: QD000P40CD; Serial: TP:1829

**RHS/Touch\_Rel. 99 RMC\_ch. 9400/Area Scan (9x13x1):** Measurement grid: dx=15mm, dy=15mm  
 Maximum value of SAR (measured) = 0.108 W/kg

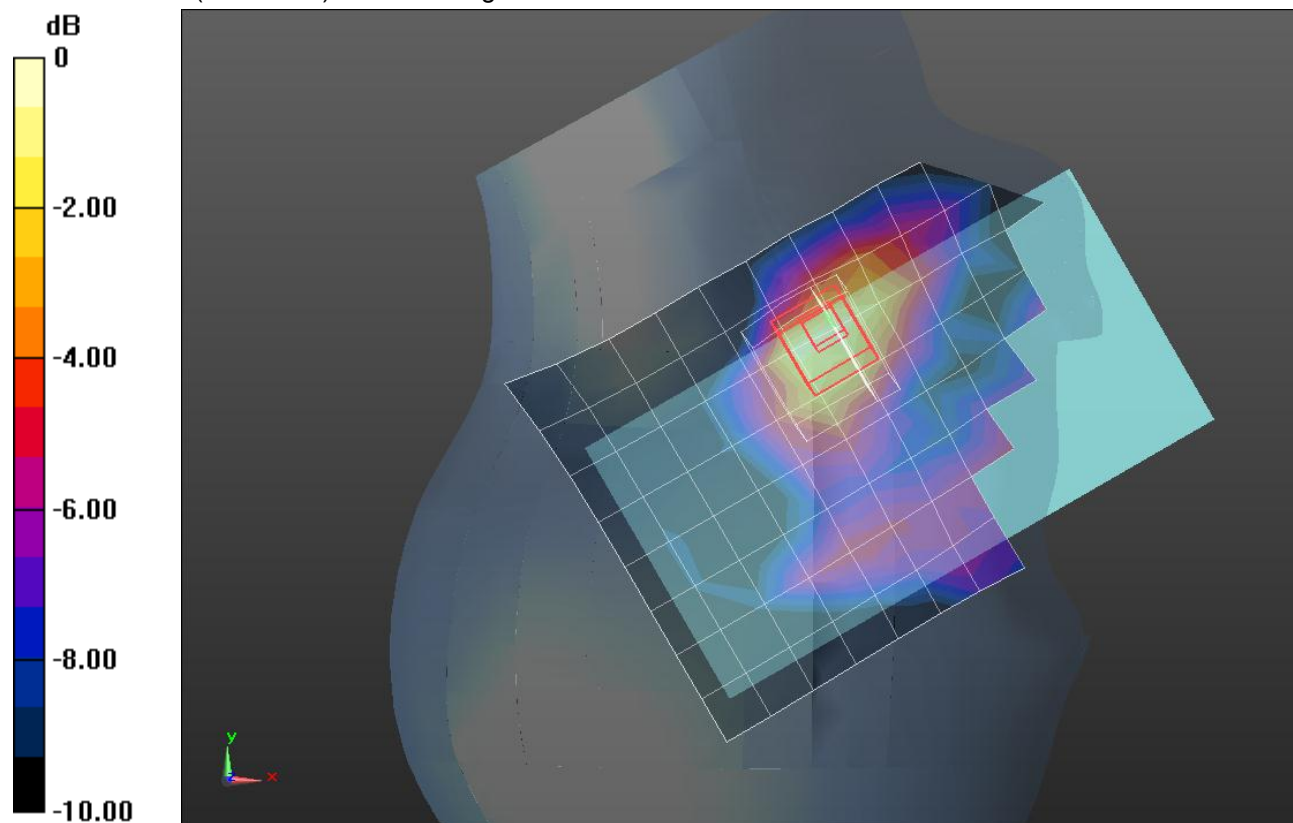
**RHS/Touch\_Rel. 99 RMC\_ch. 9400/Zoom Scan (5x5x7)/Cube 0:** Measurement grid: dx=8mm, dy=8mm, dz=5mm

Reference Value = 8.771 V/m; Power Drift = 0.20 dB

Peak SAR (extrapolated) = 0.166 W/kg

**SAR(1 g) = 0.102 W/kg; SAR(10 g) = 0.061 W/kg**

Maximum value of SAR (measured) = 0.126 W/kg



0 dB = 0.126 W/kg = -9.00 dBW/kg

## W-CDMA Band II

Frequency: 1907.6 MHz; Duty Cycle: 1:1; Room Ambient Temperature: 24.0°C; Liquid Temperature: 23.0°C  
 Medium parameters used (interpolated):  $f = 1907.6 \text{ MHz}$ ;  $\sigma = 1.534 \text{ S/m}$ ;  $\epsilon_r = 51.551$ ;  $\rho = 1000 \text{ kg/m}^3$

DASY5 Configuration:

- Area Scan Setting: Find Secondary Maximum Within: 2.0 dB and with a peak SAR value greater than 0.0012W/kg
- Electronics: DAE4 Sn1439; Calibrated: 5/14/2014
- Probe: EX3DV4 - SN3991; ConvF(7.65, 7.65, 7.65); Calibrated: 5/16/2014;
- Sensor-Surface: 2.5mm (Mechanical Surface Detection (Locations From Previous Scan Used)), Sensor-Surface: 2.5mm (Mechanical Surface Detection)
- Phantom: ELI v5.0 (B); Type: QDOVA002AA; Serial: TP:1257

**Front/Rel. 99 RMC\_ch 9538/Area Scan (9x14x1):** Measurement grid: dx=15mm, dy=15mm

[Info: Interpolated medium parameters used for SAR evaluation.](#)

Maximum value of SAR (measured) = 0.907 W/kg

**Front/Rel. 99 RMC\_ch 9538/Zoom Scan (5x5x7)/Cube 0:** Measurement grid: dx=8mm, dy=8mm, dz=5mm

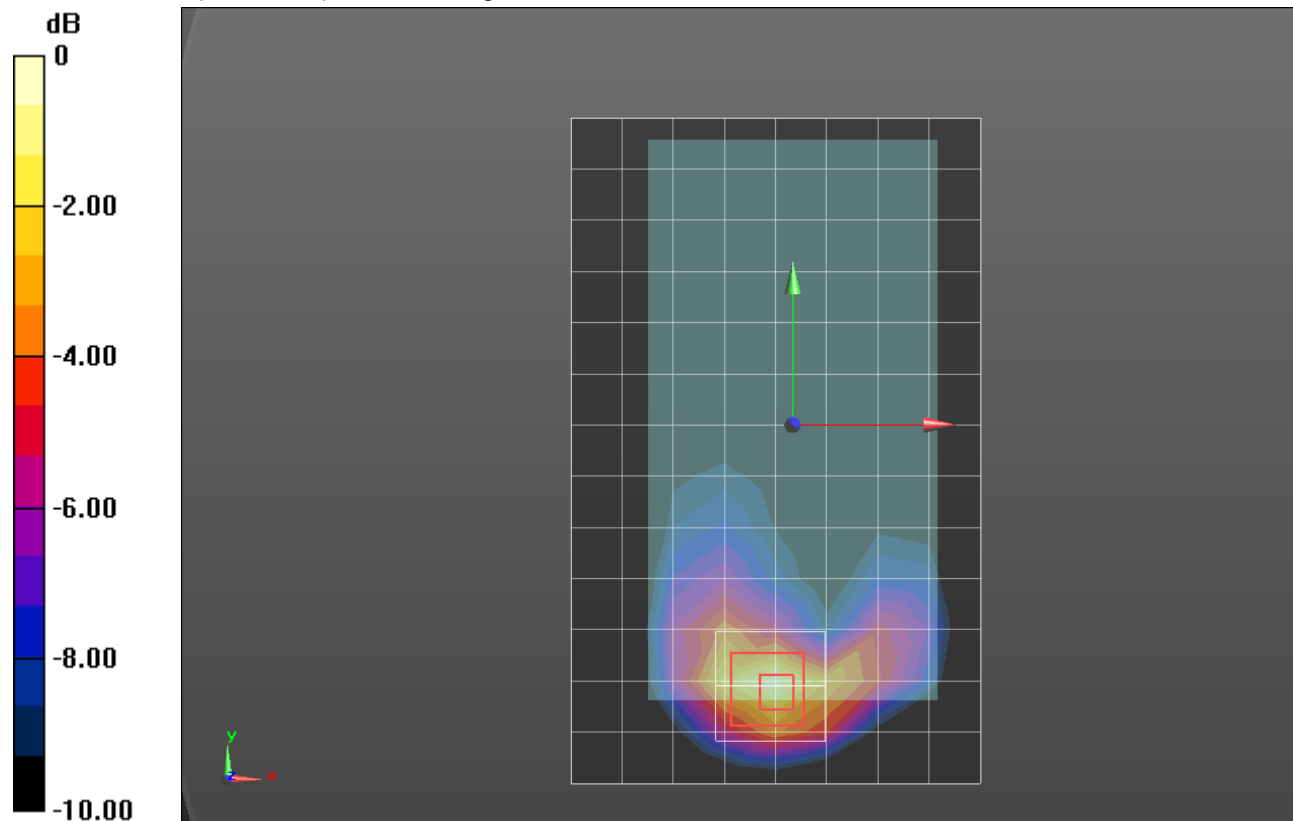
Reference Value = 24.57 V/m; Power Drift = 0.07 dB

Peak SAR (extrapolated) = 1.22 W/kg

**SAR(1 g) = 0.729 W/kg; SAR(10 g) = 0.401 W/kg**

[Info: Interpolated medium parameters used for SAR evaluation.](#)

Maximum value of SAR (measured) = 0.935 W/kg



0 dB = 0.935 W/kg = -0.29 dBW/kg

## LTE Band 41

Frequency: 2593 MHz; Duty Cycle: 1:1.59956; Room Ambient Temperature: 24.0°C; Liquid Temperature: 23.0°C  
 Medium parameters used (interpolated):  $f = 2593$  MHz;  $\sigma = 2.044$  S/m;  $\epsilon_r = 37.54$ ;  $\rho = 1000$  kg/m<sup>3</sup>

DASY5 Configuration:

- Area Scan Setting: Find Secondary Maximum Within: 2.0 dB and with a peak SAR value greater than 0.0012W/kg
- Electronics: DAE4 Sn1377; Calibrated: 8/27/2014
- Probe: EX3DV4 - SN3929; ConvF(6.37, 6.37, 6.37); Calibrated: 5/9/2014;
- Sensor-Surface: 2.5mm (Mechanical Surface Detection)
- Phantom: SAM with CRP; Type: QD000P40CD; Serial: 1768

**RHS/Touch\_QPSK RB 1/0 ch 40620/Area Scan (10x17x1):** Measurement grid: dx=12mm, dy=12mm

[Info: Interpolated medium parameters used for SAR evaluation.](#)

Maximum value of SAR (measured) = 0.109 W/kg

**RHS/Touch\_QPSK RB 1/0 ch 40620/Zoom Scan (7x7x7)/Cube 0:** Measurement grid: dx=5mm, dy=5mm, dz=5mm

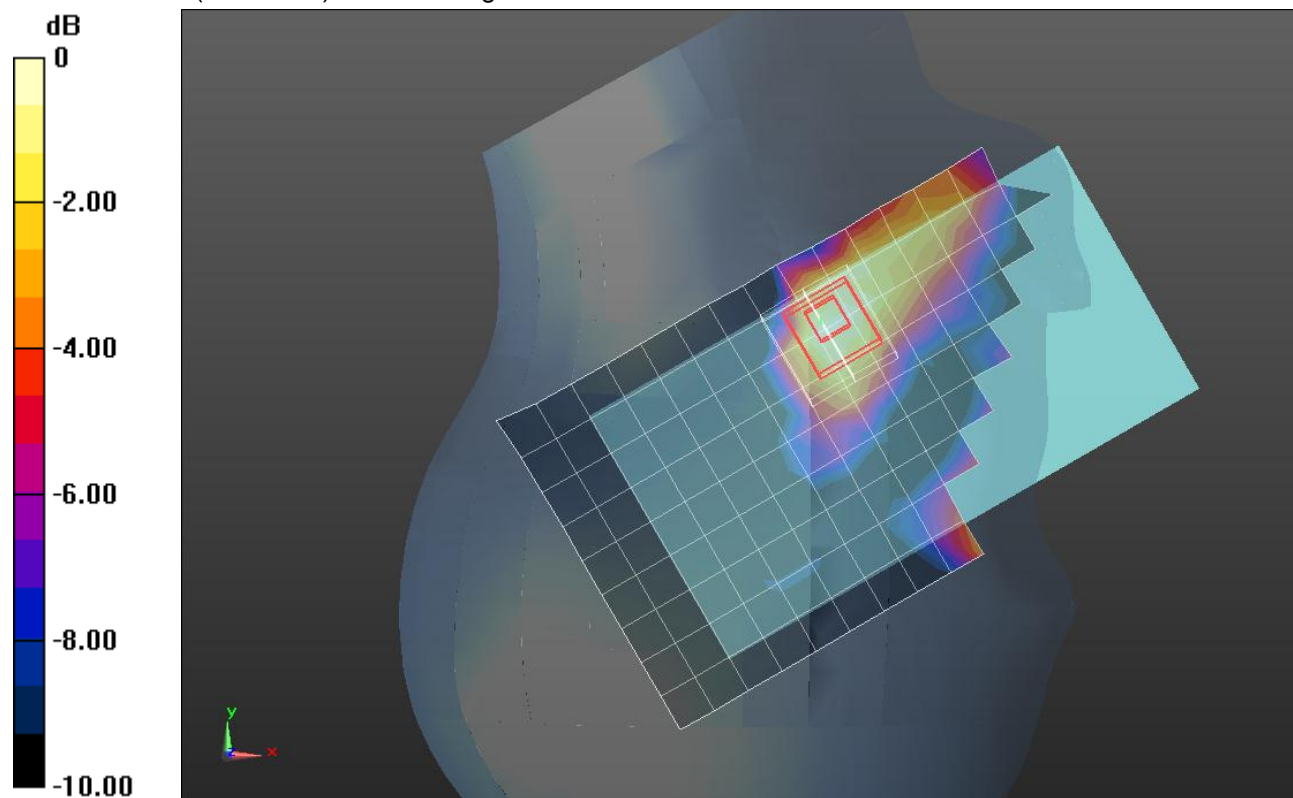
Reference Value = 7.684 V/m; Power Drift = 0.10 dB

Peak SAR (extrapolated) = 0.156 W/kg

**SAR(1 g) = 0.087 W/kg; SAR(10 g) = 0.045 W/kg**

[Info: Interpolated medium parameters used for SAR evaluation.](#)

Maximum value of SAR (measured) = 0.116 W/kg



0 dB = 0.116 W/kg = -9.36 dBW/kg

## LTE Band 41

Frequency: 2593 MHz; Duty Cycle: 1:1.59956; Room Ambient Temperature: 24.0°C; Liquid Temperature: 23.0°C  
 Medium parameters used (interpolated):  $f = 2593$  MHz;  $\sigma = 2.233$  S/m;  $\epsilon_r = 50.805$ ;  $\rho = 1000$  kg/m<sup>3</sup>

DASY5 Configuration:

- Area Scan Setting: Find Secondary Maximum Within: 2.0 dB and with a peak SAR value greater than 0.0012W/kg
- Electronics: DAE4 Sn1377; Calibrated: 8/27/2014
- Probe: EX3DV4 - SN3929; ConvF(6.64, 6.64, 6.64); Calibrated: 5/9/2014;
- Sensor-Surface: 2.5mm (Mechanical Surface Detection)
- Phantom: ELI-B V5.0; Type: QDOVA001BB; Serial: S/n:1216

**Front/QPSK RB 1/0 ch 40620/Area Scan (11x19x1):** Measurement grid: dx=12mm, dy=12mm

[Info: Interpolated medium parameters used for SAR evaluation.](#)

Maximum value of SAR (measured) = 0.687 W/kg

**Front/QPSK RB 1/0 ch 40620/Zoom Scan (7x7x7)/Cube 0:** Measurement grid: dx=5mm, dy=5mm, dz=5mm

Reference Value = 17.71 V/m; Power Drift = 0.01 dB

Peak SAR (extrapolated) = 1.11 W/kg

**SAR(1 g) = 0.554 W/kg; SAR(10 g) = 0.272 W/kg**

[Info: Interpolated medium parameters used for SAR evaluation.](#)

Maximum value of SAR (measured) = 0.765 W/kg

**Front/QPSK RB 1/0 ch 40620/Zoom Scan 2 (7x7x7)/Cube 0:** Measurement grid: dx=5mm, dy=5mm, dz=5mm

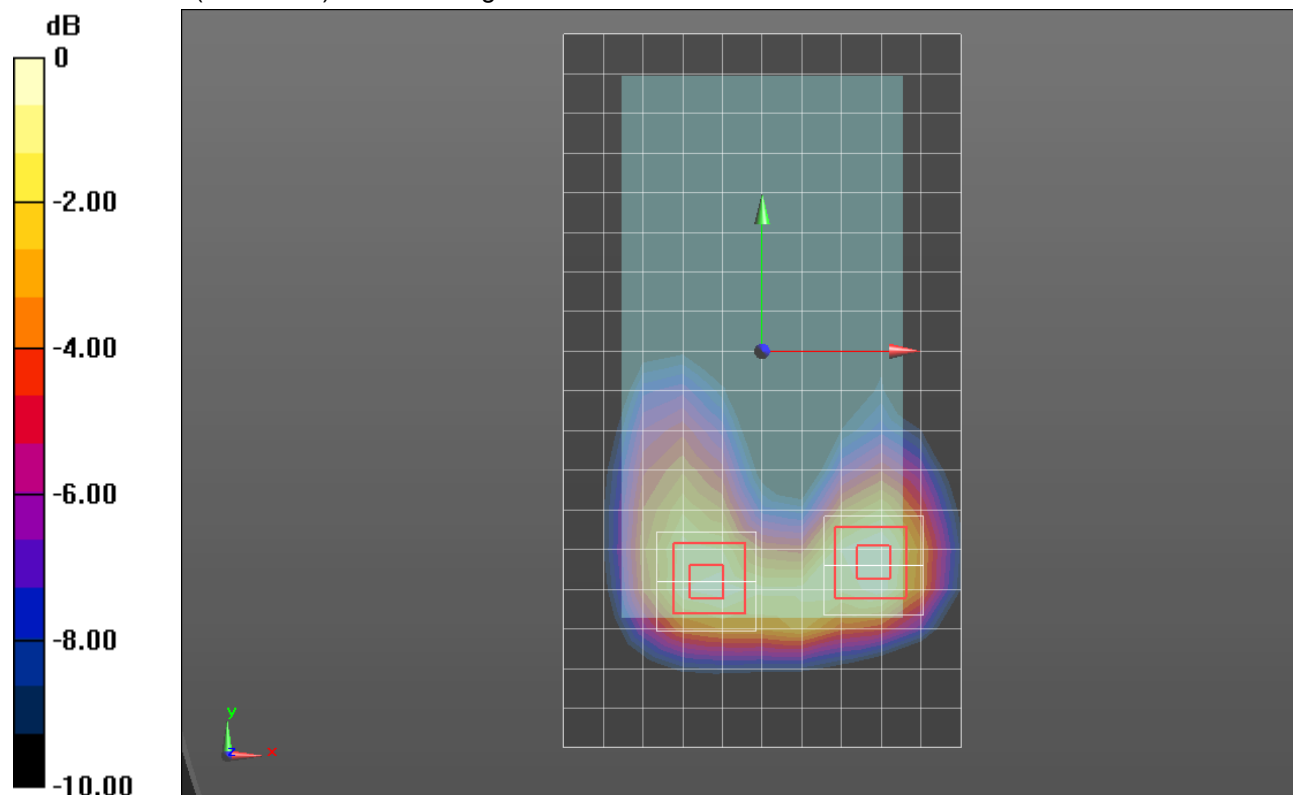
Reference Value = 17.71 V/m; Power Drift = 0.01 dB

Peak SAR (extrapolated) = 0.909 W/kg

**SAR(1 g) = 0.476 W/kg; SAR(10 g) = 0.254 W/kg**

[Info: Interpolated medium parameters used for SAR evaluation.](#)

Maximum value of SAR (measured) = 0.636 W/kg



0 dB = 0.636 W/kg = -1.97 dBW/kg

## WiFi 2.4 GHz

Frequency: 2437 MHz; Duty Cycle: 1:1; Room Ambient Temperature: 24.0°C; Liquid Temperature: 23.0°C  
 Medium parameters used (interpolated):  $f = 2437$  MHz;  $\sigma = 1.855$  S/m;  $\epsilon_r = 38.568$ ;  $\rho = 1000$  kg/m<sup>3</sup>

DASY5 Configuration:

- Area Scan Setting: Find Secondary Maximum Within: 2.0 dB and with a peak SAR value greater than 0.0012W/kg
- Electronics: DAE3 Sn427; Calibrated: 1/21/2014
- Probe: EX3DV4 - SN3902; ConvF(7.29, 7.29, 7.29); Calibrated: 5/19/2014;
- Sensor-Surface: 2.5mm (Mechanical Surface Detection)
- Phantom: SAM; Type: QD000P40CD; Serial: TP 1751

**RHS/Touch\_802.11b\_ch 6/Area Scan (12x17x1):** Measurement grid: dx=12mm, dy=12mm

[Info: Interpolated medium parameters used for SAR evaluation.](#)

Maximum value of SAR (measured) = 0.282 W/kg

**RHS/Touch\_802.11b\_ch 6/Zoom Scan (9x8x7)/Cube 0:** Measurement grid: dx=5mm, dy=5mm, dz=5mm

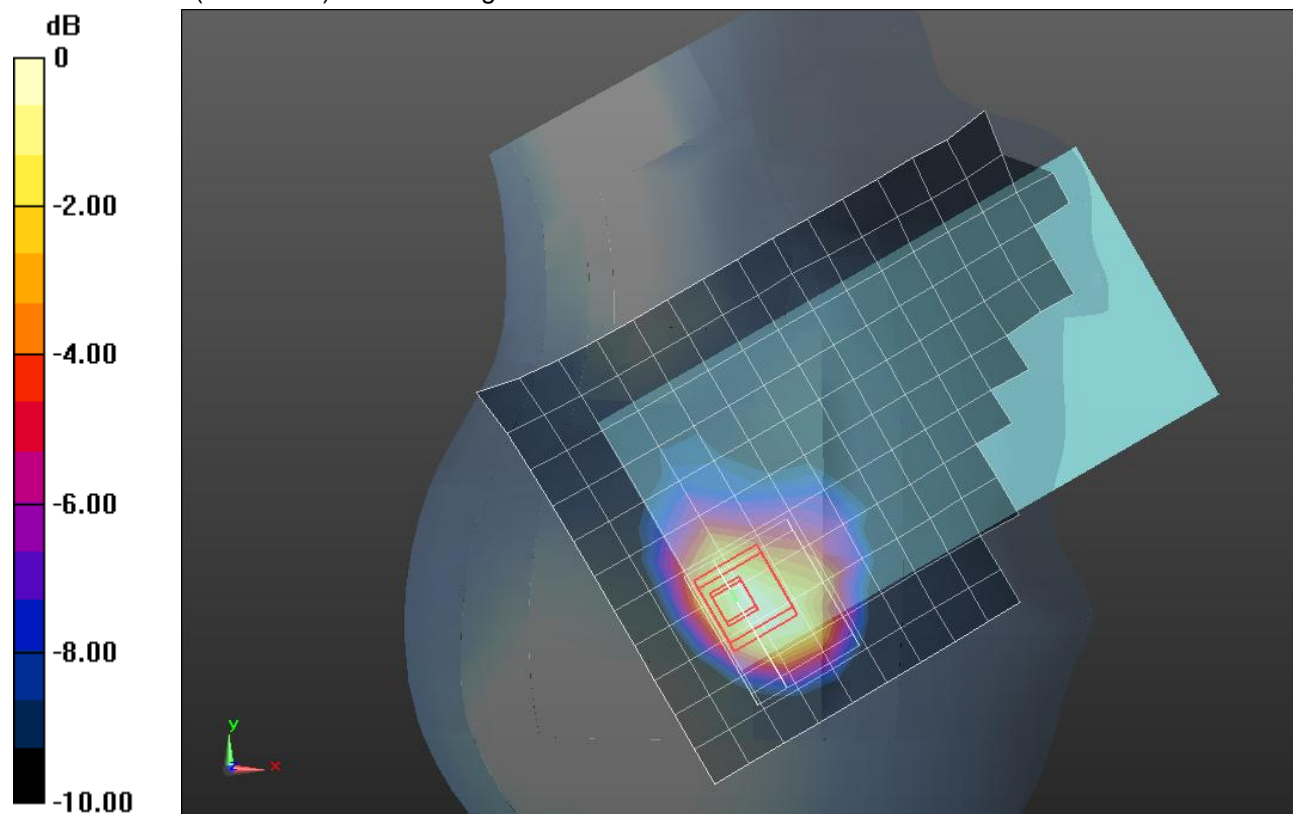
Reference Value = 12.088 V/m; Power Drift = -0.15 dB

Peak SAR (extrapolated) = 0.445 W/kg

**SAR(1 g) = 0.213 W/kg; SAR(10 g) = 0.110 W/kg**

[Info: Interpolated medium parameters used for SAR evaluation.](#)

Maximum value of SAR (measured) = 0.289 W/kg



0 dB = 0.289 W/kg = -5.39 dBW/kg

## WiFi 2.4GHz

Frequency: 2437 MHz; Duty Cycle: 1:1; Room Ambient Temperature: 24.0°C; Liquid Temperature: 23.0°C  
 Medium parameters used (interpolated):  $f = 2437$  MHz;  $\sigma = 1.996$  S/m;  $\epsilon_r = 50.829$ ;  $\rho = 1000$  kg/m<sup>3</sup>

DASY5 Configuration:

- Area Scan Setting: Find Secondary Maximum Within: 2.0 dB and with a peak SAR value greater than 0.0012W/kg
- Electronics: DAE3 Sn427; Calibrated: 1/21/2014
- Probe: EX3DV4 - SN3902; ConvF(7.35, 7.35, 7.35); Calibrated: 5/19/2014;
- Sensor-Surface: 2.5mm (Mechanical Surface Detection)
- Phantom: ELI-B v5.0; Type: QDOVA002AA; Serial: TP:1195

**Rear/802.11b\_ch 6/Area Scan (11x17x1):** Measurement grid: dx=12mm, dy=12mm

[Info: Interpolated medium parameters used for SAR evaluation.](#)

Maximum value of SAR (measured) = 0.317 W/kg

**Rear/802.11b\_ch 6/Zoom Scan (7x7x7)/Cube 0:** Measurement grid: dx=5mm, dy=5mm, dz=5mm

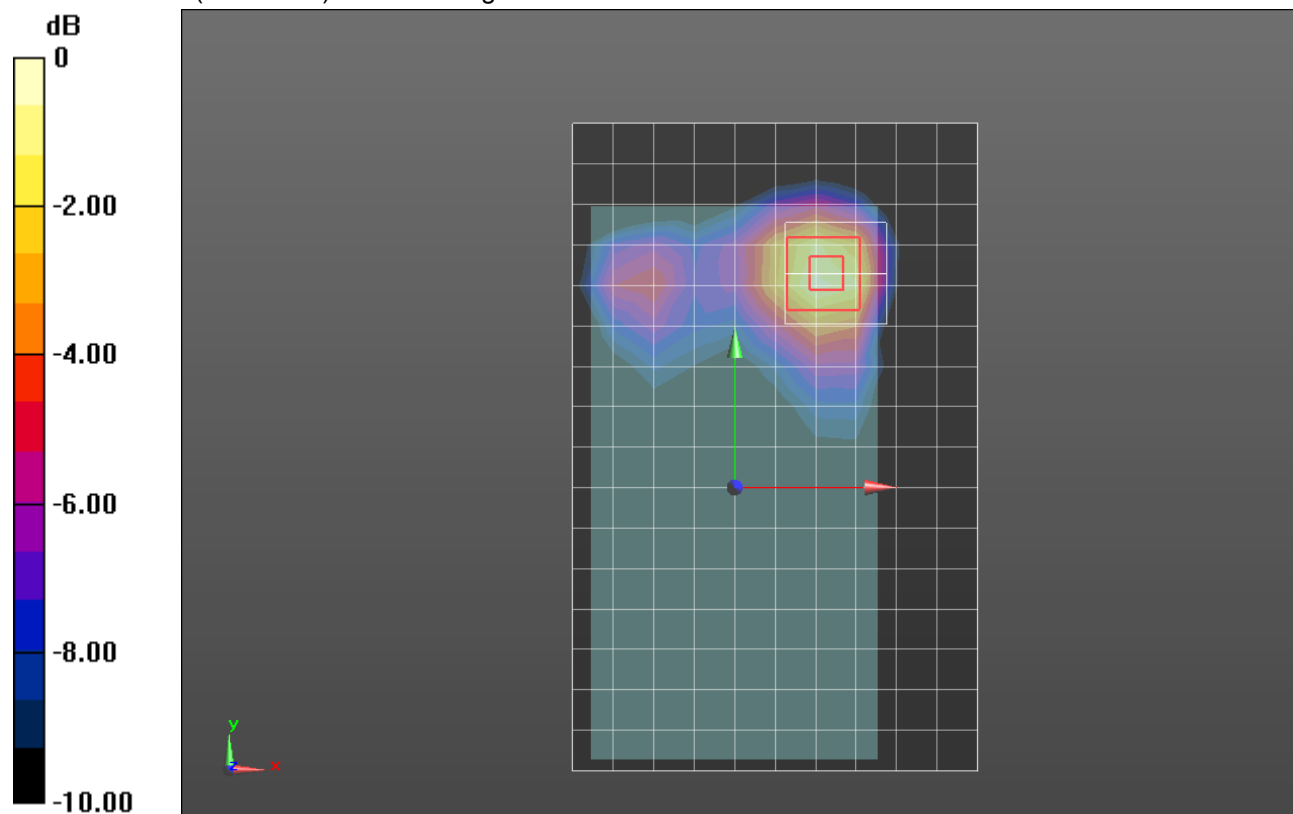
Reference Value = 6.552 V/m; Power Drift = -0.07 dB

Peak SAR (extrapolated) = 0.498 W/kg

**SAR(1 g) = 0.255 W/kg; SAR(10 g) = 0.129 W/kg**

[Info: Interpolated medium parameters used for SAR evaluation.](#)

Maximum value of SAR (measured) = 0.342 W/kg



0 dB = 0.342 W/kg = -4.66 dBW/kg

## Wi-Fi 5GHz

Frequency: 5240 MHz; Duty Cycle: 1:1; Room Ambient Temperature: 24.0°C; Liquid Temperature: 23.0°C

Medium parameters used:  $f = 5240 \text{ MHz}$ ;  $\sigma = 4.467 \text{ S/m}$ ;  $\epsilon_r = 37.325$ ;  $\rho = 1000 \text{ kg/m}^3$

DASY5 Configuration:

- Area Scan Setting: Find Secondary Maximum Within: 2.0 dB and with a peak SAR value greater than 0.0012W/kg
- Electronics: DAE4 Sn1439; Calibrated: 5/14/2014
- Probe: EX3DV4 - SN3991; ConvF(5.23, 5.23, 5.23); Calibrated: 5/16/2014;
- Sensor-Surface: 2mm (Mechanical Surface Detection (Locations From Previous Scan Used)), Sensor-Surface: 2mm (Mechanical Surface Detection)
- Phantom: TWIN SAM v5.0; Type: QD000P40CD; Serial: TP:1829

**RHS/Touch\_802.11a\_Ch 48/Area Scan (15x21x1):** Measurement grid: dx=10mm, dy=10mm

Maximum value of SAR (measured) = 0.0578 W/kg

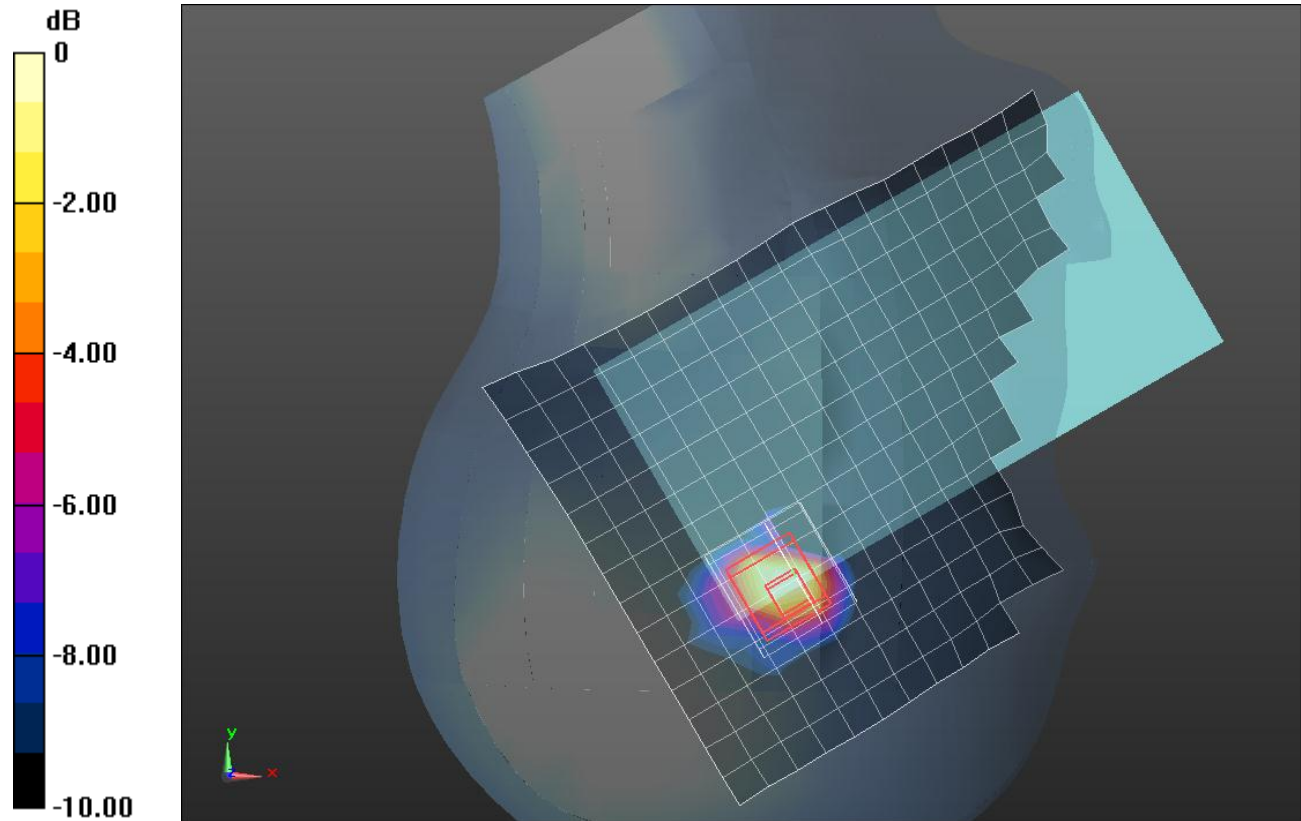
**RHS/Touch\_802.11a\_Ch 48/Zoom Scan (9x9x12)/Cube 0:** Measurement grid: dx=4mm, dy=4mm, dz=2mm

Reference Value = 3.226 V/m; Power Drift = -0.01 dB

Peak SAR (extrapolated) = 0.281 W/kg

**SAR(1 g) = 0.025 W/kg; SAR(10 g) = 0.00838 W/kg**

Maximum value of SAR (measured) = 0.0556 W/kg



0 dB = 0.0556 W/kg = -12.55 dBW/kg

## Wi-Fi 5GHz

Frequency: 5240 MHz; Duty Cycle: 1:1; Room Ambient Temperature: 24.0°C; Liquid Temperature: 23.0°C  
 Medium parameters used:  $f = 5240 \text{ MHz}$ ;  $\sigma = 5.387 \text{ S/m}$ ;  $\epsilon_r = 46.978$ ;  $\rho = 1000 \text{ kg/m}^3$

DASY5 Configuration:

- Area Scan Setting: Find Secondary Maximum Within: 2.0 dB and with a peak SAR value greater than 0.0012W/kg
- Electronics: DAE4 Sn1439; Calibrated: 5/14/2014
- Probe: EX3DV4 - SN3991; ConvF(4.66, 4.66, 4.66); Calibrated: 5/16/2014;
- Sensor-Surface: 2mm (Mechanical Surface Detection)
- Phantom: ELI v5.0 (B); Type: QDOVA002AA; Serial: TP:1257

**Rear/802.11a\_Ch 48/Area Scan (13x22x1):** Measurement grid: dx=10mm, dy=10mm

Maximum value of SAR (measured) = 0.302 W/kg

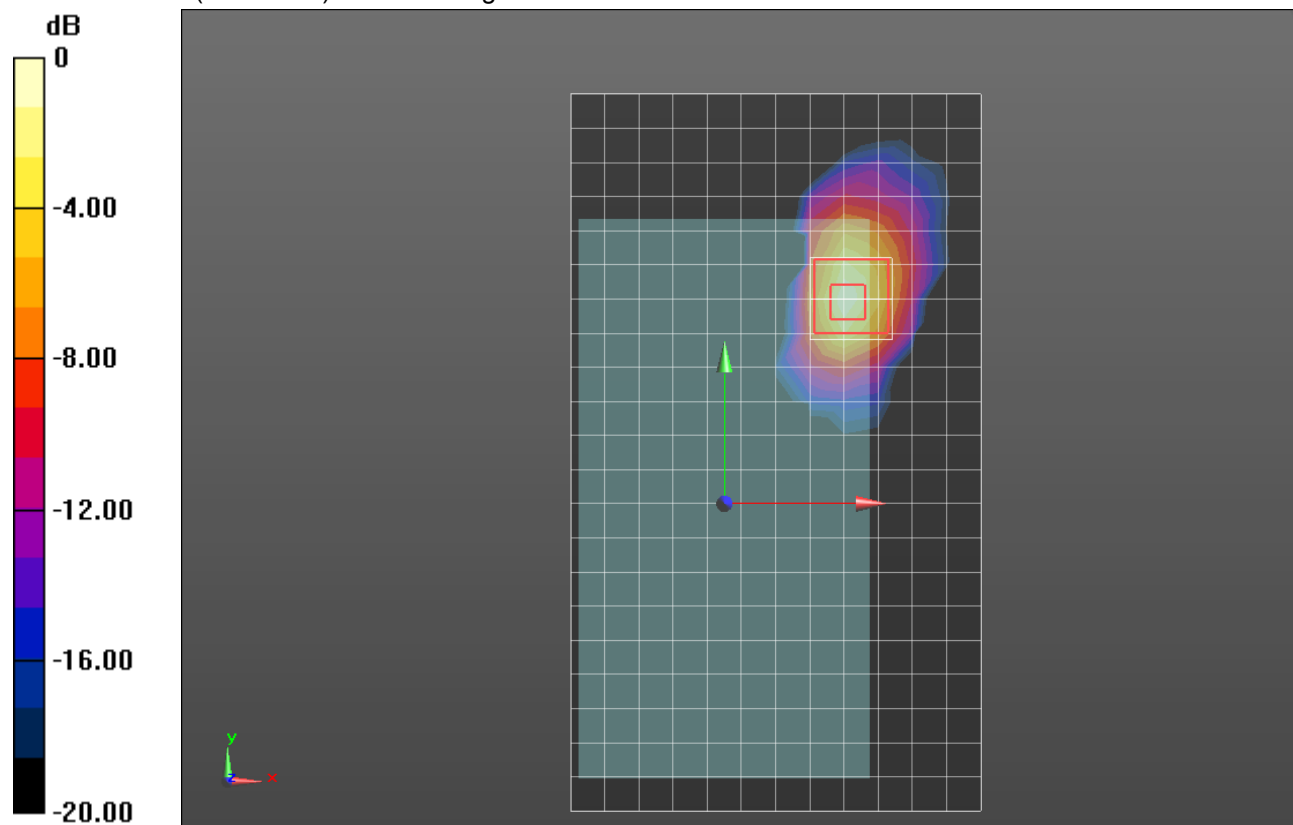
**Rear/802.11a\_Ch 48/Zoom Scan (7x7x12)/Cube 0:** Measurement grid: dx=4mm, dy=4mm, dz=2mm

Reference Value = 7.248 V/m; Power Drift = -0.11 dB

Peak SAR (extrapolated) = 0.526 W/kg

**SAR(1 g) = 0.145 W/kg; SAR(10 g) = 0.043 W/kg**

Maximum value of SAR (measured) = 0.292 W/kg



0 dB = 0.292 W/kg = -5.35 dBW/kg

## Wi-Fi 5GHz

Frequency: 5300 MHz; Duty Cycle: 1:1; Room Ambient Temperature: 24.0°C; Liquid Temperature: 23.0°C  
 Medium parameters used:  $f = 5300 \text{ MHz}$ ;  $\sigma = 4.526 \text{ S/m}$ ;  $\epsilon_r = 37.237$ ;  $\rho = 1000 \text{ kg/m}^3$

DASY5 Configuration:

- Area Scan Setting: Find Secondary Maximum Within: 2.0 dB and with a peak SAR value greater than 0.0012W/kg
- Electronics: DAE4 Sn1439; Calibrated: 5/14/2014
- Probe: EX3DV4 - SN3991; ConvF(4.96, 4.96, 4.96); Calibrated: 5/16/2014;
- Sensor-Surface: 2mm (Mechanical Surface Detection (Locations From Previous Scan Used)), Sensor-Surface: 2mm (Mechanical Surface Detection)
- Phantom: TWIN SAM v5.0; Type: QD000P40CD; Serial: TP:1829

**RHS/Touch\_802.11a\_Ch 60/Area Scan (15x21x1):** Measurement grid: dx=10mm, dy=10mm  
 Maximum value of SAR (measured) = 0.0850 W/kg

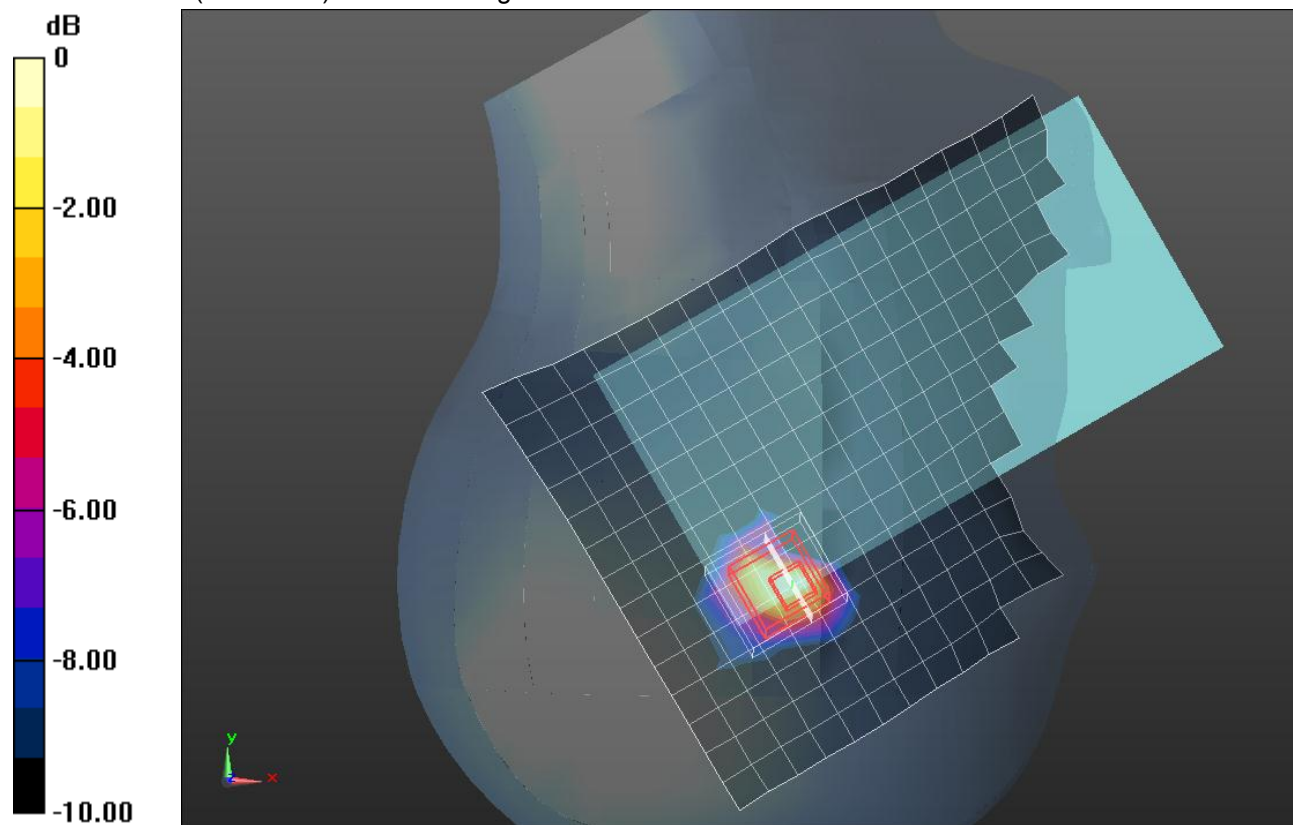
**RHS/Touch\_802.11a\_Ch 60/Zoom Scan (8x9x12)/Cube 0:** Measurement grid: dx=4mm, dy=4mm, dz=2mm

Reference Value = 3.804 V/m; Power Drift = 0.13 dB

Peak SAR (extrapolated) = 0.150 W/kg

**SAR(1 g) = 0.033 W/kg; SAR(10 g) = 0.010 W/kg**

Maximum value of SAR (measured) = 0.0837 W/kg



0 dB = 0.0837 W/kg = -10.77 dBW/kg

## Wi-Fi 5GHz

Frequency: 5300 MHz; Duty Cycle: 1:1; Room Ambient Temperature: 24.0°C; Liquid Temperature: 23.0°C  
 Medium parameters used:  $f = 5300 \text{ MHz}$ ;  $\sigma = 5.465 \text{ S/m}$ ;  $\epsilon_r = 46.868$ ;  $\rho = 1000 \text{ kg/m}^3$

DASY5 Configuration:

- Area Scan Setting: Find Secondary Maximum Within: 2.0 dB and with a peak SAR value greater than 0.0012W/kg
- Electronics: DAE4 Sn1439; Calibrated: 5/14/2014
- Probe: EX3DV4 - SN3991; ConvF(4.47, 4.47, 4.47); Calibrated: 5/16/2014;
- Sensor-Surface: 2mm (Mechanical Surface Detection (Locations From Previous Scan Used)), Sensor-Surface: 2mm (Mechanical Surface Detection)
- Phantom: ELI v5.0 (B); Type: QDOVA002AA; Serial: TP:1257

**Rear/802.11a\_Ch 60/Area Scan (13x22x1):** Measurement grid: dx=10mm, dy=10mm

Maximum value of SAR (measured) = 0.397 W/kg

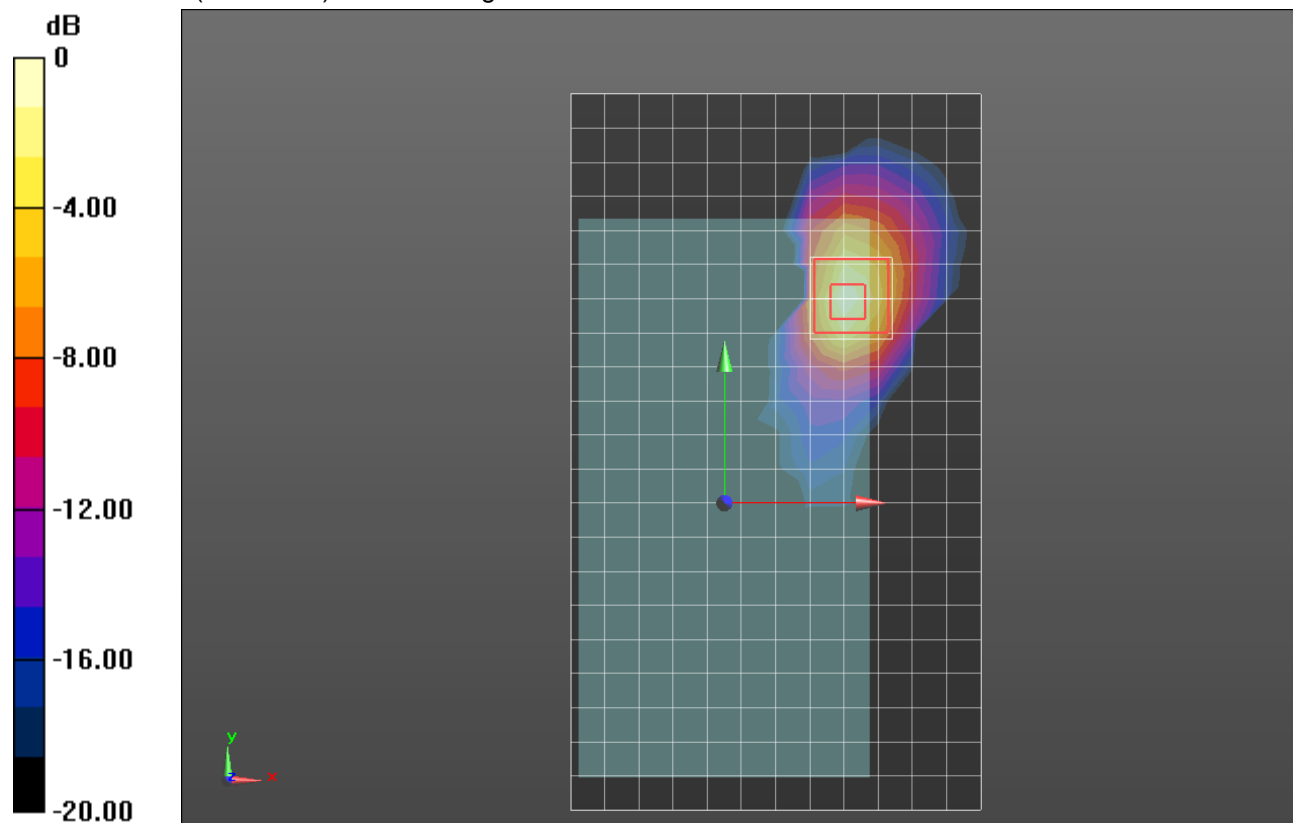
**Rear/802.11a\_Ch 60/Zoom Scan (7x7x12)/Cube 0:** Measurement grid: dx=4mm, dy=4mm, dz=2mm

Reference Value = 8.371 V/m; Power Drift = -0.08 dB

Peak SAR (extrapolated) = 0.789 W/kg

**SAR(1 g) = 0.201 W/kg; SAR(10 g) = 0.060 W/kg**

Maximum value of SAR (measured) = 0.400 W/kg



0 dB = 0.400 W/kg = -3.98 dBW/kg

## Wi-Fi 5GHz

Frequency: 5640 MHz; Duty Cycle: 1:1; Room Ambient Temperature: 24.0°C; Liquid Temperature: 23.0°C

Medium parameters used:  $f = 5640 \text{ MHz}$ ;  $\sigma = 4.867 \text{ S/m}$ ;  $\epsilon_r = 36.775$ ;  $\rho = 1000 \text{ kg/m}^3$

DASY5 Configuration:

- Area Scan Setting: Find Secondary Maximum Within: 2.0 dB and with a peak SAR value greater than 0.0012W/kg
- Electronics: DAE4 Sn1439; Calibrated: 5/14/2014
- Probe: EX3DV4 - SN3991; ConvF(4.73, 4.73, 4.73); Calibrated: 5/16/2014;
- Sensor-Surface: 2mm (Mechanical Surface Detection (Locations From Previous Scan Used)), Sensor-Surface: 2mm (Mechanical Surface Detection)
- Phantom: TWIN SAM v5.0; Type: QD000P40CD; Serial: TP:1829

**RHS/Touch\_802.11a\_Ch 128/Area Scan (15x21x1):** Measurement grid: dx=10mm, dy=10mm

Maximum value of SAR (measured) = 0.192 W/kg

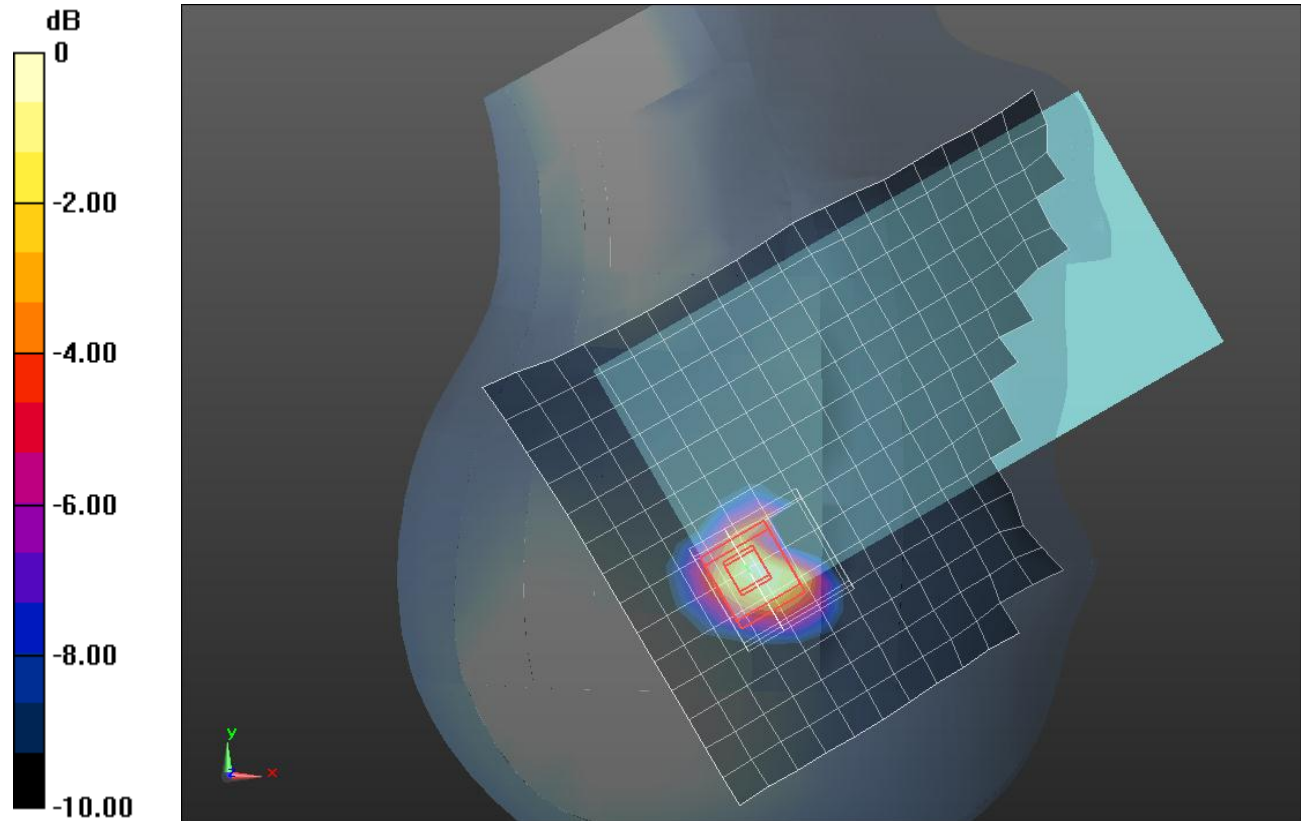
**RHS/Touch\_802.11a\_Ch 128/Zoom Scan (9x10x12)/Cube 0:** Measurement grid: dx=4mm, dy=4mm, dz=2mm

Reference Value = 6.213 V/m; Power Drift = 0.15 dB

Peak SAR (extrapolated) = 0.367 W/kg

**SAR(1 g) = 0.092 W/kg; SAR(10 g) = 0.031 W/kg**

Maximum value of SAR (measured) = 0.196 W/kg



0 dB = 0.196 W/kg = -7.08 dBW/kg

## Wi-Fi 5GHz

Frequency: 5640 MHz; Duty Cycle: 1:1; Room Ambient Temperature: 24.0°C; Liquid Temperature: 23.0°C  
 Medium parameters used:  $f = 5640 \text{ MHz}$ ;  $\sigma = 5.915 \text{ S/m}$ ;  $\epsilon_r = 46.315$ ;  $\rho = 1000 \text{ kg/m}^3$

DASY5 Configuration:

- Area Scan Setting: Find Secondary Maximum Within: 2.0 dB and with a peak SAR value greater than 0.0012W/kg
- Electronics: DAE4 Sn1439; Calibrated: 5/14/2014
- Probe: EX3DV4 - SN3991; ConvF(4.41, 4.41, 4.41); Calibrated: 5/16/2014;
- Sensor-Surface: 2mm (Mechanical Surface Detection (Locations From Previous Scan Used)), Sensor-Surface: 2mm (Mechanical Surface Detection)
- Phantom: ELI v5.0 (B); Type: QDOVA002AA; Serial: TP:1257

**Rear/802.11a\_Ch 128/Area Scan (13x22x1):** Measurement grid: dx=10mm, dy=10mm

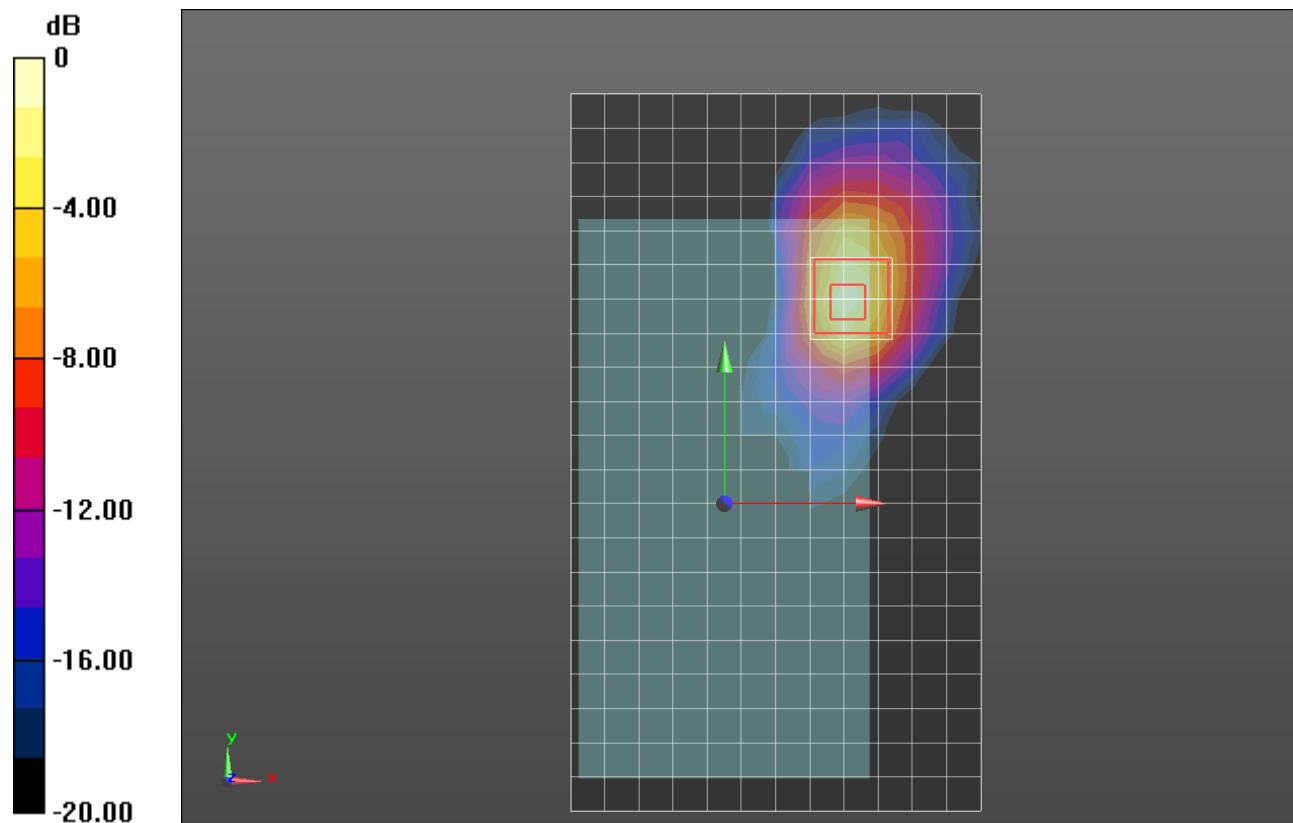
Maximum value of SAR (measured) = 0.763 W/kg

**Rear/802.11a\_Ch 128/Zoom Scan (7x7x12)/Cube 0:** Measurement grid: dx=4mm, dy=4mm, dz=2mm

Reference Value = 10.78 V/m; Power Drift = -0.11 dB

Peak SAR (extrapolated) = 1.76 W/kg

**SAR(1 g) = 0.383 W/kg; SAR(10 g) = 0.120 W/kg**



0 dB = 0.763 W/kg = -1.17 dBW/kg

## Wi-Fi 5GHz

Frequency: 5825 MHz; Duty Cycle: 1:1; Room Ambient Temperature: 24.0°C; Liquid Temperature: 23.0°C  
 Medium parameters used:  $f = 5825 \text{ MHz}$ ;  $\sigma = 5.062 \text{ S/m}$ ;  $\epsilon_r = 36.511$ ;  $\rho = 1000 \text{ kg/m}^3$

DASY5 Configuration:

- Area Scan Setting: Find Secondary Maximum Within: 2.0 dB and with a peak SAR value greater than 0.0012W/kg
- Electronics: DAE4 Sn1439; Calibrated: 5/14/2014
- Probe: EX3DV4 - SN3991; ConvF(4.66, 4.66, 4.66); Calibrated: 5/16/2014;
- Sensor-Surface: 2mm (Mechanical Surface Detection (Locations From Previous Scan Used)), Sensor-Surface: 2mm (Mechanical Surface Detection)
- Phantom: TWIN SAM v5.0; Type: QD000P40CD; Serial: TP:1829

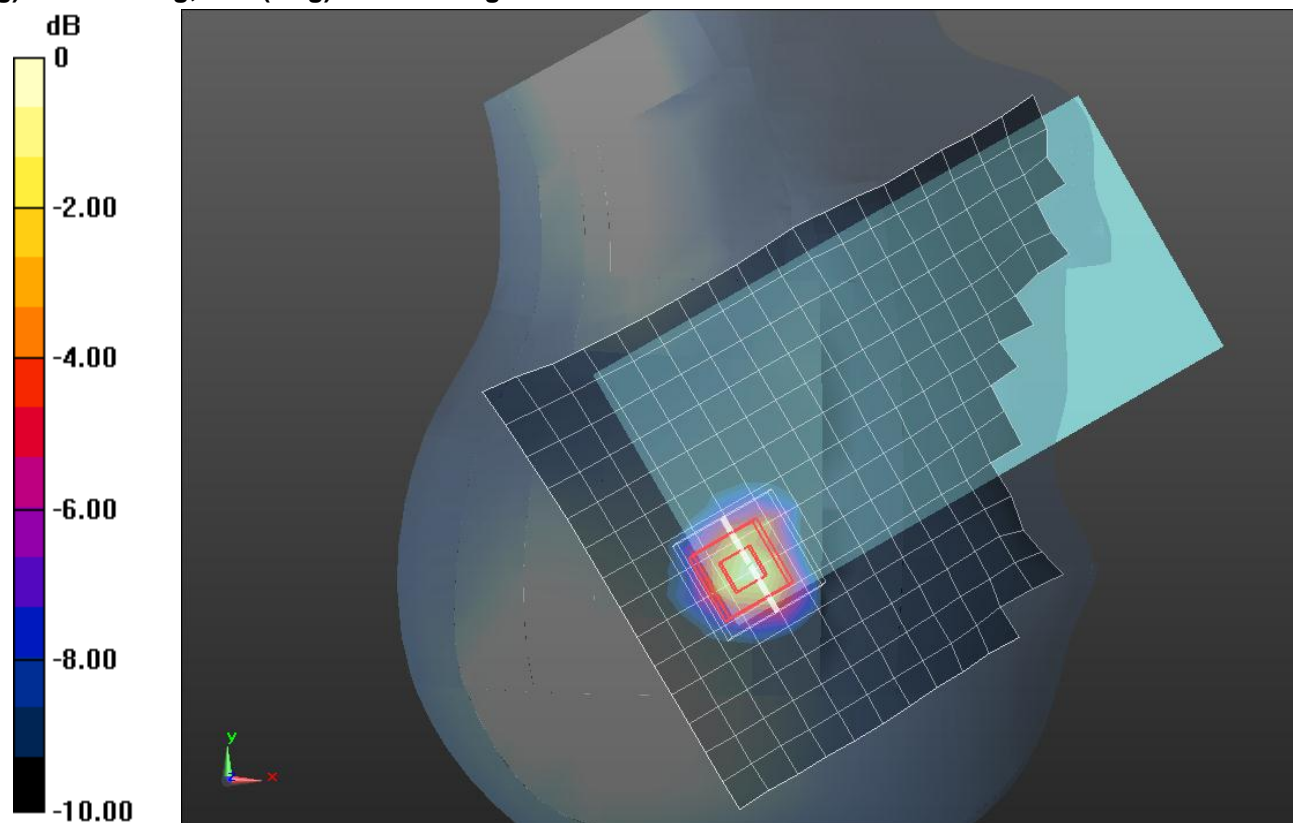
**RHS/Touch\_802.11a\_Ch 165/Area Scan (15x21x1):** Measurement grid: dx=10mm, dy=10mm  
 Maximum value of SAR (measured) = 0.217 W/kg

**RHS/Touch\_802.11a\_Ch 165/Zoom Scan (9x9x12)/Cube 0:** Measurement grid: dx=4mm, dy=4mm, dz=2mm

Reference Value = 6.102 V/m; Power Drift = 0.15 dB

Peak SAR (extrapolated) = 0.417 W/kg

**SAR(1 g) = 0.095 W/kg; SAR(10 g) = 0.029 W/kg**



0 dB = 0.217 W/kg = -6.64 dBW/kg

## Wi-Fi 5GHz

Frequency: 5825 MHz; Duty Cycle: 1:1; Room Ambient Temperature: 24.0°C; Liquid Temperature: 23.0°C  
 Medium parameters used:  $f = 5825 \text{ MHz}$ ;  $\sigma = 6.167 \text{ S/m}$ ;  $\epsilon_r = 46.008$ ;  $\rho = 1000 \text{ kg/m}^3$

DASY5 Configuration:

- Area Scan Setting: Find Secondary Maximum Within: 2.0 dB and with a peak SAR value greater than 0.0012W/kg
- Electronics: DAE4 Sn1439; Calibrated: 5/14/2014
- Probe: EX3DV4 - SN3991; ConvF(4.32, 4.32, 4.32); Calibrated: 5/16/2014;
- Sensor-Surface: 2mm (Mechanical Surface Detection (Locations From Previous Scan Used)), Sensor-Surface: 2mm (Mechanical Surface Detection)
- Phantom: ELI v5.0 (B); Type: QDOVA002AA; Serial: TP:1257

**Rear/802.11a\_Ch 165/Area Scan (13x22x1):** Measurement grid: dx=10mm, dy=10mm

Maximum value of SAR (measured) = 0.378 W/kg

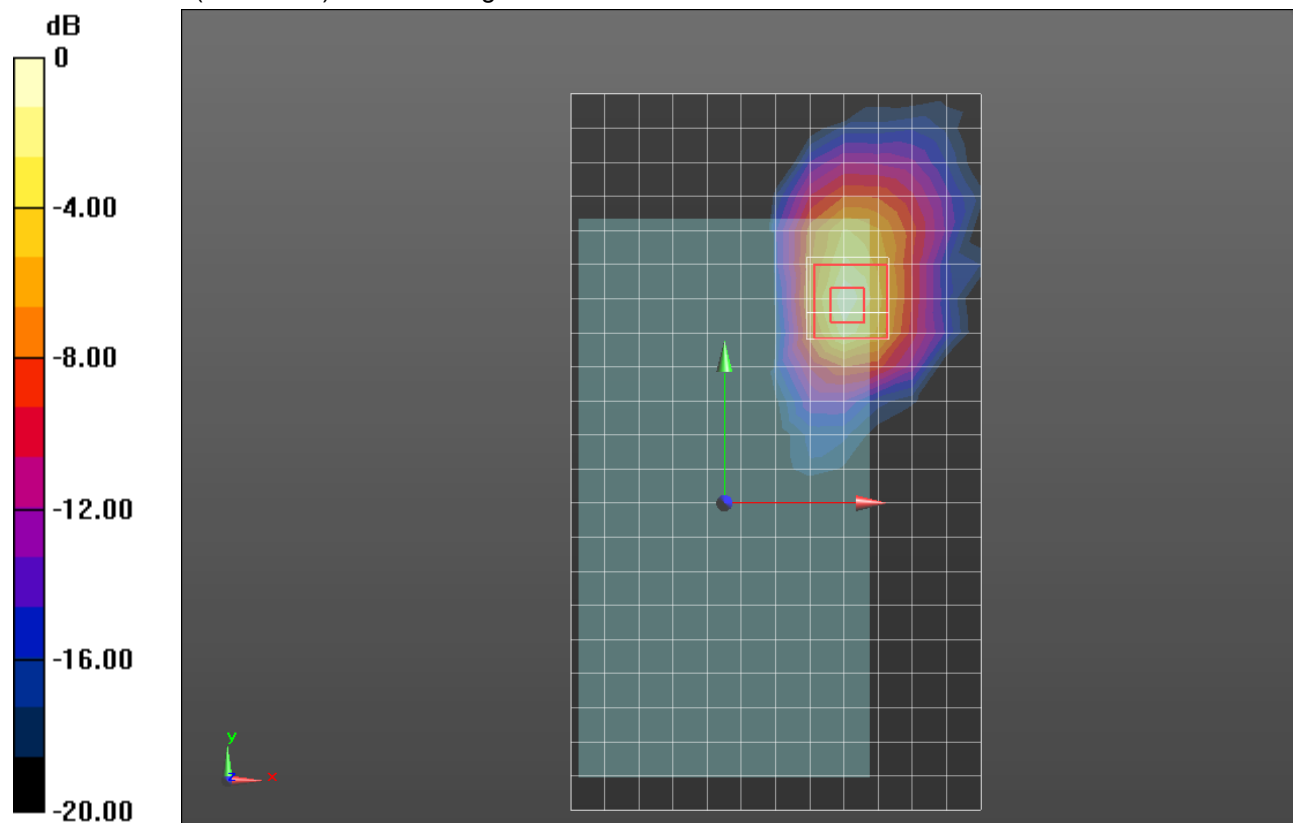
**Rear/802.11a\_Ch 165/Zoom Scan (7x7x12)/Cube 0:** Measurement grid: dx=4mm, dy=4mm, dz=2mm

Reference Value = 7.693 V/m; Power Drift = -0.11 dB

Peak SAR (extrapolated) = 0.826 W/kg

**SAR(1 g) = 0.185 W/kg; SAR(10 g) = 0.055 W/kg**

Maximum value of SAR (measured) = 0.381 W/kg



0 dB = 0.381 W/kg = -4.19 dBW/kg