

## SystemPerformanceCheck-D1900V2 SN 5d163

Frequency: 1900 MHz; Duty Cycle: 1:1; Room Ambient Temperature: 24.0°C; Liquid Temperature: 23.0°C

Medium parameters used:  $f = 1900$  MHz;  $\sigma = 1.511$  S/m;  $\epsilon_r = 52.349$ ;  $\rho = 1000$  kg/m<sup>3</sup>

DASY5 Configuration:

- Area Scan Setting: Find Secondary Maximum Within: 2.0 dB and with a peak SAR value greater than 0.0012W/kg
- Averaged Fast SAR: Polynomial fit
- Electronics: DAE4 Sn1258; Calibrated: 3/6/2013
- Probe: EX3DV4 - SN3929; ConvF(7.28, 7.28, 7.28); Calibrated: 6/24/2013;
- Sensor-Surface: 2.5mm (Mechanical Surface Detection)
- Phantom: ELI-B v5.0; Type: QDOVA002AA; Serial: TP:1195

**Body/Pin=100 mW/Area Scan (61x61x1):** Interpolated grid: dx=1.500 mm, dy=1.500 mm

Reference Value = 57.410 V/m; Power Drift = 0.04 dB

**Fast SAR: SAR(1 g) = 3.86 W/kg; SAR(10 g) = 1.98 W/kg**

Maximum value of SAR (interpolated) = 5.14 W/kg

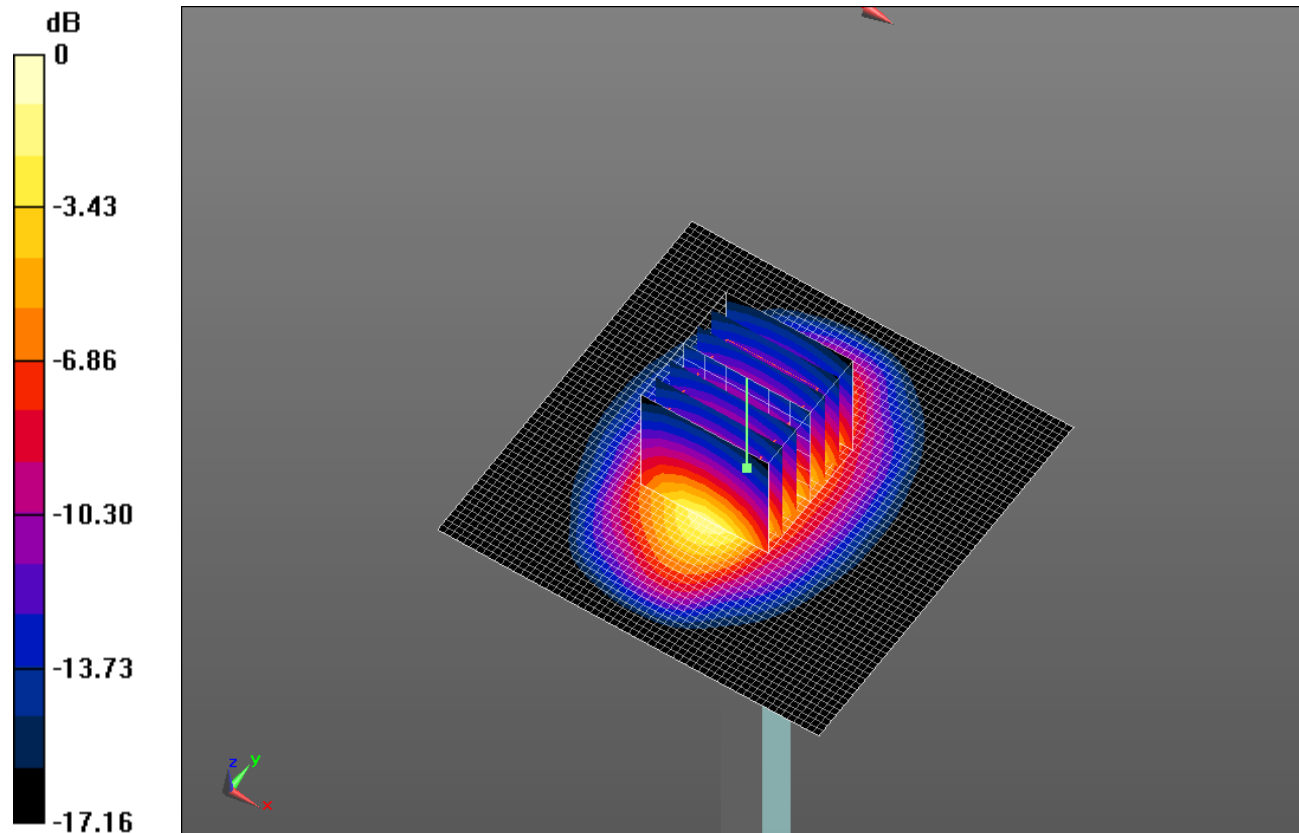
**Body/Pin=100 mW/Zoom Scan (7x7x7)/Cube 0:** Measurement grid: dx=5mm, dy=5mm, dz=5mm

Reference Value = 57.410 V/m; Power Drift = 0.04 dB

Peak SAR (extrapolated) = 6.92 W/kg

**SAR(1 g) = 3.83 W/kg; SAR(10 g) = 2 W/kg**

Maximum value of SAR (measured) = 5.18 W/kg

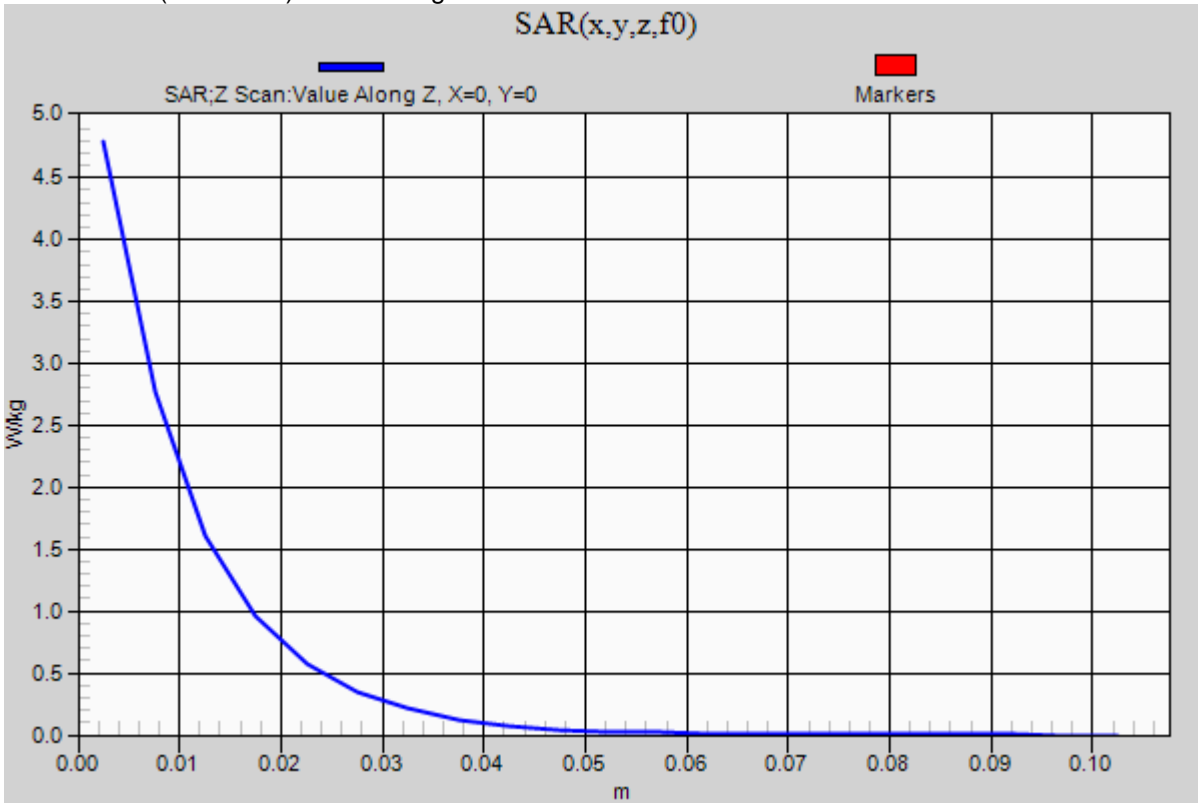


0 dB = 5.18 W/kg = 7.14 dBW/kg

### SystemPerformanceCheck-D1900V2 SN 5d163

Frequency: 1900 MHz; Duty Cycle: 1:1

**Body/Pin=100 mW/Z Scan (1x1x21):** Measurement grid: dx=20mm, dy=20mm, dz=5mm  
Maximum value of SAR (measured) = 4.79 W/kg



## 20140131 SystemPerformanceCheck-D835V2 SN 4d142

Frequency: 835 MHz; Duty Cycle: 1:1; Room Ambient Temperature: 24.0°C; Liquid Temperature: 23.0°C  
 Medium parameters used:  $f = 835 \text{ MHz}$ ;  $\sigma = 0.928 \text{ S/m}$ ;  $\epsilon_r = 42.79$ ;  $\rho = 1000 \text{ kg/m}^3$

DASY5 Configuration:

- Area Scan Setting: Find Secondary Maximum Within: 2.0 dB and with a peak SAR value greater than 0.0012W/kg
- Averaged Fast SAR: Polynomial fit
- Electronics: DAE4 Sn1380; Calibrated: 7/15/2013
- Probe: EX3DV4 - SN3936; ConvF(9.45, 9.45, 9.45); Calibrated: 7/22/2013;
- Sensor-Surface: 2.5mm (Mechanical Surface Detection)
- Phantom: SAM with CRP; Type: QD000P40CD; Serial: S/n:1772

**Head/Pin=100 mW/Area Scan (61x61x1):** Interpolated grid: dx=1.500 mm, dy=1.500 mm

Reference Value = 33.448 V/m; Power Drift = -0.18 dB

**Fast SAR: SAR(1 g) = 1.02 W/kg; SAR(10 g) = 0.686 W/kg**

Maximum value of SAR (interpolated) = 1.21 W/kg

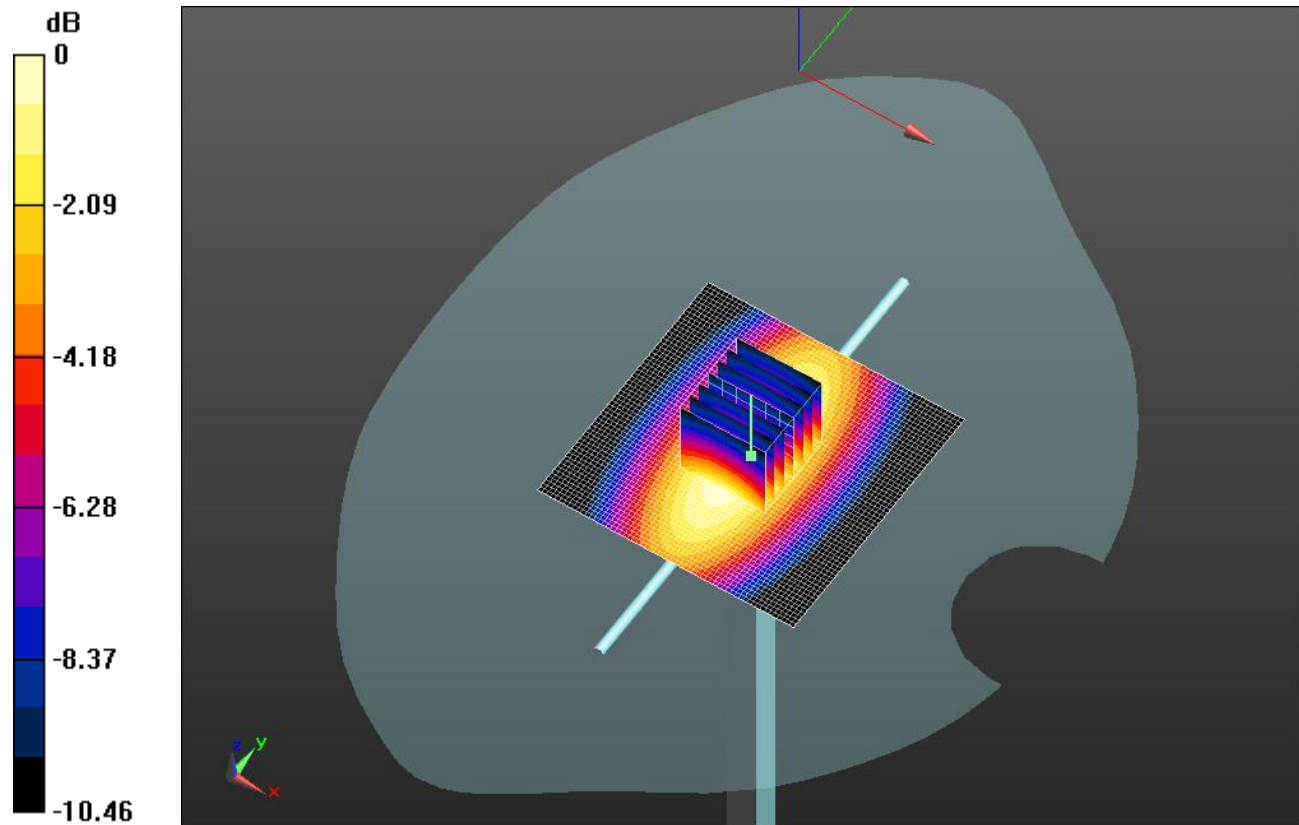
**Head/Pin=100 mW/Zoom Scan (7x7x7)/Cube 0:** Measurement grid: dx=5mm, dy=5mm, dz=5mm

Reference Value = 33.448 V/m; Power Drift = -0.18 dB

Peak SAR (extrapolated) = 1.47 W/kg

**SAR(1 g) = 0.973 W/kg; SAR(10 g) = 0.637 W/kg**

Maximum value of SAR (measured) = 1.19 W/kg

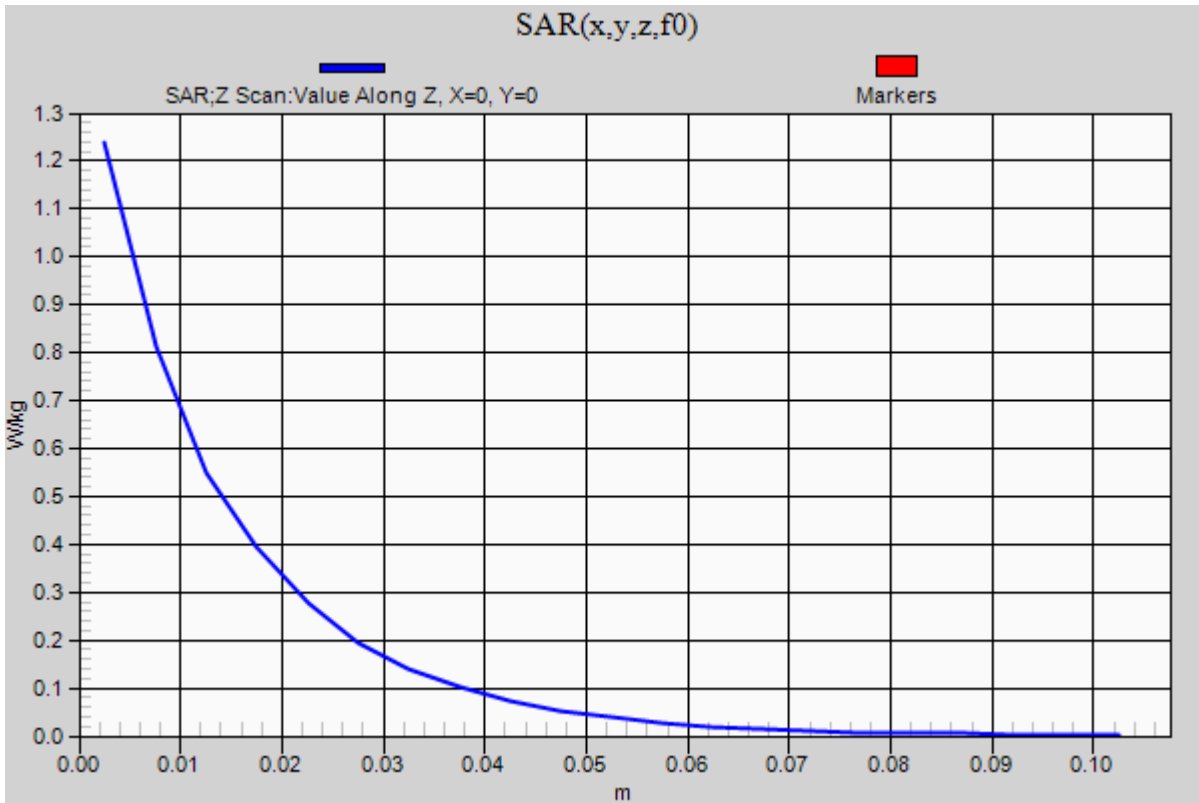


0 dB = 1.19 W/kg = 0.76 dBW/kg

### 20140131 SystemPerformanceCheck-D835V2 SN 4d142

Frequency: 835 MHz; Duty Cycle: 1:1

**Head/Pin=100 mW/Z Scan (1x1x21):** Measurement grid: dx=20mm, dy=20mm, dz=5mm  
Maximum value of SAR (measured) = 1.24 W/kg



## 20140129 SystemPerformanceCheck-D2450V2 SN 899

Frequency: 2450 MHz; Duty Cycle: 1:1; Room Ambient Temperature: 24.0°C; Liquid Temperature: 23.0°C  
 Medium parameters used:  $f = 2450 \text{ MHz}$ ;  $\sigma = 2.002 \text{ S/m}$ ;  $\epsilon_r = 52.425$ ;  $\rho = 1000 \text{ kg/m}^3$

DASY5 Configuration:

- Area Scan Setting: Find Secondary Maximum Within: 2.0 dB and with a peak SAR value greater than 0.0012W/kg
- Averaged Fast SAR: Polynomial fit
- Electronics: DAE4 Sn1377; Calibrated: 7/15/2013
- Probe: EX3DV4 - SN3902; ConvF(7.2, 7.2, 7.2); Calibrated: 7/12/2013;
- Sensor-Surface: 2.5mm (Mechanical Surface Detection)
- Phantom: ELI v5.0 (A); Type: QDOVA001BB; Serial: 1213

**Body/Pin=100 mW/Area Scan (71x71x1):** Interpolated grid: dx=1.200 mm, dy=1.200 mm

Reference Value = 52.956 V/m; Power Drift = -0.02 dB

**Fast SAR: SAR(1 g) = 5.21 W/kg; SAR(10 g) = 2.22 W/kg**

Maximum value of SAR (interpolated) = 7.61 W/kg

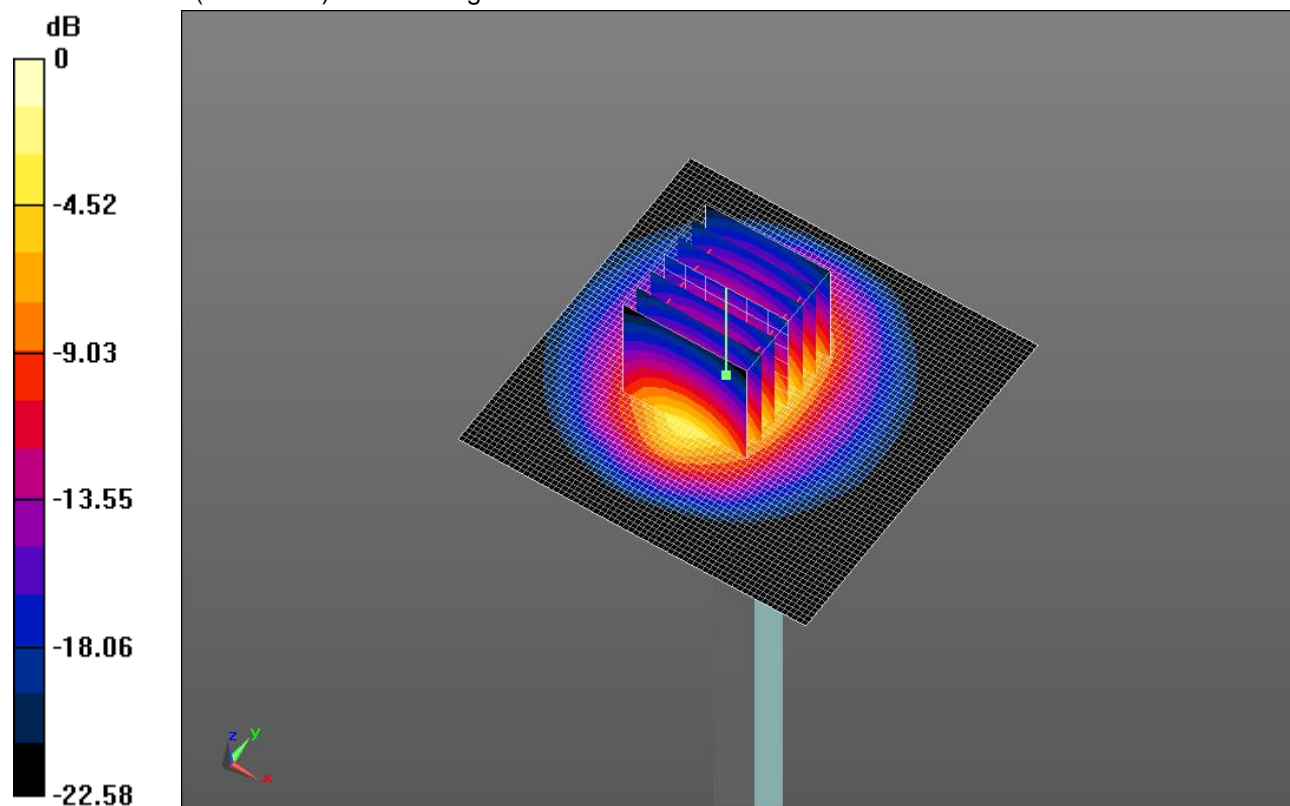
**Body/Pin=100 mW/Zoom Scan (7x7x7)/Cube 0:** Measurement grid: dx=5mm, dy=5mm, dz=5mm

Reference Value = 52.956 V/m; Power Drift = -0.02 dB

Peak SAR (extrapolated) = 11.0 W/kg

**SAR(1 g) = 5.29 W/kg; SAR(10 g) = 2.44 W/kg**

Maximum value of SAR (measured) = 7.50 W/kg

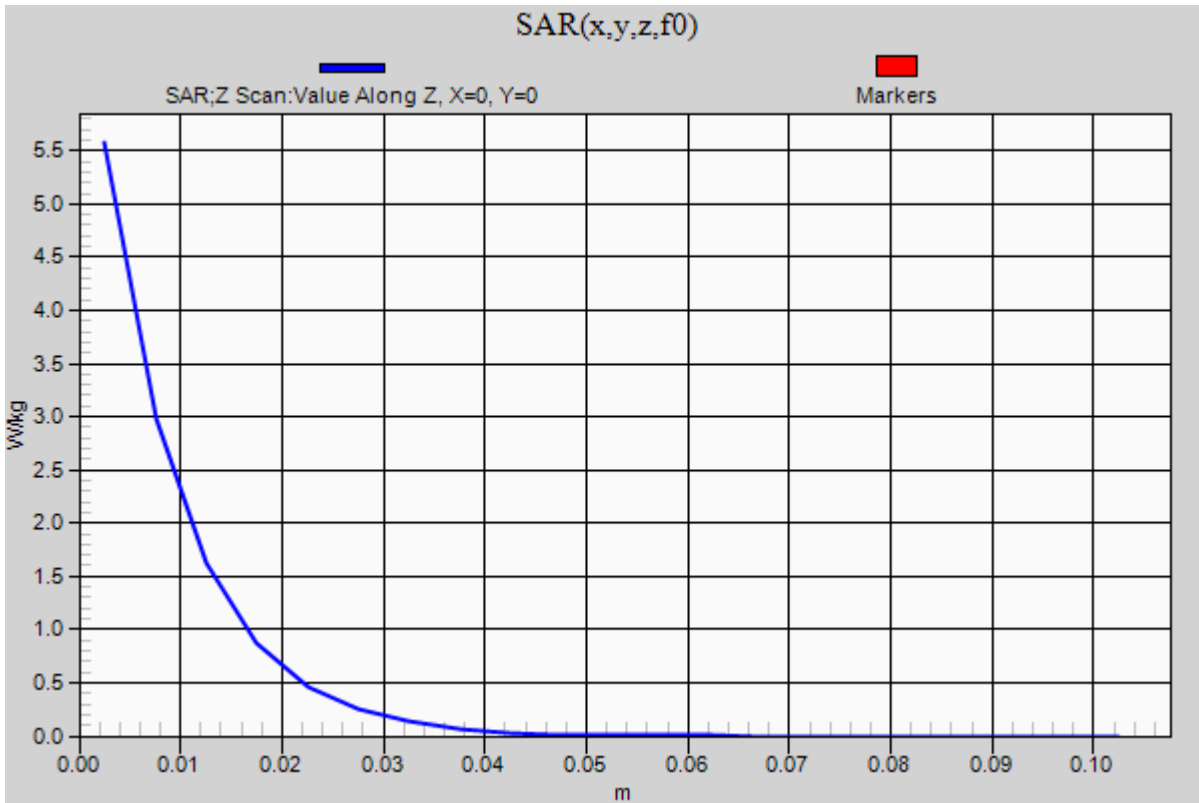


0 dB = 7.50 W/kg = 8.75 dBW/kg

### 20140129 SystemPerformanceCheck-D2450V2 SN 899

Frequency: 2450 MHz; Duty Cycle: 1:1

**Body/Pin=100 mW/Z Scan (1x1x21):** Measurement grid: dx=20mm, dy=20mm, dz=5mm  
Maximum value of SAR (measured) = 5.57 W/kg



## 20140201 SystemPerformanceCheck-D5GHzV2 SN 1168

Frequency: 5200 MHz; Duty Cycle: 1:1; Room Ambient Temperature: 24.0°C; Liquid Temperature: 23.0°C  
 Medium parameters used:  $f = 5200 \text{ MHz}$ ;  $\sigma = 5.3 \text{ S/m}$ ;  $\epsilon_r = 48.259$ ;  $\rho = 1000 \text{ kg/m}^3$

DASY5 Configuration:

- Area Scan Setting: Find Secondary Maximum Within: 2.0 dB and with a peak SAR value greater than 0.0012W/kg
- Averaged Fast SAR: Polynomial fit
- Electronics: DAE4 Sn1377; Calibrated: 7/15/2013
- Probe: EX3DV4 - SN3902; ConvF(4.76, 4.76, 4.76); Calibrated: 7/12/2013;
- Sensor-Surface: 1.4mm (Mechanical Surface Detection (Locations From Previous Scan Used)), Sensor-Surface: 1.4mm (Mechanical Surface Detection)
- Phantom: ELI v5.0 (A); Type: QDOVA001BB; Serial: 1213

**Body/5.2 GHz, Pin=100mW 2/Area Scan (61x61x1):** Interpolated grid: dx=1.000 mm, dy=1.000 mm

Reference Value = 46.660 V/m; Power Drift = 0.03 dB

**Fast SAR: SAR(1 g) = 7.47 W/kg; SAR(10 g) = 2.13 W/kg**

Maximum value of SAR (interpolated) = 18.9 W/kg

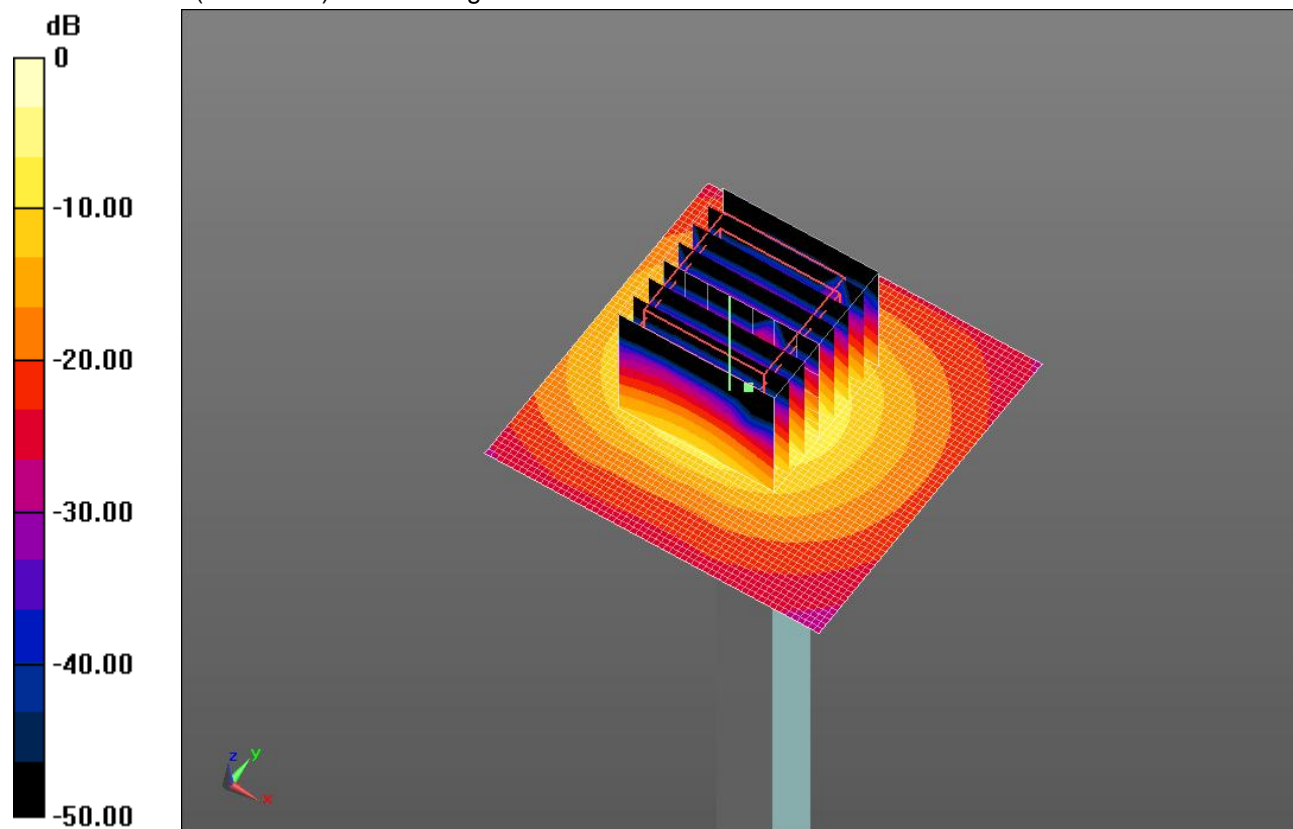
**Body/5.2 GHz, Pin=100mW 2/Zoom Scan (8x8x7)/Cube 0:** Measurement grid: dx=4mm, dy=4mm, dz=1.4mm

Reference Value = 46.660 V/m; Power Drift = 0.03 dB

Peak SAR (extrapolated) = 32.4 W/kg

**SAR(1 g) = 7.91 W/kg; SAR(10 g) = 2.24 W/kg**

Maximum value of SAR (measured) = 18.9 W/kg

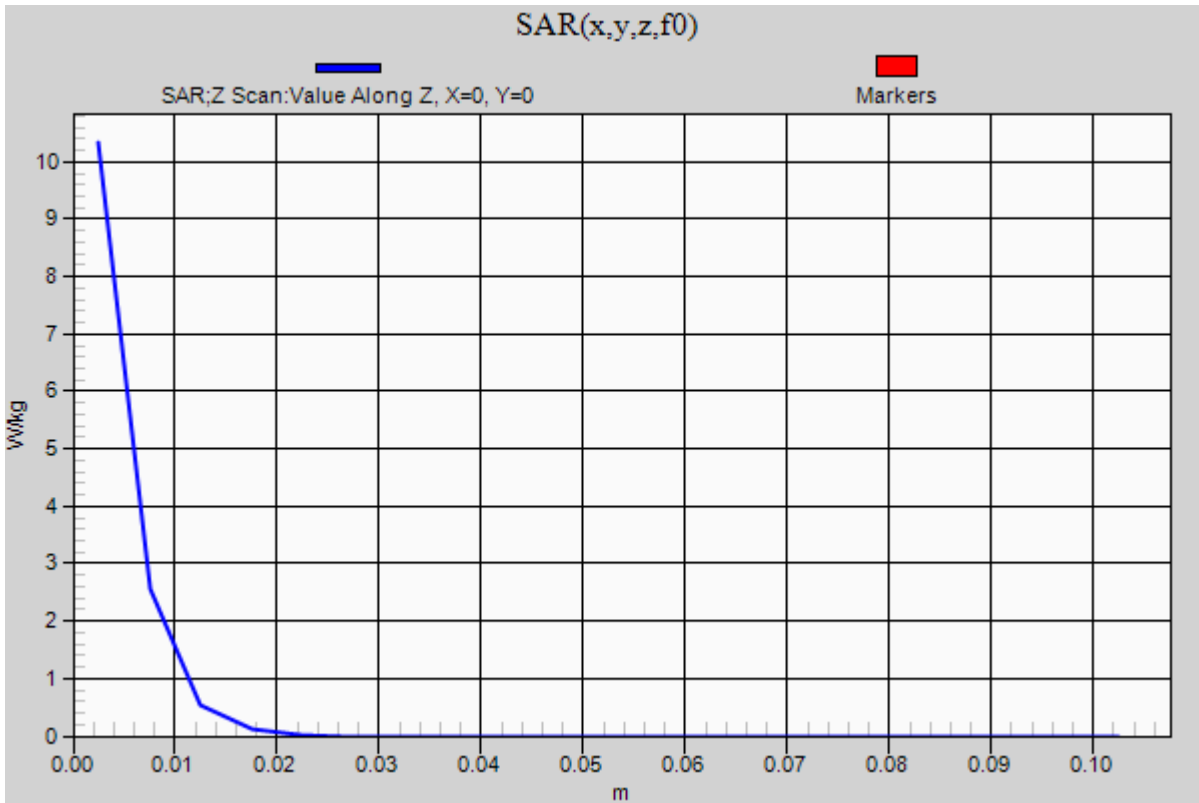


0 dB = 18.9 W/kg = 12.76 dBW/kg

### 20140201 SystemPerformanceCheck-D5GHzV2 SN 1168

Frequency: 5200 MHz; Duty Cycle: 1:1

**Body/5.2 GHz, Pin=100mW 2/Z Scan (1x1x21):** Measurement grid: dx=20mm, dy=20mm, dz=5mm  
Maximum value of SAR (measured) = 10.3 W/kg



## 20140201 SystemPerformanceCheck-D5GHzV2 SN 1168

Frequency: 5600 MHz; Duty Cycle: 1:1; Room Ambient Temperature: 24.0°C; Liquid Temperature: 23.0°C

Medium parameters used:  $f = 5600$  MHz;  $\sigma = 5.836$  S/m;  $\epsilon_r = 47.614$ ;  $\rho = 1000$  kg/m<sup>3</sup>

DASY5 Configuration:

- Area Scan Setting: Find Secondary Maximum Within: 2.0 dB and with a peak SAR value greater than 0.0012W/kg
- Averaged Fast SAR: Polynomial fit
- Electronics: DAE4 Sn1377; Calibrated: 7/15/2013
- Probe: EX3DV4 - SN3902; ConvF(3.93, 3.93, 3.93); Calibrated: 7/12/2013;
- Sensor-Surface: 1.4mm (Mechanical Surface Detection (Locations From Previous Scan Used)), Sensor-Surface: 1.4mm (Mechanical Surface Detection)
- Phantom: ELI v5.0 (A); Type: QDOVA001BB; Serial: 1213

**Body/5.6 GHz, Pin=100mW/Area Scan (61x61x1):** Interpolated grid: dx=1.000 mm, dy=1.000 mm

Reference Value = 46.478 V/m; Power Drift = 0.04 dB

**Fast SAR: SAR(1 g) = 7.95 W/kg; SAR(10 g) = 2.26 W/kg**

Maximum value of SAR (interpolated) = 21.2 W/kg

**Body/5.6 GHz, Pin=100mW/Zoom Scan (8x8x7)/Cube 0:** Measurement grid: dx=4mm, dy=4mm,

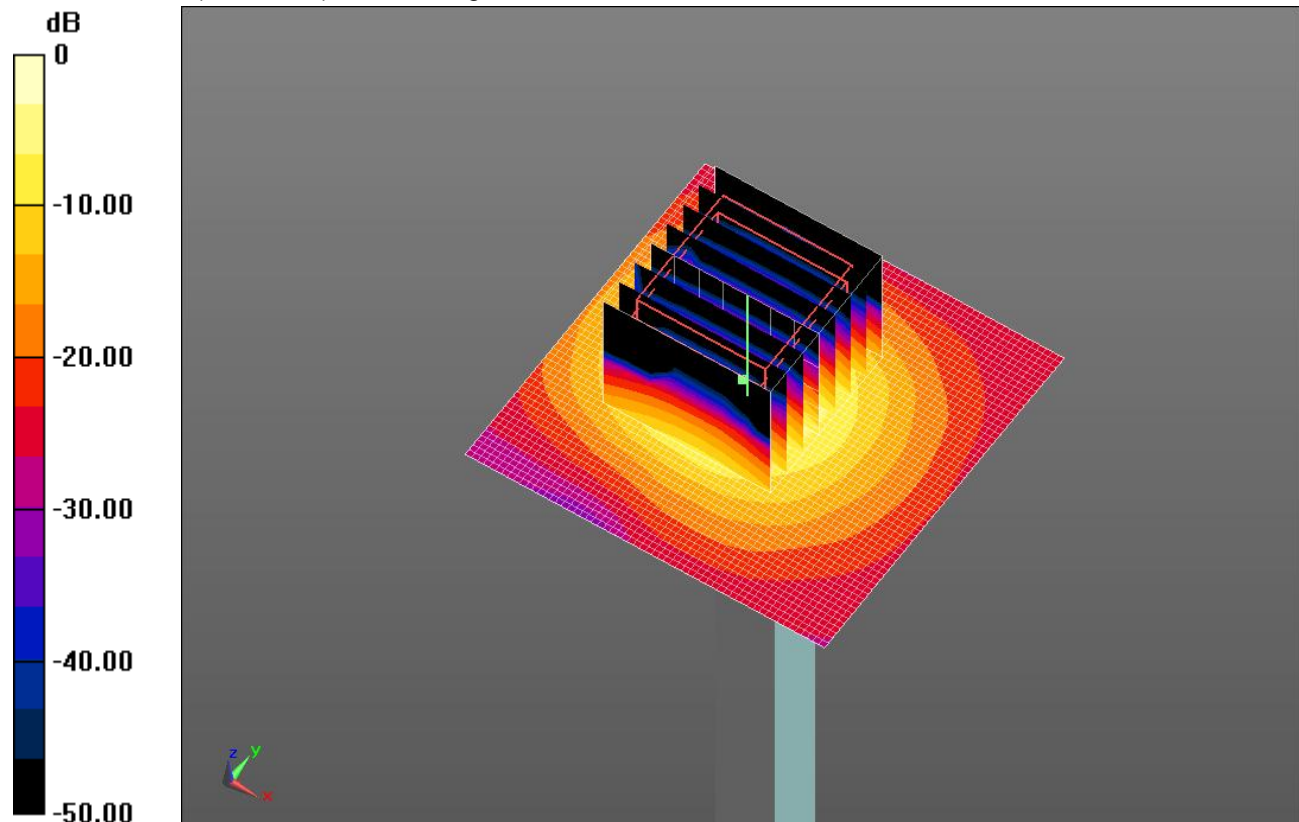
dz=1.4mm

Reference Value = 46.478 V/m; Power Drift = 0.04 dB

Peak SAR (extrapolated) = 37.6 W/kg

**SAR(1 g) = 8.43 W/kg; SAR(10 g) = 2.39 W/kg**

Maximum value of SAR (measured) = 20.6 W/kg

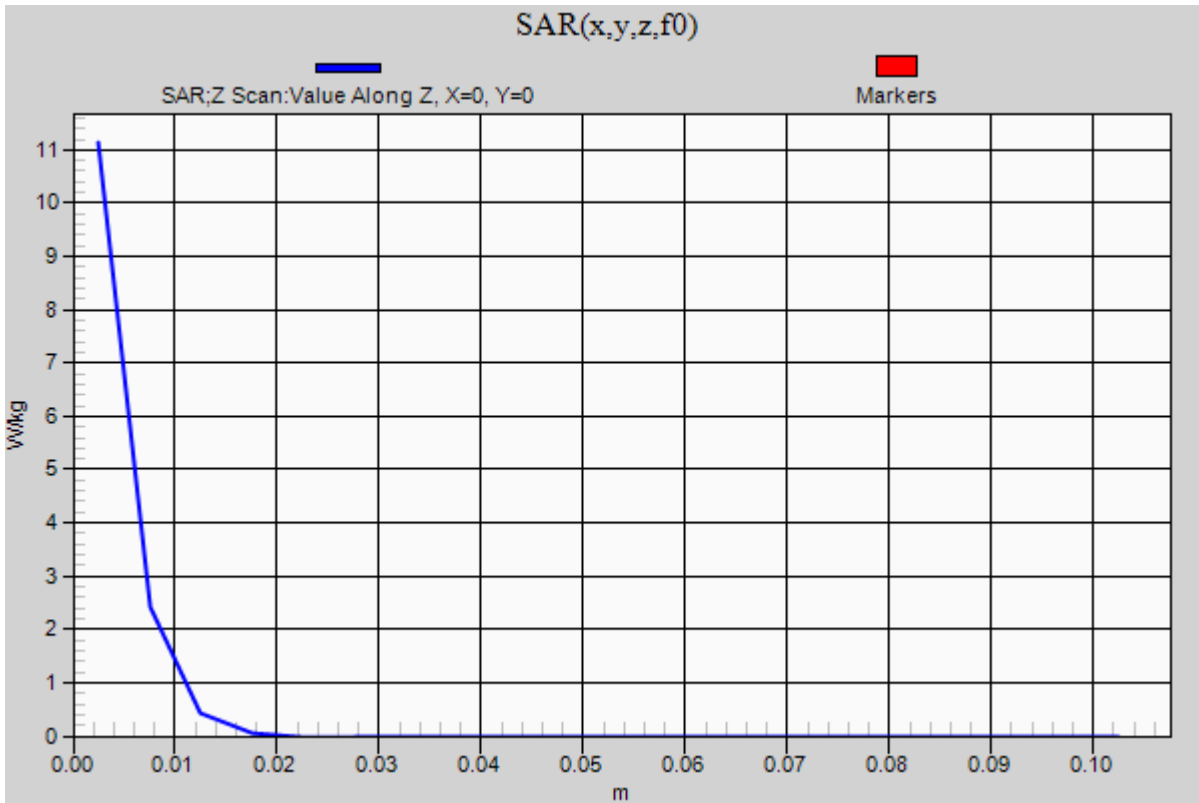


0 dB = 20.6 W/kg = 13.14 dBW/kg

### 20140201 SystemPerformanceCheck-D5GHzV2 SN 1168

Frequency: 5600 MHz; Duty Cycle: 1:1

**Body/5.6 GHz, Pin=100mW/Z Scan (1x1x21):** Measurement grid: dx=20mm, dy=20mm, dz=5mm  
Maximum value of SAR (measured) = 11.1 W/kg



## 20140201 SystemPerformanceCheck-D5GHzV2 SN 1168

Frequency: 5800 MHz; Duty Cycle: 1:1; Room Ambient Temperature: 24.0°C; Liquid Temperature: 23.0°C

Medium parameters used:  $f = 5800$  MHz;  $\sigma = 6.098$  S/m;  $\epsilon_r = 47.135$ ;  $\rho = 1000$  kg/m<sup>3</sup>

DASY5 Configuration:

- Area Scan Setting: Find Secondary Maximum Within: 2.0 dB and with a peak SAR value greater than 0.0012W/kg
- Averaged Fast SAR: Polynomial fit
- Electronics: DAE4 Sn1377; Calibrated: 7/15/2013
- Probe: EX3DV4 - SN3902; ConvF(4.23, 4.23, 4.23); Calibrated: 7/12/2013;
- Sensor-Surface: 1.4mm (Mechanical Surface Detection)
- Phantom: ELI v5.0 (A); Type: QDOVA001BB; Serial: 1213

**Body/5.8 GHz, Pin=100mW/Area Scan (61x61x1):** Interpolated grid: dx=1.000 mm, dy=1.000 mm

Reference Value = 43.535 V/m; Power Drift = 0.08 dB

**Fast SAR: SAR(1 g) = 7.22 W/kg; SAR(10 g) = 2.04 W/kg**

Maximum value of SAR (interpolated) = 19.6 W/kg

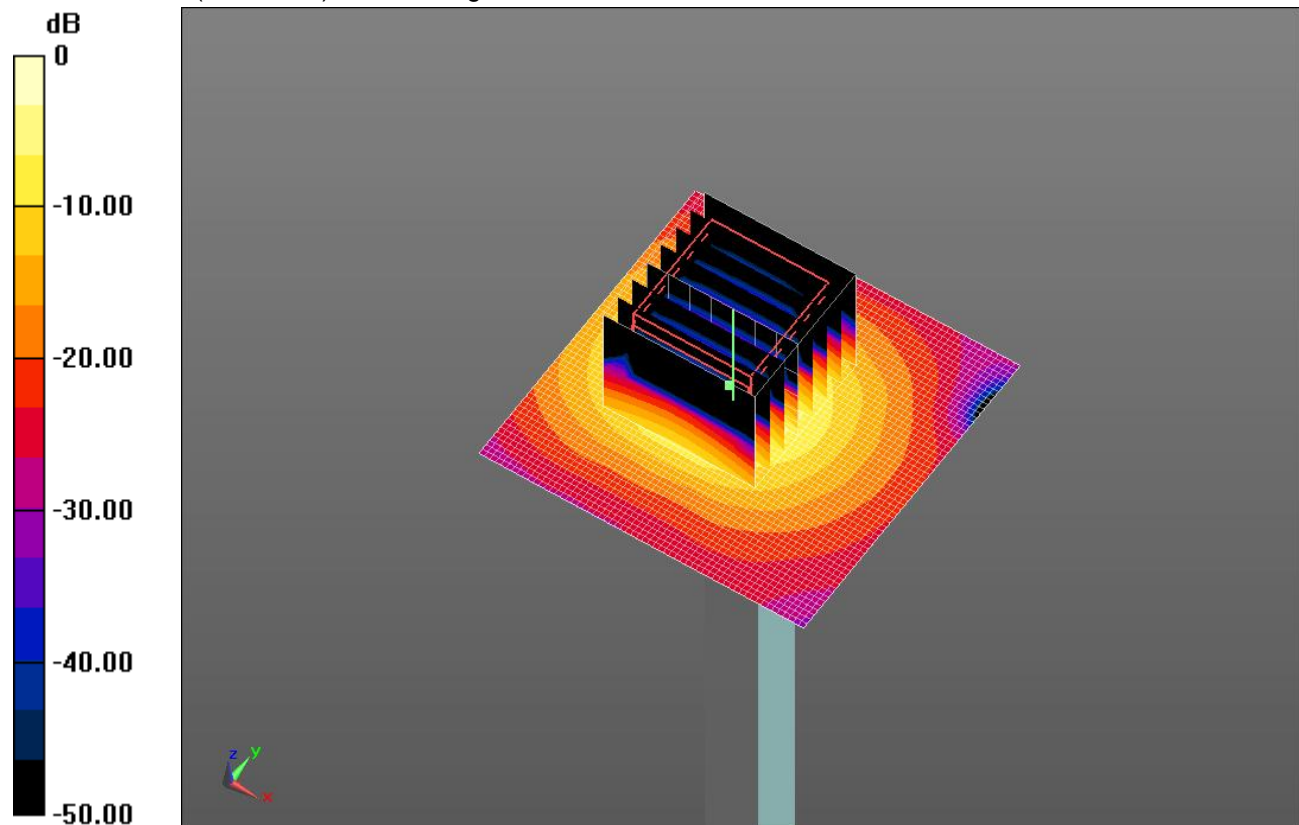
**Body/5.8 GHz, Pin=100mW/Zoom Scan (8x8x7)/Cube 0:** Measurement grid: dx=4mm, dy=4mm, dz=1.4mm

Reference Value = 43.535 V/m; Power Drift = 0.08 dB

Peak SAR (extrapolated) = 36.8 W/kg

**SAR(1 g) = 7.97 W/kg; SAR(10 g) = 2.22 W/kg**

Maximum value of SAR (measured) = 19.6 W/kg

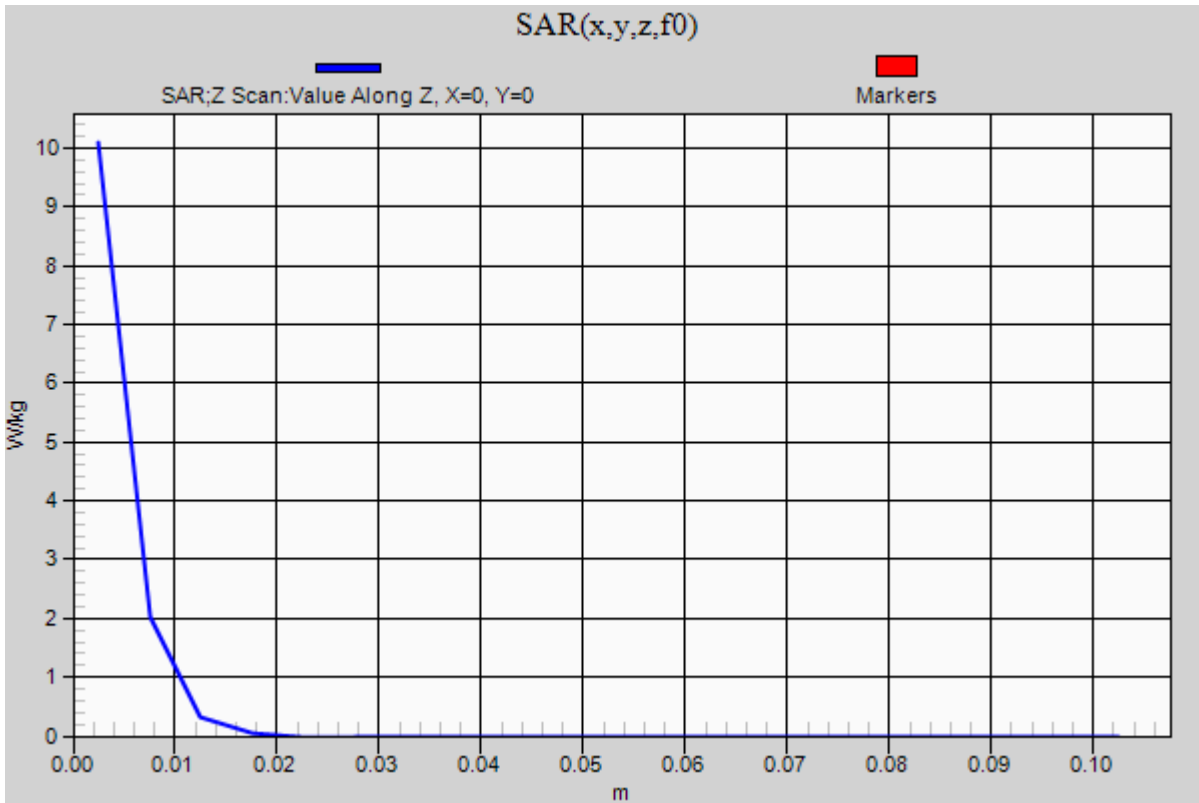


0 dB = 19.6 W/kg = 12.92 dBW/kg

### 20140201 SystemPerformanceCheck-D5GHzV2 SN 1168

Frequency: 5800 MHz; Duty Cycle: 1:1

**Body/5.8 GHz, Pin=100mW/Z Scan (1x1x21):** Measurement grid: dx=20mm, dy=20mm, dz=5mm  
Maximum value of SAR (measured) = 10.1 W/kg



## GSM 850

Frequency: 836.6 MHz; Duty Cycle: 1:2.60016; Room Ambient Temperature: 24.0°C; Liquid Temperature: 23.0°C  
 Medium parameters used (interpolated):  $f = 836.6$  MHz;  $\sigma = 0.929$  S/m;  $\epsilon_r = 42.779$ ;  $\rho = 1000$  kg/m<sup>3</sup>

DASY5 Configuration:

- Area Scan Setting: Find Secondary Maximum Within: 2.0 dB and with a peak SAR value greater than 0.0012W/kg
- Electronics: DAE4 Sn1380; Calibrated: 7/15/2013
- Probe: EX3DV4 - SN3936; ConvF(9.45, 9.45, 9.45); Calibrated: 7/22/2013;
- Sensor-Surface: 2.5mm (Mechanical Surface Detection (Locations From Previous Scan Used)), Sensor-Surface: 2.5mm (Mechanical Surface Detection)
- Phantom: SAM with CRP; Type: QD000P40CD; Serial: S/n:1772

**LHS/Touch\_GSM VoIP 3 slots\_ch 190/Area Scan (7x12x1):** Measurement grid: dx=15mm, dy=15mm

[Info: Interpolated medium parameters used for SAR evaluation.](#)

Maximum value of SAR (measured) = 0.277 W/kg

**LHS/Touch\_GSM VoIP 3 slots\_ch 190/Zoom Scan (5x5x7)/Cube 0:** Measurement grid: dx=8mm, dy=8mm, dz=5mm

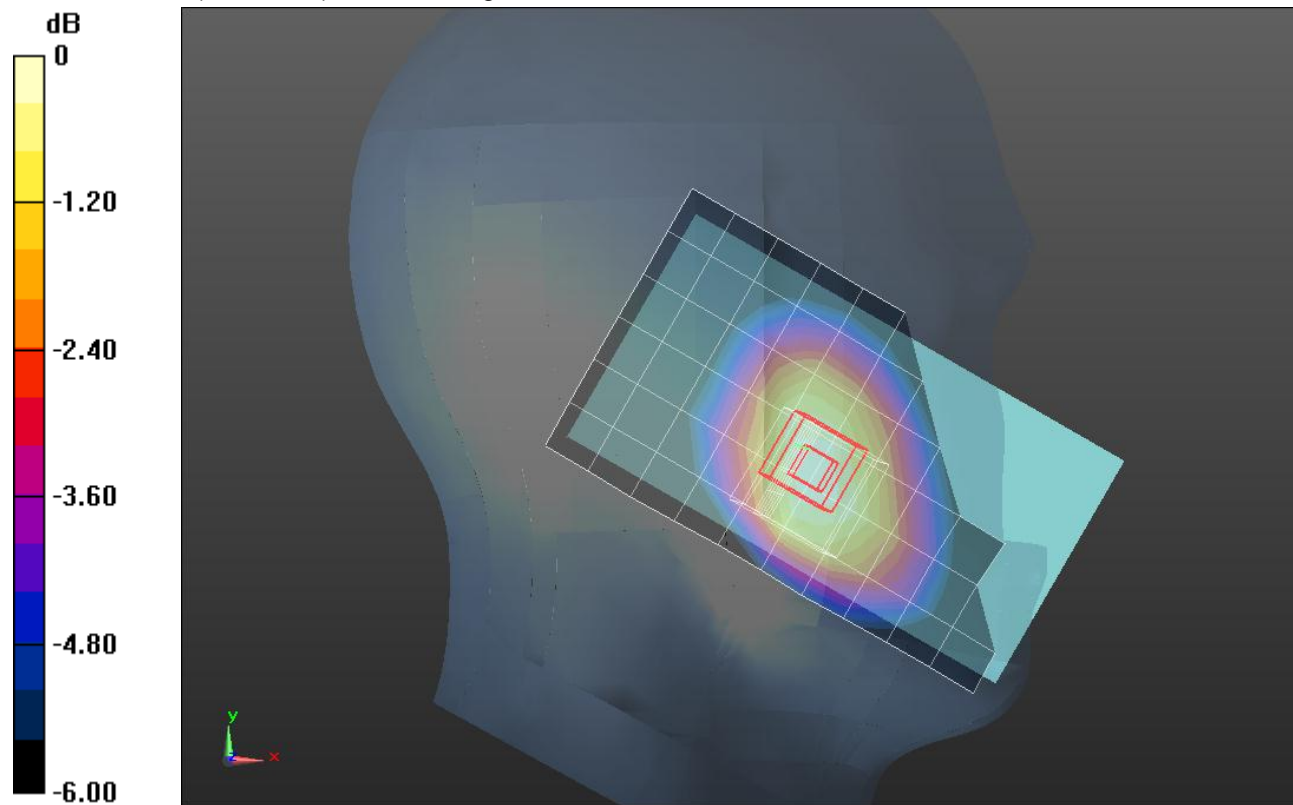
Reference Value = 17.238 V/m; Power Drift = 0.12 dB

Peak SAR (extrapolated) = 0.320 W/kg

**SAR(1 g) = 0.243 W/kg; SAR(10 g) = 0.184 W/kg**

[Info: Interpolated medium parameters used for SAR evaluation.](#)

Maximum value of SAR (measured) = 0.273 W/kg



0 dB = 0.273 W/kg = -5.64 dBW/kg

## GSM 850

Frequency: 836.6 MHz; Duty Cycle: 1:2.60016; Room Ambient Temperature: 24.0°C; Liquid Temperature: 23.0°C  
 Medium parameters used (interpolated):  $f = 836.6 \text{ MHz}$ ;  $\sigma = 1.017 \text{ S/m}$ ;  $\epsilon_r = 53.437$ ;  $\rho = 1000 \text{ kg/m}^3$

DASY5 Configuration:

- Area Scan Setting: Find Secondary Maximum Within: 2.0 dB and with a peak SAR value greater than 0.0012W/kg
- Electronics: DAE4 Sn1380; Calibrated: 7/15/2013
- Probe: EX3DV4 - SN3936; ConvF(9.3, 9.3, 9.3); Calibrated: 7/22/2013;
- Sensor-Surface: 2.5mm (Mechanical Surface Detection (Locations From Previous Scan Used)), Sensor-Surface: 2.5mm (Mechanical Surface Detection)
- Phantom: ELI A (v5.0); Type: QDOVA001BB; Serial: S/n:1212

**Rear/GPRS VoIP 3 slots\_ch 190/Area Scan (7x12x1):** Measurement grid: dx=15mm, dy=15mm

[Info: Interpolated medium parameters used for SAR evaluation.](#)

Maximum value of SAR (measured) = 0.473 W/kg

**Rear/GPRS VoIP 3 slots\_ch 190/Zoom Scan (5x5x7)/Cube 0:** Measurement grid: dx=8mm, dy=8mm, dz=5mm

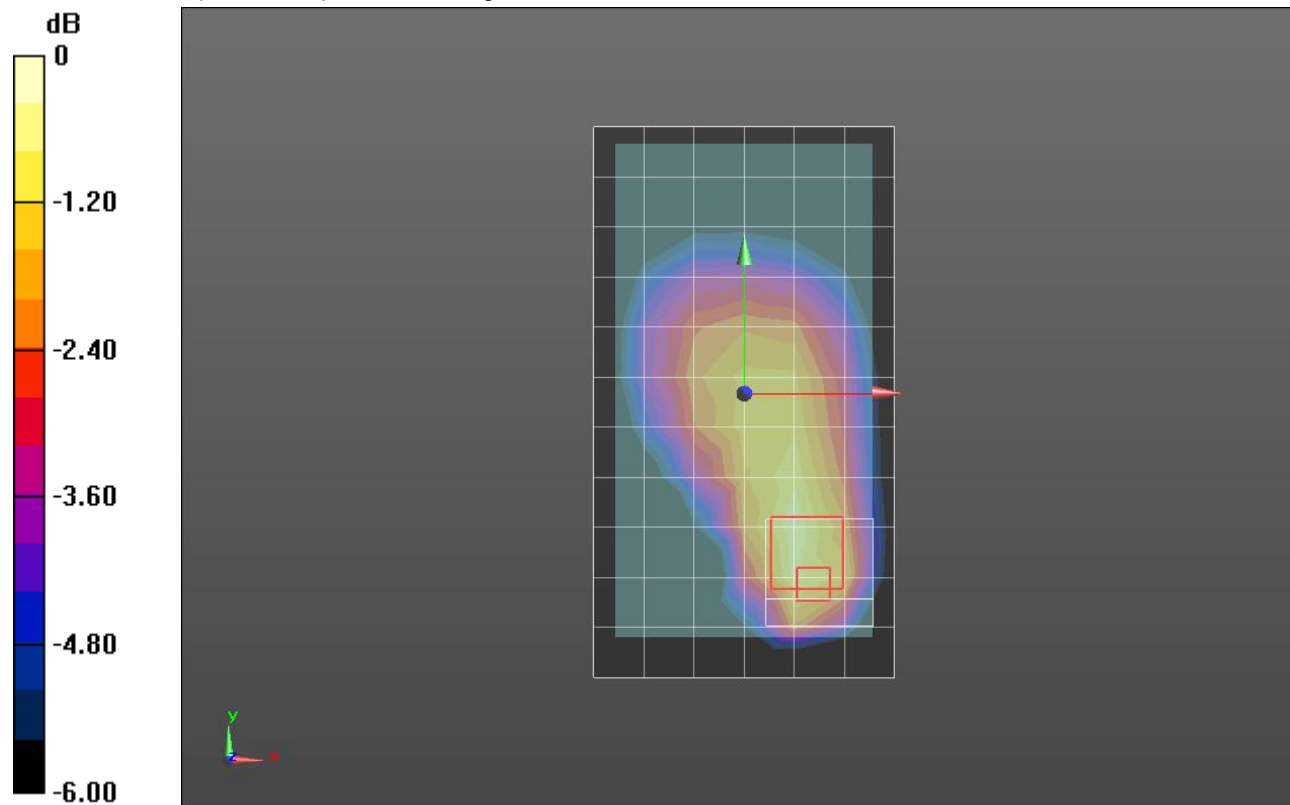
Reference Value = 22.084 V/m; Power Drift = -0.08 dB

Peak SAR (extrapolated) = 0.695 W/kg

**SAR(1 g) = 0.414 W/kg; SAR(10 g) = 0.278 W/kg**

[Info: Interpolated medium parameters used for SAR evaluation.](#)

Maximum value of SAR (measured) = 0.524 W/kg



0 dB = 0.524 W/kg = -2.81 dBW/kg

## GSM 1900

Frequency: 1880 MHz; Duty Cycle: 1:4.00037; Room Ambient Temperature: 24.0°C; Liquid Temperature: 23.0°C  
 Medium parameters used:  $f = 1880 \text{ MHz}$ ;  $\sigma = 1.437 \text{ S/m}$ ;  $\epsilon_r = 39.703$ ;  $\rho = 1000 \text{ kg/m}^3$

DASY5 Configuration:

- Area Scan Setting: Find Secondary Maximum Within: 2.0 dB and with a peak SAR value greater than 0.0012W/kg
- Electronics: DAE4 Sn1258; Calibrated: 3/6/2013
- Probe: EX3DV4 - SN3929; ConvF(7.71, 7.71, 7.71); Calibrated: 6/24/2013;
- Sensor-Surface: 2.5mm (Mechanical Surface Detection (Locations From Previous Scan Used)), Sensor-Surface: 2.5mm (Mechanical Surface Detection)
- Phantom: SAM; Type: QD000P40CD; Serial: TP 1751

**LHS/Touch\_GSM VoIP 2 slots\_ch 661/Area Scan (7x12x1):** Measurement grid: dx=15mm, dy=15mm  
 Maximum value of SAR (measured) = 0.251 W/kg

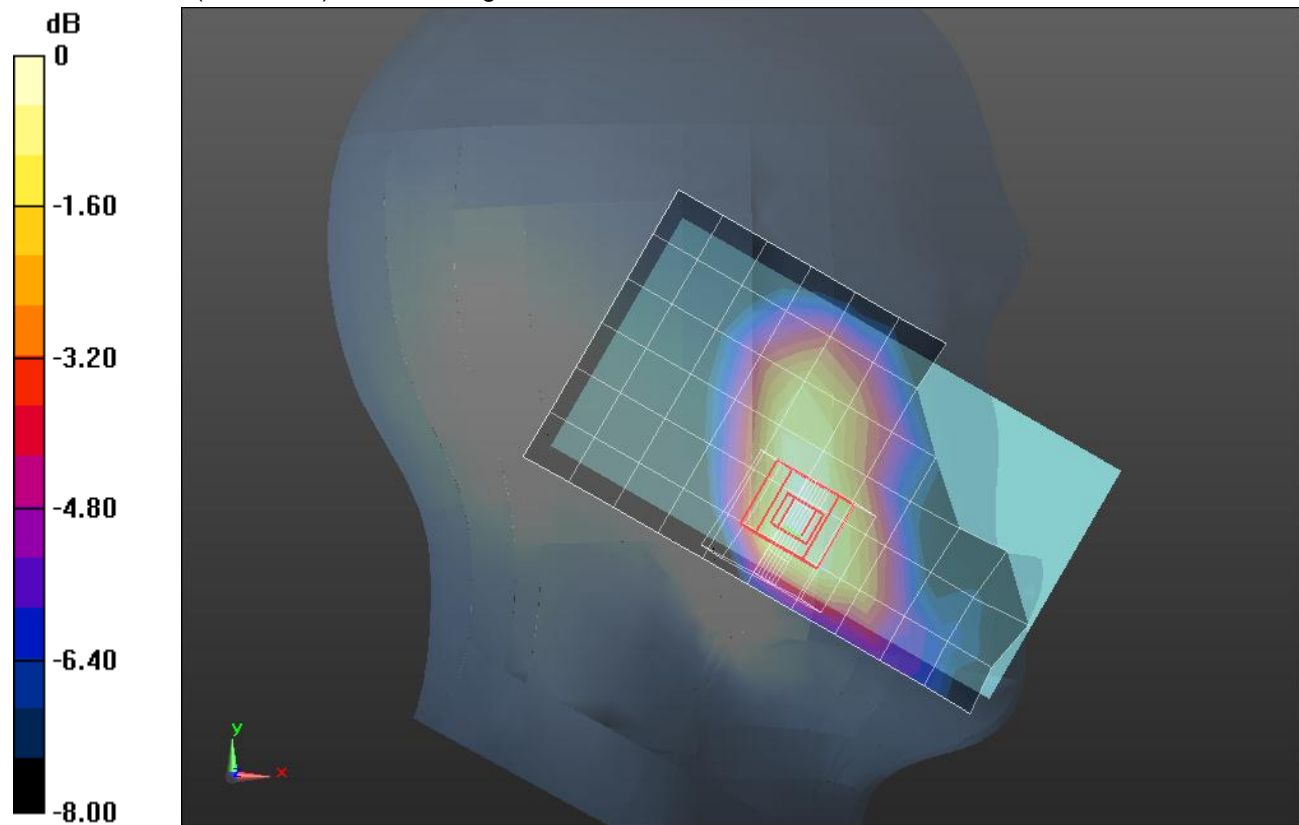
**LHS/Touch\_GSM VoIP 2 slots\_ch 661/Zoom Scan (5x5x7)/Cube 0:** Measurement grid: dx=8mm, dy=8mm, dz=5mm

Reference Value = 13.436 V/m; Power Drift = -0.09 dB

Peak SAR (extrapolated) = 0.331 W/kg

**SAR(1 g) = 0.221 W/kg; SAR(10 g) = 0.140 W/kg**

Maximum value of SAR (measured) = 0.263 W/kg



0 dB = 0.263 W/kg = -5.80 dBW/kg

## GSM 1900

Frequency: 1880 MHz; Duty Cycle: 1:4.00037; Room Ambient Temperature: 24.0°C; Liquid Temperature: 23.0°C  
 Medium parameters used:  $f = 1880 \text{ MHz}$ ;  $\sigma = 1.495 \text{ S/m}$ ;  $\epsilon_r = 52.405$ ;  $\rho = 1000 \text{ kg/m}^3$

DASY5 Configuration:

- Area Scan Setting: Find Secondary Maximum Within: 2.0 dB and with a peak SAR value greater than 0.0012W/kg
- Electronics: DAE4 Sn1258; Calibrated: 3/6/2013
- Probe: EX3DV4 - SN3929; ConvF(7.28, 7.28, 7.28); Calibrated: 6/24/2013;
- Sensor-Surface: 2.5mm (Mechanical Surface Detection (Locations From Previous Scan Used)), Sensor-Surface: 2.5mm (Mechanical Surface Detection)
- Phantom: ELI-B v5.0; Type: QDOVA002AA; Serial: TP:1195

**Rear/GPRS 2 slots\_ch 661/Area Scan (7x13x1):** Measurement grid:  $dx=15\text{mm}$ ,  $dy=15\text{mm}$   
 Maximum value of SAR (measured) = 1.24 W/kg

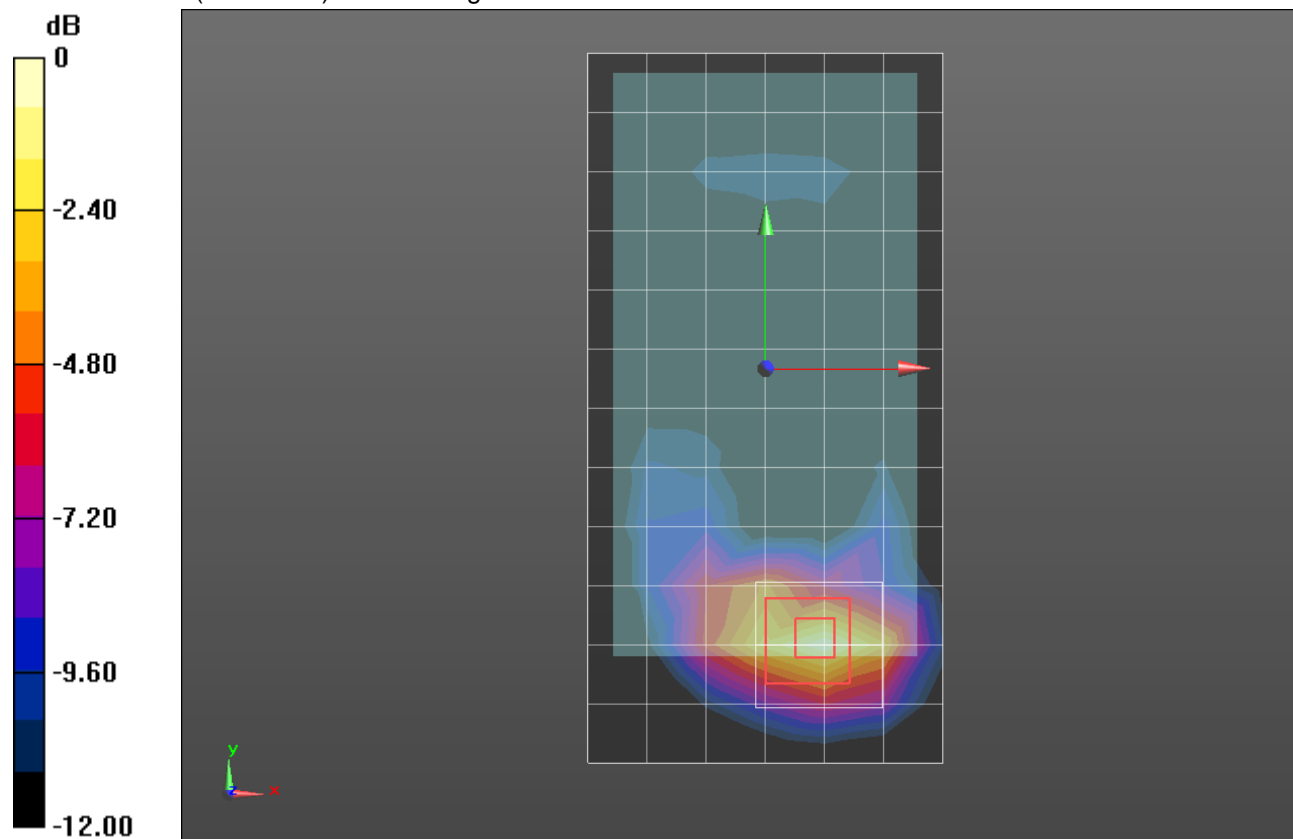
**Rear/GPRS 2 slots\_ch 661/Zoom Scan (5x5x7)/Cube 0:** Measurement grid:  $dx=8\text{mm}$ ,  $dy=8\text{mm}$ ,  
 $dz=5\text{mm}$

Reference Value = 29.252 V/m; Power Drift = 0.02 dB

Peak SAR (extrapolated) = 1.74 W/kg

**SAR(1 g) = 0.977 W/kg; SAR(10 g) = 0.499 W/kg**

Maximum value of SAR (measured) = 1.26 W/kg



0 dB = 1.26 W/kg = 1.00 dBW/kg

## W-CDMA Band V

Frequency: 836.6 MHz; Duty Cycle: 1:1; Room Ambient Temperature: 24.0°C; Liquid Temperature: 23.0°C  
 Medium parameters used (interpolated):  $f = 836.6$  MHz;  $\sigma = 0.929$  S/m;  $\epsilon_r = 42.779$ ;  $\rho = 1000$  kg/m<sup>3</sup>

DASY5 Configuration:

- Area Scan Setting: Find Secondary Maximum Within: 2.0 dB and with a peak SAR value greater than 0.0012W/kg
- Electronics: DAE4 Sn1380; Calibrated: 7/15/2013
- Probe: EX3DV4 - SN3936; ConvF(9.45, 9.45, 9.45); Calibrated: 7/22/2013;
- Sensor-Surface: 2.5mm (Mechanical Surface Detection)
- Phantom: SAM with CRP; Type: QD000P40CD; Serial: S/n:1772

**RHS/Touch\_RMC Rel.99\_ch.4183/Area Scan (7x12x1):** Measurement grid: dx=15mm, dy=15mm

[Info: Interpolated medium parameters used for SAR evaluation.](#)

Maximum value of SAR (measured) = 0.262 W/kg

**RHS/Touch\_RMC Rel.99\_ch.4183/Zoom Scan (5x5x7)/Cube 0:** Measurement grid: dx=8mm, dy=8mm, dz=5mm

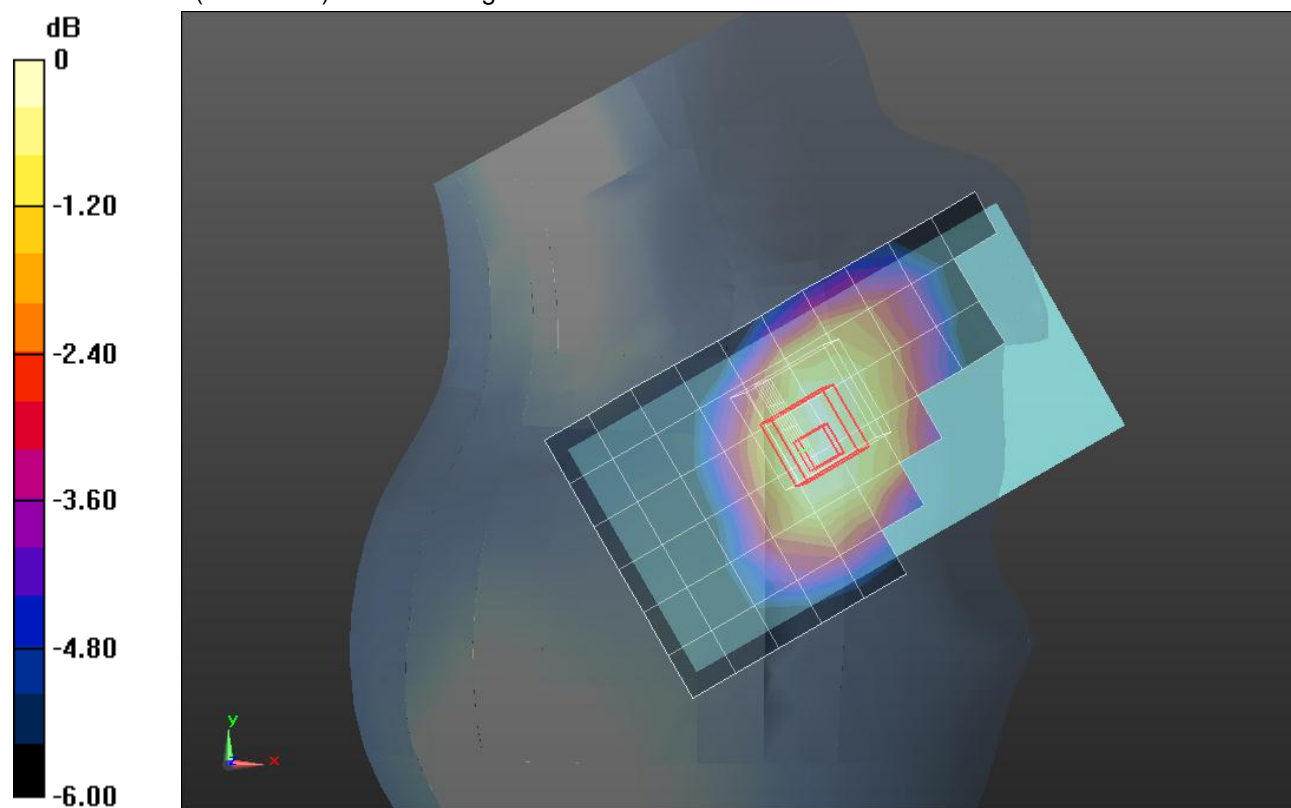
Reference Value = 17.064 V/m; Power Drift = 0.01 dB

Peak SAR (extrapolated) = 0.303 W/kg

**SAR(1 g) = 0.244 W/kg; SAR(10 g) = 0.189 W/kg**

[Info: Interpolated medium parameters used for SAR evaluation.](#)

Maximum value of SAR (measured) = 0.271 W/kg



0 dB = 0.271 W/kg = -5.67 dBW/kg

## W-CDMA Band V

Frequency: 836.6 MHz; Duty Cycle: 1:1; Room Ambient Temperature: 24.0°C; Liquid Temperature: 23.0°C  
 Medium parameters used (interpolated):  $f = 836.6$  MHz;  $\sigma = 1.017$  S/m;  $\epsilon_r = 53.437$ ;  $\rho = 1000$  kg/m<sup>3</sup>

DASY5 Configuration:

- Area Scan Setting: Find Secondary Maximum Within: 2.0 dB and with a peak SAR value greater than 0.0012W/kg
- Electronics: DAE4 Sn1380; Calibrated: 7/15/2013
- Probe: EX3DV4 - SN3936; ConvF(9.3, 9.3, 9.3); Calibrated: 7/22/2013;
- Sensor-Surface: 2.5mm (Mechanical Surface Detection)
- Phantom: ELI A (v5.0); Type: QDOVA001BB; Serial: S/n:1212

**Rear/RMC Rel.99\_ch.4183/Area Scan (7x12x1):** Measurement grid: dx=15mm, dy=15mm

[Info: Interpolated medium parameters used for SAR evaluation.](#)

Maximum value of SAR (measured) = 0.421 W/kg

**Rear/RMC Rel.99\_ch.4183/Zoom Scan (5x5x7)/Cube 0:** Measurement grid: dx=8mm, dy=8mm, dz=5mm

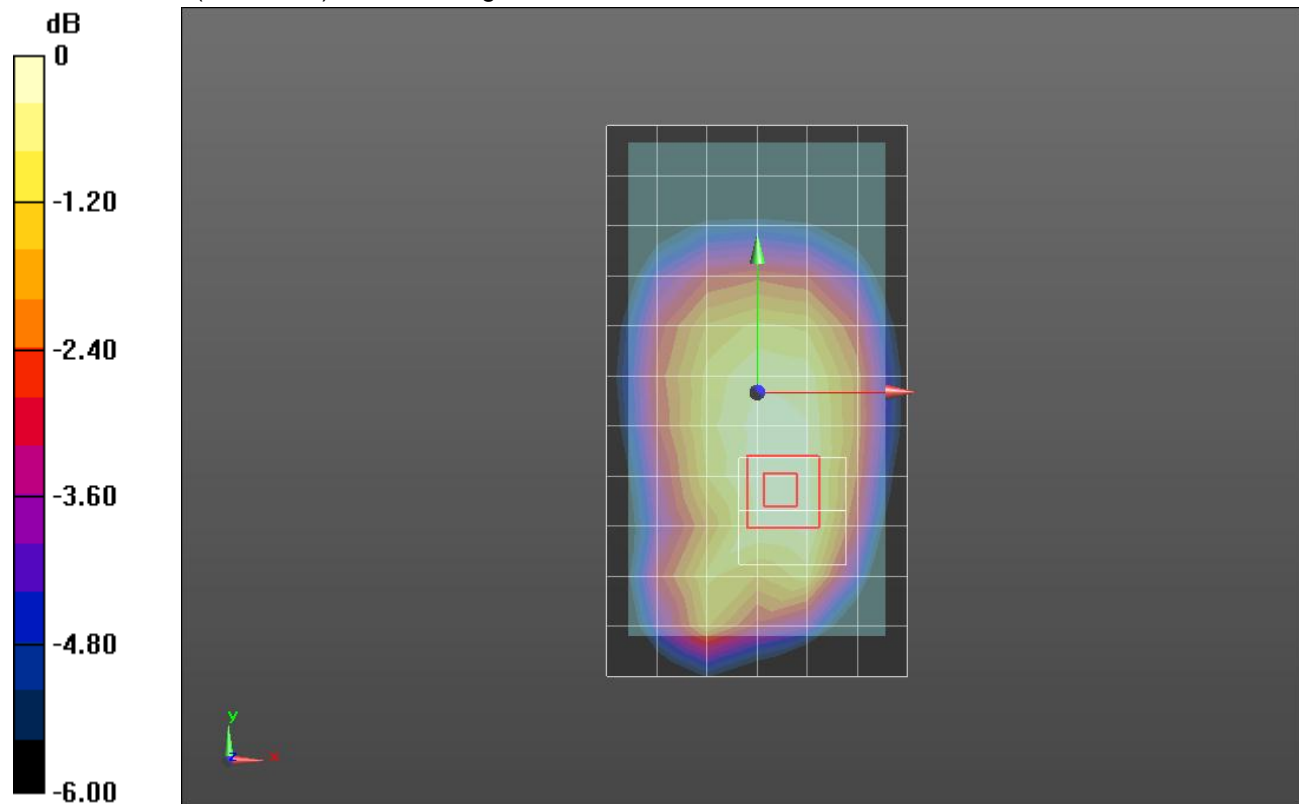
Reference Value = 20.398 V/m; Power Drift = 0.01 dB

Peak SAR (extrapolated) = 0.494 W/kg

**SAR(1 g) = 0.385 W/kg; SAR(10 g) = 0.285 W/kg**

[Info: Interpolated medium parameters used for SAR evaluation.](#)

Maximum value of SAR (measured) = 0.434 W/kg



0 dB = 0.434 W/kg = -3.63 dBW/kg

## W-CDMA Band II

Frequency: 1880 MHz; Duty Cycle: 1:1; Room Ambient Temperature: 24.0°C; Liquid Temperature: 23.0°C  
 Medium parameters used:  $f = 1880 \text{ MHz}$ ;  $\sigma = 1.437 \text{ S/m}$ ;  $\epsilon_r = 39.703$ ;  $\rho = 1000 \text{ kg/m}^3$

DASY5 Configuration:

- Area Scan Setting: Find Secondary Maximum Within: 2.0 dB and with a peak SAR value greater than 0.0012W/kg
- Electronics: DAE4 Sn1258; Calibrated: 3/6/2013
- Probe: EX3DV4 - SN3929; ConvF(7.71, 7.71, 7.71); Calibrated: 6/24/2013;
- Sensor-Surface: 2.5mm (Mechanical Surface Detection)
- Phantom: SAM; Type: QD000P40CD; Serial: TP 1751

**RHS/Touch\_Rel.99\_RMC\_12.2 kbps/ch 9400/Area Scan (7x12x1):** Measurement grid: dx=15mm, dy=15mm

Maximum value of SAR (measured) = 0.606 W/kg

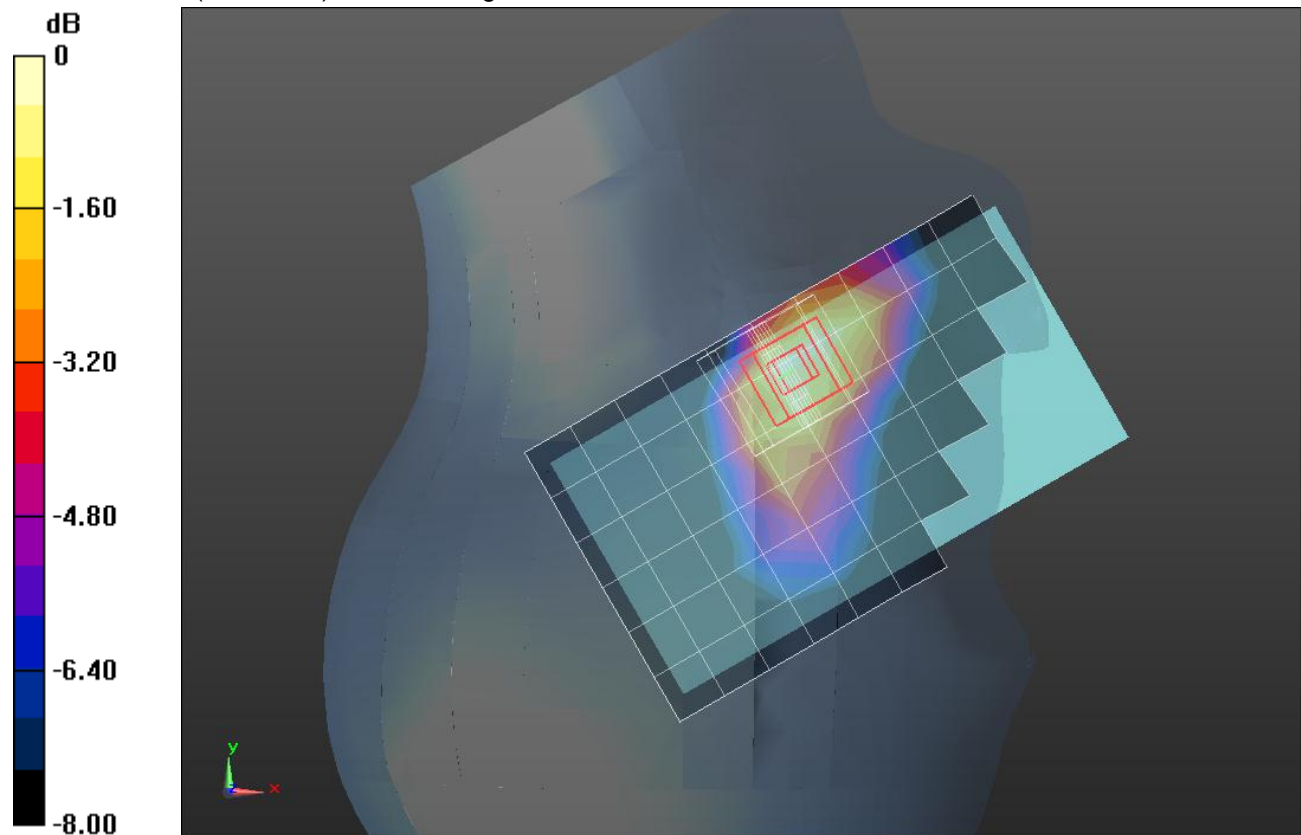
**RHS/Touch\_Rel.99\_RMC\_12.2 kbps/ch 9400/Zoom Scan (5x5x7)/Cube 0:** Measurement grid: dx=8mm, dy=8mm, dz=5mm

Reference Value = 20.721 V/m; Power Drift = 0.06 dB

Peak SAR (extrapolated) = 0.782 W/kg

**SAR(1 g) = 0.522 W/kg; SAR(10 g) = 0.333 W/kg**

Maximum value of SAR (measured) = 0.633 W/kg



0 dB = 0.633 W/kg = -1.99 dBW/kg

## W-CDMA Band II

Frequency: 1880 MHz; Duty Cycle: 1:1; Room Ambient Temperature: 24.0°C; Liquid Temperature: 23.0°C  
 Medium parameters used:  $f = 1880 \text{ MHz}$ ;  $\sigma = 1.518 \text{ S/m}$ ;  $\epsilon_r = 54.184$ ;  $\rho = 1000 \text{ kg/m}^3$

DASY5 Configuration:

- Area Scan Setting: Find Secondary Maximum Within: 2.0 dB and with a peak SAR value greater than 0.0012W/kg
- Electronics: DAE4 Sn1258; Calibrated: 3/6/2013
- Probe: EX3DV4 - SN3929; ConvF(7.28, 7.28, 7.28); Calibrated: 6/24/2013;
- Sensor-Surface: 2.5mm (Mechanical Surface Detection)
- Phantom: ELI-B v5.0; Type: QDOVA002AA; Serial: TP:1195

**Rear/Rel.99\_RMC\_12.2 kbps/ch 9400/10mm/Area Scan (7x12x1):** Measurement grid: dx=15mm, dy=15mm

Maximum value of SAR (measured) = 0.521 W/kg

**Rear/Rel.99\_RMC\_12.2 kbps/ch 9400/10mm/Zoom Scan (5x5x7)/Cube 0:** Measurement grid:

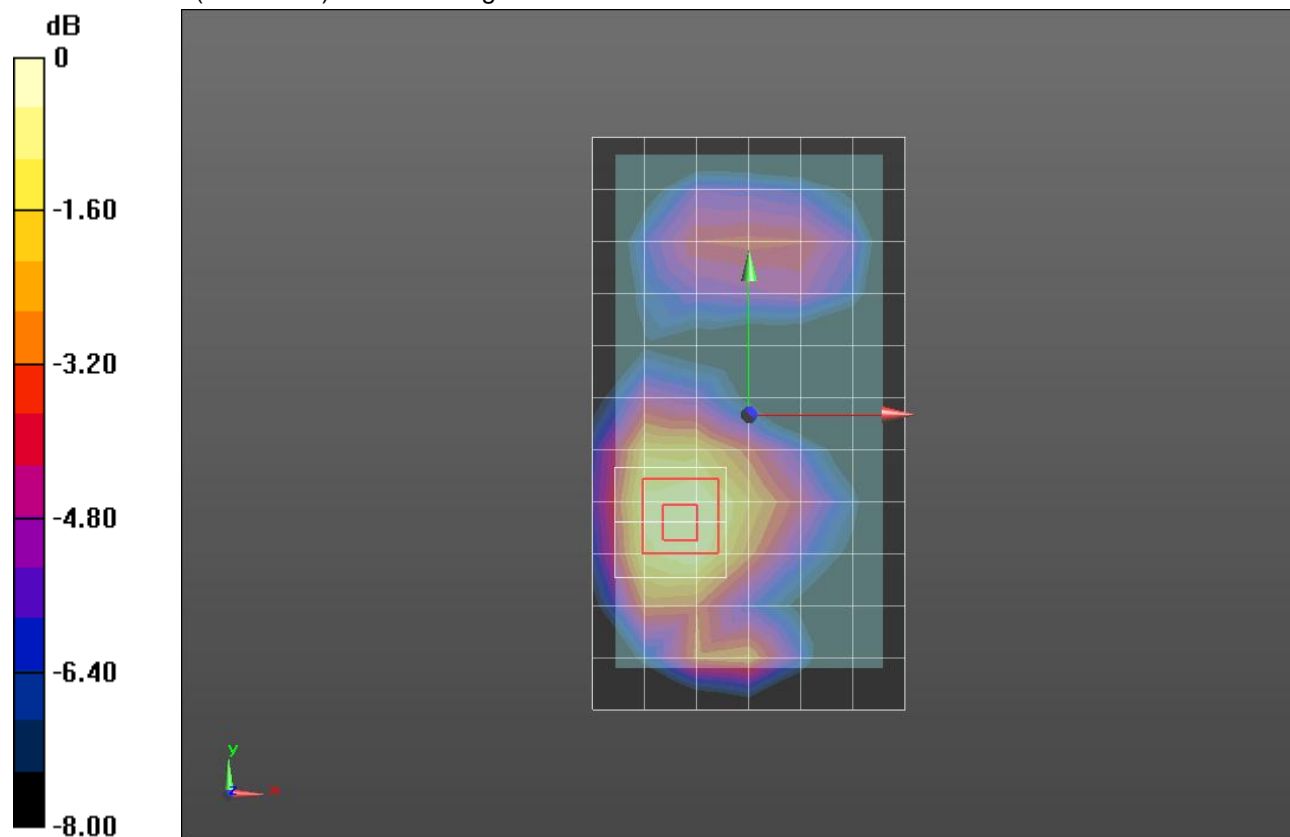
dx=8mm, dy=8mm, dz=5mm

Reference Value = 19.268 V/m; Power Drift = -0.11 dB

Peak SAR (extrapolated) = 0.712 W/kg

**SAR(1 g) = 0.476 W/kg; SAR(10 g) = 0.304 W/kg**

Maximum value of SAR (measured) = 0.578 W/kg



0 dB = 0.578 W/kg = -2.38 dBW/kg

## WiFi 2.4GHz

Frequency: 2437 MHz; Duty Cycle: 1:1; Room Ambient Temperature: 24.0°C; Liquid Temperature: 23.0°C  
 Medium parameters used (interpolated):  $f = 2437$  MHz;  $\sigma = 1.846$  S/m;  $\epsilon_r = 40.445$ ;  $\rho = 1000$  kg/m<sup>3</sup>

DASY5 Configuration:

- Area Scan Setting: Find Secondary Maximum Within: 2.0 dB and with a peak SAR value greater than 0.0012W/kg
- Electronics: DAE4 Sn1377; Calibrated: 7/15/2013
- Probe: EX3DV4 - SN3902; ConvF(7.49, 7.49, 7.49); Calibrated: 7/12/2013;
- Sensor-Surface: 2.5mm (Mechanical Surface Detection)
- Phantom: SAM with CRP; Type: QD000P40CD; Serial: 1768

**RHS/Touch\_802.11b\_ch 6/Area Scan (10x15x1):** Measurement grid: dx=12mm, dy=12mm

[Info: Interpolated medium parameters used for SAR evaluation.](#)

Maximum value of SAR (measured) = 0.137 W/kg

**RHS/Touch\_802.11b\_ch 6/Zoom Scan (7x7x7)/Cube 0:** Measurement grid: dx=5mm, dy=5mm, dz=5mm

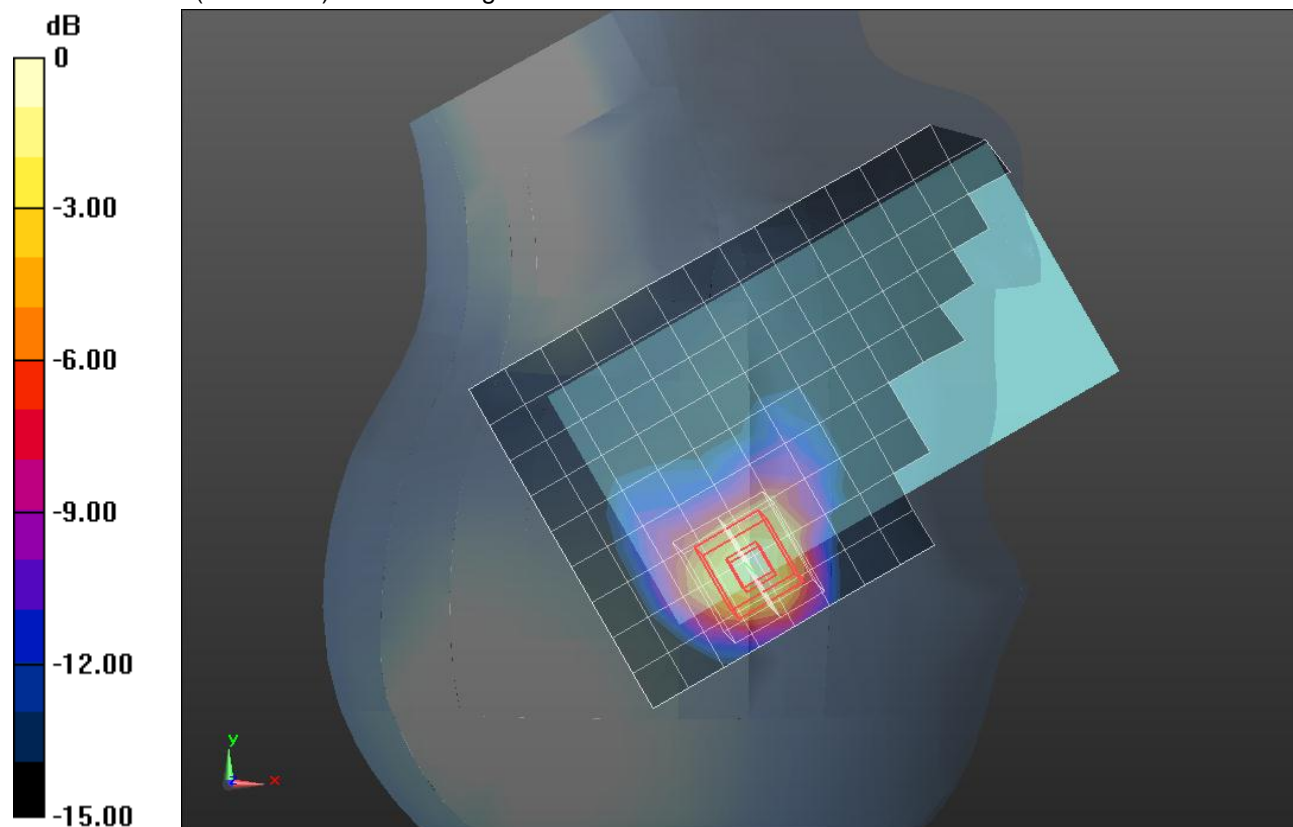
Reference Value = 9.081 V/m; Power Drift = 0.04 dB

Peak SAR (extrapolated) = 0.253 W/kg

**SAR(1 g) = 0.103 W/kg; SAR(10 g) = 0.043 W/kg**

[Info: Interpolated medium parameters used for SAR evaluation.](#)

Maximum value of SAR (measured) = 0.155 W/kg



0 dB = 0.155 W/kg = -8.10 dBW/kg

## WiFi 2.4GHz

Frequency: 2437 MHz; Duty Cycle: 1:1; Room Ambient Temperature: 24.0°C; Liquid Temperature: 23.0°C  
 Medium parameters used (interpolated):  $f = 2437$  MHz;  $\sigma = 1.985$  S/m;  $\epsilon_r = 52.454$ ;  $\rho = 1000$  kg/m<sup>3</sup>

DASY5 Configuration:

- Area Scan Setting: Find Secondary Maximum Within: 2.0 dB and with a peak SAR value greater than 0.0012W/kg
- Electronics: DAE4 Sn1377; Calibrated: 7/15/2013
- Probe: EX3DV4 - SN3902; ConvF(7.2, 7.2, 7.2); Calibrated: 7/12/2013;
- Sensor-Surface: 2.5mm (Mechanical Surface Detection)
- Phantom: ELI v5.0 (A); Type: QDOVA001BB; Serial: 1213

**Rear/802.11b\_ch 6/Area Scan (10x17x1):** Measurement grid: dx=12mm, dy=12mm

[Info: Interpolated medium parameters used for SAR evaluation.](#)

Maximum value of SAR (measured) = 0.136 W/kg

**Rear/802.11b\_ch 6/Zoom Scan (7x7x7)/Cube 0:** Measurement grid: dx=5mm, dy=5mm, dz=5mm

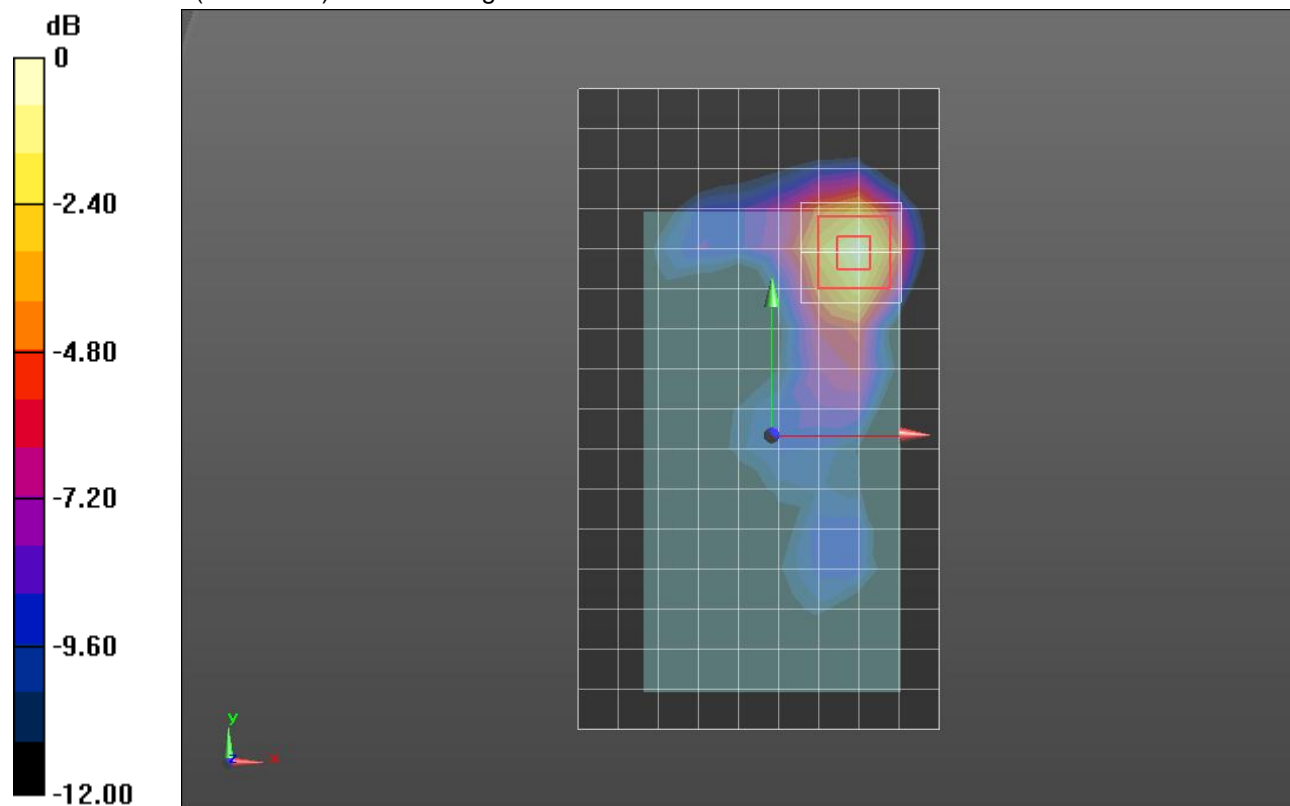
Reference Value = 8.310 V/m; Power Drift = 0.03 dB

Peak SAR (extrapolated) = 0.203 W/kg

**SAR(1 g) = 0.099 W/kg; SAR(10 g) = 0.045 W/kg**

[Info: Interpolated medium parameters used for SAR evaluation.](#)

Maximum value of SAR (measured) = 0.139 W/kg



0 dB = 0.139 W/kg = -8.57 dBW/kg

## WiFi 5.8 GHz

Frequency: 5745 MHz; Duty Cycle: 1:1; Room Ambient Temperature: 24.0°C; Liquid Temperature: 23.0°C  
Medium parameters used:  $f = 5745 \text{ MHz}$ ;  $\sigma = 5.011 \text{ S/m}$ ;  $\epsilon_r = 36.817$ ;  $\rho = 1000 \text{ kg/m}^3$

DASY5 Configuration:

- Area Scan Setting: Find Secondary Maximum Within: 2.0 dB and with a peak SAR value greater than 0.0012W/kg
- Averaged Fast SAR: Polynomial fit
- Electronics: DAE4 Sn1377; Calibrated: 7/15/2013
- Probe: EX3DV4 - SN3902; ConvF(4.97, 4.97, 4.97); Calibrated: 7/12/2013;
- Sensor-Surface: 2mm (Mechanical Surface Detection)
- Phantom: SAM with CRP; Type: QD000P40CD; Serial: 1768

**RHS/Touch\_802.11a\_Ch. 149/Area Scan (12x19x1):** Measurement grid: dx=10mm, dy=10mm

Maximum value of SAR (measured) = 0.0818 W/kg

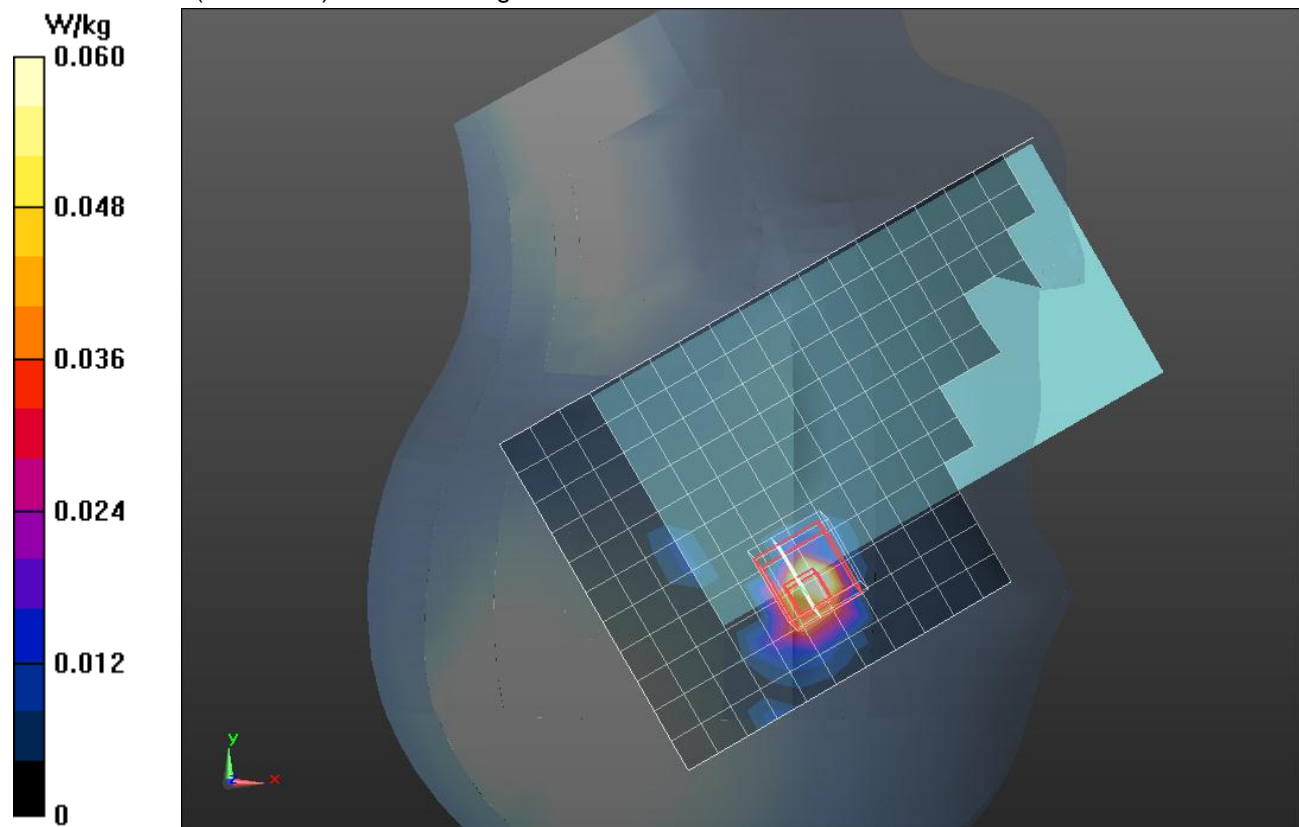
**RHS/Touch\_802.11a\_Ch. 149/Zoom Scan (7x7x12)/Cube 0:** Measurement grid: dx=4mm, dy=4mm, dz=2mm

Reference Value = 3.650 V/m; Power Drift = 0.13 dB

Peak SAR (extrapolated) = 0.575 W/kg

**SAR(1 g) = 0.045 W/kg; SAR(10 g) = 0.011 W/kg**

Maximum value of SAR (measured) = 0.0816 W/kg



## WiFi 5.8 GHz

Frequency: 5745 MHz; Duty Cycle: 1:1; Room Ambient Temperature: 24.0°C; Liquid Temperature: 23.0°C  
 Medium parameters used:  $f = 5745 \text{ MHz}$ ;  $\sigma = 6.029 \text{ S/m}$ ;  $\epsilon_r = 47.411$ ;  $\rho = 1000 \text{ kg/m}^3$

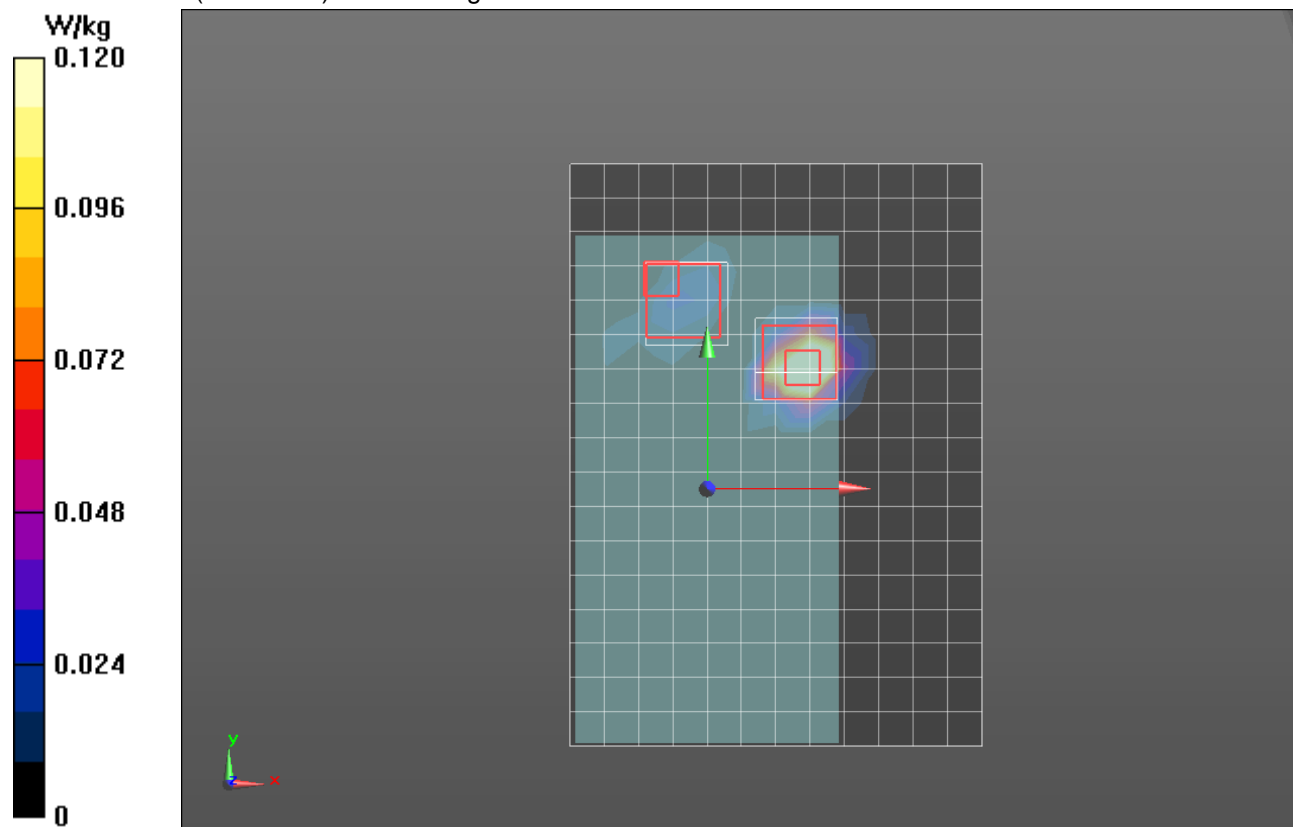
DASY5 Configuration:

- Area Scan Setting: Find Secondary Maximum Within: 2.0 dB and with a peak SAR value greater than 0.0012W/kg
- Electronics: DAE4 Sn1377; Calibrated: 7/15/2013
- Probe: EX3DV4 - SN3902; ConvF(4.23, 4.23, 4.23); Calibrated: 7/12/2013;
- Sensor-Surface: 2mm (Mechanical Surface Detection (Locations From Previous Scan Used)), Sensor-Surface: 2mm (Mechanical Surface Detection)
- Phantom: ELI v5.0 (A); Type: QDOVA001BB; Serial: 1213

**Rear/802.11a\_Ch 149/Area Scan 2 (13x18x1):** Measurement grid: dx=10mm, dy=10mm  
 Maximum value of SAR (measured) = 0.230 W/kg

**Rear/802.11a\_Ch 149/Zoom Scan (7x7x12)/Cube 0:** Measurement grid: dx=4mm, dy=4mm, dz=2mm  
 Reference Value = 0 V/m; Power Drift = 0.00 dB  
 Peak SAR (extrapolated) = 0.458 W/kg  
**SAR(1 g) = 0.102 W/kg; SAR(10 g) = 0.025 W/kg**  
 Maximum value of SAR (measured) = 0.242 W/kg

**Rear/802.11a\_Ch 149/Zoom Scan (7x7x12)/Cube 1:** Measurement grid: dx=4mm, dy=4mm, dz=2mm  
 Reference Value = 0 V/m; Power Drift = 0.00 dB  
 Peak SAR (extrapolated) = 9.06 W/kg  
**SAR(1 g) = 0.053 W/kg; SAR(10 g) = 0.00193 W/kg**  
 Maximum value of SAR (measured) = 9.06 W/kg



## WiFi 5.2 GHz

Frequency: 5180 MHz; Duty Cycle: 1:1; Room Ambient Temperature: 24.0°C; Liquid Temperature: 23.0°C  
 Medium parameters used:  $f = 5180 \text{ MHz}$ ;  $\sigma = 4.431 \text{ S/m}$ ;  $\epsilon_r = 37.538$ ;  $\rho = 1000 \text{ kg/m}^3$

DASY5 Configuration:

- Area Scan Setting: Find Secondary Maximum Within: 2.0 dB and with a peak SAR value greater than 0.0012W/kg
- Averaged Fast SAR: Polynomial fit
- Electronics: DAE4 Sn1377; Calibrated: 7/15/2013
- Probe: EX3DV4 - SN3902; ConvF(5.4, 5.4, 5.4); Calibrated: 7/12/2013;
- Sensor-Surface: 2mm (Mechanical Surface Detection)
- Phantom: SAM with CRP; Type: QD000P40CD; Serial: 1768

**RHS/Touch\_802.11a\_Ch. 36/Area Scan (12x19x1):** Measurement grid: dx=10mm, dy=10mm

Maximum value of SAR (measured) = 0.0417 W/kg

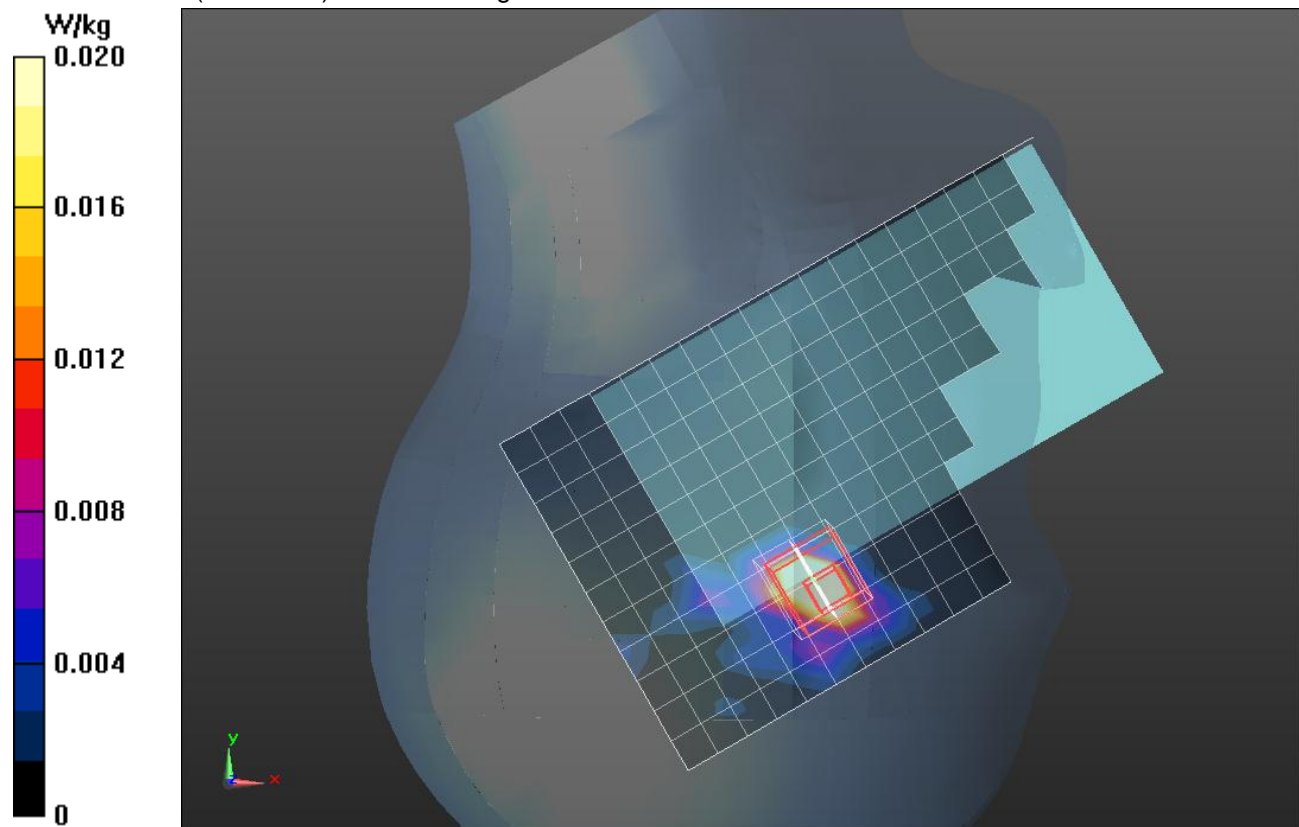
**RHS/Touch\_802.11a\_Ch. 36/Zoom Scan (7x7x12)/Cube 0:** Measurement grid: dx=4mm, dy=4mm, dz=2mm

Reference Value = 3.124 V/m; Power Drift = 0.04 dB

Peak SAR (extrapolated) = 0.221 W/kg

**SAR(1 g) = 0.022 W/kg; SAR(10 g) = 0.00371 W/kg**

Maximum value of SAR (measured) = 0.0494 W/kg



## WiFi 5.3 GHz

Frequency: 5280 MHz; Duty Cycle: 1:1; Room Ambient Temperature: 24.0°C; Liquid Temperature: 23.0°C  
 Medium parameters used:  $f = 5280$  MHz;  $\sigma = 4.53$  S/m;  $\epsilon_r = 37.411$ ;  $\rho = 1000$  kg/m<sup>3</sup>

DASY5 Configuration:

- Area Scan Setting: Find Secondary Maximum Within: 2.0 dB and with a peak SAR value greater than 0.0012W/kg
- Averaged Fast SAR: Polynomial fit
- Electronics: DAE4 Sn1377; Calibrated: 7/15/2013
- Probe: EX3DV4 - SN3902; ConvF(5.14, 5.14, 5.14); Calibrated: 7/12/2013;
- Sensor-Surface: 2mm (Mechanical Surface Detection)
- Phantom: SAM with CRP; Type: QD000P40CD; Serial: 1768

**RHS/Touch\_802.11a\_Ch. 56/Area Scan (12x19x1):** Measurement grid: dx=10mm, dy=10mm

Maximum value of SAR (measured) = 0.0650 W/kg

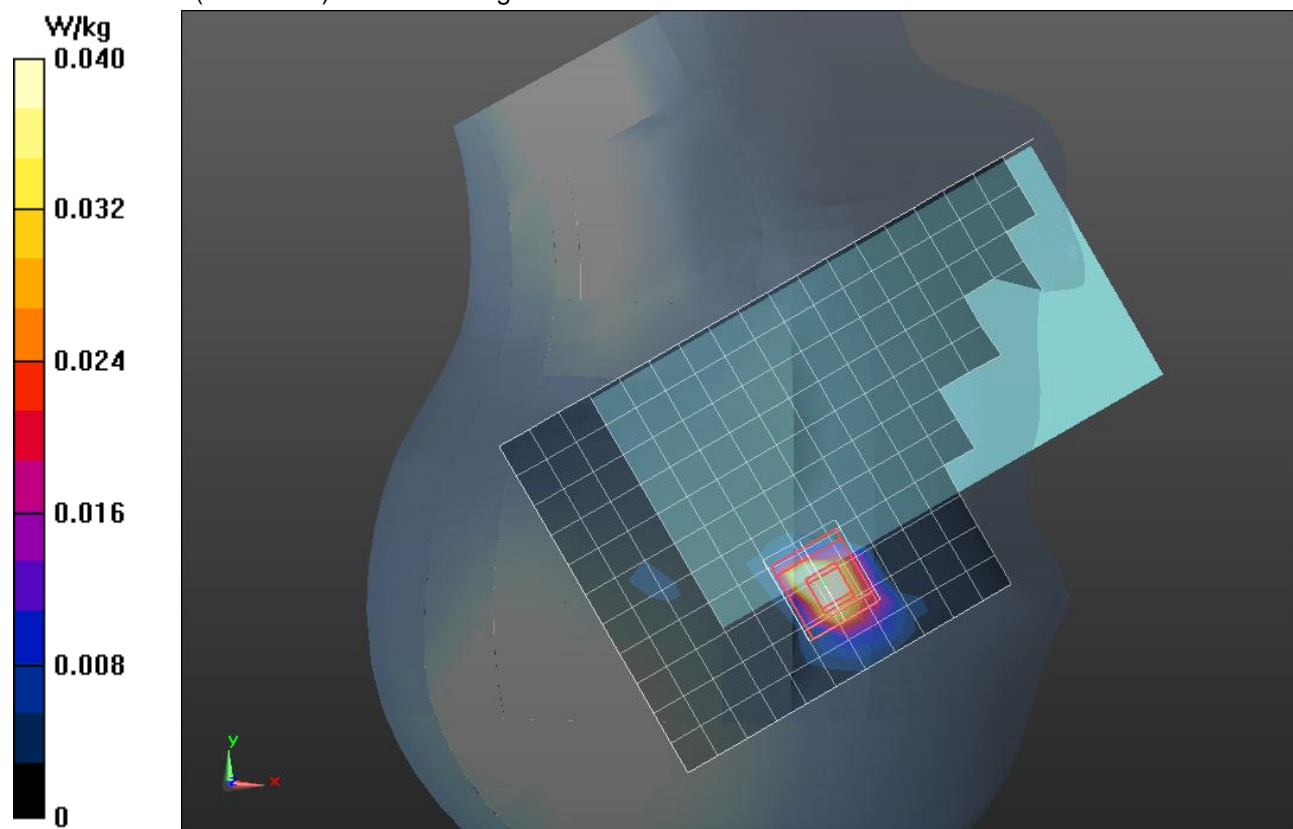
**RHS/Touch\_802.11a\_Ch. 56/Zoom Scan (7x7x12)/Cube 0:** Measurement grid: dx=4mm, dy=4mm, dz=2mm

Reference Value = 3.889 V/m; Power Drift = -0.16 dB

Peak SAR (extrapolated) = 0.241 W/kg

**SAR(1 g) = 0.033 W/kg; SAR(10 g) = 0.00629 W/kg**

Maximum value of SAR (measured) = 0.0840 W/kg



## WiFi 5.5 GHz

Frequency: 5700 MHz; Duty Cycle: 1:1; Room Ambient Temperature: 24.0°C; Liquid Temperature: 23.0°C

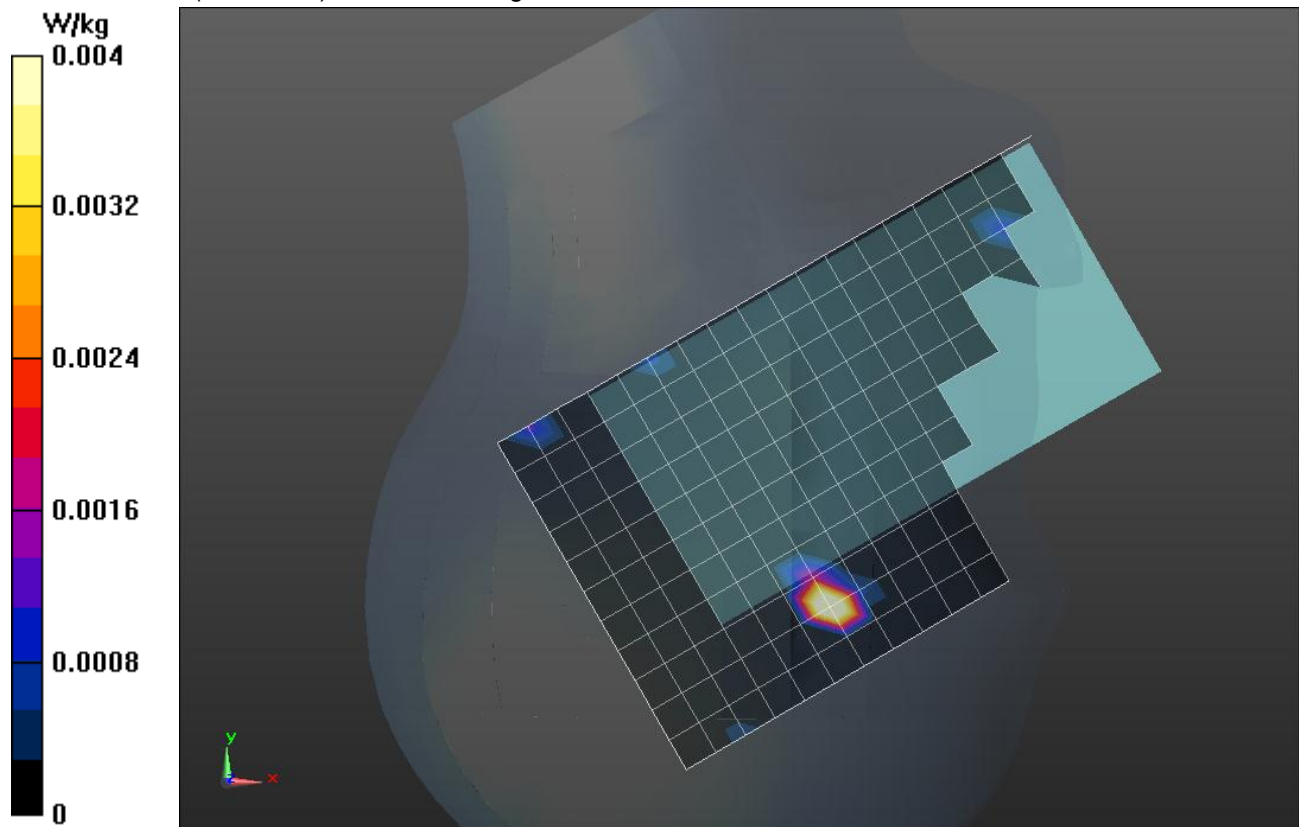
Medium parameters used:  $f = 5700$  MHz;  $\sigma = 4.961$  S/m;  $\epsilon_r = 36.872$ ;  $\rho = 1000$  kg/m<sup>3</sup>

DASY5 Configuration:

- Area Scan Setting: Find Secondary Maximum Within: 2.0 dB and with a peak SAR value greater than 0.0012W/kg
- Averaged Fast SAR: Polynomial fit
- Electronics: DAE4 Sn1377; Calibrated: 7/15/2013
- Probe: EX3DV4 - SN3902; ConvF(4.87, 4.87, 4.87); Calibrated: 7/12/2013;
- Sensor-Surface: 2mm (Mechanical Surface Detection)
- Phantom: SAM with CRP; Type: QD000P40CD; Serial: 1768

**RHS/Touch\_802.11a\_Ch. 140/Area Scan (12x19x1):** Measurement grid: dx=10mm, dy=10mm

Maximum value of SAR (measured) = 0.00588 W/kg



## WiFi 5.2 GHz

Frequency: 5180 MHz; Duty Cycle: 1:1; Room Ambient Temperature: 24.0°C; Liquid Temperature: 23.0°C  
 Medium parameters used:  $f = 5180 \text{ MHz}$ ;  $\sigma = 5.279 \text{ S/m}$ ;  $\epsilon_r = 48.333$ ;  $\rho = 1000 \text{ kg/m}^3$

DASY5 Configuration:

- Area Scan Setting: Find Secondary Maximum Within: 2.0 dB and with a peak SAR value greater than 0.0012W/kg
- Electronics: DAE4 Sn1377; Calibrated: 7/15/2013
- Probe: EX3DV4 - SN3902; ConvF(4.76, 4.76, 4.76); Calibrated: 7/12/2013;
- Sensor-Surface: 2mm (Mechanical Surface Detection)
- Phantom: ELI v5.0 (A); Type: QDOVA001BB; Serial: 1213

**Rear/802.11a\_Ch 36/Area Scan (13x18x1):** Measurement grid: dx=10mm, dy=10mm

Maximum value of SAR (measured) = 0.390 W/kg

**Rear/802.11a\_Ch 36/Zoom Scan (7x7x12)/Cube 0:** Measurement grid: dx=4mm, dy=4mm, dz=2mm

Reference Value = 9.223 V/m; Power Drift = -0.04 dB

Peak SAR (extrapolated) = 0.881 W/kg

**SAR(1 g) = 0.200 W/kg; SAR(10 g) = 0.052 W/kg**

Maximum value of SAR (measured) = 0.417 W/kg

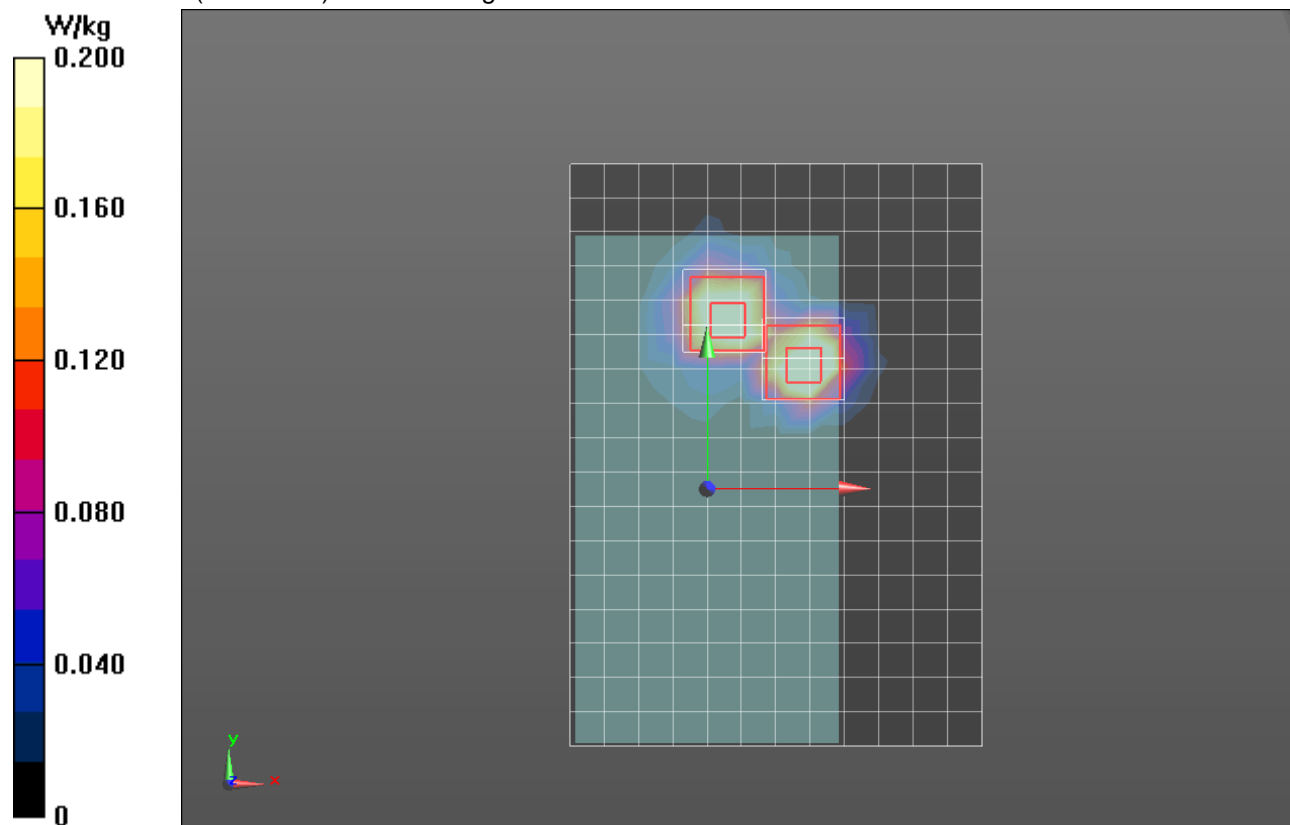
**Rear/802.11a\_Ch 36/Zoom Scan (7x7x12)/Cube 1:** Measurement grid: dx=4mm, dy=4mm, dz=2mm

Reference Value = 9.223 V/m; Power Drift = -0.04 dB

Peak SAR (extrapolated) = 1.30 W/kg

**SAR(1 g) = 0.157 W/kg; SAR(10 g) = 0.047 W/kg**

Maximum value of SAR (measured) = 0.301 W/kg



## WiFi 5.3 GHz

Frequency: 5280 MHz; Duty Cycle: 1:1; Room Ambient Temperature: 24.0°C; Liquid Temperature: 23.0°C  
 Medium parameters used:  $f = 5280 \text{ MHz}$ ;  $\sigma = 5.391 \text{ S/m}$ ;  $\epsilon_r = 48.086$ ;  $\rho = 1000 \text{ kg/m}^3$

DASY5 Configuration:

- Area Scan Setting: Find Secondary Maximum Within: 2.0 dB and with a peak SAR value greater than 0.0012W/kg
- Electronics: DAE4 Sn1377; Calibrated: 7/15/2013
- Probe: EX3DV4 - SN3902; ConvF(4.56, 4.56, 4.56); Calibrated: 7/12/2013;
- Sensor-Surface: 2mm (Mechanical Surface Detection)
- Phantom: ELI v5.0 (A); Type: QDOVA001BB; Serial: 1213

**Rear/802.11a\_Ch 56/Area Scan (13x18x1):** Measurement grid: dx=10mm, dy=10mm

Maximum value of SAR (measured) = 0.465 W/kg

**Rear/802.11a\_Ch 56/Zoom Scan (7x7x12)/Cube 0:** Measurement grid: dx=4mm, dy=4mm, dz=2mm

Reference Value = 9.819 V/m; Power Drift = -0.04 dB

Peak SAR (extrapolated) = 0.972 W/kg

**SAR(1 g) = 0.220 W/kg; SAR(10 g) = 0.055 W/kg**

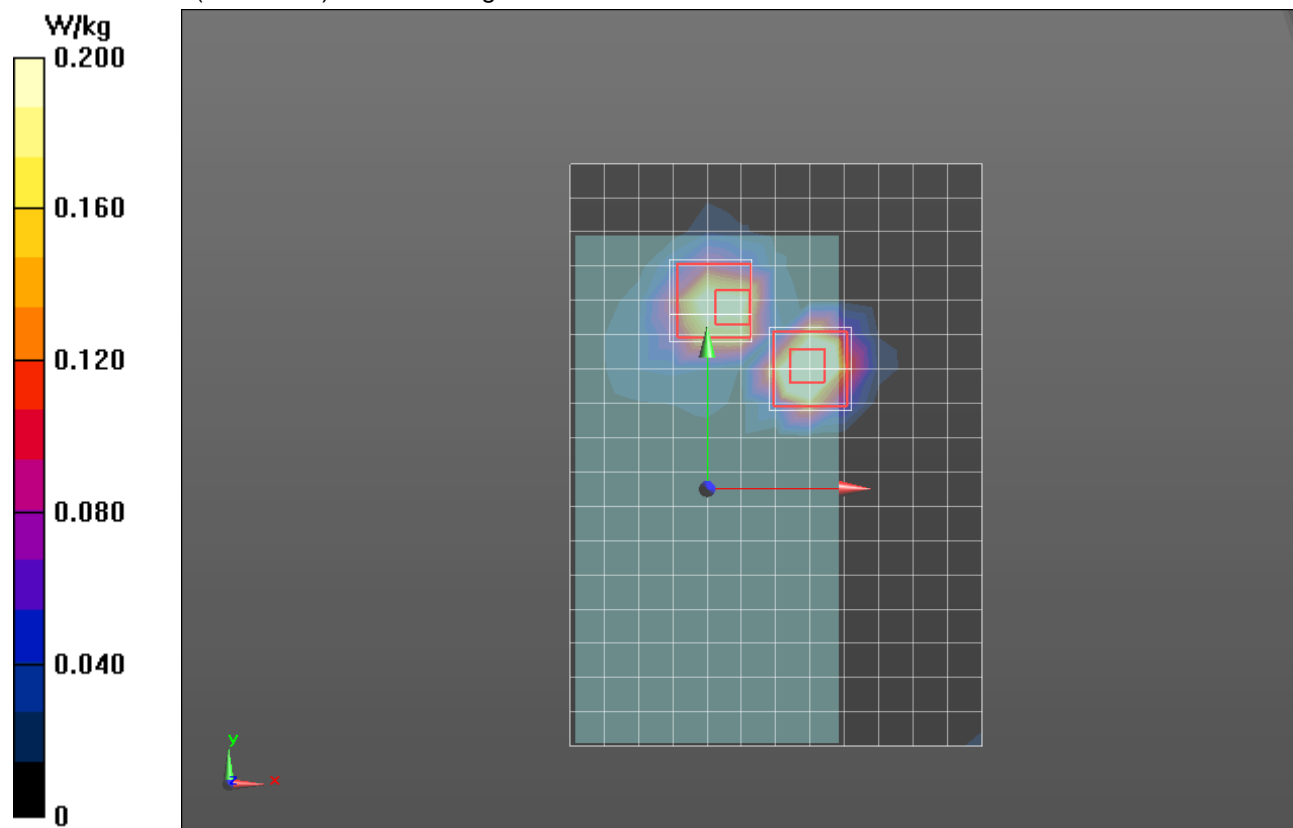
**Rear/802.11a\_Ch 56/Zoom Scan 2 (7x7x12)/Cube 0:** Measurement grid: dx=4mm, dy=4mm, dz=2mm

Reference Value = 9.819 V/m; Power Drift = -0.04 dB

Peak SAR (extrapolated) = 0.528 W/kg

**SAR(1 g) = 0.135 W/kg; SAR(10 g) = 0.038 W/kg**

Maximum value of SAR (measured) = 0.276 W/kg



## WiFi 5.5 GHz

Frequency: 5700 MHz; Duty Cycle: 1:1; Room Ambient Temperature: 24.0°C; Liquid Temperature: 23.0°C  
 Medium parameters used:  $f = 5700$  MHz;  $\sigma = 5.987$  S/m;  $\epsilon_r = 47.36$ ;  $\rho = 1000$  kg/m<sup>3</sup>

DASY5 Configuration:

- Area Scan Setting: Find Secondary Maximum Within: 2.0 dB and with a peak SAR value greater than 0.0012W/kg
- Electronics: DAE4 Sn1377; Calibrated: 7/15/2013
- Probe: EX3DV4 - SN3902; ConvF(3.93, 3.93, 3.93); Calibrated: 7/12/2013;
- Sensor-Surface: 2mm (Mechanical Surface Detection)
- Phantom: ELI v5.0 (A); Type: QDOVA001BB; Serial: 1213

**Rear/802.11a\_Ch 140/Area Scan (13x18x1):** Measurement grid: dx=10mm, dy=10mm

Maximum value of SAR (measured) = 0.188 W/kg

**Rear/802.11a\_Ch 140/Zoom Scan (7x7x12)/Cube 0:** Measurement grid: dx=4mm, dy=4mm, dz=2mm

Reference Value = 6.022 V/m; Power Drift = 0.10 dB

Peak SAR (extrapolated) = 0.365 W/kg

**SAR(1 g) = 0.082 W/kg; SAR(10 g) = 0.020 W/kg**

Maximum value of SAR (measured) = 0.199 W/kg

**Rear/802.11a\_Ch 140/Zoom Scan (7x7x12)/Cube 1:** Measurement grid: dx=4mm, dy=4mm, dz=2mm

Reference Value = 6.022 V/m; Power Drift = 0.10 dB

Peak SAR (extrapolated) = 0.241 W/kg

**SAR(1 g) = 0.020 W/kg; SAR(10 g) = 0.00581 W/kg**

Maximum value of SAR (measured) = 0.0294 W/kg

