

GSM 850

Frequency: 836.6 MHz; Duty Cycle: 1:1.99986; Room Ambient Temperature: 23.0°C; Liquid Temperature: 22.0°C
 Medium parameters used (interpolated): $f = 836.6$ MHz; $\sigma = 0.899$ S/m; $\epsilon_r = 40.016$; $\rho = 1000$ kg/m³

DASY5 Configuration:

- Area Scan Setting: Find Secondary Maximum Within: 2.0 dB and with a peak SAR value greater than 0.0012W/kg
- Electronics: DAE4 Sn1468; Calibrated: 2017-08-22
- Probe: EX3DV4 - SN7376; ConvF(10.19, 10.19, 10.19); Calibrated: 2017-08-22;
- Sensor-Surface: 2.5mm (Mechanical Surface Detection)
- Phantom: SAM (20deg probe tilt) with CRP v5.0_Front; Type: QD000P40CD; Serial: TP:1877

LHS/Touch_GPRS 4 slots_ch 190/Area Scan (8x13x1): Measurement grid: dx=15mm, dy=15mm
 Maximum value of SAR (measured) = 0.410 W/kg

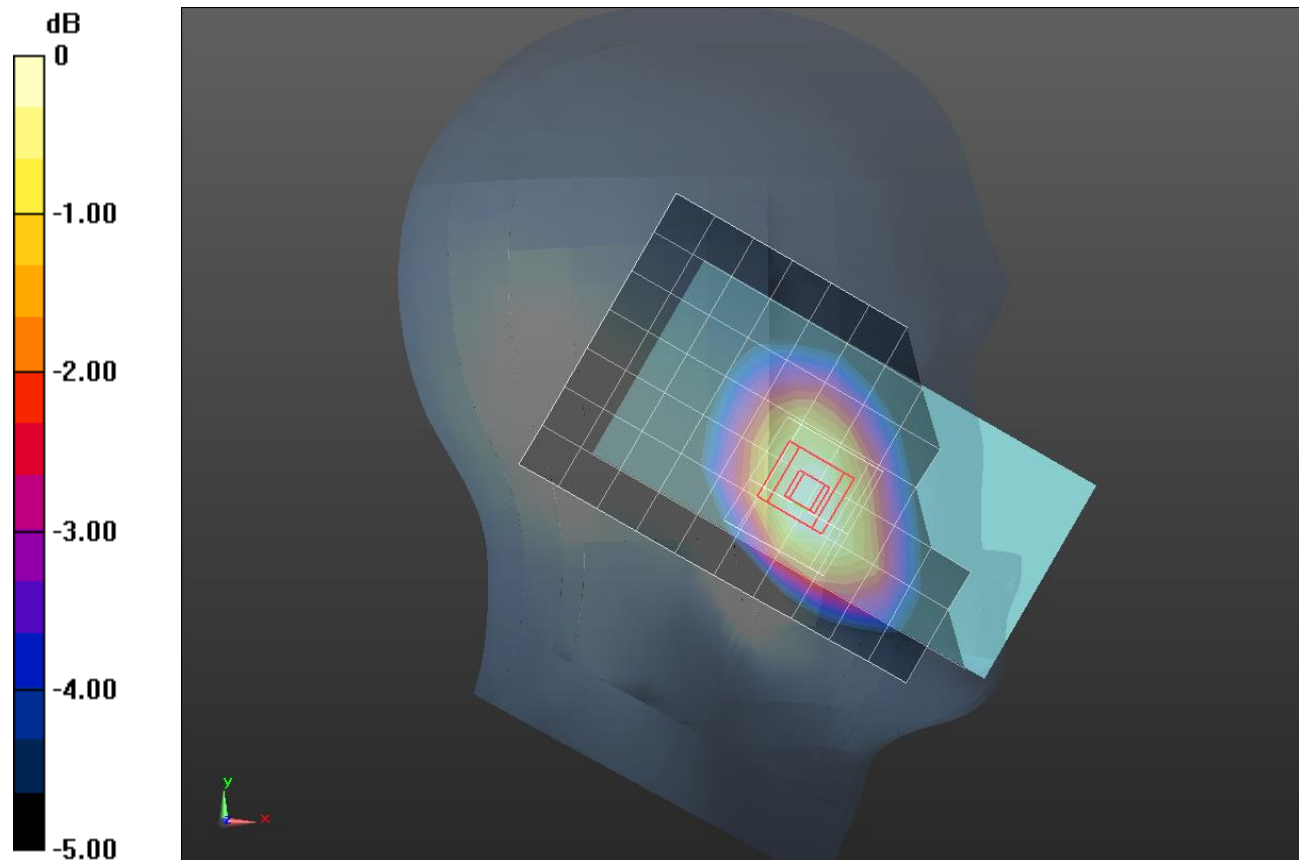
LHS/Touch_GPRS 4 slots_ch 190/Zoom Scan (6x5x7)/Cube 0: Measurement grid: dx=8mm, dy=8mm, dz=5mm

Reference Value = 21.81 V/m; Power Drift = -0.05 dB

Peak SAR (extrapolated) = 0.460 W/kg

SAR(1 g) = 0.370 W/kg; SAR(10 g) = 0.284 W/kg

Maximum value of SAR (measured) = 0.407 W/kg



0 dB = 0.407 W/kg = -3.90 dBW/kg

GSM 850

Frequency: 836.6 MHz; Duty Cycle: 1:1.99986; Room Ambient Temperature: 23.0°C; Liquid Temperature: 22.0°C
 Medium parameters used (interpolated): $f = 836.6$ MHz; $\sigma = 0.988$ S/m; $\epsilon_r = 53.193$; $\rho = 1000$ kg/m³

DASY5 Configuration:

- Area Scan Setting: Find Secondary Maximum Within: 2.0 dB and with a peak SAR value greater than 0.0012W/kg
- Electronics: DAE4 Sn1468; Calibrated: 2017-08-22
- Probe: EX3DV4 - SN7376; ConvF(10.1, 10.1, 10.1); Calibrated: 2017-08-22;
- Sensor-Surface: 2.5mm (Mechanical Surface Detection)
- Phantom: Triple Flat Phantom 5.1C; Type: QD 000 P51 CA; Serial: 1166

Rear/GPRS_4 slots_ch 190 15mm(VoIP)/Area Scan (8x14x1): Measurement grid: dx=15mm, dy=15mm

Maximum value of SAR (measured) = 0.523 W/kg

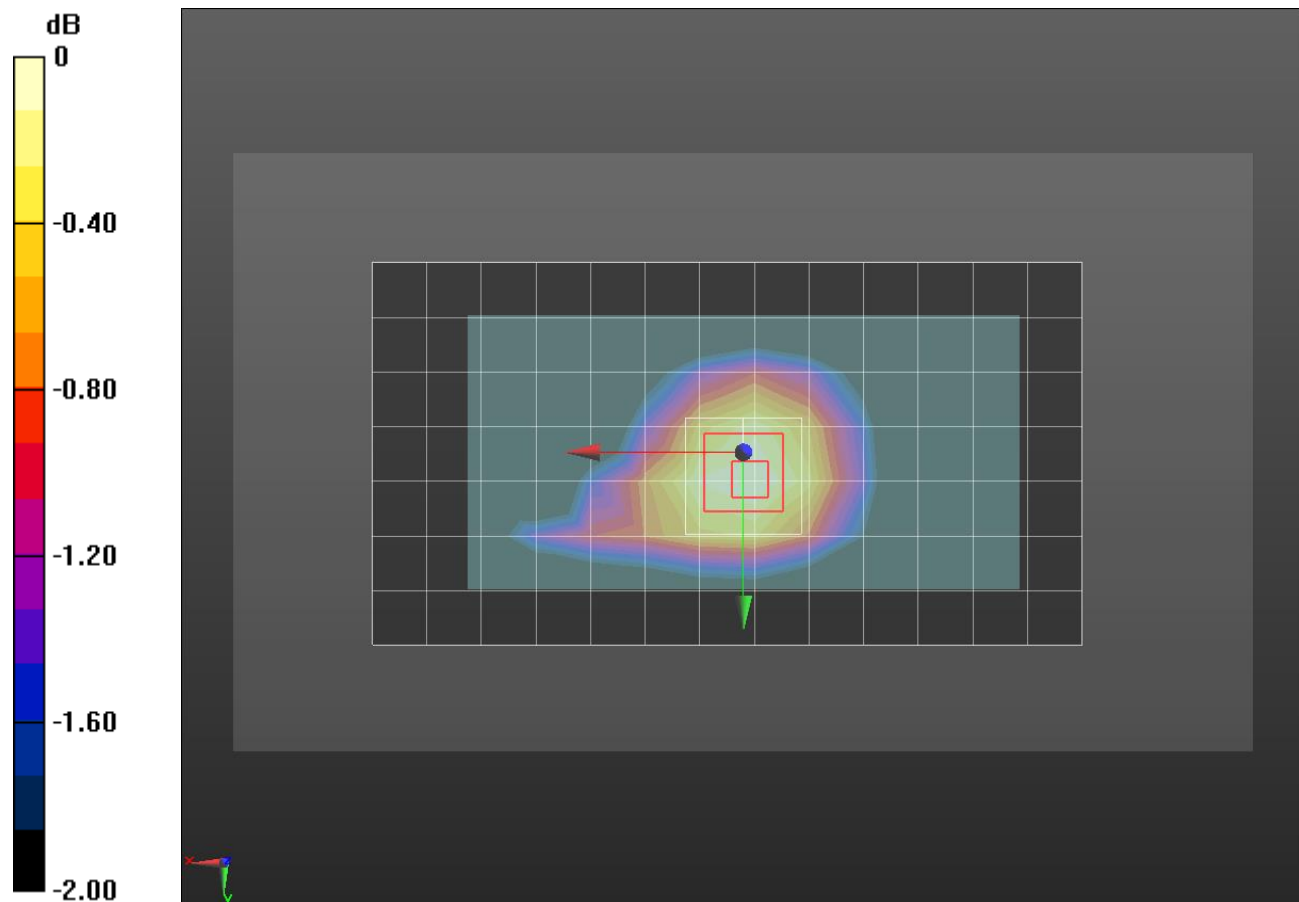
Rear/GPRS_4 slots_ch 190 15mm(VoIP)/Zoom Scan (5x5x7)/Cube 0: Measurement grid: dx=8mm, dy=8mm, dz=5mm

Reference Value = 23.27 V/m; Power Drift = 0.01 dB

Peak SAR (extrapolated) = 0.579 W/kg

SAR(1 g) = 0.464 W/kg; SAR(10 g) = 0.357 W/kg

Maximum value of SAR (measured) = 0.518 W/kg



0 dB = 0.518 W/kg = -2.86 dBW/kg

GSM 850

Frequency: 836.6 MHz; Duty Cycle: 1:1.99986; Room Ambient Temperature: 23.0°C; Liquid Temperature: 22.0°C
 Medium parameters used (interpolated): $f = 836.6$ MHz; $\sigma = 0.988$ S/m; $\epsilon_r = 53.193$; $\rho = 1000$ kg/m³

DASY5 Configuration:

- Area Scan Setting: Find Secondary Maximum Within: 2.0 dB and with a peak SAR value greater than 0.0012W/kg
- Electronics: DAE4 Sn1468; Calibrated: 2017-08-22
- Probe: EX3DV4 - SN7376; ConvF(10.1, 10.1, 10.1); Calibrated: 2017-08-22;
- Sensor-Surface: 2.5mm (Mechanical Surface Detection)
- Phantom: Triple Flat Phantom 5.1C; Type: QD 000 P51 CA; Serial: 1166

Edge 4/GPRS 4 slots_ch 190/Area Scan (13x5x1): Measurement grid: dx=15mm, dy=15mm

Maximum value of SAR (measured) = 0.787 W/kg

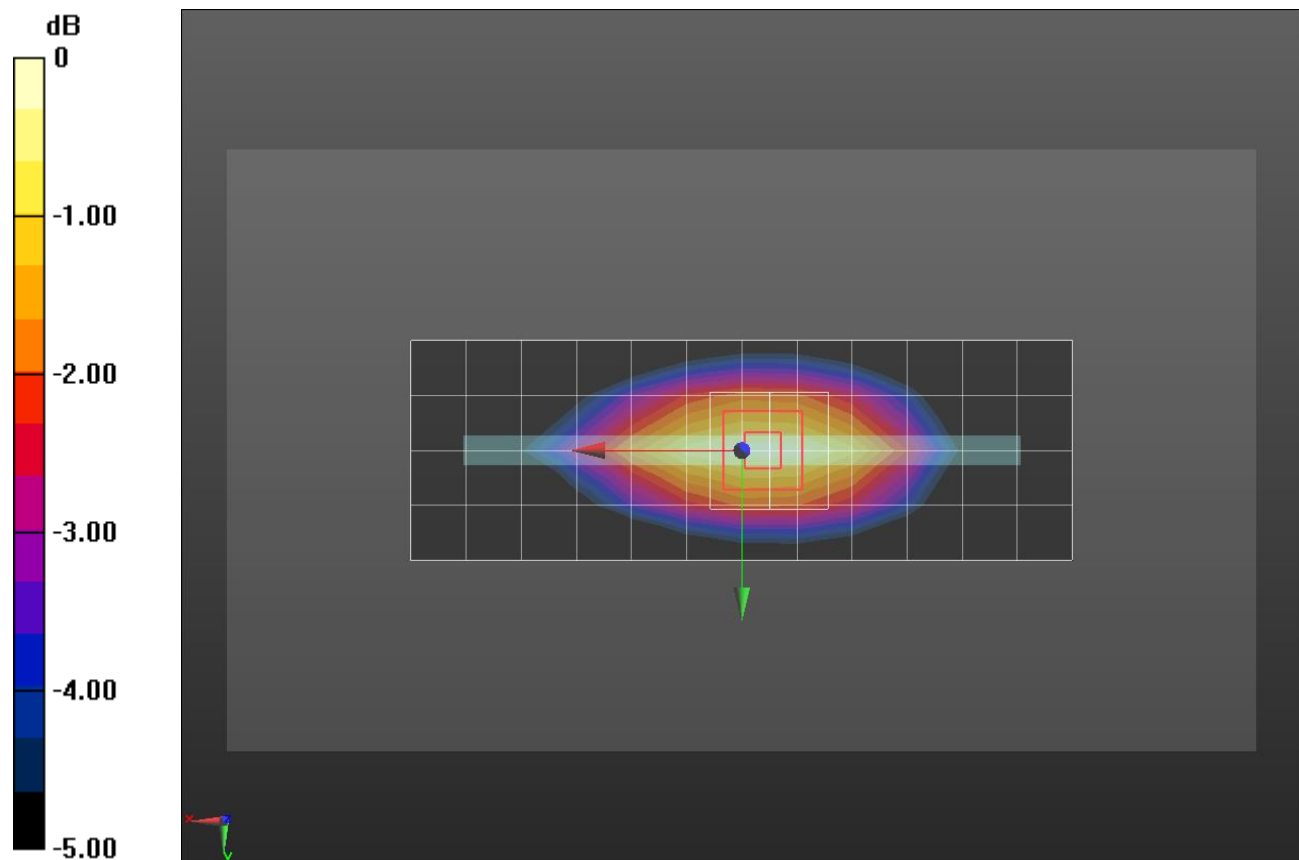
Edge 4/GPRS 4 slots_ch 190/Zoom Scan (5x5x7)/Cube 0: Measurement grid: dx=8mm, dy=8mm, dz=5mm

Reference Value = 28.63 V/m; Power Drift = 0.00 dB

Peak SAR (extrapolated) = 0.945 W/kg

SAR(1 g) = 0.672 W/kg; SAR(10 g) = 0.461 W/kg

Maximum value of SAR (measured) = 0.799 W/kg



0 dB = 0.799 W/kg = -0.97 dBW/kg

GSM 1900

Frequency: 1880 MHz; Duty Cycle: 1:4.00037; Room Ambient Temperature: 23.0°C; Liquid Temperature: 22.0°C
 Medium parameters used: $f = 1880 \text{ MHz}$; $\sigma = 1.388 \text{ S/m}$; $\epsilon_r = 39.567$; $\rho = 1000 \text{ kg/m}^3$

DASY5 Configuration:

- Area Scan Setting: Find Secondary Maximum Within: 2.0 dB and with a peak SAR value greater than 0.0012W/kg
- Electronics: DAE4 Sn1494; Calibrated: 2017-07-20
- Probe: EX3DV4 - SN7314; ConvF(8.31, 8.31, 8.31); Calibrated: 2017-09-28;
- Sensor-Surface: 2.5mm (Mechanical Surface Detection)
- Phantom: SAM Phantom CRP v5.0(Middle); Type: QD000P40CD; Serial: TP:1854

LHS/Touch_GPRS 2 slots_ch 661/Area Scan (8x13x1): Measurement grid: dx=15mm, dy=15mm
 Maximum value of SAR (measured) = 0.330 W/kg

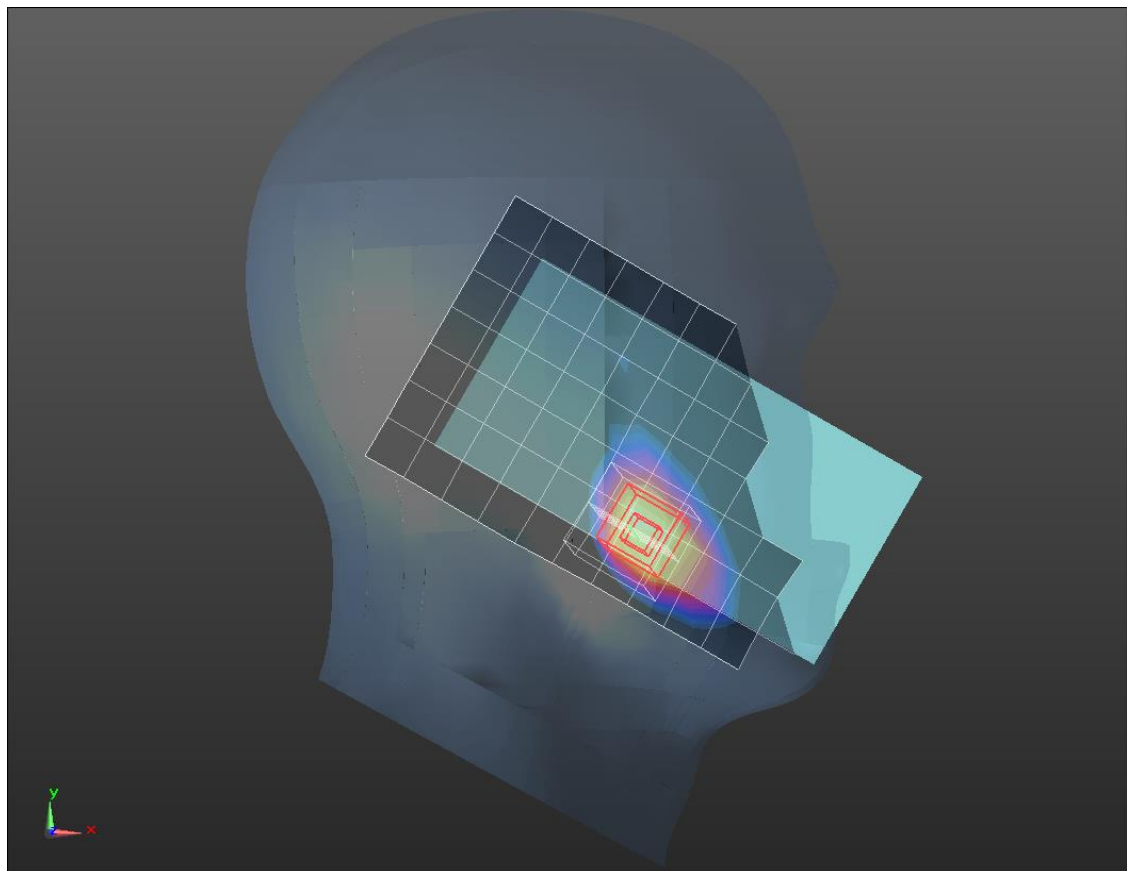
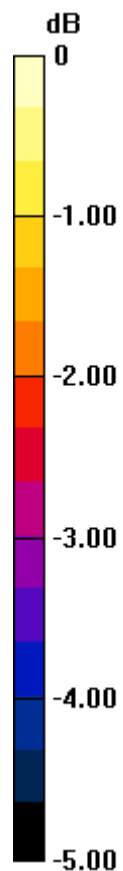
LHS/Touch_GPRS 2 slots_ch 661/Zoom Scan (5x5x7)/Cube 0: Measurement grid: dx=8mm, dy=8mm, dz=5mm

Reference Value = 15.59 V/m; Power Drift = 0.06 dB

Peak SAR (extrapolated) = 0.468 W/kg

SAR(1 g) = 0.301 W/kg; SAR(10 g) = 0.186 W/kg

Maximum value of SAR (measured) = 0.372 W/kg



0 dB = 0.372 W/kg = -4.29 dBW/kg

GSM 1900

Frequency: 1880 MHz; Duty Cycle: 1:4.00037; Room Ambient Temperature: 23.0°C; Liquid Temperature: 22.0°C
 Medium parameters used: $f = 1880 \text{ MHz}$; $\sigma = 1.557 \text{ S/m}$; $\epsilon_r = 53.271$; $\rho = 1000 \text{ kg/m}^3$

DASY5 Configuration:

- Area Scan Setting: Find Secondary Maximum Within: 2.0 dB and with a peak SAR value greater than 0.0012W/kg
- Electronics: DAE4 Sn1494; Calibrated: 2017-07-20
- Probe: EX3DV4 - SN7314; ConvF(8, 8, 8); Calibrated: 2017-09-28;
- Sensor-Surface: 2.5mm (Mechanical Surface Detection)
- Phantom: ELI v6.0; Type: QDOVA003AA; Serial: TP:2005

Rear/GPRS_2 slots_ch 661 15mm(VoIP)/Area Scan (8x13x1): Measurement grid: dx=15mm, dy=15mm

Maximum value of SAR (measured) = 0.268 W/kg

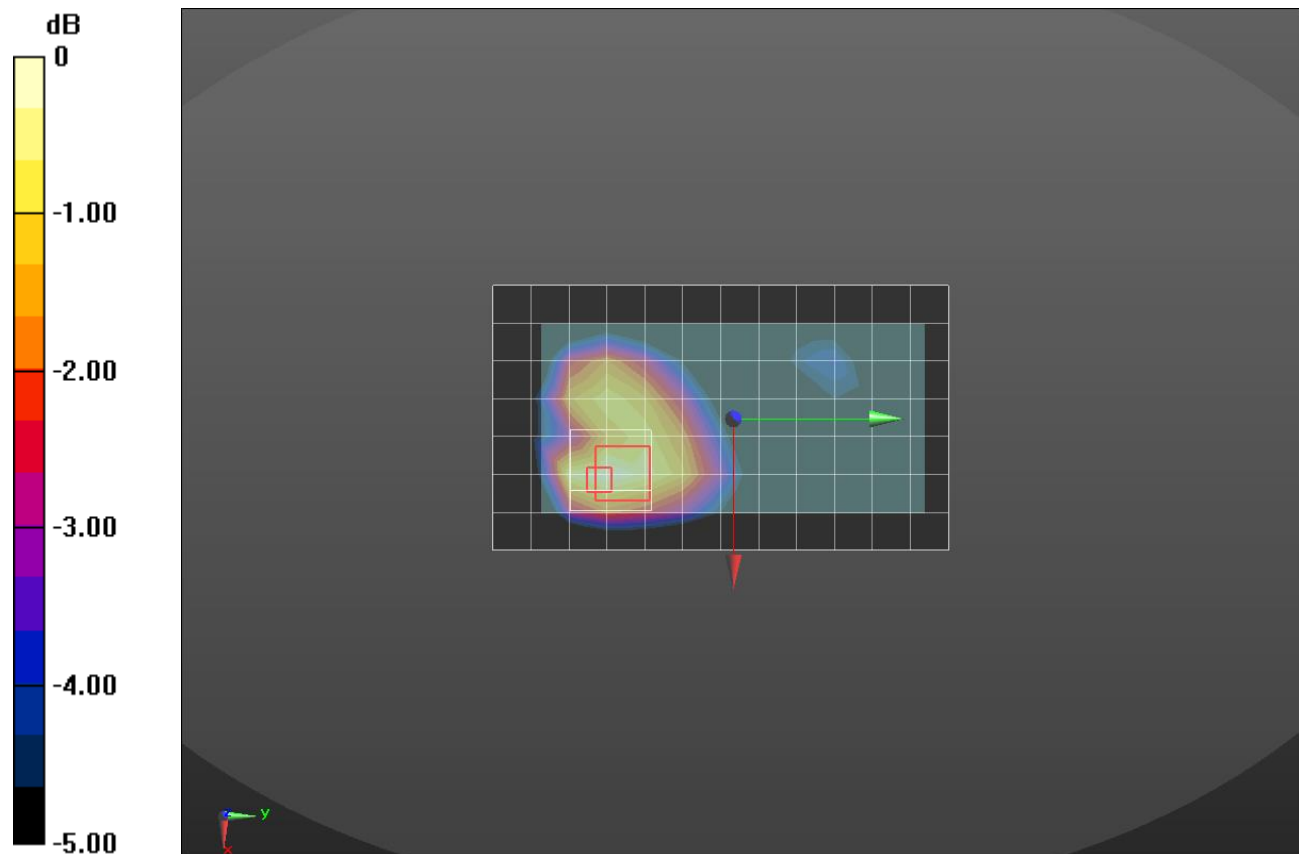
Rear/GPRS_2 slots_ch 661 15mm(VoIP)/Zoom Scan (5x5x7)/Cube 0: Measurement grid: dx=8mm, dy=8mm, dz=5mm

Reference Value = 13.25 V/m; Power Drift = -0.09 dB

Peak SAR (extrapolated) = 0.365 W/kg

SAR(1 g) = 0.217 W/kg; SAR(10 g) = 0.131 W/kg

Maximum value of SAR (measured) = 0.265 W/kg



0 dB = 0.265 W/kg = -5.77 dBW/kg

GSM 1900

Frequency: 1880 MHz; Duty Cycle: 1:4.00037; Room Ambient Temperature: 23.0°C; Liquid Temperature: 22.0°C
 Medium parameters used: $f = 1880 \text{ MHz}$; $\sigma = 1.557 \text{ S/m}$; $\epsilon_r = 53.271$; $\rho = 1000 \text{ kg/m}^3$

DASY5 Configuration:

- Area Scan Setting: Find Secondary Maximum Within: 2.0 dB and with a peak SAR value greater than 0.0012W/kg
- Electronics: DAE4 Sn1494; Calibrated: 2017-07-20
- Probe: EX3DV4 - SN7314; ConvF(8, 8, 8); Calibrated: 2017-09-28;
- Sensor-Surface: 2.5mm (Mechanical Surface Detection)
- Phantom: ELI v6.0; Type: QDOVA003AA; Serial: TP:2005

Rear/GPRS_2 slots_ch 661 10mm(Hotspot)/Area Scan (8x14x1): Measurement grid: dx=15mm, dy=15mm

Maximum value of SAR (measured) = 0.603 W/kg

Rear/GPRS_2 slots_ch 661 10mm(Hotspot)/Zoom Scan (5x5x7)/Cube 0: Measurement grid:

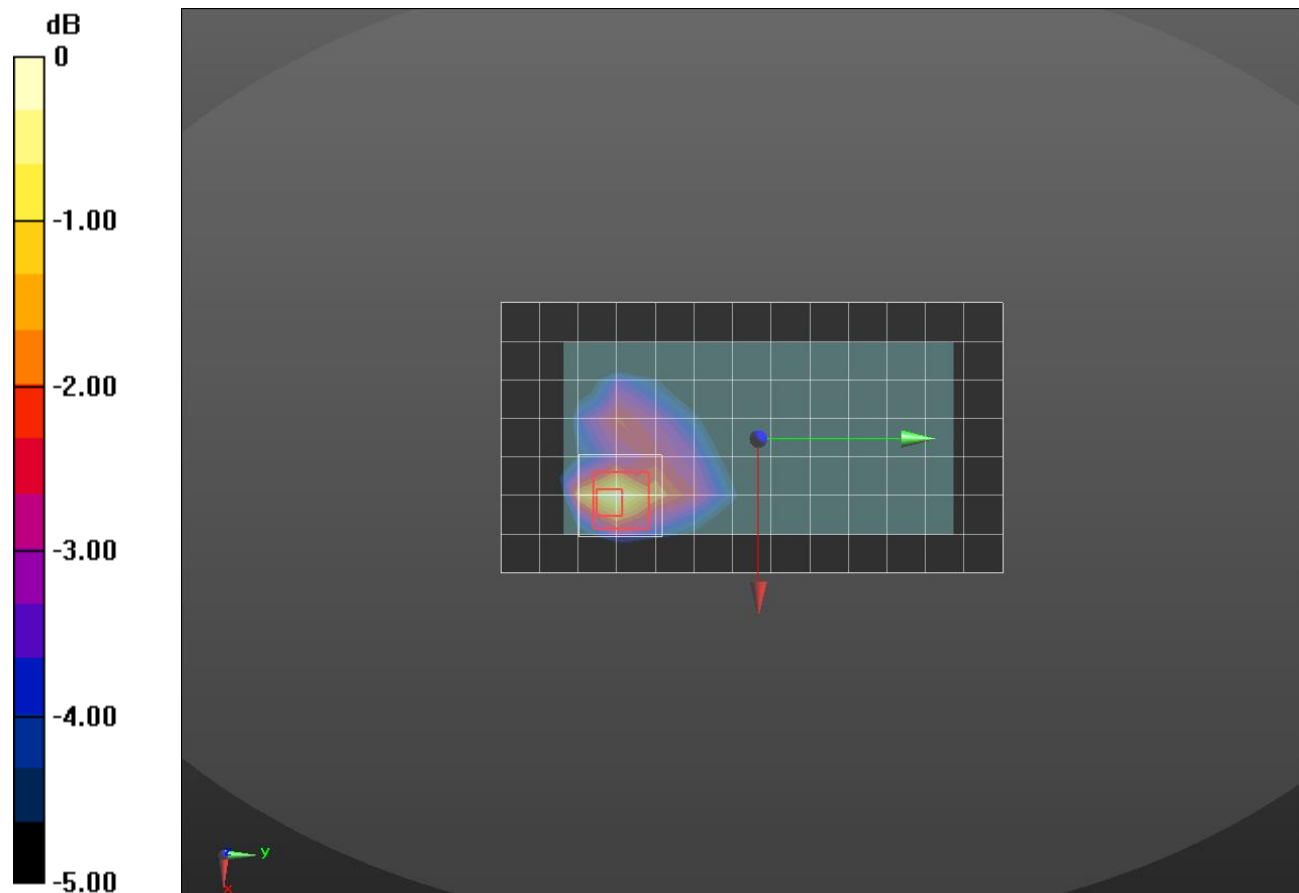
dx=8mm, dy=8mm, dz=5mm

Reference Value = 19.72 V/m; Power Drift = -0.09 dB

Peak SAR (extrapolated) = 0.875 W/kg

SAR(1 g) = 0.481 W/kg; SAR(10 g) = 0.258 W/kg

Maximum value of SAR (measured) = 0.622 W/kg



0 dB = 0.622 W/kg = -2.06 dBW/kg

WCDMA Band II

Frequency: 1880 MHz; Duty Cycle: 1:1; Room Ambient Temperature: 23.0°C; Liquid Temperature: 22.0°C
 Medium parameters used: $f = 1880 \text{ MHz}$; $\sigma = 1.388 \text{ S/m}$; $\epsilon_r = 39.567$; $\rho = 1000 \text{ kg/m}^3$

DASY5 Configuration:

- Area Scan Setting: Find Secondary Maximum Within: 2.0 dB and with a peak SAR value greater than 0.0012W/kg
- Electronics: DAE4 Sn1494; Calibrated: 2017-07-20
- Probe: EX3DV4 - SN7314; ConvF(8.31, 8.31, 8.31); Calibrated: 2017-09-28;
- Sensor-Surface: 2.5mm (Mechanical Surface Detection)
- Phantom: SAM Phantom CRP v5.0(Middle); Type: QD000P40CD; Serial: TP:1854

LHS/Touch_Rel.99 ch 9400/Area Scan (8x13x1): Measurement grid: dx=15mm, dy=15mm

Maximum value of SAR (measured) = 0.325 W/kg

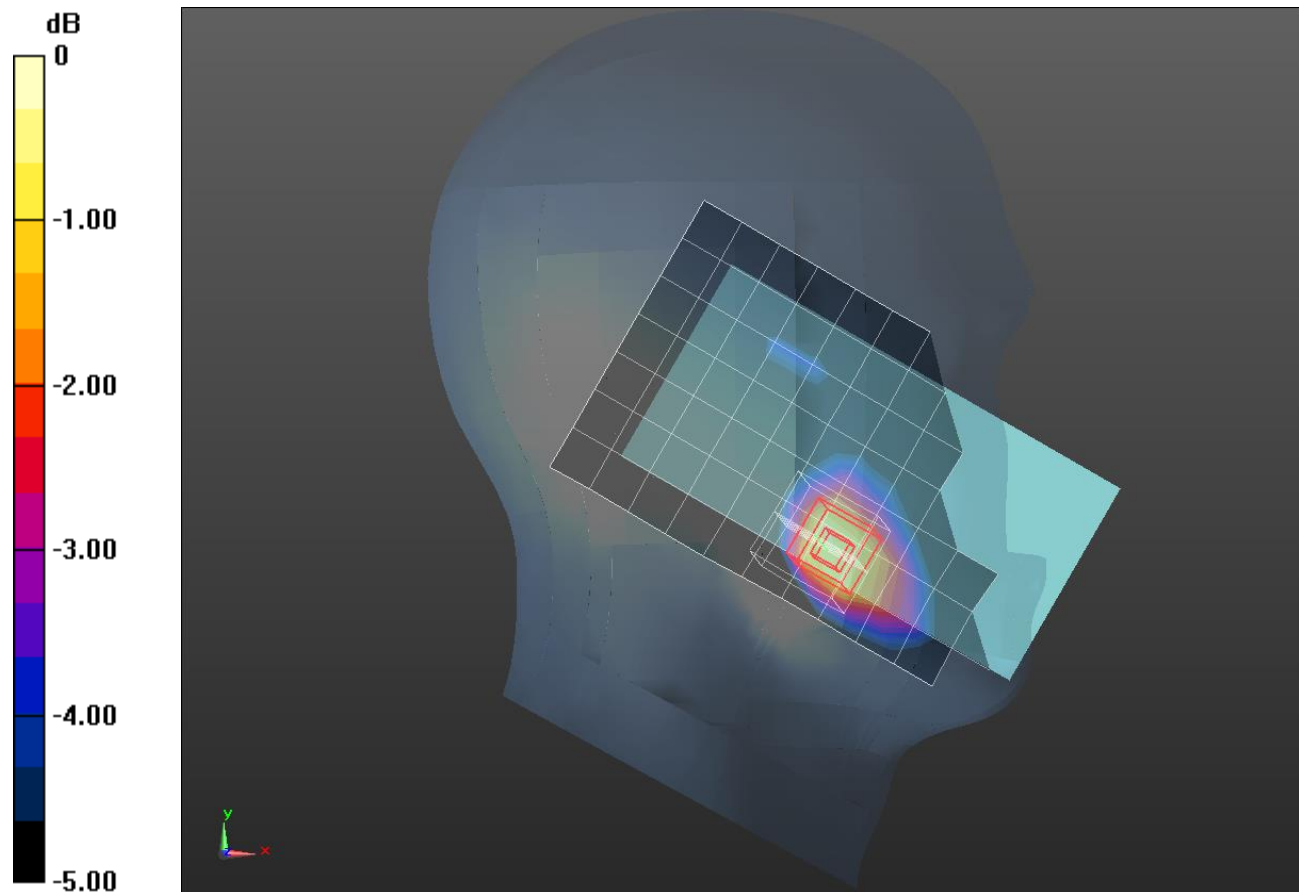
LHS/Touch_Rel.99 ch 9400/Zoom Scan (5x5x7)/Cube 0: Measurement grid: dx=8mm, dy=8mm, dz=5mm

Reference Value = 15.59 V/m; Power Drift = 0.08 dB

Peak SAR (extrapolated) = 0.466 W/kg

SAR(1 g) = 0.305 W/kg; SAR(10 g) = 0.191 W/kg

Maximum value of SAR (measured) = 0.374 W/kg



0 dB = 0.374 W/kg = -4.27 dBW/kg

WCDMA Band II

Frequency: 1880 MHz; Duty Cycle: 1:1; Room Ambient Temperature: 23.0°C; Liquid Temperature: 22.0°C
 Medium parameters used: $f = 1880 \text{ MHz}$; $\sigma = 1.557 \text{ S/m}$; $\epsilon_r = 53.271$; $\rho = 1000 \text{ kg/m}^3$

DASY5 Configuration:

- Area Scan Setting: Find Secondary Maximum Within: 2.0 dB and with a peak SAR value greater than 0.0012W/kg
- Electronics: DAE4 Sn1494; Calibrated: 2017-07-20
- Probe: EX3DV4 - SN7314; ConvF(8, 8, 8); Calibrated: 2017-09-28;
- Sensor-Surface: 2.5mm (Mechanical Surface Detection)
- Phantom: ELI v6.0; Type: QDOVA003AA; Serial: TP:2005

Rear/Rel.99 Ch 9400 15 mm/Area Scan (8x14x1): Measurement grid: dx=15mm, dy=15mm

Maximum value of SAR (measured) = 0.322 W/kg

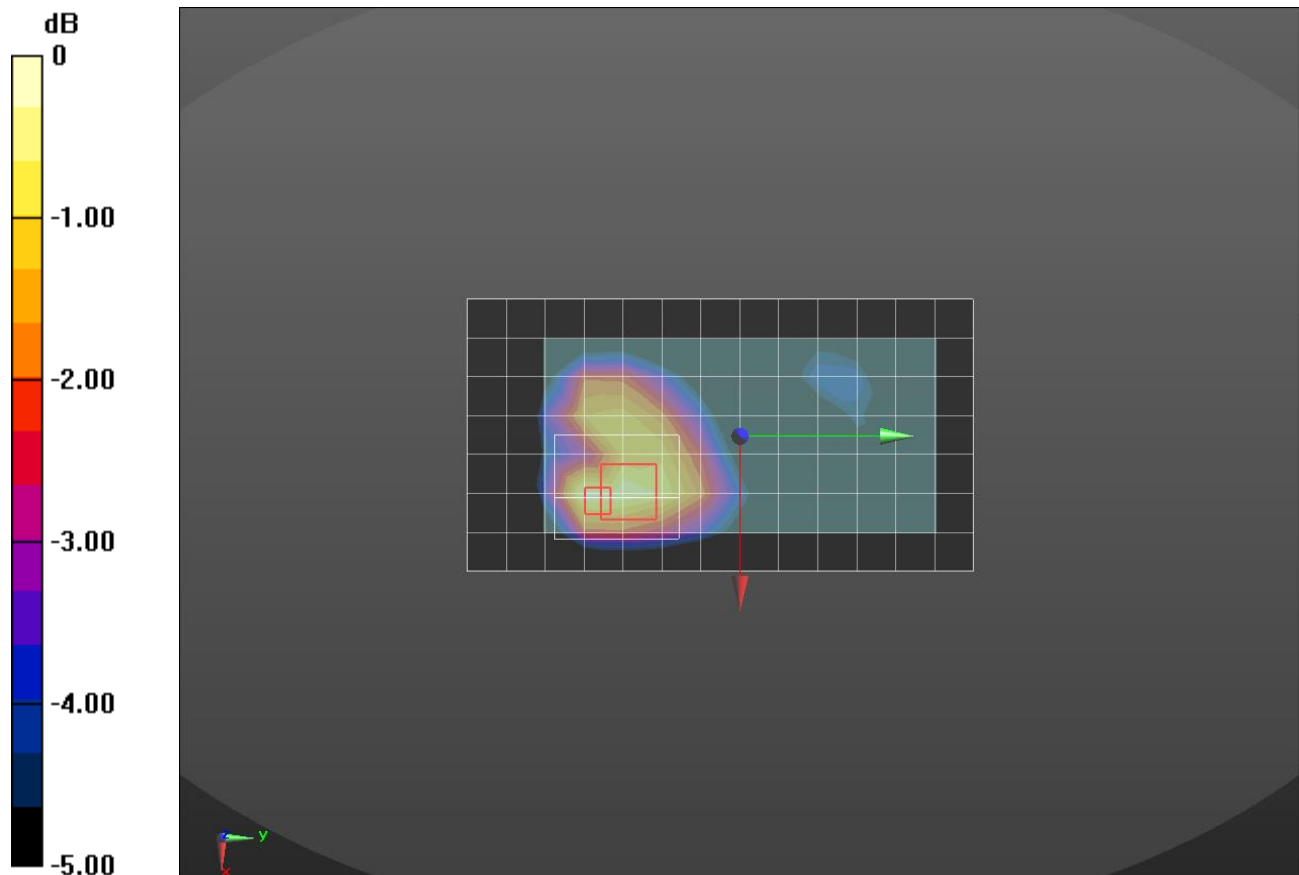
Rear/Rel.99 Ch 9400 15 mm/Zoom Scan (6x7x7)/Cube 0: Measurement grid: dx=8mm, dy=8mm, dz=5mm

Reference Value = 14.55 V/m; Power Drift = -0.01 dB

Peak SAR (extrapolated) = 0.451 W/kg

SAR(1 g) = 0.265 W/kg; SAR(10 g) = 0.160 W/kg

Maximum value of SAR (measured) = 0.337 W/kg



0 dB = 0.337 W/kg = -4.72 dBW/kg

WCDMA Band II

Frequency: 1880 MHz; Duty Cycle: 1:1; Room Ambient Temperature: 23.0°C; Liquid Temperature: 22.0°C
 Medium parameters used: $f = 1880 \text{ MHz}$; $\sigma = 1.557 \text{ S/m}$; $\epsilon_r = 53.271$; $\rho = 1000 \text{ kg/m}^3$

DASY5 Configuration:

- Area Scan Setting: Find Secondary Maximum Within: 2.0 dB and with a peak SAR value greater than 0.0012W/kg
- Electronics: DAE4 Sn1494; Calibrated: 2017-07-20
- Probe: EX3DV4 - SN7314; ConvF(8, 8, 8); Calibrated: 2017-09-28;
- Sensor-Surface: 2.5mm (Mechanical Surface Detection)
- Phantom: ELI v6.0; Type: QDOVA003AA; Serial: TP:2005

Rear/Rel.99 Ch 9400 10 mm/Area Scan (8x14x1): Measurement grid: dx=15mm, dy=15mm

Maximum value of SAR (measured) = 0.755 W/kg

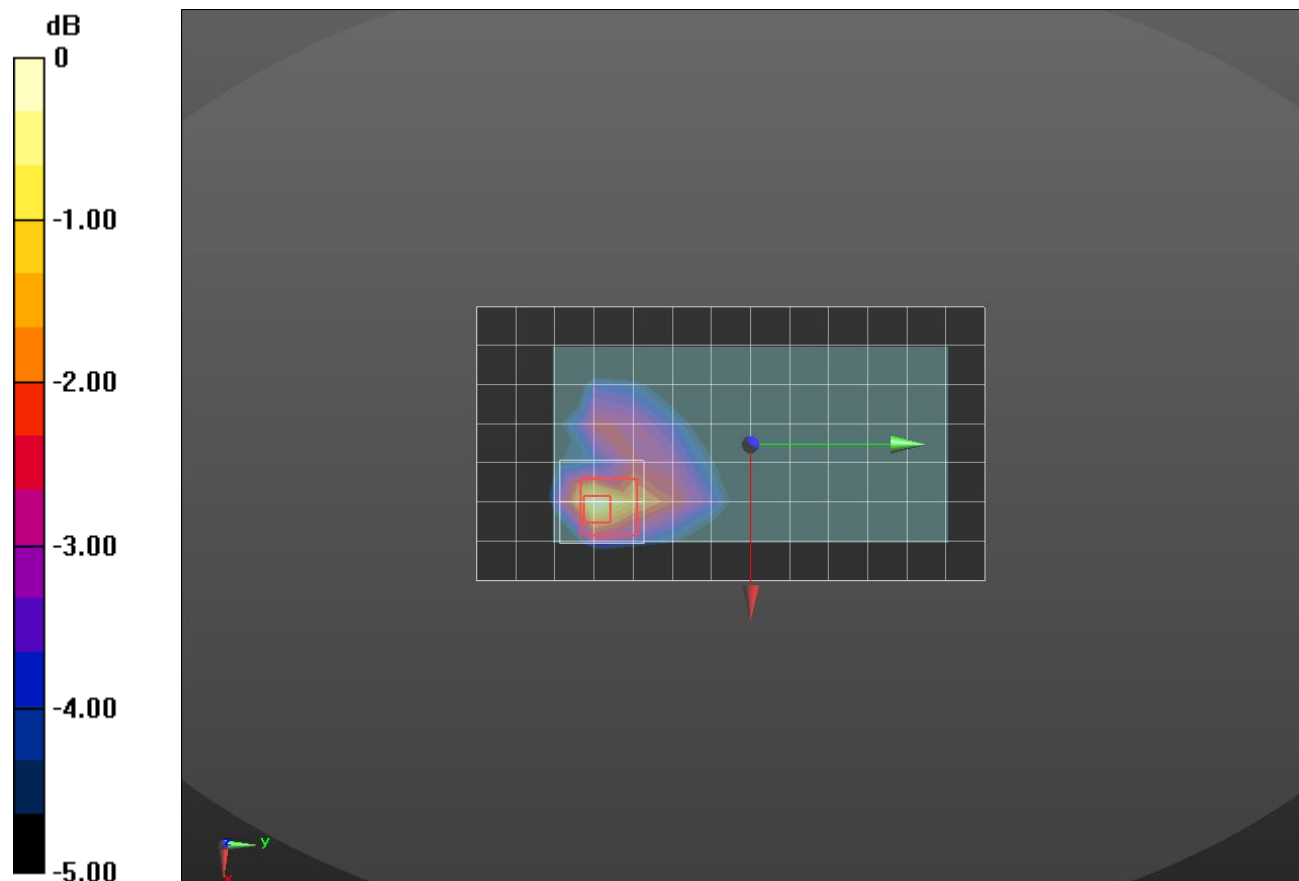
Rear/Rel.99 Ch 9400 10 mm/Zoom Scan (5x5x7)/Cube 0: Measurement grid: dx=8mm, dy=8mm, dz=5mm

Reference Value = 22.47 V/m; Power Drift = -0.09 dB

Peak SAR (extrapolated) = 1.10 W/kg

SAR(1 g) = 0.593 W/kg; SAR(10 g) = 0.317 W/kg

Maximum value of SAR (measured) = 0.754 W/kg



0 dB = 0.754 W/kg = -1.23 dBW/kg

WCDMA Band IV

Frequency: 1732.6 MHz; Duty Cycle: 1:1; Room Ambient Temperature: 23.0°C; Liquid Temperature: 22.0°C
 Medium parameters used (interpolated): $f = 1732.6$ MHz; $\sigma = 1.32$ S/m; $\epsilon_r = 39.823$; $\rho = 1000$ kg/m³

DASY5 Configuration:

- Area Scan Setting: Find Secondary Maximum Within: 2.0 dB and with a peak SAR value greater than 0.0012W/kg
- Electronics: DAE4 Sn1468; Calibrated: 2017-08-22
- Probe: EX3DV4 - SN7376; ConvF(8.75, 8.75, 8.75); Calibrated: 2017-08-22;
- Sensor-Surface: 2.5mm (Mechanical Surface Detection)
- Phantom: SAM (20deg probe tilt) with CRP v5.0_Back; Type: QD000P40CD; Serial: TP:1882

LHS/Touch_Rel.99 ch 1413/Area Scan (8x13x1): Measurement grid: dx=15mm, dy=15mm

Maximum value of SAR (measured) = 0.361 W/kg

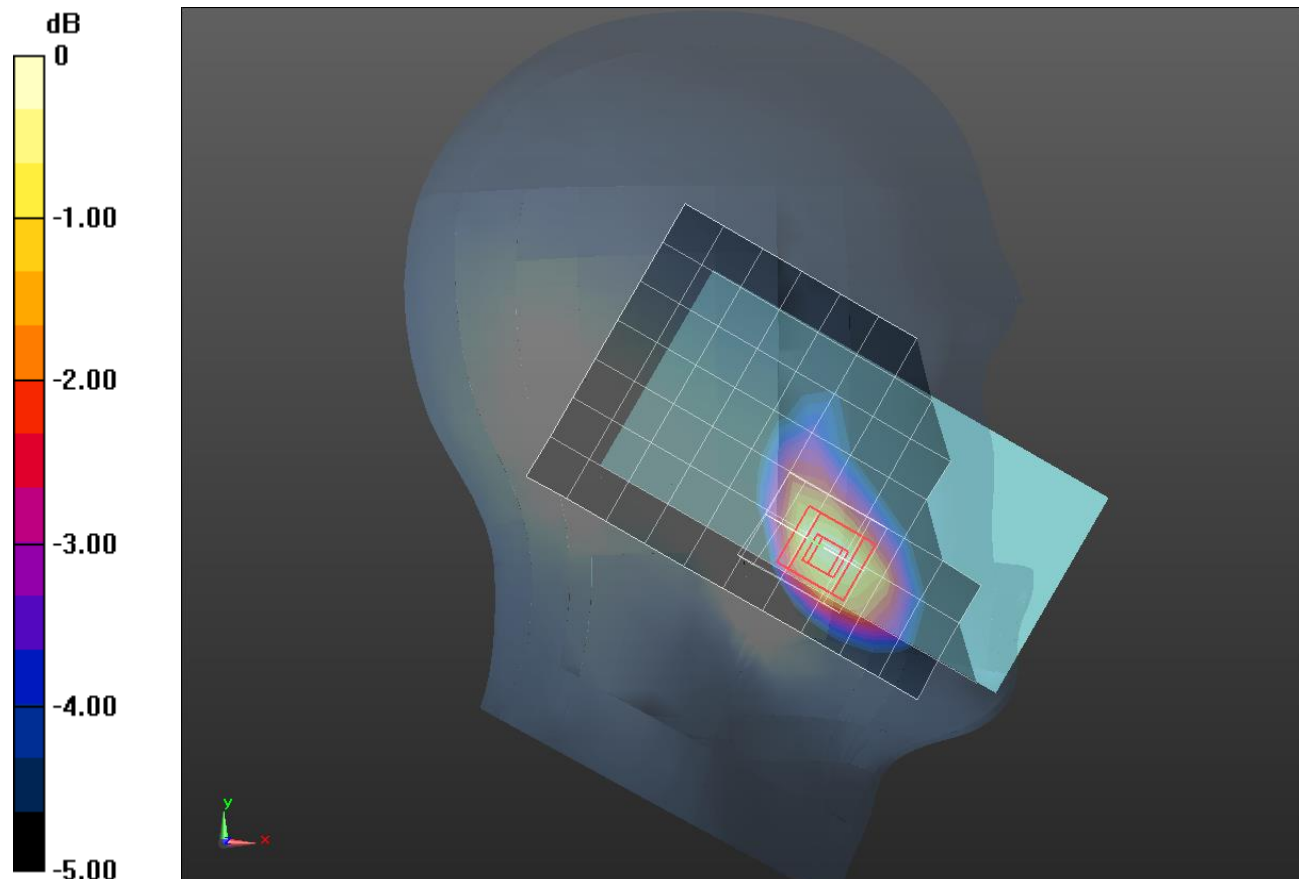
LHS/Touch_Rel.99 ch 1413/Zoom Scan (5x5x7)/Cube 0: Measurement grid: dx=8mm, dy=8mm, dz=5mm

Reference Value = 16.58 V/m; Power Drift = 0.07 dB

Peak SAR (extrapolated) = 0.475 W/kg

SAR(1 g) = 0.313 W/kg; SAR(10 g) = 0.200 W/kg

Maximum value of SAR (measured) = 0.377 W/kg



0 dB = 0.377 W/kg = -4.24 dBW/kg

WCDMA Band IV

Frequency: 1732.6 MHz; Duty Cycle: 1:1; Room Ambient Temperature: 23.0°C; Liquid Temperature: 22.0°C
 Medium parameters used (interpolated): $f = 1732.6 \text{ MHz}$; $\sigma = 1.419 \text{ S/m}$; $\epsilon_r = 53.774$; $\rho = 1000 \text{ kg/m}^3$

DASY5 Configuration:

- Area Scan Setting: Find Secondary Maximum Within: 2.0 dB and with a peak SAR value greater than 0.0012W/kg
- Electronics: DAE4 Sn1494; Calibrated: 2017-07-20
- Probe: EX3DV4 - SN7314; ConvF(8.3, 8.3, 8.3); Calibrated: 2017-09-28;
- Sensor-Surface: 2.5mm (Mechanical Surface Detection)
- Phantom: ELI v6.0; Type: QDOVA003AA; Serial: TP:2005

Rear/Rel.99 Ch 1413 15 mm/Area Scan (8x14x1): Measurement grid: dx=15mm, dy=15mm

Maximum value of SAR (measured) = 0.435 W/kg

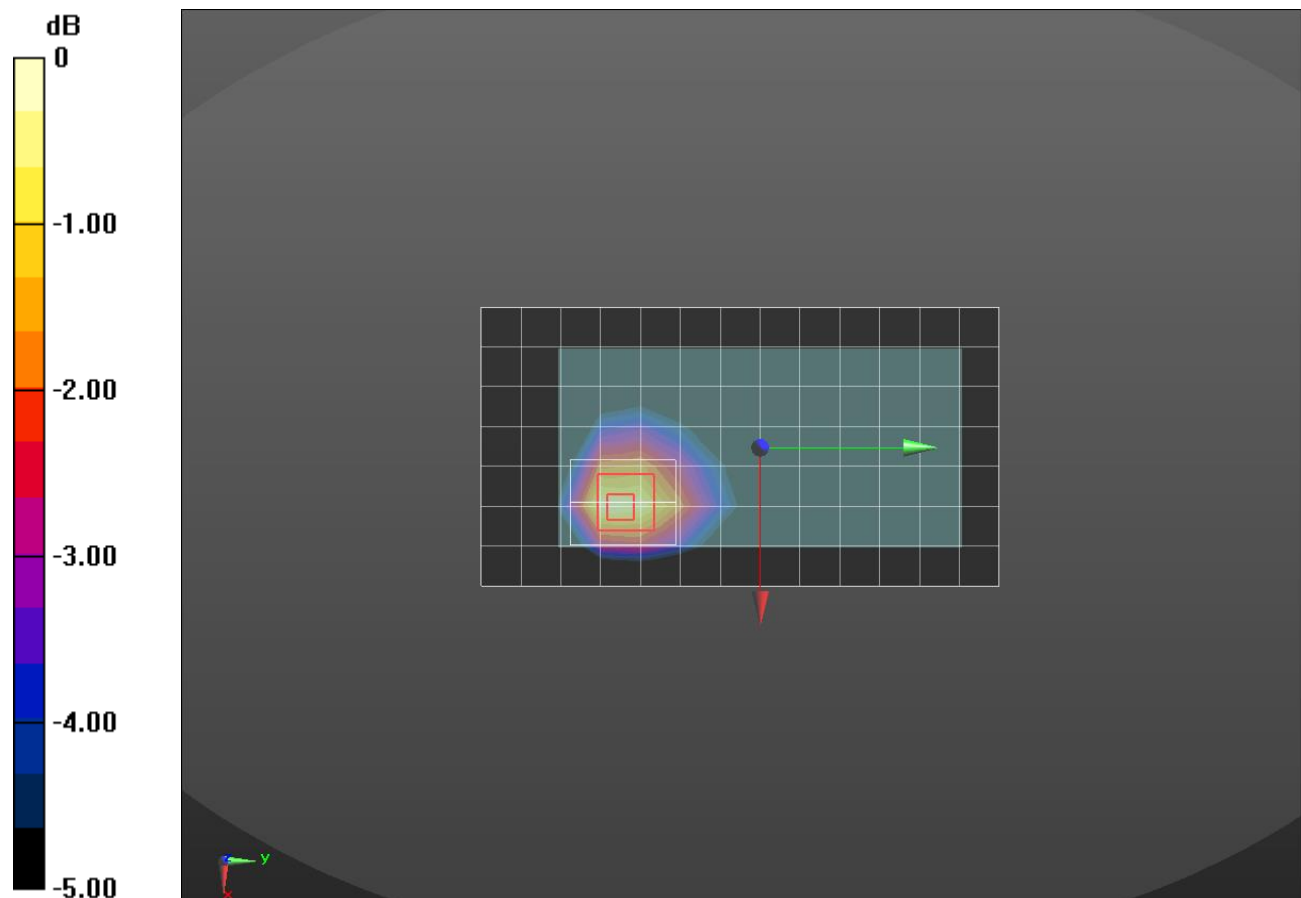
Rear/Rel.99 Ch 1413 15 mm/Zoom Scan (5x6x7)/Cube 0: Measurement grid: dx=8mm, dy=8mm, dz=5mm

Reference Value = 17.65 V/m; Power Drift = 0.02 dB

Peak SAR (extrapolated) = 0.585 W/kg

SAR(1 g) = 0.370 W/kg; SAR(10 g) = 0.227 W/kg

Maximum value of SAR (measured) = 0.458 W/kg



0 dB = 0.458 W/kg = -3.39 dBW/kg

WCDMA Band IV

Frequency: 1732.6 MHz; Duty Cycle: 1:1; Room Ambient Temperature: 23.0°C; Liquid Temperature: 22.0°C
 Medium parameters used (interpolated): $f = 1732.6$ MHz; $\sigma = 1.419$ S/m; $\epsilon_r = 53.774$; $\rho = 1000$ kg/m³

DASY5 Configuration:

- Area Scan Setting: Find Secondary Maximum Within: 2.0 dB and with a peak SAR value greater than 0.0012W/kg
- Electronics: DAE4 Sn1494; Calibrated: 2017-07-20
- Probe: EX3DV4 - SN7314; ConvF(8.3, 8.3, 8.3); Calibrated: 2017-09-28;
- Sensor-Surface: 2.5mm (Mechanical Surface Detection)
- Phantom: ELI v6.0; Type: QDOVA003AA; Serial: TP:2005

Rear/Rel.99 Ch 1413 10 mm/Area Scan (8x14x1): Measurement grid: dx=15mm, dy=15mm

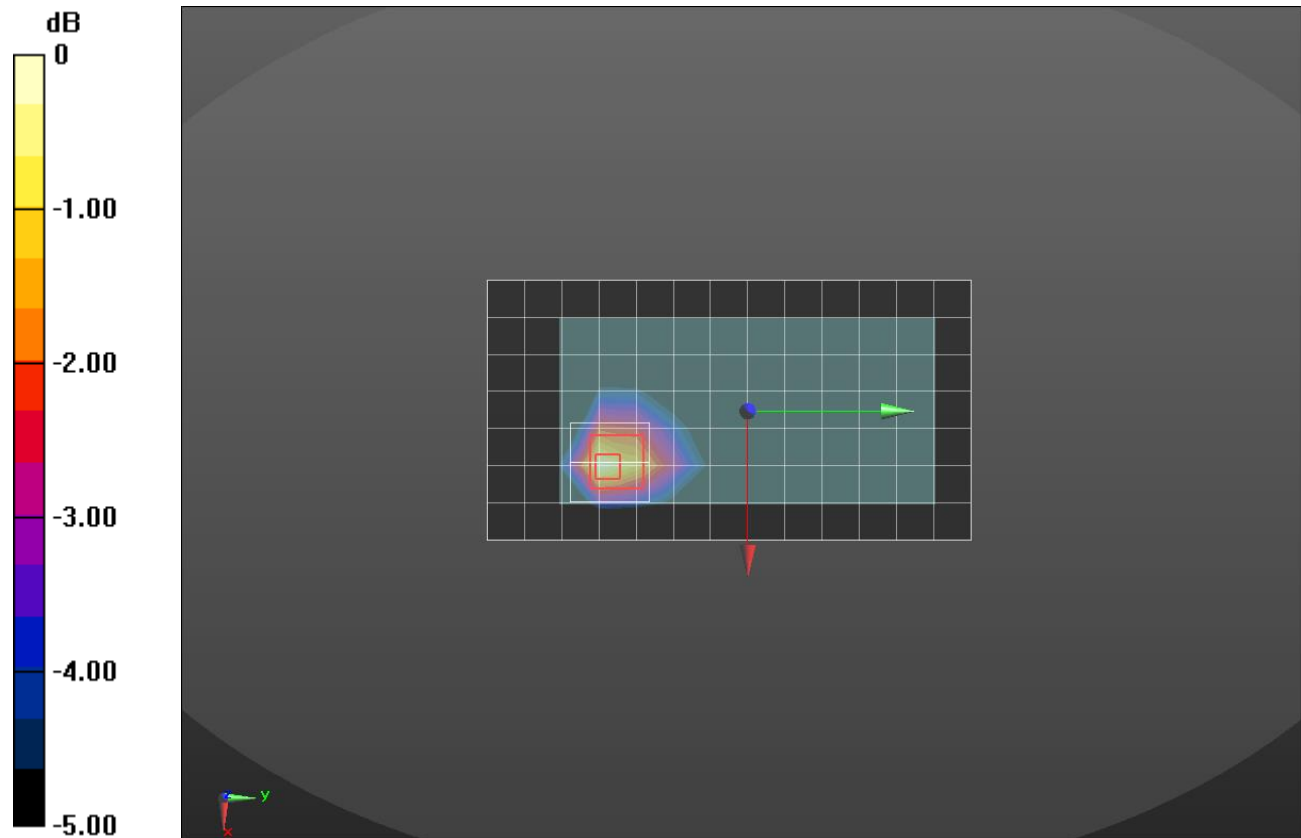
Maximum value of SAR (measured) = 0.900 W/kg

Rear/Rel.99 Ch 1413 10 mm/Zoom Scan (5x5x7)/Cube 0: Measurement grid: dx=8mm, dy=8mm, dz=5mm

Reference Value = 25.40 V/m; Power Drift = 0.01 dB

Peak SAR (extrapolated) = 1.20 W/kg

SAR(1 g) = 0.715 W/kg; SAR(10 g) = 0.416 W/kg



0 dB = 0.900 W/kg = -0.46 dBW/kg

WCDMA Band V

Frequency: 836.6 MHz; Duty Cycle: 1:1; Room Ambient Temperature: 23.0°C; Liquid Temperature: 22.0°C
Medium parameters used (interpolated): $f = 836.6$ MHz; $\sigma = 0.899$ S/m; $\epsilon_r = 40.016$; $\rho = 1000$ kg/m³

DASY5 Configuration:

- Area Scan Setting: Find Secondary Maximum Within: 2.0 dB and with a peak SAR value greater than 0.0012W/kg
- Electronics: DAE4 Sn1468; Calibrated: 2017-08-22
- Probe: EX3DV4 - SN7376; ConvF(10.19, 10.19, 10.19); Calibrated: 2017-08-22;
- Sensor-Surface: 2.5mm (Mechanical Surface Detection)
- Phantom: SAM (20deg probe tilt) with CRP v5.0_Front; Type: QD000P40CD; Serial: TP:1877

LHS/Touch_Rel.99 ch 4183/Area Scan (8x13x1): Measurement grid: dx=15mm, dy=15mm

Maximum value of SAR (measured) = 0.378 W/kg

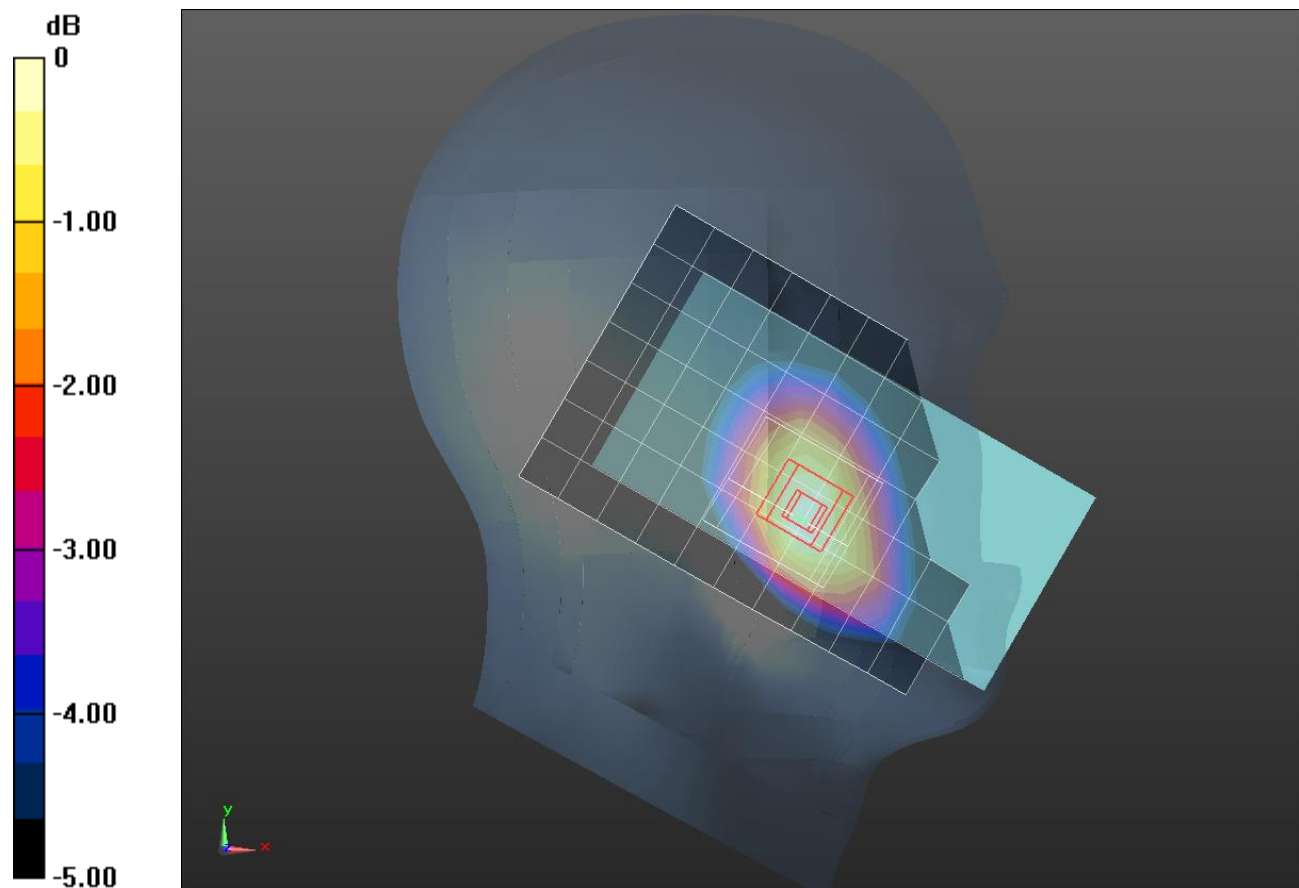
LHS/Touch_Rel.99 ch 4183/Zoom Scan (6x6x7)/Cube 0: Measurement grid: dx=8mm, dy=8mm, dz=5mm

Reference Value = 20.91 V/m; Power Drift = -0.06 dB

Peak SAR (extrapolated) = 0.432 W/kg

SAR(1 g) = 0.340 W/kg; SAR(10 g) = 0.259 W/kg

Maximum value of SAR (measured) = 0.382 W/kg



0 dB = 0.382 W/kg = -4.18 dBW/kg

WCDMA Band V

Frequency: 836.6 MHz; Duty Cycle: 1:1; Room Ambient Temperature: 23.0°C; Liquid Temperature: 22.0°C
 Medium parameters used (interpolated): $f = 836.6$ MHz; $\sigma = 0.988$ S/m; $\epsilon_r = 53.193$; $\rho = 1000$ kg/m³

DASY5 Configuration:

- Area Scan Setting: Find Secondary Maximum Within: 2.0 dB and with a peak SAR value greater than 0.0012W/kg
- Electronics: DAE4 Sn1468; Calibrated: 2017-08-22
- Probe: EX3DV4 - SN7376; ConvF(10.1, 10.1, 10.1); Calibrated: 2017-08-22;
- Sensor-Surface: 2.5mm (Mechanical Surface Detection)
- Phantom: Triple Flat Phantom 5.1C; Type: QD 000 P51 CA; Serial: 1166

Rear/Rel.99 Ch 4183 15 mm/Area Scan (8x14x1): Measurement grid: dx=15mm, dy=15mm

Maximum value of SAR (measured) = 0.470 W/kg

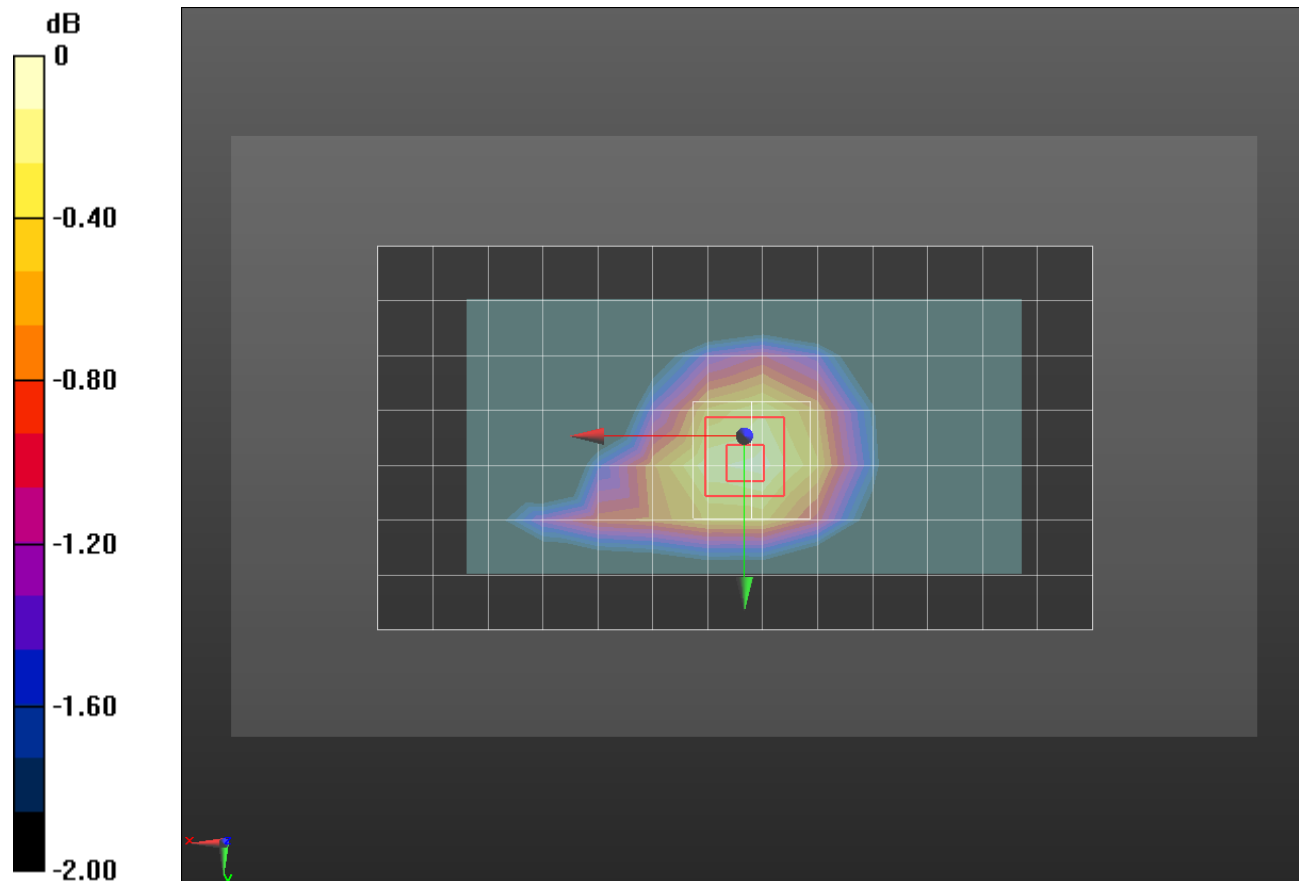
Rear/Rel.99 Ch 4183 15 mm/Zoom Scan (5x5x7)/Cube 0: Measurement grid: dx=8mm, dy=8mm, dz=5mm

Reference Value = 22.37 V/m; Power Drift = -0.01 dB

Peak SAR (extrapolated) = 0.536 W/kg

SAR(1 g) = 0.427 W/kg; SAR(10 g) = 0.328 W/kg

Maximum value of SAR (measured) = 0.477 W/kg



0 dB = 0.477 W/kg = -3.21 dBW/kg

WCDMA Band V

Frequency: 836.6 MHz; Duty Cycle: 1:1; Room Ambient Temperature: 23.0°C; Liquid Temperature: 22.0°C
 Medium parameters used (interpolated): $f = 836.6$ MHz; $\sigma = 0.988$ S/m; $\epsilon_r = 53.193$; $\rho = 1000$ kg/m³

DASY5 Configuration:

- Area Scan Setting: Find Secondary Maximum Within: 2.0 dB and with a peak SAR value greater than 0.0012W/kg
- Electronics: DAE4 Sn1468; Calibrated: 2017-08-22
- Probe: EX3DV4 - SN7376; ConvF(10.1, 10.1, 10.1); Calibrated: 2017-08-22;
- Sensor-Surface: 2.5mm (Mechanical Surface Detection)
- Phantom: Triple Flat Phantom 5.1C; Type: QD 000 P51 CA; Serial: 1166

Edge 4/Rel.99 ch 4183/Area Scan (13x5x1): Measurement grid: dx=15mm, dy=15mm

Maximum value of SAR (measured) = 0.635 W/kg

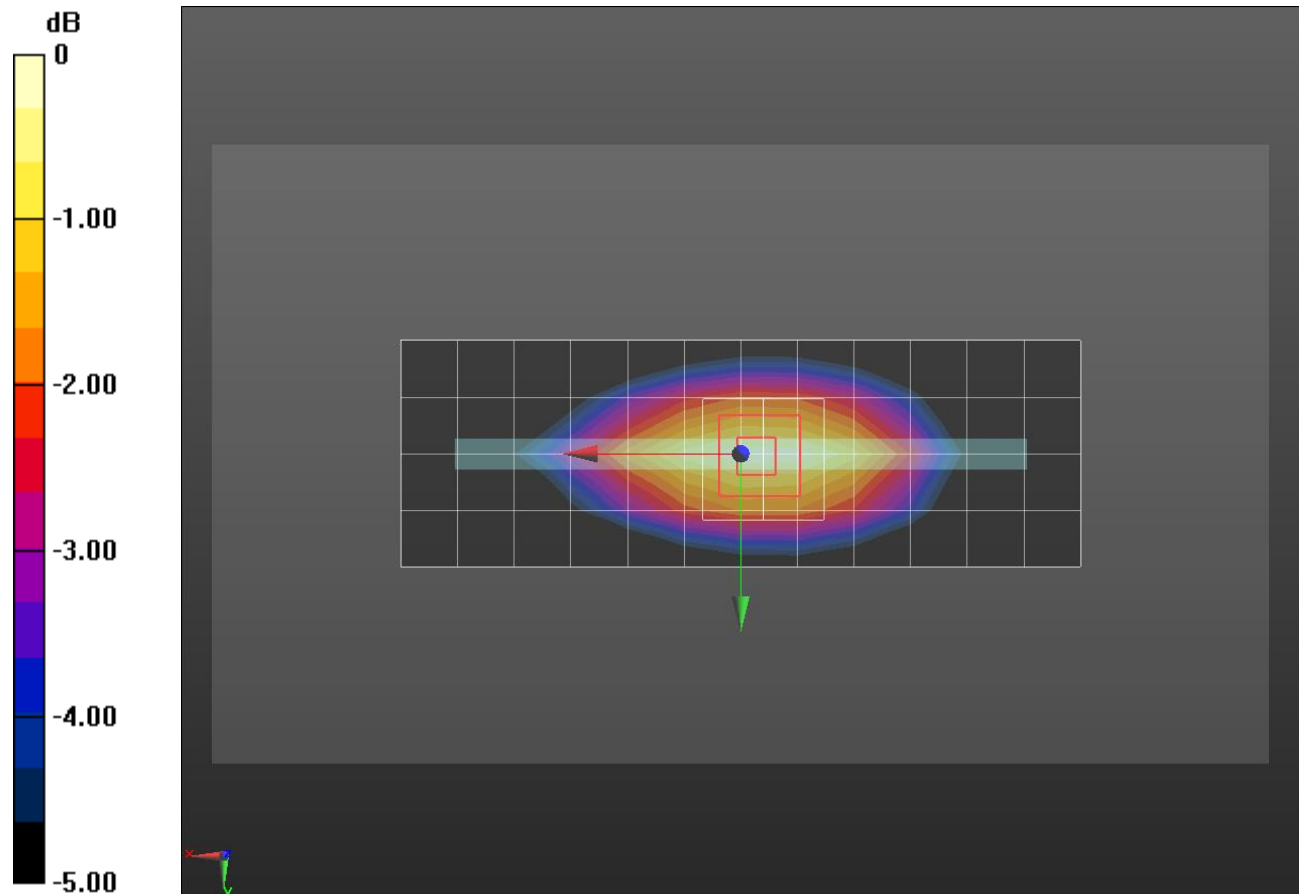
Edge 4/Rel.99 ch 4183/Zoom Scan (5x5x7)/Cube 0: Measurement grid: dx=8mm, dy=8mm, dz=5mm

Reference Value = 25.72 V/m; Power Drift = 0.01 dB

Peak SAR (extrapolated) = 0.761 W/kg

SAR(1 g) = 0.540 W/kg; SAR(10 g) = 0.371 W/kg

Maximum value of SAR (measured) = 0.641 W/kg



0 dB = 0.641 W/kg = -1.93 dBW/kg

LTE Band 2

Frequency: 1900 MHz; Duty Cycle: 1:1; Room Ambient Temperature: 23.0°C; Liquid Temperature: 22.0°C
 Medium parameters used: $f = 1900 \text{ MHz}$; $\sigma = 1.409 \text{ S/m}$; $\epsilon_r = 39.464$; $\rho = 1000 \text{ kg/m}^3$

DASY5 Configuration:

- Area Scan Setting: Find Secondary Maximum Within: 2.0 dB and with a peak SAR value greater than 0.0012W/kg
- Electronics: DAE4 Sn1494; Calibrated: 2017-07-20
- Probe: EX3DV4 - SN7314; ConvF(8.31, 8.31, 8.31); Calibrated: 2017-09-28;
- Sensor-Surface: 2.5mm (Mechanical Surface Detection)
- Phantom: SAM Phantom CRP v5.0(Middle); Type: QD000P40CD; Serial: TP:1854

LHS/Touch_QPSK RB 1/99 ch19100/Area Scan (8x13x1): Measurement grid: dx=15mm, dy=15mm

Maximum value of SAR (measured) = 0.470 W/kg

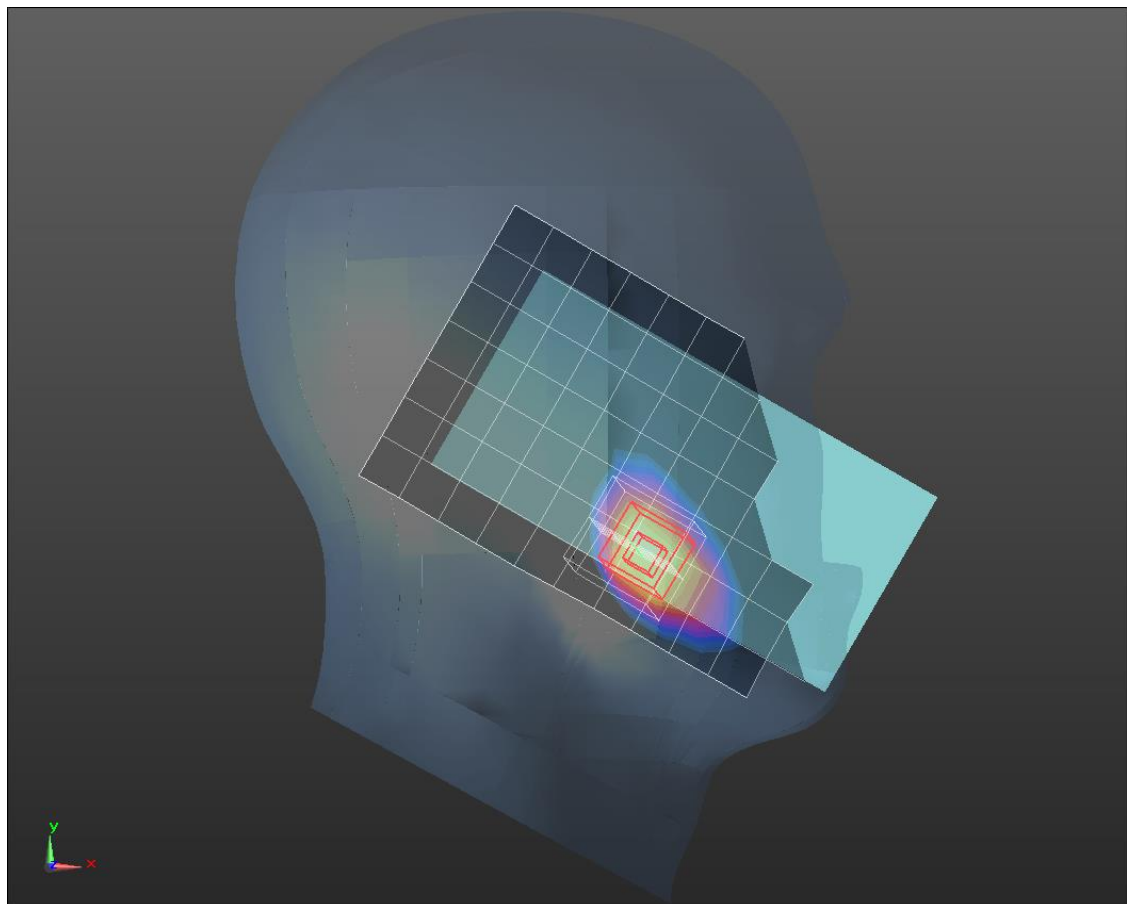
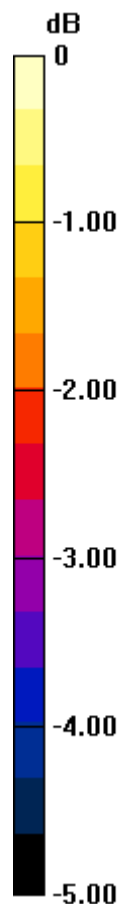
LHS/Touch_QPSK RB 1/99 ch19100/Zoom Scan (5x5x7)/Cube 0: Measurement grid: dx=8mm, dy=8mm, dz=5mm

Reference Value = 18.45 V/m; Power Drift = 0.06 dB

Peak SAR (extrapolated) = 0.647 W/kg

SAR(1 g) = 0.415 W/kg; SAR(10 g) = 0.253 W/kg

Maximum value of SAR (measured) = 0.514 W/kg



0 dB = 0.514 W/kg = -2.89 dBW/kg

LTE Band 2

Frequency: 1900 MHz; Duty Cycle: 1:1; Room Ambient Temperature: 23.0°C; Liquid Temperature: 22.0°C
 Medium parameters used: $f = 1900 \text{ MHz}$; $\sigma = 1.578 \text{ S/m}$; $\epsilon_r = 53.191$; $\rho = 1000 \text{ kg/m}^3$

DASY5 Configuration:

- Area Scan Setting: Find Secondary Maximum Within: 2.0 dB and with a peak SAR value greater than 0.0012W/kg
- Electronics: DAE4 Sn1494; Calibrated: 2017-07-20
- Probe: EX3DV4 - SN7314; ConvF(8, 8, 8); Calibrated: 2017-09-28;
- Sensor-Surface: 2.5mm (Mechanical Surface Detection)
- Phantom: ELI v6.0; Type: QDOVA003AA; Serial: TP:2005

Rear/QPSK RB 1/99 Ch 19100 15 mm/Area Scan (8x14x1): Measurement grid: $dx=15\text{mm}$, $dy=15\text{mm}$
 Maximum value of SAR (measured) = 0.469 W/kg

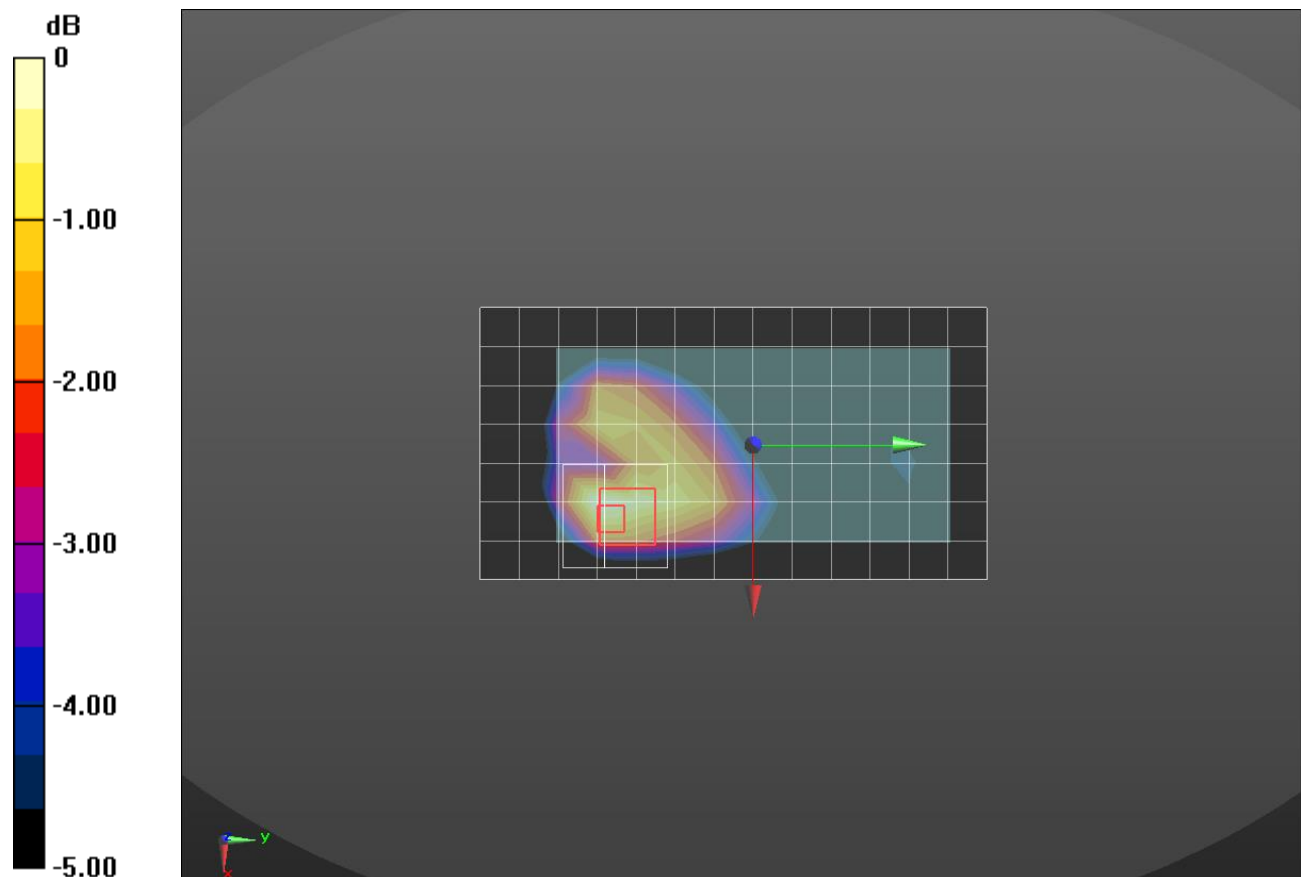
Rear/QPSK RB 1/99 Ch 19100 15 mm/Zoom Scan (6x6x7)/Cube 0: Measurement grid: $dx=8\text{mm}$, $dy=8\text{mm}$, $dz=5\text{mm}$

Reference Value = 17.43 V/m; Power Drift = -0.02 dB

Peak SAR (extrapolated) = 0.624 W/kg

SAR(1 g) = 0.355 W/kg; SAR(10 g) = 0.203 W/kg

Maximum value of SAR (measured) = 0.446 W/kg



0 dB = 0.446 W/kg = -3.51 dBW/kg

LTE Band 2

Frequency: 1900 MHz; Duty Cycle: 1:1; Room Ambient Temperature: 23.0°C; Liquid Temperature: 22.0°C
 Medium parameters used: $f = 1900 \text{ MHz}$; $\sigma = 1.578 \text{ S/m}$; $\epsilon_r = 53.191$; $\rho = 1000 \text{ kg/m}^3$

DASY5 Configuration:

- Area Scan Setting: Find Secondary Maximum Within: 2.0 dB and with a peak SAR value greater than 0.0012W/kg
- Electronics: DAE4 Sn1494; Calibrated: 2017-07-20
- Probe: EX3DV4 - SN7314; ConvF(8, 8, 8); Calibrated: 2017-09-28;
- Sensor-Surface: 2.5mm (Mechanical Surface Detection)
- Phantom: ELI v6.0; Type: QDOVA003AA; Serial: TP:2005

Rear/QPSK RB 1/99 Ch 19100 10 mm/Area Scan (8x14x1): Measurement grid: $dx=15\text{mm}$, $dy=15\text{mm}$
 Maximum value of SAR (measured) = 1.14 W/kg

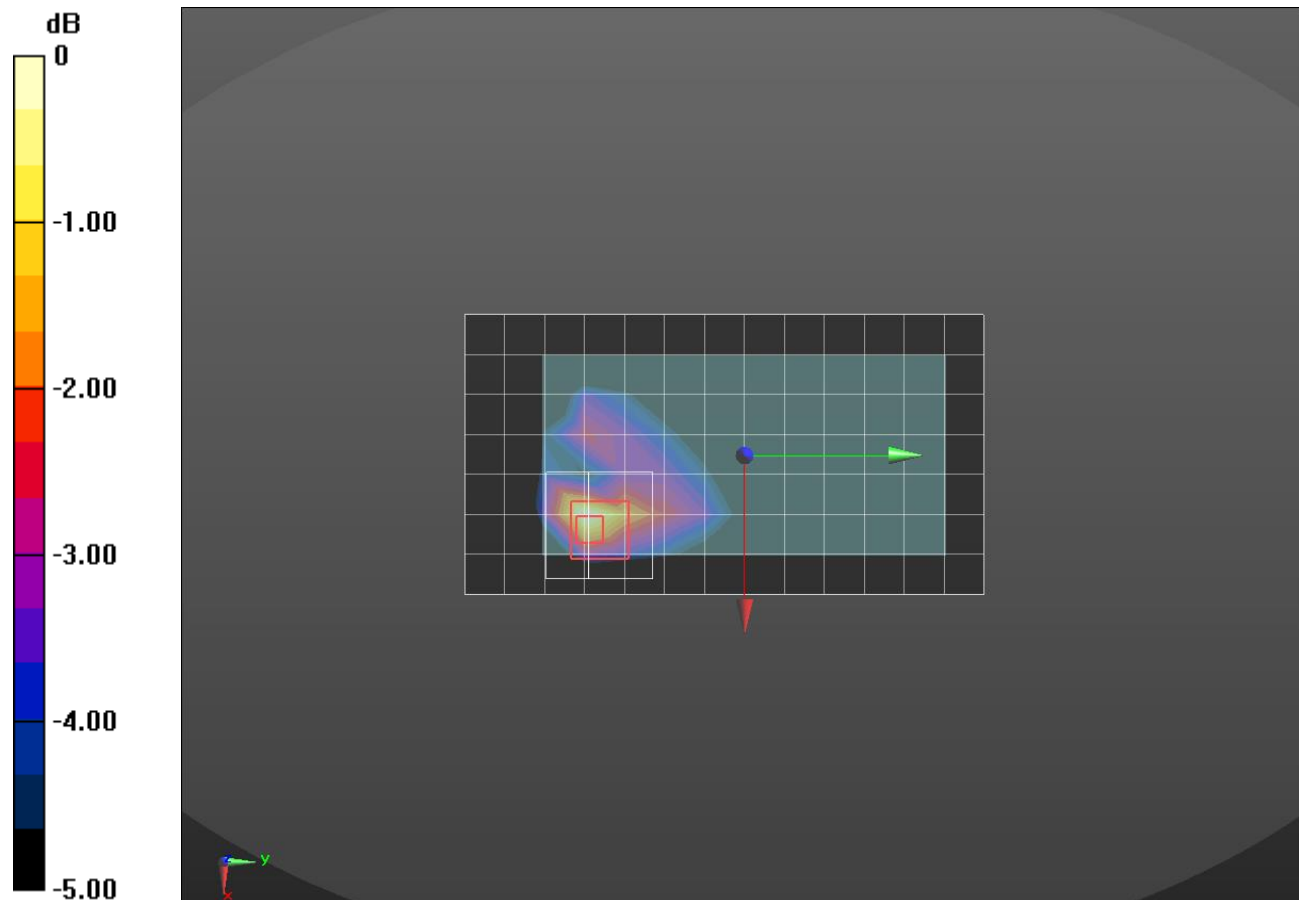
Rear/QPSK RB 1/99 Ch 19100 10 mm/Zoom Scan (6x6x7)/Cube 0: Measurement grid: $dx=8\text{mm}$, $dy=8\text{mm}$, $dz=5\text{mm}$

Reference Value = 27.24 V/m; Power Drift = -0.12 dB

Peak SAR (extrapolated) = 1.55 W/kg

SAR(1 g) = 0.820 W/kg; SAR(10 g) = 0.427 W/kg

Maximum value of SAR (measured) = 1.07 W/kg



0 dB = 1.07 W/kg = 0.29 dBW/kg

LTE Band 4

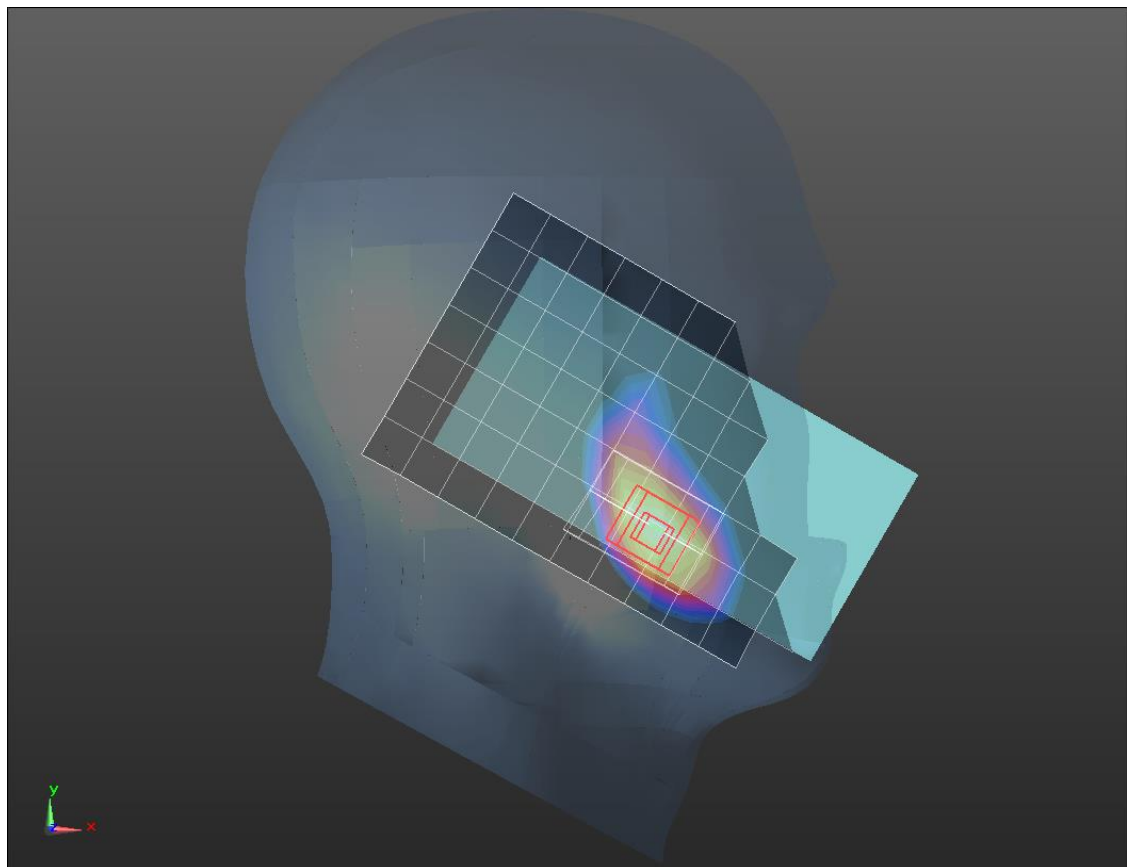
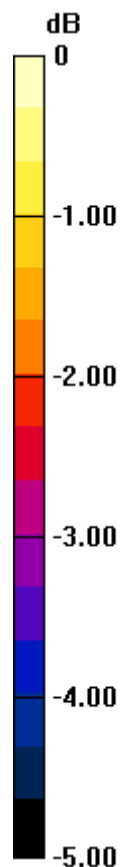
Frequency: 1732.5 MHz; Duty Cycle: 1:1; Room Ambient Temperature: 23.0°C; Liquid Temperature: 22.0°C
 Medium parameters used (interpolated): $f = 1732.5$ MHz; $\sigma = 1.32$ S/m; $\epsilon_r = 39.823$; $\rho = 1000$ kg/m³

DASY5 Configuration:

- Area Scan Setting: Find Secondary Maximum Within: 2.0 dB and with a peak SAR value greater than 0.0012W/kg
- Electronics: DAE4 Sn1468; Calibrated: 2017-08-22
- Probe: EX3DV4 - SN7376; ConvF(8.75, 8.75, 8.75); Calibrated: 2017-08-22;
- Sensor-Surface: 2.5mm (Mechanical Surface Detection)
- Phantom: SAM (20deg probe tilt) with CRP v5.0_Back; Type: QD000P40CD; Serial: TP:1882

LHS/Touch_QPSK RB 1/0 ch20175/Area Scan (8x13x1): Measurement grid: dx=15mm, dy=15mm
 Maximum value of SAR (measured) = 0.389 W/kg

LHS/Touch_QPSK RB 1/0 ch20175/Zoom Scan (5x6x7)/Cube 0: Measurement grid: dx=8mm, dy=8mm, dz=5mm
 Reference Value = 17.16 V/m; Power Drift = 0.07 dB
 Peak SAR (extrapolated) = 0.499 W/kg
SAR(1 g) = 0.329 W/kg; SAR(10 g) = 0.209 W/kg
 Maximum value of SAR (measured) = 0.393 W/kg



0 dB = 0.393 W/kg = -4.06 dBW/kg

LTE Band 4

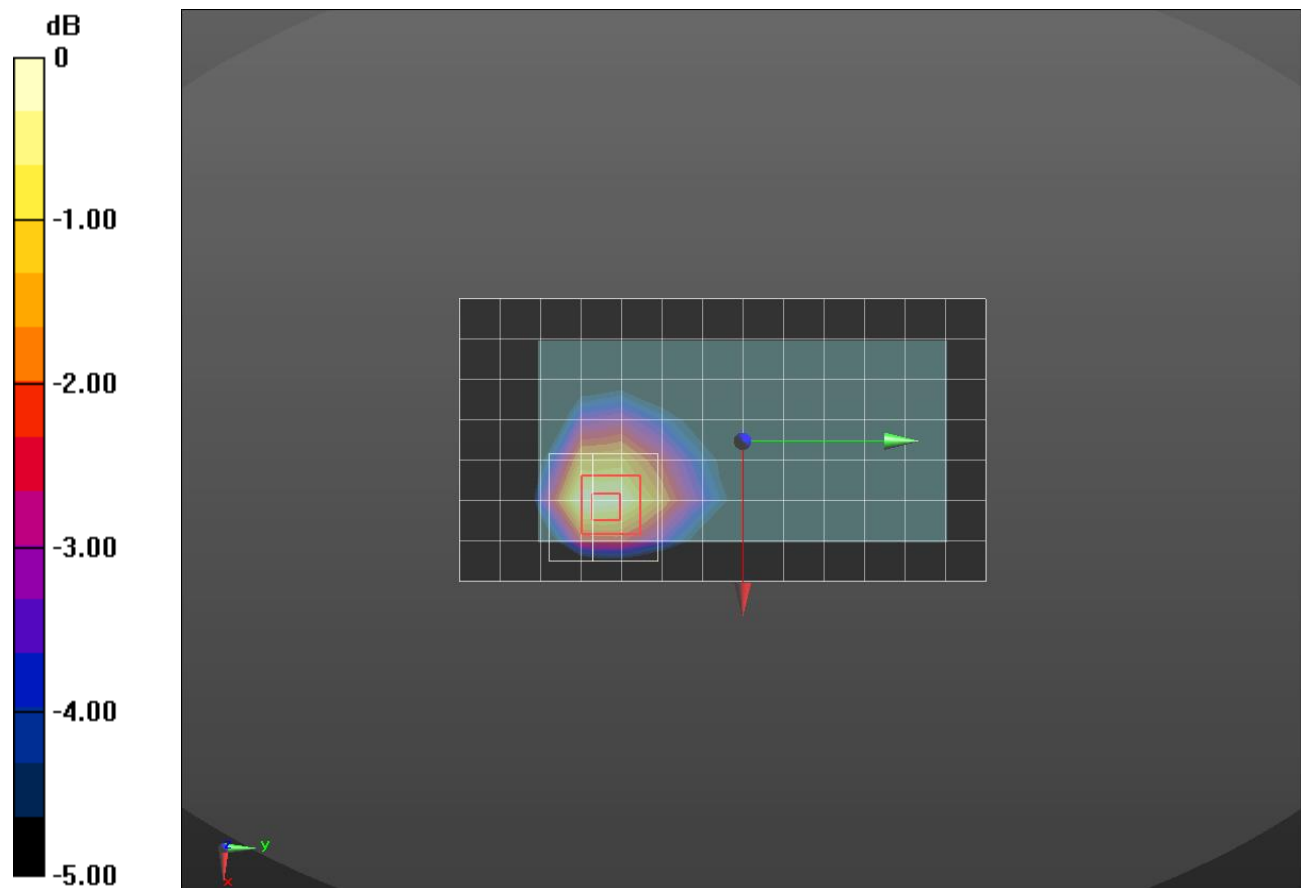
Frequency: 1732.5 MHz; Duty Cycle: 1:1; Room Ambient Temperature: 23.0°C; Liquid Temperature: 22.0°C
 Medium parameters used (interpolated): $f = 1732.5$ MHz; $\sigma = 1.419$ S/m; $\epsilon_r = 53.775$; $\rho = 1000$ kg/m³

DASY5 Configuration:

- Area Scan Setting: Find Secondary Maximum Within: 2.0 dB and with a peak SAR value greater than 0.0012W/kg
- Electronics: DAE4 Sn1494; Calibrated: 2017-07-20
- Probe: EX3DV4 - SN7314; ConvF(8.3, 8.3, 8.3); Calibrated: 2017-09-28;
- Sensor-Surface: 2.5mm (Mechanical Surface Detection)
- Phantom: ELI v6.0; Type: QDOVA003AA; Serial: TP:2005

Rear/QPSK RB 1/0 Ch 20175 15 mm/Area Scan (8x14x1): Measurement grid: dx=15mm, dy=15mm
 Maximum value of SAR (measured) = 0.431 W/kg

Rear/QPSK RB 1/0 Ch 20175 15 mm/Zoom Scan (6x6x7)/Cube 0: Measurement grid: dx=8mm, dy=8mm, dz=5mm
 Reference Value = 17.74 V/m; Power Drift = -0.02 dB
 Peak SAR (extrapolated) = 0.559 W/kg
SAR(1 g) = 0.355 W/kg; SAR(10 g) = 0.220 W/kg
 Maximum value of SAR (measured) = 0.422 W/kg



0 dB = 0.422 W/kg = -3.75 dBW/kg

LTE Band 4

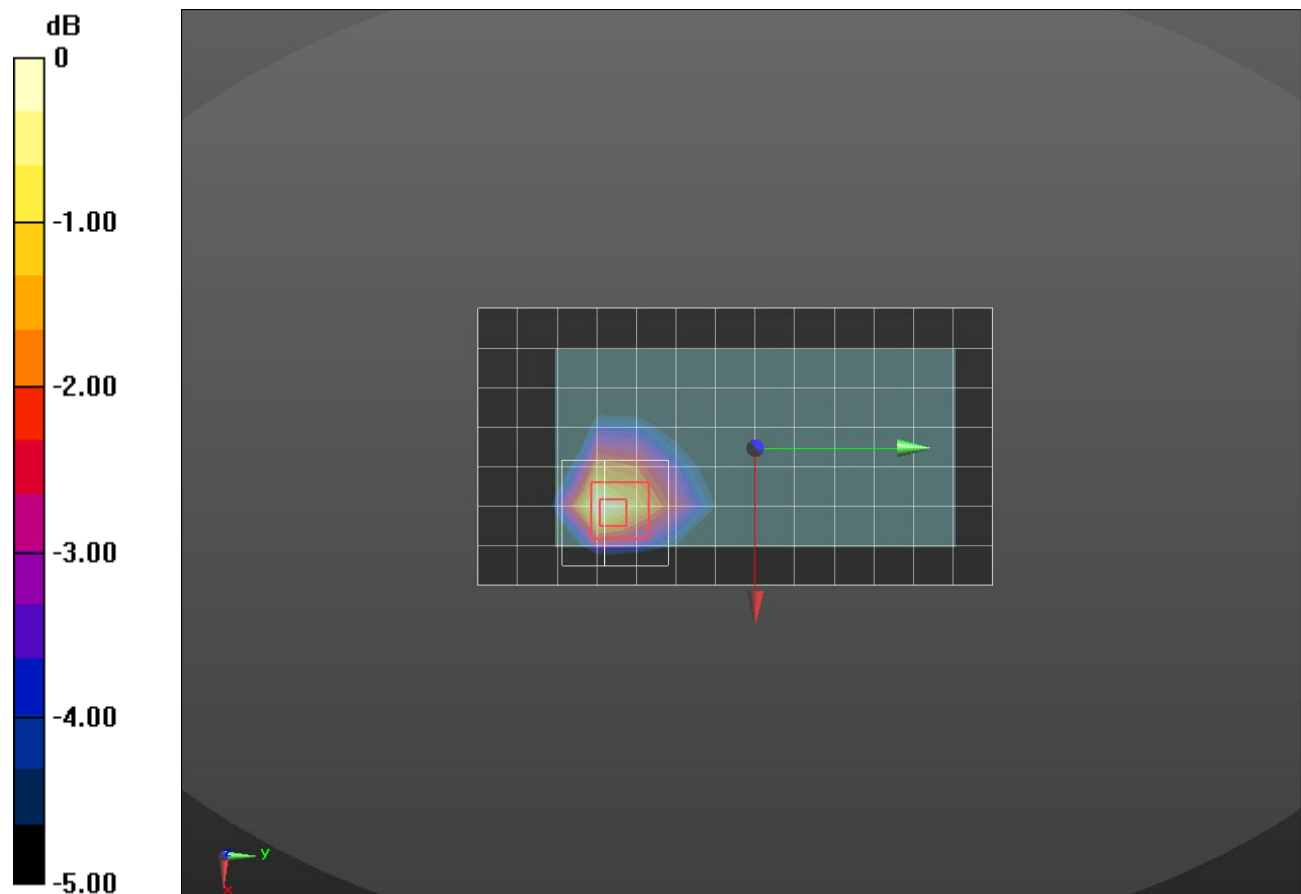
Frequency: 1732.5 MHz; Duty Cycle: 1:1; Room Ambient Temperature: 23.0°C; Liquid Temperature: 22.0°C
 Medium parameters used (interpolated): $f = 1732.5$ MHz; $\sigma = 1.419$ S/m; $\epsilon_r = 53.775$; $\rho = 1000$ kg/m³

DASY5 Configuration:

- Area Scan Setting: Find Secondary Maximum Within: 2.0 dB and with a peak SAR value greater than 0.0012W/kg
- Electronics: DAE4 Sn1494; Calibrated: 2017-07-20
- Probe: EX3DV4 - SN7314; ConvF(8.3, 8.3, 8.3); Calibrated: 2017-09-28;
- Sensor-Surface: 2.5mm (Mechanical Surface Detection)
- Phantom: ELI v6.0; Type: QDOVA003AA; Serial: TP:2005

Rear/QPSK RB 1/0 Ch 20175 10 mm/Area Scan (8x14x1): Measurement grid: dx=15mm, dy=15mm
 Maximum value of SAR (measured) = 0.906 W/kg

Rear/QPSK RB 1/0 Ch 20175 10 mm/Zoom Scan (6x6x7)/Cube 0: Measurement grid: dx=8mm, dy=8mm, dz=5mm
 Reference Value = 25.51 V/m; Power Drift = -0.01 dB
 Peak SAR (extrapolated) = 1.14 W/kg
SAR(1 g) = 0.686 W/kg; SAR(10 g) = 0.404 W/kg
 Maximum value of SAR (measured) = 0.843 W/kg



0 dB = 0.843 W/kg = -0.74 dBW/kg

LTE Band 5

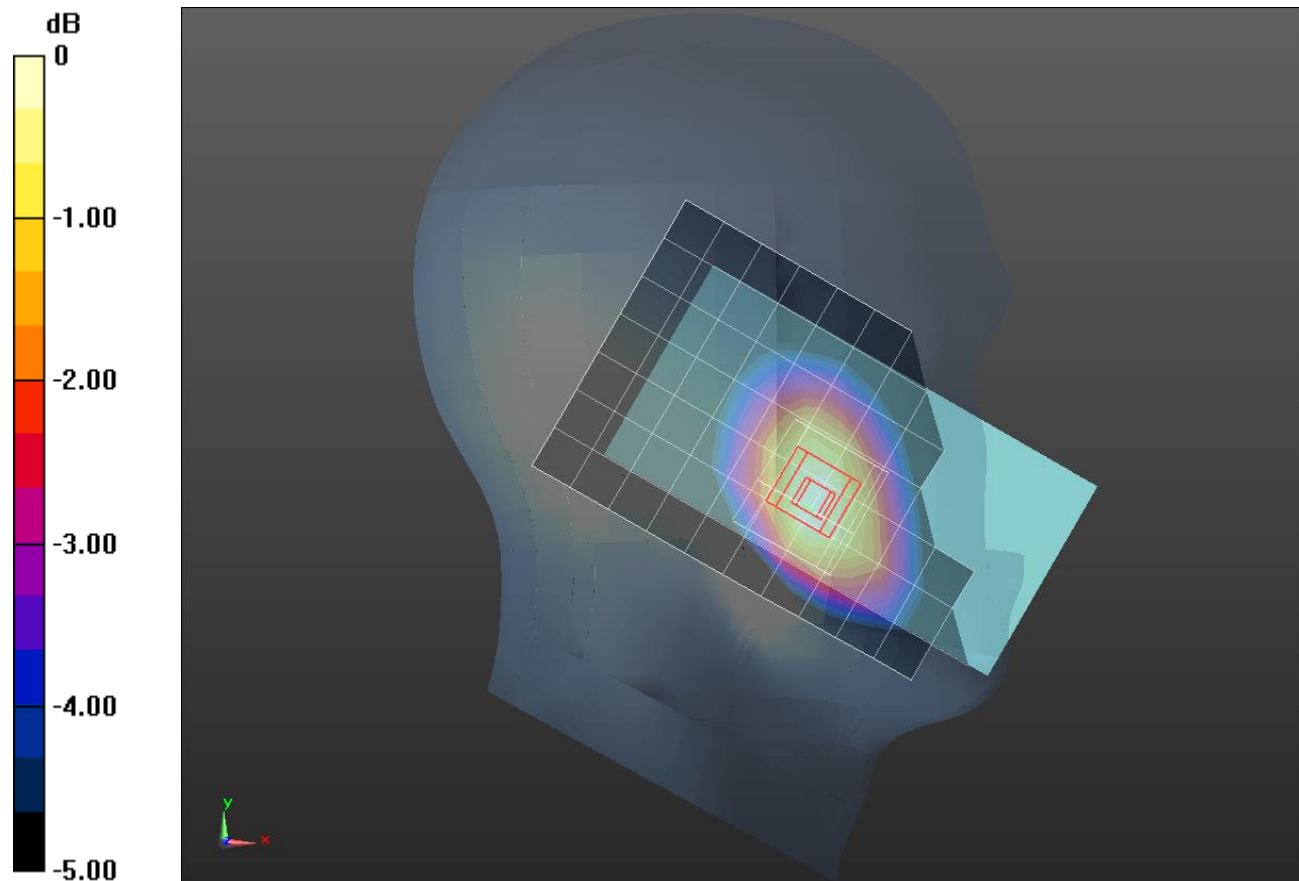
Frequency: 836.5 MHz; Duty Cycle: 1:1; Room Ambient Temperature: 23.0°C; Liquid Temperature: 22.0°C
 Medium parameters used (interpolated): $f = 836.5$ MHz; $\sigma = 0.899$ S/m; $\epsilon_r = 40.018$; $\rho = 1000$ kg/m³

DASY5 Configuration:

- Area Scan Setting: Find Secondary Maximum Within: 2.0 dB and with a peak SAR value greater than 0.0012W/kg
- Electronics: DAE4 Sn1468; Calibrated: 2017-08-22
- Probe: EX3DV4 - SN7376; ConvF(10.19, 10.19, 10.19); Calibrated: 2017-08-22;
- Sensor-Surface: 2.5mm (Mechanical Surface Detection)
- Phantom: SAM (20deg probe tilt) with CRP v5.0_Front; Type: QD000P40CD; Serial: TP:1877

LHS/Touch_QPSK RB 1/0 ch20525/Area Scan (8x13x1): Measurement grid: dx=15mm, dy=15mm
 Maximum value of SAR (measured) = 0.321 W/kg

LHS/Touch_QPSK RB 1/0 ch20525/Zoom Scan (6x5x7)/Cube 0: Measurement grid: dx=8mm, dy=8mm, dz=5mm
 Reference Value = 19.23 V/m; Power Drift = 0.00 dB
 Peak SAR (extrapolated) = 0.369 W/kg
SAR(1 g) = 0.293 W/kg; SAR(10 g) = 0.224 W/kg
 Maximum value of SAR (measured) = 0.327 W/kg



0 dB = 0.327 W/kg = -4.85 dBW/kg

LTE Band 5

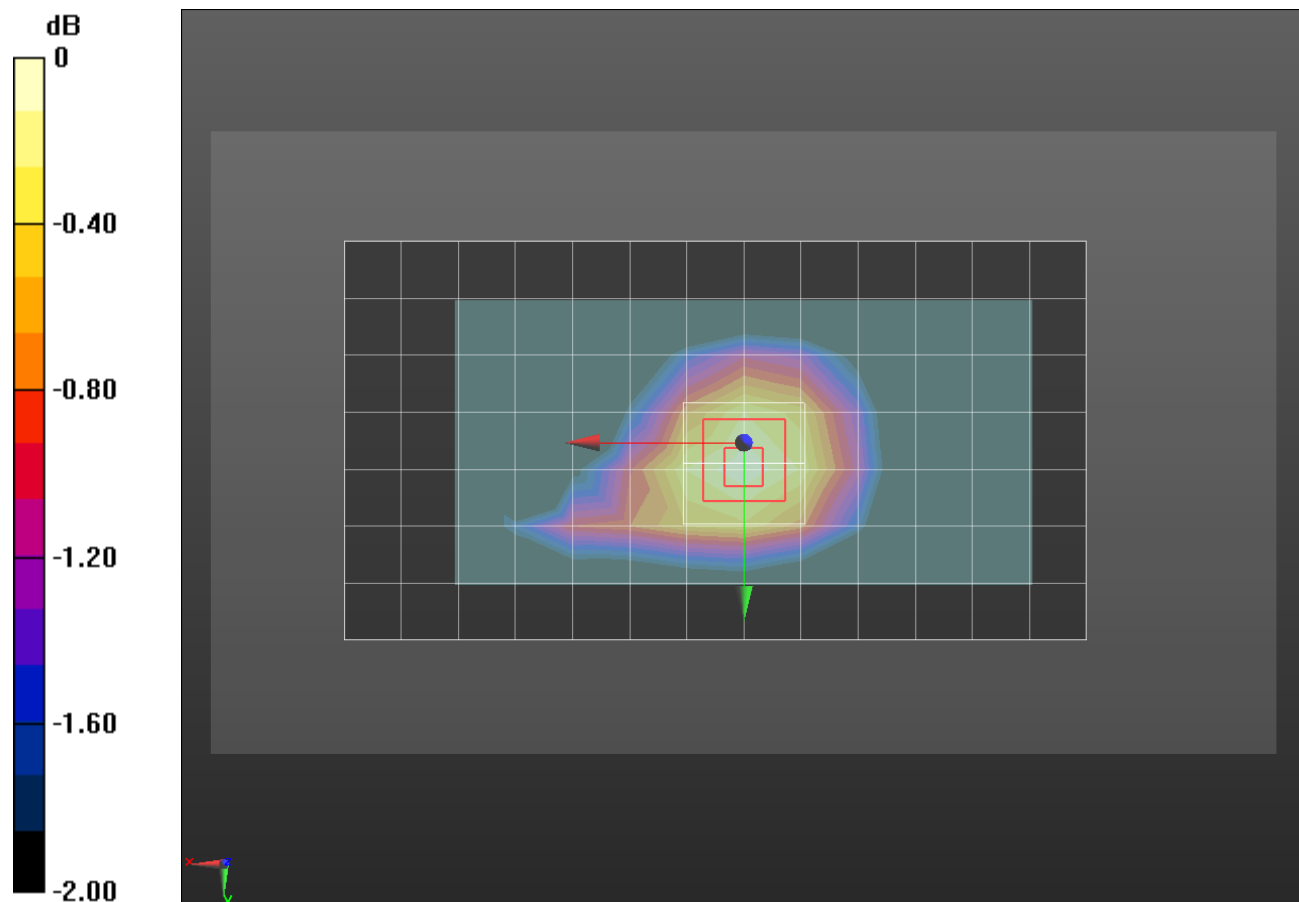
Frequency: 836.5 MHz; Duty Cycle: 1:1; Room Ambient Temperature: 23.0°C; Liquid Temperature: 22.0°C
 Medium parameters used (interpolated): $f = 836.5$ MHz; $\sigma = 0.988$ S/m; $\epsilon_r = 53.193$; $\rho = 1000$ kg/m³

DASY5 Configuration:

- Area Scan Setting: Find Secondary Maximum Within: 2.0 dB and with a peak SAR value greater than 0.0012W/kg
- Electronics: DAE4 Sn1468; Calibrated: 2017-08-22
- Probe: EX3DV4 - SN7376; ConvF(10.1, 10.1, 10.1); Calibrated: 2017-08-22;
- Sensor-Surface: 2.5mm (Mechanical Surface Detection)
- Phantom: Triple Flat Phantom 5.1C; Type: QD 000 P51 CA; Serial: 1166

Rear/QPSK RB 1/0 Ch 20525 15 mm/Area Scan (8x14x1): Measurement grid: dx=15mm, dy=15mm
 Maximum value of SAR (measured) = 0.451 W/kg

Rear/QPSK RB 1/0 Ch 20525 15 mm/Zoom Scan (5x5x7)/Cube 0: Measurement grid: dx=8mm, dy=8mm, dz=5mm
 Reference Value = 21.84 V/m; Power Drift = -0.00 dB
 Peak SAR (extrapolated) = 0.504 W/kg
SAR(1 g) = 0.404 W/kg; SAR(10 g) = 0.310 W/kg
 Maximum value of SAR (measured) = 0.452 W/kg



0 dB = 0.452 W/kg = -3.45 dBW/kg

LTE Band 5

Frequency: 836.5 MHz; Duty Cycle: 1:1; Room Ambient Temperature: 23.0°C; Liquid Temperature: 22.0°C
 Medium parameters used (interpolated): $f = 836.5$ MHz; $\sigma = 0.988$ S/m; $\epsilon_r = 53.193$; $\rho = 1000$ kg/m³

DASY5 Configuration:

- Area Scan Setting: Find Secondary Maximum Within: 2.0 dB and with a peak SAR value greater than 0.0012W/kg
- Electronics: DAE4 Sn1468; Calibrated: 2017-08-22
- Probe: EX3DV4 - SN7376; ConvF(10.1, 10.1, 10.1); Calibrated: 2017-08-22;
- Sensor-Surface: 2.5mm (Mechanical Surface Detection)
- Phantom: Triple Flat Phantom 5.1C; Type: QD 000 P51 CA; Serial: 1166

Edge 4/QPSK RB 1/0 Ch 20525/Area Scan (14x5x1): Measurement grid: dx=15mm, dy=15mm
 Maximum value of SAR (measured) = 0.628 W/kg

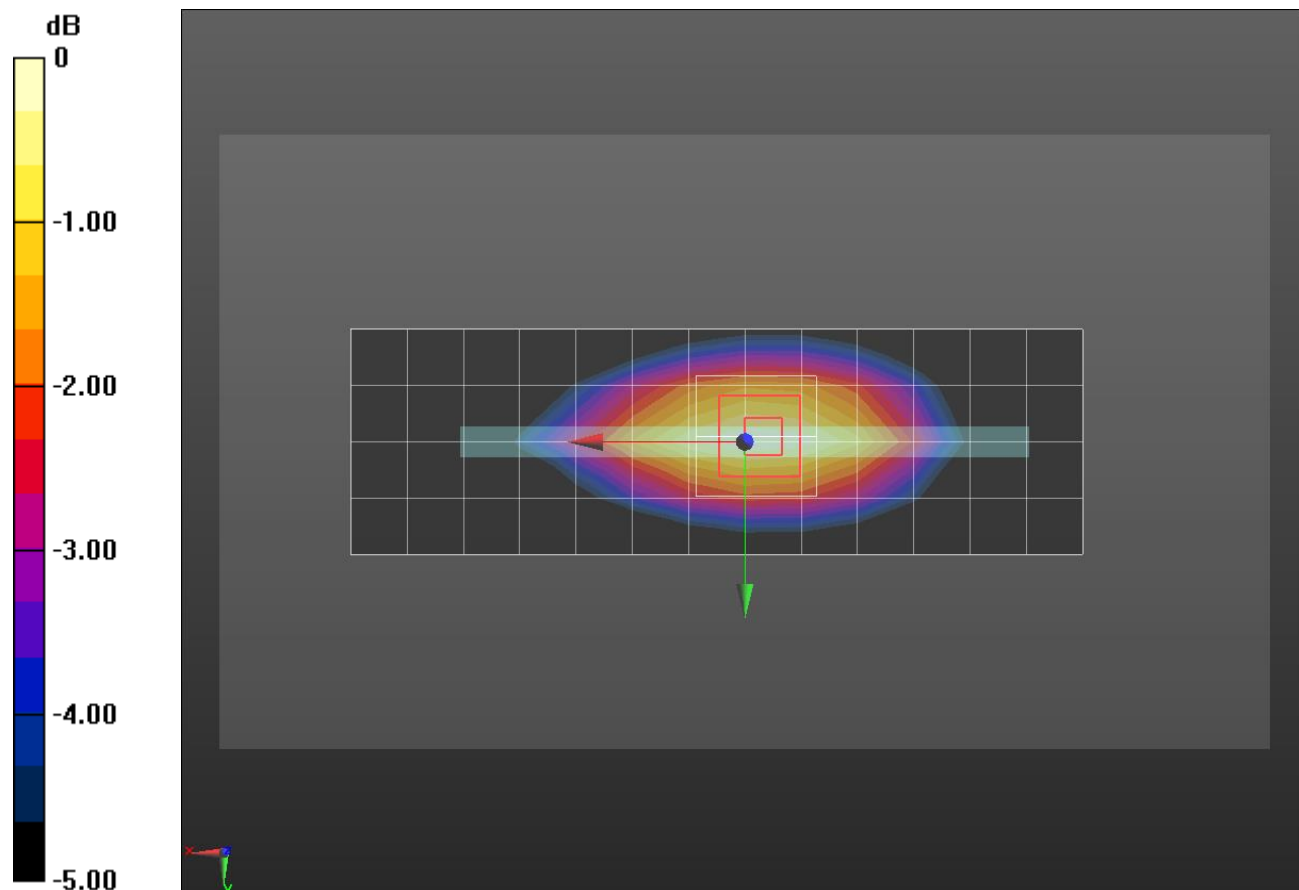
Edge 4/QPSK RB 1/0 Ch 20525/Zoom Scan (5x5x7)/Cube 0: Measurement grid: dx=8mm, dy=8mm, dz=5mm

Reference Value = 25.51 V/m; Power Drift = -0.03 dB

Peak SAR (extrapolated) = 0.737 W/kg

SAR(1 g) = 0.523 W/kg; SAR(10 g) = 0.360 W/kg

Maximum value of SAR (measured) = 0.621 W/kg



0 dB = 0.621 W/kg = -2.07 dBW/kg

LTE Band 17

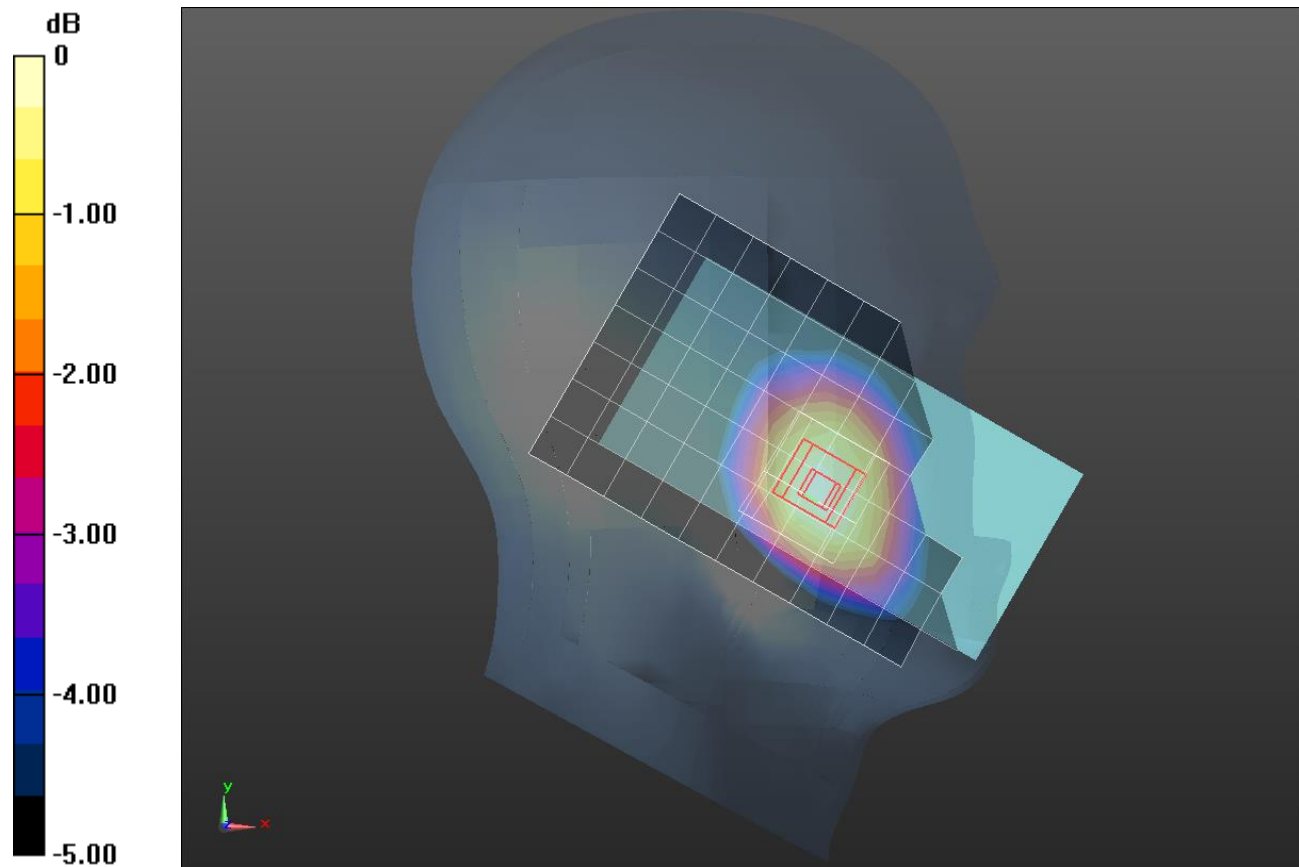
Frequency: 710 MHz; Duty Cycle: 1:1; Room Ambient Temperature: 23.0°C; Liquid Temperature: 22.0°C
 Medium parameters used: $f = 710 \text{ MHz}$; $\sigma = 0.859 \text{ S/m}$; $\epsilon_r = 42.435$; $\rho = 1000 \text{ kg/m}^3$

DASY5 Configuration:

- Area Scan Setting: Find Secondary Maximum Within: 2.0 dB and with a peak SAR value greater than 0.0012W/kg
- Electronics: DAE4 Sn1468; Calibrated: 2017-08-22
- Probe: EX3DV4 - SN7376; ConvF(10.82, 10.82, 10.82); Calibrated: 2017-08-22;
- Sensor-Surface: 2.5mm (Mechanical Surface Detection)
- Phantom: SAM (20deg probe tilt) with CRP v5.0_Back; Type: QD000P40CD; Serial: TP:1882

LHS/Touch_QPSK RB 25/12 ch23790/Area Scan (8x13x1): Measurement grid: dx=15mm, dy=15mm
 Maximum value of SAR (measured) = 0.121 W/kg

LHS/Touch_QPSK RB 25/12 ch23790/Zoom Scan (6x5x7)/Cube 0: Measurement grid: dx=8mm, dy=8mm, dz=5mm
 Reference Value = 12.04 V/m; Power Drift = 0.09 dB
 Peak SAR (extrapolated) = 0.139 W/kg
SAR(1 g) = 0.115 W/kg; SAR(10 g) = 0.092 W/kg
 Maximum value of SAR (measured) = 0.126 W/kg



0 dB = 0.126 W/kg = -9.00 dBW/kg

LTE Band 17

Frequency: 710 MHz; Duty Cycle: 1:1; Room Ambient Temperature: 23.0°C; Liquid Temperature: 22.0°C
 Medium parameters used: $f = 710 \text{ MHz}$; $\sigma = 0.925 \text{ S/m}$; $\epsilon_r = 54.38$; $\rho = 1000 \text{ kg/m}^3$

DASY5 Configuration:

- Area Scan Setting: Find Secondary Maximum Within: 2.0 dB and with a peak SAR value greater than 0.0012W/kg
- Electronics: DAE4 Sn1468; Calibrated: 2017-08-22
- Probe: EX3DV4 - SN7376; ConvF(10.43, 10.43, 10.43); Calibrated: 2017-08-22;
- Sensor-Surface: 2.5mm (Mechanical Surface Detection)
- Phantom: Triple Flat Phantom 5.1C; Type: QD 000 P51 CA; Serial: 1166

Rear/QPSK RB 25/12 Ch 23790 15 mm/Area Scan (8x14x1): Measurement grid: $dx=15\text{mm}$, $dy=15\text{mm}$
 Maximum value of SAR (measured) = 0.194 W/kg

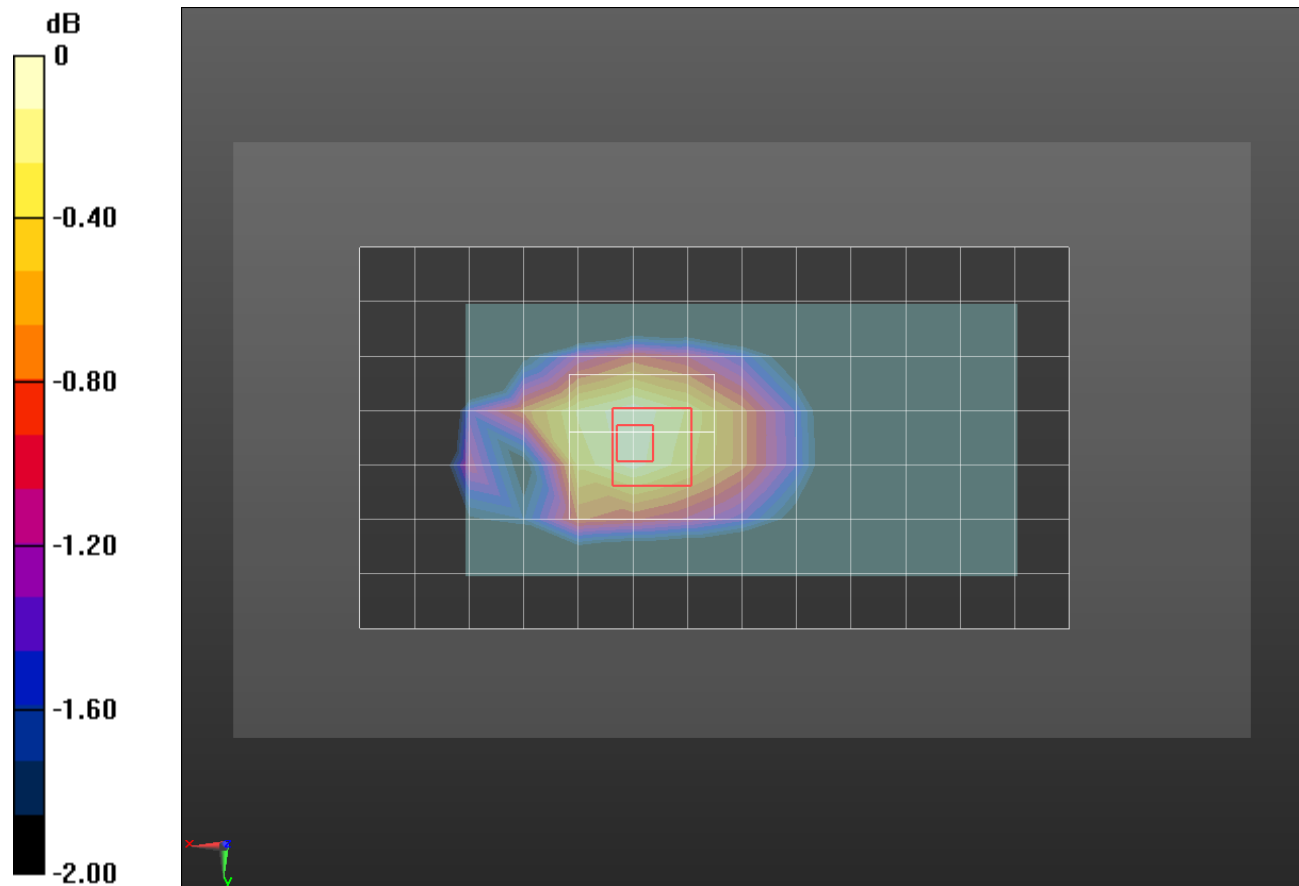
Rear/QPSK RB 25/12 Ch 23790 15 mm/Zoom Scan (6x6x7)/Cube 0: Measurement grid: $dx=8\text{mm}$, $dy=8\text{mm}$, $dz=5\text{mm}$

Reference Value = 14.76 V/m; Power Drift = -0.04 dB

Peak SAR (extrapolated) = 0.217 W/kg

SAR(1 g) = 0.175 W/kg; SAR(10 g) = 0.137 W/kg

Maximum value of SAR (measured) = 0.195 W/kg



0 dB = 0.195 W/kg = -7.10 dBW/kg

LTE Band 17

Frequency: 710 MHz; Duty Cycle: 1:1; Room Ambient Temperature: 23.0°C; Liquid Temperature: 22.0°C
 Medium parameters used: $f = 710 \text{ MHz}$; $\sigma = 0.925 \text{ S/m}$; $\epsilon_r = 54.38$; $\rho = 1000 \text{ kg/m}^3$

DASY5 Configuration:

- Area Scan Setting: Find Secondary Maximum Within: 2.0 dB and with a peak SAR value greater than 0.0012W/kg
- Electronics: DAE4 Sn1468; Calibrated: 2017-08-22
- Probe: EX3DV4 - SN7376; ConvF(10.43, 10.43, 10.43); Calibrated: 2017-08-22;
- Sensor-Surface: 2.5mm (Mechanical Surface Detection)
- Phantom: Triple Flat Phantom 5.1C; Type: QD 000 P51 CA; Serial: 1166

Rear/QPSK RB 25/12 Ch 23790 10 mm/Area Scan (8x14x1): Measurement grid: $dx=15\text{mm}$, $dy=15\text{mm}$
 Maximum value of SAR (measured) = 0.341 W/kg

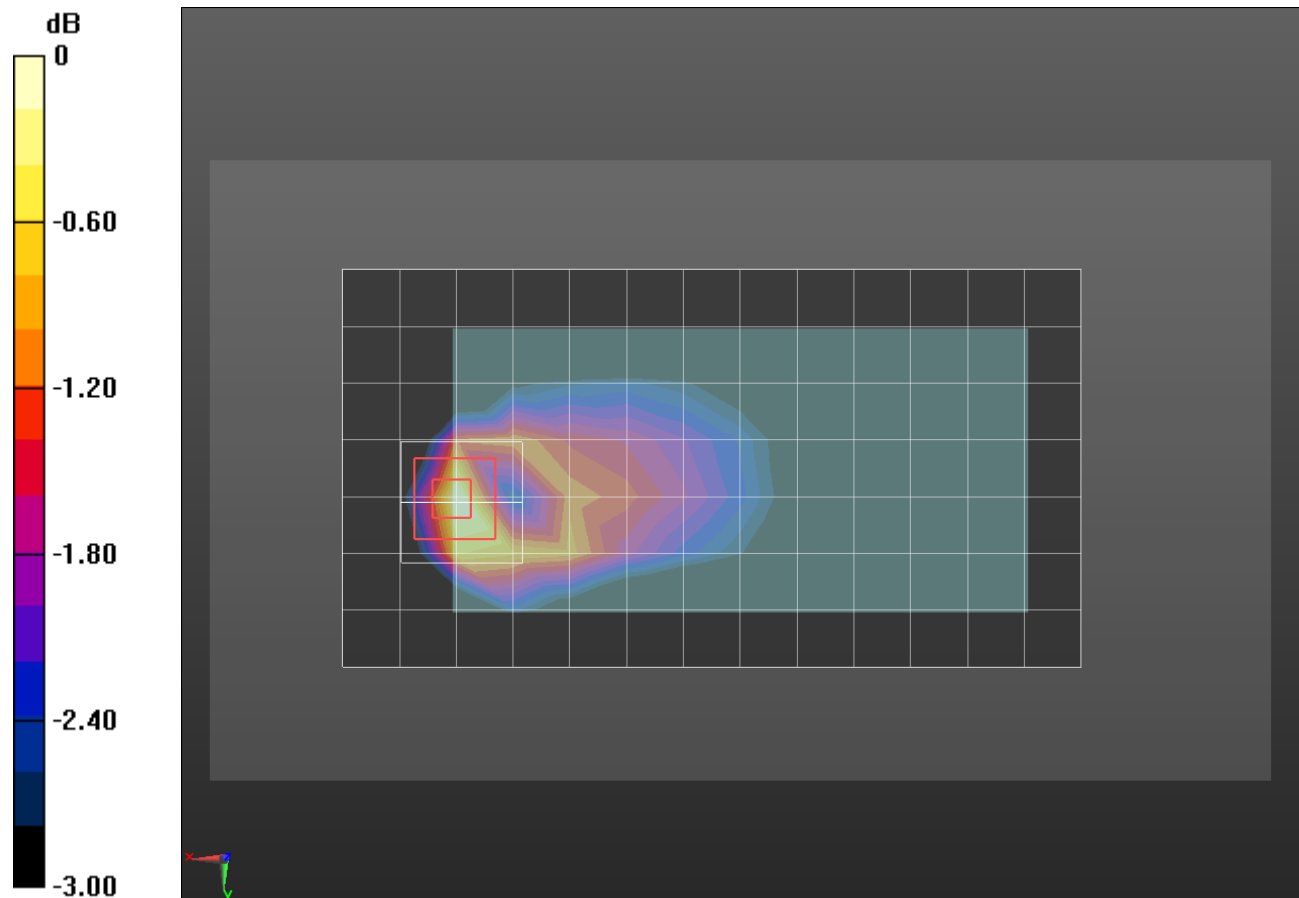
Rear/QPSK RB 25/12 Ch 23790 10 mm/Zoom Scan (5x5x7)/Cube 0: Measurement grid: $dx=8\text{mm}$, $dy=8\text{mm}$, $dz=5\text{mm}$

Reference Value = 19.23 V/m; Power Drift = 0.03 dB

Peak SAR (extrapolated) = 0.465 W/kg

SAR(1 g) = 0.256 W/kg; SAR(10 g) = 0.149 W/kg

Maximum value of SAR (measured) = 0.334 W/kg



0 dB = 0.334 W/kg = -4.76 dBW/kg

Wi-Fi 2.4 GHz

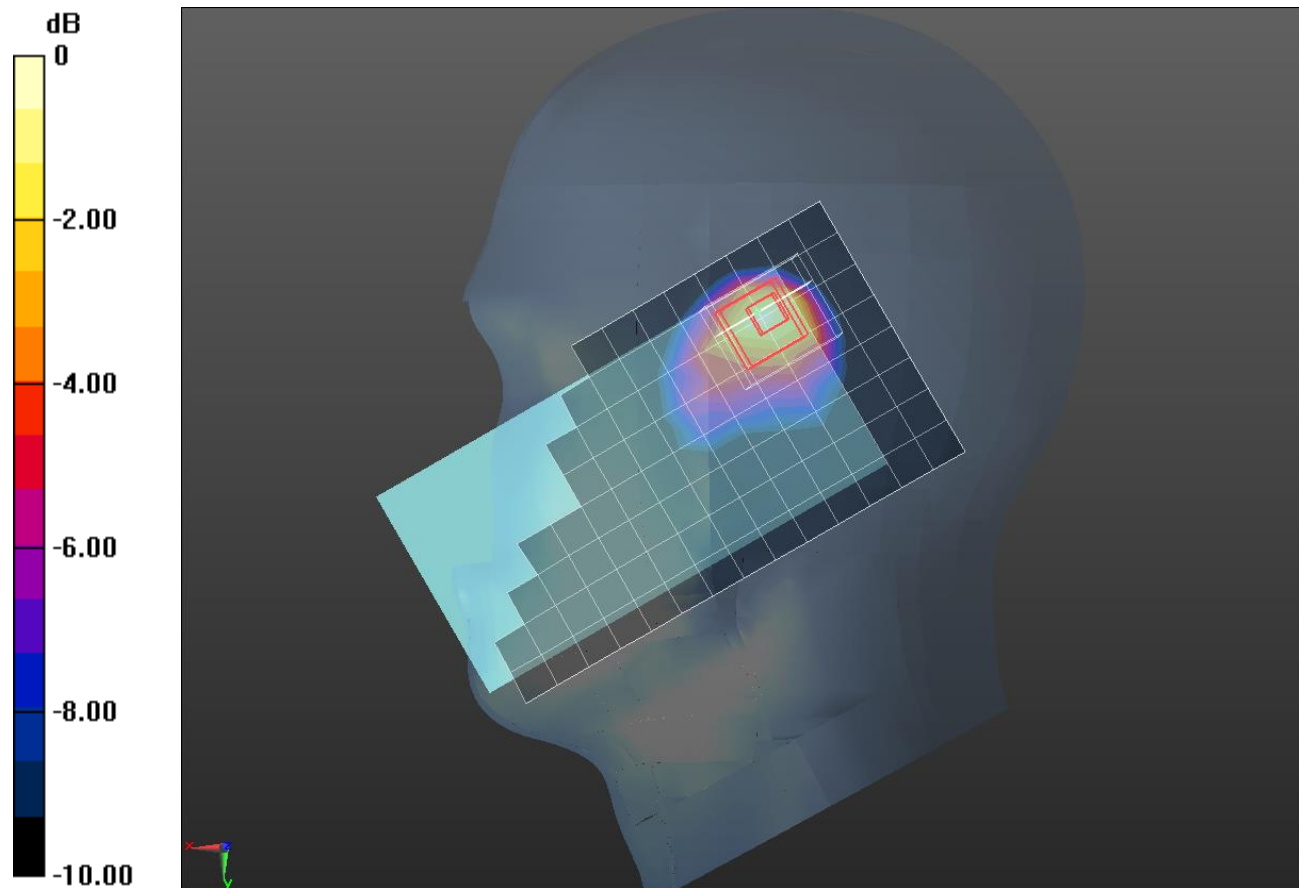
Frequency: 2462 MHz; Duty Cycle: 1:1; Room Ambient Temperature: 23.0°C; Liquid Temperature: 22.0°C
 Medium parameters used (interpolated): $f = 2462$ MHz; $\sigma = 1.86$ S/m; $\epsilon_r = 37.576$; $\rho = 1000$ kg/m³

DASY5 Configuration:

- Area Scan Setting: Find Secondary Maximum Within: 2.0 dB and with a peak SAR value greater than 0.0012W/kg
- Electronics: DAE4 Sn1468; Calibrated: 2017-08-22
- Probe: EX3DV4 - SN7376; ConvF(7.56, 7.56, 7.56); Calibrated: 2017-08-22;
- Sensor-Surface: 2.5mm (Mechanical Surface Detection)
- Phantom: SAM (20deg probe tilt) with CRP v5.0_Front; Type: QD000P40CD; Serial: TP:1877

RHS/Touch_802.11 b mode ch 11/Area Scan (9x17x1): Measurement grid: dx=12mm, dy=12mm
 Maximum value of SAR (measured) = 0.903 W/kg

RHS/Touch_802.11 b mode ch 11/Zoom Scan (7x8x7)/Cube 0: Measurement grid: dx=5mm, dy=5mm, dz=5mm
 Reference Value = 22.74 V/m; Power Drift = -0.02 dB
 Peak SAR (extrapolated) = 1.65 W/kg
SAR(1 g) = 0.661 W/kg; SAR(10 g) = 0.300 W/kg
 Maximum value of SAR (measured) = 0.942 W/kg



0 dB = 0.942 W/kg = -0.26 dBW/kg

Wi-Fi 2.4 GHz

Frequency: 2462 MHz; Duty Cycle: 1:1; Room Ambient Temperature: 23.0°C; Liquid Temperature: 22.0°C
 Medium parameters used (interpolated): $f = 2462 \text{ MHz}$; $\sigma = 1.98 \text{ S/m}$; $\epsilon_r = 51.892$; $\rho = 1000 \text{ kg/m}^3$

DASY5 Configuration:

- Area Scan Setting: Find Secondary Maximum Within: 2.0 dB and with a peak SAR value greater than 0.0012W/kg
- Electronics: DAE4 Sn1494; Calibrated: 2017-07-20
- Probe: EX3DV4 - SN7314; ConvF(7.59, 7.59, 7.59); Calibrated: 2017-09-28;
- Sensor-Surface: 2.5mm (Mechanical Surface Detection)
- Phantom: Triple Flat Phantom 5.1C; Type: QD 000 P51 CA; Serial: 1166

Front/802.11b_ch 11_15mm/Area Scan (10x17x1): Measurement grid: dx=12mm, dy=12mm

Maximum value of SAR (measured) = 0.168 W/kg

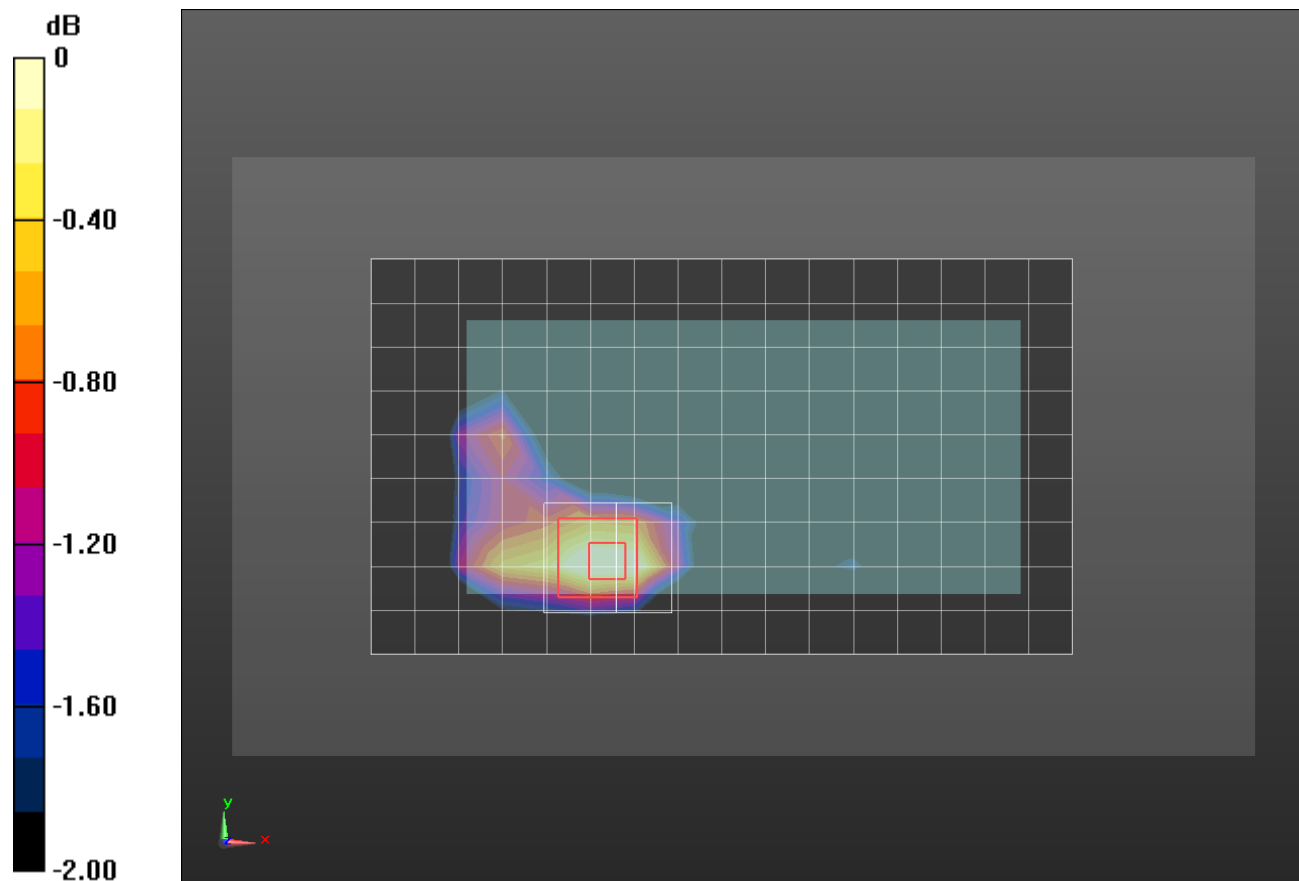
Front/802.11b_ch 11_15mm/Zoom Scan (8x7x7)/Cube 0: Measurement grid: dx=5mm, dy=5mm, dz=5mm

Reference Value = 9.421 V/m; Power Drift = -0.03 dB

Peak SAR (extrapolated) = 0.221 W/kg

SAR(1 g) = 0.124 W/kg; SAR(10 g) = 0.071 W/kg

Maximum value of SAR (measured) = 0.160 W/kg



0 dB = 0.160 W/kg = -7.96 dBW/kg

Wi-Fi 2.4 GHz

Frequency: 2462 MHz; Duty Cycle: 1:1; Room Ambient Temperature: 23.0°C; Liquid Temperature: 22.0°C
 Medium parameters used (interpolated): $f = 2462 \text{ MHz}$; $\sigma = 1.98 \text{ S/m}$; $\epsilon_r = 51.892$; $\rho = 1000 \text{ kg/m}^3$

DASY5 Configuration:

- Area Scan Setting: Find Secondary Maximum Within: 2.0 dB and with a peak SAR value greater than 0.0012W/kg
- Electronics: DAE4 Sn1494; Calibrated: 2017-07-20
- Probe: EX3DV4 - SN7314; ConvF(7.59, 7.59, 7.59); Calibrated: 2017-09-28;
- Sensor-Surface: 2.5mm (Mechanical Surface Detection)
- Phantom: Triple Flat Phantom 5.1C; Type: QD 000 P51 CA; Serial: 1166

Front/802.11b_ch 11_10mm/Area Scan (10x17x1): Measurement grid: dx=12mm, dy=12mm

Maximum value of SAR (measured) = 0.348 W/kg

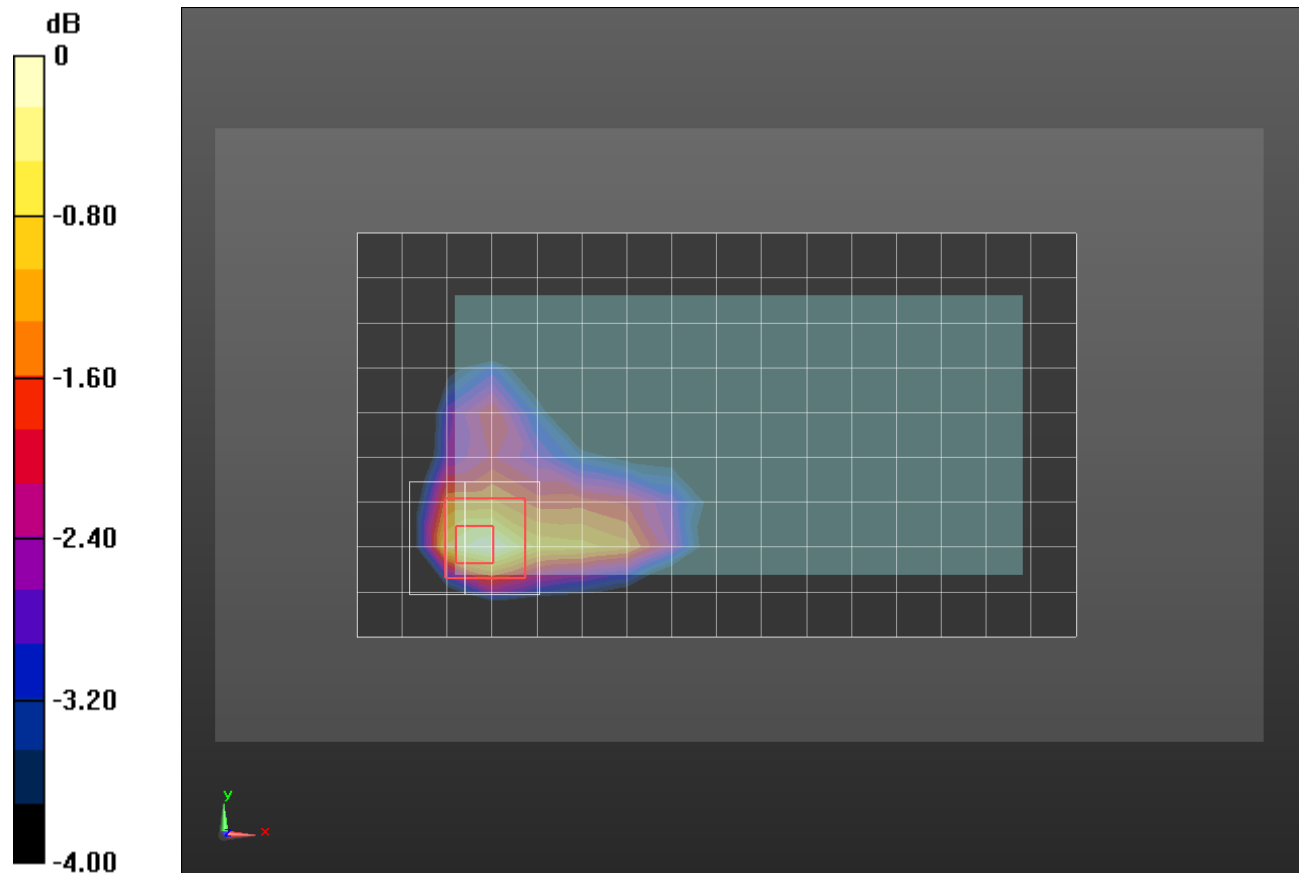
Front/802.11b_ch 11_10mm/Zoom Scan (8x7x7)/Cube 0: Measurement grid: dx=5mm, dy=5mm, dz=5mm

Reference Value = 13.91 V/m; Power Drift = 0.04 dB

Peak SAR (extrapolated) = 0.508 W/kg

SAR(1 g) = 0.252 W/kg; SAR(10 g) = 0.132 W/kg

Maximum value of SAR (measured) = 0.343 W/kg



0 dB = 0.343 W/kg = -4.65 dBW/kg

Bluetooth

Frequency: 2441 MHz; Duty Cycle: 1:1.29033; Room Ambient Temperature: 23.0°C; Liquid Temperature: 22.0°C
Medium parameters used (interpolated): $f = 2441$ MHz; $\sigma = 1.816$ S/m; $\epsilon_r = 38.532$; $\rho = 1000$ kg/m³

DASY5 Configuration:

- Area Scan Setting: Find Secondary Maximum Within: 2.0 dB and with a peak SAR value greater than 0.0012W/kg
- Electronics: DAE4 Sn1468; Calibrated: 2017-08-22
- Probe: EX3DV4 - SN7376; ConvF(7.56, 7.56, 7.56); Calibrated: 2017-08-22;
- Sensor-Surface: 2.5mm (Mechanical Surface Detection)
- Phantom: SAM (20deg probe tilt) with CRP v5.0_Front; Type: QD000P40CD; Serial: TP:1877

RHS/Touch_Bluetooth GFSK_ ch 39/Area Scan (9x16x1): Measurement grid: dx=12mm, dy=12mm
Maximum value of SAR (measured) = 0.223 W/kg

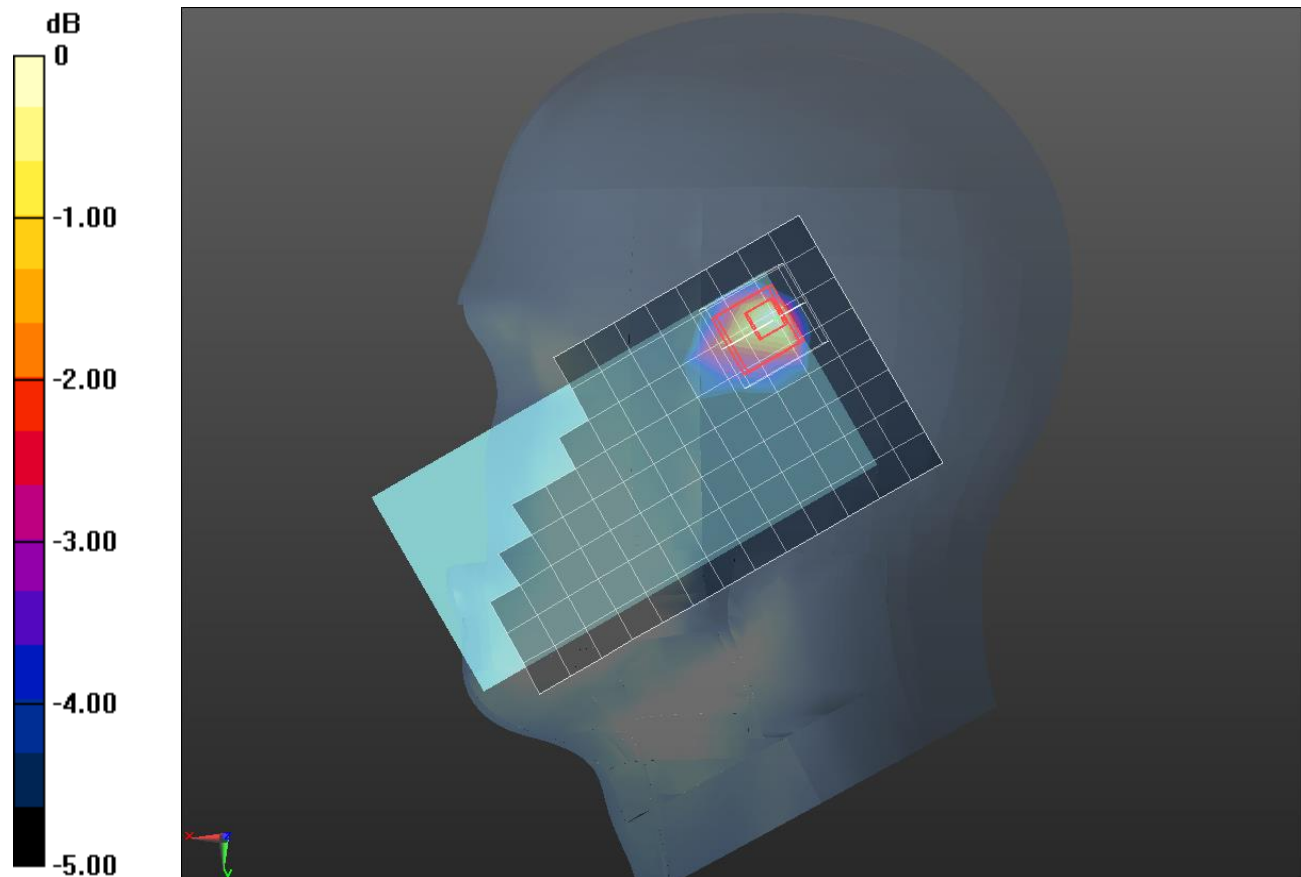
RHS/Touch_Bluetooth GFSK_ ch 39/Zoom Scan (7x7x7)/Cube 0: Measurement grid: dx=5mm, dy=5mm, dz=5mm

Reference Value = 11.06 V/m; Power Drift = -0.09 dB

Peak SAR (extrapolated) = 0.390 W/kg

SAR(1 g) = 0.151 W/kg; SAR(10 g) = 0.072 W/kg

Maximum value of SAR (measured) = 0.214 W/kg



0 dB = 0.214 W/kg = -6.70 dBW/kg