

**20160805\_SystemPerformanceCheck-D2450V2 SN 939**

Frequency: 2450 MHz; Duty Cycle: 1:1; Room Ambient Temperature: 23.0°C; Liquid Temperature: 22.0°C  
Medium parameters used:  $f = 2450$  MHz;  $\sigma = 1.847$  S/m;  $\epsilon_r = 38.152$ ;  $\rho = 1000$  kg/m<sup>3</sup>

DASY5 Configuration:

- Area Scan Setting: Find Secondary Maximum Within: 2.0 dB and with a peak SAR value greater than 0.0012W/kg
- Averaged Fast SAR: Polynomial fit
- Electronics: DAE4 Sn1468; Calibrated: 2015-09-15
- Probe: EX3DV4 - SN7376; ConvF(7.21, 7.21, 7.21); Calibrated: 2015-09-02;
- Sensor-Surface: 4mm (Mechanical Surface Detection)
- Phantom: SAM (20deg probe tilt) with CRP v5.0(Middle); Type: QD000P40CD; Serial: TP:1847

**Head/Pin=100 mW/Area Scan (9x8x1):** Measurement grid: dx=12mm, dy=12mm

Maximum value of SAR (measured) = 5.90 W/kg

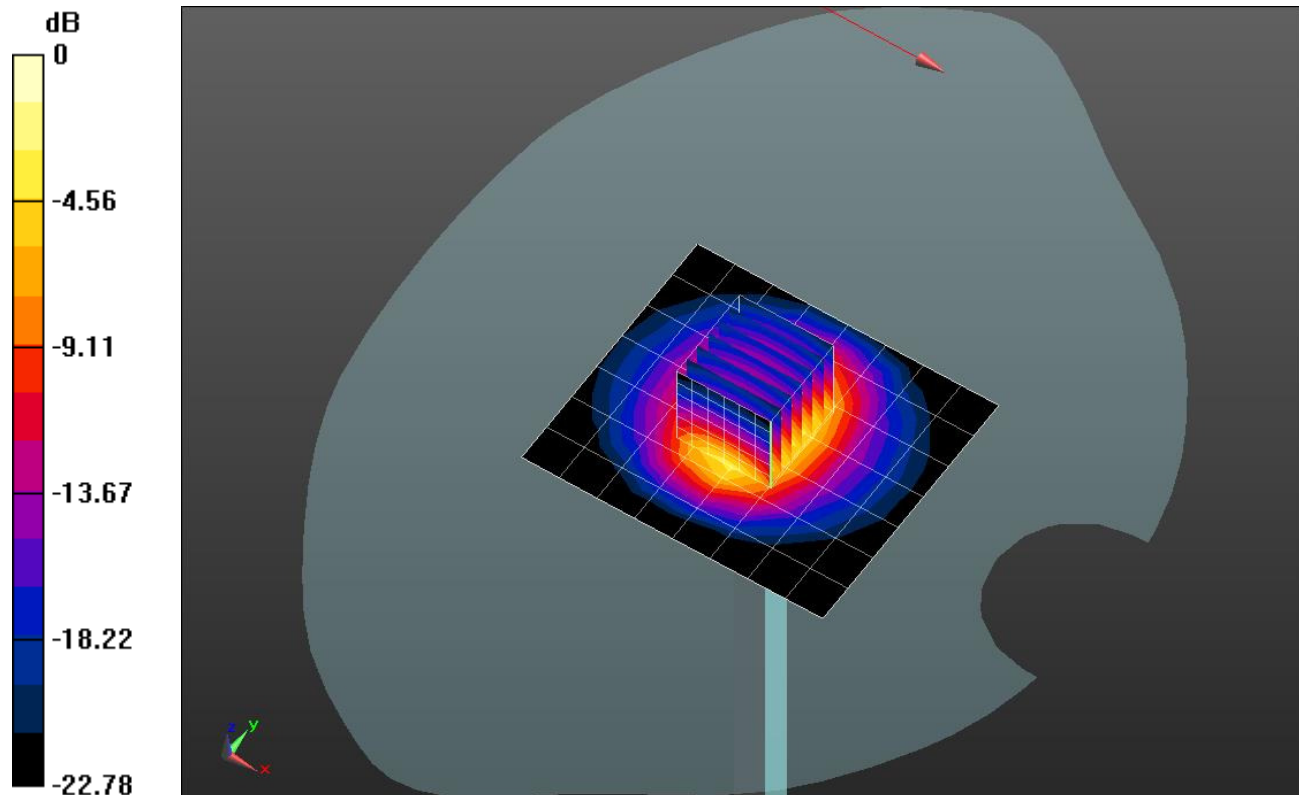
**Head/Pin=100 mW/Zoom Scan (7x7x7) (7x7x7)/Cube 0:** Measurement grid: dx=5mm, dy=5mm, dz=5mm

Reference Value = 68.32 V/m; Power Drift = -0.00 dB

Peak SAR (extrapolated) = 11.8 W/kg

**SAR(1 g) = 5.41 W/kg; SAR(10 g) = 2.47 W/kg**

Maximum value of SAR (measured) = 6.07 W/kg

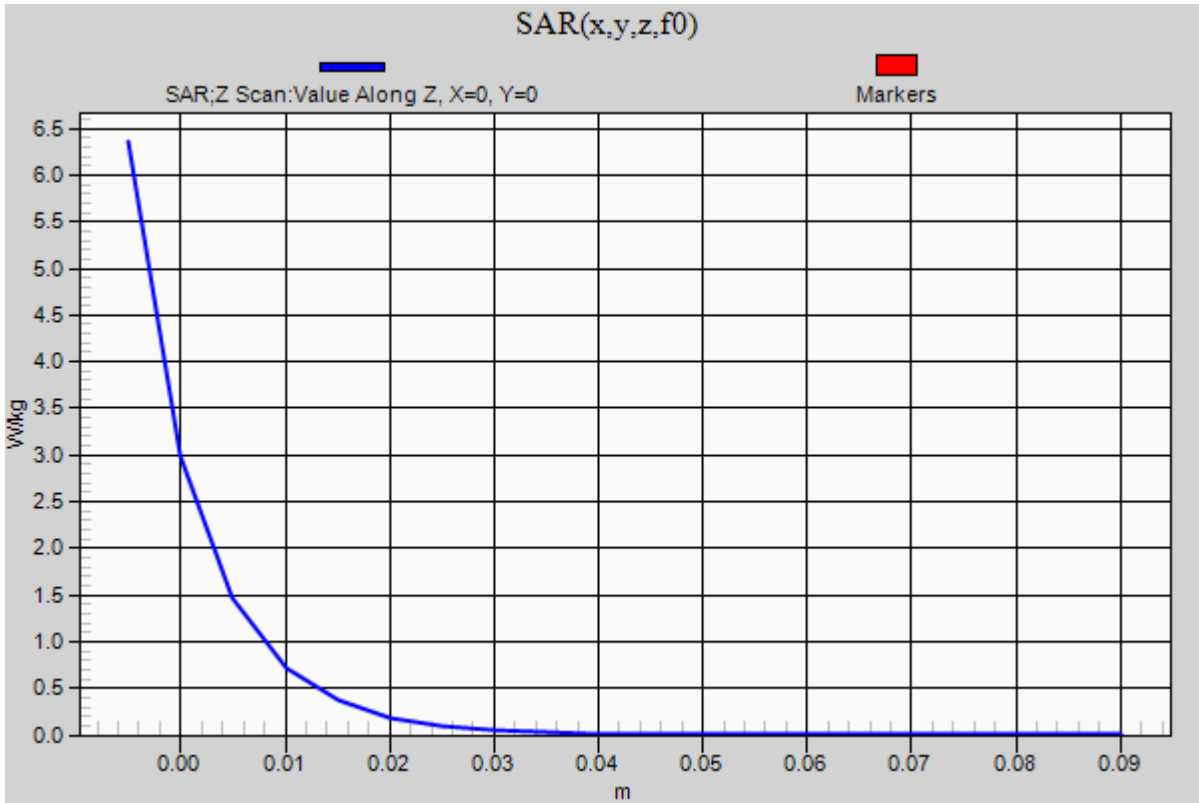


0 dB = 6.07 W/kg = 7.83 dBW/kg

### 20160805\_SystemPerformanceCheck-D2450V2 SN 939

Frequency: 2450 MHz; Duty Cycle: 1:1

**Head/Pin=100 mW/Z Scan (1x1x21):** Measurement grid: dx=20mm, dy=20mm, dz=5mm  
Maximum value of SAR (measured) = 6.36 W/kg



## 20160719\_SystemPerformanceCheck-D1900V2 SN 5d199

Frequency: 1900 MHz; Duty Cycle: 1:1; Room Ambient Temperature: 23.0°C; Liquid Temperature: 22.0°C  
 Medium parameters used:  $f = 1900 \text{ MHz}$ ;  $\sigma = 1.58 \text{ S/m}$ ;  $\epsilon_r = 53.91$ ;  $\rho = 1000 \text{ kg/m}^3$

DASY5 Configuration:

- Area Scan Setting: Find Secondary Maximum Within: 2.0 dB and with a peak SAR value greater than 0.0012W/kg
- Averaged Fast SAR: Polynomial fit
- Electronics: DAE4 Sn614; Calibrated: 2015-09-29
- Probe: EX3DV4 - SN7313; ConvF(7.54, 7.54, 7.54); Calibrated: 2015-12-30;
- Sensor-Surface: 2mm (Mechanical Surface Detection)
- Phantom: ELI v6.0; Type: QDOVA003AA; Serial: TP:xxxx

**Body/Pin=100 mW/Area Scan (7x7x1):** Measurement grid: dx=15mm, dy=15mm

Maximum value of SAR (measured) = 5.89 W/kg

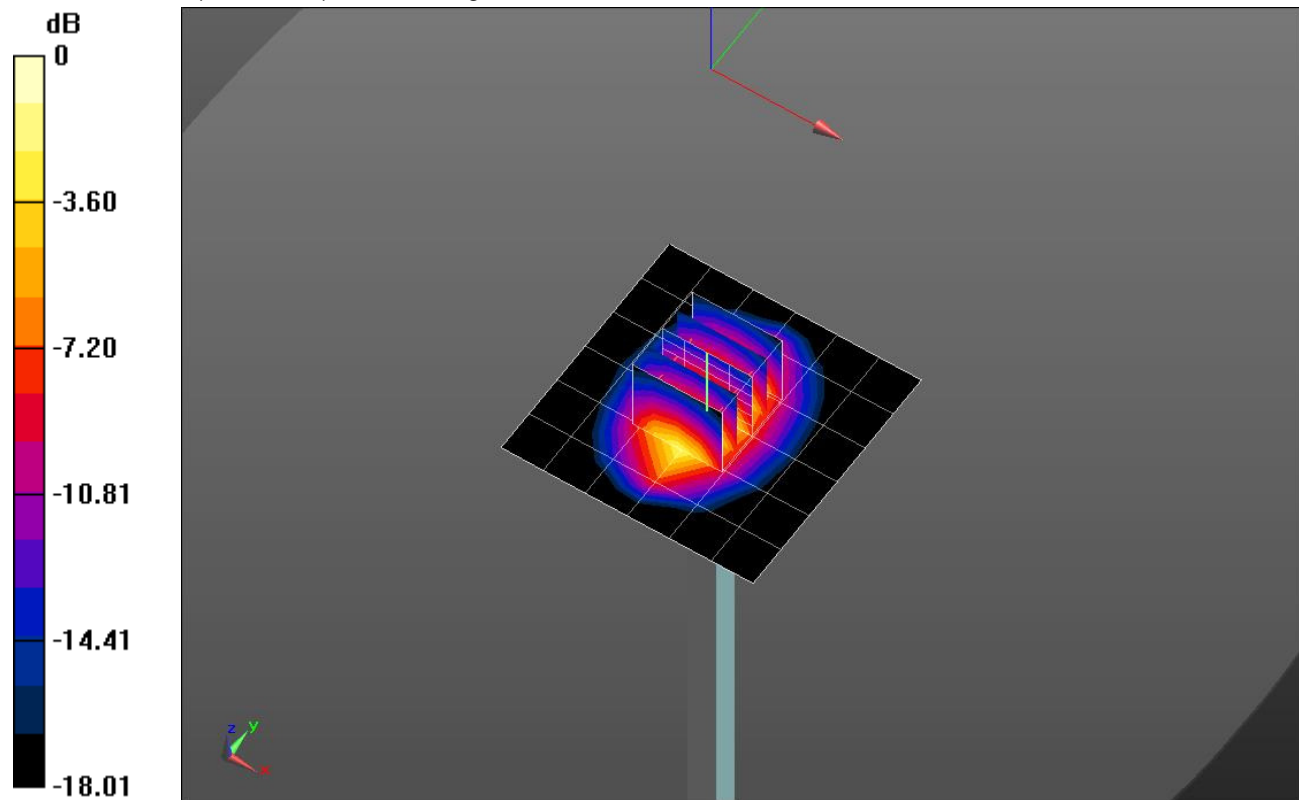
**Body/Pin=100 mW/Zoom Scan (5x5x7)/Cube 0:** Measurement grid: dx=8mm, dy=8mm, dz=5mm

Reference Value = 62.25 V/m; Power Drift = 0.07 dB

Peak SAR (extrapolated) = 7.61 W/kg

**SAR(1 g) = 4.2 W/kg; SAR(10 g) = 2.17 W/kg**

Maximum value of SAR (measured) = 6.06 W/kg

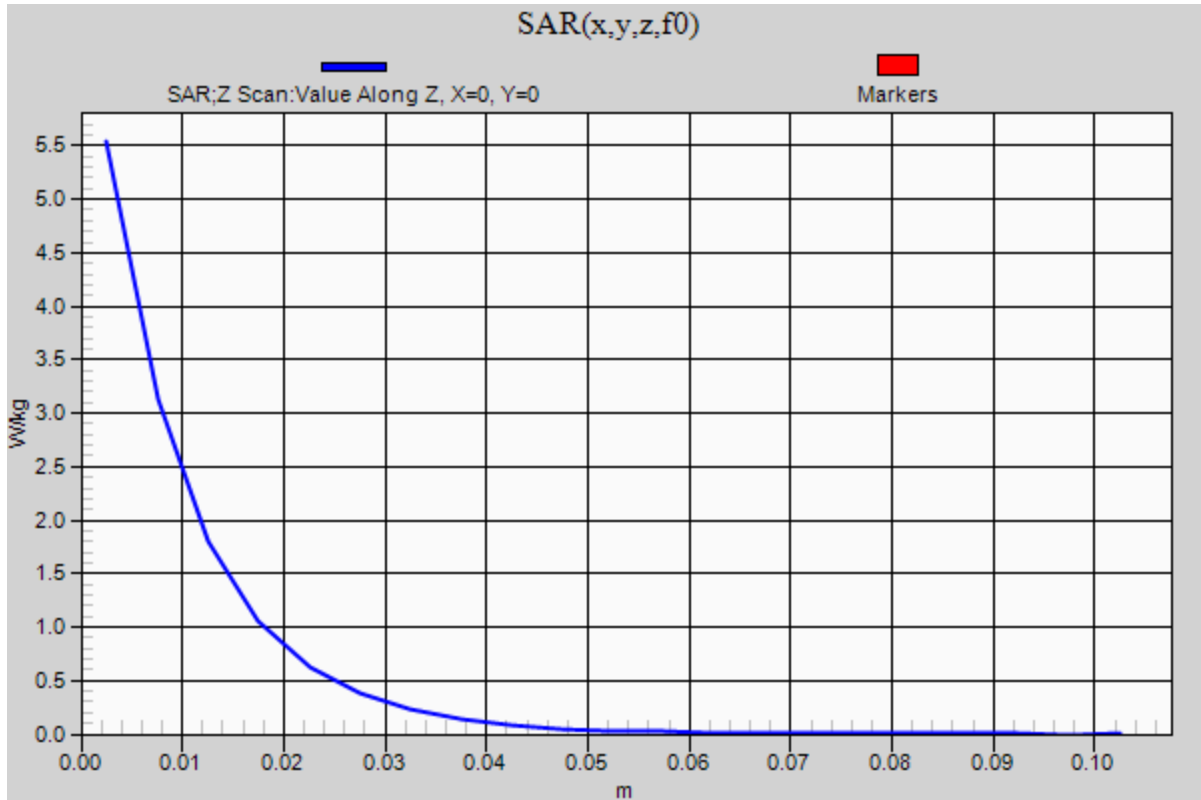


0 dB = 6.06 W/kg = 7.82 dBW/kg

### 20160719\_SystemPerformanceCheck-D1900V2 SN 5d199

Frequency: 1900 MHz; Duty Cycle: 1:1

**Body/Pin=100 mW/Z Scan (1x1x21):** Measurement grid: dx=20mm, dy=20mm, dz=5mm  
Maximum value of SAR (measured) = 5.54 W/kg



**20160722\_SystemPerformanceCheck-D835V2 SN 4d174**

Frequency: 835 MHz; Duty Cycle: 1:1; Room Ambient Temperature: 23.0°C; Liquid Temperature: 22.0°C  
Medium parameters used:  $f = 835$  MHz;  $\sigma = 1$  S/m;  $\epsilon_r = 53.776$ ;  $\rho = 1000$  kg/m<sup>3</sup>

DASY5 Configuration:

- Area Scan Setting: Find Secondary Maximum Within: 2.0 dB and with a peak SAR value greater than 0.0012W/kg
- Averaged Fast SAR: Polynomial fit
- Electronics: DAE4 Sn614; Calibrated: 2015-09-29
- Probe: EX3DV4 - SN7313; ConvF(9.42, 9.42, 9.42); Calibrated: 2015-12-30;
- Sensor-Surface: 2mm (Mechanical Surface Detection)
- Phantom: Triple Flat Phantom 5.1C; Type: QD 000 P51 CA; Serial: 1166

**Body/Pin=100 mW/Area Scan (7x13x1):** Measurement grid: dx=15mm, dy=15mm

Maximum value of SAR (measured) = 1.12 W/kg

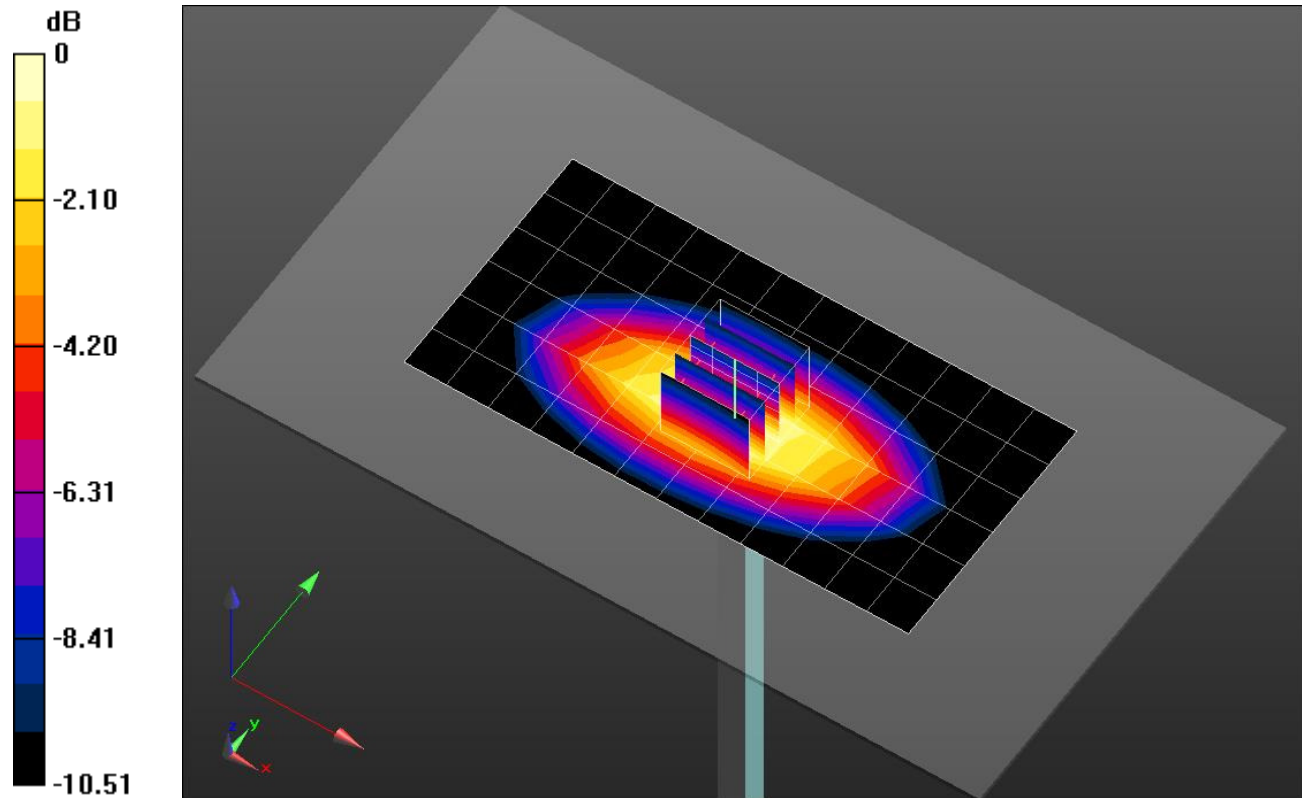
**Body/Pin=100 mW/Zoom Scan (5x5x7)/Cube 0:** Measurement grid: dx=8mm, dy=8mm, dz=5mm

Reference Value = 33.75 V/m; Power Drift = -0.05 dB

Peak SAR (extrapolated) = 1.51 W/kg

**SAR(1 g) = 1.03 W/kg; SAR(10 g) = 0.674 W/kg**

Maximum value of SAR (measured) = 1.29 W/kg



0 dB = 1.29 W/kg = 1.11 dBW/kg

### 20160722\_SystemPerformanceCheck-D835V2 SN 4d174

Frequency: 835 MHz; Duty Cycle: 1:1

**Body/Pin=100 mW/Z Scan (1x1x21):** Measurement grid: dx=20mm, dy=20mm, dz=5mm  
Maximum value of SAR (measured) = 1.07 W/kg

