

20150913_SystemPerformanceCheck-D2600V2 SN 1097

Frequency: 2600 MHz; Duty Cycle: 1:1; Room Ambient Temperature: 24.0°C; Liquid Temperature: 23.0°C
 Medium parameters used: $f = 2600 \text{ MHz}$; $\sigma = 2.235 \text{ S/m}$; $\epsilon_r = 51.168$; $\rho = 1000 \text{ kg/m}^3$

DASY5 Configuration:

- Area Scan Setting: Find Secondary Maximum Within: 2.0 dB and with a peak SAR value greater than 0.0012W/kg
- Averaged Fast SAR: Polynomial fit
- Electronics: DAE3 Sn479; Calibrated: 2014-10-15
- Probe: EX3DV4 - SN7376; ConvF(7.24, 7.24, 7.24); Calibrated: 2015-09-02;
- Sensor-Surface: 2mm (Mechanical Surface Detection)
- Phantom: ELI v6.0; Type: QDOVA003AA; Serial: TP:2013

Body/Pin=100 mW/Area Scan (9x9x1): Measurement grid: dx=12mm, dy=12mm

Maximum value of SAR (measured) = 7.65 W/kg

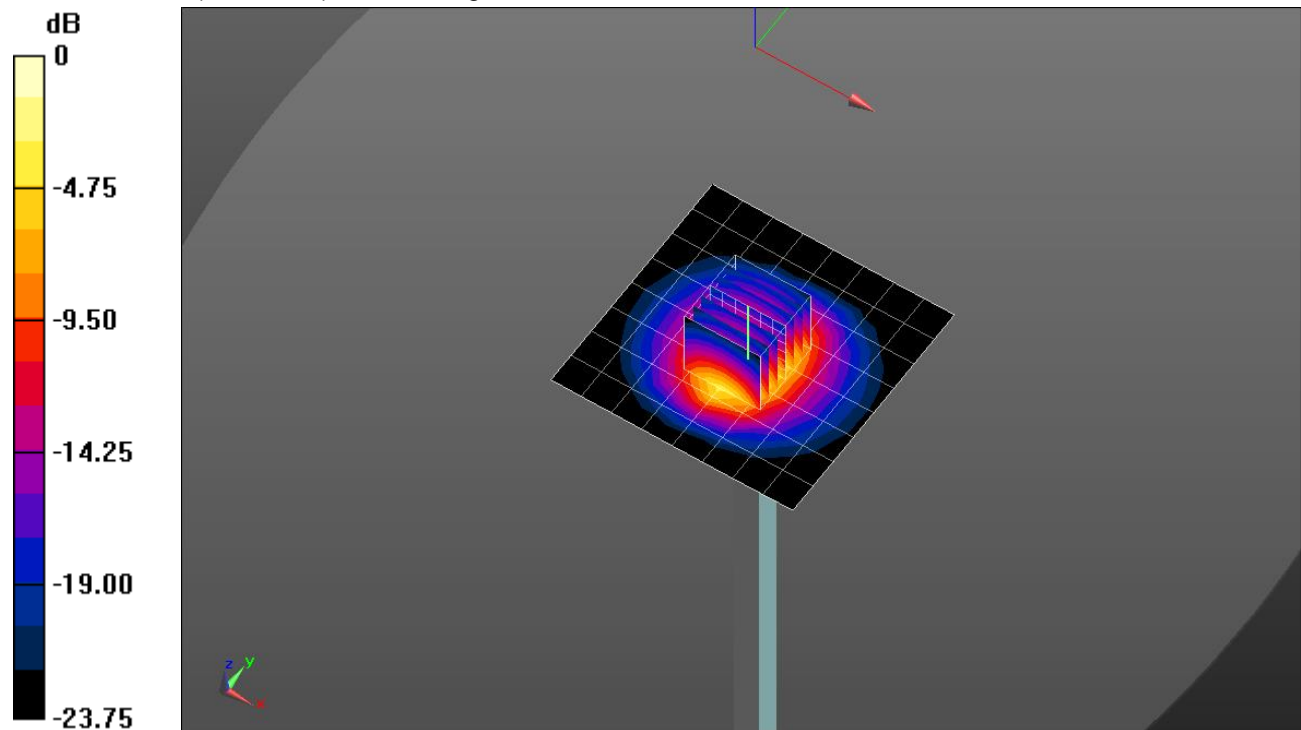
Body/Pin=100 mW/Zoom Scan (7x7x7)/Cube 0: Measurement grid: dx=5mm, dy=5mm, dz=5mm

Reference Value = 58.11 V/m; Power Drift = 0.04 dB

Peak SAR (extrapolated) = 11.4 W/kg

SAR(1 g) = 5.32 W/kg; SAR(10 g) = 2.38 W/kg

Maximum value of SAR (measured) = 8.31 W/kg

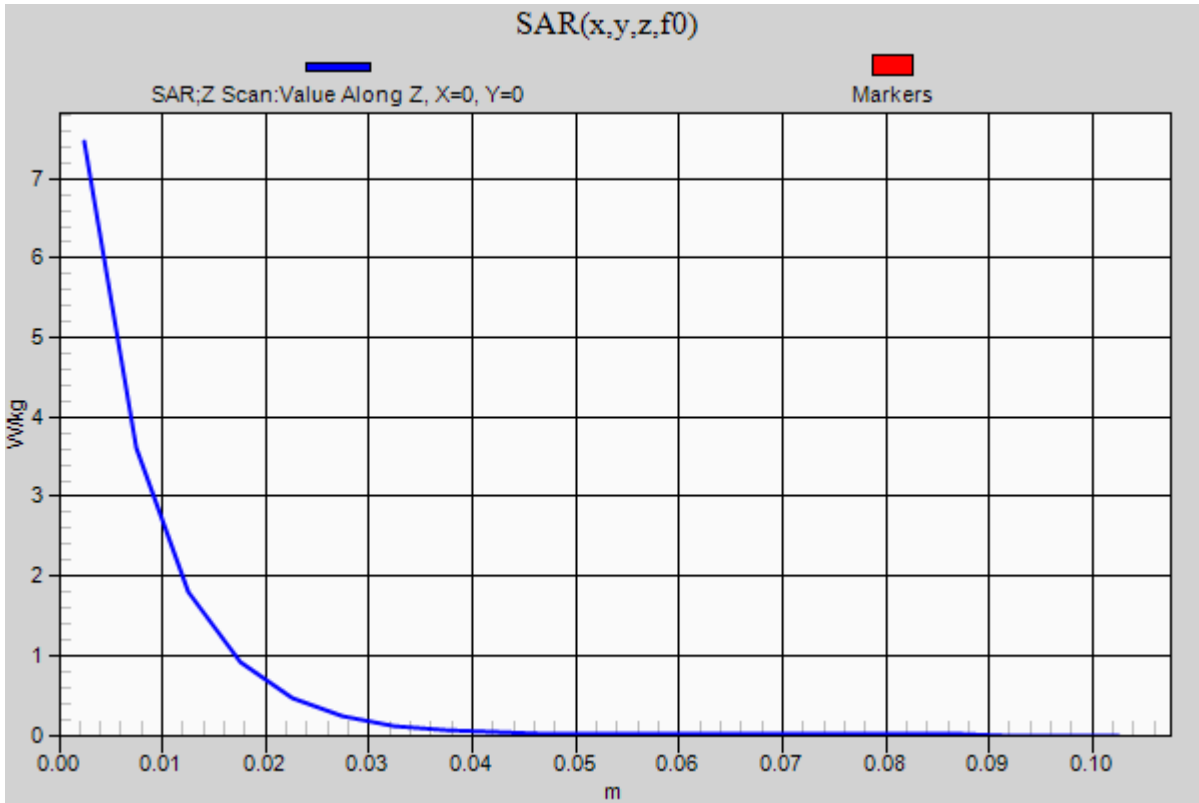


0 dB = 8.31 W/kg = 9.20 dBW/kg

20150913_SystemPerformanceCheck-D2600V2 SN 1097

Frequency: 2600 MHz; Duty Cycle: 1:1

Body/Pin=100 mW/Z Scan (1x1x21): Measurement grid: dx=20mm, dy=20mm, dz=5mm
Maximum value of SAR (measured) = 7.46 W/kg



20150909_SystemPerformanceCheck-D835V2 SN 4d159

Frequency: 835 MHz; Duty Cycle: 1:1; Room Ambient Temperature: 24.0°C; Liquid Temperature: 23.0°C
 Medium parameters used: $f = 835 \text{ MHz}$; $\sigma = 1.014 \text{ S/m}$; $\epsilon_r = 55.721$; $\rho = 1000 \text{ kg/m}^3$

DASY5 Configuration:

- Area Scan Setting: Find Secondary Maximum Within: 2.0 dB and with a peak SAR value greater than 0.0012W/kg
- Averaged Fast SAR: Polynomial fit
- Electronics: DAE4 Sn1446; Calibrated: 2015-08-17
- Probe: EX3DV4 - SN7330; ConvF(9.35, 9.35, 9.35); Calibrated: 2015-02-12;
- Sensor-Surface: 2mm (Mechanical Surface Detection)
- Phantom: ELI v5.0 (20deg probe tilt); Type: QDOVA002AA; Serial: TP:2005

Body/Pin=100 mW/Area Scan (7x13x1): Measurement grid: dx=15mm, dy=15mm

Maximum value of SAR (measured) = 1.27 W/kg

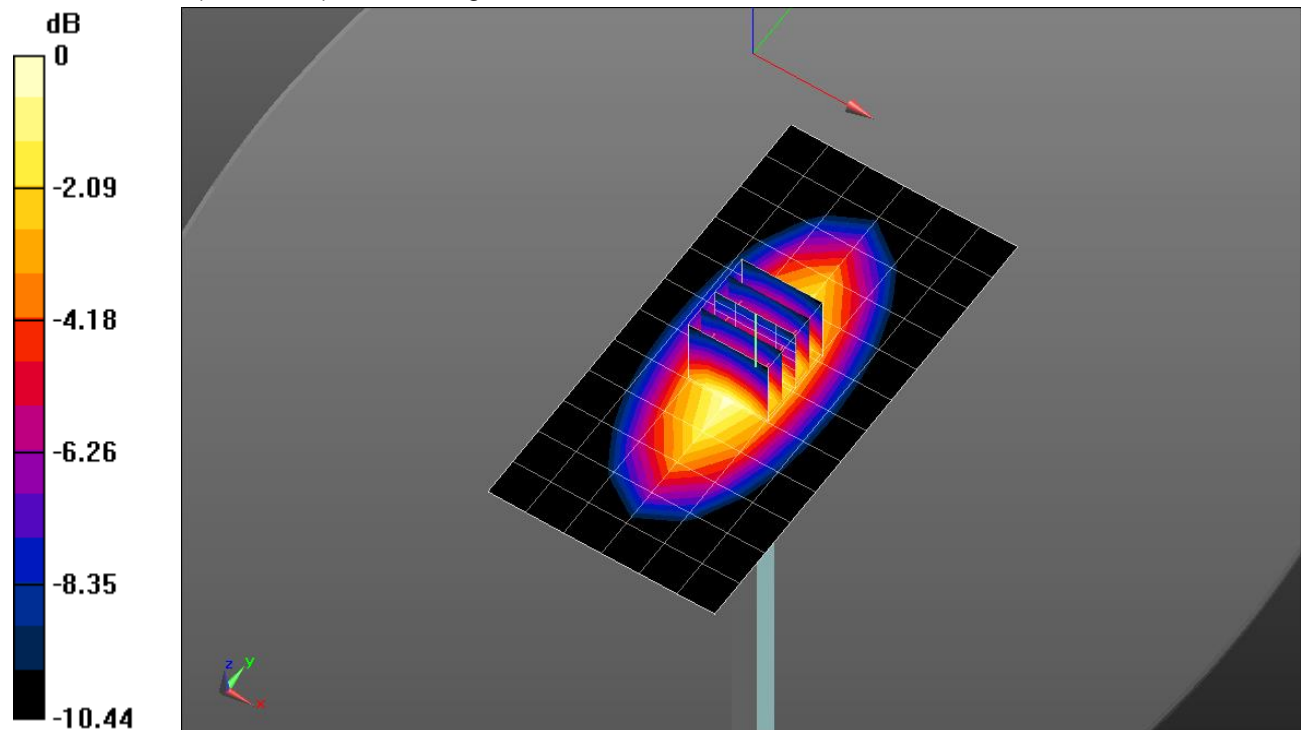
Body/Pin=100 mW/Zoom Scan (5x5x7)/Cube 0: Measurement grid: dx=8mm, dy=8mm, dz=5mm

Reference Value = 36.62 V/m; Power Drift = -0.07 dB

Peak SAR (extrapolated) = 1.46 W/kg

SAR(1 g) = 1.01 W/kg; SAR(10 g) = 0.666 W/kg

Maximum value of SAR (measured) = 1.26 W/kg

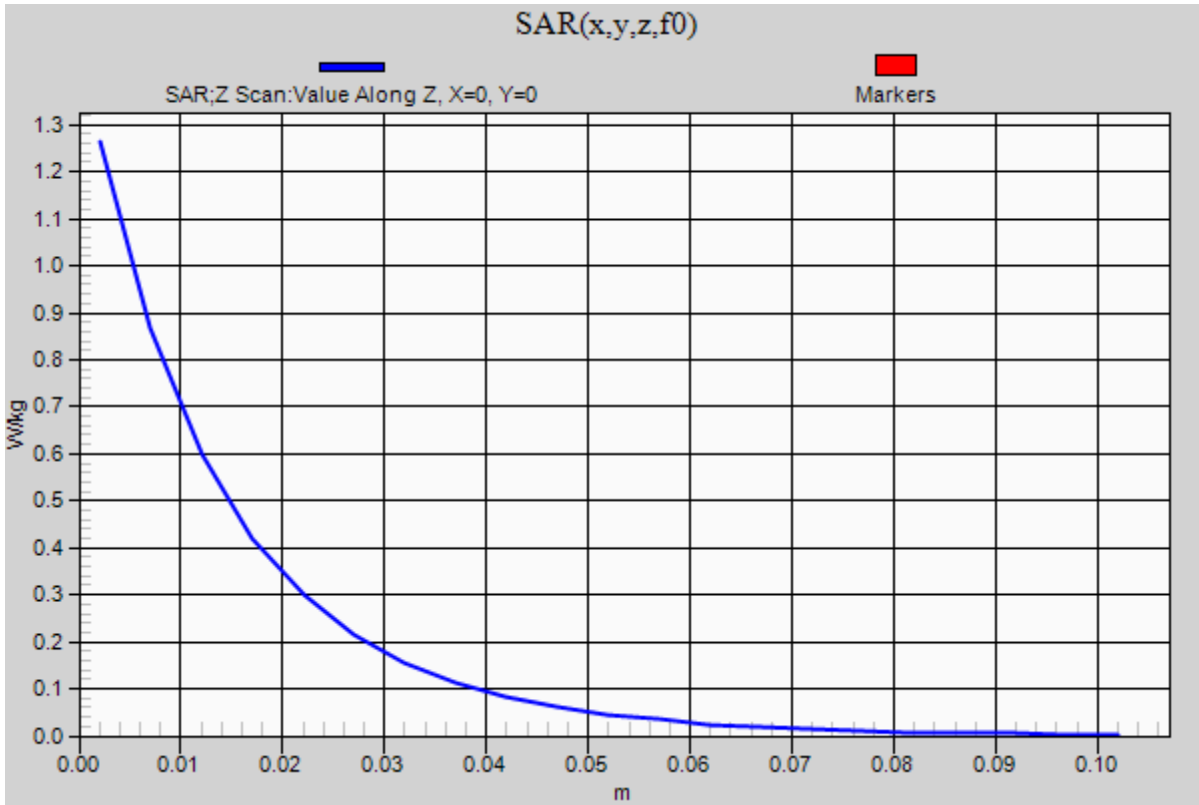


0 dB = 1.26 W/kg = 1.00 dBW/kg

20150909_SystemPerformanceCheck-D835V2 SN 4d159

Frequency: 835 MHz; Duty Cycle: 1:1

Body/Pin=100 mW/Z Scan (1x1x21): Measurement grid: dx=20mm, dy=20mm, dz=5mm
Maximum value of SAR (measured) = 1.26 W/kg



20150906_SystemPerformanceCheck_D2450V2 SN 960

Frequency: 2450 MHz; Duty Cycle: 1:1; Room Ambient Temperature: 24.0°C; Liquid Temperature: 23.0°C
 Medium parameters used: $f = 2450 \text{ MHz}$; $\sigma = 1.889 \text{ S/m}$; $\epsilon_r = 37.416$; $\rho = 1000 \text{ kg/m}^3$

DASY5 Configuration:

- Area Scan Setting: Find Secondary Maximum Within: 2.0 dB and with a peak SAR value greater than 0.0012W/kg
- Averaged Fast SAR: Polynomial fit
- Electronics: DAE3 Sn479; Calibrated: 2014-10-15
- Probe: EX3DV4 - SN7352; ConvF(7.6, 7.6, 7.6); Calibrated: 2015-03-06;
- Sensor-Surface: 4mm (Mechanical Surface Detection)
- Phantom: SAM Phantom CRP v5.0(Middle); Type: QD000P40CD; Serial: TP:1854

Head/Pin=100 mW 2/Area Scan (9x8x1): Measurement grid: dx=12mm, dy=12mm

Maximum value of SAR (measured) = 5.98 W/kg

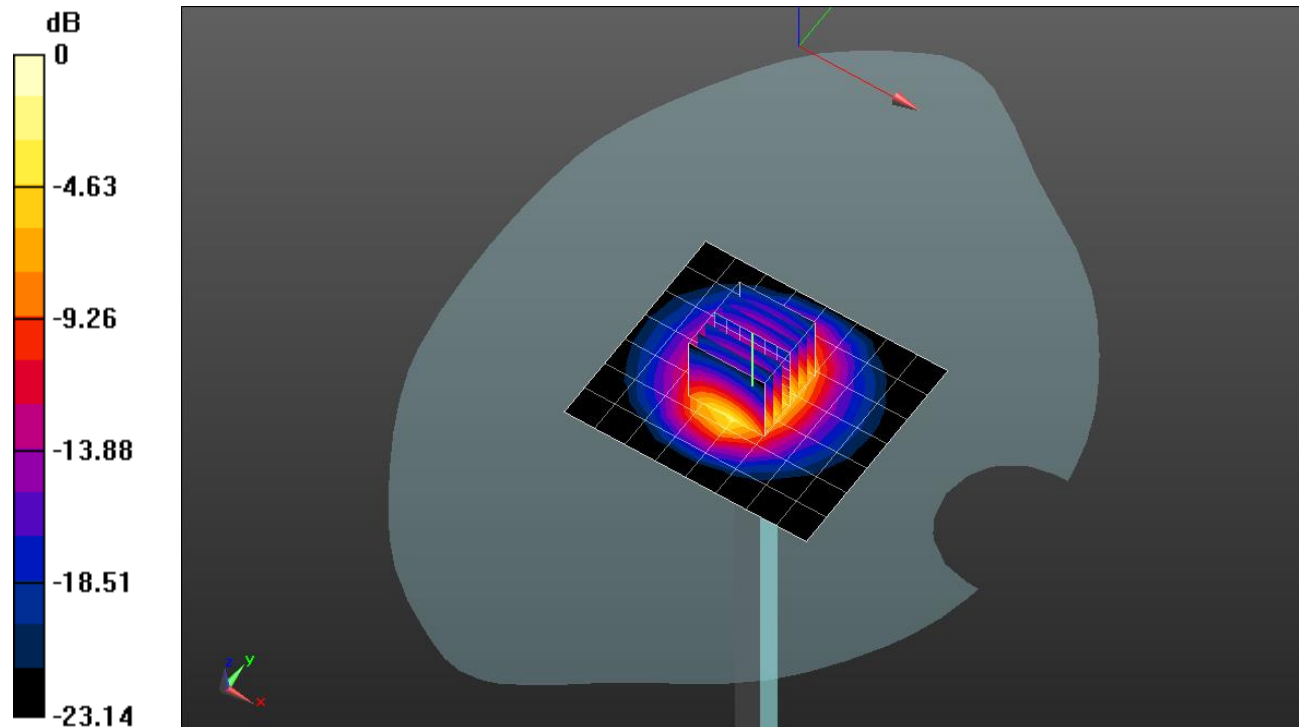
Head/Pin=100 mW 2/Zoom Scan (7x7x7) (7x7x7)/Cube 0: Measurement grid: dx=5mm, dy=5mm, dz=5mm

Reference Value = 69.29 V/m; Power Drift = -0.04 dB

Peak SAR (extrapolated) = 12.0 W/kg

SAR(1 g) = 5.64 W/kg; SAR(10 g) = 2.58 W/kg

Maximum value of SAR (measured) = 6.37 W/kg

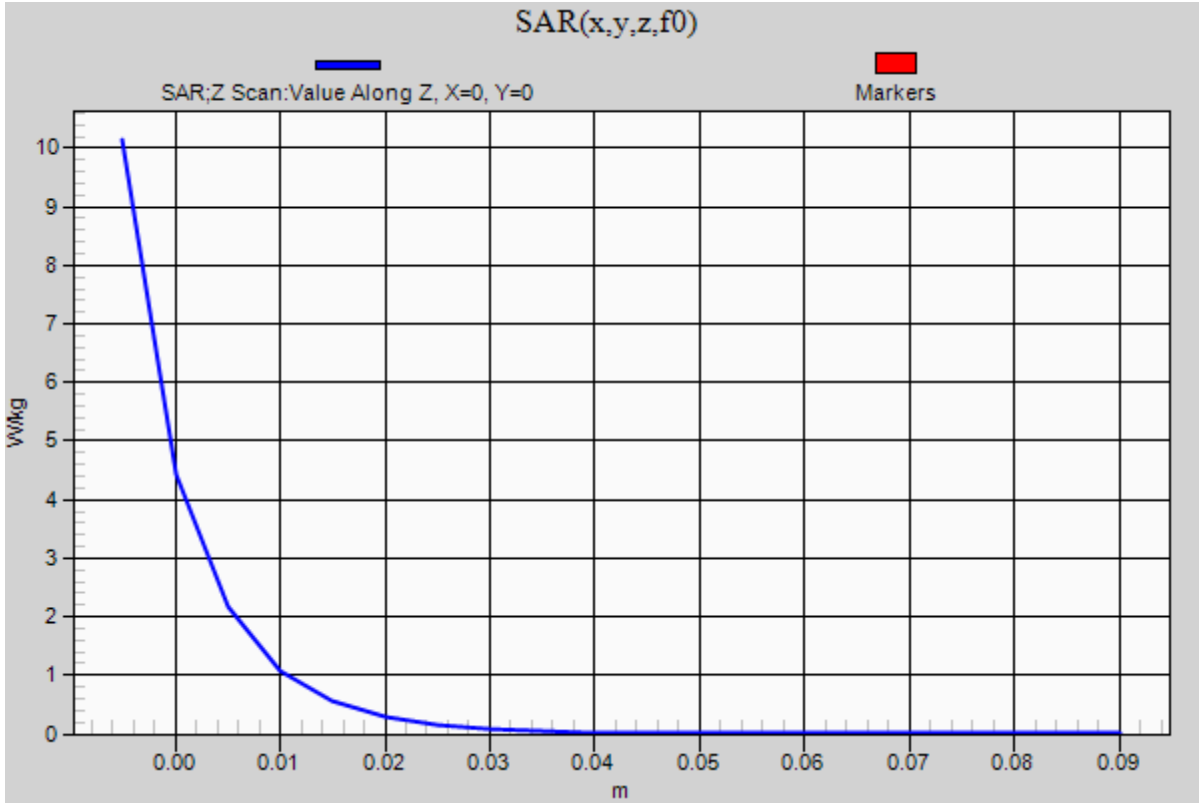


0 dB = 6.37 W/kg = 8.04 dBW/kg

20150906_SystemPerformanceCheck_D2450V2 SN 960

Frequency: 2450 MHz; Duty Cycle: 1:1

Head/Pin=100 mW 2/Z Scan (1x1x21): Measurement grid: dx=20mm, dy=20mm, dz=5mm
Maximum value of SAR (measured) = 10.1 W/kg



20150910_SystemPerformanceCheck-D1900V2 SN 5d199

Frequency: 1900 MHz; Duty Cycle: 1:1; Room Ambient Temperature: 24.0°C; Liquid Temperature: 23.0°C
 Medium parameters used: $f = 1900 \text{ MHz}$; $\sigma = 1.586 \text{ S/m}$; $\epsilon_r = 54.686$; $\rho = 1000 \text{ kg/m}^3$

DASY5 Configuration:

- Area Scan Setting: Find Secondary Maximum Within: 2.0 dB and with a peak SAR value greater than 0.0012W/kg
- Averaged Fast SAR: Polynomial fit
- Electronics: DAE3 Sn479; Calibrated: 2014-10-15
- Probe: EX3DV4 - SN7376; ConvF(7.72, 7.72, 7.72); Calibrated: 2015-09-02;
- Sensor-Surface: 2mm (Mechanical Surface Detection)
- Phantom: ELI Phantom v5.0; Type: QDOVA002AA; Serial: TP:2001

Body/Pin=100 mW 2/Area Scan (7x7x1): Measurement grid: dx=15mm, dy=15mm

Maximum value of SAR (measured) = 5.83 W/kg

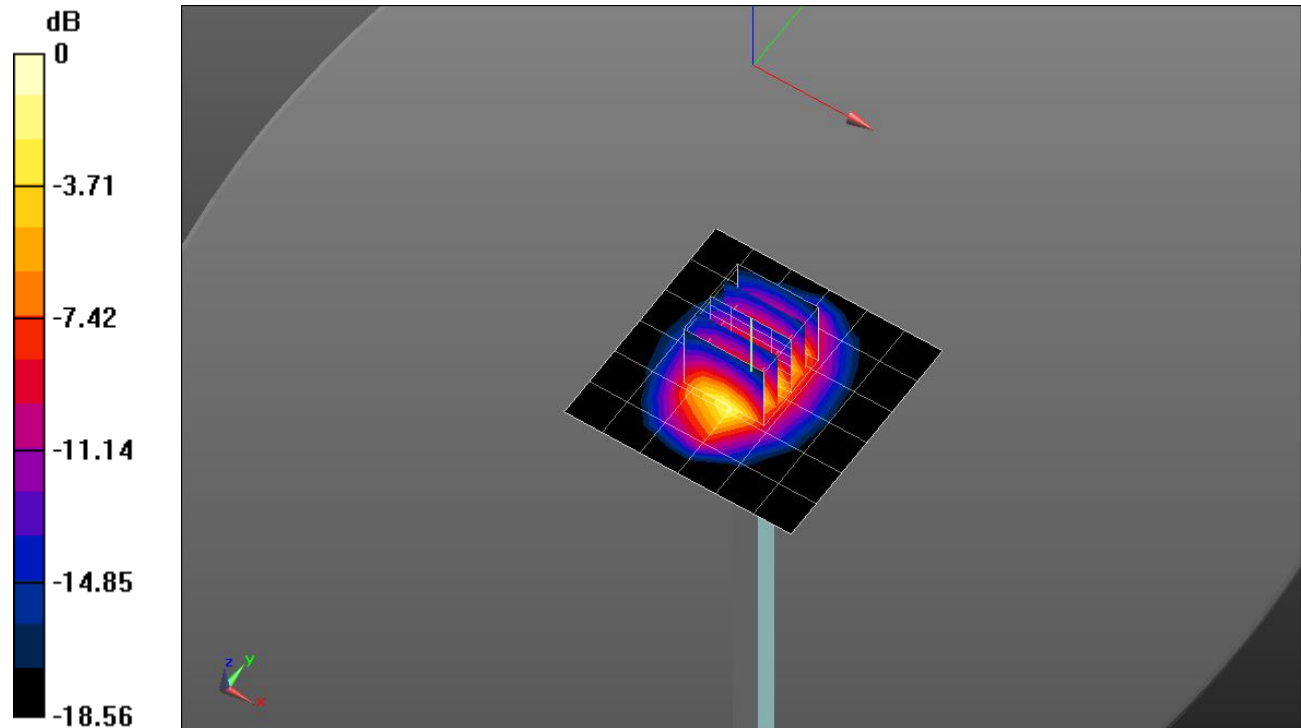
Body/Pin=100 mW 2/Zoom Scan (5x5x7)/Cube 0: Measurement grid: dx=8mm, dy=8mm, dz=5mm

Reference Value = 61.99 V/m; Power Drift = 0.02 dB

Peak SAR (extrapolated) = 8.06 W/kg

SAR(1 g) = 4.35 W/kg; SAR(10 g) = 2.22 W/kg

Maximum value of SAR (measured) = 6.30 W/kg



0 dB = 6.30 W/kg = 7.99 dBW/kg

20150910_SystemPerformanceCheck-D1900V2 SN 5d199

Frequency: 1900 MHz; Duty Cycle: 1:1

Body/Pin=100 mW 2/Z Scan (1x1x21): Measurement grid: dx=20mm, dy=20mm, dz=5mm
Maximum value of SAR (measured) = 5.49 W/kg

