

GSM 850

Frequency: 836.6 MHz; Duty Cycle: 1:1.99986; Room Ambient Temperature: 23.0°C; Liquid Temperature: 22.0°C
 Medium parameters used (interpolated): $f = 836.6$ MHz; $\sigma = 0.964$ S/m; $\epsilon_r = 54.554$; $\rho = 1000$ kg/m³

DASY5 Configuration:

- Area Scan Setting: Find Secondary Maximum Within: 2.0 dB and with a peak SAR value greater than 0.0012W/kg
- Electronics: DAE4 Sn1447; Calibrated: 2016-09-19
- Probe: EX3DV4 - SN7376; ConvF(10.12, 10.12, 10.12); Calibrated: 2016-08-30;
- Sensor-Surface: 2.5mm (Mechanical Surface Detection)
- Phantom: ELI V6.0 (20deg); Type: QD OVA 003 AA; Serial: 2013

Rear/GPRS 4 slots_ch 190 15mm/Area Scan (8x13x1): Measurement grid: dx=15mm, dy=15mm
 Maximum value of SAR (measured) = 0.645 W/kg

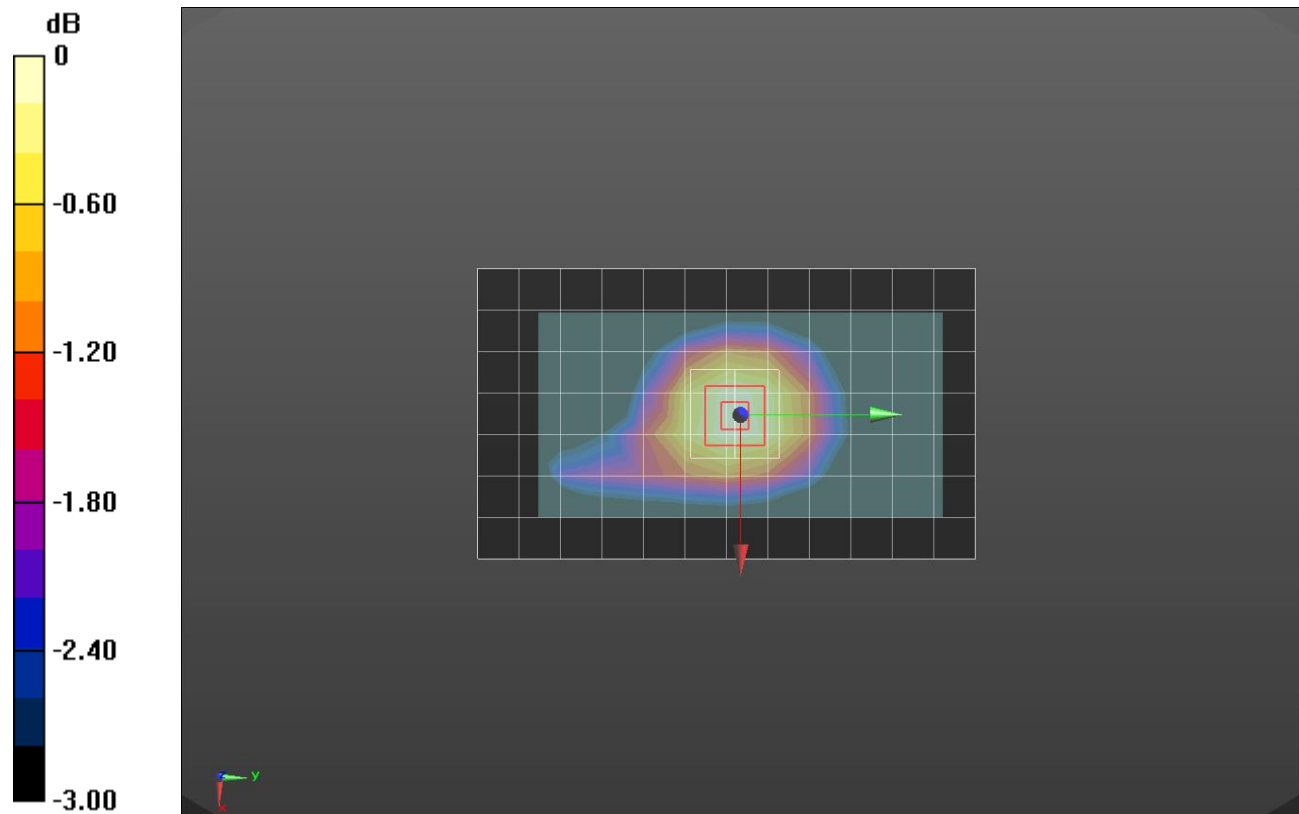
Rear/GPRS 4 slots_ch 190 15mm/Zoom Scan (5x5x7)/Cube 0: Measurement grid: dx=8mm, dy=8mm, dz=5mm

Reference Value = 26.18 V/m; Power Drift = -0.01 dB

Peak SAR (extrapolated) = 0.731 W/kg

SAR(1 g) = 0.580 W/kg; SAR(10 g) = 0.440 W/kg

Maximum value of SAR (measured) = 0.652 W/kg



0 dB = 0.652 W/kg = -1.86 dBW/kg

GSM 850

Frequency: 836.6 MHz; Duty Cycle: 1:1.99986; Room Ambient Temperature: 23.0°C; Liquid Temperature: 22.0°C
 Medium parameters used (interpolated): $f = 836.6$ MHz; $\sigma = 0.964$ S/m; $\epsilon_r = 54.554$; $\rho = 1000$ kg/m³

DASY5 Configuration:

- Area Scan Setting: Find Secondary Maximum Within: 2.0 dB and with a peak SAR value greater than 0.0012W/kg
- Electronics: DAE4 Sn1447; Calibrated: 2016-09-19
- Probe: EX3DV4 - SN7376; ConvF(10.12, 10.12, 10.12); Calibrated: 2016-08-30;
- Sensor-Surface: 2.5mm (Mechanical Surface Detection)
- Phantom: ELI V6.0 (20deg); Type: QD OVA 003 AA; Serial: 2013

Rear/GPRS 4 slots_ch 190 10mm/Area Scan (8x13x1): Measurement grid: dx=15mm, dy=15mm
 Maximum value of SAR (measured) = 0.797 W/kg

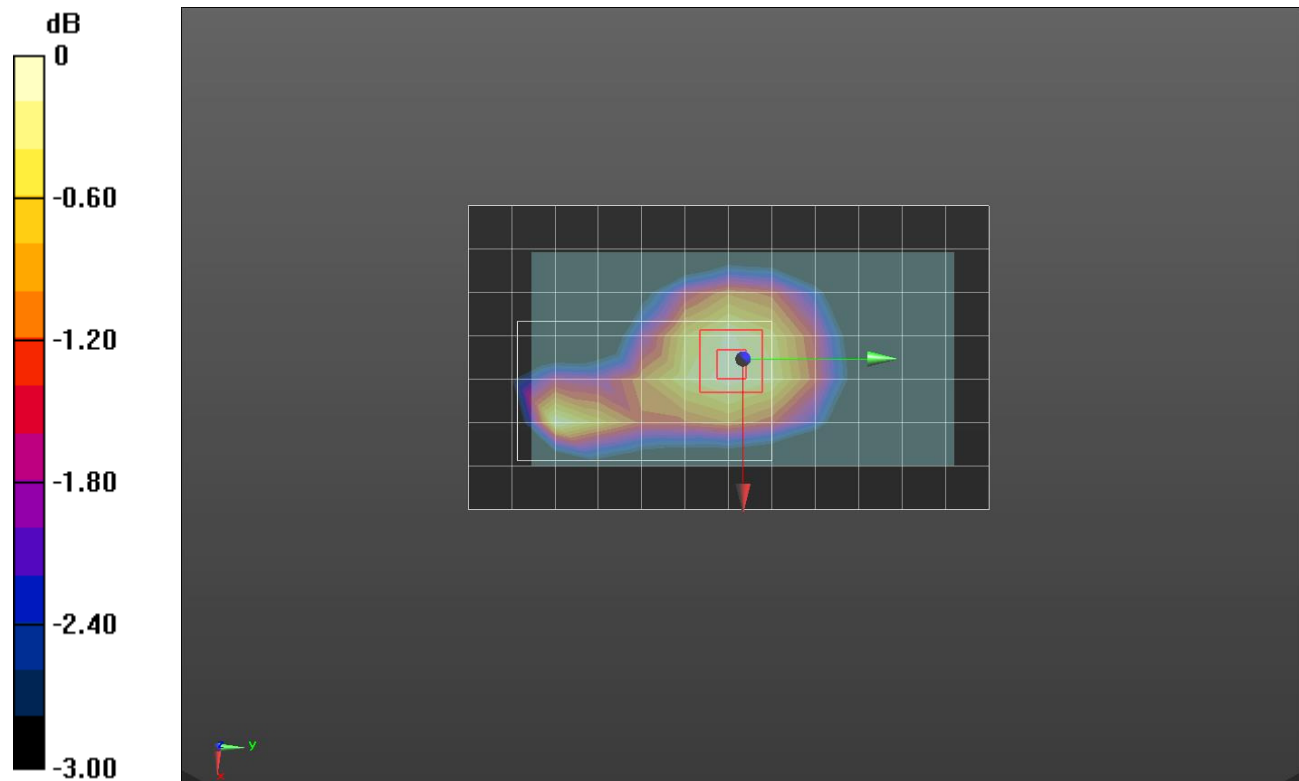
Rear/GPRS 4 slots_ch 190 10mm/Zoom Scan (7x12x7)/Cube 0: Measurement grid: dx=8mm, dy=8mm, dz=5mm

Reference Value = 28.90 V/m; Power Drift = -0.06 dB

Peak SAR (extrapolated) = 1.04 W/kg

SAR(1 g) = 0.694 W/kg; SAR(10 g) = 0.532 W/kg

Maximum value of SAR (measured) = 0.807 W/kg



0 dB = 0.807 W/kg = -0.93 dBW/kg

GSM 850

Frequency: 836.6 MHz; Duty Cycle: 1:1.99986; Room Ambient Temperature: 23.0°C; Liquid Temperature: 22.0°C
 Medium parameters used (interpolated): $f = 836.6$ MHz; $\sigma = 0.921$ S/m; $\epsilon_r = 42.981$; $\rho = 1000$ kg/m³

DASY5 Configuration:

- Area Scan Setting: Find Secondary Maximum Within: 2.0 dB and with a peak SAR value greater than 0.0012W/kg
- Electronics: DAE4 Sn1494; Calibrated: 2016-07-18
- Probe: EX3DV4 - SN7314; ConvF(10.18, 10.18, 10.18); Calibrated: 2016-09-27;
- Sensor-Surface: 2.5mm (Mechanical Surface Detection)
- Phantom: SAM Phantom CRP v5.0(Right); Type: QD000P40CD; Serial: TP:1855

LHS/Touch_GPRS 4 slots_ch 190/Area Scan (7x13x1): Measurement grid: dx=15mm, dy=15mm
 Maximum value of SAR (measured) = 0.442 W/kg

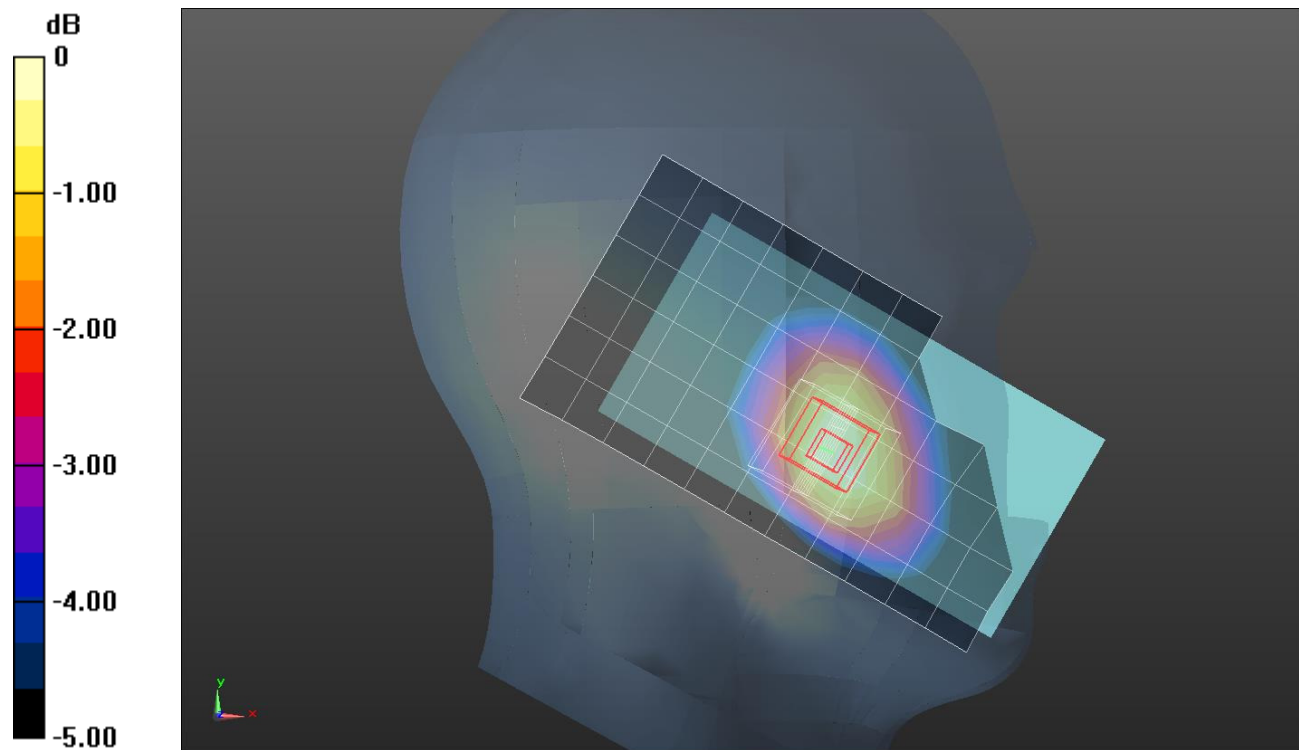
LHS/Touch_GPRS 4 slots_ch 190/Zoom Scan (5x5x7)/Cube 0: Measurement grid: dx=8mm, dy=8mm, dz=5mm

Reference Value = 6.078 V/m; Power Drift = 0.13 dB

Peak SAR (extrapolated) = 0.526 W/kg

SAR(1 g) = 0.418 W/kg; SAR(10 g) = 0.317 W/kg

Maximum value of SAR (measured) = 0.469 W/kg



0 dB = 0.469 W/kg = -3.29 dBW/kg

GSM 1900

Frequency: 1880 MHz; Duty Cycle: 1:1.99986; Room Ambient Temperature: 23.0°C; Liquid Temperature: 22.0°C
 Medium parameters used: $f = 1880$ MHz; $\sigma = 1.493$ S/m; $\epsilon_r = 53.857$; $\rho = 1000$ kg/m³

DASY5 Configuration:

- Area Scan Setting: Find Secondary Maximum Within: 2.0 dB and with a peak SAR value greater than 0.0012W/kg
- Electronics: DAE4 Sn1447; Calibrated: 2016-09-19
- Probe: EX3DV4 - SN7376; ConvF(8.07, 8.07, 8.07); Calibrated: 2016-08-30;
- Sensor-Surface: 2.5mm (Mechanical Surface Detection)
- Phantom: ELI V6.0 (20deg); Type: QD OVA 003 AA; Serial: 2013

Front/GPRS 4 slots_ch 661 15mm/Area Scan (8x13x1): Measurement grid: dx=15mm, dy=15mm
 Maximum value of SAR (measured) = 0.286 W/kg

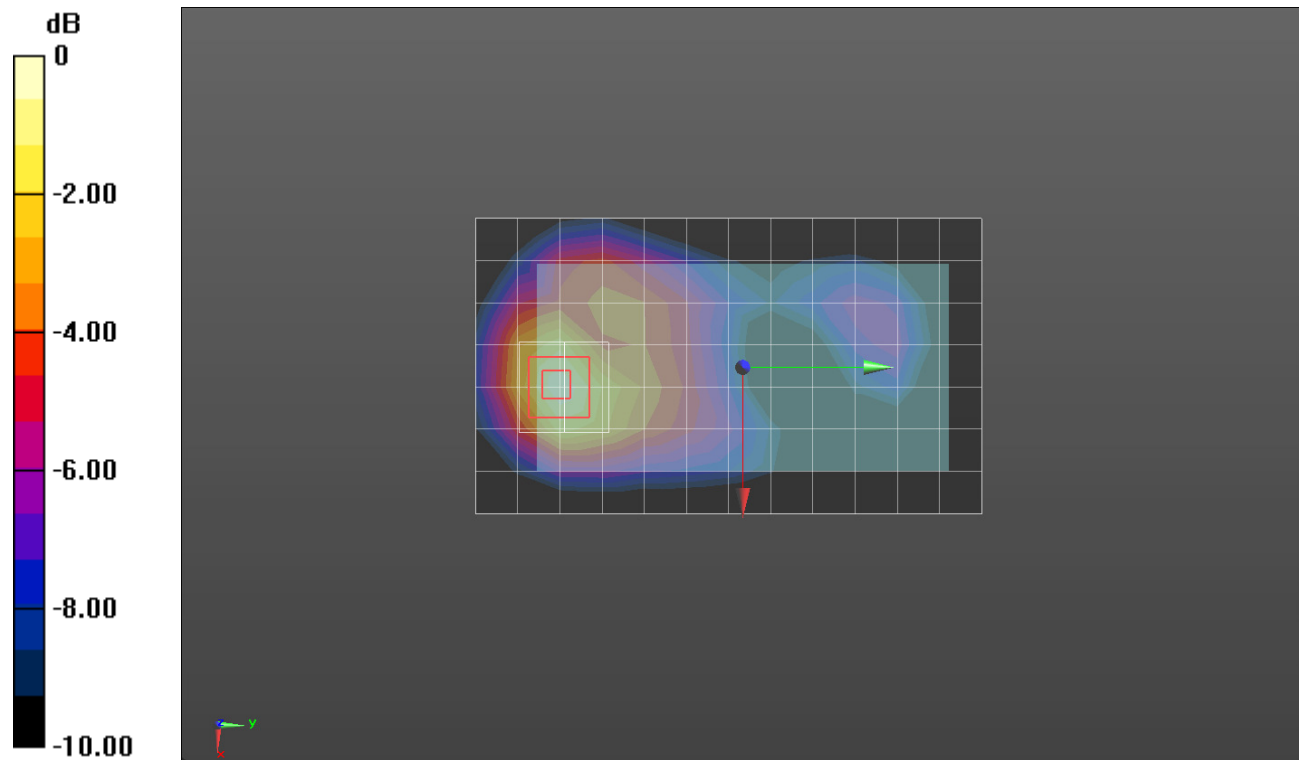
Front/GPRS 4 slots_ch 661 15mm/Zoom Scan (5x5x7)/Cube 0: Measurement grid: dx=8mm, dy=8mm, dz=5mm

Reference Value = 13.97 V/m; Power Drift = 0.06 dB

Peak SAR (extrapolated) = 0.366 W/kg

SAR(1 g) = 0.228 W/kg; SAR(10 g) = 0.134 W/kg

Maximum value of SAR (measured) = 0.280 W/kg



0 dB = 0.280 W/kg = -5.53 dBW/kg

GSM 1900

Frequency: 1880 MHz; Duty Cycle: 1:1.99986; Room Ambient Temperature: 23.0°C; Liquid Temperature: 22.0°C
 Medium parameters used: $f = 1880$ MHz; $\sigma = 1.435$ S/m; $\epsilon_r = 39.102$; $\rho = 1000$ kg/m³

DASY5 Configuration:

- Area Scan Setting: Find Secondary Maximum Within: 2.0 dB and with a peak SAR value greater than 0.0012W/kg
- Electronics: DAE4 Sn1494; Calibrated: 2016-07-18
- Probe: EX3DV4 - SN7314; ConvF(8.25, 8.25, 8.25); Calibrated: 2016-09-27;
- Sensor-Surface: 2.5mm (Mechanical Surface Detection)
- Phantom: SAM Phantom CRP v5.0(Middle); Type: QD000P40CD; Serial: TP:1854

LHS/Touch_GPRS 4 slots_ch 661/Area Scan (7x12x1): Measurement grid: dx=15mm, dy=15mm
 Maximum value of SAR (measured) = 0.250 W/kg

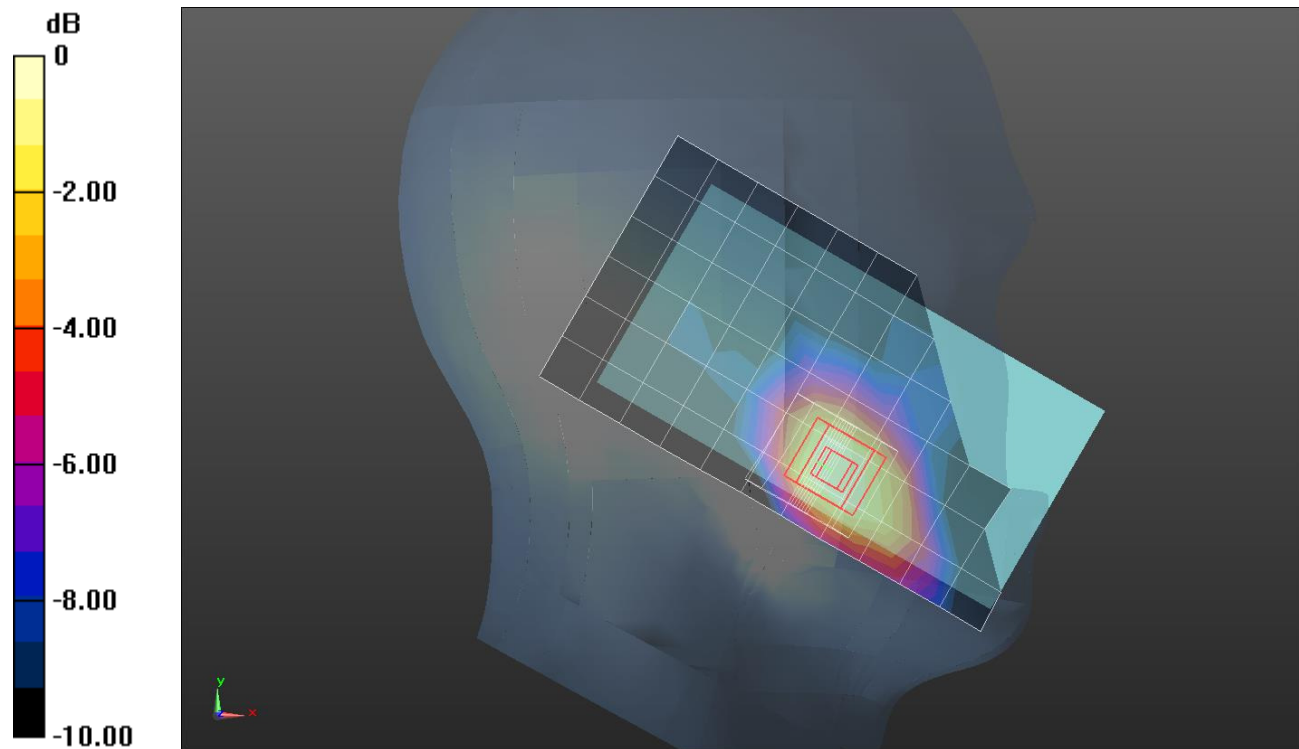
LHS/Touch_GPRS 4 slots_ch 661/Zoom Scan (5x5x7)/Cube 0: Measurement grid: dx=8mm, dy=8mm, dz=5mm

Reference Value = 14.53 V/m; Power Drift = -0.05 dB

Peak SAR (extrapolated) = 0.372 W/kg

SAR(1 g) = 0.233 W/kg; SAR(10 g) = 0.139 W/kg

Maximum value of SAR (measured) = 0.294 W/kg



0 dB = 0.294 W/kg = -5.32 dBW/kg

GSM 1900

Frequency: 1880 MHz; Duty Cycle: 1:1.99986; Room Ambient Temperature: 23.0°C; Liquid Temperature: 22.0°C
 Medium parameters used: $f = 1880$ MHz; $\sigma = 1.524$ S/m; $\epsilon_r = 51.407$; $\rho = 1000$ kg/m³

DASY5 Configuration:

- Area Scan Setting: Find Secondary Maximum Within: 2.0 dB and with a peak SAR value greater than 0.0012W/kg
- Electronics: DAE4 Sn1494; Calibrated: 2016-07-18
- Probe: EX3DV4 - SN7314; ConvF(7.96, 7.96, 7.96); Calibrated: 2016-09-27;
- Sensor-Surface: 2.5mm (Mechanical Surface Detection)
- Phantom: ELI v6.0; Type: QDOVA003AA; Serial: TP:xxxx

Front/GPRS 4 slots_ch 661 10mm/Area Scan (8x13x1): Measurement grid: dx=15mm, dy=15mm
 Maximum value of SAR (measured) = 0.470 W/kg

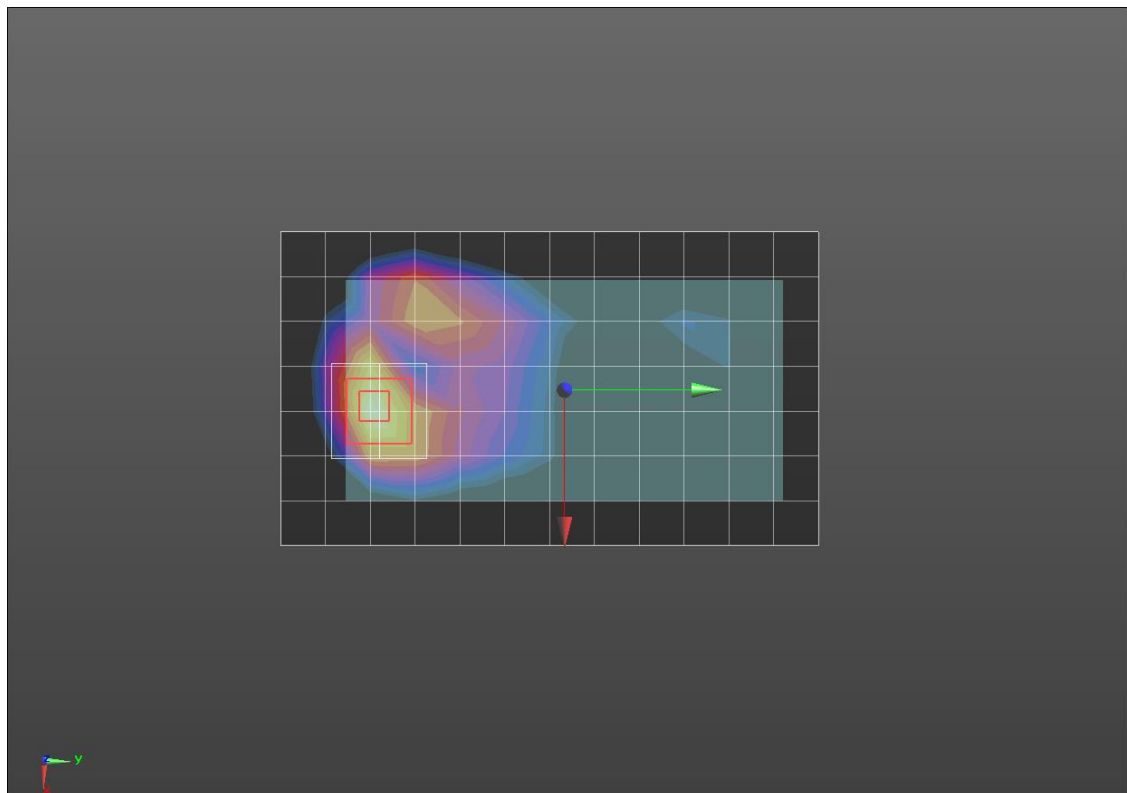
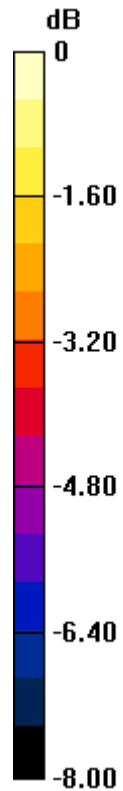
Front/GPRS 4 slots_ch 661 10mm/Zoom Scan (5x5x7)/Cube 0: Measurement grid: dx=8mm, dy=8mm, dz=5mm

Reference Value = 17.75 V/m; Power Drift = 0.09 dB

Peak SAR (extrapolated) = 0.619 W/kg

SAR(1 g) = 0.370 W/kg; SAR(10 g) = 0.204 W/kg

Maximum value of SAR (measured) = 0.480 W/kg



0 dB = 0.480 W/kg = -3.19 dBW/kg

WCDMA Band II

Frequency: 1880 MHz; Duty Cycle: 1:1; Room Ambient Temperature: 23.0°C; Liquid Temperature: 22.0°C
Medium parameters used: $f = 1880$ MHz; $\sigma = 1.39$ S/m; $\epsilon_r = 40.124$; $\rho = 1000$ kg/m³

DASY5 Configuration:

- Area Scan Setting: Find Secondary Maximum Within: 2.0 dB and with a peak SAR value greater than 0.0012W/kg
- Electronics: DAE4 Sn1494; Calibrated: 2016-07-18
- Probe: EX3DV4 - SN7314; ConvF(8.25, 8.25, 8.25); Calibrated: 2016-09-27;
- Sensor-Surface: 2.5mm (Mechanical Surface Detection)
- Phantom: SAM Phantom CRP v5.0(Middle); Type: QD000P40CD; Serial: TP:1854

LHS/Touch_Rel.99 ch 9400/Area Scan (7x12x1): Measurement grid: dx=15mm, dy=15mm

Maximum value of SAR (measured) = 0.454 W/kg

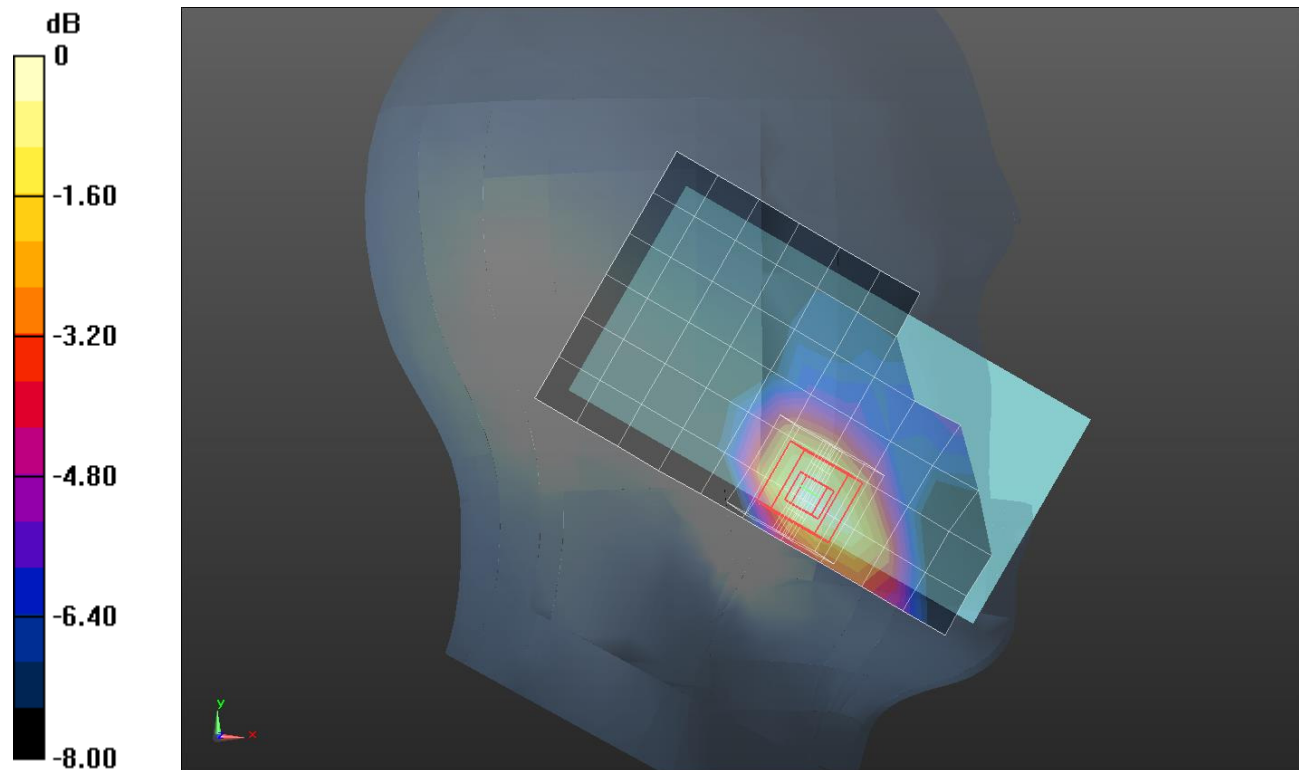
LHS/Touch_Rel.99 ch 9400/Zoom Scan (5x5x7)/Cube 0: Measurement grid: dx=8mm, dy=8mm, dz=5mm

Reference Value = 18.44 V/m; Power Drift = 0.02 dB

Peak SAR (extrapolated) = 0.579 W/kg

SAR(1 g) = 0.365 W/kg; SAR(10 g) = 0.219 W/kg

Maximum value of SAR (measured) = 0.456 W/kg



0 dB = 0.456 W/kg = -3.41 dBW/kg

W-CDMA Band II

Frequency: 1880 MHz; Duty Cycle: 1:1; Room Ambient Temperature: 23.0°C; Liquid Temperature: 22.0°C
 Medium parameters used: $f = 1880 \text{ MHz}$; $\sigma = 1.493 \text{ S/m}$; $\epsilon_r = 53.857$; $\rho = 1000 \text{ kg/m}^3$

DASY5 Configuration:

- Area Scan Setting: Find Secondary Maximum Within: 2.0 dB and with a peak SAR value greater than 0.0012W/kg
- Electronics: DAE4 Sn1447; Calibrated: 2016-09-19
- Probe: EX3DV4 - SN7376; ConvF(8.07, 8.07, 8.07); Calibrated: 2016-08-30;
- Sensor-Surface: 2.5mm (Mechanical Surface Detection)
- Phantom: ELI V6.0 (20deg); Type: QD OVA 003 AA; Serial: 2013

Front/RMC_Rel.99_ch 9400 15mm/Area Scan (7x13x1): Measurement grid: dx=15mm, dy=15mm
 Maximum value of SAR (measured) = 0.536 W/kg

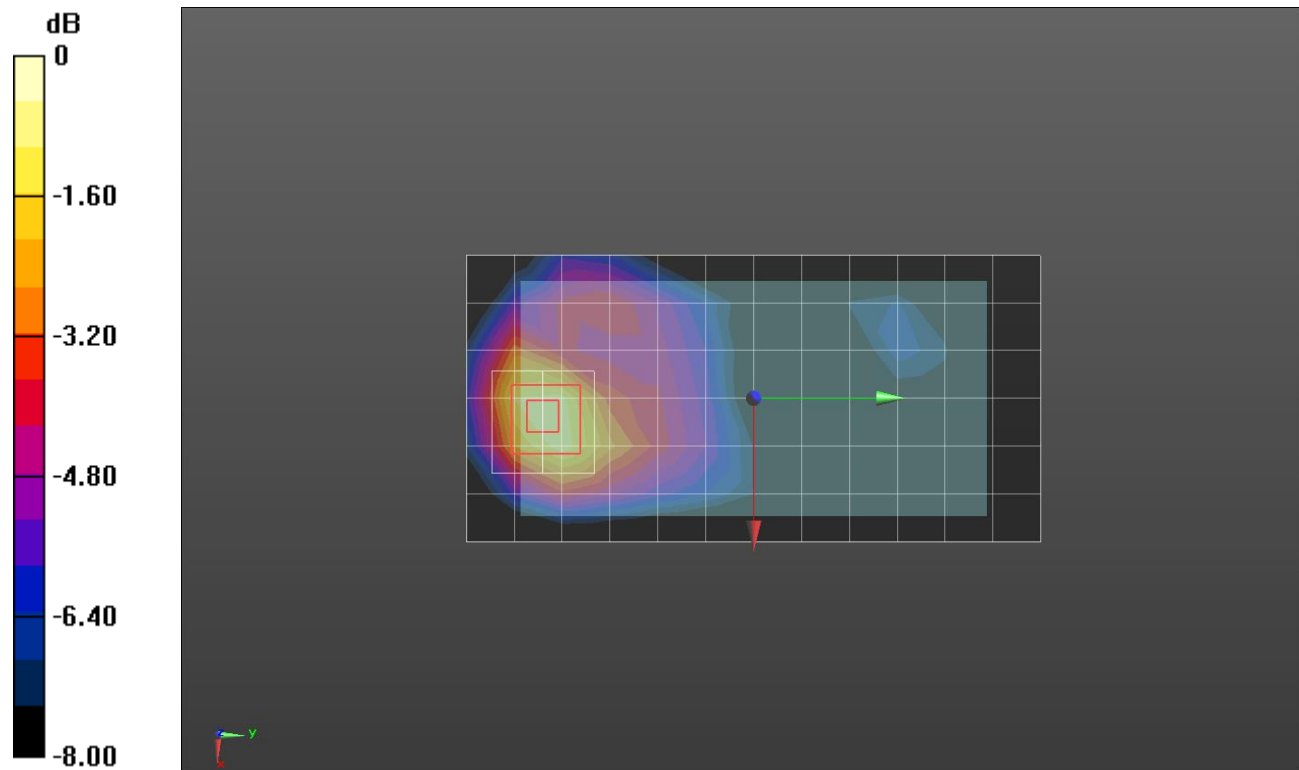
Front/RMC_Rel.99_ch 9400 15mm/Zoom Scan (5x5x7)/Cube 0: Measurement grid: dx=8mm, dy=8mm, dz=5mm

Reference Value = 19.04 V/m; Power Drift = 0.10 dB

Peak SAR (extrapolated) = 0.793 W/kg

SAR(1 g) = 0.499 W/kg; SAR(10 g) = 0.297 W/kg

Maximum value of SAR (measured) = 0.625 W/kg



0 dB = 0.625 W/kg = -2.04 dBW/kg

W-CDMA Band II

Frequency: 1880 MHz; Duty Cycle: 1:1; Room Ambient Temperature: 23.0°C; Liquid Temperature: 22.0°C
 Medium parameters used: $f = 1880 \text{ MHz}$; $\sigma = 1.493 \text{ S/m}$; $\epsilon_r = 53.857$; $\rho = 1000 \text{ kg/m}^3$

DASY5 Configuration:

- Area Scan Setting: Find Secondary Maximum Within: 2.0 dB and with a peak SAR value greater than 0.0012W/kg
- Electronics: DAE4 Sn1447; Calibrated: 2016-09-19
- Probe: EX3DV4 - SN7376; ConvF(8.07, 8.07, 8.07); Calibrated: 2016-08-30;
- Sensor-Surface: 2.5mm (Mechanical Surface Detection)
- Phantom: ELI V6.0 (20deg); Type: QD OVA 003 AA; Serial: 2013

Front/RMC_Rel.99_ch 9400 2/Area Scan (7x12x1): Measurement grid: dx=15mm, dy=15mm

Maximum value of SAR (measured) = 0.644 W/kg

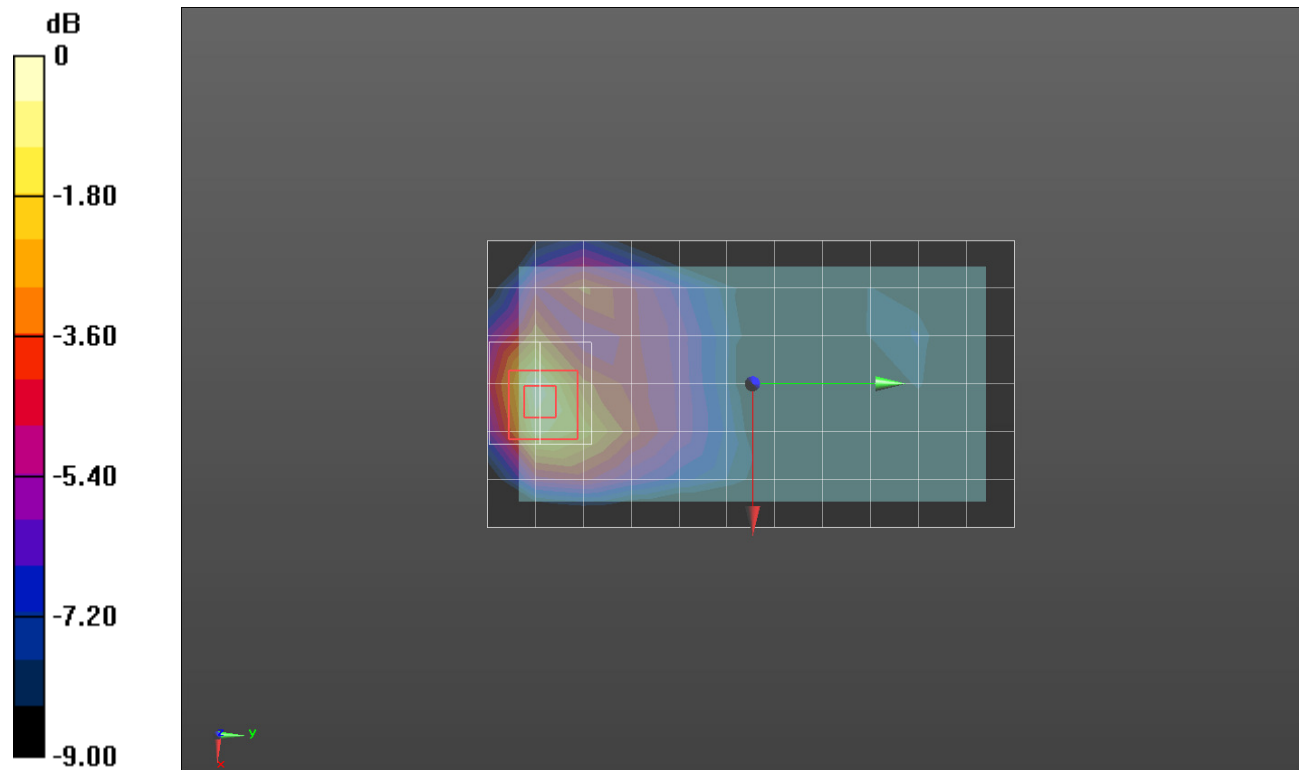
Front/RMC_Rel.99_ch 9400 2/Zoom Scan (5x5x7)/Cube 0: Measurement grid: dx=8mm, dy=8mm, dz=5mm

Reference Value = 20.99 V/m; Power Drift = -0.02 dB

Peak SAR (extrapolated) = 0.862 W/kg

SAR(1 g) = 0.519 W/kg; SAR(10 g) = 0.294 W/kg

Maximum value of SAR (measured) = 0.670 W/kg



0 dB = 0.670 W/kg = -1.74 dBW/kg

WCDMA Band V

Frequency: 836.6 MHz; Duty Cycle: 1:1; Room Ambient Temperature: 23.0°C; Liquid Temperature: 22.0°C
 Medium parameters used (interpolated): $f = 836.6$ MHz; $\sigma = 0.964$ S/m; $\epsilon_r = 54.554$; $\rho = 1000$ kg/m³

DASY5 Configuration:

- Area Scan Setting: Find Secondary Maximum Within: 2.0 dB and with a peak SAR value greater than 0.0012W/kg
- Electronics: DAE4 Sn1447; Calibrated: 2016-09-19
- Probe: EX3DV4 - SN7376; ConvF(10.12, 10.12, 10.12); Calibrated: 2016-08-30;
- Sensor-Surface: 2.5mm (Mechanical Surface Detection)
- Phantom: ELI V6.0 (20deg); Type: QD OVA 003 AA; Serial: 2013

Rear/RMC_Rel.99_ch4183 15mm/Area Scan (7x12x1): Measurement grid: dx=15mm, dy=15mm
 Maximum value of SAR (measured) = 0.352 W/kg

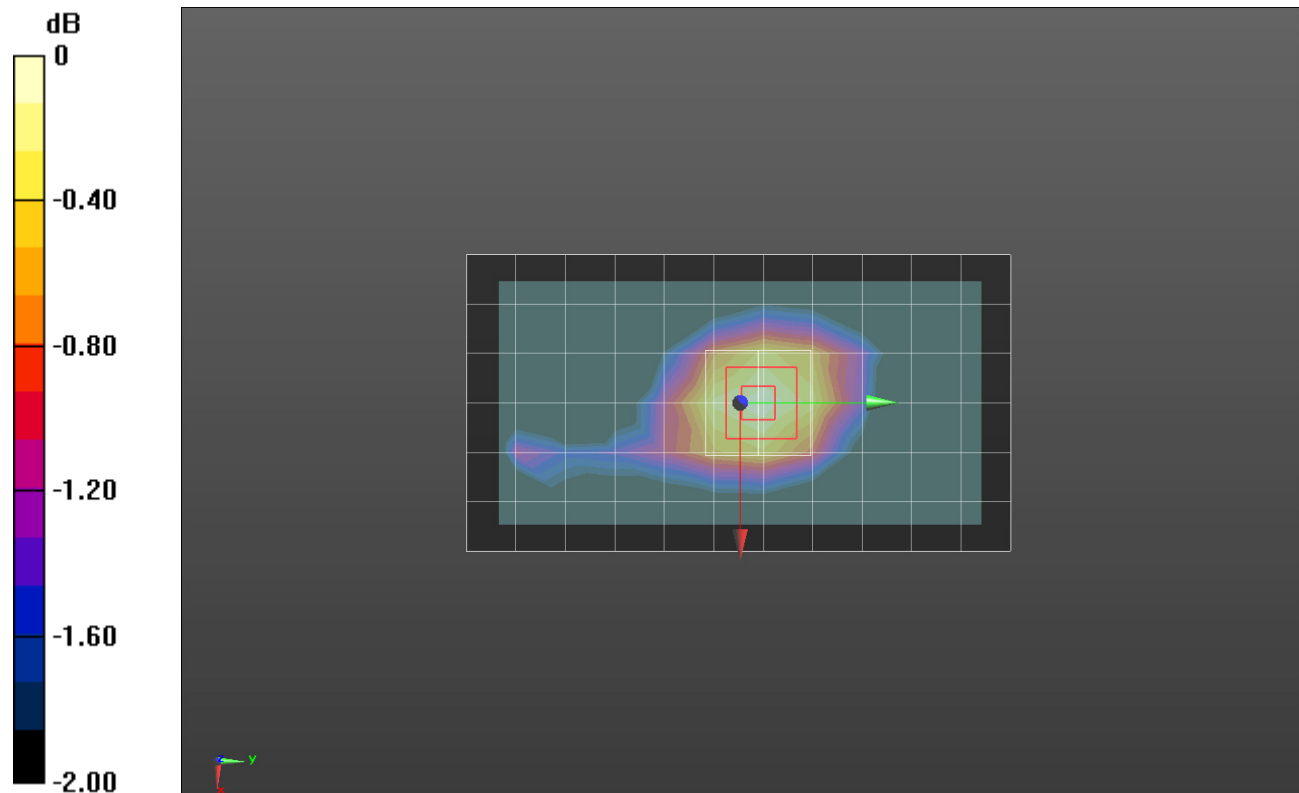
Rear/RMC_Rel.99_ch4183 15mm/Zoom Scan (5x5x7)/Cube 0: Measurement grid: dx=8mm, dy=8mm, dz=5mm

Reference Value = 19.40 V/m; Power Drift = -0.01 dB

Peak SAR (extrapolated) = 0.396 W/kg

SAR(1 g) = 0.314 W/kg; SAR(10 g) = 0.239 W/kg

Maximum value of SAR (measured) = 0.353 W/kg



0 dB = 0.353 W/kg = -4.52 dBW/kg

WCDMA Band V

Frequency: 836.6 MHz; Duty Cycle: 1:1; Room Ambient Temperature: 23.0°C; Liquid Temperature: 22.0°C
 Medium parameters used (interpolated): $f = 836.6$ MHz; $\sigma = 0.964$ S/m; $\epsilon_r = 54.554$; $\rho = 1000$ kg/m³

DASY5 Configuration:

- Area Scan Setting: Find Secondary Maximum Within: 2.0 dB and with a peak SAR value greater than 0.0012W/kg
- Electronics: DAE4 Sn1447; Calibrated: 2016-09-19
- Probe: EX3DV4 - SN7376; ConvF(10.12, 10.12, 10.12); Calibrated: 2016-08-30;
- Sensor-Surface: 2.5mm (Mechanical Surface Detection)
- Phantom: ELI V6.0 (20deg); Type: QD OVA 003 AA; Serial: 2013

Rear/RMC_Rel.99_ch4183/Area Scan (7x12x1): Measurement grid: dx=15mm, dy=15mm

Maximum value of SAR (measured) = 0.578 W/kg

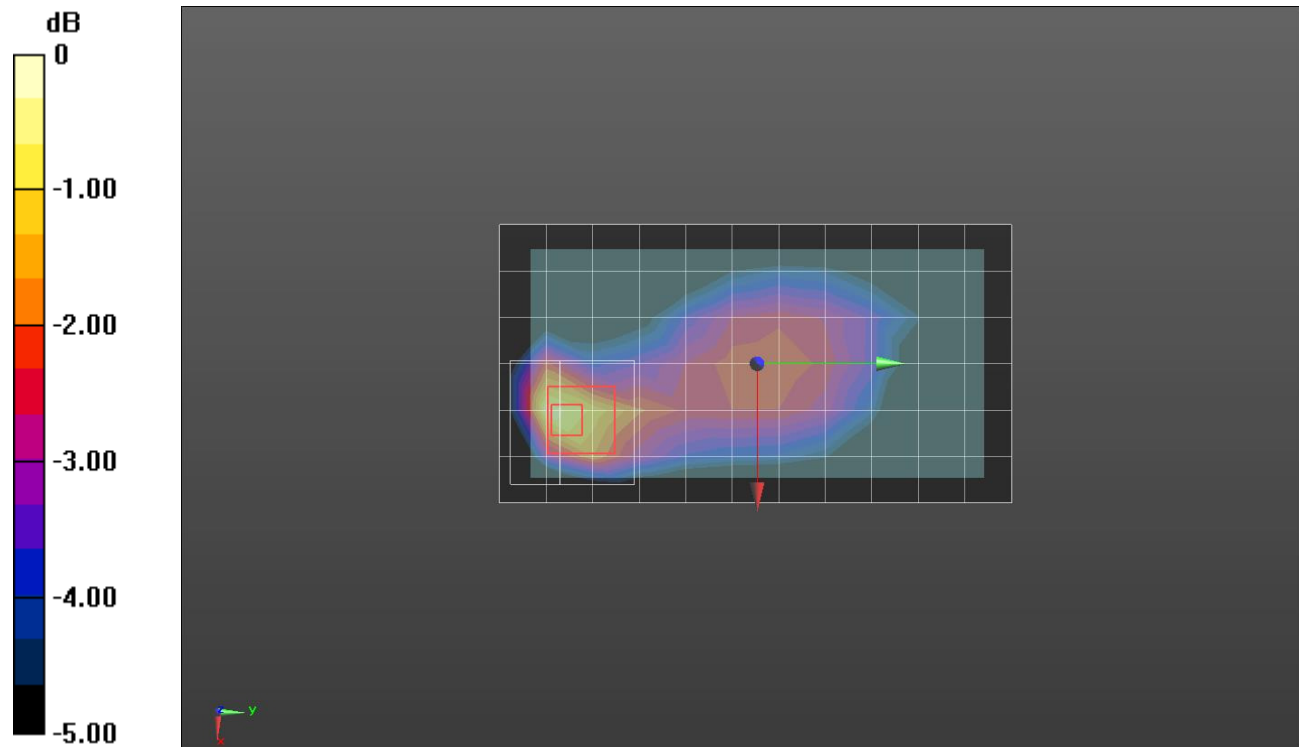
Rear/RMC_Rel.99_ch4183/Zoom Scan (6x6x7)/Cube 0: Measurement grid: dx=8mm, dy=8mm, dz=5mm

Reference Value = 24.81 V/m; Power Drift = -0.07 dB

Peak SAR (extrapolated) = 0.841 W/kg

SAR(1 g) = 0.497 W/kg; SAR(10 g) = 0.297 W/kg

Maximum value of SAR (measured) = 0.632 W/kg



0 dB = 0.632 W/kg = -1.99 dBW/kg

WCDMA Band V

Frequency: 836.6 MHz; Duty Cycle: 1:1; Room Ambient Temperature: 23.0°C; Liquid Temperature: 22.0°C
 Medium parameters used (interpolated): $f = 836.6 \text{ MHz}$; $\sigma = 0.921 \text{ S/m}$; $\epsilon_r = 42.981$; $\rho = 1000 \text{ kg/m}^3$

DASY5 Configuration:

- Area Scan Setting: Find Secondary Maximum Within: 2.0 dB and with a peak SAR value greater than 0.0012W/kg
- Electronics: DAE4 Sn1494; Calibrated: 2016-07-18
- Probe: EX3DV4 - SN7314; ConvF(10.18, 10.18, 10.18); Calibrated: 2016-09-27;
- Sensor-Surface: 2.5mm (Mechanical Surface Detection)
- Phantom: SAM Phantom CRP v5.0(Right); Type: QD000P40CD; Serial: TP:1855

LHS/Touch_Rel.99 ch 4183/Area Scan (7x12x1): Measurement grid: dx=15mm, dy=15mm

Maximum value of SAR (measured) = 0.445 W/kg

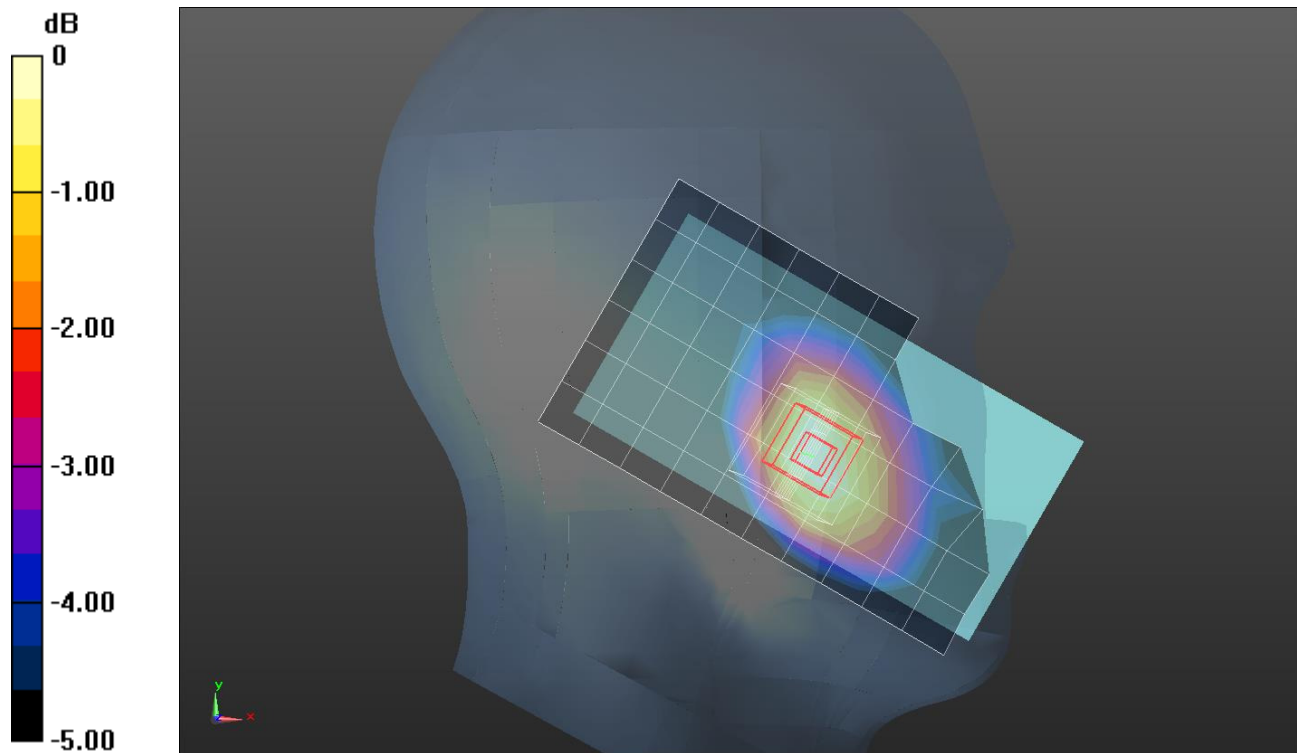
LHS/Touch_Rel.99 ch 4183/Zoom Scan (5x5x7)/Cube 0: Measurement grid: dx=8mm, dy=8mm, dz=5mm

Reference Value = 22.31 V/m; Power Drift = 0.02 dB

Peak SAR (extrapolated) = 0.505 W/kg

SAR(1 g) = 0.390 W/kg; SAR(10 g) = 0.295 W/kg

Maximum value of SAR (measured) = 0.447 W/kg



0 dB = 0.447 W/kg = -3.50 dBW/kg

LTE Band 5

Frequency: 836.5 MHz; Duty Cycle: 1:1; Room Ambient Temperature: 23.0°C; Liquid Temperature: 22.0°C
 Medium parameters used (interpolated): $f = 836.5$ MHz; $\sigma = 0.902$ S/m; $\epsilon_r = 41.009$; $\rho = 1000$ kg/m³

DASY5 Configuration:

- Area Scan Setting: Find Secondary Maximum Within: 2.0 dB and with a peak SAR value greater than 0.0012W/kg
- Electronics: DAE4 Sn1468; Calibrated: 2016-09-08
- Probe: EX3DV4 - SN7330; ConvF(9.93, 9.93, 9.93); Calibrated: 2016-02-24;
- Sensor-Surface: 2.5mm (Mechanical Surface Detection)
- Phantom: SAM (20deg probe tilt) with CRP v5.0(Right); Type: QD000P40CD; Serial: TP:1846

LHS/Touch_QPSK RB 1/0 ch20525/Area Scan (7x12x1): Measurement grid: dx=15mm, dy=15mm
 Maximum value of SAR (measured) = 0.341 W/kg

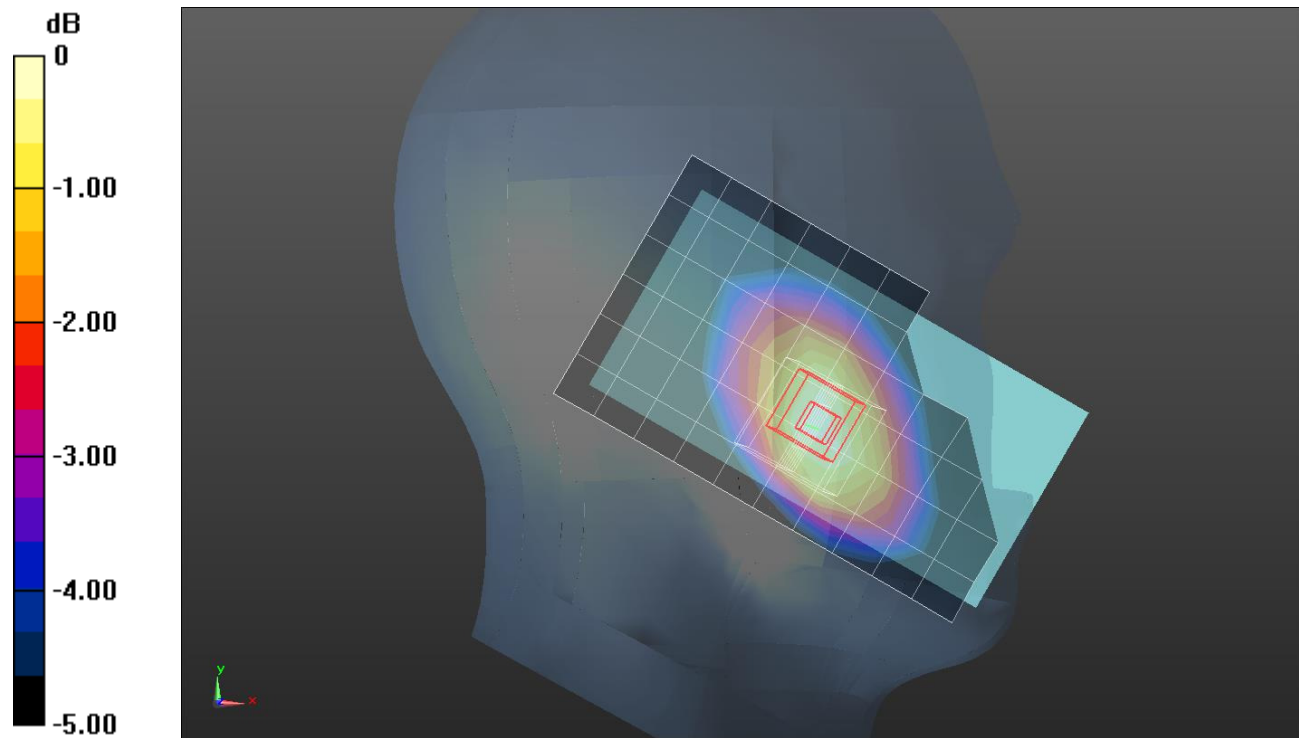
LHS/Touch_QPSK RB 1/0 ch20525/Zoom Scan (5x5x7)/Cube 0: Measurement grid: dx=8mm, dy=8mm, dz=5mm

Reference Value = 19.65 V/m; Power Drift = 0.02 dB

Peak SAR (extrapolated) = 0.411 W/kg

SAR(1 g) = 0.322 W/kg; SAR(10 g) = 0.243 W/kg

Maximum value of SAR (measured) = 0.364 W/kg



0 dB = 0.364 W/kg = -4.39 dBW/kg

LTE Band 5

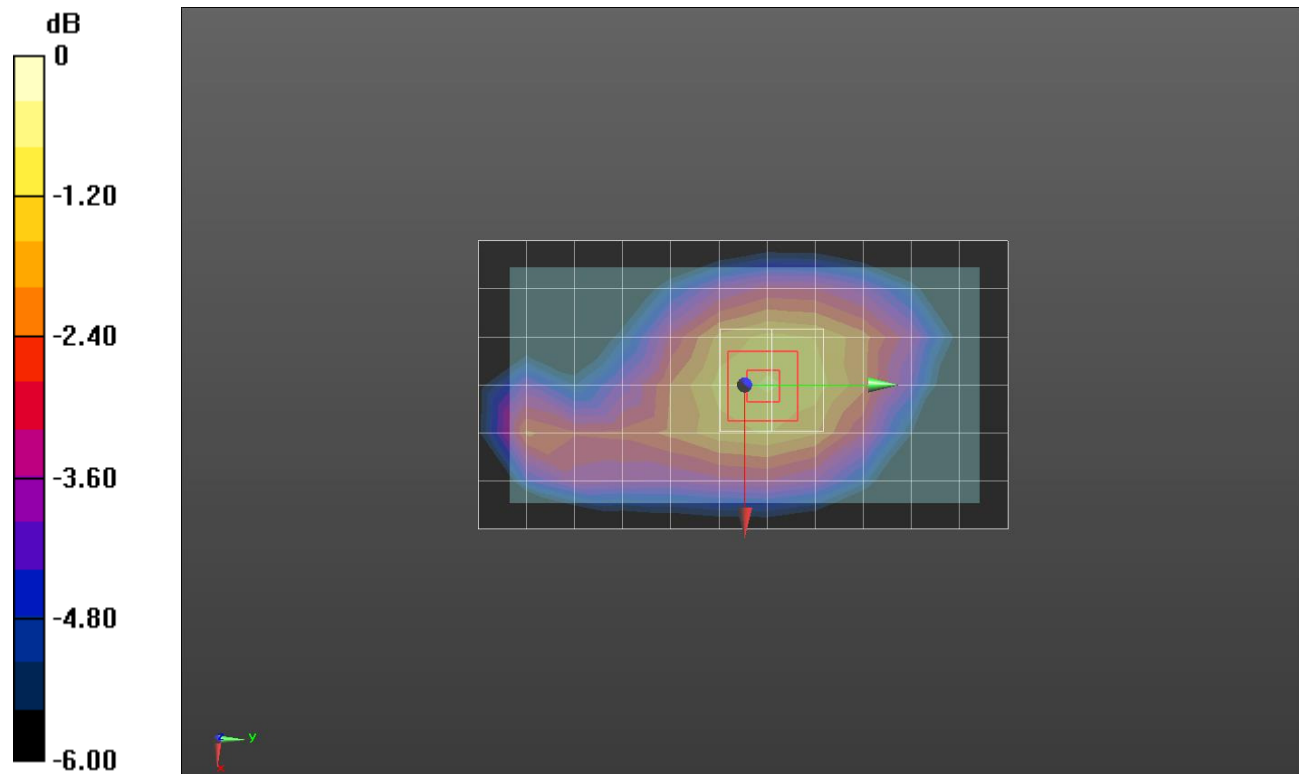
Frequency: 836.5 MHz; Duty Cycle: 1:1; Room Ambient Temperature: 23.0°C; Liquid Temperature: 22.0°C
 Medium parameters used (interpolated): $f = 836.5$ MHz; $\sigma = 0.964$ S/m; $\epsilon_r = 54.555$; $\rho = 1000$ kg/m³

DASY5 Configuration:

- Area Scan Setting: Find Secondary Maximum Within: 2.0 dB and with a peak SAR value greater than 0.0012W/kg
- Electronics: DAE4 Sn1447; Calibrated: 2016-09-19
- Probe: EX3DV4 - SN7376; ConvF(10.12, 10.12, 10.12); Calibrated: 2016-08-30;
- Sensor-Surface: 2.5mm (Mechanical Surface Detection)
- Phantom: ELI V6.0 (20deg); Type: QD OVA 003 AA; Serial: 2013

Rear/QPSK RB 1/0 ch20525 15mm/Area Scan (7x12x1): Measurement grid: dx=15mm, dy=15mm
 Maximum value of SAR (measured) = 0.353 W/kg

Rear/QPSK RB 1/0 ch20525 15mm/Zoom Scan 2 (5x5x7)/Cube 0: Measurement grid: dx=8mm, dy=8mm, dz=5mm
 Reference Value = 22.08 V/m; Power Drift = -0.01 dB
 Peak SAR (extrapolated) = 0.511 W/kg
SAR(1 g) = 0.408 W/kg; SAR(10 g) = 0.310 W/kg
 Maximum value of SAR (measured) = 0.457 W/kg



0 dB = 0.457 W/kg = -3.40 dBW/kg

LTE Band 5

Frequency: 836.5 MHz; Duty Cycle: 1:1; Room Ambient Temperature: 23.0°C; Liquid Temperature: 22.0°C
 Medium parameters used (interpolated): $f = 836.5$ MHz; $\sigma = 0.964$ S/m; $\epsilon_r = 54.555$; $\rho = 1000$ kg/m³

DASY5 Configuration:

- Area Scan Setting: Find Secondary Maximum Within: 2.0 dB and with a peak SAR value greater than 0.0012W/kg
- Electronics: DAE4 Sn1447; Calibrated: 2016-09-19
- Probe: EX3DV4 - SN7376; ConvF(10.12, 10.12, 10.12); Calibrated: 2016-08-30;
- Sensor-Surface: 2.5mm (Mechanical Surface Detection)
- Phantom: ELI V6.0 (20deg); Type: QD OVA 003 AA; Serial: 2013

Rear/QPSK RB 1/0 ch20525/Area Scan (7x12x1): Measurement grid: dx=15mm, dy=15mm

Maximum value of SAR (measured) = 0.566 W/kg

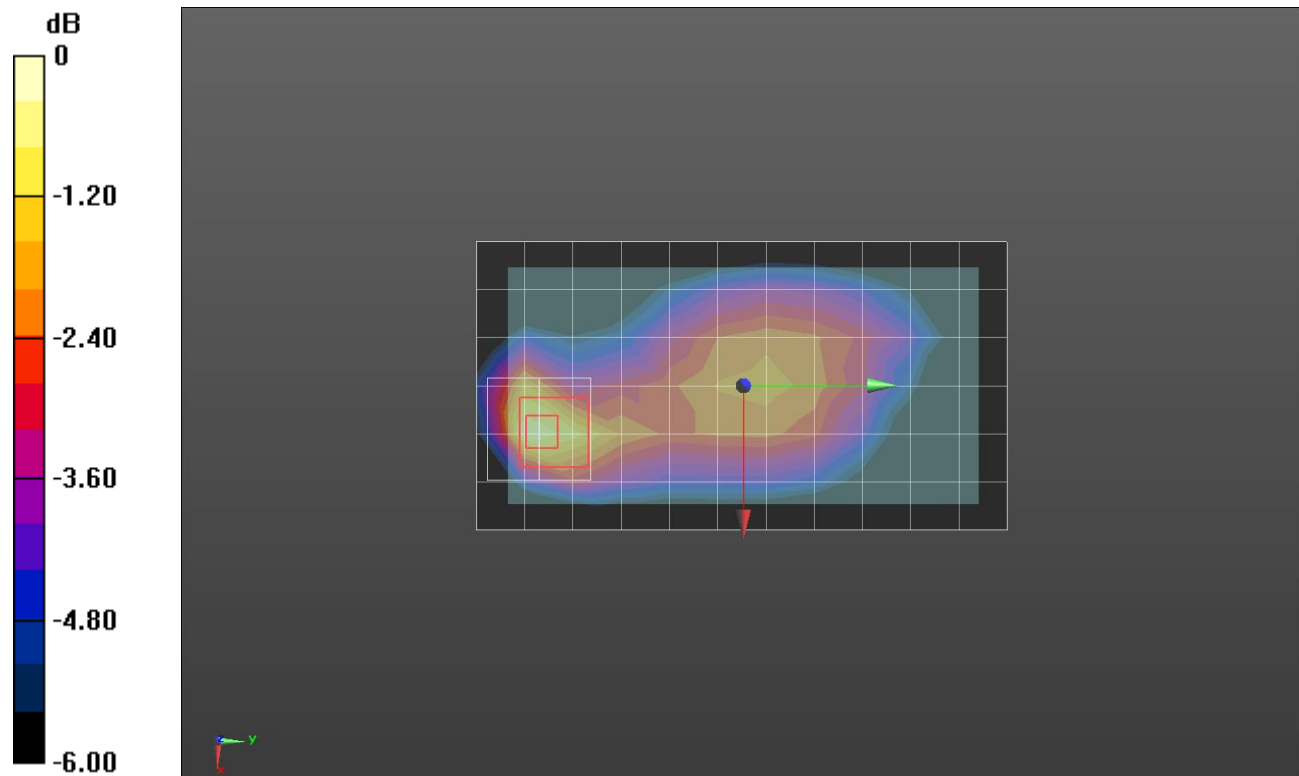
Rear/QPSK RB 1/0 ch20525/Zoom Scan (5x5x7)/Cube 0: Measurement grid: dx=8mm, dy=8mm, dz=5mm

Reference Value = 24.63 V/m; Power Drift = -0.04 dB

Peak SAR (extrapolated) = 0.799 W/kg

SAR(1 g) = 0.474 W/kg; SAR(10 g) = 0.282 W/kg

Maximum value of SAR (measured) = 0.618 W/kg



0 dB = 0.618 W/kg = -2.09 dBW/kg

Wi-Fi 2.4GHz

Frequency: 2437 MHz; Duty Cycle: 1:1; Room Ambient Temperature: 23.0°C; Liquid Temperature: 22.0°C
Medium parameters used (interpolated): $f = 2437$ MHz; $\sigma = 1.743$ S/m; $\epsilon_r = 39.396$; $\rho = 1000$ kg/m³

DASY5 Configuration:

- Area Scan Setting: Find Secondary Maximum Within: 2.0 dB and with a peak SAR value greater than 0.0012W/kg
- Electronics: DAE4 Sn1468; Calibrated: 2016-09-08
- Probe: EX3DV4 - SN7313; ConvF(7.36, 7.36, 7.36); Calibrated: 2017-01-30;
- Sensor-Surface: 2.5mm (Mechanical Surface Detection)
- Phantom: SAM (20deg probe tilt) with CRP v5.0(Middle); Type: QD000P40CD; Serial: TP:1847

RHS/Touch_802.11b_ch 6/Area Scan (9x15x1): Measurement grid: dx=12mm, dy=12mm

Maximum value of SAR (measured) = 0.492 W/kg

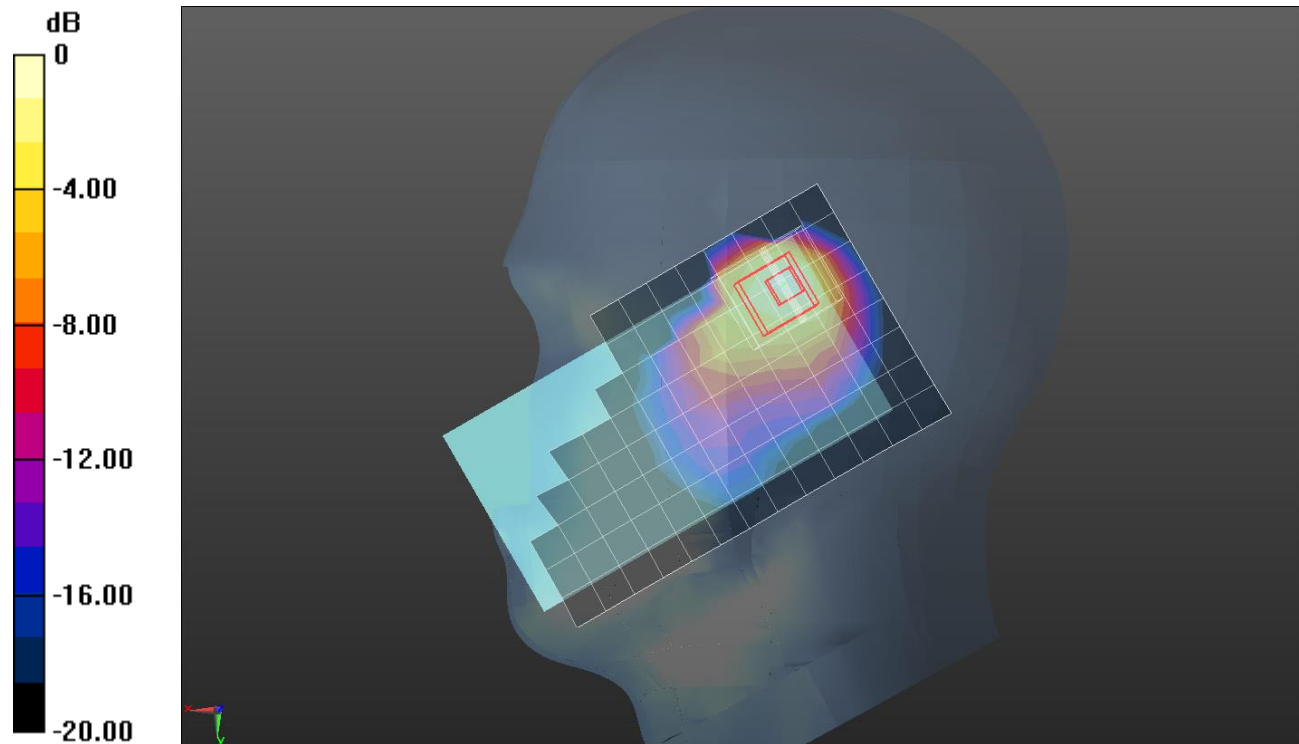
RHS/Touch_802.11b_ch 6/Zoom Scan (7x8x7)/Cube 0: Measurement grid: dx=5mm, dy=5mm, dz=5mm

Reference Value = 15.82 V/m; Power Drift = -0.01 dB

Peak SAR (extrapolated) = 0.813 W/kg

SAR(1 g) = 0.328 W/kg; SAR(10 g) = 0.152 W/kg

Maximum value of SAR (measured) = 0.473 W/kg



0 dB = 0.473 W/kg = -3.25 dBW/kg

Wi-Fi 2.4 GHz

Frequency: 2437 MHz; Duty Cycle: 1:1; Room Ambient Temperature: 23.0°C; Liquid Temperature: 22.0°C
 Medium parameters used (interpolated): $f = 2437$ MHz; $\sigma = 1.93$ S/m; $\epsilon_r = 52.231$; $\rho = 1000$ kg/m³

DASY5 Configuration:

- Area Scan Setting: Find Secondary Maximum Within: 2.0 dB and with a peak SAR value greater than 0.0012W/kg
- Electronics: DAE4 Sn1468; Calibrated: 2016-09-08
- Probe: EX3DV4 - SN7313; ConvF(7.45, 7.45, 7.45); Calibrated: 2017-01-30;
- Sensor-Surface: 2.5mm (Mechanical Surface Detection)
- Phantom: ELI v6.0; Type: QDOVA003AA; Serial: TP:2005

Front/802.11b_ch 6 15mm/Area Scan (9x15x1): Measurement grid: dx=12mm, dy=12mm

Maximum value of SAR (measured) = 0.0673 W/kg

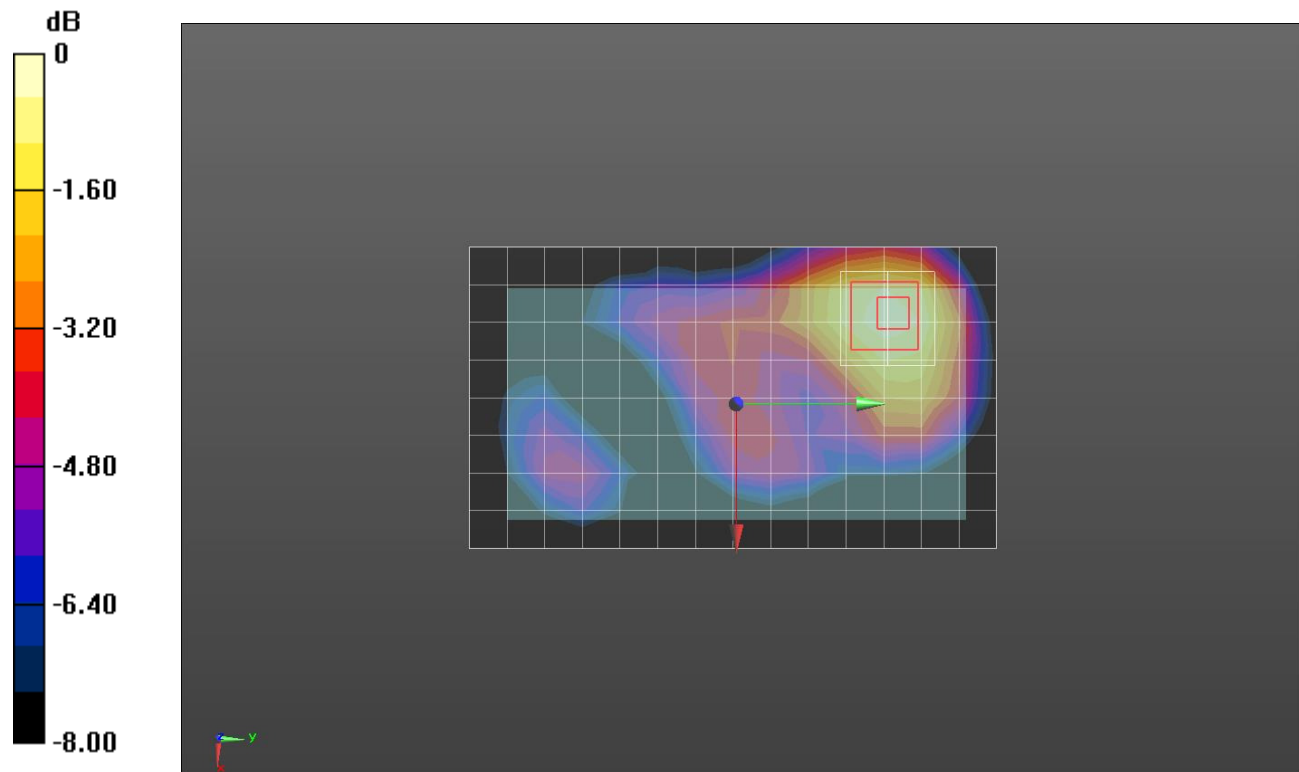
Front/802.11b_ch 6 15mm/Zoom Scan (7x7x7)/Cube 0: Measurement grid: dx=5mm, dy=5mm, dz=5mm

Reference Value = 6.020 V/m; Power Drift = 0.07 dB

Peak SAR (extrapolated) = 0.100 W/kg

SAR(1 g) = 0.052 W/kg; SAR(10 g) = 0.029 W/kg

Maximum value of SAR (measured) = 0.0694 W/kg



0 dB = 0.0694 W/kg = -11.59 dBW/kg

Wi-Fi 2.4 GHz

Frequency: 2437 MHz; Duty Cycle: 1:1; Room Ambient Temperature: 23.0°C; Liquid Temperature: 22.0°C
 Medium parameters used (interpolated): $f = 2437$ MHz; $\sigma = 1.93$ S/m; $\epsilon_r = 52.231$; $\rho = 1000$ kg/m³

DASY5 Configuration:

- Area Scan Setting: Find Secondary Maximum Within: 2.0 dB and with a peak SAR value greater than 0.0012W/kg
- Electronics: DAE4 Sn1468; Calibrated: 2016-09-08
- Probe: EX3DV4 - SN7313; ConvF(7.45, 7.45, 7.45); Calibrated: 2017-01-30;
- Sensor-Surface: 2.5mm (Mechanical Surface Detection)
- Phantom: ELI v6.0; Type: QDOVA003AA; Serial: TP:2005

Front/802.11b_ch 6/Area Scan (9x15x1): Measurement grid: dx=12mm, dy=12mm

Maximum value of SAR (measured) = 0.124 W/kg

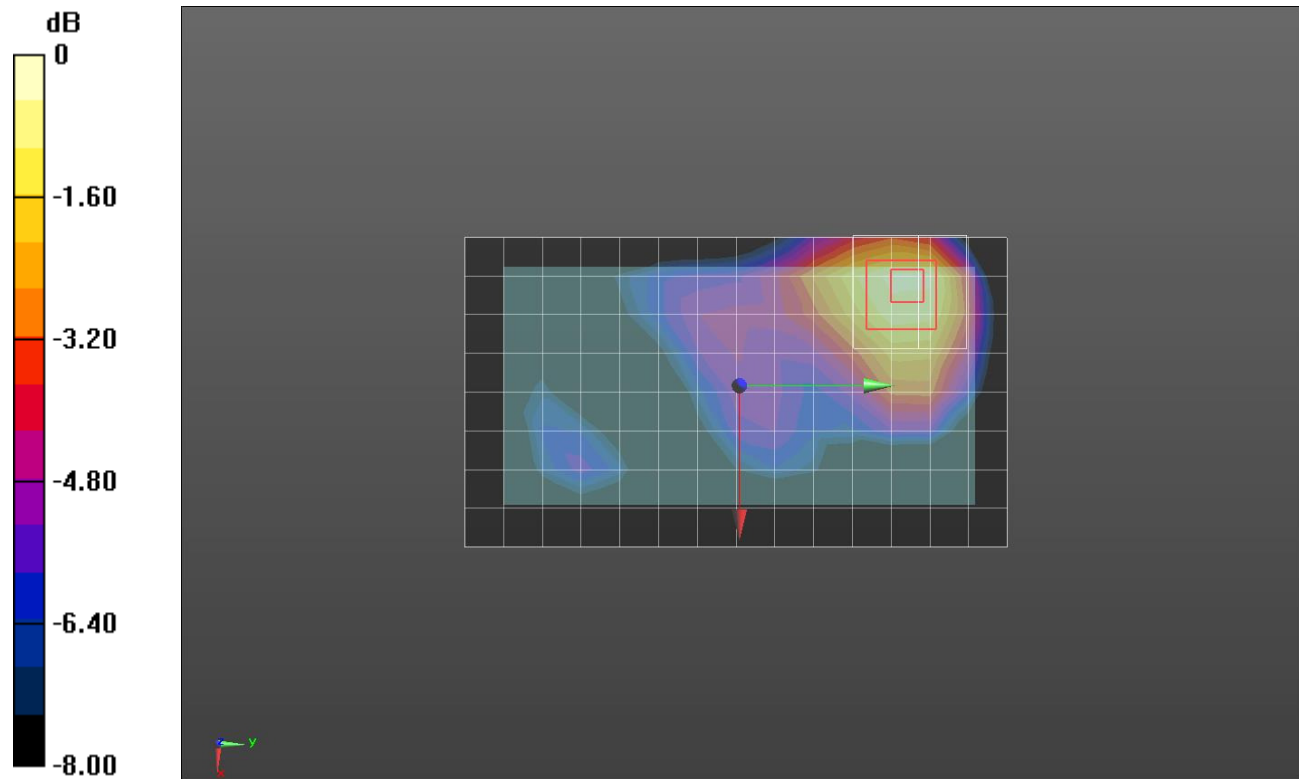
Front/802.11b_ch 6/Zoom Scan (8x8x7)/Cube 0: Measurement grid: dx=5mm, dy=5mm, dz=5mm

Reference Value = 8.089 V/m; Power Drift = 0.05 dB

Peak SAR (extrapolated) = 0.189 W/kg

SAR(1 g) = 0.100 W/kg; SAR(10 g) = 0.055 W/kg

Maximum value of SAR (measured) = 0.134 W/kg



0 dB = 0.134 W/kg = -8.73 dBW/kg

Wi-Fi 5.3 GHz

Frequency: 5300 MHz; Duty Cycle: 1:1; Room Ambient Temperature: 23.0°C; Liquid Temperature: 22.0°C
 Medium parameters used: $f = 5300 \text{ MHz}$; $\sigma = 4.677 \text{ S/m}$; $\epsilon_r = 36.627$; $\rho = 1000 \text{ kg/m}^3$

DASY5 Configuration:

- Area Scan Setting: Find Secondary Maximum Within: 2.0 dB and with a peak SAR value greater than 0.0012W/kg
- Electronics: DAE4 Sn1447; Calibrated: 2016-09-19
- Probe: EX3DV4 - SN7376; ConvF(5.22, 5.22, 5.22); Calibrated: 2016-08-30;
- Sensor-Surface: 1.4mm (Mechanical Surface Detection)
- Phantom: SAM (20deg probe tilt) with CRP v5.0_Back; Type: QD000P40CD; Serial: TP:1882

RHS/Touch_802.11a_ch 60/Area Scan (12x18x1): Measurement grid: dx=10mm, dy=10mm

Maximum value of SAR (measured) = 0.0434 W/kg

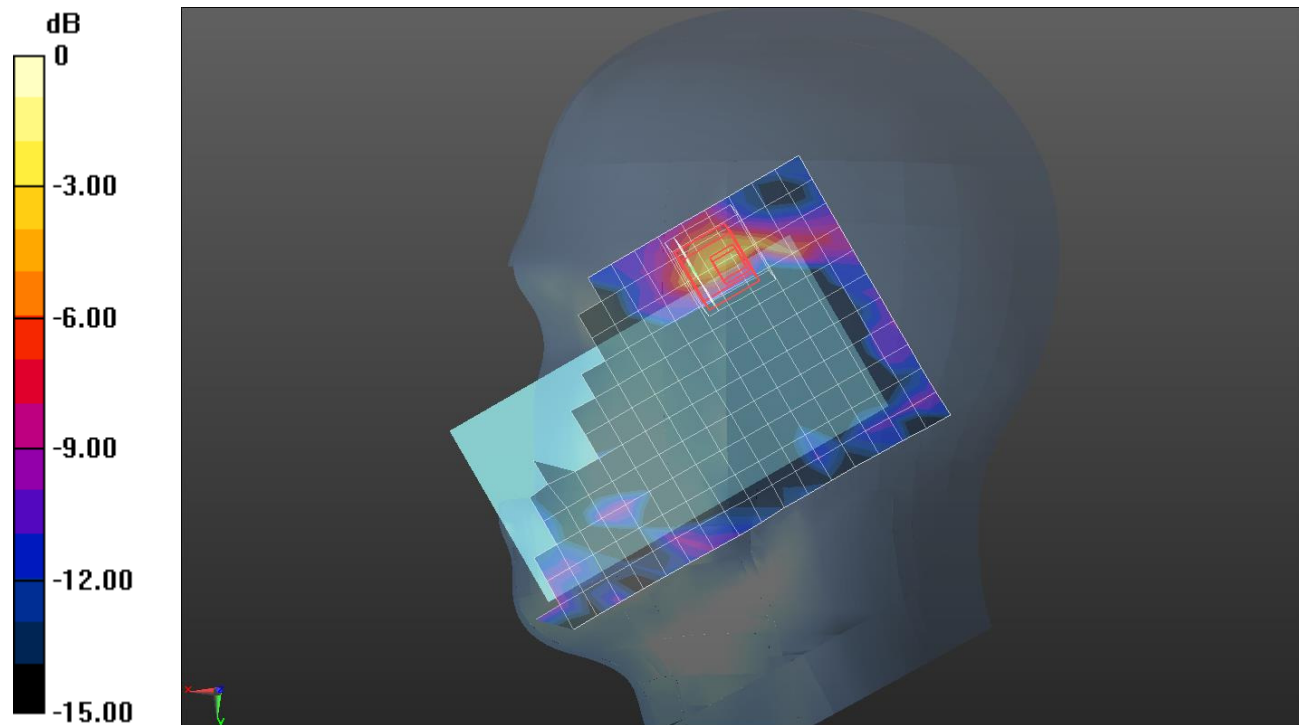
RHS/Touch_802.11a_ch 60/Zoom Scan (8x8x7)/Cube 0: Measurement grid: dx=4mm, dy=4mm, dz=1.4mm

Reference Value = 3.046 V/m; Power Drift = 0.07 dB

Peak SAR (extrapolated) = 0.152 W/kg

SAR(1 g) = 0.013 W/kg; SAR(10 g) = 0.00403 W/kg

Maximum value of SAR (measured) = 0.0794 W/kg



0 dB = 0.0794 W/kg = -11.00 dBW/kg

Wi-Fi 5.3 GHz

Frequency: 5300 MHz; Duty Cycle: 1:1; Room Ambient Temperature: 23.0°C; Liquid Temperature: 22.0°C
 Medium parameters used: $f = 5300 \text{ MHz}$; $\sigma = 5.483 \text{ S/m}$; $\epsilon_r = 48.032$; $\rho = 1000 \text{ kg/m}^3$

DASY5 Configuration:

- Area Scan Setting: Find Secondary Maximum Within: 2.0 dB and with a peak SAR value greater than 0.0012W/kg
- Electronics: DAE4 Sn1494; Calibrated: 2016-07-18
- Probe: EX3DV4 - SN7314; ConvF(4.46, 4.46, 4.46); Calibrated: 2016-09-27;
- Sensor-Surface: 1.4mm (Mechanical Surface Detection)
- Phantom: Triple Flat Phantom 5.1C; Type: QD 000 P51 CA; Serial: 1166

Rear 15mm/802.11a_ch 60/Area Scan (11x18x1): Measurement grid: dx=10mm, dy=10mm

Maximum value of SAR (measured) = 0.192 W/kg

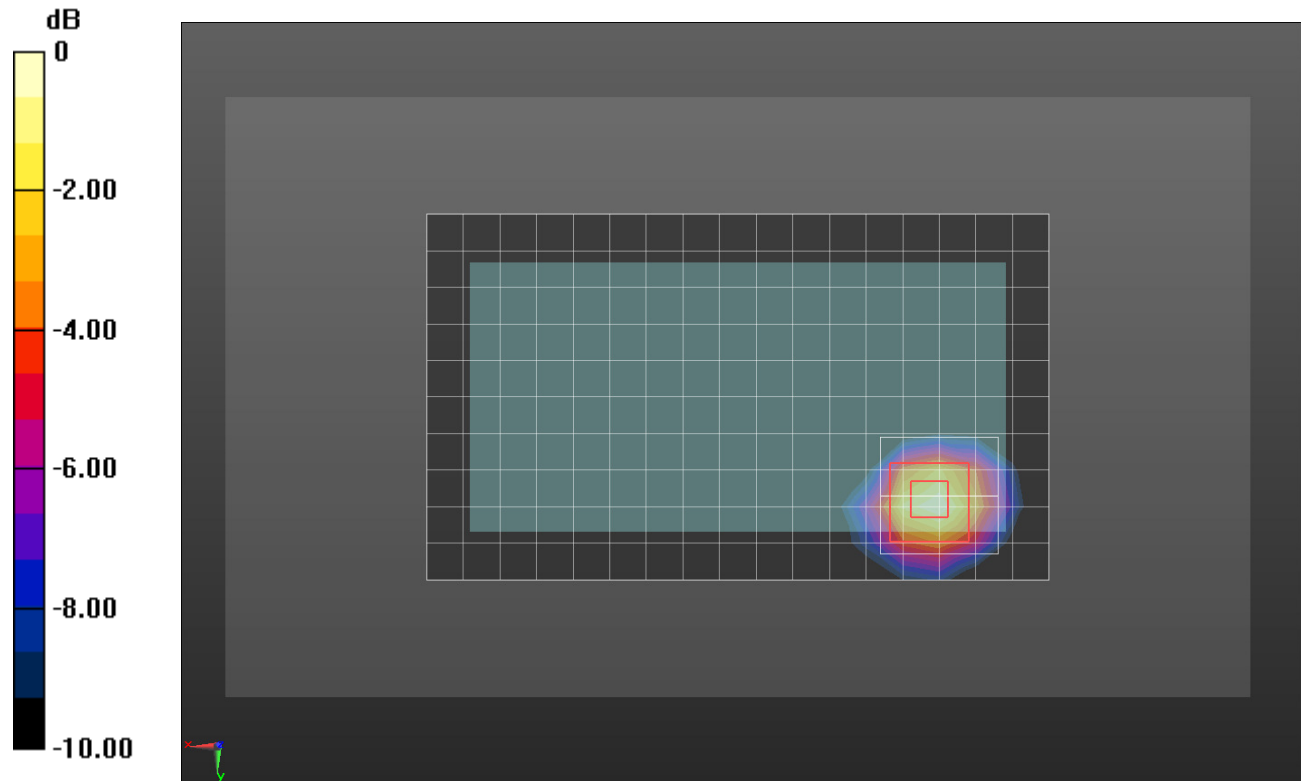
Rear 15mm/802.11a_ch 60/Zoom Scan (9x9x7)/Cube 0: Measurement grid: dx=4mm, dy=4mm, dz=1.4mm

Reference Value = 6.517 V/m; Power Drift = -0.07 dB

Peak SAR (extrapolated) = 0.294 W/kg

SAR(1 g) = 0.075 W/kg; SAR(10 g) = 0.025 W/kg

Maximum value of SAR (measured) = 0.187 W/kg



0 dB = 0.187 W/kg = -7.28 dBW/kg

Wi-Fi 5.5 GHz

Frequency: 5600 MHz; Duty Cycle: 1:1; Room Ambient Temperature: 23.0°C; Liquid Temperature: 22.0°C
 Medium parameters used: $f = 5600 \text{ MHz}$; $\sigma = 5.015 \text{ S/m}$; $\epsilon_r = 36.169$; $\rho = 1000 \text{ kg/m}^3$

DASY5 Configuration:

- Area Scan Setting: Find Secondary Maximum Within: 2.0 dB and with a peak SAR value greater than 0.0012W/kg
- Electronics: DAE4 Sn1447; Calibrated: 2016-09-19
- Probe: EX3DV4 - SN7376; ConvF(4.62, 4.62, 4.62); Calibrated: 2016-08-30;
- Sensor-Surface: 1.4mm (Mechanical Surface Detection)
- Phantom: SAM (20deg probe tilt) with CRP v5.0_Back; Type: QD000P40CD; Serial: TP:1882

RHS/Touch_802.11a_ch 120 PLS 13 #2/Area Scan (12x18x1): Measurement grid: dx=10mm, dy=10mm

Maximum value of SAR (measured) = 0.0827 W/kg

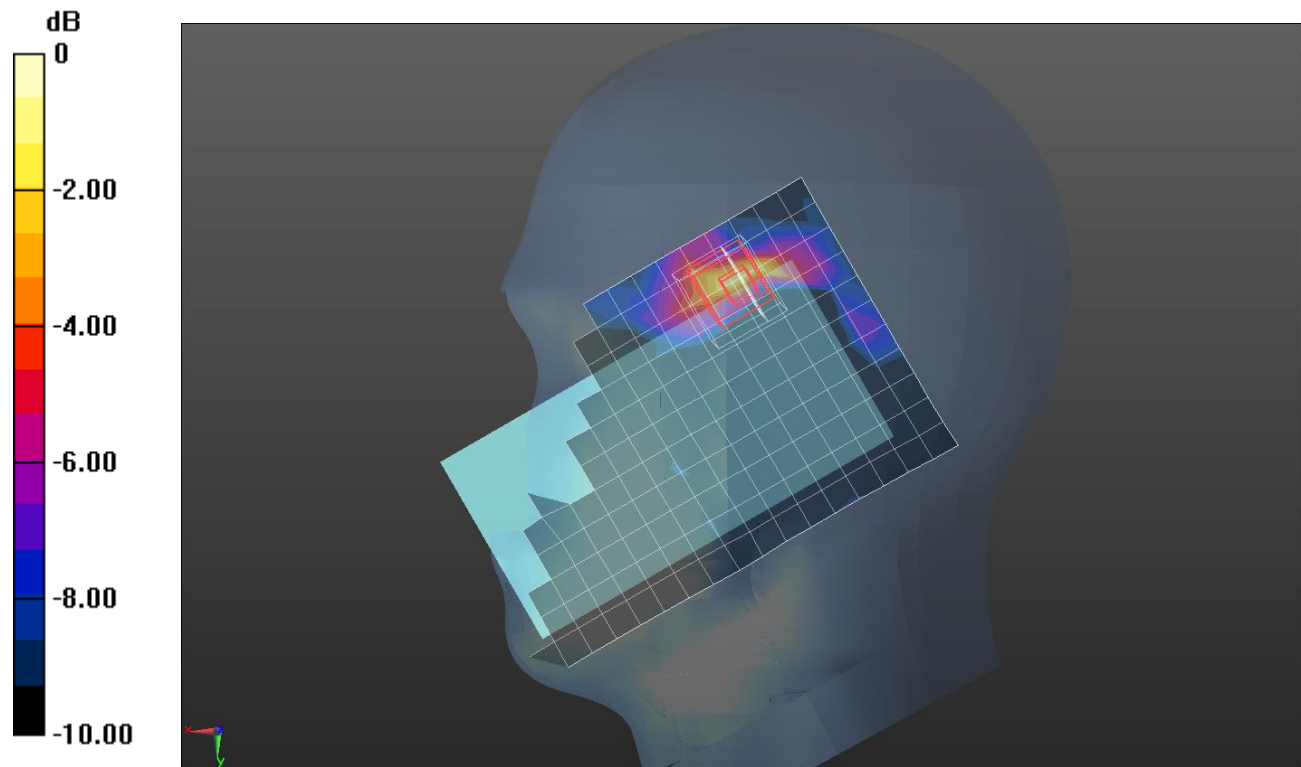
RHS/Touch_802.11a_ch 120 PLS 13 #2/Zoom Scan (8x8x7)/Cube 0: Measurement grid: dx=4mm, dy=4mm, dz=1.4mm

Reference Value = 3.650 V/m; Power Drift = -0.04 dB

Peak SAR (extrapolated) = 0.169 W/kg

SAR(1 g) = 0.026 W/kg; SAR(10 g) = 0.00661 W/kg

Maximum value of SAR (measured) = 0.0966 W/kg



0 dB = 0.0966 W/kg = -10.15 dBW/kg

Wi-Fi 5.5 GHz

Frequency: 5600 MHz; Duty Cycle: 1:1; Room Ambient Temperature: 23.0°C; Liquid Temperature: 22.0°C
 Medium parameters used: $f = 5600$ MHz; $\sigma = 5.879$ S/m; $\epsilon_r = 47.532$; $\rho = 1000$ kg/m³

DASY5 Configuration:

- Area Scan Setting: Find Secondary Maximum Within: 2.0 dB and with a peak SAR value greater than 0.0012W/kg
- Electronics: DAE4 Sn1494; Calibrated: 2016-07-18
- Probe: EX3DV4 - SN7314; ConvF(3.81, 3.81, 3.81); Calibrated: 2016-09-27;
- Sensor-Surface: 1.4mm (Mechanical Surface Detection)
- Phantom: Triple Flat Phantom 5.1C; Type: QD 000 P51 CA; Serial: 1166

Rear 15mm/802.11a_ch 120/Area Scan (11x18x1): Measurement grid: dx=10mm, dy=10mm

Maximum value of SAR (measured) = 0.375 W/kg

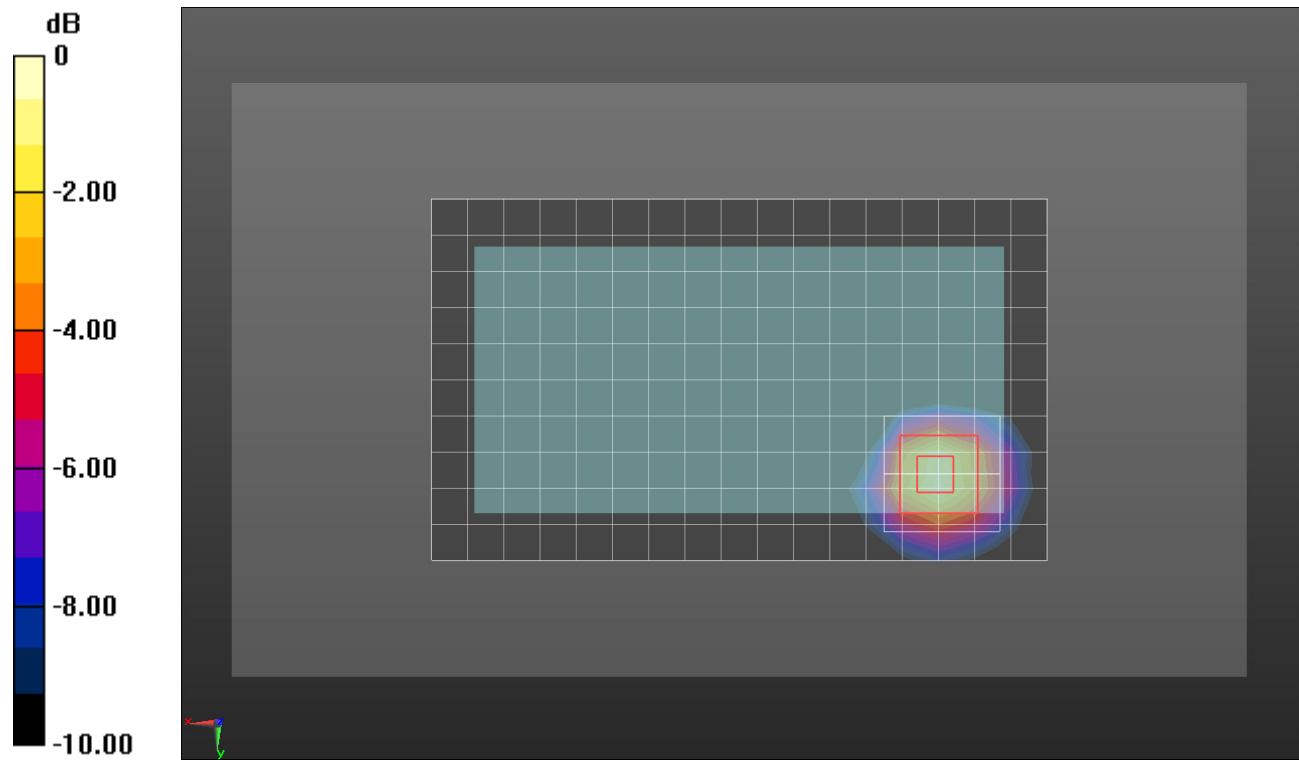
Rear 15mm/802.11a_ch 120/Zoom Scan (9x9x7)/Cube 0: Measurement grid: dx=4mm, dy=4mm, dz=1.4mm

Reference Value = 9.303 V/m; Power Drift = 0.01 dB

Peak SAR (extrapolated) = 0.858 W/kg

SAR(1 g) = 0.171 W/kg; SAR(10 g) = 0.058 W/kg

Maximum value of SAR (measured) = 0.412 W/kg



0 dB = 0.412 W/kg = -3.85 dBW/kg

Wi-Fi 5.8 GHz

Frequency: 5745 MHz; Duty Cycle: 1:1; Room Ambient Temperature: 23.0°C; Liquid Temperature: 22.0°C
Medium parameters used: $f = 5745$ MHz; $\sigma = 5.158$ S/m; $\epsilon_r = 35.993$; $\rho = 1000$ kg/m³

DASY5 Configuration:

- Area Scan Setting: Find Secondary Maximum Within: 2.0 dB and with a peak SAR value greater than 0.0012W/kg
- Electronics: DAE4 Sn1447; Calibrated: 2016-09-19
- Probe: EX3DV4 - SN7376; ConvF(4.51, 4.51, 4.51); Calibrated: 2016-08-30;
- Sensor-Surface: 1.4mm (Mechanical Surface Detection)
- Phantom: SAM (20deg probe tilt) with CRP v5.0_Back; Type: QD000P40CD; Serial: TP:1882

RHS/Touch_802.11a_ch 149/Area Scan (12x18x1): Measurement grid: dx=10mm, dy=10mm

Maximum value of SAR (measured) = 0.117 W/kg

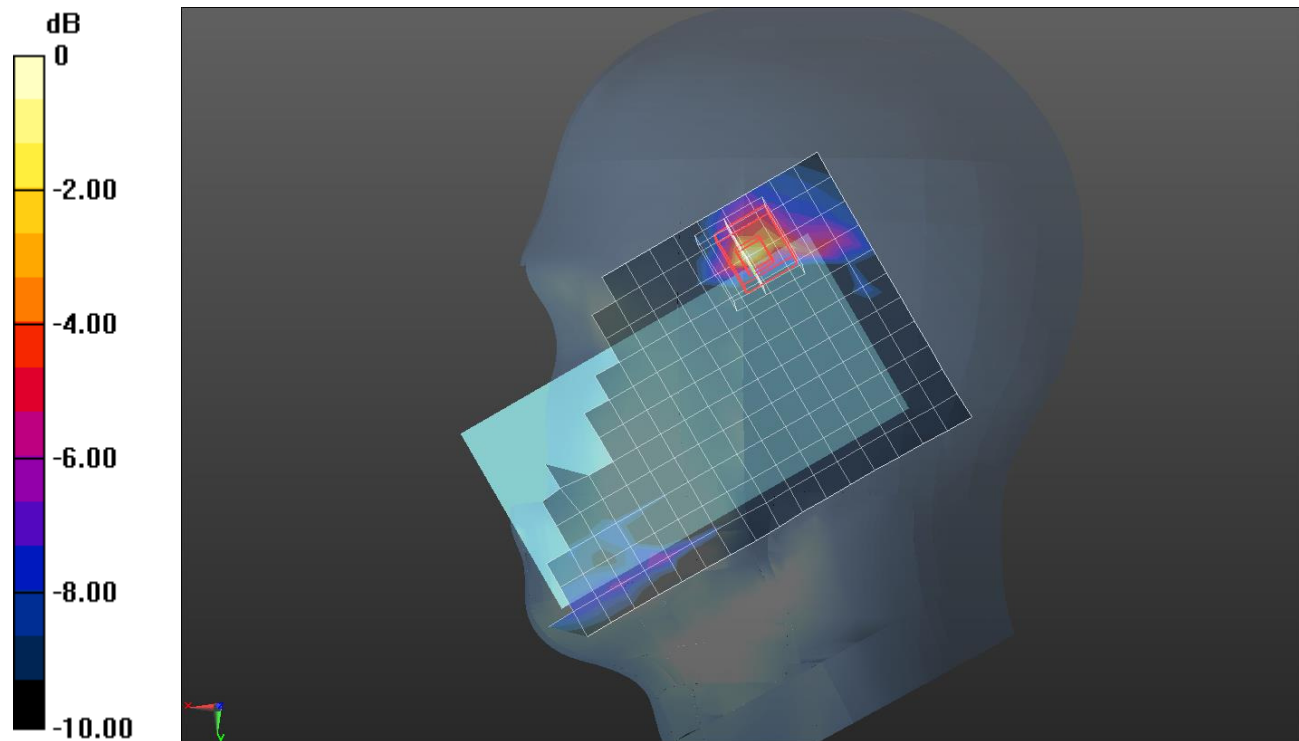
RHS/Touch_802.11a_ch 149/Zoom Scan (8x8x7)/Cube 0: Measurement grid: dx=4mm, dy=4mm, dz=1.4mm

Reference Value = 4.963 V/m; Power Drift = -0.04 dB

Peak SAR (extrapolated) = 0.203 W/kg

SAR(1 g) = 0.042 W/kg; SAR(10 g) = 0.012 W/kg

Maximum value of SAR (measured) = 0.124 W/kg



0 dB = 0.124 W/kg = -9.07 dBW/kg

Wi-Fi 5.8 GHz

Frequency: 5745 MHz; Duty Cycle: 1:1; Room Ambient Temperature: 23.0°C; Liquid Temperature: 22.0°C
 Medium parameters used: $f = 5745 \text{ MHz}$; $\sigma = 6.078 \text{ S/m}$; $\epsilon_r = 47.312$; $\rho = 1000 \text{ kg/m}^3$

DASY5 Configuration:

- Area Scan Setting: Find Secondary Maximum Within: 2.0 dB and with a peak SAR value greater than 0.0012W/kg
- Electronics: DAE4 Sn1494; Calibrated: 2016-07-18
- Probe: EX3DV4 - SN7314; ConvF(4.02, 4.02, 4.02); Calibrated: 2016-09-27;
- Sensor-Surface: 1.4mm (Mechanical Surface Detection)
- Phantom: Triple Flat Phantom 5.1C; Type: QD 000 P51 CA; Serial: 1166

Rear/802.11a_ch 149 15mm/Area Scan (11x18x1): Measurement grid: dx=10mm, dy=10mm

Maximum value of SAR (measured) = 0.285 W/kg

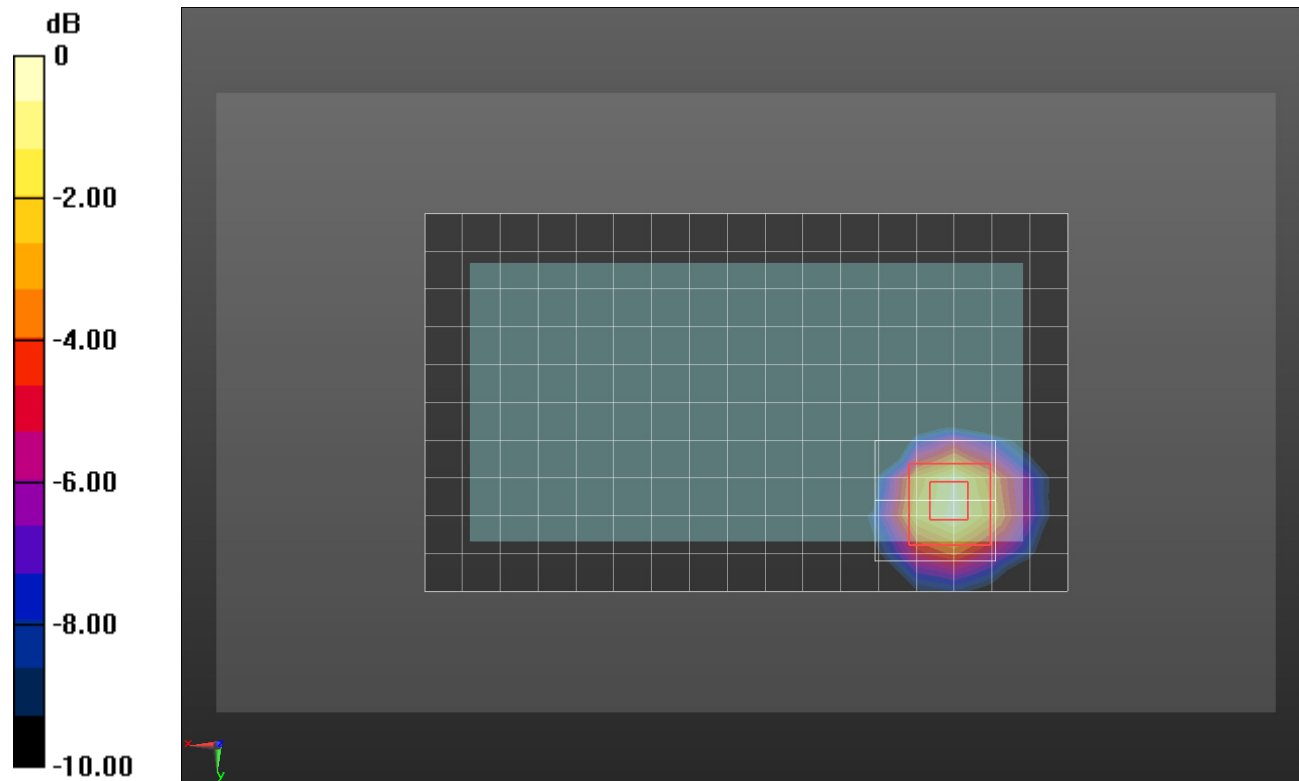
Rear/802.11a_ch 149 15mm/Zoom Scan (9x9x7)/Cube 0: Measurement grid: dx=4mm, dy=4mm, dz=1.4mm

Reference Value = 8.153 V/m; Power Drift = -0.11 dB

Peak SAR (extrapolated) = 0.470 W/kg

SAR(1 g) = 0.124 W/kg; SAR(10 g) = 0.042 W/kg

Maximum value of SAR (measured) = 0.303 W/kg



0 dB = 0.303 W/kg = -5.19 dBW/kg

Wi-Fi 5.8 GHz

Frequency: 5745 MHz; Duty Cycle: 1:1; Room Ambient Temperature: 23.0°C; Liquid Temperature: 22.0°C
 Medium parameters used: $f = 5745 \text{ MHz}$; $\sigma = 6.078 \text{ S/m}$; $\epsilon_r = 47.312$; $\rho = 1000 \text{ kg/m}^3$

DASY5 Configuration:

- Area Scan Setting: Find Secondary Maximum Within: 2.0 dB and with a peak SAR value greater than 0.0012W/kg
- Electronics: DAE4 Sn1494; Calibrated: 2016-07-18
- Probe: EX3DV4 - SN7314; ConvF(4.02, 4.02, 4.02); Calibrated: 2016-09-27;
- Sensor-Surface: 1.4mm (Mechanical Surface Detection)
- Phantom: Triple Flat Phantom 5.1C; Type: QD 000 P51 CA; Serial: 1166

Rear/802.11a_ch 149/Area Scan (11x18x1): Measurement grid: dx=10mm, dy=10mm

Maximum value of SAR (measured) = 0.502 W/kg

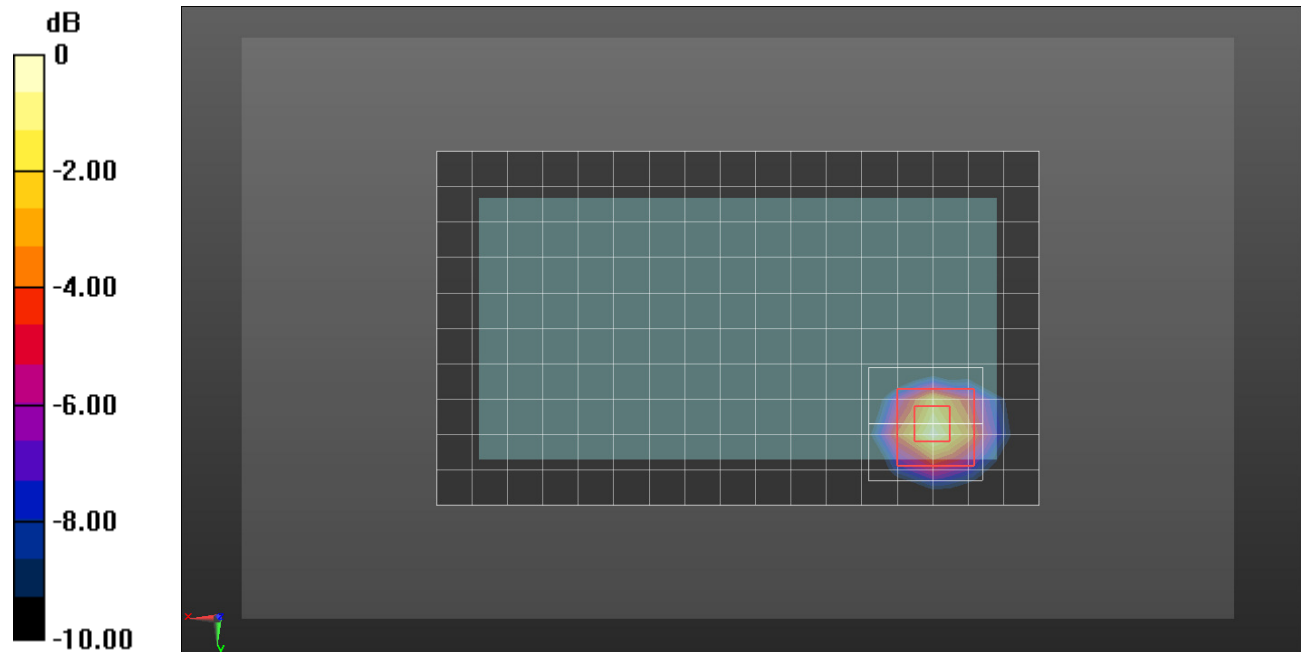
Rear/802.11a_ch 149/Zoom Scan (9x9x7)/Cube 0: Measurement grid: dx=4mm, dy=4mm, dz=1.4mm

Reference Value = 10.53 V/m; Power Drift = 0.05 dB

Peak SAR (extrapolated) = 1.94 W/kg

SAR(1 g) = 0.203 W/kg; SAR(10 g) = 0.060 W/kg

Maximum value of SAR (measured) = 0.522 W/kg



0 dB = 0.522 W/kg = -2.82 dBW/kg