

20140908_SystemPerformanceCheck-D2450V2-SN706

Frequency: 2450 MHz; Duty Cycle: 1:1; Room Ambient Temperature: 24.0°C; Liquid Temperature: 23.0°C

Medium parameters used: $f = 2450$ MHz; $\sigma = 1.872$ S/m; $\epsilon_r = 39.494$; $\rho = 1000$ kg/m³

DASY5 Configuration:

- Area Scan Setting: Find Secondary Maximum Within: 2.0 dB and with a peak SAR value greater than 0.0012W/kg
- Averaged Fast SAR: Polynomial fit
- Electronics: DAE3 Sn500; Calibrated: 5/15/2014
- Probe: EX3DV4 - SN3749; ConvF(6.6, 6.6, 6.6); Calibrated: 1/29/2014;
- Sensor-Surface: 2.5mm (Mechanical Surface Detection)
- Phantom: SAM; Type: QD000PCD; Serial: 1632

Head/Pin=100 mW/Area Scan (61x61x1): Interpolated grid: dx=1.500 mm, dy=1.500 mm

Reference Value = 61.938 V/m; Power Drift = -0.03 dB

Fast SAR: SAR(1 g) = 4.86 W/kg; SAR(10 g) = 2.12 W/kg

Maximum value of SAR (interpolated) = 7.00 W/kg

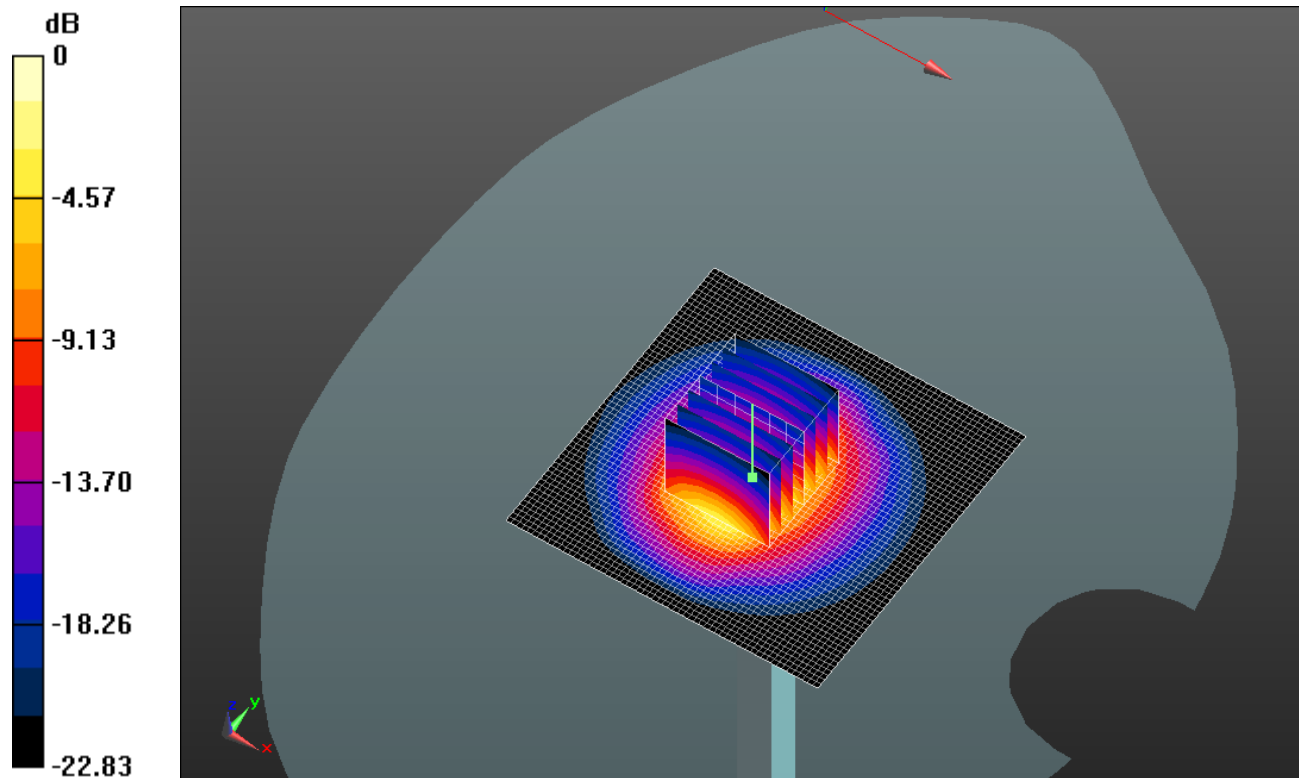
Head/Pin=100 mW/Zoom Scan (7x7x7)/Cube 0: Measurement grid: dx=5mm, dy=5mm, dz=5mm

Reference Value = 61.938 V/m; Power Drift = -0.03 dB

Peak SAR (extrapolated) = 10.5 W/kg

SAR(1 g) = 4.95 W/kg; SAR(10 g) = 2.26 W/kg

Maximum value of SAR (measured) = 7.11 W/kg

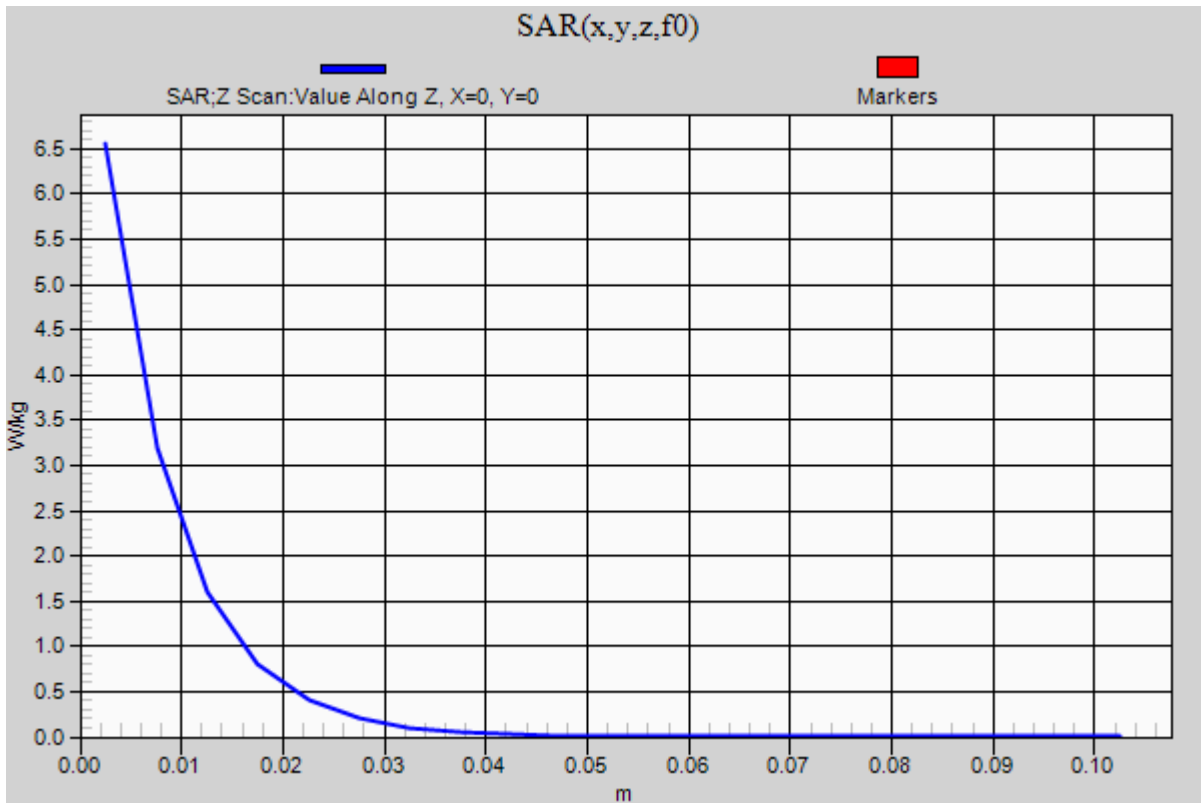


0 dB = 7.11 W/kg = 8.52 dBW/kg

20140908_SystemPerformanceCheck-D2450V2-SN706

Frequency: 2450 MHz; Duty Cycle: 1:1

Head/Pin=100 mW/Z Scan (1x1x21): Measurement grid: dx=20mm, dy=20mm, dz=5mm
Maximum value of SAR (measured) = 6.55 W/kg



20140911_SystemPerformanceCheck-D2450V2-SN748

Frequency: 2450 MHz; Duty Cycle: 1:1; Room Ambient Temperature: 24.0°C; Liquid Temperature: 23.0°C

Medium parameters used: $f = 2450$ MHz; $\sigma = 1.983$ S/m; $\epsilon_r = 51.656$; $\rho = 1000$ kg/m³

DASY5 Configuration:

- Area Scan Setting: Find Secondary Maximum Within: 2.0 dB and with a peak SAR value greater than 0.0012W/kg
- Averaged Fast SAR: Polynomial fit
- Electronics: DAE3 Sn500; Calibrated: 5/15/2014
- Probe: EX3DV4 - SN3749; ConvF(6.49, 6.49, 6.49); Calibrated: 1/29/2014;
- Sensor-Surface: 2.5mm (Mechanical Surface Detection)
- Phantom: ELI v5.0 (A); Type: QDOVA001BB; Serial: 1117

Body/Pin=100 mW/Area Scan (61x61x1): Interpolated grid: dx=1.500 mm, dy=1.500 mm

Reference Value = 61.302 V/m; Power Drift = -0.04 dB

Fast SAR: SAR(1 g) = 5.07 W/kg; SAR(10 g) = 2.11 W/kg

Maximum value of SAR (interpolated) = 7.44 W/kg

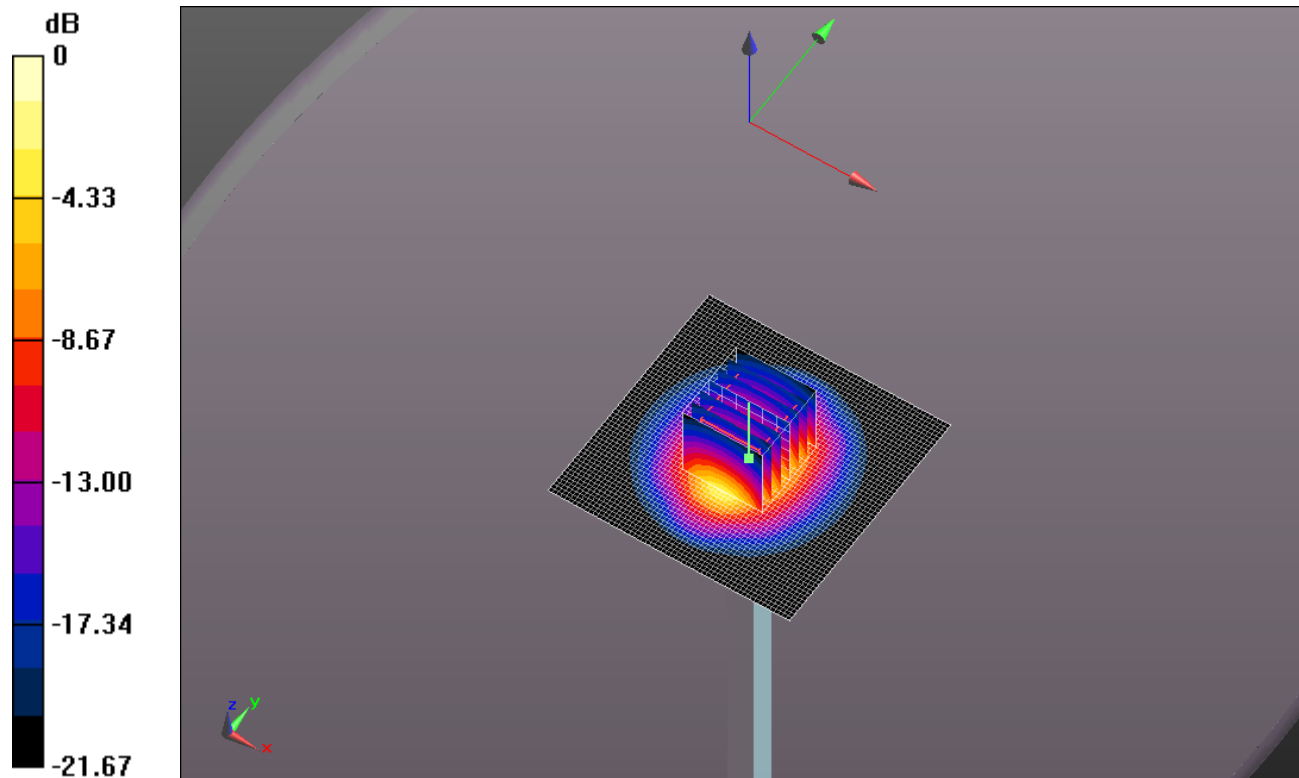
Body/Pin=100 mW/Zoom Scan (7x7x7)/Cube 0: Measurement grid: dx=5mm, dy=5mm, dz=5mm

Reference Value = 61.302 V/m; Power Drift = -0.04 dB

Peak SAR (extrapolated) = 10.9 W/kg

SAR(1 g) = 5.17 W/kg; SAR(10 g) = 2.37 W/kg

Maximum value of SAR (measured) = 7.42 W/kg

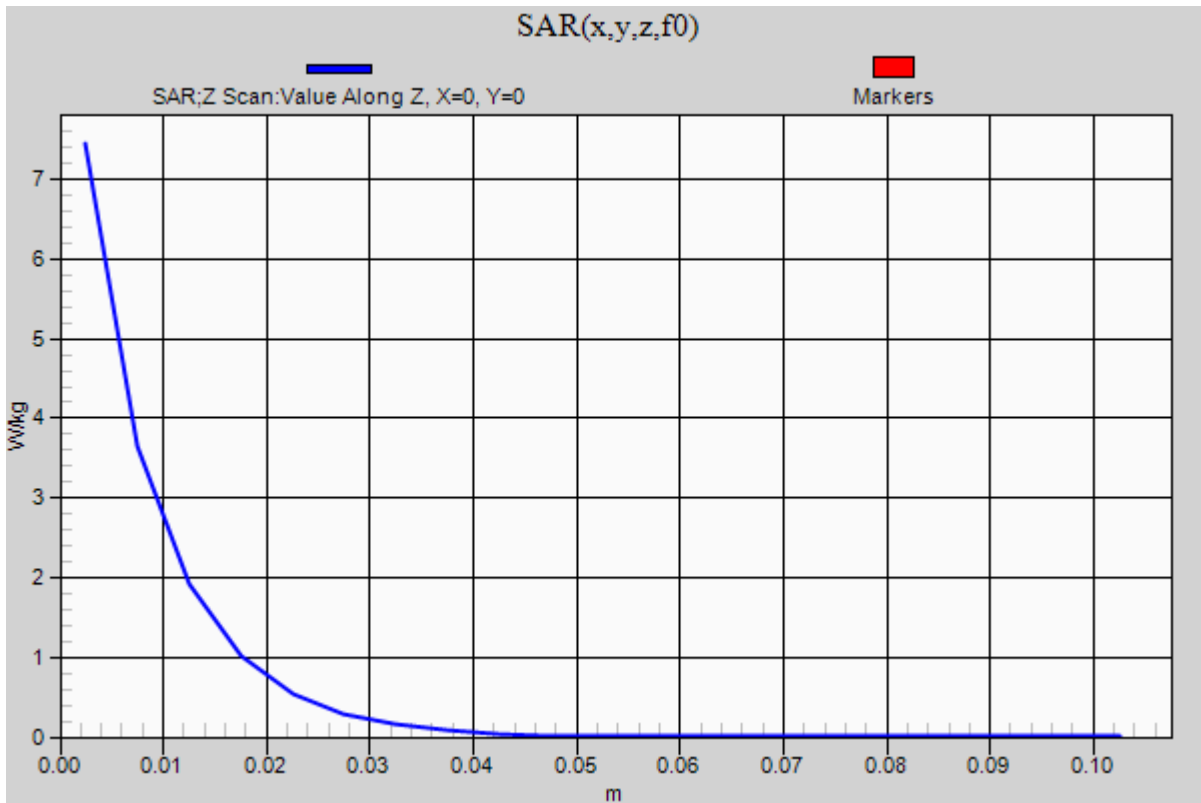


0 dB = 7.42 W/kg = 8.70 dBW/kg

20140911_SystemPerformanceCheck-D2450V2-SN748

Frequency: 2450 MHz; Duty Cycle: 1:1

Body/Pin=100 mW/Z Scan (1x1x21): Measurement grid: dx=20mm, dy=20mm, dz=5mm
Maximum value of SAR (measured) = 7.45 W/kg



20140916_SystemPerformanceCheck-D835V2 SN 4d117

Frequency: 835 MHz; Duty Cycle: 1:1; Room Ambient Temperature: 24.0°C; Liquid Temperature: 23.0°C

Medium parameters used: $f = 835 \text{ MHz}$; $\sigma = 1.018 \text{ S/m}$; $\epsilon_r = 52.551$; $\rho = 1000 \text{ kg/m}^3$

DASY5 Configuration:

- Area Scan Setting: Find Secondary Maximum Within: 2.0 dB and with a peak SAR value greater than 0.0012W/kg
- Averaged Fast SAR: Polynomial fit
- Electronics: DAE4 Sn1360; Calibrated: 3/17/2014
- Probe: EX3DV4 - SN3751; ConvF(8.54, 8.54, 8.54); Calibrated: 11/21/2013;
- Sensor-Surface: 2.5mm (Mechanical Surface Detection)
- Phantom: ELI v5.0 (A); Type: QDOVA001BB; Serial: 1117

Body/Pin=100 mW/Area Scan (61x61x1): Interpolated grid: dx=1.500 mm, dy=1.500 mm

Reference Value = 34.786 V/m; Power Drift = 0.06 dB

Fast SAR: SAR(1 g) = 1.02 W/kg; SAR(10 g) = 0.680 W/kg

Maximum value of SAR (interpolated) = 1.21 W/kg

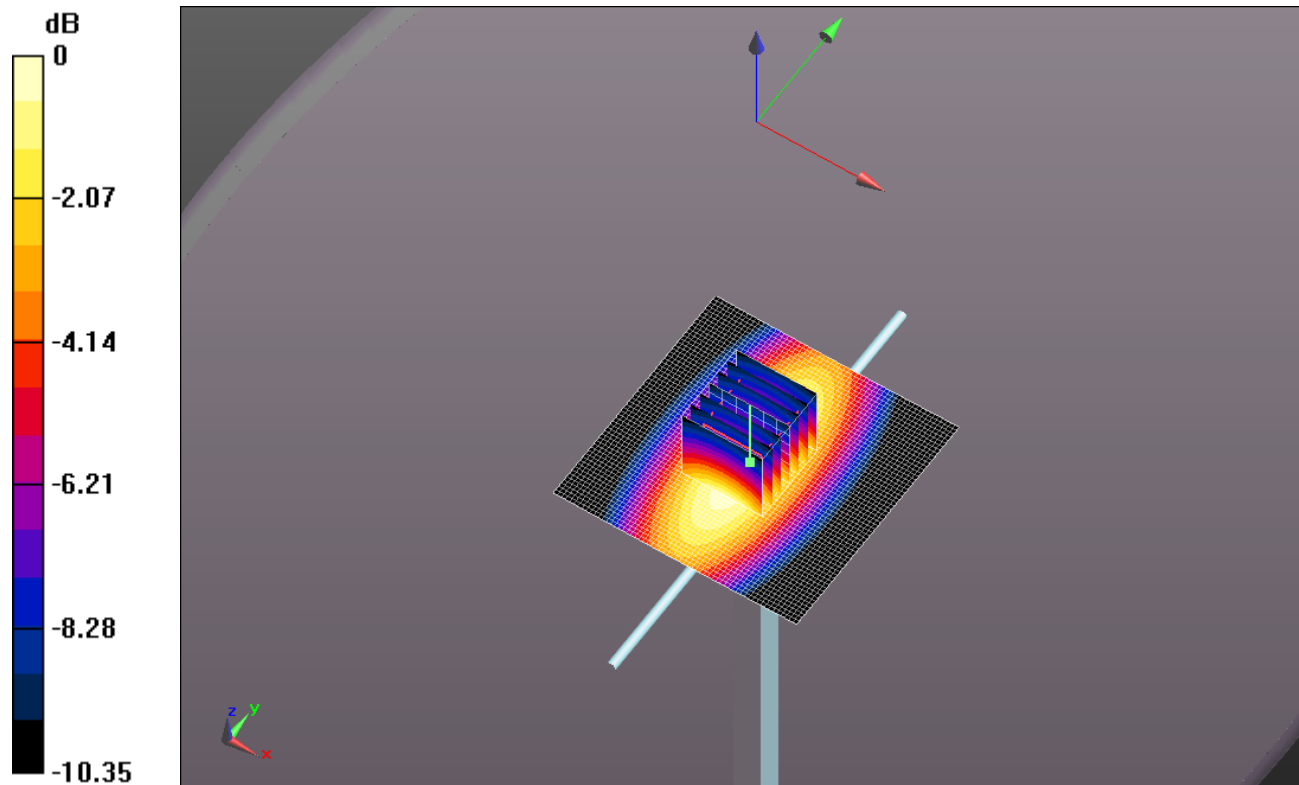
Body/Pin=100 mW/Zoom Scan (7x7x7)/Cube 0: Measurement grid: dx=5mm, dy=5mm, dz=5mm

Reference Value = 34.786 V/m; Power Drift = 0.06 dB

Peak SAR (extrapolated) = 1.48 W/kg

SAR(1 g) = 1 W/kg; SAR(10 g) = 0.657 W/kg

Maximum value of SAR (measured) = 1.22 W/kg

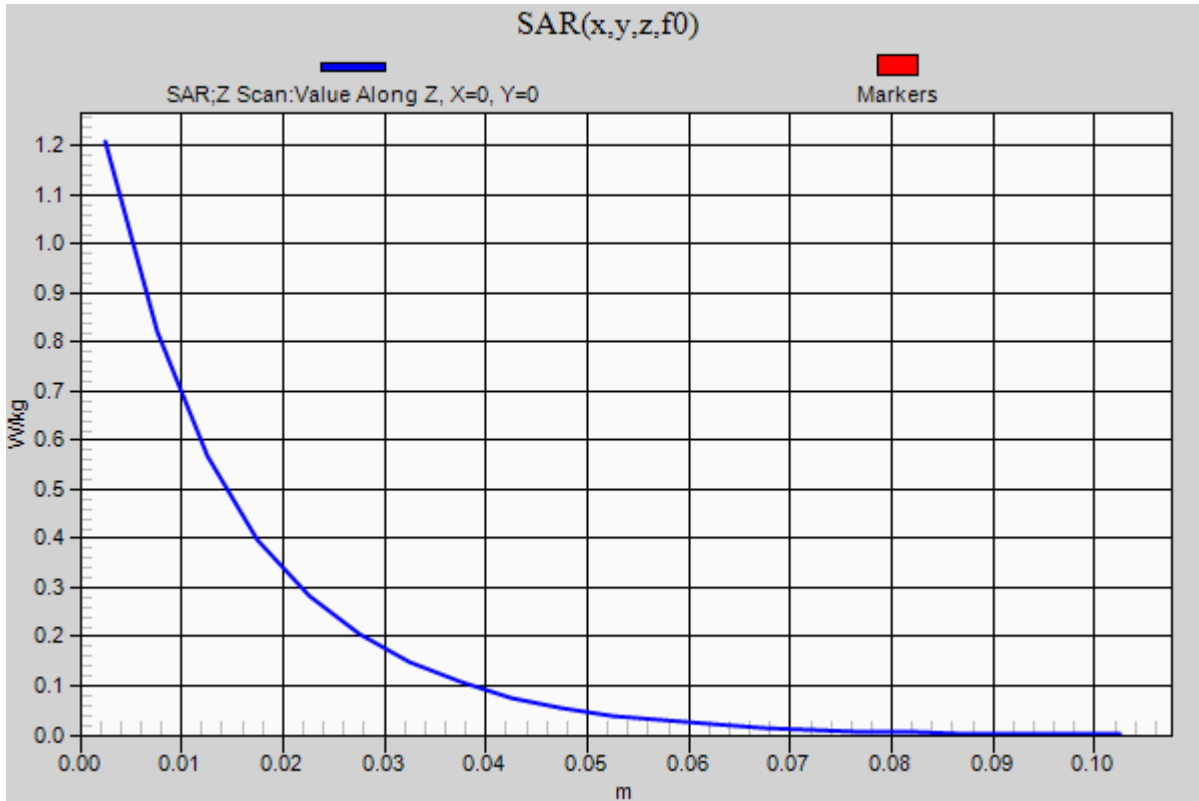


0 dB = 1.22 W/kg = 0.86 dBW/kg

20140916_SystemPerformanceCheck-D835V2 SN 4d117

Frequency: 835 MHz; Duty Cycle: 1:1

Body/Pin=100 mW/Z Scan (1x1x21): Measurement grid: dx=20mm, dy=20mm, dz=5mm
Maximum value of SAR (measured) = 1.21 W/kg



20140916_SystemPerformanceCheck-1900MHz SN 5d140

Frequency: 1900 MHz; Duty Cycle: 1:1; Room Ambient Temperature: 24.0°C; Liquid Temperature: 23.0°C
 Medium parameters used: $f = 1900 \text{ MHz}$; $\sigma = 1.58 \text{ S/m}$; $\epsilon_r = 51.956$; $\rho = 1000 \text{ kg/m}^3$

DASY5 Configuration:

- Area Scan Setting: Find Secondary Maximum Within: 2.0 dB and with a peak SAR value greater than 0.0012W/kg
- Averaged Fast SAR: Polynomial fit
- Electronics: DAE4 Sn1258; Calibrated: 5/15/2014
- Probe: EX3DV4 - SN3686; ConvF(7.09, 7.09, 7.09); Calibrated: 3/18/2014;
- Sensor-Surface: 2.5mm (Mechanical Surface Detection)
- Phantom: ELI v5.0 B; Type: SM 000 T01 DA; Serial: TP:1247

Body/Pin=100 mW/Area Scan (61x61x1): Interpolated grid: dx=1.500 mm, dy=1.500 mm

Reference Value = 59.072 V/m; Power Drift = 0.00 dB

Fast SAR: SAR(1 g) = 4.34 W/kg; SAR(10 g) = 2.21 W/kg

Maximum value of SAR (interpolated) = 5.80 W/kg

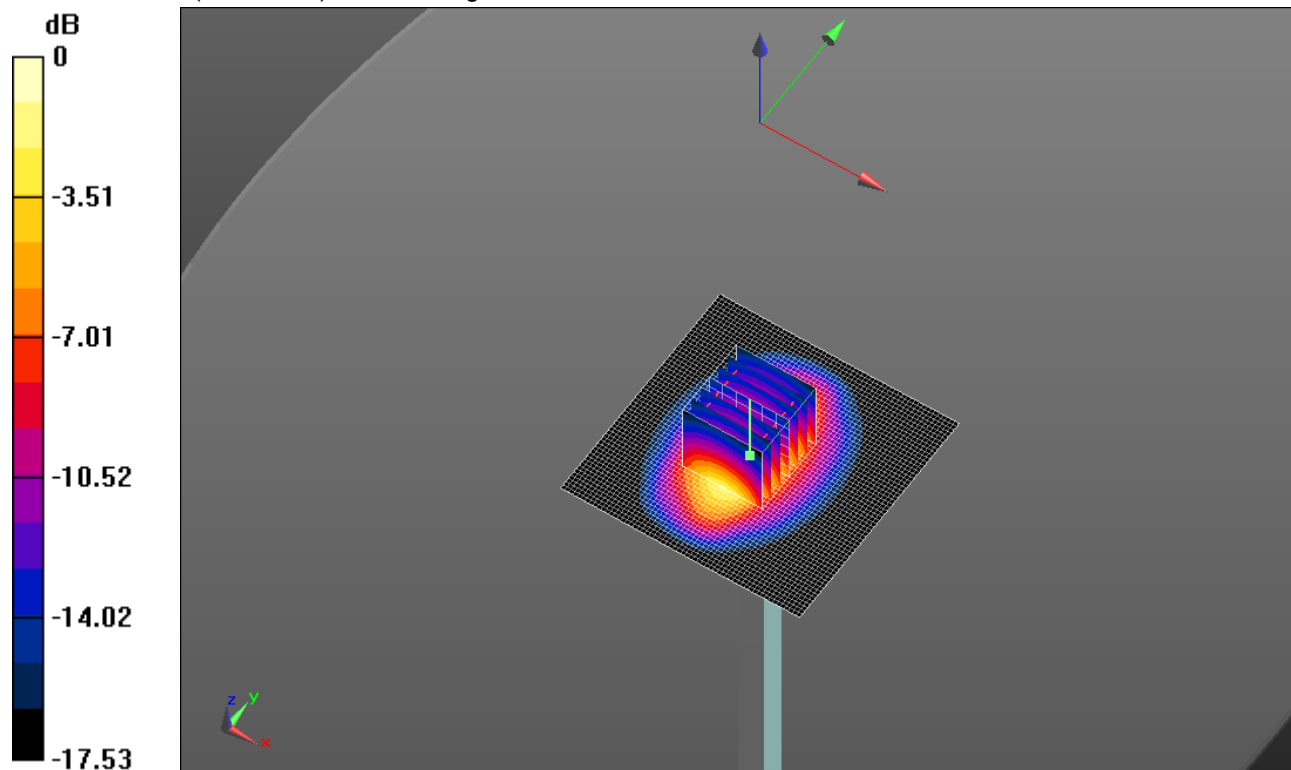
Body/Pin=100 mW/Zoom Scan (7x7x7)/Cube 0: Measurement grid: dx=5mm, dy=5mm, dz=5mm

Reference Value = 59.072 V/m; Power Drift = 0.00 dB

Peak SAR (extrapolated) = 7.87 W/kg

SAR(1 g) = 4.32 W/kg; SAR(10 g) = 2.23 W/kg

Maximum value of SAR (measured) = 5.84 W/kg

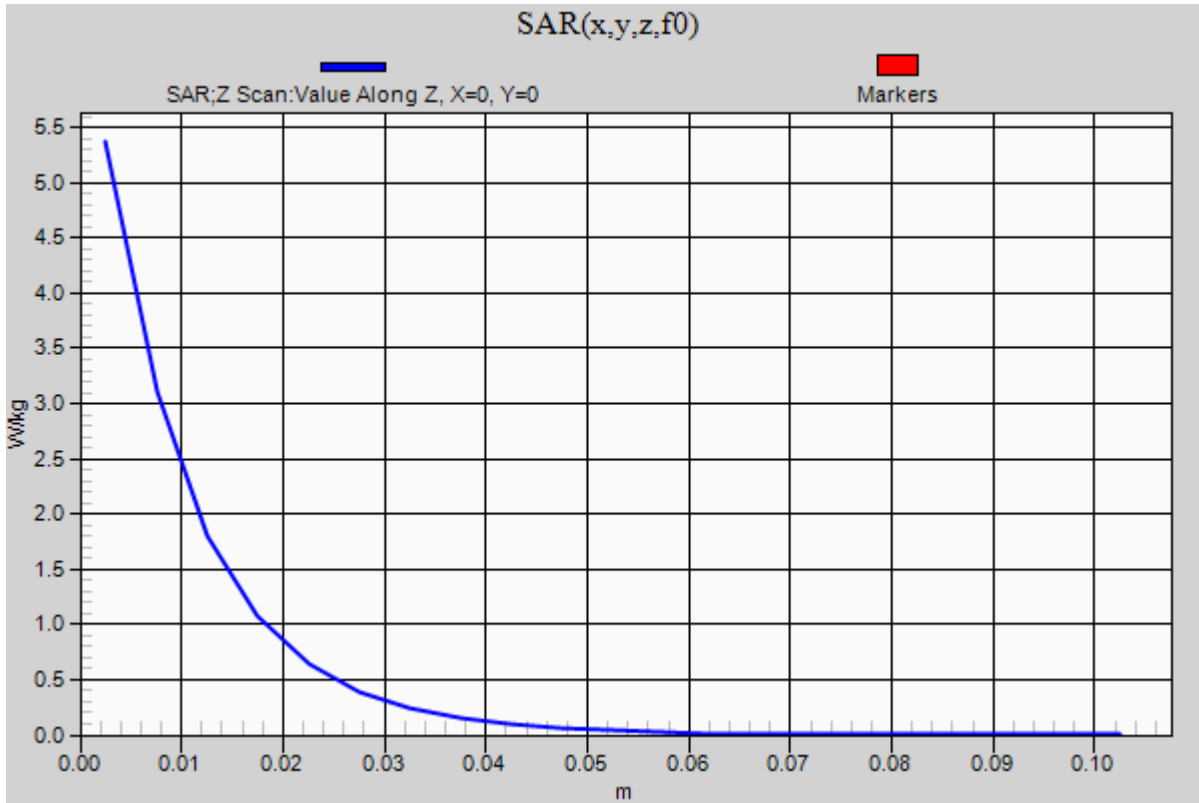


0 dB = 5.84 W/kg = 7.66 dBW/kg

20140916_SystemPerformanceCheck-1900MHz SN 5d140

Frequency: 1900 MHz; Duty Cycle: 1:1

Body/Pin=100 mW/Z Scan (1x1x21): Measurement grid: dx=20mm, dy=20mm, dz=5mm
Maximum value of SAR (measured) = 5.37 W/kg



GSM 850

Frequency: 836.6 MHz; Duty Cycle: 1:8; Room Ambient Temperature: 24.0°C; Liquid Temperature: 23.0°C
 Medium parameters used (interpolated): $f = 836.6 \text{ MHz}$; $\sigma = 0.935 \text{ S/m}$; $\epsilon_r = 41.289$; $\rho = 1000 \text{ kg/m}^3$

DASY5 Configuration:

- Area Scan Setting: Find Secondary Maximum Within: 2.0 dB and with a peak SAR value greater than 0.0012W/kg
- Electronics: DAE4 Sn1360; Calibrated: 3/17/2014
- Probe: EX3DV4 - SN3751; ConvF(9.07, 9.07, 9.07); Calibrated: 11/21/2013;
- Sensor-Surface: 2.5mm (Mechanical Surface Detection)
- Phantom: SAM v4.0(A); Type: QD000P40CD; Serial: 1632

LHS/Touch_GSM Voice_ch 190/Area Scan (7x11x1): Measurement grid: dx=15mm, dy=15mm
 Maximum value of SAR (measured) = 0.319 W/kg

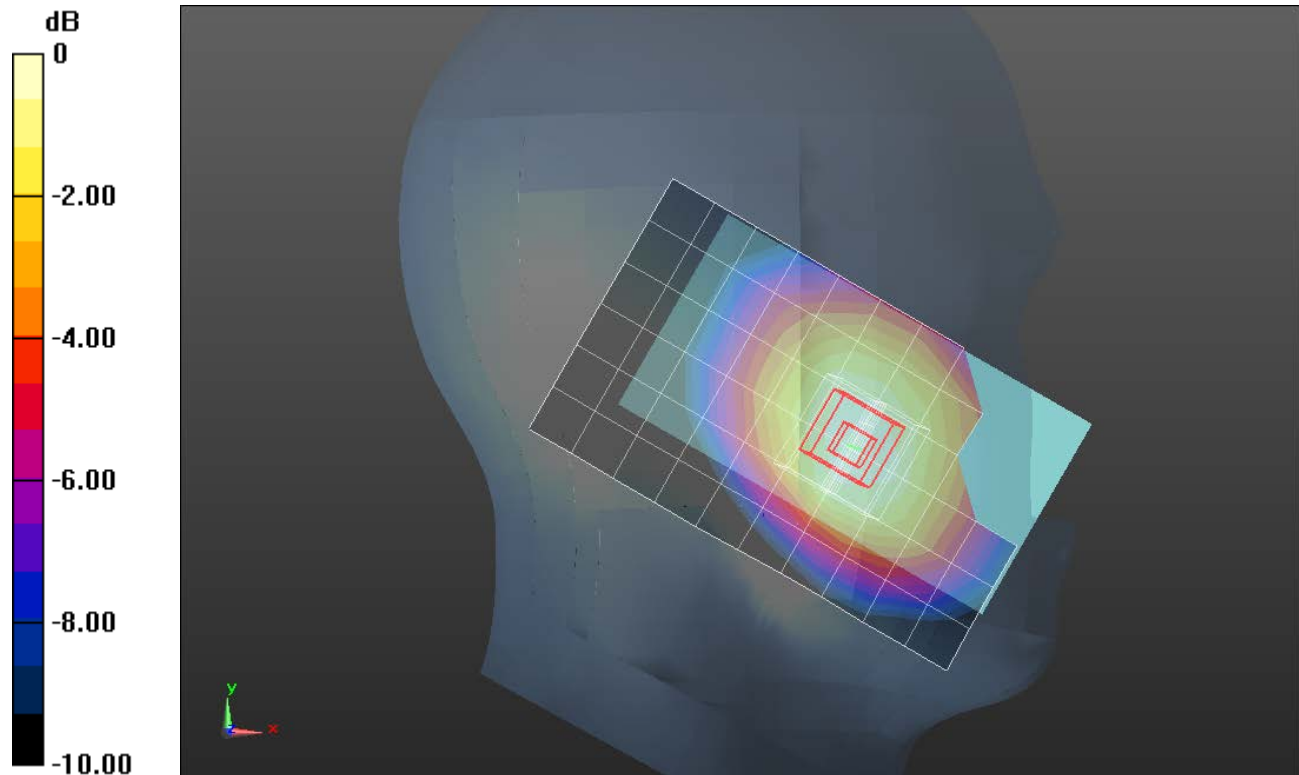
LHS/Touch_GSM Voice_ch 190/Zoom Scan (5x5x7)/Cube 0: Measurement grid: dx=8mm, dy=8mm, dz=5mm

Reference Value = 18.603 V/m; Power Drift = -0.04 dB

Peak SAR (extrapolated) = 0.341 W/kg

SAR(1 g) = 0.274 W/kg; SAR(10 g) = 0.207 W/kg

Maximum value of SAR (measured) = 0.305 W/kg



0 dB = 0.305 W/kg = -5.16 dBW/kg

GSM 850

Frequency: 836.6 MHz; Duty Cycle: 1:4; Room Ambient Temperature: 24.0°C; Liquid Temperature: 23.0°C
 Medium parameters used (interpolated): $f = 836.6 \text{ MHz}$; $\sigma = 0.903 \text{ S/m}$; $\epsilon_r = 40.424$; $\rho = 1000 \text{ kg/m}^3$

DASY5 Configuration:

- Area Scan Setting: Find Secondary Maximum Within: 2.0 dB and with a peak SAR value greater than 0.0012W/kg
- Electronics: DAE4 Sn1360; Calibrated: 3/17/2014
- Probe: EX3DV4 - SN3751; ConvF(9.07, 9.07, 9.07); Calibrated: 11/21/2013;
- Sensor-Surface: 2.5mm (Mechanical Surface Detection)
- Phantom: SAM v4.0(A); Type: QD000P40CD; Serial: 1632

LHS/Touch_GPRS 2 Slots/Area Scan (7x11x1): Measurement grid: dx=15mm, dy=15mm

[Info: Interpolated medium parameters used for SAR evaluation.](#)

Maximum value of SAR (measured) = 0.415 W/kg

LHS/Touch_GPRS 2 Slots/Zoom Scan (5x5x7)/Cube 0: Measurement grid: dx=8mm, dy=8mm, dz=5mm

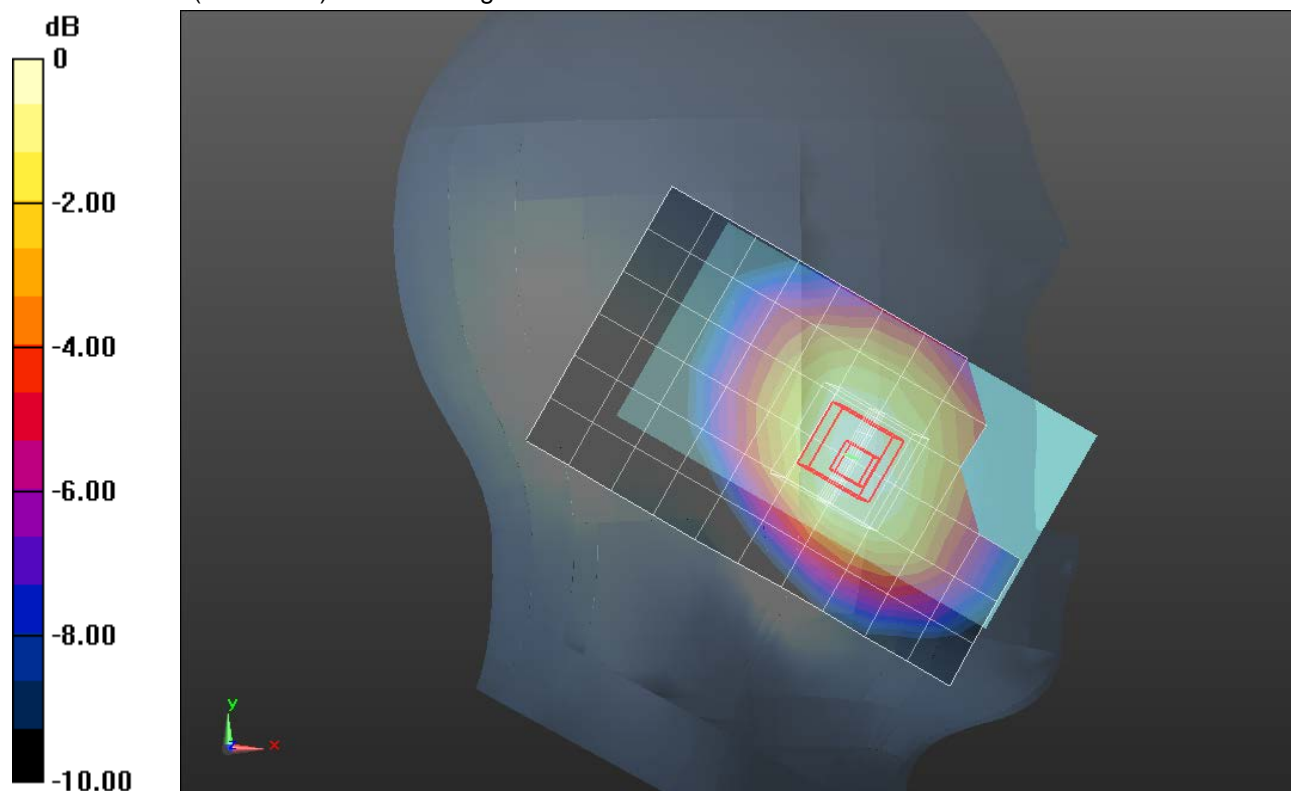
Reference Value = 21.825 V/m; Power Drift = 0.01 dB

Peak SAR (extrapolated) = 0.456 W/kg

SAR(1 g) = 0.368 W/kg; SAR(10 g) = 0.277 W/kg

[Info: Interpolated medium parameters used for SAR evaluation.](#)

Maximum value of SAR (measured) = 0.408 W/kg



0 dB = 0.408 W/kg = -3.89 dBW/kg

GSM 850

Frequency: 836.6 MHz; Duty Cycle: 1:8; Room Ambient Temperature: 24.0°C; Liquid Temperature: 23.0°C
 Medium parameters used (interpolated): $f = 836.6$ MHz; $\sigma = 1.013$ S/m; $\epsilon_r = 53.335$; $\rho = 1000$ kg/m³

DASY5 Configuration:

- Area Scan Setting: Find Secondary Maximum Within: 2.0 dB and with a peak SAR value greater than 0.0012W/kg
- Electronics: DAE4 Sn1360; Calibrated: 3/17/2014
- Probe: EX3DV4 - SN3751; ConvF(8.54, 8.54, 8.54); Calibrated: 11/21/2013;
- Sensor-Surface: 2.5mm (Mechanical Surface Detection)
- Phantom: ELI v5.0 (A); Type: QDOVA001BB; Serial: 1117

Rear/GSM Voice_ch 190/Area Scan (8x13x1): Measurement grid: dx=15mm, dy=15mm

[Info: Interpolated medium parameters used for SAR evaluation.](#)

Maximum value of SAR (measured) = 0.459 W/kg

Rear/GSM Voice_ch 190/Zoom Scan (5x5x7)/Cube 0: Measurement grid: dx=8mm, dy=8mm, dz=5mm

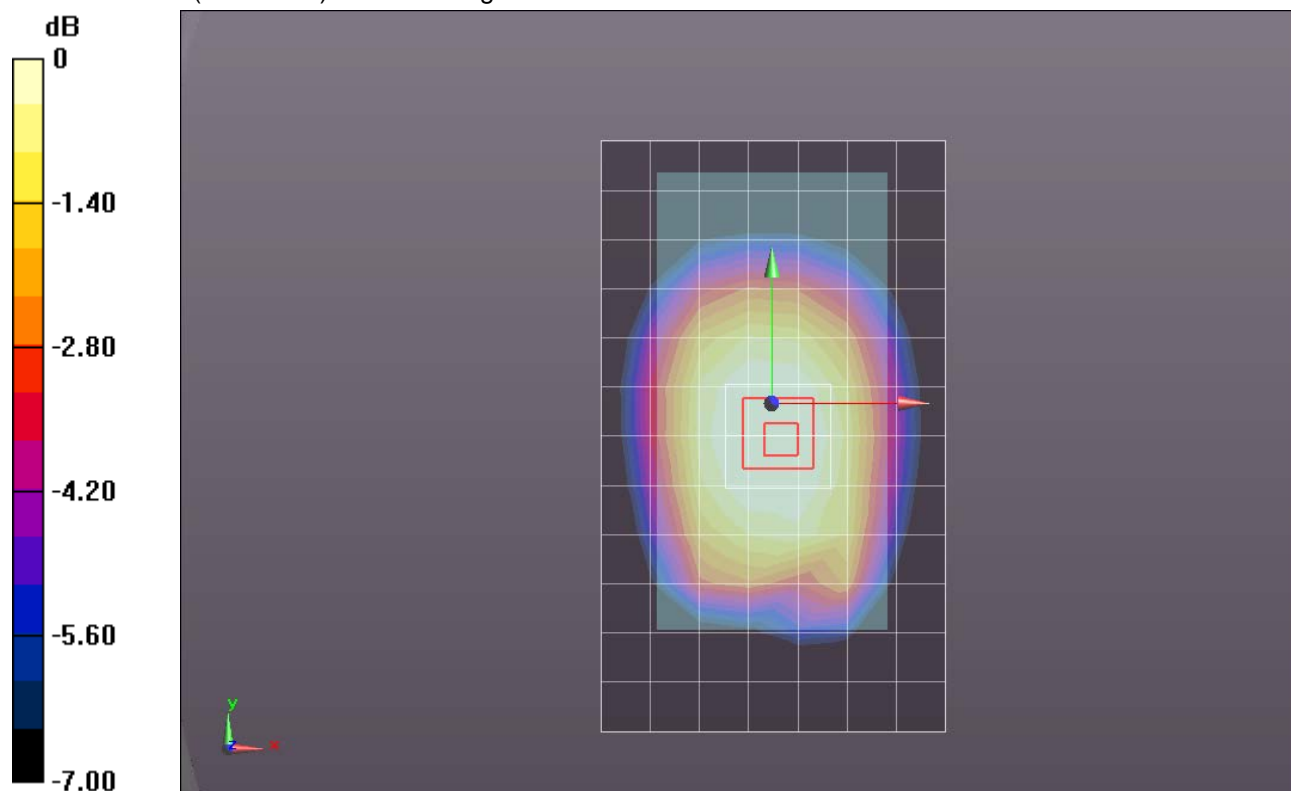
Reference Value = 21.164 V/m; Power Drift = 0.14 dB

Peak SAR (extrapolated) = 0.473 W/kg

SAR(1 g) = 0.375 W/kg; SAR(10 g) = 0.284 W/kg

[Info: Interpolated medium parameters used for SAR evaluation.](#)

Maximum value of SAR (measured) = 0.419 W/kg



0 dB = 0.419 W/kg = -3.78 dBW/kg

GSM 850

Frequency: 836.6 MHz; Duty Cycle: 1:4; Room Ambient Temperature: 24.0°C; Liquid Temperature: 23.0°C
 Medium parameters used (interpolated): $f = 836.6$ MHz; $\sigma = 1.013$ S/m; $\epsilon_r = 53.335$; $\rho = 1000$ kg/m³

DASY5 Configuration:

- Area Scan Setting: Find Secondary Maximum Within: 2.0 dB and with a peak SAR value greater than 0.0012W/kg
- Electronics: DAE4 Sn1360; Calibrated: 3/17/2014
- Probe: EX3DV4 - SN3751; ConvF(8.54, 8.54, 8.54); Calibrated: 11/21/2013;
- Sensor-Surface: 2.5mm (Mechanical Surface Detection)
- Phantom: ELI v5.0 (A); Type: QDOVA001BB; Serial: 1117

Edge 4/GPRS 2 slots_ch 190/Area Scan (6x13x1): Measurement grid: dx=15mm, dy=15mm

[Info: Interpolated medium parameters used for SAR evaluation.](#)

Maximum value of SAR (measured) = 0.917 W/kg

Edge 4/GPRS 2 slots_ch 190/Zoom Scan (5x5x7)/Cube 0: Measurement grid: dx=8mm, dy=8mm, dz=5mm

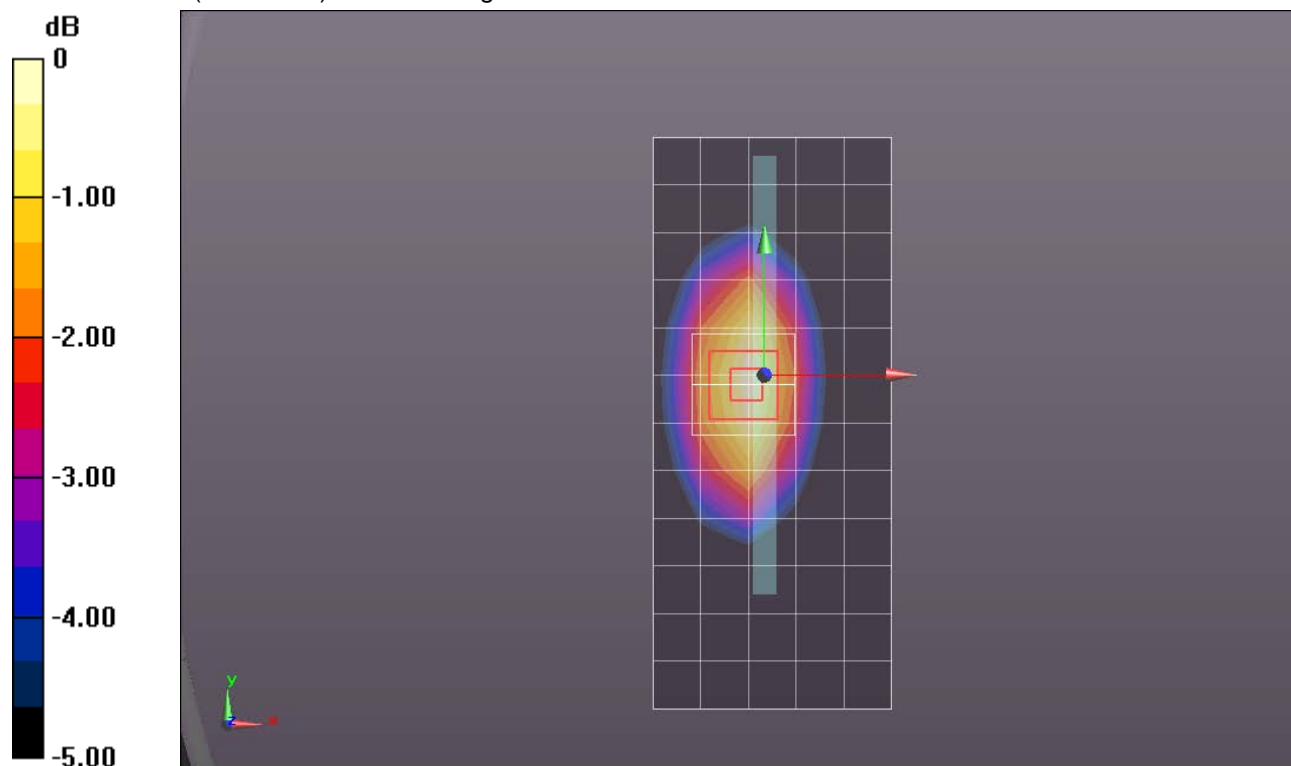
Reference Value = 30.361 V/m; Power Drift = 0.06 dB

Peak SAR (extrapolated) = 1.08 W/kg

SAR(1 g) = 0.780 W/kg; SAR(10 g) = 0.542 W/kg

[Info: Interpolated medium parameters used for SAR evaluation.](#)

Maximum value of SAR (measured) = 0.925 W/kg



0 dB = 0.925 W/kg = -0.34 dBW/kg

GSM 1900

Frequency: 1880 MHz; Duty Cycle: 1:8; Room Ambient Temperature: 24.0°C; Liquid Temperature: 23.0°C
 Medium parameters used: $f = 1880 \text{ MHz}$; $\sigma = 1.406 \text{ S/m}$; $\epsilon_r = 39.883$; $\rho = 1000 \text{ kg/m}^3$

DASY5 Configuration:

- Area Scan Setting: Find Secondary Maximum Within: 2.0 dB and with a peak SAR value greater than 0.0012W/kg
- Electronics: DAE4 Sn1258; Calibrated: 5/15/2014
- Probe: EX3DV4 - SN3686; ConvF(7.52, 7.52, 7.52); Calibrated: 3/18/2014;
- Sensor-Surface: 2.5mm (Mechanical Surface Detection)
- Phantom: SAM with CRP v5.0; Type: QD000P40CD; Serial: 1830

LHS/Touch_GSM Voice_ch 661/Area Scan (7x11x1): Measurement grid: dx=15mm, dy=15mm

Maximum value of SAR (measured) = 0.552 W/kg

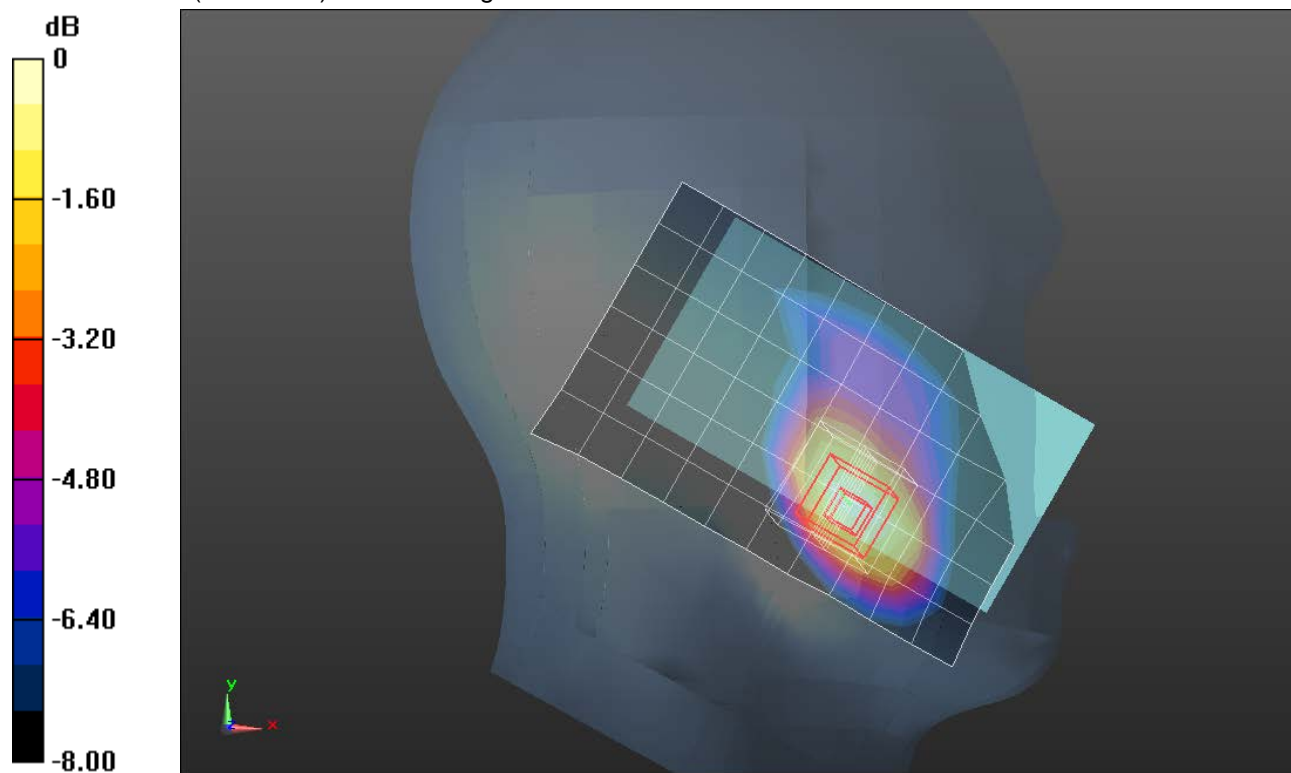
LHS/Touch_GSM Voice_ch 661/Zoom Scan (5x5x7)/Cube 0: Measurement grid: dx=8mm, dy=8mm, dz=5mm

Reference Value = 19.382 V/m; Power Drift = -0.00 dB

Peak SAR (extrapolated) = 0.733 W/kg

SAR(1 g) = 0.465 W/kg; SAR(10 g) = 0.283 W/kg

Maximum value of SAR (measured) = 0.569 W/kg



0 dB = 0.569 W/kg = -2.45 dBW/kg

GSM 1900

Frequency: 1880 MHz; Duty Cycle: 1:2.6; Room Ambient Temperature: 24.0°C; Liquid Temperature: 23.0°C
 Medium parameters used: $f = 1880 \text{ MHz}$; $\sigma = 1.406 \text{ S/m}$; $\epsilon_r = 39.883$; $\rho = 1000 \text{ kg/m}^3$

DASY5 Configuration:

- Area Scan Setting: Find Secondary Maximum Within: 2.0 dB and with a peak SAR value greater than 0.0012W/kg
- Electronics: DAE4 Sn1258; Calibrated: 5/15/2014
- Probe: EX3DV4 - SN3686; ConvF(7.52, 7.52, 7.52); Calibrated: 3/18/2014;
- Sensor-Surface: 2.5mm (Mechanical Surface Detection)
- Phantom: SAM with CRP v5.0; Type: QD000P40CD; Serial: 1830

LHS/Touch_GPRS 3 slots ch 661/Area Scan (7x11x1): Measurement grid: dx=15mm, dy=15mm
 Maximum value of SAR (measured) = 0.571 W/kg

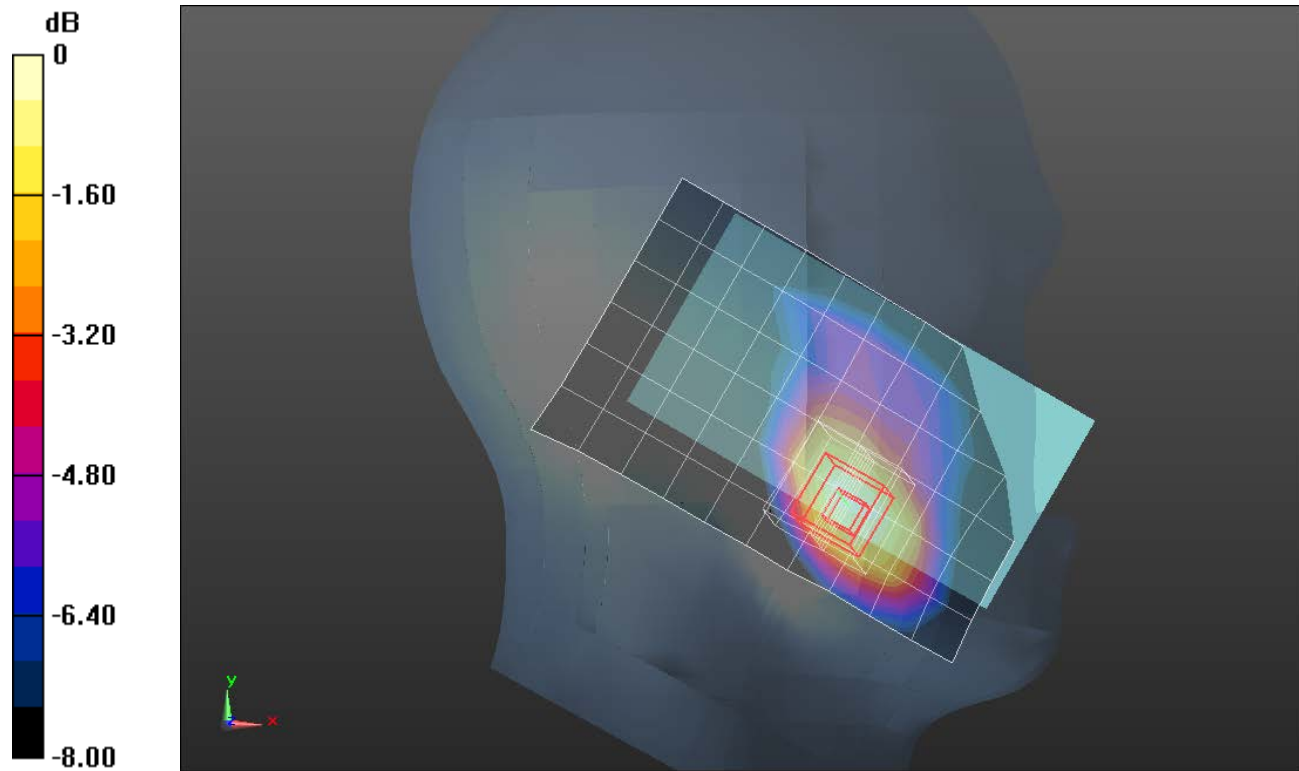
LHS/Touch_GPRS 3 slots ch 661/Zoom Scan (5x5x7)/Cube 0: Measurement grid: dx=8mm, dy=8mm, dz=5mm

Reference Value = 20.328 V/m; Power Drift = -0.02 dB

Peak SAR (extrapolated) = 0.774 W/kg

SAR(1 g) = 0.498 W/kg; SAR(10 g) = 0.306 W/kg

Maximum value of SAR (measured) = 0.606 W/kg



0 dB = 0.606 W/kg = -2.18 dBW/kg

GSM 1900

Frequency: 1880 MHz; Duty Cycle: 1:8; Room Ambient Temperature: 24.0°C; Liquid Temperature: 23.0°C
 Medium parameters used: $f = 1880 \text{ MHz}$; $\sigma = 1.53 \text{ S/m}$; $\epsilon_r = 54.283$; $\rho = 1000 \text{ kg/m}^3$

DASY5 Configuration:

- Area Scan Setting: Find Secondary Maximum Within: 2.0 dB and with a peak SAR value greater than 0.0012W/kg
- Electronics: DAE4 Sn1258; Calibrated: 5/15/2014
- Probe: EX3DV4 - SN3686; ConvF(7.09, 7.09, 7.09); Calibrated: 3/18/2014;
- Sensor-Surface: 2.5mm (Mechanical Surface Detection)
- Phantom: ELI v5.0 B; Type: SM 000 T01 DA; Serial: TP:1247

Rear/GSM Voice_ch 661/Area Scan (8x13x1): Measurement grid: dx=15mm, dy=15mm

Maximum value of SAR (measured) = 0.539 W/kg

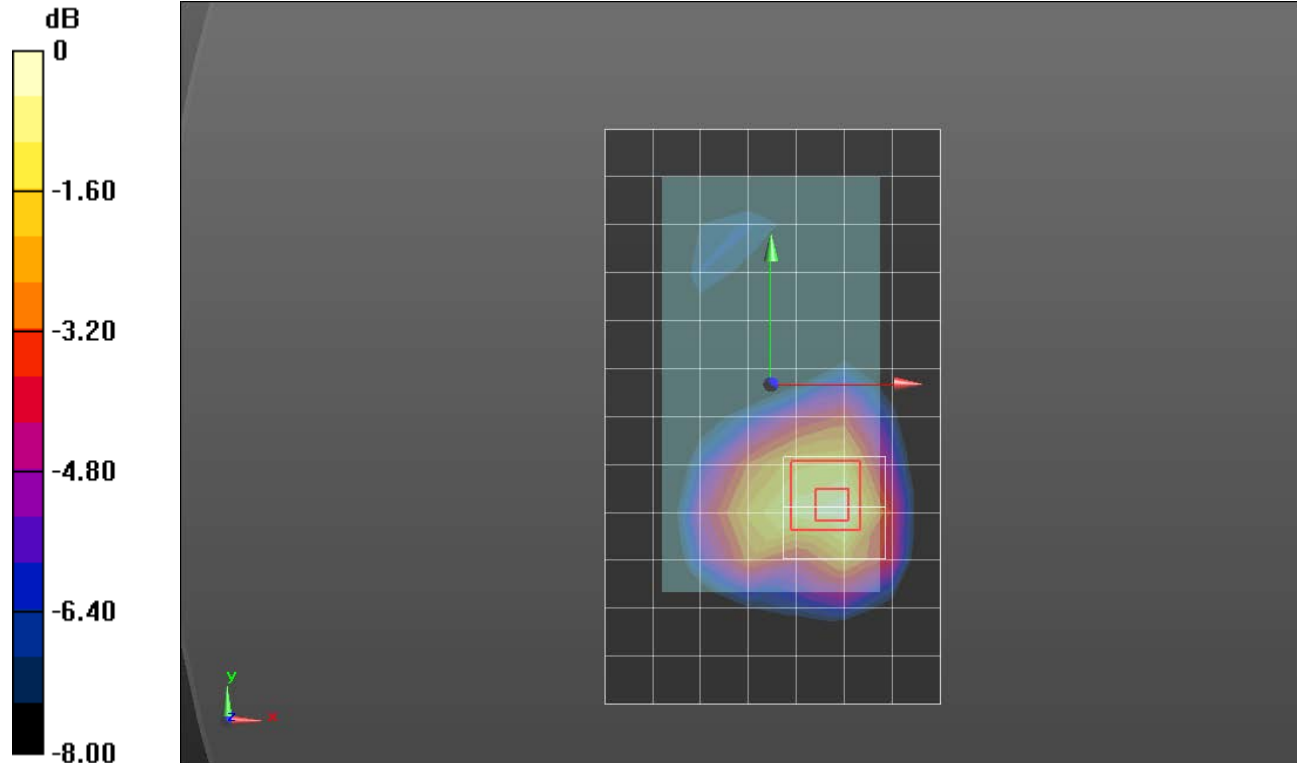
Rear/GSM Voice_ch 661/Zoom Scan (5x5x7)/Cube 0: Measurement grid: dx=8mm, dy=8mm, dz=5mm

Reference Value = 18.919 V/m; Power Drift = -0.01 dB

Peak SAR (extrapolated) = 0.692 W/kg

SAR(1 g) = 0.430 W/kg; SAR(10 g) = 0.257 W/kg

Maximum value of SAR (measured) = 0.541 W/kg



0 dB = 0.541 W/kg = -2.67 dBW/kg

GSM 1900

Frequency: 1880 MHz; Duty Cycle: 1:2.6; Room Ambient Temperature: 24.0°C; Liquid Temperature: 23.0°C
 Medium parameters used: $f = 1880 \text{ MHz}$; $\sigma = 1.53 \text{ S/m}$; $\epsilon_r = 54.283$; $\rho = 1000 \text{ kg/m}^3$

DASY5 Configuration:

- Area Scan Setting: Find Secondary Maximum Within: 2.0 dB and with a peak SAR value greater than 0.0012W/kg
- Electronics: DAE4 Sn1258; Calibrated: 5/15/2014
- Probe: EX3DV4 - SN3686; ConvF(7.09, 7.09, 7.09); Calibrated: 3/18/2014;
- Sensor-Surface: 2.5mm (Mechanical Surface Detection (Locations From Previous Scan Used)), Sensor-Surface: 2.5mm (Mechanical Surface Detection)
- Phantom: ELI v5.0 B; Type: SM 000 T01 DA; Serial: TP:1247

Rear/GPRS 3 slots_ch 661/Area Scan (8x13x1): Measurement grid: dx=15mm, dy=15mm

Maximum value of SAR (measured) = 0.645 W/kg

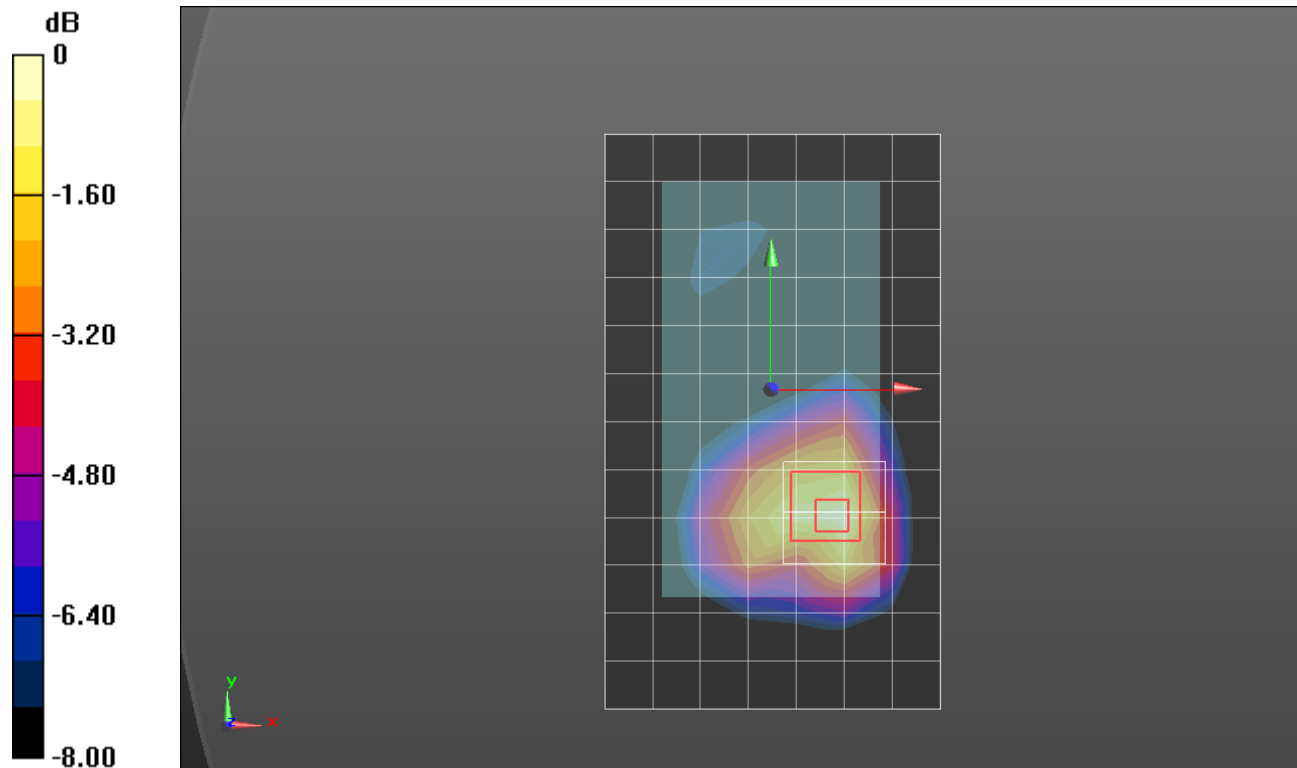
Rear/GPRS 3 slots_ch 661/Zoom Scan (5x5x7)/Cube 0: Measurement grid: dx=8mm, dy=8mm, dz=5mm

Reference Value = 18.844 V/m; Power Drift = -0.04 dB

Peak SAR (extrapolated) = 0.862 W/kg

SAR(1 g) = 0.530 W/kg; SAR(10 g) = 0.314 W/kg

Maximum value of SAR (measured) = 0.660 W/kg



0 dB = 0.660 W/kg = -1.80 dBW/kg

WiFi 2.4GHz

Frequency: 2437 MHz; Duty Cycle: 1:1; Room Ambient Temperature: 24.0°C; Liquid Temperature: 23.0°C
 Medium parameters used (interpolated): $f = 2437$ MHz; $\sigma = 1.854$ S/m; $\epsilon_r = 39.549$; $\rho = 1000$ kg/m³

DASY5 Configuration:

- Area Scan Setting: Find Secondary Maximum Within: 2.0 dB and with a peak SAR value greater than 0.0012W/kg
- Electronics: DAE3 Sn500; Calibrated: 5/15/2014
- Probe: EX3DV4 - SN3749; ConvF(6.6, 6.6, 6.6); Calibrated: 1/29/2014;
- Sensor-Surface: 2.5mm (Mechanical Surface Detection (Locations From Previous Scan Used)), Sensor-Surface: 2.5mm (Mechanical Surface Detection)
- Phantom: SAM; Type: QD000PCD; Serial: 1632

LHS/Touch_802.11b_ch 6/Area Scan (9x14x1): Measurement grid: dx=12mm, dy=12mm

[Info: Interpolated medium parameters used for SAR evaluation.](#)

Maximum value of SAR (measured) = 0.828 W/kg

LHS/Touch_802.11b_ch 6/Zoom Scan (7x7x7)/Cube 0: Measurement grid: dx=5mm, dy=5mm, dz=5mm

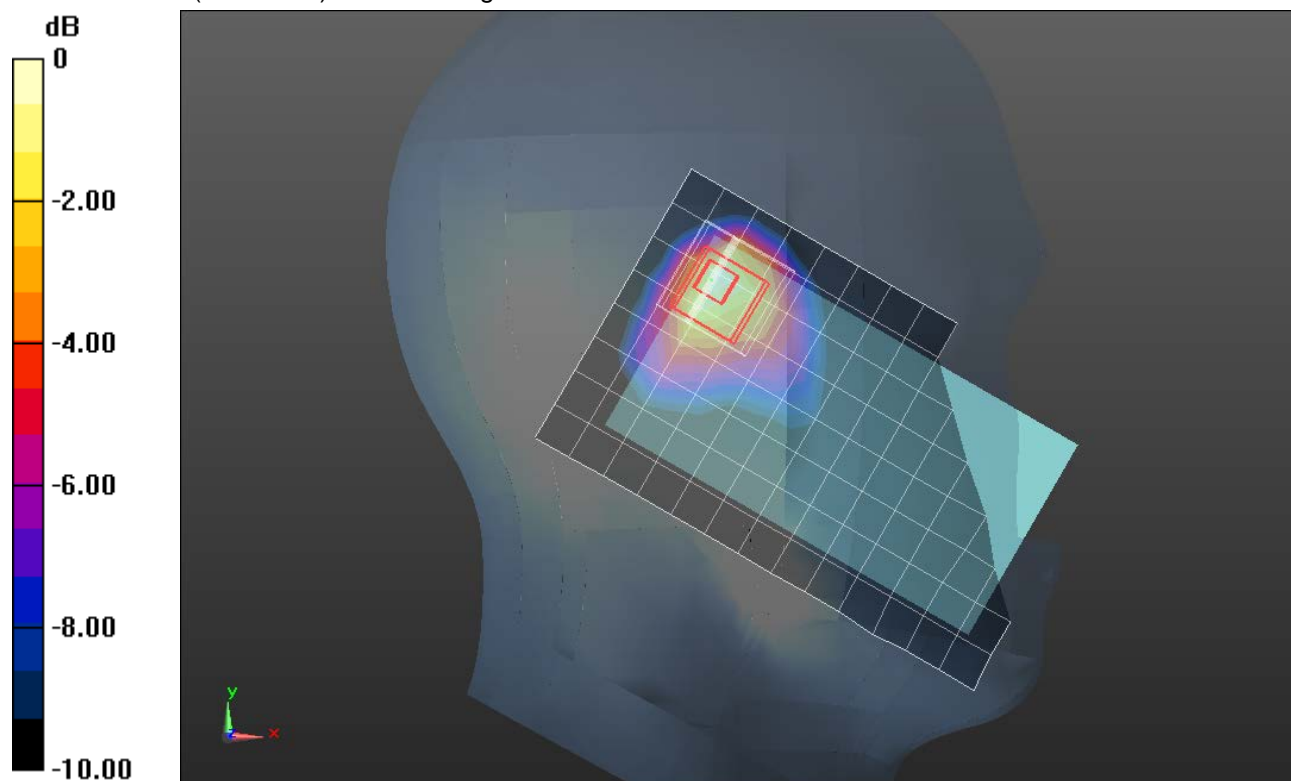
Reference Value = 21.328 V/m; Power Drift = 0.09 dB

Peak SAR (extrapolated) = 1.33 W/kg

SAR(1 g) = 0.603 W/kg; SAR(10 g) = 0.300 W/kg

[Info: Interpolated medium parameters used for SAR evaluation.](#)

Maximum value of SAR (measured) = 0.835 W/kg



0 dB = 0.835 W/kg = -0.78 dBW/kg

Body 2.4 GHz

Frequency: 2437 MHz; Duty Cycle: 1:1; Room Ambient Temperature: 24.0°C; Liquid Temperature: 23.0°C
 Medium parameters used (interpolated): $f = 2437$ MHz; $\sigma = 1.971$ S/m; $\epsilon_r = 51.74$; $\rho = 1000$ kg/m³

DASY5 Configuration:

- Area Scan Setting: Find Secondary Maximum Within: 2.0 dB and with a peak SAR value greater than 0.0012W/kg
- Electronics: DAE3 Sn500; Calibrated: 5/15/2014
- Probe: EX3DV4 - SN3749; ConvF(6.49, 6.49, 6.49); Calibrated: 1/29/2014;
- Sensor-Surface: 2mm (Mechanical Surface Detection), Sensor-Surface: 2.5mm (Mechanical Surface Detection)
- Phantom: ELI v5.0 (A); Type: QDOVA001BB; Serial: 1117

Edge 1/802.11b_Ch 6/Area Scan (6x9x1): Measurement grid: dx=12mm, dy=12mm

[Info: Interpolated medium parameters used for SAR evaluation.](#)

Maximum value of SAR (measured) = 0.312 W/kg

Edge 1/802.11b_Ch 6/Zoom Scan (7x7x7)/Cube 0: Measurement grid: dx=5mm, dy=5mm, dz=5mm

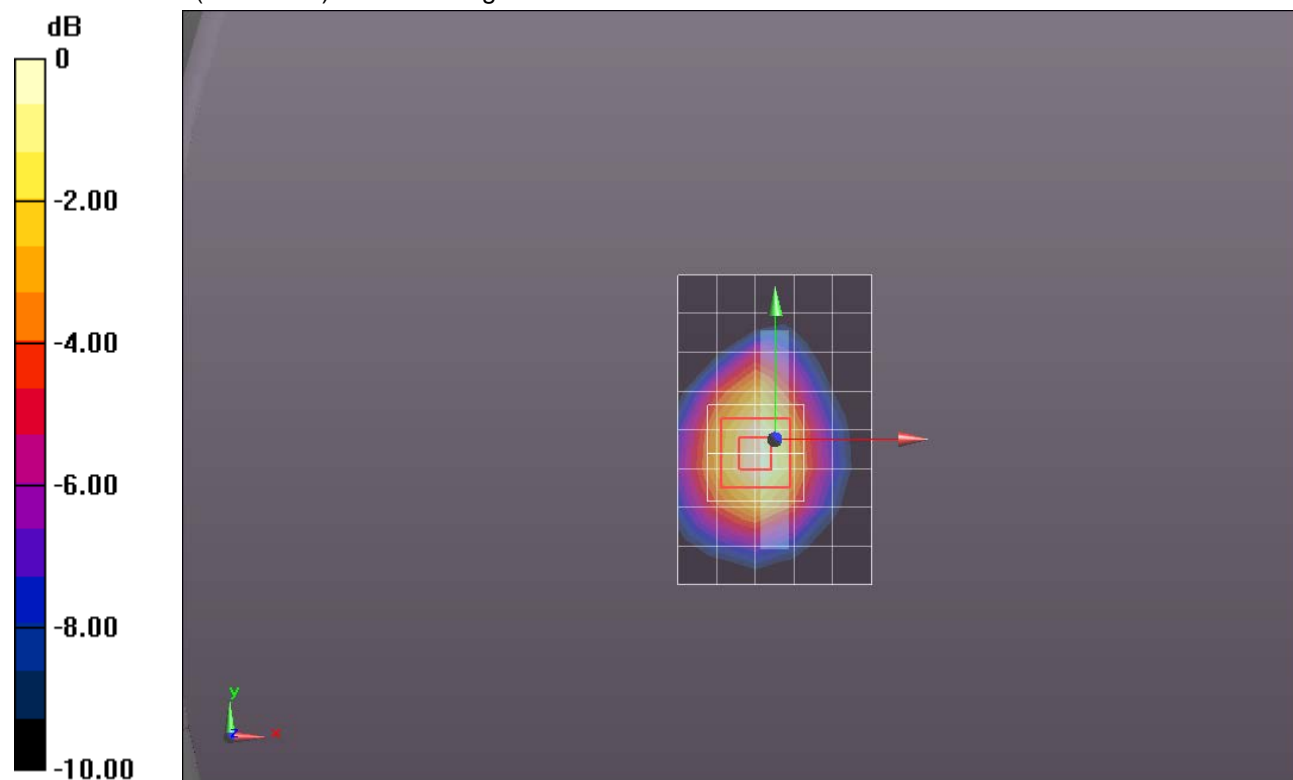
Reference Value = 10.645 V/m; Power Drift = 0.01 dB

Peak SAR (extrapolated) = 0.421 W/kg

SAR(1 g) = 0.228 W/kg; SAR(10 g) = 0.120 W/kg

[Info: Interpolated medium parameters used for SAR evaluation.](#)

Maximum value of SAR (measured) = 0.304 W/kg



0 dB = 0.304 W/kg = -5.17 dBW/kg