

#01_GSM1900_GPRS(2 Tx slots)_Left Cheek_Ch661

Communication System: UID 0, GPRS/EDGE10 (0); Frequency: 1880 MHz; Duty Cycle: 1:4.15
Medium: HSL_1900_140913 Medium parameters used: $f = 1880$ MHz; $\sigma = 1.402$ S/m; $\epsilon_r = 40.407$;
 $\rho = 1000$ kg/m³
Ambient Temperature : 23.5 °C; Liquid Temperature : 22.6 °C

DASY5 Configuration:

- Probe: EX3DV4 - SN3819; ConvF(8, 8, 8); Calibrated: 2013.11.27;
- Sensor-Surface: 2mm (Mechanical Surface Detection)
- Electronics: DAE4 Sn910; Calibrated: 2014.07.22
- Phantom: SAM1; Type: QD000P40CD; Serial: TP:1670
- Measurement SW: DASY52, Version 52.8 (7); SEMCAD X Version 14.6.10 (7164)

Ch661/Area Scan (61x111x1): Interpolated grid: dx=15mm, dy=15mm

Maximum value of SAR (interpolated) = 0.533 W/kg

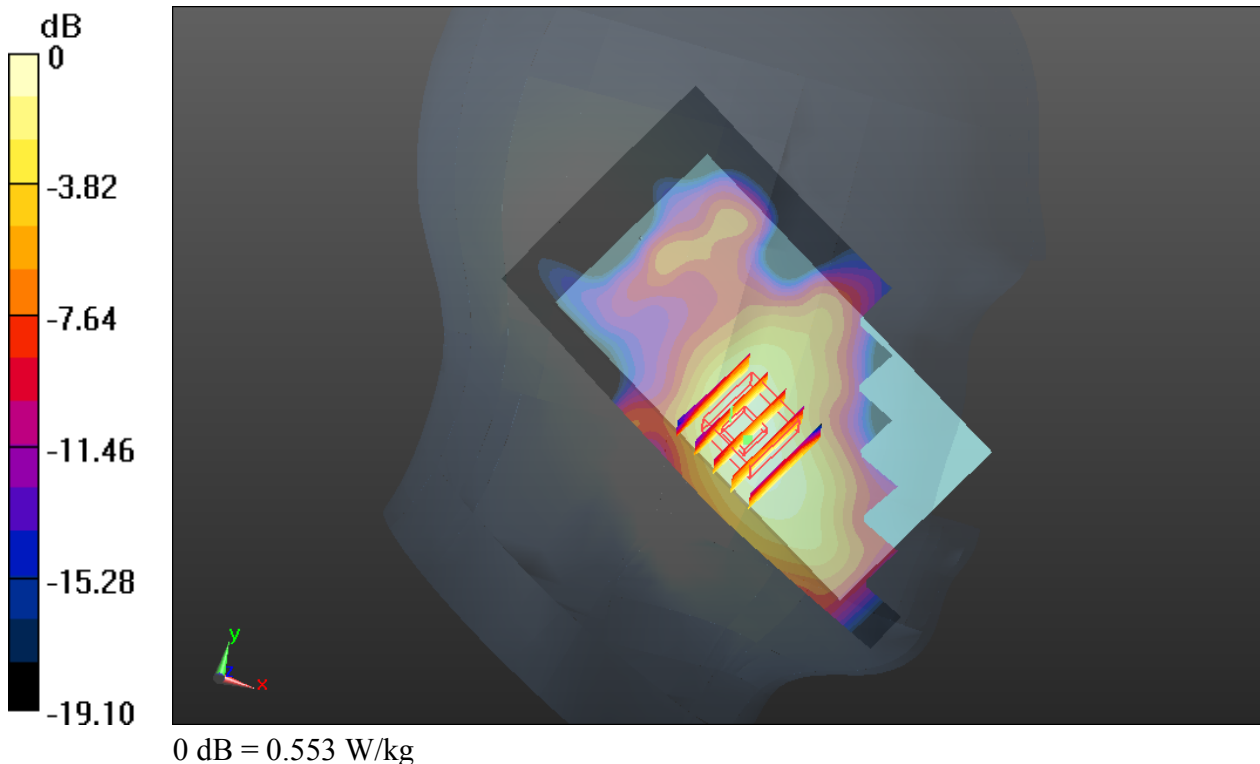
Ch661/Zoom Scan (5x5x7)/Cube 0: Measurement grid: dx=8mm, dy=8mm, dz=5mm

Reference Value = 3.777 V/m; Power Drift = 0.03 dB

Peak SAR (extrapolated) = 0.642 W/kg

SAR(1 g) = 0.454 W/kg; SAR(10 g) = 0.301 W/kg

Maximum value of SAR (measured) = 0.553 W/kg



#02_LTE Band 41_20M_QPSK_1RB_99Offset_Right Cheek_Ch40185

Communication System: UID 0, LTE (0); Frequency: 2549.5 MHz;Duty Cycle: 1:1.59
Medium: HSL_2600_140913 Medium parameters used: $f = 2549.5$ MHz; $\sigma = 1.998$ S/m; $\epsilon_r = 37.532$; $\rho = 1000$ kg/m³
Ambient Temperature : 23.3 °C; Liquid Temperature : 22.7 °C

DASY5 Configuration:

- Probe: EX3DV4 - SN3819; ConvF(7.06, 7.06, 7.06); Calibrated: 2013.11.27;
- Sensor-Surface: 2mm (Mechanical Surface Detection)
- Electronics: DAE4 Sn910; Calibrated: 2014.07.22
- Phantom: SAM1; Type: QD000P40CD; Serial: TP:1670
- Measurement SW: DASY52, Version 52.8 (7); SEMCAD X Version 14.6.10 (7164)

Ch40185/Area Scan (81x131x1): Interpolated grid: dx=12mm, dy=12mm

Maximum value of SAR (interpolated) = 0.736 W/kg

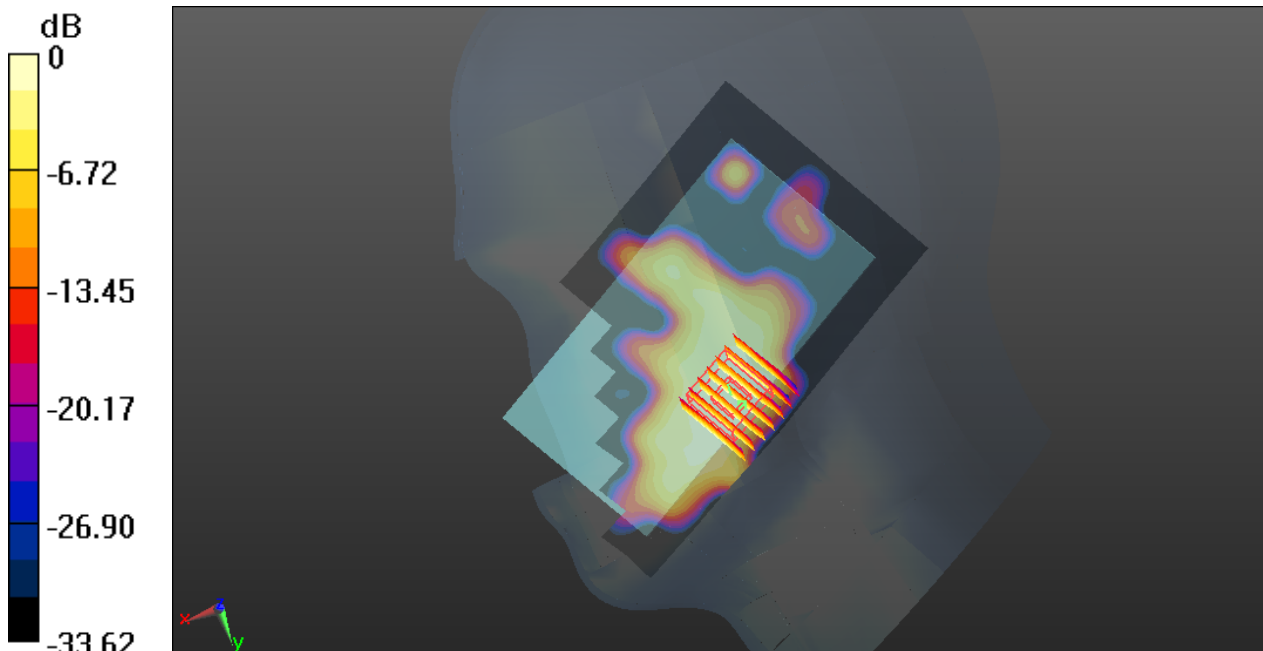
Ch40185/Zoom Scan (7x7x7)/Cube 0: Measurement grid: dx=5mm, dy=5mm, dz=5mm

Reference Value = 2.809 V/m; Power Drift = 0.08 dB

Peak SAR (extrapolated) = 0.674 W/kg

SAR(1 g) = 0.368 W/kg; SAR(10 g) = 0.192 W/kg

Maximum value of SAR (measured) = 0.506 W/kg



0 dB = 0.506 W/kg

#03_WLAN 2.4GHz_802.11b 1Mbps_Right Cheek_Ch11

Communication System: UID 0, WIFI (0); Frequency: 2462 MHz; Duty Cycle: 1:1
Medium: HSL_2450_140913 Medium parameters used: $f = 2462$ MHz; $\sigma = 1.892$ S/m; $\epsilon_r = 40.41$; $\rho = 1000$ kg/m³
Ambient Temperature : 23.5 °C; Liquid Temperature : 22.6 °C

DASY5 Configuration:

- Probe: EX3DV4 - SN3819; ConvF(7.22, 7.22, 7.22); Calibrated: 2013.11.27;
- Sensor-Surface: 2mm (Mechanical Surface Detection)
- Electronics: DAE4 Sn910; Calibrated: 2014.07.22
- Phantom: SAM1; Type: QD000P40CD; Serial: TP:1670
- Measurement SW: DASY52, Version 52.8 (7); SEMCAD X Version 14.6.10 (7164)

Ch11/Area Scan (81x131x1): Interpolated grid: dx=12mm, dy=12mm

Maximum value of SAR (interpolated) = 0.106 W/kg

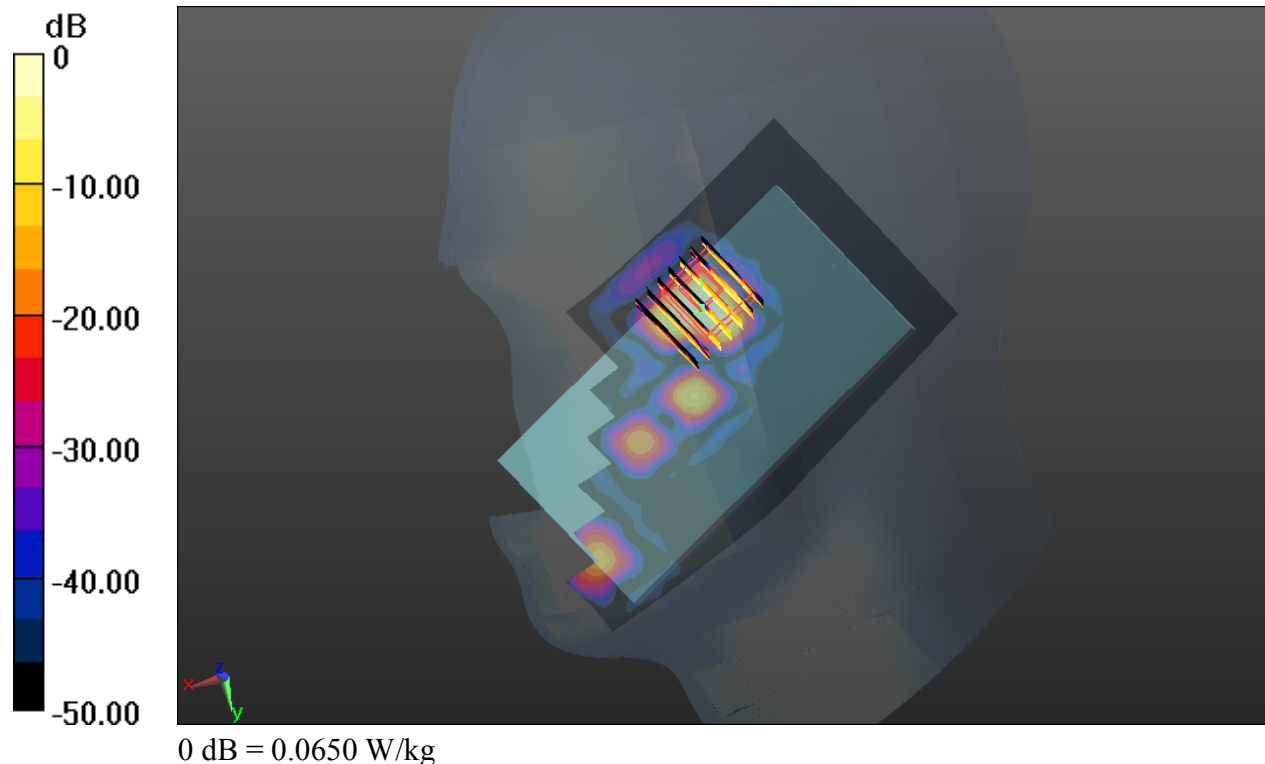
Ch11/Zoom Scan (7x7x7)/Cube 0: Measurement grid: dx=5mm, dy=5mm, dz=5mm

Reference Value = 0.264 V/m; Power Drift = 0.09 dB

Peak SAR (extrapolated) = 0.0870 W/kg

SAR(1 g) = 0.039 W/kg; SAR(10 g) = 0.014 W/kg

Maximum value of SAR (measured) = 0.0650 W/kg



#04_Bluetooth_1Mbps_DH5_Left_Cheek_Ch39

Communication System: UID 0, Bluetooth (0); Frequency: 2441 MHz; Duty Cycle: 1:1.2
Medium: HSL_2450_140913 Medium parameters used: $f = 2441$ MHz; $\sigma = 1.868$ S/m; $\epsilon_r = 40.502$;
 $\rho = 1000$ kg/m³
Ambient Temperature : 23.5 °C; Liquid Temperature : 22.6 °C

DASY5 Configuration:

- Probe: EX3DV4 - SN3819; ConvF(7.22, 7.22, 7.22); Calibrated: 2013.11.27;
- Sensor-Surface: 2mm (Mechanical Surface Detection)
- Electronics: DAE4 Sn910; Calibrated: 2014.07.22
- Phantom: SAM1; Type: QD000P40CD; Serial: TP:1670
- Measurement SW: DASY52, Version 52.8 (7); SEMCAD X Version 14.6.10 (7164)

Ch39/Area Scan (81x131x1): Interpolated grid: dx=12mm, dy=12mm

Maximum value of SAR (interpolated) = 0.0404 W/kg

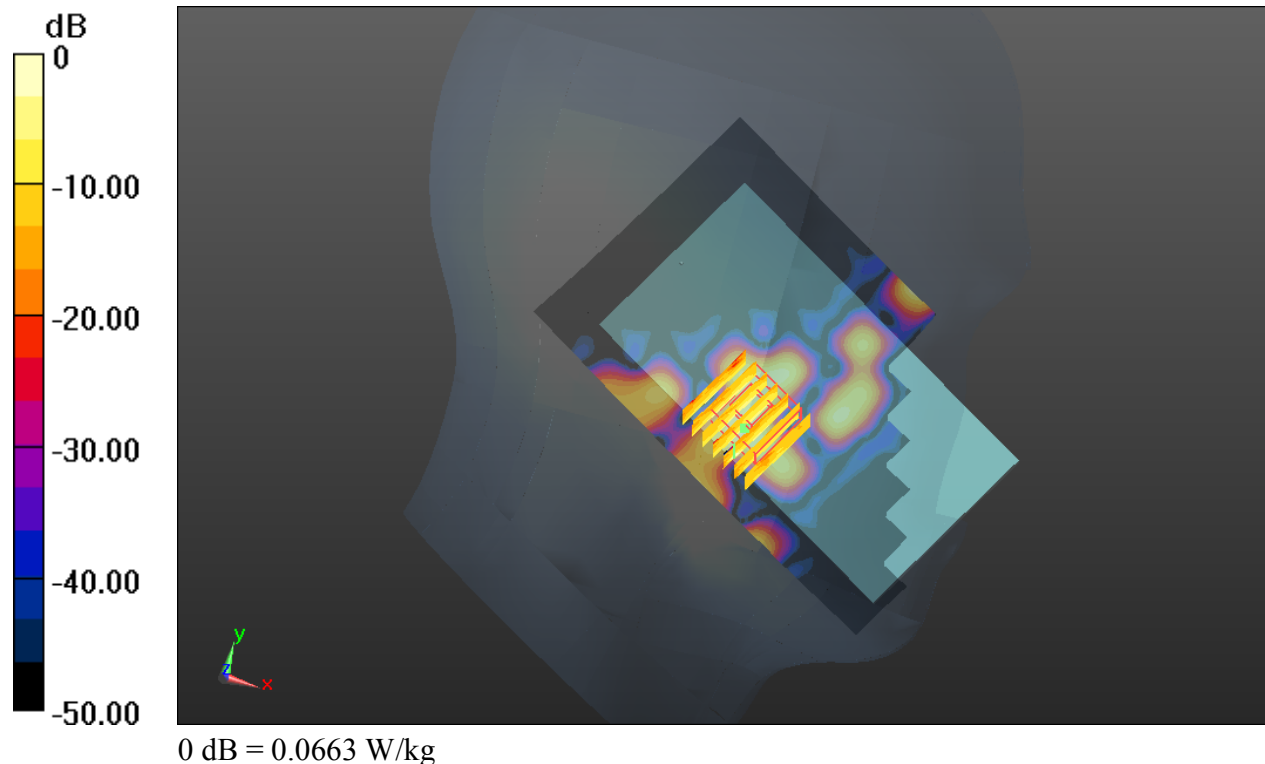
Ch39/Zoom Scan (7x7x7)/Cube 0: Measurement grid: dx=5mm, dy=5mm, dz=5mm

Reference Value = 1.567 V/m; Power Drift = -0.09 dB

Peak SAR (extrapolated) = 0.0660 W/kg

SAR(1 g) = 0.014 W/kg; SAR(10 g) = 0.00462 W/kg

Maximum value of SAR (measured) = 0.0663 W/kg



#05_GSM1900_GPRS(2 Tx slots)_Back_1cm_Ch661

Communication System: UID 0, GPRS/EDGE10 (0); Frequency: 1880 MHz; Duty Cycle: 1:4.15
Medium: MSL_1900_140913 Medium parameters used: $f = 1880$ MHz; $\sigma = 1.521$ S/m; $\epsilon_r = 53.575$;
 $\rho = 1000$ kg/m³
Ambient Temperature : 23.2 °C; Liquid Temperature : 22.7 °C

DASY5 Configuration:

- Probe: EX3DV4 - SN3819; ConvF(7.55, 7.55, 7.55); Calibrated: 2013.11.27;
- Sensor-Surface: 2mm (Mechanical Surface Detection)
- Electronics: DAE4 Sn910; Calibrated: 2014.07.22
- Phantom: SAM2; Type: QD000P40CD; Serial: TP:1671
- Measurement SW: DASY52, Version 52.8 (7); SEMCAD X Version 14.6.10 (7164)

Ch661/Area Scan (61x111x1): Interpolated grid: dx=15mm, dy=15mm

Maximum value of SAR (interpolated) = 0.601 W/kg

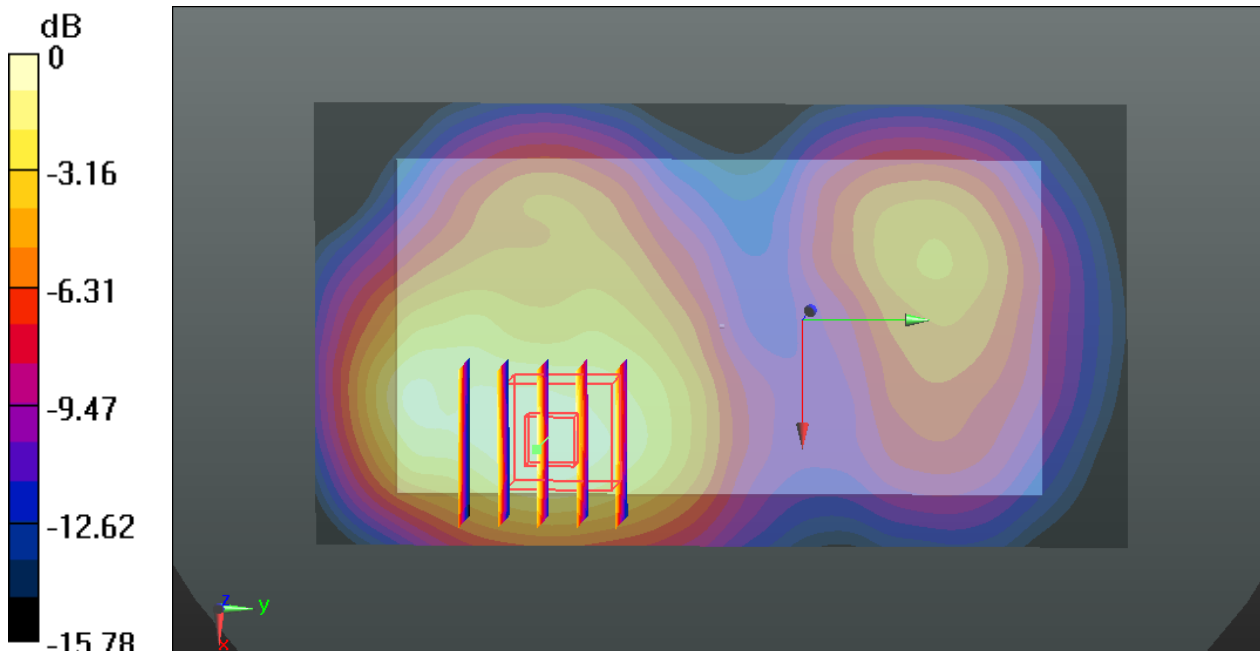
Ch661/Zoom Scan (5x5x7)/Cube 0: Measurement grid: dx=8mm, dy=8mm, dz=5mm

Reference Value = 2.261 V/m; Power Drift = 0.04 dB

Peak SAR (extrapolated) = 0.696 W/kg

SAR(1 g) = 0.464 W/kg; SAR(10 g) = 0.283 W/kg

Maximum value of SAR (measured) = 0.595 W/kg



0 dB = 0.595 W/kg

#06_LTE Band 41_20M_QPSK_1RB_99Offset_Front_1cm_Ch40185

Communication System: UID 0, LTE (0); Frequency: 2549.5 MHz;Duty Cycle: 1:307;
Medium: MSL_2600_140912 Medium parameters used: $f = 2549.5$ MHz; $\sigma = 2.135$ S/m; $\epsilon_r = 52.819$; $\rho = 1000$ kg/m³
Ambient Temperature : 23.5 °C; Liquid Temperature : 22.8 °C

DASY5 Configuration:

- Probe: EX3DV4 - SN3819; ConvF(6.79, 6.79, 6.79); Calibrated: 2013.11.27;
- Sensor-Surface: 2mm (Mechanical Surface Detection)
- Electronics: DAE4 Sn910; Calibrated: 2014.07.22
- Phantom: SAM2; Type: QD000P40CD; Serial: TP:1671
- Measurement SW: DASY52, Version 52.8 (7); SEMCAD X Version 14.6.10 (7164)

Ch40185/Area Scan (71x131x1): Interpolated grid: dx=12mm, dy=12mm

Maximum value of SAR (interpolated) = 0.475 W/kg

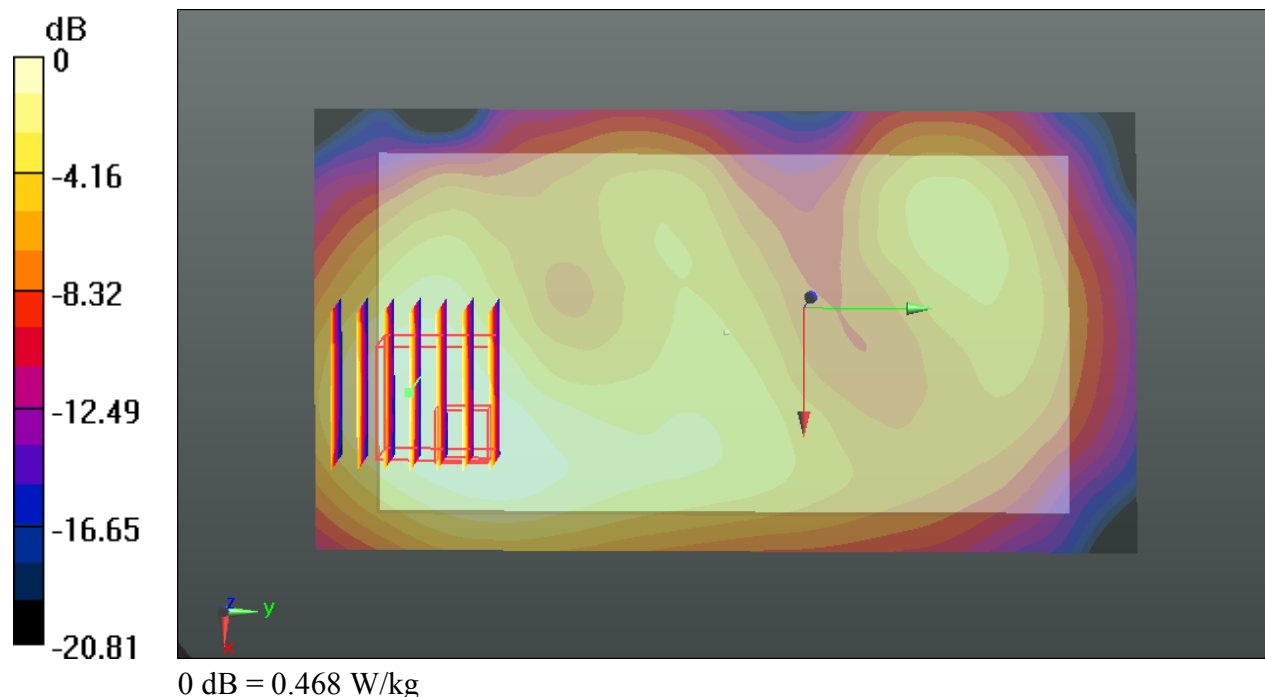
Ch40185/Zoom Scan (7x7x7)/Cube 0: Measurement grid: dx=5mm, dy=5mm, dz=5mm

Reference Value = 1.121 V/m; Power Drift = 0.02 dB

Peak SAR (extrapolated) = 0.634 W/kg

SAR(1 g) = 0.324 W/kg; SAR(10 g) = 0.183 W/kg

Maximum value of SAR (measured) = 0.468 W/kg



#07_WLAN 2.4GHz_802.11b 1Mbps_Back_1cm_Ch11

Communication System: UID 0, WIFI (0); Frequency: 2462 MHz;Duty Cycle: 1:1
Medium: MSL_2450_140912 Medium parameters used: $f = 2462$ MHz; $\sigma = 2.029$ S/m; $\epsilon_r = 51.436$;
 $\rho = 1000$ kg/m³
Ambient Temperature : 23.5 °C; Liquid Temperature : 22.7 °C

DASY5 Configuration:

- Probe: EX3DV4 - SN3819; ConvF(7.07, 7.07, 7.07); Calibrated: 2013.11.27;
- Sensor-Surface: 2mm (Mechanical Surface Detection)
- Electronics: DAE4 Sn910; Calibrated: 2014.07.22
- Phantom: SAM2; Type: QD000P40CD; Serial: TP:1671
- Measurement SW: DASY52, Version 52.8 (7); SEMCAD X Version 14.6.10 (7164)

Ch11/Area Scan (81x131x1): Interpolated grid: dx=12mm, dy=12mm

Maximum value of SAR (interpolated) = 0.0622 W/kg

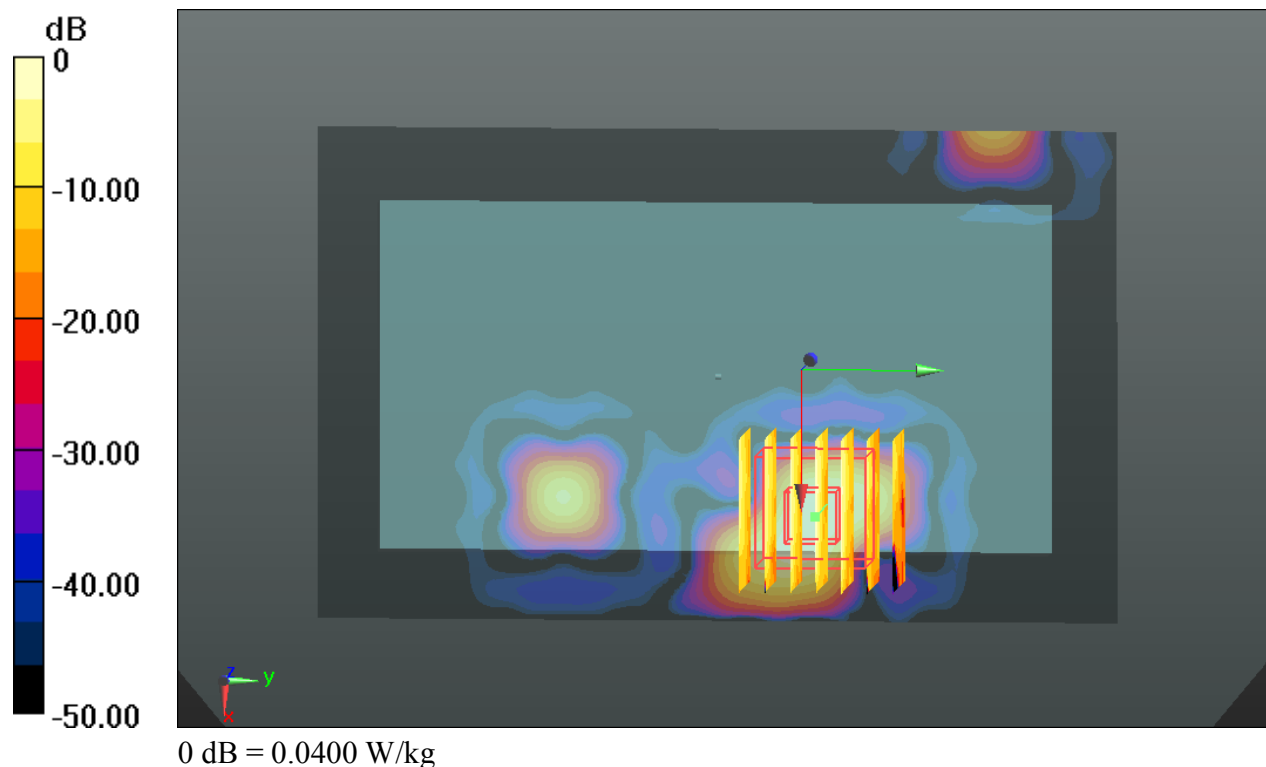
Ch11/Zoom Scan (7x7x7)/Cube 0: Measurement grid: dx=5mm, dy=5mm, dz=5mm

Reference Value = 0 V/m; Power Drift = 0.09 dB

Peak SAR (extrapolated) = 0.114 W/kg

SAR(1 g) = 0.028 W/kg; SAR(10 g) = 0.00758 W/kg

Maximum value of SAR (measured) = 0.0400 W/kg



#08_Bluetooth_1Mbps_DH5_Front_1cm_Ch39

Communication System: UID 0, Bluetooth (0); Frequency: 2441 MHz; Duty Cycle: 1:1.2
Medium: MSL_2450_140912 Medium parameters used: $f = 2441$ MHz; $\sigma = 2.001$ S/m; $\epsilon_r = 51.511$;
 $\rho = 1000$ kg/m³
Ambient Temperature : 23.5 °C; Liquid Temperature : 22.7 °C

DASY5 Configuration:

- Probe: EX3DV4 - SN3819; ConvF(7.07, 7.07, 7.07); Calibrated: 2013.11.27;
- Sensor-Surface: 2mm (Mechanical Surface Detection)
- Electronics: DAE4 Sn910; Calibrated: 2014.07.22
- Phantom: SAM2; Type: QD000P40CD; Serial: TP:1671
- Measurement SW: DASY52, Version 52.8 (7); SEMCAD X Version 14.6.10 (7164)

Ch39/Area Scan (81x131x1): Interpolated grid: dx=12mm, dy=12mm

Maximum value of SAR (interpolated) = 0.00641 W/kg

Ch39/Zoom Scan (7x7x7)/Cube 0: Measurement grid: dx=5mm, dy=5mm, dz=5mm

Reference Value = 0.634 V/m; Power Drift = 0.04 dB

Peak SAR (extrapolated) = 0.00899 W/kg

SAR(1 g) = 0.00321 W/kg; SAR(10 g) = 0.000533 W/kg

Maximum value of SAR (measured) = 0.00975 W/kg

