

20140314_SystemPerformanceCheck-D1900V2 SN 5d163

Frequency: 1900 MHz; Duty Cycle: 1:1; Room Ambient Temperature: 24.0°C; Liquid Temperature: 23.0°C

Medium parameters used: $f = 1900$ MHz; $\sigma = 1.531$ S/m; $\epsilon_r = 52.419$; $\rho = 1000$ kg/m³

DASY5 Configuration:

- Area Scan Setting: Find Secondary Maximum Within: 2.0 dB and with a peak SAR value greater than 0.0012W/kg
- Averaged Fast SAR: Polynomial fit
- Electronics: DAE4 Sn1380; Calibrated: 7/15/2013
- Probe: EX3DV4 - SN3936; ConvF(7.4, 7.4, 7.4); Calibrated: 7/22/2013;
- Sensor-Surface: 2.5mm (Mechanical Surface Detection)
- Phantom: ELI-B v5.0; Type: QDOVA002AA; Serial: TP:1195

Body/Pin=100 mW/Area Scan (61x61x1): Interpolated grid: dx=1.500 mm, dy=1.500 mm

Reference Value = 58.769 V/m; Power Drift = 0.07 dB

Fast SAR: SAR(1 g) = 4.16 W/kg; SAR(10 g) = 2.13 W/kg

Maximum value of SAR (interpolated) = 5.54 W/kg

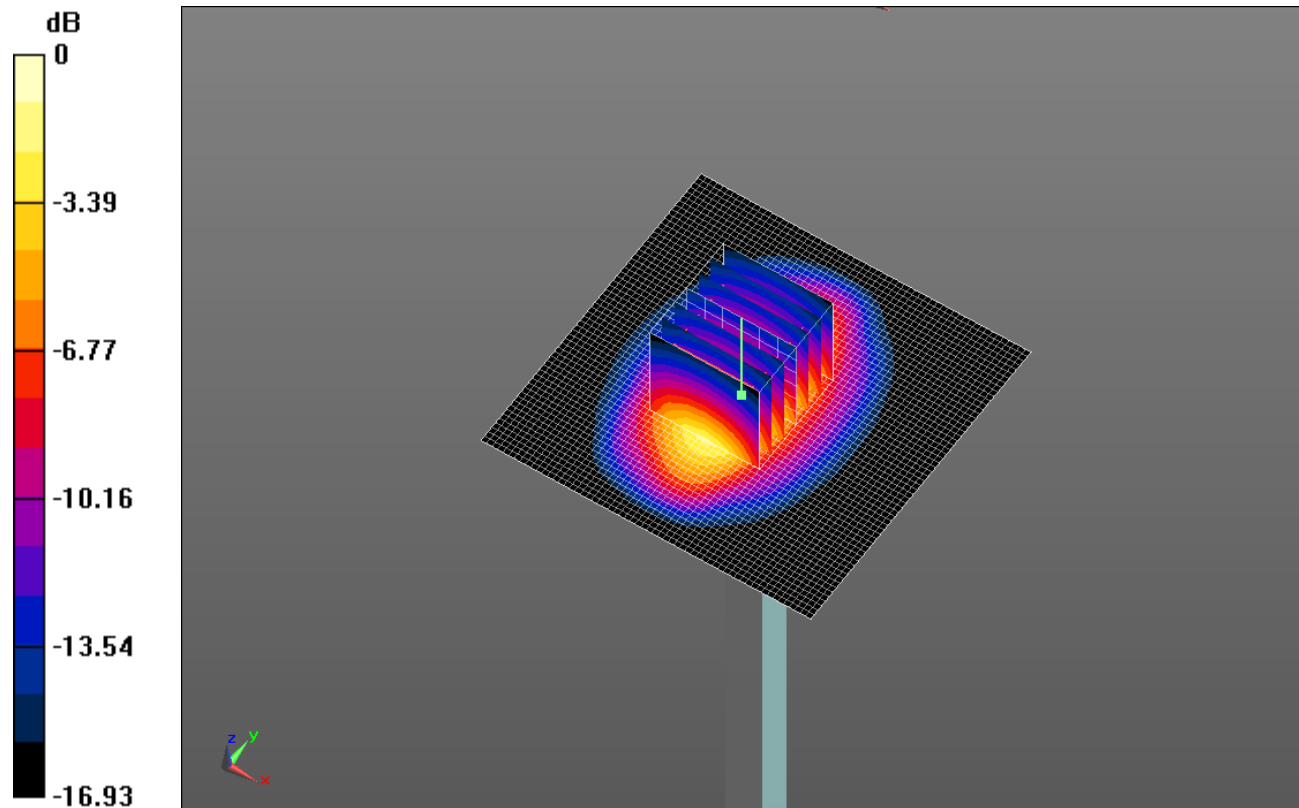
Body/Pin=100 mW/Zoom Scan (7x7x7)/Cube 0: Measurement grid: dx=5mm, dy=5mm, dz=5mm

Reference Value = 58.769 V/m; Power Drift = 0.07 dB

Peak SAR (extrapolated) = 7.53 W/kg

SAR(1 g) = 4.18 W/kg; SAR(10 g) = 2.19 W/kg

Maximum value of SAR (measured) = 5.65 W/kg

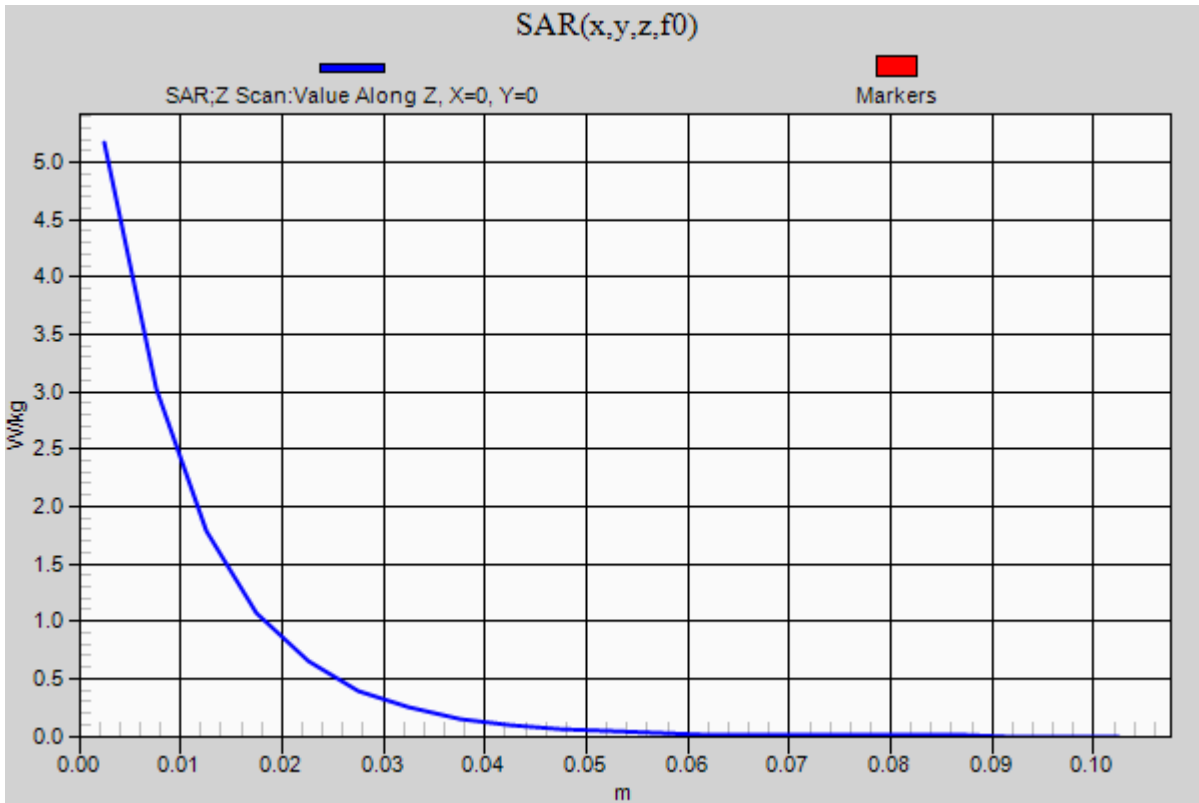


0 dB = 5.65 W/kg = 7.52 dBW/kg

20140314_SystemPerformanceCheck-D1900V2 SN 5d163

Frequency: 1900 MHz; Duty Cycle: 1:1

Body/Pin=100 mW/Z Scan (1x1x21): Measurement grid: dx=20mm, dy=20mm, dz=5mm
Maximum value of SAR (measured) = 5.17 W/kg



20140319_SystemPerformanceCheck-D2450V2 SN 706

Frequency: 2450 MHz; Duty Cycle: 1:1; Room Ambient Temperature: 24.0°C; Liquid Temperature: 23.0°C
 Medium parameters used: $f = 2450 \text{ MHz}$; $\sigma = 2.025 \text{ S/m}$; $\epsilon_r = 50.907$; $\rho = 1000 \text{ kg/m}^3$

DASY5 Configuration:

- Area Scan Setting: Find Secondary Maximum Within: 2.0 dB and with a peak SAR value greater than 0.0012W/kg
- Averaged Fast SAR: Polynomial fit
- Electronics: DAE4 Sn1377; Calibrated: 7/15/2013
- Probe: EX3DV4 - SN3902; ConvF(7.2, 7.2, 7.2); Calibrated: 7/12/2013;
- Sensor-Surface: 2.5mm (Mechanical Surface Detection (Locations From Previous Scan Used)), Sensor-Surface: 2.5mm (Mechanical Surface Detection)
- Phantom: ELI-B v5.0; Type: QDOVA001BB; Serial: 1215

Body/Pin=100 mW/Area Scan (71x71x1): Interpolated grid: dx=1.200 mm, dy=1.200 mm

Reference Value = 62.102 V/m; Power Drift = -0.00 dB

Fast SAR: SAR(1 g) = 5.39 W/kg; SAR(10 g) = 2.34 W/kg

Maximum value of SAR (interpolated) = 7.90 W/kg

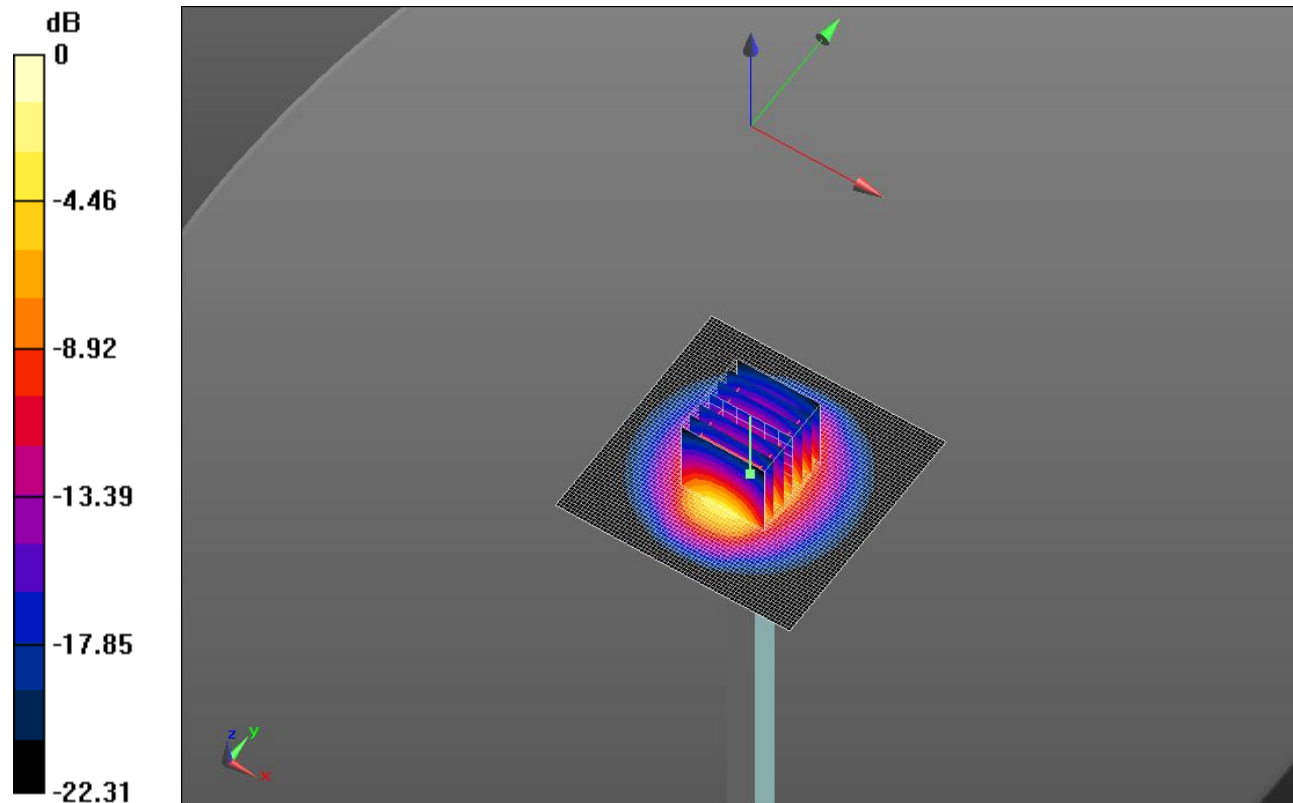
Body/Pin=100 mW/Zoom Scan (7x7x7)/Cube 0: Measurement grid: dx=5mm, dy=5mm, dz=5mm

Reference Value = 62.102 V/m; Power Drift = -0.00 dB

Peak SAR (extrapolated) = 11.3 W/kg

SAR(1 g) = 5.38 W/kg; SAR(10 g) = 2.48 W/kg

Maximum value of SAR (measured) = 7.66 W/kg

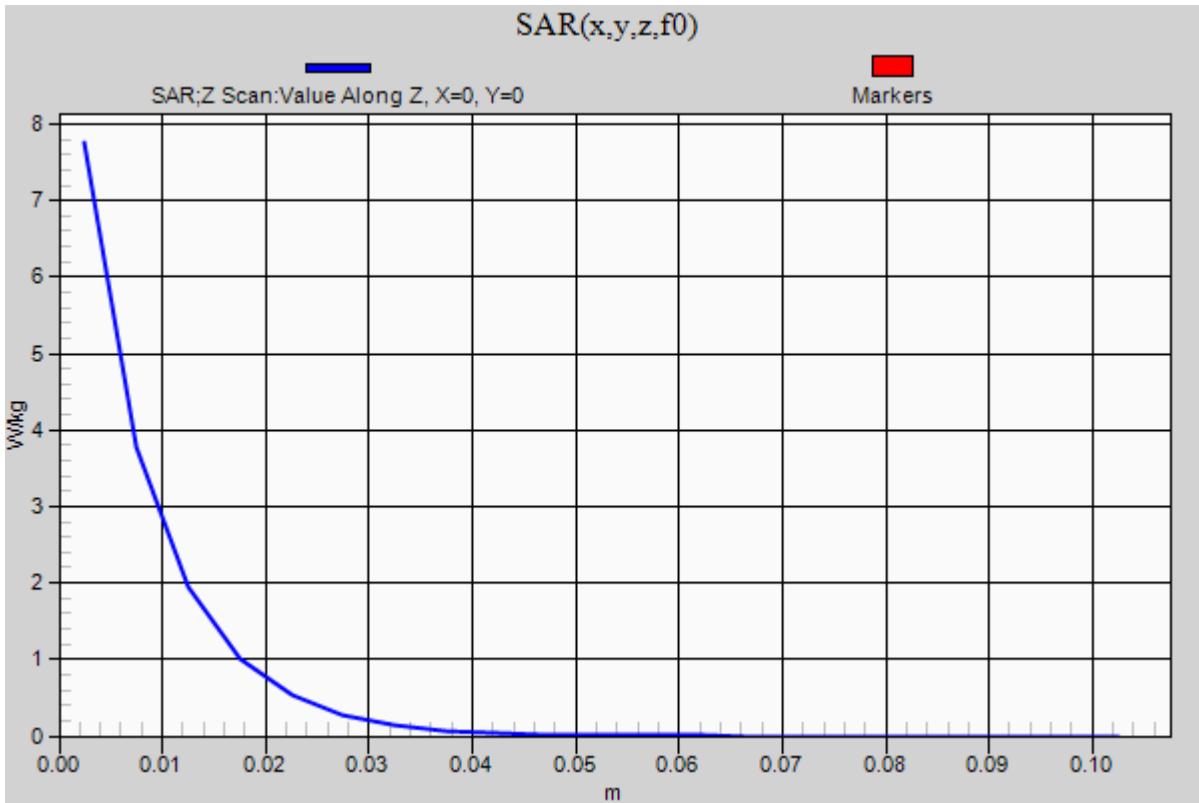


0 dB = 7.66 W/kg = 8.84 dBW/kg

20140319_SystemPerformanceCheck-D2450V2 SN 706

Frequency: 2450 MHz; Duty Cycle: 1:1

Body/Pin=100 mW/Z Scan (1x1x21): Measurement grid: dx=20mm, dy=20mm, dz=5mm
Maximum value of SAR (measured) = 7.76 W/kg



20140318_SystemPerformanceCheck-D835V2 SN 4d142

Frequency: 835 MHz; Duty Cycle: 1:1; Room Ambient Temperature: 24.0°C; Liquid Temperature: 23.0°C
 Medium parameters used: $f = 835 \text{ MHz}$; $\sigma = 1.012 \text{ S/m}$; $\epsilon_r = 52.7$; $\rho = 1000 \text{ kg/m}^3$

DASY5 Configuration:

- Area Scan Setting: Find Secondary Maximum Within: 2.0 dB and with a peak SAR value greater than 0.0012W/kg
- Averaged Fast SAR: Polynomial fit
- Electronics: DAE4 Sn1380; Calibrated: 7/15/2013
- Probe: EX3DV4 - SN3936; ConvF(9.3, 9.3, 9.3); Calibrated: 7/22/2013;
- Sensor-Surface: 2.5mm (Mechanical Surface Detection (Locations From Previous Scan Used)), Sensor-Surface: 2.5mm (Mechanical Surface Detection)
- Phantom: ELI A (v5.0); Type: QDOVA001BB; Serial: S/n:1212

Body/Pin=100 mW/Area Scan (61x61x1): Interpolated grid: dx=1.500 mm, dy=1.500 mm

Reference Value = 34.800 V/m; Power Drift = -0.01 dB

Fast SAR: SAR(1 g) = 1.01 W/kg; SAR(10 g) = 0.672 W/kg

Maximum value of SAR (interpolated) = 1.19 W/kg

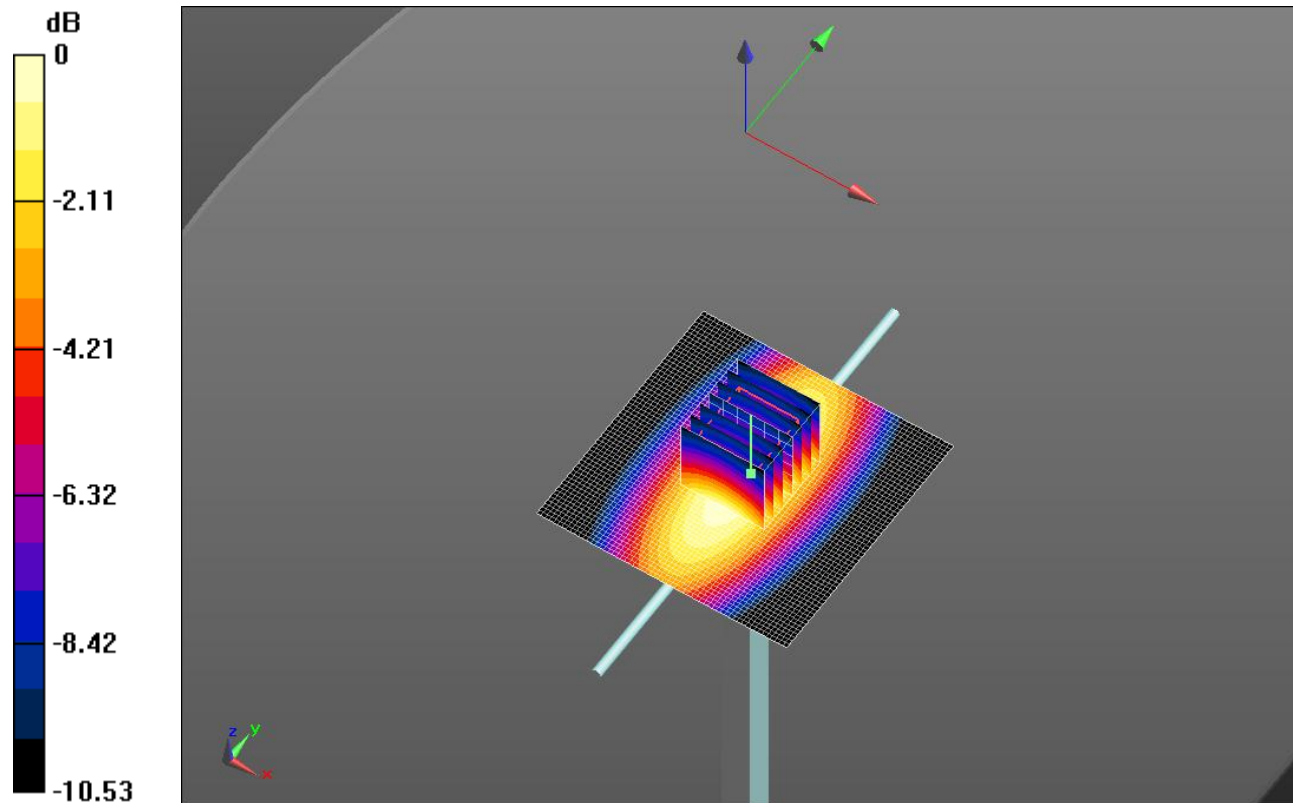
Body/Pin=100 mW/Zoom Scan (7x7x7)/Cube 0: Measurement grid: dx=5mm, dy=5mm, dz=5mm

Reference Value = 34.800 V/m; Power Drift = -0.01 dB

Peak SAR (extrapolated) = 1.47 W/kg

SAR(1 g) = 0.979 W/kg; SAR(10 g) = 0.641 W/kg

Maximum value of SAR (measured) = 1.19 W/kg

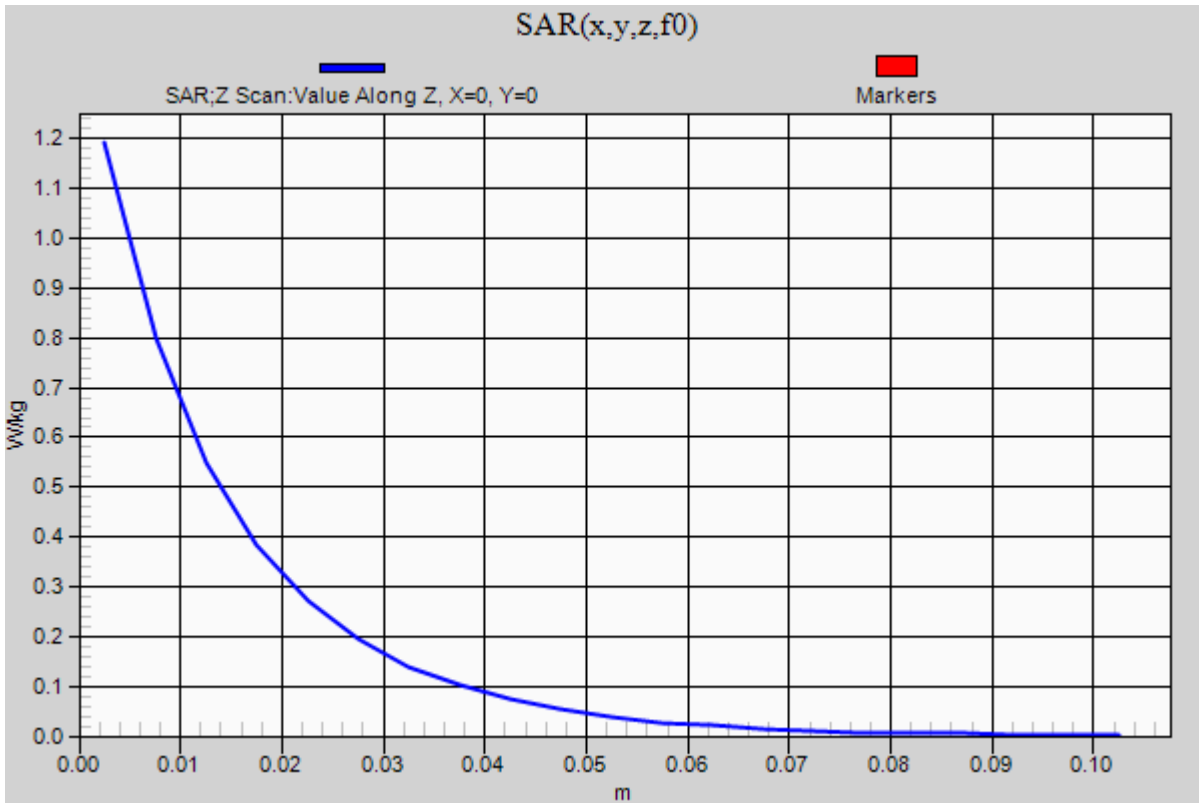


0 dB = 1.19 W/kg = 0.76 dBW/kg

20140318_SystemPerformanceCheck-D835V2 SN 4d142

Frequency: 835 MHz; Duty Cycle: 1:1

Body/Pin=100 mW/Z Scan (1x1x21): Measurement grid: dx=20mm, dy=20mm, dz=5mm
Maximum value of SAR (measured) = 1.19 W/kg



GSM 850

Frequency: 836.6 MHz; Duty Cycle: 1:8.00018; Room Ambient Temperature: 24.0°C; Liquid Temperature: 23.0°C
 Medium parameters used (interpolated): $f = 836.6$ MHz; $\sigma = 0.918$ S/m; $\epsilon_r = 41.242$; $\rho = 1000$ kg/m³

DASY5 Configuration:

- Area Scan Setting: Find Secondary Maximum Within: 2.0 dB and with a peak SAR value greater than 0.0012W/kg
- Electronics: DAE4 Sn1380; Calibrated: 7/15/2013
- Probe: EX3DV4 - SN3936; ConvF(9.45, 9.45, 9.45); Calibrated: 7/22/2013;
- Sensor-Surface: 2.5mm (Mechanical Surface Detection)
- Phantom: SAM with CRP; Type: QD000P40CD; Serial: S/n:1772

LHS/Touch_GSM Voice_ch 190/Area Scan (8x11x1): Measurement grid: dx=15mm, dy=15mm

[Info: Interpolated medium parameters used for SAR evaluation.](#)

Maximum value of SAR (measured) = 0.174 W/kg

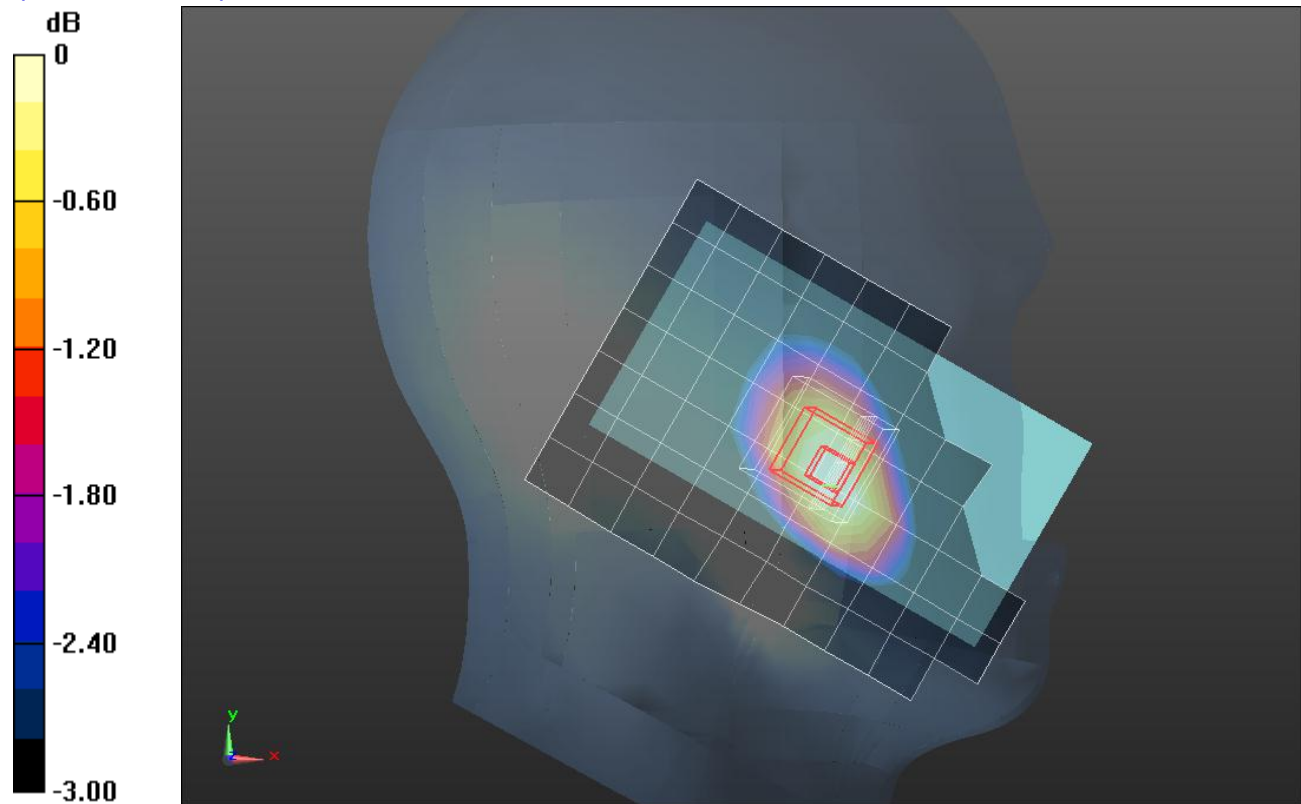
LHS/Touch_GSM Voice_ch 190/Zoom Scan (5x5x7)/Cube 0: Measurement grid: dx=8mm, dy=8mm, dz=5mm

Reference Value = 13.527 V/m; Power Drift = -0.08 dB

Peak SAR (extrapolated) = 0.199 W/kg

SAR(1 g) = 0.155 W/kg; SAR(10 g) = 0.118 W/kg

[Info: Interpolated medium parameters used for SAR evaluation.](#)



0 dB = 0.174 W/kg = -7.59 dBW/kg

GSM 850

Frequency: 836.6 MHz; Duty Cycle: 1:1.99986; Room Ambient Temperature: 24.0°C; Liquid Temperature: 23.0°C
 Medium parameters used (interpolated): $f = 836.6$ MHz; $\sigma = 0.918$ S/m; $\epsilon_r = 41.242$; $\rho = 1000$ kg/m³

DASY5 Configuration:

- Area Scan Setting: Find Secondary Maximum Within: 2.0 dB and with a peak SAR value greater than 0.0012W/kg
- Electronics: DAE4 Sn1380; Calibrated: 7/15/2013
- Probe: EX3DV4 - SN3936; ConvF(9.45, 9.45, 9.45); Calibrated: 7/22/2013;
- Sensor-Surface: 2.5mm (Mechanical Surface Detection (Locations From Previous Scan Used)), Sensor-Surface: 2.5mm (Mechanical Surface Detection)
- Phantom: SAM with CRP; Type: QD000P40CD; Serial: S/n:1772

LHS/Touch_GPRS 4 slot_ch 190/Area Scan (8x11x1): Measurement grid: dx=15mm, dy=15mm

[Info: Interpolated medium parameters used for SAR evaluation.](#)

Maximum value of SAR (measured) = 0.519 W/kg

LHS/Touch_GPRS 4 slot_ch 190/Zoom Scan (5x5x7)/Cube 0: Measurement grid: dx=8mm, dy=8mm, dz=5mm

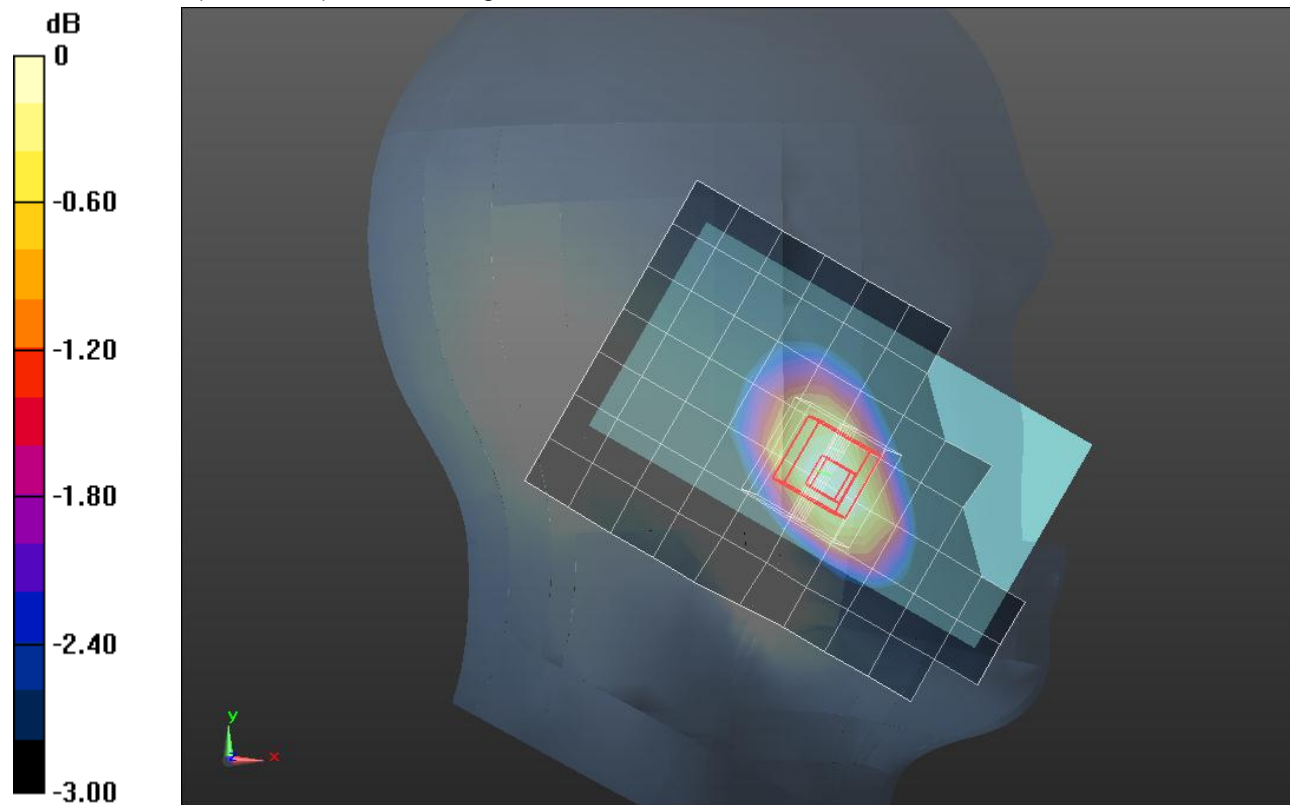
Reference Value = 23.334 V/m; Power Drift = -0.05 dB

Peak SAR (extrapolated) = 0.590 W/kg

SAR(1 g) = 0.454 W/kg; SAR(10 g) = 0.340 W/kg

[Info: Interpolated medium parameters used for SAR evaluation.](#)

Maximum value of SAR (measured) = 0.511 W/kg



0 dB = 0.511 W/kg = -2.92 dBW/kg

GSM 850

Frequency: 836.6 MHz; Duty Cycle: 1:8.00018; Room Ambient Temperature: 24.0°C; Liquid Temperature: 23.0°C
 Medium parameters used (interpolated): $f = 836.6$ MHz; $\sigma = 1.014$ S/m; $\epsilon_r = 52.687$; $\rho = 1000$ kg/m³

DASY5 Configuration:

- Area Scan Setting: Find Secondary Maximum Within: 2.0 dB and with a peak SAR value greater than 0.0012W/kg
- Electronics: DAE4 Sn1380; Calibrated: 7/15/2013
- Probe: EX3DV4 - SN3936; ConvF(9.3, 9.3, 9.3); Calibrated: 7/22/2013;
- Sensor-Surface: 2.5mm (Mechanical Surface Detection (Locations From Previous Scan Used)), Sensor-Surface: 2.5mm (Mechanical Surface Detection)
- Phantom: ELI A (v5.0); Type: QDOVA001BB; Serial: S/n:1212

Rear/GSM Voice_slots_ch 190/Area Scan (7x12x1): Measurement grid: dx=15mm, dy=15mm

[Info: Interpolated medium parameters used for SAR evaluation.](#)

Maximum value of SAR (measured) = 0.344 W/kg

Rear/GSM Voice_slots_ch 190/Zoom Scan (5x5x7)/Cube 0: Measurement grid: dx=8mm, dy=8mm, dz=5mm

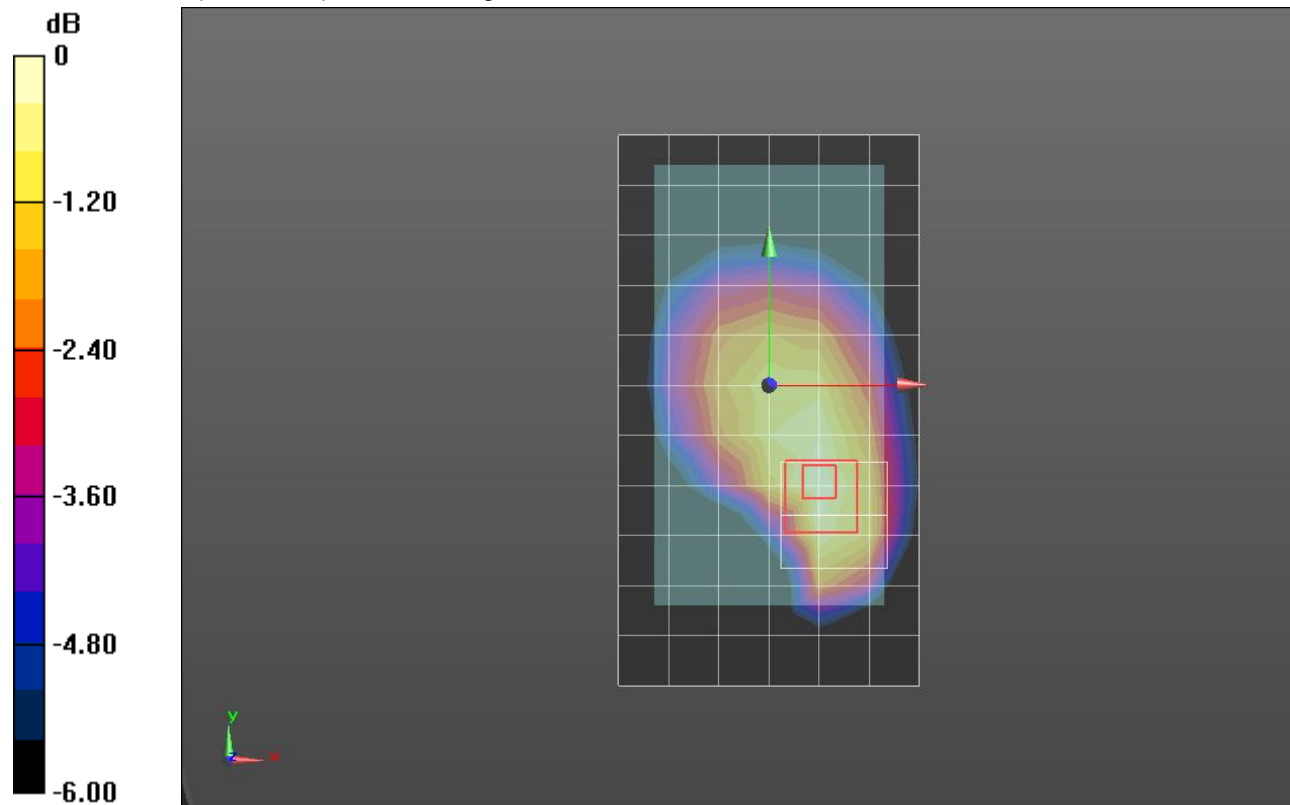
Reference Value = 18.838 V/m; Power Drift = 0.02 dB

Peak SAR (extrapolated) = 0.428 W/kg

SAR(1 g) = 0.300 W/kg; SAR(10 g) = 0.203 W/kg

[Info: Interpolated medium parameters used for SAR evaluation.](#)

Maximum value of SAR (measured) = 0.346 W/kg



0 dB = 0.346 W/kg = -4.61 dBW/kg

GSM 850

Frequency: 824.2 MHz; Duty Cycle: 1:1.99986; Room Ambient Temperature: 24.0°C; Liquid Temperature: 23.0°C
 Medium parameters used: $f = 825 \text{ MHz}$; $\sigma = 1.001 \text{ S/m}$; $\epsilon_r = 52.753$; $\rho = 1000 \text{ kg/m}^3$

DASY5 Configuration:

- Area Scan Setting: Find Secondary Maximum Within: 2.0 dB and with a peak SAR value greater than 0.0012W/kg
- Electronics: DAE4 Sn1380; Calibrated: 7/15/2013
- Probe: EX3DV4 - SN3936; ConvF(9.3, 9.3, 9.3); Calibrated: 7/22/2013;
- Sensor-Surface: 2.5mm (Mechanical Surface Detection (Locations From Previous Scan Used)), Sensor-Surface: 2.5mm (Mechanical Surface Detection)
- Phantom: ELI A (v5.0); Type: QDOVA001BB; Serial: S/n:1212

Rear/GPRS 4 slots_ch 128/Area Scan (7x12x1): Measurement grid: $dx=15\text{mm}$, $dy=15\text{mm}$

Maximum value of SAR (measured) = 1.12 W/kg

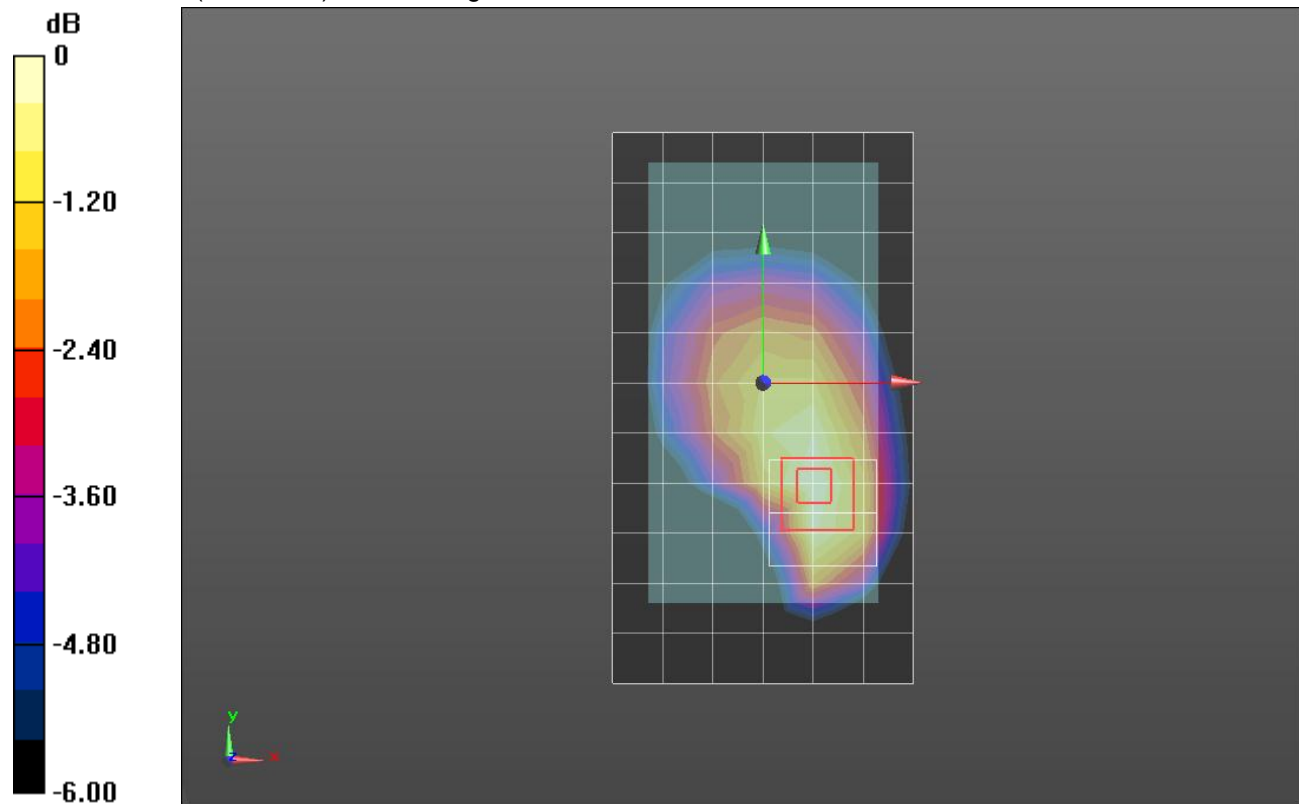
Rear/GPRS 4 slots_ch 128/Zoom Scan (5x5x7)/Cube 0: Measurement grid: $dx=8\text{mm}$, $dy=8\text{mm}$, $dz=5\text{mm}$

Reference Value = 33.739 V/m; Power Drift = 0.00 dB

Peak SAR (extrapolated) = 1.37 W/kg

SAR(1 g) = 0.953 W/kg; SAR(10 g) = 0.646 W/kg

Maximum value of SAR (measured) = 1.11 W/kg



0 dB = 1.11 W/kg = 0.45 dBW/kg

GSM 1900

Frequency: 1880 MHz; Duty Cycle: 1:8.00018; Room Ambient Temperature: 24.0°C; Liquid Temperature: 23.0°C
 Medium parameters used: $f = 1880 \text{ MHz}$; $\sigma = 1.405 \text{ S/m}$; $\epsilon_r = 39.309$; $\rho = 1000 \text{ kg/m}^3$

DASY5 Configuration:

- Area Scan Setting: Find Secondary Maximum Within: 2.0 dB and with a peak SAR value greater than 0.0012W/kg
- Electronics: DAE4 Sn1380; Calibrated: 7/15/2013
- Probe: EX3DV4 - SN3936; ConvF(7.81, 7.81, 7.81); Calibrated: 7/22/2013;
- Sensor-Surface: 2.5mm (Mechanical Surface Detection)
- Phantom: SAM; Type: QD000P40CD; Serial: TP 1751

LHS/Touch_GSM Voice_ch 661/Area Scan (8x11x1): Measurement grid: dx=15mm, dy=15mm

Maximum value of SAR (measured) = 0.137 W/kg

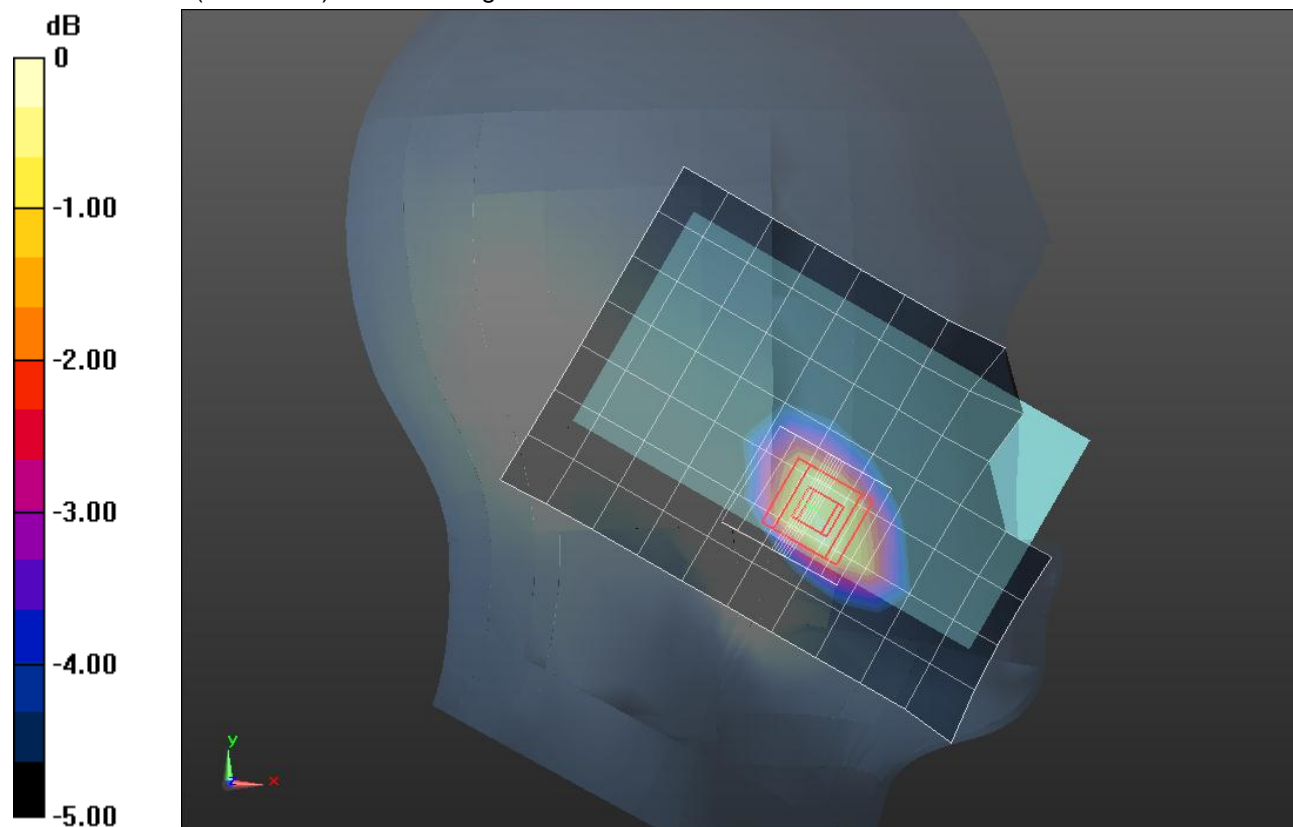
LHS/Touch_GSM Voice_ch 661/Zoom Scan (5x5x7)/Cube 0: Measurement grid: dx=8mm, dy=8mm, dz=5mm

Reference Value = 10.239 V/m; Power Drift = -0.11 dB

Peak SAR (extrapolated) = 0.189 W/kg

SAR(1 g) = 0.125 W/kg; SAR(10 g) = 0.077 W/kg

Maximum value of SAR (measured) = 0.154 W/kg



0 dB = 0.154 W/kg = -8.12 dBW/kg

GSM 1900

Frequency: 1880 MHz; Duty Cycle: 1:1.99986; Room Ambient Temperature: 24.0°C; Liquid Temperature: 23.0°C
 Medium parameters used: $f = 1880 \text{ MHz}$; $\sigma = 1.405 \text{ S/m}$; $\epsilon_r = 39.309$; $\rho = 1000 \text{ kg/m}^3$

DASY5 Configuration:

- Area Scan Setting: Find Secondary Maximum Within: 2.0 dB and with a peak SAR value greater than 0.0012W/kg
- Electronics: DAE4 Sn1380; Calibrated: 7/15/2013
- Probe: EX3DV4 - SN3936; ConvF(7.81, 7.81, 7.81); Calibrated: 7/22/2013;
- Sensor-Surface: 2.5mm (Mechanical Surface Detection (Locations From Previous Scan Used)), Sensor-Surface: 2.5mm (Mechanical Surface Detection)
- Phantom: SAM; Type: QD000P40CD; Serial: TP 1751

LHS/Touch_GPRS 4 slot_ch 661/Area Scan (8x11x1): Measurement grid: $dx=15\text{mm}$, $dy=15\text{mm}$
 Maximum value of SAR (measured) = 0.518 W/kg

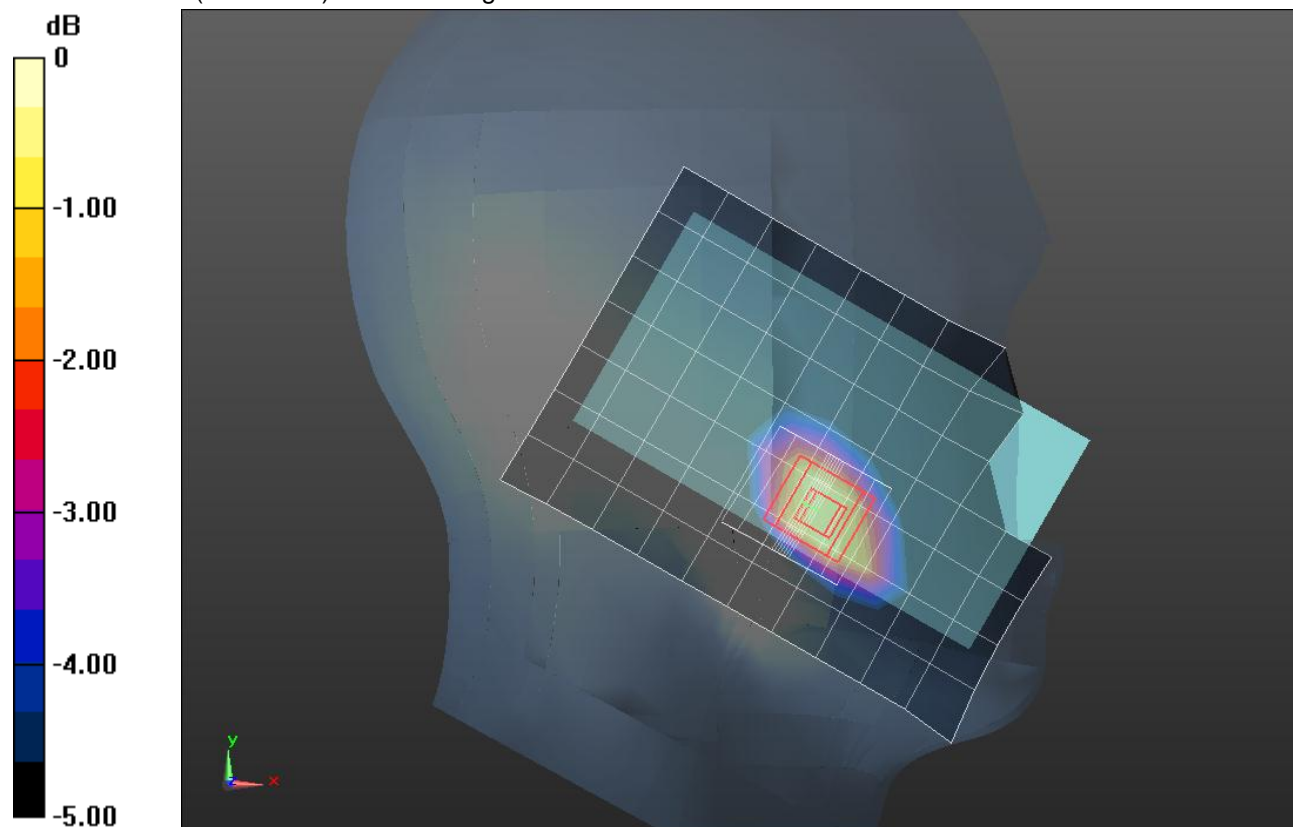
LHS/Touch_GPRS 4 slot_ch 661/Zoom Scan (5x5x7)/Cube 0: Measurement grid: $dx=8\text{mm}$, $dy=8\text{mm}$,
 $dz=5\text{mm}$

Reference Value = 20.028 V/m; Power Drift = 0.01 dB

Peak SAR (extrapolated) = 0.742 W/kg

SAR(1 g) = 0.498 W/kg; SAR(10 g) = 0.307 W/kg

Maximum value of SAR (measured) = 0.607 W/kg



0 dB = 0.607 W/kg = -2.17 dBW/kg

GSM 1900

Frequency: 1880 MHz; Duty Cycle: 1:8.00018; Room Ambient Temperature: 24.0°C; Liquid Temperature: 23.0°C
 Medium parameters used: $f = 1880 \text{ MHz}$; $\sigma = 1.51 \text{ S/m}$; $\epsilon_r = 52.52$; $\rho = 1000 \text{ kg/m}^3$

DASY5 Configuration:

- Area Scan Setting: Find Secondary Maximum Within: 2.0 dB and with a peak SAR value greater than 0.0012W/kg
- Electronics: DAE4 Sn1380; Calibrated: 7/15/2013
- Probe: EX3DV4 - SN3936; ConvF(7.4, 7.4, 7.4); Calibrated: 7/22/2013;
- Sensor-Surface: 2.5mm (Mechanical Surface Detection)
- Phantom: ELI-B v5.0; Type: QDOVA002AA; Serial: TP:1195

Front/GSM Voice_ch 661/Area Scan (7x12x1): Measurement grid: dx=15mm, dy=15mm

Maximum value of SAR (measured) = 0.282 W/kg

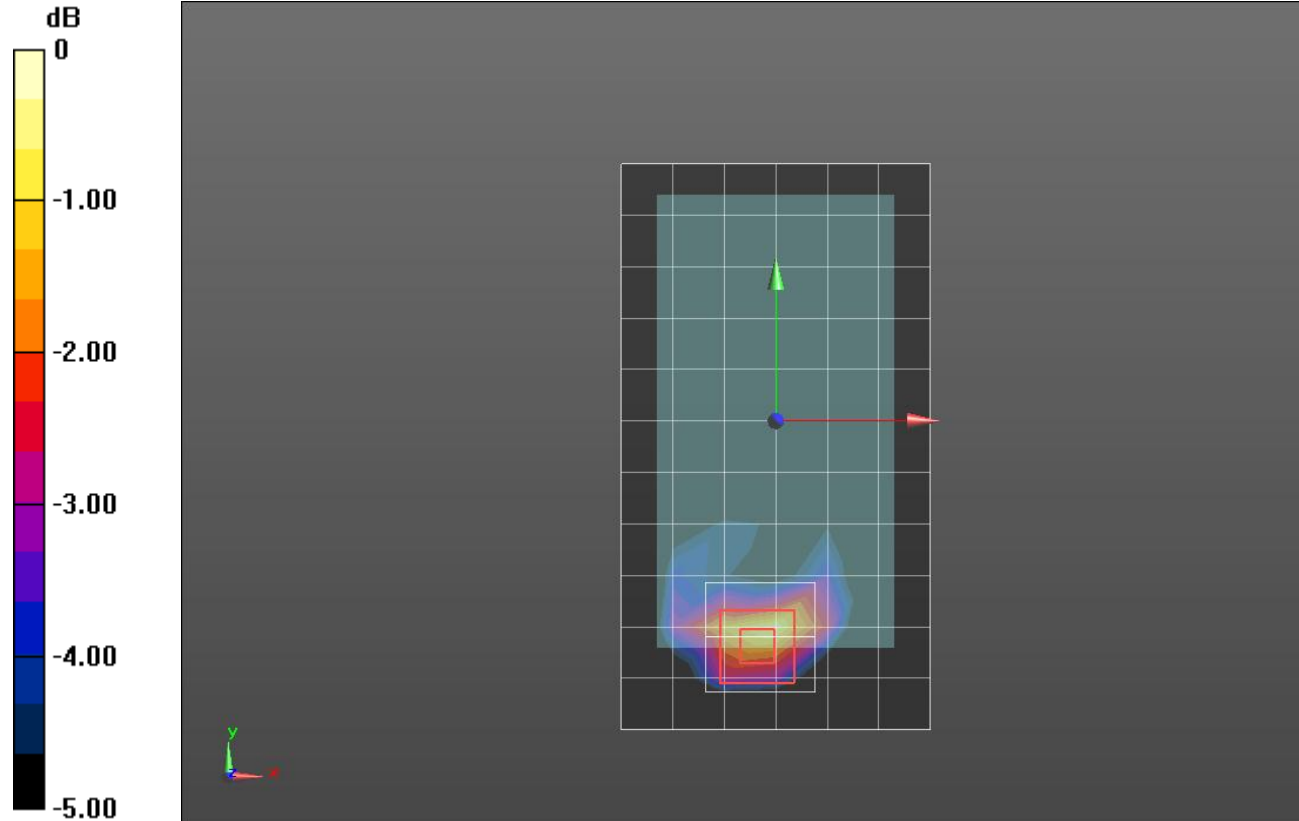
Front/GSM Voice_ch 661/Zoom Scan (5x5x7)/Cube 0: Measurement grid: dx=8mm, dy=8mm, dz=5mm

Reference Value = 4.628 V/m; Power Drift = 0.16 dB

Peak SAR (extrapolated) = 0.415 W/kg

SAR(1 g) = 0.241 W/kg; SAR(10 g) = 0.130 W/kg

Maximum value of SAR (measured) = 0.314 W/kg



0 dB = 0.314 W/kg = -5.03 dBW/kg

GSM 1900

Frequency: 1880 MHz; Duty Cycle: 1:1.99986; Room Ambient Temperature: 24.0°C; Liquid Temperature: 23.0°C
 Medium parameters used: $f = 1880$ MHz; $\sigma = 1.51$ S/m; $\epsilon_r = 52.52$; $\rho = 1000$ kg/m³

DASY5 Configuration:

- Area Scan Setting: Find Secondary Maximum Within: 2.0 dB and with a peak SAR value greater than 0.0012W/kg
- Electronics: DAE4 Sn1380; Calibrated: 7/15/2013
- Probe: EX3DV4 - SN3936; ConvF(7.4, 7.4, 7.4); Calibrated: 7/22/2013;
- Sensor-Surface: 2.5mm (Mechanical Surface Detection)
- Phantom: ELI-B v5.0; Type: QDOVA002AA; Serial: TP:1195

Front/GPRS 4 slots_ch 661/Area Scan (7x12x1): Measurement grid: dx=15mm, dy=15mm

Maximum value of SAR (measured) = 0.953 W/kg

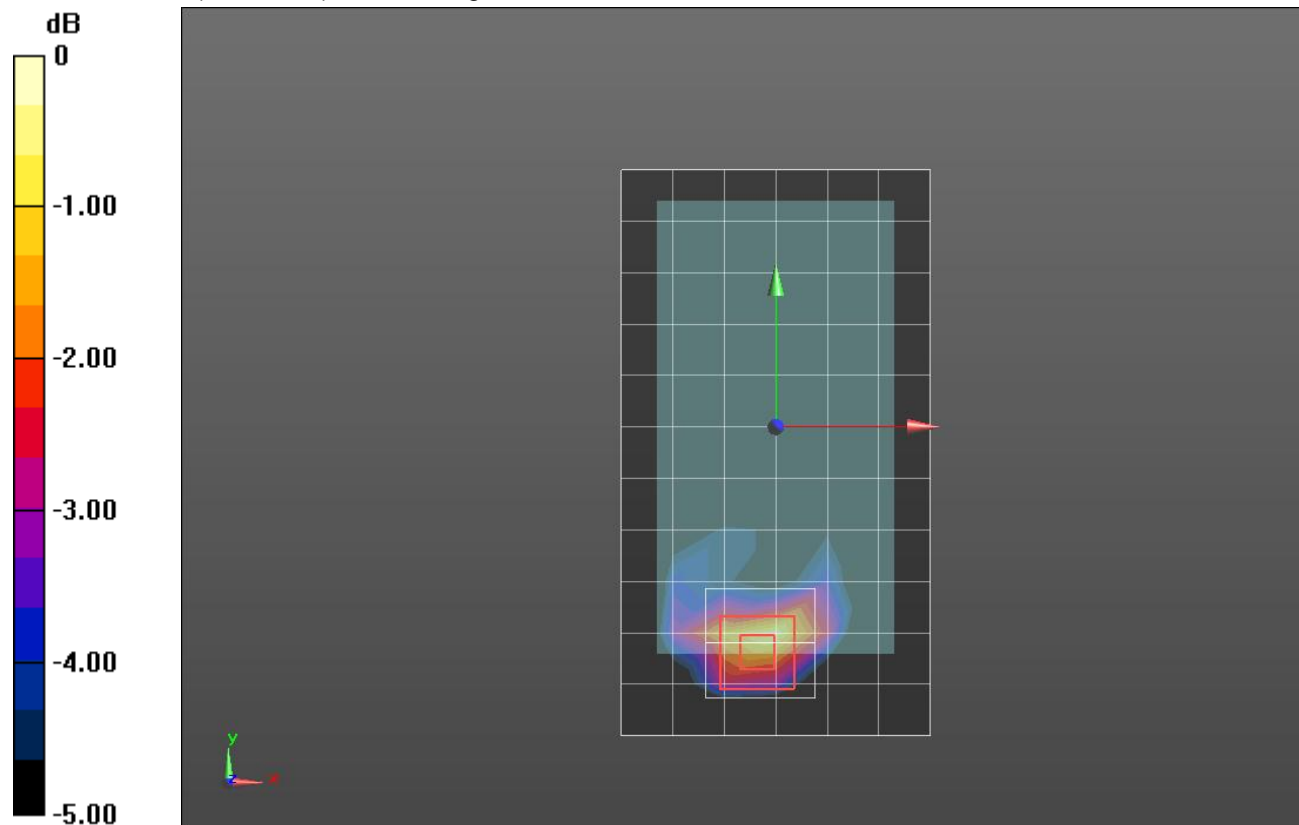
Front/GPRS 4 slots_ch 661/Zoom Scan (5x5x7)/Cube 0: Measurement grid: dx=8mm, dy=8mm, dz=5mm

Reference Value = 11.080 V/m; Power Drift = -0.03 dB

Peak SAR (extrapolated) = 1.38 W/kg

SAR(1 g) = 0.810 W/kg; SAR(10 g) = 0.438 W/kg

Maximum value of SAR (measured) = 1.05 W/kg



0 dB = 1.05 W/kg = 0.21 dBW/kg

W-CDMA Band V

Frequency: 836.6 MHz; Duty Cycle: 1:1; Room Ambient Temperature: 24.0°C; Liquid Temperature: 23.0°C
 Medium parameters used (interpolated): $f = 836.6$ MHz; $\sigma = 0.918$ S/m; $\epsilon_r = 41.242$; $\rho = 1000$ kg/m³

DASY5 Configuration:

- Area Scan Setting: Find Secondary Maximum Within: 2.0 dB and with a peak SAR value greater than 0.0012W/kg
- Electronics: DAE4 Sn1380; Calibrated: 7/15/2013
- Probe: EX3DV4 - SN3936; ConvF(9.45, 9.45, 9.45); Calibrated: 7/22/2013;
- Sensor-Surface: 2.5mm (Mechanical Surface Detection)
- Phantom: SAM with CRP; Type: QD000P40CD; Serial: S/n:1772

LHS/Touch_RMC Rel.99_ch 4183/Area Scan (8x11x1): Measurement grid: dx=15mm, dy=15mm

[Info: Interpolated medium parameters used for SAR evaluation.](#)

Maximum value of SAR (measured) = 0.144 W/kg

LHS/Touch_RMC Rel.99_ch 4183/Zoom Scan (5x5x7)/Cube 0: Measurement grid: dx=8mm, dy=8mm, dz=5mm

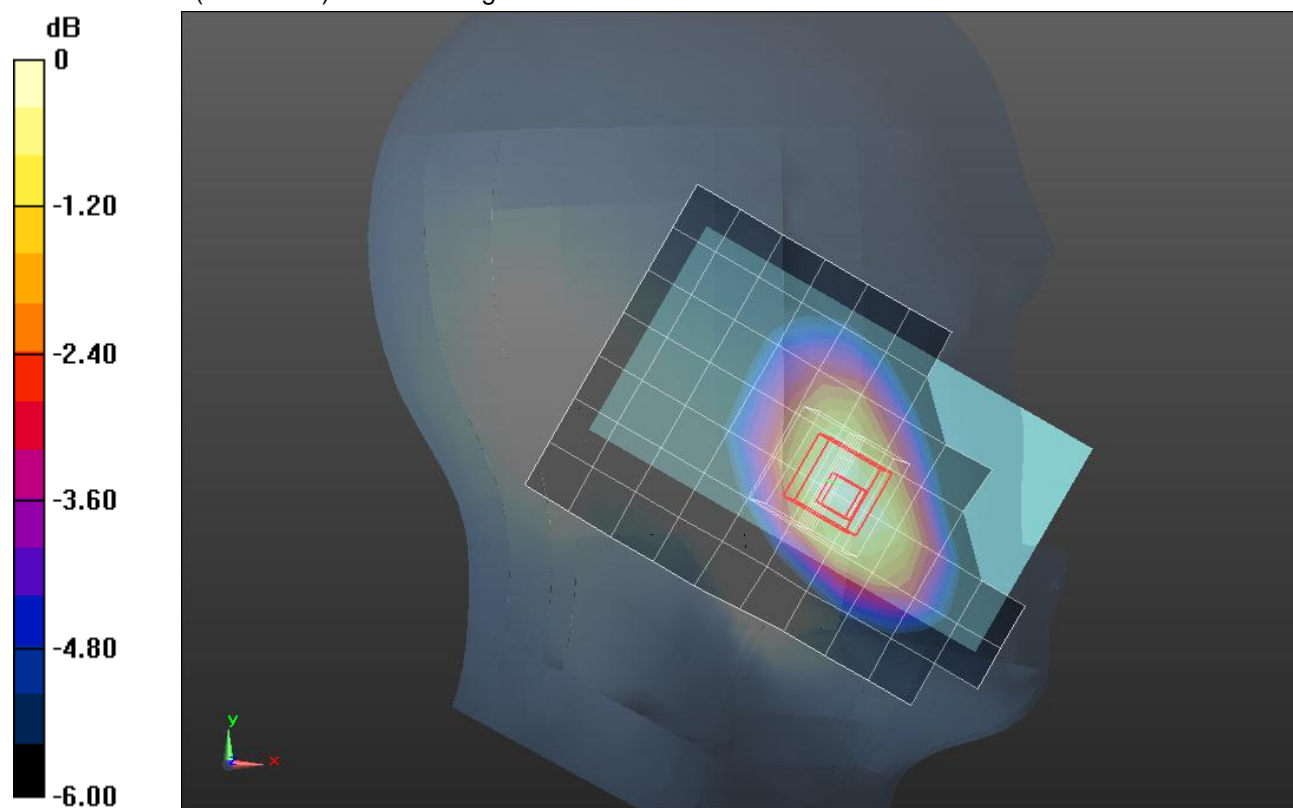
Reference Value = 12.366 V/m; Power Drift = 0.12 dB

Peak SAR (extrapolated) = 0.174 W/kg

SAR(1 g) = 0.128 W/kg; SAR(10 g) = 0.092 W/kg

[Info: Interpolated medium parameters used for SAR evaluation.](#)

Maximum value of SAR (measured) = 0.145 W/kg



0 dB = 0.145 W/kg = -8.39 dBW/kg

W-CDMA Band V

Frequency: 836.6 MHz; Duty Cycle: 1:1; Room Ambient Temperature: 24.0°C; Liquid Temperature: 23.0°C
 Medium parameters used (interpolated): $f = 836.6$ MHz; $\sigma = 1.014$ S/m; $\epsilon_r = 52.687$; $\rho = 1000$ kg/m³

DASY5 Configuration:

- Area Scan Setting: Find Secondary Maximum Within: 2.0 dB and with a peak SAR value greater than 0.0012W/kg
- Electronics: DAE4 Sn1380; Calibrated: 7/15/2013
- Probe: EX3DV4 - SN3936; ConvF(9.3, 9.3, 9.3); Calibrated: 7/22/2013;
- Sensor-Surface: 2.5mm (Mechanical Surface Detection)
- Phantom: ELI A (v5.0); Type: QDOVA001BB; Serial: S/n:1212

Rear/RMC Rel.99_ch 4183/Area Scan (7x12x1): Measurement grid: dx=15mm, dy=15mm

[Info: Interpolated medium parameters used for SAR evaluation.](#)

Maximum value of SAR (measured) = 0.245 W/kg

Rear/RMC Rel.99_ch 4183/Zoom Scan 2 (5x5x7)/Cube 0: Measurement grid: dx=8mm, dy=8mm, dz=5mm

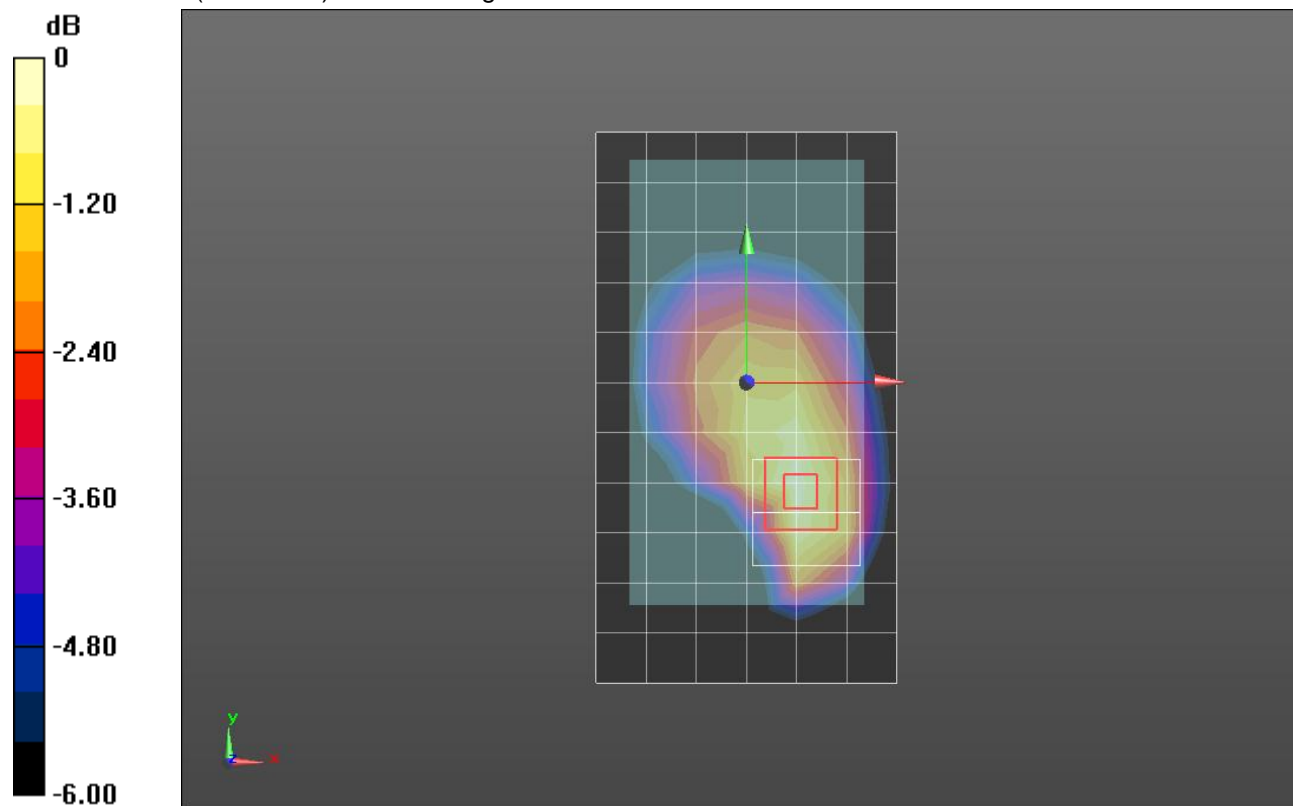
Reference Value = 13.888 V/m; Power Drift = -0.02 dB

Peak SAR (extrapolated) = 0.309 W/kg

SAR(1 g) = 0.211 W/kg; SAR(10 g) = 0.143 W/kg

[Info: Interpolated medium parameters used for SAR evaluation.](#)

Maximum value of SAR (measured) = 0.250 W/kg



0 dB = 0.250 W/kg = -6.02 dBW/kg

W-CDMA Band II

Frequency: 1907.6 MHz; Duty Cycle: 1:1; Room Ambient Temperature: 24.0°C; Liquid Temperature: 23.0°C
 Medium parameters used (interpolated): $f = 1907.6 \text{ MHz}$; $\sigma = 1.43 \text{ S/m}$; $\epsilon_r = 39.175$; $\rho = 1000 \text{ kg/m}^3$

DASY5 Configuration:

- Area Scan Setting: Find Secondary Maximum Within: 2.0 dB and with a peak SAR value greater than 0.0012W/kg
- Electronics: DAE4 Sn1380; Calibrated: 7/15/2013
- Probe: EX3DV4 - SN3936; ConvF(7.81, 7.81, 7.81); Calibrated: 7/22/2013;
- Sensor-Surface: 2.5mm (Mechanical Surface Detection)
- Phantom: SAM; Type: QD000P40CD; Serial: TP 1751

LHS/Touch_RMC Rel.99_ch 9538/Area Scan (8x11x1): Measurement grid: dx=15mm, dy=15mm

[Info: Interpolated medium parameters used for SAR evaluation.](#)

Maximum value of SAR (measured) = 0.174 W/kg

LHS/Touch_RMC Rel.99_ch 9538/Zoom Scan (5x5x7)/Cube 0: Measurement grid: dx=8mm, dy=8mm, dz=5mm

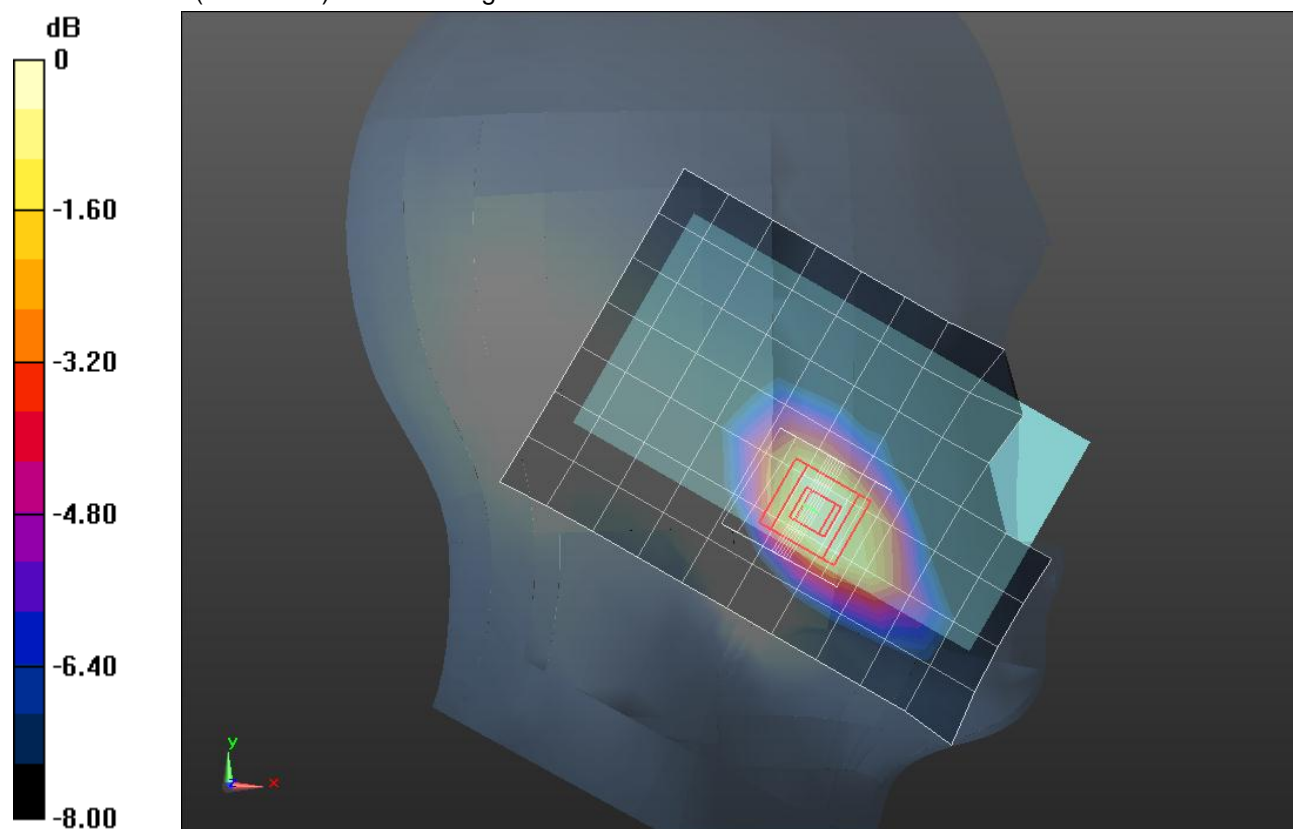
Reference Value = 11.451 V/m; Power Drift = 0.04 dB

Peak SAR (extrapolated) = 0.254 W/kg

SAR(1 g) = 0.164 W/kg; SAR(10 g) = 0.099 W/kg

[Info: Interpolated medium parameters used for SAR evaluation.](#)

Maximum value of SAR (measured) = 0.204 W/kg



0 dB = 0.204 W/kg = -6.90 dBW/kg

W-CDMA Band II

Frequency: 1907.6 MHz; Duty Cycle: 1:1; Room Ambient Temperature: 24.0°C; Liquid Temperature: 23.0°C
 Medium parameters used (interpolated): $f = 1907.6$ MHz; $\sigma = 1.535$ S/m; $\epsilon_r = 52.409$; $\rho = 1000$ kg/m³

DASY5 Configuration:

- Area Scan Setting: Find Secondary Maximum Within: 2.0 dB and with a peak SAR value greater than 0.0012W/kg
- Electronics: DAE4 Sn1380; Calibrated: 7/15/2013
- Probe: EX3DV4 - SN3936; ConvF(7.4, 7.4, 7.4); Calibrated: 7/22/2013;
- Sensor-Surface: 2.5mm (Mechanical Surface Detection)
- Phantom: ELI-B v5.0; Type: QDOVA002AA; Serial: TP:1195

Rear/RMC Rel.99_ch 9538/Area Scan (7x12x1): Measurement grid: dx=15mm, dy=15mm

[Info: Interpolated medium parameters used for SAR evaluation.](#)

Maximum value of SAR (measured) = 0.371 W/kg

Rear/RMC Rel.99_ch 9538/Zoom Scan (5x5x7)/Cube 0: Measurement grid: dx=8mm, dy=8mm, dz=5mm

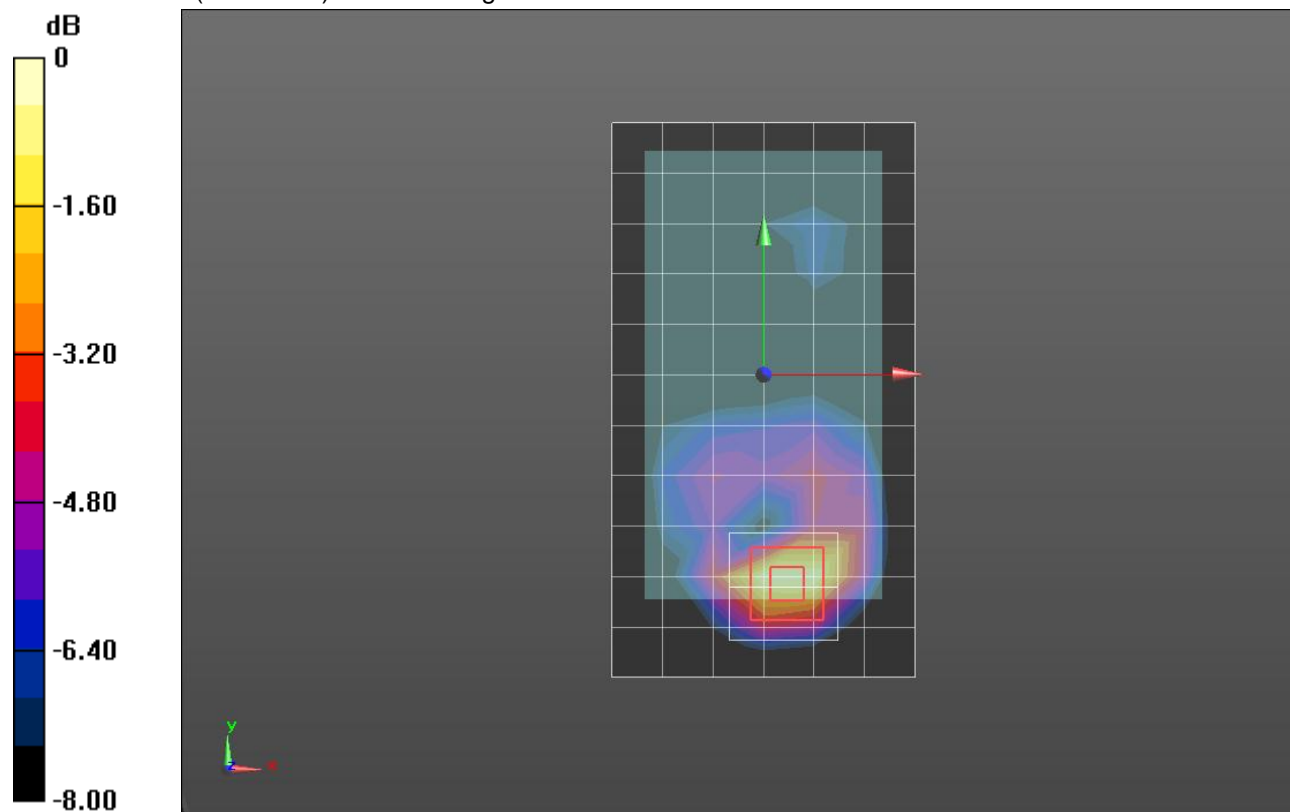
Reference Value = 9.221 V/m; Power Drift = -0.00 dB

Peak SAR (extrapolated) = 0.531 W/kg

SAR(1 g) = 0.311 W/kg; SAR(10 g) = 0.164 W/kg

[Info: Interpolated medium parameters used for SAR evaluation.](#)

Maximum value of SAR (measured) = 0.406 W/kg



0 dB = 0.406 W/kg = -3.91 dBW/kg

Wi-Fi 2.4GHz

Frequency: 2462 MHz; Duty Cycle: 1:1; Room Ambient Temperature: 24.0°C; Liquid Temperature: 23.0°C
 Medium parameters used (interpolated): $f = 2462$ MHz; $\sigma = 1.894$ S/m; $\epsilon_r = 38.103$; $\rho = 1000$ kg/m³

DASY5 Configuration:

- Area Scan Setting: Find Secondary Maximum Within: 2.0 dB and with a peak SAR value greater than 0.0012W/kg
- Electronics: DAE4 Sn1377; Calibrated: 7/15/2013
- Probe: EX3DV4 - SN3902; ConvF(7.49, 7.49, 7.49); Calibrated: 7/12/2013;
- Sensor-Surface: 2.5mm (Mechanical Surface Detection)
- Phantom: SAM with CRP; Type: QD000P40CD; Serial: 1768

LHS/Touch_802.11b_ch 11/Area Scan (9x14x1): Measurement grid: dx=12mm, dy=12mm

[Info: Interpolated medium parameters used for SAR evaluation.](#)

Maximum value of SAR (measured) = 0.0912 W/kg

LHS/Touch_802.11b_ch 11/Zoom Scan (7x7x7)/Cube 0: Measurement grid: dx=5mm, dy=5mm, dz=5mm

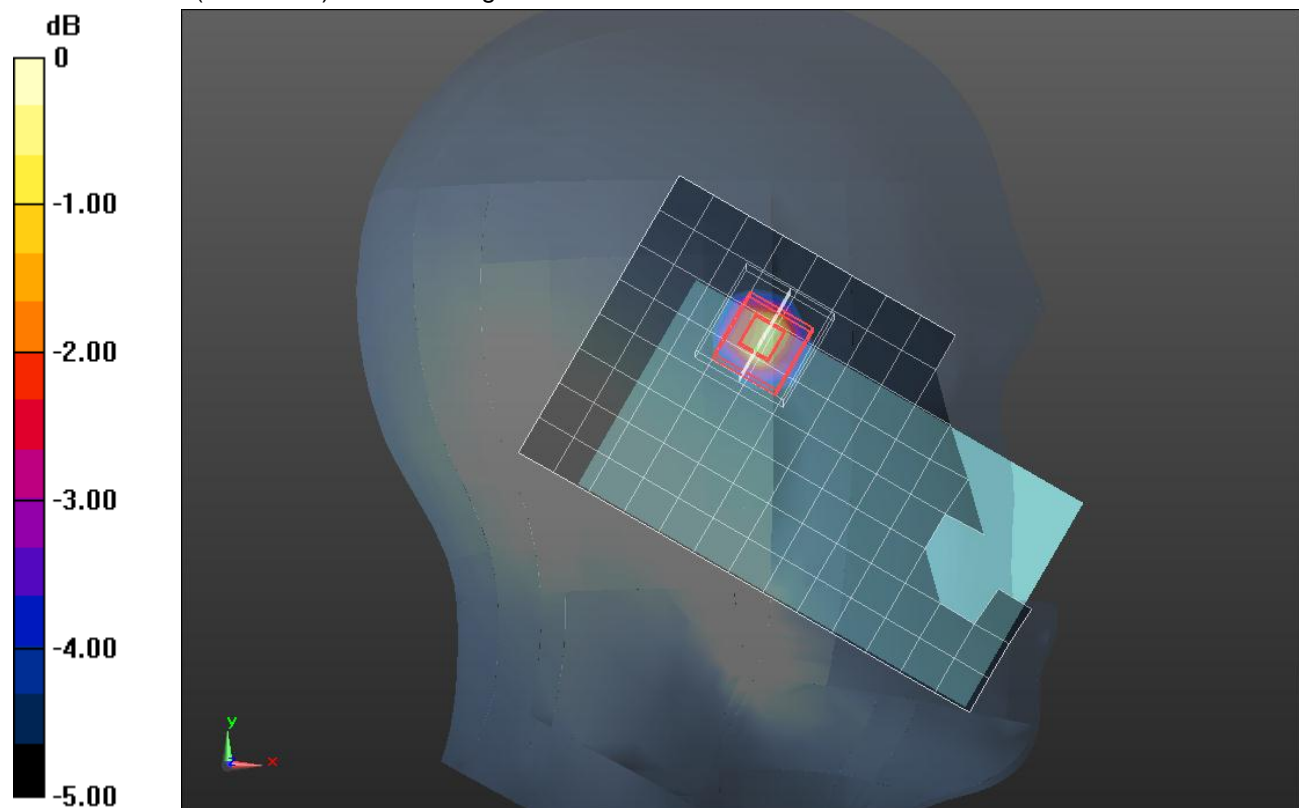
Reference Value = 6.853 V/m; Power Drift = 0.13 dB

Peak SAR (extrapolated) = 0.162 W/kg

SAR(1 g) = 0.074 W/kg; SAR(10 g) = 0.033 W/kg

[Info: Interpolated medium parameters used for SAR evaluation.](#)

Maximum value of SAR (measured) = 0.106 W/kg



0 dB = 0.106 W/kg = -9.75 dBW/kg

Wi-Fi 2.4GHz

Frequency: 2462 MHz; Duty Cycle: 1:1; Room Ambient Temperature: 24.0°C; Liquid Temperature: 23.0°C
 Medium parameters used (interpolated): $f = 2462$ MHz; $\sigma = 1.894$ S/m; $\epsilon_r = 38.103$; $\rho = 1000$ kg/m³

DASY5 Configuration:

- Area Scan Setting: Find Secondary Maximum Within: 2.0 dB and with a peak SAR value greater than 0.0012W/kg
- Electronics: DAE4 Sn1377; Calibrated: 7/15/2013
- Probe: EX3DV4 - SN3902; ConvF(7.49, 7.49, 7.49); Calibrated: 7/12/2013;
- Sensor-Surface: 2.5mm (Mechanical Surface Detection)
- Phantom: ELI-B v5.0; Type: QDOVA001BB; Serial: 1215

Rear/802.11b_ch 11/Area Scan (9x13x1): Measurement grid: dx=12mm, dy=12mm

[Info: Interpolated medium parameters used for SAR evaluation.](#)

Maximum value of SAR (measured) = 0.0836 W/kg

Rear/802.11b_ch 11/Zoom Scan (7x7x7)/Cube 0: Measurement grid: dx=5mm, dy=5mm, dz=5mm

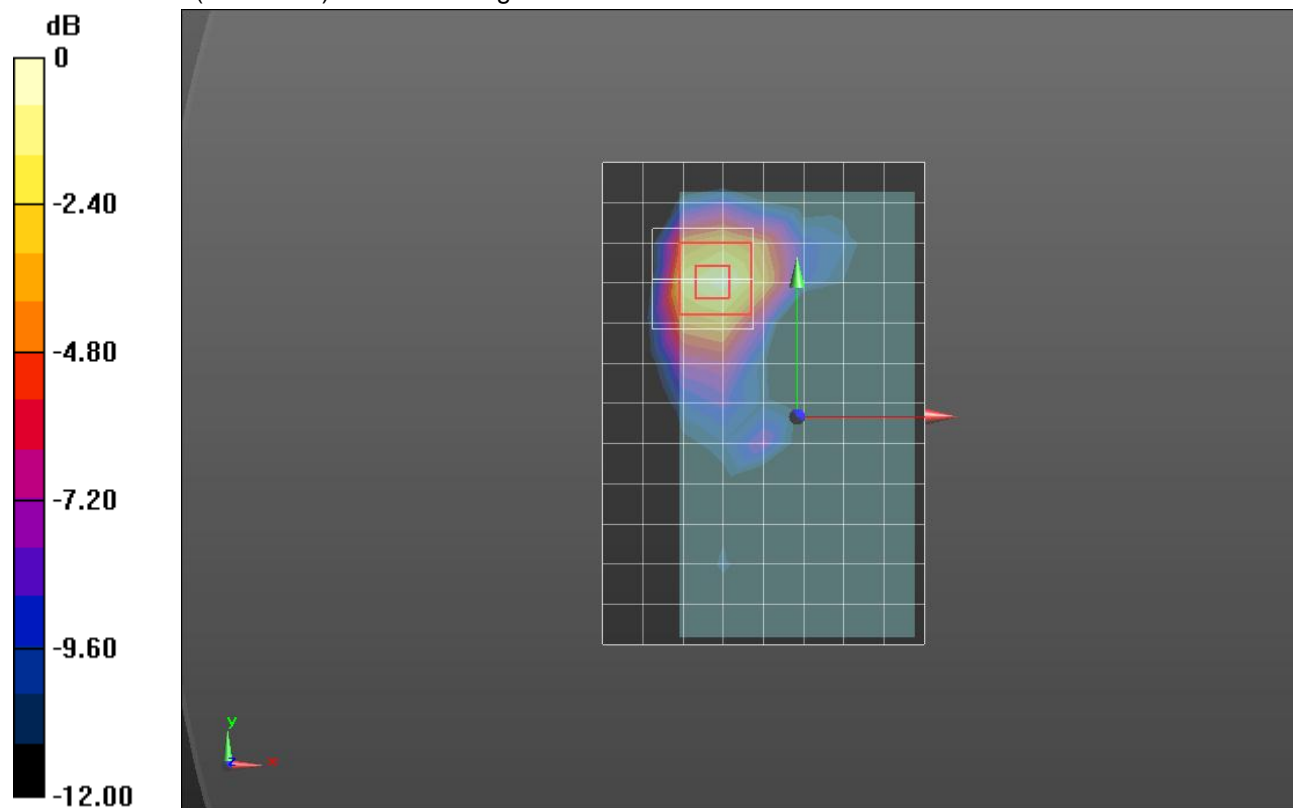
Reference Value = 6.726 V/m; Power Drift = 0.00 dB

Peak SAR (extrapolated) = 0.132 W/kg

SAR(1 g) = 0.062 W/kg; SAR(10 g) = 0.027 W/kg

[Info: Interpolated medium parameters used for SAR evaluation.](#)

Maximum value of SAR (measured) = 0.0896 W/kg



0 dB = 0.0896 W/kg = -10.48 dBW/kg