

## 20140428 SystemPerformanceCheck-D1900V2 SN 5d163

Frequency: 1900 MHz; Duty Cycle: 1:1; Room Ambient Temperature: 24.0°C; Liquid Temperature: 23.0°C  
 Medium parameters used:  $f = 1900 \text{ MHz}$ ;  $\sigma = 1.412 \text{ S/m}$ ;  $\epsilon_r = 39.466$ ;  $\rho = 1000 \text{ kg/m}^3$   
 DASY5 Configuration:

- Area Scan Setting: Find Secondary Maximum Within: 2.0 dB and with a peak SAR value greater than 0.0012W/kg
- Electronics: DAE4 Sn1377; Calibrated: 7/15/2013
- Probe: EX3DV4 - SN3902; ConvF(8.28, 8.28, 8.28); Calibrated: 7/12/2013;
- Sensor-Surface: 2.5mm (Mechanical Surface Detection)
- Phantom: SAM with CRP; Type: QD000P40CD; Serial: 1768

**Head/Pin=100 mW/Area Scan (61x61x1):** Interpolated grid: dx=1.500 mm, dy=1.500 mm

Reference Value = 60.500 V/m; Power Drift = 0.02 dB

**Fast SAR: SAR(1 g) = 4.01 W/kg; SAR(10 g) = 2.08 W/kg**

Maximum value of SAR (interpolated) = 5.30 W/kg

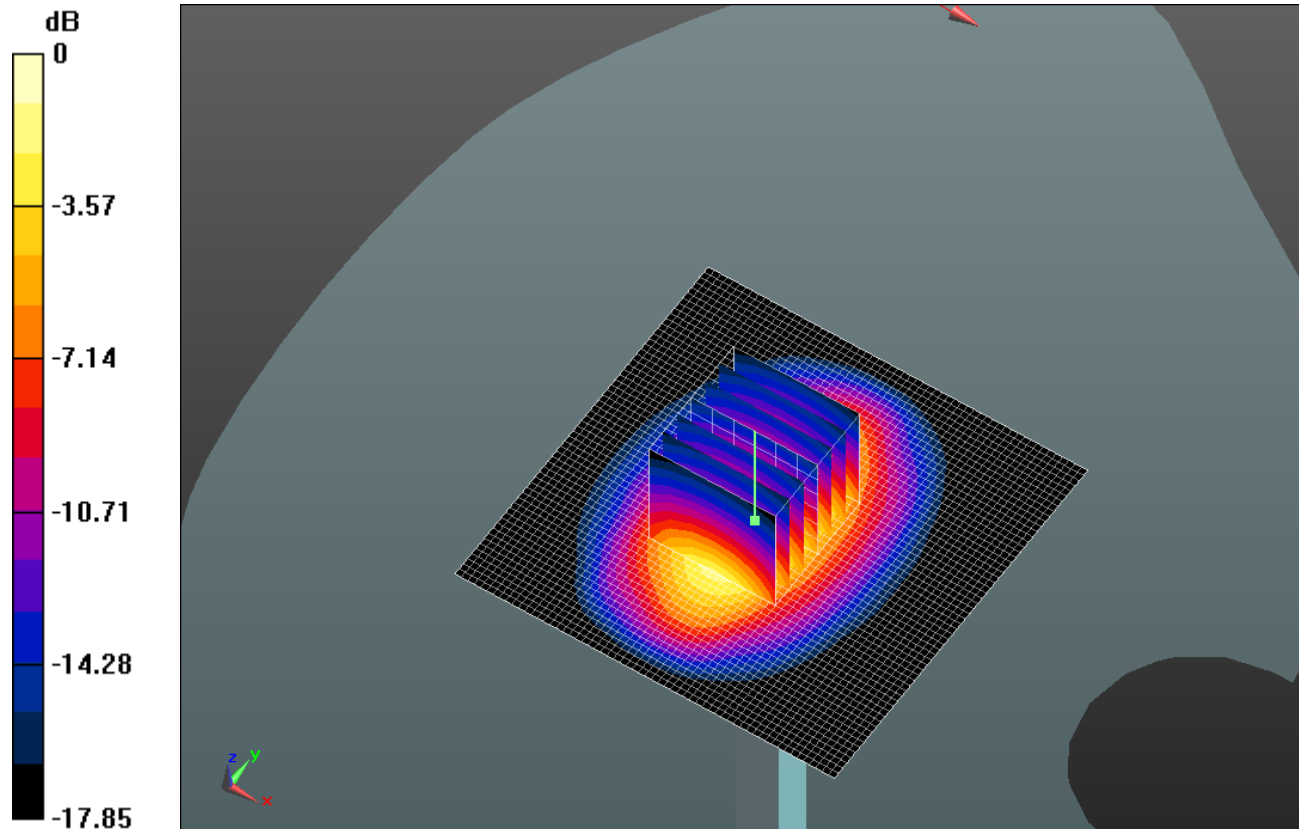
**Head/Pin=100 mW/Zoom Scan (7x7x7)/Cube 0:** Measurement grid: dx=5mm, dy=5mm, dz=5mm

Reference Value = 60.500 V/m; Power Drift = 0.02 dB

Peak SAR (extrapolated) = 7.35 W/kg

**SAR(1 g) = 3.91 W/kg; SAR(10 g) = 2.02 W/kg**

Maximum value of SAR (measured) = 5.32 W/kg

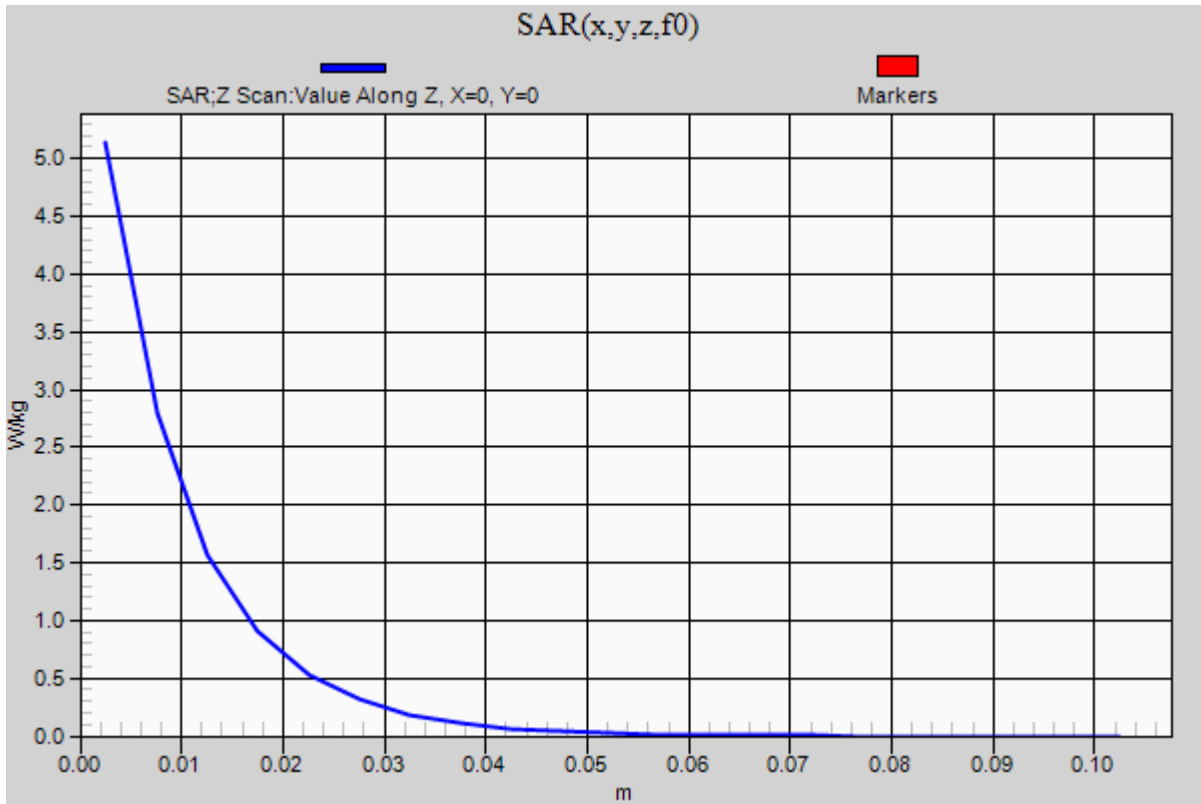


0 dB = 5.32 W/kg = 7.26 dBW/kg

### 20140428 SystemPerformanceCheck-D1900V2 SN 5d163

Frequency: 1900 MHz; Duty Cycle: 1:1

**Head/Pin=100 mW/Z Scan (1x1x21):** Measurement grid: dx=20mm, dy=20mm, dz=5mm  
Maximum value of SAR (measured) = 5.14 W/kg



## 20140428 SystemPerformanceCheck-D1900V2 SN 5d163

Frequency: 1900 MHz; Duty Cycle: 1:1; Room Ambient Temperature: 24.0°C; Liquid Temperature: 23.0°C  
 Medium parameters used:  $f = 1900$  MHz;  $\sigma = 1.499$  S/m;  $\epsilon_r = 51.184$ ;  $\rho = 1000$  kg/m<sup>3</sup>  
 DASY5 Configuration:

- Area Scan Setting: Find Secondary Maximum Within: 2.0 dB and with a peak SAR value greater than 0.0012W/kg
- Electronics: DAE4 Sn1377; Calibrated: 7/15/2013
- Probe: EX3DV4 - SN3902; ConvF(7.61, 7.61, 7.61); Calibrated: 7/12/2013;
- Sensor-Surface: 2.5mm (Mechanical Surface Detection)
- Phantom: ELI-B v5.0; Type: QDOVA001BB; Serial: 1215

**Body/Pin=100 mW/Area Scan (61x61x1):** Interpolated grid: dx=1.500 mm, dy=1.500 mm

Reference Value = 60.500 V/m; Power Drift = 0.02 dB

**Fast SAR: SAR(1 g) = 4.05 W/kg; SAR(10 g) = 2.04 W/kg**

Maximum value of SAR (interpolated) = 5.40 W/kg

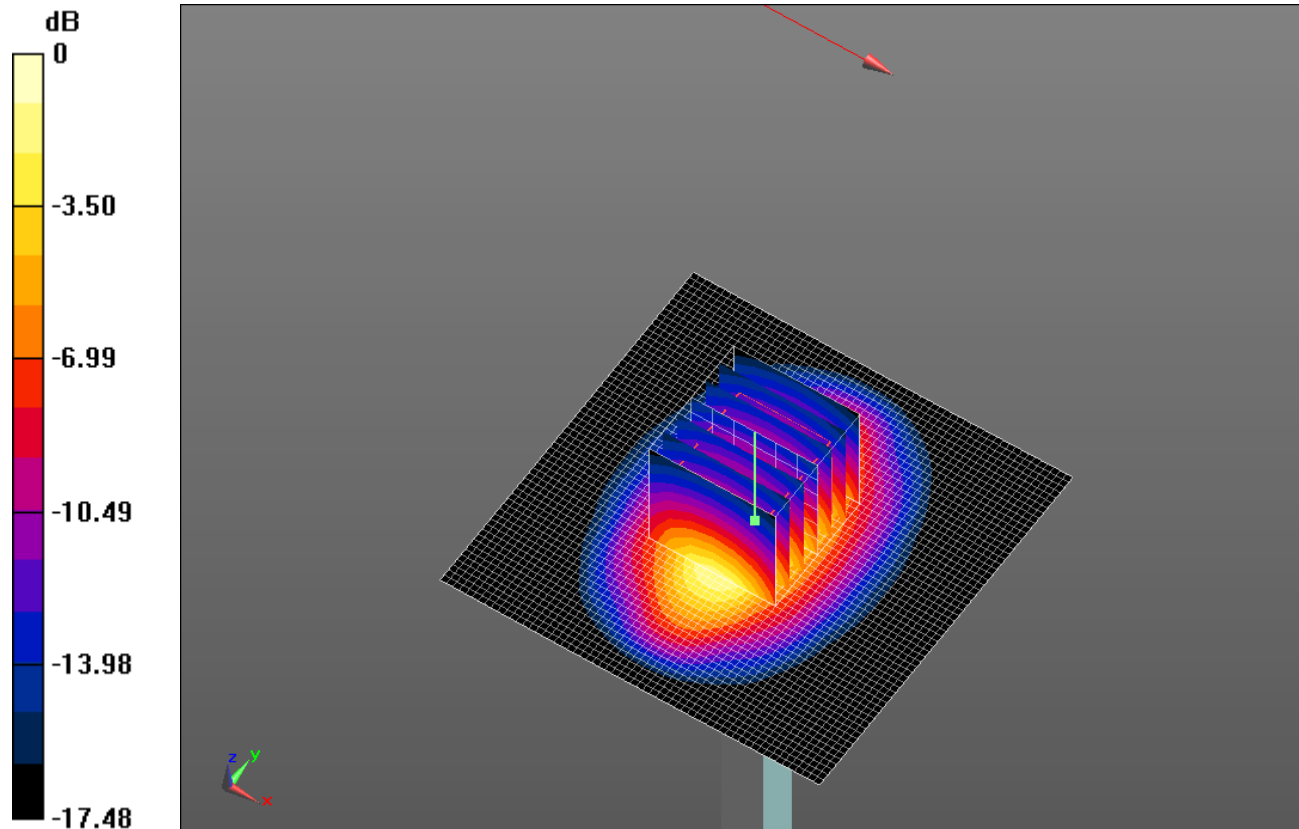
**Body/Pin=100 mW/Zoom Scan (7x7x7)/Cube 0:** Measurement grid: dx=5mm, dy=5mm, dz=5mm

Reference Value = 60.500 V/m; Power Drift = 0.02 dB

Peak SAR (extrapolated) = 7.24 W/kg

**SAR(1 g) = 3.99 W/kg; SAR(10 g) = 2.09 W/kg**

Maximum value of SAR (measured) = 5.38 W/kg

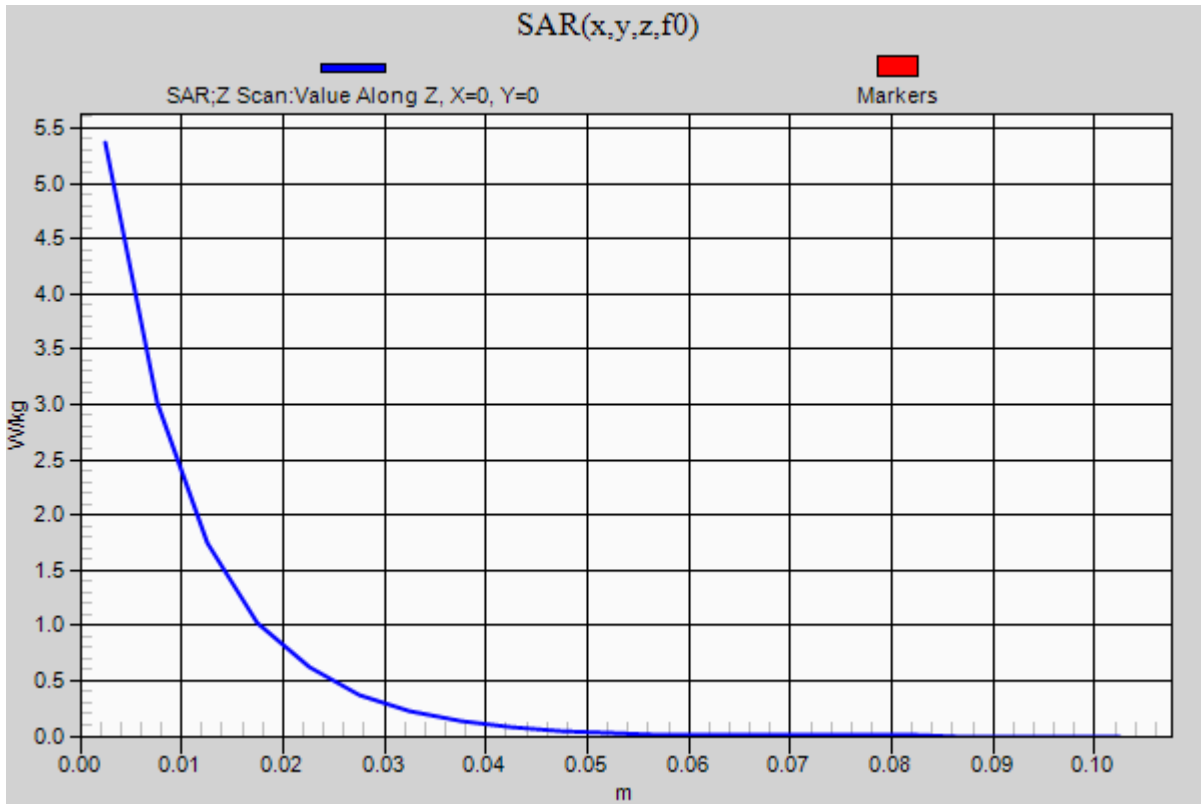


0 dB = 5.38 W/kg = 7.31 dBW/kg

### 20140428 SystemPerformanceCheck-D1900V2 SN 5d163

Frequency: 1900 MHz; Duty Cycle: 1:1

**Body/Pin=100 mW/Z Scan (1x1x21):** Measurement grid: dx=20mm, dy=20mm, dz=5mm  
Maximum value of SAR (measured) = 5.37 W/kg



## SystemPerformanceCheck-D835V2 SN 4d002

Frequency: 835 MHz; Duty Cycle: 1:1; Room Ambient Temperature: 24.0°C; Liquid Temperature: 23.0°C  
 Medium parameters used:  $f = 835 \text{ MHz}$ ;  $\sigma = 0.895 \text{ S/m}$ ;  $\epsilon_r = 40.291$ ;  $\rho = 1000 \text{ kg/m}^3$

DASY5 Configuration:

- Area Scan Setting: Find Secondary Maximum Within: 2.0 dB and with a peak SAR value greater than 0.0012W/kg
- Electronics: DAE4 Sn1377; Calibrated: 7/15/2013
- Probe: EX3DV4 - SN3902; ConvF(9.79, 9.79, 9.79); Calibrated: 7/12/2013;
- Sensor-Surface: 2.5mm (Mechanical Surface Detection)
- Phantom: SAM with CRP; Type: QD000P40CD; Serial: 1768

**Head/Pin=100 mW/Area Scan (61x61x1):** Interpolated grid: dx=1.500 mm, dy=1.500 mm

Reference Value = 36.433 V/m; Power Drift = 0.04 dB

**Fast SAR: SAR(1 g) = 0.995 W/kg; SAR(10 g) = 0.671 W/kg**

Maximum value of SAR (interpolated) = 1.18 W/kg

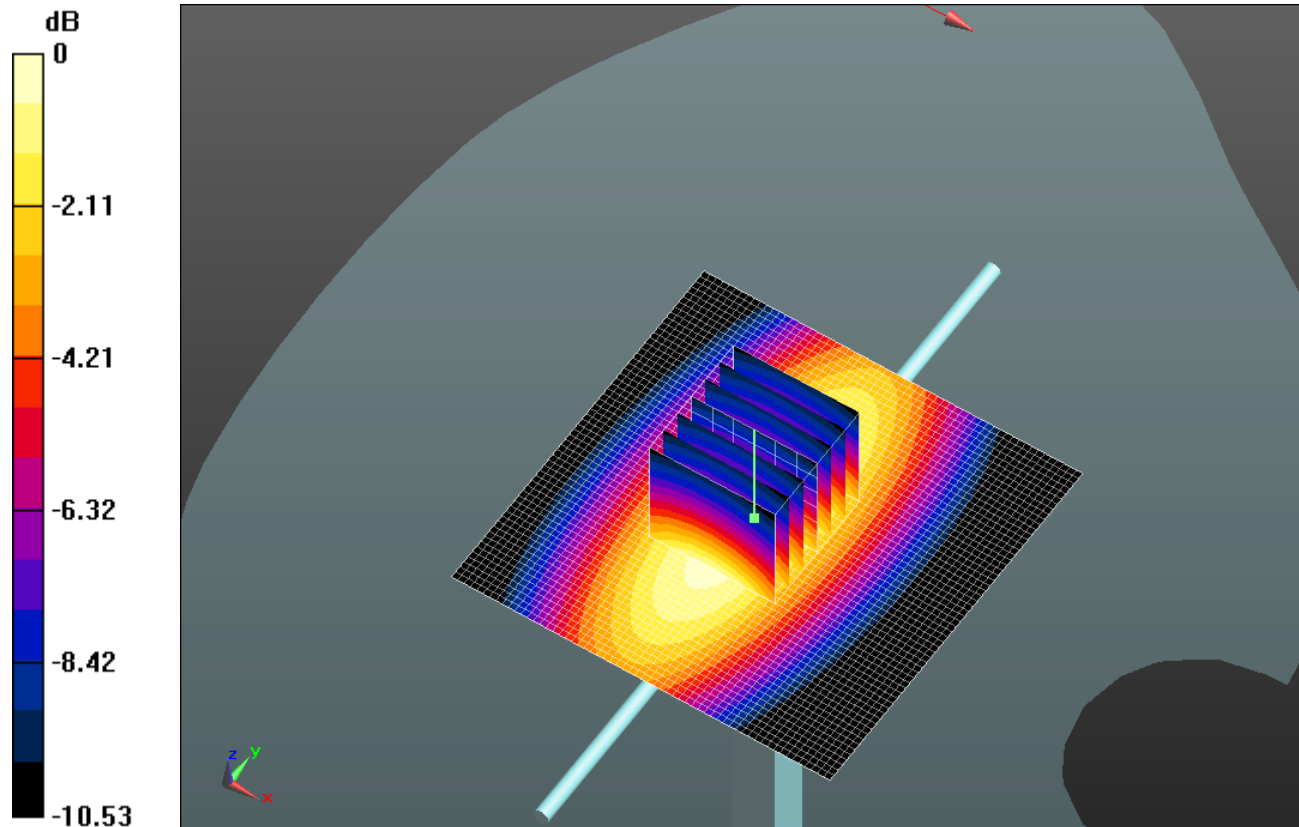
**Head/Pin=100 mW/Zoom Scan (7x7x7)/Cube 0:** Measurement grid: dx=5mm, dy=5mm, dz=5mm

Reference Value = 36.433 V/m; Power Drift = 0.04 dB

Peak SAR (extrapolated) = 1.46 W/kg

**SAR(1 g) = 0.979 W/kg; SAR(10 g) = 0.642 W/kg**

Maximum value of SAR (measured) = 1.19 W/kg

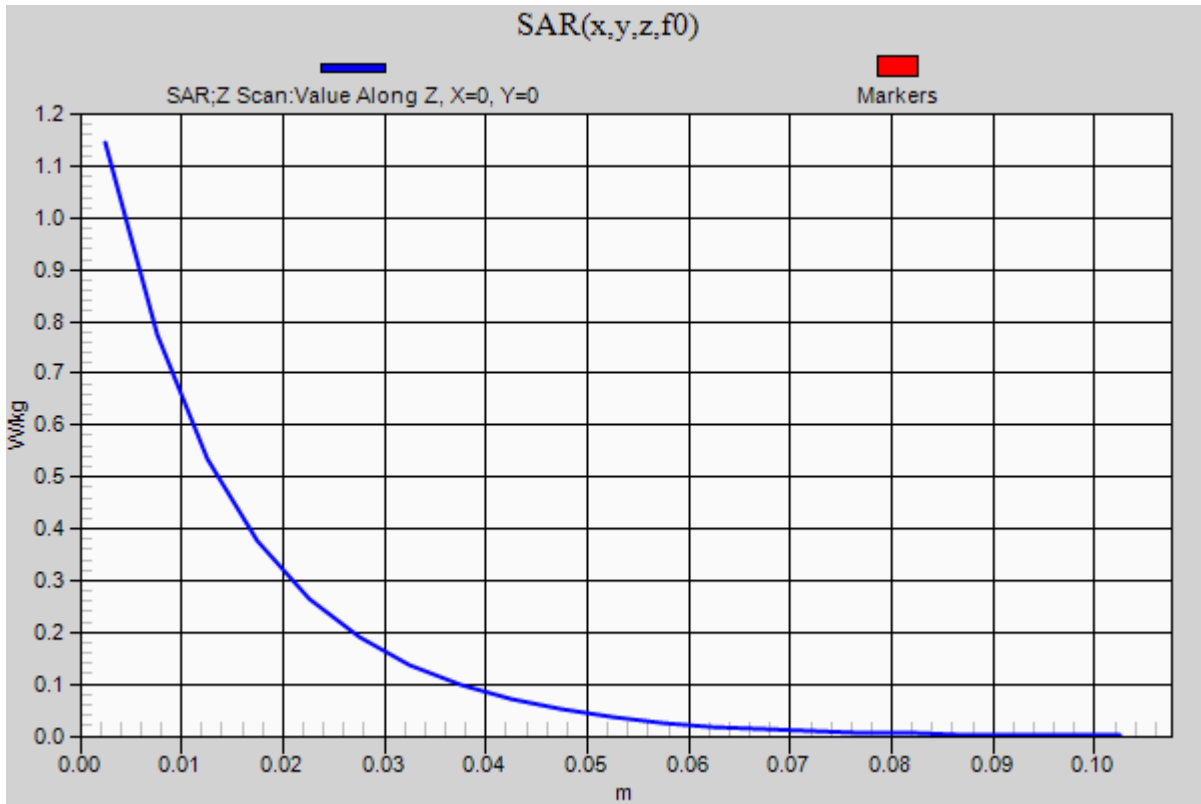


0 dB = 1.19 W/kg = 0.76 dBW/kg

### SystemPerformanceCheck-D835V2 SN 4d002

Frequency: 835 MHz; Duty Cycle: 1:1

**Head/Pin=100 mW/Z Scan (1x1x21):** Measurement grid: dx=20mm, dy=20mm, dz=5mm  
Maximum value of SAR (measured) = 1.15 W/kg



## SystemPerformanceCheck-D835V2 SN 4d002

Frequency: 835 MHz; Duty Cycle: 1:1; Room Ambient Temperature: 24.0°C; Liquid Temperature: 23.0°C  
 Medium parameters used:  $f = 835 \text{ MHz}$ ;  $\sigma = 1.001 \text{ S/m}$ ;  $\epsilon_r = 53.97$ ;  $\rho = 1000 \text{ kg/m}^3$

DASY5 Configuration:

- Area Scan Setting: Find Secondary Maximum Within: 2.0 dB and with a peak SAR value greater than 0.0012W/kg
- Electronics: DAE4 Sn1377; Calibrated: 7/15/2013
- Probe: EX3DV4 - SN3902; ConvF(9.99, 9.99, 9.99); Calibrated: 7/12/2013;
- Sensor-Surface: 2.5mm (Mechanical Surface Detection)
- Phantom: ELI v5.0 (A); Type: QDOVA001BB; Serial: 1213

**Body/Pin=100 mW/Area Scan (61x61x1):** Interpolated grid:  $dx=1.500 \text{ mm}$ ,  $dy=1.500 \text{ mm}$

Reference Value = 32.564 V/m; Power Drift = 0.04 dB

**Fast SAR: SAR(1 g) = 1.01 W/kg; SAR(10 g) = 0.682 W/kg**

Maximum value of SAR (interpolated) = 1.20 W/kg

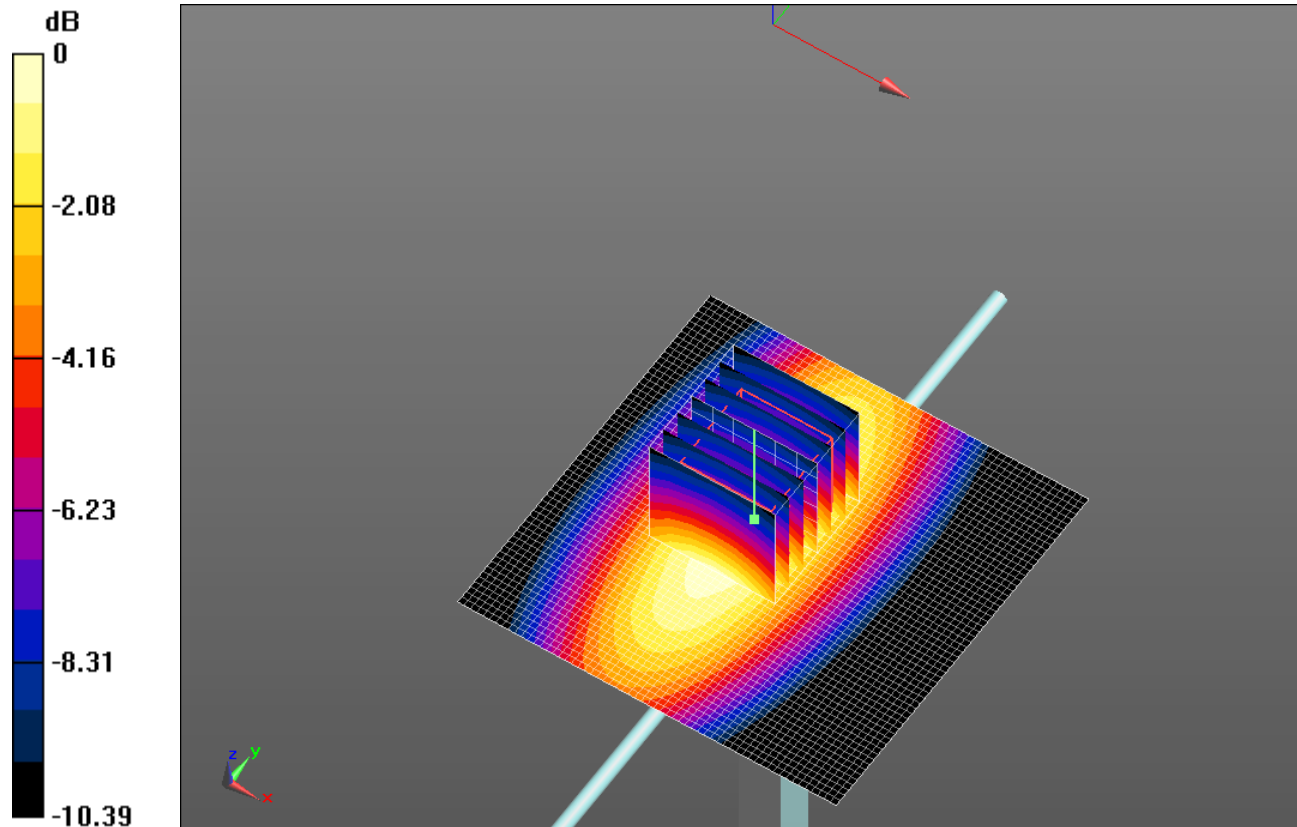
**Body/Pin=100 mW/Zoom Scan (7x7x7)/Cube 0:** Measurement grid:  $dx=5\text{mm}$ ,  $dy=5\text{mm}$ ,  $dz=5\text{mm}$

Reference Value = 32.564 V/m; Power Drift = 0.04 dB

Peak SAR (extrapolated) = 1.48 W/kg

**SAR(1 g) = 1.000 W/kg; SAR(10 g) = 0.659 W/kg**

Maximum value of SAR (measured) = 1.21 W/kg

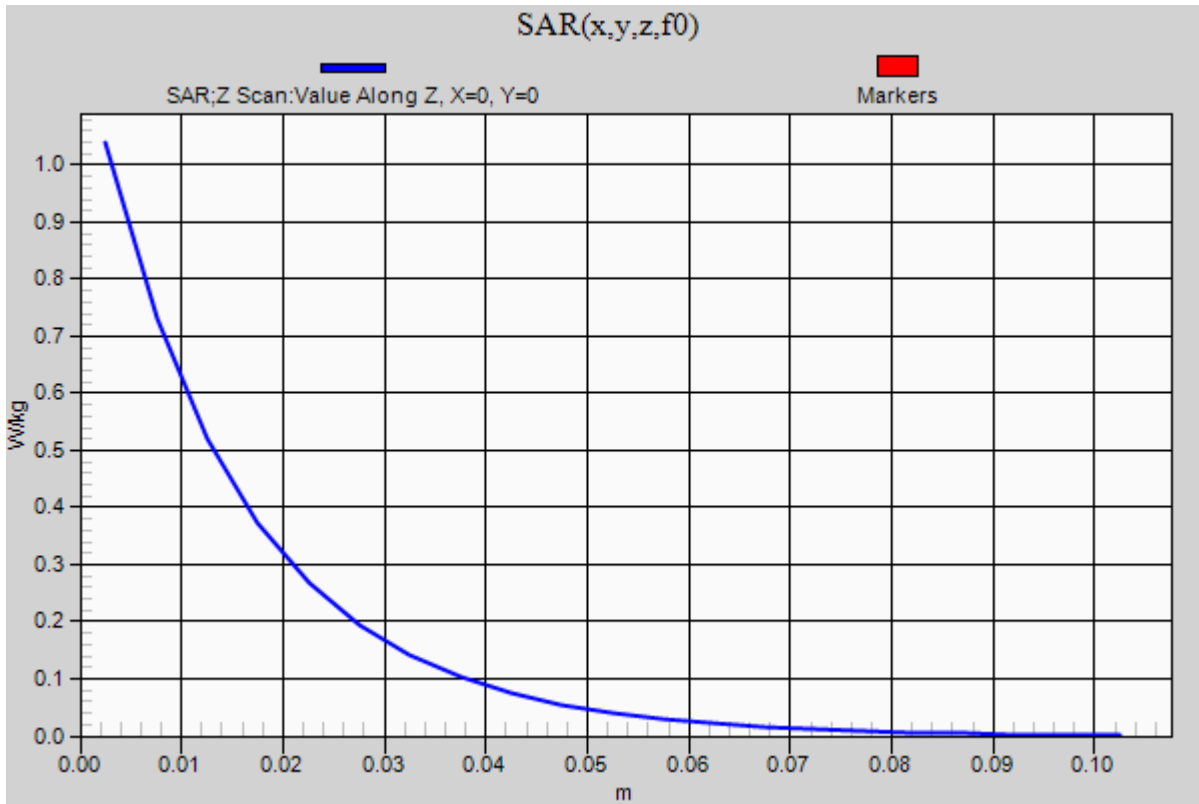


0 dB = 1.21 W/kg = 0.83 dBW/kg

### SystemPerformanceCheck-D835V2 SN 4d002

Frequency: 835 MHz; Duty Cycle: 1:1

**Body/Pin=100 mW/Z Scan (1x1x21):** Measurement grid: dx=20mm, dy=20mm, dz=5mm  
Maximum value of SAR (measured) = 1.04 W/kg



## SystemPerformanceCheck-D2450V2 SN 706

Frequency: 2450 MHz; Duty Cycle: 1:1; Room Ambient Temperature: 24.0°C; Liquid Temperature: 23.0°C  
 Medium parameters used:  $f = 2450$  MHz;  $\sigma = 1.994$  S/m;  $\epsilon_r = 51.736$ ;  $\rho = 1000$  kg/m<sup>3</sup>

DASY5 Configuration:

- Area Scan Setting: Find Secondary Maximum Within: 2.0 dB and with a peak SAR value greater than 0.0012W/kg
- Electronics: DAE4 Sn1377; Calibrated: 7/15/2013
- Probe: EX3DV4 - SN3902; ConvF(7.2, 7.2, 7.2); Calibrated: 7/12/2013;
- Sensor-Surface: 2.5mm (Mechanical Surface Detection)
- Phantom: ELI-B v5.0; Type: QDOVA001BB; Serial: 1215

**Body/Pin=100 mW 2/Area Scan (71x71x1):** Interpolated grid: dx=1.200 mm, dy=1.200 mm

Reference Value = 60.402 V/m; Power Drift = -0.01 dB

**Fast SAR: SAR(1 g) = 5.01 W/kg; SAR(10 g) = 2.18 W/kg**

Maximum value of SAR (interpolated) = 7.34 W/kg

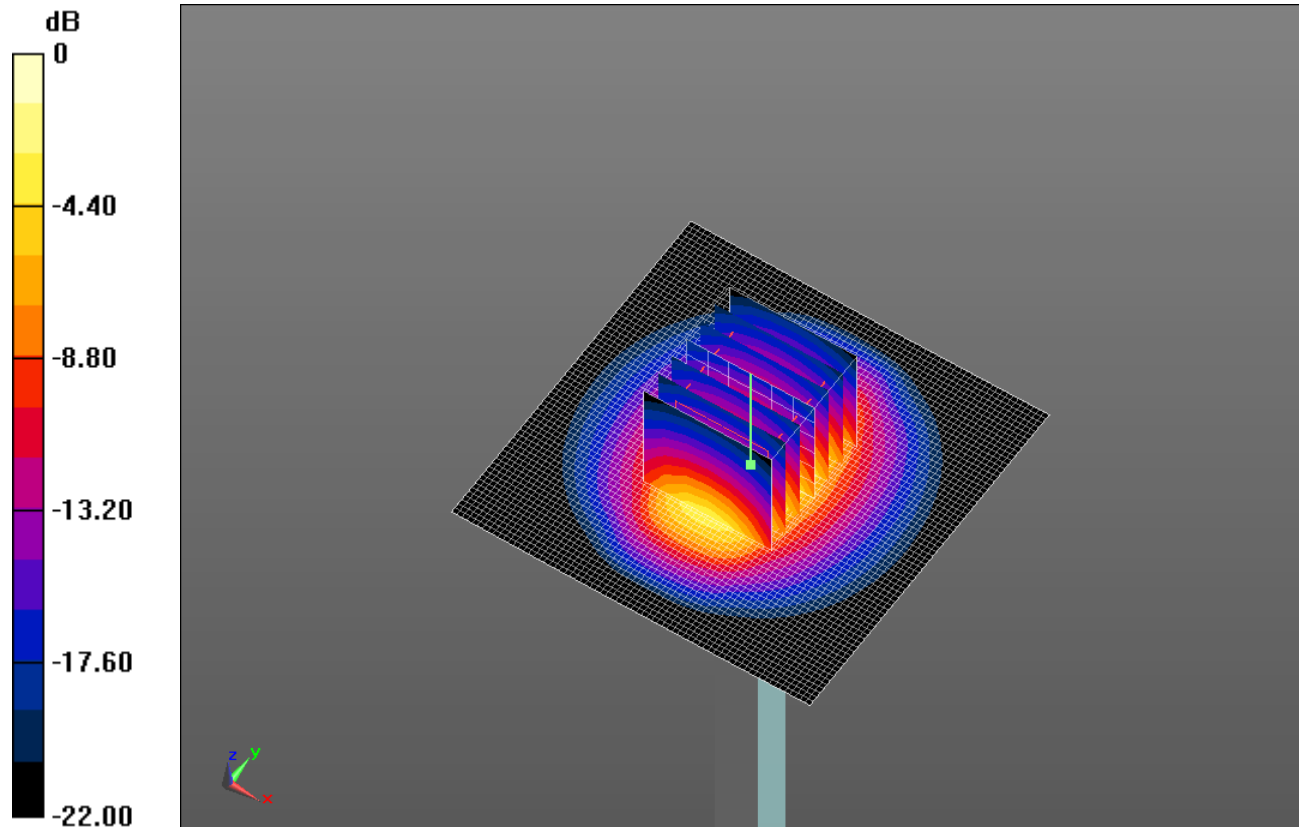
**Body/Pin=100 mW 2/Zoom Scan (7x7x7)/Cube 0:** Measurement grid: dx=5mm, dy=5mm, dz=5mm

Reference Value = 60.402 V/m; Power Drift = -0.01 dB

Peak SAR (extrapolated) = 10.5 W/kg

**SAR(1 g) = 5.06 W/kg; SAR(10 g) = 2.35 W/kg**

Maximum value of SAR (measured) = 7.21 W/kg

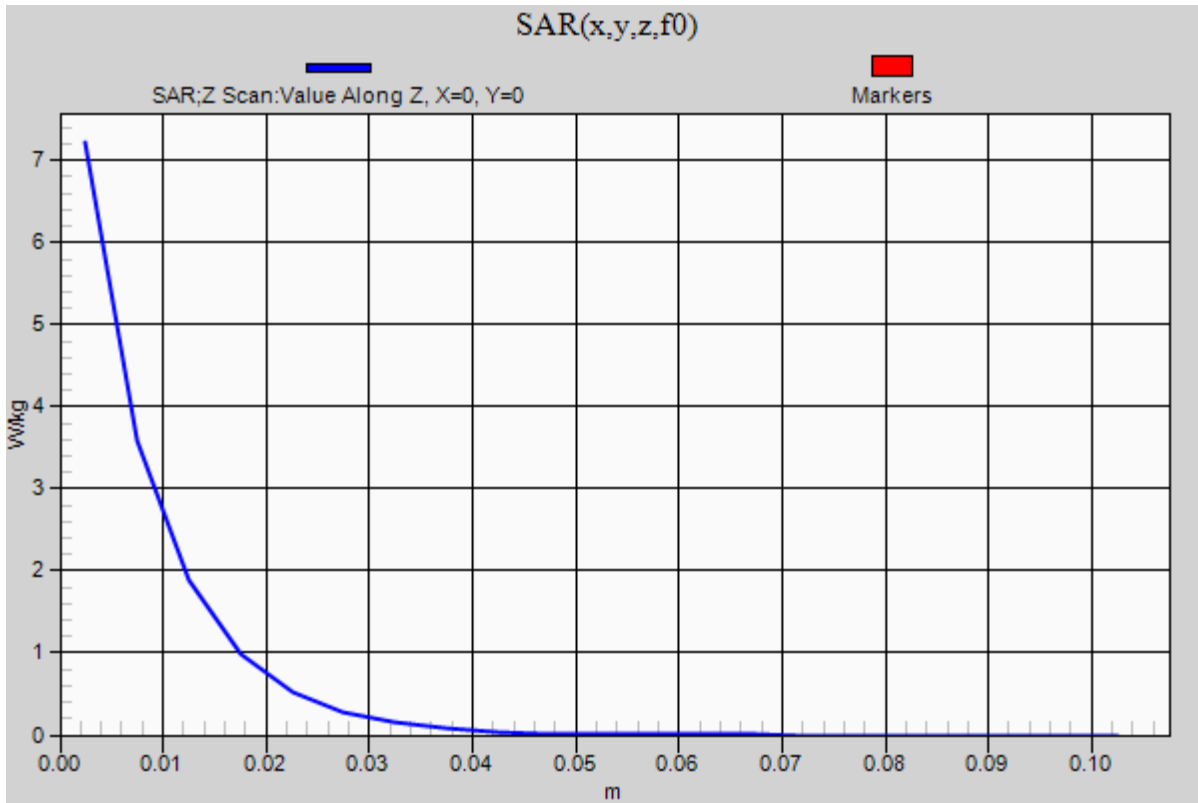


0 dB = 7.21 W/kg = 8.58 dBW/kg

### SystemPerformanceCheck-D2450V2 SN 706

Frequency: 2450 MHz; Duty Cycle: 1:1

**Body/Pin=100 mW 2/Z Scan (1x1x21):** Measurement grid: dx=20mm, dy=20mm, dz=5mm  
Maximum value of SAR (measured) = 7.22 W/kg



## 20140502 SystemPerformanceCheck-D2450V2 SN 706

Frequency: 2450 MHz; Duty Cycle: 1:1; Room Ambient Temperature: 24.0°C; Liquid Temperature: 23.0°C  
 Medium parameters used:  $f = 2450$  MHz;  $\sigma = 1.778$  S/m;  $\epsilon_r = 38.554$ ;  $\rho = 1000$  kg/m<sup>3</sup>

DASY5 Configuration:

- Area Scan Setting: Find Secondary Maximum Within: 2.0 dB and with a peak SAR value greater than 0.0012W/kg
- Electronics: DAE4 Sn1377; Calibrated: 7/15/2013
- Probe: EX3DV4 - SN3902; ConvF(7.49, 7.49, 7.49); Calibrated: 7/12/2013;
- Sensor-Surface: 2.5mm (Mechanical Surface Detection)
- Phantom: SAM with CRP; Type: QD000P40CD; Serial: 1768

**Head/Pin=100 mW/Area Scan (71x71x1):** Interpolated grid: dx=1.200 mm, dy=1.200 mm

Reference Value = 65.278 V/m; Power Drift = 0.09 dB

**Fast SAR: SAR(1 g) = 5.42 W/kg; SAR(10 g) = 2.38 W/kg**

Maximum value of SAR (interpolated) = 7.92 W/kg

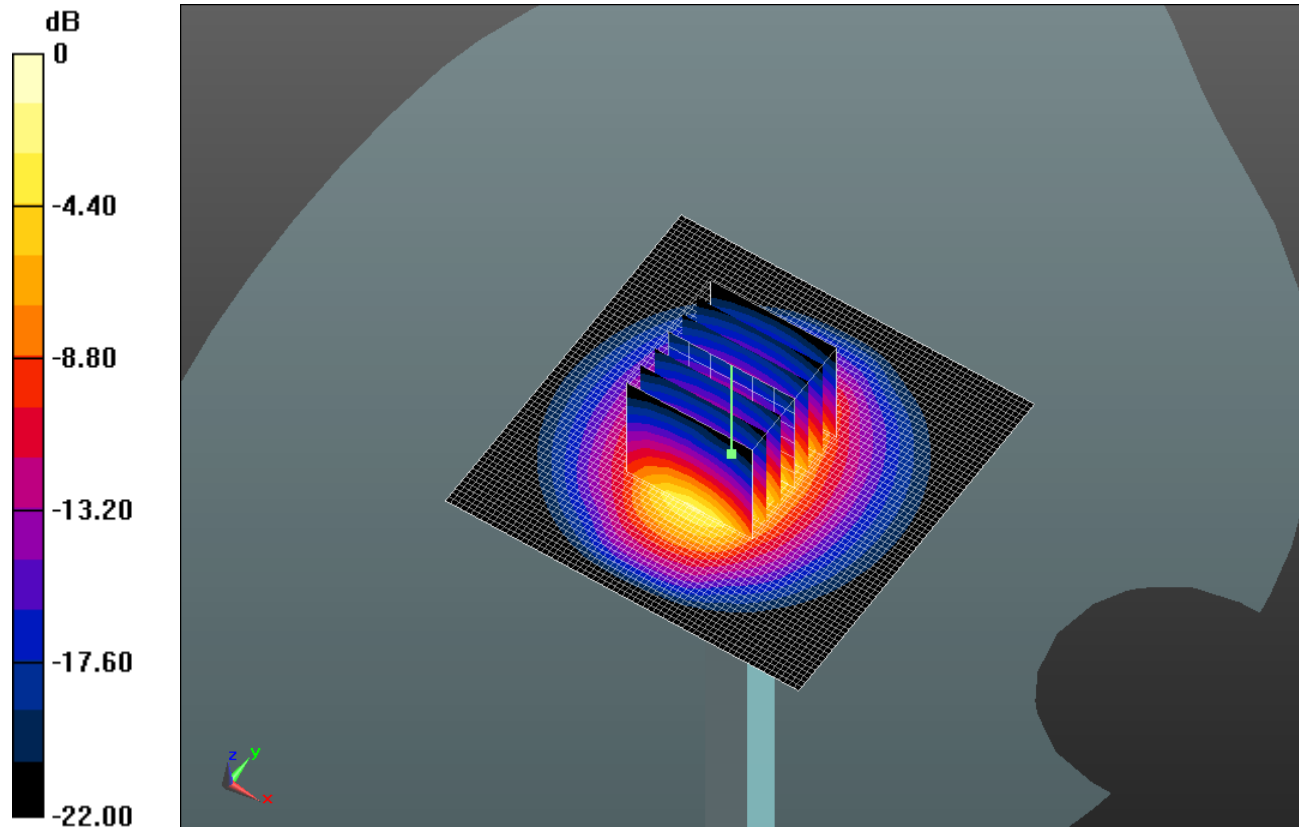
**Head/Pin=100 mW/Zoom Scan (7x7x7)/Cube 0:** Measurement grid: dx=5mm, dy=5mm, dz=5mm

Reference Value = 65.278 V/m; Power Drift = 0.09 dB

Peak SAR (extrapolated) = 11.7 W/kg

**SAR(1 g) = 5.38 W/kg; SAR(10 g) = 2.43 W/kg**

Maximum value of SAR (measured) = 7.77 W/kg

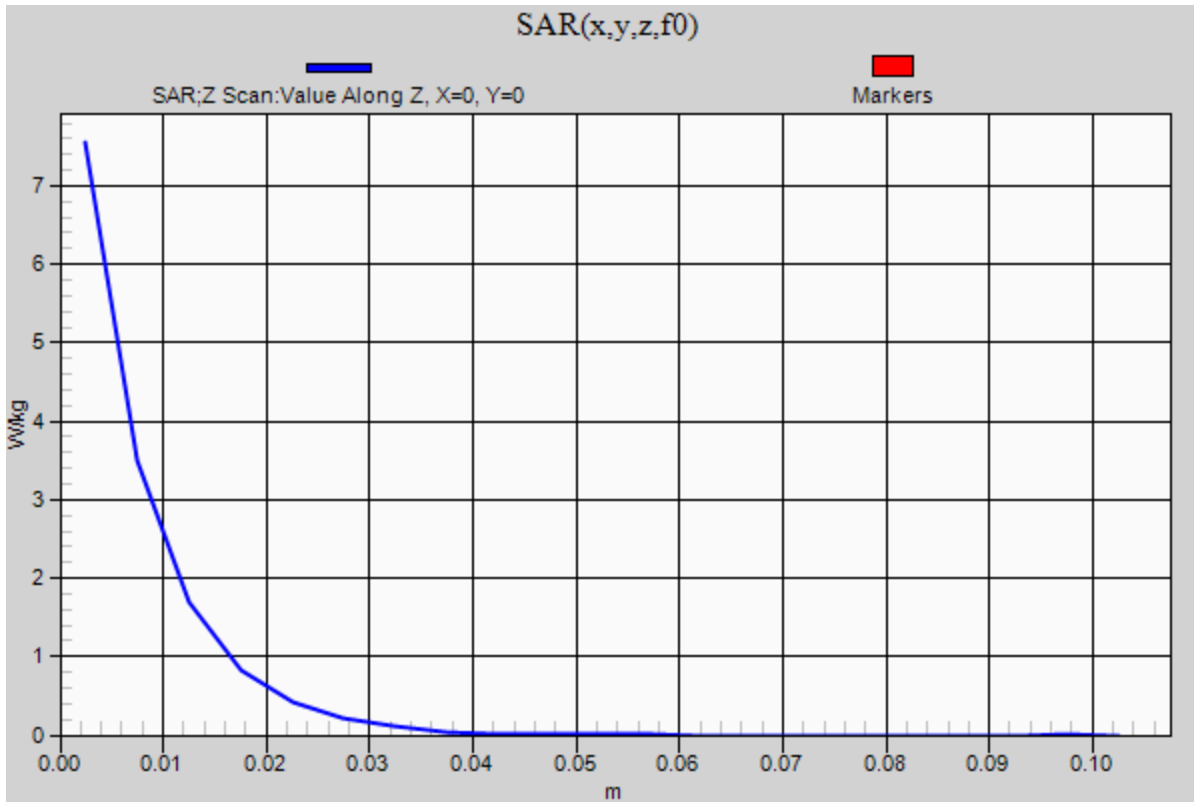


0 dB = 7.77 W/kg = 8.90 dBW/kg

### 20140502 SystemPerformanceCheck-D2450V2 SN 706

Frequency: 2450 MHz; Duty Cycle: 1:1

**Head/Pin=100 mW/Z Scan (1x1x21):** Measurement grid: dx=20mm, dy=20mm, dz=5mm  
Maximum value of SAR (measured) = 7.55 W/kg



## GSM850

Frequency: 836.6 MHz; Duty Cycle: 1:8.00018; Room Ambient Temperature: 24.0°C; Liquid Temperature: 23.0°C  
 Medium parameters used (interpolated):  $f = 836.6$  MHz;  $\sigma = 0.896$  S/m;  $\epsilon_r = 40.27$ ;  $\rho = 1000$  kg/m<sup>3</sup>

DASY5 Configuration:

- Area Scan Setting: Find Secondary Maximum Within: 2.0 dB and with a peak SAR value greater than 0.0012W/kg
- Electronics: DAE4 Sn1377; Calibrated: 7/15/2013
- Probe: EX3DV4 - SN3902; ConvF(9.79, 9.79, 9.79); Calibrated: 7/12/2013;
- Sensor-Surface: 2.5mm (Mechanical Surface Detection)
- Phantom: SAM with CRP; Type: QD000P40CD; Serial: 1768

### RHS/Touch GSM Voice Channel 190/Area Scan (8x12x1): Measurement grid: dx=15mm, dy=15mm

[Info: Interpolated medium parameters used for SAR evaluation.](#)

Maximum value of SAR (measured) = 0.0759 W/kg

### RHS/Touch GSM Voice Channel 190/Zoom Scan (5x5x7)/Cube 0: Measurement grid: dx=8mm, dy=8mm, dz=5mm

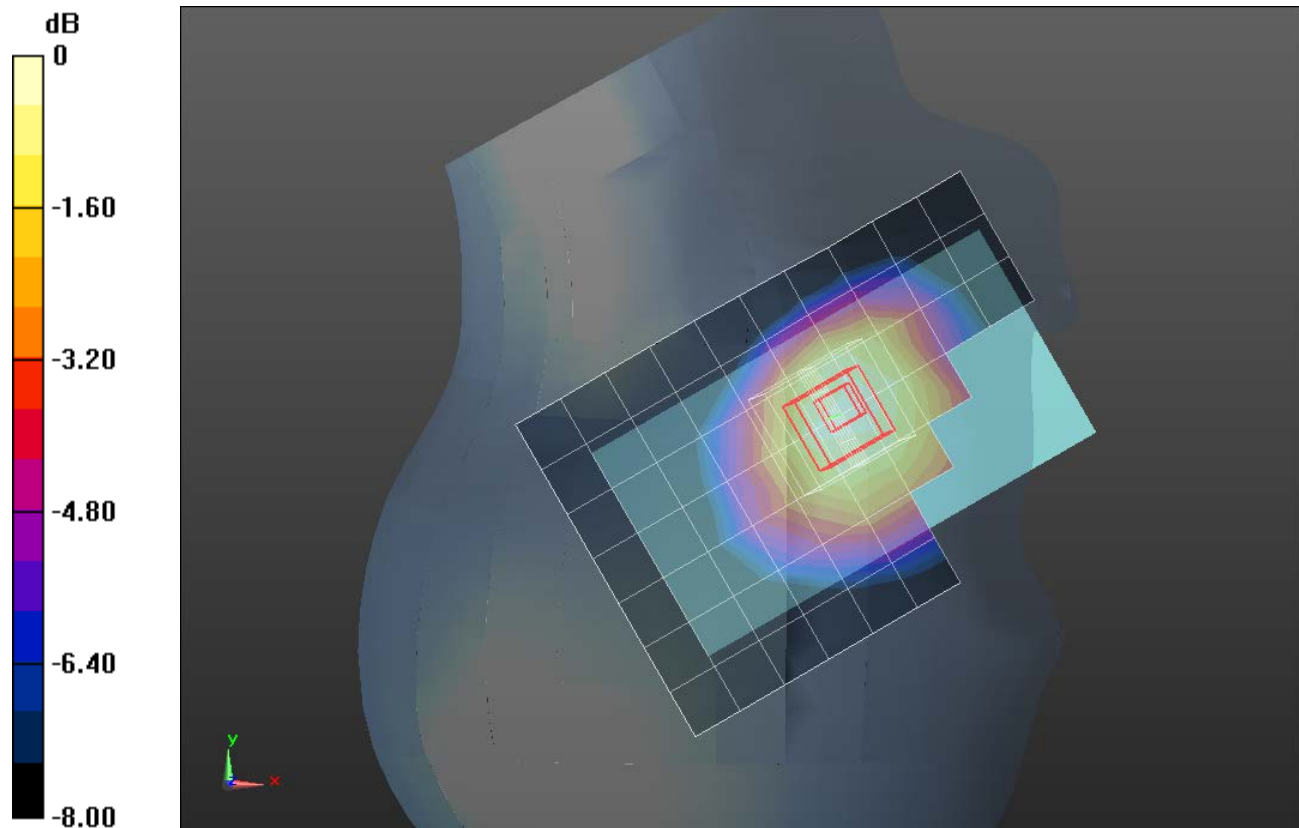
Reference Value = 9.399 V/m; Power Drift = -0.03 dB

Peak SAR (extrapolated) = 0.0850 W/kg

**SAR(1 g) = 0.069 W/kg; SAR(10 g) = 0.052 W/kg**

[Info: Interpolated medium parameters used for SAR evaluation.](#)

Maximum value of SAR (measured) = 0.0764 W/kg



0 dB = 0.0764 W/kg = -11.17 dBW/kg

## GSM850

Frequency: 836.6 MHz; Duty Cycle: 1:4.00037; Room Ambient Temperature: 24.0°C; Liquid Temperature: 23.0°C  
 Medium parameters used (interpolated):  $f = 836.6$  MHz;  $\sigma = 0.896$  S/m;  $\epsilon_r = 40.27$ ;  $\rho = 1000$  kg/m<sup>3</sup>

DASY5 Configuration:

- Area Scan Setting: Find Secondary Maximum Within: 2.0 dB and with a peak SAR value greater than 0.0012W/kg
- Electronics: DAE4 Sn1377; Calibrated: 7/15/2013
- Probe: EX3DV4 - SN3902; ConvF(9.79, 9.79, 9.79); Calibrated: 7/12/2013;
- Sensor-Surface: 2.5mm (Mechanical Surface Detection)
- Phantom: SAM with CRP; Type: QD000P40CD; Serial: 1768

**RHS/Touch GPRS 2 Slots Channel 190/Area Scan (8x12x1):** Measurement grid: dx=15mm, dy=15mm

[Info: Interpolated medium parameters used for SAR evaluation.](#)

Maximum value of SAR (measured) = 0.107 W/kg

**RHS/Touch GPRS 2 Slots Channel 190/Zoom Scan (5x5x7)/Cube 0:** Measurement grid: dx=8mm, dy=8mm, dz=5mm

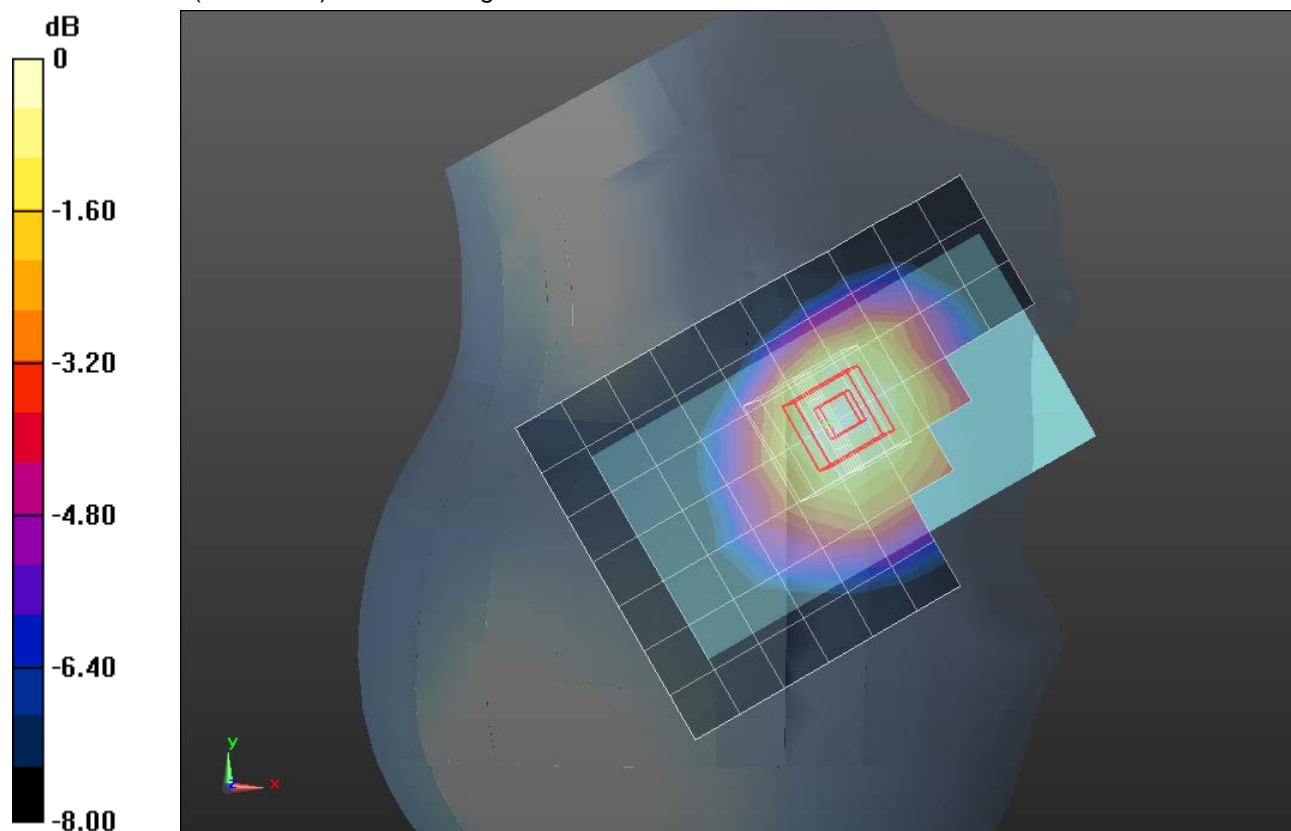
Reference Value = 11.236 V/m; Power Drift = -0.02 dB

Peak SAR (extrapolated) = 0.119 W/kg

**SAR(1 g) = 0.098 W/kg; SAR(10 g) = 0.073 W/kg**

[Info: Interpolated medium parameters used for SAR evaluation.](#)

Maximum value of SAR (measured) = 0.109 W/kg



0 dB = 0.109 W/kg = -9.63 dBW/kg

## GSM850

Frequency: 836.6 MHz; Duty Cycle: 1:8.00018; Room Ambient Temperature: 24.0°C; Liquid Temperature: 23.0°C  
 Medium parameters used (interpolated):  $f = 836.6$  MHz;  $\sigma = 1.002$  S/m;  $\epsilon_r = 53.956$ ;  $\rho = 1000$  kg/m<sup>3</sup>

DASY5 Configuration:

- Area Scan Setting: Find Secondary Maximum Within: 2.0 dB and with a peak SAR value greater than 0.0012W/kg
- Electronics: DAE4 Sn1377; Calibrated: 7/15/2013
- Probe: EX3DV4 - SN3902; ConvF(9.99, 9.99, 9.99); Calibrated: 7/12/2013;
- Sensor-Surface: 2.5mm (Mechanical Surface Detection)
- Phantom: ELI v5.0 (A); Type: QDOVA001BB; Serial: 1213

**Rear/GSM Voice Channel 190/Area Scan (7x13x1):** Measurement grid: dx=15mm, dy=15mm

[Info: Interpolated medium parameters used for SAR evaluation.](#)

Maximum value of SAR (measured) = 0.169 W/kg

**Rear/GSM Voice Channel 190/Zoom Scan (5x5x7)/Cube 0:** Measurement grid: dx=8mm, dy=8mm, dz=5mm

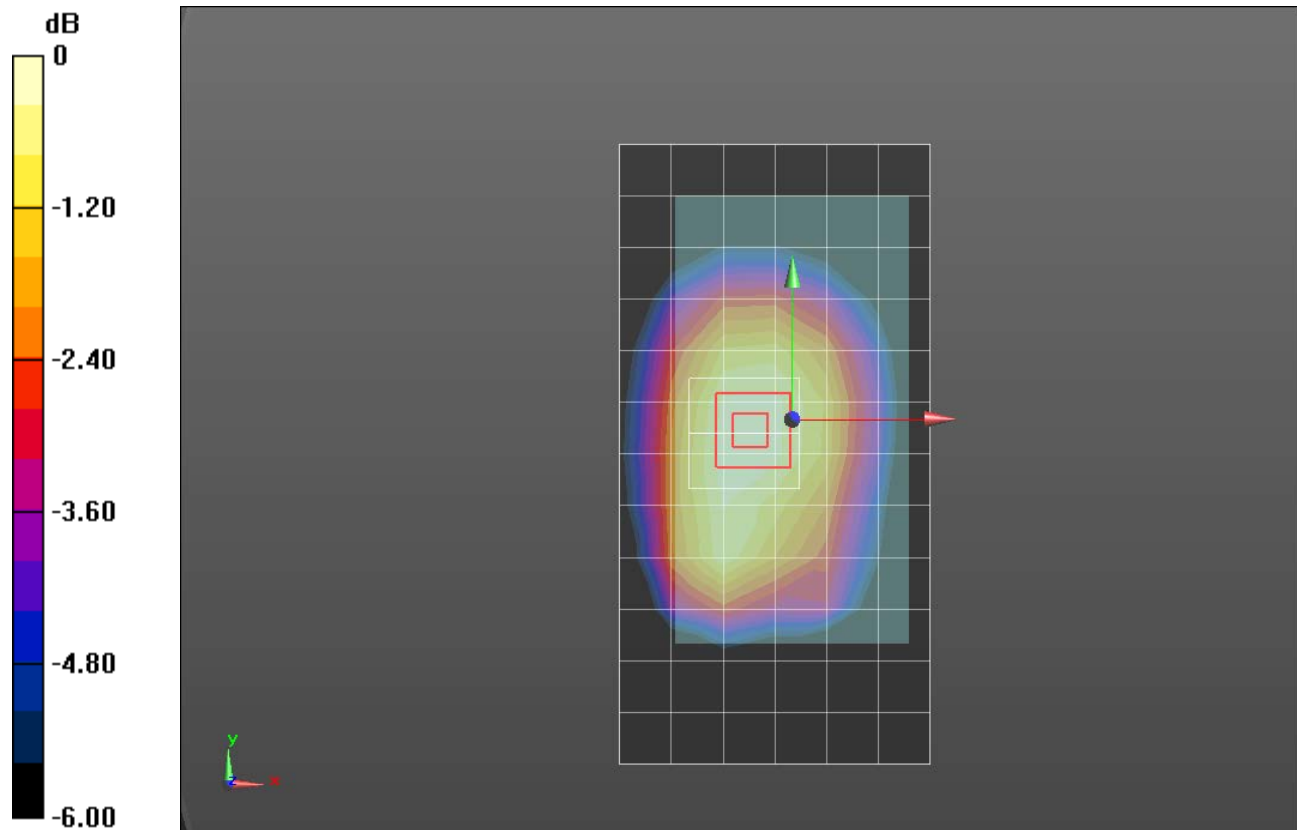
Reference Value = 13.106 V/m; Power Drift = -0.02 dB

Peak SAR (extrapolated) = 0.195 W/kg

**SAR(1 g) = 0.154 W/kg; SAR(10 g) = 0.116 W/kg**

[Info: Interpolated medium parameters used for SAR evaluation.](#)

Maximum value of SAR (measured) = 0.174 W/kg



0 dB = 0.174 W/kg = -7.59 dBW/kg

## GSM850

Frequency: 836.6 MHz; Duty Cycle: 1:4.00037; Room Ambient Temperature: 24.0°C; Liquid Temperature: 23.0°C  
 Medium parameters used (interpolated):  $f = 836.6$  MHz;  $\sigma = 1.002$  S/m;  $\epsilon_r = 53.956$ ;  $\rho = 1000$  kg/m<sup>3</sup>

DASY5 Configuration:

- Area Scan Setting: Find Secondary Maximum Within: 2.0 dB and with a peak SAR value greater than 0.0012W/kg
- Electronics: DAE4 Sn1377; Calibrated: 7/15/2013
- Probe: EX3DV4 - SN3902; ConvF(9.99, 9.99, 9.99); Calibrated: 7/12/2013;
- Sensor-Surface: 2.5mm (Mechanical Surface Detection (Locations From Previous Scan Used)), Sensor-Surface: 2.5mm (Mechanical Surface Detection)
- Phantom: ELI v5.0 (A); Type: QDOVA001BB; Serial: 1213

**Rear/GPRS 2 Slots Channel 190/Area Scan (7x13x1):** Measurement grid: dx=15mm, dy=15mm

[Info: Interpolated medium parameters used for SAR evaluation.](#)

Maximum value of SAR (measured) = 0.241 W/kg

**Rear/GPRS 2 Slots Channel 190/Zoom Scan (5x5x7)/Cube 0:** Measurement grid: dx=8mm, dy=8mm, dz=5mm

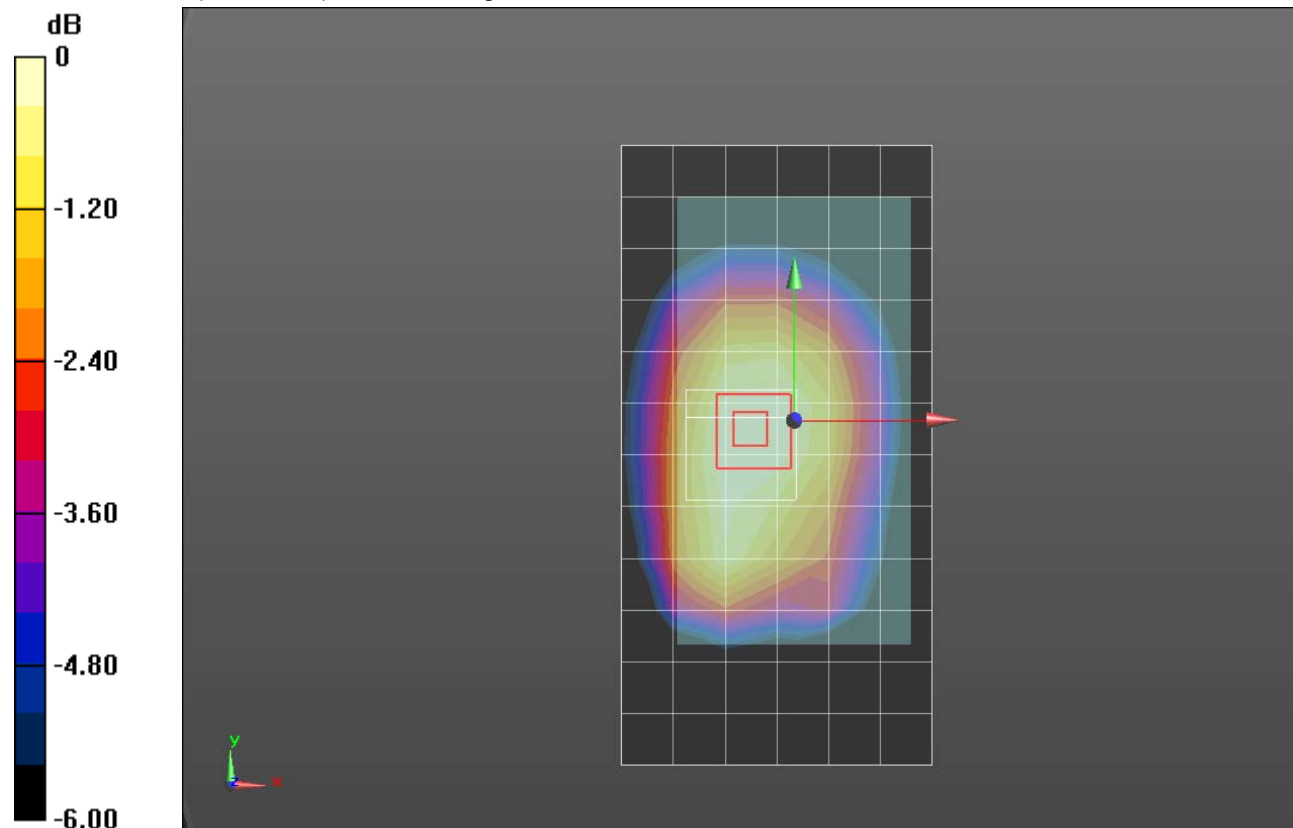
Reference Value = 15.557 V/m; Power Drift = 0.01 dB

Peak SAR (extrapolated) = 0.275 W/kg

**SAR(1 g) = 0.217 W/kg; SAR(10 g) = 0.164 W/kg**

[Info: Interpolated medium parameters used for SAR evaluation.](#)

Maximum value of SAR (measured) = 0.243 W/kg



0 dB = 0.243 W/kg = -6.14 dBW/kg

## GSM1900

Frequency: 1880 MHz; Duty Cycle: 1:8.00018; Room Ambient Temperature: 24.0°C; Liquid Temperature: 23.0°C  
 Medium parameters used:  $f = 1880 \text{ MHz}$ ;  $\sigma = 1.45 \text{ S/m}$ ;  $\epsilon_r = 39.74$ ;  $\rho = 1000 \text{ kg/m}^3$

DASY5 Configuration:

- Area Scan Setting: Find Secondary Maximum Within: 2.0 dB and with a peak SAR value greater than 0.0012W/kg
- Electronics: DAE4 Sn1377; Calibrated: 7/15/2013
- Probe: EX3DV4 - SN3902; ConvF(8.28, 8.28, 8.28); Calibrated: 7/12/2013;
- Sensor-Surface: 2.5mm (Mechanical Surface Detection)
- Phantom: SAM with CRP; Type: QD000P40CD; Serial: 1768

**RHS/Touch GSM Voice Channel 661/Area Scan (9x13x1):** Measurement grid: dx=15mm, dy=15mm

Maximum value of SAR (measured) = 0.146 W/kg

**RHS/Touch GSM Voice Channel 661/Zoom Scan (5x5x7)/Cube 0:** Measurement grid: dx=8mm,

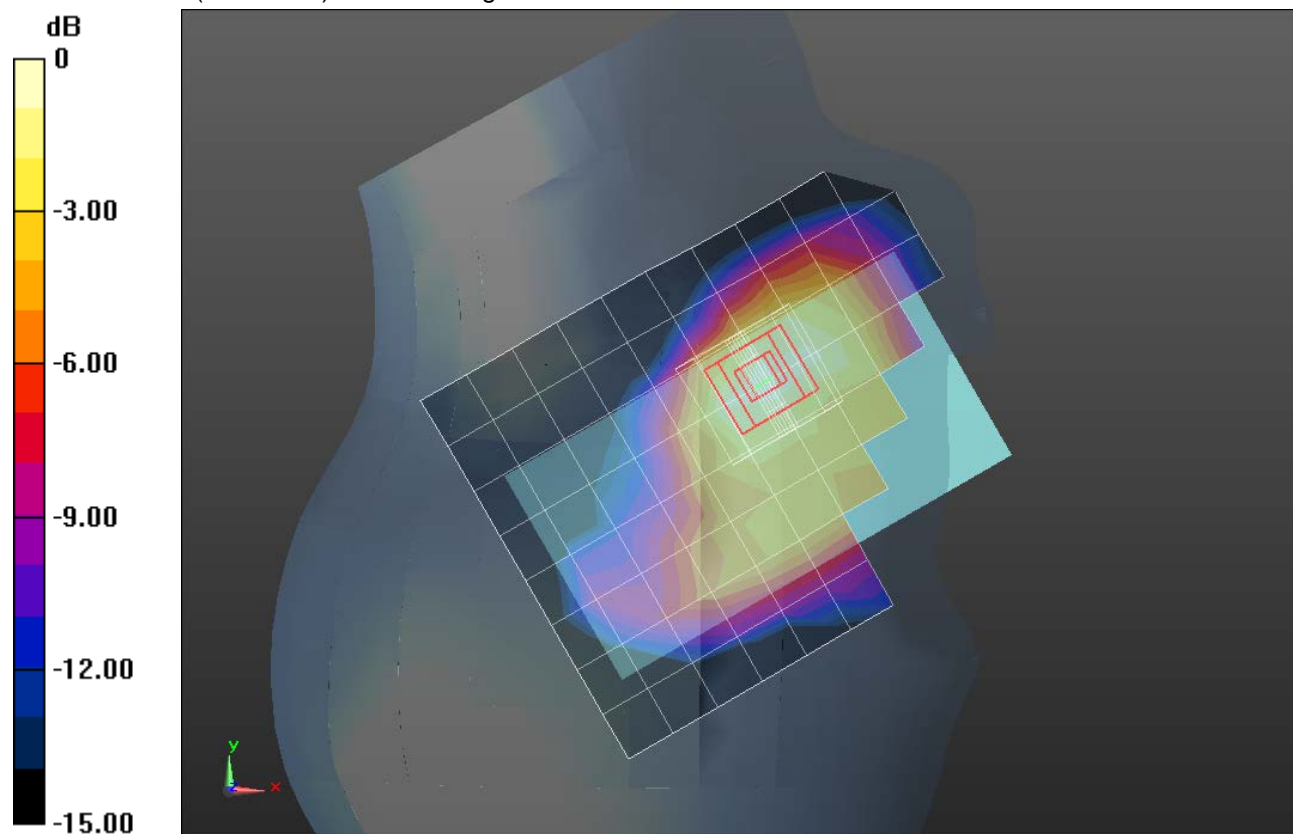
dy=8mm, dz=5mm

Reference Value = 10.082 V/m; Power Drift = -0.12 dB

Peak SAR (extrapolated) = 0.183 W/kg

**SAR(1 g) = 0.117 W/kg; SAR(10 g) = 0.070 W/kg**

Maximum value of SAR (measured) = 0.141 W/kg



0 dB = 0.141 W/kg = -8.51 dBW/kg

## GSM1900

Frequency: 1880 MHz; Duty Cycle: 1:2.60016; Room Ambient Temperature: 24.0°C; Liquid Temperature: 23.0°C  
 Medium parameters used:  $f = 1880 \text{ MHz}$ ;  $\sigma = 1.45 \text{ S/m}$ ;  $\epsilon_r = 39.74$ ;  $\rho = 1000 \text{ kg/m}^3$

DASY5 Configuration:

- Area Scan Setting: Find Secondary Maximum Within: 2.0 dB and with a peak SAR value greater than 0.0012W/kg
- Electronics: DAE4 Sn1377; Calibrated: 7/15/2013
- Probe: EX3DV4 - SN3902; ConvF(8.28, 8.28, 8.28); Calibrated: 7/12/2013;
- Sensor-Surface: 2.5mm (Mechanical Surface Detection)
- Phantom: SAM with CRP; Type: QD000P40CD; Serial: 1768

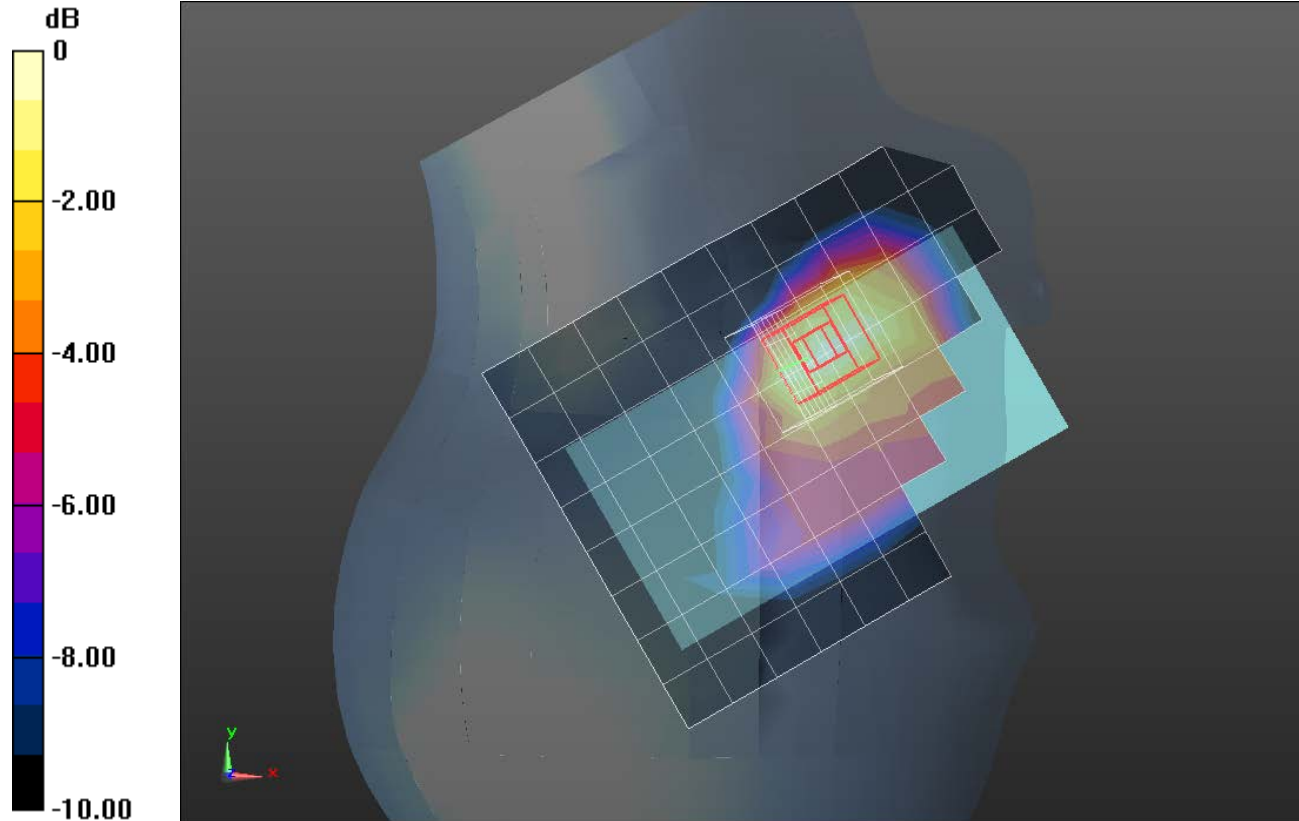
**RHS/Touch GPRS 3 Slots Channel 661/Area Scan (9x13x1):** Measurement grid: dx=15mm, dy=15mm  
 Maximum value of SAR (measured) = 0.213 W/kg

**RHS/Touch GPRS 3 Slots Channel 661/Zoom Scan (5x5x7)/Cube 0:** Measurement grid: dx=8mm, dy=8mm, dz=5mm

Reference Value = 12.257 V/m; Power Drift = 0.01 dB

Peak SAR (extrapolated) = 0.275 W/kg

**SAR(1 g) = 0.173 W/kg; SAR(10 g) = 0.102 W/kg**



0 dB = 0.213 W/kg = -6.72 dBW/kg

## GSM1900

Frequency: 1880 MHz; Duty Cycle: 1:8.00018; Room Ambient Temperature: 24.0°C; Liquid Temperature: 23.0°C  
 Medium parameters used:  $f = 1880 \text{ MHz}$ ;  $\sigma = 1.479 \text{ S/m}$ ;  $\epsilon_r = 51.25$ ;  $\rho = 1000 \text{ kg/m}^3$   
 DASY5 Configuration:

- Area Scan Setting: Find Secondary Maximum Within: 2.0 dB and with a peak SAR value greater than 0.0012W/kg
- Electronics: DAE4 Sn1377; Calibrated: 7/15/2013
- Probe: EX3DV4 - SN3902; ConvF(7.61, 7.61, 7.61); Calibrated: 7/12/2013;
- Sensor-Surface: 2.5mm (Mechanical Surface Detection)
- Phantom: ELI-B v5.0; Type: QDOVA001BB; Serial: 1215

**Rear/GSM Voice Channel 661/Area Scan (7x13x1):** Measurement grid:  $dx=15\text{mm}$ ,  $dy=15\text{mm}$   
 Maximum value of SAR (measured) = 0.721 W/kg

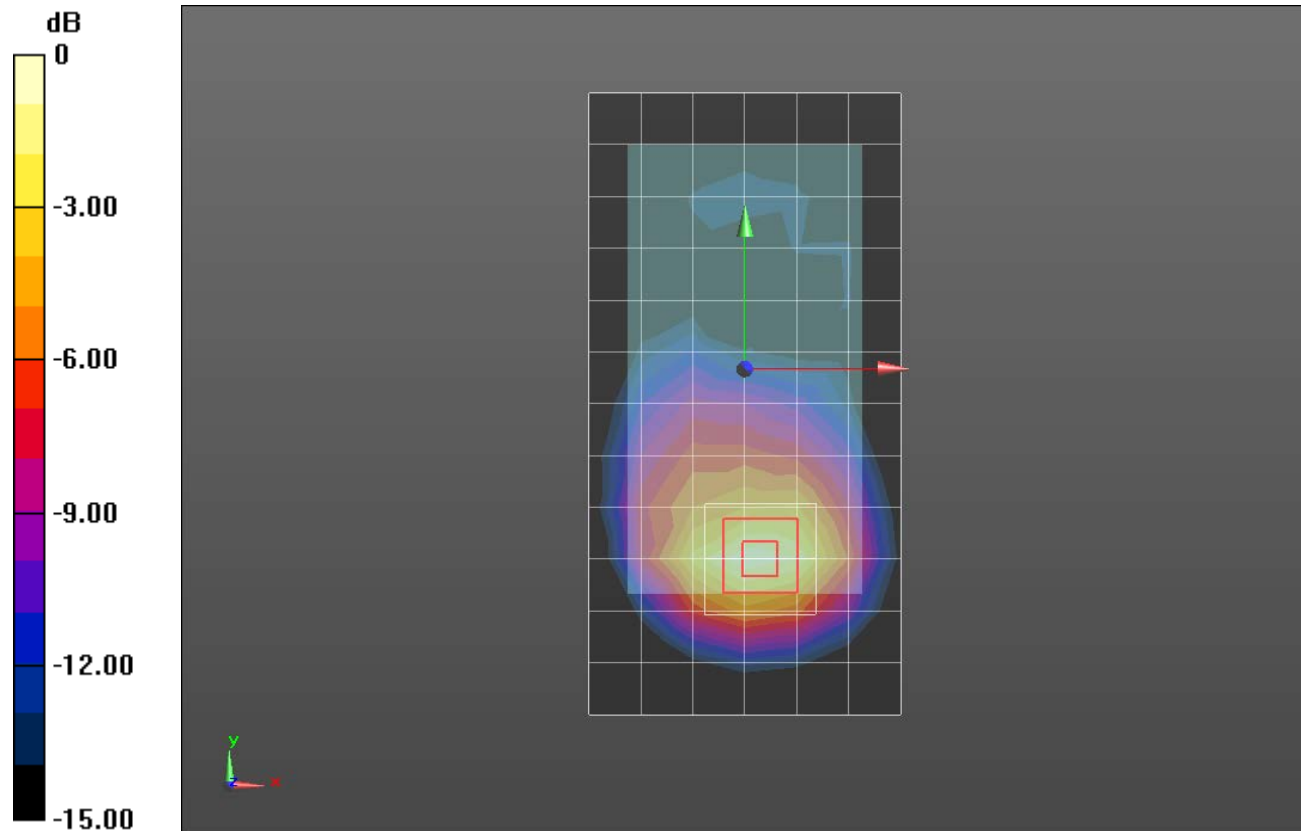
**Rear/GSM Voice Channel 661/Zoom Scan (5x5x7)/Cube 0:** Measurement grid:  $dx=8\text{mm}$ ,  $dy=8\text{mm}$ ,  
 $dz=5\text{mm}$

Reference Value = 22.206 V/m; Power Drift = -0.05 dB

Peak SAR (extrapolated) = 0.953 W/kg

**SAR(1 g) = 0.579 W/kg; SAR(10 g) = 0.324 W/kg**

Maximum value of SAR (measured) = 0.753 W/kg



0 dB = 0.753 W/kg = -1.23 dBW/kg

## GSM1900

Frequency: 1909.8 MHz; Duty Cycle: 1:2.60016; Room Ambient Temperature: 24.0°C; Liquid Temperature: 23.0°C  
 Medium parameters used:  $f = 1910 \text{ MHz}$ ;  $\sigma = 1.51 \text{ S/m}$ ;  $\epsilon_r = 51.149$ ;  $\rho = 1000 \text{ kg/m}^3$

DASY5 Configuration:

- Area Scan Setting: Find Secondary Maximum Within: 2.0 dB and with a peak SAR value greater than 0.0012W/kg
- Electronics: DAE4 Sn1377; Calibrated: 7/15/2013
- Probe: EX3DV4 - SN3902; ConvF(7.61, 7.61, 7.61); Calibrated: 7/12/2013;
- Sensor-Surface: 2.5mm (Mechanical Surface Detection)
- Phantom: ELI-B v5.0; Type: QDOVA001BB; Serial: 1215

**Rear/GPRS 3 Slots Channel 810/Area Scan (7x13x1):** Measurement grid: dx=15mm, dy=15mm

Maximum value of SAR (measured) = 0.887 W/kg

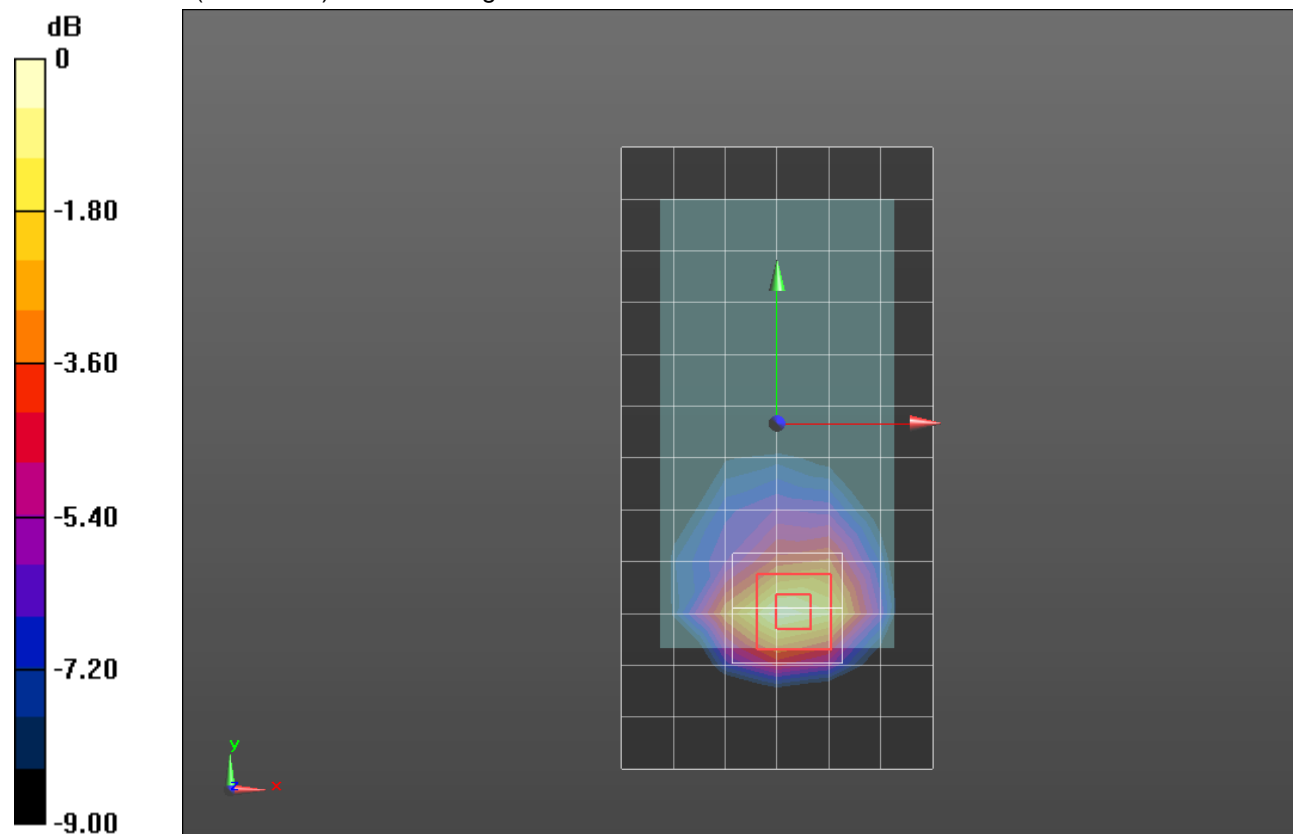
**Rear/GPRS 3 Slots Channel 810/Zoom Scan (5x5x7)/Cube 0:** Measurement grid: dx=8mm, dy=8mm, dz=5mm

Reference Value = 24.449 V/m; Power Drift = -0.03 dB

Peak SAR (extrapolated) = 1.18 W/kg

**SAR(1 g) = 0.708 W/kg; SAR(10 g) = 0.390 W/kg**

Maximum value of SAR (measured) = 0.908 W/kg



0 dB = 0.908 W/kg = -0.42 dBW/kg

## W-CDMA Band II

Frequency: 1880 MHz; Duty Cycle: 1:1; Room Ambient Temperature: 24.0°C; Liquid Temperature: 23.0°C  
 Medium parameters used:  $f = 1880 \text{ MHz}$ ;  $\sigma = 1.393 \text{ S/m}$ ;  $\epsilon_r = 39.551$ ;  $\rho = 1000 \text{ kg/m}^3$

DASY5 Configuration:

- Area Scan Setting: Find Secondary Maximum Within: 2.0 dB and with a peak SAR value greater than 0.0012W/kg
- Electronics: DAE4 Sn1377; Calibrated: 7/15/2013
- Probe: EX3DV4 - SN3902; ConvF(8.28, 8.28, 8.28); Calibrated: 7/12/2013;
- Sensor-Surface: 2.5mm (Mechanical Surface Detection)
- Phantom: SAM with CRP; Type: QD000P40CD; Serial: 1768

### RHS/Touch Rel. 99 RMC 12.2 kbps Channel 9400/Area Scan (8x13x1): Measurement grid:

$dx=15\text{mm}$ ,  $dy=15\text{mm}$

Maximum value of SAR (measured) = 0.216 W/kg

### RHS/Touch Rel. 99 RMC 12.2 kbps Channel 9400/Zoom Scan (5x5x7)/Cube 0: Measurement

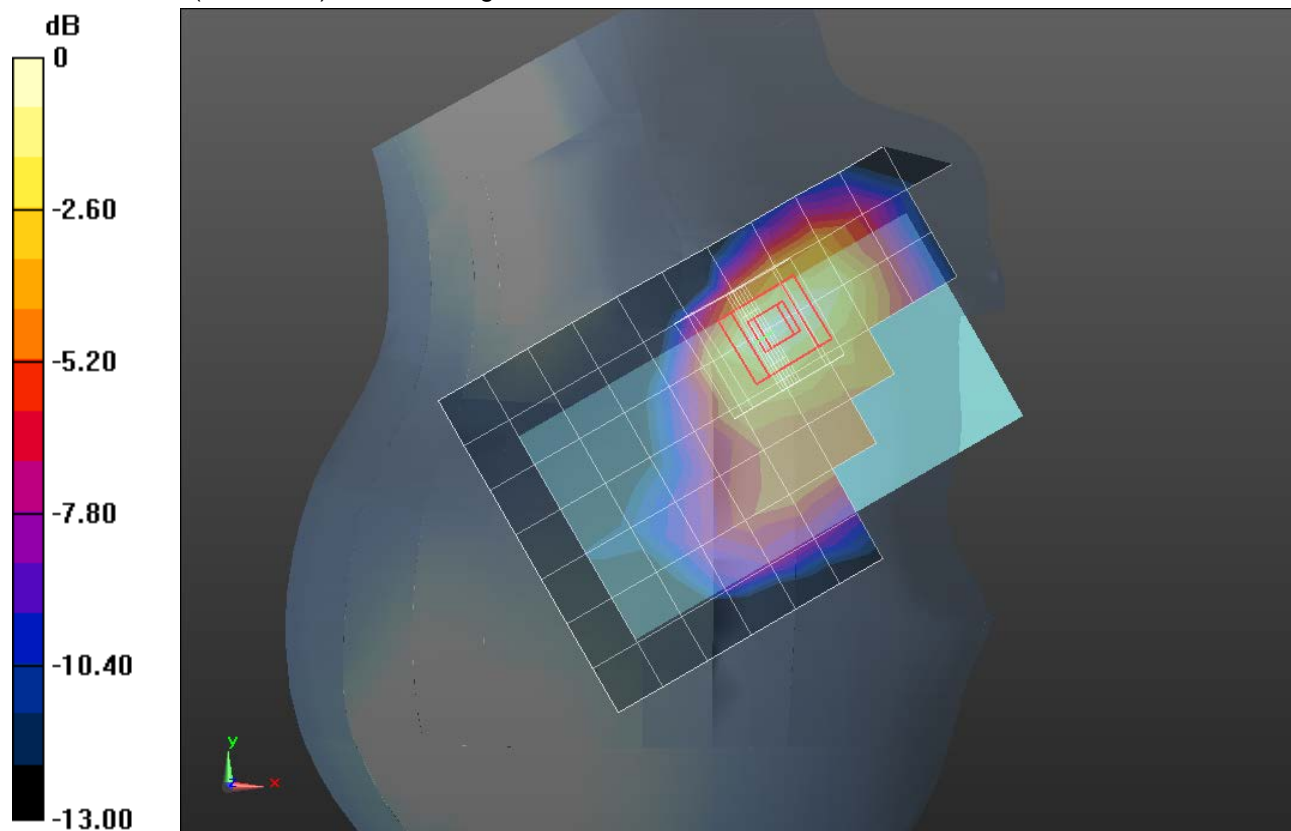
grid:  $dx=8\text{mm}$ ,  $dy=8\text{mm}$ ,  $dz=5\text{mm}$

Reference Value = 12.554 V/m; Power Drift = 0.03 dB

Peak SAR (extrapolated) = 0.287 W/kg

**SAR(1 g) = 0.179 W/kg; SAR(10 g) = 0.106 W/kg**

Maximum value of SAR (measured) = 0.226 W/kg



0 dB = 0.226 W/kg = -6.46 dBW/kg

## W-CDMA Band II

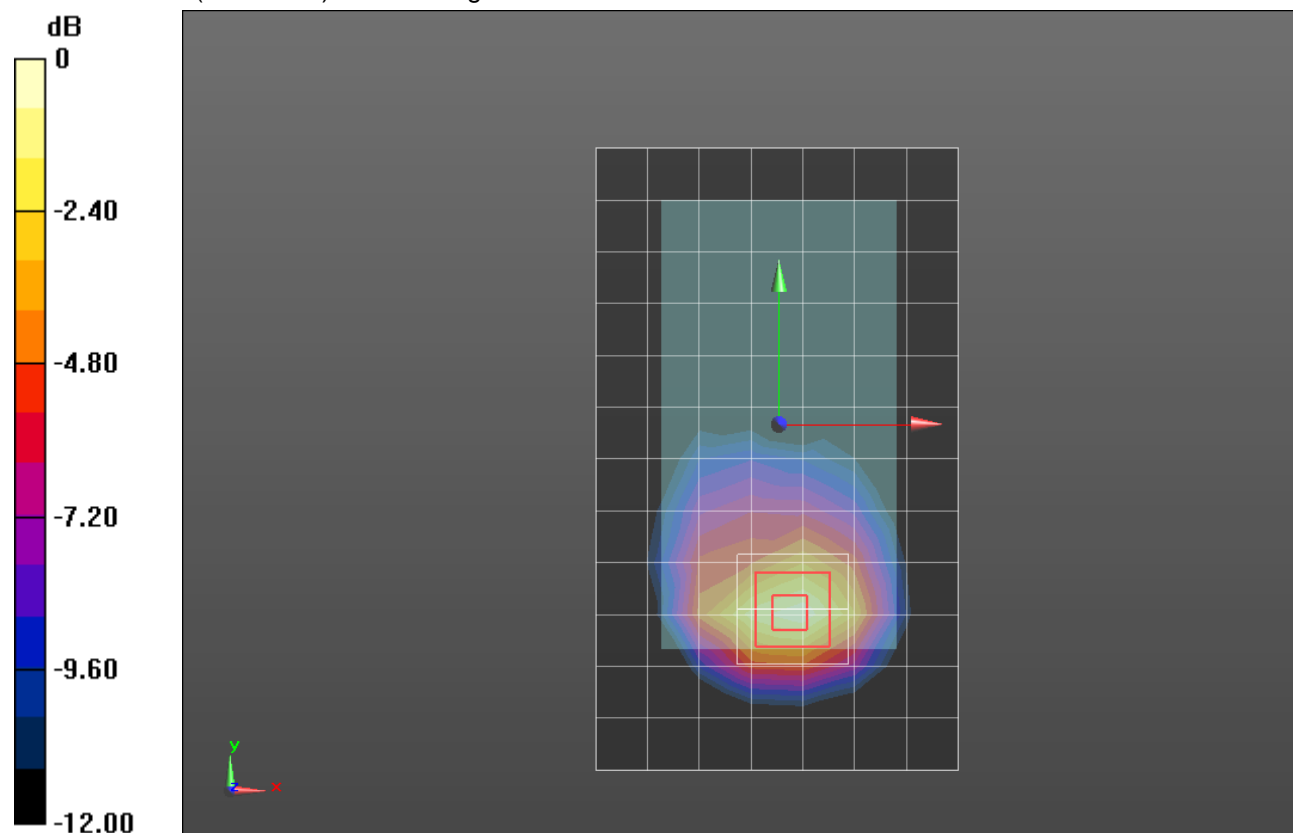
Frequency: 1880 MHz; Duty Cycle: 1:1; Room Ambient Temperature: 24.0°C; Liquid Temperature: 23.0°C  
 Medium parameters used:  $f = 1880 \text{ MHz}$ ;  $\sigma = 1.479 \text{ S/m}$ ;  $\epsilon_r = 51.25$ ;  $\rho = 1000 \text{ kg/m}^3$

DASY5 Configuration:

- Area Scan Setting: Find Secondary Maximum Within: 2.0 dB and with a peak SAR value greater than 0.0012W/kg
- Electronics: DAE4 Sn1377; Calibrated: 7/15/2013
- Probe: EX3DV4 - SN3902; ConvF(7.61, 7.61, 7.61); Calibrated: 7/12/2013;
- Sensor-Surface: 2.5mm (Mechanical Surface Detection (Locations From Previous Scan Used)), Sensor-Surface: 2.5mm (Mechanical Surface Detection)
- Phantom: ELI-B v5.0; Type: QDOVA001BB; Serial: 1215

**Rear/Rel. 99 RMC 12.2 kbps Channel 9400/Area Scan (8x13x1):** Measurement grid: dx=15mm, dy=15mm  
 Maximum value of SAR (measured) = 1.03 W/kg

**Rear/Rel. 99 RMC 12.2 kbps Channel 9400/Zoom Scan (5x5x7)/Cube 0:** Measurement grid: dx=8mm, dy=8mm, dz=5mm  
 Reference Value = 26.285 V/m; Power Drift = 0.06 dB  
 Peak SAR (extrapolated) = 1.32 W/kg  
**SAR(1 g) = 0.803 W/kg; SAR(10 g) = 0.447 W/kg**  
 Maximum value of SAR (measured) = 1.04 W/kg



0 dB = 1.04 W/kg = 0.17 dBW/kg

## 2.4GHz

Frequency: 2437 MHz; Duty Cycle: 1:1; Room Ambient Temperature: 24.0°C; Liquid Temperature: 23.0°C  
 Medium parameters used (interpolated):  $f = 2437$  MHz;  $\sigma = 1.766$  S/m;  $\epsilon_r = 38.588$ ;  $\rho = 1000$  kg/m<sup>3</sup>

DASY5 Configuration:

- Area Scan Setting: Find Secondary Maximum Within: 2.0 dB and with a peak SAR value greater than 0.0012W/kg
- Electronics: DAE4 Sn1377; Calibrated: 7/15/2013
- Probe: EX3DV4 - SN3902; ConvF(7.49, 7.49, 7.49); Calibrated: 7/12/2013;
- Sensor-Surface: 2.5mm (Mechanical Surface Detection)
- Phantom: SAM with CRP; Type: QD000P40CD; Serial: 1768

**LHS/Touch\_2.4GHz\_ch 6/Area Scan (9x14x1):** Measurement grid: dx=12mm, dy=12mm

[Info: Interpolated medium parameters used for SAR evaluation.](#)

Maximum value of SAR (measured) = 0.186 W/kg

**LHS/Touch\_2.4GHz\_ch 6/Zoom Scan (7x7x7)/Cube 0:** Measurement grid: dx=5mm, dy=5mm, dz=5mm

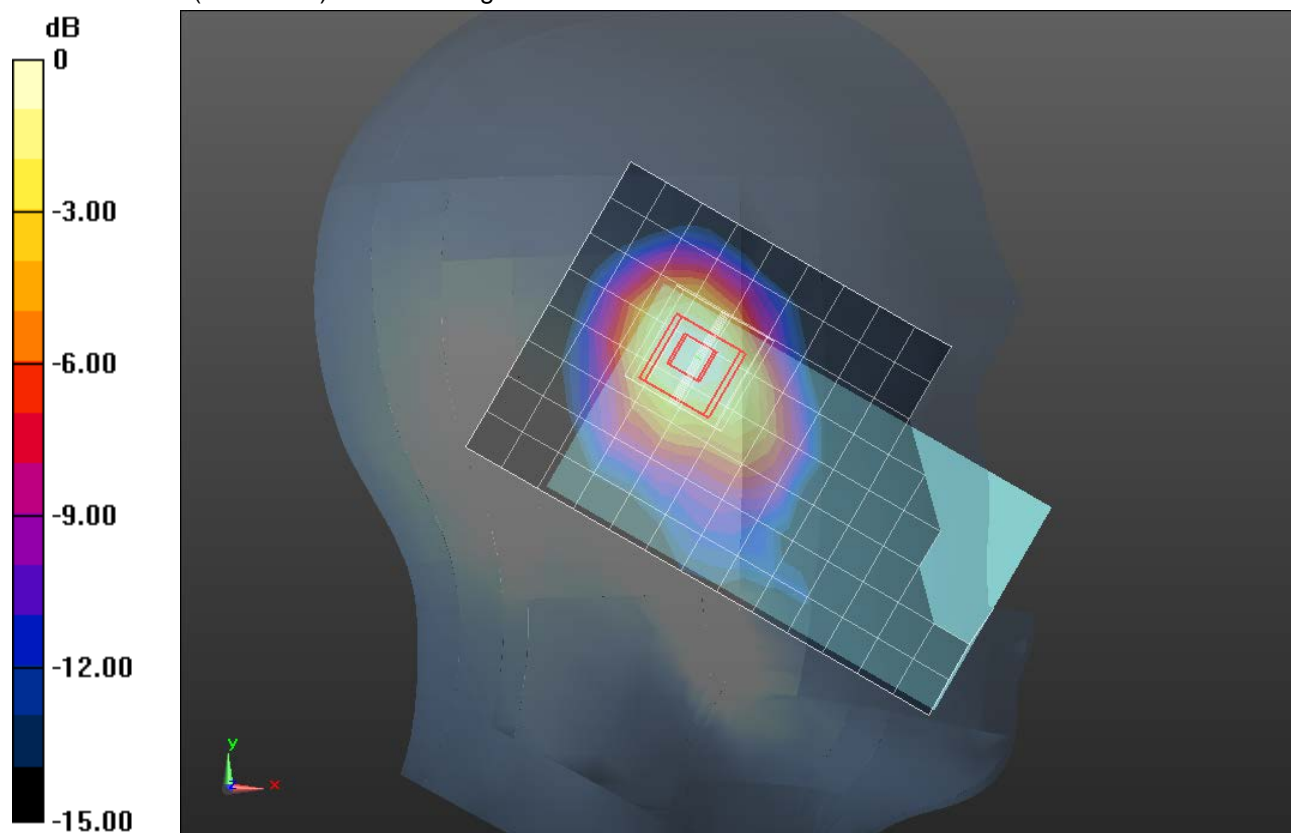
Reference Value = 10.227 V/m; Power Drift = -0.05 dB

Peak SAR (extrapolated) = 0.285 W/kg

**SAR(1 g) = 0.144 W/kg; SAR(10 g) = 0.074 W/kg**

[Info: Interpolated medium parameters used for SAR evaluation.](#)

Maximum value of SAR (measured) = 0.194 W/kg



0 dB = 0.194 W/kg = -7.12 dBW/kg

## 2.4GHz

Frequency: 2437 MHz; Duty Cycle: 1:1; Room Ambient Temperature: 24.0°C; Liquid Temperature: 23.0°C  
 Medium parameters used (interpolated):  $f = 2437$  MHz;  $\sigma = 1.976$  S/m;  $\epsilon_r = 51.792$ ;  $\rho = 1000$  kg/m<sup>3</sup>

DASY5 Configuration:

- Area Scan Setting: Find Secondary Maximum Within: 2.0 dB and with a peak SAR value greater than 0.0012W/kg
- Electronics: DAE4 Sn1377; Calibrated: 7/15/2013
- Probe: EX3DV4 - SN3902; ConvF(7.2, 7.2, 7.2); Calibrated: 7/12/2013;
- Sensor-Surface: 2.5mm (Mechanical Surface Detection)
- Phantom: ELI-B v5.0; Type: QDOVA001BB; Serial: 1215

**Rear/2.4GHz Ch.6/10mm/Area Scan (10x14x1):** Measurement grid: dx=12mm, dy=12mm

[Info: Interpolated medium parameters used for SAR evaluation.](#)

Maximum value of SAR (measured) = 0.130 W/kg

**Rear/2.4GHz Ch.6/10mm/Zoom Scan (7x7x7)/Cube 0:** Measurement grid: dx=5mm, dy=5mm, dz=5mm

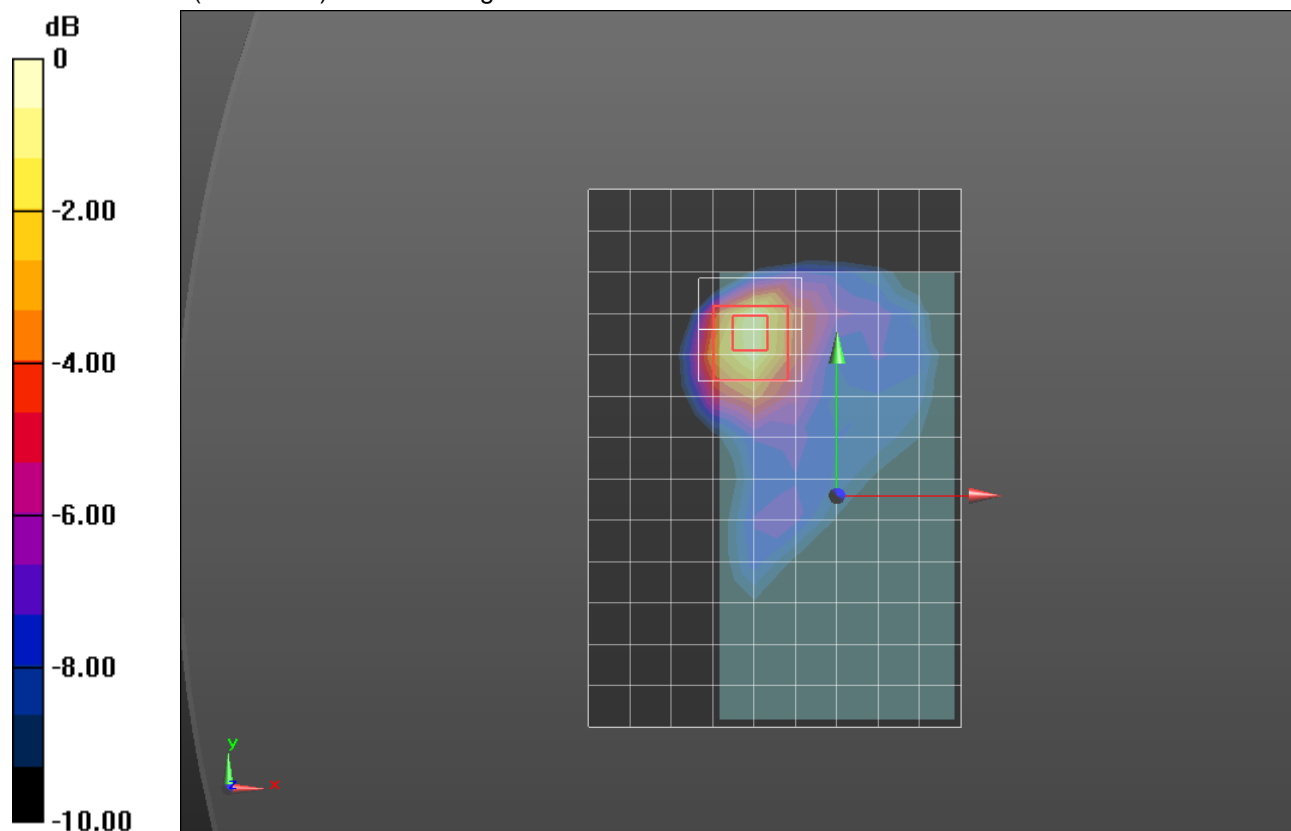
Reference Value = 8.325 V/m; Power Drift = 0.08 dB

Peak SAR (extrapolated) = 0.218 W/kg

**SAR(1 g) = 0.105 W/kg; SAR(10 g) = 0.048 W/kg**

[Info: Interpolated medium parameters used for SAR evaluation.](#)

Maximum value of SAR (measured) = 0.150 W/kg



0 dB = 0.150 W/kg = -8.24 dBW/kg