

### 41 GSM850\_GSM Voice\_Right Cheek\_Ch128

Communication System: Generic GSM; Frequency: 824.2 MHz; Duty Cycle: 1:8.3  
Medium: HSL\_835\_131107 Medium parameters used:  $f = 824.2$  MHz;  $\sigma = 0.899$  mho/m;  $\epsilon_r = 43.045$ ;  $\rho = 1000$  kg/m<sup>3</sup>  
Ambient Temperature : 23.6 °C; Liquid Temperature : 22.7 °C

#### DASY5 Configuration:

- Probe: EX3DV4 - SN3819; ConvF(9.56, 9.56, 9.56); Calibrated: 2012.11.26;
- Sensor-Surface: 2mm (Mechanical Surface Detection)
- Electronics: DAE4 Sn1303; Calibrated: 2012.11.22
- Phantom: SAM1; Type: QD000P40CD; Serial: TP:1670
- Measurement SW: DASY52, Version 52.8 (2); SEMCAD X Version 14.6.6 (6824)

#### Ch128/Area Scan (61x111x1): Interpolated grid: dx=15mm, dy=15mm

Maximum value of SAR (interpolated) = 0.252 W/kg

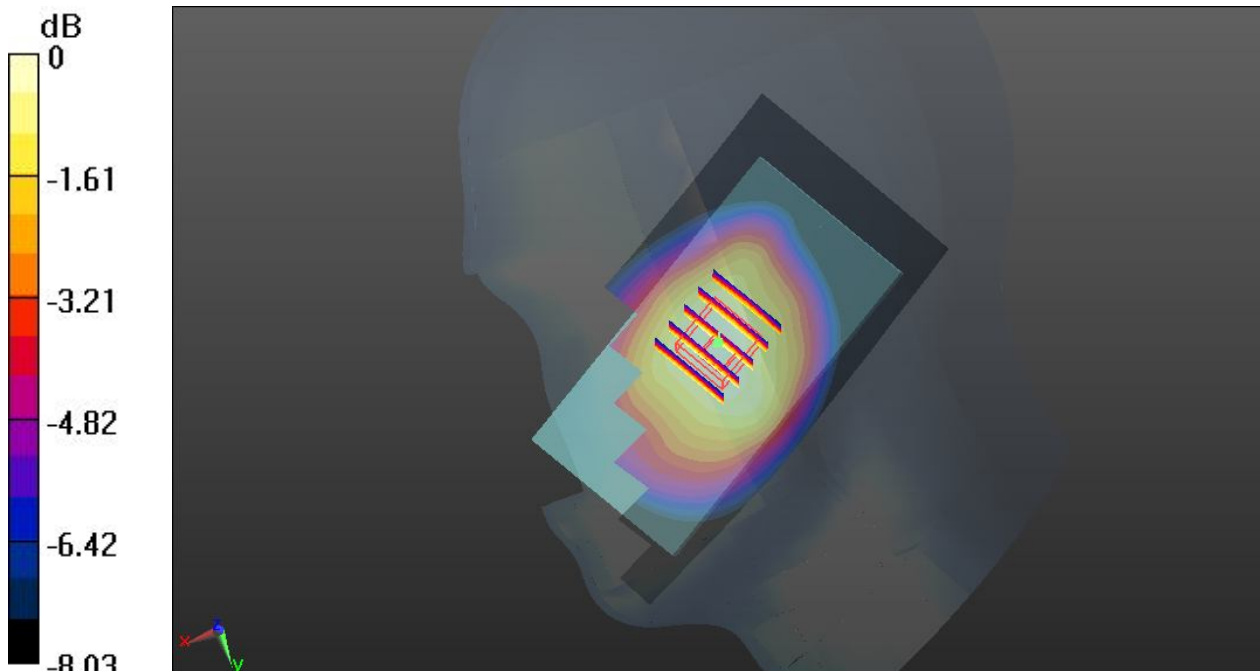
#### Ch128/Zoom Scan (5x5x7)/Cube 0: Measurement grid: dx=8mm, dy=8mm, dz=5mm

Reference Value = 17.071 V/m; Power Drift = 0.03 dB

Peak SAR (extrapolated) = 0.279 mW/g

**SAR(1 g) = 0.225 mW/g; SAR(10 g) = 0.173 mW/g**

Maximum value of SAR (measured) = 0.255 W/kg



0 dB = 0.255 W/kg

### 42 GSM850\_GSM Voice\_Right Tilted\_Ch128

Communication System: Generic GSM; Frequency: 824.2 MHz; Duty Cycle: 1:8.3  
Medium: HSL\_835\_131107 Medium parameters used:  $f = 824.2$  MHz;  $\sigma = 0.899$  mho/m;  $\epsilon_r = 43.045$ ;  $\rho = 1000$  kg/m<sup>3</sup>  
Ambient Temperature : 23.6 °C; Liquid Temperature : 22.7 °C

#### DASY5 Configuration:

- Probe: EX3DV4 - SN3819; ConvF(9.56, 9.56, 9.56); Calibrated: 2012.11.26;
- Sensor-Surface: 2mm (Mechanical Surface Detection)
- Electronics: DAE4 Sn1303; Calibrated: 2012.11.22
- Phantom: SAM1; Type: QD000P40CD; Serial: TP:1670
- Measurement SW: DASY52, Version 52.8 (2); SEMCAD X Version 14.6.6 (6824)

#### Ch128/Area Scan (61x111x1): Interpolated grid: dx=15mm, dy=15mm

Maximum value of SAR (interpolated) = 0.169 W/kg

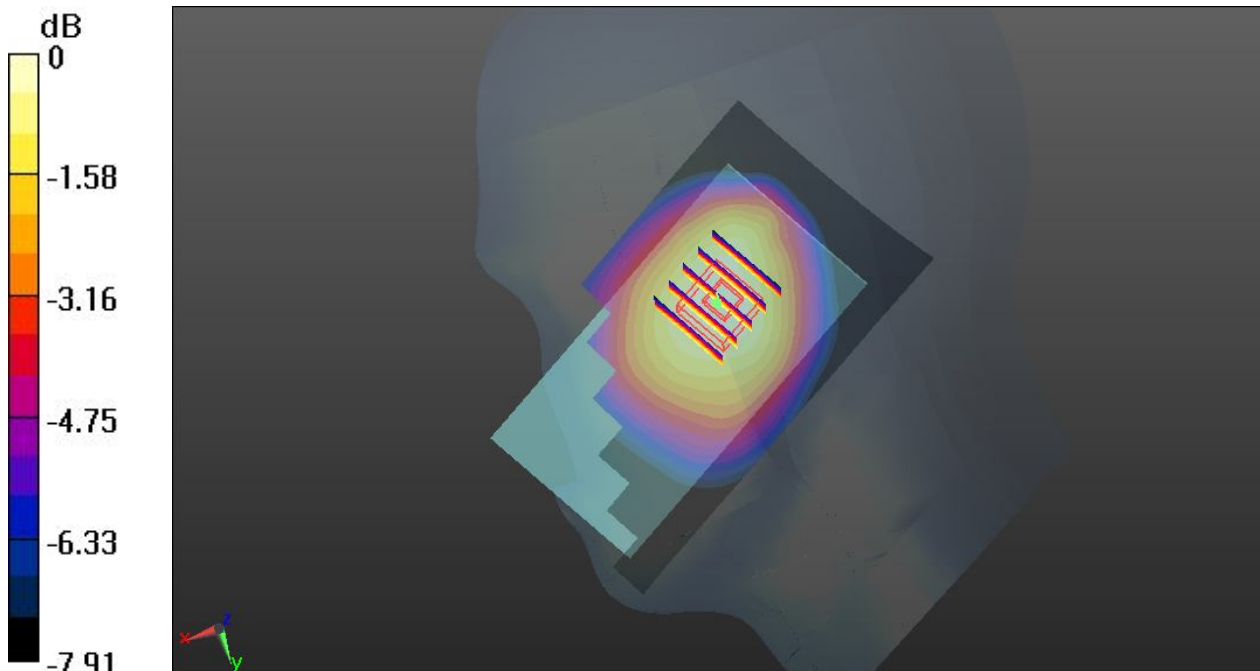
#### Ch128/Zoom Scan (5x5x7)/Cube 0: Measurement grid: dx=8mm, dy=8mm, dz=5mm

Reference Value = 14.025 V/m; Power Drift = 0.01 dB

Peak SAR (extrapolated) = 0.186 mW/g

**SAR(1 g) = 0.151 mW/g; SAR(10 g) = 0.116 mW/g**

Maximum value of SAR (measured) = 0.172 W/kg



0 dB = 0.172 W/kg

### 43 GSM850\_GSM Voice\_Left Cheek\_Ch128

Communication System: Generic GSM; Frequency: 824.2 MHz; Duty Cycle: 1:8.3  
Medium: HSL\_835\_131107 Medium parameters used:  $f = 824.2$  MHz;  $\sigma = 0.899$  mho/m;  $\epsilon_r = 43.045$ ;  $\rho = 1000$  kg/m<sup>3</sup>  
Ambient Temperature : 23.6 °C; Liquid Temperature : 22.7 °C

#### DASY5 Configuration:

- Probe: EX3DV4 - SN3819; ConvF(9.56, 9.56, 9.56); Calibrated: 2012.11.26;
- Sensor-Surface: 2mm (Mechanical Surface Detection)
- Electronics: DAE4 Sn1303; Calibrated: 2012.11.22
- Phantom: SAM1; Type: QD000P40CD; Serial: TP:1670
- Measurement SW: DASY52, Version 52.8 (2); SEMCAD X Version 14.6.6 (6824)

#### Ch128/Area Scan (61x111x1): Interpolated grid: dx=15mm, dy=15mm

Maximum value of SAR (interpolated) = 0.267 W/kg

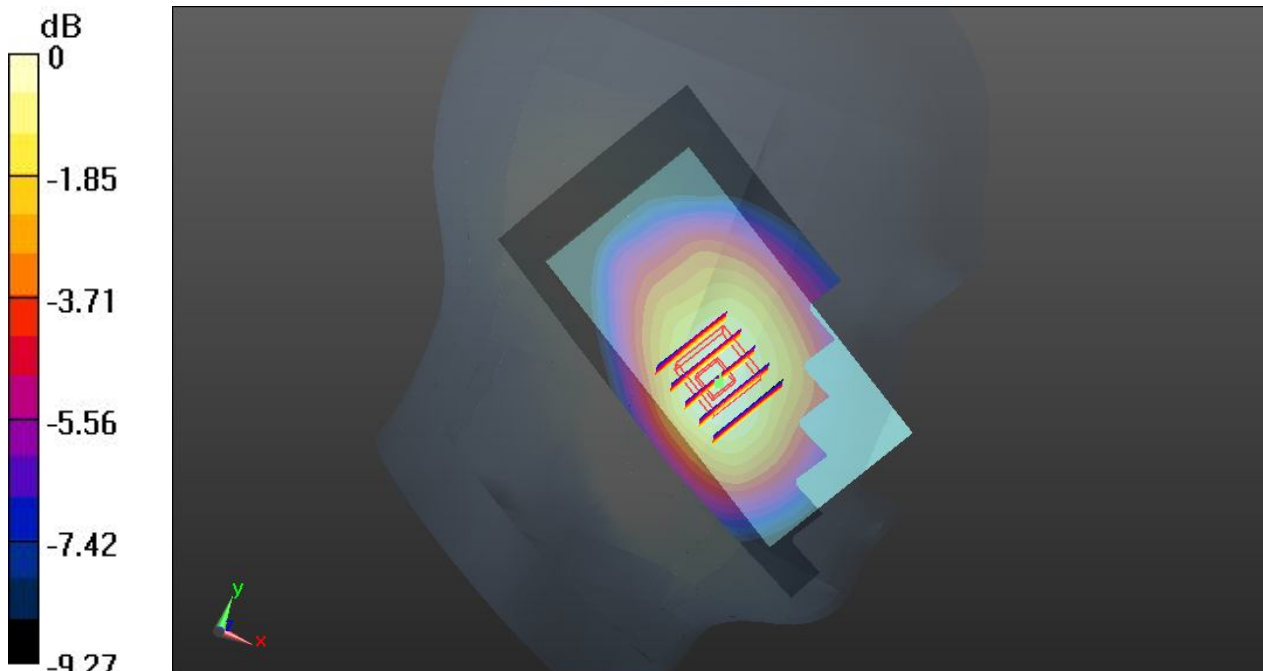
#### Ch128/Zoom Scan (5x5x7)/Cube 0: Measurement grid: dx=8mm, dy=8mm, dz=5mm

Reference Value = 17.469 V/m; Power Drift = -0.03 dB

Peak SAR (extrapolated) = 0.291 mW/g

**SAR(1 g) = 0.227 mW/g; SAR(10 g) = 0.168 mW/g**

Maximum value of SAR (measured) = 0.261 W/kg



0 dB = 0.261 W/kg

### 44 GSM850\_GSM Voice\_Left Tilted\_Ch128

Communication System: Generic GSM; Frequency: 824.2 MHz; Duty Cycle: 1:8.3  
Medium: HSL\_835\_131107 Medium parameters used:  $f = 824.2$  MHz;  $\sigma = 0.899$  mho/m;  $\epsilon_r = 43.045$ ;  $\rho = 1000$  kg/m<sup>3</sup>  
Ambient Temperature : 23.6 °C; Liquid Temperature : 22.7 °C

#### DASY5 Configuration:

- Probe: EX3DV4 - SN3819; ConvF(9.56, 9.56, 9.56); Calibrated: 2012.11.26;
- Sensor-Surface: 2mm (Mechanical Surface Detection)
- Electronics: DAE4 Sn1303; Calibrated: 2012.11.22
- Phantom: SAM1; Type: QD000P40CD; Serial: TP:1670
- Measurement SW: DASY52, Version 52.8 (2); SEMCAD X Version 14.6.6 (6824)

#### Ch128/Area Scan (61x111x1): Interpolated grid: dx=15mm, dy=15mm

Maximum value of SAR (interpolated) = 0.160 W/kg

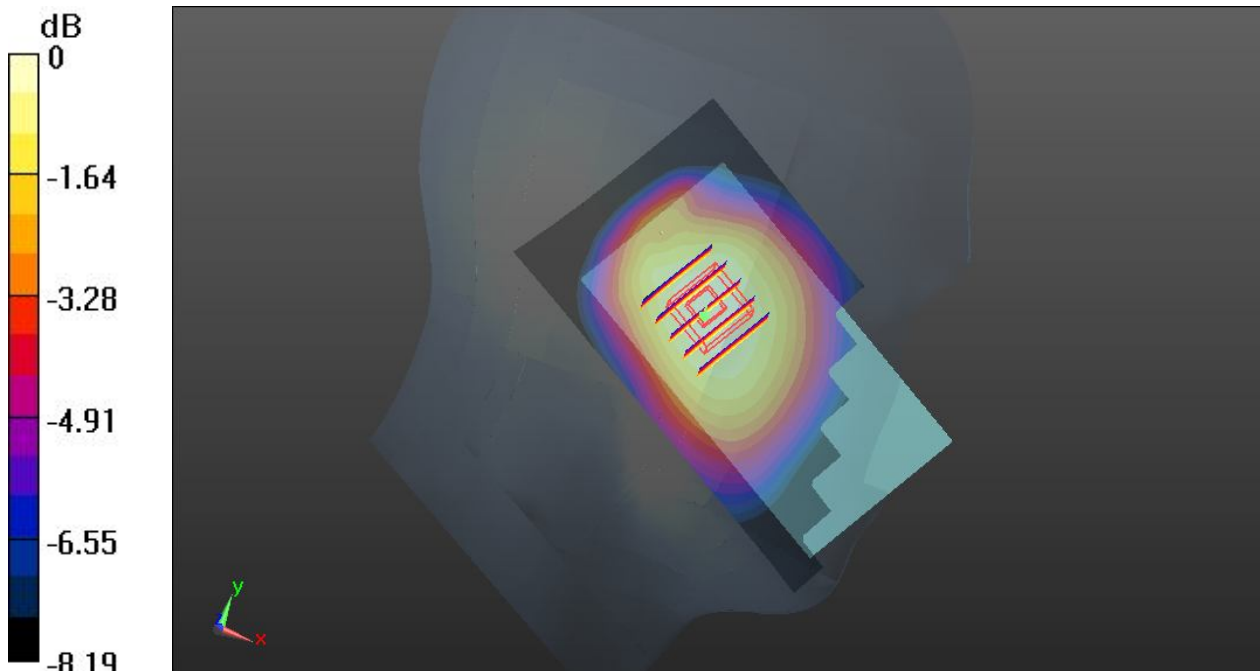
#### Ch128/Zoom Scan (5x5x7)/Cube 0: Measurement grid: dx=8mm, dy=8mm, dz=5mm

Reference Value = 13.641 V/m; Power Drift = -0.03 dB

Peak SAR (extrapolated) = 0.177 mW/g

**SAR(1 g) = 0.142 mW/g; SAR(10 g) = 0.109 mW/g**

Maximum value of SAR (measured) = 0.163 W/kg



0 dB = 0.163 W/kg

### 31 GSM1900\_GSM Voice\_Right Cheek\_Ch661

Communication System: Generic GSM; Frequency: 1880 MHz; Duty Cycle: 1:8.3  
Medium: HSL\_1900\_131107 Medium parameters used:  $f = 1880$  MHz;  $\sigma = 1.392$  mho/m;  $\epsilon_r = 41.101$ ;  $\rho = 1000$  kg/m<sup>3</sup>  
Ambient Temperature : 23.5 °C; Liquid Temperature : 22.6 °C

#### DASY5 Configuration:

- Probe: EX3DV4 - SN3819; ConvF(7.84, 7.84, 7.84); Calibrated: 2012.11.26;
- Sensor-Surface: 2mm (Mechanical Surface Detection)
- Electronics: DAE4 Sn1303; Calibrated: 2012.11.22
- Phantom: SAM2; Type: QD000P40CD; Serial: TP:1671
- Measurement SW: DASY52, Version 52.8 (2); SEMCAD X Version 14.6.6 (6824)

#### Ch661/Area Scan (61x111x1): Interpolated grid: dx=15mm, dy=15mm

Maximum value of SAR (interpolated) = 0.367 W/kg

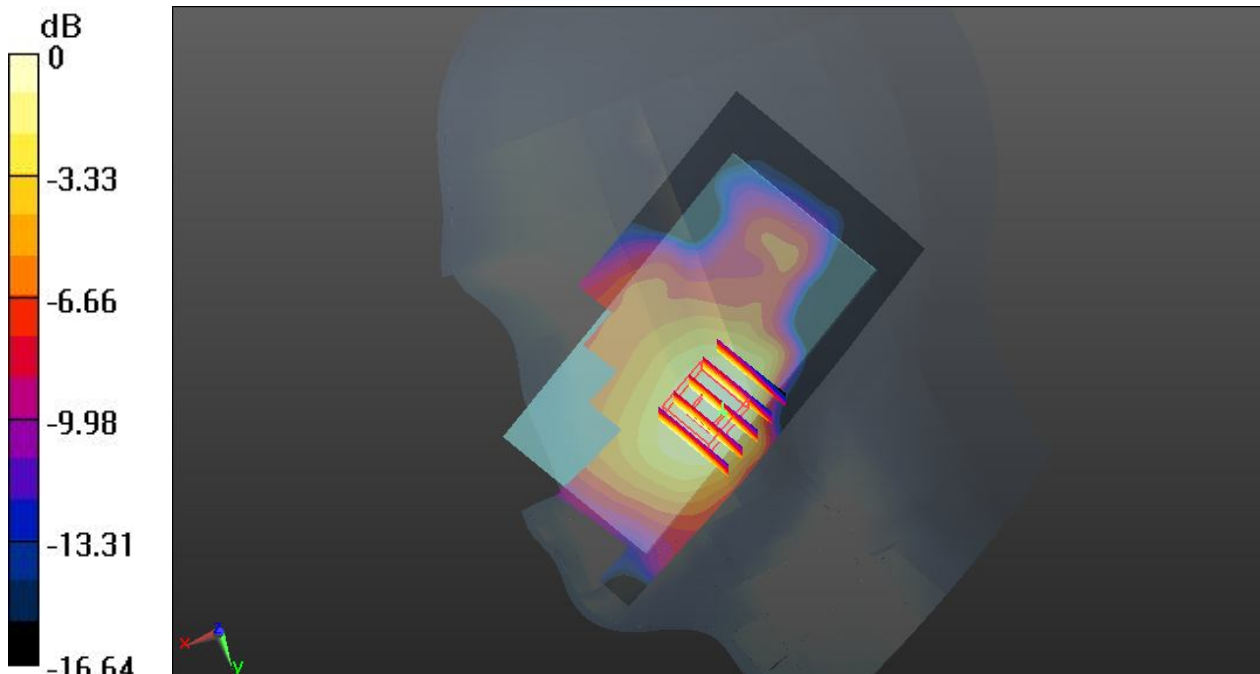
#### Ch661/Zoom Scan (5x5x7)/Cube 0: Measurement grid: dx=8mm, dy=8mm, dz=5mm

Reference Value = 16.026 V/m; Power Drift = -0.10 dB

Peak SAR (extrapolated) = 0.422 mW/g

**SAR(1 g) = 0.285 mW/g; SAR(10 g) = 0.180 mW/g**

Maximum value of SAR (measured) = 0.340 W/kg



0 dB = 0.340 W/kg

### 32 GSM1900\_GSM Voice\_Right Tilted\_Ch661

Communication System: Generic GSM; Frequency: 1880 MHz; Duty Cycle: 1:8.3  
Medium: HSL\_1900\_131107 Medium parameters used:  $f = 1880$  MHz;  $\sigma = 1.392$  mho/m;  $\epsilon_r = 41.101$ ;  $\rho = 1000$  kg/m<sup>3</sup>  
Ambient Temperature : 23.5 °C; Liquid Temperature : 22.6 °C

#### DASY5 Configuration:

- Probe: EX3DV4 - SN3819; ConvF(7.84, 7.84, 7.84); Calibrated: 2012.11.26;
- Sensor-Surface: 2mm (Mechanical Surface Detection)
- Electronics: DAE4 Sn1303; Calibrated: 2012.11.22
- Phantom: SAM2; Type: QD000P40CD; Serial: TP:1671
- Measurement SW: DASY52, Version 52.8 (2); SEMCAD X Version 14.6.6 (6824)

#### Ch661/Area Scan (61x111x1): Interpolated grid: dx=15mm, dy=15mm

Maximum value of SAR (interpolated) = 0.175 W/kg

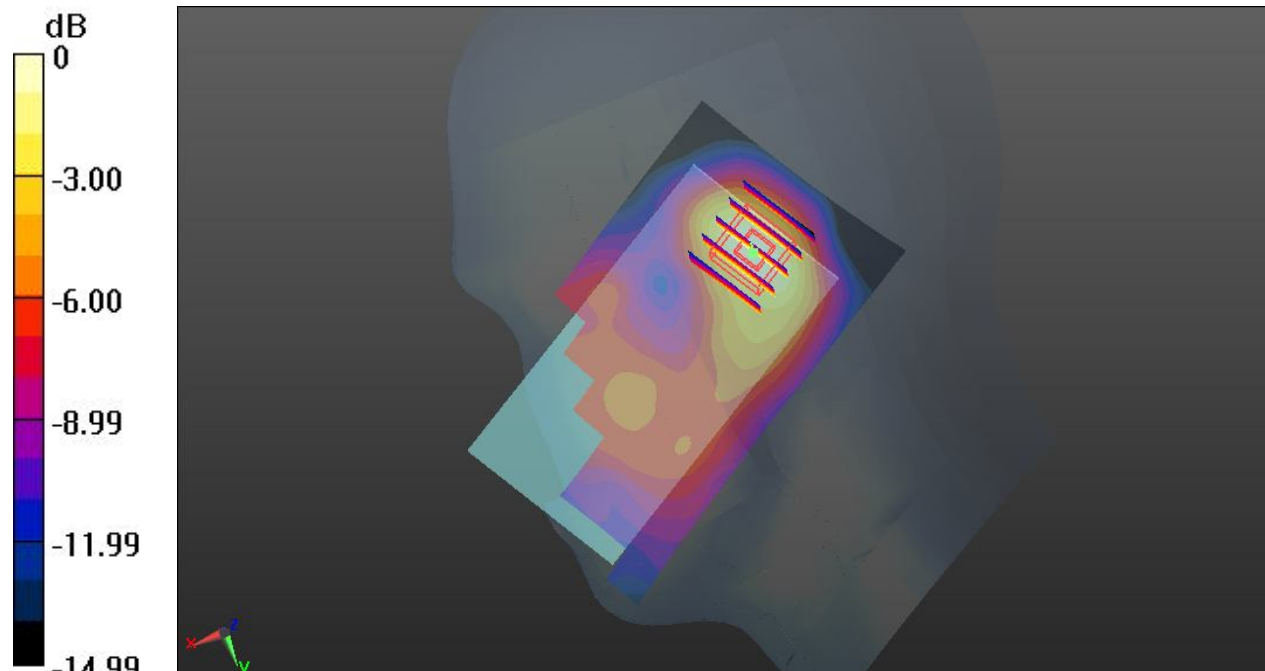
#### Ch661/Zoom Scan (5x5x7)/Cube 0: Measurement grid: dx=8mm, dy=8mm, dz=5mm

Reference Value = 11.192 V/m; Power Drift = 0.01 dB

Peak SAR (extrapolated) = 0.203 mW/g

**SAR(1 g) = 0.131 mW/g; SAR(10 g) = 0.077 mW/g**

Maximum value of SAR (measured) = 0.170 W/kg



0 dB = 0.170 W/kg

### 33 GSM1900\_GSM Voice\_Left Cheek\_Ch661

Communication System: Generic GSM; Frequency: 1880 MHz; Duty Cycle: 1:8.3  
Medium: HSL\_1900\_131107 Medium parameters used:  $f = 1880$  MHz;  $\sigma = 1.392$  mho/m;  $\epsilon_r = 41.101$ ;  $\rho = 1000$  kg/m<sup>3</sup>  
Ambient Temperature : 23.5 °C; Liquid Temperature : 22.6 °C

#### DASY5 Configuration:

- Probe: EX3DV4 - SN3819; ConvF(7.84, 7.84, 7.84); Calibrated: 2012.11.26;
- Sensor-Surface: 2mm (Mechanical Surface Detection)
- Electronics: DAE4 Sn1303; Calibrated: 2012.11.22
- Phantom: SAM2; Type: QD000P40CD; Serial: TP:1671
- Measurement SW: DASY52, Version 52.8 (2); SEMCAD X Version 14.6.6 (6824)

#### Ch661/Area Scan (61x111x1): Interpolated grid: dx=15mm, dy=15mm

Maximum value of SAR (interpolated) = 0.266 W/kg

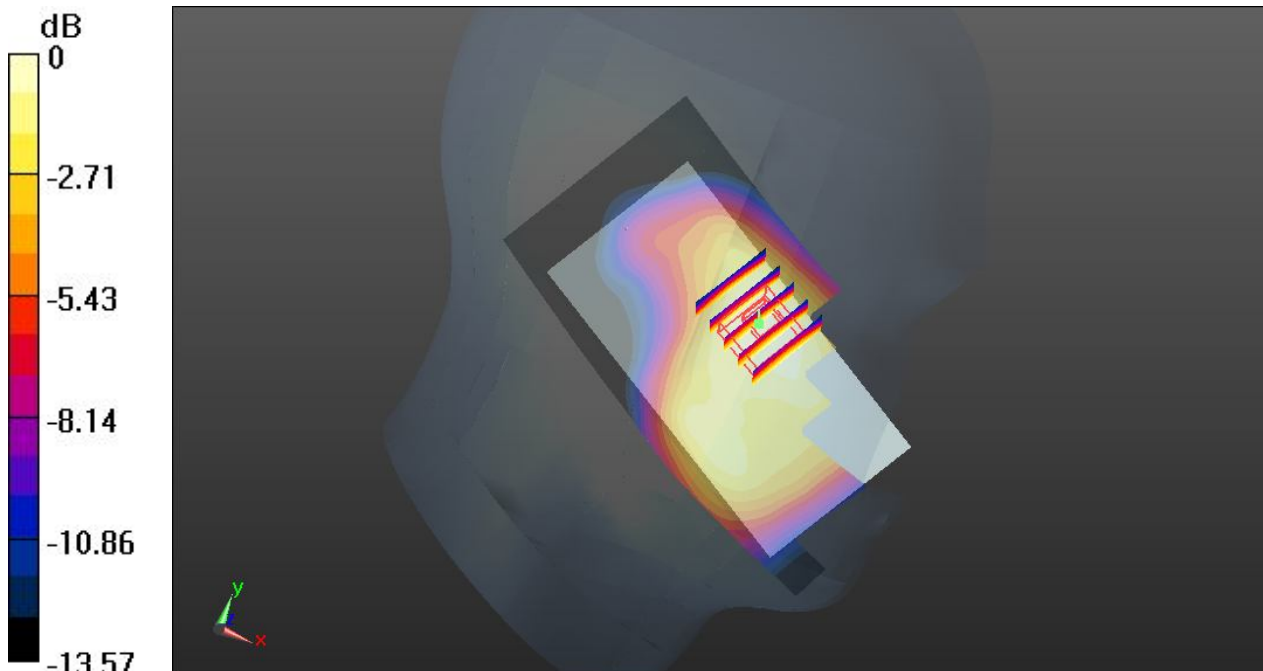
#### Ch661/Zoom Scan (5x5x7)/Cube 0: Measurement grid: dx=8mm, dy=8mm, dz=5mm

Reference Value = 14.214 V/m; Power Drift = -0.09 dB

Peak SAR (extrapolated) = 0.319 mW/g

**SAR(1 g) = 0.215 mW/g; SAR(10 g) = 0.142 mW/g**

Maximum value of SAR (measured) = 0.264 W/kg



0 dB = 0.264 W/kg

### 34 GSM1900\_GSM Voice\_Left Tilted\_Ch661

Communication System: Generic GSM; Frequency: 1880 MHz; Duty Cycle: 1:8.3  
Medium: HSL\_1900\_131107 Medium parameters used:  $f = 1880$  MHz;  $\sigma = 1.392$  mho/m;  $\epsilon_r = 41.101$ ;  $\rho = 1000$  kg/m<sup>3</sup>  
Ambient Temperature : 23.5 °C; Liquid Temperature : 22.6 °C

#### DASY5 Configuration:

- Probe: EX3DV4 - SN3819; ConvF(7.84, 7.84, 7.84); Calibrated: 2012.11.26;
- Sensor-Surface: 2mm (Mechanical Surface Detection)
- Electronics: DAE4 Sn1303; Calibrated: 2012.11.22
- Phantom: SAM2; Type: QD000P40CD; Serial: TP:1671
- Measurement SW: DASY52, Version 52.8 (2); SEMCAD X Version 14.6.6 (6824)

#### Ch661/Area Scan (61x111x1): Interpolated grid: dx=15mm, dy=15mm

Maximum value of SAR (interpolated) = 0.176 W/kg

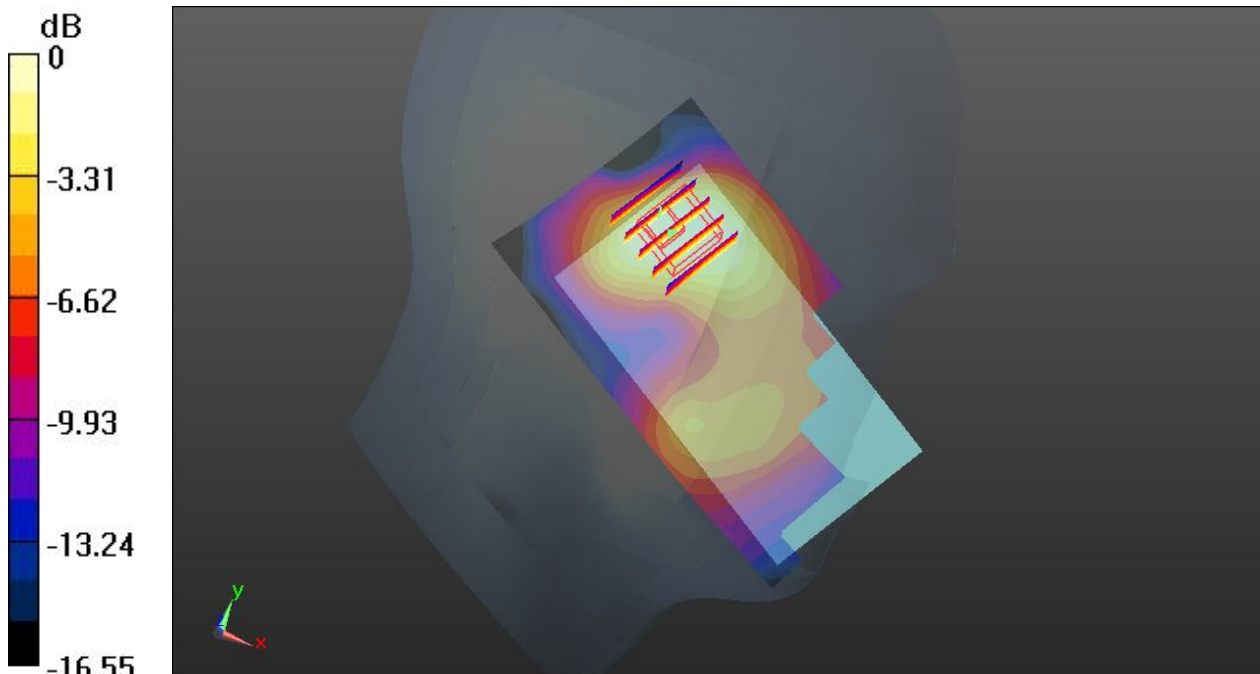
#### Ch661/Zoom Scan (5x5x7)/Cube 0: Measurement grid: dx=8mm, dy=8mm, dz=5mm

Reference Value = 10.288 V/m; Power Drift = 0.01 dB

Peak SAR (extrapolated) = 0.190 mW/g

**SAR(1 g) = 0.122 mW/g; SAR(10 g) = 0.076 mW/g**

Maximum value of SAR (measured) = 0.152 W/kg



0 dB = 0.152 W/kg

### 51 WLAN2.4G\_802.11b\_Right Cheek\_Ch1

Communication System: UID 0, WIFI (0); Frequency: 2412 MHz; Duty Cycle: 1:1  
Medium: HSL\_2450\_131118 Medium parameters used:  $f = 2412$  MHz;  $\sigma = 1.834$  S/m;  $\epsilon_r = 40.615$ ;  
 $\rho = 1000$  kg/m<sup>3</sup>  
Ambient Temperature : 23.5 °C; Liquid Temperature : 22.7 °C

#### DASY5 Configuration:

- Probe: EX3DV4 - SN3819; ConvF(6.99, 6.99, 6.99); Calibrated: 2012.11.26;
- Sensor-Surface: 2mm (Mechanical Surface Detection)
- Electronics: DAE4 Sn1303; Calibrated: 2012.11.22
- Phantom: SAM2; Type: QD000P40CD; Serial: TP:1671
- Measurement SW: DASY52, Version 52.8 (7); SEMCAD X Version 14.6.10 (7164)

**Ch1/Area Scan (71x121x1):** Interpolated grid: dx=12mm, dy=12mm

Maximum value of SAR (interpolated) = 0.247 W/kg

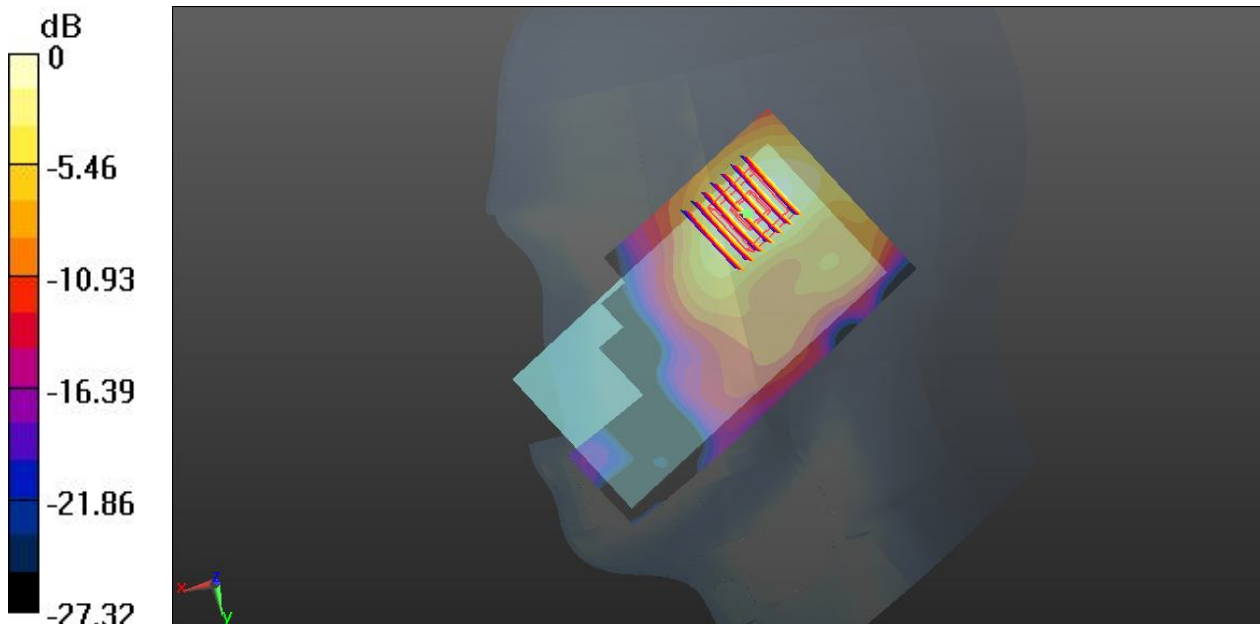
**Ch1/Zoom Scan (7x7x7)/Cube 0:** Measurement grid: dx=5mm, dy=5mm, dz=5mm

Reference Value = 12.253 V/m; Power Drift = 0.02 dB

Peak SAR (extrapolated) = 0.330 W/kg

**SAR(1 g) = 0.171 W/kg; SAR(10 g) = 0.084 W/kg**

Maximum value of SAR (measured) = 0.249 W/kg



0 dB = 0.249 W/kg

### 52 WLAN2.4G\_802.11b\_Right Tilted\_Ch1

Communication System: UID 0, WIFI (0); Frequency: 2412 MHz; Duty Cycle: 1:1  
Medium: HSL\_2450\_131118 Medium parameters used:  $f = 2412$  MHz;  $\sigma = 1.834$  S/m;  $\epsilon_r = 40.615$ ;  
 $\rho = 1000$  kg/m<sup>3</sup>  
Ambient Temperature : 23.5 °C; Liquid Temperature : 22.7 °C

#### DASY5 Configuration:

- Probe: EX3DV4 - SN3819; ConvF(6.99, 6.99, 6.99); Calibrated: 2012.11.26;
- Sensor-Surface: 2mm (Mechanical Surface Detection)
- Electronics: DAE4 Sn1303; Calibrated: 2012.11.22
- Phantom: SAM2; Type: QD000P40CD; Serial: TP:1671
- Measurement SW: DASY52, Version 52.8 (7); SEMCAD X Version 14.6.10 (7164)

**Ch1/Area Scan (71x121x1):** Interpolated grid: dx=12mm, dy=12mm

Maximum value of SAR (interpolated) = 0.163 W/kg

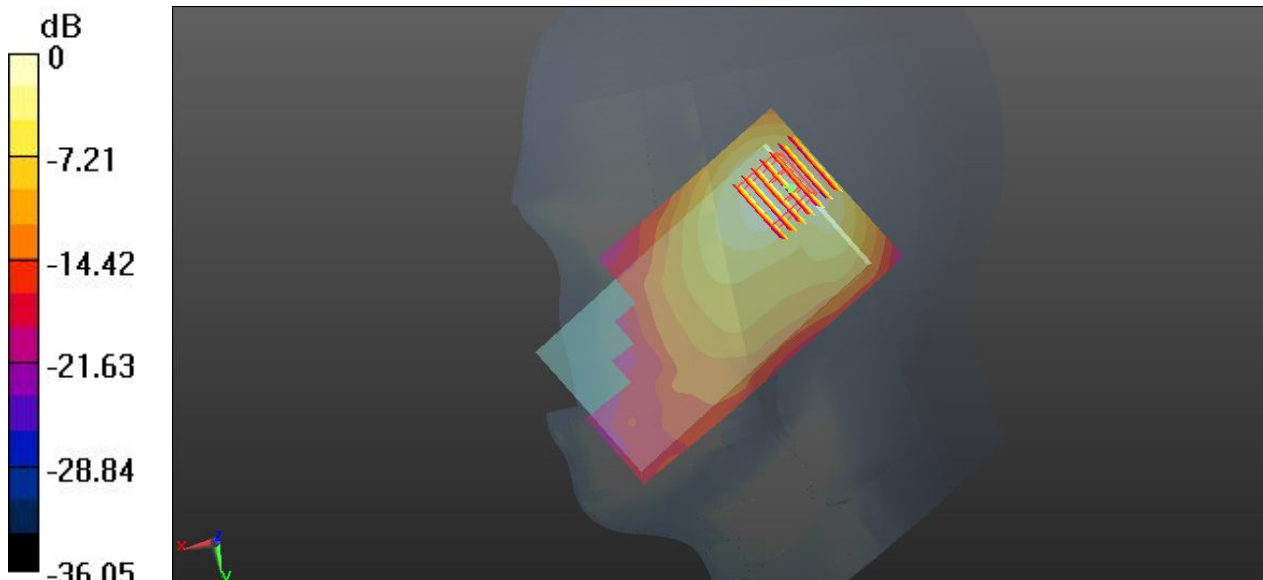
**Ch1/Zoom Scan (7x7x7)/Cube 0:** Measurement grid: dx=5mm, dy=5mm, dz=5mm

Reference Value = 9.280 V/m; Power Drift = 0.11 dB

Peak SAR (extrapolated) = 0.227 W/kg

**SAR(1 g) = 0.109 W/kg; SAR(10 g) = 0.055 W/kg**

Maximum value of SAR (measured) = 0.165 W/kg



0 dB = 0.165 W/kg

### 53 WLAN2.4G\_802.11b\_Left Cheek\_Ch1

Communication System: UID 0, WIFI (0); Frequency: 2412 MHz; Duty Cycle: 1:1  
Medium: HSL\_2450\_131118 Medium parameters used:  $f = 2412$  MHz;  $\sigma = 1.834$  S/m;  $\epsilon_r = 40.615$ ;  
 $\rho = 1000$  kg/m<sup>3</sup>  
Ambient Temperature : 23.5 °C; Liquid Temperature : 22.7 °C

#### DASY5 Configuration:

- Probe: EX3DV4 - SN3819; ConvF(6.99, 6.99, 6.99); Calibrated: 2012.11.26;
- Sensor-Surface: 2mm (Mechanical Surface Detection)
- Electronics: DAE4 Sn1303; Calibrated: 2012.11.22
- Phantom: SAM2; Type: QD000P40CD; Serial: TP:1671
- Measurement SW: DASY52, Version 52.8 (7); SEMCAD X Version 14.6.10 (7164)

**Ch1/Area Scan (71x121x1):** Interpolated grid: dx=12mm, dy=12mm

Maximum value of SAR (interpolated) = 0.116 W/kg

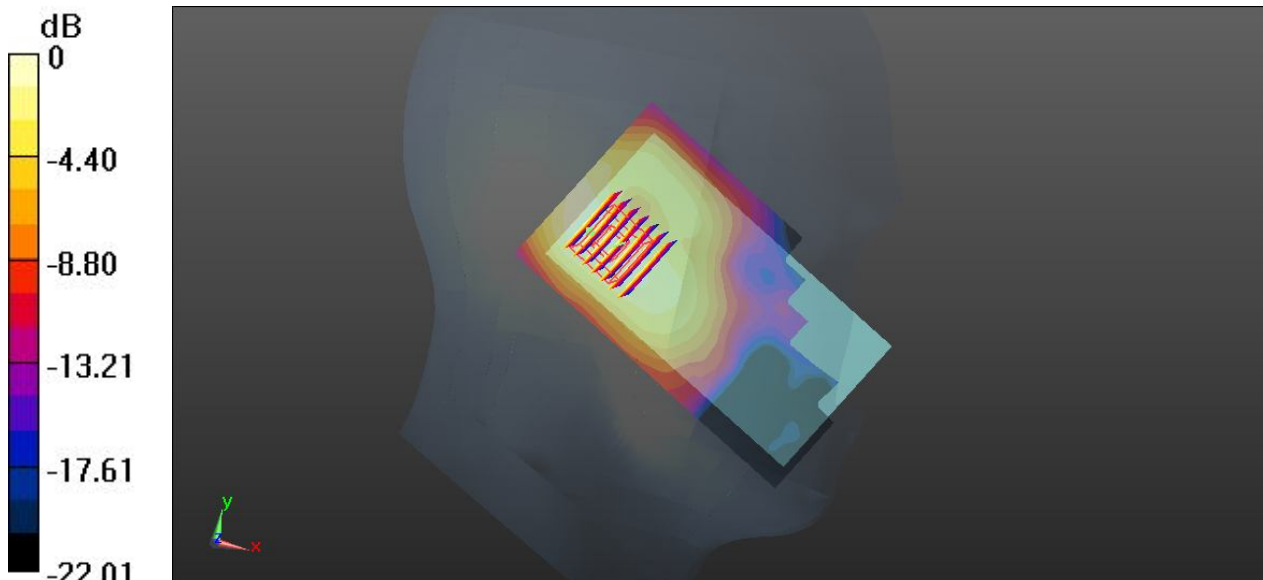
**Ch1/Zoom Scan (7x7x7)/Cube 0:** Measurement grid: dx=5mm, dy=5mm, dz=5mm

Reference Value = 8.303 V/m; Power Drift = 0.11 dB

Peak SAR (extrapolated) = 0.154 W/kg

**SAR(1 g) = 0.085 W/kg; SAR(10 g) = 0.044 W/kg**

Maximum value of SAR (measured) = 0.119 W/kg



0 dB = 0.119 W/kg

### 54 WLAN2.4G\_802.11b\_Left Tilted\_Ch1

Communication System: UID 0, WIFI (0); Frequency: 2412 MHz; Duty Cycle: 1:1  
Medium: HSL\_2450\_131118 Medium parameters used:  $f = 2412$  MHz;  $\sigma = 1.834$  S/m;  $\epsilon_r = 40.615$ ;  
 $\rho = 1000$  kg/m<sup>3</sup>  
Ambient Temperature : 23.5 °C; Liquid Temperature : 22.7 °C

#### DASY5 Configuration:

- Probe: EX3DV4 - SN3819; ConvF(6.99, 6.99, 6.99); Calibrated: 2012.11.26;
- Sensor-Surface: 2mm (Mechanical Surface Detection)
- Electronics: DAE4 Sn1303; Calibrated: 2012.11.22
- Phantom: SAM2; Type: QD000P40CD; Serial: TP:1671
- Measurement SW: DASY52, Version 52.8 (7); SEMCAD X Version 14.6.10 (7164)

#### Ch1/Area Scan (71x121x1): Interpolated grid: dx=12mm, dy=12mm

Maximum value of SAR (interpolated) = 0.138 W/kg

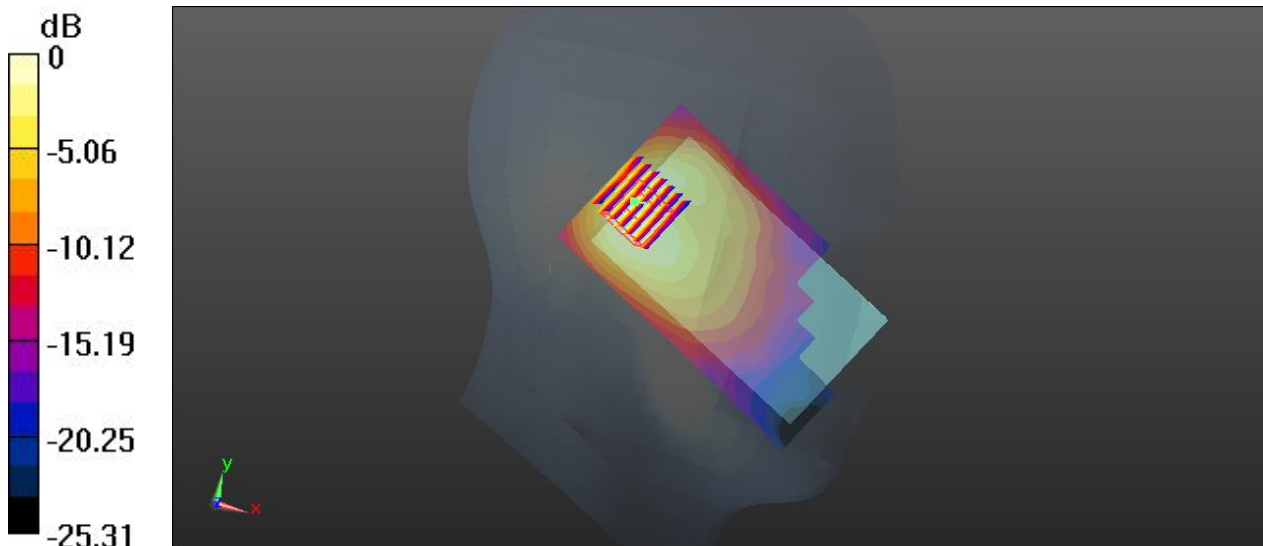
#### Ch1/Zoom Scan (7x7x7)/Cube 0: Measurement grid: dx=5mm, dy=5mm, dz=5mm

Reference Value = 8.400 V/m; Power Drift = 0.04 dB

Peak SAR (extrapolated) = 0.202 W/kg

**SAR(1 g) = 0.093 W/kg; SAR(10 g) = 0.047 W/kg**

Maximum value of SAR (measured) = 0.143 W/kg



0 dB = 0.143 W/kg

### 61 BT\_DH5\_Right Cheek\_Ch0

Communication System: UID 0, Bluetooth (0); Frequency: 2402 MHz; Duty Cycle: 1:1.303  
Medium: HSL\_2450\_131118 Medium parameters used:  $f = 2402$  MHz;  $\sigma = 1.822$  S/m;  $\epsilon_r = 40.651$ ;  
 $\rho = 1000$  kg/m<sup>3</sup>  
Ambient Temperature : 23.5 °C; Liquid Temperature : 22.7 °C

#### DASY5 Configuration:

- Probe: EX3DV4 - SN3819; ConvF(6.99, 6.99, 6.99); Calibrated: 2012.11.26;
- Sensor-Surface: 2mm (Mechanical Surface Detection)
- Electronics: DAE4 Sn1303; Calibrated: 2012.11.22
- Phantom: SAM2; Type: QD000P40CD; Serial: TP:1671
- Measurement SW: DASY52, Version 52.8 (7); SEMCAD X Version 14.6.10 (7164)

#### Ch0/Area Scan (71x121x1): Interpolated grid: dx=12mm, dy=12mm

Maximum value of SAR (interpolated) = 0.0768 W/kg

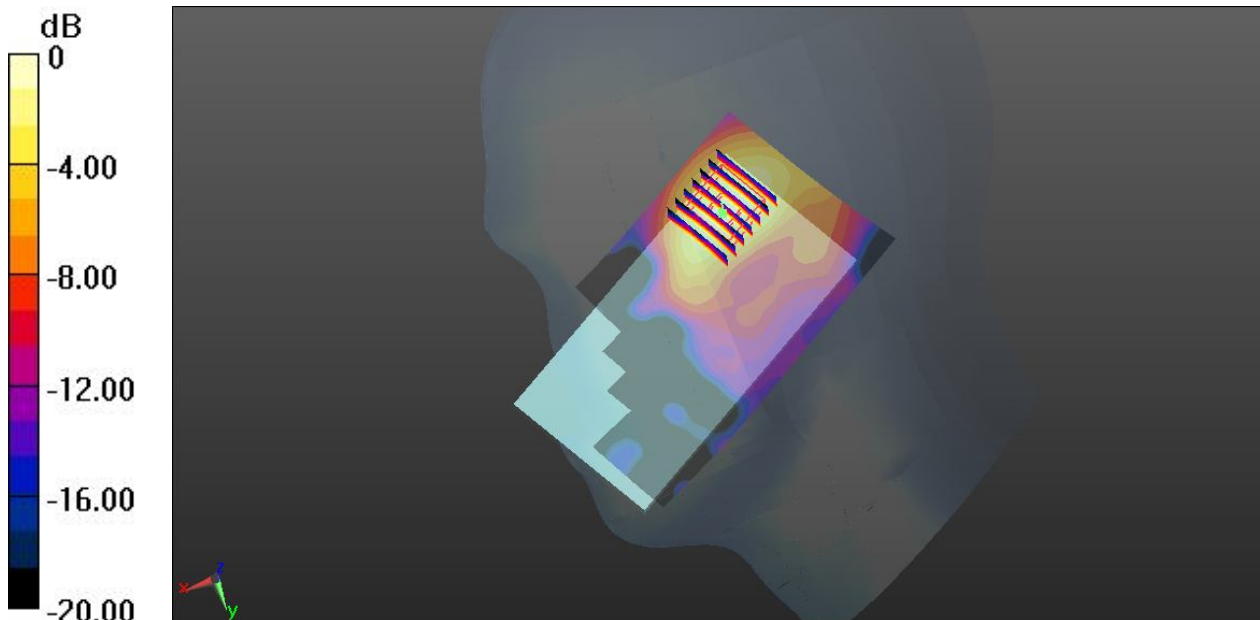
#### Ch0/Zoom Scan (7x7x7)/Cube 0: Measurement grid: dx=5mm, dy=5mm, dz=5mm

Reference Value = 7.008 V/m; Power Drift = -0.01 dB

Peak SAR (extrapolated) = 0.106 W/kg

**SAR(1 g) = 0.055 W/kg; SAR(10 g) = 0.027 W/kg**

Maximum value of SAR (measured) = 0.0787 W/kg



0 dB = 0.0787 W/kg

### 62 BT\_DH5\_Right Tilted\_Ch0

Communication System: UID 0, Bluetooth (0); Frequency: 2402 MHz; Duty Cycle: 1:1.303  
Medium: HSL\_2450\_131118 Medium parameters used:  $f = 2402$  MHz;  $\sigma = 1.822$  S/m;  $\epsilon_r = 40.651$ ;  
 $\rho = 1000$  kg/m<sup>3</sup>  
Ambient Temperature : 23.5 °C; Liquid Temperature : 22.7 °C

#### DASY5 Configuration:

- Probe: EX3DV4 - SN3819; ConvF(6.99, 6.99, 6.99); Calibrated: 2012.11.26;
- Sensor-Surface: 2mm (Mechanical Surface Detection)
- Electronics: DAE4 Sn1303; Calibrated: 2012.11.22
- Phantom: SAM2; Type: QD000P40CD; Serial: TP:1671
- Measurement SW: DASY52, Version 52.8 (7); SEMCAD X Version 14.6.10 (7164)

**Ch0/Area Scan (71x131x1):** Interpolated grid: dx=12mm, dy=12mm

Maximum value of SAR (interpolated) = 0.0510 W/kg

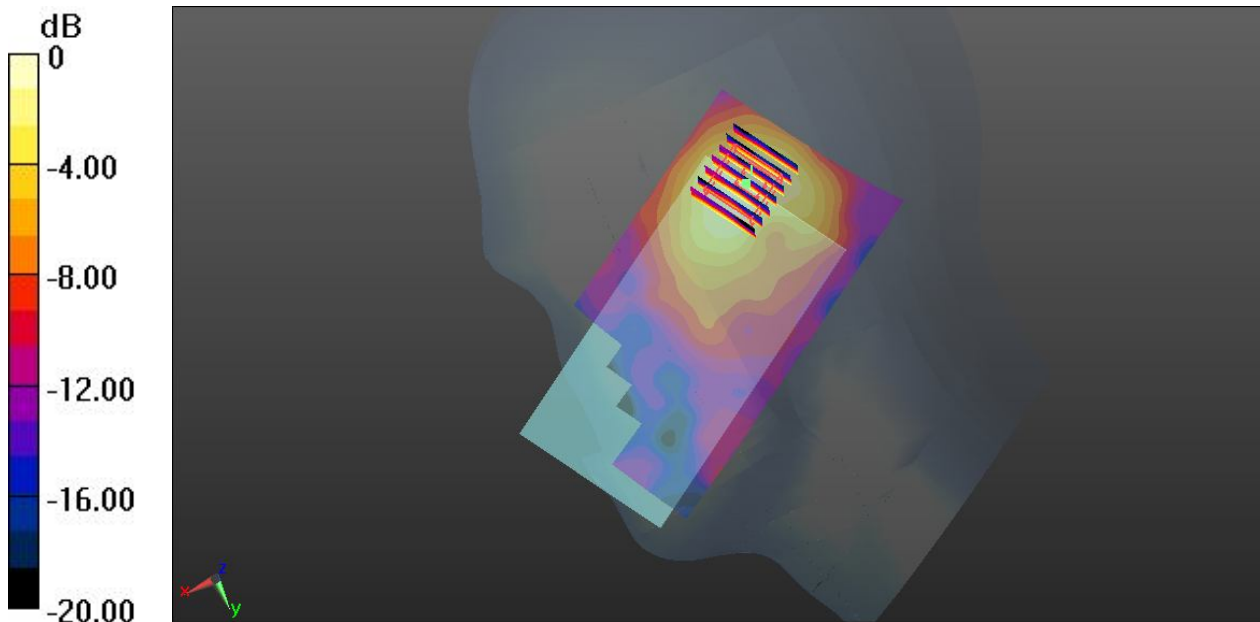
**Ch0/Zoom Scan (7x7x7)/Cube 0:** Measurement grid: dx=5mm, dy=5mm, dz=5mm

Reference Value = 5.321 V/m; Power Drift = -0.07 dB

Peak SAR (extrapolated) = 0.0710 W/kg

**SAR(1 g) = 0.033 W/kg; SAR(10 g) = 0.017 W/kg**

Maximum value of SAR (measured) = 0.0500 W/kg



0 dB = 0.0500 W/kg

**63 BT\_DH5\_Left Cheek\_Ch0**

Communication System: UID 0, Bluetooth (0); Frequency: 2402 MHz; Duty Cycle: 1:1.303  
 Medium: HSL\_2450\_131118 Medium parameters used:  $f = 2402$  MHz;  $\sigma = 1.822$  S/m;  $\epsilon_r = 40.651$ ;  
 $\rho = 1000$  kg/m<sup>3</sup>  
 Ambient Temperature : 23.5 °C; Liquid Temperature : 22.7 °C

DASY5 Configuration:

- Probe: EX3DV4 - SN3819; ConvF(6.99, 6.99, 6.99); Calibrated: 2012.11.26;
- Sensor-Surface: 2mm (Mechanical Surface Detection)
- Electronics: DAE4 Sn1303; Calibrated: 2012.11.22
- Phantom: SAM2; Type: QD000P40CD; Serial: TP:1671
- Measurement SW: DASY52, Version 52.8 (7); SEMCAD X Version 14.6.10 (7164)

**Ch0/Area Scan (71x121x1):** Interpolated grid: dx=12mm, dy=12mm

Maximum value of SAR (interpolated) = 0.0387 W/kg

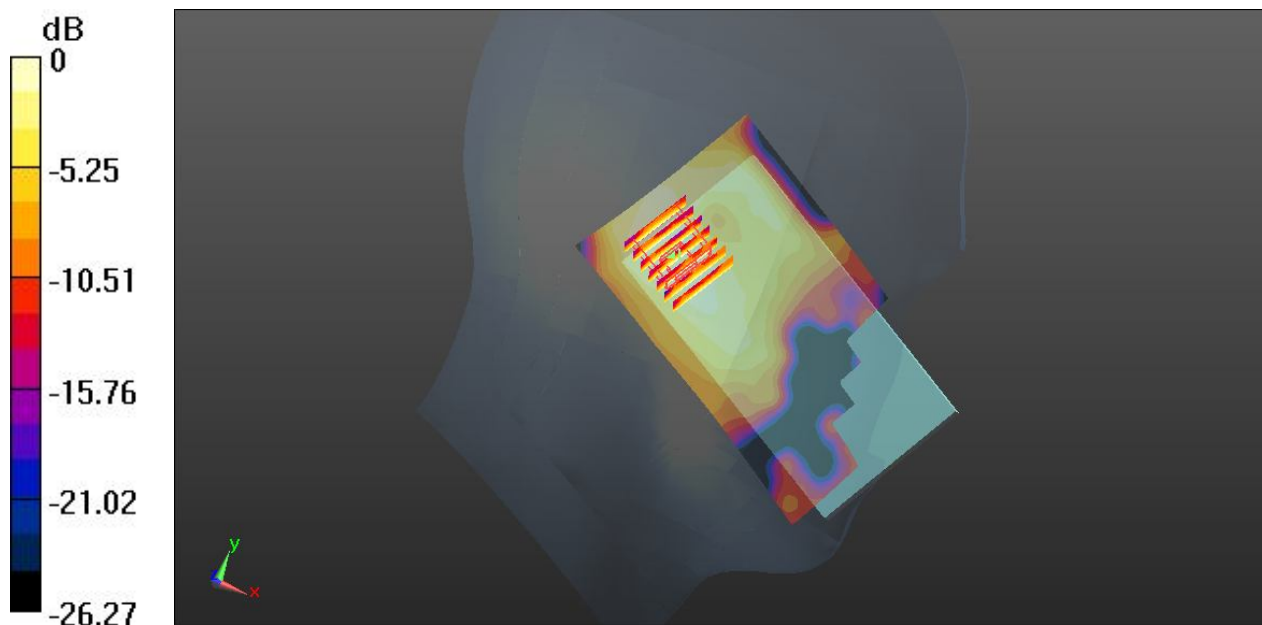
**Ch0/Zoom Scan (7x7x7)/Cube 0:** Measurement grid: dx=5mm, dy=5mm, dz=5mm

Reference Value = 4.936 V/m; Power Drift = -0.08 dB

Peak SAR (extrapolated) = 0.0520 W/kg

**SAR(1 g) = 0.029 W/kg; SAR(10 g) = 0.015 W/kg**

Maximum value of SAR (measured) = 0.0410 W/kg



0 dB = 0.0410 W/kg

### 64 BT\_DH5\_Left Tilted\_Ch0

Communication System: UID 0, Bluetooth (0); Frequency: 2402 MHz; Duty Cycle: 1:1.303  
Medium: HSL\_2450\_131118 Medium parameters used:  $f = 2402$  MHz;  $\sigma = 1.822$  S/m;  $\epsilon_r = 40.651$ ;  
 $\rho = 1000$  kg/m<sup>3</sup>  
Ambient Temperature : 23.5 °C; Liquid Temperature : 22.7 °C

#### DASY5 Configuration:

- Probe: EX3DV4 - SN3819; ConvF(6.99, 6.99, 6.99); Calibrated: 2012.11.26;
- Sensor-Surface: 2mm (Mechanical Surface Detection)
- Electronics: DAE4 Sn1303; Calibrated: 2012.11.22
- Phantom: SAM2; Type: QD000P40CD; Serial: TP:1671
- Measurement SW: DASY52, Version 52.8 (7); SEMCAD X Version 14.6.10 (7164)

#### Ch0/Area Scan (71x131x1): Interpolated grid: dx=12mm, dy=12mm

Maximum value of SAR (interpolated) = 0.0464 W/kg

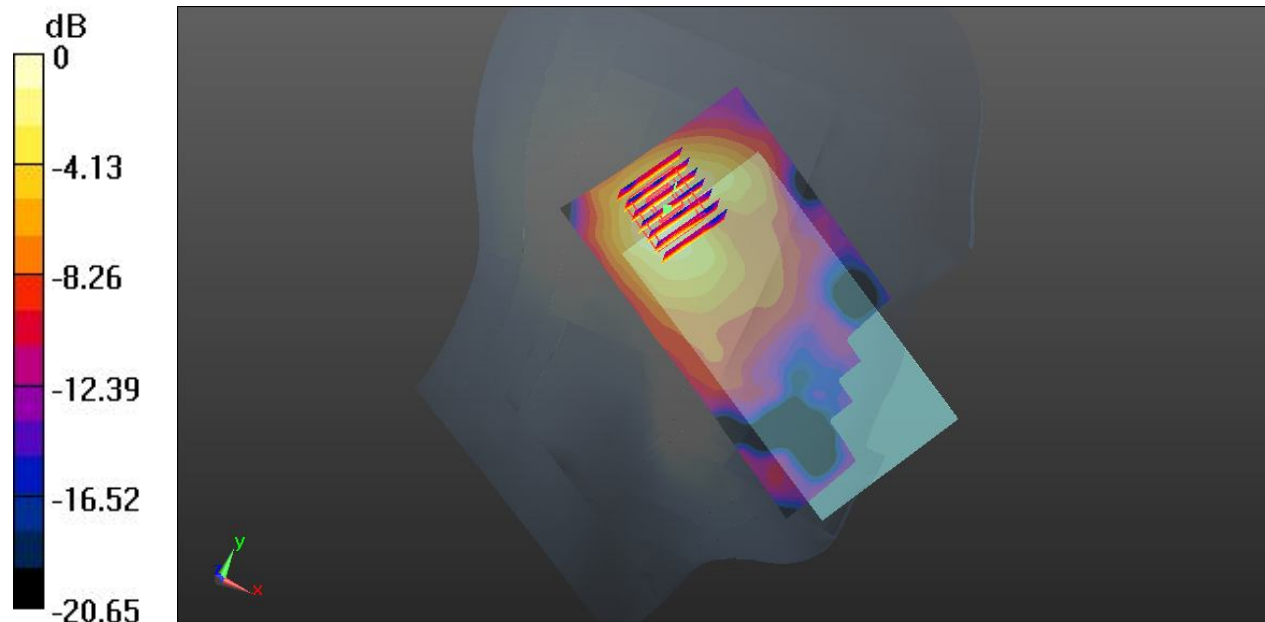
#### Ch0/Zoom Scan (7x7x7)/Cube 0: Measurement grid: dx=5mm, dy=5mm, dz=5mm

Reference Value = 4.578 V/m; Power Drift = 0.01 dB

Peak SAR (extrapolated) = 0.0690 W/kg

**SAR(1 g) = 0.034 W/kg; SAR(10 g) = 0.017 W/kg**

Maximum value of SAR (measured) = 0.0506 W/kg



### 01 GSM850\_GPRS(3 Tx slots)\_Front\_1cm\_Ch128

Communication System: GPRS/EDGE11; Frequency: 824.2 MHz; Duty Cycle: 1:2.77  
Medium: MSL\_835\_131106 Medium parameters used:  $f = 824.2$  MHz;  $\sigma = 0.965$  mho/m;  $\epsilon_r = 54.393$ ;  $\rho = 1000$  kg/m<sup>3</sup>  
Ambient Temperature : 23.4 °C; Liquid Temperature : 22.7 °C

#### DASY5 Configuration:

- Probe: EX3DV4 - SN3819; ConvF(9.5, 9.5, 9.5); Calibrated: 2012.11.26;
- Sensor-Surface: 2mm (Mechanical Surface Detection)
- Electronics: DAE4 Sn1303; Calibrated: 2012.11.22
- Phantom: SAM2; Type: QD000P40CD; Serial: TP:1671
- Measurement SW: DASY52, Version 52.8 (2); SEMCAD X Version 14.6.6 (6824)

#### Ch128/Area Scan (61x101x1): Interpolated grid: dx=15mm, dy=15mm

Maximum value of SAR (interpolated) = 0.420 W/kg

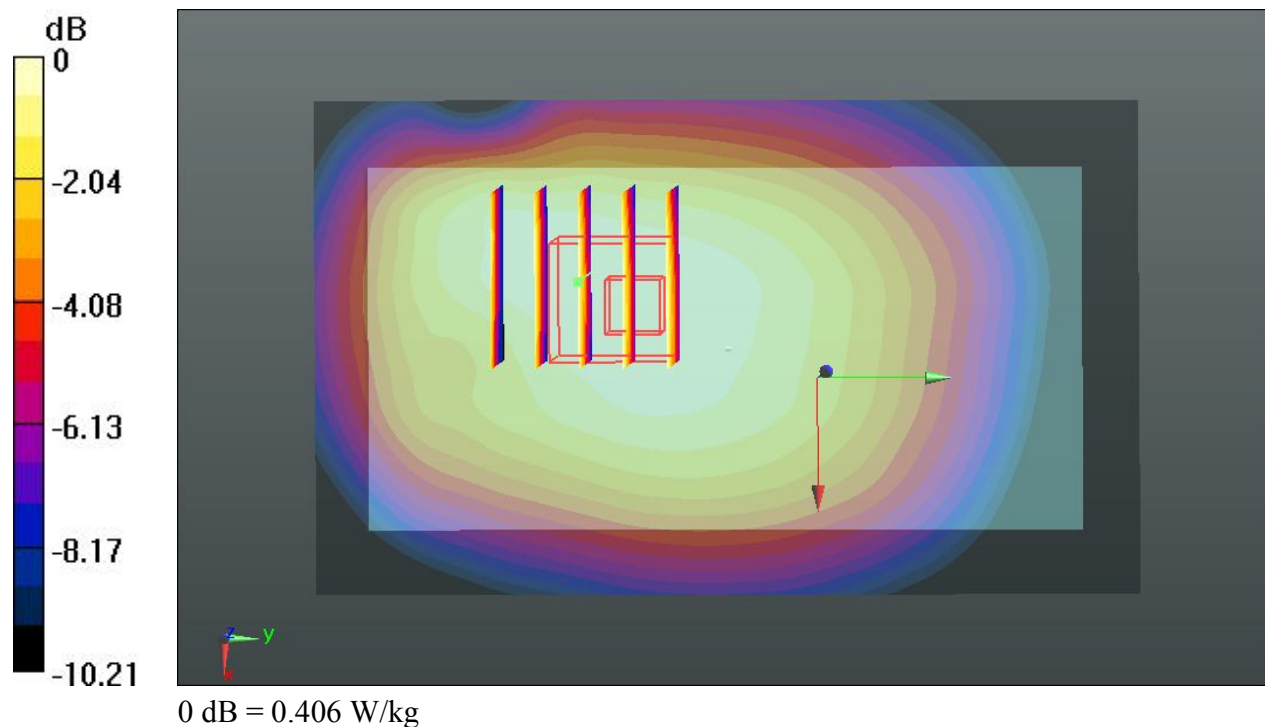
#### Ch128/Zoom Scan (5x5x7)/Cube 0: Measurement grid: dx=8mm, dy=8mm, dz=5mm

Reference Value = 21.037 V/m; Power Drift = -0.04 dB

Peak SAR (extrapolated) = 0.448 mW/g

**SAR(1 g) = 0.357 mW/g; SAR(10 g) = 0.266 mW/g**

Maximum value of SAR (measured) = 0.406 W/kg



### 02 GSM850\_GPRS(3 Tx slots)\_Back\_1cm\_Ch128

Communication System: GPRS/EDGE11; Frequency: 824.2 MHz; Duty Cycle: 1:2.77  
Medium: MSL\_835\_131106 Medium parameters used:  $f = 824.2$  MHz;  $\sigma = 0.965$  mho/m;  $\epsilon_r = 54.393$ ;  $\rho = 1000$  kg/m<sup>3</sup>  
Ambient Temperature : 23.4 °C; Liquid Temperature : 22.7 °C

#### DASY5 Configuration:

- Probe: EX3DV4 - SN3819; ConvF(9.5, 9.5, 9.5); Calibrated: 2012.11.26;
- Sensor-Surface: 2mm (Mechanical Surface Detection)
- Electronics: DAE4 Sn1303; Calibrated: 2012.11.22
- Phantom: SAM2; Type: QD000P40CD; Serial: TP:1671
- Measurement SW: DASY52, Version 52.8 (2); SEMCAD X Version 14.6.6 (6824)

#### Ch128/Area Scan (61x101x1): Interpolated grid: dx=15mm, dy=15mm

Maximum value of SAR (interpolated) = 0.593 W/kg

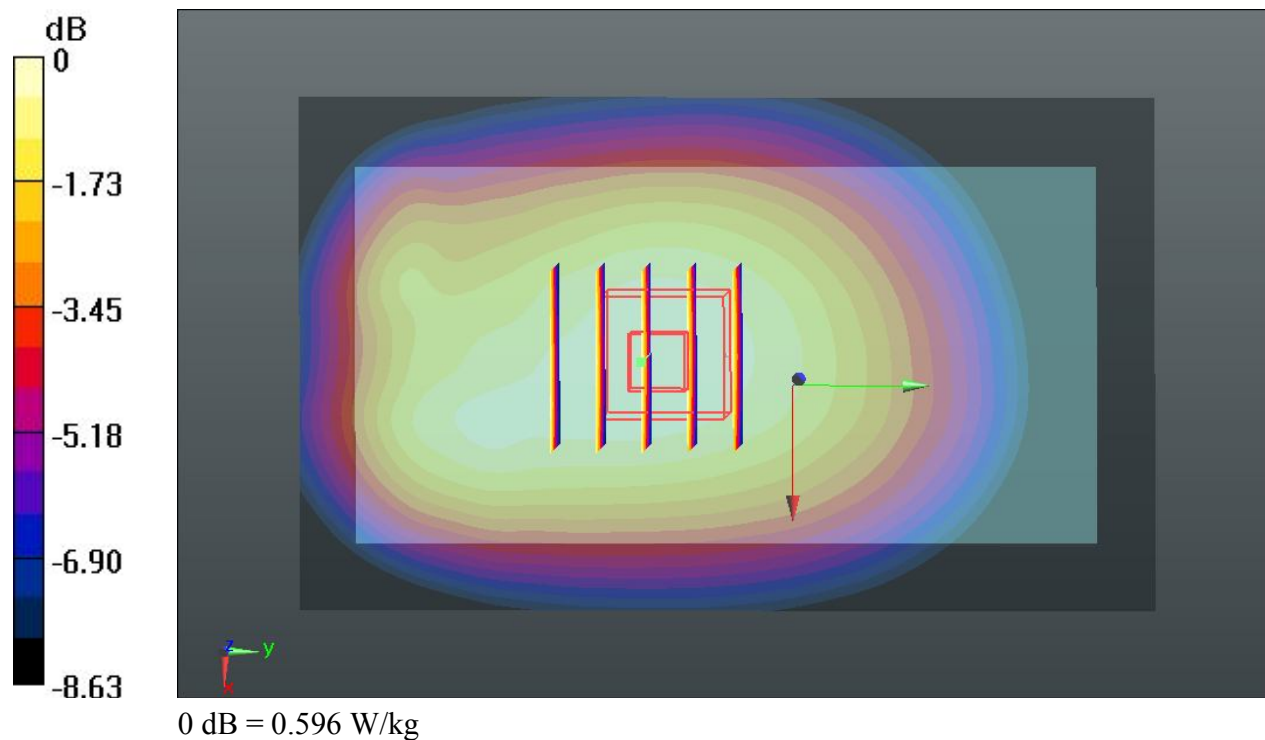
#### Ch128/Zoom Scan (5x5x7)/Cube 0: Measurement grid: dx=8mm, dy=8mm, dz=5mm

Reference Value = 25.474 V/m; Power Drift = -0.04 dB

Peak SAR (extrapolated) = 0.649 mW/g

**SAR(1 g) = 0.517 mW/g; SAR(10 g) = 0.389 mW/g**

Maximum value of SAR (measured) = 0.596 W/kg



### 03 GSM850\_GPRS(3 Tx slots)\_Left Side\_1cm\_Ch128

Communication System: GPRS/EDGE11; Frequency: 824.2 MHz; Duty Cycle: 1:2.77  
Medium: MSL\_835\_131106 Medium parameters used:  $f = 824.2$  MHz;  $\sigma = 0.965$  mho/m;  $\epsilon_r = 54.393$ ;  $\rho = 1000$  kg/m<sup>3</sup>  
Ambient Temperature : 23.4 °C; Liquid Temperature : 22.7 °C

#### DASY5 Configuration:

- Probe: EX3DV4 - SN3819; ConvF(9.5, 9.5, 9.5); Calibrated: 2012.11.26;
- Sensor-Surface: 2mm (Mechanical Surface Detection)
- Electronics: DAE4 Sn1303; Calibrated: 2012.11.22
- Phantom: SAM2; Type: QD000P40CD; Serial: TP:1671
- Measurement SW: DASY52, Version 52.8 (2); SEMCAD X Version 14.6.6 (6824)

#### Ch128/Area Scan (41x101x1): Interpolated grid: dx=15mm, dy=15mm

Maximum value of SAR (interpolated) = 0.313 W/kg

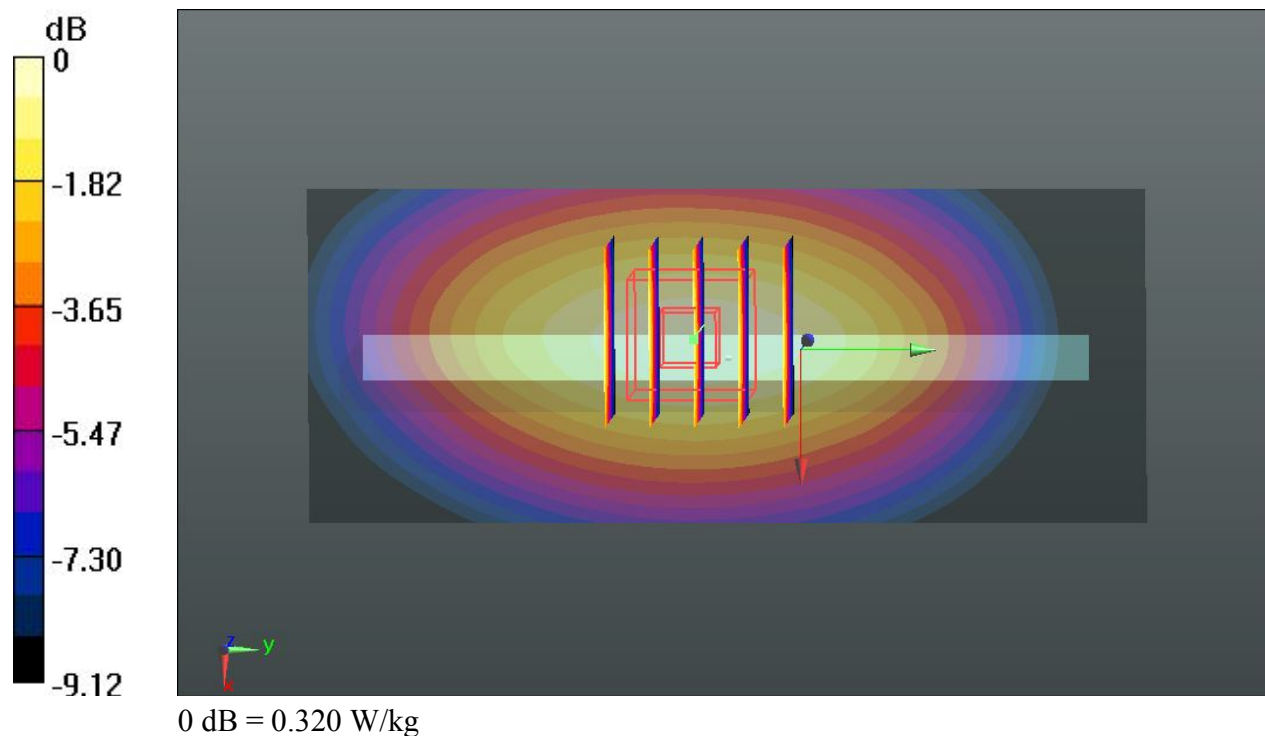
#### Ch128/Zoom Scan (5x5x7)/Cube 0: Measurement grid: dx=8mm, dy=8mm, dz=5mm

Reference Value = 18.709 V/m; Power Drift = -0.07 dB

Peak SAR (extrapolated) = 0.365 mW/g

**SAR(1 g) = 0.262 mW/g; SAR(10 g) = 0.183 mW/g**

Maximum value of SAR (measured) = 0.320 W/kg



### 04 GSM850\_GPRS(3 Tx slots)\_Right Side\_1cm\_Ch128

Communication System: GPRS/EDGE11; Frequency: 824.2 MHz; Duty Cycle: 1:2.77  
Medium: MSL\_835\_131106 Medium parameters used:  $f = 824.2$  MHz;  $\sigma = 0.965$  mho/m;  $\epsilon_r = 54.393$ ;  $\rho = 1000$  kg/m<sup>3</sup>  
Ambient Temperature : 23.4 °C; Liquid Temperature : 22.7 °C

#### DASY5 Configuration:

- Probe: EX3DV4 - SN3819; ConvF(9.5, 9.5, 9.5); Calibrated: 2012.11.26;
- Sensor-Surface: 2mm (Mechanical Surface Detection)
- Electronics: DAE4 Sn1303; Calibrated: 2012.11.22
- Phantom: SAM2; Type: QD000P40CD; Serial: TP:1671
- Measurement SW: DASY52, Version 52.8 (2); SEMCAD X Version 14.6.6 (6824)

#### Ch128/Area Scan (41x101x1): Interpolated grid: dx=15mm, dy=15mm

Maximum value of SAR (interpolated) = 0.283 W/kg

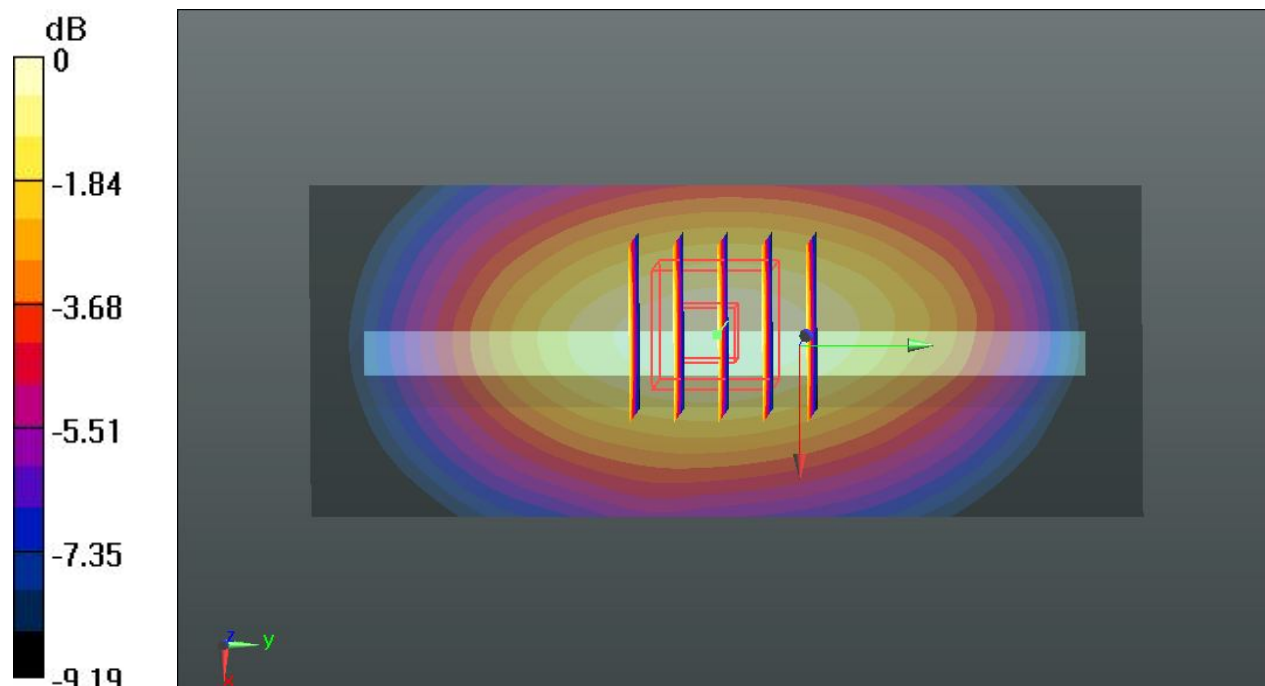
#### Ch128/Zoom Scan (5x5x7)/Cube 0: Measurement grid: dx=8mm, dy=8mm, dz=5mm

Reference Value = 17.636 V/m; Power Drift = -0.01 dB

Peak SAR (extrapolated) = 0.326 mW/g

**SAR(1 g) = 0.235 mW/g; SAR(10 g) = 0.165 mW/g**

Maximum value of SAR (measured) = 0.286 W/kg



0 dB = 0.286 W/kg

### 05 GSM850\_GPRS(3 Tx slots)\_Bottom Side\_1cm\_Ch128

Communication System: GPRS/EDGE11; Frequency: 824.2 MHz; Duty Cycle: 1:2.77  
Medium: MSL\_835\_131106 Medium parameters used:  $f = 824.2$  MHz;  $\sigma = 0.965$  mho/m;  $\epsilon_r = 54.393$ ;  $\rho = 1000$  kg/m<sup>3</sup>  
Ambient Temperature : 23.4 °C; Liquid Temperature : 22.7 °C

#### DASY5 Configuration:

- Probe: EX3DV4 - SN3819; ConvF(9.5, 9.5, 9.5); Calibrated: 2012.11.26;
- Sensor-Surface: 2mm (Mechanical Surface Detection)
- Electronics: DAE4 Sn1303; Calibrated: 2012.11.22
- Phantom: SAM2; Type: QD000P40CD; Serial: TP:1671
- Measurement SW: DASY52, Version 52.8 (2); SEMCAD X Version 14.6.6 (6824)

#### Ch128/Area Scan (41x71x1): Interpolated grid: dx=15mm, dy=15mm

Maximum value of SAR (interpolated) = 0.0675 W/kg

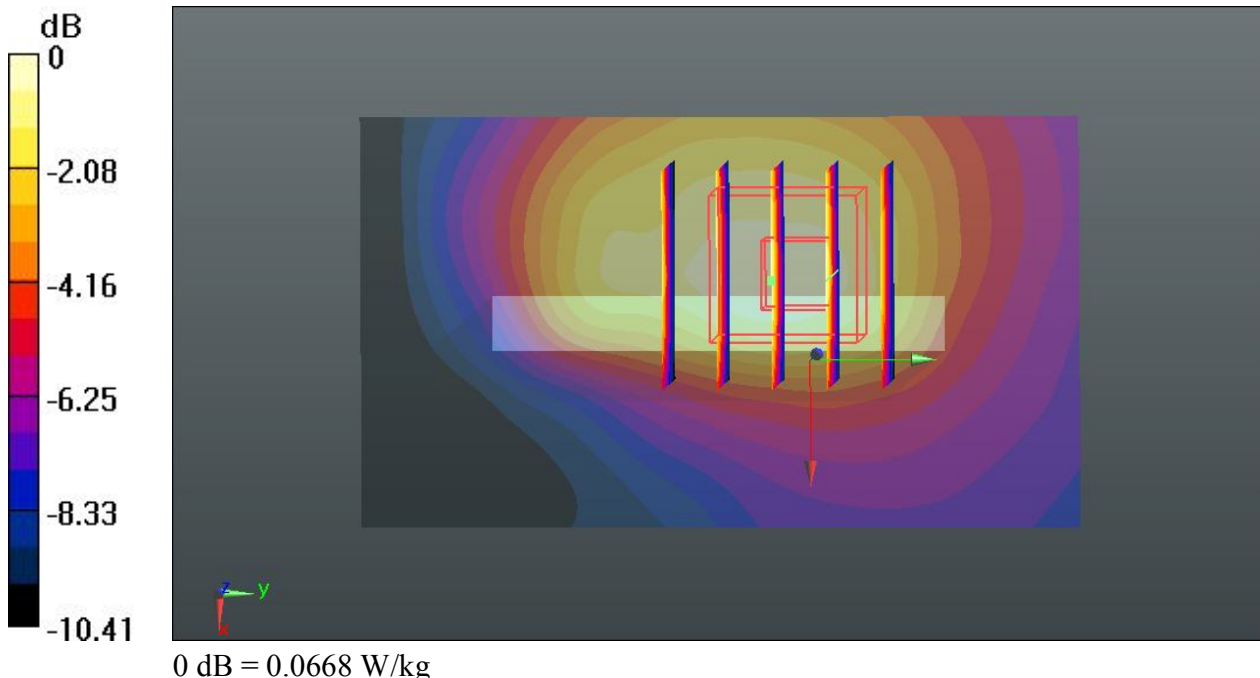
#### Ch128/Zoom Scan (5x5x7)/Cube 0: Measurement grid: dx=8mm, dy=8mm, dz=5mm

Reference Value = 8.540 V/m; Power Drift = 0.01 dB

Peak SAR (extrapolated) = 0.079 mW/g

**SAR(1 g) = 0.055 mW/g; SAR(10 g) = 0.036 mW/g**

Maximum value of SAR (measured) = 0.0668 W/kg



### 06 GSM850\_GSM Voice\_Front\_1cm\_Ch128

Communication System: Generic GSM; Frequency: 824.2 MHz; Duty Cycle: 1:8.3  
Medium: MSL\_835\_131106 Medium parameters used:  $f = 824.2$  MHz;  $\sigma = 0.965$  mho/m;  $\epsilon_r = 54.393$ ;  $\rho = 1000$  kg/m<sup>3</sup>  
Ambient Temperature : 23.4 °C; Liquid Temperature : 22.7 °C

#### DASY5 Configuration:

- Probe: EX3DV4 - SN3819; ConvF(9.5, 9.5, 9.5); Calibrated: 2012.11.26;
- Sensor-Surface: 2mm (Mechanical Surface Detection)
- Electronics: DAE4 Sn1303; Calibrated: 2012.11.22
- Phantom: SAM2; Type: QD000P40CD; Serial: TP:1671
- Measurement SW: DASY52, Version 52.8 (2); SEMCAD X Version 14.6.6 (6824)

#### Ch128/Area Scan (61x101x1): Interpolated grid: dx=15mm, dy=15mm

Maximum value of SAR (interpolated) = 0.403 W/kg

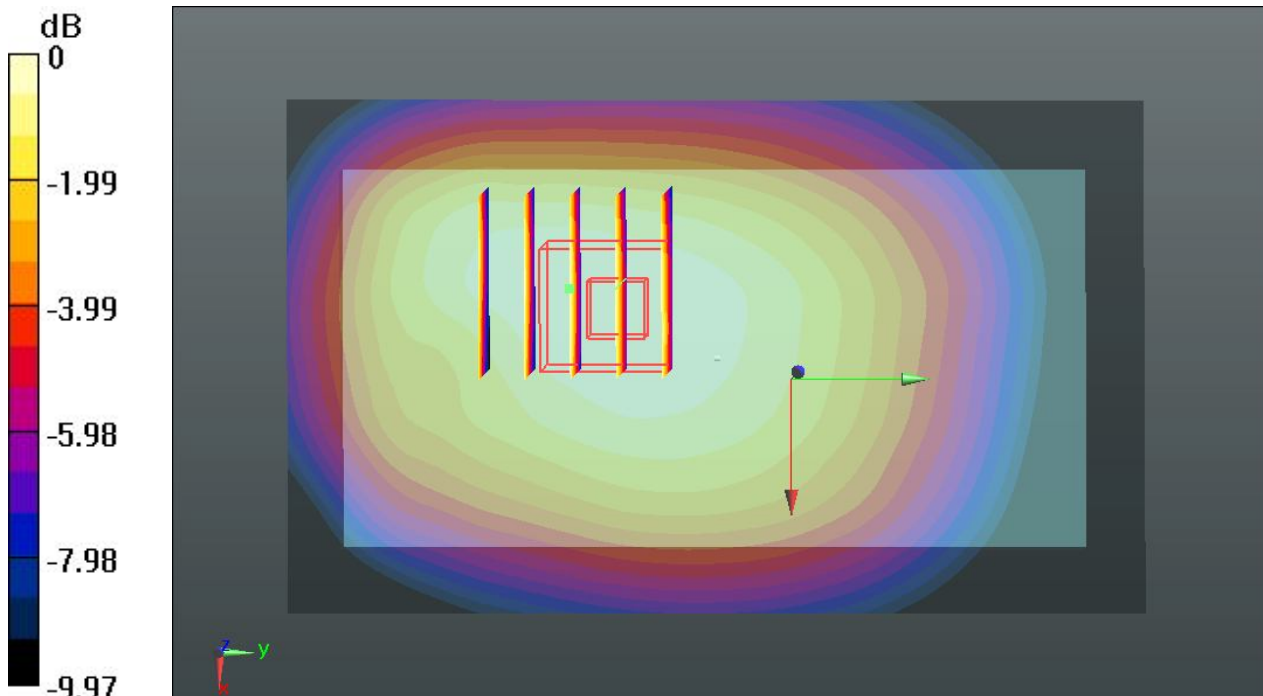
#### Ch128/Zoom Scan (5x5x7)/Cube 0: Measurement grid: dx=8mm, dy=8mm, dz=5mm

Reference Value = 20.649 V/m; Power Drift = 0.05 dB

Peak SAR (extrapolated) = 0.432 mW/g

**SAR(1 g) = 0.345 mW/g; SAR(10 g) = 0.259 mW/g**

Maximum value of SAR (measured) = 0.393 W/kg



0 dB = 0.393 W/kg

### 07 GSM850\_GSM Voice\_Back\_1cm\_Ch128

Communication System: Generic GSM; Frequency: 824.2 MHz; Duty Cycle: 1:8.3  
Medium: MSL\_835\_131106 Medium parameters used:  $f = 824.2$  MHz;  $\sigma = 0.965$  mho/m;  $\epsilon_r = 54.393$ ;  $\rho = 1000$  kg/m<sup>3</sup>  
Ambient Temperature : 23.4 °C; Liquid Temperature : 22.7 °C

#### DASY5 Configuration:

- Probe: EX3DV4 - SN3819; ConvF(9.5, 9.5, 9.5); Calibrated: 2012.11.26;
- Sensor-Surface: 2mm (Mechanical Surface Detection)
- Electronics: DAE4 Sn1303; Calibrated: 2012.11.22
- Phantom: SAM2; Type: QD000P40CD; Serial: TP:1671
- Measurement SW: DASY52, Version 52.8 (2); SEMCAD X Version 14.6.6 (6824)

#### Ch128/Area Scan (61x101x1): Interpolated grid: dx=15mm, dy=15mm

Maximum value of SAR (interpolated) = 0.571 W/kg

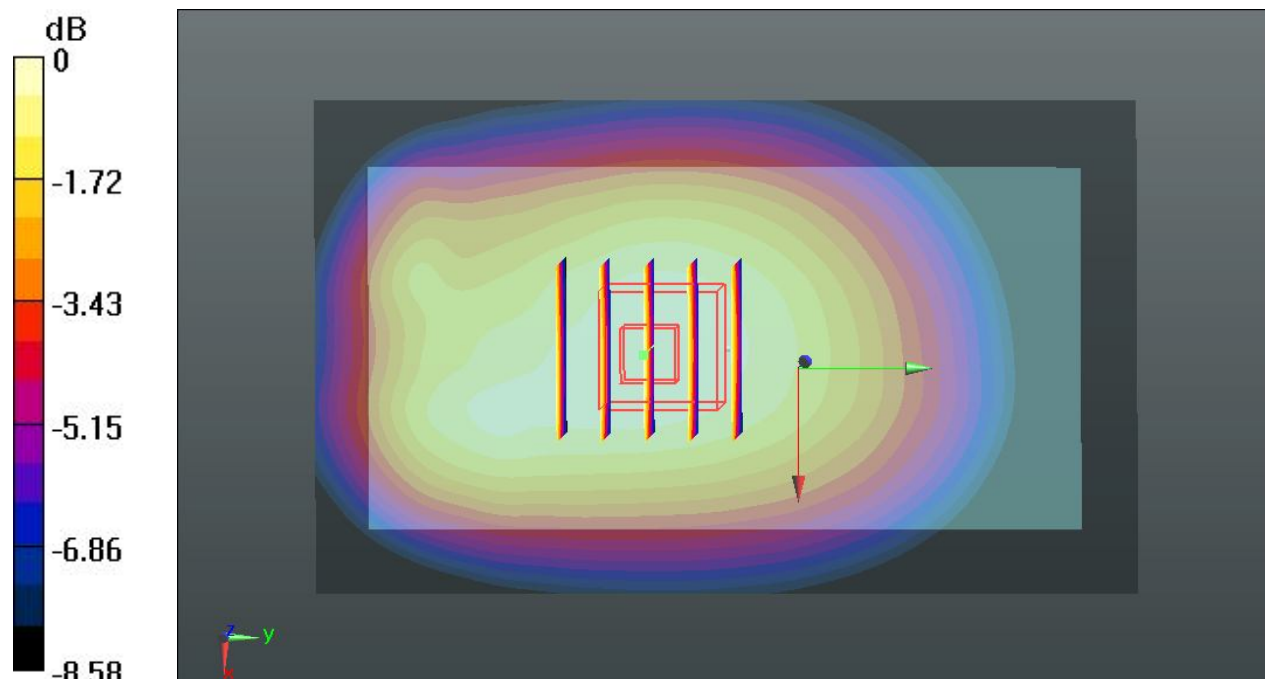
#### Ch128/Zoom Scan (5x5x7)/Cube 0: Measurement grid: dx=8mm, dy=8mm, dz=5mm

Reference Value = 24.995 V/m; Power Drift = 0.01 dB

Peak SAR (extrapolated) = 0.627 mW/g

**SAR(1 g) = 0.499 mW/g; SAR(10 g) = 0.378 mW/g**

Maximum value of SAR (measured) = 0.574 W/kg



0 dB = 0.574 W/kg

### 11 GSM1900\_GPRS(3 Tx slots)\_Front\_1cm\_Ch661

Communication System: GPRS/EDGE11; Frequency: 1880 MHz; Duty Cycle: 1:2.77  
Medium: MSL\_1900\_131107 Medium parameters used:  $f = 1880$  MHz;  $\sigma = 1.507$  mho/m;  $\epsilon_r = 54.733$ ;  $\rho = 1000$  kg/m<sup>3</sup>  
Ambient Temperature : 23.5 °C; Liquid Temperature : 22.6 °C

#### DASY5 Configuration:

- Probe: EX3DV4 - SN3819; ConvF(7.67, 7.67, 7.67); Calibrated: 2012.11.26;
- Sensor-Surface: 2mm (Mechanical Surface Detection)
- Electronics: DAE4 Sn1303; Calibrated: 2012.11.22
- Phantom: SAM1; Type: QD000P40CD; Serial: TP:1670
- Measurement SW: DASY52, Version 52.8 (2); SEMCAD X Version 14.6.6 (6824)

#### Ch661/Area Scan (61x101x1): Interpolated grid: dx=15mm, dy=15mm

Maximum value of SAR (interpolated) = 0.809 W/kg

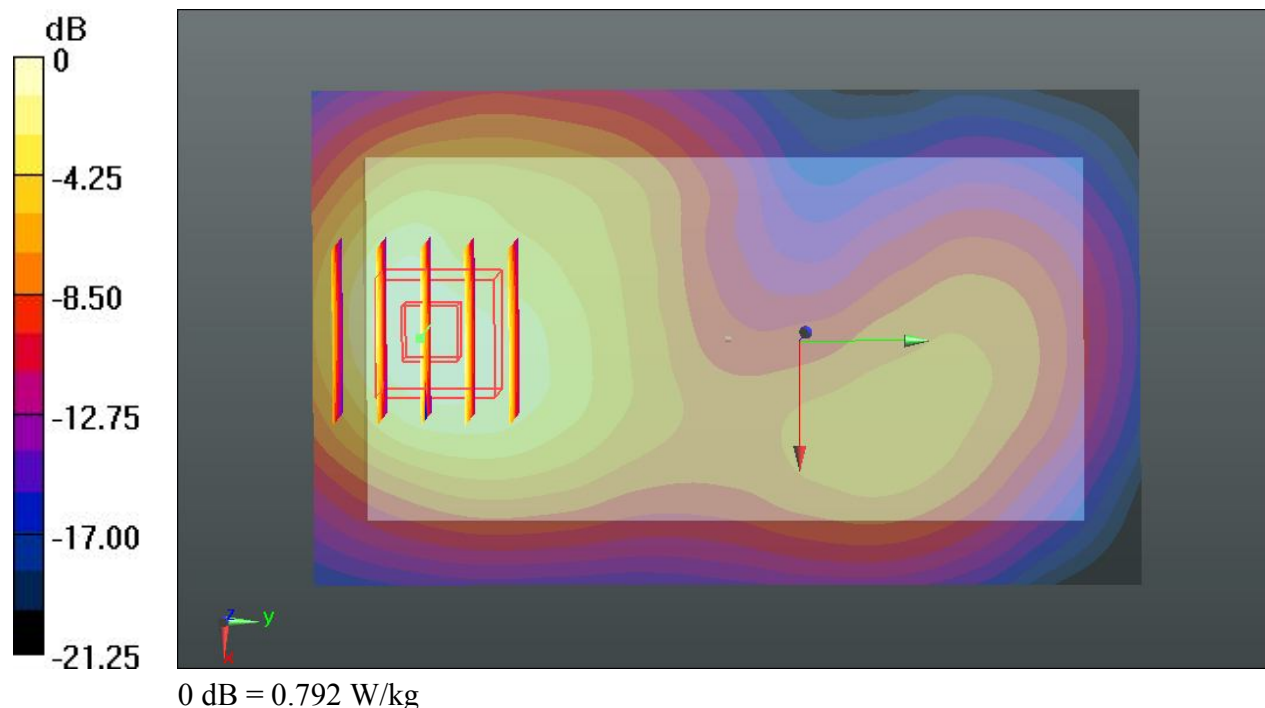
#### Ch661/Zoom Scan (5x5x7)/Cube 0: Measurement grid: dx=8mm, dy=8mm, dz=5mm

Reference Value = 23.596 V/m; Power Drift = -0.11 dB

Peak SAR (extrapolated) = 0.960 mW/g

**SAR(1 g) = 0.601 mW/g; SAR(10 g) = 0.358 mW/g**

Maximum value of SAR (measured) = 0.792 W/kg



### 12 GSM1900\_GPRS(3 Tx slots)\_Back\_1cm\_Ch661

Communication System: GPRS/EDGE11; Frequency: 1880 MHz; Duty Cycle: 1:2.77  
Medium: MSL\_1900\_131107 Medium parameters used:  $f = 1880$  MHz;  $\sigma = 1.507$  mho/m;  $\epsilon_r = 54.733$ ;  $\rho = 1000$  kg/m<sup>3</sup>  
Ambient Temperature : 23.5 °C; Liquid Temperature : 22.6 °C

#### DASY5 Configuration:

- Probe: EX3DV4 - SN3819; ConvF(7.67, 7.67, 7.67); Calibrated: 2012.11.26;
- Sensor-Surface: 2mm (Mechanical Surface Detection)
- Electronics: DAE4 Sn1303; Calibrated: 2012.11.22
- Phantom: SAM1; Type: QD000P40CD; Serial: TP:1670
- Measurement SW: DASY52, Version 52.8 (2); SEMCAD X Version 14.6.6 (6824)

#### Ch661/Area Scan (61x101x1): Interpolated grid: dx=15mm, dy=15mm

Maximum value of SAR (interpolated) = 1.20 W/kg

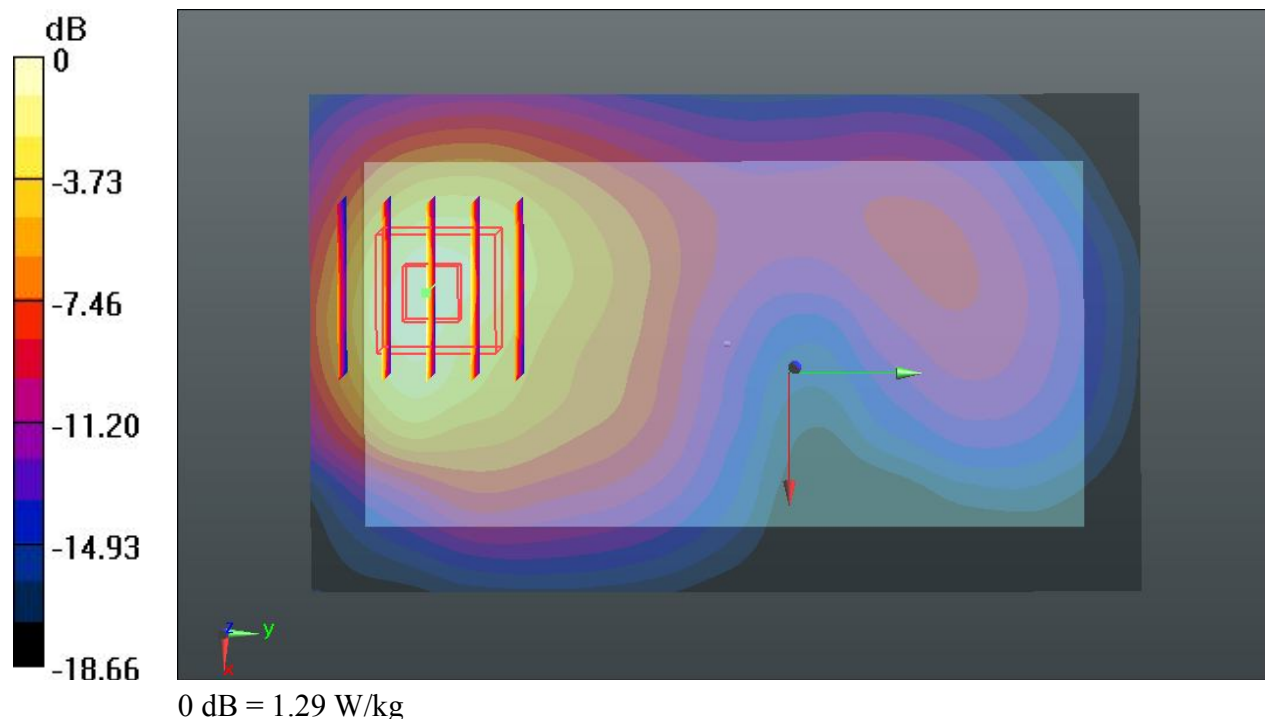
#### Ch661/Zoom Scan (5x5x7)/Cube 0: Measurement grid: dx=8mm, dy=8mm, dz=5mm

Reference Value = 29.861 V/m; Power Drift = -0.06 dB

Peak SAR (extrapolated) = 1.550 mW/g

**SAR(1 g) = 0.953 mW/g; SAR(10 g) = 0.539 mW/g**

Maximum value of SAR (measured) = 1.29 W/kg



### 13 GSM1900\_GPRS(3 Tx slots)\_Left Side\_1cm\_Ch661

Communication System: GPRS/EDGE11; Frequency: 1880 MHz; Duty Cycle: 1:2.77  
Medium: MSL\_1900\_131107 Medium parameters used:  $f = 1880$  MHz;  $\sigma = 1.507$  mho/m;  $\epsilon_r = 54.733$ ;  $\rho = 1000$  kg/m<sup>3</sup>  
Ambient Temperature : 23.5 °C; Liquid Temperature : 22.6 °C

#### DASY5 Configuration:

- Probe: EX3DV4 - SN3819; ConvF(7.67, 7.67, 7.67); Calibrated: 2012.11.26;
- Sensor-Surface: 2mm (Mechanical Surface Detection)
- Electronics: DAE4 Sn1303; Calibrated: 2012.11.22
- Phantom: SAM1; Type: QD000P40CD; Serial: TP:1670
- Measurement SW: DASY52, Version 52.8 (2); SEMCAD X Version 14.6.6 (6824)

#### Ch661/Area Scan (41x101x1): Interpolated grid: dx=15mm, dy=15mm

Maximum value of SAR (interpolated) = 0.188 W/kg

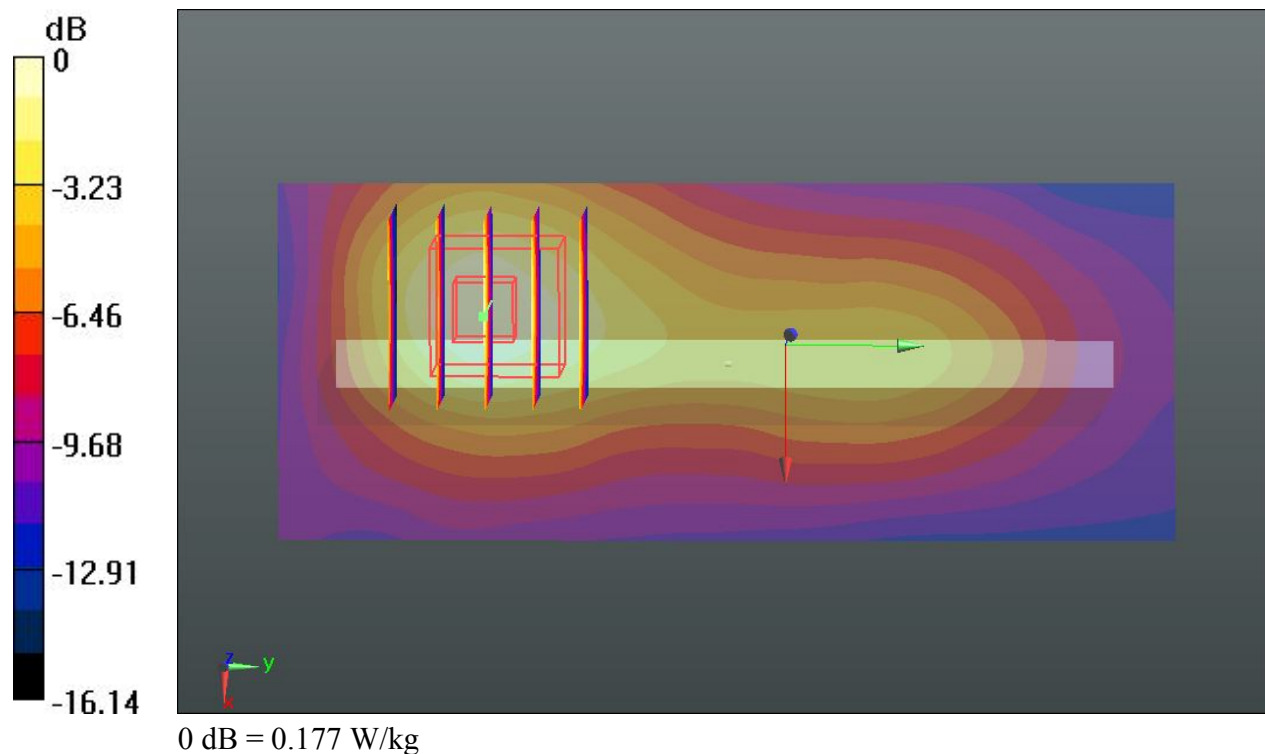
#### Ch661/Zoom Scan (5x5x7)/Cube 0: Measurement grid: dx=8mm, dy=8mm, dz=5mm

Reference Value = 10.968 V/m; Power Drift = 0.06 dB

Peak SAR (extrapolated) = 0.218 mW/g

**SAR(1 g) = 0.133 mW/g; SAR(10 g) = 0.077 mW/g**

Maximum value of SAR (measured) = 0.177 W/kg



### 14 GSM1900\_GPRS(3 Tx slots)\_Right Side\_1cm\_Ch661

Communication System: GPRS/EDGE11; Frequency: 1880 MHz; Duty Cycle: 1:2.77  
Medium: MSL\_1900\_131107 Medium parameters used:  $f = 1880$  MHz;  $\sigma = 1.507$  mho/m;  $\epsilon_r = 54.733$ ;  $\rho = 1000$  kg/m<sup>3</sup>  
Ambient Temperature : 23.5 °C; Liquid Temperature : 22.6 °C

#### DASY5 Configuration:

- Probe: EX3DV4 - SN3819; ConvF(7.67, 7.67, 7.67); Calibrated: 2012.11.26;
- Sensor-Surface: 2mm (Mechanical Surface Detection)
- Electronics: DAE4 Sn1303; Calibrated: 2012.11.22
- Phantom: SAM1; Type: QD000P40CD; Serial: TP:1670
- Measurement SW: DASY52, Version 52.8 (2); SEMCAD X Version 14.6.6 (6824)

#### Ch661/Area Scan (41x101x1): Interpolated grid: dx=15mm, dy=15mm

Maximum value of SAR (interpolated) = 0.131 W/kg

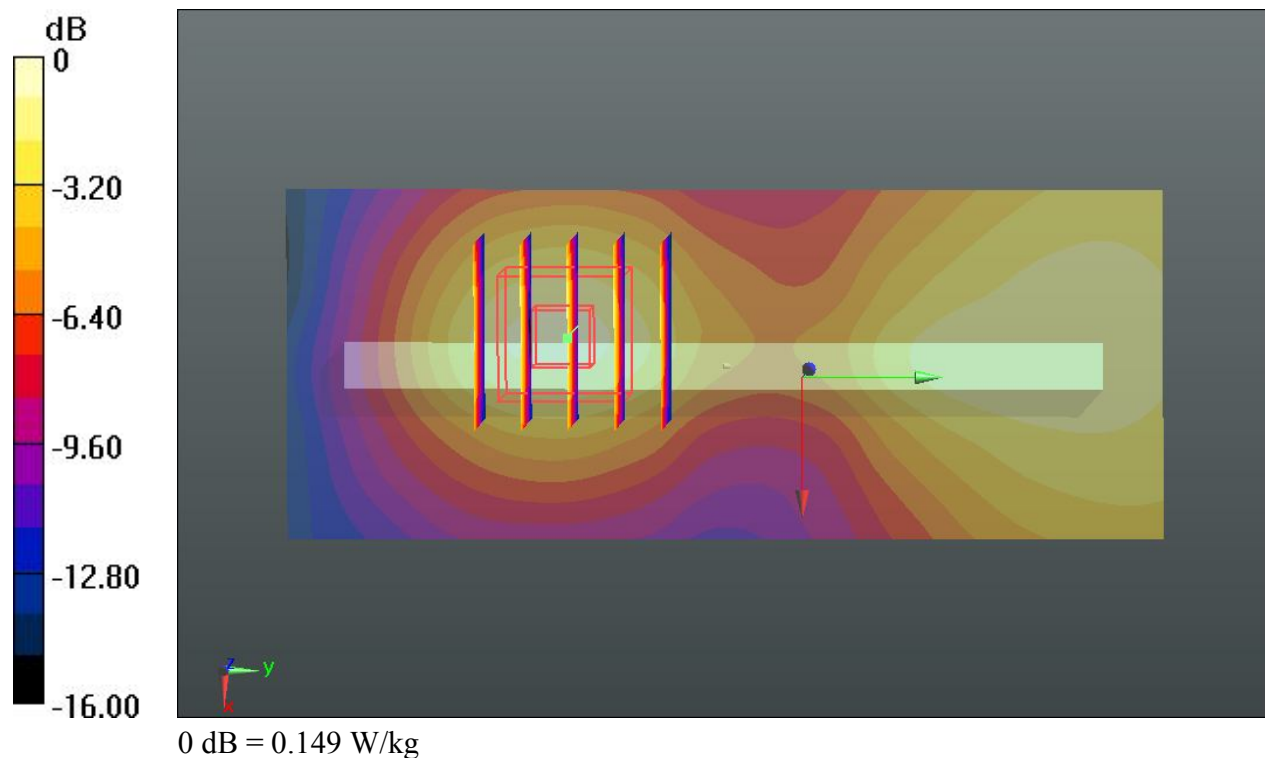
#### Ch661/Zoom Scan (5x5x7)/Cube 0: Measurement grid: dx=8mm, dy=8mm, dz=5mm

Reference Value = 9.418 V/m; Power Drift = -0.05 dB

Peak SAR (extrapolated) = 0.192 mW/g

**SAR(1 g) = 0.100 mW/g; SAR(10 g) = 0.059 mW/g**

Maximum value of SAR (measured) = 0.149 W/kg



### 15 GSM1900\_GPRS(3 Tx slots)\_Bottom Side\_1cm\_Ch661

Communication System: GPRS/EDGE11; Frequency: 1880 MHz; Duty Cycle: 1:2.77  
Medium: MSL\_1900\_131107 Medium parameters used:  $f = 1880$  MHz;  $\sigma = 1.507$  mho/m;  $\epsilon_r = 54.733$ ;  $\rho = 1000$  kg/m<sup>3</sup>  
Ambient Temperature : 23.5 °C; Liquid Temperature : 22.6 °C

#### DASY5 Configuration:

- Probe: EX3DV4 - SN3819; ConvF(7.67, 7.67, 7.67); Calibrated: 2012.11.26;
- Sensor-Surface: 2mm (Mechanical Surface Detection)
- Electronics: DAE4 Sn1303; Calibrated: 2012.11.22
- Phantom: SAM1; Type: QD000P40CD; Serial: TP:1670
- Measurement SW: DASY52, Version 52.8 (2); SEMCAD X Version 14.6.6 (6824)

#### Ch661/Area Scan (41x71x1): Interpolated grid: dx=15mm, dy=15mm

Maximum value of SAR (interpolated) = 0.702 W/kg

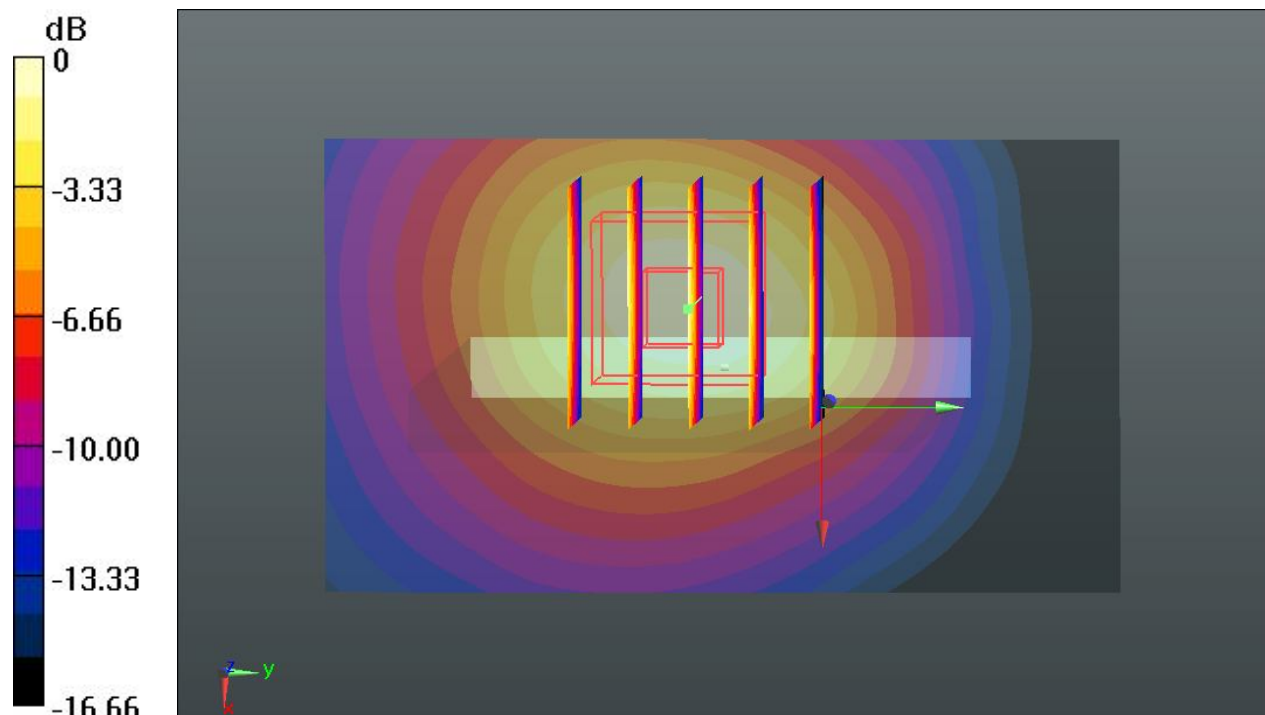
#### Ch661/Zoom Scan (5x5x7)/Cube 0: Measurement grid: dx=8mm, dy=8mm, dz=5mm

Reference Value = 21.654 V/m; Power Drift = 0.02 dB

Peak SAR (extrapolated) = 0.851 mW/g

**SAR(1 g) = 0.523 mW/g; SAR(10 g) = 0.303 mW/g**

Maximum value of SAR (measured) = 0.703 W/kg



0 dB = 0.703 W/kg

### 16 GSM1900\_GSM Voice\_Front\_1cm\_Ch661

Communication System: Generic GSM; Frequency: 1880 MHz; Duty Cycle: 1:8.3  
Medium: MSL\_1900\_131107 Medium parameters used:  $f = 1880$  MHz;  $\sigma = 1.507$  mho/m;  $\epsilon_r = 54.733$ ;  $\rho = 1000$  kg/m<sup>3</sup>  
Ambient Temperature : 23.5 °C; Liquid Temperature : 22.6 °C

#### DASY5 Configuration:

- Probe: EX3DV4 - SN3819; ConvF(7.67, 7.67, 7.67); Calibrated: 2012.11.26;
- Sensor-Surface: 2mm (Mechanical Surface Detection)
- Electronics: DAE4 Sn1303; Calibrated: 2012.11.22
- Phantom: SAM1; Type: QD000P40CD; Serial: TP:1670
- Measurement SW: DASY52, Version 52.8 (2); SEMCAD X Version 14.6.6 (6824)

**Ch661/Area Scan (61x101x1):** Interpolated grid: dx=15mm, dy=15mm

Maximum value of SAR (interpolated) = 0.642 W/kg

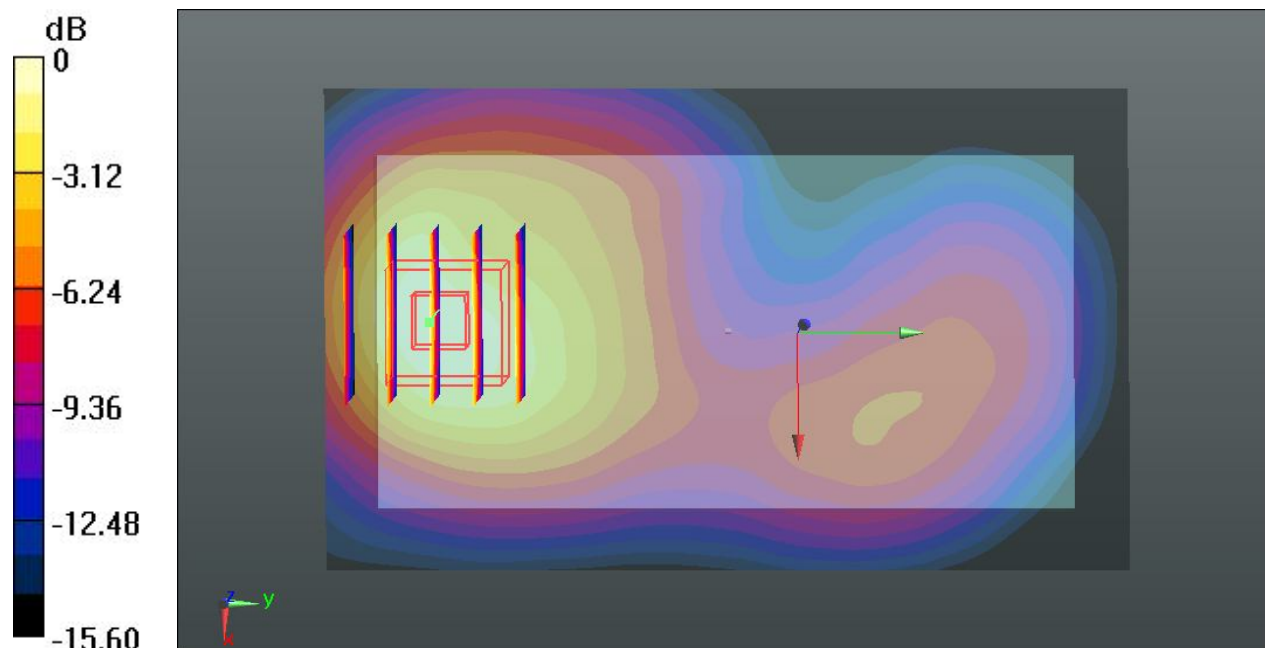
**Ch661/Zoom Scan (5x5x7)/Cube 0:** Measurement grid: dx=8mm, dy=8mm, dz=5mm

Reference Value = 21.064 V/m; Power Drift = -0.08 dB

Peak SAR (extrapolated) = 0.774 mW/g

**SAR(1 g) = 0.482 mW/g; SAR(10 g) = 0.286 mW/g**

Maximum value of SAR (measured) = 0.637 W/kg



### 17 GSM1900\_GSM Voice\_Back\_1cm\_Ch661

Communication System: Generic GSM; Frequency: 1880 MHz; Duty Cycle: 1:8.3  
Medium: MSL\_1900\_131107 Medium parameters used:  $f = 1880$  MHz;  $\sigma = 1.507$  mho/m;  $\epsilon_r = 54.733$ ;  $\rho = 1000$  kg/m<sup>3</sup>  
Ambient Temperature : 23.5 °C; Liquid Temperature : 22.6 °C

#### DASY5 Configuration:

- Probe: EX3DV4 - SN3819; ConvF(7.67, 7.67, 7.67); Calibrated: 2012.11.26;
- Sensor-Surface: 2mm (Mechanical Surface Detection)
- Electronics: DAE4 Sn1303; Calibrated: 2012.11.22
- Phantom: SAM1; Type: QD000P40CD; Serial: TP:1670
- Measurement SW: DASY52, Version 52.8 (2); SEMCAD X Version 14.6.6 (6824)

#### Ch661/Area Scan (61x101x1): Interpolated grid: dx=15mm, dy=15mm

Maximum value of SAR (interpolated) = 0.949 W/kg

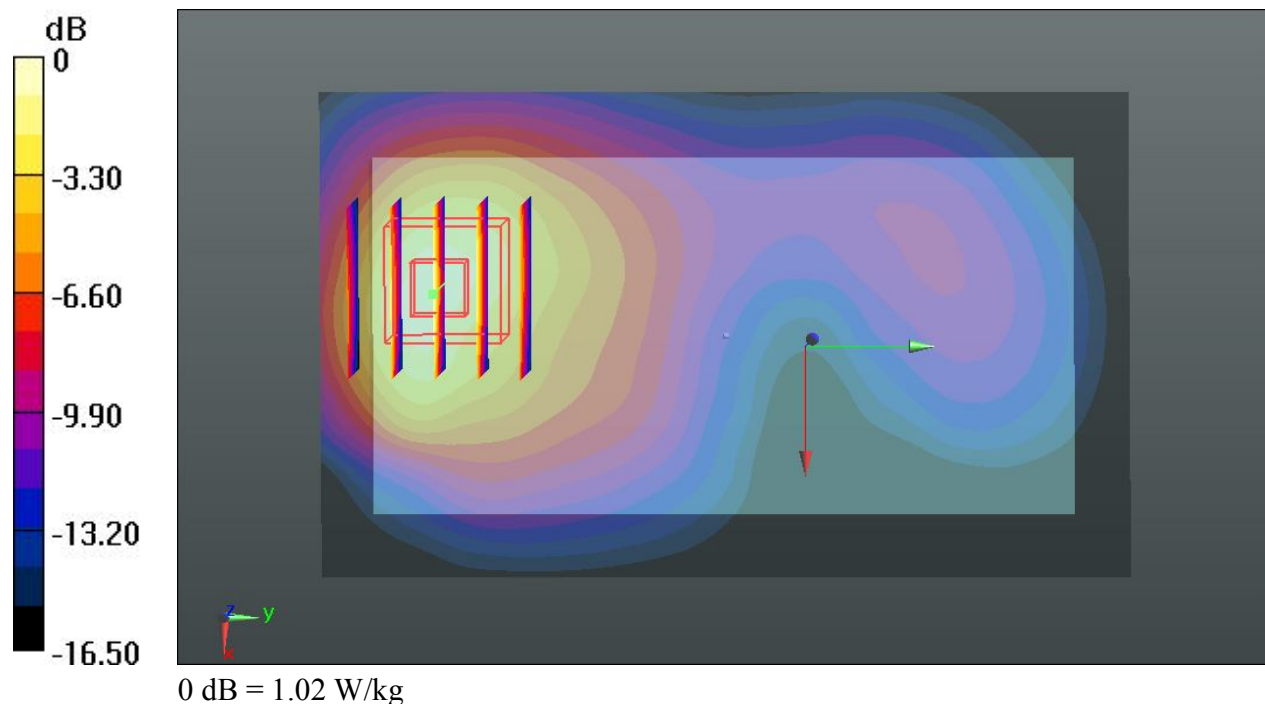
#### Ch661/Zoom Scan (5x5x7)/Cube 0: Measurement grid: dx=8mm, dy=8mm, dz=5mm

Reference Value = 26.556 V/m; Power Drift = -0.07 dB

Peak SAR (extrapolated) = 1.225 mW/g

**SAR(1 g) = 0.749 mW/g; SAR(10 g) = 0.423 mW/g**

Maximum value of SAR (measured) = 1.02 W/kg



### 18 GSM1900\_GPRS(3 Tx slots)\_Back\_1cm\_Ch512

Communication System: GPRS/EDGE11; Frequency: 1850.2 MHz; Duty Cycle: 1:2.77  
Medium: MSL\_1900\_131107 Medium parameters used:  $f = 1850.2$  MHz;  $\sigma = 1.468$  mho/m;  $\epsilon_r = 54.843$ ;  $\rho = 1000$  kg/m<sup>3</sup>  
Ambient Temperature : 23.5 °C; Liquid Temperature : 22.6 °C

#### DASY5 Configuration:

- Probe: EX3DV4 - SN3819; ConvF(7.67, 7.67, 7.67); Calibrated: 2012.11.26;
- Sensor-Surface: 2mm (Mechanical Surface Detection)
- Electronics: DAE4 Sn1303; Calibrated: 2012.11.22
- Phantom: SAM1; Type: QD000P40CD; Serial: TP:1670
- Measurement SW: DASY52, Version 52.8 (2); SEMCAD X Version 14.6.6 (6824)

#### Ch512/Area Scan (61x101x1): Interpolated grid: dx=15mm, dy=15mm

Maximum value of SAR (interpolated) = 1.03 W/kg

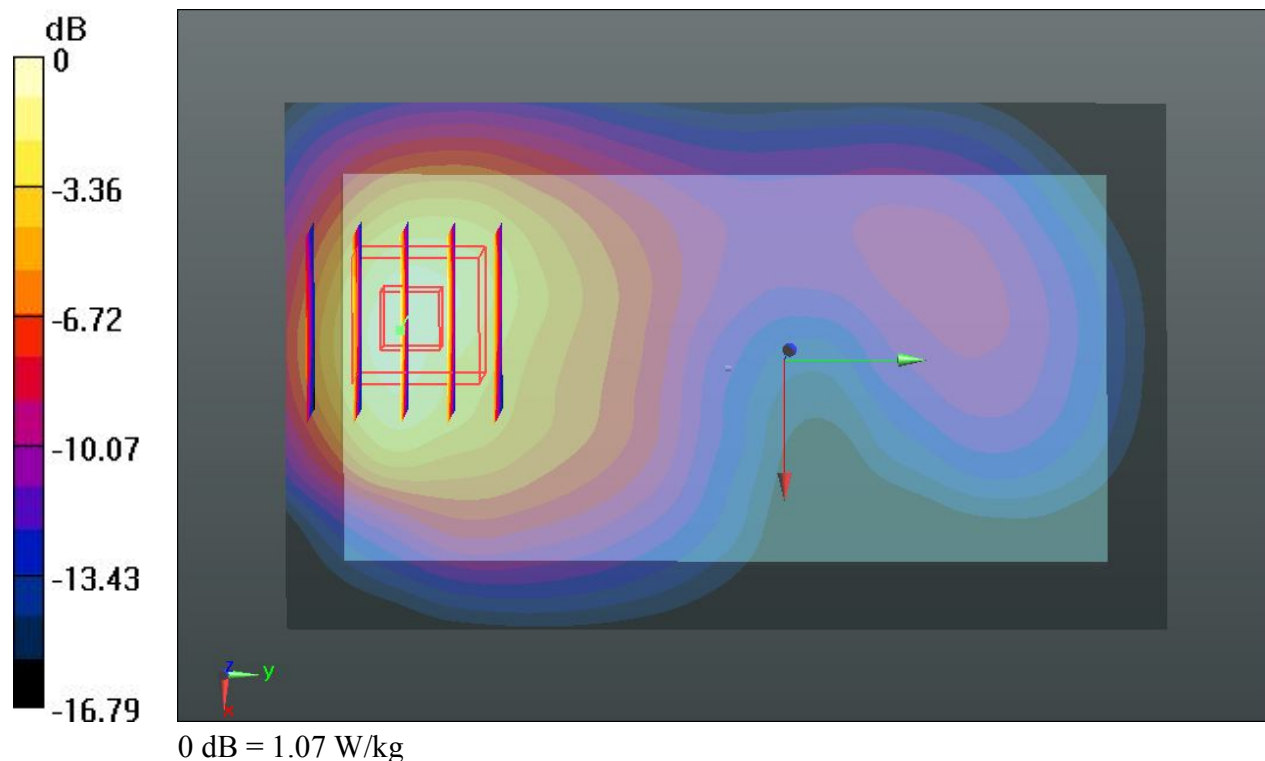
#### Ch512/Zoom Scan (5x5x7)/Cube 0: Measurement grid: dx=8mm, dy=8mm, dz=5mm

Reference Value = 27.649 V/m; Power Drift = -0.04 dB

Peak SAR (extrapolated) = 1.308 mW/g

**SAR(1 g) = 0.813 mW/g; SAR(10 g) = 0.463 mW/g**

Maximum value of SAR (measured) = 1.07 W/kg



### 19 GSM1900\_GPRS(3 Tx slots)\_Back\_1cm\_Ch810

Communication System: GPRS/EDGE11; Frequency: 1909.8 MHz; Duty Cycle: 1:2.77  
Medium: MSL\_1900\_131107 Medium parameters used:  $f = 1910$  MHz;  $\sigma = 1.544$  mho/m;  $\epsilon_r = 54.586$ ;  $\rho = 1000$  kg/m<sup>3</sup>  
Ambient Temperature : 23.5 °C; Liquid Temperature : 22.6 °C

#### DASY5 Configuration:

- Probe: EX3DV4 - SN3819; ConvF(7.67, 7.67, 7.67); Calibrated: 2012.11.26;
- Sensor-Surface: 2mm (Mechanical Surface Detection)
- Electronics: DAE4 Sn1303; Calibrated: 2012.11.22
- Phantom: SAM1; Type: QD000P40CD; Serial: TP:1670
- Measurement SW: DASY52, Version 52.8 (2); SEMCAD X Version 14.6.6 (6824)

#### Ch810/Area Scan (61x101x1): Interpolated grid: dx=15mm, dy=15mm

Maximum value of SAR (interpolated) = 1.22 W/kg

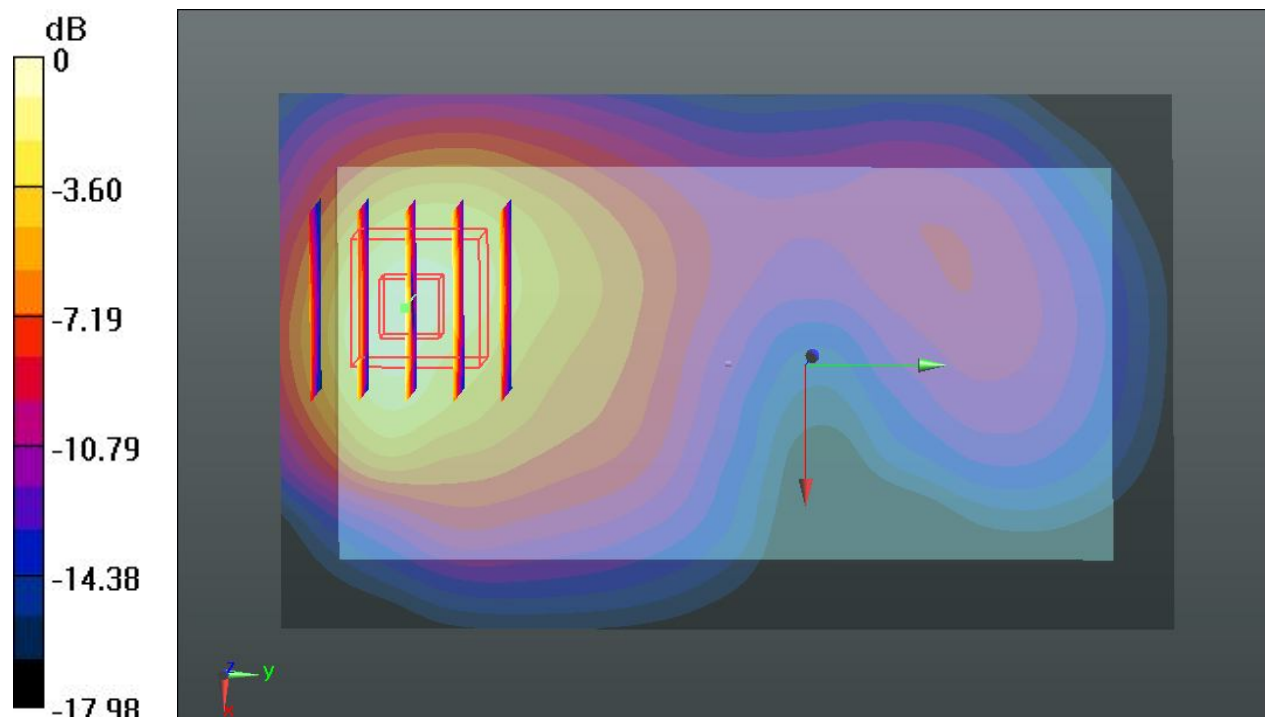
#### Ch810/Zoom Scan (5x5x7)/Cube 0: Measurement grid: dx=8mm, dy=8mm, dz=5mm

Reference Value = 29.630 V/m; Power Drift = -0.07 dB

Peak SAR (extrapolated) = 1.586 mW/g

**SAR(1 g) = 0.960 mW/g; SAR(10 g) = 0.532 mW/g**

Maximum value of SAR (measured) = 1.31 W/kg



0 dB = 1.31 W/kg

### 20 GSM1900\_GPRS(3 Tx slots)\_Back\_1cm\_Ch810\_Repeat SAR

Communication System: GPRS/EDGE11; Frequency: 1909.8 MHz; Duty Cycle: 1:2.77  
Medium: MSL\_1900\_131107 Medium parameters used:  $f = 1910$  MHz;  $\sigma = 1.544$  mho/m;  $\epsilon_r = 54.586$ ;  $\rho = 1000$  kg/m<sup>3</sup>  
Ambient Temperature : 23.5 °C; Liquid Temperature : 22.6 °C

#### DASY5 Configuration:

- Probe: EX3DV4 - SN3819; ConvF(7.67, 7.67, 7.67); Calibrated: 2012.11.26;
- Sensor-Surface: 2mm (Mechanical Surface Detection)
- Electronics: DAE4 Sn1303; Calibrated: 2012.11.22
- Phantom: SAM1; Type: QD000P40CD; Serial: TP:1670
- Measurement SW: DASY52, Version 52.8 (2); SEMCAD X Version 14.6.6 (6824)

#### Ch810/Area Scan (61x101x1): Interpolated grid: dx=15mm, dy=15mm

Maximum value of SAR (interpolated) = 1.23 W/kg

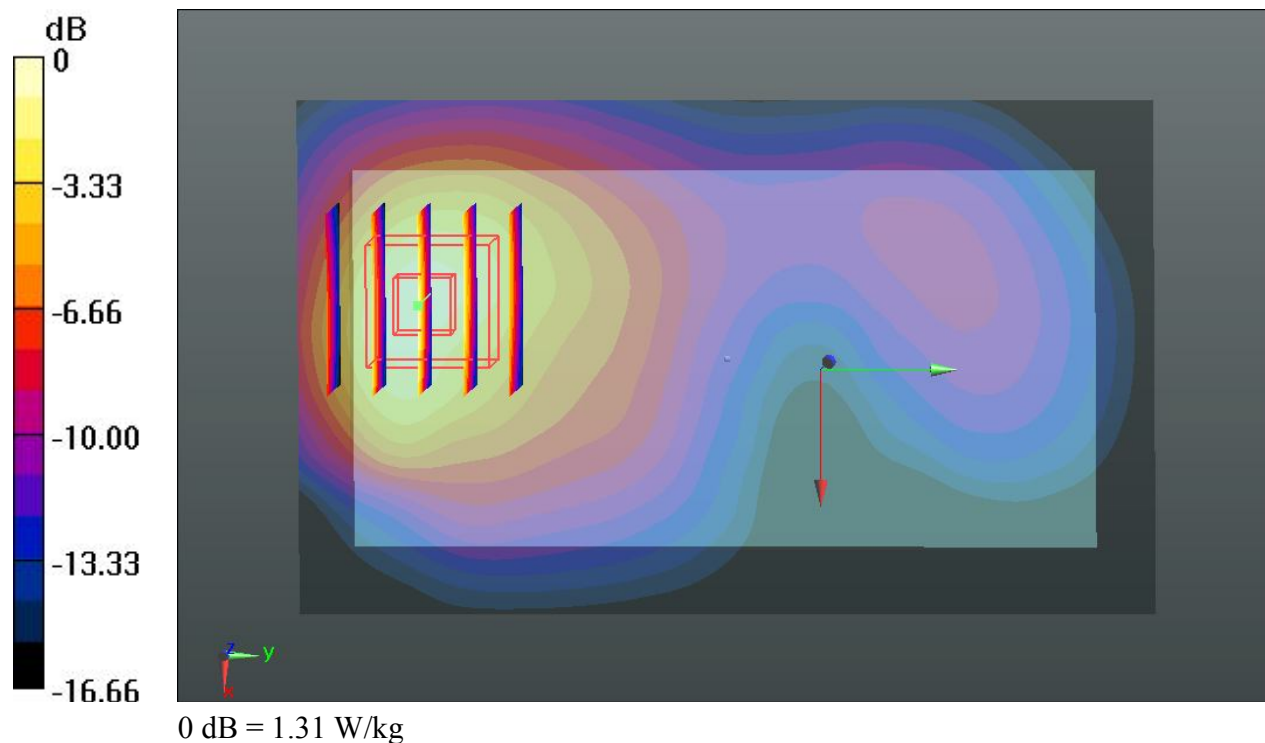
#### Ch810/Zoom Scan (5x5x7)/Cube 0: Measurement grid: dx=8mm, dy=8mm, dz=5mm

Reference Value = 29.730 V/m; Power Drift = -0.09 dB

Peak SAR (extrapolated) = 1.585 mW/g

**SAR(1 g) = 0.950 mW/g; SAR(10 g) = 0.536 mW/g**

Maximum value of SAR (measured) = 1.31 W/kg



### 21 GSM1900\_GSM Voice\_Back\_1cm\_Ch512

Communication System: Generic GSM; Frequency: 1850.2 MHz; Duty Cycle: 1:8.3  
Medium: MSL\_1900\_131107 Medium parameters used:  $f = 1850.2$  MHz;  $\sigma = 1.468$  mho/m;  $\epsilon_r = 54.843$ ;  $\rho = 1000$  kg/m<sup>3</sup>  
Ambient Temperature : 23.5 °C; Liquid Temperature : 22.6 °C

#### DASY5 Configuration:

- Probe: EX3DV4 - SN3819; ConvF(7.67, 7.67, 7.67); Calibrated: 2012.11.26;
- Sensor-Surface: 2mm (Mechanical Surface Detection)
- Electronics: DAE4 Sn1303; Calibrated: 2012.11.22
- Phantom: SAM1; Type: QD000P40CD; Serial: TP:1670
- Measurement SW: DASY52, Version 52.8 (2); SEMCAD X Version 14.6.6 (6824)

#### Ch512/Area Scan (61x101x1): Interpolated grid: dx=15mm, dy=15mm

Maximum value of SAR (interpolated) = 0.847 W/kg

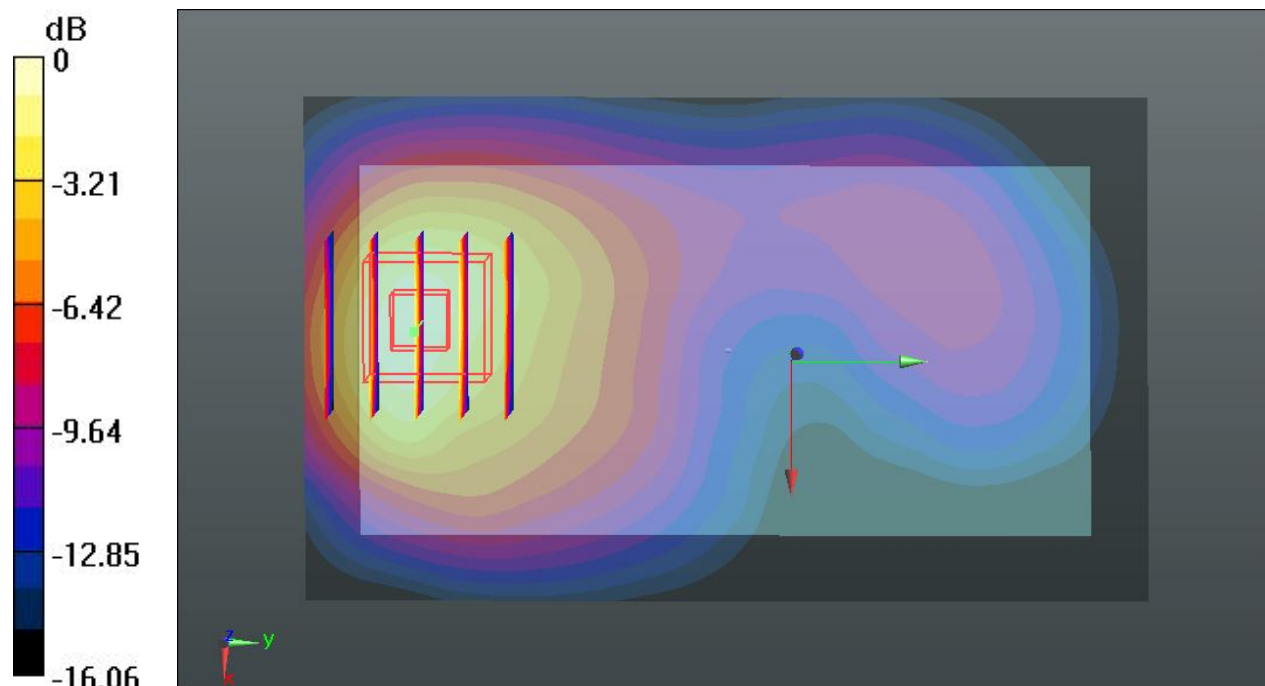
#### Ch512/Zoom Scan (5x5x7)/Cube 0: Measurement grid: dx=8mm, dy=8mm, dz=5mm

Reference Value = 24.717 V/m; Power Drift = -0.03 dB

Peak SAR (extrapolated) = 1.024 mW/g

**SAR(1 g) = 0.643 mW/g; SAR(10 g) = 0.371 mW/g**

Maximum value of SAR (measured) = 0.856 W/kg



0 dB = 0.856 W/kg

## 22 GSM1900\_GSM Voice\_Back\_1cm\_Ch810

Communication System: Generic GSM; Frequency: 1909.8 MHz; Duty Cycle: 1:8.3  
Medium: MSL\_1900\_131107 Medium parameters used:  $f = 1910$  MHz;  $\sigma = 1.544$  mho/m;  $\epsilon_r = 54.586$ ;  $\rho = 1000$  kg/m<sup>3</sup>  
Ambient Temperature : 23.5 °C; Liquid Temperature : 22.6 °C

### DASY5 Configuration:

- Probe: EX3DV4 - SN3819; ConvF(7.67, 7.67, 7.67); Calibrated: 2012.11.26;
- Sensor-Surface: 2mm (Mechanical Surface Detection)
- Electronics: DAE4 Sn1303; Calibrated: 2012.11.22
- Phantom: SAM1; Type: QD000P40CD; Serial: TP:1670
- Measurement SW: DASY52, Version 52.8 (2); SEMCAD X Version 14.6.6 (6824)

### Ch810/Area Scan (61x101x1): Interpolated grid: dx=15mm, dy=15mm

Maximum value of SAR (interpolated) = 1.05 W/kg

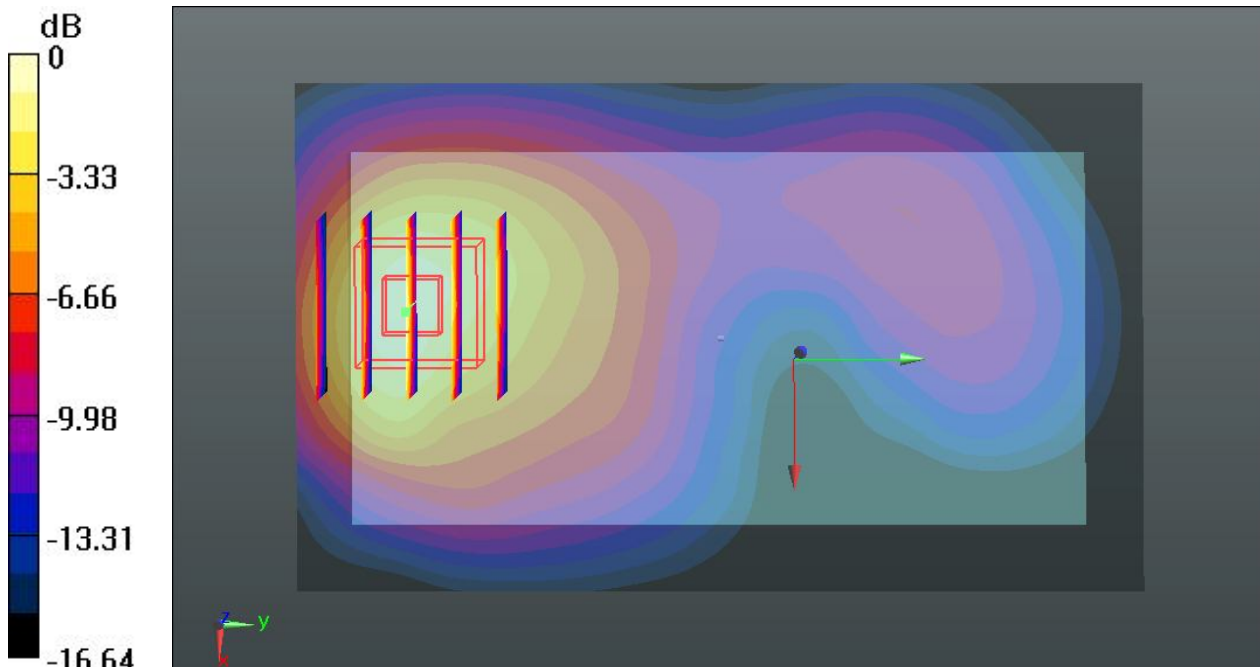
### Ch810/Zoom Scan (5x5x7)/Cube 0: Measurement grid: dx=8mm, dy=8mm, dz=5mm

Reference Value = 26.716 V/m; Power Drift = -0.05 dB

Peak SAR (extrapolated) = 1.290 mW/g

**SAR(1 g) = 0.784 mW/g; SAR(10 g) = 0.442 mW/g**

Maximum value of SAR (measured) = 1.07 W/kg



0 dB = 1.07 W/kg

### 71 WLAN2.4G\_802.11b\_Front\_1cm\_Ch1

Communication System: UID 0, WIFI (0); Frequency: 2412 MHz; Duty Cycle: 1:1  
Medium: MSL\_2450\_131118 Medium parameters used:  $f = 2412$  MHz;  $\sigma = 1.899$  S/m;  $\epsilon_r = 51.803$ ;  
 $\rho = 1000$  kg/m<sup>3</sup>  
Ambient Temperature : 23.6 °C; Liquid Temperature : 22.7 °C

#### DASY5 Configuration:

- Probe: EX3DV4 - SN3819; ConvF(7.21, 7.21, 7.21); Calibrated: 2012.11.26;
- Sensor-Surface: 2mm (Mechanical Surface Detection)
- Electronics: DAE4 Sn1303; Calibrated: 2012.11.22
- Phantom: SAM1; Type: QD000P40CD; Serial: TP:1670
- Measurement SW: DASY52, Version 52.8 (7); SEMCAD X Version 14.6.10 (7164)

**Ch1/Area Scan (71x131x1):** Interpolated grid: dx=12mm, dy=12mm

Maximum value of SAR (interpolated) = 0.0284 W/kg

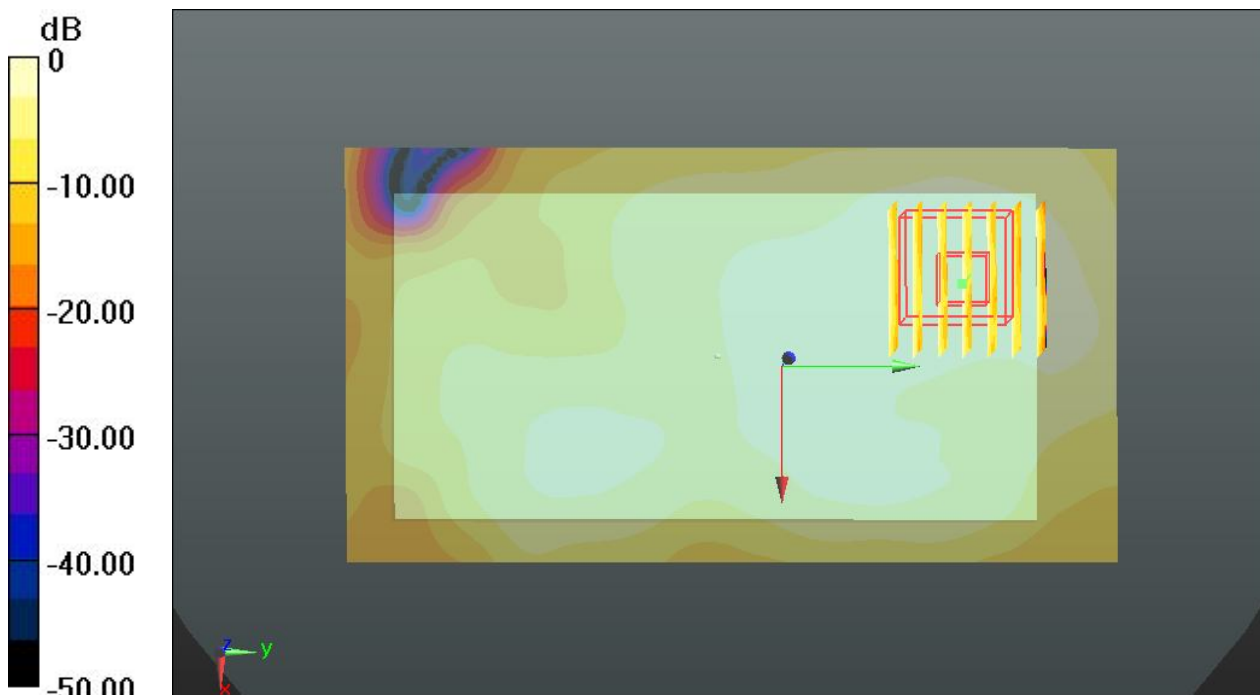
**Ch1/Zoom Scan (7x7x7)/Cube 0:** Measurement grid: dx=5mm, dy=5mm, dz=5mm

Reference Value = 3.824 V/m; Power Drift = -0.05 dB

Peak SAR (extrapolated) = 0.0410 W/kg

**SAR(1 g) = 0.021 W/kg; SAR(10 g) = 0.012 W/kg**

Maximum value of SAR (measured) = 0.0304 W/kg



0 dB = 0.0304 W/kg

### 72 WLAN2.4G\_802.11b\_Back\_1cm\_Ch1

Communication System: UID 0, WIFI (0); Frequency: 2412 MHz; Duty Cycle: 1:1  
Medium: MSL\_2450\_131118 Medium parameters used:  $f = 2412$  MHz;  $\sigma = 1.899$  S/m;  $\epsilon_r = 51.803$ ;  
 $\rho = 1000$  kg/m<sup>3</sup>  
Ambient Temperature : 23.6 °C; Liquid Temperature : 22.7 °C

#### DASY5 Configuration:

- Probe: EX3DV4 - SN3819; ConvF(7.21, 7.21, 7.21); Calibrated: 2012.11.26;
- Sensor-Surface: 2mm (Mechanical Surface Detection)
- Electronics: DAE4 Sn1303; Calibrated: 2012.11.22
- Phantom: SAM1; Type: QD000P40CD; Serial: TP:1670
- Measurement SW: DASY52, Version 52.8 (7); SEMCAD X Version 14.6.10 (7164)

#### Ch1/Area Scan (71x131x1): Interpolated grid: dx=12mm, dy=12mm

Maximum value of SAR (interpolated) = 0.182 W/kg

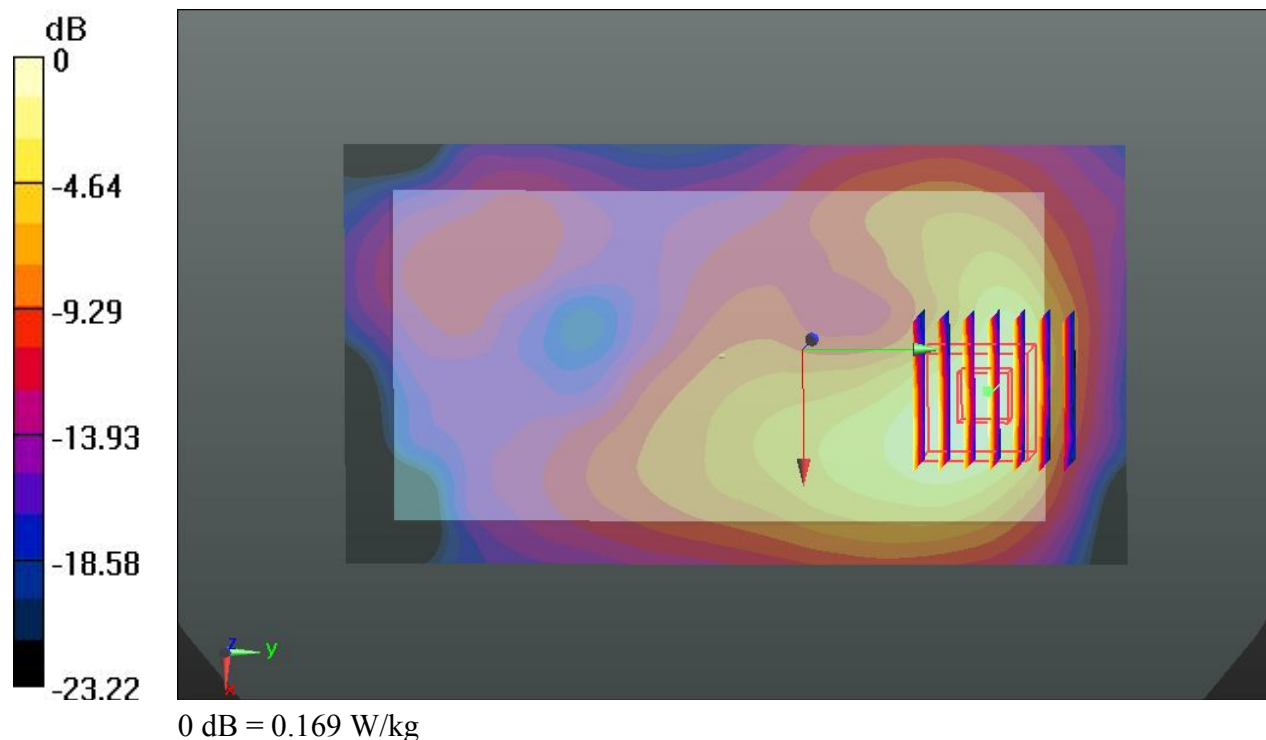
#### Ch1/Zoom Scan (7x7x7)/Cube 0: Measurement grid: dx=5mm, dy=5mm, dz=5mm

Reference Value = 9.519 V/m; Power Drift = 0.07 dB

Peak SAR (extrapolated) = 0.240 W/kg

**SAR(1 g) = 0.110 W/kg; SAR(10 g) = 0.052 W/kg**

Maximum value of SAR (measured) = 0.169 W/kg



### 73 WLAN2.4G\_802.11b\_Right Side\_1cm\_Ch1

Communication System: UID 0, WIFI (0); Frequency: 2412 MHz; Duty Cycle: 1:1  
Medium: MSL\_2450\_131118 Medium parameters used:  $f = 2412$  MHz;  $\sigma = 1.899$  S/m;  $\epsilon_r = 51.803$ ;  
 $\rho = 1000$  kg/m<sup>3</sup>  
Ambient Temperature : 23.6 °C; Liquid Temperature : 22.7 °C

#### DASY5 Configuration:

- Probe: EX3DV4 - SN3819; ConvF(7.21, 7.21, 7.21); Calibrated: 2012.11.26;
- Sensor-Surface: 2mm (Mechanical Surface Detection)
- Electronics: DAE4 Sn1303; Calibrated: 2012.11.22
- Phantom: SAM1; Type: QD000P40CD; Serial: TP:1670
- Measurement SW: DASY52, Version 52.8 (7); SEMCAD X Version 14.6.10 (7164)

#### Ch1/Area Scan (41x121x1): Interpolated grid: dx=12mm, dy=12mm

Maximum value of SAR (interpolated) = 0.0456 W/kg

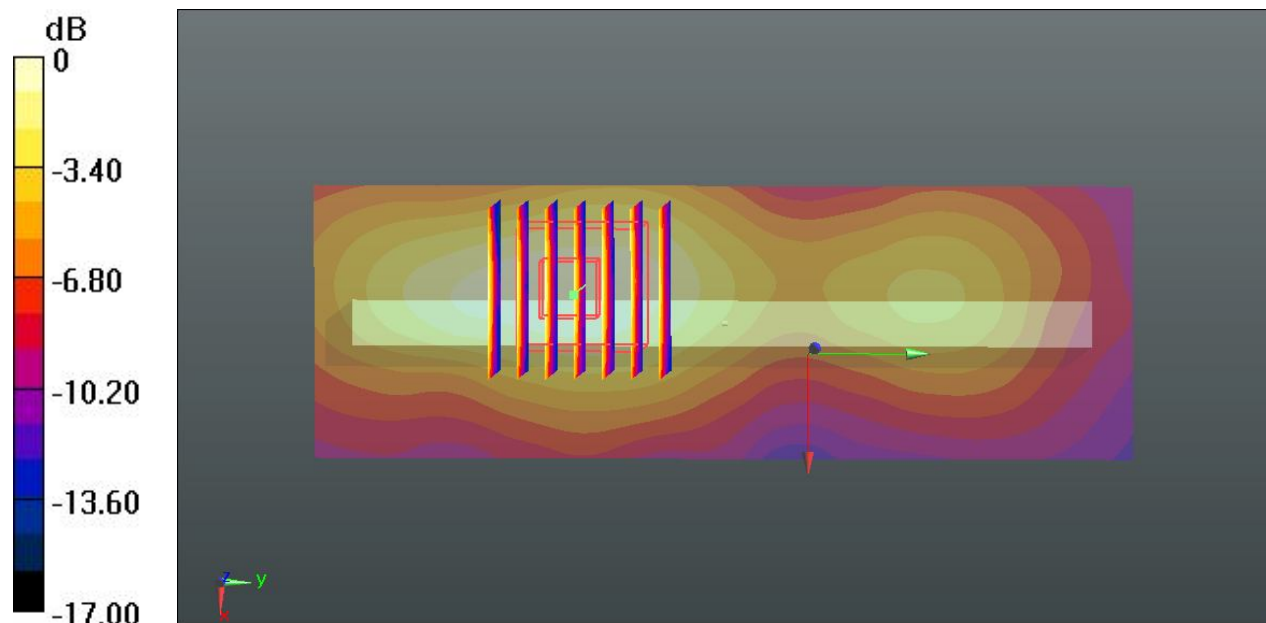
#### Ch1/Zoom Scan (7x7x7)/Cube 0: Measurement grid: dx=5mm, dy=5mm, dz=5mm

Reference Value = 4.895 V/m; Power Drift = -0.09 dB

Peak SAR (extrapolated) = 0.0680 W/kg

**SAR(1 g) = 0.033 W/kg; SAR(10 g) = 0.018 W/kg**

Maximum value of SAR (measured) = 0.0499 W/kg



0 dB = 0.0499 W/kg

### 74 WLAN2.4G\_802.11b\_Top Side\_1cm\_Ch1

Communication System: UID 0, WIFI (0); Frequency: 2412 MHz; Duty Cycle: 1:1  
Medium: MSL\_2450\_131118 Medium parameters used:  $f = 2412$  MHz;  $\sigma = 1.899$  S/m;  $\epsilon_r = 51.803$ ;  
 $\rho = 1000$  kg/m<sup>3</sup>  
Ambient Temperature : 23.6 °C; Liquid Temperature : 22.7 °C

#### DASY5 Configuration:

- Probe: EX3DV4 - SN3819; ConvF(7.21, 7.21, 7.21); Calibrated: 2012.11.26;
- Sensor-Surface: 2mm (Mechanical Surface Detection)
- Electronics: DAE4 Sn1303; Calibrated: 2012.11.22
- Phantom: SAM1; Type: QD000P40CD; Serial: TP:1670
- Measurement SW: DASY52, Version 52.8 (7); SEMCAD X Version 14.6.10 (7164)

**Ch1/Area Scan (51x91x1):** Interpolated grid: dx=12mm, dy=12mm

Maximum value of SAR (interpolated) = 0.166 W/kg

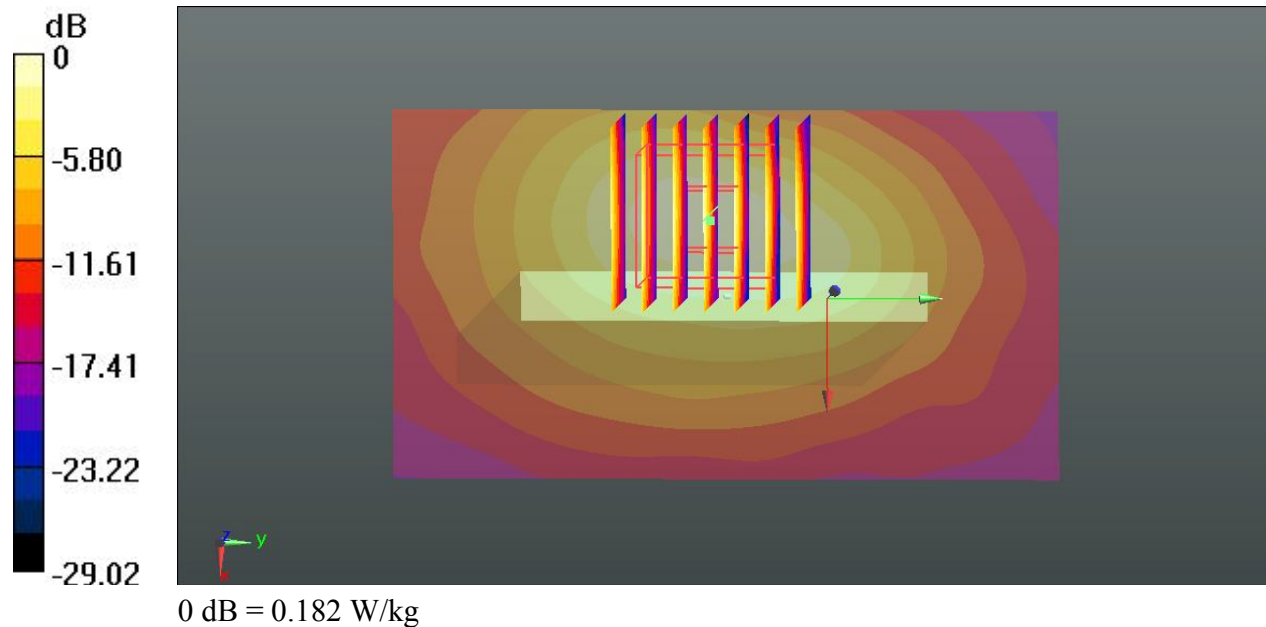
**Ch1/Zoom Scan (7x7x7)/Cube 0:** Measurement grid: dx=5mm, dy=5mm, dz=5mm

Reference Value = 9.845 V/m; Power Drift = -0.08 dB

Peak SAR (extrapolated) = 0.256 W/kg

**SAR(1 g) = 0.114 W/kg; SAR(10 g) = 0.052 W/kg**

Maximum value of SAR (measured) = 0.182 W/kg



### 81 BT\_DH5\_Front\_1cm\_Ch0

Communication System: UID 0, Bluetooth (0); Frequency: 2402 MHz; Duty Cycle: 1:1.303  
Medium: MSL\_2450\_131118 Medium parameters used:  $f = 2402$  MHz;  $\sigma = 1.885$  S/m;  $\epsilon_r = 51.834$ ;  
 $\rho = 1000$  kg/m<sup>3</sup>  
Ambient Temperature : 23.6 °C; Liquid Temperature : 22.7 °C

#### DASY5 Configuration:

- Probe: EX3DV4 - SN3819; ConvF(7.21, 7.21, 7.21); Calibrated: 2012.11.26;
- Sensor-Surface: 2mm (Mechanical Surface Detection)
- Electronics: DAE4 Sn1303; Calibrated: 2012.11.22
- Phantom: SAM1; Type: QD000P40CD; Serial: TP:1670
- Measurement SW: DASY52, Version 52.8 (7); SEMCAD X Version 14.6.10 (7164)

#### Ch0/Area Scan (71x131x1): Interpolated grid: dx=12mm, dy=12mm

Maximum value of SAR (interpolated) = 0.0150 W/kg

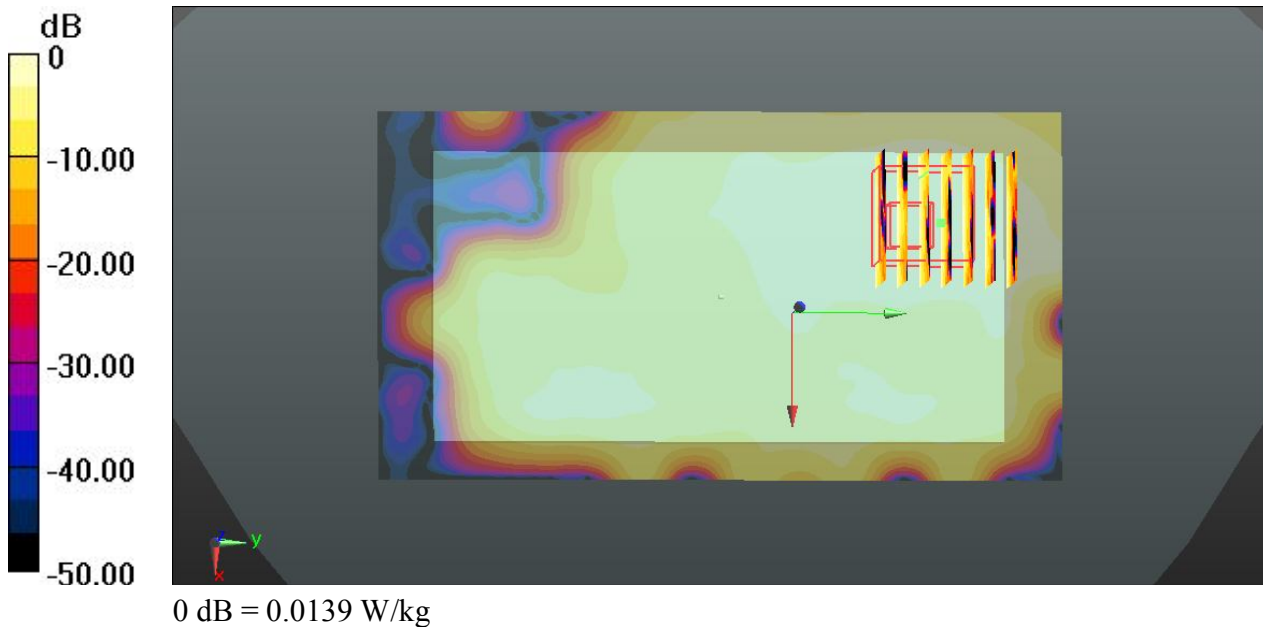
#### Ch0/Zoom Scan (7x7x7)/Cube 0: Measurement grid: dx=5mm, dy=5mm, dz=5mm

Reference Value = 2.600 V/m; Power Drift = 0.03 dB

Peak SAR (extrapolated) = 0.0220 W/kg

**SAR(1 g) = 0.00899 W/kg; SAR(10 g) = 0.00466 W/kg**

Maximum value of SAR (measured) = 0.0139 W/kg



### 82 BT\_DH5\_Back\_1cm\_Ch0

Communication System: UID 0, Bluetooth (0); Frequency: 2402 MHz; Duty Cycle: 1:1.303  
Medium: MSL\_2450\_131118 Medium parameters used:  $f = 2402$  MHz;  $\sigma = 1.885$  S/m;  $\epsilon_r = 51.834$ ;  
 $\rho = 1000$  kg/m<sup>3</sup>  
Ambient Temperature : 23.6 °C; Liquid Temperature : 22.7 °C

#### DASY5 Configuration:

- Probe: EX3DV4 - SN3819; ConvF(7.21, 7.21, 7.21); Calibrated: 2012.11.26;
- Sensor-Surface: 2mm (Mechanical Surface Detection)
- Electronics: DAE4 Sn1303; Calibrated: 2012.11.22
- Phantom: SAM1; Type: QD000P40CD; Serial: TP:1670
- Measurement SW: DASY52, Version 52.8 (7); SEMCAD X Version 14.6.10 (7164)

**Ch0/Area Scan (71x131x1):** Interpolated grid: dx=12mm, dy=12mm

Maximum value of SAR (interpolated) = 0.140 W/kg

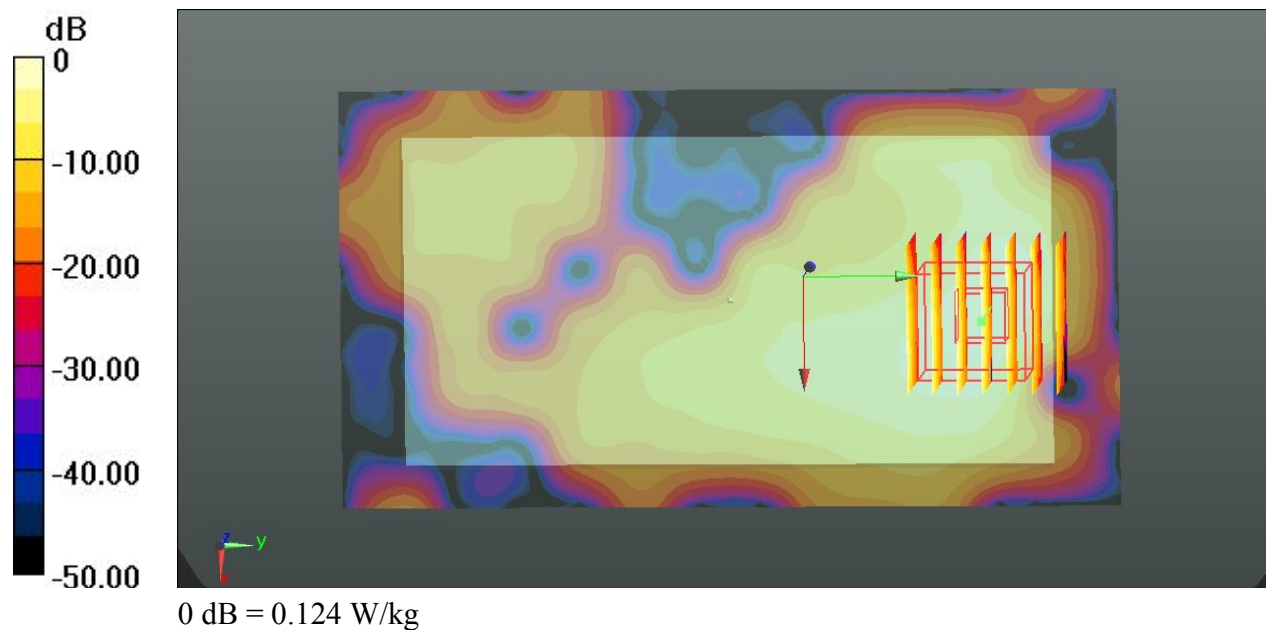
**Ch0/Zoom Scan (7x7x7)/Cube 0:** Measurement grid: dx=5mm, dy=5mm, dz=5mm

Reference Value = 8.191 V/m; Power Drift = -0.05 dB

Peak SAR (extrapolated) = 0.180 W/kg

**SAR(1 g) = 0.078 W/kg; SAR(10 g) = 0.035 W/kg**

Maximum value of SAR (measured) = 0.124 W/kg



### 83 BT\_DH5\_Right Side\_1cm\_Ch0

Communication System: UID 0, Bluetooth (0); Frequency: 2402 MHz; Duty Cycle: 1:1.303  
Medium: MSL\_2450\_131118 Medium parameters used:  $f = 2402$  MHz;  $\sigma = 1.885$  S/m;  $\epsilon_r = 51.834$ ;  
 $\rho = 1000$  kg/m<sup>3</sup>  
Ambient Temperature : 23.6 °C; Liquid Temperature : 22.7 °C

#### DASY5 Configuration:

- Probe: EX3DV4 - SN3819; ConvF(7.21, 7.21, 7.21); Calibrated: 2012.11.26;
- Sensor-Surface: 2mm (Mechanical Surface Detection)
- Electronics: DAE4 Sn1303; Calibrated: 2012.11.22
- Phantom: SAM1; Type: QD000P40CD; Serial: TP:1670
- Measurement SW: DASY52, Version 52.8 (7); SEMCAD X Version 14.6.10 (7164)

**Ch0/Area Scan (41x121x1):** Interpolated grid: dx=12mm, dy=12mm

Maximum value of SAR (interpolated) = 0.0143 W/kg

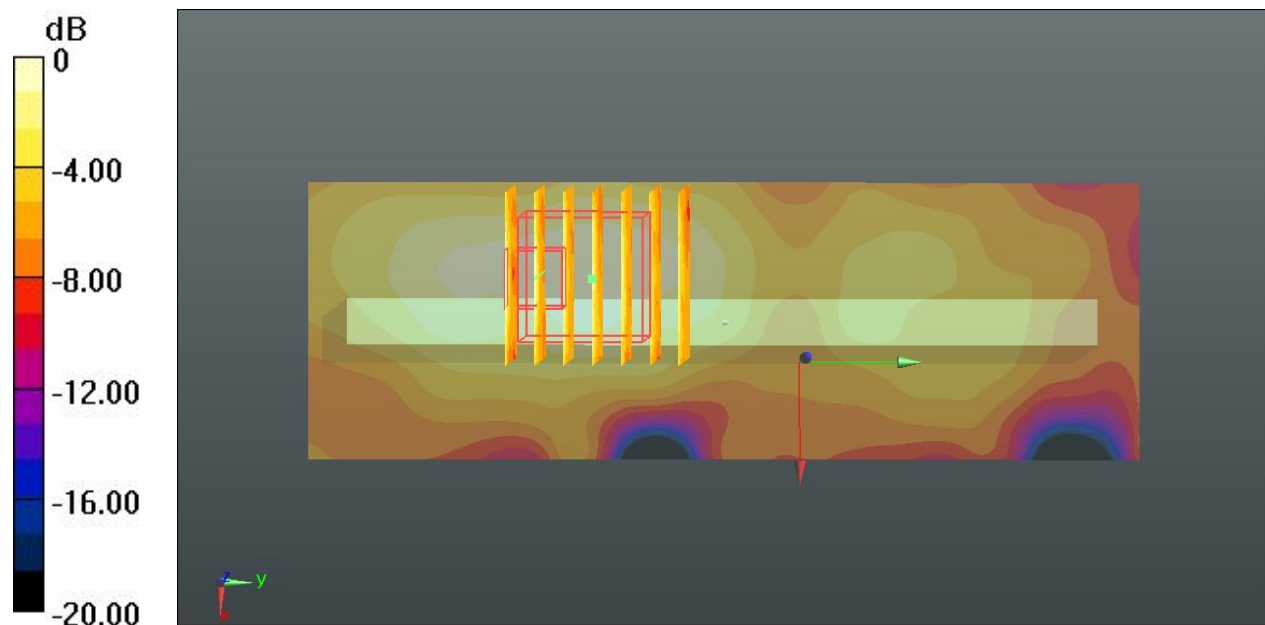
**Ch0/Zoom Scan (7x7x7)/Cube 0:** Measurement grid: dx=5mm, dy=5mm, dz=5mm

Reference Value = 2.724 V/m; Power Drift = -0.10 dB

Peak SAR (extrapolated) = 0.0270 W/kg

**SAR(1 g) = 0.000918 W/kg; SAR(10 g) = 0.00441 W/kg**

Maximum value of SAR (measured) = 0.0144 W/kg



0 dB = 0.0144 W/kg

### 84 BT\_DH5\_Top Side\_1cm\_Ch0

Communication System: UID 0, Bluetooth (0); Frequency: 2402 MHz; Duty Cycle: 1:1.303  
Medium: MSL\_2450\_131118 Medium parameters used:  $f = 2402$  MHz;  $\sigma = 1.885$  S/m;  $\epsilon_r = 51.834$ ;  
 $\rho = 1000$  kg/m<sup>3</sup>  
Ambient Temperature : 23.6 °C; Liquid Temperature : 22.7 °C

#### DASY5 Configuration:

- Probe: EX3DV4 - SN3819; ConvF(7.21, 7.21, 7.21); Calibrated: 2012.11.26;
- Sensor-Surface: 2mm (Mechanical Surface Detection)
- Electronics: DAE4 Sn1303; Calibrated: 2012.11.22
- Phantom: SAM1; Type: QD000P40CD; Serial: TP:1670
- Measurement SW: DASY52, Version 52.8 (7); SEMCAD X Version 14.6.10 (7164)

**Ch0/Area Scan (51x81x1):** Interpolated grid: dx=12mm, dy=12mm

Maximum value of SAR (interpolated) = 0.0368 W/kg

**Ch0/Zoom Scan (7x7x7)/Cube 0:** Measurement grid: dx=5mm, dy=5mm, dz=5mm

Reference Value = 4.602 V/m; Power Drift = -0.05 dB

Peak SAR (extrapolated) = 0.0590 W/kg

**SAR(1 g) = 0.027 W/kg; SAR(10 g) = 0.012 W/kg**

Maximum value of SAR (measured) = 0.0415 W/kg

