



SAR EVALUATION REPORT

FCC 47 CFR § 2.1093
IEEE Std 1528-2013

For
GSM/WCDMA/LTE Phone + BT/BLE, DTS b/g/n and ANT+

FCC ID: A3LSMG1600
Model Name: SM-G1600

Report Number: 16K23557-S1V2
Issue Date: 6/28/2016

Prepared for
SAMSUNG ELECTRONICS CO., LTD.
129 SAMSUNG-RO, YEONGTONG-GU, SUWON-SI,
GYEONGGI-DO, 443-742, KOREA

Prepared by
UL Korea, Ltd. Suwon Laboratory
218 Maeyeong-ro, Yeongtong-gu,
Suwon-si, Gyeonggi-do, 443-823, Korea
TEL: (031) 337-9902
FAX: (031) 213-5433



TL-637

Revision History

Rev.	Date	Revisions	Revised By
V1	6/24/2016	Initial Issue	Sunghoon Kim
V2	6/28/2016	Sec 7. Added notes	Sunghoon Kim

Table of Contents

1.	Attestation of Test Results	5
2.	Test Specification, Methods and Procedures.....	6
3.	Facilities and Accreditation	6
4.	SAR Measurement System & Test Equipment	7
4.1.	<i>SAR Measurement System.....</i>	<i>7</i>
4.2.	<i>SAR Scan Procedures</i>	<i>8</i>
4.3.	<i>Test Equipment.....</i>	<i>10</i>
5.	Measurement Uncertainty.....	10
6.	Device Under Test (DUT) Information	11
6.1.	<i>DUT Description</i>	<i>11</i>
6.2.	<i>Wireless Technologies.....</i>	<i>11</i>
6.3.	<i>Nominal and Maximum Output Power.....</i>	<i>12</i>
6.1.	<i>General LTE SAR Test and Reporting Considerations.....</i>	<i>13</i>
6.2.	<i>LTE (TDD) Considerations.....</i>	<i>14</i>
7.	RF Exposure Conditions (Test Configurations)	15
8.	Dielectric Property Measurements & System Check	16
8.1.	<i>Dielectric Property Measurements</i>	<i>16</i>
8.2.	<i>System Check.....</i>	<i>19</i>
9.	Conducted Output Power Measurements.....	21
9.1.	<i>GSM</i>	<i>21</i>
9.2.	<i>W-CDMA</i>	<i>23</i>
9.3.	<i>LTE.....</i>	<i>28</i>
9.4.	<i>Wi-Fi 2.4GHz (DTS Band)</i>	<i>35</i>
9.5.	<i>Bluetooth</i>	<i>35</i>
10.	Measured and Reported (Scaled) SAR Results.....	36
10.1.	<i>GSM850.....</i>	<i>38</i>
10.2.	<i>GSM1900.....</i>	<i>38</i>
10.3.	<i>W-CDMA Band II.....</i>	<i>39</i>
10.4.	<i>W-CDMA Band V</i>	<i>39</i>
10.5.	<i>LTE Band 5 (10MHz Bandwidth)</i>	<i>39</i>
10.6.	<i>LTE Band 41 (20MHz Bandwidth)</i>	<i>40</i>
10.7.	<i>Wi-Fi (DTS Band).....</i>	<i>40</i>
10.8.	<i>Bluetooth.....</i>	<i>41</i>

11. SAR Measurement Variability..... 42

12. Simultaneous Transmission SAR Analysis..... 43

 12.1. Sum of the SAR for WWAN & Wi-Fi & BT..... 44

Appendixes 45

 16K23557-S1V2 FCC Report SAR_App A_Photos & Ant. Locations..... 45

 16K23557-S1V2 FCC Report SAR_App B_Highest SAR Test Plots..... 45


 16K23557-S1V2 FCC Report SAR_App C_System Check Plots..... 45

 16K23557-S1V2 FCC Report SAR_App D_SAR Tissue Ingredients 45

 16K23557-S1V2 FCC Report SAR_App E_Probe Cal. Certificates 45

 16K23557-S1V2 FCC Report SAR_App F_Dipole Cal. Certificates..... 45

1. Attestation of Test Results

Applicant Name		SAMSUNG ELECTRONICS CO.,LTD.			
FCC ID		A3LSMG1600			
Model Name		SM-G1600			
Applicable Standards		FCC 47 CFR § 2.1093 Published RF exposure KDB procedures IEEE Std 1528-2013			
SAR Limits (W/Kg)					
Exposure Category		Peak spatial-average(1g of tissue)			
General population / Uncontrolled exposure		1.6			
The Highest Reported SAR (W/kg)					
RF Exposure Conditions		Equipment Class			
		Licensed	DTS	U-NII	DSS (BT)
Head		0.365	0.064	N/A	N/A
Body-worn*		0.914	0.162		
Hotspot/Wi-Fi Direct					
Simultaneous TX	Head	0.429		N/A	N/A
	Body-worn*	1.076			
	Hotspot/ Wi-Fi Direct				
<p>*Note: The Body-worn minimum separation distance is 15 mm. To cover both body-worn and hotspot RF exposure conditions testing was performed at a separation distance of 10 mm.</p>					
Date Tested		6/1/2016 to 6/22/2016			
Test Results		Pass			
<p>UL Korea, Ltd. tested the above equipment in accordance with the requirements set forth in the above standards. All indications of Pass/Fail in this report are opinions expressed by UL Korea, Ltd. based on interpretations and/or observations of test results. Measurement Uncertainties were not taken into account and are published for informational purposes only. The test results show that the equipment tested is capable of demonstrating compliance with the requirements as documented in this report.</p> <p>Note: The results documented in this report apply only to the tested sample, under the conditions and modes of operation as described herein. This document may not be altered or revised in any way unless done so by UL Korea, Ltd. and all revisions are duly noted in the revisions section. Any alteration of this document not carried out by UL Korea, Ltd. will constitute fraud and shall nullify the document. This report must not be used by the client to claim product certification, approval, or endorsement by IAS, any agency of the Federal Government, or any agency of any government.</p>					
Approved & Released By:			Prepared By:		
					
Justin Park Senior Engineer UL Korea, Ltd. Suwon Laboratory			Sunghoon Kim Laboratory Engineer UL Korea, Ltd. Suwon Laboratory		

2. Test Specification, Methods and Procedures

The tests documented in this report were performed in accordance with FCC 47 CFR § 2.1093, IEEE STD 1528-2013, the following FCC Published RF exposure [KDB](#) procedures:

- 248227 D01 802.11 Wi-Fi SAR v02r02
- 447498 D01 General RF Exposure Guidance v06
- 648474 D04 Handset SAR v01r03
- 690783 D01 SAR Listings on Grants v01r03
- 865664 D01 SAR measurement 100 MHz to 6 GHz v01r04
- 865664 D02 RF Exposure Reporting v01r02
- 941225 D01 3G SAR Procedures v03r01
- 941225 D05 SAR for LTE Devices v02r05
- 941225 D06 Hotspot Mode v02r01

3. Facilities and Accreditation

The test sites and measurement facilities used to collect data are located at

Suwon
SAR 1 Room
SAR 2 Room
SAR 3 Room

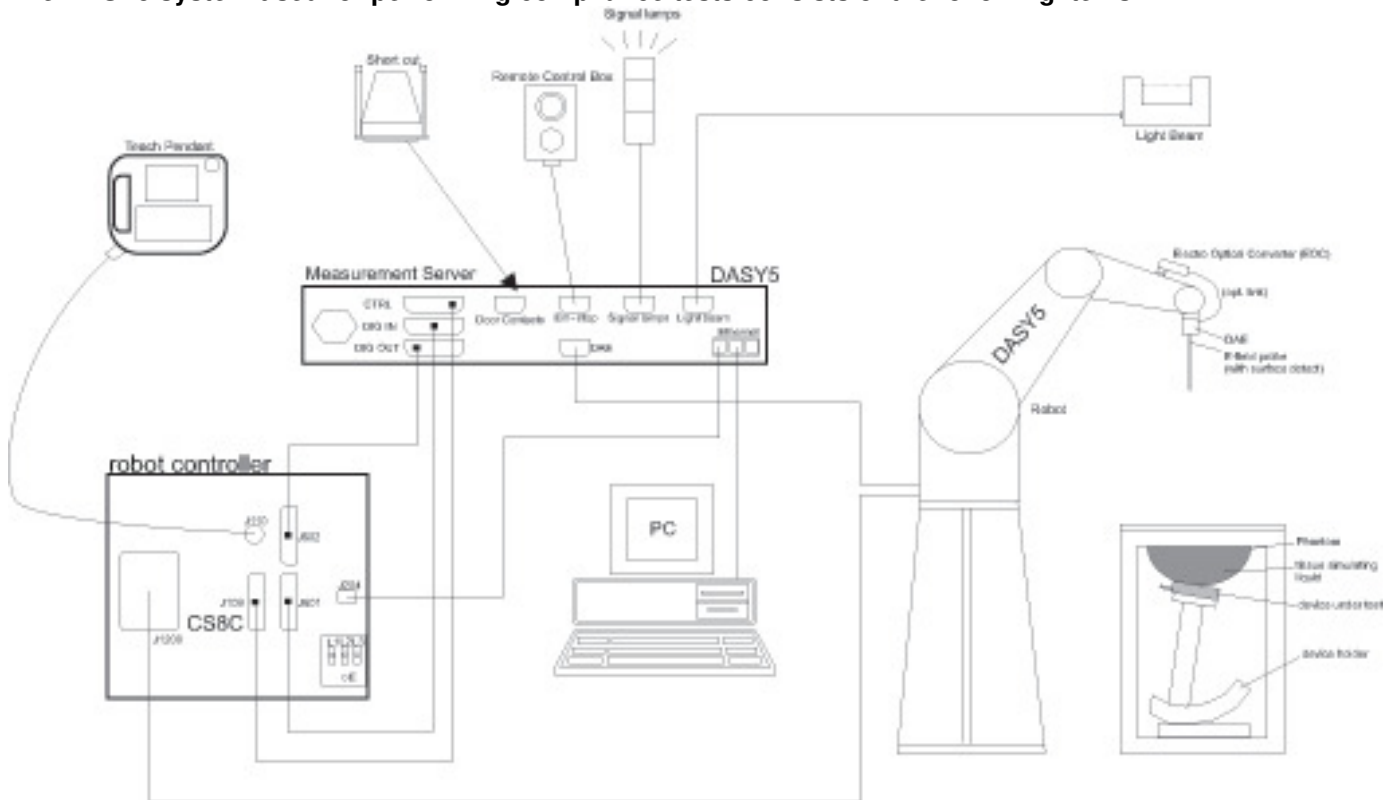
UL Korea, Ltd. is accredited by IAS, Laboratory Code TL-637.

The full scope of accreditation can be viewed at <http://www.iasonline.org/PDF/TL/TL-637.pdf>.

4. SAR Measurement System & Test Equipment

4.1. SAR Measurement System

The DASY5 system used for performing compliance tests consists of the following items:



- A standard high precision 6-axis robot with controller, teach pendant and software. An arm extension for accommodating the data acquisition electronics (DAE).
- An isotropic Field probe optimized and calibrated for the targeted measurement.
- A data acquisition electronics (DAE) which performs the signal amplification, signal multiplexing, AD-conversion, offset measurements, mechanical surface detection, collision detection, etc. The unit is battery powered with standard or rechargeable batteries. The signal is optically transmitted to the EOC.
- The Electro-optical converter (EOC) performs the conversion from optical to electrical signals for the digital communication to the DAE. To use optical surface detection, a special version of the EOC is required. The EOC signal is transmitted to the measurement server.
- The function of the measurement server is to perform the time critical tasks such as signal filtering, control of the robot operation and fast movement interrupts.
- The Light Beam used is for probe alignment. This improves the (absolute) accuracy of the probe positioning.
- A computer running WinXP or Win7 and the DASY5 software.
- Remote control and teach pendant as well as additional circuitry for robot safety such as warning lamps, etc.
- The phantom, the device holder and other accessories according to the targeted measurement.

4.2. SAR Scan Procedures

Step 1: Power Reference Measurement

The Power Reference Measurement and Power Drift Measurements are for monitoring the power drift of the device under test in the batch process. The minimum distance of probe sensors to surface determines the closest measurement point to phantom surface. The minimum distance of probe sensors to surface is 2.1 mm. This distance cannot be smaller than the distance of sensor calibration points to probe tip as defined in the probe properties.

Step 2: Area Scan

The Area Scan is used as a fast scan in two dimensions to find the area of high field values, before doing a fine measurement around the hot spot. The sophisticated interpolation routines implemented in DASY software can find the maximum locations even in relatively coarse grids. When an Area Scan has measured all reachable points, it computes the field maximal found in the scanned area, within a range of the global maximum. The range (in dB) is specified in the standards for compliance testing. For example, a 2 dB range is required in IEEE Standard 1528 and IEC 62209 standards, whereby 3 dB is a requirement when compliance is assessed in accordance with the ARIB standard (Japan). If only one Zoom Scan follows the Area Scan, then only the absolute maximum will be taken as reference. For cases where multiple maximums are detected, the number of Zoom Scans has to be increased accordingly.

Area Scan Parameters extracted from KDB 865664 D01 SAR Measurement 100 MHz to 6 GHz

	≤ 3 GHz	> 3 GHz
Maximum distance from closest measurement point (geometric center of probe sensors) to phantom surface	5 ± 1 mm	$\frac{1}{2} \cdot \delta \cdot \ln(2) \pm 0.5$ mm
Maximum probe angle from probe axis to phantom surface normal at the measurement location	$30^\circ \pm 1^\circ$	$20^\circ \pm 1^\circ$
Maximum area scan spatial resolution: Δx_{Area} , Δy_{Area}	≤ 2 GHz: ≤ 15 mm 2 – 3 GHz: ≤ 12 mm	3 – 4 GHz: ≤ 12 mm 4 – 6 GHz: ≤ 10 mm
	When the x or y dimension of the test device, in the measurement plane orientation, is smaller than the above, the measurement resolution must be \leq the corresponding x or y dimension of the test device with at least one measurement point on the test device.	

Step 3: Zoom Scan

Zoom Scans are used to assess the peak spatial SAR values within a cubic averaging volume containing 1 g and 10 g of simulated tissue. The Zoom Scan measures points (refer to table below) within a cube whose base faces are centered on the maxima found in a preceding area scan job within the same procedure. When the measurement is done, the Zoom Scan evaluates the averaged SAR for 1 g and 10 g and displays these values next to the job's label.

Zoom Scan Parameters extracted from KDB 865664 D01 SAR Measurement 100 MHz to 6 GHz

		≤ 3 GHz	> 3 GHz	
Maximum zoom scan spatial resolution: $\Delta x_{Zoom}, \Delta y_{Zoom}$		≤ 2 GHz: ≤ 8 mm 2 – 3 GHz: ≤ 5 mm *	3 – 4 GHz: ≤ 5 mm* 4 – 6 GHz: ≤ 4 mm*	
Maximum zoom scan spatial resolution, normal to phantom surface	uniform grid: $\Delta z_{Zoom}(n)$	≤ 5 mm	3 – 4 GHz: ≤ 4 mm 4 – 5 GHz: ≤ 3 mm 5 – 6 GHz: ≤ 2 mm	
	graded grid	$\Delta z_{Zoom}(1)$: between 1 st two points closest to phantom surface	≤ 4 mm	3 – 4 GHz: ≤ 3 mm 4 – 5 GHz: ≤ 2.5 mm 5 – 6 GHz: ≤ 2 mm
		$\Delta z_{Zoom}(n>1)$: between subsequent points	$\leq 1.5 \cdot \Delta z_{Zoom}(n-1)$	
Minimum zoom scan volume	x, y, z	≥ 30 mm	3 – 4 GHz: ≥ 28 mm 4 – 5 GHz: ≥ 25 mm 5 – 6 GHz: ≥ 22 mm	
Note: δ is the penetration depth of a plane-wave at normal incidence to the tissue medium; see draft standard IEEE P1528-2011 for details.				
* When zoom scan is required and the <i>reported</i> SAR from the area scan based <i>1-g SAR estimation</i> procedures of KDB 447498 is ≤ 1.4 W/kg, ≤ 8 mm, ≤ 7 mm and ≤ 5 mm zoom scan resolution may be applied, respectively, for 2 GHz to 3 GHz, 3 GHz to 4 GHz and 4 GHz to 6 GHz.				

Step 4: Power drift measurement

The Power Drift Measurement measures the field at the same location as the most recent power reference measurement within the same procedure, and with the same settings. The Power Drift Measurement gives the field difference in dB from the reading conducted within the last Power Reference Measurement. This allows a user to monitor the power drift of the device under test within a batch process. The measurement procedure is the same as Step 1.

Step 5: Z-Scan (FCC only)

The Z Scan measures points along a vertical straight line. The line runs along the Z-axis of a one-dimensional grid. In order to get a reasonable extrapolation the extrapolated distance should not be larger than the step size in Z-direction.

4.3. Test Equipment

The measuring equipment used to perform the tests documented in this report has been calibrated in accordance with the manufacturers' recommendations, and is traceable to recognized national standards.

Dielectric Property Measurements

Name of Equipment	Manufacturer	Type/Model	Serial No.	Cal. Due Date
Network Analyzer	Agilent	E5071C	MY46522054	8-18-2016
Dielectric Assessment Kit	SPEAG	DAK-3.5	1196	8-4-2016
Shorting block	SPEAG	DAK-3.5 Short	SM DAK 200 BA	N/A
Thermometer	LKM	DTM3000	3424	8-19-2016
Thermometer	Lutron	MHB-382SD	AH.91478	8-12-2016

System Check

Name of Equipment	Manufacturer	Type/Model	Serial No.	Cal. Due Date
MXG Analog Signal Generator	Agilent	N5181A	MY50145882	8-18-2016
Power Sensor	Agilent	U2000A	MY54260010	8-18-2016
Power Sensor	Agilent	U2000A	MY54260007	8-18-2016
Power Amplifier	EXODUS	1410025-AMP2027-10003	10003	8-18-2016
Directional Coupler	Agilent	772D	MY52180193	8-18-2016
Directional Coupler	Agilent	778D	MY52180432	8-18-2016
Low Pass Filter	MICROLAB	LA-15N	03943	8-18-2016
Low Pass Filter	FILTRON	L14012FL	1410003S	8-18-2016
Attenuator	Agilent	8491B/003	MY39269292	8-18-2016
Attenuator	Agilent	8491B/010	MY39269315	8-18-2016
Attenuator	Agilent	8491B/020	MY39269298	8-18-2016
E-Field Probe (SAR1)	SPEAG	EX3DV4	7314	9-25-2016
E-Field Probe (SAR2)	SPEAG	EX3DV4	7376	9-2-2016
E-Field Probe (SAR3)	SPEAG	EX3DV4	7313	12-30-2016
Data Acquisition Electronics (SAR1)	SPEAG	DAE4	1447	9-23-2016
Data Acquisition Electronics (SAR2)	SPEAG	DAE4	1468	9-15-2016
Data Acquisition Electronics (SAR3)	SPEAG	DAE4	1494	11-11-2016
System Validation Dipole	SPEAG	D835V2	4d194	9-17-2016
System Validation Dipole	SPEAG	D1900V2	5d199	2-19-2017
System Validation Dipole	SPEAG	D2450V2	939	9-28-2016
System Validation Dipole	SPEAG	D2600V2	1097	11-18-2016
Thermometer (SAR1)	Lutron	MHB-382SD	AH.91463	8-12-2016
Thermometer (SAR2)	Lutron	MHB-382SD	AH.50215	8-19-2016
Thermometer (SAR3)	Lutron	MHB-382SD	AH.50213	8-24-2016

Others

Name of Equipment	Manufacturer	Type/Model	Serial No.	Cal. Due Date
Base Station Simulator	R & S	CMW500	150313	8-18-2016
Base Station Simulator	R & S	CMW500	150314	8-18-2016

5. Measurement Uncertainty

Per KDB 865664 D01 SAR Measurement 100 MHz to 6 GHz, when the highest measured 1-g SAR within a frequency band is < 1.5 W/kg, the extensive SAR measurement uncertainty analysis described in IEEE Std 1528-2013 is not required in SAR reports submitted for equipment approval.

6. Device Under Test (DUT) Information

6.1. DUT Description

Device Dimension	LCD section Overall (Length x Width): 122.02 mm x 60.14 mm Overall Diagonal: 127.6 mm Display Diagonal: 97.6 mm	Key pad section Overall (Length x Width): 122.02 mm x 60.14 mm Overall Diagonal: 127.6 mm												
Back Cover	<input checked="" type="checkbox"/> Normal Battery Cover <input type="checkbox"/> Normal Battery Cover with NFC <input type="checkbox"/> Wireless Charger Battery Cover <input type="checkbox"/> Wireless Charger Battery Cover with NFC <input type="checkbox"/> The rechargeable battery is not user accessible.													
Battery Options	<input checked="" type="checkbox"/> Standard – Lithium-ion battery, Rating 3.8 Vdc, 6.84 Wh <input type="checkbox"/> Extended (large capacity) <input type="checkbox"/> The rechargeable battery is not user accessible.													
Wireless Router (Hotspot)	Wi-Fi Hotspot mode permits the device to share its cellular data connection with other Wi-Fi-enabled devices. <input checked="" type="checkbox"/> Mobile Hotspot (Wi-Fi 2.4 GHz)													
Wi-Fi Direct	Wi-Fi Direct enabled devices transfer data directly between each other <input checked="" type="checkbox"/> Wi-Fi Direct (Wi-Fi 2.4 GHz)													
Test sample information	<table border="1"> <thead> <tr> <th>No.</th> <th>S/N</th> <th>Notes</th> </tr> </thead> <tbody> <tr> <td>1</td> <td>R38H50RX0EN</td> <td>Main CONDUCTED, SAR</td> </tr> <tr> <td>2</td> <td>R38H50RX01L</td> <td>Main CONDUCTED, SAR</td> </tr> <tr> <td>3</td> <td>R38H50RX09F</td> <td>Wi-Fi CONDUCTED</td> </tr> </tbody> </table>		No.	S/N	Notes	1	R38H50RX0EN	Main CONDUCTED, SAR	2	R38H50RX01L	Main CONDUCTED, SAR	3	R38H50RX09F	Wi-Fi CONDUCTED
No.	S/N	Notes												
1	R38H50RX0EN	Main CONDUCTED, SAR												
2	R38H50RX01L	Main CONDUCTED, SAR												
3	R38H50RX09F	Wi-Fi CONDUCTED												

6.2. Wireless Technologies

Wireless technologies	Frequency bands	Operating mode	Duty Cycle used for SAR testing
GSM	850 1900	Voice (GMSK) GPRS (GMSK) EGPRS (8PSK)	GSM Voice: 12.5% (E)GPRS: 1 Slot: 12.5% 2 Slots: 25% 3 Slots: 37.5% 4 Slots: 50%
		GPRS Multi-Slot Class: <input type="checkbox"/> Class 8 - 1 Up, 4 Down <input type="checkbox"/> Class 10 - 2 Up, 4 Down <input type="checkbox"/> Class 12 - 4 Up, 4 Down <input checked="" type="checkbox"/> Class 33 - 4 Up, 5 Down	
Does this device support DTM (Dual Transfer Mode)? <input type="checkbox"/> Yes <input checked="" type="checkbox"/> No			
W-CDMA (UMTS)	Band II Band V	UMTS Rel. 99 (Voice & Data) HSDPA (Release 5) HSUPA (Release 6) DC-HSDPA(Release 8) HSPA+ (Release 7)	100%
LTE	FDD Band 5 TDD Band 41	QPSK 16QAM <input checked="" type="checkbox"/> Rel. 10 Does not support Carrier Aggregation (CA)	100% (FDD) 63.3% (TDD)
		Does this device support SV-LTE (1xRTT-LTE)? <input type="checkbox"/> Yes <input checked="" type="checkbox"/> No	
Wi-Fi	2.4 GHz	802.11b 802.11g 802.11n (HT20)	100%
Bluetooth	2.4 GHz	Version 4.2 LE	N/A

6.3. Nominal and Maximum Output Power

KDB 447498 sec.4.1.(3) at the maximum rated output power and within the tune-up tolerance range specified for the product, but not more than 2 dB lower than the maximum tune-up tolerance limit

Upper limit (dB): -1.5 ~ 0.5		Max. RF Output Power (dBm)	
RF Air interface	Mode	Target	Max. tune-up tolerance limit
			Burst
GSM850	Voice (1 slot)	32.5	31.0
	GPRS 1 slot	32.5	31.0
	GPRS 2 slots	31.0	29.5
	GPRS 3 slots	29.7	28.2
	GPRS 4 slots	28.0	26.5
	EGPRS 1 slot	26.5	25.0
	EGPRS 2 slots	25.0	23.5
	EGPRS 3 slots	23.2	21.7
GSM1900	Voice (1 slot)	29.5	30.0
	GPRS 1 slot	29.5	30.0
	GPRS 2 slots	28.5	29.0
	GPRS 3 slots	25.5	26.0
	GPRS 4 slots	24.0	24.5
	EGPRS 1 slot	25.5	26.0
	EGPRS 2 slots	23.5	24.0
	EGPRS 3 slots	21.5	22.0
W-CDMA Band V	R99	22.8	23.3
	HSDPA	22.8	23.3
	HSUPA	22.8	23.3
	DC-HSDPA	22.8	23.3
W-CDMA Band II	R99	21.0	21.5
	HSDPA	21.0	21.5
	HSUPA	21.0	21.5
	DC-HSDPA	21.0	21.5
LTE Band 5	QPSK, 16QAM	23.3	23.8
LTE Band 41	QPSK, 16QAM	22.9	23.4

Upper limit (dB): 0.5		Max. RF Output Power (dBm)	
RF Air interface	Mode	Target	Max. tune-up tolerance limit
WiFi 2.4 GHz	802.11b	17.0	17.5
	802.11g	14.0	14.5
	802.11n HT20	13.0	13.5
Bluetooth		10.0	10.5
Bluetooth LE		1.0	1.5

6.1. General LTE SAR Test and Reporting Considerations

Item	Description																																												
Frequency range, Channel Bandwidth, Numbers and Frequencies	Band 5	Frequency range: 824 - 849 MHz																																											
		Channel Bandwidth																																											
		20 MHz	15 MHz	10 MHz	5 MHz	3 MHz	1.4 MHz																																						
	Low			20450/ 829	20425/ 826.5	20415/ 825.5	20407/ 824.7																																						
	Mid			20525/ 836.5	20525/ 836.5	20525/ 836.5	20525/ 836.5																																						
	High			20600/ 844	20625/ 846.5	20635/ 847.5	20643/ 848.3																																						
	Band 41	Frequency range: 2555 - 2655 MHz																																											
		Channel Bandwidth																																											
		20 MHz	15 MHz	10 MHz	5 MHz	3 MHz	1.4 MHz																																						
		Low	40340/ 2565	40315/ 2562.5	40290/ 2560	40265/ 2557.5																																							
Mid		40740/ 2605	40740/ 2605	40740/ 2605	40740/ 2605																																								
High	41140/ 2645	41165/ 2647.5	41190/ 2650	41215/ 2652.5																																									
LTE transmitter and antenna implementation	LTE has 1 Main TX/RX antennas Refer to Appendix A...																																												
Maximum power reduction (MPR)	<p align="center">Table 6.2.3-1: Maximum Power Reduction (MPR) for Power Class 3</p> <table border="1"> <thead> <tr> <th rowspan="2">Modulation</th> <th colspan="6">Channel bandwidth / Transmission bandwidth (RB)</th> <th rowspan="2">MPR (dB)</th> </tr> <tr> <th>1.4 MHz</th> <th>3.0 MHz</th> <th>5 MHz</th> <th>10 MHz</th> <th>15 MHz</th> <th>20 MHz</th> </tr> </thead> <tbody> <tr> <td>QPSK</td> <td>> 5</td> <td>> 4</td> <td>> 8</td> <td>> 12</td> <td>> 16</td> <td>> 18</td> <td>≤ 1</td> </tr> <tr> <td>16 QAM</td> <td>≤ 5</td> <td>≤ 4</td> <td>≤ 8</td> <td>≤ 12</td> <td>≤ 16</td> <td>≤ 18</td> <td>≤ 1</td> </tr> <tr> <td>16 QAM</td> <td>> 5</td> <td>> 4</td> <td>> 8</td> <td>> 12</td> <td>> 16</td> <td>> 18</td> <td>≤ 2</td> </tr> </tbody> </table> <p>MPR Built-in by design A-MPR (additional MPR) was disabled during SAR testing</p>							Modulation	Channel bandwidth / Transmission bandwidth (RB)						MPR (dB)	1.4 MHz	3.0 MHz	5 MHz	10 MHz	15 MHz	20 MHz	QPSK	> 5	> 4	> 8	> 12	> 16	> 18	≤ 1	16 QAM	≤ 5	≤ 4	≤ 8	≤ 12	≤ 16	≤ 18	≤ 1	16 QAM	> 5	> 4	> 8	> 12	> 16	> 18	≤ 2
Modulation	Channel bandwidth / Transmission bandwidth (RB)						MPR (dB)																																						
	1.4 MHz	3.0 MHz	5 MHz	10 MHz	15 MHz	20 MHz																																							
QPSK	> 5	> 4	> 8	> 12	> 16	> 18	≤ 1																																						
16 QAM	≤ 5	≤ 4	≤ 8	≤ 12	≤ 16	≤ 18	≤ 1																																						
16 QAM	> 5	> 4	> 8	> 12	> 16	> 18	≤ 2																																						
Power reduction	No																																												
Spectrum plots for RB configurations	A properly configured base station simulator was used for the SAR and power measurements; therefore, spectrum plots for each RB allocation and offset configuration are not included in the SAR report.																																												

6.2. LTE (TDD) Considerations

According to KDB 941225 D05 SAR for LTE Devices, for Time-Division Duplex (TDD) systems, SAR must be tested using a fixed periodic duty factor according to the highest transmission duty factor implemented for the device and supported by the defined 3GPP LTE TDD configurations.

SAR was tested with the highest transmission duty factor (63.33%) using Uplink-downlink configuration 0 and Special subframe configuration 7.

LTE TDD Band 41 supports 3GPP TS 36.211 section 4.2 for Type 2 Frame Structure and Table 4.2-2 for uplink-downlink configurations and Table 4.2-1 for Special subframe configurations.

Table 4.2-1: Configuration of special subframe (lengths of DwPTS/GP/UpPTS).

Special subframe configuration	Normal cyclic prefix in downlink			Extended cyclic prefix in downlink		
	DwPTS	UpPTS		DwPTS	UpPTS	
		Normal cyclic prefix in uplink	Extended cyclic prefix in uplink		Normal cyclic prefix in uplink	Extended cyclic prefix in uplink
0	$6592 \cdot T_s$	$2192 \cdot T_s$	$2560 \cdot T_s$	$7680 \cdot T_s$	$2192 \cdot T_s$	$2560 \cdot T_s$
1	$19760 \cdot T_s$			$20480 \cdot T_s$		
2	$21952 \cdot T_s$			$23040 \cdot T_s$		
3	$24144 \cdot T_s$			$25600 \cdot T_s$		
4	$26336 \cdot T_s$			$7680 \cdot T_s$		
5	$6592 \cdot T_s$	$4384 \cdot T_s$	$5120 \cdot T_s$	$20480 \cdot T_s$	$4384 \cdot T_s$	$5120 \cdot T_s$
6	$19760 \cdot T_s$			$23040 \cdot T_s$		
7	$21952 \cdot T_s$			$12800 \cdot T_s$		
8	$24144 \cdot T_s$			-		
9	$13168 \cdot T_s$			-		

Calculated Duty Cycle

Uplink-Downlink Configuration	Downlink-to-Uplink Switch-point Periodicity	Subframe Number										Calculated Duty Cycle (%)
		0	1	2	3	4	5	6	7	8	9	
0	5 ms	D	S	U	U	U	D	S	U	U	U	63.33
1	5 ms	D	S	U	U	D	D	S	U	U	D	43.33
2	5 ms	D	S	U	D	D	D	S	U	D	D	23.33
3	10 ms	D	S	U	U	U	D	D	D	D	D	31.67
4	10 ms	D	S	U	U	D	D	D	D	D	D	21.67
5	10 ms	D	S	U	D	D	D	D	D	D	D	11.67
6	5 ms	D	S	U	U	U	D	S	U	U	D	53.33

Calculated Duty Cycle = Extended cyclic prefix in uplink $\times (T_s) \times \#$ of S + $\#$ of U

Example for Calculated Duty Cycle for Uplink-Downlink Configuration 0:

Calculated Duty Cycle = $5120 \times [1/(15000 \times 2048)] \times 2 + 6 \text{ ms} = 63.33\%$

where

$T_s = 1/(15000 \times 2048)$ seconds

7. RF Exposure Conditions (Test Configurations)

Refer to “SAR Photos and Ant locations” Appendix for the specific details of the antenna-to-antenna and antenna-to-edge(s) distances.

Wireless technologies	RF Exposure Conditions	DUT-to-User Separation	Test Position	Antenna-to-edge/surface	SAR Required	Note
WWAN	Head	0 mm	Left Touch	N/A	Yes	
			Left Tilt (15°)	N/A	Yes	
			Right Touch	N/A	Yes	
			Right Tilt (15°)	N/A	Yes	
	Body	15 mm	Rear	N/A	Yes	2
			Front	N/A	Yes	2
	Hotspot	10 mm	Rear	< 25 mm	Yes	
			Front	< 25 mm	Yes	
			Edge 1 (Top)	> 25 mm	No	1
			Edge 2 (Right)	< 25 mm	Yes	
Edge 3 (Bottom)			< 25 mm	Yes		
Edge 4 (Left)			< 25 mm	Yes		
WLAN	Head	0 mm	Left Touch	N/A	Yes	
			Left Tilt (15°)	N/A	Yes	
			Right Touch	N/A	Yes	
			Right Tilt (15°)	N/A	Yes	
	Body	15 mm	Rear	N/A	Yes	2
			Front	N/A	Yes	2
	Hotspot / Wi-Fi Direct	10 mm	Rear	< 25 mm	Yes	
			Front	< 25 mm	Yes	
			Edge 1 (Top)	< 25 mm	Yes	
			Edge 2 (Right)	< 25 mm	Yes	
Edge 3 (Bottom)			> 25 mm	No	1	
Edge 4 (Left)			> 25 mm	No	1	

Notes:

- SAR is not required because the distance from the antenna to the edge is > 25 mm as per KDB 941225 D06 Hot Spot SAR.
- The Body-worn minimum separation distance is 15 mm. To cover both body-worn and hotspot RF exposure conditions testing was performed at a separation distance of 10 mm.
- The DUT is a flip phone. Testing against the head was performed with the phone opened. Operation of the DUT against the ear was not performed as the DUT does not support voice operation when closed and body-worn, hotspot condition is flip cover close with belt clip.

8. Dielectric Property Measurements & System Check

8.1. Dielectric Property Measurements

The temperature of the tissue-equivalent medium used during measurement must also be within 18°C to 25°C and within $\pm 2^\circ\text{C}$ of the temperature when the tissue parameters are characterized.

The dielectric parameters must be measured before the tissue-equivalent medium is used in a series of SAR measurements. The parameters should be re-measured after each 3 – 4 days of use; or earlier if the dielectric parameters can become out of tolerance; for example, when the parameters are marginal at the beginning of the measurement series.

Tissue dielectric parameters were measured at the low, middle and high frequency of each operating frequency range of the test device.

Tissue Dielectric Parameters

FCC KDB 865664 D01 SAR Measurement 100 MHz to 6 GHz

Target Frequency (MHz)	Head		Body	
	ϵ_r	σ (S/m)	ϵ_r	σ (S/m)
150	52.3	0.76	61.9	0.80
300	45.3	0.87	58.2	0.92
450	43.5	0.87	56.7	0.94
835	41.5	0.90	55.2	0.97
900	41.5	0.97	55.0	1.05
915	41.5	0.98	55.0	1.06
1450	40.5	1.20	54.0	1.30
1610	40.3	1.29	53.8	1.40
1800 – 2000	40.0	1.40	53.3	1.52
2450	39.2	1.80	52.7	1.95
3000	38.5	2.40	52.0	2.73
5000	36.2	4.45	49.3	5.07
5100	36.1	4.55	49.1	5.18
5200	36.0	4.66	49.0	5.30
5300	35.9	4.76	48.9	5.42
5400	35.8	4.86	48.7	5.53
5500	35.6	4.96	48.6	5.65
5600	35.5	5.07	48.5	5.77
5700	35.4	5.17	48.3	5.88
5800	35.3	5.27	48.2	6.00

IEEE Std 1528-2013

Refer to Table 3 within the IEEE Std 1528-2013

Dielectric Property Measurements Results:**SAR 1 Room**

Date	Freq. (MHz)	Liquid Parameters		Measured	Target	Delta (%)	Limit ±(%)	
6-2-2016	Body 2450	e'	52.2300	Relative Permittivity (ϵ_r):	52.23	52.70	-0.89	5
		e"	14.5300	Conductivity (σ):	1.98	1.95	1.51	5
	Body 2410	e'	52.3300	Relative Permittivity (ϵ_r):	52.33	52.76	-0.81	5
		e"	14.3500	Conductivity (σ):	1.92	1.91	0.81	5
	Body 2475	e'	52.1400	Relative Permittivity (ϵ_r):	52.14	52.67	-1.00	5
		e"	14.6500	Conductivity (σ):	2.02	1.99	1.56	5
6-2-2016	Head 2450	e'	37.4400	Relative Permittivity (ϵ_r):	37.44	39.20	-4.49	5
		e"	13.6100	Conductivity (σ):	1.85	1.80	3.00	5
	Head 2410	e'	37.5500	Relative Permittivity (ϵ_r):	37.55	39.28	-4.40	5
		e"	13.5100	Conductivity (σ):	1.81	1.76	2.84	5
	Head 2475	e'	37.3500	Relative Permittivity (ϵ_r):	37.35	39.17	-4.64	5
		e"	13.6700	Conductivity (σ):	1.88	1.83	2.97	5
6-10-2016	Body 2600	e'	51.3100	Relative Permittivity (ϵ_r):	51.31	52.51	-2.29	5
		e"	15.3500	Conductivity (σ):	2.22	2.16	2.70	5
	Body 2500	e'	51.5900	Relative Permittivity (ϵ_r):	51.59	52.64	-1.99	5
		e"	15.1200	Conductivity (σ):	2.10	2.02	4.04	5
	Body 2700	e'	51.0400	Relative Permittivity (ϵ_r):	51.04	52.38	-2.57	5
		e"	15.5400	Conductivity (σ):	2.33	2.30	1.38	5
6-14-2016	Head 2600	e'	38.4700	Relative Permittivity (ϵ_r):	38.47	39.01	-1.39	5
		e"	13.9400	Conductivity (σ):	2.02	1.96	2.71	5
	Head 2500	e'	38.8200	Relative Permittivity (ϵ_r):	38.82	39.14	-0.81	5
		e"	13.7000	Conductivity (σ):	1.90	1.85	2.72	5
	Head 2700	e'	38.1100	Relative Permittivity (ϵ_r):	38.11	38.88	-1.99	5
		e"	14.1600	Conductivity (σ):	2.13	2.07	2.68	5
6-17-2016	Head 1900	e'	39.3500	Relative Permittivity (ϵ_r):	39.35	40.00	-1.63	5
		e"	13.4100	Conductivity (σ):	1.42	1.40	1.19	5
	Head 1850	e'	39.5600	Relative Permittivity (ϵ_r):	39.56	40.00	-1.10	5
		e"	13.2500	Conductivity (σ):	1.36	1.40	-2.64	5
	Head 1910	e'	39.3100	Relative Permittivity (ϵ_r):	39.31	40.00	-1.72	5
		e"	13.4500	Conductivity (σ):	1.43	1.40	2.03	5

SAR 2 Room

Date	Freq. (MHz)	Liquid Parameters		Measured	Target	Delta (%)	Limit ±(%)	
6-1-2016	Body 835	e'	53.8200	Relative Permittivity (ϵ_r):	53.82	55.20	-2.50	5
		e"	21.3600	Conductivity (σ):	0.99	0.97	2.24	5
	Body 820	e'	53.9300	Relative Permittivity (ϵ_r):	53.93	55.28	-2.44	5
		e"	21.4400	Conductivity (σ):	0.98	0.97	0.94	5
	Body 850	e'	53.7100	Relative Permittivity (ϵ_r):	53.71	55.16	-2.62	5
		e"	21.3200	Conductivity (σ):	1.01	0.99	2.08	5
6-2-2016	Head 835	e'	41.8000	Relative Permittivity (ϵ_r):	41.80	41.50	0.72	5
		e"	19.7300	Conductivity (σ):	0.92	0.90	1.78	5
	Head 820	e'	41.9400	Relative Permittivity (ϵ_r):	41.94	41.60	0.81	5
		e"	19.7700	Conductivity (σ):	0.90	0.90	0.33	5
	Head 850	e'	41.6400	Relative Permittivity (ϵ_r):	41.64	41.50	0.34	5
		e"	19.7100	Conductivity (σ):	0.93	0.92	1.81	5
6-16-2016	Body 1900	e'	50.9100	Relative Permittivity (ϵ_r):	50.91	53.30	-4.48	5
		e"	14.6000	Conductivity (σ):	1.54	1.52	1.48	5
	Body 1850	e'	51.0900	Relative Permittivity (ϵ_r):	51.09	53.30	-4.15	5
		e"	14.4300	Conductivity (σ):	1.48	1.52	-2.35	5
	Body 1910	e'	50.8700	Relative Permittivity (ϵ_r):	50.87	53.30	-4.56	5
		e"	14.6400	Conductivity (σ):	1.55	1.52	2.29	5
6-21-2016	Body 835	e'	52.7200	Relative Permittivity (ϵ_r):	52.72	55.20	-4.49	5
		e"	21.5200	Conductivity (σ):	1.00	0.97	3.00	5
	Body 820	e'	52.8500	Relative Permittivity (ϵ_r):	52.85	55.28	-4.39	5
		e"	21.5800	Conductivity (σ):	0.98	0.97	1.60	5
	Body 850	e'	52.5800	Relative Permittivity (ϵ_r):	52.58	55.16	-4.67	5
		e"	21.4700	Conductivity (σ):	1.01	0.99	2.79	5
6-22-2016	Head 835	e'	42.6700	Relative Permittivity (ϵ_r):	42.67	41.50	2.82	5
		e"	19.6000	Conductivity (σ):	0.91	0.90	1.11	5
	Head 820	e'	42.8500	Relative Permittivity (ϵ_r):	42.85	41.60	3.00	5
		e"	19.6700	Conductivity (σ):	0.90	0.90	-0.18	5
	Head 850	e'	42.5100	Relative Permittivity (ϵ_r):	42.51	41.50	2.43	5
		e"	19.5200	Conductivity (σ):	0.92	0.92	0.83	5

SAR 3 Room

Date	Freq. (MHz)	Liquid Parameters		Measured	Target	Delta (%)	Limit ±(%)	
6-7-2016	Body 1900	e'	52.6400	Relative Permittivity (ϵ_r):	52.64	53.30	-1.24	5
		e"	14.6700	Conductivity (σ):	1.55	1.52	1.96	5
	Body 1850	e'	52.9200	Relative Permittivity (ϵ_r):	52.92	53.30	-0.71	5
		e"	14.5700	Conductivity (σ):	1.50	1.52	-1.40	5
	Body 1910	e'	52.5800	Relative Permittivity (ϵ_r):	52.58	53.30	-1.35	5
		e"	14.6800	Conductivity (σ):	1.56	1.52	2.57	5
6-8-2016	Head 1900	e'	38.6600	Relative Permittivity (ϵ_r):	38.66	40.00	-3.35	5
		e"	13.8000	Conductivity (σ):	1.46	1.40	4.14	5
	Head 1850	e'	38.8900	Relative Permittivity (ϵ_r):	38.89	40.00	-2.78	5
		e"	13.6600	Conductivity (σ):	1.41	1.40	0.37	5
	Head 1910	e'	38.6000	Relative Permittivity (ϵ_r):	38.60	40.00	-3.50	5
		e"	13.8300	Conductivity (σ):	1.47	1.40	4.91	5

8.2. System Check

SAR system verification is required to confirm measurement accuracy, according to the tissue dielectric media, probe calibration points and other system operating parameters required for measuring the SAR of a test device. The system verification must be performed for each frequency band and within the valid range of each probe calibration point required for testing the device. The same SAR probe(s) and tissue-equivalent media combinations used with each specific SAR system for system verification must be used for device testing. When multiple probe calibration points are required to cover substantially large transmission bands, independent system verifications are required for each probe calibration point. A system verification must be performed before each series of SAR measurements using the same probe calibration point and tissue-equivalent medium. Additional system verification should be considered according to the conditions of the tissue-equivalent medium and measured tissue dielectric parameters, typically every three to four days when the liquid parameters are re-measured or sooner when marginal liquid parameters are used at the beginning of a series of measurements.

System Performance Check Measurement Conditions:

- The measurements were performed in the flat section of the TWIN SAM or ELI phantom, shell thickness: 2.0 ±0.2 mm (bottom plate) filled with Body or Head simulating liquid of the following parameters.
- The depth of tissue-equivalent liquid in a phantom must be ≥ 15.0 cm for SAR measurements ≤ 3 GHz and ≥ 10.0 cm for measurements > 3 GHz.
- The DASY system with an E-Field Probe was used for the measurements.
- The dipole was mounted on the small tripod so that the dipole feed point was positioned below the center marking of the flat phantom section and the dipole was oriented parallel to the body axis (the long side of the phantom). The standard measuring distance was 10 mm (above 1 GHz) and 15 mm (below 1 GHz) from dipole center to the simulating liquid surface.
- The coarse grid with a grid spacing of 15 mm was aligned with the dipole.
For 5 GHz band - The coarse grid with a grid spacing of 10 mm was aligned with the dipole.
- Special 7x7x7 (below 3 GHz) and/or 8x8x7 (above 3 GHz) fine cube was chosen for the cube.
- Distance between probe sensors and phantom surface was set to 3 mm.
For 5 GHz band - Distance between probe sensors and phantom surface was set to 2.5 mm
- The dipole input power (forward power) was 100 mW.
- The results are normalized to 1 W input power.

Reference Target SAR Values

The reference SAR values can be obtained from the calibration certificate of system validation dipoles

System Dipole	Serial No.	Cal. Date	Freq. (MHz)	Target SAR Values (W/kg)		
				1g/10g	Head	Body
D835V2	4d194	9-17-2015	835	1g	9.38	9.49
				10g	6.09	6.18
D1900V2	5d199	2-19-2016	1900	1g	39.80	39.50
				10g	20.70	20.90
D2450V2	939	9-28-2015	2450	1g	51.60	50.70
				10g	23.90	23.70
D2600V2	1097	11-18-2015	2600	1g	58.50	55.80
				10g	26.10	25.00

System Check Results

The 1-g and 10-g SAR measured with a reference dipole, using the required tissue-equivalent medium at the test frequency, must be within 10% of the manufacturer calibrated dipole SAR target.

SAR 1 Room

Date Tested	System Dipole		T.S. Liquid	Measured Results		Target (Ref. Value)	Delta $\pm 10\%$	Plot No.	
	Type	Serial #		Zoom Scan to 100 mW	Normalize to 1 W				
6-2-2016	D2450V2	939	Body	1g	5.25	52.50	50.70	3.55	1, 2
				10g	2.44	24.40	23.70	2.95	
6-2-2016	D2450V2	939	Head	1g	5.28	52.80	51.60	2.33	
				10g	2.43	24.30	23.90	1.67	
6-10-2016	D2600V2	1097	Body	1g	5.42	54.20	55.80	-2.87	
				10g	2.40	24.00	25.00	-4.00	
6-14-2016	D2600V2	1097	Head	1g	5.57	55.70	58.50	-4.79	3, 4
				10g	2.48	24.80	26.10	-4.98	
6-17-2016	D1900V2	5d199	Head	1g	3.95	39.50	39.80	-0.75	
				10g	2.04	20.40	20.70	-1.45	

SAR 2 Room

Date Tested	System Dipole		T.S. Liquid	Measured Results		Target (Ref. Value)	Delta $\pm 10\%$	Plot No.	
	Type	Serial #		Zoom Scan to 100 mW	Normalize to 1 W				
6-1-2016	D835V2	4d194	Body	1g	0.99	9.92	9.49	4.53	
				10g	0.65	6.53	6.18	5.66	
6-2-2016	D835V2	4d194	Head	1g	0.99	9.88	9.38	5.33	
				10g	0.65	6.51	6.09	6.90	
6-16-2016	D1900V2	5d199	Body	1g	4.09	40.90	39.50	3.54	
				10g	2.17	21.70	20.90	3.83	
6-21-2016	D835V2	4d194	Body	1g	0.97	9.68	9.49	2.00	
				10g	0.67	6.68	6.18	8.09	
6-22-2016	D835V2	4d194	Head	1g	0.99	9.88	9.38	5.33	5, 6
				10g	0.66	6.58	6.09	8.05	

SAR 3 Room

Date Tested	System Dipole		T.S. Liquid	Measured Results		Target (Ref. Value)	Delta $\pm 10\%$	Plot No.	
	Type	Serial #		Zoom Scan to 100 mW	Normalize to 1 W				
6-7-2016	D1900V2	5d199	Body	1g	4.10	41.00	39.5	3.80	7, 8
				10g	2.14	21.40	20.90	2.39	
6-8-2016	D1900V2	5d199	Head	1g	4.02	40.20	39.80	1.01	
				10g	2.09	20.90	20.70	0.97	

9. Conducted Output Power Measurements

9.1. GSM

Per KDB 941225 D01 3G SAR Procedures:

SAR test reduction for GPRS and EDGE modes is determined by the source-based time-averaged output power specified for production units, including tune-up tolerance. The data mode with highest specified time-averaged output power should be tested for SAR compliance in the applicable exposure conditions. For modes with the same specified maximum output power and tolerance, the higher number time-slot configuration should be tested.

GSM850 Measured Results

Band	Mode	Coding Scheme	Time Slots	Ch No.	Freq. (MHz)	Max. Pwr			
						Burst (dBm)	Frame (dBm)		
850	GSM (Voice)	CS1	1	128	824.2	32.4	23.4		
				190	836.6	32.6	23.6		
				251	848.8	32.4	23.4		
	GPRS (GMSK)	CS1	1	128	824.2	32.5	23.4		
				190	836.6	32.6	23.6		
				251	848.8	32.5	23.4		
			2	128	824.2	31.2	25.1		
				190	836.6	31.3	25.3		
				251	848.8	31.1	25.1		
			3	128	824.2	29.5	25.3		
				190	836.6	29.6	25.3		
				251	848.8	29.3	25.1		
			4	128	824.2	27.4	24.4		
				190	836.6	27.3	24.3		
				251	848.8	27.3	24.3		
			EGPRS (8PSK)	MCS5	1	128	824.2	26.3	17.3
						190	836.6	26.3	17.3
						251	848.8	26.2	17.2
	2	128			824.2	24.7	18.6		
		190			836.6	24.6	18.6		
		251			848.8	24.5	18.5		
	3	128			824.2	22.7	18.5		
		190			836.6	22.7	18.4		
		251			848.8	22.6	18.3		
4	128	824.2			21.9	18.9			
	190	836.6			22.1	19.0			
	251	848.8			21.9	18.9			

Notes:

The worst-case configuration and mode for SAR testing is determined to be as follows:

- Head & Body-worn: GMSK Voice Mode
- Head VoIP & Hotspot mode: GMSK (GPRS) mode with 3 time slots
- SAR is not required for EGPRS (8PSK) mode because its output power is less than that of GPRS Mode

GSM1900 Measured Results

Band	Mode	Coding Scheme	Time Slots	Ch No.	Freq. (MHz)	Max. Pwr		
						Burst (dBm)	Frame (dBm)	
1900	GSM (Voice)	CS1	1	512	1850.2	29.4	20.4	
				661	1880.0	29.4	20.4	
				810	1909.8	29.8	20.8	
	GPRS (GMSK)	CS1	1	1	512	1850.2	29.4	20.4
					661	1880.0	29.4	20.4
					810	1909.8	29.8	20.8
			2	1	512	1850.2	29.0	23.0
					661	1880.0	29.0	23.0
					810	1909.8	29.0	23.0
			3	1	512	1850.2	25.7	21.4
					661	1880.0	25.7	21.4
					810	1909.8	25.8	21.5
			4	1	512	1850.2	24.3	21.3
					661	1880.0	24.3	21.3
					810	1909.8	24.3	21.3
	EGPRS (8PSK)	MCS5	1	1	512	1850.2	24.8	15.8
					661	1880.0	24.7	15.7
					810	1909.8	24.9	15.9
			2	1	512	1850.2	23.8	17.8
					661	1880.0	23.7	17.7
					810	1909.8	23.8	17.8
			3	1	512	1850.2	21.9	17.6
					661	1880.0	21.7	17.4
					810	1909.8	21.9	17.6
4			1	512	1850.2	20.5	17.5	
				661	1880.0	20.3	17.3	
				810	1909.8	20.5	17.5	

Notes:

The worst-case configuration and mode for SAR testing is determined to be as follows:

- Head & Body-worn: GMSK Voice Mode
- Head VoIP & Hotspot mode: GMSK (GPRS) mode with 2 time slots
- SAR is not required for EGPRS (8PSK) mode because its output power is less than that of GPRS Mode

9.2. W-CDMA

Release 99 Setup Procedures used to establish the test signals

The following tests were completed according to the test requirements outlined in section 5.2 of the 3GPP TS34.121-1 specification. The DUT supports power Class 3, which has a nominal maximum output power of 24 dBm (+1.7/-3.7).

Mode	Subtest	Rel99
WCDMA General Settings	Loopback Mode	Test Mode 2
	Rel99 RMC	12.2kbps RMC
	Power Control Algorithm	Algorithm2
	β_c/β_d	8/15

HSDPA Setup Procedures used to establish the test signals

The following 4 Sub-tests were completed according to Release 5 procedures in section 5.2 of 3GPP TS34.121. A summary of these settings are illustrated below:

Mode	Subtest	HSDPA	HSDPA	HSDPA	HSDPA
		1	2	3	4
W-CDMA General Settings	Loopback Mode	Test Mode 1			
	Rel99 RMC	12.2kbps RMC			
	HSDPA FRC	H-Set 1			
	Power Control Algorithm	Algorithm 2			
	β_c	2/15	11/15	15/15	15/15
	β_d	15/15	15/15	8/15	4/15
	Bd (SF)	64			
	β_c/β_d	2/15	12/15	15/8	15/4
	β_{hs}	4/15	24/15	30/15	30/15
MPR (dB)	0	0	0.5	0.5	
HSDPA Specific Settings	D_{ACK}	8			
	D_{NAK}	8			
	DCQI	8			
	Ack-Nack repetition factor	3			
	CQI Feedback (Table 5.2B.4)	4ms			
	CQI Repetition Factor (Table 5.2B.4)	2			
$A_{hs}=\beta_{hs}/\beta_c$	30/15				

HSPA (HSDPA & HSUPA) Setup Procedures used to establish the test signals

The following 5 Sub-tests were completed according to Release 6 procedures in section 5.2 of 3GPP TS34.121. A summary of these settings are illustrated below:

	Mode	HSPA				
	Subtest	1	2	3	4	5
WCDMA General Settings	Loopback Mode	Test Mode 1				
	Rel99 RMC	12.2 kbps RMC				
	HSDPA FRC	H-Set 1				
	HSUPA Test	HSPA				
	Power Control Algorithm	Algorithm 2				Algorithm 1
	β_c	11/15	6/15	15/15	2/15	15/15
	β_d	15/15	15/15	9/15	15/15	0
	β_{ec}	209/225	12/15	30/15	2/15	5/15
	β_c/β_d	11/15	6/15	15/9	2/15	15/1
	β_{hs}	22/15	12/15	30/15	4/15	5/15
	β_{ed}	1309/225	94/75	47/15	56/75	47/15
CM (dB)	1	3	2	3	1	
MPR (dB)	0	2	1	2	0	
HSDPA Specific Settings	DACK	8				0
	DNAK	8				0
	DCQI	8				0
	Ack-Nack repetition factor	3				
	CQI Feedback (Table 5.2B.4)	4ms				
	CQI Repetition Factor (Table 5.2B.4)	2				
	A _{hs} = β_{hs}/β_c	30/15				
HSUPA Specific Settings	E-DPDCCH	6	8	8	5	7
	DHARQ	0	0	0	0	0
	AG Index	20	12	15	17	21
	ETFCI (from 34.121 Table C.11.1.3)	75	67	92	71	81
	Associated Max UL Data Rate kbps	242.1	174.9	482.8	205.8	308.9
	Reference E-TFCIs	5	5	2	5	1
	Reference E-TFCI	11	11	11	11	67
	Reference E-TFCI PO	4	4	4	4	18
	Reference E-TFCI	67	67	92	67	67
	Reference E-TFCI PO	18	18	18	18	18
	Reference E-TFCI	71	71	71	71	71
	Reference E-TFCI PO	23	23	23	23	23
	Reference E-TFCI	75	75	75	75	75
	Reference E-TFCI PO	26	26	26	26	26
	Reference E-TFCI	81	81	81	81	81
Reference E-TFCI PO	27	27	27	27	27	
Maximum Channelisation Codes	2xSF2				SF4	

DC-HSDPA Setup Procedures used to establish the test signals

The following tests were completed according to procedures in section 7.3.13 of 3GPP TS34.108 v9.5.0. A summary of these settings are illustrated below:

Downlink Physical Channels are set as per 3GPP TS34.121-1 v9.0.0 E.5.0

Table E.5.0: Levels for HSDPA connection setup

Parameter During Connection setup	Unit	Value
P-CPICH_Ec/Ior	dB	-10
P-CCPCH and SCH_Ec/Ior	dB	-12
PICH_Ec/Ior	dB	-15
HS-PDSCH	dB	off
HS-SCCH_1	dB	off
DPCH_Ec/Ior	dB	-5
OCNS_Ec/Ior	dB	-3.1

Call is set up as per 3GPP TS34.108 v9.5.0 sub clause 7.3.13

The configurations of the fixed reference channels for HSDPA RF tests are described in 3GPP TS 34.121, annex C for FDD and 3GPP TS 34.122.

Table C.8.1.12: Fixed Reference Channel H-Set 12

Parameter	Unit	Value
Nominal Avg. Inf. Bit Rate	kbps	60
Inter-TTI Distance	TTI's	1
Number of HARQ Processes	Proces ses	6
Information Bit Payload (N_{INF})	Bits	120
Number Code Blocks	Blocks	1
Binary Channel Bits Per TTI	Bits	960
Total Available SML's in UE	SML's	19200
Number of SML's per HARQ Proc.	SML's	3200
Coding Rate		0.15
Number of Physical Channel Codes	Codes	1
Modulation		QPSK
Note 1: The RMC is intended to be used for DC-HSDPA mode and both cells shall transmit with identical parameters as listed in the table. Note 2: Maximum number of transmission is limited to 1, i.e., retransmission is not allowed. The redundancy and constellation version 0 shall be used.		

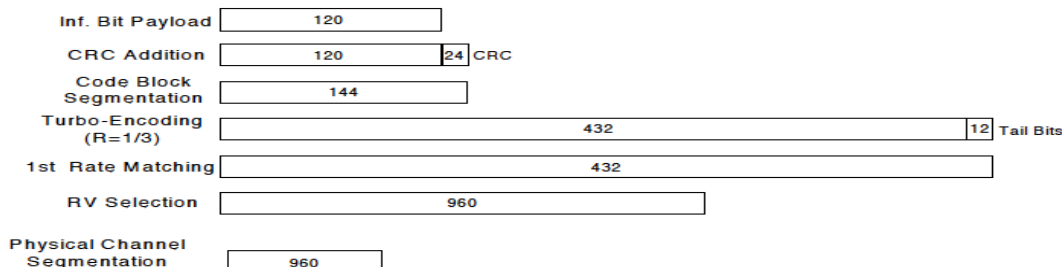


Figure C.8.19: Coding rate for Fixed reference Channel H-Set 12 (QPSK)

The following 4 Sub-tests for HSDPA were completed according to Release 8 procedures in section 5.2 of 3GPP TS34.121. A summary of subtest settings are illustrated below:

	Mode	HSDPA	HSDPA	HSDPA	HSDPA
	Subtest	1	2	3	4
WCDMA General Settings	Loopback Mode	Test Mode 1			
	Rel99 RMC	12.2kbps RMC			
	HSDPA FRC	H-Set 1			
	Power Control Algorithm	Algorithm2			
	β_c	2/15	11/15	15/15	15/15
	β_d	15/15	15/15	8/15	4/15
	β_d (SF)	64			
	β_c/β_d	2/15	11/15	15/8	15/4
	β_{hs}	4/15	24/15	30/15	30/15
MPR (dB)	0	0	0.5	0.5	
HSDPA Specific Settings	DACK	8			
	DNAK	8			
	DCQI	8			
	Ack-Nack Repetition factor	3			
	CQI Feedback	4ms			
	CQI Repetition Factor	2			
A _{hs} = β_{hs}/β_c	30/15				

HSPA+

Since 16QAM is not used for uplink, the uplink Category and release is same as HSUPA, i.e., Rel. 7 Therefore, the RF conducted power is not measured.

W-CDMA Band II Measured Results

Band	Mode		UL Ch No.	Freq. (MHz)	MPR (dB)	Max. Pwr (dBm)
W-CDMA Band II	Rel 99	RMC, 12.2 kbps	9262	1852.4	N/A	21.3
			9400	1880.0	N/A	21.1
			9538	1907.6	N/A	21.2
	HSDPA	Subtest 1	9262	1852.4	0	20.4
			9400	1880.0	0	20.2
			9538	1907.6	0	20.1
		Subtest 2	9262	1852.4	0	20.0
			9400	1880.0	0	19.8
			9538	1907.6	0	19.8
		Subtest 3	9262	1852.4	0.5	19.9
			9400	1880.0	0.5	19.6
			9538	1907.6	0.5	19.7
		Subtest 4	9262	1852.4	0.5	19.9
			9400	1880.0	0.5	19.7
			9538	1907.6	0.5	19.7
	HSUPA	Subtest 1	9262	1852.4	0	20.2
			9400	1880.0	0	19.7
			9538	1907.6	0	19.8
		Subtest 2	9262	1852.4	2	18.9
			9400	1880.0	2	19.1
			9538	1907.6	2	18.6
		Subtest 3	9262	1852.4	1	19.1
			9400	1880.0	1	19.2
			9538	1907.6	1	18.9
		Subtest 4	9262	1852.4	2	19.3
			9400	1880.0	2	19.4
			9538	1907.6	2	18.9
		Subtest 5	9262	1852.4	0	20.3
			9400	1880.0	0	20.2
			9538	1907.6	0	20.1
	DC-HSDPA	Subtest 1	9262	1852.4	0	20.4
			9400	1880.0	0	20.2
			9538	1907.6	0	20.1
		Subtest 2	9262	1852.4	0	20.0
			9400	1880.0	0	19.9
			9538	1907.6	0	19.8
		Subtest 3	9262	1852.4	0.5	20.0
			9400	1880.0	0.5	19.8
			9538	1907.6	0.5	19.8
		Subtest 4	9262	1852.4	0.5	20.0
			9400	1880.0	0.5	19.8
			9538	1907.6	0.5	19.8

W-CDMA Band V Measured Results

Band	Mode		UL Ch No.	Freq. (MHz)	MPR (dB)	Max. Pwr (dBm)
W-CDMA Band V	Rel 99	RMC, 12.2 kbps	4132	826.4	N/A	23.1
			4183	836.6	N/A	23.1
			4233	846.6	N/A	23.2
	HSDPA	Subtest 1	4132	826.4	0	22.0
			4183	836.6	0	21.9
			4233	846.6	0	22.1
		Subtest 2	4132	826.4	0	21.6
			4183	836.6	0	21.6
			4233	846.6	0	21.8
		Subtest 3	4132	826.4	0.5	21.4
			4183	836.6	0.5	21.3
			4233	846.6	0.5	21.6
		Subtest 4	4132	826.4	0.5	21.5
			4183	836.6	0.5	21.4
			4233	846.6	0.5	21.7
	HSUPA	Subtest 1	4132	826.4	0	21.6
			4183	836.6	0	21.7
			4233	846.6	0	22.1
		Subtest 2	4132	826.4	2	20.4
			4183	836.6	2	20.5
			4233	846.6	2	20.7
		Subtest 3	4132	826.4	1	20.8
			4183	836.6	1	20.3
			4233	846.6	1	20.4
		Subtest 4	4132	826.4	2	21.3
			4183	836.6	2	21.3
			4233	846.6	2	21.1
		Subtest 5	4132	826.4	0	22.0
			4183	836.6	0	22.0
			4233	846.6	0	22.2
	DC-HSDPA	Subtest 1	4132	826.4	0	22.0
			4183	836.6	0	21.9
			4233	846.6	0	22.1
		Subtest 2	4132	826.4	0	21.7
			4183	836.6	0	21.6
			4233	846.6	0	21.9
		Subtest 3	4132	826.4	0.5	21.5
			4183	836.6	0.5	21.4
			4233	846.6	0.5	21.7
		Subtest 4	4132	826.4	0.5	21.5
			4183	836.6	0.5	21.4
			4233	846.6	0.5	21.7

9.3. LTE

The following tests were conducted according to the test requirements outlined in section 6.2 of the 3GPP TS36.101 specification.

UE Power Class: 3 (23 +/- 2dBm). The allowed Maximum Power Reduction (MPR) for the maximum output power due to higher order modulation and transmit bandwidth configuration (resource blocks) is specified in Table 6.2.3-1 of the 3GPP TS36.101.

Table 6.2.3-1: Maximum Power Reduction (MPR) for Power Class 3

Modulation	Channel bandwidth / Transmission bandwidth (RB)						MPR (dB)
	1.4 MHz	3.0 MHz	5 MHz	10 MHz	15 MHz	20 MHz	
QPSK	> 5	> 4	> 8	> 12	> 16	> 18	≤ 1
16 QAM	≤ 5	≤ 4	≤ 8	≤ 12	≤ 16	≤ 18	≤ 1
16 QAM	> 5	> 4	> 8	> 12	> 16	> 18	≤ 2

The allowed A-MPR values specified below in Table 6.2.4.-1 of 3GPP TS36.101 are in addition to the allowed MPR requirements. All the measurements below were performed with A-MPR disabled, by using Network Signalling Value of "NS_01".

Table 6.2.4-1: Additional Maximum Power Reduction (A-MPR)

Network Signalling value	Requirements (sub-clause)	E-UTRA Band	Channel bandwidth (MHz)	Resources Blocks (N_{RB})	A-MPR (dB)
NS_01	6.6.2.1.1	Table 5.5-1	1.4, 3, 5, 10, 15, 20	Table 5.6-1	NA
NS_03	6.6.2.2.1	2, 4, 10, 23, 25, 35, 36	3	>5	≤ 1
			5	>6	≤ 1
			10	>6	≤ 1
			15	>8	≤ 1
			20	>10	≤ 1
NS_04	6.6.2.2.2	41	5	>6	≤ 1
			10, 15, 20	See Table 6.2.4-4	
NS_05	6.6.3.3.1	1	10,15,20	≥ 50	≤ 1
NS_06	6.6.2.2.3	12, 13, 14, 17	1.4, 3, 5, 10	Table 5.6-1	n/a
NS_07	6.6.2.2.3	13	10	Table 6.2.4-2	Table 6.2.4-2
	6.6.3.3.2				
NS_08	6.6.3.3.3	19	10, 15	> 44	≤ 3
NS_09	6.6.3.3.4	21	10, 15	> 40	≤ 1
				> 55	≤ 2
NS_10		20	15, 20	Table 6.2.4-3	Table 6.2.4-3
NS_11	6.6.2.2.1	23 ¹	1.4, 3, 5, 10	Table 6.2.4-5	Table 6.2.4-5
..					
NS_32	-	-	-	-	-

Note 1: Applies to the lower block of Band 23, i.e. a carrier placed in the 2000-2010 MHz region.

LTE Band 5 Measured Results

Band	BW (MHz)	Mode	RB Allocation	RB offset	Target MPR	Max. Avg Pwr (dBm)		
						829 MHz	836.5 MHz	844 MHz
LTE Band 5	10	QPSK	1	0	0		23.68	
			1	25	0		23.69	
			1	49	0		23.60	
			25	0	1		22.41	
			25	12	1		22.41	
			25	25	1		22.40	
		16QAM	1	0	1		22.39	
			1	25	1		22.39	
			1	49	1		22.38	
			25	0	2		21.38	
			25	12	2		21.44	
			25	25	2		21.47	
			50	0	2		21.30	
Band	BW (MHz)	Mode	RB Allocation	RB offset	Target MPR	Max. Avg Pwr (dBm)		
						826.5 MHz	836.5 MHz	846.5 MHz
LTE Band 5	5	QPSK	1	0	0	23.3	23.4	23.4
			1	12	0	23.4	23.7	23.5
			1	24	0	23.4	23.2	23.4
			12	0	1	22.4	22.6	22.5
			12	6	1	22.5	22.5	22.5
			12	11	1	22.6	22.4	22.4
		16QAM	25	0	1	22.5	22.5	22.4
			1	0	1	21.8	21.8	22.2
			1	12	1	22.0	22.2	22.3
			1	24	1	21.9	21.9	21.8
			12	0	2	21.3	21.3	21.3
			12	6	2	21.3	21.5	21.4
			12	11	2	21.5	21.3	21.3
			25	0	2	21.5	21.4	21.2
Band	BW (MHz)	Mode	RB Allocation	RB offset	Target MPR	Max. Avg Pwr (dBm)		
						825.5 MHz	836.5 MHz	847.5 MHz
LTE Band 5	3	QPSK	1	0	0	23.4	23.4	23.3
			1	8	0	23.3	23.2	23.3
			1	14	0	23.4	23.4	23.1
			8	0	1	22.3	22.5	22.4
			8	4	1	22.4	22.4	22.5
			8	7	1	22.3	22.4	22.4
			15	0	1	22.4	22.4	22.4
		16QAM	1	0	1	22.3	22.4	22.1
			1	8	1	22.5	22.3	22.1
			1	14	1	22.3	22.2	21.8
			8	0	2	21.5	21.1	21.5
			8	4	2	21.4	21.2	21.4
			8	7	2	21.4	21.1	21.4
			15	0	2	21.4	21.4	21.1

LTE Band 5 Measured Results (continued)

Band	BW (MHz)	Mode	RB Allocation	RB offset	Target MPR	Max. Avg Pwr (dBm)		
						824.7 MHz	836.5 MHz	848.3 MHz
LTE Band 5	1.4	QPSK	1	0	0	23.3	23.3	23.2
			1	3	0	23.2	23.1	23.2
			1	5	0	23.4	23.3	23.4
			3	0	0	23.2	23.3	23.4
			3	1	0	23.3	23.4	23.4
			3	3	0	23.3	23.3	23.4
			6	0	1	22.3	22.4	22.3
		16QAM	1	0	1	22.1	22.2	22.2
			1	3	1	22.3	22.3	22.5
			1	5	1	22.1	22.2	22.4
			3	0	1	22.0	22.2	22.5
			3	1	1	22.0	22.1	22.4
			3	3	1	22.1	22.4	22.5
			6	0	2	21.3	21.1	21.3

Note(s):

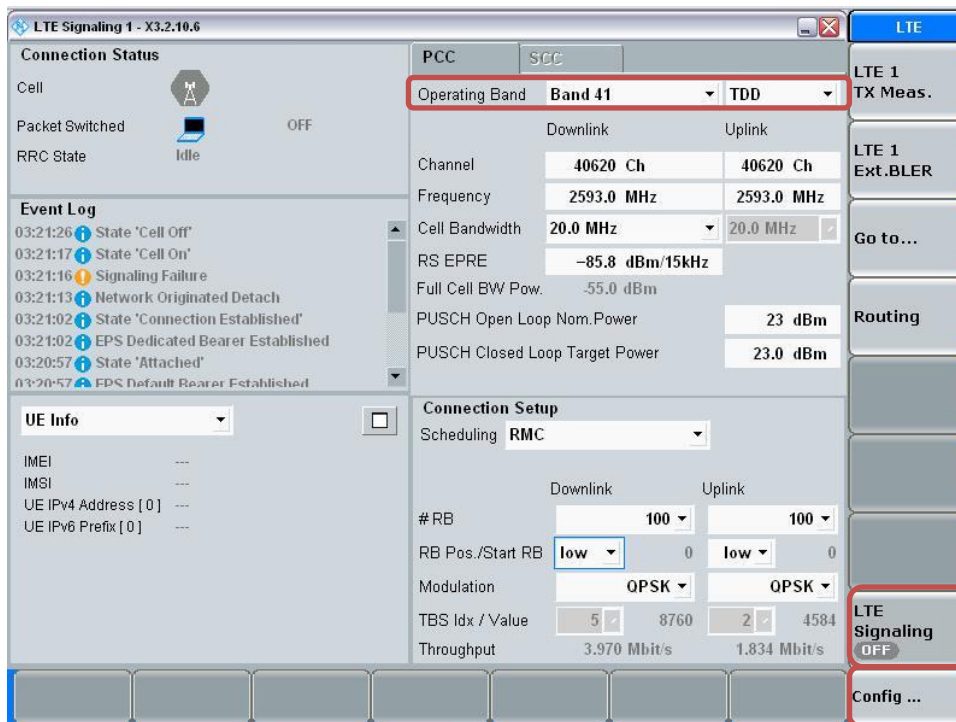
10 MHz Bandwidths does not support at least three non-overlapping channels in certain channel bandwidths. When a device supports overlapping channel assignment in a channel bandwidth configuration, the middle channel of the group of overlapping channels should be selected for testing per KDB 941225 D05 SAR for LTE Devices

LTE Band 41 Measured Results

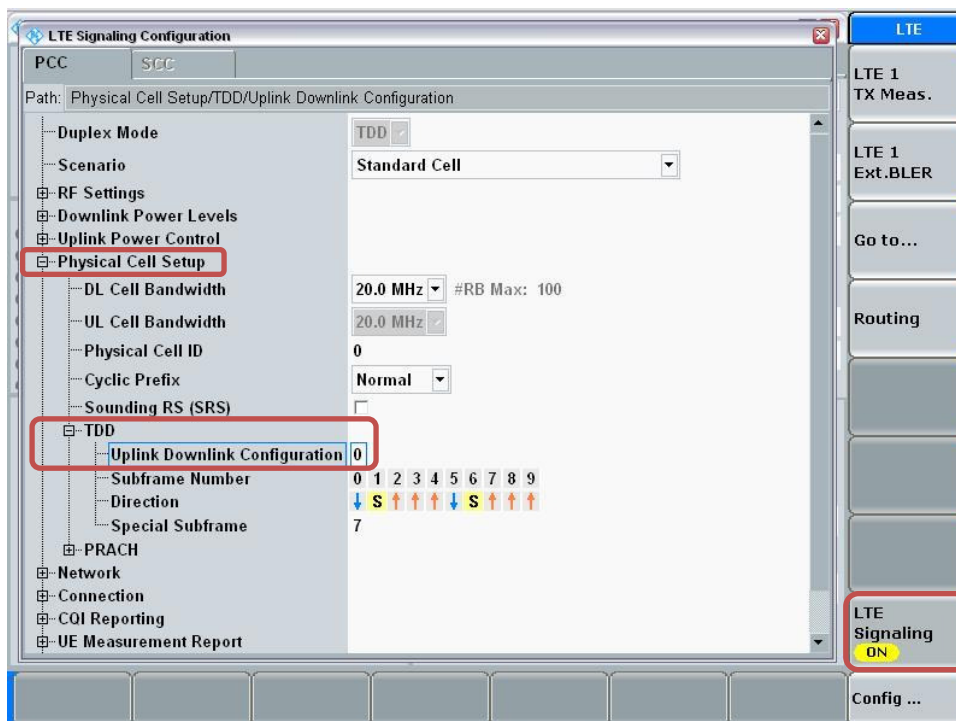
Procedure used to establish SAR test signal for LTE TDD Band 41

Set to CMW-500 with following parameters:

- Turn the LTE Signaling off using “ON | OFF” key
- Operating Band: Select Band 41 and TDD
- Go to “Config...”

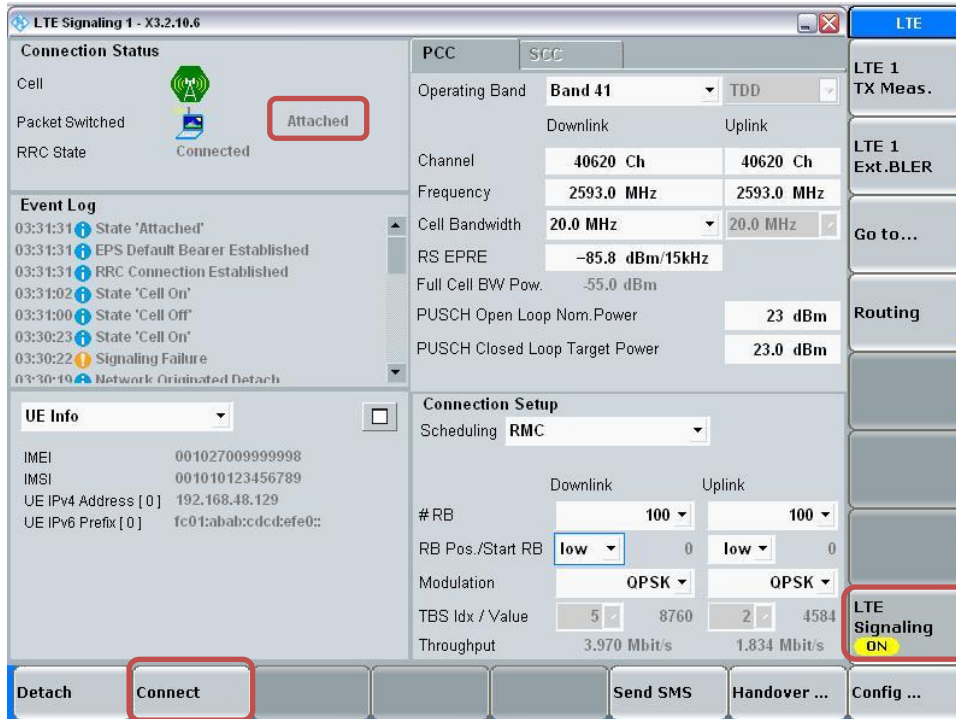


- Go to “Physical Cell Setup”
- Select “TDD” and Set “Uplink Downlink Configuration” to “0”
- Turn the cell on using “ON | OFF” key



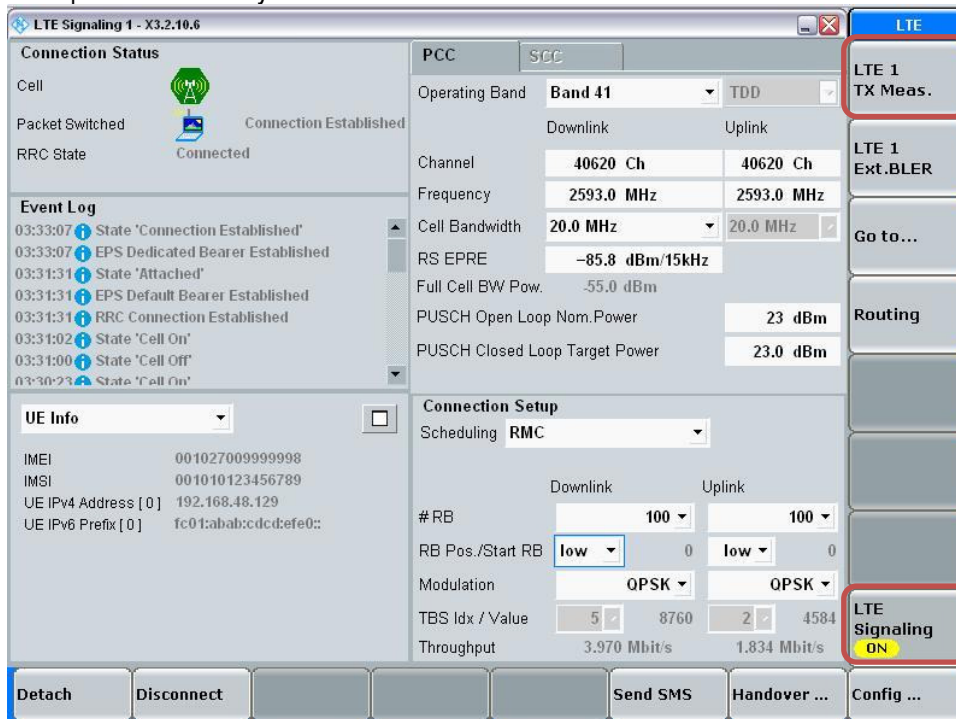
Connect to EUT

- Turn the cell on using “ON | OFF” key
- After EUT is Attached
- Select “Connect”

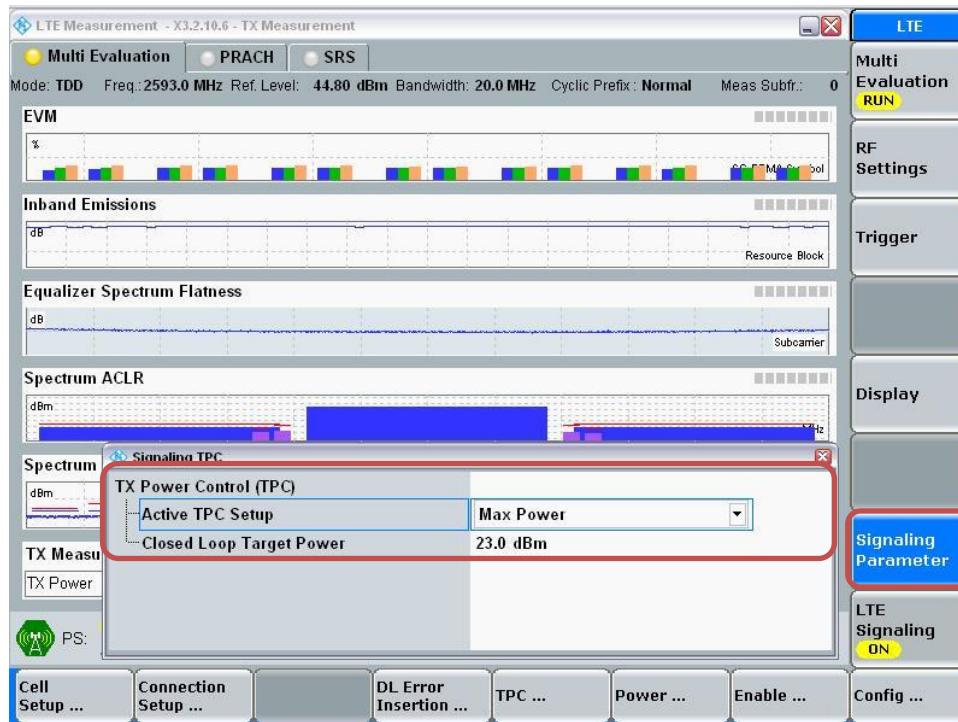


Max Power Setting

- Select “LTE 1 TX Meas.”
- Press “RESTART | STOP” Soft key

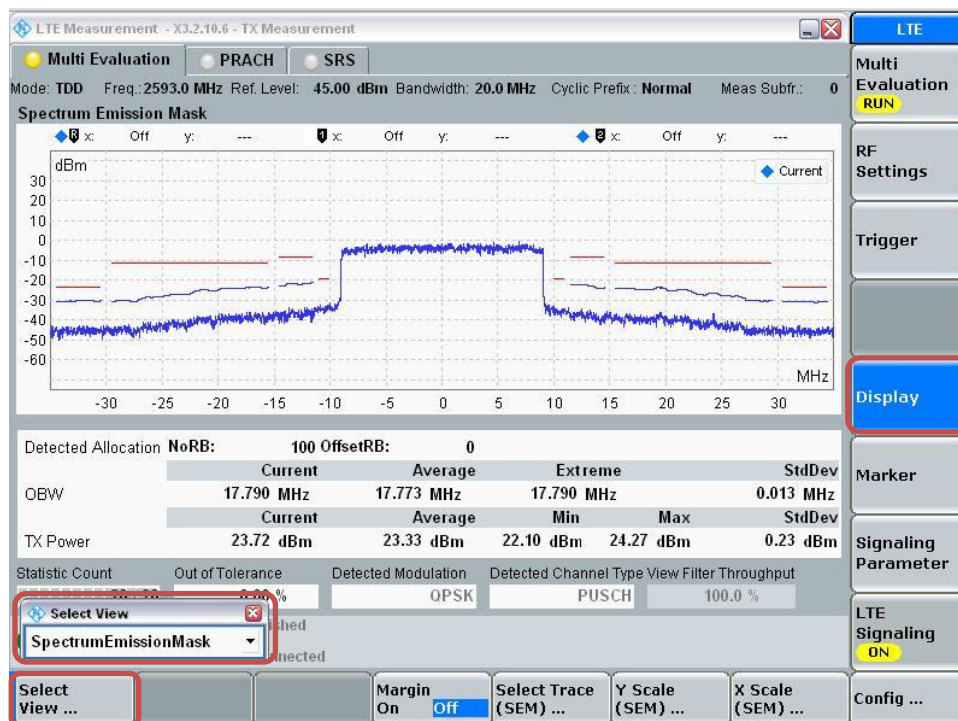


- Select “Signaling Parameter”
- Select “TX Power Control (TPC)” > Select “Active TPC Setup” to “Max Power” > Set “Closed Loop Target Power” to “23 dBm”



View TX Power

- Go to “Display”
- Select “Select View...”
- Select “Spectrum Emission Mask”



LTE Band 41 Measured Results

Band	BW (MHz)	Mode	RB Allocation	RB offset	Target MPR	Max. Avg Pwr (dBm)		
						2565 MHz	2605 MHz	2645 MHz
LTE Band 41	20	QPSK	1	0	0	22.8	22.7	23.4
			1	49	0	22.7	23.2	23.3
			1	99	0	22.5	23.2	22.1
			50	0	1	21.6	22.1	22.2
			50	24	1	21.5	22.2	22.0
			50	50	1	21.4	22.3	21.5
			100	0	1	21.6	22.1	21.9
		16QAM	1	0	1	21.1	21.3	22.2
			1	49	1	21.0	21.6	22.2
			1	99	1	20.8	21.5	21.0
			50	0	2	20.5	20.9	21.3
			50	24	2	20.5	21.2	21.1
			50	50	2	20.4	21.2	20.6
			100	0	2	20.4	21.1	20.8
Band	BW (MHz)	Mode	RB Allocation	RB offset	Target MPR	Max. Avg Pwr (dBm)		
						2562.5 MHz	2605 MHz	2647.5 MHz
LTE Band 41	15	QPSK	1	0	0	22.7	22.9	23.0
			1	37	0	22.6	23.3	22.9
			1	74	0	22.3	23.3	21.7
			36	0	1	21.6	22.0	22.0
			36	20	1	21.6	22.1	21.7
			36	39	1	21.4	22.2	21.5
			75	0	1	21.5	22.1	21.6
		16QAM	1	0	1	21.2	21.5	21.7
			1	37	1	21.2	21.4	21.3
			1	74	1	20.8	21.3	21.3
			36	0	2	20.6	21.0	20.9
			36	20	2	20.7	21.1	20.6
			36	39	2	20.5	21.2	20.3
			75	0	2	20.5	21.1	20.6
Band	BW (MHz)	Mode	RB Allocation	RB offset	Target MPR	Max. Avg Pwr (dBm)		
						2560 MHz	2605 MHz	2650 MHz
LTE Band 41	10	QPSK	1	0	0	22.8	22.9	22.9
			1	25	0	22.6	23.3	22.4
			1	49	0	22.5	23.2	21.9
			25	0	1	20.7	21.1	20.7
			25	12	1	20.7	21.1	20.5
			25	25	1	20.7	21.2	20.4
			50	0	1	20.5	21.0	20.5
		16QAM	1	0	1	21.2	20.9	21.2
			1	25	1	21.2	21.4	21.0
			1	49	1	21.0	21.2	21.7
			25	0	2	19.8	19.9	19.8
			25	12	2	19.8	20.1	19.5
			25	25	2	19.7	20.0	19.4
			50	0	2	19.7	20.1	19.5

LTE Band 41 Measured Results (continued)

Band	BW (MHz)	Mode	RB Allocation	RB offset	Target MPR	Max. Avg Pwr (dBm)		
						2557.5 MHz	2605 MHz	2652.5 MHz
LTE Band 41	5	QPSK	1	0	0	22.8	22.9	22.1
			1	12	0	23.0	23.4	22.3
			1	24	0	22.6	23.2	21.7
			12	0	1	21.8	22.0	21.2
			12	7	1	21.8	22.1	21.2
			12	13	1	21.7	22.1	21.1
			25	0	1	21.8	22.1	21.2
		16QAM	1	0	1	21.7	21.8	20.7
			1	12	1	21.8	22.2	20.7
			1	24	1	21.5	22.1	21.8
			12	0	2	20.9	21.3	20.3
			12	7	2	20.9	21.3	20.2
			12	13	2	20.9	21.3	20.1
			25	0	2	20.8	21.1	20.1

9.4. Wi-Fi 2.4GHz (DTS Band)**Measured Results**

Mode	Data Rate	Ch #	Freq. (MHz)	Avg Pwr (dBm)	Max Output Power (dBm)	SAR Test (Yes/No)	Note(s)
802.11b	1 Mbps	1	2412	17.5	17.5	Yes	
		6	2437	17.0			
		11	2462	16.8			
802.11g	6 Mbps	1	2412	Not Require	14.5	No	1
		6	2437				
		11	2462				
802.11n (HT20)	6.5 Mbps	1	2412	Not Require	13.5	No	1
		6	2437				
		11	2462				

Note(s):

- Output Power and SAR is not required for 802.11g/n HT20 channels when the highest *reported* SAR for DSSS is adjusted by the ratio of OFDM to DSSS specified maximum output power and the adjusted SAR is ≤ 1.2 W/kg.

9.5. Bluetooth

Maximum tune-up tolerance limit is 10.5 dBm from the rated nominal maximum output power. This power level qualifies for exclusion of SAR testing.

10. Measured and Reported (Scaled) SAR Results

SAR Test Reduction criteria are as follows:

KDB 447498 D01 General RF Exposure Guidance:

Testing of other required channels within the operating mode of a frequency band is not required when the reported 1-g or 10-g SAR for the mid-band or highest output power channel is:

- ≤ 0.8 W/kg or 2.0 W/kg, for 1-g or 10-g respectively, when the transmission band is ≤ 100 MHz
- ≤ 0.6 W/kg or 1.5 W/kg, for 1-g or 10-g respectively, when the transmission band is between 100 MHz and 200 MHz
- ≤ 0.4 W/kg or 1.0 W/kg, for 1-g or 10-g respectively, when the transmission band is ≥ 200 MHz

KDB 648474 D04 Handset SAR:

With headset attached, when the reported SAR for body-worn accessory, measured without a headset connected to the handset, is > 1.2 W/kg, the highest reported SAR configuration for that wireless mode and frequency band should be repeated for that body-worn accessory with a headset attached to the handset.

Additional 1-g SAR testing at 5 mm is not required. For hotspot mode, 10-g extremity SAR is not required for the surfaces and edges since all 1-g reported SAR < 1.2 W/kg. **(for Phablet only)**

KDB 941225 D01 SAR test for 3G devices:

When the maximum output power and tune-up tolerance specified for production units in a secondary mode is $\leq \frac{1}{4}$ dB higher than the primary mode or when the highest reported SAR of the primary mode is scaled by the ratio of specified maximum output power and tune-up tolerance of secondary to primary mode and the adjusted SAR is ≤ 1.2 W/kg, SAR measurement is not required for the secondary mode

KDB 941225 D05 SAR for LTE Devices:

SAR test reduction is applied using the following criteria:

- Start with the largest channel bandwidth and measure SAR for QPSK with 1 RB, and 50% RB allocation, using the RB offset and required test channel combination with the highest maximum output power among RB offsets at the upper edge, middle and lower edge of each required test channel.
- When the reported SAR is > 0.8 W/kg, testing for other Channels is performed at the highest output power level for 1RB, and 50% RB configuration for that channel.
- Testing for 100% RB configuration is performed at the highest output power level for 100% RB configuration across the Low, Mid and High Channel when the highest reported SAR for 1 RB and 50% RB are > 0.8 W/kg. Testing for the remaining required channels is not needed because the reported SAR for 100% RB Allocation < 1.45 W/kg.
- Testing for 16-QAM modulation is not required because the reported SAR for QPSK is < 1.45 W/Kg and its output power is not more than 0.5 dB higher than that of QPSK.
- Testing for the other channel bandwidths is not required because the reported SAR for the highest channel bandwidth is < 1.45 W/Kg and its output power is not more than 0.5 dB higher than that of the highest channel bandwidth.

KDB 248227 D01 SAR meas for 802.11:

SAR test reduction for 802.11 Wi-Fi transmission mode configurations are considered separately for DSSS and OFDM. An initial test position is determined to reduce the number of tests required for certain exposure configurations with multiple test positions. An initial test configuration is determined for each frequency band and aggregated band according to maximum output power, channel bandwidth, wireless mode configurations and other operating parameters to streamline the measurement requirements. For 2.4 GHz DSSS, either the initial test position or DSSS procedure is applied to reduce the number of SAR tests; these are mutually exclusive. For OFDM, an initial test position is only applicable to next to the ear, UMPC mini-tablet and hotspot mode configurations, which is tested using the initial test configuration to facilitate test reduction. For other exposure conditions with a fixed test position, SAR test reduction is determined using only the initial test configuration.

The multiple test positions require SAR measurements in head, hotspot mode or UMPC mini-tablet configurations may be reduced according to the highest reported SAR determined using the initial test position(s) by applying the DSSS or OFDM SAR measurement procedures in the required wireless mode test configuration(s). The initial test position(s) is measured using the highest measured maximum output power channel in the required wireless mode test configuration(s). When the reported SAR for the initial test position is:

- ≤ 0.4 W/kg, further SAR measurement is not required for the other test positions in that exposure configuration and wireless mode combination within the frequency band or aggregated band. DSSS and OFDM configurations are considered separately according to the required SAR procedures.
- > 0.4 W/kg, SAR is repeated using the same wireless mode test configuration tested in the initial test position to measure the subsequent next closet/smallest test separation distance and maximum coupling test position, on the highest maximum output power channel, until the reported SAR is ≤ 0.8 W/kg or all required test positions are tested.
 - For subsequent test positions with equivalent test separation distance or when exposure is dominated by coupling conditions, the position for maximum coupling condition should be tested.
 - When it is unclear, all equivalent conditions must be tested.
- For all positions/configurations tested using the initial test position and subsequent test positions, when the reported SAR is > 0.8 W/kg, measure the SAR for these positions/configurations on the subsequent next highest measured output power channel(s) until the reported SAR is ≤ 1.2 W/kg or all required test channels are considered.
 - The additional power measurements required for this step should be limited to those necessary for identifying subsequent highest output power channels to apply the test reduction.
- When the specified maximum output power is the same for both UNII 1 and UNII 2A, begin SAR measurements in UNII 2A with the channel with the highest measured output power. If the reported SAR for UNII 2A is ≤ 1.2 W/kg, SAR is not required for UNII 1; otherwise treat the remaining bands separately and test them independently for SAR.
- When the specified maximum output power is different between UNII 1 and UNII 2A, begin SAR with the band that has the higher specified maximum output. If the highest reported SAR for the band with the highest specified power is ≤ 1.2 W/kg, testing for the band with the lower specified output power is not required; otherwise test the remaining bands independently for SAR.

To determine the initial test position, Area Scans were performed to determine the position with the *Maximum Value of SAR (measured)*. The position that produced the highest *Maximum Value of SAR* is considered the worst case position; thus used as the initial test position.

10.1. GSM850

RF Exposure Conditions	Mode	Dist. (mm)	Test Position	Ch #.	Freq. (MHz)	Power (dBm)		1-g SAR (W/kg)		Plot No.
						Tune-up limit	Meas.	Meas.	Scaled	
Head	Voice	0	Left Touch	661	1880.0	33.0	32.6	0.208	0.227	
			Left Tilt	661	1880.0	33.0	32.6	0.198	0.216	
			Right Touch	661	1880.0	33.0	32.6	0.200	0.218	
			Right Tilt	661	1880.0	33.0	32.6	0.208	0.227	
Head VoIP	GPRS 3 Slot	0	Left Touch	661	1880.0	30.2	29.6	0.311	0.358	
			Left Tilt	661	1880.0	30.2	29.6	0.306	0.352	
			Right Touch	661	1880.0	30.2	29.6	0.279	0.321	
			Right Tilt	661	1880.0	30.2	29.6	0.317	0.365	1
Body-worn	Voice	10	Rear	661	1880.0	33.0	32.6	0.230	0.251	
			Front	661	1880.0	33.0	32.6	0.038	0.041	
Body-worn(VoIP) & Hotspot	GPRS 3 Slot	10	Rear	661	1880.0	30.2	29.6	0.368	0.424	2
			Front	661	1880.0	30.2	29.6	0.092	0.106	
Hotspot			Edge 2	661	1880.0	30.2	29.6	0.242	0.279	
			Edge 3	661	1880.0	30.2	29.6	0.136	0.157	
			Edge 4	661	1880.0	30.2	29.6	0.087	0.101	

10.2. GSM1900

RF Exposure Conditions	Mode	Dist. (mm)	Test Position	Ch #.	Freq. (MHz)	Power (dBm)		1-g SAR (W/kg)		Plot No.
						Tune-up limit	Meas.	Meas.	Scaled	
Head	Voice	0	Left Touch	661	1880.0	30.0	29.4	0.031	0.036	
			Left Tilt	661	1880.0	30.0	29.4	0.050	0.058	
			Right Touch	661	1880.0	30.0	29.4	0.039	0.045	
			Right Tilt	661	1880.0	30.0	29.4	0.036	0.041	
Head VoIP	GPRS 2 Slot	0	Left Touch	661	1880.0	29.0	29.0	0.059	0.059	
			Left Tilt	661	1880.0	29.0	29.0	0.086	0.087	3
			Right Touch	661	1880.0	29.0	29.0	0.068	0.068	
			Right Tilt	661	1880.0	29.0	29.0	0.063	0.063	
Body-worn	Voice	10	Rear	661	1880.0	30.0	29.4	0.456	0.527	
			Front	661	1880.0	30.0	29.4	0.120	0.139	
Body-worn(VoIP) & Hotspot	GPRS 2 Slot	10	Rear	661	1880.0	29.0	29.0	0.761	0.764	4
			Front	661	1880.0	29.0	29.0	0.142	0.143	
Hotspot			Edge 2	661	1880.0	29.0	29.0	0.101	0.101	
			Edge 3	661	1880.0	29.0	29.0	0.164	0.165	
			Edge 4	661	1880.0	29.0	29.0	0.224	0.225	

10.3. W-CDMA Band II

RF Exposure Conditions	Mode	Dist. (mm)	Test Position	Ch #.	Freq. (MHz)	Power (dBm)		1-g SAR (W/kg)		Plot No.
						Tune-up limit	Meas.	Meas.	Scaled	
Head	Rel 99 RMC	0	Left Touch	9400	1880.0	21.5	21.1	0.107	0.117	5
			Left Tilt	9400	1880.0	21.5	21.1	0.185	0.202	
			Right Touch	9400	1880.0	21.5	21.1	0.147	0.160	
			Right Tilt	9400	1880.0	21.5	21.1	0.120	0.131	
Body-worn & Hotspot	Rel 99 RMC	10	Rear	9262	1852.4	21.5	21.3	0.806	0.840	6
				9400	1880.0	21.5	21.1	0.839	0.914	
				9538	1907.6	21.5	21.2	0.813	0.874	
			Front	9400	1880.0	21.5	21.1	0.068	0.074	
Hotspot	Rel 99 RMC	10	Edge 2	9400	1880.0	21.5	21.1	0.046	0.050	
			Edge 3	9400	1880.0	21.5	21.1	0.117	0.127	
			Edge 4	9400	1880.0	21.5	21.1	0.222	0.242	

10.4. W-CDMA Band V

RF Exposure Conditions	Mode	Dist. (mm)	Test Position	Ch #.	Freq. (MHz)	Power (dBm)		1-g SAR (W/kg)		Plot No.
						Tune-up limit	Meas.	Meas.	Scaled	
Head	Rel 99 RMC	0	Left Touch	4183	836.6	23.3	23.1	0.216	0.227	7
			Left Tilt	4183	836.6	23.3	23.1	0.203	0.213	
			Right Touch	4183	836.6	23.3	23.1	0.197	0.207	
			Right Tilt	4183	836.6	23.3	23.1	0.222	0.233	
Body-worn & Hotspot	Rel 99 RMC	10	Rear	4183	836.6	23.3	23.1	0.401	0.422	8
			Front	4183	836.6	23.3	23.1	0.108	0.114	
Hotspot	Rel 99 RMC	10	Edge 2	4183	836.6	23.3	23.1	0.262	0.276	
			Edge 3	4183	836.6	23.3	23.1	0.154	0.162	
			Edge 4	4183	836.6	23.3	23.1	0.106	0.111	

10.5. LTE Band 5 (10MHz Bandwidth)

RF Exposure Conditions	Mode	Dist. (mm)	Test Position	Ch #.	Freq. (MHz)	RB Allocation	RB offset	Power (dBm)		1-g SAR (W/kg)		Plot No.
								Tune-up limit	Meas.	Meas.	Scaled	
Head	QPSK	0	Left Touch	20525	836.6	1	25	23.8	23.7	0.269	0.276	9
						25	0	22.8	22.4	0.214	0.234	
			Left Tilt	20525	836.6	1	25	23.8	23.7	0.244	0.250	
						25	0	22.8	22.4	0.197	0.215	
			Right Touch	20525	836.6	1	25	23.8	23.7	0.235	0.241	
						25	0	22.8	22.4	0.197	0.215	
Right Tilt	20525	836.6	1	25	23.8	23.7	0.248	0.254				
			25	0	22.8	22.4	0.216	0.236				
Body-Worn & Hotspot	QPSK	10	Rear	20525	836.6	1	25	23.8	23.7	0.286	0.293	10
						25	0	22.8	22.4	0.230	0.251	
			Front	20525	836.6	1	25	23.8	23.7	0.092	0.095	
						25	0	22.8	22.4	0.074	0.081	
Hotspot	QPSK	10	Edge 2	20525	836.6	1	25	23.8	23.7	0.250	0.256	
						25	0	22.8	22.4	0.205	0.224	
			Edge 3	20525	836.6	1	25	23.8	23.7	0.135	0.138	
						25	0	22.8	22.4	0.110	0.120	
			Edge 4	20525	836.6	1	25	23.8	23.7	0.100	0.103	
						25	0	22.8	22.4	0.096	0.105	

10.6. LTE Band 41 (20MHz Bandwidth)

RF Exposure Conditions	Mode	Dist. (mm)	Test Position	Ch #.	Freq. (MHz)	RB Allocation	RB offset	Power (dBm)		1-g SAR (W/kg)		Plot No.	
								Tune-up limit	Meas.	Meas.	Scaled		
Head	QPSK	0	Left Touch	40740	2605.0	1	49	23.4	23.2	0.090	0.093		
								50	50	22.4	22.3	0.085	0.088
			Left Tilt	40740	2605.0	1	49	23.4	23.2	0.059	0.062		
												50	50
			Right Touch	40740	2605.0	1	49	23.4	23.2	0.100	0.104		
												50	50
Right Tilt	40740	2605.0	1	49	23.4	23.2	0.101	0.105	11				
									50	50	22.4	22.3	0.094
Body-Worn & Hotspot	QPSK	10	Rear	40740	2605.0	1	49	23.4	23.2	0.136	0.141	12	
								50	50	22.4	22.3	0.114	0.118
			Front	40740	2605.0	1	49	23.4	23.2	0.044	0.045		
												50	50
Hotspot	QPSK	10	Edge 2	40740	2605.0	1	49	23.4	23.2	0.034	0.035		
								50	50	22.4	22.3	0.029	0.030
			Edge 3	40740	2605.0	1	49	23.4	23.2	0.110	0.114		
												50	50
			Edge 4	40740	2605.0	1	49	23.4	23.2	0.058	0.061		
												50	50

10.7. Wi-Fi (DTS Band)

Frequency Band	Mode	RF Exposure Conditions	Dist. (mm)	Test Position	Ch #.	Freq. (MHz)	Area Scan Max. SAR (W/kg)	Power (dBm)		1-g SAR (W/kg)		Plot No.
								Tune-up limit	Meas.	Meas.	Scaled	
2.4GHz	802.11b 1 Mbps	Head	0	Left Touch	1	2412	0.073	17.5	17.5	0.064	0.064	13
				Left Tilt	1	2412	0.042	17.5	17.5			
				Right Touch	1	2412	0.055	17.5	17.5			
				Right Tilt	1	2412	0.047	17.5	17.5			
		Body-worn & Hotspot & Wi-Fi Direct	10	Rear	1	2412	0.233	17.5	17.5	0.161	0.162	14
				Front	1	2412	0.049	17.5	17.5			
				Edge 1	1	2412	0.065	17.5	17.5			
				Edge 2	1	2412	0.037	17.5	17.5			

Note(s):

- Highest reported SAR is ≤ 0.4 W/kg. Therefore, further SAR measurements within this exposure condition are not required.
- Highest reported SAR is > 0.4 W/kg. Due to the highest reported SAR for this test position, other test positions in Head exposure condition were evaluated until a SAR ≤ 0.8 W/kg was reported.
- Testing for a second channel was required because the reported SAR for this test position was >0.8 W/kg.
- Additional testing required in order satisfying FCC simultaneous transmission limit criteria.

10.8. Bluetooth

Standalone SAR Test Exclusion Considerations & Estimated SAR

The 1-g and 10-g SAR test exclusion thresholds for 100 MHz to 6 GHz at test separation distances ≤ 50 mm are determined by:

$[(\text{max. power of channel, including tune-up tolerance, mW}) / (\text{min. test separation distance, mm})] \cdot [\sqrt{f(\text{GHz})}] \leq 3.0$, for 1-g SAR and ≤ 7.5 for 10-g extremity SAR, where

- $f_{(\text{GHz})}$ is the RF channel transmit frequency in GHz
- Power and distance are rounded to the nearest mW and mm before calculation
- The result is rounded to one decimal place for comparison

The test exclusions are applicable only when the minimum test separation distance is ≤ 50 mm and for transmission frequencies between 100 MHz and 6 GHz. When the minimum test separation distance is < 5 mm, a distance of 5 mm is applied to determine SAR test exclusion.

When the standalone SAR test exclusion is applied to an antenna that transmits simultaneously with other antennas, the standalone SAR must be estimated according to following to determine simultaneous transmission SAR test exclusion:

- $(\text{max. power of channel, including tune-up tolerance, mW}) / (\text{min. test separation distance, mm}) \cdot [\sqrt{f_{(\text{GHz})}/x}] \text{ W/kg}$ for test separation distances ≤ 50 mm;
where $x = 7.5$ for 1-g SAR, and $x = 18.75$ for 10-g SAR.
- 0.4 W/kg for 1-g SAR and 1.0 W/kg for 10-g SAR, when the test separation distances is > 50 mm.

Body-worn Accessory Exposure Conditions

Max. tune-up tolerance limit		Min. test separation distance (mm)	Frequency (GHz)	SAR test exclusion Result*	Test Configuration	Estimated 1-g SAR (W/kg)
(dBm)	(mW)					
10.5	11	10	2.480	1.7	Rear/Front	0.231

Conclusion:

*: The computed value is < 3 ; therefore, Bluetooth qualifies for Standalone SAR test exclusion.

11. SAR Measurement Variability

In accordance with published RF Exposure KDB 865664 D01 SAR measurement 100 MHz to 6 GHz. These additional measurements are repeated after the completion of all measurements requiring the same head or body tissue-equivalent medium in a frequency band. The test device should be returned to ambient conditions (normal room temperature) with the battery fully charged before it is re-mounted on the device holder for the repeated measurement(s) to minimize any unexpected variations in the repeated results.

- 1) Repeated measurement is not required when the original highest measured SAR is < 0.80 or 2.0 W/kg (1-g or 10-g respectively); steps 2) through 4) do not apply.
- 2) When the original highest measured SAR is ≥ 0.80 or 2.0 W/kg (1-g or 10-g respectively), repeat that measurement once.
- 3) Perform a second repeated measurement only if the ratio of largest to smallest SAR for the original and first repeated measurements is > 1.20 or when the original or repeated measurement is ≥ 1.45 or 3.6 W/kg ($\sim 10\%$ from the 1-g or 10-g respective SAR limit).
- 4) Perform a third repeated measurement only if the original, first or second repeated measurement is ≥ 1.5 or 3.75 W/kg (1-g or 10-g respectively) and the ratio of largest to smallest SAR for the original, first and second repeated measurements is > 1.20 .

Frequency Band (MHz)	Air Interface	RF Exposure Conditions	Test Position	Repeated SAR (Yes/No)	Highest Measured SAR (W/kg)	Repeated Measured SAR (W/kg)	Largest to Smallest SAR Ratio
835	GSM 850	Body & Hotspot	Rear	No	0.368	N/A	N/A
	WCDMA Band V	Body & Hotspot	Rear	No	0.401	N/A	N/A
	LTE Band 5	Body & Hotspot	Rear	No	0.286	N/A	N/A
1900	GSM 1900	Body & Hotspot	Rear	No	0.761	N/A	N/A
	WCDMA Band II	Body & Hotspot	Rear	Yes	0.839	0.824	1.02
2400	Wi-Fi 802.11b/g/n	Body & Hotspot	Rear	No	0.161	N/A	N/A
2600	LTE Band 41	Body & Hotspot	Rear	No	0.136	N/A	N/A

Note(s):

Second Repeated Measurement is not required since the ratio of the largest to smallest SAR for the original and first repeated measurement is not > 1.20 .

12. Simultaneous Transmission SAR Analysis

KDB 447498 D01 General RF Exposure Guidance introduces a new formula for calculating the SAR to Peak Location Ratio (SPLSR) between pairs of simultaneously transmitting antennas:

$$SPLSR = (SAR_1 + SAR_2)^{1.5} / Ri$$

Where:

SAR₁ is the highest measured or estimated SAR for the first of a pair of simultaneous transmitting antennas, in a specific test operating mode and exposure condition

SAR₂ is the highest measured or estimated SAR for the second of a pair of simultaneous transmitting antennas, in the same test operating mode and exposure condition as the first

Ri is the separation distance between the pair of simultaneous transmitting antennas. When the SAR is measured, for both antennas in the pair, it is determined by the actual x, y and z coordinates in the 1-g SAR for each SAR peak location, based on the extrapolated and interpolated result in the zoom scan measurement, using the formula of $[(x_1-x_2)^2 + (y_1-y_2)^2 + (z_1-z_2)^2]$

In order for a pair of simultaneous transmitting antennas with the sum of 1-g SAR > 1.6 W/kg to qualify for exemption from Simultaneous Transmission SAR measurements, it has to satisfy the condition of:

$$(SAR_1 + SAR_2)^{1.5} / Ri < 0.04$$

Simultaneous Transmission Condition

RF Exposure Condition	Item	Capable Transmit Configurations		
Head	1	GSM(Voice)	+	DTS
	2	GSM(GPRS)	+	DTS
	3	W-CDMA	+	DTS
	4	LTE	+	DTS
Body-w orn	5	GSM(Voice)	+	DTS
	6	GSM(Voice)	+	BT
	7	GSM(GPRS)	+	DTS
	8	GSM(GPRS)	+	BT
	9	W-CDMA	+	DTS
	10	W-CDMA	+	BT
	11	LTE	+	DTS
	12	LTE	+	BT
Hotspot & Wi-Fi Direct	13	GSM(GPRS)	+	DTS
	14	WCDMA	+	DTS
	15	LTE	+	DTS

Notes:

1. DTS supports Hotspot and Wi-Fi Direct.
2. GPRS, W-CDMA, LTE support Hotspot.
3. VoIP is supported in GPRS, W-CDMA, LTE
4. DTS Radio cannot transmit simultaneously with Bluetooth Radio.

12.1. Sum of the SAR for WWAN & Wi-Fi & BT

RF Exposure conditions	① WWAN	② DTS	④ BT	① + ② WWAN + DTS		① + ④ WWAN + BT	
				∑ 1-g SAR (mW/g)	SPLSR (Yes/ No)	∑ 1-g SAR (mW/g)	SPLSR (Yes/ No)
Head	0.365	0.064		0.429	No		
Body -worn & Hotspot	0.914	0.162	0.231	1.076	No	1.145	No

Conclusion:

Simultaneous transmission SAR measurement (Volume Scan) is not required because the either sum of the 1-g SAR is < 1.6 W/kg or the SPLSR is < 0.04 for all circumstances that require SPLSR calculation.

Appendixes

Refer to separated files for the following appendixes.

16K23557-S1V2 FCC Report SAR_App A_Photos & Ant. Locations

16K23557-S1V2 FCC Report SAR_App B_Highest SAR Test Plots

16K23557-S1V2 FCC Report SAR_App C_System Check Plots

16K23557-S1V2 FCC Report SAR_App D_SAR Tissue Ingredients

16K23557-S1V2 FCC Report SAR_App E_Probe Cal. Certificates

16K23557-S1V2 FCC Report SAR_App F_Dipole Cal. Certificates

END OF REPORT