

Measurement Report for Device, EDGE RIGHT, Custom Band, CW, Channel 25200000 (25200.0 MHz)

Device Under Test Properties

Model, Manufacturer	Dimensions [mm]	IMEI	DUT Type
Device,	153.5 x 68.1 x 12.0		Phone

Exposure Conditions

Phantom Section	Position, Test Distance [mm]	Band	Group, UID	Frequency [MHz], Channel Number	Conversion Factor
5G	EDGE RIGHT, 2.00	Custom Band	CW, 0--	25200.0, 25200000	1.0

Hardware Setup

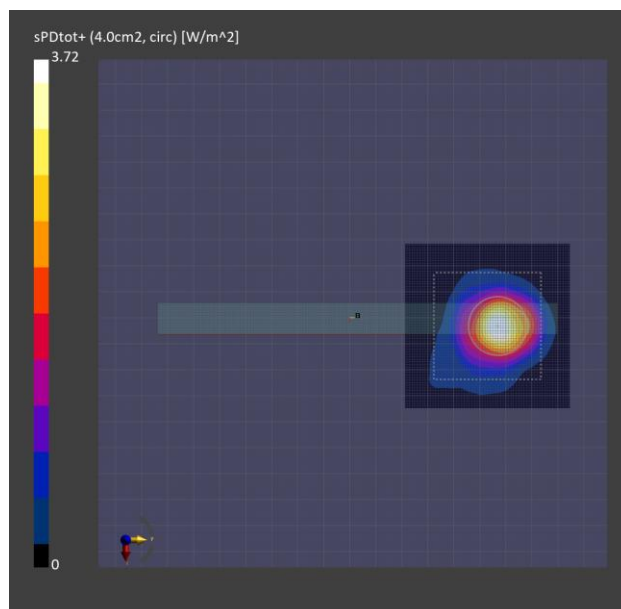
Phantom	Medium	Probe, Calibration Date	DAE, Calibration Date
mmWave - xxxx	Air -	EUmmWV4 - SN9493_F1-55GHz, 2024-01-16	DAE4 Sn1671, 2023-05-25

Scans Setup

Scan Type	5G Scan
Grid Extents [mm]	60.0 x 60.0
Grid Steps [lambda]	0.17158298424721127 x 0.17158298424721127
Sensor Surface [mm]	2.0
MAIA	Y

Measurement Results

Scan Type	5G Scan
Date	2024-04-05, 11:08
Avg. Area [cm ²]	4.00
psPDn+ [W/m ²]	2.67
psPDtot+ [W/m ²]	3.72
psPDmod+ [W/m ²]	4.09
E _{max} [V/m]	74.8
Power Drift [dB]	-0.03



Measurement Report for Device, EDGE RIGHT, Custom Band, CW, Channel 25200000 (25200.0 MHz)

Device Under Test Properties

Model, Manufacturer	Dimensions [mm]	IMEI	DUT Type
Device,	153.5 x 132.6 x 6.0		Phone

Exposure Conditions

Phantom Section	Position, Test Distance [mm]	Band	Group, UID	Frequency [MHz], Channel Number	Conversion Factor
5G	EDGE RIGHT, 2.00	Custom Band	CW, 0--	25200.0, 25200000	1.0

Hardware Setup

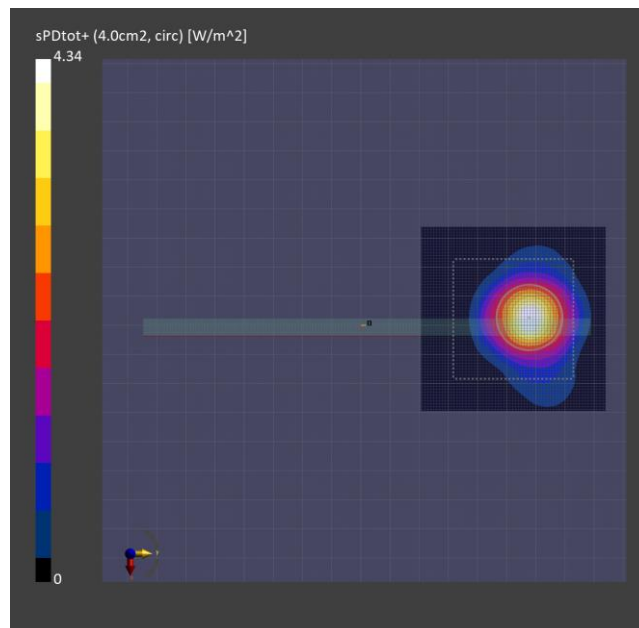
Phantom	Medium	Probe, Calibration Date	DAE, Calibration Date
mmWave - xxxx	Air -	EUmmWV4 - SN9493_F1-55GHz, 2024-01-16	DAE4 Sn1667, 2024-03-14

Scans Setup

Scan Type	5G Scan
Grid Extents [mm]	60.0 x 60.0
Grid Steps [lambda]	0.17158298424721127 x 0.17158298424721127
Sensor Surface [mm]	2.0
MAIA	Y

Measurement Results

Scan Type	5G Scan
Date	2024-04-11, 17:05
Avg. Area [cm ²]	4.00
psPDn+ [W/m ²]	3.32
psPDtot+ [W/m ²]	4.35
psPDmod+ [W/m ²]	4.64
E _{max} [V/m]	72.6
Power Drift [dB]	0.06



Measurement Report for Device, EDGE RIGHT, Custom Band, CW, Channel 28300000 (28300.0 MHz)

Device Under Test Properties

Model, Manufacturer	Dimensions [mm]	IMEI	DUT Type

Device,	153.5 x 68.1 x 12.0		Phone
---------	---------------------	--	-------

Exposure Conditions

Phantom Section	Position, Test Distance [mm]	Band	Group, UID	Frequency [MHz], Channel Number	Conversion Factor
5G	EDGE RIGHT, 2.00	Custom Band	CW, 0--	28300.0, 28300000	1.0

Hardware Setup

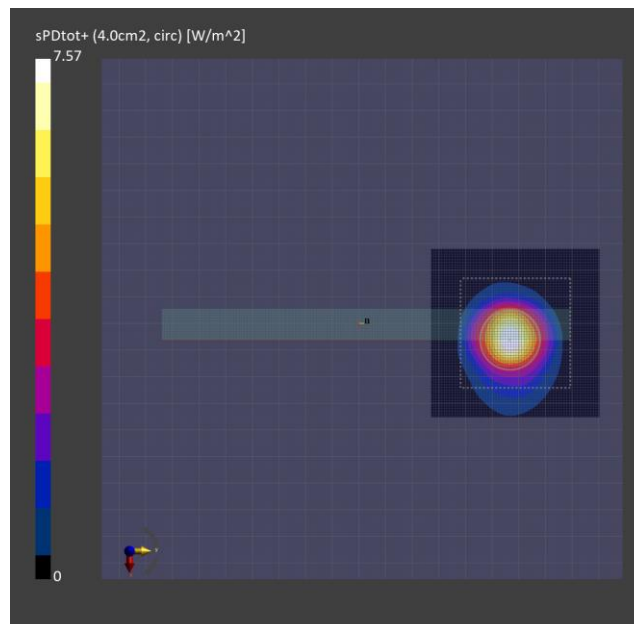
Phantom	Medium	Probe, Calibration Date	DAE, Calibration Date
mmWave - xxxx	Air -	EUmmWV4 - SN9493_F1-55GHz, 2024-01-16	DAE4 Sn1671, 2023-05-25

Scans Setup

Scan Type	5G Scan
Grid Extents [mm]	60.0 x 60.0
Grid Steps [lambda]	0.19269041484905072 x 0.19269041484905072
Sensor Surface [mm]	2.0
MAIA	Y

Measurement Results

Scan Type	5G Scan
Date	2024-04-04, 17:00
Avg. Area [cm ²]	4.00
psPDn+ [W/m ²]	6.35
psPDtot+ [W/m ²]	7.57
psPDmod+ [W/m ²]	7.85
E _{max} [V/m]	92.3
Power Drift [dB]	-0.04



Measurement Report for Device, EDGE RIGHT, Custom Band, CW, Channel 27925000 (27925.0 MHz)

Device Under Test Properties

Model, Manufacturer	Dimensions [mm]	IMEI	DUT Type
Device,	153.5 x 132.6 x 6.0		Phone

Exposure Conditions

Phantom Section	Position, Test Distance [mm]	Band	Group, UID	Frequency [MHz], Channel Number	Conversion Factor
5G	EDGE RIGHT, 2.00	Custom Band	CW, 0--	27925.0, 27925000	1.0

Hardware Setup

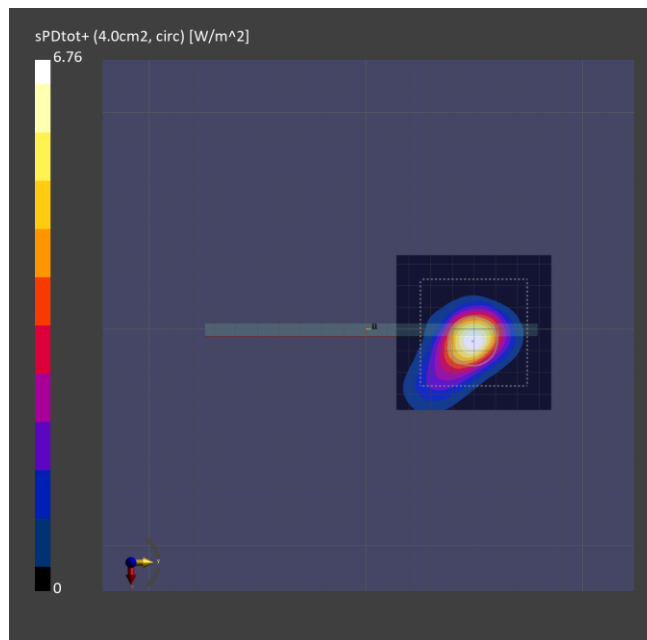
Phantom	Medium	Probe, Calibration Date	DAE, Calibration Date
mmWave - xxxx	Air -	EUmmWV4 - SN9493_F1-55GHz, 2024-01-16	DAE4 Sn1667, 2024-03-14

Scans Setup

Scan Type	5G Scan
Grid Extents [mm]	60.0 x 60.0
Grid Steps [lambda]	0.1901370966310863 x 0.1901370966310863
Sensor Surface [mm]	2.0
MAIA	Y

Measurement Results

Scan Type	5G Scan
Date	2024-04-12, 13:45
Avg. Area [cm ²]	4.00
psPDn+ [W/m ²]	3.79
psPDtot+ [W/m ²]	6.76
psPDmod+ [W/m ²]	7.01
E _{max} [V/m]	75.3
Power Drift [dB]	-0.03



Measurement Report for Device, EDGE RIGHT, Custom Band, CW, Channel 37050000 (37050.0 MHz)

Device Under Test Properties

Model, Manufacturer	Dimensions [mm]	IMEI	DUT Type
Device,	153.5 x 68.1 x 12.0		Phone

Exposure Conditions

Phantom Section	Position, Test Distance [mm]	Band	Group, UID	Frequency [MHz], Channel Number	Conversion Factor
5G	EDGE RIGHT, 2.00	Custom Band	CW, 0--	37050.0, 37050000	1.0

Hardware Setup

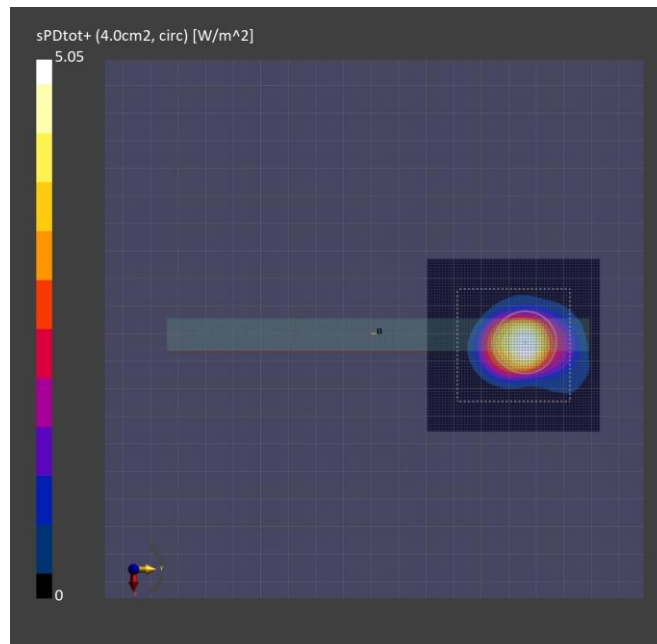
Phantom	Medium	Probe, Calibration Date	DAE, Calibration Date
mmWave - xxxx	Air -	EUmmWV4 - SN9493_F1-55GHz, 2024-01-16	DAE4 Sn1671, 2023-05-25

Scans Setup

Scan Type	5G Scan
Grid Extents [mm]	60.0 x 60.0
Grid Steps [lambda]	0.25 x 0.25
Sensor Surface [mm]	2.0
MAIA	N/A

Measurement Results

Scan Type	5G Scan
Date	2024-04-01, 20:33
Avg. Area [cm ²]	4.00
psPDn+ [W/m ²]	4.31
psPDtot+ [W/m ²]	5.05
psPDmod+ [W/m ²]	5.38
E _{max} [V/m]	95.9
Power Drift [dB]	-0.18



Measurement Report for Device, BACK, Custom Band, CW, Channel 28300000 (28300.0 MHz)

Device Under Test Properties

Model, Manufacturer	Dimensions [mm]	IMEI	DUT Type
Device,	153.5 x 132.6 x 6.0		Phone

Exposure Conditions

Phantom Section	Position, Test Distance [mm]	Band	Group, UID	Frequency [MHz], Channel Number	Conversion Factor
-----------------	------------------------------	------	------------	---------------------------------	-------------------

5G	BACK, 2.00	Custom Band	CW, 0--	28300.0, 28300000	1.0
----	------------	-------------	---------	-------------------	-----

Hardware Setup

Phantom	Medium	Probe, Calibration Date	DAE, Calibration Date
mmWave - xxxx	Air -	EUmmWV4 - SN9493_F1-55GHz, 2024-01-16	DAE4 Sn1667, 2024-03-14

Scans Setup

Scan Type	5G Scan
Grid Extents [mm]	60.0 x 60.0
Grid Steps [lambda]	0.19269041484905072 x 0.19269041484905072
Sensor Surface [mm]	2.0
MAIA	Y

Measurement Results

Scan Type	5G Scan
Date	2024-04-12, 10:30
Avg. Area [cm ²]	4.00
psPDn+ [W/m ²]	5.77
psPDtot+ [W/m ²]	6.78
psPDmod+ [W/m ²]	7.03
E _{max} [V/m]	82.4
Power Drift [dB]	0.09

