

Exposure Conditions

Phantom Section, TSL	Position, Test Distance [mm]	Band	Group, UID	Frequency [MHz], Channel Number	Conversion Factor	TSL Conductivity [S/m]	TSL Permittivity
Flat, HSL	,		CW, 0--	6500.0, 0	5.42	6.09	34.5

Hardware Setup

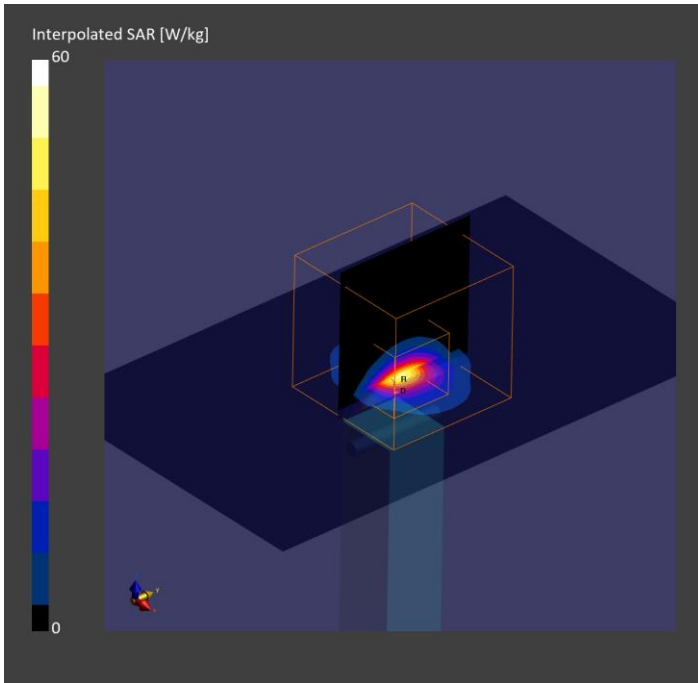
Phantom	TSL, Measured Date	Probe, Calibration Date	DAE, Calibration Date
ELI V6.0 (20deg probe tilt) - 2005	HBBL-600-10000 Charge:xxxx	EX3DV4 - SN7376, 2023-07-25	DAE4 Sn912, 2023-11-17

Scans Setup

	Area Scan	Zoom Scan
Grid Extents [mm]	51.0 x 85.0	22.0 x 22.0 x 22.0
Grid Steps [mm]	8.5 x 8.5	3.4 x 3.4 x 1.4
Sensor Surface [mm]	3.0	1.4

Measurement Results

	Area Scan	Zoom Scan
psSAR1g [W/kg]	26.5	30.8
psSAR10g [W/kg]	4.99	5.64
psAPD (1.0cm2, sq) [W/m2]		308
psAPD (4.0cm2, sq) [W/m2]		137
Power Drift [dB]	-0.04	0.04
M2/M1 [%]		49.9
Dist 3dB Peak [mm]		4.8



Exposure Conditions

Phantom Section, TSL	Position, Test Distance [mm]	Band	Group, UID	Frequency [MHz], Channel Number	Conversion Factor	TSL Conductivity [S/m]	TSL Permittivity
Flat, HSL	,		CW, 0--	8000.0, 0	5.47	7.84	32.5

Hardware Setup

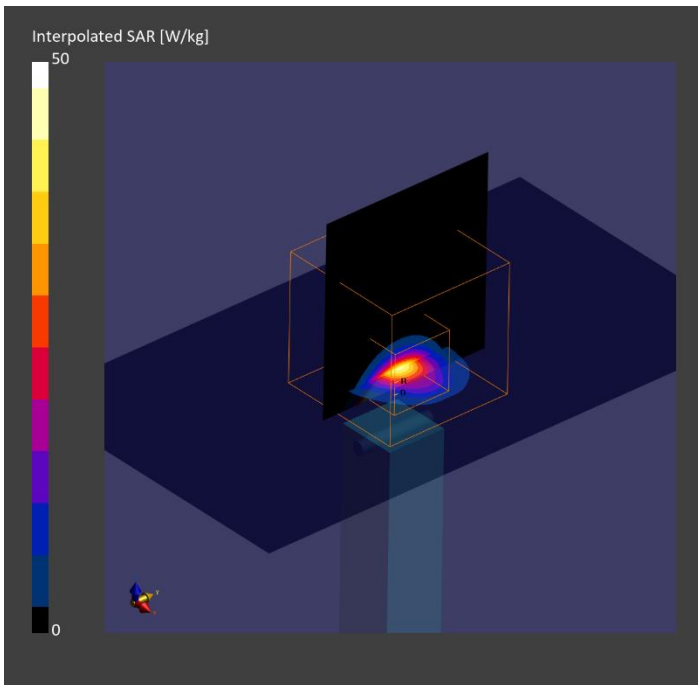
Phantom	TSL, Measured Date	Probe, Calibration Date	DAE, Calibration Date
ELI V6.0 (20deg probe tilt) - 2005	HBBL-600-10000 Charge:xxxx	EX3DV4 - SN7646, 2024-03-15	DAE4 Sn912, 2023-11-17

Scans Setup

	Area Scan	Zoom Scan
Grid Extents [mm]	52.0 x 91.0	28.0 x 28.0 x 24.0
Grid Steps [mm]	6.5 x 6.5	2.7 x 2.7 x 1.3
Sensor Surface [mm]	3.0	1.4

Measurement Results

	Area Scan	Zoom Scan
psSAR1g [W/kg]	28.2	25.4
psSAR10g [W/kg]	5.20	4.37
psAPD (1.0cm2, sq) [W/m2]		254
psAPD (4.0cm2, sq) [W/m2]		107
Power Drift [dB]	-0.00	-0.06
M2/M1 [%]		50.0
Dist 3dB Peak [mm]		4.4



Exposure Conditions

Phantom Section, TSL	Position, Test Distance [mm]	Band	Group, UID	Frequency [MHz], Channel Number	Conversion Factor	TSL Conductivity [S/m]	TSL Permittivity
Flat, HSL	,		CW, 0--	6500.0, 0	4.89	6.14	34.8

Hardware Setup

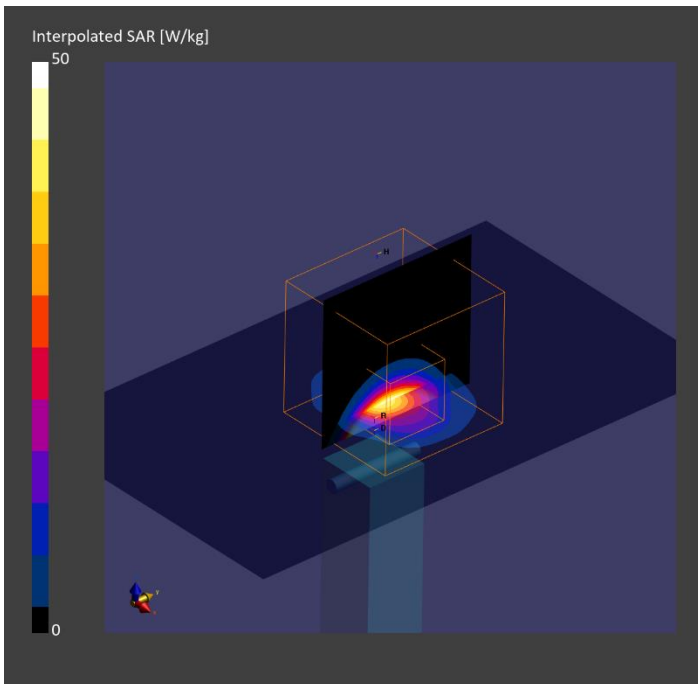
Phantom	TSL, Measured Date	Probe, Calibration Date	DAE, Calibration Date
Twin-SAM V8.0 (30deg probe tilt) – 2038	HBBL-600-10000 Charge:xxxx	EX3DV4 – SN7645, 2023-09-20	DAE4 Sn1670, 2023-05-24

Scans Setup

	Area Scan	Zoom Scan
Grid Extents [mm]	51.0 x 85.0	22.0 x 22.0 x 22.0
Grid Steps [mm]	8.5 x 8.5	3.4 x 3.4 x 1.4
Sensor Surface [mm]	3.0	1.4

Measurement Results

	Area Scan	Zoom Scan
psSAR1g [W/kg]	24.0	29.4
psSAR10g [W/kg]	5.09	5.80
psAPD (1.0cm2, sq) [W/m2]		294
psAPD (4.0cm2, sq) [W/m2]		141
Power Drift [dB]	-0.07	0.06
M2/M1 [%]		52.7
Dist 3dB Peak [mm]		4.9



UL Korea, Ltd. Suwon Laboratory SAR#8
 Measurement Report for Device, , CW, Channel 0 (8000.0 MHz)

Date/Time:2024-04-13

Exposure Conditions

Phantom Section, TSL	Position, Test Distance [mm]	Band	Group, UID	Frequency [MHz], Channel Number	Conversion Factor	TSL Conductivity [S/m]	TSL Permittivity
Flat, HSL	,		CW, 0--	8000.0, 0	4.72	8.06	31.8

Hardware Setup

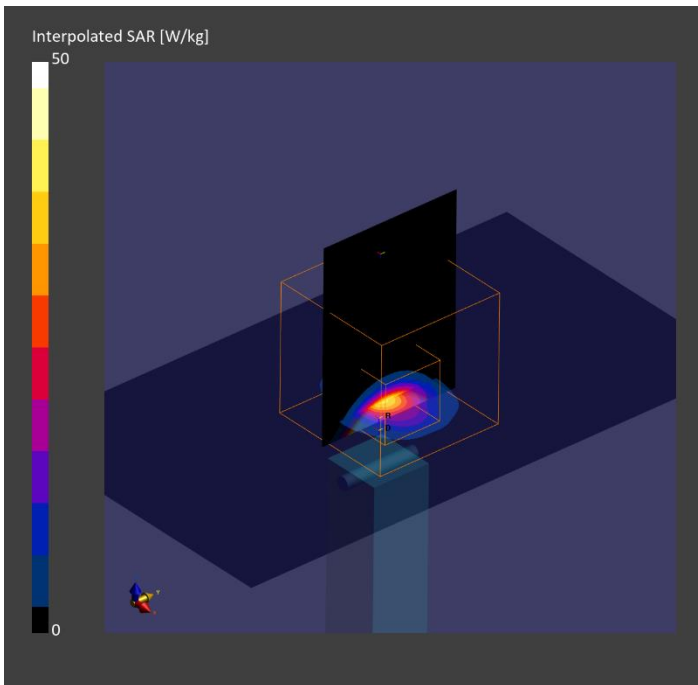
Phantom	TSL, Measured Date	Probe, Calibration Date	DAE, Calibration Date
Twinn-SAM V8.0 (30deg probe tilt) – 2038	HBBL-600-10000 Charge:xxxx, 2024-Apr-13	EX3DV4 – SN7645, 2023-09-20	DAE4 Sn1670, 2023-05-24

Scans Setup

	Area Scan	Zoom Scan
Grid Extents [mm]	52.0 x 91.0	22.0 x 22.0 x 22.0
Grid Steps [mm]	6.5 x 6.5	2.7 x 2.7 x 1.3
Sensor Surface [mm]	3.0	1.4

Measurement Results

	Area Scan	Zoom Scan
psSAR1g [W/kg]	25.6	25.0
psSAR10g [W/kg]	4.80	4.34
psAPD (1.0cm2, sq) [W/m2]		250
psAPD (4.0cm2, sq) [W/m2]		106
Power Drift [dB]	0.03	-0.05
M2/M1 [%]		46.3
Dist 3dB Peak [mm]		4.4



UL Korea, Ltd. Suwon Laboratory SAR#9
 Measurement Report for Device, FRONT, Validation band, CW, Channel 10000 (10000.0 MHz)

Date/Time:2024-04-22

Exposure Conditions

Phantom Section	Position, Test Distance [mm]	Band	Group, UID	Frequency [MHz], Channel Number	Conversion Factor
5G	FRONT, 10.00	Validation band	CW, 0--	10000.0, 10000	1.0

Hardware Setup

Phantom	Medium	Probe, Calibration Date	DAE, Calibration Date
mmWave – xxxx	Air –	EUmmWV4 – SN9536_F1 – 55GHz, 2024-02-15	DAE4 Sn474, 2023-11-10

Scans Setup

Scan Type	5G Scan
Grid Extents [mm]	60.0 x 60.0
Grid Steps [lambda]	0.125 x 0.125
Sensor Surface [mm]	10.0

Measurement Results

Scan Type	5G Scan
Avg. Area [cm ²]	4.00
psPDn+ [W/m ²]	56.4
psPDtot+ [W/m ²]	57.1
psPDmod+ [W/m ²]	57.4
E _{max} [V/m]	152
Power Drift [dB]	0.02

