

Exposure Conditions

Phantom Section, TSL	Position, Test Distance [mm]	Band	Group, UID	Frequency [MHz], Channel Number	Conversion Factor	TSL Conductivity [S/m]	TSL Permittivity
LeftHead, HSL	CHEEK, 0.00	U-NII-5	WLAN, 10755-AAC	6025.0, 15	4.89	5.49	35.0

Hardware Setup

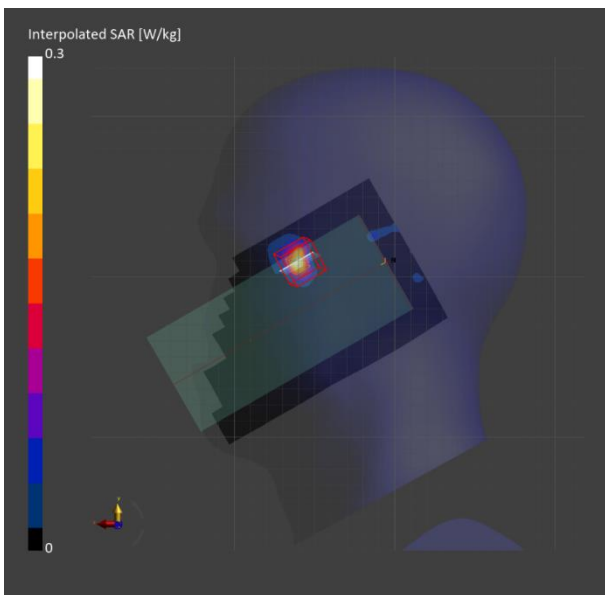
Phantom	TSL, Measured Date	Probe, Calibration Date	DAE, Calibration Date
Twin-SAM V8.0 (30deg probe tilt) - 2038	HBBL-600-10000 Charge:xxxx, 2024-Mar-14	EX3DV4 - SN7645, 2023-09-20	DAE4 Sn1670, 2023-05-24

Scans Setup

	Area Scan	Zoom Scan
Grid Extents [mm]	102.0 x 187.0	22.0 x 22.0 x 22.0
Grid Steps [mm]	8.5 x 8.5	3.4 x 3.4 x 1.4
Sensor Surface [mm]	3.0	1.4

Measurement Results

	Area Scan	Zoom Scan
psSAR1g [W/kg]	0.161	0.182
psSAR10g [W/kg]	0.045	0.050
psAPD (1.0cm2, sq) [W/m2]		1.82
psAPD (4.0cm2, sq) [W/m2]		1.15
Power Drift [dB]		-0.04
M2/M1 [%]		61.0
Dist 3dB Peak [mm]		4.9



Exposure Conditions

Phantom Section, TSL	Position, Test Distance [mm]	Band	Group, UID	Frequency [MHz], Channel Number	Conversion Factor	TSL Conductivity [S/m]	TSL Permittivity
Flat, HSL	BACK, 10.00	U-NII-5	WLAN, 10755-AAC	6345.000, 79	4.89	5.95	34.5

Hardware Setup

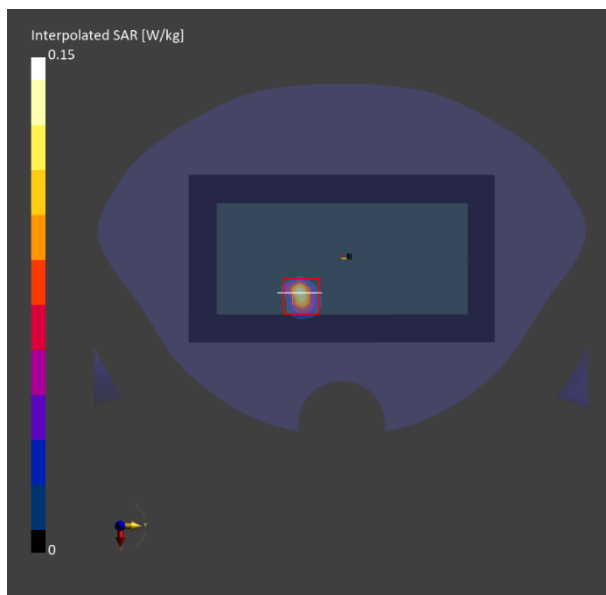
Phantom	TSL, Measured Date	Probe, Calibration Date	DAE, Calibration Date
Twin-SAM V8.0 (30deg probe tilt) - 2038	HBBL-600-10000 Charge:xxxx, 2024-Mar-14	EX3DV4 - SN7645, 2023-09-20	DAE4 Sn1670, 2023-05-24

Scans Setup

	Area Scan	Zoom Scan
Grid Extents [mm]	102.0 x 187.0	27.2 x 27.2 x 22.0
Grid Steps [mm]	8.5 x 8.5	3.4 x 3.4 x 1.4
Sensor Surface [mm]	3.0	1.4

Measurement Results

	Area Scan	Zoom Scan
psSAR1g [W/kg]	0.093	0.102
psSAR10g [W/kg]	0.023	0.022
psAPD (1.0cm2, sq) [W/m2]		1.02
psAPD (4.0cm2, sq) [W/m2]		0.546
Power Drift [dB]		0.01
M2/M1 [%]		49.5
Dist 3dB Peak [mm]		7.1



Exposure Conditions

Phantom Section, TSL	Position, Test Distance [mm]	Band	Group, UID	Frequency [MHz], Channel Number	Conversion Factor	TSL Conductivity [S/m]	TSL Permittivity
Flat, HSL	EDGE RIGHT, 0.00	U-NII-5	WLAN, 10755-AAC	6345.0, 79	4.89	6.02	34.2

Hardware Setup

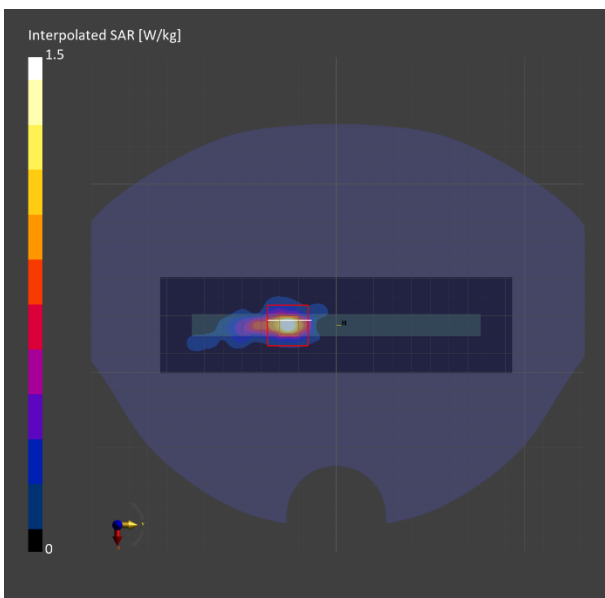
Phantom	TSL, Measured Date	Probe, Calibration Date	DAE, Calibration Date
Twin-SAM V8.0 (30deg probe tilt) - 2038	HBBL-600-10000 Charge:xxxx, 2024-Mar-15	EX3DV4 - SN7645, 2023-09-20	DAE4 Sn1670, 2023-05-24

Scans Setup

	Area Scan	Zoom Scan
Grid Extents [mm]	51.0 x 187.0	22.0 x 22.0 x 22.0
Grid Steps [mm]	8.5 x 8.5	2.6 x 2.6 x 1.2
Sensor Surface [mm]	3.0	1.4

Measurement Results

	Area Scan	Zoom Scan
psSAR1g [W/kg]	1.02	1.06
psSAR10g [W/kg]	0.260	0.280
psAPD (1.0cm2, sq) [W/m2]		10.6
psAPD (4.0cm2, sq) [W/m2]		6.55
Power Drift [dB]		-0.12
M2/M1 [%]		51.8
Dist 3dB Peak [mm]		2.7



Exposure Conditions

Phantom Section, TSL	Position, Test Distance [mm]	Band	Group, UID	Frequency [MHz], Channel Number	Conversion Factor	TSL Conductivity [S/m]	TSL Permittivity
LeftHead, HSL	TILT, 0.00	U-NII-7	WLAN, 10755-AAC	6665.0, 143	5.4	6.17	34.0

Hardware Setup

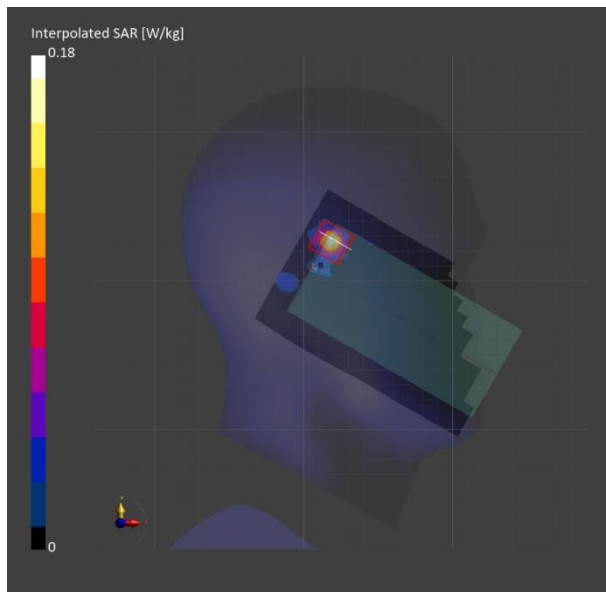
Phantom	TSL, Measured Date	Probe, Calibration Date	DAE, Calibration Date
Twin-SAM V8.0 (30deg probe tilt) - 2038	HBBL-600-10000 Charge:xxxx, 2024-Mar-28	EX3DV4 - SN7545, 2023-08-25	DAE4 Sn1670, 2023-05-24

Scans Setup

	Area Scan	Zoom Scan
Grid Extents [mm]	102.0 x 187.0	22.0 x 22.0 x 22.0
Grid Steps [mm]	8.5 x 8.5	3.4 x 3.4 x 1.4
Sensor Surface [mm]	3.0	1.4

Measurement Results

	Area Scan	Zoom Scan
psSAR1g [W/kg]	0.113	0.121
psSAR10g [W/kg]	0.029	0.029
psAPD (1.0cm2, sq) [W/m2]		1.21
psAPD (4.0cm2, sq) [W/m2]		0.695
Power Drift [dB]		0.15
M2/M1 [%]		53.4
Dist 3dB Peak [mm]		4.1



Exposure Conditions

Phantom Section, TSL	Position, Test Distance [mm]	Band	Group, UID	Frequency [MHz], Channel Number	Conversion Factor	TSL Conductivity [S/m]	TSL Permittivity
Flat, HSL	BACK, 10.00	U-NII-7	WLAN, 10755-AAC	6665.000, 143	4.89	6.27	34.3

Hardware Setup

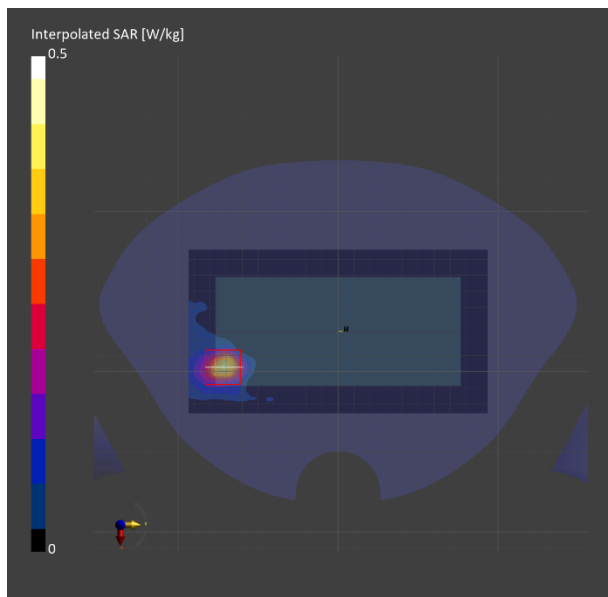
Phantom	TSL, Measured Date	Probe, Calibration Date	DAE, Calibration Date
Twin-SAM V8.0 (30deg probe tilt) - 2038	HBBL-600-10000 Charge:xxxx, 2024-Mar-21	EX3DV4 - SN7645, 2023-09-20	DAE4 Sn1670, 2023-05-24

Scans Setup

	Area Scan	Zoom Scan
Grid Extents [mm]	102.0 x 187.0	22.0 x 22.0 x 22.0
Grid Steps [mm]	8.5 x 8.5	3.4 x 3.4 x 1.4
Sensor Surface [mm]	3.0	1.4

Measurement Results

	Area Scan	Zoom Scan
psSAR1g [W/kg]	0.307	0.257
psSAR10g [W/kg]	0.101	0.079
psAPD (1.0cm2, sq) [W/m2]		2.57
psAPD (4.0cm2, sq) [W/m2]		1.84
Power Drift [dB]		-0.06
M2/M1 [%]		56.1
Dist 3dB Peak [mm]		8.3



Exposure Conditions

Phantom Section, TSL	Position, Test Distance [mm]	Band	Group, UID	Frequency [MHz], Channel Number	Conversion Factor	TSL Conductivity [S/m]	TSL Permittivity
Flat, HSL	BACK, 0.00	U-NII-7	WLAN, 10755-AAC	6665.0, 143	4.89	6.27	34.3

Hardware Setup

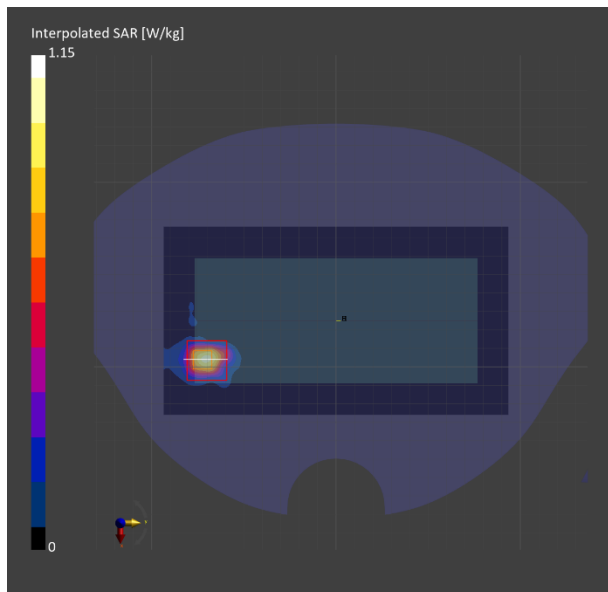
Phantom	TSL, Measured Date	Probe, Calibration Date	DAE, Calibration Date
Twin-SAM V8.0 (30deg probe tilt) - 2038	HBBL-600-10000 Charge:xxxx, 2024-Mar-21	EX3DV4 - SN7645, 2023-09-20	DAE4 Sn1670, 2023-05-24

Scans Setup

	Area Scan	Zoom Scan
Grid Extents [mm]	102.0 x 187.0	22.0 x 22.0 x 22.0
Grid Steps [mm]	8.5 x 8.5	3.4 x 3.4 x 1.4
Sensor Surface [mm]	3.0	1.4

Measurement Results

	Area Scan	Zoom Scan
psSAR1g [W/kg]	0.779	0.839
psSAR10g [W/kg]	0.224	0.201
psAPD (1.0cm2, sq) [W/m2]		8.39
psAPD (4.0cm2, sq) [W/m2]		4.79
Power Drift [dB]		-0.01
M2/M1 [%]		49.0
Dist 3dB Peak [mm]		5.5



Exposure Conditions

Phantom Section, TSL	Position, Test Distance [mm]	Band	Group, UID	Frequency [MHz], Channel Number	Conversion Factor	TSL Conductivity [S/m]	TSL Permittivity
LeftHead, HSL	CHEEK, 0.00	U-NII-5	WLAN, 10755-AAC	6345.0, 79	4.89	6.02	34.2

Hardware Setup

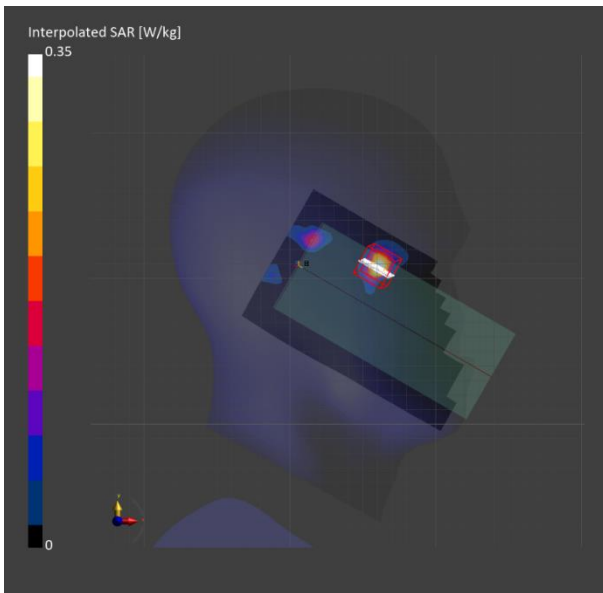
Phantom	TSL, Measured Date	Probe, Calibration Date	DAE, Calibration Date
Twin-SAM V8.0 (30deg probe tilt) - 2038	HBBL-600-10000 Charge:xxxx, 2024-Mar-15	EX3DV4 - SN7645, 2023-09-20	DAE4 Sn1670, 2023-05-24

Scans Setup

	Area Scan	Zoom Scan
Grid Extents [mm]	102.0 x 187.0	22.0 x 22.0 x 22.0
Grid Steps [mm]	8.5 x 8.5	3.4 x 3.4 x 1.4
Sensor Surface [mm]	3.0	1.4

Measurement Results

	Area Scan	Zoom Scan
psSAR1g [W/kg]	0.243	0.248
psSAR10g [W/kg]	0.066	0.069
psAPD (1.0cm2, sq) [W/m2]		2.48
psAPD (4.0cm2, sq) [W/m2]		1.54
Power Drift [dB]		0.06
M2/M1 [%]		58.7
Dist 3dB Peak [mm]		4.9



Exposure Conditions

Phantom Section, TSL	Position, Test Distance [mm]	Band	Group, UID	Frequency [MHz], Channel Number	Conversion Factor	TSL Conductivity [S/m]	TSL Permittivity
Flat, HSL	EDGE RIGHT, 0.00	U-NII-8	WLAN, 10755-AAC	6985.0, 207	5.4	6.45	33.2

Hardware Setup

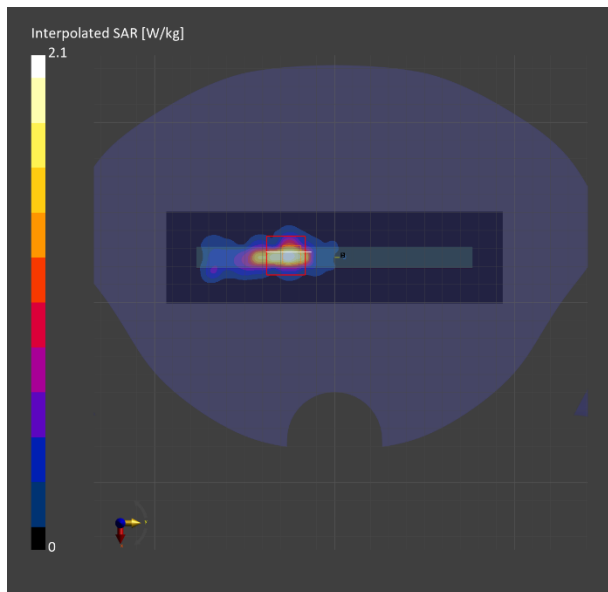
Phantom	TSL, Measured Date	Probe, Calibration Date	DAE, Calibration Date
Twin-SAM V8.0 (30deg probe tilt) - 2038	HBBL-600-10000 Charge:xxxx, 2024-Mar-26	EX3DV4 - SN7545, 2023-08-25	DAE4 Sn1670, 2023-05-24

Scans Setup

	Area Scan	Zoom Scan
Grid Extents [mm]	51.0 x 187.0	25.2 x 25.2 x 22.0
Grid Steps [mm]	8.5 x 8.5	2.1 x 2.1 x 1.4
Sensor Surface [mm]	3.0	1.4

Measurement Results

	Area Scan	Zoom Scan
psSAR1g [W/kg]	1.59	2.02
psSAR10g [W/kg]	0.445	0.526
psAPD (1.0cm2, sq) [W/m2]		20.2
psAPD (4.0cm2, sq) [W/m2]		12.2
Power Drift [dB]		-0.11
M2/M1 [%]		48.0
Dist 3dB Peak [mm]		2.6



Exposure Conditions

Phantom Section, TSL	Position, Test Distance [mm]	Band	Group, UID	Frequency [MHz], Channel Number	Conversion Factor	TSL Conductivity [S/m]	TSL Permittivity
Flat, HSL	BACK, 10.00	U-NII-8	WLAN, 10755-AAC	6985.000, 207	4.89	6.39	32.5

Hardware Setup

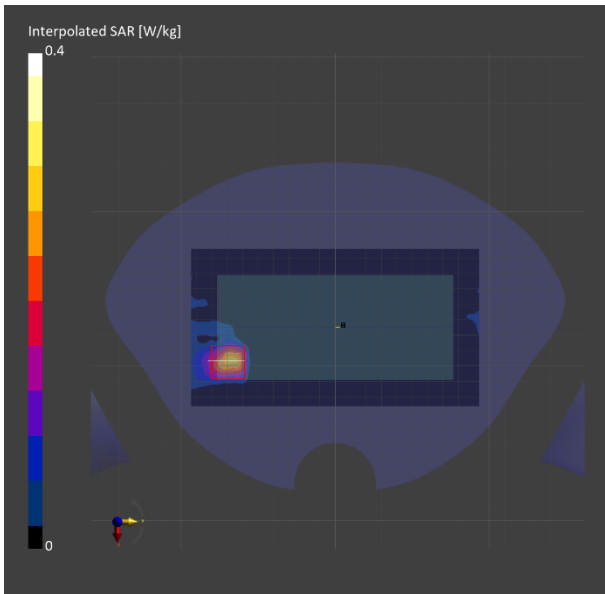
Phantom	TSL, Measured Date	Probe, Calibration Date	DAE, Calibration Date
Twin-SAM V8.0 (30deg probe tilt) - 2038	HBBL-600-10000 Charge:xxxx, 2024-Mar-19	EX3DV4 - SN7645, 2023-09-20	DAE4 Sn1670, 2023-05-24

Scans Setup

	Area Scan	Zoom Scan
Grid Extents [mm]	102.0 x 187.0	22.0 x 22.0 x 22.0
Grid Steps [mm]	8.5 x 8.5	3.4 x 3.4 x 1.4
Sensor Surface [mm]	3.0	1.4

Measurement Results

	Area Scan	Zoom Scan
psSAR1g [W/kg]	0.237	0.199
psSAR10g [W/kg]	0.081	0.061
psAPD (1.0cm2, sq) [W/m2]		1.99
psAPD (4.0cm2, sq) [W/m2]		1.43
Power Drift [dB]		-0.06
M2/M1 [%]		55.2
Dist 3dB Peak [mm]		7.7



Measurement Report for SM-F956U_Open, FRONT, Custom Band, IEEE 802.11a/h WiFi 5 GHz (OFDM, 6 Mbps, 99pc duty cycle), Channel 143 (6665.000 MHz)

Exposure Conditions

Phantom Section, TSL	Position, Test Distance [mm]	Band	Group, UID	Frequency [MHz], Channel Number	Conversion Factor	TSL Conductivity [S/m]	TSL Permittivity
Flat, HSL	FRONT, 10.00	Custom Band	CW, 10755-AAC	6665.000, 143	5.11	6.35	33.7

Hardware Setup

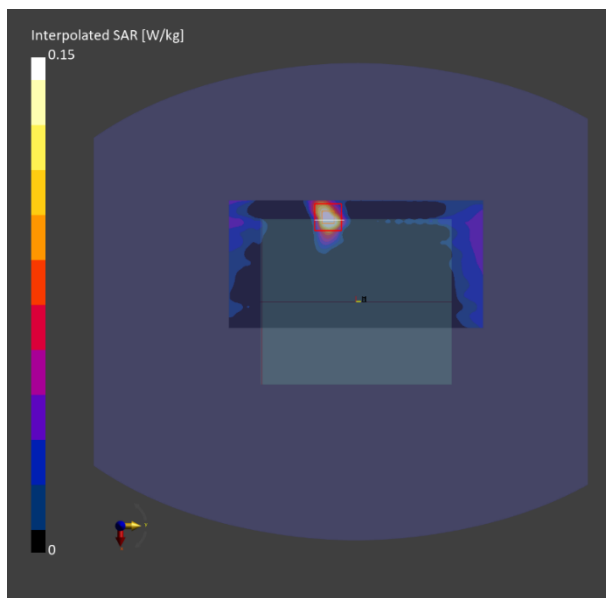
Phantom	TSL, Measured Date	Probe, Calibration Date	DAE, Calibration Date
ELI V6.0 (20deg probe tilt) - 2005	HBBL-600-10000 Charge:xxxx, 2024-Apr-19	EX3DV4 - SN7646, 2024-03-15	DAE4 Sn912, 2023-11-17

Scans Setup

	Area Scan	Zoom Scan
Grid Extents [mm]	102.0 x 204.0	22.0 x 22.0 x 22.0
Grid Steps [mm]	8.5 x 8.5	3.4 x 3.4 x 1.4
Sensor Surface [mm]	3.0	1.4

Measurement Results

	Area Scan	Zoom Scan
psSAR1g [W/kg]	0.132	0.136
psSAR10g [W/kg]	0.043	0.045
psAPD (1.0cm2, sq) [W/m2]		1.36
psAPD (4.0cm2, sq) [W/m2]		1.03
Power Drift [dB]		0.01
M2/M1 [%]		59.1
Dist 3dB Peak [mm]		7.4



Measurement Report for SM-F956U_Open, FRONT, Custom Band, IEEE 802.11a/h WiFi 5 GHz (OFDM, 6 Mbps, 99pc duty cycle), Channel 143 (6665.000 MHz)

Exposure Conditions

Phantom Section, TSL	Position, Test Distance [mm]	Band	Group, UID	Frequency [MHz], Channel Number	Conversion Factor	TSL Conductivity [S/m]	TSL Permittivity
Flat, HSL	FRONT, 0.00	Custom Band	CW, 10755-AAC	6665.000, 143	5.11	6.35	33.7

Hardware Setup

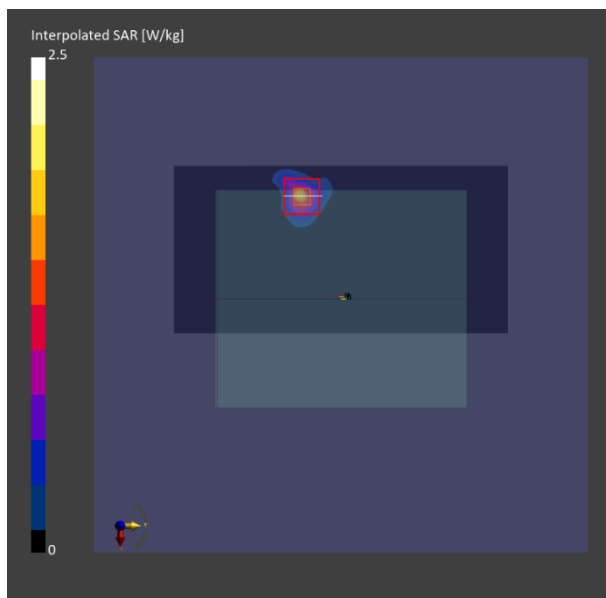
Phantom	TSL, Measured Date	Probe, Calibration Date	DAE, Calibration Date
ELI V6.0 (20deg probe tilt) - 2005	HBBL-600-10000 Charge:xxxx, 2024-Apr-19	EX3DV4 - SN7646, 2024-03-15	DAE4 Sn912, 2023-11-17

Scans Setup

	Area Scan	Zoom Scan
Grid Extents [mm]	102.0 x 204.0	22.0 x 22.0 x 22.0
Grid Steps [mm]	8.5 x 8.5	3.4 x 3.4 x 1.4
Sensor Surface [mm]	3.0	1.4

Measurement Results

	Area Scan	Zoom Scan
psSAR1g [W/kg]	1.23	1.47
psSAR10g [W/kg]	0.359	0.412
psAPD (1.0cm2, sq) [W/m2]		14.7
psAPD (4.0cm2, sq) [W/m2]		9.55
Power Drift [dB]		0.04
M2/M1 [%]		54.5
Dist 3dB Peak [mm]		5.2



Exposure Conditions

Phantom Section, TSL	Position, Test Distance [mm]	Band	Group, UID	Frequency [MHz], Channel Number	Conversion Factor	TSL Conductivity [S/m]	TSL Permittivity
Flat, HSL	BACK, 10.00	U-NII-7	WLAN, 10755-AAC	6665.000, 143	5.11	6.31	33.7

Hardware Setup

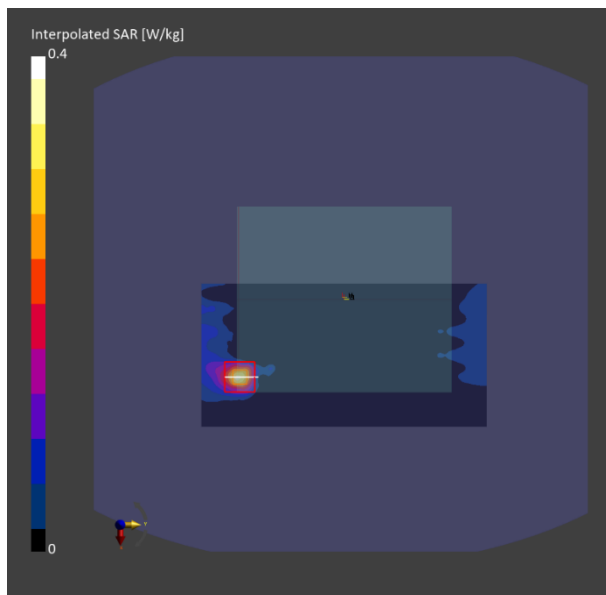
Phantom	TSL, Measured Date	Probe, Calibration Date	DAE, Calibration Date
ELI V6.0 (20deg probe tilt) - 2005	HBBL-600-10000 Charge:xxxx, 2024-Apr-22	EX3DV4 - SN7646, 2024-03-15	DAE4 Sn912, 2023-11-17

Scans Setup

	Area Scan	Zoom Scan
Grid Extents [mm]	102.0 x 204.0	22.0 x 22.0 x 22.0
Grid Steps [mm]	8.5 x 8.5	3.4 x 3.4 x 1.4
Sensor Surface [mm]	3.0	1.4

Measurement Results

	Area Scan	Zoom Scan
psSAR1g [W/kg]	0.262	0.253
psSAR10g [W/kg]	0.084	0.074
psAPD (1.0cm2, sq) [W/m2]		2.53
psAPD (4.0cm2, sq) [W/m2]		1.74
Power Drift [dB]		0.03
M2/M1 [%]		55.5
Dist 3dB Peak [mm]		6.7



Exposure Conditions

Phantom Section, TSL	Position, Test Distance [mm]	Band	Group, UID	Frequency [MHz], Channel Number	Conversion Factor	TSL Conductivity [S/m]	TSL Permittivity
Flat, HSL	FRONT, 0.00	U-NII-5	WLAN, 10755-AAC	6345.000, 79	5.11	6.08	34.5

Hardware Setup

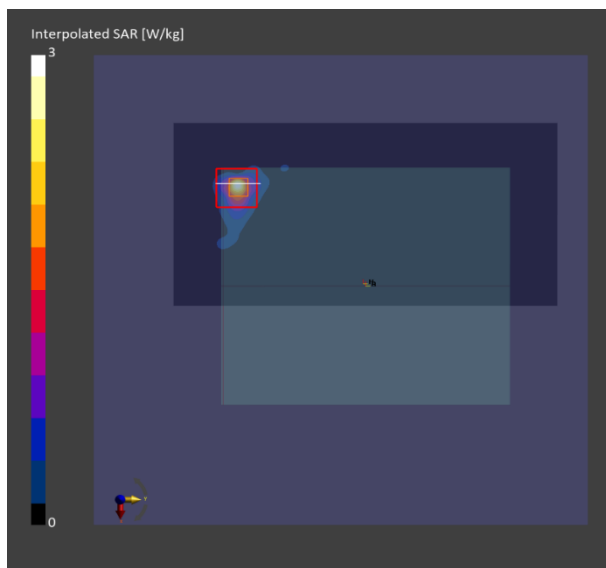
Phantom	TSL, Measured Date	Probe, Calibration Date	DAE, Calibration Date
ELI V6.0 (20deg probe tilt) - 2005	HBBL-600-10000 Charge:xxxx, 2024-Apr-19	EX3DV4 - SN7646, 2024-03-15	DAE4 Sn912, 2023-11-17

Scans Setup

	Area Scan	Zoom Scan
Grid Extents [mm]	102.0 x 204.0	22.0 x 22.0 x 22.0
Grid Steps [mm]	8.5 x 8.5	3.4 x 3.4 x 1.4
Sensor Surface [mm]	3.0	1.4

Measurement Results

	Area Scan	Zoom Scan
psSAR1g [W/kg]	1.68	1.78
psSAR10g [W/kg]	0.410	0.428
psAPD (1.0cm ² , sq) [W/m ²]		17.8
psAPD (4.0cm ² , sq) [W/m ²]		10.3
Power Drift [dB]		0.00
M2/M1 [%]		54.6
Dist 3dB Peak [mm]		4.4



Exposure Conditions

Phantom Section, TSL	Position, Test Distance [mm]	Band	Group, UID	Frequency [MHz], Channel Number	Conversion Factor	TSL Conductivity [S/m]	TSL Permittivity
Flat, HSL	BACK, 10.00	U-NII-7	WLAN, 10755-AAC	6665.000, 143	5.11	6.32	33.8

Hardware Setup

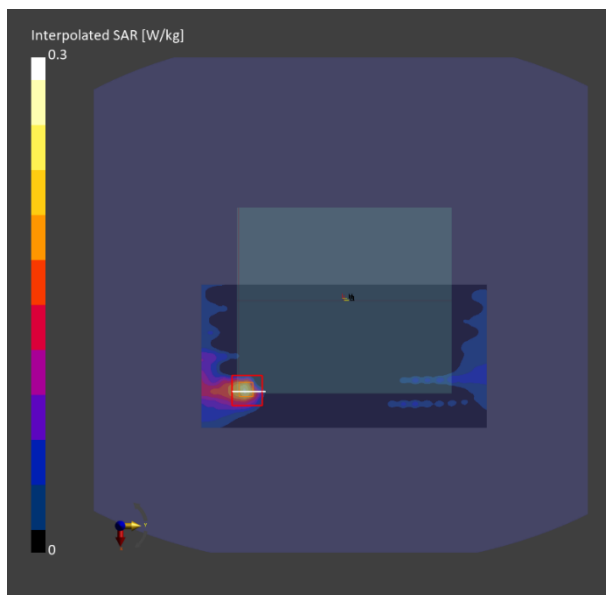
Phantom	TSL, Measured Date	Probe, Calibration Date	DAE, Calibration Date
ELI V6.0 (20deg probe tilt) - 2005	HBBL-600-10000 Charge:xxxx, 2024-Apr-18	EX3DV4 - SN7646, 2024-03-15	DAE4 Sn912, 2023-11-17

Scans Setup

	Area Scan	Zoom Scan
Grid Extents [mm]	102.0 x 204.0	22.0 x 22.0 x 22.0
Grid Steps [mm]	8.5 x 8.5	3.4 x 3.4 x 1.4
Sensor Surface [mm]	3.0	1.4

Measurement Results

	Area Scan	Zoom Scan
psSAR1g [W/kg]	0.198	0.186
psSAR10g [W/kg]	0.066	0.059
psAPD (1.0cm2, sq) [W/m2]		1.86
psAPD (4.0cm2, sq) [W/m2]		1.37
Power Drift [dB]		0.03
M2/M1 [%]		57.9
Dist 3dB Peak [mm]		7.1



Exposure Conditions

Phantom Section, TSL	Position, Test Distance [mm]	Band	Group, UID	Frequency [MHz], Channel Number	Conversion Factor	TSL Conductivity [S/m]	TSL Permittivity
Flat, HSL	FRONT, 0.00	U-NII-5	WLAN, 10755-AAC	6345.000, 79	5.11	6.06	34.1

Hardware Setup

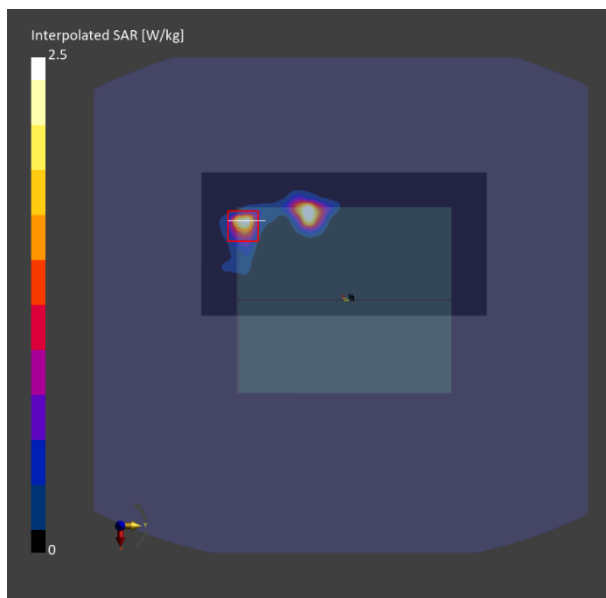
Phantom	TSL, Measured Date	Probe, Calibration Date	DAE, Calibration Date
ELI V6.0 (20deg probe tilt) - 2005	HBBL-600-10000 Charge:xxxx, 2024-Apr-22	EX3DV4 - SN7646, 2024-03-15	DAE4 Sn912, 2023-11-17

Scans Setup

	Area Scan	Zoom Scan
Grid Extents [mm]	102.0 x 204.0	27.2 x 27.2 x 22.0
Grid Steps [mm]	8.5 x 8.5	3.4 x 3.4 x 1.4
Sensor Surface [mm]	3.0	1.4

Measurement Results

	Area Scan	Zoom Scan
psSAR1g [W/kg]	1.90	1.98
psSAR10g [W/kg]	0.552	0.496
psAPD (1.0cm2, sq) [W/m2]		19.8
psAPD (4.0cm2, sq) [W/m2]		11.7
Power Drift [dB]		-0.11
M2/M1 [%]		57.7
Dist 3dB Peak [mm]		4.6



Exposure Conditions

Phantom Section, TSL	Position, Test Distance [mm]	Band	Group, UID	Frequency [MHz], Channel Number	Conversion Factor	TSL Conductivity [S/m]	TSL Permittivity
LeftHead, HSL	CHEEK, 0.00	U-NII-5	WLAN, 10755-AAC	6025.0, 15	4.89	5.49	35.0

Hardware Setup

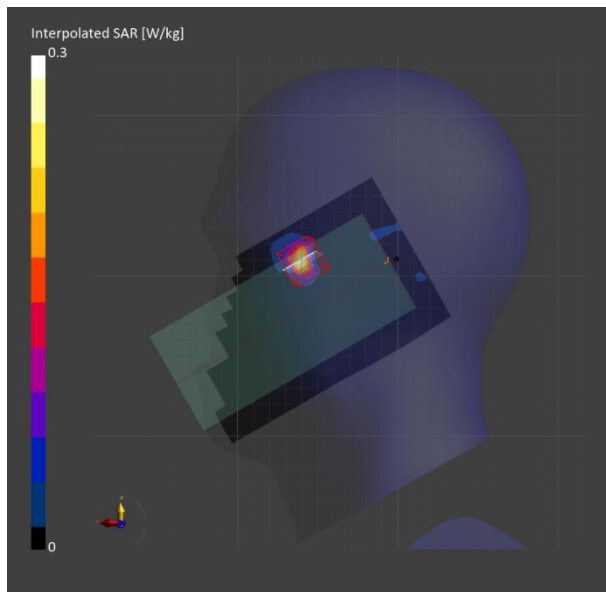
Phantom	TSL, Measured Date	Probe, Calibration Date	DAE, Calibration Date
Twin-SAM V8.0 (30deg probe tilt) - 2038	HBBL-600-10000 Charge:xxxx, 2024-Mar-14	EX3DV4 - SN7645, 2023-09-20	DAE4 Sn1670, 2023-05-24

Scans Setup

	Area Scan	Zoom Scan
Grid Extents [mm]	102.0 x 187.0	22.0 x 22.0 x 22.0
Grid Steps [mm]	8.5 x 8.5	3.4 x 3.4 x 1.4
Sensor Surface [mm]	3.0	1.4

Measurement Results

	Area Scan	Zoom Scan
psSAR1g [W/kg]	0.161	0.182
psSAR10g [W/kg]	0.045	0.050
psAPD (1.0cm2, sq) [W/m2]		1.82
psAPD (4.0cm2, sq) [W/m2]		1.15
Power Drift [dB]		-0.04
M2/M1 [%]		61.0
Dist 3dB Peak [mm]		4.9



Exposure Conditions

Phantom Section, TSL	Position, Test Distance [mm]	Band	Group, UID	Frequency [MHz], Channel Number	Conversion Factor	TSL Conductivity [S/m]	TSL Permittivity
Flat, HSL	BACK, 10.00	U-NII-5	WLAN, 10755-AAC	6345.000, 79	4.89	5.95	34.5

Hardware Setup

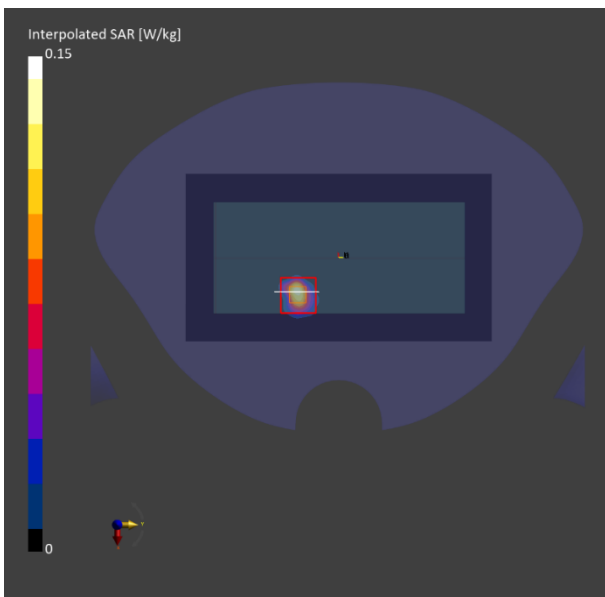
Phantom	TSL, Measured Date	Probe, Calibration Date	DAE, Calibration Date
Twin-SAM V8.0 (30deg probe tilt) - 2038	HBBL-600-10000 Charge:xxxx, 2024-Mar-14	EX3DV4 - SN7645, 2023-09-20	DAE4 Sn1670, 2023-05-24

Scans Setup

	Area Scan	Zoom Scan
Grid Extents [mm]	102.0 x 187.0	27.2 x 27.2 x 22.0
Grid Steps [mm]	8.5 x 8.5	3.4 x 3.4 x 1.4
Sensor Surface [mm]	3.0	1.4

Measurement Results

	Area Scan	Zoom Scan
psSAR1g [W/kg]	0.093	0.102
psSAR10g [W/kg]	0.023	0.022
psAPD (1.0cm2, sq) [W/m2]		1.02
psAPD (4.0cm2, sq) [W/m2]		0.546
Power Drift [dB]		0.01
M2/M1 [%]		49.5
Dist 3dB Peak [mm]		7.1



Exposure Conditions

Phantom Section, TSL	Position, Test Distance [mm]	Band	Group, UID	Frequency [MHz], Channel Number	Conversion Factor	TSL Conductivity [S/m]	TSL Permittivity
Flat, HSL	EDGE RIGHT, 0.00	U-NII-5	WLAN, 10755-AAC	6345.0, 79	4.89	6.02	34.2

Hardware Setup

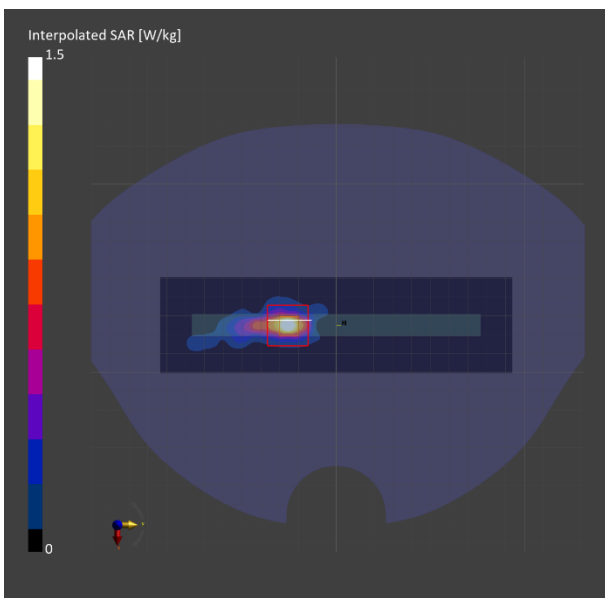
Phantom	TSL, Measured Date	Probe, Calibration Date	DAE, Calibration Date
Twin-SAM V8.0 (30deg probe tilt) - 2038	HBBL-600-10000 Charge:xxxx, 2024-Mar-15	EX3DV4 - SN7645, 2023-09-20	DAE4 Sn1670, 2023-05-24

Scans Setup

	Area Scan	Zoom Scan
Grid Extents [mm]	51.0 x 187.0	22.0 x 22.0 x 22.0
Grid Steps [mm]	8.5 x 8.5	2.6 x 2.6 x 1.2
Sensor Surface [mm]	3.0	1.4

Measurement Results

	Area Scan	Zoom Scan
psSAR1g [W/kg]	1.02	1.06
psSAR10g [W/kg]	0.260	0.280
psAPD (1.0cm ² , sq) [W/m ²]		10.6
psAPD (4.0cm ² , sq) [W/m ²]		6.55
Power Drift [dB]		-0.12
M2/M1 [%]		51.8
Dist 3dB Peak [mm]		2.7



Exposure Conditions

Phantom Section, TSL	Position, Test Distance [mm]	Band	Group, UID	Frequency [MHz], Channel Number	Conversion Factor	TSL Conductivity [S/m]	TSL Permittivity
LeftHead, HSL	TILT, 0.00	U-NII-7	WLAN, 10755-AAC	6665.0, 143	5.4	6.17	34.0

Hardware Setup

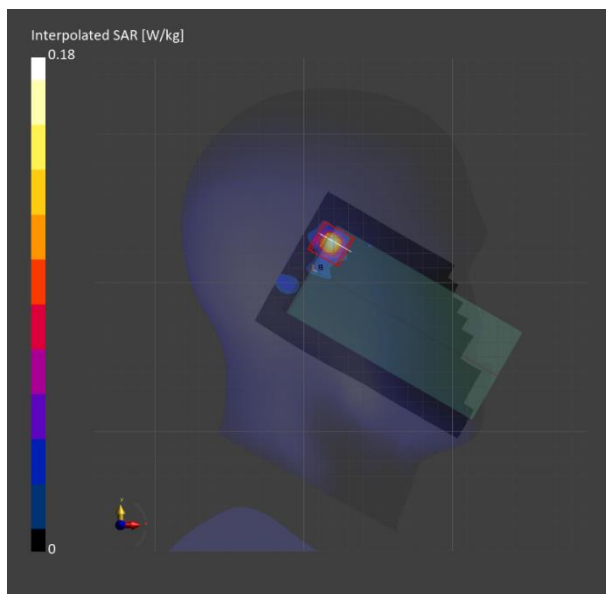
Phantom	TSL, Measured Date	Probe, Calibration Date	DAE, Calibration Date
Twin-SAM V8.0 (30deg probe tilt) - 2038	HBBL-600-10000 Charge:xxxx, 2024-Mar-28	EX3DV4 - SN7545, 2023-08-25	DAE4 Sn1670, 2023-05-24

Scans Setup

	Area Scan	Zoom Scan
Grid Extents [mm]	102.0 x 187.0	22.0 x 22.0 x 22.0
Grid Steps [mm]	8.5 x 8.5	3.4 x 3.4 x 1.4
Sensor Surface [mm]	3.0	1.4

Measurement Results

	Area Scan	Zoom Scan
psSAR1g [W/kg]	0.113	0.121
psSAR10g [W/kg]	0.029	0.029
psAPD (1.0cm2, sq) [W/m2]		1.21
psAPD (4.0cm2, sq) [W/m2]		0.695
Power Drift [dB]		0.15
M2/M1 [%]		53.4
Dist 3dB Peak [mm]		4.1



Exposure Conditions

Phantom Section, TSL	Position, Test Distance [mm]	Band	Group, UID	Frequency [MHz], Channel Number	Conversion Factor	TSL Conductivity [S/m]	TSL Permittivity
Flat, HSL	BACK, 10.00	U-NII-7	WLAN, 10755-AAC	6665.000, 143	4.89	6.27	34.3

Hardware Setup

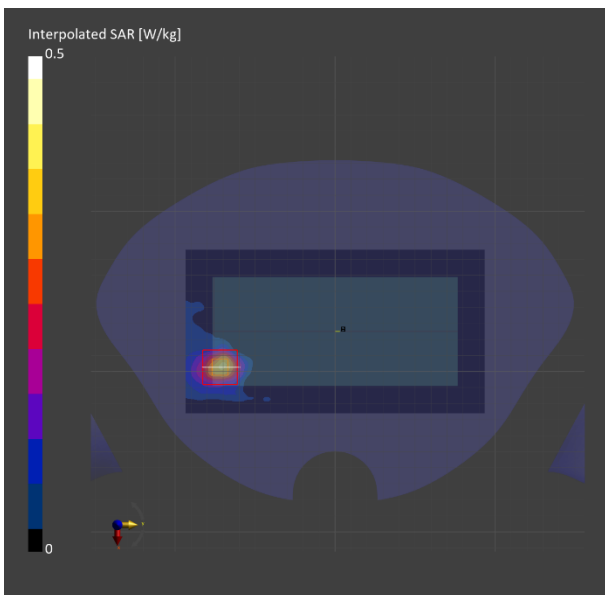
Phantom	TSL, Measured Date	Probe, Calibration Date	DAE, Calibration Date
Twin-SAM V8.0 (30deg probe tilt) - 2038	HBBL-600-10000 Charge:xxxx, 2024-Mar-21	EX3DV4 - SN7645, 2023-09-20	DAE4 Sn1670, 2023-05-24

Scans Setup

	Area Scan	Zoom Scan
Grid Extents [mm]	102.0 x 187.0	22.0 x 22.0 x 22.0
Grid Steps [mm]	8.5 x 8.5	3.4 x 3.4 x 1.4
Sensor Surface [mm]	3.0	1.4

Measurement Results

	Area Scan	Zoom Scan
psSAR1g [W/kg]	0.307	0.257
psSAR10g [W/kg]	0.101	0.079
psAPD (1.0cm2, sq) [W/m2]		2.57
psAPD (4.0cm2, sq) [W/m2]		1.84
Power Drift [dB]		-0.06
M2/M1 [%]		56.1
Dist 3dB Peak [mm]		8.3



Exposure Conditions

Phantom Section, TSL	Position, Test Distance [mm]	Band	Group, UID	Frequency [MHz], Channel Number	Conversion Factor	TSL Conductivity [S/m]	TSL Permittivity
Flat, HSL	BACK, 0.00	U-NII-7	WLAN, 10755-AAC	6665.0, 143	4.89	6.27	34.3

Hardware Setup

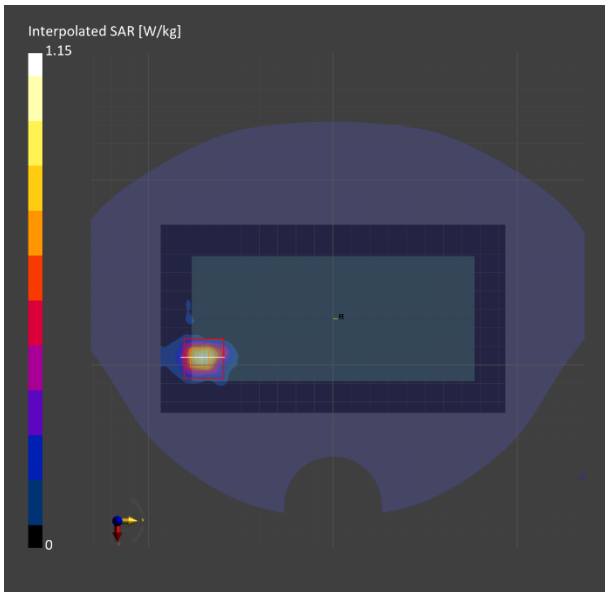
Phantom	TSL, Measured Date	Probe, Calibration Date	DAE, Calibration Date
Twin-SAM V8.0 (30deg probe tilt) - 2038	HBBL-600-10000 Charge:xxxx, 2024-Mar-21	EX3DV4 - SN7645, 2023-09-20	DAE4 Sn1670, 2023-05-24

Scans Setup

	Area Scan	Zoom Scan
Grid Extents [mm]	102.0 x 187.0	22.0 x 22.0 x 22.0
Grid Steps [mm]	8.5 x 8.5	3.4 x 3.4 x 1.4
Sensor Surface [mm]	3.0	1.4

Measurement Results

	Area Scan	Zoom Scan
psSAR1g [W/kg]	0.779	0.839
psSAR10g [W/kg]	0.224	0.201
psAPD (1.0cm2, sq) [W/m2]		8.39
psAPD (4.0cm2, sq) [W/m2]		4.79
Power Drift [dB]		-0.01
M2/M1 [%]		49.0
Dist 3dB Peak [mm]		5.5



UL Korea, Ltd. Suwon Laboratory SAR#8

Date/Time:2024-03-15

Measurement Report for SM_F956U, CHEEK, U-NII-5, IEEE 802.11ax (160MHz, MCS0, 99pc duty cycle), Channel 79 (6345.0 MHz)

Exposure Conditions

Phantom Section, TSL	Position, Test Distance [mm]	Band	Group, UID	Frequency [MHz], Channel Number	Conversion Factor	TSL Conductivity [S/m]	TSL Permittivity
LeftHead, HSL	CHEEK, 0.00	U-NII-5	WLAN, 10755-AAC	6345.0, 79	4.89	6.02	34.2

Hardware Setup

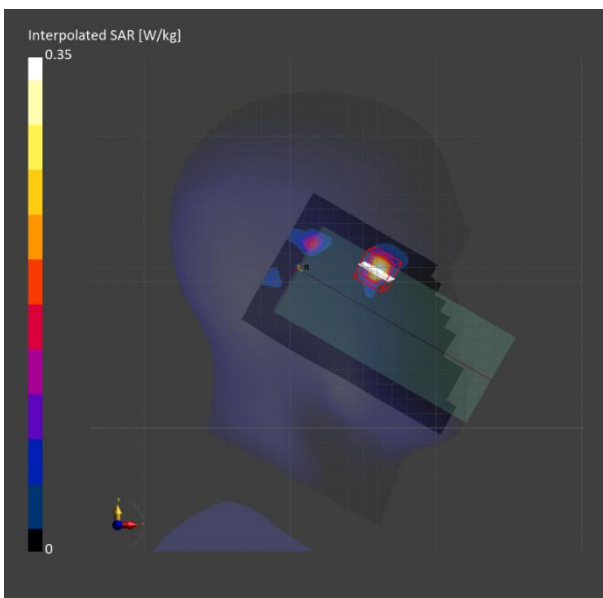
Phantom	TSL, Measured Date	Probe, Calibration Date	DAE, Calibration Date
Twin-SAM V8.0 (30deg probe tilt) - 2038	HBBL-600-10000 Charge:xxxx, 2024-Mar-15	EX3DV4 - SN7645, 2023-09-20	DAE4 Sn1670, 2023-05-24

Scans Setup

	Area Scan	Zoom Scan
Grid Extents [mm]	102.0 x 187.0	22.0 x 22.0 x 22.0
Grid Steps [mm]	8.5 x 8.5	3.4 x 3.4 x 1.4
Sensor Surface [mm]	3.0	1.4

Measurement Results

	Area Scan	Zoom Scan
psSAR1g [W/kg]	0.243	0.248
psSAR10g [W/kg]	0.066	0.069
psAPD (1.0cm2, sq) [W/m2]		2.48
psAPD (4.0cm2, sq) [W/m2]		1.54
Power Drift [dB]		0.06
M2/M1 [%]		58.7
Dist 3dB Peak [mm]		4.9



Exposure Conditions

Phantom Section, TSL	Position, Test Distance [mm]	Band	Group, UID	Frequency [MHz], Channel Number	Conversion Factor	TSL Conductivity [S/m]	TSL Permittivity
Flat, HSL	EDGE RIGHT, 0.00	U-NII-8	WLAN, 10755-AAC	6985.0, 207	5.4	6.45	33.2

Hardware Setup

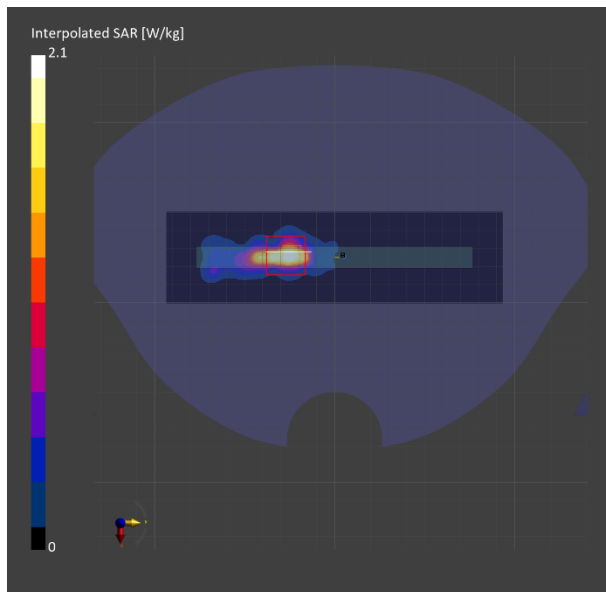
Phantom	TSL, Measured Date	Probe, Calibration Date	DAE, Calibration Date
Twin-SAM V8.0 (30deg probe tilt) - 2038	HBBL-600-10000 Charge:xxxx, 2024-Mar-26	EX3DV4 - SN7545, 2023-08-25	DAE4 Sn1670, 2023-05-24

Scans Setup

	Area Scan	Zoom Scan
Grid Extents [mm]	51.0 x 187.0	25.2 x 25.2 x 22.0
Grid Steps [mm]	8.5 x 8.5	2.1 x 2.1 x 1.4
Sensor Surface [mm]	3.0	1.4

Measurement Results

	Area Scan	Zoom Scan
psSAR1g [W/kg]	1.59	2.02
psSAR10g [W/kg]	0.445	0.526
psAPD (1.0cm2, sq) [W/m2]		20.2
psAPD (4.0cm2, sq) [W/m2]		12.2
Power Drift [dB]		-0.11
M2/M1 [%]		48.0
Dist 3dB Peak [mm]		2.6



Exposure Conditions

Phantom Section, TSL	Position, Test Distance [mm]	Band	Group, UID	Frequency [MHz], Channel Number	Conversion Factor	TSL Conductivity [S/m]	TSL Permittivity
Flat, HSL	BACK, 10.00	U-NII-8	WLAN, 10755-AAC	6985.000, 207	4.89	6.39	32.5

Hardware Setup

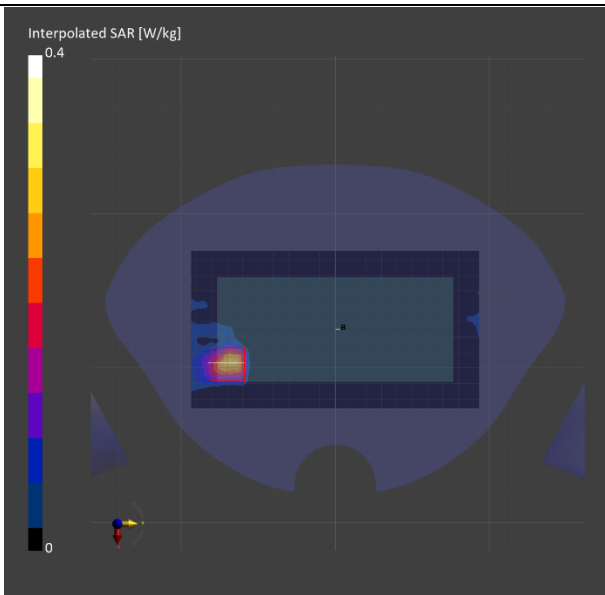
Phantom	TSL, Measured Date	Probe, Calibration Date	DAE, Calibration Date
Twin-SAM V8.0 (30deg probe tilt) - 2038	HBBL-600-10000 Charge:xxxx, 2024-Mar-19	EX3DV4 - SN7645, 2023-09-20	DAE4 Sn1670, 2023-05-24

Scans Setup

	Area Scan	Zoom Scan
Grid Extents [mm]	102.0 x 187.0	22.0 x 22.0 x 22.0
Grid Steps [mm]	8.5 x 8.5	3.4 x 3.4 x 1.4
Sensor Surface [mm]	3.0	1.4

Measurement Results

	Area Scan	Zoom Scan
psSAR1g [W/kg]	0.237	0.199
psSAR10g [W/kg]	0.081	0.061
psAPD (1.0cm2, sq) [W/m2]		1.99
psAPD (4.0cm2, sq) [W/m2]		1.43
Power Drift [dB]		-0.06
M2/M1 [%]		55.2
Dist 3dB Peak [mm]		7.7



Measurement Report for SM-F956U_Open, FRONT, Custom Band, IEEE 802.11a/h WiFi 5 GHz (OFDM, 6 Mbps, 99pc duty cycle), Channel 143 (6665.000 MHz)

Exposure Conditions

Phantom Section, TSL	Position, Test Distance [mm]	Band	Group, UID	Frequency [MHz], Channel Number	Conversion Factor	TSL Conductivity [S/m]	TSL Permittivity
Flat, HSL	FRONT, 10.00	Custom Band	CW, 10755-AAC	6665.000, 143	5.11	6.35	33.7

Hardware Setup

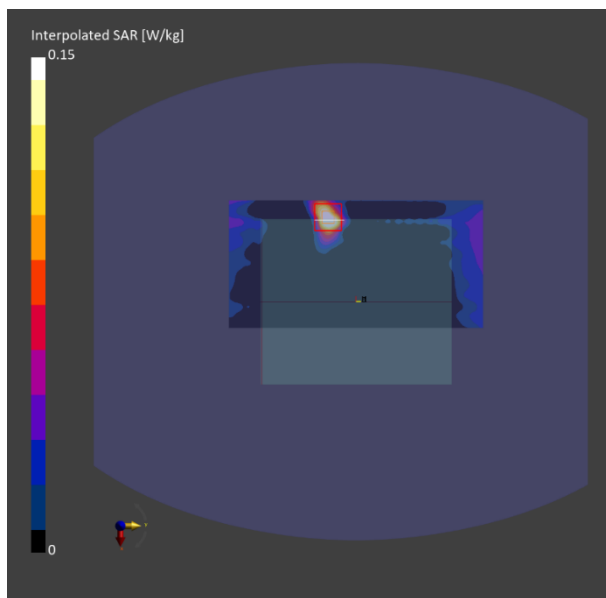
Phantom	TSL, Measured Date	Probe, Calibration Date	DAE, Calibration Date
ELI V6.0 (20deg probe tilt) - 2005	HBBL-600-10000 Charge:xxxx, 2024-Apr-19	EX3DV4 - SN7646, 2024-03-15	DAE4 Sn912, 2023-11-17

Scans Setup

	Area Scan	Zoom Scan
Grid Extents [mm]	102.0 x 204.0	22.0 x 22.0 x 22.0
Grid Steps [mm]	8.5 x 8.5	3.4 x 3.4 x 1.4
Sensor Surface [mm]	3.0	1.4

Measurement Results

	Area Scan	Zoom Scan
psSAR1g [W/kg]	0.132	0.136
psSAR10g [W/kg]	0.043	0.045
psAPD (1.0cm2, sq) [W/m2]		1.36
psAPD (4.0cm2, sq) [W/m2]		1.03
Power Drift [dB]		0.01
M2/M1 [%]		59.1
Dist 3dB Peak [mm]		7.4



Measurement Report for SM-F956U_Open, FRONT, Custom Band, IEEE 802.11a/h WiFi 5 GHz (OFDM, 6 Mbps, 99pc duty cycle), Channel 143 (6665.000 MHz)

Exposure Conditions

Phantom Section, TSL	Position, Test Distance [mm]	Band	Group, UID	Frequency [MHz], Channel Number	Conversion Factor	TSL Conductivity [S/m]	TSL Permittivity
Flat, HSL	FRONT, 0.00	Custom Band	CW, 10755-AAC	6665.000, 143	5.11	6.35	33.7

Hardware Setup

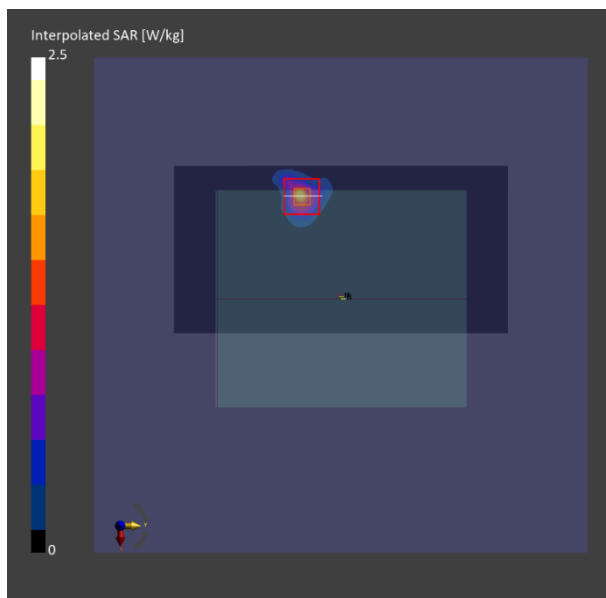
Phantom	TSL, Measured Date	Probe, Calibration Date	DAE, Calibration Date
ELI V6.0 (20deg probe tilt) - 2005	HBBL-600-10000 Charge:xxxx, 2024-Apr-19	EX3DV4 - SN7646, 2024-03-15	DAE4 Sn912, 2023-11-17

Scans Setup

	Area Scan	Zoom Scan
Grid Extents [mm]	102.0 x 204.0	22.0 x 22.0 x 22.0
Grid Steps [mm]	8.5 x 8.5	3.4 x 3.4 x 1.4
Sensor Surface [mm]	3.0	1.4

Measurement Results

	Area Scan	Zoom Scan
psSAR1g [W/kg]	1.23	1.47
psSAR10g [W/kg]	0.359	0.411
psAPD (1.0cm2, sq) [W/m2]		14.7
psAPD (4.0cm2, sq) [W/m2]		9.55
Power Drift [dB]		0.04
M2/M1 [%]		54.5
Dist 3dB Peak [mm]		5.2



Exposure Conditions

Phantom Section, TSL	Position, Test Distance [mm]	Band	Group, UID	Frequency [MHz], Channel Number	Conversion Factor	TSL Conductivity [S/m]	TSL Permittivity
Flat, HSL	BACK, 10.00	U-NII-7	WLAN, 10755-AAC	6665.000, 143	5.11	6.31	33.7

Hardware Setup

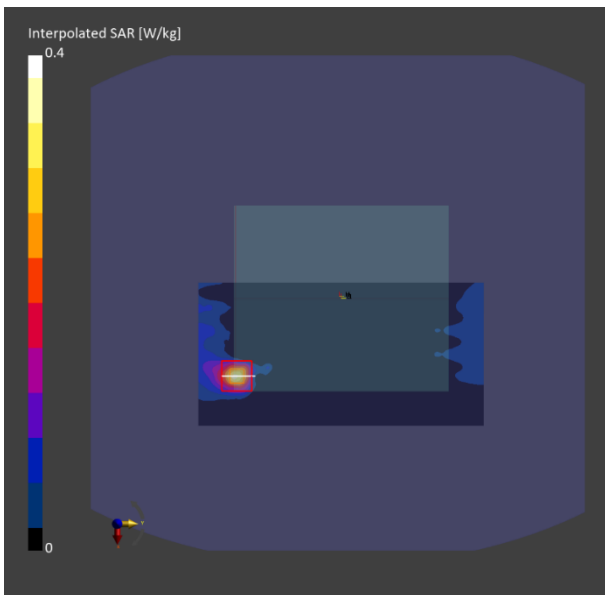
Phantom	TSL, Measured Date	Probe, Calibration Date	DAE, Calibration Date
ELI V6.0 (20deg probe tilt) - 2005	HBBL-600-10000 Charge:xxxx, 2024-Apr-22	EX3DV4 - SN7646, 2024-03-15	DAE4 Sn912, 2023-11-17

Scans Setup

	Area Scan	Zoom Scan
Grid Extents [mm]	102.0 x 204.0	22.0 x 22.0 x 22.0
Grid Steps [mm]	8.5 x 8.5	3.4 x 3.4 x 1.4
Sensor Surface [mm]	3.0	1.4

Measurement Results

	Area Scan	Zoom Scan
psSAR1g [W/kg]	0.262	0.253
psSAR10g [W/kg]	0.084	0.074
psAPD (1.0cm2, sq) [W/m2]		2.53
psAPD (4.0cm2, sq) [W/m2]		1.74
Power Drift [dB]		0.03
M2/M1 [%]		55.5
Dist 3dB Peak [mm]		6.7



UL Korea, Ltd. Suwon Laboratory SAR#7

Date/Time:2024-04-19

Measurement Report for Device, FRONT, U-NII-5, IEEE 802.11ax (160MHz, MCS0, 99pc duty cycle), Channel 79 (6345.000 MHz)

Exposure Conditions

Phantom Section, TSL	Position, Test Distance [mm]	Band	Group, UID	Frequency [MHz], Channel Number	Conversion Factor	TSL Conductivity [S/m]	TSL Permittivity
Flat, HSL	FRONT, 0.00	U-NII-5	WLAN, 10755-AAC	6345.000, 79	5.11	6.08	34.5

Hardware Setup

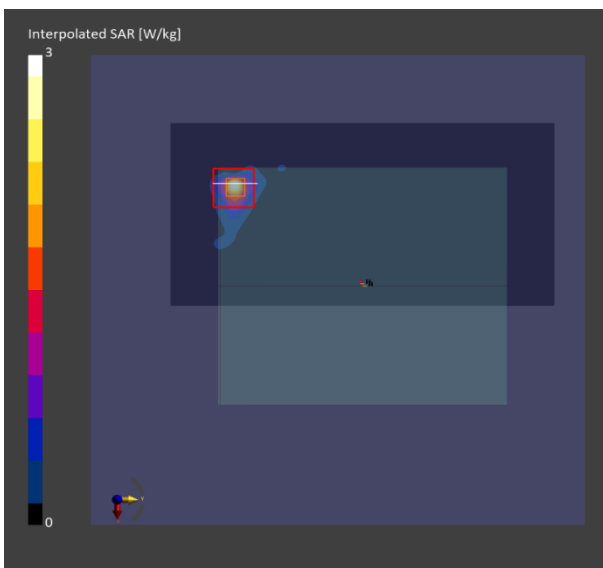
Phantom	TSL, Measured Date	Probe, Calibration Date	DAE, Calibration Date
ELI V6.0 (20deg probe tilt) - 2005	HBBL-600-10000 Charge:xxxx, 2024-Apr-19	EX3DV4 - SN7646, 2024-03-15	DAE4 Sn912, 2023-11-17

Scans Setup

	Area Scan	Zoom Scan
Grid Extents [mm]	102.0 x 204.0	22.0 x 22.0 x 22.0
Grid Steps [mm]	8.5 x 8.5	3.4 x 3.4 x 1.4
Sensor Surface [mm]	3.0	1.4

Measurement Results

	Area Scan	Zoom Scan
psSAR1g [W/kg]	1.68	1.78
psSAR10g [W/kg]	0.410	0.428
psAPD (1.0cm2, sq) [W/m2]		17.8
psAPD (4.0cm2, sq) [W/m2]		10.3
Power Drift [dB]		0.00
M2/M1 [%]		54.6
Dist 3dB Peak [mm]		4.4



UL Korea, Ltd. Suwon Laboratory SAR#7

Date/Time:2024-04-22

Measurement Report for Device, FRONT, U-NII-5, IEEE 802.11ax (160MHz, MCS0, 99pc duty cycle), Channel 79 (6345.000 MHz)

Exposure Conditions

Phantom Section, TSL	Position, Test Distance [mm]	Band	Group, UID	Frequency [MHz], Channel Number	Conversion Factor	TSL Conductivity [S/m]	TSL Permittivity
Flat, HSL	FRONT, 0.00	U-NII-5	WLAN, 10755-AAC	6345.000, 79	5.11	6.06	34.1

Hardware Setup

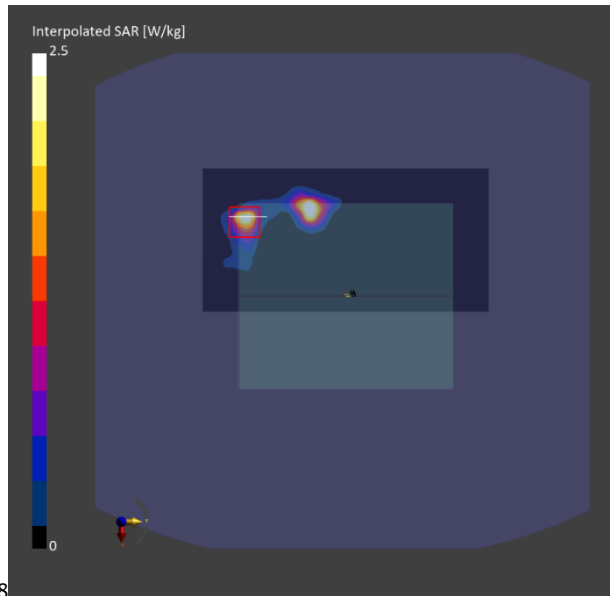
Phantom	TSL, Measured Date	Probe, Calibration Date	DAE, Calibration Date
ELI V6.0 (20deg probe tilt) - 2005	HBBL-600-10000 Charge:xxxx, 2024-Apr-22	EX3DV4 - SN7646, 2024-03-15	DAE4 Sn912, 2023-11-17

Scans Setup

	Area Scan	Zoom Scan
Grid Extents [mm]	102.0 x 204.0	27.2 x 27.2 x 22.0
Grid Steps [mm]	8.5 x 8.5	3.4 x 3.4 x 1.4
Sensor Surface [mm]	3.0	1.4

Measurement Results

	Area Scan	Zoom Scan
psSAR1g [W/kg]	1.90	1.98
psSAR10g [W/kg]	0.552	0.496
psAPD (1.0cm2, sq) [W/m2]		19.8
psAPD (4.0cm2, sq) [W/m2]		11.7
Power Drift [dB]		-0.11
M2/M1 [%]		57.7
Dist 3dB Peak [mm]		4.6



Exposure Conditions

Phantom Section, TSL	Position, Test Distance [mm]	Band	Group, UID	Frequency [MHz], Channel Number	Conversion Factor	TSL Conductivity [S/m]	TSL Permittivity
Flat, HSL	BACK, 10.00	U-NII-7	WLAN, 10755-AAC	6665.000, 143	5.11	6.32	33.8

Hardware Setup

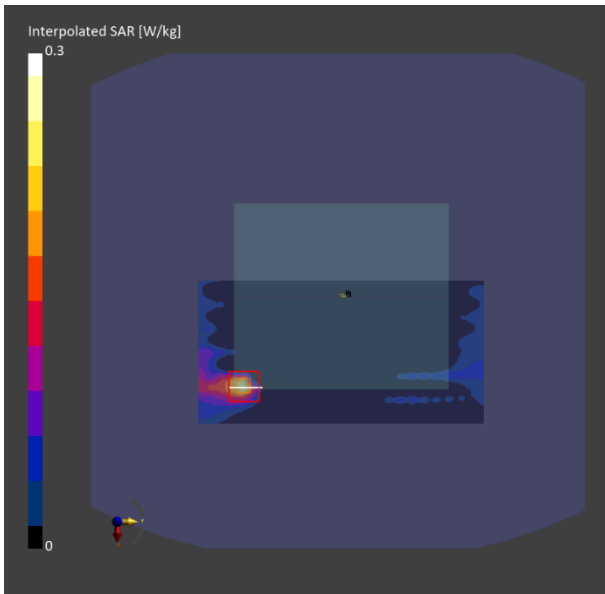
Phantom	TSL, Measured Date	Probe, Calibration Date	DAE, Calibration Date
ELI V6.0 (20deg probe tilt) - 2005	HBBL-600-10000 Charge:xxxx, 2024-Apr-18	EX3DV4 - SN7646, 2024-03-15	DAE4 Sn912, 2023-11-17

Scans Setup

	Area Scan	Zoom Scan
Grid Extents [mm]	102.0 x 204.0	22.0 x 22.0 x 22.0
Grid Steps [mm]	8.5 x 8.5	3.4 x 3.4 x 1.4
Sensor Surface [mm]	3.0	1.4

Measurement Results

	Area Scan	Zoom Scan
psSAR1g [W/kg]	0.198	0.186
psSAR10g [W/kg]	0.066	0.059
psAPD (1.0cm2, sq) [W/m2]		1.86
psAPD (4.0cm2, sq) [W/m2]		1.37
Power Drift [dB]		0.03
M2/M1 [%]		57.9
Dist 3dB Peak [mm]		7.1



Exposure Conditions

Phantom Section, TSL	Position, Test Distance [mm]	Band	Group, UID	Frequency [MHz], Channel Number	Conversion Factor	TSL Conductivity [S/m]	TSL Permittivity
Flat, HSL	EDGE LEFT, 0.00	Custom Band	CW, 0--	6489.600, 6489600	4.89	6.28	34.7

Hardware Setup

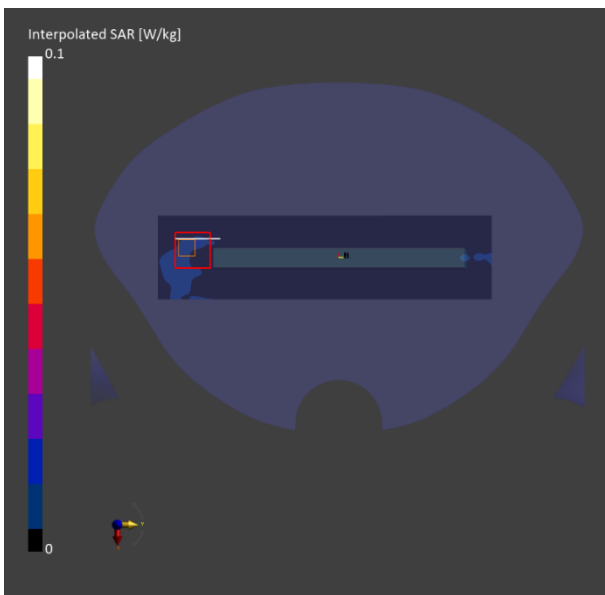
Phantom	TSL, Measured Date	Probe, Calibration Date	DAE, Calibration Date
Twin-SAM V8.0 (30deg probe tilt) - 2038	HBBL-600-10000 Charge:xxxx, 2024-Apr-13	EX3DV4 - SN7645, 2023-09-20	DAE4 Sn1670, 2023-05-24

Scans Setup

	Area Scan	Zoom Scan
Grid Extents [mm]	51.0 x 187.0	27.2 x 27.2 x 22.0
Grid Steps [mm]	8.5 x 8.5	3.4 x 3.4 x 1.4
Sensor Surface [mm]	3.0	1.4

Measurement Results

	Area Scan	Zoom Scan
psSAR1g [W/kg]	0.012	0.005
psSAR10g [W/kg]	0.004	0.003
psAPD (1.0cm2, sq) [W/m2]		0.048
psAPD (4.0cm2, sq) [W/m2]		0.058
Power Drift [dB]		-0.08
M2/M1 [%]		19.8
Dist 3dB Peak [mm]		0.7



Exposure Conditions

Phantom Section, TSL	Position, Test Distance [mm]	Band	Group, UID	Frequency [MHz], Channel Number	Conversion Factor	TSL Conductivity [S/m]	TSL Permittivity
Flat, HSL	BACK, 0.00	Custom Band	CW, 0--	6489.600, 6489600	5.11	6.19	34.9

Hardware Setup

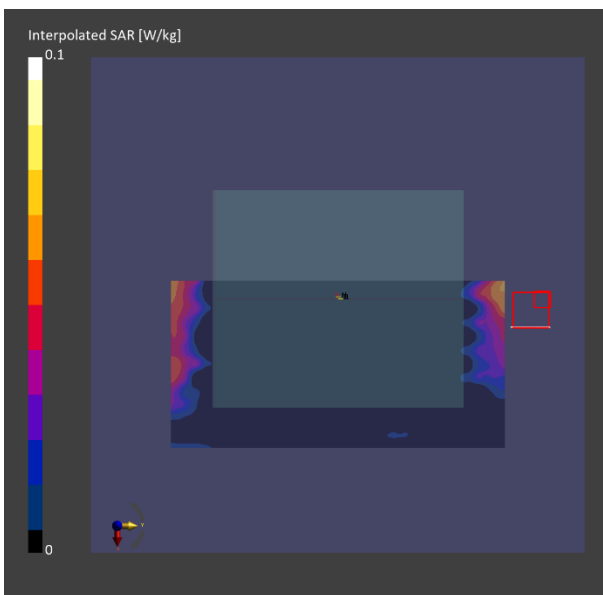
Phantom	TSL, Measured Date	Probe, Calibration Date	DAE, Calibration Date
ELI V6.0 (20deg probe tilt) - 2005	HBBL-600-10000 Charge:xxxx, 2024-Apr-23	EX3DV4 - SN7646, 2024-03-15	DAE4 Sn912, 2023-11-17

Scans Setup

	Area Scan	Zoom Scan
Grid Extents [mm]	102.0 x 204.0	22.0 x 22.0 x 22.0
Grid Steps [mm]	8.5 x 8.5	3.4 x 3.4 x 1.4
Sensor Surface [mm]	3.0	1.4

Measurement Results

	Area Scan	Zoom Scan
psSAR1g [W/kg]	0.052	0.003
psSAR10g [W/kg]	0.016	0.001
psAPD (1.0cm2, sq) [W/m2]		0.032
psAPD (4.0cm2, sq) [W/m2]		0.024
Power Drift [dB]		0.02
M2/M1 [%]		92.9
Dist 3dB Peak [mm]		1.4



Measurement Report for Device, EDGE RIGHT, U-NII-5, IEEE 802.11ax (160MHz, MCS0, 99pc duty cycle), Channel 79 (6345.0 MHz)

Exposure Conditions

Phantom Section	Position, Test Distance [mm]	Band	Group, UID	Frequency [MHz], Channel Number	Conversion Factor
5G	EDGE RIGHT, 2.00	U-NII-5	WLAN, 10755-AAC	6345.0, 79	1.0

Hardware Setup

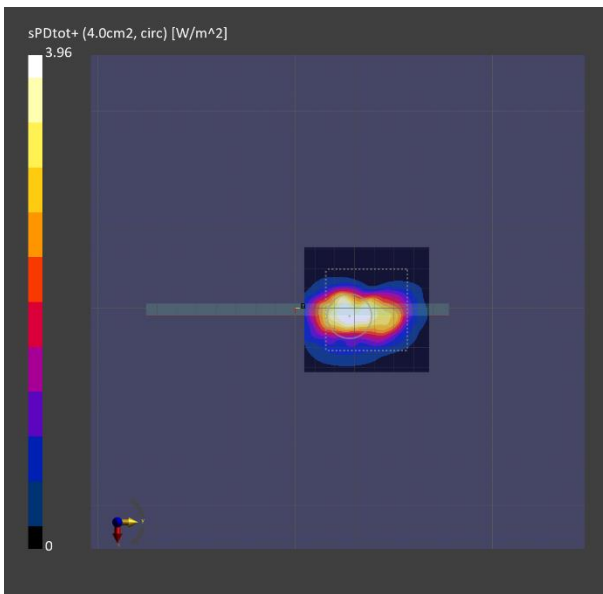
Phantom	Medium	Probe, Calibration Date	DAE, Calibration Date
mmWave - xxxx	Air -	EUmmWV4 - SN9536_F1-55GHz, 2024-02-15	DAE4 Sn474, 2023-11-10

Scans Setup

Scan Type	5G Scan
Grid Extents [mm]	60.0 x 60.0
Grid Steps [lambda]	0.043202144247958554 x 0.043202144247958554
Sensor Surface [mm]	2.0

Measurement Results

Scan Type	5G Scan
Avg. Area [cm²]	4.00
psPDn+ [W/m²]	1.83
psPDtot+ [W/m²]	3.96
psPDmod+ [W/m²]	6.76
Power Drift [dB]	-0.13



Exposure Conditions

Phantom Section	Position, Test Distance [mm]	Band	Group, UID	Frequency [MHz], Channel Number	Conversion Factor
5G	BACK, 2.00	U-NII-7	WLAN, 10755-AAC	6665.0, 143	1.0

Hardware Setup

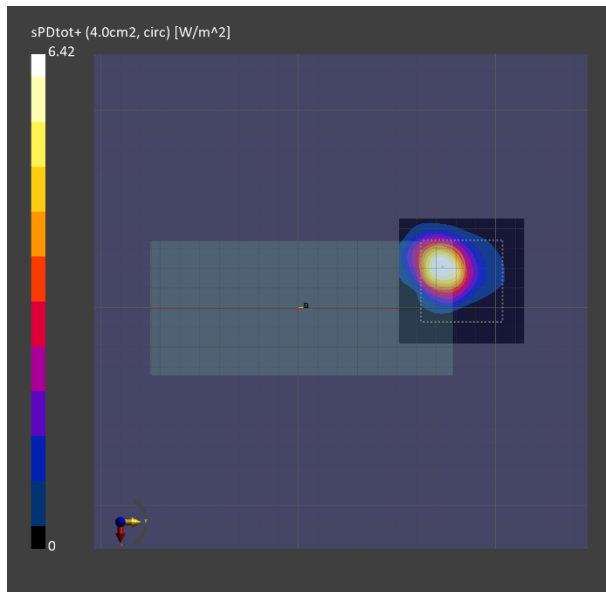
Phantom	Medium	Probe, Calibration Date	DAE, Calibration Date
mmWave - xxxx	Air -	EUmmWV4 - SN9536_F1-55GHz, 2024-02-15	DAE4 Sn474, 2023-11-10

Scans Setup

Scan Type	5G Scan
Grid Extents [mm]	60.0 x 60.0
Grid Steps [lambda]	0.04538097579395488 x 0.04538097579395488
Sensor Surface [mm]	2.0

Measurement Results

Scan Type	5G Scan
Avg. Area [cm²]	4.00
psPDn+ [W/m²]	4.46
psPDtot+ [W/m²]	6.42
psPDmod+ [W/m²]	8.58
Power Drift [dB]	0.03



Exposure Conditions

Phantom Section	Position, Test Distance [mm]	Band	Group, UID	Frequency [MHz], Channel Number	Conversion Factor
5G	EDGE RIGHT, 2.00	U-NII-8	WLAN, 10755-AAC	6985.0, 207	1.0

Hardware Setup

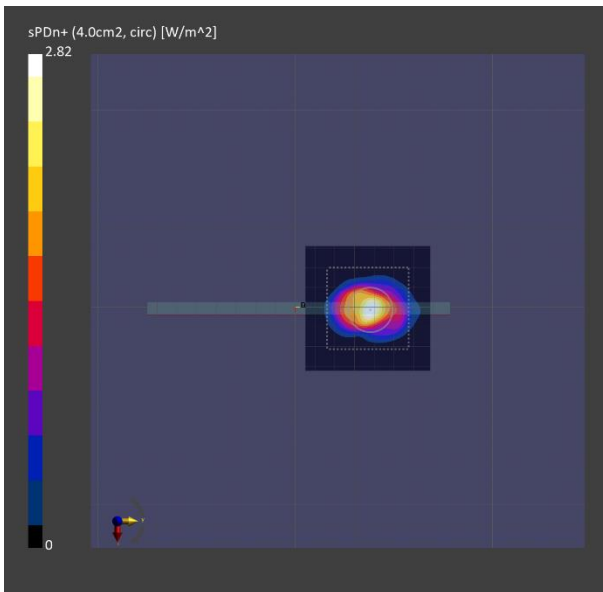
Phantom	Medium	Probe, Calibration Date	DAE, Calibration Date
mmWave - xxxx	Air -	EUmmWV4 - SN9536_F1-55GHz, 2024-02-15	DAE4 Sn474, 2023-11-10

Scans Setup

Scan Type	5G Scan
Grid Extents [mm]	60.0 x 60.0
Grid Steps [lambda]	0.047559807339951216 x 0.047559807339951216
Sensor Surface [mm]	2.0

Measurement Results

Scan Type	5G Scan
Avg. Area [cm²]	4.00
psPDn+ [W/m²]	2.82
psPDtot+ [W/m²]	6.42
psPDmod+ [W/m²]	9.04
Power Drift [dB]	0.19



Measurement Report for Device, FRONT, U-NII-7, IEEE 802.11ax (160MHz, MCS0, 99pc duty cycle), Channel 143 (6665.0 MHz)

Exposure Conditions

Phantom Section	Position, Test Distance [mm]	Band	Group, UID	Frequency [MHz], Channel Number	Conversion Factor
5G	FRONT, 2.00	U-NII-7	WLAN, 10755-AAC	6665.0, 143	1.0

Hardware Setup

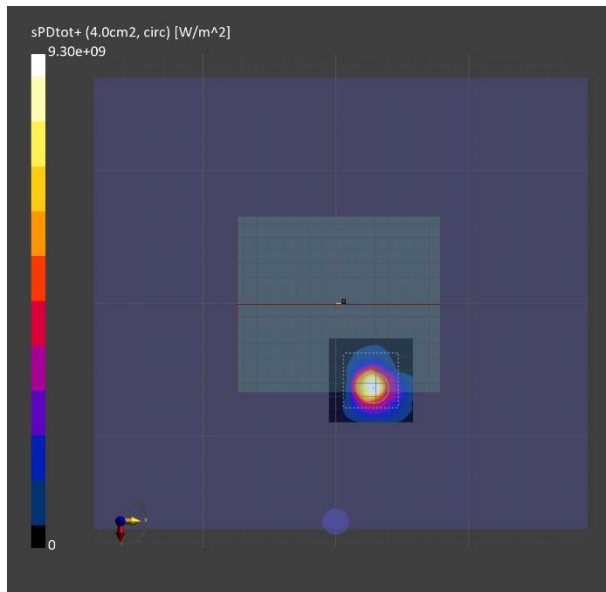
Phantom	Medium	Probe, Calibration Date	DAE, Calibration Date
mmWave - xxxx	Air -	EUmmWV4 - SN9536_F1-55GHz, 2024-02-15	DAE4 Sn474, 2023-11-10

Scans Setup

Scan Type	5G Scan
Grid Extents [mm]	60.0 x 60.0
Grid Steps [lambda]	0.04538097579395488 x 0.04538097579395488
Sensor Surface [mm]	2.0

Measurement Results

Scan Type	5G Scan
Avg. Area [cm ²]	4.00
psPDn+ [W/m ²]	1.8
psPDtot+ [W/m ²]	3.36
psPDmod+ [W/m ²]	5.11
Power Drift [dB]	-0.09



Exposure Conditions

Phantom Section	Position, Test Distance [mm]	Band	Group, UID	Frequency [MHz], Channel Number	Conversion Factor
5G	FRONT, 2.00	U-NII-7	WLAN, 10755-AAC	6665.0, 143	1.0

Hardware Setup

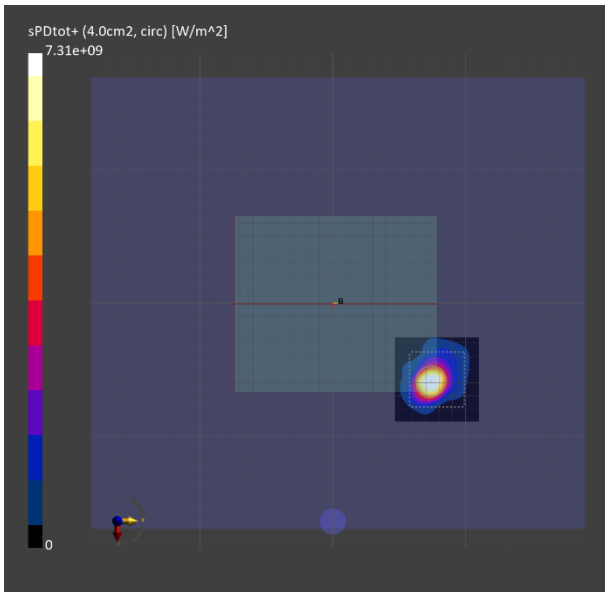
Phantom	Medium	Probe, Calibration Date	DAE, Calibration Date
mmWave - xxxx	Air -	EUmmWV4 - SN9536_F1-55GHz, 2024-02-15	DAE4 Sn474, 2023-11-10

Scans Setup

Scan Type	5G Scan
Grid Extents [mm]	60.0 x 60.0
Grid Steps [lambda]	0.04538097579395488 x 0.04538097579395488
Sensor Surface [mm]	2.0

Measurement Results

Scan Type	5G Scan
Avg. Area [cm ²]	4.00
psPDn+ [W/m ²]	1.61
psPDtot+ [W/m ²]	2.64
psPDmod+ [W/m ²]	4.19
Power Drift [dB]	0.15



Exposure Conditions

Phantom Section	Position, Test Distance [mm]	Band	Group, UID	Frequency [MHz], Channel Number	Conversion Factor
5G	EDGE RIGHT, 2.00	U-NII-7	WLAN, 10755-AAC	6665.0, 143	1.0

Hardware Setup

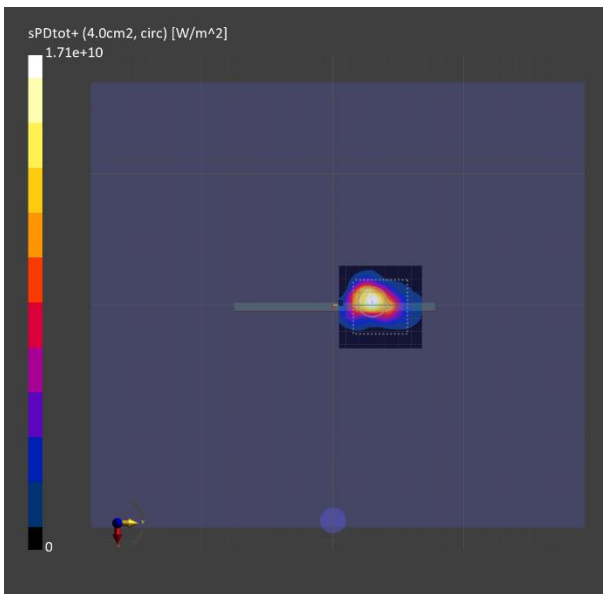
Phantom	Medium	Probe, Calibration Date	DAE, Calibration Date
mmWave - xxxx	Air -	EUmmWV4 - SN9536_F1-55GHz, 2024-02-15	DAE4 Sn474, 2023-11-10

Scans Setup

Scan Type	5G Scan
Grid Extents [mm]	60.0 x 60.0
Grid Steps [lambda]	0.04538097579395488 x 0.04538097579395488
Sensor Surface [mm]	2.0

Measurement Results

Scan Type	5G Scan
Avg. Area [cm ²]	4.00
psPDn+ [W/m ²]	3.01
psPDtot+ [W/m ²]	6.17
psPDmod+ [W/m ²]	7.71
Power Drift [dB]	0.12



Measurement Report for Device, EDGE LEFT, Custom Band, CW, Channel 6489600 (6489.6 MHz)

Exposure Conditions

Phantom Section	Position, Test Distance [mm]	Band	Group, UID	Frequency [MHz], Channel Number	Conversion Factor
5G	EDGE LEFT, 2.00	Custom Band	CW, 0--	6489.6, 6489600	1.0

Hardware Setup

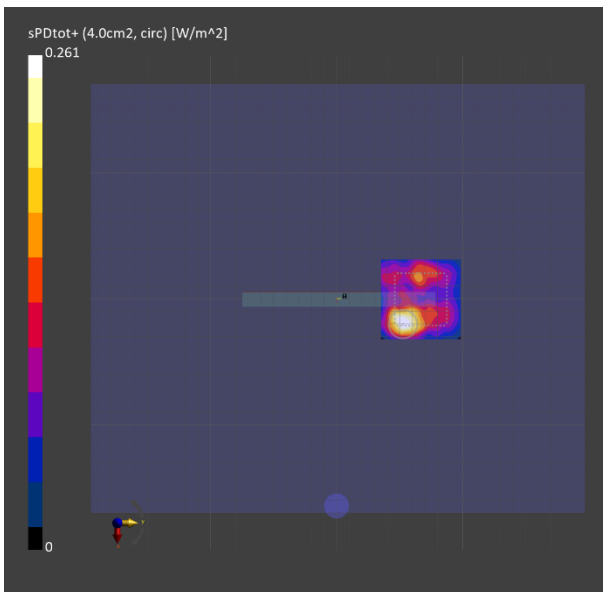
Phantom	Medium	Probe, Calibration Date	DAE, Calibration Date
mmWave - xxxx	Air -	EUmmWV4 - SN9536_F1-55GHz, 2024-02-15	DAE4 Sn474, 2023-11-10

Scans Setup

Scan Type	5G Scan
Grid Extents [mm]	60.0 x 60.0
Grid Steps [lambda]	0.04418670375280564 x 0.04418670375280564
Sensor Surface [mm]	2.0

Measurement Results

Scan Type	5G Scan
Avg. Area [cm²]	4.00
psPDn+ [W/m²]	0.120
psPDtot+ [W/m²]	0.261
psPDmod+ [W/m²]	0.468
E _{max} [V/m]	12.1
Power Drift [dB]	0



Exposure Conditions

Phantom Section	Position, Test Distance [mm]	Band	Group, UID	Frequency [MHz], Channel Number	Conversion Factor
5G	EDGE RIGHT, 2.00	Custom Band	CW, 0--	7987.2, 7987200	1.0

Hardware Setup

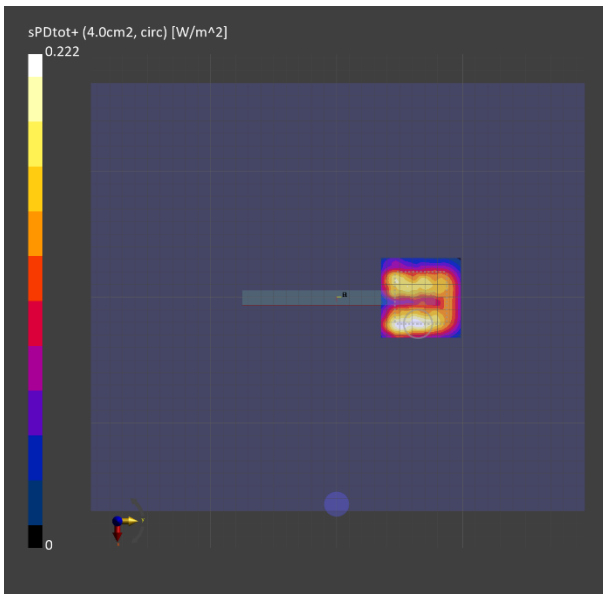
Phantom	Medium	Probe, Calibration Date	DAE, Calibration Date
mmWave - xxxx	Air -	EUmmWV4 - SN9536_F1-55GHz, 2024-02-15	DAE4 Sn474, 2023-11-10

Scans Setup

Scan Type	5G Scan
Grid Extents [mm]	60.0 x 60.0
Grid Steps [lambda]	0.05438363538806848 x 0.05438363538806848
Sensor Surface [mm]	2.0

Measurement Results

Scan Type	5G Scan
Avg. Area [cm ²]	4.00
psPDn+ [W/m ²]	0.135
psPDtot+ [W/m ²]	0.222
psPDmod+ [W/m ²]	0.371
E _{max} [V/m]	12.4
Power Drift [dB]	0



Measurement Report for Device, BACK, Custom Band, CW, Channel 6489600 (6489.6 MHz)

Exposure Conditions

Phantom Section	Position, Test Distance [mm]	Band	Group, UID	Frequency [MHz], Channel Number	Conversion Factor
5G	BACK, 2.00	Custom Band	CW, 0--	6489.6, 6489600	1.0

Hardware Setup

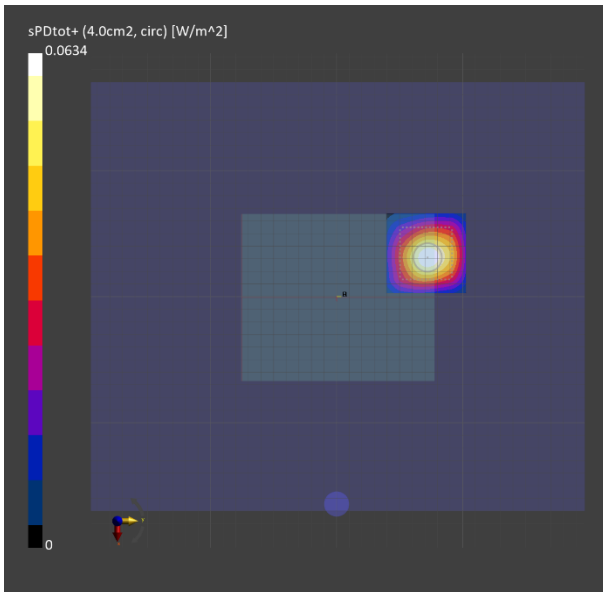
Phantom	Medium	Probe, Calibration Date	DAE, Calibration Date
mmWave - xxxx	Air -	EUmmWV4 - SN9536_F1-55GHz, 2024-02-15	DAE4 Sn474, 2023-11-10

Scans Setup

Scan Type	5G Scan
Grid Extents [mm]	60.0 x 60.0
Grid Steps [lambda]	0.04418670375280564 x 0.04418670375280564
Sensor Surface [mm]	2.0

Measurement Results

Scan Type	5G Scan
Avg. Area [cm²]	4.00
psPDn+ [W/m²]	0.040
psPDtot+ [W/m²]	0.063
psPDmod+ [W/m²]	0.065
E _{max} [V/m]	5.12
Power Drift [dB]	-0.19



Exposure Conditions

Phantom Section	Position, Test Distance [mm]	Band	Group, UID	Frequency [MHz], Channel Number	Conversion Factor
5G	BACK, 2.00	Custom Band	CW, 0--	7987.2, 7987200	1.0

Hardware Setup

Phantom	Medium	Probe, Calibration Date	DAE, Calibration Date
mmWave - xxxx	Air -	EUmmWV4 - SN9536_F1-55GHz, 2024-02-15	DAE4 Sn474, 2023-11-10

Scans Setup

Scan Type	5G Scan
Grid Extents [mm]	60.0 x 60.0
Grid Steps [lambda]	0.05438363538806848 x 0.05438363538806848
Sensor Surface [mm]	2.0

Measurement Results

Scan Type	5G Scan
Avg. Area [cm²]	4.00
psPDn+ [W/m²]	0.090
psPDtot+ [W/m²]	0.209
psPDmod+ [W/m²]	0.470
E _{max} [V/m]	12.9
Power Drift [dB]	-0.17

