

**Exposure Conditions**

Phantom Section, TSL	Position, Test Distance [mm]	Band	Group, UID	Frequency [MHz], Channel Number	Conversion Factor	TSL Conductivity [S/m]	TSL Permittivity
RightHead, HSL	CHEEK, 0.00	U-NII-5	WLAN, 10755-AAC	6025.0, 15	4.89	5.58	34.8

**Hardware Setup**

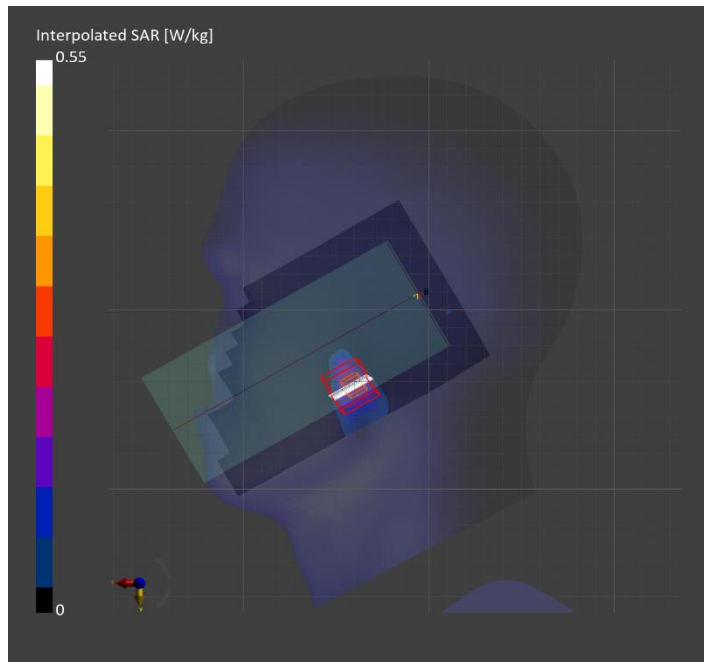
Phantom	TSL, Measured Date	Probe, Calibration Date	DAE, Calibration Date
Twin-SAM V8.0 (30deg probe tilt) - 2038	HBBL-600-10000 Charge:xxxx, 2024-May-23	EX3DV4 - SN7645, 2023-09-20	DAE4 Sn1671, 2024-04-18

**Scans Setup**

	Area Scan	Zoom Scan
Grid Extents [mm]	102.0 x 187.0	22.0 x 22.0 x 22.0
Grid Steps [mm]	8.5 x 8.5	3.4 x 3.4 x 1.4
Sensor Surface [mm]	3.0	1.4

**Measurement Results**

	Area Scan	Zoom Scan
psSAR1g [W/kg]	0.195	0.243
psSAR10g [W/kg]	0.065	0.074
psAPD (1.0cm2, sq) [W/m2]		2.43
psAPD (4.0cm2, sq) [W/m2]		1.69
Power Drift [dB]		0.07
M2/M1 [%]		63.8
Dist 3dB Peak [mm]		6.3



**Exposure Conditions**

Phantom Section, TSL	Position, Test Distance [mm]	Band	Group, UID	Frequency [MHz], Channel Number	Conversion Factor	TSL Conductivity [S/m]	TSL Permittivity
Flat, HSL	BACK, 10.00	U-NII-5	WLAN, 10755-AAC	6025.0, 15	4.89	5.45	36.4

**Hardware Setup**

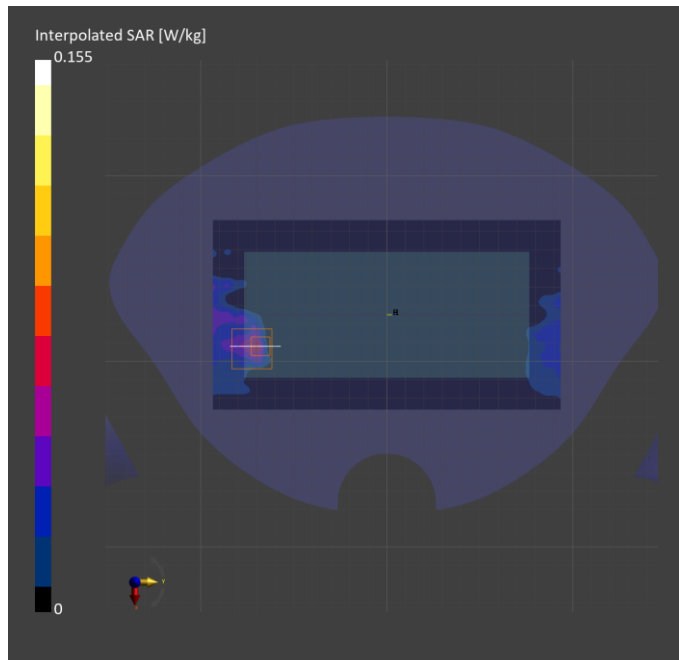
Phantom	TSL, Measured Date	Probe, Calibration Date	DAE, Calibration Date
Twin-SAM V8.0 (30deg probe tilt) - 2038	HBBL-600-10000 Charge:xxxx, 2024-May-21	EX3DV4 - SN7645, 2023-09-20	DAE4 Sn1671, 2024-04-18

**Scans Setup**

	Area Scan	Zoom Scan
Grid Extents [mm]	102.0 x 187.0	27.2 x 27.2 x 22.0
Grid Steps [mm]	8.5 x 8.5	3.4 x 3.4 x 1.4
Sensor Surface [mm]	3.0	1.4

**Measurement Results**

	Area Scan	Zoom Scan
psSAR1g [W/kg]	0.049	0.033
psSAR10g [W/kg]	0.017	0.006
psAPD (1.0cm2, sq) [W/m2]		0.331
psAPD (4.0cm2, sq) [W/m2]		0.147
Power Drift [dB]		-0.08
M2/M1 [%]		71.3
Dist 3dB Peak [mm]		3.4



**Exposure Conditions**

Phantom Section, TSL	Position, Test Distance [mm]	Band	Group, UID	Frequency [MHz], Channel Number	Conversion Factor	TSL Conductivity [S/m]	TSL Permittivity
Flat, HSL	EDGE RIGHT, 0.00	U-NII-5	WLAN, 10755-AAC	6025.0, 15	4.89	5.45	36.4

**Hardware Setup**

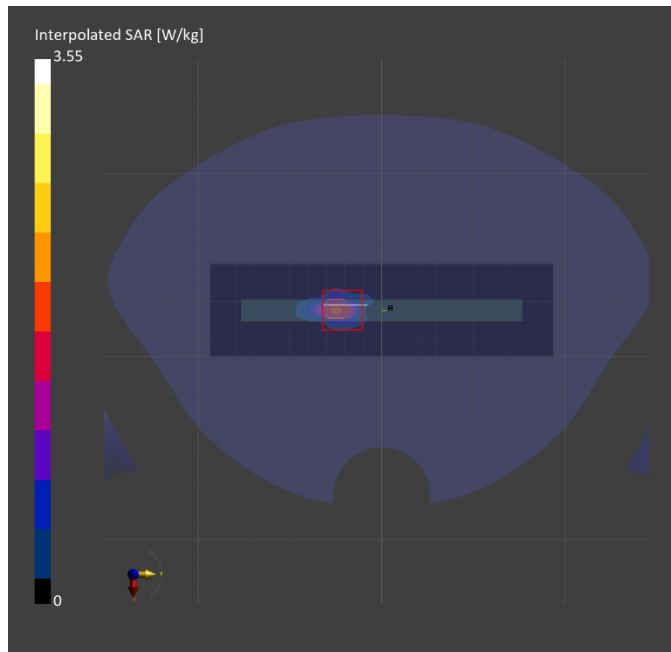
Phantom	TSL, Measured Date	Probe, Calibration Date	DAE, Calibration Date
Twin-SAM V8.0 (30deg probe tilt) - 2038	HBBL-600-10000 Charge:xxxx, 2024-May-21	EX3DV4 - SN7645, 2023-09-20	DAE4 Sn1671, 2024-04-18

**Scans Setup**

	Area Scan	Zoom Scan
Grid Extents [mm]	51.0 x 187.0	22.0 x 22.0 x 22.0
Grid Steps [mm]	8.5 x 8.5	3.4 x 3.4 x 1.4
Sensor Surface [mm]	3.0	1.4

**Measurement Results**

	Area Scan	Zoom Scan
psSAR1g [W/kg]	1.29	1.59
psSAR10g [W/kg]	0.352	0.404
psAPD (1.0cm2, sq) [W/m2]		15.9
psAPD (4.0cm2, sq) [W/m2]		9.65
Power Drift [dB]		0.12
M2/M1 [%]		49.3
Dist 3dB Peak [mm]		2.8



**Exposure Conditions**

Phantom Section, TSL	Position, Test Distance [mm]	Band	Group, UID	Frequency [MHz], Channel Number	Conversion Factor	TSL Conductivity [S/m]	TSL Permittivity
LeftHead, HSL	CHEEK, 0.00	U-NII-7	WLAN, 10755-AAC	6665.0, 143	4.89	6.22	33.5

**Hardware Setup**

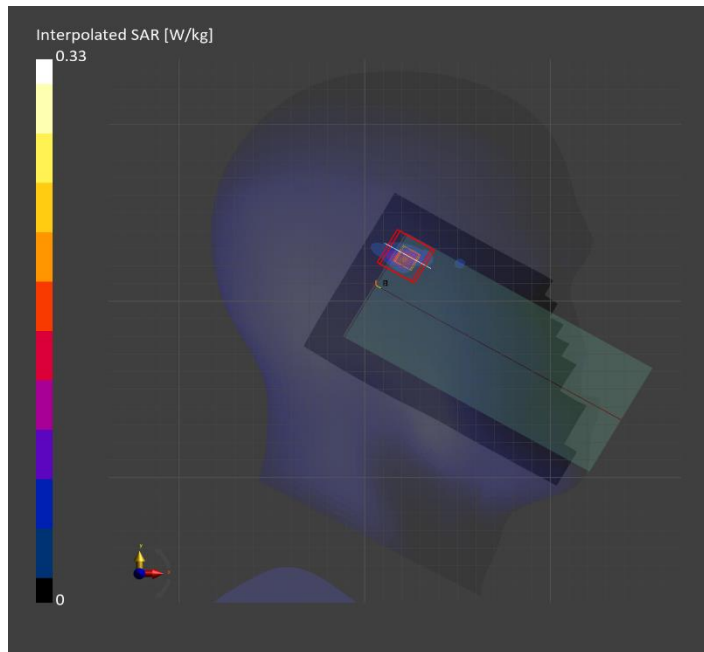
Phantom	TSL, Measured Date	Probe, Calibration Date	DAE, Calibration Date
Twin-SAM V8.0 (30deg probe tilt) - 2038	HBBL-600-10000 Charge:xxxx, 2024-May-23	EX3DV4 - SN7645, 2023-09-20	DAE4 Sn1671, 2024-04-18

**Scans Setup**

	Area Scan	Zoom Scan
Grid Extents [mm]	102.0 x 187.0	27.2 x 27.2 x 22.0
Grid Steps [mm]	8.5 x 8.5	3.4 x 3.4 x 1.4
Sensor Surface [mm]	3.0	1.4

**Measurement Results**

	Area Scan	Zoom Scan
psSAR1g [W/kg]	0.110	0.120
psSAR10g [W/kg]	0.024	0.027
psAPD (1.0cm2, sq) [W/m2]		1.20
psAPD (4.0cm2, sq) [W/m2]		0.635
Power Drift [dB]		-0.05
M2/M1 [%]		55.2
Dist 3dB Peak [mm]		2.8



**Exposure Conditions**

Phantom Section, TSL	Position, Test Distance [mm]	Band	Group, UID	Frequency [MHz], Channel Number	Conversion Factor	TSL Conductivity [S/m]	TSL Permittivity
Flat, HSL	BACK, 10.00	U-NII-7	WLAN, 10755-AAC	6665.0, 143	4.89	6.22	33.5

**Hardware Setup**

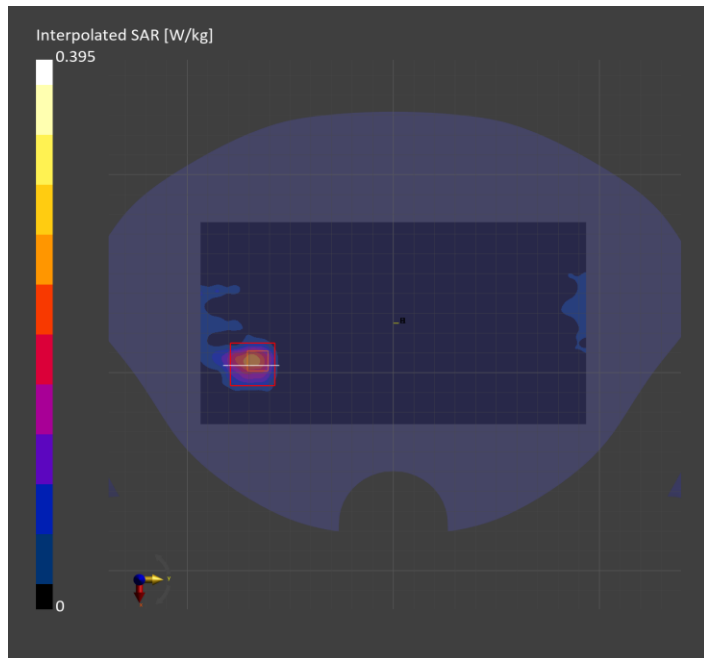
Phantom	TSL, Measured Date	Probe, Calibration Date	DAE, Calibration Date
Twin-SAM V8.0 (30deg probe tilt) - 2038	HBBL-600-10000 Charge:xxxx, 2024-May-23	EX3DV4 - SN7645, 2023-09-20	DAE4 Sn1671, 2024-04-18

**Scans Setup**

	Area Scan	Zoom Scan
Grid Extents [mm]	102.0 x 187.0	27.2 x 27.2 x 22.0
Grid Steps [mm]	8.5 x 8.5	3.4 x 3.4 x 1.4
Sensor Surface [mm]	3.0	1.4

**Measurement Results**

	Area Scan	Zoom Scan
psSAR1g [W/kg]	0.192	0.190
psSAR10g [W/kg]	0.058	0.061
psAPD (1.0cm2, sq) [W/m2]		1.90
psAPD (4.0cm2, sq) [W/m2]		1.39
Power Drift [dB]		-0.05
M2/M1 [%]		52.8
Dist 3dB Peak [mm]		8.0



**Exposure Conditions**

Phantom Section, TSL	Position, Test Distance [mm]	Band	Group, UID	Frequency [MHz], Channel Number	Conversion Factor	TSL Conductivity [S/m]	TSL Permittivity
Flat, HSL	BACK, 0.00	U-NII-7	WLAN, 10755-AAC	6665.0, 143	4.89	6.22	33.5

**Hardware Setup**

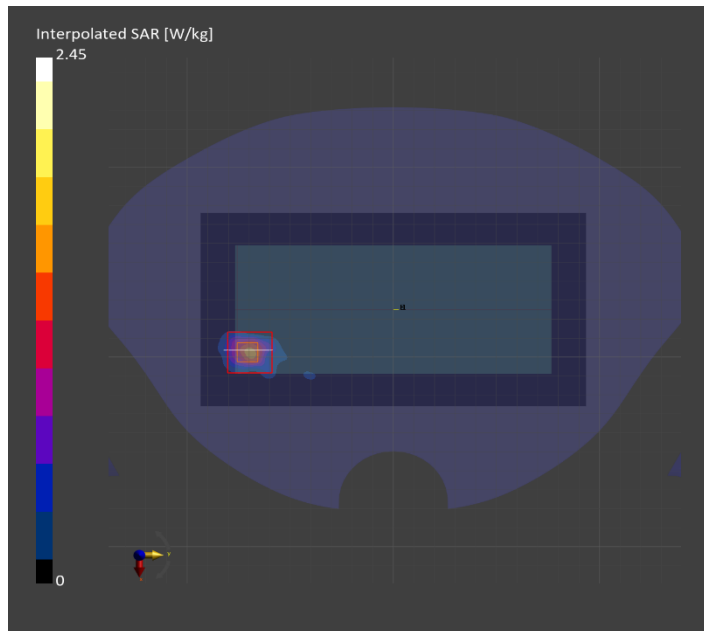
Phantom	TSL, Measured Date	Probe, Calibration Date	DAE, Calibration Date
Twin-SAM V8.0 (30deg probe tilt) - 2038	HBBL-600-10000 Charge:xxxx, 2024-May-23	EX3DV4 - SN7645, 2023-09-20	DAE4 Sn1671, 2024-04-18

**Scans Setup**

	Area Scan	Zoom Scan
Grid Extents [mm]	102.0 x 187.0	22.0 x 22.0 x 22.0
Grid Steps [mm]	8.5 x 8.5	3.4 x 3.4 x 1.4
Sensor Surface [mm]	3.0	1.4

**Measurement Results**

	Area Scan	Zoom Scan
psSAR1g [W/kg]	1.15	1.31
psSAR10g [W/kg]	0.307	0.299
psAPD (1.0cm2, sq) [W/m2]		13.1
psAPD (4.0cm2, sq) [W/m2]		7.13
Power Drift [dB]		0.02
M2/M1 [%]		51.9
Dist 3dB Peak [mm]		5.2



**Exposure Conditions**

Phantom Section, TSL	Position, Test Distance [mm]	Band	Group, UID	Frequency [MHz], Channel Number	Conversion Factor	TSL Conductivity [S/m]	TSL Permittivity
LeftHead, HSL	CHEEK, 0.00	U-NII-8	WLAN, 10755-AAC	6985.0, 207	4.89	6.45	32.9

**Hardware Setup**

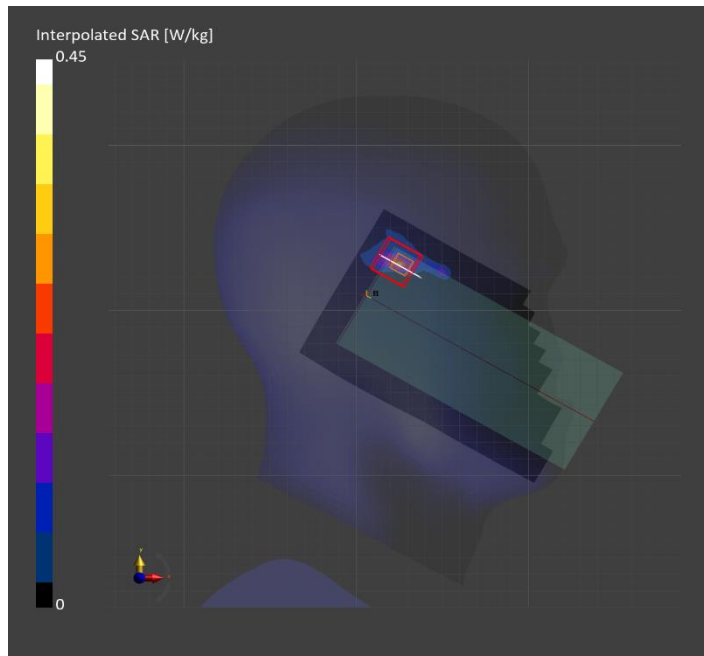
Phantom	TSL, Measured Date	Probe, Calibration Date	DAE, Calibration Date
Twin-SAM V8.0 (30deg probe tilt) - 2038	HBBL-600-10000 Charge:xxxx, 2024-May-23	EX3DV4 - SN7645, 2023-09-20	DAE4 Sn1671, 2024-04-18

**Scans Setup**

	Area Scan	Zoom Scan
Grid Extents [mm]	102.0 x 187.0	27.2 x 27.2 x 22.0
Grid Steps [mm]	8.5 x 8.5	3.4 x 3.4 x 1.4
Sensor Surface [mm]	3.0	1.4

**Measurement Results**

	Area Scan	Zoom Scan
psSAR1g [W/kg]	0.160	0.145
psSAR10g [W/kg]	0.042	0.031
psAPD (1.0cm2, sq) [W/m2]		1.45
psAPD (4.0cm2, sq) [W/m2]		0.727
Power Drift [dB]		0.05
M2/M1 [%]		52.6
Dist 3dB Peak [mm]		2.8



**Exposure Conditions**

Phantom Section, TSL	Position, Test Distance [mm]	Band	Group, UID	Frequency [MHz], Channel Number	Conversion Factor	TSL Conductivity [S/m]	TSL Permittivity
Flat, HSL	BACK, 10.00	U-NII-8	WLAN, 10755-AAC	6985.0, 207	5.11	6.41	34.6

**Hardware Setup**

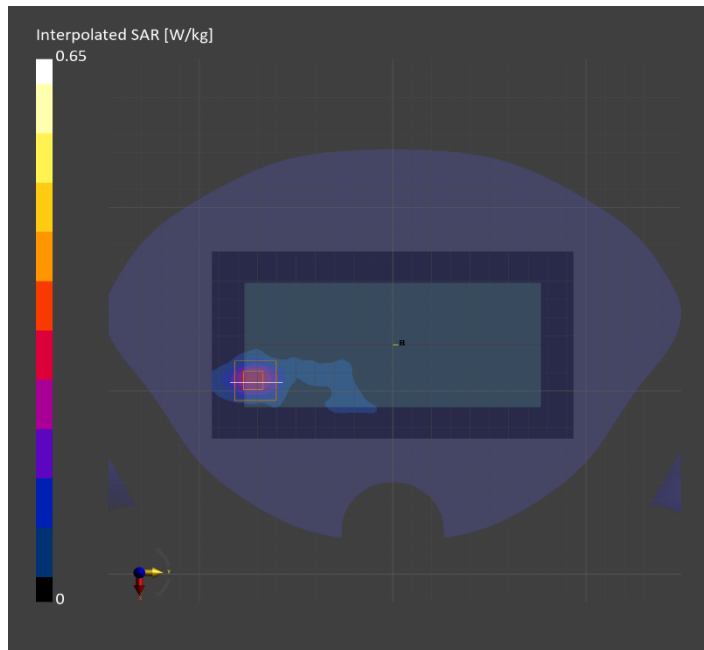
Phantom	TSL, Measured Date	Probe, Calibration Date	DAE, Calibration Date
Twin-SAM V8.0 (30deg probe tilt) - 2039	HBBL-600-10000 Charge:xxxx, 2024-May-17	EX3DV4 - SN7646, 2024-03-15	DAE4 Sn912, 2023-11-17

**Scans Setup**

	Area Scan	Zoom Scan
Grid Extents [mm]	102.0 x 187.0	27.2 x 27.2 x 22.0
Grid Steps [mm]	8.5 x 8.5	3.4 x 3.4 x 1.4
Sensor Surface [mm]	3.0	1.4

**Measurement Results**

	Area Scan	Zoom Scan
psSAR1g [W/kg]	0.256	0.241
psSAR10g [W/kg]	0.084	0.076
psAPD (1.0cm <sup>2</sup> , sq) [W/m <sup>2</sup> ]		2.41
psAPD (4.0cm <sup>2</sup> , sq) [W/m <sup>2</sup> ]		1.75
Power Drift [dB]		0.09
M2/M1 [%]		51.2
Dist 3dB Peak [mm]		7.0





**Exposure Conditions**

Phantom Section, TSL	Position, Test Distance [mm]	Band	Group, UID	Frequency [MHz], Channel Number	Conversion Factor	TSL Conductivity [S/m]	TSL Permittivity
Flat, HSL	BACK, 0.00	U-NII-8	WLAN, 10755-AAC	6985.0, 207	4.89	6.45	32.9

**Hardware Setup**

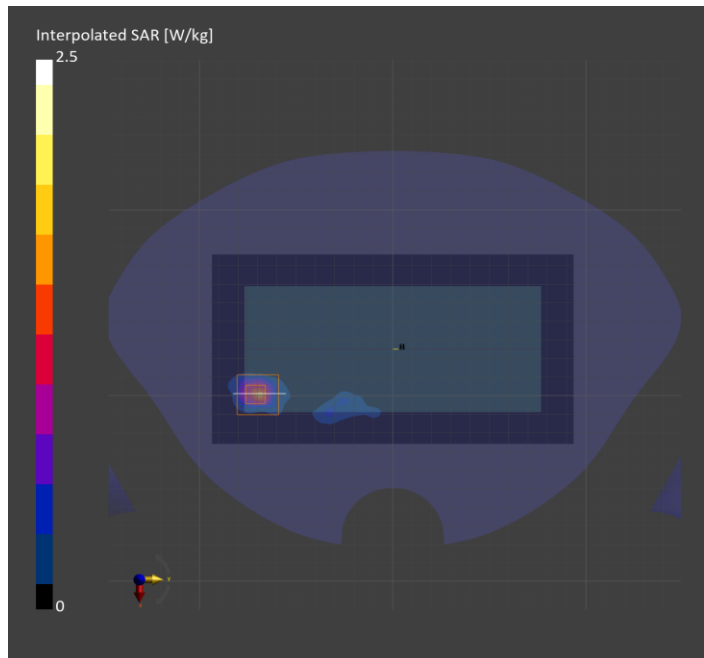
Phantom	TSL, Measured Date	Probe, Calibration Date	DAE, Calibration Date
Twin-SAM V8.0 (30deg probe tilt) - 2038	HBBL-600-10000 Charge:xxxx, 2024-May-23	EX3DV4 - SN7645, 2023-09-20	DAE4 Sn1671, 2024-04-18

**Scans Setup**

	Area Scan	Zoom Scan
Grid Extents [mm]	102.0 x 187.0	27.2 x 27.2 x 22.0
Grid Steps [mm]	8.5 x 8.5	3.4 x 3.4 x 1.4
Sensor Surface [mm]	3.0	1.4

**Measurement Results**

	Area Scan	Zoom Scan
psSAR1g [W/kg]	1.11	1.23
psSAR10g [W/kg]	0.286	0.252
psAPD (1.0cm2, sq) [W/m2]		12.3
psAPD (4.0cm2, sq) [W/m2]		6.04
Power Drift [dB]		0.02
M2/M1 [%]		53.1
Dist 3dB Peak [mm]		5.0



Measurement Report for SM-F956D\_Open, BACK, U-NII-5, IEEE 802.11ax (160MHz, MCS0, 99pc duty cycle), Channel 79 (6345.0 MHz)

Exposure Conditions

Phantom Section, TSL	Position, Test Distance [mm]	Band	Group, UID	Frequency [MHz], Channel Number	Conversion Factor	TSL Conductivity [S/m]	TSL Permittivity
Flat, HSL	BACK, 10.00	U-NII-5	WLAN, 10755-AAC	6345.0, 79	5.11	5.96	34.2

Hardware Setup

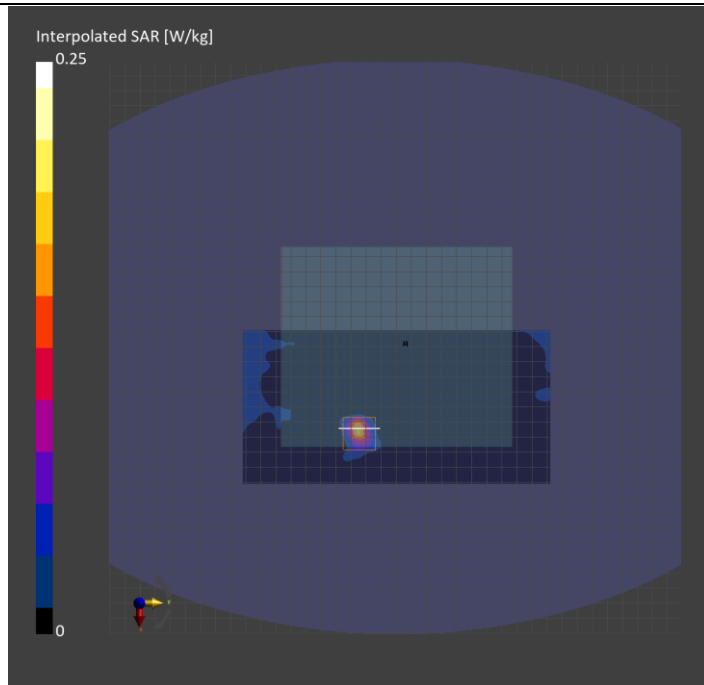
Phantom	TSL, Measured Date	Probe, Calibration Date	DAE, Calibration Date
ELI V6.0 (20deg probe tilt) - 2005	HBBL-600-10000 Charge:xxxx, 2024-May-22	EX3DV4 - SN7646, 2024-03-15	DAE4 Sn912, 2023-11-17

Scans Setup

	Area Scan	Zoom Scan
Grid Extents [mm]	102.0 x 204.0	27.2 x 27.2 x 22.0
Grid Steps [mm]	8.5 x 8.5	3.4 x 3.4 x 1.4
Sensor Surface [mm]	3.0	1.4

Measurement Results

	Area Scan	Zoom Scan
psSAR1g [W/kg]	0.125	0.127
psSAR10g [W/kg]	0.034	0.033
psAPD (1.0cm2, sq) [W/m2]		1.27
psAPD (4.0cm2, sq) [W/m2]		0.778
Power Drift [dB]		0.12
M2/M1 [%]		59.8
Dist 3dB Peak [mm]		6.5



Measurement Report for SM-F956D\_Open, FRONT, U-NII-7, IEEE 802.11ax (160MHz, MCS0, 99pc duty cycle), Channel 143 (6665.0 MHz)

Exposure Conditions

Phantom Section, TSL	Position, Test Distance [mm]	Band	Group, UID	Frequency [MHz], Channel Number	Conversion Factor	TSL Conductivity [S/m]	TSL Permittivity
Flat, HSL	FRONT, 0.00	U-NII-7	WLAN, 10755-AAC	6665.0, 143	5.11	6.33	33.6

Hardware Setup

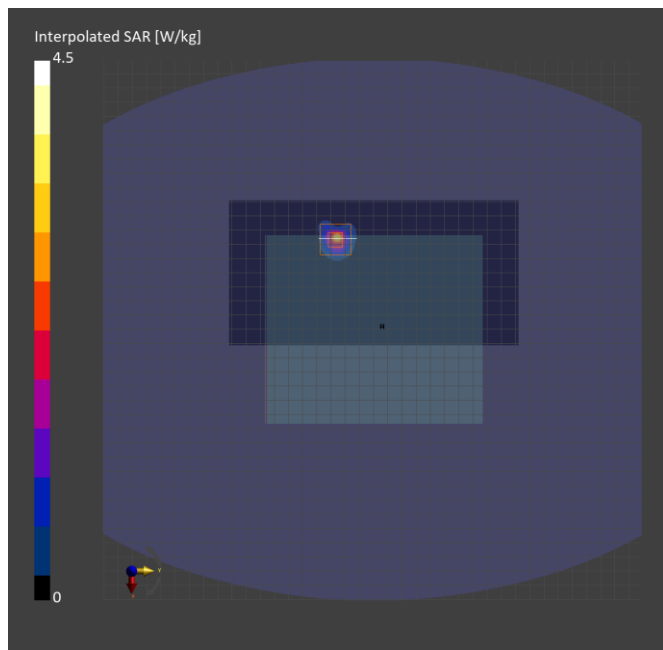
Phantom	TSL, Measured Date	Probe, Calibration Date	DAE, Calibration Date
ELI V6.0 (20deg probe tilt) - 2005	HBBL-600-10000 Charge:xxxx, 2024-May-22	EX3DV4 - SN7646, 2024-03-15	DAE4 Sn912, 2023-11-17

Scans Setup

	Area Scan	Zoom Scan
Grid Extents [mm]	102.0 x 204.0	27.2 x 27.2 x 22.0
Grid Steps [mm]	8.5 x 8.5	3.4 x 3.4 x 1.4
Sensor Surface [mm]	3.0	1.4

Measurement Results

	Area Scan	Zoom Scan
psSAR1g [W/kg]	2.04	2.15
psSAR10g [W/kg]	0.520	0.536
psAPD (1.0cm2, sq) [W/m2]		21.5
psAPD (4.0cm2, sq) [W/m2]		12.6
Power Drift [dB]		-0.05
M2/M1 [%]		47.6
Dist 3dB Peak [mm]		4.6



Measurement Report for SM-F956D\_Open, BACK, U-NII-6, IEEE 802.11ax (160MHz, MCS0, 99pc duty cycle), Channel 111 (6505.0 MHz)

Exposure Conditions

Phantom Section, TSL	Position, Test Distance [mm]	Band	Group, UID	Frequency [MHz], Channel Number	Conversion Factor	TSL Conductivity [S/m]	TSL Permittivity
Flat, HSL	BACK, 10.00	U-NII-6	WLAN, 10755-AAC	6505.0, 111	5.11	6.16	34.6

Hardware Setup

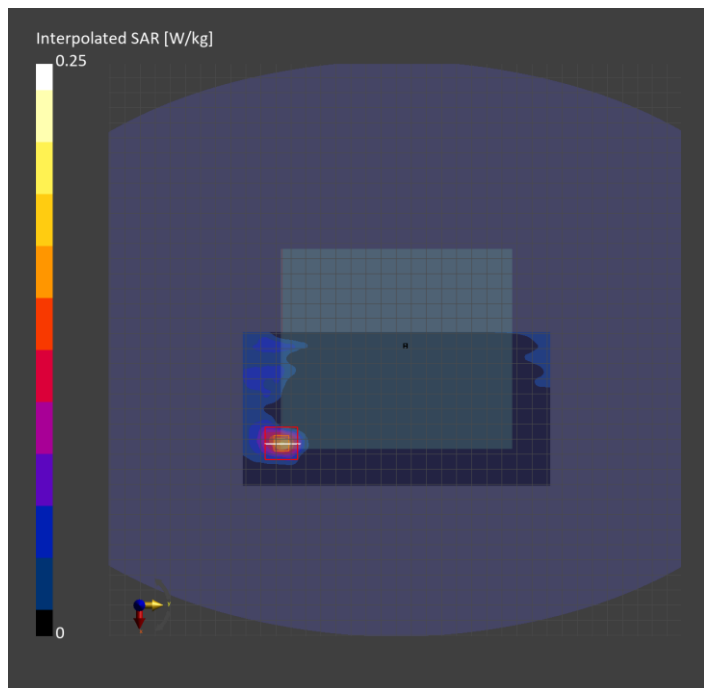
Phantom	TSL, Measured Date	Probe, Calibration Date	DAE, Calibration Date
ELI V6.0 (20deg probe tilt) - 2005	HBBL-600-10000 Charge:xxxx, 2024-May-23	EX3DV4 - SN7646, 2024-03-15	DAE4 Sn912, 2023-11-17

Scans Setup

	Area Scan	Zoom Scan
Grid Extents [mm]	102.0 x 204.0	22.0 x 22.0 x 22.0
Grid Steps [mm]	8.5 x 8.5	3.4 x 3.4 x 1.4
Sensor Surface [mm]	3.0	1.4

Measurement Results

	Area Scan	Zoom Scan
psSAR1g [W/kg]	0.129	0.124
psSAR10g [W/kg]	0.042	0.037
psAPD (1.0cm2, sq) [W/m2]		1.24
psAPD (4.0cm2, sq) [W/m2]		0.866
Power Drift [dB]		-0.18
M2/M1 [%]		55.9
Dist 3dB Peak [mm]		6.7



Measurement Report for SM-F956D\_Open, FRONT, U-NII-6, IEEE 802.11ax (160MHz, MCS0, 99pc duty cycle), Channel 111 (6505.0 MHz)

Exposure Conditions

Phantom Section, TSL	Position, Test Distance [mm]	Band	Group, UID	Frequency [MHz], Channel Number	Conversion Factor	TSL Conductivity [S/m]	TSL Permittivity
Flat, HSL	FRONT, 0.00	U-NII-6	WLAN, 10755-AAC	6505.0, 111	5.11	6.16	34.6

Hardware Setup

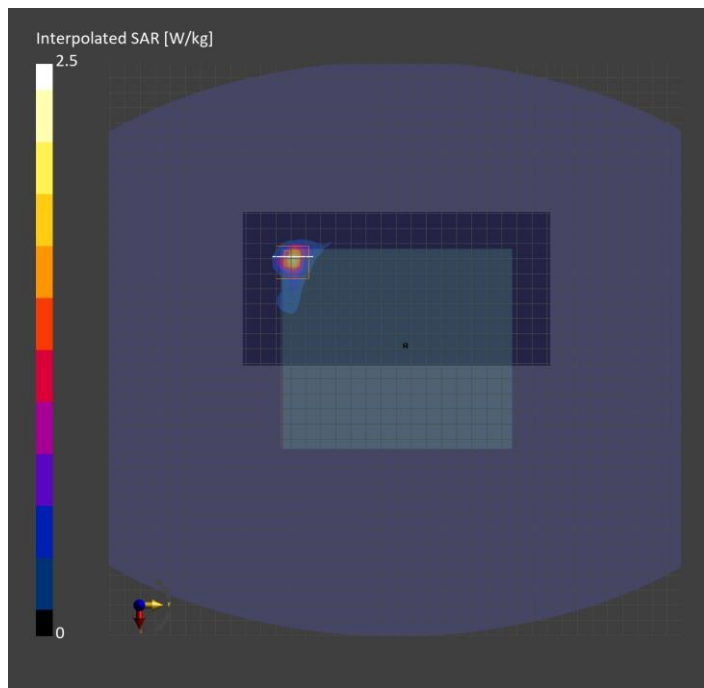
Phantom	TSL, Measured Date	Probe, Calibration Date	DAE, Calibration Date
ELI V6.0 (20deg probe tilt) - 2005	HBBL-600-10000 Charge:xxxx, 2024-May-23	EX3DV4 - SN7646, 2024-03-15	DAE4 Sn912, 2023-11-17

Scans Setup

	Area Scan	Zoom Scan
Grid Extents [mm]	102.0 x 204.0	27.2 x 27.2 x 22.0
Grid Steps [mm]	8.5 x 8.5	3.4 x 3.4 x 1.4
Sensor Surface [mm]	3.0	1.4

Measurement Results

	Area Scan	Zoom Scan
psSAR1g [W/kg]	1.36	1.58
psSAR10g [W/kg]	0.373	0.386
psAPD (1.0cm2, sq) [W/m2]		15.8
psAPD (4.0cm2, sq) [W/m2]		9.12
Power Drift [dB]		-0.16
M2/M1 [%]		56.8
Dist 3dB Peak [mm]		4.9



Measurement Report for SM-F956D\_Open, BACK, U-NII-7, IEEE 802.11ax (160MHz, MCS0, 99pc duty cycle), Channel 143 (6665.0 MHz)

Exposure Conditions

Phantom Section, TSL	Position, Test Distance [mm]	Band	Group, UID	Frequency [MHz], Channel Number	Conversion Factor	TSL Conductivity [S/m]	TSL Permittivity
Flat, HSL	BACK, 10.00	U-NII-7	WLAN, 10755-AAC	6665.0, 143	5.11	6.33	33.6

Hardware Setup

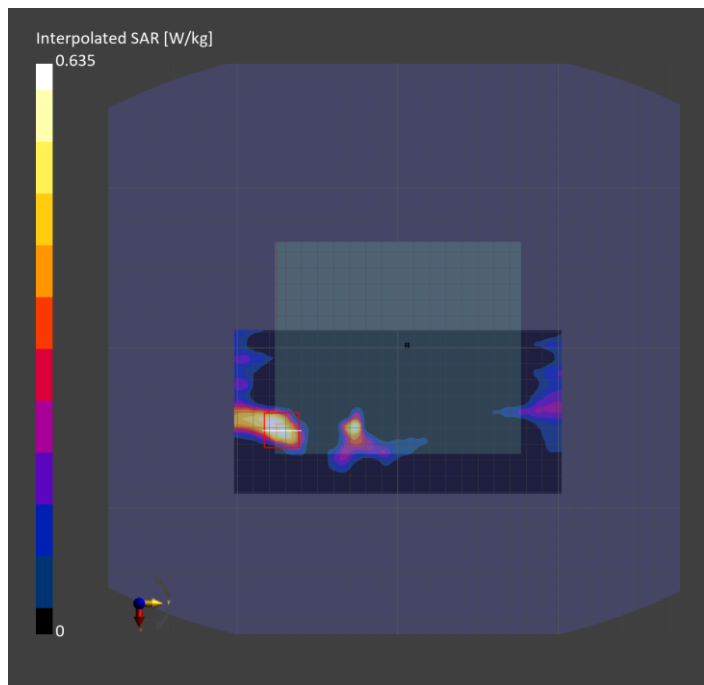
Phantom	TSL, Measured Date	Probe, Calibration Date	DAE, Calibration Date
ELI V6.0 (20deg probe tilt) - 2005	HBBL-600-10000 Charge:xxxx, 2024-May-21	EX3DV4 - SN7646, 2024-03-15	DAE4 Sn912, 2023-11-17

Scans Setup

	Area Scan	Zoom Scan
Grid Extents [mm]	102.0 x 204.0	22.0 x 22.0 x 22.0
Grid Steps [mm]	8.5 x 8.5	3.4 x 3.4 x 1.4
Sensor Surface [mm]	3.0	1.4

Measurement Results

	Area Scan	Zoom Scan
psSAR1g [W/kg]	0.118	0.112
psSAR10g [W/kg]	0.041	0.034
psAPD (1.0cm <sup>2</sup> , sq) [W/m <sup>2</sup> ]		1.12
psAPD (4.0cm <sup>2</sup> , sq) [W/m <sup>2</sup> ]		0.788
Power Drift [dB]		-0.14
M2/M1 [%]		58.4
Dist 3dB Peak [mm]		7.4



Measurement Report for SM-F956D\_Open, FRONT, U-NII-6, IEEE 802.11ax (160MHz, MCS0, 99pc duty cycle), Channel 111 (6505.0 MHz)

Exposure Conditions

Phantom Section, TSL	Position, Test Distance [mm]	Band	Group, UID	Frequency [MHz], Channel Number	Conversion Factor	TSL Conductivity [S/m]	TSL Permittivity
Flat, HSL	FRONT, 0.00	U-NII-6	WLAN, 10755-AAC	6505.0, 111	5.11	6.16	34.3

Hardware Setup

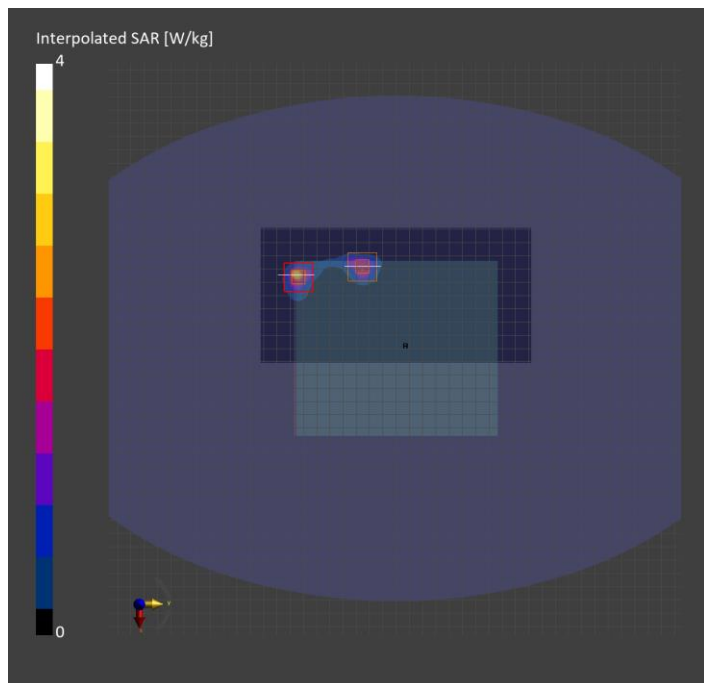
Phantom	TSL, Measured Date	Probe, Calibration Date	DAE, Calibration Date
ELI V6.0 (20deg probe tilt) - 2005	HBBL-600-10000 Charge:xxxx, 2024-May-21	EX3DV4 - SN7646, 2024-03-15	DAE4 Sn912, 2023-11-17

Scans Setup

	Area Scan	Zoom Scan
Grid Extents [mm]	102.0 x 204.0	27.2 x 27.2 x 22.0
Grid Steps [mm]	8.5 x 8.5	3.4 x 3.4 x 1.4
Sensor Surface [mm]	3.0	1.4

Measurement Results

	Area Scan	Zoom Scan 1	Zoom Scan 2
psSAR1g [W/kg]	1.94	2.05	1.59
psSAR10g [W/kg]	0.491	0.460	0.402
psAPD (1.0cm2, sq) [W/m2]		20.5	15.9
psAPD (4.0cm2, sq) [W/m2]		11.0	9.43
Power Drift [dB]			-0.11
M2/M1 [%]			48.9
Dist 3dB Peak [mm]			4.1



Measurement Report for SM\_F956B, CHEEK, U-NII-5, IEEE 802.11ax (160MHz, MCS0, 99pc duty cycle), Channel 15 (6025.0 MHz)

Exposure Conditions

Phantom Section, TSL	Position, Test Distance [mm]	Band	Group, UID	Frequency [MHz], Channel Number	Conversion Factor	TSL Conductivity [S/m]	TSL Permittivity
LeftHead, HSL	CHEEK, 0.00	U-NII-5	WLAN, 10755-AAC	6025.0, 15	5.11	5.30	35.8

Hardware Setup

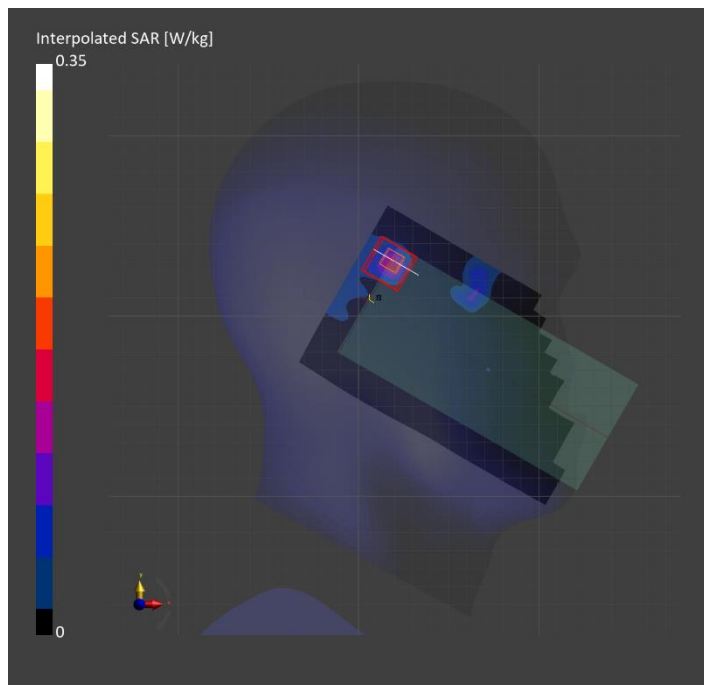
Phantom	TSL, Measured Date	Probe, Calibration Date	DAE, Calibration Date
Twin-SAM V8.0 (30deg probe tilt) - 2039	HBBL-600-10000 Charge:xxxx, 2024-May-17	EX3DV4 - SN7646, 2024-03-15	DAE4 Sn912, 2023-11-17

Scans Setup

	Area Scan	Zoom Scan
Grid Extents [mm]	102.0 x 187.0	27.2 x 27.2 x 22.0
Grid Steps [mm]	8.5 x 8.5	3.4 x 3.4 x 1.4
Sensor Surface [mm]	3.0	1.4

Measurement Results

	Area Scan	Zoom Scan
psSAR1g [W/kg]	0.110	0.123
psSAR10g [W/kg]	0.031	0.034
psAPD (1.0cm2, sq) [W/m2]		1.23
psAPD (4.0cm2, sq) [W/m2]		0.784
Power Drift [dB]		0.14
M2/M1 [%]		59.8
Dist 3dB Peak [mm]		5.6





Measurement Report for SM-F956D\_Open, BACK, U-NII-5, IEEE 802.11ax (160MHz, MCS0, 99pc duty cycle), Channel 79 (6345.0 MHz)

Exposure Conditions

Phantom Section, TSL	Position, Test Distance [mm]	Band	Group, UID	Frequency [MHz], Channel Number	Conversion Factor	TSL Conductivity [S/m]	TSL Permittivity
Flat, HSL	BACK, 10.00	U-NII-5	WLAN, 10755-AAC	6345.0, 79	5.11	5.96	34.2

Hardware Setup

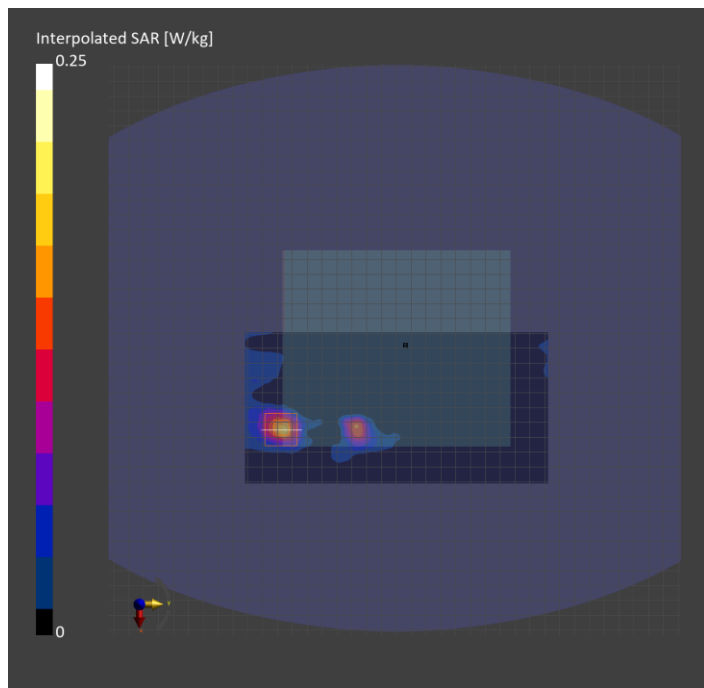
Phantom	TSL, Measured Date	Probe, Calibration Date	DAE, Calibration Date
ELI V6.0 (20deg probe tilt) - 2005	HBBL-600-10000 Charge:xxxx, 2024-May-21	EX3DV4 - SN7646, 2024-03-15	DAE4 Sn912, 2023-11-17

Scans Setup

	Area Scan	Zoom Scan
Grid Extents [mm]	102.0 x 204.0	27.2 x 27.2 x 22.0
Grid Steps [mm]	8.5 x 8.5	3.4 x 3.4 x 1.4
Sensor Surface [mm]	3.0	1.4

Measurement Results

	Area Scan	Zoom Scan
psSAR1g [W/kg]	0.133	0.118
psSAR10g [W/kg]	0.046	0.037
psAPD (1.0cm2, sq) [W/m2]		1.18
psAPD (4.0cm2, sq) [W/m2]		0.847
Power Drift [dB]		0.18
M2/M1 [%]		57.7
Dist 3dB Peak [mm]		7.7



Measurement Report for SM-F956D, EDGE LEFT, Custom Band, CW, Channel 6489600 (6489.6 MHz)

Exposure Conditions

Phantom Section, TSL	Position, Test Distance [mm]	Band	Group, UID	Frequency [MHz], Channel Number	Conversion Factor	TSL Conductivity [S/m]	TSL Permittivity
Flat, HSL	EDGE LEFT, 0.00	Custom Band	CW, 0--	6489.6, 6489600	4.89	6.13	34.2

Hardware Setup

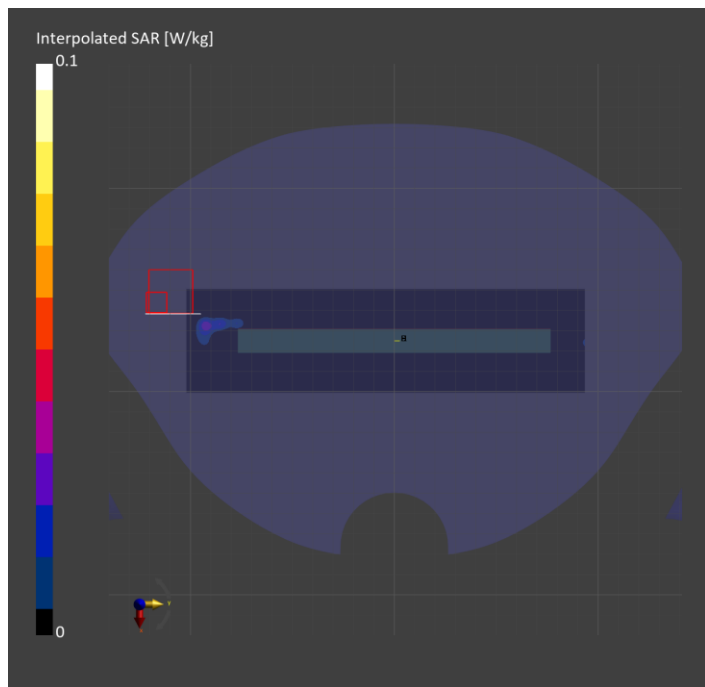
Phantom	TSL, Measured Date	Probe, Calibration Date	DAE, Calibration Date
Twin-SAM V8.0 (30deg probe tilt) - 2038	HBBL-600-10000 Charge:xxxx, 2024-May-23	EX3DV4 - SN7645, 2023-09-20	DAE4 Sn1671, 2024-04-18

Scans Setup

	Area Scan	Zoom Scan
Grid Extents [mm]	51.0 x 187.0	22.0 x 22.0 x 22.0
Grid Steps [mm]	8.5 x 8.5	3.4 x 3.4 x 1.4
Sensor Surface [mm]	3.0	1.4

Measurement Results

	Area Scan	Zoom Scan
psSAR1g [W/kg]	0.015	0
psSAR10g [W/kg]	0.002	0
psAPD (1.0cm2, sq) [W/m2]		0.01
psAPD (4.0cm2, sq) [W/m2]		0.015
Power Drift [dB]		0
M2/M1 [%]		n/a
Dist 3dB Peak [mm]		0.7



Measurement Report for SM-F956D, EDGE RIGHT, Custom Band, CW, Channel 7987200 (7987.2 MHz)

Exposure Conditions

Phantom Section, TSL	Position, Test Distance [mm]	Band	Group, UID	Frequency [MHz], Channel Number	Conversion Factor	TSL Conductivity [S/m]	TSL Permittivity
Flat, HSL	EDGE RIGHT, 0.00	Custom Band	CW, 0--	7987.2, 7987200	4.72	7.74	33.1

Hardware Setup

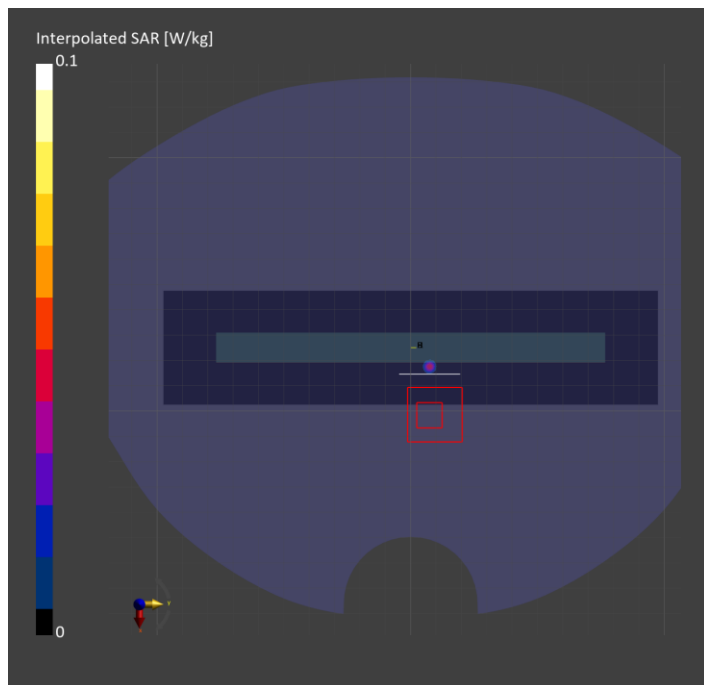
Phantom	TSL, Measured Date	Probe, Calibration Date	DAE, Calibration Date
Twin-SAM V8.0 (30deg probe tilt) - 2038	HBBL-600-10000 Charge:xxxx, 2024-May-27	EX3DV4 - SN7645, 2023-09-20	DAE4 Sn1671, 2024-04-18

Scans Setup

	Area Scan	Zoom Scan
Grid Extents [mm]	45.0 x 195.0	24.0 x 24.0 x 22.0
Grid Steps [mm]	7.5 x 7.5	3.0 x 3.0 x 1.4
Sensor Surface [mm]	3.0	1.4

Measurement Results

	Area Scan	Zoom Scan
psSAR1g [W/kg]	0	0.001
psSAR10g [W/kg]	0	0
psAPD (1.0cm2, sq) [W/m2]		0.011
psAPD (4.0cm2, sq) [W/m2]		0.019
Power Drift [dB]		0.07
M2/M1 [%]		n/a
Dist 3dB Peak [mm]		1.2



Measurement Report for SM-F956D\_Open, FRONT, Custom Band, CW, Channel 7987200 (7987.2 MHz)

Exposure Conditions

Phantom Section, TSL	Position, Test Distance [mm]	Band	Group, UID	Frequency [MHz], Channel Number	Conversion Factor	TSL Conductivity [S/m]	TSL Permittivity
Flat, HSL	FRONT, 0.00	Custom Band	CW, 0--	7987.2, 7987200	5.47	7.99	33.5

Hardware Setup

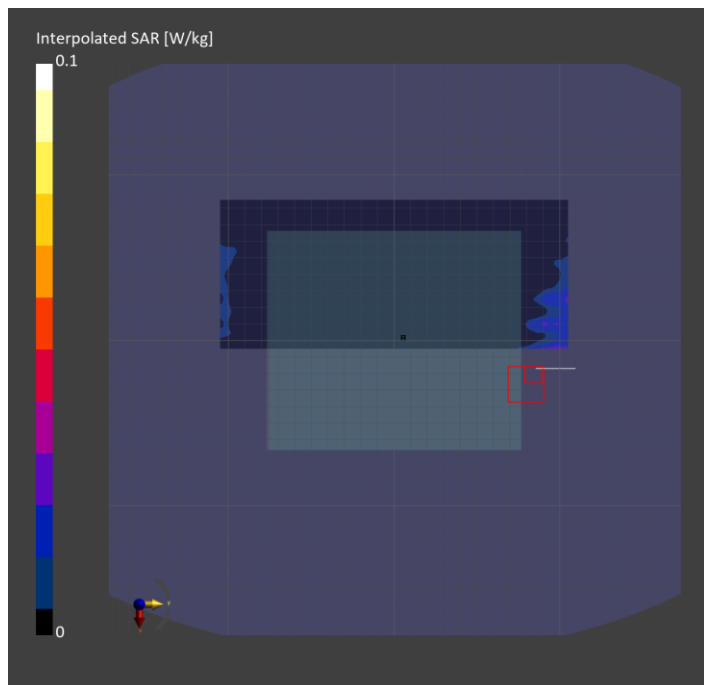
Phantom	TSL, Measured Date	Probe, Calibration Date	DAE, Calibration Date
ELI V6.0 (20deg probe tilt) - 2005	HBBL-600-10000 Charge:xxxx, 2024-May-27	EX3DV4 - SN7646, 2024-03-15	DAE4 Sn912, 2023-11-17

Scans Setup

	Area Scan	Zoom Scan
Grid Extents [mm]	90.0 x 210.0	24.0 x 24.0 x 22.0
Grid Steps [mm]	7.5 x 7.5	3.0 x 3.0 x 1.4
Sensor Surface [mm]	3.0	1.4

Measurement Results

	Area Scan	Zoom Scan
psSAR1g [W/kg]	0.024	0
psSAR10g [W/kg]	0.009	0
psAPD (1.0cm <sup>2</sup> , sq) [W/m <sup>2</sup> ]		0.001
psAPD (4.0cm <sup>2</sup> , sq) [W/m <sup>2</sup> ]		0.001
Power Drift [dB]		0.18
M2/M1 [%]		87.2
Dist 3dB Peak [mm]		0.6



**Exposure Conditions**

Phantom Section	Position, Test Distance [mm]	Band	Group, UID	Frequency [MHz], Channel Number	Conversion Factor
5G	EDGE RIGHT, 2.00	U-NII-5	WLAN, 10755-AAC	6025.0, 15	1.0

**Hardware Setup**

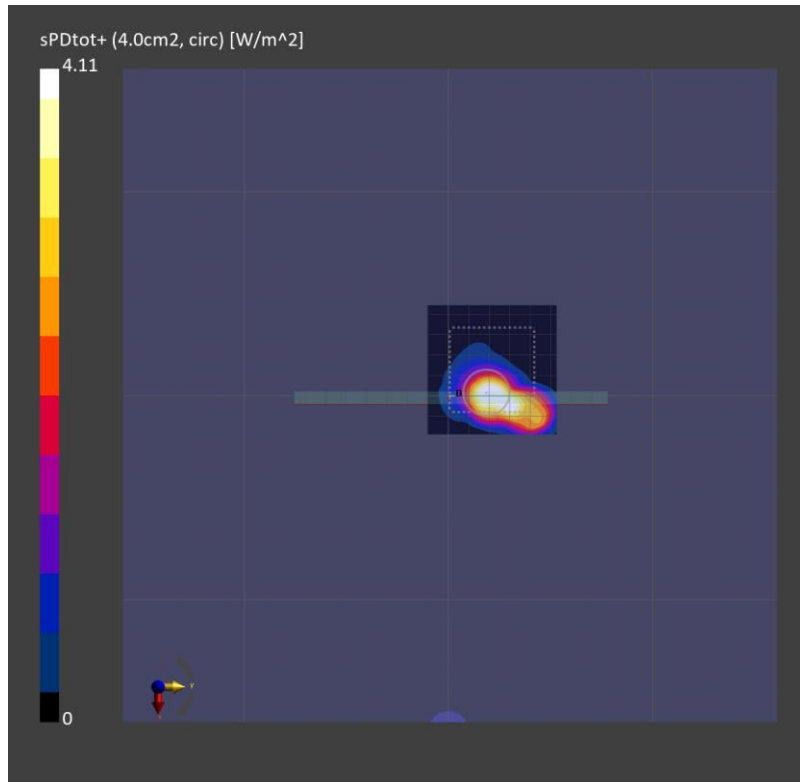
Phantom	Medium	Probe, Calibration Date	DAE, Calibration Date
mmWave - xxxx	Air -	EUmmWV4 - SN9536_F1-55GHz, 2024-02-15	DAE4 Sn1668, 2024-04-18

**Scans Setup**

Scan Type	5G Scan
Grid Extents [mm]	60.0 x 60.0
Grid Steps [lambda]	0.04102331270196222 x 0.04102331270196222
Sensor Surface [mm]	2.0

**Measurement Results**

Scan Type	5G Scan
Avg. Area [cm <sup>2</sup> ]	4.00
psPDn+ [W/m <sup>2</sup> ]	2.33
psPDtot+ [W/m <sup>2</sup> ]	4.11
psPDmod+ [W/m <sup>2</sup> ]	7.92
E <sub>max</sub> [V/m]	113
Power Drift [dB]	0.06



**Exposure Conditions**

Phantom Section	Position, Test Distance [mm]	Band	Group, UID	Frequency [MHz], Channel Number	Conversion Factor
5G	BACK, 2.00	U-NII-7	WLAN, 10755-AAC	6665.0, 143	1.0

**Hardware Setup**

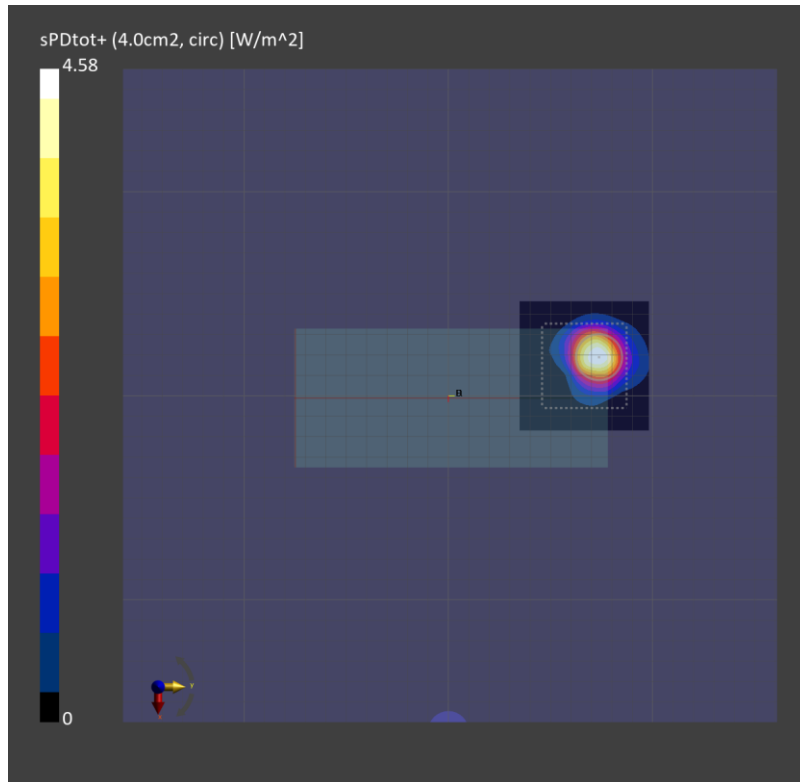
Phantom	Medium	Probe, Calibration Date	DAE, Calibration Date
mmWave - xxxx	Air -	EUmmWV4 - SN9536_F1-55GHz, 2024-02-15	DAE4 Sn1668, 2024-04-18

**Scans Setup**

Scan Type	5G Scan
Grid Extents [mm]	60.0 x 60.0
Grid Steps [lambda]	0.04538097579395488 x 0.04538097579395488
Sensor Surface [mm]	2.0

**Measurement Results**

Scan Type	5G Scan
Avg. Area [cm <sup>2</sup> ]	4.00
psPDn+ [W/m <sup>2</sup> ]	2.92
psPDtot+ [W/m <sup>2</sup> ]	4.58
psPDmod+ [W/m <sup>2</sup> ]	6.29
E <sub>max</sub> [V/m]	90.7
Power Drift [dB]	-0.11



**Exposure Conditions**

Phantom Section	Position, Test Distance [mm]	Band	Group, UID	Frequency [MHz], Channel Number	Conversion Factor
5G	BACK, 2.00	U-NII-6	WLAN, 10755-AAC	6505.0, 111	1.0

**Hardware Setup**

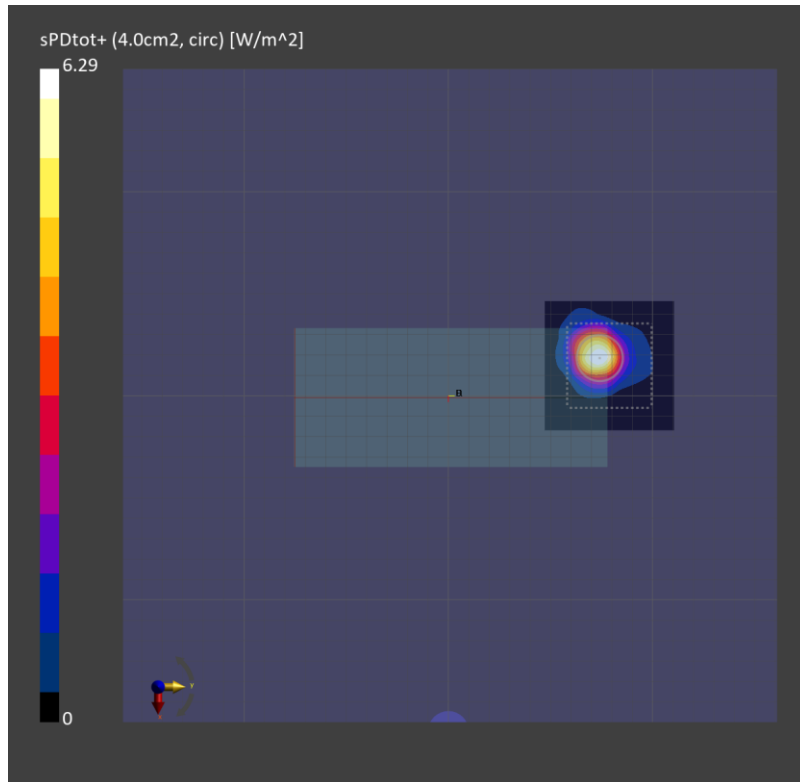
Phantom	Medium	Probe, Calibration Date	DAE, Calibration Date
mmWave - xxxx	Air -	EUmmWV4 - SN9536_F1-55GHz, 2024-02-15	DAE4 Sn1668, 2024-04-18

**Scans Setup**

Scan Type	5G Scan
Grid Extents [mm]	60.0 x 60.0
Grid Steps [lambda]	0.04429156002095672 x 0.04429156002095672
Sensor Surface [mm]	2.0

**Measurement Results**

Scan Type	5G Scan
Avg. Area [cm <sup>2</sup> ]	4.00
psPDn+ [W/m <sup>2</sup> ]	3.17
psPDtot+ [W/m <sup>2</sup> ]	6.29
psPDmod+ [W/m <sup>2</sup> ]	8.84
E <sub>max</sub> [V/m]	87.8
Power Drift [dB]	-0.15



**Exposure Conditions**

Phantom Section	Position, Test Distance [mm]	Band	Group, UID	Frequency [MHz], Channel Number	Conversion Factor
5G	FRONT, 2.00	U-NII-7	WLAN, 10755-AAC	6665.0, 143	1.0

**Hardware Setup**

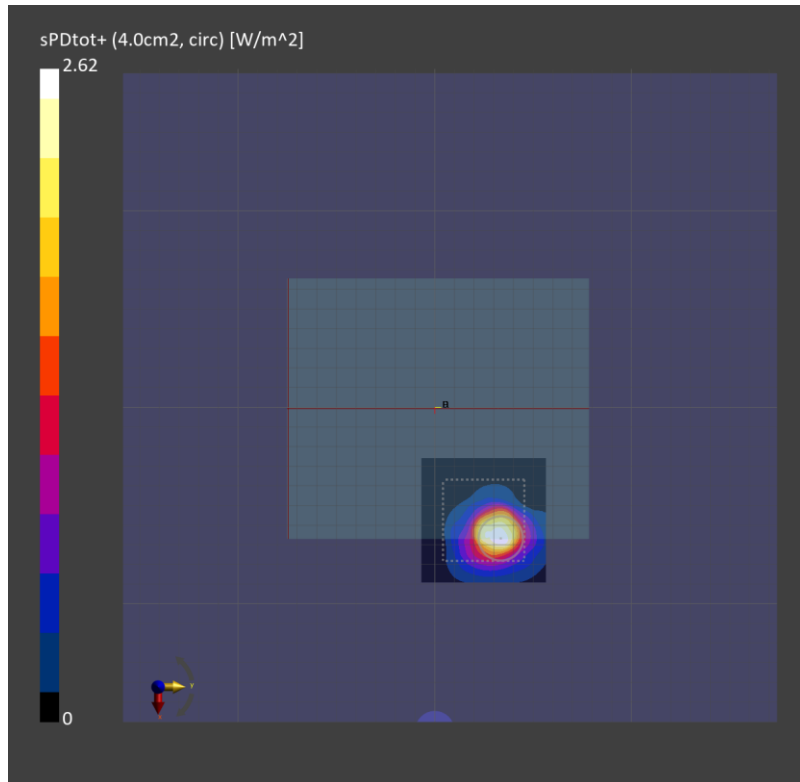
Phantom	Medium	Probe, Calibration Date	DAE, Calibration Date
mmWave - xxxx	Air -	EUmmWV4 - SN9536_F1-55GHz, 2024-02-15	DAE4 Sn1668, 2024-04-18

**Scans Setup**

Scan Type	5G Scan
Grid Extents [mm]	60.0 x 60.0
Grid Steps [lambda]	0.04538097579395488 x 0.04538097579395488
Sensor Surface [mm]	2.0

**Measurement Results**

Scan Type	5G Scan
Avg. Area [cm <sup>2</sup> ]	4.00
psPDn+ [W/m <sup>2</sup> ]	1.53
psPDtot+ [W/m <sup>2</sup> ]	2.62
psPDmod+ [W/m <sup>2</sup> ]	4.25
E <sub>max</sub> [V/m]	69.2
Power Drift [dB]	-0.01





**Exposure Conditions**

Phantom Section	Position, Test Distance [mm]	Band	Group, UID	Frequency [MHz], Channel Number	Conversion Factor
5G	FRONT, 2.00	U-NII-7	WLAN, 10755-AAC	6665.0, 143	1.0

**Hardware Setup**

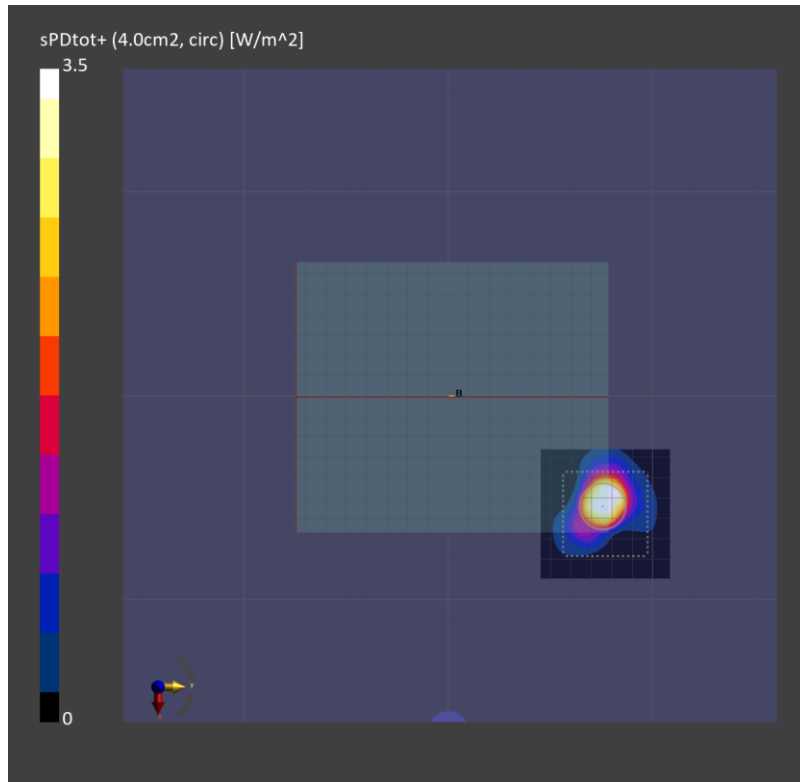
Phantom	Medium	Probe, Calibration Date	DAE, Calibration Date
mmWave - xxxx	Air -	EUmmWV4 - SN9536_F1-55GHz, 2024-02-15	DAE4 Sn1668, 2024-04-18

**Scans Setup**

Scan Type	5G Scan
Grid Extents [mm]	60.0 x 60.0
Grid Steps [lambda]	0.04429156002095672 x 0.04429156002095672
Sensor Surface [mm]	2.0

**Measurement Results**

Scan Type	5G Scan
Avg. Area [cm <sup>2</sup> ]	4.00
psPDn+ [W/m <sup>2</sup> ]	1.51
psPDtot+ [W/m <sup>2</sup> ]	3.50
psPDmod+ [W/m <sup>2</sup> ]	6.39
E <sub>max</sub> [V/m]	82.0
Power Drift [dB]	0.01



**Exposure Conditions**

Phantom Section	Position, Test Distance [mm]	Band	Group, UID	Frequency [MHz], Channel Number	Conversion Factor
5G	FRONT, 2.00	U-NII-8	WLAN, 10755-AAC	6985.0, 207	1.0

**Hardware Setup**

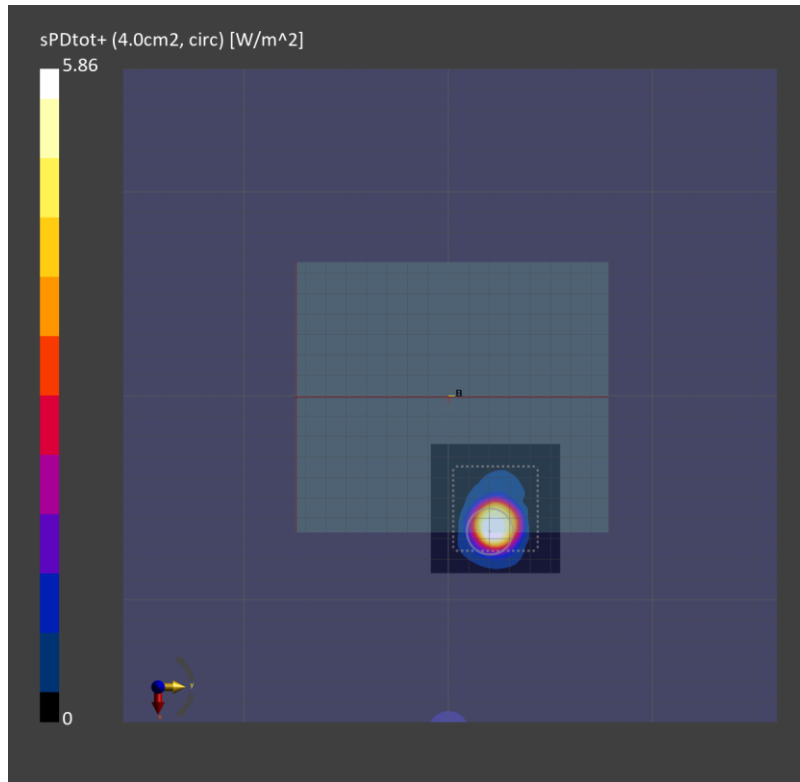
Phantom	Medium	Probe, Calibration Date	DAE, Calibration Date
mmWave - xxxx	Air -	EUmmWV4 - SN9536_F1-55GHz, 2024-02-15	DAE4 Sn1668, 2024-04-18

**Scans Setup**

Scan Type	5G Scan
Grid Extents [mm]	60.0 x 60.0
Grid Steps [lambda]	0.047559807339951216 x 0.047559807339951216
Sensor Surface [mm]	2.0

**Measurement Results**

Scan Type	5G Scan
Avg. Area [cm <sup>2</sup> ]	4.00
psPDn+ [W/m <sup>2</sup> ]	2.65
psPDtot+ [W/m <sup>2</sup> ]	5.86
psPDmod+ [W/m <sup>2</sup> ]	7.56
E <sub>max</sub> [V/m]	88.9
Power Drift [dB]	0.15



**Exposure Conditions**

Phantom Section	Position, Test Distance [mm]	Band	Group, UID	Frequency [MHz], Channel Number	Conversion Factor
5G	EDGE RIGHT, 2.00	Custom Band	CW, 0--	7987.2, 7987200	1.0

**Hardware Setup**

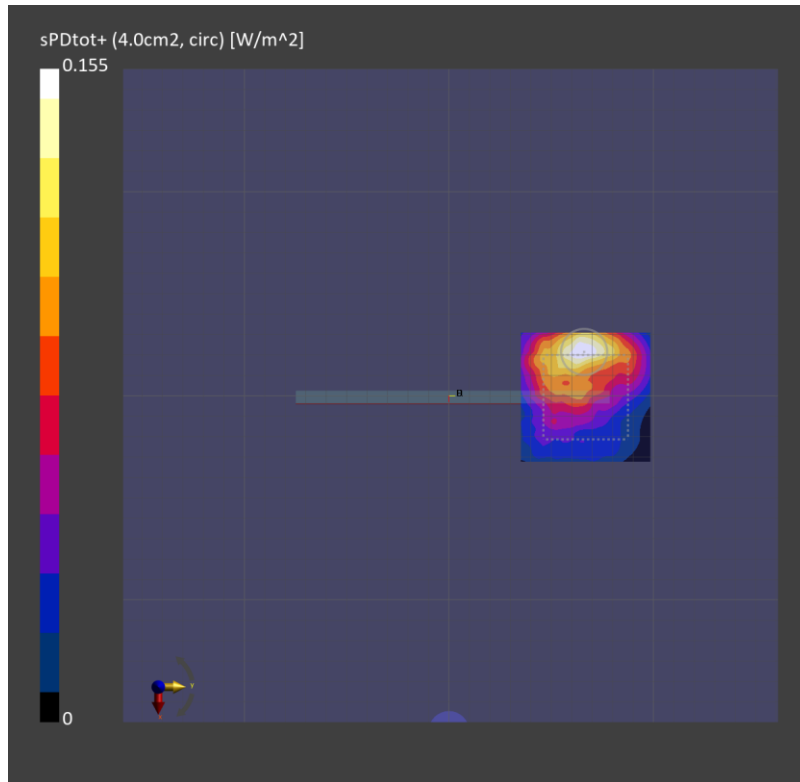
Phantom	Medium	Probe, Calibration Date	DAE, Calibration Date
mmWave - xxxx	Air -	EUmmWV4 - SN9536_F1-55GHz, 2024-02-15	DAE4 Sn1668, 2024-04-18

**Scans Setup**

Scan Type	5G Scan
Grid Extents [mm]	60.0 x 60.0
Grid Steps [lambda]	0.05438363538806848 x 0.05438363538806848
Sensor Surface [mm]	2.0

**Measurement Results**

Scan Type	5G Scan
Avg. Area [cm <sup>2</sup> ]	1.00
psPDn+ [W/m <sup>2</sup> ]	0.173
psPDtot+ [W/m <sup>2</sup> ]	0.232
psPDmod+ [W/m <sup>2</sup> ]	0.291
E <sub>max</sub> [V/m]	9.67
Power Drift [dB]	0.14



**Exposure Conditions**

Phantom Section	Position, Test Distance [mm]	Band	Group, UID	Frequency [MHz], Channel Number	Conversion Factor
5G	FRONT, 2.00	Custom Band	CW, 0--	7987.2, 7987200	1.0

**Hardware Setup**

Phantom	Medium	Probe, Calibration Date	DAE, Calibration Date
mmWave - xxxx	Air -	EUmmWV4 - SN9536_F1-55GHz, 2024-02-15	DAE4 Sn1668, 2024-04-18

**Scans Setup**

Scan Type	5G Scan
Grid Extents [mm]	60.0 x 60.0
Grid Steps [lambda]	0.05438363538806848 x 0.05438363538806848
Sensor Surface [mm]	2.0

**Measurement Results**

Scan Type	5G Scan
Avg. Area [cm <sup>2</sup> ]	1.00
psPDn+ [W/m <sup>2</sup> ]	0.119
psPDtot+ [W/m <sup>2</sup> ]	0.199
psPDmod+ [W/m <sup>2</sup> ]	0.511
E <sub>max</sub> [V/m]	13.2
Power Drift [dB]	n/a

