

System Performance Check Report

Summary

Dipole	Frequency [MHz]	TSL	Power [dBm]
D6.5GHzV2 - SN1010	6500.0	HSL	20.0

Exposure Conditions

Phantom Section, TSL	Test Distance [mm]	Band	Group, UID	Frequency [MHz], Channel Number	Conversion Factor	TSL Conductivity [S/m]	TSL Permittivity
Flat, HSL	5		CW, 0--	6500.0, 0	5.35	5.93	35.2

Hardware Setup

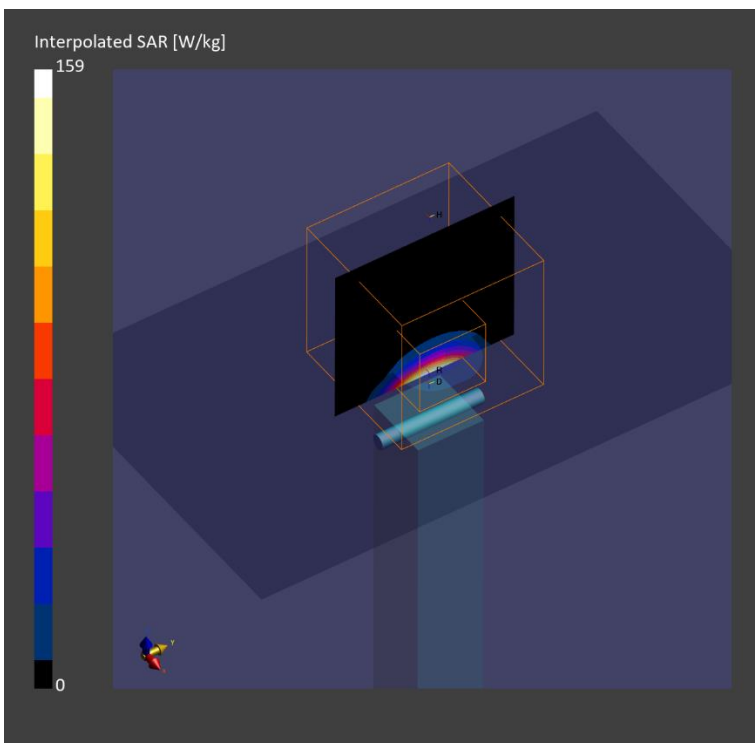
Phantom	TSL, Measured Date	Probe, Calibration Date	DAE, Calibration Date
Twin-SAM V5.0 (30deg probe tilt) - 1877	HBBL-600-10000, 2023-Jun-27	EX3DV4 - SN7545, 2022-08-19	DAE4 Sn1668, 2023-04-26

Scans Setup

	Area Scan	Zoom Scan
Grid Extents [mm]	51.0 x 85.0	22.0 x 22.0 x 22.0
Grid Steps [mm]	8.5 x 8.5	3.4 x 3.4 x 1.4
Sensor Surface [mm]	3.0	1.4

Measurement Results

	Area Scan	Zoom Scan
psSAR1g [W/Kg]	23.6	26.4
psSAR10g [W/Kg]	4.70	5.14
psAPD (4.0cm2, sq) [W/m2]		125
Power Drift [dB]		-0.04



System Performance Check Report

Summary

Dipole	Frequency [MHz]	TSL	Power [dBm]
D6.5GHzV2 - SN1010	6500.0	HSL	20.0

Exposure Conditions

Phantom Section, TSL	Test Distance [mm]	Band	Group, UID	Frequency [MHz], Channel Number	Conversion Factor	TSL Conductivity [S/m]	TSL Permittivity
Flat, HSL	5		CW, 0--	6500.0, 0	5.2	6.17	33.9

Hardware Setup

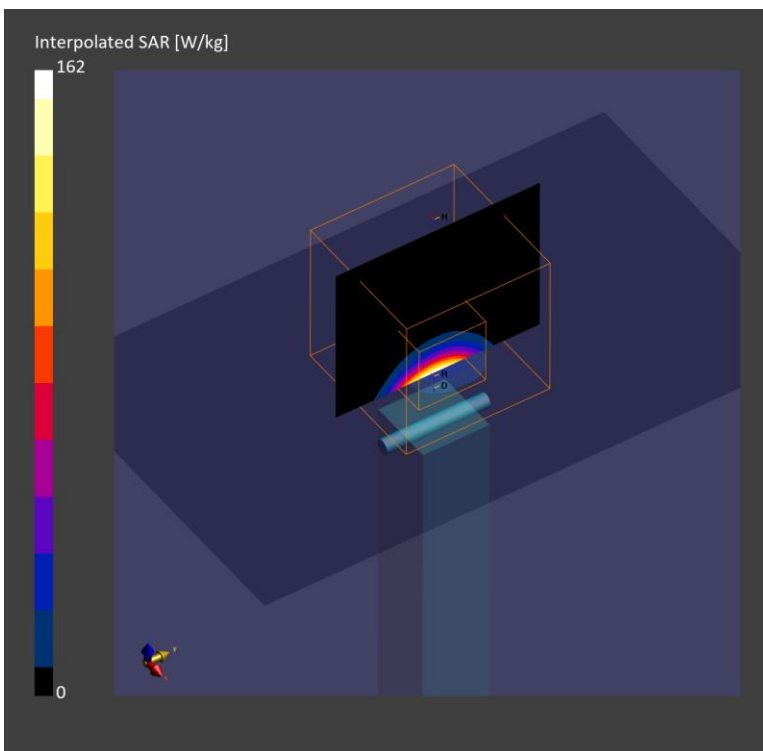
Phantom	TSL, Measured Date	Probe, Calibration Date	DAE, Calibration Date
Twin-SAM V8.0 (30deg probe tilt) - 2043	HBBL-600-10000, 2023-Jun-19	EX3DV4 - SN7376, 2022-07-27	DAE4 Sn1494, 2022-07-18

Scans Setup

	Area Scan	Zoom Scan
Grid Extents [mm]	51.0 x 85.0	22.0 x 22.0 x 22.0
Grid Steps [mm]	8.5 x 8.5	3.4 x 3.4 x 1.4
Sensor Surface [mm]	3.0	1.4

Measurement Results

	Area Scan	Zoom Scan
psSAR1g [W/Kg]	24.3	27.1
psSAR10g [W/Kg]	4.79	5.19
psAPD (4.0cm2, sq) [W/m2]		126
Power Drift [dB]		0.00



System Performance Check Report

Summary

Dipole	Frequency [MHz]	TSL	Power [dBm]
D8GHzV2 - SN1012	8000.0	HSL	20.0

Exposure Conditions

Phantom Section, TSL	Test Distance [mm]	Band	Group, UID	Frequency [MHz], Channel Number	Conversion Factor	TSL Conductivity [S/m]	TSL Permittivity
Flat, HSL	5		CW, 0--	8000.0, 0	5.0	8.08	33.0

Hardware Setup

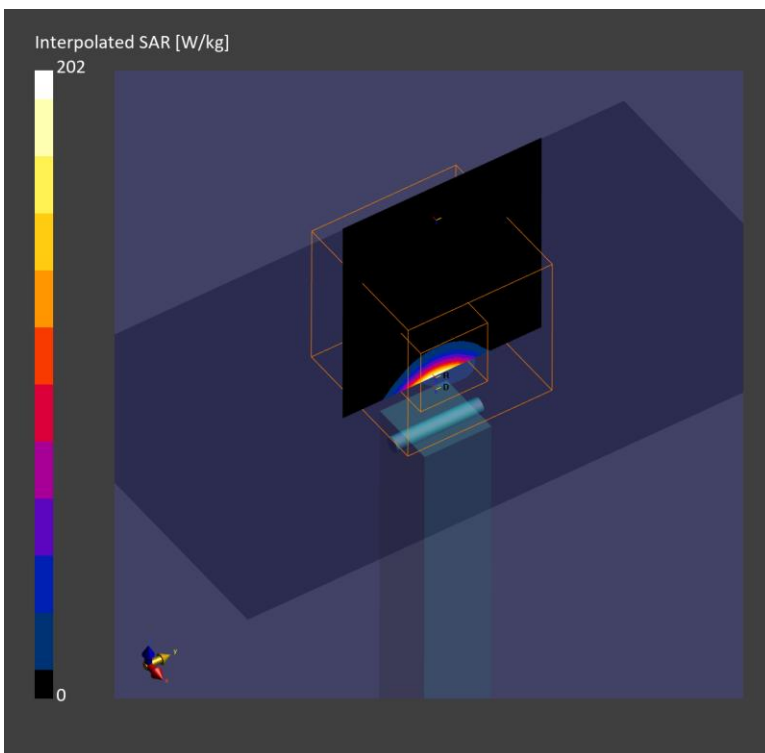
Phantom	TSL, Measured Date	Probe, Calibration Date	DAE, Calibration Date
Twin-SAM V8.0 (30deg probe tilt) - 2043	HBBL-600-10000, 2023-Jun-20	EX3DV4 - SN7376, 2022-07-27	DAE4 Sn1494, 2022-07-18

Scans Setup

	Area Scan	Zoom Scan
Grid Extents [mm]	52.0 x 91.0	22.0 x 22.0 x 22.0
Grid Steps [mm]	6.5 x 6.5	2.7 x 2.7 x 1.3
Sensor Surface [mm]	3.0	1.4

Measurement Results

	Area Scan	Zoom Scan
psSAR1g [W/Kg]	28.4	24.6
psSAR10g [W/Kg]	5.38	4.39
psAPD (4.0cm2, sq) [W/m2]		107
Power Drift [dB]		0.16



Measurement Report for Device, FRONT, Validation band, CW, Channel 10000 (10000.0 MHz)

Exposure Conditions

Phantom Section	Position, Test Distance [mm]	Band	Group, UID	Frequency [MHz], Channel Number	Conversion Factor
5G	FRONT, 10.00	Validation band	CW, 0--	10000.0, 10000	1.0

Hardware Setup

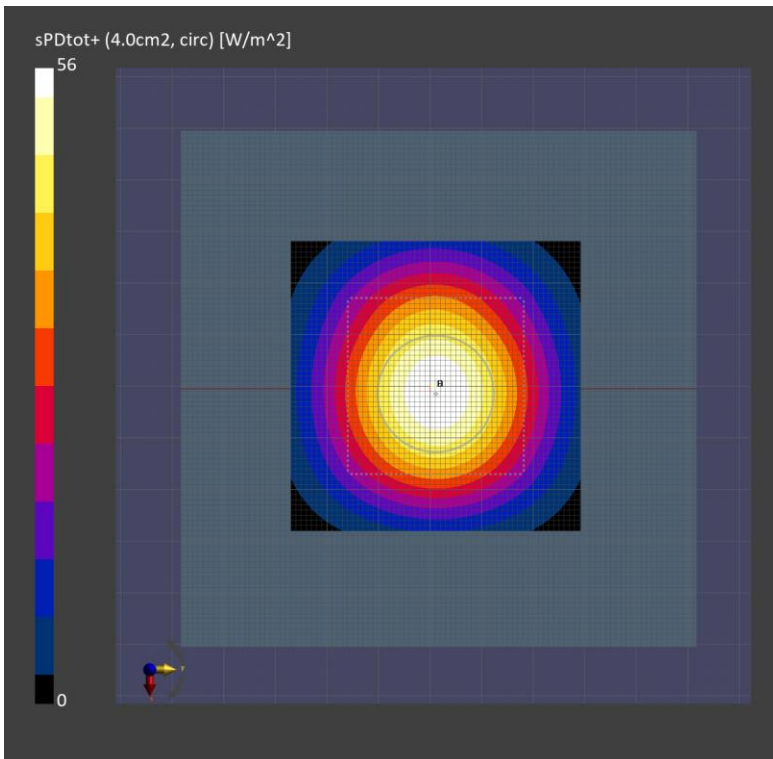
Phantom	Medium	Probe, Calibration Date	DAE, Calibration Date
mmWave - 1082	Air -	EUmmWV4 - SN9536_F1-55GHz, 2023-02-16	DAE4 Sn1468, 2022-08-18

Scans Setup

Scan Type	5G Scan
Grid Extents [mm]	60.0 x 60.0
Grid Steps [lambda]	0.125 x 0.125
Sensor Surface [mm]	10.0

Measurement Results

Scan Type	5G Scan
Avg. Area [cm ²]	4.00
psPDn+ [W/m ²]	55.8
psPDtot+ [W/m ²]	56.0
psPDmod+ [W/m ²]	56.5
E _{max} [V/m]	155
Power Drift [dB]	-0.13



Measurement Report for Device, FRONT, Validation band, CW, Channel 10000 (10000.0 MHz)

Exposure Conditions

Phantom Section	Position, Test Distance [mm]	Band	Group, UID	Frequency [MHz], Channel Number	Conversion Factor
5G	FRONT, 10.00	Validation band	CW, 0--	10000.0, 10000	1.0

Hardware Setup

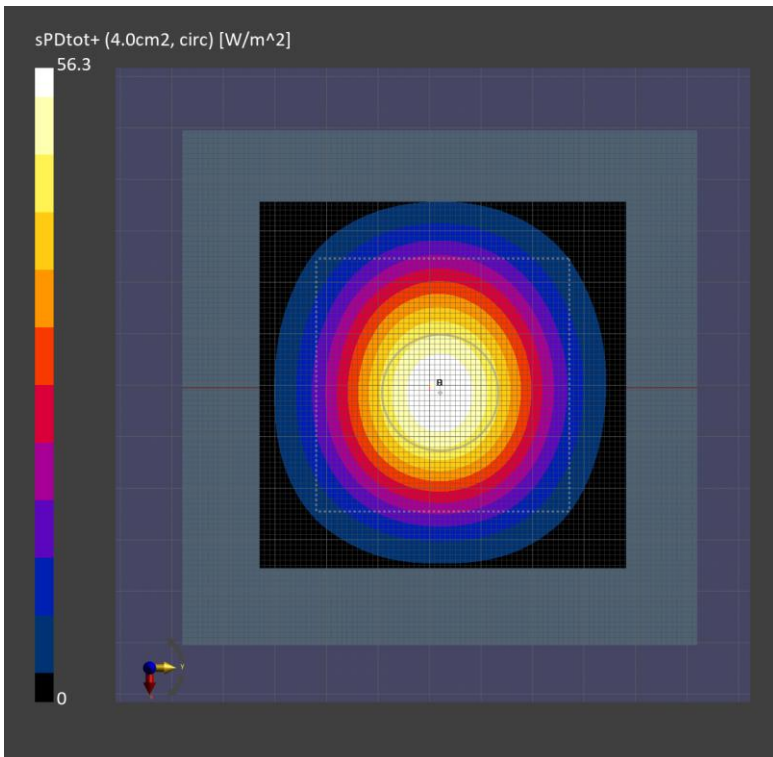
Phantom	Medium	Probe, Calibration Date	DAE, Calibration Date
mmWave - 1082	Air -	EUmmWV4 - SN9536_F1-55GHz, 2023-02-16	DAE4 Sn1468, 2022-08-18

Scans Setup

Scan Type	5G Scan
Grid Extents [mm]	60.0 x 60.0
Grid Steps [lambda]	0.125 x 0.125
Sensor Surface [mm]	10.0

Measurement Results

Scan Type	5G Scan
Avg. Area [cm ²]	4.00
psPDn+ [W/m ²]	56.1
psPDtot+ [W/m ²]	56.3
psPDmod+ [W/m ²]	56.7
E _{max} [V/m]	157
Power Drift [dB]	-0.18



Measurement Report for Device, FRONT, Validation band, CW, Channel 10000 (10000.0 MHz)

Exposure Conditions

Phantom Section	Position, Test Distance [mm]	Band	Group, UID	Frequency [MHz], Channel Number	Conversion Factor
5G	FRONT, 10.00	Validation band	CW, 0--	10000.0, 10000	1.0

Hardware Setup

Phantom	Medium	Probe, Calibration Date	DAE, Calibration Date
mmWave - xxxx	Air -	EUmmWV4 - SN9559_F1-55GHz, 2023-02-16	DAE4 Sn1670, 2023-05-24

Scans Setup

Scan Type	5G Scan
Grid Extents [mm]	60.0 x 60.0
Grid Steps [lambda]	0.125 x 0.125
Sensor Surface [mm]	10.0

Measurement Results

Scan Type	5G Scan
Avg. Area [cm ²]	4.00
psPDn+ [W/m ²]	59.1
psPDtot+ [W/m ²]	59.6
psPDmod+ [W/m ²]	60.1
E _{max} [V/m]	156
Power Drift [dB]	0.03

