

Measurement Report for Device, CHEEK, U-NII-6, IEEE 802.11ax (160MHz, MCS0, 99pc duty cycle), Channel 111 (6505.0 MHz)

Exposure Conditions

Phantom Section, TSL	Position, Test Distance [mm]	Band	Group, UID	Frequency [MHz], Channel Number	Conversion Factor	TSL Conductivity [S/m]	TSL Permittivity
RightHead, HSL	CHEEK, 0.00	U-NII-6	WLAN, 10755-AAC	6505.0, 111	5.35	5.93	35.2

Hardware Setup

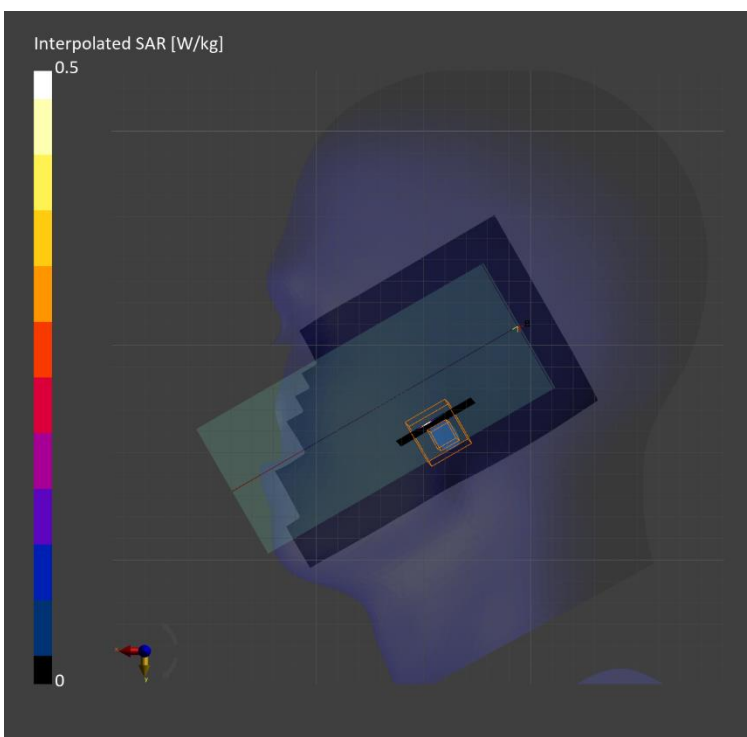
Phantom	TSL, Measured Date	Probe, Calibration Date	DAE, Calibration Date
Twin-SAM V5.0 (30deg probe tilt) - 1877	HBBL-600-10000, 2023-Jun-28	EX3DV4 - SN7545, 2022-08-19	DAE4 Sn1668, 2023-04-26

Scans Setup

	Area Scan	Zoom Scan
Grid Extents [mm]	102.0 x 187.0	22.0 x 22.0 x 22.0
Grid Steps [mm]	8.5 x 8.5	3.4 x 3.4 x 1.4
Sensor Surface [mm]	3.0	1.4

Measurement Results

	Area Scan	Zoom Scan
psSAR1g [W/Kg]	0.050	0.059
psSAR10g [W/Kg]	0.012	0.015
psAPD (4.0cm2, sq) [W/m2]		0.346
Power Drift [dB]		0.05
M2/M1 [%]		58.9
Dist 3dB Peak [mm]		4.7



Measurement Report for Device, LEFT, U-NII-6, IEEE 802.11ax (160MHz, MCS0, 99pc duty cycle), Channel 111 (6505.0 MHz)

Exposure Conditions

Phantom Section, TSL	Position, Test Distance [mm]	Band	Group, UID	Frequency [MHz], Channel Number	Conversion Factor	TSL Conductivity [S/m]	TSL Permittivity
Flat, HSL	LEFT, 0.00	U-NII-6	WLAN, 10755-AAC	6505.0, 111	5.35	6.27	33.7

Hardware Setup

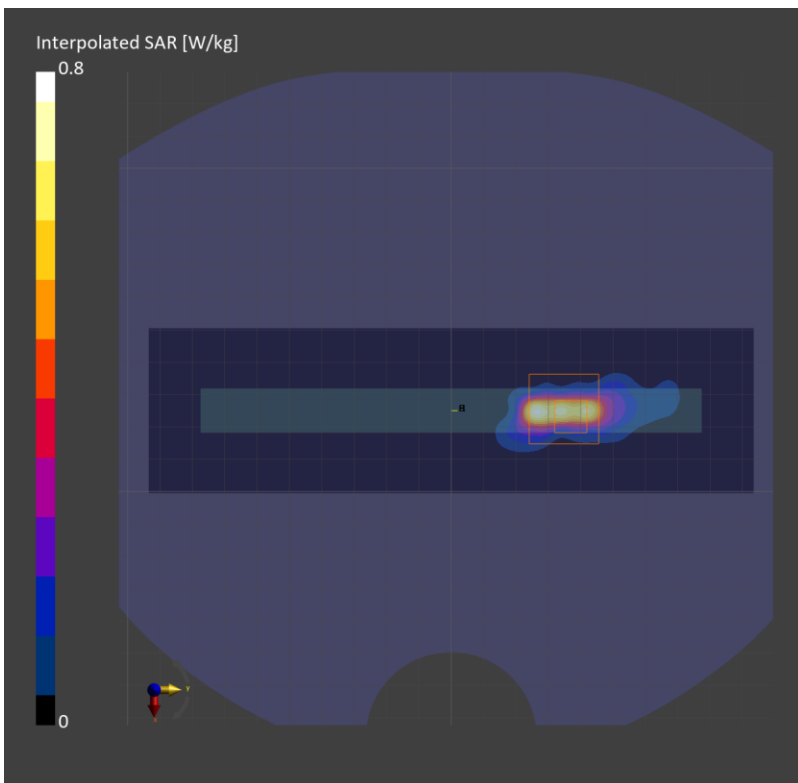
Phantom	TSL, Measured Date	Probe, Calibration Date	DAE, Calibration Date
Twin-SAM V5.0 (30deg probe tilt) - 1877	HBBL-600-10000, 2023-Jun-26	EX3DV4 - SN7545, 2022-08-19	DAE4 Sn1668, 2023-04-26

Scans Setup

	Area Scan	Zoom Scan
Grid Extents [mm]	51.0 x 187.0	22.0 x 22.0 x 22.0
Grid Steps [mm]	8.5 x 8.5	2.2 x 2.2 x 1.2
Sensor Surface [mm]	3.0	1.4

Measurement Results

	Area Scan	Zoom Scan
psSAR1g [W/Kg]	0.473	0.545
psSAR10g [W/Kg]	0.125	0.137
psAPD (4.0cm2, sq) [W/m2]		3.2
Power Drift [dB]		0.05
M2/M1 [%]		45.2
Dist 3dB Peak [mm]		2.7



Measurement Report for Device, BACK, U-NII-8, IEEE 802.11ax (160MHz, MCS0, 99pc duty cycle), Channel 207 (6985.0 MHz)

Exposure Conditions

Phantom Section, TSL	Position, Test Distance [mm]	Band	Group, UID	Frequency [MHz], Channel Number	Conversion Factor	TSL Conductivity [S/m]	TSL Permittivity
Flat, HSL	BACK, 10.00	U-NII-8	WLAN, 10755-AAC	6985.0, 207	5.35	6.83	32.9

Hardware Setup

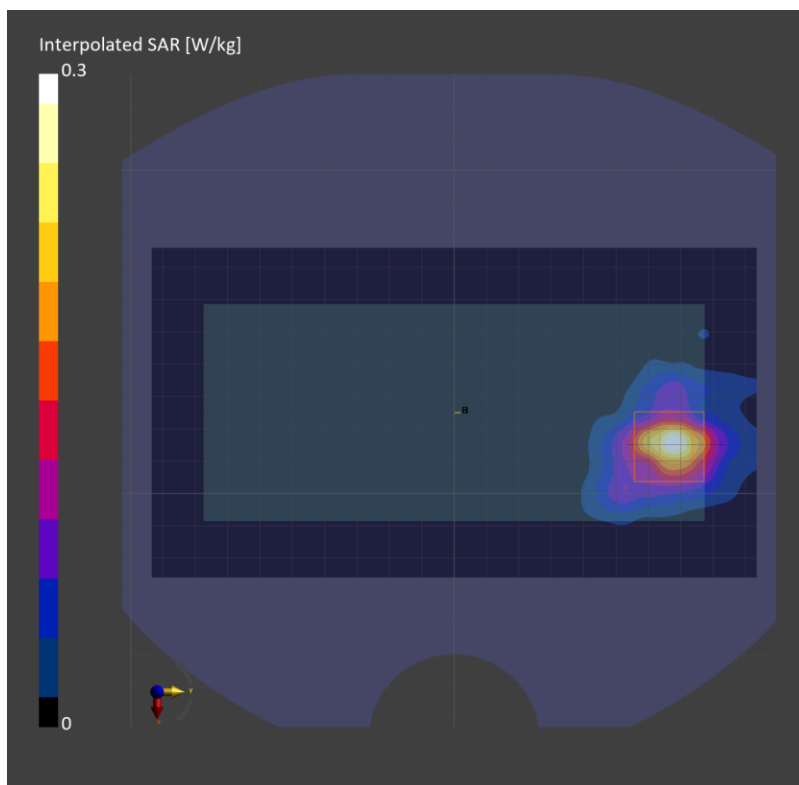
Phantom	TSL, Measured Date	Probe, Calibration Date	DAE, Calibration Date
Twin-SAM V5.0 (30deg probe tilt) - 1877	HBBL-600-10000, 2023-Jun-27	EX3DV4 - SN7545, 2022-08-19	DAE4 Sn1668, 2023-04-26

Scans Setup

	Area Scan	Zoom Scan
Grid Extents [mm]	102.0 x 187.0	22.0 x 22.0 x 22.0
Grid Steps [mm]	8.5 x 8.5	3.4 x 3.4 x 1.4
Sensor Surface [mm]	3.0	1.4

Measurement Results

	Area Scan	Zoom Scan
psSAR1g [W/Kg]	0.226	0.225
psSAR10g [W/Kg]	0.072	0.071
psAPD (4.0cm2, sq) [W/m2]		1.63
Power Drift [dB]		-0.17
M2/M1 [%]		47.7
Dist 3dB Peak [mm]		8.2



Measurement Report for SM-F946U_UMPC, FRONT, U-NII-5, IEEE 802.11ax (160MHz, MCS0, 99pc duty cycle), Channel 15 (6025.0 MHz)

Exposure Conditions

Phantom Section, TSL	Position, Test Distance [mm]	Band	Group, UID	Frequency [MHz], Channel Number	Conversion Factor	TSL Conductivity [S/m]	TSL Permittivity
Flat, HSL	FRONT, 0.00	U-NII-5	WLAN, 10755-AAC	6025.0, 15	5.35	5.39	35.8

Hardware Setup

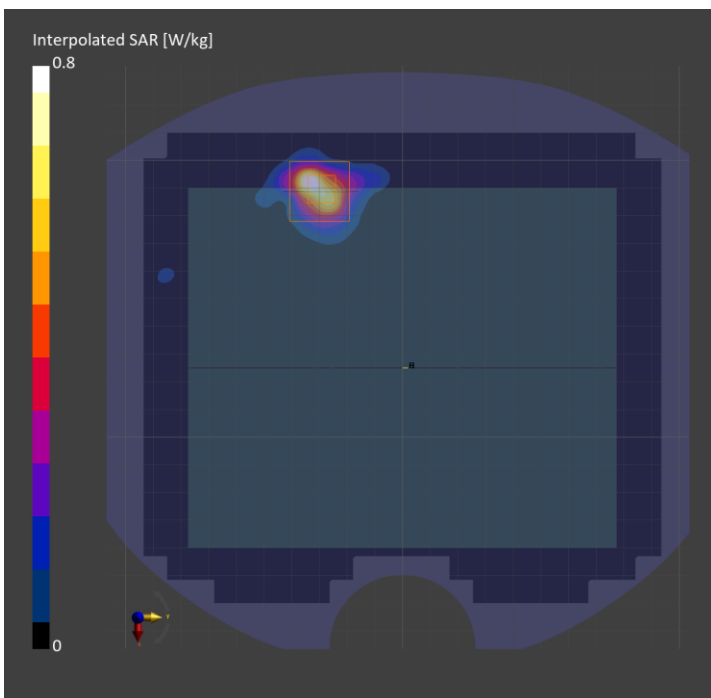
Phantom	TSL, Measured Date	Probe, Calibration Date	DAE, Calibration Date
Twin-SAM V5.0 (30deg probe tilt) - 1877	HBL-600-10000, 2023-Jun-19	EX3DV4 - SN7545, 2022-08-19	DAE4 Sn1668, 2023-04-26

Scans Setup

	Area Scan	Zoom Scan
Grid Extents [mm]	170.0 x 187.0	22.0 x 22.0 x 22.0
Grid Steps [mm]	8.5 x 8.5	3.4 x 3.4 x 1.4
Sensor Surface [mm]	3.0	1.4

Measurement Results

	Area Scan	Zoom Scan
psSAR1g [W/Kg]	0.530	0.596
psSAR10g [W/Kg]	0.161	0.170
psAPD (4.0cm2, sq) [W/m2]		3.95
Power Drift [dB]		0.03
M2/M1 [%]		55.0
Dist 3dB Peak [mm]		5.0



Measurement Report for SM-F946U_UMPC, BACK, U-NII-7, IEEE 802.11ax (160MHz, MCS0, 99pc duty cycle), Channel 143 (6665.0 MHz)

Exposure Conditions

Phantom Section, TSL	Position, Test Distance [mm]	Band	Group, UID	Frequency [MHz], Channel Number	Conversion Factor	TSL Conductivity [S/m]	TSL Permittivity
Flat, HSL	BACK, 10.00	U-NII-7	WLAN, 10755-AAC	6665.0, 143	5.35	6.10	34.4

Hardware Setup

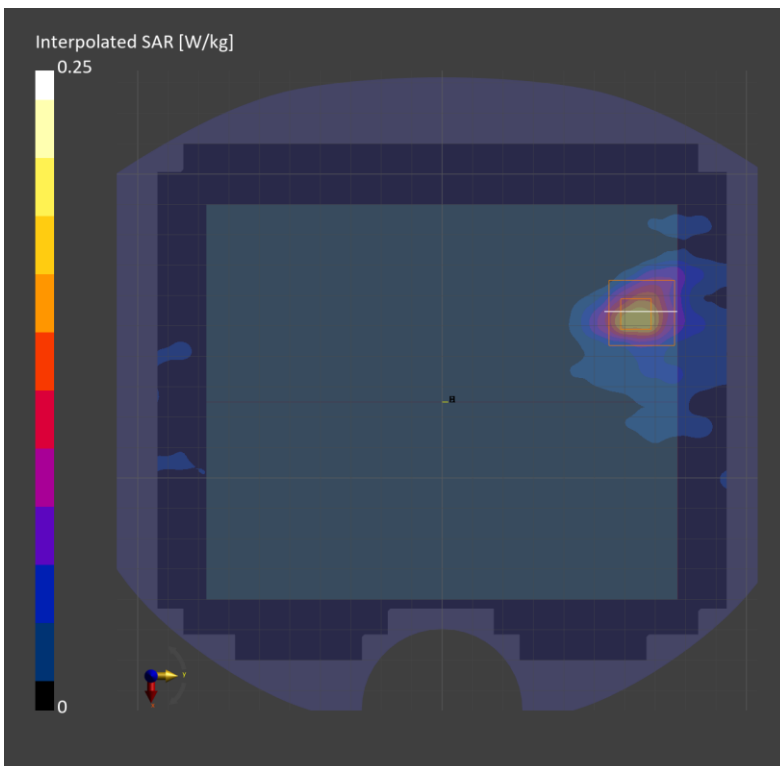
Phantom	TSL, Measured Date	Probe, Calibration Date	DAE, Calibration Date
Twin-SAM V5.0 (30deg probe tilt) - 1877	HBBL-600-10000, 2023-Jun-19	EX3DV4 - SN7545, 2022-08-19	DAE4 Sn1668, 2023-04-26

Scans Setup

	Area Scan	Zoom Scan
Grid Extents [mm]	170.0 x 187.0	22.0 x 22.0 x 22.0
Grid Steps [mm]	8.5 x 8.5	3.4 x 3.4 x 1.4
Sensor Surface [mm]	3.0	1.4

Measurement Results

	Area Scan	Zoom Scan
psSAR1g [W/Kg]	0.146	0.151
psSAR10g [W/Kg]	0.047	0.046
psAPD (4.0cm2, sq) [W/m2]		1.07
Power Drift [dB]		-0.04
M2/M1 [%]		55.9
Dist 3dB Peak [mm]		6.7



Measurement Report for SM-F946U_UMPC, FRONT, U-NII-5, IEEE 802.11ax (160MHz, MCS0, 99pc duty cycle), Channel 79 (6345.0 MHz)

Exposure Conditions

Phantom Section, TSL	Position, Test Distance [mm]	Band	Group, UID	Frequency [MHz], Channel Number	Conversion Factor	TSL Conductivity [S/m]	TSL Permittivity
Flat, HSL	FRONT, 0.00	U-NII-5	WLAN, 10755-AAC	6345.0, 79	5.35	5.71	35.1

Hardware Setup

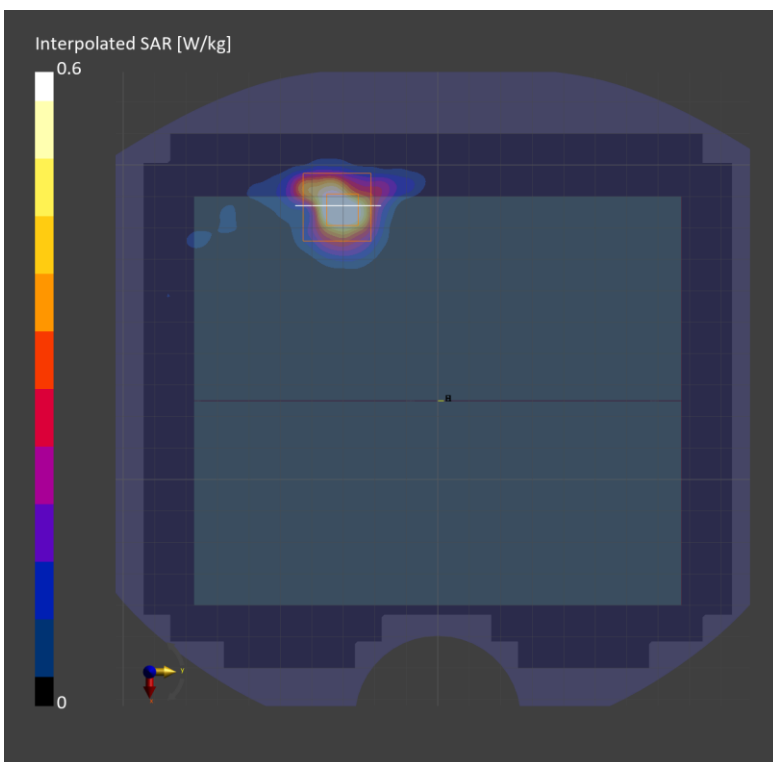
Phantom	TSL, Measured Date	Probe, Calibration Date	DAE, Calibration Date
Twin-SAM V5.0 (30deg probe tilt) - 1877	HBBL-600-10000, 2023-Jun-19	EX3DV4 - SN7545, 2022-08-19	DAE4 Sn1668, 2023-04-26

Scans Setup

	Area Scan	Zoom Scan
Grid Extents [mm]	170.0 x 187.0	22.0 x 22.0 x 22.0
Grid Steps [mm]	8.5 x 8.5	3.4 x 3.4 x 1.4
Sensor Surface [mm]	3.0	1.4

Measurement Results

	Area Scan	Zoom Scan
psSAR1g [W/Kg]	0.514	0.634
psSAR10g [W/Kg]	0.160	0.177
psAPD (4.0cm2, sq) [W/m2]		4.12
Power Drift [dB]		-0.07
M2/M1 [%]		56.2
Dist 3dB Peak [mm]		4.4



Measurement Report for Device, BACK, Custom Band, CW, Channel 7987200 (7987.2 MHz)

Exposure Conditions

Phantom Section, TSL	Position, Test Distance [mm]	Band	Group, UID	Frequency [MHz], Channel Number	Conversion Factor	TSL Conductivity [S/m]	TSL Permittivity
Flat, HSL	BACK, 0.00	Custom Band	CW, 0--	7987.2, 7987200	5.0	8.12	31.7

Hardware Setup

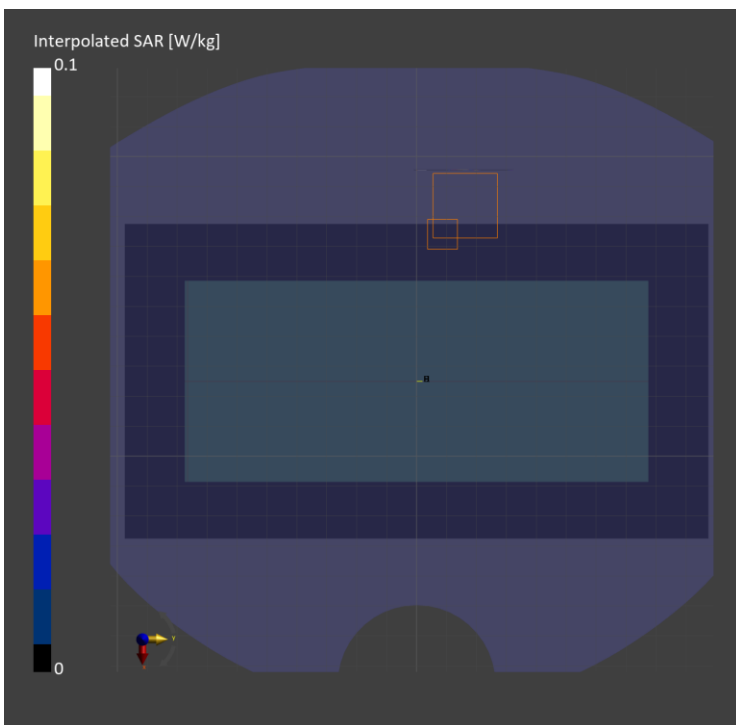
Phantom	TSL, Measured Date	Probe, Calibration Date	DAE, Calibration Date
Twin-SAM V8.0 (30deg probe tilt) - 2043	HBBL-600-1000, 2023-Jun-23	EX3DV4 - SN7376, 2022-07-27	DAE4 Sn1494, 2022-07-18

Scans Setup

	Area Scan	Zoom Scan
Grid Extents [mm]	105.0 x 195.0	24.0 x 24.0 x 22.0
Grid Steps [mm]	7.5 x 7.5	3.0 x 3.0 x 1.4
Sensor Surface [mm]	3.0	1.4

Measurement Results

	Area Scan	Zoom Scan
psSAR1g [W/Kg]	0.002	0.001
psSAR10g [W/Kg]	0	0
psAPD (4.0cm2, sq) [W/m2]		0.018
Power Drift [dB]		0
M2/M1 [%]		47.7
Dist 3dB Peak [mm]		1.7



Measurement Report for Device, EDGE TOP, Custom Band, CW, Channel 7987200 (7987.2 MHz)

Exposure Conditions

Phantom Section, TSL	Position, Test Distance [mm]	Band	Group, UID	Frequency [MHz], Channel Number	Conversion Factor	TSL Conductivity [S/m]	TSL Permittivity
Flat, HSL	EDGE TOP, 0.00	Custom Band	CW, 0--	7987.2, 7987200	5.0	8.12	31.7

Hardware Setup

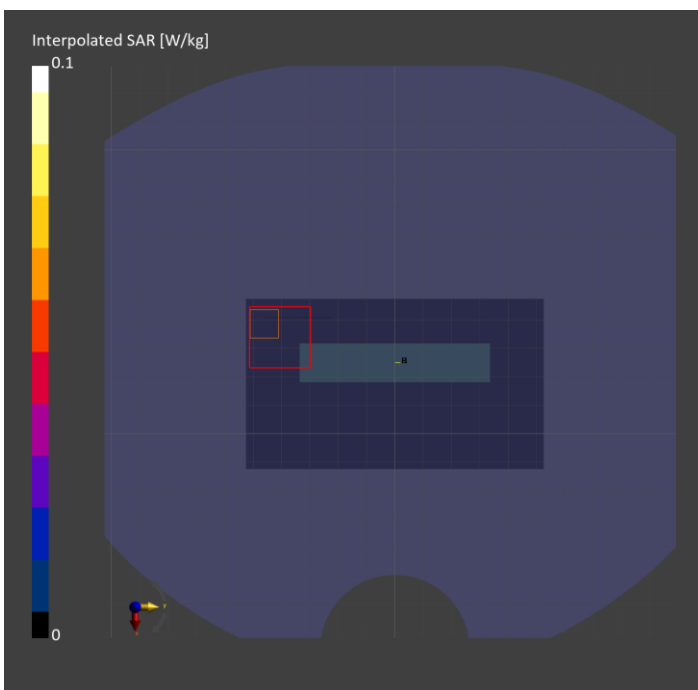
Phantom	TSL, Measured Date	Probe, Calibration Date	DAE, Calibration Date
Twin-SAM V8.0 (30deg probe tilt) - 2043	HBBL-600-10000, 2023-Jun-23	EX3DV4 - SN7376, 2022-07-27	DAE4 Sn1494, 2022-07-18

Scans Setup

	Area Scan	Zoom Scan
Grid Extents [mm]	45.0 x 105.0	24.0 x 24.0 x 22.0
Grid Steps [mm]	7.5 x 7.5	3.0 x 3.0 x 1.4
Sensor Surface [mm]	3.0	1.4

Measurement Results

	Area Scan	Zoom Scan
psSAR1g [W/kg]	0.001	0.004
psSAR10g [W/kg]	0	0.002
psAPD (4.0cm2, sq) [W/m2]		0.038
Power Drift [dB]		0
M2/M1 [%]		32.9
Dist 3dB Peak [mm]		1.4



Measurement Report for SM-F946U_UMPC, BACK, Custom Band, CW, Channel 7987200 (7987.2 MHz)

Exposure Conditions

Phantom Section, TSL	Position, Test Distance [mm]	Band	Group, UID	Frequency [MHz], Channel Number	Conversion Factor	TSL Conductivity [S/m]	TSL Permittivity
Flat, HSL	BACK, 0.00	Custom Band	CW, 0--	7987.2, 7987200	5.0	8.14	31.6

Hardware Setup

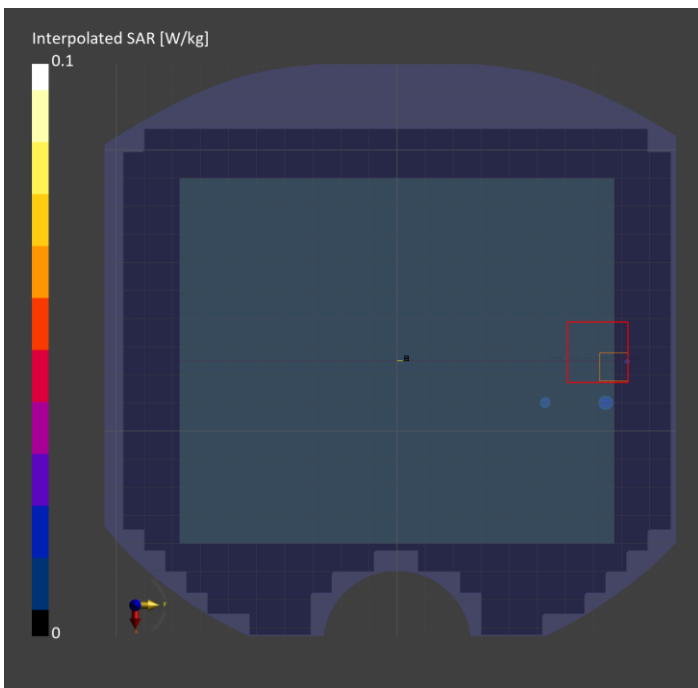
Phantom	TSL, Measured Date	Probe, Calibration Date	DAE, Calibration Date
Twin-SAM V8.0 (30deg probe tilt) - 2043	HBBL-600-10000, 2023-Jun-21	EX3DV4 - SN7376, 2022-07-27	DAE4 Sn1494, 2022-07-18

Scans Setup

	Area Scan	Zoom Scan
Grid Extents [mm]	165.0 x 195.0	22.0 x 22.0 x 22.0
Grid Steps [mm]	7.5 x 7.5	3.0 x 3.0 x 1.4
Sensor Surface [mm]	3.0	1.4

Measurement Results

	Area Scan	Zoom Scan
psSAR1g [W/kg]	0.231	0.002
psSAR10g [W/kg]	0.031	0.001
psAPD (4.0cm2, sq) [W/m2]		0.023
Power Drift [dB]		0
M2/M1 [%]		56.3
Dist 3dB Peak [mm]		1.2



Measurement Report for SM-F946U_UMPC, FRONT, Custom Band, CW, Channel 7987200 (7987.2 MHz)

Exposure Conditions

Phantom Section, TSL	Position, Test Distance [mm]	Band	Group, UID	Frequency [MHz], Channel Number	Conversion Factor	TSL Conductivity [S/m]	TSL Permittivity
Flat, HSL	FRONT, 0.00	Custom Band	CW, 0--	7987.2, 7987200	5.0	7.75	31.7

Hardware Setup

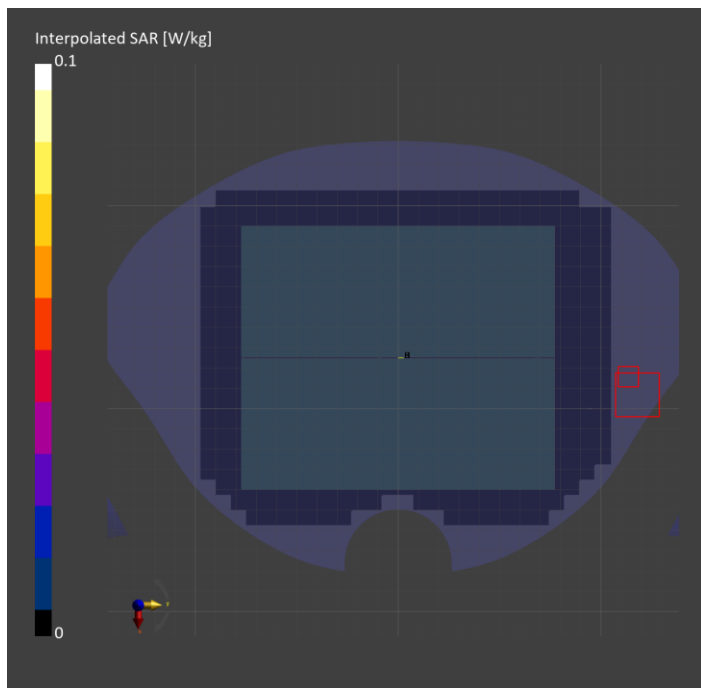
Phantom	TSL, Measured Date	Probe, Calibration Date	DAE, Calibration Date
Twin-SAM V8.0 (30deg probe tilt) - 2043	HBBL-600-10000, 2023-Jun-22	EX3DV4 - SN7376, 2022-07-27	DAE4 Sn1494, 2022-07-18

Scans Setup

	Area Scan	Zoom Scan
Grid Extents [mm]	165.0 x 195.0	22.0 x 22.0 x 22.0
Grid Steps [mm]	7.5 x 7.5	0.7 x 0.7 x 1.2
Sensor Surface [mm]	3.0	1.4

Measurement Results

	Area Scan	Zoom Scan
psSAR1g [W/kg]	0	0
psSAR10g [W/kg]	0	0
psAPD (4.0cm2, sq) [W/m2]		0.006
Power Drift [dB]		0.17
M2/M1 [%]		n/a
Dist 3dB Peak [mm]		0.2



Measurement Report for Device, BACK, U-NII-8, IEEE 802.11ax (160MHz, MCS0, 99pc duty cycle), Channel 207 (6985.0 MHz)

Exposure Conditions

Phantom Section	Position, Test Distance [mm]	Band	Group, UID	Frequency [MHz], Channel Number	Conversion Factor
5G	BACK, 2.00	U-NII-8	WLAN, 10755-AAC	6985.0, 207	1.0

Hardware Setup

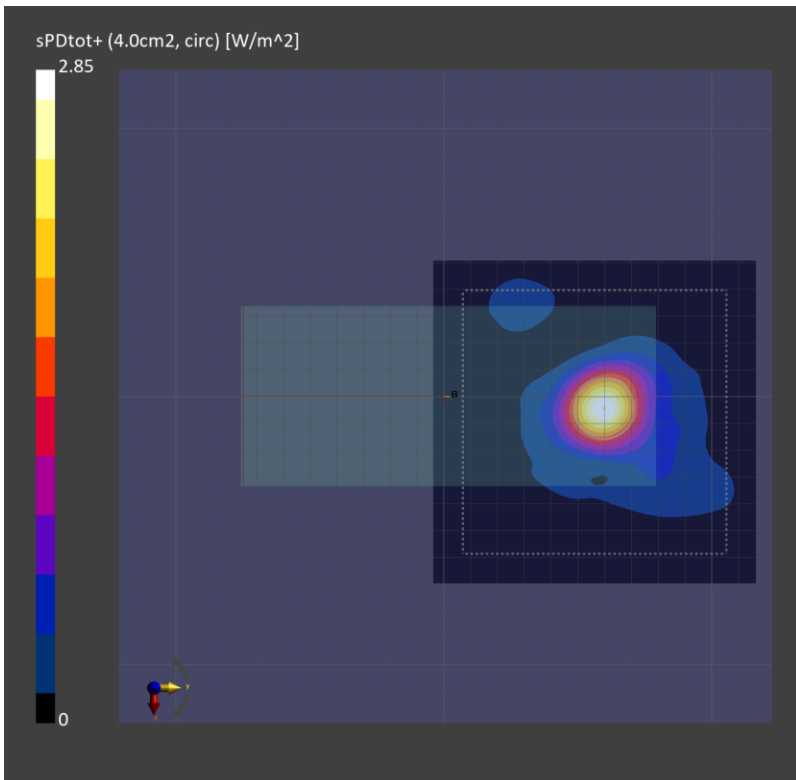
Phantom	Medium	Probe, Calibration Date	DAE, Calibration Date
mmWave - 1082	Air -	EUmmWV4 - SN9536_F1-55GHz, 2023-02-16	DAE4 Sn1468, 2022-08-18

Scans Setup

Scan Type	5G Scan
Grid Extents [mm]	120.0 x 120.0
Grid Steps [lambda]	0.047559807339951216 x 0.047559807339951216
Sensor Surface [mm]	2.0

Measurement Results

Scan Type	5G Scan
Avg. Area [cm ²]	4.00
psPDn+ [W/m ²]	2.24
psPDtot+ [W/m ²]	2.85
psPDmod+ [W/m ²]	3.44
E _{max} [V/m]	55.1
Power Drift [dB]	0.13



Measurement Report for Device, FRONT, U-NII-8, IEEE 802.11ax (160MHz, MCS0, 99pc duty cycle), Channel 207 (6985.0 MHz)

Exposure Conditions

Phantom Section	Position, Test Distance [mm]	Band	Group, UID	Frequency [MHz], Channel Number	Conversion Factor
5G	FRONT, 2.00	U-NII-8	WLAN, 10755-AAC	6985.0, 207	1.0

Hardware Setup

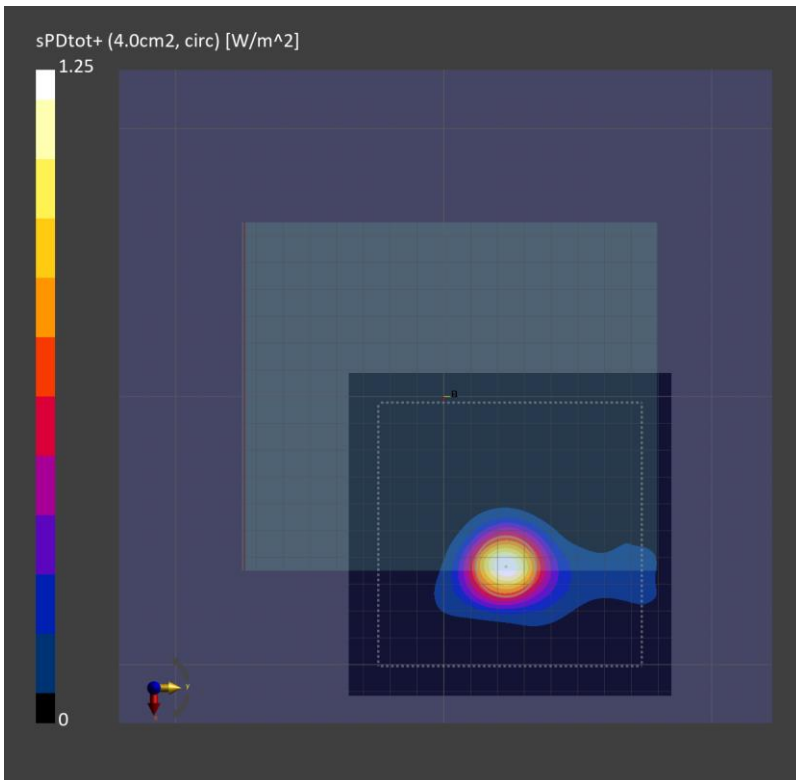
Phantom	Medium	Probe, Calibration Date	DAE, Calibration Date
mmWave - 1082	Air -	EUmmWV4 - SN9536_F1-55GHz, 2023-02-16	DAE4 Sn1468, 2022-08-18

Scans Setup

Scan Type	5G Scan
Grid Extents [mm]	120.0 x 120.0
Grid Steps [lambda]	0.047559807339951216 x 0.047559807339951216
Sensor Surface [mm]	2.0

Measurement Results

Scan Type	5G Scan
Avg. Area [cm ²]	4.00
psPDn+ [W/m ²]	1.02
psPDtot+ [W/m ²]	1.25
psPDmod+ [W/m ²]	1.48
E _{max} [V/m]	40.0
Power Drift [dB]	0.03



Measurement Report for Device, RIGHT, Custom Band, CW, Channel 6489600 (6489.6 MHz)

Exposure Conditions

Phantom Section	Position, Test Distance [mm]	Band	Group, UID	Frequency [MHz], Channel Number	Conversion Factor
5G	RIGHT, 2.00	Custom Band	CW, 0--	6489.6, 6489600	1.0

Hardware Setup

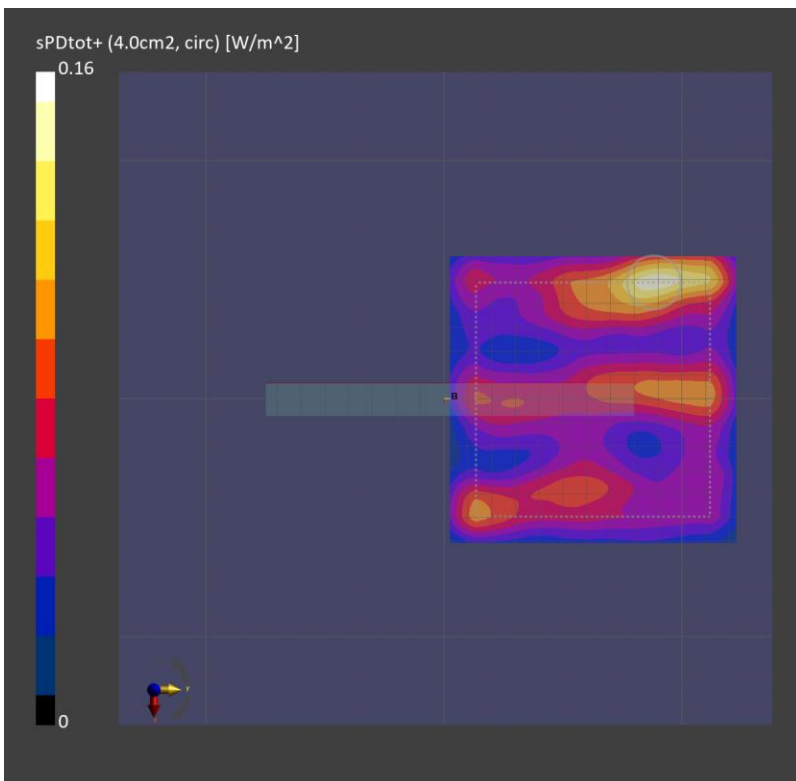
Phantom	Medium	Probe, Calibration Date	DAE, Calibration Date
mmWave - 1082	Air -	EUmmWV4 - SN9536_F1-55GHz, 2023-02-16	DAE4 Sn1468, 2022-08-18

Scans Setup

Scan Type	5G Scan
Grid Extents [mm]	120.0 x 120.0
Grid Steps [lambda]	0.04 x 0.04
Sensor Surface [mm]	2.0

Measurement Results

Scan Type	5G Scan
Avg. Area [cm ²]	4.00
psPDn+ [W/m ²]	0.138
psPDtot+ [W/m ²]	0.143
psPDmod+ [W/m ²]	0.164
E _{max} [V/m]	11.1
Power Drift [dB]	-0.07



Measurement Report for Device, BACK, Custom Band, CW, Channel 7987200 (7987.2 MHz)

Exposure Conditions

Phantom Section	Position, Test Distance [mm]	Band	Group, UID	Frequency [MHz], Channel Number	Conversion Factor
5G	BACK, 2.00	Custom Band	CW, 0--	7987.2, 7987200	1.0

Hardware Setup

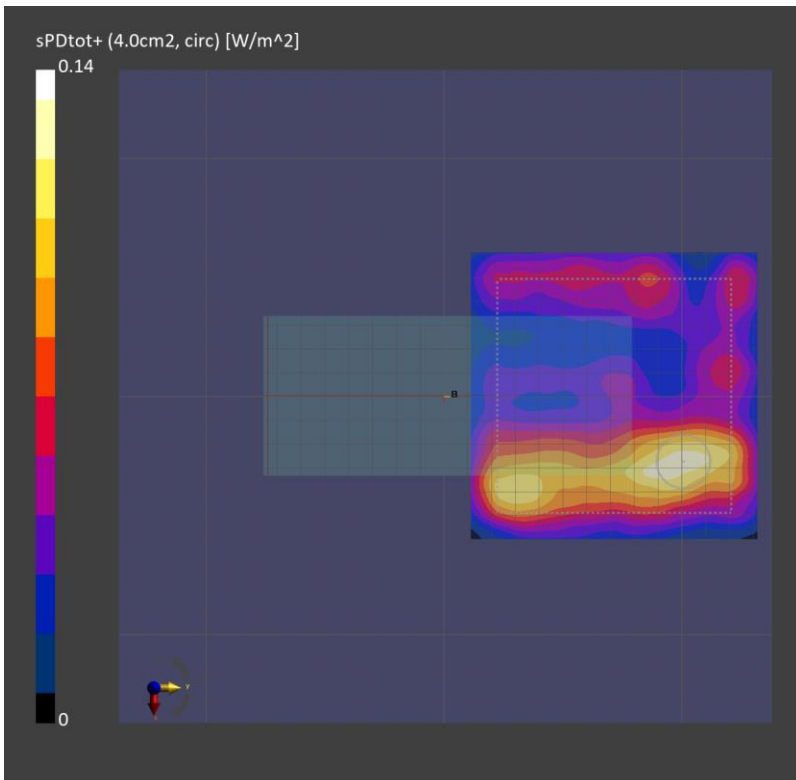
Phantom	Medium	Probe, Calibration Date	DAE, Calibration Date
mmWave - 1082	Air -	EUmmWV4 - SN9536_F1-55GHz, 2023-02-16	DAE4 Sn1468, 2022-08-18

Scans Setup

Scan Type	5G Scan
Grid Extents [mm]	120.0 x 120.0
Grid Steps [lambda]	0.04 x 0.04
Sensor Surface [mm]	2.0

Measurement Results

Scan Type	5G Scan
Avg. Area [cm ²]	4.00
psPDn+ [W/m ²]	0.119
psPDtot+ [W/m ²]	0.125
psPDmod+ [W/m ²]	0.137
E _{max} [V/m]	9.08
Power Drift [dB]	0



Measurement Report for Device, FRONT, Custom Band, CW, Channel 6489600 (6489.6 MHz)

Exposure Conditions

Phantom Section	Position, Test Distance [mm]	Band	Group, UID	Frequency [MHz], Channel Number	Conversion Factor
5G	FRONT, 2.00	Custom Band	CW, 0--	6489.6, 6489600	1.0

Hardware Setup

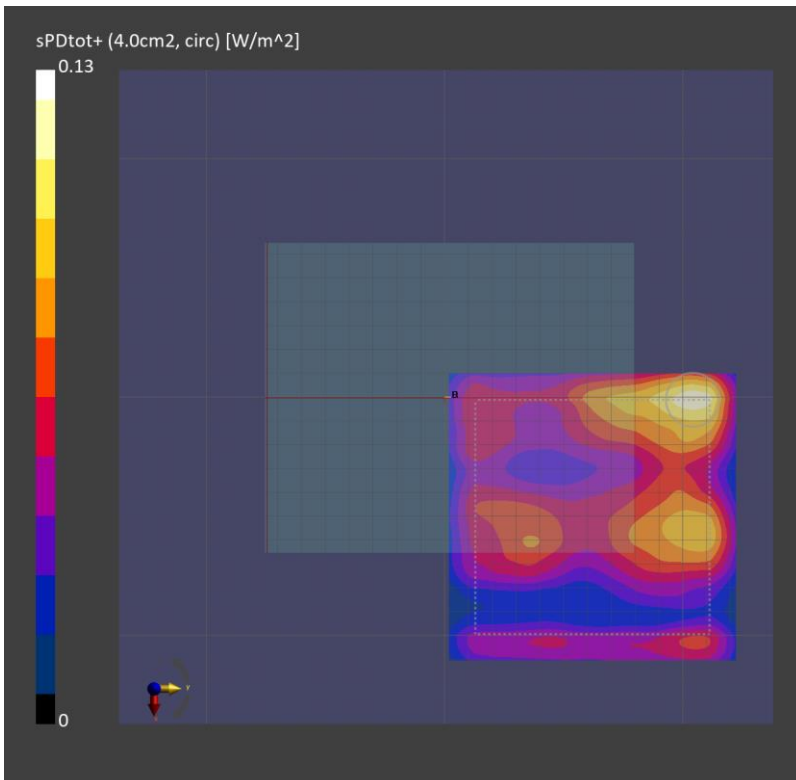
Phantom	Medium	Probe, Calibration Date	DAE, Calibration Date
mmWave - 1082	Air -	EUmmWV4 - SN9536_F1-55GHz, 2023-02-16	DAE4 Sn1468, 2022-08-18

Scans Setup

Scan Type	5G Scan
Grid Extents [mm]	120.0 x 120.0
Grid Steps [lambda]	0.04 x 0.04
Sensor Surface [mm]	2.0

Measurement Results

Scan Type	5G Scan
Avg. Area [cm ²]	4.00
psPDn+ [W/m ²]	0.108
psPDtot+ [W/m ²]	0.116
psPDmod+ [W/m ²]	0.139
E _{max} [V/m]	9.01
Power Drift [dB]	0



Measurement Report for Device, BACK, Custom Band, CW, Channel 7987200 (7987.2 MHz)

Exposure Conditions

Phantom Section	Position, Test Distance [mm]	Band	Group, UID	Frequency [MHz], Channel Number	Conversion Factor
5G	BACK, 2.00	Custom Band	CW, 0--	7987.2, 7987200	1.0

Hardware Setup

Phantom	Medium	Probe, Calibration Date	DAE, Calibration Date
mmWave - 1082	Air -	EUmmWV4 - SN9536_F1-55GHz, 2023-02-16	DAE4 Sn1468, 2022-08-18

Scans Setup

Scan Type	5G Scan
Grid Extents [mm]	120.0 x 120.0
Grid Steps [lambda]	0.04 x 0.04
Sensor Surface [mm]	2.0

Measurement Results

Scan Type	5G Scan
Avg. Area [cm ²]	4.00
psPDn+ [W/m ²]	0.121
psPDtot+ [W/m ²]	0.135
psPDmod+ [W/m ²]	0.146
E _{max} [V/m]	9.78
Power Drift [dB]	0

