

# cDASY6 Module WPT Measurement Report

## Device under test

Info:  
not set

Serial number:  
not set

Scenario:  
not set

## Tool info

DASY software version:  
cDASY6 Module WPT 2.0.0.2607

Probe model, serial and calibration date:  
MAGPy-8H3D+E3Dv2, WP000201, 2023/06/26

Software version:  
2.0.27, backend: 0.9.0

## Scan info

Center location:  
x: 4.74 mm, y: 1.45 mm, z: 9.41 mm

Dimensions:  
x: 213.0 mm, y: 213.0 mm, z: 36.7 mm

Resolution:  
x: 7.33 mm, y: 7.33 mm, z: 7.33 mm

Completed on:  
2023/07/10 14:15:47

## Measurement results

Maximum H-field [RMS]:

MAGNITUDE: 316.27 mA/m

x: 171.68 mA/m, y: 33.29 mA/m, z: 263.52 mA/m

Maximum H-field location relative to DUT:

x: 11.00 mm, y: 106.33 mm, z: 7.83 mm

Maximum E-field [RMS]:

MAGNITUDE: 106.60 mV/m

x: 3.03 mV/m, y: 105.34 mV/m, z: 16.08 mV/m

Maximum E-field location relative to DUT:

x: 0.00 m, y: 132.00 mm, z: 7.83 mm

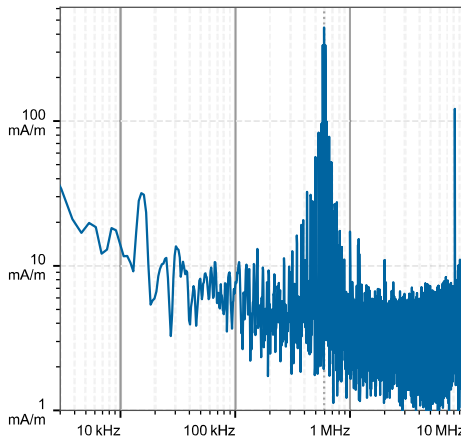
Distance to -20.0 dB boundary:

29.33 mm

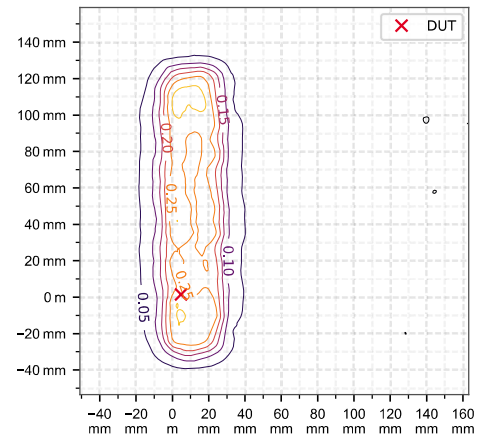
Offset relative to DUT:

x: 0.00 m, y: 0.00 m, z: 500.00  $\mu$ m

## H-field magnitude [RMS] at maximum location



## H-field magnitude [RMS] at lowest plane



## Incident fields, and induced quantities in the anatomical model ( $f = 592.61$ kHz, $\sigma = 0.750$ S/m, tissue density = $1,000$ kg/m<sup>3</sup>)

Distance [mm]	Peak incident fields		Peak $E_{ind}$ [V/m, RMS]			Peak $J_{ind}$ [ $A/m^2$ , RMS]	psSAR [mW/kg]		H-field extent	Errors		
	$H_{inc}$ [A/m, RMS]	$E_{inc}$ [V/m, RMS]	Cube avg.	Local	Line avg.	Surface avg.	1g avg.	10g avg.	-20 dB radius [mm]	Sign	Vector potential	Boundary effect
0.5	0.734	NaN	0.0186	0.0198	0.0193	0.0109	0.000124	0.0000538	55.5	6%	127%	61%
2.0	0.647	0.1	0.0169	0.0181	0.0175	0.00967	0.0000974	0.0000436	55.8	6%	127%	60%

## Standard compliance evaluation (with multi-frequency enhancement, total field evaluation)

Distance [mm]	ICNIRP 2010/2020 [dB]				ICNIRP 1998 [dB]				IEEE 2019 [dB]				FCC [dB]				HC Code 6 [dB]			
	Peak $H_{inc}$	Peak $E_{inc}$	Peak $E_{ind}$	psSAR	Peak $H_{inc}$	Peak $E_{inc}$	Peak $J_{ind}$	psSAR	Peak $H_{inc}$	Peak $E_{inc}$	Peak $E_{ind}$	psSAR	Peak $H_{inc}$	Peak $E_{inc}$	Peak $E_{ind}$	psSAR	Peak $H_{inc}$	Peak $E_{inc}$	Peak $E_{ind}$	psSAR
0.5	-21.0	nan	nan	nan	-4.5	nan	nan	nan	-38.4	nan	nan	nan	-6.9	nan	nan	nan	-4.5	nan	nan	nan
2.0	-22.1	-58.4	-73.5	-76.6	-5.6	-58.8	-41.8	-76.6	-39.5	-75.7	-77.0	-76.6	-8.0	-75.7	-73.5	-72.2	-5.6	-58.4	-72.9	-72.2

## Standard compliance evaluation (coverage factor-adjusted) (with multi-frequency enhancement, total field evaluation)

Distance [mm]	ICNIRP 2010/2020 [dB]				ICNIRP 1998 [dB]				IEEE 2019 [dB]				FCC [dB]				HC Code 6 [dB]			
	Peak $H_{inc}$	Peak $E_{inc}$	Peak $E_{ind}$	psSAR	Peak $H_{inc}$	Peak $E_{inc}$	Peak $J_{ind}$	psSAR	Peak $H_{inc}$	Peak $E_{inc}$	Peak $E_{ind}$	psSAR	Peak $H_{inc}$	Peak $E_{inc}$	Peak $E_{ind}$	psSAR	Peak $H_{inc}$	Peak $E_{inc}$	Peak $E_{ind}$	psSAR
0.5	-21.0	nan	nan	nan	-4.5	nan	nan	nan	-38.4	nan	nan	nan	-6.9	nan	nan	nan	-4.5	nan	nan	nan
2.0	-22.1	-58.4	-58.5	-76.6	-5.6	-58.8	-41.8	-76.6	-39.5	-75.7	-67.3	-76.6	-8.0	-75.7	-58.5	-72.2	-5.6	-58.4	-54.9	-72.2

Coverage factors:  $w_{E_{ind}, cube avg.} = [5.632, 5.637]$ ,  $w_{E_{ind}, line avg.} = [3.057, 3.059]$

# cDASY6 Module WPT Measurement Report

## Device under test

Info:  
not set

Serial number:  
not set

Scenario:  
not set

## Tool info

DASY software version:  
cDASY6 Module WPT 2.0.0.2607

Probe model, serial and calibration date:  
MAGPy-8H3D+E3Dv2, WP000201, 2023/06/26

Software version:  
2.0.27, backend: 0.9.0

## Scan info

Center location:  
x: 4.90 mm, y: 1.50 mm, z: 16.45 mm

Dimensions:  
x: 213.0 mm, y: 213.0 mm, z: 36.7 mm

Resolution:  
x: 7.33 mm, y: 7.33 mm, z: 7.33 mm

Completed on:  
2023/07/10 14:48:08

## Measurement results

Maximum H-field [RMS]:

MAGNITUDE: 147.93 mA/m

x: 13.84 mA/m, y: 42.10 mA/m, z: 141.14 mA/m

Maximum H-field location relative to DUT:

x: 3.67 mm, y: 106.33 mm, z: 14.83 mm

Maximum E-field [RMS]:

MAGNITUDE: 59.33 mV/m

x: 59.28 mV/m, y: 953.63  $\mu$ V/m, z: 2.22 mV/m

Maximum E-field location relative to DUT:

x: 7.33 mm, y: -29.33 mm, z: 7.50 mm

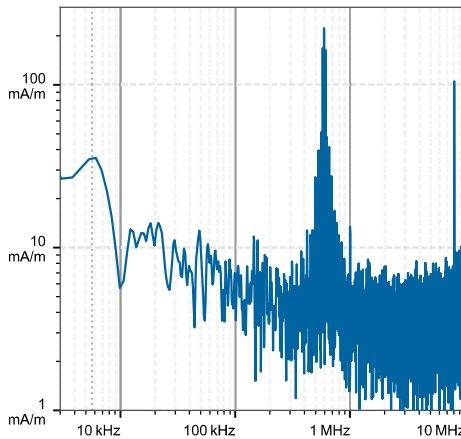
Distance to -20.0 dB boundary:

36.67 mm

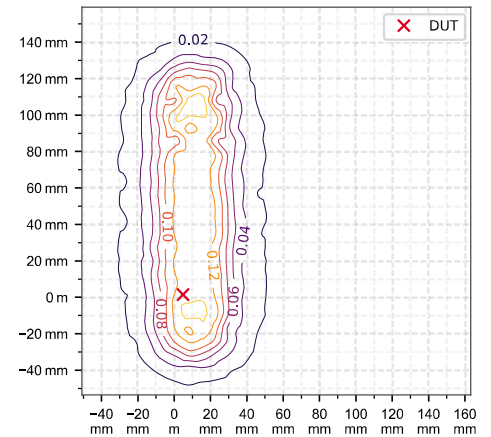
Offset relative to DUT:

x: 0.00 m, y: 0.00 m, z: 7.50 mm

## H-field magnitude [RMS] at maximum location



## H-field magnitude [RMS] at lowest plane



## Incident fields, and induced quantities in the anatomical model ( $f = 593.71$ kHz, $\sigma = 0.750$ S/m, tissue density = $1,000$ kg/m<sup>3</sup>)

Distance [mm]	Peak incident fields		Peak $E_{ind}$ [V/m, RMS]			Peak $J_{ind}$ [ $A/m^2$ , RMS]	psSAR [mW/kg]		H-field extent	Errors		
	$H_{inc}$ [A/m, RMS]	$E_{inc}$ [V/m, RMS]	Cube avg.	Local	Line avg.	Surface avg.	1g avg.	10g avg.	-20 dB radius [mm]	Sign	Vector potential	Boundary effect
7.83	0.282	0.059	0.00949	0.00973	0.00971	0.00613	0.0000392	0.0000221	63.4	6%	75%	52%

## Standard compliance evaluation (with multi-frequency enhancement, total field evaluation)

Distance [mm]	ICNIRP 2010/2020 [dB]				ICNIRP 1998 [dB]				IEEE 2019 [dB]				FCC [dB]				HC Code 6 [dB]			
	RL		BR		RL		BR		RL		BR		RL		BR		RL		BR	
Peak $H_{inc}$	Peak $E_{inc}$	Peak $E_{ind}$	psSAR	Peak $H_{inc}$	Peak $E_{inc}$	Peak $J_{ind}$	psSAR	Peak $H_{inc}$	Peak $E_{inc}$	Peak $E_{ind}$	psSAR	Peak $H_{inc}$	Peak $E_{inc}$	Peak $E_{ind}$	psSAR	Peak $H_{inc}$	Peak $E_{inc}$	Peak $E_{ind}$	psSAR	
7.83	-29.3	-63.0	-78.5	-79.6	-12.8	-63.4	-45.7	-79.6	-46.8	-80.3	-82.1	-79.6	-15.2	-80.3	-78.5	-76.1	-12.8	-63.0	-78.3	-76.1

## Standard compliance evaluation (coverage factor-adjusted) (with multi-frequency enhancement, total field evaluation)

Distance [mm]	ICNIRP 2010/2020 [dB]				ICNIRP 1998 [dB]				IEEE 2019 [dB]				FCC [dB]				HC Code 6 [dB]			
	RL		BR		RL		BR		RL		BR		RL		BR		RL		BR	
Peak $H_{inc}$	Peak $E_{inc}$	Peak $E_{ind}$	psSAR	Peak $H_{inc}$	Peak $E_{inc}$	Peak $J_{ind}$	psSAR	Peak $H_{inc}$	Peak $E_{inc}$	Peak $E_{ind}$	psSAR	Peak $H_{inc}$	Peak $E_{inc}$	Peak $E_{ind}$	psSAR	Peak $H_{inc}$	Peak $E_{inc}$	Peak $E_{ind}$	psSAR	
7.83	-29.3	-63.0	-63.3	-79.6	-12.8	-63.4	-45.7	-79.6	-46.8	-80.3	-72.3	-79.6	-15.2	-80.3	-63.3	-76.1	-12.8	-63.0	-60.1	-76.1

Coverage factors:  $w_{E_{ind}, cube\ avg.} = [5.751]$ ,  $w_{E_{ind}, line\ avg.} = [3.108]$