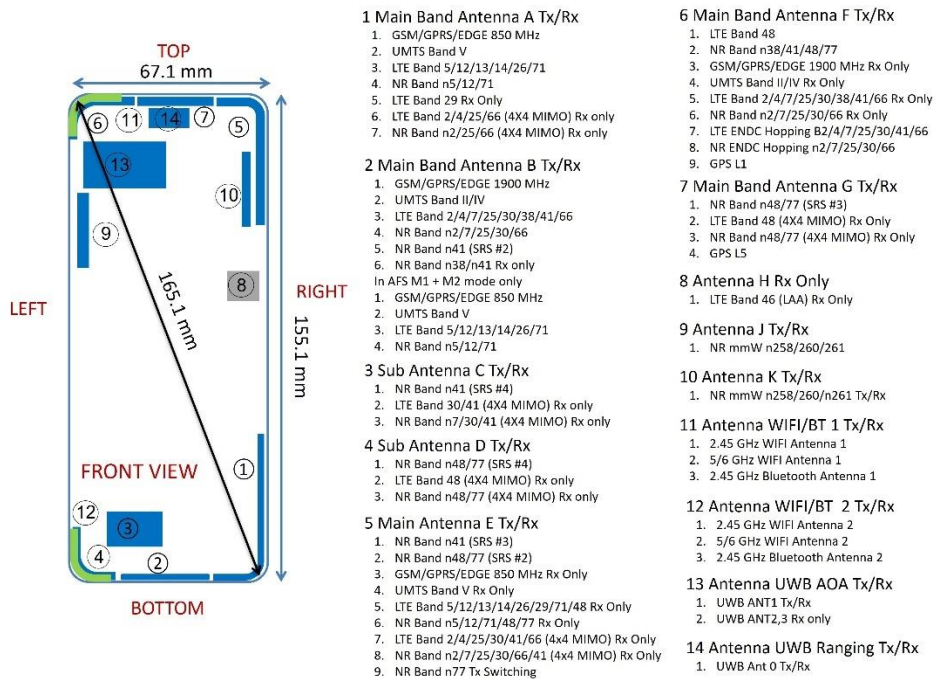


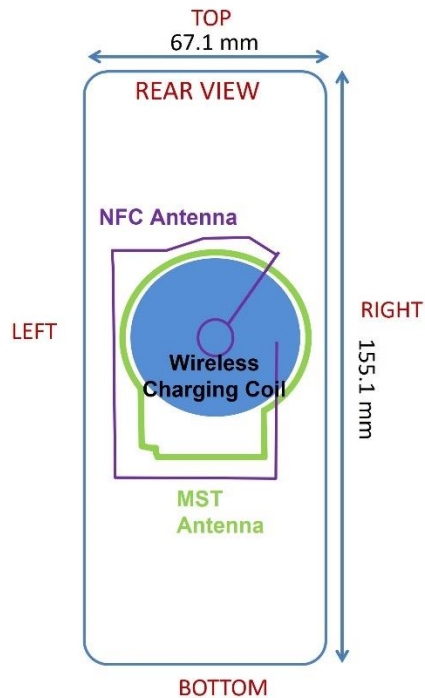
## APPENDIX E: DUT ANTENNA DIAGRAM & SAR TEST SETUP PHOTOGRAPHS

<b>FCC ID</b> A3LSMF936U	<b>SAR EVALUATION REPORT</b>	<b>Approved by:</b> Technical Manager
<b>DUT Type:</b> Portable Handset		<b>APPENDIX E:</b> Page 1 of 20

Note: Exact antenna dimensions and separation distances are shown in the Technical Descriptions in the FCC Filing.

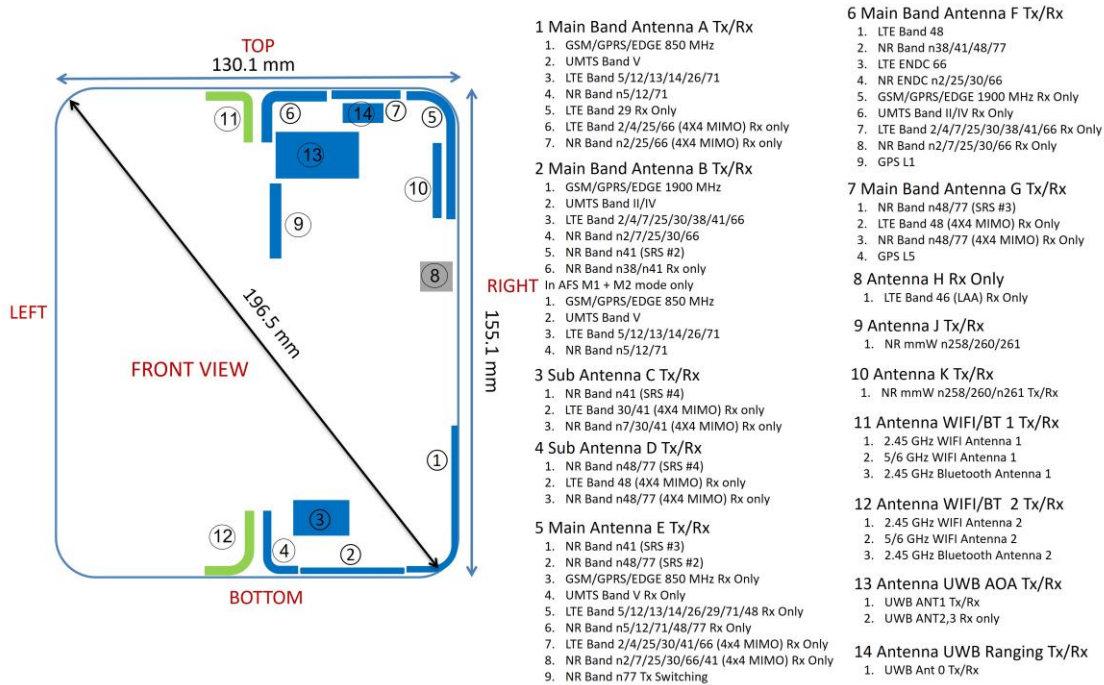


**Figure E-1**  
**DUT Antenna Locations – Closed Configuration (Handset)**

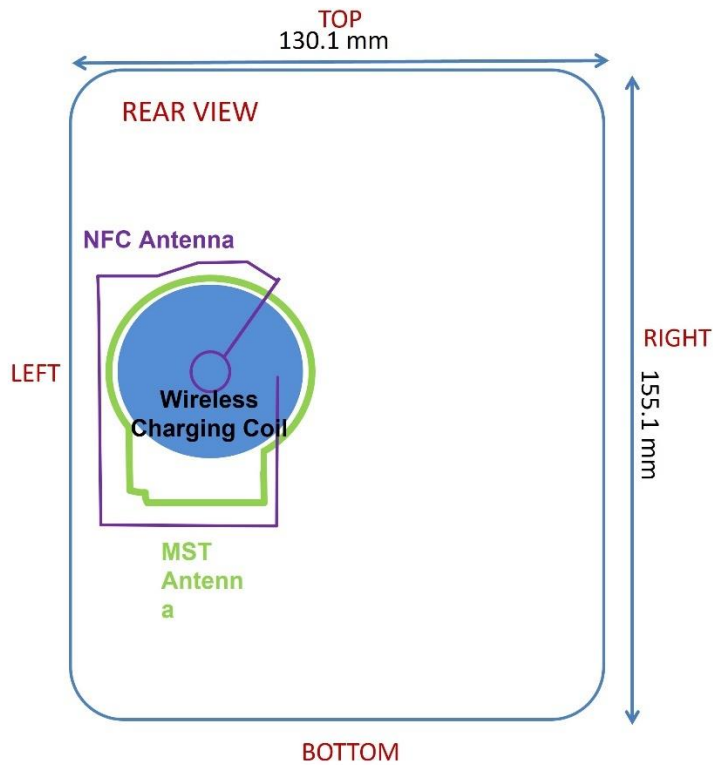


**Figure E-2**  
**Other Antenna Locations – Closed Configuration (Handset)**

FCC ID A3LSMF936U	SAR EVALUATION REPORT	Approved by: Technical Manager
DUT Type: Portable Handset		APPENDIX E: Page 2 of 20

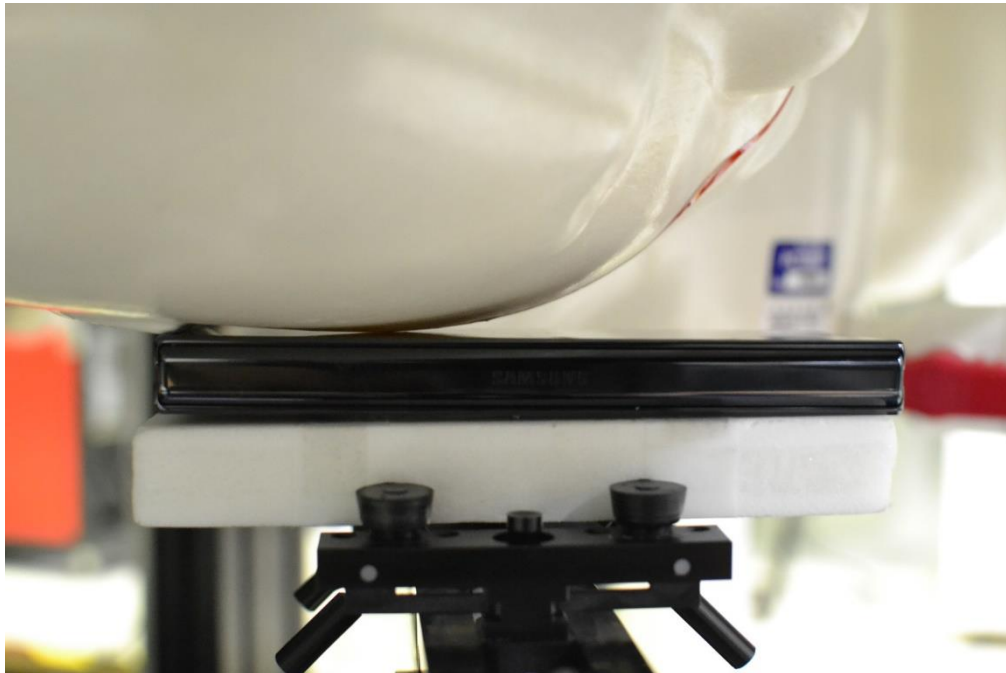


**Figure E-3**  
**DUT Antenna Locations – Open Configuration (UMPC)**

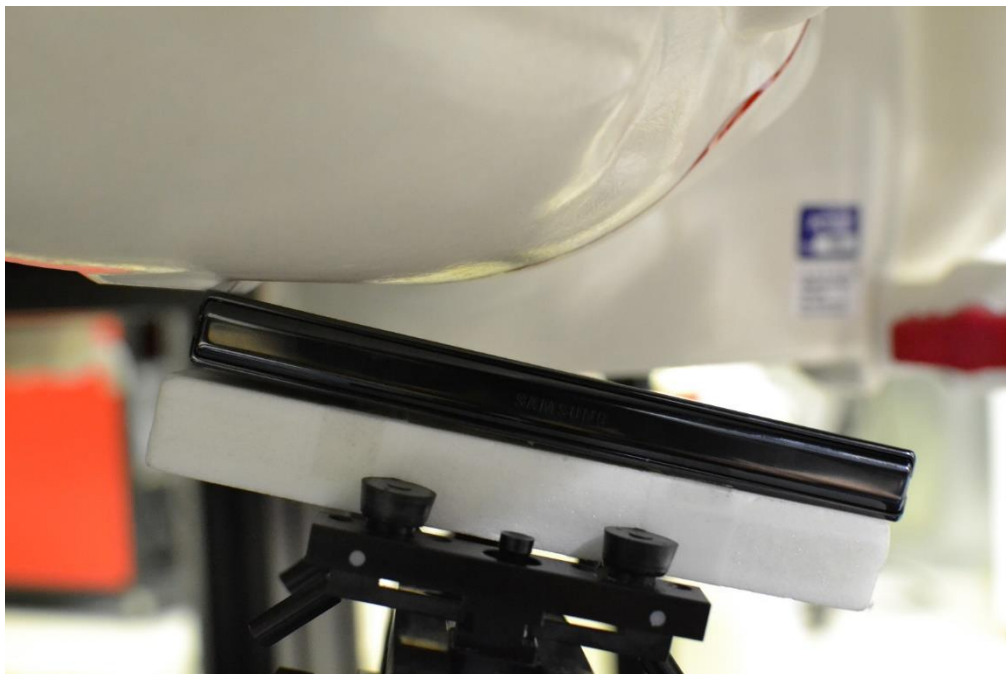


**Figure E-4**  
**Other Antenna Locations – Open Configuration (UMPC)**

FCC ID A3LSMF936U	SAR EVALUATION REPORT	Approved by: Technical Manager
DUT Type: Portable Handset		APPENDIX E: Page 3 of 20

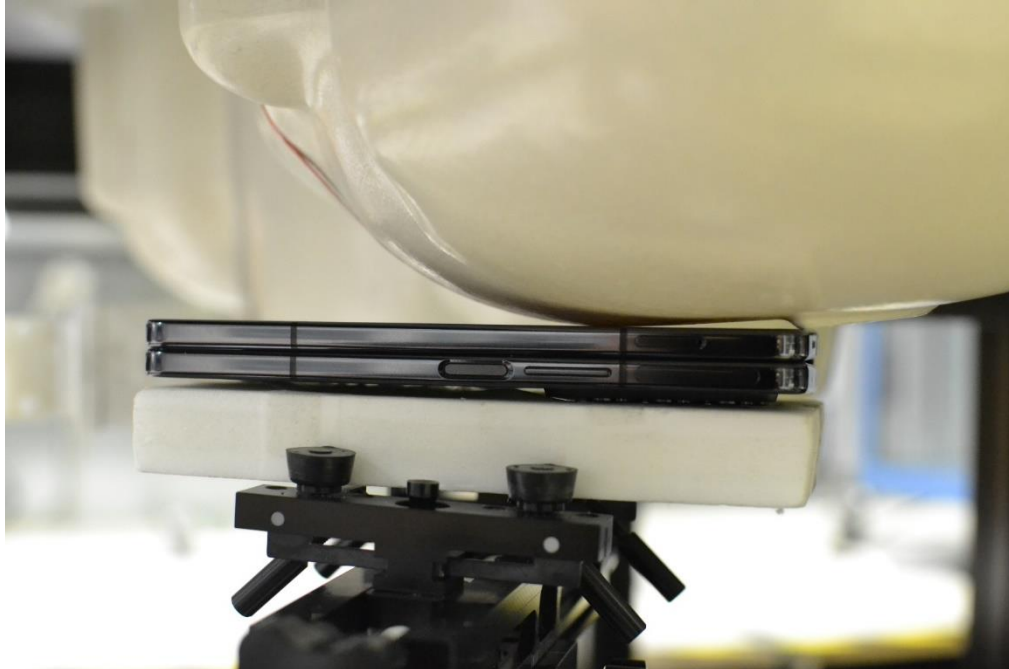


**SAR Test Setup Photo 1– Closed Configuration (Handset), Head, Right Cheek, 0 mm**

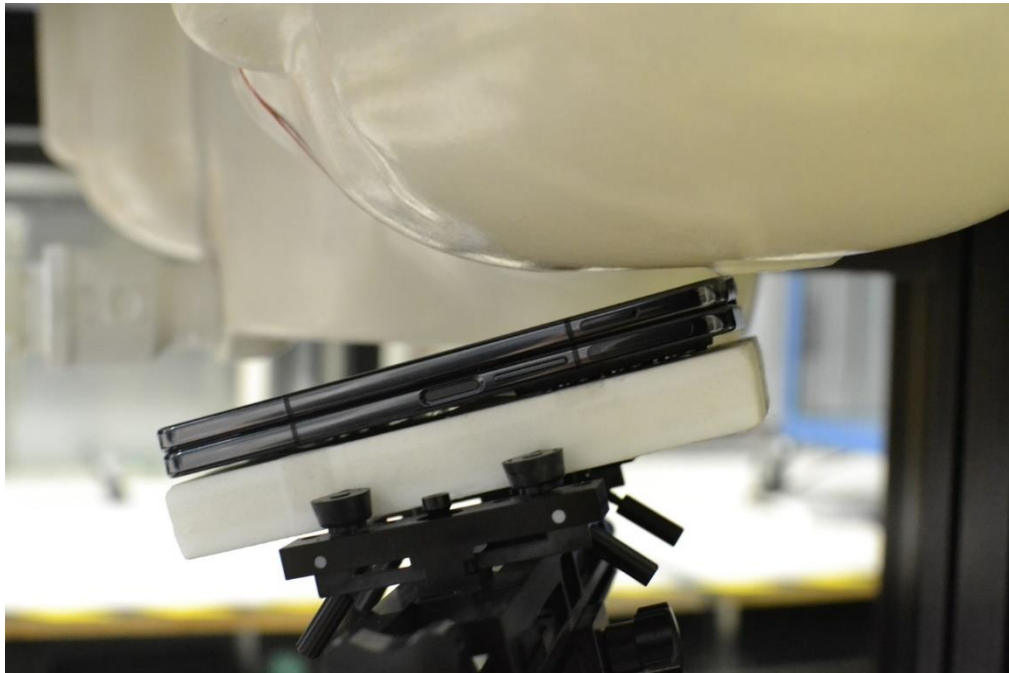


**SAR Test Setup Photo 2– Closed Configuration (Handset), Head, Right Tilt, 0 mm**

FCC ID A3LSMF936U	SAR EVALUATION REPORT	Approved by: Technical Manager
DUT Type: Portable Handset		APPENDIX E: Page 4 of 20



**SAR Test Setup Photo 3– Closed Configuration (Handset), Head, Left Cheek, 0 mm**



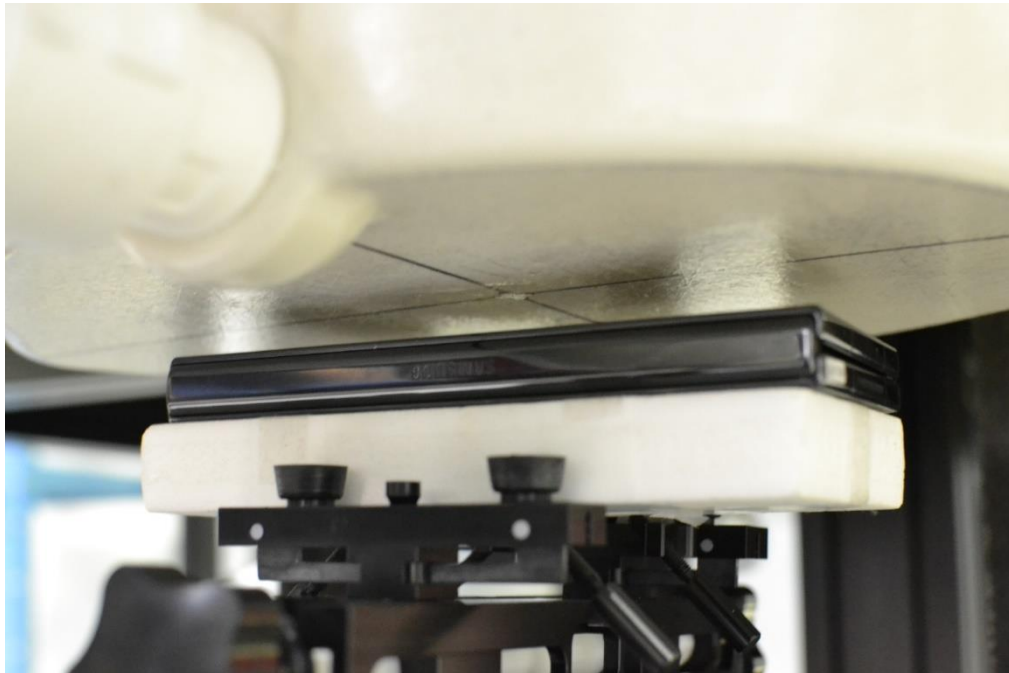
**SAR Test Setup Photo 4– Closed Configuration (Handset), Head, Left Tilt, 0 mm**

FCC ID A3LSMF936U	SAR EVALUATION REPORT	Approved by: Technical Manager
DUT Type: Portable Handset		APPENDIX E: Page 5 of 20



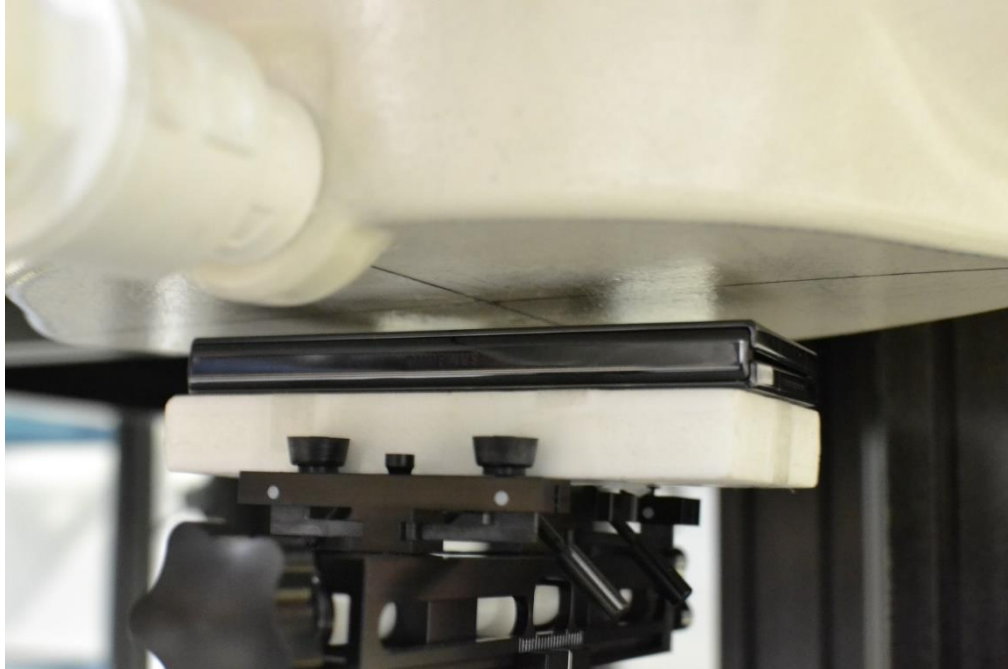


**SAR Test Setup Photo 5– Closed Configuration (Handset), Body-worn, Back Side, 15 mm**

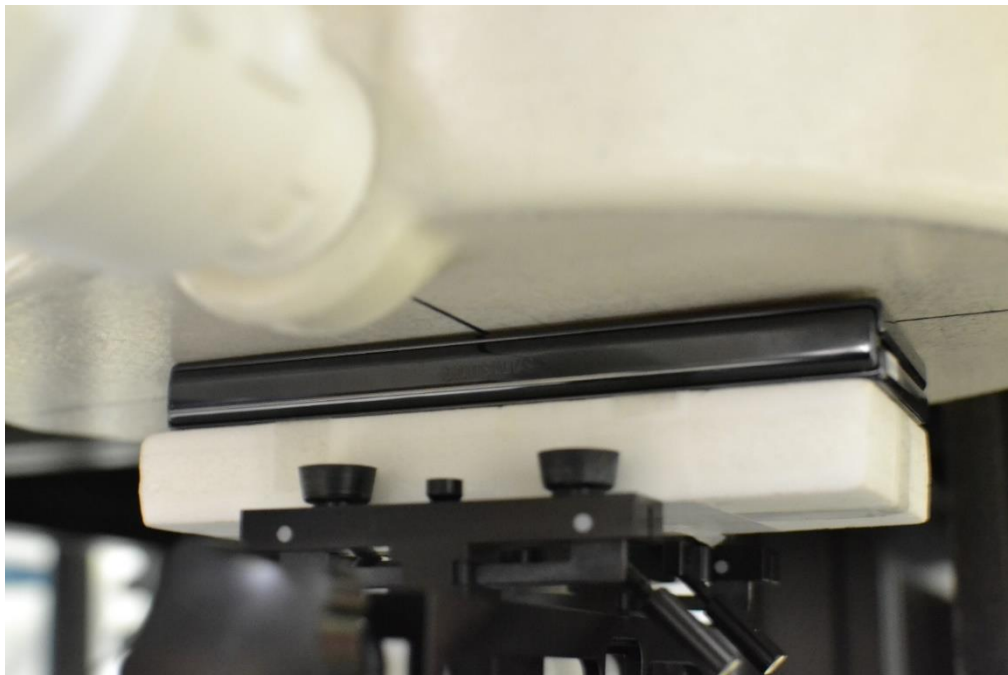


**SAR Test Setup Photo 6– Closed Configuration (Handset), Phablet, Back Side, 12 mm**

FCC ID A3LSMF936U	SAR EVALUATION REPORT	Approved by: Technical Manager
DUT Type: Portable Handset		APPENDIX E: Page 6 of 20



**SAR Test Setup Photo 7– Closed Configuration (Handset), Hotspot, Back Side, 10 mm**



**SAR Test Setup Photo 8– Closed Configuration (Handset), Phablet, Back Side, 0 mm**

FCC ID A3LSMF936U	SAR EVALUATION REPORT	Approved by: Technical Manager
DUT Type: Portable Handset		APPENDIX E: Page 7 of 20



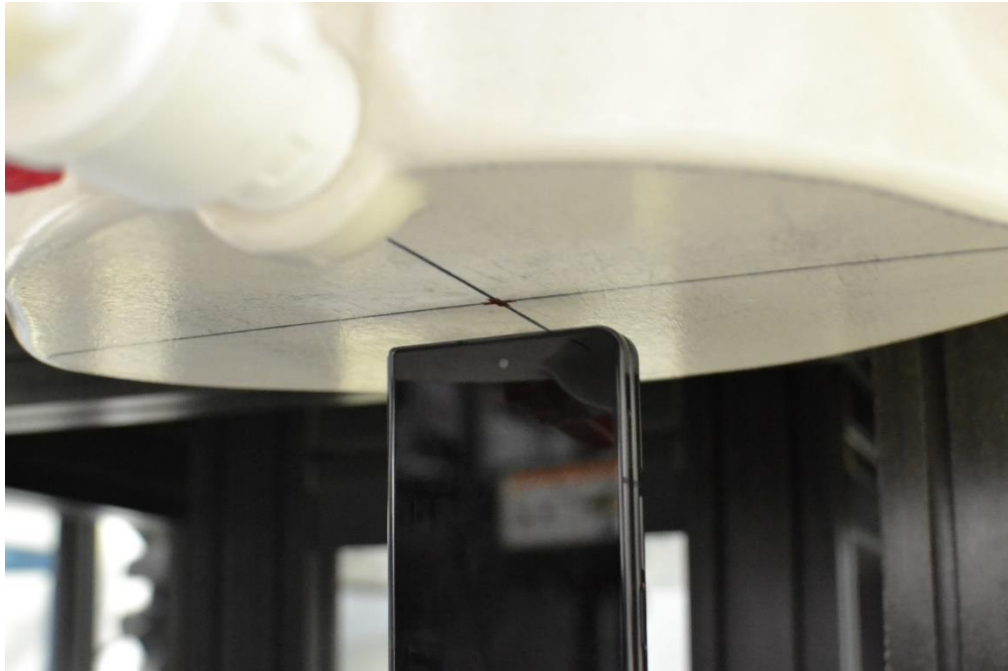
**SAR Test Setup Photo 9– Closed Configuration (Handset), Hotspot, Front Side, 10 mm**



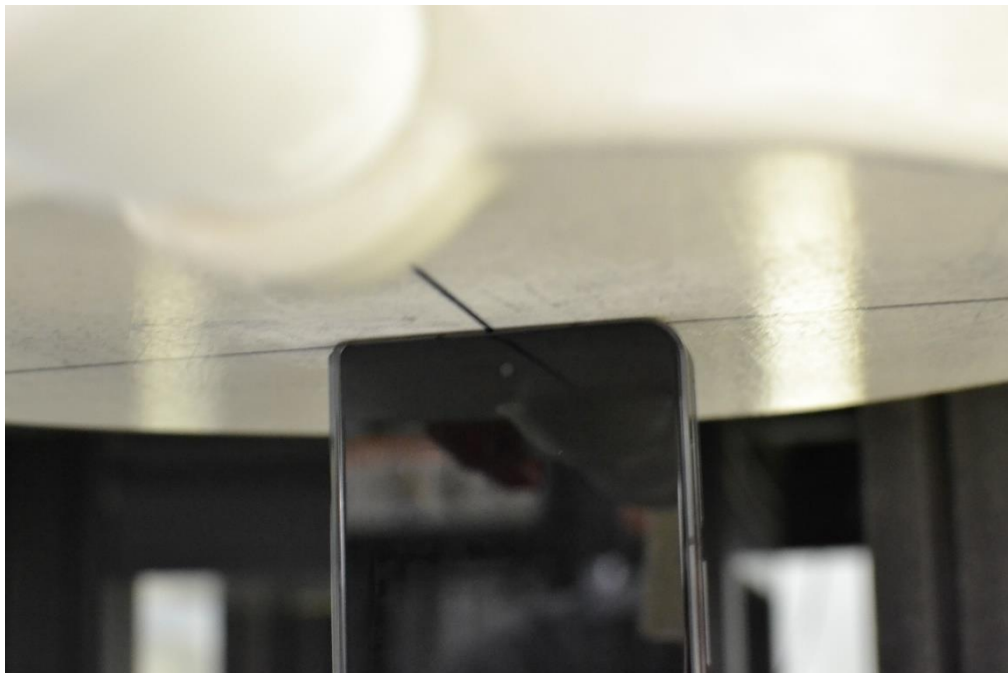
**SAR Test Setup Photo 10– Closed Configuration (Handset), Phablet, Front Side, 0 mm**

FCC ID A3LSMF936U	SAR EVALUATION REPORT	Approved by: Technical Manager
DUT Type: Portable Handset		APPENDIX E: Page 8 of 20



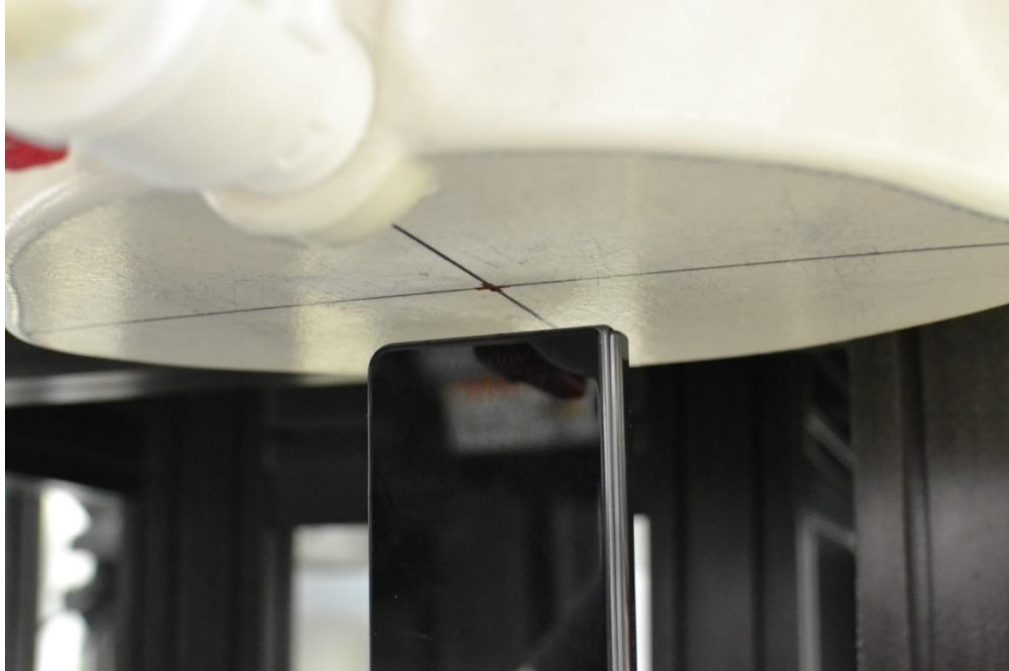


**SAR Test Setup Photo 11– Closed Configuration (Handset), Hotspot, Top Edge, 10 mm**

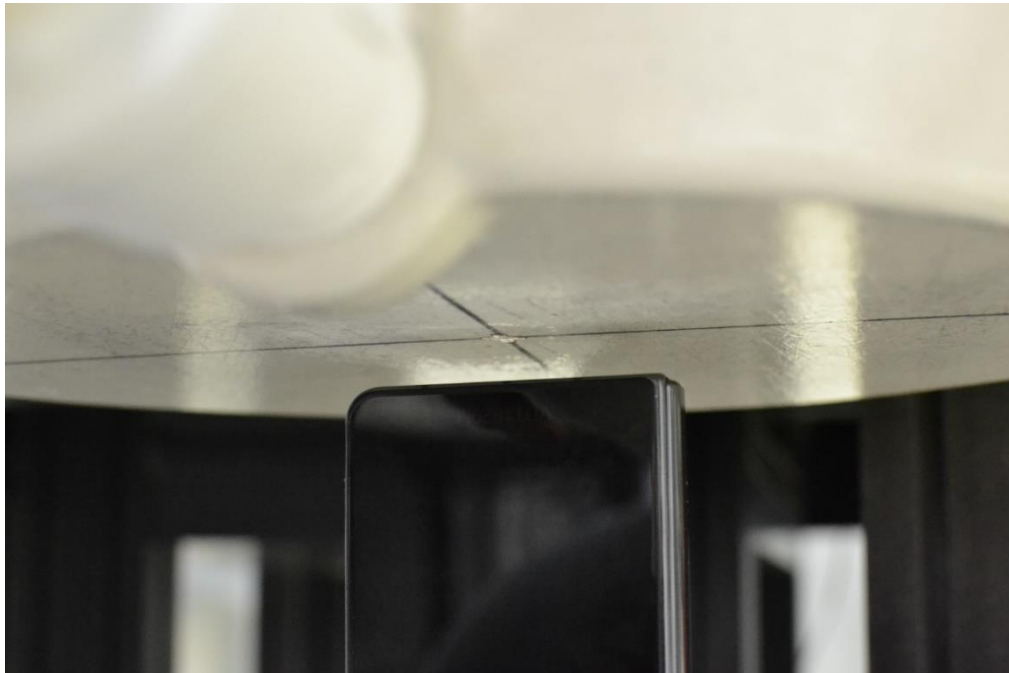


**SAR Test Setup Photo 12– Closed Configuration (Handset), Phablet, Top Edge, 0 mm**

<b>FCC ID</b> A3LSMF936U	<b>SAR EVALUATION REPORT</b>	<b>Approved by:</b> Technical Manager
<b>DUT Type:</b> Portable Handset		<b>APPENDIX E:</b> Page 9 of 20

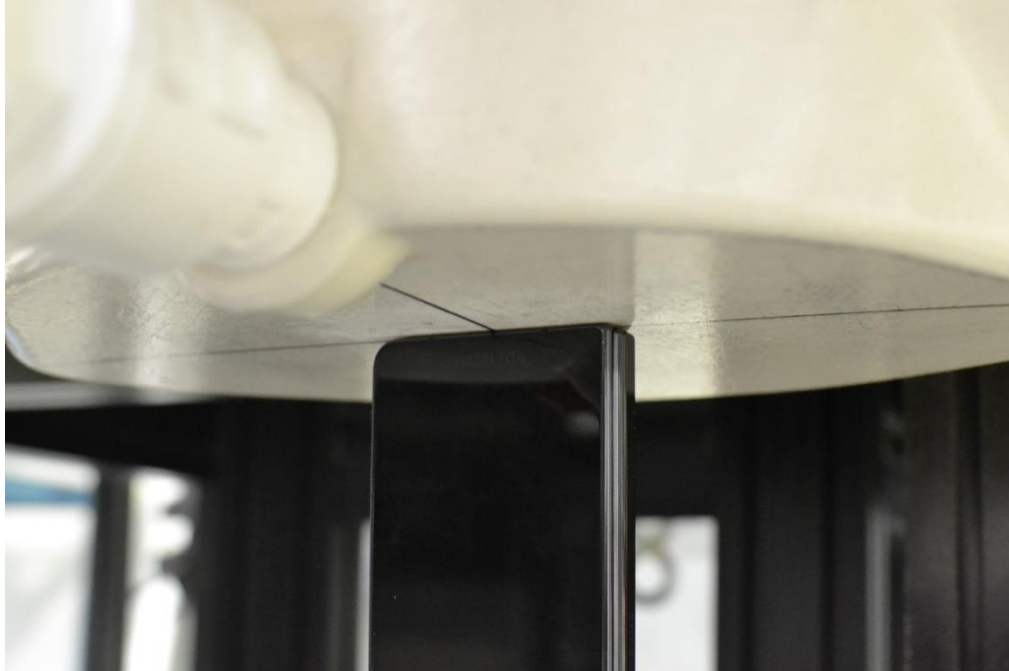


**SAR Test Setup Photo 13– Closed Configuration (Handset), Phablet, Bottom Edge, 14 mm**

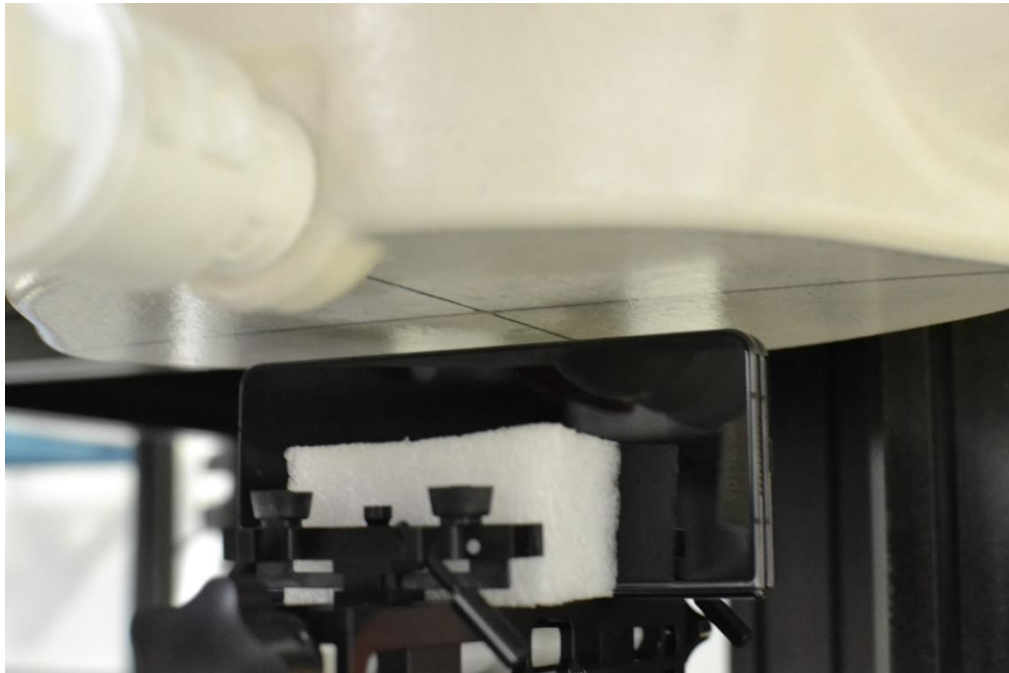


**SAR Test Setup Photo 14– Closed Configuration (Handset), Hotspot, Bottom Edge, 10 mm**

FCC ID A3LSMF936U	SAR EVALUATION REPORT	Approved by: Technical Manager
DUT Type: Portable Handset		APPENDIX E: Page 10 of 20

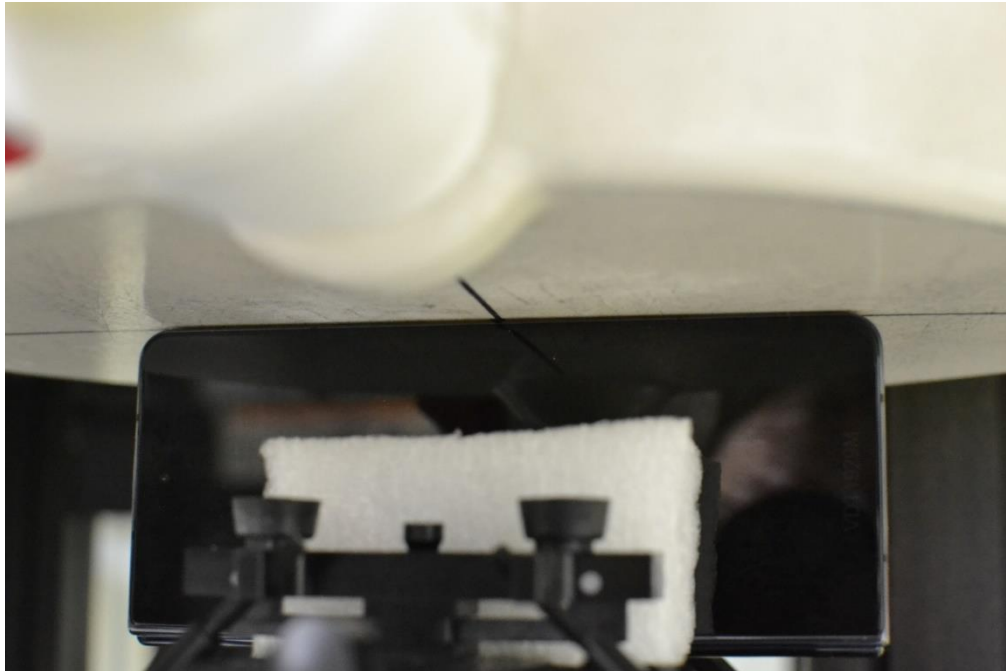


**SAR Test Setup Photo 15– Closed Configuration (Handset), Phablet, Bottom Edge, 0 mm**

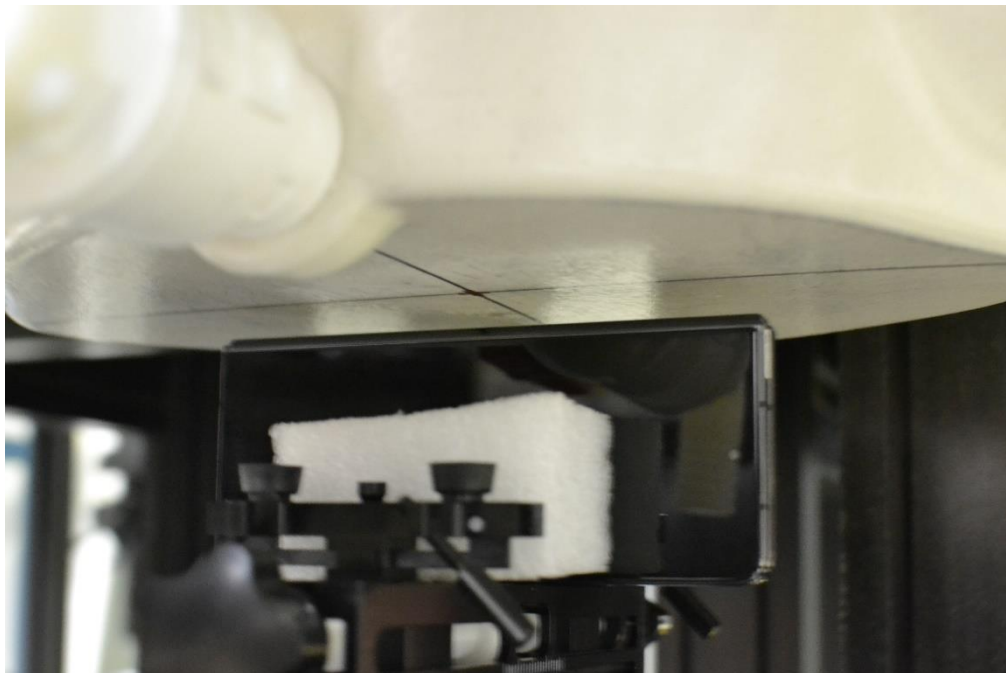


**SAR Test Setup Photo 16– Closed Configuration (Handset), Hotspot, Right Edge, 10 mm**

FCC ID A3LSMF936U	SAR EVALUATION REPORT	Approved by: Technical Manager
DUT Type: Portable Handset		APPENDIX E: Page 11 of 20

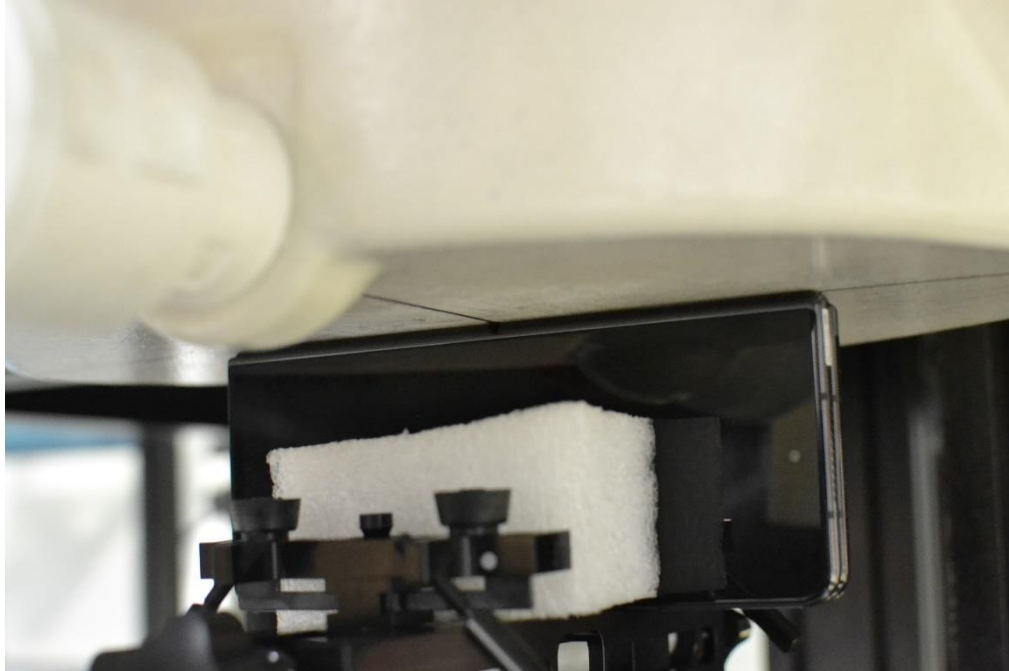


**SAR Test Setup Photo 17– Closed Configuration (Handset), Phablet, Right Edge, 0 mm**



**SAR Test Setup Photo 18– Closed Configuration (Handset), Hotspot, Left Edge, 10 mm**

<b>FCC ID</b> A3LSMF936U	<b>SAR EVALUATION REPORT</b>	<b>Approved by:</b> Technical Manager
<b>DUT Type:</b> Portable Handset		<b>APPENDIX E:</b> Page 12 of 20



**SAR Test Setup Photo 19– Closed Configuration (Handset), Phablet, Left Edge, 0 mm**



**SAR Test Setup Photo 20– Open Configuration (UMPC), UMPC Body/Extremity, Back Side, 14 mm**

<b>FCC ID</b> A3LSMF936U	<b>SAR EVALUATION REPORT</b>	<b>Approved by:</b> Technical Manager
<b>DUT Type:</b> Portable Handset		<b>APPENDIX E:</b> Page 13 of 20





**SAR Test Setup Photo 21– Open Configuration (UMPC), UMPC Body, Back Side, 10 mm**



**SAR Test Setup Photo 22– Open Configuration (UMPC), UMPC Extremity, Back Side, 0 mm**

FCC ID A3LSMF936U	SAR EVALUATION REPORT	Approved by: Technical Manager
DUT Type: Portable Handset		APPENDIX E: Page 14 of 20



**SAR Test Setup Photo 23– Open Configuration (UMPC), UMPC Body/Extremity, Front Side, 12 mm**

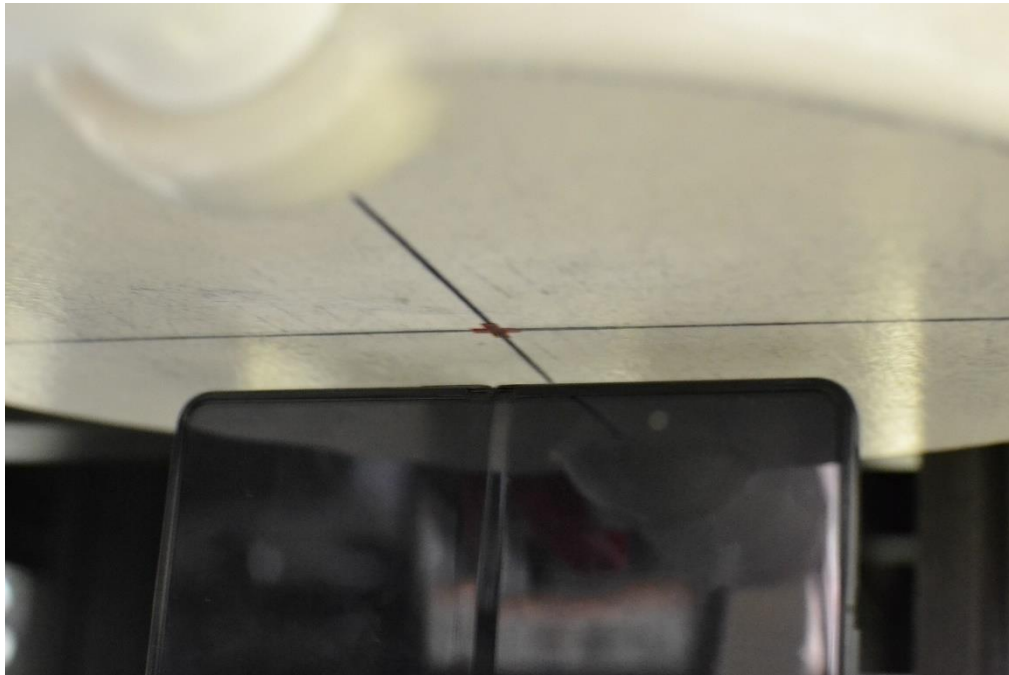


**SAR Test Setup Photo 24– Open Configuration (UMPC), UMPC Body, Front Side, 10 mm**

<b>FCC ID</b> A3LSMF936U	<b>SAR EVALUATION REPORT</b>	<b>Approved by:</b> Technical Manager
<b>DUT Type:</b> Portable Handset		<b>APPENDIX E:</b> Page 15 of 20



**SAR Test Setup Photo 25– Open Configuration (UMPC), UMPC Extremity, Front Side, 0 mm**

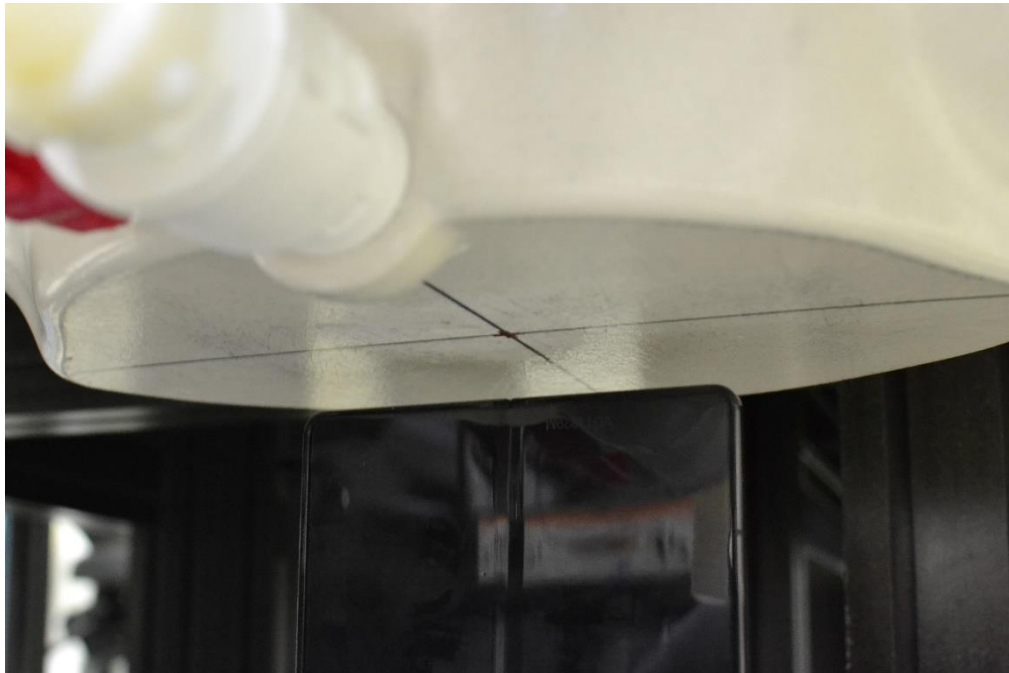


**SAR Test Setup Photo 26– Open Configuration (UMPC), UMPC Body, Top Edge, 10 mm**

<b>FCC ID</b> A3LSMF936U	<b>SAR EVALUATION REPORT</b>	<b>Approved by:</b> Technical Manager
<b>DUT Type:</b> Portable Handset		<b>APPENDIX E:</b> Page 16 of 20



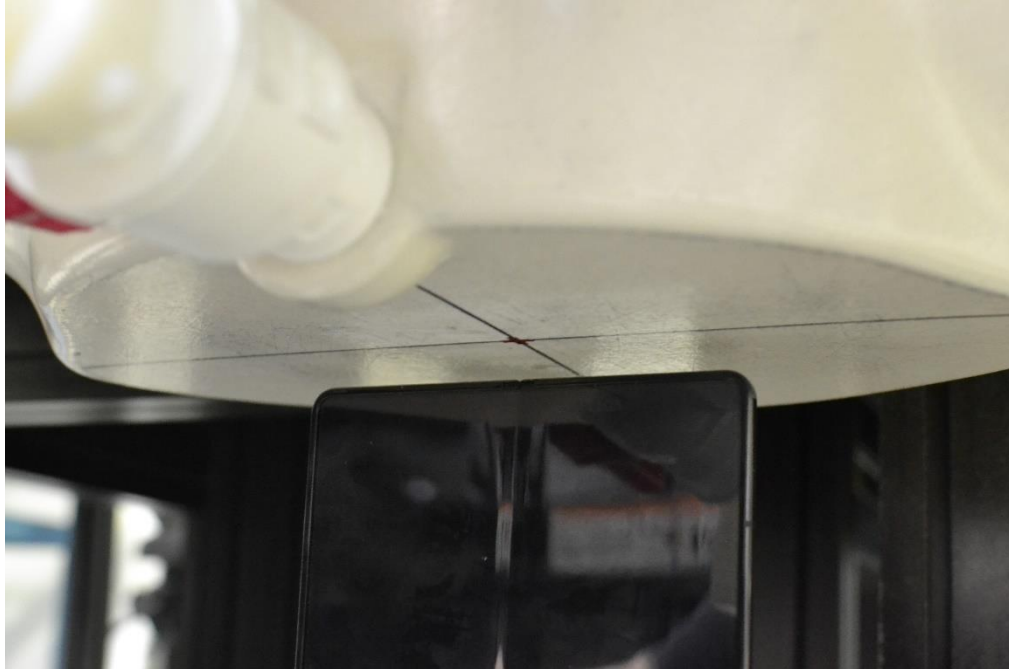
**SAR Test Setup Photo 27– Open Configuration (UMPC), UMPC Extremity, Top Edge, 0 mm**



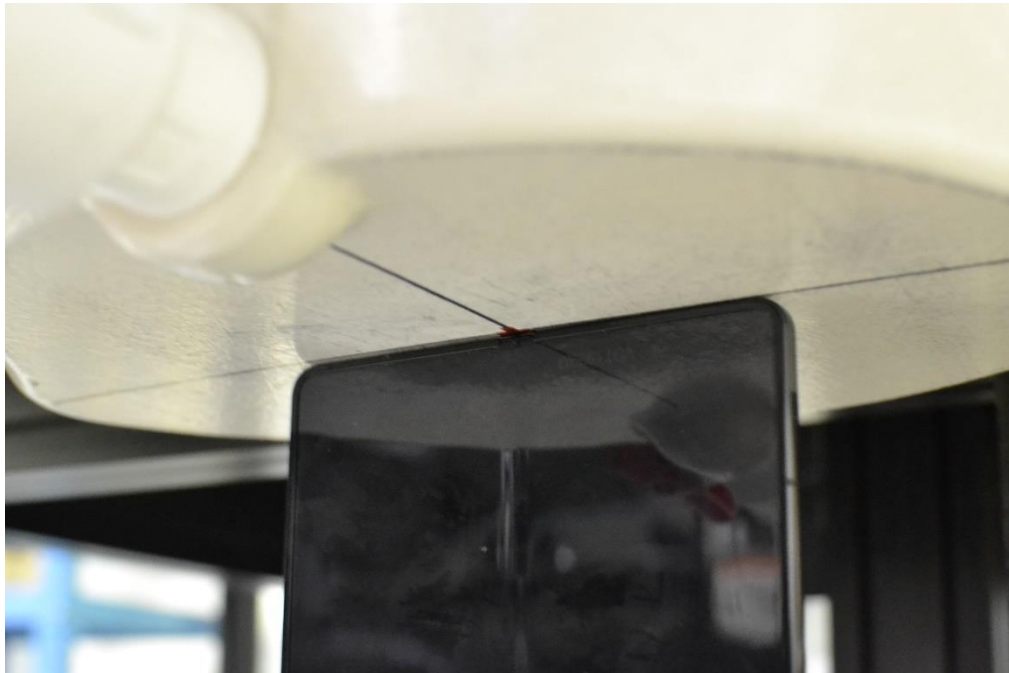
**SAR Test Setup Photo 28– Open Configuration (UMPC), UMPC Body/Extremity, Bottom Edge, 18 mm**

FCC ID A3LSMF936U	SAR EVALUATION REPORT	Approved by: Technical Manager
DUT Type: Portable Handset		APPENDIX E: Page 17 of 20





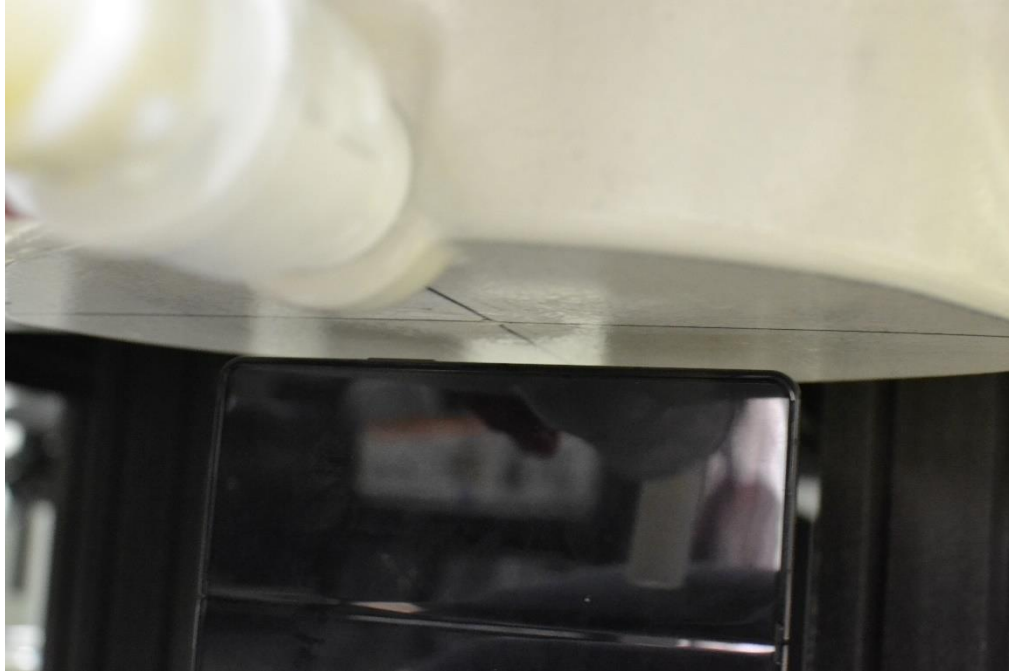
**SAR Test Setup Photo 29– Open Configuration (UMPC), UMPC Body, Bottom Edge, 10 mm**



**SAR Test Setup Photo 30– Open Configuration (UMPC), UMPC Extremity, Bottom Edge, 0 mm**

<b>FCC ID</b> A3LSMF936U	<b>SAR EVALUATION REPORT</b>	<b>Approved by:</b> Technical Manager
<b>DUT Type:</b> Portable Handset		<b>APPENDIX E:</b> Page 18 of 20





**SAR Test Setup Photo 31– Open Configuration (UMPC), UMPC Body, Right Edge, 10 mm**



**SAR Test Setup Photo 32– Open Configuration (UMPC), UMPC Extremity, Right Edge, 0 mm**

<b>FCC ID</b> A3LSMF936U	<b>SAR EVALUATION REPORT</b>	<b>Approved by:</b> Technical Manager
<b>DUT Type:</b> Portable Handset		<b>APPENDIX E:</b> Page 19 of 20



**SAR Test Setup Photo 33– Closed Configuration (Handset) Horizontal and Vertical Reference Lines**

<b>FCC ID</b> A3LSMF936U	<b>SAR EVALUATION REPORT</b>	<b>Approved by:</b> Technical Manager
<b>DUT Type:</b> Portable Handset		<b>APPENDIX E:</b> Page 20 of 20