



HCT Co., Ltd.

74, Seoicheon-ro 578beon-gil, Majang-myeon, Icheon-si, Gyeonggi-do, 17383 KOREA
Tel. +82 31 634 6300 Fax. +82 31 645 6401

Part 1 PHOTOGRAPHS

FCC ID: A3LSMF741JPN

File No.
HCT-SR-2405-FC010-P

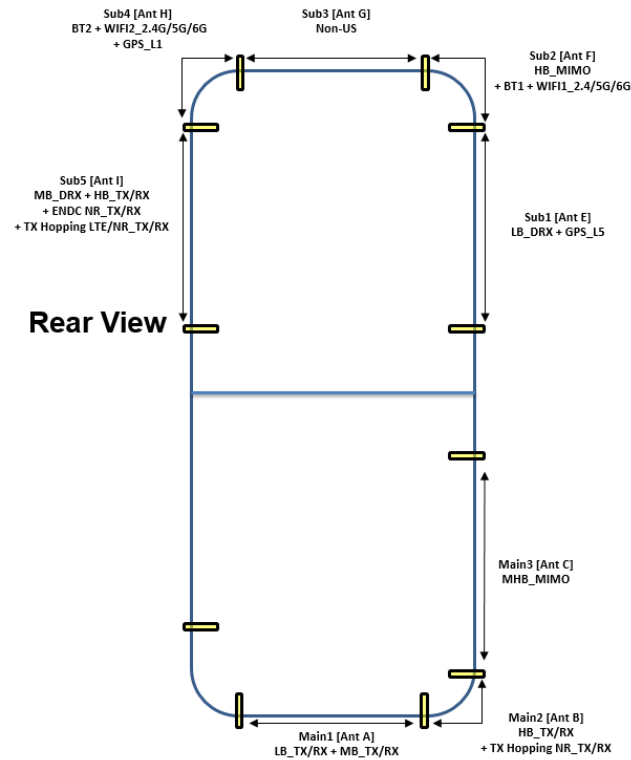
REVISION HISTORY

The revision history for this document is shown in table.

Revision No.	Date of Issue	Description
0	May. 28, 2024	Initial Release

DUT Antenna Information

* Placement of Each Antenna



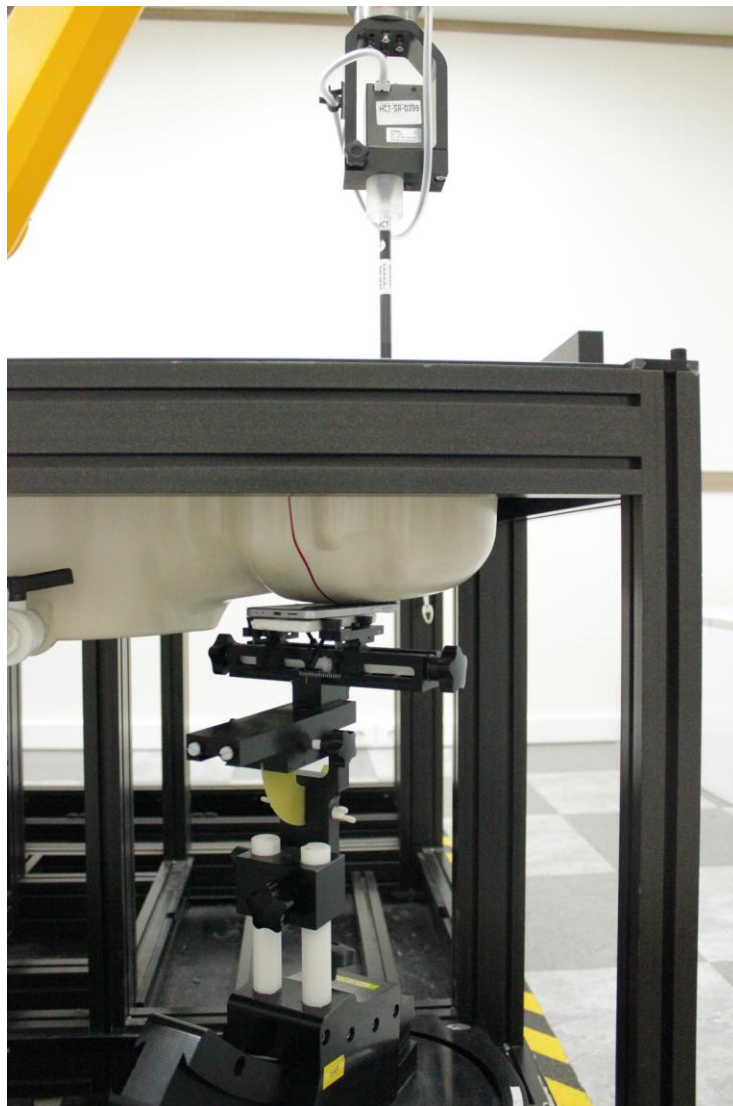
Tx Antenna Information

Ant	Support Band List
MAIN1 (Ant A)	TX/RX - GSM 850/1900, WCDMA B5 - LTE B2/4/5/12/13/66 - NR n5/66
MAIN2 (Ant B)	TX/RX - LTE B41 DRX - NR n41 TX/RX(Only TX Hopping) - NR n41 (TX Hopping)
MAIN3 (Ant C)	PRX MIMO - LTE B41 DRX MIMO - NR n41
SUB1 (Ant E)	DRX - GSM 850, WCDMA B5 - LTE B5/12/13 - NR n5 GPS L5
SUB2 (Ant F)	PRX MIMO - NR n41 DRX MIMO - LTE B41 Bluetooth Ant1, Wi-Fi Ant1 2.4G/5G/6G
SUB3 (Ant G)	Non-US
SUB4 (Ant H)	Bluetooth Ant2, Wi-Fi Ant2 2.4G/5G/6G GPS L1
SUB5 (Ant I)	TX/RX - NR n41 DRX - GSM1900 - LTE B2/4/41/66 - NR n66 TX/RX(Only MHB-MHB EN-DC or TX Hopping) - LTE B2/4/41/66 (Only TX Hopping) - NR n66 (EN-DC and TX Hopping)

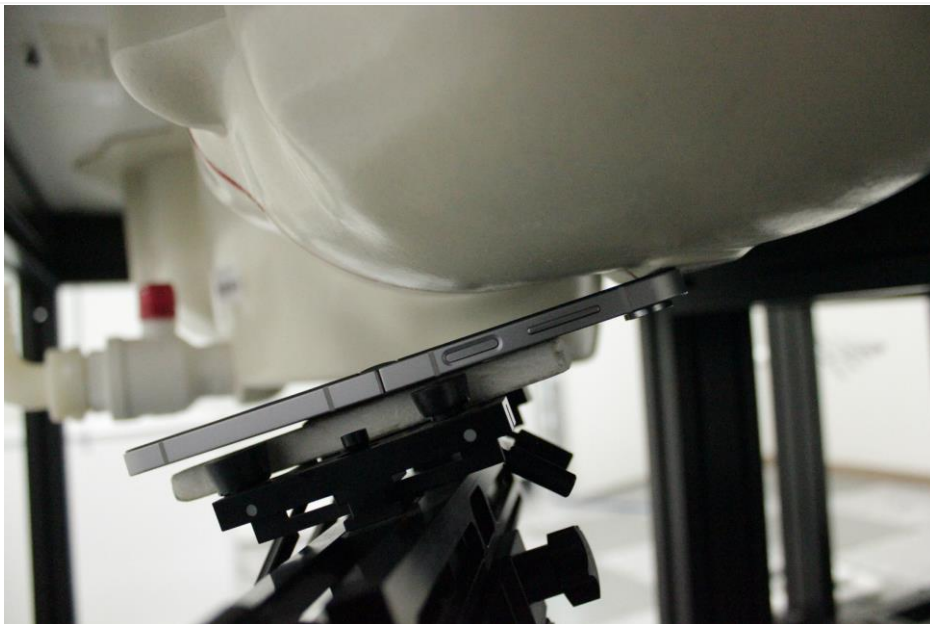
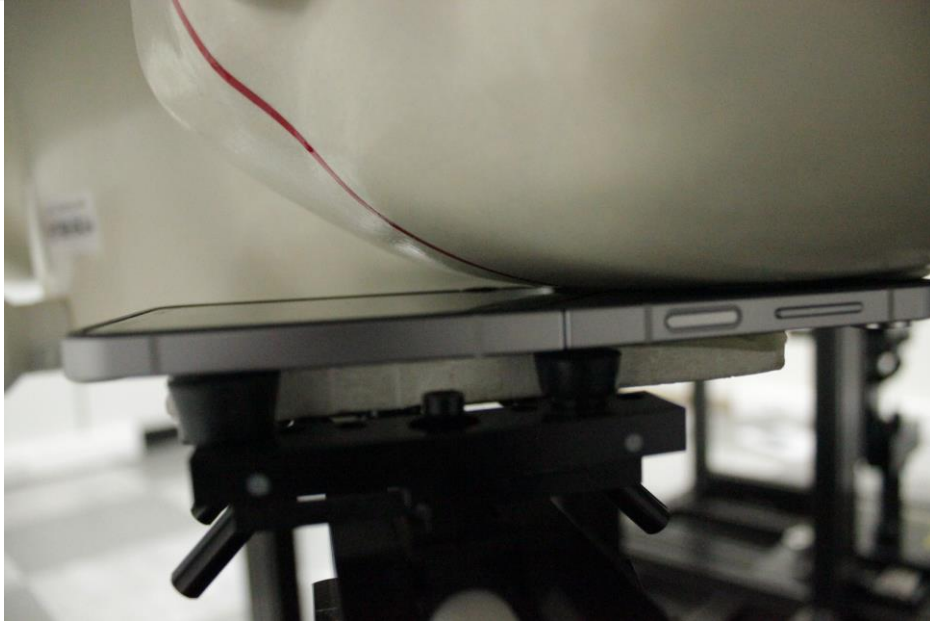
- SAR Test Setup Photo.

1. Head

1.1 Left All



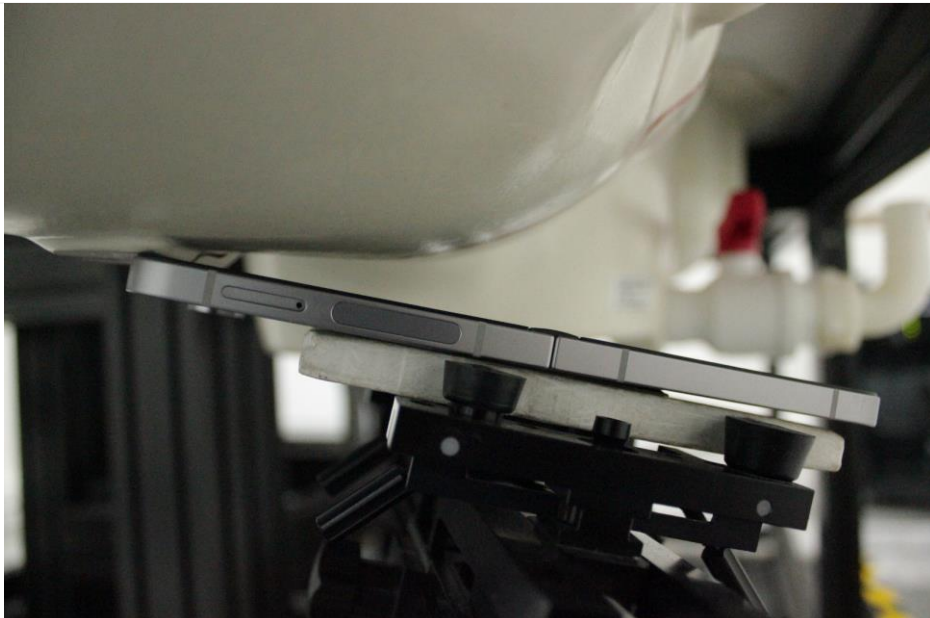
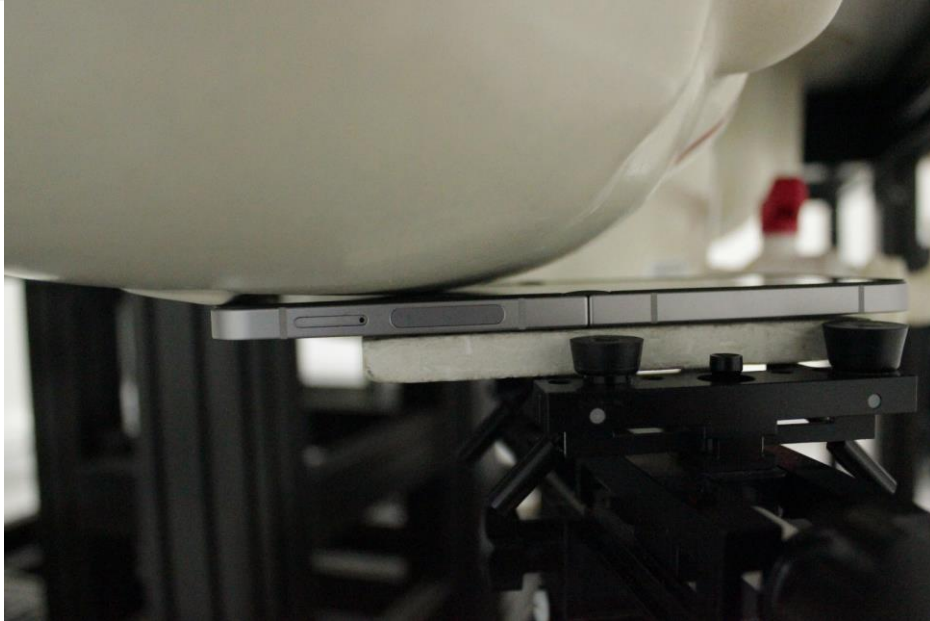
1.2 Left Touch / Left Tilt



1.3 Right All

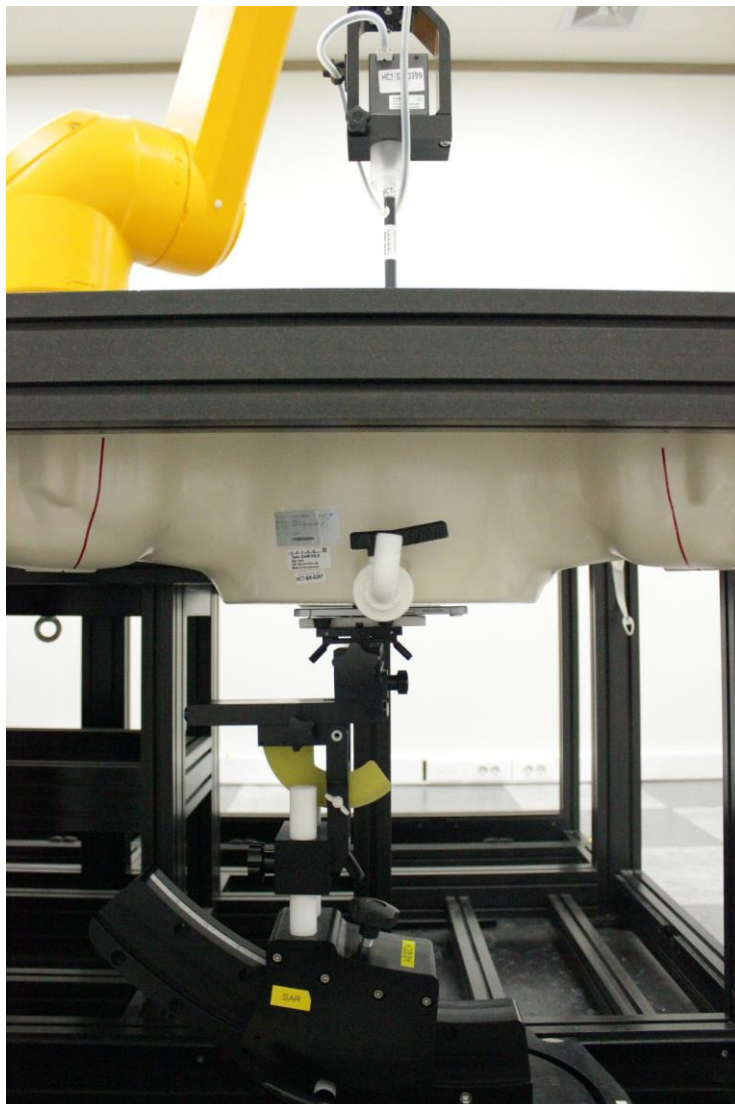


1.4 Right Touch / Right Tilt



2. Body(Open)

2.1 Body All (SAM Phantom)



2.2 Body Rear



Distance of 0 mm from the EUT



Distance of 10 mm from the EUT

2.3 Body Front



Distance of 0 mm from the EUT



Distance of 10 mm from the EUT

2.4 Body Left



Distance of 0 mm from the EUT



Distance of 10 mm from the EUT

2.5 Body Right



Distance of 0 mm from the EUT

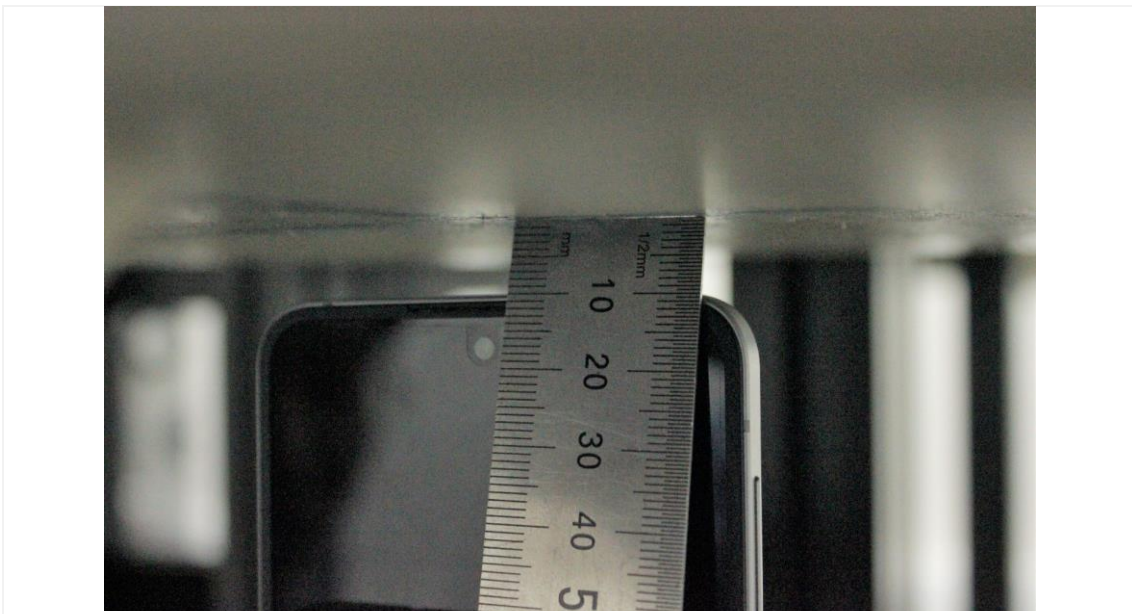


Distance of 10 mm from the EUT

2.6 Body Top



Distance of 0 mm from the EUT

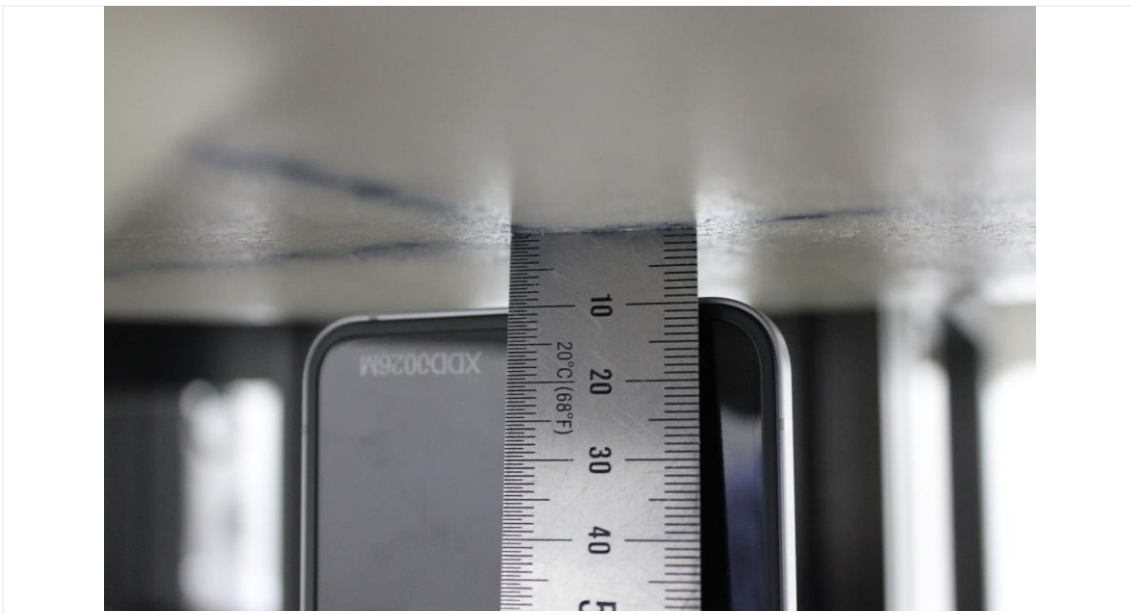


Distance of 10 mm from the EUT

2.7 Body Bottom



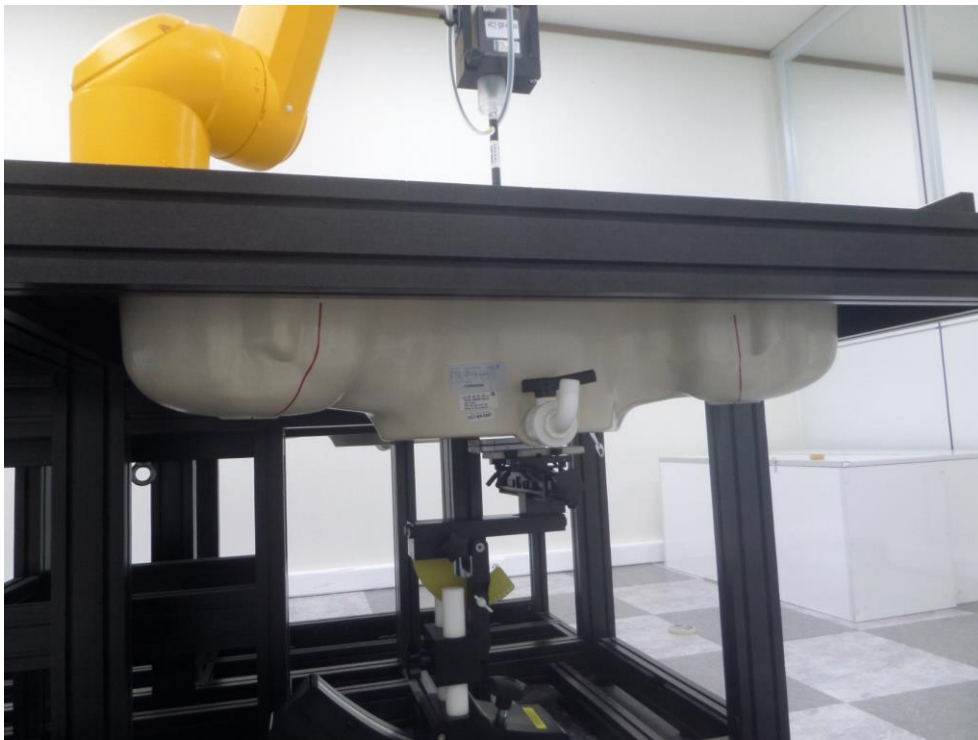
Distance of 0 mm from the EUT



Distance of 10 mm from the EUT

3. Body(Close)

3.1 Body All (SAM Phantom)



3.2 Body Rear



Distance of 5 mm from the EUT



Distance of 10 mm from the EUT

3.3 Body Front



Distance of 5 mm from the EUT



Distance of 10 mm from the EUT

3.4 Body Left



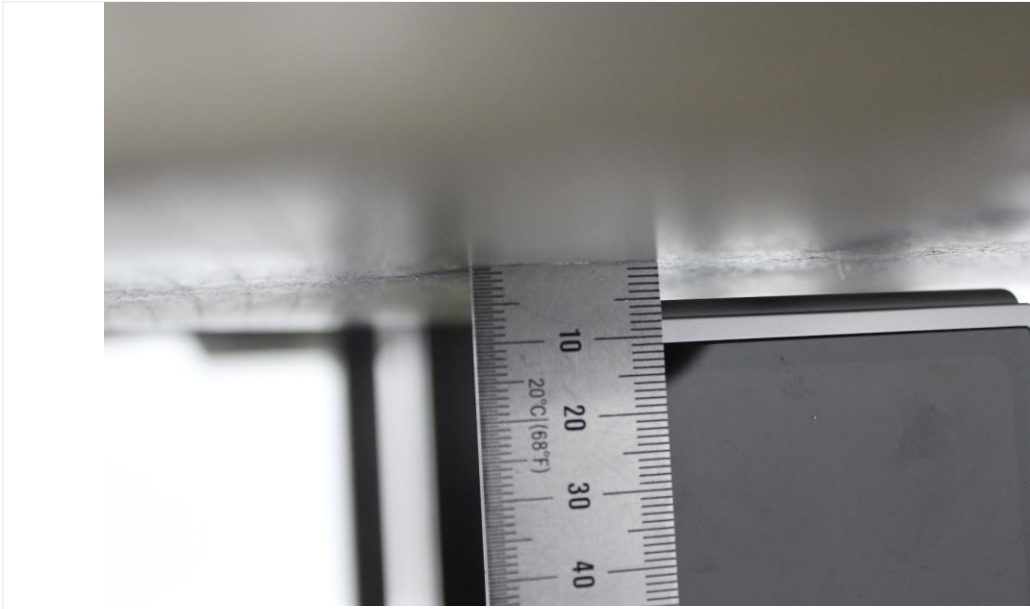
Distance of 5 mm from the EUT

3.5 Body Right



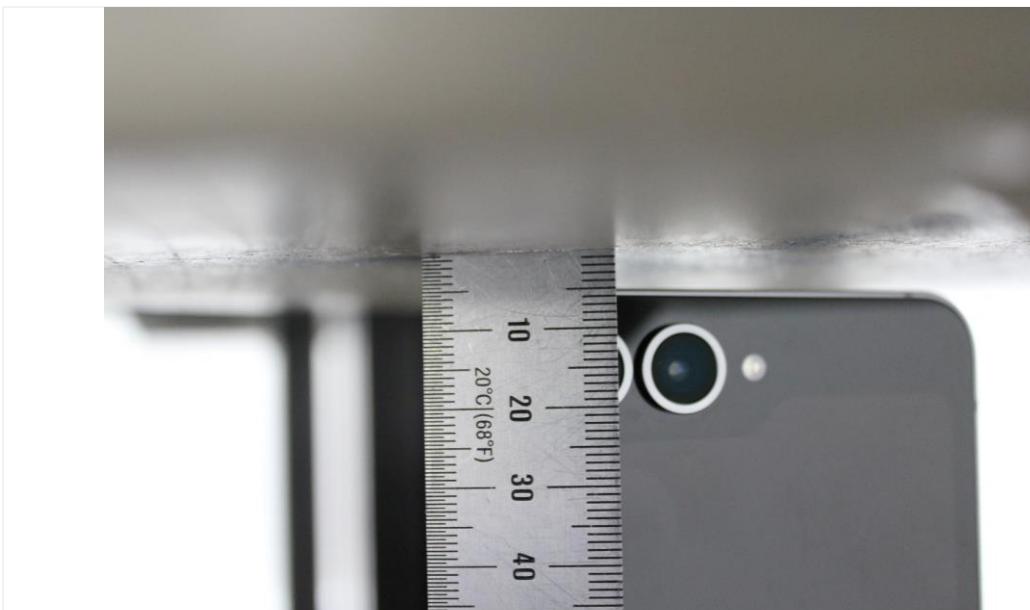
Distance of 5 mm from the EUT

3.6 Body Top



Distance of 5 mm from the EUT

3.7 Body Bottom



Distance of 5 mm from the EUT