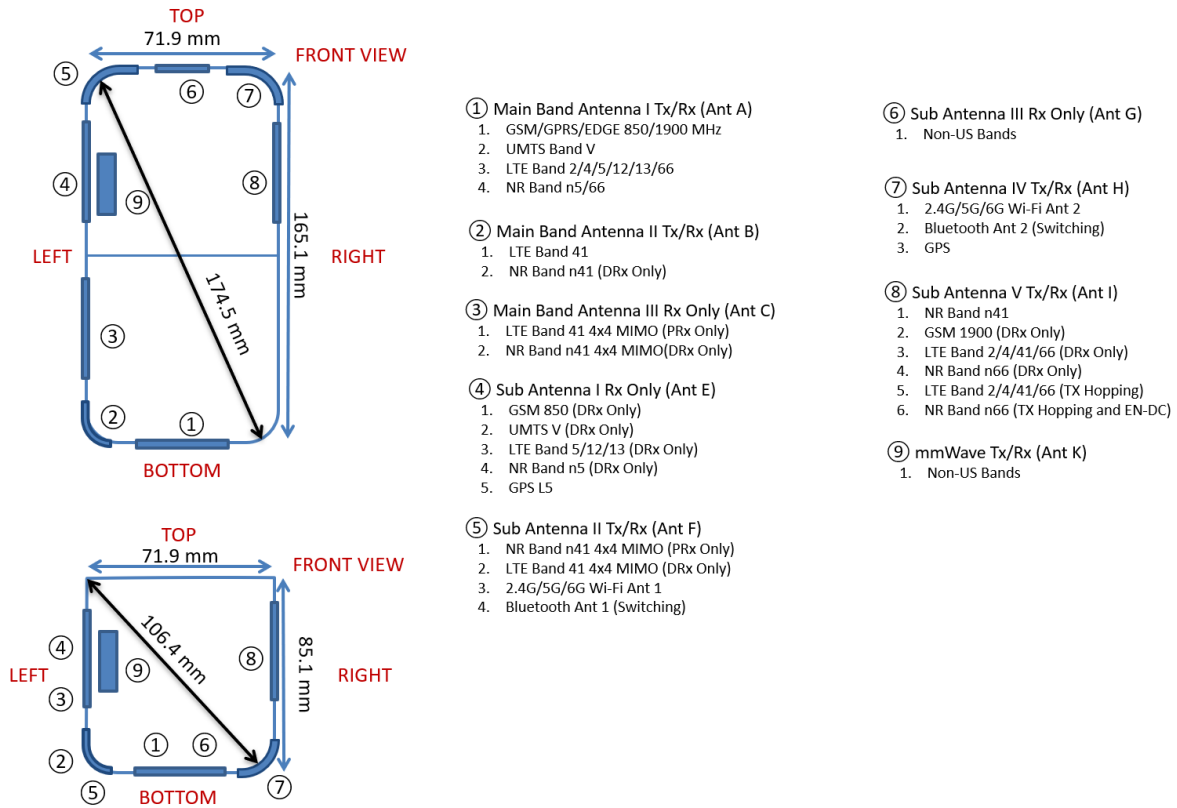


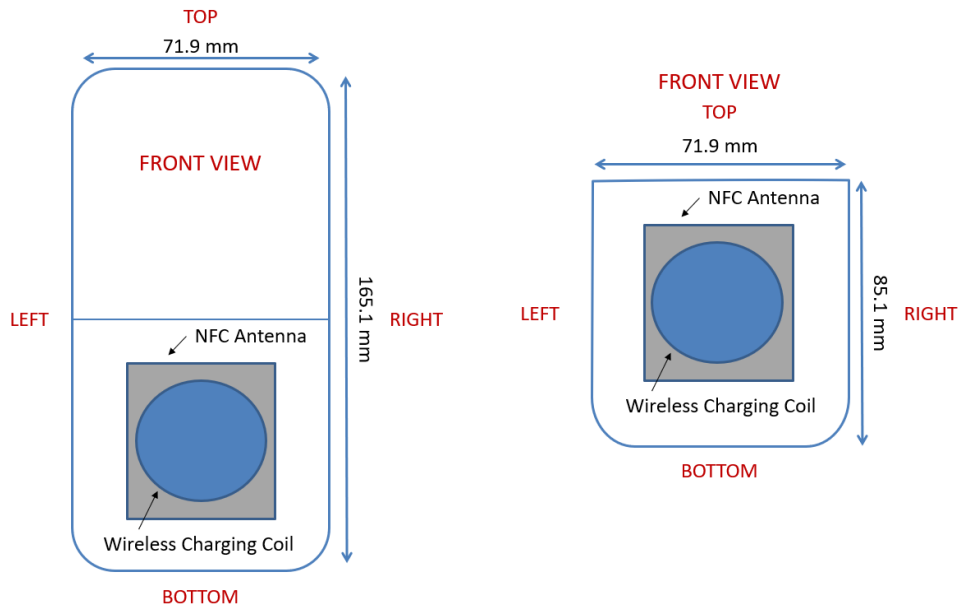
**APPENDIX K: DUT ANTENNA DIAGRAM & SAR TEST SETUP
PHOTOGRAPHS**

FCC ID: A3LSMF731JPN	SAR EVALUATION REPORT	Approved by: Technical Manager
DUT Type: Portable Handset		APPENDIX K: Page 1 of 15

Note: Exact antenna dimensions and separation distances are shown in the Technical Descriptions in the FCC Filing.

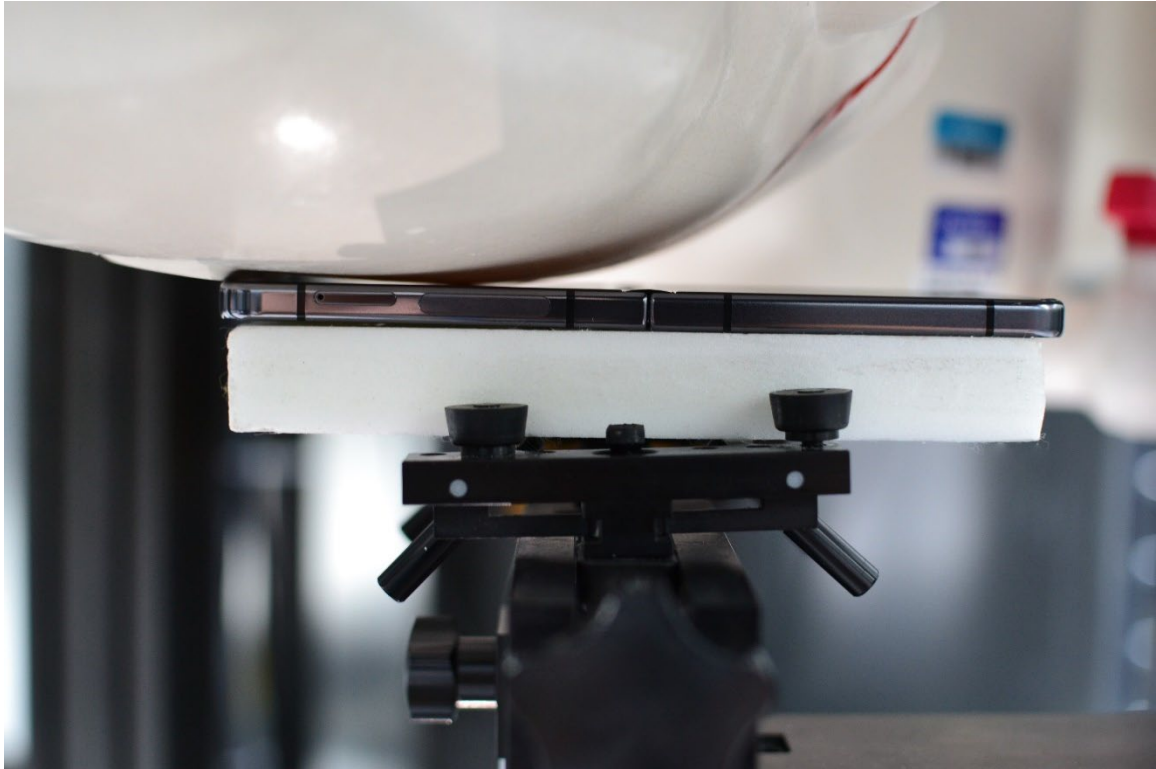


**Figure K-1
DUT Antenna Locations**

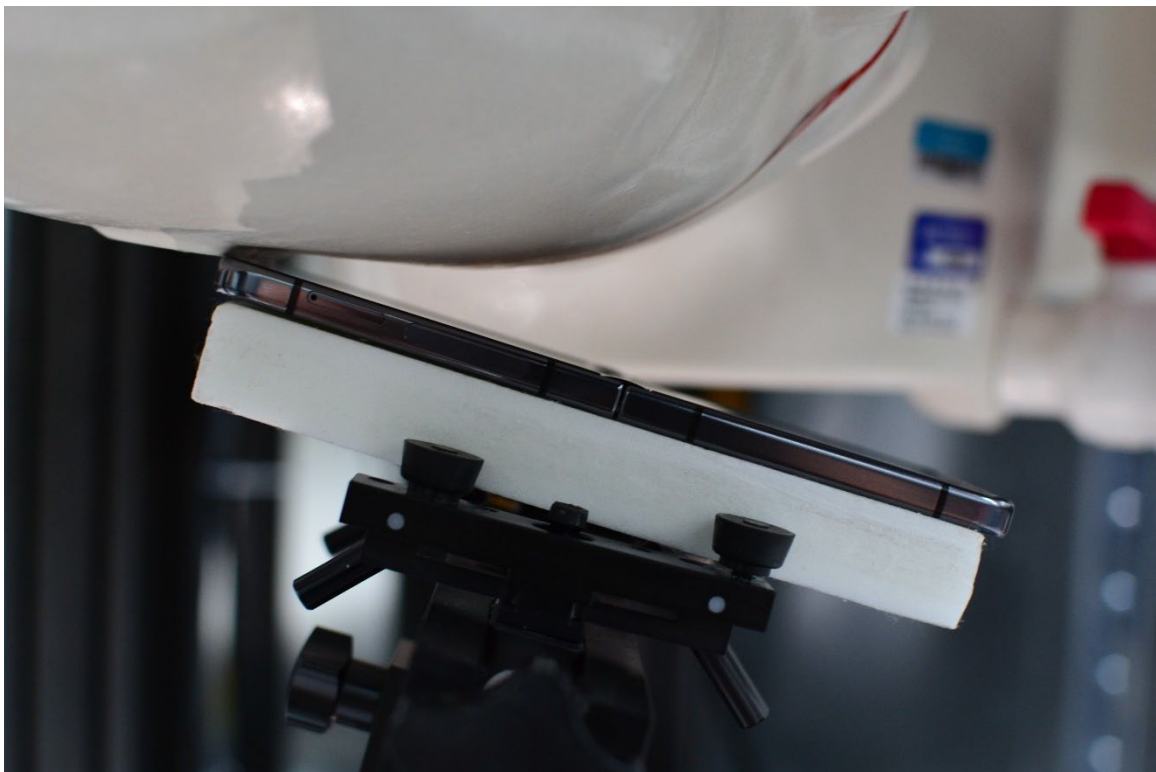


**Figure K-2
NFC Antenna Locations**

FCC ID: A3LSMF731JPN	SAR EVALUATION REPORT	Approved by: Technical Manager
DUT Type: Portable Handset		APPENDIX K: Page 2 of 15



SAR Test Setup Photo 1 – Head, Right Cheek at 0mm

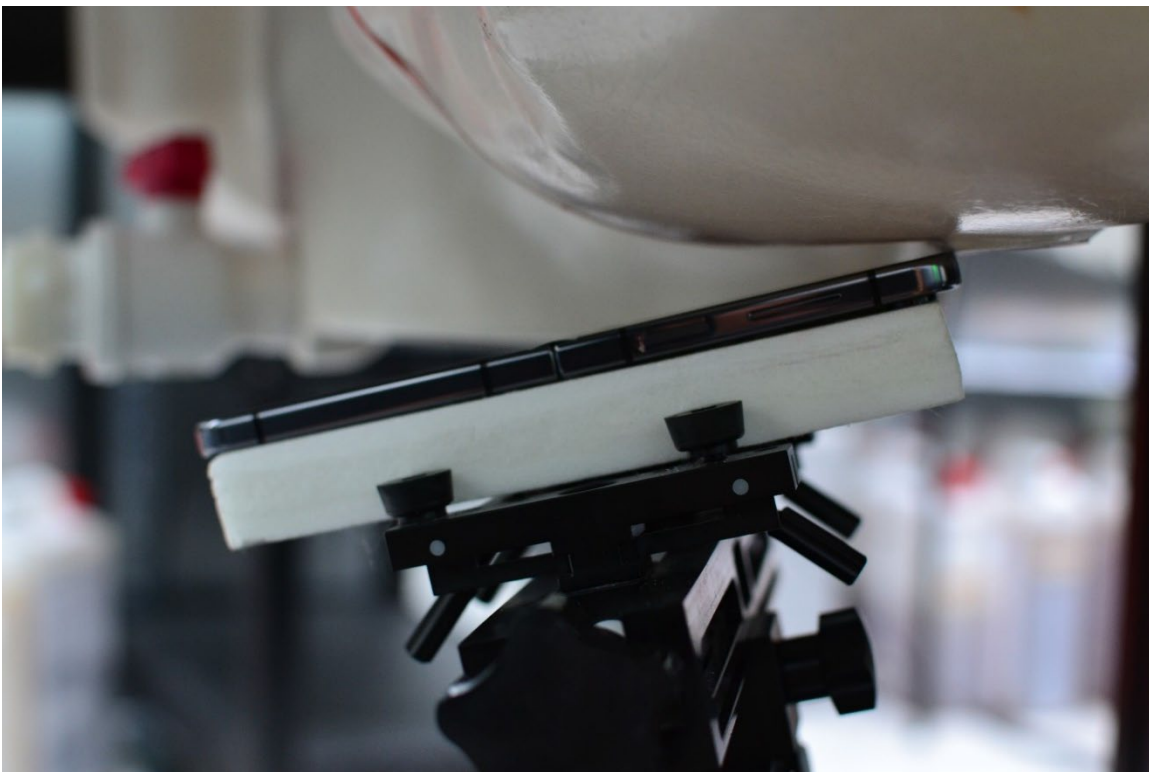


SAR Test Setup Photo 2 – Head, Right Tilt at 0 mm

FCC ID: A3LSMF731JPN	SAR EVALUATION REPORT	Approved by: Technical Manager
DUT Type: Portable Handset		APPENDIX K: Page 3 of 15

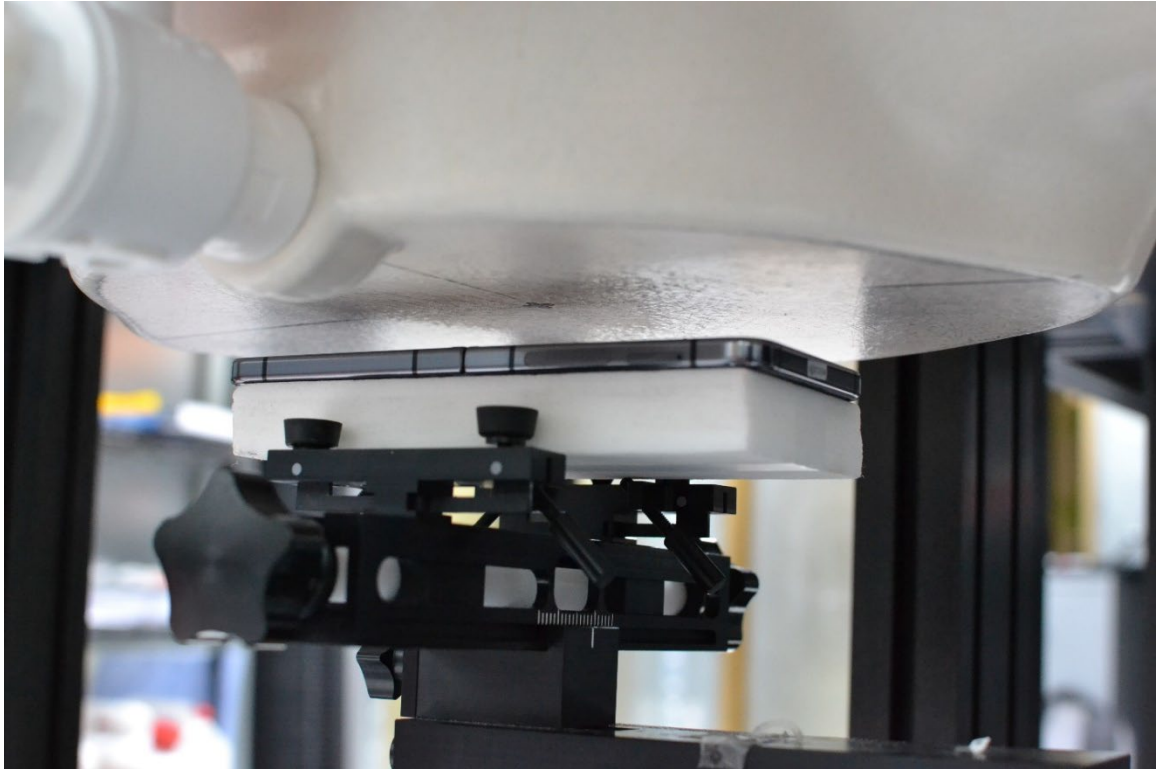


SAR Test Setup Photo 3 – Head, Left Cheek at 0 mm

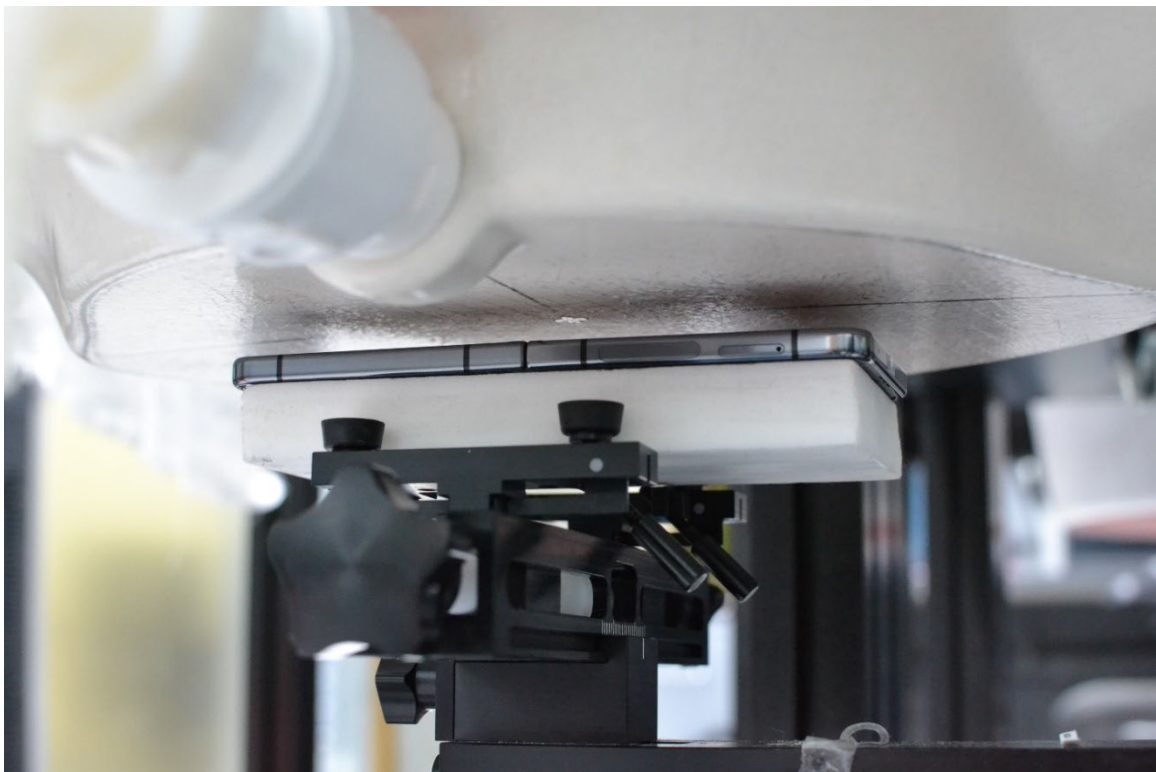


SAR Test Setup Photo 4 – Head, Left Tilt at 0 mm

FCC ID: A3LSMF731JPN	SAR EVALUATION REPORT	Approved by: Technical Manager
DUT Type: Portable Handset		APPENDIX K: Page 4 of 15



SAR Test Setup Photo 5 – Body-worn, Back Side at 15 mm

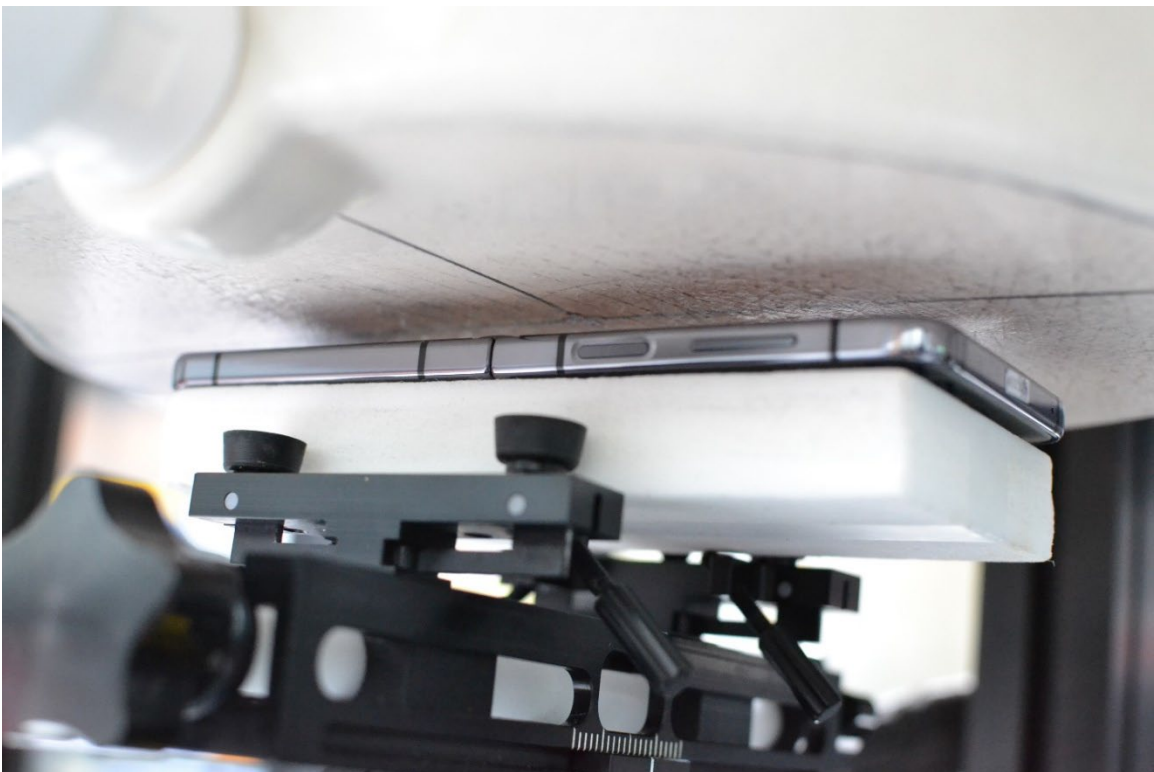


SAR Test Setup Photo 6 – Hotspot, Back Side at 10 mm

FCC ID: A3LSMF731JPN	SAR EVALUATION REPORT	Approved by: Technical Manager
DUT Type: Portable Handset		APPENDIX K: Page 5 of 15



SAR Test Setup Photo 7 – Phablet, Back Side at 0 mm

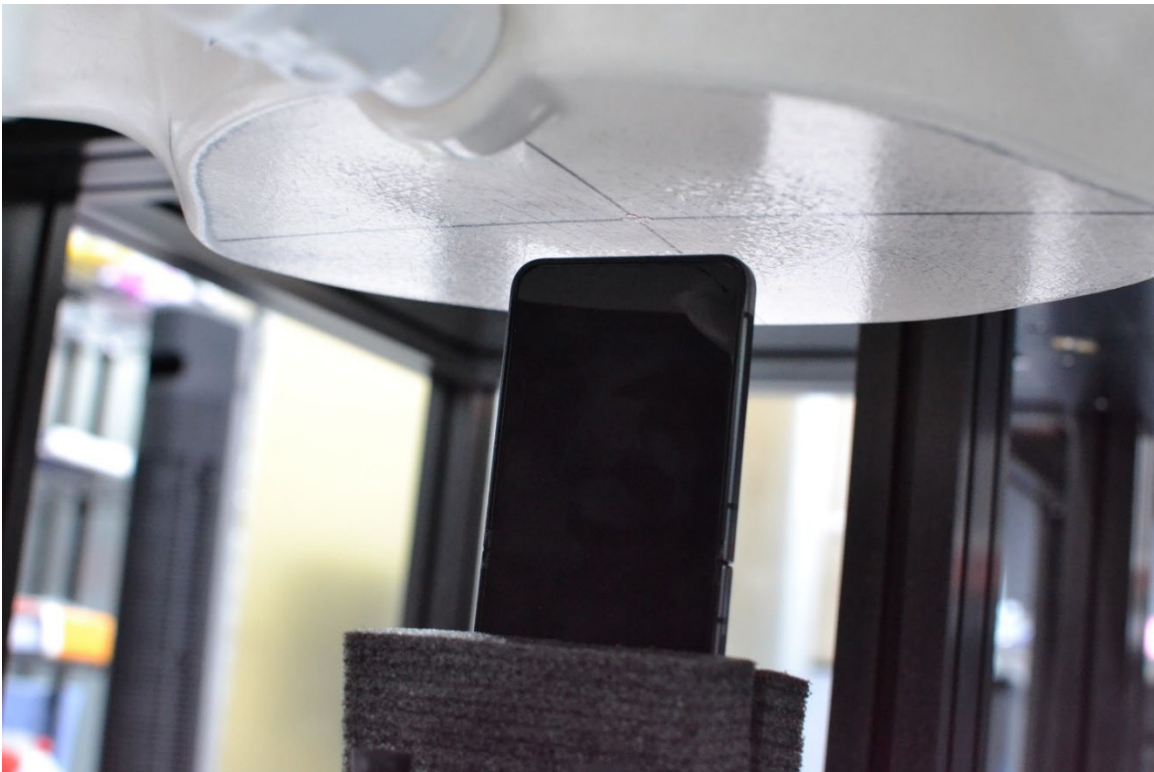


SAR Test Setup Photo 8 – Hotspot, Front Side at 10 mm

FCC ID: A3LSMF731JPN	SAR EVALUATION REPORT	Approved by: Technical Manager
DUT Type: Portable Handset		APPENDIX K: Page 6 of 15



SAR Test Setup Photo 9 – Phablet, Front Side at 0 mm

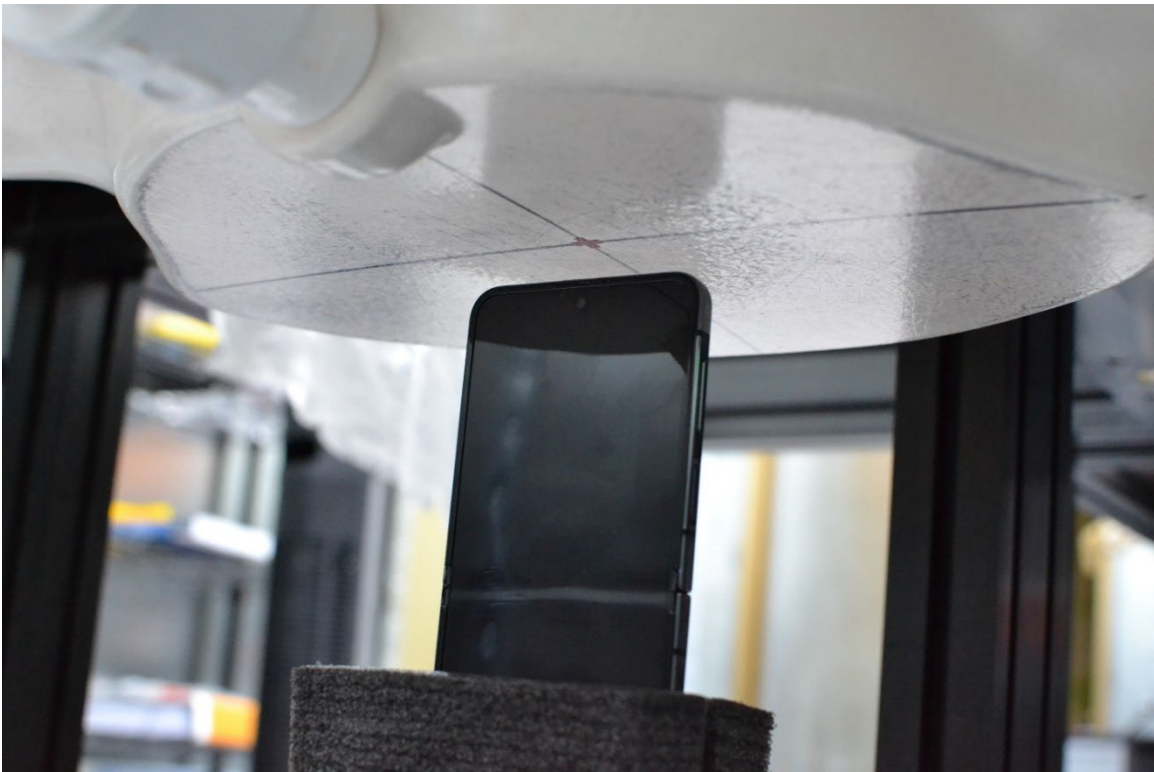


SAR Test Setup Photo 10 – Hotspot, Bottom Edge at 10 mm

FCC ID: A3LSMF731JPN	SAR EVALUATION REPORT	Approved by: Technical Manager
DUT Type: Portable Handset		APPENDIX K: Page 7 of 15

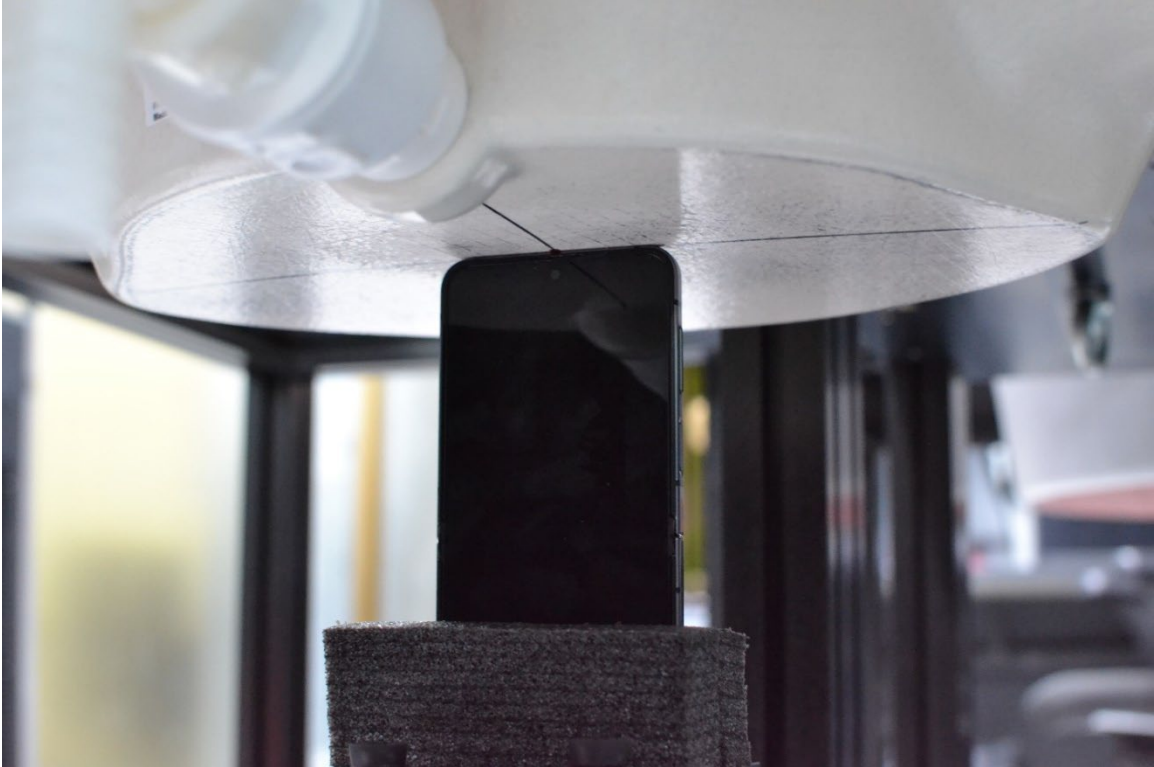


SAR Test Setup Photo 11 – Phablet, Bottom Edge at 0 mm



SAR Test Setup Photo 12 – Hotspot, Top Edge at 10 mm

FCC ID: A3LSMF731JPN	SAR EVALUATION REPORT	Approved by: Technical Manager
DUT Type: Portable Handset		APPENDIX K: Page 8 of 15



SAR Test Setup Photo 13 – Phablet, Top Edge at 0 mm



SAR Test Setup Photo 14 – Hotspot, Right Edge at 10 mm

FCC ID: A3LSMF731JPN	SAR EVALUATION REPORT	Approved by: Technical Manager
DUT Type: Portable Handset		APPENDIX K: Page 9 of 15

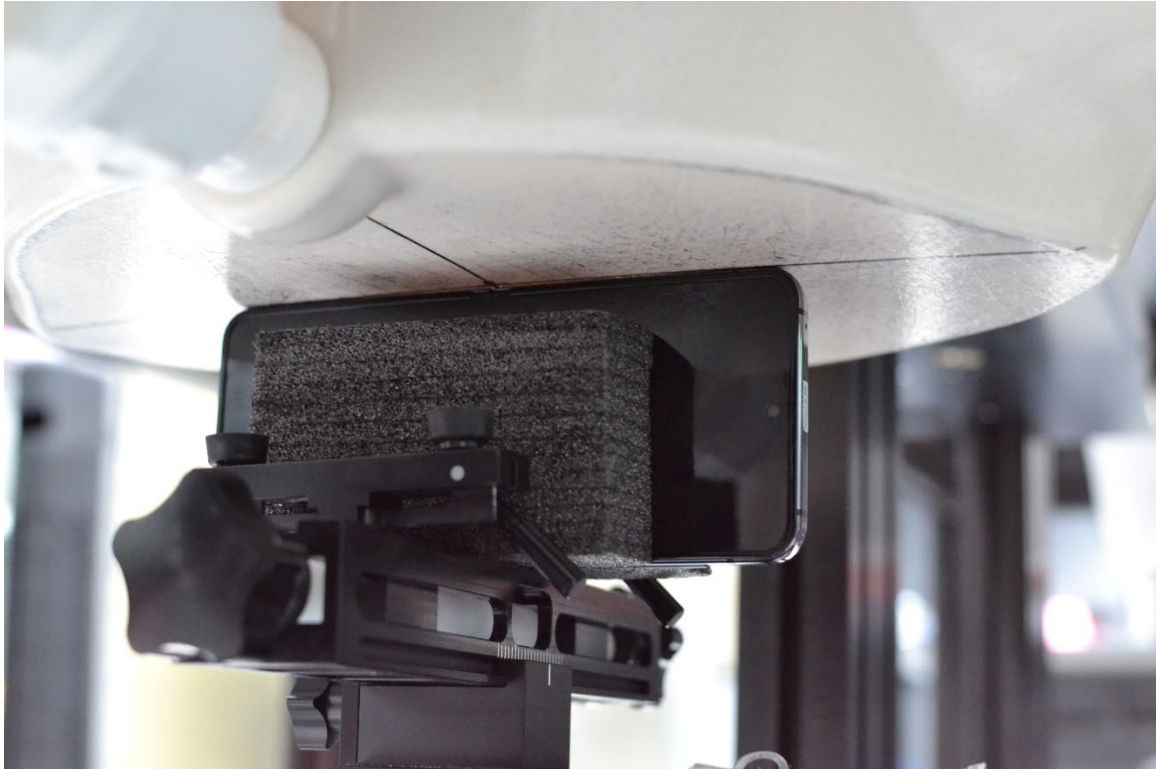


SAR Test Setup Photo 15 – Phablet, Right Edge at 0 mm



SAR Test Setup Photo 16 – Hotspot, Left Edge at 10 mm

FCC ID: A3LSMF731JPN	SAR EVALUATION REPORT	Approved by: Technical Manager
DUT Type: Portable Handset		APPENDIX K: Page 10 of 15



SAR Test Setup Photo 17 – Phablet, Left Edge at 0 mm



SAR Test Setup Photo 18 – Closed Body-worn, Back Side at 15 mm

FCC ID: A3LSMF731JPN	SAR EVALUATION REPORT	Approved by: Technical Manager
DUT Type: Portable Handset		APPENDIX K: Page 11 of 15



SAR Test Setup Photo 19 – Closed Hotspot, Back Side at 5 mm

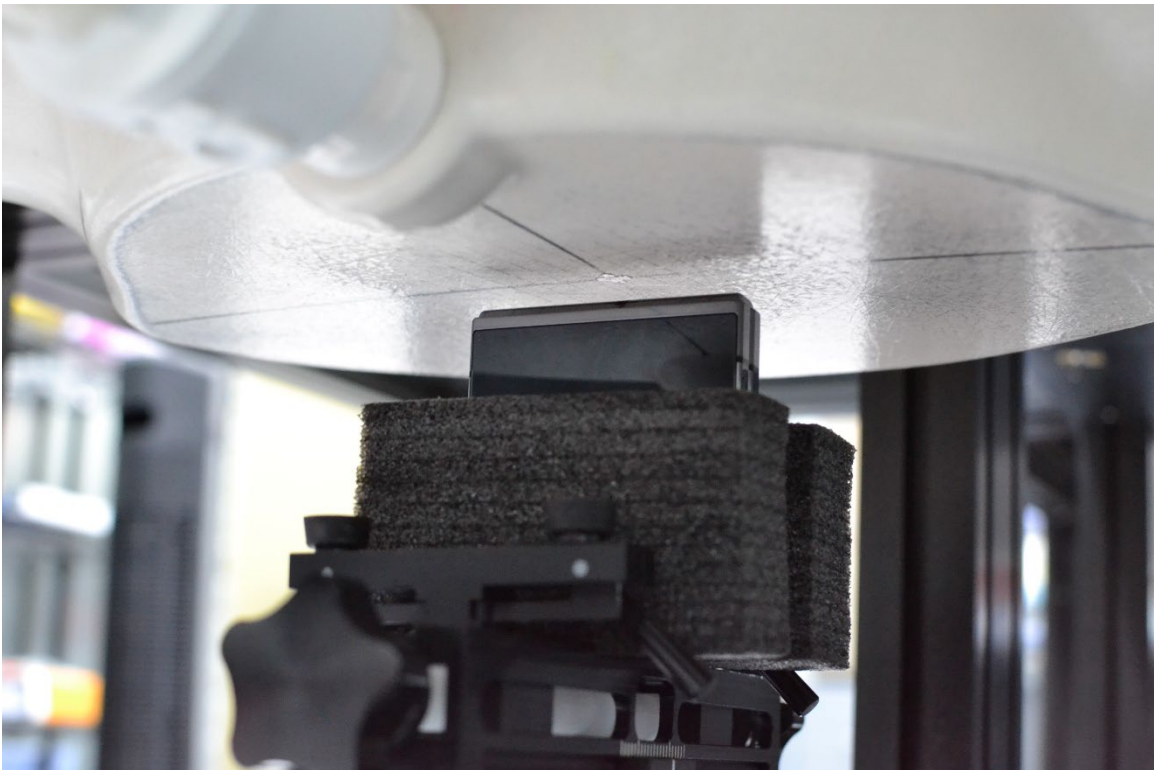


SAR Test Setup Photo 20 – Closed Hotspot, Front Side at 5 mm

FCC ID: A3LSMF731JPN	SAR EVALUATION REPORT	Approved by: Technical Manager
DUT Type: Portable Handset		APPENDIX K: Page 12 of 15

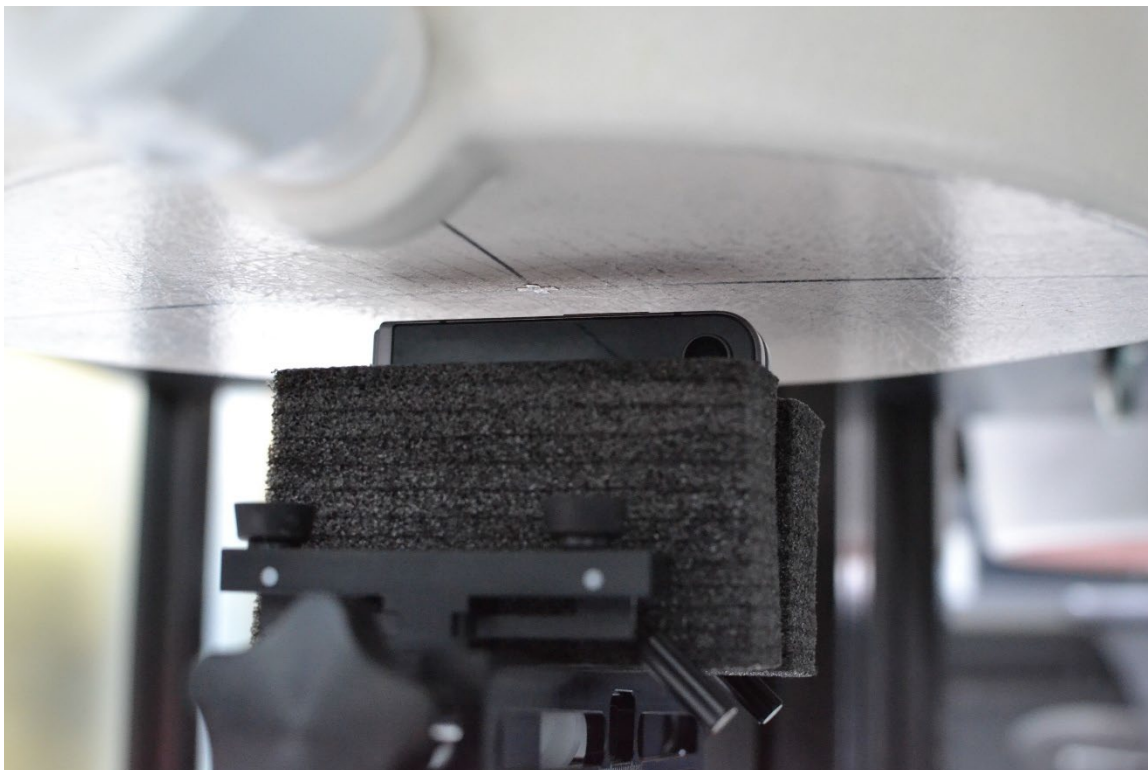


SAR Test Setup Photo 21 – Closed Hotspot, Bottom Edge at 5 mm

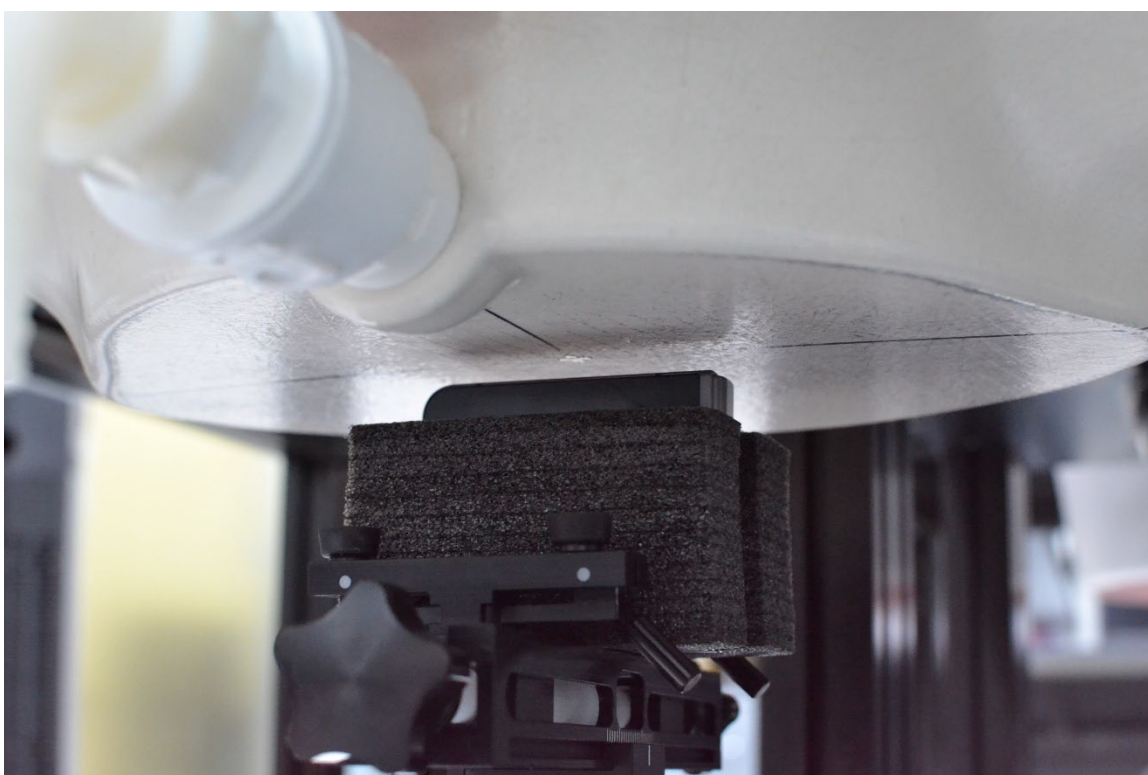


SAR Test Setup Photo 22 – Closed Hotspot, Top Edge at 5 mm

FCC ID: A3LSMF731JPN	SAR EVALUATION REPORT	Approved by: Technical Manager
DUT Type: Portable Handset		APPENDIX K: Page 13 of 15

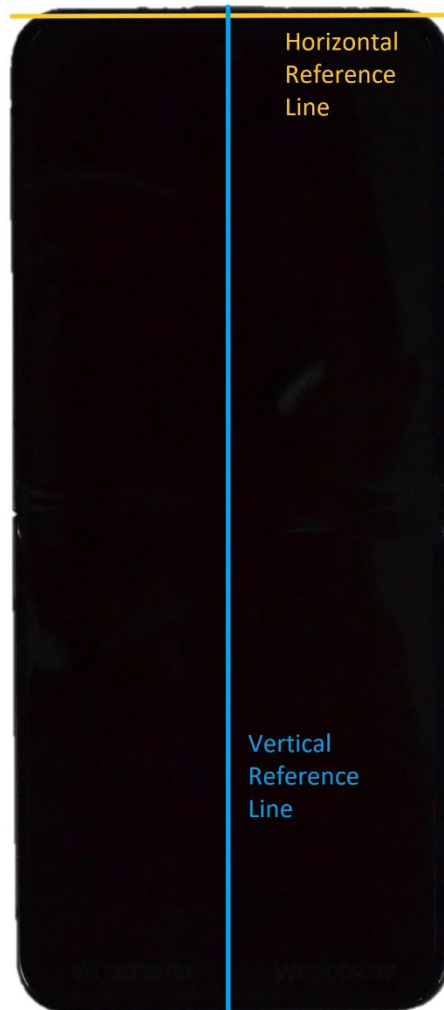


SAR Test Setup Photo 23 – Closed Hotspot, Right Edge at 5 mm



SAR Test Setup Photo 24 – Closed Hotspot, Left Edge at 5 mm

FCC ID: A3LSMF731JPN	SAR EVALUATION REPORT	Approved by: Technical Manager
DUT Type: Portable Handset		APPENDIX K: Page 14 of 15



SAR Test Setup Photo 25 – Reference Lines

FCC ID: A3LSMF731JPN	SAR EVALUATION REPORT	Approved by: Technical Manager
DUT Type: Portable Handset		APPENDIX K: Page 15 of 15