



## PART 0 SAR CHAR REPORT

**Applicant Name:**

Samsung Electronics Co., Ltd.  
129, Samsung-ro, Maetan dong,  
Yeongtong-gu, Suwon-si  
Gyeonggi-do, 16677, Korea

**Date of Testing:**

07/24/22 - 08/28/22

**Test Site/Location:**

Element, Columbia, MD, USA

**Document Serial No.:**

1M2208100088-02.A3L

**FCC ID:**

**A3LSMF721U**

**APPLICANT:**

**SAMSUNG ELECTRONICS CO., LTD**

**Report Type:**

Part 0 SAR Characterization

**DUT Type:**

Portable Handset

**Model(s):**

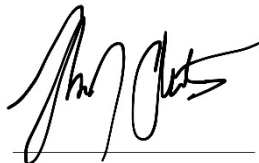
SM-F721U

**Additional Model:**

SM-F721U1

I attest to the accuracy of data. All measurements reported herein were performed by me or were made under my supervision and are correct to the best of my knowledge and belief. I assume full responsibility for the completeness of these measurements and vouch for the qualifications of all persons taking them.

Test results reported herein relate only to the item(s) tested.



RJ Ortanez  
Executive Vice President



<b>FCC ID:</b> A3LSMF721U	<b>PART 0 SAR CHAR REPORT</b>	<b>Approved by:</b> Technical Manager
<b>Document S/N:</b> 1M2208100088-02.A3L	<b>DUT Type:</b> Portable Handset	Page 1 of 11

REV 1.1  
04/08/2022

## TABLE OF CONTENTS

1	DEVICE UNDER TEST	3
1.1	Device Overview	3
1.2	Time-Averaging for SAR and Power Density	3
1.3	Nomenclature for Part 0 Report	4
1.4	Bibliography	4
2	SAR AND POWER DENSITY MEASUREMENTS	5
2.1	SAR Definition	5
2.2	SAR Measurement Procedure	5
3	SAR CHARACTERIZATION	7
3.1	DSI and SAR Determination	7
3.2	SAR Design Target	7
3.3	SAR Char	8
4	EQUIPMENT LIST	10
5	MEASUREMENT UNCERTAINTIES	11
	APPENDIX A: SAR TEST RESULTS FOR $P_{Limit}$ CALCULATIONS	1

<b>FCC ID:</b> A3LSMF721U	<b>PART 0 SAR CHAR REPORT</b>	<b>Approved by:</b> Technical Manager
<b>Document S/N:</b> 1M2208100088-02.A3L	<b>DUT Type:</b> Portable Handset	Page 2 of 11

# 1 DEVICE UNDER TEST

## 1.1 Device Overview

Band & Mode	Operating Modes	Tx Frequency
GSM/GPRS/EDGE 850	Voice/Data	824.20 - 848.80 MHz
GSM/GPRS/EDGE 1900	Voice/Data	1850.20 - 1909.80 MHz
UMTS 850	Voice/Data	826.40 - 846.60 MHz
UMTS 1750	Voice/Data	1712.4 - 1752.6 MHz
UMTS 1900	Voice/Data	1852.4 - 1907.6 MHz
LTE Band 71	Voice/Data	665.5 - 695.5 MHz
LTE Band 12	Voice/Data	699.7 - 715.3 MHz
LTE Band 13	Voice/Data	779.5 - 784.5 MHz
LTE Band 14	Voice/Data	790.5 - 795.5 MHz
LTE Band 26 (Cell)	Voice/Data	814.7 - 848.3 MHz
LTE Band 5 (Cell)	Voice/Data	824.7 - 848.3 MHz
LTE Band 66 (AWS)	Voice/Data	1710.7 - 1779.3 MHz
LTE Band 4 (AWS)	Voice/Data	1710.7 - 1754.3 MHz
LTE Band 25 (PCS)	Voice/Data	1850.7 - 1914.3 MHz
LTE Band 2 (PCS)	Voice/Data	1850.7 - 1909.3 MHz
LTE Band 30	Voice/Data	2307.5 - 2312.5 MHz
LTE Band 7	Voice/Data	2502.5 - 2567.5 MHz
LTE Band 41	Voice/Data	2498.5 - 2687.5 MHz
LTE Band 38	Voice/Data	2572.5 - 2617.5 MHz
LTE Band 48	Voice/Data	3552.5 - 3697.5 MHz
NR Band n71	Voice/Data	665.5 - 695.5 MHz
NR Band n12	Voice/Data	701.5 - 713.5 MHz
NR Band n5 (Cell)	Voice/Data	826.5 - 846.5 MHz
NR Band n66 (AWS)	Voice/Data	1712.5 - 1777.5 MHz
NR Band n25 (PCS)	Voice/Data	1852.5 - 1912.5 MHz
NR Band n2 (PCS)	Voice/Data	1852.5 - 1907.5 MHz
NR Band n30	Voice/Data	2307.5 - 2312.5 MHz
NR Band n7	Voice/Data	2502.5 - 2567.5 MHz
NR Band n41	Voice/Data	2506.02 - 2679.99 MHz
NR Band n38	Voice/Data	2575 - 2615 MHz
NR Band n48	Voice/Data	3555 - 3694.98 MHz
NR Band n77 DoD	Voice/Data	3455.01 - 3544.98 MHz
NR Band n77	Voice/Data	3705 - 3975 MHz
2.4 GHz WLAN	Voice/Data	2412 - 2462 MHz
U-NII-1	Voice/Data	5180 - 5240 MHz
U-NII-2A	Voice/Data	5260 - 5320 MHz
U-NII-2C	Voice/Data	5500 - 5720 MHz
U-NII-3	Voice/Data	5745 - 5825 MHz
U-NII-4	Voice/Data	5845 - 5885 MHz
Bluetooth	Data	2402 - 2480 MHz
NFC	Data	13.56 MHz
NR Band n258	Data	24250 - 24450 MHz; 24750 - 25250 MHz
NR Band n260	Data	37000 - 40000 MHz
NR Band n261	Data	27500 - 28350 MHz

This device uses the Qualcomm® Gen1 Smart Transmit feature to control and manage transmitting power in real time and to ensure the time-averaged RF exposure is in compliance with the FCC requirement at all times for 2G/3G/4G/5G WWAN operations. Additionally, this device supports WLAN/BT/NFC technologies, but the output power of these modems is not controlled by the Smart Transmit algorithm.

## 1.2 Time-Averaging for SAR and Power Density

This device is enabled with Qualcomm® Gen1 Smart Transmit algorithm to control and manage transmitting power in real time and to ensure that the time-averaged RF exposure from 3G/4G/5G Sub-6 NR WWAN is in

FCC ID: A3LSMF721U	PART 0 SAR CHAR REPORT	Approved by: Technical Manager
Document S/N: 1M2208100088-02.A3L	DUT Type: Portable Handset	Page 3 of 11

compliance with FCC requirements. This Part 0 report shows SAR characterization of WWAN radios for 3G/4G/5G Sub-6 NR. Characterization is achieved by determining  $P_{Limit}$  for 3G/4G/5G Sub-6 NR that corresponds to the exposure design targets after accounting for all device design related uncertainties, i.e.,  $SAR_{design\_target}$  (< FCC SAR limit) for sub-6 radio. The SAR characterization is denoted as SAR Char in this report. Section 1.3 includes a nomenclature of the specific terms used in this report.

The compliance test under the static transmission scenario and simultaneous transmission analysis are reported in Part 1 report. The validation of the time-averaging algorithm and compliance under the dynamic (time-varying) transmission scenario for WWAN technologies are reported in Part 2 report in the original filing (report SN could be found in Section 1.4 – Bibliography).

Only operations relevant to this permissive change were evaluated for compliance. Please see the original compliance evaluation in RF Exposure Technical Report S/N 1M2204080051-23.A3L (Rev1) for complete evaluation of all other operating modes. The operational description includes a description of all changed items.

### 1.3 Nomenclature for Part 0 Report

Technology	Term	Description
3G/4G/5G Sub-6 NR	$P_{limit}$	Power level that corresponds to the exposure design target ( $SAR_{design\_target}$ ) after accounting for all device design related uncertainties
	$P_{max}$	Maximum tune up output power
	$SAR_{design\_target}$	Target SAR level < FCC SAR limit after accounting for all device design related uncertainties
	$SAR Char$	Table containing $P_{limit}$ for all technologies and bands

### 1.4 Bibliography

Report Type	Report Serial Number
RF Exposure Compliance Summary Report	1M2208100088-03.A3L
RF Exposure Part 1 Test Report	1M2208100088-01.A3L
RF Exposure Part 0 Test Report	Original Filing

FCC ID: A3LSMF721U	PART 0 SAR CHAR REPORT	Approved by: Technical Manager
Document S/N: 1M2208100088-02.A3L	DUT Type: Portable Handset	Page 4 of 11

## 2 SAR AND POWER DENSITY MEASUREMENTS

### 2.1 SAR Definition

Specific Absorption Rate is defined as the time derivative (rate) of the incremental energy (dU) absorbed by (dissipated in) an incremental mass (dm) contained in a volume element (dV) of a given density (ρ). It is also defined as the rate of RF energy absorption per unit mass at a point in an absorbing body (see Equation 2-1).

**Equation 2-1**  
**SAR Mathematical Equation**

$$SAR = \frac{d}{dt} \left( \frac{dU}{dm} \right) = \frac{d}{dt} \left( \frac{dU}{\rho dv} \right)$$

SAR is expressed in units of Watts per Kilogram (W/kg).

$$SAR = \frac{\sigma \cdot E^2}{\rho}$$

where:

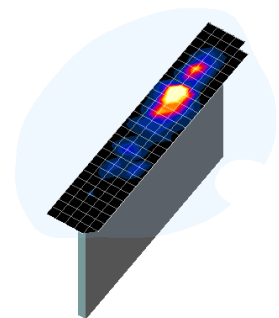
σ	=	conductivity of the tissue-simulating material (S/m)
ρ	=	mass density of the tissue-simulating material (kg/m <sup>3</sup> )
E	=	Total RMS electric field strength (V/m)

NOTE: The primary factors that control rate of energy absorption were found to be the wavelength of the incident field in relation to the dimensions and geometry of the irradiated organism, the orientation of the organism in relation to the polarity of field vectors, the presence of reflecting surfaces, and whether conductive contact is made by the organism with a ground plane.[6]

### 2.2 SAR Measurement Procedure

The evaluation was performed using the following procedure compliant to FCC KDB Publication 865664 D01v01r04 and IEEE 1528-2013:

1. The SAR distribution at the exposed side of the head or body was measured at a distance no greater than 5.0 mm from the inner surface of the shell. The area covered the entire dimension of the device-head and body interface and the horizontal grid resolution was determined per FCC KDB Publication 865664 D01v01r04 (See Table 2-1) and IEEE 1528-2013.
2. The point SAR measurement was taken at the maximum SAR region determined from Step 1 to enable the monitoring of SAR fluctuations/drifts during the 1g/10g cube evaluation. SAR at this fixed point was measured and used as a reference value.
3. Based on the area scan data, the peak of the region with maximum SAR was determined by spline interpolation. Around this point, a volume was assessed according to the measurement resolution and volume size requirements of FCC KDB Publication 865664 D01v01r04 (See Table 2-1) and IEEE 1528-2013. On the



**Figure 2-1**  
**Sample SAR Area Scan**

FCC ID: A3LSMF721U	PART 0 SAR CHAR REPORT	Approved by: Technical Manager
Document S/N: 1M2208100088-02.A3L	DUT Type: Portable Handset	Page 5 of 11

REV 1.1  
04/08/2022

basis of this data set, the spatial peak SAR value was evaluated with the following procedure (see references or the DASY manual online for more details):

- a. SAR values at the inner surface of the phantom are extrapolated from the measured values along the line away from the surface with spacing no greater than that in Table 2-1. The extrapolation was based on a least-squares algorithm. A polynomial of the fourth order was calculated through the points in the z-axis (normal to the phantom shell).
  - b. After the maximum interpolated values were calculated between the points in the cube, the SAR was averaged over the spatial volume (1g or 10g) using a 3D-Spline interpolation algorithm. The 3D-spline is composed of three one-dimensional splines with the “Not a knot” condition (in x, y, and z directions). The volume was then integrated with the trapezoidal algorithm. One thousand points (10 x 10 x 10) were obtained through interpolation, in order to calculate the averaged SAR.
  - c. All neighboring volumes were evaluated until no neighboring volume with a higher average value was found.
4. The SAR reference value, at the same location as step 2, was re-measured after the zoom scan was complete to calculate the SAR drift. If the drift deviated by more than 5%, the SAR test and drift measurements were repeated.

**Table 2-1  
Area and Zoom Scan Resolutions per FCC KDB Publication 865664 D01v01r04\***

Frequency	Maximum Area Scan Resolution (mm) ( $\Delta x_{\text{area}}, \Delta y_{\text{area}}$ )	Maximum Zoom Scan Resolution (mm) ( $\Delta x_{\text{zoom}}, \Delta y_{\text{zoom}}$ )	Maximum Zoom Scan Spatial Resolution (mm)			Minimum Zoom Scan Volume (mm) (x,y,z)
			Uniform Grid	Graded Grid		
			$\Delta z_{\text{zoom}}(n)$	$\Delta z_{\text{zoom}}(1)^*$	$\Delta z_{\text{zoom}}(n>1)^*$	
≤ 2 GHz	≤ 15	≤ 8	≤ 5	≤ 4	≤ 1.5* $\Delta z_{\text{zoom}}(n-1)$	≥ 30
2-3 GHz	≤ 12	≤ 5	≤ 5	≤ 4	≤ 1.5* $\Delta z_{\text{zoom}}(n-1)$	≥ 30
3-4 GHz	≤ 12	≤ 5	≤ 4	≤ 3	≤ 1.5* $\Delta z_{\text{zoom}}(n-1)$	≥ 28
4-5 GHz	≤ 10	≤ 4	≤ 3	≤ 2.5	≤ 1.5* $\Delta z_{\text{zoom}}(n-1)$	≥ 25
5-6 GHz	≤ 10	≤ 4	≤ 2	≤ 2	≤ 1.5* $\Delta z_{\text{zoom}}(n-1)$	≥ 22

\*Also compliant to IEEE 1528-2013 Table 6

FCC ID: A3LSMF721U	<b>PART 0 SAR CHAR REPORT</b>	<b>Approved by:</b> Technical Manager
<b>Document S/N:</b> 1M2208100088-02.A3L	<b>DUT Type:</b> Portable Handset	Page 6 of 11

### 3 SAR CHARACTERIZATION

#### 3.1 DSI and SAR Determination

This device uses different Device State Index (DSI) to configure different time averaged power levels based on certain exposure scenarios. Depending on the detection scheme implemented in the smartphone, the worst-case SAR was determined by measurements for the relevant exposure conditions for that DSI. Detailed descriptions of the detection mechanisms are included in the operational description.

When 1g SAR and 10g SAR exposure comparison is needed, the worst-case was determined from SAR normalized to 1g or 10g SAR limit.

The device state index (DSI) conditions used in Table 3-1 represent different exposure scenarios.

**Table 3-1  
DSI and Corresponding Exposure Scenarios**

Scenario	Description	SAR Test Cases
Head (DSI = 2)	<ul style="list-style-type: none"> <li>Device positioned next to head</li> <li>Receiver Active</li> </ul>	Head SAR per KDB Publication 648474 D04
Hotspot mode (DSI = 3)	<ul style="list-style-type: none"> <li>Device transmits in hotspot mode near body</li> <li>Hotspot Mode Active</li> </ul>	Hotspot SAR per KDB Publication 941225 D06
Phablet Grip (DSI=1 or 4)	<ul style="list-style-type: none"> <li>Device is held with hand and grip sensor is triggered</li> <li>Grip sensor triggered or earjack is active</li> </ul>	Phablet SAR per KDB Publication 648474 D04 & KDB Publication 616217 D04
Phablet (DSI = 0)	<ul style="list-style-type: none"> <li>Device is held with hand and grip sensor is not triggered</li> <li>Distance grip sensor not triggered</li> </ul>	Phablet SAR per KDB Publication 648474 D04 & KDB Publication 616217 D04
Body-worn (DSI = 0)	<ul style="list-style-type: none"> <li>Device being used with a body-worn accessory</li> </ul>	Body-worn SAR per KDB Publication 648474 D04

#### 3.2 SAR Design Target

*SAR\_design\_target* is determined by ensuring that it is less than FCC SAR limit after accounting for total device designed related uncertainties specified by the manufacturer (see Table 3-2).

**Table 3-2  
*SAR\_design\_target* Calculations**

<b><i>SAR_design_target</i></b>			
$SAR\_design\_target < SAR\_regulatory\_limit \times 10^{\frac{-Total\ Uncertainty}{10}}$			
<b>1g SAR (W/kg)</b>		<b>10g SAR (W/kg)</b>	
<i>Total Uncertainty</i>	1.0 dB	<i>Total Uncertainty</i>	1.0 dB
<i>SAR_regulatory_limit</i>	1.6 W/kg	<i>SAR_regulatory_limit</i>	4.0 W/kg
<i>SAR_design_target</i>	1.0 W/kg	<i>SAR_design_target</i>	2.5 W/kg

FCC ID: A3LSMF721U	PART 0 SAR CHAR REPORT	Approved by: Technical Manager
Document S/N: 1M2208100088-02.A3L	DUT Type: Portable Handset	Page 7 of 11

### 3.3 SAR Char

SAR test results corresponding to  $P_{max}$  for each antenna/technology/band/DSI can be found in Appendix A.

$P_{limit}$  is calculated by linearly scaling with the measured SAR at the  $P_{part0}$  to correspond to the  $SAR_{design\_target}$ . When  $P_{limit} < P_{max}$ ,  $P_{part0}$  was used as  $P_{limit}$  in the Smart Transmit EFS. When  $P_{limit} > P_{max}$  and  $P_{part0}=P_{max}$ , calculated  $P_{limit}$  was used in the Smart Transmit EFS. All reported SAR obtained from the  $P_{part0}$  SAR tests was less than  $SAR_{Design\_target}+ 1$  dB Uncertainty. The final  $P_{limit}$  determination for each exposure scenario corresponding to  $SAR_{design\_target}$  are shown in Table 3-3.

**Table 3-3  
 $P_{Limit}$  Determination**

Device State Index (DSI)	$P_{Limit}$ Determination Scenarios
0	The worst-case SAR exposure is determined as maximum SAR normalized to the limit (i.e. lowest $P_{limit}$ ) among: 1. Body Worn SAR 2. Extremity SAR measured at 8, 6 and 12 mm spacing for back, front, bottom respectively 3. Extremity SAR measured at 0 mm for all surfaces
1 or 4	$P_{limit}$ is calculated based on 10g Extremity SAR at 0 mm for all surfaces
2	$P_{limit}$ is calculated based on 1g Head SAR
3	$P_{limit}$ is calculated based on 1g Hotspot SAR at 10 mm

FCC ID: A3LSMF721U	PART 0 SAR CHAR REPORT	Approved by: Technical Manager
Document S/N: 1M2208100088-02.A3L	DUT Type: Portable Handset	Page 8 of 11



**Table 3-4  
SAR Characterizations**

Exposure Scenario	Body-Worn	Phablet Max	Grip Sensor Active	Head	Hotspot	Earjack	Maximum Tune-Up Output Power*
Averaging Volume	1g	10g	10g	1g	1g	10g	
Spacing	15 mm	8, 6, 12, 0 mm	0 mm	0 mm	10, 5 mm	0 mm	
DSI	0	0	1	2	3	4	
Technology/Band	Antenna						Pmax
UMTS 1750	A	25.4	N/A	22.0	19.0	N/A	24.0
LTE Band 66 (AWS)	A	25.9	N/A	35.4	18.5	N/A	23.5
LTE Band 4 (AWS)	A	25.9	N/A	35.4	18.0	N/A	23.5
LTE Band 30	B	27.1	21.0	36.7	17.0	21.0	22.0
LTE Band 7	B	26.8	20.5	34.0	17.5	20.5	23.5
LTE Band 41 (PC3)	B	24.0	24.0	32.9	18.0	24.0	22.0
LTE Band 41 (PC2)	B	24.0	24.0	32.9	18.0	24.0	22.0
NR Band n66 (AWS)	A	24.8	N/A	34.3	17.5	N/A	23.5
NR Band n30	B	28.2	21.5	35.9	18.0	21.5	22.5
NR Band n7	B	27.9	20.5	34.7	19.5	20.5	23.5
NR Band n41 (PC3)	C	10.0	N/A	10.0	10.0	N/A	13.5
NR Band n41 (PC2)	C	10.0	N/A	10.0	10.0	N/A	15.5

**Notes:**

1. For all modes/bands, when Hotspot Mode (DSI=3) and Extremity sensor (DSI=1) are triggered at the same time, DSI=3 takes priority, thus the  $P_{limit}$  for DSI=3 is set to be less or equal to  $P_{limit}$  for DSI=1
2. When  $P_{max} < P_{limit}$ , the DUT will operate at a power level up to  $P_{max}$ .
3.  $P_{limit}$  for DSI=1 and DSI =4 are the same.
4. For all modes/bands, when RCV is active, DSI=2 takes priority over all levels.

FCC ID: A3LSMF721U	PART 0 SAR CHAR REPORT	Approved by: Technical Manager
Document S/N: 1M2208100088-02.A3L	DUT Type: Portable Handset	Page 9 of 11

# 4 EQUIPMENT LIST

## For SAR measurements

Manufacturer	Model	Description	Cal Date	Cal Interval	Cal Due	Serial Number
Agilent	E4404B	Spectrum Analyzer	N/A	N/A	N/A	MY45113242
Agilent	E4438C	ESG Vector Signal Generator	5/10/2022	Annual	5/10/2023	MY42082659
Agilent	E4438C	ESG Vector Signal Generator	2/14/2022	Annual	2/14/2023	MY42082385
Agilent	N5182A	MXG Vector Signal Generator	6/21/2022	Annual	6/21/2023	MY47420651
Agilent	8753E5	S-Parameter Vector Network Analyzer	2/11/2022	Annual	2/11/2023	MY40003841
Agilent	8753E5	S-Parameter Vector Network Analyzer	12/17/2021	Annual	12/17/2022	MY40000670
Agilent	E5515C	Wireless Communications Test Set	5/12/2022	Annual	5/12/2023	GB43304278
Agilent	E5515C	Wireless Communications Test Set	1/14/2020	Triennial	1/14/2023	GB43304447
Agilent	N4010A	Wireless Connectivity Test Set	N/A	N/A	N/A	GB46170464
Amplifier Research	1551G6	Amplifier	CBT	N/A	CBT	433974
Amplifier Research	1551G6	Amplifier	9/15/2021	Annual	9/15/2022	433971
Rohde & Schwarz	NRX	Power Meter	11/22/2021	Annual	11/22/2022	102583
Anritsu	ML2496A	Power Meter	3/31/2022	Annual	3/31/2023	1138001
Anritsu	MA2411B	Pulse Power Sensor	4/29/2022	Annual	4/29/2023	1207470
Anritsu	MA2411B	Pulse Power Sensor	9/21/2021	Annual	9/21/2022	1339008
Anritsu	MT8821C	Radio Communication Analyzer MT8821C	3/31/2022	Annual	3/31/2023	6201664756
Anritsu	MT8821C	Radio Communication Analyzer MT8821C	9/26/2021	Annual	9/26/2022	6201524637
Anritsu	MT8821C	Radio Communication Analyzer MT8821C	8/10/2021	Annual	8/10/2022	6262150000
Anritsu	MT8000A	Radio Communication Test Station	8/2/2021	Annual	8/2/2022	6272337438
Anritsu	MT8000A	Radio Communication Test Station	3/30/2022	Annual	3/30/2023	6261914237
Anritsu	MT8000A	Radio Communication Test Station	4/20/2022	Annual	4/20/2023	6262036828
Anritsu	MA24106A	USB Power Sensor	6/1/2022	Annual	6/1/2023	1349514
Anritsu	MA24106A	USB Power Sensor	3/22/2022	Annual	3/22/2023	2205501
Control Company	4353	Long Stem Thermometer	10/28/2020	Biennial	10/28/2022	200670623
Control Company	4353	Long Stem Thermometer	10/28/2020	Biennial	10/28/2022	200670633
Control Company	4353	Long Stem Thermometer	10/28/2020	Biennial	10/28/2022	200670635
Control Company	4040	Therm./ Clock/ Humidity Monitor	1/21/2022	Annual	1/21/2023	160574418
Control Company	4040	Therm./ Clock/ Humidity Monitor	3/12/2021	Biennial	3/12/2023	210202100
Mitutoyo	500-196-30	CD-6° ASX 6inch Digital Caliper	2/16/2022	Triennial	2/16/2025	A20238413
Keysight Technologies	N6705B	DC Power Analyzer	5/5/2021	Triennial	5/5/2024	MYS30040059
MCL	BW-N6W5+	6dB Attenuator	CBT	N/A	CBT	1139
Mini-Circuits	VLF-6000+	Low Pass Filter DC to 6000 MHz	CBT	N/A	CBT	N/A
Mini-Circuits	BW-N20W5+	DC to 18 GHz Precision Fixed 20 dB Attenuator	CBT	N/A	CBT	N/A
Mini-Circuits	NLP-1200+	Low Pass Filter DC to 1000 MHz	CBT	N/A	CBT	N/A
Mini-Circuits	NLP-2950+	Low Pass Filter DC to 2700 MHz	CBT	N/A	CBT	N/A
Mini-Circuits	BW-N20W5	Power Attenuator	CBT	N/A	CBT	1236
Mini-Circuits	ZUDC10-83-5+	Directional Coupler	CBT	N/A	CBT	2050
Mini-Circuits	ZUDC10-83-5+	Directional Coupler	9/15/2021	Annual	9/15/2022	2111
Narda	4772-3	Attenuator (3dB)	CBT	N/A	CBT	9406
Narda	BW-S3W2	Attenuator (3dB)	CBT	N/A	CBT	120
Pasternack	PE5011-1	Torque Wrench	12/21/2021	Biennial	12/21/2023	82475
Huber + Suhner	742-0-0-21	Torque Wrench	4/6/2022	Biennial	4/6/2024	83881
Rohde & Schwarz	CMW500	Wideband Radio Communication Tester	4/18/2022	Annual	4/18/2023	128633
Rohde & Schwarz	CMW500	Wideband Radio Communication Tester	3/29/2022	Annual	3/29/2023	171075
Rohde & Schwarz	CMW500	Wideband Radio Communication Tester	4/8/2022	Annual	4/8/2023	162125
Rohde & Schwarz	CMW500	Wideband Radio Communication Tester	4/7/2022	Annual	4/7/2023	167283
SPEAG	DAK-3.5	Dielectric Assessment Kit	1/6/2022	Annual	1/6/2023	1278
SPEAG	DAK-3.5	Dielectric Assessment Kit	10/20/2021	Annual	10/20/2022	1091
SPEAG	DAKS-3.5	Portable Dielectric Assessment Kit	8/18/2021	Annual	8/18/2022	1041
SPEAG	DAK-3.5	Dielectric Assessment Kit	1/6/2022	Annual	1/6/2023	1278
SPEAG	MAIA	Modulation and Audio Interference Analyzer	N/A	N/A	N/A	1379
SPEAG	D1765V2	1750 MHz SAR Dipole	5/14/2021	Biennial	5/14/2023	1008
SPEAG	D1750V2	1750 MHz SAR Dipole	1/18/2022	Annual	1/18/2023	1148
SPEAG	D1750V2	1750 MHz SAR Dipole	10/22/2021	Annual	10/22/2022	1150
SPEAG	D2300V2	2300 MHz SAR Dipole	8/18/2021	Annual	8/18/2022	1073
SPEAG	D2300V2	2300 MHz SAR Dipole	6/3/2021	Biennial	6/3/2023	1116
SPEAG	D2450V2	2450 MHz SAR Dipole	8/18/2021	Annual	8/18/2022	719
SPEAG	D2450V2	2450 MHz SAR Dipole	11/25/2021	Annual	11/25/2022	981
SPEAG	D2450V2	2450 MHz SAR Dipole	9/20/2020	Biennial	9/20/2022	797
SPEAG	D2600V2	2600 MHz SAR Dipole	4/14/2021	Biennial	4/14/2023	1004
SPEAG	D2600V2	2600 MHz SAR Dipole	11/12/2019	Triennial	11/12/2022	1071
SPEAG	D2300V2	2300 MHz SAR Dipole	11/10/2020	Biennial	11/10/2022	1064
SPEAG	DAE4	Dasy Data Acquisition Electronics	8/3/2021	Annual	8/3/2022	1681
SPEAG	DAE4	Dasy Data Acquisition Electronics	11/10/2021	Annual	11/10/2022	1323
SPEAG	DAE4	Dasy Data Acquisition Electronics	3/16/2022	Annual	3/16/2023	1272
SPEAG	DAE4	Dasy Data Acquisition Electronics	5/10/2022	Annual	5/10/2023	1678
SPEAG	DAE4	Dasy Data Acquisition Electronics	6/14/2022	Annual	6/14/2023	1334
SPEAG	DAE4	Dasy Data Acquisition Electronics	2/22/2022	Annual	2/22/2023	665
SPEAG	DAE4	Dasy Data Acquisition Electronics	1/14/2022	Annual	1/14/2023	1558
SPEAG	DAE4	Dasy Data Acquisition Electronics	2/23/2022	Annual	2/23/2023	1415
SPEAG	EX3DV4	SAR Probe	8/5/2021	Annual	8/5/2022	7670
SPEAG	EX3DV4	SAR Probe	6/16/2022	Annual	6/16/2023	7409
SPEAG	EX3DV4	SAR Probe	11/16/2021	Annual	11/16/2022	7538
SPEAG	EX3DV4	SAR Probe	2/22/2022	Annual	2/22/2023	7417
SPEAG	EX3DV4	SAR Probe	5/18/2022	Annual	5/18/2023	7660
SPEAG	EX3DV4	SAR Probe	3/21/2022	Annual	3/21/2023	7527
SPEAG	EX3DV4	SAR Probe	1/19/2022	Annual	1/19/2023	7570
SPEAG	EX3DV4	SAR Probe	2/21/2022	Annual	2/21/2023	7488

Note:

1. CBT (Calibrated Before Testing). Prior to testing, the measurement paths containing a cable, amplifier, attenuator, coupler or filter were connected to a calibrated source (i.e. a signal generator) to determine the losses of the measurement path. The power meter offset was then adjusted to compensate for the measurement system losses. This level offset is stored within the power meter before measurements are made. This calibration verification procedure applies to the system verification and output power measurements. The calibrated reading is then taken directly from the power meter after compensation of the losses for all final power measurements.
2. Each equipment item was used solely within its respective calibration period.

FCC ID: A3LSMF721U	PART 0 SAR CHAR REPORT	Approved by: Technical Manager
Document S/N: 1M2208100088-02.A3L	DUT Type: Portable Handset	Page 10 of 11

## 5 MEASUREMENT UNCERTAINTIES

### For SAR Measurements

a	c	d	e= f(d,k)	f	g	h = c x f/e	i = c x g/e	k
Uncertainty Component	Tol. (± %)	Prob. Dist.	Div.	c <sub>i</sub> 1gm	c <sub>i</sub> 10 gms	1gm u <sub>i</sub> (± %)	10gms u <sub>i</sub> (± %)	v <sub>i</sub>
<b>Measurement System</b>								
Probe Calibration	6.55	N	1	1.0	1.0	6.6	6.6	∞
Axial Isotropy	0.25	N	1	0.7	0.7	0.2	0.2	∞
Hemishperical Isotropy	1.3	N	1	0.7	0.7	0.9	0.9	∞
Boundary Effect	2.0	R	1.73	1.0	1.0	1.2	1.2	∞
Linearity	0.3	N	1	1.0	1.0	0.3	0.3	∞
System Detection Limits	0.25	R	1.73	1.0	1.0	0.1	0.1	∞
Readout Electronics	0.3	N	1	1.0	1.0	0.3	0.3	∞
Response Time	0.8	R	1.73	1.0	1.0	0.5	0.5	∞
Integration Time	2.6	R	1.73	1.0	1.0	1.5	1.5	∞
RF Ambient Conditions - Noise	3.0	R	1.73	1.0	1.0	1.7	1.7	∞
RF Ambient Conditions - Reflections	3.0	R	1.73	1.0	1.0	1.7	1.7	∞
Probe Positioner Mechanical Tolerance	0.4	R	1.73	1.0	1.0	0.2	0.2	∞
Probe Positioning w/ respect to Phantom	6.7	R	1.73	1.0	1.0	3.9	3.9	∞
Extrapolation, Interpolation & Integration algorithms for Max. SAR Evaluation	4.0	R	1.73	1.0	1.0	2.3	2.3	∞
<b>Test Sample Related</b>								
Test Sample Positioning	2.7	N	1	1.0	1.0	2.7	2.7	35
Device Holder Uncertainty	1.67	N	1	1.0	1.0	1.7	1.7	5
Output Power Variation - SAR drift measurement	5.0	R	1.73	1.0	1.0	2.9	2.9	∞
SAR Scaling	0.0	R	1.73	1.0	1.0	0.0	0.0	∞
<b>Phantom &amp; Tissue Parameters</b>								
Phantom Uncertainty (Shape & Thickness tolerances)	7.6	R	1.73	1.0	1.0	4.4	4.4	∞
Liquid Conductivity - measurement uncertainty	4.2	N	1	0.78	0.71	3.3	3.0	10
Liquid Permittivity - measurement uncertainty	4.1	N	1	0.23	0.26	1.0	1.1	10
Liquid Conductivity - Temperature Uncertainty	3.4	R	1.73	0.78	0.71	1.5	1.4	∞
Liquid Permittivity - Temperature Uncertainty	0.6	R	1.73	0.23	0.26	0.1	0.1	∞
Liquid Conductivity - deviation from target values	5.0	R	1.73	0.64	0.43	1.8	1.2	∞
Liquid Permittivity - deviation from target values	5.0	R	1.73	0.60	0.49	1.7	1.4	∞
<b>Combined Standard Uncertainty (k=1)</b>	RSS					11.5	11.3	60
<b>Expanded Uncertainty</b> (95% CONFIDENCE LEVEL)	k=2					23.0	22.6	

FCC ID: A3LSMF721U	<b>PART 0 SAR CHAR REPORT</b>	Approved by: Technical Manager
Document S/N: 1M2208100088-02.A3L	DUT Type: Portable Handset	Page 11 of 11