




17. TEST PHOTOGRAPHS

See following Attached Pages for setup photographs.

FCC ID: A3LSMF711U1	 PCTEST Proud to be part of 	HAC (RF EMISSIONS) TEST REPORT		Approved by: Quality Manager
Filename: 1M2112280172-03.A3L	Test Dates: 12/27/2021	DUT Type: Portable Handset	Page 48 of 50	

© 2022 PCTEST

REV 3.5.M

6/22/2020

© 2022 PCTEST All rights reserved. Unless otherwise specified, no part of this report may be reproduced or utilized in any part, form or by any means, electronic or mechanical, including photocopying and microfilm, without permission in writing from PCTEST. If you have any questions about this international copyright or have an enquiry about obtaining additional rights to this report or assembly of contents thereof, please contact INFO@PCTEST.COM.

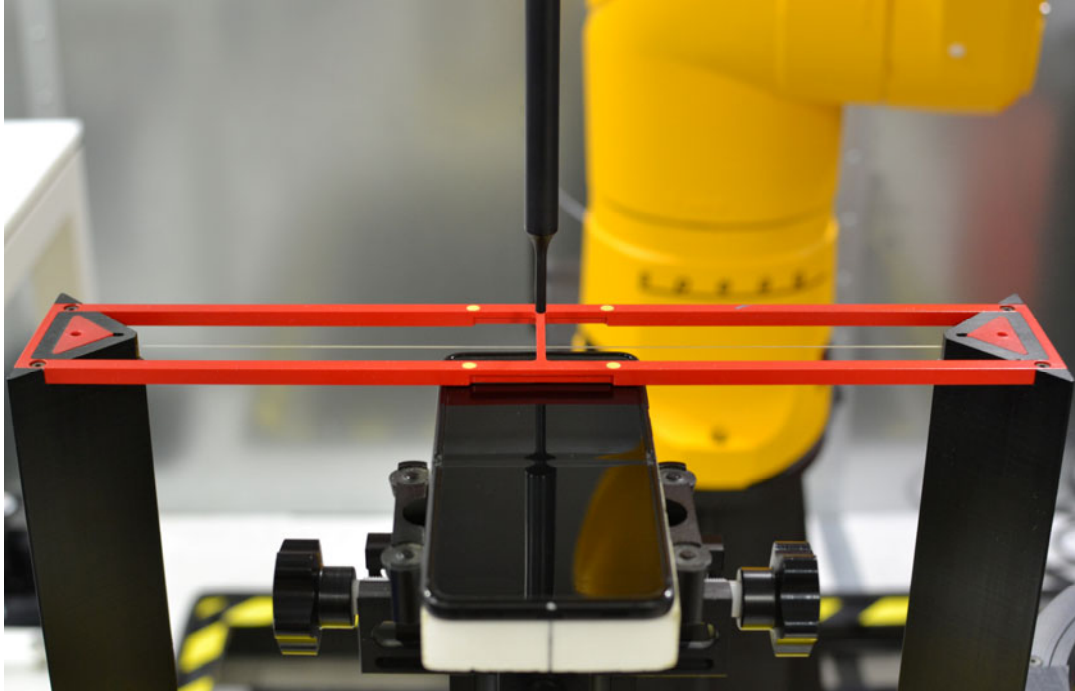


Figure 17-1
Ear Reference Point HAC Phantom Alignment

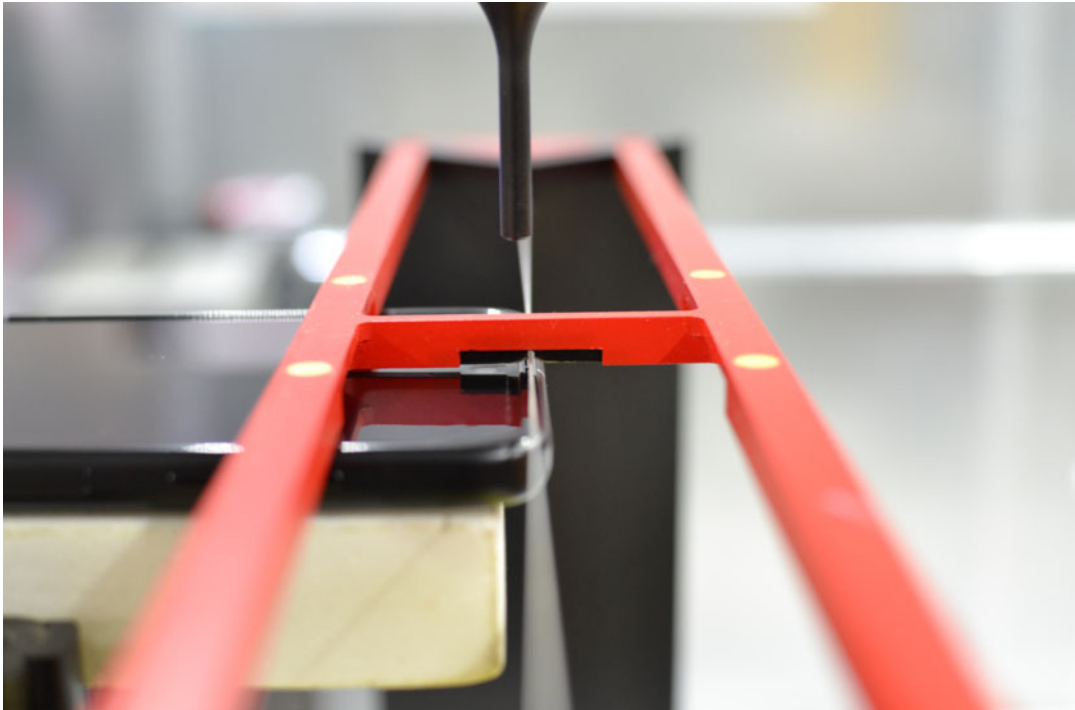




Figure 17-2
HAC Phantom Plane Alignment

FCC ID: A3LSMF711U1	 PCTEST <small>Proud to be part of</small>	HAC (RF EMISSIONS) TEST REPORT	 Approved by: Quality Manager
Filename: 1M2112280172-03.A3L	Test Dates: 12/27/2021	DUT Type: Portable Handset	Page 49 of 50

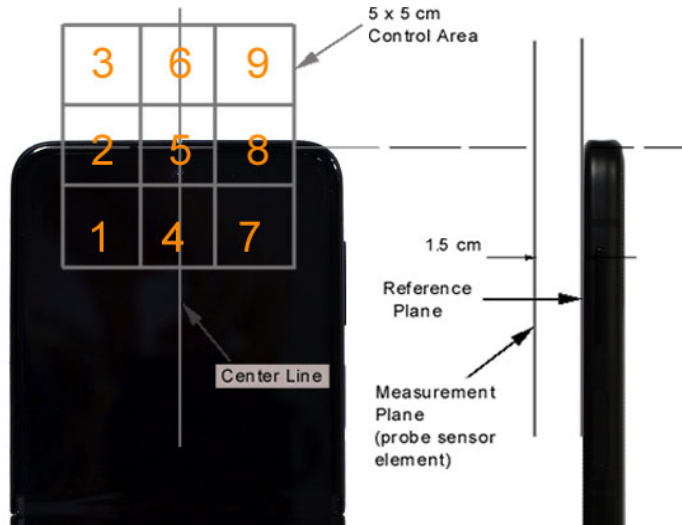


Figure 17-3 5x5 Scan grid above WD
(Acoustic Centered Scan Area pictured)

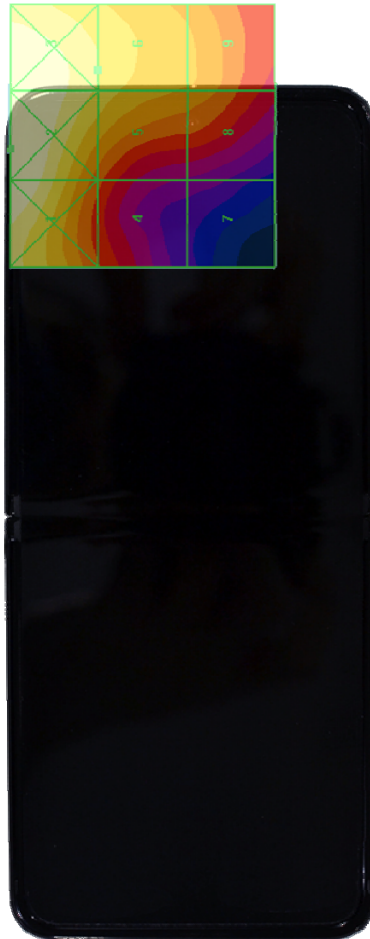


Figure 17-4 E-Field WD Scan overlay
(T-Coil Centered Scan Area pictured)

FCC ID: A3LSMF711U1	PCTEST Proud to be part of	HAC (RF EMISSIONS) TEST REPORT	SAMSUNG	Approved by: Quality Manager
Filename: 1M2112280172-03.A3L	Test Dates: 12/27/2021	DUT Type: Portable Handset	Page 50 of 50	