

APPENDIX B: POWER DENSITY SYSTEM VERIFICATION PLOTS

PCTEST

Date: 08/16/2021

30 GHz System Verification

Device Under Test Properties

| | |
|----------------------------|---------------|
| DUT | Serial Number |
| 30 GHz Verification Source | 1035 |

Exposure Conditions

| Phantom Section | Position | Test Distance [mm] | Band | Frequency [MHz] |
|-----------------|----------|--------------------|-----------------|-----------------|
| 5G | FRONT | 5.55 | Validation band | 30000.00 |

Hardware Setup

| | |
|------------------------------|---------------------------|
| Probe, Calibration Date | DAE, Calibration Date |
| EUmmWV3 - SN9389, 11/16/2020 | DAE4ip SN1638, 11/17/2020 |

Software Setup

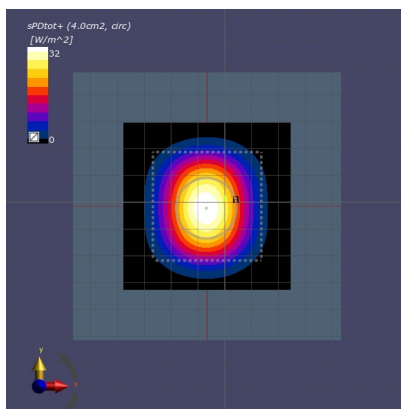
| | |
|----------------------|------------------|
| Software | Software Version |
| cDASY6 Module mmWave | 2.4.2.62 |

Scans Setup

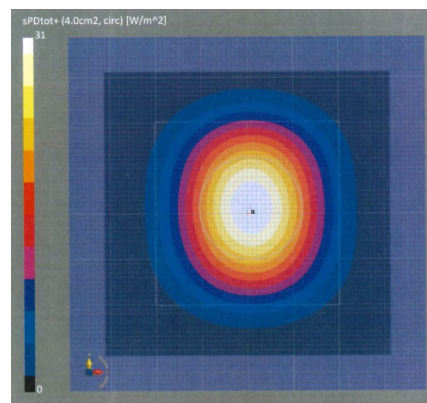
| | |
|---------------------|-------------|
| Scan Type | 5G Scan |
| Grid Extents [mm] | 60.0 x 60.0 |
| Grid Steps [lambda] | 0.25 x 0.25 |
| Sensor Surface [mm] | 5.55 |

Measurement Results

| | |
|---|---------|
| Scan Type | 5G Scan |
| Avg. Area [cm ²] | 4.00 |
| pS _{tot} avg [W/m ²] | 32.0 |
| pS _n avg [W/m ²] | 31.6 |
| E _{peak} [V/m] | 127.0 |
| Deviation (dB) | 0.14 |



30 GHz System Verification



Calibration Certificate

PCTEST

Date: 08/30/2021

30 GHz System Verification

Device Under Test Properties

| | |
|----------------------------|---------------|
| DUT | Serial Number |
| 30 GHz Verification Source | 1045 |

Exposure Conditions

| Phantom Section | Position | Test Distance [mm] | Band | Frequency [MHz] |
|-----------------|----------|--------------------|-----------------|-----------------|
| 5G | FRONT | 5.55 | Validation band | 30000.00 |

Hardware Setup

| | |
|-----------------------------|---------------------------|
| Probe, Calibration Date | DAE, Calibration Date |
| EUmWV4 - SN9523, 01/11/2021 | DAE4ip SN1639, 11/17/2020 |

Software Setup

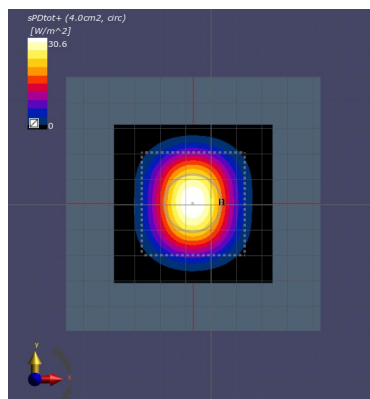
| | |
|----------------------|------------------|
| Software | Software Version |
| cDASY6 Module mmWave | 2.4.2.62 |

Scans Setup

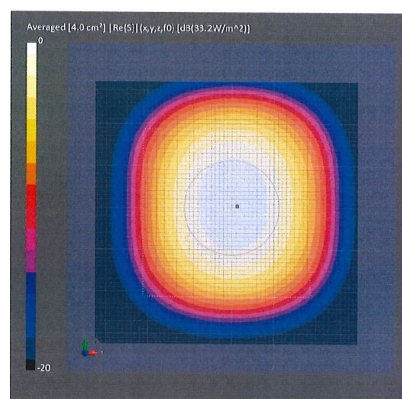
| | |
|---------------------|-------------|
| Scan Type | 5G Scan |
| Grid Extents [mm] | 60.0 x 60.0 |
| Grid Steps [lambda] | 0.25 x 0.25 |
| Sensor Surface [mm] | 5.55 |

Measurement Results

| | |
|---|---------|
| Scan Type | 5G Scan |
| Avg. Area [cm ²] | 4.00 |
| pS _{tot} avg [W/m ²] | 30.6 |
| pS _n avg [W/m ²] | 30.2 |
| E _{peak} [V/m] | 126.0 |
| Deviation (dB) | -0.35 |



30 GHz System Verification



Calibration Certificate