

APPENDIX A: POWER DENSITY TEST PLOTS

PCTEST

Date: 08/09/2021

Antenna K; Beam 21; V; Low Ch.; CW; Closed

Device Under Test Properties

DUT	Serial Number	DUT Type
A3LSMF711U1	JH21435M	Portable Handset

Exposure Conditions

Phantom Section	Position	Test Distance [mm]	Band	Frequency [MHz]
5G	LEFT	2.00	n261	27550.10

Hardware Setup

Probe, Calibration Date	DAE, Calibration Date
EUmmWV3 - SN9389, 11/16/2020	DAE4ip SN1638, 11/17/2020

Software Setup

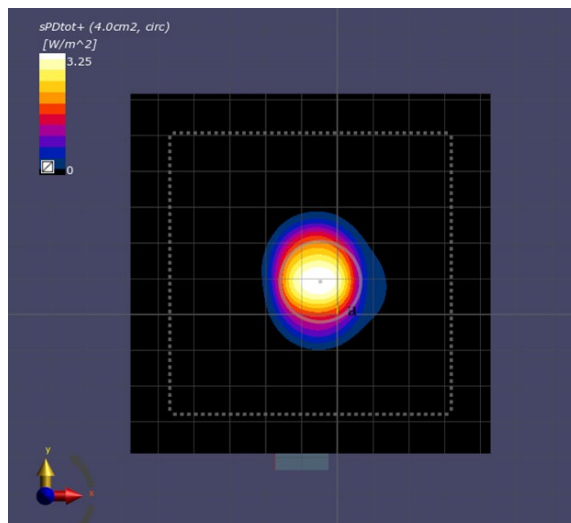
Software	Software Version
cDASY6 Module mmWave	2.4.2.62

Scans Setup

Scan Type	5G Scan
Grid Extents [mm]	100x100
Grid Steps [lambda]	0.25 x 0.25
Sensor Surface [mm]	2.0

Measurement Results

Scan Type	5G Scan
Avg. Area [cm ²]	4.00
pS _{tot} avg [W/m ²]	3.25
pS _n avg [W/m ²]	3.02
E _{peak} [V/m]	81.2
Power Drift [dB]	-0.03



PCTEST

Date: 08/18/2021

Antenna L; Beam 161; H; Low Ch.; CW; Closed

Device Under Test Properties

DUT	Serial Number	DUT Type
A3LSMF711U1	JH21435M	Portable Handset

Exposure Conditions

Phantom Section	Position	Test Distance [mm]	Band	Frequency [MHz]
5G	FRONT	2.00	n261	27550.10

Hardware Setup

Probe, Calibration Date	DAE, Calibration Date
EUmmWV3 - SN9389, 11/16/2020	DAE4ip SN1638, 11/17/2020

Software Setup

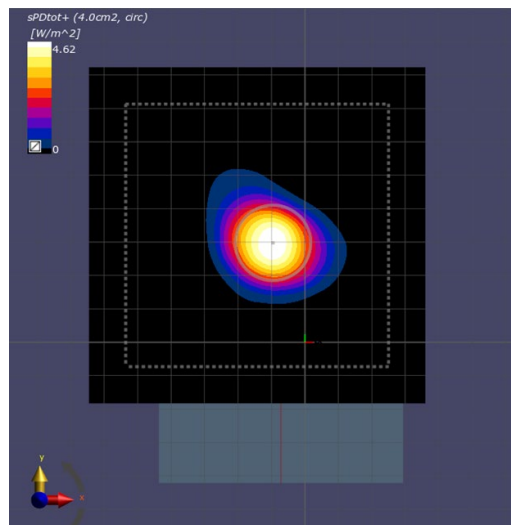
Software	Software Version
cDASY6 Module mmWave	2.4.2.62

Scans Setup

Scan Type	5G Scan
Grid Extents [mm]	100x100
Grid Steps [lambda]	0.25 x 0.25
Sensor Surface [mm]	2.0

Measurement Results

Scan Type	5G Scan
Avg. Area [cm ²]	4.00
pS _{tot} avg [W/m ²]	4.62
pS _n avg [W/m ²]	3.13
E _{peak} [V/m]	78.1
Power Drift [dB]	0.13



PCTEST

Date: 08/20/2021

Antenna K; Beam 29; V; Low Ch.; CW; Open

Device Under Test Properties

DUT	Serial Number	DUT Type
A3LSMF711U1	JH21435M	Portable Handset

Exposure Conditions

Phantom Section	Position	Test Distance [mm]	Band	Frequency [MHz]
5G	LEFT	2.00	n261	27550.10

Hardware Setup

Probe, Calibration Date	DAE, Calibration Date
EUmWV3 - SN9389, 11/16/2020	DAE4ip SN1638, 11/17/2020

Software Setup

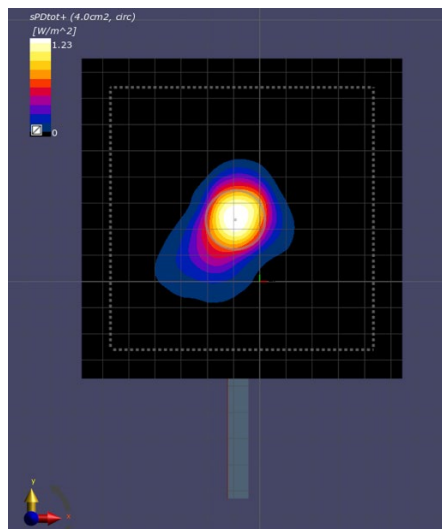
Software	Software Version
cDASY6 Module mmWave	2.4.2.62

Scans Setup

Scan Type	5G Scan
Grid Extents [mm]	120x120
Grid Steps [lambda]	0.25 x 0.25
Sensor Surface [mm]	2.0

Measurement Results

Scan Type	5G Scan
Avg. Area [cm ²]	4.00
pS _{tot} avg [W/m ²]	1.23
pS _n avg [W/m ²]	0.717
E _{peak} [V/m]	49.5
Power Drift [dB]	0.06



PCTEST

Date: 08/16/2021

Antenna L; Beam 153; H; Low Ch.; CW; Open

Device Under Test Properties

DUT	Serial Number	DUT Type
A3LSMF711U1	JH20713M	Portable Handset

Exposure Conditions

Phantom Section	Position	Test Distance [mm]	Band	Frequency [MHz]
5G	BACK	2.00	n261	27550.10

Hardware Setup

Probe, Calibration Date	DAE, Calibration Date
EUmmWV4 - SN9523, 01/11/2021	DAE4ip SN1639, 11/17/2020

Software Setup

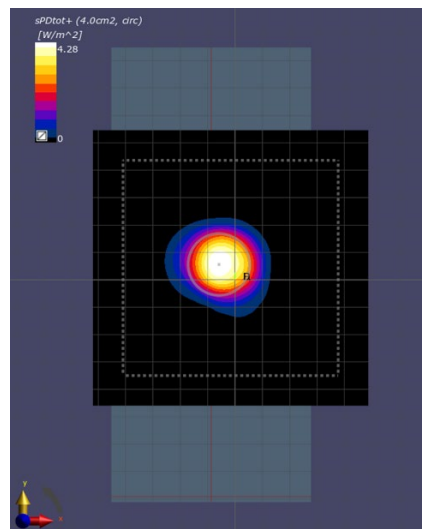
Software	Software Version
cDASY6 Module mmWave	2.4.2.62

Scans Setup

Scan Type	5G Scan
Grid Extents [mm]	100x100
Grid Steps [lambda]	0.25 x 0.25
Sensor Surface [mm]	2.0

Measurement Results

Scan Type	5G Scan
Avg. Area [cm ²]	4.00
pS _{tot} avg [W/m ²]	4.28
pS _n avg [W/m ²]	3.14
E _{peak} [V/m]	80.3
Power Drift [dB]	-0.12



PCTEST

Date: 08/11/2021

Antenna K; Beam 162; H; High Ch.; CW; Closed

Device Under Test Properties

DUT	Serial Number	DUT Type
A3LSMF711U1	JH21435M	Portable Handset

Exposure Conditions

Phantom Section	Position	Test Distance [mm]	Band	Frequency [MHz]
5G	LEFT	2.00	n260	39949.90

Hardware Setup

Probe, Calibration Date	DAE, Calibration Date
EUMmWV3 - SN9389, 11/16/2020	DAE4ip SN1638, 11/17/2020

Software Setup

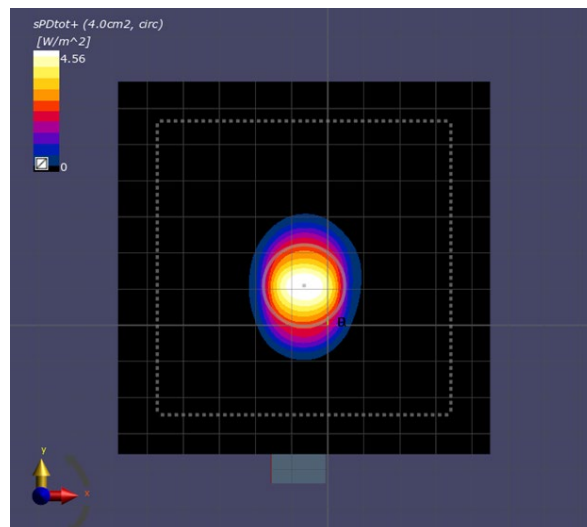
Software	Software Version
cDASY6 Module mmWave	2.4.2.62

Scans Setup

Scan Type	5G Scan
Grid Extents [mm]	100x100
Grid Steps [lambda]	0.25 x 0.25
Sensor Surface [mm]	2.0

Measurement Results

Scan Type	5G Scan
Avg. Area [cm ²]	4.00
pS _{tot} avg [W/m ²]	4.56
pS _n avg [W/m ²]	4.17
E _{peak} [V/m]	93.9
Power Drift [dB]	0.20



PCTEST

Date: 08/16/2021

Antenna L; Beam 157; H; Mid Ch.; CW; Closed

Device Under Test Properties

DUT	Serial Number	DUT Type
A3LSMF711U1	JH21435M	Portable Handset

Exposure Conditions

Phantom Section	Position	Test Distance [mm]	Band	Frequency [MHz]
5G	FRONT	2.00	n260	38500.00

Hardware Setup

Probe, Calibration Date	DAE, Calibration Date
EUmmWV3 - SN9389, 11/16/2020	DAE4ip SN1638, 11/17/2020

Software Setup

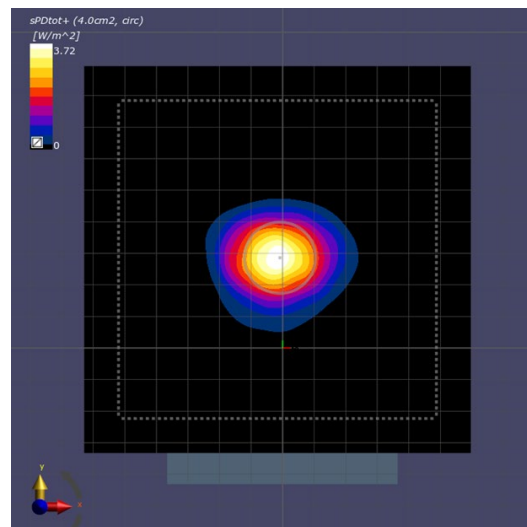
Software	Software Version
cDASY6 Module mmWave	2.4.2.62

Scans Setup

Scan Type	5G Scan
Grid Extents [mm]	120x120
Grid Steps [lambda]	0.25 x 0.25
Sensor Surface [mm]	2.0

Measurement Results

Scan Type	5G Scan
Avg. Area [cm ²]	4.00
pS _{tot} avg [W/m ²]	3.72
pS _n avg [W/m ²]	2.91
E _{peak} [V/m]	79.9
Power Drift [dB]	0.03



PCTEST

Date: 08/20/2021

Antenna K; Beam 162; H; High Ch.; CW; Open

Device Under Test Properties

DUT	Serial Number	DUT Type
A3LSMF711U1	JH21435M	Portable Handset

Exposure Conditions

Phantom Section	Position	Test Distance [mm]	Band	Frequency [MHz]
5G	LEFT	2.00	n260	39949.90

Hardware Setup

Probe, Calibration Date	DAE, Calibration Date
EUmWV3 - SN9389, 11/16/2020	DAE4ip SN1638, 11/17/2020

Software Setup

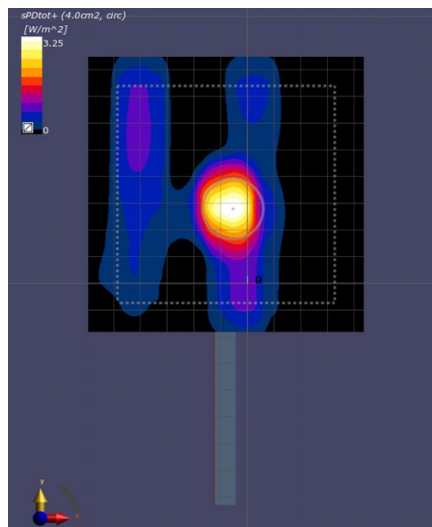
Software	Software Version
cDASY6 Module mmWave	2.4.2.62

Scans Setup

Scan Type	5G Scan
Grid Extents [mm]	100x100
Grid Steps [lambda]	0.25 x 0.25
Sensor Surface [mm]	2.0

Measurement Results

Scan Type	5G Scan
Avg. Area [cm ²]	4.00
pS _{tot} avg [W/m ²]	3.25
pS _n avg [W/m ²]	2.73
E _{peak} [V/m]	95.2
Power Drift [dB]	0.20



PCTEST

Date: 08/20/2021

Antenna L; Beam 39; V; Mid Ch.; CW; Open

Device Under Test Properties

DUT	Serial Number	DUT Type
A3LSMF711U1	JH20713M	Portable Handset

Exposure Conditions

Phantom Section	Position	Test Distance [mm]	Band	Frequency [MHz]
5G	BACK	2.00	n260	38500.00

Hardware Setup

Probe, Calibration Date	DAE, Calibration Date
EUmmWV4 - SN9523, 01/11/2021	DAE4ip SN1639, 11/17/2020

Software Setup

Software	Software Version
cDASY6 Module mmWave	2.4.2.62

Scans Setup

Scan Type	5G Scan
Grid Extents [mm]	100x100
Grid Steps [lambda]	0.25 x 0.25
Sensor Surface [mm]	2.0

Measurement Results

Scan Type	5G Scan
Avg. Area [cm ²]	4.00
pS _{tot} avg [W/m ²]	3.17
pS _n avg [W/m ²]	2.14
E _{peak} [V/m]	76.2
Power Drift [dB]	0.06

