

APPENDIX B: POWER DENSITY SYSTEM VERIFICATION PLOTS

PCTEST

Date: 05/10/21

30 GHz System Verification

Device Under Test Properties

DUT	Serial Number
30 GHz Verification Source	1035

Exposure Conditions

Phantom Section	Position	Test Distance [mm]	Band	Frequency [MHz]
5G	FRONT	5.55	Validation band	30000.00

Hardware Setup

Probe, Calibration Date	DAE, Calibration Date
EUmmWV3 - SN9389, 11/16/20	DAE4 SN1638, 11/17/20

Software Setup

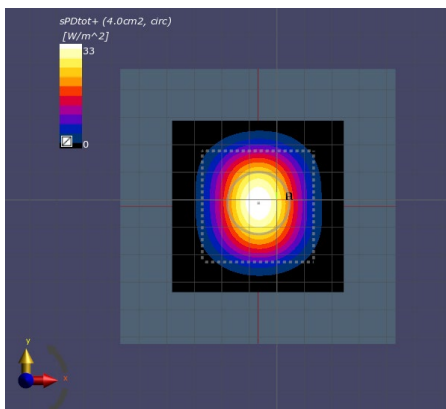
Software	Software Version
cDASY6 Module mmWave	2.2.0.76

Scans Setup

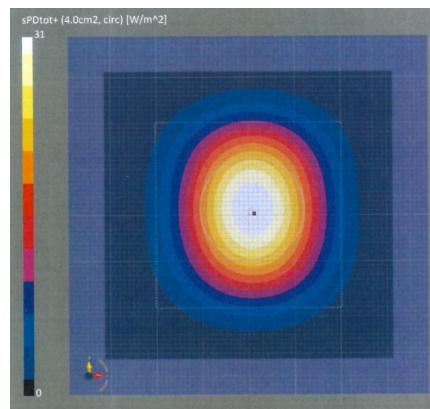
Scan Type	5G Scan
Grid Extents [mm]	60.0 x 60.0
Grid Steps [lambda]	0.25 x 0.25
Sensor Surface [mm]	5.55

Measurement Results

Scan Type	5G Scan
Avg. Area [cm²]	4.00
pS_{tot} avg [W/m²]	33.0
pS_n avg [W/m²]	32.5
E_{peak} [V/m]	129.0
Deviation (dB)	0.27



30GHz System Verification



Calibration Certificate

PCTEST

Date: 05/12/21

30 GHz System Verification

Device Under Test Properties

DUT	Serial Number
30 GHz Verification Source	1045

Exposure Conditions

Phantom Section	Position	Test Distance [mm]	Band	Frequency [MHz]
5G	FRONT	5.55	Validation band	30000.00

Hardware Setup

Probe, Calibration Date	DAE, Calibration Date
EUmmWV3 - SN9523, 01/11/21	DAE4 SN1639, 11/17/20

Software Setup

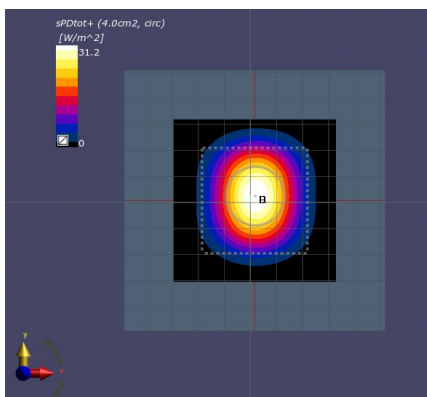
Software	Software Version
cDASY6 Module mmWave	2.2.0.76

Scans Setup

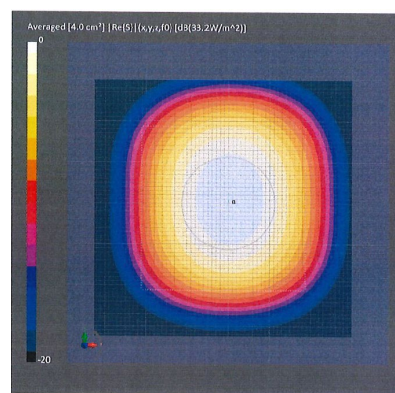
Scan Type	5G Scan
Grid Extents [mm]	60.0 x 60.0
Grid Steps [lambda]	0.25 x 0.25
Sensor Surface [mm]	5.55

Measurement Results

Scan Type	5G Scan
Avg. Area [cm ²]	4.00
pS _{tot} avg [W/m ²]	31.2
pS _n avg [W/m ²]	30.8
E _{peak} [V/m]	126.0
Deviation (dB)	-0.27



30GHz System Verification



Calibration Certificate