

APPENDIX A: POWER DENSITY TEST PLOTS

PCTEST

Date: 05/07/2021

Antenna K; Beam 21; V; Low Ch.; CW; Closed

Device Under Test Properties

DUT	Serial Number	DUT Type
A3LSMF711U	UD10832M	Portable Handset

Exposure Conditions

Phantom Section	Position	Test Distance [mm]	Band	Frequency [MHz]
5G	LEFT	2.00	n261	27550.10

Hardware Setup

Probe, Calibration Date	DAE, Calibration Date
EUmmWV3 - SN9389, 11/16/2020	DAE4 SN1638, 11/17/2020

Software Setup

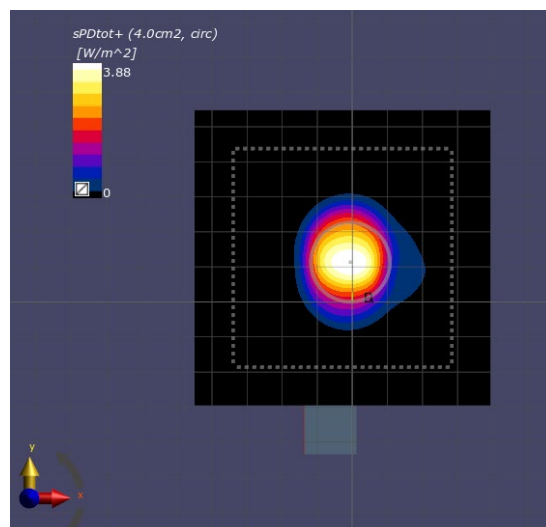
Software	Software Version
cDASY6 Module mmWave	2.2.0.76

Scans Setup

Scan Type	5G Scan
Grid Extents [mm]	80x80
Grid Steps [lambda]	0.25 x 0.25
Sensor Surface [mm]	2.0

Measurement Results

Scan Type	5G Scan
Avg. Area [cm ²]	4.00
pS _{tot} avg [W/m ²]	3.88
pS _n avg [W/m ²]	3.59
E _{peak} [V/m]	86.0
Power Drift [dB]	-0.20



PCTEST

Date: 05/05/2021

Antenna L; Beam 161; H; Low Ch.; CW; Closed

Device Under Test Properties

DUT	Serial Number	DUT Type
A3LSMF711U	UD10832M	Portable Handset

Exposure Conditions

Phantom Section	Position	Test Distance [mm]	Band	Frequency [MHz]
5G	FRONT	2.00	n261	27550.10

Hardware Setup

Probe, Calibration Date	DAE, Calibration Date
EUmmWV3 - SN9389, 11/16/2020	DAE4 SN1638, 11/17/2020

Software Setup

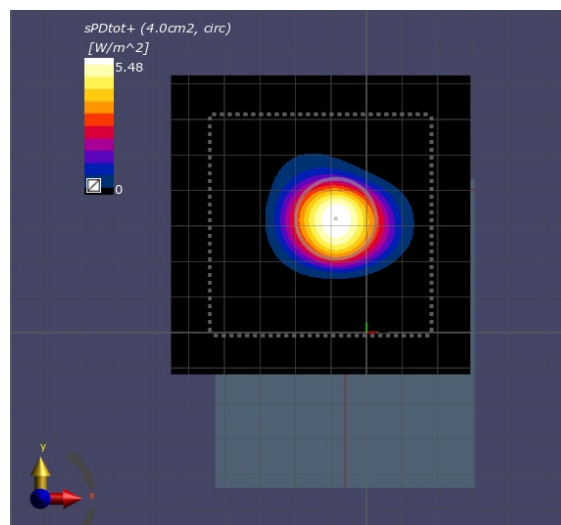
Software	Software Version
cDASY6 Module mmWave	2.2.0.76

Scans Setup

Scan Type	5G Scan
Grid Extents [mm]	80x80
Grid Steps [lambda]	0.25 x 0.25
Sensor Surface [mm]	2.0

Measurement Results

Scan Type	5G Scan
Avg. Area [cm ²]	4.00
pS _{tot} avg [W/m ²]	5.48
pS _n avg [W/m ²]	3.95
E _{peak} [V/m]	81.3
Power Drift [dB]	0.08



PCTEST

Date: 05/13/2021

Antenna K; Beam 29; V; Low Ch.; CW; Open

Device Under Test Properties

DUT	Serial Number	DUT Type
A3LSMF711U	UD10832M	Portable Handset

Exposure Conditions

Phantom Section	Position	Test Distance [mm]	Band	Frequency [MHz]
5G	LEFT	2.00	n261	27550.10

Hardware Setup

Probe, Calibration Date	DAE, Calibration Date
EUmmWV3 - SN9389, 11/16/2020	DAE4 SN1638, 11/17/2020

Software Setup

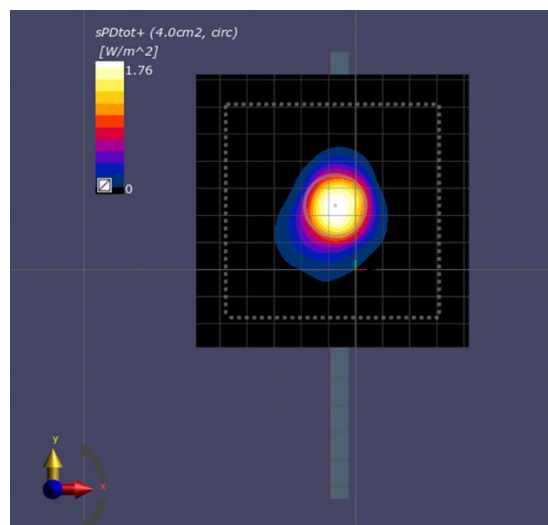
Software	Software Version
cDASY6 Module mmWave	2.2.0.76

Scans Setup

Scan Type	5G Scan
Grid Extents [mm]	100x100
Grid Steps [lambda]	0.25 x 0.25
Sensor Surface [mm]	2.0

Measurement Results

Scan Type	5G Scan
Avg. Area [cm ²]	4.00
pS _{tot} avg [W/m ²]	1.76
pS _n avg [W/m ²]	1.15
E _{peak} [V/m]	56.6
Power Drift [dB]	-0.04



PCTEST

Date: 05/10/2021

Antenna L; Beam 24; V; Low Ch.; CW; Open

Device Under Test Properties

DUT	Serial Number	DUT Type
A3LSMF711U	UD10832M	Portable Handset

Exposure Conditions

Phantom Section	Position	Test Distance [mm]	Band	Frequency [MHz]
5G	BACK	2.00	n261	27550.10

Hardware Setup

Probe, Calibration Date	DAE, Calibration Date
EUmmWV3 - SN9389, 11/16/2020	DAE4 SN1638, 11/17/2020

Software Setup

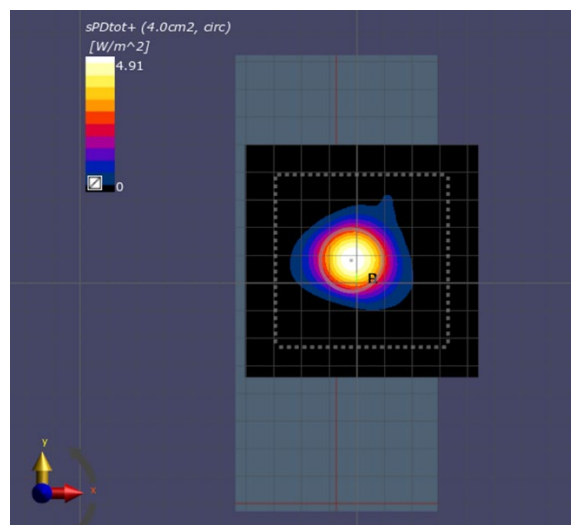
Software	Software Version
cDASY6 Module mmWave	2.2.0.76

Scans Setup

Scan Type	5G Scan
Grid Extents [mm]	80x80
Grid Steps [lambda]	0.25 x 0.25
Sensor Surface [mm]	2.0

Measurement Results

Scan Type	5G Scan
Avg. Area [cm ²]	4.00
pS _{tot} avg [W/m ²]	4.91
pS _n avg [W/m ²]	3.03
E _{peak} [V/m]	77.6
Power Drift [dB]	0.15



PCTEST

Date: 05/10/2021

Antenna K; Beam 162; H; High Ch.; CW; Closed

Device Under Test Properties

DUT	Serial Number	DUT Type
A3LSMF711U	UD10832M	Portable Handset

Exposure Conditions

Phantom Section	Position	Test Distance [mm]	Band	Frequency [MHz]
5G	LEFT	2.00	n260	39950.00

Hardware Setup

Probe, Calibration Date	DAE, Calibration Date
EUMmWV3 - SN9389, 11/16/2020	DAE4 SN1638, 11/17/2020

Software Setup

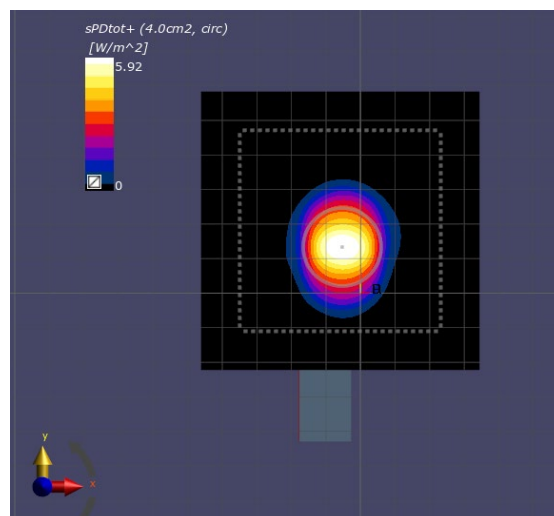
Software	Software Version
cDASY6 Module mmWave	2.2.0.76

Scans Setup

Scan Type	5G Scan
Grid Extents [mm]	80x80
Grid Steps [lambda]	0.25 x 0.25
Sensor Surface [mm]	2.0

Measurement Results

Scan Type	5G Scan
Avg. Area [cm ²]	4.00
pS _{tot} avg [W/m ²]	5.92
pS _n avg [W/m ²]	5.39
E _{peak} [V/m]	97.6
Power Drift [dB]	-0.05



PCTEST

Date: 05/07/2021

Antenna L; Beam 38/166; MIMO; Mid Ch.; CW; Closed

Device Under Test Properties

DUT	Serial Number	DUT Type
A3LSMF711U	UD10832M	Portable Handset

Exposure Conditions

Phantom Section	Position	Test Distance [mm]	Band	Frequency [MHz]
5G	FRONT	2.00	n260	38500.00

Hardware Setup

Probe, Calibration Date	DAE, Calibration Date
EUMmWV3 - SN9389, 11/16/2020	DAE4 SN1638, 11/17/2020

Software Setup

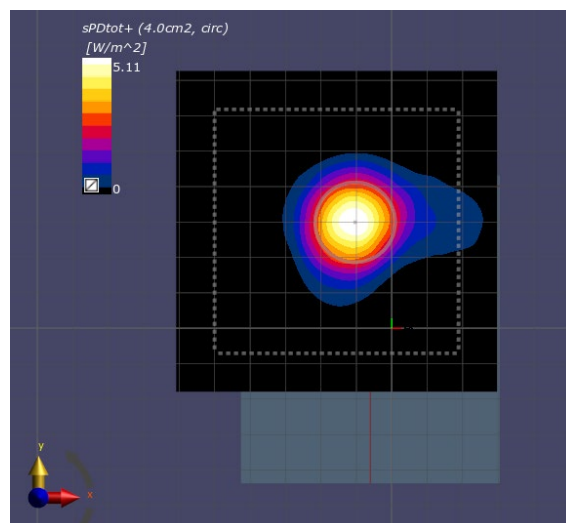
Software	Software Version
cDASY6 Module mmWave	2.2.0.76

Scans Setup

Scan Type	5G Scan
Grid Extents [mm]	90x90
Grid Steps [lambda]	0.25 x 0.25
Sensor Surface [mm]	2.0

Measurement Results

Scan Type	5G Scan
Avg. Area [cm ²]	4.00
pS _{tot} avg [W/m ²]	5.11
pS _n avg [W/m ²]	3.96
E _{peak} [V/m]	90.8
Power Drift [dB]	0.02



PCTEST

Date: 05/13/2021

Antenna K; Beam 162; H; High Ch.; CW; Open

Device Under Test Properties

DUT	Serial Number	DUT Type
A3LSMF711U	UD10832M	Portable Handset

Exposure Conditions

Phantom Section	Position	Test Distance [mm]	Band	Frequency [MHz]
5G	LEFT	2.00	n260	39950.00

Hardware Setup

Probe, Calibration Date	DAE, Calibration Date
EUmmWV3 - SN9389, 11/16/2020	DAE4 SN1638, 11/17/2020

Software Setup

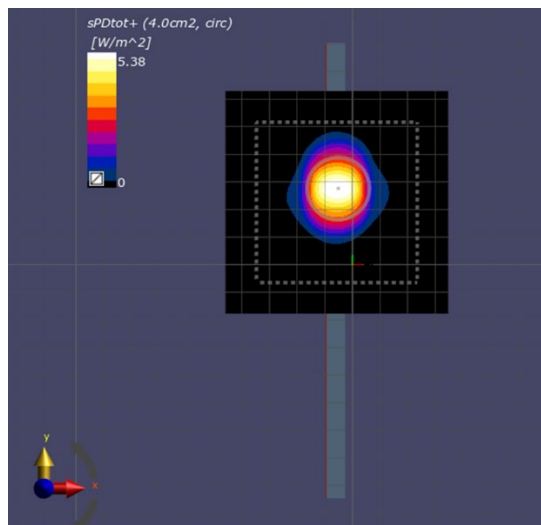
Software	Software Version
cDASY6 Module mmWave	2.2.0.76

Scans Setup

Scan Type	5G Scan
Grid Extents [mm]	80x80
Grid Steps [lambda]	0.25 x 0.25
Sensor Surface [mm]	2.0

Measurement Results

Scan Type	5G Scan
Avg. Area [cm ²]	4.00
pS _{tot} avg [W/m ²]	5.38
pS _n avg [W/m ²]	4.82
E _{peak} [V/m]	100
Power Drift [dB]	-0.01



PCTEST

Date: 05/11/2021

Antenna L; Beam 39; V; Mid Ch.; CW; Open

Device Under Test Properties

DUT	Serial Number	DUT Type
A3LSMF711U	UD10832M	Portable Handset

Exposure Conditions

Phantom Section	Position	Test Distance [mm]	Band	Frequency [MHz]
5G	BACK	2.00	n260	38500.00

Hardware Setup

Probe, Calibration Date	DAE, Calibration Date
EUmmWV3 - SN9389, 11/16/2020	DAE4 SN1638, 11/17/2020

Software Setup

Software	Software Version
cDASY6 Module mmWave	2.2.0.76

Scans Setup

Scan Type	5G Scan
Grid Extents [mm]	110x110
Grid Steps [lambda]	0.25 x 0.25
Sensor Surface [mm]	2.0

Measurement Results

Scan Type	5G Scan
Avg. Area [cm ²]	4.00
pS _{tot} avg [W/m ²]	3.18
pS _n avg [W/m ²]	2.45
E _{peak} [V/m]	74.9
Power Drift [dB]	0.04

