



SAMSUNG MODEL: SM-B780A UD **BC**
FCC ID: A3LSMB780A RATED: 3.7 V 1300 mA
For information call: 1 888 987 4357

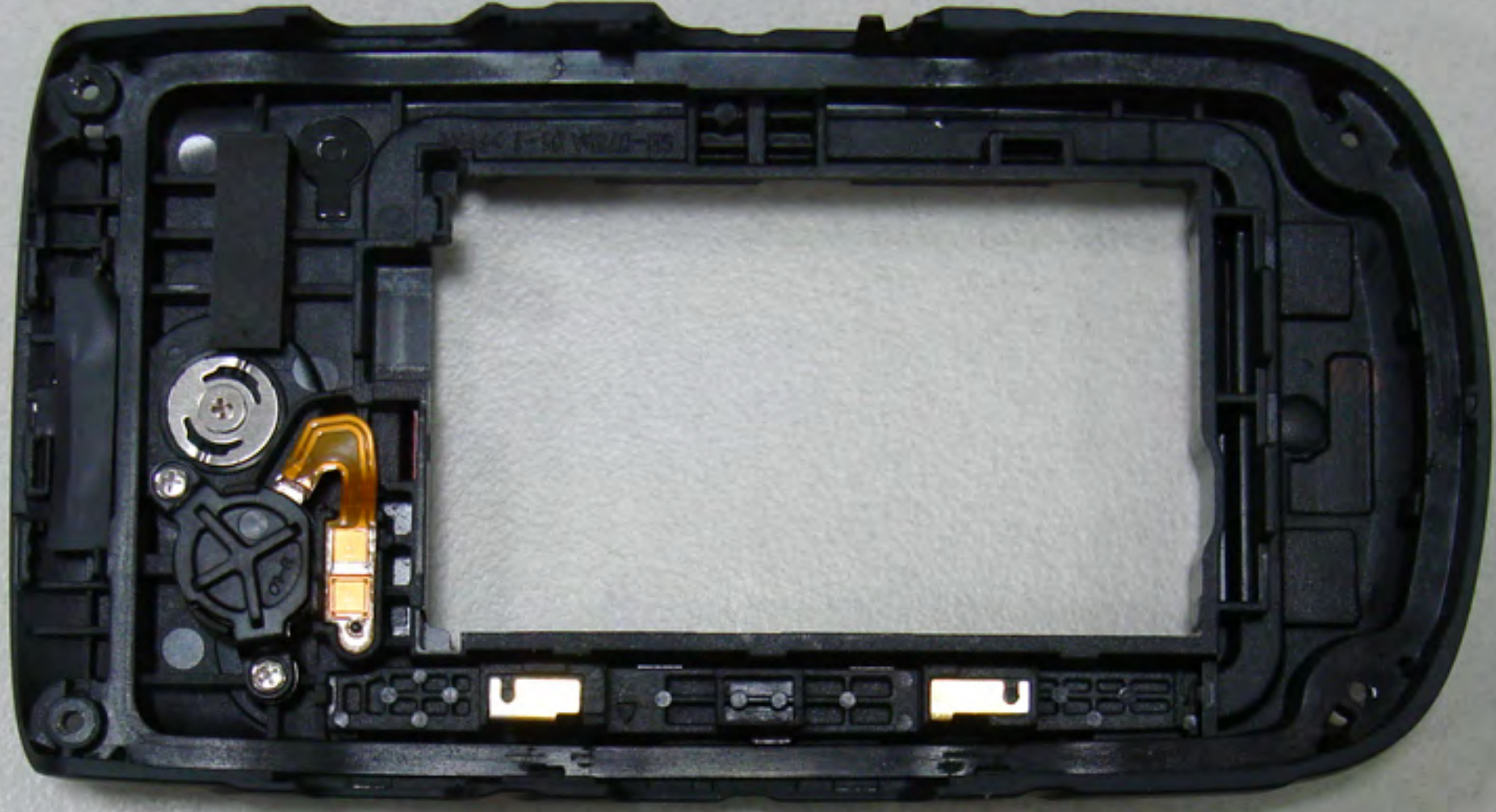
IMEI : 352904060011951
S/N : R31F500K1MV
1405
SKU : XXXXX
MADE IN KOREA

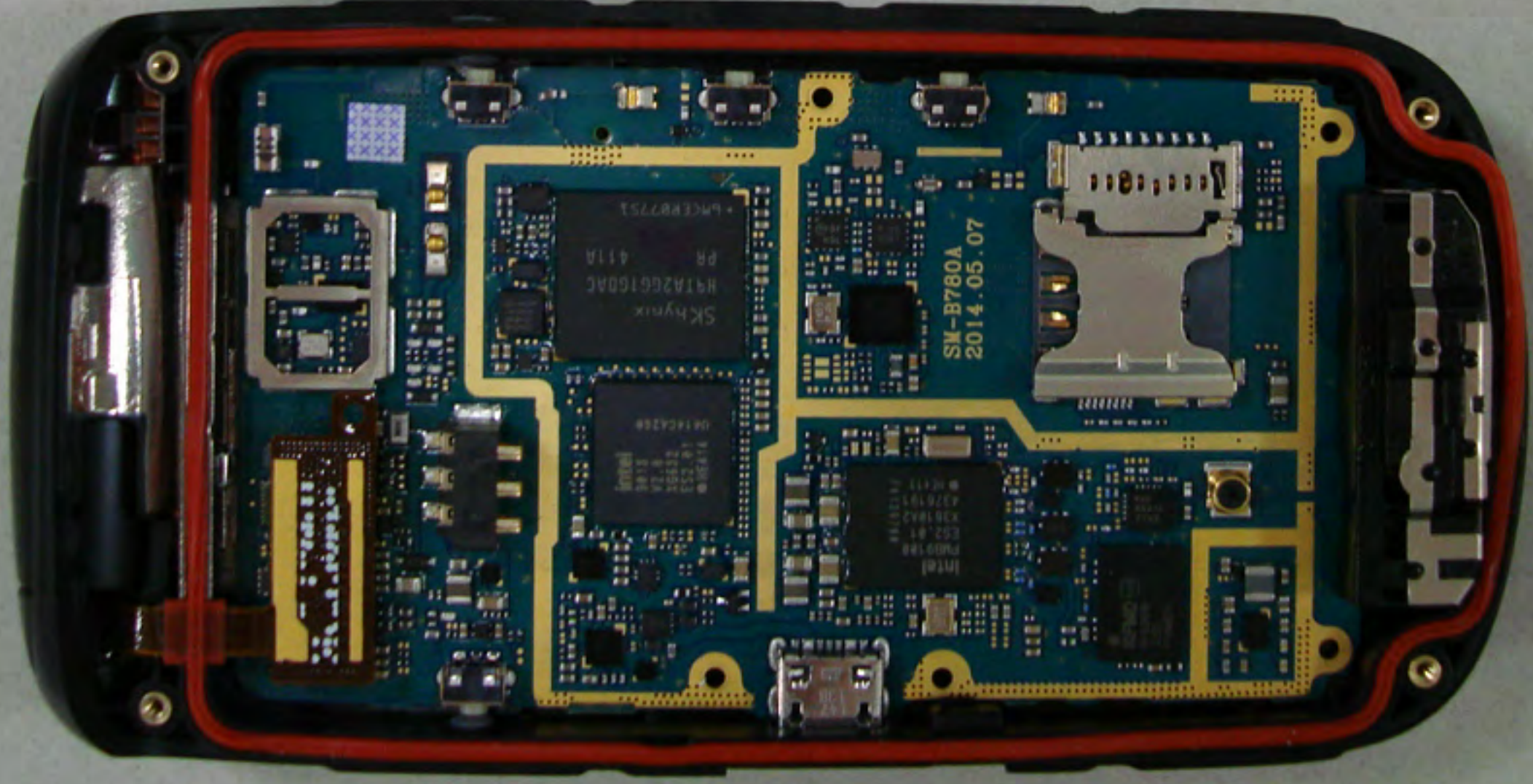
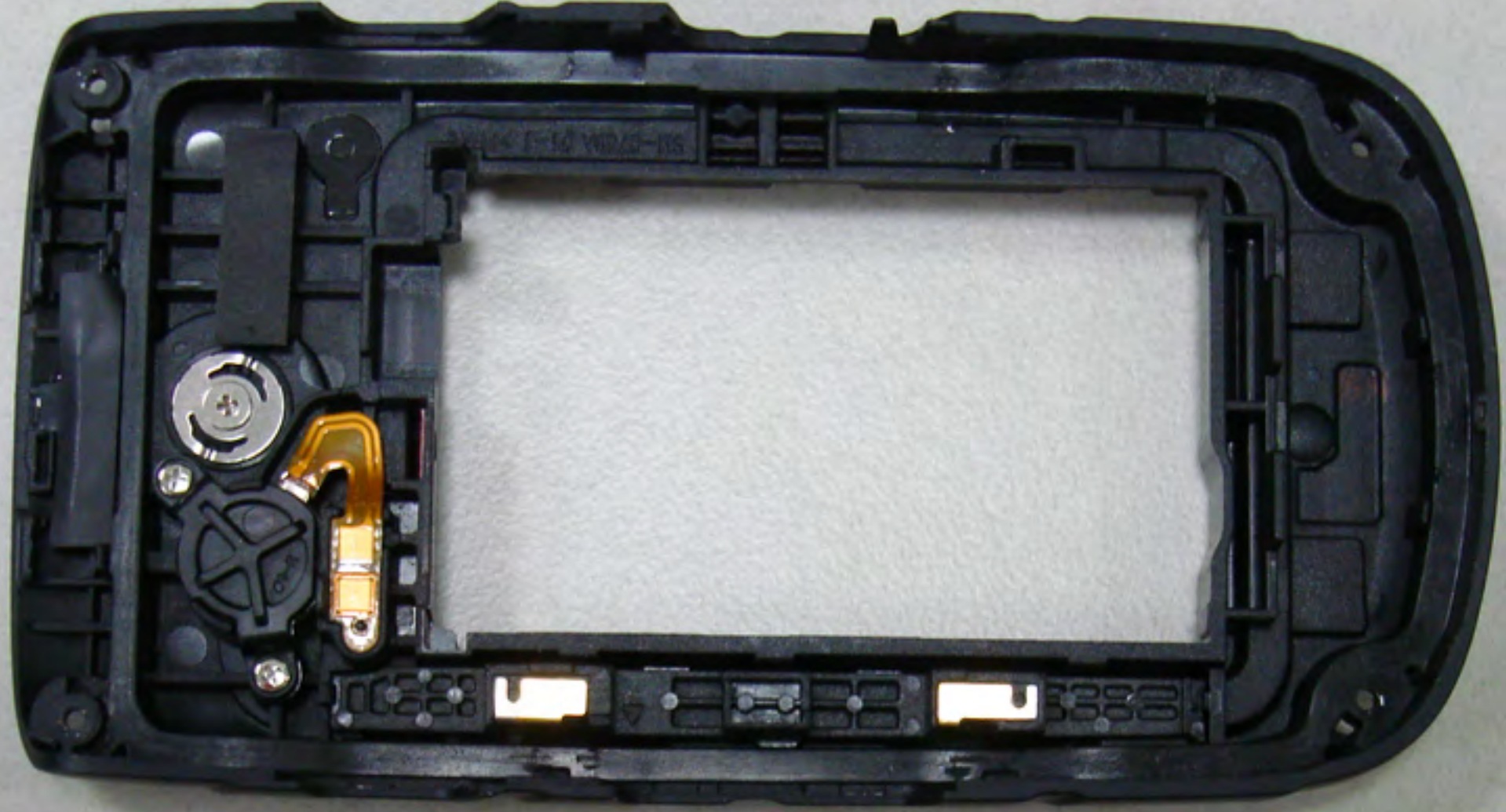
REV0.1

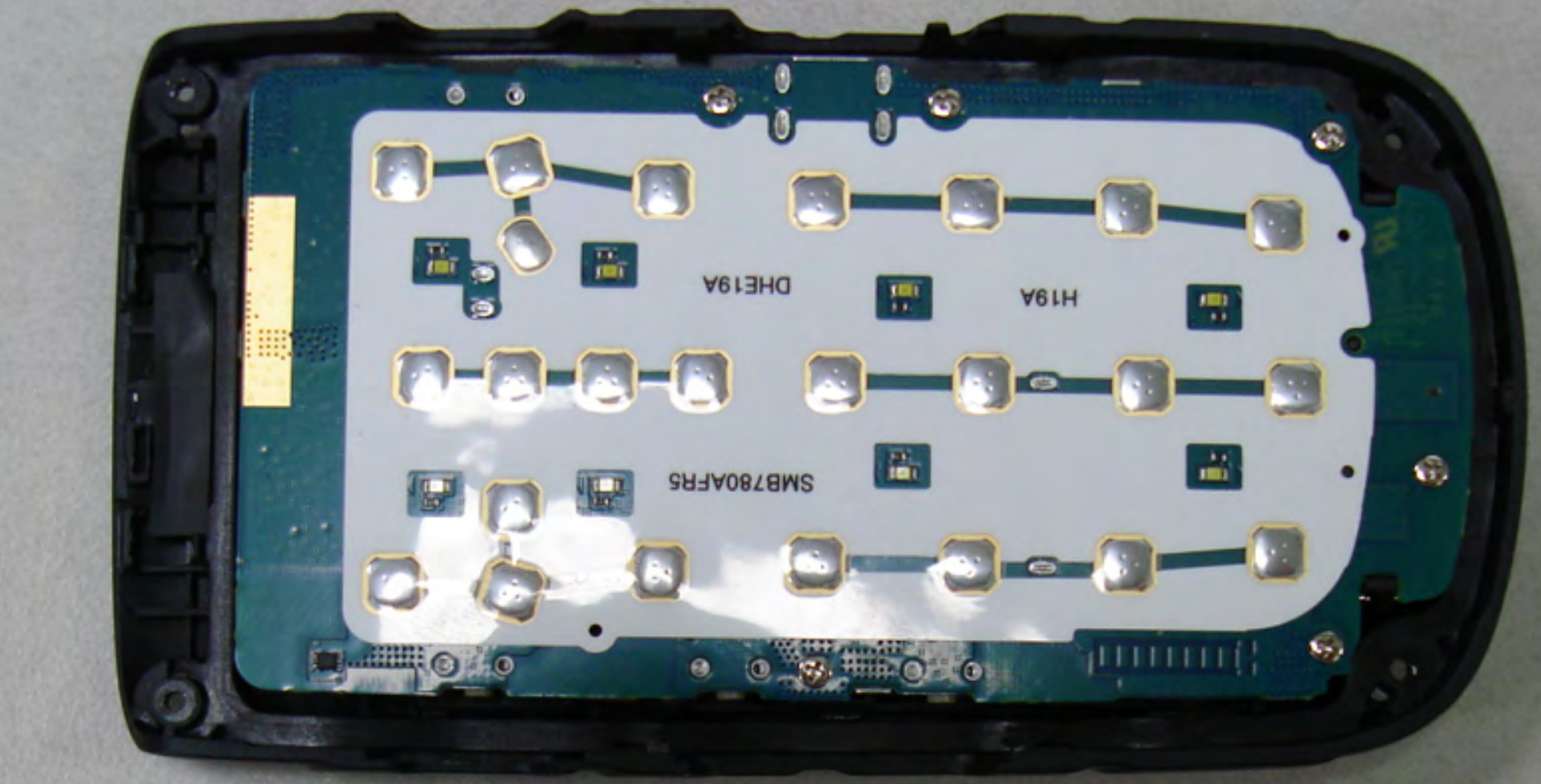


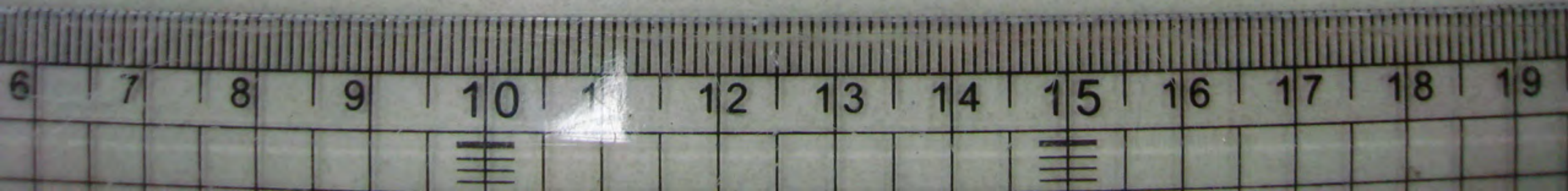
SAMSUNG

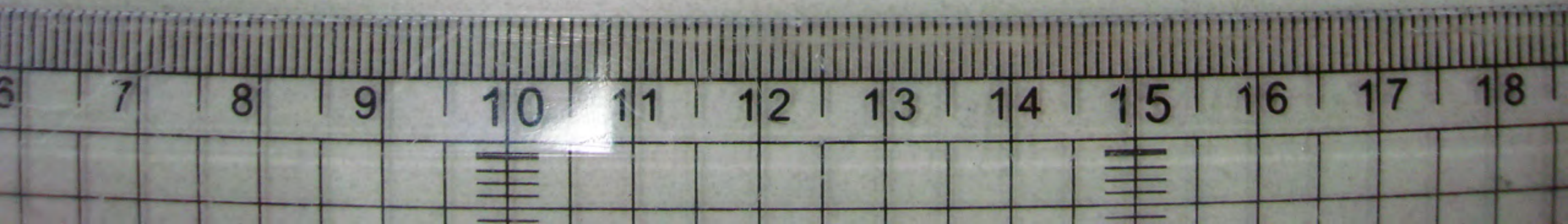
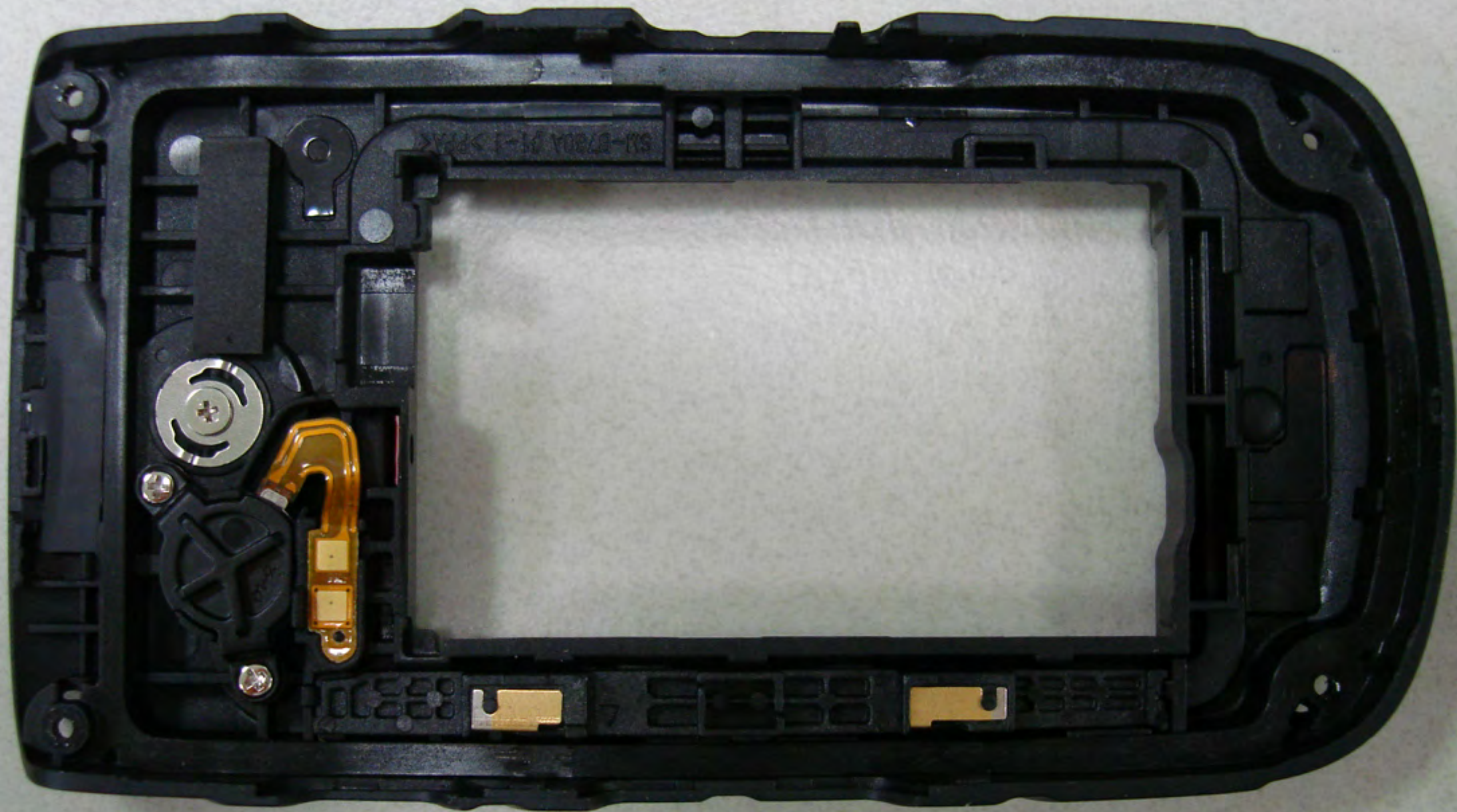
3.7 V Li-Ion BATTERY 4.81Wh
3.7 V Li-Ion BATTERY 4.81Wh

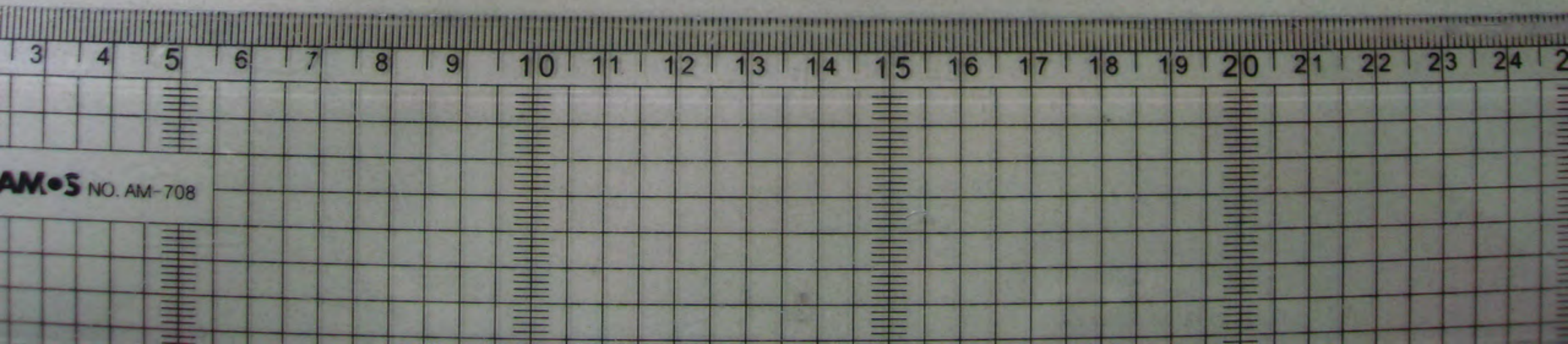




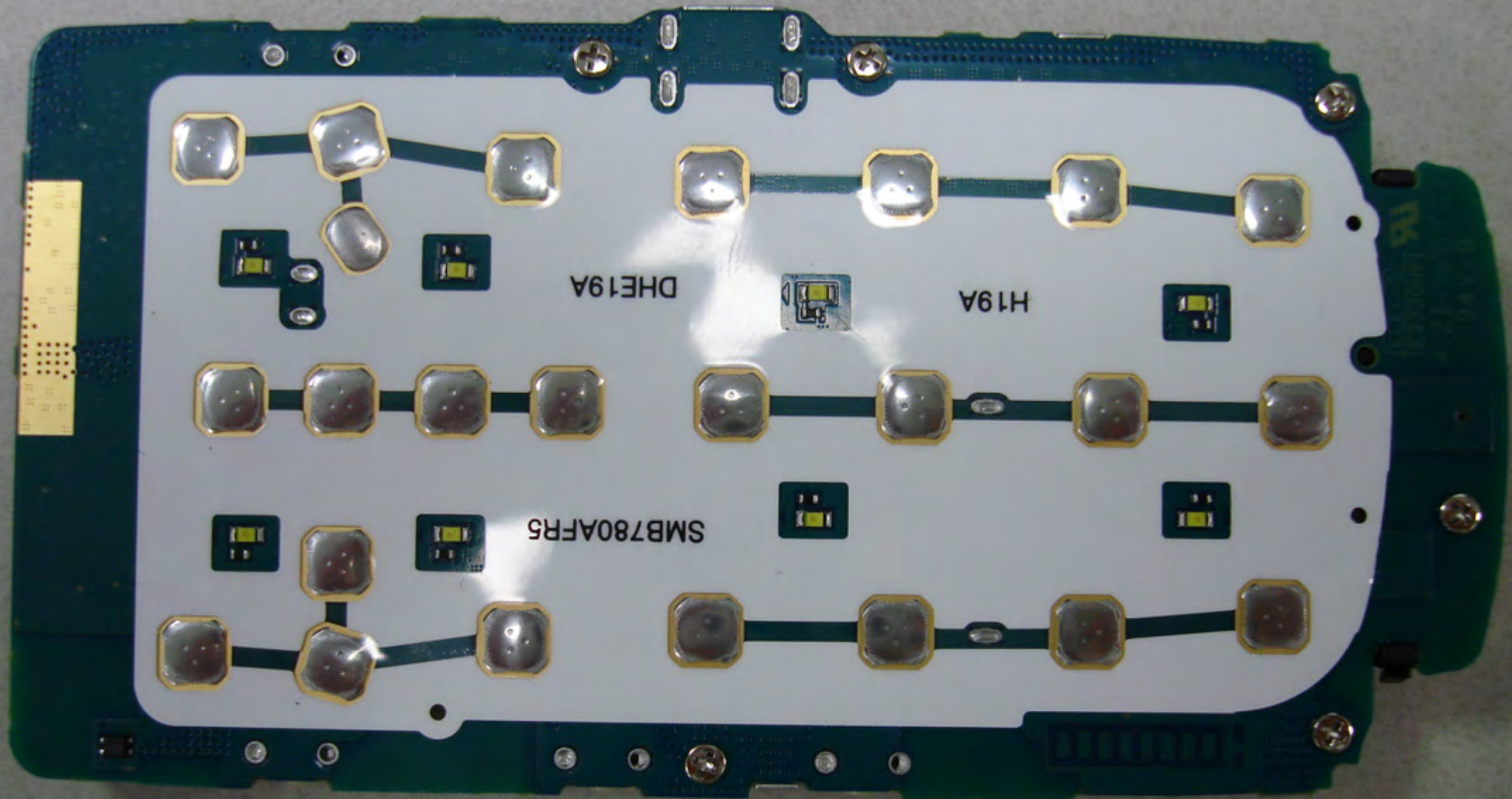








AM•S NO. AM-708



DHE19A

H19A

SMB780AFR5

8

9

10

11

12

13

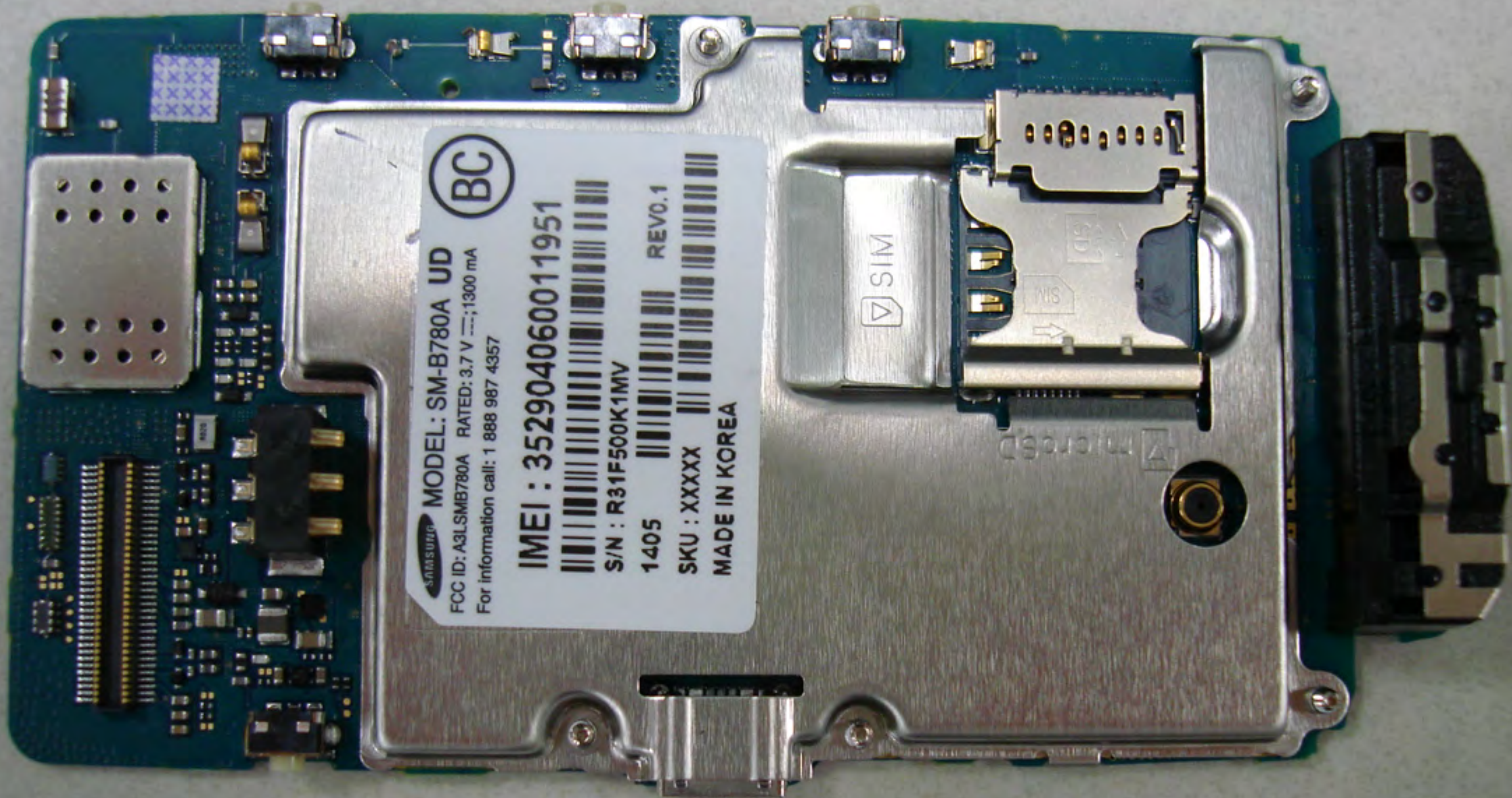
14

15

16

17

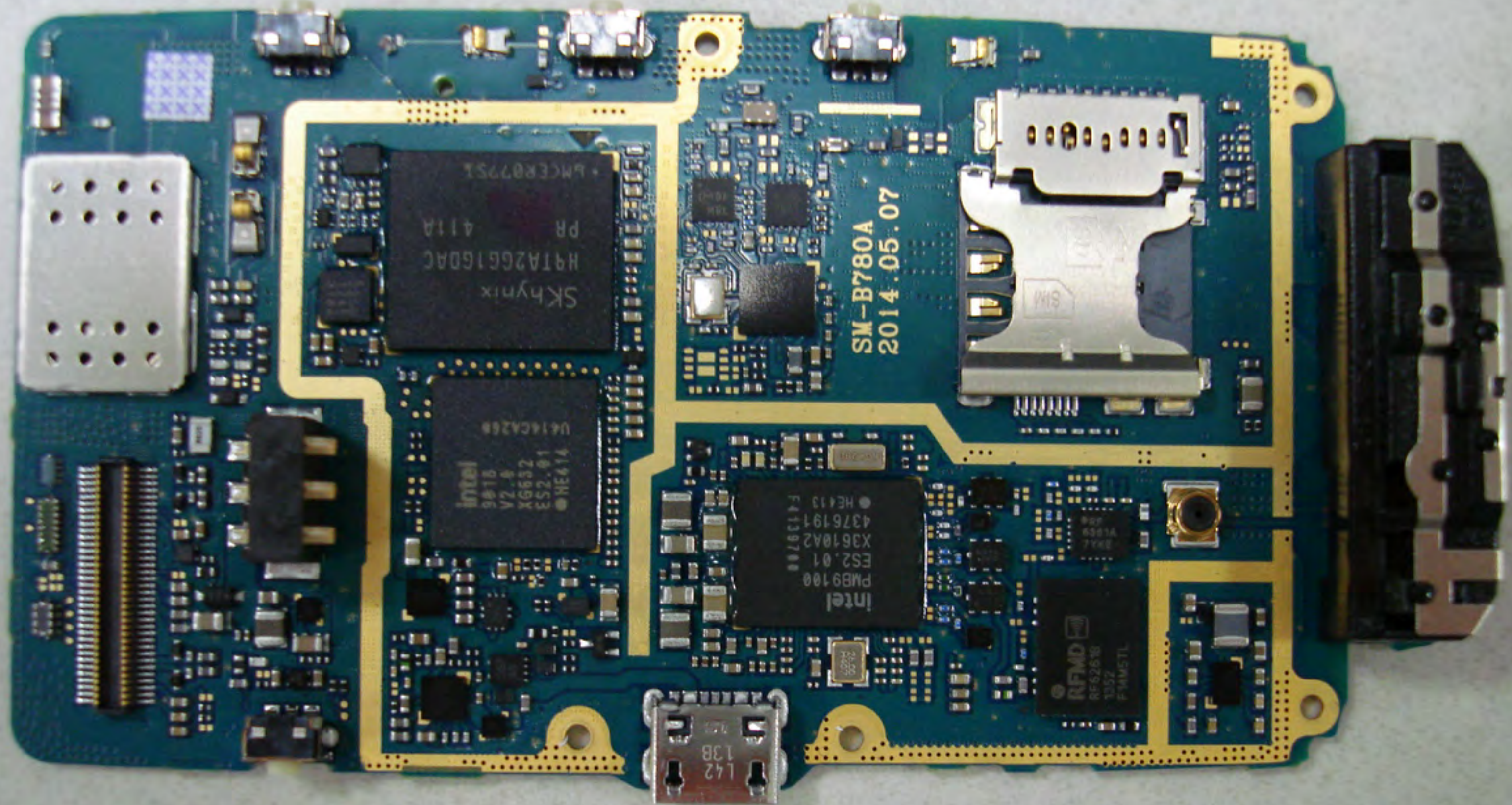
18



SAMSUNG MODEL: SM-B780A UD **BC**
FCC ID: A3LSMB780A RATED: 3.7 V 1300 mA
For information call: 1 888 987 4357

IMEI : 352904060011951
S/N : R31F500K1MV
1405 REV0.1
SKU : XXXXX
MADE IN KOREA





SKhynix
H9TA2GG1GDAC
PR
411A
PMCE80795L

SM-B780A
2014.05.07

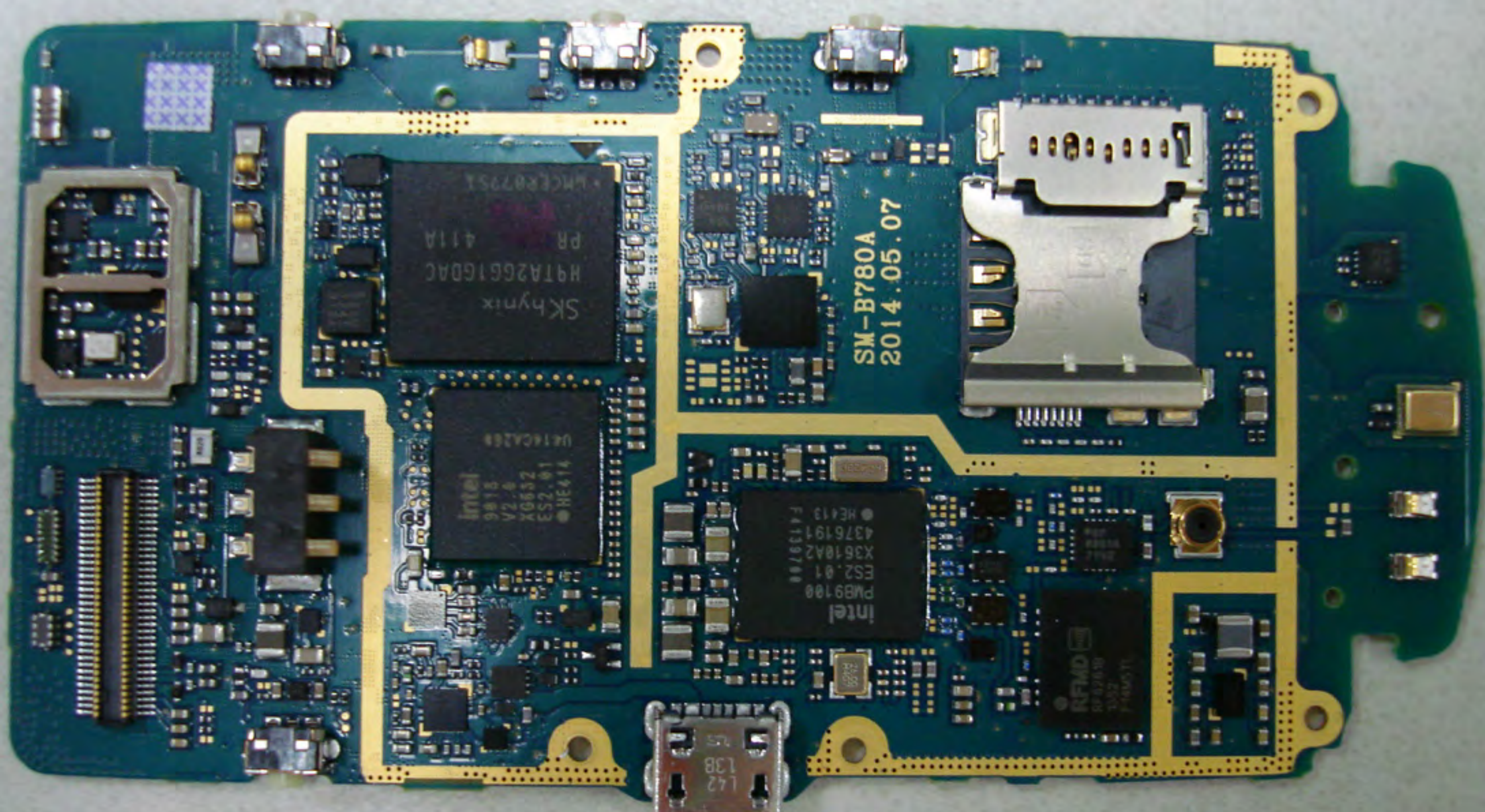
Intel
U416CA288
9818
V2.0
X6632
ES2.01
HE414

Intel
PMB9100
ES2.01
X3610A2
4376191
HE413
F4129780

RFMD
RF628W
135Z
FMM5TL

L42
138

9 10 11 12 13 14 15 16 17 18



Skynix
H9TA26G16DAC
PR 411A
LMCEP0795A

SM-B780A
2014.05.07

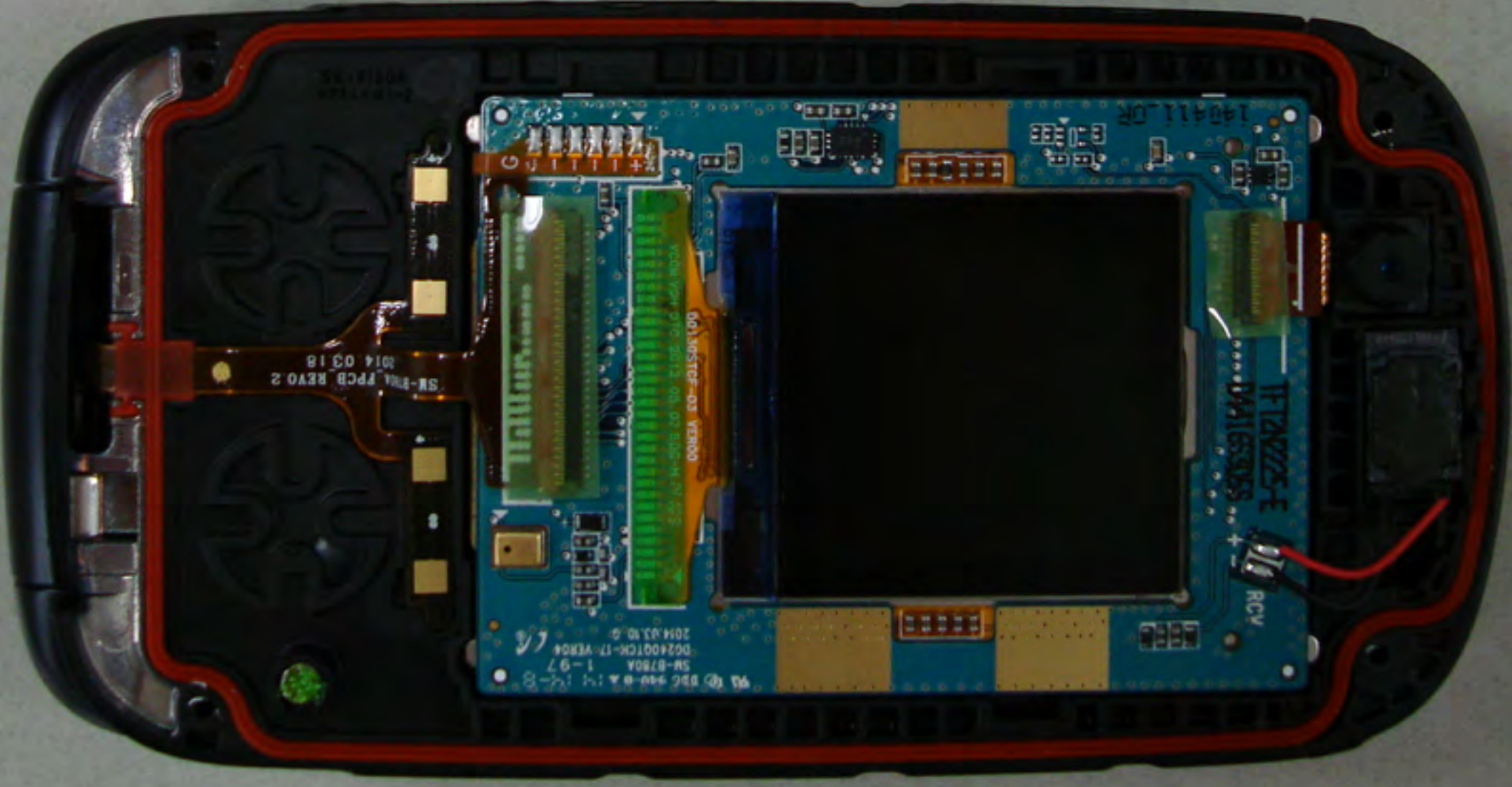
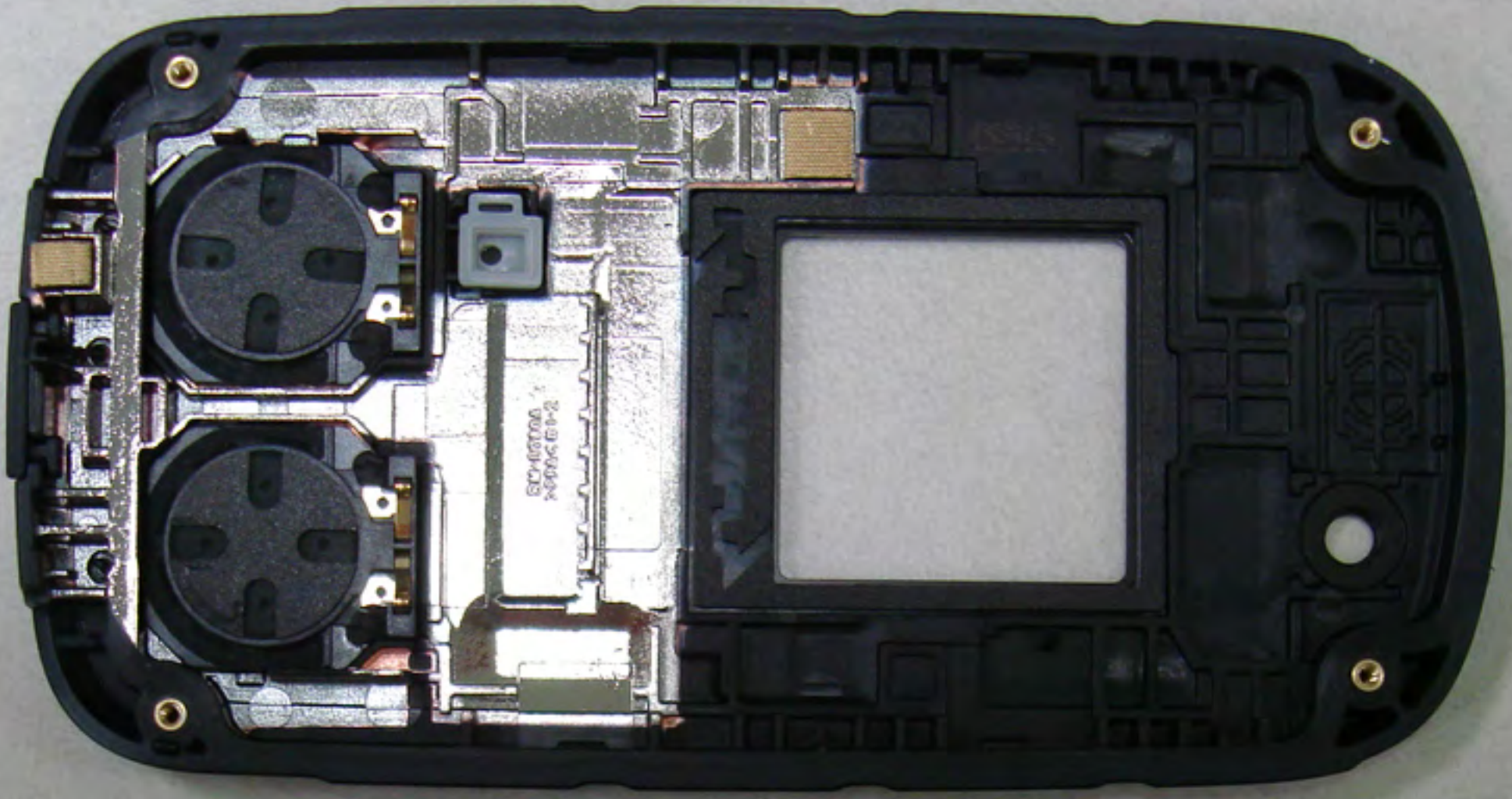
Intel
V2.0
XG652
ES2.01
HE414
UET16CA268

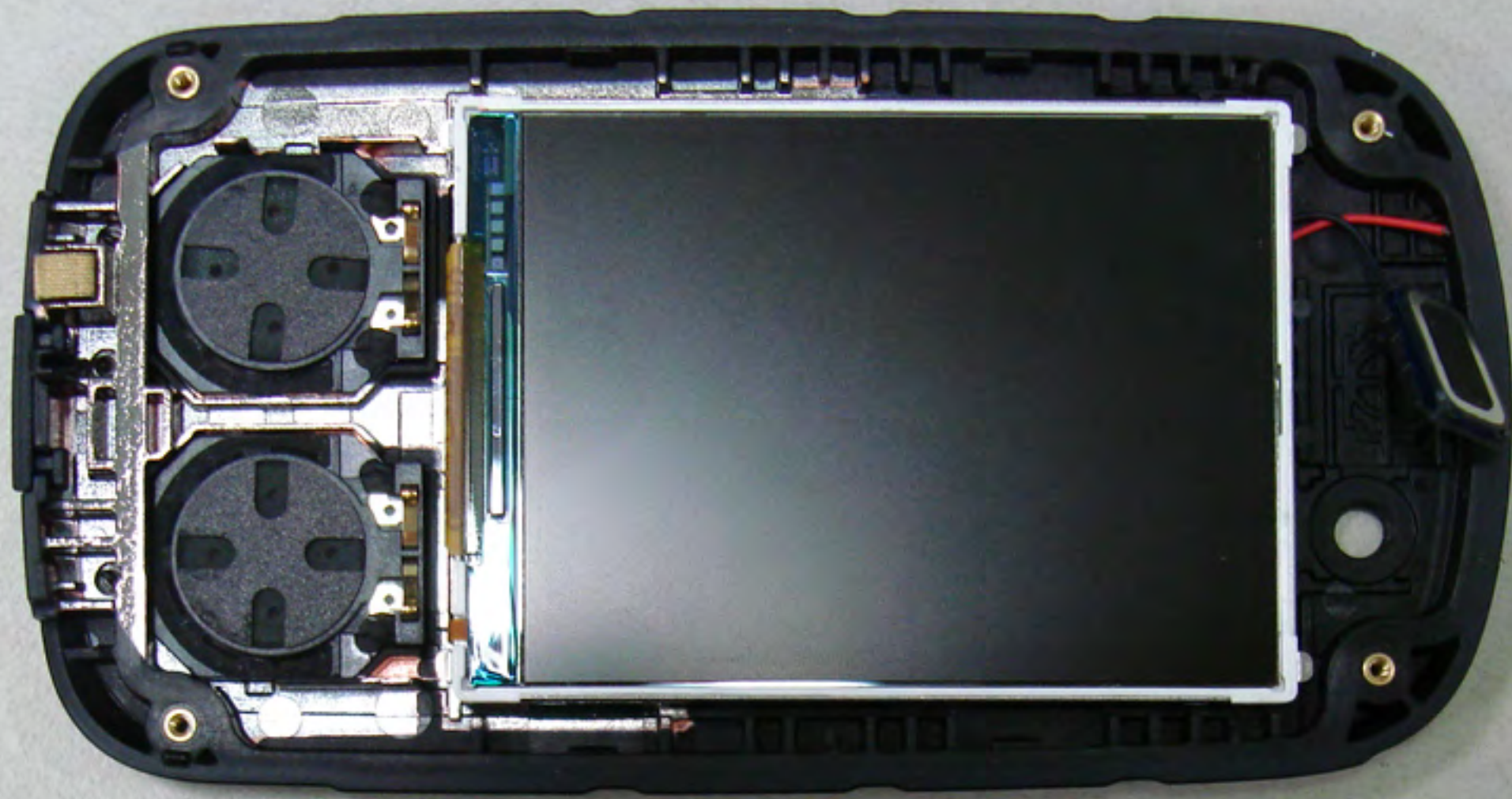
Intel
PM89100
ES2.01
X3618A2
4376191
FA139788
HE413

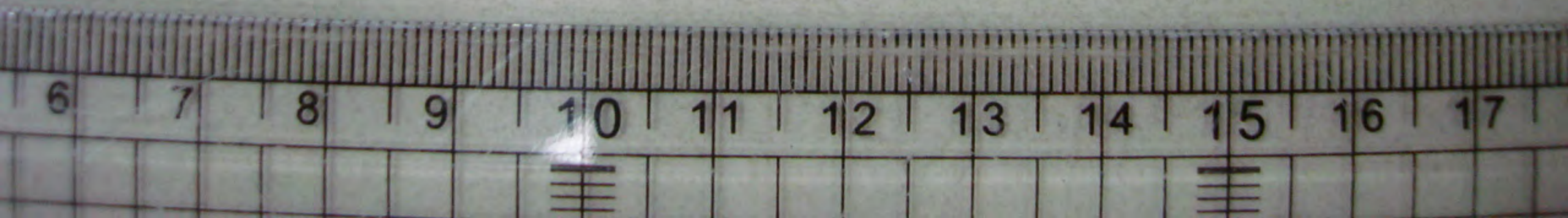
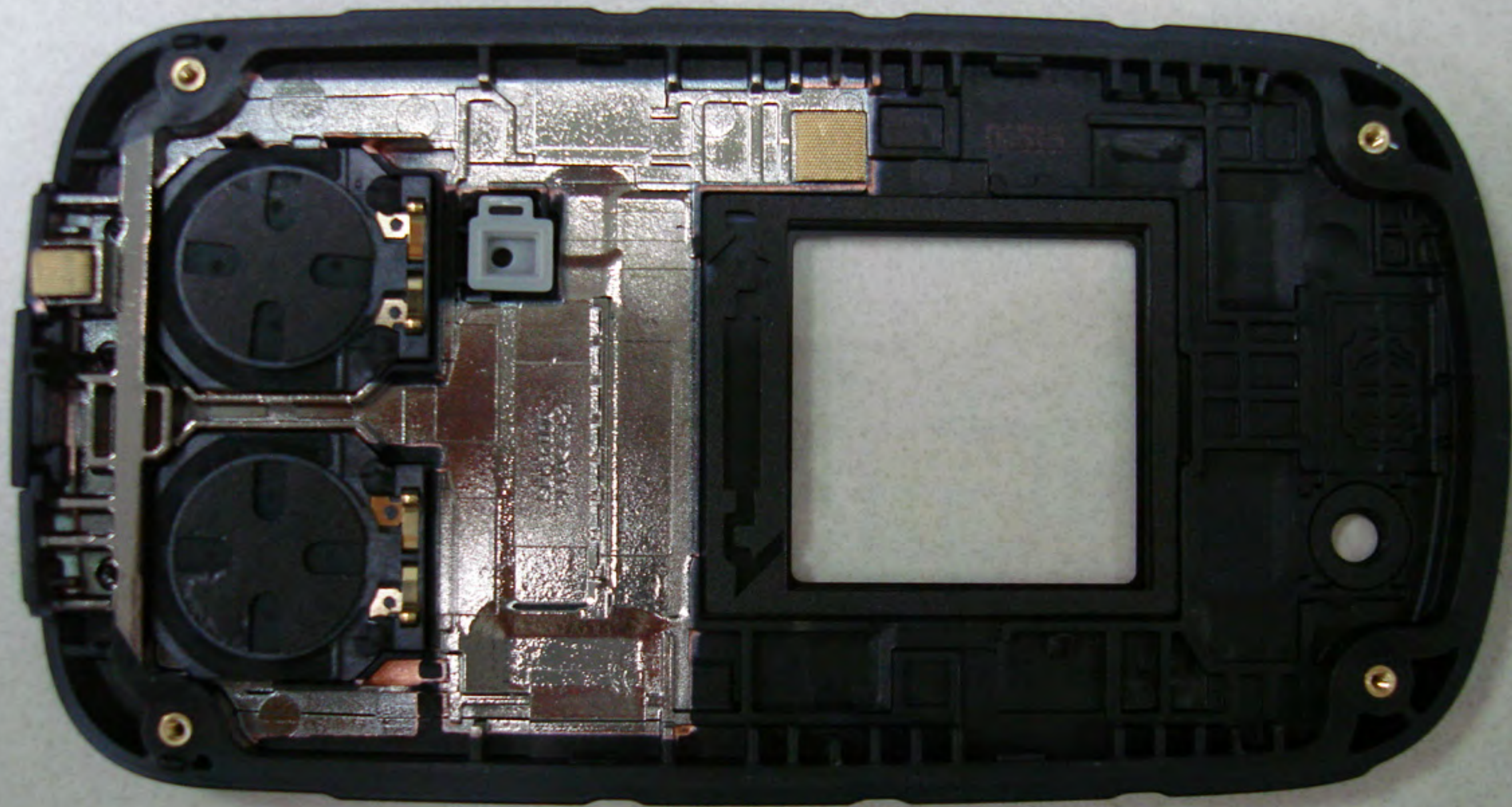
RFMD
RF-07810
1392
P44607C

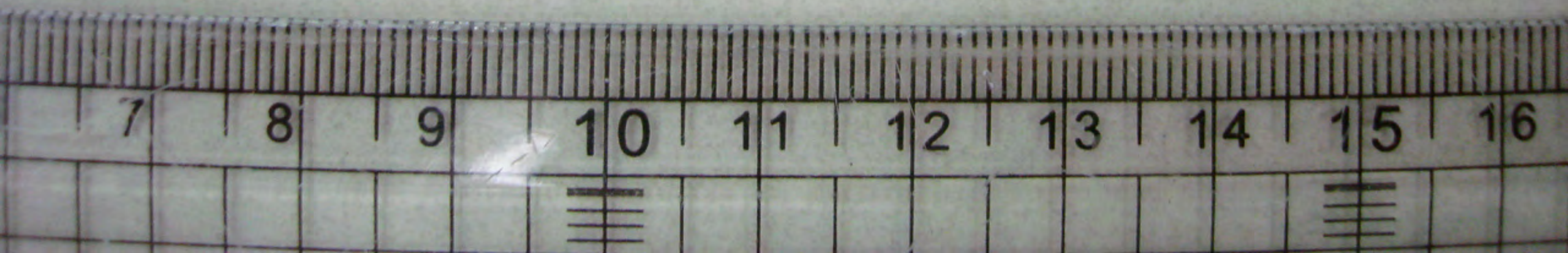
L42
L38
L25

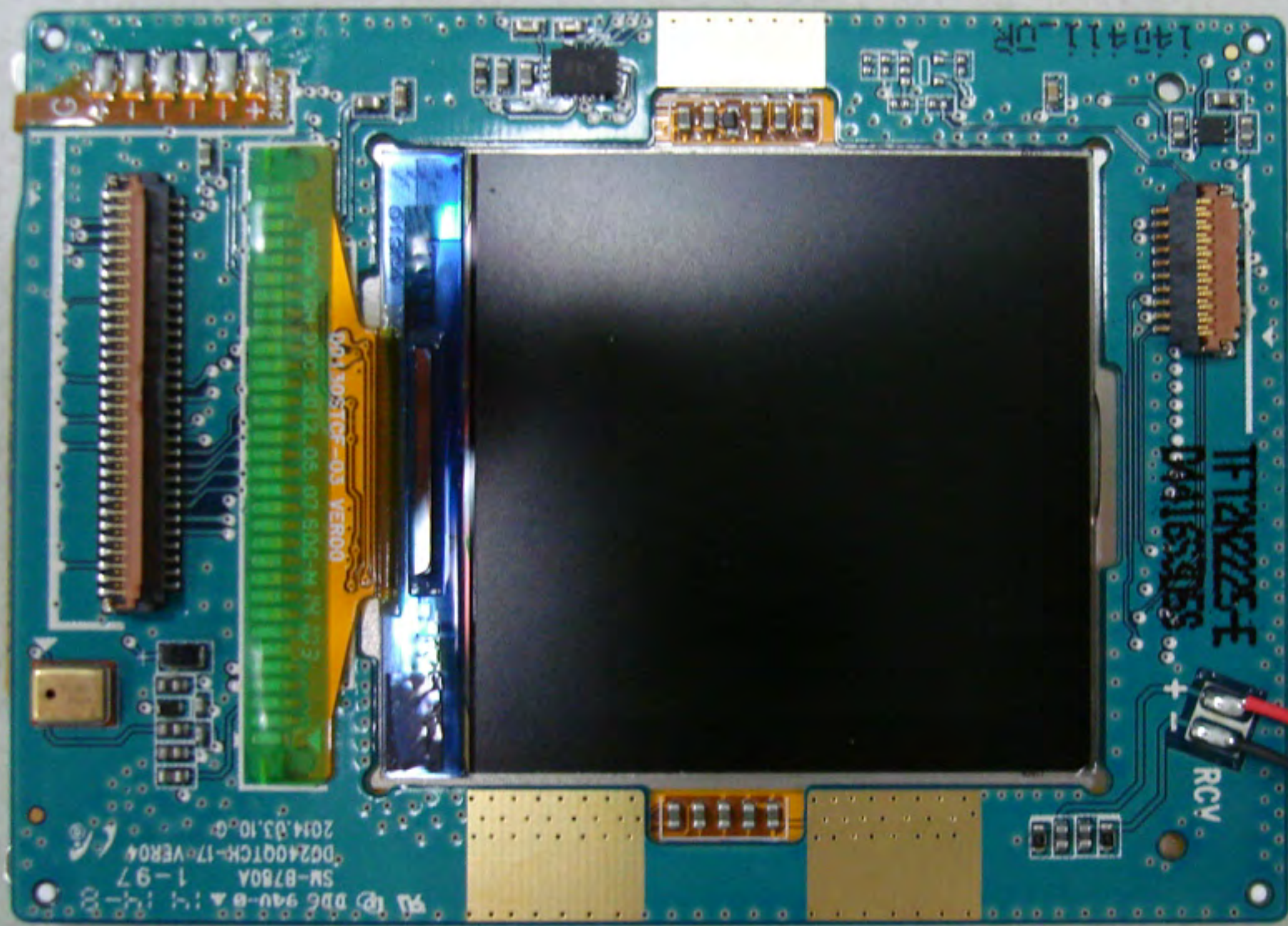
9 10 11 12 13 14 15 16 17 18











5A @ 940-8-1-1-8
SM-8780A 1-97
DQ240Q1CK-17-VER04
2014.03.10 ©

140411-02

IF12N225-F
D41659055

RCV

D01N05T0F-03 VER00

