

## 20140922\_SystemPerformanceCheck-D835V2 SN 4d117

Frequency: 835 MHz; Duty Cycle: 1:1; Room Ambient Temperature: 24.0°C; Liquid Temperature: 23.0°C

Medium parameters used:  $f = 835 \text{ MHz}$ ;  $\sigma = 0.927 \text{ S/m}$ ;  $\epsilon_r = 41.153$ ;  $\rho = 1000 \text{ kg/m}^3$

DASY5 Configuration:

- Area Scan Setting: Find Secondary Maximum Within: 2.0 dB and with a peak SAR value greater than 0.0012W/kg
- Averaged Fast SAR: Polynomial fit
- Electronics: DAE3 Sn427; Calibrated: 1/21/2014
- Probe: EX3DV4 - SN3902; ConvF(10.04, 10.04, 10.04); Calibrated: 5/19/2014;
- Sensor-Surface: 2.5mm (Mechanical Surface Detection)
- Phantom: SAM; Type: QD000P40CD; Serial: TP 1751

**Head/Pin=100 mW/Area Scan (61x61x1):** Interpolated grid: dx=1.500 mm, dy=1.500 mm

Reference Value = 33.555 V/m; Power Drift = -0.02 dB

**Fast SAR: SAR(1 g) = 0.898 W/kg; SAR(10 g) = 0.605 W/kg**

Maximum value of SAR (interpolated) = 1.06 W/kg

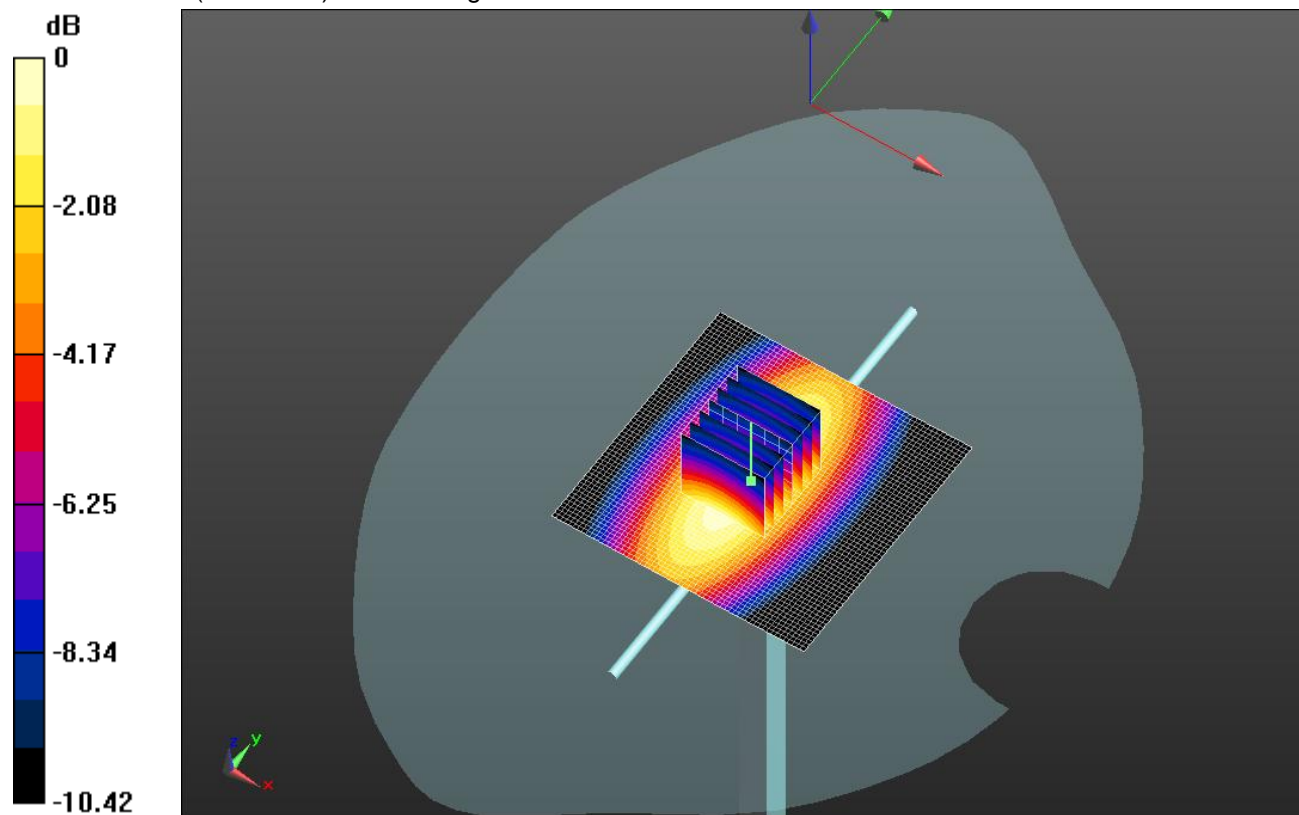
**Head/Pin=100 mW/Zoom Scan (7x7x7)/Cube 0:** Measurement grid: dx=5mm, dy=5mm, dz=5mm

Reference Value = 33.555 V/m; Power Drift = -0.02 dB

Peak SAR (extrapolated) = 1.30 W/kg

**SAR(1 g) = 0.880 W/kg; SAR(10 g) = 0.578 W/kg**

Maximum value of SAR (measured) = 1.07 W/kg

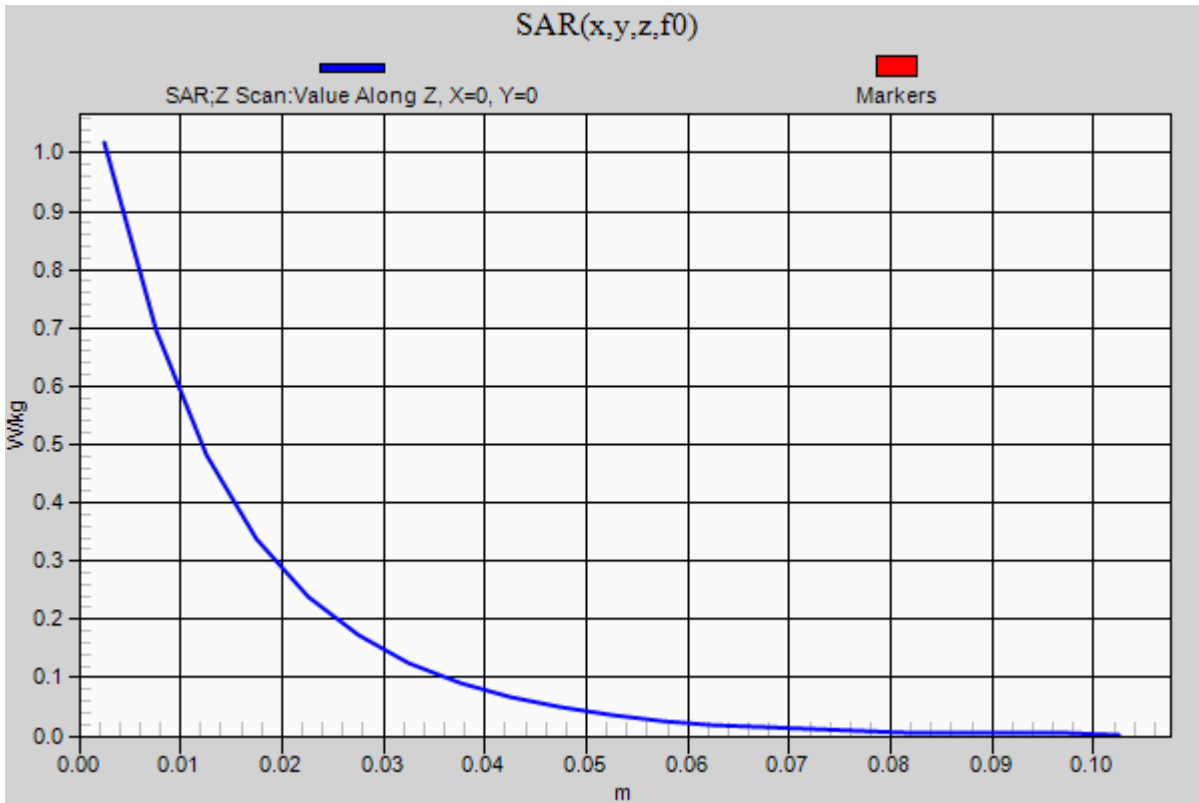


0 dB = 1.07 W/kg = 0.29 dBW/kg

### 20140922\_SystemPerformanceCheck-D835V2 SN 4d117

Frequency: 835 MHz; Duty Cycle: 1:1

**Head/Pin=100 mW/Z Scan (1x1x21):** Measurement grid: dx=20mm, dy=20mm, dz=5mm  
Maximum value of SAR (measured) = 1.02 W/kg



## 20140919\_SystemPerformanceCheck-D1900V2 SN 5d043

Frequency: 1900 MHz; Duty Cycle: 1:1; Room Ambient Temperature: 24.0°C; Liquid Temperature: 23.0°C

Medium parameters used:  $f = 1900$  MHz;  $\sigma = 1.523$  S/m;  $\epsilon_r = 50.739$ ;  $\rho = 1000$  kg/m<sup>3</sup>

DASY5 Configuration:

- Area Scan Setting: Find Secondary Maximum Within: 2.0 dB and with a peak SAR value greater than 0.0012W/kg
- Averaged Fast SAR: Polynomial fit
- Electronics: DAE4 Sn1439; Calibrated: 5/14/2014
- Probe: EX3DV4 - SN3991; ConvF(7.65, 7.65, 7.65); Calibrated: 5/16/2014;
- Sensor-Surface: 2.5mm (Mechanical Surface Detection (Locations From Previous Scan Used)), Sensor-Surface: 2.5mm (Mechanical Surface Detection)
- Phantom: ELI v5.0 (B); Type: QDOVA002AA; Serial: TP:1257

**Body/Pin=100 mW/Area Scan (61x61x1):** Interpolated grid: dx=1.500 mm, dy=1.500 mm

Reference Value = 61.12 V/m; Power Drift = -0.02 dB

**Fast SAR: SAR(1 g) = 4.07 W/kg; SAR(10 g) = 2.03 W/kg**

Maximum value of SAR (interpolated) = 5.46 W/kg

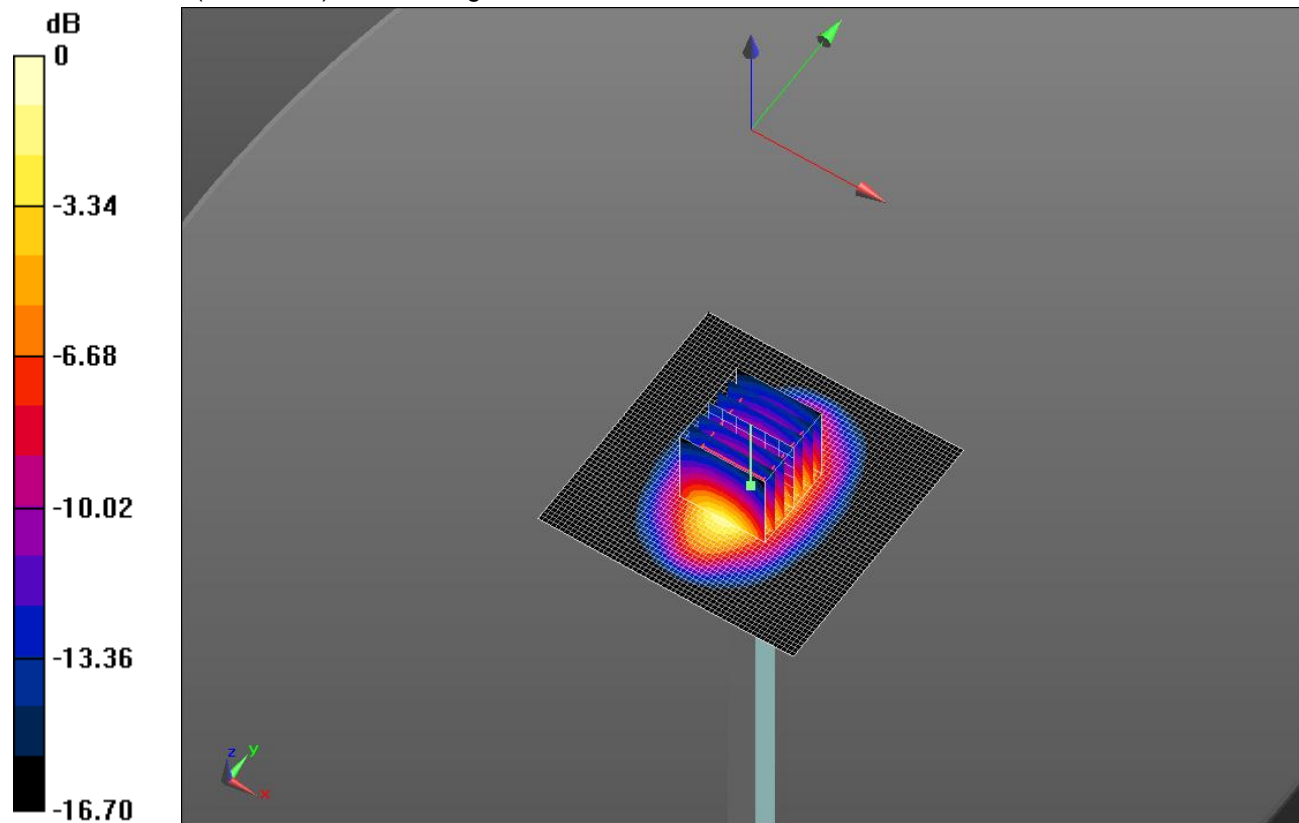
**Body/Pin=100 mW/Zoom Scan (7x7x7)/Cube 0:** Measurement grid: dx=5mm, dy=5mm, dz=5mm

Reference Value = 61.12 V/m; Power Drift = -0.02 dB

Peak SAR (extrapolated) = 7.25 W/kg

**SAR(1 g) = 4.11 W/kg; SAR(10 g) = 2.16 W/kg**

Maximum value of SAR (measured) = 5.50 W/kg



0 dB = 5.50 W/kg = 7.40 dBW/kg

### 20140919\_SystemPerformanceCheck-D1900V2 SN 5d043

Frequency: 1900 MHz; Duty Cycle: 1:1

**Body/Pin=100 mW/Z Scan (1x1x21):** Measurement grid: dx=20mm, dy=20mm, dz=5mm  
Maximum value of SAR (measured) = 5.54 W/kg

