

20180828_SystemPerformanceCheck-D2450V2 SN 899

Frequency: 2450 MHz; Duty Cycle: 1:1; Room Ambient Temperature: 24.0°C; Liquid Temperature: 23.0°C

Medium parameters used: $f = 2450$ MHz; $\sigma = 2.072$ S/m; $\epsilon_r = 54.956$; $\rho = 1000$ kg/m³

DASY5 Configuration:

- Area Scan Setting: Find Secondary Maximum Within: 2.0 dB and with a peak SAR value greater than 0.0012W/kg
- Electronics: DAE4 Sn1546; Calibrated: 5/3/2018
- Probe: EX3DV4 - SN7498; ConvF(7.72, 7.72, 7.72) @ 2450 MHz; Calibrated: 5/4/2018
- Sensor-Surface: 2.5mm (Mechanical Surface Detection)
- Phantom: ELI V8.0 (20deg probe tilt) Front; Type: QD OVA 004 AA; Serial: 2081

Body/Pin=100 mW/Area Scan (8x8x1): Measurement grid: dx=12mm, dy=12mm

Maximum value of SAR (measured) = 5.31 W/kg

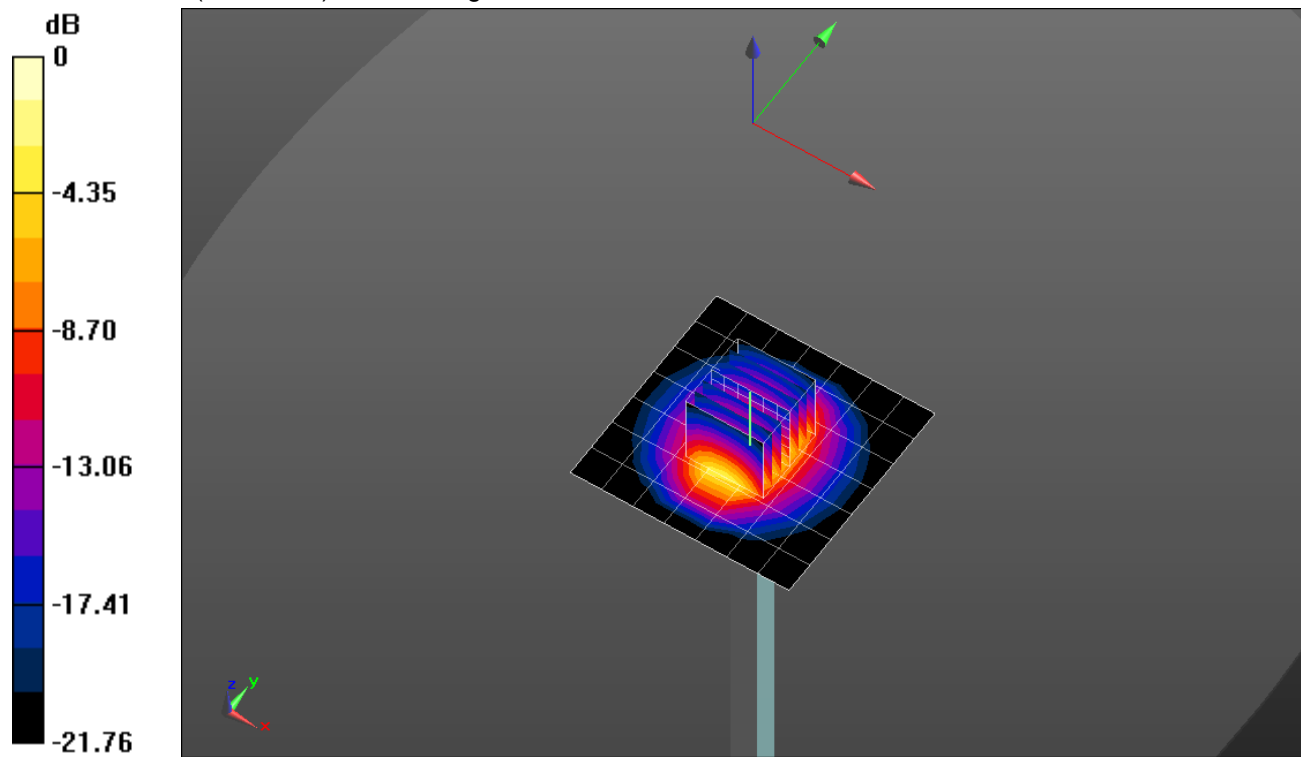
Body/Pin=100 mW/Zoom Scan (7x7x7)/Cube 0: Measurement grid: dx=5mm, dy=5mm, dz=5mm

Reference Value = 61.32 V/m; Power Drift = 0.01 dB

Peak SAR (extrapolated) = 11.1 W/kg

SAR(1 g) = 5.35 W/kg; SAR(10 g) = 2.48 W/kg

Maximum value of SAR (measured) = 7.62 W/kg

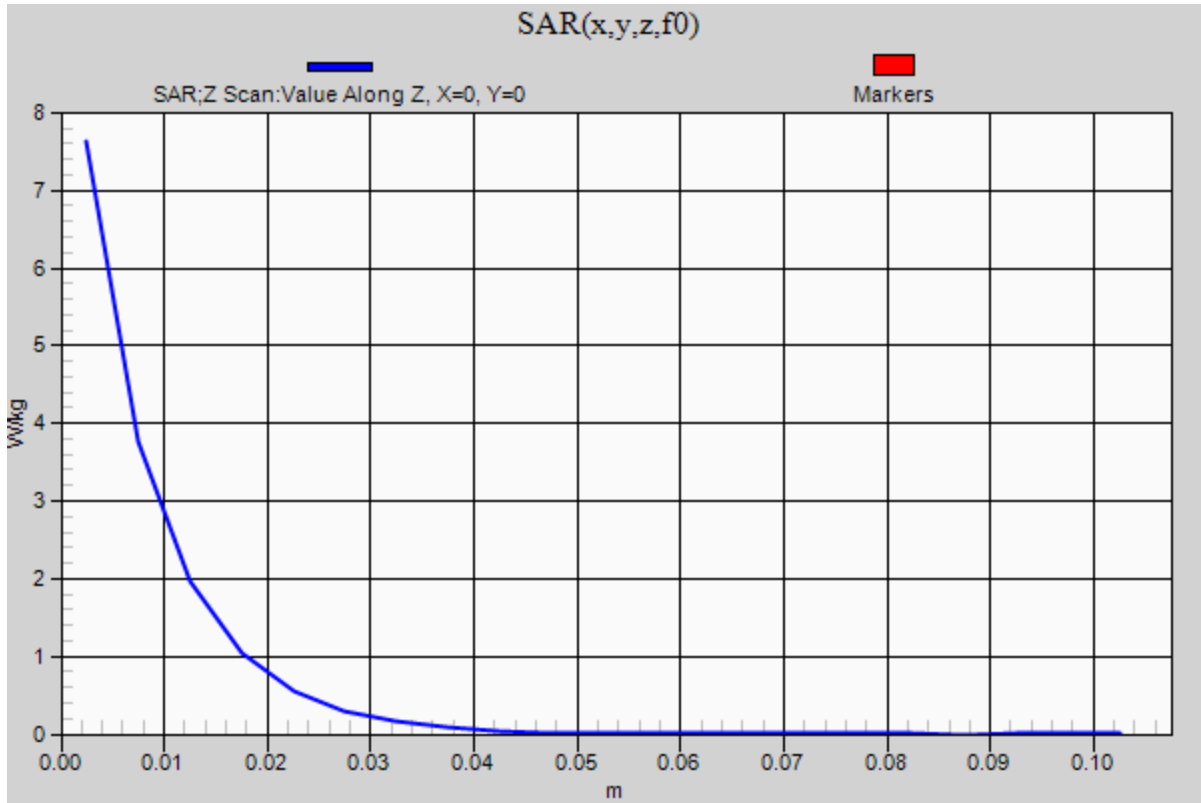


0 dB = 7.62 W/kg = 8.82 dBW/kg

20180828_SystemPerformanceCheck-D2450V2 SN 899

Frequency: 2450 MHz; Duty Cycle: 1:1

Body/Pin=100 mW/Z Scan (1x1x21): Measurement grid: dx=20mm, dy=20mm, dz=5mm
Maximum value of SAR (measured) = 7.63 W/kg



20180828_SystemPerformanceCheck-D2600V2 SN 1036

Frequency: 2600 MHz; Duty Cycle: 1:1; Room Ambient Temperature: 24.0°C; Liquid Temperature: 23.0°C

Medium parameters used: $f = 2600$ MHz; $\sigma = 2.225$ S/m; $\epsilon_r = 52.232$; $\rho = 1000$ kg/m³

DASY5 Configuration:

- Area Scan Setting: Find Secondary Maximum Within: 2.0 dB and with a peak SAR value greater than 0.0012W/kg
- Electronics: DAE4 Sn1546; Calibrated: 5/3/2018
- Probe: EX3DV4 - SN7498; ConvF(7.61, 7.61, 7.61) @ 2600 MHz; Calibrated: 5/4/2018
- Sensor-Surface: 2.5mm (Mechanical Surface Detection)
- Phantom: ELI V8.0 (20deg probe tilt) Front; Type: QD OVA 004 AA; Serial: 2081

Body/Pin=100 mW/Area Scan (8x8x1): Measurement grid: dx=12mm, dy=12mm

Maximum value of SAR (measured) = 5.84 W/kg

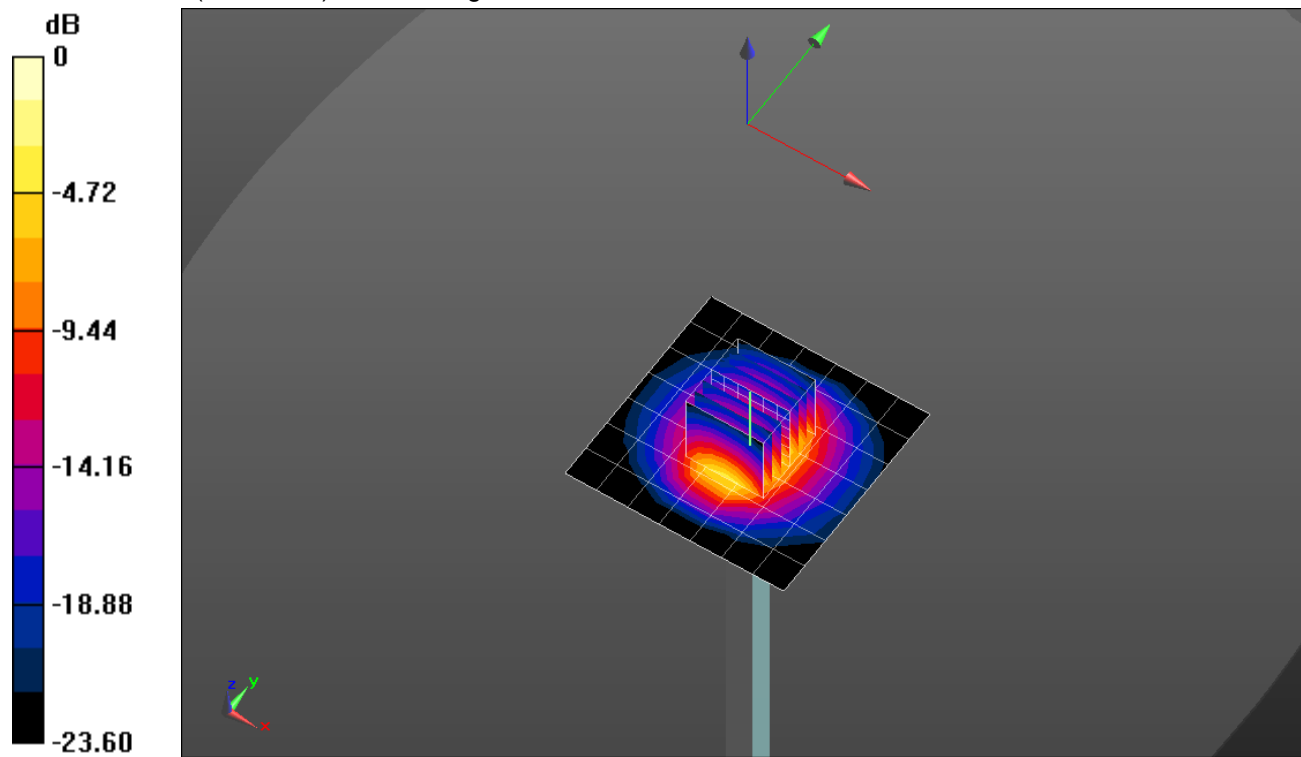
Body/Pin=100 mW/Zoom Scan (7x7x7)/Cube 0: Measurement grid: dx=5mm, dy=5mm, dz=5mm

Reference Value = 58.45 V/m; Power Drift = -0.05 dB

Peak SAR (extrapolated) = 11.3 W/kg

SAR(1 g) = 5.24 W/kg; SAR(10 g) = 2.33 W/kg

Maximum value of SAR (measured) = 7.62 W/kg



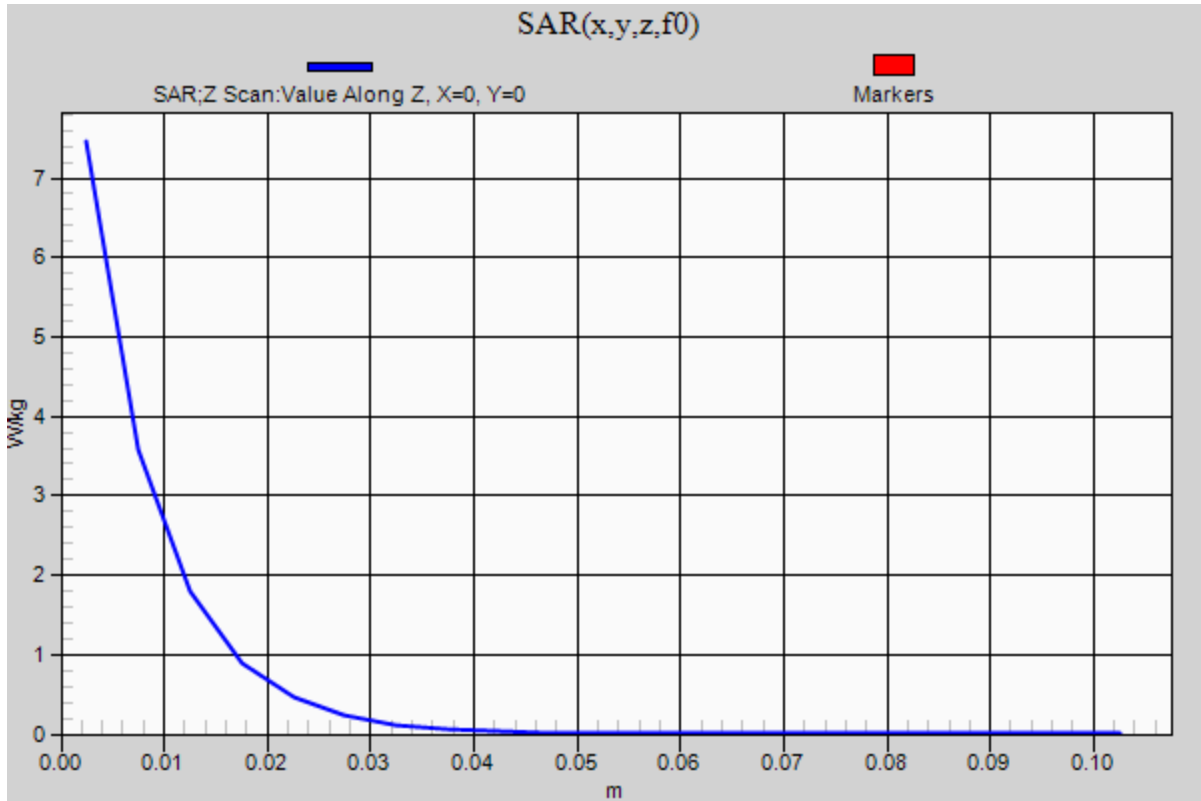
0 dB = 7.62 W/kg = 8.82 dBW/kg

20180828_SystemPerformanceCheck-D2600V2 SN 1036

Frequency: 2600 MHz; Duty Cycle: 1:1

Body/Pin=100 mW/Z Scan (1x1x21): Measurement grid: dx=20mm, dy=20mm, dz=5mm

Maximum value of SAR (measured) = 7.46 W/kg



20180827_SystemPerformanceCheck-D5GHzV2 SN 1003

Frequency: 5250 MHz; Duty Cycle: 1:1; Room Ambient Temperature: 24.0°C; Liquid Temperature: 23.0°C

Medium parameters used: $f = 5250$ MHz; $\sigma = 4.503$ S/m; $\epsilon_r = 36.117$; $\rho = 1000$ kg/m³

DASY5 Configuration:

- Area Scan Setting: Find Secondary Maximum Within: 2.0 dB and with a peak SAR value greater than 0.0012W/kg
- Electronics: DAE4 Sn1545; Calibrated: 4/13/2018
- Probe: EX3DV4 - SN3885; ConvF(4.98, 4.98, 4.98) @ 5250 MHz; Calibrated: 10/24/2017
- Sensor-Surface: 1.4mm (Mechanical Surface Detection)
- Phantom: Twin-SAM V8.0 (20deg probe tilt); Type: QD 000 P41 AA; Serial: 1957

Head/5.25 GHz, Pin=100mW/Area Scan (7x7x1): Measurement grid: dx=10mm, dy=10mm

Maximum value of SAR (measured) = 20.3 W/kg

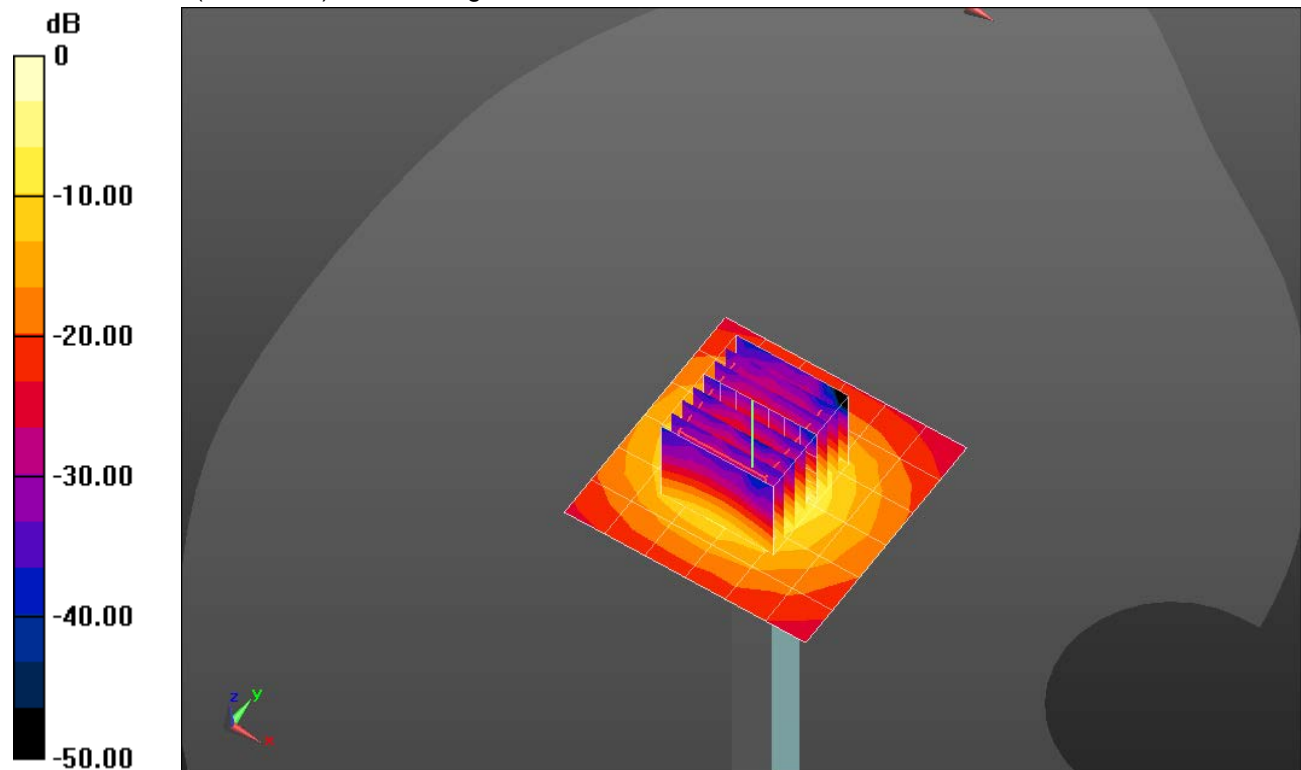
Head/5.25 GHz, Pin=100mW/Zoom Scan (8x8x7)/Cube 0: Measurement grid: dx=4mm, dy=4mm, dz=1.4mm

Reference Value = 59.63 V/m; Power Drift = -0.15 dB

Peak SAR (extrapolated) = 35.5 W/kg

SAR(1 g) = 8.7 W/kg; SAR(10 g) = 2.53 W/kg

Maximum value of SAR (measured) = 20.7 W/kg

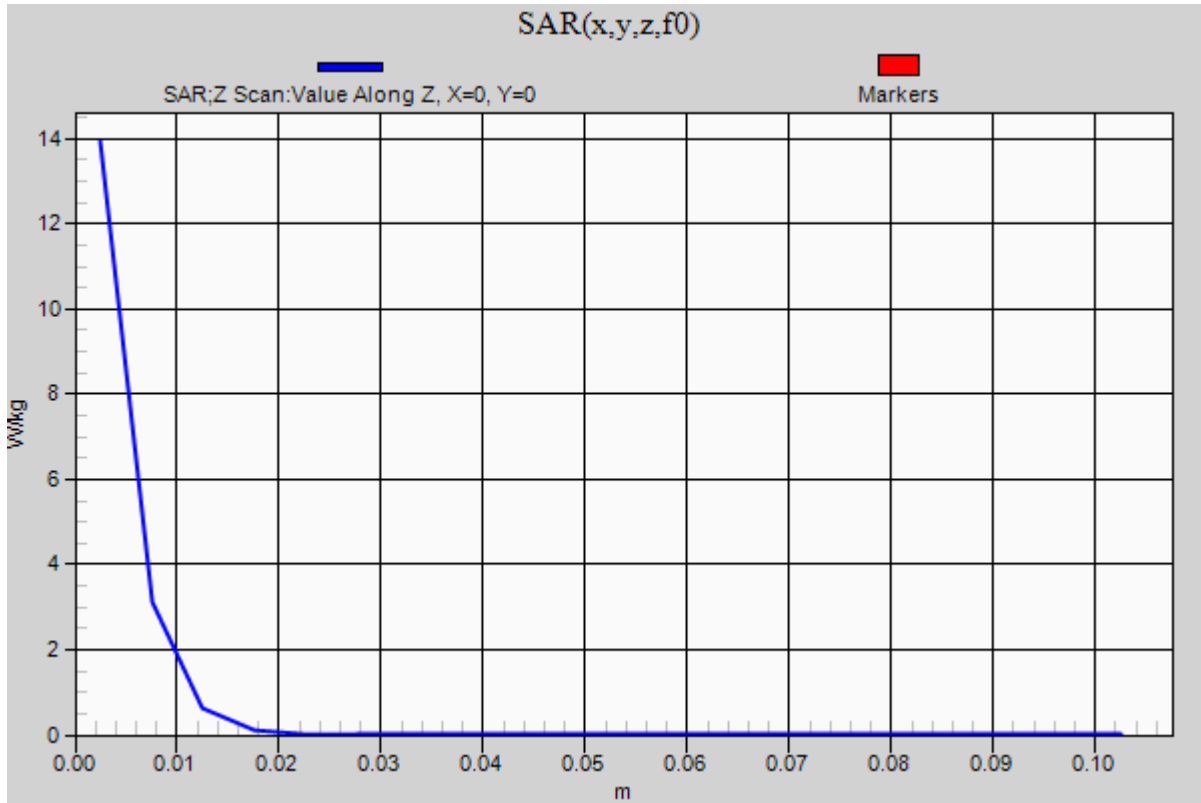


0 dB = 20.7 W/kg = 13.16 dBW/kg

20180827_SystemPerformanceCheck-D5GHzV2 SN 1003

Frequency: 5250 MHz; Duty Cycle: 1:1

Head/5.25 GHz, Pin=100mW/Z Scan (1x1x21): Measurement grid: dx=20mm, dy=20mm, dz=5mm
Maximum value of SAR (measured) = 13.9 W/kg



20180827_SystemPerformanceCheck-D5GHzV2 SN 1003

Frequency: 5600 MHz; Duty Cycle: 1:1; Room Ambient Temperature: 24.0°C; Liquid Temperature: 23.0°C

Medium parameters used: $f = 5600$ MHz; $\sigma = 5.887$ S/m; $\epsilon_r = 47.061$; $\rho = 1000$ kg/m³

DASY5 Configuration:

- Area Scan Setting: Find Secondary Maximum Within: 2.0 dB and with a peak SAR value greater than 0.0012W/kg
- Electronics: DAE4 Sn1545; Calibrated: 4/13/2018
- Probe: EX3DV4 - SN3885; ConvF(4.08, 4.08, 4.08) @ 5600 MHz; Calibrated: 10/24/2017
- Sensor-Surface: 1.4mm (Mechanical Surface Detection)
- Phantom: ELI V8.0 (20deg probe tilt) Front; Type: QD OVA 004 AA; Serial: 2081

Body/5.6 GHz, Pin=100mW/Area Scan (7x7x1): Measurement grid: dx=10mm, dy=10mm

Maximum value of SAR (measured) = 17.3 W/kg

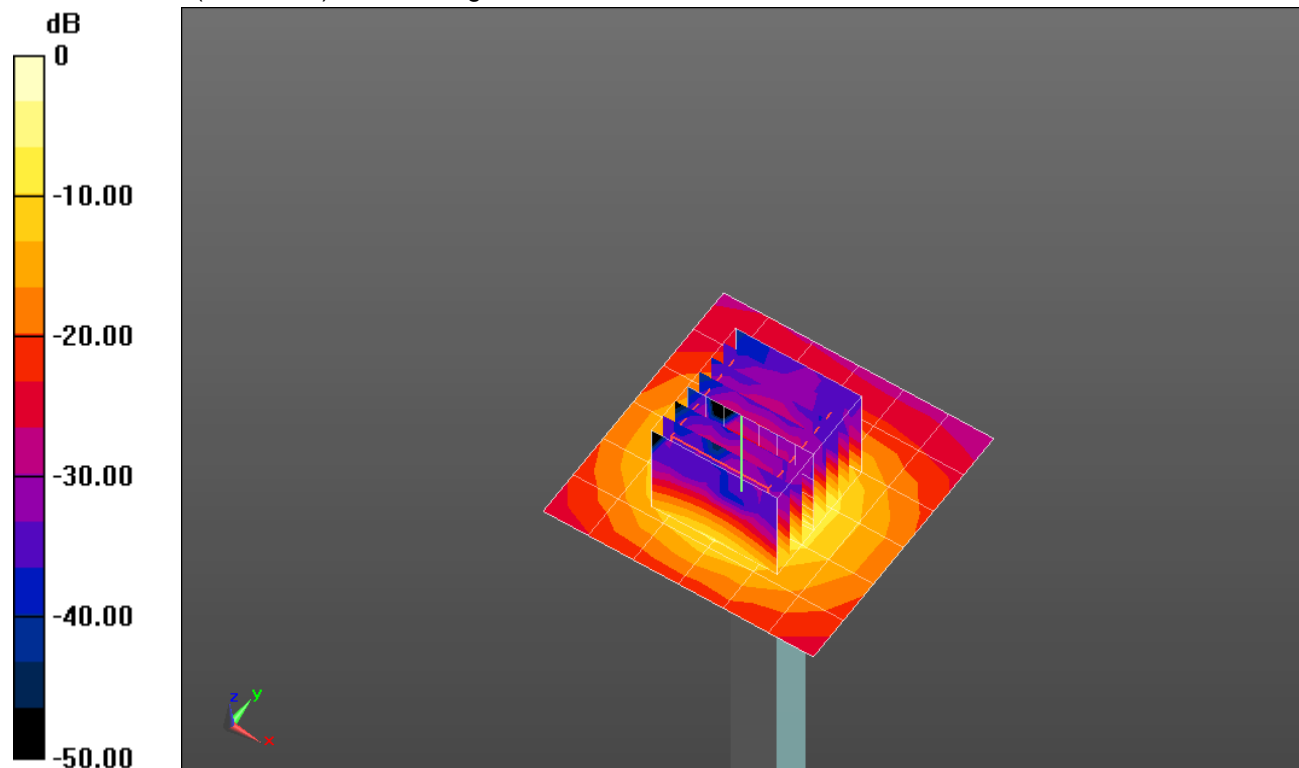
Body/5.6 GHz, Pin=100mW/Zoom Scan (8x8x7)/Cube 0: Measurement grid: dx=4mm, dy=4mm, dz=1.4mm

Reference Value = 47.00 V/m; Power Drift = 0.01 dB

Peak SAR (extrapolated) = 39.5 W/kg

SAR(1 g) = 8.44 W/kg; SAR(10 g) = 2.35 W/kg

Maximum value of SAR (measured) = 21.1 W/kg

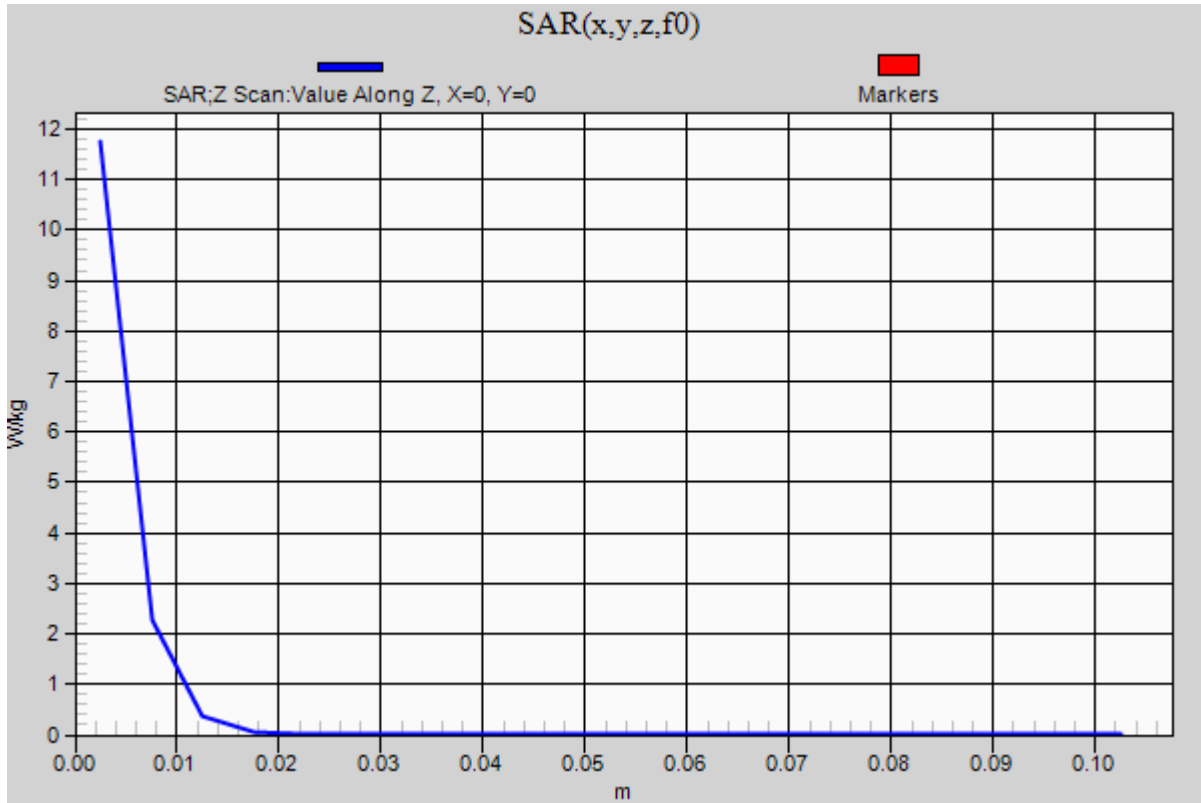


0 dB = 21.1 W/kg = 13.24 dBW/kg

20180827_SystemPerformanceCheck-D5GHzV2 SN 1003

Frequency: 5600 MHz; Duty Cycle: 1:1

Body/5.6 GHz, Pin=100mW/Z Scan (1x1x21): Measurement grid: dx=20mm, dy=20mm, dz=5mm
Maximum value of SAR (measured) = 11.7 W/kg



20180827_SystemPerformanceCheck-D5GHzV2 SN 1003

Frequency: 5750 MHz; Duty Cycle: 1:1; Room Ambient Temperature: 24.0°C; Liquid Temperature: 23.0°C

Medium parameters used: $f = 5750$ MHz; $\sigma = 6.113$ S/m; $\epsilon_r = 46.731$; $\rho = 1000$ kg/m³

DASY5 Configuration:

- Area Scan Setting: Find Secondary Maximum Within: 2.0 dB and with a peak SAR value greater than 0.0012W/kg
- Electronics: DAE4 Sn1545; Calibrated: 4/13/2018
- Probe: EX3DV4 - SN3885; ConvF(4.29, 4.29, 4.29) @ 5750 MHz; Calibrated: 10/24/2017
- Sensor-Surface: 1.4mm (Mechanical Surface Detection)
- Phantom: ELI V8.0 (20deg probe tilt) Front; Type: QD OVA 004 AA; Serial: 2081

Body/5.75 GHz, Pin=100mW/Area Scan (7x7x1): Measurement grid: dx=10mm, dy=10mm

Maximum value of SAR (measured) = 16.5 W/kg

Body/5.75 GHz, Pin=100mW/Zoom Scan (8x8x7)/Cube 0: Measurement grid: dx=4mm, dy=4mm,

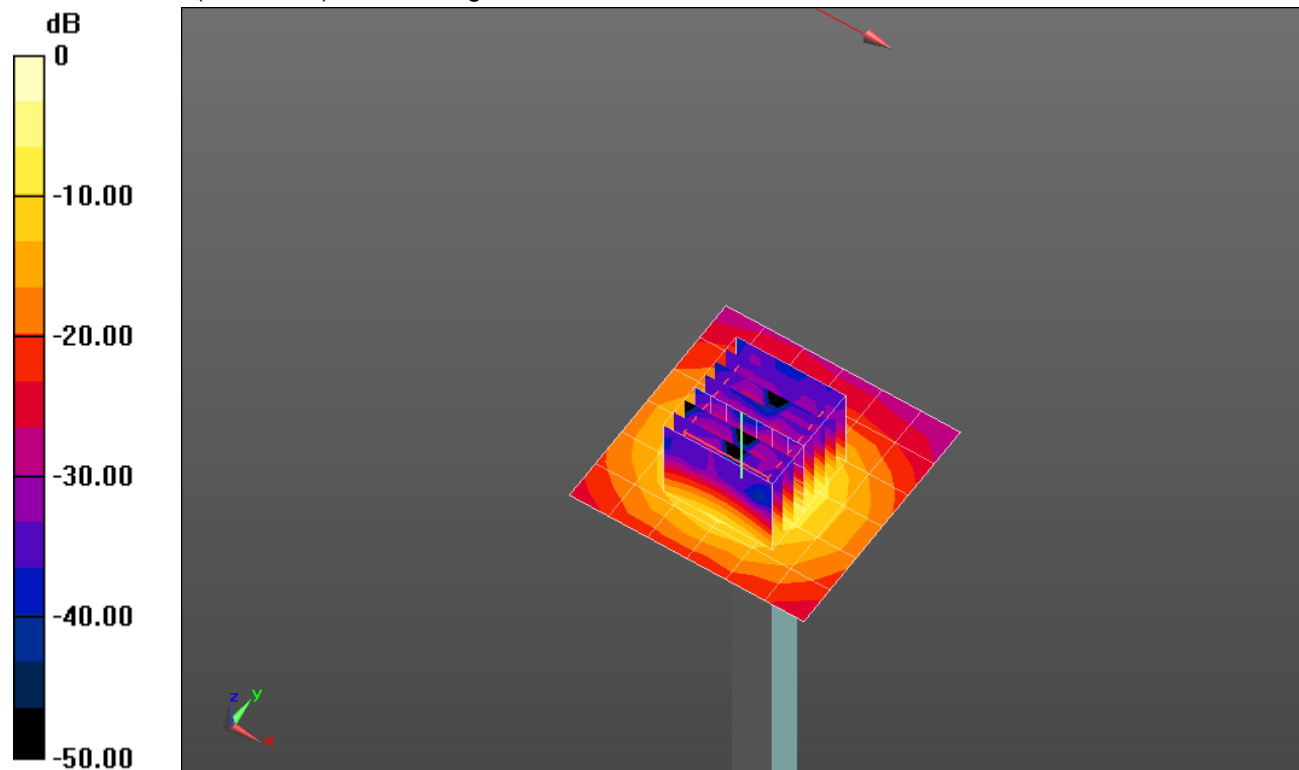
dz=1.4mm

Reference Value = 45.64 V/m; Power Drift = -0.04 dB

Peak SAR (extrapolated) = 37.4 W/kg

SAR(1 g) = 7.94 W/kg; SAR(10 g) = 2.21 W/kg

Maximum value of SAR (measured) = 19.9 W/kg

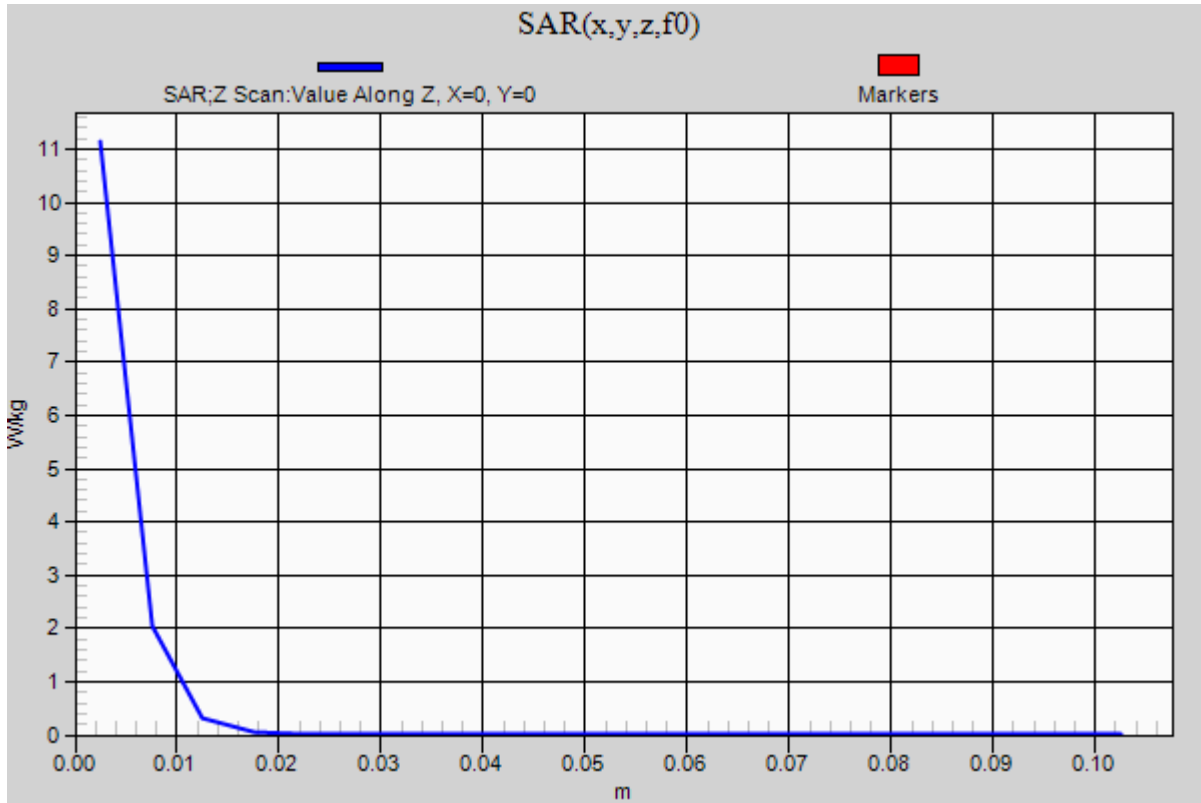


0 dB = 19.9 W/kg = 12.99 dBW/kg

20180827_SystemPerformanceCheck-D5GHzV2 SN 1003

Frequency: 5750 MHz; Duty Cycle: 1:1

Body/5.75 GHz, Pin=100mW/Z Scan (1x1x21): Measurement grid: dx=20mm, dy=20mm, dz=5mm
Maximum value of SAR (measured) = 11.1 W/kg



20180828_SystemPerformanceCheck-D1750V2 SN 1077

Frequency: 1750 MHz; Duty Cycle: 1:1; Room Ambient Temperature: 24.0°C; Liquid Temperature: 23.0°C

Medium parameters used: $f = 1750$ MHz; $\sigma = 1.389$ S/m; $\epsilon_r = 39.522$; $\rho = 1000$ kg/m³

DASY5 Configuration:

- Area Scan Setting: Find Secondary Maximum Within: 2.0 dB and with a peak SAR value greater than 0.0012W/kg
- Electronics: DAE4 Sn1545; Calibrated: 4/13/2018
- Probe: EX3DV4 - SN3885; ConvF(8.26, 8.26, 8.26) @ 1750 MHz; Calibrated: 10/24/2017
- Sensor-Surface: 2.5mm (Mechanical Surface Detection)
- Phantom: Twin-SAM V8.0 (20deg probe tilt); Type: QD 000 P41 AA; Serial: 1957

Head/Pin=100 mW/Area Scan (7x7x1): Measurement grid: dx=15mm, dy=15mm

Maximum value of SAR (measured) = 4.92 W/kg

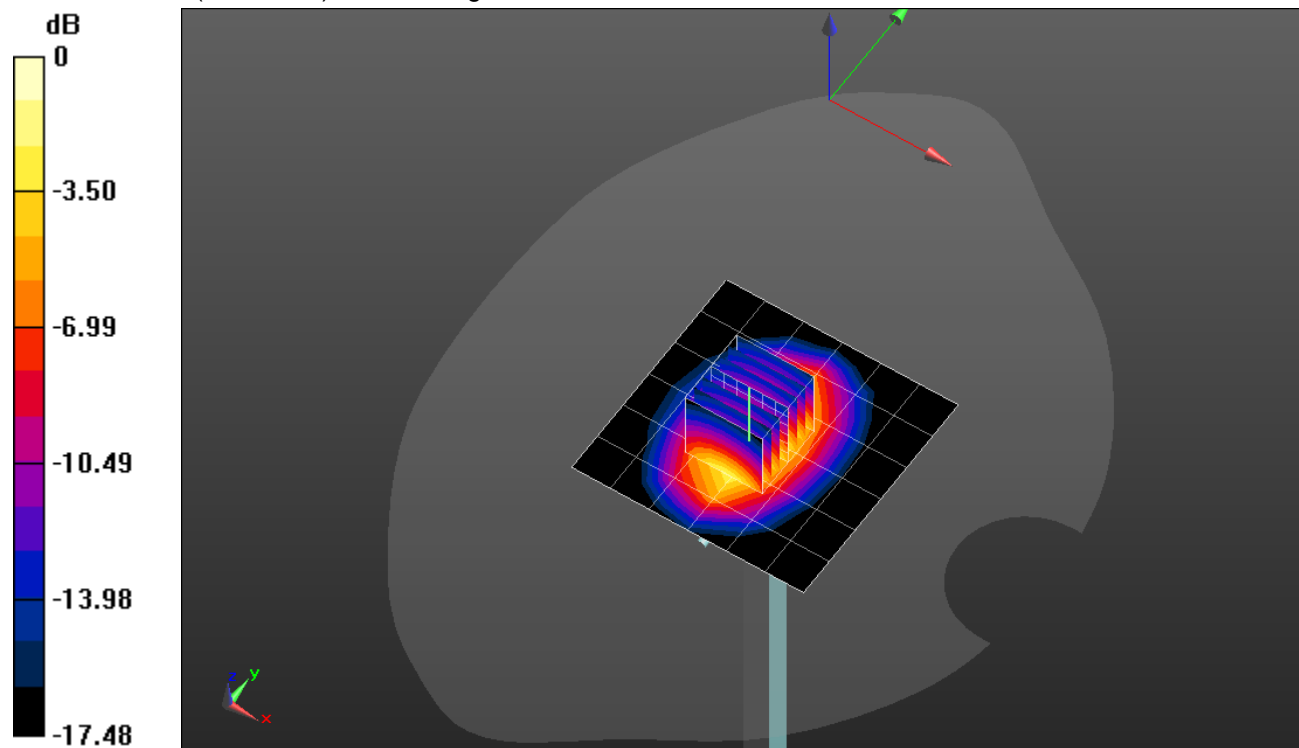
Head/Pin=100 mW/Zoom Scan (7x7x7)/Cube 0: Measurement grid: dx=5mm, dy=5mm, dz=5mm

Reference Value = 60.18 V/m; Power Drift = 0.00 dB

Peak SAR (extrapolated) = 7.07 W/kg

SAR(1 g) = 3.8 W/kg; SAR(10 g) = 2.01 W/kg

Maximum value of SAR (measured) = 5.08 W/kg



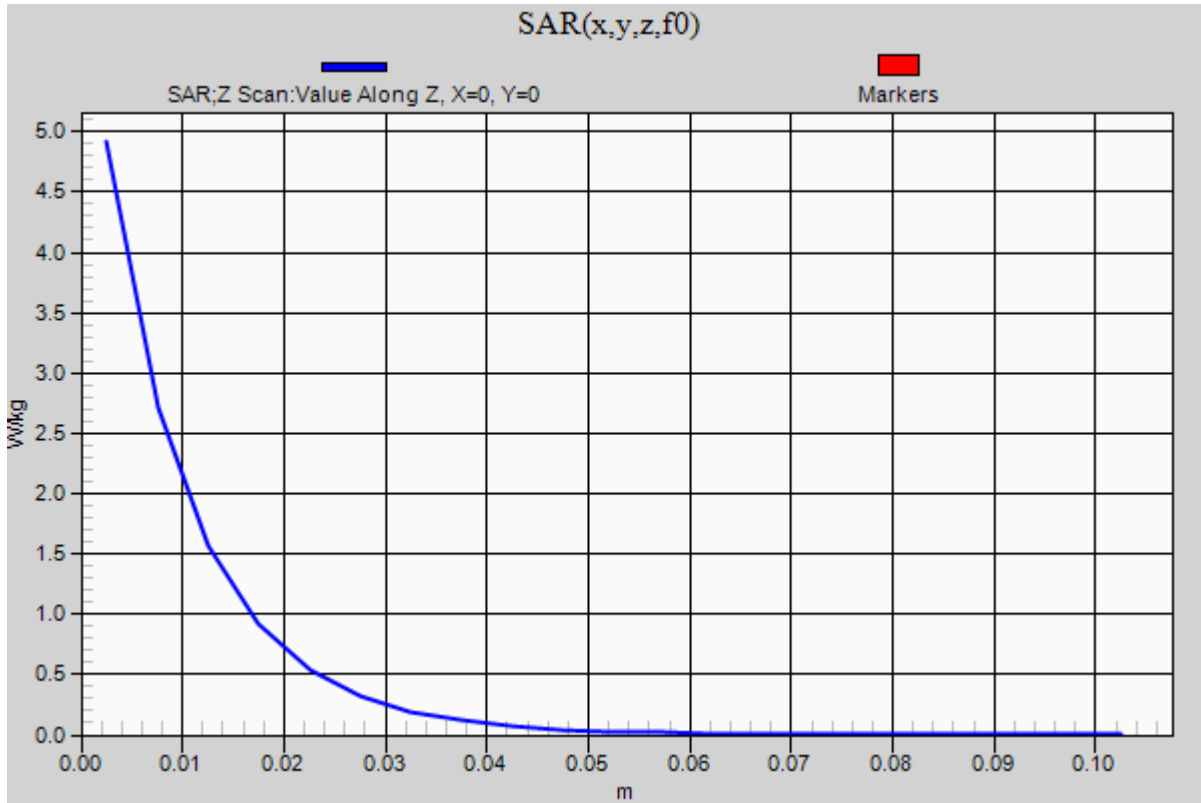
0 dB = 5.08 W/kg = 7.06 dBW/kg

20180828_SystemPerformanceCheck-D1750V2 SN 1077

Frequency: 1750 MHz; Duty Cycle: 1:1

Head/Pin=100 mW/Z Scan (1x1x21): Measurement grid: dx=20mm, dy=20mm, dz=5mm

Maximum value of SAR (measured) = 4.92 W/kg



20180828_SystemPerformanceCheck-D1900V2 SN 5d163

Frequency: 1900 MHz; Duty Cycle: 1:1; Room Ambient Temperature: 24.0°C; Liquid Temperature: 23.0°C

Medium parameters used: $f = 1900$ MHz; $\sigma = 1.557$ S/m; $\epsilon_r = 55.484$; $\rho = 1000$ kg/m³

DASY5 Configuration:

- Area Scan Setting: Find Secondary Maximum Within: 2.0 dB and with a peak SAR value greater than 0.0012W/kg
- Electronics: DAE4 Sn1545; Calibrated: 4/13/2018
- Probe: EX3DV4 - SN3885; ConvF(7.81, 7.81, 7.81) @ 1900 MHz; Calibrated: 10/24/2017
- Sensor-Surface: 2.5mm (Mechanical Surface Detection (Locations From Previous Scan Used)), Sensor-Surface: 2.5mm (Mechanical Surface Detection)
- Phantom: ELI V8.0 (20deg probe tilt) Front; Type: QD OVA 004 AA; Serial: 2081

Body/Pin=100 mW/Area Scan (7x7x1): Measurement grid: dx=15mm, dy=15mm

Maximum value of SAR (measured) = 5.12 W/kg

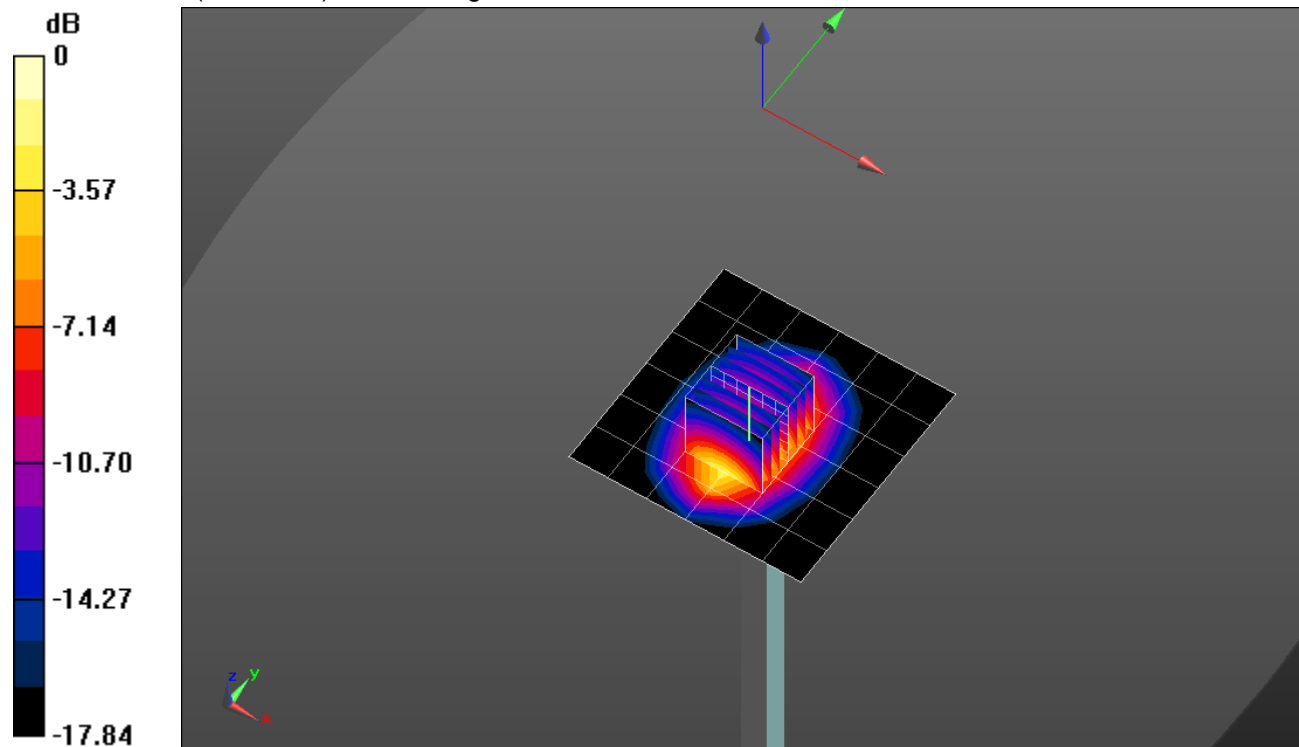
Body/Pin=100 mW/Zoom Scan (7x7x7)/Cube 0: Measurement grid: dx=5mm, dy=5mm, dz=5mm

Reference Value = 58.15 V/m; Power Drift = 0.01 dB

Peak SAR (extrapolated) = 7.48 W/kg

SAR(1 g) = 4.03 W/kg; SAR(10 g) = 2.08 W/kg

Maximum value of SAR (measured) = 5.43 W/kg

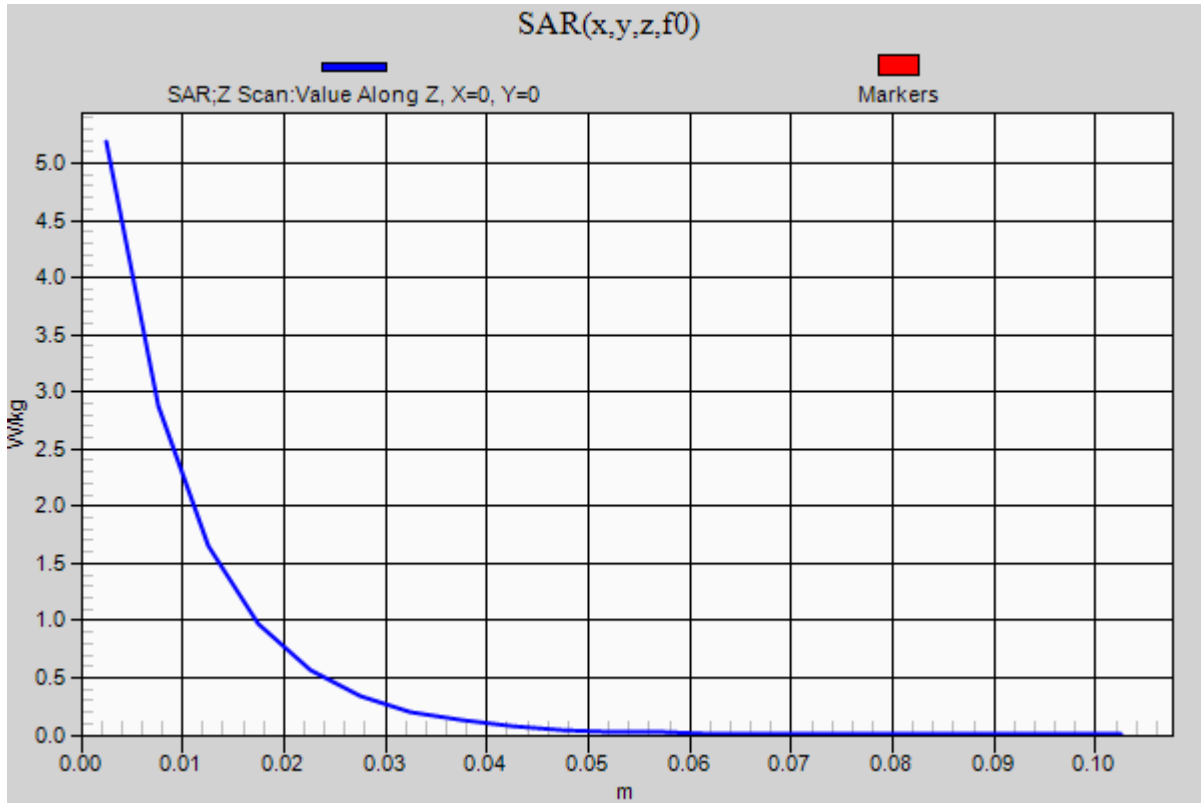


0 dB = 5.43 W/kg = 7.35 dBW/kg

20180828_SystemPerformanceCheck-D1900V2 SN 5d163

Frequency: 1900 MHz; Duty Cycle: 1:1

Body/Pin=100 mW/Z Scan (1x1x21): Measurement grid: dx=20mm, dy=20mm, dz=5mm
Maximum value of SAR (measured) = 5.19 W/kg



20180829_SystemPerformanceCheck-D835V2 SN 4d117

Frequency: 835 MHz; Duty Cycle: 1:1; Room Ambient Temperature: 24.0°C; Liquid Temperature: 23.0°C

Medium parameters used: $f = 835 \text{ MHz}$; $\sigma = 1.011 \text{ S/m}$; $\epsilon_r = 53.813$; $\rho = 1000 \text{ kg/m}^3$

DASY5 Configuration:

- Area Scan Setting: Find Secondary Maximum Within: 2.0 dB and with a peak SAR value greater than 0.0012W/kg
- Electronics: DAE4 Sn1545; Calibrated: 4/13/2018
- Probe: EX3DV4 - SN3885; ConvF(9.51, 9.51, 9.51) @ 835 MHz; Calibrated: 10/24/2017
- Sensor-Surface: 2.5mm (Mechanical Surface Detection)
- Phantom: ELI V8.0 (20deg probe tilt) Front; Type: QD OVA 004 AA; Serial: 2081

Body/Pin=100 mW/Area Scan (7x7x1): Measurement grid: dx=15mm, dy=15mm

Maximum value of SAR (measured) = 1.14 W/kg

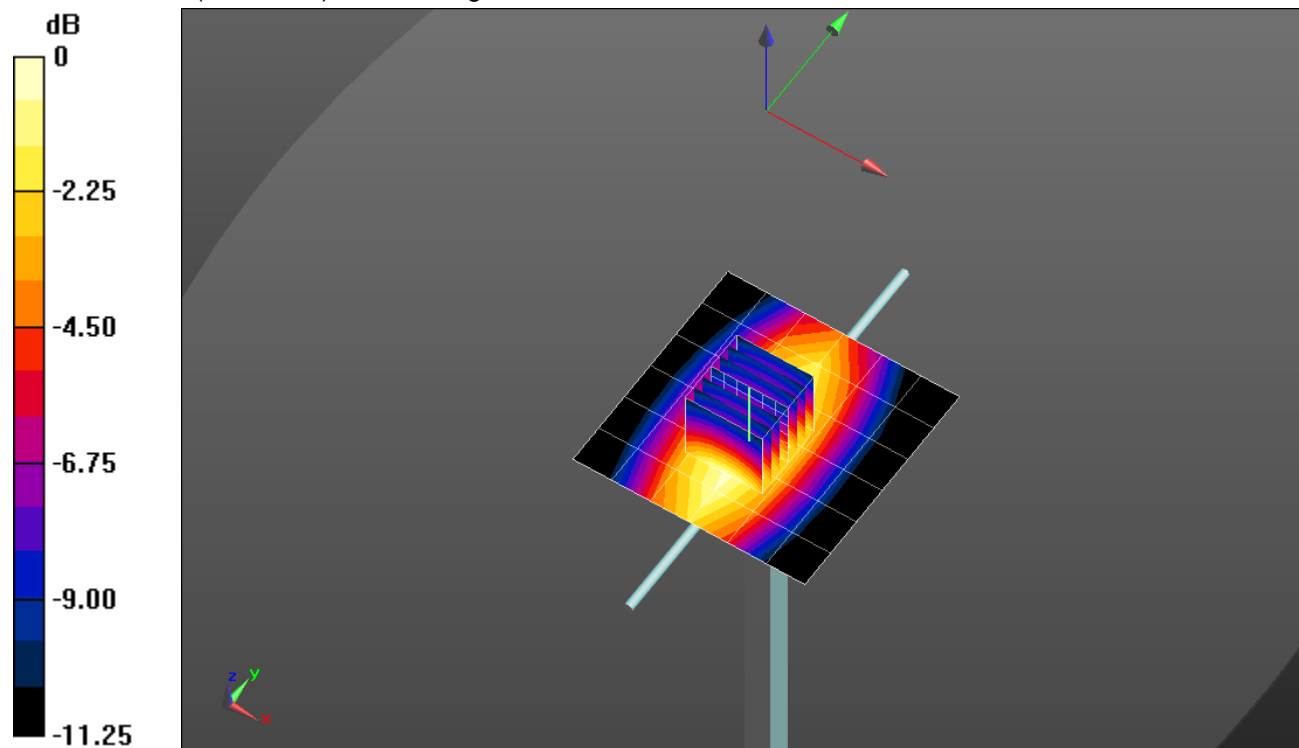
Body/Pin=100 mW/Zoom Scan (7x7x7)/Cube 0: Measurement grid: dx=5mm, dy=5mm, dz=5mm

Reference Value = 34.08 V/m; Power Drift = -0.08 dB

Peak SAR (extrapolated) = 1.43 W/kg

SAR(1 g) = 0.948 W/kg; SAR(10 g) = 0.616 W/kg

Maximum value of SAR (measured) = 1.16 W/kg

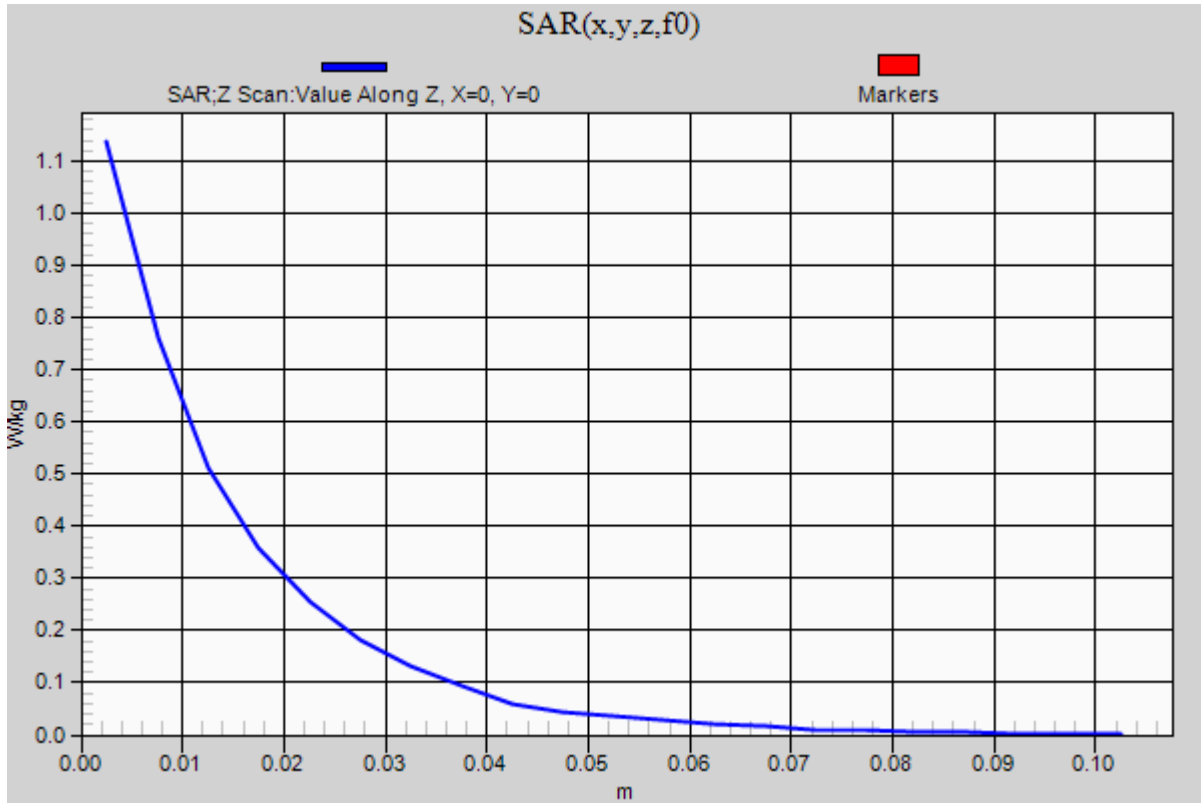


0 dB = 1.16 W/kg = 0.64 dBW/kg

20180829_SystemPerformanceCheck-D835V2 SN 4d117

Frequency: 835 MHz; Duty Cycle: 1:1

Body/Pin=100 mW/Z Scan (1x1x21): Measurement grid: dx=20mm, dy=20mm, dz=5mm
Maximum value of SAR (measured) = 1.14 W/kg



20180829_SystemPerformanceCheck-D750V3 SN 1071

Frequency: 750 MHz; Duty Cycle: 1:1; Room Ambient Temperature: 24.0°C; Liquid Temperature: 23.0°C

Medium parameters used: $f = 750 \text{ MHz}$; $\sigma = 0.979 \text{ S/m}$; $\epsilon_r = 52.831$; $\rho = 1000 \text{ kg/m}^3$

DASY5 Configuration:

- Area Scan Setting: Find Secondary Maximum Within: 2.0 dB and with a peak SAR value greater than 0.0012W/kg
- Electronics: DAE4 Sn1545; Calibrated: 4/13/2018
- Probe: EX3DV4 - SN3885; ConvF(9.53, 9.53, 9.53) @ 750 MHz; Calibrated: 10/24/2017
- Sensor-Surface: 2.5mm (Mechanical Surface Detection)
- Phantom: ELI V8.0 (20deg probe tilt) Front; Type: QD OVA 004 AA; Serial: 2081

Body/Pin=100 mW/Area Scan (7x7x1): Measurement grid: dx=15mm, dy=15mm

Maximum value of SAR (measured) = 1.13 W/kg

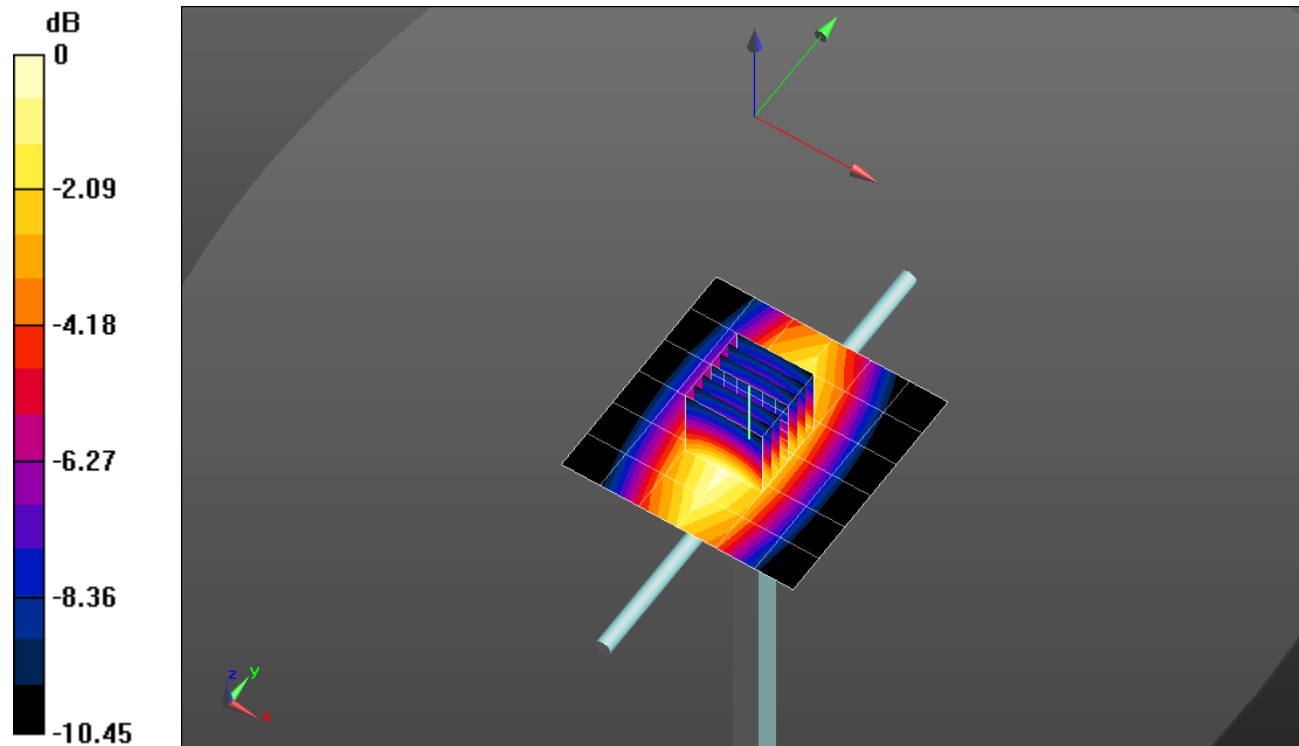
Body/Pin=100 mW/Zoom Scan (7x7x7)/Cube 0: Measurement grid: dx=5mm, dy=5mm, dz=5mm

Reference Value = 34.09 V/m; Power Drift = 0.01 dB

Peak SAR (extrapolated) = 1.39 W/kg

SAR(1 g) = 0.923 W/kg; SAR(10 g) = 0.607 W/kg

Maximum value of SAR (measured) = 1.12 W/kg



0 dB = 1.12 W/kg = 0.49 dBW/kg

20180829_SystemPerformanceCheck-D750V3 SN 1071

Frequency: 750 MHz; Duty Cycle: 1:1

Body/Pin=100 mW/Z Scan (1x1x21): Measurement grid: dx=20mm, dy=20mm, dz=5mm
Maximum value of SAR (measured) = 1.12 W/kg

