

# Measurement Report for Device, EDGE RIGHT, n261, Beam ID 150, Channel 2071821 (27559.3MHz)

## Device under Test Properties

<b>Name, Manufacturer</b>	<b>DUT Type</b>
A3LSMA716V	Phone

## Exposure Conditions

<b>Phantom Section</b>	<b>Position, Test Distance [mm]</b>	<b>Band</b>	<b>Frequency [MHz], Channel Number</b>
5G Air	EDGE RIGHT, 2.00	n261	27559.3, 2071821

## Hardware Setup

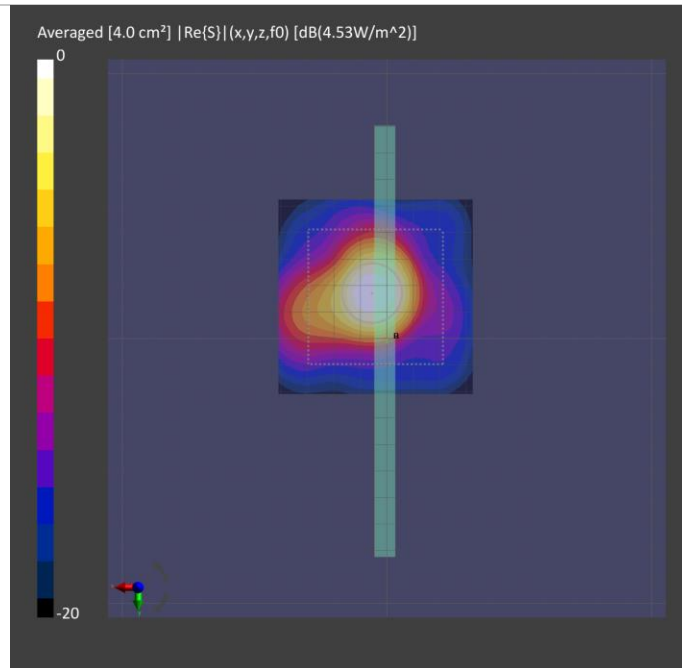
<b>Phantom</b>	<b>Medium</b>	<b>Probe, Calibration Date</b>	<b>DAE, Calibration Date</b>
mmWave	--Air-	EUmmWV4 - SN9431_F1-78GHz, 2020-02-26	DAE4 Sn1494, 2019-07-18

## Scan Setup

	5G Scan
Grid Extents [mm]	70.0 x 70.0
Grid Steps [lambda]	0.25 x 0.25
Sensor Surface [mm]	2.0
MAIA	N/A

## Measurement Results

	5G Scan
Date	2020-05-11
Avg. Area [cm <sup>2</sup> ]	4.00
pS <sub>tot</sub> avg [W/m <sup>2</sup> ]	4.53
pS <sub>n</sub> avg [W/m <sup>2</sup> ]	3.90
E <sub>peak</sub> [V/m]	67.9
Power Drift [dB]	0.03



# Measurement Report for Device, EDGE Left, n261, Beam ID 154, Channel 2071821 (27559.3MHz)

## Device under Test Properties

<b>Name, Manufacturer</b>	<b>DUT Type</b>
A3LSMA716V	Phone

## Exposure Conditions

<b>Phantom Section</b>	<b>Position, Test Distance [mm]</b>	<b>Band</b>	<b>Frequency [MHz], Channel Number</b>
5G Air	EDGE Left, 2.00	n261	27559.3, 2071821

## Hardware Setup

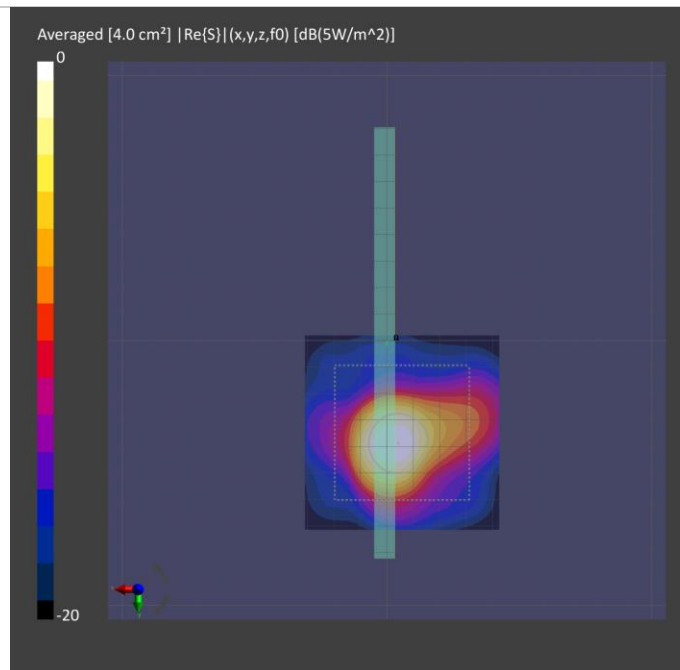
<b>Phantom</b>	<b>Medium</b>	<b>Probe, Calibration Date</b>	<b>DAE, Calibration Date</b>
mmWave	--Air-	EUmmWV4 - SN9431_F1-78GHz, 2020-02-26	DAE4 Sn1494, 2019-07-18

## Scan Setup

	5G Scan
Grid Extents [mm]	70.0 x 70.0
Grid Steps [lambda]	0.25 x 0.25
Sensor Surface [mm]	2.0
MAIA	N/A

## Measurement Results

	5G Scan
Date	2020-05-11
Avg. Area [cm <sup>2</sup> ]	4.00
pS <sub>tot</sub> avg [W/m <sup>2</sup> ]	5.00
pS <sub>n</sub> avg [W/m <sup>2</sup> ]	4.19
E <sub>peak</sub> [V/m]	71.0
Power Drift [dB]	0.04



# Measurement Report for Device, EDGE RIGHT, n260, Beam ID 15, Channel 2230029 (37051.8MHz)

## Device under Test Properties

<b>Name, Manufacturer</b>	<b>DUT Type</b>
A3LSMA716V	Phone

## Exposure Conditions

<b>Phantom Section</b>	<b>Position, Test Distance [mm]</b>	<b>Band</b>	<b>Frequency [MHz], Channel Number</b>
5G Air	EDGE RIGHT 2.00	n260	37051.8, 2230029

## Hardware Setup

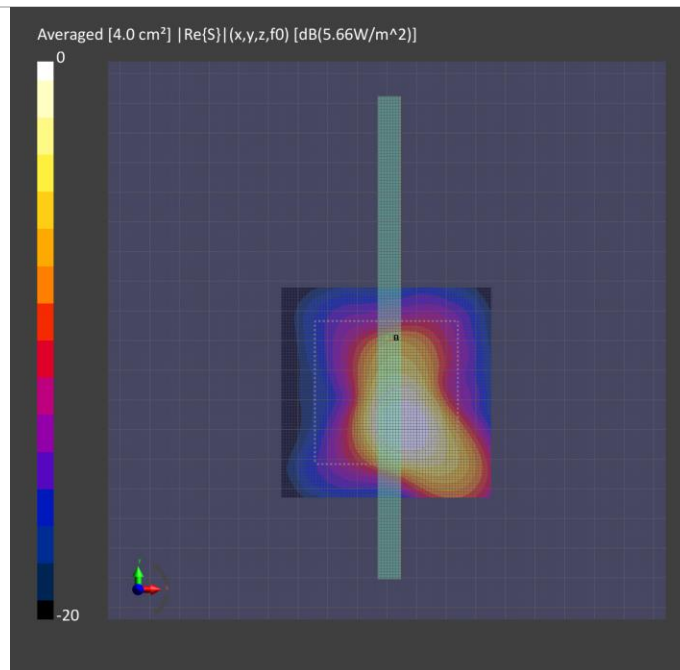
<b>Phantom</b>	<b>Medium</b>	<b>Probe, Calibration Date</b>	<b>DAE, Calibration Date</b>
mmWave	--Air-	EUmmWV4 - SN9450_F1-78GHz, 2019-09-13	DAE4 Sn1494, 2019-07-18

## Scan Setup

	5G Scan
Grid Extents [mm]	70.0 x 70.0
Grid Steps [lambda]	0.25 x 0.25
Sensor Surface [mm]	2.0
MAIA	N/A

## Measurement Results

	5G Scan
Date	2020-05-29
Avg. Area [cm <sup>2</sup> ]	4.00
pS <sub>tot</sub> avg [W/m <sup>2</sup> ]	5.66
pS <sub>n</sub> avg [W/m <sup>2</sup> ]	4.08
E <sub>peak</sub> [V/m]	80.9
Power Drift [dB]	-0.12



# Measurement Report for Device, Edge Left, n260, Beam ID 20, Channel 2278331 (39949.9MHz)

## Device under Test Properties

<b>Name, Manufacturer</b>	<b>DUT Type</b>
A3LSMA716V	Phone

## Exposure Conditions

<b>Phantom Section</b>	<b>Position, Test Distance [mm]</b>	<b>Band</b>	<b>Frequency [MHz], Channel Number</b>
5G Air	Edge Left, 2.00	n260	39949.9, 2278331

## Hardware Setup

<b>Phantom</b>	<b>Medium</b>	<b>Probe, Calibration Date</b>	<b>DAE, Calibration Date</b>
mmWave	--Air-	EUmmWV4 - SN9431_F1-78GHz, 2020-02-26	DAE4 Sn1494, 2019-07-18

## Scan Setup

	5G Scan
Grid Extents [mm]	60.0 x 60.0
Grid Steps [lambda]	0.25 x 0.25
Sensor Surface [mm]	2.0
MAIA	N/A

## Measurement Results

	5G Scan
Date	2020-05-12
Avg. Area [cm <sup>2</sup> ]	4.00
pS <sub>tot</sub> avg [W/m <sup>2</sup> ]	4.36
pS <sub>n</sub> avg [W/m <sup>2</sup> ]	3.47
E <sub>peak</sub> [V/m]	95.8
Power Drift [dB]	0.06

