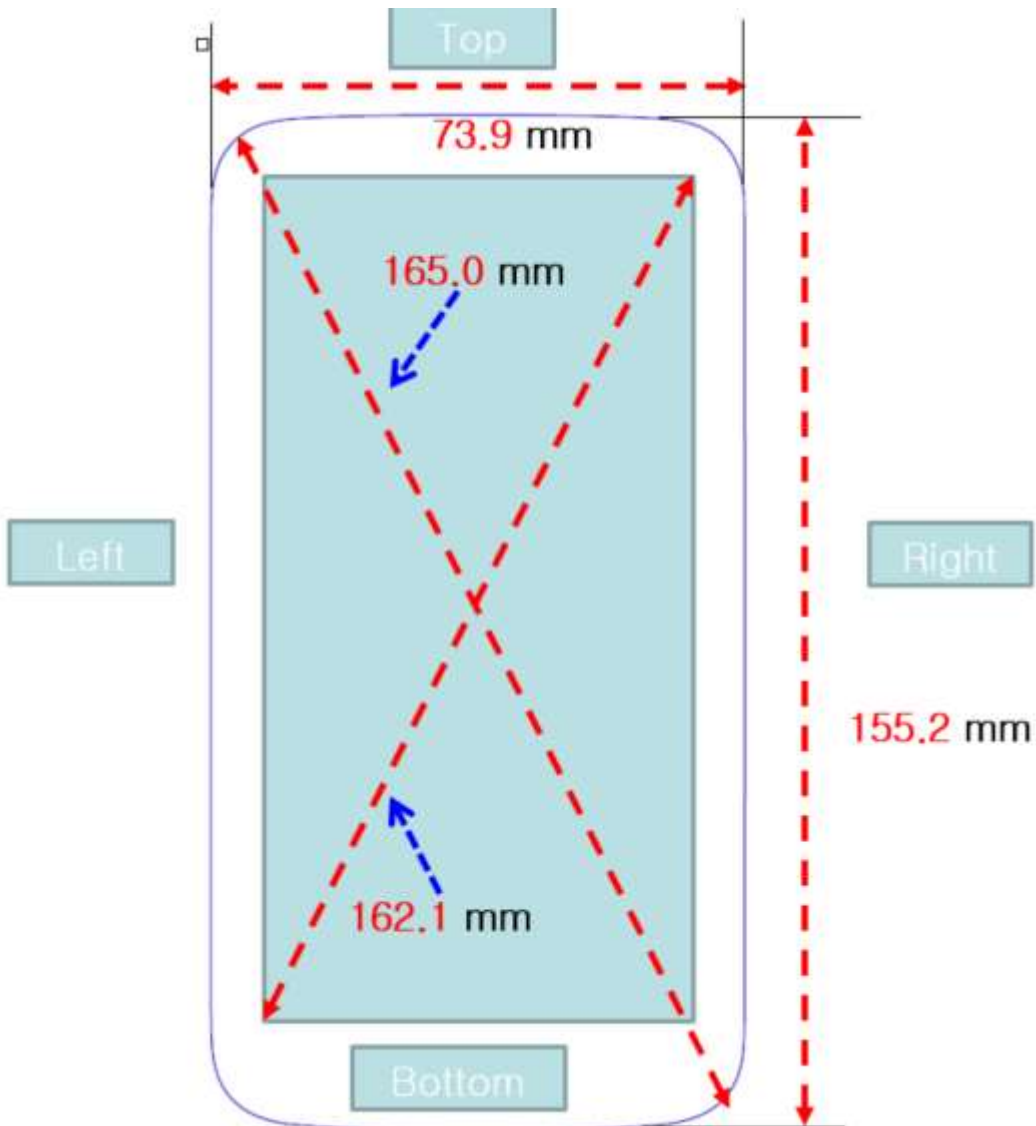


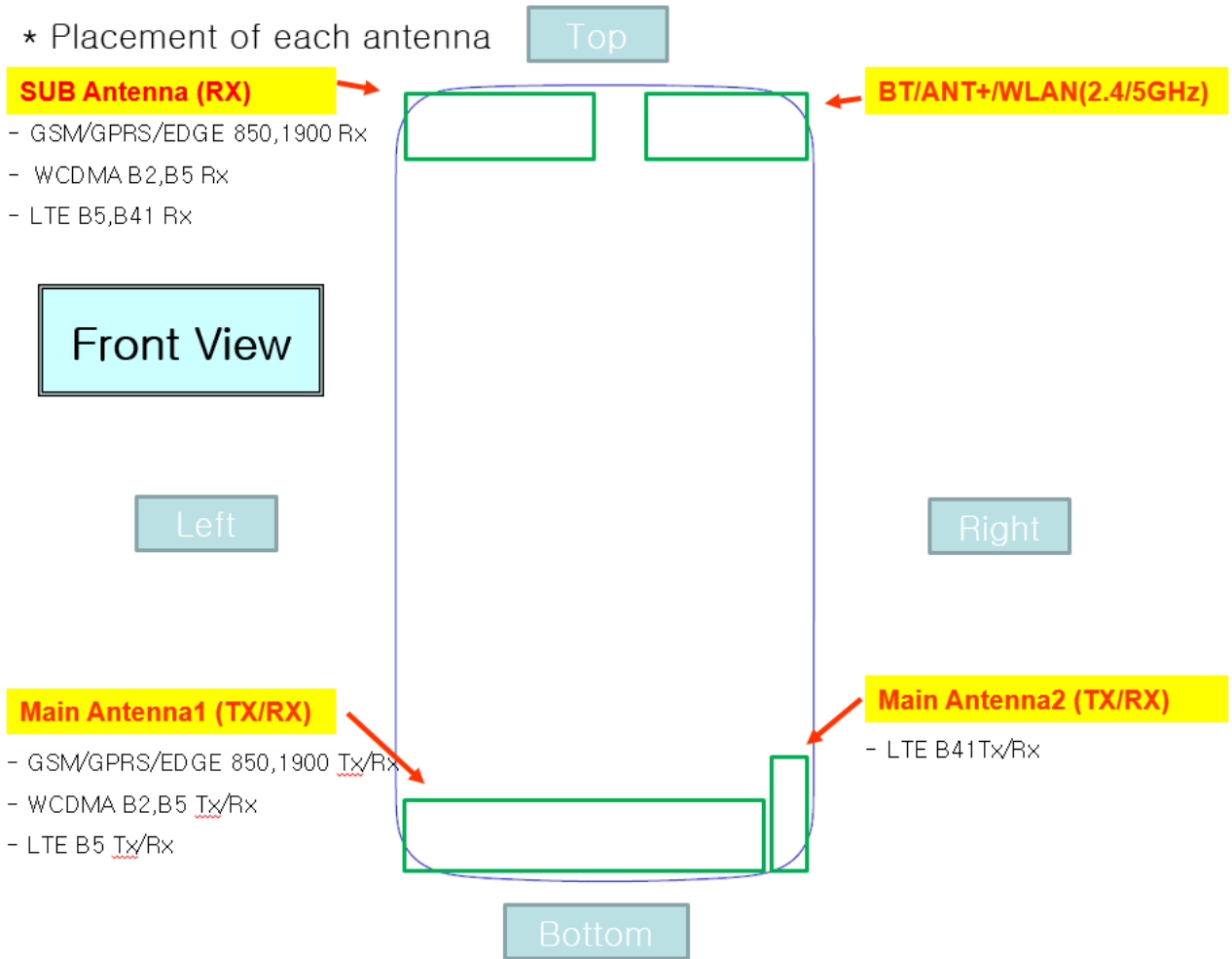
Attachment 8.

- DUT Antenna Information and SAR Test SETUP PHOTOGRAPHS

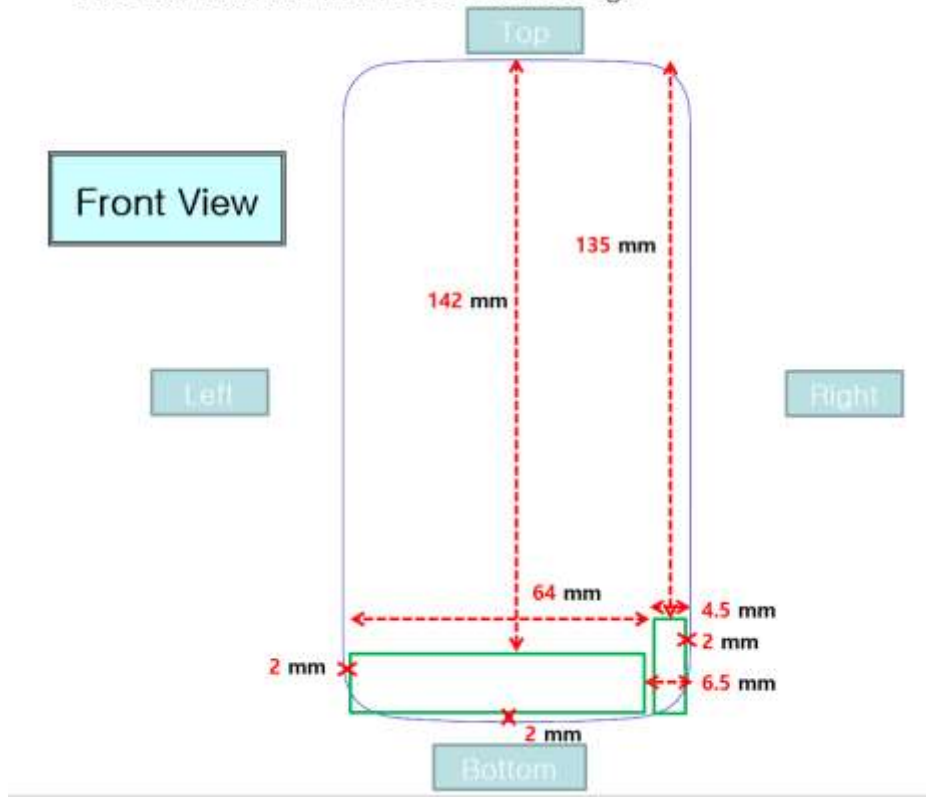
DUT Antenna Information



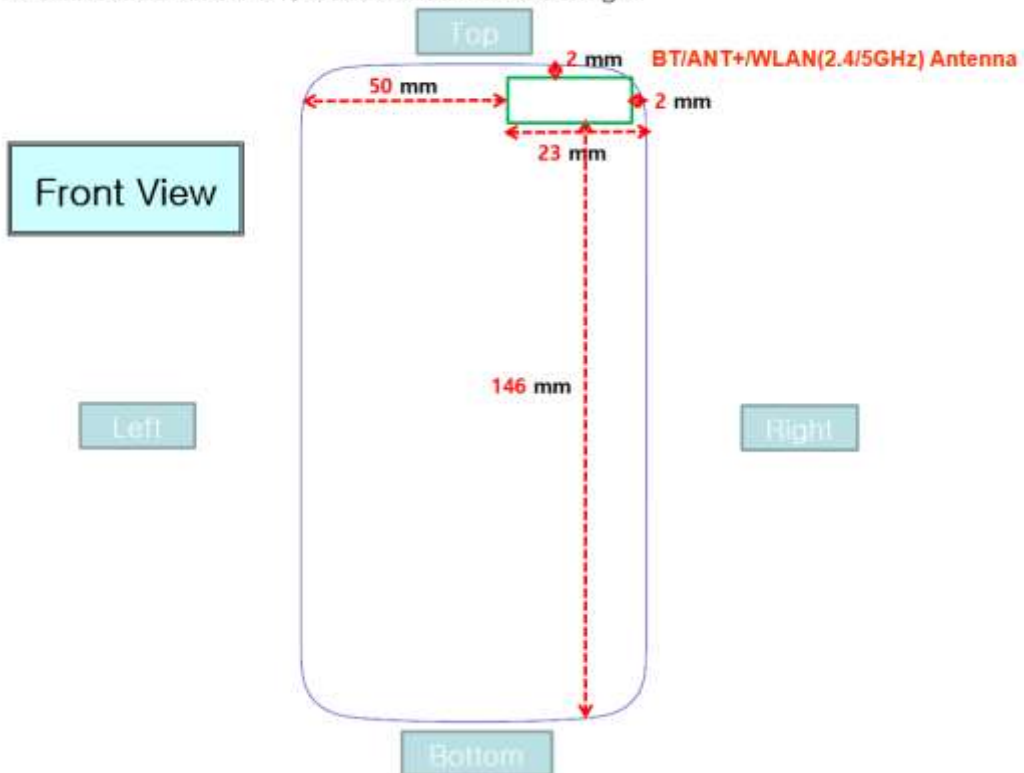
* Placement of each antenna



* Distance between main antenna and edge

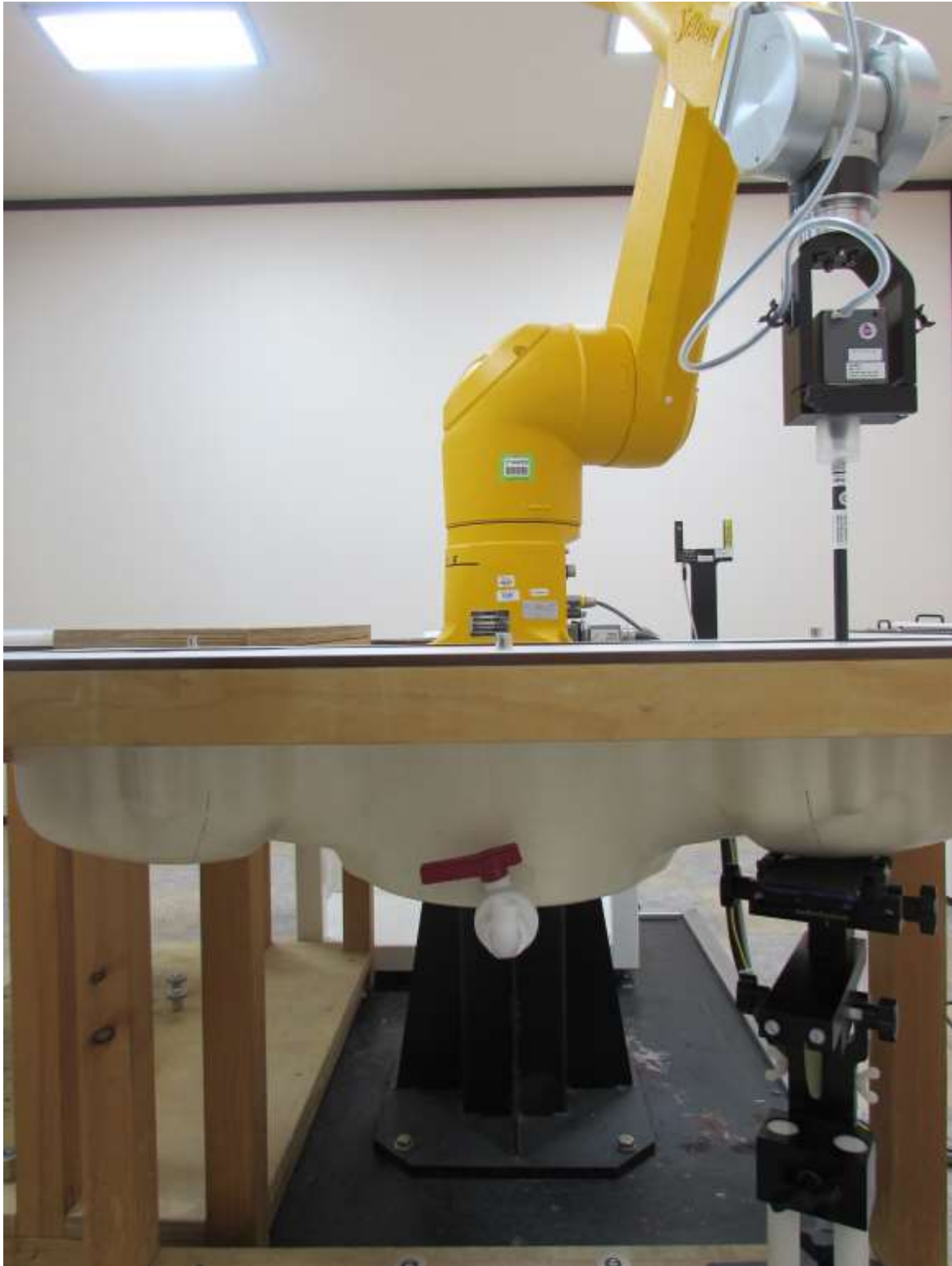


Distance between BT/WLAN antenna and edge

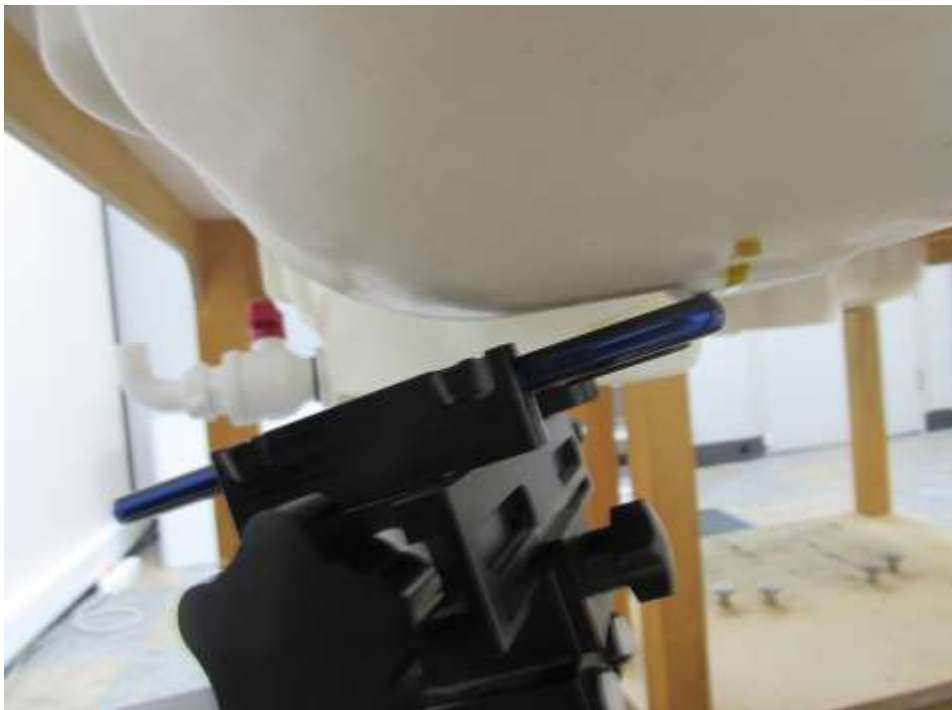


SAR Test Setup Photographs

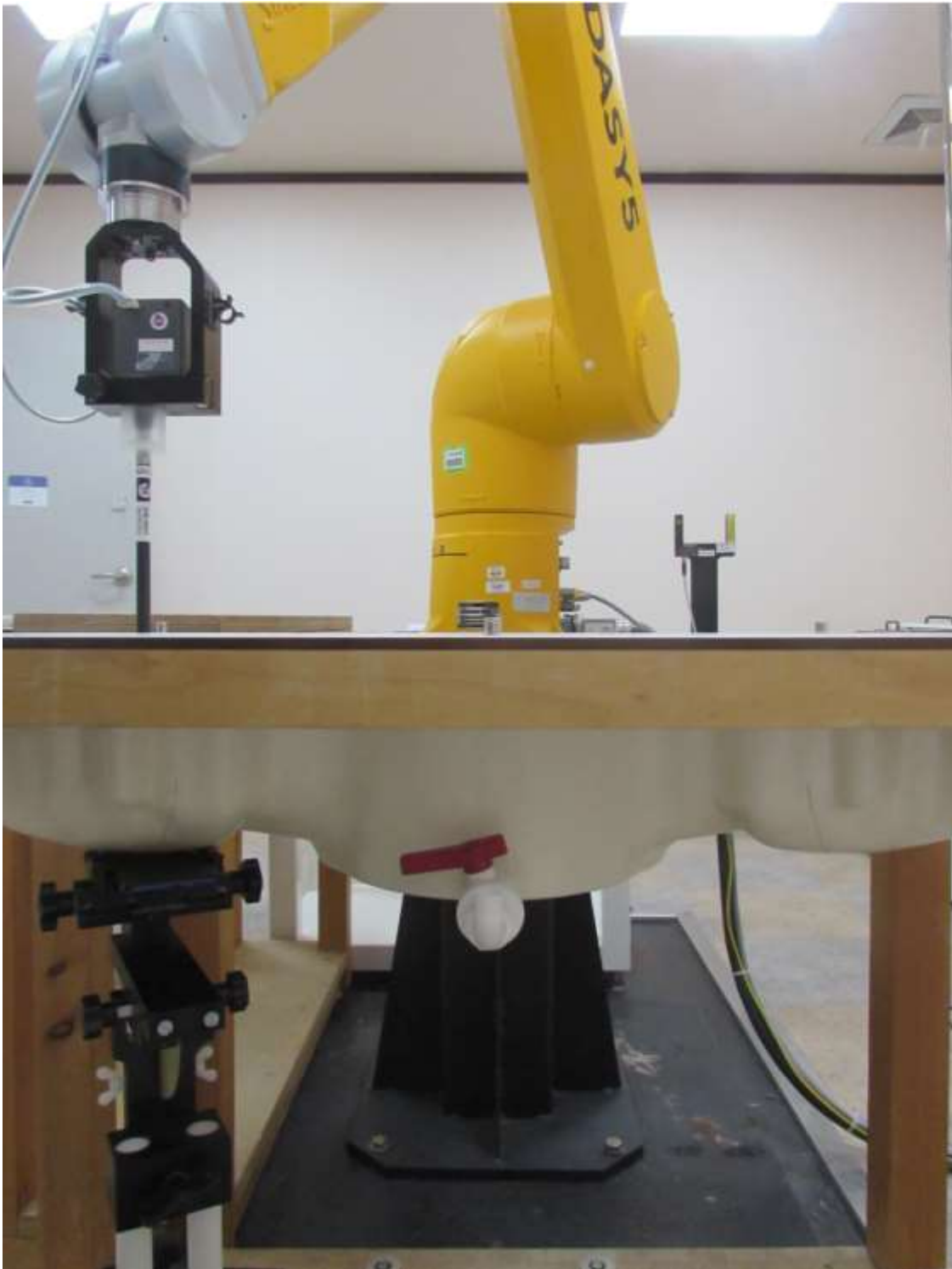
■ Test Setup Photo(Left All)



■ Test Setup Photo(Left Touch/Tilt)



■ **Test Setup Photo(Right All)**



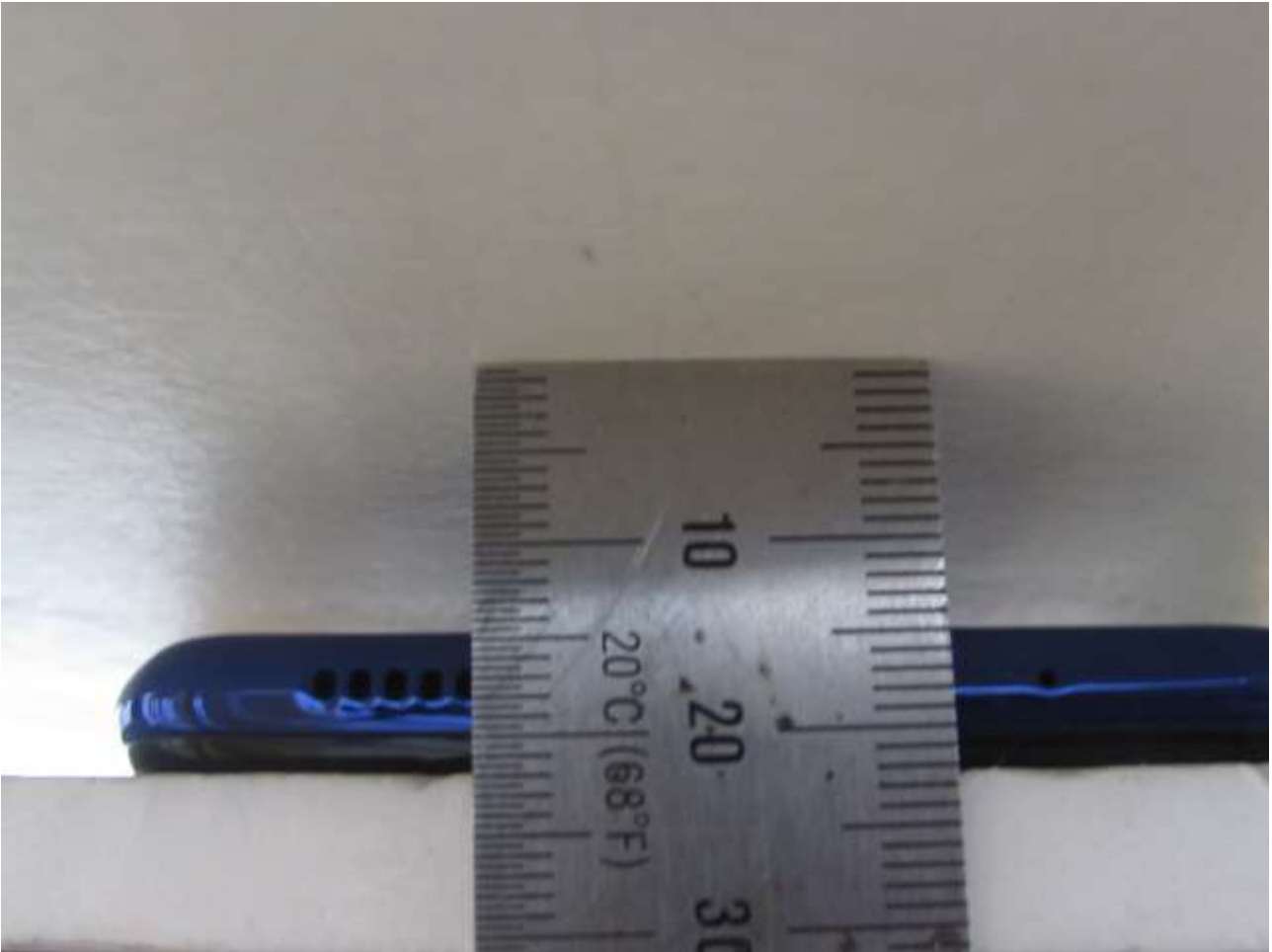
■ **Test Setup Photo (Right Touch/Tilt)**



■ Test Setup Photo(Body All)

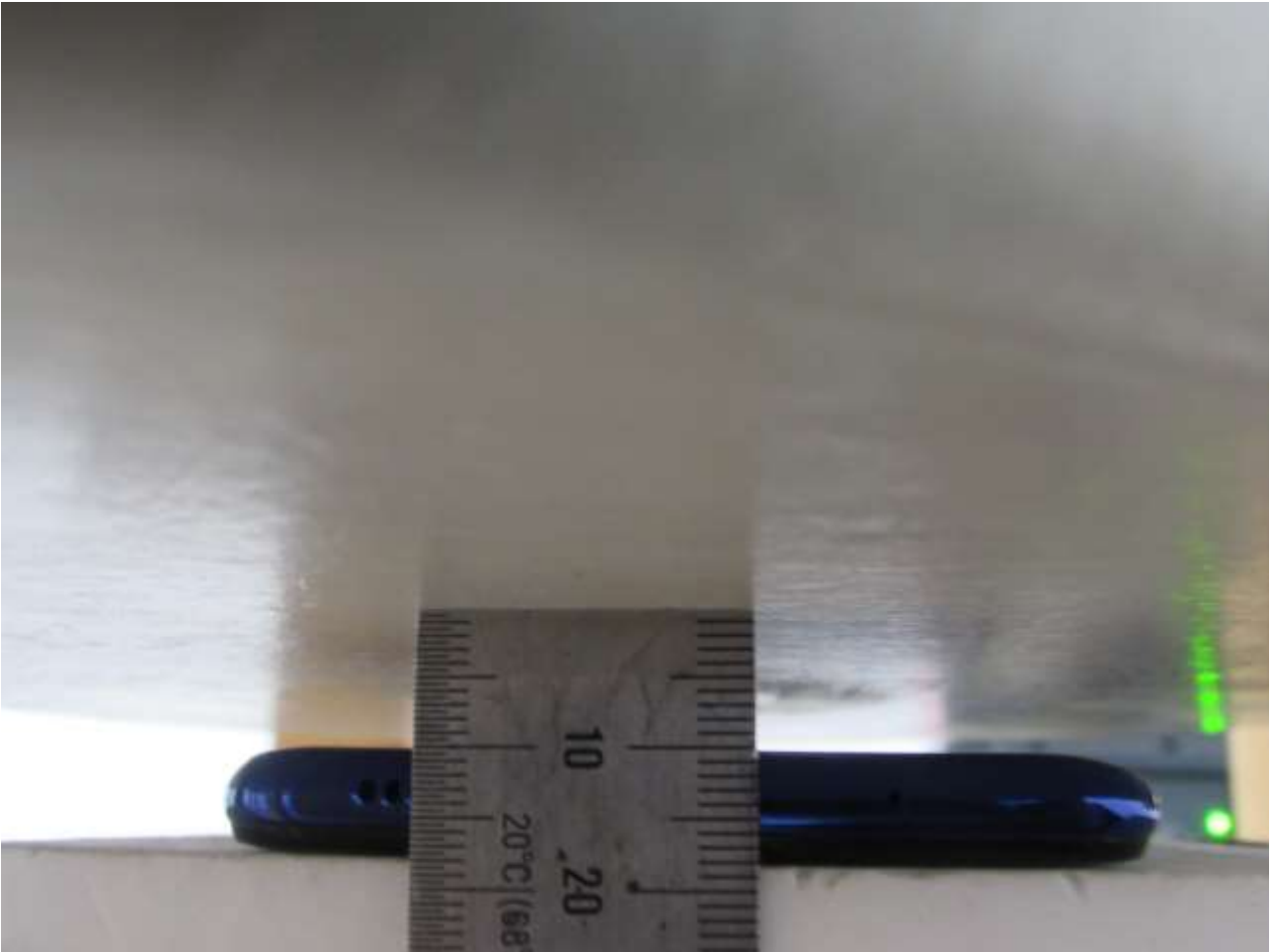


■ **Test Setup Photo (Rear)**



[Distance of 15 mm from the EUT]

■ **Test Setup Photo (Rear)**



[Distance of 10 mm from the EUT]

■ **Test Setup Photo (Right)**



[Distance of 10 mm from the EUT]

■ **Test Setup Photo (Top)**



[Distance of 10 mm from the EUT]