

## GSM 850

Frequency: 836.6 MHz; Duty Cycle: 1:1.99986; Room Ambient Temperature: 23.0°C; Liquid Temperature: 22.0°C  
 Medium parameters used (interpolated):  $f = 836.6$  MHz;  $\sigma = 0.905$  S/m;  $\epsilon_r = 40.998$ ;  $\rho = 1000$  kg/m<sup>3</sup>

DASY5 Configuration:

- Area Scan Setting: Find Secondary Maximum Within: 2.0 dB and with a peak SAR value greater than 0.0012W/kg
- Electronics: DAE3 Sn479; Calibrated: 2017-10-23
- Probe: EX3DV4 - SN7330; ConvF(10.43, 10.43, 10.43); Calibrated: 2018-01-22;
- Sensor-Surface: 2.5mm (Mechanical Surface Detection)
- Phantom: SAM (20deg probe tilt) with CRP v5.0(Right); Type: QD000P40CD; Serial: TP:1846

**RHS/Touch\_GPRS\_4 slots ch 190/Area Scan (8x14x1):** Measurement grid: dx=15mm, dy=15mm  
 Maximum value of SAR (measured) = 0.186 W/kg

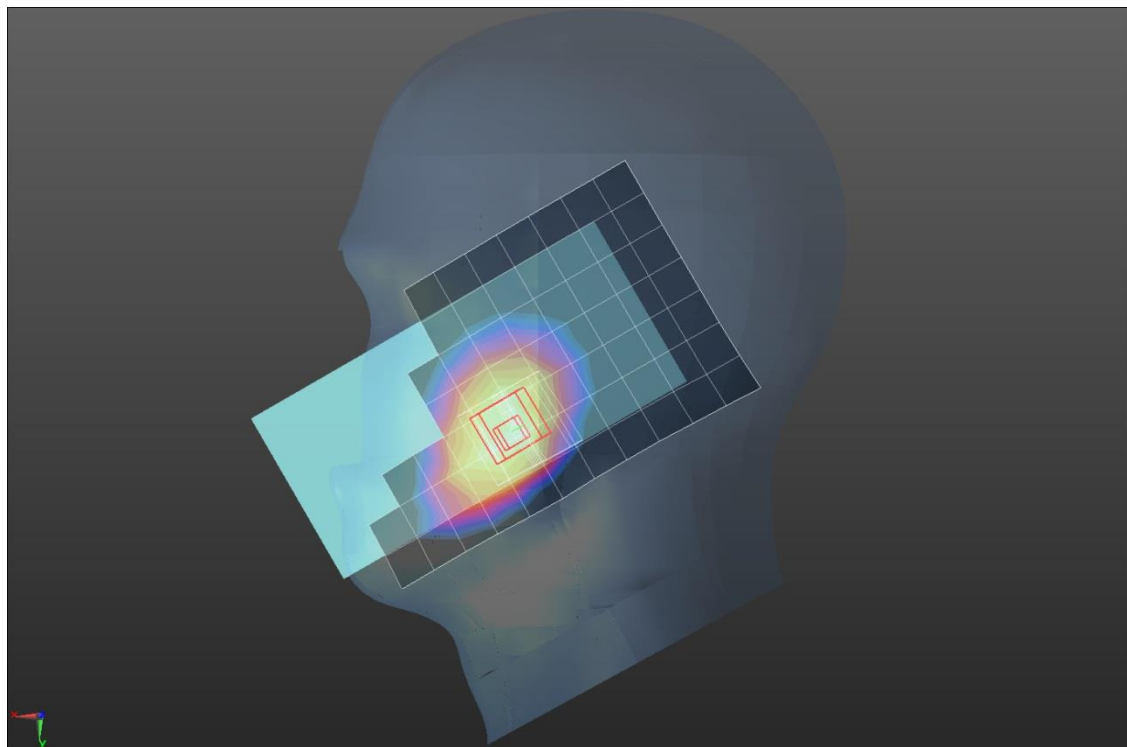
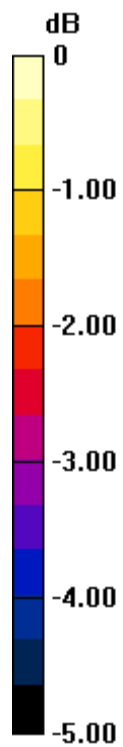
**RHS/Touch\_GPRS\_4 slots ch 190/Zoom Scan (5x5x7)/Cube 0:** Measurement grid: dx=8mm, dy=8mm, dz=5mm

Reference Value = 15.00 V/m; Power Drift = 0.07 dB

Peak SAR (extrapolated) = 0.219 W/kg

**SAR(1 g) = 0.174 W/kg; SAR(10 g) = 0.134 W/kg**

Maximum value of SAR (measured) = 0.194 W/kg



0 dB = 0.194 W/kg = -7.12 dBW/kg

## GSM 850

Frequency: 836.6 MHz; Duty Cycle: 1:1.99986; Room Ambient Temperature: 23.0°C; Liquid Temperature: 22.0°C  
 Medium parameters used (interpolated):  $f = 836.6$  MHz;  $\sigma = 0.988$  S/m;  $\epsilon_r = 53.173$ ;  $\rho = 1000$  kg/m<sup>3</sup>

DASY5 Configuration:

- Area Scan Setting: Find Secondary Maximum Within: 2.0 dB and with a peak SAR value greater than 0.0012W/kg
- Electronics: DAE3 Sn479; Calibrated: 2017-10-23
- Probe: EX3DV4 - SN7330; ConvF(10.09, 10.09, 10.09); Calibrated: 2018-01-22;
- Sensor-Surface: 2.5mm (Mechanical Surface Detection)
- Phantom: ELI v6.0; Type: QDOVA003AA; Serial: TP:2005

**Rear/GPRS\_4 Slot\_ch 190/Area Scan (8x14x1):** Measurement grid: dx=15mm, dy=15mm

Maximum value of SAR (measured) = 0.412 W/kg

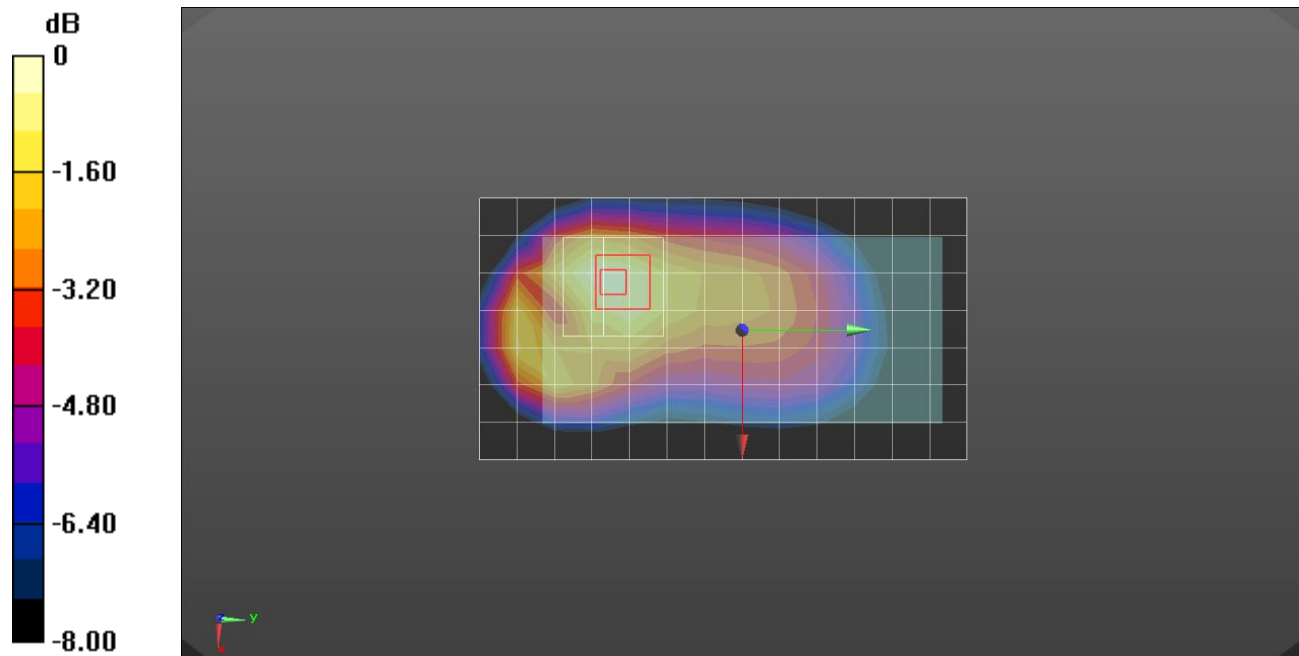
**Rear/GPRS\_4 Slot\_ch 190/Zoom Scan (6x6x7)/Cube 0:** Measurement grid: dx=8mm, dy=8mm, dz=5mm

Reference Value = 20.72 V/m; Power Drift = 0.09 dB

Peak SAR (extrapolated) = 0.513 W/kg

**SAR(1 g) = 0.374 W/kg; SAR(10 g) = 0.258 W/kg**

Maximum value of SAR (measured) = 0.437 W/kg



0 dB = 0.437 W/kg = -3.60 dBW/kg

## GSM 850

Frequency: 836.6 MHz; Duty Cycle: 1:1.99986; Room Ambient Temperature: 23.0°C; Liquid Temperature: 22.0°C  
 Medium parameters used (interpolated):  $f = 836.6$  MHz;  $\sigma = 0.988$  S/m;  $\epsilon_r = 53.173$ ;  $\rho = 1000$  kg/m<sup>3</sup>

DASY5 Configuration:

- Area Scan Setting: Find Secondary Maximum Within: 2.0 dB and with a peak SAR value greater than 0.0012W/kg
- Electronics: DAE3 Sn479; Calibrated: 2017-10-23
- Probe: EX3DV4 - SN7330; ConvF(10.09, 10.09, 10.09); Calibrated: 2018-01-22;
- Sensor-Surface: 2.5mm (Mechanical Surface Detection)
- Phantom: ELI v6.0; Type: QDOVA003AA; Serial: TP:2005

**Rear/GPRS\_4 Slots\_ch 190/Area Scan (8x14x1):** Measurement grid: dx=15mm, dy=15mm

Maximum value of SAR (measured) = 0.436 W/kg

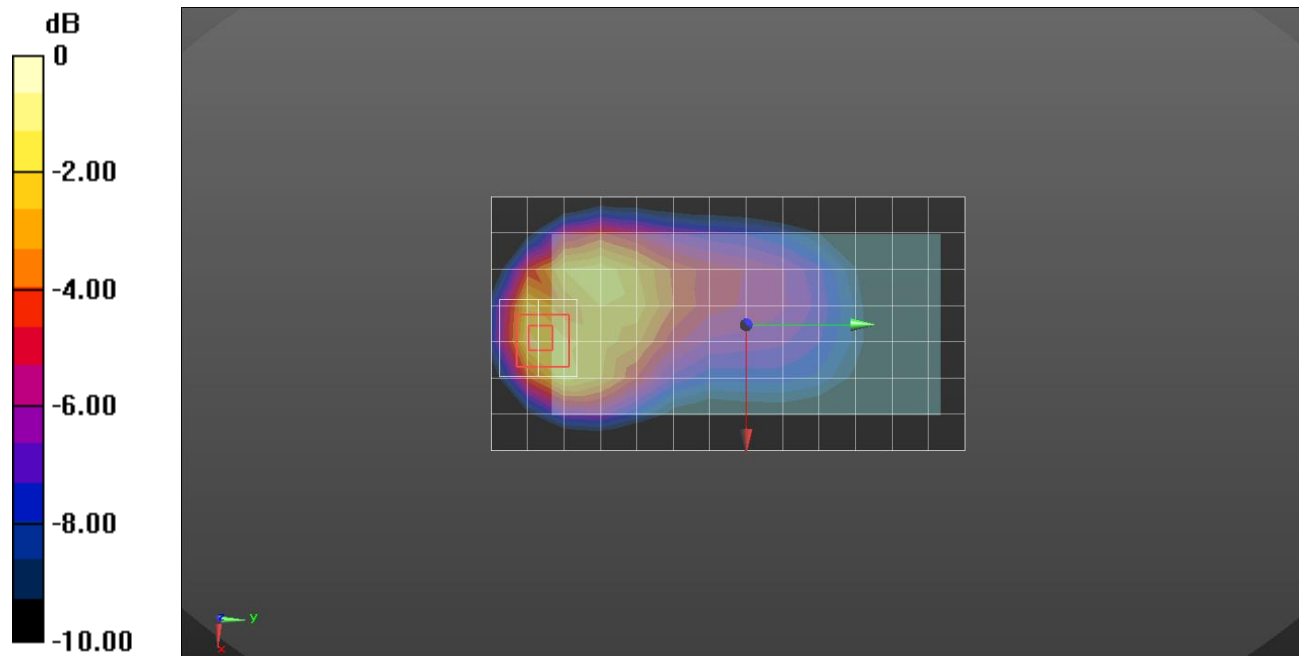
**Rear/GPRS\_4 Slots\_ch 190/Zoom Scan (5x5x7)/Cube 0:** Measurement grid: dx=8mm, dy=8mm, dz=5mm

Reference Value = 20.38 V/m; Power Drift = 0.08 dB

Peak SAR (extrapolated) = 0.785 W/kg

**SAR(1 g) = 0.427 W/kg; SAR(10 g) = 0.236 W/kg**

Maximum value of SAR (measured) = 0.568 W/kg



0 dB = 0.568 W/kg = -2.46 dBW/kg

## GSM 1900

Frequency: 1880 MHz; Duty Cycle: 1:1.99986; Room Ambient Temperature: 23.0°C; Liquid Temperature: 22.0°C  
 Medium parameters used:  $f = 1880$  MHz;  $\sigma = 1.44$  S/m;  $\epsilon_r = 38.444$ ;  $\rho = 1000$  kg/m<sup>3</sup>

DASY5 Configuration:

- Area Scan Setting: Find Secondary Maximum Within: 2.0 dB and with a peak SAR value greater than 0.0012W/kg
- Electronics: DAE4 Sn1494; Calibrated: 2017-07-20
- Probe: EX3DV4 - SN7314; ConvF(8.31, 8.31, 8.31); Calibrated: 2017-09-28;
- Sensor-Surface: 2.5mm (Mechanical Surface Detection)
- Phantom: SAM Phantom CRP v5.0(Middle); Type: QD000P40CD; Serial: TP:1854

**LHS/Touch\_GPRS\_4 slots ch 661/Area Scan (8x14x1):** Measurement grid: dx=15mm, dy=15mm

Maximum value of SAR (measured) = 0.0515 W/kg

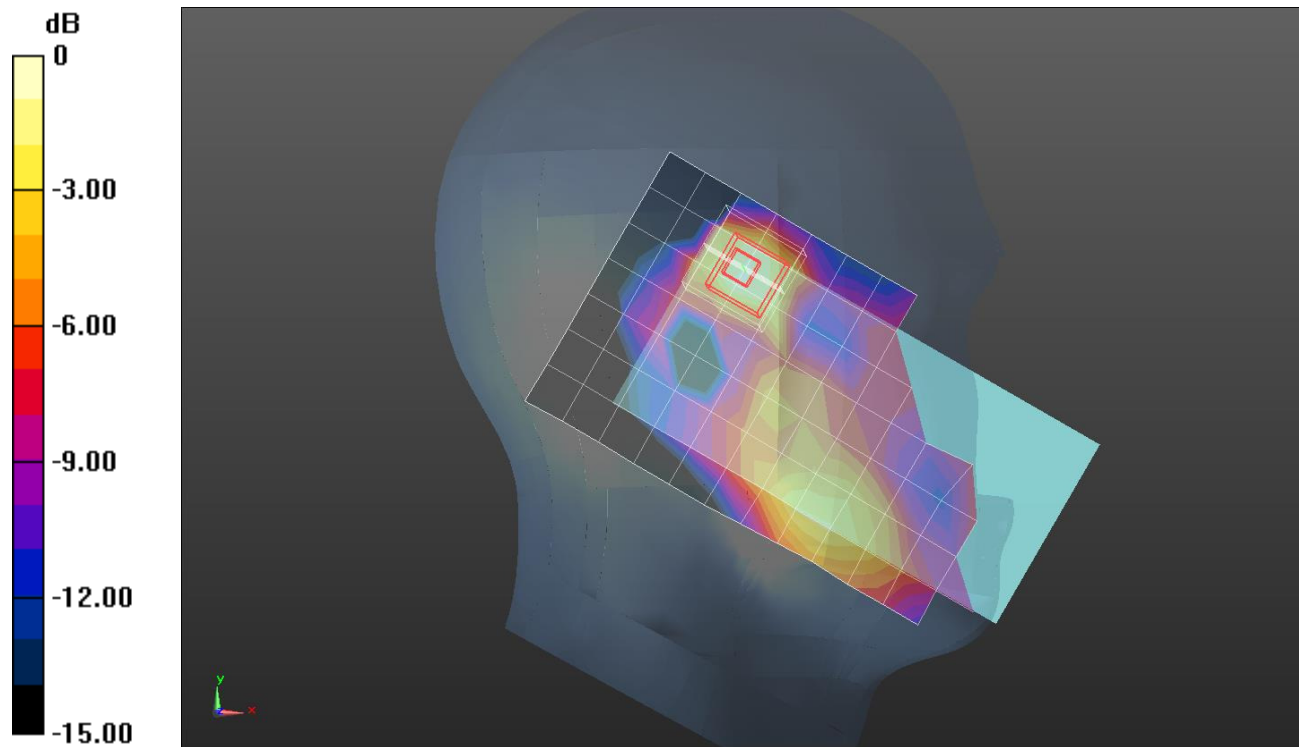
**LHS/Touch\_GPRS\_4 slots ch 661/Zoom Scan (5x5x7)/Cube 0:** Measurement grid: dx=8mm, dy=8mm, dz=5mm

Reference Value = 5.674 V/m; Power Drift = 0.07 dB

Peak SAR (extrapolated) = 0.0800 W/kg

**SAR(1 g) = 0.046 W/kg; SAR(10 g) = 0.024 W/kg**

Maximum value of SAR (measured) = 0.0597 W/kg



0 dB = 0.0597 W/kg = -12.24 dBW/kg

## GSM 1900

Frequency: 1880 MHz; Duty Cycle: 1:1.99986; Room Ambient Temperature: 23.0°C; Liquid Temperature: 22.0°C  
 Medium parameters used:  $f = 1880$  MHz;  $\sigma = 1.562$  S/m;  $\epsilon_r = 54.232$ ;  $\rho = 1000$  kg/m<sup>3</sup>

DASY5 Configuration:

- Area Scan Setting: Find Secondary Maximum Within: 2.0 dB and with a peak SAR value greater than 0.0012W/kg
- Electronics: DAE4 Sn1468; Calibrated: 2017-08-22
- Probe: EX3DV4 - SN7376; ConvF(8.05, 8.05, 8.05); Calibrated: 2017-08-22;
- Sensor-Surface: 2.5mm (Mechanical Surface Detection)
- Phantom: Triple Flat Phantom 5.1C; Type: QD 000 P51 CA; Serial: 1166

**Rear/GPRS\_4 slots\_ch 661/Area Scan (8x14x1):** Measurement grid: dx=15mm, dy=15mm

Maximum value of SAR (measured) = 0.478 W/kg

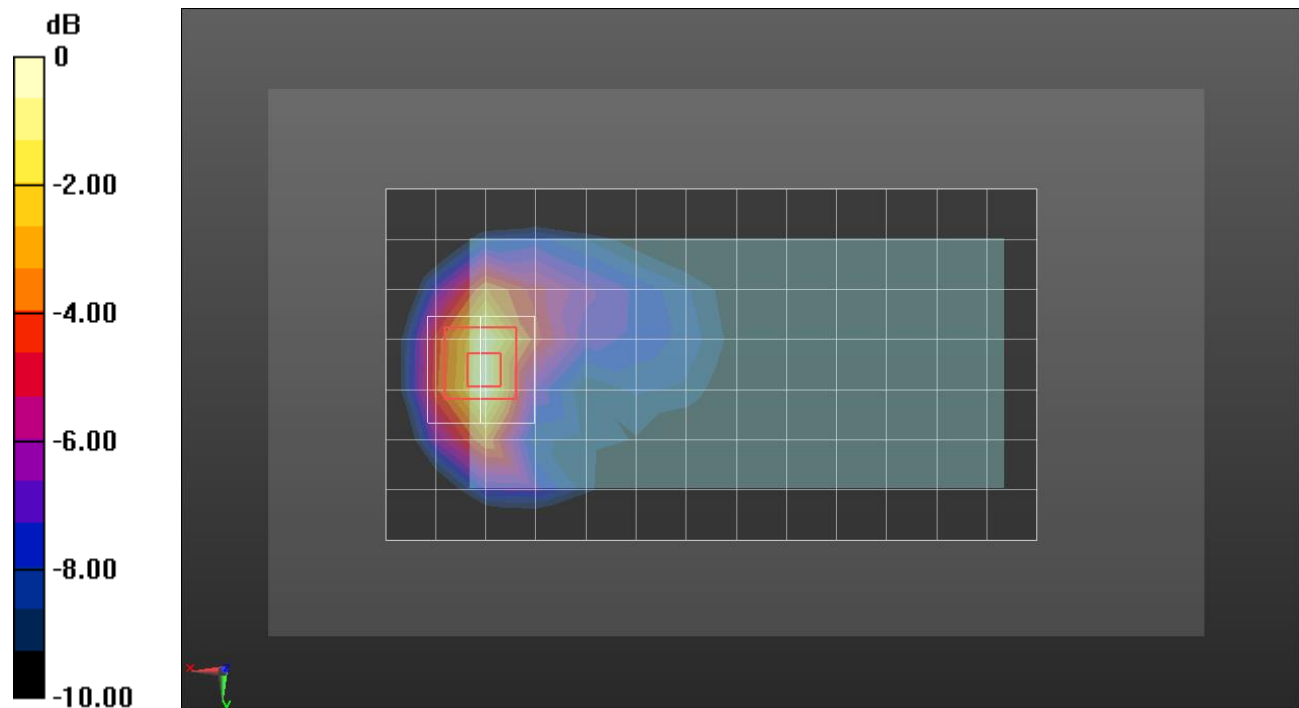
**Rear/GPRS\_4 slots\_ch 661/Zoom Scan (5x5x7)/Cube 0:** Measurement grid: dx=8mm, dy=8mm, dz=5mm

Reference Value = 18.20 V/m; Power Drift = 0.01 dB

Peak SAR (extrapolated) = 0.656 W/kg

**SAR(1 g) = 0.396 W/kg; SAR(10 g) = 0.218 W/kg**

Maximum value of SAR (measured) = 0.506 W/kg



0 dB = 0.506 W/kg = -2.96 dBW/kg

## GSM 1900

Frequency: 1880 MHz; Duty Cycle: 1:1.99986; Room Ambient Temperature: 23.0°C; Liquid Temperature: 22.0°C  
 Medium parameters used:  $f = 1880$  MHz;  $\sigma = 1.562$  S/m;  $\epsilon_r = 54.232$ ;  $\rho = 1000$  kg/m<sup>3</sup>

DASY5 Configuration:

- Area Scan Setting: Find Secondary Maximum Within: 2.0 dB and with a peak SAR value greater than 0.0012W/kg
- Electronics: DAE4 Sn1468; Calibrated: 2017-08-22
- Probe: EX3DV4 - SN7376; ConvF(8.05, 8.05, 8.05); Calibrated: 2017-08-22;
- Sensor-Surface: 2.5mm (Mechanical Surface Detection)
- Phantom: Triple Flat Phantom 5.1C; Type: QD 000 P51 CA; Serial: 1166

**Edge 3/GPRS\_4 slots\_ch 661/Area Scan (6x9x1):** Measurement grid: dx=15mm, dy=15mm

Maximum value of SAR (measured) = 0.439 W/kg

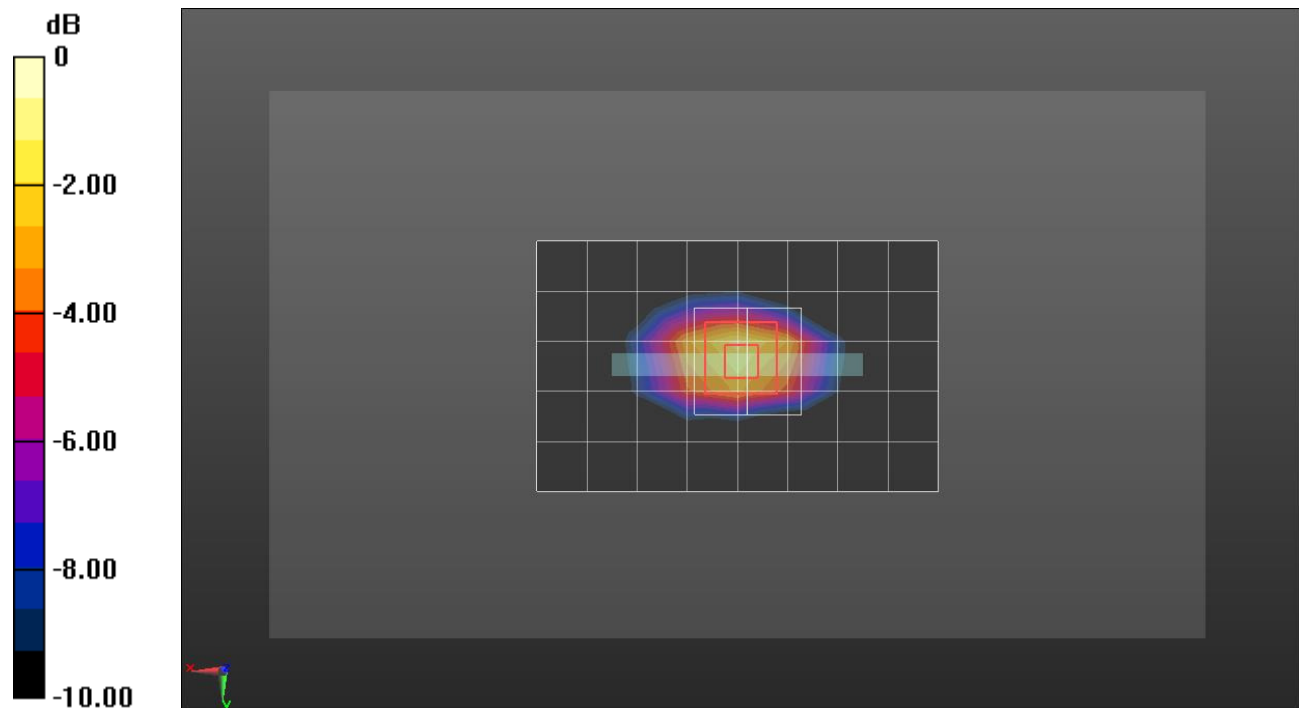
**Edge 3/GPRS\_4 slots\_ch 661/Zoom Scan (5x5x7)/Cube 0:** Measurement grid: dx=8mm, dy=8mm, dz=5mm

Reference Value = 19.13 V/m; Power Drift = -0.05 dB

Peak SAR (extrapolated) = 0.731 W/kg

**SAR(1 g) = 0.420 W/kg; SAR(10 g) = 0.220 W/kg**

Maximum value of SAR (measured) = 0.554 W/kg



0 dB = 0.554 W/kg = -2.56 dBW/kg

## W-CDMA Band II

Frequency: 1880 MHz; Duty Cycle: 1:1; Room Ambient Temperature: 23.0°C; Liquid Temperature: 22.0°C  
 Medium parameters used:  $f = 1880 \text{ MHz}$ ;  $\sigma = 1.44 \text{ S/m}$ ;  $\epsilon_r = 38.444$ ;  $\rho = 1000 \text{ kg/m}^3$

DASY5 Configuration:

- Area Scan Setting: Find Secondary Maximum Within: 2.0 dB and with a peak SAR value greater than 0.0012W/kg
- Electronics: DAE4 Sn1494; Calibrated: 2017-07-20
- Probe: EX3DV4 - SN7314; ConvF(8.31, 8.31, 8.31); Calibrated: 2017-09-28;
- Sensor-Surface: 2.5mm (Mechanical Surface Detection)
- Phantom: SAM Phantom CRP v5.0(Middle); Type: QD000P40CD; Serial: TP:1854

**LHS/Touch\_Rel.99 ch 9400/Area Scan (8x14x1):** Measurement grid: dx=15mm, dy=15mm

Maximum value of SAR (measured) = 0.121 W/kg

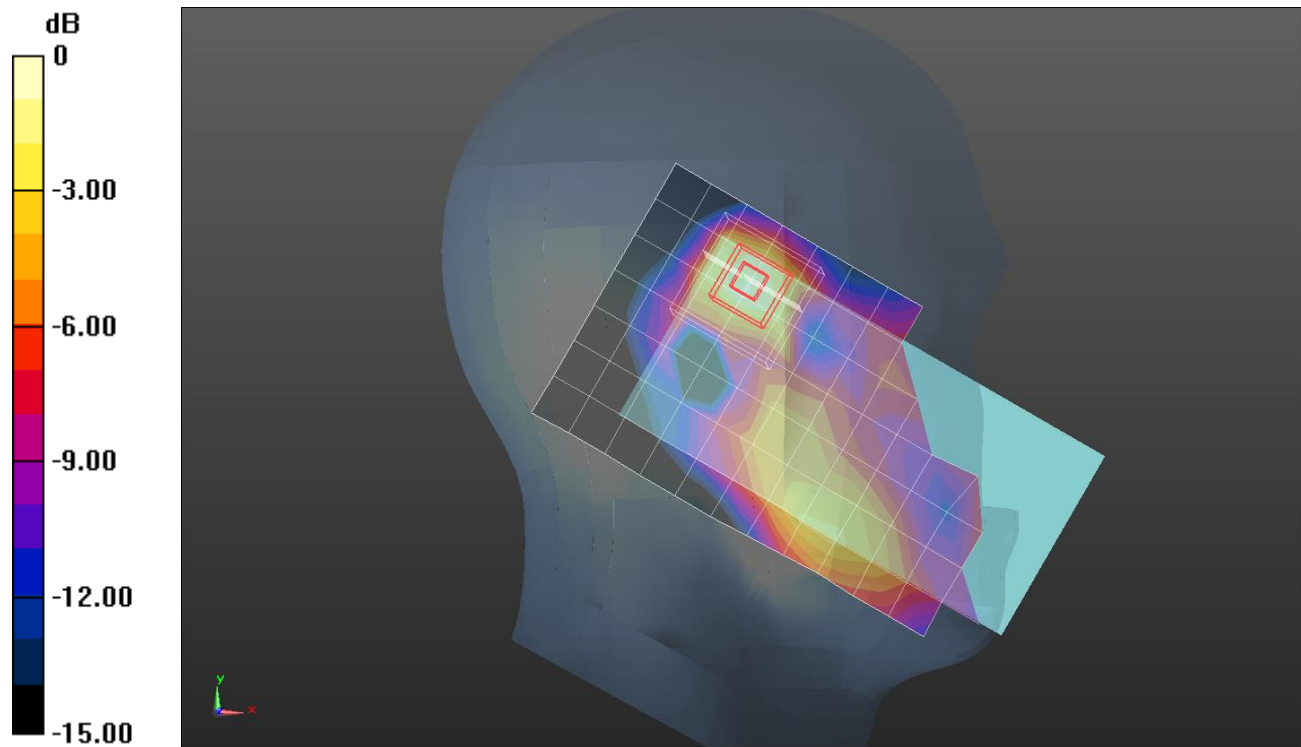
**LHS/Touch\_Rel.99 ch 9400/Zoom Scan (6x6x7)/Cube 0:** Measurement grid: dx=8mm, dy=8mm, dz=5mm

Reference Value = 8.958 V/m; Power Drift = 0.10 dB

Peak SAR (extrapolated) = 0.192 W/kg

**SAR(1 g) = 0.114 W/kg; SAR(10 g) = 0.061 W/kg**

Maximum value of SAR (measured) = 0.143 W/kg



0 dB = 0.143 W/kg = -8.45 dBW/kg

## W-CDMA Band II

Frequency: 1880 MHz; Duty Cycle: 1:1; Room Ambient Temperature: 23.0°C; Liquid Temperature: 22.0°C  
 Medium parameters used:  $f = 1880$  MHz;  $\sigma = 1.545$  S/m;  $\epsilon_r = 53.844$ ;  $\rho = 1000$  kg/m<sup>3</sup>

DASY5 Configuration:

- Area Scan Setting: Find Secondary Maximum Within: 2.0 dB and with a peak SAR value greater than 0.0012W/kg
- Electronics: DAE4 Sn1468; Calibrated: 2017-08-22
- Probe: EX3DV4 - SN7376; ConvF(8.05, 8.05, 8.05); Calibrated: 2017-08-22;
- Sensor-Surface: 2.5mm (Mechanical Surface Detection)
- Phantom: Triple Flat Phantom 5.1C; Type: QD 000 P51 CA; Serial: 1166

**Rear/Rel.99\_ch 9538/Area Scan (8x14x1):** Measurement grid: dx=15mm, dy=15mm

Maximum value of SAR (measured) = 0.915 W/kg

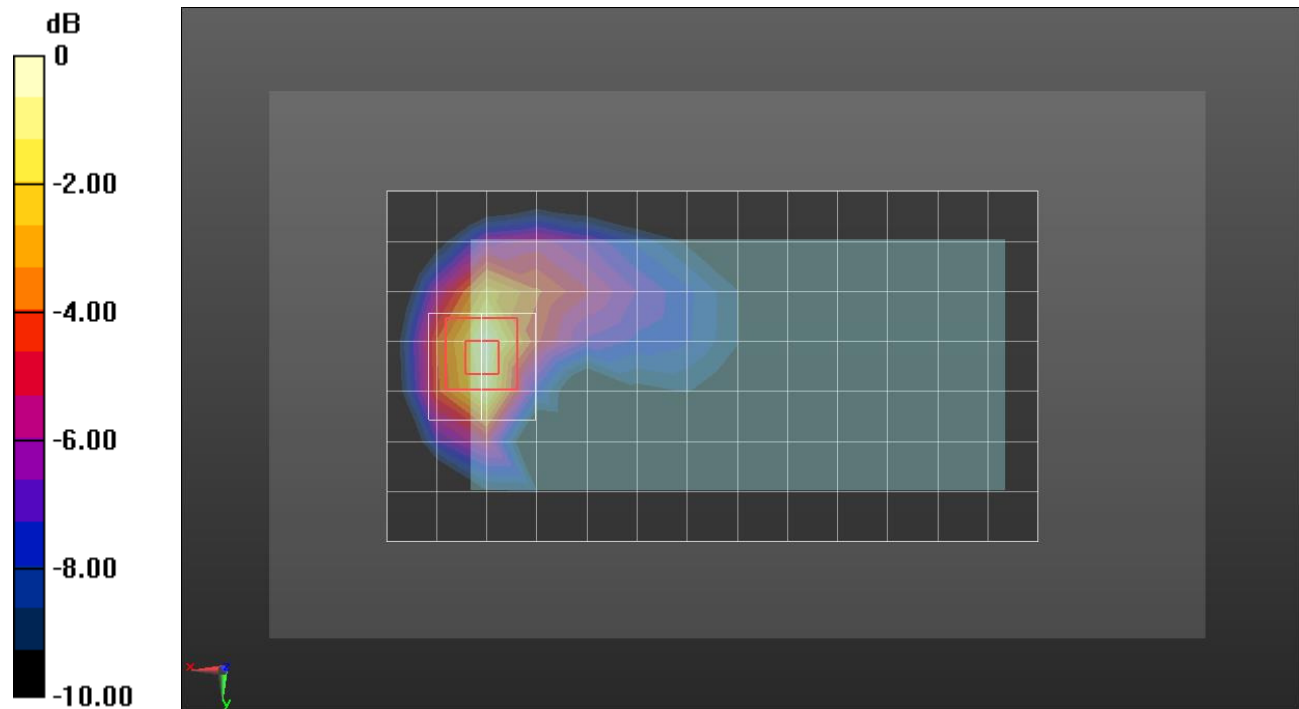
**Rear/Rel.99\_ch 9538/Zoom Scan (5x5x7)/Cube 0:** Measurement grid: dx=8mm, dy=8mm, dz=5mm

Reference Value = 24.85 V/m; Power Drift = -0.01 dB

Peak SAR (extrapolated) = 1.22 W/kg

**SAR(1 g) = 0.733 W/kg; SAR(10 g) = 0.405 W/kg**

Maximum value of SAR (measured) = 0.943 W/kg



0 dB = 0.943 W/kg = -0.25 dBW/kg

## W-CDMA Band II

Frequency: 1907.6 MHz; Duty Cycle: 1:1; Room Ambient Temperature: 23.0°C; Liquid Temperature: 22.0°C  
 Medium parameters used (interpolated):  $f = 1907.6$  MHz;  $\sigma = 1.57$  S/m;  $\epsilon_r = 53.782$ ;  $\rho = 1000$  kg/m<sup>3</sup>

DASY5 Configuration:

- Area Scan Setting: Find Secondary Maximum Within: 2.0 dB and with a peak SAR value greater than 0.0012W/kg
- Electronics: DAE4 Sn1468; Calibrated: 2017-08-22
- Probe: EX3DV4 - SN7376; ConvF(8.05, 8.05, 8.05); Calibrated: 2017-08-22;
- Sensor-Surface: 2.5mm (Mechanical Surface Detection)
- Phantom: Triple Flat Phantom 5.1C; Type: QD 000 P51 CA; Serial: 1166

**Edge 3/Rel.99\_ch 9538/Area Scan (6x9x1):** Measurement grid: dx=15mm, dy=15mm

Maximum value of SAR (measured) = 0.688 W/kg

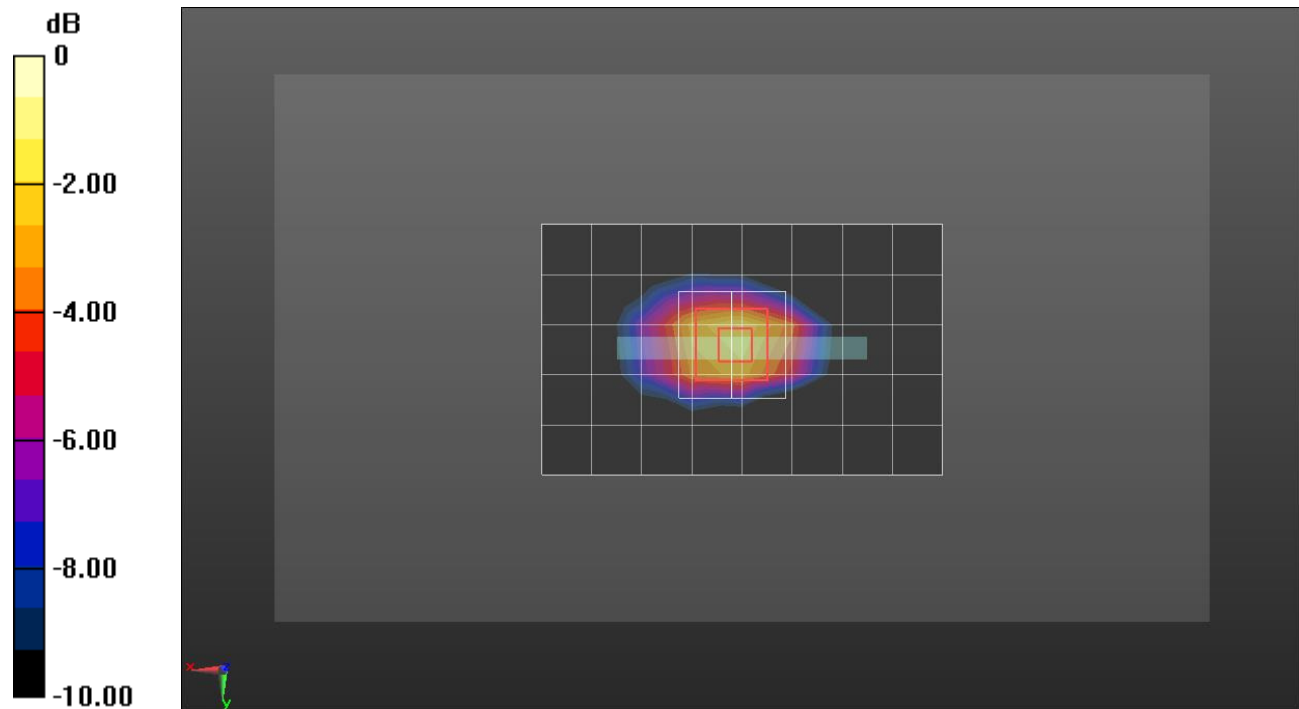
**Edge 3/Rel.99\_ch 9538/Zoom Scan (5x5x7)/Cube 0:** Measurement grid: dx=8mm, dy=8mm, dz=5mm

Reference Value = 24.33 V/m; Power Drift = -0.05 dB

Peak SAR (extrapolated) = 1.18 W/kg

**SAR(1 g) = 0.685 W/kg; SAR(10 g) = 0.359 W/kg**

Maximum value of SAR (measured) = 0.907 W/kg



0 dB = 0.907 W/kg = -0.42 dBW/kg

## W-CDMA Band II

Frequency: 1880 MHz; Duty Cycle: 1:1; Room Ambient Temperature: 23.0°C; Liquid Temperature: 22.0°C  
 Medium parameters used:  $f = 1880 \text{ MHz}$ ;  $\sigma = 1.545 \text{ S/m}$ ;  $\epsilon_r = 53.844$ ;  $\rho = 1000 \text{ kg/m}^3$

DASY5 Configuration:

- Area Scan Setting: Find Secondary Maximum Within: 2.0 dB and with a peak SAR value greater than 0.0012W/kg
- Electronics: DAE4 Sn1468; Calibrated: 2017-08-22
- Probe: EX3DV4 - SN7376; ConvF(8.05, 8.05, 8.05); Calibrated: 2017-08-22;
- Sensor-Surface: 2.5mm (Mechanical Surface Detection)
- Phantom: Triple Flat Phantom 5.1C; Type: QD 000 P51 CA; Serial: 1166

**Rear/Rel.99\_ch 9400/Area Scan (8x14x1):** Measurement grid: dx=15mm, dy=15mm

Maximum value of SAR (measured) = 2.79 W/kg

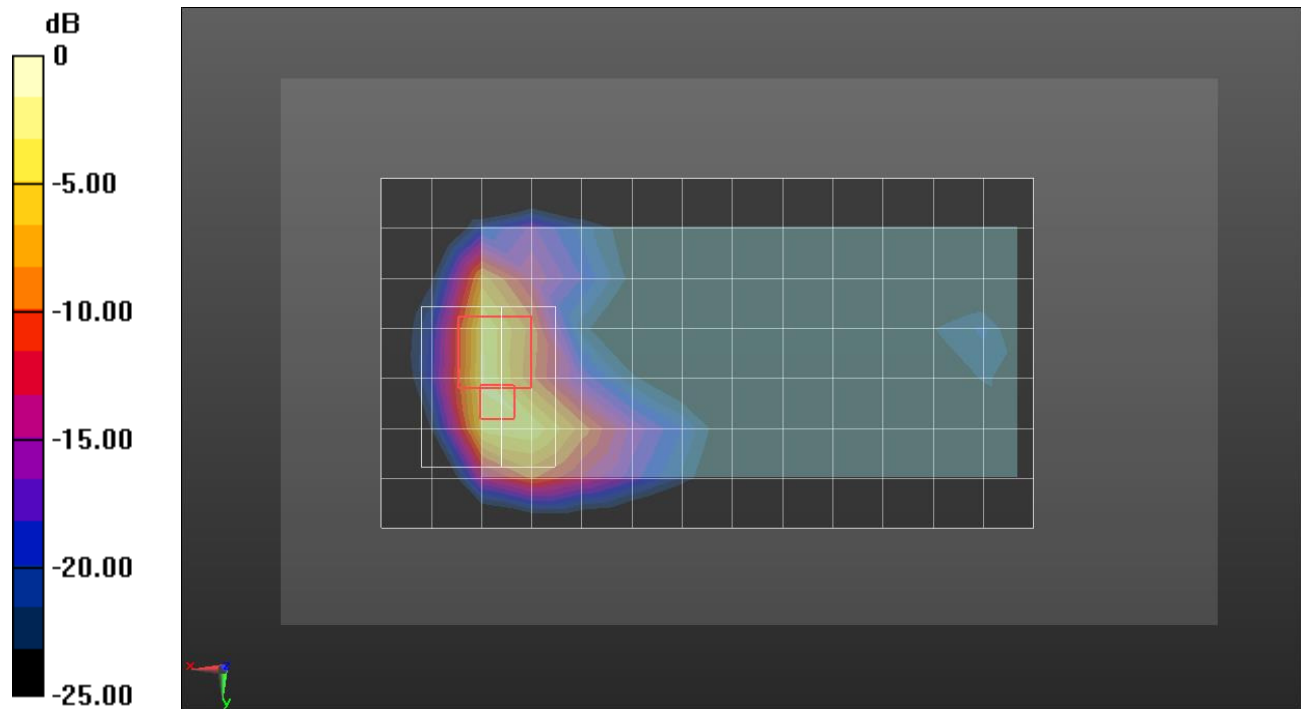
**Rear/Rel.99\_ch 9400/Zoom Scan (7x6x7)/Cube 0:** Measurement grid: dx=8mm, dy=8mm, dz=5mm

Reference Value = 60.93 V/m; Power Drift = -0.04 dB

Peak SAR (extrapolated) = 8.30 W/kg

**SAR(1 g) = 3.05 W/kg; SAR(10 g) = 1.3 W/kg**

Maximum value of SAR (measured) = 5.47 W/kg



0 dB = 5.47 W/kg = 7.38 dBW/kg

## W-CDMA Band IV

Frequency: 1732.6 MHz; Duty Cycle: 1:1; Room Ambient Temperature: 23.0°C; Liquid Temperature: 22.0°C  
 Medium parameters used (interpolated):  $f = 1732.6$  MHz;  $\sigma = 1.307$  S/m;  $\epsilon_r = 39.003$ ;  $\rho = 1000$  kg/m<sup>3</sup>

DASY5 Configuration:

- Area Scan Setting: Find Secondary Maximum Within: 2.0 dB and with a peak SAR value greater than 0.0012W/kg
- Electronics: DAE4 Sn1494; Calibrated: 2017-07-20
- Probe: EX3DV4 - SN7314; ConvF(8.65, 8.65, 8.65); Calibrated: 2017-09-28;
- Sensor-Surface: 2.5mm (Mechanical Surface Detection)
- Phantom: SAM Phantom CRP v5.0(Middle); Type: QD000P40CD; Serial: TP:1854

**LHS/Touch\_Rel.99 ch 1413/Area Scan (8x14x1):** Measurement grid: dx=15mm, dy=15mm

Maximum value of SAR (measured) = 0.184 W/kg

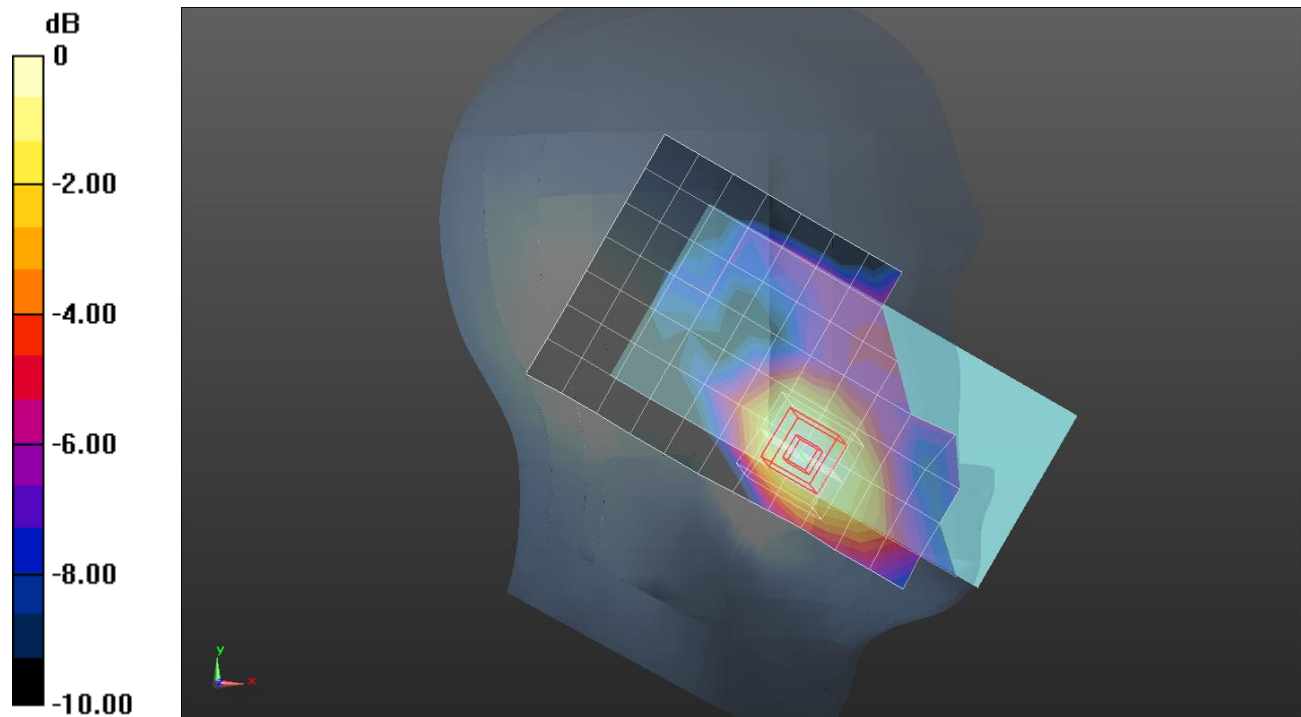
**LHS/Touch\_Rel.99 ch 1413/Zoom Scan (5x5x7)/Cube 0:** Measurement grid: dx=8mm, dy=8mm, dz=5mm

Reference Value = 12.21 V/m; Power Drift = 0.01 dB

Peak SAR (extrapolated) = 0.229 W/kg

**SAR(1 g) = 0.156 W/kg; SAR(10 g) = 0.102 W/kg**

Maximum value of SAR (measured) = 0.187 W/kg



0 dB = 0.187 W/kg = -7.28 dBW/kg

## W-CDMA Band IV

Frequency: 1732.6 MHz; Duty Cycle: 1:1; Room Ambient Temperature: 23.0°C; Liquid Temperature: 22.0°C  
 Medium parameters used (interpolated):  $f = 1732.6$  MHz;  $\sigma = 1.426$  S/m;  $\epsilon_r = 54.25$ ;  $\rho = 1000$  kg/m<sup>3</sup>

DASY5 Configuration:

- Area Scan Setting: Find Secondary Maximum Within: 2.0 dB and with a peak SAR value greater than 0.0012W/kg
- Electronics: DAE4 Sn1468; Calibrated: 2017-08-22
- Probe: EX3DV4 - SN7376; ConvF(8.41, 8.41, 8.41); Calibrated: 2017-08-22;
- Sensor-Surface: 2.5mm (Mechanical Surface Detection)
- Phantom: Triple Flat Phantom 5.1C; Type: QD 000 P51 CA; Serial: 1166

**Rear/Rel.99\_ch 1413/Area Scan (8x14x1):** Measurement grid: dx=15mm, dy=15mm

Maximum value of SAR (measured) = 1.21 W/kg

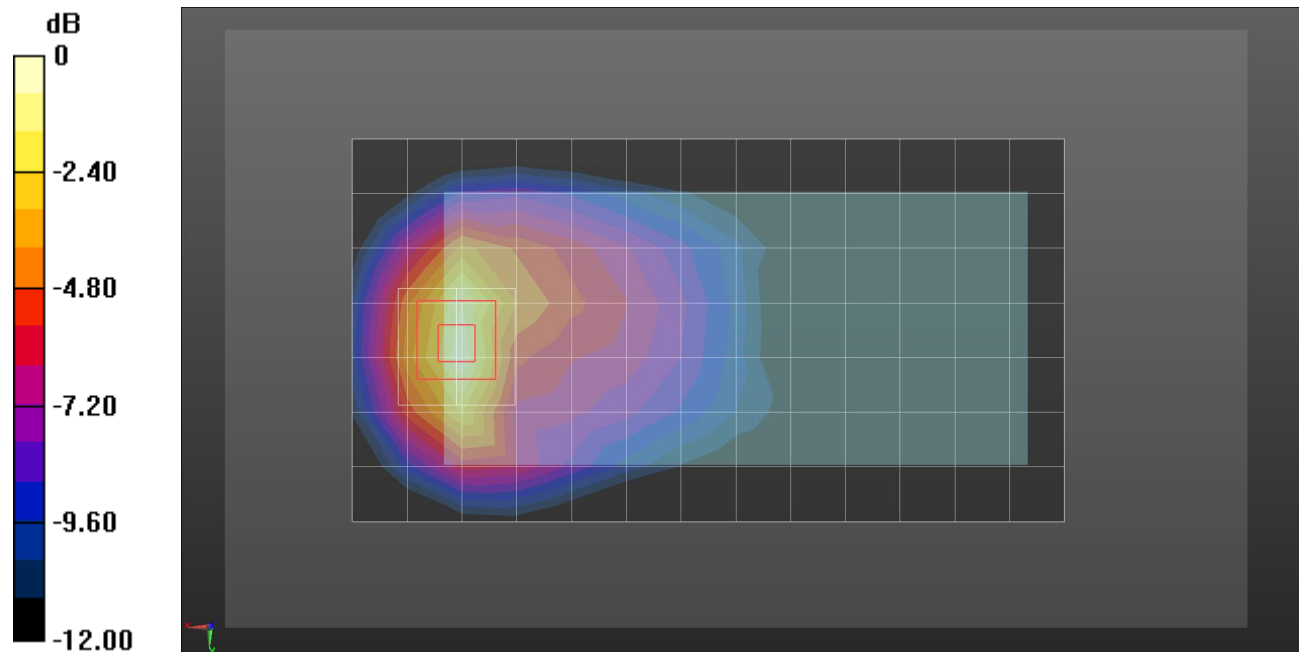
**Rear/Rel.99\_ch 1413/Zoom Scan (5x5x7)/Cube 0:** Measurement grid: dx=8mm, dy=8mm, dz=5mm

Reference Value = 29.78 V/m; Power Drift = 0.01 dB

Peak SAR (extrapolated) = 1.57 W/kg

**SAR(1 g) = 0.970 W/kg; SAR(10 g) = 0.555 W/kg**

Maximum value of SAR (measured) = 1.24 W/kg



0 dB = 1.24 W/kg = 0.93 dBW/kg

## W-CDMA Band IV

Frequency: 1732.6 MHz; Duty Cycle: 1:1; Room Ambient Temperature: 23.0°C; Liquid Temperature: 22.0°C  
 Medium parameters used (interpolated):  $f = 1732.6$  MHz;  $\sigma = 1.426$  S/m;  $\epsilon_r = 54.25$ ;  $\rho = 1000$  kg/m<sup>3</sup>

DASY5 Configuration:

- Area Scan Setting: Find Secondary Maximum Within: 2.0 dB and with a peak SAR value greater than 0.0012W/kg
- Electronics: DAE4 Sn1468; Calibrated: 2017-08-22
- Probe: EX3DV4 - SN7376; ConvF(8.41, 8.41, 8.41); Calibrated: 2017-08-22;
- Sensor-Surface: 2.5mm (Mechanical Surface Detection)
- Phantom: Triple Flat Phantom 5.1C; Type: QD 000 P51 CA; Serial: 1166

**Edge 3/Rel.99\_ch 1413/Area Scan (6x9x1):** Measurement grid: dx=15mm, dy=15mm

Maximum value of SAR (measured) = 0.708 W/kg

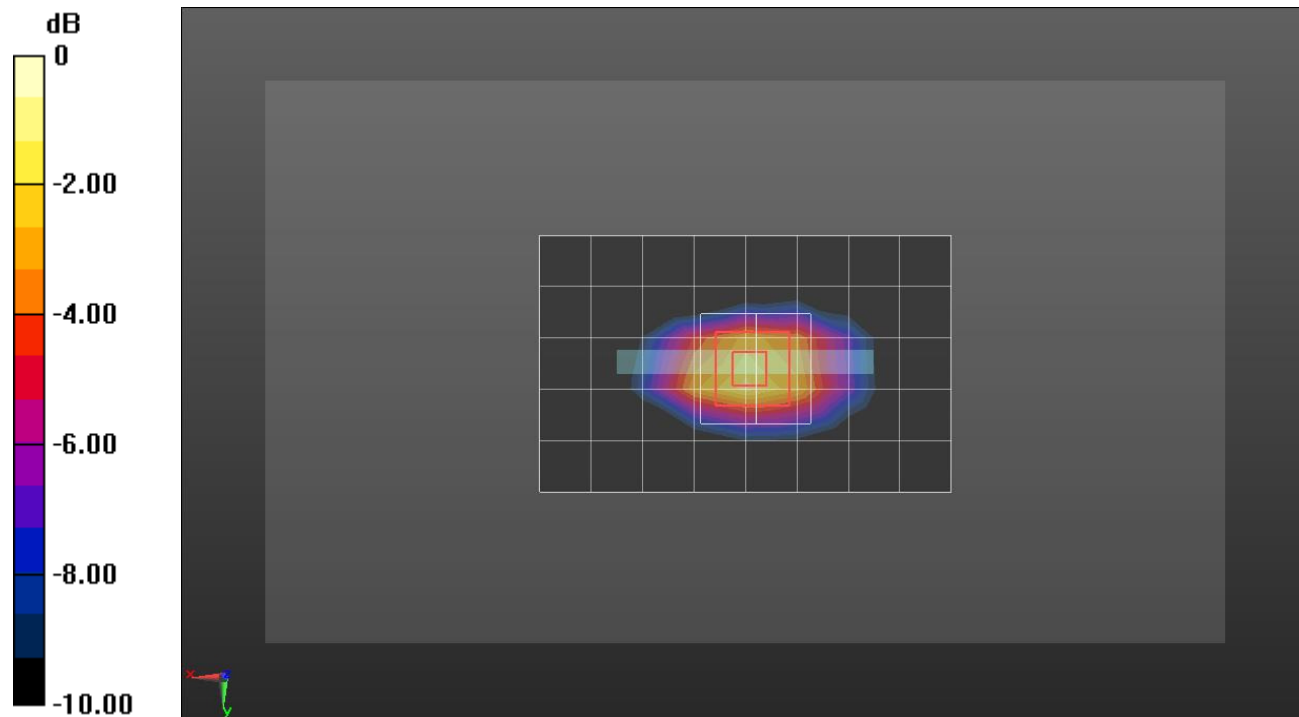
**Edge 3/Rel.99\_ch 1413/Zoom Scan (5x5x7)/Cube 0:** Measurement grid: dx=8mm, dy=8mm, dz=5mm

Reference Value = 25.30 V/m; Power Drift = -0.02 dB

Peak SAR (extrapolated) = 1.17 W/kg

**SAR(1 g) = 0.689 W/kg; SAR(10 g) = 0.371 W/kg**

Maximum value of SAR (measured) = 0.895 W/kg



0 dB = 0.895 W/kg = -0.48 dBW/kg

## W-CDMA Band IV

Frequency: 1732.6 MHz; Duty Cycle: 1:1; Room Ambient Temperature: 23.0°C; Liquid Temperature: 22.0°C  
 Medium parameters used (interpolated):  $f = 1732.6$  MHz;  $\sigma = 1.426$  S/m;  $\epsilon_r = 54.25$ ;  $\rho = 1000$  kg/m<sup>3</sup>

DASY5 Configuration:

- Area Scan Setting: Find Secondary Maximum Within: 2.0 dB and with a peak SAR value greater than 0.0012W/kg
- Electronics: DAE4 Sn1468; Calibrated: 2017-08-22
- Probe: EX3DV4 - SN7376; ConvF(8.41, 8.41, 8.41); Calibrated: 2017-08-22;
- Sensor-Surface: 2.5mm (Mechanical Surface Detection)
- Phantom: Triple Flat Phantom 5.1C; Type: QD 000 P51 CA; Serial: 1166

**Rear/Rel.99\_ch 1413/Area Scan (8x14x1):** Measurement grid: dx=15mm, dy=15mm

Maximum value of SAR (measured) = 3.73 W/kg

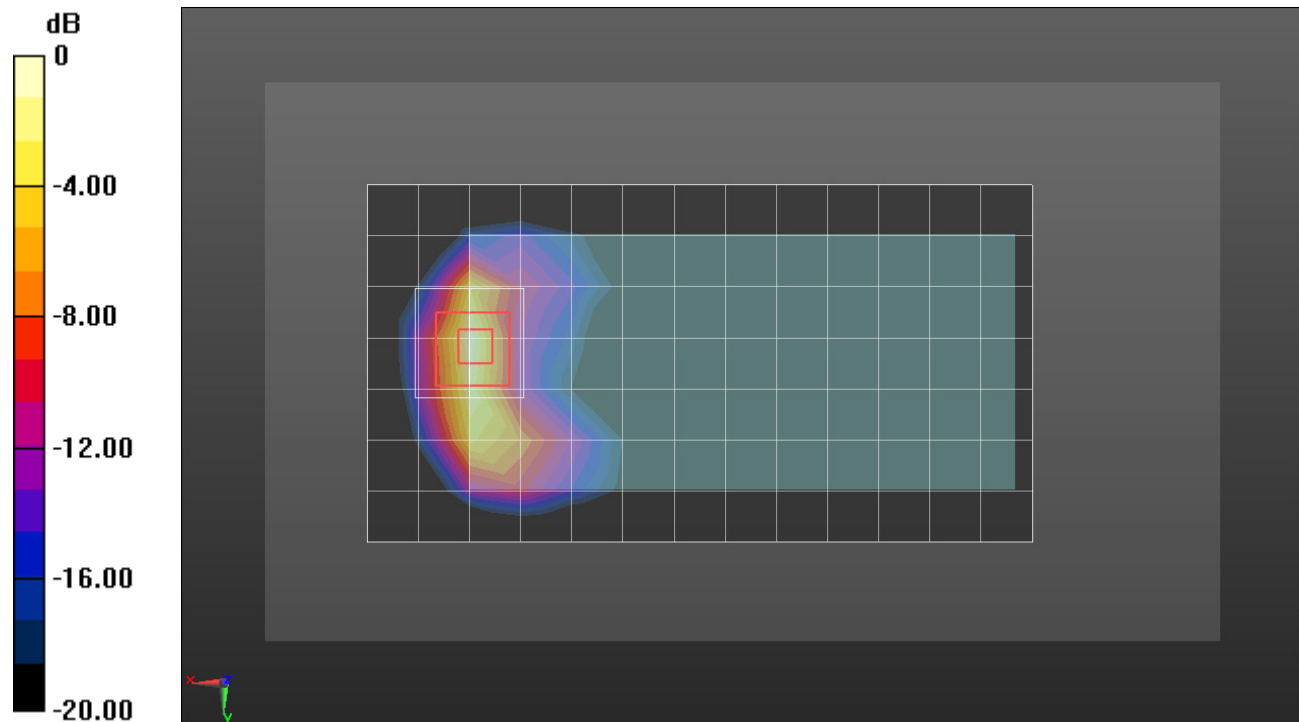
**Rear/Rel.99\_ch 1413/Zoom Scan (5x5x7)/Cube 0:** Measurement grid: dx=8mm, dy=8mm, dz=5mm

Reference Value = 55.06 V/m; Power Drift = -0.01 dB

Peak SAR (extrapolated) = 5.91 W/kg

**SAR(1 g) = 2.82 W/kg; SAR(10 g) = 1.22 W/kg**

Maximum value of SAR (measured) = 3.78 W/kg



0 dB = 3.78 W/kg = 5.77 dBW/kg

## W-CDMA Band V

Frequency: 836.6 MHz; Duty Cycle: 1:1; Room Ambient Temperature: 23.0°C; Liquid Temperature: 22.0°C  
 Medium parameters used (interpolated):  $f = 836.6$  MHz;  $\sigma = 0.9$  S/m;  $\epsilon_r = 42.917$ ;  $\rho = 1000$  kg/m<sup>3</sup>

DASY5 Configuration:

- Area Scan Setting: Find Secondary Maximum Within: 2.0 dB and with a peak SAR value greater than 0.0012W/kg
- Electronics: DAE3 Sn479; Calibrated: 2017-10-23
- Probe: EX3DV4 - SN7330; ConvF(10.43, 10.43, 10.43); Calibrated: 2018-01-22;
- Sensor-Surface: 2.5mm (Mechanical Surface Detection)
- Phantom: SAM (20deg probe tilt) with CRP v5.0(Right); Type: QD000P40CD; Serial: TP:1846

**RHS/Touch\_Rel.99 ch 4183/Area Scan (8x14x1):** Measurement grid: dx=15mm, dy=15mm

Maximum value of SAR (measured) = 0.196 W/kg

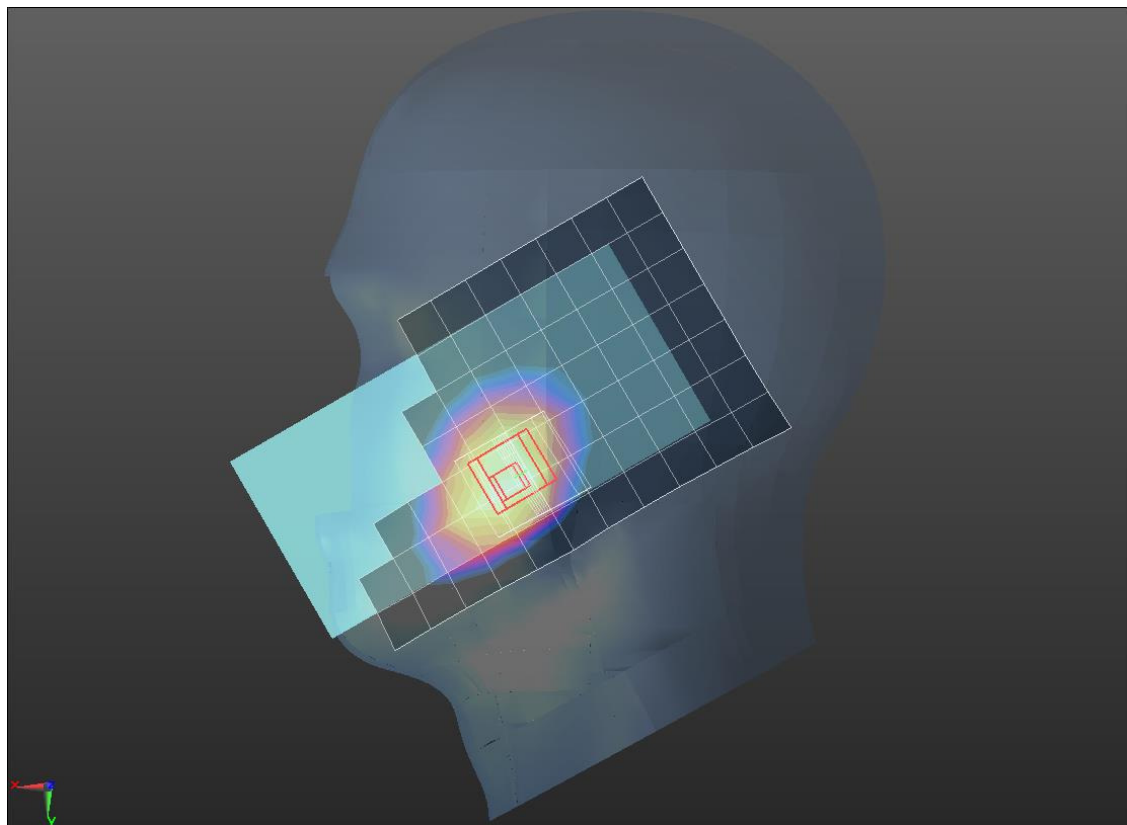
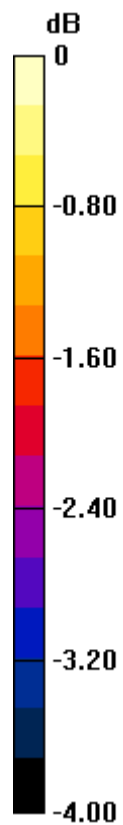
**RHS/Touch\_Rel.99 ch 4183/Zoom Scan (5x5x7)/Cube 0:** Measurement grid: dx=8mm, dy=8mm, dz=5mm

Reference Value = 14.97 V/m; Power Drift = 0.05 dB

Peak SAR (extrapolated) = 0.226 W/kg

**SAR(1 g) = 0.179 W/kg; SAR(10 g) = 0.139 W/kg**

Maximum value of SAR (measured) = 0.200 W/kg



0 dB = 0.200 W/kg = -6.99 dBW/kg

## W-CDMA Band V

Frequency: 836.6 MHz; Duty Cycle: 1:1; Room Ambient Temperature: 23.0°C; Liquid Temperature: 22.0°C  
 Medium parameters used (interpolated):  $f = 836.6$  MHz;  $\sigma = 0.98$  S/m;  $\epsilon_r = 55.071$ ;  $\rho = 1000$  kg/m<sup>3</sup>

DASY5 Configuration:

- Area Scan Setting: Find Secondary Maximum Within: 2.0 dB and with a peak SAR value greater than 0.0012W/kg
- Electronics: DAE3 Sn479; Calibrated: 2017-10-23
- Probe: EX3DV4 - SN7330; ConvF(10.09, 10.09, 10.09); Calibrated: 2018-01-22;
- Sensor-Surface: 2.5mm (Mechanical Surface Detection)
- Phantom: ELI v6.0; Type: QDOVA003AA; Serial: TP:2005

**Rear/Rel.99\_Ch 4183/Area Scan (8x14x1):** Measurement grid: dx=15mm, dy=15mm

Maximum value of SAR (measured) = 0.429 W/kg

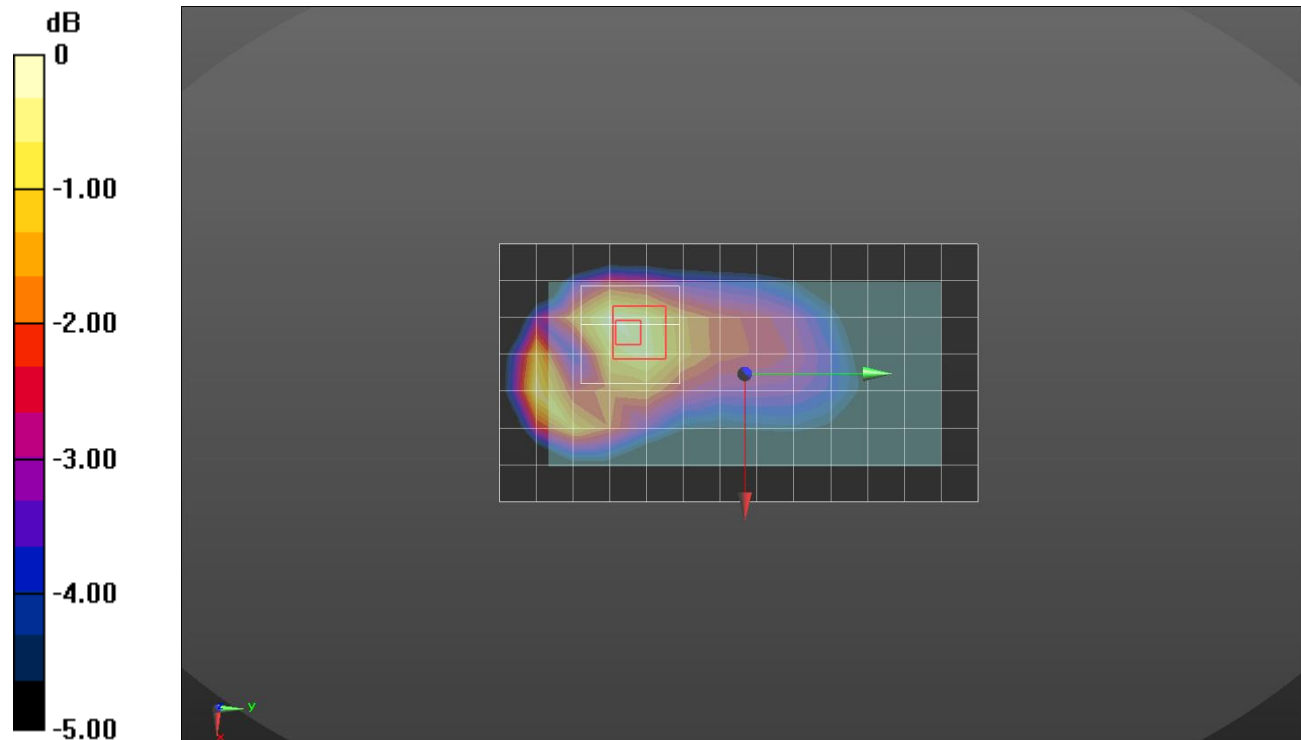
**Rear/Rel.99\_Ch 4183/Zoom Scan (6x6x7)/Cube 0:** Measurement grid: dx=8mm, dy=8mm, dz=5mm

Reference Value = 21.14 V/m; Power Drift = 0.08 dB

Peak SAR (extrapolated) = 0.539 W/kg

**SAR(1 g) = 0.386 W/kg; SAR(10 g) = 0.267 W/kg**

Maximum value of SAR (measured) = 0.448 W/kg



0 dB = 0.448 W/kg = -3.49 dBW/kg

## W-CDMA Band V

Frequency: 836.6 MHz; Duty Cycle: 1:1; Room Ambient Temperature: 23.0°C; Liquid Temperature: 22.0°C  
 Medium parameters used (interpolated):  $f = 836.6$  MHz;  $\sigma = 0.98$  S/m;  $\epsilon_r = 55.071$ ;  $\rho = 1000$  kg/m<sup>3</sup>

DASY5 Configuration:

- Area Scan Setting: Find Secondary Maximum Within: 2.0 dB and with a peak SAR value greater than 0.0012W/kg
- Electronics: DAE3 Sn479; Calibrated: 2017-10-23
- Probe: EX3DV4 - SN7330; ConvF(10.09, 10.09, 10.09); Calibrated: 2018-01-22;
- Sensor-Surface: 2.5mm (Mechanical Surface Detection)
- Phantom: ELI v6.0; Type: QDOVA003AA; Serial: TP:2005

**Rear/Rel.99\_Ch 4183/Area Scan (8x14x1):** Measurement grid: dx=15mm, dy=15mm

Maximum value of SAR (measured) = 0.647 W/kg

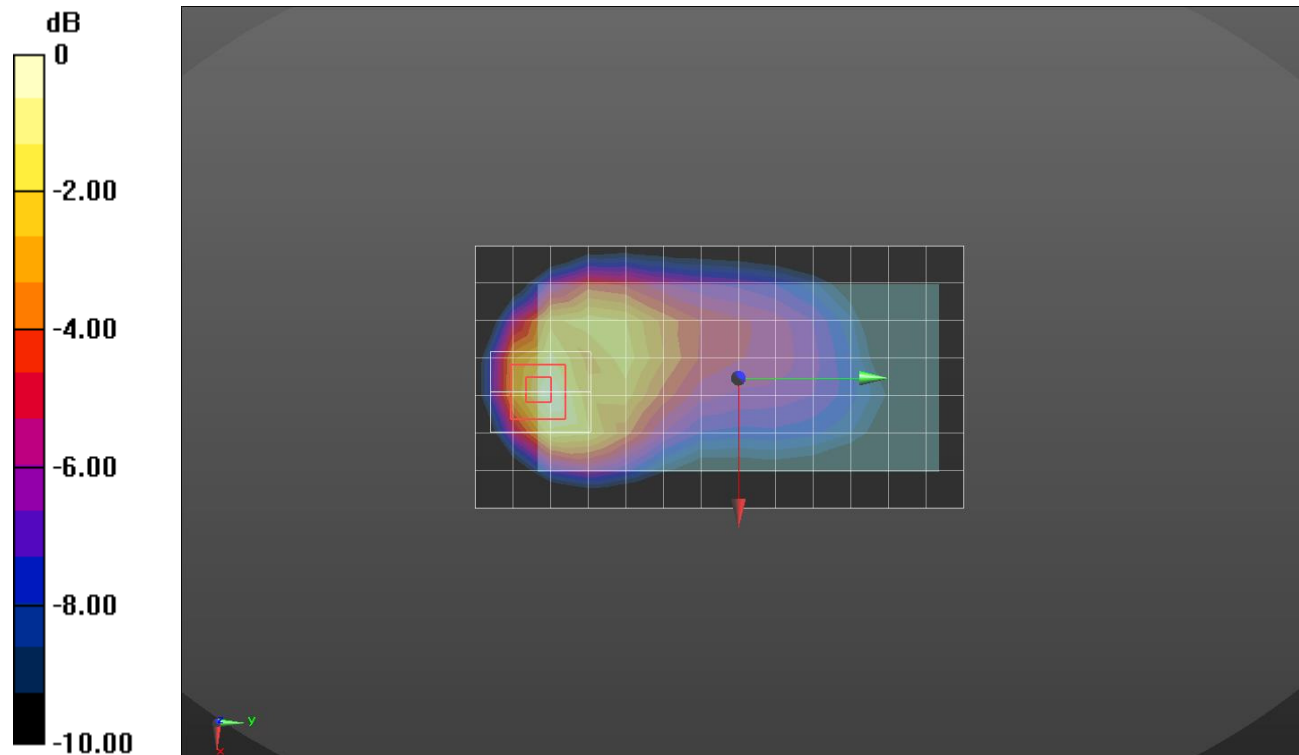
**Rear/Rel.99\_Ch 4183/Zoom Scan (5x6x7)/Cube 0:** Measurement grid: dx=8mm, dy=8mm, dz=5mm

Reference Value = 26.03 V/m; Power Drift = -0.12 dB

Peak SAR (extrapolated) = 0.958 W/kg

**SAR(1 g) = 0.516 W/kg; SAR(10 g) = 0.281 W/kg**

Maximum value of SAR (measured) = 0.635 W/kg



0 dB = 0.635 W/kg = -1.97 dBW/kg

## LTE Band 2

Frequency: 1880 MHz; Duty Cycle: 1:1; Room Ambient Temperature: 23.0°C; Liquid Temperature: 22.0°C  
 Medium parameters used:  $f = 1880 \text{ MHz}$ ;  $\sigma = 1.44 \text{ S/m}$ ;  $\epsilon_r = 38.444$ ;  $\rho = 1000 \text{ kg/m}^3$

DASY5 Configuration:

- Area Scan Setting: Find Secondary Maximum Within: 2.0 dB and with a peak SAR value greater than 0.0012W/kg
- Electronics: DAE4 Sn1494; Calibrated: 2017-07-20
- Probe: EX3DV4 - SN7314; ConvF(8.31, 8.31, 8.31); Calibrated: 2017-09-28;
- Sensor-Surface: 2.5mm (Mechanical Surface Detection)
- Phantom: SAM Phantom CRP v5.0(Middle); Type: QD000P40CD; Serial: TP:1854

**LHS/Touch\_QPSK RB 1/0 ch 18900/Area Scan (8x13x1):** Measurement grid: dx=15mm, dy=15mm  
 Maximum value of SAR (measured) = 0.117 W/kg

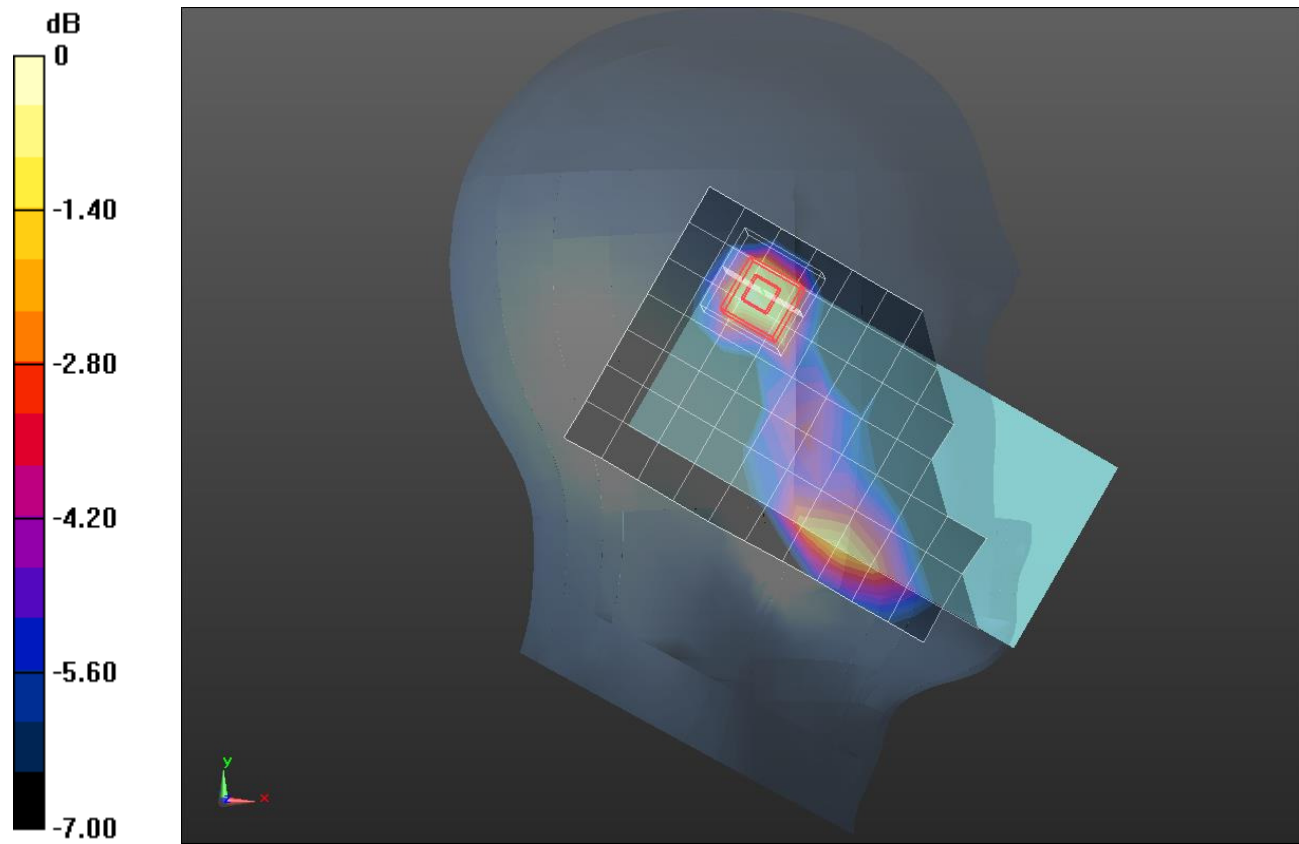
**LHS/Touch\_QPSK RB 1/0 ch 18900/Zoom Scan (5x5x7)/Cube 0:** Measurement grid: dx=8mm, dy=8mm, dz=5mm

Reference Value = 8.735 V/m; Power Drift = 0.10 dB

Peak SAR (extrapolated) = 0.175 W/kg

**SAR(1 g) = 0.105 W/kg; SAR(10 g) = 0.058 W/kg**

Maximum value of SAR (measured) = 0.131 W/kg



0 dB = 0.131 W/kg = -8.83 dBW/kg

## LTE Band 2

Frequency: 1900 MHz; Duty Cycle: 1:1; Room Ambient Temperature: 23.0°C; Liquid Temperature: 22.0°C  
 Medium parameters used:  $f = 1900 \text{ MHz}$ ;  $\sigma = 1.582 \text{ S/m}$ ;  $\epsilon_r = 51.834$ ;  $\rho = 1000 \text{ kg/m}^3$

DASY5 Configuration:

- Area Scan Setting: Find Secondary Maximum Within: 2.0 dB and with a peak SAR value greater than 0.0012W/kg
- Electronics: DAE4 Sn1468; Calibrated: 2017-08-22
- Probe: EX3DV4 - SN7376; ConvF(8.05, 8.05, 8.05); Calibrated: 2017-08-22;
- Sensor-Surface: 2.5mm (Mechanical Surface Detection)
- Phantom: Triple Flat Phantom 5.1C; Type: QD 000 P51 CA; Serial: 1166

**Rear/QPSK RB 1/0 ch 19100/Area Scan (8x14x1):** Measurement grid:  $dx=15\text{mm}$ ,  $dy=15\text{mm}$

Maximum value of SAR (measured) = 1.13 W/kg

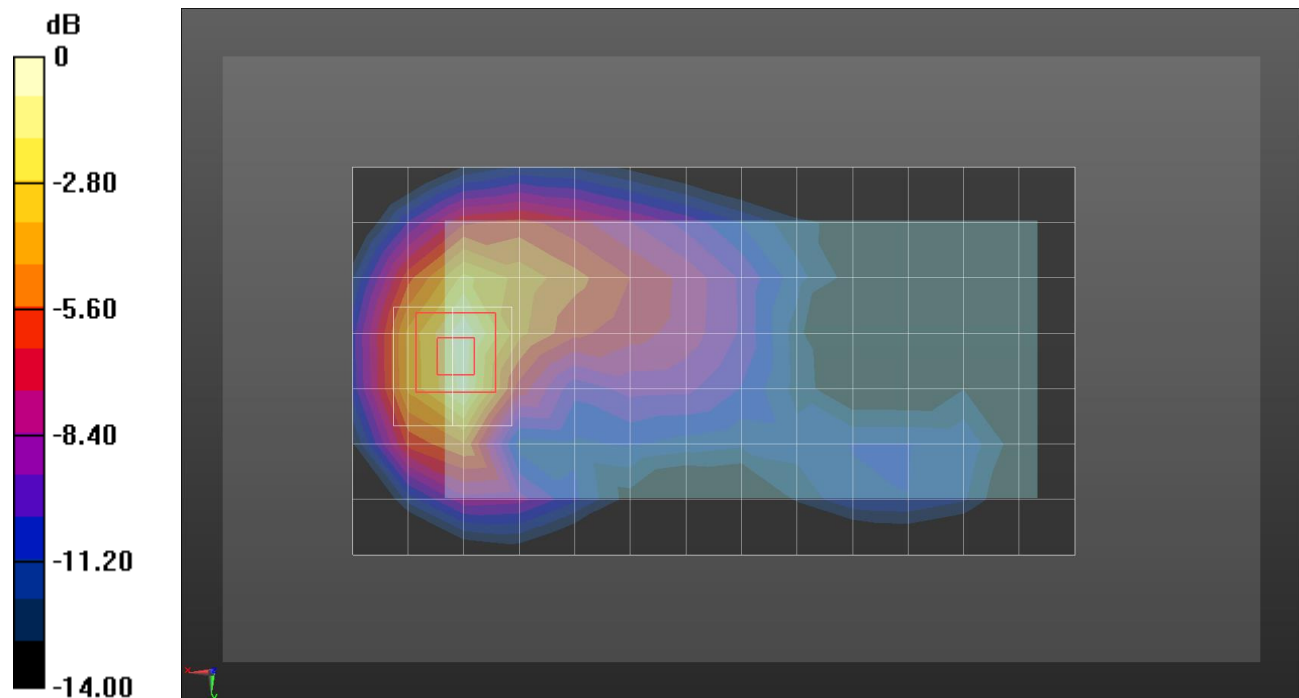
**Rear/QPSK RB 1/0 ch 19100/Zoom Scan (5x5x7)/Cube 0:** Measurement grid:  $dx=8\text{mm}$ ,  $dy=8\text{mm}$ ,  $dz=5\text{mm}$

Reference Value = 27.42 V/m; Power Drift = -0.07 dB

Peak SAR (extrapolated) = 1.56 W/kg

**SAR(1 g) = 0.927 W/kg; SAR(10 g) = 0.512 W/kg**

Maximum value of SAR (measured) = 1.18 W/kg



0 dB = 1.18 W/kg = 0.72 dBW/kg

## LTE Band 2

Frequency: 1900 MHz; Duty Cycle: 1:1; Room Ambient Temperature: 23.0°C; Liquid Temperature: 22.0°C  
 Medium parameters used:  $f = 1900$  MHz;  $\sigma = 1.582$  S/m;  $\epsilon_r = 51.834$ ;  $\rho = 1000$  kg/m<sup>3</sup>

DASY5 Configuration:

- Area Scan Setting: Find Secondary Maximum Within: 2.0 dB and with a peak SAR value greater than 0.0012W/kg
- Electronics: DAE4 Sn1468; Calibrated: 2017-08-22
- Probe: EX3DV4 - SN7376; ConvF(8.05, 8.05, 8.05); Calibrated: 2017-08-22;
- Sensor-Surface: 2.5mm (Mechanical Surface Detection)
- Phantom: Triple Flat Phantom 5.1C; Type: QD 000 P51 CA; Serial: 1166

**Edge 3/QPSK RB 50/0 ch 19100/Area Scan (6x9x1):** Measurement grid: dx=15mm, dy=15mm

Maximum value of SAR (measured) = 0.990 W/kg

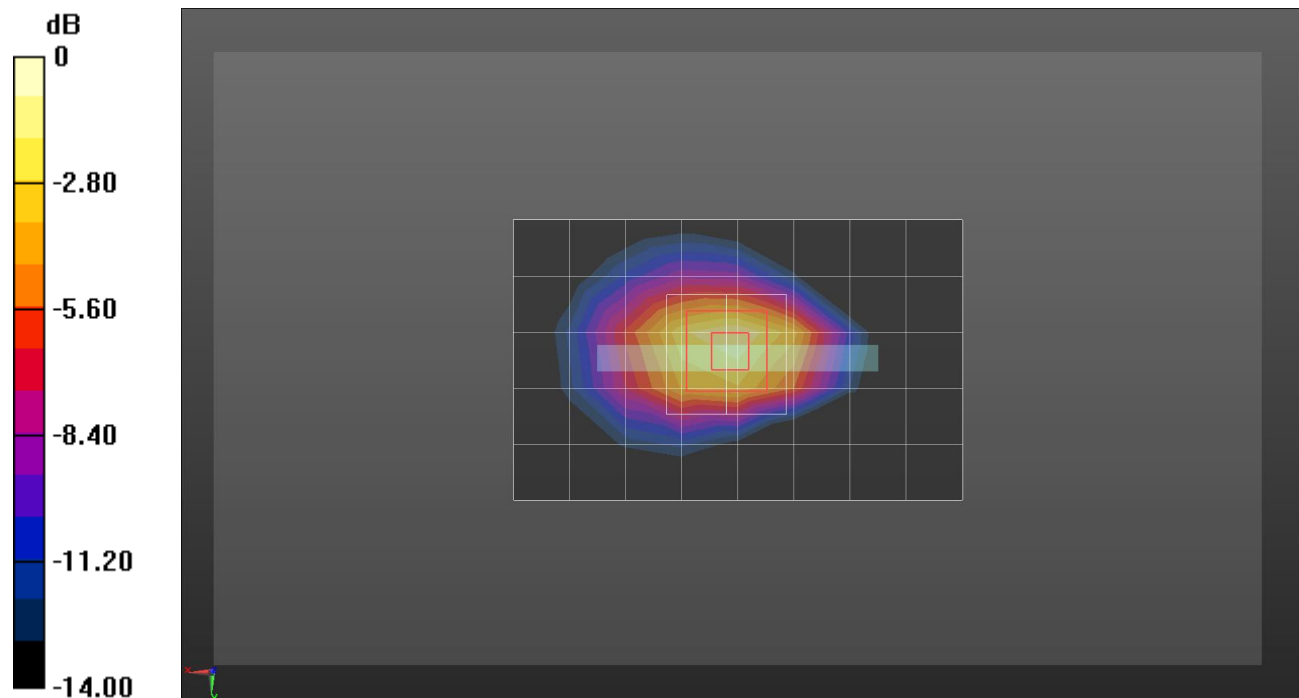
**Edge 3/QPSK RB 50/0 ch 19100/Zoom Scan (5x5x7)/Cube 0:** Measurement grid: dx=8mm, dy=8mm, dz=5mm

Reference Value = 26.59 V/m; Power Drift = -0.13 dB

Peak SAR (extrapolated) = 1.58 W/kg

**SAR(1 g) = 0.908 W/kg; SAR(10 g) = 0.474 W/kg**

Maximum value of SAR (measured) = 1.20 W/kg



0 dB = 1.20 W/kg = 0.79 dBW/kg

## LTE Band 2

Frequency: 1880 MHz; Duty Cycle: 1:1; Room Ambient Temperature: 23.0°C; Liquid Temperature: 22.0°C  
 Medium parameters used:  $f = 1880 \text{ MHz}$ ;  $\sigma = 1.563 \text{ S/m}$ ;  $\epsilon_r = 51.895$ ;  $\rho = 1000 \text{ kg/m}^3$

DASY5 Configuration:

- Area Scan Setting: Find Secondary Maximum Within: 2.0 dB and with a peak SAR value greater than 0.0012W/kg
- Electronics: DAE4 Sn1468; Calibrated: 2017-08-22
- Probe: EX3DV4 - SN7376; ConvF(8.05, 8.05, 8.05); Calibrated: 2017-08-22;
- Sensor-Surface: 2.5mm (Mechanical Surface Detection)
- Phantom: Triple Flat Phantom 5.1C; Type: QD 000 P51 CA; Serial: 1166

**Rear/QPSK RB 50/0 ch 18900/Area Scan (8x14x1):** Measurement grid: dx=15mm, dy=15mm

Maximum value of SAR (measured) = 7.05 W/kg

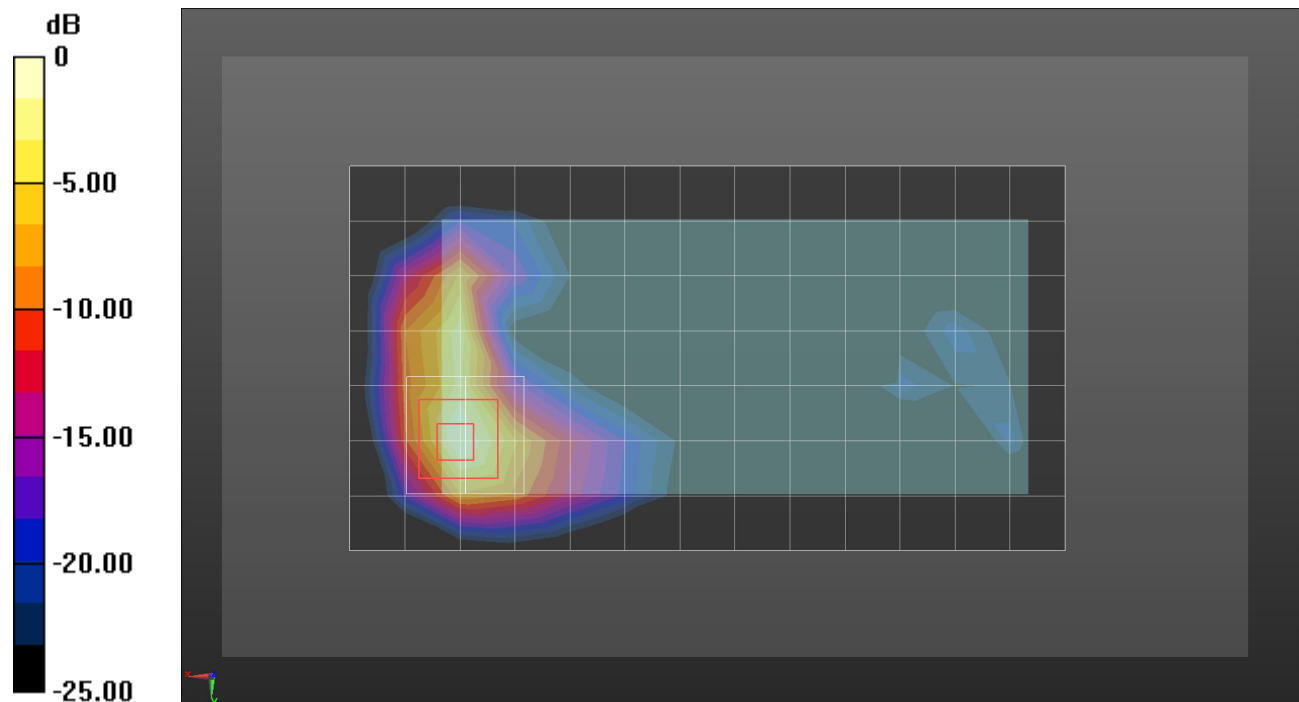
**Rear/QPSK RB 50/0 ch 18900/Zoom Scan (5x5x7)/Cube 0:** Measurement grid: dx=8mm, dy=8mm, dz=5mm

Reference Value = 60.92 V/m; Power Drift = -0.04 dB

Peak SAR (extrapolated) = 11.2 W/kg

**SAR(1 g) = 3.87 W/kg; SAR(10 g) = 1.45 W/kg**

Maximum value of SAR (measured) = 5.72 W/kg



0 dB = 5.72 W/kg = 7.57 dBW/kg

## LTE Band 5

Frequency: 836.5 MHz; Duty Cycle: 1:1; Room Ambient Temperature: 23.0°C; Liquid Temperature: 22.0°C  
Medium parameters used (interpolated):  $f = 836.5$  MHz;  $\sigma = 0.9$  S/m;  $\epsilon_r = 42.918$ ;  $\rho = 1000$  kg/m<sup>3</sup>

DASY5 Configuration:

- Area Scan Setting: Find Secondary Maximum Within: 2.0 dB and with a peak SAR value greater than 0.0012W/kg
- Electronics: DAE3 Sn479; Calibrated: 2017-10-23
- Probe: EX3DV4 - SN7330; ConvF(10.43, 10.43, 10.43); Calibrated: 2018-01-22;
- Sensor-Surface: 2.5mm (Mechanical Surface Detection)
- Phantom: SAM (20deg probe tilt) with CRP v5.0(Right); Type: QD000P40CD; Serial: TP:1846

**RHS/Touch\_QPSK RB 1/49 ch 20525/Area Scan (8x14x1):** Measurement grid: dx=15mm, dy=15mm  
Maximum value of SAR (measured) = 0.211 W/kg

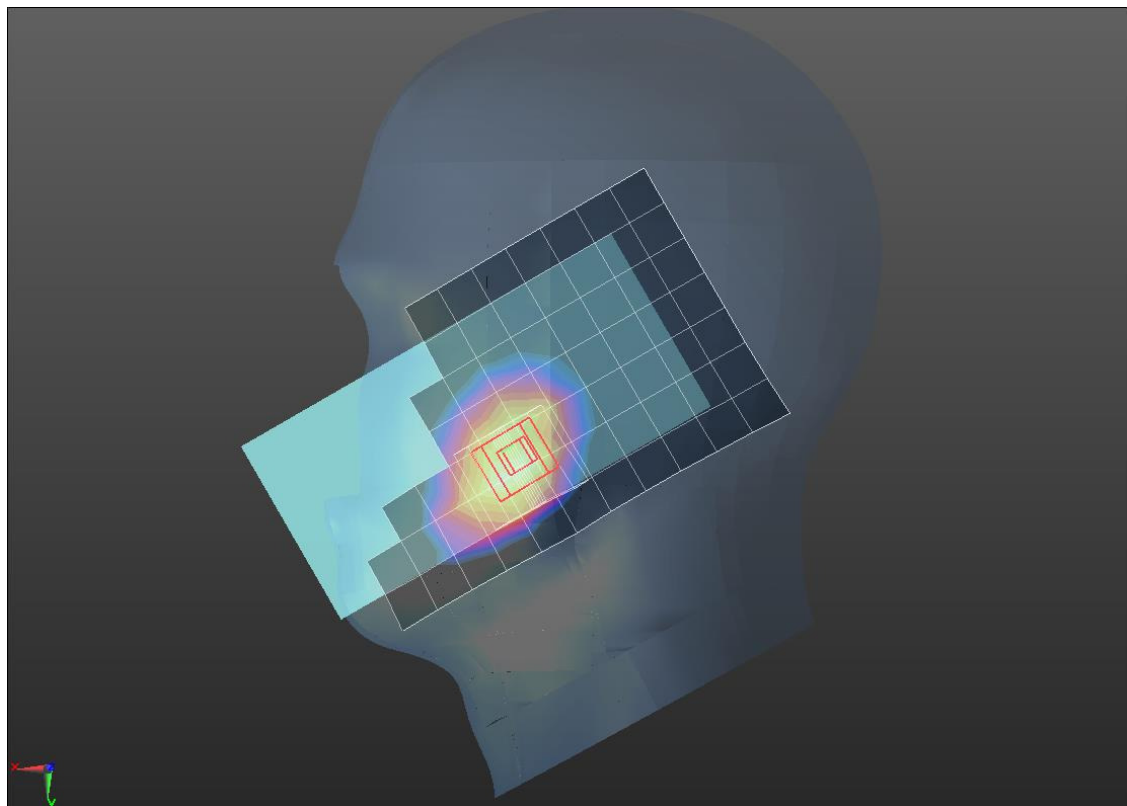
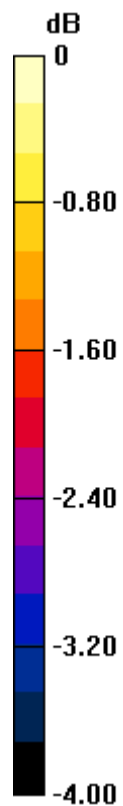
**RHS/Touch\_QPSK RB 1/49 ch 20525/Zoom Scan (5x5x7)/Cube 0:** Measurement grid: dx=8mm, dy=8mm, dz=5mm

Reference Value = 15.53 V/m; Power Drift = 0.18 dB

Peak SAR (extrapolated) = 0.251 W/kg

**SAR(1 g) = 0.192 W/kg; SAR(10 g) = 0.147 W/kg**

Maximum value of SAR (measured) = 0.215 W/kg



0 dB = 0.215 W/kg = -6.68 dBW/kg

## LTE Band 5

Frequency: 836.5 MHz; Duty Cycle: 1:1; Room Ambient Temperature: 23.0°C; Liquid Temperature: 22.0°C  
Medium parameters used (interpolated):  $f = 836.5$  MHz;  $\sigma = 0.98$  S/m;  $\epsilon_r = 55.072$ ;  $\rho = 1000$  kg/m<sup>3</sup>

DASY5 Configuration:

- Area Scan Setting: Find Secondary Maximum Within: 2.0 dB and with a peak SAR value greater than 0.0012W/kg
- Electronics: DAE3 Sn479; Calibrated: 2017-10-23
- Probe: EX3DV4 - SN7330; ConvF(10.09, 10.09, 10.09); Calibrated: 2018-01-22;
- Sensor-Surface: 2.5mm (Mechanical Surface Detection)
- Phantom: ELI v6.0; Type: QDOVA003AA; Serial: TP:2005

**Rear/QPSK RB 1/49 ch 20525/Area Scan (8x14x1):** Measurement grid: dx=15mm, dy=15mm

Maximum value of SAR (measured) = 0.439 W/kg

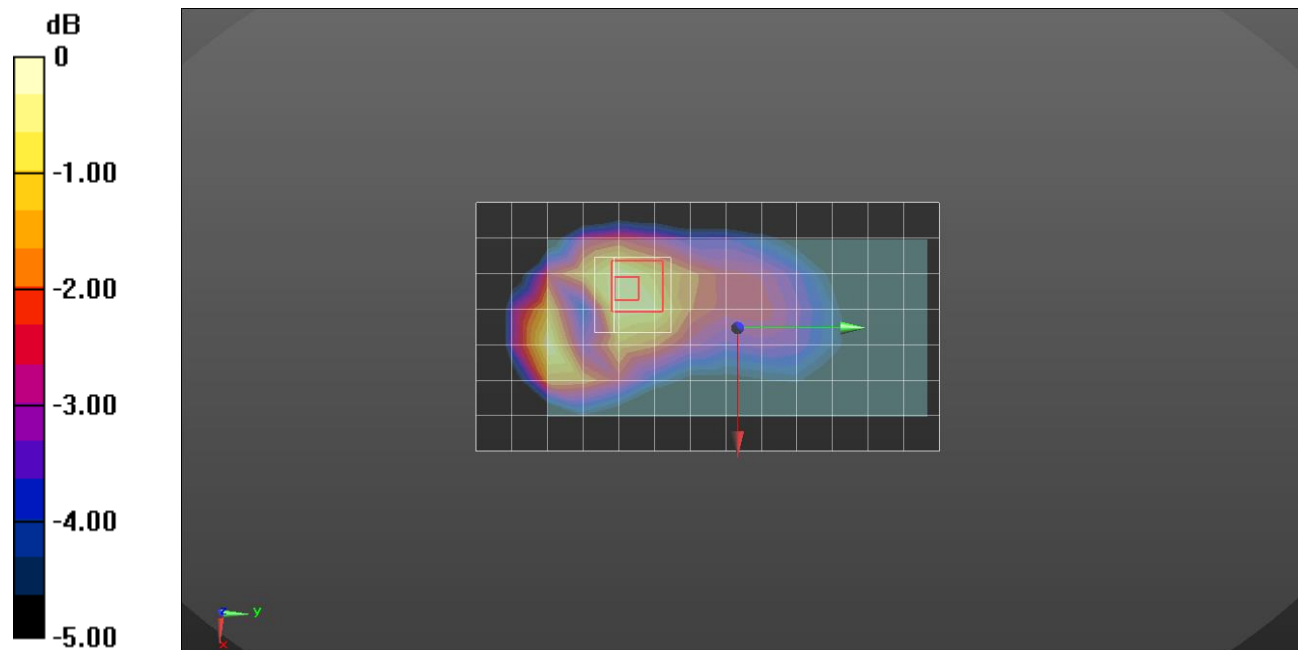
**Rear/QPSK RB 1/49 ch 20525/Zoom Scan (5x5x7)/Cube 0:** Measurement grid: dx=8mm, dy=8mm, dz=5mm

Reference Value = 21.82 V/m; Power Drift = 0.12 dB

Peak SAR (extrapolated) = 0.569 W/kg

**SAR(1 g) = 0.397 W/kg; SAR(10 g) = 0.276 W/kg**

Maximum value of SAR (measured) = 0.468 W/kg



0 dB = 0.468 W/kg = -3.30 dBW/kg

## LTE Band 5

Frequency: 836.5 MHz; Duty Cycle: 1:1; Room Ambient Temperature: 23.0°C; Liquid Temperature: 22.0°C  
 Medium parameters used (interpolated):  $f = 836.5$  MHz;  $\sigma = 0.98$  S/m;  $\epsilon_r = 55.072$ ;  $\rho = 1000$  kg/m<sup>3</sup>

DASY5 Configuration:

- Area Scan Setting: Find Secondary Maximum Within: 2.0 dB and with a peak SAR value greater than 0.0012W/kg
- Electronics: DAE3 Sn479; Calibrated: 2017-10-23
- Probe: EX3DV4 - SN7330; ConvF(10.09, 10.09, 10.09); Calibrated: 2018-01-22;
- Sensor-Surface: 2.5mm (Mechanical Surface Detection)
- Phantom: ELI v6.0; Type: QDOVA003AA; Serial: TP:2005

**Rear/QPSK RB 1/49 ch 20525/Area Scan (8x14x1):** Measurement grid: dx=15mm, dy=15mm

Maximum value of SAR (measured) = 0.782 W/kg

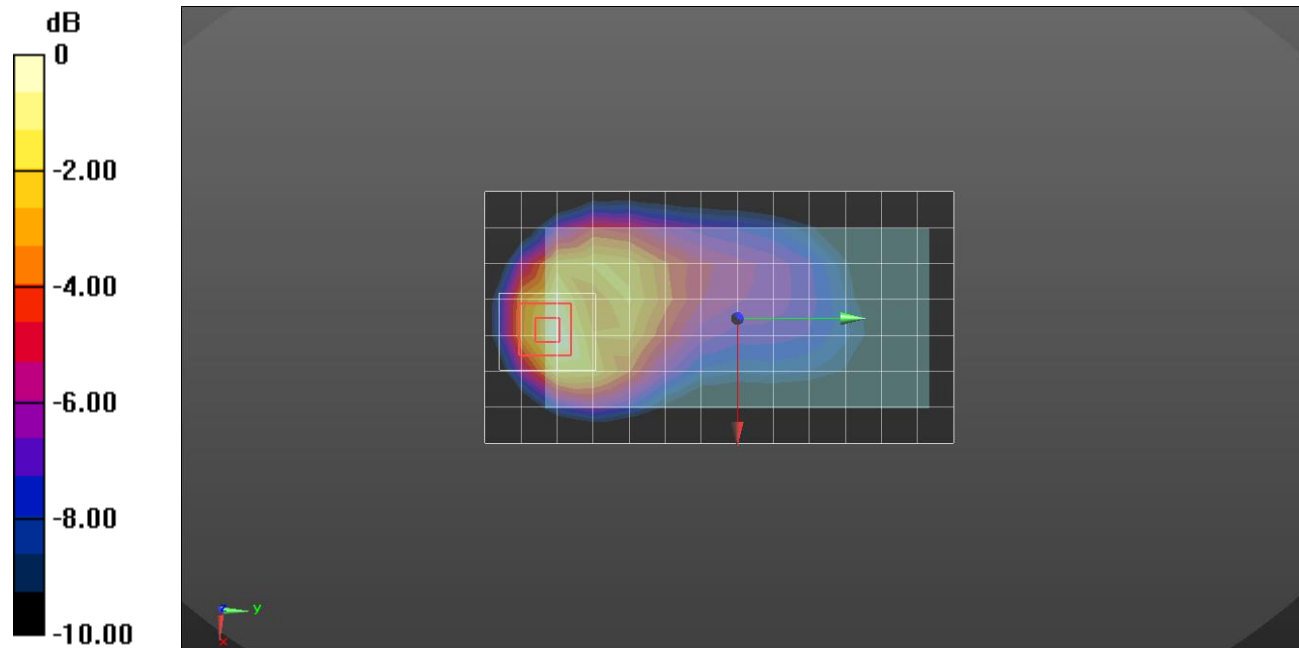
**Rear/QPSK RB 1/49 ch 20525/Zoom Scan (5x6x7)/Cube 0:** Measurement grid: dx=8mm, dy=8mm, dz=5mm

Reference Value = 28.45 V/m; Power Drift = -0.10 dB

Peak SAR (extrapolated) = 1.14 W/kg

**SAR(1 g) = 0.614 W/kg; SAR(10 g) = 0.333 W/kg**

Maximum value of SAR (measured) = 0.767 W/kg



0 dB = 0.767 W/kg = -1.15 dBW/kg

## LTE Band 12

Frequency: 707.5 MHz; Duty Cycle: 1:1; Room Ambient Temperature: 23.0°C; Liquid Temperature: 22.0°C  
Medium parameters used (interpolated):  $f = 707.5$  MHz;  $\sigma = 0.861$  S/m;  $\epsilon_r = 42.614$ ;  $\rho = 1000$  kg/m<sup>3</sup>

DASY5 Configuration:

- Area Scan Setting: Find Secondary Maximum Within: 2.0 dB and with a peak SAR value greater than 0.0012W/kg
- Electronics: DAE4 Sn1494; Calibrated: 2017-07-20
- Probe: EX3DV4 - SN7314; ConvF(10.55, 10.55, 10.55); Calibrated: 2017-09-28;
- Sensor-Surface: 2.5mm (Mechanical Surface Detection)
- Phantom: SAM Phantom CRP v5.0(Right); Type: QD000P40CD; Serial: TP:1855

**RHS/Touch\_QPSK RB 1/0 ch 23095/Area Scan (8x13x1):** Measurement grid: dx=15mm, dy=15mm  
Maximum value of SAR (measured) = 0.0963 W/kg

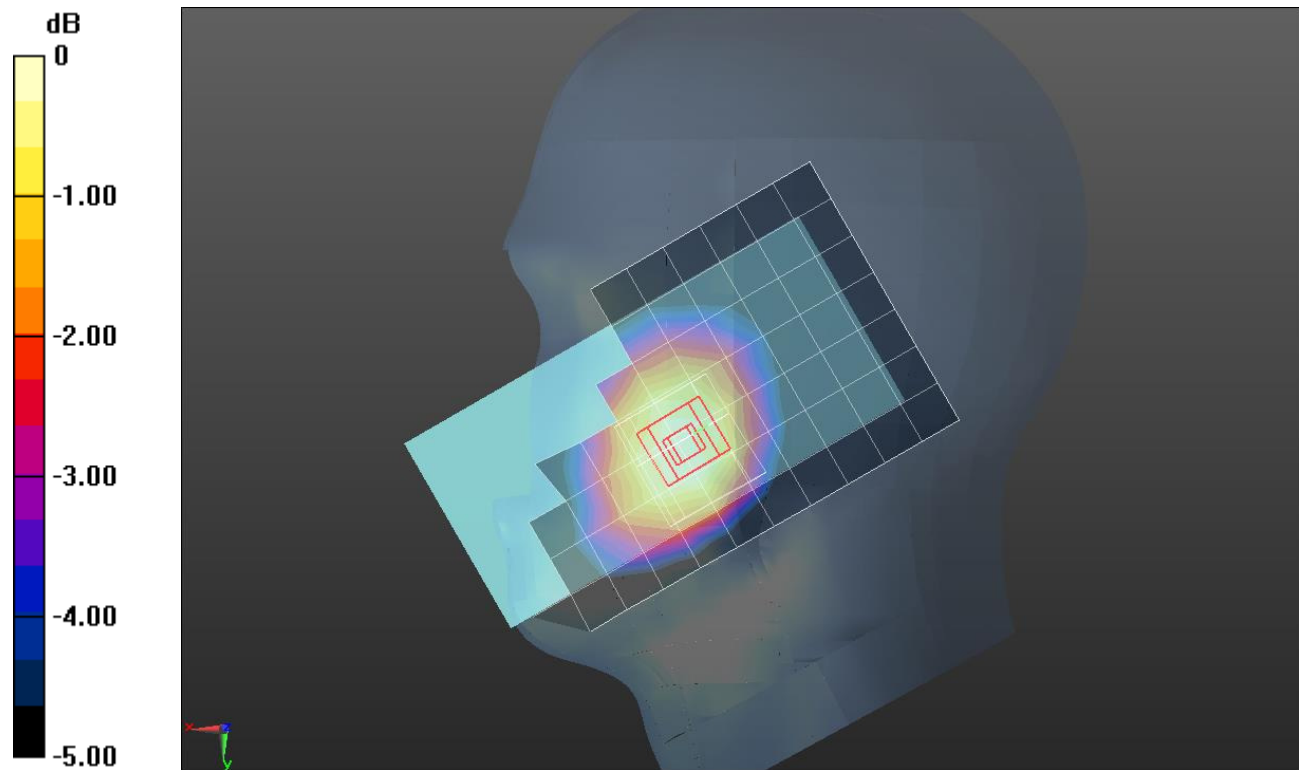
**RHS/Touch\_QPSK RB 1/0 ch 23095/Zoom Scan (6x5x7)/Cube 0:** Measurement grid: dx=8mm, dy=8mm, dz=5mm

Reference Value = 10.84 V/m; Power Drift = -0.15 dB

Peak SAR (extrapolated) = 0.106 W/kg

**SAR(1 g) = 0.089 W/kg; SAR(10 g) = 0.070 W/kg**

Maximum value of SAR (measured) = 0.0956 W/kg



0 dB = 0.0956 W/kg = -10.20 dBW/kg

## LTE Band 12

Frequency: 707.5 MHz; Duty Cycle: 1:1; Room Ambient Temperature: 23.0°C; Liquid Temperature: 22.0°C  
 Medium parameters used (interpolated):  $f = 707.5$  MHz;  $\sigma = 0.922$  S/m;  $\epsilon_r = 55.078$ ;  $\rho = 1000$  kg/m<sup>3</sup>

DASY5 Configuration:

- Area Scan Setting: Find Secondary Maximum Within: 2.0 dB and with a peak SAR value greater than 0.0012W/kg
- Electronics: DAE4 Sn1494; Calibrated: 2017-07-20
- Probe: EX3DV4 - SN7314; ConvF(10.3, 10.3, 10.3); Calibrated: 2017-09-28;
- Sensor-Surface: 2.5mm (Mechanical Surface Detection)
- Phantom: Triple Flat Phantom 5.1C; Type: QD 000 P51 CA; Serial: 1166

**Rear/QPSK RB 1/0 ch 23095/Area Scan (8x14x1):** Measurement grid: dx=15mm, dy=15mm

Maximum value of SAR (measured) = 0.0922 W/kg

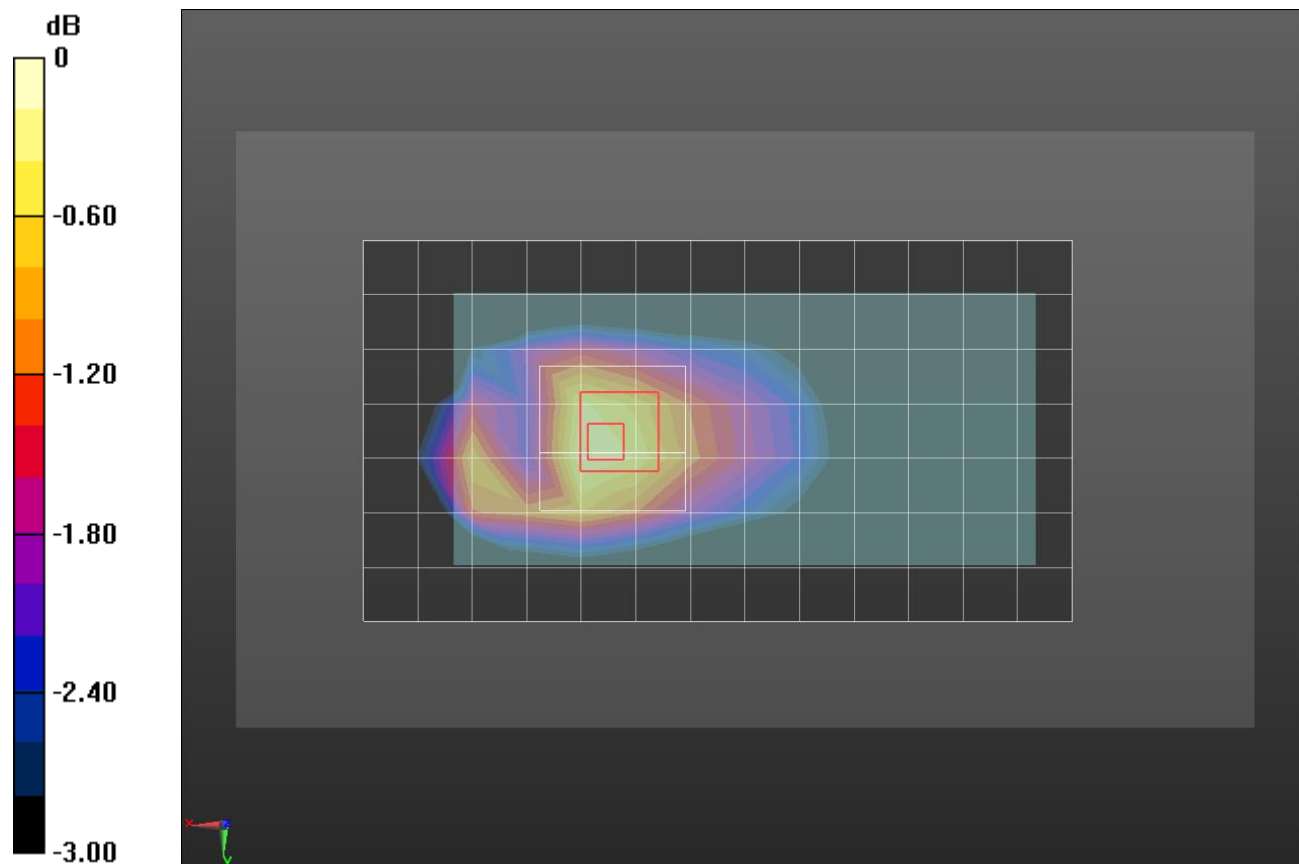
**Rear/QPSK RB 1/0 ch 23095/Zoom Scan (6x6x7)/Cube 0:** Measurement grid: dx=8mm, dy=8mm, dz=5mm

Reference Value = 10.07 V/m; Power Drift = -0.01 dB

Peak SAR (extrapolated) = 0.112 W/kg

**SAR(1 g) = 0.083 W/kg; SAR(10 g) = 0.062 W/kg**

Maximum value of SAR (measured) = 0.0959 W/kg



0 dB = 0.0959 W/kg = -10.18 dBW/kg

## LTE Band 12

Frequency: 707.5 MHz; Duty Cycle: 1:1; Room Ambient Temperature: 23.0°C; Liquid Temperature: 22.0°C  
 Medium parameters used (interpolated):  $f = 707.5$  MHz;  $\sigma = 0.926$  S/m;  $\epsilon_r = 55.898$ ;  $\rho = 1000$  kg/m<sup>3</sup>

DASY5 Configuration:

- Area Scan Setting: Find Secondary Maximum Within: 2.0 dB and with a peak SAR value greater than 0.0012W/kg
- Electronics: DAE4 Sn1494; Calibrated: 2017-07-20
- Probe: EX3DV4 - SN7314; ConvF(10.3, 10.3, 10.3); Calibrated: 2017-09-28;
- Sensor-Surface: 2.5mm (Mechanical Surface Detection)
- Phantom: Triple Flat Phantom 5.1C; Type: QD 000 P51 CA; Serial: 1166

**Edge 2/QPSK RB 1/0 ch 23095/Area Scan (5x14x1):** Measurement grid: dx=15mm, dy=15mm

Maximum value of SAR (measured) = 0.186 W/kg

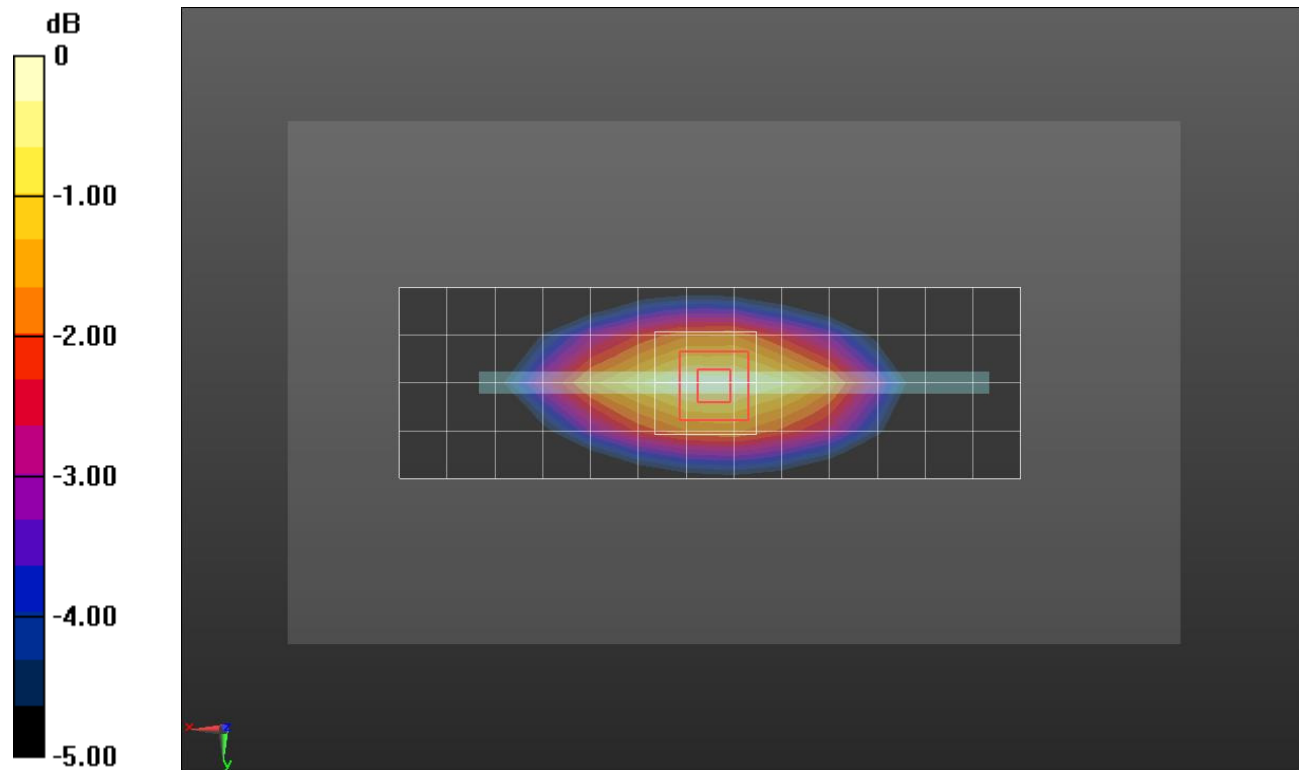
**Edge 2/QPSK RB 1/0 ch 23095/Zoom Scan (5x5x7)/Cube 0:** Measurement grid: dx=8mm, dy=8mm, dz=5mm

Reference Value = 14.20 V/m; Power Drift = -0.01 dB

Peak SAR (extrapolated) = 0.225 W/kg

**SAR(1 g) = 0.159 W/kg; SAR(10 g) = 0.111 W/kg**

Maximum value of SAR (measured) = 0.188 W/kg



0 dB = 0.188 W/kg = -7.26 dBW/kg

## LTE Band 13

Frequency: 782 MHz; Duty Cycle: 1:1; Room Ambient Temperature: 23.0°C; Liquid Temperature: 22.0°C  
 Medium parameters used (interpolated):  $f = 782 \text{ MHz}$ ;  $\sigma = 0.927 \text{ S/m}$ ;  $\epsilon_r = 41.578$ ;  $\rho = 1000 \text{ kg/m}^3$

DASY5 Configuration:

- Area Scan Setting: Find Secondary Maximum Within: 2.0 dB and with a peak SAR value greater than 0.0012W/kg
- Electronics: DAE4 Sn1494; Calibrated: 2017-07-20
- Probe: EX3DV4 - SN7314; ConvF(10.55, 10.55, 10.55); Calibrated: 2017-09-28;
- Sensor-Surface: 2.5mm (Mechanical Surface Detection)
- Phantom: SAM Phantom CRP v5.0(Right); Type: QD000P40CD; Serial: TP:1855

**RHS/Touch\_QPSK RB 25/0 ch 23230/Area Scan (8x13x1):** Measurement grid:  $dx=15\text{mm}$ ,  $dy=15\text{mm}$   
 Maximum value of SAR (measured) = 0.132 W/kg

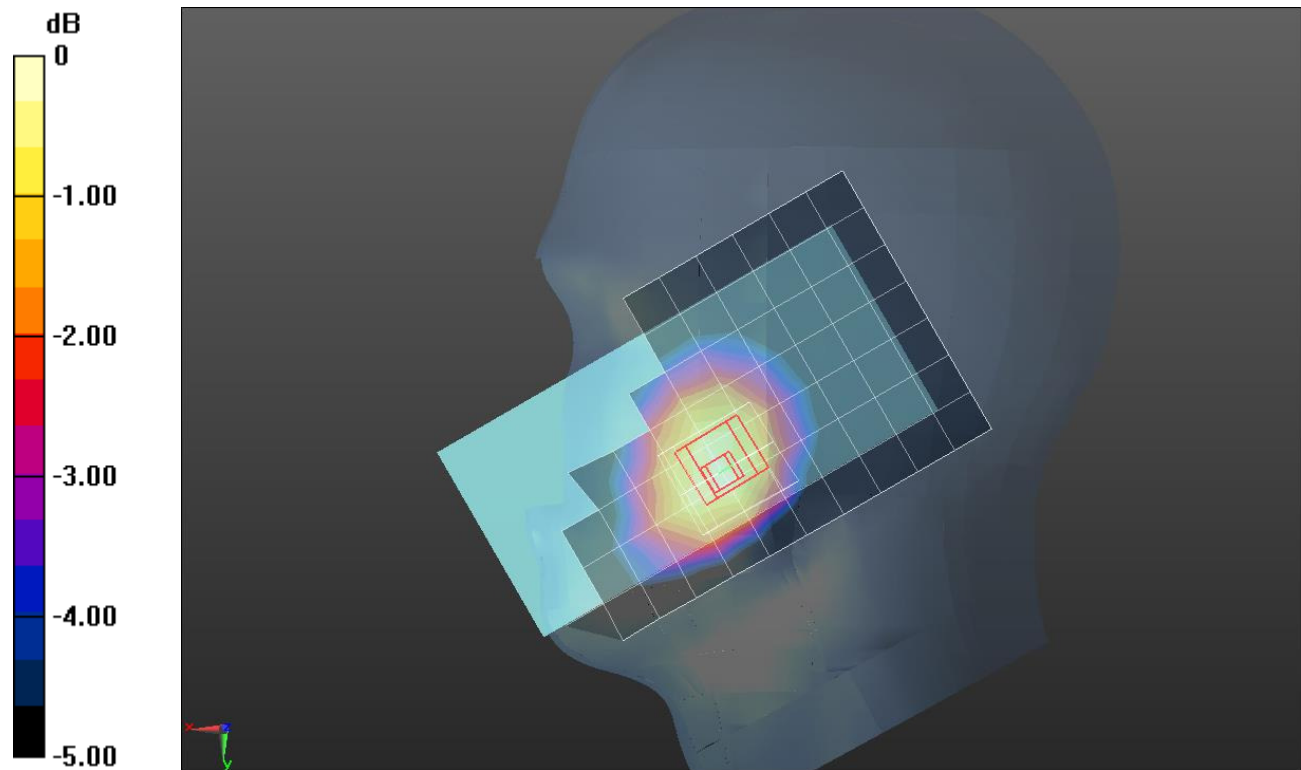
**RHS/Touch\_QPSK RB 25/0 ch 23230/Zoom Scan (5x5x7)/Cube 0:** Measurement grid:  $dx=8\text{mm}$ ,  $dy=8\text{mm}$ ,  $dz=5\text{mm}$

Reference Value = 12.18 V/m; Power Drift = 0.09 dB

Peak SAR (extrapolated) = 0.159 W/kg

**SAR(1 g) = 0.122 W/kg; SAR(10 g) = 0.094 W/kg**

Maximum value of SAR (measured) = 0.135 W/kg



0 dB = 0.135 W/kg = -8.70 dBW/kg

## LTE Band 13

Frequency: 782 MHz; Duty Cycle: 1:1; Room Ambient Temperature: 23.0°C; Liquid Temperature: 22.0°C  
 Medium parameters used (interpolated):  $f = 782 \text{ MHz}$ ;  $\sigma = 0.993 \text{ S/m}$ ;  $\epsilon_r = 53.722$ ;  $\rho = 1000 \text{ kg/m}^3$

DASY5 Configuration:

- Area Scan Setting: Find Secondary Maximum Within: 2.0 dB and with a peak SAR value greater than 0.0012W/kg
- Electronics: DAE4 Sn1494; Calibrated: 2017-07-20
- Probe: EX3DV4 - SN7314; ConvF(10.3, 10.3, 10.3); Calibrated: 2017-09-28;
- Sensor-Surface: 2.5mm (Mechanical Surface Detection)
- Phantom: Triple Flat Phantom 5.1C; Type: QD 000 P51 CA; Serial: 1166

**Rear/QPSK RB 25/0 ch 23230/Area Scan (8x14x1):** Measurement grid: dx=15mm, dy=15mm

Maximum value of SAR (measured) = 0.249 W/kg

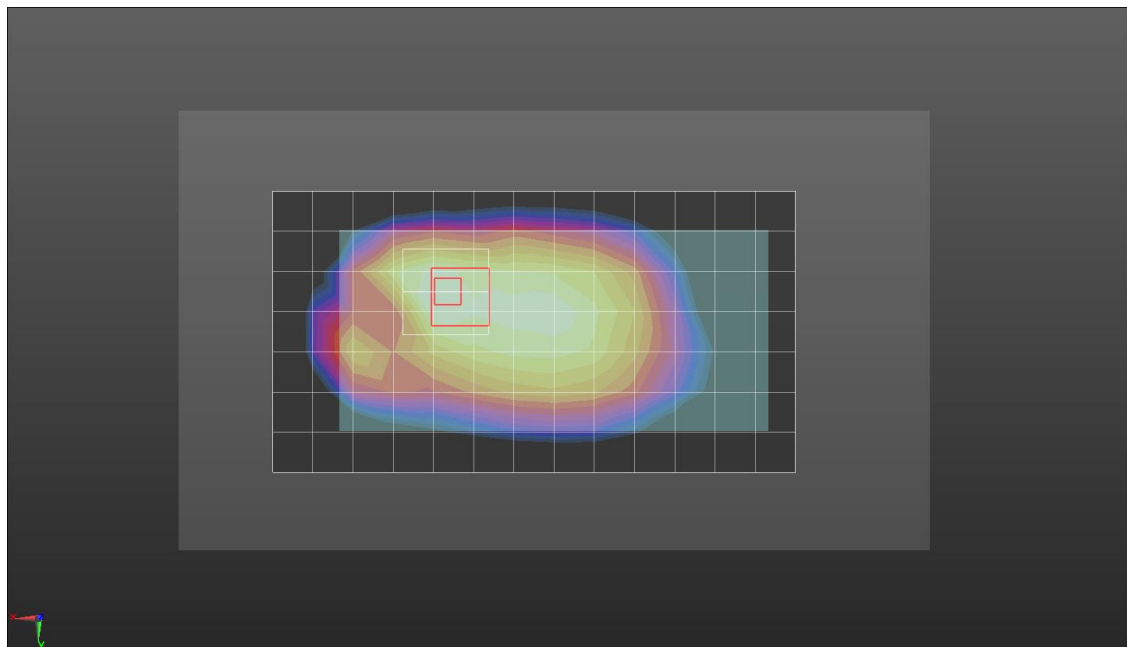
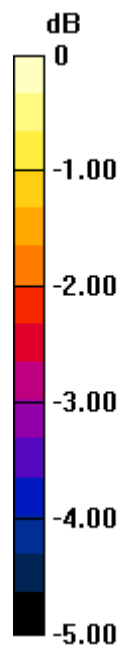
**Rear/QPSK RB 25/0 ch 23230/Zoom Scan (5x5x7)/Cube 0:** Measurement grid: dx=8mm, dy=8mm, dz=5mm

Reference Value = 16.05 V/m; Power Drift = -0.06 dB

Peak SAR (extrapolated) = 0.281 W/kg

**SAR(1 g) = 0.222 W/kg; SAR(10 g) = 0.167 W/kg**

Maximum value of SAR (measured) = 0.250 W/kg



0 dB = 0.250 W/kg = -6.02 dBW/kg

## LTE Band 13

Frequency: 782 MHz; Duty Cycle: 1:1; Room Ambient Temperature: 23.0°C; Liquid Temperature: 22.0°C  
 Medium parameters used (interpolated):  $f = 782 \text{ MHz}$ ;  $\sigma = 0.993 \text{ S/m}$ ;  $\epsilon_r = 53.722$ ;  $\rho = 1000 \text{ kg/m}^3$

DASY5 Configuration:

- Area Scan Setting: Find Secondary Maximum Within: 2.0 dB and with a peak SAR value greater than 0.0012W/kg
- Electronics: DAE4 Sn1494; Calibrated: 2017-07-20
- Probe: EX3DV4 - SN7314; ConvF(10.3, 10.3, 10.3); Calibrated: 2017-09-28;
- Sensor-Surface: 2.5mm (Mechanical Surface Detection)
- Phantom: Triple Flat Phantom 5.1C; Type: QD 000 P51 CA; Serial: 1166

**Rear/QPSK RB 25/0 ch 23230/Area Scan (8x14x1):** Measurement grid: dx=15mm, dy=15mm

Maximum value of SAR (measured) = 0.522 W/kg

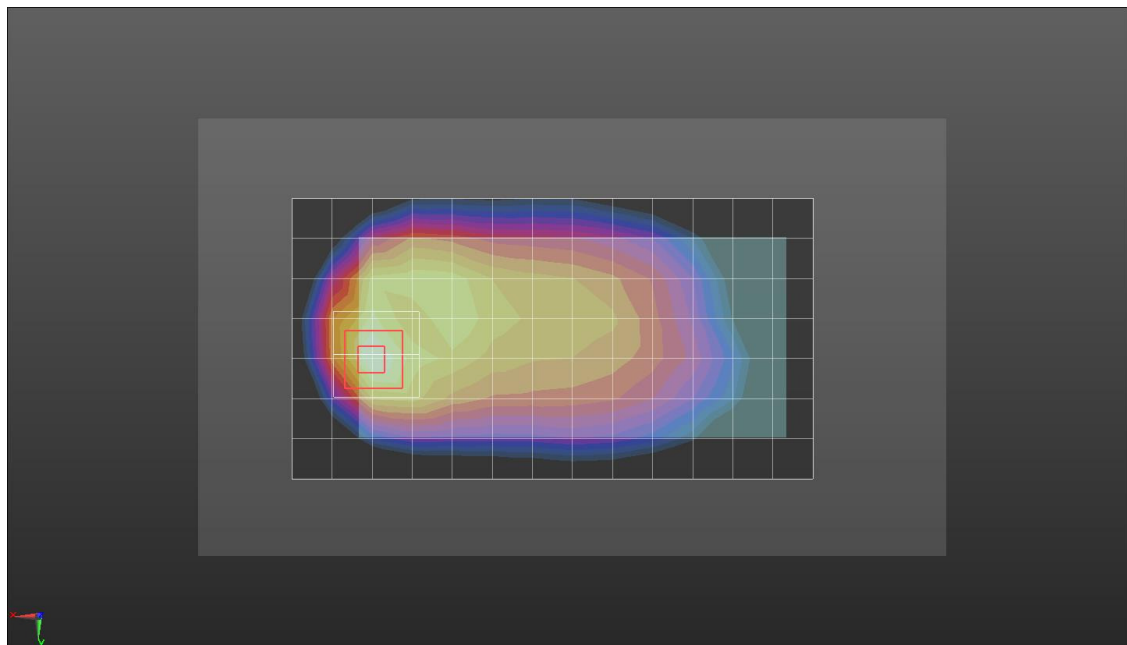
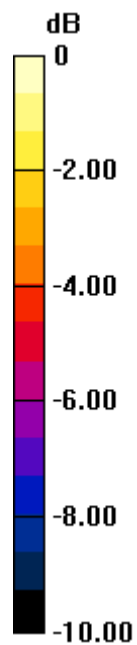
**Rear/QPSK RB 25/0 ch 23230/Zoom Scan (5x5x7)/Cube 0:** Measurement grid: dx=8mm, dy=8mm, dz=5mm

Reference Value = 22.49 V/m; Power Drift = -0.06 dB

Peak SAR (extrapolated) = 0.710 W/kg

**SAR(1 g) = 0.368 W/kg; SAR(10 g) = 0.202 W/kg**

Maximum value of SAR (measured) = 0.480 W/kg



0 dB = 0.480 W/kg = -3.19 dBW/kg

## LTE Band 41

Frequency: 2593 MHz; Duty Cycle: 1:1.59956; Room Ambient Temperature: 23.0°C; Liquid Temperature: 22.0°C  
Medium parameters used (interpolated):  $f = 2593$  MHz;  $\sigma = 2.001$  S/m;  $\epsilon_r = 38.774$ ;  $\rho = 1000$  kg/m<sup>3</sup>

DASY5 Configuration:

- Area Scan Setting: Find Secondary Maximum Within: 2.0 dB and with a peak SAR value greater than 0.0012W/kg
- Electronics: DAE3 Sn479; Calibrated: 2017-10-23
- Probe: EX3DV4 - SN7330; ConvF(7.45, 7.45, 7.45); Calibrated: 2018-01-22;
- Sensor-Surface: 2.5mm (Mechanical Surface Detection)
- Phantom: SAM (20deg probe tilt) with CRP v5.0(Middle); Type: QD000P40CD; Serial: TP:1847

**RHS/Tilt\_QPSK RB 1/99\_ch 40620/Area Scan (9x16x1):** Measurement grid: dx=12mm, dy=12mm  
Maximum value of SAR (measured) = 0.197 W/kg

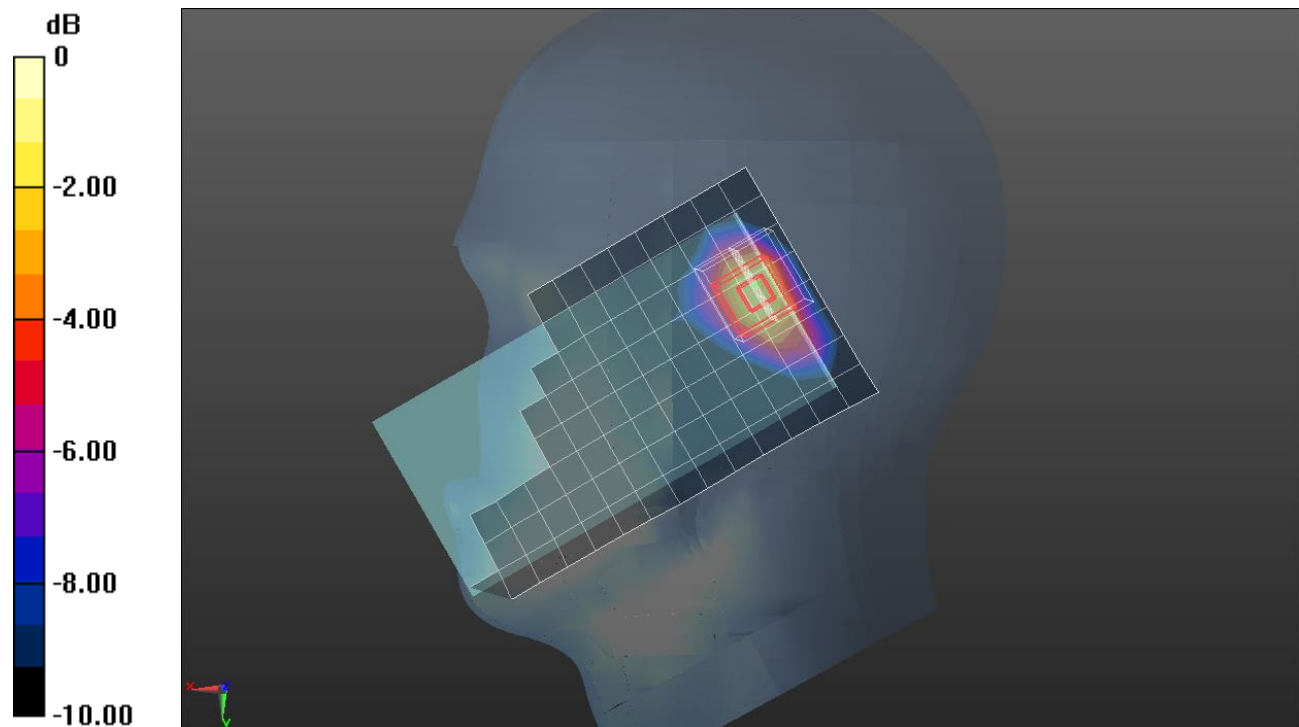
**RHS/Tilt\_QPSK RB 1/99\_ch 40620/Zoom Scan (7x7x7)/Cube 0:** Measurement grid: dx=5mm, dy=5mm, dz=5mm

Reference Value = 11.31 V/m; Power Drift = 0.18 dB

Peak SAR (extrapolated) = 0.387 W/kg

**SAR(1 g) = 0.185 W/kg; SAR(10 g) = 0.084 W/kg**

Maximum value of SAR (measured) = 0.257 W/kg



0 dB = 0.257 W/kg = -5.90 dBW/kg

## LTE Band 41

Frequency: 2593 MHz; Duty Cycle: 1:1.59956; Room Ambient Temperature: 23.0°C; Liquid Temperature: 22.0°C  
 Medium parameters used (interpolated):  $f = 2593$  MHz;  $\sigma = 2.206$  S/m;  $\epsilon_r = 50.815$ ;  $\rho = 1000$  kg/m<sup>3</sup>

DASY5 Configuration:

- Area Scan Setting: Find Secondary Maximum Within: 2.0 dB and with a peak SAR value greater than 0.0012W/kg
- Electronics: DAE4 Sn1494; Calibrated: 2017-07-20
- Probe: EX3DV4 - SN7314; ConvF(7.44, 7.44, 7.44); Calibrated: 2017-09-28;
- Sensor-Surface: 2.5mm (Mechanical Surface Detection)
- Phantom: Triple Flat Phantom 5.1C; Type: QD 000 P51 CA; Serial: 1166

**Rear/QPSK RB 1/99 ch 40620/Area Scan (9x17x1):** Measurement grid: dx=12mm, dy=12mm

Maximum value of SAR (measured) = 0.530 W/kg

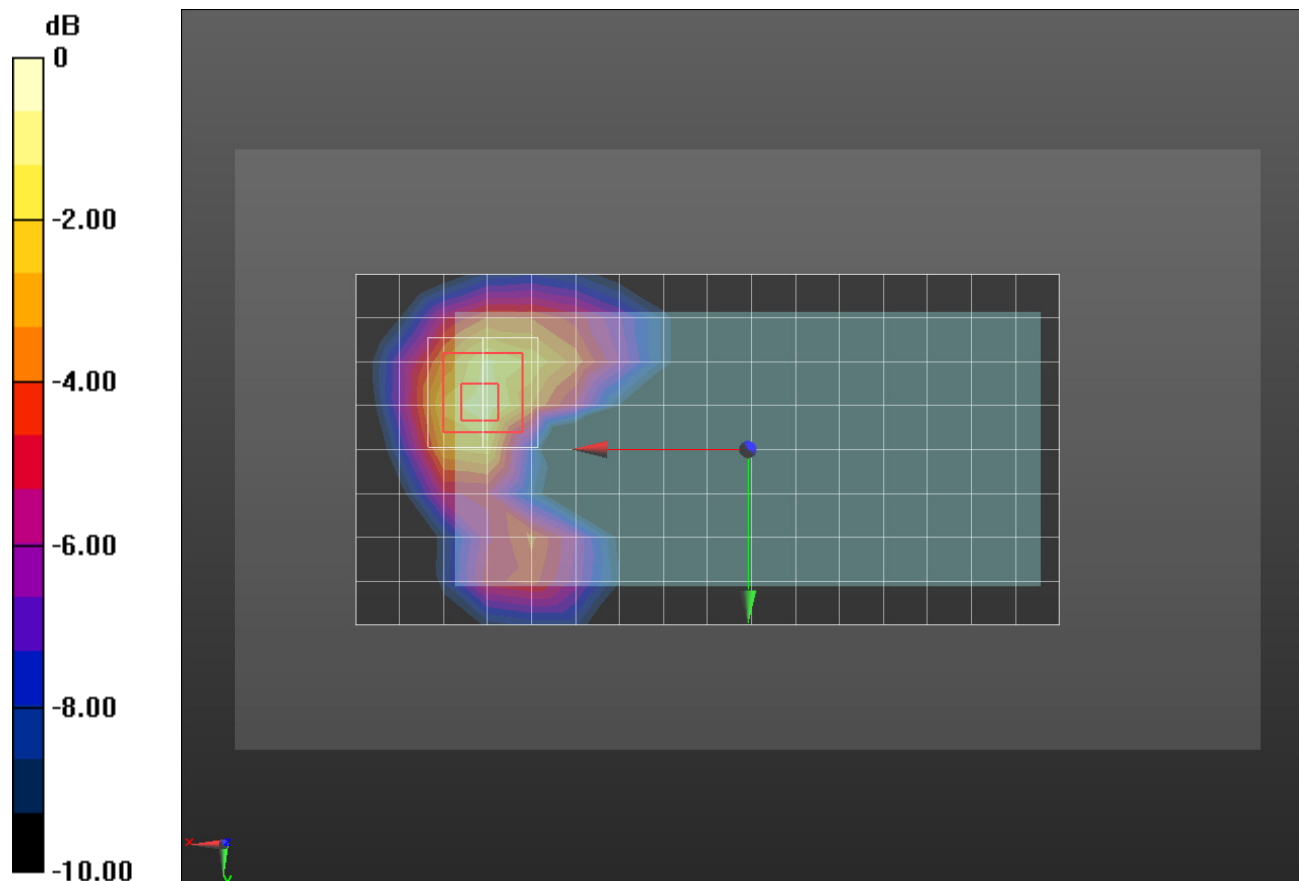
**Rear/QPSK RB 1/99 ch 40620/Zoom Scan (7x7x7)/Cube 0:** Measurement grid: dx=5mm, dy=5mm, dz=5mm

Reference Value = 16.36 V/m; Power Drift = -0.09 dB

Peak SAR (extrapolated) = 0.856 W/kg

**SAR(1 g) = 0.428 W/kg; SAR(10 g) = 0.219 W/kg**

Maximum value of SAR (measured) = 0.611 W/kg



0 dB = 0.611 W/kg = -2.14 dBW/kg

## LTE Band 41

Frequency: 2593 MHz; Duty Cycle: 1:1.59956; Room Ambient Temperature: 23.0°C; Liquid Temperature: 22.0°C  
 Medium parameters used (interpolated):  $f = 2593$  MHz;  $\sigma = 2.206$  S/m;  $\epsilon_r = 50.815$ ;  $\rho = 1000$  kg/m<sup>3</sup>

DASY5 Configuration:

- Area Scan Setting: Find Secondary Maximum Within: 2.0 dB and with a peak SAR value greater than 0.0012W/kg
- Electronics: DAE4 Sn1494; Calibrated: 2017-07-20
- Probe: EX3DV4 - SN7314; ConvF(7.44, 7.44, 7.44); Calibrated: 2017-09-28;
- Sensor-Surface: 2.5mm (Mechanical Surface Detection)
- Phantom: Triple Flat Phantom 5.1C; Type: QD 000 P51 CA; Serial: 1166

**Rear/QPSK RB 1/99 ch 40620/Area Scan (9x17x1):** Measurement grid: dx=12mm, dy=12mm

Maximum value of SAR (measured) = 0.736 W/kg

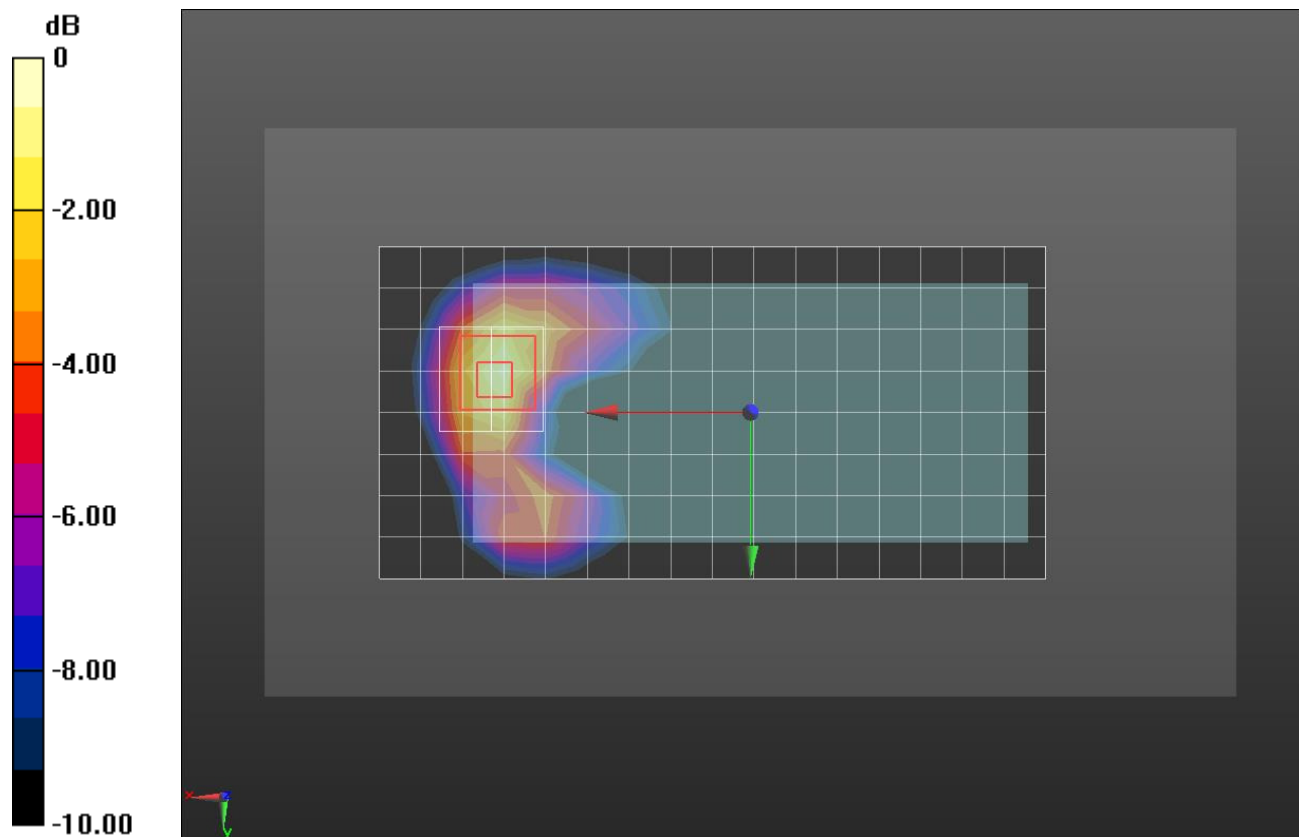
**Rear/QPSK RB 1/99 ch 40620/Zoom Scan (7x7x7)/Cube 0:** Measurement grid: dx=5mm, dy=5mm, dz=5mm

Reference Value = 18.53 V/m; Power Drift = -0.14 dB

Peak SAR (extrapolated) = 1.13 W/kg

**SAR(1 g) = 0.573 W/kg; SAR(10 g) = 0.279 W/kg**

Maximum value of SAR (measured) = 0.804 W/kg



0 dB = 0.804 W/kg = -0.95 dBW/kg

## LTE Band 66

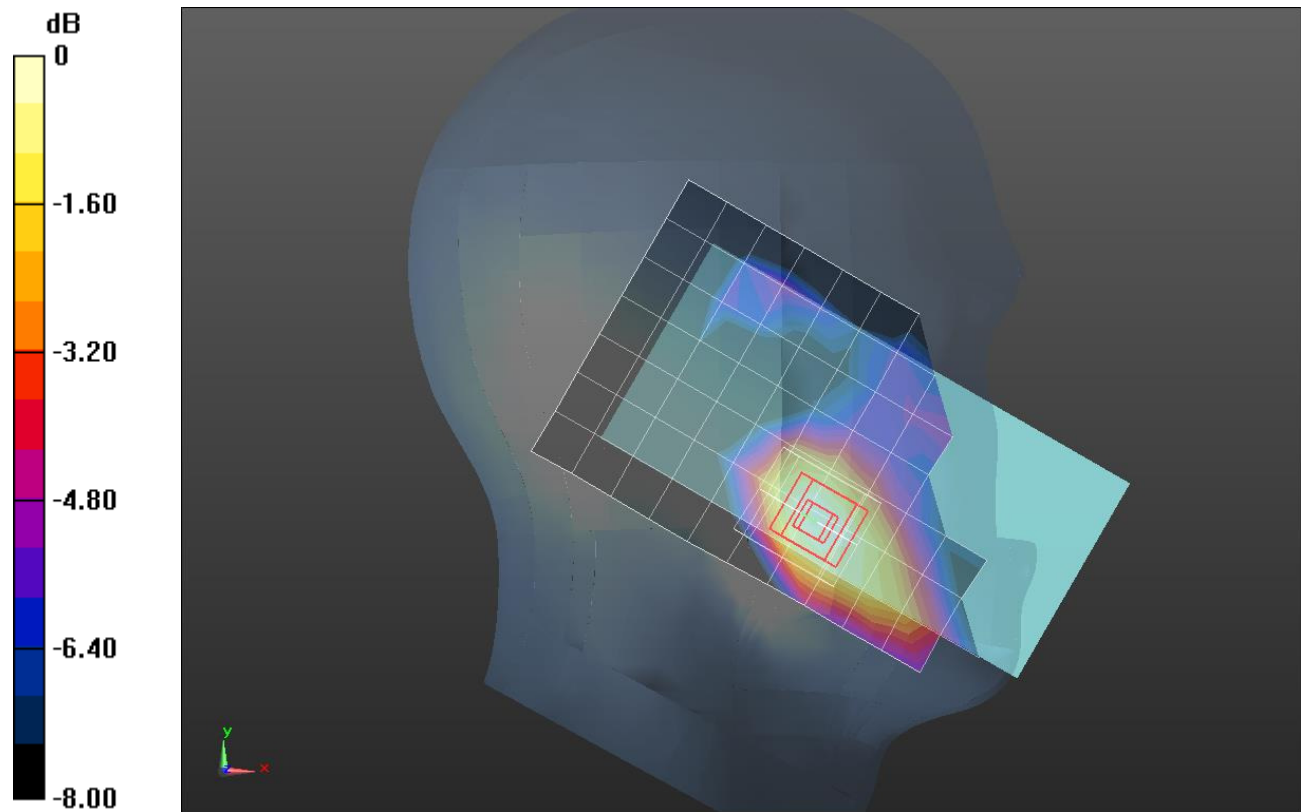
Frequency: 1720 MHz; Duty Cycle: 1:1; Room Ambient Temperature: 23.0°C; Liquid Temperature: 22.0°C  
 Medium parameters used:  $f = 1720 \text{ MHz}$ ;  $\sigma = 1.296 \text{ S/m}$ ;  $\epsilon_r = 39.056$ ;  $\rho = 1000 \text{ kg/m}^3$

DASY5 Configuration:

- Area Scan Setting: Find Secondary Maximum Within: 2.0 dB and with a peak SAR value greater than 0.0012W/kg
- Electronics: DAE4 Sn1494; Calibrated: 2017-07-20
- Probe: EX3DV4 - SN7314; ConvF(8.65, 8.65, 8.65); Calibrated: 2017-09-28;
- Sensor-Surface: 2.5mm (Mechanical Surface Detection)
- Phantom: SAM Phantom CRP v5.0(Middle); Type: QD000P40CD; Serial: TP:1854

**LHS/Touch\_QPSK RB 1/99 ch 132072/Area Scan (8x13x1):** Measurement grid: dx=15mm, dy=15mm  
 Maximum value of SAR (measured) = 0.203 W/kg

**LHS/Touch\_QPSK RB 1/99 ch 132072/Zoom Scan (5x5x7)/Cube 0:** Measurement grid: dx=8mm, dy=8mm, dz=5mm  
 Reference Value = 12.40 V/m; Power Drift = 0.05 dB  
 Peak SAR (extrapolated) = 0.231 W/kg  
**SAR(1 g) = 0.161 W/kg; SAR(10 g) = 0.109 W/kg**  
 Maximum value of SAR (measured) = 0.190 W/kg



0 dB = 0.190 W/kg = -7.21 dBW/kg

## LTE Band 66

Frequency: 1720 MHz; Duty Cycle: 1:1; Room Ambient Temperature: 23.0°C; Liquid Temperature: 22.0°C  
 Medium parameters used:  $f = 1720 \text{ MHz}$ ;  $\sigma = 1.419 \text{ S/m}$ ;  $\epsilon_r = 52.367$ ;  $\rho = 1000 \text{ kg/m}^3$

DASY5 Configuration:

- Area Scan Setting: Find Secondary Maximum Within: 2.0 dB and with a peak SAR value greater than 0.0012W/kg
- Electronics: DAE4 Sn1468; Calibrated: 2017-08-22
- Probe: EX3DV4 - SN7376; ConvF(8.41, 8.41, 8.41); Calibrated: 2017-08-22;
- Sensor-Surface: 2.5mm (Mechanical Surface Detection)
- Phantom: Triple Flat Phantom 5.1C; Type: QD 000 P51 CA; Serial: 1166

**Rear/QPSK RB 1/99 ch 132072/Area Scan (8x14x1):** Measurement grid:  $dx=15\text{mm}$ ,  $dy=15\text{mm}$   
 Maximum value of SAR (measured) = 0.949 W/kg

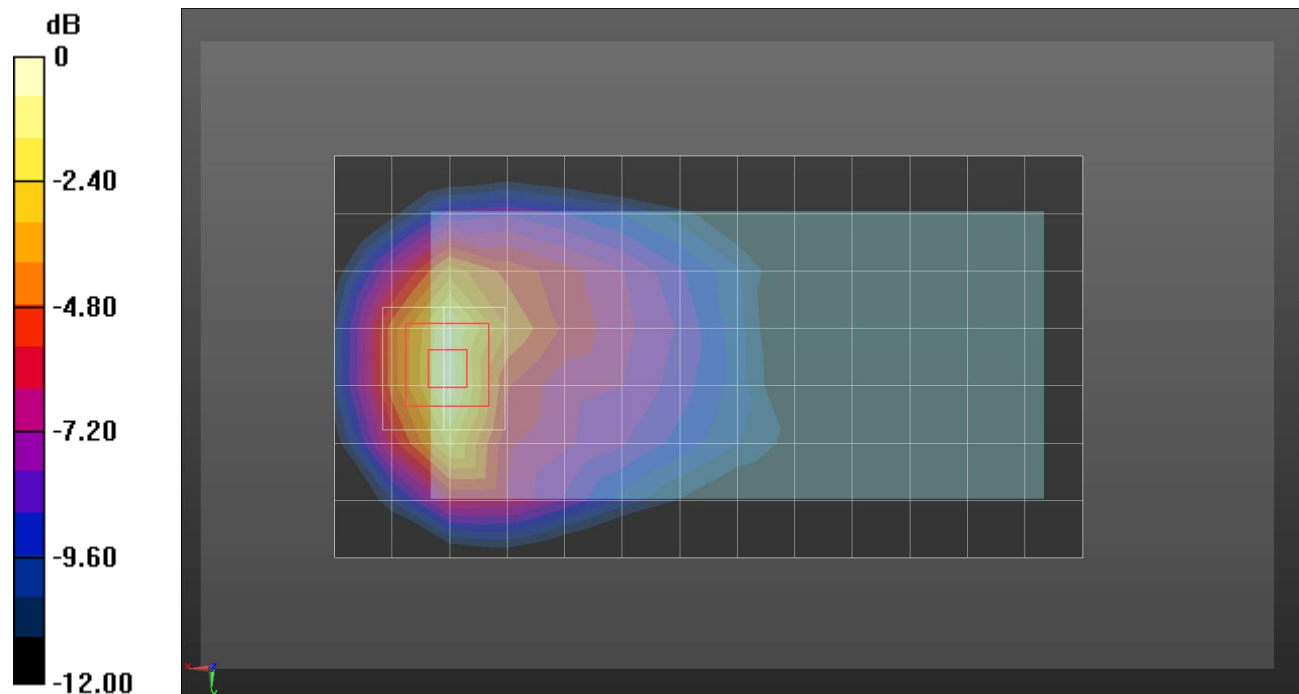
**Rear/QPSK RB 1/99 ch 132072/Zoom Scan (5x5x7)/Cube 0:** Measurement grid:  $dx=8\text{mm}$ ,  $dy=8\text{mm}$ ,  
 $dz=5\text{mm}$

Reference Value = 26.89 V/m; Power Drift = -0.01 dB

Peak SAR (extrapolated) = 1.30 W/kg

**SAR(1 g) = 0.797 W/kg; SAR(10 g) = 0.449 W/kg**

Maximum value of SAR (measured) = 1.02 W/kg



0 dB = 1.02 W/kg = 0.09 dBW/kg

## LTE Band 66

Frequency: 1745 MHz; Duty Cycle: 1:1; Room Ambient Temperature: 23.0°C; Liquid Temperature: 22.0°C  
 Medium parameters used:  $f = 1745 \text{ MHz}$ ;  $\sigma = 1.441 \text{ S/m}$ ;  $\epsilon_r = 52.298$ ;  $\rho = 1000 \text{ kg/m}^3$

DASY5 Configuration:

- Area Scan Setting: Find Secondary Maximum Within: 2.0 dB and with a peak SAR value greater than 0.0012W/kg
- Electronics: DAE4 Sn1468; Calibrated: 2017-08-22
- Probe: EX3DV4 - SN7376; ConvF(8.41, 8.41, 8.41); Calibrated: 2017-08-22;
- Sensor-Surface: 2.5mm (Mechanical Surface Detection)
- Phantom: Triple Flat Phantom 5.1C; Type: QD 000 P51 CA; Serial: 1166

**Rear/QPSK RB 50/0 ch 132322/Area Scan (8x14x1):** Measurement grid:  $dx=15\text{mm}$ ,  $dy=15\text{mm}$

Maximum value of SAR (measured) = 1.12 W/kg

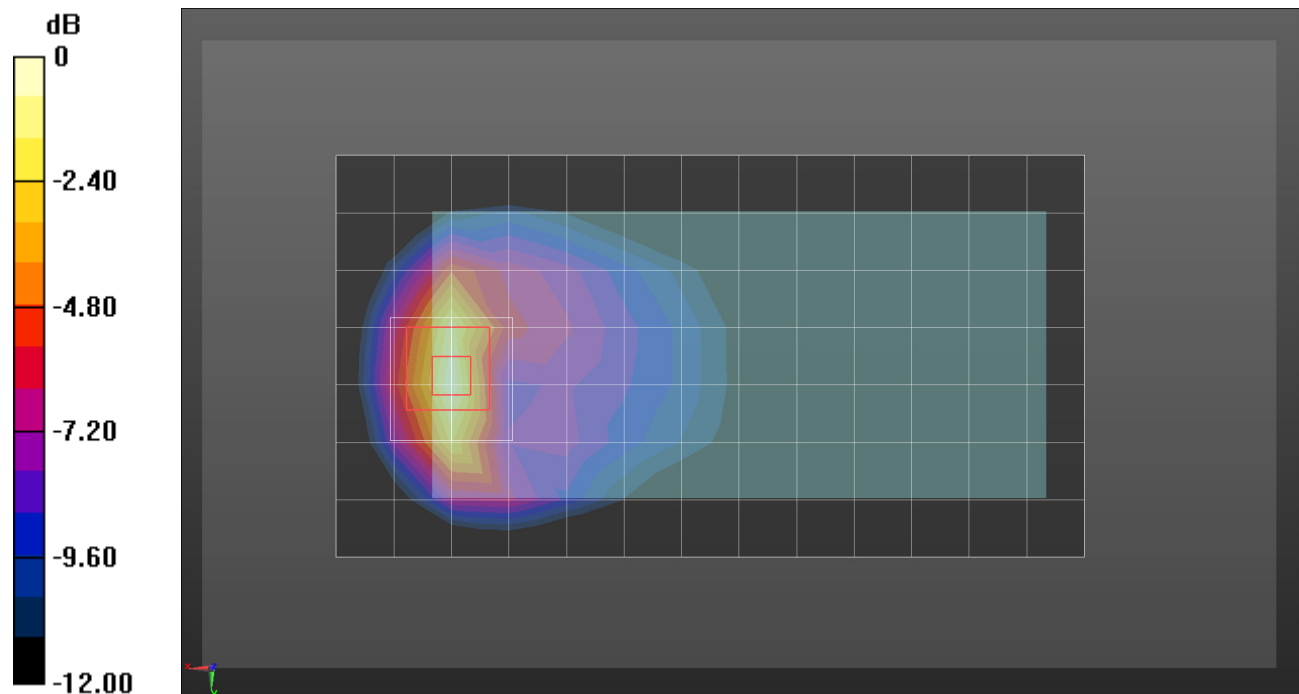
**Rear/QPSK RB 50/0 ch 132322/Zoom Scan (5x5x7)/Cube 0:** Measurement grid:  $dx=8\text{mm}$ ,  $dy=8\text{mm}$ ,  $dz=5\text{mm}$

Reference Value = 28.13 V/m; Power Drift = 0.02 dB

Peak SAR (extrapolated) = 1.48 W/kg

**SAR(1 g) = 0.850 W/kg; SAR(10 g) = 0.445 W/kg**

Maximum value of SAR (measured) = 1.13 W/kg



0 dB = 1.13 W/kg = 0.53 dBW/kg

## LTE Band 66

Frequency: 1720 MHz; Duty Cycle: 1:1; Room Ambient Temperature: 23.0°C; Liquid Temperature: 22.0°C  
 Medium parameters used:  $f = 1720 \text{ MHz}$ ;  $\sigma = 1.419 \text{ S/m}$ ;  $\epsilon_r = 52.367$ ;  $\rho = 1000 \text{ kg/m}^3$

DASY5 Configuration:

- Area Scan Setting: Find Secondary Maximum Within: 2.0 dB and with a peak SAR value greater than 0.0012W/kg
- Electronics: DAE4 Sn1468; Calibrated: 2017-08-22
- Probe: EX3DV4 - SN7376; ConvF(8.41, 8.41, 8.41); Calibrated: 2017-08-22;
- Sensor-Surface: 2.5mm (Mechanical Surface Detection)
- Phantom: Triple Flat Phantom 5.1C; Type: QD 000 P51 CA; Serial: 1166

**Front/QPSK RB 50/0 ch 132072/Area Scan (8x14x1):** Measurement grid:  $dx=15\text{mm}$ ,  $dy=15\text{mm}$

Maximum value of SAR (measured) = 3.61 W/kg

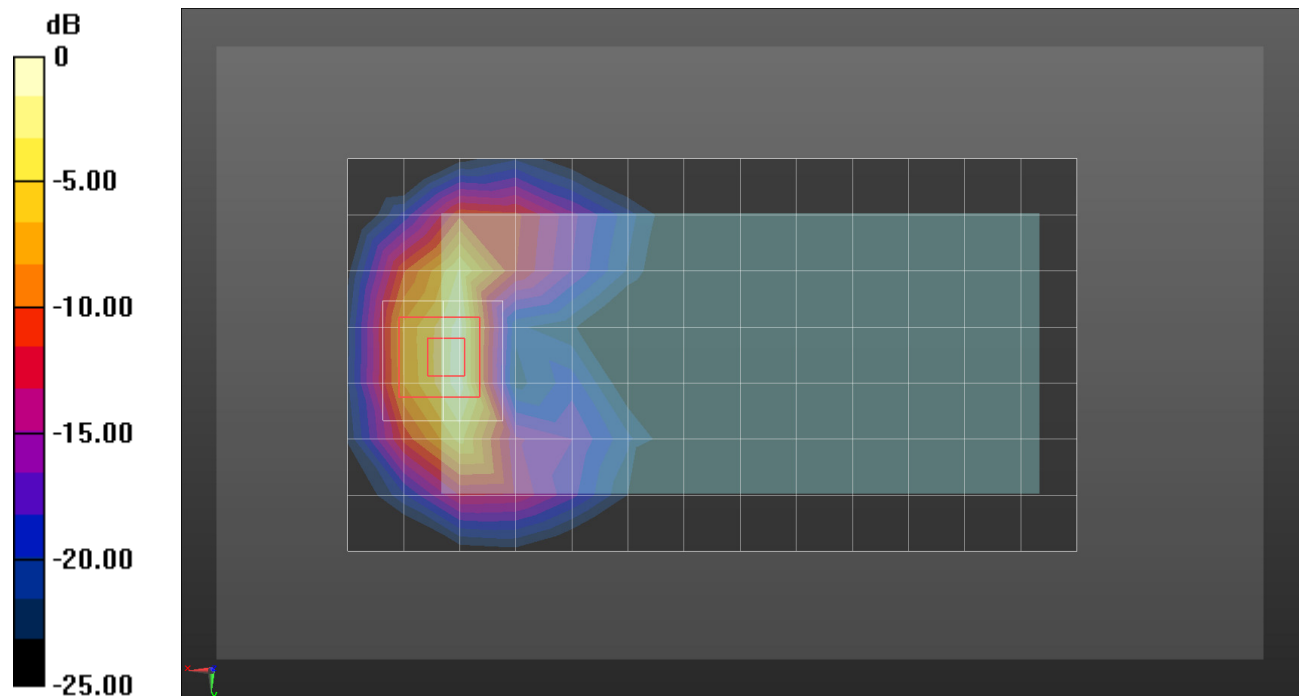
**Front/QPSK RB 50/0 ch 132072/Zoom Scan (5x5x7)/Cube 0:** Measurement grid:  $dx=8\text{mm}$ ,  $dy=8\text{mm}$ ,  $dz=5\text{mm}$

Reference Value = 55.34 V/m; Power Drift = -0.01 dB

Peak SAR (extrapolated) = 6.14 W/kg

**SAR(1 g) = 2.97 W/kg; SAR(10 g) = 1.35 W/kg**

Maximum value of SAR (measured) = 4.21 W/kg



0 dB = 4.21 W/kg = 6.24 dBW/kg

## Wi-Fi 2.4 GHz

Frequency: 2462 MHz; Duty Cycle: 1:1; Room Ambient Temperature: 23.0°C; Liquid Temperature: 22.0°C  
Medium parameters used (interpolated):  $f = 2462$  MHz;  $\sigma = 1.854$  S/m;  $\epsilon_r = 39.234$ ;  $\rho = 1000$  kg/m<sup>3</sup>

DASY5 Configuration:

- Area Scan Setting: Find Secondary Maximum Within: 2.0 dB and with a peak SAR value greater than 0.0012W/kg
- Electronics: DAE3 Sn479; Calibrated: 2017-10-23
- Probe: EX3DV4 - SN7330; ConvF(7.71, 7.71, 7.71); Calibrated: 2018-01-22;
- Sensor-Surface: 2.5mm (Mechanical Surface Detection)
- Phantom: SAM (20deg probe tilt) with CRP v5.0(Middle); Type: QD000P40CD; Serial: TP:1847

**RHS/Tilt\_802.11 b mode ch 11/Area Scan (9x17x1):** Measurement grid: dx=12mm, dy=12mm

Maximum value of SAR (measured) = 0.447 W/kg

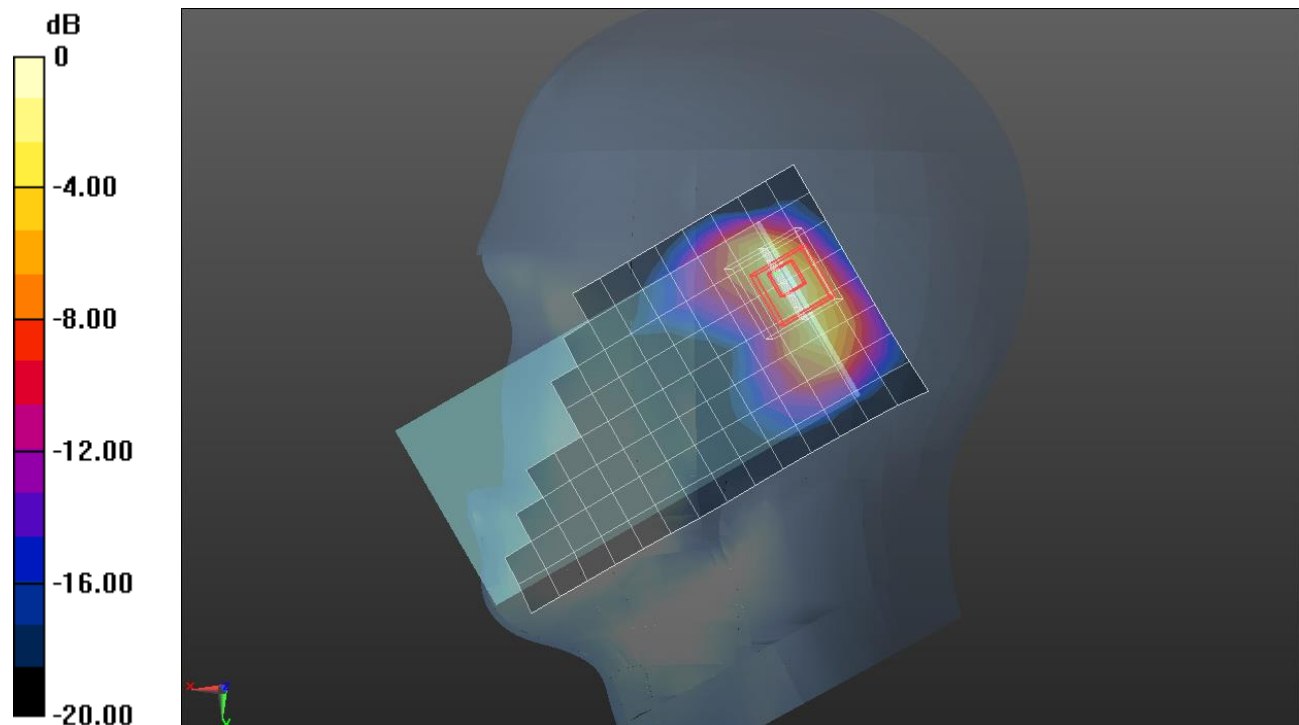
**RHS/Tilt\_802.11 b mode ch 11/Zoom Scan (7x7x7)/Cube 0:** Measurement grid: dx=5mm, dy=5mm, dz=5mm

Reference Value = 15.62 V/m; Power Drift = 0.07 dB

Peak SAR (extrapolated) = 0.796 W/kg

**SAR(1 g) = 0.281 W/kg; SAR(10 g) = 0.109 W/kg**

Maximum value of SAR (measured) = 0.453 W/kg



0 dB = 0.453 W/kg = -3.44 dBW/kg

## Wi-Fi 2.4 GHz

Frequency: 2437 MHz; Duty Cycle: 1:1; Room Ambient Temperature: 23.0°C; Liquid Temperature: 22.0°C  
 Medium parameters used (interpolated):  $f = 2437$  MHz;  $\sigma = 2.014$  S/m;  $\epsilon_r = 51.324$ ;  $\rho = 1000$  kg/m<sup>3</sup>

DASY5 Configuration:

- Area Scan Setting: Find Secondary Maximum Within: 2.0 dB and with a peak SAR value greater than 0.0012W/kg
- Electronics: DAE4 Sn1494; Calibrated: 2017-07-20
- Probe: EX3DV4 - SN7314; ConvF(7.59, 7.59, 7.59); Calibrated: 2017-09-28;
- Sensor-Surface: 2.5mm (Mechanical Surface Detection)
- Phantom: Triple Flat Phantom 5.1C; Type: QD 000 P51 CA; Serial: 1166

**Rear/802.11 b mode ch 6/Area Scan (16x9x1):** Measurement grid: dx=12mm, dy=12mm

Maximum value of SAR (measured) = 0.122 W/kg

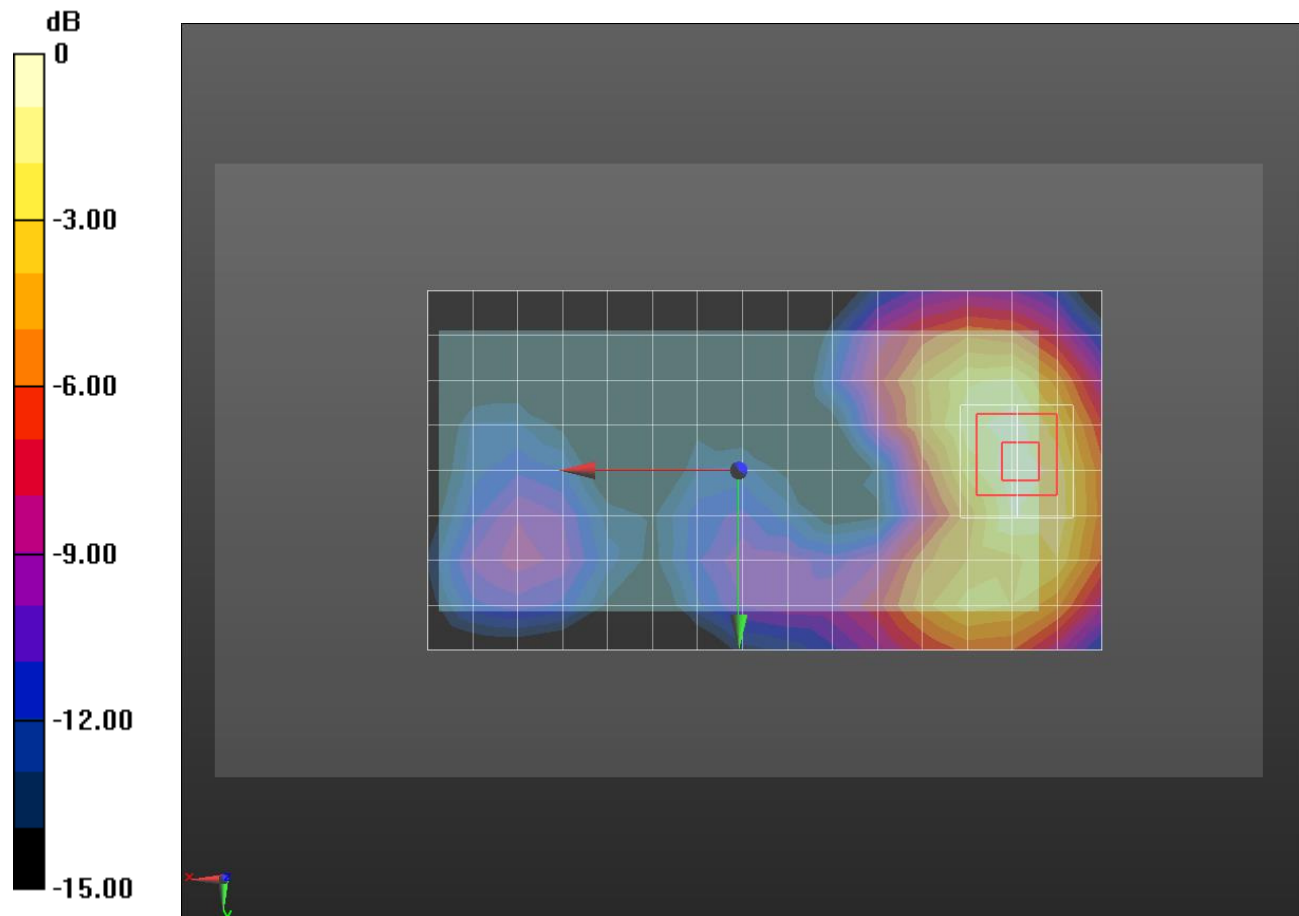
**Rear/802.11 b mode ch 6/Zoom Scan (7x7x7)/Cube 0:** Measurement grid: dx=5mm, dy=5mm, dz=5mm

Reference Value = 7.936 V/m; Power Drift = 0.06 dB

Peak SAR (extrapolated) = 0.177 W/kg

**SAR(1 g) = 0.096 W/kg; SAR(10 g) = 0.053 W/kg**

Maximum value of SAR (measured) = 0.126 W/kg



0 dB = 0.126 W/kg = -9.00 dBW/kg

## Wi-Fi 2.4 GHz

Frequency: 2437 MHz; Duty Cycle: 1:1; Room Ambient Temperature: 23.0°C; Liquid Temperature: 22.0°C  
 Medium parameters used (interpolated):  $f = 2437$  MHz;  $\sigma = 2.014$  S/m;  $\epsilon_r = 51.324$ ;  $\rho = 1000$  kg/m<sup>3</sup>

DASY5 Configuration:

- Area Scan Setting: Find Secondary Maximum Within: 2.0 dB and with a peak SAR value greater than 0.0012W/kg
- Electronics: DAE4 Sn1494; Calibrated: 2017-07-20
- Probe: EX3DV4 - SN7314; ConvF(7.59, 7.59, 7.59); Calibrated: 2017-09-28;
- Sensor-Surface: 2.5mm (Mechanical Surface Detection)
- Phantom: Triple Flat Phantom 5.1C; Type: QD 000 P51 CA; Serial: 1166

**Edge 1/802.11 b mode ch 6/Area Scan (9x5x1):** Measurement grid: dx=12mm, dy=12mm

Maximum value of SAR (measured) = 0.351 W/kg

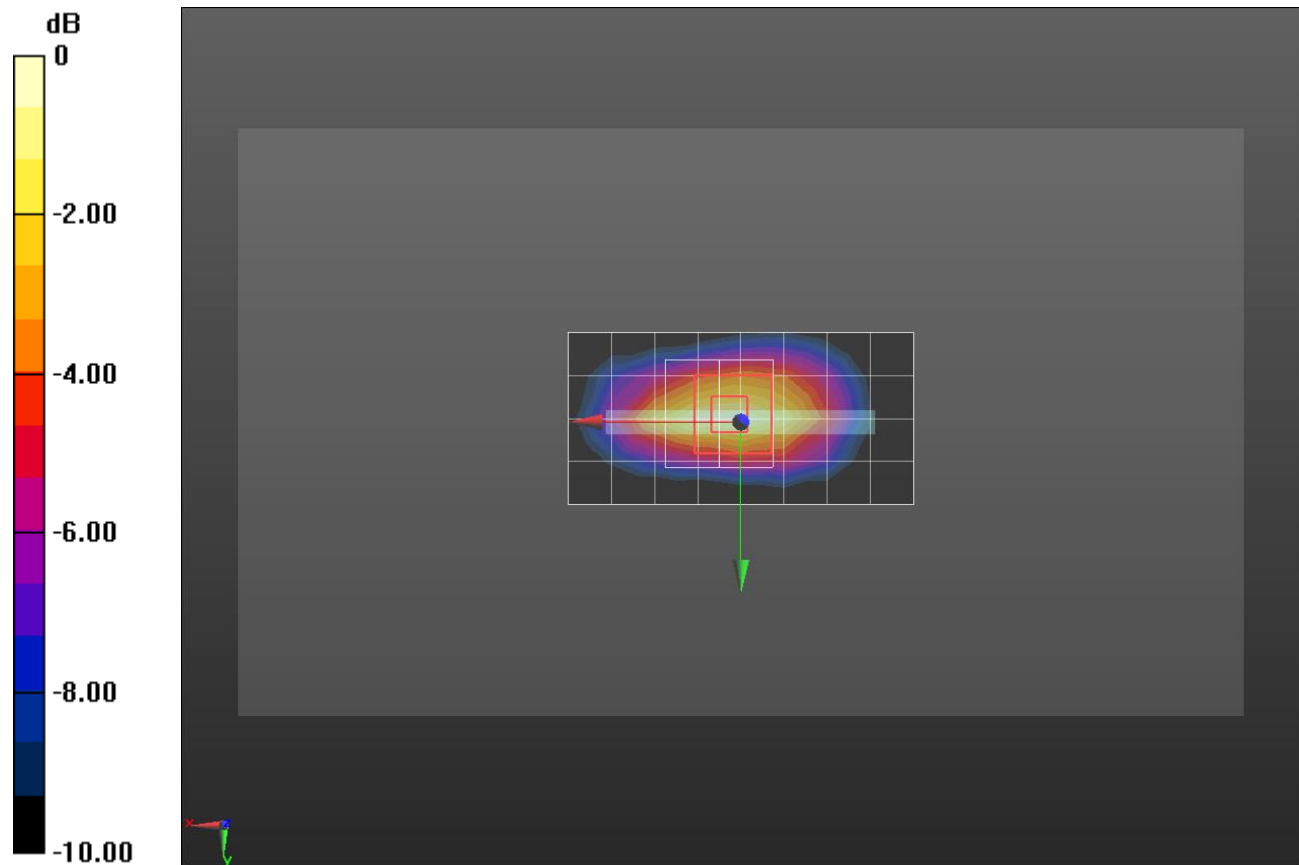
**Edge 1/802.11 b mode ch 6/Zoom Scan (7x7x7)/Cube 0:** Measurement grid: dx=5mm, dy=5mm, dz=5mm

Reference Value = 13.37 V/m; Power Drift = -0.03 dB

Peak SAR (extrapolated) = 0.507 W/kg

**SAR(1 g) = 0.260 W/kg; SAR(10 g) = 0.128 W/kg**

Maximum value of SAR (measured) = 0.358 W/kg



0 dB = 0.358 W/kg = -4.46 dBW/kg

## Wi-Fi 5.3 GHz

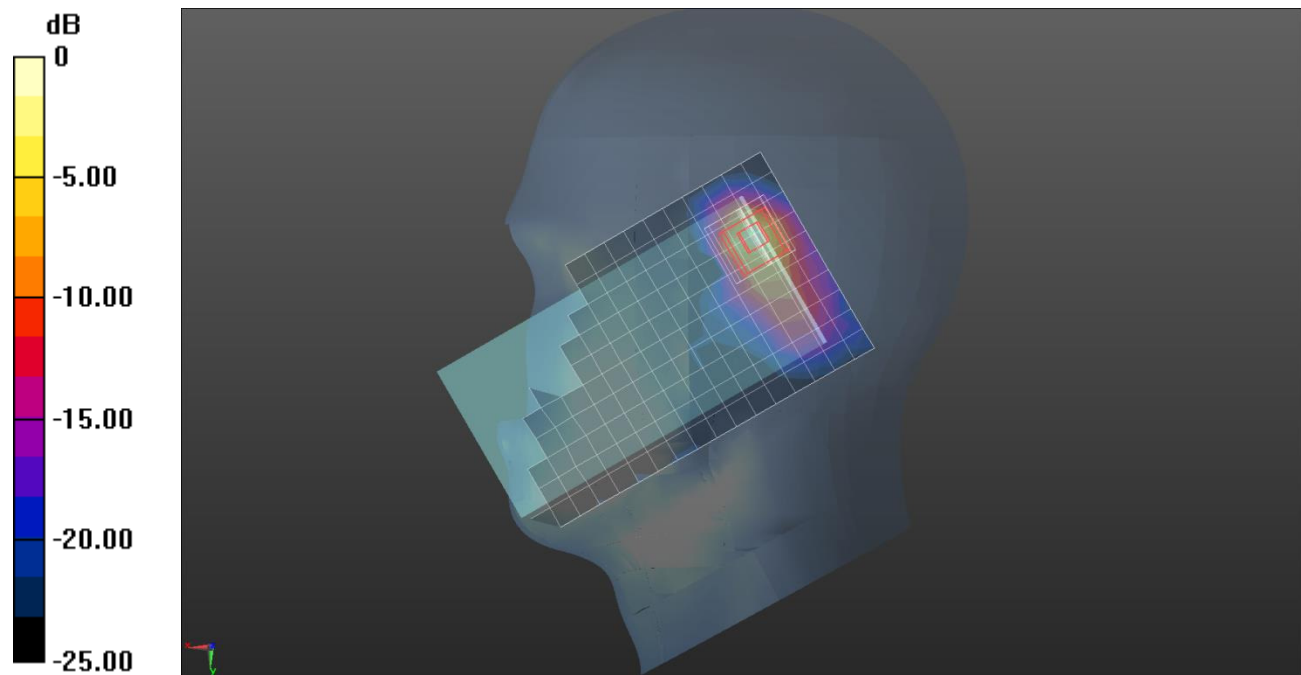
Frequency: 5270 MHz; Duty Cycle: 1:1; Room Ambient Temperature: 23.0°C; Liquid Temperature: 22.0°C  
 Medium parameters used:  $f = 5270 \text{ MHz}$ ;  $\sigma = 4.628 \text{ S/m}$ ;  $\epsilon_r = 37.034$ ;  $\rho = 1000 \text{ kg/m}^3$

DASY5 Configuration:

- Area Scan Setting: Find Secondary Maximum Within: 2.0 dB and with a peak SAR value greater than 0.0012W/kg
- Electronics: DAE4 Sn1468; Calibrated: 2017-08-22
- Probe: EX3DV4 - SN7376; ConvF(5.19, 5.19, 5.19); Calibrated: 2017-08-22;
- Sensor-Surface: 1.4mm (Mechanical Surface Detection)
- Phantom: SAM (20deg probe tilt) with CRP v5.0\_Back; Type: QD000P40CD; Serial: TP:1882

**RHS/Tilt\_802.11n\_HT 40 ch 54/Area Scan (11x19x1):** Measurement grid:  $dx=10\text{mm}$ ,  $dy=10\text{mm}$   
 Maximum value of SAR (measured) = 0.962 W/kg

**RHS/Tilt\_802.11n\_HT 40 ch 54/Zoom Scan (8x8x7)/Cube 0:** Measurement grid:  $dx=4\text{mm}$ ,  $dy=4\text{mm}$ ,  
 $dz=1.4\text{mm}$   
 Reference Value = 17.09 V/m; Power Drift = 0.02 dB  
 Peak SAR (extrapolated) = 1.91 W/kg  
**SAR(1 g) = 0.395 W/kg; SAR(10 g) = 0.098 W/kg**  
 Maximum value of SAR (measured) = 1.03 W/kg



0 dB = 1.03 W/kg = 0.13 dBW/kg

## Wi-Fi 5.3 GHz

Frequency: 5320 MHz; Duty Cycle: 1:1; Room Ambient Temperature: 23.0°C; Liquid Temperature: 22.0°C  
 Medium parameters used:  $f = 5320 \text{ MHz}$ ;  $\sigma = 5.59 \text{ S/m}$ ;  $\epsilon_r = 47.191$ ;  $\rho = 1000 \text{ kg/m}^3$

DASY5 Configuration:

- Area Scan Setting: Find Secondary Maximum Within: 2.0 dB and with a peak SAR value greater than 0.0012W/kg
- Electronics: DAE4 Sn1494; Calibrated: 2017-07-20
- Probe: EX3DV4 - SN7314; ConvF(4.85, 4.85, 4.85); Calibrated: 2017-09-28;
- Sensor-Surface: 1.4mm (Mechanical Surface Detection)
- Phantom: Triple Flat Phantom 5.1C; Type: QD 000 P51 CA; Serial: 1166

**Front/802.11 a mode ch 64/Area Scan (20x11x1):** Measurement grid: dx=10mm, dy=10mm

Maximum value of SAR (measured) = 0.370 W/kg

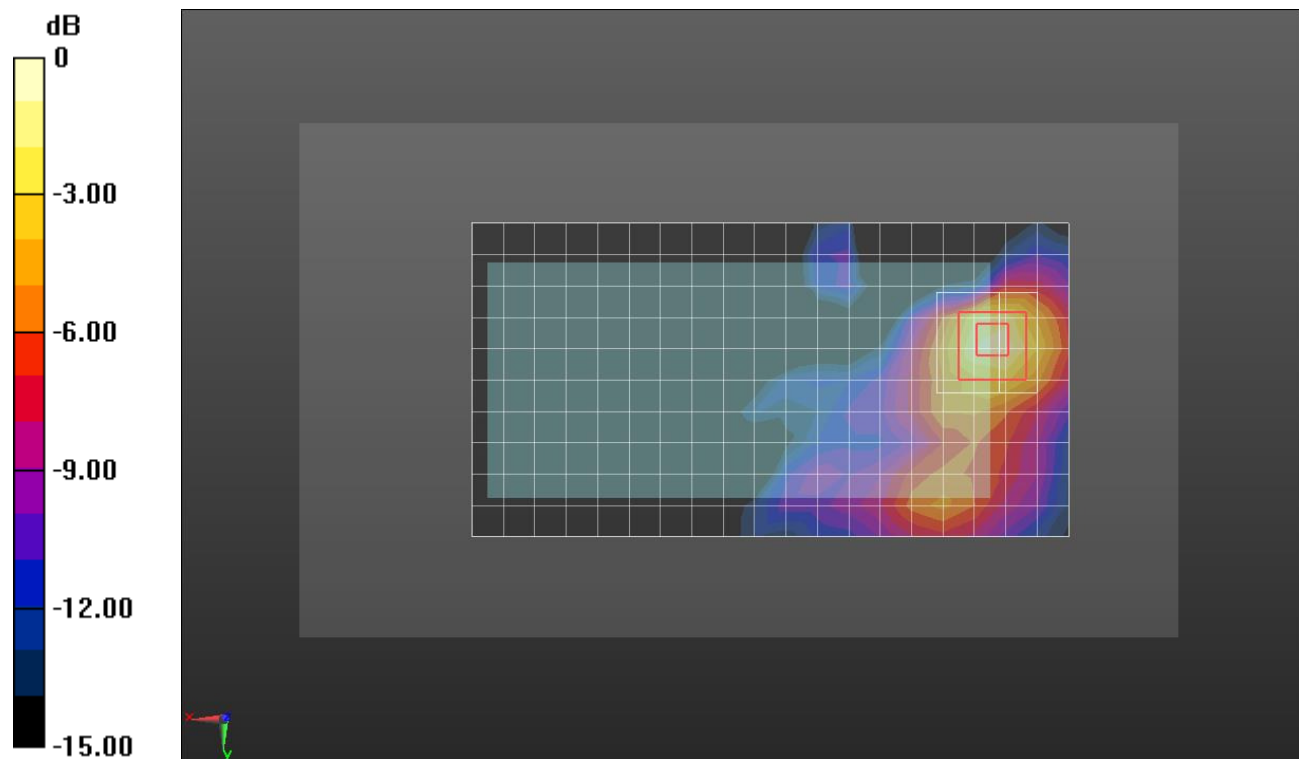
**Front/802.11 a mode ch 64/Zoom Scan (9x9x7)/Cube 0:** Measurement grid: dx=4mm, dy=4mm, dz=1.4mm

Reference Value = 8.995 V/m; Power Drift = 0.03 dB

Peak SAR (extrapolated) = 0.655 W/kg

**SAR(1 g) = 0.163 W/kg; SAR(10 g) = 0.059 W/kg**

Maximum value of SAR (measured) = 0.401 W/kg



0 dB = 0.401 W/kg = -3.97 dBW/kg

## Wi-Fi 5.3 GHz

Frequency: 5320 MHz; Duty Cycle: 1:1; Room Ambient Temperature: 23.0°C; Liquid Temperature: 22.0°C  
 Medium parameters used:  $f = 5320 \text{ MHz}$ ;  $\sigma = 5.59 \text{ S/m}$ ;  $\epsilon_r = 47.191$ ;  $\rho = 1000 \text{ kg/m}^3$

DASY5 Configuration:

- Area Scan Setting: Find Secondary Maximum Within: 2.0 dB and with a peak SAR value greater than 0.0012W/kg
- Electronics: DAE4 Sn1494; Calibrated: 2017-07-20
- Probe: EX3DV4 - SN7314; ConvF(4.85, 4.85, 4.85); Calibrated: 2017-09-28;
- Sensor-Surface: 1.4mm (Mechanical Surface Detection)
- Phantom: Triple Flat Phantom 5.1C; Type: QD 000 P51 CA; Serial: 1166

**Edge 1/802.11 a mode ch 64/Area Scan (13x6x1):** Measurement grid: dx=10mm, dy=10mm

Maximum value of SAR (measured) = 6.46 W/kg

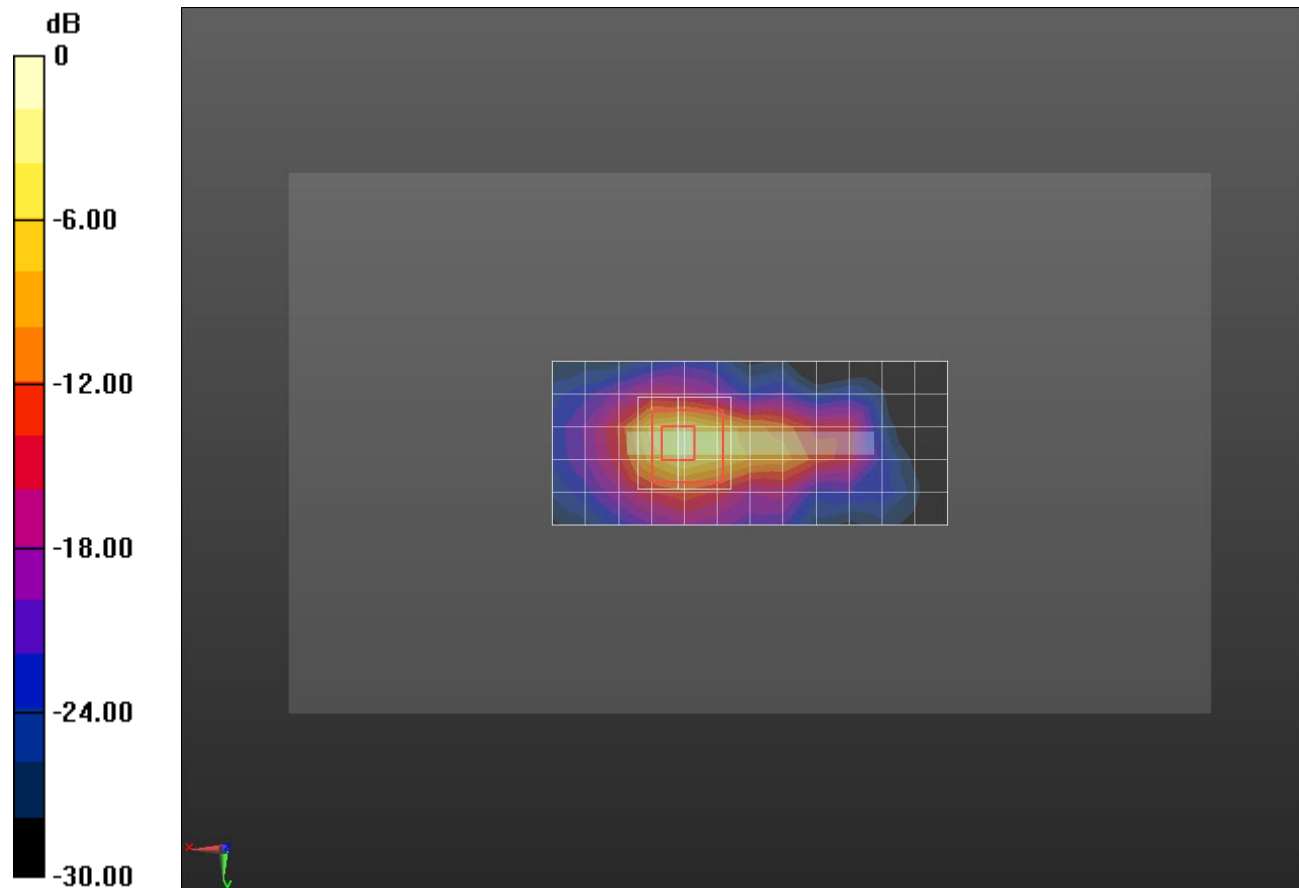
**Edge 1/802.11 a mode ch 64/Zoom Scan (8x8x7)/Cube 0:** Measurement grid: dx=4mm, dy=4mm, dz=1.4mm

Reference Value = 57.94 V/m; Power Drift = -0.14 dB

Peak SAR (extrapolated) = 30.9 W/kg

**SAR(1 g) = 5.08 W/kg; SAR(10 g) = 1.26 W/kg**

Maximum value of SAR (measured) = 14.1 W/kg



0 dB = 14.1 W/kg = 11.49 dBW/kg

## Wi-Fi 5.6 GHz

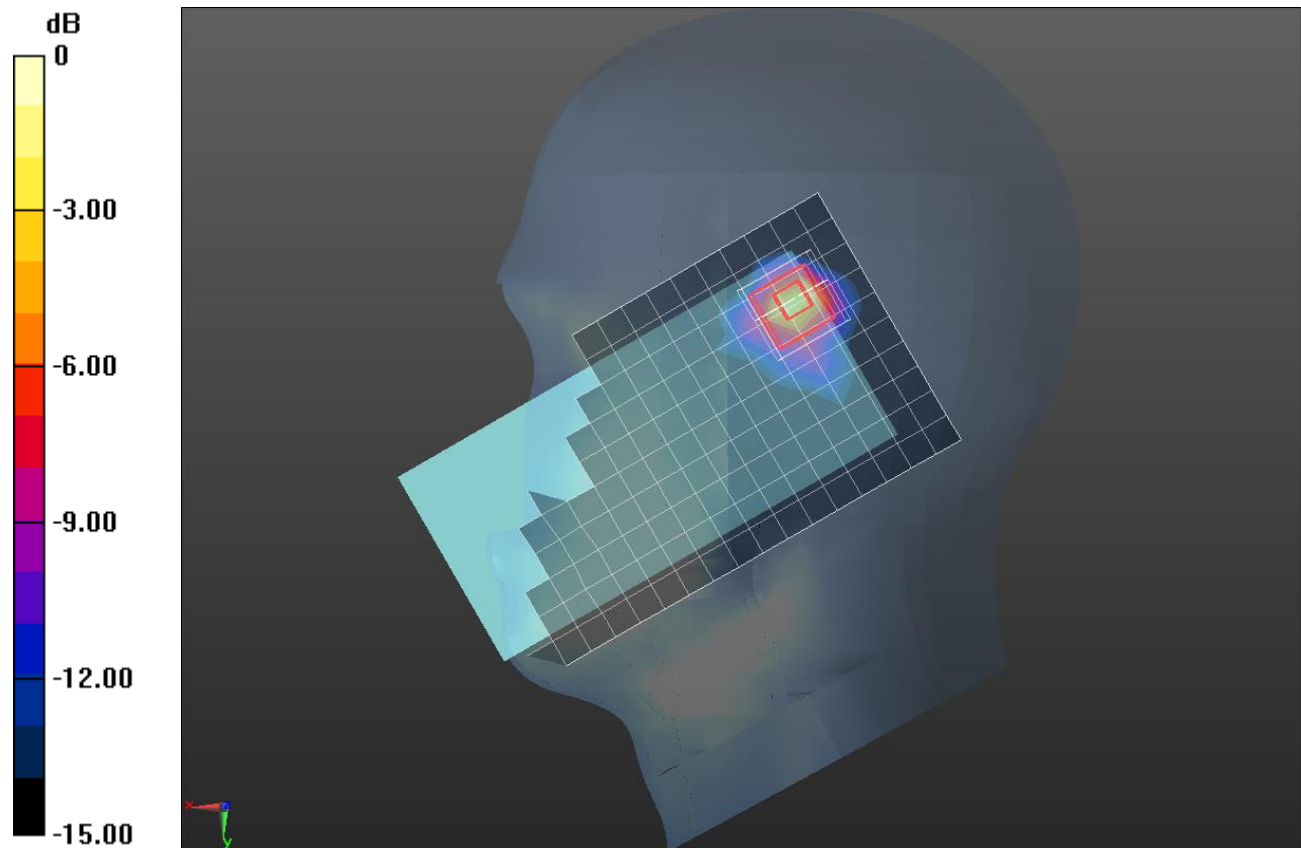
Frequency: 5550 MHz; Duty Cycle: 1:1; Room Ambient Temperature: 23.0°C; Liquid Temperature: 22.0°C  
 Medium parameters used:  $f = 5550 \text{ MHz}$ ;  $\sigma = 4.916 \text{ S/m}$ ;  $\epsilon_r = 36.632$ ;  $\rho = 1000 \text{ kg/m}^3$

DASY5 Configuration:

- Area Scan Setting: Find Secondary Maximum Within: 2.0 dB and with a peak SAR value greater than 0.0012W/kg
- Electronics: DAE4 Sn1468; Calibrated: 2017-08-22
- Probe: EX3DV4 - SN7376; ConvF(4.82, 4.82, 4.82); Calibrated: 2017-08-22;
- Sensor-Surface: 1.4mm (Mechanical Surface Detection)
- Phantom: SAM (20deg probe tilt) with CRP v5.0\_Back; Type: QD000P40CD; Serial: TP:1882

**RHS/Touch\_802.11n\_HT 40 ch 110/Area Scan (11x19x1):** Measurement grid: dx=10mm, dy=10mm  
 Maximum value of SAR (measured) = 1.93 W/kg

**RHS/Touch\_802.11n\_HT 40 ch 110/Zoom Scan (8x8x7)/Cube 0:** Measurement grid: dx=4mm, dy=4mm, dz=1.4mm  
 Reference Value = 19.06 V/m; Power Drift = -0.13 dB  
 Peak SAR (extrapolated) = 4.92 W/kg  
**SAR(1 g) = 1.01 W/kg; SAR(10 g) = 0.266 W/kg**  
 Maximum value of SAR (measured) = 2.67 W/kg



0 dB = 2.67 W/kg = 4.27 dBW/kg

## Wi-Fi 5.6 GHz

Frequency: 5580 MHz; Duty Cycle: 1:1; Room Ambient Temperature: 23.0°C; Liquid Temperature: 22.0°C  
 Medium parameters used:  $f = 5580 \text{ MHz}$ ;  $\sigma = 5.898 \text{ S/m}$ ;  $\epsilon_r = 47.539$ ;  $\rho = 1000 \text{ kg/m}^3$

DASY5 Configuration:

- Area Scan Setting: Find Secondary Maximum Within: 2.0 dB and with a peak SAR value greater than 0.0012W/kg
- Electronics: DAE4 Sn1494; Calibrated: 2017-07-20
- Probe: EX3DV4 - SN7314; ConvF(4.08, 4.08, 4.08); Calibrated: 2017-09-28;
- Sensor-Surface: 1.4mm (Mechanical Surface Detection)
- Phantom: Triple Flat Phantom 5.1C; Type: QD 000 P51 CA; Serial: 1166

**Front/802.11 a mode ch 116/Area Scan (20x11x1):** Measurement grid: dx=10mm, dy=10mm

Maximum value of SAR (measured) = 0.861 W/kg

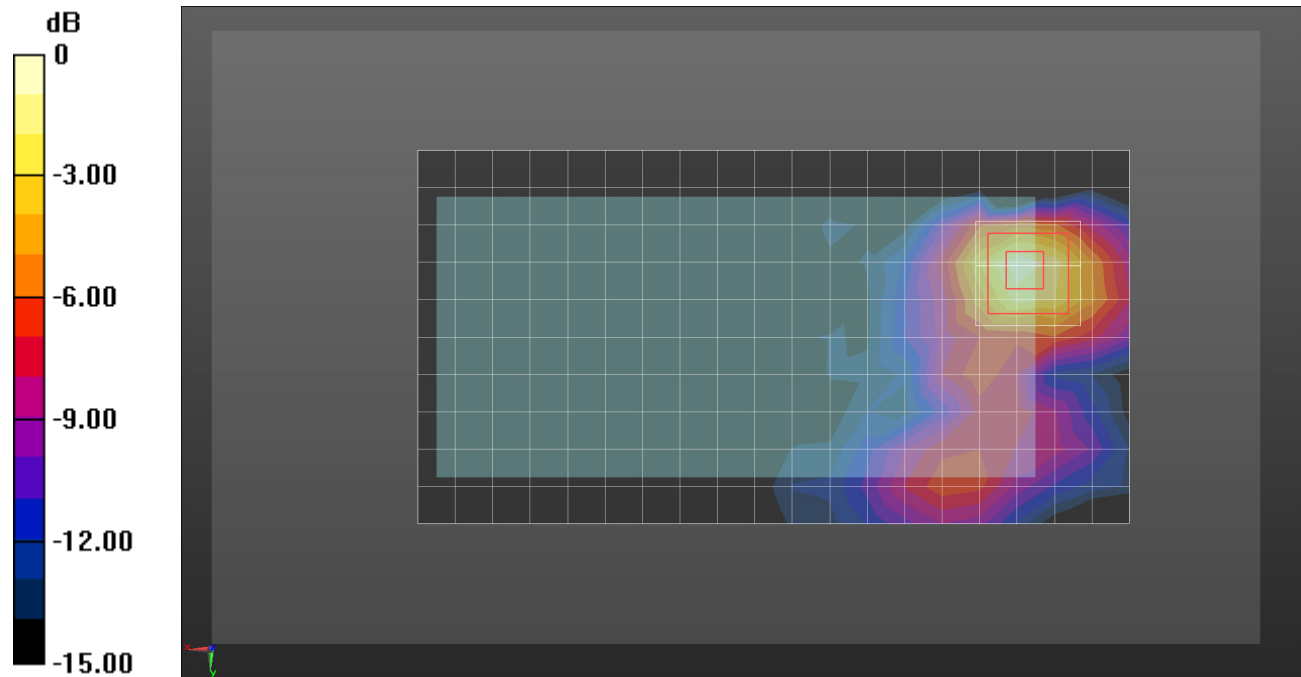
**Front/802.11 a mode ch 116/Zoom Scan (8x8x7)/Cube 0:** Measurement grid: dx=4mm, dy=4mm, dz=1.4mm

Reference Value = 13.64 V/m; Power Drift = -0.01 dB

Peak SAR (extrapolated) = 1.56 W/kg

**SAR(1 g) = 0.379 W/kg; SAR(10 g) = 0.135 W/kg**

Maximum value of SAR (measured) = 0.900 W/kg



0 dB = 0.900 W/kg = -0.46 dBW/kg

## Wi-Fi 5.6 GHz

Frequency: 5580 MHz; Duty Cycle: 1:1; Room Ambient Temperature: 23.0°C; Liquid Temperature: 22.0°C  
 Medium parameters used:  $f = 5580 \text{ MHz}$ ;  $\sigma = 5.898 \text{ S/m}$ ;  $\epsilon_r = 47.539$ ;  $\rho = 1000 \text{ kg/m}^3$

DASY5 Configuration:

- Area Scan Setting: Find Secondary Maximum Within: 2.0 dB and with a peak SAR value greater than 0.0012W/kg
- Electronics: DAE4 Sn1494; Calibrated: 2017-07-20
- Probe: EX3DV4 - SN7314; ConvF(4.08, 4.08, 4.08); Calibrated: 2017-09-28;
- Sensor-Surface: 1.4mm (Mechanical Surface Detection)
- Phantom: Triple Flat Phantom 5.1C; Type: QD 000 P51 CA; Serial: 1166

**Front/802.11 a mode ch 116/Area Scan (20x11x1):** Measurement grid: dx=10mm, dy=10mm

Maximum value of SAR (measured) = 17.4 W/kg

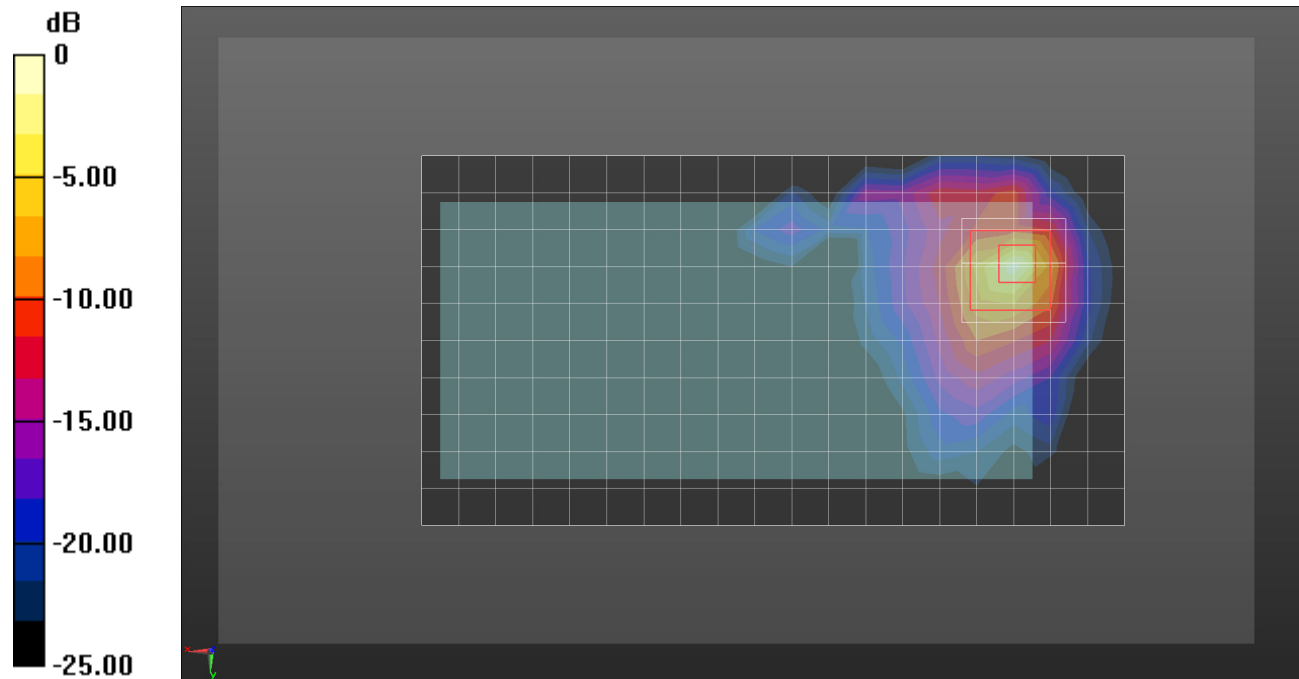
**Front/802.11 a mode ch 116/Zoom Scan (8x8x7)/Cube 0:** Measurement grid: dx=4mm, dy=4mm, dz=1.4mm

Reference Value = 61.42 V/m; Power Drift = 0.13 dB

Peak SAR (extrapolated) = 38.0 W/kg

**SAR(1 g) = 6.43 W/kg; SAR(10 g) = 1.6 W/kg**

Maximum value of SAR (measured) = 19.0 W/kg



0 dB = 19.0 W/kg = 12.79 dBW/kg

## Wi-Fi 5.8 GHz

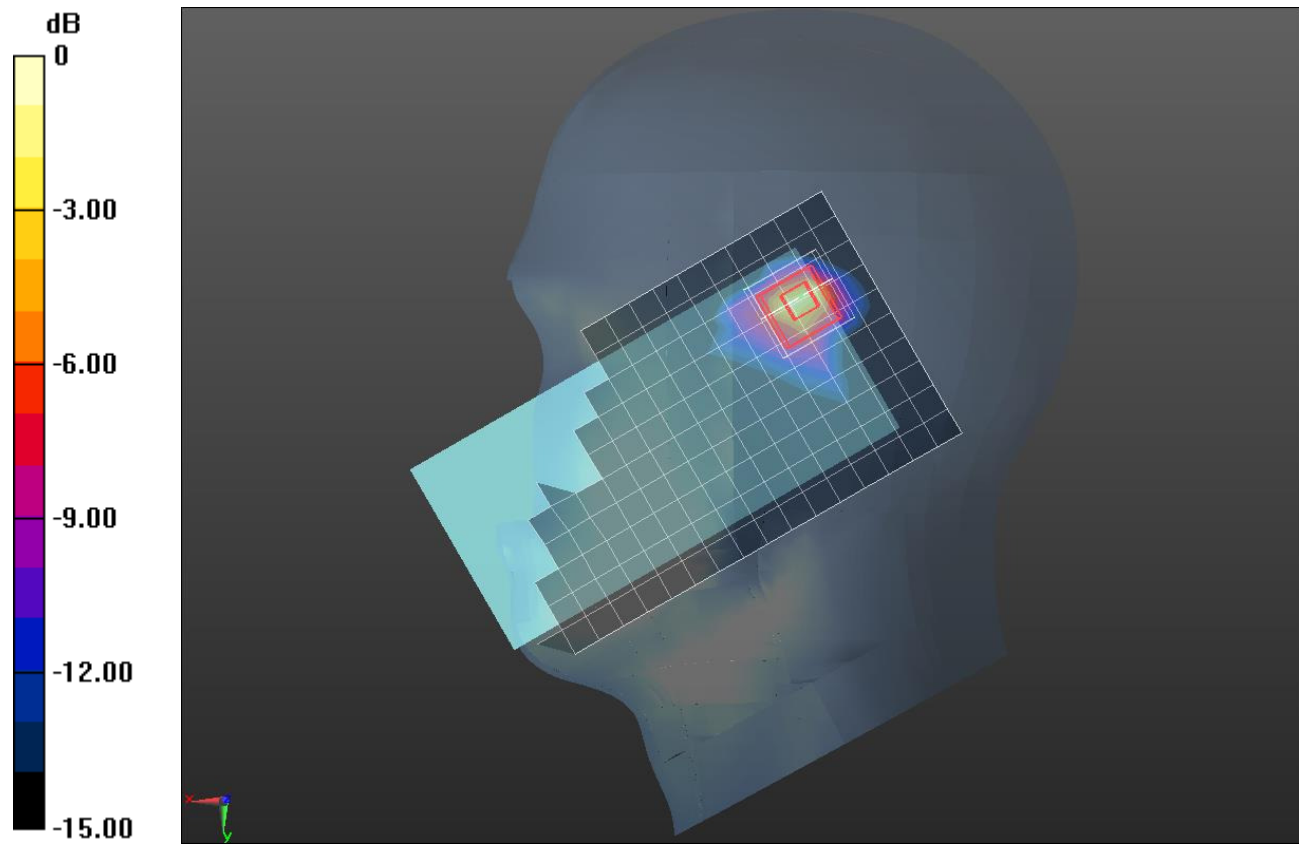
Frequency: 5755 MHz; Duty Cycle: 1:1; Room Ambient Temperature: 23.0°C; Liquid Temperature: 22.0°C  
 Medium parameters used:  $f = 5755 \text{ MHz}$ ;  $\sigma = 5.135 \text{ S/m}$ ;  $\epsilon_r = 36.343$ ;  $\rho = 1000 \text{ kg/m}^3$

DASY5 Configuration:

- Area Scan Setting: Find Secondary Maximum Within: 2.0 dB and with a peak SAR value greater than 0.0012W/kg
- Electronics: DAE4 Sn1468; Calibrated: 2017-08-22
- Probe: EX3DV4 - SN7376; ConvF(4.69, 4.69, 4.69); Calibrated: 2017-08-22;
- Sensor-Surface: 1.4mm (Mechanical Surface Detection)
- Phantom: SAM (20deg probe tilt) with CRP v5.0\_Back; Type: QD000P40CD; Serial: TP:1882

**RHS/Touch\_802.11n\_HT 40 ch 151/Area Scan (11x19x1):** Measurement grid: dx=10mm, dy=10mm  
 Maximum value of SAR (measured) = 1.99 W/kg

**RHS/Touch\_802.11n\_HT 40 ch 151/Zoom Scan (8x8x7)/Cube 0:** Measurement grid: dx=4mm, dy=4mm, dz=1.4mm  
 Reference Value = 18.04 V/m; Power Drift = -0.03 dB  
 Peak SAR (extrapolated) = 4.77 W/kg  
**SAR(1 g) = 0.955 W/kg; SAR(10 g) = 0.259 W/kg**  
 Maximum value of SAR (measured) = 2.60 W/kg



0 dB = 2.60 W/kg = 4.15 dBW/kg

## Wi-Fi 5.8 GHz

Frequency: 5785 MHz; Duty Cycle: 1:1; Room Ambient Temperature: 23.0°C; Liquid Temperature: 22.0°C  
 Medium parameters used:  $f = 5785 \text{ MHz}$ ;  $\sigma = 6.219 \text{ S/m}$ ;  $\epsilon_r = 46.466$ ;  $\rho = 1000 \text{ kg/m}^3$

DASY5 Configuration:

- Area Scan Setting: Find Secondary Maximum Within: 2.0 dB and with a peak SAR value greater than 0.0012W/kg
- Electronics: DAE4 Sn1494; Calibrated: 2017-07-20
- Probe: EX3DV4 - SN7314; ConvF(4.51, 4.51, 4.51); Calibrated: 2017-09-28;
- Sensor-Surface: 1.4mm (Mechanical Surface Detection)
- Phantom: Triple Flat Phantom 5.1C; Type: QD 000 P51 CA; Serial: 1166

**Front/802.11 a mode ch 157/Area Scan (20x11x1):** Measurement grid: dx=10mm, dy=10mm

Maximum value of SAR (measured) = 1.14 W/kg

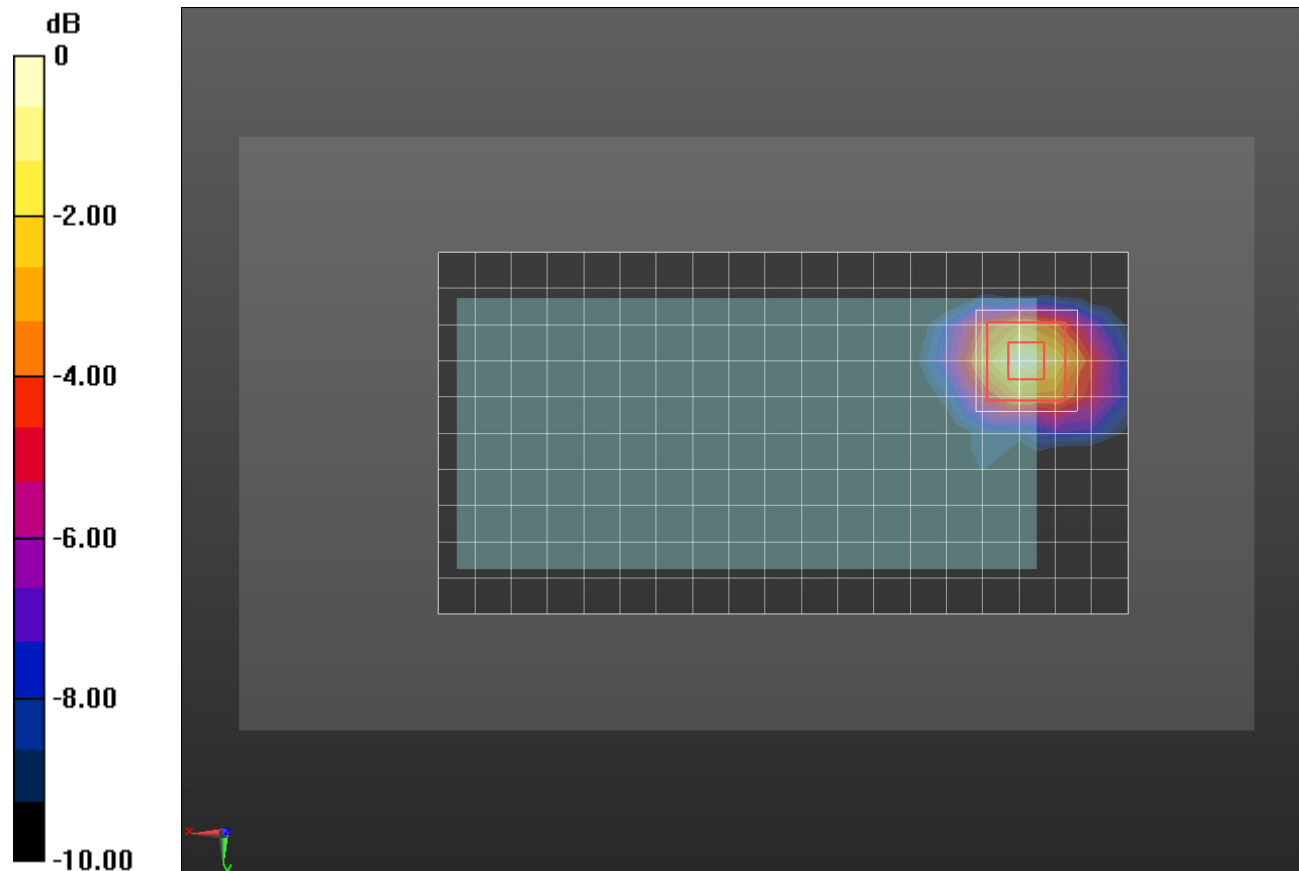
**Front/802.11 a mode ch 157/Zoom Scan (8x8x7)/Cube 0:** Measurement grid: dx=4mm, dy=4mm, dz=1.4mm

Reference Value = 15.22 V/m; Power Drift = 0.03 dB

Peak SAR (extrapolated) = 2.09 W/kg

**SAR(1 g) = 0.475 W/kg; SAR(10 g) = 0.171 W/kg**

Maximum value of SAR (measured) = 1.13 W/kg



0 dB = 1.13 W/kg = 0.53 dBW/kg

## Wi-Fi 5.8 GHz

Frequency: 5785 MHz; Duty Cycle: 1:1; Room Ambient Temperature: 23.0°C; Liquid Temperature: 22.0°C  
 Medium parameters used:  $f = 5785 \text{ MHz}$ ;  $\sigma = 6.219 \text{ S/m}$ ;  $\epsilon_r = 46.466$ ;  $\rho = 1000 \text{ kg/m}^3$

DASY5 Configuration:

- Area Scan Setting: Find Secondary Maximum Within: 2.0 dB and with a peak SAR value greater than 0.0012W/kg
- Electronics: DAE4 Sn1494; Calibrated: 2017-07-20
- Probe: EX3DV4 - SN7314; ConvF(4.51, 4.51, 4.51); Calibrated: 2017-09-28;
- Sensor-Surface: 1.4mm (Mechanical Surface Detection)
- Phantom: Triple Flat Phantom 5.1C; Type: QD 000 P51 CA; Serial: 1166

**Front/802.11 a mode ch 157/Area Scan (20x11x1):** Measurement grid: dx=10mm, dy=10mm

Maximum value of SAR (measured) = 1.90 W/kg

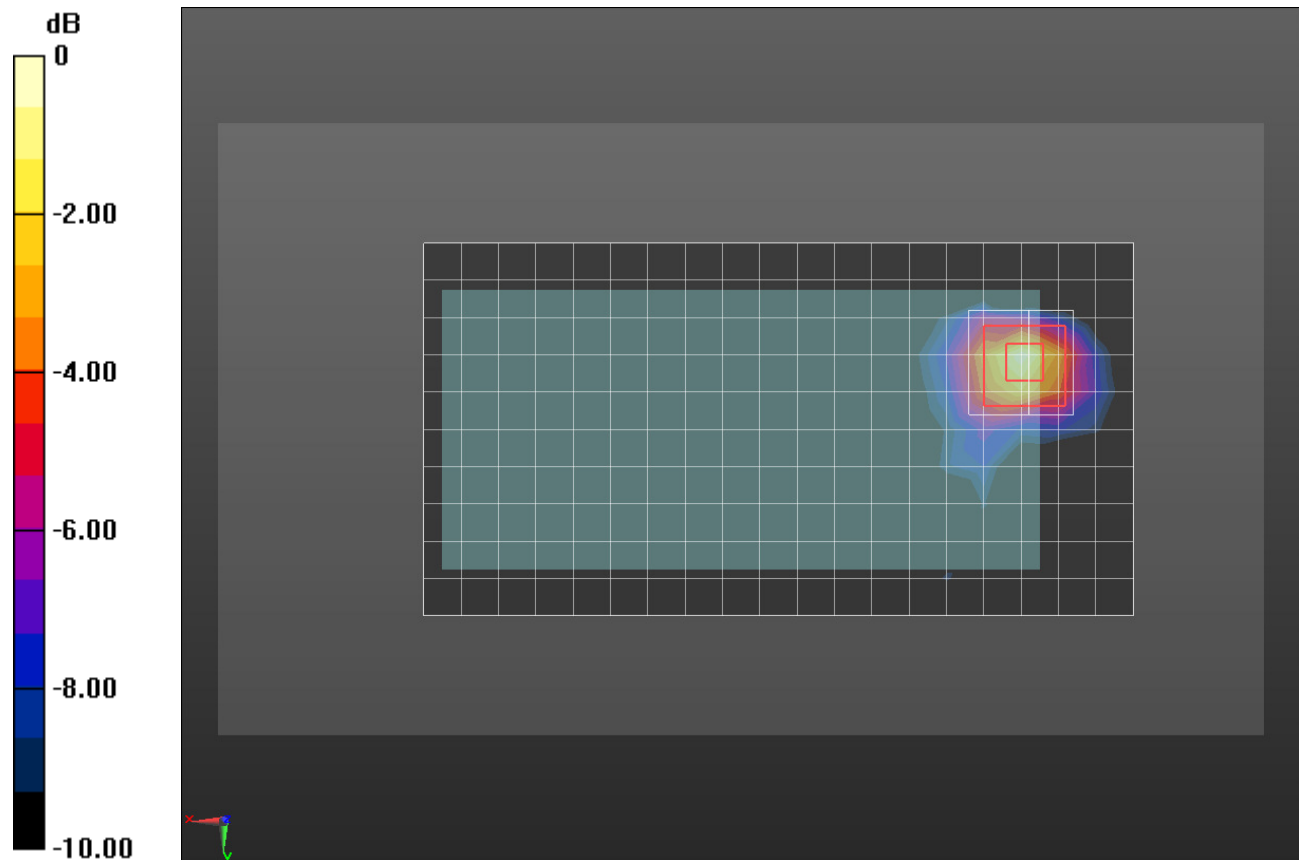
**Front/802.11 a mode ch 157/Zoom Scan (8x8x7)/Cube 0:** Measurement grid: dx=4mm, dy=4mm, dz=1.4mm

Reference Value = 19.78 V/m; Power Drift = -0.07 dB

Peak SAR (extrapolated) = 3.67 W/kg

**SAR(1 g) = 0.801 W/kg; SAR(10 g) = 0.268 W/kg**

Maximum value of SAR (measured) = 1.95 W/kg



0 dB = 1.95 W/kg = 2.90 dBW/kg

## Bluetooth

Frequency: 2402 MHz; Duty Cycle: 1:1.29033; Room Ambient Temperature: 23.0°C; Liquid Temperature: 22.0°C  
Medium parameters used (interpolated):  $f = 2402$  MHz;  $\sigma = 1.788$  S/m;  $\epsilon_r = 39.421$ ;  $\rho = 1000$  kg/m<sup>3</sup>

DASY5 Configuration:

- Area Scan Setting: Find Secondary Maximum Within: 2.0 dB and with a peak SAR value greater than 0.0012W/kg
- Electronics: DAE3 Sn479; Calibrated: 2017-10-23
- Probe: EX3DV4 - SN7330; ConvF(7.71, 7.71, 7.71); Calibrated: 2018-01-22;
- Sensor-Surface: 2.5mm (Mechanical Surface Detection)
- Phantom: SAM (20deg probe tilt) with CRP v5.0(Middle); Type: QD000P40CD; Serial: TP:1847

**RHS/Tilt\_bluetooth\_GFSK\_ch 0/Area Scan (9x17x1):** Measurement grid: dx=12mm, dy=12mm  
Maximum value of SAR (measured) = 0.206 W/kg

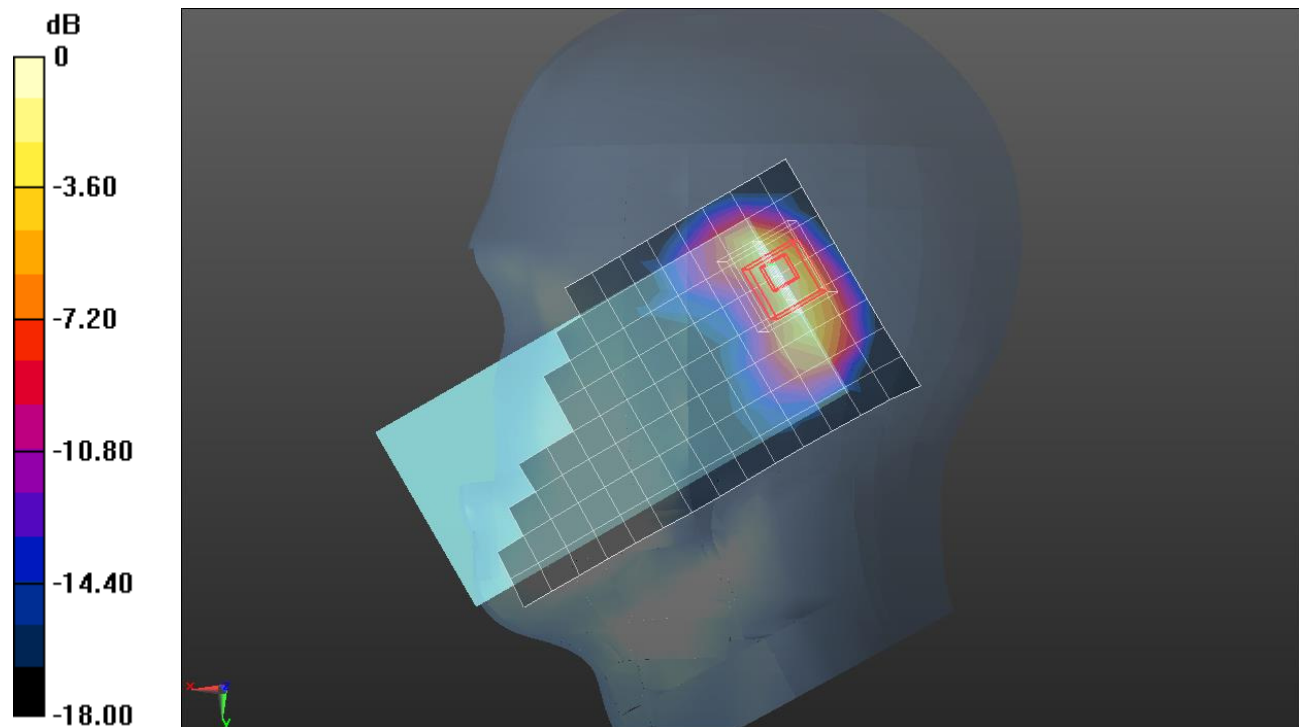
**RHS/Tilt\_bluetooth\_GFSK\_ch 0/Zoom Scan (7x7x7)/Cube 0:** Measurement grid: dx=5mm, dy=5mm, dz=5mm

Reference Value = 10.79 V/m; Power Drift = 0.00 dB

Peak SAR (extrapolated) = 0.356 W/kg

**SAR(1 g) = 0.129 W/kg; SAR(10 g) = 0.050 W/kg**

Maximum value of SAR (measured) = 0.205 W/kg



0 dB = 0.205 W/kg = -6.88 dBW/kg