



HCT Co., Ltd.
74, Seoicheon-ro 578beon-gil, Majang-myeon, Icheon-si, Gyeonggi-do, 17383
KOREA Tel. +82 31 634 6300 Fax. +82 31 645 6401

FCC ID: A3LSMA536V

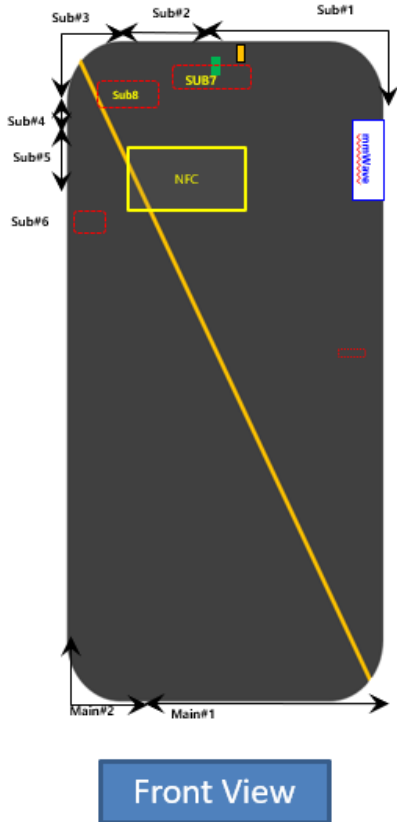
Appendix A.

- DUT Antenna Information and SAR Test SETUP PHOTOGRAPHS

REVISION HISTORY

Revision No.	Date of Issue	Description
0	Jul. 15, 2022	Initial Release

- DUT Antenna Information

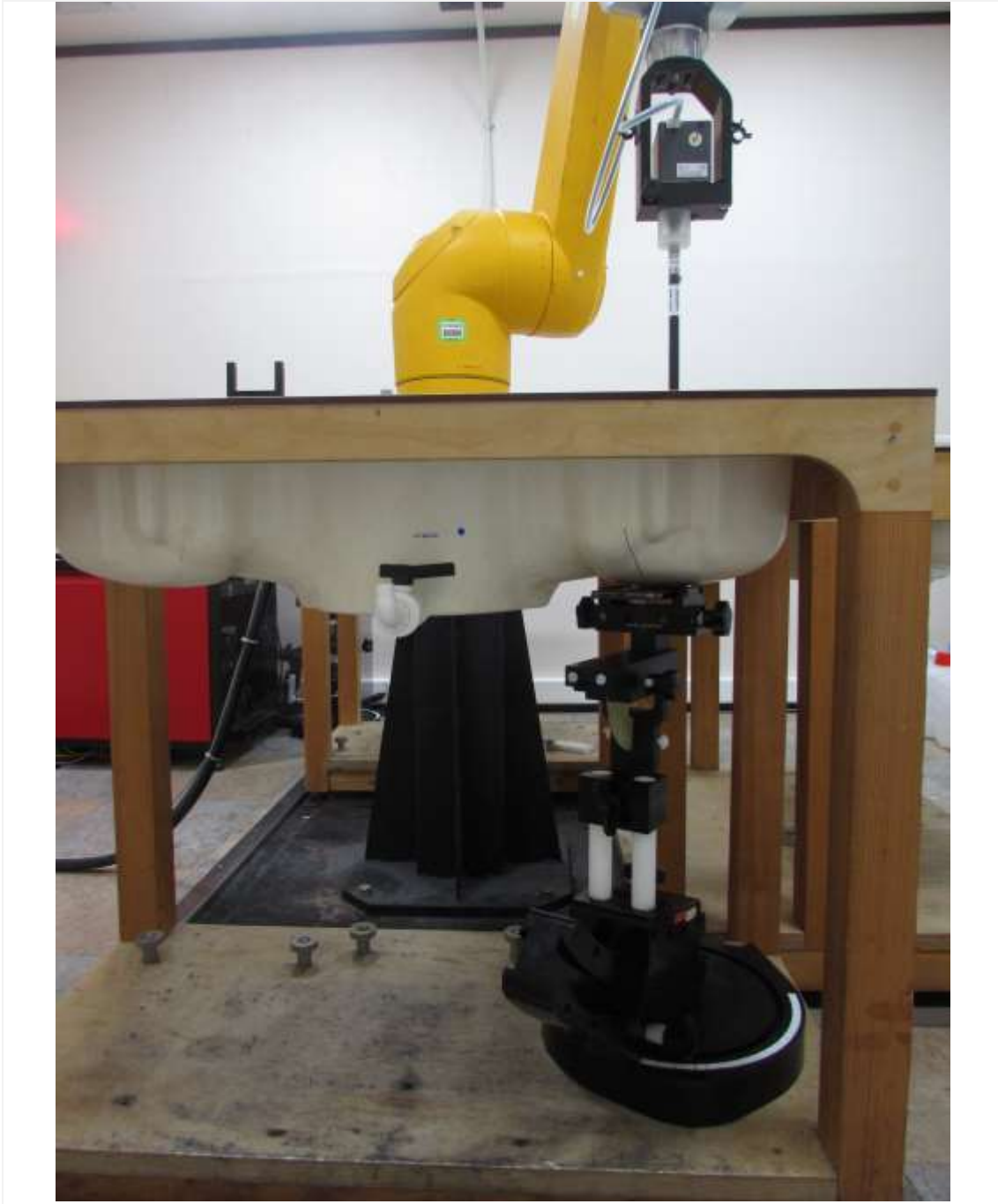


Front View

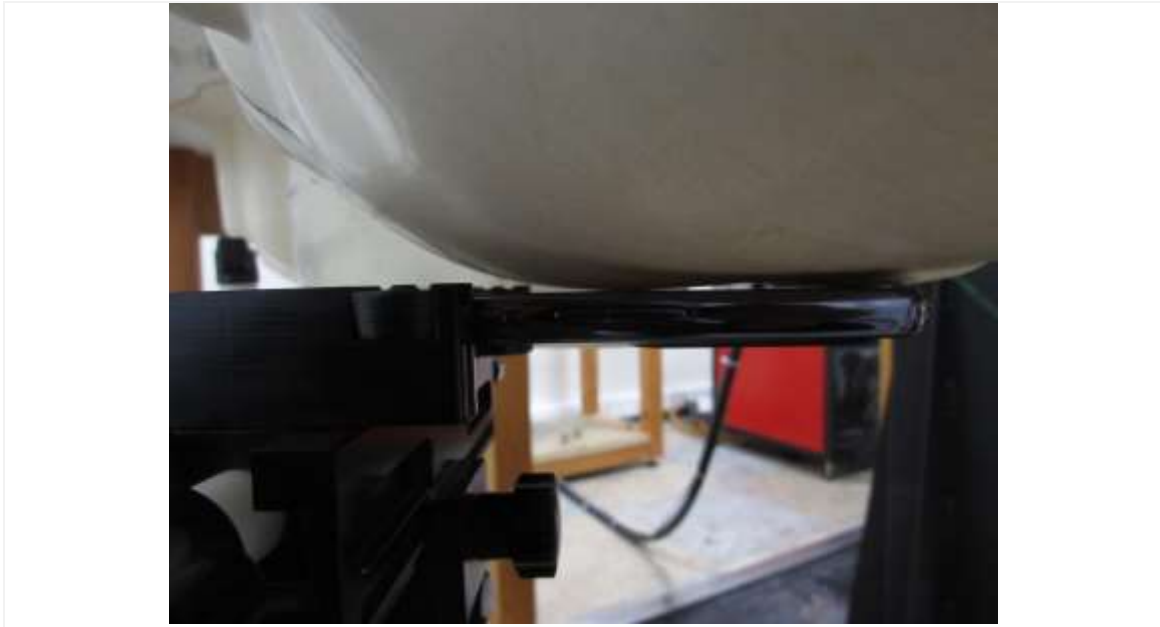
	Antenna Location	Band
Top	Sub#1 (Metal)	DRX GSM850 DRX WCDMA 5 DRX LTE B5/12/13 DRX NR n5 DRX MIMO LTE B2/4/66 DRX MIMO NR n2/66
	Sub#2 (Metal)	DRX PCS1900 DRX WCDMA 2 DRX LTE B2/4/7/66 DRX NR n2/66 WIFI 2.4G GPS
	Sub#3 (Metal)	PRX+TX LTE B48 PRX+TX NR n48/77 (SRS#A) WIFI 5G
	Sub#4 (Metal+LDS)	-
	Sub#5 (Metal)	PRX MIMO LTE B2/4/48/66 PRX MIMO NR n2/48/66/77 (SRS#B)
	Sub#6 (LDS)	PRX LTE B46
	Sub#7 (LDS)	DRX LTE B46
	Sub#8 (LDS)	DRX MIMO LTE B48 DRX MIMO NR n48/77(SRS#D)
Bottom	Main#1 (Metal)	PRX+TX GSM850/PCS1900 PRX+TX WCDMA 2/4/5 PRX+TX LTE B2/4/5/12/13/66 PRX+TX NR n2/5/66
	Main#2 (Metal)	PRX+TX LTE B7 DRX LTE B48 DRX NR n48/77(SRS#C)

- SAR Test SETUP PHOTOGRAPHS

1. Head
1.1 Left All



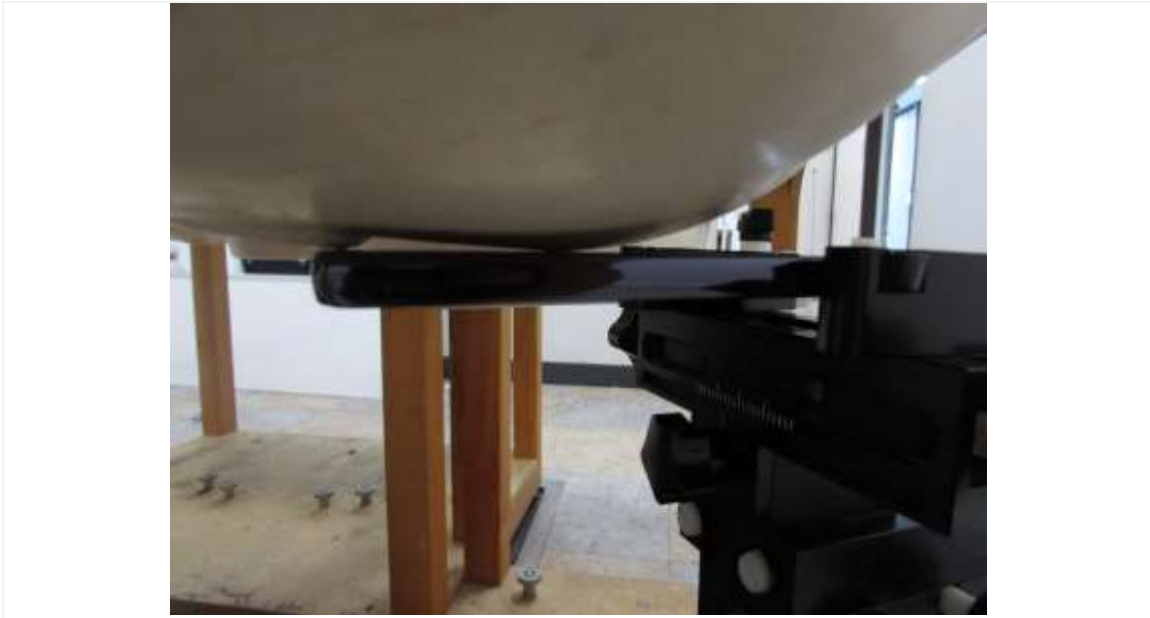
1.2 Left Touch / Left Tilt



1.3 Right All



1.4 Right Touch / Right Tilt



2. Body

2.1 Body All



2.2 Body Rear



Distance of 10 mm from the EUT



Distance of 15 mm from the EUT

2.3 Body Front

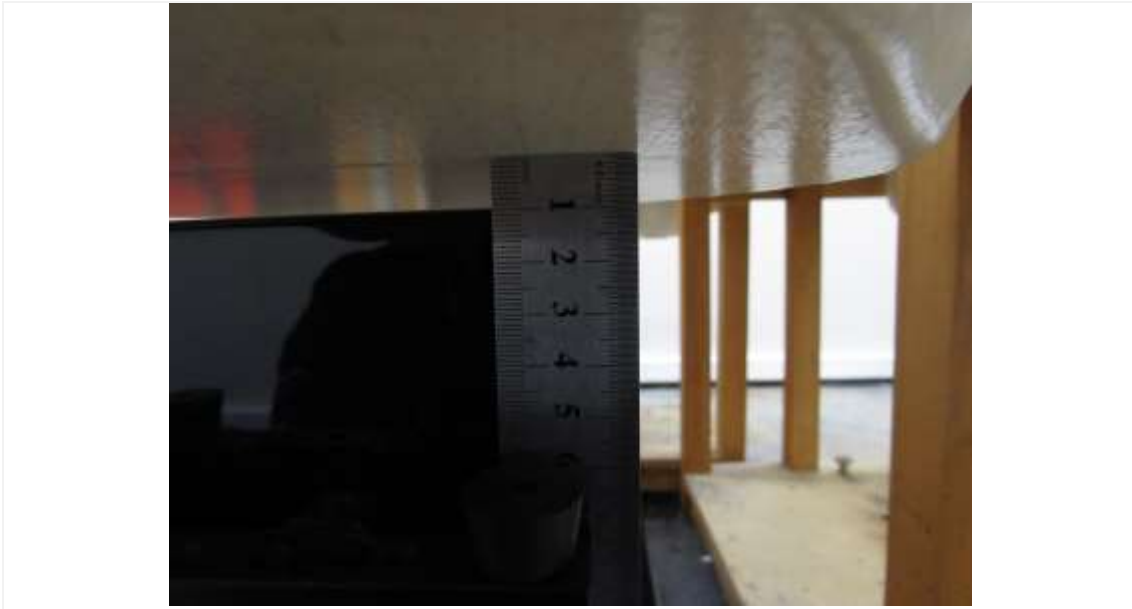


Distance of 10 mm from the EUT



Distance of 15 mm from the EUT

2.4 Body Left



Distance of 10 mm from the EUT

2.5 Body Right



Distance of 10 mm from the EUT

2.6 Body Top



Distance of 10 mm from the EUT

2.7 Body Bottom



Distance of 10 mm from the EUT

3. Phablet

3.1 Phablet SAR Test Setup Rear



Distance of 0 mm from the EUT

3.2 Phablet SAR Test Setup Front



Distance of 0 mm from the EUT

3.3 Phablet SAR Test Setup Left



Distance of 0 mm from the EUT

3.4 Phablet SAR Test Setup Right



Distance of 0 mm from the EUT

3.5 Phablet SAR Test Setup Top



Distance of 0 mm from the EUT

3.6 Phablet SAR Test Setup Bottom



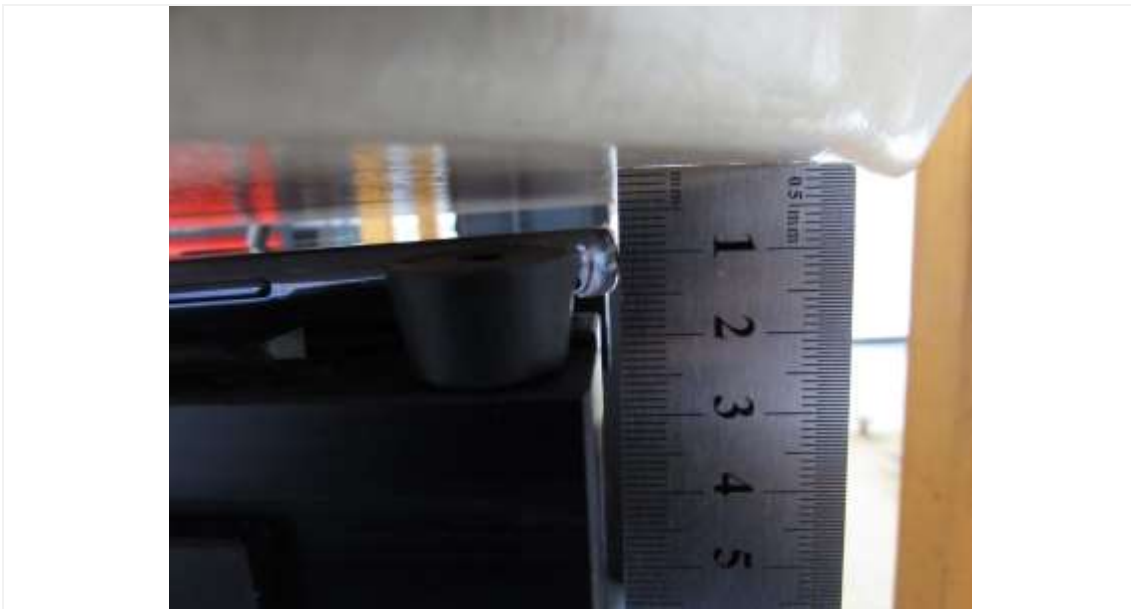
Distance of 0 mm from the EUT

3.7 Phablet SAR Test Setup Rear



Distance of 11 mm from the EUT

3.8 Phablet SAR Test Setup Front



Distance of 7 mm from the EUT

3.9 Phablet SAR Test Setup Bottom



Distance of 13 mm from the EUT