



HCT Co., Ltd.  
74, Seoicheon-ro 578beon-gil, Majang-myeon, Icheon-si, Gyeonggi-do, 17383  
KOREA Tel. +82 31 634 6300 Fax. +82 31 645 6401

FCC ID: A3LSMA536V

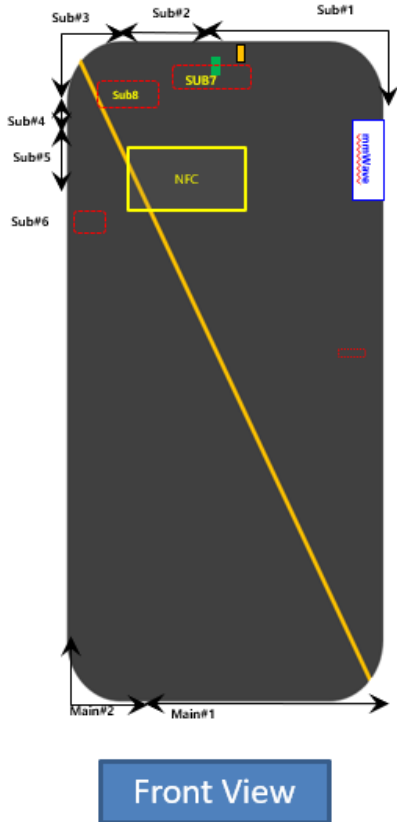
## Appendix A.

### - DUT Antenna Information and SAR Test SETUP PHOTOGRAPHS

#### REVISION HISTORY

Revision No.	Date of Issue	Description
0	Jan. 09, 2022	Initial Release

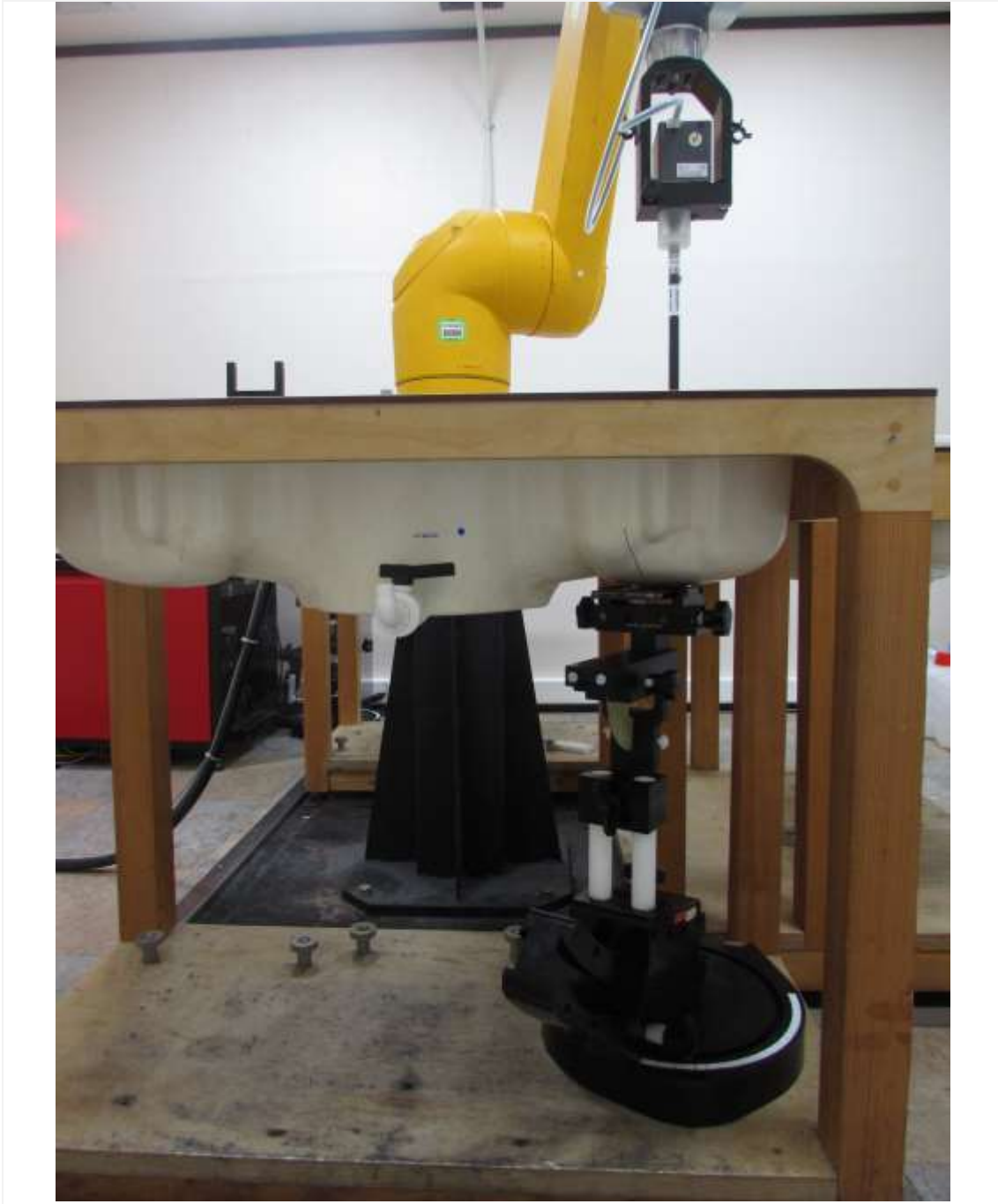
### - DUT Antenna Information



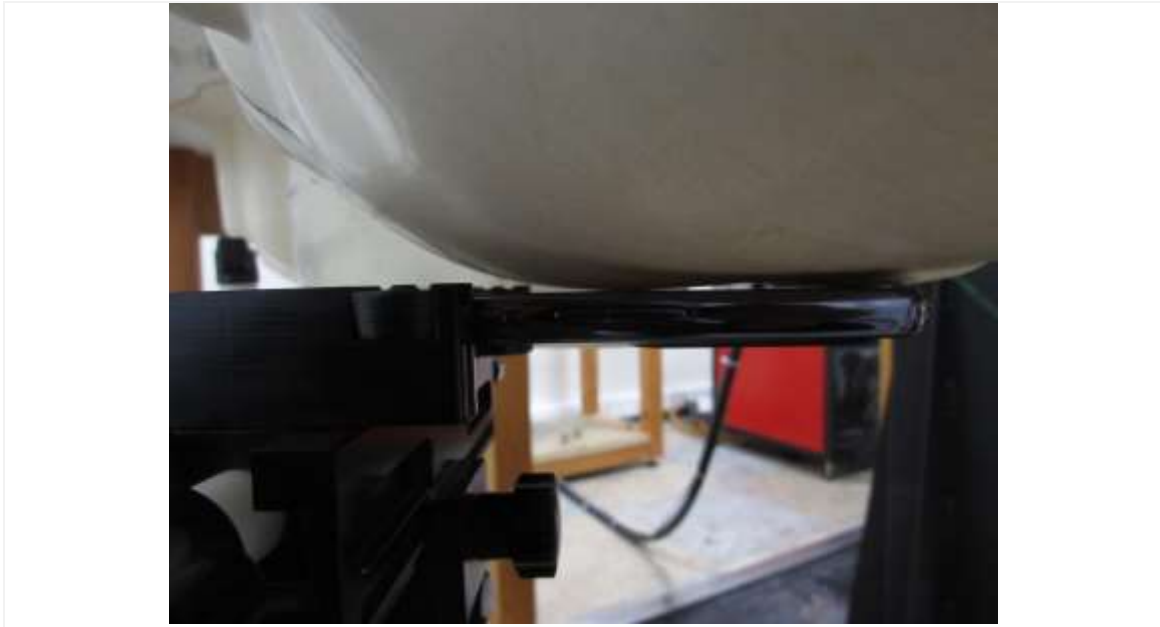
	Antenna Location	Band
Top	Sub#1 (Metal)	DRX GSM850 DRX WCDMA 5 DRX LTE B5/12/13 DRX NR n5 DRX MIMO LTE B2/4/66 DRX MIMO NR n2/66
	Sub#2 (Metal)	DRX PCS1900 DRX WCDMA 2 DRX LTE B2/4/7/66 DRX NR n2/66 WIFI 2.4G GPS
	Sub#3 (Metal)	PRX+TX LTE B48 PRX+TX NR n48/77 (SRS#A) WIFI 5G
	Sub#4 (Metal+LDS)	-
	Sub#5 (Metal)	PRX MIMO LTE B2/4/48/66 PRX MIMO NR n2/48/66/77 (SRS#B)
	Sub#6 (LDS)	PRX LTE B46
	Sub#7 (LDS)	DRX LTE B46
	Sub#8 (LDS)	DRX MIMO LTE B48 DRX MIMO NR n48/77(SRS#D)
Bottom	Main#1 (Metal)	PRX+TX GSM850/PCS1900 PRX+TX WCDMA 2/4/5 PRX+TX LTE B2/4/5/12/13/66 PRX+TX NR n2/5/66
	Main#2 (Metal)	PRX+TX LTE B7 DRX LTE B48 DRX NR n48/77(SRS#C)

**- SAR Test SETUP PHOTOGRAPHS**

1. Head  
1.1 Left All



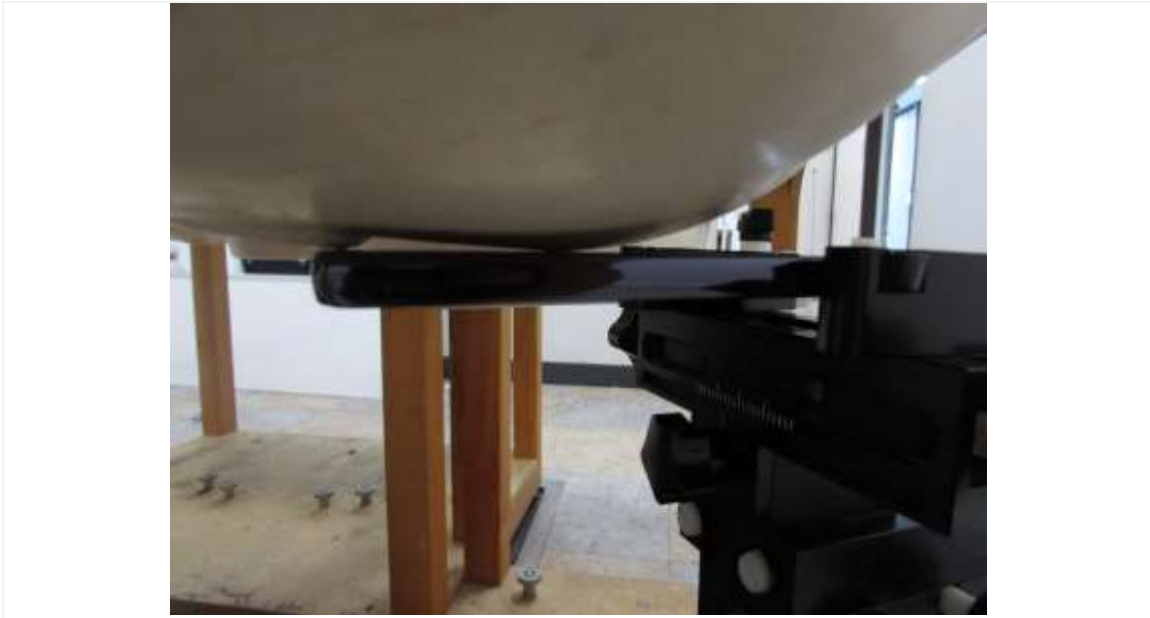
## 1.2 Left Touch / Left Tilt



## 1.3 Right All



## 1.4 Right Touch / Right Tilt



## 2. Body

### 2.1 Body All





## 2.2 Body Rear



Distance of 10 mm from the EUT



Distance of 15 mm from the EUT

## 2.3 Body Front

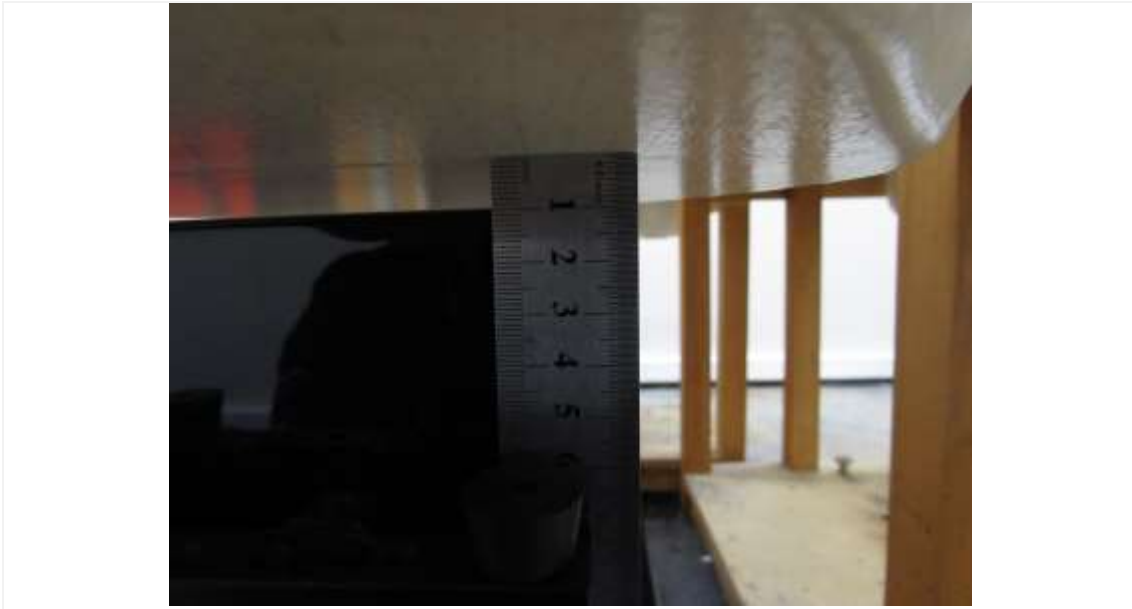


Distance of 10 mm from the EUT



Distance of 15 mm from the EUT

## 2.4 Body Left



Distance of 10 mm from the EUT

## 2.5 Body Right



Distance of 10 mm from the EUT

## 2.6 Body Top



Distance of 10 mm from the EUT

## 2.7 Body Bottom



Distance of 10 mm from the EUT

### 3. Phablet

#### 3.1 Phablet SAR Test Setup Rear



Distance of 0 mm from the EUT

#### 3.2 Phablet SAR Test Setup Front



Distance of 0 mm from the EUT

### 3.3 Phablet SAR Test Setup Left



Distance of 0 mm from the EUT

### 3.4 Phablet SAR Test Setup Right



Distance of 0 mm from the EUT

### 3.5 Phablet SAR Test Setup Top



Distance of 0 mm from the EUT

### 3.6 Phablet SAR Test Setup Bottom



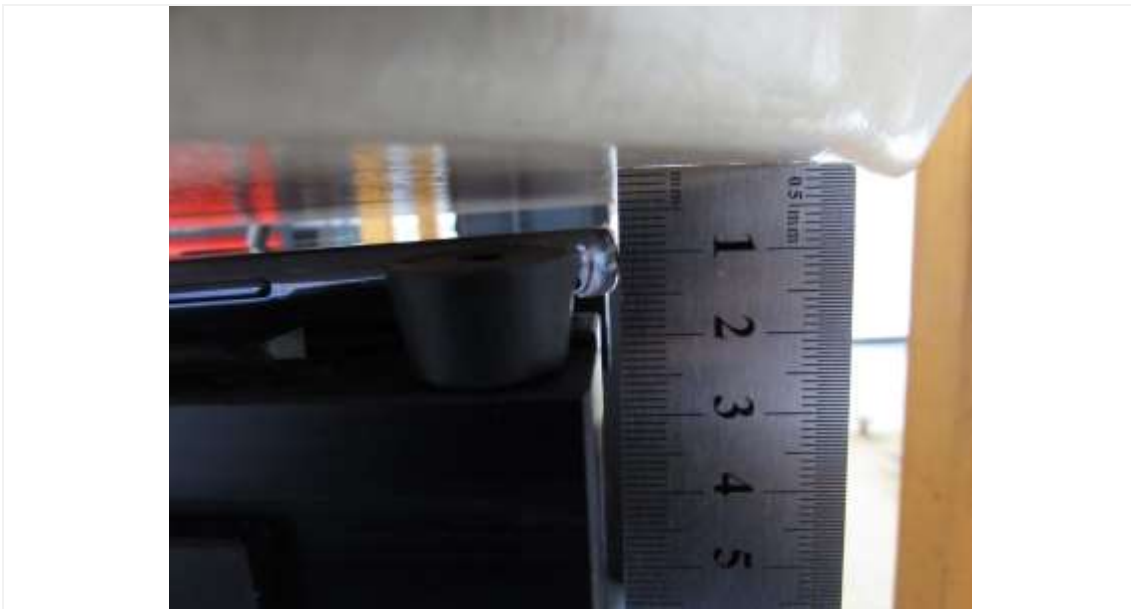
Distance of 0 mm from the EUT

### 3.7 Phablet SAR Test Setup Rear



Distance of 11 mm from the EUT

### 3.8 Phablet SAR Test Setup Front



Distance of 7 mm from the EUT



### 3.9 Phablet SAR Test Setup Bottom



Distance of 13 mm from the EUT