





MODEL / 型号 / 全球统一编号: B3300001
Secondary Li-ion Battery / 锂离子电池组 / 二次锂电池组
Nominal Voltage / 标称电压 / 標稱電壓 / 정격: 3.88 V \equiv ,
Rated Capacity / 额定容量 / 額定電容量: 4860 mAh, 18.8
Typical Capacity: 5000 mAh, 19.40 Wh, 充电限制电压: 4.



Li-ion 00



廢電池請回收
Warning:
Do not disassemble, crush, puncture, heat,
burn or reuse. Authorized Service Provider Only.
警告: 禁止拆卸、穿刺、燃燒或重複使用。

A53 KA41



SAMSUNG ASSEMBLED IN CHINA
中國製造/中国制造

Model / 型号 / 型號: EB-BA336ABY 제조사: Ningde An
Secondary Li-ion Battery / 锂离子電池組 / 二次鋰電池組
Nominal Voltage / 標稱電壓 / 標稱電壓: 3.88 V
Rated Capacity / 額定容量 / 額定電容量: 4860 mAh, 18.8 Wh
Typical Capacity: 5000 mAh, 19.40 Wh, 充電限制電壓: 4.4 V

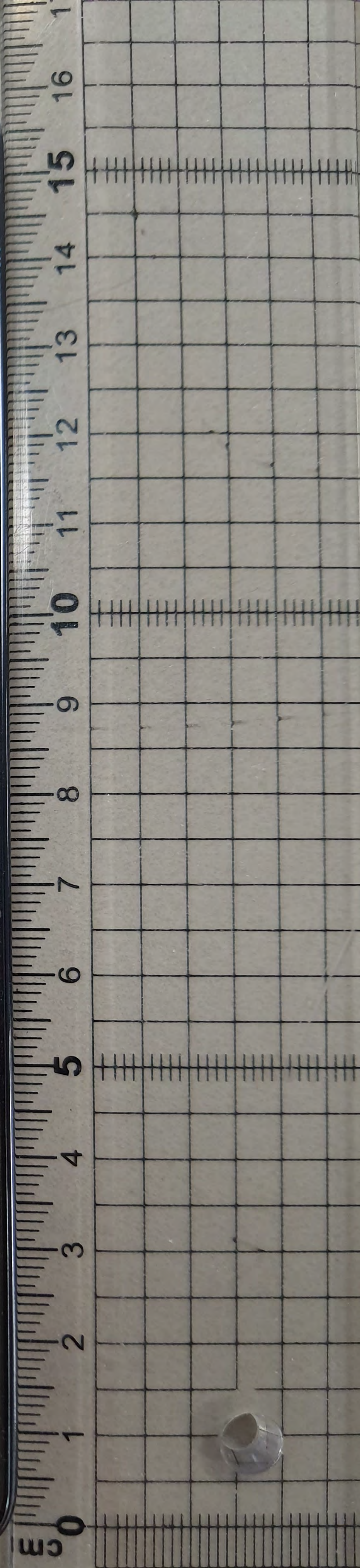
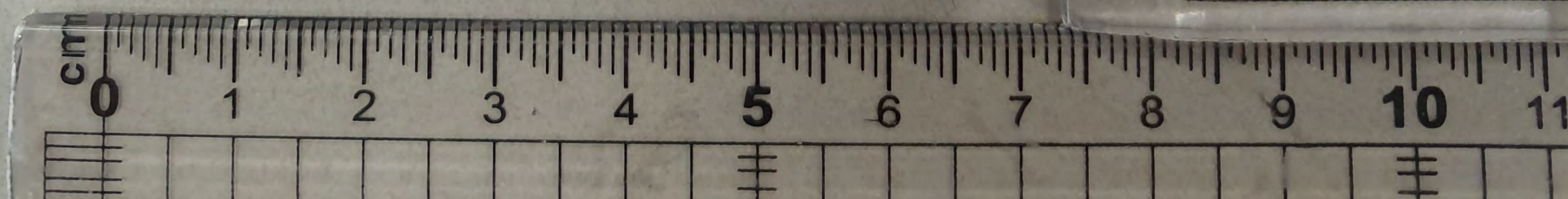


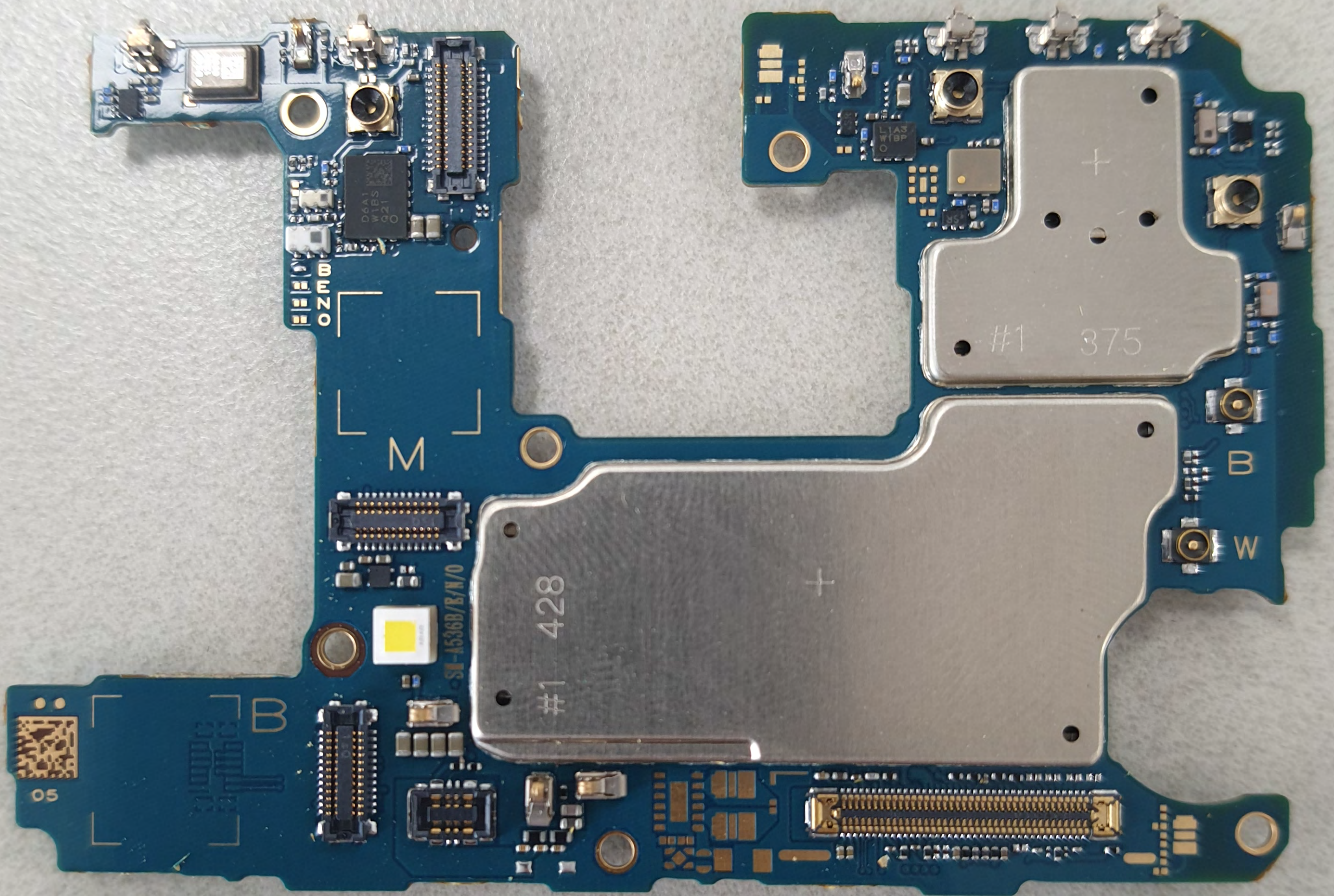
Li-ion 00
廢電池請回收
MH29195

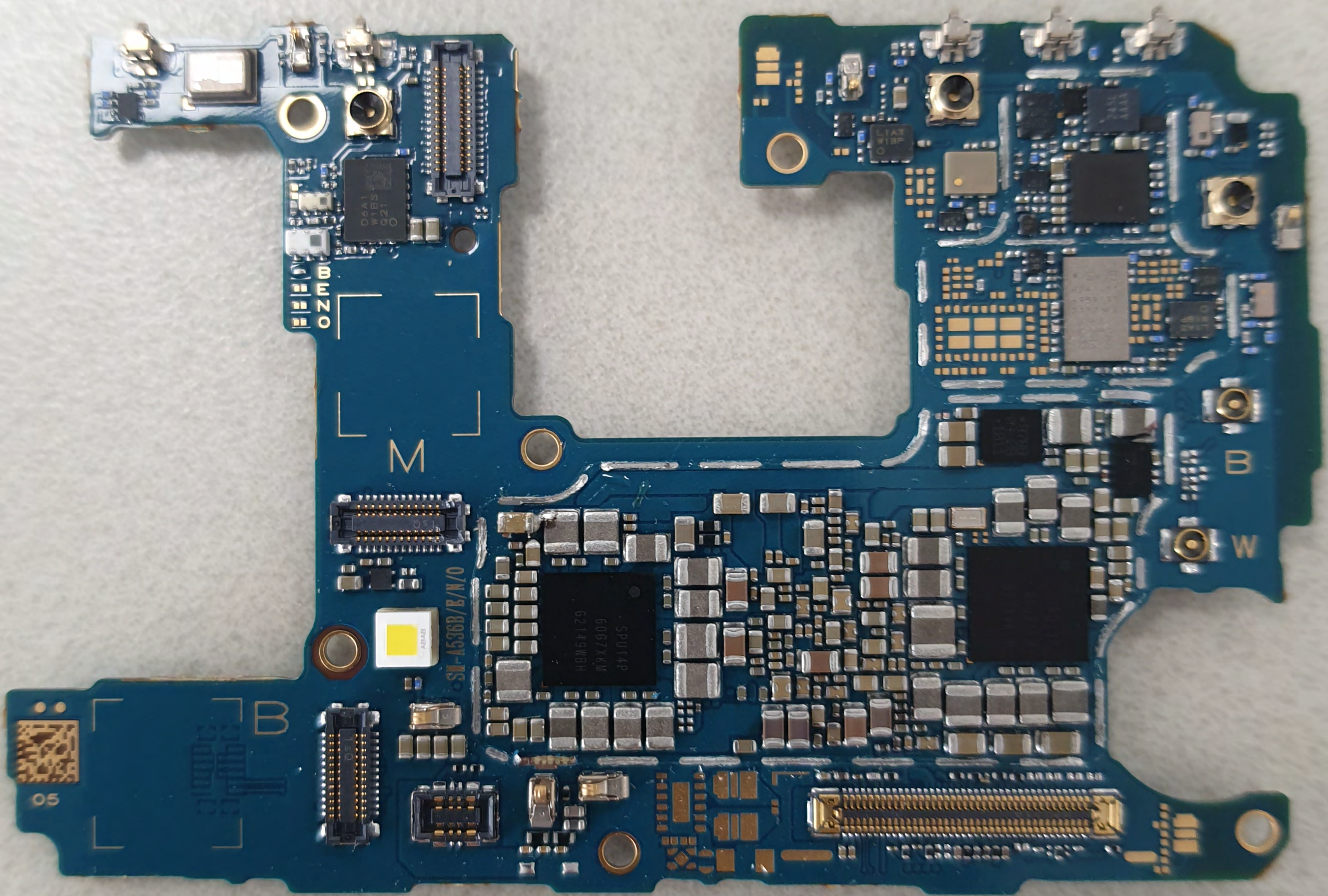
Warning:
Do not disassemble, crush, puncture, heat,
burn or reuse. Authorized Service Provider Only.
警告: 禁止拆卸、穿刺、燃燒或重複使用。

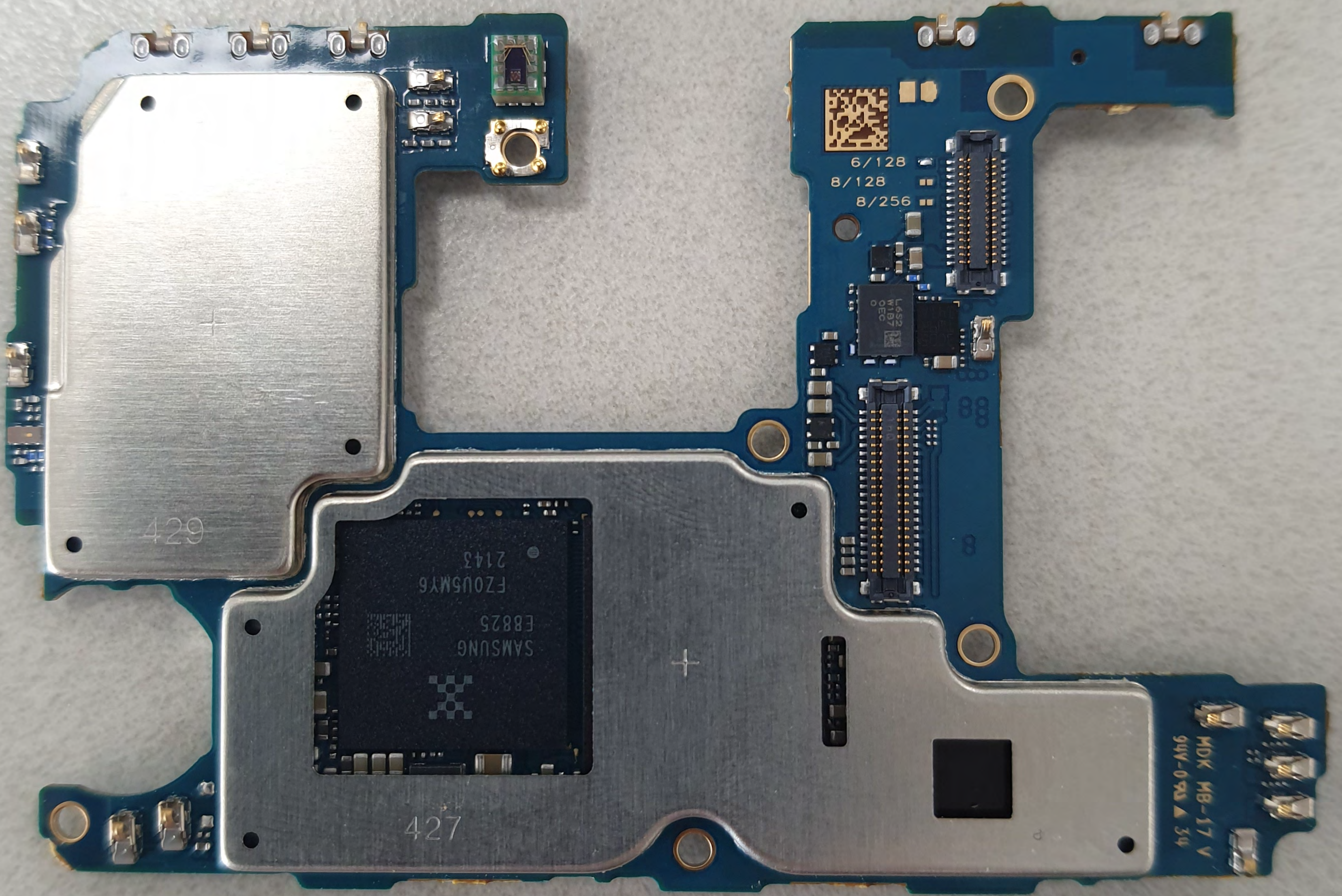
MAIN

SM-A536B CTC R03
DDR1B20NF









429

SAMSUNG
E8825
FZ0U5MY6
2143

427

6/128
8/128
8/256

MOK MB-17 V
94V-093 34