

GSM 850_Head_1120 GPRS Retest

Frequency: 836.6 MHz; Duty Cycle: 1:4.00037; Room Ambient Temperature: 24.0°C; Liquid Temperature: 23.0°C
 Medium parameters used (interpolated): $f = 836.6$ MHz; $\sigma = 0.905$ S/m; $\epsilon_r = 40.643$; $\rho = 1000$ kg/m³

DASY5 Configuration:

- Area Scan Setting: Find Secondary Maximum Within: 2.0 dB and with a peak SAR value greater than 0.0012W/kg
- Electronics: DAE4 Sn1468; Calibrated: 2015-09-15
- Probe: EX3DV4 - SN7376; ConvF(9.99, 9.99, 9.99); Calibrated: 2015-09-02;
- Sensor-Surface: 2mm (Mechanical Surface Detection)
- Phantom: SAM (20deg probe tilt) with CRP v5.0(Right); Type: QD000P40CD; Serial: TP:1846

RHS/Touch_GPRS 2slots_ch 190/Area Scan (7x12x1): Measurement grid: dx=15mm, dy=15mm.
 Maximum value of SAR (measured) = 0.187 W/kg

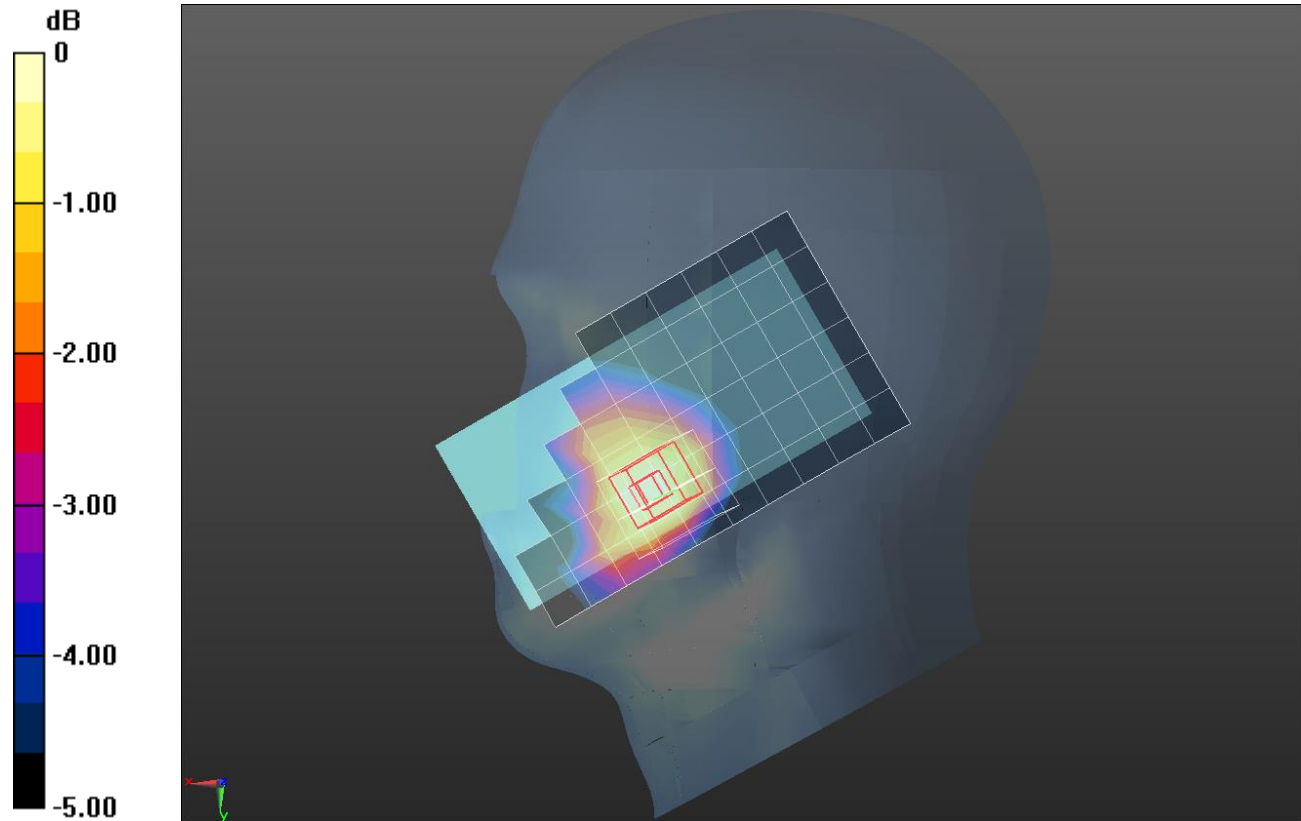
RHS/Touch_GPRS 2slots_ch 190/Zoom Scan (5x5x7)/Cube 0: Measurement grid: dx=8mm, dy=8mm, dz=5mm

Reference Value = 4.058 V/m; Power Drift = 0.04 dB

Peak SAR (extrapolated) = 0.208 W/kg

SAR(1 g) = 0.172 W/kg; SAR(10 g) = 0.132 W/kg

Maximum value of SAR (measured) = 0.192 W/kg



0 dB = 0.192 W/kg = -7.17 dBW/kg

GSM 850

Frequency: 836.6 MHz; Duty Cycle: 1:8.30042; Room Ambient Temperature: 24.0°C; Liquid Temperature: 23.0°C
 Medium parameters used (interpolated): $f = 836.6$ MHz; $\sigma = 0.984$ S/m; $\epsilon_r = 53.814$; $\rho = 1000$ kg/m³

DASY5 Configuration:

- Area Scan Setting: Find Secondary Maximum Within: 2.0 dB and with a peak SAR value greater than 0.0012W/kg
- Electronics: DAE4 Sn1468; Calibrated: 2015-09-15
- Probe: EX3DV4 - SN7376; ConvF(10.07, 10.07, 10.07); Calibrated: 2015-09-02;
- Sensor-Surface: 2mm (Mechanical Surface Detection)
- Phantom: Triple Flat Phantom 5.1C; Type: QD 000 P51 CA; Serial: 1166

Front/GPRS 2 slots_ch 190/Area Scan (12x8x1): Measurement grid: dx=15mm, dy=15mm

Maximum value of SAR (measured) = 0.873 W/kg

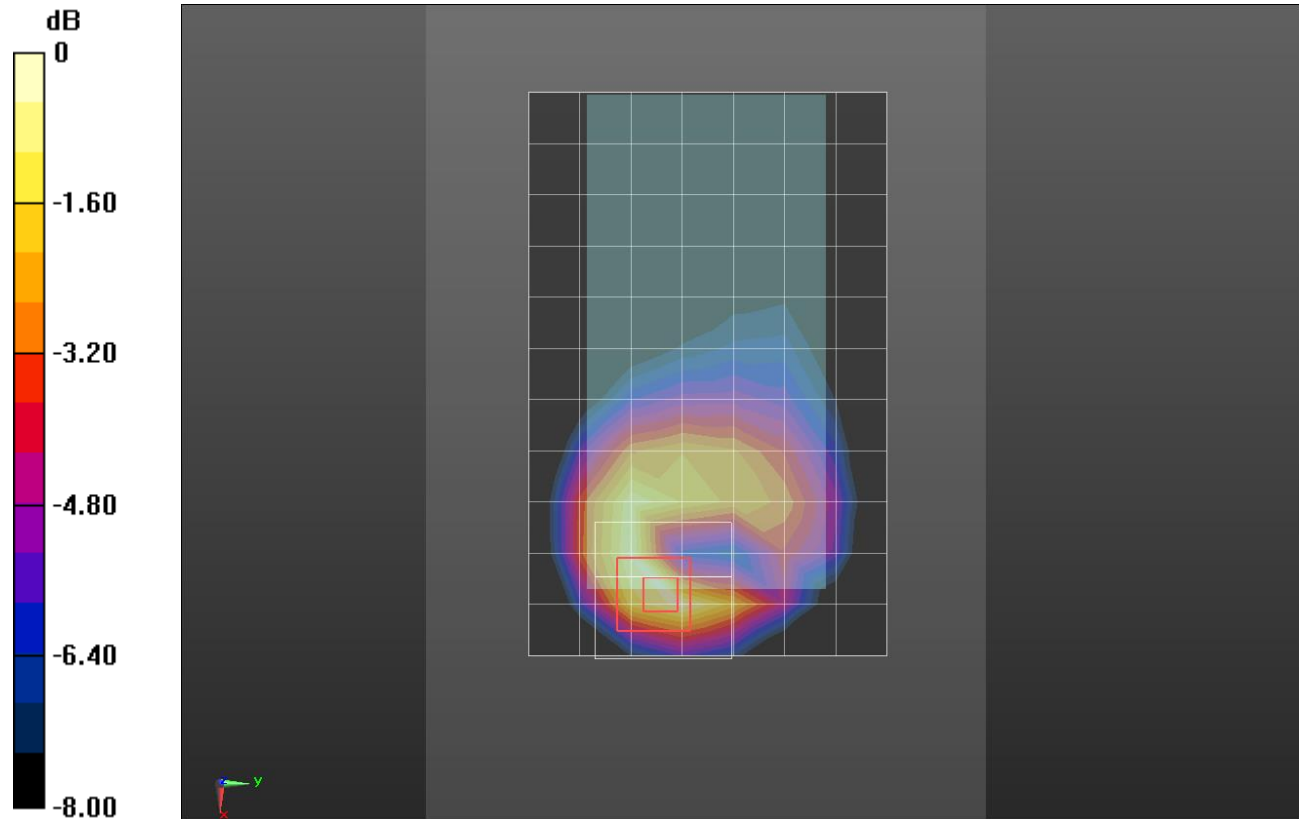
Front/GPRS 2 slots_ch 190/Zoom Scan (6x6x7)/Cube 0: Measurement grid: dx=8mm, dy=8mm, dz=5mm

Reference Value = 30.51 V/m; Power Drift = 0.05 dB

Peak SAR (extrapolated) = 1.23 W/kg

SAR(1 g) = 0.687 W/kg; SAR(10 g) = 0.385 W/kg

Maximum value of SAR (measured) = 0.921 W/kg



0 dB = 0.921 W/kg = -0.36 dBW/kg

GSM 1900_Head_1121

Frequency: 1880 MHz; Duty Cycle: 1:4.00037; Room Ambient Temperature: 24.0°C; Liquid Temperature: 23.0°C
 Medium parameters used: $f = 1880$ MHz; $\sigma = 1.408$ S/m; $\epsilon_r = 39.027$; $\rho = 1000$ kg/m³

DASY5 Configuration:

- Area Scan Setting: Find Secondary Maximum Within: 2.0 dB and with a peak SAR value greater than 0.0012W/kg
- Electronics: DAE4 Sn1446; Calibrated: 2015-08-17
- Probe: EX3DV4 - SN7330; ConvF(8.07, 8.07, 8.07); Calibrated: 2015-02-12;
- Sensor-Surface: 2mm (Mechanical Surface Detection)
- Phantom: SAM Phantom CRP v5.0(Right); Type: QD000P40CD; Serial: TP:1855

RHS/Touch_GPRS 2 slots_ch 661/Area Scan (8x12x1): Measurement grid: dx=15mm, dy=15mm

Maximum value of SAR (measured) = 0.0994 W/kg

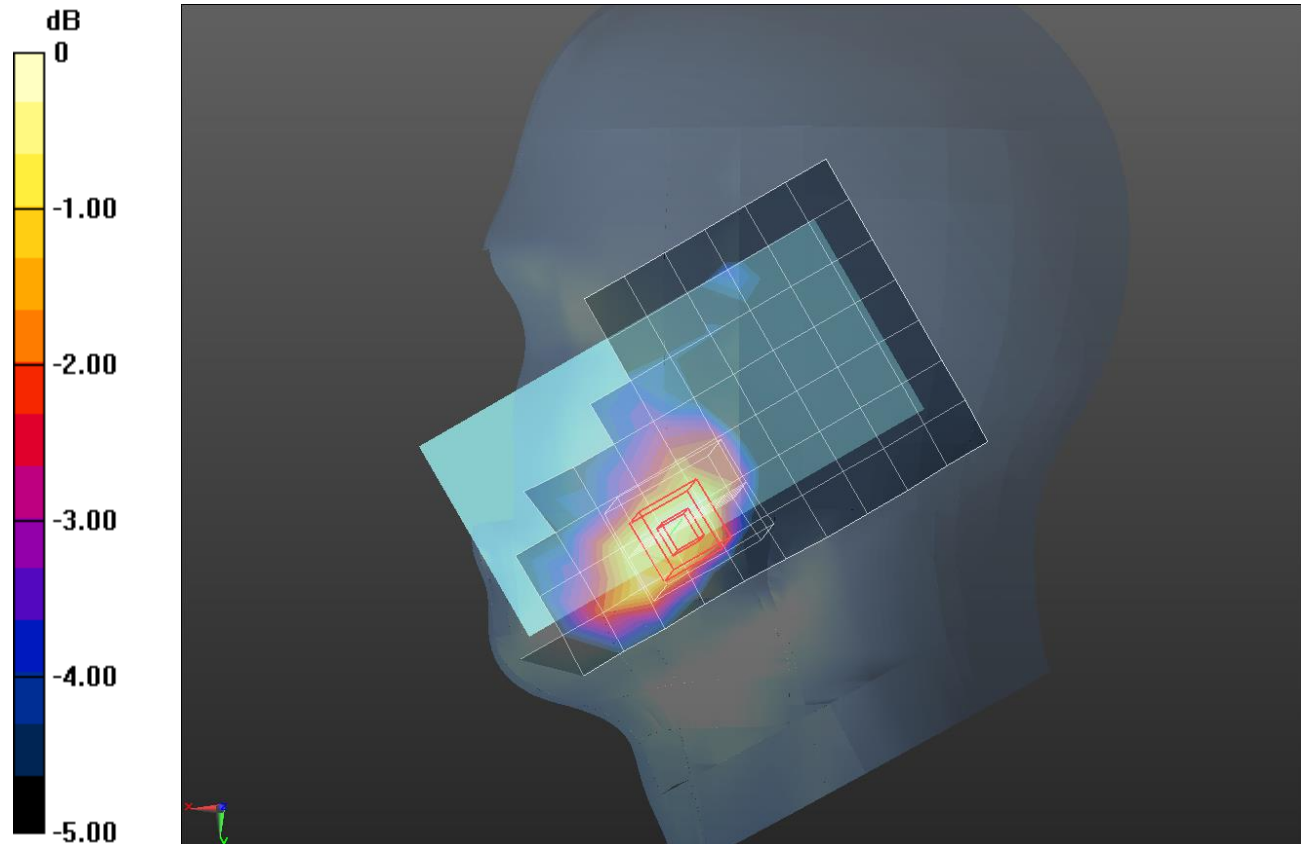
RHS/Touch_GPRS 2 slots_ch 661/Zoom Scan (5x6x7)/Cube 0: Measurement grid: dx=8mm, dy=8mm, dz=5mm

Reference Value = 5.914 V/m; Power Drift = 0.02 dB

Peak SAR (extrapolated) = 0.126 W/kg

SAR(1 g) = 0.079 W/kg; SAR(10 g) = 0.049 W/kg

Maximum value of SAR (measured) = 0.103 W/kg



0 dB = 0.103 W/kg = -9.87 dBW/kg

GSM1900_Body

Frequency: 1909.8 MHz; Duty Cycle: 1:4.00037; Room Ambient Temperature: 24.0°C; Liquid Temperature: 23.0°C
 Medium parameters used: $f = 1910 \text{ MHz}$; $\sigma = 1.593 \text{ S/m}$; $\epsilon_r = 52.212$; $\rho = 1000 \text{ kg/m}^3$

DASY5 Configuration:

- Area Scan Setting: Find Secondary Maximum Within: 2.0 dB and with a peak SAR value greater than 0.0012W/kg
- Electronics: DAE4 Sn1446; Calibrated: 2015-08-17
- Probe: EX3DV4 - SN7330; ConvF(7.82, 7.82, 7.82); Calibrated: 2015-02-12;
- Sensor-Surface: 2mm (Mechanical Surface Detection)
- Phantom: ELI v6.0; Type: QDOVA003AA; Serial: TP:xxxx

Edge 3/GPRS 2 slots_ch810/Area Scan (8x5x1): Measurement grid: dx=15mm, dy=15mm

Maximum value of SAR (measured) = 0.994 W/kg

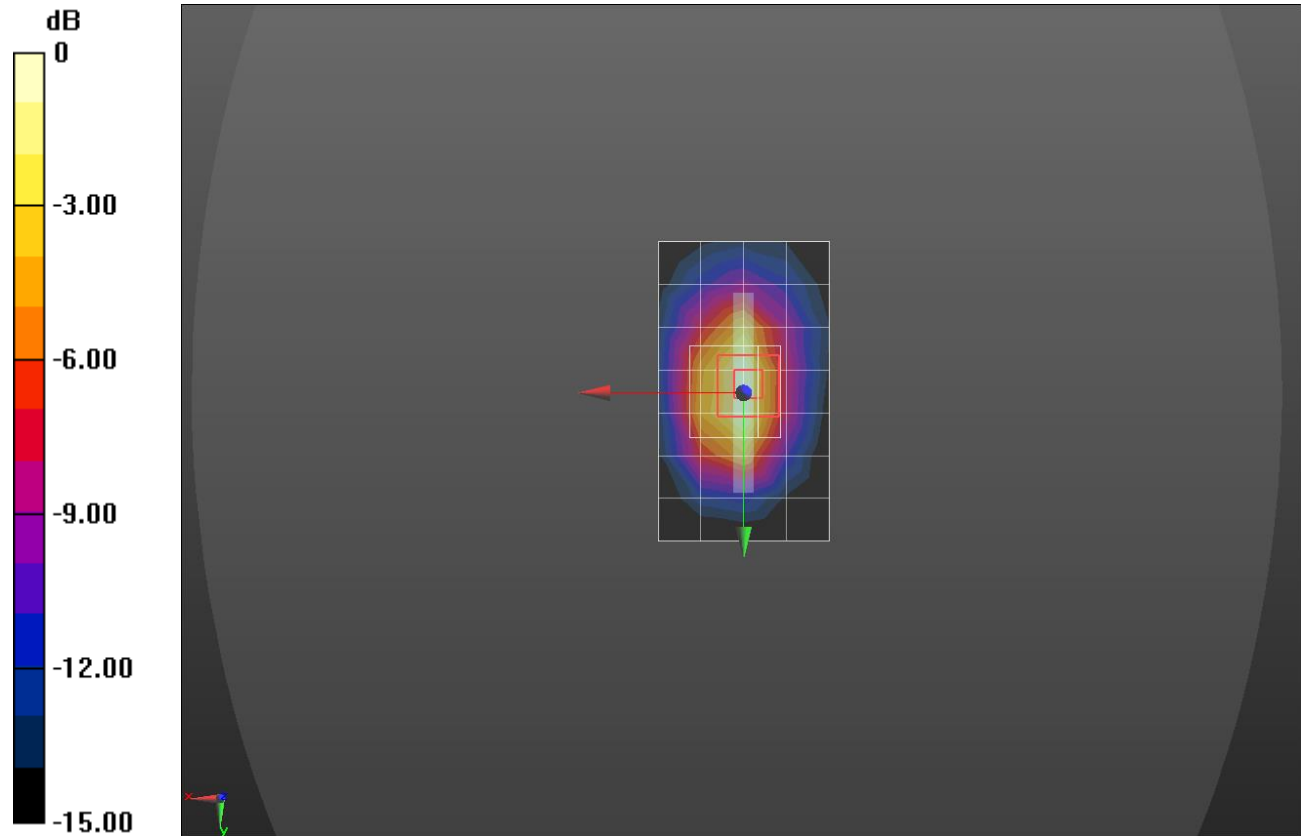
Edge 3/GPRS 2 slots_ch810/Zoom Scan (5x5x7)/Cube 0: Measurement grid: dx=8mm, dy=8mm, dz=5mm

Reference Value = 25.85 V/m; Power Drift = 0.06 dB

Peak SAR (extrapolated) = 1.39 W/kg

SAR(1 g) = 0.767 W/kg; SAR(10 g) = 0.385 W/kg

Maximum value of SAR (measured) = 0.958 W/kg



0 dB = 0.958 W/kg = -0.19 dBW/kg

WCDMA Band 2_1121

Frequency: 1880 MHz; Duty Cycle: 1:1; Room Ambient Temperature: 24.0°C; Liquid Temperature: 23.0°C
 Medium parameters used: $f = 1880 \text{ MHz}$; $\sigma = 1.408 \text{ S/m}$; $\epsilon_r = 39.027$; $\rho = 1000 \text{ kg/m}^3$

DASY5 Configuration:

- Area Scan Setting: Find Secondary Maximum Within: 2.0 dB and with a peak SAR value greater than 0.0012W/kg
- Electronics: DAE4 Sn1446; Calibrated: 2015-08-17
- Probe: EX3DV4 - SN7330; ConvF(8.07, 8.07, 8.07); Calibrated: 2015-02-12;
- Sensor-Surface: 2mm (Mechanical Surface Detection)
- Phantom: SAM Phantom CRP v5.0(Right); Type: QD000P40CD; Serial: TP:1855

RHS/Touch_Rel.99 ch 9400/Area Scan (8x12x1): Measurement grid: dx=15mm, dy=15mm

Maximum value of SAR (measured) = 0.144 W/kg

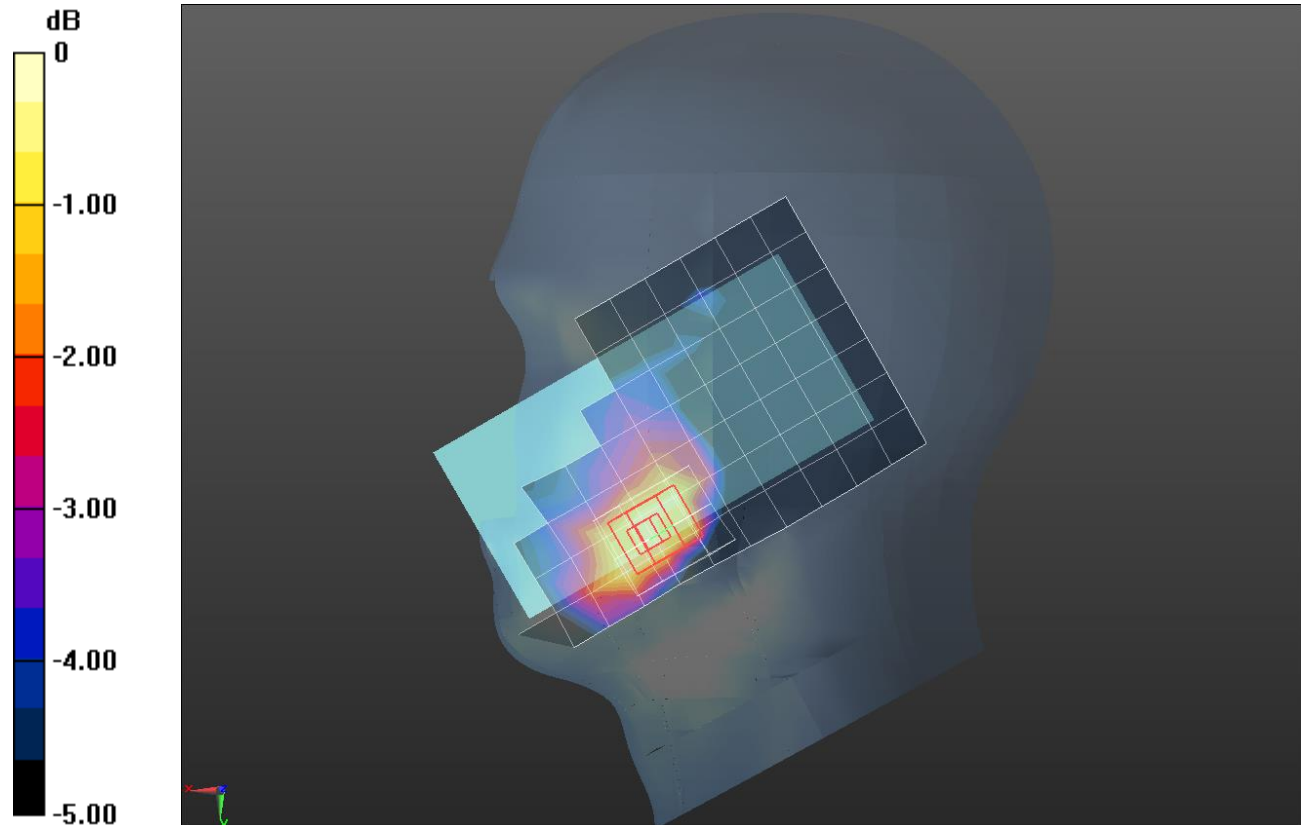
RHS/Touch_Rel.99 ch 9400/Zoom Scan (5x5x7)/Cube 0: Measurement grid: dx=8mm, dy=8mm, dz=5mm

Reference Value = 9.749 V/m; Power Drift = -0.10 dB

Peak SAR (extrapolated) = 0.193 W/kg

SAR(1 g) = 0.119 W/kg; SAR(10 g) = 0.074 W/kg

Maximum value of SAR (measured) = 0.156 W/kg



0 dB = 0.156 W/kg = -8.07 dBW/kg

WCDMA Band 2

Frequency: 1907.6 MHz; Duty Cycle: 1:1; Room Ambient Temperature: 24.0°C; Liquid Temperature: 23.0°C
 Medium parameters used (interpolated): $f = 1907.6 \text{ MHz}$; $\sigma = 1.557 \text{ S/m}$; $\epsilon_r = 50.97$; $\rho = 1000 \text{ kg/m}^3$

DASY5 Configuration:

- Area Scan Setting: Find Secondary Maximum Within: 2.0 dB and with a peak SAR value greater than 0.0012W/kg
- Electronics: DAE4 Sn1446; Calibrated: 2015-08-17
- Probe: EX3DV4 - SN7330; ConvF(7.82, 7.82, 7.82); Calibrated: 2015-02-12;
- Sensor-Surface: 2mm (Mechanical Surface Detection)
- Phantom: ELI v6.0; Type: QDOVA003AA; Serial: TP:2001

Rear/RMC Rel.99 ch9538 10mm/Area Scan (13x8x1): Measurement grid: $dx=15\text{mm}$, $dy=15\text{mm}$
 Maximum value of SAR (measured) = 0.986 W/kg

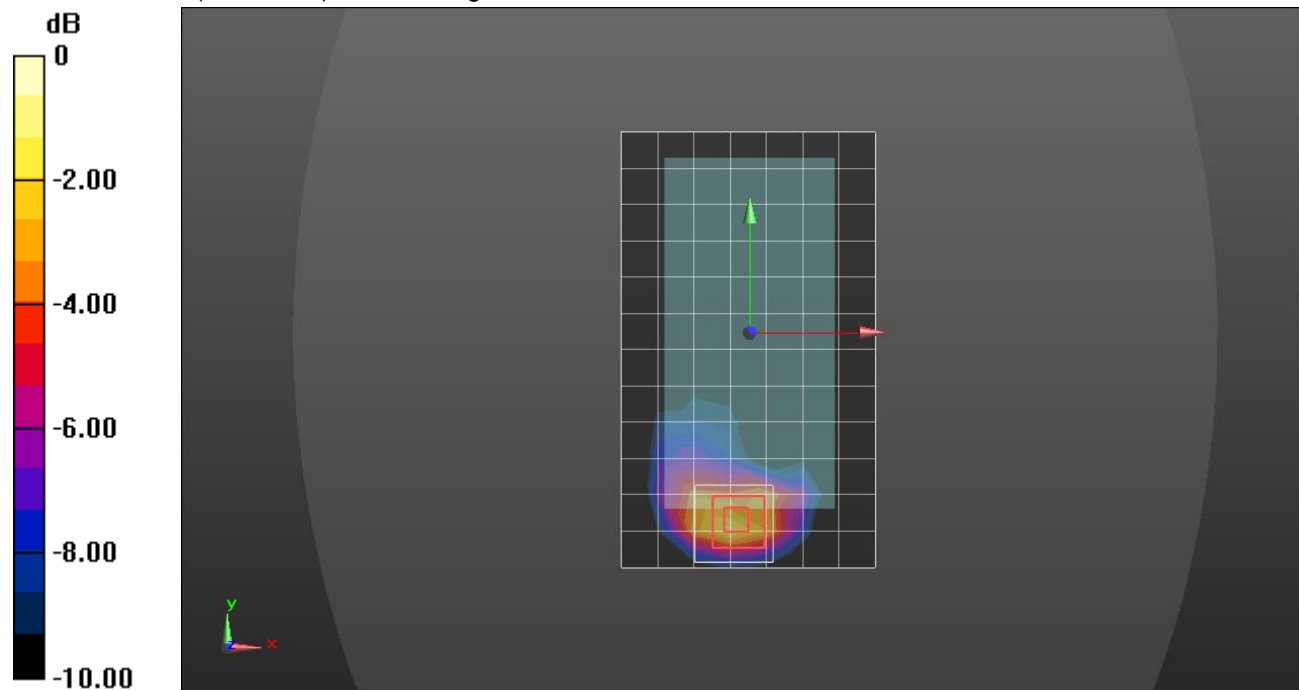
Rear/RMC Rel.99 ch9538 10mm/Zoom Scan (5x5x7)/Cube 0: Measurement grid: $dx=8\text{mm}$, $dy=8\text{mm}$, $dz=5\text{mm}$

Reference Value = 26.39 V/m; Power Drift = 0.09 dB

Peak SAR (extrapolated) = 1.60 W/kg

SAR(1 g) = 0.894 W/kg; SAR(10 g) = 0.455 W/kg

Maximum value of SAR (measured) = 1.23 W/kg



0 dB = 1.23 W/kg = 0.90 dBW/kg

WCDMA Band 5_1118

Frequency: 836.6 MHz; Duty Cycle: 1:1; Room Ambient Temperature: 24.0°C; Liquid Temperature: 23.0°C
 Medium parameters used (interpolated): $f = 836.6$ MHz; $\sigma = 0.885$ S/m; $\epsilon_r = 40.784$; $\rho = 1000$ kg/m³

DASY5 Configuration:

- Area Scan Setting: Find Secondary Maximum Within: 2.0 dB and with a peak SAR value greater than 0.0012W/kg
- Electronics: DAE4 Sn1468; Calibrated: 2015-09-15
- Probe: EX3DV4 - SN7376; ConvF(9.99, 9.99, 9.99); Calibrated: 2015-09-02;
- Sensor-Surface: 2mm (Mechanical Surface Detection)
- Phantom: SAM (20deg probe tilt) with CRP v5.0(Right); Type: QD000P40CD; Serial: TP:1846

RHS/Touch_RMC Rel .99_ch 4183/Area Scan (7x12x1): Measurement grid: dx=15mm, dy=15mm
 Maximum value of SAR (measured) = 0.164 W/kg

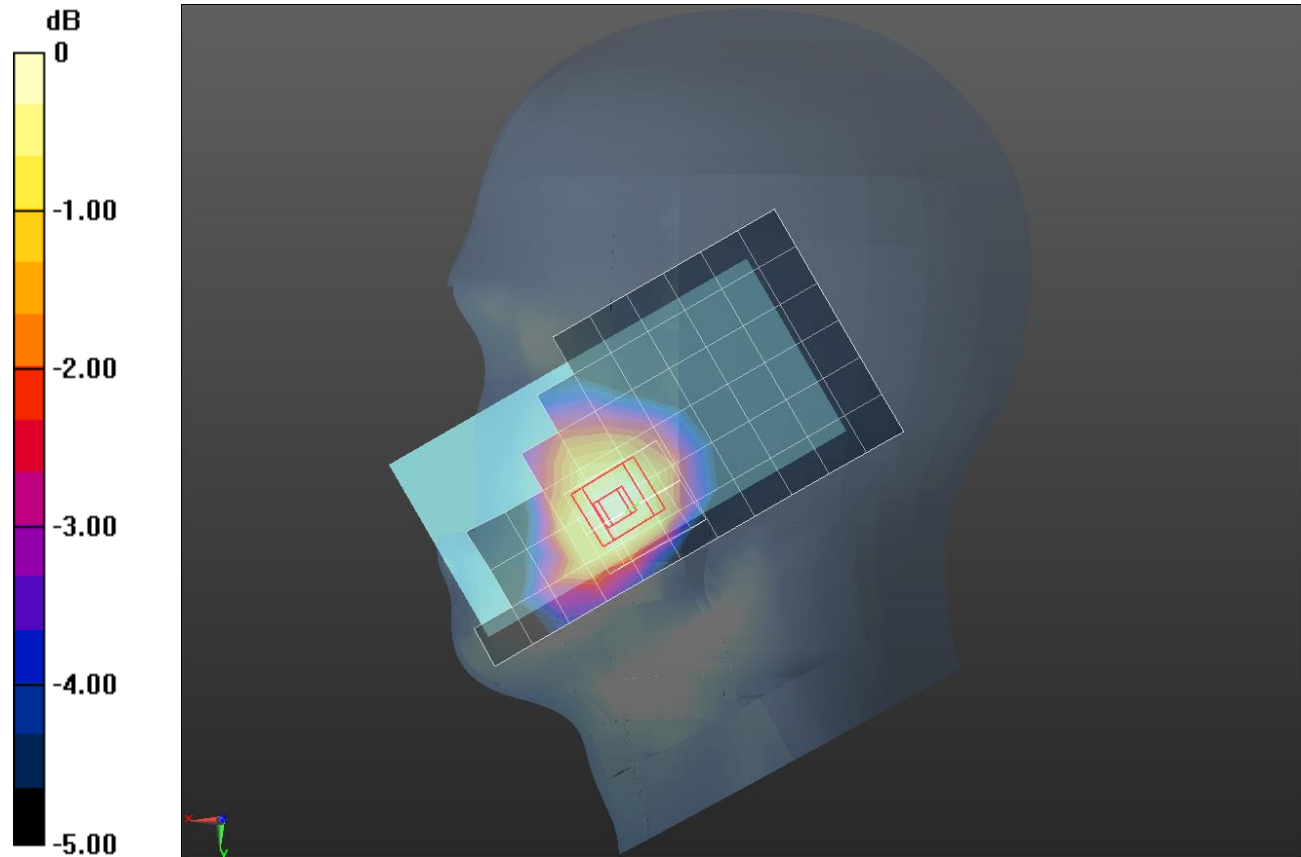
RHS/Touch_RMC Rel .99_ch 4183/Zoom Scan (5x5x7)/Cube 0: Measurement grid: dx=8mm, dy=8mm, dz=5mm

Reference Value = 13.81 V/m; Power Drift = 0.00 dB

Peak SAR (extrapolated) = 0.176 W/kg

SAR(1 g) = 0.147 W/kg; SAR(10 g) = 0.114 W/kg

Maximum value of SAR (measured) = 0.163 W/kg



0 dB = 0.163 W/kg = -7.88 dBW/kg

WCDMA Band V

Frequency: 836.6 MHz; Duty Cycle: 1:1; Room Ambient Temperature: 24.0°C; Liquid Temperature: 23.0°C
 Medium parameters used (interpolated): $f = 836.6$ MHz; $\sigma = 0.984$ S/m; $\epsilon_r = 53.814$; $\rho = 1000$ kg/m³

DASY5 Configuration:

- Area Scan Setting: Find Secondary Maximum Within: 2.0 dB and with a peak SAR value greater than 0.0012W/kg
- Electronics: DAE4 Sn1468; Calibrated: 2015-09-15
- Probe: EX3DV4 - SN7376; ConvF(10.07, 10.07, 10.07); Calibrated: 2015-09-02;
- Sensor-Surface: 2mm (Mechanical Surface Detection)
- Phantom: Triple Flat Phantom 5.1C; Type: QD 000 P51 CA; Serial: 1167

Rear/RMC Rel.99 ch4183/Area Scan (8x13x1): Measurement grid: dx=15mm, dy=15mm

Maximum value of SAR (measured) = 0.807 W/kg

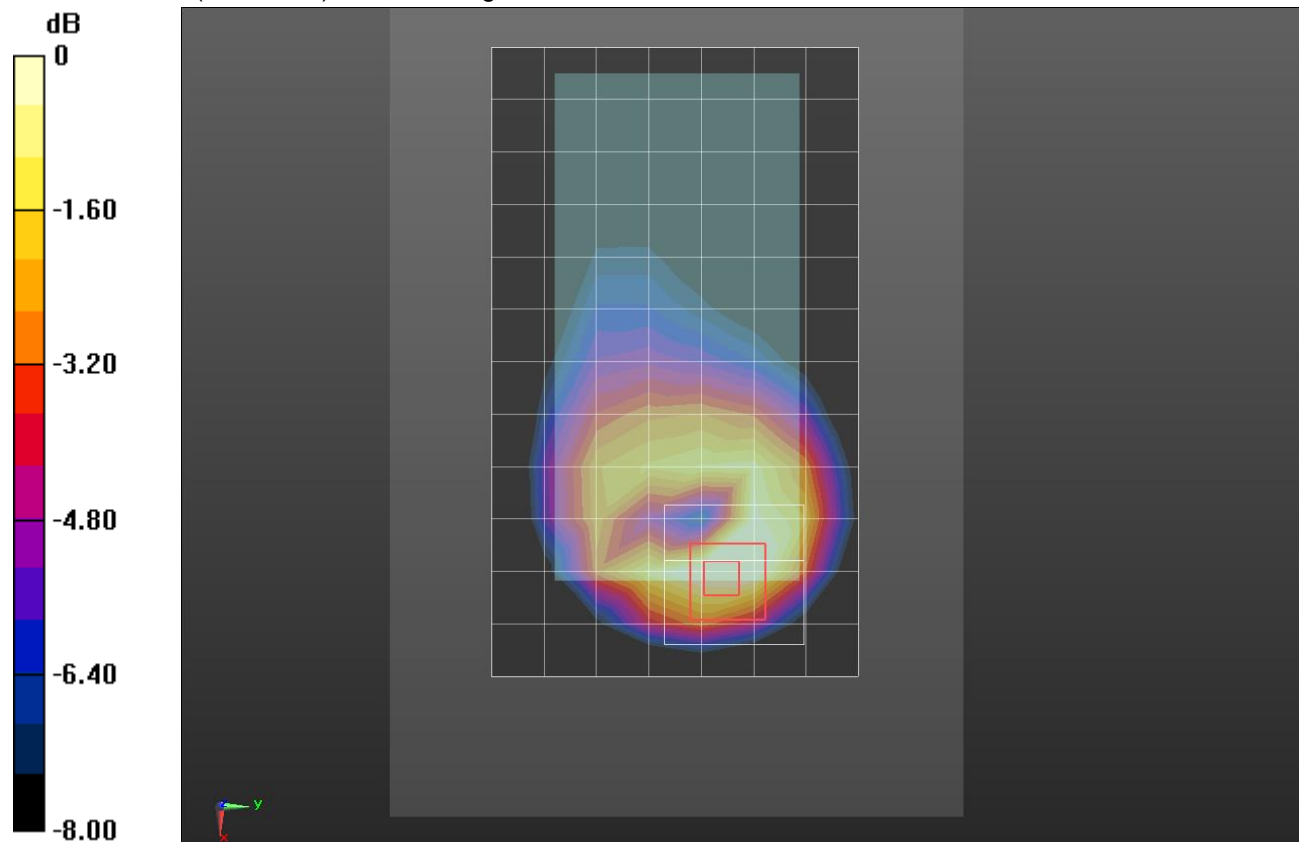
Rear/RMC Rel.99 ch4183/Zoom Scan (6x6x7)/Cube 0: Measurement grid: dx=8mm, dy=8mm, dz=5mm

Reference Value = 29.53 V/m; Power Drift = -0.04 dB

Peak SAR (extrapolated) = 1.10 W/kg

SAR(1 g) = 0.628 W/kg; SAR(10 g) = 0.353 W/kg

Maximum value of SAR (measured) = 0.836 W/kg



0 dB = 0.721 W/kg = -1.42 dBW/kg

LTE Band 5

Frequency: 836.5 MHz; Duty Cycle: 1:1; Room Ambient Temperature: 24.0°C; Liquid Temperature: 23.0°C
 Medium parameters used (interpolated): $f = 836.5$ MHz; $\sigma = 0.885$ S/m; $\epsilon_r = 40.785$; $\rho = 1000$ kg/m³

DASY5 Configuration:

- Area Scan Setting: Find Secondary Maximum Within: 2.0 dB and with a peak SAR value greater than 0.0012W/kg
- Electronics: DAE4 Sn1468; Calibrated: 2015-09-15
- Probe: EX3DV4 - SN7376; ConvF(9.99, 9.99, 9.99); Calibrated: 2015-09-02;
- Sensor-Surface: 2mm (Mechanical Surface Detection)
- Phantom: SAM (20deg probe tilt) with CRP v5.0(Right); Type: QD000P40CD; Serial: TP:1846

RHS/Touch_QPSK RB 1/49 ch20525/Area Scan (8x12x1): Measurement grid: dx=15mm, dy=15mm
 Maximum value of SAR (measured) = 0.168 W/kg

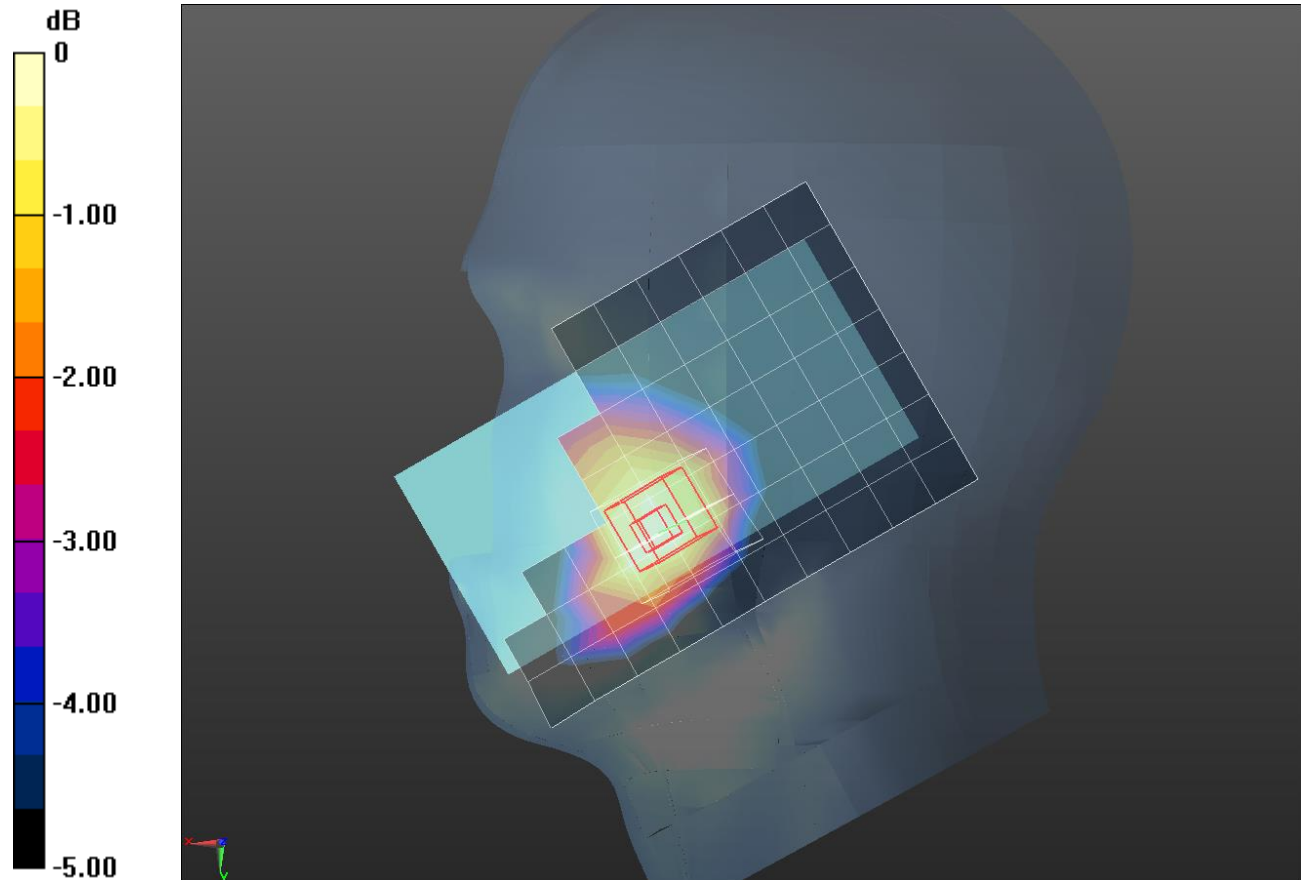
RHS/Touch_QPSK RB 1/49 ch20525/Zoom Scan (5x5x7)/Cube 0: Measurement grid: dx=8mm, dy=8mm, dz=5mm

Reference Value = 14.03 V/m; Power Drift = -0.00 dB

Peak SAR (extrapolated) = 0.185 W/kg

SAR(1 g) = 0.152 W/kg; SAR(10 g) = 0.118 W/kg

Maximum value of SAR (measured) = 0.169 W/kg



0 dB = 0.169 W/kg = -7.72 dBW/kg

LTE Band V_20151116

Frequency: 836.5 MHz; Duty Cycle: 1:1; Room Ambient Temperature: 24.0°C; Liquid Temperature: 23.0°C
 Medium parameters used (interpolated): $f = 836.5$ MHz; $\sigma = 0.983$ S/m; $\epsilon_r = 53.07$; $\rho = 1000$ kg/m³

DASY5 Configuration:

- Area Scan Setting: Find Secondary Maximum Within: 2.0 dB and with a peak SAR value greater than 0.0012W/kg
- Electronics: DAE4 Sn1468; Calibrated: 2015-09-15
- Probe: EX3DV4 - SN7376; ConvF(10.07, 10.07, 10.07); Calibrated: 2015-09-02;
- Sensor-Surface: 2mm (Mechanical Surface Detection)
- Phantom: Triple Flat Phantom 5.1C; Type: QD 000 P51 CA; Serial: 1167

Rear/QPSK RB 1/49 ch20525/Area Scan (8x13x1): Measurement grid: dx=15mm, dy=15mm

Maximum value of SAR (measured) = 0.671 W/kg

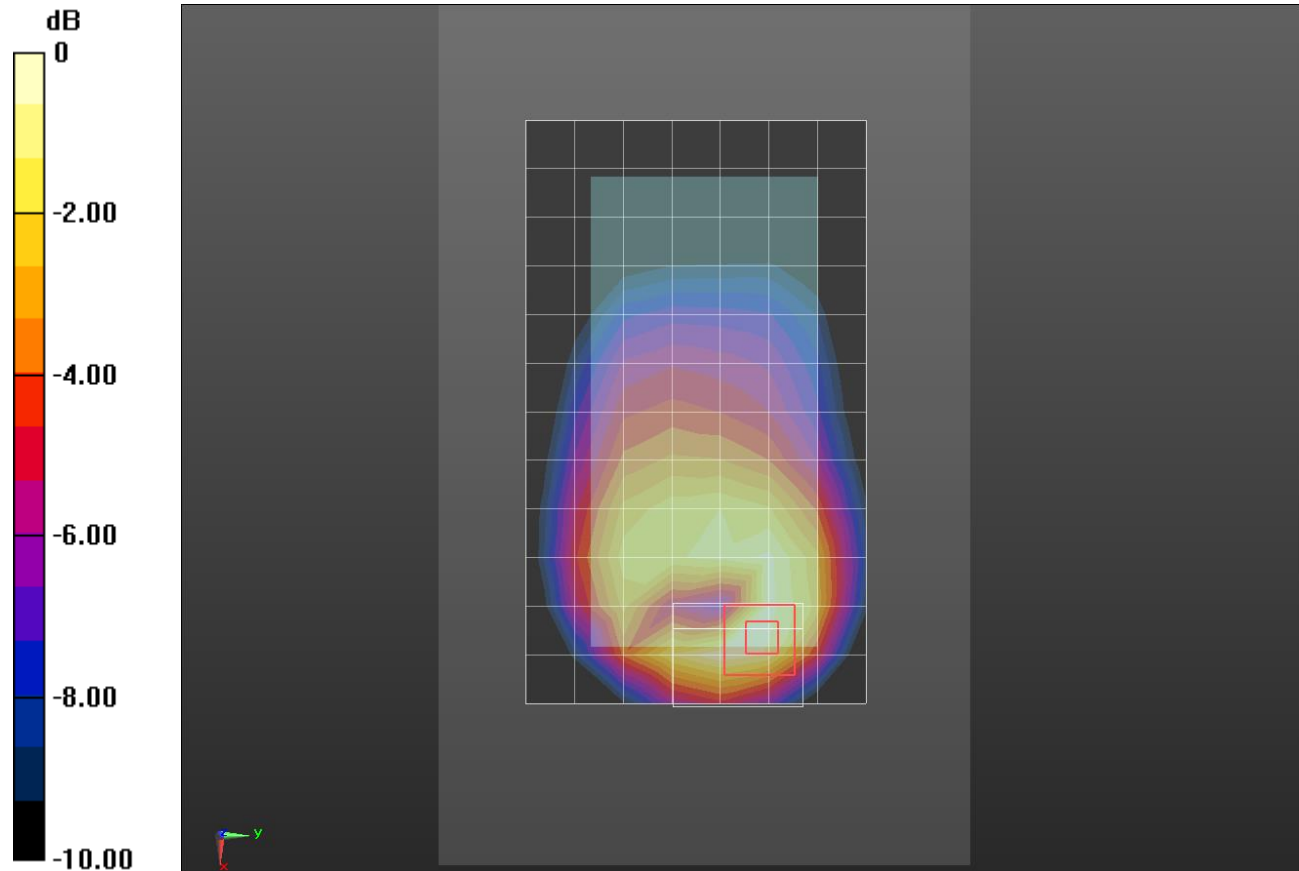
Rear/QPSK RB 1/49 ch20525/Zoom Scan (5x6x7)/Cube 0: Measurement grid: dx=8mm, dy=8mm, dz=5mm

Reference Value = 26.89 V/m; Power Drift = 0.05 dB

Peak SAR (extrapolated) = 0.860 W/kg

SAR(1 g) = 0.522 W/kg; SAR(10 g) = 0.309 W/kg

Maximum value of SAR (measured) = 0.676 W/kg



0 dB = 0.676 W/kg = -1.70 dBW/kg

Wi-Fi 2.4GHz

Frequency: 2462 MHz; Duty Cycle: 1:1; Room Ambient Temperature: 24.0°C; Liquid Temperature: 23.0°C
 Medium parameters used (interpolated): $f = 2462 \text{ MHz}$; $\sigma = 1.875 \text{ S/m}$; $\epsilon_r = 37.73$; $\rho = 1000 \text{ kg/m}^3$

DASY5 Configuration:

- Area Scan Setting: Find Secondary Maximum Within: 2.0 dB and with a peak SAR value greater than 0.0012W/kg
- Electronics: DAE4 Sn1447; Calibrated: 2015-09-23
- Probe: EX3DV4 - SN7314; ConvF(7.18, 7.18, 7.18); Calibrated: 2015-09-25;
- Sensor-Surface: 2mm (Mechanical Surface Detection)
- Phantom: SAM (20deg probe tilt) with CRP v5.0(Right); Type: QD000P40CD; Serial: TP:xxxx

RHS/Touch_802.11b_ch 11/Area Scan (9x15x1): Measurement grid: dx=12mm, dy=12mm

Maximum value of SAR (measured) = 1.08 W/kg

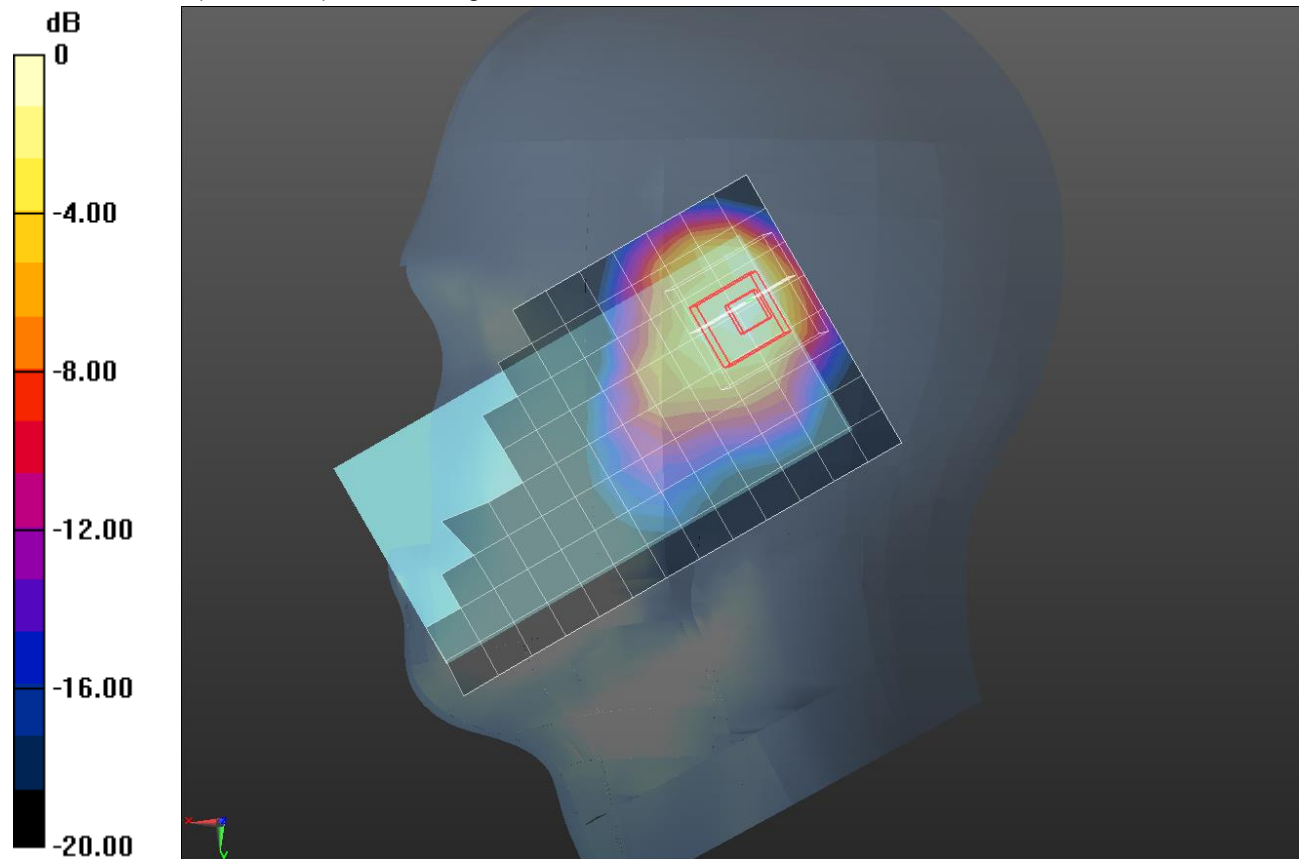
RHS/Touch_802.11b_ch 11/Zoom Scan (8x8x7)/Cube 0: Measurement grid: dx=5mm, dy=5mm, dz=5mm

Reference Value = 22.28 V/m; Power Drift = -0.05 dB

Peak SAR (extrapolated) = 1.55 W/kg

SAR(1 g) = 0.751 W/kg; SAR(10 g) = 0.379 W/kg

Maximum value of SAR (measured) = 1.12 W/kg



0 dB = 1.12 W/kg = 0.49 dBW/kg

Wi-Fi 2.4GHz_1118

Frequency: 2412 MHz; Duty Cycle: 1:1; Room Ambient Temperature: 24.0°C; Liquid Temperature: 23.0°C
 Medium parameters used (interpolated): $f = 2412 \text{ MHz}$; $\sigma = 1.976 \text{ S/m}$; $\epsilon_r = 51.002$; $\rho = 1000 \text{ kg/m}^3$

DASY5 Configuration:

- Area Scan Setting: Find Secondary Maximum Within: 2.0 dB and with a peak SAR value greater than 0.0012W/kg
- Electronics: DAE4 Sn1447; Calibrated: 2015-09-23
- Probe: EX3DV4 - SN7314; ConvF(7.28, 7.28, 7.28); Calibrated: 2015-09-25;
- Sensor-Surface: 2mm (Mechanical Surface Detection)
- Phantom: Triple Flat Phantom 5.1C; Type: QD 000 P51 CA; Serial: xxxx

Front/802.11b_ch 1/Area Scan (15x9x1): Measurement grid: dx=12mm, dy=12mm

Maximum value of SAR (measured) = 0.259 W/kg

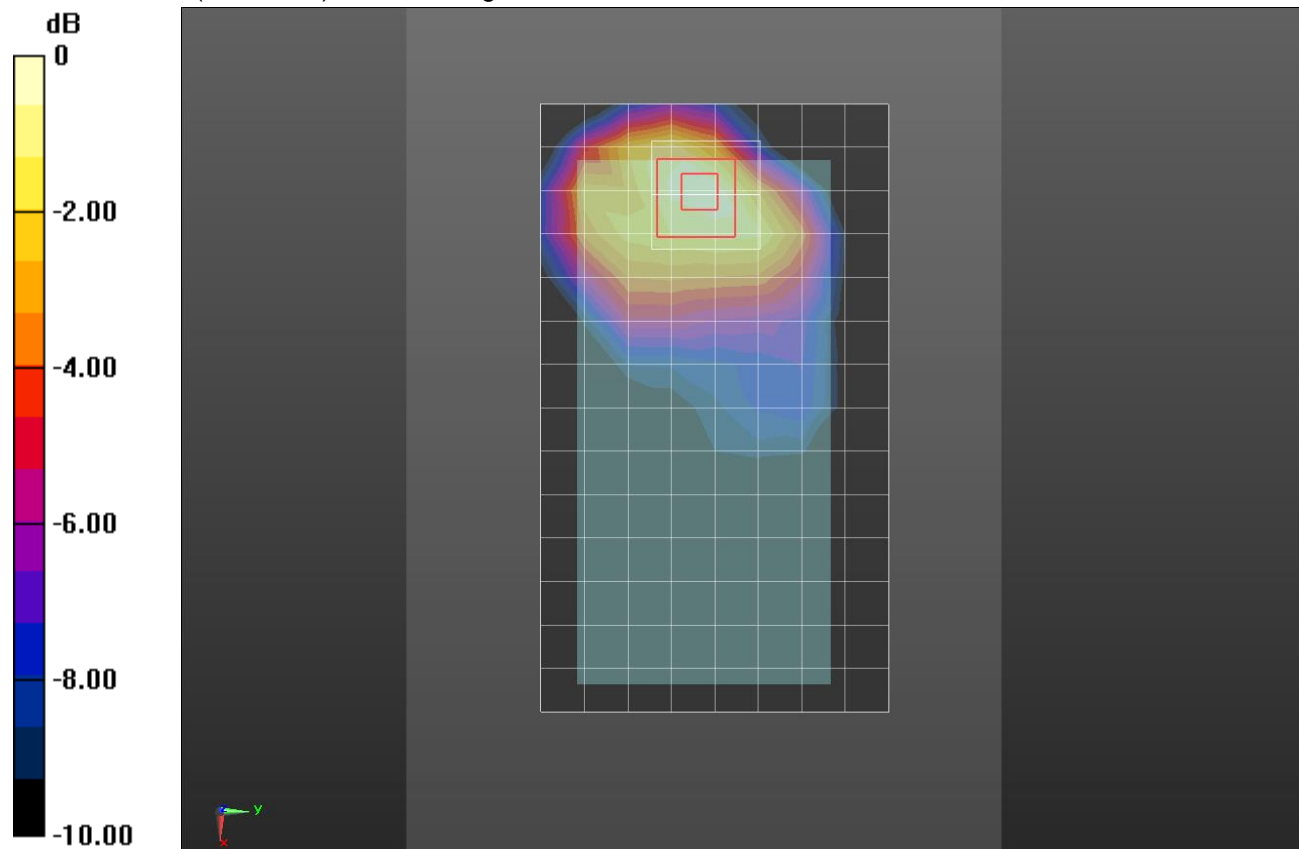
Front/802.11b_ch 1/Zoom Scan (7x7x7)/Cube 0: Measurement grid: dx=5mm, dy=5mm, dz=5mm

Reference Value = 4.037 V/m; Power Drift = 0.01 dB

Peak SAR (extrapolated) = 0.340 W/kg

SAR(1 g) = 0.190 W/kg; SAR(10 g) = 0.106 W/kg

Maximum value of SAR (measured) = 0.264 W/kg



0 dB = 0.264 W/kg = -5.78 dBW/kg

Wi-Fi 5.3GHz_1116

Frequency: 5260 MHz; Duty Cycle: 1:1; Room Ambient Temperature: 24.0°C; Liquid Temperature: 23.0°C
 Medium parameters used: $f = 5260 \text{ MHz}$; $\sigma = 4.531 \text{ S/m}$; $\epsilon_r = 36.158$; $\rho = 1000 \text{ kg/m}^3$

DASY5 Configuration:

- Area Scan Setting: Find Secondary Maximum Within: 2.0 dB and with a peak SAR value greater than 0.0012W/kg
- Electronics: DAE4 Sn1447; Calibrated: 2015-09-23
- Probe: EX3DV4 - SN7314; ConvF(4.91, 4.91, 4.91); Calibrated: 2015-09-25;
- Sensor-Surface: 2mm (Mechanical Surface Detection)
- Phantom: SAM (20deg probe tilt) with CRP v5.0(Middle); Type: QD000P40CD; Serial: TP:xxxx

RHS/Touch_802.11a_ch 52/Area Scan (10x17x1): Measurement grid: dx=10mm, dy=10mm

Maximum value of SAR (measured) = 1.25 W/kg

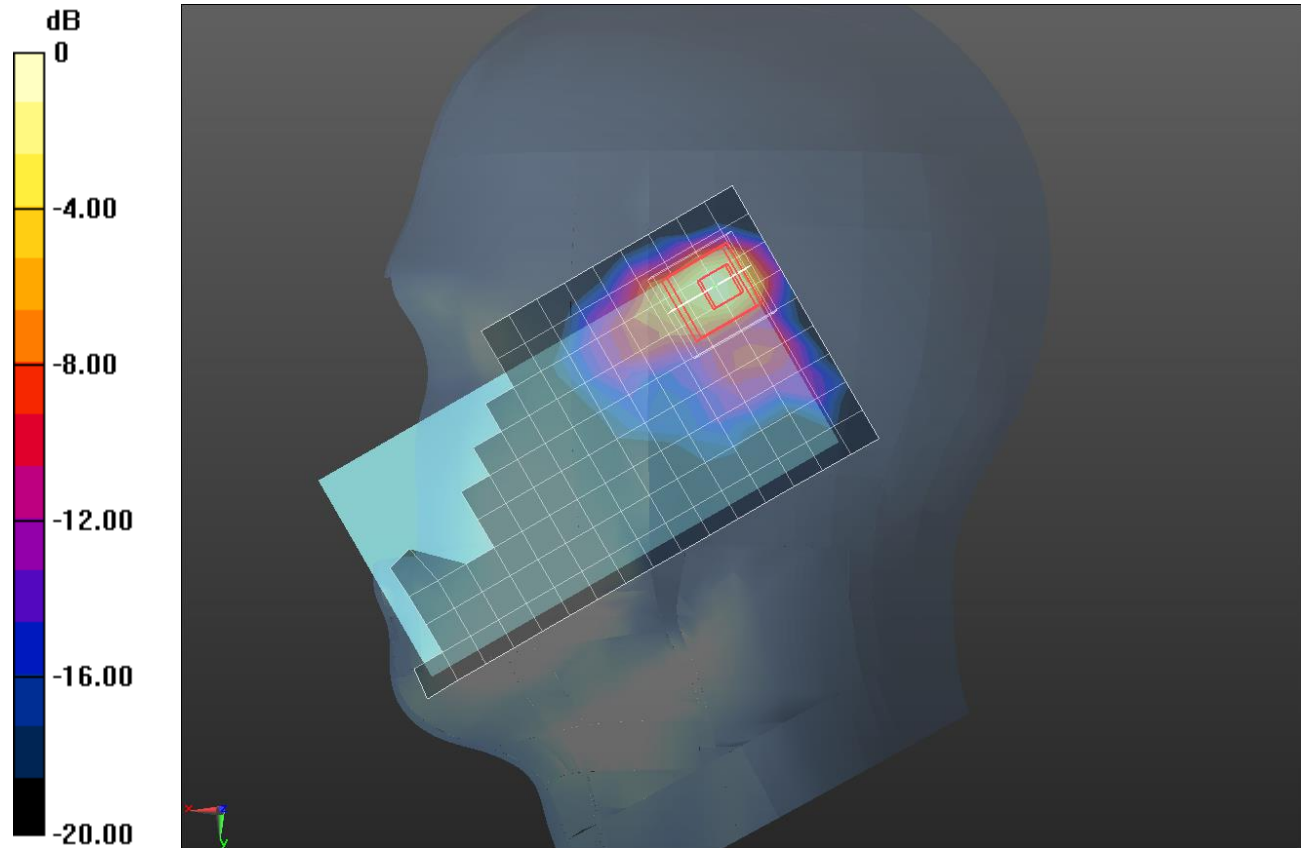
RHS/Touch_802.11a_ch 52/Zoom Scan (8x8x12)/Cube 0: Measurement grid: dx=4mm, dy=4mm, dz=2mm

Reference Value = 13.17 V/m; Power Drift = 0.07 dB

Peak SAR (extrapolated) = 3.45 W/kg

SAR(1 g) = 0.866 W/kg; SAR(10 g) = 0.248 W/kg

Maximum value of SAR (measured) = 1.82 W/kg



0 dB = 1.82 W/kg = 2.60 dBW/kg

Wi-Fi 5.3GHz

Frequency: 5300 MHz; Duty Cycle: 1:1; Room Ambient Temperature: 24.0°C; Liquid Temperature: 23.0°C
 Medium parameters used: $f = 5300 \text{ MHz}$; $\sigma = 5.553 \text{ S/m}$; $\epsilon_r = 48.853$; $\rho = 1000 \text{ kg/m}^3$

DASY5 Configuration:

- Area Scan Setting: Find Secondary Maximum Within: 2.0 dB and with a peak SAR value greater than 0.0012W/kg
- Electronics: DAE4 Sn1447; Calibrated: 2015-09-23
- Probe: EX3DV4 - SN7314; ConvF(4.26, 4.26, 4.26); Calibrated: 2015-09-25;
- Sensor-Surface: 2mm (Mechanical Surface Detection)
- Phantom: ELI v6.0; Type: QDOVA003AA; Serial: TP:2013

Rear/802.11a_ch 60 2/Area Scan (10x18x1): Measurement grid: dx=10mm, dy=10mm

Maximum value of SAR (measured) = 0.199 W/kg

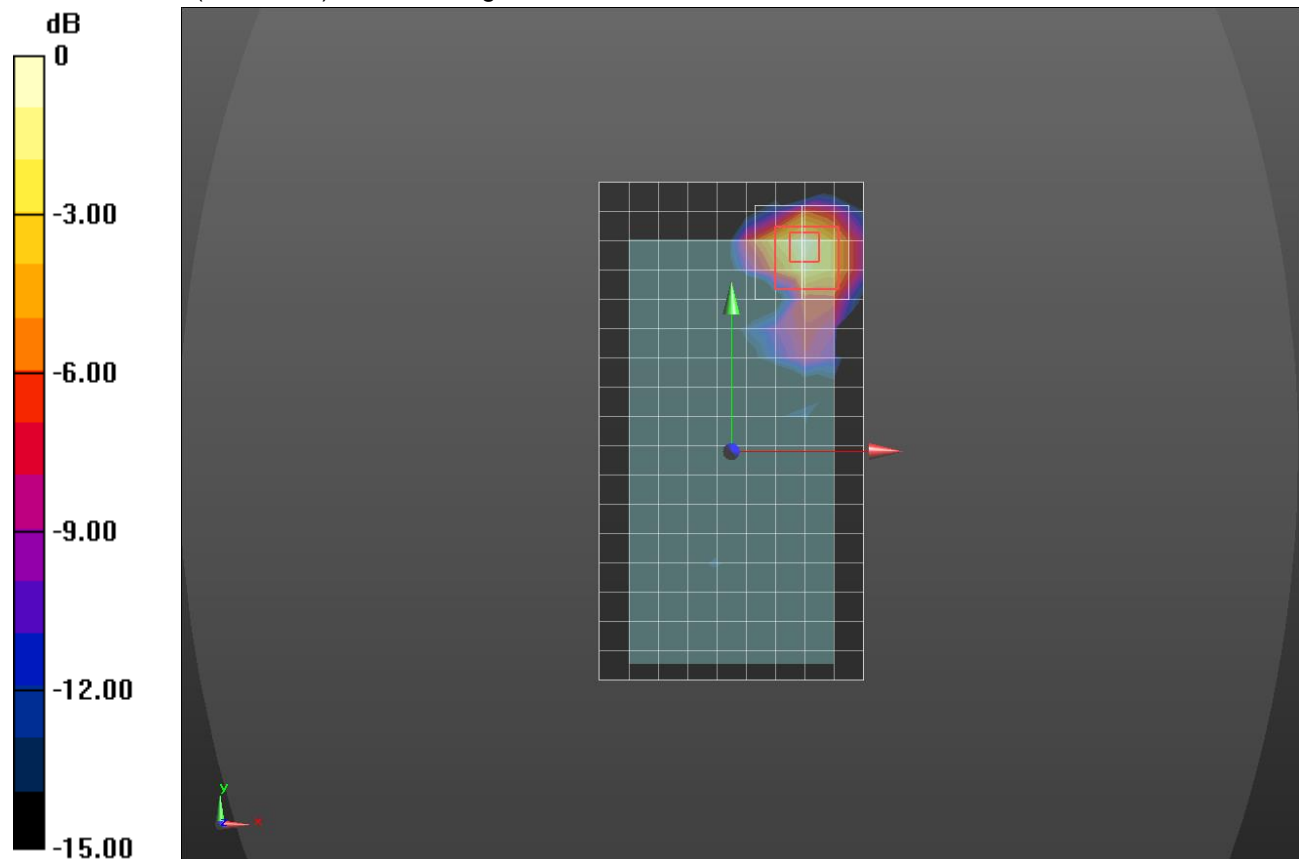
Rear/802.11a_ch 60 2/Zoom Scan (9x9x12)/Cube 0: Measurement grid: dx=4mm, dy=4mm, dz=2mm

Reference Value = 6.361 V/m; Power Drift = -0.08 dB

Peak SAR (extrapolated) = 0.520 W/kg

SAR(1 g) = 0.079 W/kg; SAR(10 g) = 0.026 W/kg

Maximum value of SAR (measured) = 0.196 W/kg



0 dB = 0.196 W/kg = -7.08 dBW/kg

Wi-Fi 5.6GHz_1116

Frequency: 5580 MHz; Duty Cycle: 1:1; Room Ambient Temperature: 24.0°C; Liquid Temperature: 23.0°C
 Medium parameters used: $f = 5580 \text{ MHz}$; $\sigma = 4.839 \text{ S/m}$; $\epsilon_r = 35.726$; $\rho = 1000 \text{ kg/m}^3$

DASY5 Configuration:

- Area Scan Setting: Find Secondary Maximum Within: 2.0 dB and with a peak SAR value greater than 0.0012W/kg
- Electronics: DAE4 Sn1447; Calibrated: 2015-09-23
- Probe: EX3DV4 - SN7314; ConvF(4.5, 4.5, 4.5); Calibrated: 2015-09-25;
- Sensor-Surface: 2mm (Mechanical Surface Detection)
- Phantom: SAM (20deg probe tilt) with CRP v5.0(Middle); Type: QD000P40CD; Serial: TP:xxxx

RHS/Tilt_802.11a_ch 116/Area Scan (10x17x1): Measurement grid: dx=10mm, dy=10mm

Maximum value of SAR (measured) = 1.16 W/kg

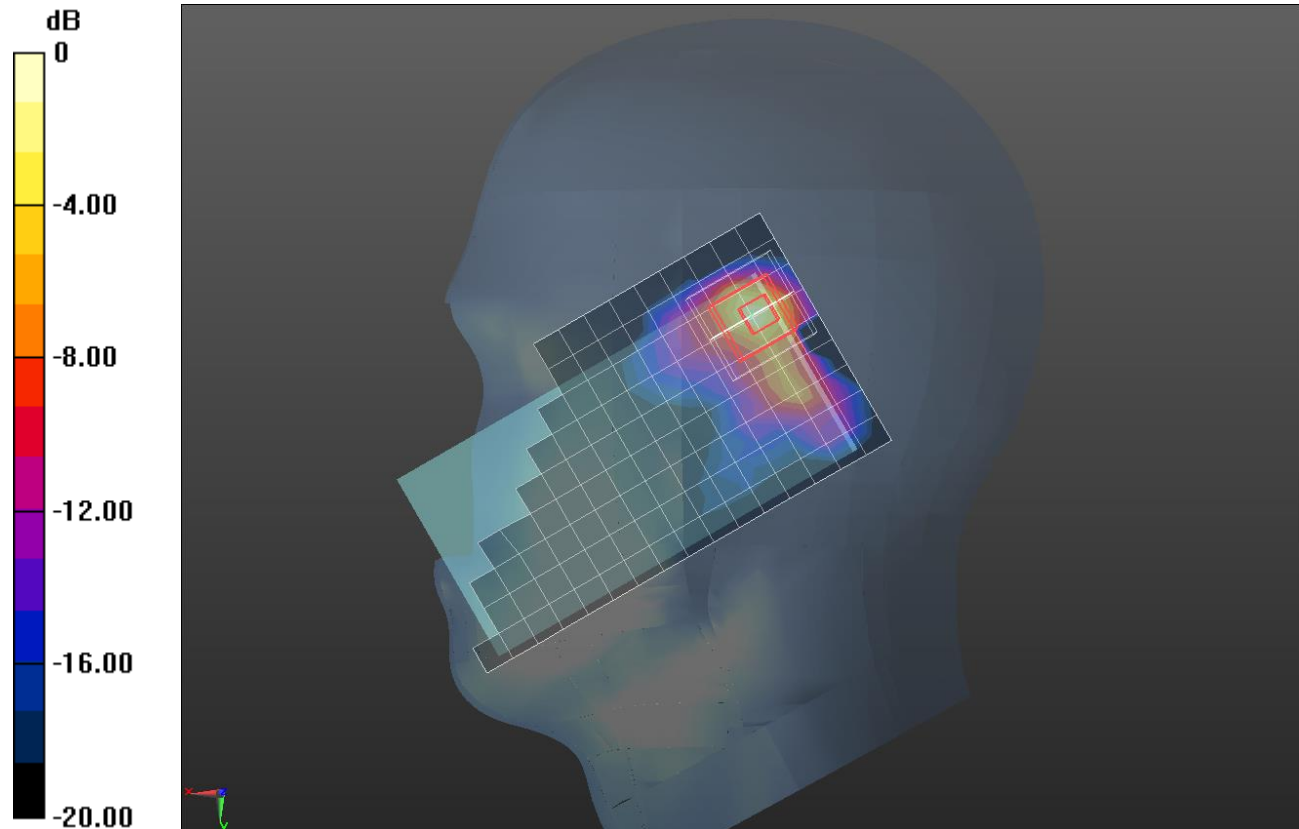
RHS/Tilt_802.11a_ch 116/Zoom Scan (9x9x12)/Cube 0: Measurement grid: dx=4mm, dy=4mm, dz=2mm

Reference Value = 16.07 V/m; Power Drift = 0.12 dB

Peak SAR (extrapolated) = 2.88 W/kg

SAR(1 g) = 0.657 W/kg; SAR(10 g) = 0.172 W/kg

Maximum value of SAR (measured) = 1.37 W/kg



0 dB = 1.37 W/kg = 1.37 dBW/kg

Wi-Fi 5.6GHz

Frequency: 5580 MHz; Duty Cycle: 1:1; Room Ambient Temperature: 24.0°C; Liquid Temperature: 23.0°C
 Medium parameters used: $f = 5580 \text{ MHz}$; $\sigma = 5.892 \text{ S/m}$; $\epsilon_r = 48.456$; $\rho = 1000 \text{ kg/m}^3$

DASY5 Configuration:

- Area Scan Setting: Find Secondary Maximum Within: 2.0 dB and with a peak SAR value greater than 0.0012W/kg
- Electronics: DAE4 Sn1447; Calibrated: 2015-09-23
- Probe: EX3DV4 - SN7314; ConvF(3.6, 3.6, 3.6); Calibrated: 2015-09-25;
- Sensor-Surface: 2mm (Mechanical Surface Detection)
- Phantom: ELI v6.0; Type: QDOVA003AA; Serial: TP:2013

Rear/802.11a_ch 116/Area Scan (10x18x1): Measurement grid: dx=10mm, dy=10mm

Maximum value of SAR (measured) = 0.242 W/kg

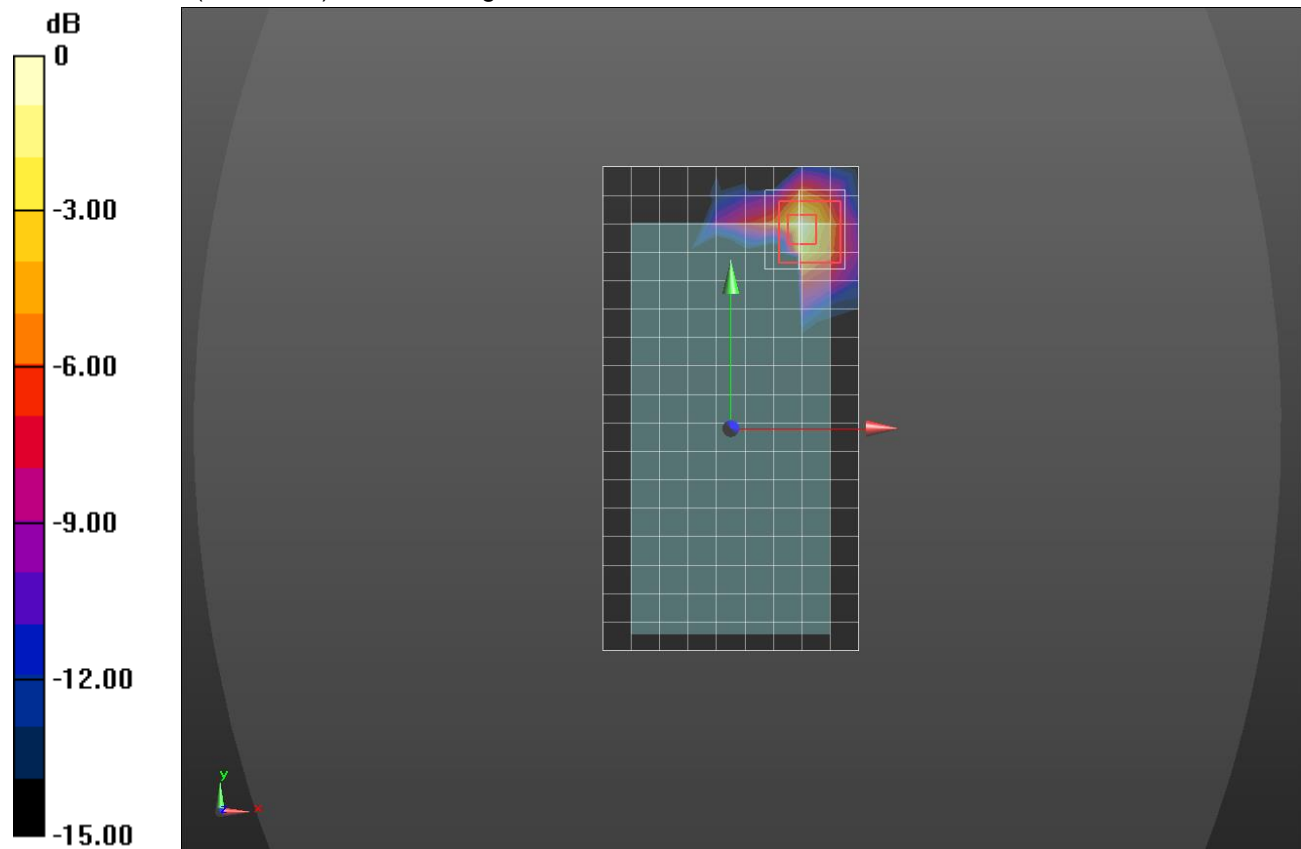
Rear/802.11a_ch 116/Zoom Scan (8x8x12)/Cube 0: Measurement grid: dx=4mm, dy=4mm, dz=2mm

Reference Value = 7.229 V/m; Power Drift = -0.07 dB

Peak SAR (extrapolated) = 0.535 W/kg

SAR(1 g) = 0.095 W/kg; SAR(10 g) = 0.028 W/kg

Maximum value of SAR (measured) = 0.231 W/kg



0 dB = 0.231 W/kg = -6.36 dBW/kg

Wi-Fi 5.8GHz_1116

Frequency: 5745 MHz; Duty Cycle: 1:1; Room Ambient Temperature: 24.0°C; Liquid Temperature: 23.0°C
 Medium parameters used: $f = 5745 \text{ MHz}$; $\sigma = 5.01 \text{ S/m}$; $\epsilon_r = 35.523$; $\rho = 1000 \text{ kg/m}^3$

DASY5 Configuration:

- Area Scan Setting: Find Secondary Maximum Within: 2.0 dB and with a peak SAR value greater than 0.0012W/kg
- Electronics: DAE4 Sn1447; Calibrated: 2015-09-23
- Probe: EX3DV4 - SN7314; ConvF(4.47, 4.47, 4.47); Calibrated: 2015-09-25;
- Sensor-Surface: 2mm (Mechanical Surface Detection)
- Phantom: SAM (20deg probe tilt) with CRP v5.0(Middle); Type: QD000P40CD; Serial: TP:xxxx

RHS/Tilt_802.11a_ch 149/Area Scan (10x17x1): Measurement grid: dx=10mm, dy=10mm

Maximum value of SAR (measured) = 0.922 W/kg

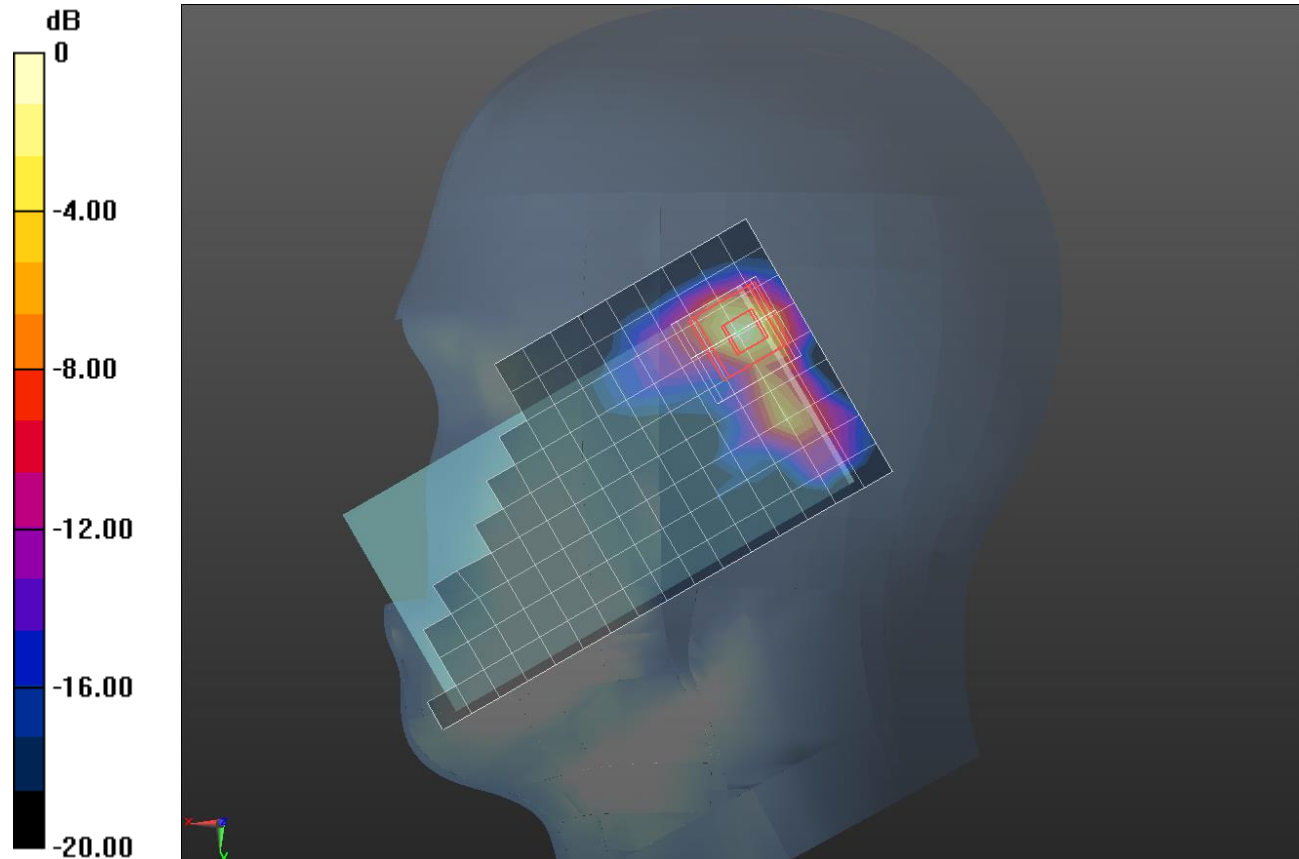
RHS/Tilt_802.11a_ch 149/Zoom Scan (8x8x12)/Cube 0: Measurement grid: dx=4mm, dy=4mm, dz=2mm

Reference Value = 13.87 V/m; Power Drift = 0.10 dB

Peak SAR (extrapolated) = 2.27 W/kg

SAR(1 g) = 0.496 W/kg; SAR(10 g) = 0.121 W/kg

Maximum value of SAR (measured) = 1.11 W/kg



0 dB = 1.11 W/kg = 0.45 dBW/kg

Wi-Fi 5.8GHz

Frequency: 5745 MHz; Duty Cycle: 1:1; Room Ambient Temperature: 24.0°C; Liquid Temperature: 23.0°C
 Medium parameters used: $f = 5745 \text{ MHz}$; $\sigma = 6.158 \text{ S/m}$; $\epsilon_r = 48.078$; $\rho = 1000 \text{ kg/m}^3$

DASY5 Configuration:

- Area Scan Setting: Find Secondary Maximum Within: 2.0 dB and with a peak SAR value greater than 0.0012W/kg
- Electronics: DAE4 Sn1447; Calibrated: 2015-09-23
- Probe: EX3DV4 - SN7314; ConvF(3.91, 3.91, 3.91); Calibrated: 2015-09-25;
- Sensor-Surface: 2mm (Mechanical Surface Detection)
- Phantom: ELI v6.0; Type: QDOVA003AA; Serial: TP:2013

Front/802.11a_ch 149/Area Scan (10x17x1): Measurement grid: dx=10mm, dy=10mm

Maximum value of SAR (measured) = 0.180 W/kg

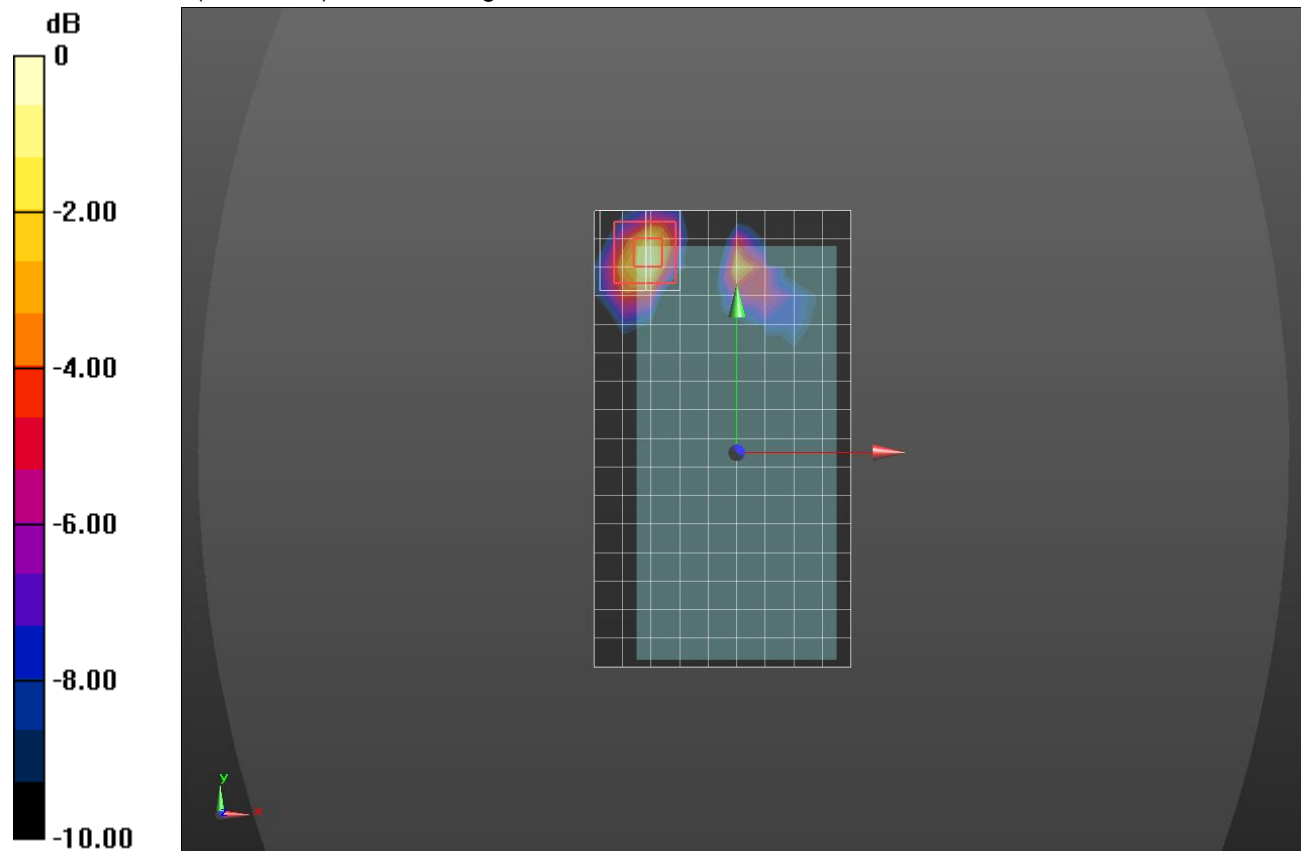
Front/802.11a_ch 149/Zoom Scan (8x8x12)/Cube 0: Measurement grid: dx=4mm, dy=4mm, dz=2mm

Reference Value = 6.014 V/m; Power Drift = 0.18 dB

Peak SAR (extrapolated) = 0.479 W/kg

SAR(1 g) = 0.076 W/kg; SAR(10 g) = 0.025 W/kg

Maximum value of SAR (measured) = 0.208 W/kg



0 dB = 0.208 W/kg = -6.82 dBW/kg