

## 20190124\_SystemPerformanceCheck-D2600V2 SN 1097

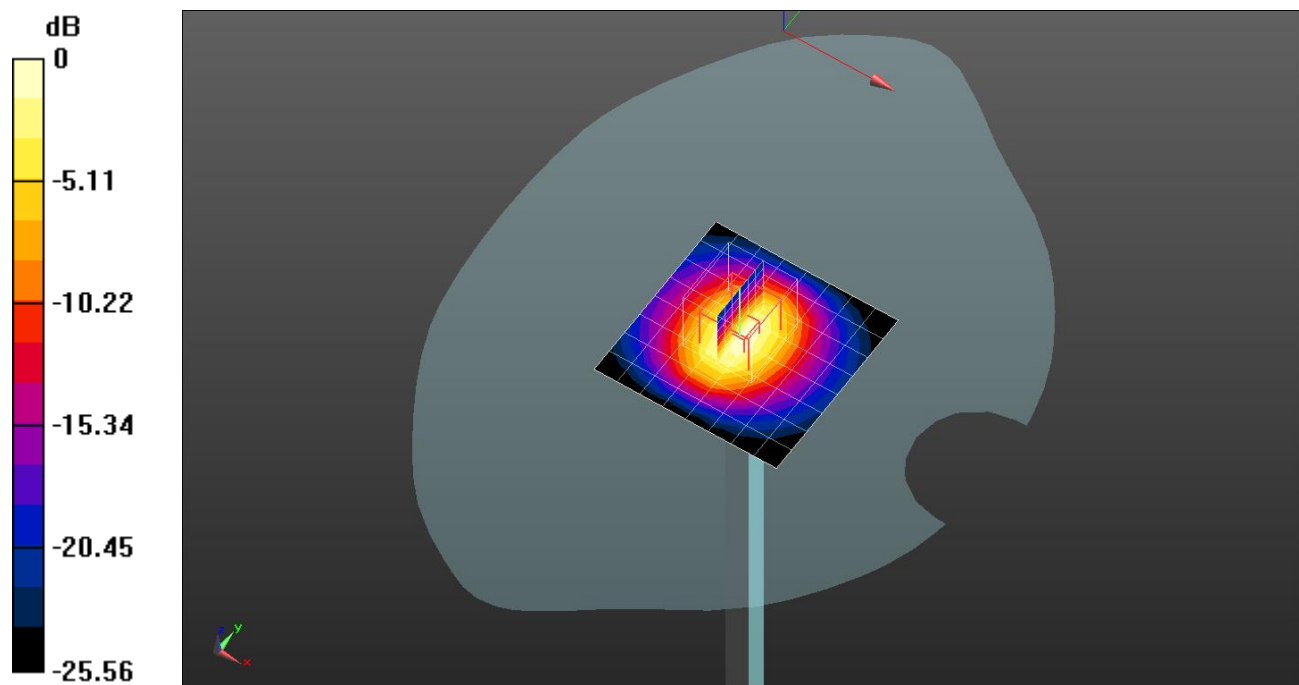
Frequency: 2600 MHz; Duty Cycle: 1:1; Room Ambient Temperature: 23.0°C; Liquid Temperature: 22.0°C  
 Medium parameters used:  $f = 2600$  MHz;  $\sigma = 1.968$  S/m;  $\epsilon_r = 38.926$ ;  $\rho = 1000$  kg/m<sup>3</sup>

DASY5 Configuration:

- Area Scan Setting: Find Secondary Maximum Within: 2.0 dB and with a peak SAR value greater than 0.0012W/kg
- Averaged Fast SAR: Polynomial fit
- Electronics: DAE4 Sn1494; Calibrated: 2018-07-23
- Probe: EX3DV4 - SN7376; ConvF(7.3, 7.3, 7.3); Calibrated: 2018-09-26;
- Sensor-Surface: 2.5mm (Mechanical Surface Detection)
- Phantom: SAM (20deg probe tilt) with CRP v5.0\_Front; Type: QD000P40CD; Serial: TP:1877

**Head/Pin=100 mW/Area Scan (9x9x1):** Measurement grid: dx=10mm, dy=10mm  
 Maximum value of SAR (measured) = 7.61 W/kg

**Head/Pin=100 mW/Zoom Scan (7x7x7)/Cube 0:** Measurement grid: dx=5mm, dy=5mm, dz=5mm  
 Reference Value = 66.45 V/m; Power Drift = 0.01 dB  
 Peak SAR (extrapolated) = 13.7 W/kg  
**SAR(1 g) = 5.92 W/kg; SAR(10 g) = 2.58 W/kg**  
 Maximum value of SAR (measured) = 8.75 W/kg

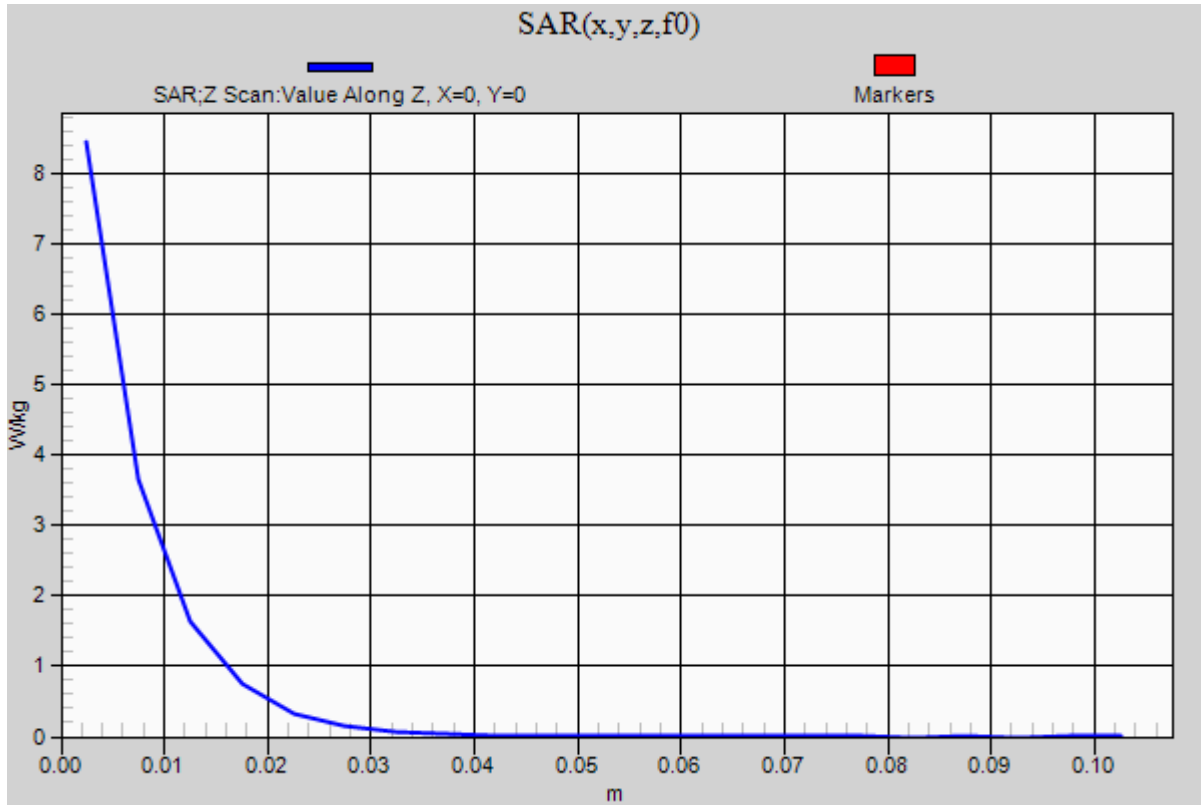


0 dB = 8.75 W/kg = 9.42 dBW/kg

### 20190124\_SystemPerformanceCheck-D2600V2 SN 1097

Frequency: 2600 MHz; Duty Cycle: 1:1

**Head/Pin=100 mW/Z Scan (1x1x21):** Measurement grid: dx=20mm, dy=20mm, dz=5mm  
Maximum value of SAR (measured) = 8.45 W/kg



## 20190208\_SystemPerformanceCheck-D2450V2 SN 960

Frequency: 2450 MHz; Duty Cycle: 1:1; Room Ambient Temperature: 23.0°C; Liquid Temperature: 22.0°C

Medium parameters used:  $f = 2450$  MHz;  $\sigma = 1.964$  S/m;  $\epsilon_r = 52.625$ ;  $\rho = 1000$  kg/m<sup>3</sup>

DASY5 Configuration:

- Area Scan Setting: Find Secondary Maximum Within: 2.0 dB and with a peak SAR value greater than 0.0012W/kg
- Averaged Fast SAR: Polynomial fit
- Electronics: DAE4 Sn1494; Calibrated: 2018-07-23
- Probe: EX3DV4 - SN7376; ConvF(7.5, 7.5, 7.5); Calibrated: 2018-09-26;
- Sensor-Surface: 2.5mm (Mechanical Surface Detection)
- Phantom: ELI V6.0 (20deg); Type: QD OVA 003 AA; Serial: 2013

**Body/Pin=100 mW/Area Scan (8x8x1):** Measurement grid: dx=12mm, dy=12mm

Maximum value of SAR (measured) = 6.02 W/kg

**Body/Pin=100 mW/Zoom Scan (7x7x7) (7x7x7)/Cube 0:** Measurement grid: dx=5mm, dy=5mm,

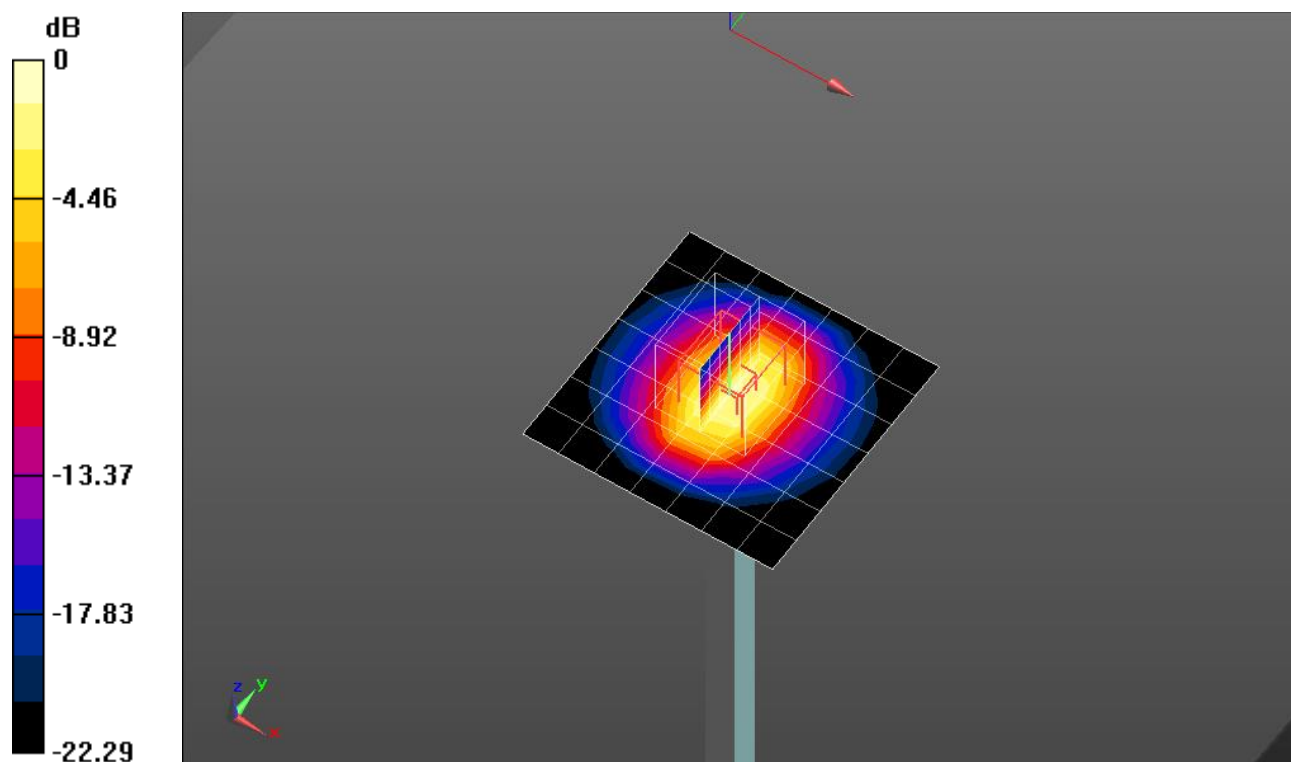
dz=5mm

Reference Value = 62.69 V/m; Power Drift = -0.03 dB

Peak SAR (extrapolated) = 10.9 W/kg

**SAR(1 g) = 5.3 W/kg; SAR(10 g) = 2.44 W/kg**

Maximum value of SAR (measured) = 7.56 W/kg

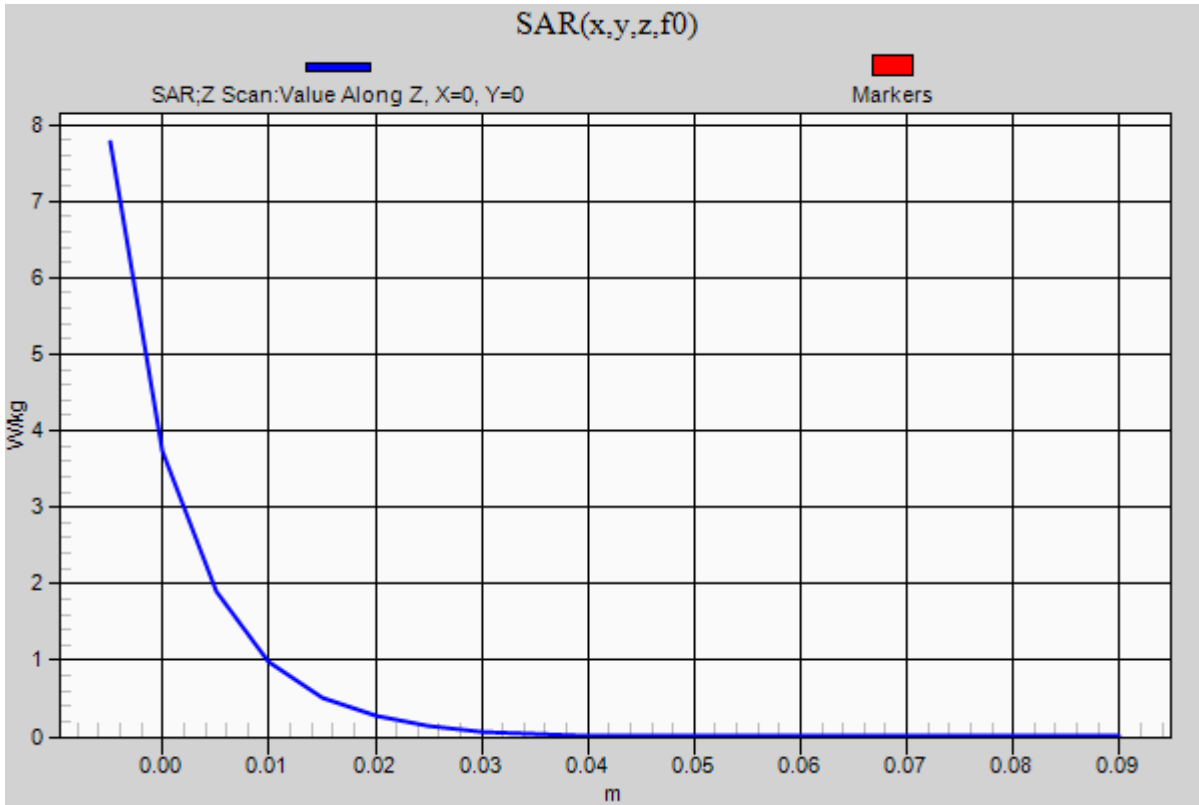


0 dB = 7.56 W/kg = 8.79 dBW/kg

### 20190208\_SystemPerformanceCheck-D2450V2 SN 960

Frequency: 2450 MHz; Duty Cycle: 1:1

**Body/Pin=100 mW/Z Scan (1x1x21):** Measurement grid: dx=20mm, dy=20mm, dz=5mm  
Maximum value of SAR (measured) = 7.77 W/kg



**20190110\_SystemPerformanceCheck-D835V2 SN 4d194**

Frequency: 835 MHz; Duty Cycle: 1:1; Room Ambient Temperature: 23.0°C; Liquid Temperature: 22.0°C  
Medium parameters used:  $f = 835$  MHz;  $\sigma = 1.007$  S/m;  $\epsilon_r = 55.771$ ;  $\rho = 1000$  kg/m<sup>3</sup>

DASY5 Configuration:

- Area Scan Setting: Find Secondary Maximum Within: 2.0 dB and with a peak SAR value greater than 0.0012W/kg
- Averaged Fast SAR: Polynomial fit
- Electronics: DAE4 Sn1447; Calibrated: 2018-03-15
- Probe: EX3DV4 - SN7313; ConvF(9.59, 9.59, 9.59); Calibrated: 2018-02-20;
- Sensor-Surface: 2.5mm (Mechanical Surface Detection)
- Phantom: ELI v6.0; Type: QDOVA003AA; Serial: TP:2005

**Body/Pin=100 mW/Area Scan (5x13x1):** Measurement grid: dx=15mm, dy=15mm

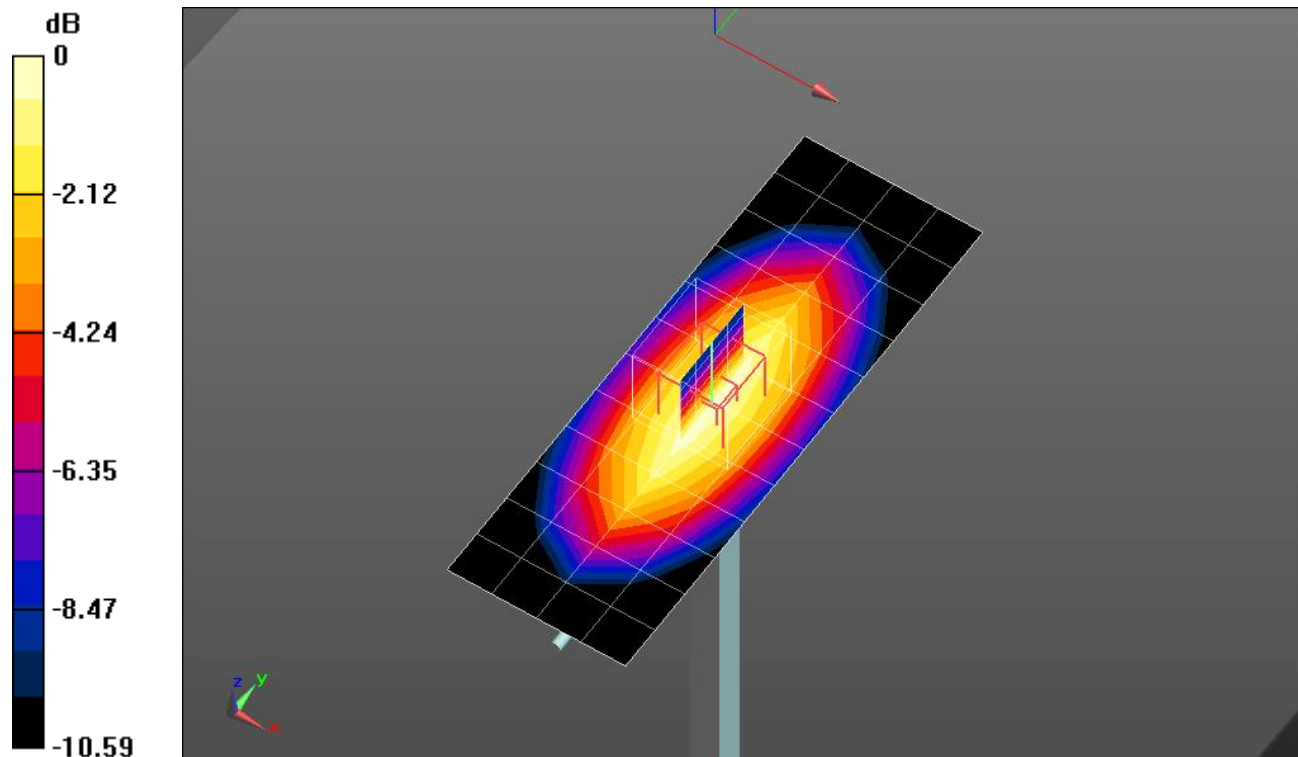
Maximum value of SAR (measured) = 1.27 W/kg

**Body/Pin=100 mW/Zoom Scan (5x5x7)/Cube 0:** Measurement grid: dx=8mm, dy=8mm, dz=5mm

Reference Value = 35.78 V/m; Power Drift = -0.01 dB

Peak SAR (extrapolated) = 1.56 W/kg

**SAR(1 g) = 1.04 W/kg; SAR(10 g) = 0.679 W/kg**

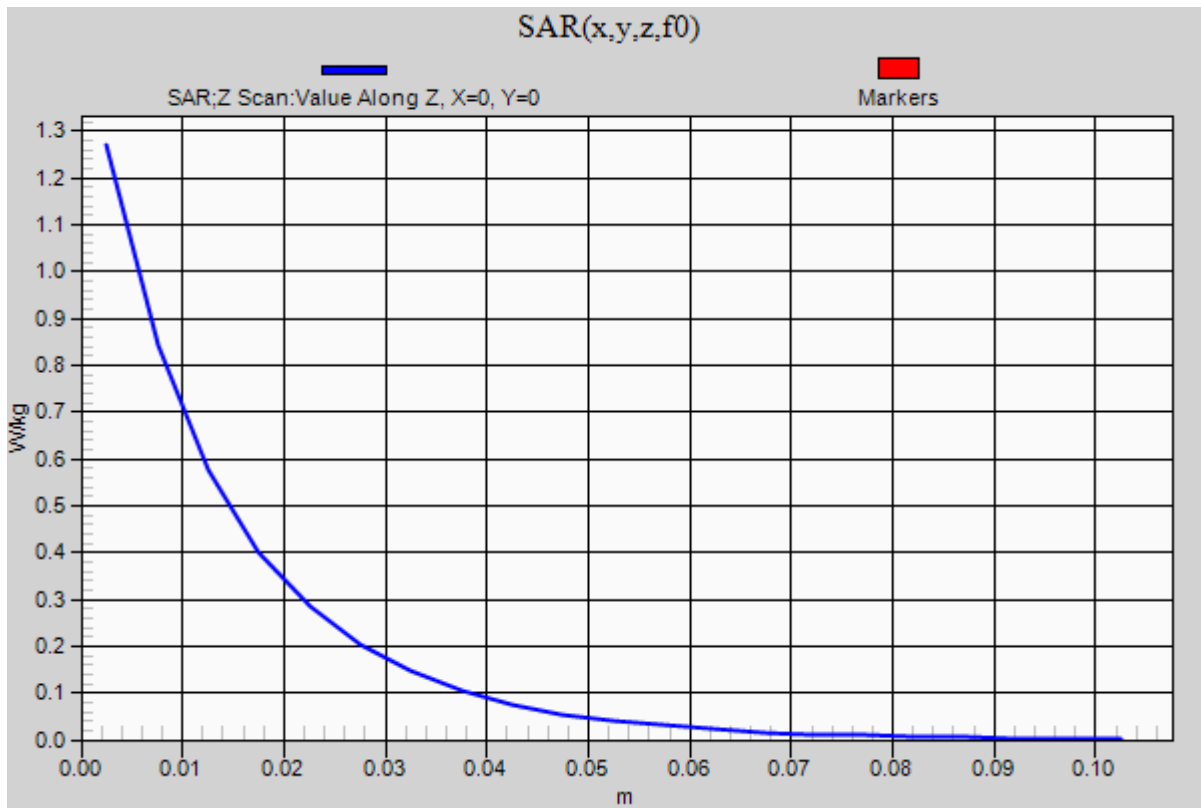


0 dB = 1.27 W/kg = 1.04 dBW/kg

### 20190110\_SystemPerformanceCheck-D835V2 SN 4d194

Frequency: 835 MHz; Duty Cycle: 1:1

**Body/Pin=100 mW/Z Scan (1x1x21):** Measurement grid: dx=20mm, dy=20mm, dz=5mm  
Maximum value of SAR (measured) = 1.27 W/kg



**20190114\_SystemPerformanceCheck-D835V2 SN 4d194**

Frequency: 835 MHz; Duty Cycle: 1:1; Room Ambient Temperature: 23.0°C; Liquid Temperature: 22.0°C  
Medium parameters used:  $f = 835$  MHz;  $\sigma = 0.97$  S/m;  $\epsilon_r = 54.028$ ;  $\rho = 1000$  kg/m<sup>3</sup>

DASY5 Configuration:

- Area Scan Setting: Find Secondary Maximum Within: 2.0 dB and with a peak SAR value greater than 0.0012W/kg
- Averaged Fast SAR: Polynomial fit
- Electronics: DAE4 Sn1447; Calibrated: 2018-03-15
- Probe: EX3DV4 - SN7313; ConvF(9.59, 9.59, 9.59); Calibrated: 2018-02-20;
- Sensor-Surface: 2.5mm (Mechanical Surface Detection)
- Phantom: ELI v6.0; Type: QDOVA003AA; Serial: TP:2005

**Body/Pin=100 mW/Area Scan (5x13x1):** Measurement grid: dx=15mm, dy=15mm

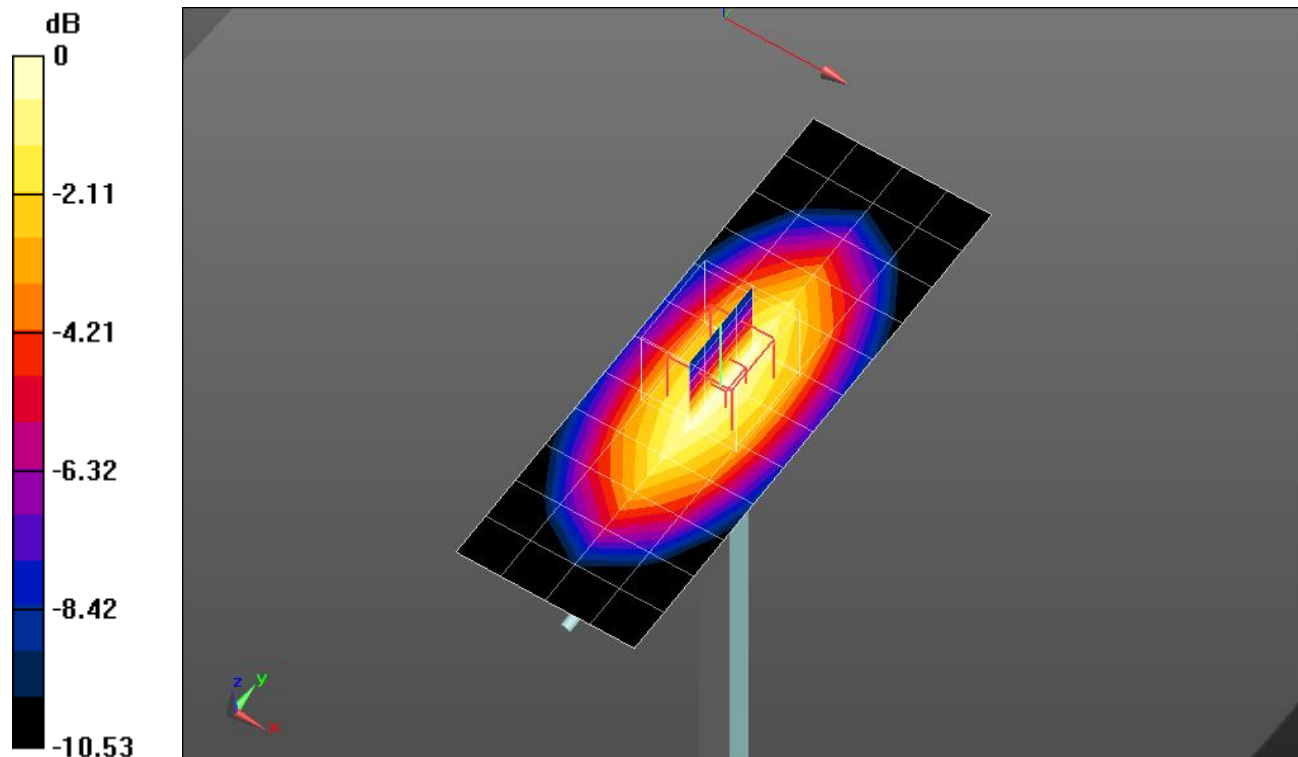
Maximum value of SAR (measured) = 1.27 W/kg

**Body/Pin=100 mW/Zoom Scan (5x5x7)/Cube 0:** Measurement grid: dx=8mm, dy=8mm, dz=5mm

Reference Value = 36.51 V/m; Power Drift = -0.02 dB

Peak SAR (extrapolated) = 1.56 W/kg

**SAR(1 g) = 1.04 W/kg; SAR(10 g) = 0.681 W/kg**

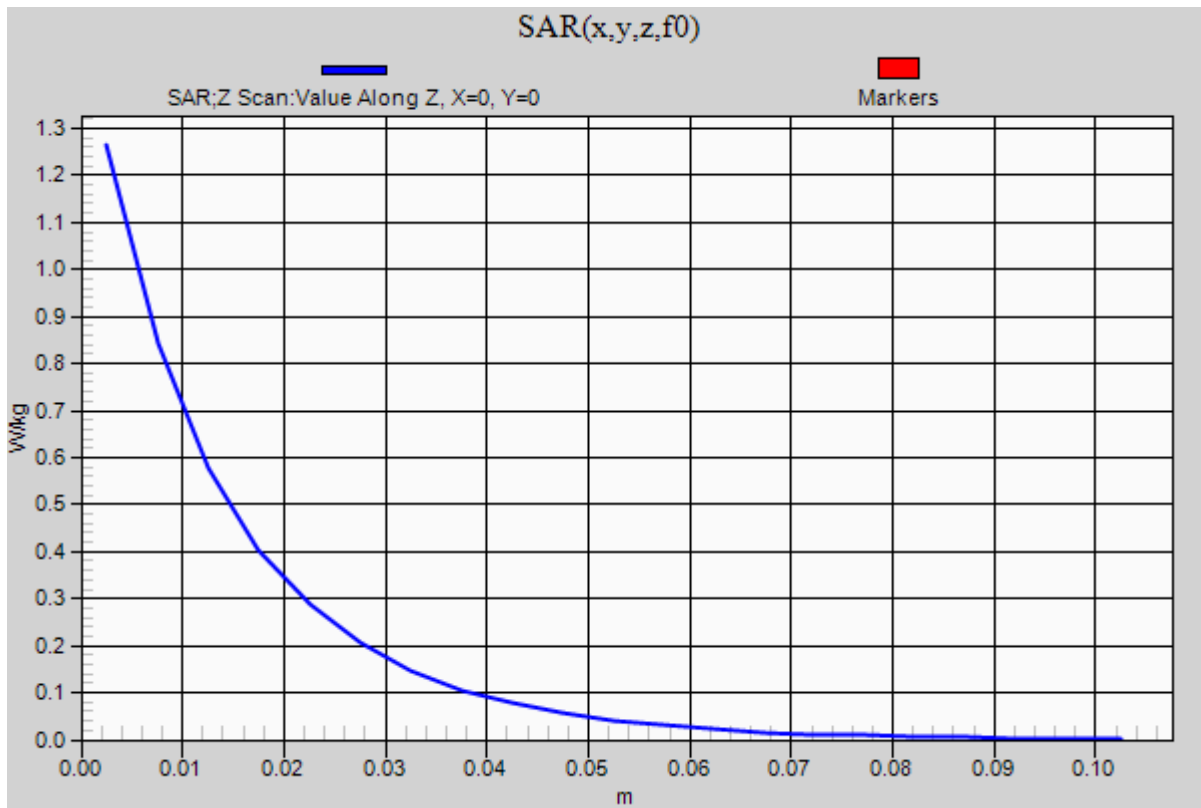


0 dB = 1.27 W/kg = 1.04 dBW/kg

### 20190114\_SystemPerformanceCheck-D835V2 SN 4d194

Frequency: 835 MHz; Duty Cycle: 1:1

**Body/Pin=100 mW/Z Scan (1x1x21):** Measurement grid: dx=20mm, dy=20mm, dz=5mm  
Maximum value of SAR (measured) = 1.26 W/kg



**20190121\_SystemPerformanceCheck-D1750V2 SN 1125**

Frequency: 1750 MHz; Duty Cycle: 1:1; Room Ambient Temperature: 23.0°C; Liquid Temperature: 22.0°C

Medium parameters used:  $f = 1750$  MHz;  $\sigma = 1.442$  S/m;  $\epsilon_r = 55.141$ ;  $\rho = 1000$  kg/m<sup>3</sup>

DASY5 Configuration:

- Area Scan Setting: Find Secondary Maximum Within: 2.0 dB and with a peak SAR value greater than 0.0012W/kg
- Averaged Fast SAR: Polynomial fit
- Electronics: DAE4 Sn1468; Calibrated: 2018-08-22
- Probe: EX3DV4 - SN7314; ConvF(8.03, 8.03, 8.03); Calibrated: 2018-08-30;
- Sensor-Surface: 2.5mm (Mechanical Surface Detection)
- Phantom: ELI v6.0; Type: QDOVA003AA; Serial: TP:2005

**Body/Pin=100 mW/Area Scan (7x7x1):** Measurement grid: dx=15mm, dy=15mm

Maximum value of SAR (measured) = 4.82 W/kg

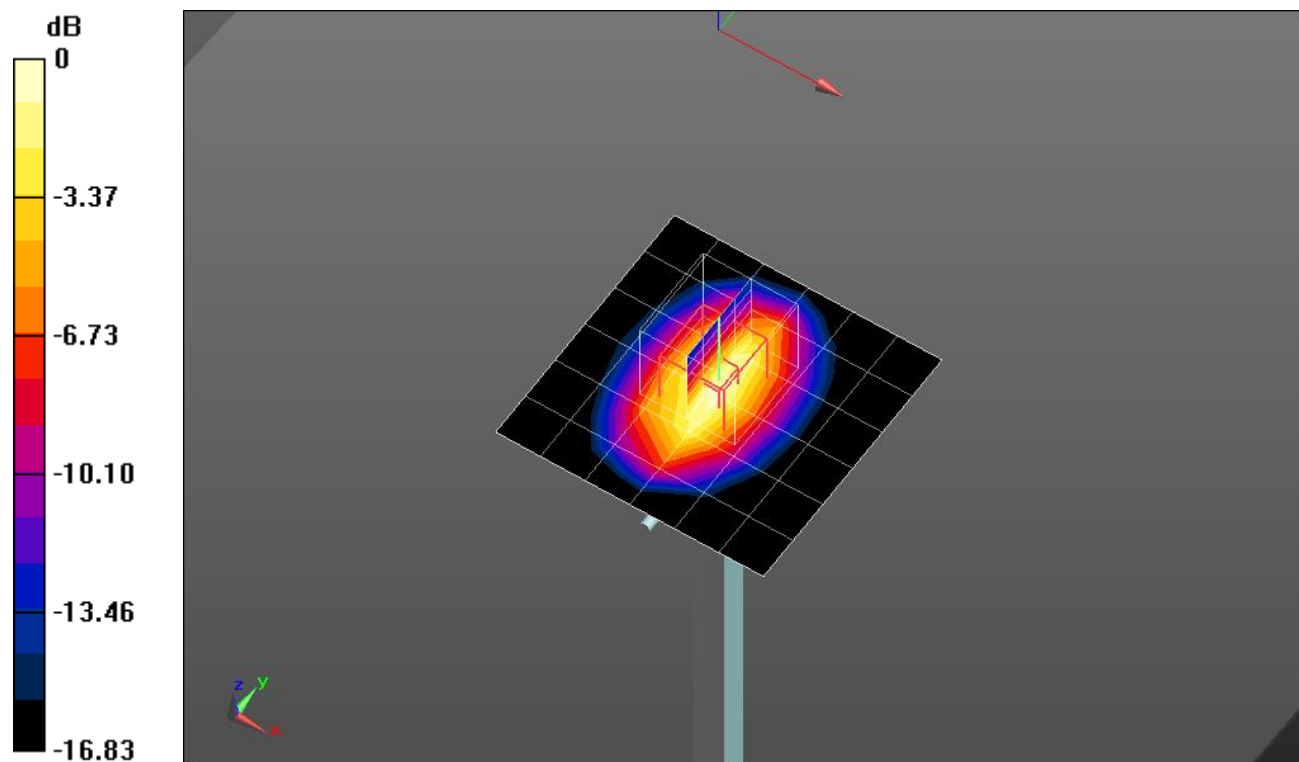
**Body/Pin=100 mW/Zoom Scan (5x5x7)/Cube 0:** Measurement grid: dx=8mm, dy=8mm, dz=5mm

Reference Value = 58.64 V/m; Power Drift = 0.11 dB

Peak SAR (extrapolated) = 6.92 W/kg

**SAR(1 g) = 3.94 W/kg; SAR(10 g) = 2.11 W/kg**

Maximum value of SAR (measured) = 5.22 W/kg

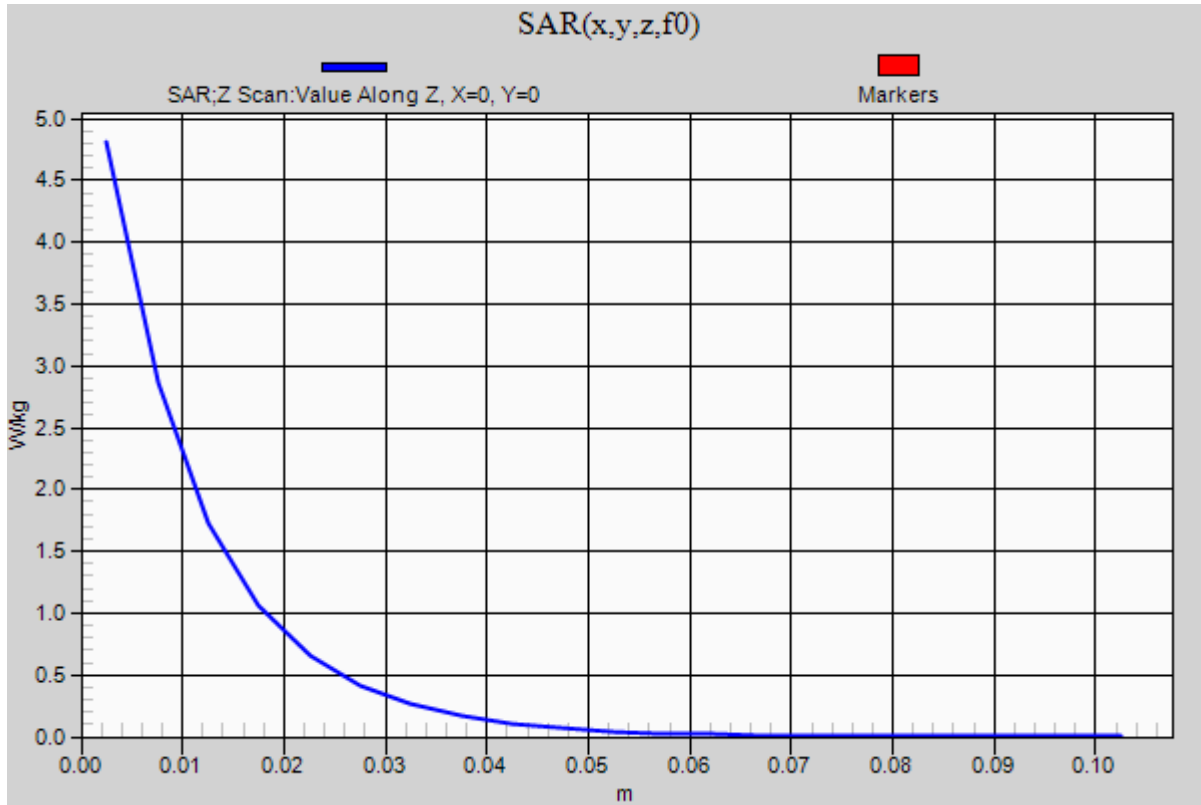


0 dB = 5.22 W/kg = 7.18 dBW/kg

### 20190121\_SystemPerformanceCheck-D1750V2 SN 1125

Frequency: 1750 MHz; Duty Cycle: 1:1

**Body/Pin=100 mW/Z Scan (1x1x21):** Measurement grid: dx=20mm, dy=20mm, dz=5mm  
Maximum value of SAR (measured) = 4.81 W/kg



## 20190124\_SystemPerformanceCheck-D1900V2 SN 5d199

Frequency: 1900 MHz; Duty Cycle: 1:1; Room Ambient Temperature: 23.0°C; Liquid Temperature: 22.0°C  
 Medium parameters used:  $f = 1900$  MHz;  $\sigma = 1.564$  S/m;  $\epsilon_r = 54.403$ ;  $\rho = 1000$  kg/m<sup>3</sup>

DASY5 Configuration:

- Area Scan Setting: Find Secondary Maximum Within: 2.0 dB and with a peak SAR value greater than 0.0012W/kg
- Averaged Fast SAR: Polynomial fit
- Electronics: DAE4 Sn1468; Calibrated: 2018-08-22
- Probe: EX3DV4 - SN7314; ConvF(7.74, 7.74, 7.74); Calibrated: 2018-08-30;
- Sensor-Surface: 2.5mm (Mechanical Surface Detection)
- Phantom: ELI v6.0; Type: QDOVA003AA; Serial: TP:2005

**Body/Pin=100 mW/Area Scan (7x7x1):** Measurement grid: dx=15mm, dy=15mm

Maximum value of SAR (measured) = 4.68 W/kg

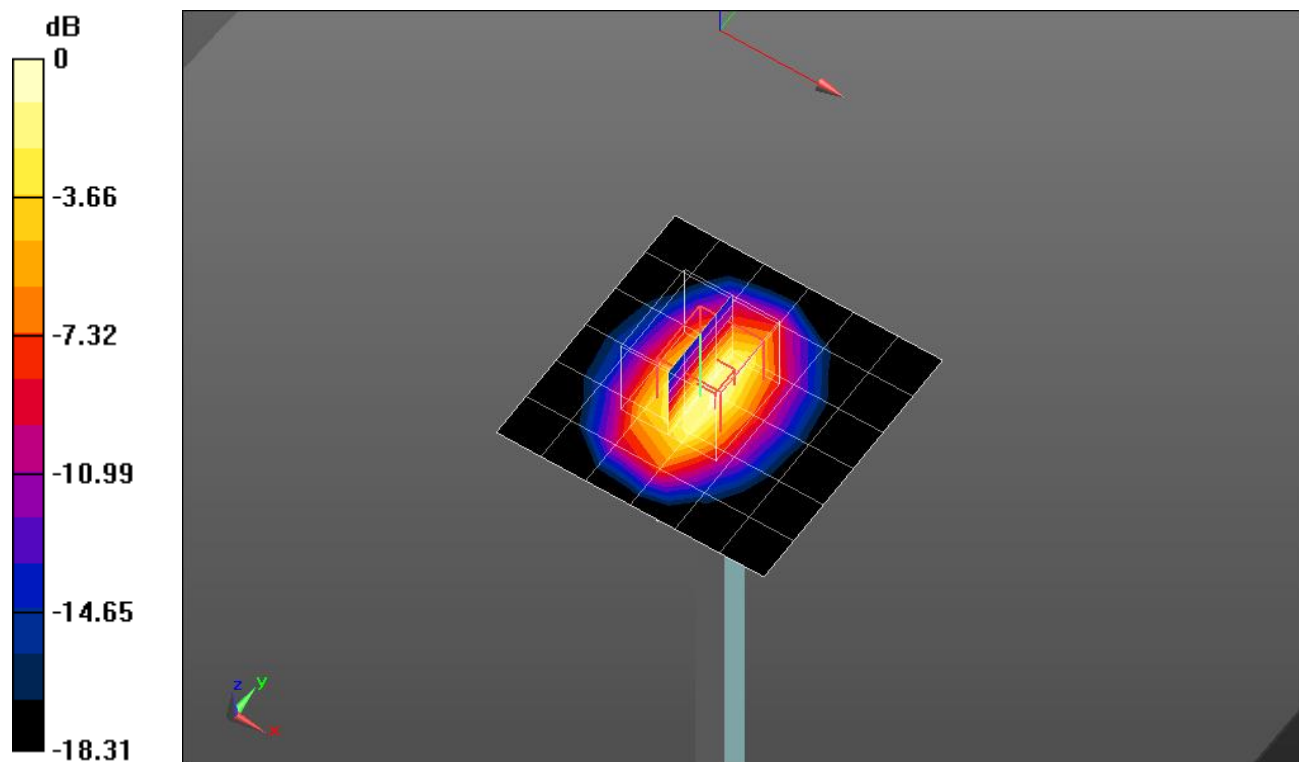
**Body/Pin=100 mW/Zoom Scan (5x5x7)/Cube 0:** Measurement grid: dx=8mm, dy=8mm, dz=5mm

Reference Value = 58.02 V/m; Power Drift = 0.17 dB

Peak SAR (extrapolated) = 7.55 W/kg

**SAR(1 g) = 4.21 W/kg; SAR(10 g) = 2.2 W/kg**

Maximum value of SAR (measured) = 5.50 W/kg

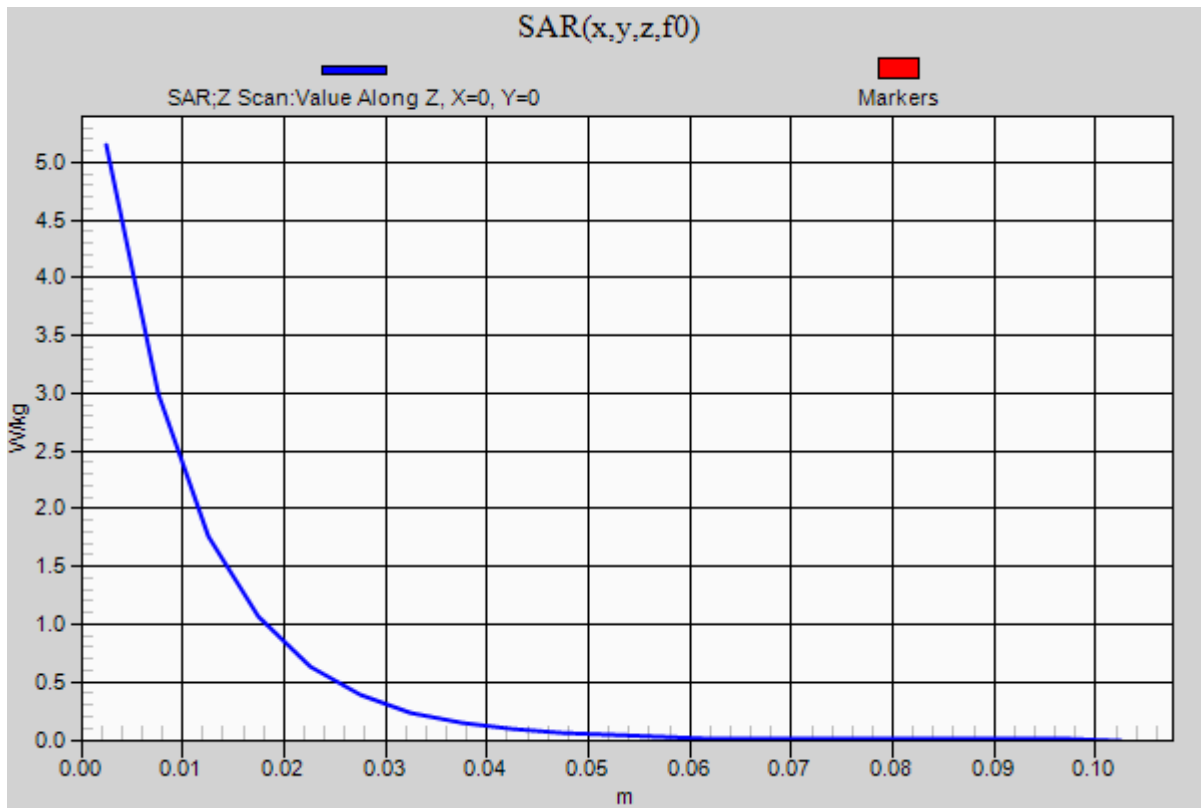


0 dB = 5.50 W/kg = 7.40 dBW/kg

### 20190124\_SystemPerformanceCheck-D1900V2 SN 5d199

Frequency: 1900 MHz; Duty Cycle: 1:1

**Body/Pin=100 mW/Z Scan (1x1x21):** Measurement grid: dx=20mm, dy=20mm, dz=5mm  
Maximum value of SAR (measured) = 5.15 W/kg



## 20190207\_SystemPerformanceCheck-D5GHzV2 SN 1209

Frequency: 5750 MHz; Duty Cycle: 1:1; Room Ambient Temperature: 23.0°C; Liquid Temperature: 22.0°C  
 Medium parameters used:  $f = 5750$  MHz;  $\sigma = 5.808$  S/m;  $\epsilon_r = 46.821$ ;  $\rho = 1000$  kg/m<sup>3</sup>

DASY5 Configuration:

- Area Scan Setting: Find Secondary Maximum Within: 2.0 dB and with a peak SAR value greater than 0.0012W/kg
- Averaged Fast SAR: Polynomial fit
- Electronics: DAE4 Sn1468; Calibrated: 2018-08-22
- Probe: EX3DV4 - SN7314; ConvF(4.31, 4.31, 4.31); Calibrated: 2018-08-30;
- Sensor-Surface: 1.4mm (Mechanical Surface Detection)
- Phantom: ELI v6.0; Type: QDOVA003AA; Serial: TP:2005

**Body/5.75 GHz, Pin=100mW/Area Scan (7x7x1):** Measurement grid: dx=10mm, dy=10mm  
 Maximum value of SAR (measured) = 14.9 W/kg

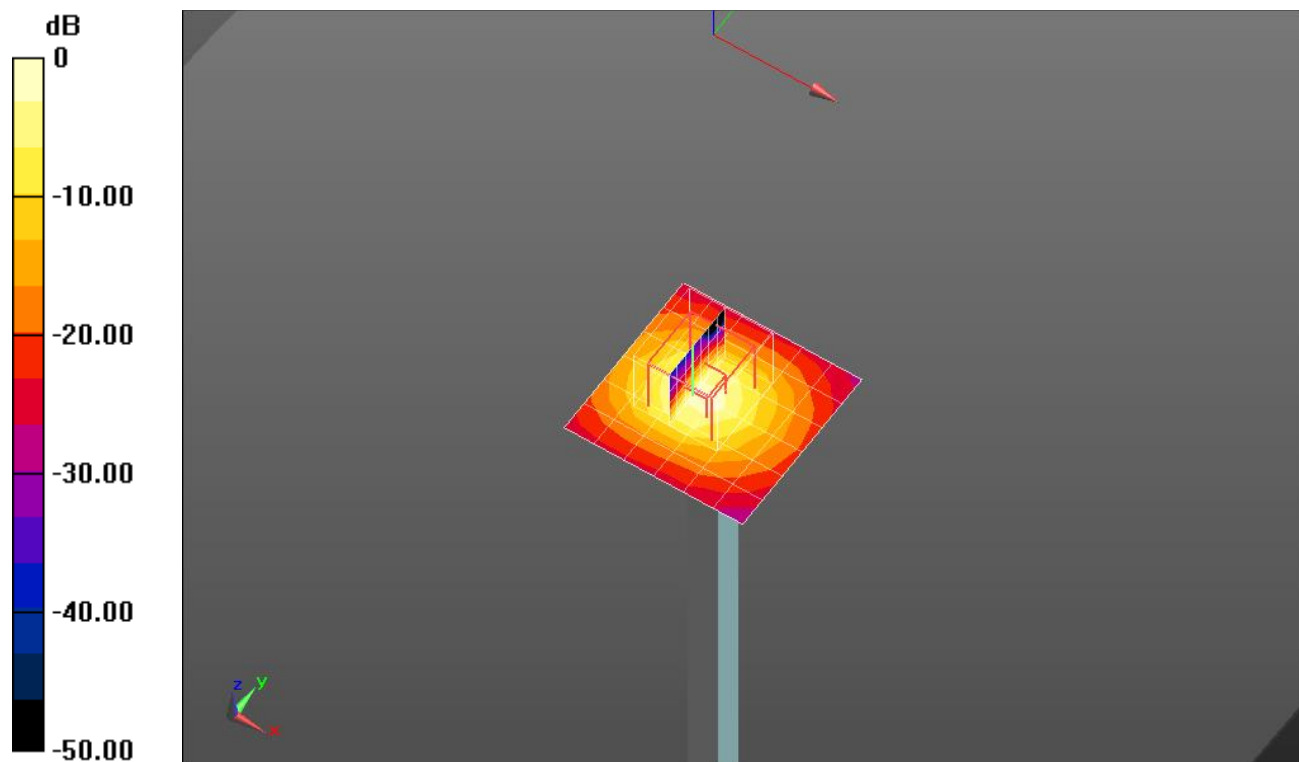
**Body/5.75 GHz, Pin=100mW/Zoom Scan (8x8x7)/Cube 0:** Measurement grid: dx=4mm, dy=4mm, dz=1.4mm

Reference Value = 58.64 V/m; Power Drift = 0.19 dB

Peak SAR (extrapolated) = 34.5 W/kg

**SAR(1 g) = 7.22 W/kg; SAR(10 g) = 1.98 W/kg**

Maximum value of SAR (measured) = 18.4 W/kg

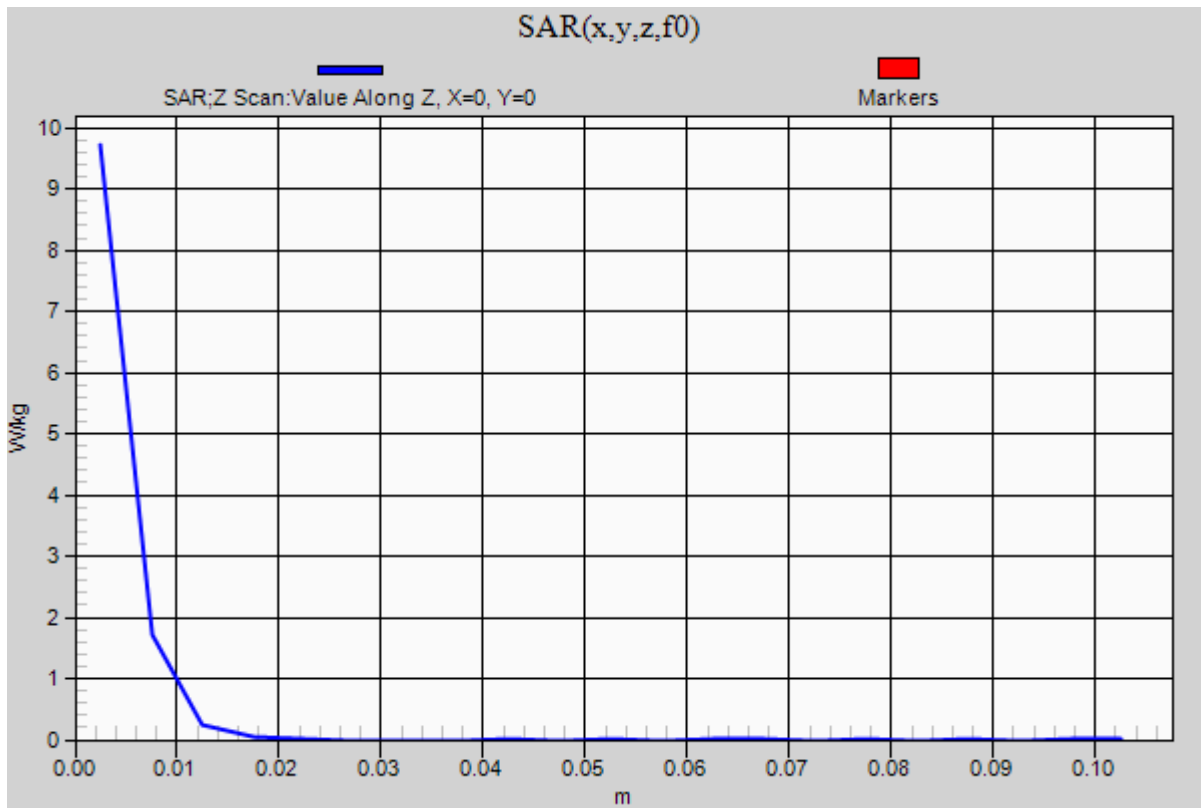


0 dB = 18.4 W/kg = 12.65 dBW/kg

### 20190207\_SystemPerformanceCheck-D5GHzV2 SN 1209

Frequency: 5750 MHz; Duty Cycle: 1:1

**Body/5.75 GHz, Pin=100mW/Z Scan (1x1x21):** Measurement grid: dx=20mm, dy=20mm, dz=5mm  
Maximum value of SAR (measured) = 9.72 W/kg



## 20190207\_SystemPerformanceCheck-D1900V2 SN 5d199

Frequency: 1900 MHz; Duty Cycle: 1:1; Room Ambient Temperature: 23.0°C; Liquid Temperature: 22.0°C  
 Medium parameters used:  $f = 1900$  MHz;  $\sigma = 1.567$  S/m;  $\epsilon_r = 55.267$ ;  $\rho = 1000$  kg/m<sup>3</sup>

DASY5 Configuration:

- Area Scan Setting: Find Secondary Maximum Within: 2.0 dB and with a peak SAR value greater than 0.0012W/kg
- Averaged Fast SAR: Polynomial fit
- Electronics: DAE4 Sn1259; Calibrated: 2018-07-26
- Probe: EX3DV4 - SN3991; ConvF(8.03, 8.03, 8.03); Calibrated: 2018-05-24;
- Sensor-Surface: 2.5mm (Mechanical Surface Detection)
- Phantom: ELI V5.0 (20deg probe tilt)\_20190207; Type: QD OVA 001 BB; Serial: 1212

**Body/Pin=100 mW/Area Scan (7x7x1):** Measurement grid: dx=15mm, dy=15mm

Maximum value of SAR (measured) = 5.25 W/kg

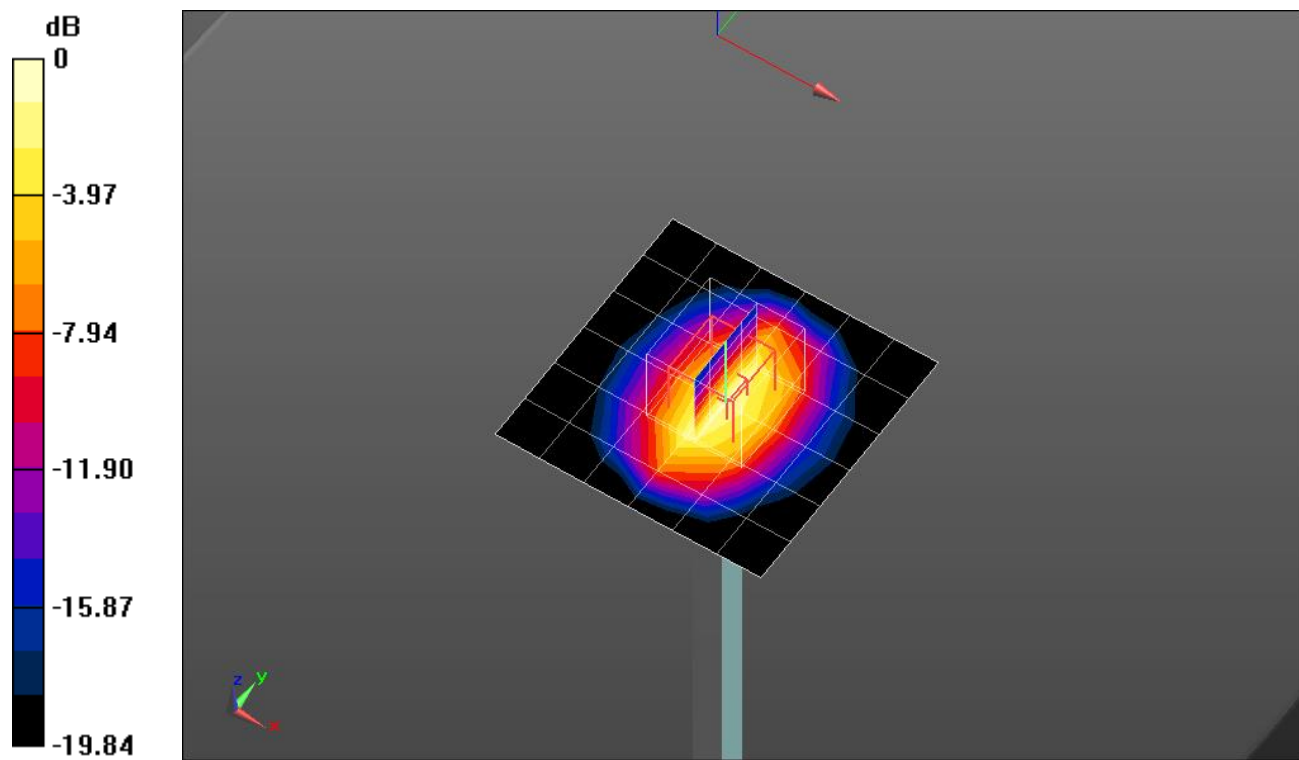
**Body/Pin=100 mW/Zoom Scan (5x5x7)/Cube 0:** Measurement grid: dx=8mm, dy=8mm, dz=5mm

Reference Value = 61.01 V/m; Power Drift = -0.08 dB

Peak SAR (extrapolated) = 7.91 W/kg

**SAR(1 g) = 4.16 W/kg; SAR(10 g) = 2.08 W/kg**

Maximum value of SAR (measured) = 5.57 W/kg



0 dB = 5.57 W/kg = 7.46 dBW/kg

### 20190207\_SystemPerformanceCheck-D1900V2 SN 5d199

Frequency: 1900 MHz; Duty Cycle: 1:1

**Body/Pin=100 mW/Z Scan (1x1x21):** Measurement grid: dx=20mm, dy=20mm, dz=5mm  
Maximum value of SAR (measured) = 5.62 W/kg

