

## GSM 850

Communication System: UID 10021 - DAC, GSM-FDD (TDMA, GMSK); Frequency: 824.2 MHz; Duty Cycle: 1:8.6896

Phantom section: RF Section

DASY5 Configuration:

- Probe: EF3DV3 - SN4064; ConvF(1, 1, 1); Calibrated: 2018-11-15;
- Sensor-Surface: (Fix Surface)
- Electronics: DAE4 Sn1447; Calibrated: 2018-03-15
- Phantom: HAC Test Arch with AMCC; Type: SD HAC P01 BB
- Measurement SW: DASY52, Version 52.8 (8); SEMCAD X Version 14.6.10 (7331)

### GSM850 E-Field measurement/Voice\_ch 128/Hearing Aid Compatibility Test (101x101x1): Interpolated grid: dx=0.5000 mm, dy=0.5000 mm

Device Reference Point: 0, 0, -6.3 mm

Reference Value = 53.63 V/m; Power Drift = 0.01 dB

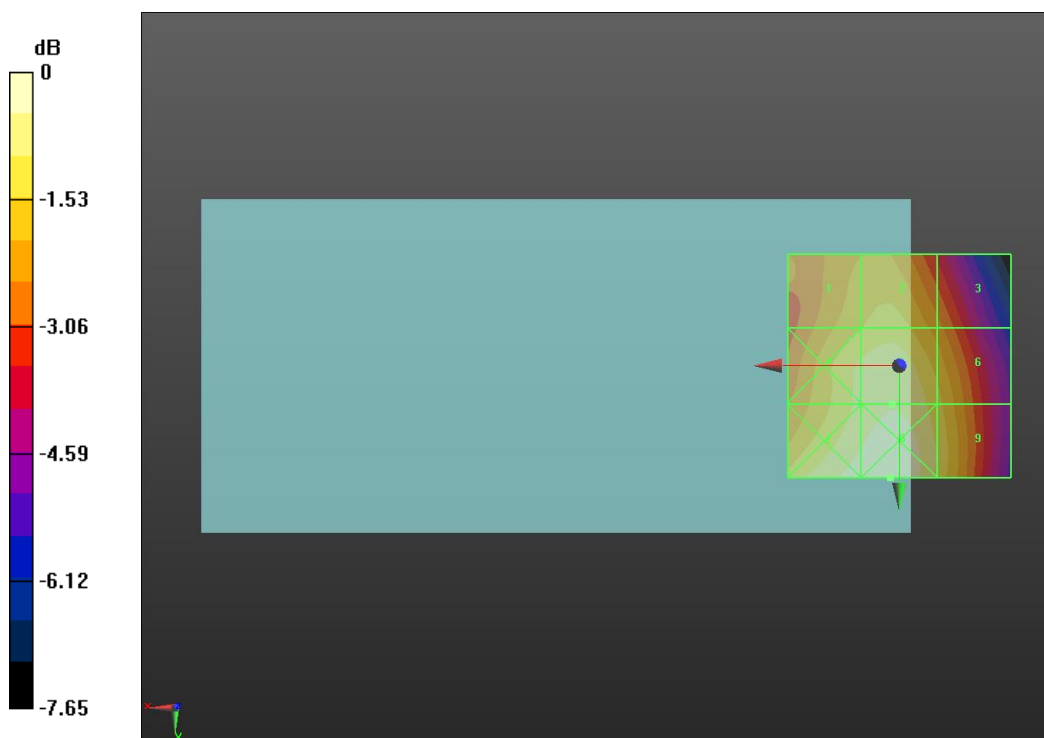
Applied MIF = 3.63 dB

RF audio interference level = 35.95 dBV/m

Emission category: **M4**

MIF scaled E-field

|  |  |  |
|--|--|--|
| Grid 1 <b>M4</b><br><b>34.96 dBV/m</b> | Grid 2 <b>M4</b><br><b>35.24 dBV/m</b> | Grid 3 <b>M4</b><br><b>34.19 dBV/m</b> |
| Grid 4 <b>M4</b><br><b>35.65 dBV/m</b> | Grid 5 <b>M4</b><br><b>35.95 dBV/m</b> | Grid 6 <b>M4</b><br><b>35.16 dBV/m</b> |
| Grid 7 <b>M4</b><br><b>36.31 dBV/m</b> | Grid 8 <b>M4</b><br><b>36.5 dBV/m</b>  | Grid 9 <b>M4</b><br><b>35.44 dBV/m</b> |



0 dB = 66.83 V/m = 36.50 dBV/m

## GSM 850

Communication System: UID 10021 - DAC, GSM-FDD (TDMA, GMSK); Frequency: 836.6 MHz; Duty Cycle: 1:8.6896

Phantom section: RF Section

DASY5 Configuration:

- Probe: EF3DV3 - SN4064; ConvF(1, 1, 1); Calibrated: 2018-11-15;

- Sensor-Surface: (Fix Surface)

- Electronics: DAE4 Sn1447; Calibrated: 2018-03-15

- Phantom: HAC Test Arch with AMCC; Type: SD HAC P01 BB

- Measurement SW: DASY52, Version 52.8 (8); SEMCAD X Version 14.6.10 (7331)

## GSM850 E-Field measurement/Voice\_ch 190/Hearing Aid Compatibility Test

**(101x101x1)**: Interpolated grid: dx=0.5000 mm, dy=0.5000 mm

Device Reference Point: 0, 0, -6.3 mm

Reference Value = 57.67 V/m; Power Drift = 0.06 dB

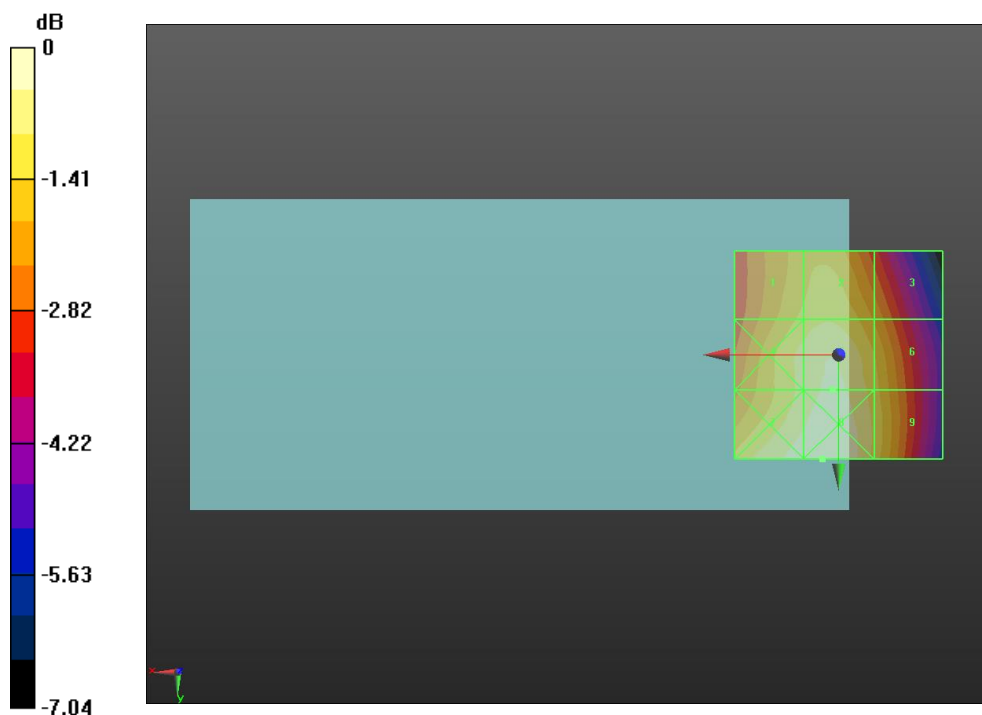
Applied MIF = 3.63 dB

RF audio interference level = 36.55 dBV/m

**Emission category: M4**

MIF scaled E-field

|  |  |  |
|--|--|--|
| <b>Grid 1 M4</b><br><b>35.69 dBV/m</b> | <b>Grid 2 M4</b><br><b>35.96 dBV/m</b> | <b>Grid 3 M4</b><br><b>35.01 dBV/m</b> |
| <b>Grid 4 M4</b><br><b>36.19 dBV/m</b> | <b>Grid 5 M4</b><br><b>36.55 dBV/m</b> | <b>Grid 6 M4</b><br><b>35.74 dBV/m</b> |
| <b>Grid 7 M4</b><br><b>36.77 dBV/m</b> | <b>Grid 8 M4</b><br><b>36.93 dBV/m</b> | <b>Grid 9 M4</b><br><b>35.92 dBV/m</b> |



0 dB = 70.23 V/m = 36.93 dBV/m

## GSM 850

Communication System: UID 10021 - DAC, GSM-FDD (TDMA, GMSK); Frequency: 848.6 MHz; Duty Cycle: 1:8.6896

Phantom section: RF Section

DASY5 Configuration:

- Probe: EF3DV3 - SN4064; ConvF(1, 1, 1); Calibrated: 2018-11-15;
- Sensor-Surface: (Fix Surface)
- Electronics: DAE4 Sn1447; Calibrated: 2018-03-15
- Phantom: HAC Test Arch with AMCC; Type: SD HAC P01 BB
- Measurement SW: DASY52, Version 52.8 (8); SEMCAD X Version 14.6.10 (7331)

### GSM850 E-Field measurement/Voice\_ch 251/Hearing Aid Compatibility Test (101x101x1): Interpolated grid: dx=0.5000 mm, dy=0.5000 mm

Device Reference Point: 0, 0, -6.3 mm

Reference Value = 59.07 V/m; Power Drift = 0.03 dB

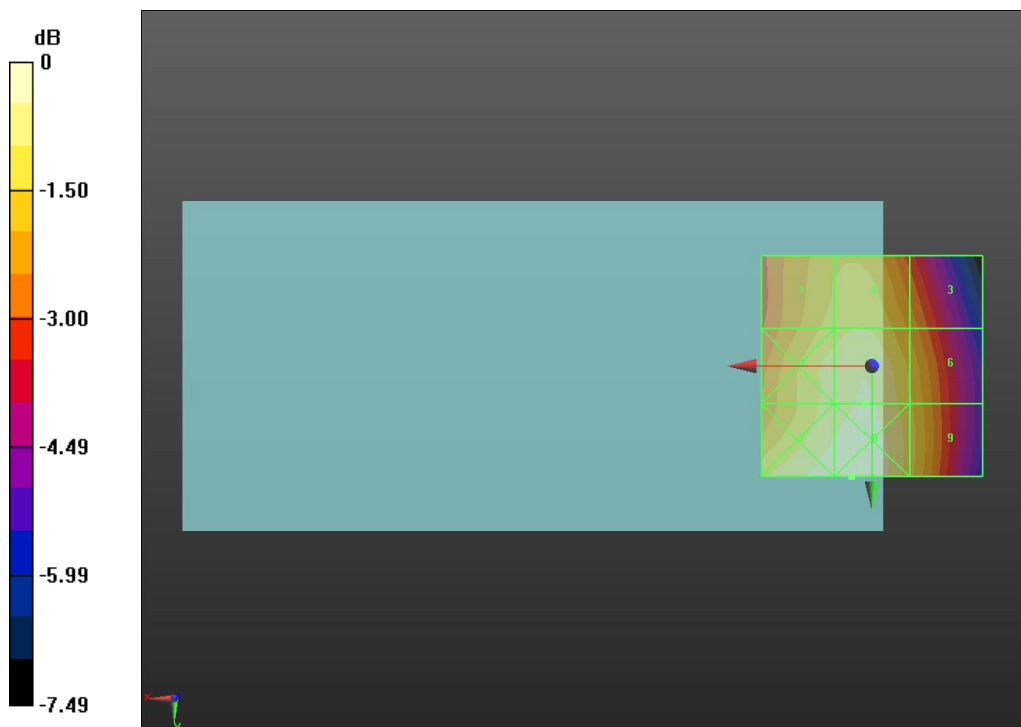
Applied MIF = 3.63 dB

RF audio interference level = 36.73 dBV/m

Emission category: **M4**

MIF scaled E-field

|  |  |  |
|--|--|--|
| Grid 1 <b>M4</b><br><b>35.95 dBV/m</b> | Grid 2 <b>M4</b><br><b>36.19 dBV/m</b> | Grid 3 <b>M4</b><br><b>35.08 dBV/m</b> |
| Grid 4 <b>M4</b><br><b>36.46 dBV/m</b> | Grid 5 <b>M4</b><br><b>36.73 dBV/m</b> | Grid 6 <b>M4</b><br><b>35.8 dBV/m</b>  |
| Grid 7 <b>M4</b><br><b>37.02 dBV/m</b> | Grid 8 <b>M4</b><br><b>37.17 dBV/m</b> | Grid 9 <b>M4</b><br><b>35.98 dBV/m</b> |



0 dB = 72.20 V/m = 37.17 dBV/m

## GSM 1900

Communication System: UID 10021 - DAC, GSM-FDD (TDMA, GMSK); Frequency: 1850.2 MHz; Duty Cycle: 1:8.6896

Phantom section: RF Section

DASY5 Configuration:

- Probe: EF3DV3 - SN4064; ConvF(1, 1, 1); Calibrated: 2018-11-15;
- Sensor-Surface: (Fix Surface)
- Electronics: DAE4 Sn1447; Calibrated: 2018-03-15
- Phantom: HAC Test Arch with AMCC; Type: SD HAC P01 BB
- Measurement SW: DASY52, Version 52.8 (8); SEMCAD X Version 14.6.10 (7331)

### GSM1900 E-Field measurement/Voice\_ch 512/Hearing Aid Compatibility Test

**(101x101x1)**: Interpolated grid: dx=0.5000 mm, dy=0.5000 mm

Device Reference Point: 0, 0, -6.3 mm

Reference Value = 4.740 V/m; Power Drift = 0.07 dB

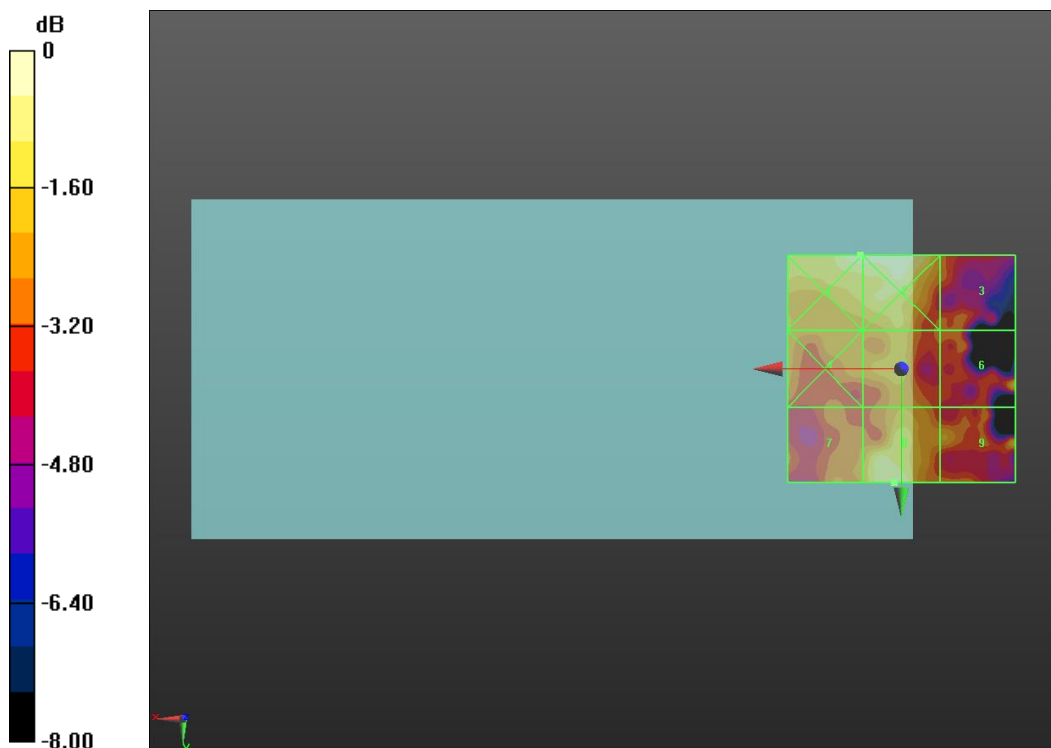
Applied MIF = 3.63 dB

RF audio interference level = 17.34 dBV/m

**Emission category: M4**

MIF scaled E-field

|  |  |  |
|--|--|--|
| <b>Grid 1 M4</b><br><b>17.82 dBV/m</b> | <b>Grid 2 M4</b><br><b>17.81 dBV/m</b> | <b>Grid 3 M4</b><br><b>15.15 dBV/m</b> |
| <b>Grid 4 M4</b><br><b>15.78 dBV/m</b> | <b>Grid 5 M4</b><br><b>16.3 dBV/m</b>  | <b>Grid 6 M4</b><br><b>16.49 dBV/m</b> |
| <b>Grid 7 M4</b><br><b>15.7 dBV/m</b>  | <b>Grid 8 M4</b><br><b>17.34 dBV/m</b> | <b>Grid 9 M4</b><br><b>16.07 dBV/m</b> |



0 dB = 7.781 V/m = 17.82 dBV/m

## GSM 1900

Communication System: UID 10021 - DAC, GSM-FDD (TDMA, GMSK); Frequency: 1880 MHz; Duty Cycle: 1:8.6896

Phantom section: RF Section

DASY5 Configuration:

- Probe: EF3DV3 - SN4064; ConvF(1, 1, 1); Calibrated: 2018-11-15;

- Sensor-Surface: (Fix Surface)

- Electronics: DAE4 Sn1447; Calibrated: 2018-03-15

- Phantom: HAC Test Arch with AMCC; Type: SD HAC P01 BB

- Measurement SW: DASY52, Version 52.8 (8); SEMCAD X Version 14.6.10 (7331)

## GSM1900 E-Field measurement/Voice\_ch 661/Hearing Aid Compatibility Test

**(101x101x1)**: Interpolated grid: dx=0.5000 mm, dy=0.5000 mm

Device Reference Point: 0, 0, -6.3 mm

Reference Value = 5.788 V/m; Power Drift = 0.04 dB

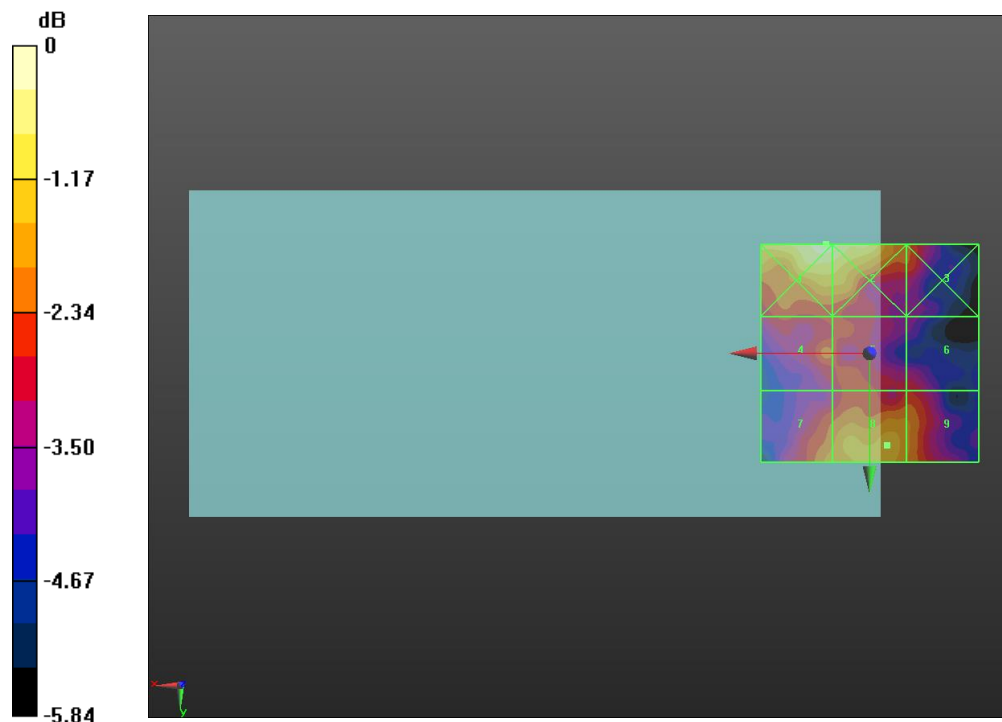
Applied MIF = 3.63 dB

RF audio interference level = 18.24 dBV/m

**Emission category: M4**

MIF scaled E-field

|  |  |  |
|--|--|--|
| <b>Grid 1 M4</b><br><b>19.53 dBV/m</b> | <b>Grid 2 M4</b><br><b>19.42 dBV/m</b> | <b>Grid 3 M4</b><br><b>17.39 dBV/m</b> |
| <b>Grid 4 M4</b><br><b>17.36 dBV/m</b> | <b>Grid 5 M4</b><br><b>17.17 dBV/m</b> | <b>Grid 6 M4</b><br><b>16.78 dBV/m</b> |
| <b>Grid 7 M4</b><br><b>17.82 dBV/m</b> | <b>Grid 8 M4</b><br><b>18.24 dBV/m</b> | <b>Grid 9 M4</b><br><b>17.73 dBV/m</b> |



0 dB = 9.470 V/m = 19.53 dBV/m

## GSM 1900

Communication System: UID 10021 - DAC, GSM-FDD (TDMA, GMSK); Frequency: 1909.8 MHz; Duty Cycle: 1:8.6896

Phantom section: RF Section

DASY5 Configuration:

- Probe: EF3DV3 - SN4064; ConvF(1, 1, 1); Calibrated: 2018-11-15;
- Sensor-Surface: (Fix Surface)
- Electronics: DAE4 Sn1447; Calibrated: 2018-03-15
- Phantom: HAC Test Arch with AMCC; Type: SD HAC P01 BB
- Measurement SW: DASY52, Version 52.8 (8); SEMCAD X Version 14.6.10 (7331)

### GSM1900 E-Field measurement/Voice\_ch 810/Hearing Aid Compatibility Test (101x101x1): Interpolated grid: dx=0.5000 mm, dy=0.5000 mm

Device Reference Point: 0, 0, -6.3 mm

Reference Value = 6.840 V/m; Power Drift = -0.07 dB

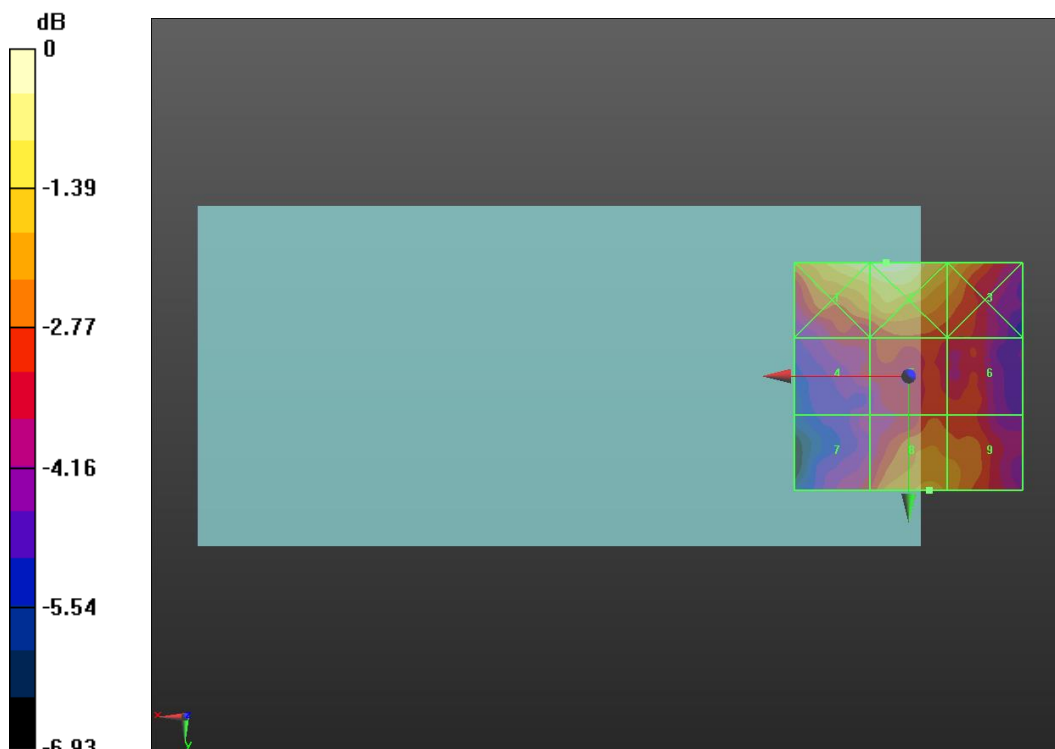
Applied MIF = 3.63 dB

RF audio interference level = 20.26 dBV/m

Emission category: **M4**

MIF scaled E-field

|  |  |  |
|--|--|--|
| <b>Grid 1 M4</b><br><b>21.58 dBV/m</b> | <b>Grid 2 M4</b><br><b>21.83 dBV/m</b> | <b>Grid 3 M4</b><br><b>20.37 dBV/m</b> |
| <b>Grid 4 M4</b><br><b>18.42 dBV/m</b> | <b>Grid 5 M4</b><br><b>19 dBV/m</b>    | <b>Grid 6 M4</b><br><b>18.9 dBV/m</b>  |
| <b>Grid 7 M4</b><br><b>18.55 dBV/m</b> | <b>Grid 8 M4</b><br><b>20.26 dBV/m</b> | <b>Grid 9 M4</b><br><b>19.83 dBV/m</b> |



0 dB = 12.35 V/m = 21.83 dBV/m

## LTE Band 41

Communication System: UID 10173 - CAG, LTE-TDD (SC-FDMA, 1 RB, 20 MHz, 16-QAM); Frequency: 2506 MHz; Duty Cycle: 1:8.87156

Phantom section: RF Section

DASY5 Configuration:

- Probe: EF3DV3 - SN4064; ConvF(1, 1, 1); Calibrated: 2018-11-15;
- Sensor-Surface: (Fix Surface)
- Electronics: DAE4 Sn1447; Calibrated: 2018-03-15
- Phantom: HAC Test Arch with AMCC; Type: SD HAC P01 BB
- Measurement SW: DASY52, Version 52.8 (8); SEMCAD X Version 14.6.10 (7331)

## LTE Band 41 E-Field measurement/Voice\_ch 39750 RB 1/0/Hearing Aid Compatibility Test (101x101x1):

Interpolated grid: dx=0.5000 mm, dy=0.5000 mm

Device Reference Point: 0, 0, -6.3 mm

Reference Value = 11.37 V/m; Power Drift = -0.15 dB

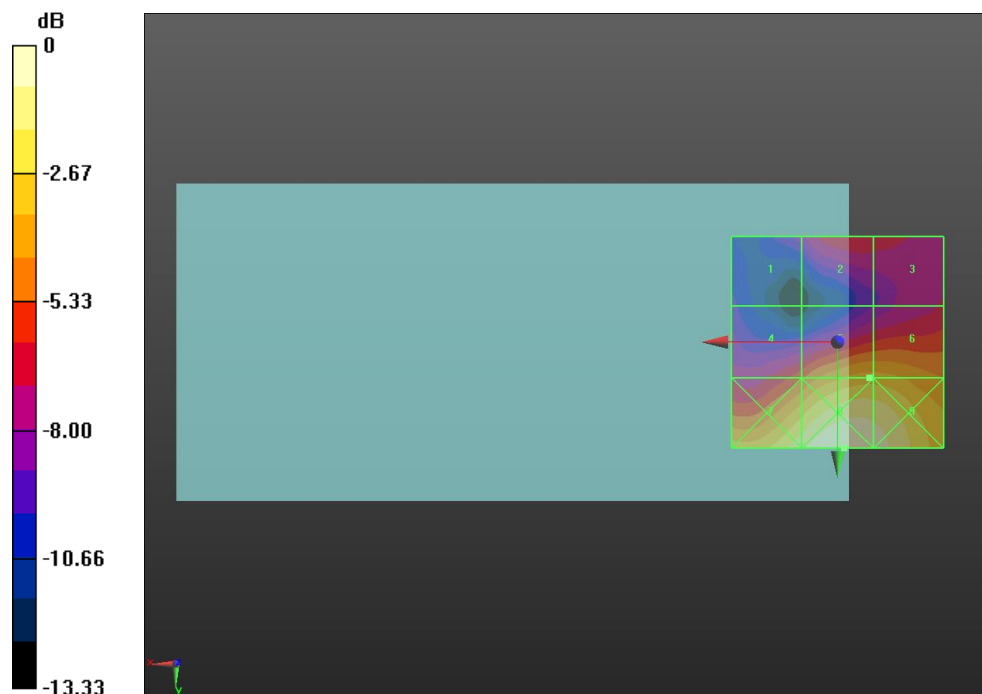
Applied MIF = -1.44 dB

RF audio interference level = 22.04 dBV/m

Emission category: **M4**

MIF scaled E-field

|  |  |  |
|--|--|--|
| Grid 1 <b>M4</b><br><b>16.91 dBV/m</b> | Grid 2 <b>M4</b><br><b>18.89 dBV/m</b> | Grid 3 <b>M4</b><br><b>18.74 dBV/m</b> |
| Grid 4 <b>M4</b><br><b>19.66 dBV/m</b> | Grid 5 <b>M4</b><br><b>22.04 dBV/m</b> | Grid 6 <b>M4</b><br><b>22.02 dBV/m</b> |
| Grid 7 <b>M4</b><br><b>24.06 dBV/m</b> | Grid 8 <b>M4</b><br><b>25.13 dBV/m</b> | Grid 9 <b>M4</b><br><b>24.7 dBV/m</b>  |



0 dB = 18.05 V/m = 25.13 dBV/m

## LTE Band 41

Communication System: UID 10173 - CAG, LTE-TDD (SC-FDMA, 1 RB, 20 MHz, 16-QAM); Frequency: 2549.5 MHz; Duty Cycle: 1:8.87156

Phantom section: RF Section

DASY5 Configuration:

- Probe: EF3DV3 - SN4064; ConvF(1, 1, 1); Calibrated: 2018-11-15;
- Sensor-Surface: (Fix Surface)
- Electronics: DAE4 Sn1447; Calibrated: 2018-03-15
- Phantom: HAC Test Arch with AMCC; Type: SD HAC P01 BB
- Measurement SW: DASY52, Version 52.8 (8); SEMCAD X Version 14.6.10 (7331)

## LTE Band 41 E-Field measurement/Voice\_ch 40185 RB 1/0/Hearing Aid Compatibility

**Test (101x101x1):** Interpolated grid: dx=0.5000 mm, dy=0.5000 mm

Device Reference Point: 0, 0, -6.3 mm

Reference Value = 13.20 V/m; Power Drift = 0.12 dB

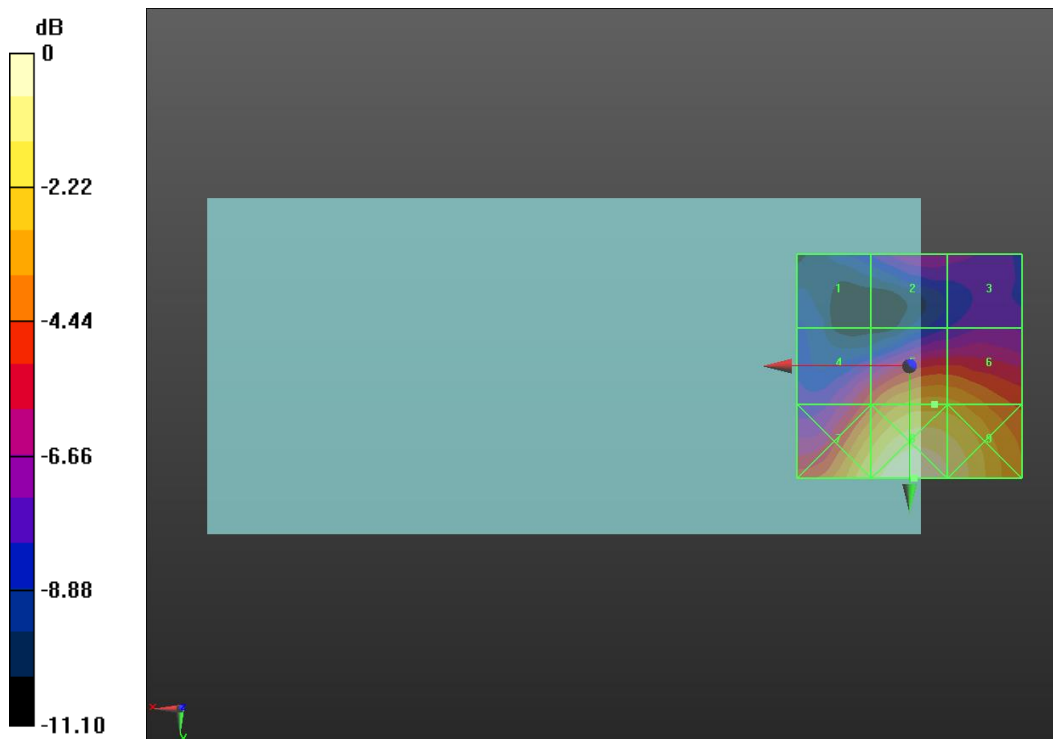
Applied MIF = -1.44 dB

RF audio interference level = 21.77 dBV/m

**Emission category: M4**

MIF scaled E-field

|  |  |  |
|--|--|--|
| Grid 1 <b>M4</b><br><b>16.32 dBV/m</b> | Grid 2 <b>M4</b><br><b>17.78 dBV/m</b> | Grid 3 <b>M4</b><br><b>17.47 dBV/m</b> |
| Grid 4 <b>M4</b><br><b>19.81 dBV/m</b> | Grid 5 <b>M4</b><br><b>21.77 dBV/m</b> | Grid 6 <b>M4</b><br><b>21.7 dBV/m</b>  |
| Grid 7 <b>M4</b><br><b>23.16 dBV/m</b> | Grid 8 <b>M4</b><br><b>24.33 dBV/m</b> | Grid 9 <b>M4</b><br><b>23.67 dBV/m</b> |



0 dB = 16.47 V/m = 24.33 dBV/m

## LTE Band 41

Communication System: UID 10173 - CAG, LTE-TDD (SC-FDMA, 1 RB, 20 MHz, 16-QAM); Frequency: 2593 MHz; Duty Cycle: 1:8.87156

Phantom section: RF Section

DASY5 Configuration:

- Probe: EF3DV3 - SN4064; ConvF(1, 1, 1); Calibrated: 2018-11-15;
- Sensor-Surface: (Fix Surface)
- Electronics: DAE4 Sn1447; Calibrated: 2018-03-15
- Phantom: HAC Test Arch with AMCC; Type: SD HAC P01 BB
- Measurement SW: DASY52, Version 52.8 (8); SEMCAD X Version 14.6.10 (7331)

## LTE Band 41 E-Field measurement/Voice\_ch 40620 RB 1/0/Hearing Aid Compatibility

**Test (101x101x1):** Interpolated grid: dx=0.5000 mm, dy=0.5000 mm

Device Reference Point: 0, 0, -6.3 mm

Reference Value = 12.68 V/m; Power Drift = 0.06 dB

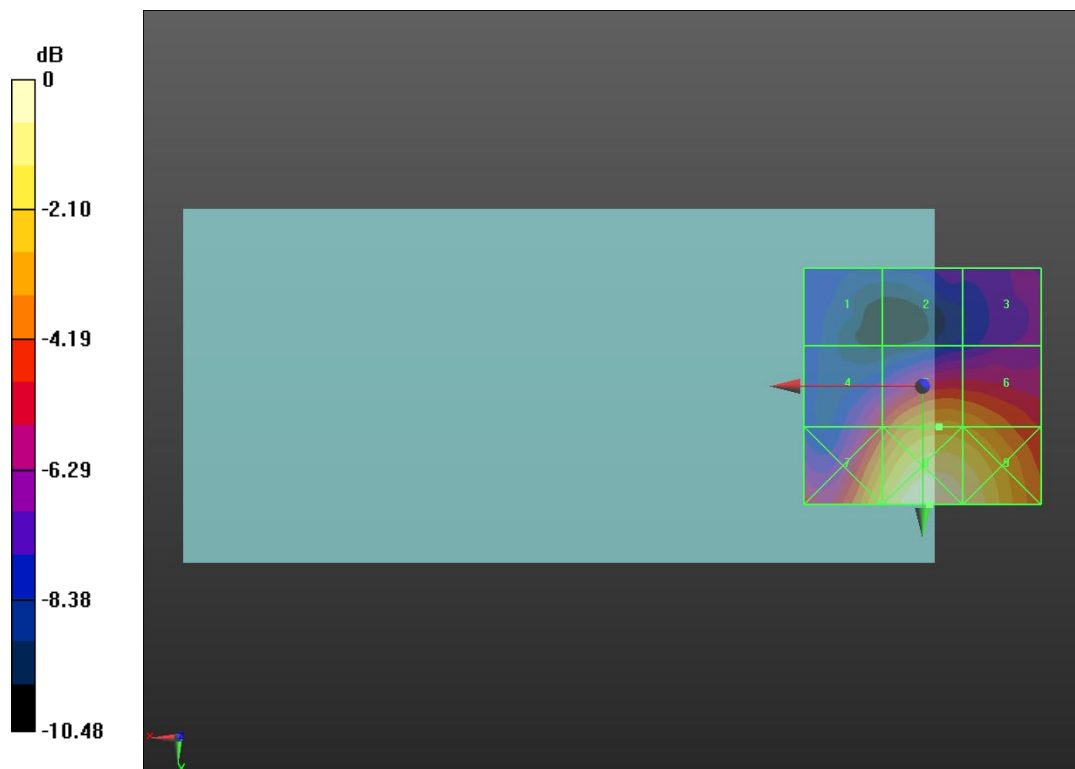
Applied MIF = -1.44 dB

RF audio interference level = 21.15 dBV/m

**Emission category: M4**

MIF scaled E-field

|  |  |  |
|--|--|--|
| Grid 1 <b>M4</b><br><b>16.06 dBV/m</b> | Grid 2 <b>M4</b><br><b>16.47 dBV/m</b> | Grid 3 <b>M4</b><br><b>17.04 dBV/m</b> |
| Grid 4 <b>M4</b><br><b>18.9 dBV/m</b>  | Grid 5 <b>M4</b><br><b>21.15 dBV/m</b> | Grid 6 <b>M4</b><br><b>20.93 dBV/m</b> |
| Grid 7 <b>M4</b><br><b>22.02 dBV/m</b> | Grid 8 <b>M4</b><br><b>23.65 dBV/m</b> | Grid 9 <b>M4</b><br><b>23.08 dBV/m</b> |



0 dB = 15.22 V/m = 23.65 dBV/m

## LTE Band 41

Communication System: UID 10173 - CAG, LTE-TDD (SC-FDMA, 1 RB, 20 MHz, 16-QAM); Frequency: 2636.5 MHz; Duty Cycle: 1:8.87156

Phantom section: RF Section

DASY5 Configuration:

- Probe: EF3DV3 - SN4064; ConvF(1, 1, 1); Calibrated: 2018-11-15;
- Sensor-Surface: (Fix Surface)
- Electronics: DAE4 Sn1447; Calibrated: 2018-03-15
- Phantom: HAC Test Arch with AMCC; Type: SD HAC P01 BB
- Measurement SW: DASY52, Version 52.8 (8); SEMCAD X Version 14.6.10 (7331)

## LTE Band 41 E-Field measurement/Voice\_ch 41055 RB 1/0/Hearing Aid Compatibility

**Test (101x101x1):** Interpolated grid: dx=0.5000 mm, dy=0.5000 mm

Device Reference Point: 0, 0, -6.3 mm

Reference Value = 11.66 V/m; Power Drift = 0.03 dB

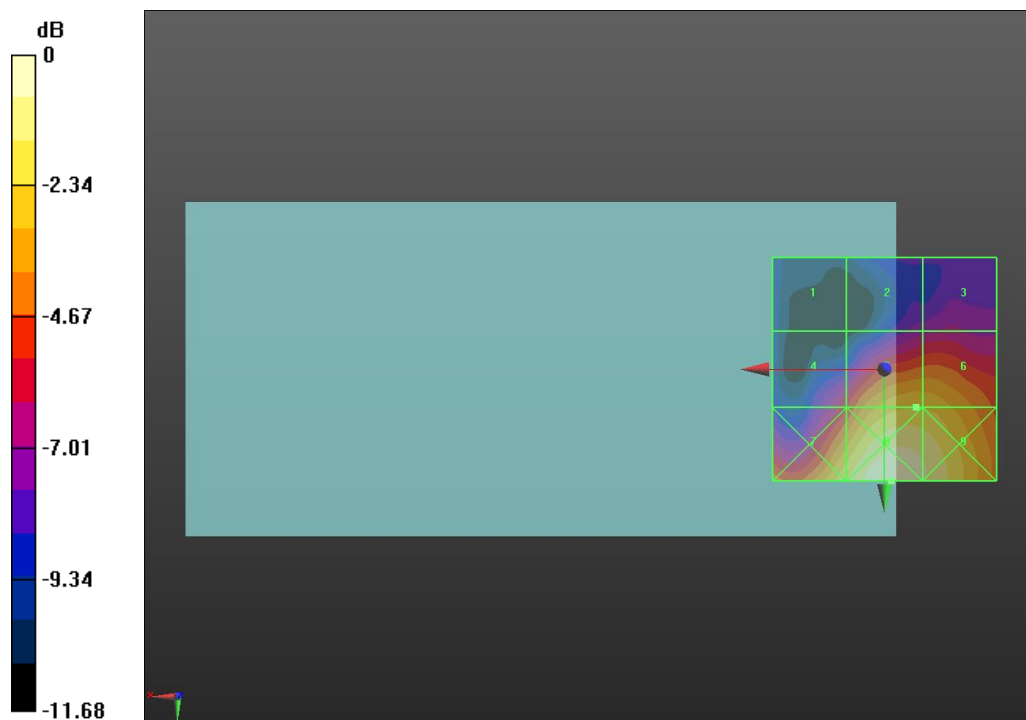
Applied MIF = -1.44 dB

RF audio interference level = 20.22 dBV/m

**Emission category: M4**

MIF scaled E-field

|  |  |  |
|--|--|--|
| Grid 1 <b>M4</b><br><b>13.51 dBV/m</b> | Grid 2 <b>M4</b><br><b>15.33 dBV/m</b> | Grid 3 <b>M4</b><br><b>15.81 dBV/m</b> |
| Grid 4 <b>M4</b><br><b>17.06 dBV/m</b> | Grid 5 <b>M4</b><br><b>20.22 dBV/m</b> | Grid 6 <b>M4</b><br><b>20.19 dBV/m</b> |
| Grid 7 <b>M4</b><br><b>21.01 dBV/m</b> | Grid 8 <b>M4</b><br><b>22.55 dBV/m</b> | Grid 9 <b>M4</b><br><b>21.93 dBV/m</b> |



0 dB = 13.41 V/m = 22.55 dBV/m

## LTE Band 41

Communication System: UID 10173 - CAG, LTE-TDD (SC-FDMA, 1 RB, 20 MHz, 16-QAM); Frequency: 2680 MHz; Duty Cycle: 1:8.87156

Phantom section: RF Section

DASY5 Configuration:

- Probe: EF3DV3 - SN4064; ConvF(1, 1, 1); Calibrated: 2018-11-15;
- Sensor-Surface: (Fix Surface)
- Electronics: DAE4 Sn1447; Calibrated: 2018-03-15
- Phantom: HAC Test Arch with AMCC; Type: SD HAC P01 BB
- Measurement SW: DASY52, Version 52.8 (8); SEMCAD X Version 14.6.10 (7331)

### LTE Band 41 E-Field measurement/Voice\_ch 41490 RB 1/0/Hearing Aid Compatibility Test (101x101x1):

Interpolated grid: dx=0.5000 mm, dy=0.5000 mm

Device Reference Point: 0, 0, -6.3 mm

Reference Value = 13.40 V/m; Power Drift = 0.03 dB

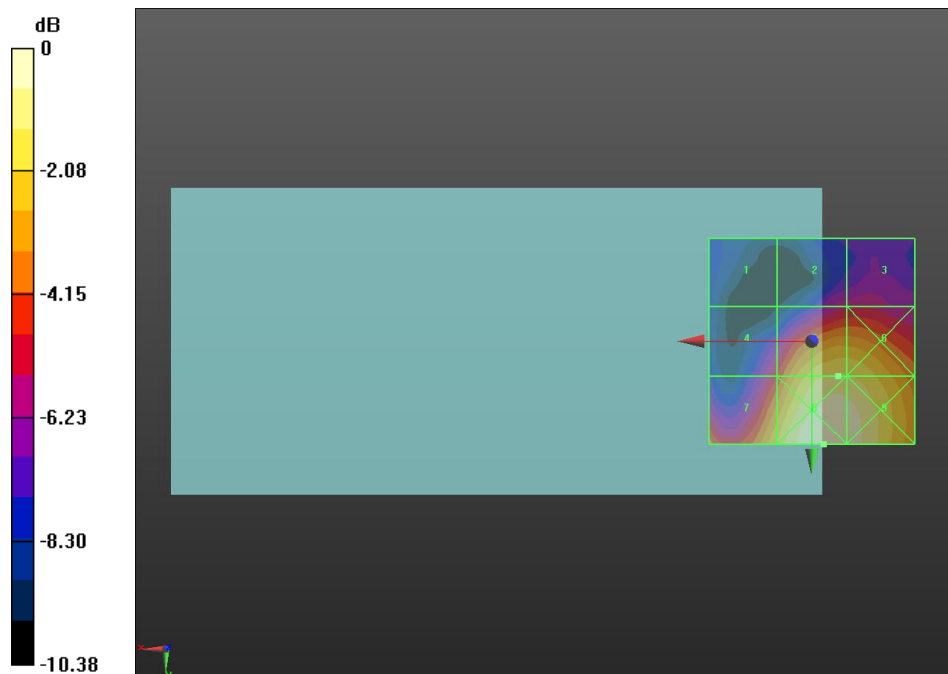
Applied MIF = -1.44 dB

RF audio interference level = 21.25 dBV/m

Emission category: **M4**

MIF scaled E-field

|  |  |  |
|--|--|--|
| Grid 1 <b>M4</b><br><b>14.94 dBV/m</b> | Grid 2 <b>M4</b><br><b>16.76 dBV/m</b> | Grid 3 <b>M4</b><br><b>16.95 dBV/m</b> |
| Grid 4 <b>M4</b><br><b>17.7 dBV/m</b>  | Grid 5 <b>M4</b><br><b>21.25 dBV/m</b> | Grid 6 <b>M4</b><br><b>21.2 dBV/m</b>  |
| Grid 7 <b>M4</b><br><b>20.49 dBV/m</b> | Grid 8 <b>M4</b><br><b>22.52 dBV/m</b> | Grid 9 <b>M4</b><br><b>22.27 dBV/m</b> |



0 dB = 13.36 V/m = 22.52 dBV/m