

20190131_SystemPerformanceCheck-D5GHzV2 SN 1209

Frequency: 5750 MHz; Duty Cycle: 1:1; Room Ambient Temperature: 23.0°C; Liquid Temperature: 22.0°C
Medium parameters used: $f = 5750$ MHz; $\sigma = 5.373$ S/m; $\epsilon_r = 34.331$; $\rho = 1000$ kg/m³

DASY5 Configuration:

- Area Scan Setting: Find Secondary Maximum Within: 2.0 dB and with a peak SAR value greater than 0.0012W/kg
- Averaged Fast SAR: Polynomial fit
- Electronics: DAE4 Sn1494; Calibrated: 2018-07-23
- Probe: EX3DV4 - SN7376; ConvF(4.63, 4.63, 4.63); Calibrated: 2018-09-26;
- Sensor-Surface: 1.4mm (Mechanical Surface Detection)
- Phantom: SAM (20deg probe tilt) with CRP v5.0_Back; Type: QD000P40CD; Serial: TP:1882

Head/5.75 GHz, Pin=100mW/Area Scan (7x7x1): Measurement grid: dx=10mm, dy=10mm

Maximum value of SAR (measured) = 20.3 W/kg

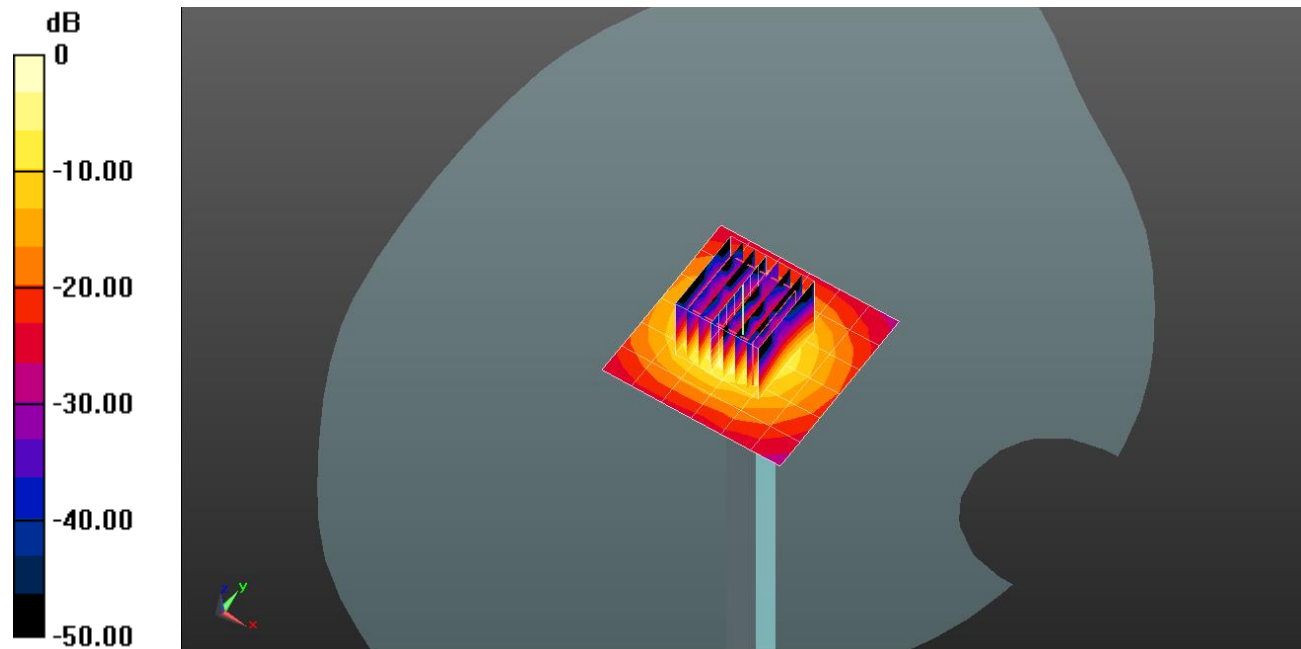
Head/5.75 GHz, Pin=100mW/Zoom Scan (8x8x7)/Cube 0: Measurement grid: dx=4mm, dy=4mm, dz=1.4mm

Reference Value = 68.03 V/m; Power Drift = 0.10 dB

Peak SAR (extrapolated) = 40.7 W/kg

SAR(1 g) = 8.43 W/kg; SAR(10 g) = 2.39 W/kg

Maximum value of SAR (measured) = 21.0 W/kg

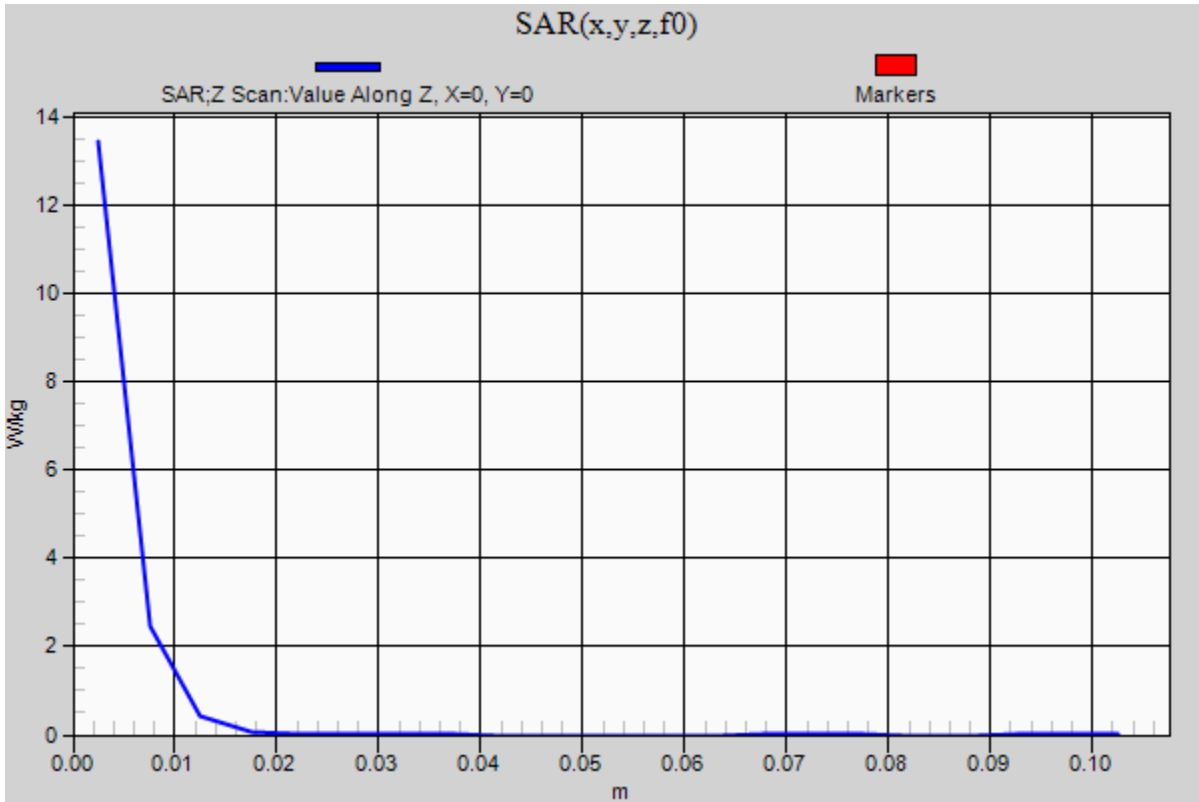


0 dB = 21.0 W/kg = 13.22 dBW/kg

20190131_SystemPerformanceCheck-D5GHzV2 SN 1209

Frequency: 5750 MHz; Duty Cycle: 1:1

Head/5.75 GHz, Pin=100mW/Z Scan (1x1x21): Measurement grid: dx=20mm, dy=20mm, dz=5mm
Maximum value of SAR (measured) = 13.4 W/kg



20190102_SystemPerformanceCheck-D750V2 SN 1122

Frequency: 750 MHz; Duty Cycle: 1:1; Room Ambient Temperature: 23.0°C; Liquid Temperature: 22.0°C
Medium parameters used: $f = 750$ MHz; $\sigma = 0.953$ S/m; $\epsilon_r = 57.008$; $\rho = 1000$ kg/m³

DASY5 Configuration:

- Area Scan Setting: Find Secondary Maximum Within: 2.0 dB and with a peak SAR value greater than 0.0012W/kg
- Averaged Fast SAR: Polynomial fit
- Electronics: DAE4 Sn1447; Calibrated: 2018-03-15
- Probe: EX3DV4 - SN7313; ConvF(9.82, 9.82, 9.82); Calibrated: 2018-02-20;
- Sensor-Surface: 2.5mm (Mechanical Surface Detection)
- Phantom: ELI v6.0; Type: QDOVA003AA; Serial: TP:2005

Body/Pin=100 mW/Area Scan (7x14x1): Measurement grid: dx=15mm, dy=15mm

Maximum value of SAR (measured) = 1.05 W/kg

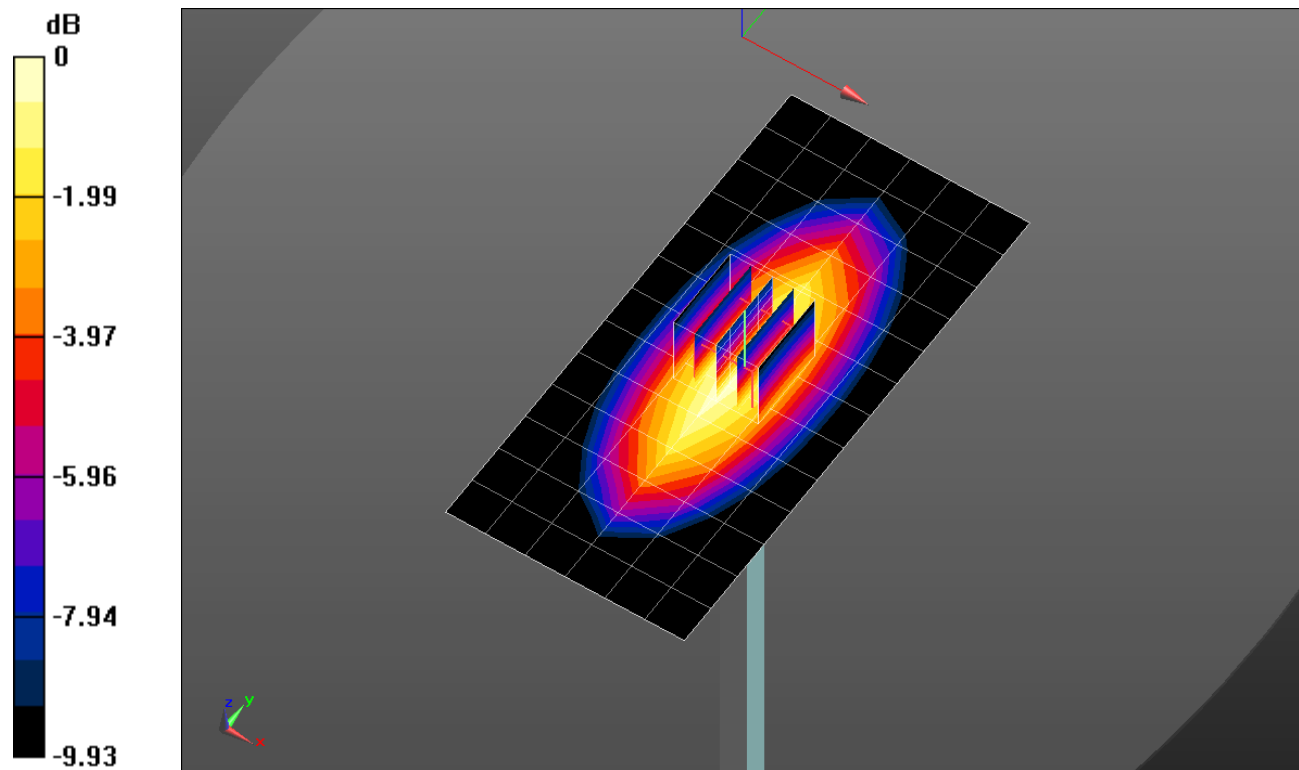
Body/Pin=100 mW/Zoom Scan (5x5x7)/Cube 0: Measurement grid: dx=8mm, dy=8mm, dz=5mm

Reference Value = 33.87 V/m; Power Drift = -0.05 dB

Peak SAR (extrapolated) = 1.31 W/kg

SAR(1 g) = 0.887 W/kg; SAR(10 g) = 0.591 W/kg

Maximum value of SAR (measured) = 1.07 W/kg

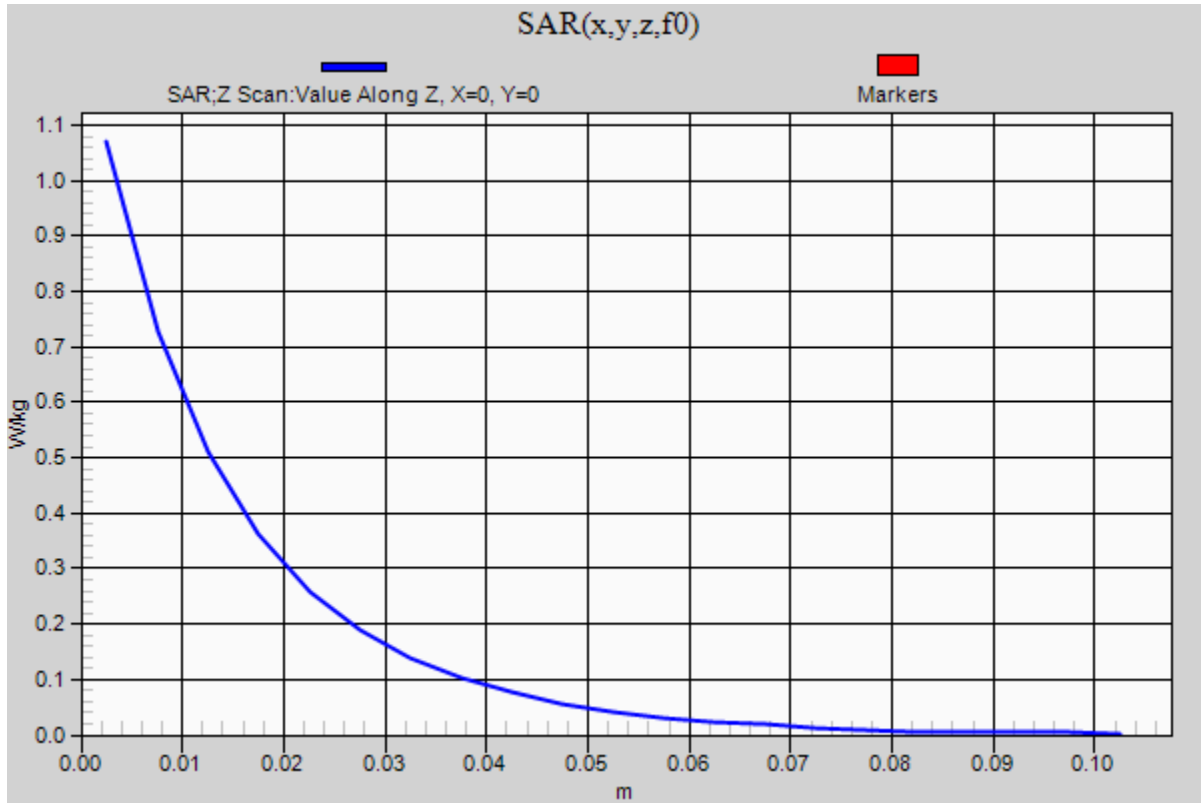


0 dB = 1.07 W/kg = 0.29 dBW/kg

20190102_SystemPerformanceCheck-D750V2 SN 1122

Frequency: 750 MHz; Duty Cycle: 1:1

Body/Pin=100 mW/Z Scan (1x1x21): Measurement grid: dx=20mm, dy=20mm, dz=5mm
Maximum value of SAR (measured) = 1.07 W/kg



20190107_SystemPerformanceCheck-D835V2 SN 4d194

Frequency: 835 MHz; Duty Cycle: 1:1; Room Ambient Temperature: 23.0°C; Liquid Temperature: 22.0°C
Medium parameters used: $f = 835$ MHz; $\sigma = 0.998$ S/m; $\epsilon_r = 55.244$; $\rho = 1000$ kg/m³

DASY5 Configuration:

- Area Scan Setting: Find Secondary Maximum Within: 2.0 dB and with a peak SAR value greater than 0.0012W/kg
- Averaged Fast SAR: Polynomial fit
- Electronics: DAE4 Sn1447; Calibrated: 2018-03-15
- Probe: EX3DV4 - SN7313; ConvF(9.59, 9.59, 9.59); Calibrated: 2018-02-20;
- Sensor-Surface: 2.5mm (Mechanical Surface Detection)
- Phantom: ELI v6.0; Type: QDOVA003AA; Serial: TP:2005

Body/Pin=100 mW/Area Scan (5x13x1): Measurement grid: dx=15mm, dy=15mm

Maximum value of SAR (measured) = 1.26 W/kg

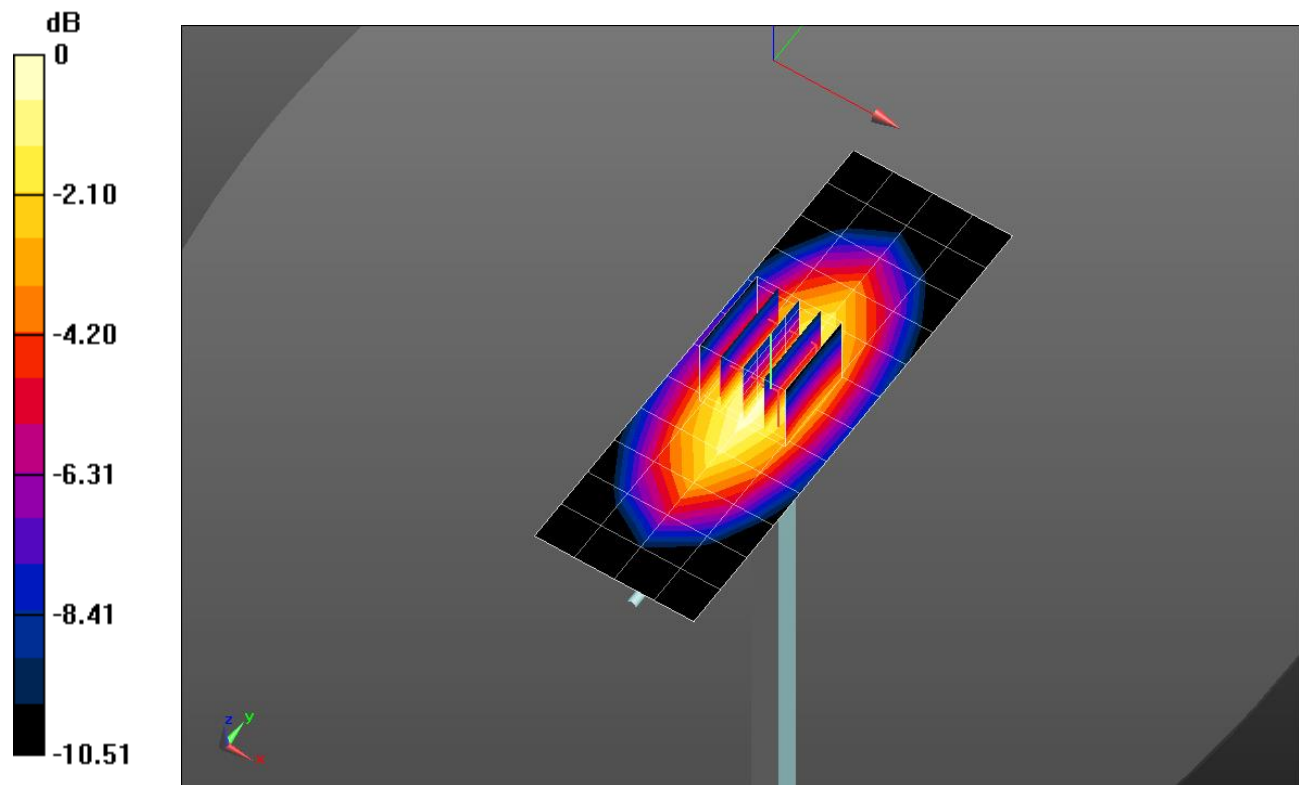
Body/Pin=100 mW/Zoom Scan (5x5x7)/Cube 0: Measurement grid: dx=8mm, dy=8mm, dz=5mm

Reference Value = 35.98 V/m; Power Drift = -0.01 dB

Peak SAR (extrapolated) = 1.55 W/kg

SAR(1 g) = 1.04 W/kg; SAR(10 g) = 0.684 W/kg

Maximum value of SAR (measured) = 1.27 W/kg

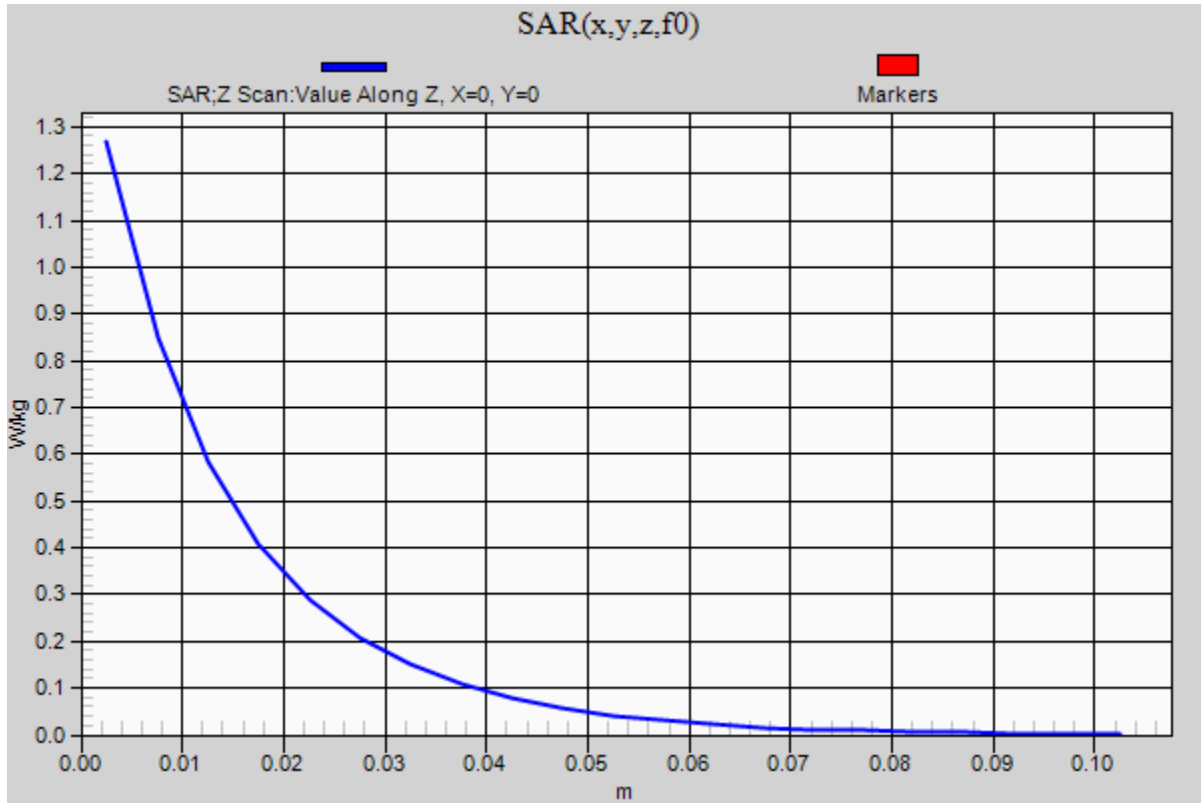


0 dB = 1.27 W/kg = 1.04 dBW/kg

20190107_SystemPerformanceCheck-D835V2 SN 4d194

Frequency: 835 MHz; Duty Cycle: 1:1

Body/Pin=100 mW/Z Scan (1x1x21): Measurement grid: dx=20mm, dy=20mm, dz=5mm
Maximum value of SAR (measured) = 1.27 W/kg



20190107_SystemPerformanceCheck-D1900V2 SN 5d199

Frequency: 1900 MHz; Duty Cycle: 1:1; Room Ambient Temperature: 23.0°C; Liquid Temperature: 22.0°C
Medium parameters used: $f = 1900$ MHz; $\sigma = 1.524$ S/m; $\epsilon_r = 53.558$; $\rho = 1000$ kg/m³

DASY5 Configuration:

- Area Scan Setting: Find Secondary Maximum Within: 2.0 dB and with a peak SAR value greater than 0.0012W/kg
- Averaged Fast SAR: Polynomial fit
- Electronics: DAE4 Sn1468; Calibrated: 2018-08-22
- Probe: EX3DV4 - SN7314; ConvF(7.74, 7.74, 7.74); Calibrated: 2018-08-30;
- Sensor-Surface: 2.5mm (Mechanical Surface Detection)
- Phantom: ELI v6.0; Type: QDOVA003AA; Serial: TP:2005

Body/Pin=100 mW/Area Scan (7x7x1): Measurement grid: dx=15mm, dy=15mm

Maximum value of SAR (measured) = 4.91 W/kg

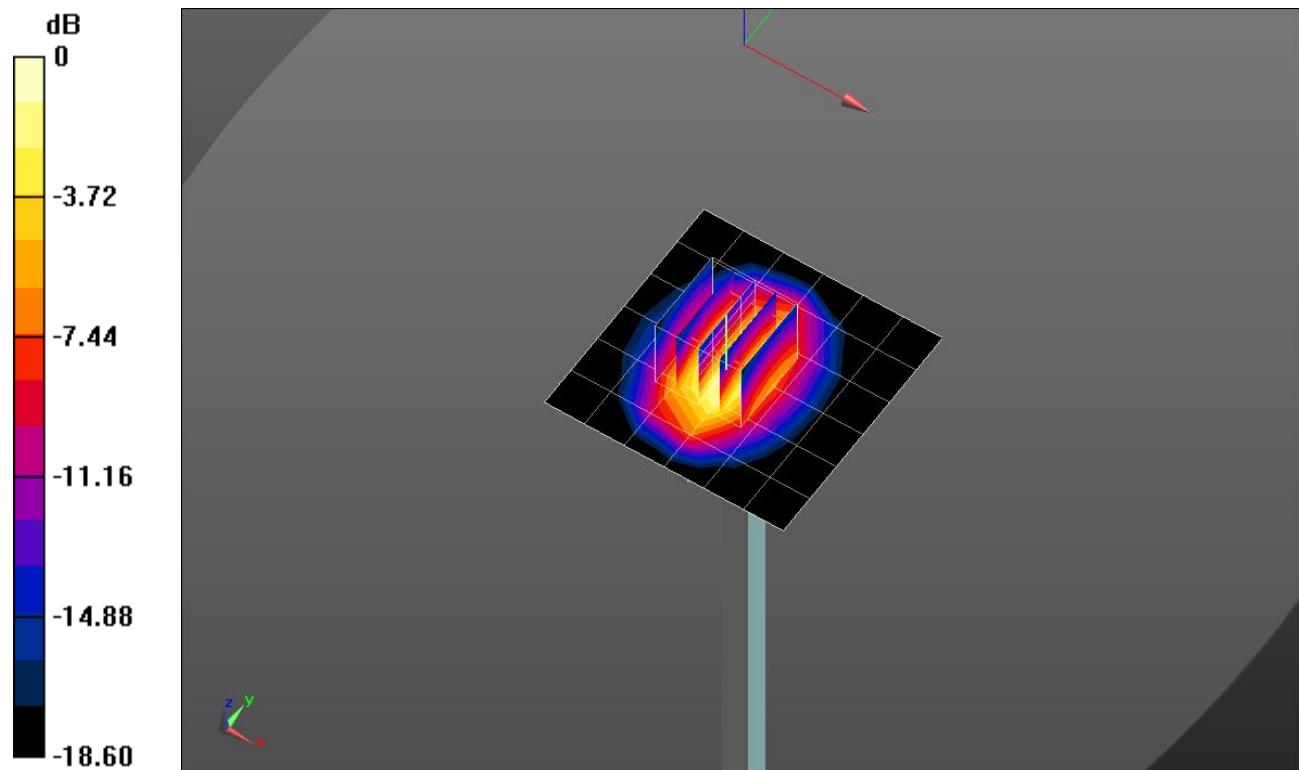
Body/Pin=100 mW/Zoom Scan (5x5x7)/Cube 0: Measurement grid: dx=8mm, dy=8mm, dz=5mm

Reference Value = 59.94 V/m; Power Drift = 0.14 dB

Peak SAR (extrapolated) = 7.63 W/kg

SAR(1 g) = 4.24 W/kg; SAR(10 g) = 2.21 W/kg

Maximum value of SAR (measured) = 5.49 W/kg

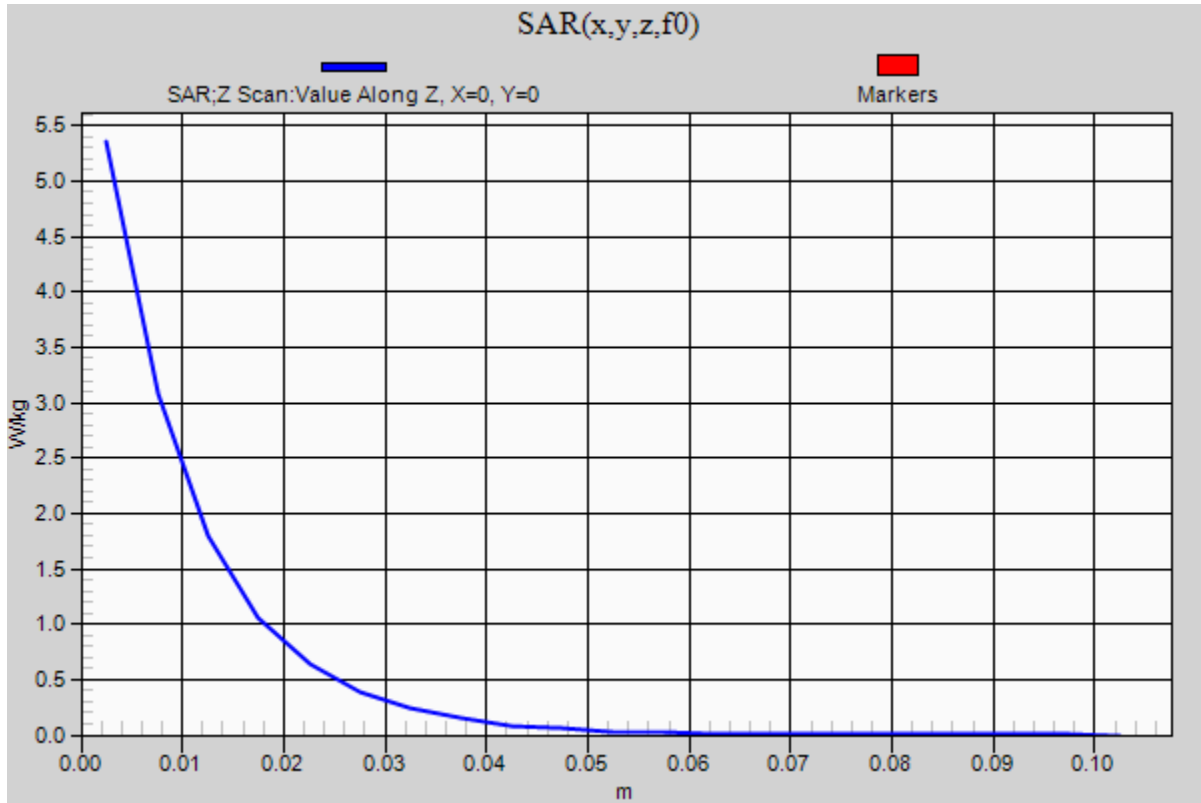


0 dB = 5.49 W/kg = 7.40 dBW/kg

20190107_SystemPerformanceCheck-D1900V2 SN 5d199

Frequency: 1900 MHz; Duty Cycle: 1:1

Body/Pin=100 mW/Z Scan (1x1x21): Measurement grid: dx=20mm, dy=20mm, dz=5mm
Maximum value of SAR (measured) = 5.35 W/kg



20190108_SystemPerformanceCheck-D1750V2 SN 1125

Frequency: 1750 MHz; Duty Cycle: 1:1; Room Ambient Temperature: 23.0°C; Liquid Temperature: 22.0°C
Medium parameters used: $f = 1750$ MHz; $\sigma = 1.546$ S/m; $\epsilon_r = 53.591$; $\rho = 1000$ kg/m³

DASY5 Configuration:

- Area Scan Setting: Find Secondary Maximum Within: 2.0 dB and with a peak SAR value greater than 0.0012W/kg
- Averaged Fast SAR: Polynomial fit
- Electronics: DAE4 Sn1468; Calibrated: 2018-08-22
- Probe: EX3DV4 - SN7314; ConvF(8.03, 8.03, 8.03); Calibrated: 2018-08-30;
- Sensor-Surface: 2.5mm (Mechanical Surface Detection)
- Phantom: ELI v6.0; Type: QDOVA003AA; Serial: TP:2005

Body/Pin=100 mW/Area Scan (6x9x1): Measurement grid: dx=15mm, dy=15mm

Maximum value of SAR (measured) = 4.76 W/kg

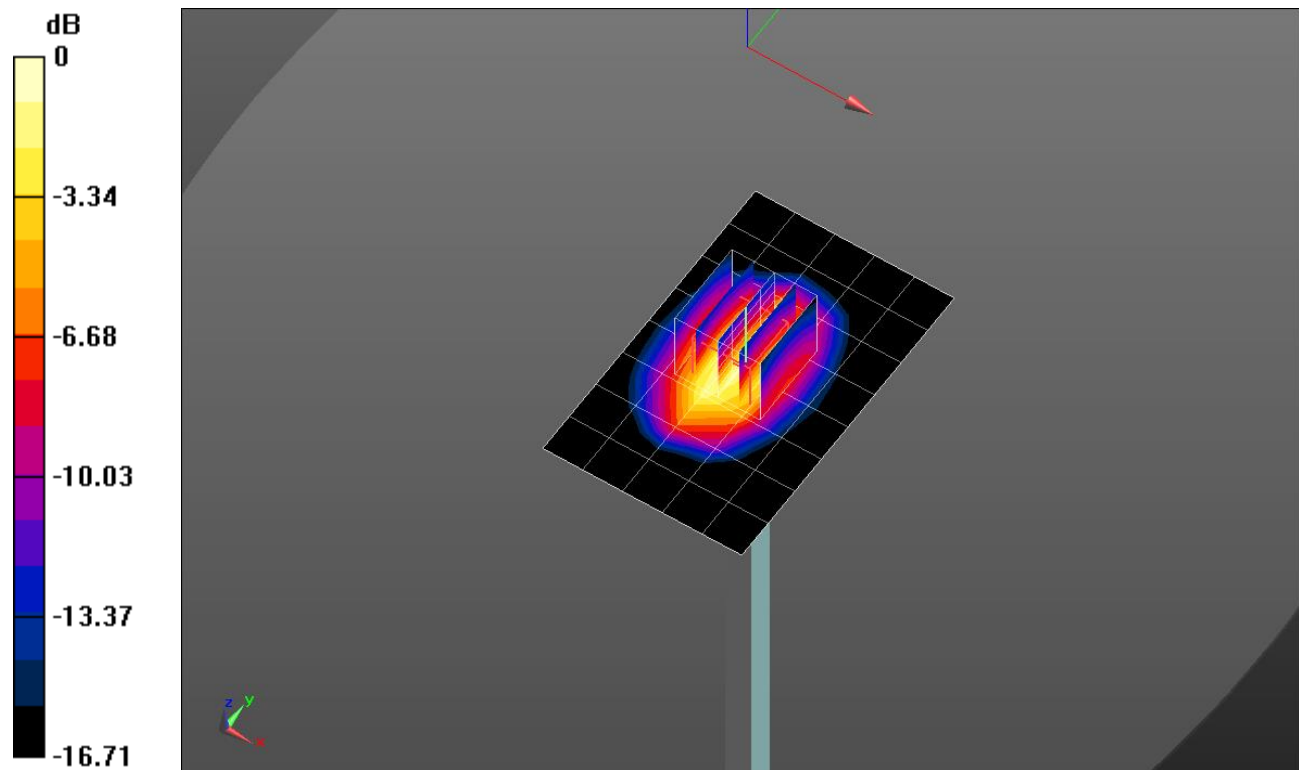
Body/Pin=100 mW/Zoom Scan (5x5x7)/Cube 0: Measurement grid: dx=8mm, dy=8mm, dz=5mm

Reference Value = 55.70 V/m; Power Drift = 0.17 dB

Peak SAR (extrapolated) = 6.76 W/kg

SAR(1 g) = 3.88 W/kg; SAR(10 g) = 2.08 W/kg

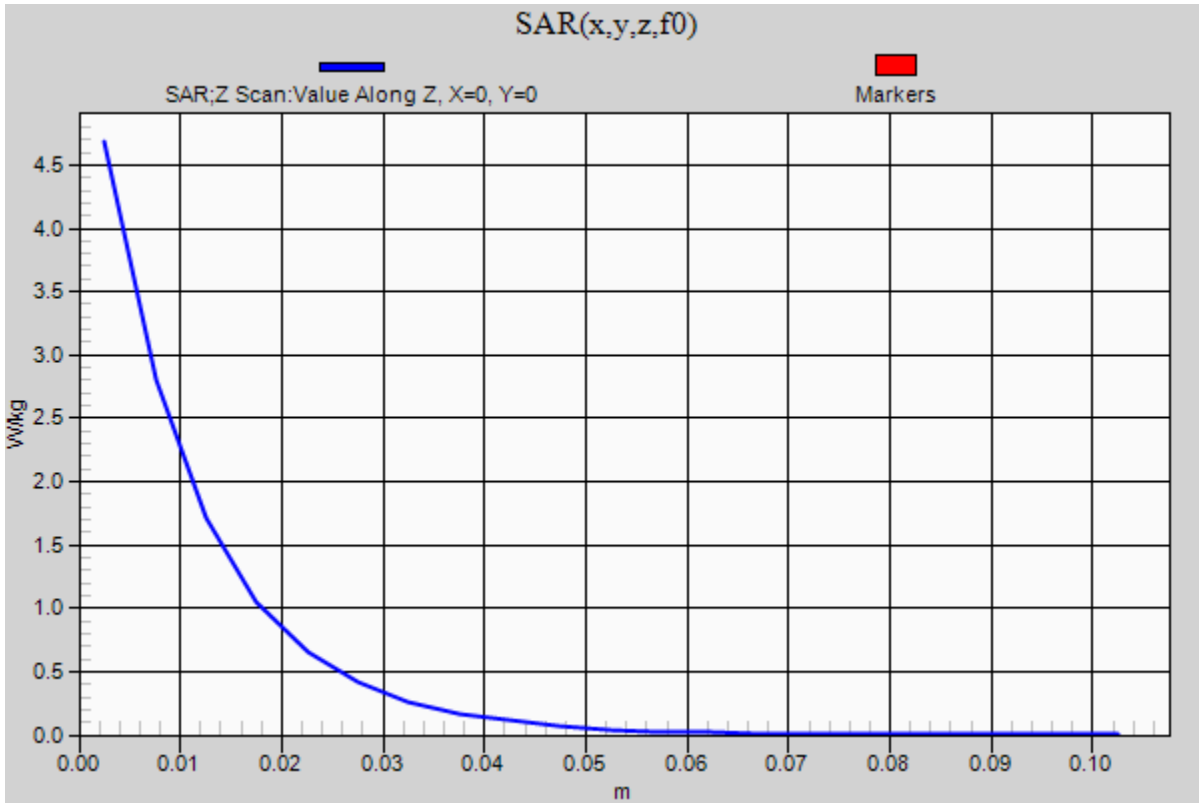
Maximum value of SAR (measured) = 5.09 W/kg



20190108_SystemPerformanceCheck-D1750V2 SN 1125

Frequency: 1750 MHz; Duty Cycle: 1:1

Body/Pin=100 mW/Z Scan (1x1x21): Measurement grid: dx=20mm, dy=20mm, dz=5mm
Maximum value of SAR (measured) = 4.68 W/kg



20190131_SystemPerformanceCheck-D5GHzV2 SN 1209

Frequency: 5600 MHz; Duty Cycle: 1:1; Room Ambient Temperature: 23.0°C; Liquid Temperature: 22.0°C
 Medium parameters used: $f = 5600$ MHz; $\sigma = 5.892$ S/m; $\epsilon_r = 48.171$; $\rho = 1000$ kg/m³

DASY5 Configuration:

- Area Scan Setting: Find Secondary Maximum Within: 2.0 dB and with a peak SAR value greater than 0.0012W/kg
- Averaged Fast SAR: Polynomial fit
- Electronics: DAE4 Sn1468; Calibrated: 2018-08-22
- Probe: EX3DV4 - SN7314; ConvF(4.03, 4.03, 4.03); Calibrated: 2018-08-30;
- Sensor-Surface: 1.4mm (Mechanical Surface Detection)
- Phantom: ELI v6.0; Type: QDOVA003AA; Serial: TP:2005

Body/5.6 GHz, Pin=100mW/Area Scan (7x7x1): Measurement grid: dx=10mm, dy=10mm

Maximum value of SAR (measured) = 16.1 W/kg

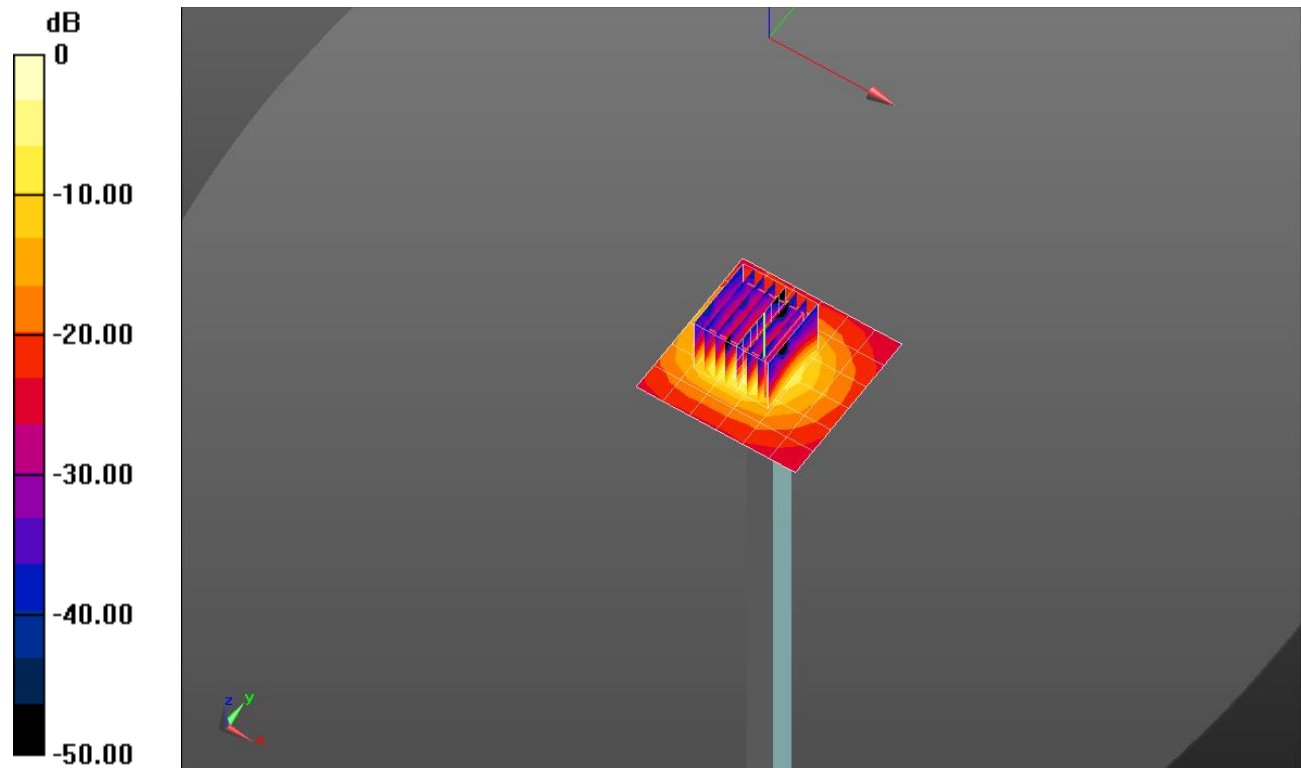
Body/5.6 GHz, Pin=100mW/Zoom Scan (8x8x7)/Cube 0: Measurement grid: dx=4mm, dy=4mm, dz=1.4mm

Reference Value = 59.98 V/m; Power Drift = 0.19 dB

Peak SAR (extrapolated) = 37.7 W/kg

SAR(1 g) = 8.57 W/kg; SAR(10 g) = 2.34 W/kg

Maximum value of SAR (measured) = 20.7 W/kg

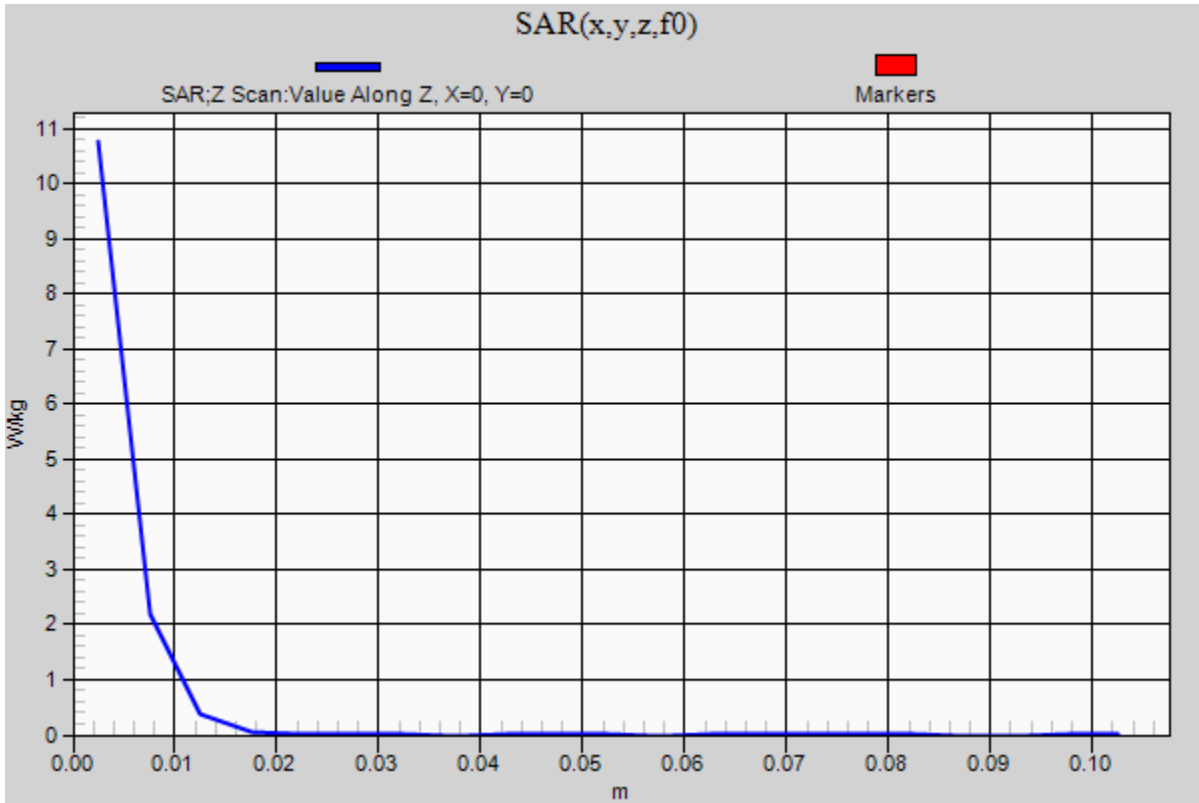


0 dB = 20.7 W/kg = 13.16 dBW/kg

20190131_SystemPerformanceCheck-D5GHzV2 SN 1209

Frequency: 5600 MHz; Duty Cycle: 1:1

Body/5.6 GHz, Pin=100mW/Z Scan (1x1x21): Measurement grid: dx=20mm, dy=20mm, dz=5mm
Maximum value of SAR (measured) = 10.8 W/kg



20190123_SystemPerformanceCheck-D2600V2 SN 1097

Frequency: 2600 MHz; Duty Cycle: 1:1; Room Ambient Temperature: 23.0°C; Liquid Temperature: 22.0°C
 Medium parameters used: $f = 2600 \text{ MHz}$; $\sigma = 2.24 \text{ S/m}$; $\epsilon_r = 51.251$; $\rho = 1000 \text{ kg/m}^3$

DASY5 Configuration:

- Area Scan Setting: Find Secondary Maximum Within: 2.0 dB and with a peak SAR value greater than 0.0012W/kg
- Averaged Fast SAR: Polynomial fit
- Electronics: DAE4 Sn1259; Calibrated: 2018-07-26
- Probe: EX3DV4 - SN3991; ConvF(7.6, 7.6, 7.6); Calibrated: 2018-05-24;
- Sensor-Surface: 2.5mm (Mechanical Surface Detection)
- Phantom: ELI V5.0 (20deg probe tilt)_20181018; Type: QD OVA 001 BB; Serial: 1212

Body/Pin=100 mW/Area Scan (9x9x1): Measurement grid: dx=10mm, dy=10mm

Maximum value of SAR (measured) = 6.42 W/kg

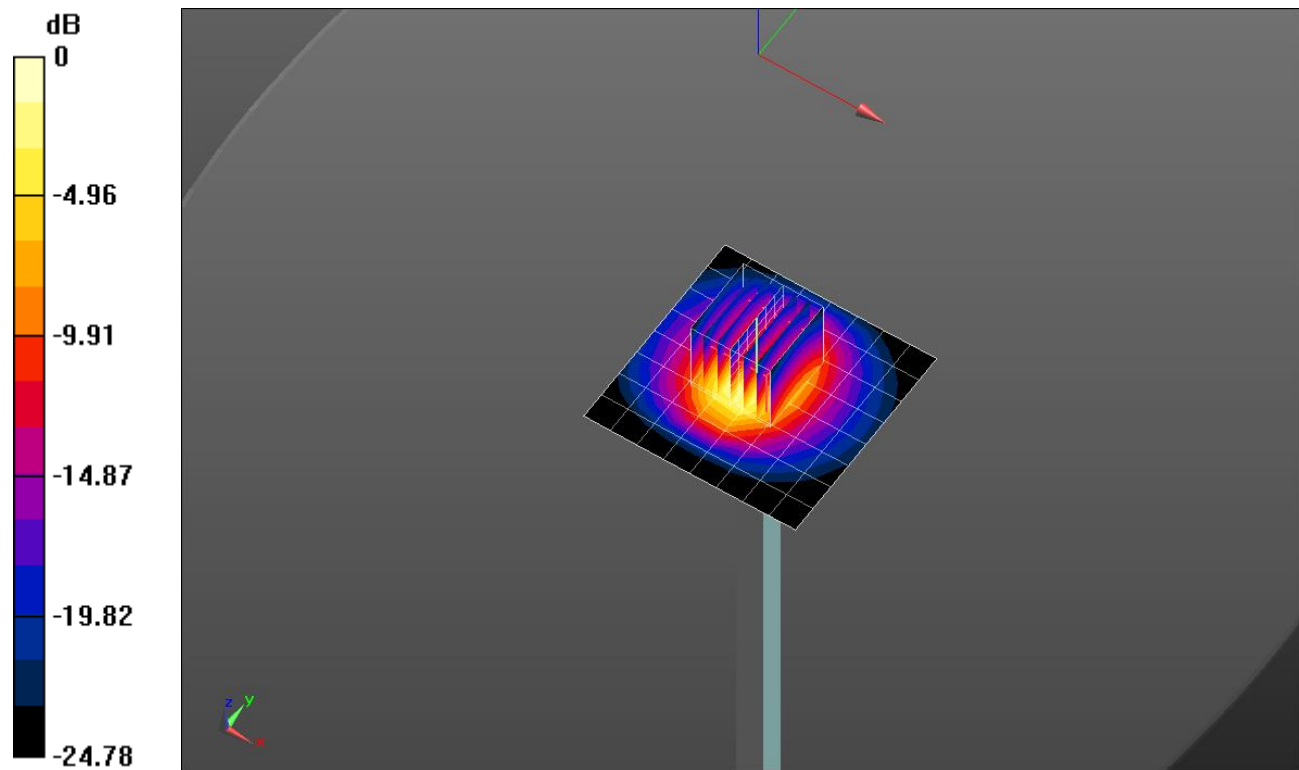
Body/Pin=100 mW/Zoom Scan (7x7x7)/Cube 0: Measurement grid: dx=5mm, dy=5mm, dz=5mm

Reference Value = 58.87 V/m; Power Drift = 0.09 dB

Peak SAR (extrapolated) = 11.7 W/kg

SAR(1 g) = 5.3 W/kg; SAR(10 g) = 2.31 W/kg

Maximum value of SAR (measured) = 7.77 W/kg

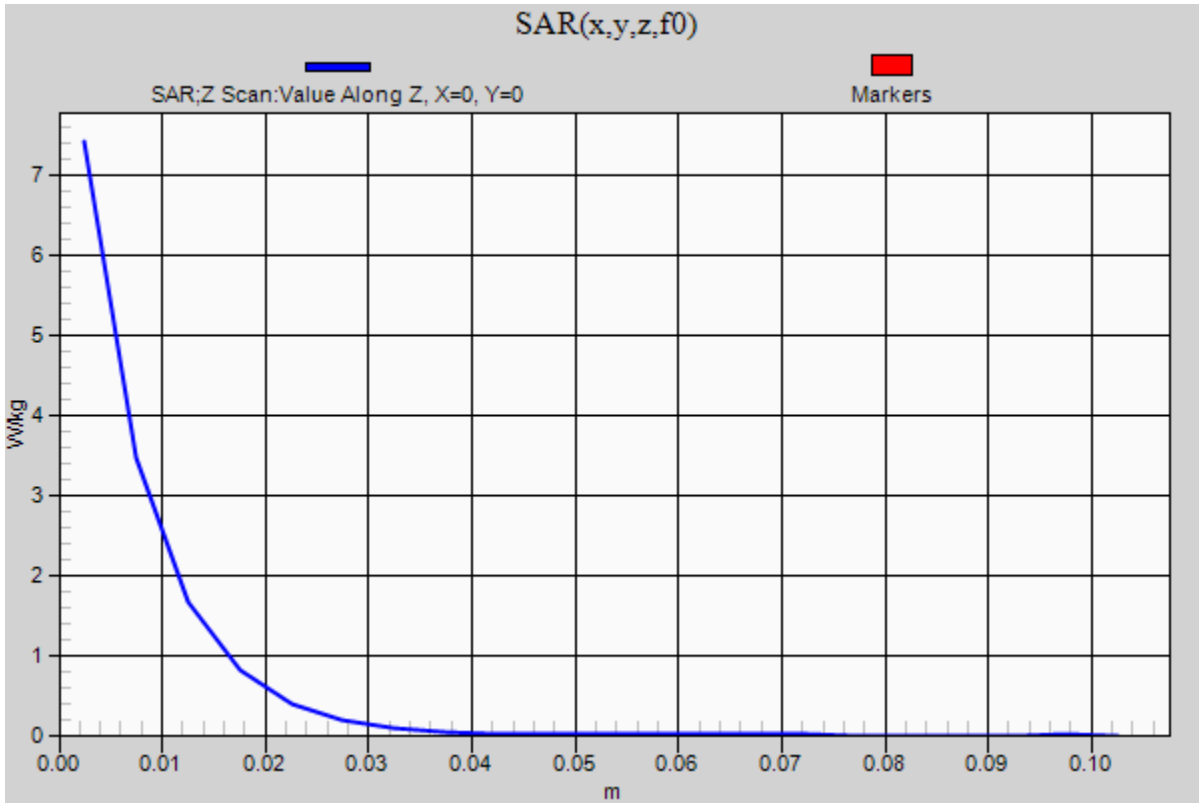


0 dB = 7.77 W/kg = 8.90 dBW/kg

20190123_SystemPerformanceCheck-D2600V2 SN 1097

Frequency: 2600 MHz; Duty Cycle: 1:1

Body/Pin=100 mW/Z Scan (1x1x21): Measurement grid: dx=20mm, dy=20mm, dz=5mm
Maximum value of SAR (measured) = 7.42 W/kg



20190128_SystemPerformanceCheck-D2450V2 SN 960

Frequency: 2450 MHz; Duty Cycle: 1:1; Room Ambient Temperature: 23.0°C; Liquid Temperature: 22.0°C
 Medium parameters used: $f = 2450 \text{ MHz}$; $\sigma = 2.01 \text{ S/m}$; $\epsilon_r = 52.526$; $\rho = 1000 \text{ kg/m}^3$

DASY5 Configuration:

- Area Scan Setting: Find Secondary Maximum Within: 2.0 dB and with a peak SAR value greater than 0.0012W/kg
- Averaged Fast SAR: Polynomial fit
- Electronics: DAE4 Sn1259; Calibrated: 2018-07-26
- Probe: EX3DV4 - SN3991; ConvF(7.72, 7.72, 7.72); Calibrated: 2018-05-24;
- Sensor-Surface: 2.5mm (Mechanical Surface Detection)
- Phantom: ELI V5.0 (20deg probe tilt)_20181018; Type: QD OVA 001 BB; Serial: 1212

Body/Pin=100 mW/Area Scan (8x8x1): Measurement grid: dx=12mm, dy=12mm

Maximum value of SAR (measured) = 6.88 W/kg

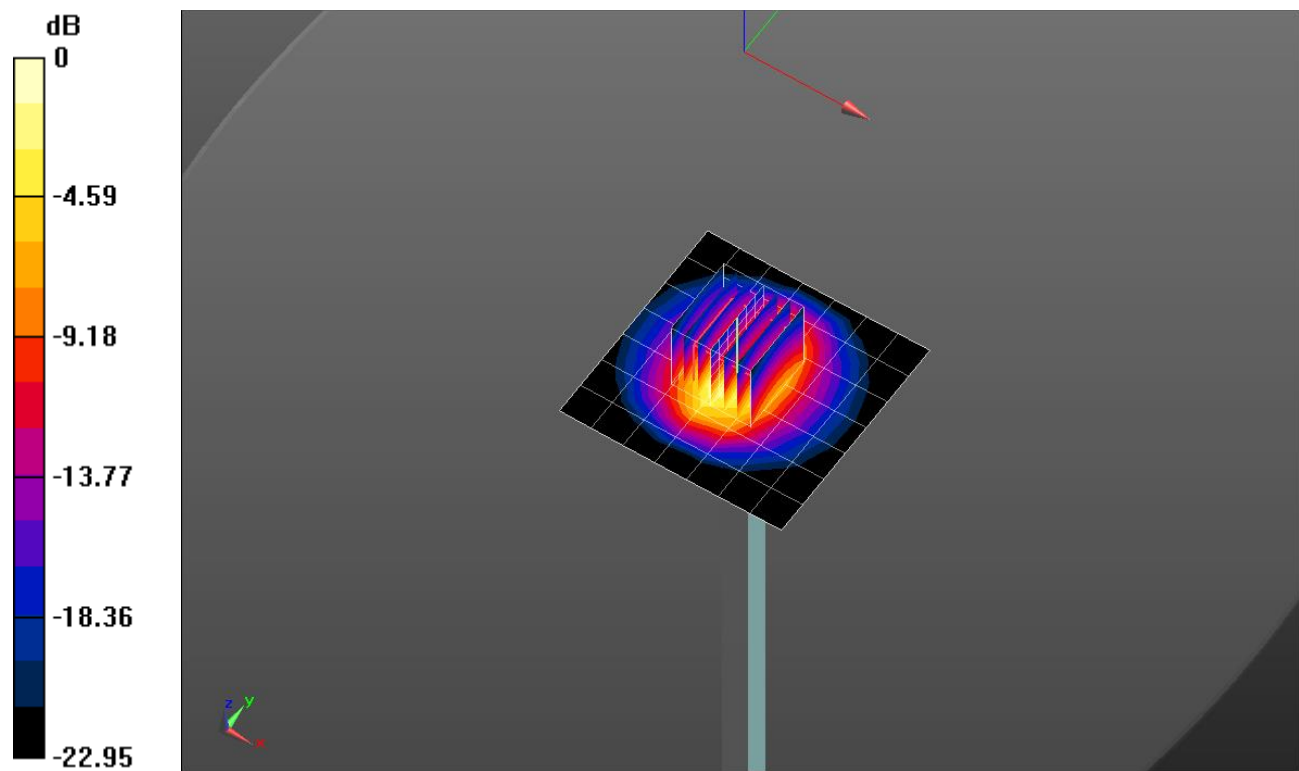
Body/Pin=100 mW/Zoom Scan (7x7x7) (7x7x7)/Cube 0: Measurement grid: dx=5mm, dy=5mm, dz=5mm

Reference Value = 60.68 V/m; Power Drift = 0.06 dB

Peak SAR (extrapolated) = 11.0 W/kg

SAR(1 g) = 5.26 W/kg; SAR(10 g) = 2.4 W/kg

Maximum value of SAR (measured) = 7.50 W/kg



0 dB = 7.50 W/kg = 8.75 dBW/kg

20190128_SystemPerformanceCheck-D2450V2 SN 960

Frequency: 2450 MHz; Duty Cycle: 1:1

Body/Pin=100 mW/Z Scan (1x1x21): Measurement grid: dx=20mm, dy=20mm, dz=5mm
Maximum value of SAR (measured) = 3.64 W/kg

