



**FCC 47 CFR § 2.1093
IEEE Std 1528-2013**

SAR EVALUATION REPORT

FOR

GSM/WCDMA/LTE Phone + BT/BLE, DTS/UNII a/b/g/n/ac and ANT+ and NFC

MODEL NUMBER: SM-A505FM/DS

FCC ID: A3LSMA505FM

REPORT NUMBER: 4788862444-S1V2

ISSUE DATE: 2/25/2019

Prepared for
**SAMSUNG ELECTRONICS CO., LTD.
129 SAMSUNG-RO, YEONGTONG-GU, SUWON-SI,
GYEONGGI-DO, 16677, KOREA**

Prepared by
**UL Korea, Ltd.
26th floor, 152, Teheran-ro, Gangnam-gu Seoul, 06236, Korea**

**Suwon Test Site: UL Korea, Ltd. Suwon Laboratory
218 Maeyeong-ro, Yeongtong-gu,
Suwon-si, Gyeonggi-do, 16675, Korea
TEL: (031) 337-9902
FAX: (031) 213-5433**



TL-637

Revision History

Rev.	Date	Revisions	Revised By
V1	2/19/2019	Initial Issue	JeongYeon Won
V2	2/25/2019	Sec 8.2 -Revised D835V2 Body System check data in SAR 2 Sec.10.4, Sec 11, Appendix B -Revised SAR results in WCDMA Band V Body-worn and Hotspot mode	JeongYeon Won

Table of Contents

1. Attestation of Test Results 5

2. Test Specification, Methods and Procedures..... 6

3. Facilities and Accreditation 6

4. SAR Measurement System & Test Equipment 7

 4.1. SAR Measurement System..... 7

 4.2. SAR Scan Procedures 8

 4.3. Test Equipment..... 10

5. Measurement Uncertainty..... 11

6. Device Under Test (DUT) Information 11

 6.1. DUT Description 11

 6.2. Wireless Technologies..... 12

 6.3. Nominal and Maximum Output Power..... 13

 6.4. General LTE SAR Test and Reporting Considerations..... 15

 6.5. LTE Carrier Aggregation 16

 6.6. LTE (TDD) Considerations..... 17

 6.7. Proximity Sensor feature..... 18

 6.7.1. Proximity Sensor Triggering Distance (KDB 616217 §6.2)..... 19

 6.7.2. Proximity Sensor Coverage (KDB 616217 §6.3) 22

 6.7.3. Proximity Sensor Tilt Angle Assessment (KDB 616217 §6.4)..... 22

 6.7.4. Resulting test positions for SAR measurements 22

7. RF Exposure Conditions (Test Configurations)..... 23

8. Dielectric Property Measurements & System Check 24

 8.1 Dielectric Property Measurements..... 24

 8.2 System Check..... 27

9. Conducted Output Power Measurements..... 29

 9.1 GSM 29

 9.2 W-CDMA 31

 9.3 LTE..... 36

 9.3.1 LTE Rel. 10 Carrier Aggregation..... 44

 9.4 Wi-Fi 2.4 GHz (DTS Band)..... 44


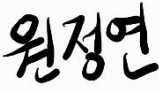
 9.5 Wi-Fi 5GHz (U-NII Bands)..... 45

 9.6 Bluetooth 46

10. Measured and Reported (Scaled) SAR Results..... 47

10.1	GSM 850	49
10.2	GSM1900	49
10.3	W-CDMA Band II	49
10.4	W-CDMA Band V.....	50
10.5	LTE Band 5 (10MHz Bandwidth).....	50
10.6	LTE Band 41 (20MHz Bandwidth).....	51
10.7	Wi-Fi (DTS Band)	51
10.8	Wi-Fi (U-NII Bands)	52
10.9	Bluetooth	53
11.	SAR Measurement Variability.....	54
12.	DUT Holder Perturbations	55
13.	Simultaneous Transmission SAR Analysis.....	55
13.1	Sum of the SAR for WWAN & Wi-Fi & BT.....	57
Appendixes	58
	4788862444-S1V2 FCC Report SAR_App A_Photos & Ant. Locations	58
	4788862444-S1V2 FCC Report SAR_App B_Highest SAR Test Plots	58
	4788862444-S1V2 FCC Report SAR_App C_System Check Plots	58
	4788862444-S1V2 FCC Report SAR_App D_SAR Tissue Ingredients.....	58
	4788862444-S1V2 FCC Report SAR_App E_Probe Cal. Certificates.....	58
	4788862444-S1V2 FCC Report SAR_App F_Dipole Cal. Certificates	58

1. Attestation of Test Results

Applicant Name	SAMSUNG ELECTRONICS CO.,LTD.				
FCC ID	A3LSMA505FM				
Model Number	SM-A505FM/DS				
Applicable Standards	FCC 47 CFR § 2.1093 Published RF exposure KDB procedures IEEE Std 1528-2013				
SAR Limits (W/Kg)					
Exposure Category	Peak spatial-average(1g of tissue)		Phablet (10g of tissue)		
General population / Uncontrolled exposure	1.6		4.0		
The Highest Reported SAR (W/kg)					
RF Exposure Conditions	Equipment Class				
	Licensed	DTS	U-NII	DSS(BT)	
Head	0.32	0.27	0.80	0.10	
Body-worn	0.41	<0.10	0.27	N/A	
Hotspot	0.79	0.17	0.40		
Phablet-10g	N/A	N/A	1.10		
Simultaneous TX	Head	1.12	0.60	1.12	0.43
	Body-worn	0.68	0.49	0.68	N/A
	Hotspot	1.19	0.97	1.19	
	Phablet-10g	N/A	N/A	N/A	
Date Tested	1/25/2019 to 2/19/2019				
Test Results	Pass				
<p>UL Korea, Ltd. tested the above equipment in accordance with the requirements set forth in the above standards. All indications of Pass/Fail in this report are opinions expressed by UL Korea, Ltd. based on interpretations and/or observations of test results. Measurement Uncertainties were not taken into account and are published for informational purposes only. The test results show that the equipment tested is capable of demonstrating compliance with the requirements as documented in this report.</p> <p>Note: The results documented in this report apply only to the tested sample, under the conditions and modes of operation as described herein. This document may not be altered or revised in any way unless done so by UL Korea, Ltd. and all revisions are duly noted in the revisions section. Any alteration of this document not carried out by UL Korea, Ltd. will constitute fraud and shall nullify the document. This report must not be used by the client to claim product certification, approval, or endorsement by IAS, any agency of the Federal Government, or any agency of any government.</p>					
Approved & Released By:		Prepared By:			
					
Justin Park Lead Test Engineer UL Korea, Ltd. Suwon Laboratory		JeongYeon Won Laboratory Technician UL Korea, Ltd. Suwon Laboratory			

2. Test Specification, Methods and Procedures

The tests documented in this report were performed in accordance with FCC 47 CFR § 2.1093, IEEE STD 1528-2013, the following FCC Published RF exposure [KDB](#) procedures:

- 248227 D01 802.11 Wi-Fi SAR v02r02
- 447498 D01 General RF Exposure Guidance v06
- 648474 D04 Handset SAR v01r03
- 690783 D01 SAR Listings on Grants v01r03
- 865664 D01 SAR measurement 100 MHz to 6 GHz v01r04
- 865664 D02 RF Exposure Reporting v01r02
- 941225 D01 3G SAR Procedures v03r01
- 941225 D05 SAR for LTE Devices v02r05
- 941225 D05A LTE Rel.10 KDB Inquiry Sheet v01r02
- 941225 D06 Hotspot Mode v02r01
- 941225 D07 UMPC Mini Tablet v01r02

In addition to the above, the following information was used:

- [TCB workshop](#) October, 2014; Page 37, RF Exposure Procedures Update (Other LTE Considerations)
- [TCB workshop](#) October, 2016; Page 7, RF Exposure Procedures (Bluetooth Duty Factor)
- [TCB workshop](#) October, 2016; Page 18, RF Exposure Procedures (DUT Holder Perturbations)
- [TCB workshop](#) April, 2018; Page 3, RF Exposure Procedures (LTE DL CA SAR Test Exclusion Update)

3. Facilities and Accreditation

The test sites and measurement facilities used to collect data are located at

Suwon
SAR 1 Room
SAR 2 Room
SAR 3 Room
SAR 4 Room

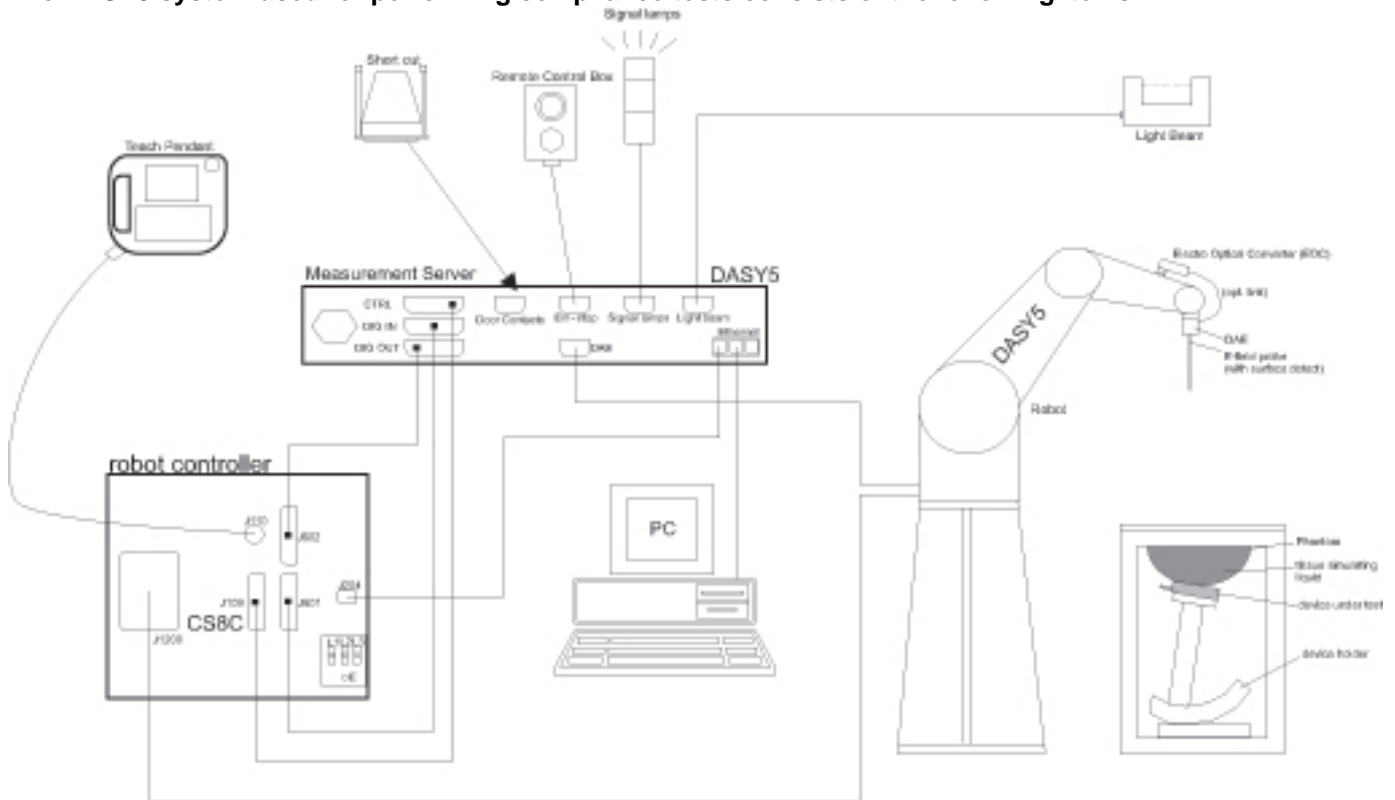
UL Korea, Ltd. is accredited by IAS, Laboratory Code TL-637.

The full scope of accreditation can be viewed at <http://www.iasonline.org/PDF/TL/TL-637.pdf>.

4. SAR Measurement System & Test Equipment

4.1. SAR Measurement System

The DASY5 system used for performing compliance tests consists of the following items:



- A standard high precision 6-axis robot with controller, teach pendant and software. An arm extension for accommodating the data acquisition electronics (DAE).
- An isotropic Field probe optimized and calibrated for the targeted measurement.
- A data acquisition electronics (DAE) which performs the signal amplification, signal multiplexing, AD-conversion, offset measurements, mechanical surface detection, collision detection, etc. The unit is battery powered with standard or rechargeable batteries. The signal is optically transmitted to the EOC.
- The Electro-optical converter (EOC) performs the conversion from optical to electrical signals for the digital communication to the DAE. To use optical surface detection, a special version of the EOC is required. The EOC signal is transmitted to the measurement server.
- The function of the measurement server is to perform the time critical tasks such as signal filtering, control of the robot operation and fast movement interrupts.
- The Light Beam used is for probe alignment. This improves the (absolute) accuracy of the probe positioning.
- A computer running WinXP or Win7 and the DASY5 software.
- Remote control and teach pendant as well as additional circuitry for robot safety such as warning lamps, etc.
- The phantom, the device holder and other accessories according to the targeted measurement.

4.2. SAR Scan Procedures

Step 1: Power Reference Measurement

The Power Reference Measurement and Power Drift Measurements are for monitoring the power drift of the device under test in the batch process. The minimum distance of probe sensors to surface determines the closest measurement point to phantom surface. The minimum distance of probe sensors to surface is 2.1 mm. This distance cannot be smaller than the distance of sensor calibration points to probe tip as defined in the probe properties.

Step 2: Area Scan

The Area Scan is used as a fast scan in two dimensions to find the area of high field values, before doing a fine measurement around the hot spot. The sophisticated interpolation routines implemented in DASY software can find the maximum locations even in relatively coarse grids. When an Area Scan has measured all reachable points, it computes the field maximal found in the scanned area, within a range of the global maximum. The range (in dB) is specified in the standards for compliance testing. For example, a 2 dB range is required in IEEE Standard 1528 and IEC 62209 standards, whereby 3 dB is a requirement when compliance is assessed in accordance with the ARIB standard (Japan). If only one Zoom Scan follows the Area Scan, then only the absolute maximum will be taken as reference. For cases where multiple maximums are detected, the number of Zoom Scans has to be increased accordingly.

Area Scan Parameters extracted from KDB 865664 D01 SAR Measurement 100 MHz to 6 GHz

	≤ 3 GHz	> 3 GHz
Maximum distance from closest measurement point (geometric center of probe sensors) to phantom surface	5 ± 1 mm	$\frac{1}{2} \cdot \delta \cdot \ln(2) \pm 0.5$ mm
Maximum probe angle from probe axis to phantom surface normal at the measurement location	$30^\circ \pm 1^\circ$	$20^\circ \pm 1^\circ$
Maximum area scan spatial resolution: Δx_{Area} , Δy_{Area}	≤ 2 GHz: ≤ 15 mm $2 - 3$ GHz: ≤ 12 mm	$3 - 4$ GHz: ≤ 12 mm $4 - 6$ GHz: ≤ 10 mm
	When the x or y dimension of the test device, in the measurement plane orientation, is smaller than the above, the measurement resolution must be \leq the corresponding x or y dimension of the test device with at least one measurement point on the test device.	

Step 3: Zoom Scan

Zoom Scans are used to assess the peak spatial SAR values within a cubic averaging volume containing 1 g and 10 g of simulated tissue. The Zoom Scan measures points (refer to table below) within a cube whose base faces are centered on the maxima found in a preceding area scan job within the same procedure. When the measurement is done, the Zoom Scan evaluates the averaged SAR for 1 g and 10 g and displays these values next to the job's label.

Zoom Scan Parameters extracted from KDB 865664 D01 SAR Measurement 100 MHz to 6 GHz

			≤ 3 GHz	> 3 GHz
Maximum zoom scan spatial resolution: $\Delta x_{Zoom}, \Delta y_{Zoom}$			≤ 2 GHz: ≤ 8 mm 2 – 3 GHz: ≤ 5 mm*	3 – 4 GHz: ≤ 5 mm* 4 – 6 GHz: ≤ 4 mm*
Maximum zoom scan spatial resolution, normal to phantom surface	uniform grid: $\Delta z_{Zoom}(n)$		≤ 5 mm	3 – 4 GHz: ≤ 4 mm 4 – 5 GHz: ≤ 3 mm 5 – 6 GHz: ≤ 2 mm
	graded grid	$\Delta z_{Zoom}(1)$: between 1 st two points closest to phantom surface	≤ 4 mm	3 – 4 GHz: ≤ 3 mm 4 – 5 GHz: ≤ 2.5 mm 5 – 6 GHz: ≤ 2 mm
		$\Delta z_{Zoom}(n>1)$: between subsequent points	≤ 1.5 · $\Delta z_{Zoom}(n-1)$	
Minimum zoom scan volume	x, y, z	≥ 30 mm	3 – 4 GHz: ≥ 28 mm 4 – 5 GHz: ≥ 25 mm 5 – 6 GHz: ≥ 22 mm	
Note: δ is the penetration depth of a plane-wave at normal incidence to the tissue medium; see draft standard IEEE P1528-2011 for details. * When zoom scan is required and the <i>reported</i> SAR from the <i>area scan based 1-g SAR estimation</i> procedures of KDB 447498 is ≤ 1.4 W/kg, ≤ 8 mm, ≤ 7 mm and ≤ 5 mm zoom scan resolution may be applied, respectively, for 2 GHz to 3 GHz, 3 GHz to 4 GHz and 4 GHz to 6 GHz.				

Step 4: Power drift measurement

The Power Drift Measurement measures the field at the same location as the most recent power reference measurement within the same procedure, and with the same settings. The Power Drift Measurement gives the field difference in dB from the reading conducted within the last Power Reference Measurement. This allows a user to monitor the power drift of the device under test within a batch process. The measurement procedure is the same as Step 1.

Step 5: Z-Scan (FCC only)

The Z Scan measures points along a vertical straight line. The line runs along the Z-axis of a one-dimensional grid. In order to get a reasonable extrapolation the extrapolated distance should not be larger than the step size in Z-direction.

4.3. Test Equipment

The measuring equipment used to perform the tests documented in this report has been calibrated in accordance with the manufacturers' recommendations, and is traceable to recognized national standards.

Dielectric Property Measurements

Name of Equipment	Manufacturer	Type/Model	Serial No.	Cal. Due Date
Network Analyzer	Agilent	E5071C	MY46522054	8-7-2019
Dielectric Assessment Kit	SPEAG	DAK-3.5	1196	6-26-2019
Shorting block	SPEAG	DAK-3.5 Short	SM DAK 200 BA	N/A
Thermometer	LKM	DTM3000	3424	8-9-2019

System Check

Name of Equipment	Manufacturer	Type/Model	Serial No.	Cal. Due Date
MXG Analog Signal Generator	Agilent	N5181A	MY50145882	8-7-2019
Power Sensor	Agilent	U2000A	MY54260010	8-7-2019
Power Sensor	Agilent	U2000A	MY54260007	8-7-2019
Power Amplifier	EXODUS	1410025-AMP2027-10003	10003	8-8-2019
Directional Coupler	Agilent	772D	MY52180193	8-7-2019
Directional Coupler	Agilent	778D	MY52180432	8-7-2019
Low Pass Filter	MICROLAB	LA-15N	03943	8-7-2019
Low Pass Filter	FILTRON	L14012FL	1410003S	8-7-2019
Low Pass Filter	MICROLAB	LA-60N	03942	8-7-2019
Attenuator	Agilent	8491B/003	MY39269292	8-7-2019
Attenuator	Agilent	8491B/010	MY39269315	8-7-2019
Attenuator	Agilent	8491B/020	MY39269298	8-7-2019
E-Field Probe (SAR1)	SPEAG	EX3DV4	7376	9-26-2019
E-Field Probe (SAR2)	SPEAG	EX3DV4	7313	2-20-2019
E-Field Probe (SAR2)	SPEAG	EX3DV4	7330	1-31-2020
E-Field Probe (SAR3)	SPEAG	EX3DV4	7314	8-30-2019
E-Field Probe (SAR4)	SPEAG	EX3DV4	3991	5-24-2019
Data Acquisition Electronics (SAR1)	SPEAG	DAE4	1494	7-23-2019
Data Acquisition Electronics (SAR2)	SPEAG	DAE4	1447	3-15-2019
Data Acquisition Electronics (SAR3)	SPEAG	DAE4	1468	8-22-2019
Data Acquisition Electronics (SAR4)	SPEAG	DAE4	1259	7-26-2019
System Validation Dipole	SPEAG	D835V2	4d194	7-24-2019
System Validation Dipole	SPEAG	D1900V2	5d199	3-15-2019
System Validation Dipole	SPEAG	D2450V2	960	3-20-2019
System Validation Dipole	SPEAG	D2600V2	1097	1-17-2019
System Validation Dipole	SPEAG	D5GHzV2	1184	8-21-2019
Thermometer (SAR1)	Lutron	MHB-382SD	AH.91463	8-8-2019
Thermometer (SAR2)	Lutron	MHB-382SD	AH.50215	8-13-2019
Thermometer (SAR3)	Lutron	MHB-382SD	AH.50213	8-14-2019
Thermometer (SAR4)	Lutron	MHB-382SD	AH.91478	8-8-2019

Others

Name of Equipment	Manufacturer	Type/Model	Serial No.	Cal. Due Date
Base Station Simulator	R & S	CMW500	150313	8-9-2019
Base Station Simulator	R & S	CMW500	150314	8-9-2019
Base Station Simulator	R & S	CMW500	162790	8-9-2019
Wireless Connectivity Tester	R & S	CMW270	100982	8-8-2019
Bluetooth Tester	TESCOM	TC-3000C	3000C000546	8-7-2019

Note(s):

Refer to Appendix F that mentioned about justification for Extended SAR Dipole Calibrations (D2600, SN : 1097)

5. Measurement Uncertainty

Per KDB 865664 D01 SAR Measurement 100 MHz to 6 GHz, when the highest measured 1-g SAR within a frequency band is < 1.5 W/kg and the measured 10-g SAR within a frequency band is < 3.75 W/kg. The expanded SAR measurement uncertainty must be $\leq 30\%$, for a confidence interval of $k = 2$. If these conditions are met, extensive SAR measurement uncertainty analysis described in IEEE Std 1528-2013 is not required in SAR reports submitted for equipment approval.

6. Device Under Test (DUT) Information

6.1. DUT Description

Device Dimension	Overall (Length x Width): 158.5 mm x 74.5 mm Overall Diagonal: 165.0 mm Display Diagonal: 158.0 mm																					
Back Cover	<input checked="" type="checkbox"/> The Back Cover is not removable.																					
Battery Options	<input checked="" type="checkbox"/> The rechargeable battery is not user accessible																					
Wireless Router (Hotspot)	Wi-Fi Hotspot mode permits the device to share its cellular data connection with other Wi-Fi-enabled devices. <input checked="" type="checkbox"/> Mobile Hotspot (Wi-Fi 2.4 GHz) <input checked="" type="checkbox"/> Mobile Hotspot (Wi-Fi 5.8GHz_only ch.149)																					
Wi-Fi Direct	Wi-Fi Direct enabled devices transfer data directly between each other <input checked="" type="checkbox"/> Wi-Fi Direct (Wi-Fi 2.4 GHz) <input checked="" type="checkbox"/> Wi-Fi Direct (Wi-Fi 5 GHz_Ch.36 – Ch.48, Ch 149 – Ch165)																					
Test Sample Information	<table border="1"> <thead> <tr> <th>No.</th> <th>S/N</th> <th>Notes</th> </tr> </thead> <tbody> <tr> <td>1</td> <td>R38M109EBAH</td> <td>Main/Wi-Fi-BT conduction</td> </tr> <tr> <td>2</td> <td>R38M109EB8B</td> <td>SAR</td> </tr> <tr> <td>3</td> <td>R38M109EB7J</td> <td>SAR</td> </tr> <tr> <td>4</td> <td>R38M109EB9D</td> <td>SAR</td> </tr> <tr> <td>5</td> <td>R38M109DWQT</td> <td>SAR</td> </tr> <tr> <td>6</td> <td>R38M109DWRP</td> <td>SAR</td> </tr> </tbody> </table>	No.	S/N	Notes	1	R38M109EBAH	Main/Wi-Fi-BT conduction	2	R38M109EB8B	SAR	3	R38M109EB7J	SAR	4	R38M109EB9D	SAR	5	R38M109DWQT	SAR	6	R38M109DWRP	SAR
No.	S/N	Notes																				
1	R38M109EBAH	Main/Wi-Fi-BT conduction																				
2	R38M109EB8B	SAR																				
3	R38M109EB7J	SAR																				
4	R38M109EB9D	SAR																				
5	R38M109DWQT	SAR																				
6	R38M109DWRP	SAR																				

6.2. Wireless Technologies

Wireless technologies	Frequency bands	Operating mode		Duty Cycle used for SAR testing
GSM	850 1900	Voice (GMSK) GPRS (GMSK) EGPRS (8PSK)	GPRS Multi-Slot Class: <input type="checkbox"/> Class 8 - 1 Up, 4 Down <input type="checkbox"/> Class 10 - 2 Up, 4 Down <input type="checkbox"/> Class 12 - 4 Up, 4 Down <input checked="" type="checkbox"/> Class 33 - 4 Up, 5 Down	GSM Voice: 12.5% (E)GPRS: 1 Slot: 12.5% 2 Slots: 25% 3 Slots: 37.5% 4 Slots: 50%
W-CDMA (UMTS)	Band II Band V	UMTS Rel. 99 (Voice & Data) HSDPA (Release 9) HSUPA (Release 9) DC-HSDPA (Release 9) HSPA+ (Release 9)		100%
LTE	FDD Band 5 TDD Band 41	QPSK 16QAM Rel. 10 Carrier Aggregation support downlink only		100% (FDD) 63.3% (TDD) ¹
		Does this device support SV-LTE (1xRTT-LTE)? <input type="checkbox"/> Yes <input checked="" type="checkbox"/> No		
Wi-Fi	2.4 GHz	802.11b 802.11g 802.11n (HT20)		99.8% (802.11b) 97.2% (802.11g) 97.0% (802.11n 20MHz BW)
		5 GHz	802.11a 802.11n (HT20) 802.11n (HT40) 802.11ac (VHT20) 802.11ac (VHT40) 802.11ac (VHT80)	
	Does this device support bands 5.60 ~ 5.65 GHz? <input checked="" type="checkbox"/> Yes <input type="checkbox"/> No			
	Does this device support Band gap channel(s)? <input checked="" type="checkbox"/> Yes <input type="checkbox"/> No			
Bluetooth	2.4 GHz	Version 5.0 LE		76.7% (DH5)

Notes:

1. This device supports uplink-downlink configuration 0-6. The configuration with the highest duty cycle was used (Subframe Number 0 at 63.3%).
2. The Bluetooth protocol is considered source-based averaging. Bluetooth GFSK (DH5) was verified to have the highest duty cycle of 76.7% and was considered and used for SAR Testing.
3. Duty cycle for Wi-Fi is referenced from the DTS and UNII report.

6.3. Nominal and Maximum Output Power

KDB 447498 sec.4.1. at the maximum rated output power and within the tune-up tolerance range specified for the product, but not more than 2 dB lower than the maximum tune-up tolerance limit

RF Air interface	Antenna	Mode	Time Slots	Max. RF Output Power (dBm)	
				Tune-up Limit	Frame Power
GSM850	Main 1	Voice/GPRS	1	34.0	25.0
		GPRS	2	31.5	25.5
		GPRS	3	30.0	25.7
		GPRS	4	29.0	26.0
		EGPRS	1	27.5	18.5
		EGPRS	2	25.0	19.0
		EGPRS	3	24.0	19.7
GSM1900	Main 1	Voice/GPRS	1	31.0	22.0
		GPRS	2	28.0	22.0
		GPRS	3	26.0	21.7
		GPRS	4	24.5	21.5
		EGPRS	1	26.5	17.5
		EGPRS	2	24.0	18.0
		EGPRS	3	23.0	18.7
		EGPRS	4	21.5	18.5

RF Air interface	Antenna	Mode	Max. RF Output Power (dBm)	Reduced. RF Output Power (dBm)
W-CDMA Band II	Main 1	R99	24.5	21.5
		HSDPA	23.5	21.0
		HSUPA	23.0	21.0
		DC-HSDPA	23.5	21.0
W-CDMA Band V	Main 1	R99	25.5	
		HSDPA	24.5	
		HSUPA	22.5	
		DC-HSDPA	25.0	

RF Air interface	Antenna	Mode	Max. RF Output Power (dBm)
LTE Band 5	Main 1	QPSK	25.5
LTE Band 41	Main 2	QPSK	24.5

Notes:

1. The device utilizes power reduction under some portable hotspot conditions for SAR compliance. There is power reduction for WCDMA Band II. The reduced powers were confirmed via conducted power measurements the RF port. Detailed description of the hotspot power reduction mechanism is included in the operational description.
2. WCDMA band II has support to proximity sensor back-off function. it is operating during extremity (hand-held) use conditions. And This function is apply to phablet 10-g SAR exposure condition. Other Head and Body exposure conditions are performed SAR test at full power. The proximity sensor details explain in SAR report according to Section 6 in KDB 616217.
3. LTE QPSK configuration has the highest maximum average output power per 3GPP standard.
4. WCDMA Band II has support to power reduction when earphone is connected to phone. But Max power's reported SAR result is not over 1.2 W/kg in body-worn exposure condition. so we don't need to evaluation for phone + earphone configuration in body-worn accessory exposure condition according to Sec.2.3 in KDB 648474 D04. Therefore we don't need to consider about power reduction when earphone is connected to phone.
5. All Power reduction mechanisms are not work in WCDMA Band II at the same time.

RF Air interface	Mode	Max. RF Output Power (dBm)	Reduced. RF Output Power (dBm)
WiFi 2.4 GHz (Ch.1 - Ch.10)	802.11b	17.5	14.5
	802.11g	17.0	14.0
	802.11n HT20	17.0	14.0
WiFi 2.4 GHz (Ch.11)	802.11b	17.5	14.5
	802.11g	15.0	12.0
	802.11n HT20	14.5	11.5
WiFi 2.4 GHz (Ch.12)	802.11b	16.0	13.0
	802.11g	11.5	8.5
	802.11n HT20	12.0	9.0
WiFi 2.4 GHz (Ch.13)	802.11b	12.5	9.5
	802.11g	9.5	6.5
	802.11n HT20	10.0	7.0
WiFi 5 GHz (UNII-1)	802.11a	15.5	13.0
	802.11n HT20	15.5	13.0
	802.11n HT40	12.5	
	802.11ac VHT20	15.5	13.0
	802.11ac VHT40	12.5	
WiFi 5 GHz (UNII-2A)	802.11ac VHT80	11.0	
	802.11a	10.5	
	802.11n HT20	10.5	
	802.11n HT40	8.5	
	802.11ac VHT20	10.5	
	802.11ac VHT40	8.5	
WiFi 5 GHz (UNII-2C)	802.11ac VHT80	8.0	
	802.11a	13.5	
	802.11n HT20	13.0	
	802.11n HT40	10.5	
	802.11ac VHT20	13.0	
	802.11ac VHT40	10.5	
WiFi 5 GHz (UNII-3)	802.11ac VHT80	9.5	
	802.11a	16.0	13.0
	802.11n HT20	16.0	13.0
	802.11n HT40	15.0	12.0
	802.11ac VHT20	16.0	13.0
	802.11ac VHT40	15.0	12.0
	802.11ac VHT80	14.0	11.0
	Bluetooth	10.0	
	Bluetooth EDR	7.0	
	Bluetooth LE	7.0	

Note(s):

This device uses an independent fixed level power reduction mechanism for WLAN operations during RCV operated. Detailed descriptions of the power reduction mechanism are included in the operational description.

6.4. General LTE SAR Test and Reporting Considerations

Item	Description																																																														
Frequency range, Channel Bandwidth, Numbers and Frequencies	Band 5	Frequency range: 824 - 849 MHz																																																													
		Channel Bandwidth																																																													
		20 MHz	15 MHz	10 MHz	5 MHz	3 MHz	1.4 MHz																																																								
	Low			20450/ 829	20425/ 826.5	20415/ 825.5	20407/ 824.7																																																								
	Mid			20525/ 836.5	20525/ 836.5	20525/ 836.5	20525/ 836.5																																																								
	High			20600/ 844	20625/ 846.5	20635/ 847.5	20643/ 848.3																																																								
	Band 41	Frequency range: 2496 - 2690 MHz																																																													
		Channel Bandwidth																																																													
		20 MHz	15 MHz	10 MHz	5 MHz	3 MHz	1.4 MHz																																																								
	Low	39750 / 2506.0																																																													
	Low-Mid	40185 / 2549.5																																																													
	Mid	40620 / 2593.0																																																													
	Mid-High	41055 / 2636.5																																																													
	High	41490 / 2680.0																																																													
LTE transmitter and antenna implementation	Refer to Appendix A.																																																														
Maximum power reduction (MPR)	<p>Table 6.2.3-1: Maximum Power Reduction (MPR) for Power Class 1, 2 and 3</p> <table border="1"> <thead> <tr> <th rowspan="2">Modulation</th> <th colspan="6">Channel bandwidth / Transmission bandwidth (N_{RB})</th> <th rowspan="2">MPR (dB)</th> </tr> <tr> <th>1.4 MHz</th> <th>3.0 MHz</th> <th>5 MHz</th> <th>10 MHz</th> <th>15 MHz</th> <th>20 MHz</th> </tr> </thead> <tbody> <tr> <td>QPSK</td> <td>> 5</td> <td>> 4</td> <td>> 8</td> <td>> 12</td> <td>> 16</td> <td>> 18</td> <td>≤ 1</td> </tr> <tr> <td>16 QAM</td> <td>≤ 5</td> <td>≤ 4</td> <td>≤ 8</td> <td>≤ 12</td> <td>≤ 16</td> <td>≤ 18</td> <td>≤ 1</td> </tr> <tr> <td>16 QAM</td> <td>> 5</td> <td>> 4</td> <td>> 8</td> <td>> 12</td> <td>> 16</td> <td>> 18</td> <td>≤ 2</td> </tr> <tr> <td>64 QAM</td> <td>≤ 5</td> <td>≤ 4</td> <td>≤ 8</td> <td>≤ 12</td> <td>≤ 16</td> <td>≤ 18</td> <td>≤ 2</td> </tr> <tr> <td>64 QAM</td> <td>> 5</td> <td>> 4</td> <td>> 8</td> <td>> 12</td> <td>> 16</td> <td>> 18</td> <td>≤ 3</td> </tr> <tr> <td>256 QAM</td> <td colspan="6">≥ 1</td> <td>≤ 5</td> </tr> </tbody> </table> <p>MPR Built-in by design The manufacturer MPR values are always within the 3GPP maximum MPR allowance but may not follow the default MPR values. A-MPR (additional MPR) was disabled during SAR testing</p>	Modulation	Channel bandwidth / Transmission bandwidth (N _{RB})						MPR (dB)	1.4 MHz	3.0 MHz	5 MHz	10 MHz	15 MHz	20 MHz	QPSK	> 5	> 4	> 8	> 12	> 16	> 18	≤ 1	16 QAM	≤ 5	≤ 4	≤ 8	≤ 12	≤ 16	≤ 18	≤ 1	16 QAM	> 5	> 4	> 8	> 12	> 16	> 18	≤ 2	64 QAM	≤ 5	≤ 4	≤ 8	≤ 12	≤ 16	≤ 18	≤ 2	64 QAM	> 5	> 4	> 8	> 12	> 16	> 18	≤ 3	256 QAM	≥ 1						≤ 5
Modulation	Channel bandwidth / Transmission bandwidth (N _{RB})						MPR (dB)																																																								
	1.4 MHz	3.0 MHz	5 MHz	10 MHz	15 MHz	20 MHz																																																									
QPSK	> 5	> 4	> 8	> 12	> 16	> 18	≤ 1																																																								
16 QAM	≤ 5	≤ 4	≤ 8	≤ 12	≤ 16	≤ 18	≤ 1																																																								
16 QAM	> 5	> 4	> 8	> 12	> 16	> 18	≤ 2																																																								
64 QAM	≤ 5	≤ 4	≤ 8	≤ 12	≤ 16	≤ 18	≤ 2																																																								
64 QAM	> 5	> 4	> 8	> 12	> 16	> 18	≤ 3																																																								
256 QAM	≥ 1						≤ 5																																																								
Power reduction	No																																																														
Spectrum plots for RB configurations	A properly configured base station simulator was used for the SAR and power measurements; therefore, spectrum plots for each RB allocation and offset configuration are not included in the SAR report.																																																														

Notes:

- SAR Testing for LTE was performed with the same number of RB and RB offsets transmitting on all TTI frames (maximum TTI).

6.5. LTE Carrier Aggregation

DL Intra-Band Non-contiguous

E-UTRA CA configuration (BCS)	E-UTRA Band	Allowed Channel BW Per Carrier (MHz)					Max Aggregated BW
		1st Carrier	2nd Carrier	3rd Carrier	4th Carrier	5th Carrier	
CA_5A-5A (0),(1)	Band 5	5,10	5,10				20 MHz
	Band 5	3	5				8 MHz

DL Intra-Band Contiguous

E-UTRA CA configuration (BCS)	E-UTRA Band	Allowed Channel BW Per Carrier (MHz)					Max Aggregated BW
		1st Carrier	2nd Carrier	3rd Carrier	4th Carrier	5th Carrier	
CA_5B (0),(1)	Band 5	5,10	10				20 MHz
		10	5				
		3	5				8 MHz
		5	3				

Note(s):

- For supported channels, please refer to §6.4.

6.6. LTE (TDD) Considerations

According to KDB 941225 D05 SAR for LTE Devices, for Time-Division Duplex (TDD) systems, SAR must be tested using a fixed periodic duty factor according to the highest transmission duty factor implemented for the device and supported by the defined 3GPP LTE TDD configurations.

LTE TDD Bands support 3GPP TS 36.211 section 4.2 for Type 2 Frame Structure and Table 4.2-2 for uplink-downlink configurations and Table 4.2-1 for Special subframe configurations.

Table 4.2-1: Configuration of special subframe (lengths of DwPTS/GP/UpPTS).

Special subframe configuration	Normal cyclic prefix in downlink			Extended cyclic prefix in downlink		
	DwPTS	UpPTS		DwPTS	UpPTS	
		Normal cyclic prefix in uplink	Extended cyclic prefix in uplink		Normal cyclic prefix in uplink	Extended cyclic prefix in uplink
0	$6592 \cdot T_s$	$2192 \cdot T_s$	$2560 \cdot T_s$	$7680 \cdot T_s$	$2192 \cdot T_s$	$2560 \cdot T_s$
1	$19760 \cdot T_s$			$20480 \cdot T_s$		
2	$21952 \cdot T_s$			$23040 \cdot T_s$		
3	$24144 \cdot T_s$			$25600 \cdot T_s$		
4	$26336 \cdot T_s$			$7680 \cdot T_s$		
5	$6592 \cdot T_s$	$4384 \cdot T_s$	$5120 \cdot T_s$	$20480 \cdot T_s$	$4384 \cdot T_s$	$5120 \cdot T_s$
6	$19760 \cdot T_s$			$23040 \cdot T_s$		
7	$21952 \cdot T_s$			$12800 \cdot T_s$		
8	$24144 \cdot T_s$			-		
9	$13168 \cdot T_s$			-		

Calculated Duty Cycle

Uplink-Downlink Configuration	Downlink-to-Uplink Switch-point Periodicity	Subframe Number										Calculated Duty Cycle (%)
		0	1	2	3	4	5	6	7	8	9	
0	5 ms	D	S	U	U	U	D	S	U	U	U	63.33
1	5 ms	D	S	U	U	D	D	S	U	U	D	43.33
2	5 ms	D	S	U	D	D	D	S	U	D	D	23.33
3	10 ms	D	S	U	U	U	D	D	D	D	D	31.67
4	10 ms	D	S	U	U	D	D	D	D	D	D	21.67
5	10 ms	D	S	U	D	D	D	D	D	D	D	11.67
6	5 ms	D	S	U	U	U	D	S	U	U	D	53.33

Calculated Duty Cycle = Extended cyclic prefix in uplink $\times (T_s) \times \#$ of S + $\#$ of U

Example for Calculated Duty Cycle for Uplink-Downlink Configuration 0:

Calculated Duty Cycle = $5120 \times [1/(15000 \times 2048)] \times 2 + 6 \text{ ms} = 63.33\%$

where

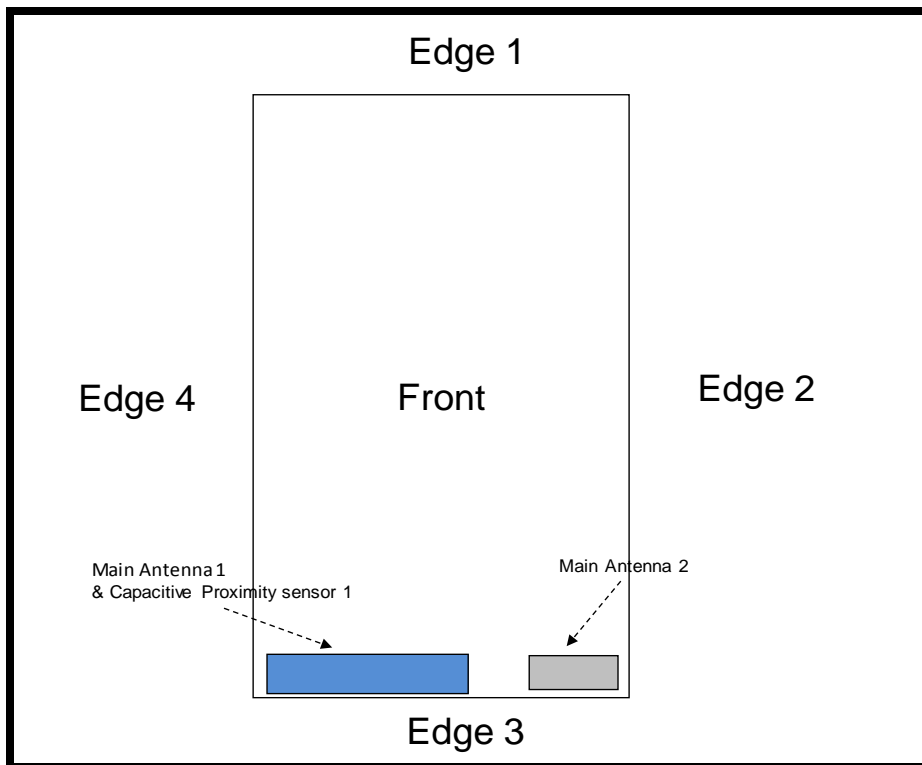
$T_s = 1/(15000 \times 2048)$ seconds

Note(s):

This device supports uplink-downlink configurations 0-6. The configuration with highest duty cycle was used for SAR Testing: configuration 0 at 63.3% duty cycle and Special Subframe 7

6.7. Proximity Sensor feature

The DUT has one proximity sensors to reduce the output power. The position of the sensors and antenna are as shown in the graphic.

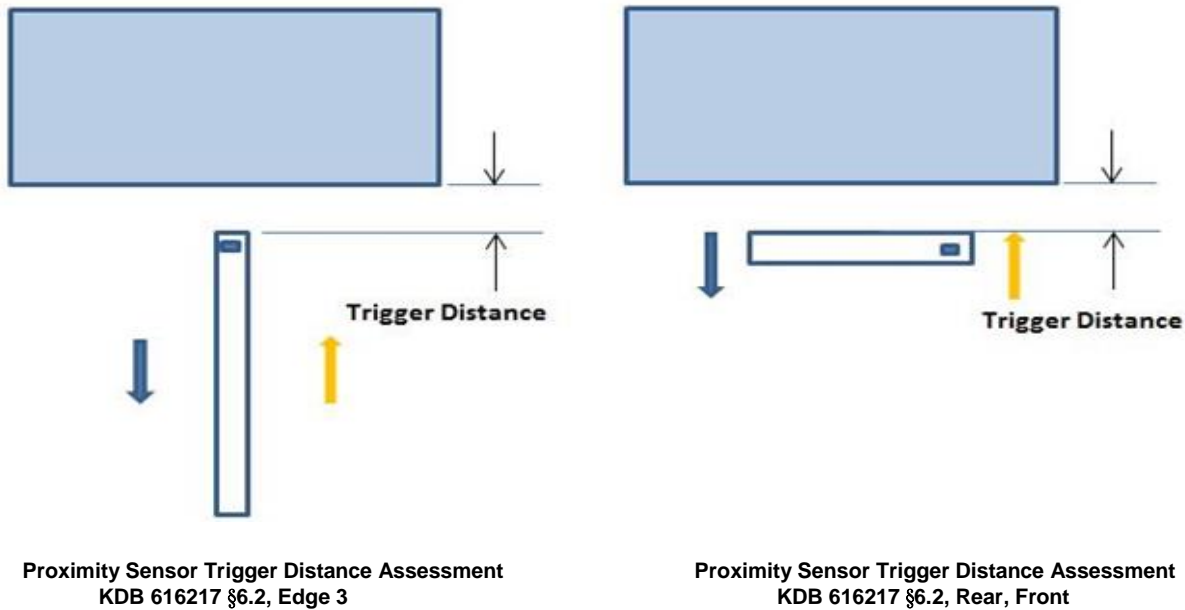


6.7.1. Proximity Sensor Triggering Distance (KDB 616217 §6.2)

Front, Rear and Edge 3 of the DUT was placed directly below the flat phantom. The DUT was moved toward the phantom in accordance with the steps outlined in KDB 616217 §6.2 to determine the trigger distance for enabling power reduction. The DUT was moved away from the phantom to determine the trigger distance for resuming full power.

The DUT featured a visual indicator on its display that showed the status of the proximity sensor (Triggered or not triggered). This was used to determine the status of the sensor during the proximity sensor assessment as monitoring the output power directly was not practical without affecting the measurement.

It was confirmed separately that the output power was altered according to the proximity sensor status indication. This was achieved by observing the proximity sensor status at the same time as monitoring the conducted power. Section 9 contains both the full and reduced conducted power measurements.



LEGEND

- ➔ Direction of DUT travel for determination of power reduction triggering point
- ➔ Direction of DUT travel for determination of full power resumption triggering point

Summary of Trigger Distances

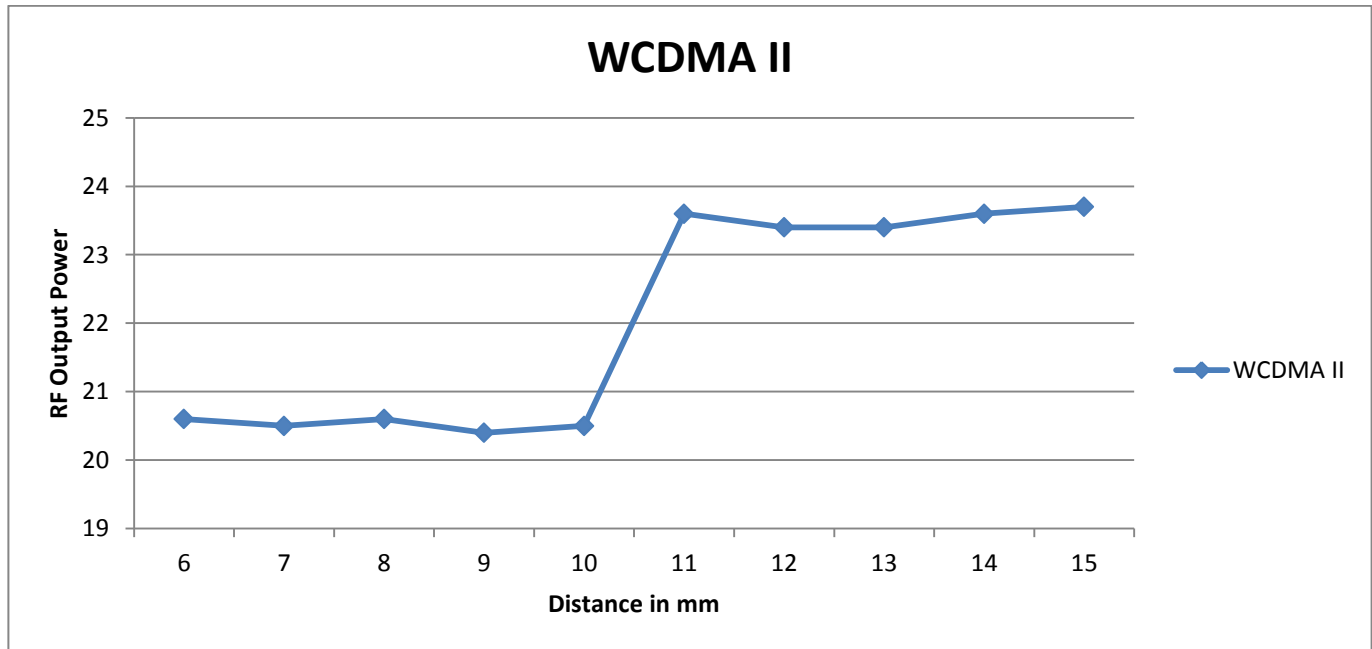
Tissue simulating liquid	Trigger distance - Rear		Trigger distance - Front		Trigger distance – Edge 3	
	Moving toward phantom	Moving from phantom	Moving toward phantom	Moving from phantom	Moving toward phantom	Moving from phantom
1900 Body	10 mm	10 mm	2 mm	2 mm	6 mm	6 mm

Proximity Sensor Triggering Distance Measurement Results

WCDMA Band II

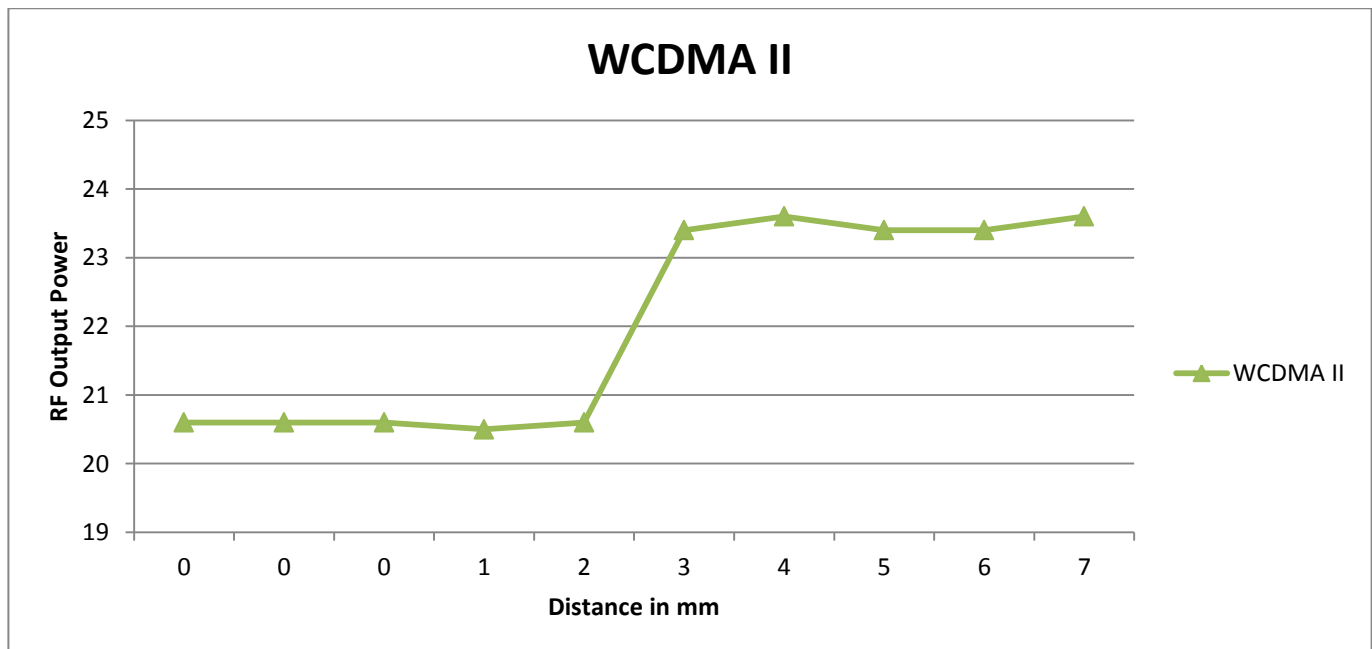
Rear, DUT Moving Toward (Trigger) from the Phantom

Distance to DUT vs. Output Power in dBm										
Distance (mm)	6	7	8	9	10	11	12	13	14	15
WCDMA II	20.6	20.5	20.6	20.4	20.5	23.6	23.4	23.4	23.6	23.7



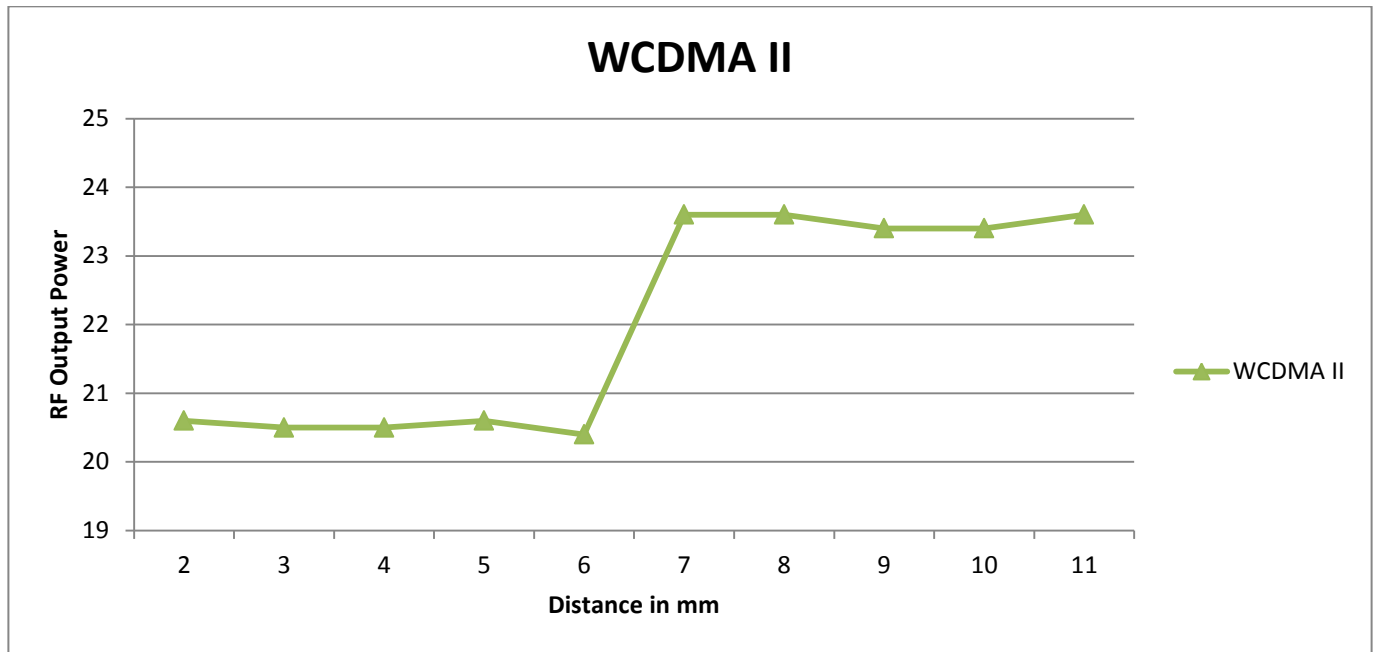
Front, DUT Moving Toward (Trigger) from the Phantom

Distance to DUT vs. Output Power in dBm										
Distance (mm)	0	0	0	1	2	3	4	5	6	7
WCDMA II	20.6	20.6	20.6	20.5	20.6	23.4	23.6	23.4	23.4	23.6



Edge 3, DUT Moving Toward (Trigger) from the Phantom

Distance to DUT vs. Output Power in dBm										
Distance (mm)	2	3	4	5	6	7	8	9	10	11
WCDMA II	20.6	20.5	20.5	20.6	20.4	23.6	23.6	23.4	23.4	23.6



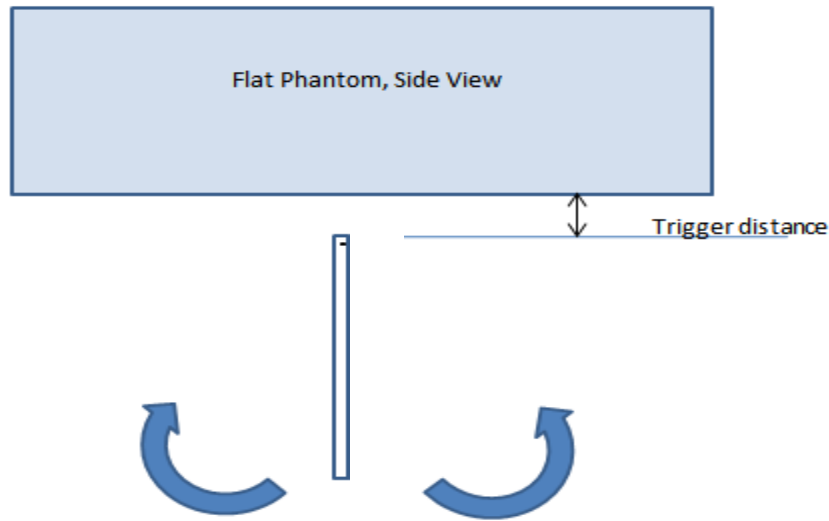
6.7.2 Proximity Sensor Coverage (KDB 616217 §6.3)

As there is no spatial offset between the antenna and the proximity sensor element, proximity sensor coverage did not need to be assessed.

6.7.3 Proximity Sensor Tilt Angle Assessment (KDB 616217 §6.4)

The DUT was positioned directly below the flat phantom at the minimum measured trigger distance with Edge 3 parallel to the base of the flat phantom for each band.

The DUT was rotated about Edge 3 for angles up to +/- 45°. If the output power increased during the rotation the DUT was moved 1mm toward the phantom and the rotation repeated. This procedure was repeated until the power remained reduced for all angles up to +/- 45°.



Proximity sensor tilt angle assessment (Edge 3) KDB 616217 §6.4

Summary of DUT Tilt Angle Influence to Proximity Sensor Triggering (Edge 3)

Band (MHz)	Minimum trigger distance measured according to KDB 616217 §6.2	Minimum distance at which power reduction was maintained over +/-45°	Power reduction status											
			-45°	-40°	-30°	-20°	-10°	0°	10°	20°	30°	40°	45°	
1900	6 mm	6 mm	On	On	On	On	On	On	On	On	On	On	On	On

6.7.4 Resulting test positions for SAR measurements

Wireless technologies	DUT Position	§6.2 Triggering Distance	§6.3 Coverage	§6.4 Tilt Angle	Worst case distance for SAR
WWAN (Main 1)	Rear	10 mm	N/A	N/A	9 mm
	Front	2 mm	N/A	N/A	1 mm
	Edge 3	6 mm	N/A	6 mm	5 mm

7. RF Exposure Conditions (Test Configurations)

Refer to Appendix A for the specific details of the antenna-to-antenna and antenna-to-edge(s) distances.

Wireless technologies	RF Exposure Conditions	Antennaa	DUT-to-User Separation	Test Position	Antenna-to-edge/surface	SAR Required	Note
WWAN	Head	Main Ant. 1 & 2	0 mm	Left Touch	N/A	Yes	
				Left Tilt (15°)	N/A	Yes	
				Right Touch	N/A	Yes	
				Right Tilt (15°)	N/A	Yes	
	Body	Main Ant. 1 & 2	15 mm	Rear	N/A	Yes	
				Front	N/A	Yes	
	Hotspot	Main Ant.1	10 mm	Rear	< 25 mm	Yes	
				Front	< 25 mm	Yes	
				Edge 1 (Top)	> 25 mm	No	1
				Edge 2 (Right)	< 25 mm	Yes	
				Edge 3 (Bottom)	< 25 mm	Yes	
				Edge 4 (Left)	< 25 mm	Yes	
	Hotspot	Main Ant.2	10 mm	Rear	< 25 mm	Yes	
				Front	< 25 mm	Yes	
				Edge 1 (Top)	> 25 mm	No	1
				Edge 2 (Right)	< 25 mm	Yes	
				Edge 3 (Bottom)	< 25 mm	Yes	
				Edge 4 (Left)	> 25 mm	No	1
	Phablet-10g	Main Ant.1	0 mm	Rear	< 25 mm	Yes	
				Front	< 25 mm	Yes	
				Edge 1 (Top)	> 25 mm	No	1
				Edge 2 (Right)	< 25 mm	Yes	
				Edge 3 (Bottom)	< 25 mm	Yes	
				Edge 4 (Left)	< 25 mm	Yes	
Phablet-10g	Main Ant.2	0 mm	Rear	< 25 mm	Yes		
			Front	< 25 mm	Yes		
			Edge 1 (Top)	> 25 mm	No	1	
			Edge 2 (Right)	< 25 mm	Yes		
			Edge 3 (Bottom)	< 25 mm	Yes		
			Edge 4 (Left)	> 25 mm	No	1	
WLAN & BT	Head	WiFi & BT Ant.	0 mm	Left Touch	N/A	Yes	
				Left Tilt (15°)	N/A	Yes	
				Right Touch	N/A	Yes	
				Right Tilt (15°)	N/A	Yes	
	Body		15 mm	Rear	N/A	Yes	
				Front	N/A	Yes	
	Hotspot		10 mm	Rear	< 25 mm	Yes	
				Front	< 25 mm	Yes	
				Edge 1 (Top)	< 25 mm	Yes	
				Edge 2 (Right)	< 25 mm	Yes	
				Edge 3 (Bottom)	> 25 mm	No	1
				Edge 4 (Left)	> 25 mm	No	1
	Phablet-10g		0 mm	Rear	< 25 mm	Yes	
				Front	< 25 mm	Yes	
				Edge 1 (Top)	< 25 mm	Yes	
				Edge 2 (Right)	< 25 mm	Yes	
				Edge 3 (Bottom)	> 25 mm	No	1
				Edge 4 (Left)	> 25 mm	No	1

Notes:

- SAR is not required because the distance from the antenna to the edge is > 25 mm as per KDB 941225 D06 Hot Spot SAR.
- When Hotspot Mode is not supported, 10-g Phablet SAR is required for all surfaces and edges with an antenna located at ≤ 25 mm from that surface or edge in direct contact with a flat phantom, to address interactive hand use exposure conditions.
- When hotspot mode applies, 10-g Phablet SAR is required only for the surfaces and edges with hotspot mode 1-g reported SAR > 1.2 W/kg. When hotspot mode does not apply, 10-g Phablet SAR is required for all surfaces and Edges within 25mm of the antenna.

8. Dielectric Property Measurements & System Check

8.1 Dielectric Property Measurements

The temperature of the tissue-equivalent medium used during measurement must also be within 18°C to 25°C and within $\pm 2^\circ\text{C}$ of the temperature when the tissue parameters are characterized.

The dielectric parameters must be measured before the tissue-equivalent medium is used in a series of SAR measurements. The parameters should be re-measured after each 3 – 4 days of use; or earlier if the dielectric parameters can become out of tolerance; for example, when the parameters are marginal at the beginning of the measurement series.

Tissue dielectric parameters were measured at the low, middle and high frequency of each operating frequency range of the test device.

Tissue Dielectric Parameters

FCC KDB 865664 D01 SAR Measurement 100 MHz to 6 GHz

Target Frequency (MHz)	Head		Body	
	ϵ_r	σ (S/m)	ϵ_r	σ (S/m)
150	52.3	0.76	61.9	0.80
300	45.3	0.87	58.2	0.92
450	43.5	0.87	56.7	0.94
835	41.5	0.90	55.2	0.97
900	41.5	0.97	55.0	1.05
915	41.5	0.98	55.0	1.06
1450	40.5	1.20	54.0	1.30
1610	40.3	1.29	53.8	1.40
1800 – 2000	40.0	1.40	53.3	1.52
2450	39.2	1.80	52.7	1.95
3000	38.5	2.40	52.0	2.73
5000	36.2	4.45	49.3	5.07
5100	36.1	4.55	49.1	5.18
5200	36.0	4.66	49.0	5.30
5300	35.9	4.76	48.9	5.42
5400	35.8	4.86	48.7	5.53
5500	35.6	4.96	48.6	5.65
5600	35.5	5.07	48.5	5.77
5700	35.4	5.17	48.3	5.88
5800	35.3	5.27	48.2	6.00

IEEE Std 1528-2013

Refer to Table 3 within the IEEE Std 1528-2013

Dielectric Property Measurements Results:

SAR 1 Room

Date	Freq. (MHz)	Liquid Parameters		Measured	Target	Delta (%)	Limit ±(%)	
1-29-2019	Head 2600	e'	38.4300	Relative Permittivity (ϵ_r):	38.43	39.01	-1.49	5
		e"	13.9500	Conductivity (σ):	2.02	1.96	2.78	5
	Head 2500	e'	38.7800	Relative Permittivity (ϵ_r):	38.78	39.14	-0.91	5
		e"	13.7200	Conductivity (σ):	1.91	1.85	2.87	5
	Head 2700	e'	38.0600	Relative Permittivity (ϵ_r):	38.06	38.88	-2.12	5
		e"	14.1900	Conductivity (σ):	2.13	2.07	2.90	5
2-11-2019	Body 2450	e'	53.4100	Relative Permittivity (ϵ_r):	53.41	52.70	1.35	5
		e"	14.7800	Conductivity (σ):	2.01	1.95	3.25	5
	Body 2400	e'	53.4900	Relative Permittivity (ϵ_r):	53.49	52.77	1.36	5
		e"	14.6900	Conductivity (σ):	1.96	1.90	3.28	5
	Body 2480	e'	53.3600	Relative Permittivity (ϵ_r):	53.36	52.66	1.33	5
		e"	14.8500	Conductivity (σ):	2.05	1.99	2.79	5
2-11-2019	Head 2450	e'	40.8200	Relative Permittivity (ϵ_r):	40.82	39.20	4.13	5
		e"	13.3800	Conductivity (σ):	1.82	1.80	1.26	5
	Head 2400	e'	40.9500	Relative Permittivity (ϵ_r):	40.95	39.30	4.21	5
		e"	13.2500	Conductivity (σ):	1.77	1.75	0.94	5
	Head 2480	e'	40.7300	Relative Permittivity (ϵ_r):	40.73	39.16	4.00	5
		e"	13.4300	Conductivity (σ):	1.85	1.83	1.06	5
2-18-2019	Head 5180	e'	35.1400	Relative Permittivity (ϵ_r):	35.14	36.01	-2.42	5
		e"	15.4600	Conductivity (σ):	4.45	4.63	-3.84	5
	Head 5260	e'	35.0500	Relative Permittivity (ϵ_r):	35.05	35.92	-2.43	5
		e"	15.5300	Conductivity (σ):	4.54	4.71	-3.61	5
	Head 5600	e'	34.7000	Relative Permittivity (ϵ_r):	34.70	35.53	-2.35	5
		e"	15.7400	Conductivity (σ):	4.90	5.06	-3.15	5
	Head 5750	e'	34.5100	Relative Permittivity (ϵ_r):	34.51	35.36	-2.41	5
		e"	15.8700	Conductivity (σ):	5.07	5.21	-2.68	5
	Head 5825	e'	34.4500	Relative Permittivity (ϵ_r):	34.45	35.30	-2.41	5
		e"	15.9500	Conductivity (σ):	5.17	5.27	-1.97	5

SAR 2 Room

Date	Freq. (MHz)	Liquid Parameters		Measured	Target	Delta (%)	Limit ±(%)	
1-29-2019	Body 835	e'	52.9100	Relative Permittivity (ϵ_r):	52.91	55.20	-4.15	5
		e"	21.2700	Conductivity (σ):	0.99	0.97	1.81	5
	Body 820	e'	53.0700	Relative Permittivity (ϵ_r):	53.07	55.28	-3.99	5
		e"	21.3200	Conductivity (σ):	0.97	0.97	0.37	5
	Body 850	e'	52.7500	Relative Permittivity (ϵ_r):	52.75	55.16	-4.36	5
		e"	21.2200	Conductivity (σ):	1.00	0.99	1.60	5
1-31-2019	Head 2450	e'	39.6500	Relative Permittivity (ϵ_r):	39.65	39.20	1.15	5
		e"	13.3900	Conductivity (σ):	1.82	1.80	1.34	5
	Head 2400	e'	39.8200	Relative Permittivity (ϵ_r):	39.82	39.30	1.33	5
		e"	13.2300	Conductivity (σ):	1.77	1.75	0.79	5
	Head 2480	e'	39.5400	Relative Permittivity (ϵ_r):	39.54	39.16	0.96	5
		e"	13.4700	Conductivity (σ):	1.86	1.83	1.37	5
2-18-2019	Body 835	e'	55.8400	Relative Permittivity (ϵ_r):	55.84	55.20	1.16	5
		e"	20.5000	Conductivity (σ):	0.95	0.97	-1.88	5
	Body 820	e'	55.9800	Relative Permittivity (ϵ_r):	55.98	55.28	1.27	5
		e"	20.6000	Conductivity (σ):	0.94	0.97	-3.02	5
	Body 850	e'	55.7000	Relative Permittivity (ϵ_r):	55.70	55.16	0.98	5
		e"	20.4300	Conductivity (σ):	0.97	0.99	-2.18	5

SAR 3 Room

Date	Freq. (MHz)	Liquid Parameters		Measured	Target	Delta (%)	Limit ±(%)	
1-30-2019	Head 835	e'	40.9800	Relative Permittivity (ϵ_r):	40.98	41.50	-1.25	5
		e"	19.9700	Conductivity (σ):	0.93	0.90	3.02	5
	Head 820	e'	41.1700	Relative Permittivity (ϵ_r):	41.17	41.60	-1.04	5
		e"	20.0200	Conductivity (σ):	0.91	0.90	1.60	5
	Head 850	e'	40.7900	Relative Permittivity (ϵ_r):	40.79	41.50	-1.71	5
		e"	19.9200	Conductivity (σ):	0.94	0.92	2.89	5
2-18-2019	Body 5180	e'	49.8800	Relative Permittivity (ϵ_r):	49.88	49.05	1.70	5
		e"	18.5600	Conductivity (σ):	5.35	5.27	1.41	5
	Body 5260	e'	49.7700	Relative Permittivity (ϵ_r):	49.77	48.94	1.70	5
		e"	18.6300	Conductivity (σ):	5.45	5.36	1.57	5
	Body 5600	e'	49.1800	Relative Permittivity (ϵ_r):	49.18	48.48	1.45	5
		e"	18.9800	Conductivity (σ):	5.91	5.76	2.59	5
	Body 5750	e'	48.9300	Relative Permittivity (ϵ_r):	48.93	48.27	1.36	5
		e"	19.1700	Conductivity (σ):	6.13	5.94	3.25	5
	Body 5825	e'	48.7800	Relative Permittivity (ϵ_r):	48.78	48.20	1.20	5
		e"	19.2400	Conductivity (σ):	6.23	6.00	3.86	5

SAR 4 Room

Date	Freq. (MHz)	Liquid Parameters		Measured	Target	Delta (%)	Limit ±(%)	
1-28-2019	Body 2600	e'	52.1100	Relative Permittivity (ϵ_r):	52.11	52.51	-0.76	5
		e"	15.1100	Conductivity (σ):	2.18	2.16	1.09	5
	Body 2500	e'	52.4000	Relative Permittivity (ϵ_r):	52.40	52.64	-0.45	5
		e"	14.8500	Conductivity (σ):	2.06	2.02	2.18	5
	Body 2700	e'	51.8000	Relative Permittivity (ϵ_r):	51.80	52.38	-1.12	5
		e"	15.3000	Conductivity (σ):	2.30	2.30	-0.19	5
1-30-2019	Head 1900	e'	38.8300	Relative Permittivity (ϵ_r):	38.83	40.00	-2.93	5
		e"	13.4400	Conductivity (σ):	1.42	1.40	1.42	5
	Head 1850	e'	38.9900	Relative Permittivity (ϵ_r):	38.99	40.00	-2.53	5
		e"	13.2900	Conductivity (σ):	1.37	1.40	-2.35	5
	Head 1910	e'	38.7900	Relative Permittivity (ϵ_r):	38.79	40.00	-3.03	5
		e"	13.4700	Conductivity (σ):	1.43	1.40	2.18	5
1-31-2019	Body 1900	e'	53.7800	Relative Permittivity (ϵ_r):	53.78	53.30	0.90	5
		e"	14.1900	Conductivity (σ):	1.50	1.52	-1.37	5
	Body 1850	e'	53.9300	Relative Permittivity (ϵ_r):	53.93	53.30	1.18	5
		e"	14.1500	Conductivity (σ):	1.46	1.52	-4.24	5
	Body 1910	e'	53.7200	Relative Permittivity (ϵ_r):	53.72	53.30	0.79	5
		e"	14.1700	Conductivity (σ):	1.50	1.52	-0.99	5

8.2 System Check

SAR system verification is required to confirm measurement accuracy, according to the tissue dielectric media, probe calibration points and other system operating parameters required for measuring the SAR of a test device. The system verification must be performed for each frequency band and within the valid range of each probe calibration point required for testing the device. The same SAR probe(s) and tissue-equivalent media combinations used with each specific SAR system for system verification must be used for device testing. When multiple probe calibration points are required to cover substantially large transmission bands, independent system verifications are required for each probe calibration point. A system verification must be performed before each series of SAR measurements using the same probe calibration point and tissue-equivalent medium. Additional system verification should be considered according to the conditions of the tissue-equivalent medium and measured tissue dielectric parameters, typically every three to four days when the liquid parameters are re-measured or sooner when marginal liquid parameters are used at the beginning of a series of measurements.

System Performance Check Measurement Conditions:

- The measurements were performed in the flat section of the TWIN SAM or ELI phantom, shell thickness: 2.0 ±0.2 mm (bottom plate) filled with Body or Head simulating liquid of the following parameters.
- The depth of tissue-equivalent liquid in a phantom must be ≥ 15.0 cm for SAR measurements ≤ 3 GHz and ≥ 10.0 cm for measurements > 3 GHz.
- The DASY system with an E-Field Probe was used for the measurements.
- The dipole was mounted on the small tripod so that the dipole feed point was positioned below the center marking of the flat phantom section and the dipole was oriented parallel to the body axis (the long side of the phantom). The standard measuring distance was 10 mm (above 1 GHz) and 15 mm (below 1 GHz) from dipole center to the simulating liquid surface.
- The coarse grid with a grid spacing of 15 mm was aligned with the dipole.
For 5 GHz band - The coarse grid with a grid spacing of 10 mm was aligned with the dipole.
- Special 7x7x7 (below 3 GHz) and/or 8x8x7 (above 3 GHz) fine cube was chosen for the cube.
- Distance between probe sensors and phantom surface was set to 2.5 mm.
For 5 GHz band - Distance between probe sensors and phantom surface was set to 1.4 mm
- The dipole input power (forward power) was 100 mW.
- The results are normalized to 1 W input power.

Reference Target SAR Values

The reference SAR values can be obtained from the calibration certificate of system validation dipoles.

System Dipole	Serial No.	Cal. Date	Freq. (MHz)	Target SAR Values (W/kg)		
				1g/10g	Head	Body
D835V2	4d194	7-24-2018	835	1g	9.36	9.61
				10g	6.02	6.32
D1900V2	5d199	3-15-2018	1900	1g	40.40	39.60
				10g	21.10	20.80
D2450V2	960	3-20-2018	2450	1g	53.60	49.80
				10g	25.10	23.50
D2600V2	1097	1-17-2018	2600	1g	56.40	54.40
				10g	25.30	24.20
D5GHzV2	1184	8-21-2018	5250	1g	81.10	75.00
				10g	23.40	20.90
			5600	1g	85.00	78.60
				10g	24.40	22.00
			5750	1g	82.60	76.20
				10g	23.70	21.20

Note(s):

Refer to Appendix F that mentioned about justification for Extended SAR Dipole Calibrations (D2600, SN : 1097)

System Check Results

The 1-g and 10-g SAR measured with a reference dipole, using the required tissue-equivalent medium at the test frequency, must be within 10% of the manufacturer calibrated dipole SAR target.

SAR 1 Room

Date Tested	System Dipole		T.S. Liquid	Measured Results		Target (Ref. Value)	Delta $\pm 10\%$	Plot No.	
	Type	Serial #		Zoom Scan to 100 mW	Normalize to 1 W				
1-29-2019	D2600V2	1097	Head	1g	6.05	60.5	56.40	7.27	1,2
				10g	2.64	26.4	25.30	4.35	
2-11-2019	D2450V2	960	Body	1g	5.24	52.4	49.80	5.22	3,4
				10g	2.35	23.5	23.50	0.00	
2-11-2019	D2450V2	960	Head	1g	5.53	55.3	53.60	3.17	
				10g	2.49	24.9	25.10	-0.80	
2-18-2019	D5GHzV2	1184	Head	1g	7.57	75.7	81.10	-6.66	
				10g	2.15	21.5	23.40	-8.12	
2-18-2019	D5GHzV2	1184	Head	1g	8.65	86.5	85.00	1.76	
				10g	2.44	24.4	24.40	0.00	
2-18-2019	D5GHzV2	1184	Head	1g	8.17	81.7	82.60	-1.09	
				10g	2.30	23.0	23.70	-2.95	

SAR 2 Room

Date Tested	System Dipole		T.S. Liquid	Measured Results		Target (Ref. Value)	Delta $\pm 10\%$	Plot No.	
	Type	Serial #		Zoom Scan to 100 mW	Normalize to 1 W				
1-29-2019	D835V2	4d194	Body	1g	0.99	9.9	9.61	3.12	
				10g	0.65	6.5	6.32	2.85	
1-31-2019	D2450V2	960	Head	1g	5.11	51.1	53.60	-4.66	5,6
				10g	2.31	23.1	25.10	-7.97	
2-18-2019	D835V2	4d194	Body	1g	0.95	9.5	9.61	-0.83	
				10g	0.62	6.2	6.32	-1.27	

SAR 3 Room

Date Tested	System Dipole		T.S. Liquid	Measured Results		Target (Ref. Value)	Delta $\pm 10\%$	Plot No.	
	Type	Serial #		Zoom Scan to 100 mW	Normalize to 1 W				
1-30-2019	D835V2	4d194	Head	1g	0.98	9.8	9.36	5.13	7,8
				10g	0.65	6.5	6.02	7.48	
2-18-2019	D5GHzV2	1184	Body	1g	7.51	75.1	75.00	0.13	
				10g	2.09	20.9	20.90	0.00	
2-18-2019	D5GHzV2	1184	Body	1g	8.40	84.0	78.60	6.87	9,10
				10g	2.31	23.1	22.00	5.00	
2-18-2019	D5GHzV2	1184	Body	1g	7.78	77.8	76.20	2.10	
				10g	2.15	21.5	21.20	1.42	

SAR 4 Room

Date Tested	System Dipole		T.S. Liquid	Measured Results		Target (Ref. Value)	Delta $\pm 10\%$	Plot No.	
	Type	Serial #		Zoom Scan to 100 mW	Normalize to 1 W				
1-28-2019	D2600V2	1097	Body	1g	5.38	53.8	54.40	-1.10	
				10g	2.31	23.1	24.20	-4.55	
1-30-2019	D1900V2	5d199	Head	1g	4.03	40.3	40.40	-0.25	
				10g	2.09	20.9	21.10	-0.95	
1-31-2019	D1900V2	5d199	Body	1g	4.29	42.9	39.60	8.33	11,12
				10g	2.26	22.6	20.80	8.65	

9. Conducted Output Power Measurements

9.1 GSM

Per KDB 941225 D01 3G SAR Procedures:

SAR test reduction for GPRS and EDGE modes is determined by the source-based time-averaged output power specified for production units, including tune-up tolerance. The data mode with highest specified time-averaged output power should be tested for SAR compliance in the applicable exposure conditions. For modes with the same specified maximum output power and tolerance, the higher number time-slot configuration should be tested.

GSM850 Measured Results

Full Power

Mode	Coding Scheme	Time Slots	Ch No.	Freq. (MHz)	Burst Pwr (dBm)	Frame Pwr (dBm)	Max. Frame Pwr (dBm)
GSM (Voice)	CS1	1	128	824.4	33.5	24.5	25.0
			190	836.6	33.6	24.6	
			251	848.8	33.3	24.3	
GPRS (GMSK)	CS1	1	128	824.4	33.4	24.4	25.0
			190	836.6	33.4	24.4	
			251	848.8	33.5	24.5	
		2	128	824.4	31.3	25.2	25.5
			190	836.6	31.5	25.5	
			251	848.8	31.5	25.5	
		3	128	824.4	29.5	25.2	25.7
			190	836.6	29.8	25.5	
			251	848.8	29.6	25.3	
		4	128	824.4	28.8	25.8	26.0
			190	836.6	29.0	26.0	
			251	848.8	29.0	26.0	
EGPRS (8PSK)	MCS5	1	128	824.4	26.8	17.7	18.5
			190	836.6	27.0	18.0	
			251	848.8	27.0	17.9	
		2	128	824.4	24.7	18.6	19.0
			190	836.6	24.9	18.9	
			251	848.8	24.8	18.8	
		3	128	824.4	23.4	19.2	19.7
			190	836.6	23.9	19.6	
			251	848.8	23.6	19.3	
		4	128	824.4	22.4	19.4	20.0
			190	836.6	22.7	19.6	
			251	848.8	22.6	19.6	

Notes:

The worst-case configuration and mode for SAR testing is determined to be as follows:

- GMSK (GPRS) mode with 4 time slots for Max power, based on the Tune-up Procedure. Refer to §6.3.
- SAR is not required for EGPRS (8PSK) mode because the maximum output power and tune-up limit is $\leq 1/4$ dB higher than GMSK GPRS or the adjusted SAR of the highest reported SAR of GMSK GPRS is ≤ 1.2 W/kg.

GSM1900 Measured Results

Full Power

Mode	Coding Scheme	Time Slots	Ch No.	Freq. (MHz)	Burst Pwr (dBm)	Frame Pwr (dBm)	Max. Frame Pwr (dBm)
GSM (Voice)	CS1	1	512	1850.2	29.7	20.6	22.0
			661	1880.0	29.3	20.2	
			810	1909.8	29.3	20.3	
GPRS (GMSK)	CS1	1	512	1850.2	29.7	20.6	22.0
			661	1880.0	29.6	20.5	
			810	1909.8	29.2	20.2	
		2	512	1850.2	27.0	21.0	22.0
			661	1880.0	26.7	20.7	
			810	1909.8	26.7	20.7	
		3	512	1850.2	25.3	21.0	21.7
			661	1880.0	25.2	20.9	
			810	1909.8	25.0	20.7	
		4	512	1850.2	24.3	21.3	21.5
			661	1880.0	24.0	21.0	
			810	1909.8	24.1	21.1	
EGPRS (8PSK)	MCS5	1	512	1850.2	25.6	16.6	17.5
			661	1880.0	25.5	16.5	
			810	1909.8	25.5	16.5	
		2	512	1850.2	23.2	17.2	18.0
			661	1880.0	23.2	17.2	
			810	1909.8	23.3	17.2	
		3	512	1850.2	22.3	18.0	18.7
			661	1880.0	22.1	17.8	
			810	1909.8	22.2	17.9	
		4	512	1850.2	21.1	18.0	18.5
			661	1880.0	20.8	17.8	
			810	1909.8	20.9	17.9	

Notes:

The worst-case configuration and mode for SAR testing is determined to be as follows:

- GMSK (GPRS) mode with 2 time slots for Max power, based on the Tune-up Procedure. Refer to §6.3.
- SAR is not required for EGPRS (8PSK) mode because the maximum output power and tune-up limit is ≤ 1/4dB higher than GMSK GPRS or the adjusted SAR of the highest reported SAR of GMSK GPRS is ≤ 1.2W/kg.

9.2 W-CDMA

Release 99 Setup Procedures used to establish the test signals

The following tests were completed according to the test requirements outlined in section 5.2 of the 3GPP TS34.121-1 specification. The DUT supports power Class 3, which has a nominal maximum output power of 24 dBm (+1.7/-3.7).

Mode	Subtest	Rel99
WCDMA General Settings	Loopback Mode	Test Mode 2
	Rel99 RMC	12.2kbps RMC
	Power Control Algorithm	Algorithm2
	β_c/β_d	8/15

HSDPA Setup Procedures used to establish the test signals

The following 4 Sub-tests were completed according to Release 5 procedures in section 5.2 of 3GPP TS34.121. A summary of these settings are illustrated below:

Mode	HSDPA	HSDPA	HSDPA	HSDPA	
Subtest	1	2	3	4	
W-CDMA General Settings	Loopback Mode	Test Mode 1			
	Rel99 RMC	12.2kbps RMC			
	HSDPA FRC	H-Set 1			
	Power Control Algorithm	Algorithm 2			
	β_c	2/15	11/15	15/15	15/15
	β_d	15/15	15/15	8/15	4/15
	Bd (SF)	64			
	β_c/β_d	2/15	11/15	15/8	15/4
	β_{hs}	4/15	24/15	30/15	30/15
MPR (dB)	0	0	0.5	0.5	
HSDPA Specific Settings	D_{ACK}	8			
	D_{NAK}	8			
	DCQI	8			
	Ack-Nack repetition factor	3			
	CQI Feedback (Table 5.2B.4)	4ms			
	CQI Repetition Factor (Table 5.2B.4)	2			
$A_{hs}=\beta_{hs}/\beta_c$	30/15				

HSPA (HSDPA & HSUPA) Setup Procedures used to establish the test signals

The following 5 Sub-tests were completed according to Release 6 procedures in table C,11.1.3 of 3GPP TS 34.121-1 v13. A summary of these settings are illustrated below:

	Mode	HSPA				
	Subtest	1	2	3	4	5
WCDMA General Settings	Loopback Mode	Test Mode 1				
	Rel99 RMC	12.2 kbps RMC				
	HSDPA FRC	H-Set 1				
	HSUPA Test	HSPA				
	Power Control Algorithm	Algorithm 2				Algorithm 1
	β_c	11/15	6/15	15/15	2/15	15/15
	β_d	15/15	15/15	9/15	15/15	0
	β_{ec}	209/225	12/15	30/15	2/15	5/15
	β_c/β_d	11/15	6/15	15/9	2/15	-
	β_{hs}	22/15	12/15	30/15	4/15	5/15
	β_{ed}	1309/225	94/75	47/15	56/75	47/15
CM (dB)	1	3	2	3	1	
MPR (dB)	0	2	1	2	0	
HSDPA Specific Settings	DACK	8				0
	DNAK	8				0
	DCQI	8				0
	Ack-Nack repetition factor	3				
	CQI Feedback (Table 5.2B.4)	4ms				
	CQI Repetition Factor (Table 5.2B.4)	2				
	A _{hs} = β_{hs}/β_c	30/15				
HSUPA Specific Settings	E-DPDCCH	6	8	8	5	0
	DHARQ	0	0	0	0	0
	AG Index	20	12	15	17	12
	ETFCI (from 34.121 Table C.11.1.3)	75	67	92	71	67
	Associated Max UL Data Rate kbps	242.1	174.9	482.8	205.8	308.9
	Reference E-TFCIs	5	5	2	5	1
	Reference E-TFCI	11	11	11	11	67
	Reference E-TFCI PO	4	4	4	4	18
	Reference E-TFCI	67	67	92	67	67
	Reference E-TFCI PO	18	18	18	18	18
	Reference E-TFCI	71	71	71	71	71
	Reference E-TFCI PO	23	23	23	23	23
	Reference E-TFCI	75	75	75	75	75
	Reference E-TFCI PO	26	26	26	26	26
	Reference E-TFCI	81	81	81	81	81
Reference E-TFCI PO	27	27	27	27	27	
Maximum Channelization Codes	2xSF2				SF4	

DC-HSDPA Setup Procedures used to establish the test signals

The following tests were completed according to procedures in section 7.3.13 of 3GPP TS34.108 v9.5.0. A summary of these settings are illustrated below:

Downlink Physical Channels are set as per 3GPP TS34.121-1 v9.0.0 E.5.0

Table E.5.0: Levels for HSDPA connection setup

Parameter During Connection setup	Unit	Value
P-CPICH_Ec/Ior	dB	-10
P-CCPCH and SCH_Ec/Ior	dB	-12
PICH_Ec/Ior	dB	-15
HS-PDSCH	dB	off
HS-SCCH_1	dB	off
DPCH_Ec/Ior	dB	-5
OCNS_Ec/Ior	dB	-3.1

Call is set up as per 3GPP TS34.108 v9.5.0 sub clause 7.3.13

The configurations of the fixed reference channels for HSDPA RF tests are described in 3GPP TS 34.121, annex C for FDD and 3GPP TS 34.122.

Table C.8.1.12: Fixed Reference Channel H-Set 12

Parameter	Unit	Value
Nominal Avg. Inf. Bit Rate	kbps	60
Inter-TTI Distance	TTI's	1
Number of HARQ Processes	Processes	6
Information Bit Payload (N_{INF})	Bits	120
Number Code Blocks	Blocks	1
Binary Channel Bits Per TTI	Bits	960
Total Available SML's in UE	SML's	19200
Number of SML's per HARQ Proc.	SML's	3200
Coding Rate		0.15
Number of Physical Channel Codes	Codes	1
Modulation		QPSK
Note 1: The RMC is intended to be used for DC-HSDPA mode and both cells shall transmit with identical parameters as listed in the table. Note 2: Maximum number of transmission is limited to 1, i.e., retransmission is not allowed. The redundancy and constellation version 0 shall be used.		

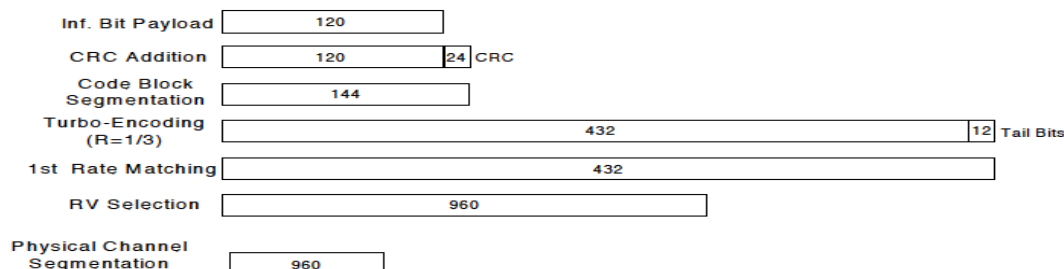


Figure C.8.19: Coding rate for Fixed reference Channel H-Set 12 (QPSK)

The following 4 Sub-tests for HSDPA were completed according to Release 8 procedures in section 5.2 of 3GPP TS34.121. A summary of subtest settings are illustrated below:

Mode	HSDPA	HSDPA	HSDPA	HSDPA
Subtest	1	2	3	4
WCDMA General Settings	Loopback Mode			
	Test Mode 1			
	Rel99 RMC			
	12.2kbps RMC			
	HSDPA FRC			
	H-Set 12			
	Power Control Algorithm			
	Algorithm2			
	β_c	2/15	11/15	15/15
β_d	15/15	15/15	8/15	4/15
β_d (SF)	64			
β_c/β_d	2/15	11/15	15/8	15/4
β_{hs}	4/15	24/15	30/15	30/15
MPR (dB)	0	0	0.5	0.5
HSDPA Specific Settings	DACK			
	8			
	DNAK			
	8			
	DCQI			
	8			
	Ack-Nack Repetition factor			
3				
CQI Feedback				
4ms				
CQI Repetition Factor				
2				
$A_{hs} = \beta_{hs}/\beta_c$				
30/15				

HSPA+

Since 16QAM is not used for uplink, the uplink Category and release is same as HSUPA, i.e., Rel. 7 Therefore, the RF conducted power is not measured.

W-CDMA Band II Measured Results

Band	Mode		UL Ch No.	Freq. (MHz)	MPR (dB)	Max. RF output power (dBm)	MPR (dB)	Reduced. RF output power Hotspot back-off (dBm)	Reduced. RF output power Proximity sensor back-off (dBm)		
						Meas. Avg Pwr		Meas. Avg Pwr	Meas. Avg Pwr		
W-CDMA Band II	Rel 99	RMC, 12.2 kbps	9262	1852.4	N/A	23.7	N/A	20.6	20.5		
			9400	1880.0		23.2		20.2			
			9538	1907.6		23.3		20.4			
	HSDPA	Subtest 1		9262	1852.4	0	23.4	0	20.6	20.6	
				9400	1880.0		23.0		20.2		
				9538	1907.6		23.1		20.3		
		Subtest 2			9262	1852.4	0	22.8	0	20.7	20.7
					9400	1880.0		22.3		20.2	
					9538	1907.6		22.4		20.3	
		Subtest 3			9262	1852.4	0.5	22.5	0	20.7	20.7
					9400	1880.0		21.9		20.2	
					9538	1907.6		22.0		20.4	
		Subtest 4			9262	1852.4	0.5	22.1	0	20.7	20.7
					9400	1880.0		21.6		20.2	
					9538	1907.6		21.7		20.4	
	HSUPA	Subtest 1				0	21.8	0	19.6	19.7	
							9400		1880.0	21.4	19.1
							9538		1907.6	21.5	19.3
		Subtest 2				2	20.0	0	19.7	19.7	
							9400		1880.0	19.4	19.1
							9538		1907.6	19.5	19.4
		Subtest 3				1	21.0	0	19.7	19.7	
							9400		1880.0	20.5	19.1
							9538		1907.6	20.6	19.4
		Subtest 4				2	20.0	0	19.7	19.7	
							9400		1880.0	19.4	19.1
							9538		1907.6	19.6	19.3
		Subtest 5				0	22.9	0	20.7	20.7	
							9400		1880.0	22.4	20.2
							9538		1907.6	22.4	20.3
	DC-HSDPA	Subtest 1				0	23.4	0	20.5	20.5	
							9400		1880.0	23.1	20.2
							9538		1907.6	23.1	20.2
		Subtest 2				0	22.7	0	20.5	20.6	
							9400		1880.0	22.4	20.2
							9538		1907.6	22.3	20.2
		Subtest 3				0.5	21.4	0	20.6	20.6	
							9400		1880.0	21.0	20.2
							9538		1907.6	20.9	20.2
		Subtest 4				0.5	22.0	0	20.6	20.6	
							9400		1880.0	21.7	20.3
							9538		1907.6	21.6	20.2

W-CDMA Band V Measured Results

Band	Mode		UL Ch No.	Freq. (MHz)	MPR (dB)	Max. RF output power (dBm)	
						Meas. Avg Pwr	
W-CDMA Band V	Rel 99	RMC, 12.2 kbps	4132	826.4	N/A	24.7	
			4183	836.6		24.9	
			4233	846.6		24.8	
	HSDPA	Subtest 1	4132	826.4	0	23.5	
			4183	836.6		23.7	
			4233	846.6		23.5	
		Subtest 2	4132	826.4	0	23.3	
			4183	836.6		23.4	
			4233	846.6		23.3	
		Subtest 3	4132	826.4	0.5	22.4	
			4183	836.6		22.6	
			4233	846.6		22.3	
		Subtest 4	4132	826.4	0.5	22.4	
			4183	836.6		22.6	
			4233	846.6		22.4	
		HSUPA	Subtest 1	4132	826.4	0	20.6
				4183	836.6		20.8
				4233	846.6		20.6
	Subtest 2		4132	826.4	2	19.3	
			4183	836.6		19.5	
			4233	846.6		19.3	
	Subtest 3		4132	826.4	1	20.2	
			4183	836.6		20.4	
			4233	846.6		20.2	
	Subtest 4		4132	826.4	2	19.3	
			4183	836.6		19.5	
			4233	846.6		19.3	
	Subtest 5		4132	826.4	0	22.4	
			4183	836.6		22.5	
			4233	846.6		22.3	
	DC-HSDPA	Subtest 1	4132	826.4	0	23.6	
			4183	836.6		23.5	
			4233	846.6		23.5	
		Subtest 2	4132	826.4	0	23.4	
			4183	836.6		23.2	
			4233	846.6		23.2	
		Subtest 3	4132	826.4	1	22.3	
			4183	836.6		22.3	
			4233	846.6		22.3	
		Subtest 4	4132	826.4	1	22.3	
			4183	836.6		22.3	
			4233	846.6		22.3	

9.3 LTE

The following tests were conducted according to the test requirements outlined in section 6.2 of the 3GPP TS36.101 specification.

UE Power Class: 3 (23 +/- 2dBm). The allowed Maximum Power Reduction (MPR) for the maximum output power due to higher order modulation and transmit bandwidth configuration (resource blocks) is specified in Table 6.2.3-1 of the 3GPP TS36.101.

Table 6.2.3-1: Maximum Power Reduction (MPR) for Power Class 1, 2 and 3

Modulation	Channel bandwidth / Transmission bandwidth (N _{RB})						MPR (dB)
	1.4 MHz	3.0 MHz	5 MHz	10 MHz	15 MHz	20 MHz	
QPSK	> 5	> 4	> 8	> 12	> 16	> 18	≤ 1
16 QAM	≤ 5	≤ 4	≤ 8	≤ 12	≤ 16	≤ 18	≤ 1
16 QAM	> 5	> 4	> 8	> 12	> 16	> 18	≤ 2
64 QAM	≤ 5	≤ 4	≤ 8	≤ 12	≤ 16	≤ 18	≤ 2
64 QAM	> 5	> 4	> 8	> 12	> 16	> 18	≤ 3
256 QAM	≥ 1						≤ 5

The allowed A-MPR values specified below in Table 6.2.4-1 of 3GPP TS36.101 are in addition to the allowed MPR requirements. All the measurements below were performed with A-MPR disabled, by using Network Signaling Value of "NS_01".

Table 6.2.4-1: Additional Maximum Power Reduction (A-MPR)

Network Signalling value	Requirements (subclause)	E-UTRA Band	Channel bandwidth (MHz)	Resources Blocks (N _{RB})	A-MPR (dB)
NS_01	6.6.2.1.1	Table 5.5-1	1.4, 3, 5, 10, 15, 20	Table 5.6-1	N/A
NS_03	6.6.2.2.1	2, 4, 10, 23, 25, 35, 36, 66, 70	3	>5	≤ 1
			5	>6	≤ 1
			10	>6	≤ 1
			15	>8	≤ 1
NS_04	6.6.2.2.2, 6.6.3.3.19	41	5, 10, 15, 20	Table 6.2.4-4, Table 6.2.4-4a	
			10, 15, 20	≥ 50 (NOTE 1)	≤ 1 (NOTE 1)
NS_05	6.6.3.3.1	1	15, 20	Table 6.2.4-18 (NOTE 2)	
			10, 15, 20	≥ 50	≤ 1 (NOTE 1)
			15, 20	Table 6.2.4-18 (NOTE 2)	
NS_06	6.6.2.2.3	12, 13, 14, 17	1.4, 3, 5, 10	Table 5.6-1	N/A
NS_07	6.6.2.2.3	13	10	Table 6.2.4-2	
6.6.3.3.2					
NS_08	6.6.3.3.3	19	10, 15	> 44	≤ 3
NS_09	6.6.3.3.4	21	10, 15	> 40	≤ 1
				> 55	≤ 2
NS_10		20	15, 20	Table 6.2.4-3	
NS_11	6.6.2.2.1	23	1.4, 3, 5, 10, 15, 20	Table 6.2.4-5	
				6.6.3.3.13	
NS_12	6.6.3.3.5	26	1.4, 3, 5, 10, 15	Table 6.2.4-6	
				6.6.3.3.6	
NS_13	6.6.3.3.6	26	5	Table 6.2.4-7	
NS_14	6.6.3.3.7	26	10, 15	Table 6.2.4-8	
NS_15	6.6.3.3.8	26	1.4, 3, 5, 10, 15	Table 6.2.4-9	
				Table 6.2.4-10	
NS_16	6.6.3.3.9	27	3, 5, 10	Table 6.2.4-11, Table 6.2.4-12, Table 6.2.4-13	
NS_17	6.6.3.3.10	28	5, 10	Table 5.6-1	N/A
				5	≥ 2
NS_18	6.6.3.3.11	28	10, 15, 20	≥ 1	≤ 4
				Table 6.2.4-14	
NS_19	6.2.2	44	10, 15, 20	Table 6.2.4-14	
				6.6.2.2.1	
NS_20	6.6.3.3.14	23	5, 10, 15, 20	Table 6.2.4-15	
				6.6.3.3.15	
NS_21	6.6.3.3.15	30	5, 10	Table 6.2.4-16	
NS_22	6.6.3.3.16	42, 43	5, 10, 15, 20	Table 6.2.4-17	
NS_23	6.6.3.3.17	42, 43	5, 10, 15, 20	N/A	
NS_24	6.6.3.3.20	65 (NOTE 4)	5, 10, 15, 20	Table 6.2.4-19	
NS_25	6.6.3.3.21	65 (NOTE 4)	5, 10, 15, 20	Table 6.2.4-20	
NS_26	6.6.3.3.22	68	10, 15	Table 6.2.4-21	
NS_27	6.6.2.2.5, 6.6.3.3.23	48	5, 10, 15, 20	Table 6.2.4-22	
				Table 6.2.4-23	
NS_28	6.2.2A, 6.6.3.3.24	46 (NOTE 5)	20	Table 6.2.4-23	
				Table 6.2.4-24	
NS_29	6.2.2A, 6.6.2.3.1a, 6.6.3.3.25	46 (NOTE 5)	20	Table 6.2.4-24	
				Table 6.2.4-25	
NS_30	6.2.2A, 6.6.3.3.26	46 (NOTE 5)	20	Table 6.2.4-25	
				Table 6.2.4-26	
NS_31	6.2.2A, 6.6.3.3.27	46 (NOTE 5)	20	Table 6.2.4-26	
				-	
NS_32	-	-	-	-	-

NOTE 1: Applicable when the lower edge of the assigned E-UTRA UL channel bandwidth frequency is larger than or equal to the upper edge of PHS band (1915.7 MHz) + 4 MHz + the channel BW assigned, where channel BW is as defined in subclause 5.6. A-MPR for

LTE Band 5 Measured Results

Band	BW (MHz)	Mode	RB Allocation	RB offset	MPR	Max. Meas. Avg Pwr (dBm)		
						829 MHz	836.5 MHz	844 MHz
LTE Band 5	10	QPSK	1	0	0		24.3	
			1	25	0		24.3	
			1	49	0		24.4	
			25	0	1		23.3	
			25	12	1		23.3	
			25	25	1		23.3	
			50	0	1		23.3	
		16QAM	1	0	1		23.2	
			1	25	1		23.2	
			1	49	1		23.3	
			25	0	2		22.3	
			25	12	2		22.3	
			25	25	2		22.3	
			50	0	2		22.3	
Band	BW (MHz)	Mode	RB Allocation	RB offset	MPR	Max. Meas. Avg Pwr (dBm)		
						826.5 MHz	836.5 MHz	846.5 MHz
LTE Band 5	5	QPSK	1	0	0	24.2	24.3	24.3
			1	12	0	24.2	24.3	24.3
			1	24	0	24.2	24.3	24.2
			12	0	1	23.3	23.3	23.2
			12	7	1	23.3	23.3	23.2
			12	13	1	23.3	23.3	23.1
			25	0	1	23.3	23.3	23.2
		16QAM	1	0	1	23.3	23.2	22.9
			1	12	1	23.3	23.2	22.9
			1	24	1	23.3	23.3	22.9
			12	0	2	22.2	22.3	22.1
			12	7	2	22.2	22.3	22.1
			12	13	2	22.2	22.3	22.1
			25	0	2	22.2	22.3	22.2

Note(s):

10 MHz Bandwidths does not support at least three non-overlapping channels in certain channel bandwidths. When a device supports overlapping channel assignment in a channel bandwidth configuration, the middle channel of the group of overlapping channels should be selected for testing per KDB 941225 D05 SAR for LTE Devices

LTE Band 5 Measured Results (continued)

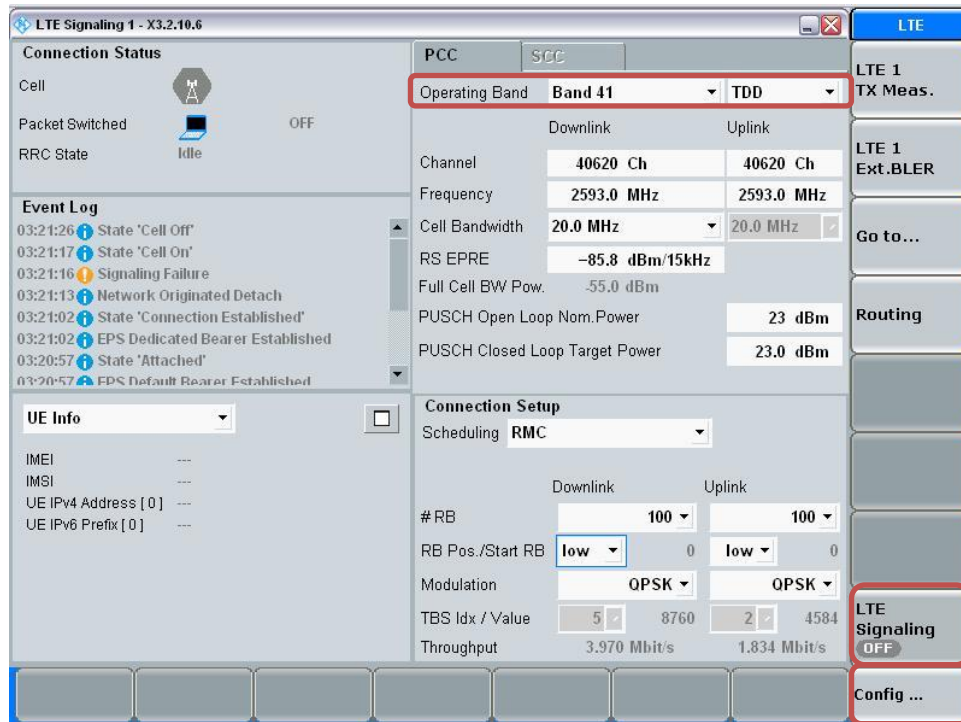
Band	BW (MHz)	Mode	RB Allocation	RB offset	MPR	Max. Meas. Avg Pwr (dBm)		
						825.5 MHz	836.5 MHz	847.5 MHz
LTE Band 5	3	QPSK	1	0	0	24.2	24.3	24.3
			1	8	0	24.3	24.3	24.3
			1	14	0	24.2	24.3	24.2
			8	0	1	23.2	23.3	23.2
			8	4	1	23.2	23.3	23.2
			8	7	1	23.2	23.3	23.2
			15	0	1	23.2	23.3	23.2
		16QAM	1	0	1	23.3	23.1	23.1
			1	8	1	23.3	23.1	23.1
			1	14	1	23.3	23.0	23.1
			8	0	2	22.3	22.3	22.1
			8	4	2	22.3	22.3	22.1
			8	7	2	22.3	22.3	22.1
			15	0	2	22.2	22.2	22.2
			15	0	2	22.2	22.2	22.2
Band	BW (MHz)	Mode	RB Allocation	RB offset	MPR	Max. Meas. Avg Pwr (dBm)		
						824.7 MHz	836.5 MHz	848.3 MHz
LTE Band 5	1.4	QPSK	1	0	0	24.2	24.3	24.3
			1	3	0	24.2	24.3	24.2
			1	5	0	24.1	24.3	24.3
			3	0	0	24.2	24.3	24.3
			3	1	0	24.2	24.3	24.2
			3	3	0	24.2	24.3	24.3
			6	0	1	23.2	23.3	23.2
		16QAM	1	0	1	23.0	23.2	23.0
			1	3	1	22.9	23.2	22.9
			1	5	1	23.0	23.2	23.0
			3	0	1	23.2	23.2	23.3
			3	1	1	23.2	23.2	23.3
			3	3	1	23.2	23.2	23.3
			6	0	2	22.1	22.1	22.3
			6	0	2	22.1	22.1	22.3

LTE Band TDD Measured Results

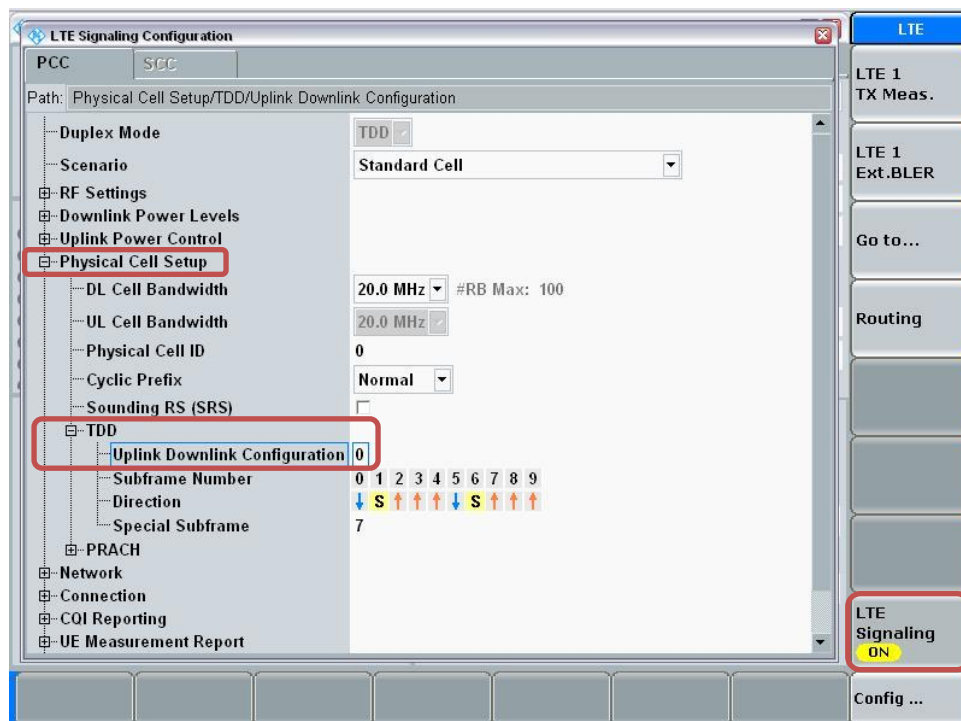
Procedure used to establish SAR test signal for LTE TDD Band

Set to CMW-500 with following parameters:

- Turn the LTE Signaling off using “ON | OFF” key
- Operating Band: Select Band 41 and TDD
- Go to “Config...”

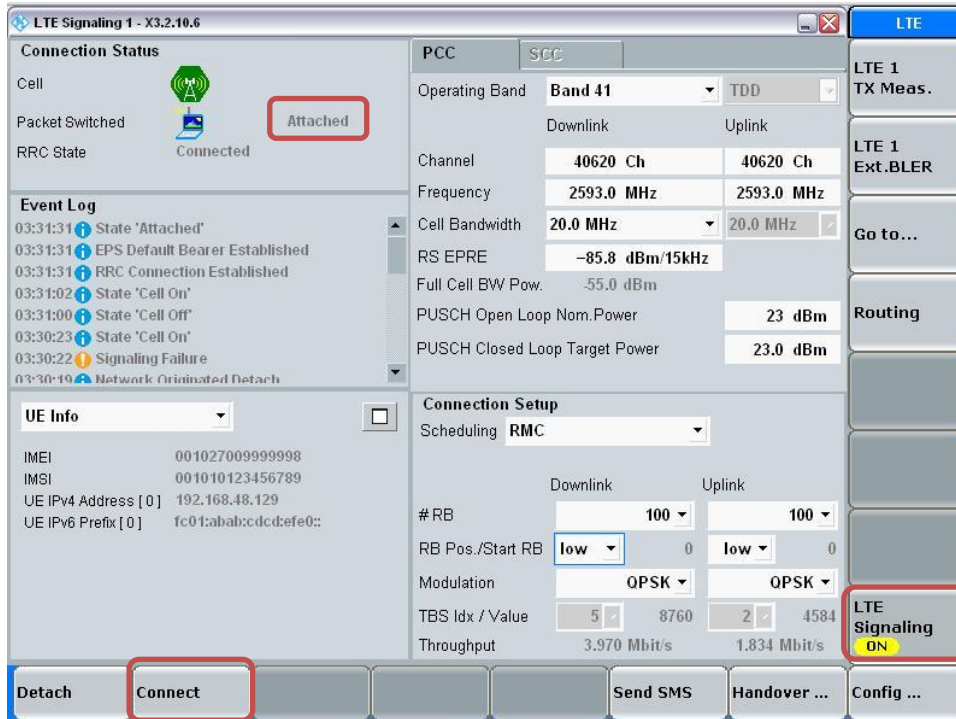


- Go to “Physical Cell Setup”
- Select “TDD” and Set “Uplink Downlink Configuration” to “0”
- Turn the cell on using “ON | OFF” key



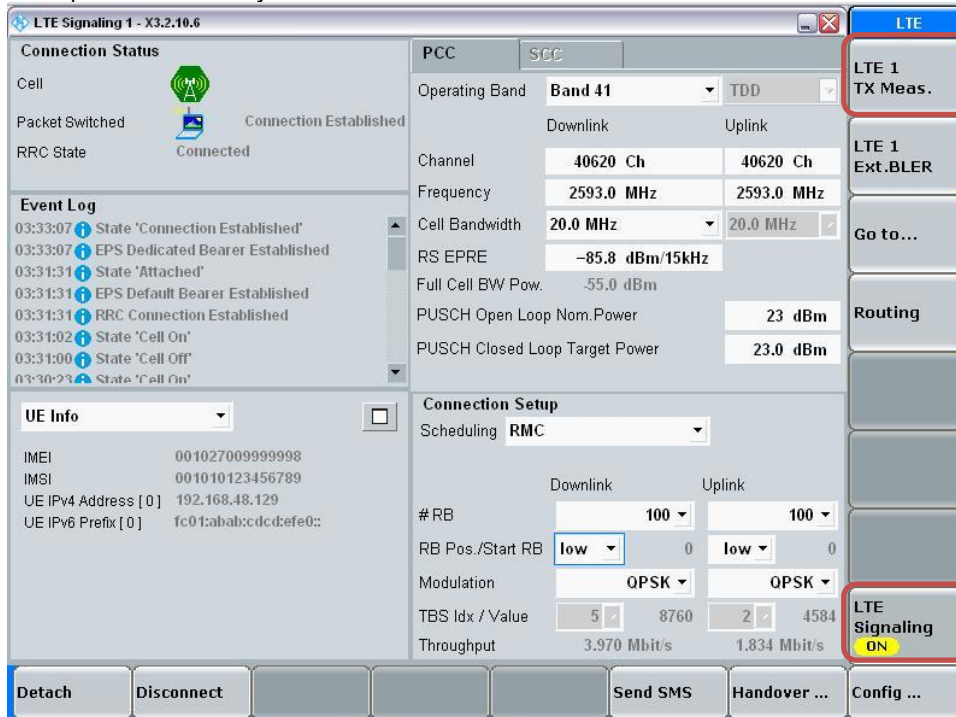
Connect to EUT

- Turn the cell on using “ON | OFF” key
- After EUT is Attached
- Select “Connect”

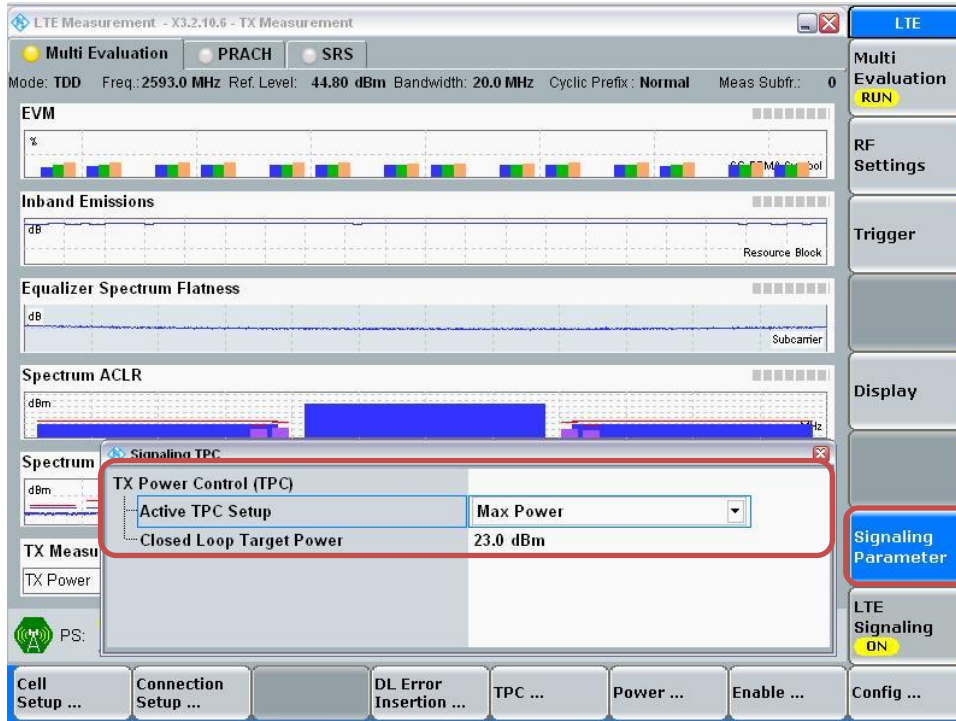


Max Power Setting

- Select “LTE 1 TX Meas.”
- Press “RESTART | STOP” Soft key



- Select “Signaling Parameter”
- Select “TX Power Control (TPC)” > Select “Active TPC Setup” to “Max Power” > Set “Closed Loop Target Power” to “23 dBm”



View TX Power

- Go to “Display”
- Select “Select View...”
- Select “Spectrum Emission Mask”



LTE Band 41 Measured Results

Band	BW (MHz)	Mode	RB Allocation	RB offset	MPR	Max. Meas. Avg Pwr (dBm)				
						2506 MHz	2549.5 MHz	2593 MHz	2636.5 MHz	2680 MHz
LTE Band 41	20	QPSK	1	0	0	23.3	23.7	23.7	23.5	23.1
			1	49	0	23.3	23.8	23.6	23.5	23.3
			1	99	0	23.3	23.8	23.7	23.5	23.3
			50	0	1	22.2	22.6	22.5	22.3	22.1
			50	24	1	22.2	22.7	22.5	22.4	22.1
			50	50	1	22.3	22.7	22.5	22.4	22.2
			100	0	1	22.2	22.7	22.5	22.4	22.1
		16QAM	1	0	1	22.3	22.5	22.4	22.2	22.1
			1	49	1	22.3	22.4	22.8	22.2	21.7
			1	99	1	22.3	22.5	22.8	22.3	22.2
			50	0	2	21.3	21.7	21.5	21.3	21.2
			50	24	2	21.2	21.7	21.5	21.3	21.2
			50	50	2	21.2	21.7	21.5	21.4	21.2
			100	0	2	21.3	21.7	21.5	21.3	21.2
Band	BW (MHz)	Mode	RB Allocation	RB offset	MPR	Max. Meas. Avg Pwr (dBm)				
						2506 MHz	2549.5 MHz	2593 MHz	2636.5 MHz	2680 MHz
LTE Band 41	15	QPSK	1	0	0	23.3	23.7	23.6	23.4	23.2
			1	37	0	23.3	23.7	23.7	23.4	23.2
			1	74	0	23.3	23.8	23.7	23.4	23.3
			36	0	1	22.2	22.7	22.5	22.4	22.1
			36	20	1	22.2	22.7	22.5	22.4	22.1
			36	39	1	22.2	22.7	22.5	22.4	22.2
			75	0	1	22.2	22.7	22.5	22.4	22.1
		16QAM	1	0	1	22.2	22.1	22.5	22.5	21.6
			1	37	1	22.3	22.1	22.5	22.4	22.1
			1	74	1	22.2	22.2	22.5	22.6	22.0
			36	0	2	21.3	21.7	21.5	21.3	21.1
			36	20	2	21.2	21.7	21.5	21.3	21.2
			36	39	2	21.3	21.7	21.5	21.4	21.2
			75	0	2	21.3	21.7	21.5	21.3	21.1

LTE Band 41 Measured Results (continued)

Band	BW (MHz)	Mode	RB Allocation	RB offset	MPR	Max. Meas. Avg Pwr (dBm)				
						2506 MHz	2549.5 MHz	2593 MHz	2636.5 MHz	2680 MHz
LTE Band 41	10	QPSK	1	0	0	23.3	23.6	23.6	23.3	23.1
			1	25	0	23.3	23.7	23.6	23.4	23.2
			1	49	0	23.3	23.7	23.6	23.4	23.2
			25	0	1	22.2	22.7	22.5	22.4	22.1
			25	12	1	22.2	22.7	22.5	22.4	22.1
			25	25	1	22.2	22.7	22.5	22.4	22.1
		16QAM	50	0	1	22.2	22.7	22.5	22.3	22.1
			1	0	1	22.3	22.4	22.4	22.5	21.9
			1	25	1	22.3	22.5	22.5	22.5	22.0
			1	49	1	22.3	22.5	22.5	22.6	22.0
			25	0	2	21.3	21.6	21.5	21.4	21.1
			25	12	2	21.3	21.7	21.5	21.4	21.1
			25	25	2	21.3	21.7	21.5	21.4	21.1
			50	0	2	21.2	21.7	21.5	21.3	21.1
LTE Band 41	5	QPSK	1	0	0	23.2	23.7	23.6	23.4	23.2
			1	12	0	23.2	23.8	23.6	23.5	23.2
			1	24	0	23.2	23.7	23.5	23.5	23.2
			12	0	1	22.2	22.7	22.5	22.4	22.1
			12	7	1	22.2	22.7	22.6	22.4	22.1
			12	13	1	22.2	22.7	22.5	22.4	22.1
			25	0	1	22.2	22.7	22.5	22.4	22.1
		16QAM	1	0	1	22.2	22.6	22.1	22.4	22.1
			1	12	1	22.2	22.6	22.1	22.4	22.1
			1	24	1	22.2	22.6	22.1	22.4	22.1
			12	0	2	21.1	21.7	21.4	21.3	21.2
			12	7	2	21.2	21.7	21.4	21.3	21.2
			12	13	2	21.2	21.7	21.4	21.3	21.2
			25	0	2	21.2	21.7	21.6	21.4	21.2

9.3.1 LTE Rel. 10 Carrier Aggregation

LTE Release 10 Carrier Aggregation

The following power measurements were performed with a single carrier uplink; CA for this particular project only supports one (1) uplink and two (2) downlinks.

Max power results

E-UTRA CA configuration (BCS)	Bands		UL					DL					LTE Rel 8 Tx. Power [dBm]	LTE Rel 10 Tx. Power [dBm]	Delta	
	PCC	SCC	PCC					PCC		SCC						
	1st	2nd	Mode	BW (MHz)	Channel	Freq. (MHz)	RB/Offset	BW (MHz)	Channel	Freq. (MHz)	BW (MHz)	Channel				Freq. (MHz)
5A-5A	5A	5A	10	QPSK	20600	844.0	1/25	10	2600	889.0	10	2450	874.0	24.50	24.44	-0.1
5B	5B	5B	10	QPSK	20600	844.0	1/25	10	2600	889.0	10	2501	879.1	24.50	24.47	0.0

Note(s):

- Per KDB 941225 D05A LTE Rel. 10 KDB inquiry Sheet: SAR is excluded for Carrier Aggregation when measured power doesn't exceed LTE Release 8 by more than a 1/4 dBm.
- When the same frequency band is used for both contiguous and non-contiguous in DL CA Intra band, power was measured using the configuration with the largest aggregated bandwidth and maximum output power among the contiguous and non-contiguous in DL CA Intra band configurations

9.4 Wi-Fi 2.4 GHz (DTS Band)

Measured Results (Max power)

Mode	Data Rate	Ch #	Freq. (MHz)	Meas. Avg Pwr (dBm)	Max Output Power (dBm)	SAR Test (Yes/No)
802.11b	1 Mbps	1	2412.0	17.2	17.5	Yes
		6	2437.0	16.5		
		11	2462.0	17.0		
		12	2467.0	15.4	16.0	No
		13	2472.0	11.5	12.5	
802.11g	6 Mbps	1	2412.0	Not Required	17.0	No
		6	2437.0		15.0	
		11	2462.0		11.5	
		12	2467.0		9.5	
		13	2472.0		9.5	
802.11n (HT20)	6.5 Mbps	1	2412.0	Not Required	17.0	No
		6	2437.0		14.5	
		11	2462.0		12.0	
		12	2467.0		12.0	
		13	2472.0		10.0	

Measured Results (reduced power)

Mode	Data Rate	Ch #	Freq. (MHz)	Meas. Avg Pwr (dBm)	Max Output Power (dBm)	SAR Test (Yes/No)
802.11b	1 Mbps	1	2412.0	14.2	14.5	Yes
		6	2437.0	13.6		
		11	2462.0	14.0		
		12	2467.0	12.7	13.0	No
		13	2472.0	9.4	9.5	
802.11g	6 Mbps	1	2412.0	Not Required	14.0	No
		6	2437.0		12.0	
		11	2462.0		8.5	
		12	2467.0		6.5	
		13	2472.0		6.5	
802.11n (HT20)	6.5 Mbps	1	2412.0	Not Required	14.0	No
		6	2437.0		11.5	
		11	2462.0		9.0	
		12	2467.0		7.0	
		13	2472.0		7.0	

Note(s):

- SAR is not required for 802.11g/n modes when the adjusted SAR for 802.11b is < 1.2 W/kg.
- For "Not required", SAR Test reduction was applied from KDB 248227 guidance, Sec. 2.1, b), 1) when the same maximum power is specified for multiple transmission modes in a frequency band, the largest channel bandwidth, lowest order modulation, lowest data rate and lowest order 802.11a/g/n/ac mode is used for SAR measurement, on the highest measured output power channel in the initial test configuration, for each frequency band. Additional output power measurements were not deemed necessary.
- Additionally, SAR is not required for Channels 12 and 13 because the tune-up limit and the measured output power for these two channels are no greater than those for the default test channels. Refer to §6.3.

9.5 Wi-Fi 5GHz (U-NII Bands)

Measured Results

Band (GHz)	Mode	Data Rate	Ch #	Freq. (MHz)	Max Pwr.			Reduction Pwr.		
					Avg Pwr (dBm)	Max Output Power (dBm)	SAR Test (Yes/No)	Avg Pwr (dBm)	Max Output Power (dBm)	SAR Test (Yes/No)
5.2 (U-NII 1)	802.11a	6 Mbps	36	5180.0	14.2	15.5	Yes	11.9	13.0	Yes
			40	5200.0	14.1			12.0		
			44	5220.0	14.6			12.5		
			48	5240.0	14.1			12.0		
	802.11n (HT20)	6.5 Mbps	36	5180.0	14.5	15.5	No	11.6	13.0	No
			40	5200.0	14.5			11.8		
			44	5220.0	15.1			12.4		
			48	5240.0	14.3			11.8		
	802.11n (HT40)	13.5 Mbps	38	5190.0	Not Required	12.5	No	Not Required	12.5	No
			46	5230.0	Not Required			Not Required		
	802.11ac (VHT20)	6.5 Mbps	36	5180.0	14.4	15.5	No	11.6	13.0	No
			40	5200.0	14.5			11.7		
			44	5220.0	14.9			12.3		
			48	5240.0	14.2			11.7		
802.11ac (VHT40)	13.5 Mbps	38	5190.0	Not Required	12.5	No	Not Required	12.5	No	
		46	5230.0	Not Required			Not Required			
802.11ac (VHT80)	29.3 Mbps	42	5210.0	Not Required	11.0	No	Not Required	11.0	No	
5.5 (U-NII 2C)	802.11a	6 Mbps	100	5500.0	12.8	13.5	Yes			
			120	5600.0	12.5					
			124	5620.0	11.8					
			144	5720.0	12.3					
	802.11n (HT20)	6.5 Mbps	100	5500.0	Not Required	13.0	No			
			120	5600.0	Not Required					
			124	5620.0	Not Required					
			144	5720.0	Not Required					
	802.11n (HT40)	13.5 Mbps	102	5510.0	Not Required	10.5	No			
			118	5590.0	Not Required					
			126	5630.0	Not Required					
			142	5710.0	Not Required					
	802.11ac (VHT20)	6.5 Mbps	100	5500.0	Not Required	13.0	No			
			120	5600.0	Not Required					
			124	5620.0	Not Required					
			144	5720.0	Not Required					
	802.11ac (VHT40)	13.5 Mbps	102	5510.0	Not Required	10.5	No			
			118	5590.0	Not Required					
126			5630.0	Not Required						
142			5710.0	Not Required						
802.11ac (VHT80)	29.3 Mbps	106	5530.0	Not Required	9.5	No				
		122	5610.0	Not Required						
		138	5690.0	Not Required						
5.8 (U-NII 3)	802.11a	6 Mbps	149	5745.0	15.2	16.0	Yes	12.4	13.0	Yes
			157	5785.0	14.9			12.4		
			165	5825.0	14.7			12.3		
	802.11n (HT20)	6.5 Mbps	149	5745.0	15.0	16.0	No	12.2	13.0	No
			157	5785.0	14.6			12.1		
			165	5825.0	14.4			12.0		
	802.11n (HT40)	13.5 Mbps	151	5755.0	Not Required	15.0	No	Not Required	12.0	No
			159	5795.0	Not Required			Not Required		
	802.11ac (VHT20)	6.5 Mbps	149	5745.0	14.9	16.0	No	12.1	13.0	No
			157	5785.0	14.5			12.0		
			165	5825.0	14.3			12.0		
	802.11ac (VHT40)	13.5 Mbps	151	5755.0	Not Required	15.0	No	Not Required	12.0	No
159			5795.0	Not Required	Not Required					
802.11ac (VHT80)	29.3 Mbps	155	5775.0	Not Required	14.0	No	Not Required	11.0	No	

Note(s):

- For "Not required", SAR Test reduction was applied from KDB 248227 guidance, Sec. 2.1, b), 1) when the same maximum power is specified for multiple transmission modes in a frequency band, the largest channel bandwidth, lowest order modulation, lowest data rate and lowest order 802.11a/g/n/ac mode is used for SAR measurement, on the highest measured output power channel in the initial test configuration, for each frequency band.
- When the same transmission mode configurations have the same maximum output power on the same channel for the 802.11 a/g/n/ac/ax modes, the channel in the lower order/sequence 802.11 mode (i.e. a, g, n ac) is selected.
- When UNII band 1's specified maximum output power is higher than UNII band 2A, begin SAR measurement in UNII band 1; and if the highest reported SAR for UNII band 1 is
 - ≤ 1.2 W/kg, SAR is not required for UNII band 2A
 - > 1.2 W/kg, both bands should be tested independently for SAR.

9.6 Bluetooth

Average Power Measured Results

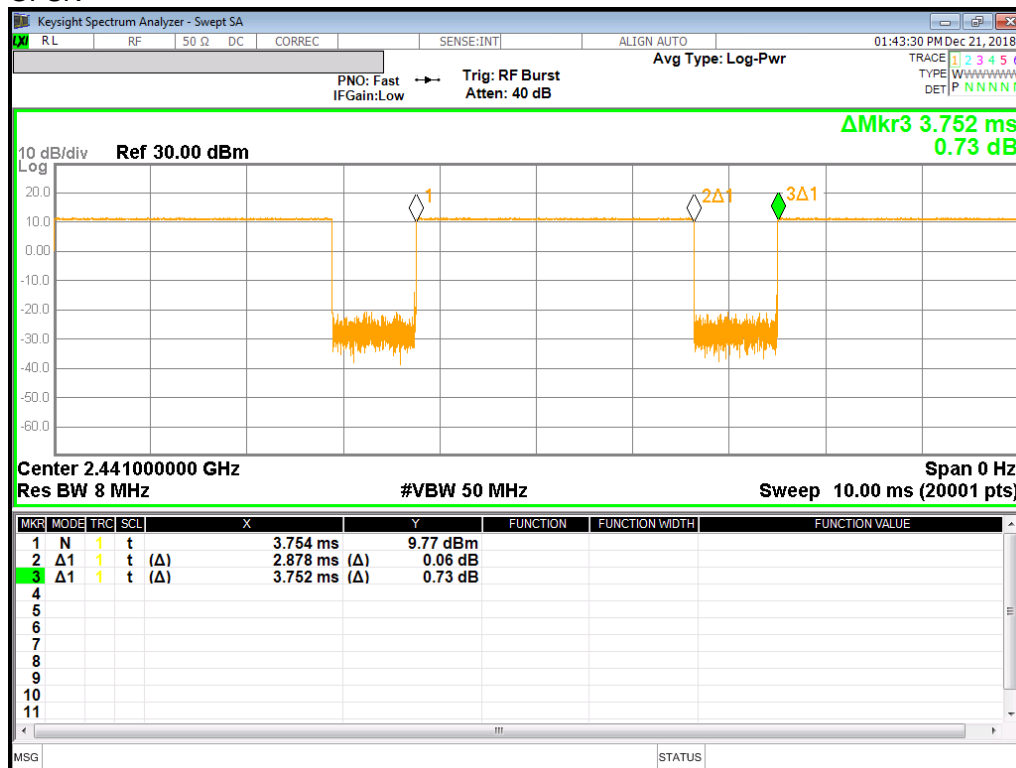
Band (GHz)	Mode	Ch #	Freq. (MHz)	Meas. Avg Pwr (dBm)
2.4	GFSK	0	2402	8.7
		39	2441	9.1
		78	2480	8.0
	EDR, 8-DPSK	0	2402	6.9
		39	2441	7.2
		78	2480	6.2
	LE, GFSK-1M	0	2402	6.0
		19	2440	6.3
		39	2480	5.3
	LE, GFSK-2M	0	2402	5.8
		19	2440	6.2
		39	2480	5.2

Duty Factor Measured Results

Mode	Type	T on (ms)	Period (ms)	Duty Cycle	Crest Factor (1/duty cycle)
GFSK	DH5	2.878	3.752	76.7%	1.30

Duty Cycle plots

GFSK



10. Measured and Reported (Scaled) SAR Results

SAR Test Reduction criteria are as follows:

Reported SAR(W/kg) for WWAN= Measured SAR *Tune-up Scaling Factor

Reported SAR(W/kg) for Wi-Fi and Bluetooth= Measured SAR * Tune-up scaling factor * Duty Cycle scaling factor

KDB 447498 D01 General RF Exposure Guidance:

Testing of other required channels within the operating mode of a frequency band is not required when the reported 1-g or 10-g SAR for the mid-band or highest output power channel is:

- ≤ 0.8 W/kg or 2.0 W/kg, for 1-g or 10-g respectively, when the transmission band is ≤ 100 MHz
- ≤ 0.6 W/kg or 1.5 W/kg, for 1-g or 10-g respectively, when the transmission band is between 100 MHz and 200 MHz
- ≤ 0.4 W/kg or 1.0 W/kg, for 1-g or 10-g respectively, when the transmission band is ≥ 200 MHz

KDB 648474 D04 Handset SAR:

With headset attached, when the reported SAR for body-worn accessory, measured without a headset connected to the handset, is > 1.2 W/kg, the highest reported SAR configuration for that wireless mode and frequency band should be repeated for that body-worn accessory with a headset attached to the handset.

KDB 648474 D04 Handset SAR (Phablet Only):

When hotspot mode does not apply, 10-g Extremity SAR is required for all surfaces and edges with an antenna located at ≤ 25 mm from that surface or edge in direct contact with a flat phantom, to address interactive hand use exposure conditions. When hotspot mode applies, 10-g extremity SAR is required only for the surfaces and edges with hotspot mode 1-g reported SAR > 1.2 W/kg .

Additional 1-g SAR testing at 5 mm is not required when hotspot mode 10-g extremity SAR is not required for the surfaces and edges; since all 1-g reported SAR < 1.2 W/kg.

KDB 941225 D01 SAR test for 3G devices:

When the maximum output power and tune-up tolerance specified for production units in a secondary mode is $\leq \frac{1}{4}$ dB higher than the primary mode or when the highest reported SAR of the primary mode is scaled by the ratio of specified maximum output power and tune-up tolerance of secondary to primary mode and the adjusted SAR is ≤ 1.2 W/kg, SAR measurement is not required for the secondary mode.

KDB 941225 D05 SAR for LTE Devices:

SAR test reduction is applied using the following criteria:

- Start with the largest channel bandwidth and measure SAR for QPSK with 1 RB, and 50% RB allocation, using the RB offset and required test channel combination with the highest maximum output power among RB offsets at the upper edge, middle and lower edge of each required test channel.
- When the reported SAR is > 0.8 W/kg, testing for other Channels is performed at the highest output power level for 1RB, and 50% RB configuration for that channel.
- Testing for 100% RB configuration is performed at the highest output power level for 100% RB configuration across the Low, Mid and High Channel when the highest reported SAR for 1 RB and 50% RB are > 0.8 W/kg. Testing for the remaining required channels is not needed because the reported SAR for 100% RB Allocation < 1.45 W/kg.
- Testing for 16-QAM modulation is not required because the reported SAR for QPSK is < 1.45 W/Kg and its output power is not more than 0.5 dB higher than that of QPSK.
- Testing for the other channel bandwidths is not required because the reported SAR for the highest channel bandwidth is < 1.45 W/Kg and its output power is not more than 0.5 dB higher than that of the highest channel bandwidth.
- For LTE bands that do not support at least three non-overlapping channels in certain channel bandwidths, test the available non-overlapping channels instead. When a device supports overlapping channel assignment in a channel bandwidth configuration, the middle channel of the group of overlapping channels should be selected for testing; therefore, the requirement for H, M and L channels may not fully apply.

KDB 248227 D01 SAR meas for 802.11:

SAR test reduction for 802.11 Wi-Fi transmission mode configurations are considered separately for DSSS and OFDM. An initial test position is determined to reduce the number of tests required for certain exposure configurations with multiple test positions. An initial test configuration is determined for each frequency band and aggregated band according to maximum output power, channel bandwidth, wireless mode configurations and other operating parameters to streamline the measurement requirements. For 2.4 GHz DSSS, either the initial test position or DSSS procedure is applied to reduce the number of SAR tests; these are mutually exclusive. For OFDM, an initial test position is only applicable to next to the ear, UMPC mini-tablet and hotspot mode configurations, which is tested using the initial test configuration to facilitate test reduction. For other exposure conditions with a fixed test position, SAR test reduction is determined using only the initial test configuration.

The multiple test positions require SAR measurements in head, hotspot mode or UMPC mini-tablet configurations may be reduced according to the highest reported SAR determined using the initial test position(s) by applying the DSSS or OFDM SAR measurement procedures in the required wireless mode test configuration(s). The initial test position(s) is measured using the highest measured maximum output power channel in the required wireless mode test configuration(s). When the reported SAR for the initial test position is:

- ≤ 0.4 W/kg, further SAR measurement is not required for the other test positions in that exposure configuration and wireless mode combination within the frequency band or aggregated band. DSSS and OFDM configurations are considered separately according to the required SAR procedures.
- > 0.4 W/kg, SAR is repeated using the same wireless mode test configuration tested in the initial test position to measure the subsequent next closet/smallest test separation distance and maximum coupling test position, on the highest maximum output power channel, until the reported SAR is ≤ 0.8 W/kg or all required test positions are tested.
 - For subsequent test positions with equivalent test separation distance or when exposure is dominated by coupling conditions, the position for maximum coupling condition should be tested.
 - When it is unclear, all equivalent conditions must be tested.
- For all positions/configurations tested using the initial test position and subsequent test positions, when the reported SAR is > 0.8 W/kg, measure the SAR for these positions/configurations on the subsequent next highest measured output power channel(s) until the reported SAR is ≤ 1.2 W/kg or all required test channels are considered.
 - The additional power measurements required for this step should be limited to those necessary for identifying subsequent highest output power channels to apply the test reduction.
- When the specified maximum output power is the same for both UNII 1 and UNII 2A, begin SAR measurements in UNII 2A with the channel with the highest measured output power. If the reported SAR for UNII 2A is ≤ 1.2 W/kg, SAR is not required for UNII 1; otherwise treat the remaining bands separately and test them independently for SAR.
- When the specified maximum output power is different between UNII 1 and UNII 2A, begin SAR with the band that has the higher specified maximum output. If the highest reported SAR for the band with the highest specified power is ≤ 1.2 W/kg, testing for the band with the lower specified output power is not required; otherwise test the remaining bands independently for SAR.

To determine the initial test position, Area Scans were performed to determine the position with the *Maximum Value of SAR (measured)*. The position that produced the highest *Maximum Value of SAR* is considered the worst case position; thus used as the initial test position.

10.1 GSM 850

Antenna	RF Exposure Conditions	Mode	PWR Back-off	Dist. (mm)	Test Position	Ch #.	Freq. (MHz)	Power (dBm)		1-g SAR (W/kg)		Plot No.
								Tune-up limit	Meas.	Meas.	Scaled	
Main 1	Head	GPRS 4 Slot	N/A	0	Left Touch	190	836.6	29.0	29.0	0.203	0.203	
					Left Tilt	190	836.6	29.0	29.0	0.118	0.118	
					Right Touch	190	836.6	29.0	29.0	0.249	0.249	1
					Right Tilt	190	836.6	29.0	29.0	0.127	0.127	
	Body-worn	GPRS 4 Slot	N/A	15	Rear	190	836.6	29.0	29.0	0.386	0.386	2
					Front	190	836.6	29.0	29.0	0.246	0.246	
	Hotspot	GPRS 4 Slot	N/A	10	Rear	190	836.6	29.0	29.0	0.787	0.788	3
					Front	190	836.6	29.0	29.0	0.233	0.233	
					Edge 2	190	836.6	29.0	29.0	0.371	0.371	
					Edge 3	190	836.6	29.0	29.0	0.252	0.252	
				Edge 4	190	836.6	29.0	29.0	0.140	0.140		

10.2 GSM1900

Antenna	RF Exposure Conditions	Mode	PWR Back-off	Dist. (mm)	Test Position	Ch #.	Freq. (MHz)	Power (dBm)		1-g SAR (W/kg)		Plot No.
								Tune-up limit	Meas.	Meas.	Scaled	
Main 1	Head	GPRS 2 Slot	N/A	0	Left Touch	661	1880.0	28.0	26.7	0.135	0.183	4
					Left Tilt	661	1880.0	28.0	26.7	0.094	0.128	
					Right Touch	661	1880.0	28.0	26.7	0.087	0.118	
					Right Tilt	661	1880.0	28.0	26.7	0.083	0.113	
	Body-worn	GPRS 2 Slot	N/A	15	Rear	661	1880.0	28.0	26.7	0.252	0.342	5
					Front	661	1880.0	28.0	26.7	0.129	0.175	
	Hotspot	GPRS 2 Slot	N/A	10	Rear	661	1880.0	28.0	26.7	0.319	0.432	6
					Front	661	1880.0	28.0	26.7	0.211	0.286	
					Edge 2	661	1880.0	28.0	26.7	0.065	0.088	
					Edge 3	661	1880.0	28.0	26.7	0.167	0.226	
				Edge 4	661	1880.0	28.0	26.7	0.198	0.268		

10.3 W-CDMA Band II

Antenna	RF Exposure Conditions	Mode	PWR Back-off	Dist. (mm)	Test Position	Ch #.	Freq. (MHz)	Power (dBm)		1-g SAR (W/kg)		Plot No.
								Tune-up limit	Meas.	Meas.	Scaled	
Main 1	Head	Rel.99 RMC	Off	0	Left Touch	9400	1880.0	24.5	23.2	0.241	0.324	7
					Left Tilt	9400	1880.0	24.5	23.2	0.165	0.222	
					Right Touch	9400	1880.0	24.5	23.2	0.159	0.214	
					Right Tilt	9400	1880.0	24.5	23.2	0.147	0.197	
	Body-worn	Rel.99 RMC	Off	15	Rear	9400	1880.0	24.5	23.2	0.262	0.352	8
					Front	9400	1880.0	24.5	23.2	0.194	0.261	
	Hotspot	Rel.99 RMC	On	10	Rear	9400	1880.0	21.5	20.2	0.396	0.534	9
					Front	9400	1880.0	21.5	20.2	0.227	0.306	
					Edge 2	9400	1880.0	21.5	20.2	0.088	0.119	
					Edge 3	9400	1880.0	21.5	20.2	0.205	0.277	
				Edge 4	9400	1880.0	21.5	20.2	0.281	0.379		

10.4 W-CDMA Band V

Antenna	RF Exposure Conditions	Mode	PWR Back-off	Dist. (mm)	Test Position	Ch #.	Freq. (MHz)	Power (dBm)		1-g SAR (W/kg)		Plot No.
								Tune-up limit	Meas.	Meas.	Scaled	
Main 1	Head	Rel.99 RMC	N/A	0	Left Touch	4183	836.6	25.5	24.9	0.175	0.200	10
					Left Tilt	4183	836.6	25.5	24.9	0.093	0.106	
					Right Touch	4183	836.6	25.5	24.9	0.204	0.234	
					Right Tilt	4183	836.6	25.5	24.9	0.088	0.100	
	Body-worn	Rel.99 RMC	N/A	15	Rear	4183	836.6	25.5	24.9	0.271	0.310	11
					Front	4183	836.6	25.5	24.9	0.174	0.199	
	Hotspot	Rel.99 RMC	N/A	10	Rear	4183	836.6	25.5	24.9	0.664	0.760	12
					Front	4183	836.6	25.5	24.9	0.154	0.176	
					Edge 2	4183	836.6	25.5	24.9	0.211	0.242	
					Edge 3	4183	836.6	25.5	24.9	0.211	0.242	
					Edge 4	4183	836.6	25.5	24.9	0.082	0.094	

10.5 LTE Band 5 (10MHz Bandwidth)

Antenna	RF Exposure Conditions	Mode	PWR Back-off	Dist. (mm)	Test Position	Ch #.	Freq. (MHz)	RB Allocation	RB offset	Power (dBm)		1-g SAR (W/kg)		Plot No.
										Tune-up limit	Meas.	Meas.	Scaled	
Main 1	Head	QPSK	N/A	0	Left Touch	20525	836.5	1	49	25.5	24.4	0.154	0.200	
								25	25	24.5	23.3	0.114	0.149	
					Left Tilt	20525	836.5	1	49	25.5	24.4	0.089	0.116	
								25	25	24.5	23.3	0.066	0.087	
					Right Touch	20525	836.5	1	49	25.5	24.4	0.190	0.247	13
								25	25	24.5	23.3	0.145	0.190	
					Right Tilt	20525	836.5	1	49	25.5	24.4	0.093	0.121	
								25	25	24.5	23.3	0.071	0.093	
	Body-worn	QPSK	N/A	15	Rear	20525	836.5	1	49	25.5	24.4	0.314	0.408	14
								25	25	24.5	23.3	0.243	0.318	
					Front	20525	836.5	1	49	25.5	24.4	0.178	0.231	
								25	25	24.5	23.3	0.136	0.178	
	Hotspot	QPSK	N/A	10	Rear	20525	836.5	1	49	25.5	24.4	0.611	0.794	15
								25	25	24.5	23.3	0.456	0.597	
					Front	20525	836.5	1	49	25.5	24.4	0.182	0.237	
								25	25	24.5	23.3	0.139	0.182	
					Edge 2	20525	836.5	1	49	25.5	24.4	0.270	0.351	
								25	25	24.5	23.3	0.209	0.273	
					Edge 3	20525	836.5	1	49	25.5	24.4	0.193	0.251	
								25	25	24.5	23.3	0.140	0.183	
					Edge 4	20525	836.5	1	49	25.5	24.4	0.106	0.138	
								25	25	24.5	23.3	0.082	0.107	

10.6 LTE Band 41 (20MHz Bandwidth)

Antenna	RF Exposure Conditions	Mode	PWR Back-off	Dist. (mm)	Test Position	Ch #.	Freq. (MHz)	RB Allocation	RB offset	Power (dBm)		1-g SAR (W/kg)		Plot No.
										Tune-up limit	Meas.	Meas.	Scaled	
Main 2	Head	QPSK	N/A	0	Left Touch	40185	2549.5	1	99	24.5	23.8	0.136	0.160	16
								50	50	23.5	22.7	0.107	0.129	
					Left Tilt	40185	2549.5	1	99	24.5	23.8	0.044	0.051	
								50	50	23.5	22.7	0.031	0.038	
					Right Touch	40185	2549.5	1	99	24.5	23.8	0.100	0.117	
								50	50	23.5	22.7	0.080	0.097	
	Right Tilt	40185	2549.5	1	99	24.5	23.8	0.089	0.104					
				50	50	23.5	22.7	0.080	0.097					
	Body-worn	QPSK	N/A	15	Rear	40185	2549.5	1	99	24.5	23.8	0.203	0.239	
								50	50	23.5	22.7	0.161	0.194	
					Front	40185	2549.5	1	99	24.5	23.8	0.206	0.242	17
								50	50	23.5	22.7	0.167	0.201	
	Hotspot	QPSK	N/A	10	Rear	40185	2549.5	1	99	24.5	23.8	0.420	0.494	18
								50	50	23.5	22.7	0.334	0.403	
					Front	40185	2549.5	1	99	24.5	23.8	0.370	0.435	
								50	50	23.5	22.7	0.296	0.357	
					Edge 2	40185	2549.5	1	99	24.5	23.8	0.290	0.341	
								50	50	23.5	22.7	0.235	0.284	
Edge 3					40185	2549.5	1	99	24.5	23.8	0.236	0.277		
							50	50	23.5	22.7	0.187	0.226		

10.7 Wi-Fi (DTS Band)

Frequency Band	Mode	RF Exposure Conditions	PWR Back-off	Dist. (mm)	Test Position	Ch #.	Freq. (MHz)	Area Scan Max. SAR (W/kg)	Duty Cycle (%)	Power (dBm)		1-g SAR (W/kg)		Note	Plot No.		
										Tune-up limit	Meas.	Meas.	Scaled				
2.4GHz	802.11b 1 Mbps	Head	On	0	Left Touch	1	2412.0	0.323	99.8	14.5	14.2						
												Left Tilt	1	2412.0	0.354	99.8	14.5
					Right Touch	1	2412.0	0.145	99.8	14.5	14.2						
												Right Tilt	1	2412.0	0.142	99.8	14.5
		Body-worn	Off	15	Rear	1	2412.0	0.098	99.8	17.5	17.2	0.073	0.078	1	20		
														Front	1	2412.0	0.066
		Hotspot	Off	10	Rear	1	2412.0	0.221	99.8	17.5	17.2	0.163	0.174	1	21		
														Front	1	2412.0	0.145
Edge 1	1				2412.0	0.151	99.8	17.5	17.2								
										Edge 2	1	2412.0	0.077	99.8	17.5	17.2	

Note(s):

1. When the Highest reported SAR is ≤ 0.4 or 1.0 W/kg (1-g or 10-g respectively). Therefore, further SAR measurements within this exposure condition are not required.
2. Highest reported SAR is > 0.4 or 1.0 W/kg (1-g or 10-g respectively). Due to the highest reported SAR for this test position, other test positions in this exposure condition were evaluated until a SAR ≤ 0.8 or 2.0 W/kg (1-g or 10-g respectively) was reported.
3. Testing for a second channel was required because the reported SAR for this test position was > 0.8 or 2.0 W/kg (1-g or 10-g respectively).
4. Additional testing required in order satisfying FCC simultaneous transmission limit criteria.
5. SAR testing is not required for OFDM mode(s) when the highest reported SAR for DSSS is adjusted by the ratio of OFDM to DSSS specified maximum output power and the adjusted SAR is ≤ 1.2 W/kg.

10.8 Wi-Fi (U-NII Bands)

Frequency Band	Mode	RF Exposure Conditions	PWR Back-off	Dist. (mm)	Test Position	Ch #.	Freq. (MHz)	Area Scan Max. SAR (W/kg)	Duty Cycle (%)	Power (dBm)		1-g SAR (W/kg)		10-g SAR (W/kg)		Note	Plot No.			
										Tune-up limit	Meas.	Meas.	Scaled	Meas.	Scaled					
5.2 GHz U-NII 1	802.11a 6 Mbps	Head	On	0	Left Touch	44	5220.0	0.860	97.7	13.0	12.5									
					Left Tilt	44	5220.0	1.290	97.7	13.0	12.5	0.520	0.594						22	
					Right Touch	44	5220.0	0.876	97.7	13.0	12.5									
					Right Tilt	44	5220.0	1.050	97.7	13.0	12.5	0.481	0.550						2	
	802.11a 6 Mbps	Body-worn	Off	15	Rear	44	5220.0	0.376	97.7	15.5	14.6	0.166	0.209					1	23	
					Front	44	5220.0	0.131	97.7	15.5	14.6									
		Phablet-10g	Off	0	Rear	44	5220.0	5.396	97.7	15.5	14.6									
					Front	44	5220.0	1.863	97.7	15.5	14.6									
802.11a 6 Mbps	Phablet-10g	Off	0	Edge 1	44	5220.0	6.024	97.7	15.5	14.6			0.590	0.741			1	24		
				Edge 2	44	5220.0	0.180	97.7	15.5	14.6										
5.5 GHz U-NII 2C	802.11a 6 Mbps	Head	N/A	0	Left Touch	100	5500.0	1.260	97.7	13.5	12.8	0.528	0.638					2		
					Left Tilt	100	5500.0	1.550	97.7	13.5	12.8	0.658	0.795						25	
					Right Touch	100	5500.0	0.837	97.7	13.5	12.8									
					Right Tilt	100	5500.0	1.050	97.7	13.5	12.8									
	802.11a 6 Mbps	Body-worn	N/A	15	Rear	100	5500.0	0.468	97.7	13.5	12.8	0.223	0.269					1	26	
					Front	100	5500.0	0.149	97.7	13.5	12.8									
		Phablet-10g	N/A	0	Rear	100	5500.0	4.313	97.7	13.5	12.8					0.669	0.808		2	
					Front	100	5500.0	2.230	97.7	13.5	12.8									
	Edge 1				100	5500.0	5.063	97.7	13.5	12.8					0.914	1.104			27	
	Edge 2				100	5500.0	0.652	97.7	13.5	12.8										
	5.8 GHz U-NII 3	802.11a 6 Mbps	Head	On	0	Left Touch	149	5745.0	0.373	97.7	13.0	12.4								
						Left Tilt	149	5745.0	0.434	97.7	13.0	12.4	0.187	0.221					1	28
Right Touch						149	5745.0	0.303	97.7	13.0	12.4									
Right Tilt						149	5745.0	0.389	97.7	13.0	12.4									
802.11a 6 Mbps		Body-worn	Off	15	Rear	149	5745.0	0.478	97.7	16.0	15.2	0.210	0.260					1	29	
					Front	149	5745.0	0.149	97.7	16.0	15.2									
		Hotspot	Off	10	Rear	149	5745.0	0.616	97.7	16.0	15.2									
					Front	149	5745.0	0.215	97.7	16.0	15.2									
					Edge 1	149	5745.0	0.655	97.7	16.0	15.2			0.324	0.400			1	30	
					Edge 2	149	5745.0	0.192	97.7	16.0	15.2									

Note(s):

- Highest reported SAR is ≤ 0.4 or 1.0 W/kg (1-g or 10-g respectively). Therefore, further SAR measurements within this exposure condition are not required.
- Highest reported SAR is > 0.4 or 1.0 W/kg (1-g or 10-g respectively). Due to the highest reported SAR for this test position, other test positions in this exposure condition were evaluated until a SAR ≤ 0.8 or 2.0 W/kg (1-g or 10-g respectively) was reported.
- Testing for a second channel was required because the reported SAR for this test position was > 0.8 or 2.0 W/kg (1-g or 10-g respectively).
- Additional testing required in order satisfying FCC simultaneous transmission limit criteria.

10.9 Bluetooth

Frequency Band	Mode	RF Exposure Conditions	Dist. (mm)	Test Position	Ch #.	Freq. (MHz)	Duty Cycle (%)	Power (dBm)		1-g SAR (W/kg)		Plot No.
								Tune-up limit	Meas.	Meas.	Scaled	
2.4GHz	GFSK	Head	0	Left Touch	39	2441.0	76.7	10.0	9.1	0.064	0.102	
				Left Tilt	39	2441.0	76.7	10.0	9.1	0.065	0.104	31
				Right Touch	39	2441.0	76.7	10.0	9.1	0.032	0.051	
				Rightt Tilt	39	2441.0	76.7	10.0	9.1	0.031	0.050	

Standalone SAR Test Exclusion Considerations & Estimated SAR

The 1-g and 10-g SAR test exclusion thresholds for 100 MHz to 6 GHz at test separation distances ≤ 50 mm are determined by:

$[(\text{max. power of channel, including tune-up tolerance, mW}) / (\text{min. test separation distance, mm})] \cdot [\sqrt{f(\text{GHz})}] \leq 3.0$, for 1-g SAR and ≤ 7.5 for 10-g extremity SAR, where

- $f_{(\text{GHz})}$ is the RF channel transmit frequency in GHz
- Power and distance are rounded to the nearest mW and mm before calculation
- The result is rounded to one decimal place for comparison

The test exclusions are applicable only when the minimum test separation distance is ≤ 50 mm and for transmission frequencies between 100 MHz and 6 GHz. When the minimum test separation distance is < 5 mm, a distance of 5 mm is applied to determine SAR test exclusion.

When the standalone SAR test exclusion is applied to an antenna that transmits simultaneously with other antennas, the standalone SAR must be estimated according to following to determine simultaneous transmission SAR test exclusion:

- $(\text{max. power of channel, including tune-up tolerance, mW}) / (\text{min. test separation distance, mm}) \cdot [\sqrt{f_{(\text{GHz})}}/x] \text{ W/kg}$ for test separation distances ≤ 50 mm; where $x = 7.5$ for 1-g SAR, and $x = 18.75$ for 10-g SAR.
- 0.4 W/kg for 1-g SAR and 1.0 W/kg for 10-g SAR, when the test separation distances is > 50 mm.

RF Air interface	RF Exposure Conditions	Frequency (GHz)	Max. tune-up tolerance Power		Min. test separation distance (mm)	SAR test exclusion Result*	Estimated 1-g SAR (W/kg)
			(dBm)	(mW)			
Bluetooth	Body-w orn	2.480	10.0	10	15	1.0	0.140
	Hotspot	2.480	10.0	10	10	1.6	0.210

Conclusion:

*: The computed value is ≤ 3; therefore, this qualifies for Standalone SAR test exclusion.

11. SAR Measurement Variability

In accordance with published RF Exposure KDB 865664 D01 SAR measurement 100 MHz to 6 GHz. These additional measurements are repeated after the completion of all measurements requiring the same head or body tissue-equivalent medium in a frequency band. The test device should be returned to ambient conditions (normal room temperature) with the battery fully charged before it is re-mounted on the device holder for the repeated measurement(s) to minimize any unexpected variations in the repeated results.

- 1) Repeated measurement is not required when the original highest measured SAR is < 0.8 or 2 W/kg (1-g or 10-g respectively); steps 2) through 4) do not apply.
- 2) When the original highest measured SAR is ≥ 0.8 or 2 W/kg (1-g or 10-g respectively), repeat that measurement once.
- 3) Perform a second repeated measurement only if the **ratio of largest to smallest SAR** for the original and first repeated measurements is > 1.20 or when the original or repeated measurement is ≥ 1.45 or 3.6 W/kg ($\sim 10\%$ from the 1-g or 10-g respective SAR limit).
- 4) Perform a third repeated measurement only if the original, first, or second repeated measurement is ≥ 1.5 or 3.75 W/kg (1-g or 10-g respectively) and the ratio of largest to smallest SAR for the original, first and second repeated measurements is > 1.20 .

Peak spatial-average (1g of tissue)

Frequency Band (MHz)	Air Interface	RF Exposure Conditions	Test Position	Repeated SAR (Yes/No)	Highest Measured SAR (W/kg)	Repeated Measured SAR (W/kg)	Largest to Smallest SAR Ratio
835	GSM 850	Hotspot	Rear	No	0.787	N/A	N/A
	WCDMA Band V	Hotspot	Rear	No	0.664	N/A	N/A
	LTE Band 5	Hotspot	Rear	No	0.611	N/A	N/A
1900	GSM 1900	Hotspot	Rear	No	0.319	N/A	N/A
	WCDMA Band II	Hotspot	Rear	No	0.396	N/A	N/A
2400	Wi-Fi 802.11b/g/n	Head	Left Tilt	No	0.251	N/A	N/A
	Bluetooth	Head	Left Tilt	No	0.065	N/A	N/A
2600	LTE Band 41	Hotspot	Rear	No	0.420	N/A	N/A
5200	Wi-Fi 802.11a/n	Head	Left Tilt	No	0.520	N/A	N/A
5500	Wi-Fi 802.11a/n	Head	Left Tilt	No	0.658	N/A	N/A
5800	Wi-Fi 802.11a/n	Hotspot	Edge 1	No	0.324	N/A	N/A

Peak spatial-average (10g of tissue)

Frequency Band (MHz)	Air Interface	RF Exposure Conditions	Test Position	Repeated SAR (Yes/No)	Highest Measured SAR (W/kg)	Repeated Measured SAR (W/kg)	Largest to Smallest SAR Ratio
5200	Wi-Fi 802.11a/n	Phablet-10g	Edge 1	No	0.590	N/A	N/A
5500	Wi-Fi 802.11a/n	Phablet-10g	Edge 1	No	0.914	N/A	N/A

Note(s):

Second Repeated Measurement is not required since the ratio of the largest to smallest SAR for the original and first repeated measurement is not > 1.20 .

12. DUT Holder Perturbations

In accordance with published DUT Holder Perturbations in Oct.2016 TCB workshop,

When Highest reported SAR is over 1.2 or 3.0 W/kg (1-g or 10-g respectively), Holder perturbation verification is required for each antenna, using the highest configuration among all applicable frequency bands. Both Head test and Body test (Edge 1-4 sides) are evaluated with DUT holder. Both Front and Rear sides are evaluated without DUT holder. (Details of test setup are refer to Appendix A.)

So we are only consider about Head test and Body test (Edge 1-4 sides).

All highest SAR level is not over 1.2 or 3.0 W/kg (1-g or 10-g respectively) in All bands.

Please refer to Section 10. **So DUT Holder perturbations verification are not required.**

13. Simultaneous Transmission SAR Analysis

Simultaneous Transmission Condition

RF Exposure Condition	Item	Capable Transmit Configurations	
Head & Body-worn & Phablet-10g	1	GSM(Voice/GPRS)	+ DTS
	2	GSM(Voice/GPRS)	+ UNII
	3	GSM(Voice/GPRS)	+ BT
	4	W-CDMA	+ DTS
	5	W-CDMA	+ UNII
	6	W-CDMA	+ BT
	7	LTE	+ DTS
	8	LTE	+ UNII
	9	LTE	+ BT
Hotspot	10	GSM(GPRS)	+ DTS
	11	GSM(GPRS)	+ UNII
	12	GSM(GPRS)	+ BT
	13	W-CDMA	+ DTS
	14	W-CDMA	+ UNII
	15	W-CDMA	+ BT
	16	LTE	+ DTS
	17	LTE	+ UNII
	18	LTE	+ BT

Notes:

1. DTS supports Wi-Fi Direct, Hotspot and VoIP.
2. U-NII supports Wi-Fi Direct, Hotspot and VoIP.
3. GPRS, W-CDMA, LTE supports Hotspot and VoIP.
4. U-NII Radio cannot transmit simultaneously with Bluetooth Radio.
5. DTS Radio cannot transmit simultaneously with Bluetooth Radio.
6. DTS Radio cannot transmit simultaneously with UNII Radio.
7. BT tethering is consider about each RF exposure conditions

Simultaneous transmission SAR test exclusion considerations

KDB 447498 D01 General RF Exposure Guidance provides two procedures for determining simultaneous transmission SAR test exclusion: Sum of SAR and SAR to Peak Location Ratio (SPLSR)

Sum of SAR

To qualify for simultaneous transmission SAR test exclusion based upon Sum of SAR the sum of the reported standalone SARs for all simultaneously transmitting antennas shall be below the applicable standalone SAR limit. If the sum of the SARs is above the applicable limit then simultaneous transmission SAR test exclusion may still apply if the requirements of the SAR to Peak Location Ratio (SPLSR) evaluation are met.

SAR to Peak Location Ratio (SPLSR)

KDB 447498 D01 General RF Exposure Guidance explains how to calculate the SAR to Peak Location Ratio (SPLSR) between pairs of simultaneously transmitting antennas:

$$SPLSR = (SAR_1 + SAR_2)^{1.5} / Ri$$

Where:

SAR₁ is the highest reported or estimated SAR for the first of a pair of simultaneous transmitting antennas, in a specific test operating mode and exposure condition

SAR₂ is the highest reported or estimated SAR for the second of a pair of simultaneous transmitting antennas, in the same test operating mode and exposure condition as the first

R_i is the separation distance between the pair of simultaneous transmitting antennas. When the SAR is measured, for both antennas in the pair, it is determined by the actual x, y and z coordinates in the 1-g SAR for each SAR peak location, based on the extrapolated and interpolated result in the zoom scan measurement, using the formula of

$$[(x_1 - x_2)^2 + (y_1 - y_2)^2 + (z_1 - z_2)^2]$$

In order for a pair of simultaneous transmitting antennas with the sum of 1-g SAR > 1.6 W/kg to qualify for exemption from Simultaneous Transmission SAR measurements, it has to satisfy the condition of:

$$(SAR_1 + SAR_2)^{1.5} / Ri \leq 0.04$$

When an individual antenna transmits at on two bands simultaneously, the sum of the highest *reported* SAR for the frequency bands should be used to determine **SAR₁**, or **SAR₂**. When SPLSR is necessary, the smallest distance between the peak SAR locations for the antenna pair with respect to the peaks from each antenna should be used.

The antennas in all antenna pairs that do not qualify for simultaneous transmission SAR test exclusion must be tested for SAR compliance, according to the enlarged zoom scan and volume scan post-processing procedures in KDB Publication 865664 D01

The antennas for the unlicensed transmitters are closely situated. As a result, the associated SAR hotspots are also closely situated. Some of the sum of SAR calculations yielded results over 1.6 W/kg. The SPLSR calculations for these situations were performed by treating the unlicensed SAR values as a single transmitter. The most conservative distance between all the unlicensed hotspots to the licensed hotspot was used for the value of *d* in the SPLSR calculation.

Simultaneous transmission SAR measurement

When simultaneous transmission SAR measurements are required in different frequency bands not covered by a single probe calibration point then separate tests for each frequency band are performed. The tests are performed using enlarged zoom scans which are processed, by means of superposition, using the DASY5 volume scan postprocessing procedures to determine the 1-g SAR for the aggregate SAR distribution.

The spatial resolution used for all enlarged zoom scans is the same as used for the most stringent zoom scans. I.E. the scan parameters required for the highest frequency assessed are used for all enlarged zoom scans. The scans cover the complete area of the device to ensure all transmitting antennas and radiating structures are assessed.

DASY5 provides the ability to perform Multiband Evaluations according to the latest standards using the Volume Scan job as well as appropriate routines for the Post-processing.

In order to extract and process measurements within different frequency bands, the SEMCAD X Post-processor performs the combination and subsequent superposition of these measurement data via DASY5= Combined MultiBand Averaged SAR.

Combined Multi Band Averaged SAR allows - in addition to the data extraction - an evaluation of the 1 g, 10 g and/or arbitrary averaged mass SAR.

Power Scaling Factor is used to allow the volume scans to be scaled by a value other than "1", this is important when the results need to be scaled to different maximum power levels. The Power Scaling Factor is applied to each individual point of the scan. When power scaling is used in multi-band combinations the scaling factor is applied to each individual point of the first scan, the second factor is then applied to each individual point of the second scan and so on. The scans are then combined.

13.1 Sum of the SAR for WWAN & Wi-Fi & BT

RF Exposure conditions	Test Position	① WWAN	② DTS	③ U-NII	④ BT	① + ② WWAN + DTS		① + ③ WWAN + U-NII		① + ④ WWAN + BT	
						∑ 1-g SAR (mW/g)	SPLSR (Yes/ No)	∑ 1-g SAR (mW/g)	SPLSR (Yes/ No)	∑ 1-g SAR (mW/g)	SPLSR (Yes/ No)
						Head	All Position	0.324	0.273	0.795	0.104
Body-worn	All Position	0.408	0.078	0.269	0.140	0.486	No	0.677	No	0.548	No
Hotspot	All Position	0.794	0.174	0.400	0.210	0.968	No	1.194	No	1.004	No

Conclusion:

Simultaneous transmission SAR measurement (Volume Scan) is not required because the either sum of the 1-g SAR is < 1.6 W/kg or the SPLSR is ≤ 0.04 for all circumstances that require SPLSR calculation.

Appendixes

Refer to separated files for the following appendixes.

4788862444-S1V2 FCC Report SAR_App A_Photos & Ant. Locations

4788862444-S1V2 FCC Report SAR_App B_Highest SAR Test Plots

4788862444-S1V2 FCC Report SAR_App C_System Check Plots

4788862444-S1V2 FCC Report SAR_App D_SAR Tissue Ingredients

4788862444-S1V2 FCC Report SAR_App E_Probe Cal. Certificates

4788862444-S1V2 FCC Report SAR_App F_Dipole Cal. Certificates

END OF REPORT