



ELECTRONICS

Power Density Simulation Report

FCC Part #0

FCC ID : A3LSMA426U

Revision : B

Date : Feb 16th, 2021

Innovative Product R&D Group 2

Yeongsu Noh

1. Simulation methodology for Power Density (PD)

1.1 Simulation tool

1.1.1 Tool description

For the simulation approach to calculating power density (PD) evaluation for mobile phone with mmWave antenna modules, ANSYS Electromagnetics suite version 19.3 (HFSS) is used. ANSYS HFSS is one of several commercial tools for 3D full-wave electromagnetic simulation used for antenna and RF structure design of high frequency component. ANSYS Electromagnetics suite version 19.3 (HFSS) is implemented based on Finite Element Method (FEM), which operates in the frequency domain.

1.1.2 Mesh and Convergence criteria

To solve the PD analysis using FEM, volume area containing simulated objects should be subdivided into electrically small parts that are called finite elements as the unknown functions. To subdivide system, the adaptive mesh technique in ANSYS Electromagnetics suite version 19.3 (HFSS) is used. ANSYS Electromagnetics suite version 19.3 (HFSS) starts to refine the initial mesh based on wavelength and calculate the error to iterative process for adaptive mesh refinement. The determination parameter of the number of iteration in ANSYS Electromagnetics suite version 19.3 (HFSS) is defined as convergence criteria, delta S, and the iterative adaptive mesh process repeats until the delta S is met. In ANSYS Electromagnetics suite version 19.3 (HFSS), the accuracy of converged results depends on the delta S. Figure 1 is an example of final adaptive mesh of the device (cross-section of top view).

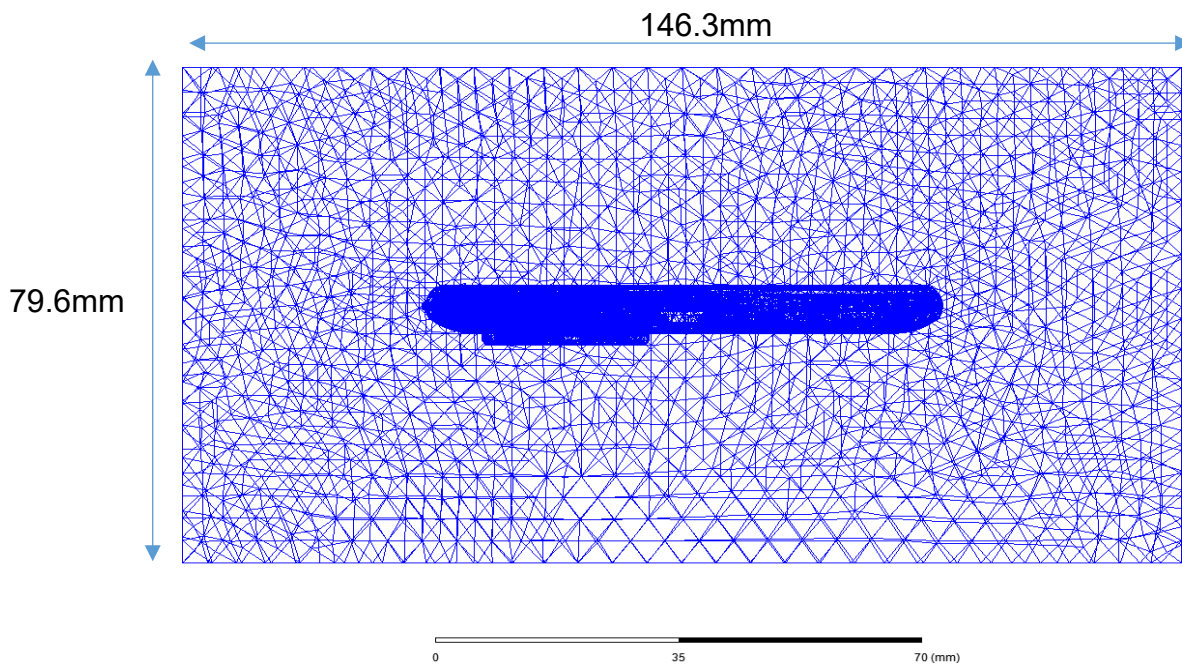


Figure 1 Example of the adaptive mesh technique (Top view)

1.1.3 Power density calculation

After solving 3D full-wave electromagnetic simulation, various kinds of physical quantities can be obtained. To calculate PD evaluation, two physical quantities, an electric field (\vec{E}) and a magnetic field (\vec{H}) are needed. The actual consumption power can be expressed as the real term of the Poynting vector (\vec{S}) from the cross product of \vec{E} and complex conjugation of \vec{H} as shown below:

$$\langle \vec{S} \rangle = \text{Re} \left(\frac{1}{2} \vec{E} \times \vec{H}^* \right)$$

$\langle \vec{S} \rangle$ can be expressed as point power density based on a peak value of each spatial point on mesh grids, and obtained directly from ANSYS Electromagnetics suite version 19.3 (HFSS).

From the point power density $\langle \vec{S} \rangle$, the spatial-averaged power density (PD_{av}) on an evaluated area (A) can be derived as shown below:

$$PD_{av} = \frac{1}{A} \int_A \langle \vec{S} \rangle \cdot ds = \frac{1}{2A_{av}} \iint_{A_{av}} \| \text{Re}\{E \times H^*\} \| dA$$

, where the spatial-averaged power density (PD_{av}) is total power density value considering on x, y and z components of point power density $\langle \vec{S} \rangle$ and the evaluated area (A) is 4cm^2 .

1.2 Simulation setup

1.2.1 3D modeling

Figure 2 shows the simulation model which is mounted three mmWave antenna modules. This simulation modeling includes most of the entire structure of device itself such as PCB, metal frame, battery, cables, and legacy antennas as well as mmWave antenna modules called as Ant R and Ant L. Ant R is placed on the left side and antennas are facing the left side, and Ant L is placed on the right side and antennas are facing the right side of the device.

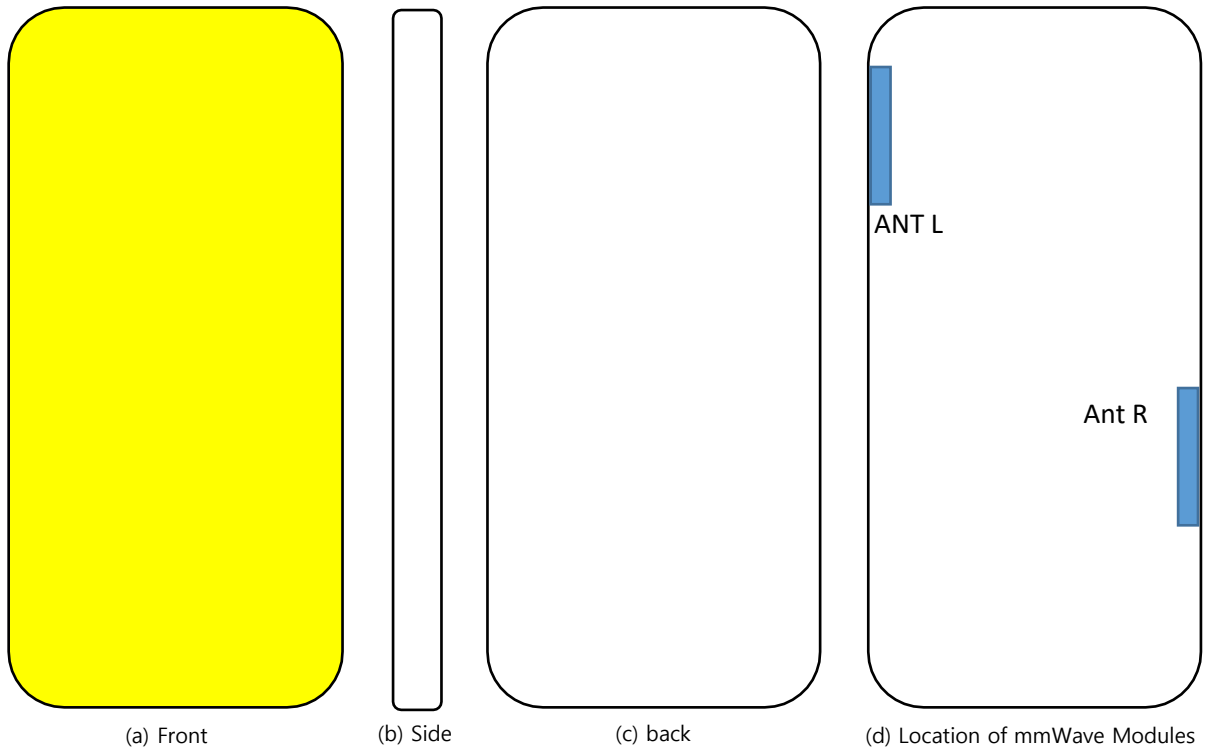


Figure 2 Simulation model which is mounted three mmWave antenna modules

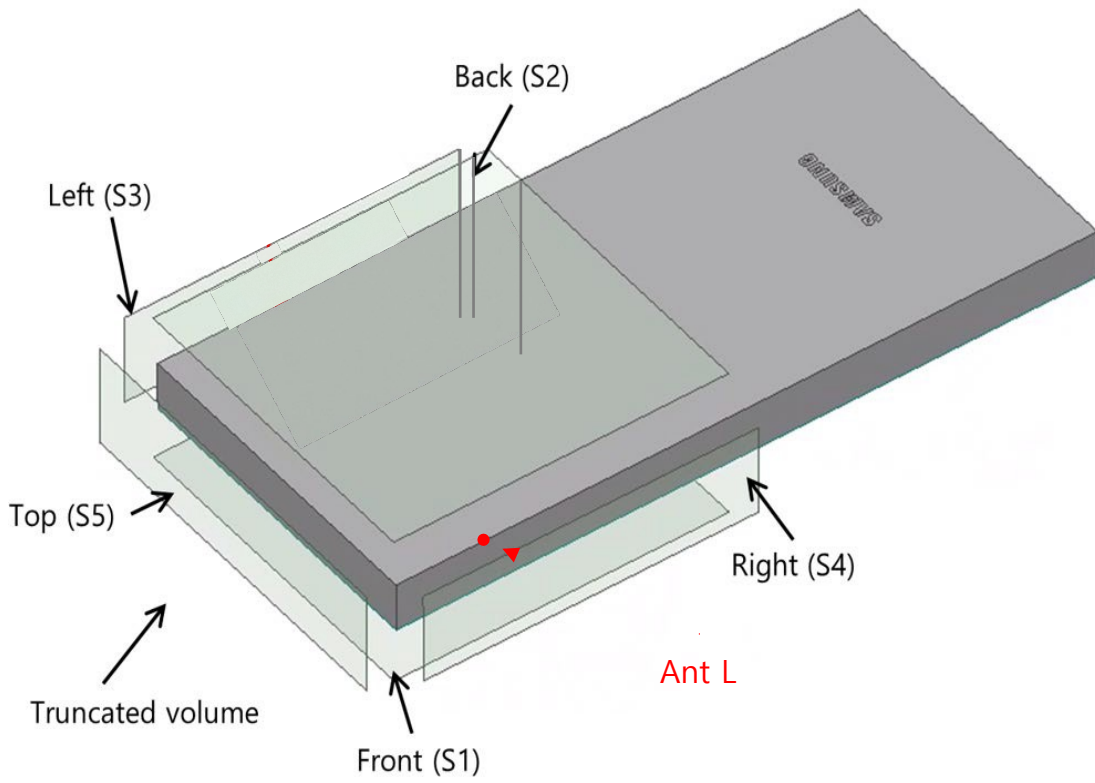
1.2.2 PD evaluation planes

Table 1 shows the PD evaluation planes for each mmWave antenna module and Figure 3 shows the PD evaluation planes and truncation area of the simulation model to find worst case of beamforming cases. In Ant R cases, five PD evaluation planes except bottom side are set up. Ant L are placed at the upper of the device and the bottom side is excluded from the worst case because the distance from the bottom side is more than 10 lambda at 28GHz and 39 GHz. In Ant R case, five PD evaluation planes except top side are set up, Ant L is placed at the lower of the device and the top side is excluded from the worst case for the same reason as Ant R.

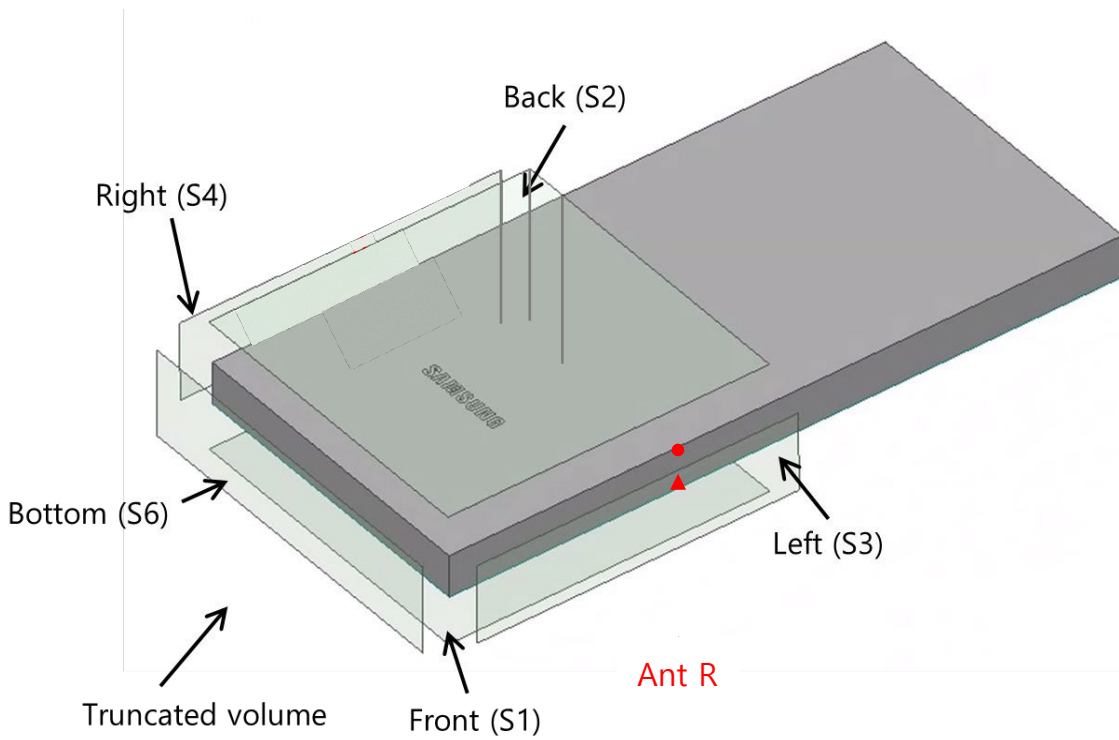
Please note that the “right” and “left” edge of mentioned in this report are defined from the perspective of looking at the device from the front side.

Table 1. PD evaluation planes

	Front	Back	Left From Front View	Right From Front View	Top	Bottom
	S1	S2	S3	S4	S5	S6
Ant L	O	O	O	O	O	X
Ant R	O	O	O	O	X	O



(a) Ant L



(b) Ant R

Figure 3. PD evaluation planes



ELECTRONICS

1.2.3 Boundary condition

To simulate electromagnetic tool based on FEM, the boundary condition allows electromagnetic waves to be electrically open at the boundary and radiated far away without reflection. ANSYS Electromagnetics suite version 19.3 (HFSS) can support the absorbing boundary condition (ABC) for radiation boundary and make normally a quarter wave length from the radiating structure. In this report, to cover all beamforming cases of mmWave antenna modules, the three wavelength spacing from the device is used.

1.2.4 Source excitation condition

The number of antenna ports of Ant R, and ANT L for source excitation consists of 16, and 16, respectively. The dipole array antennas consist of 4 antenna elements and each element uses two ports as a source excitation. All antenna ports of Ant R and ANT L are for patch array antennas.

After finishing 3D full wave electromagnetic simulation of modeling structure, the magnitude and phase information can be loaded for each port by using "Edit Sources" function in ANSYS Electromagnetics suite (HFSS). Since ANSYS Electromagnetics suite (HFSS) uses FEM solver based on frequency domain analysis method, the input source for the port excitation applies sinusoidal waveform for each frequency.

1.2.5 Condition of simulation completion

The simulation completion condition of ANSYS Electromagnetics suite (HFSS) is defined as delta S. The ANSYS Electromagnetics suite (HFSS) calculates the S-parameter for the mesh conditions of each step and determines whether to proceed with the operation of the next step by comparing the difference between the S-parameters in the previous step. A difference between the previous step and the current step of S-parameter is expressed as delta S, and the delta S generally sets 0.02. The simulation result of this report is the result of setting delta S to 0.02.

2. Simulation verification

2.1 Spatial-averaged power density

As mentioned in the previous chapter, the Poynting vector (\vec{S}) can be obtained through cross product of an electric field (\vec{E}) and complex conjugate of a magnetic field (\vec{H}). The real term of the Poynting vector can be described as the point power density or peak power density. Using the point power density, the spatial-averaged power density can be obtained by the integral of 4 cm^2 at 2.5 mm intervals of the point power density result. Figure 6 shows examples of the distribution plot of point power density and the averaged power density.

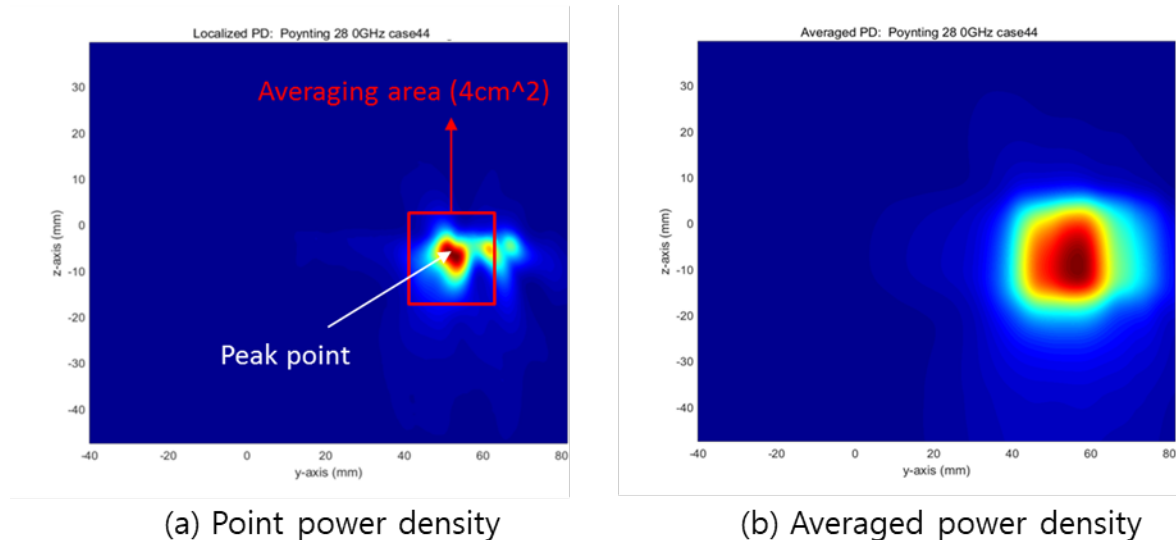


Figure 4. Power density distribution (Example)

2.2 Comparison between simulation and measurement

In this section, the simulated-power density distributions and measured-power density distributions are compared to each mmWave antenna.

Based on comparison of power density distributions, simulated power density and measured power density have a good correlation. The discrepancy in amplitude between simulated 4 cm^2 averaged power density and measured 4 cm^2 averaged power density is considered as housing influence and used in determining input power limit for each beam for RF exposure compliance (see RF Exposure Part 0 Report).

The input powers per each active port are listed below for both Simulation and Measurement validation and power density characterization. For Simulation, these values were entered directly into HFSS model. For measurement, FTM S/W was used to input these values for each active port also.



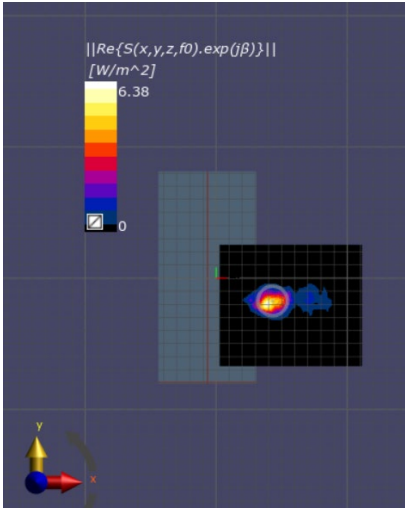
ELECTRONICS

Mode/Band	Antenna	Input Power (dBm)	
		SISO	MIMO
n261	R Patch	6.0	6.0
	L Patch	6.0	6.0
n260	R Patch	6.0	6.0
	L Patch	6.0	6.0

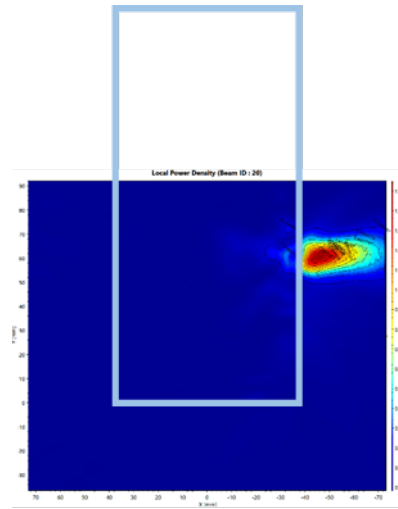
* The below simulation and measurement result were performed at 2mm evaluation distance and 28GHz / 38.5GHz. The *input.power.limit* was determined based on below results in RF Exposure Part 0 Report.

Band	Antenna	Beam ID	Surface	4cm ² psPD	
				Measured	Simulated
				(mW/cm ²)	
n261	R (patch)	20	Back	0.310	0.733
			Left	0.882	1.607
		158	Back	0.427	0.806
			Left	0.693	1.450
	L (patch)	15	Back	0.398	0.758
			Right	0.832	1.519
143		Back	0.389	0.683	
n260	R (patch)	30	Back	0.149	0.436
		19	Left	1.180	1.411
		157	Back	0.639	1.099
		159	Left	1.160	1.506
	L (patch)	25	Back	0.188	0.391
			Right	0.682	1.175
		154	Back	0.585	0.904
			Right	0.865	1.324

n261 Ant R-Patch: Mid Channel, Beam ID 20, Back

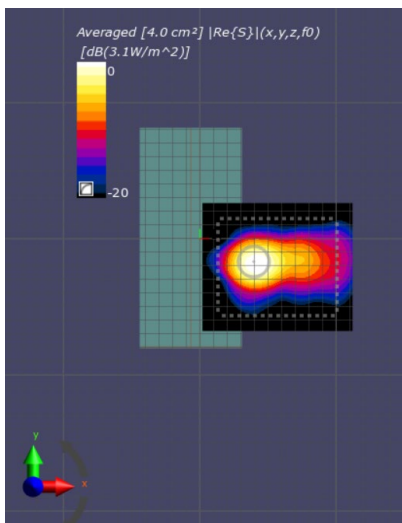


(a) measurement

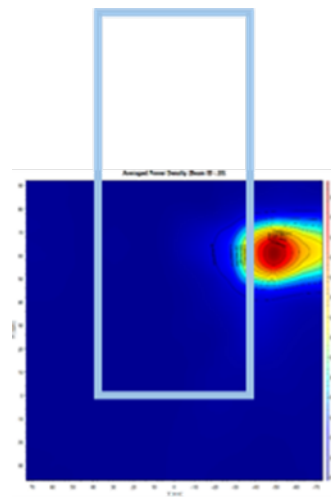


(b) simulation

Ant R-Patch: Mid Channel, Point power density



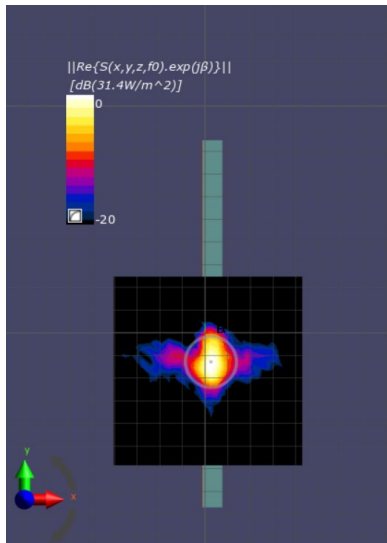
(a) measurement



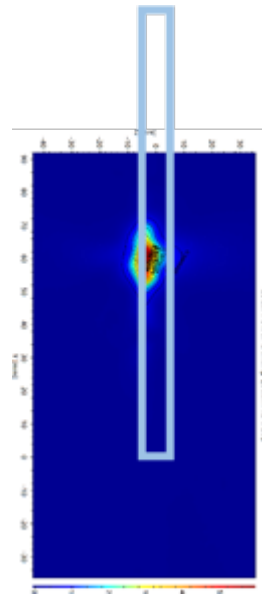
(b) simulation

Ant R-Patch: Mid Channel, 4cm² averaged power density

n261 Ant R-Patch: Mid Channel, Beam ID 20, Left

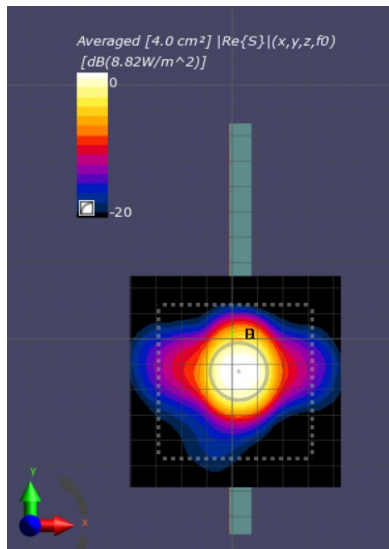


(a) measurement

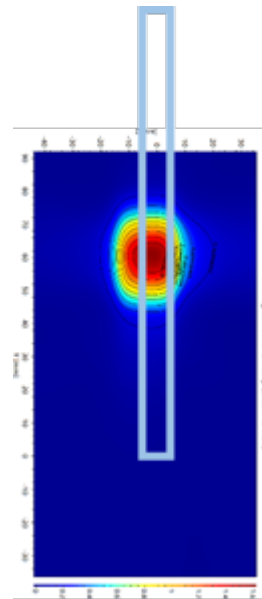


(b) simulation

Ant R-Patch: Mid Channel, Point power density

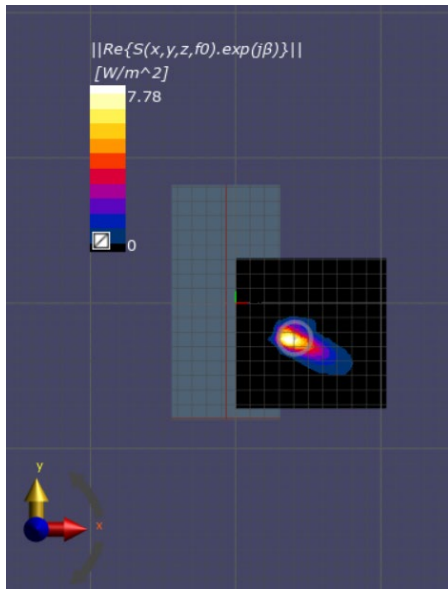


(a) measurement

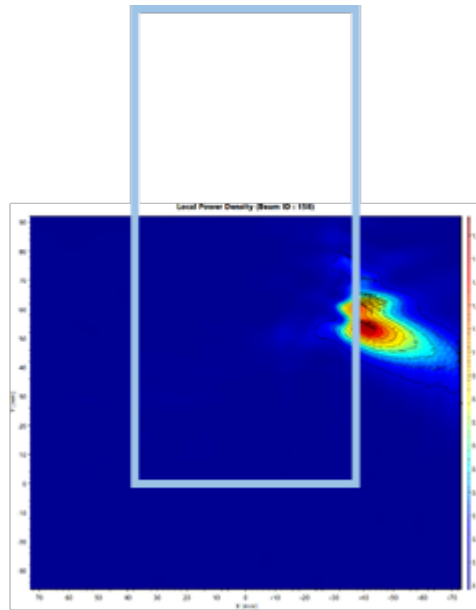


(b) simulation

Ant R-Patch: Mid Channel, 4cm² averaged power density

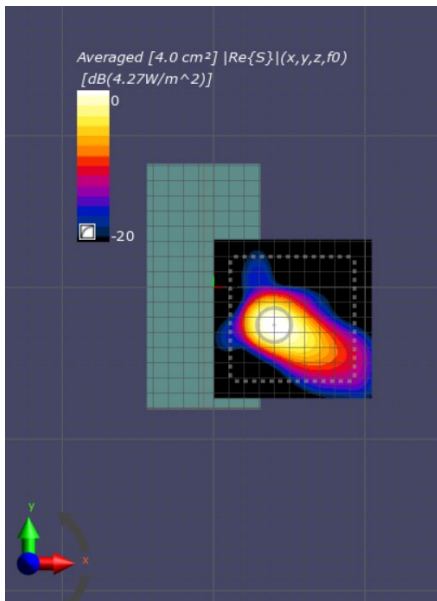


(a) measurement

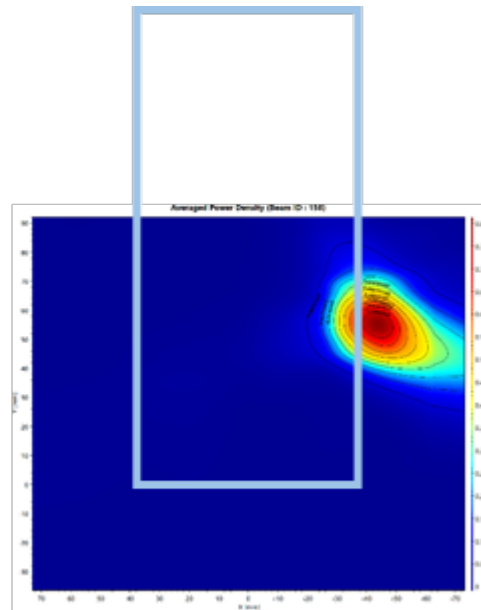


(b) simulation

Ant R-Patch: Mid Channel, Point power density



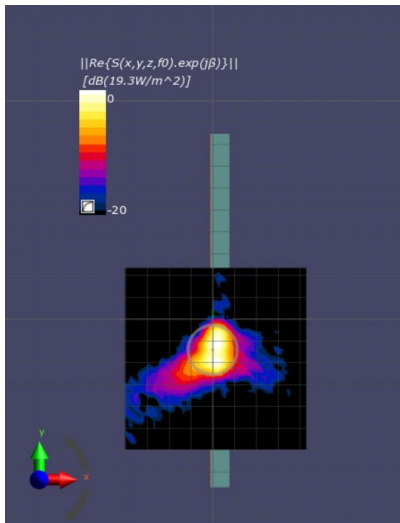
(a) measurement



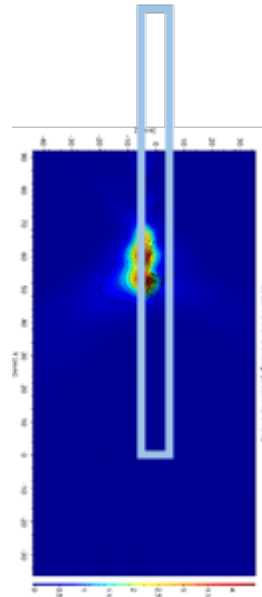
(b) simulation

Ant R-Patch: Mid Channel, 4cm² averaged power density

n261 Ant R-Patch: Mid Channel, Beam ID 158, Left

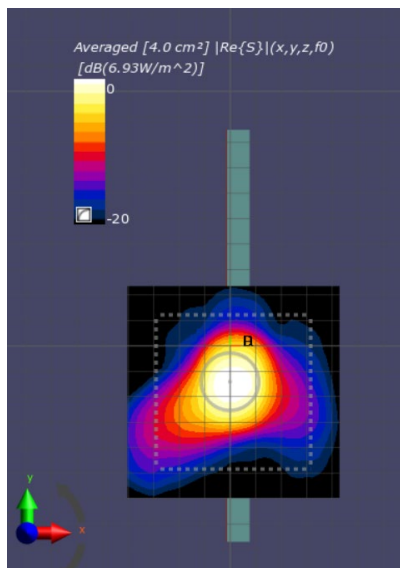


(a) measurement

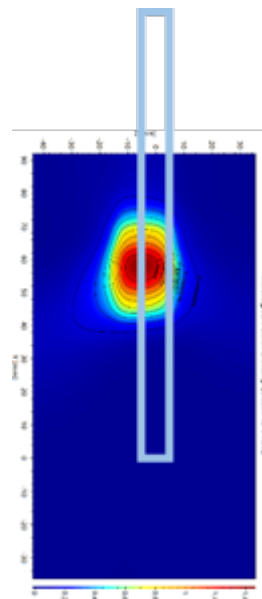


(b) simulation

Ant R-Patch: Mid Channel, Point power density



(a) measurement



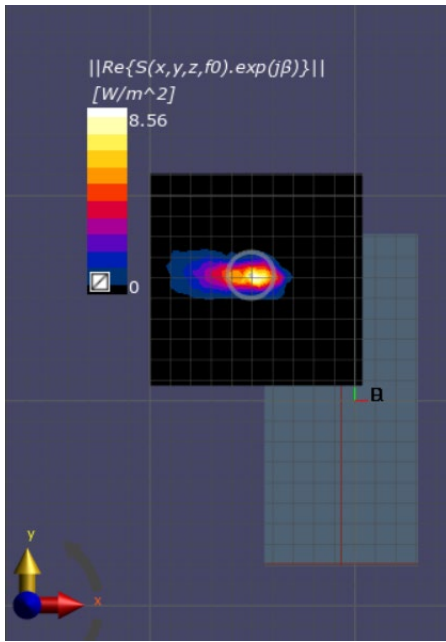
(b) simulation

Ant R-Patch: Mid Channel, 4cm² averaged power density

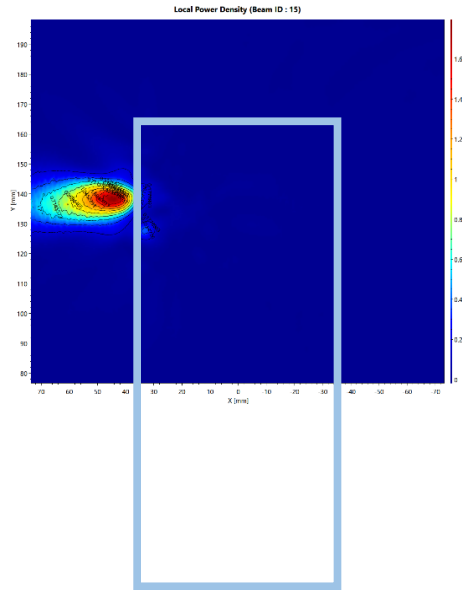


ELECTRONICS

n261 Ant L-Patch: Mid Channel, Beam ID 15, Back

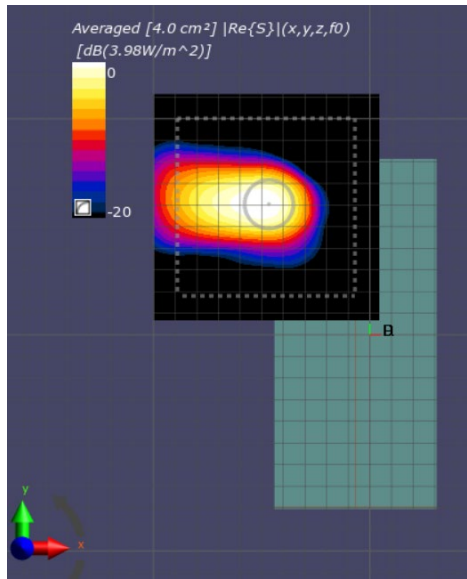


(a) measurement

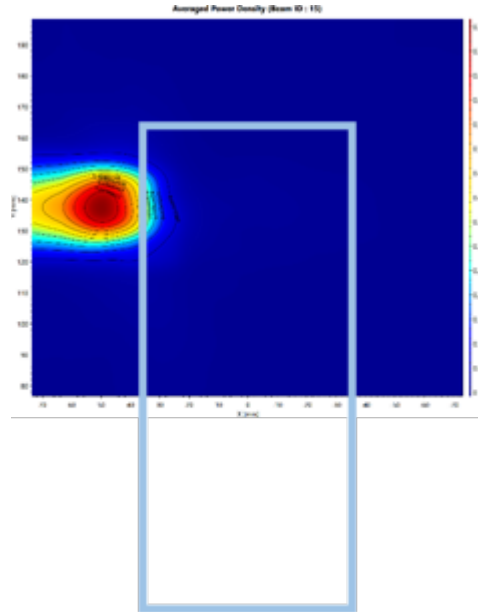


(b) simulation

Ant L-Patch: Mid Channel, Point power density



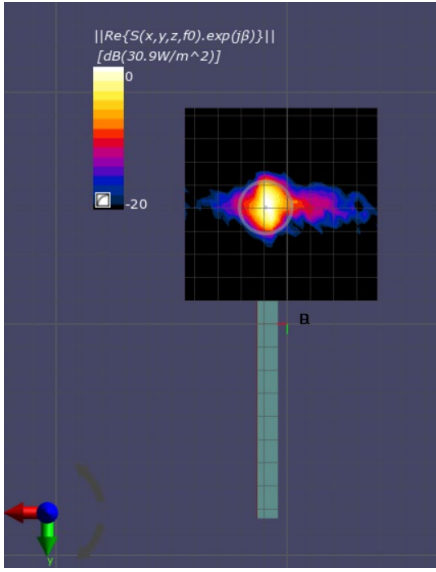
(a) measurement



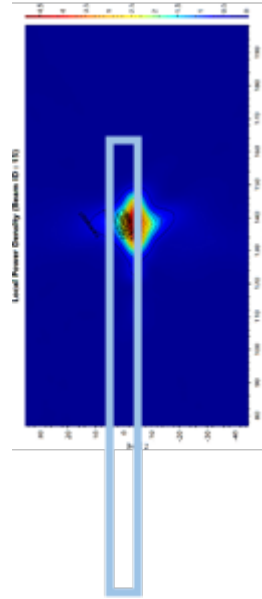
(b) simulation

Ant L-Patch: Mid Channel, 4cm² averaged power density

n261 Ant L-Patch: Mid Channel, Beam ID 15, Right

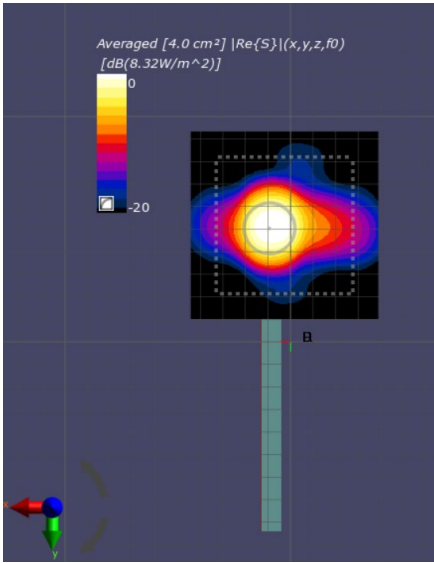


(a) measurement

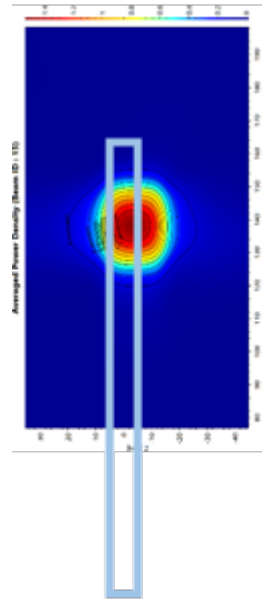


(b) simulation

Ant L-Patch: Mid Channel, Point power density

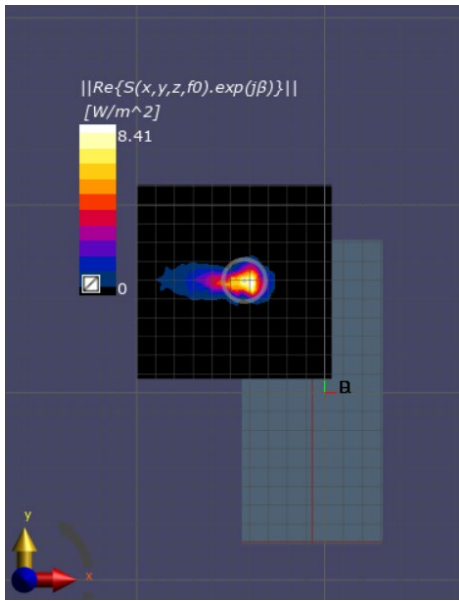


(a) measurement

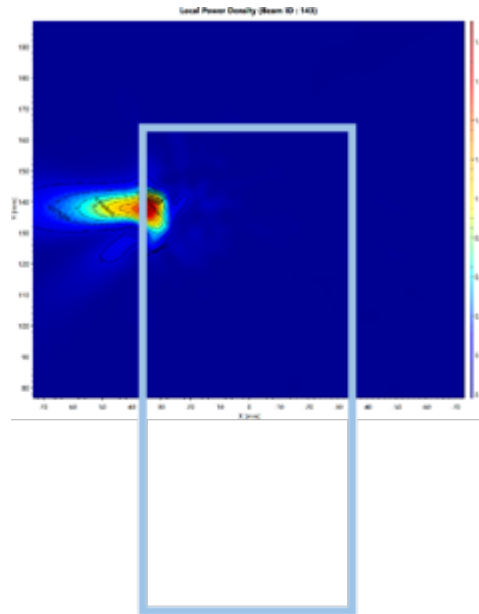


(b) simulation

Ant L-Patch: Mid Channel, 4cm² averaged power density

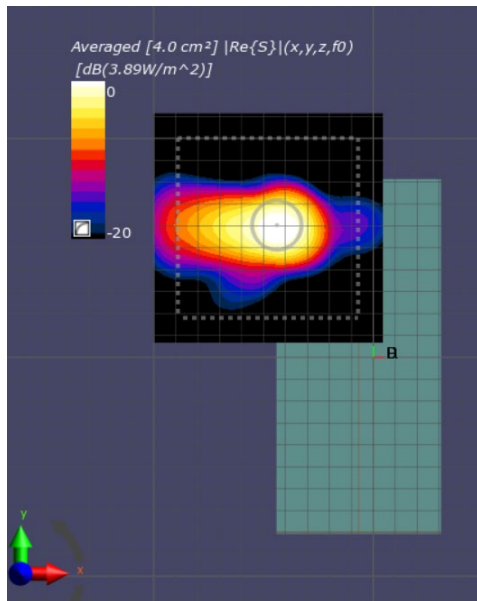


(a) measurement

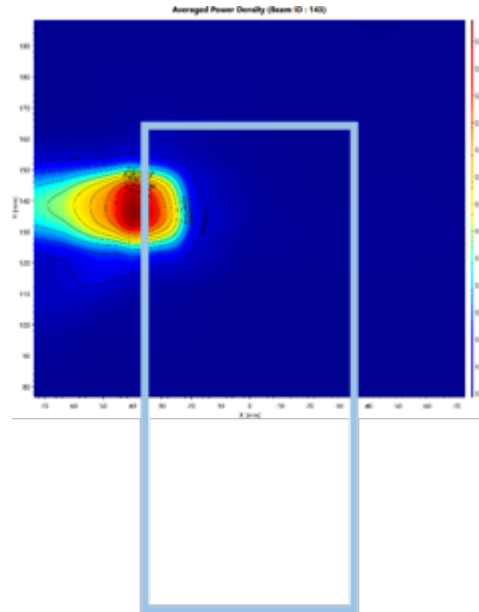


(b) simulation

Ant L-Patch: Mid Channel, Point power density

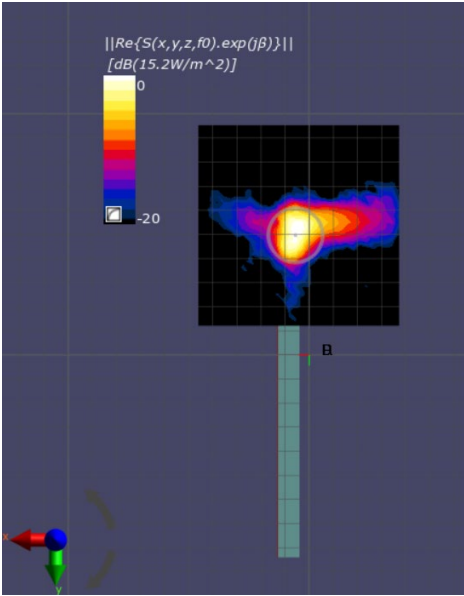


(a) measurement

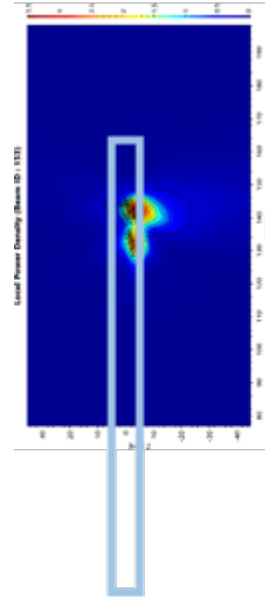


(b) simulation

Ant L-Patch: Mid Channel, 4cm² averaged power density

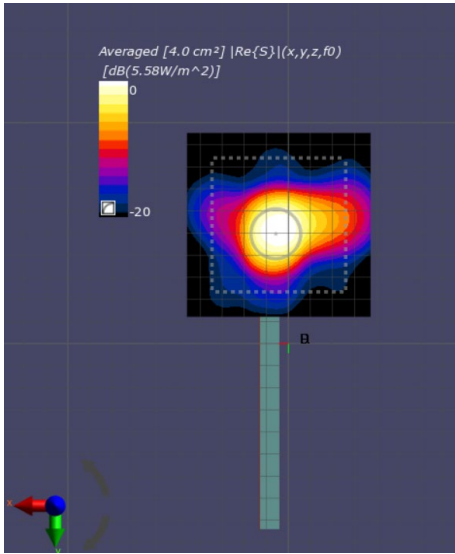


(a) measurement

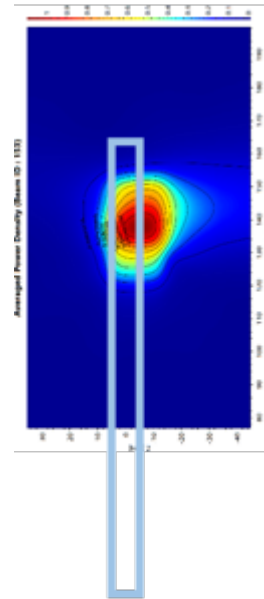


(b) simulation

Ant L-Patch: Mid Channel, Point power density

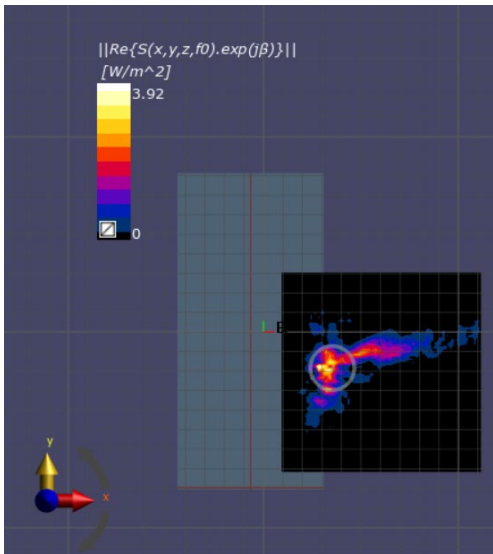


(a) measurement

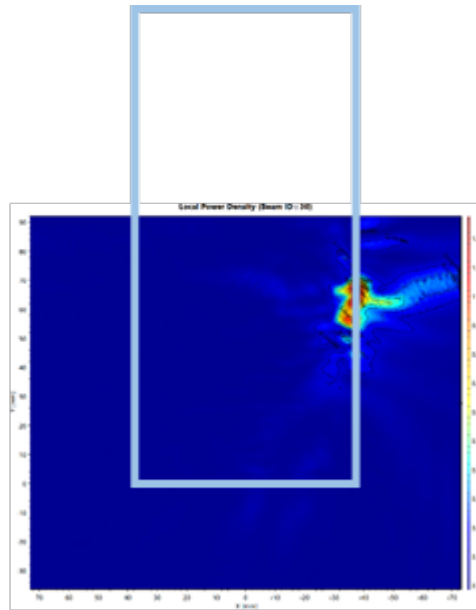


(b) simulation

Ant L-Patch: Mid Channel, 4cm² averaged power density

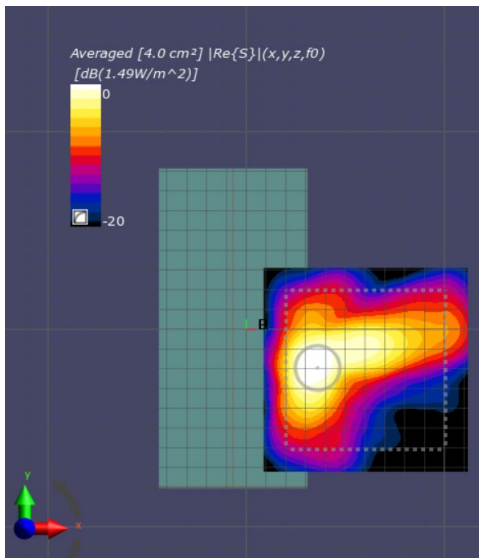


(a) measurement

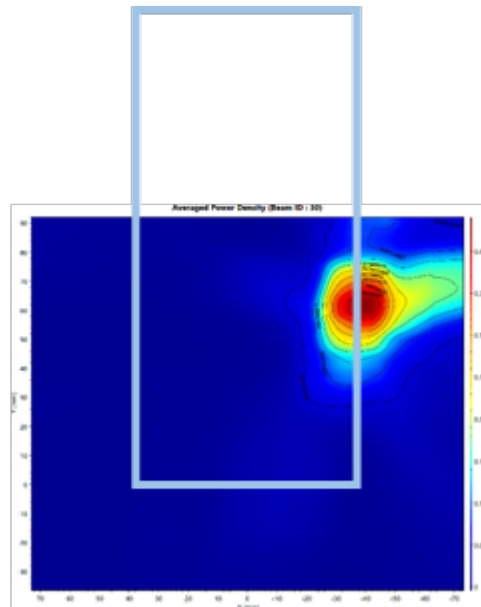


(b) simulation

Ant [Antenna]-Patch: Mid Channel, Point power density

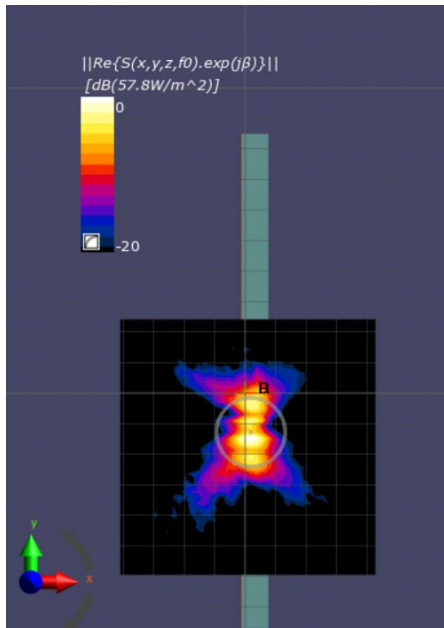


(a) measurement

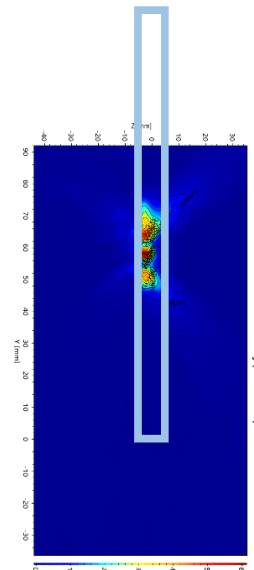


(b) simulation

Ant R-Patch: Mid Channel, 4cm² averaged power density

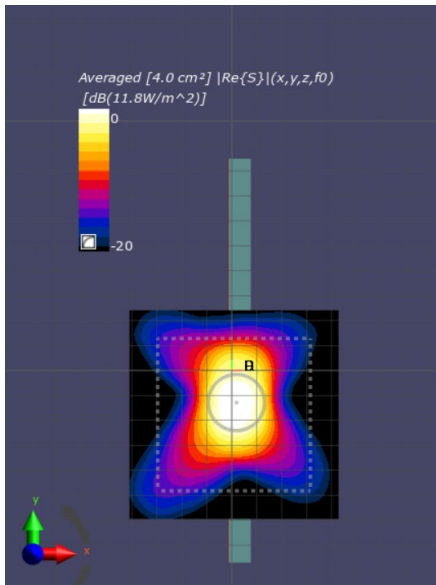


(a) measurement

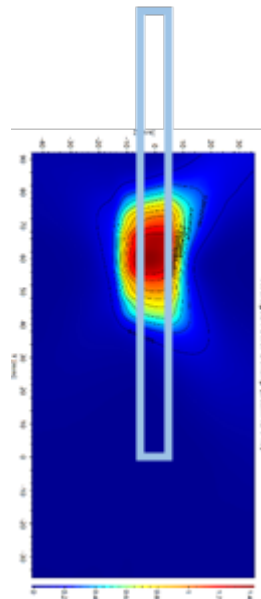


(b) simulation

Ant R-Patch: Mid Channel, Point power density

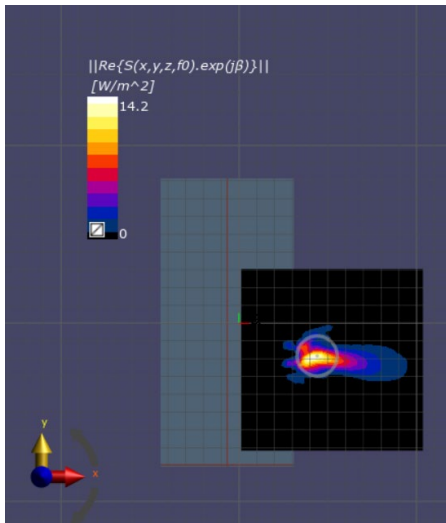


(a) measurement

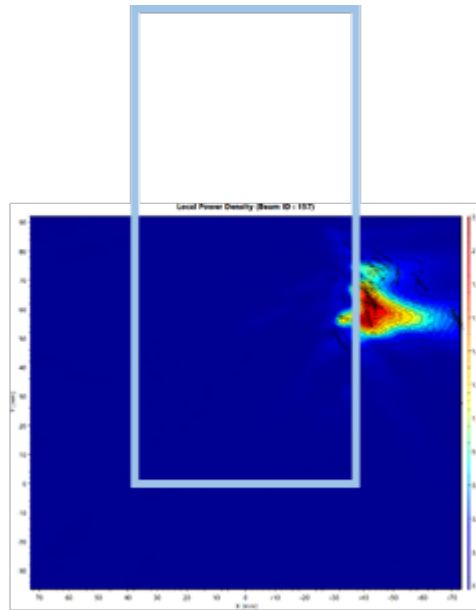


(b) simulation

Ant R-Patch: Mid Channel, 4cm² averaged power density

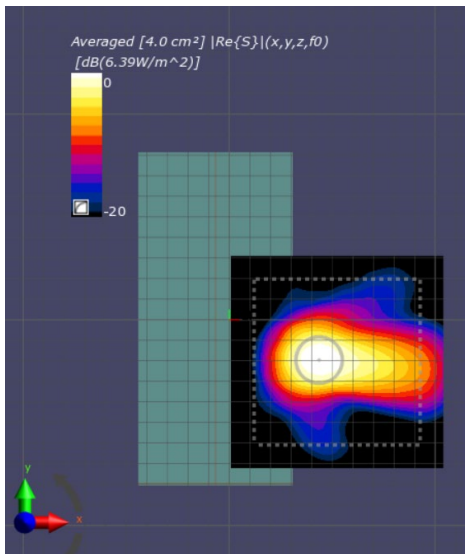


(a) measurement

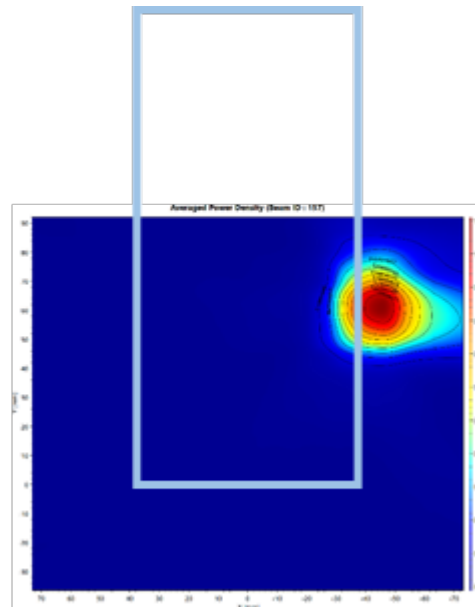


(b) simulation

Ant R-Patch: Mid Channel, Point power density



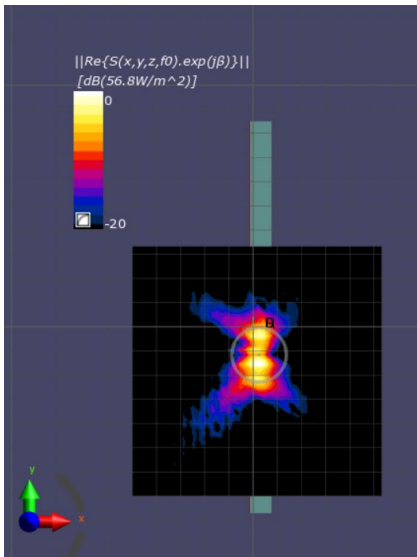
(a) measurement



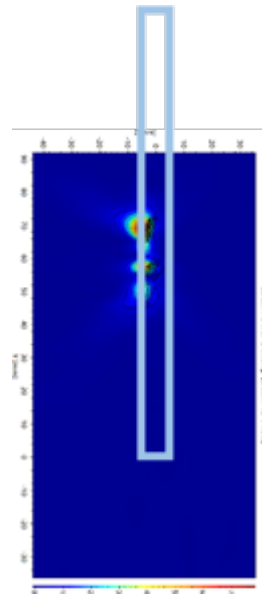
(b) simulation

Ant R-Patch: Mid Channel, 4cm² averaged power density

n260 Ant R-Patch: Mid Channel, Beam ID 159, Left

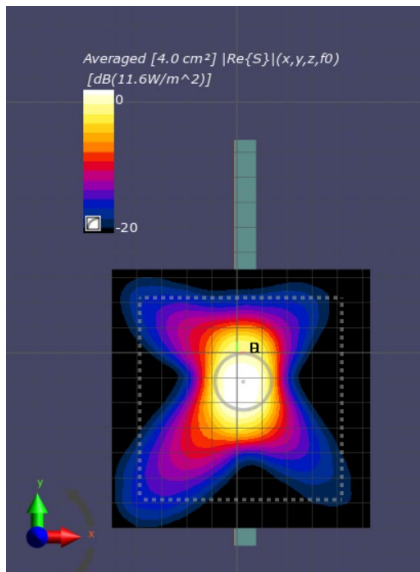


(a) measurement

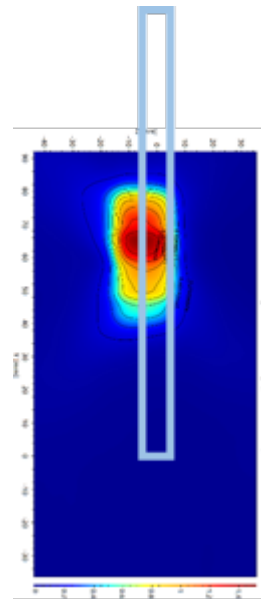


(b) simulation

Ant R-Patch: Mid Channel, Point power density

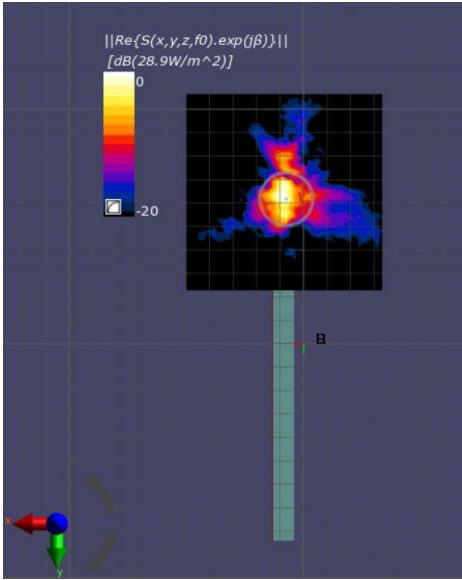


(a) measurement

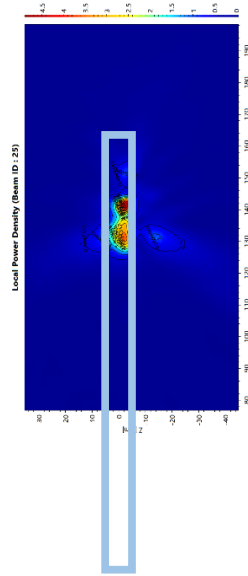


(b) simulation

Ant R-Patch: Mid Channel, 4cm² averaged power density

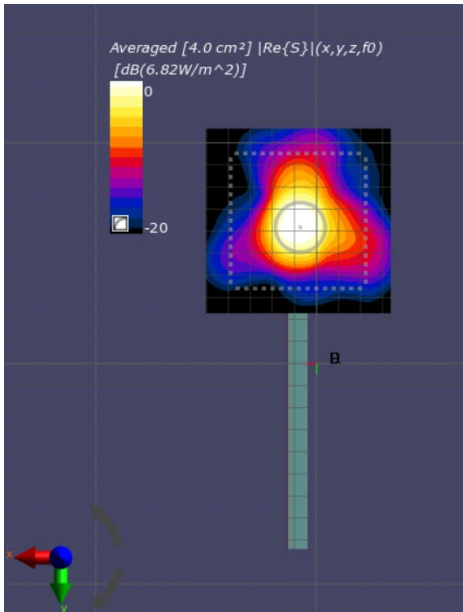


(a) measurement

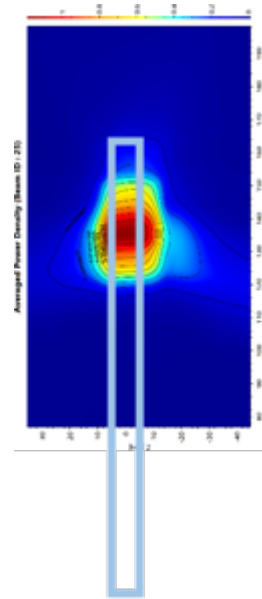


(b) simulation

Ant L-Patch: Mid Channel, Point power density

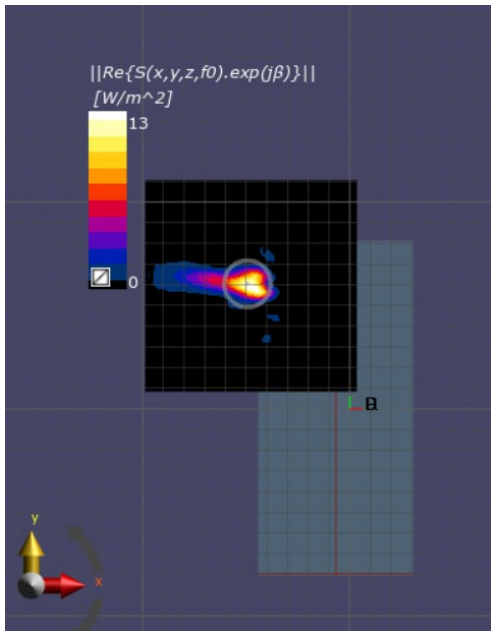


(a) measurement

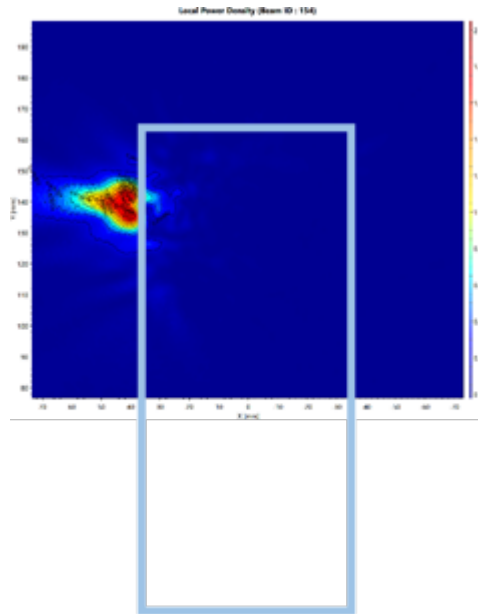


(b) simulation

Ant L-Patch: Mid Channel, 4cm² averaged power density

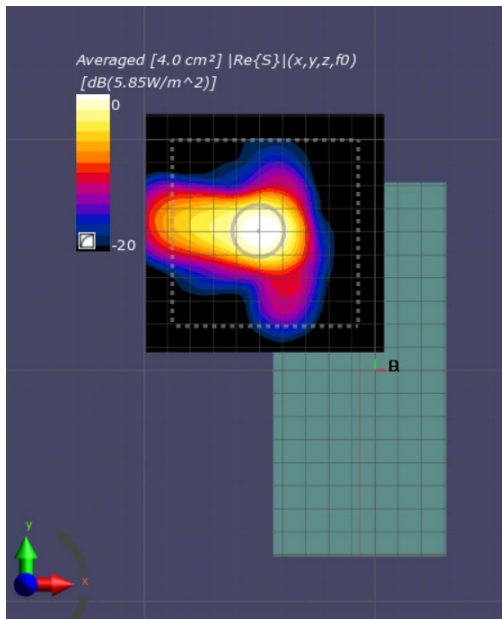


(a) measurement

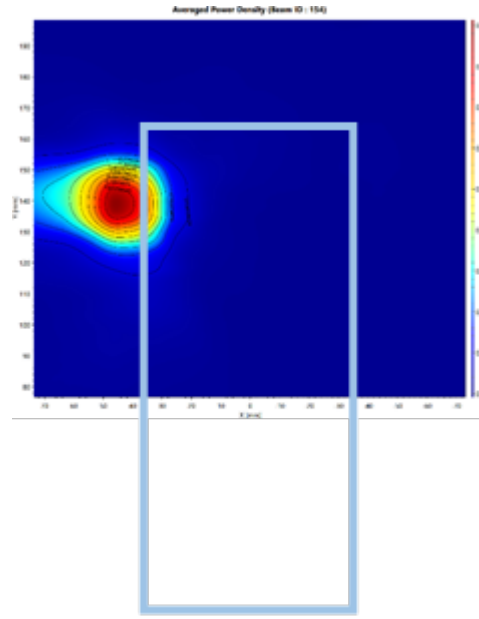


(b) simulation

Ant L-Patch: Mid Channel, Point power density



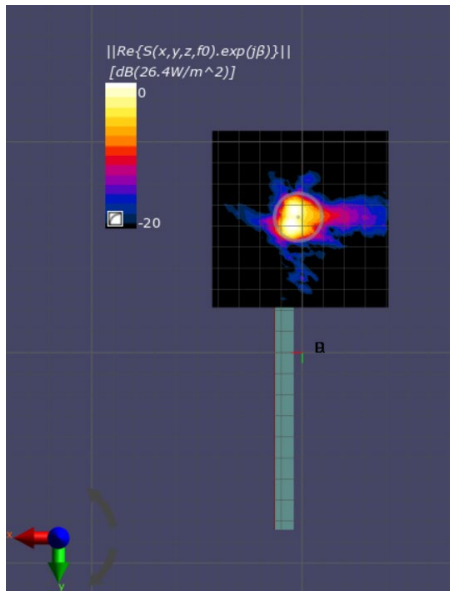
(a) measurement



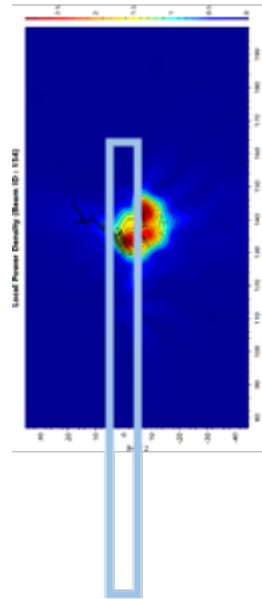
(b) simulation

Ant L-Patch: Mid Channel, 4cm² averaged power density

n260 Ant L-Patch: Mid Channel, Beam ID 154, Right

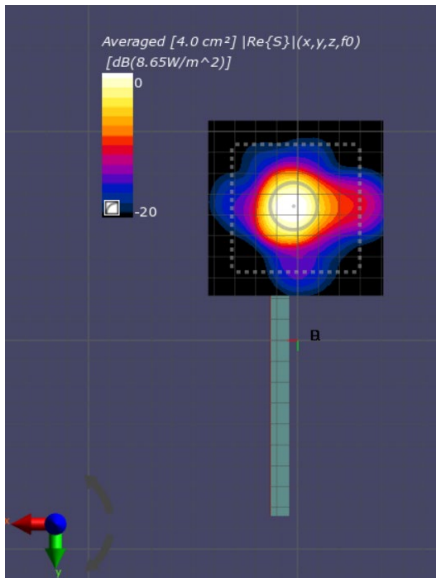


(a) measurement

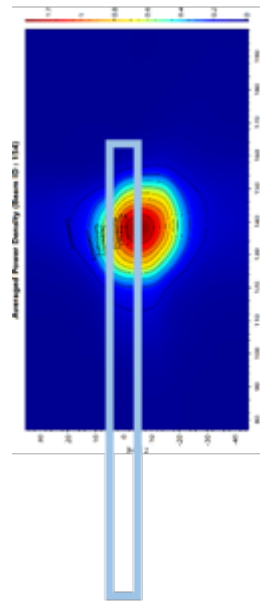


(b) simulation

Ant L-Patch: Mid Channel, Point power density



(a) measurement



(b) simulation

Ant L-Patch: Mid Channel, 4cm² averaged power density



ELECTRONICS

3 Simulation results

This section shows the PD simulation results of Ant R and Ant L at 28GHz and 39GHz for each evaluation plane specified in Table 1 at distance of 2mm. The ratio of PD exposure from specific surfaces to the worst surface at 2mm are reported in this section to support RF exposure analysis for simultaneous transmission scenarios performed in Appendix C of Part 1 Near Field PD report.

The relative phase between beam pairs is not controlled in the chipset design. Therefore, the relative phase between each beam pair was considered mathematically to identify the worst case conditions. The below MIMO results represent the highest reported MIMO simulation results after sweeping across the relative phase between beams a 5° step interval from 0° to 360°,

The worst-case simulated PD determined from the tables in this section were used for conservativeness in *input.power.limit* determination in RF Exposure Part 0 Report.

3.1 PD for Low/Mid/High Channel at 28GHz / 39GHz

3.1.1 Ant R – Patch Antenna

Table 4 & Table 5 show the PD simulation evaluation of Ant R patch antenna at 28GHz / 39GHz for the corresponding evaluation planes specified in Table 1.

Table 4. PD of Ant R – patch antenna (28GHz – n261)

- R-patch Low CH

PD Simulation											Max Ratio out of all Beams						
No.	Module	Type(P or D)	Beam ID_1	Beam ID_2	Feed no.	4cm2 PD(mW/cm2)							Max	0.54	0.60	0.24	
						S4(Right)	S3(Left)	S5(Top)	S6(Bottom)	S1(Front)	S2(Rear)	ratio (Front)/(worst-surface)		ratio (Back)/(worst-surface)	ratio (Top)/(worst-surface)		
49					1	0.00	0.43	0.06	0.01	0.19	0.14	0.43	0.43	0.32	0.13		
50					2	0.01	0.70	0.04	0.10	0.26	0.34	0.70	0.37	0.48	0.06		
51					2	0.00	0.68	0.03	0.02	0.33	0.28	0.68	0.48	0.42	0.04		
52					2	0.01	0.78	0.06	0.06	0.37	0.31	0.78	0.47	0.39	0.07		
53					2	0.01	0.85	0.03	0.06	0.43	0.31	0.85	0.51	0.37	0.04		
54					2	0.01	0.90	0.04	0.01	0.47	0.36	0.90	0.52	0.40	0.04		
55					4	0.02	0.94	0.16	0.16	0.33	0.56	0.94	0.35	0.60	0.17		
56					4	0.01	1.26	0.09	0.12	0.60	0.47	1.26	0.48	0.37	0.07		
57					4	0.01	1.65	0.02	0.02	0.89	0.73	1.65	0.54	0.44	0.01		
58					4	0.01	1.42	0.15	0.01	0.76	0.55	1.42	0.53	0.39	0.11		
59					4	0.01	1.11	0.27	0.05	0.58	0.48	1.11	0.52	0.43	0.24		
60					4	0.02	1.04	0.15	0.18	0.42	0.56	1.04	0.40	0.54	0.14		
61					4	0.01	1.53	0.03	0.04	0.82	0.66	1.53	0.54	0.43	0.02		
62					4	0.02	1.61	0.07	0.01	0.87	0.68	1.61	0.54	0.42	0.05		
63					4	0.01	1.31	0.19	0.02	0.70	0.51	1.31	0.54	0.39	0.15		
64					1	0.00	0.53	0.03	0.00	0.20	0.23	0.53	0.37	0.44	0.06		
65					2	0.00	0.84	0.08	0.01	0.34	0.38	0.84	0.41	0.45	0.09		
66					2	0.00	0.88	0.03	0.01	0.38	0.49	0.88	0.43	0.56	0.03		
67					2	0.00	0.85	0.10	0.01	0.31	0.42	0.85	0.36	0.50	0.12		
68					2	0.00	0.84	0.09	0.01	0.32	0.45	0.84	0.38	0.54	0.10		
69					2	0.00	0.89	0.06	0.01	0.37	0.50	0.89	0.41	0.57	0.07		
70					4	0.00	1.44	0.29	0.03	0.63	0.74	1.44	0.44	0.52	0.20		
71					4	0.01	1.38	0.07	0.02	0.62	0.76	1.38	0.45	0.55	0.05		
72					4	0.01	1.53	0.02	0.01	0.70	0.86	1.53	0.46	0.56	0.01		
73					4	0.01	1.57	0.05	0.00	0.70	0.90	1.57	0.44	0.57	0.03		
74					4	0.01	1.43	0.16	0.04	0.50	0.75	1.43	0.35	0.52	0.11		
75					4	0.00	1.50	0.21	0.03	0.62	0.78	1.50	0.41	0.52	0.14		
76					4	0.01	1.47	0.02	0.01	0.70	0.80	1.47	0.47	0.54	0.01		
77					4	0.01	1.54	0.03	0.01	0.70	0.88	1.54	0.45	0.57	0.02		
78					4	0.01	1.62	0.07	0.01	0.64	0.90	1.62	0.39	0.56	0.04		
79					2	130	2	0.01	1.07	0.09	0.02	0.43	0.42	1.07	0.41	0.40	0.09
80					6	134	4	0.01	1.61	0.15	0.13	0.62	0.67	1.61	0.38	0.42	0.09
81					7	135	4	0.01	1.79	0.08	0.04	0.75	0.92	1.79	0.42	0.51	0.04
82					8	136	4	0.01	1.52	0.22	0.08	0.65	0.71	1.52	0.43	0.47	0.14
83					11	139	4	0.01	1.69	0.14	0.08	0.70	0.68	1.69	0.44	0.42	0.08
84					12	140	4	0.01	1.74	0.16	0.02	0.79	0.88	1.74	0.46	0.51	0.09
85					18	146	8	0.03	2.78	0.54	0.24	1.24	1.67	2.78	0.45	0.60	0.19
86					19	147	8	0.03	3.10	0.21	0.18	1.29	1.64	3.10	0.42	0.53	0.07
87					20	148	8	0.04	3.46	0.05	0.03	1.74	1.88	3.46	0.50	0.54	0.01
88					21	149	8	0.03	3.28	0.30	0.03	1.59	1.67	3.28	0.48	0.51	0.09
89					22	150	8	0.03	2.71	0.52	0.12	1.40	1.32	2.71	0.52	0.49	0.19
90					27	155	8	0.03	2.95	0.46	0.25	1.22	1.57	2.95	0.41	0.53	0.16
91					28	156	8	0.05	3.28	0.05	0.07	1.69	1.78	3.28	0.52	0.54	0.01
92					29	157	8	0.04	3.51	0.18	0.02	1.68	1.87	3.51	0.48	0.53	0.05
93					30	158	8	0.03	3.08	0.35	0.04	1.54	1.47	3.08	0.50	0.48	0.11



ELECTRONICS

- R-patch Mid CH

No.	Module	Type(P or D)	PD Simulation										Max Ratio out of all Beams		
			Beam ID_1	Beam ID_2	Feed no.	4cm2 PD(mW/cm2)						Max	0.54	0.63	0.21
						S4(Right)	S3(Left)	S5(Top)	S6(Bottom)	S1(Front)	S2(Rear)		ratio (Front)/(worst-surface)	ratio (Back)/(worst-surface)	ratio (Top)/(worst-surface)
49	R	Patch	2		1	0.003	0.419	0.047	0.014	0.173	0.151	0.42	0.41	0.36	0.11
50			6		2	0.009	0.696	0.042	0.094	0.259	0.289	0.70	0.37	0.42	0.06
51			7		2	0.004	0.603	0.030	0.026	0.286	0.253	0.60	0.47	0.42	0.05
52			8		2	0.007	0.732	0.053	0.041	0.331	0.290	0.73	0.45	0.40	0.07
53			11		2	0.007	0.791	0.029	0.060	0.390	0.322	0.79	0.49	0.41	0.04
54			12		2	0.005	0.823	0.044	0.009	0.424	0.343	0.82	0.52	0.42	0.05
55			18		4	0.019	0.930	0.148	0.153	0.319	0.506	0.93	0.34	0.54	0.16
56			19		4	0.014	1.030	0.087	0.131	0.473	0.442	1.03	0.46	0.43	0.08
57			20		4	0.015	1.607	0.019	0.019	0.868	0.733	1.61	0.54	0.46	0.01
58			21		4	0.010	1.354	0.168	0.010	0.731	0.574	1.35	0.54	0.42	0.12
59			22		4	0.013	1.133	0.240	0.046	0.587	0.482	1.13	0.52	0.43	0.21
60			27		4	0.021	0.966	0.145	0.173	0.377	0.512	0.97	0.39	0.53	0.15
61			28		4	0.014	1.456	0.029	0.045	0.767	0.667	1.46	0.53	0.46	0.02
62			29		4	0.013	1.499	0.071	0.008	0.802	0.651	1.50	0.54	0.43	0.05
63			30		4	0.011	1.301	0.205	0.013	0.703	0.556	1.30	0.54	0.43	0.16
64			130		1	0.002	0.467	0.027	0.006	0.175	0.223	0.47	0.37	0.48	0.06
65			134		2	0.004	0.739	0.070	0.015	0.291	0.364	0.74	0.39	0.49	0.09
66			135		2	0.005	0.768	0.025	0.005	0.338	0.447	0.77	0.44	0.58	0.03
67			136		2	0.004	0.692	0.084	0.008	0.257	0.356	0.69	0.37	0.51	0.12
68			139		2	0.004	0.717	0.066	0.010	0.280	0.416	0.72	0.39	0.58	0.09
69			140		2	0.004	0.748	0.056	0.006	0.307	0.426	0.75	0.41	0.57	0.07
70			146		4	0.004	1.167	0.222	0.033	0.489	0.666	1.17	0.42	0.57	0.19
71			147		4	0.015	1.217	0.058	0.019	0.556	0.710	1.22	0.46	0.58	0.05
72			148		4	0.018	1.373	0.018	0.007	0.637	0.790	1.37	0.46	0.58	0.01
73			149		4	0.011	1.405	0.041	0.005	0.619	0.804	1.41	0.44	0.57	0.03
74			150		4	0.007	1.263	0.148	0.042	0.428	0.695	1.26	0.34	0.55	0.12
75			155		4	0.004	1.308	0.173	0.030	0.555	0.708	1.31	0.42	0.54	0.13
76			156		4	0.018	1.286	0.014	0.007	0.616	0.737	1.29	0.48	0.57	0.01
77			157		4	0.014	1.379	0.035	0.006	0.619	0.801	1.38	0.45	0.58	0.03
78			158		4	0.010	1.450	0.057	0.013	0.580	0.806	1.45	0.40	0.56	0.04
79	2	130	2	0.009	0.973	0.076	0.018	0.386	0.446	0.97	0.40	0.46	0.08		
80	6	134	4	0.015	1.593	0.137	0.114	0.556	0.713	1.59	0.35	0.45	0.09		
81	7	135	4	0.015	1.644	0.071	0.042	0.669	0.887	1.64	0.41	0.54	0.04		
82	8	136	4	0.013	1.469	0.191	0.056	0.620	0.648	1.47	0.42	0.44	0.13		
83	11	139	4	0.017	1.513	0.114	0.074	0.657	0.681	1.51	0.43	0.45	0.08		
84	12	140	4	0.013	1.584	0.153	0.018	0.730	0.782	1.58	0.46	0.49	0.10		
85	18	146	8	0.032	2.524	0.486	0.221	0.945	1.600	2.52	0.37	0.63	0.19		
86	19	147	8	0.042	2.819	0.195	0.201	1.098	1.556	2.82	0.39	0.55	0.07		
87	20	148	8	0.057	3.241	0.045	0.032	1.624	1.824	3.24	0.50	0.56	0.01		
88	21	149	8	0.036	3.038	0.294	0.022	1.441	1.619	3.04	0.47	0.53	0.10		
89	22	150	8	0.030	2.658	0.525	0.123	1.331	1.293	2.66	0.50	0.49	0.20		
90	27	155	8	0.038	2.716	0.416	0.265	1.028	1.511	2.72	0.38	0.56	0.15		
91	28	156	8	0.047	3.090	0.055	0.079	1.518	1.758	3.09	0.49	0.57	0.02		
92	29	157	8	0.049	3.263	0.181	0.026	1.492	1.782	3.26	0.46	0.55	0.06		
93	30	158	8	0.034	2.935	0.299	0.044	1.488	1.458	2.93	0.51	0.50	0.10		



ELECTRONICS

- R-patch High CH

PD Simulation													Max Ratio out of all Beams		
No.	Module	Type(P or D)	Beam ID_1	Beam ID_2	Feed no.	4cm2 PD(mW/cm2)							0.55	0.65	0.19
						S4(Right)	S3(Left)	S5(Top)	S6(Bottom)	S1(Front)	S2(Rear)	Max	ratio (Front)/(worst-surface)	ratio (Back)/(worst-surface)	ratio (Top)/(worst-surface)
49	R	Patch	2		1	0.00	0.43	0.03	0.01	0.17	0.16	0.43	0.41	0.36	0.07
50			6		2	0.01	0.70	0.04	0.08	0.25	0.27	0.70	0.36	0.39	0.05
51			7		2	0.00	0.59	0.03	0.02	0.28	0.23	0.59	0.48	0.38	0.05
52			8		2	0.01	0.72	0.05	0.03	0.31	0.26	0.72	0.43	0.37	0.07
53			11		2	0.01	0.75	0.03	0.06	0.36	0.32	0.75	0.48	0.43	0.03
54			12		2	0.00	0.76	0.04	0.01	0.39	0.31	0.76	0.52	0.40	0.05
55			18		4	0.02	1.00	0.15	0.14	0.35	0.46	1.00	0.35	0.46	0.15
56			19		4	0.02	0.96	0.08	0.13	0.44	0.41	0.96	0.46	0.42	0.08
57			20		4	0.01	1.53	0.02	0.02	0.82	0.70	1.53	0.54	0.46	0.01
58			21		4	0.01	1.28	0.14	0.01	0.70	0.55	1.28	0.55	0.43	0.11
59			22		4	0.01	1.13	0.19	0.03	0.59	0.47	1.13	0.52	0.41	0.16
60			27		4	0.02	1.01	0.14	0.16	0.40	0.44	1.01	0.40	0.44	0.14
61			28		4	0.01	1.36	0.04	0.04	0.71	0.62	1.36	0.52	0.46	0.03
62			29		4	0.01	1.40	0.06	0.01	0.75	0.62	1.40	0.54	0.44	0.04
63			30		4	0.01	1.25	0.17	0.01	0.69	0.54	1.25	0.55	0.43	0.13
64			130		1	0.00	0.40	0.02	0.01	0.15	0.20	0.40	0.38	0.52	0.05
65			134		2	0.00	0.62	0.05	0.02	0.24	0.33	0.62	0.39	0.53	0.09
66			135		2	0.01	0.66	0.02	0.00	0.30	0.40	0.66	0.45	0.60	0.03
67			136		2	0.00	0.58	0.07	0.01	0.21	0.31	0.58	0.37	0.53	0.12
68			139		2	0.00	0.60	0.05	0.01	0.25	0.35	0.60	0.41	0.59	0.08
69			140		2	0.00	0.64	0.05	0.01	0.26	0.37	0.64	0.40	0.58	0.08
70			146		4	0.00	0.91	0.16	0.03	0.38	0.56	0.91	0.42	0.62	0.17
71			147		4	0.02	1.04	0.04	0.02	0.49	0.63	1.04	0.47	0.61	0.04
72			148		4	0.02	1.18	0.02	0.01	0.56	0.71	1.18	0.47	0.60	0.02
73			149		4	0.01	1.22	0.03	0.01	0.53	0.72	1.22	0.44	0.59	0.03
74			150		4	0.01	1.08	0.13	0.04	0.36	0.62	1.08	0.33	0.57	0.12
75			155		4	0.01	1.07	0.13	0.03	0.48	0.60	1.07	0.45	0.56	0.12
76			156		4	0.02	1.10	0.01	0.01	0.53	0.68	1.10	0.48	0.61	0.01
77			157		4	0.02	1.19	0.03	0.01	0.54	0.71	1.19	0.45	0.60	0.03
78			158		4	0.01	1.26	0.05	0.01	0.50	0.72	1.26	0.39	0.57	0.04
79			2	130	2	0.01	0.91	0.06	0.02	0.35	0.46	0.91	0.39	0.50	0.06
80			6	134	4	0.02	1.49	0.12	0.11	0.49	0.73	1.49	0.33	0.49	0.08
81			7	135	4	0.02	1.49	0.07	0.04	0.63	0.81	1.49	0.42	0.54	0.04
82			8	136	4	0.01	1.36	0.16	0.04	0.56	0.59	1.36	0.41	0.43	0.12
83			11	139	4	0.02	1.37	0.09	0.08	0.60	0.65	1.37	0.44	0.47	0.07
84			12	140	4	0.02	1.39	0.13	0.02	0.63	0.67	1.39	0.45	0.48	0.09
85			18	146	8	0.03	2.29	0.43	0.20	0.84	1.50	2.29	0.37	0.65	0.19
86			19	147	8	0.06	2.51	0.18	0.22	0.96	1.43	2.51	0.38	0.57	0.07
87			20	148	8	0.06	3.04	0.04	0.02	1.50	1.71	3.04	0.49	0.56	0.01
88			21	149	8	0.04	2.79	0.23	0.03	1.33	1.57	2.79	0.48	0.56	0.08
89			22	150	8	0.03	2.38	0.42	0.10	1.17	1.24	2.38	0.49	0.52	0.18
90			27	155	8	0.04	2.44	0.37	0.25	0.99	1.40	2.44	0.40	0.58	0.15
91			28	156	8	0.05	2.90	0.06	0.08	1.35	1.68	2.90	0.47	0.58	0.02
92			29	157	8	0.05	2.95	0.16	0.03	1.35	1.63	2.95	0.46	0.55	0.05
93			30	158	8	0.04	2.70	0.23	0.04	1.36	1.51	2.70	0.50	0.56	0.09



ELECTRONICS

Table 5. PD of Ant R – patch antenna (39GHz – n260)

- R-patch Low CH

No.	Module	Type(P or D)	PD Simulation										Max Ratio out of all Beams		
			Beam ID_1	Beam ID_2	Feed no.	4cm2 PD(mW/cm2)							0.72	0.57	0.23
						S4(Right)	S3(Left)	S5(Top)	S6(Bottom)	S1(Front)	S2(Rear)	Max	ratio (Front)/(worst-surface)	ratio (Back)/(worst-surface)	ratio (Top)/(worst-surface)
49	R	Patch	2		1	0.00	0.37	0.04	0.01	0.19	0.09	0.37	0.52	0.23	0.10
50			3		1	0.00	0.47	0.04	0.01	0.25	0.10	0.47	0.53	0.21	0.08
51			7		2	0.00	0.91	0.08	0.02	0.42	0.13	0.91	0.46	0.15	0.09
52			8		2	0.00	0.42	0.08	0.02	0.28	0.12	0.42	0.65	0.30	0.19
53			9		2	0.00	0.74	0.11	0.01	0.38	0.17	0.74	0.51	0.23	0.15
54			12		2	0.00	0.59	0.08	0.02	0.32	0.17	0.59	0.54	0.28	0.13
55			13		2	0.00	0.93	0.11	0.02	0.48	0.16	0.93	0.51	0.18	0.12
56			19		4	0.01	1.44	0.21	0.06	0.80	0.27	1.44	0.55	0.19	0.14
57			20		4	0.01	1.22	0.24	0.01	0.65	0.32	1.22	0.53	0.26	0.20
58			21		4	0.01	0.95	0.14	0.07	0.68	0.30	0.95	0.72	0.32	0.15
59			22		4	0.01	1.35	0.16	0.06	0.73	0.30	1.35	0.54	0.22	0.12
60			23		4	0.01	1.35	0.28	0.01	0.67	0.34	1.35	0.50	0.25	0.21
61			28		4	0.01	1.49	0.34	0.03	0.84	0.33	1.49	0.56	0.22	0.23
62			29		4	0.01	0.98	0.20	0.03	0.67	0.29	0.98	0.68	0.30	0.20
63			30		4	0.01	1.01	0.08	0.06	0.71	0.26	1.01	0.70	0.26	0.08
64			31		4	0.01	1.50	0.29	0.06	0.83	0.30	1.50	0.55	0.20	0.19
65			130		1	0.00	0.55	0.02	0.01	0.19	0.27	0.55	0.35	0.49	0.04
66			131		1	0.00	0.38	0.01	0.00	0.13	0.19	0.38	0.34	0.51	0.03
67			135		2	0.01	1.11	0.12	0.01	0.30	0.46	1.11	0.27	0.41	0.11
68			136		2	0.00	0.93	0.08	0.02	0.39	0.51	0.93	0.42	0.54	0.09
69			137		2	0.01	1.09	0.11	0.02	0.28	0.44	1.09	0.26	0.41	0.10
70			140		2	0.00	1.10	0.13	0.01	0.37	0.49	1.10	0.34	0.45	0.12
71			141		2	0.01	1.02	0.09	0.02	0.31	0.43	1.02	0.30	0.42	0.09
72			147		4	0.01	1.30	0.14	0.05	0.43	0.59	1.30	0.33	0.45	0.11
73			148		4	0.01	1.44	0.17	0.01	0.64	0.78	1.44	0.44	0.54	0.12
74			149		4	0.00	1.39	0.10	0.03	0.59	0.80	1.39	0.43	0.57	0.07
75			150		4	0.01	1.23	0.14	0.06	0.44	0.59	1.23	0.36	0.48	0.11
76			151		4	0.01	1.37	0.19	0.01	0.54	0.73	1.37	0.40	0.53	0.14
77			156		4	0.01	1.34	0.20	0.03	0.44	0.66	1.34	0.33	0.49	0.15
78			157		4	0.01	1.46	0.09	0.01	0.64	0.82	1.46	0.44	0.56	0.06
79			158		4	0.01	1.25	0.07	0.06	0.52	0.64	1.25	0.41	0.51	0.05
80			159		4	0.01	1.33	0.19	0.04	0.41	0.65	1.33	0.31	0.49	0.15
81			2	130	2	0.01	1.00	0.07	0.02	0.41	0.42	1.00	0.41	0.42	0.07
82			3	131	2	0.00	0.96	0.06	0.02	0.39	0.34	0.96	0.41	0.35	0.06
83			7	135	4	0.01	1.75	0.27	0.03	0.76	0.64	1.75	0.44	0.37	0.15
84			8	136	4	0.01	1.45	0.25	0.05	0.70	0.73	1.45	0.48	0.50	0.18
85			9	137	4	0.01	2.05	0.25	0.03	0.72	0.82	2.05	0.35	0.40	0.12
86			12	140	4	0.01	1.82	0.30	0.03	0.71	0.87	1.82	0.39	0.48	0.16
87			13	141	4	0.01	2.09	0.22	0.07	0.89	0.66	2.09	0.43	0.31	0.11
88			19	147	4	0.03	3.14	0.40	0.11	1.46	1.19	3.14	0.47	0.38	0.13
89			20	148	8	0.03	2.72	0.45	0.03	1.40	1.32	2.72	0.52	0.48	0.17
90			21	149	8	0.02	2.40	0.38	0.14	1.30	1.21	2.40	0.54	0.50	0.16
91			22	150	8	0.03	2.94	0.32	0.13	1.41	1.21	2.94	0.48	0.41	0.11
92			23	151	8	0.03	3.25	0.63	0.02	1.32	1.21	3.25	0.41	0.37	0.19
93			28	156	8	0.03	3.46	0.68	0.07	1.48	1.21	3.46	0.43	0.35	0.20
94			29	157	8	0.02	2.58	0.39	0.05	1.43	1.24	2.58	0.55	0.48	0.15
95			30	158	8	0.04	2.48	0.20	0.19	1.59	1.00	2.48	0.64	0.40	0.08
96			31	159	8	0.04	3.41	0.58	0.11	1.49	1.22	3.41	0.44	0.36	0.17



ELECTRONICS

- R-patch Mid CH

PD Simulation													Max Ratio out of all Beams			
No.	Module	Type(P or D)	Beam ID_1	Beam ID_2	Feed no.	4cm2 PD(mW/cm2)							Max	0.73	0.74	0.31
						S4(Right)	S3(Left)	S5(Top)	S6(Bottom)	S1(Front)	S2(Rear)	ratio (Front)/(worst-surface)		ratio (Back)/(worst-surface)	ratio (Top)/(worst-surface)	
49			2		1	0.002	0.380	0.042	0.014	0.218	0.096	0.38	0.57	0.25	0.11	
50			3		1	0.002	0.454	0.062	0.014	0.253	0.161	0.45	0.56	0.35	0.14	
51			7		2	0.004	0.934	0.057	0.019	0.488	0.221	0.93	0.52	0.24	0.06	
52			8		2	0.006	0.505	0.109	0.024	0.366	0.145	0.50	0.73	0.29	0.22	
53			9		2	0.002	0.762	0.127	0.010	0.423	0.211	0.76	0.56	0.28	0.17	
54			12		2	0.004	0.633	0.117	0.013	0.346	0.197	0.63	0.55	0.31	0.19	
55			13		2	0.006	0.954	0.104	0.021	0.565	0.234	0.95	0.59	0.25	0.11	
56			19		4	0.007	1.411	0.270	0.056	0.930	0.304	1.41	0.66	0.22	0.19	
57			20		4	0.012	1.196	0.275	0.016	0.775	0.360	1.20	0.65	0.30	0.23	
58			21		4	0.010	0.883	0.273	0.081	0.589	0.388	0.88	0.67	0.44	0.31	
59			22		4	0.010	1.365	0.229	0.054	0.909	0.378	1.36	0.67	0.28	0.17	
60			23		4	0.011	1.199	0.294	0.016	0.788	0.331	1.20	0.66	0.28	0.24	
61			28		4	0.009	1.331	0.306	0.031	0.851	0.281	1.33	0.64	0.21	0.23	
62			29		4	0.011	0.920	0.286	0.062	0.586	0.414	0.92	0.64	0.45	0.31	
63			30		4	0.016	1.076	0.169	0.031	0.720	0.436	1.08	0.67	0.41	0.16	
64			31		4	0.006	1.363	0.290	0.050	0.852	0.286	1.36	0.63	0.21	0.21	
65			130		1	0.002	0.534	0.031	0.006	0.156	0.269	0.53	0.29	0.50	0.06	
66			131		1	0.002	0.406	0.015	0.005	0.118	0.217	0.41	0.29	0.53	0.04	
67			135		2	0.004	1.113	0.192	0.008	0.241	0.492	1.11	0.22	0.44	0.17	
68			136		2	0.003	0.995	0.097	0.011	0.276	0.678	1.00	0.28	0.68	0.10	
69			137		2	0.004	1.134	0.182	0.009	0.233	0.514	1.13	0.21	0.45	0.16	
70			140		2	0.004	1.039	0.177	0.005	0.265	0.504	1.04	0.26	0.48	0.17	
71			141		2	0.003	1.134	0.126	0.014	0.280	0.589	1.13	0.25	0.52	0.11	
72			147		4	0.010	1.312	0.213	0.037	0.353	0.703	1.31	0.27	0.54	0.16	
73			148		4	0.005	1.289	0.241	0.007	0.440	0.871	1.29	0.34	0.68	0.19	
74			149		4	0.006	1.500	0.081	0.039	0.519	1.010	1.50	0.35	0.67	0.05	
75			150		4	0.011	1.321	0.202	0.049	0.415	0.753	1.32	0.31	0.57	0.15	
76			151		4	0.008	1.387	0.300	0.008	0.505	0.664	1.39	0.36	0.48	0.22	
77			156		4	0.010	1.433	0.278	0.024	0.434	0.682	1.43	0.30	0.48	0.19	
78			157		4	0.004	1.495	0.112	0.012	0.466	1.099	1.49	0.31	0.74	0.07	
79			158		4	0.012	1.302	0.083	0.042	0.433	0.795	1.30	0.33	0.61	0.06	
80			159		4	0.011	1.506	0.264	0.032	0.379	0.711	1.51	0.25	0.47	0.18	
81			2	130	2	0.006	0.988	0.082	0.022	0.416	0.436	0.99	0.42	0.44	0.08	
82			3	131	2	0.007	0.931	0.091	0.026	0.457	0.458	0.93	0.49	0.49	0.10	
83			7	135	4	0.011	1.627	0.316	0.027	0.821	0.693	1.63	0.50	0.43	0.19	
84			8	136	4	0.014	1.716	0.342	0.040	0.676	1.008	1.72	0.39	0.59	0.20	
85			9	137	4	0.008	2.029	0.351	0.023	0.731	0.842	2.03	0.36	0.42	0.17	
86			12	140	4	0.010	1.962	0.387	0.020	0.630	0.880	1.96	0.32	0.45	0.20	
87			13	141	4	0.016	2.096	0.244	0.041	0.865	0.839	2.10	0.41	0.40	0.12	
88			19	147	4	0.022	3.044	0.493	0.102	1.452	1.199	3.04	0.48	0.39	0.16	
89			20	148	8	0.026	2.722	0.582	0.024	1.433	1.360	2.72	0.53	0.50	0.21	
90			21	149	8	0.025	2.638	0.423	0.168	1.304	1.760	2.64	0.49	0.67	0.16	
91			22	150	8	0.035	3.100	0.403	0.125	1.473	1.274	3.10	0.48	0.41	0.13	
92			23	151	8	0.030	3.086	0.764	0.033	1.447	1.253	3.09	0.47	0.41	0.25	
93			28	156	8	0.027	3.327	0.657	0.053	1.348	1.190	3.33	0.41	0.36	0.20	
94			29	157	8	0.023	2.827	0.545	0.091	1.378	1.665	2.83	0.49	0.59	0.19	
95			30	158	8	0.053	2.454	0.349	0.121	1.213	1.374	2.45	0.49	0.56	0.14	
96			31	159	8	0.021	3.454	0.620	0.091	1.458	1.215	3.45	0.42	0.35	0.18	



ELECTRONICS

- R-patch High CH

PD Simulation													Max Ratio out of all Beams		
No.	Module	Type(P or D)	Beam ID_1	Beam ID_2	Feed no.	4cm2 PD(mW/cm2)							0.74	0.74	0.36
						S4(Right)	S3(Left)	S5(Top)	S6(Bottom)	S1(Front)	S2(Rear)	Max	ratio (Front)/(worst-surface)	ratio (Back)/(worst-surface)	ratio (Top)/(worst-surface)
49			2		1	0.00	0.34	0.05	0.00	0.19	0.10	0.34	0.54	0.29	0.15
50			3		1	0.00	0.44	0.07	0.01	0.26	0.11	0.44	0.58	0.24	0.15
51			7		2	0.00	0.85	0.07	0.01	0.42	0.24	0.85	0.49	0.29	0.08
52			8		2	0.00	0.49	0.09	0.01	0.31	0.15	0.49	0.64	0.31	0.19
53			9		2	0.00	0.68	0.10	0.01	0.36	0.19	0.68	0.52	0.27	0.14
54			12		2	0.00	0.64	0.12	0.01	0.39	0.13	0.64	0.61	0.21	0.19
55			13		2	0.00	0.88	0.09	0.02	0.48	0.23	0.88	0.55	0.26	0.10
56			19		4	0.01	1.36	0.21	0.04	0.80	0.39	1.36	0.59	0.28	0.16
57			20		4	0.01	1.27	0.31	0.01	0.70	0.37	1.27	0.55	0.30	0.25
58			21		4	0.01	0.85	0.31	0.07	0.63	0.22	0.85	0.74	0.26	0.36
59			22		4	0.01	1.21	0.16	0.05	0.74	0.46	1.21	0.61	0.38	0.13
60			23		4	0.01	1.33	0.30	0.01	0.70	0.40	1.33	0.53	0.31	0.22
61			28		4	0.01	1.45	0.26	0.02	0.79	0.38	1.45	0.55	0.26	0.18
62			29		4	0.01	0.82	0.25	0.06	0.60	0.24	0.82	0.73	0.30	0.30
63			30		4	0.01	1.01	0.19	0.04	0.61	0.42	1.01	0.61	0.41	0.19
64			31		4	0.01	1.42	0.23	0.03	0.84	0.36	1.42	0.60	0.25	0.17
65			130		1	0.00	0.57	0.03	0.01	0.15	0.32	0.57	0.26	0.56	0.05
66			131		1	0.00	0.43	0.02	0.01	0.10	0.23	0.43	0.23	0.54	0.04
67			135		2	0.00	1.07	0.18	0.02	0.22	0.50	1.07	0.20	0.47	0.17
68			136		2	0.00	1.04	0.12	0.01	0.30	0.71	1.04	0.29	0.68	0.11
69			137		2	0.00	1.07	0.16	0.02	0.20	0.52	1.07	0.18	0.49	0.15
70			140		2	0.00	1.07	0.20	0.01	0.27	0.51	1.07	0.25	0.48	0.19
71			141		2	0.00	1.07	0.09	0.02	0.23	0.61	1.07	0.22	0.57	0.09
72			147		4	0.01	1.28	0.16	0.06	0.33	0.65	1.28	0.26	0.51	0.13
73			148		4	0.00	1.44	0.26	0.02	0.47	0.94	1.44	0.33	0.66	0.18
74			149		4	0.01	1.59	0.11	0.03	0.44	1.18	1.59	0.28	0.74	0.07
75			150		4	0.01	1.29	0.16	0.08	0.37	0.71	1.29	0.29	0.55	0.13
76			151		4	0.00	1.51	0.30	0.01	0.41	0.70	1.51	0.27	0.46	0.20
77			156		4	0.00	1.51	0.26	0.02	0.43	0.69	1.51	0.29	0.46	0.17
78			157		4	0.00	1.60	0.15	0.02	0.47	1.13	1.60	0.29	0.71	0.09
79			158		4	0.01	1.28	0.09	0.07	0.37	0.82	1.28	0.29	0.64	0.07
80			159		4	0.00	1.52	0.24	0.03	0.39	0.74	1.52	0.25	0.49	0.16
81			2	130	2	0.00	0.95	0.12	0.02	0.41	0.52	0.95	0.43	0.55	0.13
82			3	131	2	0.01	0.91	0.09	0.02	0.43	0.41	0.91	0.47	0.45	0.10
83			7	135	4	0.01	1.75	0.30	0.05	0.70	0.71	1.75	0.40	0.41	0.17
84			8	136	4	0.01	1.64	0.30	0.03	0.68	1.00	1.64	0.41	0.61	0.19
85			9	137	4	0.01	1.88	0.39	0.03	0.73	1.03	1.88	0.39	0.55	0.21
86			12	140	4	0.01	1.84	0.45	0.02	0.74	0.85	1.84	0.40	0.46	0.24
87			13	141	4	0.01	1.92	0.25	0.05	0.82	0.95	1.92	0.43	0.49	0.13
88			19	147	4	0.02	3.00	0.44	0.13	1.31	1.22	3.00	0.44	0.41	0.14
89			20	148	8	0.02	2.90	0.68	0.03	1.32	1.61	2.90	0.46	0.55	0.23
90			21	149	8	0.02	2.57	0.46	0.16	1.28	1.59	2.57	0.50	0.62	0.18
91			22	150	8	0.03	2.78	0.36	0.17	1.28	1.29	2.78	0.46	0.46	0.13
92			23	151	8	0.02	3.49	0.83	0.03	1.37	1.50	3.49	0.39	0.43	0.24
93			28	156	8	0.02	3.41	0.65	0.05	1.39	1.44	3.41	0.41	0.42	0.19
94			29	157	8	0.02	2.65	0.54	0.12	1.17	1.61	2.65	0.44	0.61	0.21
95			30	158	8	0.04	2.40	0.36	0.14	1.19	1.40	2.40	0.50	0.58	0.15
96			31	159	8	0.01	3.35	0.60	0.07	1.41	1.34	3.35	0.42	0.40	0.18



ELECTRONICS

3.1.2 Ant L – Patch Antenna

Table 6 & Table 7 show the PD simulation evaluation of Ant L patch antenna at 28GHz / 39GHz for the corresponding evaluation plane specified in Table 1.

Table 6. PD of Ant L – patch antenna (28GHz – n261)

- L-patch Low CH

No.	Module	Type(P or D)	PD Simulation										Max Ratio out of all Beams			
			Beam ID_1	Beam ID_2	Feed no.	4cm2 PD(mW/cm2)							Max	0.60	0.59	0.22
						S4(Right)	S3(Left)	S5(Top)	S6(Bottom)	S1(Front)	S2(Rear)	ratio (Front)/(worst-surface)				
1	L	Patch	0		1	0.46	0.00	0.03	0.01	0.18	0.16	0.46	0.39	0.35	0.07	
2			1	1	0.49	0.01	0.03	0.00	0.22	0.16	0.49	0.45	0.32	0.05		
3			3	2	0.64	0.01	0.05	0.02	0.25	0.25	0.64	0.38	0.39	0.07		
4			4	2	0.68	0.00	0.03	0.01	0.36	0.30	0.68	0.52	0.43	0.05		
5			5	2	0.86	0.01	0.11	0.02	0.39	0.34	0.86	0.46	0.40	0.13		
6			9	2	0.87	0.02	0.04	0.01	0.40	0.39	0.87	0.46	0.45	0.05		
7			10	2	0.67	0.00	0.05	0.02	0.31	0.25	0.67	0.46	0.37	0.07		
8			13	4	0.99	0.05	0.20	0.05	0.38	0.48	0.99	0.39	0.49	0.20		
9			14	4	1.54	0.02	0.07	0.01	0.77	0.70	1.54	0.50	0.45	0.05		
10			15	4	1.65	0.00	0.03	0.01	0.98	0.75	1.65	0.59	0.45	0.02		
11			16	4	1.42	0.01	0.19	0.02	0.66	0.61	1.42	0.47	0.43	0.13		
12			17	4	1.44	0.02	0.30	0.05	0.63	0.56	1.44	0.44	0.39	0.21		
13			23	4	1.39	0.05	0.14	0.04	0.60	0.61	1.39	0.43	0.44	0.10		
14			24	4	1.59	0.01	0.03	0.01	0.92	0.74	1.59	0.58	0.46	0.02		
15			25	4	1.57	0.01	0.07	0.01	0.87	0.66	1.57	0.56	0.42	0.04		
16			26	4	1.51	0.02	0.26	0.05	0.64	0.63	1.51	0.42	0.41	0.17		
17			128	1	0.39	0.00	0.01	0.01	0.18	0.14	0.39	0.46	0.37	0.03		
18			129	1	0.32	0.00	0.02	0.00	0.12	0.19	0.32	0.37	0.59	0.06		
19			131	2	0.52	0.01	0.03	0.02	0.23	0.29	0.52	0.44	0.55	0.06		
20			132	2	0.76	0.00	0.01	0.00	0.40	0.27	0.76	0.52	0.36	0.02		
21			133	2	0.61	0.01	0.05	0.02	0.21	0.27	0.61	0.34	0.44	0.08		
22			137	2	0.69	0.00	0.01	0.01	0.37	0.24	0.69	0.53	0.35	0.02		
23			138	2	0.74	0.00	0.03	0.00	0.38	0.27	0.74	0.51	0.37	0.04		
24			141	4	1.23	0.01	0.04	0.06	0.56	0.56	1.23	0.45	0.45	0.03		
25			142	4	1.16	0.01	0.03	0.01	0.60	0.52	1.16	0.51	0.44	0.03		
26			143	4	1.29	0.01	0.03	0.01	0.63	0.67	1.29	0.49	0.52	0.02		
27			144	4	1.26	0.01	0.15	0.01	0.50	0.70	1.26	0.39	0.55	0.12		
28			145	4	0.88	0.01	0.12	0.02	0.33	0.42	0.88	0.38	0.48	0.13		
29			151	4	1.26	0.01	0.03	0.03	0.61	0.56	1.26	0.48	0.45	0.02		
30			152	4	1.18	0.01	0.03	0.01	0.62	0.60	1.18	0.53	0.51	0.02		
31			153	4	1.31	0.01	0.05	0.00	0.58	0.67	1.31	0.44	0.52	0.04		
32			154	4	1.09	0.01	0.16	0.01	0.40	0.59	1.09	0.36	0.54	0.15		
33			0	128	2	0.91	0.01	0.06	0.01	0.41	0.41	0.91	0.45	0.45	0.07	
34			1	129	2	0.87	0.01	0.06	0.01	0.37	0.40	0.87	0.42	0.46	0.07	
35			3	131	4	1.16	0.01	0.09	0.04	0.45	0.57	1.16	0.39	0.49	0.07	
36			4	132	4	1.55	0.01	0.07	0.01	0.82	0.66	1.55	0.53	0.43	0.04	
37			5	133	4	1.59	0.02	0.19	0.03	0.58	0.70	1.59	0.37	0.44	0.12	
38			9	137	4	1.64	0.02	0.08	0.03	0.82	0.73	1.64	0.50	0.45	0.05	
39			10	138	4	1.47	0.01	0.10	0.03	0.79	0.66	1.47	0.53	0.45	0.07	
40			13	141	8	2.42	0.08	0.31	0.12	1.05	1.21	2.42	0.43	0.50	0.13	
41			14	142	8	2.89	0.03	0.14	0.04	1.50	1.44	2.89	0.52	0.50	0.05	
42			15	143	8	3.00	0.02	0.07	0.02	1.81	1.59	3.00	0.60	0.53	0.02	
43			16	144	8	3.03	0.02	0.41	0.04	1.39	1.58	3.03	0.46	0.52	0.14	
44			17	145	8	2.61	0.03	0.56	0.08	1.15	1.13	2.61	0.44	0.43	0.22	
45			23	151	8	2.71	0.06	0.25	0.10	1.35	1.41	2.71	0.50	0.52	0.09	
46			24	152	8	2.98	0.02	0.07	0.02	1.65	1.48	2.98	0.56	0.50	0.02	
47			25	153	8	2.97	0.02	0.17	0.01	1.66	1.58	2.97	0.56	0.53	0.06	
48			26	154	8	2.93	0.02	0.51	0.08	1.11	1.42	2.93	0.38	0.49	0.17	



ELECTRONICS

- L-patch Mid CH

PD Simulation													Max Ratio out of all Beams		
No.	Module	Type(P or D)	Beam ID_1	Beam ID_2	Feed no.	4cm2 PD(mW/cm2)						Max	0.54	0.67	0.21
						S4(Right)	S3(Left)	S5(Top)	S6(Bottom)	S1(Front)	S2(Rear)		ratio (Front)/(worst-surface)	ratio (Back)/(worst-surface)	ratio (Top)/(worst-surface)
1	L	Patch	0		1	0.438	0.003	0.036	0.006	0.168	0.163	0.44	0.38	0.37	0.08
2			1	1	0.456	0.004	0.029	0.003	0.196	0.153	0.46	0.43	0.34	0.06	
3			3	2	0.572	0.008	0.049	0.020	0.205	0.235	0.57	0.36	0.41	0.09	
4			4	2	0.652	0.003	0.033	0.006	0.306	0.310	0.65	0.47	0.48	0.05	
5			5	2	0.863	0.009	0.127	0.011	0.395	0.324	0.86	0.46	0.38	0.15	
6			9	2	0.793	0.012	0.038	0.011	0.349	0.362	0.79	0.44	0.46	0.05	
7			10	2	0.637	0.004	0.048	0.017	0.266	0.285	0.64	0.42	0.45	0.08	
8			13	4	0.965	0.044	0.163	0.065	0.342	0.463	0.97	0.35	0.48	0.17	
9			14	4	1.381	0.011	0.075	0.006	0.728	0.632	1.38	0.53	0.46	0.05	
10			15	4	1.519	0.007	0.026	0.008	0.791	0.758	1.52	0.52	0.50	0.02	
11			16	4	1.378	0.009	0.193	0.017	0.656	0.557	1.38	0.48	0.40	0.14	
12			17	4	1.447	0.013	0.310	0.029	0.601	0.575	1.45	0.42	0.40	0.21	
13			23	4	1.286	0.034	0.133	0.030	0.576	0.526	1.29	0.45	0.41	0.10	
14			24	4	1.415	0.009	0.029	0.008	0.759	0.698	1.42	0.54	0.49	0.02	
15			25	4	1.438	0.007	0.045	0.007	0.725	0.652	1.44	0.50	0.45	0.03	
16			26	4	1.496	0.010	0.284	0.029	0.628	0.630	1.50	0.42	0.42	0.19	
17			128	1	0.316	0.002	0.011	0.004	0.147	0.161	0.32	0.46	0.51	0.03	
18			129	1	0.290	0.002	0.018	0.004	0.107	0.195	0.29	0.37	0.67	0.06	
19			131	2	0.458	0.005	0.035	0.019	0.210	0.264	0.46	0.46	0.58	0.08	
20			132	2	0.610	0.005	0.013	0.003	0.324	0.270	0.61	0.53	0.44	0.02	
21			133	2	0.536	0.004	0.046	0.015	0.171	0.269	0.54	0.32	0.50	0.09	
22			137	2	0.563	0.005	0.012	0.010	0.303	0.234	0.56	0.54	0.42	0.02	
23			138	2	0.578	0.004	0.021	0.004	0.295	0.259	0.58	0.51	0.45	0.04	
24			141	4	0.966	0.011	0.034	0.045	0.467	0.446	0.97	0.48	0.46	0.03	
25			142	4	0.993	0.012	0.037	0.015	0.540	0.552	0.99	0.54	0.56	0.04	
26			143	4	1.081	0.011	0.022	0.007	0.518	0.683	1.08	0.48	0.63	0.02	
27			144	4	1.079	0.007	0.115	0.007	0.424	0.668	1.08	0.39	0.62	0.11	
28			145	4	0.751	0.007	0.125	0.029	0.258	0.451	0.75	0.34	0.60	0.17	
29			151	4	1.042	0.011	0.027	0.025	0.542	0.550	1.04	0.52	0.53	0.03	
30			152	4	0.991	0.011	0.023	0.010	0.530	0.590	0.99	0.54	0.60	0.02	
31			153	4	1.083	0.008	0.044	0.005	0.472	0.660	1.08	0.44	0.61	0.04	
32			154	4	0.941	0.007	0.139	0.015	0.319	0.597	0.94	0.34	0.63	0.15	
33			0	128	2	0.799	0.006	0.054	0.012	0.366	0.445	0.80	0.46	0.56	0.07
34			1	129	2	0.823	0.006	0.061	0.011	0.351	0.421	0.82	0.43	0.51	0.07
35			3	131	4	1.002	0.013	0.089	0.043	0.401	0.546	1.00	0.40	0.54	0.09
36			4	132	4	1.416	0.010	0.063	0.011	0.670	0.724	1.42	0.47	0.51	0.04
37			5	133	4	1.561	0.013	0.213	0.032	0.613	0.728	1.56	0.39	0.47	0.14
38			9	137	4	1.436	0.021	0.070	0.026	0.711	0.731	1.44	0.50	0.51	0.05
39			10	138	4	1.280	0.012	0.098	0.030	0.640	0.712	1.28	0.50	0.56	0.08
40			13	141	8	2.055	0.066	0.228	0.146	0.921	1.052	2.06	0.45	0.51	0.11
41			14	142	8	2.602	0.025	0.167	0.025	1.356	1.442	2.60	0.52	0.55	0.06
42			15	143	8	2.830	0.024	0.065	0.015	1.433	1.699	2.83	0.51	0.60	0.02
43			16	144	8	2.765	0.020	0.390	0.030	1.315	1.618	2.76	0.48	0.59	0.14
44			17	145	8	2.489	0.024	0.514	0.104	0.925	1.184	2.49	0.37	0.48	0.21
45			23	151	8	2.396	0.055	0.222	0.062	1.263	1.329	2.40	0.53	0.55	0.09
46			24	152	8	2.670	0.025	0.067	0.018	1.334	1.479	2.67	0.50	0.55	0.03
47			25	153	8	2.792	0.021	0.119	0.014	1.345	1.688	2.79	0.48	0.60	0.04
48			26	154	8	2.814	0.022	0.503	0.070	1.031	1.528	2.81	0.37	0.54	0.18



ELECTRONICS

- L-patch High CH

PD Simulation													Max Ratio out of all Beams		
No.	Module	Type(P or D)	Beam ID_1	Beam ID_2	Feed no.	4cm2 PD(mW/cm2)							0.55	0.70	0.21
						S4(Right)	S3(Left)	S5(Top)	S6(Bottom)	S1(Front)	S2(Rear)	Max	ratio (Front)/(worst-surface)	ratio (Back)/(worst-surface)	ratio (Top)/(worst-surface)
1			0		1	0.42	0.00	0.03	0.00	0.16	0.17	0.42	0.38	0.40	0.06
2			1		1	0.44	0.00	0.03	0.00	0.19	0.15	0.44	0.42	0.34	0.06
3			3		2	0.59	0.01	0.03	0.02	0.22	0.25	0.59	0.37	0.42	0.05
4			4		2	0.64	0.00	0.03	0.01	0.30	0.30	0.64	0.47	0.46	0.05
5			5		2	0.80	0.01	0.11	0.01	0.36	0.31	0.80	0.45	0.39	0.13
6			9		2	0.78	0.01	0.03	0.01	0.32	0.38	0.78	0.41	0.48	0.04
7			10		2	0.61	0.00	0.04	0.02	0.25	0.29	0.61	0.41	0.48	0.07
8			13		4	1.02	0.03	0.15	0.05	0.40	0.49	1.02	0.39	0.48	0.15
9			14		4	1.34	0.02	0.06	0.01	0.65	0.66	1.34	0.48	0.49	0.05
10			15		4	1.50	0.01	0.02	0.01	0.77	0.74	1.50	0.51	0.49	0.01
11			16		4	1.34	0.01	0.20	0.02	0.65	0.55	1.34	0.48	0.41	0.15
12			17		4	1.24	0.01	0.25	0.03	0.53	0.52	1.24	0.43	0.42	0.20
13			23		4	1.29	0.03	0.10	0.03	0.56	0.57	1.29	0.43	0.44	0.08
14			24		4	1.36	0.01	0.03	0.01	0.69	0.69	1.36	0.51	0.51	0.02
15			25		4	1.41	0.01	0.04	0.01	0.70	0.65	1.41	0.49	0.46	0.03
16			26		4	1.35	0.01	0.25	0.03	0.60	0.58	1.35	0.44	0.43	0.19
17			128		1	0.27	0.00	0.01	0.00	0.12	0.17	0.27	0.45	0.62	0.04
18			129		1	0.25	0.00	0.02	0.00	0.10	0.17	0.25	0.40	0.70	0.06
19			131		2	0.37	0.00	0.04	0.01	0.17	0.24	0.37	0.46	0.64	0.12
20			132		2	0.54	0.00	0.01	0.00	0.28	0.26	0.54	0.52	0.48	0.02
21			133		2	0.47	0.00	0.04	0.01	0.15	0.26	0.47	0.32	0.55	0.09
22			137		2	0.48	0.00	0.01	0.01	0.26	0.23	0.48	0.54	0.48	0.02
23			138		2	0.51	0.00	0.02	0.00	0.25	0.25	0.51	0.50	0.49	0.04
24			141		4	0.78	0.01	0.04	0.03	0.37	0.43	0.78	0.48	0.56	0.05
25			142		4	0.83	0.01	0.03	0.01	0.44	0.55	0.83	0.53	0.66	0.03
26			143		4	0.96	0.01	0.01	0.01	0.46	0.64	0.96	0.48	0.67	0.02
27			144		4	0.96	0.01	0.10	0.01	0.38	0.62	0.96	0.40	0.64	0.10
28			145		4	0.64	0.01	0.13	0.03	0.21	0.44	0.64	0.33	0.69	0.20
29			151		4	0.85	0.01	0.02	0.02	0.43	0.53	0.85	0.51	0.63	0.02
30			152		4	0.86	0.01	0.02	0.01	0.46	0.56	0.86	0.53	0.65	0.02
31			153		4	0.99	0.01	0.04	0.00	0.42	0.65	0.99	0.42	0.65	0.04
32			154		4	0.82	0.01	0.12	0.01	0.28	0.55	0.82	0.34	0.67	0.14
33			0	128	2	0.76	0.01	0.04	0.01	0.34	0.46	0.76	0.44	0.60	0.05
34			1	129	2	0.77	0.00	0.05	0.01	0.32	0.40	0.77	0.41	0.51	0.07
35			3	131	4	0.92	0.01	0.07	0.04	0.37	0.52	0.92	0.40	0.56	0.08
36			4	132	4	1.36	0.01	0.06	0.01	0.61	0.71	1.36	0.45	0.52	0.04
37			5	133	4	1.43	0.01	0.17	0.03	0.52	0.72	1.43	0.37	0.50	0.12
38			9	137	4	1.25	0.02	0.05	0.02	0.69	0.72	1.25	0.55	0.58	0.04
39			10	138	4	1.26	0.01	0.10	0.03	0.55	0.73	1.26	0.44	0.58	0.08
40			13	141	8	1.86	0.06	0.23	0.13	0.89	1.16	1.86	0.48	0.62	0.12
41			14	142	8	2.37	0.03	0.13	0.03	1.28	1.46	2.37	0.54	0.61	0.06
42			15	143	8	2.72	0.02	0.05	0.01	1.36	1.60	2.72	0.50	0.59	0.02
43			16	144	8	2.57	0.01	0.34	0.03	1.19	1.55	2.57	0.46	0.60	0.13
44			17	145	8	2.29	0.02	0.48	0.08	0.76	1.19	2.29	0.33	0.52	0.21
45			23	151	8	2.36	0.05	0.16	0.06	1.20	1.37	2.36	0.51	0.58	0.07
46			24	152	8	2.45	0.02	0.08	0.02	1.24	1.43	2.45	0.51	0.58	0.03
47			25	153	8	2.72	0.02	0.10	0.01	1.24	1.69	2.72	0.46	0.62	0.04
48			26	154	8	2.63	0.02	0.48	0.04	0.98	1.49	2.63	0.37	0.57	0.18



ELECTRONICS

Table 7. PD of Ant L – patch antenna (39GHz – n260)

- L-patch Low CH

No.	Module	Type(P or D)	PD Simulation										Max Ratio out of all Beams				
			Beam ID_1	Beam ID_2	Feed no.	4cm2 PD(mW/cm2)								Max	0.81 ratio (Front)/(worst-surface)	0.67 ratio (Back)/(worst-surface)	0.25 ratio (Top)/(worst-surface)
						S4(Right)	S3(Left)	S5(Top)	S6(Bottom)	S1(Front)	S2(Rear)						
1	L	Patch	0		1	0.18	0.00	0.02	0.01	0.09	0.06	0.18	0.52	0.32	0.09		
2			1	1	0.40	0.01	0.03	0.01	0.28	0.11	0.40	0.71	0.27	0.07			
3			4	2	0.64	0.02	0.05	0.02	0.47	0.16	0.64	0.73	0.25	0.09			
4			5	2	0.64	0.01	0.03	0.01	0.49	0.18	0.64	0.77	0.28	0.05			
5			6	2	0.49	0.01	0.03	0.01	0.26	0.11	0.49	0.52	0.22	0.07			
6			10	2	0.69	0.01	0.05	0.01	0.43	0.19	0.69	0.63	0.27	0.08			
7			11	2	0.46	0.01	0.04	0.02	0.29	0.14	0.46	0.62	0.30	0.09			
8			14	4	1.06	0.02	0.13	0.05	0.81	0.31	1.06	0.77	0.29	0.12			
9			15	4	1.05	0.02	0.09	0.01	0.82	0.32	1.05	0.78	0.31	0.09			
10			16	4	0.98	0.02	0.06	0.04	0.76	0.26	0.98	0.77	0.26	0.06			
11			17	4	1.07	0.02	0.12	0.05	0.83	0.29	1.07	0.77	0.28	0.12			
12			18	4	0.93	0.02	0.16	0.02	0.67	0.27	0.93	0.72	0.30	0.17			
13			24	4	0.93	0.02	0.21	0.03	0.57	0.23	0.93	0.61	0.25	0.23			
14			25	4	1.07	0.02	0.07	0.01	0.87	0.34	1.07	0.81	0.32	0.06			
15			26	4	0.96	0.03	0.07	0.05	0.73	0.28	0.96	0.76	0.29	0.07			
16			27	4	0.95	0.02	0.24	0.04	0.66	0.23	0.95	0.69	0.24	0.25			
17			128	1	0.41	0.00	0.02	0.01	0.20	0.13	0.41	0.48	0.32	0.04			
18			129	1	0.31	0.00	0.02	0.00	0.13	0.17	0.31	0.42	0.54	0.07			
19			132	2	0.84	0.01	0.06	0.04	0.41	0.20	0.84	0.48	0.24	0.07			
20			133	2	0.70	0.01	0.04	0.01	0.46	0.25	0.70	0.66	0.35	0.06			
21			134	2	0.87	0.01	0.07	0.03	0.35	0.21	0.87	0.40	0.24	0.08			
22			138	2	0.85	0.01	0.06	0.02	0.36	0.22	0.85	0.43	0.26	0.07			
23			139	2	0.48	0.00	0.06	0.01	0.18	0.32	0.48	0.37	0.67	0.13			
24			142	4	1.03	0.02	0.16	0.08	0.58	0.43	1.03	0.57	0.42	0.16			
25			143	4	0.99	0.02	0.25	0.01	0.51	0.52	0.99	0.51	0.53	0.25			
26			144	4	1.14	0.02	0.07	0.01	0.71	0.52	1.14	0.63	0.45	0.06			
27			145	4	0.99	0.02	0.07	0.06	0.56	0.40	0.99	0.56	0.41	0.08			
28			146	4	1.04	0.02	0.24	0.02	0.47	0.46	1.04	0.45	0.45	0.24			
29			152	4	1.11	0.01	0.23	0.05	0.54	0.44	1.11	0.49	0.39	0.20			
30			153	4	1.12	0.02	0.12	0.02	0.66	0.49	1.12	0.59	0.43	0.11			
31			154	4	1.13	0.02	0.05	0.01	0.72	0.49	1.13	0.64	0.43	0.05			
32			155	4	0.99	0.02	0.12	0.07	0.51	0.45	0.99	0.51	0.46	0.12			
33			0	128	2	0.63	0.01	0.05	0.02	0.32	0.21	0.63	0.50	0.34	0.07		
34			1	129	2	0.80	0.01	0.05	0.01	0.47	0.36	0.80	0.59	0.44	0.06		
35			4	132	4	1.57	0.04	0.13	0.07	0.94	0.42	1.57	0.60	0.26	0.08		
36			5	133	4	1.52	0.02	0.08	0.03	1.06	0.48	1.52	0.70	0.32	0.05		
37			6	134	4	1.43	0.02	0.11	0.05	0.70	0.40	1.43	0.49	0.28	0.08		
38			10	138	4	1.65	0.02	0.13	0.05	0.89	0.45	1.65	0.54	0.27	0.08		
39			11	139	4	0.89	0.01	0.13	0.03	0.53	0.50	0.89	0.60	0.56	0.14		
40			14	142	8	2.63	0.04	0.37	0.11	1.75	0.95	2.63	0.67	0.36	0.14		
41			15	143	8	2.46	0.05	0.45	0.03	1.64	1.11	2.46	0.67	0.45	0.18		
42			16	144	8	2.28	0.03	0.18	0.07	1.57	0.83	2.28	0.69	0.36	0.08		
43			17	145	8	2.50	0.06	0.29	0.11	1.71	0.91	2.50	0.68	0.37	0.12		
44			18	146	8	2.23	0.04	0.43	0.06	1.36	0.96	2.23	0.61	0.43	0.19		
45			24	152	8	2.24	0.04	0.52	0.11	1.23	0.86	2.24	0.55	0.38	0.23		
46			25	153	8	2.57	0.05	0.28	0.03	1.86	0.86	2.57	0.72	0.33	0.11		
47			26	154	8	2.18	0.05	0.11	0.07	1.48	0.91	2.18	0.68	0.42	0.05		
48			27	155	8	2.26	0.05	0.45	0.14	1.32	0.91	2.26	0.59	0.40	0.20		



ELECTRONICS

- L-patch Mid CH

No.	Module	Type(P or D)	PD Simulation										Max Ratio out of all Beams			
			Beam ID_1	Beam ID_2	Feed no.	4cm2 PD(mW/cm2)							Max	0.81	0.69	0.24
						S4(Right)	S3(Left)	S5(Top)	S6(Bottom)	S1(Front)	S2(Rear)	ratio (Front)/(worst-surface)		ratio (Back)/(worst-surface)	ratio (Top)/(worst-surface)	
1			0		1	0.179	0.002	0.013	0.008	0.104	0.075	0.18	0.58	0.42	0.07	
2			1		1	0.406	0.007	0.022	0.008	0.285	0.108	0.41	0.70	0.26	0.05	
3			4		2	0.685	0.021	0.068	0.020	0.498	0.172	0.69	0.73	0.25	0.10	
4			5		2	0.558	0.008	0.046	0.012	0.423	0.250	0.56	0.76	0.45	0.08	
5			6		2	0.492	0.006	0.050	0.011	0.259	0.154	0.49	0.53	0.31	0.10	
6			10		2	0.743	0.009	0.068	0.014	0.491	0.201	0.74	0.66	0.27	0.09	
7			11		2	0.424	0.008	0.040	0.020	0.260	0.162	0.42	0.61	0.38	0.09	
8			14		4	0.981	0.021	0.116	0.049	0.743	0.321	0.98	0.76	0.33	0.12	
9			15		4	1.129	0.018	0.148	0.008	0.863	0.322	1.13	0.76	0.29	0.13	
10			16		4	0.796	0.041	0.066	0.044	0.616	0.315	0.80	0.77	0.40	0.08	
11			17		4	0.958	0.023	0.109	0.055	0.732	0.317	0.96	0.76	0.33	0.11	
12			18		4	1.050	0.020	0.198	0.012	0.691	0.303	1.05	0.66	0.29	0.19	
13			24		4	1.048	0.024	0.232	0.035	0.683	0.296	1.05	0.65	0.28	0.22	
14			25		4	1.175	0.019	0.102	0.008	0.948	0.391	1.17	0.81	0.33	0.09	
15			26		4	0.830	0.033	0.044	0.047	0.636	0.364	0.83	0.77	0.44	0.05	
16			27		4	1.040	0.024	0.237	0.047	0.718	0.292	1.04	0.69	0.28	0.23	
17			128		1	0.444	0.004	0.010	0.018	0.183	0.182	0.44	0.41	0.41	0.02	
18			129		1	0.352	0.003	0.021	0.003	0.106	0.214	0.35	0.30	0.61	0.06	
19			132		2	0.816	0.010	0.051	0.050	0.340	0.285	0.82	0.42	0.35	0.06	
20			133		2	0.736	0.009	0.041	0.007	0.339	0.421	0.74	0.46	0.57	0.06	
21			134		2	0.829	0.007	0.051	0.038	0.337	0.275	0.83	0.41	0.33	0.06	
22			138		2	0.829	0.006	0.048	0.026	0.369	0.289	0.83	0.45	0.35	0.06	
23			139		2	0.553	0.004	0.057	0.006	0.157	0.371	0.55	0.28	0.67	0.10	
24			142		4	1.165	0.013	0.163	0.081	0.553	0.640	1.17	0.47	0.55	0.14	
25			143		4	0.932	0.016	0.220	0.017	0.486	0.396	0.93	0.52	0.43	0.24	
26			144		4	1.324	0.016	0.042	0.012	0.589	0.848	1.32	0.44	0.64	0.03	
27			145		4	1.135	0.018	0.097	0.060	0.529	0.612	1.14	0.47	0.54	0.09	
28			146		4	1.008	0.014	0.228	0.027	0.474	0.391	1.01	0.47	0.39	0.23	
29			152		4	1.259	0.010	0.174	0.059	0.472	0.559	1.26	0.38	0.44	0.14	
30			153		4	1.099	0.017	0.107	0.012	0.525	0.530	1.10	0.48	0.48	0.10	
31			154		4	1.324	0.017	0.033	0.015	0.579	0.904	1.32	0.44	0.68	0.02	
32			155		4	1.228	0.015	0.146	0.072	0.558	0.612	1.23	0.45	0.50	0.12	
33			0	128	2	0.692	0.008	0.031	0.028	0.326	0.317	0.69	0.47	0.46	0.04	
34			1	129	2	0.826	0.011	0.055	0.014	0.403	0.357	0.83	0.49	0.43	0.07	
35			4	132	4	1.583	0.041	0.148	0.102	1.037	0.510	1.58	0.65	0.32	0.09	
36			5	133	4	1.420	0.023	0.125	0.022	0.922	0.816	1.42	0.65	0.57	0.09	
37			6	134	4	1.460	0.020	0.141	0.072	0.783	0.614	1.46	0.54	0.42	0.10	
38			10	138	4	1.687	0.022	0.162	0.054	0.999	0.564	1.69	0.59	0.33	0.10	
39			11	139	4	0.945	0.017	0.118	0.027	0.413	0.624	0.95	0.44	0.66	0.13	
40			14	142	8	2.466	0.040	0.249	0.167	1.482	1.157	2.47	0.60	0.47	0.10	
41			15	143	8	2.433	0.041	0.440	0.025	1.527	0.826	2.43	0.63	0.34	0.18	
42			16	144	8	2.437	0.046	0.144	0.054	1.408	1.529	2.44	0.58	0.63	0.06	
43			17	145	8	2.356	0.047	0.216	0.138	1.521	1.149	2.36	0.65	0.49	0.09	
44			18	146	8	2.374	0.043	0.481	0.057	1.434	0.806	2.37	0.60	0.34	0.20	
45			24	152	8	2.591	0.044	0.451	0.134	1.387	1.246	2.59	0.54	0.48	0.17	
46			25	153	8	2.643	0.049	0.311	0.026	1.630	1.093	2.64	0.62	0.41	0.12	
47			26	154	8	2.279	0.057	0.111	0.065	1.438	1.573	2.28	0.63	0.69	0.05	
48			27	155	8	2.407	0.042	0.446	0.172	1.437	1.362	2.41	0.60	0.57	0.19	



ELECTRONICS

- L-patch High CH

No.	Module	Type(P or D)	PD Simulation										Max Ratio out of all Beams			
			Beam ID_1	Beam ID_2	Feed no.	4cm2 PD(mW/cm2)							Max	0.80 ratio (Front)/(wor rst-surface)	0.69 ratio (Back)/(wor st-surface)	0.19 ratio (Top)/(wor t-surface)
						S4(Right)	S3(Left)	S5(Top)	S6(Bottom)	S1(Front)	S2(Rear)	Max				
1	L	Patch	0		1	0.21	0.00	0.01	0.01	0.14	0.08	0.21	0.66	0.39	0.04	
2			1	1	0.40	0.01	0.03	0.01	0.27	0.10	0.40	0.68	0.25	0.07		
3			4	2	0.61	0.03	0.05	0.02	0.43	0.14	0.61	0.70	0.22	0.08		
4			5	2	0.52	0.01	0.05	0.01	0.34	0.20	0.52	0.65	0.39	0.09		
5			6	2	0.49	0.01	0.03	0.01	0.29	0.20	0.49	0.60	0.41	0.06		
6			10	2	0.73	0.01	0.07	0.01	0.45	0.19	0.73	0.61	0.26	0.09		
7			11	2	0.50	0.01	0.03	0.01	0.34	0.15	0.50	0.68	0.31	0.06		
8			14	4	1.05	0.02	0.11	0.04	0.82	0.26	1.05	0.78	0.25	0.11		
9			15	4	1.01	0.03	0.15	0.02	0.74	0.32	1.01	0.73	0.32	0.15		
10			16	4	0.65	0.06	0.09	0.03	0.49	0.26	0.65	0.74	0.40	0.14		
11			17	4	1.01	0.02	0.11	0.04	0.80	0.26	1.01	0.80	0.26	0.10		
12			18	4	1.06	0.02	0.18	0.01	0.78	0.32	1.06	0.74	0.30	0.17		
13			24	4	1.07	0.03	0.20	0.03	0.68	0.35	1.07	0.63	0.32	0.19		
14			25	4	0.97	0.02	0.16	0.02	0.69	0.38	0.97	0.71	0.39	0.17		
15			26	4	0.69	0.04	0.06	0.06	0.54	0.21	0.69	0.79	0.30	0.09		
16			27	4	1.05	0.03	0.19	0.04	0.69	0.36	1.05	0.66	0.35	0.18		
17			128	1	0.39	0.01	0.01	0.02	0.13	0.21	0.39	0.34	0.53	0.04		
18			129	1	0.36	0.00	0.02	0.00	0.10	0.23	0.36	0.27	0.63	0.05		
19			132	2	0.80	0.01	0.06	0.05	0.30	0.32	0.80	0.37	0.40	0.07		
20			133	2	0.72	0.01	0.04	0.01	0.30	0.42	0.72	0.42	0.59	0.05		
21			134	2	0.81	0.01	0.06	0.04	0.30	0.30	0.81	0.36	0.38	0.07		
22			138	2	0.82	0.01	0.05	0.03	0.32	0.32	0.82	0.40	0.39	0.06		
23			139	2	0.55	0.00	0.05	0.01	0.15	0.33	0.55	0.28	0.59	0.08		
24			142	4	1.19	0.02	0.12	0.09	0.43	0.59	1.19	0.36	0.49	0.10		
25			143	4	1.05	0.01	0.20	0.01	0.43	0.50	1.05	0.41	0.48	0.19		
26			144	4	1.28	0.02	0.03	0.02	0.47	0.88	1.28	0.37	0.69	0.02		
27			145	4	1.26	0.02	0.09	0.08	0.52	0.74	1.26	0.41	0.59	0.07		
28			146	4	1.11	0.02	0.17	0.02	0.43	0.49	1.11	0.39	0.44	0.16		
29			152	4	1.25	0.01	0.17	0.06	0.42	0.51	1.25	0.34	0.41	0.14		
30			153	4	1.15	0.02	0.14	0.01	0.41	0.69	1.15	0.36	0.60	0.12		
31			154	4	1.23	0.02	0.04	0.02	0.54	0.78	1.23	0.44	0.64	0.04		
32			155	4	1.17	0.02	0.11	0.08	0.45	0.67	1.17	0.38	0.57	0.09		
33			0	128	2	0.63	0.01	0.04	0.03	0.34	0.39	0.63	0.55	0.63	0.06	
34			1	129	2	0.83	0.01	0.06	0.01	0.42	0.39	0.83	0.51	0.47	0.08	
35			4	132	4	1.48	0.04	0.12	0.09	0.92	0.52	1.48	0.62	0.35	0.08	
36			5	133	4	1.42	0.02	0.13	0.03	0.83	0.74	1.42	0.59	0.52	0.09	
37			6	134	4	1.48	0.02	0.13	0.07	0.77	0.69	1.48	0.52	0.47	0.08	
38			10	138	4	1.66	0.02	0.14	0.04	0.93	0.57	1.66	0.56	0.34	0.09	
39			11	139	4	0.93	0.02	0.08	0.03	0.50	0.47	0.93	0.54	0.51	0.09	
40			14	142	8	2.45	0.04	0.24	0.18	1.56	0.88	2.45	0.64	0.36	0.10	
41			15	143	8	2.52	0.05	0.48	0.04	1.44	0.97	2.52	0.57	0.39	0.19	
42			16	144	8	2.01	0.10	0.17	0.07	1.19	1.34	2.01	0.59	0.67	0.09	
43			17	145	8	2.45	0.04	0.19	0.16	1.57	1.16	2.45	0.64	0.47	0.08	
44			18	146	8	2.53	0.04	0.46	0.04	1.51	1.04	2.53	0.60	0.41	0.18	
45			24	152	8	2.62	0.04	0.44	0.12	1.42	1.14	2.62	0.54	0.44	0.17	
46			25	153	8	2.60	0.04	0.42	0.05	1.37	1.23	2.60	0.53	0.48	0.16	
47			26	154	8	1.96	0.08	0.13	0.12	1.27	1.20	1.96	0.65	0.61	0.07	
48			27	155	8	2.34	0.04	0.35	0.17	1.34	1.36	2.34	0.57	0.58	0.15	