

## 20190215\_SystemPerformanceCheck-D2600V2 SN 1097

Frequency: 2600 MHz; Duty Cycle: 1:1; Room Ambient Temperature: 23.0°C; Liquid Temperature: 22.0°C  
 Medium parameters used:  $f = 2600$  MHz;  $\sigma = 1.945$  S/m;  $\epsilon_r = 39.178$ ;  $\rho = 1000$  kg/m<sup>3</sup>

DASY5 Configuration:

- Area Scan Setting: Find Secondary Maximum Within: 2.0 dB and with a peak SAR value greater than 0.0012W/kg
- Averaged Fast SAR: Polynomial fit
- Electronics: DAE4 Sn1494; Calibrated: 2018-07-23
- Probe: EX3DV4 - SN7376; ConvF(7.3, 7.3, 7.3); Calibrated: 2018-09-26;
- Sensor-Surface: 2.5mm (Mechanical Surface Detection)
- Phantom: SAM (20deg probe tilt) with CRP v5.0\_Front; Type: QD000P40CD; Serial: TP:1877

**Head/Pin=100 mW/Area Scan (9x9x1):** Measurement grid: dx=10mm, dy=10mm

Maximum value of SAR (measured) = 8.07 W/kg

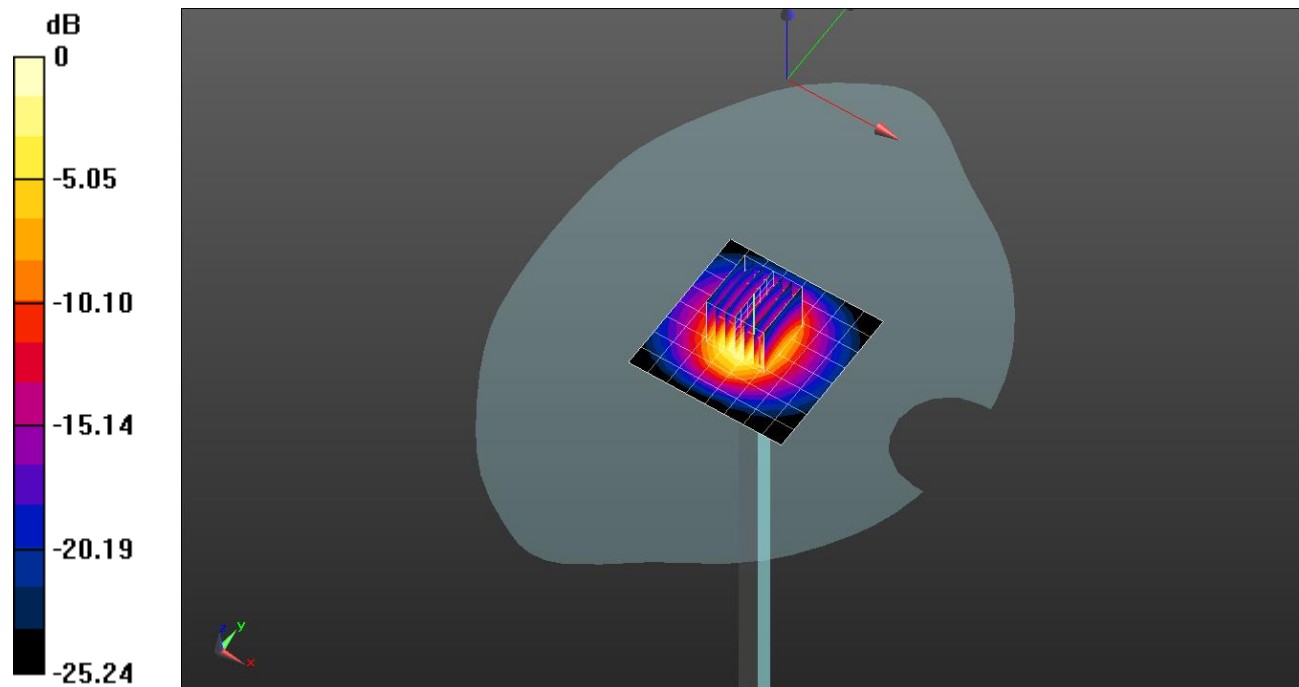
**Head/Pin=100 mW/Zoom Scan (7x7x7)/Cube 0:** Measurement grid: dx=5mm, dy=5mm, dz=5mm

Reference Value = 67.68 V/m; Power Drift = 0.05 dB

Peak SAR (extrapolated) = 13.7 W/kg

**SAR(1 g) = 6.04 W/kg; SAR(10 g) = 2.66 W/kg**

Maximum value of SAR (measured) = 8.83 W/kg

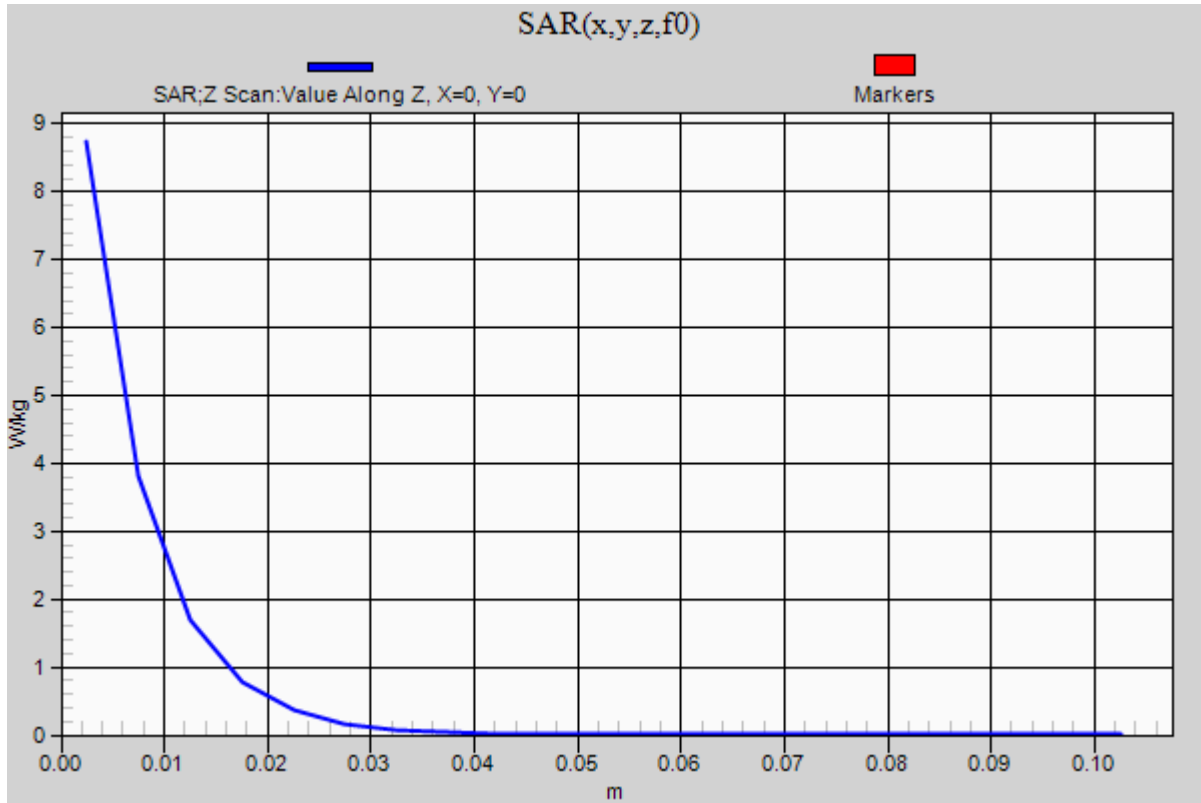


0 dB = 8.83 W/kg = 9.46 dBW/kg

### 20190215\_SystemPerformanceCheck-D2600V2 SN 1097

Frequency: 2600 MHz; Duty Cycle: 1:1

**Head/Pin=100 mW/Z Scan (1x1x21):** Measurement grid: dx=20mm, dy=20mm, dz=5mm  
Maximum value of SAR (measured) = 8.74 W/kg



## 20190221\_SystemPerformanceCheck-D2450V2 SN 960

Frequency: 2450 MHz; Duty Cycle: 1:1; Room Ambient Temperature: 23.0°C; Liquid Temperature: 22.0°C  
 Medium parameters used:  $f = 2450 \text{ MHz}$ ;  $\sigma = 1.831 \text{ S/m}$ ;  $\epsilon_r = 38.638$ ;  $\rho = 1000 \text{ kg/m}^3$

DASY5 Configuration:

- Area Scan Setting: Find Secondary Maximum Within: 2.0 dB and with a peak SAR value greater than 0.0012W/kg
- Averaged Fast SAR: Polynomial fit
- Electronics: DAE4 Sn1494; Calibrated: 2018-07-23
- Probe: EX3DV4 - SN7376; ConvF(7.4, 7.4, 7.4); Calibrated: 2018-09-26;
- Sensor-Surface: 2.5mm (Mechanical Surface Detection)
- Phantom: SAM (20deg probe tilt) with CRP v5.0\_Front; Type: QD000P40CD; Serial: TP:1877

**Head/Pin=100 mW/Area Scan (8x8x1):** Measurement grid: dx=12mm, dy=12mm

Maximum value of SAR (measured) = 5.93 W/kg

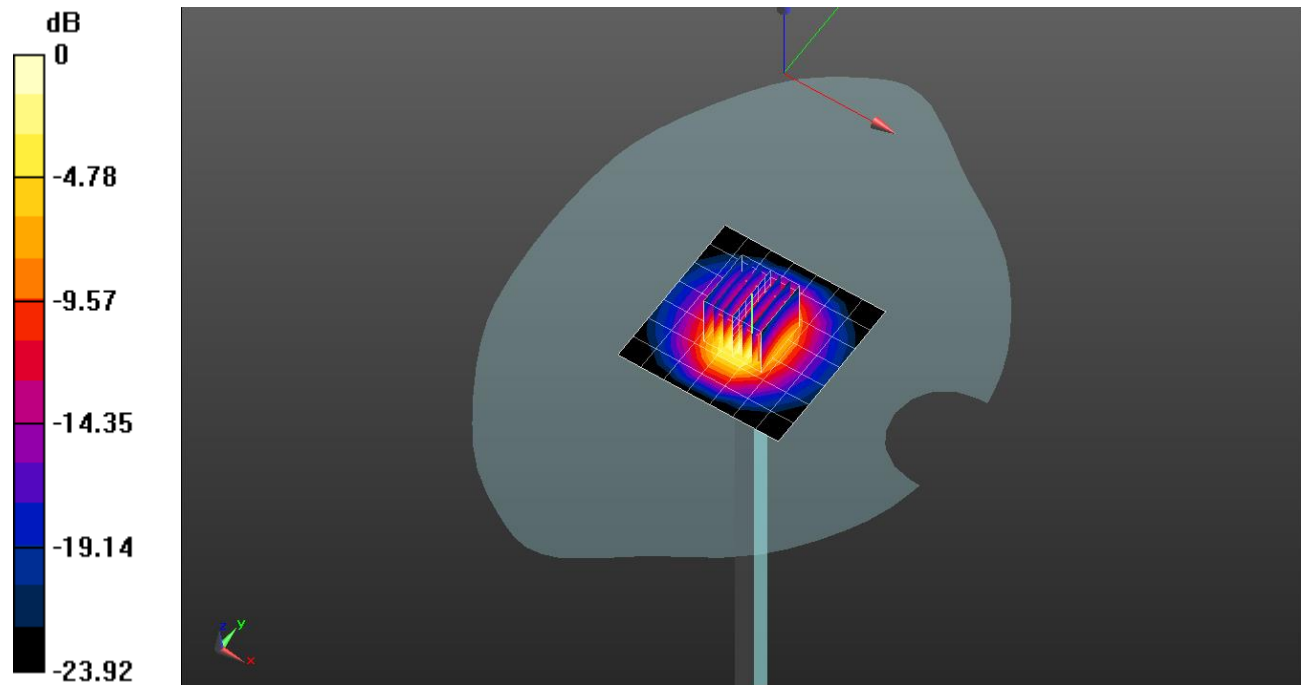
**Head/Pin=100 mW/Zoom Scan (7x7x7) (7x7x7)/Cube 0:** Measurement grid: dx=5mm, dy=5mm, dz=5mm

Reference Value = 67.86 V/m; Power Drift = -0.08 dB

Peak SAR (extrapolated) = 12.5 W/kg

**SAR(1 g) = 5.78 W/kg; SAR(10 g) = 2.65 W/kg**

Maximum value of SAR (measured) = 8.33 W/kg

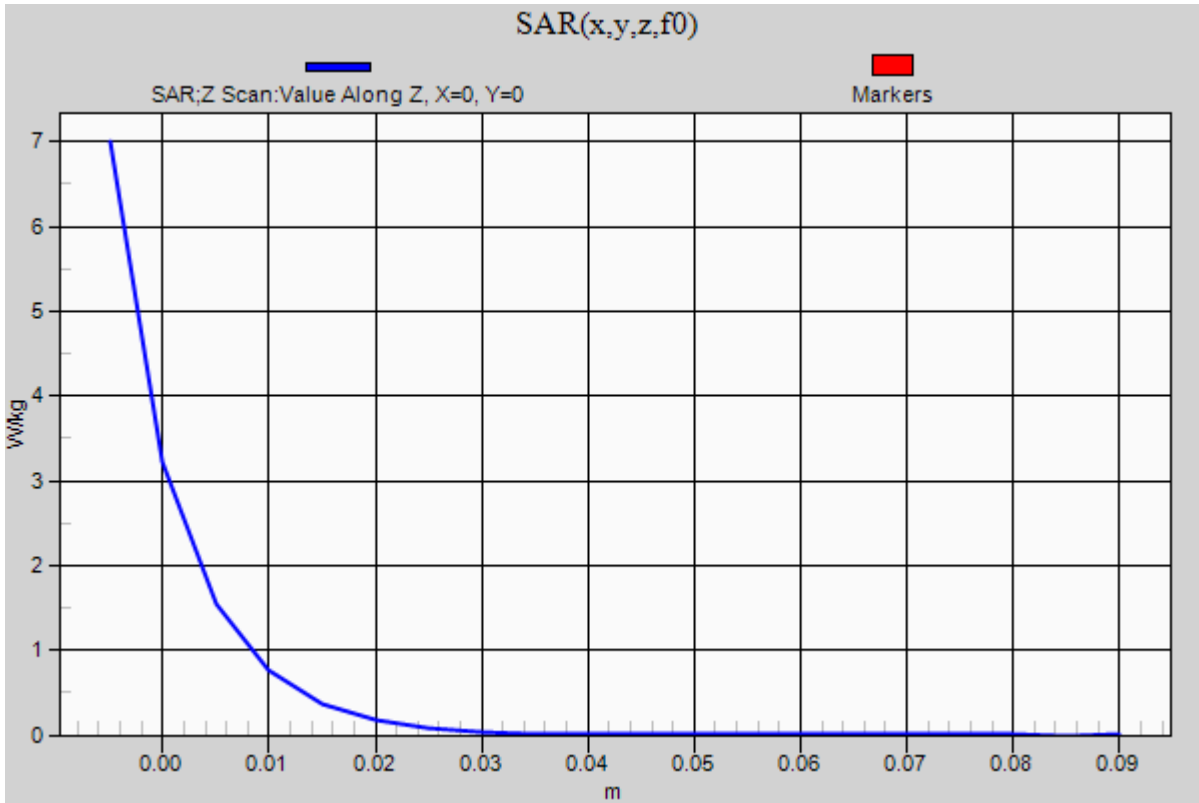


0 dB = 8.33 W/kg = 9.21 dBW/kg

### 20190221\_SystemPerformanceCheck-D2450V2 SN 960

Frequency: 2450 MHz; Duty Cycle: 1:1

**Head/Pin=100 mW/Z Scan (1x1x21):** Measurement grid: dx=20mm, dy=20mm, dz=5mm  
Maximum value of SAR (measured) = 7.00 W/kg



## 20190221\_SystemPerformanceCheck-D5GHzV2 SN 1184

Frequency: 5600 MHz; Duty Cycle: 1:1; Room Ambient Temperature: 23.0°C; Liquid Temperature: 22.0°C  
 Medium parameters used:  $f = 5600 \text{ MHz}$ ;  $\sigma = 5.069 \text{ S/m}$ ;  $\epsilon_r = 34.944$ ;  $\rho = 1000 \text{ kg/m}^3$

DASY5 Configuration:

- Area Scan Setting: Find Secondary Maximum Within: 2.0 dB and with a peak SAR value greater than 0.0012W/kg
- Averaged Fast SAR: Polynomial fit
- Electronics: DAE4 Sn1494; Calibrated: 2018-07-23
- Probe: EX3DV4 - SN7376; ConvF(4.6, 4.6, 4.6); Calibrated: 2018-09-26;
- Sensor-Surface: 1.4mm (Mechanical Surface Detection)
- Phantom: SAM (20deg probe tilt) with CRP v5.0\_Back; Type: QD000P40CD; Serial: TP:1882

**Head/5.6 GHz, Pin=100mW/Area Scan (7x7x1):** Measurement grid: dx=10mm, dy=10mm

Maximum value of SAR (measured) = 20.3 W/kg

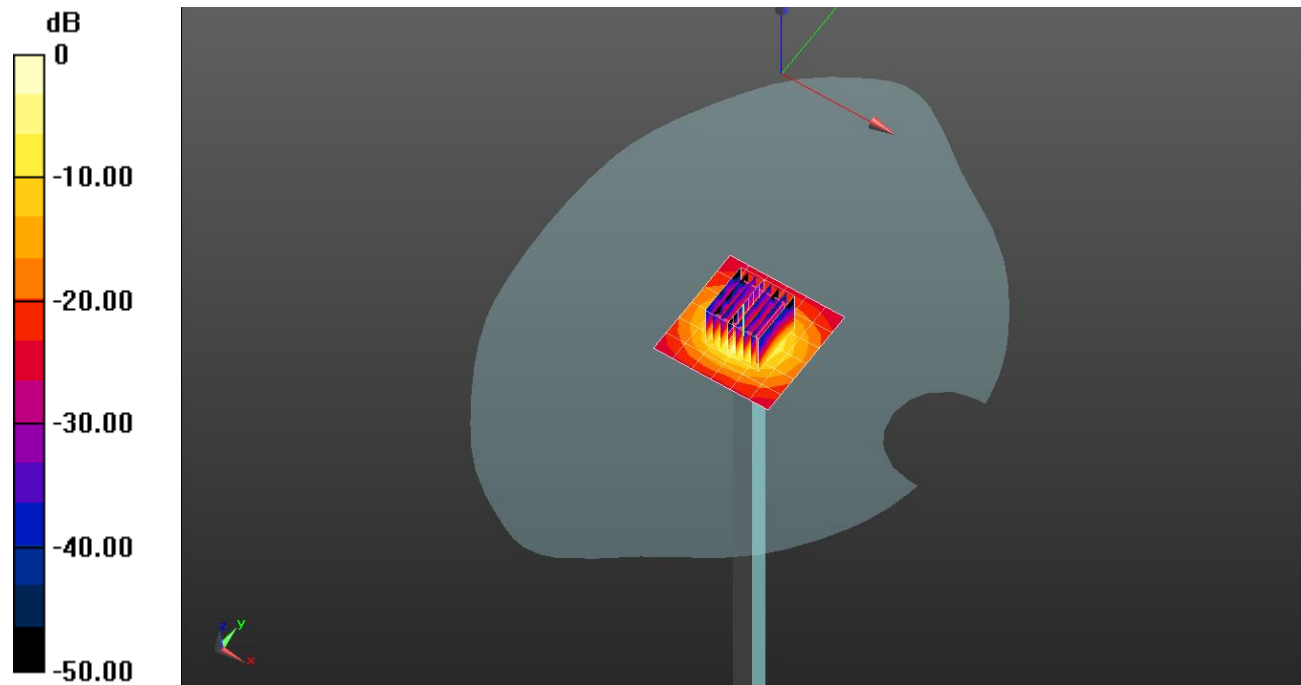
**Head/5.6 GHz, Pin=100mW/Zoom Scan (8x8x7)/Cube 0:** Measurement grid: dx=4mm, dy=4mm, dz=1.4mm

Reference Value = 70.60 V/m; Power Drift = -0.02 dB

Peak SAR (extrapolated) = 36.0 W/kg

**SAR(1 g) = 8.03 W/kg; SAR(10 g) = 2.27 W/kg**

Maximum value of SAR (measured) = 19.6 W/kg

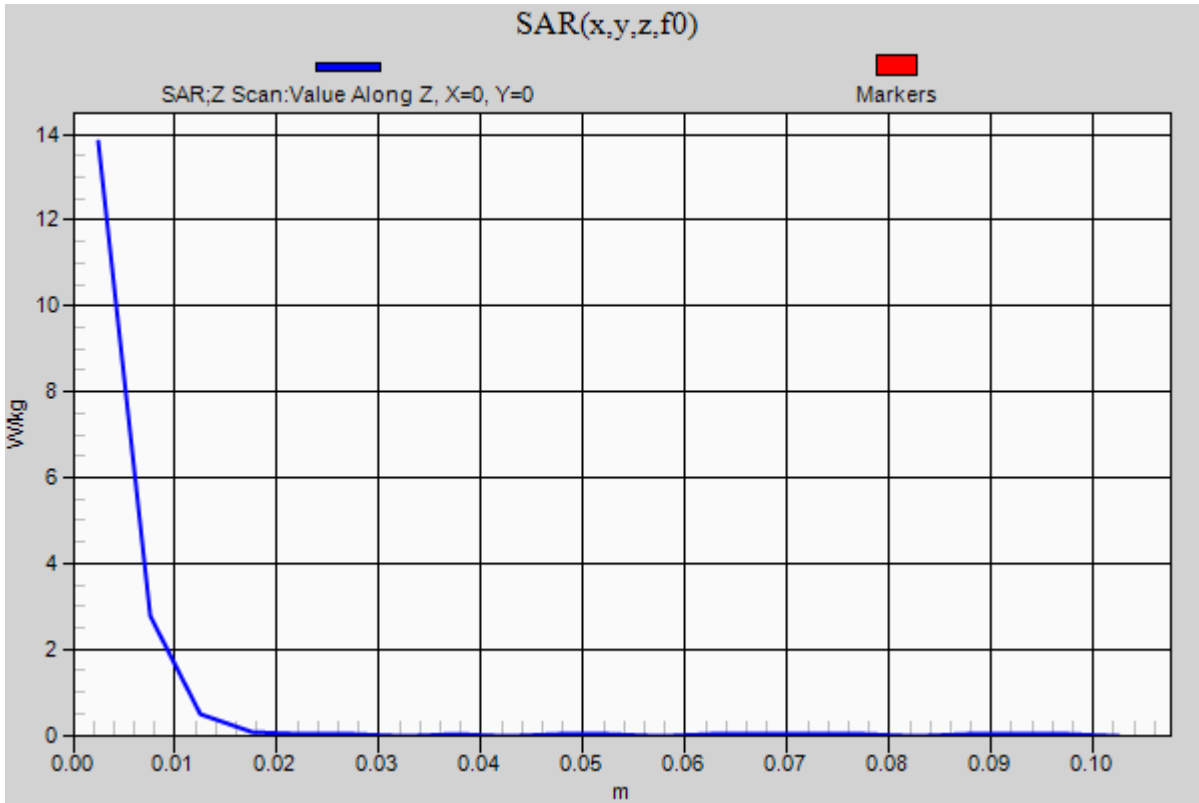


0 dB = 19.6 W/kg = 12.92 dBW/kg

### 20190221\_SystemPerformanceCheck-D5GHzV2 SN 1184

Frequency: 5600 MHz; Duty Cycle: 1:1

**Head/5.6 GHz, Pin=100mW/Z Scan (1x1x21):** Measurement grid: dx=20mm, dy=20mm, dz=5mm  
Maximum value of SAR (measured) = 13.8 W/kg



**20190218\_SystemPerformanceCheck-D835V2 SN 4d194**

Frequency: 835 MHz; Duty Cycle: 1:1; Room Ambient Temperature: 23.0°C; Liquid Temperature: 22.0°C  
Medium parameters used:  $f = 835$  MHz;  $\sigma = 0.952$  S/m;  $\epsilon_r = 55.841$ ;  $\rho = 1000$  kg/m<sup>3</sup>

DASY5 Configuration:

- Area Scan Setting: Find Secondary Maximum Within: 2.0 dB and with a peak SAR value greater than 0.0012W/kg
- Averaged Fast SAR: Polynomial fit
- Electronics: DAE4 Sn1447; Calibrated: 2018-03-15
- Probe: EX3DV4 - SN7330; ConvF(10.45, 10.45, 10.45); Calibrated: 2019-01-31;
- Sensor-Surface: 2.5mm (Mechanical Surface Detection)
- Phantom: ELI v6.0; Type: QDOVA003AA; Serial: TP:2005

**Body/Pin=100 mW/Area Scan (5x13x1):** Measurement grid: dx=15mm, dy=15mm

Maximum value of SAR (measured) = 1.07 W/kg

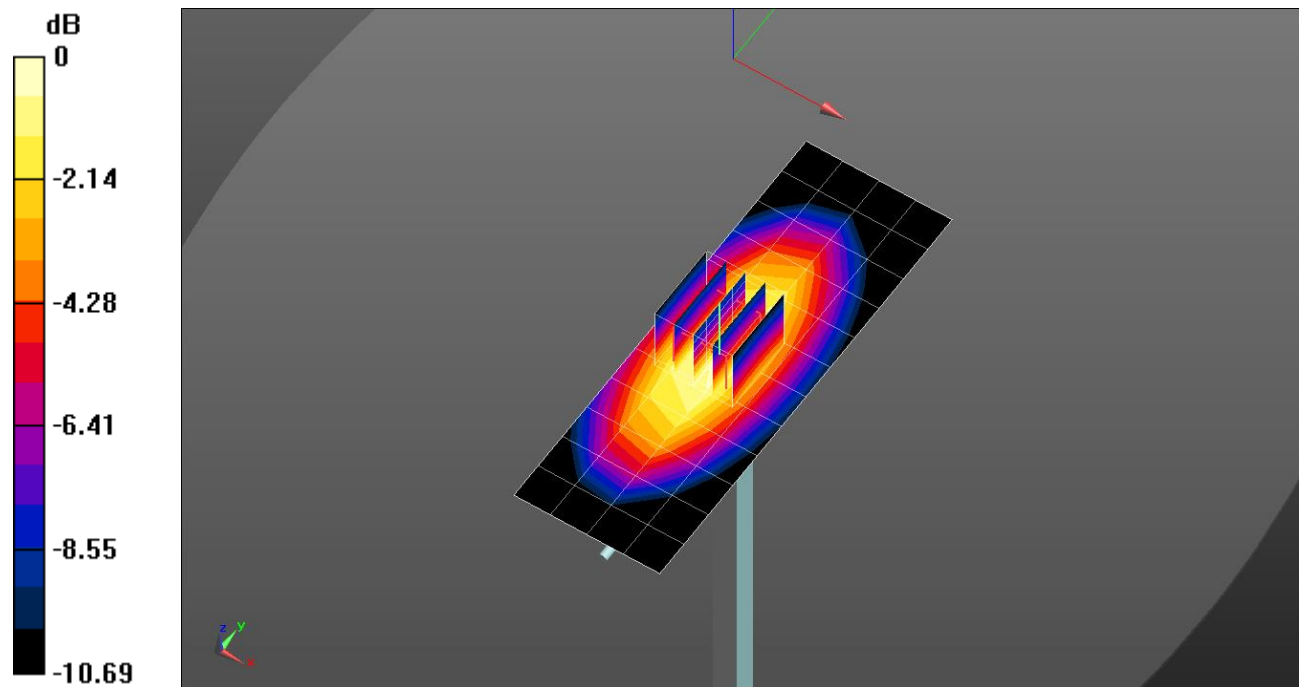
**Body/Pin=100 mW/Zoom Scan (5x5x7)/Cube 0:** Measurement grid: dx=8mm, dy=8mm, dz=5mm

Reference Value = 33.93 V/m; Power Drift = 0.07 dB

Peak SAR (extrapolated) = 1.42 W/kg

**SAR(1 g) = 0.953 W/kg; SAR(10 g) = 0.624 W/kg**

Maximum value of SAR (measured) = 1.16 W/kg

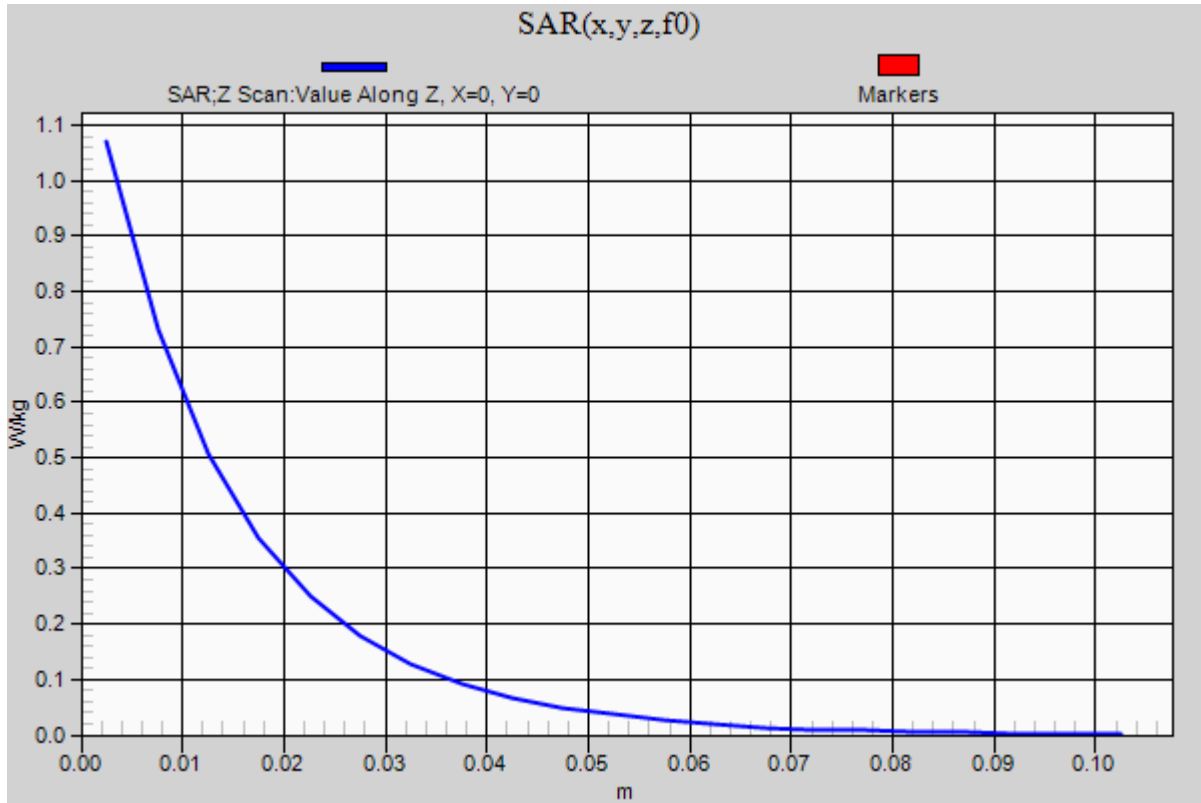


0 dB = 1.16 W/kg = 0.64 dBW/kg

### 20190218\_SystemPerformanceCheck-D835V2 SN 4d194

Frequency: 835 MHz; Duty Cycle: 1:1

**Body/Pin=100 mW/Z Scan (1x1x21):** Measurement grid: dx=20mm, dy=20mm, dz=5mm  
Maximum value of SAR (measured) = 1.07 W/kg





**20190219\_SystemPerformanceCheck-D835V2 SN 4d194**

Frequency: 835 MHz; Duty Cycle: 1:1; Room Ambient Temperature: 23.0°C; Liquid Temperature: 22.0°C  
Medium parameters used:  $f = 835$  MHz;  $\sigma = 0.901$  S/m;  $\epsilon_r = 40.797$ ;  $\rho = 1000$  kg/m<sup>3</sup>

DASY5 Configuration:

- Area Scan Setting: Find Secondary Maximum Within: 2.0 dB and with a peak SAR value greater than 0.0012W/kg
- Averaged Fast SAR: Polynomial fit
- Electronics: DAE4 Sn1468; Calibrated: 2018-08-22
- Probe: EX3DV4 - SN7314; ConvF(9.47, 9.47, 9.47); Calibrated: 2018-08-30;
- Sensor-Surface: 2.5mm (Mechanical Surface Detection)
- Phantom: SAM Phantom CRP v5.0(Right); Type: QD000P40CD; Serial: TP:1855

**Head/Pin=100 mW/Area Scan (7x13x1):** Measurement grid: dx=15mm, dy=15mm

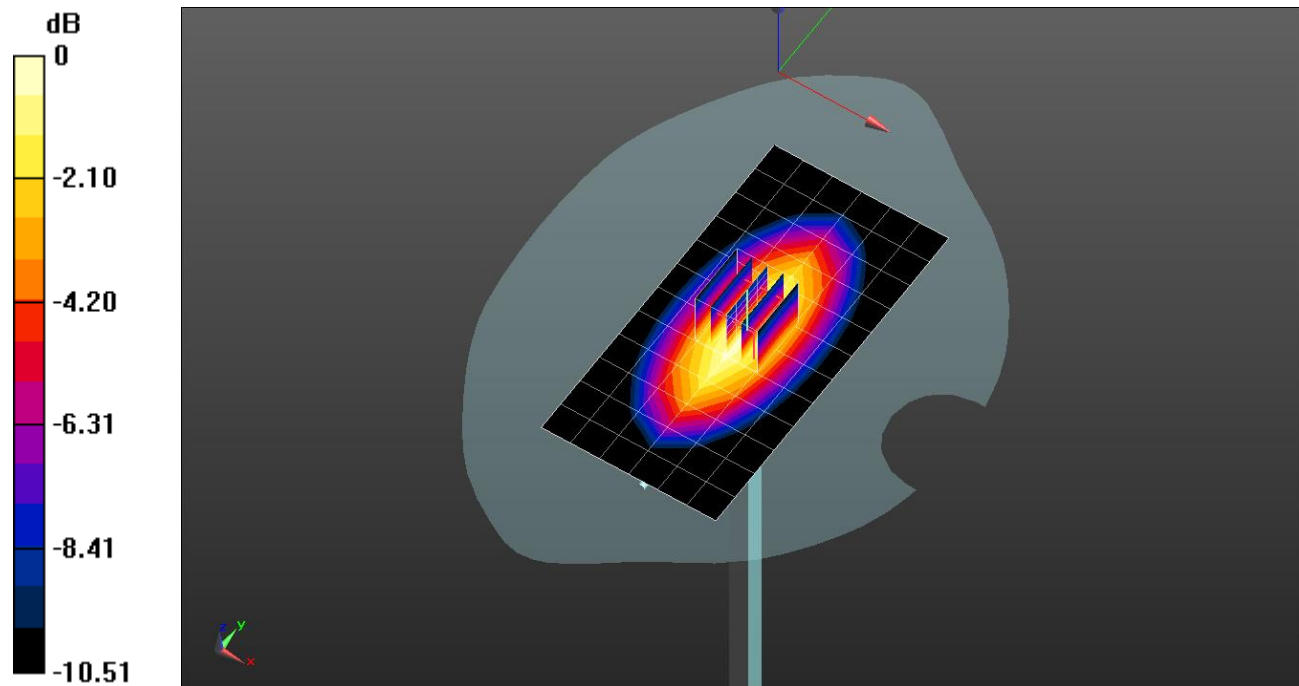
Maximum value of SAR (measured) = 1.19 W/kg

**Head/Pin=100 mW/Zoom Scan (5x5x7)/Cube 0:** Measurement grid: dx=8mm, dy=8mm, dz=5mm

Reference Value = 36.90 V/m; Power Drift = -0.05 dB

Peak SAR (extrapolated) = 1.44 W/kg

**SAR(1 g) = 0.975 W/kg; SAR(10 g) = 0.642 W/kg**

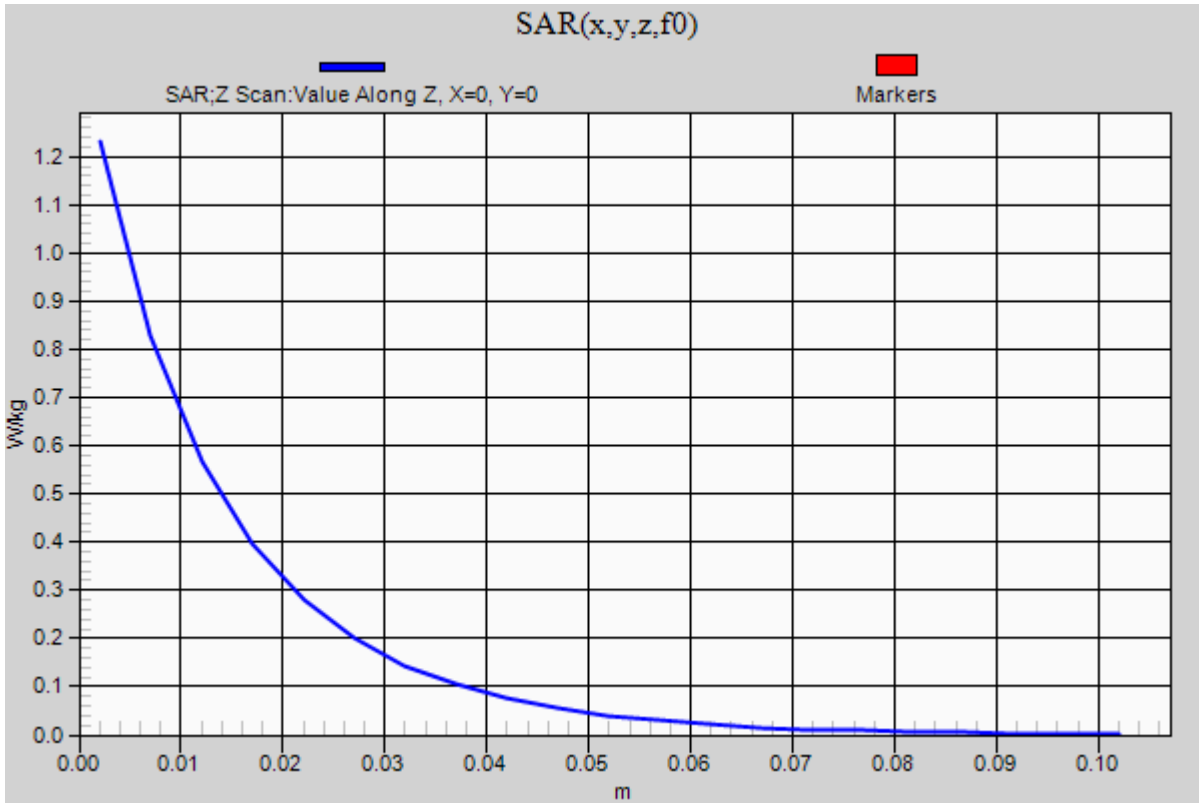


0 dB = 1.19 W/kg = 0.76 dBW/kg

### 20190219\_SystemPerformanceCheck-D835V2 SN 4d194

Frequency: 835 MHz; Duty Cycle: 1:1

**Head/Pin=100 mW/Z Scan (1x1x21):** Measurement grid: dx=20mm, dy=20mm, dz=5mm  
Maximum value of SAR (measured) = 1.23 W/kg



## 20190218\_SystemPerformanceCheck-D1900V2 SN 5d199

Frequency: 1900 MHz; Duty Cycle: 1:1; Room Ambient Temperature: 23.0°C; Liquid Temperature: 22.0°C  
 Medium parameters used:  $f = 1900$  MHz;  $\sigma = 1.576$  S/m;  $\epsilon_r = 52.754$ ;  $\rho = 1000$  kg/m<sup>3</sup>

DASY5 Configuration:

- Area Scan Setting: Find Secondary Maximum Within: 2.0 dB and with a peak SAR value greater than 0.0012W/kg
- Averaged Fast SAR: Polynomial fit
- Electronics: DAE4 Sn1259; Calibrated: 2018-07-26
- Probe: EX3DV4 - SN3991; ConvF(8.03, 8.03, 8.03); Calibrated: 2018-05-24;
- Sensor-Surface: 2.5mm (Mechanical Surface Detection)
- Phantom: ELI V5.0 (20deg probe tilt)\_20190207; Type: QD OVA 001 BB; Serial: 1212

**Body/Pin=100 mW/Area Scan (7x7x1):** Measurement grid: dx=15mm, dy=15mm

Maximum value of SAR (measured) = 5.36 W/kg

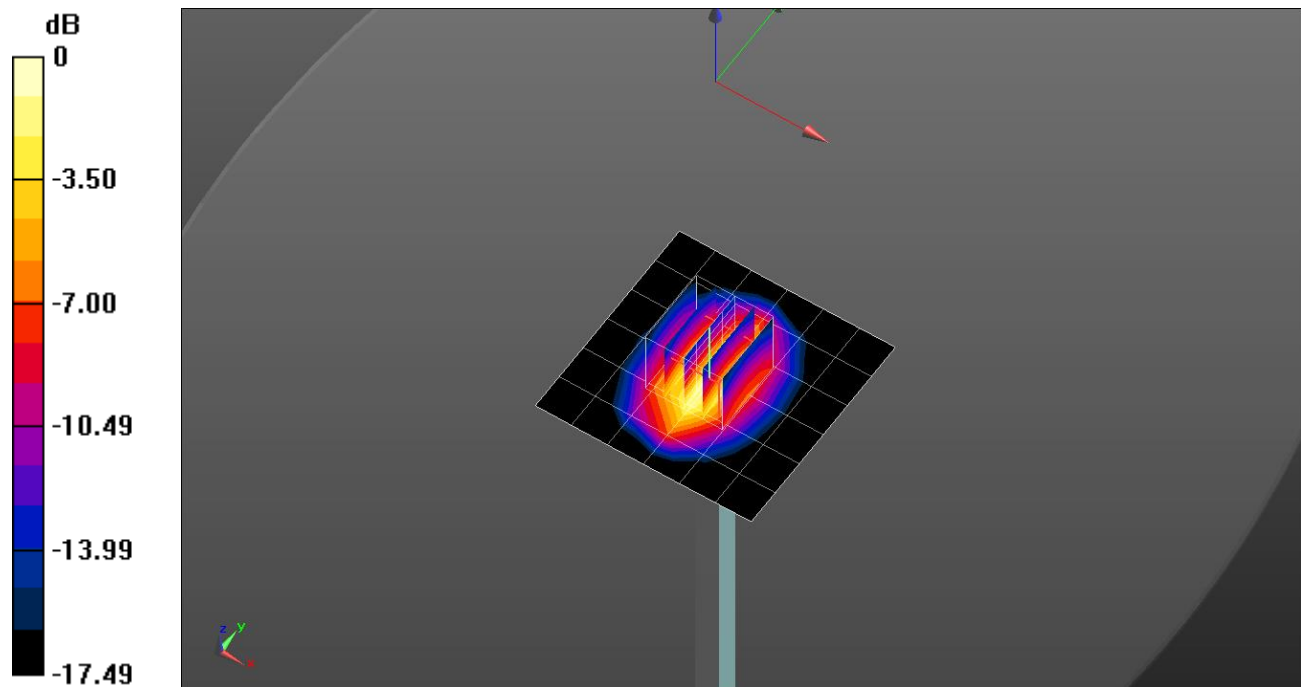
**Body/Pin=100 mW/Zoom Scan (5x5x7)/Cube 0:** Measurement grid: dx=8mm, dy=8mm, dz=5mm

Reference Value = 60.44 V/m; Power Drift = 0.00 dB

Peak SAR (extrapolated) = 7.43 W/kg

**SAR(1 g) = 4.21 W/kg; SAR(10 g) = 2.21 W/kg**

Maximum value of SAR (measured) = 5.61 W/kg



0 dB = 5.61 W/kg = 7.49 dBW/kg

### 20190218\_SystemPerformanceCheck-D1900V2 SN 5d199

Frequency: 1900 MHz; Duty Cycle: 1:1

**Body/Pin=100 mW/Z Scan (1x1x21):** Measurement grid: dx=20mm, dy=20mm, dz=5mm  
Maximum value of SAR (measured) = 5.62 W/kg

