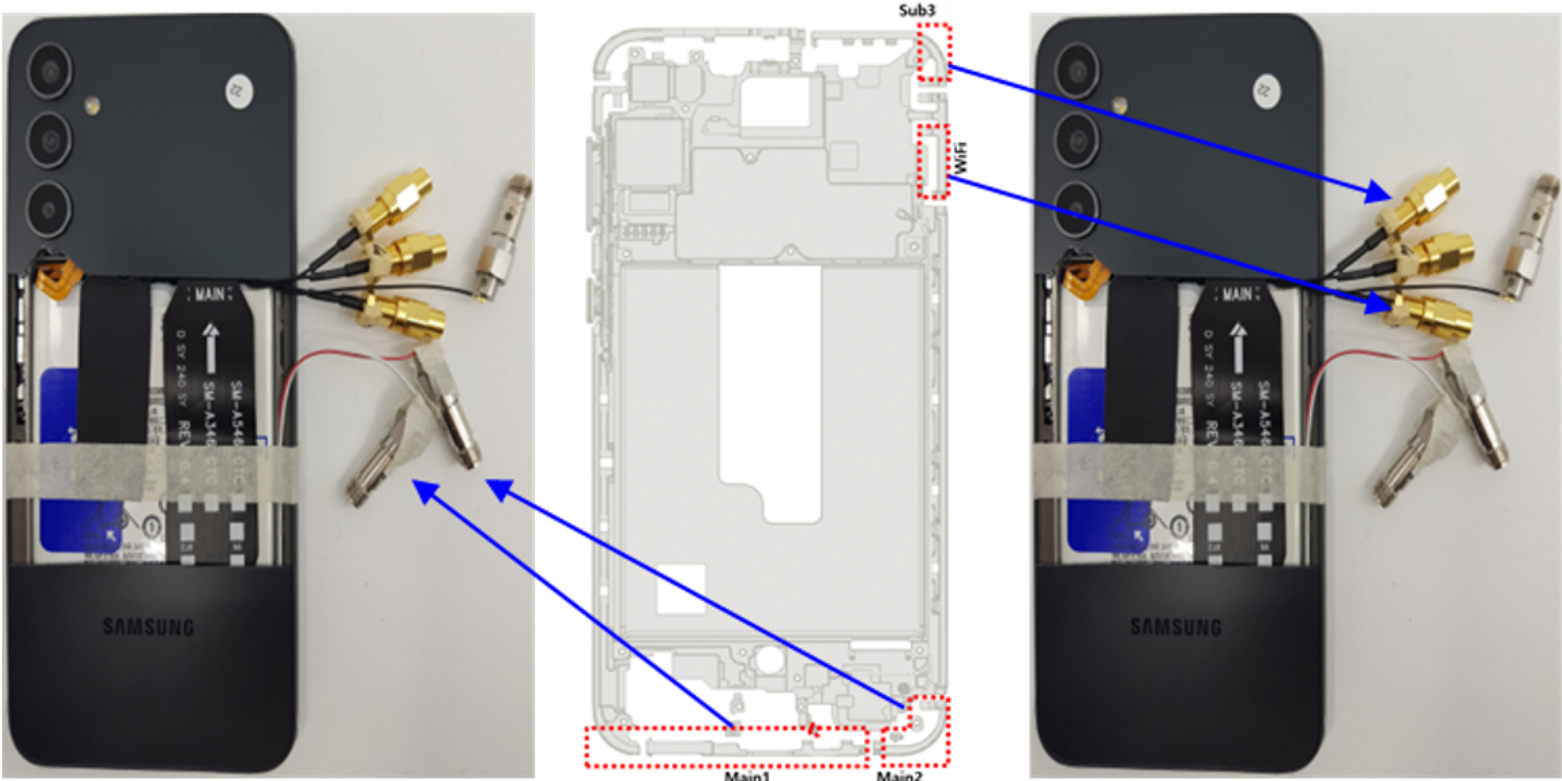


Appendix Antenna specification Setup photo

1. Main/Sub Antenna Setup photo

Samsung has a system that can measure VSWR using RTS60 chamber and ZNB 8 network analyzer for passive measurement. In order to measure the VSWR of each antenna, the lab connects the coaxial cable to the point in contact with the antenna on the main board. The VSWR is measured through the coaxial cable connected in the set. At this time, SM-A346B is assembled in the same state as the user environment



2. BT/WiFi Antenna Setup photo

Samsung Antenna Lab has a system that can measure VSWR using KSS chamber and E5071B network analyzer. In order to measure the VSWR of each antenna, the lab connects the coaxial cable to the point in contact with the antenna on the main board. The VSWR is measured through the coaxial cable connected in the set. At this time, SM-A346B is assembled in the same state as the user environment.

