

GSM 850: GPRS-FDD (TDMA, GMSK, TN 0-1), CHEEK

Exposure Conditions

Band	GSM 850	TSL Permittivity	42.6
Frequency [MHz] Channel Number	836.600 190	TSL Conductivity [S/m]	0.917
Group UID	GSM 10024-DAC	Phantom Section TSL	RightHead HSL
Conversion Factor	8.63	Test Distance [mm]	0.00

Hardware Setup

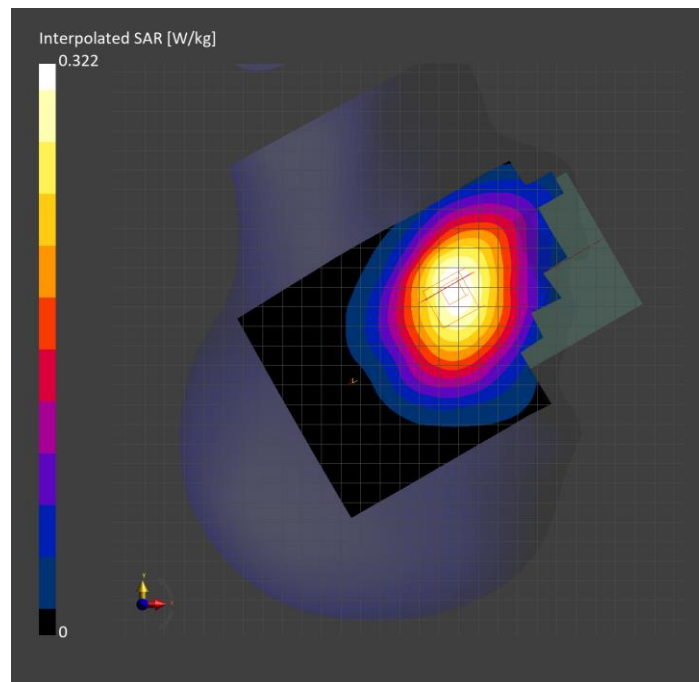
Probe Calibration Date	EX3DV4 - SN7463 2023-04-19	Phantom	Twin-SAM V8.0 (30deg probe tilt)
DAE Calibration Date	DAE4 Sn1357 2023-01-27	TSL Type	HBBL-600-10000
Software Version	16.2.4.2524		

Scan Setup

	Area Scan	Zoom Scan
Grid Extents [mm]	120.0 x 210.0	30.0 x 30.0 x 30.0
Grid Steps [mm]	15.0 x 15.0	6.0 x 6.0 x 1.5
Sensor Surface [mm]	3.0	1.4
Graded Grid	N/A	Yes
M2/M1 [%]		96.9
Dist 3dB Peak [mm]		> 15.0
Peak SAR [W/kg] SAR Peak Location [mm]	N/A	0.322 [57.5, -258.4, -176.9]

Measurement Results

	Area Scan	Zoom Scan
psSAR1g [W/Kg]	0.263	0.279
psSAR10g [W/Kg]	0.180	0.221
Power Drift [dB]	N/A	0.04



GSM 850: GPRS-FDD (TDMA, GMSK, TN 0-1), BACK

Exposure Conditions

Band	GSM 850	TSL Permittivity	43.3
Frequency [MHz] Channel Number	836.600 190	TSL Conductivity [S/m]	0.939
Group UID	GSM 10024-DAC	Phantom Section TSL	Flat HSL
Conversion Factor	8.63	Test Distance [mm]	15.00

Hardware Setup

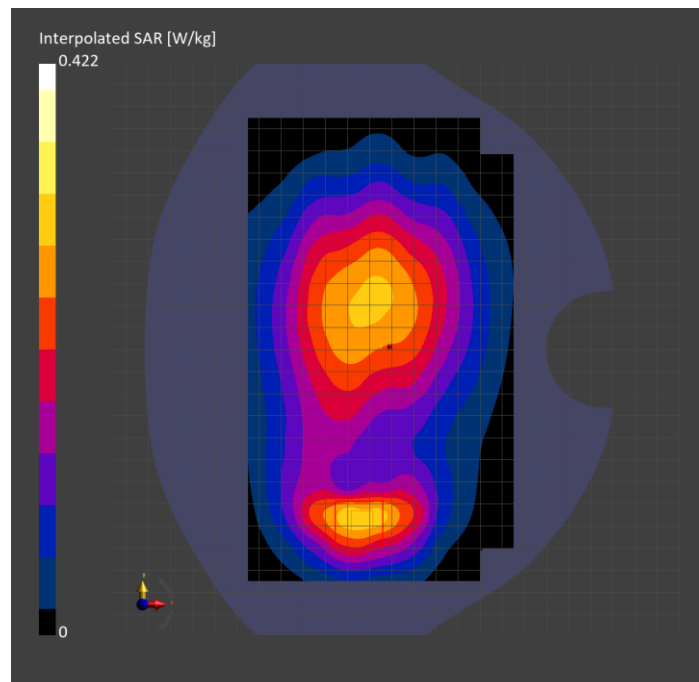
Probe Calibration Date	EX3DV4 - SN7463 2023-04-19	Phantom	Twin-SAM V8.0 (30deg probe tilt)
DAE Calibration Date	DAE4 Sn1357 2023-01-27	TSL Type	HBBL-600-10000
Software Version	16.2.4.2524		

Scan Setup

	Area Scan	Zoom Scan
Grid Extents [mm]	120.0 x 210.0	30.0 x 30.0 x 30.0
Grid Steps [mm]	15.0 x 15.0	6.0 x 6.0 x 1.5
Sensor Surface [mm]	3.0	1.4
Graded Grid	N/A	Yes
M2/M1 [%]		91.0
Dist 3dB Peak [mm]		13.2
Peak SAR [W/kg] SAR Peak Location [mm]	N/A	0.422 [-31.9, -78.3, -207.0]

Measurement Results

	Area Scan	Zoom Scan
psSAR1g [W/Kg]	0.262	0.275
psSAR10g [W/Kg]	0.181	0.169
Power Drift [dB]	N/A	-0.00



GSM 850: GPRS-FDD (TDMA, GMSK, TN 0-1-2), BACK

Exposure Conditions

Band	GSM 850	TSL Permittivity	43.3
Frequency [MHz] Channel Number	836.600 190	TSL Conductivity [S/m]	0.939
Group UID	GSM 10027-DAC	Phantom Section TSL	Flat HSL
Conversion Factor	8.63	Test Distance [mm]	10.00

Hardware Setup

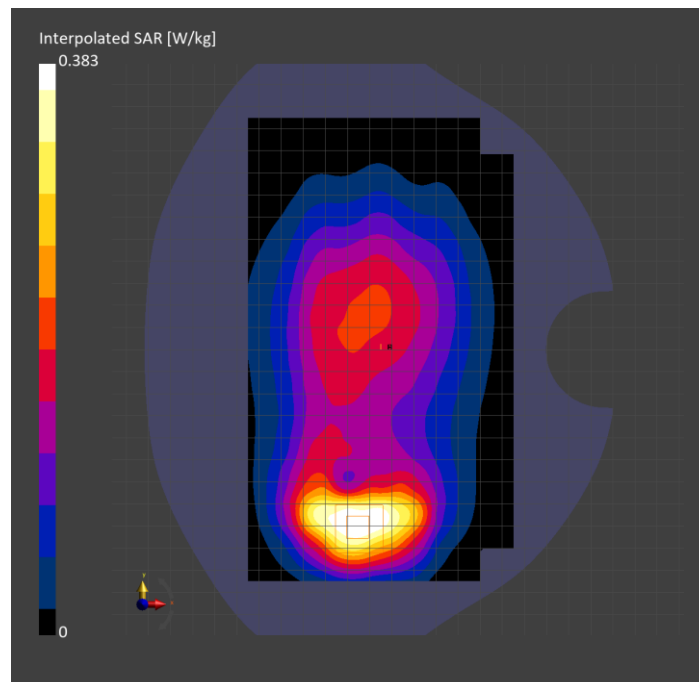
Probe Calibration Date	EX3DV4 - SN7463 2023-04-19	Phantom	Twin-SAM V8.0 (30deg probe tilt)
DAE Calibration Date	DAE4 Sn1357 2023-01-27	TSL Type	HBBL-600-10000
Software Version	16.2.4.2524		

Scan Setup

	Area Scan	Zoom Scan
Grid Extents [mm]	120.0 x 210.0	30.0 x 30.0 x 30.0
Grid Steps [mm]	15.0 x 15.0	6.0 x 6.0 x 1.5
Sensor Surface [mm]	3.0	1.4
Graded Grid	N/A	Yes
M2/M1 [%]		89.4
Dist 3dB Peak [mm]		9.6
Peak SAR [W/kg] SAR Peak Location [mm]	N/A	0.383 [-35.5, -79.4, -207.0]

Measurement Results

	Area Scan	Zoom Scan
psSAR1g [W/Kg]	0.194	0.222
psSAR10g [W/Kg]	0.127	0.127
Power Drift [dB]	N/A	-0.02



GSM 850: GPRS-FDD (TDMA, GMSK, TN 0-1-2), BACK

Exposure Conditions

Band	GSM 850	TSL Permittivity	39.9
Frequency [MHz] Channel Number	836.600 190	TSL Conductivity [S/m]	0.867
Group UID	GSM 10027-DAC	Phantom Section TSL	Flat HSL
Conversion Factor	9.42	Test Distance [mm]	0.00

Hardware Setup

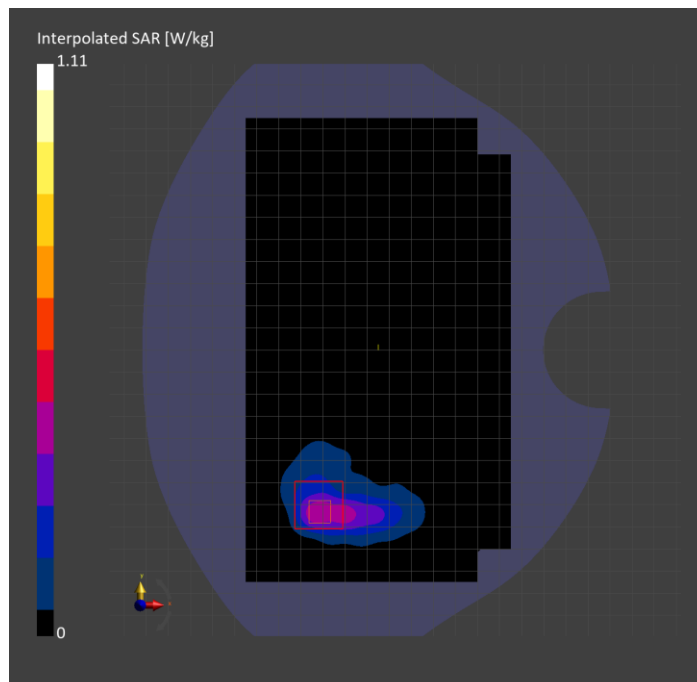
Probe Calibration Date	EX3DV4 - SN7356 2023-03-17	Phantom	Twin-SAM V8.0 (30deg probe tilt)
DAE Calibration Date	DAE4 Sn1674 2023-05-11	TSL Type	HBBL-600-10000
Software Version	16.2.4.2524		

Scan Setup

	Area Scan	Zoom Scan
Grid Extents [mm]	120.0 x 210.0	30.0 x 30.0 x 30.0
Grid Steps [mm]	15.0 x 15.0	6.0 x 6.0 x 1.5
Sensor Surface [mm]	3.0	1.4
Graded Grid	N/A	Yes
M2/M1 [%]		56.3
Dist 3dB Peak [mm]		4.8
Peak SAR [W/kg] SAR Peak Location [mm]	N/A	1.11 [-61.0, -64.5, -207.0]

Measurement Results

	Area Scan	Zoom Scan
psSAR1g [W/Kg]	0.364	0.319
psSAR10g [W/Kg]	0.206	0.149
Power Drift [dB]	N/A	-0.04



GSM 850: GPRS-FDD (TDMA, GMSK, TN 0-1-2), BACK

Exposure Conditions

Band	GSM 850	TSL Permittivity	39.9
Frequency [MHz] Channel Number	836.600 190	TSL Conductivity [S/m]	0.867
Group UID	GSM 10027-DAC	Phantom Section TSL	Flat HSL
Conversion Factor	9.42	Test Distance [mm]	16.00

Hardware Setup

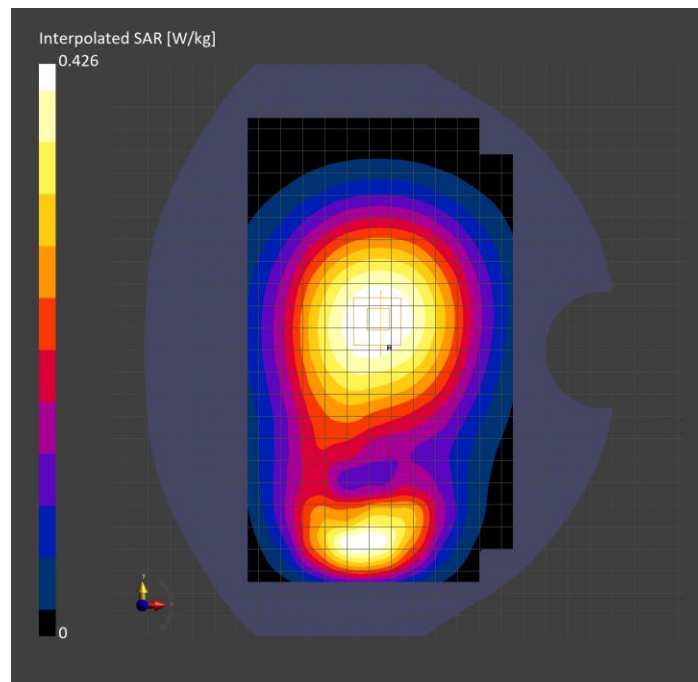
Probe Calibration Date	EX3DV4 - SN7356 2023-03-17	Phantom	Twin-SAM V8.0 (30deg probe tilt)
DAE Calibration Date	DAE4 Sn1674 2023-05-11	TSL Type	HBBL-600-10000
Software Version	16.2.4.2524		

Scan Setup

	Area Scan	Zoom Scan
Grid Extents [mm]	120.0 x 210.0	30.0 x 30.0 x 30.0
Grid Steps [mm]	15.0 x 15.0	6.0 x 6.0 x 1.5
Sensor Surface [mm]	3.0	1.4
Graded Grid	N/A	Yes
M2/M1 [%]		91.3
Dist 3dB Peak [mm]		> 15.0
Peak SAR [W/kg] SAR Peak Location [mm]	N/A	0.426 [-24.7, 15.0, -207.0]

Measurement Results

	Area Scan	Zoom Scan
psSAR1g [W/Kg]	0.315	0.329
psSAR10g [W/Kg]	0.223	0.253
Power Drift [dB]	N/A	-0.04



PCS 1900: GPRS-FDD (TDMA, GMSK, TN 0), CHEEK

Exposure Conditions

Band	PCS 1900	TSL Permittivity	38.6
Frequency [MHz] Channel Number	1880.000 661	TSL Conductivity [S/m]	1.40
Group UID	GSM 10023-DAC	Phantom Section TSL	LeftHead HSL
Conversion Factor	8.38	Test Distance [mm]	0.00

Hardware Setup

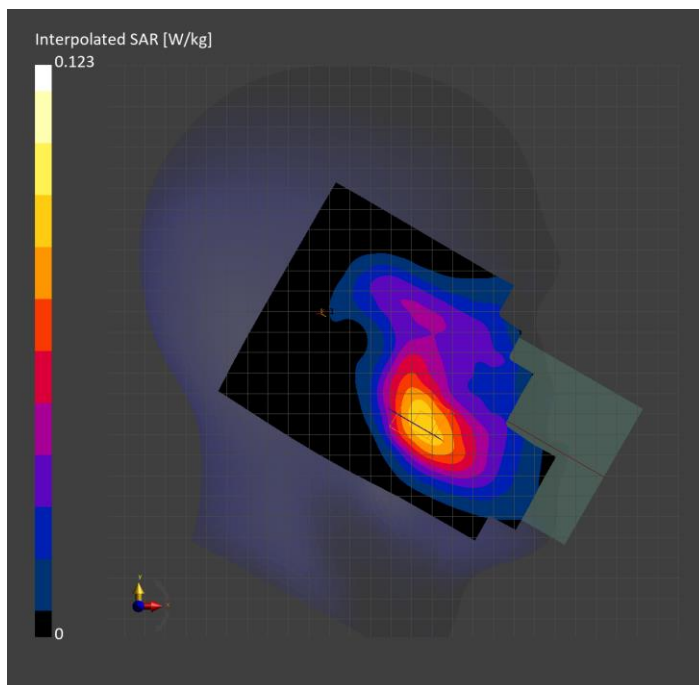
Probe Calibration Date	EX3DV4 - SN7356 2023-03-17	Phantom	Twin-SAM V8.0 (30deg probe tilt)
DAE Calibration Date	DAE4 Sn1674 2023-05-11	TSL Type	HBBL-600-10000
Software Version	16.2.4.2524		

Scan Setup

	Area Scan	Zoom Scan
Grid Extents [mm]	120.0 x 210.0	30.0 x 30.0 x 30.0
Grid Steps [mm]	15.0 x 15.0	6.0 x 6.0 x 1.5
Sensor Surface [mm]	3.0	1.4
Graded Grid	N/A	Yes
M2/M1 [%]		88.6
Dist 3dB Peak [mm]		13.2
Peak SAR [W/kg] SAR Peak Location [mm]	N/A	0.123 [57.4, 251.3, -174.0]

Measurement Results

	Area Scan	Zoom Scan
psSAR1g [W/Kg]	0.075	0.083
psSAR10g [W/Kg]	0.045	0.053
Power Drift [dB]	N/A	-0.14



PCS 1900: GPRS-FDD (TDMA, GMSK, TN 0), BACK

Exposure Conditions

Band	PCS 1900	TSL Permittivity	38.6
Frequency [MHz] Channel Number	1880.000 661	TSL Conductivity [S/m]	1.40
Group UID	GSM 10023-DAC	Phantom Section TSL	Flat HSL
Conversion Factor	8.38	Test Distance [mm]	15.00

Hardware Setup

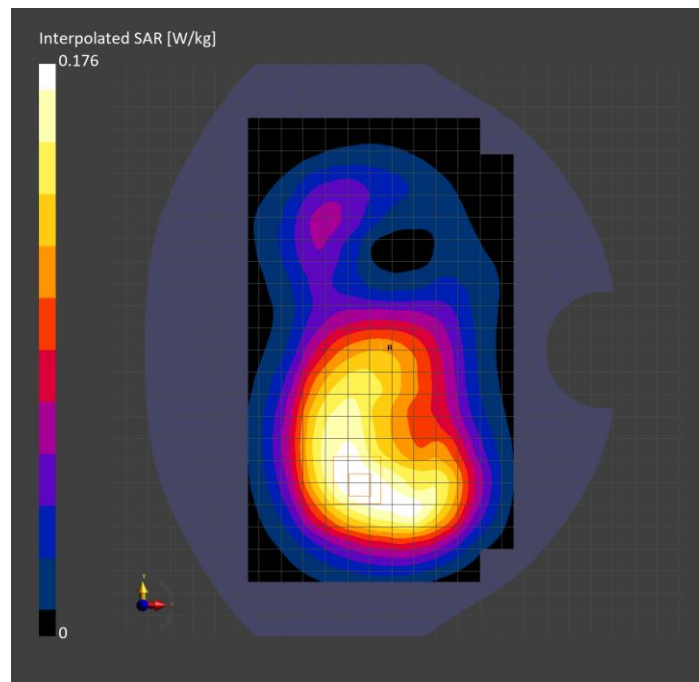
Probe Calibration Date	EX3DV4 - SN7356 2023-03-17	Phantom	Twin-SAM V8.0 (30deg probe tilt)
DAE Calibration Date	DAE4 Sn1674 2023-05-11	TSL Type	HBBL-600-10000
Software Version	16.2.4.2524		

Scan Setup

	Area Scan	Zoom Scan
Grid Extents [mm]	120.0 x 210.0	30.0 x 30.0 x 30.0
Grid Steps [mm]	15.0 x 15.0	6.0 x 6.0 x 1.5
Sensor Surface [mm]	3.0	1.4
Graded Grid	N/A	Yes
M2/M1 [%]		86.8
Dist 3dB Peak [mm]		> 15.0
Peak SAR [W/kg] SAR Peak Location [mm]	N/A	0.176 [-34.0, -62.7, -207.0]

Measurement Results

	Area Scan	Zoom Scan
psSAR1g [W/Kg]	0.111	0.115
psSAR10g [W/Kg]	0.069	0.075
Power Drift [dB]	N/A	-0.08



PCS 1900: GPRS-FDD (TDMA, GMSK, TN 0-1-2), EDGE BOTTOM

Exposure Conditions

Band	PCS 1900	TSL Permittivity	38.6
Frequency [MHz] Channel Number	1880.000 661	TSL Conductivity [S/m]	1.40
Group UID	GSM 10027-DAC	Phantom Section TSL	Flat HSL
Conversion Factor	8.38	Test Distance [mm]	10.00

Hardware Setup

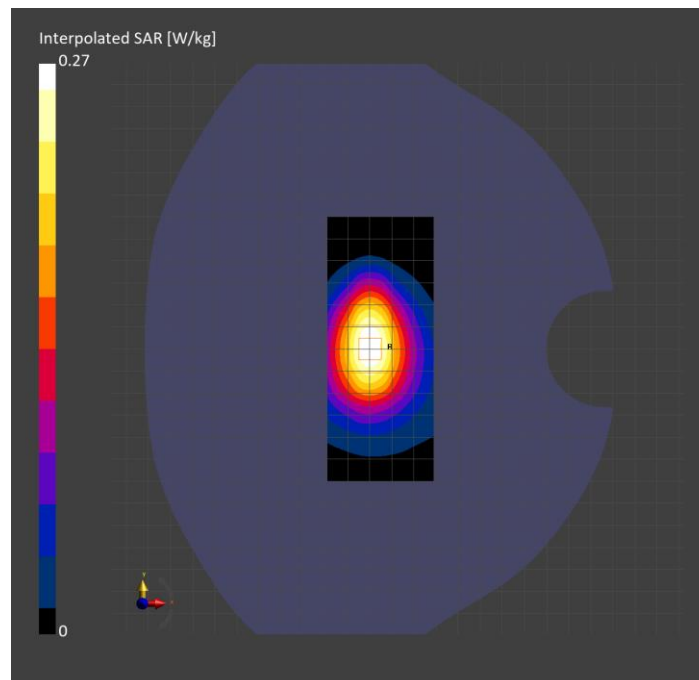
Probe Calibration Date	EX3DV4 - SN7356 2023-03-17	Phantom	Twin-SAM V8.0 (30deg probe tilt)
DAE Calibration Date	DAE4 Sn1674 2023-05-11	TSL Type	HBBL-600-10000
Software Version	16.2.4.2524		

Scan Setup

	Area Scan	Zoom Scan
Grid Extents [mm]	48.0 x 120.0	30.0 x 30.0 x 30.0
Grid Steps [mm]	8.0 x 15.0	6.0 x 6.0 x 1.5
Sensor Surface [mm]	3.0	1.4
Graded Grid	N/A	Yes
M2/M1 [%]		86.1
Dist 3dB Peak [mm]		14.5
Peak SAR [W/kg] SAR Peak Location [mm]	N/A	0.270 [-30.4, 2.1, -207.0]

Measurement Results

	Area Scan	Zoom Scan
psSAR1g [W/Kg]	0.166	0.168
psSAR10g [W/Kg]	0.095	0.100
Power Drift [dB]	N/A	-0.03



Band 2: UMTS-FDD (WCDMA), CHEEK

Exposure Conditions

Band	Band 2	TSL Permittivity	38.6
Frequency [MHz] Channel Number	1880.000 9400	TSL Conductivity [S/m]	1.40
Group UID	WCDMA 10011-CAC	Phantom Section TSL	LeftHead HSL
Conversion Factor	8.38	Test Distance [mm]	0.00

Hardware Setup

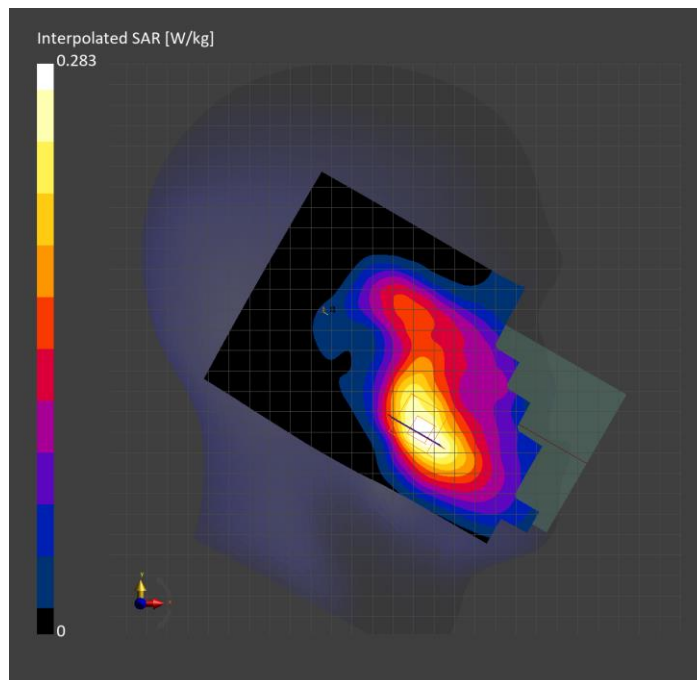
Probe Calibration Date	EX3DV4 - SN7356 2023-03-17	Phantom	Twin-SAM V8.0 (30deg probe tilt)
DAE Calibration Date	DAE4 Sn1674 2023-05-11	TSL Type	HBBL-600-10000
Software Version	16.2.4.2524		

Scan Setup

	Area Scan	Zoom Scan
Grid Extents [mm]	120.0 x 210.0	30.0 x 30.0 x 30.0
Grid Steps [mm]	15.0 x 15.0	6.0 x 6.0 x 1.5
Sensor Surface [mm]	3.0	1.4
Graded Grid	N/A	Yes
M2/M1 [%]		90.8
Dist 3dB Peak [mm]		13.9
Peak SAR [W/kg] SAR Peak Location [mm]	N/A	0.283 [56.1, 246.9, -173.7]

Measurement Results

	Area Scan	Zoom Scan
psSAR1g [W/Kg]	0.194	0.201
psSAR10g [W/Kg]	0.114	0.132
Power Drift [dB]	N/A	-0.02



Band 2: UMTS-FDD (WCDMA), BACK

Exposure Conditions

Band	Band 2	TSL Permittivity	38.6
Frequency [MHz] Channel Number	1880.000 9400	TSL Conductivity [S/m]	1.40
Group UID	WCDMA 10011-CAC	Phantom Section TSL	Flat HSL
Conversion Factor	8.38	Test Distance [mm]	15.00

Hardware Setup

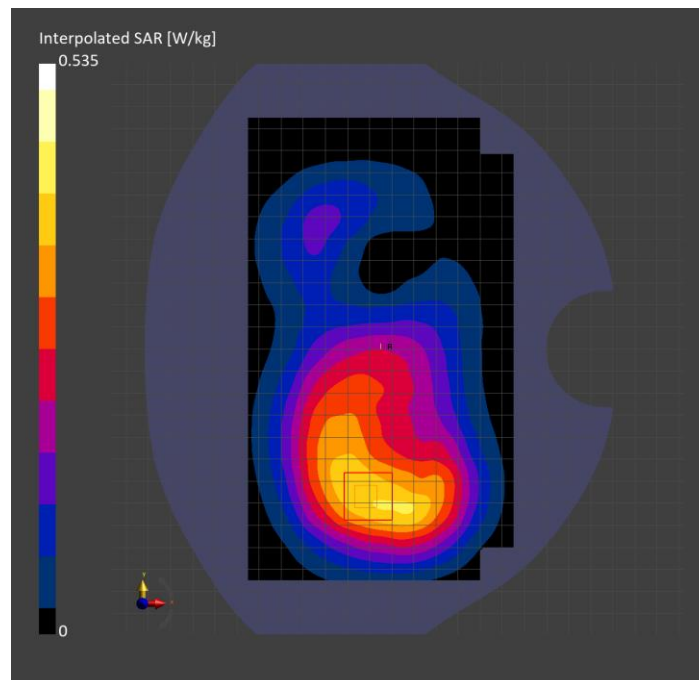
Probe Calibration Date	EX3DV4 - SN7356 2023-03-17	Phantom	Twin-SAM V8.0 (30deg probe tilt)
DAE Calibration Date	DAE4 Sn1674 2023-05-11	TSL Type	HBBL-600-10000
Software Version	16.2.4.2524		

Scan Setup

	Area Scan	Zoom Scan
Grid Extents [mm]	120.0 x 210.0	30.0 x 30.0 x 30.0
Grid Steps [mm]	15.0 x 15.0	6.0 x 6.0 x 1.5
Sensor Surface [mm]	3.0	1.4
Graded Grid	N/A	Yes
M2/M1 [%]		87.2
Dist 3dB Peak [mm]		> 15.0
Peak SAR [W/kg] SAR Peak Location [mm]	N/A	0.535 [-29.8, -69.4, -207.0]

Measurement Results

	Area Scan	Zoom Scan
psSAR1g [W/Kg]	0.340	0.353
psSAR10g [W/Kg]	0.212	0.231
Power Drift [dB]	N/A	0.01



Band 2: UMTS-FDD (WCDMA), EDGE BOTTOM

Exposure Conditions

Band	Band 2	TSL Permittivity	38.6
Frequency [MHz] Channel Number	1880.000 9400	TSL Conductivity [S/m]	1.40
Group UID	WCDMA 10011-CAC	Phantom Section TSL	Flat HSL
Conversion Factor	8.38	Test Distance [mm]	10.00

Hardware Setup

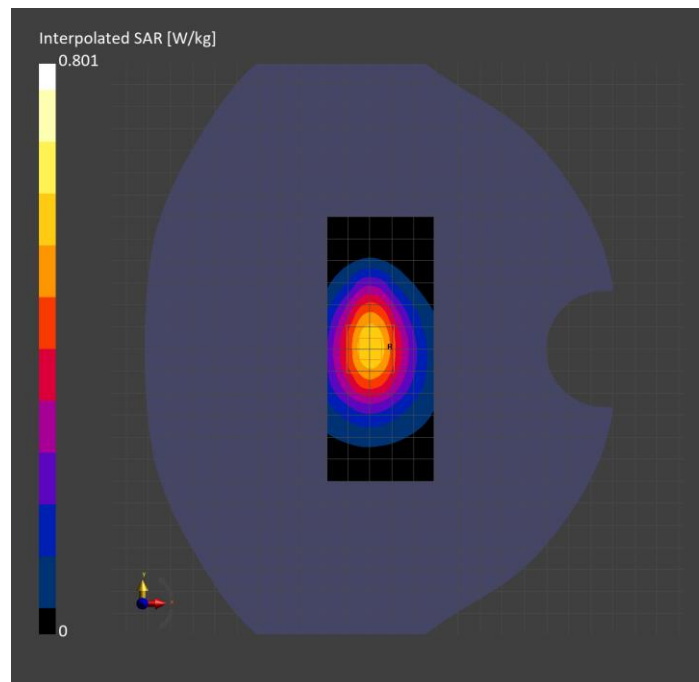
Probe Calibration Date	EX3DV4 - SN7356 2023-03-17	Phantom	Twin-SAM V8.0 (30deg probe tilt)
DAE Calibration Date	DAE4 Sn1674 2023-05-11	TSL Type	HBBL-600-10000
Software Version	16.2.4.2524		

Scan Setup

	Area Scan	Zoom Scan
Grid Extents [mm]	48.0 x 120.0	30.0 x 30.0 x 30.0
Grid Steps [mm]	8.0 x 15.0	6.0 x 6.0 x 1.5
Sensor Surface [mm]	3.0	1.4
Graded Grid	N/A	Yes
M2/M1 [%]		86.2
Dist 3dB Peak [mm]		15.6
Peak SAR [W/kg] SAR Peak Location [mm]	N/A	0.801 [-29.2, 1.6, -207.0]

Measurement Results

	Area Scan	Zoom Scan
psSAR1g [W/Kg]	0.493	0.500
psSAR10g [W/Kg]	0.283	0.299
Power Drift [dB]	N/A	-0.02



Band 4: UMTS-FDD (WCDMA), CHEEK

Exposure Conditions

Band	Band 4	TSL Permittivity	38.9
Frequency [MHz] Channel Number	1732.600 1413	TSL Conductivity [S/m]	1.32
Group UID	WCDMA 10011-CAC	Phantom Section TSL	LeftHead HSL
Conversion Factor	8.92	Test Distance [mm]	0.00

Hardware Setup

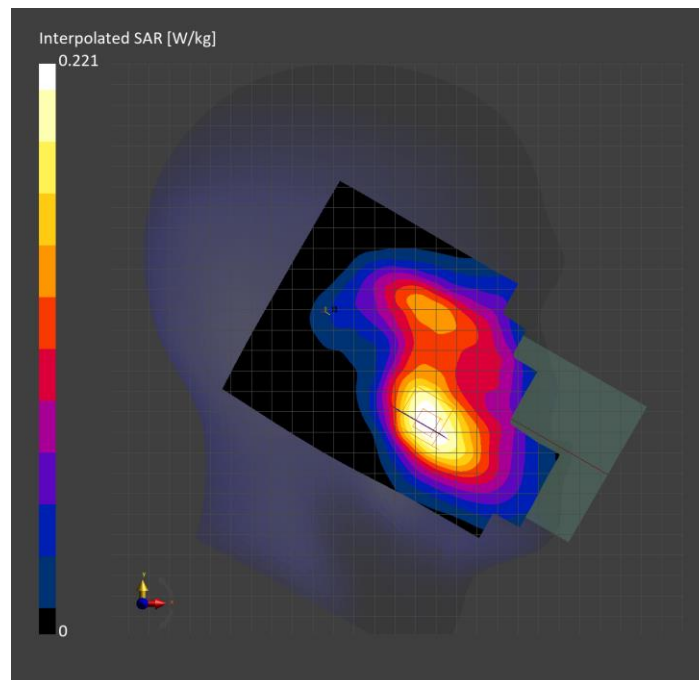
Probe Calibration Date	EX3DV4 - SN7356 2023-03-17	Phantom	Twin-SAM V8.0 (30deg probe tilt)
DAE Calibration Date	DAE4 Sn1674 2023-05-11	TSL Type	HBBL-600-10000
Software Version	16.2.4.2524		

Scan Setup

	Area Scan	Zoom Scan
Grid Extents [mm]	120.0 x 210.0	30.0 x 30.0 x 30.0
Grid Steps [mm]	15.0 x 15.0	6.0 x 6.0 x 1.5
Sensor Surface [mm]	3.0	1.4
Graded Grid	N/A	Yes
M2/M1 [%]		89.8
Dist 3dB Peak [mm]		14.0
Peak SAR [W/kg] SAR Peak Location [mm]	N/A	0.221 [57.4, 251.3, -174.0]

Measurement Results

	Area Scan	Zoom Scan
psSAR1g [W/Kg]	0.142	0.153
psSAR10g [W/Kg]	0.087	0.101
Power Drift [dB]	N/A	-0.00



Band 4: UMTS-FDD (WCDMA), BACK

Exposure Conditions

Band	Band 4	TSL Permittivity	38.9
Frequency [MHz] Channel Number	1732.600 1413	TSL Conductivity [S/m]	1.32
Group UID	WCDMA 10011-CAC	Phantom Section TSL	Flat HSL
Conversion Factor	8.92	Test Distance [mm]	15.00

Hardware Setup

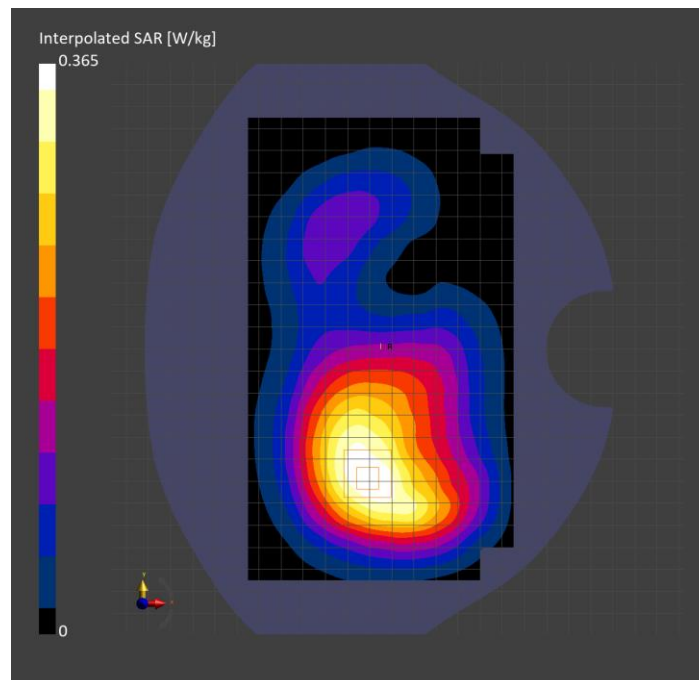
Probe Calibration Date	EX3DV4 - SN7356 2023-03-17	Phantom	Twin-SAM V8.0 (30deg probe tilt)
DAE Calibration Date	DAE4 Sn1674 2023-05-11	TSL Type	HBBL-600-10000
Software Version	16.2.4.2524		

Scan Setup

	Area Scan	Zoom Scan
Grid Extents [mm]	120.0 x 210.0	30.0 x 30.0 x 30.0
Grid Steps [mm]	15.0 x 15.0	6.0 x 6.0 x 1.5
Sensor Surface [mm]	3.0	1.4
Graded Grid	N/A	Yes
M2/M1 [%]		87.8
Dist 3dB Peak [mm]		> 15.0
Peak SAR [W/kg] SAR Peak Location [mm]	N/A	0.365 [-31.6, -60.0, -207.0]

Measurement Results

	Area Scan	Zoom Scan
psSAR1g [W/Kg]	0.235	0.247
psSAR10g [W/Kg]	0.149	0.165
Power Drift [dB]	N/A	-0.02



Band 4: UMTS-FDD (WCDMA), EDGE BOTTOM

Exposure Conditions

Band	Band 4	TSL Permittivity	38.9
Frequency [MHz] Channel Number	1732.600 1413	TSL Conductivity [S/m]	1.32
Group UID	WCDMA 10011-CAC	Phantom Section TSL	Flat HSL
Conversion Factor	8.92	Test Distance [mm]	10.00

Hardware Setup

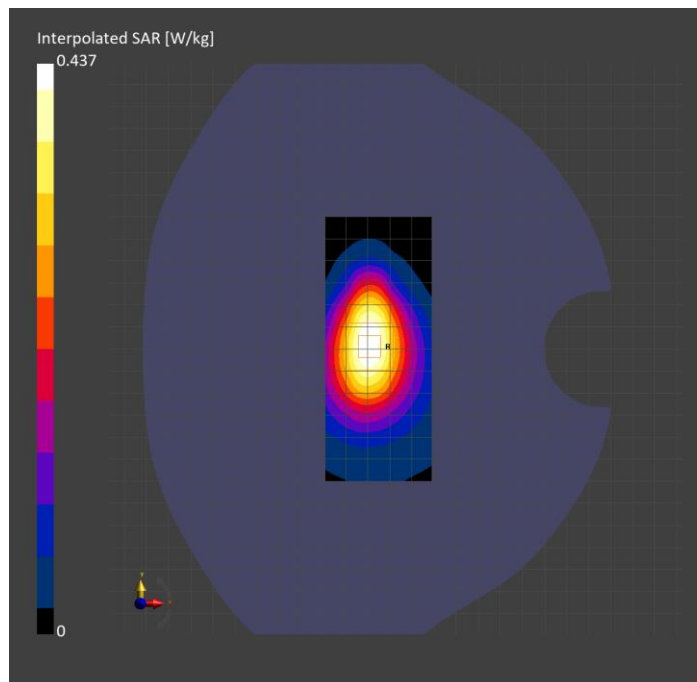
Probe Calibration Date	EX3DV4 - SN7356 2023-03-17	Phantom	Twin-SAM V8.0 (30deg probe tilt)
DAE Calibration Date	DAE4 Sn1674 2023-05-11	TSL Type	HBBL-600-10000
Software Version	16.2.4.2524		

Scan Setup

	Area Scan	Zoom Scan
Grid Extents [mm]	48.0 x 120.0	30.0 x 30.0 x 30.0
Grid Steps [mm]	8.0 x 15.0	6.0 x 6.0 x 1.5
Sensor Surface [mm]	3.0	1.4
Graded Grid	N/A	Yes
M2/M1 [%]		86.4
Dist 3dB Peak [mm]		15.6
Peak SAR [W/kg] SAR Peak Location [mm]	N/A	0.437 [-28.9, 1.6, -207.0]

Measurement Results

	Area Scan	Zoom Scan
psSAR1g [W/Kg]	0.273	0.276
psSAR10g [W/Kg]	0.160	0.168
Power Drift [dB]	N/A	-0.02



Band 5: UMTS-FDD (WCDMA), CHEEK

Exposure Conditions

Band	Band 5	TSL Permittivity	43.3
Frequency [MHz] Channel Number	836.600 4183	TSL Conductivity [S/m]	0.939
Group UID	WCDMA 10011-CAC	Phantom Section TSL	RightHead HSL
Conversion Factor	8.63	Test Distance [mm]	0.00

Hardware Setup

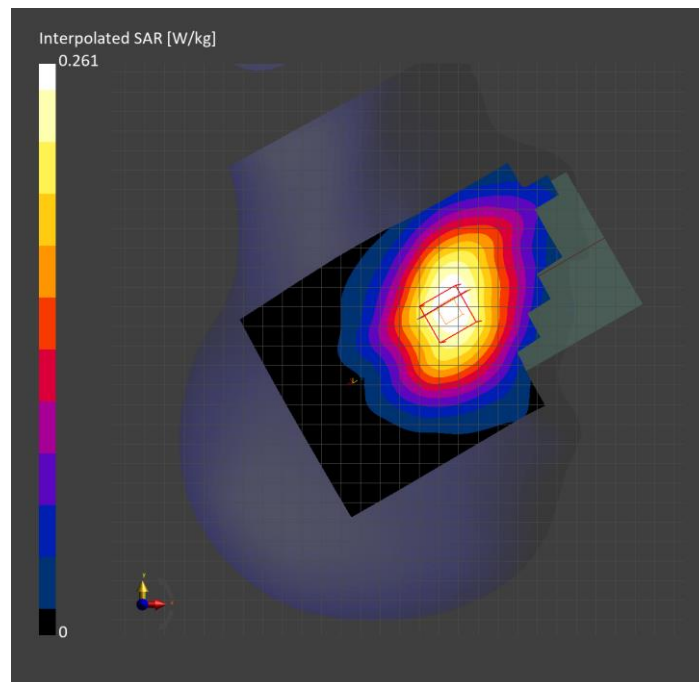
Probe Calibration Date	EX3DV4 - SN7463 2023-04-19	Phantom	Twin-SAM V8.0 (30deg probe tilt)
DAE Calibration Date	DAE4 Sn1357 2023-01-27	TSL Type	HBBL-600-10000
Software Version	16.2.4.2524		

Scan Setup

	Area Scan	Zoom Scan
Grid Extents [mm]	120.0 x 210.0	30.0 x 30.0 x 30.0
Grid Steps [mm]	15.0 x 15.0	6.0 x 6.0 x 1.5
Sensor Surface [mm]	3.0	1.4
Graded Grid	N/A	Yes
M2/M1 [%]		99.2
Dist 3dB Peak [mm]		> 15.0
Peak SAR [W/kg] SAR Peak Location [mm]	N/A	0.261 [54.2, -268.5, -175.9]

Measurement Results

	Area Scan	Zoom Scan
psSAR1g [W/Kg]	0.213	0.230
psSAR10g [W/Kg]	0.148	0.185
Power Drift [dB]	N/A	-0.07



Band 5: UMTS-FDD (WCDMA), BACK

Exposure Conditions

Band	Band 5	TSL Permittivity	43.3
Frequency [MHz] Channel Number	836.600 4183	TSL Conductivity [S/m]	0.939
Group UID	WCDMA 10011-CAC	Phantom Section TSL	Flat HSL
Conversion Factor	8.63	Test Distance [mm]	15.00

Hardware Setup

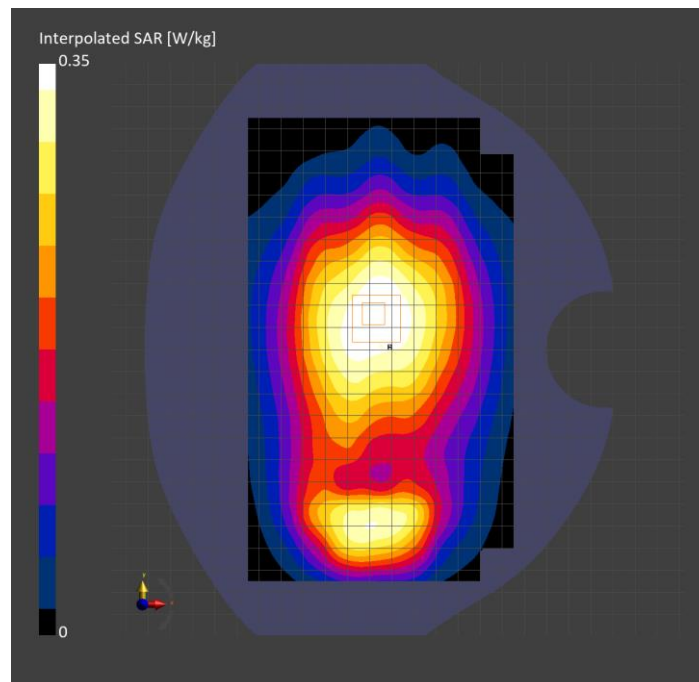
Probe Calibration Date	EX3DV4 - SN7463 2023-04-19	Phantom	Twin-SAM V8.0 (30deg probe tilt)
DAE Calibration Date	DAE4 Sn1357 2023-01-27	TSL Type	HBBL-600-10000
Software Version	16.2.4.2524		

Scan Setup

	Area Scan	Zoom Scan
Grid Extents [mm]	120.0 x 210.0	30.0 x 30.0 x 30.0
Grid Steps [mm]	15.0 x 15.0	6.0 x 6.0 x 1.5
Sensor Surface [mm]	3.0	1.4
Graded Grid	N/A	Yes
M2/M1 [%]		97.9
Dist 3dB Peak [mm]		> 15.0
Peak SAR [W/kg] SAR Peak Location [mm]	N/A	0.350 [-24.7, 16.5, -207.0]

Measurement Results

	Area Scan	Zoom Scan
psSAR1g [W/Kg]	0.281	0.299
psSAR10g [W/Kg]	0.199	0.236
Power Drift [dB]	N/A	-0.01



Band 5: UMTS-FDD (WCDMA), BACK

Exposure Conditions

Band	Band 5	TSL Permittivity	43.3
Frequency [MHz] Channel Number	846.600 4233	TSL Conductivity [S/m]	0.943
Group UID	WCDMA 10011-CAC	Phantom Section TSL	Flat HSL
Conversion Factor	8.63	Test Distance [mm]	10.00

Hardware Setup

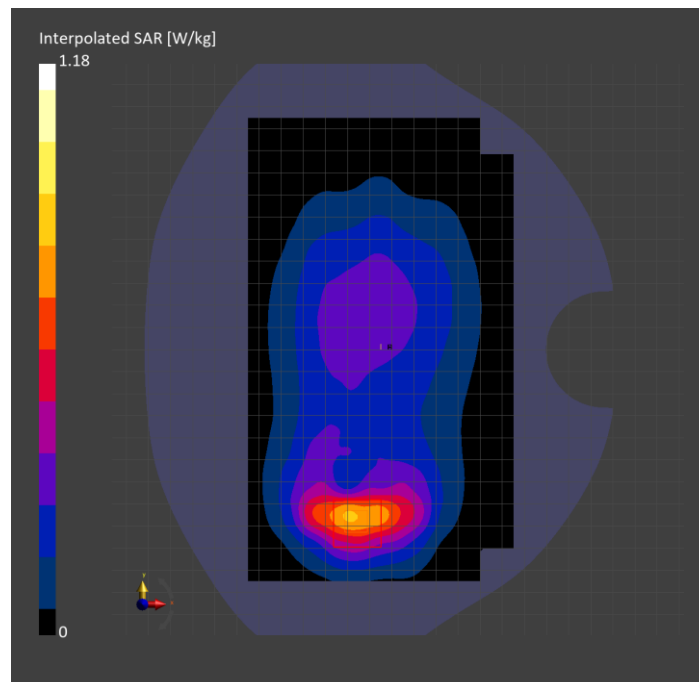
Probe Calibration Date	EX3DV4 - SN7463 2023-04-19	Phantom	Twin-SAM V8.0 (30deg probe tilt)
DAE Calibration Date	DAE4 Sn1357 2023-01-27	TSL Type	HBBL-600-10000
Software Version	16.2.4.2524		

Scan Setup

	Area Scan	Zoom Scan
Grid Extents [mm]	120.0 x 210.0	30.0 x 30.0 x 30.0
Grid Steps [mm]	15.0 x 15.0	6.0 x 6.0 x 1.5
Sensor Surface [mm]	3.0	1.4
Graded Grid	N/A	Yes
M2/M1 [%]		88.1
Dist 3dB Peak [mm]		10.8
Peak SAR [W/kg] SAR Peak Location [mm]	N/A	1.18 [-40.3, -78.0, -207.0]

Measurement Results

	Area Scan	Zoom Scan
psSAR1g [W/Kg]	0.673	0.699
psSAR10g [W/Kg]	0.417	0.404
Power Drift [dB]	N/A	0.01



Band 2: LTE-FDD (SC-FDMA, 1 RB, 20 MHz, QPSK) RBPosition:Mid AntennaCfg:SISO, BACK

Exposure Conditions

Band	Band 2	TSL Permittivity	38.8
Frequency [MHz] Channel Number	1880.000 18900	TSL Conductivity [S/m]	1.37
Group UID	LTE-FDD 10169-CAF	Phantom Section TSL	Flat HSL
Conversion Factor	8.38	Test Distance [mm]	15.00

Hardware Setup

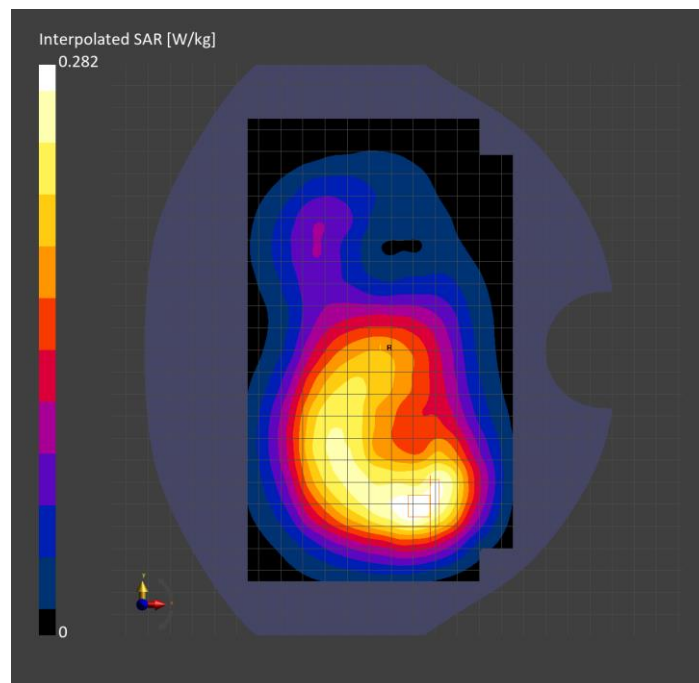
Probe Calibration Date	EX3DV4 - SN7356 2023-03-17	Phantom	Twin-SAM V8.0 (30deg probe tilt)
DAE Calibration Date	DAE4 Sn1674 2023-05-11	TSL Type	HBBL-600-10000
Software Version	16.2.4.2524		

Scan Setup

	Area Scan	Zoom Scan
Grid Extents [mm]	120.0 x 210.0	30.0 x 30.0 x 30.0
Grid Steps [mm]	15.0 x 15.0	6.0 x 6.0 x 1.5
Sensor Surface [mm]	3.0	1.4
Graded Grid	N/A	Yes
M2/M1 [%]		85.9
Dist 3dB Peak [mm]		17.8
Peak SAR [W/kg] SAR Peak Location [mm]	N/A	0.282 [-2.2, -69.0, -207.0]

Measurement Results

	Area Scan	Zoom Scan
psSAR1g [W/Kg]	0.169	0.175
psSAR10g [W/Kg]	0.103	0.109
Power Drift [dB]	N/A	-0.15



Band 2: LTE-FDD (SC-FDMA, 1 RB, 20 MHz, QPSK) RBPosition:Mid AntennaCfg:SISO, EDGE BOTTOM

Exposure Conditions

Band	Band 2	TSL Permittivity	38.6
Frequency [MHz] Channel Number	1880.000 18900	TSL Conductivity [S/m]	1.40
Group UID	LTE-FDD 10169-CAF	Phantom Section TSL	Flat HSL
Conversion Factor	8.38	Test Distance [mm]	10.00

Hardware Setup

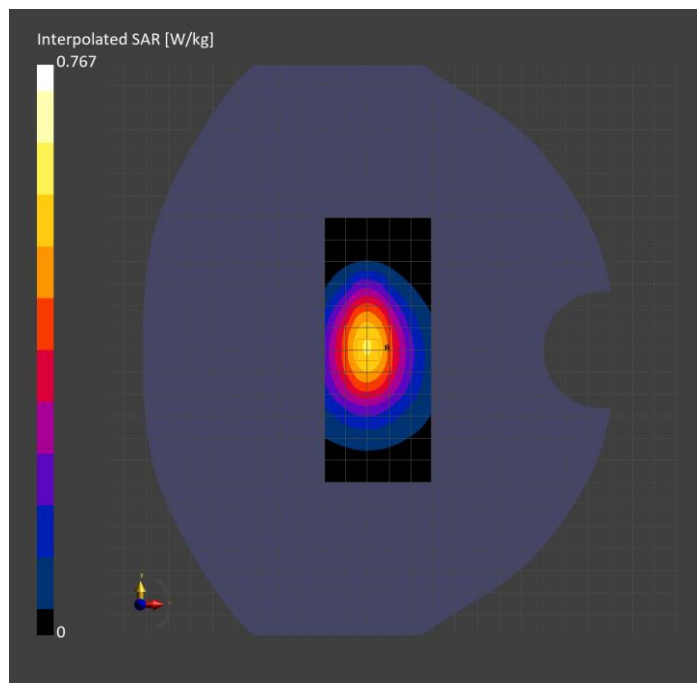
Probe Calibration Date	EX3DV4 - SN7356 2023-03-17	Phantom	Twin-SAM V8.0 (30deg probe tilt)
DAE Calibration Date	DAE4 Sn1674 2023-05-11	TSL Type	HBBL-600-10000
Software Version	16.2.4.2524		

Scan Setup

	Area Scan	Zoom Scan
Grid Extents [mm]	48.0 x 120.0	30.0 x 30.0 x 30.0
Grid Steps [mm]	8.0 x 15.0	6.0 x 6.0 x 1.5
Sensor Surface [mm]	3.0	1.4
Graded Grid	N/A	Yes
M2/M1 [%]		87.0
Dist 3dB Peak [mm]		15.6
Peak SAR [W/kg] SAR Peak Location [mm]	N/A	0.767 [-29.7, 1.6, -207.0]

Measurement Results

	Area Scan	Zoom Scan
psSAR1g [W/Kg]	0.483	0.487
psSAR10g [W/Kg]	0.278	0.292
Power Drift [dB]	N/A	-0.01



Band 2: LTE-FDD (SC-FDMA, 50% RB, 20 MHz, QPSK) RBPosition:Mid AntennaCfg:SISO, CHEEK

Exposure Conditions

Band	Band 2	TSL Permittivity	41.2
Frequency [MHz] Channel Number	1880.000 18900	TSL Conductivity [S/m]	1.43
Group UID	LTE-FDD 10297-AAE	Phantom Section TSL	RightHead HSL
Conversion Factor	8.38	Test Distance [mm]	0.00

Hardware Setup

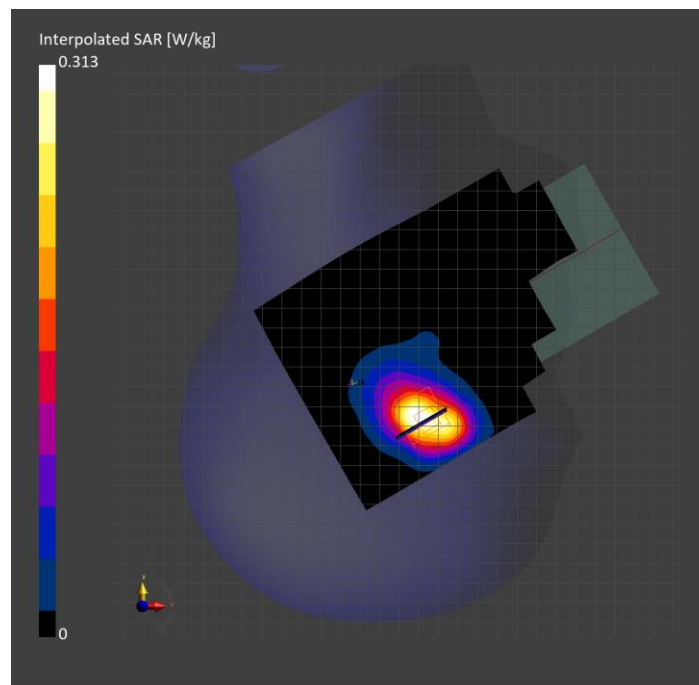
Probe Calibration Date	EX3DV4 - SN7356 2023-03-17	Phantom	Twin-SAM V8.0 (30deg probe tilt)
DAE Calibration Date	DAE4 Sn1674 2023-05-11	TSL Type	HBBL-600-10000
Software Version	16.2.4.2524		

Scan Setup

	Area Scan	Zoom Scan
Grid Extents [mm]	120.0 x 210.0	30.0 x 30.0 x 30.0
Grid Steps [mm]	15.0 x 15.0	6.0 x 6.0 x 1.5
Sensor Surface [mm]	3.0	1.4
Graded Grid	N/A	Yes
M2/M1 [%]		85.3
Dist 3dB Peak [mm]		8.7
Peak SAR [W/kg] SAR Peak Location [mm]	N/A	0.313 [47.3, -327.1, -174.6]

Measurement Results

	Area Scan	Zoom Scan
psSAR1g [W/Kg]	0.141	0.168
psSAR10g [W/Kg]	0.077	0.086
Power Drift [dB]	N/A	0.03



**Band 5: LTE-FDD (SC-FDMA, 1 RB, 10 MHz, QPSK) RBPosition:Low
AntennaCfg:SISO, CHEEK**

Exposure Conditions

Band	Band 5	TSL Permittivity	42.6
Frequency [MHz] Channel Number	836.500 20525	TSL Conductivity [S/m]	0.917
Group UID	LTE-FDD 10175-CAH	Phantom Section TSL	RightHead HSL
Conversion Factor	8.63	Test Distance [mm]	0.00

Hardware Setup

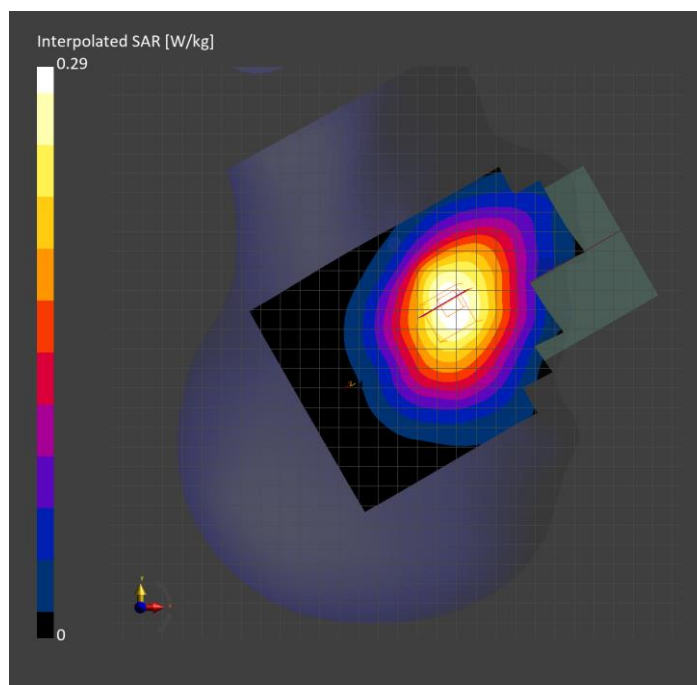
Probe Calibration Date	EX3DV4 - SN7463 2023-04-19	Phantom	Twin-SAM V8.0 (30deg probe tilt)
DAE Calibration Date	DAE4 Sn1357 2023-01-27	TSL Type	HBBL-600-10000
Software Version	16.2.4.2524		

Scan Setup

	Area Scan	Zoom Scan
Grid Extents [mm]	120.0 x 210.0	30.0 x 30.0 x 30.0
Grid Steps [mm]	15.0 x 15.0	6.0 x 6.0 x 1.5
Sensor Surface [mm]	3.0	1.4
Graded Grid	N/A	Yes
M2/M1 [%]		94.6
Dist 3dB Peak [mm]		> 15.0
Peak SAR [W/kg] SAR Peak Location [mm]	N/A	0.290 [55.5, -266.4, -175.7]

Measurement Results

	Area Scan	Zoom Scan
psSAR1g [W/Kg]	0.241	0.246
psSAR10g [W/Kg]	0.165	0.195
Power Drift [dB]	N/A	0.05



Band 5: LTE-FDD (SC-FDMA, 1 RB, 10 MHz, QPSK) RBPosition:Low AntennaCfg:SISO, BACK

Exposure Conditions

Band	Band 5	TSL Permittivity	43.3
Frequency [MHz] Channel Number	836.500 20525	TSL Conductivity [S/m]	0.939
Group UID	LTE-FDD 10175-CAH	Phantom Section TSL	Flat HSL
Conversion Factor	8.63	Test Distance [mm]	15.00

Hardware Setup

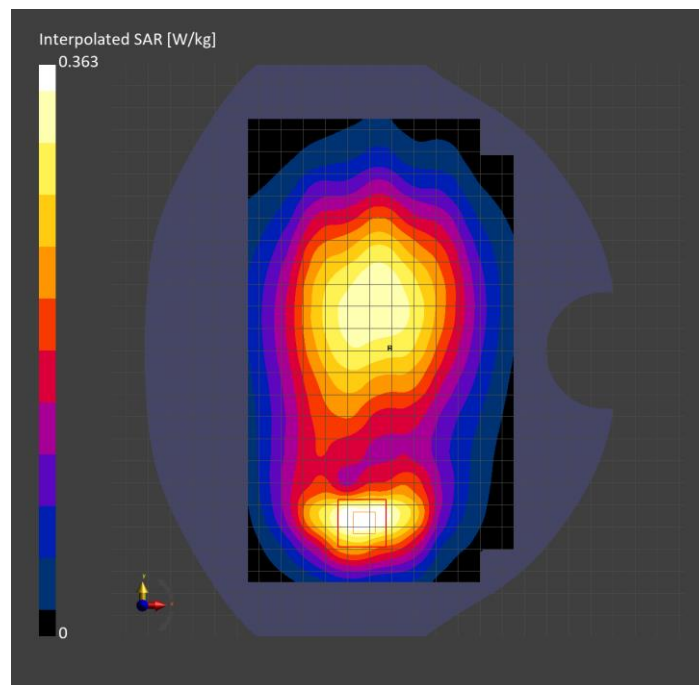
Probe Calibration Date	EX3DV4 - SN7463 2023-04-19	Phantom	Twin-SAM V8.0 (30deg probe tilt)
DAE Calibration Date	DAE4 Sn1357 2023-01-27	TSL Type	HBBL-600-10000
Software Version	16.2.4.2524		

Scan Setup

	Area Scan	Zoom Scan
Grid Extents [mm]	120.0 x 210.0	30.0 x 30.0 x 30.0
Grid Steps [mm]	15.0 x 15.0	6.0 x 6.0 x 1.5
Sensor Surface [mm]	3.0	1.4
Graded Grid	N/A	Yes
M2/M1 [%]		91.7
Dist 3dB Peak [mm]		13.0
Peak SAR [W/kg] SAR Peak Location [mm]	N/A	0.363 [-32.8, -75.9, -207.0]

Measurement Results

	Area Scan	Zoom Scan
psSAR1g [W/Kg]	0.232	0.241
psSAR10g [W/Kg]	0.153	0.149
Power Drift [dB]	N/A	0.01



Band 5: LTE-FDD (SC-FDMA, 1 RB, 10 MHz, QPSK) RBPosition:Low AntennaCfg:SISO, BACK

Exposure Conditions

Band	Band 5	TSL Permittivity	42.6
Frequency [MHz] Channel Number	836.500 20525	TSL Conductivity [S/m]	0.917
Group UID	LTE-FDD 10175-CAH	Phantom Section TSL	Flat HSL
Conversion Factor	8.63	Test Distance [mm]	10.00

Hardware Setup

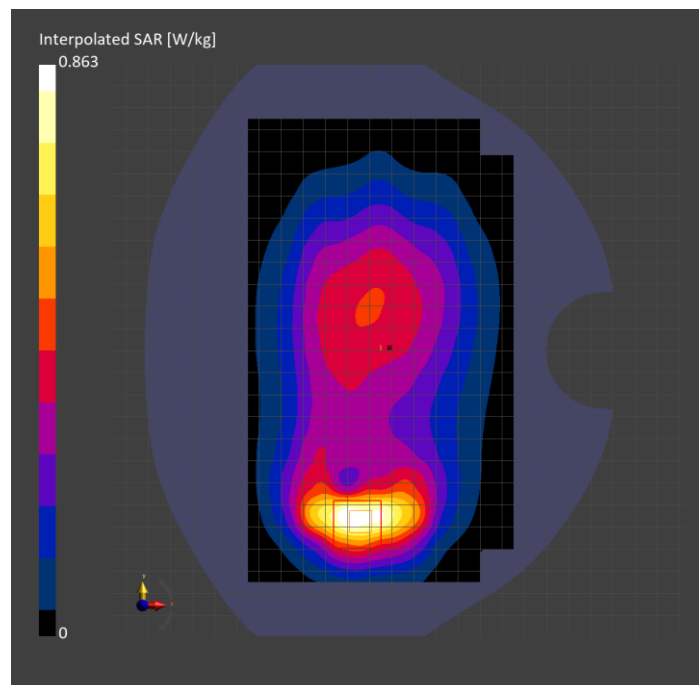
Probe Calibration Date	EX3DV4 - SN7463 2023-04-19	Phantom	Twin-SAM V8.0 (30deg probe tilt)
DAE Calibration Date	DAE4 Sn1357 2023-01-27	TSL Type	HBBL-600-10000
Software Version	16.2.4.2524		

Scan Setup

	Area Scan	Zoom Scan
Grid Extents [mm]	120.0 x 210.0	30.0 x 30.0 x 30.0
Grid Steps [mm]	15.0 x 15.0	6.0 x 6.0 x 1.5
Sensor Surface [mm]	3.0	1.4
Graded Grid	N/A	Yes
M2/M1 [%]		88.6
Dist 3dB Peak [mm]		10.8
Peak SAR [W/kg] SAR Peak Location [mm]	N/A	0.863 [-31.9, -76.8, -207.0]

Measurement Results

	Area Scan	Zoom Scan
psSAR1g [W/Kg]	0.507	0.521
psSAR10g [W/Kg]	0.315	0.303
Power Drift [dB]	N/A	0.03



Band 12: LTE-FDD (SC-FDMA, 1 RB, 10 MHz, QPSK) RBPosition:Low AntennaCfg:SISO, CHEEK

Exposure Conditions

Band	Band 12	TSL Permittivity	43.8
Frequency [MHz] Channel Number	707.500 23095	TSL Conductivity [S/m]	0.898
Group UID	LTE-FDD 10175-CAH	Phantom Section TSL	RightHead HSL
Conversion Factor	9.07	Test Distance [mm]	0.00

Hardware Setup

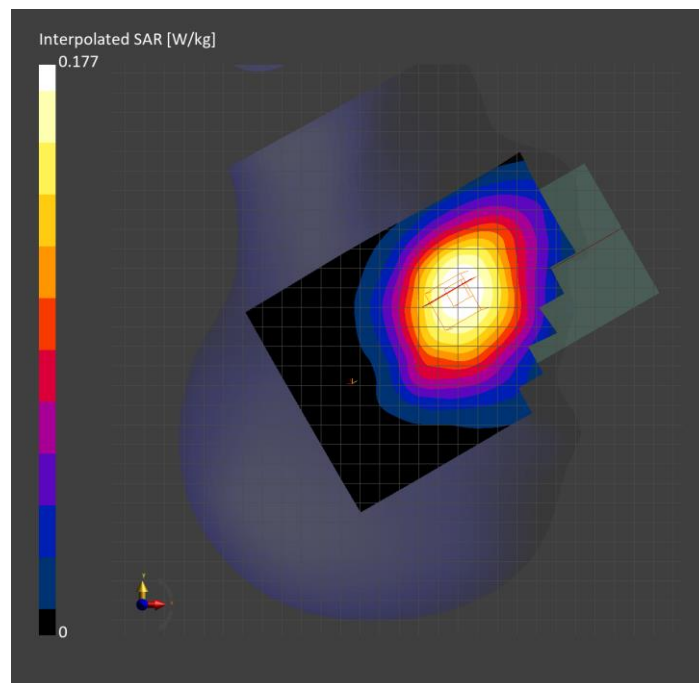
Probe Calibration Date	EX3DV4 - SN7463 2023-04-19	Phantom	Twin-SAM V8.0 (30deg probe tilt)
DAE Calibration Date	DAE4 Sn1357 2023-01-27	TSL Type	HBBL-600-10000
Software Version	16.2.4.2524		

Scan Setup

	Area Scan	Zoom Scan
Grid Extents [mm]	120.0 x 210.0	30.0 x 30.0 x 30.0
Grid Steps [mm]	15.0 x 15.0	6.0 x 6.0 x 1.5
Sensor Surface [mm]	3.0	1.4
Graded Grid	N/A	Yes
M2/M1 [%]		99.6
Dist 3dB Peak [mm]		> 15.0
Peak SAR [W/kg] SAR Peak Location [mm]	N/A	0.177 [58.5, -261.1, -174.8]

Measurement Results

	Area Scan	Zoom Scan
psSAR1g [W/Kg]	0.157	0.160
psSAR10g [W/Kg]	0.110	0.131
Power Drift [dB]	N/A	0.00



Band 12: LTE-FDD (SC-FDMA, 1 RB, 10 MHz, QPSK) RBPosition:Low AntennaCfg:SISO, BACK

Exposure Conditions

Band	Band 12	TSL Permittivity	43.8
Frequency [MHz] Channel Number	707.500 23095	TSL Conductivity [S/m]	0.898
Group UID	LTE-FDD 10175-CAH	Phantom Section TSL	Flat HSL
Conversion Factor	9.07	Test Distance [mm]	15.00

Hardware Setup

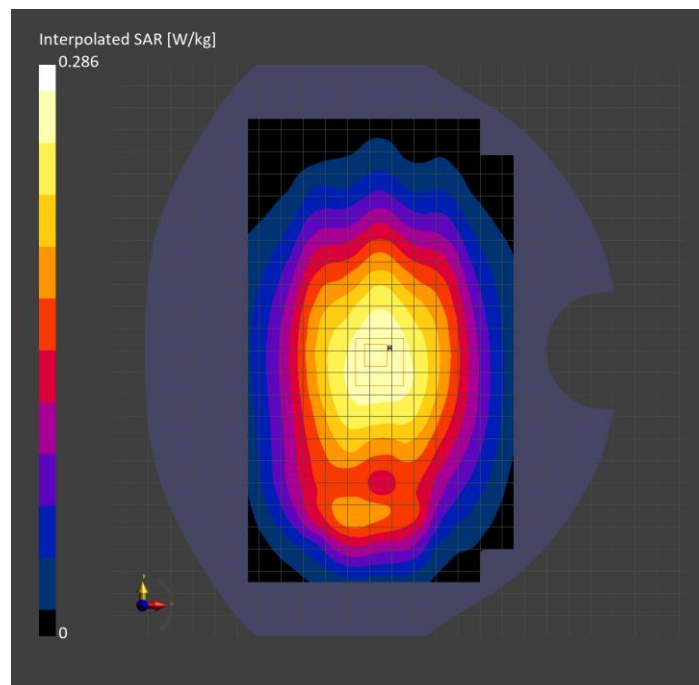
Probe Calibration Date	EX3DV4 - SN7463 2023-04-19	Phantom	Twin-SAM V8.0 (30deg probe tilt)
DAE Calibration Date	DAE4 Sn1357 2023-01-27	TSL Type	HBBL-600-10000
Software Version	16.2.4.2524		

Scan Setup

	Area Scan	Zoom Scan
Grid Extents [mm]	120.0 x 210.0	30.0 x 30.0 x 30.0
Grid Steps [mm]	15.0 x 15.0	6.0 x 6.0 x 1.5
Sensor Surface [mm]	3.0	1.4
Graded Grid	N/A	Yes
M2/M1 [%]		97.9
Dist 3dB Peak [mm]		> 15.0
Peak SAR [W/kg] SAR Peak Location [mm]	N/A	0.286 [-28.0, -6.0, -207.0]

Measurement Results

	Area Scan	Zoom Scan
psSAR1g [W/Kg]	0.231	0.246
psSAR10g [W/Kg]	0.165	0.196
Power Drift [dB]	N/A	0.06



Band 12: LTE-FDD (SC-FDMA, 1 RB, 10 MHz, QPSK) RBPosition:Low AntennaCfg:SISO, BACK

Exposure Conditions

Band	Band 12	TSL Permittivity	43.8
Frequency [MHz] Channel Number	707.500 23095	TSL Conductivity [S/m]	0.898
Group UID	LTE-FDD 10175-CAH	Phantom Section TSL	Flat HSL
Conversion Factor	9.07	Test Distance [mm]	10.00

Hardware Setup

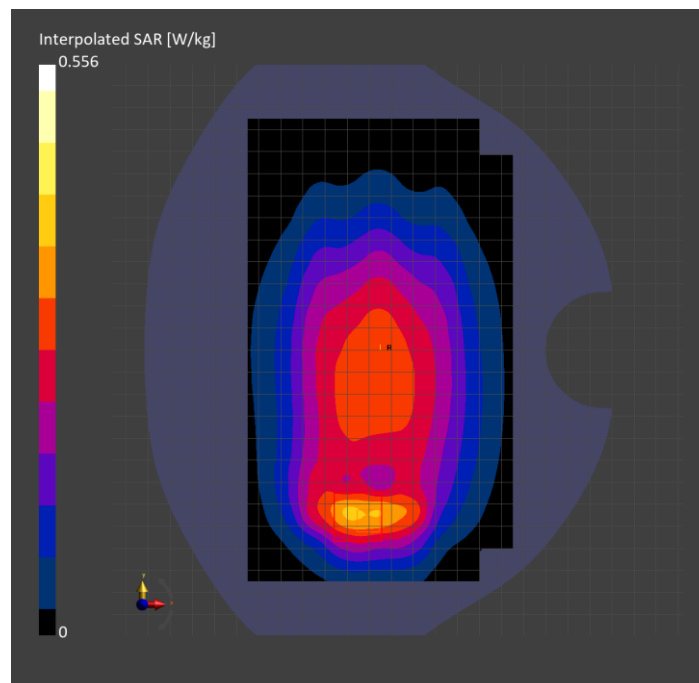
Probe Calibration Date	EX3DV4 - SN7463 2023-04-19	Phantom	Twin-SAM V8.0 (30deg probe tilt)
DAE Calibration Date	DAE4 Sn1357 2023-01-27	TSL Type	HBBL-600-10000
Software Version	16.2.4.2524		

Scan Setup

	Area Scan	Zoom Scan
Grid Extents [mm]	120.0 x 210.0	30.0 x 30.0 x 30.0
Grid Steps [mm]	15.0 x 15.0	6.0 x 6.0 x 1.5
Sensor Surface [mm]	3.0	1.4
Graded Grid	N/A	Yes
M2/M1 [%]		83.4
Dist 3dB Peak [mm]		12.0
Peak SAR [W/kg] SAR Peak Location [mm]	N/A	0.556 [-29.5, -76.5, -207.0]

Measurement Results

	Area Scan	Zoom Scan
psSAR1g [W/Kg]	0.327	0.328
psSAR10g [W/Kg]	0.213	0.197
Power Drift [dB]	N/A	0.01



Band 13: LTE-FDD (SC-FDMA, 1 RB, 10 MHz, QPSK) RBPosition:High AntennaCfg:SISO, CHEEK

Exposure Conditions

Band	Band 13	TSL Permittivity	43.6
Frequency [MHz] Channel Number	782.000 23230	TSL Conductivity [S/m]	0.927
Group UID	LTE-FDD 10175-CAH	Phantom Section TSL	RightHead HSL
Conversion Factor	9.07	Test Distance [mm]	0.00

Hardware Setup

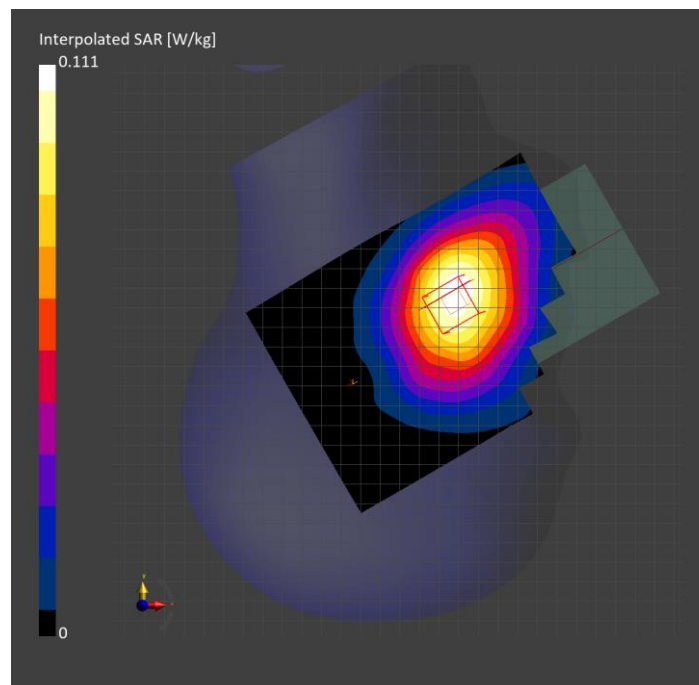
Probe Calibration Date	EX3DV4 - SN7463 2023-04-19	Phantom	Twin-SAM V8.0 (30deg probe tilt)
DAE Calibration Date	DAE4 Sn1357 2023-01-27	TSL Type	HBBL-600-10000
Software Version	16.2.4.2524		

Scan Setup

	Area Scan	Zoom Scan
Grid Extents [mm]	120.0 x 210.0	30.0 x 30.0 x 30.0
Grid Steps [mm]	15.0 x 15.0	6.0 x 6.0 x 1.5
Sensor Surface [mm]	3.0	1.4
Graded Grid	N/A	Yes
M2/M1 [%]		96.0
Dist 3dB Peak [mm]		> 15.0
Peak SAR [W/kg] SAR Peak Location [mm]	N/A	0.111 [56.1, -262.5, -175.3]

Measurement Results

	Area Scan	Zoom Scan
psSAR1g [W/Kg]	0.095	0.098
psSAR10g [W/Kg]	0.066	0.078
Power Drift [dB]	N/A	-0.03



Band 13: LTE-FDD (SC-FDMA, 1 RB, 10 MHz, QPSK) RBPosition:High AntennaCfg:SISO, BACK

Exposure Conditions

Band	Band 13	TSL Permittivity	43.6
Frequency [MHz] Channel Number	782.000 23230	TSL Conductivity [S/m]	0.927
Group UID	LTE-FDD 10175-CAH	Phantom Section TSL	Flat HSL
Conversion Factor	9.07	Test Distance [mm]	15.00

Hardware Setup

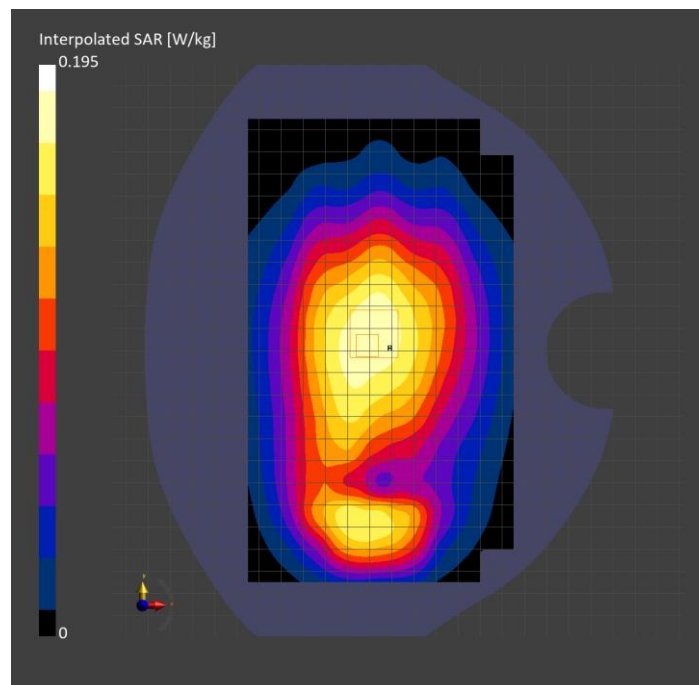
Probe Calibration Date	EX3DV4 - SN7463 2023-04-19	Phantom	Twin-SAM V8.0 (30deg probe tilt)
DAE Calibration Date	DAE4 Sn1357 2023-01-27	TSL Type	HBBL-600-10000
Software Version	16.2.4.2524		

Scan Setup

	Area Scan	Zoom Scan
Grid Extents [mm]	120.0 x 210.0	30.0 x 30.0 x 30.0
Grid Steps [mm]	15.0 x 15.0	6.0 x 6.0 x 1.5
Sensor Surface [mm]	3.0	1.4
Graded Grid	N/A	Yes
M2/M1 [%]		98.4
Dist 3dB Peak [mm]		> 15.0
Peak SAR [W/kg] SAR Peak Location [mm]	N/A	0.195 [-35.8, 1.5, -207.0]

Measurement Results

	Area Scan	Zoom Scan
psSAR1g [W/Kg]	0.156	0.168
psSAR10g [W/Kg]	0.111	0.133
Power Drift [dB]	N/A	-0.04



Band 13: LTE-FDD (SC-FDMA, 1 RB, 10 MHz, QPSK) RBPosition:High AntennaCfg:SISO, BACK

Exposure Conditions

Band	Band 13	TSL Permittivity	43.6
Frequency [MHz] Channel Number	782.000 23230	TSL Conductivity [S/m]	0.927
Group UID	LTE-FDD 10175-CAH	Phantom Section TSL	Flat HSL
Conversion Factor	9.07	Test Distance [mm]	10.00

Hardware Setup

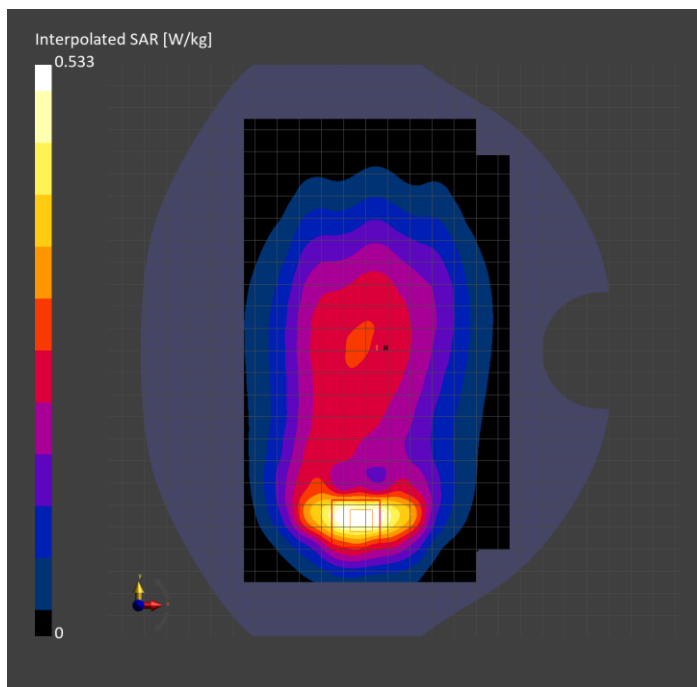
Probe Calibration Date	EX3DV4 - SN7463 2023-04-19	Phantom	Twin-SAM V8.0 (30deg probe tilt)
DAE Calibration Date	DAE4 Sn1357 2023-01-27	TSL Type	HBBL-600-10000
Software Version	16.2.4.2524		

Scan Setup

	Area Scan	Zoom Scan
Grid Extents [mm]	120.0 x 210.0	30.0 x 30.0 x 30.0
Grid Steps [mm]	15.0 x 15.0	6.0 x 6.0 x 1.5
Sensor Surface [mm]	3.0	1.4
Graded Grid	N/A	Yes
M2/M1 [%]		85.3
Dist 3dB Peak [mm]		10.8
Peak SAR [W/kg] SAR Peak Location [mm]	N/A	0.533 [-30.7, -76.8, -207.0]

Measurement Results

	Area Scan	Zoom Scan
psSAR1g [W/Kg]	0.313	0.322
psSAR10g [W/Kg]	0.194	0.185
Power Drift [dB]	N/A	0.01



**Band 26: LTE-FDD (SC-FDMA, 1 RB, 15 MHz, QPSK) RBPosition:Low
AntennaCfg:SISO, CHEEK**

Exposure Conditions

Band	Band 26	TSL Permittivity	43.3
Frequency [MHz] Channel Number	831.500 26865	TSL Conductivity [S/m]	0.938
Group UID	LTE-FDD 10181-CAF	Phantom Section TSL	RightHead HSL
Conversion Factor	8.63	Test Distance [mm]	0.00

Hardware Setup

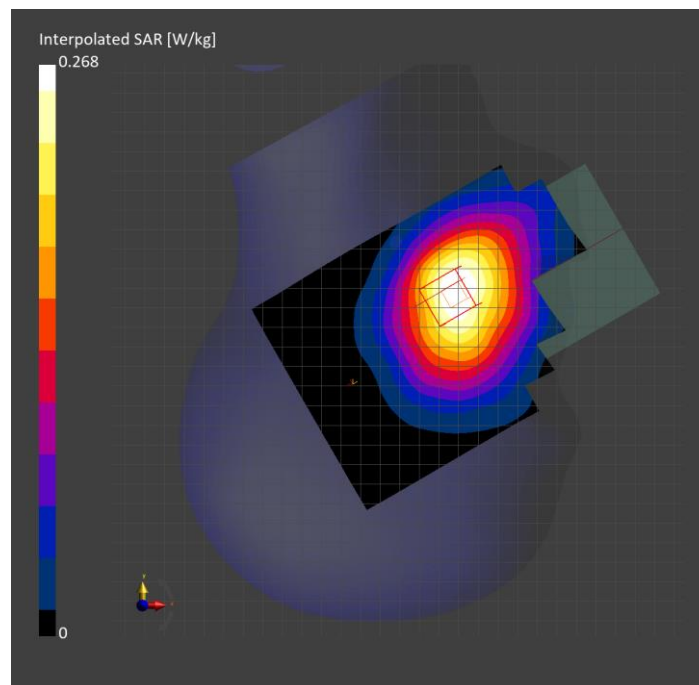
Probe Calibration Date	EX3DV4 - SN7463 2023-04-19	Phantom	Twin-SAM V8.0 (30deg probe tilt)
DAE Calibration Date	DAE4 Sn1357 2023-01-27	TSL Type	HBBL-600-10000
Software Version	16.2.4.2524		

Scan Setup

	Area Scan	Zoom Scan
Grid Extents [mm]	120.0 x 210.0	30.0 x 30.0 x 30.0
Grid Steps [mm]	15.0 x 15.0	6.0 x 6.0 x 1.5
Sensor Surface [mm]	3.0	1.4
Graded Grid	N/A	Yes
M2/M1 [%]		96.4
Dist 3dB Peak [mm]		20.0
Peak SAR [W/kg] SAR Peak Location [mm]	N/A	0.268 [56.7, -258.0, -174.8]

Measurement Results

	Area Scan	Zoom Scan
psSAR1g [W/Kg]	0.222	0.227
psSAR10g [W/Kg]	0.153	0.176
Power Drift [dB]	N/A	0.05



Band 26: LTE-FDD (SC-FDMA, 1 RB, 15 MHz, QPSK) RBPosition:Low AntennaCfg:SISO, BACK

Exposure Conditions

Band	Band 26	TSL Permittivity	43.3
Frequency [MHz] Channel Number	831.500 26865	TSL Conductivity [S/m]	0.938
Group UID	LTE-FDD 10181-CAF	Phantom Section TSL	Flat HSL
Conversion Factor	8.63	Test Distance [mm]	15.00

Hardware Setup

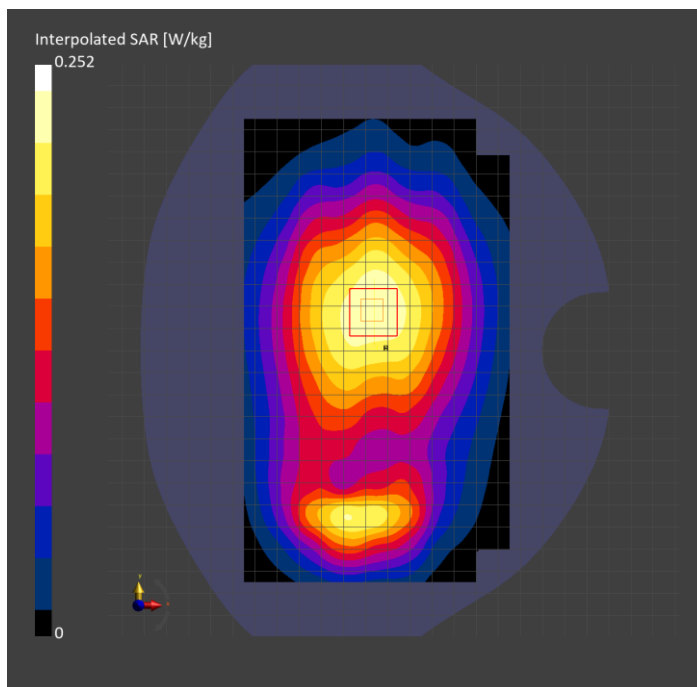
Probe Calibration Date	EX3DV4 - SN7463 2023-04-19	Phantom	Twin-SAM V8.0 (30deg probe tilt)
DAE Calibration Date	DAE4 Sn1357 2023-01-27	TSL Type	HBBL-600-10000
Software Version	16.2.4.2524		

Scan Setup

	Area Scan	Zoom Scan
Grid Extents [mm]	120.0 x 210.0	30.0 x 30.0 x 30.0
Grid Steps [mm]	15.0 x 15.0	6.0 x 6.0 x 1.5
Sensor Surface [mm]	3.0	1.4
Graded Grid	N/A	Yes
M2/M1 [%]		97.0
Dist 3dB Peak [mm]		> 15.0
Peak SAR [W/kg] SAR Peak Location [mm]	N/A	0.252 [-26.0, 15.7, -207.0]

Measurement Results

	Area Scan	Zoom Scan
psSAR1g [W/Kg]	0.202	0.214
psSAR10g [W/Kg]	0.142	0.169
Power Drift [dB]	N/A	0.07



Band 26: LTE-FDD (SC-FDMA, 1 RB, 15 MHz, QPSK) RBPosition:Low AntennaCfg:SISO, BACK

Exposure Conditions

Band	Band 26	TSL Permittivity	43.3
Frequency [MHz] Channel Number	831.500 26865	TSL Conductivity [S/m]	0.938
Group UID	LTE-FDD 10181-CAF	Phantom Section TSL	Flat HSL
Conversion Factor	8.63	Test Distance [mm]	10.00

Hardware Setup

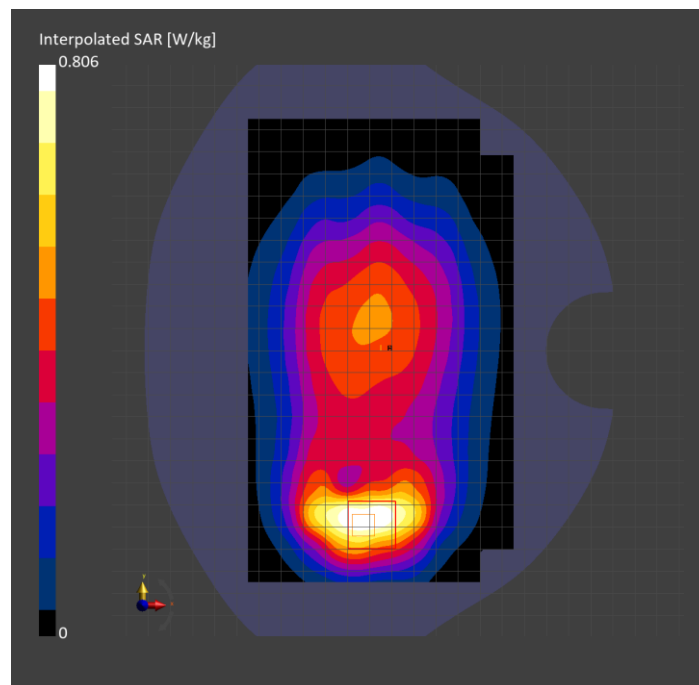
Probe Calibration Date	EX3DV4 - SN7463 2023-04-19	Phantom	Twin-SAM V8.0 (30deg probe tilt)
DAE Calibration Date	DAE4 Sn1357 2023-01-27	TSL Type	HBBL-600-10000
Software Version	16.2.4.2524		

Scan Setup

	Area Scan	Zoom Scan
Grid Extents [mm]	120.0 x 210.0	30.0 x 30.0 x 30.0
Grid Steps [mm]	15.0 x 15.0	6.0 x 6.0 x 1.5
Sensor Surface [mm]	3.0	1.4
Graded Grid	N/A	Yes
M2/M1 [%]		86.8
Dist 3dB Peak [mm]		10.8
Peak SAR [W/kg] SAR Peak Location [mm]	N/A	0.806 [-30.7, -79.2, -207.0]

Measurement Results

	Area Scan	Zoom Scan
psSAR1g [W/Kg]	0.435	0.474
psSAR10g [W/Kg]	0.281	0.275
Power Drift [dB]	N/A	0.11



Band 41: LTE-TDD (SC-FDMA, 1 RB, 20 MHz, QPSK, UL Subframe=2,3,4,7,8,9) RBPosition:Mid AntennaCfg:SISO, CHEEK

Exposure Conditions

Band	Band 41	TSL Permittivity	38.5
Frequency [MHz] Channel Number	2593.000 40620	TSL Conductivity [S/m]	1.91
Group UID	LTE-TDD 10435-AAG	Phantom Section TSL	LeftHead HSL
Conversion Factor	8.02	Test Distance [mm]	0.00

Hardware Setup

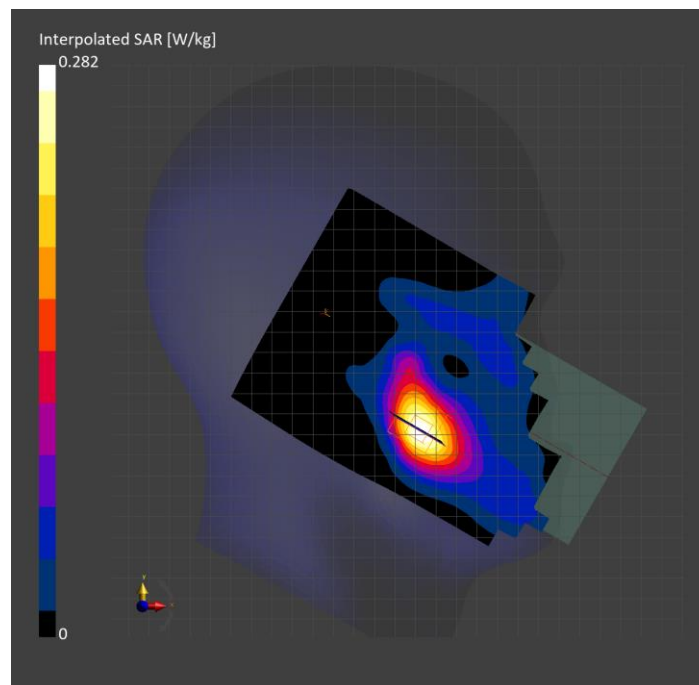
Probe Calibration Date	EX3DV4 - SN7356 2023-03-17	Phantom	Twin-SAM V8.0 (30deg probe tilt)
DAE Calibration Date	DAE4 Sn1674 2023-05-11	TSL Type	HBBL-600-10000
Software Version	16.2.4.2524		

Scan Setup

	Area Scan	Zoom Scan
Grid Extents [mm]	120.0 x 200.0	30.0 x 30.0 x 30.0
Grid Steps [mm]	10.0 x 10.0	5.0 x 5.0 x 1.5
Sensor Surface [mm]	3.0	1.4
Graded Grid	N/A	Yes
M2/M1 [%]		86.8
Dist 3dB Peak [mm]		11.3
Peak SAR [W/kg] SAR Peak Location [mm]	N/A	0.282 [53.1, 250.8, -174.6]

Measurement Results

	Area Scan	Zoom Scan
psSAR1g [W/Kg]	0.176	0.176
psSAR10g [W/Kg]	0.090	0.096
Power Drift [dB]	N/A	0.01



Band 41: LTE-TDD (SC-FDMA, 1 RB, 20 MHz, QPSK, UL Subframe=2,3,4,7,8,9) RBPosition:Mid AntennaCfg:SISO, BACK

Exposure Conditions

Band	Band 41	TSL Permittivity	38.5
Frequency [MHz] Channel Number	2593.000 40620	TSL Conductivity [S/m]	1.91
Group UID	LTE-TDD 10435-AAG	Phantom Section TSL	Flat HSL
Conversion Factor	8.02	Test Distance [mm]	15.00

Hardware Setup

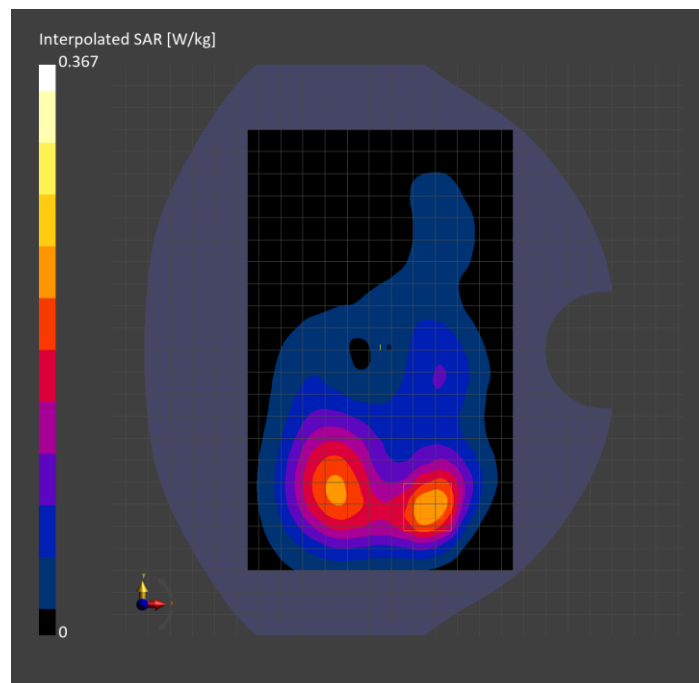
Probe Calibration Date	EX3DV4 - SN7356 2023-03-17	Phantom	Twin-SAM V8.0 (30deg probe tilt)
DAE Calibration Date	DAE4 Sn1674 2023-05-11	TSL Type	HBBL-600-10000
Software Version	16.2.4.2524		

Scan Setup

	Area Scan	Zoom Scan
Grid Extents [mm]	120.0 x 200.0	30.0 x 30.0 x 30.0
Grid Steps [mm]	10.0 x 10.0	5.0 x 5.0 x 1.5
Sensor Surface [mm]	3.0	1.4
Graded Grid	N/A	Yes
M2/M1 [%]		81.9
Dist 3dB Peak [mm]		12.6
Peak SAR [W/kg] SAR Peak Location [mm]	N/A	0.367 [-2.0, -73.0, -207.0]

Measurement Results

	Area Scan	Zoom Scan
psSAR1g [W/Kg]	0.197	0.197
psSAR10g [W/Kg]	0.103	0.102
Power Drift [dB]	N/A	-0.08



Band 41: LTE-TDD (SC-FDMA, 50% RB, 20 MHz, QPSK, UL Subframe=2,3,4,7,8,9) RBPosition:Low AntennaCfg:SISO, BACK

Exposure Conditions

Band	Band 41	TSL Permittivity	38.5
Frequency [MHz] Channel Number	2593.000 40620	TSL Conductivity [S/m]	1.91
Group UID	LTE-TDD 10494-AAG	Phantom Section TSL	Flat HSL
Conversion Factor	8.02	Test Distance [mm]	10.00

Hardware Setup

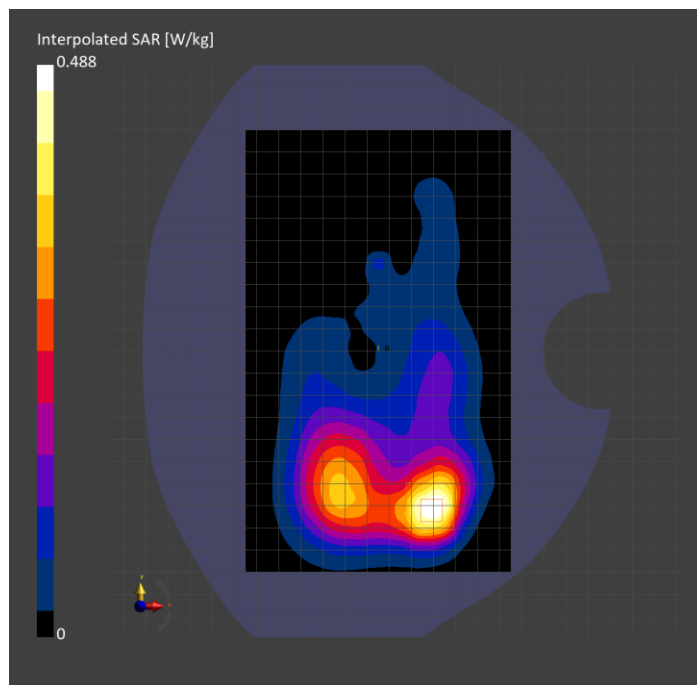
Probe Calibration Date	EX3DV4 - SN7356 2023-03-17	Phantom	Twin-SAM V8.0 (30deg probe tilt)
DAE Calibration Date	DAE4 Sn1674 2023-05-11	TSL Type	HBBL-600-10000
Software Version	16.2.4.2524		

Scan Setup

	Area Scan	Zoom Scan
Grid Extents [mm]	120.0 x 200.0	30.0 x 30.0 x 30.0
Grid Steps [mm]	10.0 x 10.0	5.0 x 5.0 x 1.5
Sensor Surface [mm]	3.0	1.4
Graded Grid	N/A	Yes
M2/M1 [%]		80.2
Dist 3dB Peak [mm]		10.8
Peak SAR [W/kg] SAR Peak Location [mm]	N/A	0.488 [0.0, -72.0, -207.0]

Measurement Results

	Area Scan	Zoom Scan
psSAR1g [W/Kg]	0.246	0.246
psSAR10g [W/Kg]	0.125	0.122
Power Drift [dB]	N/A	-0.04



Band 66: LTE-FDD (SC-FDMA, 1 RB, 20 MHz, QPSK) RBPosition:Low AntennaCfg:SISO, CHEEK

Exposure Conditions

Band	Band 66	TSL Permittivity	41.3
Frequency [MHz] Channel Number	1745.000 132322	TSL Conductivity [S/m]	1.32
Group UID	LTE-FDD 10169-CAF	Phantom Section TSL	RightHead HSL
Conversion Factor	8.92	Test Distance [mm]	0.00

Hardware Setup

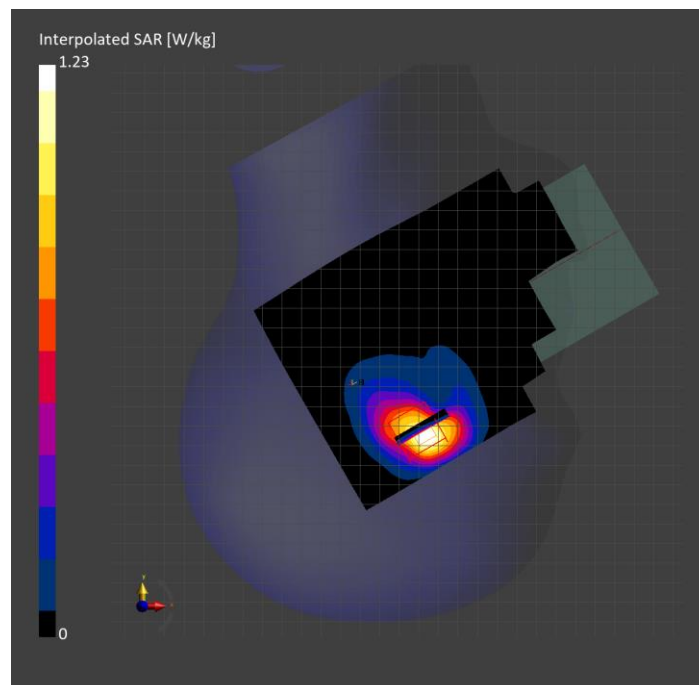
Probe Calibration Date	EX3DV4 - SN7356 2023-03-17	Phantom	Twin-SAM V8.0 (30deg probe tilt)
DAE Calibration Date	DAE4 Sn1674 2023-05-11	TSL Type	HBBL-600-10000
Software Version	16.2.4.2524		

Scan Setup

	Area Scan	Zoom Scan
Grid Extents [mm]	120.0 x 210.0	30.0 x 30.0 x 30.0
Grid Steps [mm]	15.0 x 15.0	6.0 x 6.0 x 1.5
Sensor Surface [mm]	3.0	1.4
Graded Grid	N/A	Yes
M2/M1 [%]		82.9
Dist 3dB Peak [mm]		8.1
Peak SAR [W/kg] SAR Peak Location [mm]	N/A	1.23 [43.5, -332.8, -174.2]

Measurement Results

	Area Scan	Zoom Scan
psSAR1g [W/Kg]	0.596	0.642
psSAR10g [W/Kg]	0.318	0.323
Power Drift [dB]	N/A	-0.01



Band 66: LTE-FDD (SC-FDMA, 1 RB, 20 MHz, QPSK) RBPosition:High AntennaCfg:SISO, BACK

Exposure Conditions

Band	Band 66	TSL Permittivity	41.3
Frequency [MHz] Channel Number	1745.000 132322	TSL Conductivity [S/m]	1.32
Group UID	LTE-FDD 10169-CAF	Phantom Section TSL	Flat HSL
Conversion Factor	8.92	Test Distance [mm]	15.00

Hardware Setup

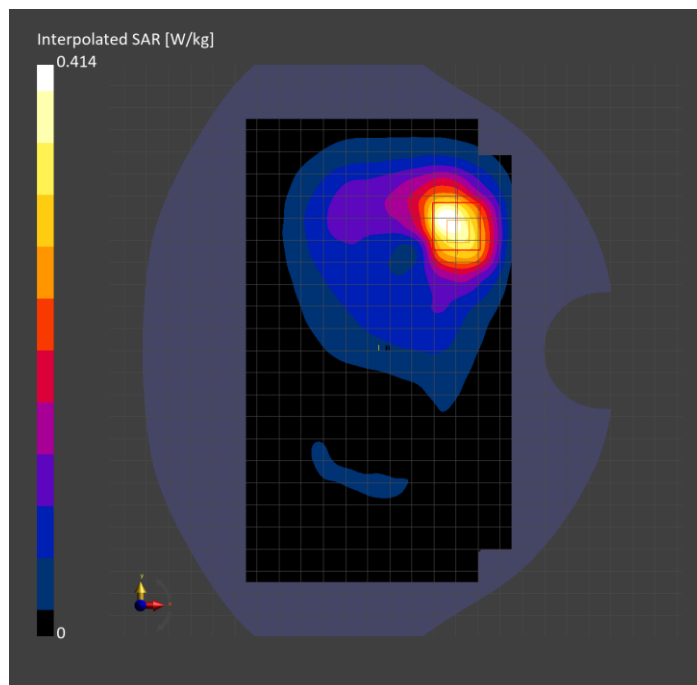
Probe Calibration Date	EX3DV4 - SN7356 2023-03-17	Phantom	Twin-SAM V8.0 (30deg probe tilt)
DAE Calibration Date	DAE4 Sn1674 2023-05-11	TSL Type	HBBL-600-10000
Software Version	16.2.4.2524		

Scan Setup

	Area Scan	Zoom Scan
Grid Extents [mm]	120.0 x 210.0	30.0 x 30.0 x 30.0
Grid Steps [mm]	15.0 x 15.0	6.0 x 6.0 x 1.5
Sensor Surface [mm]	3.0	1.4
Graded Grid	N/A	Yes
M2/M1 [%]		85.2
Dist 3dB Peak [mm]		10.8
Peak SAR [W/kg] SAR Peak Location [mm]	N/A	0.414 [10.7, 51.9, -207.0]

Measurement Results

	Area Scan	Zoom Scan
psSAR1g [W/Kg]	0.213	0.241
psSAR10g [W/Kg]	0.120	0.132
Power Drift [dB]	N/A	-0.04



Band 66: LTE-FDD (SC-FDMA, 1 RB, 20 MHz, QPSK) RBPosition:High AntennaCfg:SISO, BACK

Exposure Conditions

Band	Band 66	TSL Permittivity	41.3
Frequency [MHz] Channel Number	1745.000 132322	TSL Conductivity [S/m]	1.32
Group UID	LTE-FDD 10169-CAF	Phantom Section TSL	Flat HSL
Conversion Factor	8.92	Test Distance [mm]	10.00

Hardware Setup

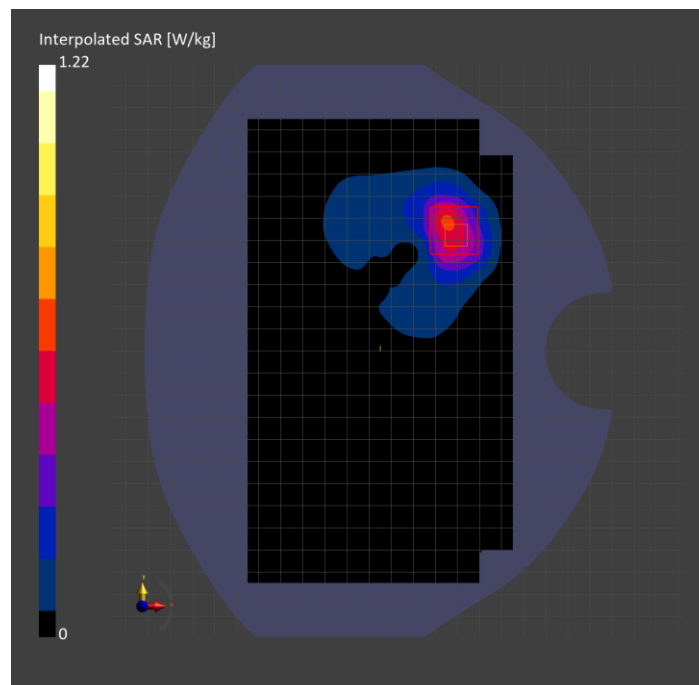
Probe Calibration Date	EX3DV4 - SN7356 2023-03-17	Phantom	Twin-SAM V8.0 (30deg probe tilt)
DAE Calibration Date	DAE4 Sn1674 2023-05-11	TSL Type	HBBL-600-10000
Software Version	16.2.4.2524		

Scan Setup

	Area Scan	Zoom Scan
Grid Extents [mm]	120.0 x 210.0	30.0 x 30.0 x 30.0
Grid Steps [mm]	15.0 x 15.0	6.0 x 6.0 x 1.5
Sensor Surface [mm]	3.0	1.4
Graded Grid	N/A	Yes
M2/M1 [%]		81.1
Dist 3dB Peak [mm]		7.7
Peak SAR [W/kg] SAR Peak Location [mm]	N/A	1.22 [10.4, 50.7, -207.0]

Measurement Results

	Area Scan	Zoom Scan
psSAR1g [W/Kg]	0.516	0.631
psSAR10g [W/Kg]	0.279	0.314
Power Drift [dB]	N/A	-0.12



**Band n5: 5G NR (DFT-s-OFDM, 1 RB, 20 MHz, QPSK, 15 kHz) RBPosition:Mid
AntennaCfg:SISO, CHEEK**

Exposure Conditions

Band	Band n5	TSL Permittivity	43.6
Frequency [MHz] Channel Number	836.500 167300	TSL Conductivity [S/m]	0.872
Group UID	5G NR FR1 FDD 10931-AAC	Phantom Section TSL	RightHead HSL
Conversion Factor	8.5	Test Distance [mm]	0.00

Hardware Setup

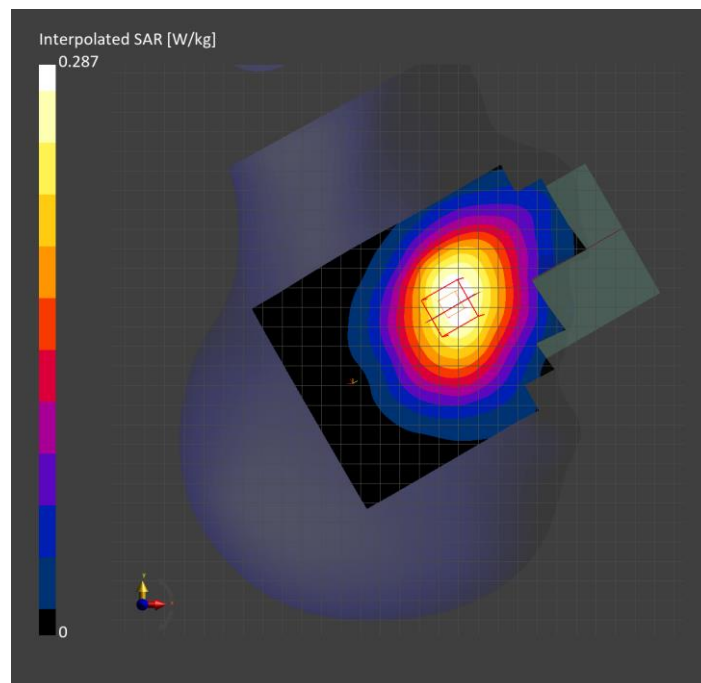
Probe Calibration Date	EX3DV4 - SN7463 2023-04-19	Phantom	Twin-SAM V8.0 (30deg probe tilt)
DAE Calibration Date	DAE4 Sn1357 2023-01-27	TSL Type	HBBL-600-10000
Software Version	16.2.4.2524		

Scan Setup

	Area Scan	Zoom Scan
Grid Extents [mm]	120.0 x 210.0	30.0 x 30.0 x 30.0
Grid Steps [mm]	15.0 x 15.0	6.0 x 6.0 x 1.5
Sensor Surface [mm]	3.0	1.4
Graded Grid	N/A	Yes
M2/M1 [%]		95.4
Dist 3dB Peak [mm]		> 15.0
Peak SAR [W/kg] SAR Peak Location [mm]	N/A	0.287 [52.8, -273.1, -176.3]

Measurement Results

	Area Scan	Zoom Scan
psSAR1g [W/Kg]	0.245	0.247
psSAR10g [W/Kg]	0.168	0.196
Power Drift [dB]	N/A	0.01



**Band n5: 5G NR (DFT-s-OFDM, 50% RB, 20 MHz, QPSK, 15 kHz) RBPosition:Mid
AntennaCfg:SISO, BACK**

Exposure Conditions

Band	Band n5	TSL Permittivity	43.6
Frequency [MHz] Channel Number	836.500 167300	TSL Conductivity [S/m]	0.872
Group UID	5G NR FR1 FDD 10939-AAC	Phantom Section TSL	Flat HSL
Conversion Factor	8.5	Test Distance [mm]	15.00

Hardware Setup

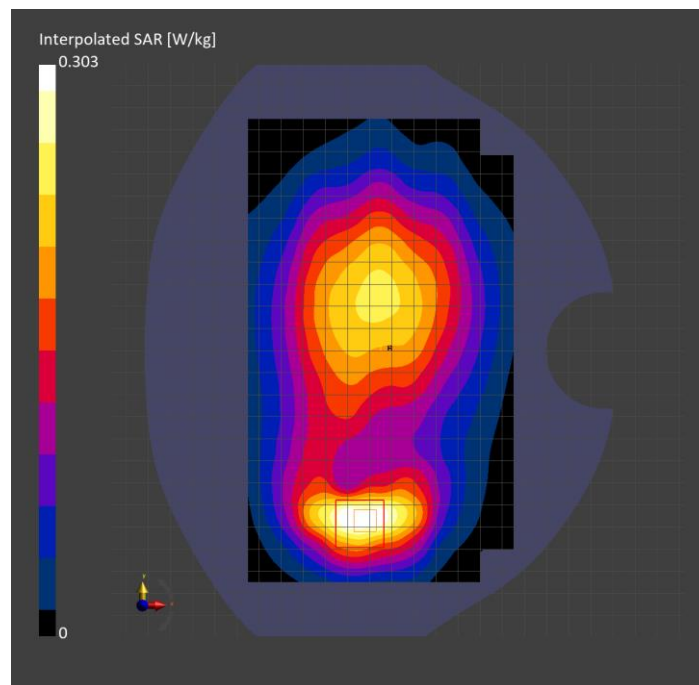
Probe Calibration Date	EX3DV4 - SN7463 2023-04-19	Phantom	Twin-SAM V8.0 (30deg probe tilt)
DAE Calibration Date	DAE4 Sn1357 2023-01-27	TSL Type	HBBL-600-10000
Software Version	16.2.4.2524		

Scan Setup

	Area Scan	Zoom Scan
Grid Extents [mm]	120.0 x 210.0	30.0 x 30.0 x 30.0
Grid Steps [mm]	15.0 x 15.0	6.0 x 6.0 x 1.5
Sensor Surface [mm]	3.0	1.4
Graded Grid	N/A	Yes
M2/M1 [%]		90.0
Dist 3dB Peak [mm]		12.6
Peak SAR [W/kg] SAR Peak Location [mm]	N/A	0.303 [-31.9, -76.8, -207.0]

Measurement Results

	Area Scan	Zoom Scan
psSAR1g [W/Kg]	0.182	0.193
psSAR10g [W/Kg]	0.116	0.117
Power Drift [dB]	N/A	0.05



**Band n5: 5G NR (DFT-s-OFDM, 1 RB, 20 MHz, QPSK, 15 kHz) RBPosition:Mid
AntennaCfg:SISO, BACK**

Exposure Conditions

Band	Band n5	TSL Permittivity	43.6
Frequency [MHz] Channel Number	836.500 167300	TSL Conductivity [S/m]	0.872
Group UID	5G NR FR1 FDD 10931-AAC	Phantom Section TSL	Flat HSL
Conversion Factor	8.5	Test Distance [mm]	10.00

Hardware Setup

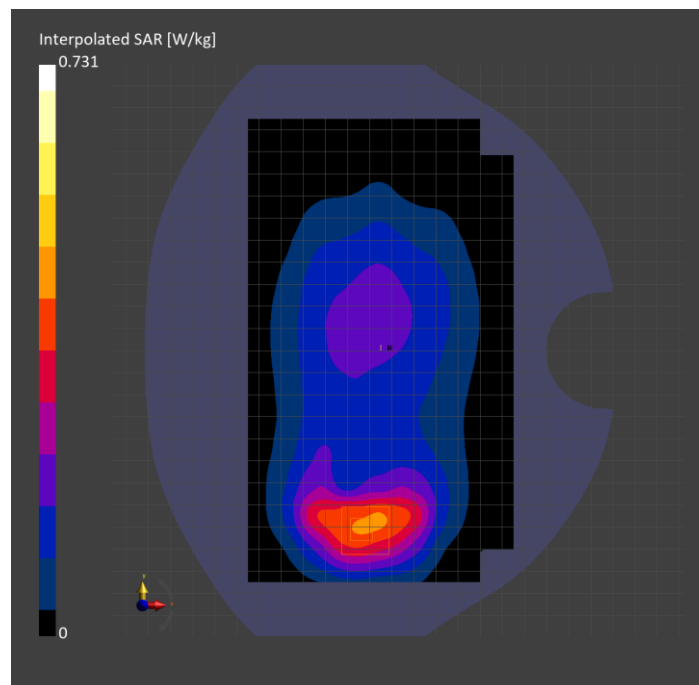
Probe Calibration Date	EX3DV4 - SN7463 2023-04-19	Phantom	Twin-SAM V8.0 (30deg probe tilt)
DAE Calibration Date	DAE4 Sn1357 2023-01-27	TSL Type	HBBL-600-10000
Software Version	16.2.4.2524		

Scan Setup

	Area Scan	Zoom Scan
Grid Extents [mm]	120.0 x 210.0	30.0 x 30.0 x 30.0
Grid Steps [mm]	15.0 x 15.0	6.0 x 6.0 x 1.5
Sensor Surface [mm]	3.0	1.4
Graded Grid	N/A	Yes
M2/M1 [%]		84.9
Dist 3dB Peak [mm]		9.6
Peak SAR [W/kg] SAR Peak Location [mm]	N/A	0.731 [-34.8, -80.6, -207.0]

Measurement Results

	Area Scan	Zoom Scan
psSAR1g [W/Kg]	0.386	0.436
psSAR10g [W/Kg]	0.255	0.253
Power Drift [dB]	N/A	-0.00



Band n26: 5G NR (DFT-s-OFDM, 50% RB, 20 MHz, QPSK, 15 kHz) RBPosition:Mid AntennaCfg:SISO, CHEEK

Exposure Conditions

Band	Band n26	TSL Permittivity	43.6
Frequency [MHz] Channel Number	831.500 166300	TSL Conductivity [S/m]	0.870
Group UID	5G NR FR1 FDD 10939-AAC	Phantom Section TSL	RightHead HSL
Conversion Factor	8.5	Test Distance [mm]	0.00

Hardware Setup

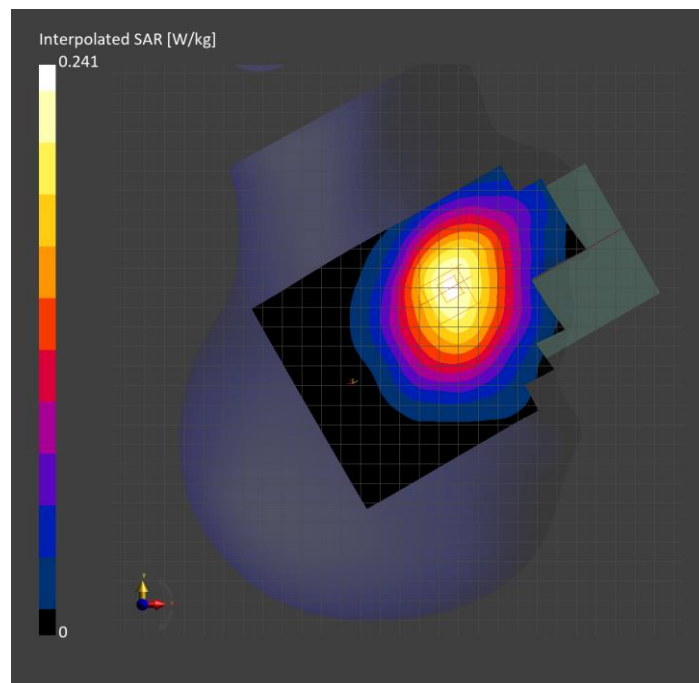
Probe Calibration Date	EX3DV4 - SN7463 2023-04-19	Phantom	Twin-SAM V8.0 (30deg probe tilt)
DAE Calibration Date	DAE4 Sn1357 2023-01-27	TSL Type	HBBL-600-10000
Software Version	16.2.4.2524		

Scan Setup

	Area Scan	Zoom Scan
Grid Extents [mm]	120.0 x 210.0	30.0 x 30.0 x 30.0
Grid Steps [mm]	15.0 x 15.0	6.0 x 6.0 x 1.5
Sensor Surface [mm]	3.0	1.4
Graded Grid	N/A	Yes
M2/M1 [%]		97.6
Dist 3dB Peak [mm]		> 15.0
Peak SAR [W/kg] SAR Peak Location [mm]	N/A	0.241 [56.6, -259.5, -176.9]

Measurement Results

	Area Scan	Zoom Scan
psSAR1g [W/Kg]	0.197	0.210
psSAR10g [W/Kg]	0.136	0.167
Power Drift [dB]	N/A	-0.05



**Band n26: 5G NR (DFT-s-OFDM, 1 RB, 20 MHz, QPSK, 15 kHz) RBPosition:Mid
AntennaCfg:SISO, BACK**

Exposure Conditions

Band	Band n26	TSL Permittivity	43.6
Frequency [MHz] Channel Number	831.500 166300	TSL Conductivity [S/m]	0.870
Group UID	5G NR FR1 FDD 10931-AAC	Phantom Section TSL	Flat HSL
Conversion Factor	8.5	Test Distance [mm]	15.00

Hardware Setup

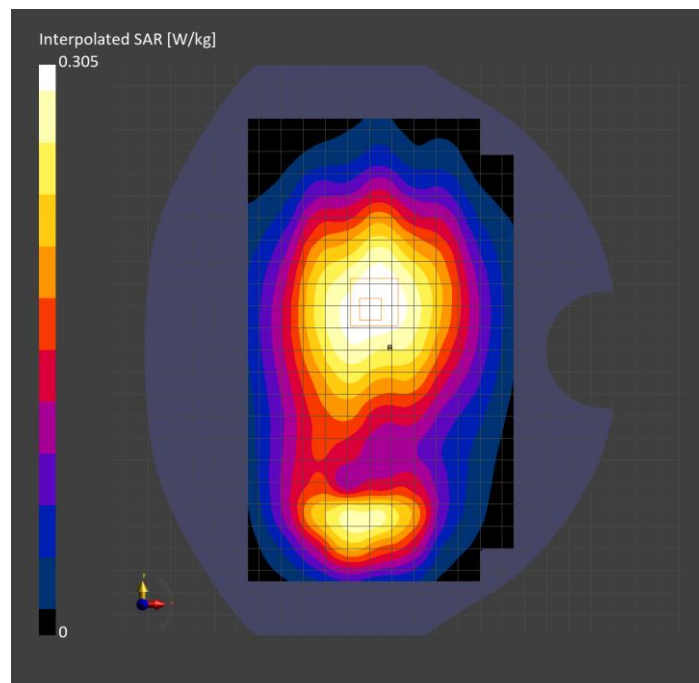
Probe Calibration Date	EX3DV4 - SN7463 2023-04-19	Phantom	Twin-SAM V8.0 (30deg probe tilt)
DAE Calibration Date	DAE4 Sn1357 2023-01-27	TSL Type	HBBL-600-10000
Software Version	16.2.4.2524		

Scan Setup

	Area Scan	Zoom Scan
Grid Extents [mm]	120.0 x 210.0	30.0 x 30.0 x 30.0
Grid Steps [mm]	15.0 x 15.0	6.0 x 6.0 x 1.5
Sensor Surface [mm]	3.0	1.4
Graded Grid	N/A	Yes
M2/M1 [%]		97.4
Dist 3dB Peak [mm]		> 15.0
Peak SAR [W/kg] SAR Peak Location [mm]	N/A	0.305 [-29.5, 21.3, -207.0]

Measurement Results

	Area Scan	Zoom Scan
psSAR1g [W/Kg]	0.244	0.259
psSAR10g [W/Kg]	0.172	0.204
Power Drift [dB]	N/A	-0.01



**Band n26: 5G NR (DFT-s-OFDM, 1 RB, 20 MHz, QPSK, 15 kHz) RBPosition:Mid
AntennaCfg:SISO, BACK**

Exposure Conditions

Band	Band n26	TSL Permittivity	43.6
Frequency [MHz] Channel Number	831.500 166300	TSL Conductivity [S/m]	0.870
Group UID	5G NR FR1 FDD 10931-AAC	Phantom Section TSL	Flat HSL
Conversion Factor	8.5	Test Distance [mm]	10.00

Hardware Setup

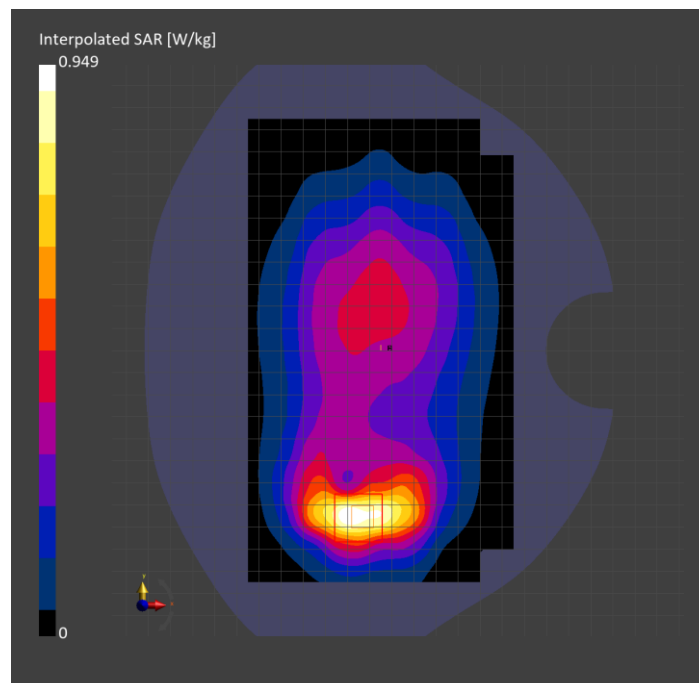
Probe Calibration Date	EX3DV4 - SN7463 2023-04-19	Phantom	Twin-SAM V8.0 (30deg probe tilt)
DAE Calibration Date	DAE4 Sn1357 2023-01-27	TSL Type	HBBL-600-10000
Software Version	16.2.4.2524		

Scan Setup

	Area Scan	Zoom Scan
Grid Extents [mm]	120.0 x 210.0	30.0 x 30.0 x 30.0
Grid Steps [mm]	15.0 x 15.0	6.0 x 6.0 x 1.5
Sensor Surface [mm]	3.0	1.4
Graded Grid	N/A	Yes
M2/M1 [%]		82.5
Dist 3dB Peak [mm]		10.3
Peak SAR [W/kg] SAR Peak Location [mm]	N/A	0.949 [-35.5, -74.4, -207.0]

Measurement Results

	Area Scan	Zoom Scan
psSAR1g [W/Kg]	0.535	0.562
psSAR10g [W/Kg]	0.329	0.324
Power Drift [dB]	N/A	0.08



Band n41: 5G NR (DFT-s-OFDM, 1 RB, 100 MHz, QPSK, 30 kHz) RBPosition:Mid AntennaCfg:SISO, CHEEK

Exposure Conditions

Band	Band n41	TSL Permittivity	40.9
Frequency [MHz] Channel Number	2592.990 518598	TSL Conductivity [S/m]	1.87
Group UID	5G NR FR1 TDD 10866-AAF	Phantom Section TSL	LeftHead HSL
Conversion Factor	7.03	Test Distance [mm]	0.00

Hardware Setup

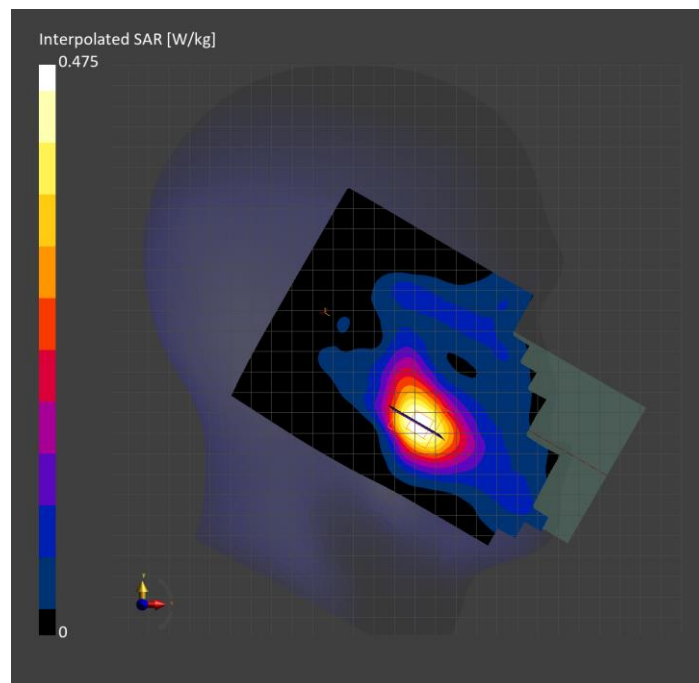
Probe Calibration Date	EX3DV4 - SN7463 2023-04-19	Phantom	Twin-SAM V8.0 (30deg probe tilt)
DAE Calibration Date	DAE4 Sn1357 2023-01-27	TSL Type	HBBL-600-10000
Software Version	16.2.4.2524		

Scan Setup

	Area Scan	Zoom Scan
Grid Extents [mm]	120.0 x 200.0	30.0 x 30.0 x 30.0
Grid Steps [mm]	10.0 x 10.0	5.0 x 5.0 x 1.5
Sensor Surface [mm]	3.0	1.4
Graded Grid	N/A	Yes
M2/M1 [%]		89.7
Dist 3dB Peak [mm]		13.3
Peak SAR [W/kg] SAR Peak Location [mm]	N/A	0.475 [54.9, 252.0, -174.4]

Measurement Results

	Area Scan	Zoom Scan
psSAR1g [W/Kg]	0.290	0.298
psSAR10g [W/Kg]	0.150	0.167
Power Drift [dB]	N/A	0.02



**Band n41: 5G NR (DFT-s-OFDM, 50% RB, 100 MHz, QPSK, 30 kHz) RBPosition:Mid
AntennaCfg:SISO, BACK**

Exposure Conditions

Band	Band n41	TSL Permittivity	40.9
Frequency [MHz] Channel Number	2592.990 518598	TSL Conductivity [S/m]	1.87
Group UID	5G NR FR1 TDD 10917-AAD	Phantom Section TSL	Flat HSL
Conversion Factor	7.03	Test Distance [mm]	15.00

Hardware Setup

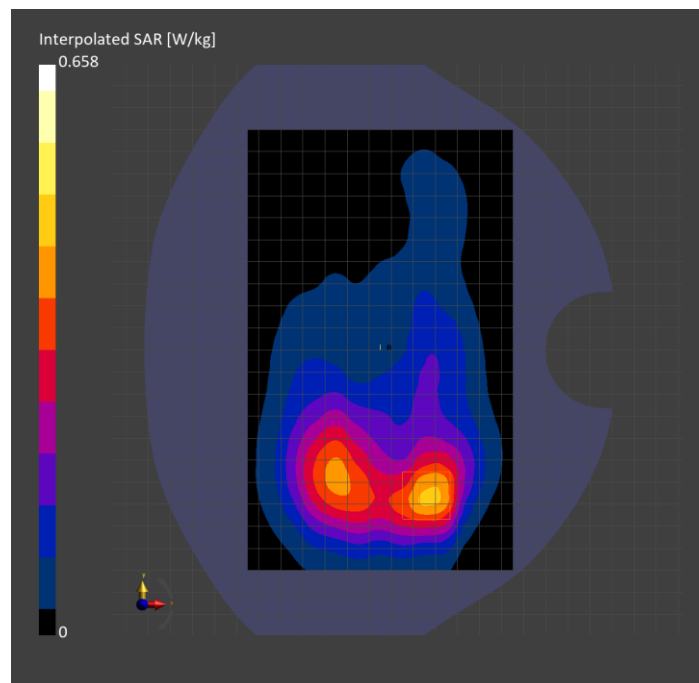
Probe Calibration Date	EX3DV4 - SN7463 2023-04-19	Phantom	Twin-SAM V8.0 (30deg probe tilt)
DAE Calibration Date	DAE4 Sn1357 2023-01-27	TSL Type	HBBL-600-10000
Software Version	16.2.4.2524		

Scan Setup

	Area Scan	Zoom Scan
Grid Extents [mm]	120.0 x 200.0	30.0 x 30.0 x 30.0
Grid Steps [mm]	10.0 x 10.0	5.0 x 5.0 x 1.5
Sensor Surface [mm]	3.0	1.4
Graded Grid	N/A	Yes
M2/M1 [%]		85.2
Dist 3dB Peak [mm]		13.7
Peak SAR [W/kg] SAR Peak Location [mm]	N/A	0.658 [-2.0, -67.0, -207.0]

Measurement Results

	Area Scan	Zoom Scan
psSAR1g [W/Kg]	0.371	0.371
psSAR10g [W/Kg]	0.198	0.204
Power Drift [dB]	N/A	-0.02



**Band n41: 5G NR (DFT-s-OFDM, 50% RB, 100 MHz, QPSK, 30 kHz) RBPosition:Mid
AntennaCfg:SISO, BACK**

Exposure Conditions

Band	Band n41	TSL Permittivity	39.3
Frequency [MHz] Channel Number	2592.990 518598	TSL Conductivity [S/m]	1.95
Group UID	5G NR FR1 TDD 10917-AAD	Phantom Section TSL	Flat HSL
Conversion Factor	7.58	Test Distance [mm]	10.00

Hardware Setup

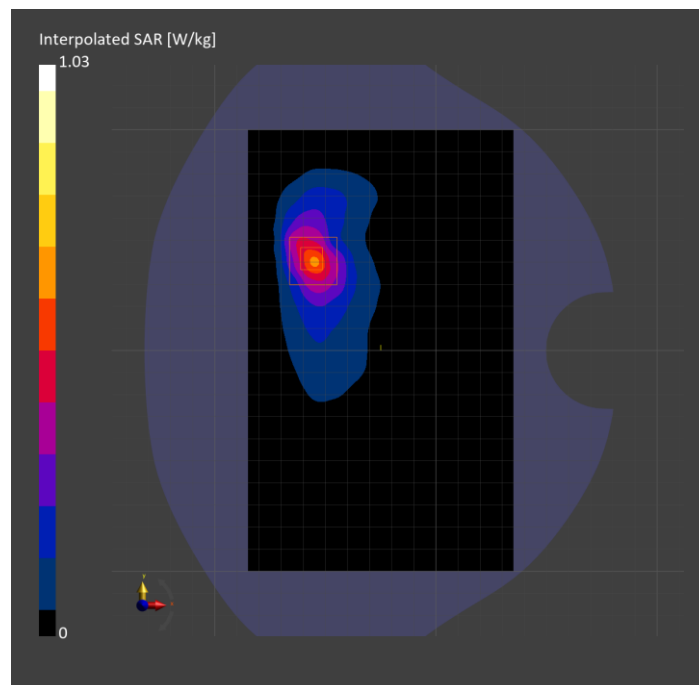
Probe Calibration Date	EX3DV4 - SN7335 2023-01-26	Phantom	Twin-SAM V5.0 (30deg probe tilt)
DAE Calibration Date	DAE4 Sn1472 2023-01-23	TSL Type	HBBL-600-10000
Software Version	16.2.4.2524		

Scan Setup

	Area Scan	Zoom Scan
Grid Extents [mm]	120.0 x 200.0	30.0 x 30.0 x 30.0
Grid Steps [mm]	10.0 x 10.0	5.0 x 5.0 x 1.5
Sensor Surface [mm]	3.0	1.4
Graded Grid	N/A	Yes
M2/M1 [%]		78.1
Dist 3dB Peak [mm]		8.5
Peak SAR [W/kg] SAR Peak Location [mm]	N/A	1.04 [-58.0, 43.0, -207.0]

Measurement Results

	Area Scan	Zoom Scan
psSAR1g [W/Kg]	0.460	0.470
psSAR10g [W/Kg]	0.215	0.213
Power Drift [dB]	N/A	-0.09



Band n66: 5G NR (DFT-s-OFDM, 50% RB, 20 MHz, QPSK, 15 kHz) RBPosition:Mid AntennaCfg:SISO, CHEEK

Exposure Conditions

Band	Band n66	TSL Permittivity	41.6
Frequency [MHz] Channel Number	1745.000 349000	TSL Conductivity [S/m]	1.30
Group UID	5G NR FR1 FDD 10939-AAC	Phantom Section TSL	LeftHead HSL
Conversion Factor	8.92	Test Distance [mm]	0.00

Hardware Setup

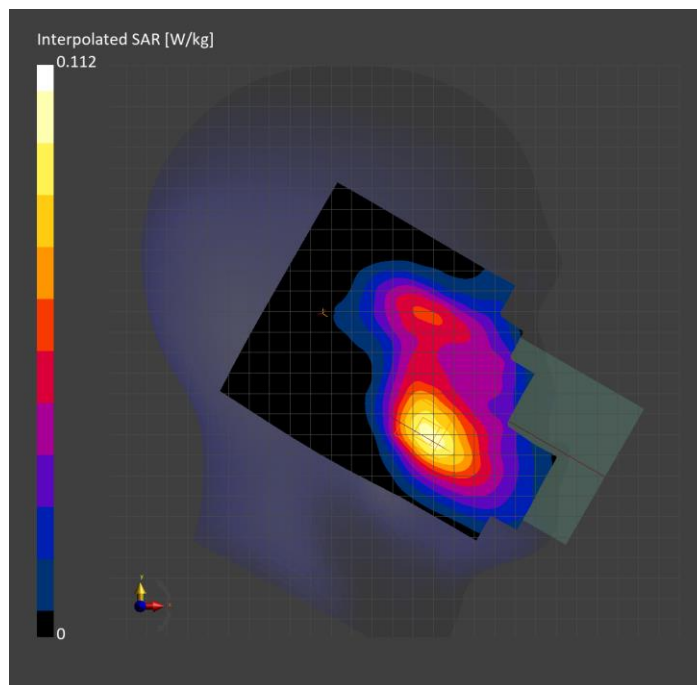
Probe Calibration Date	EX3DV4 - SN7356 2023-03-17	Phantom	Twin-SAM V8.0 (30deg probe tilt)
DAE Calibration Date	DAE4 Sn1674 2023-05-11	TSL Type	HBBL-600-10000
Software Version	16.2.4.2524		

Scan Setup

	Area Scan	Zoom Scan
Grid Extents [mm]	120.0 x 210.0	30.0 x 30.0 x 30.0
Grid Steps [mm]	15.0 x 15.0	6.0 x 6.0 x 1.5
Sensor Surface [mm]	3.0	1.4
Graded Grid	N/A	Yes
M2/M1 [%]		88.7
Dist 3dB Peak [mm]		12.9
Peak SAR [W/kg] SAR Peak Location [mm]	N/A	0.112 [59.6, 246.5, -172.9]

Measurement Results

	Area Scan	Zoom Scan
psSAR1g [W/Kg]	0.072	0.077
psSAR10g [W/Kg]	0.043	0.050
Power Drift [dB]	N/A	-0.05



**Band n66: 5G NR (DFT-s-OFDM, 1 RB, 20 MHz, QPSK, 15 kHz) RBPosition:Mid
AntennaCfg:SISO, BACK**

Exposure Conditions

Band	Band n66	TSL Permittivity	40.9
Frequency [MHz] Channel Number	1745.000 349000	TSL Conductivity [S/m]	1.31
Group UID	5G NR FR1 FDD 10931-AAC	Phantom Section TSL	Flat HSL
Conversion Factor	8.03	Test Distance [mm]	15.00

Hardware Setup

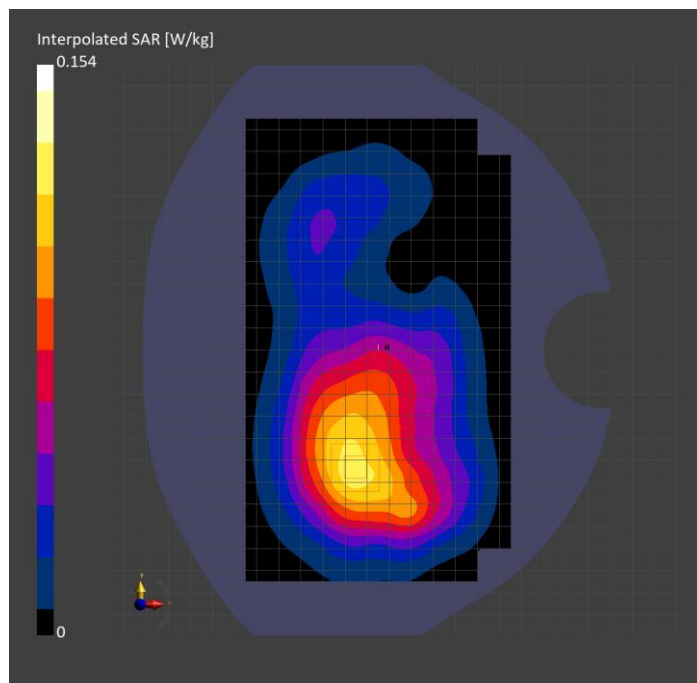
Probe Calibration Date	EX3DV4 - SN7463 2023-04-19	Phantom	Twin-SAM V8.0 (30deg probe tilt)
DAE Calibration Date	DAE4 Sn1357 2023-01-27	TSL Type	HBBL-600-10000
Software Version	16.2.4.2524		

Scan Setup

	Area Scan	Zoom Scan
Grid Extents [mm]	120.0 x 210.0	30.0 x 30.0 x 30.0
Grid Steps [mm]	15.0 x 15.0	6.0 x 6.0 x 1.5
Sensor Surface [mm]	3.0	1.4
Graded Grid	N/A	Yes
M2/M1 [%]		90.8
Dist 3dB Peak [mm]		> 15.0
Peak SAR [W/kg] SAR Peak Location [mm]	N/A	0.154 [-33.7, -53.7, -207.0]

Measurement Results

	Area Scan	Zoom Scan
psSAR1g [W/Kg]	0.104	0.109
psSAR10g [W/Kg]	0.065	0.074
Power Drift [dB]	N/A	0.05



Band n66: 5G NR (DFT-s-OFDM, 50% RB, 20 MHz, QPSK, 15 kHz) RBPosition:Mid AntennaCfg:SISO, BACK

Exposure Conditions

Band	Band n66	TSL Permittivity	40.9
Frequency [MHz] Channel Number	1745.000 349000	TSL Conductivity [S/m]	1.31
Group UID	5G NR FR1 FDD 10939-AAC	Phantom Section TSL	Flat HSL
Conversion Factor	8.03	Test Distance [mm]	10.00

Hardware Setup

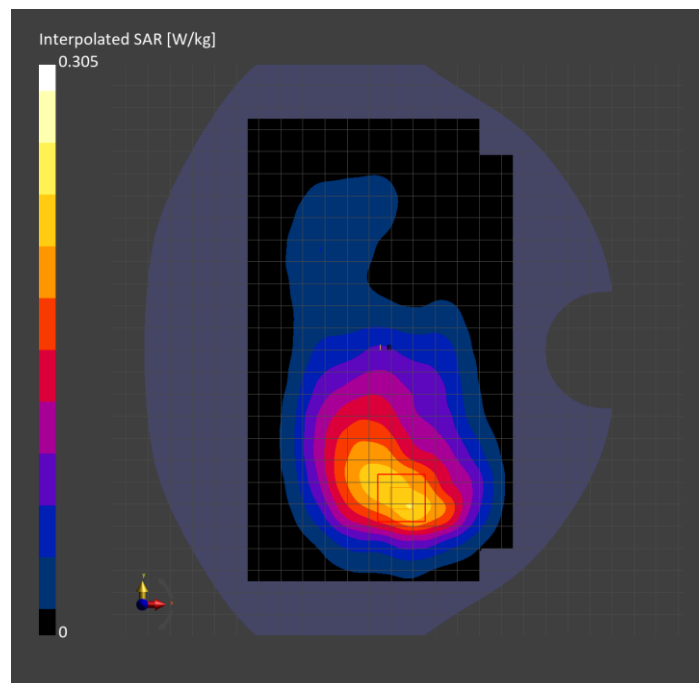
Probe Calibration Date	EX3DV4 - SN7463 2023-04-19	Phantom	Twin-SAM V8.0 (30deg probe tilt)
DAE Calibration Date	DAE4 Sn1357 2023-01-27	TSL Type	HBBL-600-10000
Software Version	16.2.4.2524		

Scan Setup

	Area Scan	Zoom Scan
Grid Extents [mm]	120.0 x 210.0	30.0 x 30.0 x 30.0
Grid Steps [mm]	15.0 x 15.0	6.0 x 6.0 x 1.5
Sensor Surface [mm]	3.0	1.4
Graded Grid	N/A	Yes
M2/M1 [%]		90.2
Dist 3dB Peak [mm]		16.4
Peak SAR [W/kg] SAR Peak Location [mm]	N/A	0.305 [-3.7, -72.3, -207.0]

Measurement Results

	Area Scan	Zoom Scan
psSAR1g [W/Kg]	0.192	0.208
psSAR10g [W/Kg]	0.119	0.136
Power Drift [dB]	N/A	0.03



**Band n77: 5G NR (DFT-s-OFDM, 50% RB, 100 MHz, QPSK, 30 kHz) RBPosition:Mid
AntennaCfg:SISO, CHEEK**

Exposure Conditions

Band	Band n77	TSL Permittivity	39.5
Frequency [MHz] Channel Number	3499.995 633333	TSL Conductivity [S/m]	2.77
Group UID	5G NR FR1 TDD 10917-AAD	Phantom Section TSL	RightHead HSL
Conversion Factor	7.04	Test Distance [mm]	0.00

Hardware Setup

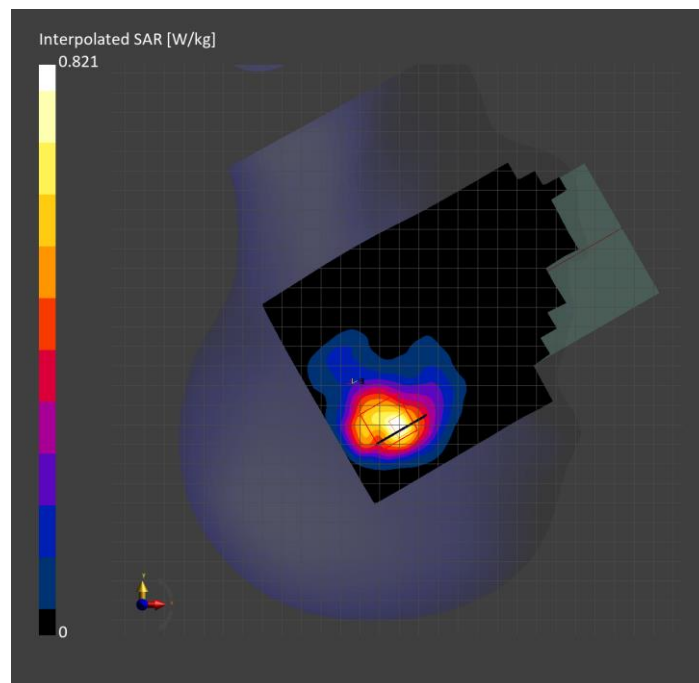
Probe Calibration Date	EX3DV4 - SN7356 2023-03-17	Phantom	Twin-SAM V8.0 (30deg probe tilt)
DAE Calibration Date	DAE4 Sn1674 2023-05-11	TSL Type	HBBL-600-10000
Software Version	16.2.4.2524		

Scan Setup

	Area Scan	Zoom Scan
Grid Extents [mm]	120.0 x 200.0	30.0 x 30.0 x 28.0
Grid Steps [mm]	10.0 x 10.0	5.0 x 5.0 x 1.4
Sensor Surface [mm]	3.0	1.4
Graded Grid	N/A	Yes
M2/M1 [%]		74.0
Dist 3dB Peak [mm]		8.3
Peak SAR [W/kg] SAR Peak Location [mm]	N/A	0.821 [30.4, -333.8, -174.5]

Measurement Results

	Area Scan	Zoom Scan
psSAR1g [W/Kg]	0.312	0.311
psSAR10g [W/Kg]	0.141	0.138
Power Drift [dB]	N/A	0.05



Band n77: 5G NR (DFT-s-OFDM, 1 RB, 100 MHz, QPSK, 30 kHz) RBPosition:Low AntennaCfg:SISO, BACK

Exposure Conditions

Band	Band n77	TSL Permittivity	39.5
Frequency [MHz] Channel Number	3499.995 633333	TSL Conductivity [S/m]	2.77
Group UID	5G NR FR1 TDD 10866-AAF	Phantom Section TSL	Flat HSL
Conversion Factor	7.04	Test Distance [mm]	15.00

Hardware Setup

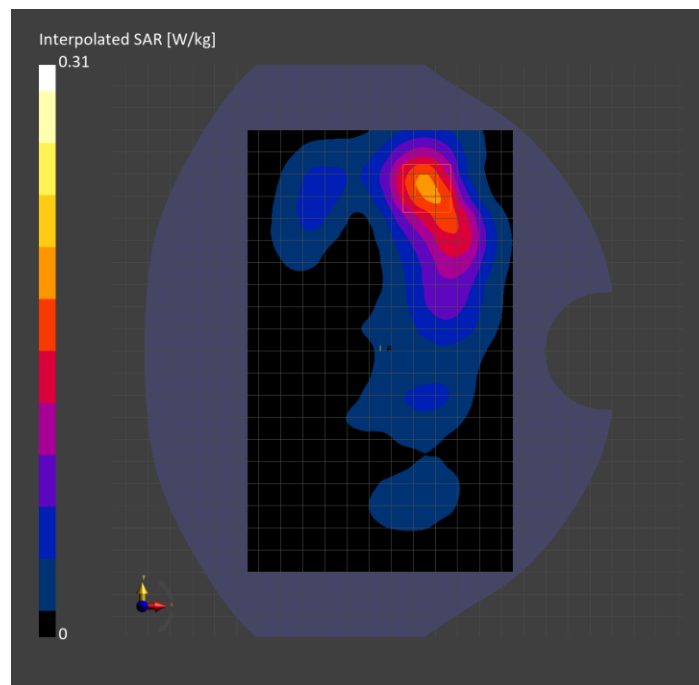
Probe Calibration Date	EX3DV4 - SN7356 2023-03-17	Phantom	Twin-SAM V8.0 (30deg probe tilt)
DAE Calibration Date	DAE4 Sn1674 2023-05-11	TSL Type	HBBL-600-10000
Software Version	16.2.4.2524		

Scan Setup

	Area Scan	Zoom Scan
Grid Extents [mm]	120.0 x 200.0	30.0 x 30.0 x 28.0
Grid Steps [mm]	10.0 x 10.0	5.0 x 5.0 x 1.4
Sensor Surface [mm]	3.0	1.4
Graded Grid	N/A	Yes
M2/M1 [%]		77.7
Dist 3dB Peak [mm]		13.5
Peak SAR [W/kg] SAR Peak Location [mm]	N/A	0.310 [-4.0, 75.0, -207.0]

Measurement Results

	Area Scan	Zoom Scan
psSAR1g [W/Kg]	0.147	0.144
psSAR10g [W/Kg]	0.073	0.070
Power Drift [dB]	N/A	-0.12



**Band n77: 5G NR (DFT-s-OFDM, 50% RB, 100 MHz, QPSK, 30 kHz) RBPosition:Mid
AntennaCfg:SISO, BACK**

Exposure Conditions

Band	Band n77	TSL Permittivity	39.5
Frequency [MHz] Channel Number	3499.995 633333	TSL Conductivity [S/m]	2.77
Group UID	5G NR FR1 TDD 10917-AAD	Phantom Section TSL	Flat HSL
Conversion Factor	7.04	Test Distance [mm]	10.00

Hardware Setup

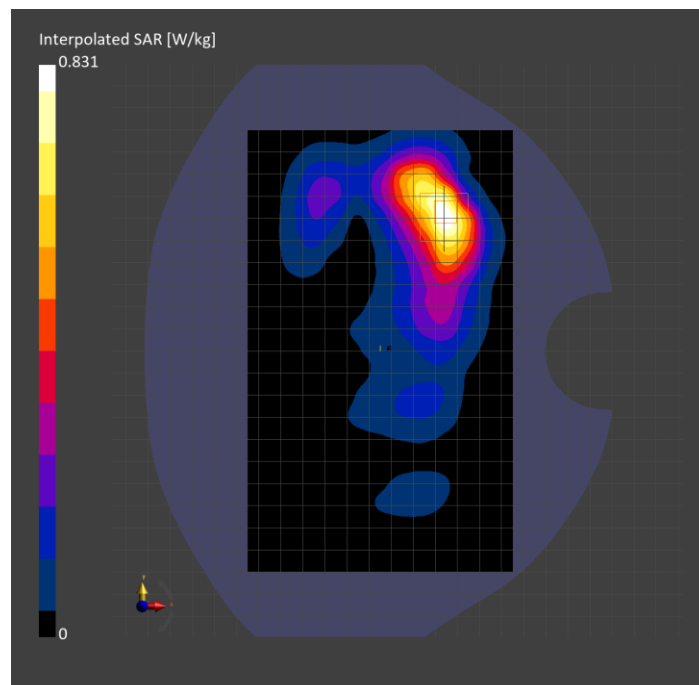
Probe Calibration Date	EX3DV4 - SN7356 2023-03-17	Phantom	Twin-SAM V8.0 (30deg probe tilt)
DAE Calibration Date	DAE4 Sn1674 2023-05-11	TSL Type	HBBL-600-10000
Software Version	16.2.4.2524		

Scan Setup

	Area Scan	Zoom Scan
Grid Extents [mm]	120.0 x 200.0	30.0 x 30.0 x 28.0
Grid Steps [mm]	10.0 x 10.0	5.0 x 5.0 x 1.4
Sensor Surface [mm]	3.0	1.4
Graded Grid	N/A	Yes
M2/M1 [%]		74.6
Dist 3dB Peak [mm]		9.3
Peak SAR [W/kg] SAR Peak Location [mm]	N/A	0.830 [4.0, 65.0, -207.0]

Measurement Results

	Area Scan	Zoom Scan
psSAR1g [W/Kg]	0.318	0.331
psSAR10g [W/Kg]	0.147	0.145
Power Drift [dB]	N/A	-0.12



Band n77: 5G NR (DFT-s-OFDM, 1 RB, 100 MHz, QPSK, 30 kHz) RBPosition:Low AntennaCfg:SISO, BACK

Exposure Conditions

Band	Band n77	TSL Permittivity	39.2
Frequency [MHz] Channel Number	3499.995 633333	TSL Conductivity [S/m]	2.78
Group UID	5G NR FR1 TDD 10866-AAF	Phantom Section TSL	Flat HSL
Conversion Factor	6.87	Test Distance [mm]	0.00

Hardware Setup

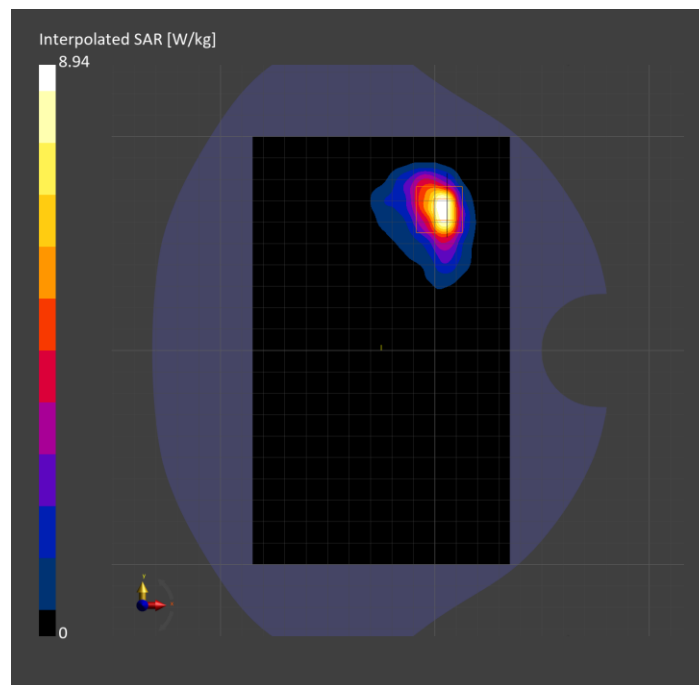
Probe Calibration Date	EX3DV4 - SN7335 2023-01-26	Phantom	Twin-SAM V5.0 (30deg probe tilt)
DAE Calibration Date	DAE4 Sn1472 2023-01-23	TSL Type	HBBL-600-10000
Software Version	16.2.4.2524		

Scan Setup

	Area Scan	Zoom Scan
Grid Extents [mm]	120.0 x 200.0	30.0 x 30.0 x 28.0
Grid Steps [mm]	10.0 x 10.0	5.0 x 5.0 x 1.4
Sensor Surface [mm]	3.0	1.4
Graded Grid	N/A	Yes
M2/M1 [%]		70.2
Dist 3dB Peak [mm]		5.4
Peak SAR [W/kg] SAR Peak Location [mm]	N/A	8.94 [6.0, 66.0, -207.0]

Measurement Results

	Area Scan	Zoom Scan
psSAR1g [W/Kg]	2.57	2.81
psSAR10g [W/Kg]	0.989	0.976
Power Drift [dB]	N/A	-0.00



Band n77: 5G NR (DFT-s-OFDM, 1 RB, 100 MHz, QPSK, 30 kHz) RBPosition:Low AntennaCfg:SISO, CHEEK

Exposure Conditions

Band	Band n77	TSL Permittivity	38.5
Frequency [MHz] Channel Number	3858.000 657200	TSL Conductivity [S/m]	3.28
Group UID	5G NR FR1 TDD 10866-AAF	Phantom Section TSL	RightHead HSL
Conversion Factor	6.15	Test Distance [mm]	0.00

Hardware Setup

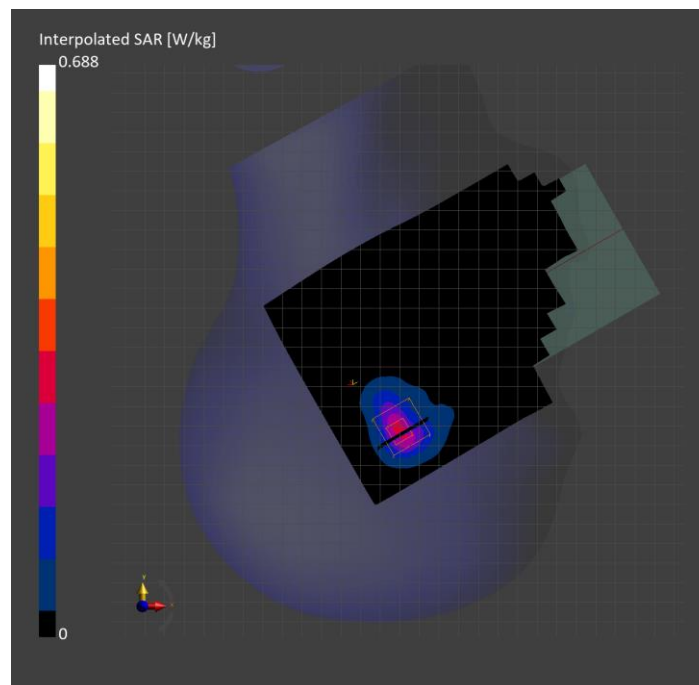
Probe Calibration Date	EX3DV4 - SN7463 2023-04-19	Phantom	Twin-SAM V8.0 (30deg probe tilt)
DAE Calibration Date	DAE4 Sn1357 2023-01-27	TSL Type	HBBL-600-10000
Software Version	16.2.4.2524		

Scan Setup

	Area Scan	Zoom Scan
Grid Extents [mm]	120.0 x 200.0	30.0 x 30.0 x 28.0
Grid Steps [mm]	10.0 x 10.0	5.0 x 5.0 x 1.4
Sensor Surface [mm]	3.0	1.4
Graded Grid	N/A	Yes
M2/M1 [%]		80.8
Dist 3dB Peak [mm]		8.3
Peak SAR [W/kg] SAR Peak Location [mm]	N/A	0.588 [31.4, -335.4, -174.4]

Measurement Results

	Area Scan	Zoom Scan
psSAR1g [W/Kg]	0.218	0.237
psSAR10g [W/Kg]	0.086	0.093
Power Drift [dB]	N/A	0.04



**Band n77: 5G NR (DFT-s-OFDM, 50% RB, 100 MHz, QPSK, 30 kHz) RBPosition:Mid
AntennaCfg:SISO, BACK**

Exposure Conditions

Band	Band n77	TSL Permittivity	38.5
Frequency [MHz] Channel Number	3858.000 657200	TSL Conductivity [S/m]	3.28
Group UID	5G NR FR1 TDD 10917-AAD	Phantom Section TSL	Flat HSL
Conversion Factor	6.15	Test Distance [mm]	15.00

Hardware Setup

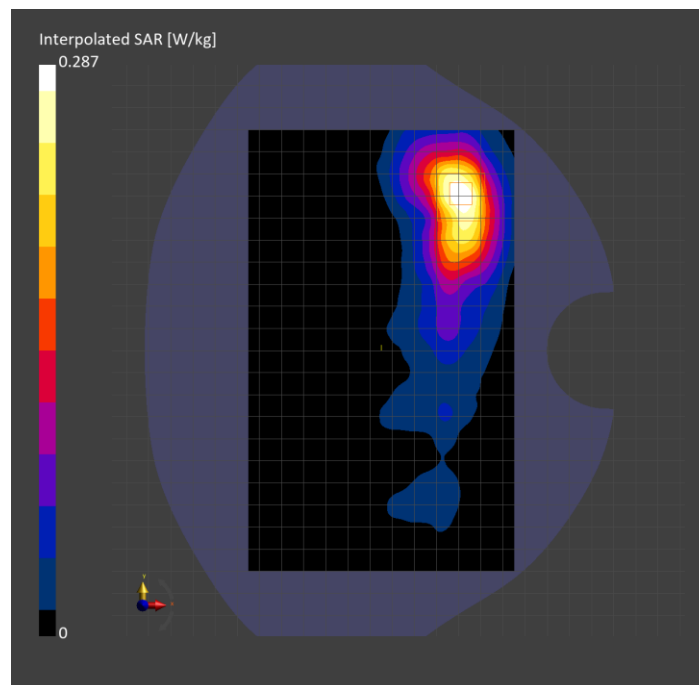
Probe Calibration Date	EX3DV4 - SN7463 2023-04-19	Phantom	Twin-SAM V8.0 (30deg probe tilt)
DAE Calibration Date	DAE4 Sn1357 2023-01-27	TSL Type	HBBL-600-10000
Software Version	16.2.4.2524		

Scan Setup

	Area Scan	Zoom Scan
Grid Extents [mm]	120.0 x 200.0	30.0 x 30.0 x 28.0
Grid Steps [mm]	10.0 x 10.0	5.0 x 5.0 x 1.4
Sensor Surface [mm]	3.0	1.4
Graded Grid	N/A	Yes
M2/M1 [%]		80.5
Dist 3dB Peak [mm]		11.2
Peak SAR [W/kg] SAR Peak Location [mm]	N/A	0.287 [11.0, 72.0, -207.0]

Measurement Results

	Area Scan	Zoom Scan
psSAR1g [W/Kg]	0.124	0.128
psSAR10g [W/Kg]	0.056	0.057
Power Drift [dB]	N/A	-0.08



**Band n77: 5G NR (DFT-s-OFDM, 50% RB, 100 MHz, QPSK, 30 kHz) RBPosition:Mid
AntennaCfg:SISO, BACK**

Exposure Conditions

Band	Band n77	TSL Permittivity	38.5
Frequency [MHz] Channel Number	3858.000 657200	TSL Conductivity [S/m]	3.28
Group UID	5G NR FR1 TDD 10917-AAD	Phantom Section TSL	Flat HSL
Conversion Factor	6.15	Test Distance [mm]	10.00

Hardware Setup

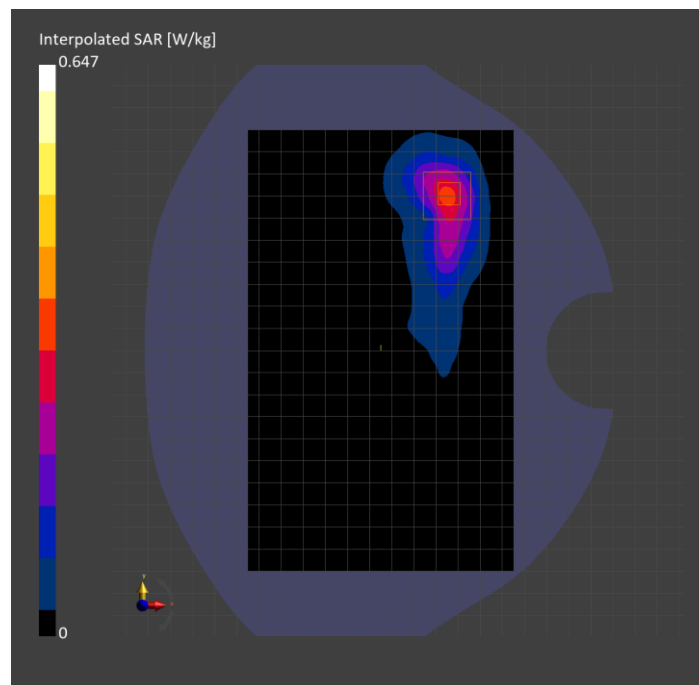
Probe Calibration Date	EX3DV4 - SN7463 2023-04-19	Phantom	Twin-SAM V8.0 (30deg probe tilt)
DAE Calibration Date	DAE4 Sn1357 2023-01-27	TSL Type	HBBL-600-10000
Software Version	16.2.4.2524		

Scan Setup

	Area Scan	Zoom Scan
Grid Extents [mm]	120.0 x 200.0	30.0 x 30.0 x 28.0
Grid Steps [mm]	10.0 x 10.0	5.0 x 5.0 x 1.4
Sensor Surface [mm]	3.0	1.4
Graded Grid	N/A	Yes
M2/M1 [%]		81.0
Dist 3dB Peak [mm]		9.3
Peak SAR [W/kg] SAR Peak Location [mm]	N/A	0.647 [6.0, 72.0, -207.0]

Measurement Results

	Area Scan	Zoom Scan
psSAR1g [W/Kg]	0.257	0.275
psSAR10g [W/Kg]	0.106	0.115
Power Drift [dB]	N/A	-0.11



Band n77: 5G NR (DFT-s-OFDM, 1 RB, 100 MHz, QPSK, 30 kHz) RBPosition:Low AntennaCfg:SISO, BACK

Exposure Conditions

Band	Band n77	TSL Permittivity	38.6
Frequency [MHz] Channel Number	3858.000 657200	TSL Conductivity [S/m]	3.13
Group UID	5G NR FR1 TDD 10866-AAF	Phantom Section TSL	Flat HSL
Conversion Factor	6.75	Test Distance [mm]	0.00

Hardware Setup

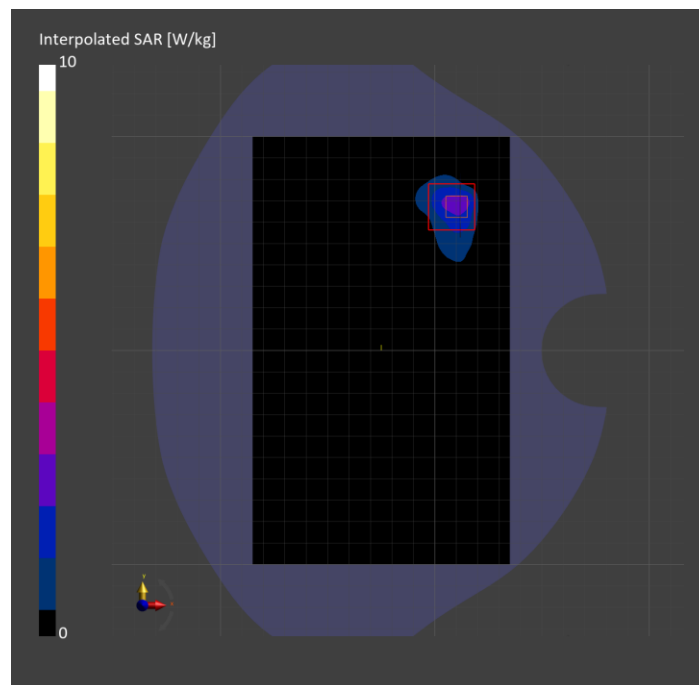
Probe Calibration Date	EX3DV4 - SN7335 2023-01-26	Phantom	Twin-SAM V5.0 (30deg probe tilt)
DAE Calibration Date	DAE4 Sn1472 2023-01-23	TSL Type	HBBL-600-10000
Software Version	16.2.4.2524		

Scan Setup

	Area Scan	Zoom Scan
Grid Extents [mm]	120.0 x 200.0	30.0 x 30.0 x 28.0
Grid Steps [mm]	10.0 x 10.0	5.0 x 5.0 x 1.4
Sensor Surface [mm]	3.0	1.4
Graded Grid	N/A	Yes
M2/M1 [%]		65.6
Dist 3dB Peak [mm]		5.0
Peak SAR [W/kg] SAR Peak Location [mm]	N/A	10.0 [12.0, 65.0, -207.0]

Measurement Results

	Area Scan	Zoom Scan
psSAR1g [W/Kg]	2.17	2.67
psSAR10g [W/Kg]	0.822	0.864
Power Drift [dB]	N/A	0.01



WLAN 2.4GHz: IEEE 802.11b WiFi 2.4 GHz (DSSS, 1 Mbps, 99pc duty cycle), TILT

Exposure Conditions

Band	WLAN 2.4GHz	TSL Permittivity	40.4
Frequency [MHz] Channel Number	2437.000 6	TSL Conductivity [S/m]	1.77
Group UID	WLAN 10415-AAA	Phantom Section TSL	RightHead HSL
Conversion Factor	6.87	Test Distance [mm]	0.00

Hardware Setup

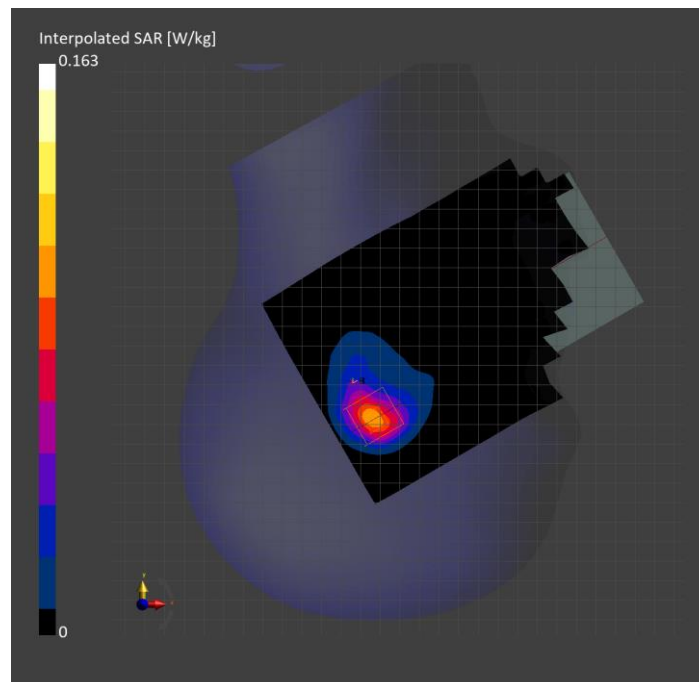
Probe Calibration Date	EX3DV4 - SN7463 2023-04-19	Phantom	Twin-SAM V8.0 (30deg probe tilt)
DAE Calibration Date	DAE4 Sn1357 2023-01-27	TSL Type	HBBL-600-10000
Software Version	16.2.4.2524		

Scan Setup

	Area Scan	Zoom Scan
Grid Extents [mm]	120.0 x 200.0	30.0 x 30.0 x 30.0
Grid Steps [mm]	10.0 x 10.0	5.0 x 5.0 x 1.5
Sensor Surface [mm]	3.0	1.4
Graded Grid	N/A	Yes
M2/M1 [%]		79.5
Dist 3dB Peak [mm]		8.7
Peak SAR [W/kg] SAR Peak Location [mm]	N/A	0.163 [16.4, -327.7, -174.2]

Measurement Results

	Area Scan	Zoom Scan
psSAR1g [W/Kg]	0.082	0.077
psSAR10g [W/Kg]	0.039	0.036
Power Drift [dB]	N/A	-0.06



WLAN 2.4GHz: IEEE 802.11b WiFi 2.4 GHz (DSSS, 1 Mbps, 99pc duty cycle), BACK

Exposure Conditions

Band	WLAN 2.4GHz	TSL Permittivity	40.4
Frequency [MHz] Channel Number	2437.000 6	TSL Conductivity [S/m]	1.77
Group UID	WLAN 10415-AAA	Phantom Section TSL	Flat HSL
Conversion Factor	6.87	Test Distance [mm]	15.00

Hardware Setup

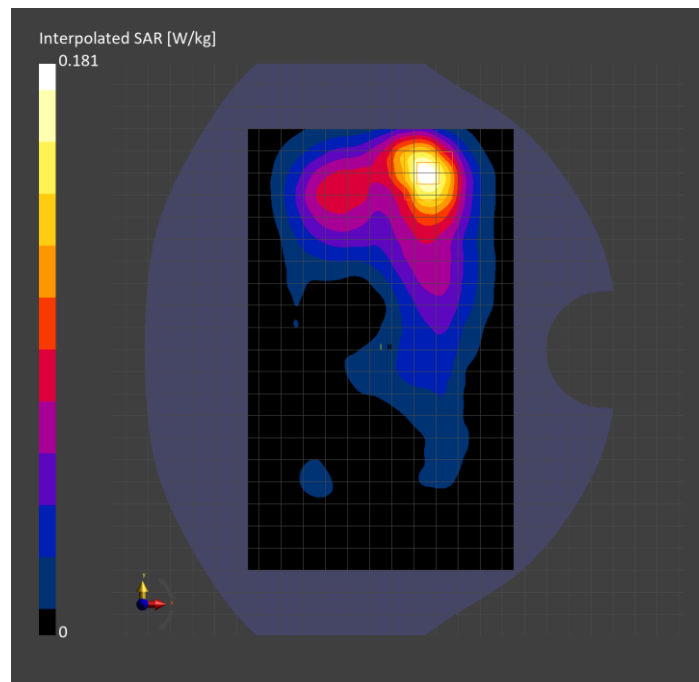
Probe Calibration Date	EX3DV4 - SN7463 2023-04-19	Phantom	Twin-SAM V8.0 (30deg probe tilt)
DAE Calibration Date	DAE4 Sn1357 2023-01-27	TSL Type	HBBL-600-10000
Software Version	16.2.4.2524		

Scan Setup

	Area Scan	Zoom Scan
Grid Extents [mm]	120.0 x 200.0	30.0 x 30.0 x 30.0
Grid Steps [mm]	10.0 x 10.0	5.0 x 5.0 x 1.5
Sensor Surface [mm]	3.0	1.4
Graded Grid	N/A	Yes
M2/M1 [%]		84.0
Dist 3dB Peak [mm]		11.7
Peak SAR [W/kg] SAR Peak Location [mm]	N/A	0.181 [-4.5, 82.0, -207.0]

Measurement Results

	Area Scan	Zoom Scan
psSAR1g [W/Kg]	0.091	0.098
psSAR10g [W/Kg]	0.047	0.050
Power Drift [dB]	N/A	-0.03



WLAN 2.4GHz: IEEE 802.11b WiFi 2.4 GHz (DSSS, 1 Mbps, 99pc duty cycle), BACK

Exposure Conditions

Band	WLAN 2.4GHz	TSL Permittivity	40.4
Frequency [MHz] Channel Number	2437.000 6	TSL Conductivity [S/m]	1.77
Group UID	WLAN 10415-AAA	Phantom Section TSL	Flat HSL
Conversion Factor	6.87	Test Distance [mm]	10.00

Hardware Setup

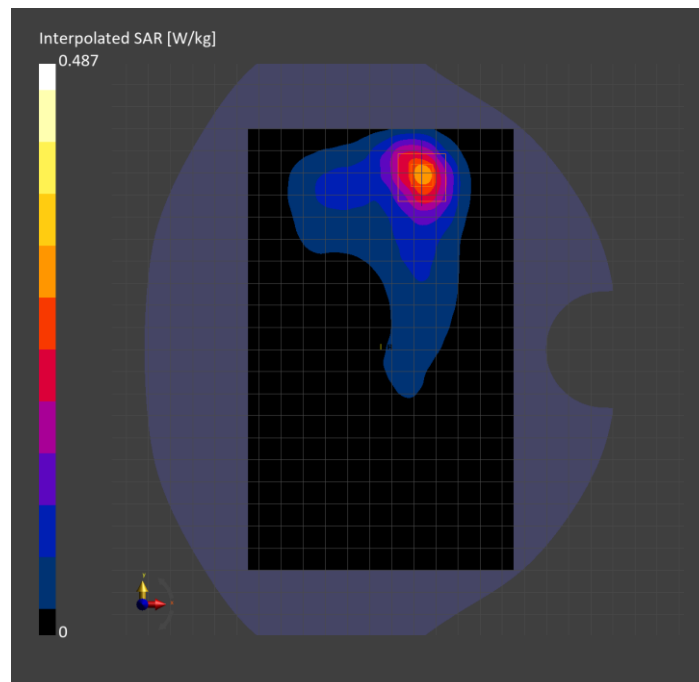
Probe Calibration Date	EX3DV4 - SN7463 2023-04-19	Phantom	Twin-SAM V8.0 (30deg probe tilt)
DAE Calibration Date	DAE4 Sn1357 2023-01-27	TSL Type	HBBL-600-10000
Software Version	16.2.4.2524		

Scan Setup

	Area Scan	Zoom Scan
Grid Extents [mm]	120.0 x 200.0	30.0 x 30.0 x 30.0
Grid Steps [mm]	10.0 x 10.0	5.0 x 5.0 x 1.5
Sensor Surface [mm]	3.0	1.4
Graded Grid	N/A	Yes
M2/M1 [%]		82.8
Dist 3dB Peak [mm]		9.5
Peak SAR [W/kg] SAR Peak Location [mm]	N/A	0.488 [-6.5, 80.0, -207.0]

Measurement Results

	Area Scan	Zoom Scan
psSAR1g [W/Kg]	0.241	0.250
psSAR10g [W/Kg]	0.118	0.121
Power Drift [dB]	N/A	-0.04



U-NII-1, U-NII-2A: IEEE 802.11n (HT Greenfield, 13.5 Mbps, BPSK), TILT

Exposure Conditions

Band	U-NII-1, U-NII-2A	TSL Permittivity	35.9
Frequency [MHz] Channel Number	5310.000 62	TSL Conductivity [S/m]	4.55
Group UID	WLAN 10114-CAE	Phantom Section TSL	LeftHead HSL
Conversion Factor	5.58	Test Distance [mm]	0.00

Hardware Setup

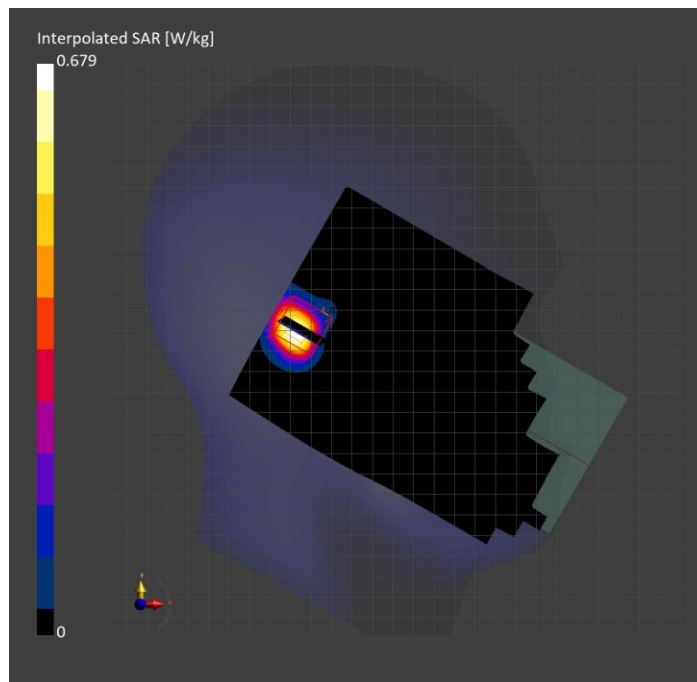
Probe Calibration Date	EX3DV4 - SN7356 2023-03-17	Phantom	Twin-SAM V8.0 (30deg probe tilt)
DAE Calibration Date	DAE4 Sn1674 2023-05-11	TSL Type	HBBL-600-10000
Software Version	16.2.4.2524		

Scan Setup

	Area Scan	Zoom Scan
Grid Extents [mm]	120.0 x 200.0	24.0 x 24.0 x 22.0
Grid Steps [mm]	10.0 x 10.0	4.0 x 4.0 x 1.4
Sensor Surface [mm]	3.0	1.4
Graded Grid	N/A	Yes
M2/M1 [%]		65.6
Dist 3dB Peak [mm]		8.8
Peak SAR [W/kg] SAR Peak Location [mm]	N/A	0.679 [-7.8, 298.5, -169.5]

Measurement Results

	Area Scan	Zoom Scan
psSAR1g [W/Kg]	0.192	0.204
psSAR10g [W/Kg]	0.069	0.066
Power Drift [dB]	N/A	0.00



U-NII-1, U-NII-2A: IEEE 802.11a/h WiFi 5 GHz (OFDM, 6 Mbps, 99pc duty cycle), BACK

Exposure Conditions

Band	U-NII-1, U-NII-2A	TSL Permittivity	34.9
Frequency [MHz] Channel Number	5300.000 60	TSL Conductivity [S/m]	4.55
Group UID	WLAN 10417-AAD	Phantom Section TSL	Flat HSL
Conversion Factor	5.14	Test Distance [mm]	15.00

Hardware Setup

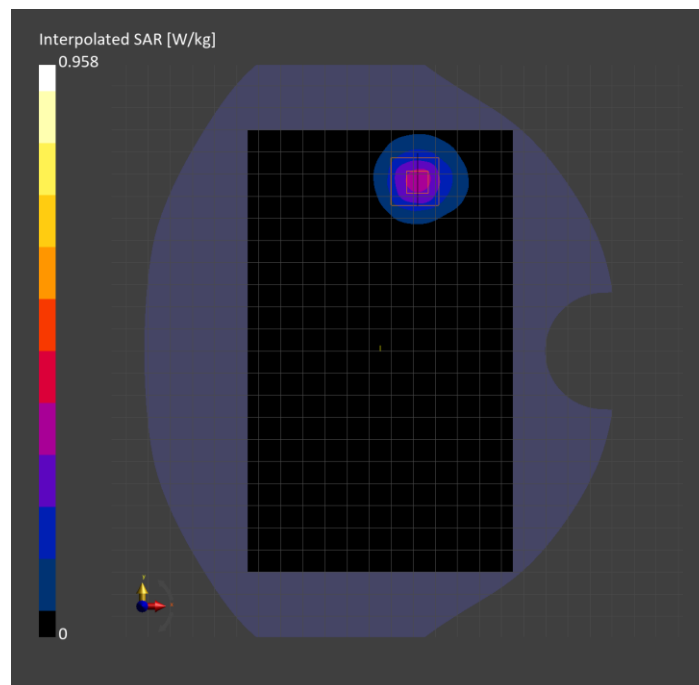
Probe Calibration Date	EX3DV4 - SN3773 2023-02-13	Phantom	Twin-SAM V8.0 (30deg probe tilt)
DAE Calibration Date	DAE4 Sn1674 2023-05-11	TSL Type	HBBL-600-10000
Software Version	16.2.4.2524		

Scan Setup

	Area Scan	Zoom Scan
Grid Extents [mm]	120.0 x 200.0	22.0 x 22.0 x 22.0
Grid Steps [mm]	10.0 x 10.0	4.0 x 4.0 x 1.4
Sensor Surface [mm]	3.0	1.4
Graded Grid	N/A	Yes
M2/M1 [%]		64.5
Dist 3dB Peak [mm]		11.5
Peak SAR [W/kg] SAR Peak Location [mm]	N/A	0.958 [-7.9, 76.7, -207.0]

Measurement Results

	Area Scan	Zoom Scan
psSAR1g [W/Kg]	0.266	0.281
psSAR10g [W/Kg]	0.103	0.103
Power Drift [dB]	N/A	0.03



U-NII-1, U-NII-2A: IEEE 802.11a/h WiFi 5 GHz (OFDM, 6 Mbps, 99pc duty cycle), BACK

Exposure Conditions

Band	U-NII-1, U-NII-2A	TSL Permittivity	35.0
Frequency [MHz] Channel Number	5220.000 44	TSL Conductivity [S/m]	4.46
Group UID	WLAN 10417-AAD	Phantom Section TSL	Flat HSL
Conversion Factor	5.14	Test Distance [mm]	10.00

Hardware Setup

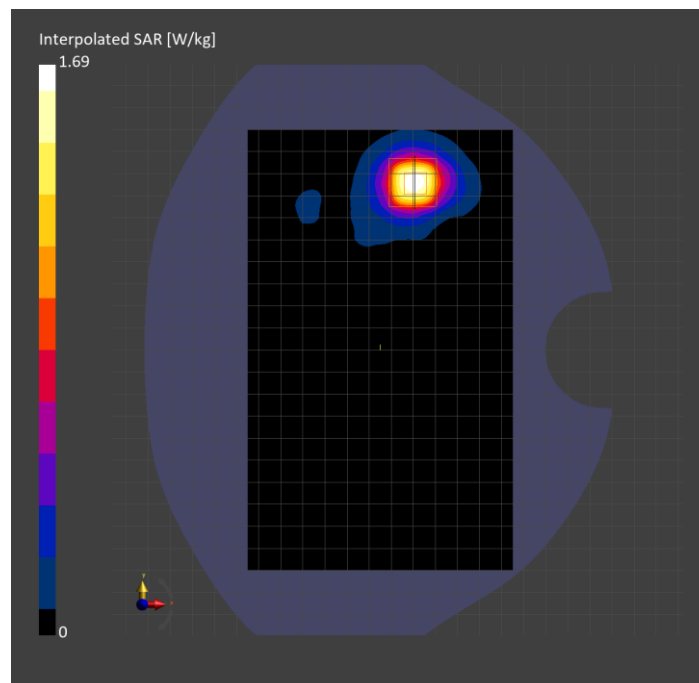
Probe Calibration Date	EX3DV4 - SN3773 2023-02-13	Phantom	Twin-SAM V8.0 (30deg probe tilt)
DAE Calibration Date	DAE4 Sn1674 2023-05-11	TSL Type	HBBL-600-10000
Software Version	16.2.4.2524		

Scan Setup

	Area Scan	Zoom Scan
Grid Extents [mm]	120.0 x 200.0	24.0 x 24.0 x 22.0
Grid Steps [mm]	10.0 x 10.0	4.0 x 4.0 x 1.4
Sensor Surface [mm]	3.0	1.4
Graded Grid	N/A	Yes
M2/M1 [%]		65.0
Dist 3dB Peak [mm]		8.7
Peak SAR [W/kg] SAR Peak Location [mm]	N/A	1.69 [-9.2, 75.2, -207.0]

Measurement Results

	Area Scan	Zoom Scan
psSAR1g [W/Kg]	0.426	0.482
psSAR10g [W/Kg]	0.157	0.160
Power Drift [dB]	N/A	0.03



U-NII-1, U-NII-2A: IEEE 802.11n (HT Greenfield, 13.5 Mbps, BPSK), EDGE TOP

Exposure Conditions

Band	U-NII-1, U-NII-2A	TSL Permittivity	35.9
Frequency [MHz] Channel Number	5310.000 62	TSL Conductivity [S/m]	4.55
Group UID	WLAN 10114-CAE	Phantom Section TSL	Flat HSL
Conversion Factor	5.58	Test Distance [mm]	0.00

Hardware Setup

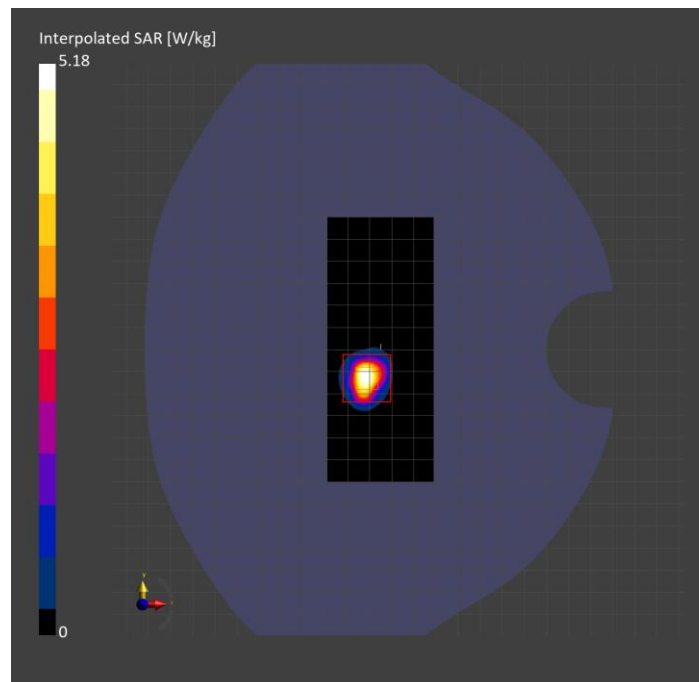
Probe Calibration Date	EX3DV4 - SN7356 2023-03-17	Phantom	Twin-SAM V8.0 (30deg probe tilt)
DAE Calibration Date	DAE4 Sn1674 2023-05-11	TSL Type	HBBL-600-10000
Software Version	16.2.4.2524		

Scan Setup

	Area Scan	Zoom Scan
Grid Extents [mm]	48.0 x 120.0	24.0 x 24.0 x 22.0
Grid Steps [mm]	8.0 x 10.0	4.0 x 4.0 x 1.4
Sensor Surface [mm]	3.0	1.4
Graded Grid	N/A	Yes
M2/M1 [%]		62.7
Dist 3dB Peak [mm]		4.9
Peak SAR [W/kg] SAR Peak Location [mm]	N/A	5.18 [-31.4, -13.6, -207.0]

Measurement Results

	Area Scan	Zoom Scan
psSAR1g [W/Kg]	0.962	1.14
psSAR10g [W/Kg]	0.242	0.251
Power Drift [dB]	N/A	0.01



WLAN 5GHz: IEEE 802.11ac WiFi (80MHz, MCS0, 99pc duty cycle), TILT

Exposure Conditions

Band	WLAN 5GHz	TSL Permittivity	34.3
Frequency [MHz] Channel Number	5610.000 122	TSL Conductivity [S/m]	5.05
Group UID	WLAN 10544-AAD	Phantom Section TSL	LeftHead HSL
Conversion Factor	4.81	Test Distance [mm]	0.00

Hardware Setup

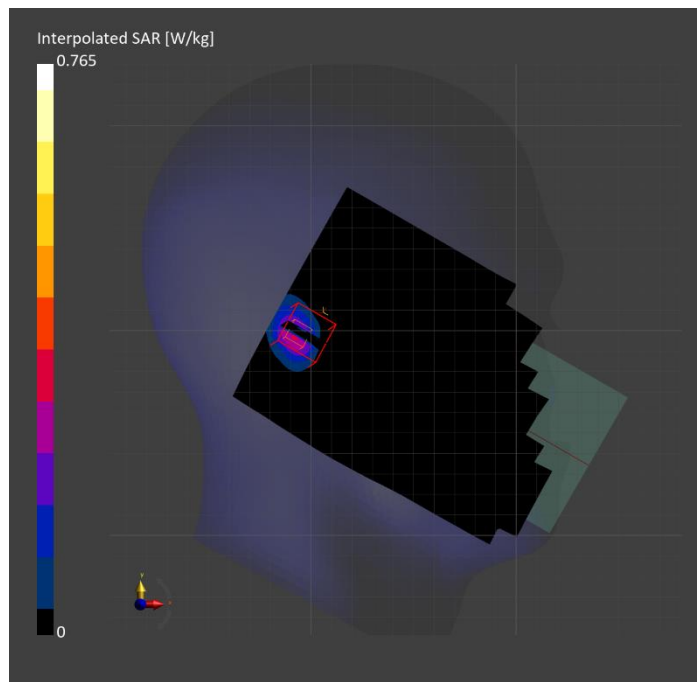
Probe Calibration Date	EX3DV4 - SN7335 2023-01-26	Phantom	Twin-SAM V5.0 (30deg probe tilt)
DAE Calibration Date	DAE4 Sn1472 2023-01-23	TSL Type	HBBL-600-10000
Software Version	16.2.4.2524		

Scan Setup

	Area Scan	Zoom Scan
Grid Extents [mm]	120.0 x 200.0	22.0 x 22.0 x 22.0
Grid Steps [mm]	10.0 x 10.0	4.0 x 4.0 x 1.4
Sensor Surface [mm]	3.0	1.4
Graded Grid	N/A	Yes
M2/M1 [%]		67.2
Dist 3dB Peak [mm]		8.6
Peak SAR [W/kg] SAR Peak Location [mm]	N/A	0.765 [-7.6, 296.4, -169.3]

Measurement Results

	Area Scan	Zoom Scan
psSAR1g [W/Kg]	0.224	0.222
psSAR10g [W/Kg]	0.076	0.069
Power Drift [dB]	N/A	-0.05



U-NII-2C Standalone: IEEE 802.11a/h WiFi 5 GHz (OFDM, 6 Mbps, 99pc duty cycle), BACK

Exposure Conditions

Band	WLAN 5GHz	TSL Permittivity	34.5
Frequency [MHz] Channel Number	5500.000 100	TSL Conductivity [S/m]	4.77
Group UID	WLAN 10417-AAD	Phantom Section TSL	Flat HSL
Conversion Factor	4.58	Test Distance [mm]	15.00

Hardware Setup

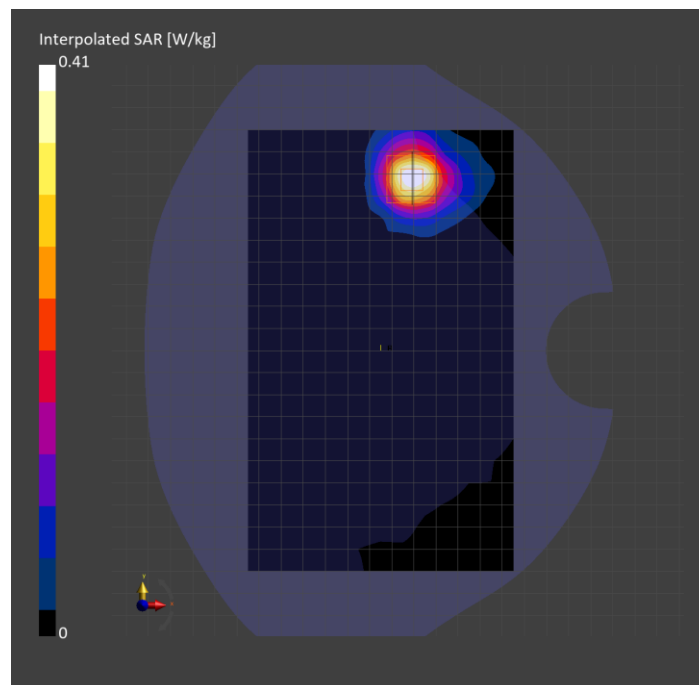
Probe Calibration Date	EX3DV4 - SN3773 2023-02-13	Phantom	Twin-SAM V8.0 (30deg probe tilt)
DAE Calibration Date	DAE4 Sn1674 2023-05-11	TSL Type	HBBL-600-10000
Software Version	16.2.4.2524		

Scan Setup

	Area Scan	Zoom Scan
Grid Extents [mm]	120.0 x 200.0	22.0 x 22.0 x 22.0
Grid Steps [mm]	10.0 x 10.0	4.0 x 4.0 x 1.4
Sensor Surface [mm]	3.0	1.4
Graded Grid	N/A	Yes
M2/M1 [%]		62.4
Dist 3dB Peak [mm]		11.2
Peak SAR [W/kg] SAR Peak Location [mm]	N/A	0.410 [-10.7, 77.2, -210.1]

Measurement Results

	Area Scan	Zoom Scan
psSAR1g [W/Kg]	0.105	0.111
psSAR10g [W/Kg]	0.040	0.038
Power Drift [dB]	N/A	0.02



WLAN 5GHz: IEEE 802.11ac WiFi (80MHz, MCS0, 99pc duty cycle), EDGE TOP

Exposure Conditions

Band	WLAN 5GHz	TSL Permittivity	34.3
Frequency [MHz] Channel Number	5610.000 122	TSL Conductivity [S/m]	5.05
Group UID	WLAN 10544-AAD	Phantom Section TSL	Flat HSL
Conversion Factor	4.81	Test Distance [mm]	5.00

Hardware Setup

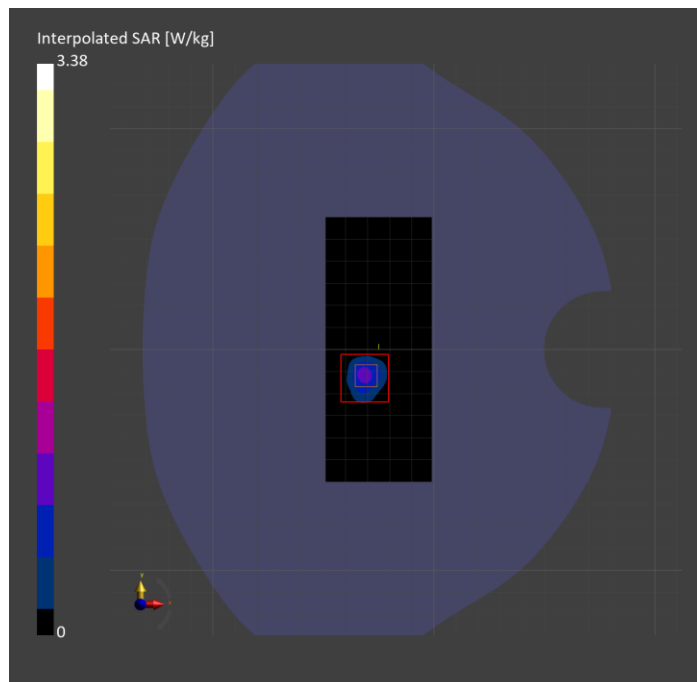
Probe Calibration Date	EX3DV4 - SN7335 2023-01-26	Phantom	Twin-SAM V5.0 (30deg probe tilt)
DAE Calibration Date	DAE4 Sn1472 2023-01-23	TSL Type	HBBL-600-10000
Software Version	16.2.4.2524		

Scan Setup

	Area Scan	Zoom Scan
Grid Extents [mm]	48.0 x 120.0	24.0 x 24.0 x 22.0
Grid Steps [mm]	8.0 x 10.0	4.0 x 4.0 x 1.4
Sensor Surface [mm]	3.0	1.4
Graded Grid	N/A	Yes
M2/M1 [%]		61.4
Dist 3dB Peak [mm]		4.8
Peak SAR [W/kg] SAR Peak Location [mm]	N/A	3.38 [-30.6, -12.8, -207.0]

Measurement Results

	Area Scan	Zoom Scan
psSAR1g [W/Kg]	0.619	0.741
psSAR10g [W/Kg]	0.162	0.171
Power Drift [dB]	N/A	-0.01



U-NII-3 Standalone: IEEE 802.11ac WiFi (80MHz, MCS0, 99pc duty cycle), TILT

Exposure Conditions

Band	U-NII-3 Standalone	TSL Permittivity	34.0
Frequency [MHz] Channel Number	5775.000 155	TSL Conductivity [S/m]	5.24
Group UID	WLAN 10544-AAD	Phantom Section TSL	LeftHead HSL
Conversion Factor	4.89	Test Distance [mm]	0.00

Hardware Setup

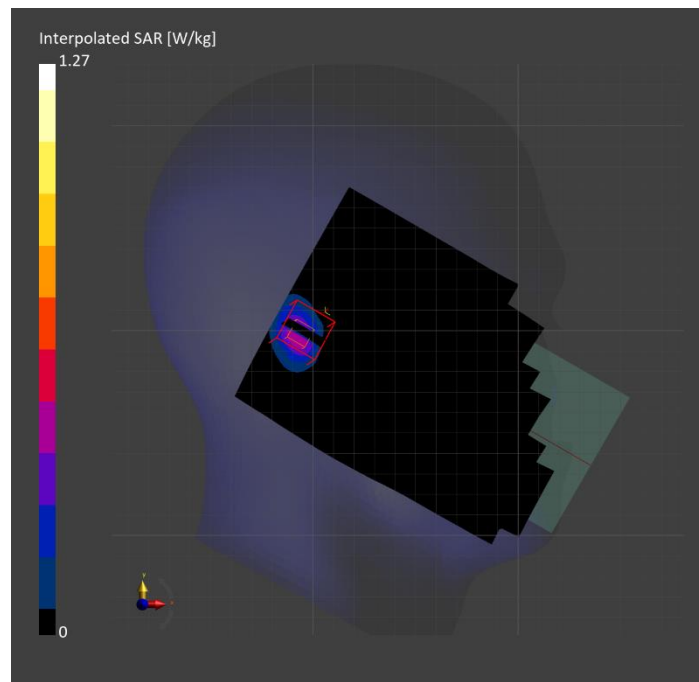
Probe Calibration Date	EX3DV4 - SN7335 2023-01-26	Phantom	Twin-SAM V5.0 (30deg probe tilt)
DAE Calibration Date	DAE4 Sn1472 2023-01-23	TSL Type	HBBL-600-10000
Software Version	16.2.4.2524		

Scan Setup

	Area Scan	Zoom Scan
Grid Extents [mm]	120.0 x 200.0	24.0 x 24.0 x 22.0
Grid Steps [mm]	10.0 x 10.0	4.0 x 4.0 x 1.4
Sensor Surface [mm]	3.0	1.4
Graded Grid	N/A	Yes
M2/M1 [%]		62.6
Dist 3dB Peak [mm]		9.0
Peak SAR [W/kg] SAR Peak Location [mm]	N/A	1.27 [-7.3, 297.1, -169.5]

Measurement Results

	Area Scan	Zoom Scan
psSAR1g [W/Kg]	0.353	0.349
psSAR10g [W/Kg]	0.122	0.112
Power Drift [dB]	N/A	-0.00



U-NII-3 Standalone: IEEE 802.11a/h WiFi 5 GHz (OFDM, 6 Mbps, 99pc duty cycle), BACK

Exposure Conditions

Band	U-NII-3 Standalone	TSL Permittivity	34.5
Frequency [MHz] Channel Number	5785.000 157	TSL Conductivity [S/m]	5.18
Group UID	WLAN 10417-AAD	Phantom Section TSL	Flat HSL
Conversion Factor	4.7	Test Distance [mm]	15.00

Hardware Setup

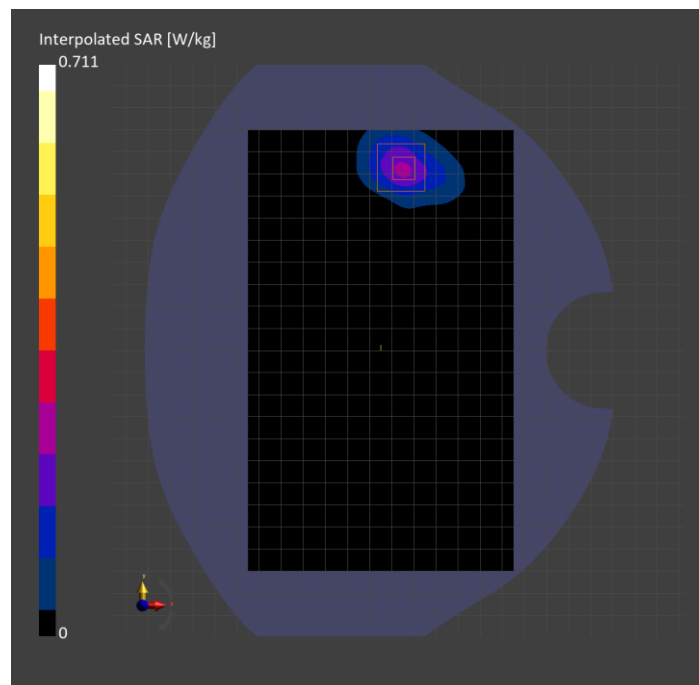
Probe Calibration Date	EX3DV4 - SN7463 2023-04-19	Phantom	Twin-SAM V8.0 (30deg probe tilt)
DAE Calibration Date	DAE4 Sn1357 2023-01-27	TSL Type	HBBL-600-10000
Software Version	16.2.4.2524		

Scan Setup

	Area Scan	Zoom Scan
Grid Extents [mm]	120.0 x 200.0	22.0 x 22.0 x 22.0
Grid Steps [mm]	10.0 x 10.0	4.0 x 4.0 x 1.4
Sensor Surface [mm]	3.0	1.4
Graded Grid	N/A	Yes
M2/M1 [%]		64.2
Dist 3dB Peak [mm]		11.3
Peak SAR [W/kg] SAR Peak Location [mm]	N/A	0.711 [-14.7, 81.9, -207.0]

Measurement Results

	Area Scan	Zoom Scan
psSAR1g [W/Kg]	0.186	0.201
psSAR10g [W/Kg]	0.071	0.072
Power Drift [dB]	N/A	0.03



U-NII-3 Standalone: IEEE 802.11a/h WiFi 5 GHz (OFDM, 6 Mbps, 99pc duty cycle), EDGE TOP

Exposure Conditions

Band	U-NII-3 Standalone	TSL Permittivity	34.5
Frequency [MHz] Channel Number	5785.000 157	TSL Conductivity [S/m]	5.18
Group UID	WLAN 10417-AAD	Phantom Section TSL	Flat HSL
Conversion Factor	4.7	Test Distance [mm]	10.00

Hardware Setup

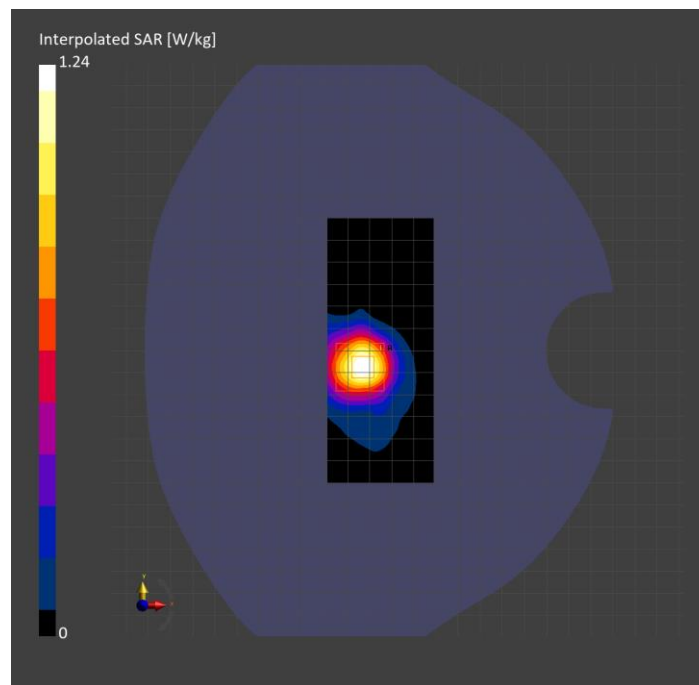
Probe Calibration Date	EX3DV4 - SN7463 2023-04-19	Phantom	Twin-SAM V8.0 (30deg probe tilt)
DAE Calibration Date	DAE4 Sn1357 2023-01-27	TSL Type	HBBL-600-10000
Software Version	16.2.4.2524		

Scan Setup

	Area Scan	Zoom Scan
Grid Extents [mm]	48.0 x 120.0	22.0 x 22.0 x 22.0
Grid Steps [mm]	8.0 x 10.0	4.0 x 4.0 x 1.4
Sensor Surface [mm]	3.0	1.4
Graded Grid	N/A	Yes
M2/M1 [%]		65.7
Dist 3dB Peak [mm]		11.4
Peak SAR [W/kg] SAR Peak Location [mm]	N/A	1.24 [-33.4, -7.8, -207.0]

Measurement Results

	Area Scan	Zoom Scan
psSAR1g [W/Kg]	0.333	0.357
psSAR10g [W/Kg]	0.124	0.132
Power Drift [dB]	N/A	0.08



ISM 2.4 GHz Band: IEEE 802.15.1 Bluetooth (GFSK, DH5), TILT

Exposure Conditions

Band	ISM 2.4 GHz Band	TSL Permittivity	40.4
Frequency [MHz] Channel Number	2441.000 39	TSL Conductivity [S/m]	1.77
Group UID	Bluetooth 10032-CAA	Phantom Section TSL	RightHead HSL
Conversion Factor	6.87	Test Distance [mm]	0.00

Hardware Setup

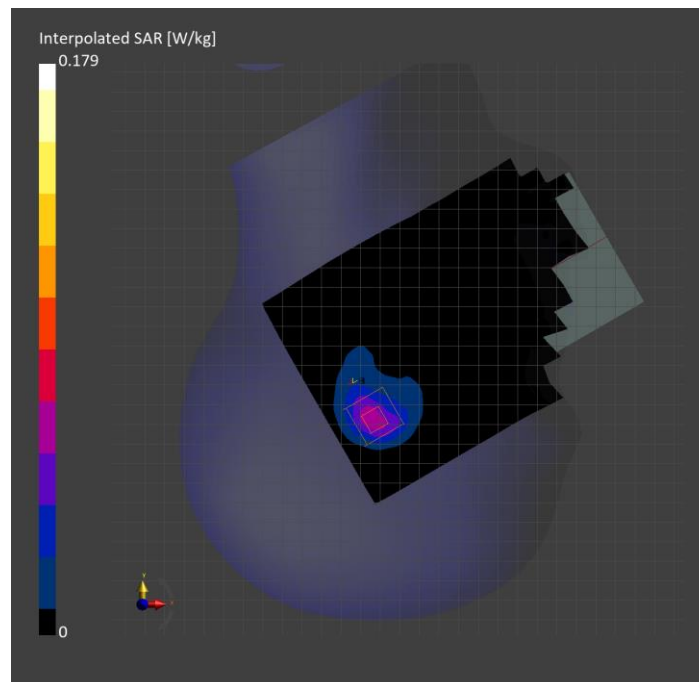
Probe Calibration Date	EX3DV4 - SN7463 2023-04-19	Phantom	Twin-SAM V8.0 (30deg probe tilt)
DAE Calibration Date	DAE4 Sn1357 2023-01-27	TSL Type	HBBL-600-10000
Software Version	16.2.4.2524		

Scan Setup

	Area Scan	Zoom Scan
Grid Extents [mm]	120.0 x 200.0	30.0 x 30.0 x 30.0
Grid Steps [mm]	10.0 x 10.0	5.0 x 5.0 x 1.5
Sensor Surface [mm]	3.0	1.4
Graded Grid	N/A	Yes
M2/M1 [%]		81.8
Dist 3dB Peak [mm]		9.0
Peak SAR [W/kg] SAR Peak Location [mm]	N/A	0.179 [16.9, -328.0, -174.3]

Measurement Results

	Area Scan	Zoom Scan
psSAR1g [W/Kg]	0.055	0.051
psSAR10g [W/Kg]	0.026	0.023
Power Drift [dB]	N/A	0.10



ISM 2.4 GHz Band: IEEE 802.15.1 Bluetooth (GFSK, DH5), BACK

Exposure Conditions

Band	ISM 2.4 GHz Band	TSL Permittivity	40.4
Frequency [MHz] Channel Number	2441.000 39	TSL Conductivity [S/m]	1.77
Group UID	Bluetooth 10032-CAA	Phantom Section TSL	Flat HSL
Conversion Factor	6.87	Test Distance [mm]	15.00

Hardware Setup

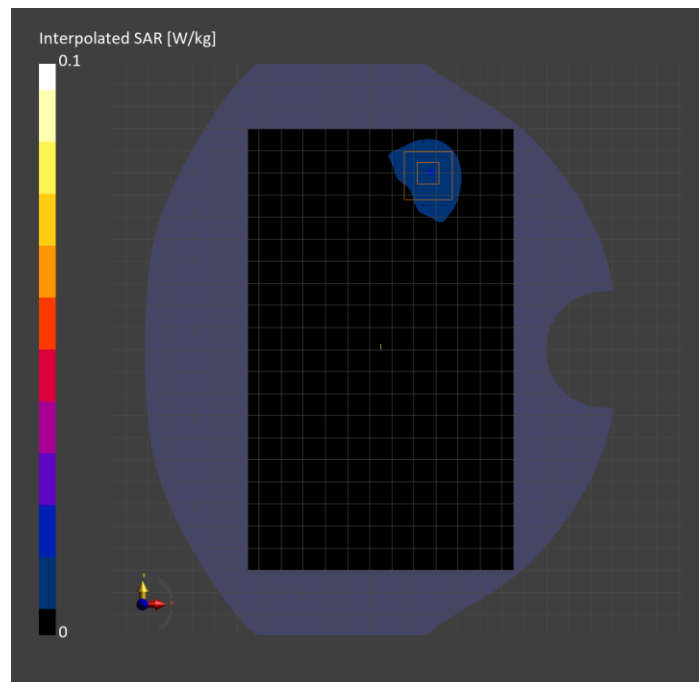
Probe Calibration Date	EX3DV4 - SN7463 2023-04-19	Phantom	Twin-SAM V8.0 (30deg probe tilt)
DAE Calibration Date	DAE4 Sn1357 2023-01-27	TSL Type	HBBL-600-10000
Software Version	16.2.4.2524		

Scan Setup

	Area Scan	Zoom Scan
Grid Extents [mm]	120.0 x 200.0	30.0 x 30.0 x 30.0
Grid Steps [mm]	10.0 x 10.0	5.0 x 5.0 x 1.5
Sensor Surface [mm]	3.0	1.4
Graded Grid	N/A	Yes
M2/M1 [%]		79.5
Dist 3dB Peak [mm]		11.4
Peak SAR [W/kg] SAR Peak Location [mm]	N/A	0.030 [-6.0, 81.0, -207.0]

Measurement Results

	Area Scan	Zoom Scan
psSAR1g [W/Kg]	0.013	0.014
psSAR10g [W/Kg]	0.007	0.006
Power Drift [dB]	N/A	-0.07



ISM 2.4 GHz Band: IEEE 802.15.1 Bluetooth (GFSK, DH5), BACK

Exposure Conditions

Band	ISM 2.4 GHz Band	TSL Permittivity	40.4
Frequency [MHz] Channel Number	2441.000 39	TSL Conductivity [S/m]	1.77
Group UID	Bluetooth 10032-CAA	Phantom Section TSL	Flat HSL
Conversion Factor	6.87	Test Distance [mm]	10.00

Hardware Setup

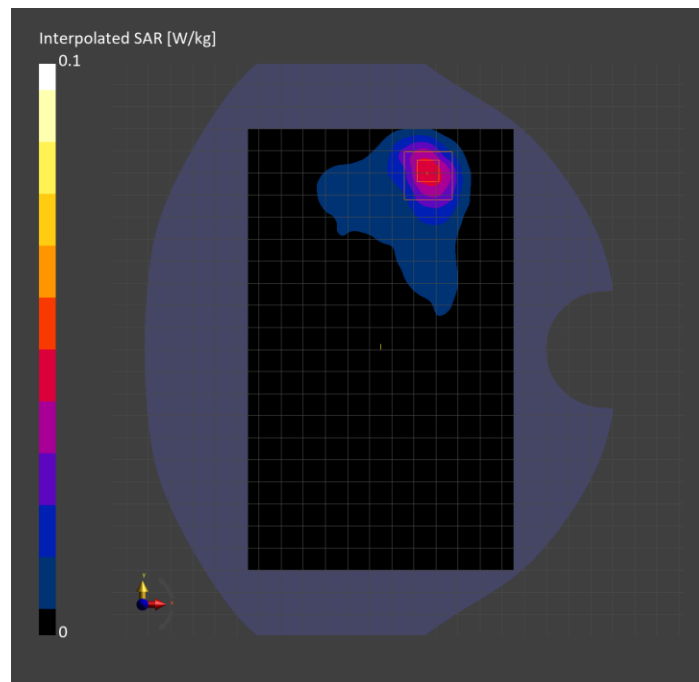
Probe Calibration Date	EX3DV4 - SN7463 2023-04-19	Phantom	Twin-SAM V8.0 (30deg probe tilt)
DAE Calibration Date	DAE4 Sn1357 2023-01-27	TSL Type	HBBL-600-10000
Software Version	16.2.4.2524		

Scan Setup

	Area Scan	Zoom Scan
Grid Extents [mm]	120.0 x 200.0	30.0 x 30.0 x 30.0
Grid Steps [mm]	10.0 x 10.0	5.0 x 5.0 x 1.5
Sensor Surface [mm]	3.0	1.4
Graded Grid	N/A	Yes
M2/M1 [%]		83.7
Dist 3dB Peak [mm]		9.5
Peak SAR [W/kg] SAR Peak Location [mm]	N/A	0.080 [-4.0, 83.0, -207.0]

Measurement Results

	Area Scan	Zoom Scan
psSAR1g [W/Kg]	0.038	0.039
psSAR10g [W/Kg]	0.018	0.017
Power Drift [dB]	N/A	0.08



NFC: CW, BACK

Exposure Conditions

Band	NFC	TSL Permittivity	52.6
Frequency [MHz] Channel Number	13.6 0	TSL Conductivity [S/m]	0.808
Group UID	CW 0--	Phantom Section TSL	Flat HSL
Conversion Factor	19.03	Test Distance [mm]	0.00

Hardware Setup

Probe Calibration Date	EX3DV4 - SN3989 2023-01-26	Phantom	ELI V8.0 (20deg probe tilt)
DAE Calibration Date	DAE4 Sn1547 2023-04-18	TSL Type	HBBL4-250V3
Software Version	16.2.2.1588		

Scan Setup

	Area Scan	Zoom Scan
Grid Extents [mm]	120.0 x 210.0	36.0 x 36.0 x 30.0
Grid Steps [mm]	15.0 x 15.0	6.0 x 6.0 x 1.5
Sensor Surface [mm]	3.0	1.4
Graded Grid	n/a	Yes
M2/M1 [%]		44.0
Dist 3dB Peak [mm]		3.7
Peak SAR [W/kg] SAR Peak Location [mm]	N/A	0.564

Measurement Results

	Area Scan	Zoom Scan
psSAR1g [W/Kg]	0.099	0.098
psSAR10g [W/Kg]	0.063	0.034
Power Drift [dB]	n/a	-0.13

