

Measurement Report for Device, FRONT, Validation band, CW, Channel 30000 (30000.0 MHz)

Exposure Conditions

Phantom Section	Position, Test Distance [mm]	Band	Group, UID	Frequency [MHz], Channel Number	Conversion Factor
5G	FRONT, 5.55	Validation band	CW, 0--	30000.0, 30000	1.0

Hardware Setup

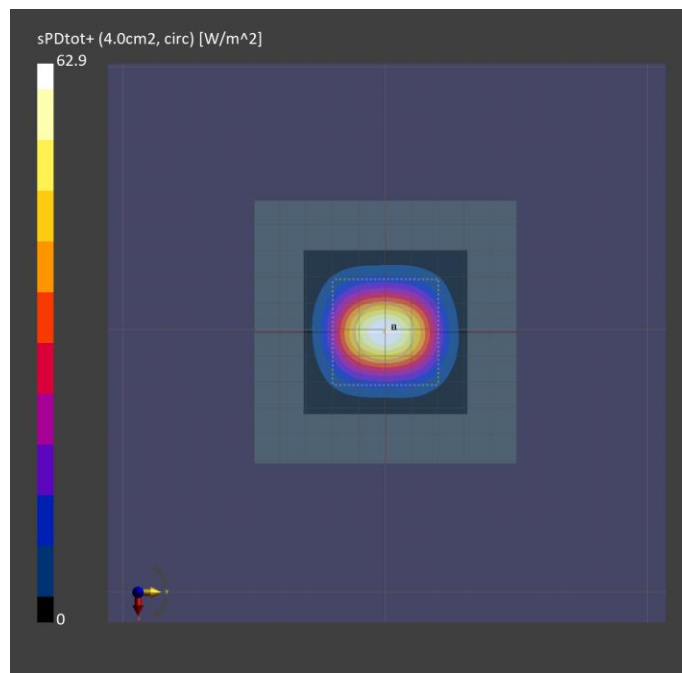
Phantom	Medium	Probe, Calibration Date	DAE, Calibration Date
mmWave	Air -	EUmmWV4 - SN9559_F1-55GHz, 2022-02-28	DAE4 Sn1667, 2022-04-27

Scans Setup

Scan Type	5G Scan
Grid Extents [mm]	60.0 x 60.0
Grid Steps [lambda]	0.25 x 0.25
Sensor Surface [mm]	5.55
MAIA	N/A

Measurement Results

Scan Type	5G Scan
Date	2022-10-26
Avg. Area [cm <sup>2</sup> ]	4.00
psPDn+ [W/m <sup>2</sup> ]	62.3
psPDtot+ [W/m <sup>2</sup> ]	62.9
psPDmod+ [W/m <sup>2</sup> ]	63.1
E <sub>max</sub> [V/m]	1.79
Power Drift [dB]	-0.06



**Measurement Report for Device, FRONT, Validation band, CW, Channel 30000 (30000.0 MHz)**

**Exposure Conditions**

Phantom Section	Position, Test Distance [mm]	Band	Group, UID	Frequency [MHz], Channel Number	Conversion Factor
5G	FRONT, 5.55	Validation band	CW, 0--	30000.0, 30000	1.0

**Hardware Setup**

Phantom	Medium	Probe, Calibration Date	DAE, Calibration Date
mmWave	Air -	EUmmWV4 - SN9536_F1-55GHz, 2022-02-28	DAE4 Sn1670, 2022-06-07

**Scans Setup**

Scan Type	5G Scan
Grid Extents [mm]	60.0 x 60.0
Grid Steps [lambda]	0.25 x 0.25
Sensor Surface [mm]	5.55
MAIA	N/A

**Measurement Results**

Scan Type	5G Scan
Date	2022-11-10
Avg. Area [cm <sup>2</sup> ]	4.00
psPDn+ [W/m <sup>2</sup> ]	42.9
psPDtot+ [W/m <sup>2</sup> ]	43.3
psPDmod+ [W/m <sup>2</sup> ]	43.4
E <sub>max</sub> [V/m]	153
Power Drift [dB]	-0.09

