

# Measurement Report for Device, Right Touch, GSM 850, UID 10024 DAC, Channel 251 (848.8MHz)

## Exposure Conditions

Phantom Section, TSL	Position, Test Distance [mm]	Band	Group, UID	Frequency [MHz], Channel Number	Conversion Factor	TSL Conductivity [S/m]	TSL Permittivity
Left Head, HSL	CHEEK, 0.00	GSM 850	GSM, 10024-DAC	848.8, 251	9.19	0.982	41.7

## Hardware Setup

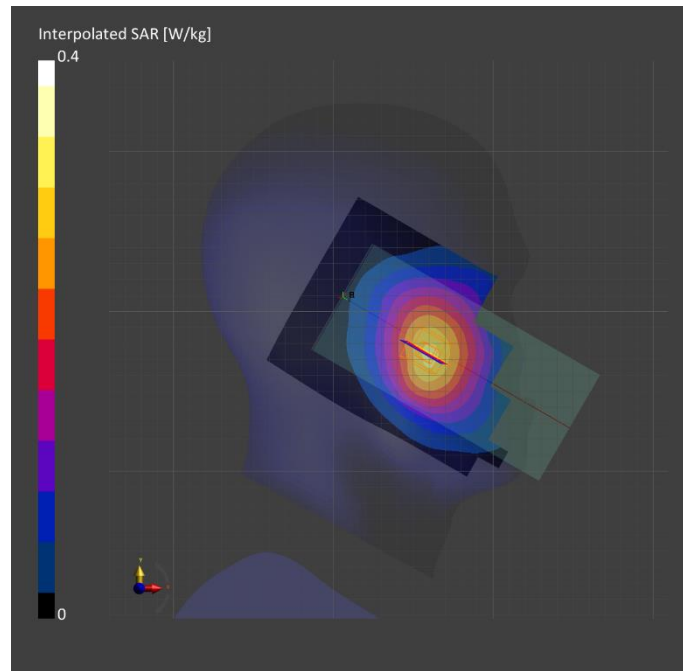
Phantom	TSL, Measured Date	Probe, Calibration Date	DAE, Calibration Date
Twin-SAM V8.0 (30deg probe tilt) - 2043	HBBL-600-10000, 2022-Jun-13	EX3DV4 - SN3928, 2022-03-03	DAE4 Sn1494, 2021-07-27

## Scan Setup

	Area Scan	Zoom Scan
Grid Extents [mm]	120.0 x 210.0	30.0 x 30.0 x 30.0
Grid Steps [mm]	15.0 x 15.0	6.0 x 6.0 x 1.5
Sensor Surface [mm]	3.0	1.4

## Measurement Results

	Area Scan	Zoom Scan
Date	2022-06-14	2022-06-14
psSAR1g [W/kg]	0.270	0.289
psSAR10g [W/kg]	0.186	0.220
Power Drift [dB]		-0.02



# Measurement Report for Device, Rear, GSM 850, UID 10024 DAC, Channel 251 (848.8MHz)

## Exposure Conditions

Phantom Section, TSL	Position, Test Distance [mm]	Band	Group, UID	Frequency [MHz], Channel Number	Conversion Factor	TSL Conductivity [S/m]	TSL Permittivity
Flat, HSL	BACK, 15.00	GSM 850	GSM, 10024-DAC	848.8, 251	9.19	0.982	41.7

## Hardware Setup

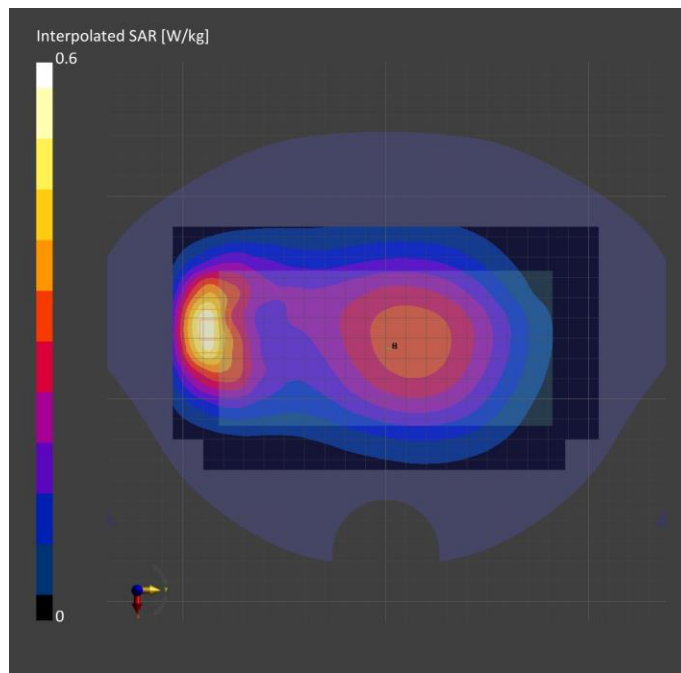
Phantom	TSL, Measured Date	Probe, Calibration Date	DAE, Calibration Date
Twin-SAM V8.0 (30deg probe tilt) - 2043	HBBL-600-10000, 2022-Jun-13	EX3DV4 - SN3928, 2022-03-03	DAE4 Sn1494, 2021-07-27

## Scan Setup

	Area Scan	Zoom Scan
Grid Extents [mm]	120.0 x 210.0	30.0 x 30.0 x 30.0
Grid Steps [mm]	15.0 x 15.0	6.0 x 6.0 x 1.5
Sensor Surface [mm]	3.0	1.4

## Measurement Results

	Area Scan	Zoom Scan
Date	2022-06-14	2022-06-14
psSAR1g [W/kg]	0.455	0.463
psSAR10g [W/kg]	0.290	0.271
Power Drift [dB]		-0.03



# Measurement Report for Device, Rear, GSM 850, UID 10024 DAC, Channel 251 (848.8MHz)

## Exposure Conditions

Phantom Section, TSL	Position, Test Distance [mm]	Band	Group, UID	Frequency [MHz], Channel Number	Conversion Factor	TSL Conductivity [S/m]	TSL Permittivity
Flat, HSL	BACK, 10.00	GSM 850	GSM, 10024-DAC	848.8, 251	9.19	0.982	41.7

## Hardware Setup

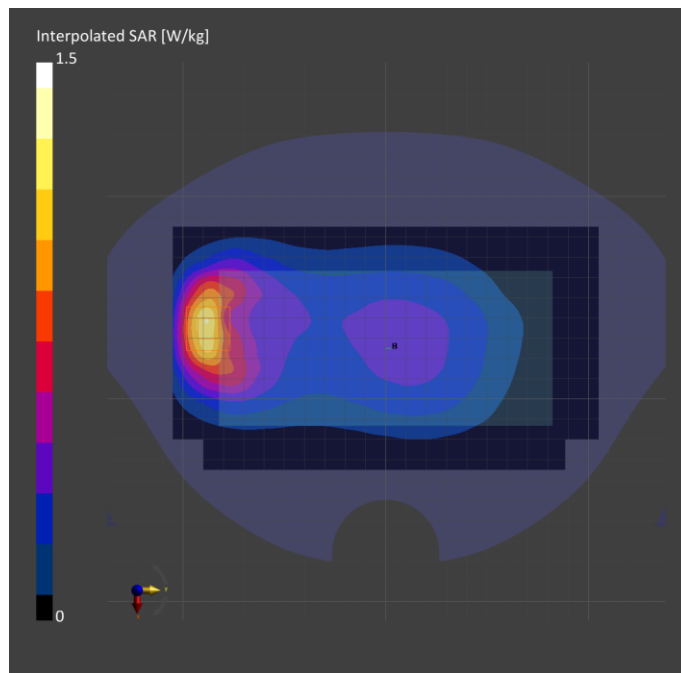
Phantom	TSL, Measured Date	Probe, Calibration Date	DAE, Calibration Date
Twin-SAM V8.0 (30deg probe tilt) - 2043	HBBL-600-10000, 2022-Jun-13	EX3DV4 - SN3928, 2022-03-03	DAE4 Sn1494, 2021-07-27

## Scan Setup

	Area Scan	Zoom Scan
Grid Extents [mm]	120.0 x 210.0	30.0 x 30.0 x 30.0
Grid Steps [mm]	15.0 x 15.0	6.0 x 6.0 x 1.5
Sensor Surface [mm]	3.0	1.4

## Measurement Results

	Area Scan	Zoom Scan
Date	2022-06-13	2022-06-13
psSAR1g [W/kg]	1.04	1.06
psSAR10g [W/kg]	0.649	0.584
Power Drift [dB]		-0.02



# Measurement Report for Device, Left Touch, GSM 1900, UID 10027 DAC, Channel 661 (1880.0MHz)

## Exposure Conditions

Phantom Section, TSL	Position, Test Distance [mm]	Band	Group, UID	Frequency [MHz], Channel Number	Conversion Factor	TSL Conductivity [S/m]	TSL Permittivity
Left Head, HSL	CHEEK, 0.00	PCS 1900	GSM, 10027-DAC	1880.0, 661	8.12	1.39	38.8

## Hardware Setup

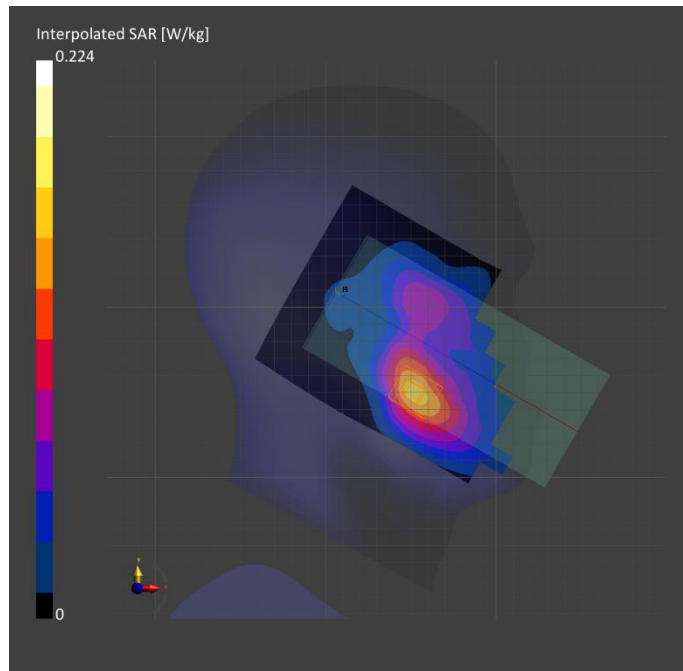
Phantom	TSL, Measured Date	Probe, Calibration Date	DAE, Calibration Date
Twin-SAM V8.0 (30deg probe tilt) - 2039	HBBL-600-10000, 2022-Jun-20	EX3DV4 - SN7545, 2021-08-26	DAE4 Sn1667, 2022-04-27

## Scan Setup

	Area Scan	Zoom Scan
Grid Extents [mm]	120.0 x 210.0	32.0 x 32.0 x 30.0
Grid Steps [mm]	15.0 x 15.0	6.0 x 6.0 x 1.5
Sensor Surface [mm]	3.0	1.4

## Measurement Results

	Area Scan	Zoom Scan
Date	2022-06-22	2022-06-22
psSAR1g [W/kg]	0.133	0.138
psSAR10g [W/kg]	0.078	0.087
Power Drift [dB]		0.05



# Measurement Report for Device, Rear, GSM 1900, UID 10027 DAC, Channel 661 (1880.0MHz)

## Exposure Conditions

Phantom Section, TSL	Position, Test Distance [mm]	Band	Group, UID	Frequency [MHz], Channel Number	Conversion Factor	TSL Conductivity [S/m]	TSL Permittivity
Flat, HSL	BACK, 15.00	PCS 1900	GSM, 10027-DAC	1880.0, 661	8.12	1.39	38.8

## Hardware Setup

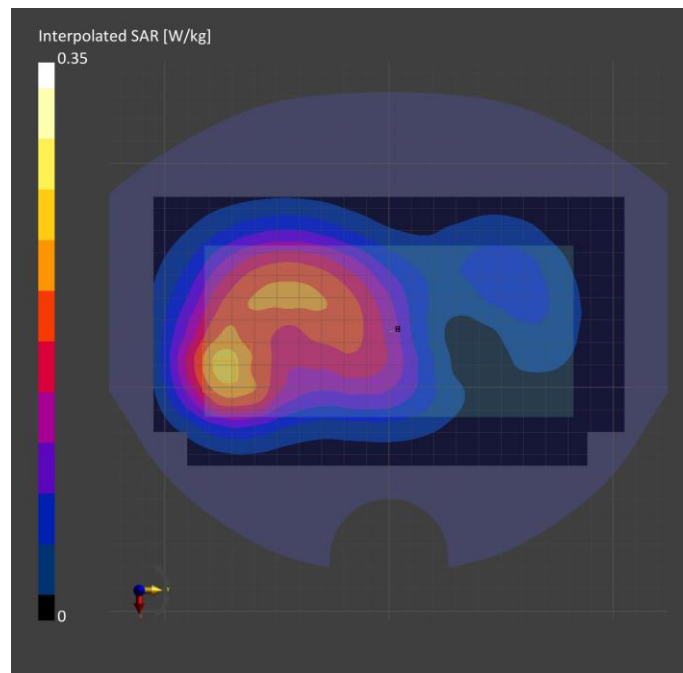
Phantom	TSL, Measured Date	Probe, Calibration Date	DAE, Calibration Date
Twin-SAM V8.0 (30deg probe tilt) - 2039	HBBL-600-10000, 2022-Jun-20	EX3DV4 - SN7545, 2021-08-26	DAE4 Sn1667, 2022-04-27

## Scan Setup

	Area Scan	Zoom Scan
Grid Extents [mm]	120.0 x 210.0	32.0 x 32.0 x 30.0
Grid Steps [mm]	15.0 x 15.0	6.0 x 6.0 x 1.5
Sensor Surface [mm]	3.0	1.4

## Measurement Results

	Area Scan	Zoom Scan
Date	2022-06-22	2022-06-22
psSAR1g [W/kg]	0.209	0.213
psSAR10g [W/kg]	0.126	0.126
Power Drift [dB]		-0.02



# Measurement Report for Device, Rear, GSM 1900, UID 10027 DAC, Channel 661 (1880.0MHz)

## Exposure Conditions

Phantom Section, TSL	Position, Test Distance [mm]	Band	Group, UID	Frequency [MHz], Channel Number	Conversion Factor	TSL Conductivity [S/m]	TSL Permittivity
Flat, HSL	BACK, 10.00	PCS 1900	GSM, 10027-DAC	1880.0, 661	8.12	1.39	38.8

## Hardware Setup

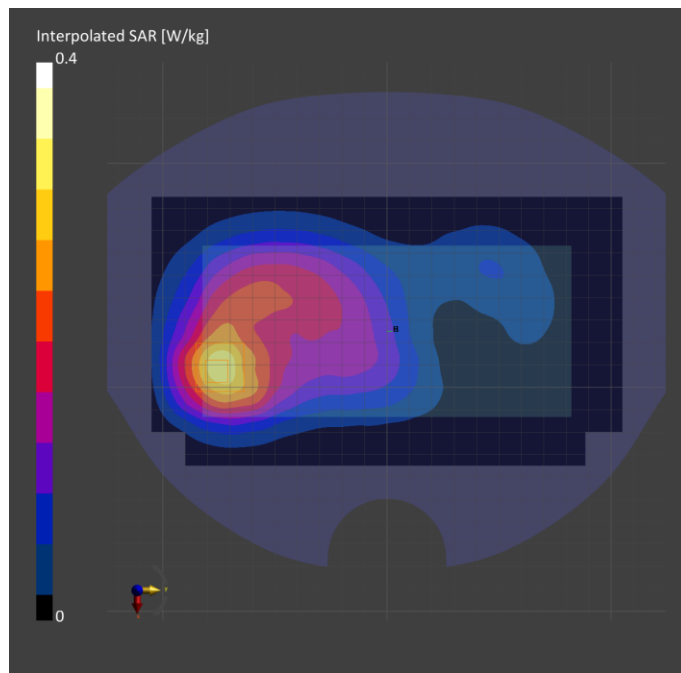
Phantom	TSL, Measured Date	Probe, Calibration Date	DAE, Calibration Date
Twin-SAM V8.0 (30deg probe tilt) - 2039	HBBL-600-10000, 2022-Jun-20	EX3DV4 - SN7545, 2021-08-26	DAE4 Sn1667, 2022-04-27

## Scan Setup

	Area Scan	Zoom Scan
Grid Extents [mm]	120.0 x 210.0	32.0 x 32.0 x 30.0
Grid Steps [mm]	15.0 x 15.0	6.0 x 6.0 x 1.5
Sensor Surface [mm]	3.0	1.4

## Measurement Results

	Area Scan	Zoom Scan
Date	2022-06-22	2022-06-22
psSAR1g [W/kg]	0.273	0.286
psSAR10g [W/kg]	0.161	0.163
Power Drift [dB]		0.01



# Measurement Report for Device, Left Touch, WCDMA Band 2, UTRA/FDD, UID 10011 CAB, Channel 9400 (1880.0MHz)

## Exposure Conditions

Phantom Section, TSL	Position, Test Distance [mm]	Band	Group, UID	Frequency [MHz], Channel Number	Conversion Factor	TSL Conductivity [S/m]	TSL Permittivity
Left Head, HSL	CHEEK, 0.00	Band 2, UTRA/FDD	WCDMA, 10011-CAB	1880.0, 9400	8.12	1.42	39.1

## Hardware Setup

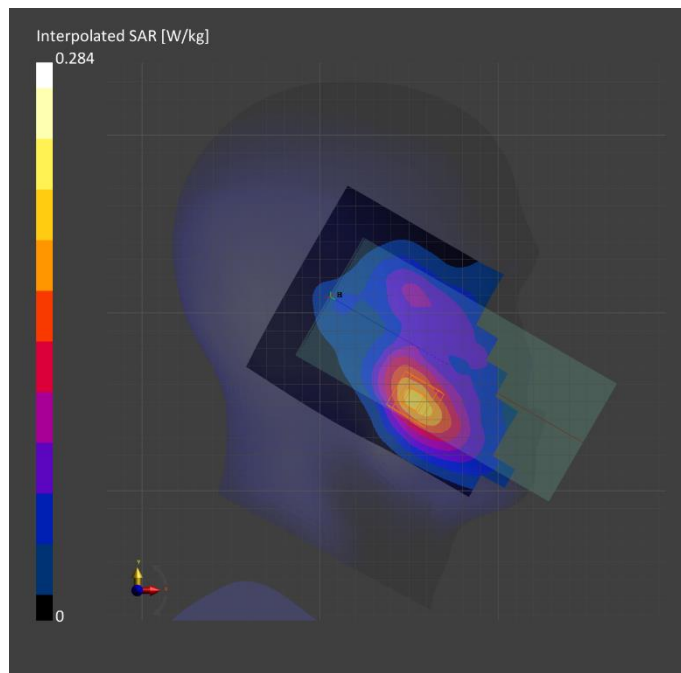
Phantom	TSL, Measured Date	Probe, Calibration Date	DAE, Calibration Date
Twin-SAM V8.0 (30deg probe tilt) - 2039	HBBL-600-10000, 2022-Jun-13	EX3DV4 - SN7545, 2021-08-26	DAE4 Sn1667, 2022-04-27

## Scan Setup

	Area Scan	Zoom Scan
Grid Extents [mm]	120.0 x 210.0	32.0 x 32.0 x 30.0
Grid Steps [mm]	15.0 x 15.0	6.0 x 6.0 x 1.5
Sensor Surface [mm]	3.0	1.4

## Measurement Results

	Area Scan	Zoom Scan
Date	2022-06-14	2022-06-14
psSAR1g [W/kg]	0.166	0.170
psSAR10g [W/kg]	0.098	0.105
Power Drift [dB]		0.01



# Measurement Report for Device, Rear, WCDMA Band 2, UTRA/FDD, UID 10011 CAB, Channel 9400 (1880.0MHz)

## Exposure Conditions

Phantom Section, TSL	Position, Test Distance [mm]	Band	Group, UID	Frequency [MHz], Channel Number	Conversion Factor	TSL Conductivity [S/m]	TSL Permittivity
Flat, HSL	BACK, 15.00	Band 2, UTRA/FDD	WCDMA, 10011-CAB	1880.0, 9400	8.12	1.42	39.1

## Hardware Setup

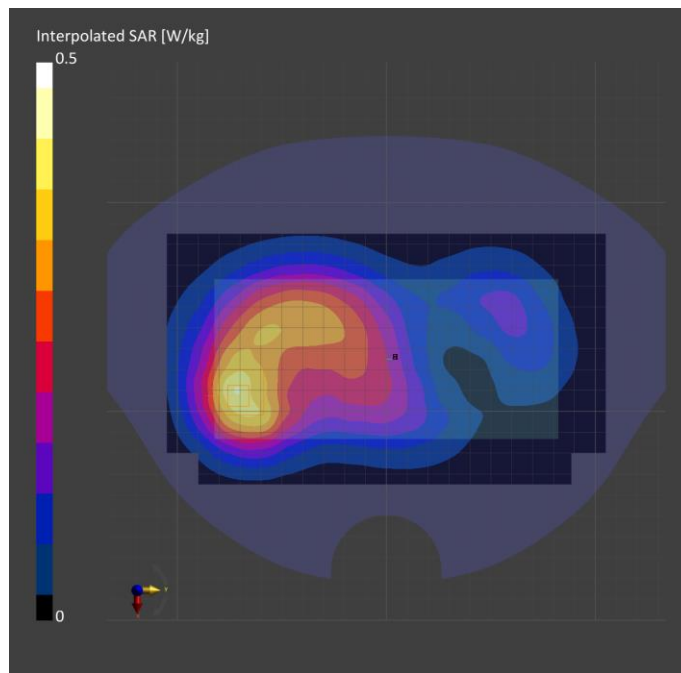
Phantom	TSL, Measured Date	Probe, Calibration Date	DAE, Calibration Date
Twin-SAM V8.0 (30deg probe tilt) - 2039	HBBL-600-10000, 2022-Jun-13	EX3DV4 - SN7545, 2021-08-26	DAE4 Sn1667, 2022-04-27

## Scan Setup

	Area Scan	Zoom Scan
Grid Extents [mm]	120.0 x 210.0	32.0 x 32.0 x 30.0
Grid Steps [mm]	15.0 x 15.0	6.0 x 6.0 x 1.5
Sensor Surface [mm]	3.0	1.4

## Measurement Results

	Area Scan	Zoom Scan
Date	2022-06-14	2022-06-14
psSAR1g [W/kg]	0.346	0.350
psSAR10g [W/kg]	0.210	0.208
Power Drift [dB]		0.02





# Measurement Report for Device, Rear, WCDMA Band 2, UTRA/FDD, UID 10011 CAB, Channel 9400 (1880.0MHz)

## Exposure Conditions

Phantom Section, TSL	Position, Test Distance [mm]	Band	Group, UID	Frequency [MHz], Channel Number	Conversion Factor	TSL Conductivity [S/m]	TSL Permittivity
Flat, HSL	BACK, 10.00	Band 2, UTRA/FDD	WCDMA, 10011-CAB	1880.0, 9400	8.12	1.42	39.1

## Hardware Setup

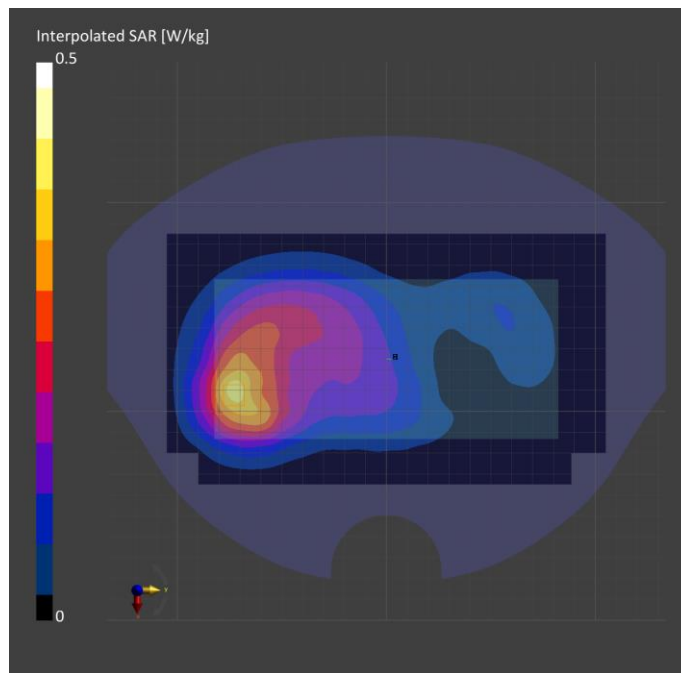
Phantom	TSL, Measured Date	Probe, Calibration Date	DAE, Calibration Date
Twin-SAM V8.0 (30deg probe tilt) - 2039	HBBL-600-10000, 2022-Jun-13	EX3DV4 - SN7545, 2021-08-26	DAE4 Sn1667, 2022-04-27

## Scan Setup

	Area Scan	Zoom Scan
Grid Extents [mm]	120.0 x 210.0	32.0 x 32.0 x 30.0
Grid Steps [mm]	15.0 x 15.0	6.0 x 6.0 x 1.5
Sensor Surface [mm]	3.0	1.4

## Measurement Results

	Area Scan	Zoom Scan
Date	2022-06-14	2022-06-14
psSAR1g [W/kg]	0.322	0.326
psSAR10g [W/kg]	0.190	0.187
Power Drift [dB]		0.01



**Measurement Report for Device, Left Touch, WCDMA Band 4, UTRA/FDD, UID 10011 CAB, Channel 1413 (1732.6MHz)**

**Exposure Conditions**

Phantom Section, TSL	Position, Test Distance [mm]	Band	Group, UID	Frequency [MHz], Channel Number	Conversion Factor	TSL Conductivity [S/m]	TSL Permittivity
Left Head, HSL	CHEEK, 0.00	Band 4, UTRA/FDD	WCDMA, 10011-CAB	1732.6, 1413	8.37	1.34	39.1

**Hardware Setup**

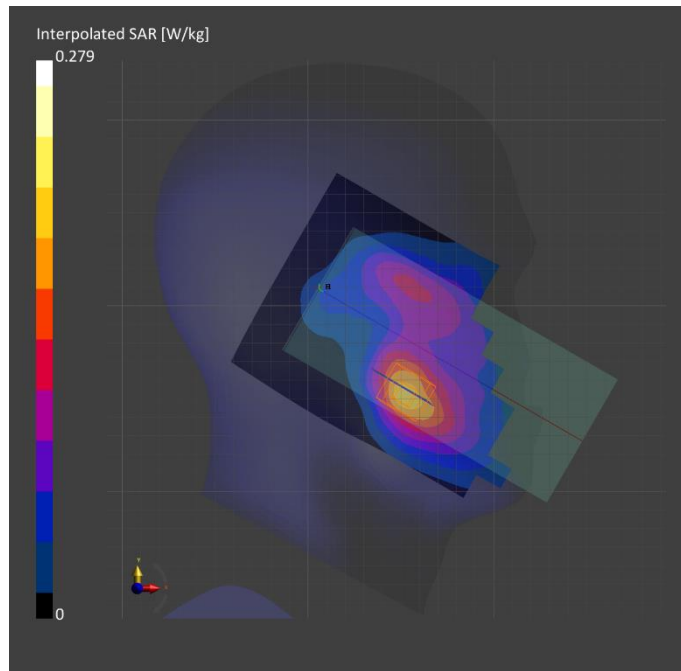
Phantom	TSL, Measured Date	Probe, Calibration Date	DAE, Calibration Date
Twin-SAM V8.0 (30deg probe tilt) - 2039	HBBL-600-10000, 2022-Jun-13	EX3DV4 - SN7545, 2021-08-26	DAE4 Sn1667, 2022-04-27

**Scan Setup**

	Area Scan	Zoom Scan
Grid Extents [mm]	120.0 x 210.0	32.0 x 32.0 x 30.0
Grid Steps [mm]	15.0 x 15.0	6.0 x 6.0 x 1.5
Sensor Surface [mm]	3.0	1.4

**Measurement Results**

	Area Scan	Zoom Scan
Date	2022-06-15	2022-06-15
psSAR1g [W/kg]	0.170	0.173
psSAR10g [W/kg]	0.101	0.110
Power Drift [dB]		0.03



# Measurement Report for Device, Rear, WCDMA Band 4, UTRA/FDD, UID 10011 CAB, Channel 1413 (1732.6MHz)

## Exposure Conditions

Phantom Section, TSL	Position, Test Distance [mm]	Band	Group, UID	Frequency [MHz], Channel Number	Conversion Factor	TSL Conductivity [S/m]	TSL Permittivity
Flat, HSL	BACK, 15.00	Band 4, UTRA/FDD	WCDMA, 10011-CAB	1732.6, 1413	8.37	1.34	39.1

## Hardware Setup

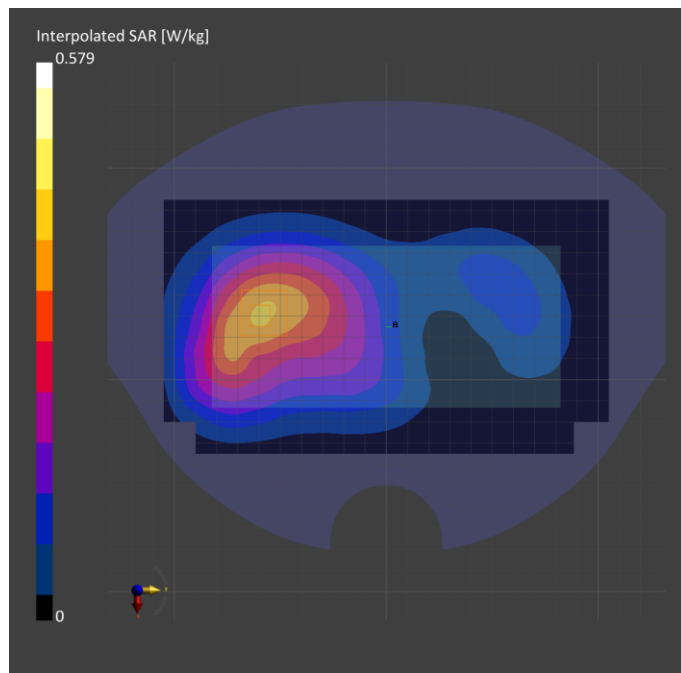
Phantom	TSL, Measured Date	Probe, Calibration Date	DAE, Calibration Date
Twin-SAM V8.0 (30deg probe tilt) - 2039	HBBL-600-10000, 2022-Jun-13	EX3DV4 - SN7545, 2021-08-26	DAE4 Sn1667, 2022-04-27

## Scan Setup

	Area Scan	Zoom Scan
Grid Extents [mm]	120.0 x 210.0	32.0 x 32.0 x 30.0
Grid Steps [mm]	15.0 x 15.0	6.0 x 6.0 x 1.5
Sensor Surface [mm]	3.0	1.4

## Measurement Results

	Area Scan	Zoom Scan
Date	2022-06-15	2022-06-15
psSAR1g [W/kg]	0.335	0.347
psSAR10g [W/kg]	0.213	0.225
Power Drift [dB]		-0.01



# Measurement Report for Device, Edge 1, WCDMA Band 4, UTRA/FDD, UID 10011 CAB, Channel 1413 (1732.6MHz)

## Exposure Conditions

Phantom Section, TSL	Position, Test Distance [mm]	Band	Group, UID	Frequency [MHz], Channel Number	Conversion Factor	TSL Conductivity [S/m]	TSL Permittivity
Flat, HSL	EDGE BOTTOM, 10.00	Band 4, UTRA/FDD	WCDMA, 10011-CAB	1732.6, 1413	8.37	1.34	39.1

## Hardware Setup

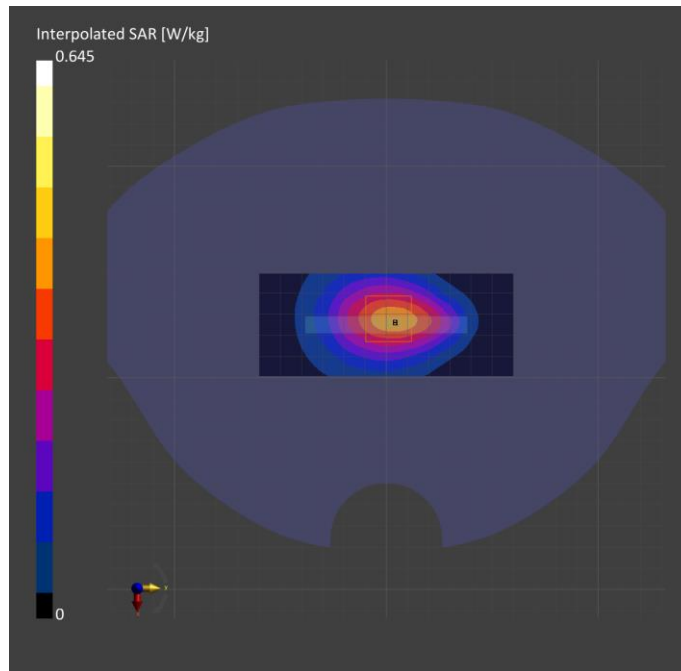
Phantom	TSL, Measured Date	Probe, Calibration Date	DAE, Calibration Date
Twin-SAM V8.0 (30deg probe tilt) - 2039	HBBL-600-10000, 2022-Jun-13	EX3DV4 - SN7545, 2021-08-26	DAE4 Sn1667, 2022-04-27

## Scan Setup

	Area Scan	Zoom Scan
Grid Extents [mm]	48.42 x 120.0	32.0 x 32.0 x 30.0
Grid Steps [mm]	8.07 x 15.0	6.0 x 6.0 x 1.5
Sensor Surface [mm]	3.0	1.4

## Measurement Results

	Area Scan	Zoom Scan
Date	2022-06-15	2022-06-15
psSAR1g [W/kg]	0.347	0.355
psSAR10g [W/kg]	0.205	0.210
Power Drift [dB]		0.02



# Measurement Report for Device, Right Touch, WCDMA Band 5, UTRA/FDD, UID 10011 CAB, Channel 4183 (836.6MHz)

## Exposure Conditions

Phantom Section, TSL	Position, Test Distance [mm]	Band	Group, UID	Frequency [MHz], Channel Number	Conversion Factor	TSL Conductivity [S/m]	TSL Permittivity
Right Head, HSL	CHEEK, 0.00	Band 5, UTRA/FDD	WCDMA, 10011-CAB	836.6, 4183	9.19	0.973	41.9

## Hardware Setup

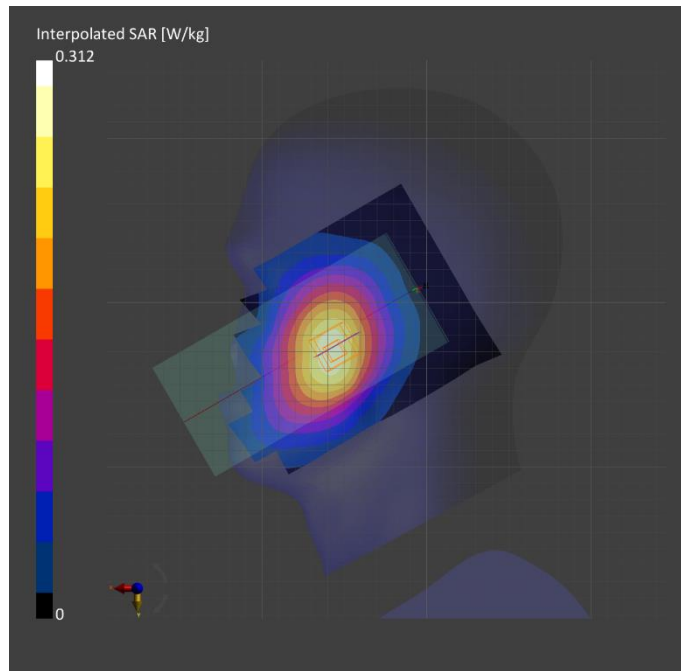
Phantom	TSL, Measured Date	Probe, Calibration Date	DAE, Calibration Date
Twin-SAM V8.0 (30deg probe tilt) - 2043	HBBL-600-10000, 2022-Jun-13	EX3DV4 - SN3928, 2022-03-03	DAE4 Sn1494, 2021-07-27

## Scan Setup

	Area Scan	Zoom Scan
Grid Extents [mm]	120.0 x 210.0	30.0 x 30.0 x 30.0
Grid Steps [mm]	15.0 x 15.0	6.0 x 6.0 x 1.5
Sensor Surface [mm]	3.0	1.4

## Measurement Results

	Area Scan	Zoom Scan
Date	2022-06-14	2022-06-14
psSAR1g [W/kg]	0.246	0.247
psSAR10g [W/kg]	0.170	0.189
Power Drift [dB]		-0.02



# Measurement Report for Device, Rear, WCDMA Band 5, UTRA/FDD, UID 10011 CAB, Channel 4183 (836.6MHz)

## Exposure Conditions

Phantom Section, TSL	Position, Test Distance [mm]	Band	Group, UID	Frequency [MHz], Channel Number	Conversion Factor	TSL Conductivity [S/m]	TSL Permittivity
Flat, HSL	BACK, 15.00	Band 5, UTRA/FDD	WCDMA, 10011-CAB	836.6, 4183	9.19	0.973	41.9

## Hardware Setup

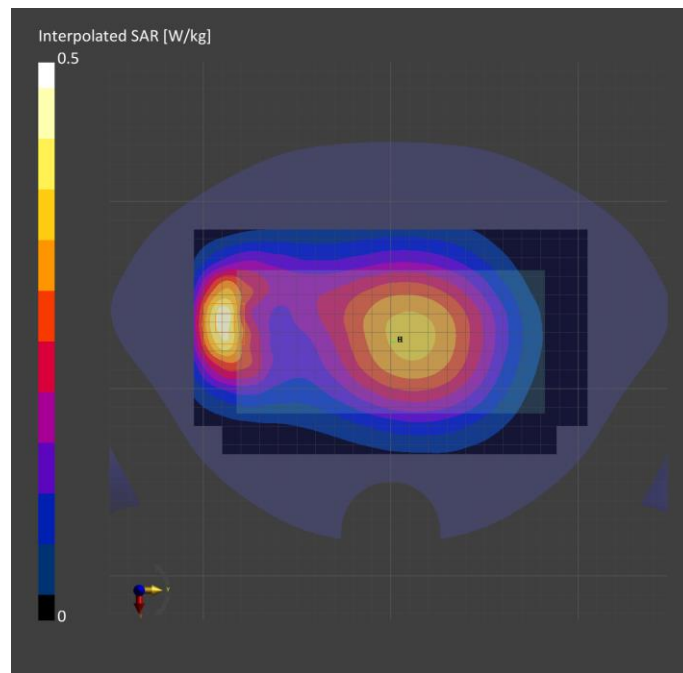
Phantom	TSL, Measured Date	Probe, Calibration Date	DAE, Calibration Date
Twin-SAM V8.0 (30deg probe tilt) - 2043	HBBL-600-10000, 2022-Jun-13	EX3DV4 - SN3928, 2022-03-03	DAE4 Sn1494, 2021-07-27

## Scan Setup

	Area Scan	Zoom Scan
Grid Extents [mm]	120.0 x 210.0	30.0 x 30.0 x 30.0
Grid Steps [mm]	15.0 x 15.0	6.0 x 6.0 x 1.5
Sensor Surface [mm]	3.0	1.4

## Measurement Results

	Area Scan	Zoom Scan
Date	2022-06-14	2022-06-14
psSAR1g [W/kg]	0.376	0.376
psSAR10g [W/kg]	0.239	0.221
Power Drift [dB]		-0.00



**Measurement Report for Device, Rear, WCDMA Band 5, UTRA/FDD, UID 10011 CAB, Channel 4183 (836.6MHz)**

**Exposure Conditions**

Phantom Section, TSL	Position, Test Distance [mm]	Band	Group, UID	Frequency [MHz], Channel Number	Conversion Factor	TSL Conductivity [S/m]	TSL Permittivity
Flat, HSL	BACK, 10.00	Band 5, UTRA/FDD	WCDMA, 10011-CAB	836.6, 4183	9.19	0.895	42.2

**Hardware Setup**

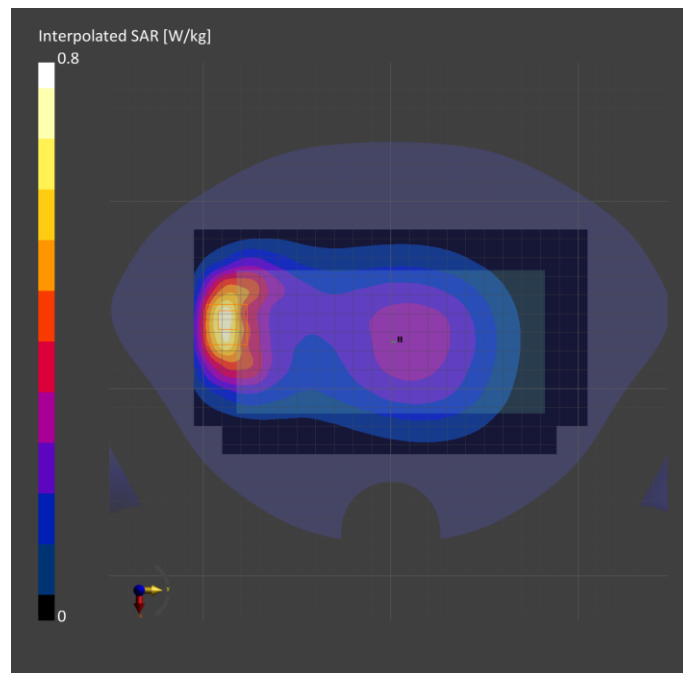
Phantom	TSL, Measured Date	Probe, Calibration Date	DAE, Calibration Date
Twin-SAM V8.0 (30deg probe tilt) - 2043	HBBL-600-10000, 2022-Jun-13	EX3DV4 - SN3928, 2022-03-03	DAE4 Sn1494, 2021-07-27

**Scan Setup**

	Area Scan	Zoom Scan
Grid Extents [mm]	120.0 x 210.0	30.0 x 30.0 x 30.0
Grid Steps [mm]	15.0 x 15.0	6.0 x 6.0 x 1.5
Sensor Surface [mm]	3.0	1.4

**Measurement Results**

	Area Scan	Zoom Scan
Date	2022-06-15	2022-06-15
psSAR1g [W/kg]	0.594	0.615
psSAR10g [W/kg]	0.373	0.341
Power Drift [dB]		0.00



**Measurement Report for Device, Left Touch, LTE Band 2, E-UTRA/FDD, UID 10169 CAE, Channel 19100 (1900.0MHz)**

**Exposure Conditions**

Phantom Section, TSL	Position, Test Distance [mm]	Band	Group, UID	Frequency [MHz], Channel Number	Conversion Factor	TSL Conductivity [S/m]	TSL Permittivity
Left Head, HSL	CHEEK, 0.00	Band 2, E-UTRA/FDD	LTE-FDD, 10169-CAE	1900.0, 19100	8.12	1.44	39.2

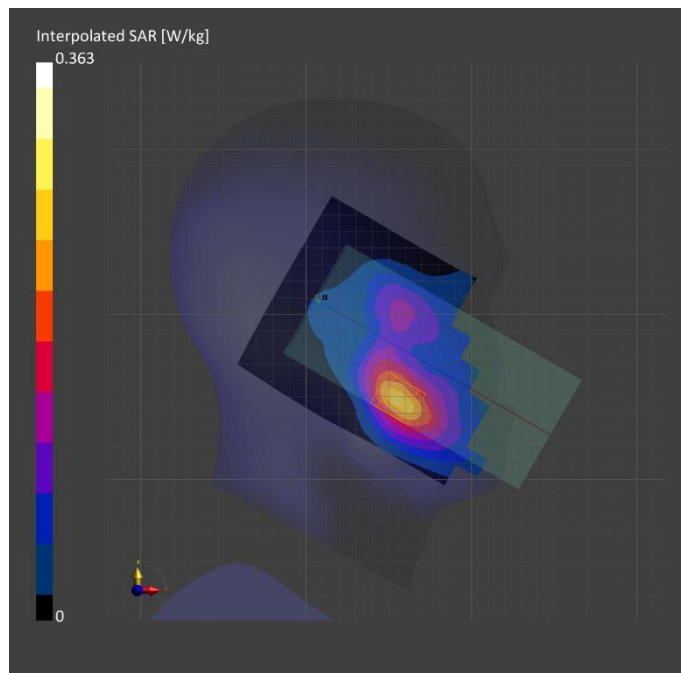
**Hardware Setup**

Phantom	TSL, Measured Date	Probe, Calibration Date	DAE, Calibration Date
Twin-SAM V8.0 (30deg probe tilt) - 2039	HBBL-600-10000, 2022-Jun-13	EX3DV4 - SN7545, 2021-08-26	DAE4 Sn1667, 2022-04-27

**Scan Setup**

**Measurement Results**

	Area Scan	Zoom Scan		Area Scan	Zoom Scan
Grid Extents [mm]	120.0 x 210.0	32.0 x 32.0 x 30.0	Date	2022-06-16	2022-06-16
Grid Steps [mm]	15.0 x 15.0	6.0 x 6.0 x 1.5	psSAR1g [W/kg]	0.212	0.222
Sensor Surface [mm]	3.0	1.4	psSAR10g [W/kg]	0.124	0.137
			Power Drift [dB]		0.04





**Measurement Report for Device, Rear, LTE Band 2, E-UTRA/FDD, UID 10169 CAE, Channel 19100 (1900.0MHz)**

**Exposure Conditions**

Phantom Section, TSL	Position, Test Distance [mm]	Band	Group, UID	Frequency [MHz], Channel Number	Conversion Factor	TSL Conductivity [S/m]	TSL Permittivity
Flat, HSL	BACK, 15.00	Band 2, E-UTRA/FDD	LTE-FDD, 10169-CAE	1900.0, 19100	8.12	1.44	39.2

**Hardware Setup**

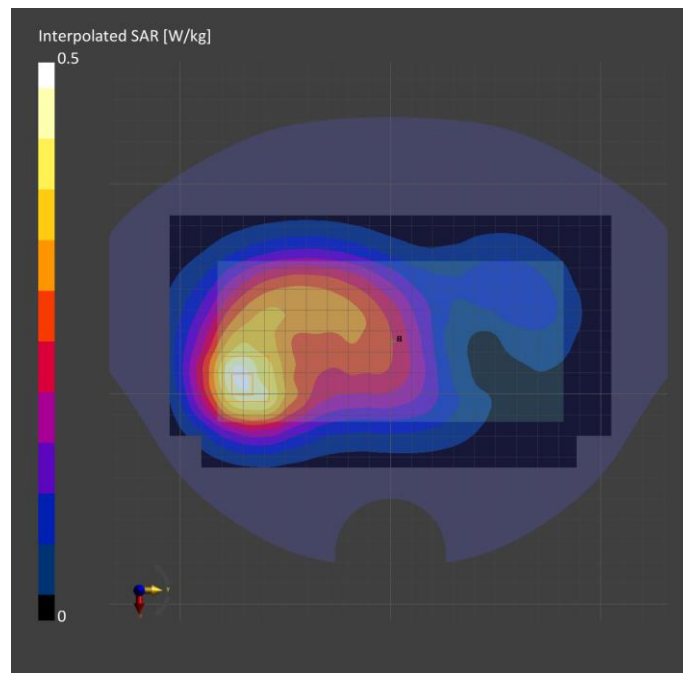
Phantom	TSL, Measured Date	Probe, Calibration Date	DAE, Calibration Date
Twin-SAM V8.0 (30deg probe tilt) - 2039	HBBL-600-10000, 2022-Jun-13	EX3DV4 - SN7545, 2021-08-26	DAE4 Sn1667, 2022-04-27

**Scan Setup**

	Area Scan	Zoom Scan
Grid Extents [mm]	120.0 x 210.0	32.0 x 32.0 x 30.0
Grid Steps [mm]	15.0 x 15.0	6.0 x 6.0 x 1.5
Sensor Surface [mm]	3.0	1.4

**Measurement Results**

	Area Scan	Zoom Scan
Date	2022-06-16	2022-06-16
psSAR1g [W/kg]	0.395	0.410
psSAR10g [W/kg]	0.239	0.244
Power Drift [dB]		0.01



# Measurement Report for Device, Rear, LTE Band 2, E-UTRA/FDD, UID 10297 AAD, Channel 19100 (1900.0MHz)

## Exposure Conditions

Phantom Section, TSL	Position, Test Distance [mm]	Band	Group, UID	Frequency [MHz], Channel Number	Conversion Factor	TSL Conductivity [S/m]	TSL Permittivity
Flat, HSL	BACK, 10.00	Band 2, E-UTRA/FDD	LTE-FDD, 10297-AAD	1900.0, 19100	8.12	1.44	39.2

## Hardware Setup

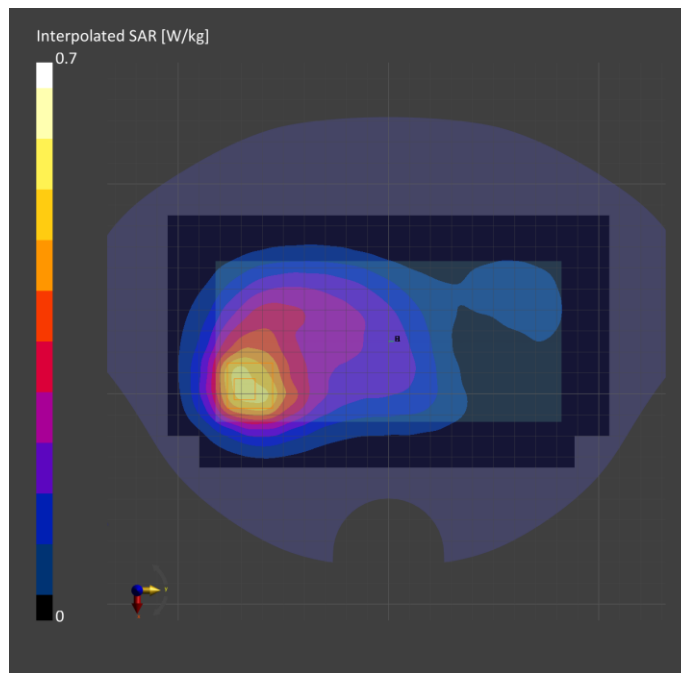
Phantom	TSL, Measured Date	Probe, Calibration Date	DAE, Calibration Date
Twin-SAM V8.0 (30deg probe tilt) - 2039	HBBL-600-10000, 2022-Jun-13	EX3DV4 - SN7545, 2021-08-26	DAE4 Sn1667, 2022-04-27

## Scan Setup

	Area Scan	Zoom Scan
Grid Extents [mm]	120.0 x 210.0	32.0 x 32.0 x 30.0
Grid Steps [mm]	15.0 x 15.0	6.0 x 6.0 x 1.5
Sensor Surface [mm]	3.0	1.4

## Measurement Results

	Area Scan	Zoom Scan
Date	2022-06-16	2022-06-16
psSAR1g [W/kg]	0.481	0.511
psSAR10g [W/kg]	0.287	0.291
Power Drift [dB]		0.04



## LTE Band 2

Frequency: 1880 MHz; Duty Cycle: 1:1; Room Ambient Temperature: 23.0°C; Liquid Temperature: 22.0°C  
 Medium parameters used:  $f = 1880 \text{ MHz}$ ;  $\sigma = 1.412 \text{ S/m}$ ;  $\epsilon_r = 39.144$ ;  $\rho = 1000 \text{ kg/m}^3$

DASY5 Configuration:

- Area Scan Setting: Find Secondary Maximum Within: 2.0 dB and with a peak SAR value greater than 0.012W/kg
- Electronics: DAE4 Sn912; Calibrated: 11/22/2021
- Probe: EX3DV4 - SN7376; ConvF(8.48, 8.48, 8.48) @ 1880 MHz; Calibrated: 7/30/2021
- Sensor-Surface: 1.4mm (Mechanical Surface Detection)
- Phantom: Twin-SAM V5.0 (20deg probe tilt); Type: QD 000 P40 CD; Serial: 1751

**LHS/Touch QPSK RB 1/0 ch.18900/Area Scan (8x13x1):** Measurement grid: dx=15mm, dy=15mm  
 Maximum value of SAR (measured) = 0.858 W/kg

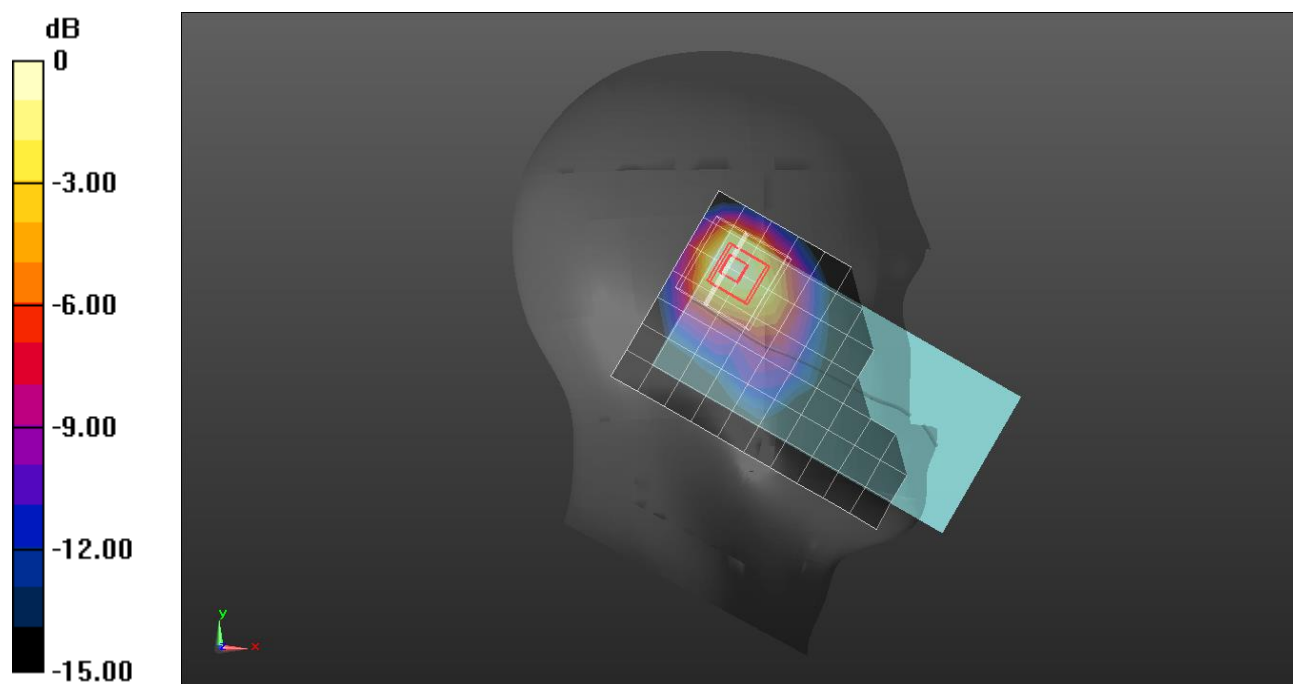
**LHS/Touch QPSK RB 1/0 ch.18900/Zoom Scan (6x6x7)/Cube 0:** Measurement grid: dx=8mm, dy=8mm, dz=5mm

Reference Value = 23.96 V/m; Power Drift = 0.01 dB

Peak SAR (extrapolated) = 1.16 W/kg

**SAR(1 g) = 0.617 W/kg; SAR(10 g) = 0.340 W/kg**

Maximum value of SAR (measured) = 0.267 W/kg



0 dB = 0.919 W/kg = -0.37 dBW/kg

## LTE Band 2

Frequency: 1880 MHz; Duty Cycle: 1:1; Room Ambient Temperature: 23.0°C; Liquid Temperature: 22.0°C  
 Medium parameters used:  $f = 1880$  MHz;  $\sigma = 1.412$  S/m;  $\epsilon_r = 39.144$ ;  $\rho = 1000$  kg/m<sup>3</sup>

DASY5 Configuration:

- Area Scan Setting: Find Secondary Maximum Within: 2.0 dB and with a peak SAR value greater than 0.012W/kg
- Electronics: DAE4 Sn912; Calibrated: 11/22/2021
- Probe: EX3DV4 - SN7376; ConvF(8.48, 8.48, 8.48) @ 1880 MHz; Calibrated: 7/30/2021
- Sensor-Surface: 1.4mm (Mechanical Surface Detection)
- Phantom: Twin-SAM V5.0 (20deg probe tilt); Type: QD 000 P40 CD; Serial: 1751

**Rear/QPSK RB 1/0 ch.18900/Area Scan (8x14x1):** Measurement grid: dx=15mm, dy=15mm  
 Maximum value of SAR (measured) = 0.158 W/kg

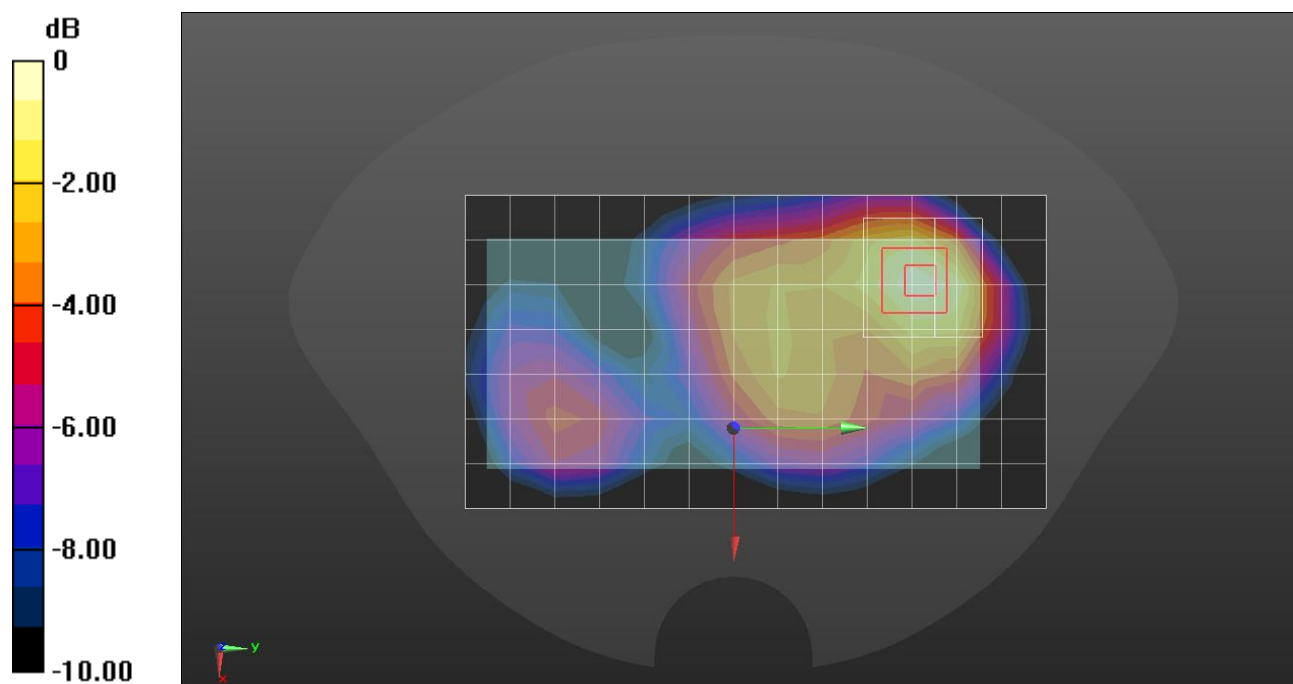
**Rear/QPSK RB 1/0 ch.18900/Zoom Scan (6x6x7)/Cube 0:** Measurement grid: dx=8mm, dy=8mm, dz=5mm

Reference Value = 9.921 V/m; Power Drift = 0.12 dB

Peak SAR (extrapolated) = 0.201 W/kg

**SAR(1 g) = 0.111 W/kg; SAR(10 g) = 0.065 W/kg**

Maximum value of SAR (measured) = 0.162 W/kg



0 dB = 0.162 W/kg = -7.90 dBW/kg

## LTE Band 2

Frequency: 1880 MHz; Duty Cycle: 1:1; Room Ambient Temperature: 23.0°C; Liquid Temperature: 22.0°C  
 Medium parameters used:  $f = 1880 \text{ MHz}$ ;  $\sigma = 1.412 \text{ S/m}$ ;  $\epsilon_r = 39.144$ ;  $\rho = 1000 \text{ kg/m}^3$

DASY5 Configuration:

- Area Scan Setting: Find Secondary Maximum Within: 2.0 dB and with a peak SAR value greater than 0.012W/kg
- Electronics: DAE4 Sn912; Calibrated: 11/22/2021
- Probe: EX3DV4 - SN7376; ConvF(8.48, 8.48, 8.48) @ 1880 MHz; Calibrated: 7/30/2021
- Sensor-Surface: 1.4mm (Mechanical Surface Detection)
- Phantom: Twin-SAM V5.0 (20deg probe tilt); Type: QD 000 P40 CD; Serial: 1751

**Rear/QPSK RB 1/0 ch.18900/Area Scan (8x14x1):** Measurement grid: dx=15mm, dy=15mm  
 Maximum value of SAR (measured) = 0.315 W/kg

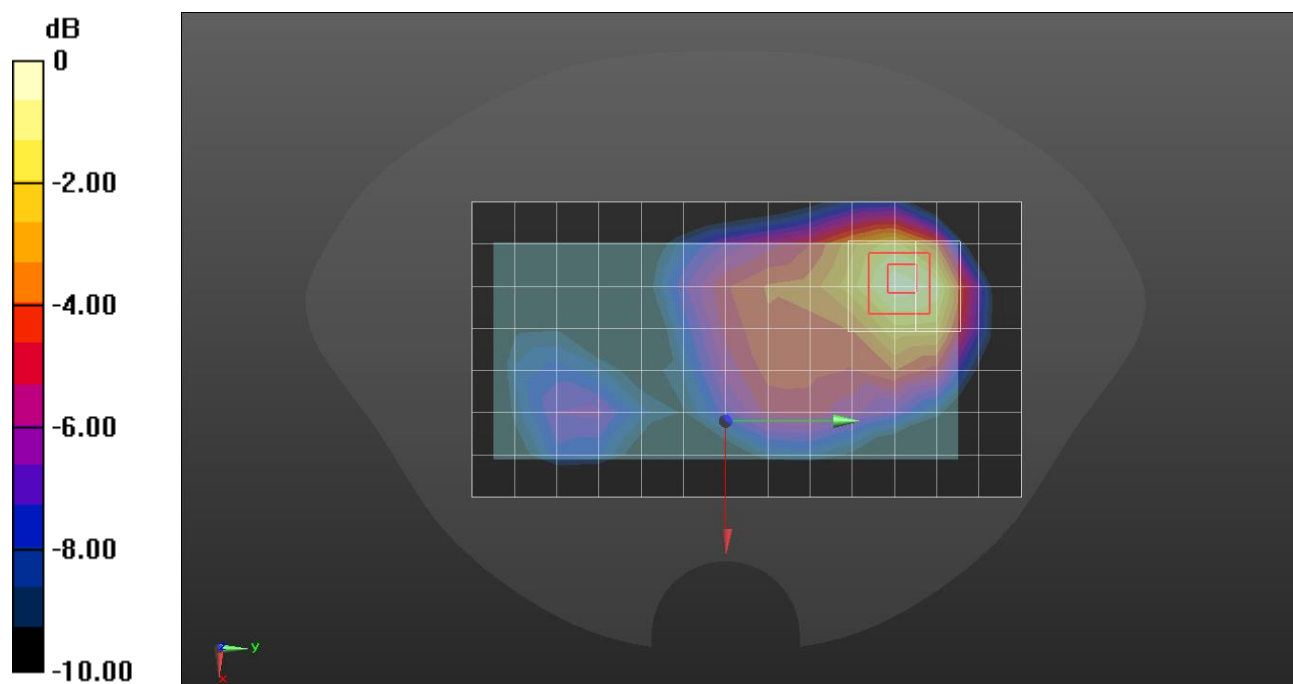
**Rear/QPSK RB 1/0 ch.18900/Zoom Scan (5x6x7)/Cube 0:** Measurement grid: dx=8mm, dy=8mm, dz=5mm

Reference Value = 13.95 V/m; Power Drift = -0.05 dB

Peak SAR (extrapolated) = 0.408 W/kg

**SAR(1 g) = 0.220 W/kg; SAR(10 g) = 0.124 W/kg**

Maximum value of SAR (measured) = 0.326 W/kg



0 dB = 0.326 W/kg = -4.87 dBW/kg

**Measurement Report for Device, Right Touch, LTE Band 5, E-UTRA/FDD, UID 10175 CAG, Channel 20525 (836.5MHz)**

**Exposure Conditions**

Phantom Section, TSL	Position, Test Distance [mm]	Band	Group, UID	Frequency [MHz], Channel Number	Conversion Factor	TSL Conductivity [S/m]	TSL Permittivity
Right Head, HSL	CHEEK, 0.00	Band 5, E-UTRA/FDD	LTE-FDD, 10175-CAG	836.5, 20525	9.19	0.895	42.2

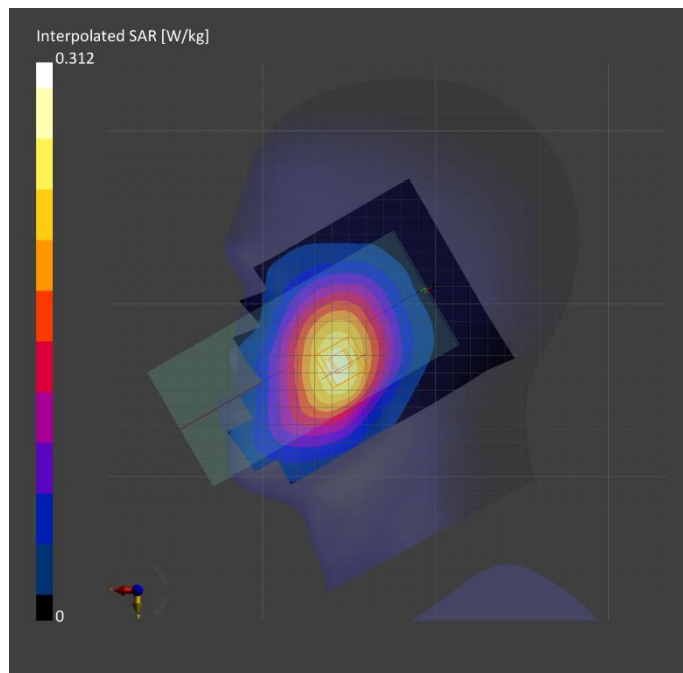
**Hardware Setup**

Phantom	TSL, Measured Date	Probe, Calibration Date	DAE, Calibration Date
Twin-SAM V8.0 (30deg probe tilt) - 2043	HBBL-600-10000, 2022-Jun-13	EX3DV4 - SN3928, 2022-03-03	DAE4 Sn1494, 2021-07-27

**Scan Setup**

**Measurement Results**

	Area Scan	Zoom Scan		Area Scan	Zoom Scan
Grid Extents [mm]	120.0 x 210.0	30.0 x 30.0 x 30.0	Date	2022-06-15	2022-06-15
Grid Steps [mm]	15.0 x 15.0	6.0 x 6.0 x 1.5	psSAR1g [W/kg]	0.241	0.246
Sensor Surface [mm]	3.0	1.4	psSAR10g [W/kg]	0.165	0.187
			Power Drift [dB]		-0.07



# Measurement Report for Device, Rear, LTE Band 5, E-UTRA/FDD, UID 10175 CAG, Channel 20525 (836.5MHz)

## Exposure Conditions

Phantom Section, TSL	Position, Test Distance [mm]	Band	Group, UID	Frequency [MHz], Channel Number	Conversion Factor	TSL Conductivity [S/m]	TSL Permittivity
Flat, HSL	BACK, 15.00	Band 5, E-UTRA/FDD	LTE-FDD, 10175-CAG	836.5, 20525	9.19	0.973	41.9

## Hardware Setup

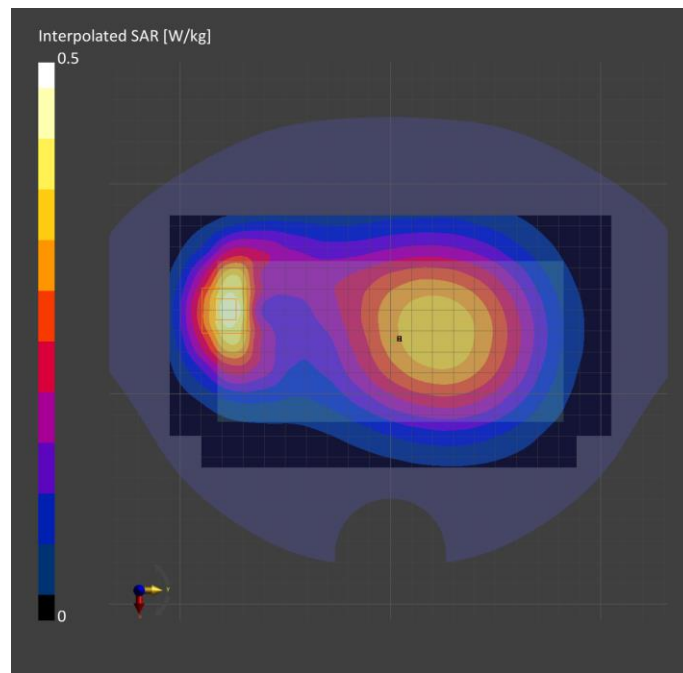
Phantom	TSL, Measured Date	Probe, Calibration Date	DAE, Calibration Date
Twin-SAM V8.0 (30deg probe tilt) - 2043	HBBL-600-10000, 2022-Jun-13	EX3DV4 - SN3928, 2022-03-03	DAE4 Sn1494, 2021-07-27

## Scan Setup

	Area Scan	Zoom Scan
Grid Extents [mm]	120.0 x 210.0	30.0 x 30.0 x 30.0
Grid Steps [mm]	15.0 x 15.0	6.0 x 6.0 x 1.5
Sensor Surface [mm]	3.0	1.4

## Measurement Results

	Area Scan	Zoom Scan
Date	2022-06-14	2022-06-14
psSAR1g [W/kg]	0.386	0.380
psSAR10g [W/kg]	0.244	0.224
Power Drift [dB]		-0.02



# Measurement Report for Device, Rear, LTE Band 5, E-UTRA/FDD, UID 10175 CAG, Channel 20525 (836.5MHz)

## Exposure Conditions

Phantom Section, TSL	Position, Test Distance [mm]	Band	Group, UID	Frequency [MHz], Channel Number	Conversion Factor	TSL Conductivity [S/m]	TSL Permittivity
Flat, HSL	BACK, 10.00	Band 5, E-UTRA/FDD	LTE-FDD, 10175-CAG	836.5, 20525	10.57	0.989	41.4

## Hardware Setup

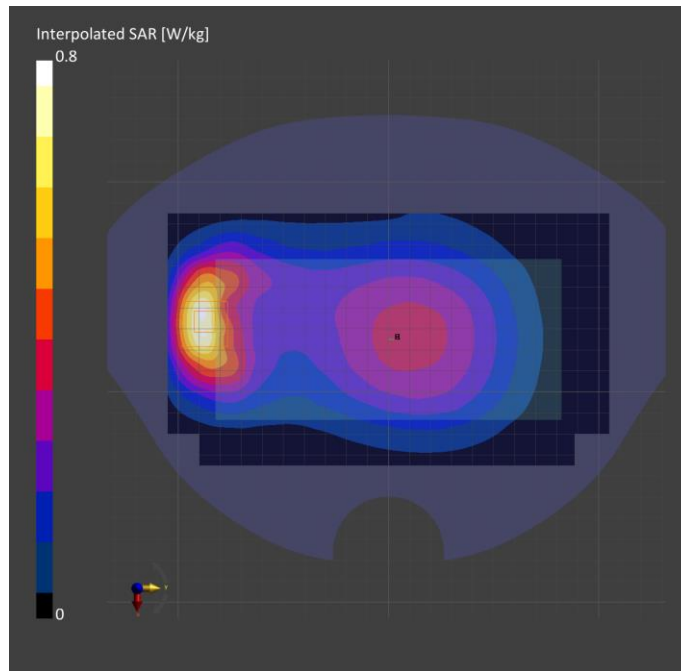
Phantom	TSL, Measured Date	Probe, Calibration Date	DAE, Calibration Date
Twin-SAM V8.0 (30deg probe tilt) - 2043	HBBL-600-10000, 2022-Jun-20	EX3DV4 - SN7330, 2022-01-28	DAE4 Sn1494, 2021-07-27

## Scan Setup

	Area Scan	Zoom Scan
Grid Extents [mm]	120.0 x 210.0	30.0 x 30.0 x 30.0
Grid Steps [mm]	15.0 x 15.0	6.0 x 6.0 x 1.5
Sensor Surface [mm]	3.0	1.4

## Measurement Results

	Area Scan	Zoom Scan
Date	2022-06-21	2022-06-21
psSAR1g [W/kg]	0.628	0.643
psSAR10g [W/kg]	0.395	0.360
Power Drift [dB]		0.02





**Measurement Report for Device, Left Touch, LTE Band 12, E-UTRA/FDD, UID 10175 CAG, Channel 23095 (707.5MHz)**

**Exposure Conditions**

Phantom Section, TSL	Position, Test Distance [mm]	Band	Group, UID	Frequency [MHz], Channel Number	Conversion Factor	TSL Conductivity [S/m]	TSL Permittivity
Left Head, HSL	CHEEK, 0.00	Band 12, E-UTRA/FDD	LTE-FDD, 10175-CAG	707.5, 23095	11.13	0.862	43.4

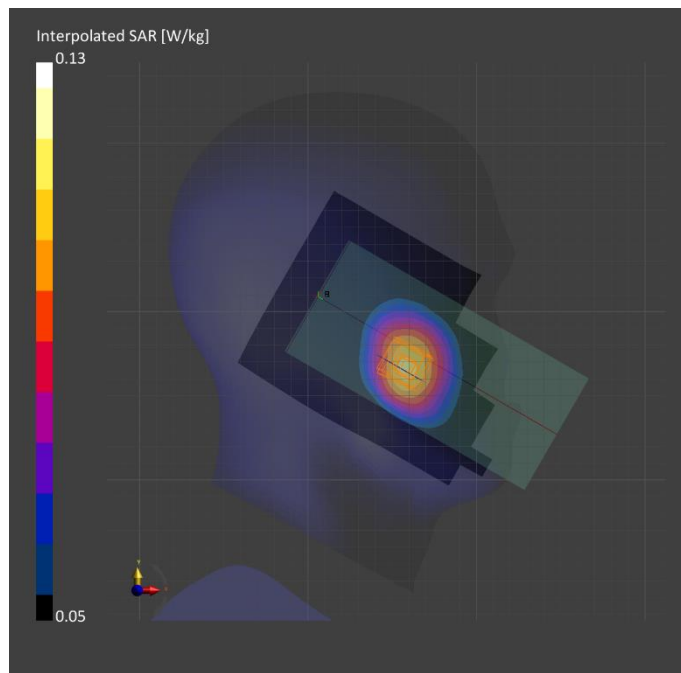
**Hardware Setup**

Phantom	TSL, Measured Date	Probe, Calibration Date	DAE, Calibration Date
Twin-SAM V8.0 (30deg probe tilt) - 2043	HBBL-600-10000, 2022-Jun-21	EX3DV4 - SN7330, 2022-01-28	DAE4 Sn1494, 2021-07-27

**Scan Setup**

**Measurement Results**

	Area Scan	Zoom Scan		Area Scan	Zoom Scan
Grid Extents [mm]	120.0 x 210.0	30.0 x 30.0 x 30.0	Date	2022-06-21	2022-06-21
Grid Steps [mm]	15.0 x 15.0	6.0 x 6.0 x 1.5	psSAR1g [W/kg]	0.10	0.107
Sensor Surface [mm]	3.0	1.4	psSAR10g [W/kg]	0.070	0.086
			Power Drift [dB]		-0.07



# Measurement Report for Device, Rear, LTE Band 12, E-UTRA/FDD, UID 10175 CAG, Channel 23095 (707.5MHz)

## Exposure Conditions

Phantom Section, TSL	Position, Test Distance [mm]	Band	Group, UID	Frequency [MHz], Channel Number	Conversion Factor	TSL Conductivity [S/m]	TSL Permittivity
Flat, HSL	BACK, 15.00	Band 12, E-UTRA/FDD	LTE-FDD, 10175-CAG	707.5, 23095	11.13	0.862	43.4

## Hardware Setup

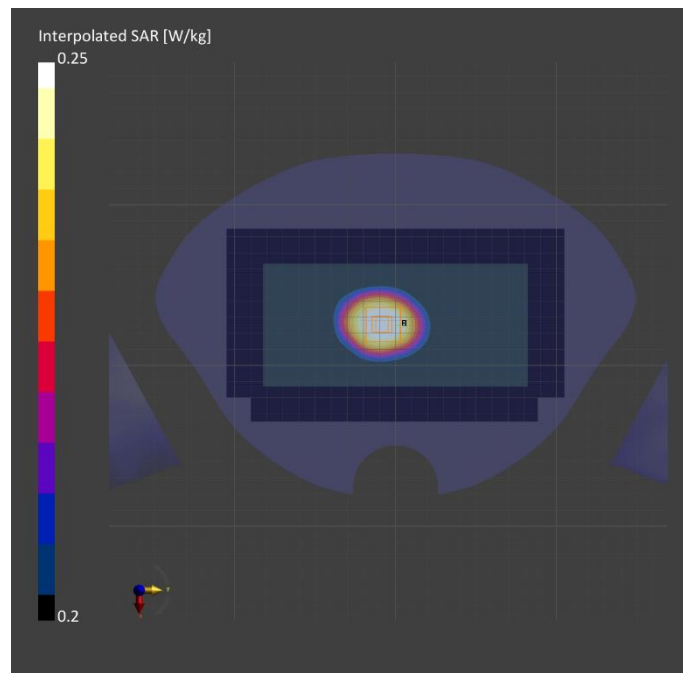
Phantom	TSL, Measured Date	Probe, Calibration Date	DAE, Calibration Date
Twin-SAM V8.0 (30deg probe tilt) - 2043	HBBL-600-10000, 2022-Jun-21	EX3DV4 - SN7330, 2022-01-28	DAE4 Sn1494, 2021-07-27

## Scan Setup

	Area Scan	Zoom Scan
Grid Extents [mm]	120.0 x 210.0	30.0 x 30.0 x 30.0
Grid Steps [mm]	15.0 x 15.0	6.0 x 6.0 x 1.5
Sensor Surface [mm]	3.0	1.4

## Measurement Results

	Area Scan	Zoom Scan
Date	2022-06-21	2022-06-21
psSAR1g [W/kg]	0.226	0.239
psSAR10g [W/kg]	0.162	0.188
Power Drift [dB]		0.01



**Measurement Report for Device, Rear, LTE Band 12, E-UTRA/FDD, UID 10175 CAG, Channel 23095 (707.5MHz)**

**Exposure Conditions**

Phantom Section, TSL	Position, Test Distance [mm]	Band	Group, UID	Frequency [MHz], Channel Number	Conversion Factor	TSL Conductivity [S/m]	TSL Permittivity
Flat, HSL	BACK, 10.00	Band 12, E-UTRA/FDD	LTE-FDD, 10175-CAG	707.5, 23095	11.13	0.859	42.4

**Hardware Setup**

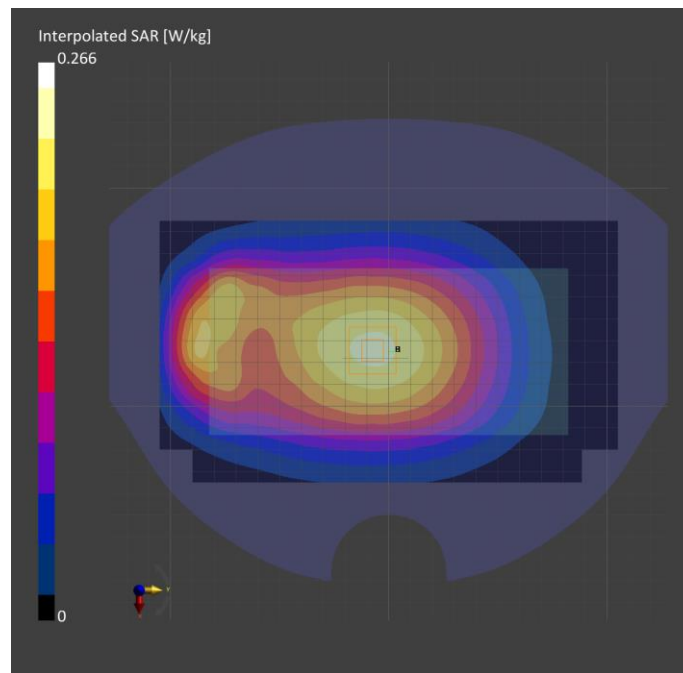
Phantom	TSL, Measured Date	Probe, Calibration Date	DAE, Calibration Date
Twin-SAM V8.0 (30deg probe tilt) - 2043	HBBL-600-10000, 2022-Jun-16	EX3DV4 - SN7330, 2022-01-28	DAE4 Sn1494, 2021-07-27

**Scan Setup**

	Area Scan	Zoom Scan
Grid Extents [mm]	120.0 x 210.0	30.0 x 30.0 x 30.0
Grid Steps [mm]	15.0 x 15.0	6.0 x 6.0 x 1.5
Sensor Surface [mm]	3.0	1.4

**Measurement Results**

	Area Scan	Zoom Scan
Date	2022-06-16	2022-06-16
psSAR1g [W/kg]	0.202	0.211
psSAR10g [W/kg]	0.144	0.167
Power Drift [dB]		-0.01



**Measurement Report for Device, Right Touch, LTE Band 13, E-UTRA/FDD, UID 10175 CAG, Channel 23230 (782.0MHz)**

**Exposure Conditions**

Phantom Section, TSL	Position, Test Distance [mm]	Band	Group, UID	Frequency [MHz], Channel Number	Conversion Factor	TSL Conductivity [S/m]	TSL Permittivity
Right Head, HSL	CHEEK, 0.00	Band 13, E-UTRA/FDD	LTE-FDD, 10175-CAG	782.0, 23230	11.13	0.919	41.4

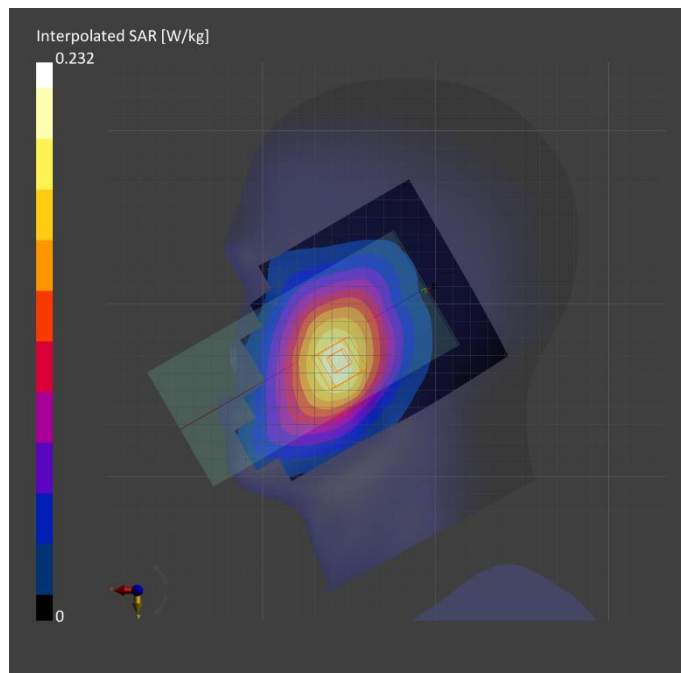
**Hardware Setup**

Phantom	TSL, Measured Date	Probe, Calibration Date	DAE, Calibration Date
Twin-SAM V8.0 (30deg probe tilt) - 2043	HBBL-600-10000, 2022-Jun-16	EX3DV4 - SN7330, 2022-01-28	DAE4 Sn1494, 2021-07-27

**Scan Setup**

**Measurement Results**

	Area Scan	Zoom Scan		Area Scan	Zoom Scan
Grid Extents [mm]	120.0 x 210.0	30.0 x 30.0 x 30.0	Date	2022-06-17	2022-06-17
Grid Steps [mm]	15.0 x 15.0	6.0 x 6.0 x 1.5	psSAR1g [W/kg]	0.184	0.189
Sensor Surface [mm]	3.0	1.4	psSAR10g [W/kg]	0.127	0.147
			Power Drift [dB]		0.06



# Measurement Report for Device, Rear, LTE Band 13, E-UTRA/FDD, UID 10175 CAG, Channel 23230 (782.0MHz)

## Exposure Conditions

Phantom Section, TSL	Position, Test Distance [mm]	Band	Group, UID	Frequency [MHz], Channel Number	Conversion Factor	TSL Conductivity [S/m]	TSL Permittivity
Flat, HSL	BACK, 15.00	Band 13, E-UTRA/FDD	LTE-FDD, 10175-CAG	782.0, 23230	11.13	0.919	41.4

## Hardware Setup

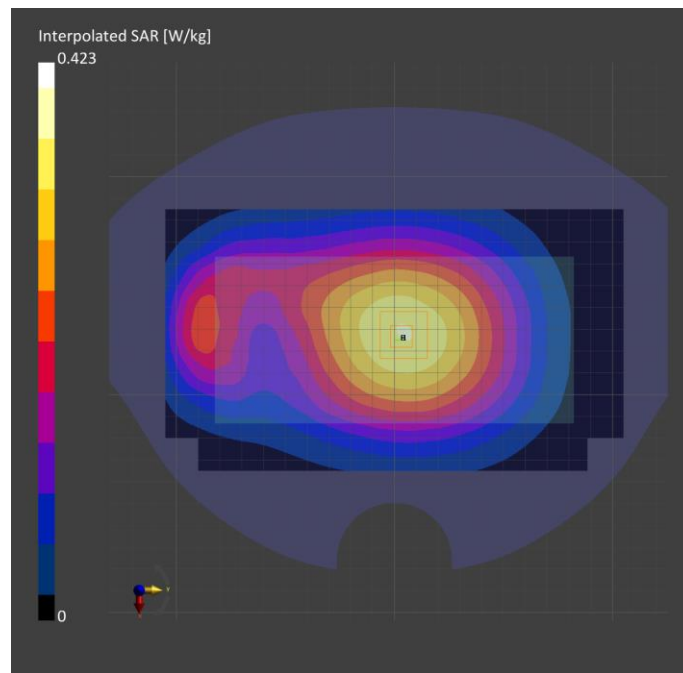
Phantom	TSL, Measured Date	Probe, Calibration Date	DAE, Calibration Date
Twin-SAM V8.0 (30deg probe tilt) - 2043	HBBL-600-10000, 2022-Jun-16	EX3DV4 - SN7330, 2022-01-28	DAE4 Sn1494, 2021-07-27

## Scan Setup

	Area Scan	Zoom Scan
Grid Extents [mm]	120.0 x 210.0	30.0 x 30.0 x 30.0
Grid Steps [mm]	15.0 x 15.0	6.0 x 6.0 x 1.5
Sensor Surface [mm]	3.0	1.4

## Measurement Results

	Area Scan	Zoom Scan
Date	2022-06-17, 00:40	2022-06-17, 00:43
psSAR1g [W/kg]	0.313	0.330
psSAR10g [W/kg]	0.223	0.256
Power Drift [dB]		0.00



**Measurement Report for Device, Rear, LTE Band 13, E-UTRA/FDD, UID 10175 CAG, Channel 23230 (782.0MHz)**

**Exposure Conditions**

Phantom Section, TSL	Position, Test Distance [mm]	Band	Group, UID	Frequency [MHz], Channel Number	Conversion Factor	TSL Conductivity [S/m]	TSL Permittivity
Flat, HSL	BACK, 10.00	Band 13, E-UTRA/FDD	LTE-FDD, 10175-CAG	782.0, 23230	11.13	0.919	41.4

**Hardware Setup**

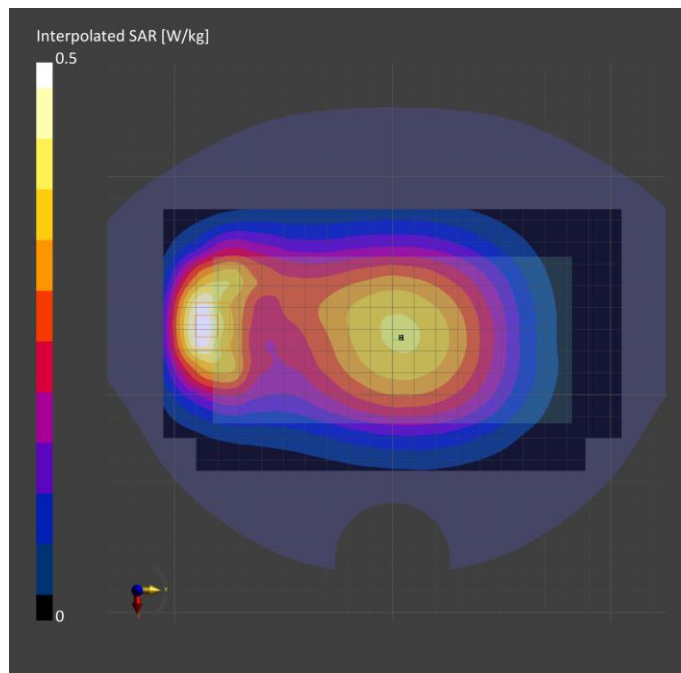
Phantom	TSL, Measured Date	Probe, Calibration Date	DAE, Calibration Date
Twin-SAM V8.0 (30deg probe tilt) - 2043	HBBL-600-10000, 2022-Jun-16	EX3DV4 - SN7330, 2022-01-28	DAE4 Sn1494, 2021-07-27

**Scan Setup**

	Area Scan	Zoom Scan
Grid Extents [mm]	120.0 x 210.0	30.0 x 30.0 x 30.0
Grid Steps [mm]	15.0 x 15.0	6.0 x 6.0 x 1.5
Sensor Surface [mm]	3.0	1.4

**Measurement Results**

	Area Scan	Zoom Scan
Date	2022-06-17	2022-06-17
psSAR1g [W/kg]	0.413	0.432
psSAR10g [W/kg]	0.270	0.249
Power Drift [dB]		-0.01



# Measurement Report for Device, Right Touch, Band 26 E-UTRA/FDD, UID 10181 CAE, Channel 26865 (831.5MHz)

## Exposure Conditions

Phantom Section, TSL	Position, Test Distance [mm]	Band	Group, UID	Frequency [MHz], Channel Number	Conversion Factor	TSL Conductivity [S/m]	TSL Permittivity
Right Head, HSL	CHEEK, 0.00	Band 26 E-UTRA/FDD	LTE-FDD, 10181-CAE	831.5, 26865	10.57	0.887	42.1

## Hardware Setup

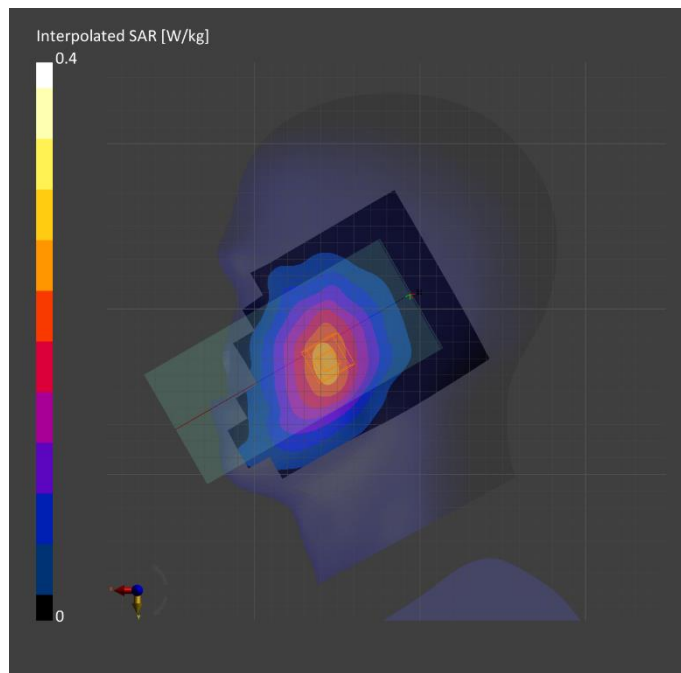
Phantom	TSL, Measured Date	Probe, Calibration Date	DAE, Calibration Date
Twin-SAM V8.0 (30deg probe tilt) - 2043	HBBL-600-10000, 2022-Jun-20	EX3DV4 - SN7330, 2022-01-28	DAE4 Sn1494, 2021-07-27

## Scan Setup

	Area Scan	Zoom Scan
Grid Extents [mm]	120.0 x 210.0	30.0 x 30.0 x 30.0
Grid Steps [mm]	15.0 x 15.0	6.0 x 6.0 x 1.5
Sensor Surface [mm]	3.0	1.4

## Measurement Results

	Area Scan	Zoom Scan
Date	2022-06-21	2022-06-21
psSAR1g [W/kg]	0.223	0.227
psSAR10g [W/kg]	0.151	0.172
Power Drift [dB]		-0.00



**Measurement Report for Device, Raer, LTE Band 26 E-UTRA/FDD, UID 10181 CAE, Channel 26865 (831.5MHz)**

**Exposure Conditions**

Phantom Section, TSL	Position, Test Distance [mm]	Band	Group, UID	Frequency [MHz], Channel Number	Conversion Factor	TSL Conductivity [S/m]	TSL Permittivity
Flat, HSL	BACK, 15.00	Band 26 E-UTRA/FDD	LTE-FDD, 10181-CAE	831.5, 26865	10.57	0.940	40.9

**Hardware Setup**

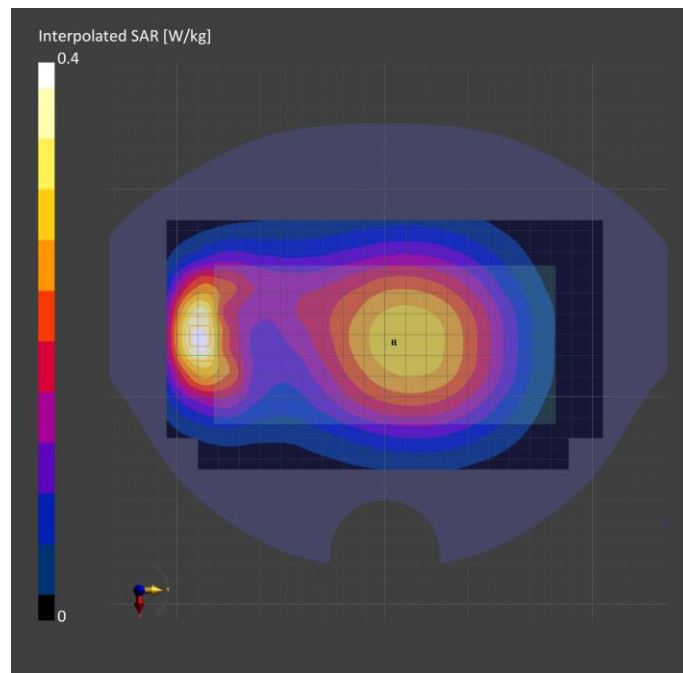
Phantom	TSL, Measured Date	Probe, Calibration Date	DAE, Calibration Date
Twin-SAM V8.0 (30deg probe tilt) - 2043	HBBL-600-10000, 2022-Jun-16	EX3DV4 - SN7330, 2022-01-28	DAE4 Sn1494, 2021-07-27

**Scan Setup**

	Area Scan	Zoom Scan
Grid Extents [mm]	120.0 x 210.0	30.0 x 30.0 x 30.0
Grid Steps [mm]	15.0 x 15.0	6.0 x 6.0 x 1.5
Sensor Surface [mm]	3.0	1.4

**Measurement Results**

	Area Scan	Zoom Scan
Date	2022-06-17	2022-06-17
psSAR1g [W/kg]	0.324	0.325
psSAR10g [W/kg]	0.205	0.190
Power Drift [dB]		-0.01





# Measurement Report for Device, Rear, Band 26 E-UTRA/FDD, UID 10181 CAE, Channel 26865 (831.5MHz)

## Exposure Conditions

Phantom Section, TSL	Position, Test Distance [mm]	Band	Group, UID	Frequency [MHz], Channel Number	Conversion Factor	TSL Conductivity [S/m]	TSL Permittivity
Flat, HSL	BACK, 10.00	Band 26 E-UTRA/FDD	LTE-FDD, 10181-CAE	831.5, 26865	10.57	0.887	42.1

## Hardware Setup

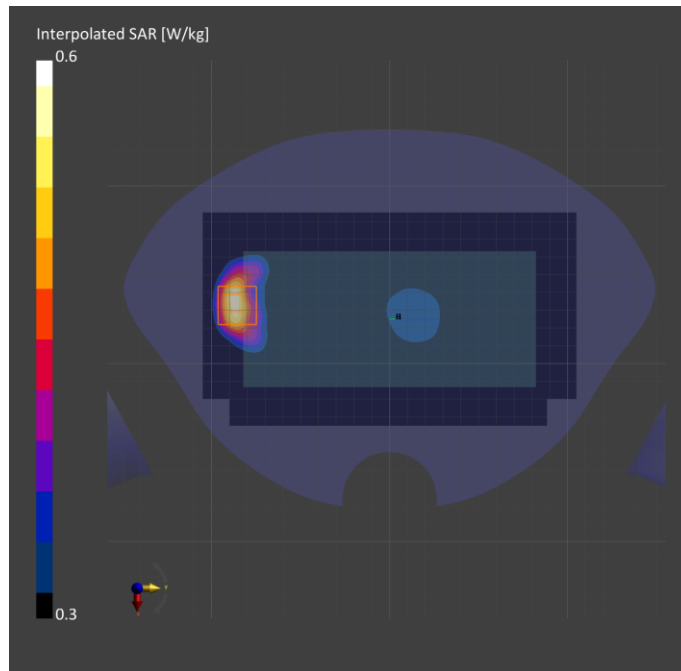
Phantom	TSL, Measured Date	Probe, Calibration Date	DAE, Calibration Date
Twin-SAM V8.0 (30deg probe tilt) - 2043	HBBL-600-10000, 2022-Jun-20	EX3DV4 - SN7330, 2022-01-28	DAE4 Sn1494, 2021-07-27

## Scan Setup

	Area Scan	Zoom Scan
Grid Extents [mm]	120.0 x 210.0	30.0 x 30.0 x 30.0
Grid Steps [mm]	15.0 x 15.0	6.0 x 6.0 x 1.5
Sensor Surface [mm]	3.0	1.4

## Measurement Results

	Area Scan	Zoom Scan
Date	2022-06-22	2022-06-22
psSAR1g [W/kg]	0.482	0.524
psSAR10g [W/kg]	0.313	0.299
Power Drift [dB]		0.00



**Measurement Report for Device, Left Touch, LTE Band 41, E-UTRA/TDD, UID 10172 CAG, Channel 39750 (2506.0MHz)**

**Exposure Conditions**

Phantom Section, TSL	Position, Test Distance [mm]	Band	Group, UID	Frequency [MHz], Channel Number	Conversion Factor	TSL Conductivity [S/m]	TSL Permittivity
Left Head, HSL	CHEEK, 0.00	Band 41, E-UTRA/TDD	LTE-TDD, 10172-CAG	2506.0, 39750	8.05	1.84	39.4

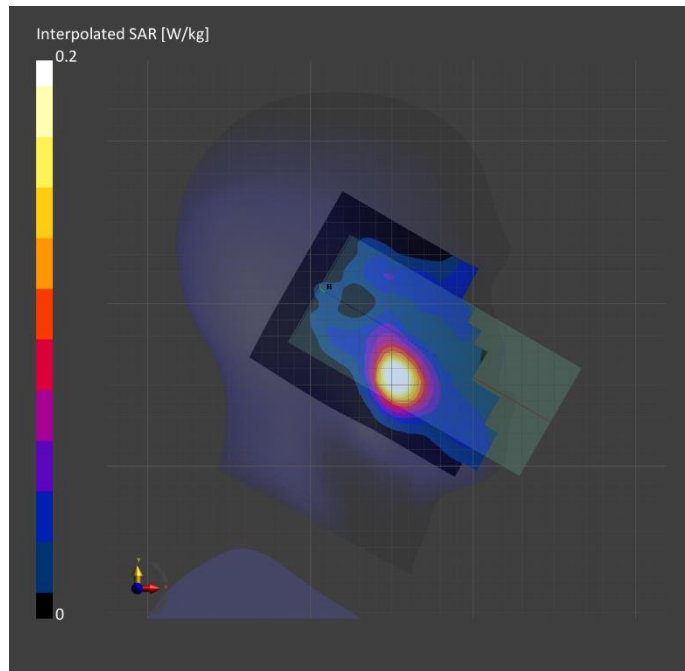
**Hardware Setup**

Phantom	TSL, Measured Date	Probe, Calibration Date	DAE, Calibration Date
Twin-SAM V8.0 (30deg probe tilt) - 2042	HBBL-600-10000, 2022-Jun-14	EX3DV4 - SN7645, 2022-04-29	DAE4 Sn1668, 2022-04-27

**Scan Setup**

**Measurement Results**

	Area Scan	Zoom Scan		Area Scan	Zoom Scan
Grid Extents [mm]	120.0 x 200.0	30.0 x 30.0 x 30.0	Date	2022-06-14	2022-06-14
Grid Steps [mm]	10.0 x 10.0	5.0 x 5.0 x 1.5	psSAR1g [W/kg]	0.177	0.184
Sensor Surface [mm]	3.0	1.4	psSAR10g [W/kg]	0.090	0.094
			Power Drift [dB]		0.01



**Measurement Report for Device, Rear, LTE Band 41, E-UTRA/TDD, UID 10172 CAG, Channel 39750 (2506.0MHz)**

**Exposure Conditions**

Phantom Section, TSL	Position, Test Distance [mm]	Band	Group, UID	Frequency [MHz], Channel Number	Conversion Factor	TSL Conductivity [S/m]	TSL Permittivity
Flat, HSL	BACK, 15.00	Band 41, E-UTRA/TDD	LTE-TDD, 10172-CAG	2506.0, 39750	8.05	1.84	39.4

**Hardware Setup**

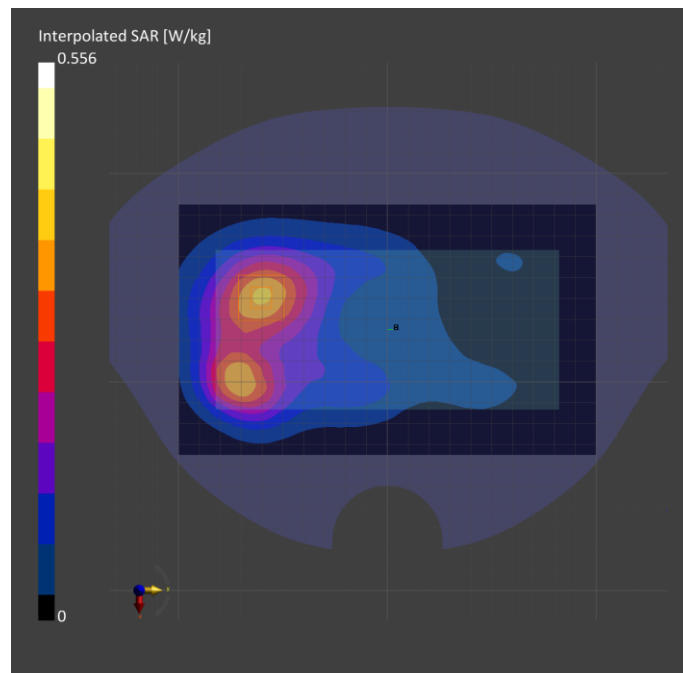
Phantom	TSL, Measured Date	Probe, Calibration Date	DAE, Calibration Date
Twin-SAM V8.0 (30deg probe tilt) - 2042	HBBL-600-10000, 2022-Jun-14	EX3DV4 - SN7645, 2022-04-29	DAE4 Sn1668, 2022-04-27

**Scan Setup**

	Area Scan	Zoom Scan
Grid Extents [mm]	120.0 x 200.0	30.0 x 30.0 x 30.0
Grid Steps [mm]	10.0 x 10.0	5.0 x 5.0 x 1.5
Sensor Surface [mm]	3.0	1.4

**Measurement Results**

	Area Scan	Zoom Scan
Date	2022-06-14	2022-06-14
psSAR1g [W/kg]	0.310	0.314
psSAR10g [W/kg]	0.173	0.179
Power Drift [dB]		-0.04



**Measurement Report for Device, Rear, LTE Band 41, E-UTRA/TDD, UID 10172 CAG, Channel 40620 (2593.0MHz)**

**Exposure Conditions**

Phantom Section, TSL	Position, Test Distance [mm]	Band	Group, UID	Frequency [MHz], Channel Number	Conversion Factor	TSL Conductivity [S/m]	TSL Permittivity
Flat, HSL	BACK, 10.00	Band 41, E-UTRA/TDD	LTE-TDD, 10172-CAG	2593.0, 40620	8.05	1.91	39.3

**Hardware Setup**

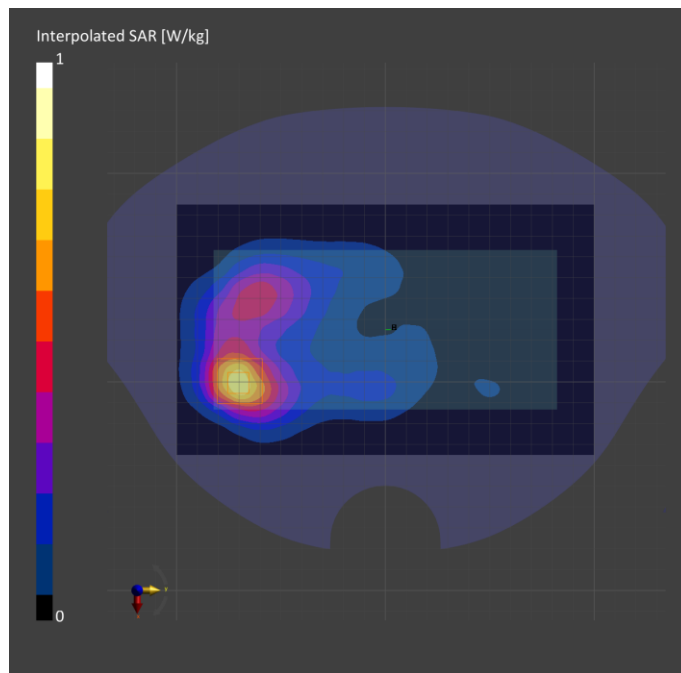
Phantom	TSL, Measured Date	Probe, Calibration Date	DAE, Calibration Date
Twin-SAM V8.0 (30deg probe tilt) - 2042	HBBL-600-10000, 2022-Jun-14	EX3DV4 - SN7645, 2022-04-29	DAE4 Sn1668, 2022-04-27

**Scan Setup**

	Area Scan	Zoom Scan
Grid Extents [mm]	120.0 x 200.0	30.0 x 30.0 x 30.0
Grid Steps [mm]	10.0 x 10.0	5.0 x 5.0 x 1.5
Sensor Surface [mm]	3.0	1.4

**Measurement Results**

	Area Scan	Zoom Scan
Date	2022-06-14	2022-06-14
psSAR1g [W/kg]	0.653	0.652
psSAR10g [W/kg]	0.331	0.323
Power Drift [dB]		0.01



## LTE Band 66

Frequency: 1745 MHz; Duty Cycle: 1:1; Room Ambient Temperature: 23.0°C; Liquid Temperature: 22.0°C  
 Medium parameters used:  $f = 1745 \text{ MHz}$ ;  $\sigma = 1.354 \text{ S/m}$ ;  $\epsilon_r = 39.35$ ;  $\rho = 1000 \text{ kg/m}^3$

DASY5 Configuration:

- Area Scan Setting: Find Secondary Maximum Within: 2.0 dB and with a peak SAR value greater than 0.012W/kg
- Electronics: DAE4 Sn1591; Calibrated: 3/24/2022
- Probe: EX3DV4 - SN7376; ConvF(8.58, 8.58, 8.58) @ 1745 MHz; Calibrated: 7/30/2021
- Sensor-Surface: 1.4mm (Mechanical Surface Detection)
- Phantom: Twin-SAM V5.0 (20deg probe tilt); Type: QD 000 P40 CD; Serial: 1751

**RHS/Touch QPSK RB 1/0 ch.132322/Area Scan (8x14x1):** Measurement grid:  $dx=15\text{mm}$ ,  $dy=15\text{mm}$   
 Maximum value of SAR (measured) = 0.271 W/kg

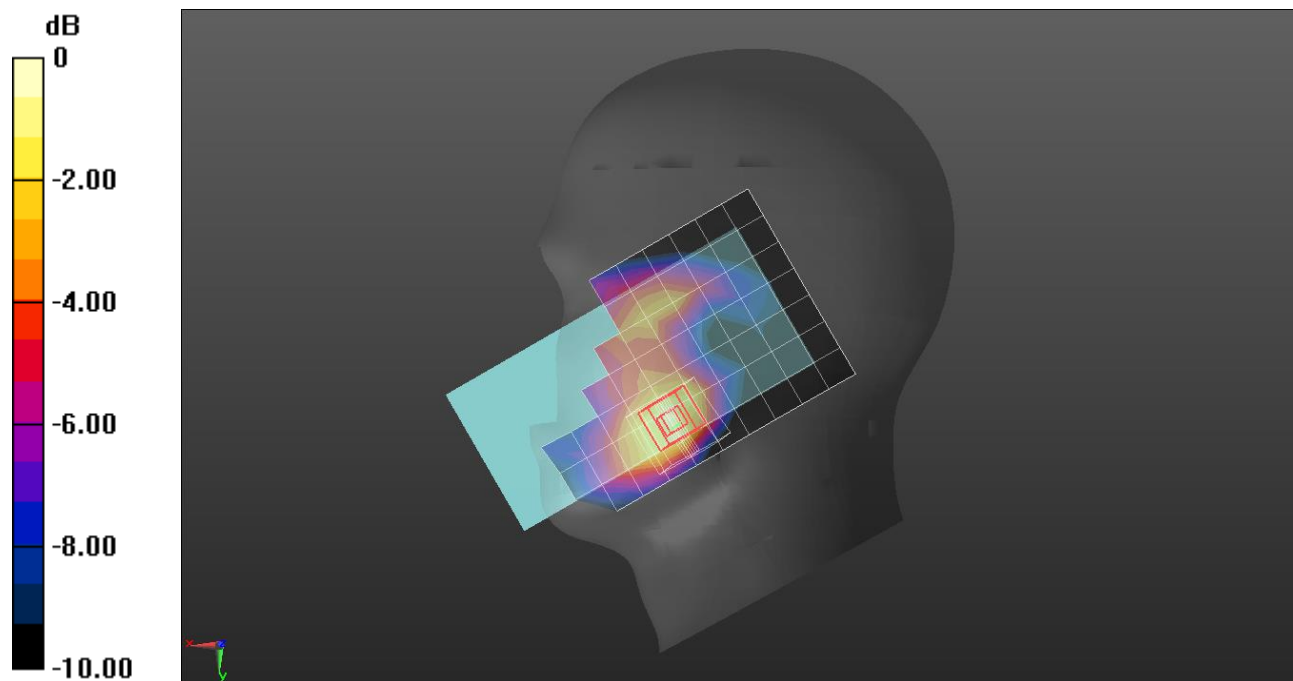
**RHS/Touch QPSK RB 1/0 ch.132322/Zoom Scan (5x5x7)/Cube 0:** Measurement grid:  $dx=8\text{mm}$ ,  $dy=8\text{mm}$ ,  $dz=5\text{mm}$

Reference Value = 13.56 V/m; Power Drift = 0.07 dB

Peak SAR (extrapolated) = 0.373 W/kg

**SAR(1 g) = 0.237 W/kg; SAR(10 g) = 0.148 W/kg**

Maximum value of SAR (measured) = 0.316 W/kg



0 dB = 0.316 W/kg = -5.00 dBW/kg

# Measurement Report for Device, Rear, LTE Band 66, E-UTRA/FDD, UID 10169 CAE, Channel 132322 (1745.0MHz)

## Exposure Conditions

Phantom Section, TSL	Position, Test Distance [mm]	Band	Group, UID	Frequency [MHz], Channel Number	Conversion Factor	TSL Conductivity [S/m]	TSL Permittivity
Flat, HSL	BACK, 15.00	Band 66, E-UTRA/FDD	LTE-FDD, 10169-CAE	1745.0, 132322	8.37	1.35	40.6

## Hardware Setup

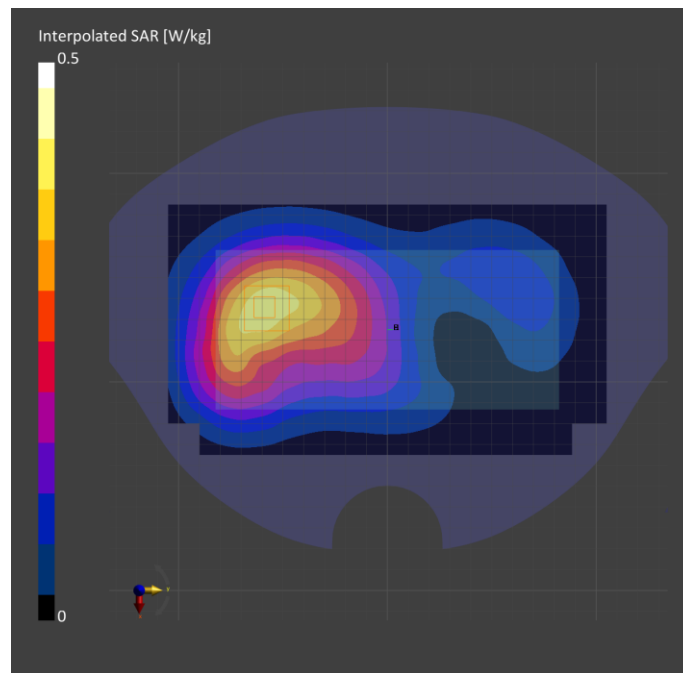
Phantom	TSL, Measured Date	Probe, Calibration Date	DAE, Calibration Date
Twin-SAM V8.0 (30deg probe tilt) - 2039	HBBL-600-10000, 2022-Jun-17	EX3DV4 - SN7545, 2021-08-26	DAE4 Sn1667, 2022-04-27

## Scan Setup

	Area Scan	Zoom Scan
Grid Extents [mm]	120.0 x 210.0	32.0 x 32.0 x 30.0
Grid Steps [mm]	15.0 x 15.0	6.0 x 6.0 x 1.5
Sensor Surface [mm]	3.0	1.4

## Measurement Results

	Area Scan	Zoom Scan
Date	2022-06-17	2022-06-17
psSAR1g [W/kg]	0.347	0.364
psSAR10g [W/kg]	0.219	0.239
Power Drift [dB]		0.06



## LTE Band 66

Frequency: 1745 MHz; Duty Cycle: 1:1; Room Ambient Temperature: 23.0°C; Liquid Temperature: 22.0°C  
 Medium parameters used:  $f = 1745 \text{ MHz}$ ;  $\sigma = 1.354 \text{ S/m}$ ;  $\epsilon_r = 39.35$ ;  $\rho = 1000 \text{ kg/m}^3$

DASY5 Configuration:

- Area Scan Setting: Find Secondary Maximum Within: 2.0 dB and with a peak SAR value greater than 0.012W/kg
- Electronics: DAE4 Sn1591; Calibrated: 3/24/2022
- Probe: EX3DV4 - SN7376; ConvF(8.58, 8.58, 8.58) @ 1745 MHz; Calibrated: 7/30/2021
- Sensor-Surface: 1.4mm (Mechanical Surface Detection (Locations From Previous Scan Used)), Sensor-Surface: 1.4mm (Mechanical Surface Detection)
- Phantom: Twin-SAM V5.0 (20deg probe tilt); Type: QD 000 P40 CD; Serial: 1751

**Edge 3/QPSK RB 50/0 ch.132322/Area Scan (9x5x1):** Measurement grid: dx=15mm, dy=15mm

Maximum value of SAR (measured) = 0.549 W/kg

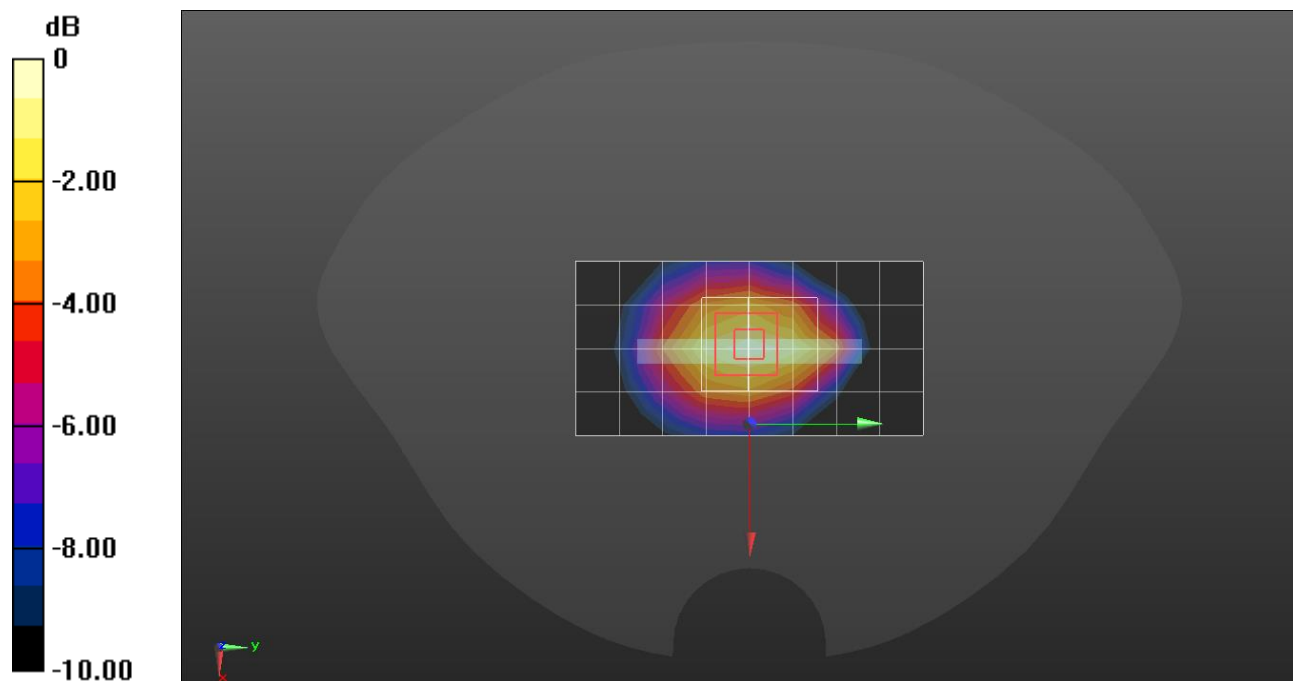
**Edge 3/QPSK RB 50/0 ch.132322/Zoom Scan (5x6x7)/Cube 0:** Measurement grid: dx=8mm, dy=8mm, dz=5mm

Reference Value = 18.48 V/m; Power Drift = -0.09 dB

Peak SAR (extrapolated) = 0.667 W/kg

**SAR(1 g) = 0.392 W/kg; SAR(10 g) = 0.236 W/kg**

Maximum value of SAR (measured) = 0.565 W/kg



0 dB = 0.565 W/kg = -2.48 dBW/kg

**Measurement Report for Device, Left Touch, LTE Band 66, E-UTRA/FDD, UID 10169 CAE, Channel 132072 (1720.0MHz)**

**Exposure Conditions**

Phantom Section, TSL	Position, Test Distance [mm]	Band	Group, UID	Frequency [MHz], Channel Number	Conversion Factor	TSL Conductivity [S/m]	TSL Permittivity
Left Head, HSL	CHEEK, 0.00	Band 66, E-UTRA/FDD	LTE-FDD, 10169-CAE	1720.0, 132072	9.23	1.34	40.0

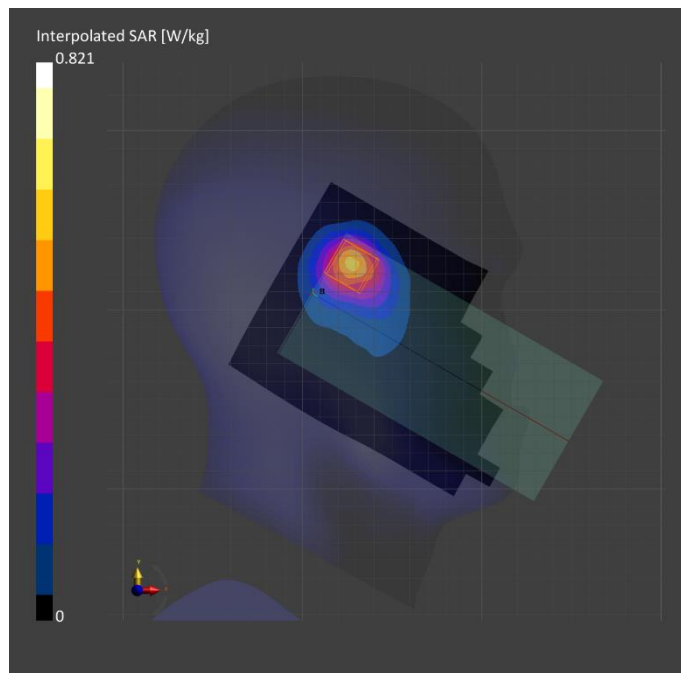
**Hardware Setup**

Phantom	TSL, Measured Date	Probe, Calibration Date	DAE, Calibration Date
Twin-SAM V8.0 (30deg probe tilt) - 2042	HBBL-600-10000, 2022-Jun-21	EX3DV4 - SN7645, 2022-04-29	DAE4 Sn1668, 2022-04-27

**Scan Setup**

**Measurement Results**

	Area Scan	Zoom Scan		Area Scan	Zoom Scan
Grid Extents [mm]	120.0 x 210.0	30.0 x 30.0 x 30.0	Date	2022-06-23	2022-06-23
Grid Steps [mm]	15.0 x 15.0	6.0 x 6.0 x 1.5	psSAR1g [W/kg]	0.461	0.480
Sensor Surface [mm]	3.0	1.4	psSAR10g [W/kg]	0.260	0.268
			Power Drift [dB]		0.00





**Measurement Report for Device, Rear, LTE Band 66, E-UTRA/FDD, UID 10169 CAE, Channel 132072 (1720.0MHz)**

**Exposure Conditions**

Phantom Section, TSL	Position, Test Distance [mm]	Band	Group, UID	Frequency [MHz], Channel Number	Conversion Factor	TSL Conductivity [S/m]	TSL Permittivity
Flat, HSL	BACK, 15.00	Band 66, E-UTRA/FDD	LTE-FDD, 10169-CAE	1720.0, 132072	9.23	1.35	40.3

**Hardware Setup**

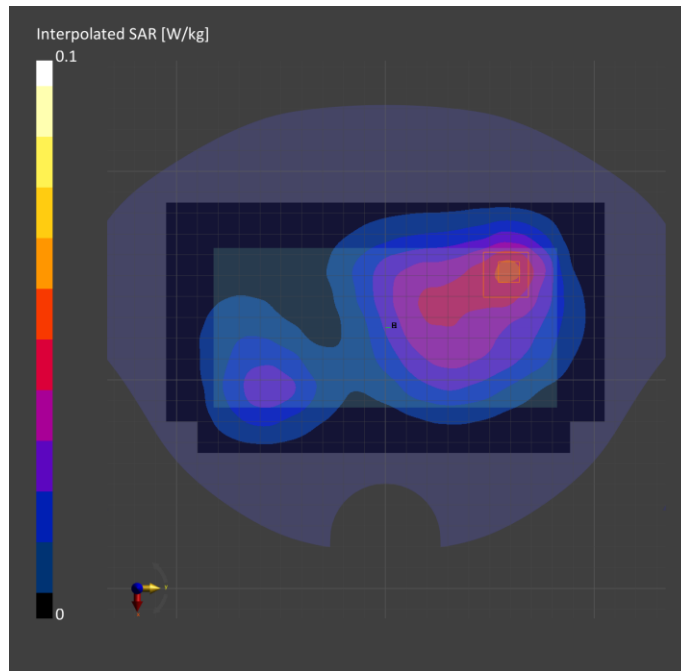
Phantom	TSL, Measured Date	Probe, Calibration Date	DAE, Calibration Date
Twin-SAM V8.0 (30deg probe tilt) - 2042	HBBL-600-10000, 2022-Jun-27	EX3DV4 - SN7645, 2022-04-29	DAE4 Sn1668, 2022-04-27

**Scan Setup**

	Area Scan	Zoom Scan
Grid Extents [mm]	120.0 x 210.0	30.0 x 30.0 x 30.0
Grid Steps [mm]	15.0 x 15.0	6.0 x 6.0 x 1.5
Sensor Surface [mm]	3.0	1.4

**Measurement Results**

	Area Scan	Zoom Scan
Date	2022-06-29	2022-06-29
psSAR1g [W/kg]	0.044	0.046
psSAR10g [W/kg]	0.027	0.028
Power Drift [dB]		-0.17



**Measurement Report for Device, Rear, LTE Band 66, E-UTRA/FDD, UID 10169 CAE, Channel 132072 (1720.0MHz)**

**Exposure Conditions**

Phantom Section, TSL	Position, Test Distance [mm]	Band	Group, UID	Frequency [MHz], Channel Number	Conversion Factor	TSL Conductivity [S/m]	TSL Permittivity
Flat, HSL	BACK, 10.00	Band 66, E-UTRA/FDD	LTE-FDD, 10169-CAE	1720.0, 132072	9.23	1.34	40.0

**Hardware Setup**

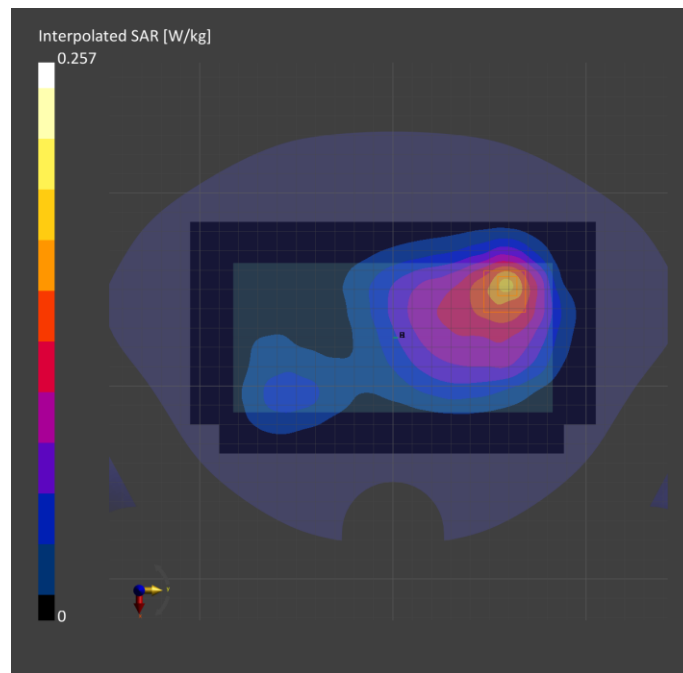
Phantom	TSL, Measured Date	Probe, Calibration Date	DAE, Calibration Date
Twin-SAM V8.0 (30deg probe tilt) - 2042	HBBL-600-10000, 2022-Jun-21	EX3DV4 - SN7645, 2022-04-29	DAE4 Sn1668, 2022-04-27

**Scan Setup**

	Area Scan	Zoom Scan
Grid Extents [mm]	120.0 x 210.0	30.0 x 30.0 x 30.0
Grid Steps [mm]	15.0 x 15.0	6.0 x 6.0 x 1.5
Sensor Surface [mm]	3.0	1.4

**Measurement Results**

	Area Scan	Zoom Scan
Date	2022-06-23	2022-06-23
psSAR1g [W/kg]	0.145	0.146
psSAR10g [W/kg]	0.086	0.086
Power Drift [dB]		-0.03



# Measurement Report for Device, Right Touch, NR Band n5, UID 10931 AAB, Channel 167300 (836.5MHz)

## Exposure Conditions

Phantom Section, TSL	Position, Test Distance [mm]	Band	Group, UID	Frequency [MHz], Channel Number	Conversion Factor	TSL Conductivity [S/m]	TSL Permittivity
Right Head, HSL	CHEEK, 0.00	Band n5	5G NR FR1 FDD, 10931-AAB	836.5, 167300	10.57	0.989	41.4

## Hardware Setup

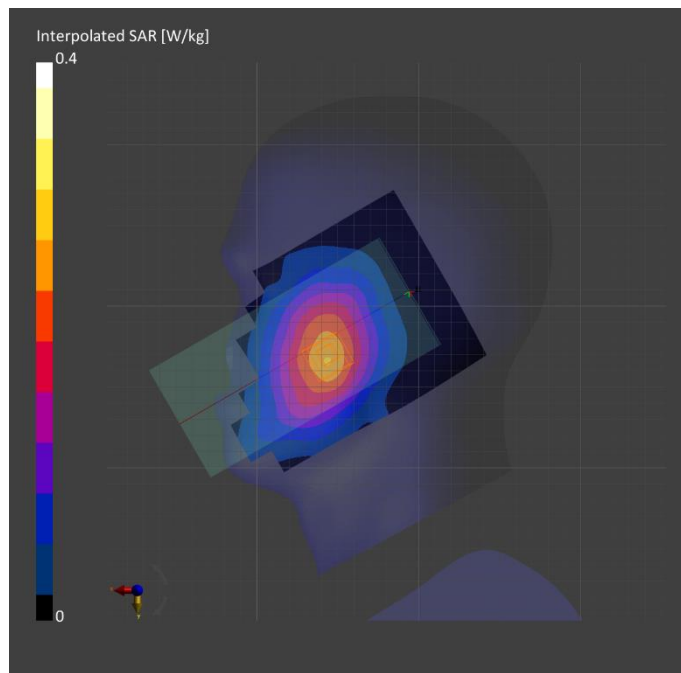
Phantom	TSL, Measured Date	Probe, Calibration Date	DAE, Calibration Date
Twin-SAM V8.0 (30deg probe tilt) - 2043	HBBL-600-10000, 2022-Jun-20	EX3DV4 - SN7330, 2022-01-28	DAE4 Sn1494, 2021-07-27

## Scan Setup

	Area Scan	Zoom Scan
Grid Extents [mm]	120.0 x 210.0	30.0 x 30.0 x 30.0
Grid Steps [mm]	15.0 x 15.0	6.0 x 6.0 x 1.5
Sensor Surface [mm]	3.0	1.4

## Measurement Results

	Area Scan	Zoom Scan
Date	2022-06-22	2022-06-22
psSAR1g [W/kg]	0.233	0.243
psSAR10g [W/kg]	0.159	0.184
Power Drift [dB]		0.01



# Measurement Report for Device, Rear, NR Band n5, UID 10931 AAB, Channel 167300 (836.5MHz)

## Exposure Conditions

Phantom Section, TSL	Position, Test Distance [mm]	Band	Group, UID	Frequency [MHz], Channel Number	Conversion Factor	TSL Conductivity [S/m]	TSL Permittivity
Flat, HSL	BACK, 15.00	Band n5	5G NR FR1 FDD, 10931-AAB	836.5, 167300	10.54	0.935	42.1

## Hardware Setup

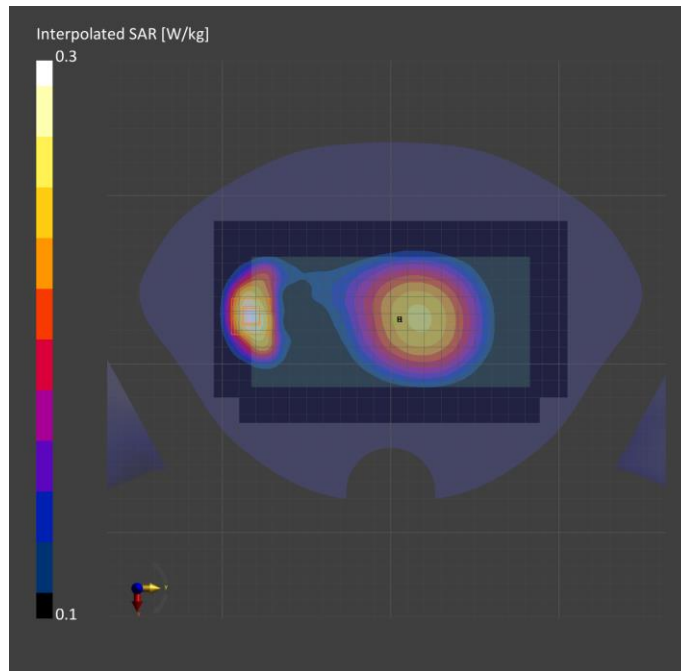
Phantom	TSL, Measured Date	Probe, Calibration Date	DAE, Calibration Date
Twin-SAM V8.0 (30deg probe tilt) - 2042	HBBL-600-10000, 2022-Jun-21	EX3DV4 - SN7645, 2022-04-29	DAE4 Sn1668, 2022-04-27

## Scan Setup

	Area Scan	Zoom Scan
Grid Extents [mm]	120.0 x 210.0	30.0 x 30.0 x 30.0
Grid Steps [mm]	15.0 x 15.0	6.0 x 6.0 x 1.5
Sensor Surface [mm]	3.0	1.4

## Measurement Results

	Area Scan	Zoom Scan
Date	2022-06-22	2022-06-22
psSAR1g [W/kg]	0.253	0.279
psSAR10g [W/kg]	0.167	0.161
Power Drift [dB]		-0.14



# Measurement Report for Device, Rear, NR Band n5, UID 10939 AAB, Channel 167300 (836.5MHz)

## Exposure Conditions

Phantom Section, TSL	Position, Test Distance [mm]	Band	Group, UID	Frequency [MHz], Channel Number	Conversion Factor	TSL Conductivity [S/m]	TSL Permittivity
Flat, HSL	BACK, 10.00	Band n5	5G NR FR1 FDD, 10939-AAB	836.5, 167300	10.54	0.935	42.1

## Hardware Setup

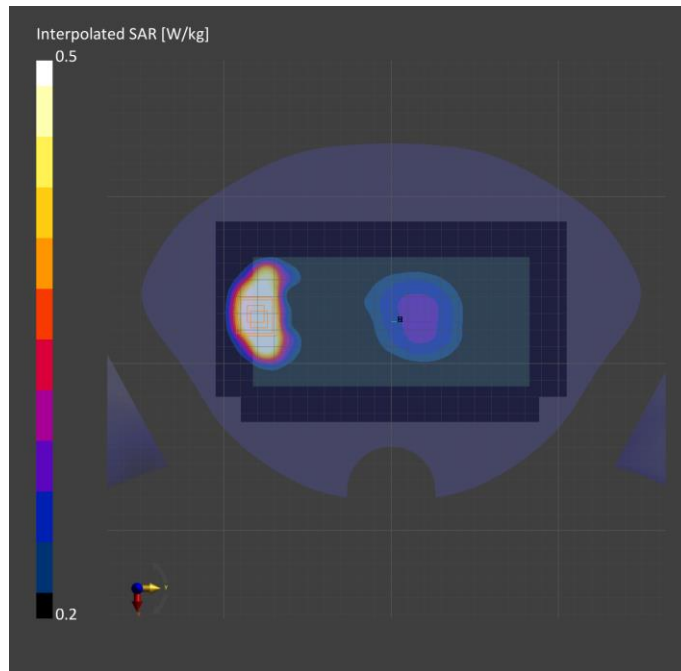
Phantom	TSL, Measured Date	Probe, Calibration Date	DAE, Calibration Date
Twin-SAM V8.0 (30deg probe tilt) - 2042	HBBL-600-10000, 2022-Jun-21	EX3DV4 - SN7645, 2022-04-29	DAE4 Sn1668, 2022-04-27

## Scan Setup

	Area Scan	Zoom Scan
Grid Extents [mm]	120.0 x 210.0	30.0 x 30.0 x 30.0
Grid Steps [mm]	15.0 x 15.0	6.0 x 6.0 x 1.5
Sensor Surface [mm]	3.0	1.4

## Measurement Results

	Area Scan	Zoom Scan
Date	2022-06-22	2022-06-22
psSAR1g [W/kg]	0.530	0.594
psSAR10g [W/kg]	0.345	0.323
Power Drift [dB]		-0.00



# Measurement Report for Device, Left Touch, NR Band n66, UID 10939 AAB, Channel 354000 (1770.0MHz)

## Exposure Conditions

Phantom Section, TSL	Position, Test Distance [mm]	Band	Group, UID	Frequency [MHz], Channel Number	Conversion Factor	TSL Conductivity [S/m]	TSL Permittivity
Left Head, HSL	CHEEK, 0.00	Band n66	5G NR FR1 FDD, 10939-AAB	1770.0, 354000	9.23	1.37	40.3

## Hardware Setup

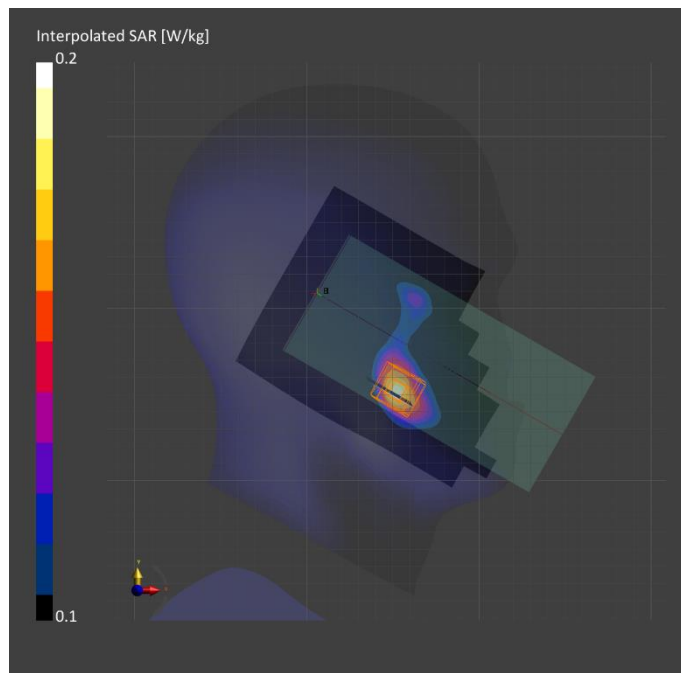
Phantom	TSL, Measured Date	Probe, Calibration Date	DAE, Calibration Date
Twin-SAM V8.0 (30deg probe tilt) - 2042	HBBL-600-10000, 2022-Jun-27	EX3DV4 - SN7645, 2022-04-29	DAE4 Sn1668, 2022-04-27

## Scan Setup

	Area Scan	Zoom Scan
Grid Extents [mm]	120.0 x 210.0	30.0 x 30.0 x 30.0
Grid Steps [mm]	15.0 x 15.0	6.0 x 6.0 x 1.5
Sensor Surface [mm]	3.0	1.4

## Measurement Results

	Area Scan	Zoom Scan
Date	2022-06-28	2022-06-28
psSAR1g [W/kg]	0.153	0.162
psSAR10g [W/kg]	0.091	0.105
Power Drift [dB]		0.00



**Measurement Report for Device, Rear, NR Band n66, UID 10939 AAB, Channel 354000 (1770.0MHz)**

**Exposure Conditions**

Phantom Section, TSL	Position, Test Distance [mm]	Band	Group, UID	Frequency [MHz], Channel Number	Conversion Factor	TSL Conductivity [S/m]	TSL Permittivity
Flat, HSL	BACK, 15.00	Band n66	5G NR FR1 FDD, 10939-AAB	1770.0, 354000	9.23	1.37	40.3

**Hardware Setup**

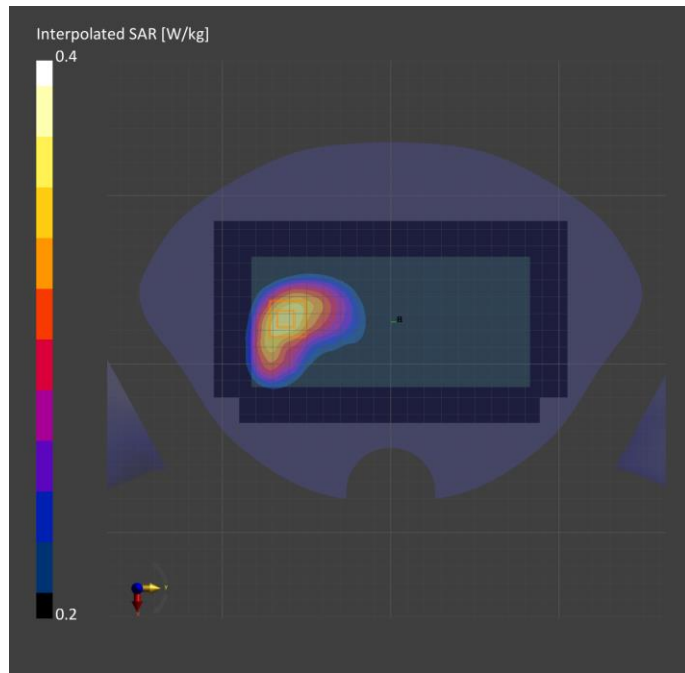
Phantom	TSL, Measured Date	Probe, Calibration Date	DAE, Calibration Date
Twin-SAM V8.0 (30deg probe tilt) - 2042	HBBL-600-10000, 2022-Jun-27	EX3DV4 - SN7645, 2022-04-29	DAE4 Sn1668, 2022-04-27

**Scan Setup**

	Area Scan	Zoom Scan
Grid Extents [mm]	120.0 x 210.0	30.0 x 30.0 x 30.0
Grid Steps [mm]	15.0 x 15.0	6.0 x 6.0 x 1.5
Sensor Surface [mm]	3.0	1.4

**Measurement Results**

	Area Scan	Zoom Scan
Date	2022-06-28	2022-06-28
psSAR1g [W/kg]	0.312	0.323
psSAR10g [W/kg]	0.197	0.212
Power Drift [dB]		0.02



## NR Band n66

Frequency: 1770 MHz; Duty Cycle: 1:1; Room Ambient Temperature: 23.0°C; Liquid Temperature: 22.0°C  
 Medium parameters used:  $f = 1770$  MHz;  $\sigma = 1.336$  S/m;  $\epsilon_r = 39.431$ ;  $\rho = 1000$  kg/m<sup>3</sup>

DASY5 Configuration:

- Area Scan Setting: Find Secondary Maximum Within: 2.0 dB and with a peak SAR value greater than 0.012W/kg
- Electronics: DAE4 Sn912; Calibrated: 2021-11-22
- Probe: EX3DV4 - SN7376; ConvF(8.58, 8.58, 8.58) @ 1770 MHz; Calibrated: 2021-07-30
- Sensor-Surface: 1.4mm (Mechanical Surface Detection)
- Phantom: Twin-SAM V5.0 (20deg probe tilt); Type: QD 000 P40 CD; Serial: 1751

**Rear/QPSK RB 50/28 ch.354000/Area Scan (8x14x1):** Measurement grid: dx=15mm, dy=15mm  
 Maximum value of SAR (measured) = 0.962 W/kg

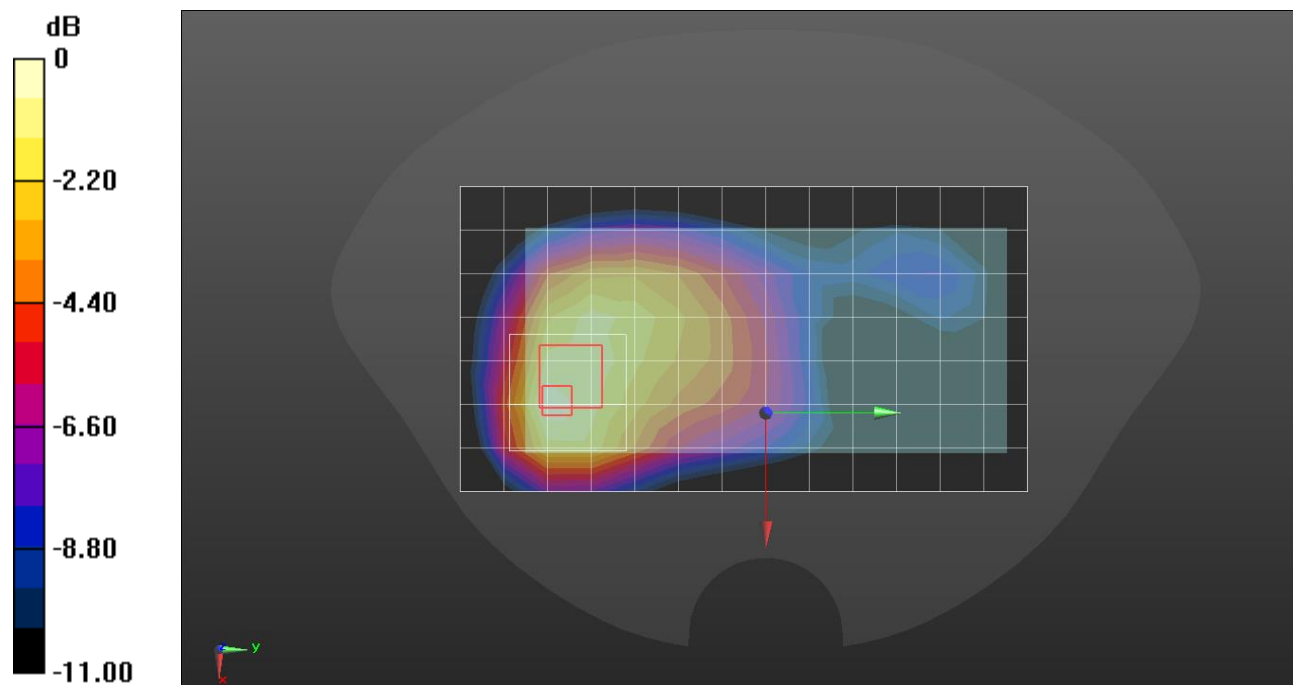
**Rear/QPSK RB 50/28 ch.354000/Zoom Scan (6x6x7)/Cube 0:** Measurement grid: dx=8mm, dy=8mm, dz=5mm

Reference Value = 25.34 V/m; Power Drift = -0.03 dB

Peak SAR (extrapolated) = 1.16 W/kg

**SAR(1 g) = 0.678 W/kg; SAR(10 g) = 0.414 W/kg**

Maximum value of SAR (measured) = 0.986 W/kg



0 dB = 0.986 W/kg = -0.06 dBW/kg



# Measurement Report for Device, Left Touch, NR Band n66, UID 10939 AAB, Channel 354000 (1770.0MHz)

## Exposure Conditions

Phantom Section, TSL	Position, Test Distance [mm]	Band	Group, UID	Frequency [MHz], Channel Number	Conversion Factor	TSL Conductivity [S/m]	TSL Permittivity
Left Head, HSL	CHEEK, 0.00	Band n66	5G NR FR1 FDD, 10939-AAB	1770.0, 354000	9.23	1.36	40.0

## Hardware Setup

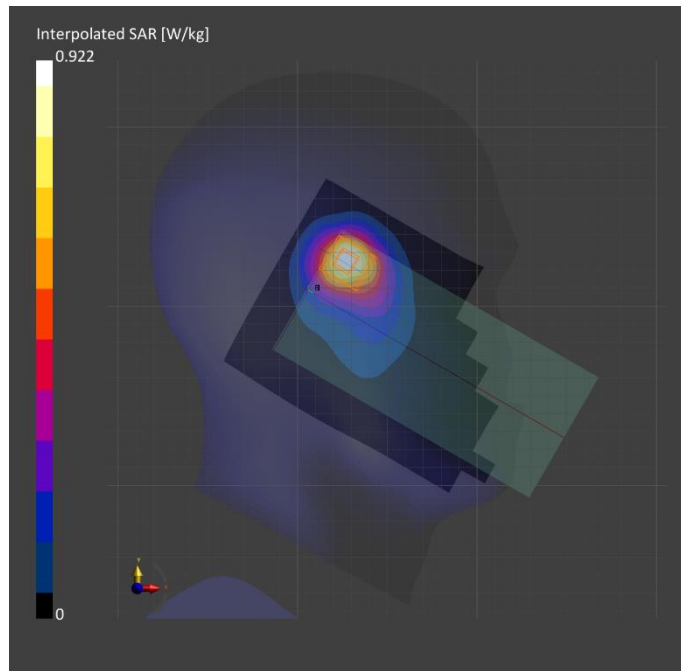
Phantom	TSL, Measured Date	Probe, Calibration Date	DAE, Calibration Date
Twin-SAM V8.0 (30deg probe tilt) - 2042	HBBL-600-10000, 2022-Jun-21	EX3DV4 - SN7645, 2022-04-29	DAE4 Sn1668, 2022-04-27

## Scan Setup

	Area Scan	Zoom Scan
Grid Extents [mm]	120.0 x 210.0	30.0 x 30.0 x 30.0
Grid Steps [mm]	15.0 x 15.0	6.0 x 6.0 x 1.5
Sensor Surface [mm]	3.0	1.4

## Measurement Results

	Area Scan	Zoom Scan
Date	2022-06-23	2022-06-23
psSAR1g [W/kg]	0.498	0.525
psSAR10g [W/kg]	0.281	0.293
Power Drift [dB]		0.09



**Measurement Report for Device, Rear, NR Band n66, UID 10931 AAB, Channel 354000 (1770.0MHz)**

**Exposure Conditions**

Phantom Section, TSL	Position, Test Distance [mm]	Band	Group, UID	Frequency [MHz], Channel Number	Conversion Factor	TSL Conductivity [S/m]	TSL Permittivity
Flat, HSL	BACK, 15.00	Band n66	5G NR FR1 FDD, 10931-AAB	1770.0, 354000	9.23	1.36	40.0

**Hardware Setup**

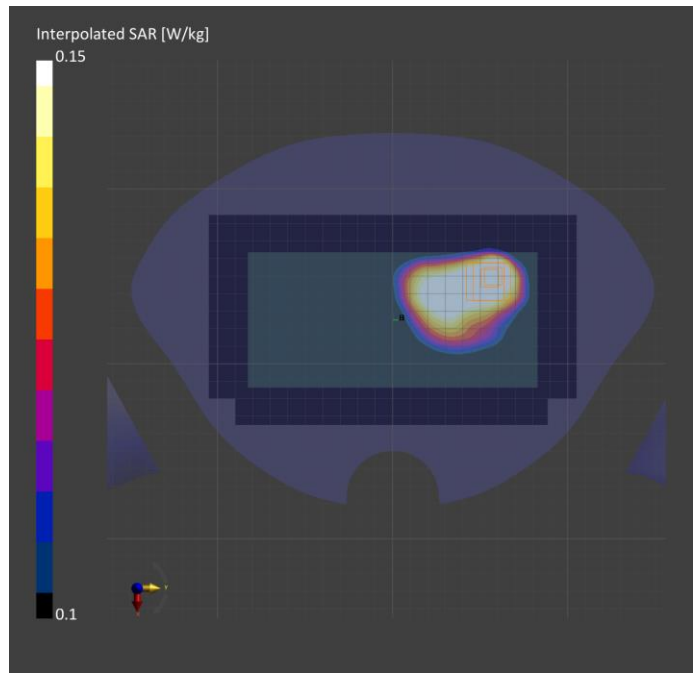
Phantom	TSL, Measured Date	Probe, Calibration Date	DAE, Calibration Date
Twin-SAM V8.0 (30deg probe tilt) - 2042	HBBL-600-10000, 2022-Jun-21	EX3DV4 - SN7645, 2022-04-29	DAE4 Sn1668, 2022-04-27

**Scan Setup**

	Area Scan	Zoom Scan
Grid Extents [mm]	120.0 x 210.0	30.0 x 30.0 x 30.0
Grid Steps [mm]	15.0 x 15.0	6.0 x 6.0 x 1.5
Sensor Surface [mm]	3.0	1.4

**Measurement Results**

	Area Scan	Zoom Scan
Date	2022-06-23	2022-06-23
psSAR1g [W/kg]	0.143	0.145
psSAR10g [W/kg]	0.089	0.091
Power Drift [dB]		0.10



# Measurement Report for Device, Rear, NR Band n66, UID 10939 AAB, Channel 354000 (1770.0MHz)

## Exposure Conditions

Phantom Section, TSL	Position, Test Distance [mm]	Band	Group, UID	Frequency [MHz], Channel Number	Conversion Factor	TSL Conductivity [S/m]	TSL Permittivity
Flat, HSL	BACK, 10.00	Band n66	5G NR FR1 FDD, 10939-AAB	1770.0, 354000	9.23	1.36	40.0

## Hardware Setup

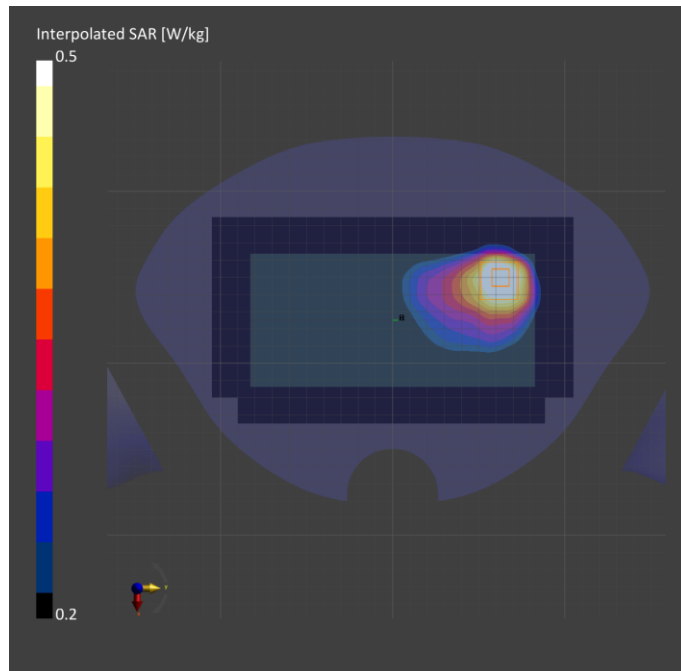
Phantom	TSL, Measured Date	Probe, Calibration Date	DAE, Calibration Date
Twin-SAM V8.0 (30deg probe tilt) - 2042	HBBL-600-10000, 2022-Jun-21	EX3DV4 - SN7645, 2022-04-29	DAE4 Sn1668, 2022-04-27

## Scan Setup

	Area Scan	Zoom Scan
Grid Extents [mm]	120.0 x 210.0	30.0 x 30.0 x 30.0
Grid Steps [mm]	15.0 x 15.0	6.0 x 6.0 x 1.5
Sensor Surface [mm]	3.0	1.4

## Measurement Results

	Area Scan	Zoom Scan
Date	2022-06-22	2022-06-22
psSAR1g [W/kg]	0.473	0.481
psSAR10g [W/kg]	0.285	0.285
Power Drift [dB]		-0.03



# Measurement Report for Device, Right Touch, WLAN 2.4GHz, UID 10415 AAA, Channel 11 (2462.0MHz)

## Exposure Conditions

Phantom Section, TSL	Position, Test Distance [mm]	Band	Group, UID	Frequency [MHz], Channel Number	Conversion Factor	TSL Conductivity [S/m]	TSL Permittivity
Right Head, HSL	CHEEK, 0.00	WLAN 2.4GHz	WLAN, 10415-AAA	2462.0, 11	7.56	1.87	39.8

## Hardware Setup

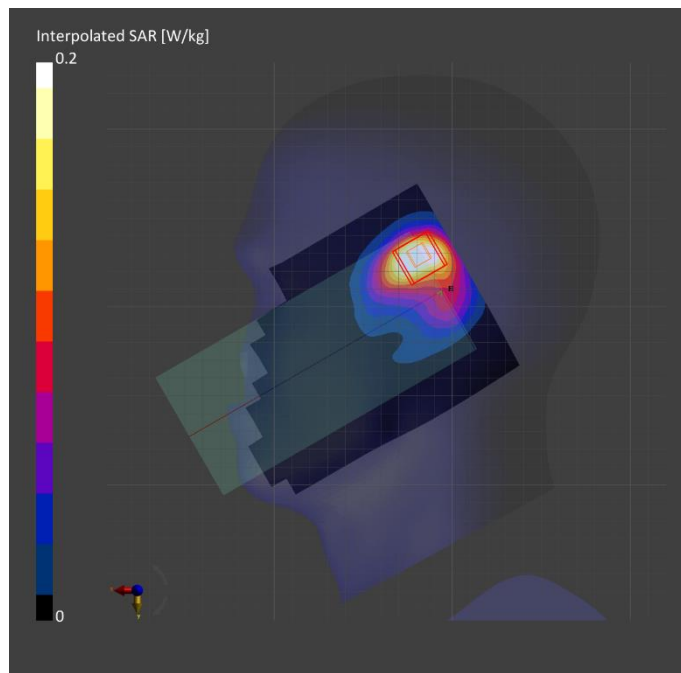
Phantom	TSL, Measured Date	Probe, Calibration Date	DAE, Calibration Date
Twin-SAM V8.0 (30deg probe tilt) - 2039	HBBL-600-10000, 2022-Jun-20	EX3DV4 - SN7545, 2021-08-26	DAE4 Sn1667, 2022-04-27

## Scan Setup

	Area Scan	Zoom Scan
Grid Extents [mm]	120.0 x 200.0	30.0 x 30.0 x 30.0
Grid Steps [mm]	10.0 x 10.0	5.0 x 5.0 x 1.5
Sensor Surface [mm]	3.0	1.4

## Measurement Results

	Area Scan	Zoom Scan
Date	2022-06-22	2022-06-22
psSAR1g [W/kg]	0.166	0.174
psSAR10g [W/kg]	0.089	0.085
Power Drift [dB]		-0.03



# Measurement Report for Device, Rear, WLAN 2.4GHz, UID 10415 AAA, Channel 6 (2437.0MHz)

## Exposure Conditions

Phantom Section, TSL	Position, Test Distance [mm]	Band	Group, UID	Frequency [MHz], Channel Number	Conversion Factor	TSL Conductivity [S/m]	TSL Permittivity
Flat, HSL	BACK, 15.00	WLAN 2.4GHz	WLAN, 10415-AAA	2437.0, 6	8.25	1.82	38.0

## Hardware Setup

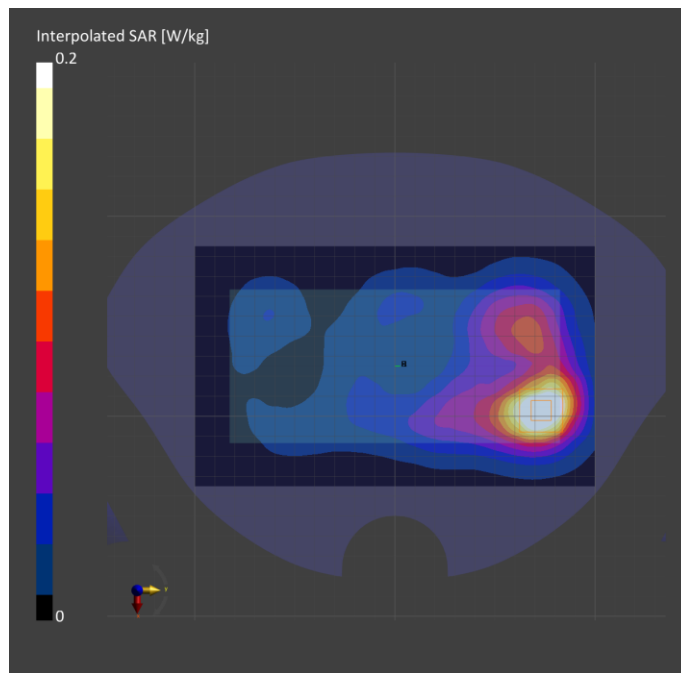
Phantom	TSL, Measured Date	Probe, Calibration Date	DAE, Calibration Date
Twin-SAM V8.0 (30deg probe tilt) - 2042	HBBL-600-10000, 2022-Jun-13	EX3DV4 - SN7645, 2022-04-29	DAE4 Sn1668, 2022-04-27

## Scan Setup

	Area Scan	Zoom Scan
Grid Extents [mm]	120.0 x 200.0	30.0 x 30.0 x 30.0
Grid Steps [mm]	10.0 x 10.0	5.0 x 5.0 x 1.5
Sensor Surface [mm]	3.0	1.4

## Measurement Results

	Area Scan	Zoom Scan
Date	2022-06-13	2022-06-13
psSAR1g [W/kg]	0.199	0.205
psSAR10g [W/kg]	0.102	0.102
Power Drift [dB]		0.02



# Measurement Report for Device, Rear, WLAN 2.4GHz, UID 10415 AAA, Channel 6 (2437.0MHz)

## Exposure Conditions

Phantom Section, TSL	Position, Test Distance [mm]	Band	Group, UID	Frequency [MHz], Channel Number	Conversion Factor	TSL Conductivity [S/m]	TSL Permittivity
Flat, HSL	BACK, 10.00	WLAN 2.4GHz	WLAN, 10415-AAA	2437.0, 6	8.25	1.82	38.0

## Hardware Setup

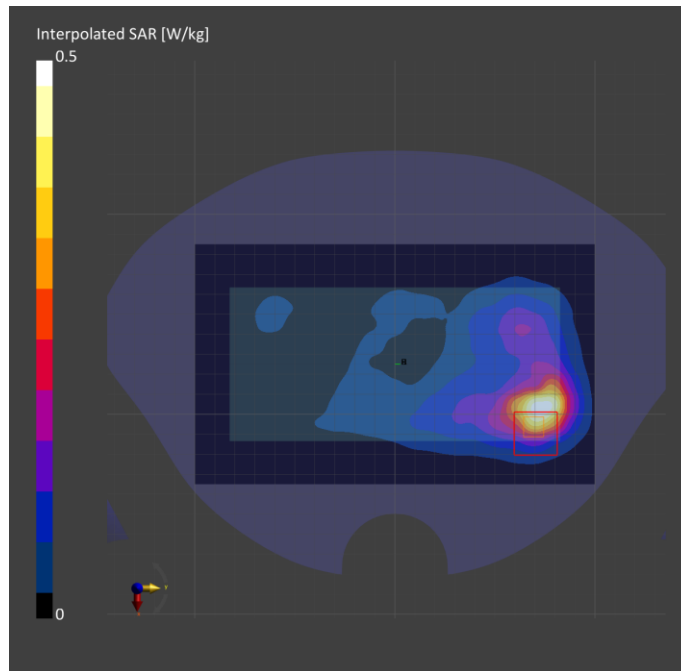
Phantom	TSL, Measured Date	Probe, Calibration Date	DAE, Calibration Date
Twin-SAM V8.0 (30deg probe tilt) - 2042	HBBL-600-10000, 2022-Jun-13	EX3DV4 - SN7645, 2022-04-29	DAE4 Sn1668, 2022-04-27

## Scan Setup

	Area Scan	Zoom Scan
Grid Extents [mm]	120.0 x 200.0	30.0 x 30.0 x 30.0
Grid Steps [mm]	10.0 x 10.0	5.0 x 5.0 x 1.5
Sensor Surface [mm]	3.0	1.4

## Measurement Results

	Area Scan	Zoom Scan
Date	2022-06-13	2022-06-13
psSAR1g [W/kg]	0.390	0.285
psSAR10g [W/kg]	0.191	0.086
Power Drift [dB]		-0.08



# Measurement Report for Device, Right Tilt, U-NII-2A, UID 10626 AAC, Channel 58 (5290.0MHz)

## Exposure Conditions

Phantom Section, TSL	Position, Test Distance [mm]	Band	Group, UID	Frequency [MHz], Channel Number	Conversion Factor	TSL Conductivity [S/m]	TSL Permittivity
Right Head, HSL	TILT, 0.00	U-NII-1, U-NII-2A	WLAN, 10626-AAC	5290.0, 58	5.24	4.77	35.8

## Hardware Setup

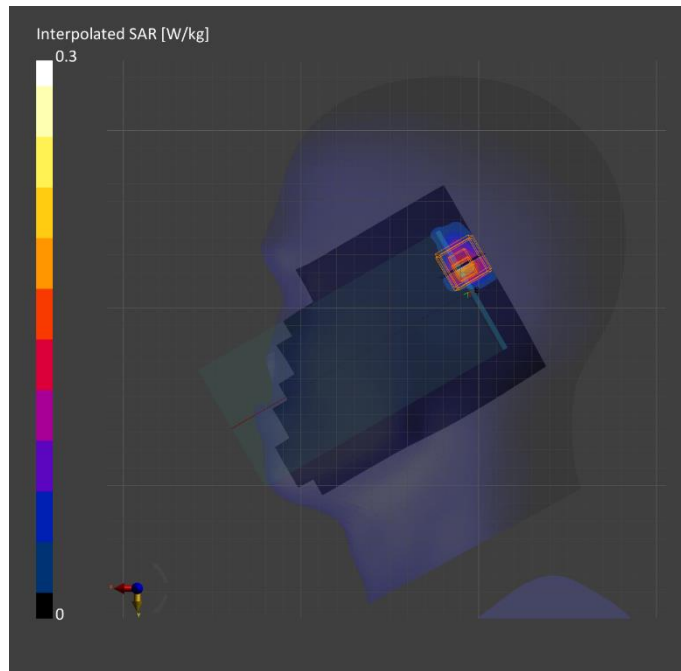
Phantom	TSL, Measured Date	Probe, Calibration Date	DAE, Calibration Date
Twin-SAM V8.0 (30deg probe tilt) - 2037	HBBL-600-10000, 2022-Jun-13	EX3DV4 - SN7313, 2022-03-02	DAE4 Sn1343, 2021-08-23

## Scan Setup

	Area Scan	Zoom Scan
Grid Extents [mm]	120.0 x 200.0	22.0 x 22.0 x 22.0
Grid Steps [mm]	10.0 x 10.0	4.0 x 4.0 x 1.4
Sensor Surface [mm]	3.0	1.4

## Measurement Results

	Area Scan	Zoom Scan
Date	2022-06-14	2022-06-14
psSAR1g [W/kg]	0.137	0.161
psSAR10g [W/kg]	0.046	0.044
Power Drift [dB]		-0.01



# Measurement Report for Device, Rear, U-NII-2A, UID 10583 AAC, Channel 52 (5260.0MHz)

## Exposure Conditions

Phantom Section, TSL	Position, Test Distance [mm]	Band	Group, UID	Frequency [MHz], Channel Number	Conversion Factor	TSL Conductivity [S/m]	TSL Permittivity
Flat, HSL	BACK, 15.00	U-NII-1, U-NII-2A	WLAN, 10583-AAC	5260.0, 52	5.24	4.58	35.7

## Hardware Setup

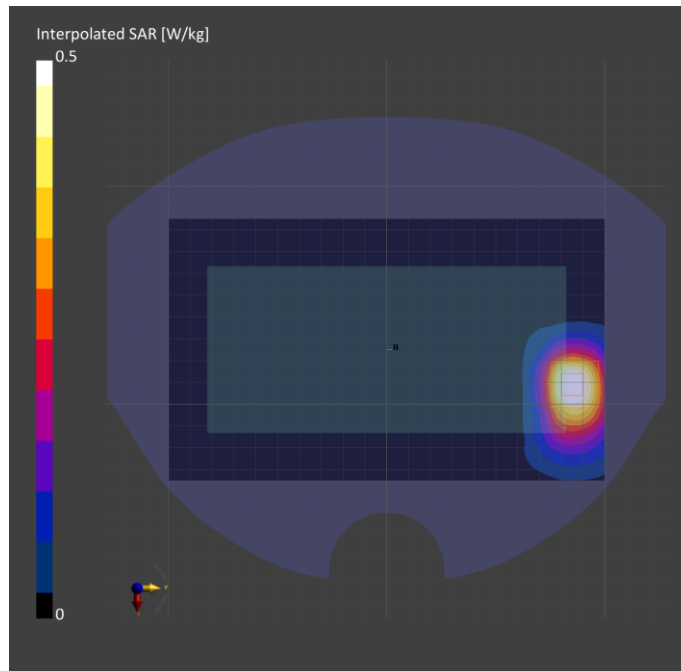
Phantom	TSL, Measured Date	Probe, Calibration Date	DAE, Calibration Date
Twin-SAM V8.0 (30deg probe tilt) - 2037	HBBL-600-10000, 2022-Jun-30	EX3DV4 - SN7313, 2022-03-02	DAE4 Sn1343, 2021-08-23

## Scan Setup

	Area Scan	Zoom Scan
Grid Extents [mm]	120.0 x 200.0	22.0 x 22.0 x 22.0
Grid Steps [mm]	10.0 x 10.0	4.0 x 4.0 x 1.4
Sensor Surface [mm]	3.0	1.4

## Measurement Results

	Area Scan	Zoom Scan
Date	2022-06-30	2022-06-30
psSAR1g [W/kg]	0.391	0.409
psSAR10g [W/kg]	0.160	0.154
Power Drift [dB]		-0.03





# Measurement Report for Device, Rear, U-NII-2A, UID 10583 AAC, Channel 52 (5260.0MHz)

## Exposure Conditions

Phantom Section, TSL	Position, Test Distance [mm]	Band	Group, UID	Frequency [MHz], Channel Number	Conversion Factor	TSL Conductivity [S/m]	TSL Permittivity
Flat, HSL	BACK, 0.00	U-NII-1, U-NII-2A	WLAN, 10583-AAC	5260.0, 52	5.24	4.74	35.9

## Hardware Setup

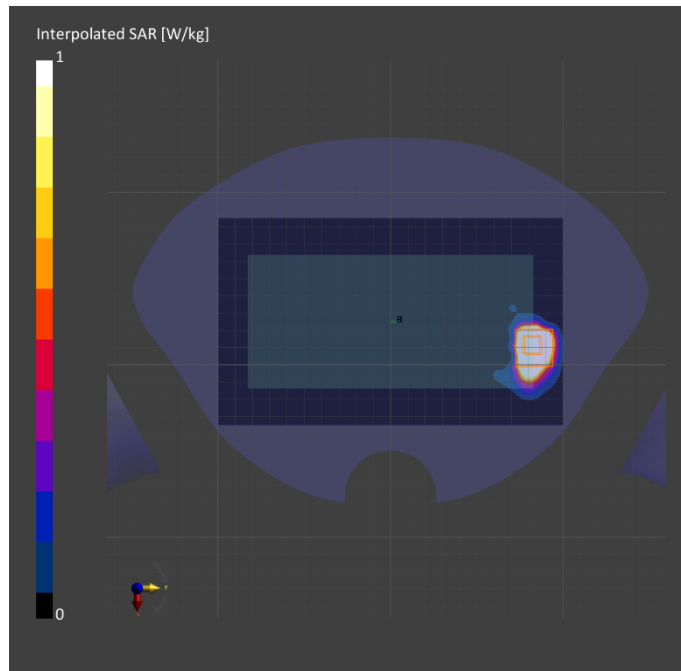
Phantom	TSL, Measured Date	Probe, Calibration Date	DAE, Calibration Date
Twin-SAM V8.0 (30deg probe tilt) - 2037	HBBL-600-10000, 2022-Jun-13	EX3DV4 - SN7313, 2022-03-02	DAE4 Sn1343, 2021-08-23

## Scan Setup

	Area Scan	Zoom Scan
Grid Extents [mm]	120.0 x 200.0	22.0 x 22.0 x 22.0
Grid Steps [mm]	10.0 x 10.0	4.0 x 4.0 x 1.4
Sensor Surface [mm]	3.0	1.4

## Measurement Results

	Area Scan	Zoom Scan
Date	2022-06-14	2022-06-14
psSAR1g [W/kg]	3.51	5.35
psSAR10g [W/kg]	0.917	1.06
Power Drift [dB]		0.02



# Measurement Report for Device, Right Tilt, U-NII-2C Standalone, UID 10626 AAC, Channel 106 (5530.0MHz)

## Exposure Conditions

Phantom Section, TSL	Position, Test Distance [mm]	Band	Group, UID	Frequency [MHz], Channel Number	Conversion Factor	TSL Conductivity [S/m]	TSL Permittivity
Right Head, HSL	TILT, 0.00	U-NII-2C Standalone	WLAN, 10626-AAC	5530.0, 106	4.66	5.03	35.3

## Hardware Setup

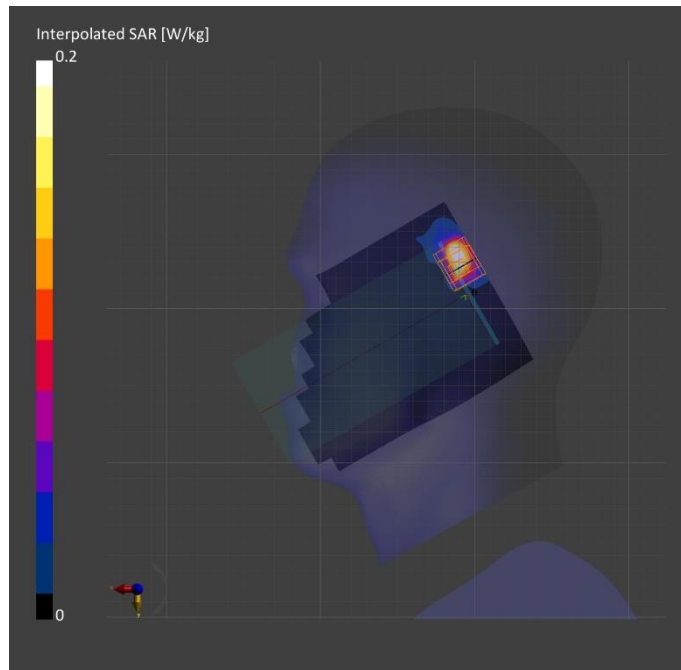
Phantom	TSL, Measured Date	Probe, Calibration Date	DAE, Calibration Date
Twin-SAM V8.0 (30deg probe tilt) - 2037	HBBL-600-10000, 2022-Jun-13	EX3DV4 - SN7313, 2022-03-02	DAE4 Sn1343, 2021-08-23

## Scan Setup

	Area Scan	Zoom Scan
Grid Extents [mm]	120.0 x 200.0	22.0 x 22.0 x 22.0
Grid Steps [mm]	10.0 x 10.0	4.0 x 4.0 x 1.4
Sensor Surface [mm]	3.0	1.4

## Measurement Results

	Area Scan	Zoom Scan
Date	2022-06-15	2022-06-15
psSAR1g [W/kg]	0.140	0.184
psSAR10g [W/kg]	0.047	0.055
Power Drift [dB]		0.03



# Measurement Report for Device, Rear, U-NII-2C Standalone, UID 10583 AAC, Channel 124 (5620.0MHz)

## Exposure Conditions

Phantom Section, TSL	Position, Test Distance [mm]	Band	Group, UID	Frequency [MHz], Channel Number	Conversion Factor	TSL Conductivity [S/m]	TSL Permittivity
Flat, HSL	BACK, 15.00	U-NII-2C Standalone	WLAN, 10583-AAC	5620.0, 124	4.66	5.12	35.2

## Hardware Setup

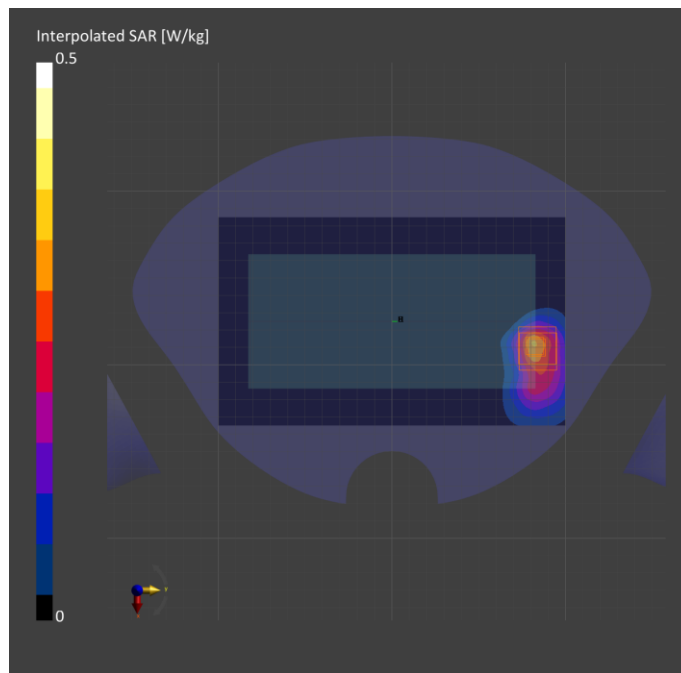
Phantom	TSL, Measured Date	Probe, Calibration Date	DAE, Calibration Date
Twin-SAM V8.0 (30deg probe tilt) - 2037	HBBL-600-10000, 2022-Jun-13	EX3DV4 - SN7313, 2022-03-02	DAE4 Sn1343, 2021-08-23

## Scan Setup

	Area Scan	Zoom Scan
Grid Extents [mm]	120.0 x 200.0	22.0 x 22.0 x 22.0
Grid Steps [mm]	10.0 x 10.0	4.0 x 4.0 x 1.4
Sensor Surface [mm]	3.0	1.4

## Measurement Results

	Area Scan	Zoom Scan
Date	2022-06-14	2022-06-14
psSAR1g [W/kg]	0.248	0.253
psSAR10g [W/kg]	0.099	0.091
Power Drift [dB]		-0.09



# Measurement Report for Device, Edge 1, U-NII-2C Standalone, UID 10583 AAC, Channel 124 (5620.0MHz)

## Exposure Conditions

Phantom Section, TSL	Position, Test Distance [mm]	Band	Group, UID	Frequency [MHz], Channel Number	Conversion Factor	TSL Conductivity [S/m]	TSL Permittivity
Flat, HSL	EDGE TOP, 0.00	U-NII-2C Standalone	WLAN, 10583-AAC	5620.0, 124	4.66	5.12	35.2

## Hardware Setup

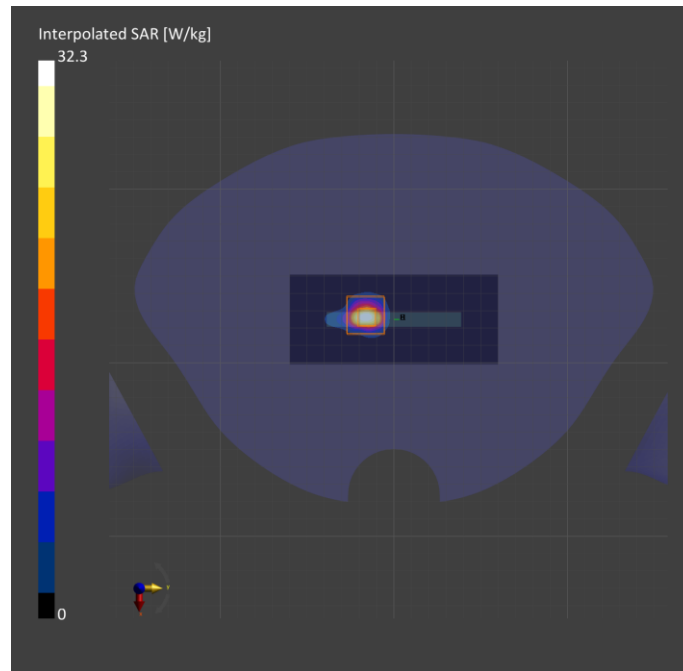
Phantom	TSL, Measured Date	Probe, Calibration Date	DAE, Calibration Date
Twin-SAM V8.0 (30deg probe tilt) - 2037	HBBL-600-10000, 2022-Jun-13	EX3DV4 - SN7313, 2022-03-02	DAE4 Sn1343, 2021-08-23

## Scan Setup

	Area Scan	Zoom Scan
Grid Extents [mm]	51.6 x 120.0	22.0 x 22.0 x 22.0
Grid Steps [mm]	8.6 x 10.0	4.0 x 4.0 x 1.4
Sensor Surface [mm]	3.0	1.4

## Measurement Results

	Area Scan	Zoom Scan
Date	2022-06-13	2022-06-13
psSAR1g [W/kg]	6.15	7.38
psSAR10g [W/kg]	1.63	1.74
Power Drift [dB]		0.05



# Measurement Report for Device, Left Tilt, U-NII-3 Standalone, UID 10626 AAC, Channel 155 (5775.0MHz)

## Exposure Conditions

Phantom Section, TSL	Position, Test Distance [mm]	Band	Group, UID	Frequency [MHz], Channel Number	Conversion Factor	TSL Conductivity [S/m]	TSL Permittivity
Left Head, HSL	TILT, 0.00	U-NII-3 Standalone	WLAN, 10626-AAC	5775.0, 155	4.65	5.30	34.9

## Hardware Setup

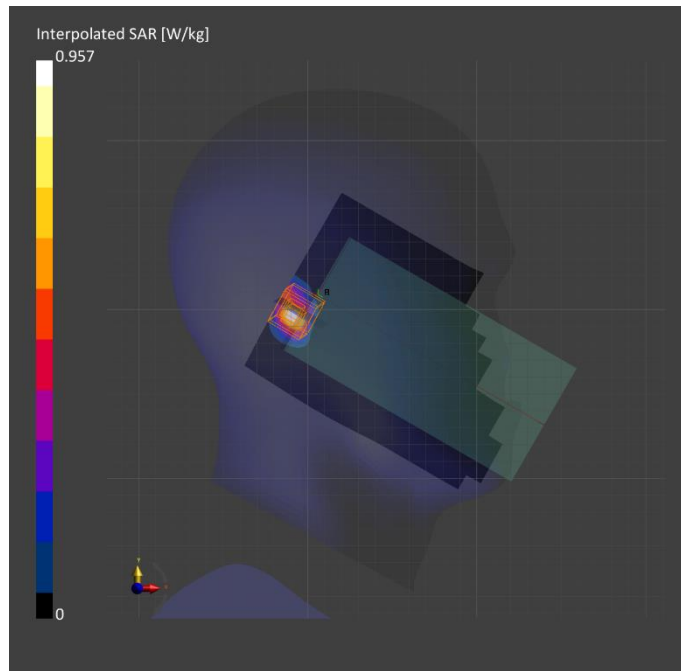
Phantom	TSL, Measured Date	Probe, Calibration Date	DAE, Calibration Date
Twin-SAM V8.0 (30deg probe tilt) - 2037	HBBL-600-10000, 2022-Jun-13	EX3DV4 - SN7313, 2022-03-02	DAE4 Sn1343, 2021-08-23

## Scan Setup

	Area Scan	Zoom Scan
Grid Extents [mm]	120.0 x 200.0	22.0 x 22.0 x 22.0
Grid Steps [mm]	10.0 x 10.0	4.0 x 4.0 x 1.4
Sensor Surface [mm]	3.0	1.4

## Measurement Results

	Area Scan	Zoom Scan
Date	2022-06-15	2022-06-15
psSAR1g [W/kg]	0.182	0.175
psSAR10g [W/kg]	0.059	0.048
Power Drift [dB]		-0.14



# Measurement Report for Device, Rear, U-NII-3 Standalone, UID 10583 AAC, Channel 157 (5785.0MHz)

## Exposure Conditions

Phantom Section, TSL	Position, Test Distance [mm]	Band	Group, UID	Frequency [MHz], Channel Number	Conversion Factor	TSL Conductivity [S/m]	TSL Permittivity
Flat, HSL	BACK, 15.00	U-NII-3 Standalone	WLAN, 10583-AAC	5785.0, 157	4.65	5.30	34.9

## Hardware Setup

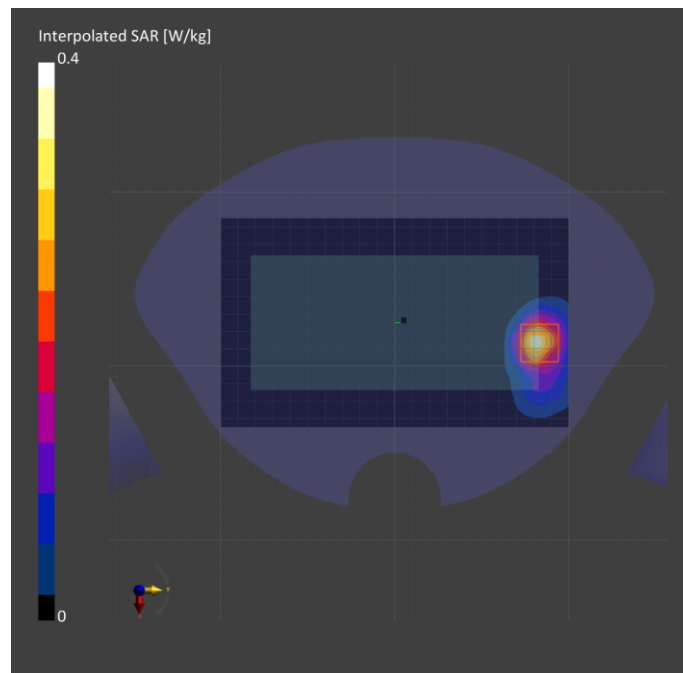
Phantom	TSL, Measured Date	Probe, Calibration Date	DAE, Calibration Date
Twin-SAM V8.0 (30deg probe tilt) - 2037	HBBL-600-10000, 2022-Jun-13	EX3DV4 - SN7313, 2022-03-02	DAE4 Sn1343, 2021-08-23

## Scan Setup

	Area Scan	Zoom Scan
Grid Extents [mm]	120.0 x 200.0	22.0 x 22.0 x 22.0
Grid Steps [mm]	10.0 x 10.0	4.0 x 4.0 x 1.4
Sensor Surface [mm]	3.0	1.4

## Measurement Results

	Area Scan	Zoom Scan
Date	2022-06-14	2022-06-14
psSAR1g [W/kg]	0.259	0.259
psSAR10g [W/kg]	0.094	0.090
Power Drift [dB]		0.07



# Measurement Report for Device, Edge 1, U-NII-3 Standalone, UID 10583 AAC, Channel 149 (5745.0MHz)

## Exposure Conditions

Phantom Section, TSL	Position, Test Distance [mm]	Band	Group, UID	Frequency [MHz], Channel Number	Conversion Factor	TSL Conductivity [S/m]	TSL Permittivity
Flat, HSL	EDGE TOP, 0.00	U-NII-3 Standalone	WLAN, 10583-AAC	5745.0, 149	4.65	5.26	34.9

## Hardware Setup

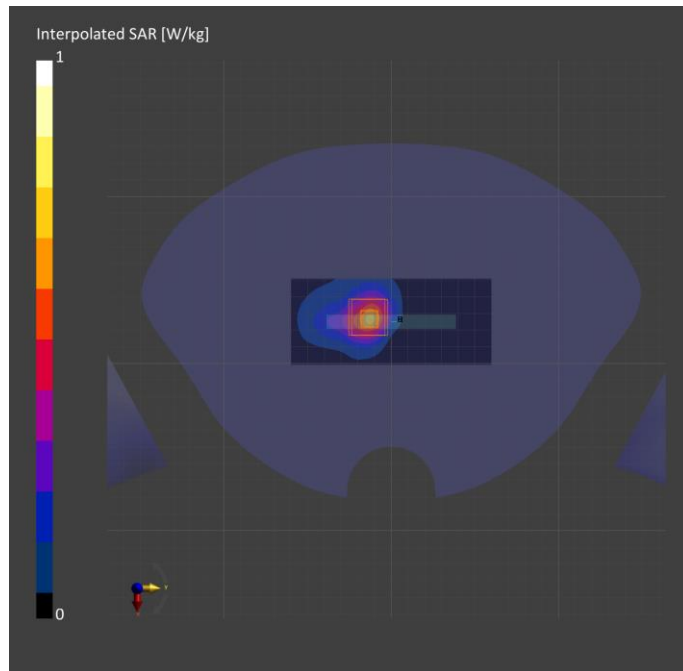
Phantom	TSL, Measured Date	Probe, Calibration Date	DAE, Calibration Date
Twin-SAM V8.0 (30deg probe tilt) - 2037	HBBL-600-10000, 2022-Jun-13	EX3DV4 - SN7313, 2022-03-02	DAE4 Sn1343, 2021-08-23

## Scan Setup

	Area Scan	Zoom Scan
Grid Extents [mm]	51.6 x 120.0	22.0 x 22.0 x 22.0
Grid Steps [mm]	8.6 x 10.0	4.0 x 4.0 x 1.4
Sensor Surface [mm]	3.0	1.4

## Measurement Results

	Area Scan	Zoom Scan
Date	2022-06-13	2022-06-13
psSAR1g [W/kg]	0.499	0.529
psSAR10g [W/kg]	0.185	0.188
Power Drift [dB]		0.11



# Measurement Report for Device, Right Touch, Bluetooth 2.4 GHz Band, UID 10032 CAA, Channel 78 (2480.0MHz)

## Exposure Conditions

Phantom Section, TSL	Position, Test Distance [mm]	Band	Group, UID	Frequency [MHz], Channel Number	Conversion Factor	TSL Conductivity [S/m]	TSL Permittivity
Right Head, HSL	CHEEK, 0.00	ISM 2.4 GHz Band	Bluetooth, 10032-CAA	2480.0, 78	7.56	1.83	37.8

## Hardware Setup

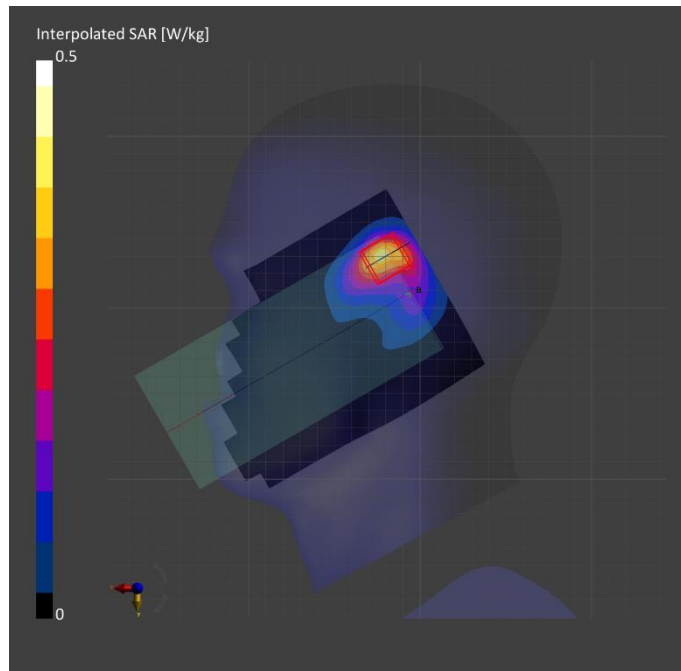
Phantom	TSL, Measured Date	Probe, Calibration Date	DAE, Calibration Date
Twin-SAM V8.0 (30deg probe tilt) - 2039	HBBL-600-10000, 2022-Jun-20	EX3DV4 - SN7545, 2021-08-26	DAE4 Sn1667, 2022-04-27

## Scan Setup

	Area Scan	Zoom Scan
Grid Extents [mm]	120.0 x 200.0	30.0 x 30.0 x 30.0
Grid Steps [mm]	10.0 x 10.0	5.0 x 5.0 x 1.5
Sensor Surface [mm]	3.0	1.4

## Measurement Results

	Area Scan	Zoom Scan
Date	2022-06-21	2022-06-21
psSAR1g [W/kg]	0.307	0.316
psSAR10g [W/kg]	0.159	0.156
Power Drift [dB]		-0.02





# Measurement Report for Device, Rear, Bluetooth 2.4 GHz Band, UID 10032 CAA, Channel 78 (2480.0MHz)

## Exposure Conditions

Phantom Section, TSL	Position, Test Distance [mm]	Band	Group, UID	Frequency [MHz], Channel Number	Conversion Factor	TSL Conductivity [S/m]	TSL Permittivity
Flat, HSL	BACK, 15.00	ISM 2.4 GHz Band	Bluetooth, 10032-CAA	2480.0, 78	7.56	1.83	37.8

## Hardware Setup

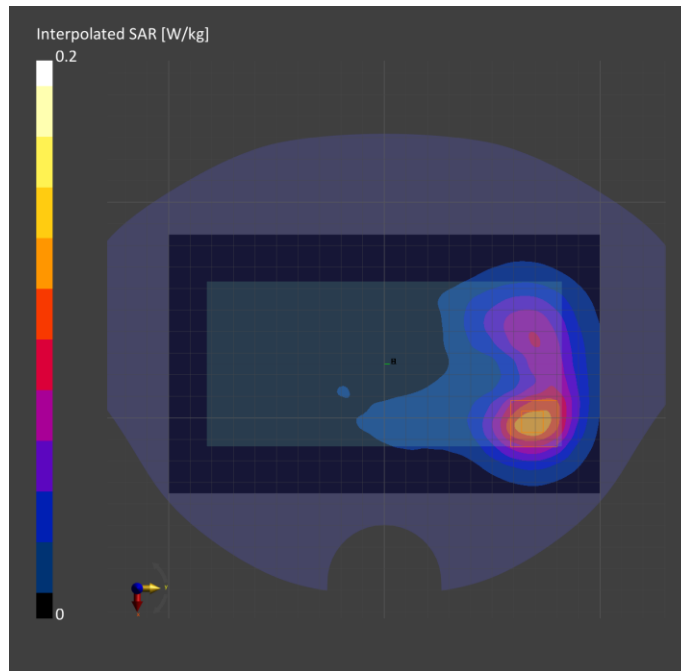
Phantom	TSL, Measured Date	Probe, Calibration Date	DAE, Calibration Date
Twin-SAM V8.0 (30deg probe tilt) - 2039	HBBL-600-10000, 2022-Jun-20	EX3DV4 - SN7545, 2021-08-26	DAE4 Sn1667, 2022-04-27

## Scan Setup

	Area Scan	Zoom Scan
Grid Extents [mm]	120.0 x 200.0	30.0 x 30.0 x 30.0
Grid Steps [mm]	10.0 x 10.0	5.0 x 5.0 x 1.5
Sensor Surface [mm]	3.0	1.4

## Measurement Results

	Area Scan	Zoom Scan
Date	2022-06-22	2022-06-21
psSAR1g [W/kg]	0.077	0.110
psSAR10g [W/kg]	0.043	0.055
Power Drift [dB]		0.02



# Measurement Report for Device, Rear, Bluetooth 2.4 GHz Band, UID 10032 CAA, Channel 78 (2480.0MHz)

## Exposure Conditions

Phantom Section, TSL	Position, Test Distance [mm]	Band	Group, UID	Frequency [MHz], Channel Number	Conversion Factor	TSL Conductivity [S/m]	TSL Permittivity
Flat, HSL	BACK, 10.00	ISM 2.4 GHz Band	Bluetooth, 10032-CAA	2480.0, 78	7.56	1.83	37.8

## Hardware Setup

Phantom	TSL, Measured Date	Probe, Calibration Date	DAE, Calibration Date
Twin-SAM V8.0 (30deg probe tilt) - 2039	HBBL-600-1000, 2022-Jun-20	EX3DV4 - SN7545, 2021-08-26	DAE4 Sn1667, 2022-04-27

## Scan Setup

	Area Scan	Zoom Scan
Grid Extents [mm]	120.0 x 200.0	30.0 x 30.0 x 30.0
Grid Steps [mm]	10.0 x 10.0	5.0 x 5.0 x 1.5
Sensor Surface [mm]	3.0	1.4

## Measurement Results

	Area Scan	Zoom Scan
Date	2022-06-21	2022-06-21
psSAR1g [W/kg]	0.222	0.233
psSAR10g [W/kg]	0.115	0.113
Power Drift [dB]		0.02

