



**FCC 47 CFR § 2.1093  
IEEE Std 1528-2013**

**SAR EVALUATION REPORT**

**FOR**

**GSM/WCDMA/LTE Phone + BT/BLE, DTS b/g/n and NFC**

**MODEL NUMBER: SM-A205S**

**FCC ID: A3LSMA205S**

**REPORT NUMBER: 4788869688-S1V2**

**ISSUE DATE: 4/25/2019**

*Prepared for*  
**SAMSUNG ELECTRONICS CO., LTD.  
129 SAMSUNG-RO, YEONGTONG-GU, SUWON-SI,  
GYEONGGI-DO, 16677, KOREA**

*Prepared by*  
**UL Korea, Ltd.**

**26th floor, 152, Teheran-ro, Gangnam-gu Seoul, 06236, Korea**

**Suwon Test Site: UL Korea, Ltd. Suwon Laboratory  
218 Maeyeong-ro, Yeongtong-gu,  
Suwon-si, Gyeonggi-do, 16675, Korea  
TEL: (031) 337-9902  
FAX: (031) 213-5433**



**TL-637**

**Revision History**

Rev.	Date	Revisions	Revised By
V1	4/19/2019	Initial Issue	Seonggon Lee
V2	4/25/2019	-Sec.1 Revised SAR value in the table. -Sec.6.3 Revised table and notes. -Sec.10.2, Sec.11, Appendix B Revised SAR results in Hotspot exposure condition Removed SAR results in Specific product 10-g exposure condition.	Seonggon Lee

**Table of Contents**

**1. Attestation of Test Results ..... 5**

**2. Test Specification, Methods and Procedures..... 6**

**3. Facilities and Accreditation ..... 6**

**4. SAR Measurement System & Test Equipment ..... 7**

    4.1. SAR Measurement System..... 7

    4.2. SAR Scan Procedures ..... 8

    4.3. Test Equipment..... 10

**5. Measurement Uncertainty..... 10**

**6. Device Under Test (DUT) Information ..... 11**

    6.1. DUT Description ..... 11

    6.2. Wireless Technologies..... 12

    6.3. Nominal and Maximum Output Power..... 13

    6.4. General LTE SAR Test and Reporting Considerations..... 15

    6.5. LTE (TDD) Considerations..... 16

    6.6. Proximity sensor feature ..... 17

        6.6.1. Proximity Sensor Triggering Distance (KDB 616217 §6.2) ..... 18

        6.6.2. Proximity Sensor Coverage (KDB 616217 §6.3) ..... 22

        6.6.3. Proximity Sensor Tilt Angle Assessment (KDB 616217 §6.4)..... 22

        6.6.4. Resulting test positions for SAR measurements ..... 22

**7. RF Exposure Conditions (Test Configurations)..... 23**

**8. Dielectric Property Measurements & System Check ..... 24**

    8.1. Dielectric Property Measurements ..... 24

    8.2. System Check..... 27

**9. Conducted Output Power Measurements..... 29**

    9.1. GSM ..... 29

    9.2. W-CDMA ..... 30

    9.3. LTE..... 34

    9.4. Wi-Fi 2.4 GHz (DTS Band)..... 46

    9.5. Bluetooth ..... 47

**10. Measured and Reported (Scaled) SAR Results..... 48**



    10.1. GSM 1900..... 50

    10.2. W-CDMA Band II..... 50

    10.3. W-CDMA Band V ..... 50

10.4.	<i>LTE Band 2(20MHz Bandwidth)</i> .....	51
10.5.	<i>LTE Band 5 (10MHz Bandwidth)</i> .....	51
10.6.	<i>LTE Band 17 (10MHz Bandwidth)</i> .....	52
10.7.	<i>LTE Band 41 (20MHz Bandwidth)</i> .....	53
10.8.	<i>Wi-Fi (DTS Band)</i> .....	54
10.9.	<i>Bluetooth</i> .....	55
<b>11.</b>	<b>SAR Measurement Variability</b> .....	<b>56</b>
<b>12.</b>	<b>DUT Holder Perturbations</b> .....	<b>57</b>
<b>13.</b>	<b>Simultaneous Transmission SAR Analysis</b> .....	<b>57</b>
13.1.	<i>Sum of the SAR for WWAN &amp; Wi-Fi &amp; BT</i> .....	59
<b>Appendixes</b>	.....	<b>60</b>
	<i>4788869688-S1V2 FCC Report SAR_App A_Photos &amp; Ant. Locations</i> .....	60
	<i>4788869688-S1V2 FCC Report SAR_App B_Highest SAR Test Plots</i> .....	60
	<i>4788869688-S1V2 FCC Report SAR_App C_System Check Plots</i> .....	60
	<i>4788869688-S1V2 FCC Report SAR_App D_SAR Tissue Ingredients</i> .....	60
	<i>4788869688-S1V2 FCC Report SAR_App E_Probe Cal. Certificates</i> .....	60
	<i>4788869688-S1V2 FCC Report SAR_App F_Dipole Cal. Certificates</i> .....	60

### 1. Attestation of Test Results

Applicant Name	SAMSUNG ELECTRONICS CO.,LTD.		
FCC ID	A3LSMA205S		
Model Number	SM-A205S		
Applicable Standards	FCC 47 CFR § 2.1093 Published RF exposure KDB procedures IEEE Std 1528-2013		
<b>SAR Limits (W/Kg)</b>			
Exposure Category	Peak spatial-average(1g of tissue)	Product specific 10-g (10g of tissue)	
General population / Uncontrolled exposure	1.6	4.0	
<b>The Highest Reported SAR (W/kg)</b>			
RF Exposure Conditions	Equipment Class		
	Licensed	DTS	DSS(BT)
Head	0.36	0.17	0.15
Body-worn	0.37	<0.10	N/A
Hotspot	0.88	0.14	
Product specific 10-g	N/A	N/A	N/A
Standalone Tx	Head	0.53	0.53
	Body-worn	0.42	
	Hotspot	1.02	
	Product specific 10-g	N/A	
Date Tested	4/08/2019 to 4/18/2019, 4/25/2019		
Test Results	Pass		
<p>UL Korea, Ltd. tested the above equipment in accordance with the requirements set forth in the above standards. All indications of Pass/Fail in this report are opinions expressed by UL Korea, Ltd. based on interpretations and/or observations of test results. Measurement Uncertainties were not taken into account and are published for informational purposes only. The test results show that the equipment tested is capable of demonstrating compliance with the requirements as documented in this report.</p> <p><b>Note:</b> The results documented in this report apply only to the tested sample, under the conditions and modes of operation as described herein. This document may not be altered or revised in any way unless done so by UL Korea, Ltd. and all revisions are duly noted in the revisions section. Any alteration of this document not carried out by UL Korea, Ltd. will constitute fraud and shall nullify the document. This report must not be used by the client to claim product certification, approval, or endorsement by IAS, any agency of the Federal Government, or any agency of any government.</p>			
Approved & Released By:		Prepared By:	
			
Justin Park Lead Test Engineer UL Korea, Ltd. Suwon Laboratory		Seonggon Lee Laboratory Technician UL Korea, Ltd. Suwon Laboratory	

## 2. Test Specification, Methods and Procedures

The tests documented in this report were performed in accordance with FCC 47 CFR § 2.1093, IEEE STD 1528-2013, the following FCC Published RF exposure [KDB](#) procedures:

- 248227 D01 802.11 Wi-Fi SAR v02r02
- 447498 D01 General RF Exposure Guidance v06
- 648474 D04 Handset SAR v01r03
- 690783 D01 SAR Listings on Grants v01r03
- 865664 D01 SAR measurement 100 MHz to 6 GHz v01r04
- 865664 D02 RF Exposure Reporting v01r02
- 941225 D01 3G SAR Procedures v03r01
- 941225 D05 SAR for LTE Devices v02r05
- 941225 D06 Hotspot Mode v02r01
- 941225 D07 UMPC Mini Tablet v01r02
- 941225 D05A LTE Rel.10 KDB Inquiry Sheet v01r02

In addition to the above, the following information was used:

- [TCB workshop](#) October, 2014; Page 37, RF Exposure Procedures Update (Other LTE Considerations)
- [TCB workshop](#) October, 2016; Page 7, RF Exposure Procedures (Bluetooth Duty Factor)
- [TCB workshop](#) October, 2016; Page 18, RF Exposure Procedures (DUT Holder Perturbations)

## 3. Facilities and Accreditation

The test sites and measurement facilities used to collect data are located at

Suwon
SAR 1 Room
SAR 2 Room
SAR 3 Room
SAR 4 Room

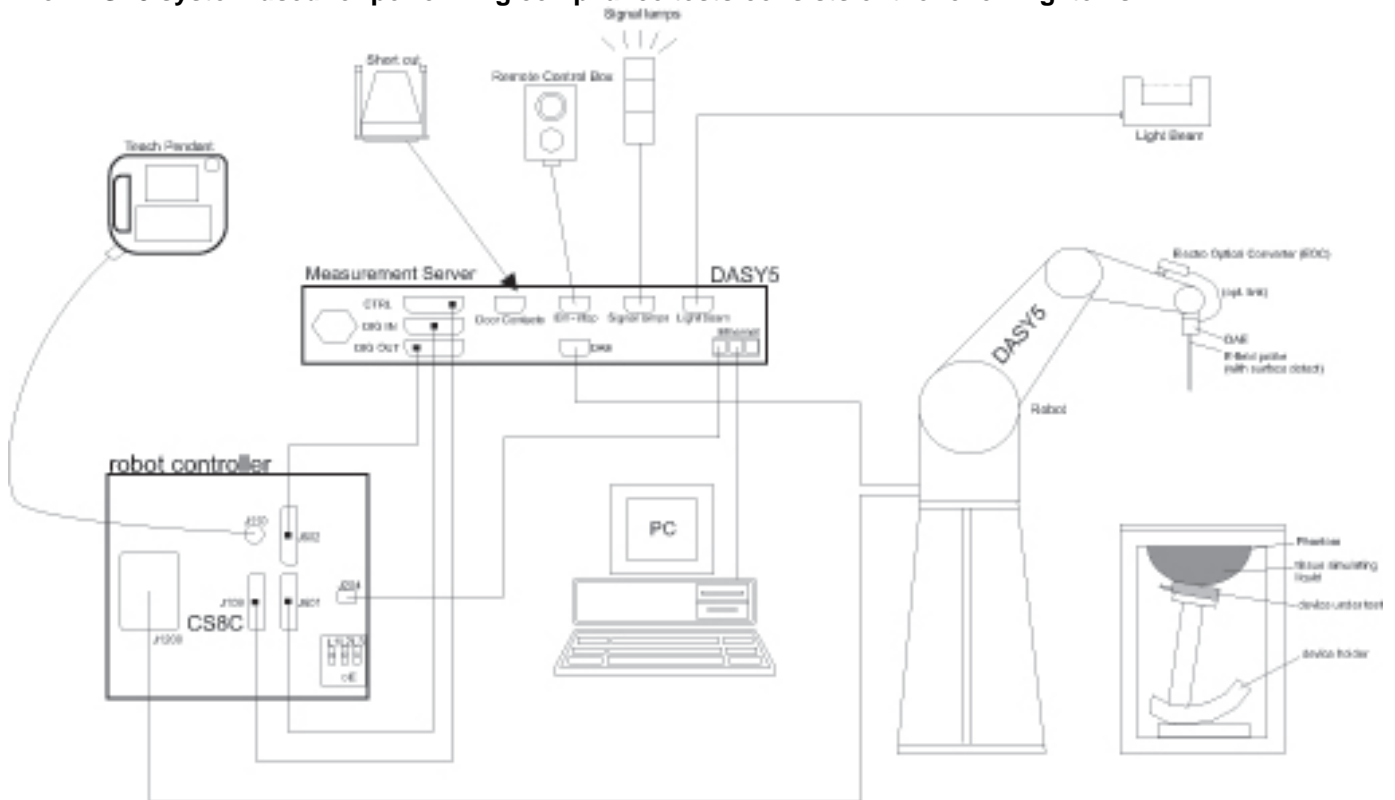
UL Korea, Ltd. is accredited by IAS, Laboratory Code TL-637.

The full scope of accreditation can be viewed at <http://www.iasonline.org/PDF/TL/TL-637.pdf>.

## 4. SAR Measurement System & Test Equipment

### 4.1. SAR Measurement System

The DASY5 system used for performing compliance tests consists of the following items:



- A standard high precision 6-axis robot with controller, teach pendant and software. An arm extension for accommodating the data acquisition electronics (DAE).
- An isotropic Field probe optimized and calibrated for the targeted measurement.
- A data acquisition electronics (DAE) which performs the signal amplification, signal multiplexing, AD-conversion, offset measurements, mechanical surface detection, collision detection, etc. The unit is battery powered with standard or rechargeable batteries. The signal is optically transmitted to the EOC.
- The Electro-optical converter (EOC) performs the conversion from optical to electrical signals for the digital communication to the DAE. To use optical surface detection, a special version of the EOC is required. The EOC signal is transmitted to the measurement server.
- The function of the measurement server is to perform the time critical tasks such as signal filtering, control of the robot operation and fast movement interrupts.
- The Light Beam used is for probe alignment. This improves the (absolute) accuracy of the probe positioning.
- A computer running WinXP or Win7 and the DASY5 software.
- Remote control and teach pendant as well as additional circuitry for robot safety such as warning lamps, etc.
- The phantom, the device holder and other accessories according to the targeted measurement.

## 4.2. SAR Scan Procedures

### Step 1: Power Reference Measurement

The Power Reference Measurement and Power Drift Measurements are for monitoring the power drift of the device under test in the batch process. The minimum distance of probe sensors to surface determines the closest measurement point to phantom surface. The minimum distance of probe sensors to surface is 2.1 mm. This distance cannot be smaller than the distance of sensor calibration points to probe tip as defined in the probe properties.

### Step 2: Area Scan

The Area Scan is used as a fast scan in two dimensions to find the area of high field values, before doing a fine measurement around the hot spot. The sophisticated interpolation routines implemented in DASY software can find the maximum locations even in relatively coarse grids. When an Area Scan has measured all reachable points, it computes the field maximal found in the scanned area, within a range of the global maximum. The range (in dB) is specified in the standards for compliance testing. For example, a 2 dB range is required in IEEE Standard 1528 and IEC 62209 standards, whereby 3 dB is a requirement when compliance is assessed in accordance with the ARIB standard (Japan). If only one Zoom Scan follows the Area Scan, then only the absolute maximum will be taken as reference. For cases where multiple maximums are detected, the number of Zoom Scans has to be increased accordingly.

Area Scan Parameters extracted from KDB 865664 D01 SAR Measurement 100 MHz to 6 GHz

	$\leq 3$ GHz	$> 3$ GHz
Maximum distance from closest measurement point (geometric center of probe sensors) to phantom surface	$5 \pm 1$ mm	$\frac{1}{2} \cdot \delta \cdot \ln(2) \pm 0.5$ mm
Maximum probe angle from probe axis to phantom surface normal at the measurement location	$30^\circ \pm 1^\circ$	$20^\circ \pm 1^\circ$
Maximum area scan spatial resolution: $\Delta x_{Area}$ , $\Delta y_{Area}$	$\leq 2$ GHz: $\leq 15$ mm $2 - 3$ GHz: $\leq 12$ mm	$3 - 4$ GHz: $\leq 12$ mm $4 - 6$ GHz: $\leq 10$ mm
	When the x or y dimension of the test device, in the measurement plane orientation, is smaller than the above, the measurement resolution must be $\leq$ the corresponding x or y dimension of the test device with at least one measurement point on the test device.	



**Step 3: Zoom Scan**

Zoom Scans are used to assess the peak spatial SAR values within a cubic averaging volume containing 1 g and 10 g of simulated tissue. The Zoom Scan measures points (refer to table below) within a cube whose base faces are centered on the maxima found in a preceding area scan job within the same procedure. When the measurement is done, the Zoom Scan evaluates the averaged SAR for 1 g and 10 g and displays these values next to the job's label.

Zoom Scan Parameters extracted from KDB 865664 D01 SAR Measurement 100 MHz to 6 GHz

			≤ 3 GHz	> 3 GHz
Maximum zoom scan spatial resolution: $\Delta x_{Zoom}, \Delta y_{Zoom}$			≤ 2 GHz: ≤ 8 mm 2 – 3 GHz: ≤ 5 mm*	3 – 4 GHz: ≤ 5 mm* 4 – 6 GHz: ≤ 4 mm*
Maximum zoom scan spatial resolution, normal to phantom surface	uniform grid: $\Delta z_{Zoom}(n)$		≤ 5 mm	3 – 4 GHz: ≤ 4 mm 4 – 5 GHz: ≤ 3 mm 5 – 6 GHz: ≤ 2 mm
	graded grid	$\Delta z_{Zoom}(1)$ : between 1 <sup>st</sup> two points closest to phantom surface	≤ 4 mm	3 – 4 GHz: ≤ 3 mm 4 – 5 GHz: ≤ 2.5 mm 5 – 6 GHz: ≤ 2 mm
		$\Delta z_{Zoom}(n>1)$ : between subsequent points	≤ 1.5 · $\Delta z_{Zoom}(n-1)$	
Minimum zoom scan volume	x, y, z		≥ 30 mm	3 – 4 GHz: ≥ 28 mm 4 – 5 GHz: ≥ 25 mm 5 – 6 GHz: ≥ 22 mm
Note: $\delta$ is the penetration depth of a plane-wave at normal incidence to the tissue medium; see draft standard IEEE P1528-2011 for details. * When zoom scan is required and the <i>reported</i> SAR from the <i>area scan based 1-g SAR estimation</i> procedures of KDB 447498 is ≤ 1.4 W/kg, ≤ 8 mm, ≤ 7 mm and ≤ 5 mm zoom scan resolution may be applied, respectively, for 2 GHz to 3 GHz, 3 GHz to 4 GHz and 4 GHz to 6 GHz.				

**Step 4: Power drift measurement**

The Power Drift Measurement measures the field at the same location as the most recent power reference measurement within the same procedure, and with the same settings. The Power Drift Measurement gives the field difference in dB from the reading conducted within the last Power Reference Measurement. This allows a user to monitor the power drift of the device under test within a batch process. The measurement procedure is the same as Step 1.

**Step 5: Z-Scan (FCC only)**

The Z Scan measures points along a vertical straight line. The line runs along the Z-axis of a one-dimensional grid. In order to get a reasonable extrapolation the extrapolated distance should not be larger than the step size in Z-direction.

### 4.3. Test Equipment

The measuring equipment used to perform the tests documented in this report has been calibrated in accordance with the manufacturers' recommendations, and is traceable to recognized national standards.

#### Dielectric Property Measurements

Name of Equipment	Manufacturer	Type/Model	Serial No.	Cal. Due Date
Network Analyzer	Agilent	E5071C	MY46522054	8/7/2019
Dielectric Assessment Kit	SPEAG	DAK-3.5	1196	6/26/2019
Shorting block	SPEAG	DAK-3.5 Short	SM DAK 200 BA	N/A
Thermometer	LKM	DTM3000	3424	8/9/2019

#### System Check

Name of Equipment	Manufacturer	Type/Model	Serial No.	Cal. Due Date
MXG Analog Signal Generator	Agilent	N5181A	MY50145882	8/7/2019
Power Sensor	Agilent	U2000A	MY54260010	8/7/2019
Power Sensor	Agilent	U2000A	MY54260007	8/7/2019
Power Amplifier	EXODUS	1410025-AMP2027-10003	10003	8/8/2019
Directional Coupler	Agilent	772D	MY52180193	8/7/2019
Directional Coupler	Agilent	778D	MY52180432	8/7/2019
Low Pass Filter	MICROLAB	LA-15N	03943	8/7/2019
Low Pass Filter	FILTRON	L14012FL	1410003S	8/7/2019
Attenuator	Agilent	8491B/003	MY39269292	8/7/2019
Attenuator	Agilent	8491B/010	MY39269315	8/7/2019
Attenuator	Agilent	8491B/020	MY39269298	8/7/2019
E-Field Probe (SAR1)	SPEAG	EX3DV4	7376	9/26/2019
E-Field Probe (SAR2)	SPEAG	EX3DV4	7330	1/31/2020
E-Field Probe (SAR3)	SPEAG	EX3DV4	7314	8/30/2019
E-Field Probe (SAR4)	SPEAG	EX3DV4	3991	5/24/2019
Data Acquisition Electronics (SAR1)	SPEAG	DAE4	1447	3/21/2020
Data Acquisition Electronics (SAR2)	SPEAG	DAE4	1494	7/23/2019
Data Acquisition Electronics (SAR3)	SPEAG	DAE4	1468	8/22/2019
Data Acquisition Electronics (SAR4)	SPEAG	DAE4	1259	7/26/2019
System Validation Dipole	SPEAG	D750V3	1122	2/19/2020
System Validation Dipole	SPEAG	D835V2	4d174	1/23/2021
System Validation Dipole	SPEAG	D1900V2	5d190	10/23/2020
System Validation Dipole	SPEAG	D2450V2	939	10/16/2020
System Validation Dipole	SPEAG	D2600V2	1097	1/17/2020
Thermometer (SAR1)	Lutron	MHB-382SD	AH.91463	8/8/2019
Thermometer (SAR2)	Lutron	MHB-382SD	AH.50215	8/13/2019
Thermometer (SAR3)	Lutron	MHB-382SD	AH.50213	8/14/2019
Thermometer (SAR4)	Lutron	MHB-382SD	AH.91478	8/8/2019

#### Others

Name of Equipment	Manufacturer	Type/Model	Serial No.	Cal. Due Date
Base Station Simulator	R & S	CMW500	150313	8/9/2019
Base Station Simulator	R & S	CMW500	150314	8/9/2019
Base Station Simulator	R & S	CMW500	162790	8/9/2019
Wireless Connectivity Tester	R & S	CMW270	100982	8/8/2019

#### Note(s):

Refer to Appendix F that mentioned about justification for Extended SAR Dipole Calibrations (D750/SN: 1122, D2600/SN: 1097)

### 5. Measurement Uncertainty

Per KDB 865664 D01 SAR Measurement 100 MHz to 6 GHz, when the highest measured 1-g SAR within a frequency band is < 1.5 W/kg and the measured 10-g SAR within a frequency band is < 3.75 W/kg. The expanded SAR measurement uncertainty must be  $\leq 30\%$ , for a confidence interval of  $k = 2$ . If these conditions are met, extensive SAR measurement uncertainty analysis described in IEEE Std 1528-2013 is not required in SAR reports submitted for equipment approval.

## 6. Device Under Test (DUT) Information

### 6.1. DUT Description

Device Dimension	Overall (Length x Width): 158.3 mm x 74.6 mm Overall Diagonal: 169.0 mm Display Diagonal: 162.4 mm																					
Back Cover	<input checked="" type="checkbox"/> The Back Cover is not removable.																					
Battery Options	<input checked="" type="checkbox"/> The rechargeable battery is not user accessible.																					
Wireless Router (Hotspot)	Wi-Fi Hotspot mode permits the device to share its cellular data connection with other Wi-Fi-enabled devices. <input checked="" type="checkbox"/> Mobile Hotspot (Wi-Fi 2.4 GHz(Ch. 1 ~ Ch. 11))																					
Wi-Fi Direct	Wi-Fi Direct enabled devices transfer data directly between each other <input checked="" type="checkbox"/> Wi-Fi Direct (Wi-Fi 2.4 GHz(Ch. 1 ~ Ch. 11))																					
Test Sample Information	<table border="1"> <thead> <tr> <th>No.</th> <th>S/N</th> <th>Notes</th> </tr> </thead> <tbody> <tr> <td>1</td> <td>R39M30M7Z0H</td> <td>Main Conducted</td> </tr> <tr> <td>2</td> <td>R39M30M809P</td> <td>Wi-Fi Conducted</td> </tr> <tr> <td>3</td> <td>R39M30M7RTZ</td> <td>SAR</td> </tr> <tr> <td>4</td> <td>R39M30M7S0J</td> <td>SAR</td> </tr> <tr> <td>5</td> <td>R39M30M7RKF</td> <td>SAR</td> </tr> <tr> <td>6</td> <td>R39M30M7RFM</td> <td>SAR</td> </tr> </tbody> </table>	No.	S/N	Notes	1	R39M30M7Z0H	Main Conducted	2	R39M30M809P	Wi-Fi Conducted	3	R39M30M7RTZ	SAR	4	R39M30M7S0J	SAR	5	R39M30M7RKF	SAR	6	R39M30M7RFM	SAR
No.	S/N	Notes																				
1	R39M30M7Z0H	Main Conducted																				
2	R39M30M809P	Wi-Fi Conducted																				
3	R39M30M7RTZ	SAR																				
4	R39M30M7S0J	SAR																				
5	R39M30M7RKF	SAR																				
6	R39M30M7RFM	SAR																				

## 6.2. Wireless Technologies

Wireless technologies	Frequency bands	Operating mode		Duty Cycle used for SAR testing
GSM	1900	Voice (GMSK)	GPRS Multi-Slot Class: <input type="checkbox"/> Class 8 – 1 UP, 4 Down <input type="checkbox"/> Class 10 – 2 UP, 4 Down <input type="checkbox"/> Class 12 – 4 UP, 4 Down <input checked="" type="checkbox"/> Class 33 – 4 UP, 5 Down	GSM Voice: 12.5% (E)GPRS: 1 Slot: 12.5% 2 Slot: 25% 3 Slot: 37.5% 4 Slot: 50%
		GPRS (GMSK)		
W-CDMA (UMTS)	Band II Band V	UMTS Rel. 99 (Voice & Data) HSDPA (Category 14) HSUPA (Category 6)		100%
LTE	FDD Band 2 FDD Band 5 FDD Band 17 TDD Band 41	QPSK 16QAM Rel. 10 Does not support Carrier Aggregation (CA)		100% (FDD) 63.3% (TDD)
		Does this device support SV-LTE (1xRTT-LTE)? <input type="checkbox"/> Yes <input checked="" type="checkbox"/> No		
Wi-Fi	2.4 GHz	802.11b 802.11g 802.11n (HT20)		99.6% (802.11b) 95.6% (802.11g) 96.2% (802.11n 20MHz BW)
Bluetooth	2.4 GHz	Version 5.0 LE		76.8% (DH5)

### Notes:

1. This device supports uplink-downlink configuration 0-6. The configuration with the highest duty cycle was used (uplink-downlink configuration 0 at 63.3%).
2. The Bluetooth protocol is considered source-based averaging. Bluetooth GFSK (DH5) was verified to have the highest duty cycle of 76.8% and was considered and used for SAR Testing.
3. Duty cycle for Wi-Fi is referenced from the DTS report.

### 6.3. Nominal and Maximum Output Power

KDB 447498 sec.4.1. at the maximum rated output power and within the tune-up tolerance range specified for the product, but not more than 2 dB lower than the maximum tune-up tolerance limit.

RF Air interface	Antenna	Mode	Time Slots	Max. RF Output Power (dBm)		Reduced RF Output Power (dBm) Proximity sensor back-off	
				Tune-up Limit	Frame Power	Tune-up Limit	Frame Power
GSM1900	Main 1	Voice/GPRS	1	30.5	21.5	27.5	18.5
		GPRS	2	28.0	22.0	25.0	19.0
		GPRS	3	26.5	22.2	23.5	19.2
		GPRS	4	25.0	22.0	22.0	19.0
		EGPRS	1	26.5	17.5		
		EGPRS	2	24.0	18.0		
		EGPRS	3	22.5	18.2		
		EGPRS	4	20.5	17.5		

RF Air interface	Antenna	Mode	Max. RF Output Power (dBm)	Reduced. RF Output Power (dBm) Hotspot back-off & Proximity sensor back-off	Reduced. RF Output Power (dBm) Ear-jack back-off
W-CDMA Band II	Main 1	R99	24.5	21.5	22.5
		HSDPA	24.0	21.0	22.0
		HSUPA	24.0	21.0	22.0
W-CDMA Band V	Main 1	R99	25.5		
		HSDPA	23.5		
		HSUPA	25.0		
RF Air interface	Antenna	Mode	Max. RF Output Power (dBm)	Reduced. RF Output Power (dBm) Hotspot back-off & Proximity sensor back-off	Reduced. RF Output Power (dBm) Ear-jack back-off
LTE Band 2	Main 1	QPSK	25.0	22.0	22.0
LTE Band 5	Main 1	QPSK	25.5		
LTE Band 17	Main 1	QPSK	25.5		
LTE Band 41	Main 2	QPSK	25.0		

**Note(s):**

- The device utilizes power reduction under some portable hotspot conditions for SAR compliance. There is power reduction for WCDMA Band II and LTE Band 2. The reduced powers were confirmed via conducted power measurements the RF port. Detailed description of the hotspot power reduction mechanism is included in the operational description.
- GSM1900, WCDMA Band II and LTE Band 2 support to proximity sensor back-off function. It is operating during extremity (hand-held) use conditions. And this function is applied to phablet 10-g SAR exposure condition. Other Head and Body exposure conditions are performed SAR test at full power. The proximity sensor details are explained in SAR report according to Section 6 in KDB 616217.
- WWAN bands (WCDMA Band II, LTE Band 2) has support to power reduction when ear-jack is connected to phone.
- All Power reduction mechanisms are not work at the same time.
- LTE QPSK configuration has the highest maximum average output power per 3GPP standard.
- This device supports power reduction in the body-worn mode with the ear-jack connected and in hotspot mode for WCDMA Band II and LTE Band 2. As the power reduction is different for ear-jack (2dB reduction) connected versus hotspot mode (3dB reduction) for WCDMA Band II, testing for the hotspot exposure condition was performed at full power and not at a reduced power setting to conservatively cover the possibility of hotspot mode being enabled with the ear-jack connected. The level of power reduction for LTE Band 2 operations is the same for hotspot and ear-jack configurations therefore testing was done at the reduced power for hotspot operations.

RF Air interface	Mode	Max. RF Output Power (dBm)	Reduced. RF Output Power (dBm)
WiFi 2.4 GHz (Ch.1 - Ch.10)	802.11b	18.0	12.0
	802.11g	17.0	12.0
	802.11n HT20	17.0	12.0
WiFi 2.4 GHz (Ch.11)	802.11b	18.0	12.0
	802.11g	17.0	12.0
	802.11n HT20	16.0	12.0
WiFi 2.4 GHz (Ch.12)	802.11b	17.0	8.0
	802.11g	12.5	8.0
	802.11n HT20	12.0	6.0
WiFi 2.4 GHz (Ch.13)	802.11b	16.0	8.0
	802.11g	10.0	8.0
	802.11n HT20	7.0	6.0
Bluetooth		10.0	
Bluetooth LE		6.0	

**Note(s):**

This device uses an independent fixed level power reduction mechanism for WLAN operations during RCV operation. Detailed descriptions of the power reduction mechanism are included in the operational description.

### 6.4. General LTE SAR Test and Reporting Considerations

Item	Description																																																																				
Frequency range, Channel Bandwidth, Numbers and Frequencies	Band 2	Frequency range: 1850 - 1910 MHz																																																																			
		Channel Bandwidth																																																																			
		20 MHz	15 MHz	10 MHz	5 MHz	3 MHz	1.4 MHz																																																														
	Low	18700/ 1860	18675/ 1857.5	18650/ 1855	18625/ 1852.5	18615/ 1851.5	18607/ 1850.7																																																														
	Mid	18900/ 1880	18900/ 1880	18900/ 1880	18900/ 1880	18900/ 1880	18900/ 1880																																																														
	High	19100 /1900	19125/ 1902.5	19150/ 1905	19175/ 1907.5	19185/ 1908.5	19193/ 1909.3																																																														
	Band 5	Frequency range: 824 - 849 MHz																																																																			
		Channel Bandwidth																																																																			
		20 MHz	15 MHz	10 MHz	5 MHz	3 MHz	1.4 MHz																																																														
	Low			20450/ 829	20425/ 826.5	20415/ 825.5	20407/ 824.7																																																														
	Mid			20525/ 836.5	20525/ 836.5	20525/ 836.5	20525/ 836.5																																																														
	High			20600/ 844	20625/ 846.5	20635/ 847.5	20643/ 848.3																																																														
	Band 17	Frequency range: 704 - 716 MHz																																																																			
		Channel Bandwidth																																																																			
		20 MHz	15 MHz	10 MHz	5 MHz	3 MHz	1.4 MHz																																																														
	Low			23780/ 709	23755/ 706.5																																																																
	Mid			23790/ 710	23790/ 710																																																																
	High			23800/ 711	23825/ 713.5																																																																
	Band 41	Frequency range: 2496 - 2690 MHz																																																																			
		Channel Bandwidth																																																																			
	20 MHz	15 MHz	10 MHz	5 MHz	3 MHz	1.4 MHz																																																															
Low	39750 / 2506.0																																																																				
Low-Mid	40185 / 2549.5																																																																				
Mid	40620 / 2593.0																																																																				
Mid-High	41055 / 2636.5																																																																				
High	41490 / 2680.0																																																																				
LTE transmitter and antenna implementation	Refer to Appendix A.																																																																				
Maximum power reduction (MPR)	<p align="center"><b>Table 6.2.3-1: Maximum Power Reduction (MPR) for Power Class 1, 2 and 3</b></p> <table border="1"> <thead> <tr> <th rowspan="2">Modulation</th> <th colspan="6">Channel bandwidth / Transmission bandwidth (N<sub>RB</sub>)</th> <th rowspan="2">MPR (dB)</th> </tr> <tr> <th>1.4 MHz</th> <th>3.0 MHz</th> <th>5 MHz</th> <th>10 MHz</th> <th>15 MHz</th> <th>20 MHz</th> </tr> </thead> <tbody> <tr> <td>QPSK</td> <td>&gt; 5</td> <td>&gt; 4</td> <td>&gt; 8</td> <td>&gt; 12</td> <td>&gt; 16</td> <td>&gt; 18</td> <td>≤ 1</td> </tr> <tr> <td>16 QAM</td> <td>≤ 5</td> <td>≤ 4</td> <td>≤ 8</td> <td>≤ 12</td> <td>≤ 16</td> <td>≤ 18</td> <td>≤ 1</td> </tr> <tr> <td>16 QAM</td> <td>&gt; 5</td> <td>&gt; 4</td> <td>&gt; 8</td> <td>&gt; 12</td> <td>&gt; 16</td> <td>&gt; 18</td> <td>≤ 2</td> </tr> <tr> <td>64 QAM</td> <td>≤ 5</td> <td>≤ 4</td> <td>≤ 8</td> <td>≤ 12</td> <td>≤ 16</td> <td>≤ 18</td> <td>≤ 2</td> </tr> <tr> <td>64 QAM</td> <td>&gt; 5</td> <td>&gt; 4</td> <td>&gt; 8</td> <td>&gt; 12</td> <td>&gt; 16</td> <td>&gt; 18</td> <td>≤ 3</td> </tr> <tr> <td>256 QAM</td> <td colspan="6">≥ 1</td> <td>≤ 5</td> </tr> </tbody> </table> <p>MPR Built-in by design                      The manufacturer MPR values are always within the 3GPP maximum MPR allowance but may not follow the default MPR values.                      A-MPR (additional MPR) was disabled during SAR testing</p>							Modulation	Channel bandwidth / Transmission bandwidth (N <sub>RB</sub> )						MPR (dB)	1.4 MHz	3.0 MHz	5 MHz	10 MHz	15 MHz	20 MHz	QPSK	> 5	> 4	> 8	> 12	> 16	> 18	≤ 1	16 QAM	≤ 5	≤ 4	≤ 8	≤ 12	≤ 16	≤ 18	≤ 1	16 QAM	> 5	> 4	> 8	> 12	> 16	> 18	≤ 2	64 QAM	≤ 5	≤ 4	≤ 8	≤ 12	≤ 16	≤ 18	≤ 2	64 QAM	> 5	> 4	> 8	> 12	> 16	> 18	≤ 3	256 QAM	≥ 1						≤ 5
Modulation	Channel bandwidth / Transmission bandwidth (N <sub>RB</sub> )						MPR (dB)																																																														
	1.4 MHz	3.0 MHz	5 MHz	10 MHz	15 MHz	20 MHz																																																															
QPSK	> 5	> 4	> 8	> 12	> 16	> 18	≤ 1																																																														
16 QAM	≤ 5	≤ 4	≤ 8	≤ 12	≤ 16	≤ 18	≤ 1																																																														
16 QAM	> 5	> 4	> 8	> 12	> 16	> 18	≤ 2																																																														
64 QAM	≤ 5	≤ 4	≤ 8	≤ 12	≤ 16	≤ 18	≤ 2																																																														
64 QAM	> 5	> 4	> 8	> 12	> 16	> 18	≤ 3																																																														
256 QAM	≥ 1						≤ 5																																																														
Power reduction	Yes																																																																				
Spectrum plots for RB configurations	A properly configured base station simulator was used for the SAR and power measurements; therefore, spectrum plots for each RB allocation and offset configuration are not included in the SAR report.																																																																				

**Note(s):**

- SAR Testing for LTE was performed with the same number of RB and RB offsets transmitting on all TTI frames (maximum TTI).

### 6.5. LTE (TDD) Considerations

According to KDB 941225 D05 SAR for LTE Devices, for Time-Division Duplex (TDD) systems, SAR must be tested using a fixed periodic duty factor according to the highest transmission duty factor implemented for the device and supported by the defined 3GPP LTE TDD configurations.

LTE TDD Bands support 3GPP TS 36.211 section 4.2 for Type 2 Frame Structure and Table 4.2-2 for uplink-downlink configurations and Table 4.2-1 for Special subframe configurations.

Table 4.2-1: Configuration of special subframe (lengths of DwPTS/GP/UpPTS).

Special subframe configuration	Normal cyclic prefix in downlink			Extended cyclic prefix in downlink		
	DwPTS	UpPTS		DwPTS	UpPTS	
		Normal cyclic prefix in uplink	Extended cyclic prefix in uplink		Normal cyclic prefix in uplink	Extended cyclic prefix in uplink
0	$6592 \cdot T_s$	$2192 \cdot T_s$	$2560 \cdot T_s$	$7680 \cdot T_s$	$2192 \cdot T_s$	$2560 \cdot T_s$
1	$19760 \cdot T_s$			$20480 \cdot T_s$		
2	$21952 \cdot T_s$			$23040 \cdot T_s$		
3	$24144 \cdot T_s$			$25600 \cdot T_s$		
4	$26336 \cdot T_s$			$7680 \cdot T_s$	$4384 \cdot T_s$	$5120 \cdot T_s$
5	$6592 \cdot T_s$	$20480 \cdot T_s$				
6	$19760 \cdot T_s$	$23040 \cdot T_s$				
7	$21952 \cdot T_s$	$12800 \cdot T_s$				
8	$24144 \cdot T_s$	-	-	-		
9	$13168 \cdot T_s$	-	-	-	-	

#### Calculated Duty Cycle

Uplink-Downlink Configuration	Downlink-to-Uplink Switch-point Periodicity	Subframe Number										Calculated Duty Cycle (%)
		0	1	2	3	4	5	6	7	8	9	
0	5 ms	D	S	U	U	U	D	S	U	U	U	63.33
1	5 ms	D	S	U	U	D	D	S	U	U	D	43.33
2	5 ms	D	S	U	D	D	D	S	U	D	D	23.33
3	10 ms	D	S	U	U	U	D	D	D	D	D	31.67
4	10 ms	D	S	U	U	D	D	D	D	D	D	21.67
5	10 ms	D	S	U	D	D	D	D	D	D	D	11.67
6	5 ms	D	S	U	U	U	D	S	U	U	D	53.33

Calculated Duty Cycle = Extended cyclic prefix in uplink x ( $T_s$ ) x # of S + # of U

Example for Calculated Duty Cycle for Uplink-Downlink Configuration 0:  
 Calculated Duty Cycle =  $5120 \times [1/(15000 \times 2048)] \times 2 + 6 \text{ ms} = 63.33\%$   
 where  
 $T_s = 1/(15000 \times 2048)$  seconds

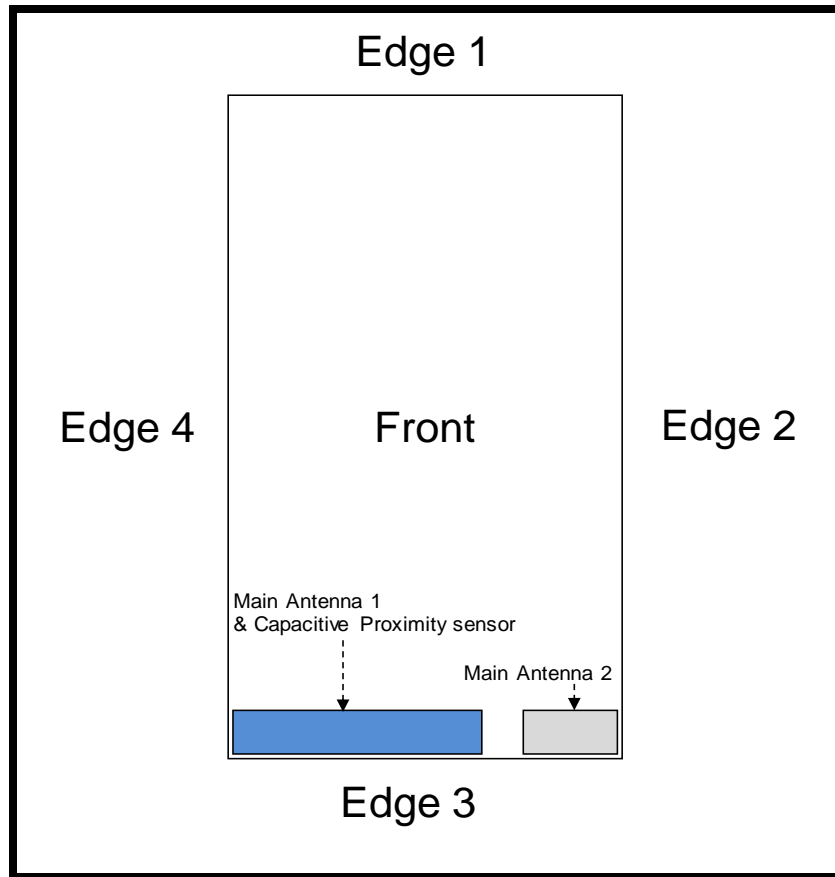
**Note(s):**

This device supports uplink-downlink configurations 0-6. The configuration with highest duty cycle was used for SAR Testing: configuration 0 at 63.3% duty cycle and Special Subframe 7.



### 6.6. Proximity sensor feature

The DUT has one proximity sensor to reduce the output power. The position of the sensor and antenna are as shown in the graphic.

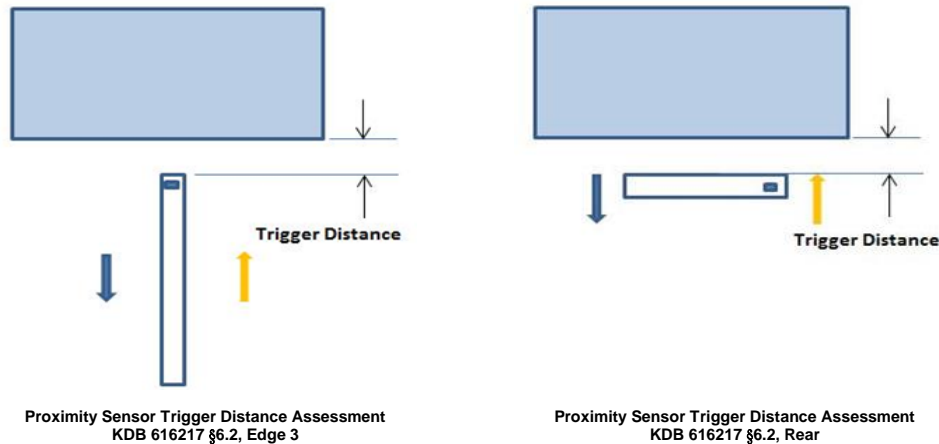


### 6.6.1. Proximity Sensor Triggering Distance (KDB 616217 §6.2)

Rear and Edge 3 of the DUT was placed directly below the flat phantom. The DUT was moved toward the phantom in accordance with the steps outlined in KDB 616217 §6.2 to determine the trigger distance for enabling power reduction. The DUT was moved away from the phantom to determine the trigger distance for resuming full power.

The DUT featured a visual indicator on its display that showed the status of the proximity sensor (Triggered or not triggered). This was used to determine the status of the sensor during the proximity sensor assessment as monitoring the output power directly was not practical without affecting the measurement.

It was confirmed separately that the output power was altered according to the proximity sensor status indication. This was achieved by observing the proximity sensor status at the same time as monitoring the conducted power. Section 9 contains both the full and reduced conducted power measurements.



**LEGEND**

- Direction of DUT travel for determination of power reduction triggering point
- Direction of DUT travel for determination of full power resumption triggering point

#### Summary of Trigger Distances

Tissue Simulating Liquid	Trigger distance - Rear		Trigger distance - Edge 3	
	Moving toward phantom	Moving from phantom	Moving toward phantom	Moving from phantom
1900 Body	10 mm	10 mm	6 mm	6 mm

**Note(s):**

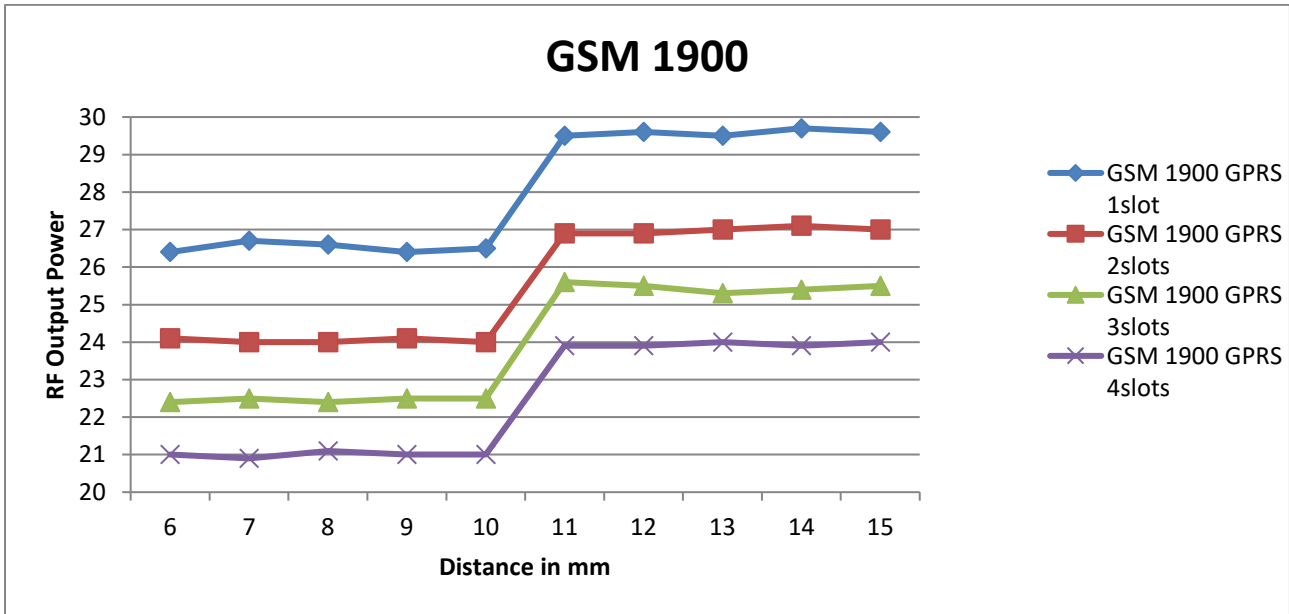
Triggering distances were verified for supported positions according to Sec.6.2 in KDB 616217.

**Proximity Sensor Triggering Distance Measurement Results**

**GSM 1900**

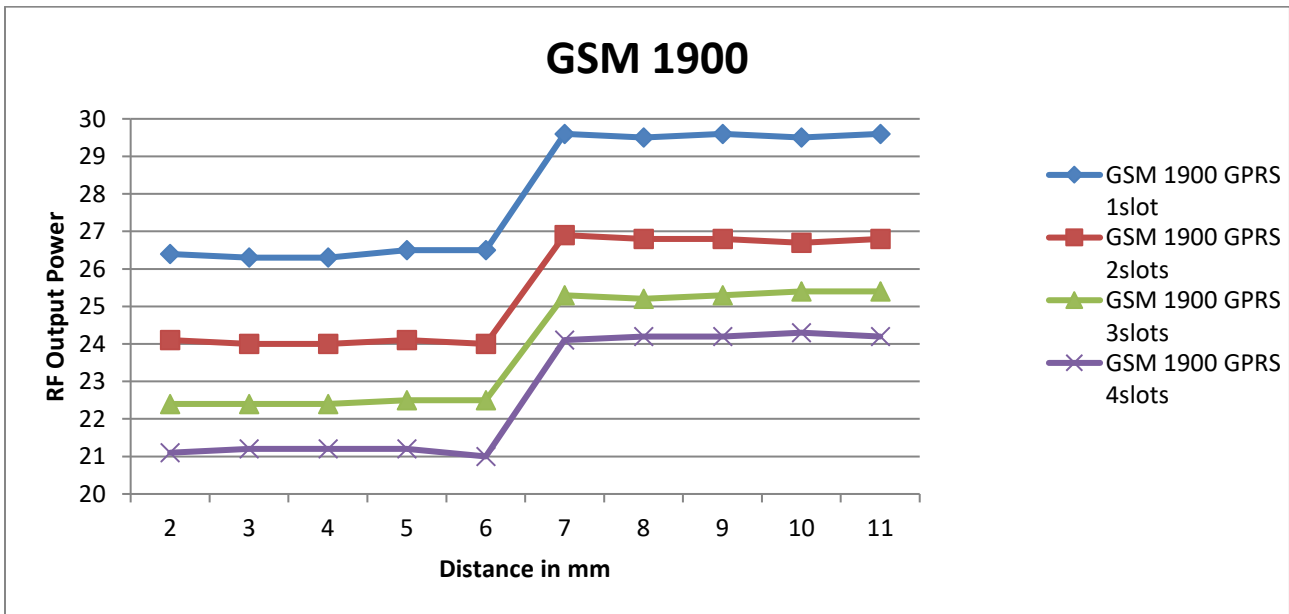
Rear, DUT Moving Toward (Trigger) from the Phantom

Distance to DUT vs. Output Power in dBm										
Distance (mm)	6	7	8	9	10	11	12	13	14	15
GSM 1900 GPRS 1slot	26.4	26.7	26.6	26.4	26.5	29.5	29.6	29.5	29.7	29.6
GSM 1900 GPRS 2slots	24.1	24.0	24.0	24.1	24.0	26.9	26.9	27.0	27.1	27.0
GSM 1900 GPRS 3slots	22.4	22.5	22.4	22.5	22.5	25.6	25.5	25.3	25.4	25.5
GSM 1900 GPRS 4slots	21.0	20.9	21.1	21.0	21.0	23.9	23.9	24.0	23.9	24.0



Edge 3, DUT Moving Toward (Trigger) from the Phantom

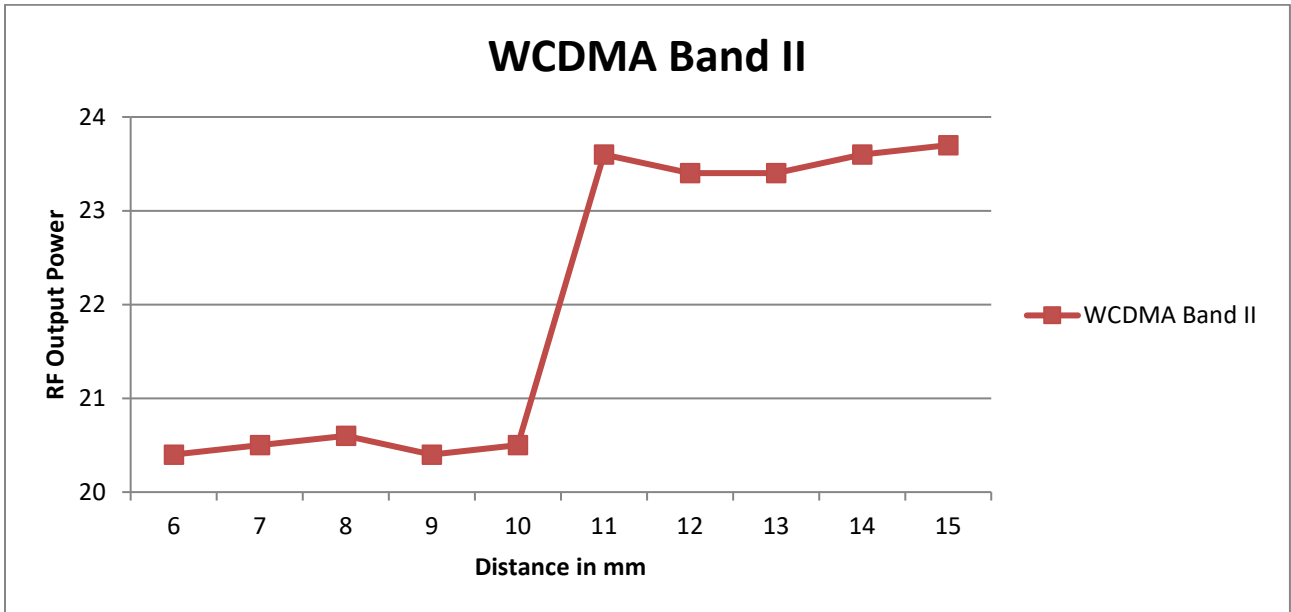
Distance to DUT vs. Output Power in dBm										
Distance (mm)	2	3	4	5	6	7	8	9	10	11
GSM 1900 GPRS 1slot	26.4	26.3	26.3	26.5	26.5	29.6	29.5	29.6	29.5	29.6
GSM 1900 GPRS 2slots	24.1	24.0	24.0	24.1	24.0	26.9	26.8	26.8	26.7	26.8
GSM 1900 GPRS 3slots	22.4	22.4	22.4	22.5	22.5	25.3	25.2	25.3	25.4	25.4
GSM 1900 GPRS 4slots	21.1	21.2	21.2	21.2	21.0	24.1	24.2	24.2	24.3	24.2



**WCDMA Band II**

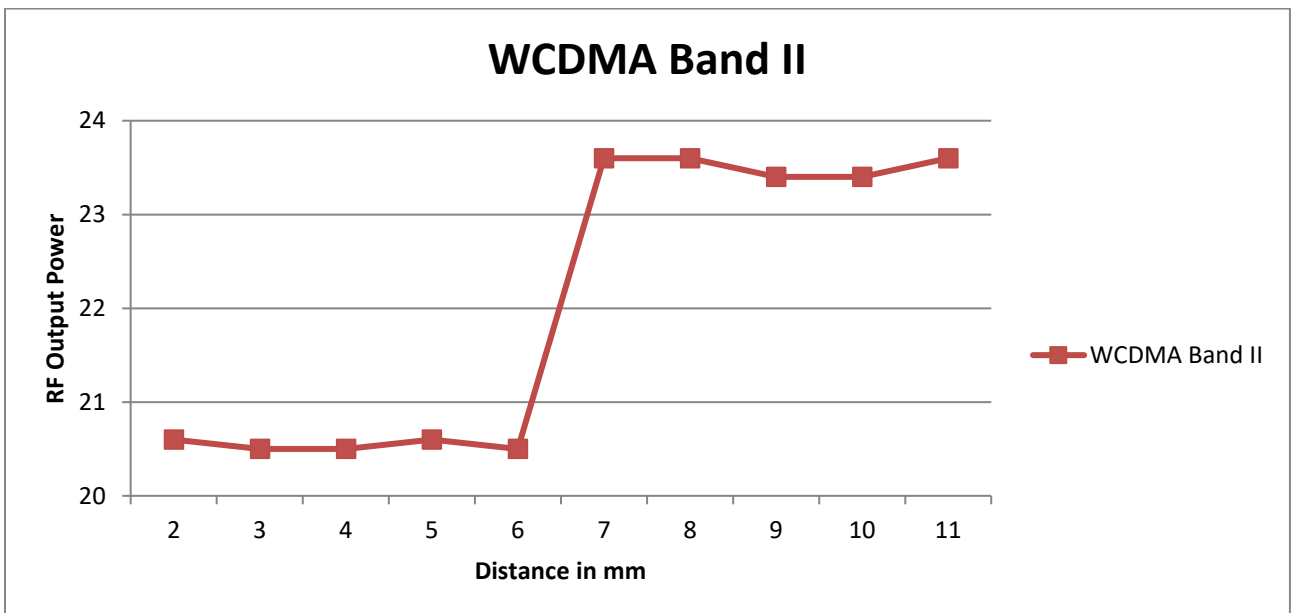
Rear, DUT Moving Toward (Trigger) from the Phantom

Distance to DUT vs. Output Power in dBm										
Distance (mm)	6	7	8	9	10	11	12	13	14	15
WCDMA Band II	20.4	20.5	20.6	20.4	20.5	23.6	23.4	23.4	23.6	23.7



Edge 3, DUT Moving Toward (Trigger) from the Phantom

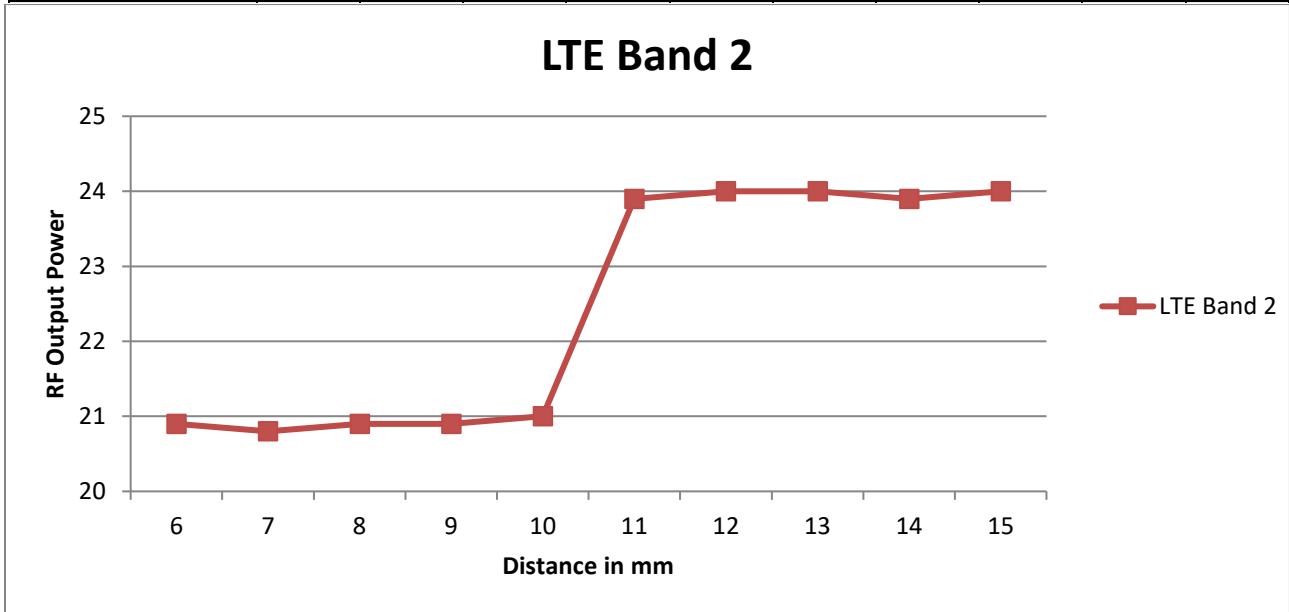
Distance to DUT vs. Output Power in dBm										
Distance (mm)	2	3	4	5	6	7	8	9	10	11
WCDMA Band II	20.6	20.5	20.5	20.6	20.5	23.6	23.6	23.4	23.4	23.6



**LTE Band 2**

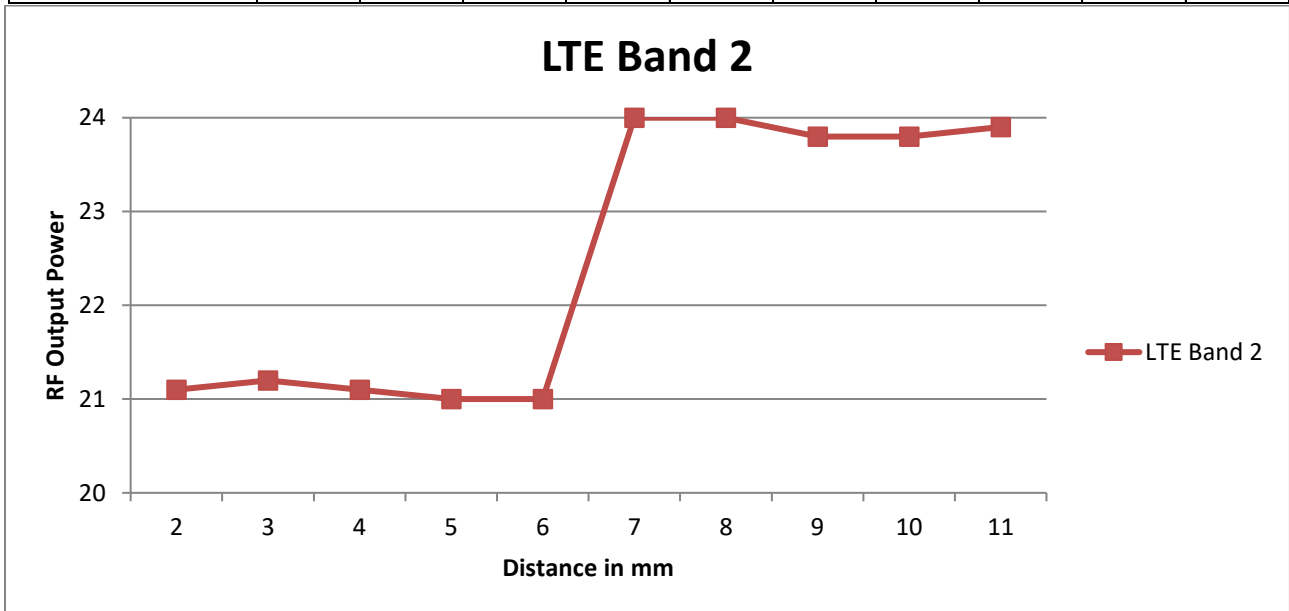
Rear, DUT Moving Toward (Trigger) from the Phantom

Distance to DUT vs. Output Power in dBm										
Distance (mm)	6	7	8	9	10	11	12	13	14	15
LTE Band 2	20.9	20.8	20.9	20.9	21.0	23.9	24.0	24.0	23.9	24.0



Edge 3, DUT Moving Toward (Trigger) from the Phantom

Distance to DUT vs. Output Power in dBm										
Distance (mm)	2	3	4	5	6	7	8	9	10	11
LTE Band 2	21.1	21.2	21.1	21.0	21.0	24.0	24.0	23.8	23.8	23.9



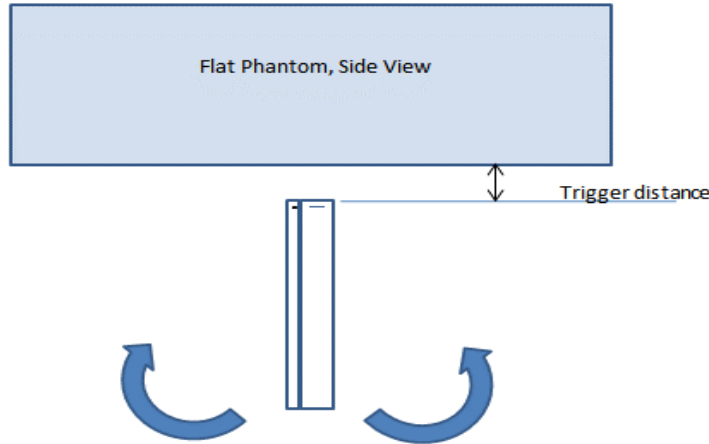
**6.6.2. Proximity Sensor Coverage (KDB 616217 §6.3)**

As there is no spatial offset between the antenna and the proximity sensor element, proximity sensor coverage did not need to be assessed.

**6.6.3. Proximity Sensor Tilt Angle Assessment (KDB 616217 §6.4)**

The DUT was positioned directly below the flat phantom at the minimum measured trigger distance with Edge 3 parallel to the base of the flat phantom for each band.

The EUT was rotated about Edge 3 for angles up to +/- 45°. If the output power increased during the rotation the DUT was moved 1mm toward the phantom and the rotation repeated. This procedure was repeated until the power remained reduced for all angles up to +/- 45°.



Proximity sensor tilt angle assessment (Edge 3) KDB 616217 §6.4

**Summary of Tablet Tilt Angle Influence to Proximity Sensor Triggering (Edge 3)**

Band (MHz)	Minimum trigger distance measured according to KDB 616217 §6.2	Minimum distance at which power reduction was maintained over +/-45°	Power reduction status											
			-45°	-40°	-30°	-20°	-10°	0°	10°	20°	30°	40°	45°	
1900	6 mm	6 mm	On	On	On	On	On	On	On	On	On	On	On	On

**6.6.4. Resulting test positions for SAR measurements**

Wireless technologies	Position	§6.2 Triggering Distance	§6.3 Coverage	§6.4 Tilt Angle	Worst case distance for SAR
WWAN (Main Ant.1)	Rear	10 mm	N/A	N/A	9 mm
	Edge 3	6 mm	N/A	6 mm	5 mm

### 7. RF Exposure Conditions (Test Configurations)

Refer to Appendix A for the specific details of the antenna-to-antenna and antenna-to-edge(s) distances.

Wireless technologies	RF Exposure Conditions	Antennaa	DUT-to-User Separation	Test Position	Antenna-to-edge/surface	SAR Required	Note	
WWAN	Head	Main Ant. 1 & 2	0 mm	Left Touch	N/A	Yes		
				Left Tilt (15°)	N/A	Yes		
				Right Touch	N/A	Yes		
				Right Tilt (15°)	N/A	Yes		
	Body-worn	Main Ant. 1 & 2	15 mm	Rear	N/A	Yes		
				Front	N/A	Yes		
	Hotspot	Main Ant. 1	10 mm	Rear	< 25 mm	Yes		
				Front	< 25 mm	Yes		
				Edge 1 (Top)	> 25 mm	No	1	
				Edge 2 (Right)	< 25 mm	Yes		
				Edge 3 (Bottom)	< 25 mm	Yes		
				Edge 4 (Left)	< 25 mm	Yes		
	Hotspot	Main Ant. 2	10 mm	Rear	< 25 mm	Yes		
				Front	< 25 mm	Yes		
				Edge 1 (Top)	> 25 mm	No	1	
				Edge 2 (Right)	< 25 mm	Yes		
				Edge 3 (Bottom)	< 25 mm	Yes		
				Edge 4 (Left)	> 25 mm	No	1	
	Product Specific 10-g	Main Ant. 1 & Main Ant. 2	0 mm	Rear	Refer to notes 2 & 3			
				Front				
Edge 1 (Top)								
Edge 2 (Right)								
Edge 3 (Bottom)								
Edge 4 (Left)								
WLAN & BT	Head	Wi-Fi & BT Ant.	0 mm	Left Touch	N/A	Yes		
				Left Tilt (15°)	N/A	Yes		
				Right Touch	N/A	Yes		
				Right Tilt (15°)	N/A	Yes		
	Body-worn		15 mm	Rear	N/A	Yes		
				Front	N/A	Yes		
	Hotspot		10 mm	Rear	< 25 mm	Yes		
				Front	< 25 mm	Yes		
				Edge 1 (Top)	< 25 mm	Yes		
				Edge 2 (Right)	< 25 mm	Yes		
				Edge 3 (Bottom)	> 25 mm	No	1	
				Edge 4 (Left)	> 25 mm	No	1	
	Product Specific 10-g	0 mm	Rear	Refer to notes 2 & 4				
			Front					
			Edge 1 (Top)					
			Edge 2 (Right)					
Edge 3 (Bottom)								
Edge 4 (Left)								

**Notes:**

- SAR is not required because the distance from the antenna to the edge is > 25 mm as per KDB 941225 D06 Hotspot SAR.
- For Phablet devices: When hotspot mode applies, Product specific 10-g SAR is required only for the surfaces and edges with hotspot mode 1-g reported SAR > 1.2 W/kg.
- For Phablet devices : When hotspot mode applies and power reduction applies to hotspot mode, Product specific 10-g SAR is required for each test position that has and adjusted SAR to maximum power that is > 1.2 W/kg.
- For Phablet devices: When hotspot mode is not supported, Product specific 10-g SAR is required for all surfaces and edges with an antenna located at ≤ 25mm from that surface or edge in direct contact with a flat phantom, to address interactive hand use exposure conditions.

## 8. Dielectric Property Measurements & System Check

### 8.1. Dielectric Property Measurements

The temperature of the tissue-equivalent medium used during measurement must also be within 18°C to 25°C and within  $\pm 2^\circ\text{C}$  of the temperature when the tissue parameters are characterized.

The dielectric parameters must be measured before the tissue-equivalent medium is used in a series of SAR measurements. The parameters should be re-measured after each 3 – 4 days of use; or earlier if the dielectric parameters can become out of tolerance; for example, when the parameters are marginal at the beginning of the measurement series.

Tissue dielectric parameters were measured at the low, middle and high frequency of each operating frequency range of the test device.

#### Tissue Dielectric Parameters

FCC KDB 865664 D01 SAR Measurement 100 MHz to 6 GHz

Target Frequency (MHz)	Head		Body	
	$\epsilon_r$	$\sigma$ (S/m)	$\epsilon_r$	$\sigma$ (S/m)
150	52.3	0.76	61.9	0.80
300	45.3	0.87	58.2	0.92
450	43.5	0.87	56.7	0.94
835	41.5	0.90	55.2	0.97
900	41.5	0.97	55.0	1.05
915	41.5	0.98	55.0	1.06
1450	40.5	1.20	54.0	1.30
1610	40.3	1.29	53.8	1.40
1800 – 2000	40.0	1.40	53.3	1.52
2450	39.2	1.80	52.7	1.95
3000	38.5	2.40	52.0	2.73
5000	36.2	4.45	49.3	5.07
5100	36.1	4.55	49.1	5.18
5200	36.0	4.66	49.0	5.30
5300	35.9	4.76	48.9	5.42
5400	35.8	4.86	48.7	5.53
5500	35.6	4.96	48.6	5.65
5600	35.5	5.07	48.5	5.77
5700	35.4	5.17	48.3	5.88
5800	35.3	5.27	48.2	6.00

#### IEEE Std 1528-2013

Refer to Table 3 within the IEEE Std 1528-2013



**Dielectric Property Measurements Results:****SAR 1 Room**

Date	Freq. (MHz)	Liquid Parameters		Measured	Target	Delta (%)	Limit ±(%)	
04-09-2019	Head 2450	e'	39.7500	Relative Permittivity ( $\epsilon_r$ ):	39.75	39.20	1.40	5
		e"	13.4400	Conductivity ( $\sigma$ ):	1.83	1.80	1.72	5
	Head 2400	e'	40.0700	Relative Permittivity ( $\epsilon_r$ ):	40.07	39.30	1.97	5
		e"	13.2200	Conductivity ( $\sigma$ ):	1.76	1.75	0.72	5
	Head 2480	e'	39.6000	Relative Permittivity ( $\epsilon_r$ ):	39.60	39.16	1.12	5
		e"	13.5400	Conductivity ( $\sigma$ ):	1.87	1.83	1.89	5
04-09-2019	Head 2600	e'	39.0600	Relative Permittivity ( $\epsilon_r$ ):	39.06	39.01	0.13	5
		e"	13.8600	Conductivity ( $\sigma$ ):	2.00	1.96	2.12	5
	Head 2500	e'	39.5400	Relative Permittivity ( $\epsilon_r$ ):	39.54	39.14	1.03	5
		e"	13.5800	Conductivity ( $\sigma$ ):	1.89	1.85	1.82	5
	Head 2700	e'	38.6300	Relative Permittivity ( $\epsilon_r$ ):	38.63	38.88	-0.65	5
		e"	14.0900	Conductivity ( $\sigma$ ):	2.12	2.07	2.18	5
04-10-2019	Body 2450	e'	51.9600	Relative Permittivity ( $\epsilon_r$ ):	51.96	52.70	-1.40	5
		e"	14.4000	Conductivity ( $\sigma$ ):	1.96	1.95	0.60	5
	Body 2400	e'	52.2700	Relative Permittivity ( $\epsilon_r$ ):	52.27	52.77	-0.95	5
		e"	14.2000	Conductivity ( $\sigma$ ):	1.89	1.90	-0.16	5
	Body 2480	e'	51.8400	Relative Permittivity ( $\epsilon_r$ ):	51.84	52.66	-1.56	5
		e"	14.5000	Conductivity ( $\sigma$ ):	2.00	1.99	0.37	5
04-10-2019	Body 2600	e'	51.3100	Relative Permittivity ( $\epsilon_r$ ):	51.31	52.51	-2.29	5
		e"	14.5300	Conductivity ( $\sigma$ ):	2.10	2.16	-2.79	5
	Body 2500	e'	51.7400	Relative Permittivity ( $\epsilon_r$ ):	51.74	52.64	-1.70	5
		e"	14.4800	Conductivity ( $\sigma$ ):	2.01	2.02	-0.37	5
	Body 2700	e'	51.0800	Relative Permittivity ( $\epsilon_r$ ):	51.08	52.38	-2.49	5
		e"	14.6100	Conductivity ( $\sigma$ ):	2.19	2.30	-4.69	5

**SAR 2 Room**

Date	Freq. (MHz)	Liquid Parameters		Measured	Target	Delta (%)	Limit ±(%)	
04-08-2019	Body 835	e'	53.0700	Relative Permittivity ( $\epsilon_r$ ):	53.07	55.20	-3.86	5
		e"	20.8200	Conductivity ( $\sigma$ ):	0.97	0.97	-0.35	5
	Body 820	e'	53.2200	Relative Permittivity ( $\epsilon_r$ ):	53.22	55.28	-3.72	5
		e"	20.8800	Conductivity ( $\sigma$ ):	0.95	0.97	-1.70	5
	Body 850	e'	52.9600	Relative Permittivity ( $\epsilon_r$ ):	52.96	55.16	-3.98	5
		e"	20.7700	Conductivity ( $\sigma$ ):	0.98	0.99	-0.56	5
04-10-2019	Body 750	e'	55.6600	Relative Permittivity ( $\epsilon_r$ ):	55.66	55.55	0.20	5
		e"	22.5700	Conductivity ( $\sigma$ ):	0.94	0.96	-2.27	5
	Body 700	e'	56.6300	Relative Permittivity ( $\epsilon_r$ ):	56.63	55.74	1.60	5
		e"	24.5400	Conductivity ( $\sigma$ ):	0.96	0.96	-0.43	5
	Body 790	e'	55.6600	Relative Permittivity ( $\epsilon_r$ ):	55.66	55.39	0.48	5
		e"	22.5600	Conductivity ( $\sigma$ ):	0.99	0.97	2.57	5

**SAR 3 Room**

Date	Freq. (MHz)	Liquid Parameters		Measured	Target	Delta (%)	Limit ±(%)	
04-09-2019	Head 835	e'	43.2000	Relative Permittivity ( $\epsilon_r$ ):	43.20	41.50	4.10	5
		e"	19.4800	Conductivity ( $\sigma$ ):	0.90	0.90	0.49	5
	Head 820	e'	43.4000	Relative Permittivity ( $\epsilon_r$ ):	43.40	41.60	4.32	5
		e"	19.5400	Conductivity ( $\sigma$ ):	0.89	0.90	-0.84	5
	Head 850	e'	43.0000	Relative Permittivity ( $\epsilon_r$ ):	43.00	41.50	3.61	5
		e"	19.4700	Conductivity ( $\sigma$ ):	0.92	0.92	0.57	5
04-10-2019	Body 750	e'	55.6600	Relative Permittivity ( $\epsilon_r$ ):	55.66	55.55	0.20	5
		e"	22.5700	Conductivity ( $\sigma$ ):	0.94	0.96	-2.27	5
	Body 700	e'	56.6300	Relative Permittivity ( $\epsilon_r$ ):	56.63	55.74	1.60	5
		e"	24.5400	Conductivity ( $\sigma$ ):	0.96	0.96	-0.43	5
	Body 790	e'	55.6600	Relative Permittivity ( $\epsilon_r$ ):	55.66	55.39	0.48	5
		e"	22.5600	Conductivity ( $\sigma$ ):	0.99	0.97	2.57	5

**SAR 4 Room**

Date	Freq. (MHz)	Liquid Parameters		Measured	Target	Delta (%)	Limit ±(%)	
04-10-2019	Head 1900	e'	38.5100	Relative Permittivity ( $\epsilon_r$ ):	38.51	40.00	-3.73	5
		e"	13.6600	Conductivity ( $\sigma$ ):	1.44	1.40	3.08	5
	Head 1850	e'	38.6400	Relative Permittivity ( $\epsilon_r$ ):	38.64	40.00	-3.40	5
		e"	13.8100	Conductivity ( $\sigma$ ):	1.42	1.40	1.47	5
	Head 1910	e'	38.4800	Relative Permittivity ( $\epsilon_r$ ):	38.48	40.00	-3.80	5
		e"	13.6400	Conductivity ( $\sigma$ ):	1.45	1.40	3.47	5
04-15-2019	Body 1900	e'	52.3700	Relative Permittivity ( $\epsilon_r$ ):	52.37	53.30	-1.74	5
		e"	14.8700	Conductivity ( $\sigma$ ):	1.57	1.52	3.35	5
	Body 1850	e'	52.6000	Relative Permittivity ( $\epsilon_r$ ):	52.60	53.30	-1.31	5
		e"	14.9900	Conductivity ( $\sigma$ ):	1.54	1.52	1.44	5
	Body 1910	e'	52.3200	Relative Permittivity ( $\epsilon_r$ ):	52.32	53.30	-1.84	5
		e"	14.9300	Conductivity ( $\sigma$ ):	1.59	1.52	4.32	5
04-18-2019	Body 1900	e'	53.8700	Relative Permittivity ( $\epsilon_r$ ):	53.87	53.30	1.07	5
		e"	14.9800	Conductivity ( $\sigma$ ):	1.58	1.52	4.12	5
	Body 1850	e'	53.9100	Relative Permittivity ( $\epsilon_r$ ):	53.91	53.30	1.14	5
		e"	15.0900	Conductivity ( $\sigma$ ):	1.55	1.52	2.12	5
	Body 1910	e'	53.8900	Relative Permittivity ( $\epsilon_r$ ):	53.89	53.30	1.11	5
		e"	14.9800	Conductivity ( $\sigma$ ):	1.59	1.52	4.66	5
04-18-2019	Head 1900	e'	38.3000	Relative Permittivity ( $\epsilon_r$ ):	38.30	40.00	-4.25	5
		e"	13.8400	Conductivity ( $\sigma$ ):	1.46	1.40	4.44	5
	Head 1850	e'	38.4200	Relative Permittivity ( $\epsilon_r$ ):	38.42	40.00	-3.95	5
		e"	13.9500	Conductivity ( $\sigma$ ):	1.43	1.40	2.50	5
	Head 1910	e'	38.2800	Relative Permittivity ( $\epsilon_r$ ):	38.28	40.00	-4.30	5
		e"	13.8300	Conductivity ( $\sigma$ ):	1.47	1.40	4.91	5

## 8.2. System Check

SAR system verification is required to confirm measurement accuracy, according to the tissue dielectric media, probe calibration points and other system operating parameters required for measuring the SAR of a test device. The system verification must be performed for each frequency band and within the valid range of each probe calibration point required for testing the device. The same SAR probe(s) and tissue-equivalent media combinations used with each specific SAR system for system verification must be used for device testing. When multiple probe calibration points are required to cover substantially large transmission bands, independent system verifications are required for each probe calibration point. A system verification must be performed before each series of SAR measurements using the same probe calibration point and tissue-equivalent medium. Additional system verification should be considered according to the conditions of the tissue-equivalent medium and measured tissue dielectric parameters, typically every three to four days when the liquid parameters are re-measured or sooner when marginal liquid parameters are used at the beginning of a series of measurements.

### System Performance Check Measurement Conditions:

- The measurements were performed in the flat section of the TWIN SAM or ELI phantom, shell thickness: 2.0 ±0.2 mm (bottom plate) filled with Body or Head simulating liquid of the following parameters.
- The depth of tissue-equivalent liquid in a phantom must be ≥ 15.0 cm for SAR measurements ≤ 3 GHz and ≥ 10.0 cm for measurements > 3 GHz.
- The DASY system with an E-Field Probe was used for the measurements.
- The dipole was mounted on the small tripod so that the dipole feed point was positioned below the center marking of the flat phantom section and the dipole was oriented parallel to the body axis (the long side of the phantom). The standard measuring distance was 10 mm (above 1 GHz) and 15 mm (below 1 GHz) from dipole center to the simulating liquid surface.
- The coarse grid with a grid spacing of 15 mm was aligned with the dipole.  
For 5 GHz band - The coarse grid with a grid spacing of 10 mm was aligned with the dipole.
- Special 7x7x7 (below 3 GHz) and/or 8x8x7 (above 3 GHz) fine cube was chosen for the cube.
- Distance between probe sensors and phantom surface was set to 2.5 mm.  
For 5 GHz band - Distance between probe sensors and phantom surface was set to 1.4 mm
- The dipole input power (forward power) was 100 mW.
- The results are normalized to 1 W input power.

### Reference Target SAR Values

The reference SAR values can be obtained from the calibration certificate of system validation dipoles.

System Dipole	Serial No.	Cal. Date	Freq. (MHz)	Target SAR Values (W/kg)		
				1g/10g	Head	Body
D750V3	1122	2-19-2018	750	1g	8.22	8.63
				10g	5.35	5.72
D835V2	4d174	1-23-2019	835	1g	9.28	9.47
				10g	6.04	6.23
D1900V2	5d190	10-23-2018	1900	1g	39.10	39.00
				10g	20.40	20.50
D2450V2	939	10-16-2018	2450	1g	53.20	50.10
				10g	24.80	23.50
D2600V2	1097	1-17-2018	2600	1g	56.40	54.40
				10g	25.30	24.20

#### Note(s):

Refer to Appendix F that mentioned about justification for Extended SAR Dipole Calibrations (D750/SN: 1122, D2600/SN: 1097)

**System Check Results**

The 1-g and 10-g SAR measured with a reference dipole, using the required tissue-equivalent medium at the test frequency, must be within 10% of the manufacturer calibrated dipole SAR target.

**SAR 1 Room**

Date Tested	System Dipole		T.S. Liquid	Measured Results		Target (Ref. Value)	Delta $\pm 10\%$	Plot No.	
	Type	Serial #		Zoom Scan to 100 mW	Normalize to 1 W				
4-9-2019	D2450V2	939	Head	1g	5.39	53.90	53.20	1.32	
				10g	2.45	24.50	24.80	-1.21	
4-9-2019	D2600V2	1097	Head	1g	5.63	56.30	56.40	-0.18	
				10g	2.49	24.90	25.30	-1.58	
4-10-2019	D2450V2	939	Body	1g	5.44	54.40	50.10	8.58	1,2
				10g	2.54	25.40	23.50	8.09	
4-10-2019	D2600V2	1097	Body	1g	5.55	55.50	54.40	2.02	3,4
				10g	2.48	24.80	24.20	2.48	

**SAR 2 Room**

Date Tested	System Dipole		T.S. Liquid	Measured Results		Target (Ref. Value)	Delta $\pm 10\%$	Plot No.	
	Type	Serial #		Zoom Scan to 100 mW	Normalize to 1 W				
4-9-2019	D835V2	4d174	Body	1g	0.95	9.50	9.47	0.32	
				10g	0.62	6.23	6.23	0.00	
4-10-2019	D750V3	1122	Body	1g	0.80	8.01	8.63	-7.18	5,6
				10g	0.54	5.35	5.72	-6.47	

**SAR 3 Room**

Date Tested	System Dipole		T.S. Liquid	Measured Results		Target (Ref. Value)	Delta $\pm 10\%$	Plot No.	
	Type	Serial #		Zoom Scan to 100 mW	Normalize to 1 W				
4-9-2019	D835V2	4d174	Head	1g	0.97	9.72	9.28	4.74	7,8
				10g	0.64	6.37	6.04	5.46	
4-11-2019	D750V3	1122	Head	1g	0.84	8.35	8.22	1.58	
				10g	0.55	5.54	5.35	3.55	

**SAR 4 Room**

Date Tested	System Dipole		T.S. Liquid	Measured Results		Target (Ref. Value)	Delta $\pm 10\%$	Plot No.	
	Type	Serial #		Zoom Scan to 100 mW	Normalize to 1 W				
4-10-2019	D1900V2	5d190	Head	1g	3.82	38.20	39.10	-2.30	
				10g	1.97	19.70	20.40	-3.43	
4-15-2019	D1900V2	5d190	Body	1g	4.00	40.00	39.00	2.56	
				10g	2.08	20.80	20.50	1.46	
4-18-2019	D1900V2	5d190	Body	1g	4.09	40.90	39.00	4.87	
				10g	2.12	21.20	20.50	3.41	
4-18-2019	D1900V2	5d190	Head	1g	4.13	41.30	39.10	5.63	9,10
				10g	2.13	21.30	20.40	4.41	

## 9. Conducted Output Power Measurements

Conducted output power was measured for WWAN in accordance with ANSI C63.26-2015.

### 9.1. GSM

Per KDB 941225 D01 3G SAR Procedures:

SAR test reduction for GPRS and EDGE modes is determined by the source-based time-averaged output power specified for production units, including tune-up tolerance. The data mode with highest specified time-averaged output power should be tested for SAR compliance in the applicable exposure conditions. For modes with the same specified maximum output power and tolerance, the higher number time-slot configuration should be tested.

#### GSM1900 Measured Results

Mode	Coding Scheme	Time Slots	Ch No.	Freq. (MHz)	Maximum Average Power (dBm)				Reduced Average Power (dBm) Proximity sensor back-off			
					Measured		Tune-up Limit		Measured		Tune-up Limit	
					Burst Pwr	Frame Pwr	Burst Pwr	Frame Pwr	Burst Pwr	Frame Pwr	Burst Pwr	Frame Pwr
GSM (Voice)	CS1	1	512	1850.2	28.4	19.4	30.5	21.5	25.9	16.9	27.5	18.5
			661	1880.0	28.8	19.8			26.2	17.2		
			810	1909.8	29.4	20.4			26.8	17.7		
GPRS (GMSK)	CS1	1	512	1850.2	28.4	19.4	30.5	21.5	25.9	16.9	27.5	18.5
			661	1880.0	28.7	19.7			26.1	17.1		
			810	1909.8	29.3	20.3			26.9	17.9		
		2	512	1850.2	26.3	20.2	28.0	22.0	23.3	17.3	25.0	19.0
			661	1880.0	26.5	20.5			23.6	17.6		
			810	1909.8	27.3	21.3			24.5	18.5		
		3	512	1850.2	24.6	20.3	26.5	22.2	21.8	17.6	23.5	19.2
			661	1880.0	24.9	20.7			22.2	17.9		
			810	1909.8	25.8	21.6			23.2	18.9		
		4	512	1850.2	23.1	20.1	25.0	22.0	20.0	17.0	22.0	19.0
			661	1880.0	23.5	20.5			20.4	17.4		
			810	1909.8	24.5	21.5			21.3	18.3		
EGPRS (8PSK)	MCS5	1	512	1850.2	24.9	15.8	26.5	17.5				
			661	1880.0	24.9	15.9						
			810	1909.8	24.8	15.7						
		2	512	1850.2	22.6	16.6	24.0	18.0				
			661	1880.0	22.7	16.7						
			810	1909.8	22.7	16.7						
		3	512	1850.2	21.3	17.1	22.5	18.2				
			661	1880.0	21.5	17.3						
			810	1909.8	21.4	17.1						
		4	512	1850.2	20.1	17.1	20.5	17.5				
			661	1880.0	20.1	17.1						
			810	1909.8	20.1	17.1						

#### Notes:

The worst-case configuration and mode for SAR testing is determined to be as follows:

- GMSK (GPRS) mode with 3 time slots for Max power, based on the Tune-up Procedure. Refer to §6.3.
- SAR is not required for EGPRS (8PSK) mode because the maximum output power and tune-up limit is ≤ 1/4dB higher than GMSK GPRS or the adjusted SAR of the highest reported SAR of GMSK GPRS is ≤ 1.2W/kg.

## 9.2. W-CDMA

### Release 99 Setup Procedures used to establish the test signals

The following tests were completed according to the test requirements outlined in section 5.2 of the 3GPP TS34.121-1 specification. The DUT supports power Class 3, which has a nominal maximum output power of 24 dBm (+1.7/-3.7).

Mode	Subtest	Rel99
WCDMA General Settings	Loopback Mode	Test Mode 2
	Rel99 RMC	12.2kbps RMC
	Power Control Algorithm	Algorithm2
	$\beta_c/\beta_d$	8/15

### HSDPA Setup Procedures used to establish the test signals

The following 4 Sub-tests were completed according to Release 5 procedures in section 5.2 of 3GPP TS34.121. A summary of these settings are illustrated below:

	Mode	HSDPA	HSDPA	HSDPA	HSDPA
	Subtest	1	2	3	4
W-CDMA General Settings	Loopback Mode	Test Mode 1			
	Rel99 RMC	12.2kbps RMC			
	HSDPA FRC	H-Set 1			
	Power Control Algorithm	Algorithm 2			
	$\beta_c$	2/15	11/15	15/15	15/15
	$\beta_d$	15/15	15/15	8/15	4/15
	Bd (SF)	64			
	$\beta_c/\beta_d$	2/15	11/15	15/8	15/4
	$\beta_{hs}$	4/15	24/15	30/15	30/15
MPR (dB)	0	0	0.5	0.5	
HSDPA Specific Settings	$D_{ACK}$	8			
	$D_{NAK}$	8			
	DCQI	8			
	Ack-Nack repetition factor	3			
	CQI Feedback (Table 5.2B.4)	4ms			
	CQI Repetition Factor (Table 5.2B.4)	2			
	$A_{hs}=\beta_{hs}/\beta_c$	30/15			

**HSPA (HSDPA & HSUPA) Setup Procedures used to establish the test signals**

The following 5 Sub-tests were completed according to Release 6 procedures in table C,11.1.3 of 3GPP TS 34.121-1 v13. A summary of these settings are illustrated below:

	Mode	HSPA				
	Subtest	1	2	3	4	5
WCDMA General Settings	Loopback Mode	Test Mode 1				
	Rel99 RMC	12.2 kbps RMC				
	HSDPA FRC	H-Set 1				
	HSUPA Test	HSPA				
	Power Control Algorithm	Algorithm 2				Algorithm 1
	$\beta_c$	11/15	6/15	15/15	2/15	15/15
	$\beta_d$	15/15	15/15	9/15	15/15	0
	$\beta_{ec}$	209/225	12/15	30/15	2/15	5/15
	$\beta_c/\beta_d$	11/15	6/15	15/9	2/15	-
	$\beta_{hs}$	22/15	12/15	30/15	4/15	5/15
	$\beta_{ed}$	1309/225	94/75	47/15	56/75	47/15
CM (dB)	1	3	2	3	1	
MPR (dB)	0	2	1	2	0	
HSDPA Specific Settings	DACK	8				0
	DNAK	8				0
	DCQI	8				0
	Ack-Nack repetition factor	3				
	CQI Feedback (Table 5.2B.4)	4ms				
	CQI Repetition Factor (Table 5.2B.4)	2				
	A <sub>hs</sub> = $\beta_{hs}/\beta_c$	30/15				
HSUPA Specific Settings	E-DPDCCH	6	8	8	5	0
	DHARQ	0	0	0	0	0
	AG Index	20	12	15	17	12
	ETFCI (from 34.121 Table C.11.1.3)	75	67	92	71	67
	Associated Max UL Data Rate kbps	242.1	174.9	482.8	205.8	308.9
	Reference E-TFCIs	5	5	2	5	1
	Reference E-TFCI	11	11	11	11	67
	Reference E-TFCI PO	4	4	4	4	18
	Reference E-TFCI	67	67	92	67	67
	Reference E-TFCI PO	18	18	18	18	18
	Reference E-TFCI	71	71	71	71	71
	Reference E-TFCI PO	23	23	23	23	23
	Reference E-TFCI	75	75	75	75	75
	Reference E-TFCI PO	26	26	26	26	26
	Reference E-TFCI	81	81	81	81	81
Reference E-TFCI PO	27	27	27	27	27	
Maximum Channelization Codes	2xSF2				SF4	

**W-CDMA Band II Measured Results**

Mode		UL Ch No.	Freq. (MHz)	Maximum Average Power (dBm)			Reduced Average Power (dBm) Hotspot back-off			Reduced Average Power (dBm) Proximity Sensor back-off			
				Measured Pwr	MPR	Tune-up Limit	Measured Pwr	MPR	Tune-up Limit	Measured Pwr	MPR	Tune-up Limit	
Release 99	Rel 99 (RMC, 12.2 kbps)	9262	1852.4	23.3	N/A	24.5	20.1	N/A	21.5	20.2	N/A	21.5	
		9400	1880.0	23.3			20.1			20.1			
		9538	1907.6	23.7			20.5			20.5			
HSDPA	Subtest 1	9262	1852.4	22.8	0	24.0	20.2	0	21.0	20.2	0	21.0	
		9400	1880.0	22.8			20.1			20.1			
		9538	1907.6	23.2			20.5			20.6			
	Subtest 2	9262	1852.4	21.5	0	24.0	20.3	0	21.0	20.3	0	21.0	
		9400	1880.0	21.6			20.2			20.2			
		9538	1907.6	21.7			20.6			20.6			
	Subtest 3	9262	1852.4	21.9	0.5	23.5	20.3	0	21.0	20.3	0	21.0	
		9400	1880.0	21.9			20.2			20.3			
		9538	1907.6	22.2			20.6			20.7			
	Subtest 4	9262	1852.4	21.0	0.5	23.5	20.3	0	21.0	20.3	0	21.0	
		9400	1880.0	21.0			20.2			20.3			
		9538	1907.6	21.3			20.7			20.7			
	HSUPA	Subtest 1	9262	1852.4	21.9	0	24.0	19.1	0	21.0	19.1	0	21.0
			9400	1880.0	21.8			19.0			19.0		
			9538	1907.6	22.1			19.5			19.5		
Subtest 2		9262	1852.4	19.5	2	22.0	19.1	0	21.0	19.2	0	21.0	
		9400	1880.0	19.6			19.1			19.1			
		9538	1907.6	19.7			19.6			19.6			
Subtest 3		9262	1852.4	21.9	1	23.0	19.0	0	21.0	19.2	0	21.0	
		9400	1880.0	21.9			18.9			19.1			
		9538	1907.6	22.2			19.5			19.6			
Subtest 4		9262	1852.4	19.5	2	22.0	19.1	0	21.0	19.2	0	21.0	
		9400	1880.0	19.6			19.1			19.1			
		9538	1907.6	19.7			19.5			19.6			
Subtest 5		9262	1852.4	23.5	0	24.0	20.3	0	21.0	20.4	0	21.0	
		9400	1880.0	23.4			20.2			20.2			
		9538	1907.6	23.4			20.5			20.6			



**W-CDMA Band V Measured Results**

Mode		UL Ch No.	Freq. (MHz)	Maximum Average Power (dBm)		
				Measured Pwr	MPR	Tune-up Limit
Release 99	Rel 99 (RMC, 12.2 kbps)	4132	826.4	24.6	N/A	25.5
		4183	836.6	24.7		
		4233	846.6	24.8		
HSDPA	Subtest 1	4132	826.4	23.0	0	23.5
		4183	836.6	23.3		
		4233	846.6	23.3		
	Subtest 2	4132	826.4	22.3	0	23.5
		4183	836.6	22.4		
		4233	846.6	22.4		
	Subtest 3	4132	826.4	22.3	0.5	23.0
		4183	836.6	22.4		
		4233	846.6	22.4		
	Subtest 4	4132	826.4	21.3	0.5	23.0
		4183	836.6	21.5		
		4233	846.6	21.5		
HSUPA	Subtest 1	4132	826.4	22.3	1	24.0
		4183	836.6	22.3		
		4233	846.6	22.4		
	Subtest 2	4132	826.4	20.1	3	22.0
		4183	836.6	20.2		
		4233	846.6	20.3		
	Subtest 3	4132	826.4	22.3	1	24.0
		4183	836.6	22.4		
		4233	846.6	22.4		
	Subtest 4	4132	826.4	20.1	3	22.0
		4183	836.6	20.3		
		4233	846.6	20.3		
	Subtest 5	4132	826.4	24.7	0	25.0
		4183	836.6	24.8		
		4233	846.6	24.9		

### 9.3. LTE

The following tests were conducted according to the test requirements outlined in section 6.2 of the 3GPP TS36.101 specification.

UE Power Class: 3 (23 +/- 2dBm). The allowed Maximum Power Reduction (MPR) for the maximum output power due to higher order modulation and transmit bandwidth configuration (resource blocks) is specified in Table 6.2.3-1 of the 3GPP TS36.101.

**Table 6.2.3-1: Maximum Power Reduction (MPR) for Power Class 1, 2 and 3**

Modulation	Channel bandwidth / Transmission bandwidth (N <sub>RB</sub> )						MPR (dB)
	1.4 MHz	3.0 MHz	5 MHz	10 MHz	15 MHz	20 MHz	
QPSK	> 5	> 4	> 8	> 12	> 16	> 18	≤ 1
16 QAM	≤ 5	≤ 4	≤ 8	≤ 12	≤ 16	≤ 18	≤ 1
16 QAM	> 5	> 4	> 8	> 12	> 16	> 18	≤ 2
64 QAM	≤ 5	≤ 4	≤ 8	≤ 12	≤ 16	≤ 18	≤ 2
64 QAM	> 5	> 4	> 8	> 12	> 16	> 18	≤ 3
256 QAM	≥ 1						≤ 5

The allowed A-MPR values specified below in Table 6.2.4-1 of 3GPP TS36.101 are in addition to the allowed MPR requirements. All the measurements below were performed with A-MPR disabled, by using Network Signaling Value of "NS\_01".

**Table 6.2.4-1: Additional Maximum Power Reduction (A-MPR)**

Network Signalling value	Requirements (subclause)	E-UTRA Band	Channel bandwidth (MHz)	Resources Blocks (N <sub>RB</sub> )	A-MPR (dB)
NS_01	6.6.2.1.1	Table 5.5-1	1.4, 3, 5, 10, 15, 20	Table 5.6-1	N/A
NS_03	6.6.2.2.1	2, 4, 10, 23, 25, 35, 36, 66, 70	3	>5	≤ 1
			5	>6	≤ 1
			10	>6	≤ 1
			15	>8	≤ 1
NS_04	6.6.2.2.2, 6.6.3.3.19	41	5, 10, 15, 20	Table 6.2.4-4, Table 6.2.4-4a	
			10, 15, 20	≥ 50 (NOTE 1)	≤ 1 (NOTE 1)
NS_05	6.6.3.3.1	1	15, 20	Table 6.2.4-18 (NOTE 2)	
			10, 15, 20	≥ 50	≤ 1 (NOTE 1)
			15, 20	Table 6.2.4-18 (NOTE 2)	
NS_06	6.6.2.2.3	12, 13, 14, 17	1.4, 3, 5, 10	Table 5.6-1	N/A
NS_07	6.6.2.2.3 6.6.3.3.2	13	10	Table 6.2.4-2	
NS_08	6.6.3.3.3	19	10, 15	> 44	≤ 3
NS_09	6.6.3.3.4	21	10, 15	> 40	≤ 1
				> 55	≤ 2
NS_10		20	15, 20	Table 6.2.4-3	
NS_11	6.6.2.2.1 6.6.3.3.13	23	1.4, 3, 5, 10, 15, 20	Table 6.2.4-5	
			1.4, 3, 5, 10, 15	Table 6.2.4-6	
NS_13	6.6.3.3.6	26	5	Table 6.2.4-7	
NS_14	6.6.3.3.7	26	10, 15	Table 6.2.4-8	
NS_15	6.6.3.3.8	26	1.4, 3, 5, 10, 15	Table 6.2.4-9 Table 6.2.4-10	
			3, 5, 10	Table 6.2.4-11, Table 6.2.4-12, Table 6.2.4-13	
NS_17	6.6.3.3.10	28	5, 10	Table 5.6-1	N/A
NS_18	6.6.3.3.11	28	5	≥ 2	≤ 1
			10, 15, 20	≥ 1	≤ 4
NS_19	6.6.3.3.12	44	10, 15, 20	Table 6.2.4-14	
NS_20	6.2.2 6.6.2.2.1 6.6.3.3.14	23	5, 10, 15, 20	Table 6.2.4-15	
			5, 10	Table 6.2.4-16	
NS_22	6.6.3.3.16	42, 43	5, 10, 15, 20	Table 6.2.4-17	
NS_23	6.6.3.3.17	42, 43	5, 10, 15, 20	N/A	
NS_24	6.6.3.3.20	65 (NOTE 4)	5, 10, 15, 20	Table 6.2.4-19	
NS_25	6.6.3.3.21	65 (NOTE 4)	5, 10, 15, 20	Table 6.2.4-20	
NS_26	6.6.3.3.22	68	10, 15	Table 6.2.4-21	
NS_27	6.6.2.2.5, 6.6.3.3.23	48	5, 10, 15, 20	Table 6.2.4-22	
NS_28	6.2.2A, 6.6.3.3.24	46 (NOTE 5)	20	Table 6.2.4-23	
NS_29	6.2.2A, 6.6.2.3.1a, 6.6.3.3.25	46 (NOTE 5)	20	Table 6.2.4-24	
NS_30	6.2.2A, 6.6.3.3.26	46 (NOTE 5)	20	Table 6.2.4-25	
NS_31	6.2.2A, 6.6.3.3.27	46 (NOTE 5)	20	Table 6.2.4-26	
NS_32	-	-	-	-	-

NOTE 1: Applicable when the lower edge of the assigned E-UTRA UL channel bandwidth frequency is larger than or equal to the upper edge of PHS band (1915.7 MHz) + 4 MHz + the channel BW assigned, where channel BW is as defined in subclause 5.6. A-MPR for

### Max power Results

#### LTE Band 2 Measured Results

BW (MHz)	Mode	RB Allocation	RB offset	Maximum Average Power (dBm)				
				Measured Pwr (dBm)			MPR	Tune-up Limit
				18700	18900	19100		
				1860 MHz	1880 MHz	1900 MHz		
20 MHz	QPSK	1	0	24.0	24.3	24.3	0.0	25
		1	49	24.0	24.2	24.3	0.0	25
		1	99	23.9	24.2	23.4	0.0	25
		50	0	22.9	23.1	23.1	1.0	24
		50	24	22.8	23.1	23.1	1.0	24
		50	50	22.8	23.1	23.2	1.0	24
		100	0	22.8	23.1	23.2	1.0	24
	16QAM	1	0	22.8	23.1	23.0	1.0	24
		1	49	22.8	23.0	23.0	1.0	24
		1	99	22.7	23.0	22.8	1.0	24
		50	0	22.0	22.3	22.2	2.0	23
		50	24	22.0	22.2	22.2	2.0	23
		50	50	21.9	22.2	22.3	2.0	23
		100	0	22.0	22.3	22.3	2.0	23
BW (MHz)	Mode	RB Allocation	RB offset	Measured Pwr (dBm)			MPR	Tune-up Limit
				18675	18900	19125		
				1857.5 MHz	1880 MHz	1902.5 MHz		
15 MHz	QPSK	1	0	23.9	24.4	24.3	0.0	25
		1	37	23.9	24.3	24.3	0.0	25
		1	74	23.8	24.2	23.7	0.0	25
		36	0	22.9	23.2	23.1	1.0	24
		36	20	22.9	23.1	23.2	1.0	24
		36	39	22.8	23.1	23.2	1.0	24
		75	0	22.9	23.1	23.1	1.0	24
	16QAM	1	0	22.8	23.1	23.0	1.0	24
		1	37	22.7	23.1	23.0	1.0	24
		1	74	22.7	23.0	23.1	1.0	24
		36	0	22.0	22.2	22.2	2.0	23
		36	20	22.0	22.2	22.2	2.0	23
		36	39	22.0	22.2	22.3	2.0	23
		75	0	22.0	22.2	22.3	2.0	23
BW (MHz)	Mode	RB Allocation	RB offset	Measured Pwr (dBm)			MPR	Tune-up Limit
				18650	18900	19150		
				1855 MHz	1880 MHz	1905 MHz		
10 MHz	QPSK	1	0	23.9	24.4	24.4	0.0	25
		1	25	24.0	24.4	24.4	0.0	25
		1	49	23.9	24.4	24.1	0.0	25
		25	0	22.8	23.1	23.1	1.0	24
		25	12	22.8	23.1	23.1	1.0	24
		25	25	22.8	23.1	23.2	1.0	24
		50	0	22.8	23.1	23.2	1.0	24
	16QAM	1	0	22.9	23.1	23.0	1.0	24
		1	25	22.9	23.0	23.0	1.0	24
		1	49	22.9	23.0	23.1	1.0	24
		25	0	22.0	22.3	22.3	2.0	23
		25	12	22.0	22.3	22.3	2.0	23
		25	25	22.0	22.3	22.3	2.0	23
		50	0	21.9	22.2	22.3	2.0	23

**LTE Band 2 Measured Results (continued)**

BW (MHz)	Mode	RB Allocation	RB offset	Maximum Average Power (dBm)				
				Measured Pwr (dBm)			MPR	Tune-up Limit
				18625	18900	19175		
				1852.5 MHz	1880 MHz	1907.5 MHz		
5 MHz	QPSK	1	0	23.9	24.3	24.5	0.0	25
		1	12	23.9	24.3	24.5	0.0	25
		1	24	23.9	24.3	24.5	0.0	25
		12	0	22.9	23.2	23.2	1.0	24
		12	7	22.9	23.2	23.3	1.0	24
		12	13	22.8	23.2	23.3	1.0	24
		25	0	22.8	23.2	23.3	1.0	24
	16QAM	1	0	22.6	22.9	23.3	1.0	24
		1	12	22.6	22.9	23.4	1.0	24
		1	24	22.6	22.9	23.4	1.0	24
		12	0	21.9	22.3	22.4	2.0	23
		12	7	21.9	22.3	22.4	2.0	23
		12	13	21.9	22.3	22.4	2.0	23
		25	0	22.0	22.3	22.4	2.0	23
BW (MHz)	Mode	RB Allocation	RB offset	Measured Pwr (dBm)			MPR	Tune-up Limit
				18615	18900	19185		
				1851.5 MHz	1880 MHz	1908.5 MHz		
3 MHz	QPSK	1	0	24.0	24.5	24.6	0.0	25
		1	8	24.0	24.5	24.5	0.0	25
		1	14	24.0	24.4	24.6	0.0	25
		8	0	22.9	23.3	23.3	1.0	24
		8	4	22.9	23.3	23.3	1.0	24
		8	7	22.9	23.3	23.3	1.0	24
		15	0	22.9	23.2	23.3	1.0	24
	16QAM	1	0	22.9	23.1	23.2	1.0	24
		1	8	22.9	23.2	23.3	1.0	24
		1	14	22.9	23.1	23.2	1.0	24
		8	0	22.1	22.4	22.4	2.0	23
		8	4	22.0	22.4	22.4	2.0	23
		8	7	22.1	22.4	22.4	2.0	23
		15	0	22.0	22.4	22.3	2.0	23
BW (MHz)	Mode	RB Allocation	RB offset	Measured Pwr (dBm)			MPR	Tune-up Limit
				18607	18900	19193		
				1850.7 MHz	1880 MHz	1909.3 MHz		
1.4 MHz	QPSK	1	0	24.2	24.6	24.6	0.0	25
		1	3	24.1	24.5	24.6	0.0	25
		1	5	24.1	24.6	24.7	0.0	25
		3	0	24.0	24.5	24.5	0.0	25
		3	1	24.0	24.5	24.5	0.0	25
		3	3	24.0	24.5	24.5	0.0	25
		6	0	23.1	23.4	23.5	1.0	24
	16QAM	1	0	22.8	23.2	23.2	1.0	24
		1	3	22.8	23.2	23.1	1.0	24
		1	5	22.9	23.3	23.3	1.0	24
		3	0	23.0	23.3	23.3	1.0	24
		3	1	23.0	23.2	23.3	1.0	24
		3	3	23.0	23.2	23.3	1.0	24
		6	0	22.2	22.4	22.6	2.0	23

**LTE Band 5 Measured Results**

BW (MHz)	Mode	RB Allocation	RB offset	Maximum Average Power (dBm)					MPR	Tune-up Limit	
				Measured Pwr (dBm)			20525	20625			20625
				826.5 MHz	836.5 MHz	846.5 MHz					
10 MHz	QPSK	1	0		24.7			0.0	25.5		
		1	25		24.7			0.0	25.5		
		1	49		24.6			0.0	25.5		
		25	0		23.6			1.0	24.5		
		25	12		23.6			1.0	24.5		
		25	25		23.6			1.0	24.5		
		50	0		23.6			1.0	24.5		
	16QAM	1	0		23.6			1.0	24.5		
		1	25		23.6			1.0	24.5		
		1	49		23.5			1.0	24.5		
		25	0		22.7			2.0	23.5		
		25	12		22.7			2.0	23.5		
		25	25		22.6			2.0	23.5		
		50	0		22.6			2.0	23.5		
BW (MHz)	Mode	RB Allocation	RB offset	Measured Pwr (dBm)			MPR	Tune-up Limit			
				20425	20525	20625					
				826.5 MHz	836.5 MHz	846.5 MHz					
5 MHz	QPSK	1	0	24.4	24.6	23.8	0.0	25.5			
		1	12	24.4	24.6	23.8	0.0	25.5			
		1	24	24.3	24.6	23.8	0.0	25.5			
		12	0	23.4	23.6	22.8	1.0	24.5			
		12	7	23.4	23.6	22.8	1.0	24.5			
		12	13	23.4	23.6	22.8	1.0	24.5			
		25	0	23.4	23.6	22.8	1.0	24.5			
	16QAM	1	0	23.4	23.5	22.8	1.0	24.5			
		1	12	23.3	23.4	22.7	1.0	24.5			
		1	24	23.3	23.4	22.8	1.0	24.5			
		12	0	22.4	22.6	21.9	2.0	23.5			
		12	7	22.3	22.6	21.8	2.0	23.5			
		12	13	22.3	22.6	21.9	2.0	23.5			
		25	0	22.4	22.7	21.9	2.0	23.5			

**LTE Band 5 Measured Results (Continued)**

BW (MHz)	Mode	RB Allocation	RB offset	Measured Pw r (dBm)			MPR	Tune-up Limit
				20415	20525	20635		
				825.5 MHz	836.5 MHz	847.5 MHz		
3 MHz	QPSK	1	0	24.2	24.7	23.5	0.0	25.5
		1	8	24.2	24.7	23.5	0.0	25.5
		1	14	24.1	24.7	23.6	0.0	25.5
		8	0	23.2	23.6	22.5	1.0	24.5
		8	4	23.2	23.7	22.5	1.0	24.5
		8	7	23.2	23.6	22.5	1.0	24.5
		15	0	23.2	23.6	22.5	1.0	24.5
	16QAM	1	0	23.3	23.7	22.4	1.0	24.5
		1	8	23.2	23.6	22.3	1.0	24.5
		1	14	23.3	23.7	22.3	1.0	24.5
		8	0	22.3	22.7	21.5	2.0	23.5
		8	4	22.3	22.7	21.5	2.0	23.5
		8	7	22.3	22.6	21.5	2.0	23.5
		15	0	22.2	22.6	21.5	2.0	23.5
BW (MHz)	Mode	RB Allocation	RB offset	Measured pw r (dBm)			MPR	Tune-up Limit
				20407	20525	20643		
				824.7 MHz	836.5 MHz	848.3 MHz		
1.4 MHz	QPSK	1	0	23.9	24.5	23.2	0.0	25.5
		1	3	24.0	24.5	23.2	0.0	25.5
		1	5	24.0	24.5	23.2	0.0	25.5
		3	0	24.0	24.6	23.2	0.0	25.5
		3	1	24.0	24.6	23.2	0.0	25.5
		3	3	24.0	24.6	23.2	0.0	25.5
		6	0	23.0	23.6	22.2	1.0	24.5
	16QAM	1	0	22.8	23.5	22.1	1.0	24.5
		1	3	22.8	23.3	22.1	1.0	24.5
		1	5	22.9	23.5	22.2	1.0	24.5
		3	0	23.0	23.6	22.3	1.0	24.5
		3	1	23.1	23.6	22.3	1.0	24.5
		3	3	23.0	23.5	22.3	1.0	24.5
		6	0	22.1	22.5	21.3	2.0	23.5

**Note(s):**

10 MHz Bandwidths does not support at least three non-overlapping channels in certain channel bandwidths. When a device supports overlapping channel assignment in a channel bandwidth configuration, the middle channel of the group of overlapping channels should be selected for testing per KDB 941225 D05 SAR for LTE Devices

**LTE Band 17 Measured Results**

BW (MHz)	Mode	RB Allocation	RB offset	Maximum Average Power (dBm)			
				Measured Pwr (dBm)		MPR	Tune-up Limit
				23790	710 MHz		
10 MHz	QPSK	1	0	24.4		0.0	25.5
		1	25	24.3		0.0	25.5
		1	49	24.3		0.0	25.5
		25	0	23.2		1.0	24.5
		25	12	23.2		1.0	24.5
		25	25	23.2		1.0	24.5
		50	0	23.2		1.0	24.5
	16QAM	1	0	23.1		1.0	24.5
		1	25	23.1		1.0	24.5
		1	49	23.0		1.0	24.5
		25	0	22.3		2.0	23.5
		25	12	22.2		2.0	23.5
		25	25	22.2		2.0	23.5
		50	0	22.2		2.0	23.5
BW (MHz)	Mode	RB Allocation	RB offset	Measured Pwr (dBm)			
				Measured Pwr (dBm)		MPR	Tune-up Limit
				23790	710 MHz		
5 MHz	QPSK	1	0	24.2		0.0	25.5
		1	12	24.2		0.0	25.5
		1	24	24.2		0.0	25.5
		12	0	23.2		1.0	24.5
		12	7	23.2		1.0	24.5
		12	13	23.2		1.0	24.5
		25	0	23.2		1.0	24.5
	16QAM	1	0	22.9		1.0	24.5
		1	12	22.9		1.0	24.5
		1	24	22.9		1.0	24.5
		12	0	22.3		2.0	23.5
		12	7	22.3		2.0	23.5
		12	13	22.2		2.0	23.5
		25	0	22.3		2.0	23.5

**Note(s):**  
 10 MHz and 5 MHz Bandwidths do not support at least three non-overlapping channels in certain channel bandwidths. When a device supports overlapping channel assignment in a channel bandwidth configuration, the middle channel of the group of overlapping channels should be selected for testing per KDB 941225 D05 SAR for LTE Devices

### Reduced power Results

#### LTE Band 2 Measured Results

BW (MHz)	Mode	RB Allocation	RB offset	Reduced Average Power(dBm)					Reduced Average Power(dBm)				
				Hotspot back-off			MPR	Tune-up Limit	Proximity sensor back-off			MPR	Tune-up Limit
				Measured Pwr (dBm)					Measured Pwr (dBm)				
				18700	18900	19100			18700	18900	19100		
1860 MHz	1880 MHz	1900 MHz	1860 MHz	1880 MHz	1900 MHz								
20 MHz	QPSK	1	0	21.0	21.4	21.5	0.0	22	21.0	21.4	21.4	0.0	22
		1	49	21.0	21.3	21.5	0.0	22	21.0	21.3	21.4	0.0	22
		1	99	20.9	21.3	21.5	0.0	22	20.9	21.3	21.4	0.0	22
		50	0	21.0	21.3	21.3	0.0	22	21.0	21.3	21.3	0.0	22
		50	24	20.9	21.2	21.3	0.0	22	20.9	21.2	21.3	0.0	22
		50	50	20.9	21.2	21.3	0.0	22	20.9	21.2	21.3	0.0	22
	16QAM	100	0	20.9	21.2	21.3	0.0	22	20.9	21.2	21.3	0.0	22
		1	0	20.8	21.3	21.3	0.0	22	20.8	21.2	21.1	0.0	22
		1	49	20.8	21.2	21.3	0.0	22	20.8	21.2	21.2	0.0	22
		1	99	20.7	21.2	21.4	0.0	22	20.7	21.1	21.3	0.0	22
		50	0	21.0	21.3	21.2	0.0	22	21.0	21.3	21.2	0.0	22
		50	24	21.0	21.3	21.2	0.0	22	20.9	21.2	21.2	0.0	22
15 MHz	QPSK	50	50	20.9	21.2	21.3	0.0	22	20.9	21.2	21.3	0.0	22
		1	0	21.0	21.3	21.3	0.0	22	21.0	21.3	21.3	0.0	22
		1	37	21.0	21.3	21.3	0.0	22	21.0	21.3	21.3	0.0	22
		1	74	20.9	21.2	21.4	0.0	22	20.9	21.2	21.4	0.0	22
		36	0	20.9	21.3	21.2	0.0	22	20.9	21.2	21.2	0.0	22
		36	20	20.9	21.2	21.2	0.0	22	20.9	21.2	21.3	0.0	22
	16QAM	36	39	20.9	21.2	21.3	0.0	22	20.9	21.2	21.3	0.0	22
		75	0	20.9	21.3	21.3	0.0	22	20.9	21.2	21.3	0.0	22
		1	0	20.9	21.2	21.3	0.0	22	20.9	21.4	21.3	0.0	22
		1	37	20.9	21.1	21.3	0.0	22	20.9	21.3	21.3	0.0	22
		1	74	20.8	21.1	21.4	0.0	22	20.8	21.2	21.5	0.0	22
		36	0	21.0	21.3	21.2	0.0	22	21.0	21.3	21.2	0.0	22
10 MHz	QPSK	36	20	21.0	21.2	21.2	0.0	22	21.0	21.3	21.2	0.0	22
		36	39	21.0	21.2	21.3	0.0	22	21.0	21.2	21.3	0.0	22
		75	0	20.9	21.2	21.3	0.0	22	20.9	21.3	21.3	0.0	22
		1	0	20.9	21.3	21.3	0.0	22	20.9	21.2	21.2	0.0	22
		1	25	20.9	21.3	21.4	0.0	22	20.9	21.3	21.3	0.0	22
		1	49	20.9	21.2	21.5	0.0	22	20.9	21.3	21.4	0.0	22
	16QAM	25	0	20.9	21.2	21.2	0.0	22	20.9	21.2	21.2	0.0	22
		25	12	20.9	21.2	21.2	0.0	22	20.9	21.2	21.2	0.0	22
		25	25	20.9	21.2	21.2	0.0	22	20.9	21.2	21.2	0.0	22
		50	0	20.9	21.2	21.2	0.0	22	20.8	21.2	21.2	0.0	22
		1	0	21.0	21.1	21.1	0.0	22	20.9	21.2	21.0	0.0	22
		1	25	21.0	21.1	21.1	0.0	22	20.9	21.2	21.1	0.0	22
10 MHz	16QAM	1	49	21.0	21.1	21.2	0.0	22	20.8	21.2	21.2	0.0	22
		25	0	21.0	21.3	21.2	0.0	22	21.0	21.3	21.2	0.0	22
		25	12	21.0	21.3	21.2	0.0	22	20.9	21.3	21.2	0.0	22
		25	25	21.0	21.3	21.3	0.0	22	20.9	21.2	21.3	0.0	22
		50	0	20.9	21.3	21.2	0.0	22	20.9	21.2	21.2	0.0	22
		50	0	20.9	21.3	21.2	0.0	22	20.9	21.2	21.2	0.0	22



**LTE Band 2 Measured Results (continued)**

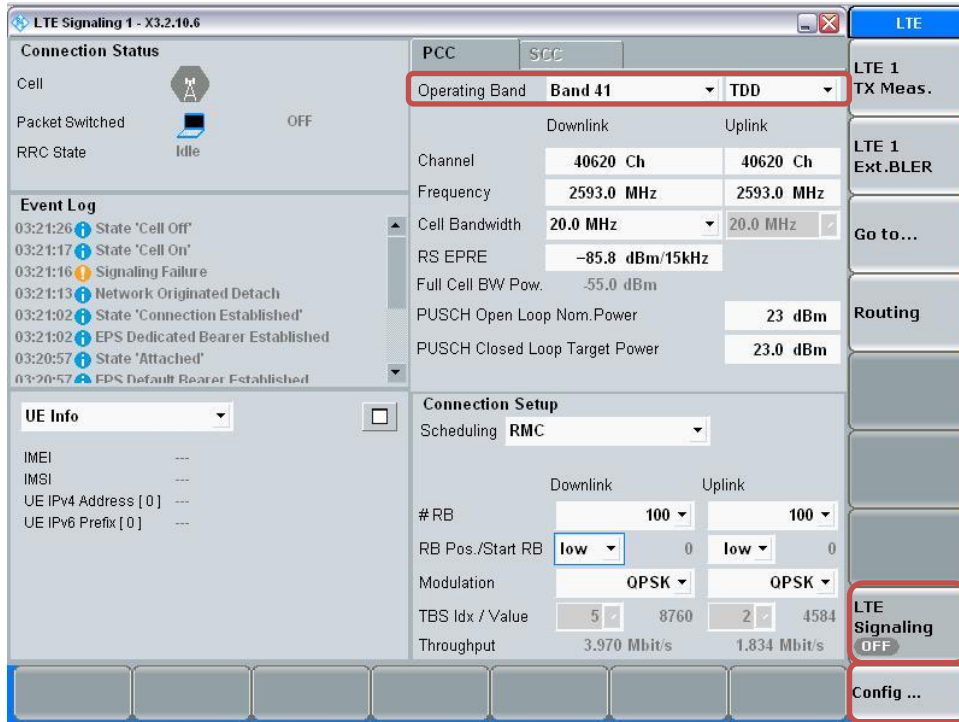
BW (MHz)	Mode	RB Allocation	RB offset	Reduced Average Power(dBm) Hotspot back-off					Reduced Average Power(dBm) Proximity sensor back-off				
				Measured Pw r (dBm)			MPR	Tune-up Limit	Measured Pw r (dBm)			MPR	Tune-up Limit
				18625	18900	19175			18625	18900	19175		
				1852.5 MHz	1880 MHz	1907.5 MHz			1852.5 MHz	1880 MHz	1907.5 MHz		
5 MHz	QPSK	1	0	20.9	21.3	21.3	0.0	22	20.9	21.3	21.2	0.0	22
		1	12	20.8	21.2	21.3	0.0	22	20.9	21.2	21.3	0.0	22
		1	24	20.8	21.2	21.4	0.0	22	20.9	21.2	21.3	0.0	22
		12	0	20.9	21.3	21.3	0.0	22	20.8	21.2	21.2	0.0	22
		12	7	20.9	21.2	21.3	0.0	22	20.8	21.2	21.2	0.0	22
		12	13	20.9	21.2	21.3	0.0	22	20.8	21.2	21.3	0.0	22
	16QAM	25	0	20.8	21.2	21.3	0.0	22	20.8	21.2	21.2	0.0	22
		1	0	20.7	21.0	21.2	0.0	22	20.6	21.1	21.2	0.0	22
		1	12	20.7	21.0	21.2	0.0	22	20.6	21.1	21.3	0.0	22
		1	24	20.7	21.0	21.3	0.0	22	20.6	21.1	21.4	0.0	22
		12	0	20.9	21.3	21.3	0.0	22	20.9	21.2	21.1	0.0	22
		12	7	20.9	21.2	21.3	0.0	22	20.9	21.2	21.2	0.0	22
		12	13	20.9	21.3	21.3	0.0	22	20.9	21.2	21.2	0.0	22
		25	0	20.9	21.3	21.3	0.0	22	20.9	21.2	21.2	0.0	22
BW (MHz)	Mode	RB Allocation	RB offset	Measured Pw r (dBm)					Measured Pw r (dBm)				
				18615	18900	19185	MPR	Tune-up Limit	18615	18900	19185	MPR	Tune-up Limit
				1851.5 MHz	1880 MHz	1908.5 MHz			1851.5 MHz	1880 MHz	1908.5 MHz		
				1851.5 MHz	1880 MHz	1908.5 MHz			1851.5 MHz	1880 MHz	1908.5 MHz		
3 MHz	QPSK	1	0	20.8	21.2	21.2	0.0	22	20.8	21.2	21.2	0.0	22
		1	8	20.8	21.2	21.3	0.0	22	20.8	21.2	21.3	0.0	22
		1	14	20.8	21.3	21.3	0.0	22	20.8	21.2	21.3	0.0	22
		8	0	20.9	21.3	21.3	0.0	22	20.8	21.2	21.2	0.0	22
		8	4	20.9	21.3	21.3	0.0	22	20.8	21.2	21.2	0.0	22
		8	7	20.9	21.3	21.3	0.0	22	20.8	21.2	21.2	0.0	22
		15	0	20.8	21.2	21.2	0.0	22	20.8	21.2	21.2	0.0	22
	16QAM	1	0	20.8	21.2	21.2	0.0	22	20.8	21.1	21.0	0.0	22
		1	8	20.8	21.2	21.1	0.0	22	20.8	21.0	21.1	0.0	22
		1	14	20.8	21.2	21.1	0.0	22	20.7	21.1	21.0	0.0	22
		8	0	20.9	21.3	21.2	0.0	22	20.9	21.3	21.2	0.0	22
		8	4	20.9	21.3	21.3	0.0	22	20.9	21.3	21.2	0.0	22
		8	7	20.9	21.3	21.3	0.0	22	20.9	21.3	21.2	0.0	22
		15	0	20.9	21.3	21.2	0.0	22	20.8	21.2	21.1	0.0	22
BW (MHz)	Mode	RB Allocation	RB offset	Measured Pw r (dBm)					Measured Pw r (dBm)				
				18607	18900	19193	MPR	Tune-up Limit	18607	18900	19193	MPR	Tune-up Limit
				1850.7 MHz	1880 MHz	1909.3 MHz			1850.7 MHz	1880 MHz	1909.3 MHz		
				1850.7 MHz	1880 MHz	1909.3 MHz			1850.7 MHz	1880 MHz	1909.3 MHz		
1.4 MHz	QPSK	1	0	20.9	21.2	21.1	0.0	22	20.8	21.1	21.2	0.0	22
		1	3	20.9	21.2	21.1	0.0	22	20.9	21.1	21.2	0.0	22
		1	5	20.9	21.2	21.2	0.0	22	20.8	21.2	21.3	0.0	22
		3	0	20.8	21.1	21.1	0.0	22	20.8	21.1	21.1	0.0	22
		3	1	20.8	21.2	21.1	0.0	22	20.8	21.2	21.1	0.0	22
		3	3	20.8	21.2	21.1	0.0	22	20.8	21.2	21.2	0.0	22
		6	0	20.9	21.2	21.2	0.0	22	20.8	21.2	21.2	0.0	22
	16QAM	1	0	21.0	21.2	21.0	0.0	22	20.9	21.2	21.0	0.0	22
		1	3	20.8	21.1	21.1	0.0	22	20.9	21.1	21.1	0.0	22
		1	5	20.8	21.2	21.1	0.0	22	20.9	21.1	21.0	0.0	22
		3	0	20.9	21.1	21.1	0.0	22	20.8	21.2	21.1	0.0	22
		3	1	20.9	21.1	21.1	0.0	22	20.8	21.2	21.2	0.0	22
		3	3	20.9	21.1	21.1	0.0	22	20.8	21.2	21.1	0.0	22
		6	0	21.0	21.3	21.1	0.0	22	20.9	21.1	21.3	0.0	22

**LTE Band TDD Measured Results**

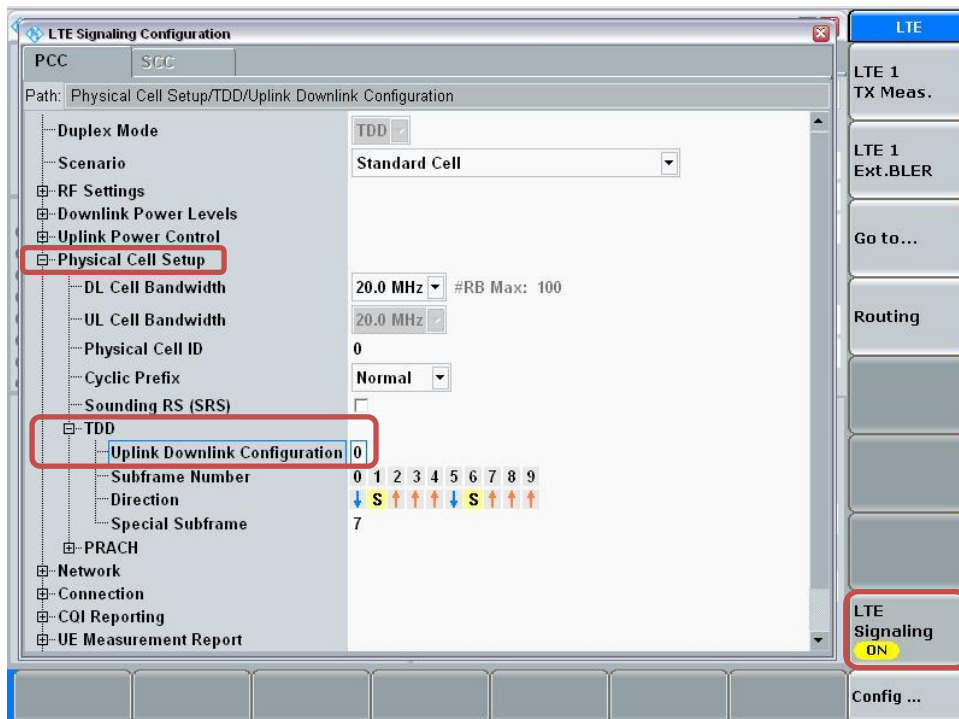
**Procedure used to establish SAR test signal for LTE TDD Band**

Set to CMW-500 with following parameters:

- Turn the LTE Signaling off using “ON | OFF” key
- Operating Band: Select Band 41 and TDD
- Go to “Config...”

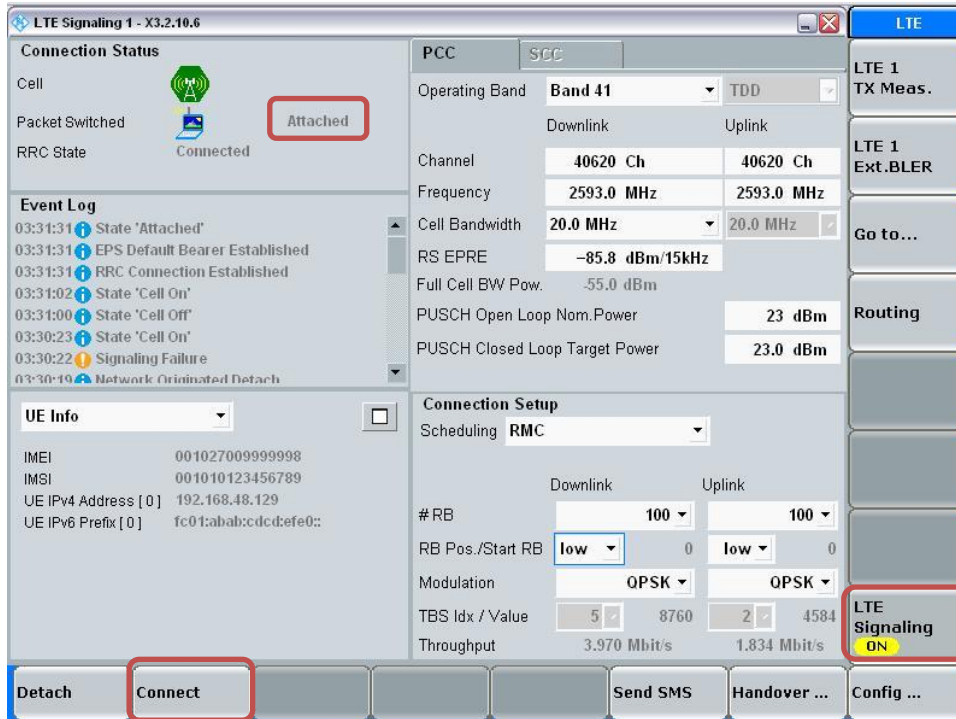


- Go to “Physical Cell Setup”
- Select “TDD” and Set “Uplink Downlink Configuration” to “0” (Uplink Downlink Configuration “0” for Power class 3, Uplink Downlink Configuration “1” for Power class 2.)
- Turn the cell on using “ON | OFF” key



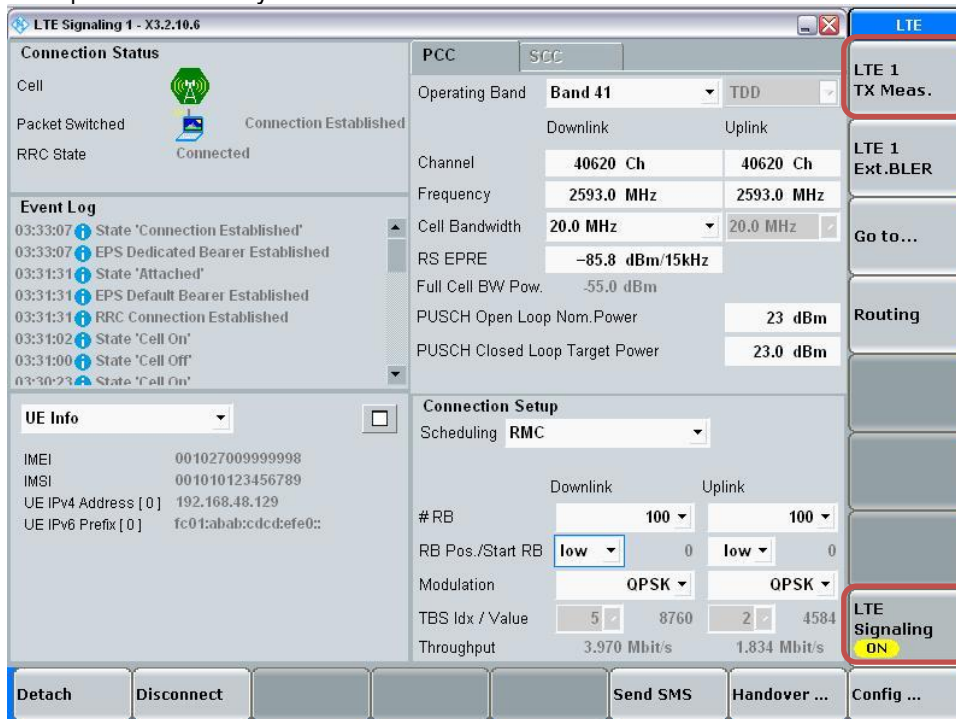
**Connect to EUT**

- Turn the cell on using “ON | OFF” key
- After EUT is Attached
- Select “Connect”

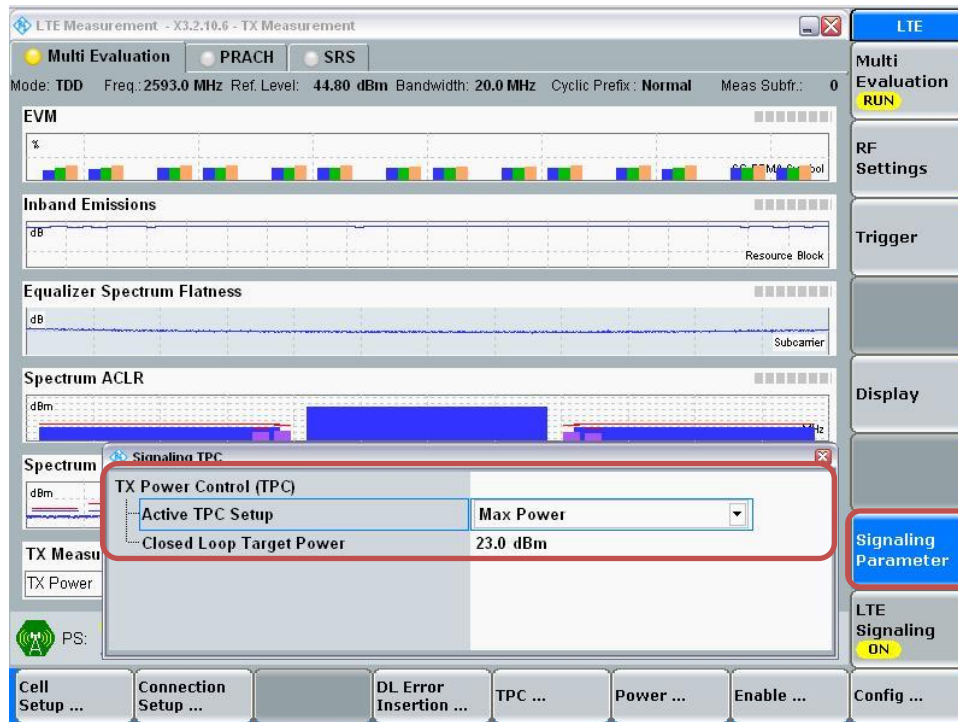


**Max Power Setting**

- Select “LTE 1 TX Meas.”
- Press “RESTART | STOP” Soft key



- Select “Signaling Parameter”
- Select “TX Power Control (TPC)” > Select “Active TPC Setup” to “Max Power” > Set “Closed Loop Target Power” to “23 dBm”



**View TX Power**

- Go to “Display”
- Select “Select View...”
- Select “Spectrum Emission Mask”



**LTE Band 41 Measured Results**

BW (MHz)	Mode	RB Allocation	RB offset	Maximum Average Power (dBm)							MPR	Tune-up Limit
				Measured Pw r (dBm)								
				39750	40185	40620	41055	41490				
				2506 MHz	2549.5 MHz	2593 MHz	2636.5 MHz	2680 MHz				
20 MHz	QPSK	1	0	23.5	23.1	23.1	23.6	23.9	0.0	25.0		
		1	49	23.4	23.0	23.2	23.6	23.8	0.0	25.0		
		1	99	23.4	22.7	23.3	23.4	23.3	0.0	25.0		
		50	0	22.5	22.1	22.2	22.6	22.8	1.0	24.0		
		50	24	22.5	22.0	22.2	22.5	22.7	1.0	24.0		
		50	50	22.5	21.9	22.1	22.5	22.6	1.0	24.0		
	16QAM	100	0	22.5	22.0	22.1	22.5	22.7	1.0	24.0		
		1	0	22.4	22.1	22.0	22.6	22.6	1.0	24.0		
		1	49	22.4	21.9	21.8	22.5	22.6	1.0	24.0		
		1	99	22.2	22.0	21.8	22.4	22.7	1.0	24.0		
		50	0	21.4	21.0	21.2	21.6	21.7	2.0	23.0		
		50	24	21.4	20.9	21.2	21.6	21.6	2.0	23.0		
		50	50	21.4	20.8	21.1	21.5	21.6	2.0	23.0		
		100	0	21.4	20.9	21.2	21.6	21.7	2.0	23.0		
15 MHz	QPSK	1	0	23.5	23.1	23.2	23.6	23.9	0.0	25.0		
		1	37	23.5	23.0	23.2	23.6	23.8	0.0	25.0		
		1	74	23.5	22.8	23.2	23.5	23.6	0.0	25.0		
		36	0	22.6	22.2	22.2	22.6	22.8	1.0	24.0		
		36	20	22.6	22.1	22.2	22.6	22.8	1.0	24.0		
		36	39	22.6	22.0	22.2	22.5	22.7	1.0	24.0		
		75	0	22.6	22.1	22.2	22.6	22.8	1.0	24.0		
	16QAM	1	0	22.5	22.0	21.9	22.5	22.6	1.0	24.0		
		1	37	22.1	21.7	21.7	22.5	22.6	1.0	24.0		
		1	74	22.1	21.6	21.7	22.0	22.2	1.0	24.0		
		36	0	21.5	21.0	21.2	21.7	21.8	2.0	23.0		
		36	20	21.5	21.0	21.2	21.6	21.8	2.0	23.0		
		36	39	21.5	20.9	21.1	21.6	21.7	2.0	23.0		
		75	0	21.5	20.9	21.2	21.6	21.7	2.0	23.0		
10 MHz	QPSK	1	0	23.5	23.0	23.2	23.6	23.9	0.0	25.0		
		1	25	23.5	23.0	23.2	23.6	23.8	0.0	25.0		
		1	49	23.4	22.9	23.1	23.5	23.6	0.0	25.0		
		25	0	22.5	22.1	22.2	22.6	22.7	1.0	24.0		
		25	12	22.5	22.1	22.1	22.5	22.7	1.0	24.0		
		25	25	22.5	22.0	22.1	22.5	22.7	1.0	24.0		
		50	0	22.5	22.0	22.1	22.5	22.7	1.0	24.0		
	16QAM	1	0	22.6	21.7	21.9	22.6	22.4	1.0	24.0		
		1	25	22.6	21.6	21.9	22.6	22.4	1.0	24.0		
		1	49	22.5	21.6	21.9	22.5	22.3	1.0	24.0		
		25	0	21.5	21.0	21.2	21.6	21.8	2.0	23.0		
		25	12	21.5	20.9	21.1	21.6	21.7	2.0	23.0		
		25	25	21.4	20.9	21.1	21.5	21.7	2.0	23.0		
		50	0	21.5	20.9	21.1	21.6	21.7	2.0	23.0		
5 MHz	QPSK	1	0	23.4	23.0	23.1	23.5	23.8	0.0	25.0		
		1	12	23.5	23.0	23.1	23.5	23.8	0.0	25.0		
		1	24	23.5	22.9	23.1	23.5	23.7	0.0	25.0		
		12	0	22.6	22.1	22.1	22.6	22.7	1.0	24.0		
		12	7	22.6	22.0	22.1	22.5	22.7	1.0	24.0		
		12	13	22.6	22.0	22.1	22.5	22.7	1.0	24.0		
		25	0	22.6	22.0	22.1	22.5	22.7	1.0	24.0		
	16QAM	1	0	22.3	21.7	21.9	22.3	22.4	1.0	24.0		
		1	12	22.3	21.7	21.9	22.4	22.3	1.0	24.0		
		1	24	22.3	21.7	21.9	22.3	22.2	1.0	24.0		
		12	0	21.5	20.9	21.1	21.6	21.6	2.0	23.0		
		12	7	21.5	20.9	21.0	21.6	21.6	2.0	23.0		
		12	13	21.5	20.9	21.0	21.5	21.6	2.0	23.0		
		25	0	21.5	21.0	21.2	21.6	21.7	2.0	23.0		



### 9.4. Wi-Fi 2.4 GHz (DTS Band)

#### Measured Results (Max power)

Band (GHz)	Mode	Data Rate	Ch #	Freq. (MHz)	Avg Pwr (dBm)	Max Output Power (dBm)	SAR Test (Yes/No)
2.4	802.11b	1 Mbps	1	2412	16.5	18.0	Yes
			6	2437	16.7		
			11	2462	16.8		
			12	2467	16.5	17.0	
			13	2472	15.2		
	802.11g	6 Mbps	1	2412	Not Required	17.0	No
			6	2437			
			11	2462			
			12	2467		12.5	
			13	2472		10.0	
	802.11n (HT20)	6.5 Mbps	1	2412	Not Required	17.0	No
			6	2437		16.0	
			11	2462			
			12	2467			
			13	2472		7.0	

#### Measured Results (Reduced power)

Band (GHz)	Mode	Data Rate	Ch #	Freq. (MHz)	Avg Pwr (dBm)	Max Output Power (dBm)	SAR Test (Yes/No)
2.4	802.11b	1 Mbps	1	2412	11.1	12.0	Yes
			6	2437	11.2		
			11	2462	11.4		
			12	2467	7.0	8.0	
			13	2472	6.6		
	802.11g	6 Mbps	1	2412	11.4	12.0	No
			6	2437	11.7		
			11	2462	10.9		
			12	2467	7.0	8.0	
			13	2472	7.5		
	802.11n (HT20)	6.5 Mbps	1	2412	11.3	12.0	No
			6	2437	11.6		
			11	2462	10.7		
			12	2467	Not Required	6.0	
			13	2472			

#### Note(s):

- SAR is not required for 802.11g/n modes when the adjusted SAR for 802.11b is < 1.2 W/kg.
- For "Not required", SAR Test reduction was applied from KDB 248227 guidance, Sec. 2.1, b), 1) when the same maximum power is specified for multiple transmission modes in a frequency band, the largest channel bandwidth, lowest order modulation, lowest data rate and lowest order 802.11a/g/n/ac mode is used for SAR measurement, on the highest measured output power channel in the initial test configuration, for each frequency band. Additional output power measurements were not deemed necessary.
- Additionally, SAR is not required for Channels 12 and 13 because the tune-up limit and the measured output power for these two channels are no greater than those for the default test channels. Refer to §6.3.

### 9.5. Bluetooth

#### Average Power Measured Results

Band (GHz)	Mode	Ch #	Freq. (MHz)	Meas. Avg Pwr (dBm)	Tune-up Limit
2.4	GFSK	0	2402	9.0	10.0
		39	2441	9.3	
		78	2480	8.2	
	EDR, 8-DPSK	0	2402	7.4	
		39	2441	7.8	
		78	2480	6.9	
	LE, GFSK, 1Mbps	0	2402	4.9	6.0
		19	2440	5.5	
		39	2480	5.0	
	LE, GFSK, 2Mbps	0	2402	4.7	
		19	2440	5.3	
		39	2480	4.8	

**Note(s):**

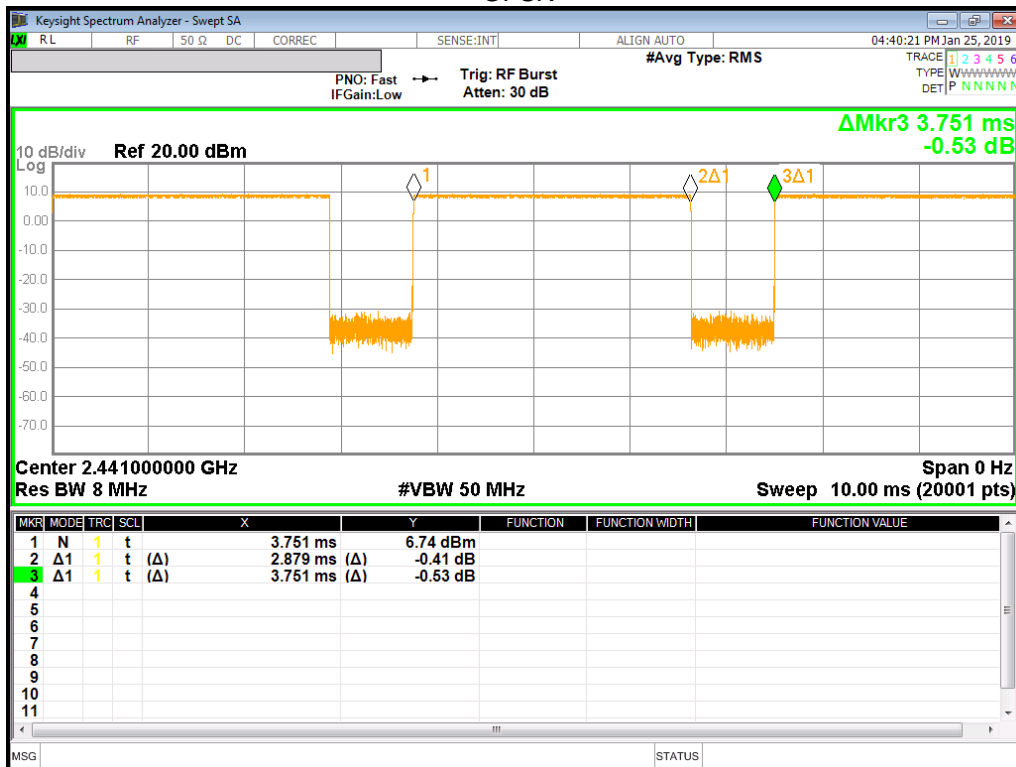
SAR test is evaluated at GFSK mode in Bluetooth

#### Duty Factor Measured Results

Mode	Type	T on (ms)	Period (ms)	Duty Cycle	Crest Factor (1/duty cycle)
GFSK	DH5	2.879	3.751	76.8%	1.30

### Duty Cycle plots

#### GFSK



## 10. Measured and Reported (Scaled) SAR Results

### SAR Test Reduction criteria are as follows:

Reported SAR(W/kg) for WWAN= Measured SAR \*Tune-up Scaling Factor

Reported SAR(W/kg) for Wi-Fi and Bluetooth= Measured SAR \* Tune-up scaling factor \* Duty Cycle scaling factor

### KDB 447498 D01 General RF Exposure Guidance:

Testing of other required channels within the operating mode of a frequency band is not required when the reported 1-g or 10-g SAR for the mid-band or highest output power channel is:

- $\leq 0.8$  W/kg or 2.0 W/kg, for 1-g or 10-g respectively, when the transmission band is  $\leq 100$  MHz
- $\leq 0.6$  W/kg or 1.5 W/kg, for 1-g or 10-g respectively, when the transmission band is between 100 MHz and 200 MHz
- $\leq 0.4$  W/kg or 1.0 W/kg, for 1-g or 10-g respectively, when the transmission band is  $\geq 200$  MHz

### KDB 648474 D04 Handset SAR:

With headset attached, when the reported SAR for body-worn accessory, measured without a headset connected to the handset, is  $> 1.2$  W/kg, the highest reported SAR configuration for that wireless mode and frequency band should be repeated for that body-worn accessory with a headset attached to the handset.

### KDB 648474 D04 Handset SAR (Phablet Only):

When hotspot mode does not apply, 10-g Extremity SAR is required for all surfaces and edges with an antenna located at  $\leq 25$  mm from that surface or edge in direct contact with a flat phantom, to address interactive hand use exposure conditions. When hotspot mode applies, 10-g extremity SAR is required only for the surfaces and edges with hotspot mode 1-g reported SAR  $> 1.2$  W/kg .

Additional 1-g SAR testing at 5 mm is not required when hotspot mode 10-g extremity SAR is not required for the surfaces and edges; since all 1-g reported SAR  $< 1.2$  W/kg.

### KDB 941225 D01 SAR test for 3G devices:

When the maximum output power and tune-up tolerance specified for production units in a secondary mode is  $\leq \frac{1}{4}$  dB higher than the primary mode or when the highest reported SAR of the primary mode is scaled by the ratio of specified maximum output power and tune-up tolerance of secondary to primary mode and the adjusted SAR is  $\leq 1.2$  W/kg, SAR measurement is not required for the secondary mode.

### KDB 941225 D05 SAR for LTE Devices:

SAR test reduction is applied using the following criteria:

- Start with the largest channel bandwidth and measure SAR for QPSK with 1 RB, and 50% RB allocation, using the RB offset and required test channel combination with the highest maximum output power among RB offsets at the upper edge, middle and lower edge of each required test channel.
- When the reported SAR is  $> 0.8$  W/kg, testing for other Channels is performed at the highest output power level for 1RB, and 50% RB configuration for that channel.
- Testing for 100% RB configuration is performed at the highest output power level for 100% RB configuration across the Low, Mid and High Channel when the highest reported SAR for 1 RB and 50% RB are  $> 0.8$  W/kg. Testing for the remaining required channels is not needed because the reported SAR for 100% RB Allocation  $< 1.45$  W/kg.
- Testing for 16-QAM modulation is not required because the reported SAR for QPSK is  $< 1.45$  W/Kg and its output power is not more than 0.5 dB higher than that of QPSK.
- Testing for the other channel bandwidths is not required because the reported SAR for the highest channel bandwidth is  $< 1.45$  W/Kg and its output power is not more than 0.5 dB higher than that of the highest channel bandwidth.
- For LTE bands that do not support at least three non-overlapping channels in certain channel bandwidths, test the available non-overlapping channels instead. When a device supports overlapping channel assignment in a channel bandwidth configuration, the middle channel of the group of overlapping channels should be selected for testing; therefore, the requirement for H, M and L channels may not fully apply.



**KDB 248227 D01 SAR meas for 802.11:**

SAR test reduction for 802.11 Wi-Fi transmission mode configurations are considered separately for DSSS and OFDM. An initial test position is determined to reduce the number of tests required for certain exposure configurations with multiple test positions. An initial test configuration is determined for each frequency band and aggregated band according to maximum output power, channel bandwidth, wireless mode configurations and other operating parameters to streamline the measurement requirements. For 2.4 GHz DSSS, either the initial test position or DSSS procedure is applied to reduce the number of SAR tests; these are mutually exclusive. For OFDM, an initial test position is only applicable to next to the ear, UMPC mini-tablet and hotspot mode configurations, which is tested using the initial test configuration to facilitate test reduction. For other exposure conditions with a fixed test position, SAR test reduction is determined using only the initial test configuration.

The multiple test positions require SAR measurements in head, hotspot mode or UMPC mini-tablet configurations may be reduced according to the highest reported SAR determined using the initial test position(s) by applying the DSSS or OFDM SAR measurement procedures in the required wireless mode test configuration(s). The initial test position(s) is measured using the highest measured maximum output power channel in the required wireless mode test configuration(s). When the reported SAR for the initial test position is:

- $\leq 0.4$  W/kg, further SAR measurement is not required for the other test positions in that exposure configuration and wireless mode combination within the frequency band or aggregated band. DSSS and OFDM configurations are considered separately according to the required SAR procedures.
- $> 0.4$  W/kg, SAR is repeated using the same wireless mode test configuration tested in the initial test position to measure the subsequent next closet/smallest test separation distance and maximum coupling test position, on the highest maximum output power channel, until the reported SAR is  $\leq 0.8$  W/kg or all required test positions are tested.
  - For subsequent test positions with equivalent test separation distance or when exposure is dominated by coupling conditions, the position for maximum coupling condition should be tested.
  - When it is unclear, all equivalent conditions must be tested.
- For all positions/configurations tested using the initial test position and subsequent test positions, when the reported SAR is  $> 0.8$  W/kg, measure the SAR for these positions/configurations on the subsequent next highest measured output power channel(s) until the reported SAR is  $\leq 1.2$  W/kg or all required test channels are considered.
  - The additional power measurements required for this step should be limited to those necessary for identifying subsequent highest output power channels to apply the test reduction.
- When the specified maximum output power is the same for both UNII 1 and UNII 2A, begin SAR measurements in UNII 2A with the channel with the highest measured output power. If the reported SAR for UNII 2A is  $\leq 1.2$  W/kg, SAR is not required for UNII 1; otherwise treat the remaining bands separately and test them independently for SAR.
- When the specified maximum output power is different between UNII 1 and UNII 2A, begin SAR with the band that has the higher specified maximum output. If the highest reported SAR for the band with the highest specified power is  $\leq 1.2$  W/kg, testing for the band with the lower specified output power is not required; otherwise test the remaining bands independently for SAR.

To determine the initial test position, Area Scans were performed to determine the position with the *Maximum Value of SAR (measured)*. The position that produced the highest *Maximum Value of SAR* is considered the worst case position; thus used as the initial test position.

### 10.1. GSM 1900

Antenna	RF Exposure Conditions	Mode	PWR Back-off	Dist. (mm)	Test Position	Ch #.	Freq. (MHz)	Power (dBm)		1-g SAR (W/kg)		Plot No.
								Tune-up limit	Meas.	Meas.	Scaled	
Main Ant.1	Head	Voice	Off	0	Left Touch	810	1909.8	30.5	29.4	0.158	0.204	1
					Left Tilt	810	1909.8	30.5	29.4	0.106	0.137	
					Right Touch	810	1909.8	30.5	29.4	0.087	0.113	
					Right Tilt	810	1909.8	30.5	29.4	0.079	0.102	
	Body-worn	GPRS 3 Slots	Off	15	Rear	810	1909.8	26.5	25.8	0.131	0.152	2
					Front	810	1909.8	26.5	25.8	0.111	0.129	
	Hotspot	GPRS 3 Slots	Off	10	Rear	810	1909.8	26.5	25.8	0.262	0.305	3
					Front	810	1909.8	26.5	25.8	0.201	0.234	
					Edge 2	810	1909.8	26.5	25.8	0.078	0.091	
					Edge 3	810	1909.8	26.5	25.8	0.246	0.286	
					Edge 4	810	1909.8	26.5	25.8	0.204	0.237	

### 10.2. W-CDMA Band II

Antenna	RF Exposure Conditions	Mode	PWR Back-off	Dist. (mm)	Test Position	Ch #.	Freq. (MHz)	Power (dBm)		1-g SAR (W/kg)		Plot No.
								Tune-up limit	Meas.	Meas.	Scaled	
Main Ant.1	Head	Rel.99 RMC	Off	0	Left Touch	9400	1880.0	24.5	23.3	0.270	0.355	4
					Left Tilt	9400	1880.0	24.5	23.3	0.163	0.214	
					Right Touch	9400	1880.0	24.5	23.3	0.156	0.205	
					Right Tilt	9400	1880.0	24.5	23.3	0.128	0.168	
	Body-worn	Rel.99 RMC	Off	15	Rear	9400	1880.0	24.5	23.3	0.233	0.307	5
					Front	9400	1880.0	24.5	23.3	0.175	0.230	
	Hotspot	Rel.99 RMC	Off	10	Rear	9400	1880.0	24.5	23.3	0.517	0.680	6
					Front	9400	1880.0	24.5	23.3	0.290	0.382	
					Edge 2	9400	1880.0	24.5	23.3	0.111	0.146	
					Edge 3	9400	1880.0	24.5	23.3	0.348	0.458	
					Edge 4	9400	1880.0	24.5	23.3	0.296	0.389	

### 10.3. W-CDMA Band V

Antenna	RF Exposure Conditions	Mode	PWR Back-off	Dist. (mm)	Test Position	Ch #.	Freq. (MHz)	Power (dBm)		1-g SAR (W/kg)		Plot No.
								Tune-up limit	Meas.	Meas.	Scaled	
Main Ant.1	Head	Rel.99 RMC	N/A	0	Left Touch	4183	836.6	25.5	24.7	0.137	0.164	
					Left Tilt	4183	836.6	25.5	24.7	0.083	0.100	
					Right Touch	4183	836.6	25.5	24.7	0.164	0.196	7
					Right Tilt	4183	836.6	25.5	24.7	0.086	0.103	
	Body-worn	Rel.99 RMC	N/A	15	Rear	4183	836.6	25.5	24.7	0.259	0.310	8
					Front	4183	836.6	25.5	24.7	0.159	0.190	
	Hotspot	Rel.99 RMC	N/A	10	Rear	4183	836.6	25.5	24.7	0.482	0.577	9
					Front	4183	836.6	25.5	24.7	0.154	0.184	
					Edge 2	4183	836.6	25.5	24.7	0.203	0.243	
					Edge 3	4183	836.6	25.5	24.7	0.154	0.184	
					Edge 4	4183	836.6	25.5	24.7	0.083	0.100	

### 10.4. LTE Band 2(20MHz Bandwidth)

Antenna	RF Exposure Conditions	Mode	PWR Back-off	Dist. (mm)	Test Position	Ch #.	Freq. (MHz)	RB Allocation	RB offset	Power (dBm)		1-g SAR (W/kg)		Plot No.
										Tune-up limit	Meas.	Meas.	Scaled	
Main 1	Head	QPSK	Off	0	Left Touch	19100	1900.0	1	0	25.0	24.3	0.296	0.346	10
								50	0	24.0	23.2	0.258	0.311	
					Left Tilt	19100	1900.0	1	0	25.0	24.3	0.147	0.172	
								50	0	24.0	23.2	0.123	0.148	
					Right Touch	19100	1900.0	1	0	25.0	24.3	0.165	0.193	
								50	0	24.0	23.2	0.146	0.176	
					Right Tilt	19100	1900.0	1	0	25.0	24.3	0.118	0.138	
								50	0	24.0	23.2	0.108	0.130	
	Body-worn	QPSK	Off	15	Rear	19100	1900.0	1	0	25.0	24.3	0.318	0.371	11
								50	0	24.0	23.2	0.277	0.334	
					Front	19100	1900.0	1	0	25.0	24.3	0.225	0.263	
								50	0	24.0	23.2	0.193	0.233	
	Hotspot	QPSK	On	10	Rear	19100	1900.0	1	0	22.0	21.5	0.362	0.404	12
								50	50	22.0	21.3	0.416	0.485	
					Front	19100	1900.0	1	0	22.0	21.5	0.182	0.203	
								50	50	22.0	21.3	0.210	0.245	
					Edge 2	19100	1900.0	1	0	22.0	21.5	0.068	0.076	
								50	50	22.0	21.3	0.080	0.093	
					Edge 3	19100	1900.0	1	0	22.0	21.5	0.200	0.223	
								50	50	22.0	21.3	0.233	0.272	
					Edge 4	19100	1900.0	1	0	22.0	21.5	0.184	0.205	
								50	50	22.0	21.3	0.210	0.245	

### 10.5. LTE Band 5 (10MHz Bandwidth)

Antenna	RF Exposure Conditions	Mode	PWR Back-off	Dist. (mm)	Test Position	Ch #.	Freq. (MHz)	RB Allocation	RB offset	Power (dBm)		1-g SAR (W/kg)		Plot No.
										Tune-up limit	Meas.	Meas.	Scaled	
Main Ant.1	Head	QPSK	N/A	0	Left Touch	20525	836.5	1	0	25.5	24.7	0.120	0.144	
								25	0	24.5	23.6	0.101	0.123	
					Left Tilt	20525	836.5	1	0	25.5	24.7	0.073	0.088	
								25	0	24.5	23.6	0.060	0.073	
					Right Touch	20525	836.5	1	0	25.5	24.7	0.142	0.170	13
								25	0	24.5	23.6	0.124	0.151	
					Right Tilt	20525	836.5	1	0	25.5	24.7	0.069	0.082	
								25	0	24.5	23.6	0.059	0.072	
	Body-worn	QPSK	N/A	15	Rear	20525	836.5	1	0	25.5	24.7	0.160	0.192	14
								25	0	24.5	23.6	0.126	0.154	
					Front	20525	836.5	1	0	25.5	24.7	0.136	0.163	
								25	0	24.5	23.6	0.108	0.132	
	Hotspot	QPSK	N/A	10	Rear	20525	836.5	1	0	25.5	24.7	0.199	0.238	15
								25	0	24.5	23.6	0.166	0.202	
					Front	20525	836.5	1	0	25.5	24.7	0.125	0.150	
								25	0	24.5	23.6	0.103	0.126	
					Edge 2	20525	836.5	1	0	25.5	24.7	0.184	0.220	
								25	0	24.5	23.6	0.152	0.185	
					Edge 3	20525	836.5	1	0	25.5	24.7	0.124	0.148	
								25	0	24.5	23.6	0.106	0.129	
					Edge 4	20525	836.5	1	0	25.5	24.7	0.084	0.100	
								25	0	24.5	23.6	0.065	0.079	

### 10.6. LTE Band 17 (10MHz Bandwidth)

Antenna	RF Exposure Conditions	Mode	PWR Back-off	Dist. (mm)	Test Position	Ch #.	Freq. (MHz)	RB Allocation	RB offset	Power (dBm)		1-g SAR (W/kg)		Plot No.
										Tune-up limit	Meas.	Meas.	Scaled	
Main Ant.1	Head	QPSK	N/A	0	Left Touch	23790	710.0	1	0	25.5	24.4	0.080	0.104	
								25	0	24.5	23.2	0.063	0.084	
					Left Tilt	23790	710.0	1	0	25.5	24.4	0.051	0.066	
								25	0	24.5	23.2	0.041	0.054	
					Right Touch	23790	710.0	1	0	25.5	24.4	0.082	0.107	16
								25	0	24.5	23.2	0.068	0.091	
	Right Tilt	23790	710.0	1	0	25.5	24.4	0.047	0.062					
				25	0	24.5	23.2	0.039	0.052					
	Body-worn	QPSK	N/A	15	Rear	23790	710.0	1	0	25.5	24.4	0.199	0.259	17
								25	0	24.5	23.2	0.166	0.222	
					Front	23790	710.0	1	0	25.5	24.4	0.088	0.115	
								25	0	24.5	23.2	0.075	0.100	
	Hotspot	QPSK	N/A	10	Rear	23790	710.0	1	0	25.5	24.4	0.239	0.311	18
								25	0	24.5	23.2	0.196	0.262	
					Front	23790	710.0	1	0	25.5	24.4	0.087	0.113	
								25	0	24.5	23.2	0.071	0.095	
					Edge 2	23790	710.0	1	0	25.5	24.4	0.086	0.112	
								25	0	24.5	23.2	0.077	0.103	
					Edge 3	23790	710.0	1	0	25.5	24.4	0.046	0.060	
								25	0	24.5	23.2	0.038	0.050	
					Edge 4	23790	710.0	1	0	25.5	24.4	0.072	0.094	
								25	0	24.5	23.2	0.067	0.090	

### 10.7. LTE Band 41 (20MHz Bandwidth)

Antenna	RF Exposure Conditions	Mode	PWR Back-off	Dist. (mm)	Test Position	Ch #.	Freq. (MHz)	RB Allocation	RB offset	Power (dBm)		1-g SAR (W/kg)		Plot No.
										Tune-up limit	Meas.	Meas.	Scaled	
Main Ant.2	Head	QPSK	N/A	0	Left Touch	41490	2680.0	1	0	25.0	23.9	0.112	0.145	
								50	0	24.0	22.8	0.128	0.171	
					Left Tilt	41490	2680.0	1	0	25.0	23.9	0.166	0.215	
								50	0	24.0	22.8	0.132	0.176	
					Right Touch	41490	2680.0	1	0	25.0	23.9	0.232	0.301	19
								50	0	24.0	22.8	0.195	0.260	
					Right Tilt	41490	2680.0	1	0	25.0	23.9	0.082	0.106	
								50	0	24.0	22.8	0.044	0.058	
	Body-w orn	QPSK	N/A	15	Rear	41490	2680.0	1	0	25.0	23.9	0.184	0.238	
								50	0	24.0	22.8	0.170	0.226	
					Front	41490	2680.0	1	0	25.0	23.9	0.248	0.321	
								50	0	24.0	22.8	0.275	0.366	20
	Hotspot	QPSK	N/A	10	Rear	41490	2680.0	1	0	25.0	23.9	0.456	0.591	
								50	0	24.0	22.8	0.434	0.578	
					Front	39750	2506.0	1	0	25.0	23.5	0.521	0.738	
								50	0	24.0	22.5	0.356	0.502	
						40185	2549.5	1	0	25.0	23.1	0.529	0.813	
								50	0	24.0	22.1	0.394	0.614	
						40620	2593.0	1	0	25.0	23.1	0.566	0.875	21
								50	0	24.0	22.2	0.421	0.643	
					41055	2636.5	1	0	25.0	23.6	0.540	0.740		
							50	0	24.0	22.6	0.396	0.546		
						41490	2680.0	1	0	25.0	23.9	0.659	0.854	
								50	0	24.0	22.8	0.558	0.743	
					100	0	24.0	22.7	0.510	0.691				
					Edge 2	39750	2506.0	1	0	25.0	23.5	0.431	0.611	
								50	0	24.0	22.5	0.313	0.441	
						40185	2549.5	1	0	25.0	23.1	0.425	0.653	
								50	0	24.0	22.1	0.302	0.471	
						40620	2593.0	1	0	25.0	23.1	0.420	0.650	
50								0	24.0	22.2	0.280	0.428		
41055						2636.5	1	0	25.0	23.6	0.458	0.627		
	50	0	24.0	22.6			0.325	0.448						
41490	2680.0	1	0	25.0		23.9	0.542	0.703						
		50	0	24.0		22.8	0.494	0.658						
100	0	24.0	22.7	0.393	0.532									
Edge 3	41490	2680.0	1	0	25.0	23.9	0.106	0.137						
			50	0	24.0	22.8	0.122	0.163						

### 10.8. Wi-Fi (DTS Band)

Frequency Band	Mode	RF Exposure Conditions	PWR Back-off	Dist. (mm)	Test Position	Ch #.	Freq. (MHz)	Area Scan Max. SAR (W/kg)	Duty Cycle (%)	Power (dBm)		1-g SAR (W/kg)		Note	Plot No.
										Tune-up limit	Meas.	Meas.	Scaled		
2.4GHz	802.11b 1 Mbps	Head	On	0	Left Touch	11	2462.0	0.197	99.6%	12.0	11.4				
					Left Tilt	11	2462.0	0.243	99.6%	12.0	11.4	0.149	0.171	1	22
					Right Touch	11	2462.0	0.102	99.6%	12.0	11.4				
					Right Tilt	11	2462.0	0.089	99.6%	12.0	11.4				
	Body-worn	Off	15	Rear	11	2462.0	0.047	99.6%	18.0	16.8	0.038	0.050	1	23	
				Front	11	2462.0	0.030	99.6%	18.0	16.8					
	Hotspot	Off	10	Rear	11	2462.0	0.142	99.6%	18.0	16.8	0.106	0.140	1	24	
				Front	11	2462.0	0.108	99.6%	18.0	16.8					
				Edge 1	11	2462.0	0.098	99.6%	18.0	16.8					
				Edge 2	11	2462.0	0.024	99.6%	18.0	16.8					

**Note(s):**

1. When the Highest reported SAR is  $\leq 0.4$  or  $1.0$  W/kg (1-g or 10-g respectively). Therefore, further SAR measurements within this exposure condition are not required.
2. Highest reported SAR is  $> 0.4$  or  $1.0$  W/kg (1-g or 10-g respectively). Due to the highest reported SAR for this test position, other test positions in this exposure condition were evaluated until a SAR  $\leq 0.8$  or  $2.0$  W/kg (1-g or 10-g respectively) was reported.
3. Testing for a second channel was required because the reported SAR for this test position was  $> 0.8$  or  $2.0$  W/kg (1-g or 10-g respectively).
4. Additional testing required in order satisfying FCC simultaneous transmission limit criteria.
5. SAR testing is not required for OFDM mode(s) when the highest reported SAR for DSSS is adjusted by the ratio of OFDM to DSSS specified maximum output power and the adjusted SAR is  $\leq 1.2$  W/kg.

### 10.9. Bluetooth

Frequency Band	Mode	RF Exposure Conditions	Dist. (mm)	Test Position	Ch #.	Freq. (MHz)	Duty Cycle (%)	Power (dBm)		1-g SAR (W/kg)		Plot No.
								Tune-up limit	Meas.	Meas.	Scaled	
2.4GHz	GFSK	Head	0	Left Touch	39	2441.0	76.8%	10.0	9.3	0.086	0.131	25
				Left Tilt	39	2441.0	76.8%	10.0	9.3	0.095	0.145	
				Right Touch	39	2441.0	76.8%	10.0	9.3	0.042	0.063	
				Right Tilt	39	2441.0	76.8%	10.0	9.3	0.041	0.062	

#### Standalone SAR Test Exclusion Considerations & Estimated SAR

The 1-g and 10-g SAR test exclusion thresholds for 100 MHz to 6 GHz at test separation distances ≤ 50 mm are determined by:

$[(\text{max. power of channel, including tune-up tolerance, mW}) / (\text{min. test separation distance, mm})] \cdot [\sqrt{f(\text{GHz})}] \leq 3.0$ , for 1-g SAR and ≤ 7.5 for 10-g extremity SAR, where

- $f_{(\text{GHz})}$  is the RF channel transmit frequency in GHz
- Power and distance are rounded to the nearest mW and mm before calculation
- The result is rounded to one decimal place for comparison

The test exclusions are applicable only when the minimum test separation distance is ≤ 50 mm and for transmission frequencies between 100 MHz and 6 GHz. When the minimum test separation distance is < 5 mm, a distance of 5 mm is applied to determine SAR test exclusion.

When the standalone SAR test exclusion is applied to an antenna that transmits simultaneously with other antennas, the standalone SAR must be estimated according to following to determine simultaneous transmission SAR test exclusion:

- $(\text{max. power of channel, including tune-up tolerance, mW}) / (\text{min. test separation distance, mm}) \cdot [\sqrt{f_{(\text{GHz})}/x}] \text{ W/kg}$  for test separation distances ≤ 50 mm; where  $x = 7.5$  for 1-g SAR, and  $x = 18.75$  for 10-g SAR.
- 0.4 W/kg for 1-g SAR and 1.0 W/kg for 10-g SAR, when the test separation distances is > 50 mm.

RF Air interface	RF Exposure Conditions	Frequency (GHz)	Max. tune-up tolerance Power		Min. test separation distance (mm)	SAR test exclusion Result*	Estimated 1-g SAR (W/kg)
			(dBm)	(mW)			
Bluetooth	Body-worn	2.480	10.0	10	15	1.0	0.140
	Hotspot	2.480	10.0	10	10	1.6	0.210

**Conclusion:**

\*: The computed value is ≤ 3; therefore, this qualifies for Standalone SAR test exclusion.

## 11. SAR Measurement Variability

In accordance with published RF Exposure KDB 865664 D01 SAR measurement 100 MHz to 6 GHz. These additional measurements are repeated after the completion of all measurements requiring the same head or body tissue-equivalent medium in a frequency band. The test device should be returned to ambient conditions (normal room temperature) with the battery fully charged before it is re-mounted on the device holder for the repeated measurement(s) to minimize any unexpected variations in the repeated results.

- 1) Repeated measurement is not required when the original highest measured SAR is  $<0.8$  or  $2$  W/kg (1-g or 10-g respectively); steps 2) through 4) do not apply.
- 2) When the original highest measured SAR is  $\geq 0.8$  or  $2$  W/kg (1-g or 10-g respectively), repeat that measurement once.
- 3) Perform a second repeated measurement only if the **ratio of largest to smallest SAR** for the original and first repeated measurements is  $> 1.20$  or when the original or repeated measurement is  $\geq 1.45$  or  $3.6$  W/kg (~ 10% from the 1-g or 10-g respective SAR limit).
- 4) Perform a third repeated measurement only if the original, first, or second repeated measurement is  $\geq 1.5$  or  $3.75$  W/kg (1-g or 10-g respectively) and the ratio of largest to smallest SAR for the original, first and second repeated measurements is  $> 1.20$ .

### Peak spatial-average (1g of tissue)

Frequency Band (MHz)	Air Interface	RF Exposure Conditions	Test Position	Repeated SAR (Yes/No)	Highest Measured SAR (W/kg)	Repeated Measured SAR (W/kg)	Largest to Smallest SAR Ratio
750	LTE Band 17	Hotspot	Rear	No	0.239	N/A	N/A
850	W-CDMA Band V	Hotspot	Rear	No	0.482	N/A	N/A
	LTE Band 5	Hotspot	Rear	No	0.199	N/A	N/A
1900	LTE Band 2	Hotspot	Rear	No	0.416	N/A	N/A
	GSM 1900	Hotspot	Rear	No	0.262	N/A	N/A
	W-CDMA Band II	Hotspot	Rear	No	0.517	N/A	N/A
2450	Wi-Fi 802.11b/g/n	Head	Left Tilt	No	0.149	N/A	N/A
	Bluetooth	Head	Left Tilt	No	0.095	N/A	N/A
2600	LTE Band 41	Hotspot	Front	No	0.659	N/A	N/A

### Note(s):

Second Repeated Measurement is not required since the ratio of the largest to smallest SAR for the original and first repeated measurement is not  $> 1.20$ .



## 12. DUT Holder Perturbations

In accordance with published DUT Holder Perturbations in Oct.2016 TCB workshop,

When Highest reported SAR is over 1.2 or 3.0 W/kg (1-g or 10-g respectively), Holder perturbation verification is required for each antenna, using the highest configuration among all applicable frequency bands. Both Head test and Body test (Edge 1-4 sides) are evaluated with DUT holder. Both Front and Rear sides are evaluated without DUT holder. (Details of test setup are refer to Appendix A.)

So we are only consider about Head test and Body test (Edge 1-4 sides).

All highest SAR level is not over 1.2 or 3.0 W/kg (1-g or 10-g respectively) in All bands.

Please refer to Section 10. **So DUT Holder perturbations verification are not required.**

## 13. Simultaneous Transmission SAR Analysis

### Simultaneous Transmission Condition

RF Exposure Condition	Item	Capable Transmit Configurations		
Head	1	GSM (Voice)	+	DTS
	2	GSM (Voice)	+	BT
	3	W-CDMA	+	DTS
	4	W-CDMA	+	BT
	5	LTE	+	DTS
	6	LTE	+	BT
Body worn	1	GSM (Voice/GPRS)	+	DTS
	2	GSM (Voice/GPRS)	+	BT
	3	W-CDMA	+	DTS
	4	W-CDMA	+	BT
	5	LTE	+	DTS
	6	LTE	+	BT
Hotspot & Phablet 10-g	7	GSM (GPRS)	+	DTS
	8	GSM (GPRS)	+	BT
	9	W-CDMA	+	DTS
	10	W-CDMA	+	BT
	11	LTE	+	DTS
	12	LTE	+	BT
Notes:				
<ol style="list-style-type: none"> <li>1. DTS supports Wi-Fi Direct, Hotspot and VoIP.</li> <li>2. W-CDMA and LTE support Hotspot and VoIP.</li> <li>3. DTS Radio cannot transmit simultaneously with Bluetooth Radio.</li> <li>4. BT tethering is consider about each RF exposure conditions.</li> </ol>				

## Simultaneous transmission SAR test exclusion considerations

KDB 447498 D01 General RF Exposure Guidance provides two procedures for determining simultaneous transmission SAR test exclusion: Sum of SAR and SAR to Peak Location Ratio (SPLSR)

### Sum of SAR

To qualify for simultaneous transmission SAR test exclusion based upon Sum of SAR the sum of the reported standalone SARs for all simultaneously transmitting antennas shall be below the applicable standalone SAR limit. If the sum of the SARs is above the applicable limit then simultaneous transmission SAR test exclusion may still apply if the requirements of the SAR to Peak Location Ratio (SPLSR) evaluation are met.

### SAR to Peak Location Ratio (SPLSR)

KDB 447498 D01 General RF Exposure Guidance explains how to calculate the SAR to Peak Location Ratio (SPLSR) between pairs of simultaneously transmitting antennas:

$$SPLSR = (SAR_1 + SAR_2)^{1.5} / R_i$$

Where:

**SAR<sub>1</sub>** is the highest reported or estimated SAR for the first of a pair of simultaneous transmitting antennas, in a specific test operating mode and exposure condition

**SAR<sub>2</sub>** is the highest reported or estimated SAR for the second of a pair of simultaneous transmitting antennas, in the same test operating mode and exposure condition as the first

**R<sub>i</sub>** is the separation distance between the pair of simultaneous transmitting antennas. When the SAR is measured, for both antennas in the pair, it is determined by the actual x, y and z coordinates in the 1-g SAR for each SAR peak location, based on the extrapolated and interpolated result in the zoom scan measurement, using the formula of

$$[(x_1 - x_2)^2 + (y_1 - y_2)^2 + (z_1 - z_2)^2]$$

In order for a pair of simultaneous transmitting antennas with the sum of 1-g SAR > 1.6 W/kg to qualify for exemption from Simultaneous Transmission SAR measurements, it has to satisfy the condition of:

$$(SAR_1 + SAR_2)^{1.5} / R_i \leq 0.04$$

When an individual antenna transmits at on two bands simultaneously, the sum of the highest *reported* SAR for the frequency bands should be used to determine **SAR<sub>1</sub>**, or **SAR<sub>2</sub>**. When SPLSR is necessary, the smallest distance between the peak SAR locations for the antenna pair with respect to the peaks from each antenna should be used.

The antennas in all antenna pairs that do not qualify for simultaneous transmission SAR test exclusion must be tested for SAR compliance, according to the enlarged zoom scan and volume scan post-processing procedures in KDB Publication 865664 D01

The antennas for the unlicensed transmitters are closely situated. As a result, the associated SAR hotspots are also closely situated. Some of the sum of SAR calculations yielded results over 1.6 W/kg. The SPLSR calculations for these situations were performed by treating the unlicensed SAR values as a single transmitter. The most conservative distance between all the unlicensed hotspots to the licensed hotspot was used for the value of *d* in the SPLSR calculation.

### Simultaneous transmission SAR measurement

When simultaneous transmission SAR measurements are required in different frequency bands not covered by a single probe calibration point then separate tests for each frequency band are performed. The tests are performed using enlarged zoom scans which are processed, by means of superposition, using the DASY5 volume scan postprocessing procedures to determine the 1-g SAR for the aggregate SAR distribution.

The spatial resolution used for all enlarged zoom scans is the same as used for the most stringent zoom scans. I.E. the scan parameters required for the highest frequency assessed are used for all enlarged zoom scans. The scans cover the complete area of the device to ensure all transmitting antennas and radiating structures are assessed.

DASY5 provides the ability to perform Multiband Evaluations according to the latest standards using the Volume Scan job as well as appropriate routines for the Post-processing.

In order to extract and process measurements within different frequency bands, the SEMCAD X Post-processor performs the combination and subsequent superposition of these measurement data via DASY5= Combined MultiBand Averaged SAR.

Combined Multi Band Averaged SAR allows - in addition to the data extraction - an evaluation of the 1 g, 10 g and/or arbitrary averaged mass SAR.

Power Scaling Factor is used to allow the volume scans to be scaled by a value other than "1", this is important when the results need to be scaled to different maximum power levels. The Power Scaling Factor is applied to each individual point of the scan. When power scaling is used in multi-band combinations the scaling factor is applied to each individual point of the first scan, the second factor is then applied to each individual point of the second scan and so on. The scans are then combined.

### 13.1. Sum of the SAR for WWAN & Wi-Fi & BT

RF Exposure	Test Position	Standalone SAR (W/kg)			① + ② WWAN + DTS		① + ③ WWAN + BT	
		① WWAN	② DTS	③ BT	∑ 1-g SAR (mW/g)	SPLSR (Yes/No)	∑ 1-g SAR (mW/g)	SPLSR (Yes/No)
Head	All position	0.355	0.171	0.145	0.526	No	0.500	No
Body-Worn	All position	0.371	0.050	0.140	0.421	No	0.511	No
Hotspot	All position	0.875	0.140	0.210	1.015	No	1.085	No

**Conclusion:**

Simultaneous transmission SAR measurement (Volume Scan) is not required because the either sum of the 1-g SAR is < 1.6 W/kg or the SPLSR is ≤ 0.04 for all circumstances that require SPLSR calculation.

## **Appendixes**

**Refer to separated files for the following appendixes.**

**4788869688-S1V2 FCC Report SAR\_App A\_Photos & Ant. Locations**

**4788869688-S1V2 FCC Report SAR\_App B\_Highest SAR Test Plots**

**4788869688-S1V2 FCC Report SAR\_App C\_System Check Plots**

**4788869688-S1V2 FCC Report SAR\_App D\_SAR Tissue Ingredients**

**4788869688-S1V2 FCC Report SAR\_App E\_Probe Cal. Certificates**

**4788869688-S1V2 FCC Report SAR\_App F\_Dipole Cal. Certificates**

**END OF REPORT**