

### System Performance Check Report for D1750V2 - SN1125

Room Ambient Temperature: 23.0°C, Liquid Temperature: 22.0°C

#### Exposure Conditions

Frequency [MHz]	1750.000	TSL Permittivity	40.1
Group / UID	CW / 0--	TSL Conductivity [S/m]	1.33
Conversion Factor	7.9	Phantom Section / TSL	Flat / Head Simulating Liquid

#### DASY Configuration

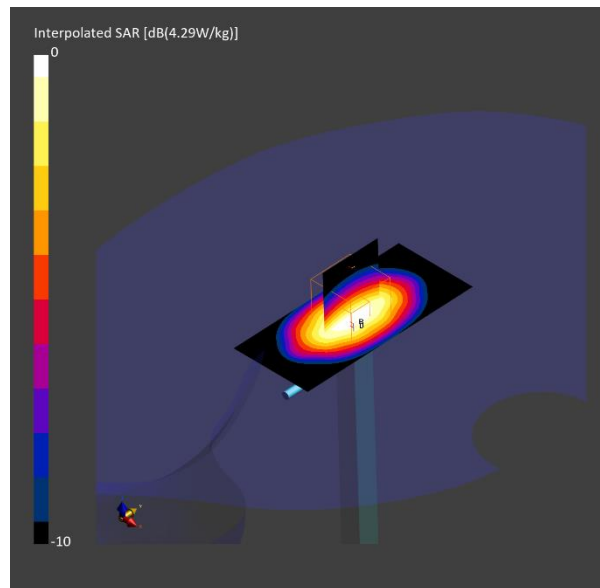
Probe   Calibration Date	EX3DV4 - SN7313   2024-02-21	Phantom	Twin-SAM V8.0 (30deg probe tilt)
DAE   Calibration Date	DAE4 Sn1447   2024-03-13	TSL Type	HBBL-600-10000
Software Version	16.4.0.5005		

#### Scans Setup

	Area Scan	Zoom Scan
Grid Extents [mm]	40.0 x 90.0	30.0 x 30.0 x 30.0
Grid Steps [mm]	10.0 x 15.0	6.0 x 6.0 x 1.5
Sensor Surface [mm]	3.0	1.4

#### Measurement Results

	Area Scan	Zoom Scan
psSAR1g [W/Kg]	3.43	3.44
psSAR10g [W/Kg]	1.83	1.85
Power Drift [dB]		0.00
Dist 3dB Peak [mm]		10.8
M2/M1 [%]		82.8



### System Performance Check Report for D1750V2 - SN1180

Room Ambient Temperature: 23.0°C, Liquid Temperature: 22.0°C

#### Exposure Conditions

Frequency [MHz]	1750.000	TSL Permittivity	39.7
Group / UID	CW / 0--	TSL Conductivity [S/m]	1.39
Conversion Factor	7.94	Phantom Section / TSL	Flat / Head Simulating Liquid

#### DASY Configuration

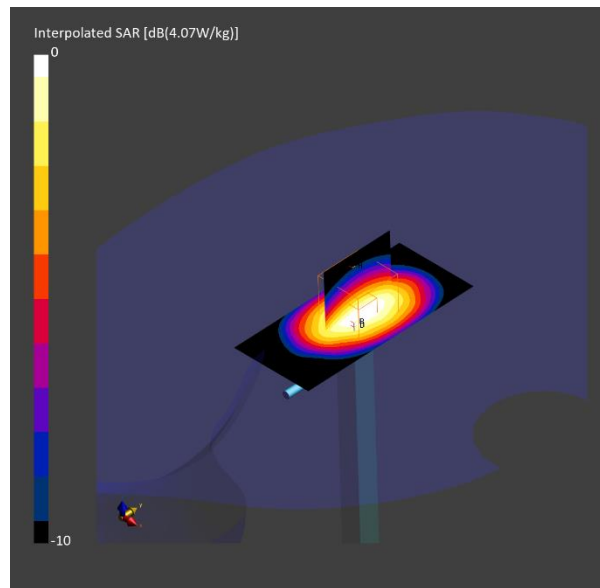
Probe   Calibration Date	EX3DV4 - SN7646   2024-03-15	Phantom	Twin-SAM V8.0 (30deg probe tilt)
DAE   Calibration Date	DAE4 Sn1670   2024-05-15	TSL Type	HBBL-600-10000
Software Version	16.4.0.5005		

#### Scans Setup

	Area Scan	Zoom Scan
Grid Extents [mm]	40.0 x 90.0	32.0 x 32.0 x 30.0
Grid Steps [mm]	10.0 x 15.0	6.0 x 6.0 x 1.5
Sensor Surface [mm]	3.0	1.4

#### Measurement Results

	Area Scan	Zoom Scan
psSAR1g [W/Kg]	3.30	<b>3.36</b>
psSAR10g [W/Kg]	1.80	<b>1.90</b>
Power Drift [dB]		-0.02
Dist 3dB Peak [mm]		10.8
M2/M1 [%]		84.6



### System Performance Check Report for D1900V2 - SN5d199

Room Ambient Temperature: 23.0°C, Liquid Temperature: 22.0°C

#### Exposure Conditions

Frequency [MHz]	1900.000	TSL Permittivity	39.5
Group / UID	CW / 0--	TSL Conductivity [S/m]	1.48
Conversion Factor	7.61	Phantom Section / TSL	Flat / Head Simulating Liquid

#### DASY Configuration

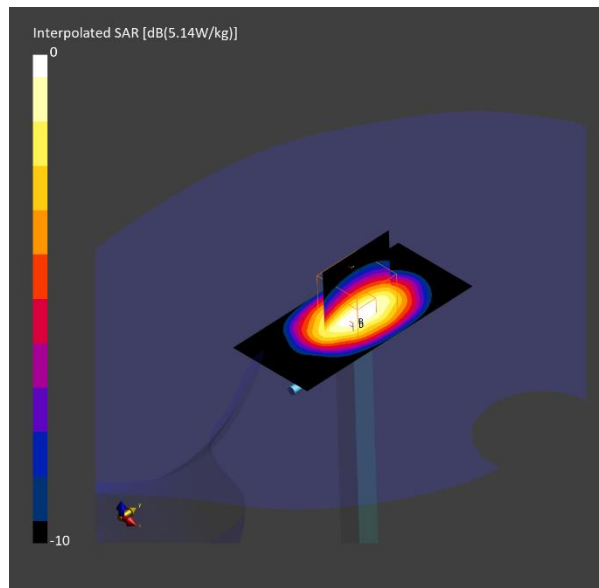
Probe   Calibration Date	EX3DV4 - SN7646   2024-03-15	Phantom	Twin-SAM V8.0 (30deg probe tilt)
DAE   Calibration Date	DAE4 Sn1670   2024-05-15	TSL Type	HBBL-600-10000
Software Version	16.4.0.5005		

#### Scans Setup

	Area Scan	Zoom Scan
Grid Extents [mm]	40.0 x 90.0	32.0 x 32.0 x 30.0
Grid Steps [mm]	10.0 x 15.0	6.0 x 6.0 x 1.5
Sensor Surface [mm]	3.0	1.4

#### Measurement Results

	Area Scan	Zoom Scan
psSAR1g [W/Kg]	4.08	<b>4.12</b>
psSAR10g [W/Kg]	2.11	<b>2.20</b>
Power Drift [dB]		-0.00
Dist 3dB Peak [mm]		9.6
M2/M1 [%]		84.1



## System Performance Check Report for CLA-13 - SN1015

Room Ambient Temperature: 23.0°C, Liquid Temperature: 22.0°C

### Exposure Conditions

Frequency [MHz]	13.000	TSL Permittivity	53.6
Group / UID	CW / 0--	TSL Conductivity [S/m]	0.724
Conversion Factor	16.85	Phantom Section / TSL	Flat / Head Simulating Liquid

### DASY Configuration

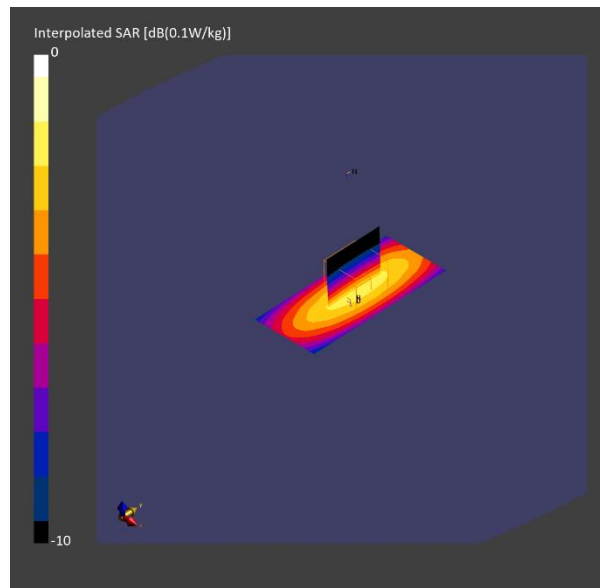
Probe   Calibration Date	EX3DV4 - SN7646   2024-03-15	Phantom	ELI V6.0 (20deg probe tilt)
DAE   Calibration Date	DAE4 Sn1670   2024-05-15	TSL Type	HBBL-600-10000
Software Version	16.4.0.5005		

### Scans Setup

	Area Scan	Zoom Scan
Grid Extents [mm]	40.0 x 90.0	32.0 x 32.0 x 30.0
Grid Steps [mm]	10.0 x 15.0	6.0 x 6.0 x 1.5
Sensor Surface [mm]	3.0	1.4

### Measurement Results

	Area Scan	Zoom Scan
psSAR1g [W/Kg]	0.058	<b>0.055</b>
psSAR10g [W/Kg]	0.047	<b>0.034</b>
Power Drift [dB]		0.01
Dist 3dB Peak [mm]		15.6
M2/M1 [%]		75.5



## System Performance Check Report for D1900V2 - SN5d190

Room Ambient Temperature: 23.0°C, Liquid Temperature: 22.0°C

### Exposure Conditions

Frequency [MHz]	1900.000	TSL Permittivity	40.5
Group / UID	CW / 0--	TSL Conductivity [S/m]	1.41
Conversion Factor	7.61	Phantom Section / TSL	Flat / Head Simulating Liquid

### DASY Configuration

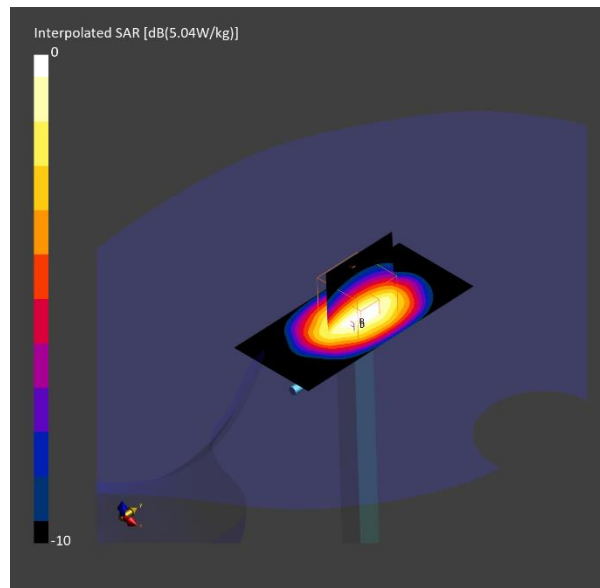
Probe   Calibration Date	EX3DV4 - SN7646   2024-03-15	Phantom	Twin-SAM V8.0 (30deg probe tilt)
DAE   Calibration Date	DAE4 Sn1670   2024-05-15	TSL Type	HBBL-600-10000
Software Version	16.4.0.5005		

### Scans Setup

	Area Scan	Zoom Scan
Grid Extents [mm]	40.0 x 90.0	32.0 x 32.0 x 30.0
Grid Steps [mm]	10.0 x 15.0	6.0 x 6.0 x 1.5
Sensor Surface [mm]	3.0	1.4

### Measurement Results

	Area Scan	Zoom Scan
psSAR1g [W/Kg]	4.02	<b>4.01</b>
psSAR10g [W/Kg]	2.09	<b>2.14</b>
Power Drift [dB]		0.02
Dist 3dB Peak [mm]		9.9
M2/M1 [%]		84.2



## System Performance Check Report for D5GHzV2 - SN1209

Room Ambient Temperature: 23.0°C, Liquid Temperature: 22.0°C

### Exposure Conditions

Frequency [MHz]	5600.000	TSL Permittivity	34.7
Group / UID	CW / 0--	TSL Conductivity [S/m]	4.95
Conversion Factor	4.57	Phantom Section / TSL	Flat / Head Simulating Liquid

### DASY Configuration

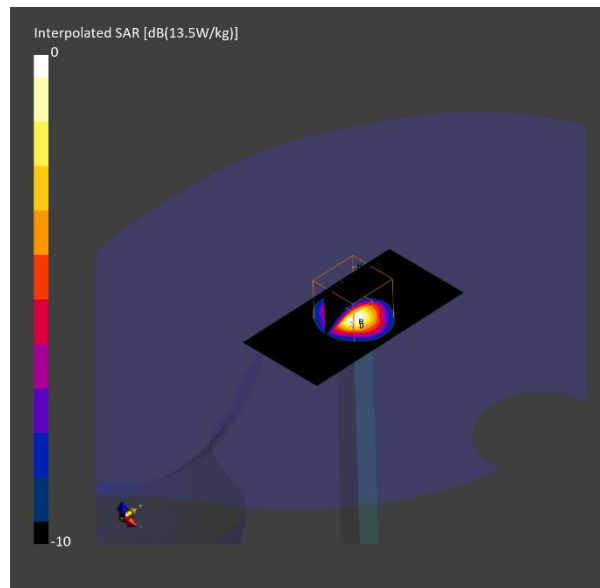
Probe   Calibration Date	EX3DV4 - SN7645   2023-09-20	Phantom	Twin-SAM V8.0 (30deg probe tilt)
DAE   Calibration Date	DAE4 Sn1671   2024-04-18	TSL Type	HBBL-600-10000
Software Version	16.4.0.5005		

### Scans Setup

	Area Scan	Zoom Scan
Grid Extents [mm]	40.0 x 80.0	22.0 x 22.0 x 22.0
Grid Steps [mm]	10.0 x 10.0	4.0 x 4.0 x 1.4
Sensor Surface [mm]	3.0	1.4

### Measurement Results

	Area Scan	Zoom Scan
psSAR1g [W/Kg]	8.32	<b>8.81</b>
psSAR10g [W/Kg]	2.36	<b>2.56</b>
Power Drift [dB]		0.00
Dist 3dB Peak [mm]		7.6
M2/M1 [%]		63.6



## System Performance Check Report for D750V3 - SN1205

Room Ambient Temperature: 23.0°C, Liquid Temperature: 22.0°C

### Exposure Conditions

Frequency [MHz]	750.000	TSL Permittivity	42.1
Group / UID	CW / 0--	TSL Conductivity [S/m]	0.891
Conversion Factor	7.92	Phantom Section / TSL	Flat / Head Simulating Liquid

### DASY Configuration

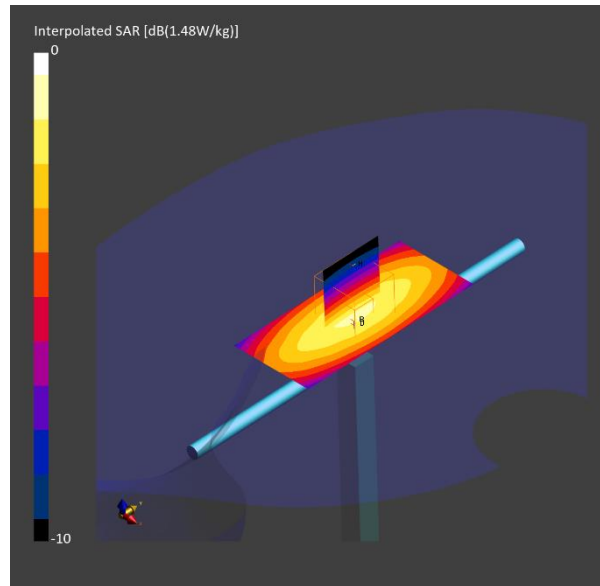
Probe   Calibration Date	EX3DV4 - SN7645   2023-09-20	Phantom	Twin-SAM V8.0 (30deg probe tilt)
DAE   Calibration Date	DAE4 Sn1671   2024-04-18	TSL Type	HBBL-600-10000
Software Version	16.4.0.5005		

### Scans Setup

	Area Scan	Zoom Scan
Grid Extents [mm]	40.0 x 90.0	30.0 x 30.0 x 30.0
Grid Steps [mm]	10.0 x 15.0	6.0 x 6.0 x 1.5
Sensor Surface [mm]	3.0	1.4

### Measurement Results

	Area Scan	Zoom Scan
psSAR1g [W/Kg]	0.918	<b>0.909</b>
psSAR10g [W/Kg]	0.613	<b>0.606</b>
Power Drift [dB]		-0.02
Dist 3dB Peak [mm]		> 15.0
M2/M1 [%]		88.8



## System Performance Check Report for D835V2 - SN4d174

Room Ambient Temperature: 23.0°C, Liquid Temperature: 22.0°C

### Exposure Conditions

Frequency [MHz]	835.000	TSL Permittivity	42.5
Group / UID	CW / 0--	TSL Conductivity [S/m]	0.919
Conversion Factor	8.38	Phantom Section / TSL	Flat / Head Simulating Liquid

### DASY Configuration

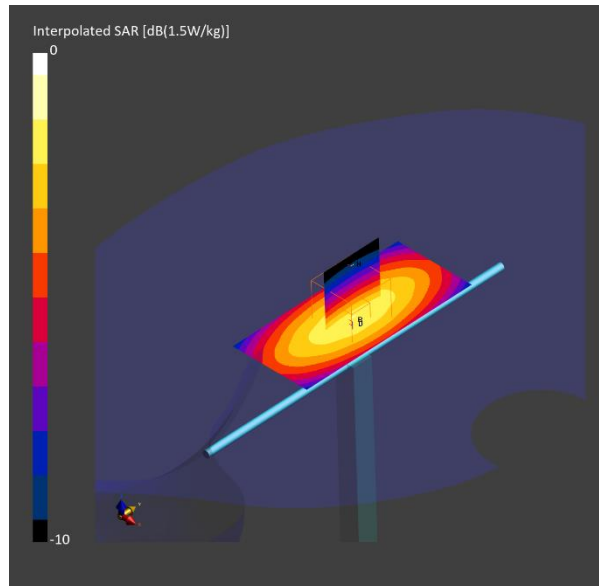
Probe   Calibration Date	EX3DV4 - SN7645   2023-09-20	Phantom	Twin-SAM V8.0 (30deg probe tilt)
DAE   Calibration Date	DAE4 Sn1671   2024-04-18	TSL Type	HBBL-600-10000
Software Version	16.4.0.5005		

### Scans Setup

	Area Scan	Zoom Scan
Grid Extents [mm]	40.0 x 90.0	30.0 x 30.0 x 30.0
Grid Steps [mm]	10.0 x 15.0	6.0 x 6.0 x 1.5
Sensor Surface [mm]	3.0	1.4

### Measurement Results

	Area Scan	Zoom Scan
psSAR1g [W/Kg]	0.885	<b>0.889</b>
psSAR10g [W/Kg]	0.584	<b>0.595</b>
Power Drift [dB]		-0.00
Dist 3dB Peak [mm]		21.3
M2/M1 [%]		89.4





### System Performance Check Report for D2450V2 - SN960

Room Ambient Temperature: 23.0°C, Liquid Temperature: 22.0°C

#### Exposure Conditions

Frequency [MHz]	2450.000	TSL Permittivity	38.9
Group / UID	CW / 0--	TSL Conductivity [S/m]	1.76
Conversion Factor	7.48	Phantom Section / TSL	Flat / Head Simulating Liquid

#### DASY Configuration

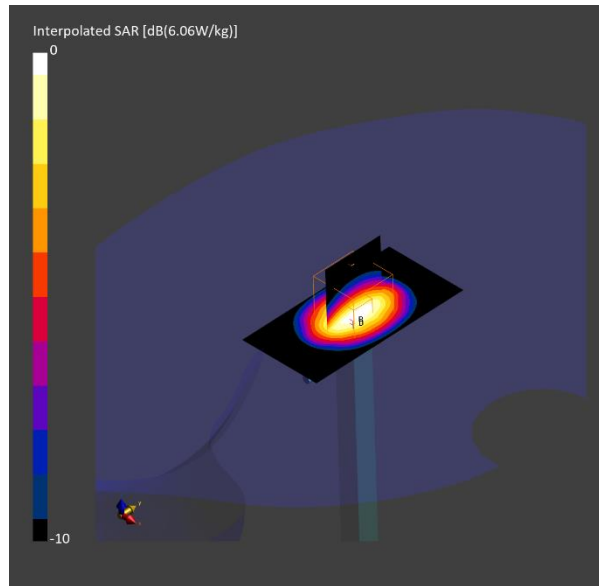
Probe   Calibration Date	EX3DV4 - SN7314   2024-05-23	Phantom	Twin-SAM V8.0 (30deg probe tilt)
DAE   Calibration Date	DAE4 Sn1668   2024-04-18	TSL Type	HBBL-600-10000
Software Version	16.4.0.5005		

#### Scans Setup

	Area Scan	Zoom Scan
Grid Extents [mm]	40.0 x 80.0	30.0 x 30.0 x 30.0
Grid Steps [mm]	10.0 x 10.0	5.0 x 5.0 x 1.5
Sensor Surface [mm]	3.0	1.4

#### Measurement Results

	Area Scan	Zoom Scan
psSAR1g [W/Kg]	4.60	<b>4.74</b>
psSAR10g [W/Kg]	2.14	<b>2.26</b>
Power Drift [dB]		0.03
Dist 3dB Peak [mm]		9.0
M2/M1 [%]		78.8



## System Performance Check Report for D2600V2 - SN1178

Room Ambient Temperature: 23.0°C, Liquid Temperature: 22.0°C

### Exposure Conditions

Frequency [MHz]	2600.000	TSL Permittivity	38.8
Group / UID	CW / 0--	TSL Conductivity [S/m]	1.90
Conversion Factor	7.28	Phantom Section / TSL	Flat / Head Simulating Liquid

### DASY Configuration

Probe   Calibration Date	EX3DV4 - SN7314   2024-05-23	Phantom	Twin-SAM V8.0 (30deg probe tilt)
DAE   Calibration Date	DAE4 Sn1668   2024-04-18	TSL Type	HBBL-600-10000
Software Version	16.4.0.5005		

### Scans Setup

	Area Scan	Zoom Scan
Grid Extents [mm]	40.0 x 80.0	30.0 x 30.0 x 30.0
Grid Steps [mm]	10.0 x 10.0	5.0 x 5.0 x 1.5
Sensor Surface [mm]	3.0	1.4

### Measurement Results

	Area Scan	Zoom Scan
psSAR1g [W/Kg]	5.22	5.29
psSAR10g [W/Kg]	2.36	2.46
Power Drift [dB]		0.01
Dist 3dB Peak [mm]		9.0
M2/M1 [%]		80.1

